

STATE OF NEW MEXICO
ENERGY, MINERALS AND NATURAL RESOURCES DEPARTMENT
OIL CONSERVATION DIVISION

APPLICATION OF MRC HAT MESA, LLC FOR
APPROVAL OF AN OVERLAPPING HORIZONTAL
WELL SPACING UNIT AND COMPULSORY POOLING,
LEA COUNTY, NEW MEXICO.

CASE NO. 23993

NOTICE OF REVISED EXHIBIT C-2

MRC Hat Mesa, LLC applicant in the above-referenced case, gives notice that it is filing the attached exhibit for acceptance into the record.

Revised Exhibit C-2 is a revised copy of the C-102s that shows the portion of the lateral, and dedicated acreage, for the pool indicated.

Respectfully submitted,

HOLLAND & HART LLP



Michael H. Feldewert
Adam G. Rankin
Paula M. Vance
Post Office Box 2208
Santa Fe, New Mexico 87504-2208
(505) 988-4421
(505) 983-6043 Facsimile
mfeldewert@hollandhart.com
agrarkin@hollandhart.com
pmvance@hollandhart.com

ATTORNEYS FOR MRC HAT MESA, LLC

District I
 1625 N. French Dr., Hobbs, NM 88240
 Phone: (575) 393-6161 Fax: (575) 393-0720
 District II
 811 S. First St., Artesia, NM 88210
 Phone: (575) 748-1283 Fax: (575) 748-9720
 District III
 1000 Rio Brazos Road, Aztec, NM 87410
 Phone: (505) 334-6178 Fax: (505) 334-6170
 District IV
 1220 S. St. Francis Dr., Santa Fe, NM 87505
 Phone: (505) 476-3460 Fax: (505) 476-3462

State of New Mexico
 Energy, Minerals & Natural Resources
 Department
 OIL CONSERVATION DIVISION
 1220 South St. Francis Dr.
 Santa Fe, NM 87505

FORM C-102
 Revised August 1, 2011
 Submit one copy to appropriate
 District Office

AMENDED REPORT

WELL LOCATION AND ACREAGE DEDICATION PLAT

¹ API Number	² Pool Code	³ Pool Name
	97927	WL-025 G-07 5213330F; Bone Springs
⁴ Property Code	⁵ Property Name	
	PAUL FLOWERS	
⁶ OGRID No.	⁷ Operator Name	⁸ Well Number
228937	MATADOR PRODUCTION COMPANY	111H
		⁹ Elevation
		3614'

¹⁰Surface Location

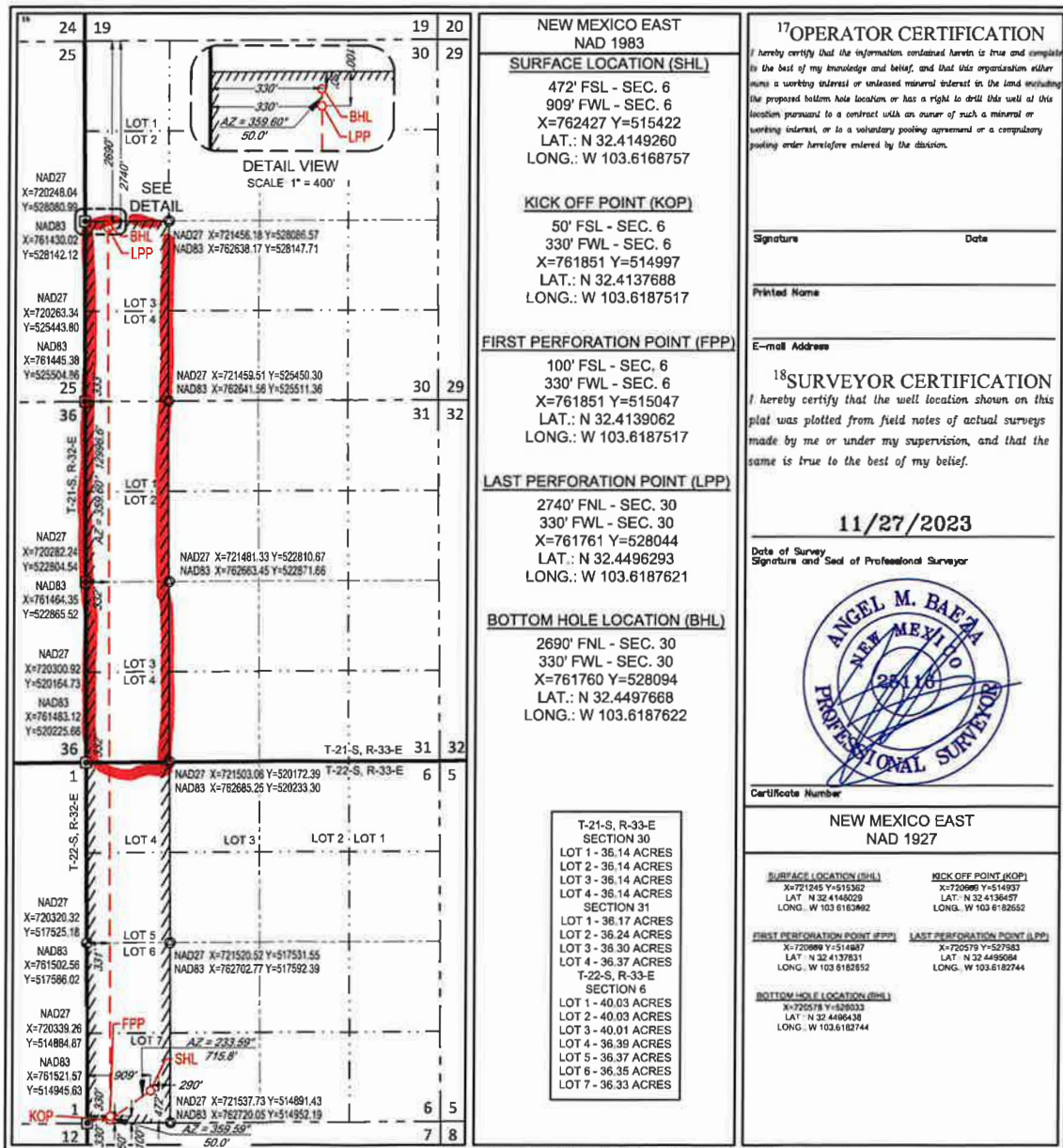
UL or lot no.	Section	Township	Range	Lot Idn	Feet from the	North/South line	Feet from the	East/West line	County
7	6	22-S	33-E	-	472'	SOUTH	909'	WEST	LEA

¹¹Bottom Hole Location If Different From Surface

UL or lot no.	Section	Township	Range	Lot Idn	Feet from the	North/South line	Feet from the	East/West line	County
3	30	21-S	33-E	-	2690'	NORTH	330'	WEST	LEA

¹² Dedicated Area	¹³ Joint or Infill	¹⁴ Consolidation Code	¹⁵ Order No.
217.36 -308.94			

No allowable will be assigned to this completion until all interests have been consolidated or a non-standard unit has been approved by the division.



District I
1625 N. French Dr., Hobbs, NM 88240
Phone: (575) 393-6161 Fax: (575) 393-0720
District II
811 S. First St., Artesia, NM 88210
Phone: (575) 748-1283 Fax: (575) 748-9720
District III
1000 Rio Brazos Road, Aztec, NM 87410
Phone: (505) 334-6178 Fax: (505) 334-6170
District IV
1220 S. St. Francis Dr., Santa Fe, NM 87505
Phone: (505) 476-3460 Fax: (505) 476-3462

State of New Mexico
Energy, Minerals & Natural Resources
Department
OIL CONSERVATION DIVISION
1220 South St. Francis Dr.
Santa Fe, NM 87505

FORM C-102
Revised August 1, 2011
Submit one copy to appropriate
District Office

AMENDED REPORT

WELL LOCATION AND ACREAGE DEDICATION PLAT

¹ API Number		² Pool Code 37870		³ Pool Name Legg; Bone Spring					
⁴ Property Code		⁵ Property Name PAUL FLOWERS		⁶ Well Number 111H					
⁷ GRID No. 228937		⁸ Operator Name MATADOR PRODUCTION COMPANY		⁹ Elevation 3614'					
¹⁰ Surface Location									
UL or lot no. 7	Section 6	Township 22-S	Range 33-E	Lot Idn -	Feet from the 472'	North/South line SOUTH	Feet from the 909'	East/West line WEST	County LEA
¹¹ Bottom Hole Location If Different From Surface									
UL or lot no. 3	Section 30	Township 21-S	Range 33-E	Lot Idn -	Feet from the 2690'	North/South line NORTH	Feet from the 330'	East/West line WEST	County LEA
¹² Dedicated Acres 145.44 398.94		¹³ Joint or Infill		¹⁴ Consolidation Code		¹⁵ Order No.			

No allowable will be assigned to this completion until all interests have been consolidated or a non-standard unit has been approved by the division.

Map details include: LOT 1, LOT 2, LOT 3, LOT 4, LOT 5, LOT 6, LOT 7, LOT 8. Coordinates for various points are listed, such as NAD27 X=720248.04 Y=526980.99 and NAD83 X=761430.02 Y=528142.12. A detail view shows a well location with a 330' radius and a 50.0' depth.

NEW MEXICO EAST NAD 1983

SURFACE LOCATION (SHL)
472' FSL - SEC. 6
909' FWL - SEC. 6
X=762427 Y=515422
LAT.: N 32.4149260
LONG.: W 103.6168757

KICK OFF POINT (KOP)
50' FSL - SEC. 6
330' FWL - SEC. 6
X=761851 Y=514997
LAT.: N 32.4137688
LONG.: W 103.6187517

FIRST PERFORATION POINT (FPP)
100' FSL - SEC. 6
330' FWL - SEC. 6
X=761851 Y=515047
LAT.: N 32.4139062
LONG.: W 103.6187517

LAST PERFORATION POINT (LPP)
2740' FNL - SEC. 30
330' FWL - SEC. 30
X=761761 Y=528044
LAT.: N 32.4496293
LONG.: W 103.6187621

BOTTOM HOLE LOCATION (BHL)
2690' FNL - SEC. 30
330' FWL - SEC. 30
X=761760 Y=528094
LAT.: N 32.4497668
LONG.: W 103.6187622

17 OPERATOR CERTIFICATION
I hereby certify that the information contained herein is true and complete to the best of my knowledge and belief, and that this organization either owns a working interest or undivided mineral interest in the land including the proposed bottom hole location, or has a right to drill this well at this location pursuant to a contract with an owner of such a mineral or working interest, or to a voluntary pooling agreement or a compulsory pooling order heretofore entered by the division.

Signature _____ Date _____
Printed Name _____
E-mail Address _____

18 SURVEYOR CERTIFICATION
I hereby certify that the well location shown on this plat was plotted from field notes of actual surveys made by me or under my supervision, and that the same is true to the best of my belief.

11/27/2023

Date of Survey _____
Signature and Seal of Professional Surveyor

Certificate Number _____

NEW MEXICO EAST
NAD 1927

SURFACE LOCATION (SHL) X=721245 Y=515362 LAT.: N 32.4148029 LONG.: W 103.6183892	KICK OFF POINT (KOP) X=720689 Y=514937 LAT.: N 32.4136457 LONG.: W 103.6182652
FIRST PERFORATION POINT (FPP) X=720689 Y=514987 LAT.: N 32.4137831 LONG.: W 103.6182952	LAST PERFORATION POINT (LPP) X=720579 Y=527983 LAT.: N 32.4485064 LONG.: W 103.6182744
BOTTOM HOLE LOCATION (BHL) X=720578 Y=528033 LAT.: N 32.4486438 LONG.: W 103.6182744	

District I
1625 N. French Dr., Hobbs, NM 88240
Phone: (575) 393-6161 Fax: (575) 393-0720
District II
811 S. First St., Artesia, NM 88210
Phone: (575) 748-1283 Fax: (575) 748-9720
District III
1000 Rio Brazos Road, Aztec, NM 87410
Phone: (505) 334-6178 Fax: (505) 334-6170
District IV
1220 S. St. Francis Dr., Santa Fe, NM 87505
Phone: (505) 476-3460 Fax: (505) 476-3462

State of New Mexico
Energy, Minerals & Natural Resources
Department
OIL CONSERVATION DIVISION
1220 South St. Francis Dr.
Santa Fe, NM 87505

FORM C-102
Revised August 1, 2011
Submit one copy to appropriate
District Office

AMENDED REPORT

WELL LOCATION AND ACREAGE DEDICATION PLAT

¹ API Number	² Pool Code	³ Pool Name
	97927	WC-025 G-07 S213330F; Bone Springs
⁴ Property Code	⁵ Property Name	
	PAUL FLOWERS	
⁶ OGRID No.	⁷ Operator Name	⁸ Well Number
228937	MATADOR PRODUCTION COMPANY	131H
		⁹ Elevation
		3614'

¹⁰ Surface Location									
UL or lot no.	Section	Township	Range	Lot Idn	Feet from the	North/South line	Feet from the	East/West line	County
7	6	22-S	33-E	-	442'	SOUTH	1019'	WEST	LEA

¹¹ Bottom Hole Location If Different From Surface									
UL or lot no.	Section	Township	Range	Lot Idn	Feet from the	North/South line	Feet from the	East/West line	County
3	30	21-S	33-E	-	2690'	NORTH	330'	WEST	LEA

¹² Dedicated Acres	¹³ Joint or Infill	¹⁴ Consolidation Code	¹⁵ Order No.
398.94			

No allowable will be assigned to this completion until all interests have been consolidated or a non-standard unit has been approved by the division.

217.36

**NEW MEXICO EAST
NAD 1983**

SURFACE LOCATION (SHL)
442' FSL - SEC. 6
1019' FWL - SEC. 6
X=762537 Y=515393
LAT.: N 32.4148431
LONG.: W 103.6165194

KICK OFF POINT (KOP)
50' FSL - SEC. 6
330' FWL - SEC. 6
X=761851 Y=514997
LAT.: N 32.4137688
LONG.: W 103.6187517

FIRST PERFORATION POINT (FPP)
100' FSL - SEC. 6
330' FWL - SEC. 6
X=761851 Y=515047
LAT.: N 32.4139062
LONG.: W 103.6187517

LAST PERFORATION POINT (LPP)
2740' FNL - SEC. 30
330' FWL - SEC. 30
X=761761 Y=528044
LAT.: N 32.4496293
LONG.: W 103.6187621

BOTTOM HOLE LOCATION (BHL)
2690' FNL - SEC. 30
330' FWL - SEC. 30
X=761760 Y=528094
LAT.: N 32.4497668
LONG.: W 103.6187622

¹⁷OPERATOR CERTIFICATION
I hereby certify that the information contained herein is true and complete to the best of my knowledge and belief, and that this organization either owns a working interest or unleased mineral interest in the land including the proposed bottom hole location or has a right to drill this well at this location pursuant to a contract with an owner of such a mineral or working interest, or to a voluntary pooling agreement or a compulsory pooling order heretofore entered by the division.

Signature _____ Date _____

Printed Name _____

E-mail Address _____

¹⁸SURVEYOR CERTIFICATION
I hereby certify that the well location shown on this plat was plotted from field notes of actual surveys made by me or under my supervision, and that the same is true to the best of my belief.

11/27/2023

Date of Survey
Signature and Seal of Professional Surveyor

Certificate Number _____

**NEW MEXICO EAST
NAD 1927**

SURFACE LOCATION (SHL) X=721355 Y=515332 LAT.: N 32.4147200 LONG.: W 103.6165330	KICK OFF POINT (KOP) X=720669 Y=514997 LAT.: N 32.4136457 LONG.: W 103.6162892
FIRST PERFORATION POINT (FPP) X=720660 Y=514967 LAT.: N 32.4137831 LONG.: W 103.6162652	LAST PERFORATION POINT (LPP) X=720579 Y=527983 LAT.: N 32.4495064 LONG.: W 103.6182744
BOTTOM HOLE LOCATION (BHL) X=720578 Y=528033 LAT.: N 32.4496438 LONG.: W 103.6182744	

District I
1625 N. French Dr., Hobbs, NM 88240
Phone: (575) 393-6161 Fax: (575) 393-0720
District II
811 S. First St., Artesia, NM 88210
Phone: (575) 748-1283 Fax: (575) 748-9720
District III
1000 Rio Brazos Road, Aztec, NM 87410
Phone: (505) 334-6178 Fax: (505) 334-6170
District IV
1220 S. St. Francis Dr., Santa Fe, NM 87505
Phone: (505) 476-3460 Fax: (505) 476-3462

State of New Mexico
Energy, Minerals & Natural Resources
Department
OIL CONSERVATION DIVISION
1220 South St. Francis Dr.
Santa Fe, NM 87505

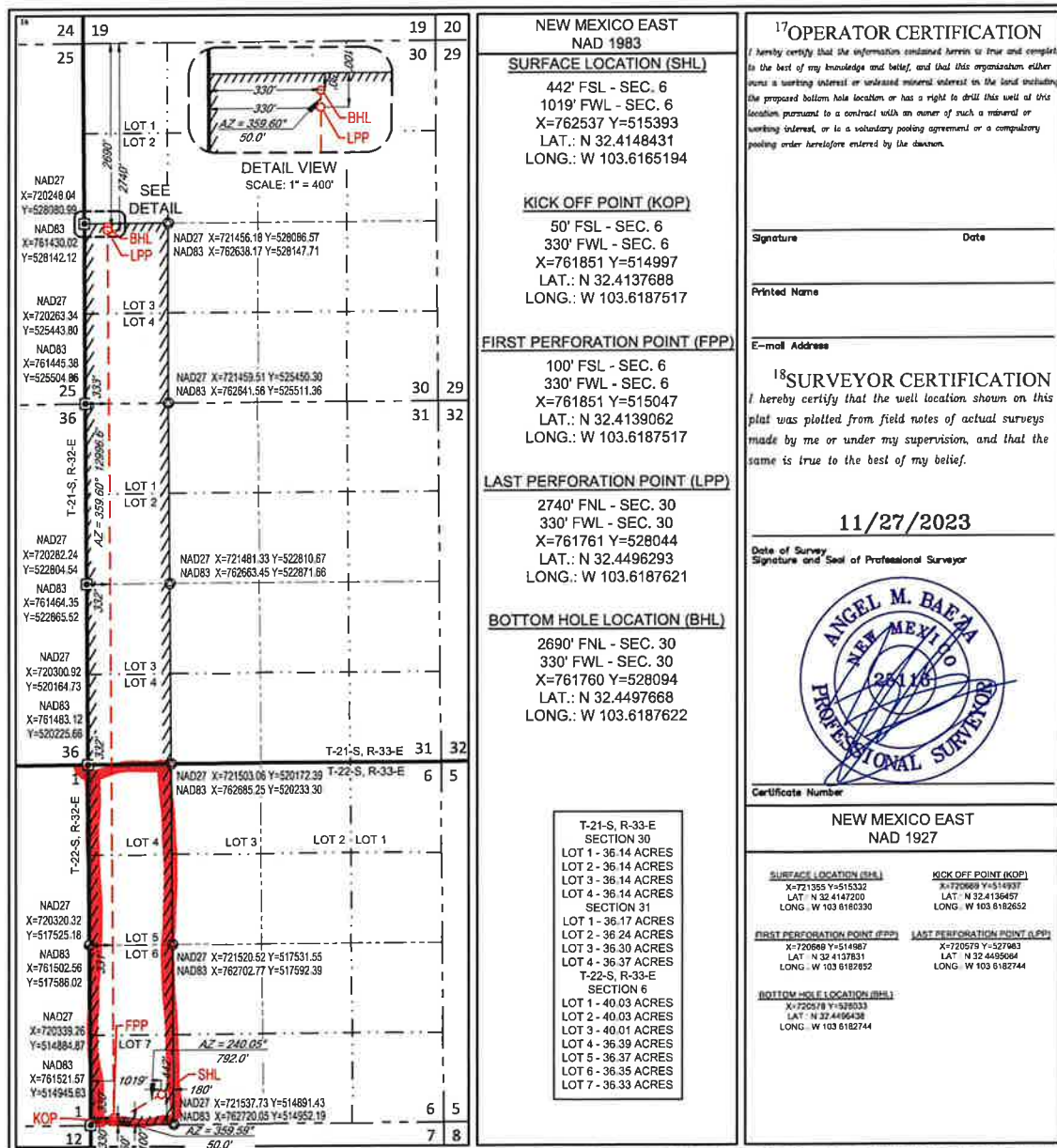
FORM C-102
Revised August 1, 2011
Submit one copy to appropriate
District Office

AMENDED REPORT

WELL LOCATION AND ACREAGE DEDICATION PLAT

1 API Number		2 Pool Code 37870		3 Pool Name Legs; Bone Spring					
4 Property Code		5 Property Name PAUL FLOWERS			6 Well Number 131H				
7 OGRID No. 228937		8 Operator Name MATADOR PRODUCTION COMPANY			9 Elevation 3614'				
10 Surface Location									
UL or lot no. 7	Section 6	Township 22-S	Range 33-E	Lot Idn -	Feet from the 442'	North/South line SOUTH	Feet from the 1019'	East/West line WEST	County LEA
11 Bottom Hole Location If Different From Surface									
UL or lot no. 3	Section 30	Township 21-S	Range 33-E	Lot Idn -	Feet from the 2690'	North/South line NORTH	Feet from the 330'	East/West line WEST	County LEA
12 Dedicated Acres 388.94		13 Joint or Infill		14 Consolidation Code		15 Order No.			

No allowable will be assigned to this completion until all interests have been consolidated or a non-standard unit has been approved by the division.



District I
1625 N. French Dr., Hobbs, NM 88240
Phone: (575) 393-6161 Fax: (575) 393-0720
District II
811 S. First St., Artesia, NM 88210
Phone: (575) 748-1283 Fax: (575) 748-9720
District III
1000 Rio Brazos Road, Aztec, NM 87410
Phone: (505) 334-6178 Fax: (505) 334-6170
District IV
1220 S. St. Francis Dr., Santa Fe, NM 87505
Phone: (505) 476-3460 Fax: (505) 476-3462

State of New Mexico
Energy, Minerals & Natural Resources
Department
OIL CONSERVATION DIVISION
1220 South St. Francis Dr.
Santa Fe, NM 87505

FORM C-102
Revised August 1, 2011
Submit one copy to appropriate
District Office

AMENDED REPORT

WELL LOCATION AND ACREAGE DEDICATION PLAT

¹ API Number	² Pool Code	³ Pool Name
	97927	WC-025 G-07 S213330F; Bone Spring
⁴ Property Code	⁵ Property Name	⁶ Well Number
	PAUL FLOWERS	151H
⁷ GRID No.	⁸ Operator Name	⁹ Elevation
228937	MATADOR PRODUCTION COMPANY	3614'

¹⁰Surface Location

UL or lot no.	Section	Township	Range	Lot Idn	Feet from the	North/South line	Feet from the	East/West line	County
7	6	22-S	33-E	-	472'	SOUTH	989'	WEST	LEA

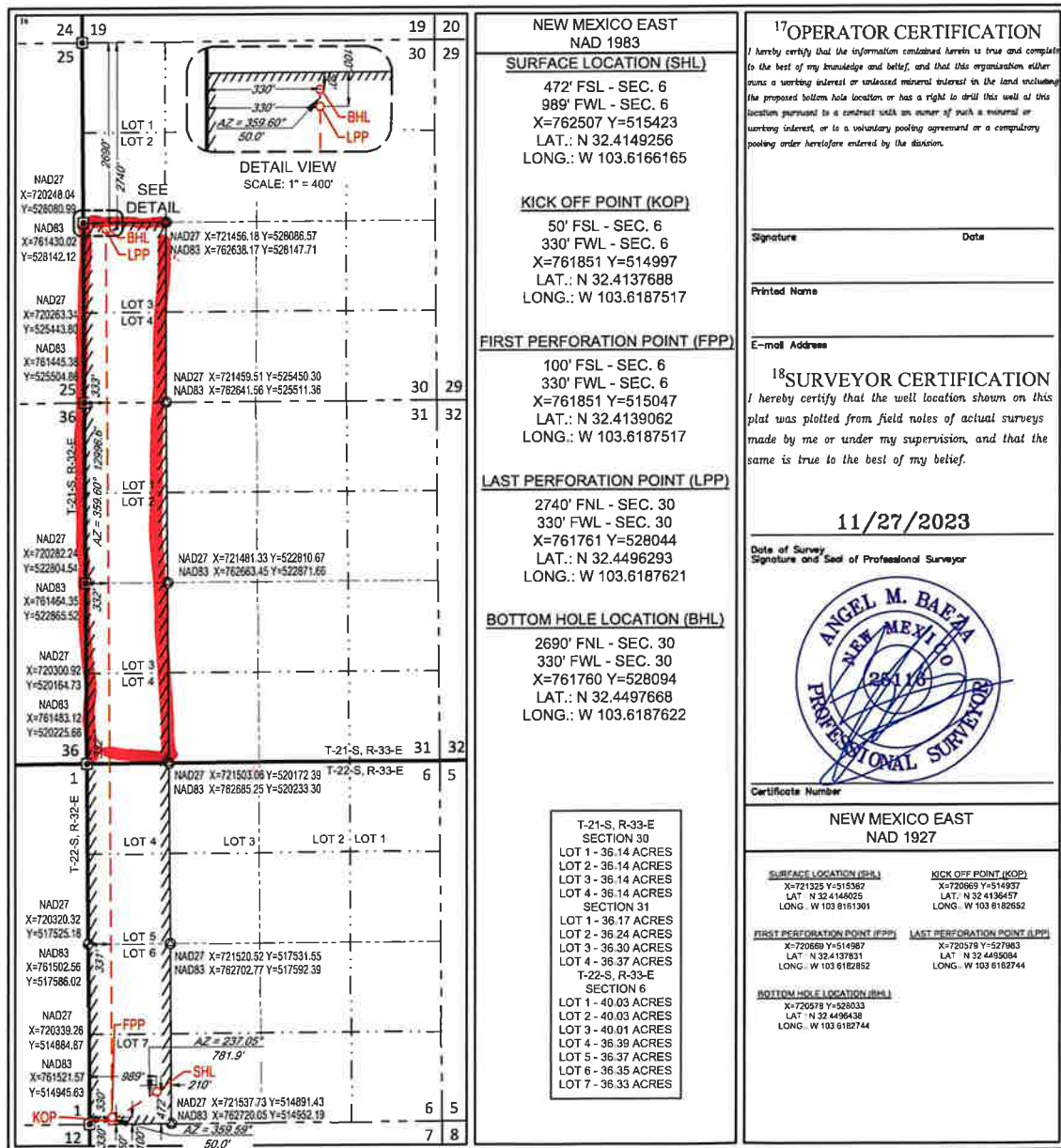
¹¹Bottom Hole Location If Different From Surface

UL or lot no.	Section	Township	Range	Lot Idn	Feet from the	North/South line	Feet from the	East/West line	County
3	30	21-S	33-E	-	2690'	NORTH	330'	WEST	LEA

¹² Dedicated Acres	¹³ Joint or Infill	¹⁴ Consolidation Code	¹⁵ Order No.
398.94			

No allowable will be assigned to this completion until all interests have been consolidated or a non-standard unit has been approved by the division.

217.36



District I
1625 N. French Dr., Hobbs, NM 88240
Phone: (575) 393-6161 Fax: (575) 393-0720
District II
811 S. First St., Artesia, NM 88210
Phone: (575) 748-1283 Fax: (575) 748-9720
District III
1000 Rio Brazos Road, Aztec, NM 87410
Phone: (505) 334-6178 Fax: (505) 334-6170
District IV
1220 S. St. Francis Dr., Santa Fe, NM 87505
Phone: (505) 476-3460 Fax: (505) 476-3462

State of New Mexico
Energy, Minerals & Natural Resources
Department
OIL CONSERVATION DIVISION
1220 South St. Francis Dr.
Santa Fe, NM 87505

FORM C-102
Revised August 1, 2011
Submit one copy to appropriate
District Office

AMENDED REPORT

WELL LOCATION AND ACREAGE DEDICATION PLAT

¹ API Number		² Pool Code 37870		³ Pool Name Legg; Bone Spring					
⁴ Property Code		⁵ Property Name PAUL FLOWERS		⁶ Well Number 151H					
⁷ OGRID No. 228937		⁸ Operator Name MATADOR PRODUCTION COMPANY		⁹ Elevation 3614'					
¹⁰ Surface Location									
UL or lot no. 7	Section 6	Township 22-S	Range 33-E	Lot Idn -	Feet from the 472'	North/South line SOUTH	Feet from the 989'	East/West line WEST	County LEA
¹¹ Bottom Hole Location If Different From Surface									
UL or lot no. 3	Section 30	Township 21-S	Range 33-E	Lot Idn -	Feet from the 2690'	North/South line NORTH	Feet from the 330'	East/West line WEST	County LEA
¹² Dedicated Acres 145.44 308.94		¹³ Joint or Infill		¹⁴ Consolidation Code		¹⁵ Order No.			

No allowable will be assigned to this completion until all interests have been consolidated or a non-standard unit has been approved by the division.

DETAIL VIEW
SCALE: 1" = 400'

NEW MEXICO EAST NAD 1983

SURFACE LOCATION (SHL)
472' FSL - SEC. 6
989' FWL - SEC. 6
X=762507 Y=515423
LAT.: N 32.4149256
LONG.: W 103.6166165

KICK OFF POINT (KOP)
50' FSL - SEC. 6
330' FWL - SEC. 6
X=761851 Y=514997
LAT.: N 32.4137688
LONG.: W 103.6187517

FIRST PERFORATION POINT (FPP)
100' FSL - SEC. 6
330' FWL - SEC. 6
X=761851 Y=515047
LAT.: N 32.4139062
LONG.: W 103.6187517

LAST PERFORATION POINT (LPP)
2740' FNL - SEC. 30
330' FWL - SEC. 30
X=761761 Y=528044
LAT.: N 32.4496293
LONG.: W 103.6187621

BOTTOM HOLE LOCATION (BHL)
2690' FNL - SEC. 30
330' FWL - SEC. 30
X=761760 Y=528094
LAT.: N 32.4497668
LONG.: W 103.6187622

17 OPERATOR CERTIFICATION
I hereby certify that the information contained herein is true and complete to the best of my knowledge and belief, and that this organization either owns a working interest or undivided mineral interest in the land including the proposed bottom hole location or has a right to drill this well at this location pursuant to a contract with an owner of such a mineral or working interest, or to a voluntary pooling agreement or a compulsory pooling order heretofore entered by the division.

Signature _____ Date _____

Printed Name _____

E-mail Address _____

18 SURVEYOR CERTIFICATION
I hereby certify that the well location shown on this plat was plotted from field notes of actual surveys made by me or under my supervision, and that the same is true to the best of my belief.

11/27/2023

Date of Survey _____
Signature and Seal of Professional Surveyor

Certificate Number _____

NEW MEXICO EAST
NAD 1927

SURFACE LOCATION (SHL) X=721325 Y=515362 LAT.: N 32.4146025 LONG.: W 103.6161301	KICK OFF POINT (KOP) X=720899 Y=514937 LAT.: N 32.4136457 LONG.: W 103.6162852
FIRST PERFORATION POINT (FPP) X=720869 Y=514867 LAT.: N 32.4137831 LONG.: W 103.6162652	LAST PERFORATION POINT (LPP) X=720579 Y=527883 LAT.: N 32.4495054 LONG.: W 103.6162744
BOTTOM HOLE LOCATION (BHL) X=720578 Y=528033 LAT.: N 32.4494338 LONG.: W 103.6162744	