

STATE OF NEW MEXICO  
ENERGY, MINERALS AND NATURAL RESOURCES DEPARTMENT  
OIL CONSERVATION DIVISION

APPLICATION OF MRC HAT MESA, LLC FOR  
APPROVAL OF AN OVERLAPPING HORIZONTAL  
WELL SPACING UNIT AND COMPULSORY POOLING,  
LEA COUNTY, NEW MEXICO.

CASE NO. 23994

**NOTICE OF REVISED EXHIBIT A AND EXHIBIT C-2**

MRC Hat Mesa, LLC applicant in the above-referenced case, gives notice that it is filing the attached exhibit for acceptance into the record.

**Revised Exhibit A** is a revised compulsory pooling checklist that shows EOG Resources, Inc. made an entry of appearance in the case.

**Revised Exhibit C-2** is a revised copy of the C-102s that shows the portion of the lateral, and dedicated acreage, for the pool indicated.

Respectfully submitted,

HOLLAND & HART LLP



---

Michael H. Feldewert  
Adam G. Rankin  
Paula M. Vance  
Post Office Box 2208  
Santa Fe, New Mexico 87504-2208  
(505) 988-4421  
(505) 983-6043 Facsimile  
mfeldewert@hollandhart.com  
agrarkin@hollandhart.com  
pmvance@hollandhart.com

ATTORNEYS FOR MRC HAT MESA, LLC

**CERTIFICATE OF SERVICE**

I hereby certify that on December 7, 2023, I served a copy of the foregoing document to the following counsel of record via Electronic Mail to:

Jordan L. Kessler  
EOG RESOURCES, INC.  
125 Lincoln Avenue, Suite 213  
Santa Fe, New Mexico 87501  
(432) 488-6108  
*Jordan\_kessler@eogresources.com*

*Attorney for EOG Resources*



---


Paula M. Vance

**COMPULSORY POOLING APPLICATION CHECKLIST****ALL INFORMATION IN THE APPLICATION MUST BE SUPPORTED BY SIGNED AFFIDAVITS**

<b>Case: 23994</b>	<b>APPLICANT'S RESPONSE</b>
<b>Date</b>	<b>December 7, 2023</b>
Applicant	MRC Hat Mesa, LLC
Designated Operator & OGRID (affiliation if applicable)	Matador Production Company (OGRID No. 228937)
Applicant's Counsel:	Holland & Hart LLP
Case Title:	APPLICATION OF MRC HAT MESA, LLC FOR APPROVAL OF AN OVERLAPPING HORIZONTAL WELL SPACING UNIT AND COMPULSORY POOLING, LEA COUNTY, NEW MEXICO.
Entries of Appearance/Intervenors:	EOG Resources. Inc.
Well Family	Paul Flowers
<b>Formation/Pool</b>	
Formation Name(s) or Vertical Extent:	Bone Spring Formation
Primary Product (Oil or Gas):	Oil
Pooling this vertical extent:	N/A
Pool Name and Pool Code:	WC-025 G-07 S213330F; BONE SPRING [97927] for the acreage in Sections 30 & 31 and LEGG; BONE SPRING [37870] for the acreage in Section 6
Well Location Setback Rules:	Statewide oil rules
<b>Spacing Unit</b>	
Type (Horizontal/Vertical)	Horizontal
Size (Acres)	400
Building Blocks:	40 acres
Orientation:	North-South
Description: TRS/County	E/2 W/2 of Section 6, Township 22 South, Range 33 East, and the E/2 W/2 of Section 31 and the E/2 SW/4 of Section 30, Township 21 South, Range 33 East, NMPM, Lea County, New Mexico
Standard Horizontal Well Spacing Unit (Y/N), If No, describe and is approval of non-standard unit requested in this application?	Yes
<b>Other Situations</b>	
Depth Severance: Y/N. If yes, description	No
Proximity Tracts: If yes, description	No
Proximity Defining Well: if yes, description	N/A
Applicant's Ownership in Each Tract	Exhibit C-4
<b>Well(s)</b>	
Name & API (if assigned), surface and bottom hole location, footages, completion target, orientation, completion status (standard or non-standard)	Add wells as needed

**BEFORE THE OIL CONSERVATION DIVISION**  
Santa Fe, New Mexico  
Revised Exhibit A  
Submitted by: MRC Hat Mesa, LLC  
Hearing Date: December 7, 2023  
Case No. 23994

Well #1	Paul Flowers State Com 112H well SHL: 442' FSL, 909' FWL (Lot 7) of Section 6, T22S-R33E BHL: 2,690' FNL, 1,649' FWL (Unit K) of Section 30, T21S-R33E Target: Bone Spring Orientation: North-South Completion: Standard Location
Well #2	Paul Flowers State Com 132H well SHL: 442' FSL, 2,038' FEL (Unit O) of Section 6, T22S-R33E BHL: 2,690' FNL, 2,177' FWL (Unit K) of Section 30, T21S-R33E Target: Bone Spring Orientation: North-South Completion: Standard Location
Well #3	Paul Flowers State Com 152H well SHL: 472' FSL, 2,068' FEL (Unit O) of Section 6, T22S-R33E BHL: 2,690' FNL, 2,177' FWL (Unit K) of Section 30, T21S-R33E Target: Bone Spring Orientation: North-South Completion: Standard Location
Horizontal Well First and Last Take Points	Exhibit C-2
Completion Target (Formation, TVD and MD)	Exhibit C-5
<b>AFE Capex and Operating Costs</b>	
Drilling Supervision/Month \$	\$8,000
Production Supervision/Month \$	\$800
Justification for Supervision Costs	Exhibit C
Requested Risk Charge	200%
<b>Notice of Hearing</b>	
Proposed Notice of Hearing	Exhibit B
Proof of Mailed Notice of Hearing (20 days before hearing)	Exhibit E
Proof of Published Notice of Hearing (10 days before hearing)	Exhibit F
<b>Ownership Determination</b>	
Land Ownership Schematic of the Spacing Unit	Exhibit C-4
Tract List (including lease numbers and owners)	Exhibit C-3
If approval of Non-Standard Spacing Unit is requested, Tract List (including lease numbers and owners) of Tracts subject to notice requirements.	N/A
Pooled Parties (including ownership type)	Exhibit C-4
Unlocatable Parties to be Pooled	N/A
Ownership Depth Severance (including percentage above & below)	N/A
<b>Joinder</b>	
Sample Copy of Proposal Letter	Exhibit C-5
List of Interest Owners (ie Exhibit A of JOA)	Exhibit C-4
Chronology of Contact with Non-Joined Working Interests	Exhibit C-6
Overhead Rates In Proposal Letter	Exhibit C-5
Cost Estimate to Drill and Complete	Exhibit C-5
Cost Estimate to Equip Well	Exhibit C-5

Cost Estimate for Production Facilities	Exhibit C-5
<b>Geology</b>	
Summary (including special considerations)	Exhibit D
Spacing Unit Schematic	Exhibit D-1
Gunbarrel/Lateral Trajectory Schematic	N/A
Well Orientation (with rationale)	Exhibit D
Target Formation	Exhibit D, D-3
HSU Cross Section	Exhibit D-3
Depth Severance Discussion	N/A
<b>Forms, Figures and Tables</b>	
C-102	Exhibit C-2
Tracts	Exhibit C-4
Summary of Interests, Unit Recapitulation (Tracts)	Exhibit C-4
General Location Map (including basin)	Exhibit D-1
Well Bore Location Map	Exhibit D-1
Structure Contour Map - Subsea Depth	Exhibit D-2
Cross Section Location Map (including wells)	Exhibit D-3
Cross Section (including Landing Zone)	Exhibit D-3
<b>Additional Information</b>	
Special Provisions/Stipulations	N/A
<b>CERTIFICATION: I hereby certify that the information provided in this checklist is complete and accurate.</b>	
<b>Printed Name</b> (Attorney or Party Representative):	Paula M. Vance
<b>Signed Name</b> (Attorney or Party Representative):	
<b>Date:</b>	12/7/2023

District I  
1625 N. French Dr., Hobbs, NM 88240  
Phone: (575) 393-6161 Fax: (575) 393-0720  
District II  
811 S. First St., Artesia, NM 88210  
Phone: (575) 748-1283 Fax: (575) 748-9720  
District III  
1000 Rio Brazos Road, Aztec, NM 87410  
Phone: (505) 334-6178 Fax: (505) 334-6170  
District IV  
1230 S. St. Francis Dr., Santa Fe, NM 87505  
Phone: (505) 476-3460 Fax: (505) 476-3462

State of New Mexico  
Energy, Minerals & Natural Resources  
Department  
OIL CONSERVATION DIVISION  
1220 South St. Francis Dr.  
Santa Fe, NM 87505

Santa Fe, New Mexico  
Revised Exhibit No. C-2  
Submitted by: MRC Hat Mesa, LLC  
Hearing Date: December 7, 2023 FORM C-102  
Case No. 23994 Revised August 1, 2011

Submit one copy to appropriate  
District Office

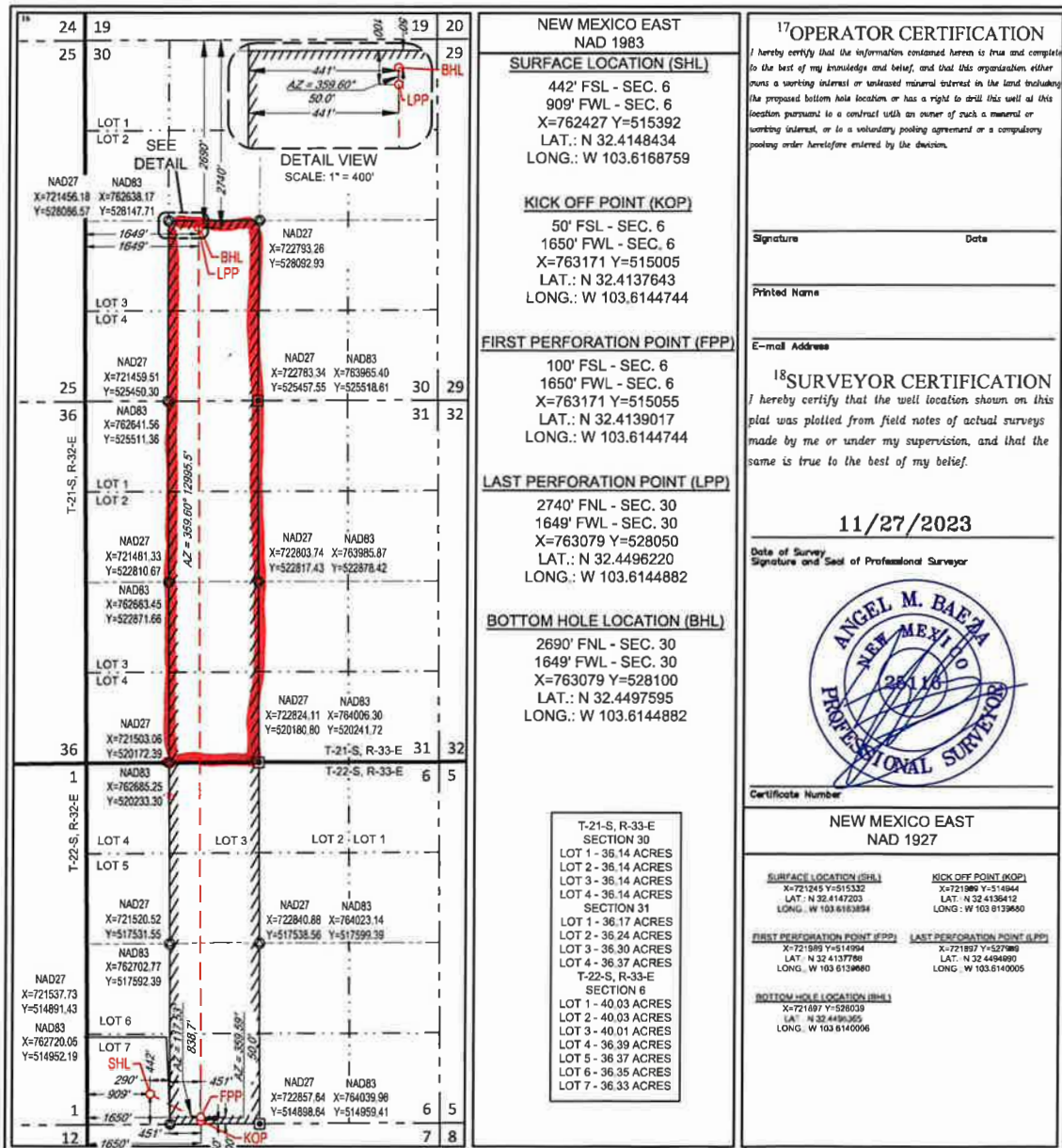
AMENDED REPORT

WELL LOCATION AND ACREAGE DEDICATION PLAT

<sup>1</sup> API Number		<sup>2</sup> Pool Code		<sup>3</sup> Pool Name					
		97927		WC-025 G-07 5213330F; Bone Spring					
<sup>4</sup> Property Code		<sup>5</sup> Property Name			<sup>6</sup> Well Number				
		PAUL FLOWERS			112H				
<sup>7</sup> GRID No.		<sup>8</sup> Operator Name			<sup>9</sup> Elevation				
220937		MATADOR PRODUCTION COMPANY			3614'				
<sup>10</sup> Surface Location									
UL or lot no.	Section	Township	Range	Lot Idn	Feet from the	North/South line	Feet from the	East/West line	County
7	6	22-S	33-E	-	442'	SOUTH	909'	WEST	LEA
<sup>11</sup> Bottom Hole Location If Different From Surface									
UL or lot no.	Section	Township	Range	Lot Idn	Feet from the	North/South line	Feet from the	East/West line	County
K	30	21-S	33-E	-	2690'	NORTH	1649'	WEST	LEA
<sup>12</sup> Dedicated Acres		<sup>13</sup> Joint or Infill		<sup>14</sup> Consolidation Code		<sup>15</sup> Order No.			
440.01									

240

No allowable will be assigned to this completion until all interests have been consolidated or a non-standard unit has been approved by the division.



S:\SURVEY\MATADOR\_RESOURCES\PAUL\_FLOWERS\FINAL\_PRODUCT\640\_PAUL\_FLOWERS\_112H.DWG 12/25/2023 12:28:06 PM adas@baha

District I  
1625 N. French Dr., Hobbs, NM 88240  
Phone: (575) 393-6161 Fax: (575) 393-0720  
District II  
811 S. First St., Artesia, NM 88210  
Phone: (575) 748-1283 Fax: (575) 748-9720  
District III  
1000 Rio Brazos Road, Aztec, NM 87410  
Phone: (505) 334-6178 Fax: (505) 334-6170  
District IV  
1220 S. St. Francis Dr., Santa Fe, NM 87505  
Phone: (505) 476-3460 Fax: (505) 476-3462

State of New Mexico  
Energy, Minerals & Natural Resources  
Department  
OIL CONSERVATION DIVISION  
1220 South St. Francis Dr.  
Santa Fe, NM 87505

FORM C-102  
Revised August 1, 2011  
Submit one copy to appropriate  
District Office

AMENDED REPORT

WELL LOCATION AND ACREAGE DEDICATION PLAT

<sup>1</sup> API Number	<sup>2</sup> Pool Code 37870	<sup>3</sup> Pool Name Legg; Bone Springs
<sup>4</sup> Property Code	<sup>5</sup> Property Name PAUL FLOWERS	<sup>6</sup> Well Number 112H
<sup>7</sup> GRID No. 228937	<sup>8</sup> Operator Name MATADOR PRODUCTION COMPANY	<sup>9</sup> Elevation 3614'

<sup>10</sup>Surface Location

UL or lot no.	Section	Township	Range	Lot Idn	Feet from the	North/South line	Feet from the	East/West line	County
7	6	22-S	33-E	-	442'	SOUTH	909'	WEST	LEA

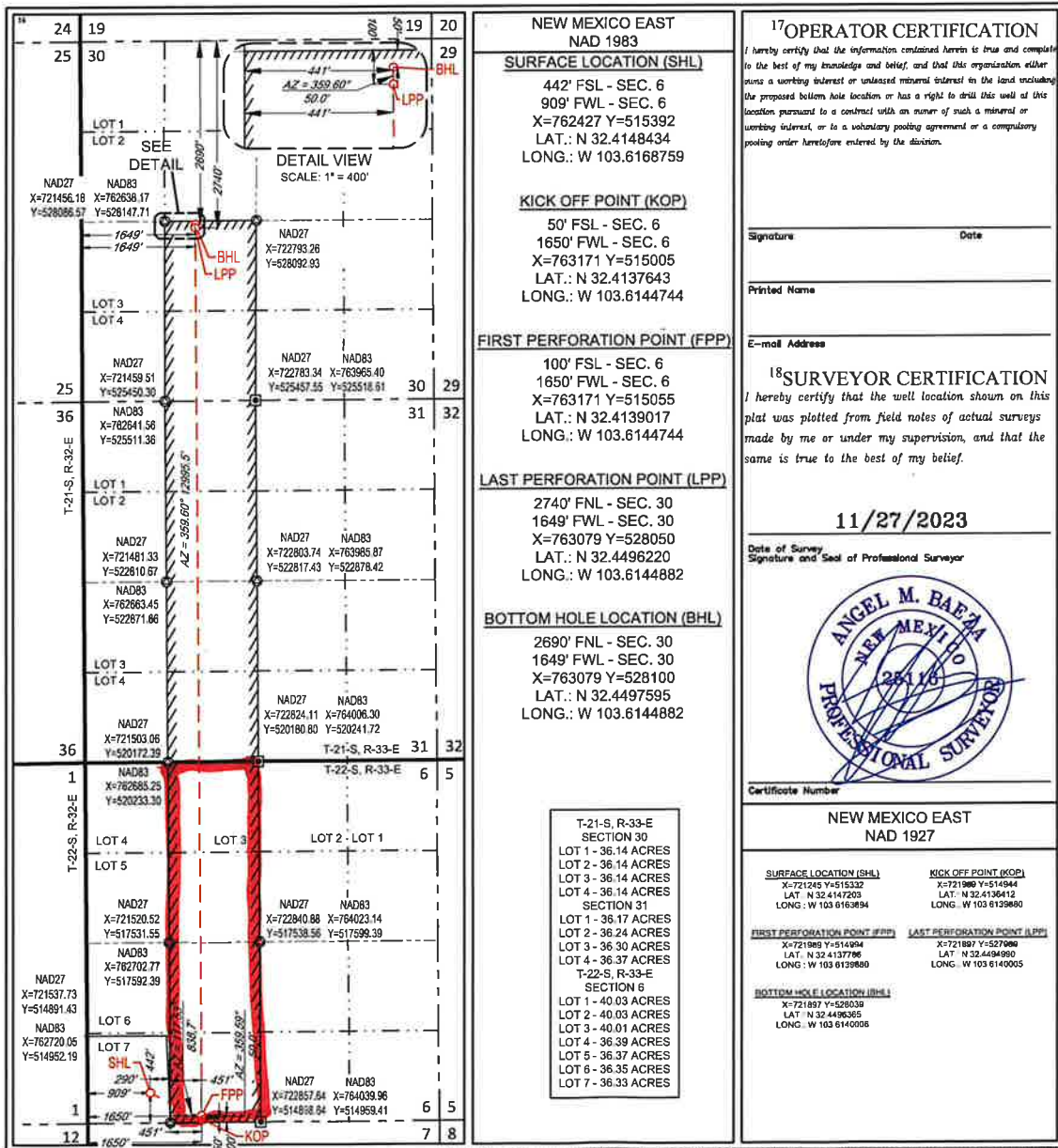
<sup>11</sup>Bottom Hole Location If Different From Surface

UL or lot no.	Section	Township	Range	Lot Idn	Feet from the	North/South line	Feet from the	East/West line	County
K	30	21-S	33-E	-	2690'	NORTH	1649'	WEST	LEA

40.01

<sup>12</sup> Dedicated Acres 440.01	<sup>13</sup> Joint or Infill	<sup>14</sup> Consolidation Code	<sup>15</sup> Order No.
---	-------------------------------	----------------------------------	-------------------------

No allowable will be assigned to this completion until all interests have been consolidated or a non-standard unit has been approved by the division.



District I  
1625 N. French Dr., Hobbs, NM 88240  
Phone: (575) 393-6161 Fax: (575) 393-0720  
District II  
811 S. First St., Artesia, NM 88210  
Phone: (575) 748-1283 Fax: (575) 748-9720  
District III  
1000 Rio Brazos Road, Aztec, NM 87410  
Phone: (505) 334-6178 Fax: (505) 334-6170  
District IV  
1228 S. St. Francis Dr., Santa Fe, NM 87505  
Phone: (505) 476-3460 Fax: (505) 476-3462

State of New Mexico  
Energy, Minerals & Natural Resources  
Department  
OIL CONSERVATION DIVISION  
1220 South St. Francis Dr.  
Santa Fe, NM 87505

FORM C-102  
Revised August 1, 2011  
Submit one copy to appropriate  
District Office

AMENDED REPORT

WELL LOCATION AND ACREAGE DEDICATION PLAT

1 API Number		2 Pool Code		3 Pool Name					
		97927		WC-025 G-07 SA13330F; Bone Springs					
4 Property Code		5 Property Name			6 Well Number				
		PAUL FLOWERS			132H				
7 OGRID No.		8 Operator Name			9 Elevation				
228937		MATADOR PRODUCTION COMPANY			3617'				
10 Surface Location									
UL or lot no.	Section	Township	Range	Lot Idn	Feet from the	North/South line	Feet from the	East/West line	County
0	6	22-S	33-E	-	442'	SOUTH	2038'	EAST	LEA
11 Bottom Hole Location If Different From Surface									
UL or lot no.	Section	Township	Range	Lot Idn	Feet from the	North/South line	Feet from the	East/West line	County
K	30	21-S	33-E	-	2690'	NORTH	2177'	WEST	LEA
12 Dedicated Acres		13 Joint or Infill		14 Consolidation Code		15 Order No.			
440.01									

240

No allowable will be assigned to this completion until all interests have been consolidated or a non-standard unit has been approved by the division.

Map details include: LOT 1, LOT 2, LOT 3, LOT 4, LOT 5, LOT 6, LOT 7. Township: T-21-S, R-33-E. Range: 33-E. Section: 30. Well location marked with BHL, FPP, KOP, and SHL. A detail view shows a 360-degree angle and a 358.60-foot distance.

**NEW MEXICO EAST NAD 1983**

**SURFACE LOCATION (SHL)**  
442' FSL - SEC. 6  
2038' FWL - SEC. 6  
X=764639 Y=515404  
LAT.: N 32.4148356  
LONG.: W 103.6097084

**KICK OFF POINT (KOP)**  
50' FSL - SEC. 6  
2178' FWL - SEC. 6  
X=763699 Y=515008  
LAT.: N 32.4137624  
LONG.: W 103.6127634

**FIRST PERFORATION POINT (FPP)**  
100' FSL - SEC. 6  
2178' FWL - SEC. 6  
X=763699 Y=515058  
LAT.: N 32.4138999  
LONG.: W 103.6127635

**LAST PERFORATION POINT (LPP)**  
2740' FNL - SEC. 30  
2177' FWL - SEC. 30  
X=763607 Y=528052  
LAT.: N 32.4496191  
LONG.: W 103.6127665

**BOTTOM HOLE LOCATION (BHL)**  
2690' FNL - SEC. 30  
2177' FWL - SEC. 30  
X=763607 Y=528102  
LAT.: N 32.4497565  
LONG.: W 103.6127766

T-21-S, R-33-E  
SECTION 30  
LOT 1 - 36.14 ACRES  
LOT 2 - 36.14 ACRES  
LOT 3 - 36.14 ACRES  
LOT 4 - 36.14 ACRES  
SECTION 31  
LOT 1 - 36.17 ACRES  
LOT 2 - 36.24 ACRES  
LOT 3 - 36.30 ACRES  
LOT 4 - 36.37 ACRES  
T-22-S, R-33-E  
SECTION 6  
LOT 1 - 40.03 ACRES  
LOT 2 - 40.03 ACRES  
LOT 3 - 40.01 ACRES  
LOT 4 - 36.39 ACRES  
LOT 5 - 36.37 ACRES  
LOT 6 - 36.35 ACRES  
LOT 7 - 36.33 ACRES

**17 OPERATOR CERTIFICATION**  
I hereby certify that the information contained herein is true and complete to the best of my knowledge and belief, and that this organization either owns a working interest or unless mineral interest in the land including the proposed bottom hole location or has a right to drill this well at this location pursuant to a contract with an owner of such a mineral or working interest, or to a voluntary pooling agreement or a compulsory pooling order heretofore entered by the division.

Signature \_\_\_\_\_ Date \_\_\_\_\_

Printed Name \_\_\_\_\_

E-mail Address \_\_\_\_\_

**18 SURVEYOR CERTIFICATION**  
I hereby certify that the well location shown on this plat was plotted from field notes of actual surveys made by me or under my supervision, and that the same is true to the best of my belief.

11/27/2023

Date of Survey  
Signature and Seal of Professional Surveyor

Certificate Number \_\_\_\_\_

**NEW MEXICO EAST NAD 1927**

<b>SURFACE LOCATION (SHL)</b> X=723451 Y=515344 LAT N 32 4147124 LONG. W 103 6092221	<b>KICK OFF POINT (KOP)</b> X=722517 Y=514947 LAT N 32 4136393 LONG. W 103 6122771
<b>FIRST PERFORATION POINT (FPP)</b> X=722516 Y=514997 LAT N 32 4137788 LONG. W 103 6122772	<b>LAST PERFORATION POINT (LPP)</b> X=722425 Y=527991 LAT N 32 4494960 LONG. W 103 6122890
<b>BOTTOM HOLE LOCATION (BHL)</b> X=722425 Y=528041 LAT. N 32 4496335 LONG. W 103 6122890	



District I  
1625 N. French Dr., Hobbs, NM 88240  
Phone: (575) 393-6161 Fax: (575) 393-0720  
District II  
811 S. First St., Artesia, NM 88210  
Phone: (575) 748-1283 Fax: (575) 748-9720  
District III  
1000 Rio Brazos Road, Aztec, NM 87410  
Phone: (505) 334-6178 Fax: (505) 334-6170  
District IV  
1220 S. St. Francis Dr., Santa Fe, NM 87505  
Phone: (505) 476-3460 Fax: (505) 476-3462

State of New Mexico  
Energy, Minerals & Natural Resources  
Department  
OIL CONSERVATION DIVISION  
1220 South St. Francis Dr.  
Santa Fe, NM 87505

FORM C-102  
Revised August 1, 2011  
Submit one copy to appropriate  
District Office

AMENDED REPORT

WELL LOCATION AND ACREAGE DEDICATION PLAT

<sup>1</sup> API Number	<sup>2</sup> Pool Code 37870	<sup>3</sup> Pool Name Less; Bone Spring
<sup>4</sup> Property Code	<sup>5</sup> Property Name PAUL FLOWERS	<sup>6</sup> Well Number 132H
<sup>7</sup> GRID No. 228937	<sup>8</sup> Operator Name MATADOR PRODUCTION COMPANY	<sup>9</sup> Elevation 3617'

<sup>10</sup>Surface Location

UL or lot no.	Section	Township	Range	Lot Idn	Feet from the	North/South line	Feet from the	East/West line	County
0	6	22-S	33-E	-	442'	SOUTH	2038'	EAST	LEA

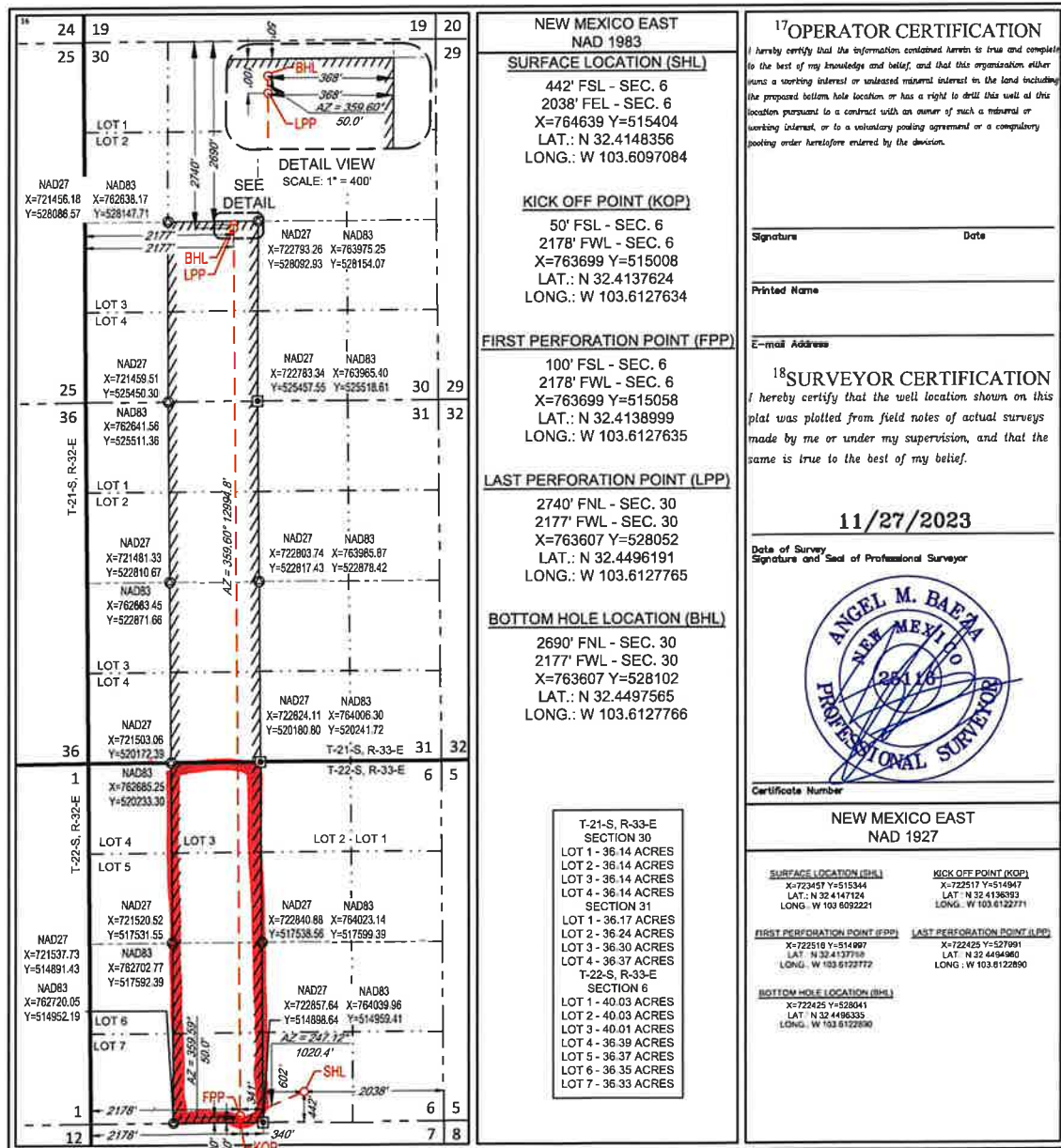
<sup>11</sup>Bottom Hole Location If Different From Surface

UL or lot no.	Section	Township	Range	Lot Idn	Feet from the	North/South line	Feet from the	East/West line	County
K	30	21-S	33-E	-	2690'	NORTH	2177'	WEST	LEA

<sup>12</sup> Dedicated Acres 440.01	<sup>13</sup> Joint or Infill	<sup>14</sup> Consolidation Code	<sup>15</sup> Order No.
---	-------------------------------	----------------------------------	-------------------------

160.01

No allowable will be assigned to this completion until all interests have been consolidated or a non-standard unit has been approved by the division.



District I  
1625 N. French Dr., Hobbs, NM 88240  
Phone: (575) 393-6161 Fax: (575) 393-0720  
District II  
811 S. First St., Artesia, NM 88210  
Phone: (575) 748-1283 Fax: (575) 748-9720  
District III  
1000 Rio Brazos Road, Aztec, NM 87410  
Phone: (505) 334-6178 Fax: (505) 334-6170  
District IV  
1220 S. St. Francis Dr., Santa Fe, NM 87505  
Phone: (505) 476-3460 Fax: (505) 476-3462

State of New Mexico  
Energy, Minerals & Natural Resources  
Department  
OIL CONSERVATION DIVISION  
1220 South St. Francis Dr.  
Santa Fe, NM 87505

FORM C-102  
Revised August 1, 2011  
Submit one copy to appropriate  
District Office

AMENDED REPORT

WELL LOCATION AND ACREAGE DEDICATION PLAT

API Number		Pool Code		Pool Name					
		97927		WC-025 G-07 SA13330F Bone Sp. 8					
Property Code		Property Name		Well Number					
		PAUL FLOWERS		152H					
OGRID No.		Operator Name		Elevation					
228937		MATADOR PRODUCTION COMPANY		3617'					
Surface Location									
UL or lot no.	Section	Township	Range	Lot Idn	Feet from the	North/South line	Feet from the	East/West line	County
0	6	22-S	33-E	-	472'	SOUTH	2068'	EAST	LEA
Bottom Hole Location If Different From Surface									
UL or lot no.	Section	Township	Range	Lot Idn	Feet from the	North/South line	Feet from the	East/West line	County
K	30	21-S	33-E	-	2690'	NORTH	2177'	WEST	LEA
Dedicated Acres		Joint or Infill		Consolidation Code		Order No.			
440.01									

240

No allowable will be assigned to this completion until all interests have been consolidated or a non-standard unit has been approved by the division.

**DETAIL VIEW**  
SCALE: 1" = 400'

**LOT AREAS**

Section	Lot	Acres
T-21-S, R-33-E SECTION 30	LOT 1	36.14
	LOT 2	36.14
	LOT 3	36.14
T-21-S, R-33-E SECTION 31	LOT 1	36.17
	LOT 2	36.24
	LOT 3	36.30
	LOT 4	36.37
T-22-S, R-33-E SECTION 6	LOT 1	40.03
	LOT 2	40.03
	LOT 3	40.01
	LOT 4	36.39
	LOT 5	36.37
	LOT 6	36.35
	LOT 7	36.33

**NEW MEXICO EAST NAD 1983**

**SURFACE LOCATION (SHL)**  
472' FSL - SEC. 6  
2068' FWL - SEC. 6  
X=764609 Y=515434  
LAT.: N 32.4149182  
LONG.: W 103.6098054

**KICK OFF POINT (KOP)**  
50' FSL - SEC. 6  
2178' FWL - SEC. 6  
X=763699 Y=515008  
LAT.: N 32.4137624  
LONG.: W 103.6127634

**FIRST PERFORATION POINT (FPP)**  
100' FSL - SEC. 6  
2178' FWL - SEC. 6  
X=763699 Y=515058  
LAT.: N 32.4138999  
LONG.: W 103.6127635

**LAST PERFORATION POINT (LPP)**  
2740' FNL - SEC. 30  
2177' FWL - SEC. 30  
X=763607 Y=528052  
LAT.: N 32.4496191  
LONG.: W 103.6127765

**BOTTOM HOLE LOCATION (BHL)**  
2690' FNL - SEC. 30  
2177' FWL - SEC. 30  
X=763607 Y=528102  
LAT.: N 32.4497565  
LONG.: W 103.6127766

**OPERATOR CERTIFICATION**  
I hereby certify that the information contained herein is true and complete to the best of my knowledge and belief, and that this organization either owns a working interest or undivided mineral interest in the land including the proposed bottom hole location or has a right to drill this well at this location pursuant to a contract with an owner of such a mineral or working interest, or to a voluntary pooling agreement or a compulsory pooling order heretofore entered by the division.

Signature \_\_\_\_\_ Date \_\_\_\_\_  
Printed Name \_\_\_\_\_  
E-mail Address \_\_\_\_\_

**SURVEYOR CERTIFICATION**  
I hereby certify that the well location shown on this plat was plotted from field notes of actual surveys made by me or under my supervision, and that the same is true to the best of my belief.

11/27/2023  
Date of Survey  
Signature and Seal of Professional Surveyor

**ANGEL M. BAEZA**  
NEW MEXICO  
PROFESSIONAL SURVEYOR

Certificate Number \_\_\_\_\_

**NEW MEXICO EAST NAD 1927**

<b>SURFACE LOCATION (SHL)</b> X=723427 Y=515373 LAT. N 32.4147951 LONG. W 103.6093192	<b>KICK OFF POINT (KOP)</b> X=722517 Y=514947 LAT. N 32.4136393 LONG. W 103.6122771
<b>FIRST PERFORATION POINT (FPP)</b> X=722516 Y=514997 LAT. N 32.4137768 LONG. W 103.6122772	<b>LAST PERFORATION POINT (LPP)</b> X=722425 Y=527991 LAT. N 32.4494960 LONG. W 103.6122890
<b>BOTTOM HOLE LOCATION (BHL)</b> X=722425 Y=528041 LAT. N 32.4496335 LONG. W 103.6122890	

District I  
1625 N. French Dr., Hobbs, NM 88240  
Phone: (575) 393-6161 Fax: (575) 393-0720  
District II  
811 S. First St., Artesia, NM 88210  
Phone: (575) 748-1283 Fax: (575) 748-9720  
District III  
1000 Rio Brazos Road, Aztec, NM 87410  
Phone: (505) 334-6178 Fax: (505) 334-6170  
District IV  
1220 S. St. Francis Dr., Santa Fe, NM 87505  
Phone: (505) 476-3460 Fax: (505) 476-3462

State of New Mexico  
Energy, Minerals & Natural Resources  
Department  
OIL CONSERVATION DIVISION  
1220 South St. Francis Dr.  
Santa Fe, NM 87505

FORM C-102  
Revised August 1, 2011  
Submit one copy to appropriate  
District Office

AMENDED REPORT

WELL LOCATION AND ACREAGE DEDICATION PLAT

<sup>1</sup> API Number	<sup>2</sup> Pool Code 37870	<sup>3</sup> Pool Name Legs; Bone Springs
<sup>4</sup> Property Code	<sup>5</sup> Property Name PAUL FLOWERS	
<sup>6</sup> Well Number 152H	<sup>7</sup> Operator Name MATADOR PRODUCTION COMPANY	
<sup>8</sup> OGRID No. 228937	<sup>9</sup> Elevation 3617'	

<sup>10</sup>Surface Location

UL or lot no.	Section	Township	Range	Lot Idn	Feet from the	North/South line	Feet from the	East/West line	County
0	6	22-S	33-E	-	472'	SOUTH	2068'	EAST	LEA

<sup>11</sup>Bottom Hole Location If Different From Surface

UL or lot no.	Section	Township	Range	Lot Idn	Feet from the	North/South line	Feet from the	East/West line	County
K	30	21-S	33-E	-	2690'	NORTH	2177'	WEST	LEA

<sup>12</sup> Dedicated Acres 160.01	<sup>13</sup> Joint or Infill	<sup>14</sup> Consolidation Code	<sup>15</sup> Order No.
---	-------------------------------	----------------------------------	-------------------------

No allowable will be assigned to this completion until all interests have been consolidated or a non-standard unit has been approved by the division.

