

CASE NO. 24556

**APPLICATION OF MEWBOURNE OIL COMPANY
FOR COMPULSORY POOLING, EDDY COUNTY, NEW MEXICO**

EXHIBIT LIST

PART II

3. Geologist's Affidavit
 - 3-A: Structure Map
 - 3-B: Cross-Section
 - 3-C: Horizontal Drilling Plan

4. Affidavit of Mailing
 - 4-A: Notice Letter
 - 4-B: Certified Notice Spreadsheet

5. Affidavit of Publication

6. Application and Proposed Notice

STATE OF NEW MEXICO
ENERGY, MINERALS AND NATURAL RESOURCES DEPARTMENT
OIL CONSERVATION DIVISION

APPLICATIONS OF MEWBOURNE OIL COMPANY
FOR COMPULSORY POOLING, EDDY COUNTY,
NEW MEXICO.

Case Nos. 24556 - 24558

SELF-AFFIRMED STATEMENT OF CHARLES CROSBY

COUNTY OF MIDLAND)
) ss.
STATE OF TEXAS)

Charles Crosby deposes and states:

1. I am over the age of 18, and have personal knowledge of the matters stated herein.

2. I am a geologist for Mewbourne Oil Company ("Mewbourne"), and I am familiar with the geological matters involved in this case. I have been qualified by the Division as an expert petroleum geologist.

3. These cases involve the Bone Spring formation underlying horizontal spacing units collectively comprising Sections 7 and 8, Township 20 South, Range 29 East, N.M.P.M., Eddy County, New Mexico. Applicant proposes to drill the following wells to depths sufficient to test the Bone Spring formation:

(a) the Jericho 8/7 Fed. Com. Well Nos. 611H, with a first take point in the NE/4NE/4 of Section 8 and a last take point in the NW/4NW/4 of Section 7;

(b) the Jericho 8/7 Fed. Com. Well Nos. 614H, with a first take point in the SE/4NE/4 of Section 8 and a last take point in the SW/4NW/4 of Section 7; and

(c) the Jericho 8/7 Fed. Com. Well Nos. 617H, with a first take point in the SE/4SE/4 of Section 8 and a last take point in the SW/4SW/4 of Section 7.

4. The following geological plats are attached hereto:

(a) Exhibit 3-A is a Wolfcamp structure map. It shows that structure dips gently to the east-southeast. It also shows a west-east line of cross-section.

(b) Exhibit 3-B is a cross section showing the Third Bone Spring and the Upper Wolfcamp. The well logs on the cross-section give a representative sample of the Third

EXHIBIT 3

2

Bone Spring Sand in this area. The target zone in the sand is continuous and uniformly thick across the well unit.

5. I conclude from the maps that:

- (a) The horizontal spacing units are justified from a geologic standpoint.
- (b) The target zone is continuous and of relatively uniform thickness across the well units.
- (c) Each quarter-quarter section in a well unit will contribute more or less equally to production.
- (d) There is no faulting or other geologic impediment in the area which will affect the drilling of the subject wells.

6. Exhibit 3-A shows that Third Bone Spring Sand wells nearest the proposed wells are overwhelmingly laydown wells. Mewbourne believes laydown well units are reasonable.

7. Exhibit 3-C contains Survey Calculation Reports for the proposed wells. The producing intervals of the wells will be orthodox.

I understand that this Self-Affirmed Statement will be used as written testimony in this case. I affirm that my testimony in paragraphs 1 through 7 above is true and correct and is made under penalty of perjury under the laws of the State of New Mexico. My testimony is made as of the date handwritten next to my signature below.

6/19/24

Date



Charles Crosby

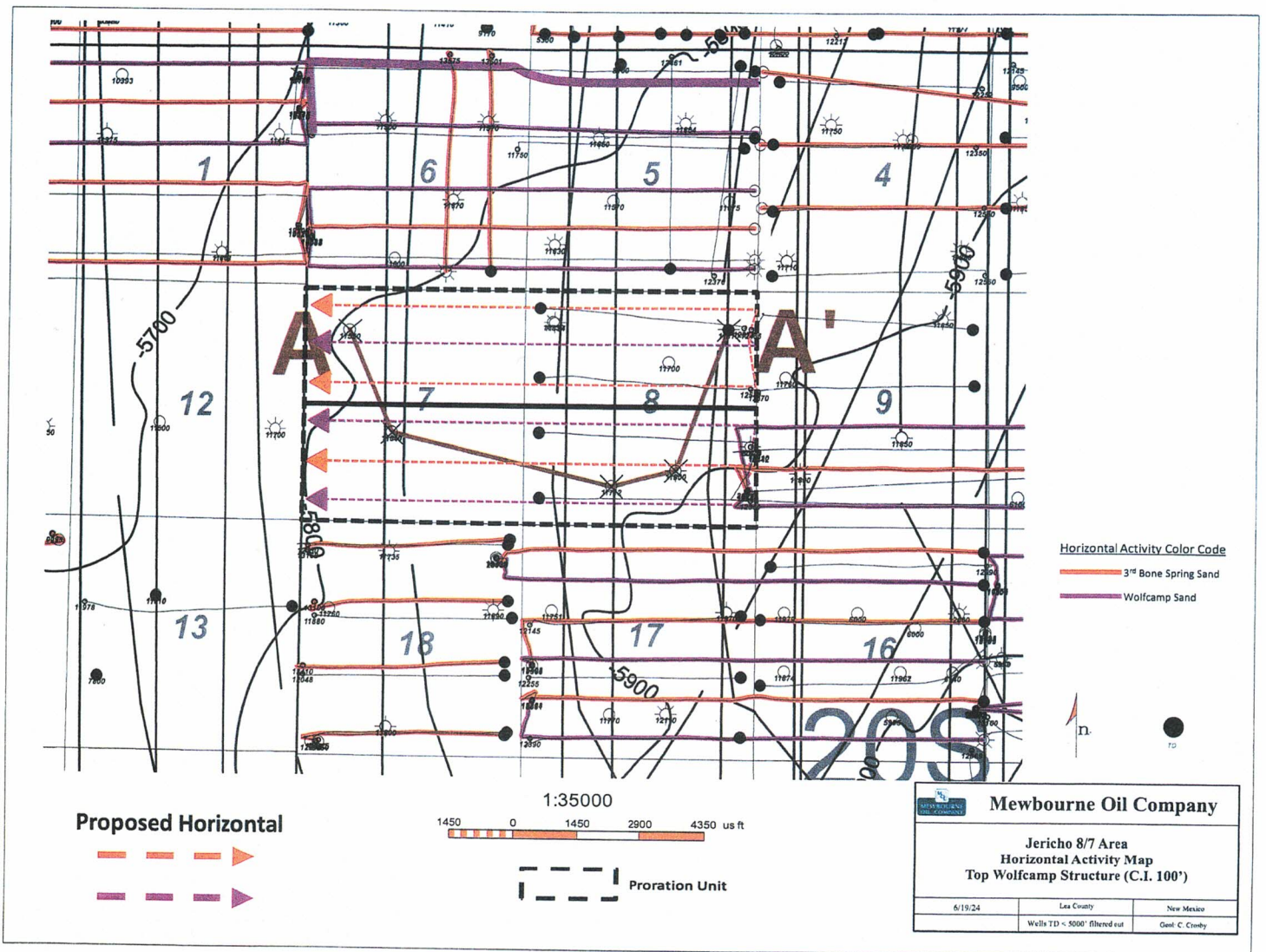


EXHIBIT 3-A

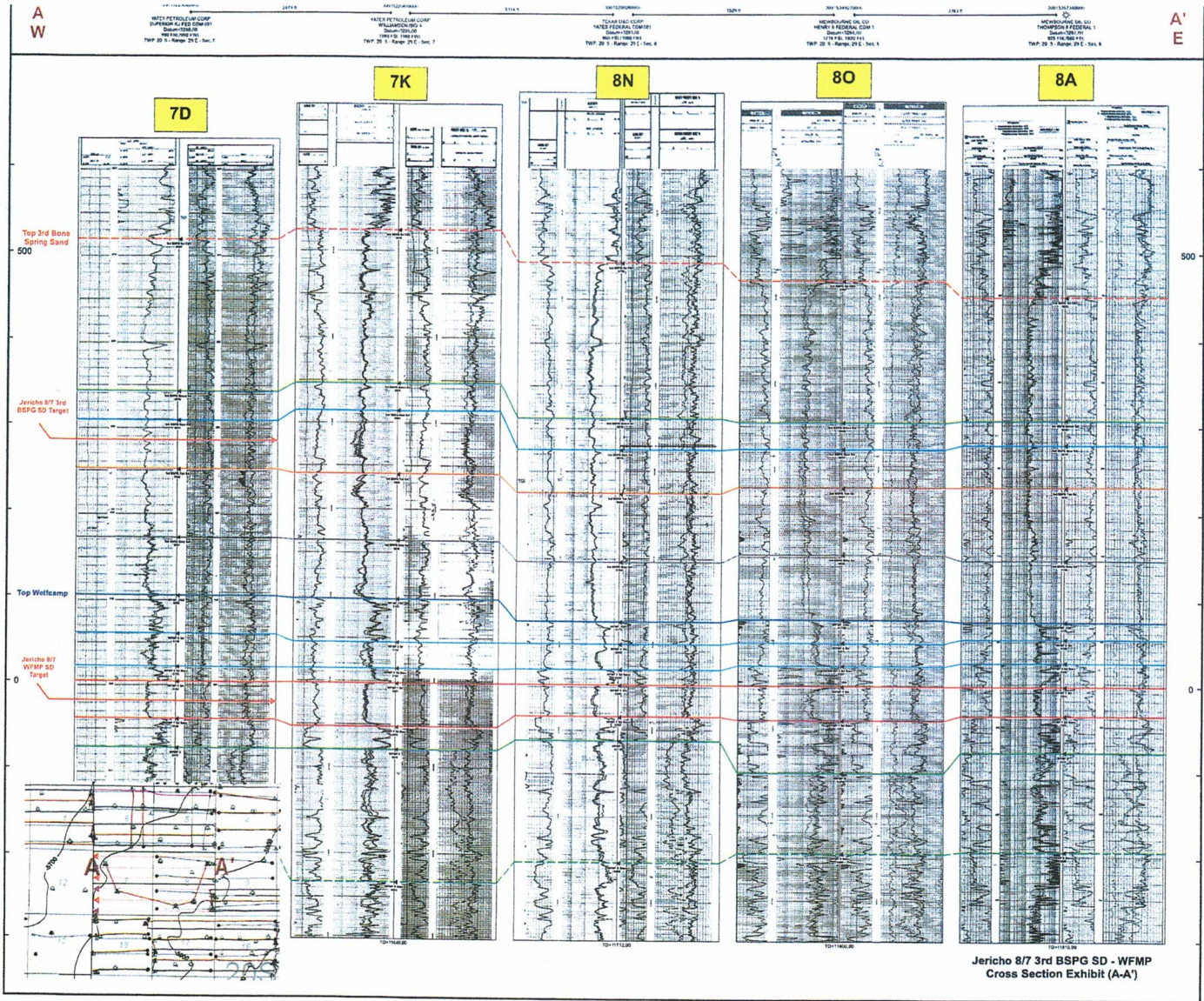


EXHIBIT 3-B

5

Mewbourne Oil Company

SURVEY CALCULATION REPORT
Minimum Curvature Calculations

Operator: Mewbourne Oil Company
Lease Name: Jericho 8/7 Fed Com 621H
KOP 8439.04
SL: 1120 FNL & 210 FEL; Sec 8A/20S/29E
PBHL: 440 FNL & 100 FWL; Sec 7C/20S/29E

Target KBTVD: 9,012 Feet 9012.00
Target Angle: 90.62 Degrees 90.62
Section Plane: 273.92 Degrees
Declination Corrected to True North: 6.63 Degrees
Bit to Survey Offset: 44 Feet

Survey No.	Measured Depth-ft	Drift (Deg.)	Azimuth (Deg.)	Course Length	TVD (Feet)	Vertical Section	+N/-S (Feet)	+E/-W (Feet)	Closure Distance	Closure Direction	BUR	DLS	KBTVD	+Above		DRIFT (RADIANS)	AZIMUTH (RADIANS)
														-Below Target	Target		
T/I	8439.04	0.00	273.92	N/A	8439.0	0.0	0.0	0.0	0.0	0.0	N/A	N/A	8439.0	573.0	1E-12	4.78	#VALUE!
1	8529.66	9.06	273.92	90.617	8529.3	7.2	0.5	-7.1	7.2	273.9	10.0	10.0	8529.4	482.6	0.1581561	4.78	0.158156
2	8620.28	18.12	273.92	90.617	8617.3	28.4	1.9	-28.4	28.4	273.9	10.0	10.0	8617.6	394.4	0.3163122	4.78	0.158156
3	8710.89	27.19	273.92	90.617	8700.8	63.3	4.3	-63.1	63.3	273.9	10.0	10.0	8701.5	310.5	0.4744683	4.78	0.158156
4	8801.51	36.25	273.92	90.617	8777.8	110.9	7.6	-110.6	110.9	273.9	10.0	10.0	8779.0	233.0	0.6326245	4.78	0.158156
5	8892.13	45.31	273.92	90.617	8846.4	170.0	11.6	-169.6	170.0	273.9	10.0	10.0	8848.2	163.8	0.7907806	4.78	0.158156
6	8982.74	54.37	273.92	90.617	8904.7	239.2	16.3	-238.6	239.2	273.9	10.0	10.0	8907.3	104.7	0.9489367	4.78	0.158156
7	9073.36	63.43	273.92	90.617	8951.5	316.7	21.6	-316.0	316.7	273.9	10.0	10.0	8954.9	57.1	1.1070928	4.78	0.158156
8	9163.98	72.49	273.92	90.617	8985.5	400.6	27.4	-399.7	400.6	273.9	10.0	10.0	8989.8	22.2	1.2652489	4.78	0.158156
9	9254.59	81.56	273.92	90.617	9005.8	488.8	33.4	-487.7	488.8	273.9	10.0	10.0	9011.0	1.0	1.423405	4.78	0.158156
10	9345.21	90.62	273.92	90.617	9012.0	579.1	39.6	-577.8	579.1	273.9	10.0	10.0	9018.2	-6.2	1.5815612	4.78	0.158156
11	9400.00	90.62	273.92	54.79	9011.4	633.9	43.3	-632.4	633.9	273.9	0.0	0.0	9018.2	-6.2	1.5815612	4.78	1E-10
12	9500.00	90.62	273.92	100	9010.3	733.9	50.2	-732.2	733.9	273.9	0.0	0.0	9018.2	-6.2	1.5815612	4.78	1E-10
13	9600.00	90.62	273.92	100	9009.2	833.9	57.0	-832.0	833.9	273.9	0.0	0.0	9018.2	-6.2	1.5815612	4.78	1E-10
14	9700.00	90.62	273.92	100	9008.1	933.9	63.8	-931.7	933.9	273.9	0.0	0.0	9018.2	-6.2	1.5815612	4.78	1E-10
15	9800.00	90.62	273.92	100	9007.1	1033.9	70.7	-1031.5	1033.9	273.9	0.0	0.0	9018.2	-6.2	1.5815612	4.78	1E-10
16	9900.00	90.62	273.92	100	9006.0	1133.9	77.5	-1131.2	1133.9	273.9	0.0	0.0	9018.2	-6.2	1.5815612	4.78	1E-10
17	10000.00	90.62	273.92	100	9004.9	1233.9	84.3	-1231.0	1233.9	273.9	0.0	0.0	9018.2	-6.2	1.5815612	4.78	1E-10
18	10100.00	90.62	273.92	100	9003.8	1333.9	91.2	-1330.8	1333.9	273.9	0.0	0.0	9018.2	-6.2	1.5815612	4.78	1E-10
19	10200.00	90.62	273.92	100	9002.8	1433.9	98.0	-1430.5	1433.9	273.9	0.0	0.0	9018.2	-6.2	1.5815612	4.78	1E-10
20	10300.00	90.62	273.92	100	9001.7	1533.9	104.8	-1530.3	1533.9	273.9	0.0	0.0	9018.2	-6.2	1.5815612	4.78	1E-10
21	10400.00	90.62	273.92	100	9000.6	1633.9	111.7	-1630.0	1633.9	273.9	0.0	0.0	9018.2	-6.2	1.5815612	4.78	1E-10
22	10500.00	90.62	273.92	100	8999.5	1733.8	118.5	-1729.8	1733.8	273.9	0.0	0.0	9018.2	-6.2	1.5815612	4.78	1E-10
23	10600.00	90.62	273.92	100	8998.5	1833.8	125.3	-1829.6	1833.8	273.9	0.0	0.0	9018.2	-6.2	1.5815612	4.78	1E-10
24	10700.00	90.62	273.92	100	8997.4	1933.8	132.2	-1929.3	1933.8	273.9	0.0	0.0	9018.2	-6.2	1.5815612	4.78	1E-10
25	10800.00	90.62	273.92	100	8996.3	2033.8	139.0	-2029.1	2033.8	273.9	0.0	0.0	9018.2	-6.2	1.5815612	4.78	1E-10
26	10900.00	90.62	273.92	100	8995.2	2133.8	145.8	-2128.8	2133.8	273.9	0.0	0.0	9018.2	-6.2	1.5815612	4.78	1E-10
27	11000.00	90.62	273.92	100	8994.2	2233.8	152.7	-2228.6	2233.8	273.9	0.0	0.0	9018.2	-6.2	1.5815612	4.78	1E-10
28	11100.00	90.62	273.92	100	8993.1	2333.8	159.5	-2328.4	2333.8	273.9	0.0	0.0	9018.2	-6.2	1.5815612	4.78	1E-10
29	11200.00	90.62	273.92	100	8992.0	2433.8	166.3	-2428.1	2433.8	273.9	0.0	0.0	9018.2	-6.2	1.5815612	4.78	1E-10
30	11300.00	90.62	273.92	100	8990.9	2533.8	173.2	-2527.9	2533.8	273.9	0.0	0.0	9018.2	-6.2	1.5815612	4.78	1E-10
31	11400.00	90.62	273.92	100	8989.8	2633.8	180.0	-2627.6	2633.8	273.9	0.0	0.0	9018.2	-6.2	1.5815612	4.78	1E-10
32	11500.00	90.62	273.92	100	8988.8	2733.8	186.8	-2727.4	2733.8	273.9	0.0	0.0	9018.2	-6.2	1.5815612	4.78	1E-10
33	11600.00	90.62	273.92	100	8987.7	2833.8	193.7	-2827.2	2833.8	273.9	0.0	0.0	9018.2	-6.2	1.5815612	4.78	1E-10
34	11700.00	90.62	273.92	100	8986.6	2933.8	200.5	-2926.9	2933.8	273.9	0.0	0.0	9018.2	-6.2	1.5815612	4.78	1E-10
35	11800.00	90.62	273.92	100	8985.5	3033.8	207.3	-3026.7	3033.8	273.9	0.0	0.0	9018.2	-6.2	1.5815612	4.78	1E-10
36	11900.00	90.62	273.92	100	8984.5	3133.8	214.2	-3126.4	3133.8	273.9	0.0	0.0	9018.2	-6.2	1.5815612	4.78	1E-10
37	12000.00	90.62	273.92	100	8983.4	3233.8	221.0	-3226.2	3233.8	273.9	0.0	0.0	9018.2	-6.2	1.5815612	4.78	1E-10
38	12100.00	90.62	273.92	100	8982.3	3333.8	227.8	-3326.0	3333.8	273.9	0.0	0.0	9018.2	-6.2	1.5815612	4.78	1E-10
39	12200.00	90.62	273.92	100	8981.2	3433.8	234.7	-3425.7	3433.8	273.9	0.0	0.0	9018.2	-6.2	1.5815612	4.78	1E-10
40	12300.00	90.62	273.92	100	8980.2	3533.7	241.5	-3525.5	3533.7	273.9	0.0	0.0	9018.2	-6.2	1.5815612	4.78	1E-10
41	12400.00	90.62	273.92	100	8979.1	3633.7	248.3	-3625.2	3633.7	273.9	0.0	0.0	9018.2	-6.2	1.5815612	4.78	1E-10
42	12500.00	90.62	273.92	100	8978.0	3733.7	255.2	-3725.0	3733.7	273.9	0.0	0.0	9018.2	-6.2	1.5815612	4.78	1E-10
43	12600.00	90.62	273.92	100	8976.9	3833.7	262.0	-3824.8	3833.7	273.9	0.0	0.0	9018.2	-6.2	1.5815612	4.78	1E-10
44	12700.00	90.62	273.92	100	8975.9	3933.7	268.8	-3924.5	3933.7	273.9	0.0	0.0	9018.2	-6.2	1.5815612	4.78	1E-10
45	12800.00	90.62	273.92	100	8974.8	4033.7	275.7	-4024.3	4033.7	273.9	0.0	0.0	9018.2	-6.2	1.5815612	4.78	1E-10
46	12900.00	90.62	273.92	100	8973.7	4133.7	282.5	-4124.0	4133.7	273.9	0.0	0.0	9018.2	-6.2	1.5815612	4.78	1E-10
47	13000.00	90.62	273.92	100	8972.6	4233.7	289.3	-4223.8	4233.7	273.9	0.0	0.0	9018.2	-6.2	1.5815612	4.78	1E-10
48	13100.00	90.62	273.92	100	8971.5	4333.7	296.2	-4323.6	4333.7	273.9	0.0	0.0	9018.2	-6.2	1.5815612	4.78	1E-10
49	13200.00	90.62	273.92	100	8970.5	4433.7	303.0	-4423.3	4433.7	273.9	0.0	0.0	9018.2	-6.2	1.5815612	4.78	1E-10
50	13300.00	90.62	273.92	100	8969.4	4533.7	309.8	-4523.1	4533.7	273.9	0.0	0.0	9018.2	-6.2	1.5815612	4.78	1E-10
51	13400.00	90.62	273.92	100	8968.3	4633.7	316.7	-4622.8	4633.7	273.9	0.0	0.0	9018.2	-6.2	1.5815612	4.78	1E-10
52	13500.00	90.62	273.92	100	8967.2	4733.7	323.5	-4722.6	4733.7	273.9	0.0	0.0	9018.2	-6.2	1.5815612	4.78	1E-10
53	13600.00	90.62	273.92	100	8966.2	4833.7	330.3	-4822.4	4833.7	273.9	0.0	0.0	9018.2	-6.2	1.5815612	4.78	1E-10
54	13700.00	90.62	273.92	100	8965.1	4933.7	337.2	-4922.1	4933.7	273.9	0.0	0.0	9018.2	-6.2	1.5815612	4.78	1E-10
55	13800.00	90.62	273.92	100	8964.0	5033.7	344.0	-5021.9	5033.7	273.9	0.0	0.0	9018.2	-6.2	1.5815612	4.78	1E-10
56	13900.00	90.62	273.92	100	8962.9	5133.7	350.8	-5121.6	5133.7	273.9	0.0	0					

57	14000.00	90.62	273.92	100	8961.9	5233.6	357.7	-5221.4	5233.6	273.9	0.0	0.0	9018.2	-6.2	1.5815612	4.78	1E-10
58	14100.00	90.62	273.92	100	8960.8	5333.6	364.5	-5321.2	5333.6	273.9	0.0	0.0	9018.2	-6.2	1.5815612	4.78	1E-10
59	14200.00	90.62	273.92	100	8959.7	5433.6	371.3	-5420.9	5433.6	273.9	0.0	0.0	9018.2	-6.2	1.5815612	4.78	1E-10
60	14300.00	90.62	273.92	100	8958.6	5533.6	378.2	-5520.7	5533.6	273.9	0.0	0.0	9018.2	-6.2	1.5815612	4.78	1E-10
61	14400.00	90.62	273.92	100	8957.6	5633.6	385.0	-5620.5	5633.6	273.9	0.0	0.0	9018.2	-6.2	1.5815612	4.78	1E-10
62	14500.00	90.62	273.92	100	8956.5	5733.6	391.8	-5720.2	5733.6	273.9	0.0	0.0	9018.2	-6.2	1.5815612	4.78	1E-10
63	14600.00	90.62	273.92	100	8955.4	5833.6	398.7	-5820.0	5833.6	273.9	0.0	0.0	9018.2	-6.2	1.5815612	4.78	1E-10
64	14700.00	90.62	273.92	100	8954.3	5933.6	405.5	-5919.7	5933.6	273.9	0.0	0.0	9018.2	-6.2	1.5815612	4.78	1E-10
65	14800.00	90.62	273.92	100	8953.2	6033.6	412.4	-6019.5	6033.6	273.9	0.0	0.0	9018.2	-6.2	1.5815612	4.78	1E-10
66	14900.00	90.62	273.92	100	8952.2	6133.6	419.2	-6119.3	6133.6	273.9	0.0	0.0	9018.2	-6.2	1.5815612	4.78	1E-10
67	15000.00	90.62	273.92	100	8951.1	6233.6	426.0	-6219.0	6233.6	273.9	0.0	0.0	9018.2	-6.2	1.5815612	4.78	1E-10
68	15100.00	90.62	273.92	100	8950.0	6333.6	432.9	-6318.8	6333.6	273.9	0.0	0.0	9018.2	-6.2	1.5815612	4.78	1E-10
69	15200.00	90.62	273.92	100	8948.9	6433.6	439.7	-6418.5	6433.6	273.9	0.0	0.0	9018.2	-6.2	1.5815612	4.78	1E-10
70	15300.00	90.62	273.92	100	8947.9	6533.6	446.5	-6518.3	6533.6	273.9	0.0	0.0	9018.2	-6.2	1.5815612	4.78	1E-10
71	15400.00	90.62	273.92	100	8946.8	6633.6	453.4	-6618.1	6633.6	273.9	0.0	0.0	9018.2	-6.2	1.5815612	4.78	1E-10
72	15500.00	90.62	273.92	100	8945.7	6733.6	460.2	-6717.8	6733.6	273.9	0.0	0.0	9018.2	-6.2	1.5815612	4.78	1E-10
73	15600.00	90.62	273.92	100	8944.6	6833.6	467.0	-6817.6	6833.6	273.9	0.0	0.0	9018.2	-6.2	1.5815612	4.78	1E-10
74	15700.00	90.62	273.92	100	8943.6	6933.5	473.9	-6917.3	6933.5	273.9	0.0	0.0	9018.2	-6.2	1.5815612	4.78	1E-10
75	15800.00	90.62	273.92	100	8942.5	7033.5	480.7	-7017.1	7033.5	273.9	0.0	0.0	9018.2	-6.2	1.5815612	4.78	1E-10
76	15900.00	90.62	273.92	100	8941.4	7133.5	487.5	-7116.9	7133.5	273.9	0.0	0.0	9018.2	-6.2	1.5815612	4.78	1E-10
77	16000.00	90.62	273.92	100	8940.3	7233.5	494.4	-7216.6	7233.5	273.9	0.0	0.0	9018.2	-6.2	1.5815612	4.78	1E-10
78	16100.00	90.62	273.92	100	8939.3	7333.5	501.2	-7316.4	7333.5	273.9	0.0	0.0	9018.2	-6.2	1.5815612	4.78	1E-10
79	16200.00	90.62	273.92	100	8938.2	7433.5	508.0	-7416.1	7433.5	273.9	0.0	0.0	9018.2	-6.2	1.5815612	4.78	1E-10
80	16300.00	90.62	273.92	100	8937.1	7533.5	514.9	-7515.9	7533.5	273.9	0.0	0.0	9018.2	-6.2	1.5815612	4.78	1E-10
81	16400.00	90.62	273.92	100	8936.0	7633.5	521.7	-7615.7	7633.5	273.9	0.0	0.0	9018.2	-6.2	1.5815612	4.78	1E-10
82	16500.00	90.62	273.92	100	8934.9	7733.5	528.5	-7715.4	7733.5	273.9	0.0	0.0	9018.2	-6.2	1.5815612	4.78	1E-10
83	16600.00	90.62	273.92	100	8933.9	7833.5	535.4	-7815.2	7833.5	273.9	0.0	0.0	9018.2	-6.2	1.5815612	4.78	1E-10
84	16700.00	90.62	273.92	100	8932.8	7933.5	542.2	-7914.9	7933.5	273.9	0.0	0.0	9018.2	-6.2	1.5815612	4.78	1E-10
85	16800.00	90.62	273.92	100	8931.7	8033.5	549.0	-8014.7	8033.5	273.9	0.0	0.0	9018.2	-6.2	1.5815612	4.78	1E-10
86	16900.00	90.62	273.92	100	8930.6	8133.5	555.9	-8114.5	8133.5	273.9	0.0	0.0	9018.2	-6.2	1.5815612	4.78	1E-10
87	17000.00	90.62	273.92	100	8929.6	8233.5	562.7	-8214.2	8233.5	273.9	0.0	0.0	9018.2	-6.2	1.5815612	4.78	1E-10
88	17100.00	90.62	273.92	100	8928.5	8333.5	569.5	-8314.0	8333.5	273.9	0.0	0.0	9018.2	-6.2	1.5815612	4.78	1E-10
89	17200.00	90.62	273.92	100	8927.4	8433.5	576.4	-8413.7	8433.5	273.9	0.0	0.0	9018.2	-6.2	1.5815612	4.78	1E-10
90	17300.00	90.62	273.92	100	8926.3	8533.5	583.2	-8513.5	8533.5	273.9	0.0	0.0	9018.2	-6.2	1.5815612	4.78	1E-10
91	17400.00	90.62	273.92	100	8925.3	8633.4	590.0	-8613.3	8633.4	273.9	0.0	0.0	9018.2	-6.2	1.5815612	4.78	1E-10
92	17500.00	90.62	273.92	100	8924.2	8733.4	596.9	-8713.0	8733.4	273.9	0.0	0.0	9018.2	-6.2	1.5815612	4.78	1E-10
93	17600.00	90.62	273.92	100	8923.1	8833.4	603.7	-8812.8	8833.4	273.9	0.0	0.0	9018.2	-6.2	1.5815612	4.78	1E-10
94	17700.00	90.62	273.92	100	8922.0	8933.4	610.5	-8912.5	8933.4	273.9	0.0	0.0	9018.2	-6.2	1.5815612	4.78	1E-10
95	17800.00	90.62	273.92	100	8921.0	9033.4	617.4	-9012.3	9033.4	273.9	0.0	0.0	9018.2	-6.2	1.5815612	4.78	1E-10
96	17900.00	90.62	273.92	100	8919.9	9133.4	624.2	-9112.1	9133.4	273.9	0.0	0.0	9018.2	-6.2	1.5815612	4.78	1E-10
97	18000.00	90.62	273.92	100	8918.8	9233.4	631.0	-9211.8	9233.4	273.9	0.0	0.0	9018.2	-6.2	1.5815612	4.78	1E-10
98	18100.00	90.62	273.92	100	8917.7	9333.4	637.9	-9311.6	9333.4	273.9	0.0	0.0	9018.2	-6.2	1.5815612	4.78	1E-10
99	18200.00	90.62	273.92	100	8916.6	9433.4	644.7	-9411.3	9433.4	273.9	0.0	0.0	9018.2	-6.2	1.5815612	4.78	1E-10
100	18300.00	90.62	273.92	100	8915.6	9533.4	651.5	-9511.1	9533.4	273.9	0.0	0.0	9018.2	-6.2	1.5815612	4.78	1E-10
101	18400.00	90.62	273.92	100	8914.5	9633.4	658.4	-9610.9	9633.4	273.9	0.0	0.0	9018.2	-6.2	1.5815612	4.78	1E-10
102	18500.00	90.62	273.92	100	8913.4	9733.4	665.2	-9710.6	9733.4	273.9	0.0	0.0	9018.2	-6.2	1.5815612	4.78	1E-10
103	18600.00	90.62	273.92	100	8912.3	9833.4	672.0	-9810.4	9833.4	273.9	0.0	0.0	9018.2	-6.2	1.5815612	4.78	1E-10
104	18700.00	90.62	273.92	100	8911.3	9933.4	678.9	-9910.1	9933.4	273.9	0.0	0.0	9018.2	-6.2	1.5815612	4.78	1E-10
105	18721.09	90.62	273.92	21.09	8911.0	9954.5	680.3	-9931.2	9954.5	273.9	0.0	0.0	9018.2	-6.2	1.5815612	4.78	1E-10
106	18721.09	90.62	273.92	0	8911.0	9954.5	680.3	-9931.2	9954.5	273.9	#DIV/0!	#DIV/0!	9018.2	-6.2	1.5815612	4.78	1E-10

Mewbourne Oil Company

SURVEY CALCULATION REPORT
Minimum Curvature Calculations

Operator: Mewbourne Oil Company
Lease Name: Jericho 8/7 Fed Com 624H
KOP 8444.04
SL: 1160 FNL & 210 FEL; Sec 8A/20S/29E
PBHL: 2200 FNL & 100 FWL; Sec 7E/20S/29E

Target KBTVD: 9,017 Feet 9017.00
Target Angle: 90.55 Degrees 90.55
Section Plane: 264.04 Degrees
Declination Corrected to True North: 6.63 Degrees
Bit to Survey Offset: 44 Feet

Survey No.	Measured Depth-ft	Drift (Deg.)	Azimuth (Deg.)	Course Length	TVD (Feet)	Vertical Section	+N/-S (Feet)	+E/-W (Feet)	Closure Distance	Closure Direction	BUR	DLS	KBTVD	+Above			
														-Below Target	DRIFT (RADIANS)	AZIMUTH (RADIANS)	
T/I	8444.04	0.00	264.04	N/A	8444.0	0.0	0.0	0.0	0.0	0.0	N/A	N/A	8444.0	573.0	1E-12	4.61	#VALUE!
1	8534.59	9.05	264.04	90.546	8534.2	7.1	-0.7	-7.1	7.1	264.0	10.0	10.0	8534.3	482.7	0.1580334	4.61	0.1580334
2	8625.14	18.11	264.04	90.546	8622.1	28.4	-2.9	-28.2	28.4	264.0	10.0	10.0	8622.4	394.6	0.3160669	4.61	0.1580334
3	8715.68	27.16	264.04	90.546	8705.6	63.2	-6.6	-62.9	63.2	264.0	10.0	10.0	8706.2	310.8	0.4741003	4.61	0.1580334
4	8806.23	36.22	264.04	90.546	8782.6	110.7	-11.5	-110.1	110.7	264.0	10.0	10.0	8783.6	233.4	0.6321338	4.61	0.1580334
5	8896.77	45.27	264.04	90.546	8851.1	169.8	-17.6	-168.8	169.8	264.0	10.0	10.0	8852.7	164.3	0.7901672	4.61	0.1580334
6	8987.32	54.33	264.04	90.546	8909.5	238.8	-24.8	-237.5	238.8	264.0	10.0	10.0	8911.8	105.2	0.9482006	4.61	0.1580334
7	9077.87	63.38	264.04	90.546	8956.3	316.3	-32.8	-314.5	316.3	264.0	10.0	10.0	8959.3	57.7	1.1062341	4.61	0.1580334
8	9168.41	72.44	264.04	90.546	8990.3	400.1	-41.5	-397.9	400.1	264.0	10.0	10.0	8994.1	22.9	1.2642675	4.61	0.1580334
9	9258.96	81.49	264.04	90.546	9010.7	488.2	-50.7	-485.5	488.2	264.0	10.0	10.0	9015.4	1.6	1.4223009	4.61	0.1580334
10	9349.51	90.55	264.04	90.546	9017.0	578.4	-60.1	-575.3	578.4	264.0	10.0	10.0	9022.5	-5.5	1.5803344	4.61	0.1580334
11	9400.00	90.55	264.04	50.493	9016.5	628.9	-65.3	-625.5	628.9	264.0	0.0	0.0	9022.5	-5.5	1.5803344	4.61	1E-10
12	9500.00	90.55	264.04	100	9015.5	728.9	-75.7	-725.0	728.9	264.0	0.0	0.0	9022.5	-5.5	1.5803344	4.61	1E-10
13	9600.00	90.55	264.04	100	9014.6	828.9	-86.1	-824.4	828.9	264.0	0.0	0.0	9022.5	-5.5	1.5803344	4.61	1E-10
14	9700.00	90.55	264.04	100	9013.6	928.9	-96.5	-923.9	928.9	264.0	0.0	0.0	9022.5	-5.5	1.5803344	4.61	1E-10
15	9800.00	90.55	264.04	100	9012.7	1028.9	-106.9	-1023.3	1028.9	264.0	0.0	0.0	9022.5	-5.5	1.5803344	4.61	1E-10
16	9900.00	90.55	264.04	100	9011.7	1128.9	-117.2	-1122.8	1128.9	264.0	0.0	0.0	9022.5	-5.5	1.5803344	4.61	1E-10
17	10000.00	90.55	264.04	100	9010.8	1228.9	-127.6	-1222.2	1228.9	264.0	0.0	0.0	9022.5	-5.5	1.5803344	4.61	1E-10
18	10100.00	90.55	264.04	100	9009.8	1328.9	-138.0	-1321.7	1328.9	264.0	0.0	0.0	9022.5	-5.5	1.5803344	4.61	1E-10
19	10200.00	90.55	264.04	100	9008.9	1428.9	-148.4	-1421.1	1428.9	264.0	0.0	0.0	9022.5	-5.5	1.5803344	4.61	1E-10
20	10300.00	90.55	264.04	100	9007.9	1528.9	-158.8	-1520.6	1528.9	264.0	0.0	0.0	9022.5	-5.5	1.5803344	4.61	1E-10
21	10400.00	90.55	264.04	100	9007.0	1628.9	-169.2	-1620.1	1628.9	264.0	0.0	0.0	9022.5	-5.5	1.5803344	4.61	1E-10
22	10500.00	90.55	264.04	100	9006.0	1728.9	-179.6	-1719.5	1728.9	264.0	0.0	0.0	9022.5	-5.5	1.5803344	4.61	1E-10
23	10600.00	90.55	264.04	100	9005.0	1828.9	-189.9	-1819.0	1828.9	264.0	0.0	0.0	9022.5	-5.5	1.5803344	4.61	1E-10
24	10700.00	90.55	264.04	100	9004.1	1928.9	-200.3	-1918.4	1928.9	264.0	0.0	0.0	9022.5	-5.5	1.5803344	4.61	1E-10
25	10800.00	90.55	264.04	100	9003.1	2028.8	-210.7	-2017.9	2028.8	264.0	0.0	0.0	9022.5	-5.5	1.5803344	4.61	1E-10
26	10900.00	90.55	264.04	100	9002.2	2128.8	-221.1	-2117.3	2128.8	264.0	0.0	0.0	9022.5	-5.5	1.5803344	4.61	1E-10
27	11000.00	90.55	264.04	100	9001.2	2228.8	-231.5	-2216.8	2228.8	264.0	0.0	0.0	9022.5	-5.5	1.5803344	4.61	1E-10
28	11100.00	90.55	264.04	100	9000.3	2328.8	-241.9	-2316.2	2328.8	264.0	0.0	0.0	9022.5	-5.5	1.5803344	4.61	1E-10
29	11200.00	90.55	264.04	100	8999.3	2428.8	-252.2	-2415.7	2428.8	264.0	0.0	0.0	9022.5	-5.5	1.5803344	4.61	1E-10
30	11300.00	90.55	264.04	100	8998.4	2528.8	-262.6	-2515.2	2528.8	264.0	0.0	0.0	9022.5	-5.5	1.5803344	4.61	1E-10
31	11400.00	90.55	264.04	100	8997.4	2628.8	-273.0	-2614.6	2628.8	264.0	0.0	0.0	9022.5	-5.5	1.5803344	4.61	1E-10
32	11500.00	90.55	264.04	100	8996.5	2728.8	-283.4	-2714.1	2728.8	264.0	0.0	0.0	9022.5	-5.5	1.5803344	4.61	1E-10
33	11600.00	90.55	264.04	100	8995.5	2828.8	-293.8	-2813.5	2828.8	264.0	0.0	0.0	9022.5	-5.5	1.5803344	4.61	1E-10
34	11700.00	90.55	264.04	100	8994.6	2928.8	-304.2	-2913.0	2928.8	264.0	0.0	0.0	9022.5	-5.5	1.5803344	4.61	1E-10
35	11800.00	90.55	264.04	100	8993.6	3028.8	-314.6	-3012.4	3028.8	264.0	0.0	0.0	9022.5	-5.5	1.5803344	4.61	1E-10
36	11900.00	90.55	264.04	100	8992.6	3128.8	-324.9	-3111.9	3128.8	264.0	0.0	0.0	9022.5	-5.5	1.5803344	4.61	1E-10
37	12000.00	90.55	264.04	100	8991.7	3228.8	-335.3	-3211.3	3228.8	264.0	0.0	0.0	9022.5	-5.5	1.5803344	4.61	1E-10
38	12100.00	90.55	264.04	100	8990.7	3328.8	-345.7	-3310.8	3328.8	264.0	0.0	0.0	9022.5	-5.5	1.5803344	4.61	1E-10
39	12200.00	90.55	264.04	100	8989.8	3428.8	-356.1	-3410.2	3428.8	264.0	0.0	0.0	9022.5	-5.5	1.5803344	4.61	1E-10
40	12300.00	90.55	264.04	100	8988.8	3528.8	-366.5	-3509.7	3528.8	264.0	0.0	0.0	9022.5	-5.5	1.5803344	4.61	1E-10
41	12400.00	90.55	264.04	100	8987.9	3628.8	-376.9	-3609.2	3628.8	264.0	0.0	0.0	9022.5	-5.5	1.5803344	4.61	1E-10
42	12500.00	90.55	264.04	100	8986.9	3728.8	-387.3	-3708.6	3728.8	264.0	0.0	0.0	9022.5	-5.5	1.5803344	4.61	1E-10
43	12600.00	90.55	264.04	100	8986.0	3828.8	-397.6	-3808.1	3828.8	264.0	0.0	0.0	9022.5	-5.5	1.5803344	4.61	1E-10
44	12700.00	90.55	264.04	100	8985.0	3928.8	-408.0	-3907.5	3928.8	264.0	0.0	0.0	9022.5	-5.5	1.5803344	4.61	1E-10
45	12800.00	90.55	264.04	100	8984.1	4028.8	-418.4	-4007.0	4028.8	264.0	0.0	0.0	9022.5	-5.5	1.5803344	4.61	1E-10
46	12900.00	90.55	264.04	100	8983.1	4128.8	-428.8	-4106.4	4128.8	264.0	0.0	0.0	9022.5	-5.5	1.5803344	4.61	1E-10
47	13000.00	90.55	264.04	100	8982.2	4228.7	-439.2	-4205.9	4228.7	264.0	0.0	0.0	9022.5	-5.5	1.5803344	4.61	1E-10
48	13100.00	90.55	264.04	100	8981.2	4328.7	-449.6	-4305.3	4328.7	264.0	0.0	0.0	9022.5	-5.5	1.5803344	4.61	1E-10
49	13200.00	90.55	264.04	100	8980.2	4428.7	-460.0	-4404.8	4428.7	264.0	0.0	0.0	9022.5	-5.5	1.5803344	4.61	1E-10
50	13300.00	90.55	264.04	100	8979.3	4528.7	-470.3	-4504.2	4528.7	264.0	0.0	0.0	9022.5	-5.5	1.5803344	4.61	1E-10
51	13400.00	90.55	264.04	100	8978.3	4628.7	-480.7	-4603.7	4628.7	264.0	0.0	0.0	9022.5	-5.5	1.5803344	4.61	1E-10
52	13500.00	90.55	264.04	100	8977.4	4728.7	-491.1	-4703.2	4728.7	264.0	0.0	0.0	9022.5	-5.5	1.5803344	4.61	1E-10
53	13600.00	90.55	264.04	100	8976.4	4828.7	-501.5	-4802.6	4828.7	264.0	0.0	0.0	9022.5	-5.5	1.5803344	4.61	1E-10
54	13700.00	90.55	264.04	100	8975.5	4928.7	-511.9	-4902.1	4928.7	264.0	0.0	0.0	9022.5	-5.5	1.5803344	4.61	1E-10
55	13800.00	90.55	264.04	100	8974.5	5028.7	-522.3	-5001.5	5028.7	264.0	0.0	0.0	9022.5	-5.5	1.5803344	4.61	1E-10
56	13900.00	90.55	264.04	100	8973.6	5128.7	-532.6	-5101.0	5128.7	264.0	0.0						

57	14000.00	90.55	264.04	100	8972.6	5228.7	-543.0	-5200.4	5228.7	264.0	0.0	0.0	9022.5	-5.5	1.5803344	4.61	1E-10
58	14100.00	90.55	264.04	100	8971.7	5328.7	-553.4	-5299.9	5328.7	264.0	0.0	0.0	9022.5	-5.5	1.5803344	4.61	1E-10
59	14200.00	90.55	264.04	100	8970.7	5428.7	-563.8	-5399.3	5428.7	264.0	0.0	0.0	9022.5	-5.5	1.5803344	4.61	1E-10
60	14300.00	90.55	264.04	100	8969.8	5528.7	-574.2	-5498.8	5528.7	264.0	0.0	0.0	9022.5	-5.5	1.5803344	4.61	1E-10
61	14400.00	90.55	264.04	100	8968.8	5628.7	-584.6	-5598.2	5628.7	264.0	0.0	0.0	9022.5	-5.5	1.5803344	4.61	1E-10
62	14500.00	90.55	264.04	100	8967.8	5728.7	-595.0	-5697.7	5728.7	264.0	0.0	0.0	9022.5	-5.5	1.5803344	4.61	1E-10
63	14600.00	90.55	264.04	100	8966.9	5828.7	-605.3	-5797.2	5828.7	264.0	0.0	0.0	9022.5	-5.5	1.5803344	4.61	1E-10
64	14700.00	90.55	264.04	100	8965.9	5928.7	-615.7	-5896.6	5928.7	264.0	0.0	0.0	9022.5	-5.5	1.5803344	4.61	1E-10
65	14800.00	90.55	264.04	100	8965.0	6028.7	-626.1	-5996.1	6028.7	264.0	0.0	0.0	9022.5	-5.5	1.5803344	4.61	1E-10
66	14900.00	90.55	264.04	100	8964.0	6128.7	-636.5	-6095.5	6128.7	264.0	0.0	0.0	9022.5	-5.5	1.5803344	4.61	1E-10
67	15000.00	90.55	264.04	100	8963.1	6228.7	-646.9	-6195.0	6228.7	264.0	0.0	0.0	9022.5	-5.5	1.5803344	4.61	1E-10
68	15100.00	90.55	264.04	100	8962.1	6328.7	-657.3	-6294.4	6328.7	264.0	0.0	0.0	9022.5	-5.5	1.5803344	4.61	1E-10
69	15200.00	90.55	264.04	100	8961.2	6428.6	-667.7	-6393.9	6428.6	264.0	0.0	0.0	9022.5	-5.5	1.5803344	4.61	1E-10
70	15300.00	90.55	264.04	100	8960.2	6528.6	-678.0	-6493.3	6528.6	264.0	0.0	0.0	9022.5	-5.5	1.5803344	4.61	1E-10
71	15400.00	90.55	264.04	100	8959.3	6628.6	-688.4	-6592.8	6628.6	264.0	0.0	0.0	9022.5	-5.5	1.5803344	4.61	1E-10
72	15500.00	90.55	264.04	100	8958.3	6728.6	-698.8	-6692.2	6728.6	264.0	0.0	0.0	9022.5	-5.5	1.5803344	4.61	1E-10
73	15600.00	90.55	264.04	100	8957.4	6828.6	-709.2	-6791.7	6828.6	264.0	0.0	0.0	9022.5	-5.5	1.5803344	4.61	1E-10
74	15700.00	90.55	264.04	100	8956.4	6928.6	-719.6	-6891.2	6928.6	264.0	0.0	0.0	9022.5	-5.5	1.5803344	4.61	1E-10
75	15800.00	90.55	264.04	100	8955.4	7028.6	-730.0	-6990.6	7028.6	264.0	0.0	0.0	9022.5	-5.5	1.5803344	4.61	1E-10
76	15900.00	90.55	264.04	100	8954.5	7128.6	-740.4	-7090.1	7128.6	264.0	0.0	0.0	9022.5	-5.5	1.5803344	4.61	1E-10
77	16000.00	90.55	264.04	100	8953.5	7228.6	-750.7	-7189.5	7228.6	264.0	0.0	0.0	9022.5	-5.5	1.5803344	4.61	1E-10
78	16100.00	90.55	264.04	100	8952.6	7328.6	-761.1	-7289.0	7328.6	264.0	0.0	0.0	9022.5	-5.5	1.5803344	4.61	1E-10
79	16200.00	90.55	264.04	100	8951.6	7428.6	-771.5	-7388.4	7428.6	264.0	0.0	0.0	9022.5	-5.5	1.5803344	4.61	1E-10
80	16300.00	90.55	264.04	100	8950.7	7528.6	-781.9	-7487.9	7528.6	264.0	0.0	0.0	9022.5	-5.5	1.5803344	4.61	1E-10
81	16400.00	90.55	264.04	100	8949.7	7628.6	-792.3	-7587.3	7628.6	264.0	0.0	0.0	9022.5	-5.5	1.5803344	4.61	1E-10
82	16500.00	90.55	264.04	100	8948.8	7728.6	-802.7	-7686.8	7728.6	264.0	0.0	0.0	9022.5	-5.5	1.5803344	4.61	1E-10
83	16600.00	90.55	264.04	100	8947.8	7828.6	-813.0	-7786.3	7828.6	264.0	0.0	0.0	9022.5	-5.5	1.5803344	4.61	1E-10
84	16700.00	90.55	264.04	100	8946.9	7928.6	-823.4	-7885.7	7928.6	264.0	0.0	0.0	9022.5	-5.5	1.5803344	4.61	1E-10
85	16800.00	90.55	264.04	100	8945.9	8028.6	-833.8	-7985.2	8028.6	264.0	0.0	0.0	9022.5	-5.5	1.5803344	4.61	1E-10
86	16900.00	90.55	264.04	100	8945.0	8128.6	-844.2	-8084.6	8128.6	264.0	0.0	0.0	9022.5	-5.5	1.5803344	4.61	1E-10
87	17000.00	90.55	264.04	100	8944.0	8228.6	-854.6	-8184.1	8228.6	264.0	0.0	0.0	9022.5	-5.5	1.5803344	4.61	1E-10
88	17100.00	90.55	264.04	100	8943.1	8328.6	-865.0	-8283.5	8328.6	264.0	0.0	0.0	9022.5	-5.5	1.5803344	4.61	1E-10
89	17200.00	90.55	264.04	100	8942.1	8428.6	-875.4	-8383.0	8428.6	264.0	0.0	0.0	9022.5	-5.5	1.5803344	4.61	1E-10
90	17300.00	90.55	264.04	100	8941.1	8528.6	-885.7	-8482.4	8528.6	264.0	0.0	0.0	9022.5	-5.5	1.5803344	4.61	1E-10
91	17400.00	90.55	264.04	100	8940.2	8628.5	-896.1	-8581.9	8628.5	264.0	0.0	0.0	9022.5	-5.5	1.5803344	4.61	1E-10
92	17500.00	90.55	264.04	100	8939.2	8728.5	-906.5	-8681.3	8728.5	264.0	0.0	0.0	9022.5	-5.5	1.5803344	4.61	1E-10
93	17600.00	90.55	264.04	100	8938.3	8828.5	-916.9	-8780.8	8828.5	264.0	0.0	0.0	9022.5	-5.5	1.5803344	4.61	1E-10
94	17700.00	90.55	264.04	100	8937.3	8928.5	-927.3	-8880.3	8928.5	264.0	0.0	0.0	9022.5	-5.5	1.5803344	4.61	1E-10
95	17800.00	90.55	264.04	100	8936.4	9028.5	-937.7	-8979.7	9028.5	264.0	0.0	0.0	9022.5	-5.5	1.5803344	4.61	1E-10
96	17900.00	90.55	264.04	100	8935.4	9128.5	-948.1	-9079.2	9128.5	264.0	0.0	0.0	9022.5	-5.5	1.5803344	4.61	1E-10
97	18000.00	90.55	264.04	100	8934.5	9228.5	-958.4	-9178.6	9228.5	264.0	0.0	0.0	9022.5	-5.5	1.5803344	4.61	1E-10
98	18100.00	90.55	264.04	100	8933.5	9328.5	-968.8	-9278.1	9328.5	264.0	0.0	0.0	9022.5	-5.5	1.5803344	4.61	1E-10
99	18200.00	90.55	264.04	100	8932.6	9428.5	-979.2	-9377.5	9428.5	264.0	0.0	0.0	9022.5	-5.5	1.5803344	4.61	1E-10
100	18300.00	90.55	264.04	100	8931.6	9528.5	-989.6	-9477.0	9528.5	264.0	0.0	0.0	9022.5	-5.5	1.5803344	4.61	1E-10
101	18400.00	90.55	264.04	100	8930.7	9628.5	-1000.0	-9576.4	9628.5	264.0	0.0	0.0	9022.5	-5.5	1.5803344	4.61	1E-10
102	18500.00	90.55	264.04	100	8929.7	9728.5	-1010.4	-9675.9	9728.5	264.0	0.0	0.0	9022.5	-5.5	1.5803344	4.61	1E-10
103	18600.00	90.55	264.04	100	8928.7	9828.5	-1020.7	-9775.3	9828.5	264.0	0.0	0.0	9022.5	-5.5	1.5803344	4.61	1E-10
104	18700.00	90.55	264.04	100	8927.8	9928.5	-1031.1	-9874.8	9928.5	264.0	0.0	0.0	9022.5	-5.5	1.5803344	4.61	1E-10
105	18779.65	90.55	264.04	79.647	8927.0	10008.1	-1039.4	-9954.0	10008.1	264.0	0.0	0.0	9022.5	-5.5	1.5803344	4.61	1E-10
106	18779.65	90.55	264.04	0	8927.0	10008.1	-1039.4	-9954.0	10008.1	264.0	#####	#####	9022.5	-5.5	1.5803344	4.61	1E-10

Mewbourne Oil Company

SURVEY CALCULATION REPORT
Minimum Curvature Calculations

Operator: Mewbourne Oil Company
Lease Name: Jericho 8/7 Fed Com 627H
KOP 8450.04
SL: 1030 FSL & 210 FEL; Sec 8P/20S/29E
PBHL: 1310 FSL & 100 FWL; Sec 7M/20S/29E

Target KBTVD: 9,023 Feet 9023.00
Target Angle: 90.62 Degrees 90.62
Section Plane: 271.83 Degrees
Declination Corrected to True North: 6.63 Degrees
Bit to Survey Offset: 44 Feet

Survey No.	Measured Depth-ft	Drift (Deg.)	Azimuth (Deg.)	Course Length	TVD (Feet)	Vertical Section	+N/-S (Feet)	+E/-W (Feet)	Closure Distance	Closure Direction	BUR	DLS	KBTVD	+Above			
														-Below Target	DRIFT (RADIAN)	AZIMUTH (RADIAN)	
T/I	8450.04	0.00	271.83	N/A	8450.0	0.0	0.0	0.0	0.0	0.0	N/A	N/A	8450.0	573.0	1E-12	4.74	#VALUE!
1	8540.66	9.06	271.83	90.621	8540.3	7.2	0.2	-7.1	7.2	271.8	10.0	10.0	8540.4	482.6	0.1581637	4.74	0.1581637
2	8631.28	18.12	271.83	90.621	8628.3	28.4	0.9	-28.4	28.4	271.8	10.0	10.0	8628.6	394.4	0.3163274	4.74	0.1581637
3	8721.91	27.19	271.83	90.621	8711.8	63.3	2.0	-63.3	63.3	271.8	10.0	10.0	8712.5	310.5	0.4744911	4.74	0.1581637
4	8812.53	36.25	271.83	90.621	8788.8	110.9	3.5	-110.8	110.9	271.8	10.0	10.0	8790.0	233.0	0.6326548	4.74	0.1581637
5	8903.15	45.31	271.83	90.621	8857.4	170.0	5.4	-169.9	170.0	271.8	10.0	10.0	8859.2	163.8	0.7908185	4.74	0.1581637
6	8993.77	54.37	271.83	90.621	8915.8	239.2	7.6	-239.1	239.2	271.8	10.0	10.0	8918.3	104.7	0.9489822	4.74	0.1581637
7	9084.39	63.43	271.83	90.621	8962.5	316.7	10.1	-316.6	316.7	271.8	10.0	10.0	8965.9	57.1	1.1071459	4.74	0.1581637
8	9175.01	72.50	271.83	90.621	8996.5	400.6	12.8	-400.4	400.6	271.8	10.0	10.0	9000.8	22.2	1.2653096	4.74	0.1581637
9	9265.63	81.56	271.83	90.621	9016.8	488.9	15.6	-488.6	488.9	271.8	10.0	10.0	9022.1	0.9	1.4234733	4.74	0.1581637
10	9356.25	90.62	271.83	90.621	9023.0	579.2	18.5	-578.9	579.2	271.8	10.0	10.0	9029.2	-6.2	1.581637	4.74	0.1581637
11	9400.00	90.62	271.83	43.747	9022.5	622.9	19.8	-622.6	622.9	271.8	0.0	0.0	9029.2	-6.2	1.581637	4.74	1E-10
12	9500.00	90.62	271.83	100	9021.4	722.9	23.0	-722.5	722.9	271.8	0.0	0.0	9029.2	-6.2	1.581637	4.74	1E-10
13	9600.00	90.62	271.83	100	9020.3	822.9	26.2	-822.5	822.9	271.8	0.0	0.0	9029.2	-6.2	1.581637	4.74	1E-10
14	9700.00	90.62	271.83	100	9019.2	922.9	29.4	-922.4	922.9	271.8	0.0	0.0	9029.2	-6.2	1.581637	4.74	1E-10
15	9800.00	90.62	271.83	100	9018.2	1022.9	32.6	-1022.4	1022.9	271.8	0.0	0.0	9029.2	-6.2	1.581637	4.74	1E-10
16	9900.00	90.62	271.83	100	9017.1	1122.9	35.8	-1122.3	1122.9	271.8	0.0	0.0	9029.2	-6.2	1.581637	4.74	1E-10
17	10000.00	90.62	271.83	100	9016.0	1222.9	39.0	-1222.3	1222.9	271.8	0.0	0.0	9029.2	-6.2	1.581637	4.74	1E-10
18	10100.00	90.62	271.83	100	9014.9	1322.9	42.1	-1322.2	1322.9	271.8	0.0	0.0	9029.2	-6.2	1.581637	4.74	1E-10
19	10200.00	90.62	271.83	100	9013.8	1422.9	45.3	-1422.1	1422.9	271.8	0.0	0.0	9029.2	-6.2	1.581637	4.74	1E-10
20	10300.00	90.62	271.83	100	9012.7	1522.9	48.5	-1522.1	1522.9	271.8	0.0	0.0	9029.2	-6.2	1.581637	4.74	1E-10
21	10400.00	90.62	271.83	100	9011.7	1622.9	51.7	-1622.0	1622.9	271.8	0.0	0.0	9029.2	-6.2	1.581637	4.74	1E-10
22	10500.00	90.62	271.83	100	9010.6	1722.8	54.9	-1722.0	1722.8	271.8	0.0	0.0	9029.2	-6.2	1.581637	4.74	1E-10
23	10600.00	90.62	271.83	100	9009.5	1822.8	58.1	-1821.9	1822.8	271.8	0.0	0.0	9029.2	-6.2	1.581637	4.74	1E-10
24	10700.00	90.62	271.83	100	9008.4	1922.8	61.3	-1921.9	1922.8	271.8	0.0	0.0	9029.2	-6.2	1.581637	4.74	1E-10
25	10800.00	90.62	271.83	100	9007.3	2022.8	64.4	-2021.8	2022.8	271.8	0.0	0.0	9029.2	-6.2	1.581637	4.74	1E-10
26	10900.00	90.62	271.83	100	9006.2	2122.8	67.6	-2121.7	2122.8	271.8	0.0	0.0	9029.2	-6.2	1.581637	4.74	1E-10
27	11000.00	90.62	271.83	100	9005.1	2222.8	70.8	-2221.7	2222.8	271.8	0.0	0.0	9029.2	-6.2	1.581637	4.74	1E-10
28	11100.00	90.62	271.83	100	9004.1	2322.8	74.0	-2321.6	2322.8	271.8	0.0	0.0	9029.2	-6.2	1.581637	4.74	1E-10
29	11200.00	90.62	271.83	100	9003.0	2422.8	77.2	-2421.6	2422.8	271.8	0.0	0.0	9029.2	-6.2	1.581637	4.74	1E-10
30	11300.00	90.62	271.83	100	9001.9	2522.8	80.4	-2521.5	2522.8	271.8	0.0	0.0	9029.2	-6.2	1.581637	4.74	1E-10
31	11400.00	90.62	271.83	100	9000.8	2622.8	83.6	-2621.5	2622.8	271.8	0.0	0.0	9029.2	-6.2	1.581637	4.74	1E-10
32	11500.00	90.62	271.83	100	8999.7	2722.8	86.7	-2721.4	2722.8	271.8	0.0	0.0	9029.2	-6.2	1.581637	4.74	1E-10
33	11600.00	90.62	271.83	100	8998.6	2822.8	89.9	-2821.4	2822.8	271.8	0.0	0.0	9029.2	-6.2	1.581637	4.74	1E-10
34	11700.00	90.62	271.83	100	8997.6	2922.8	93.1	-2921.3	2922.8	271.8	0.0	0.0	9029.2	-6.2	1.581637	4.74	1E-10
35	11800.00	90.62	271.83	100	8996.5	3022.8	96.3	-3021.2	3022.8	271.8	0.0	0.0	9029.2	-6.2	1.581637	4.74	1E-10
36	11900.00	90.62	271.83	100	8995.4	3122.8	99.5	-3121.2	3122.8	271.8	0.0	0.0	9029.2	-6.2	1.581637	4.74	1E-10
37	12000.00	90.62	271.83	100	8994.3	3222.8	102.7	-3221.1	3222.8	271.8	0.0	0.0	9029.2	-6.2	1.581637	4.74	1E-10
38	12100.00	90.62	271.83	100	8993.2	3322.8	105.9	-3321.1	3322.8	271.8	0.0	0.0	9029.2	-6.2	1.581637	4.74	1E-10
39	12200.00	90.62	271.83	100	8992.1	3422.7	109.0	-3421.0	3422.7	271.8	0.0	0.0	9029.2	-6.2	1.581637	4.74	1E-10
40	12300.00	90.62	271.83	100	8991.1	3522.7	112.2	-3521.0	3522.7	271.8	0.0	0.0	9029.2	-6.2	1.581637	4.74	1E-10
41	12400.00	90.62	271.83	100	8990.0	3622.7	115.4	-3620.9	3622.7	271.8	0.0	0.0	9029.2	-6.2	1.581637	4.74	1E-10
42	12500.00	90.62	271.83	100	8988.9	3722.7	118.6	-3720.8	3722.7	271.8	0.0	0.0	9029.2	-6.2	1.581637	4.74	1E-10
43	12600.00	90.62	271.83	100	8987.8	3822.7	121.8	-3820.8	3822.7	271.8	0.0	0.0	9029.2	-6.2	1.581637	4.74	1E-10
44	12700.00	90.62	271.83	100	8986.7	3922.7	125.0	-3920.7	3922.7	271.8	0.0	0.0	9029.2	-6.2	1.581637	4.74	1E-10
45	12800.00	90.62	271.83	100	8985.6	4022.7	128.2	-4020.7	4022.7	271.8	0.0	0.0	9029.2	-6.2	1.581637	4.74	1E-10
46	12900.00	90.62	271.83	100	8984.6	4122.7	131.3	-4120.6	4122.7	271.8	0.0	0.0	9029.2	-6.2	1.581637	4.74	1E-10
47	13000.00	90.62	271.83	100	8983.5	4222.7	134.5	-4220.6	4222.7	271.8	0.0	0.0	9029.2	-6.2	1.581637	4.74	1E-10
48	13100.00	90.62	271.83	100	8982.4	4322.7	137.7	-4320.5	4322.7	271.8	0.0	0.0	9029.2	-6.2	1.581637	4.74	1E-10
49	13200.00	90.62	271.83	100	8981.3	4422.7	140.9	-4420.4	4422.7	271.8	0.0	0.0	9029.2	-6.2	1.581637	4.74	1E-10
50	13300.00	90.62	271.83	100	8980.2	4522.7	144.1	-4520.4	4522.7	271.8	0.0	0.0	9029.2	-6.2	1.581637	4.74	1E-10
51	13400.00	90.62	271.83	100	8979.1	4622.7	147.3	-4620.3	4622.7	271.8	0.0	0.0	9029.2	-6.2	1.581637	4.74	1E-10
52	13500.00	90.62	271.83	100	8978.0	4722.7	150.4	-4720.3	4722.7	271.8	0.0	0.0	9029.2	-6.2	1.581637	4.74	1E-10
53	13600.00	90.62	271.83	100	8977.0	4822.7	153.6	-4820.2	4822.7	271.8	0.0	0.0	9029.2	-6.2	1.581637	4.74	1E-10
54	13700.00	90.62	271.83	100	8975.9	4922.7	156.8	-4920.2	4922.7	271.8	0.0	0.0	9029.2	-6.2	1.581637	4.74	1E-10
55	13800.00	90.62	271.83	100	8974.8	5022.7	160.0	-5020.1	5022.7	271.8	0.0	0.0	9029.2	-6.2	1.581637	4.74	1E-10
56	13900.00	90.62	271.83	100	8973.7	5122.6	163.2	-5120.0	5122.6	271.8	0.0	0.0	9029.2	-6.2	1.581637	4.74	1E-10

57	14000.00	90.62	271.83	100	8972.6	5222.6	166.4	-5220.0	5222.6	271.8	0.0	0.0	9029.2	-6.2	1.581637	4.74	1E-10
58	14100.00	90.62	271.83	100	8971.5	5322.6	169.6	-5319.9	5322.6	271.8	0.0	0.0	9029.2	-6.2	1.581637	4.74	1E-10
59	14200.00	90.62	271.83	100	8970.5	5422.6	172.7	-5419.9	5422.6	271.8	0.0	0.0	9029.2	-6.2	1.581637	4.74	1E-10
60	14300.00	90.62	271.83	100	8969.4	5522.6	175.9	-5519.8	5522.6	271.8	0.0	0.0	9029.2	-6.2	1.581637	4.74	1E-10
61	14400.00	90.62	271.83	100	8968.3	5622.6	179.1	-5619.8	5622.6	271.8	0.0	0.0	9029.2	-6.2	1.581637	4.74	1E-10
62	14500.00	90.62	271.83	100	8967.2	5722.6	182.3	-5719.7	5722.6	271.8	0.0	0.0	9029.2	-6.2	1.581637	4.74	1E-10
63	14600.00	90.62	271.83	100	8966.1	5822.6	185.5	-5819.7	5822.6	271.8	0.0	0.0	9029.2	-6.2	1.581637	4.74	1E-10
64	14700.00	90.62	271.83	100	8965.0	5922.6	188.7	-5919.6	5922.6	271.8	0.0	0.0	9029.2	-6.2	1.581637	4.74	1E-10
65	14800.00	90.62	271.83	100	8964.0	6022.6	191.9	-6019.5	6022.6	271.8	0.0	0.0	9029.2	-6.2	1.581637	4.74	1E-10
66	14900.00	90.62	271.83	100	8962.9	6122.6	195.0	-6119.5	6122.6	271.8	0.0	0.0	9029.2	-6.2	1.581637	4.74	1E-10
67	15000.00	90.62	271.83	100	8961.8	6222.6	198.2	-6219.4	6222.6	271.8	0.0	0.0	9029.2	-6.2	1.581637	4.74	1E-10
68	15100.00	90.62	271.83	100	8960.7	6322.6	201.4	-6319.4	6322.6	271.8	0.0	0.0	9029.2	-6.2	1.581637	4.74	1E-10
69	15200.00	90.62	271.83	100	8959.6	6422.6	204.6	-6419.3	6422.6	271.8	0.0	0.0	9029.2	-6.2	1.581637	4.74	1E-10
70	15300.00	90.62	271.83	100	8958.5	6522.6	207.8	-6519.3	6522.6	271.8	0.0	0.0	9029.2	-6.2	1.581637	4.74	1E-10
71	15400.00	90.62	271.83	100	8957.4	6622.6	211.0	-6619.2	6622.6	271.8	0.0	0.0	9029.2	-6.2	1.581637	4.74	1E-10
72	15500.00	90.62	271.83	100	8956.4	6722.6	214.2	-6719.1	6722.6	271.8	0.0	0.0	9029.2	-6.2	1.581637	4.74	1E-10
73	15600.00	90.62	271.83	100	8955.3	6822.5	217.3	-6819.1	6822.5	271.8	0.0	0.0	9029.2	-6.2	1.581637	4.74	1E-10
74	15700.00	90.62	271.83	100	8954.2	6922.5	220.5	-6919.0	6922.5	271.8	0.0	0.0	9029.2	-6.2	1.581637	4.74	1E-10
75	15800.00	90.62	271.83	100	8953.1	7022.5	223.7	-7019.0	7022.5	271.8	0.0	0.0	9029.2	-6.2	1.581637	4.74	1E-10
76	15900.00	90.62	271.83	100	8952.0	7122.5	226.9	-7118.9	7122.5	271.8	0.0	0.0	9029.2	-6.2	1.581637	4.74	1E-10
77	16000.00	90.62	271.83	100	8950.9	7222.5	230.1	-7218.9	7222.5	271.8	0.0	0.0	9029.2	-6.2	1.581637	4.74	1E-10
78	16100.00	90.62	271.83	100	8949.9	7322.5	233.3	-7318.8	7322.5	271.8	0.0	0.0	9029.2	-6.2	1.581637	4.74	1E-10
79	16200.00	90.62	271.83	100	8948.8	7422.5	236.5	-7418.7	7422.5	271.8	0.0	0.0	9029.2	-6.2	1.581637	4.74	1E-10
80	16300.00	90.62	271.83	100	8947.7	7522.5	239.6	-7518.7	7522.5	271.8	0.0	0.0	9029.2	-6.2	1.581637	4.74	1E-10
81	16400.00	90.62	271.83	100	8946.6	7622.5	242.8	-7618.6	7622.5	271.8	0.0	0.0	9029.2	-6.2	1.581637	4.74	1E-10
82	16500.00	90.62	271.83	100	8945.5	7722.5	246.0	-7718.6	7722.5	271.8	0.0	0.0	9029.2	-6.2	1.581637	4.74	1E-10
83	16600.00	90.62	271.83	100	8944.4	7822.5	249.2	-7818.5	7822.5	271.8	0.0	0.0	9029.2	-6.2	1.581637	4.74	1E-10
84	16700.00	90.62	271.83	100	8943.4	7922.5	252.4	-7918.5	7922.5	271.8	0.0	0.0	9029.2	-6.2	1.581637	4.74	1E-10
85	16800.00	90.62	271.83	100	8942.3	8022.5	255.6	-8018.4	8022.5	271.8	0.0	0.0	9029.2	-6.2	1.581637	4.74	1E-10
86	16900.00	90.62	271.83	100	8941.2	8122.5	258.8	-8118.3	8122.5	271.8	0.0	0.0	9029.2	-6.2	1.581637	4.74	1E-10
87	17000.00	90.62	271.83	100	8940.1	8222.5	261.9	-8218.3	8222.5	271.8	0.0	0.0	9029.2	-6.2	1.581637	4.74	1E-10
88	17100.00	90.62	271.83	100	8939.0	8322.5	265.1	-8318.2	8322.5	271.8	0.0	0.0	9029.2	-6.2	1.581637	4.74	1E-10
89	17200.00	90.62	271.83	100	8937.9	8422.5	268.3	-8418.2	8422.5	271.8	0.0	0.0	9029.2	-6.2	1.581637	4.74	1E-10
90	17300.00	90.62	271.83	100	8936.9	8522.4	271.5	-8518.1	8522.4	271.8	0.0	0.0	9029.2	-6.2	1.581637	4.74	1E-10
91	17400.00	90.62	271.83	100	8935.8	8622.4	274.7	-8618.1	8622.4	271.8	0.0	0.0	9029.2	-6.2	1.581637	4.74	1E-10
92	17500.00	90.62	271.83	100	8934.7	8722.4	277.9	-8718.0	8722.4	271.8	0.0	0.0	9029.2	-6.2	1.581637	4.74	1E-10
93	17600.00	90.62	271.83	100	8933.6	8822.4	281.1	-8818.0	8822.4	271.8	0.0	0.0	9029.2	-6.2	1.581637	4.74	1E-10
94	17700.00	90.62	271.83	100	8932.5	8922.4	284.2	-8917.9	8922.4	271.8	0.0	0.0	9029.2	-6.2	1.581637	4.74	1E-10
95	17800.00	90.62	271.83	100	8931.4	9022.4	287.4	-9017.8	9022.4	271.8	0.0	0.0	9029.2	-6.2	1.581637	4.74	1E-10
96	17900.00	90.62	271.83	100	8930.3	9122.4	290.6	-9117.8	9122.4	271.8	0.0	0.0	9029.2	-6.2	1.581637	4.74	1E-10
97	18000.00	90.62	271.83	100	8929.3	9222.4	293.8	-9217.7	9222.4	271.8	0.0	0.0	9029.2	-6.2	1.581637	4.74	1E-10
98	18100.00	90.62	271.83	100	8928.2	9322.4	297.0	-9317.7	9322.4	271.8	0.0	0.0	9029.2	-6.2	1.581637	4.74	1E-10
99	18200.00	90.62	271.83	100	8927.1	9422.4	300.2	-9417.6	9422.4	271.8	0.0	0.0	9029.2	-6.2	1.581637	4.74	1E-10
100	18300.00	90.62	271.83	100	8926.0	9522.4	303.4	-9517.6	9522.4	271.8	0.0	0.0	9029.2	-6.2	1.581637	4.74	1E-10
101	18400.00	90.62	271.83	100	8924.9	9622.4	306.5	-9617.5	9622.4	271.8	0.0	0.0	9029.2	-6.2	1.581637	4.74	1E-10
102	18500.00	90.62	271.83	100	8923.8	9722.4	309.7	-9717.4	9722.4	271.8	0.0	0.0	9029.2	-6.2	1.581637	4.74	1E-10
103	18600.00	90.62	271.83	100	8922.8	9822.4	312.9	-9817.4	9822.4	271.8	0.0	0.0	9029.2	-6.2	1.581637	4.74	1E-10
104	18700.00	90.62	271.83	100	8921.7	9922.4	316.1	-9917.3	9922.4	271.8	0.0	0.0	9029.2	-6.2	1.581637	4.74	1E-10
105	18758.68	90.62	271.83	58.681	8921.0	9981.0	318.0	-9976.0	9981.0	271.8	0.0	0.0	9029.2	-6.2	1.581637	4.74	1E-10
106	18758.68	90.62	271.83	0	8921.0	9981.0	318.0	-9976.0	9981.0	271.8	#####	#####	9029.2	-6.2	1.581637	4.74	1E-10

STATE OF NEW MEXICO
ENERGY, MINERALS AND NATURAL RESOURCES DEPARTMENT
OIL CONSERVATION DIVISION

APPLICATIONS OF MEWBOURNE OIL COMPANY
FOR COMPULSORY POOLING, EDDY COUNTY,
NEW MEXICO.

Case Nos. 24556-24558 & 24571-24573

SELF-AFFIRMED STATEMENT OF NOTICE

COUNTY OF SANTA FE)
) ss.
STATE OF NEW MEXICO)

James Bruce deposes and states:

1. I am over the age of 18, and have personal knowledge of the matters stated herein.
2. I am an attorney for Mewbourne Oil Company.
3. Mewbourne Oil Company has conducted a good faith, diligent effort to find the names and correct addresses of the interest owners entitled to receive notice of the applications filed herein.
4. Notice of the applications was provided to the interest owners, at their last known addresses, by certified mail. Copies of the notice letter and certified return receipts are attached hereto as Exhibit 4-A.
5. Applicant has complied with the notice provisions of Division Rules.

I understand that this Self-Affirmed Statement will be used as written testimony in this case. I affirm that my testimony in paragraphs 1 through 5 above is true and correct and is made under penalty of perjury under the laws of the State of New Mexico. My testimony is made as of the date handwritten next to my signature below.

Date: 6/19/24



James Bruce

EXHIBIT 4

JAMES BRUCE
ATTORNEY AT LAW

POST OFFICE BOX 1056
SANTA FE, NEW MEXICO 87504

369 MONTEZUMA, NO. 213
SANTA FE, NEW MEXICO 87501

(505) 982-2043 (Phone)
(505) 660-6612 (Cell)
(505) 982-2151 (Fax)

jamesbruc@aol.com

June 5, 2024

CERTIFIED MAIL - RETURN RECEIPT REQUESTED

To: Persons on Exhibit A

EXHIBIT 4-A

Ladies and gentlemen:

Mewbourne Oil Company has filed six applications with the Oil Conservation Division seeking the following relief:

Case No. 24556: Mewbourne Oil Company seeks an order pooling all uncommitted mineral interest owners in the Bone Spring formation underlying a horizontal spacing unit comprised of the N/2N/2 of Section 8 and the N/2N/2 of Section 7, Township 20 South, Range 29 East, N.M.P.M., Eddy County, New Mexico (containing 320 acres). The unit will be dedicated to the Jericho 8/7 Fed. Com. Well No. 611H.

Case No. 24557: Mewbourne Oil Company seeks an order pooling all uncommitted mineral interest owners in the Bone Spring formation underlying a horizontal spacing unit comprised of the S/2N/2 of Section 8 and the S/2N/2 of Section 7, Township 20 South, Range 29 East, N.M.P.M., Eddy County, New Mexico (containing 320 acres). The unit will be dedicated to the Jericho 8/7 Fed. Com. Well No. 614H.

Case No. 24558: Mewbourne Oil Company seeks an order pooling all uncommitted mineral interest owners in the Bone Spring formation underlying a proximity tract horizontal spacing unit comprised of the S/2 of Section 8 and the S/2 of Section 7, Township 20 South, Range 29 East, N.M.P.M., Eddy County, New Mexico (containing 640 acres). The unit will be dedicated to the Jericho 8/7 Fed. Com. Well No. 617H.

Case No. 24571: Mewbourne Oil Company seeks an order pooling all uncommitted mineral interest owners in the Wolfcamp formation underlying a proximity tract horizontal spacing unit comprised of the N/2 of Section 8 and the N/2 of Section 7, Township 20 South, Range 29 East, N.M.P.M., Eddy County, New Mexico (containing 640 acres). The unit will be dedicated to the Jericho 8/7 Fed. Com. Well No. 712H.

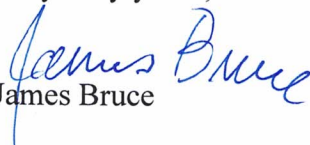
Case No. 24572: Mewbourne Oil Company seeks an order pooling all uncommitted mineral interest owners in the Wolfcamp formation underlying a horizontal spacing unit comprised of the N/2S/2 of Section 8 and the N/2S/2 of Section 7, Township 20 South, Range 29 East, N.M.P.M., Eddy County, New Mexico (containing 320 acres). The unit will be dedicated to the Jericho 8/7 Fed. Com. Well No. 715H.

Case No. 24573: Mewbourne Oil Company seeks an order pooling all uncommitted mineral interest owners in the Wolfcamp formation underlying a horizontal spacing unit comprised of the S/2S/2 of Section 8 and the S/2S/2 of Section 7, Township 20 South, Range 29 East, N.M.P.M., Eddy County, New Mexico (containing 320 acres). The unit will be dedicated to the Jericho 8/7 Fed. Com. Well No. 718H.

Also to be considered will be the cost of drilling, completing, testing, and equipping the wells and the allocation of the cost thereof, as well as actual operating costs and charges for supervision, designation of applicant as operator of the wells, and a 200% charge for the risk involved in drilling, completing, testing and equipping the wells.

This matter is scheduled for hearing at 8:30 a.m. on Thursday, June 27, 2024. The hearing may be attended (a) in person in Pecos Hall of the Wendell Chino Building, 1st Floor, 1220 South St. Francis Drive, Santa Fe New Mexico 87505, or (b) via the WebEx virtual meeting platform. To view the hearing docket and to determine how to participate in an electronic hearing, go to <https://www.emnrd.nm.gov/ocd/hearing-info/>, or contact Freya Tschantz at freya.tschantz@emnrd.nm.gov. You are not required to attend this hearing, but as an owner of an interest who may be affected by the applications, you may appear and present testimony. Failure to appear at that time and become a party of record will preclude you from contesting these matters at a later date. A party appearing in a Division case is required by Division Rules to file a Pre-Hearing Statement no later than five business days before the hearing date. This statement may be filed online with the Division at ocd.hearings@emnrd.nm.gov, and should include: The name of the party and his or her attorney; a concise statement of the case; the name(s) of the witness(es) the party will call to testify at the hearing; the approximate time the party will need to present his or her case; and identification of any procedural matters that need to be resolved prior to the hearing. The Pre-Hearing Statement must also be provided to the attorney for applicant, James Bruce, P.O. Box 1056, Santa Fe, New Mexico 87504, jamesbruc@aol.com.

Very truly yours,


James Bruce

Attorney for Mewbourne Oil Company

14

EXHIBIT A

EOG Resources, Inc.
Modland Division – Land Dept.
P.O. Box 2267
Midland, TX 79702

Davoil, Inc.
No. 1208
6300 Ridglea Place
Fort Worth, TX 76116

Devon Energy Production Company, L.P.
333 West Sheridan Ave.
Oklahoma City, OK 73102

Magnum Hunter Resources, Inc.
Suite 300N
6001 Deauville Boulevard
Midland, TX 79706

Estate of Howard C. Warden
Suite 3100 161 North Clark Street
Chicago, IL 60601

WPX Energy Permian, LLC
333 West Sheridan Ave.
Oklahoma City, OK 73102

Estate of E.J. Rousuck
Address unknown

15

SENDER: COMPLETE THIS SECTION

- Complete items 1, 2, and 3.
- Print your name and address on the reverse so that we can return the card to you.
- Attach this card to the back of the mailpiece, or on the front if space permits.

1. Article Addressed to:

WPX Energy Permian, LLC
333 West Sheridan Ave.
Oklahoma City, OK 73102

9590 9402 8411 3156 6444 90
7020 0090 0000 0864 5452

2. Article Number (Transfer from envelope label)

PS Form 3811, July 2020 PSN 7530-02-000-9053

M - JER

Domestic Return Receipt

COMPLETE THIS SECTION ON DELIVERY

- A. Signature Agent
- B. Received by (Printed Name) Addressee

D. Is delivery address different from item 1? If YES, enter delivery address below:

73102
OKLAHOMA CITY, OK

- 3. Service Type
 - Priority Mail Express®
 - Registered Mail™
 - Adult Signature Restricted Delivery
 - Certified Mail®
 - Certified Mail Restricted Delivery
 - Collect on Delivery
 - Collect on Delivery Restricted Delivery

Postage (over \$500) cted Delivery

Domestic Return Receipt

SENDER: COMPLETE THIS SECTION

- Complete items 1, 2, and 3.
- Print your name and address on the reverse so that we can return the card to you.
- Attach this card to the back of the mailpiece, or on the front if space permits.

1. Article Addressed to:

Magnum Hunter Resources, Inc.
Suite 300N
6001 Deauville Boulevard
Midland, TX 79706

9590 9402 8411 3156 6444 76
7020 0090 0000 0864 5476

2. Article Number (Transfer from envelope label)

PS Form 3811, July 2020 PSN 7530-02-000-9053

M - JER

Domestic Return Receipt

COMPLETE THIS SECTION ON DELIVERY

- A. Signature Agent
- B. Received by (Printed Name) Addressee

D. Is delivery address different from item 1? If YES, enter delivery address below:

73102
OKLAHOMA CITY, OK

- 3. Service Type
 - Priority Mail Express®
 - Registered Mail™
 - Adult Signature Restricted Delivery
 - Certified Mail®
 - Certified Mail Restricted Delivery
 - Collect on Delivery
 - Collect on Delivery Restricted Delivery

Postage (over \$500) icted Delivery

Domestic Return Receipt

U.S. Postal Service™
CERTIFIED MAIL® RECEIPT
Domestic Mail Only

For delivery information, visit our website at www.usps.com®.

OFFICIAL USE

Certified Mail Fee \$
Extra Services & Fees (check box, add fee as appropriate)
 Return Receipt (hardcopy) \$
 Return Receipt (electronic) \$
 Certified Mail Restricted Delivery \$
 Adult Signature Required \$
 Adult Signature Restricted Delivery \$
Postage \$
Total Postage and Fees \$

Sent To
Magnum Hunter Resources, Inc.
Suite 300N
6001 Deauville Boulevard
Midland, TX 79706
City, State, Zip+4®

PS Form 3800, April 2015 PSN 7530-02-000-9047

See Reverse for Instructions

9275 4980 0000 0600 0202
7020 0090 0000 0864 5476

COMPLETE THIS SECTION ON DELIVERY

- A. Signature Agent
- B. Received by (Printed Name) Addressee

D. Is delivery address different from item 1? If YES, enter delivery address below:

73102
OKLAHOMA CITY, OK

- 3. Service Type
 - Priority Mail Express®
 - Registered Mail™
 - Adult Signature Restricted Delivery
 - Certified Mail®
 - Certified Mail Restricted Delivery
 - Collect on Delivery
 - Collect on Delivery Restricted Delivery

Postage (over \$500) icted Delivery

Domestic Return Receipt

9275 4980 0000 0600 0202
7020 0090 0000 0864 5476

SENDER: COMPLETE THIS SECTION

- Complete items 1, 2, and 3.
- Print your name and address on the reverse so that we can return the card to you.
- Attach this card to the back of the mailpiece, or on the front if space permits.

1. Article Addressed to:

Devon Energy Production Company, L.P.
333 West Sheridan Ave.
Oklahoma City, OK 73102

9590 9402 8411 3156 6444 69

2. Article Number (Transfer from carrier label)
7020 0090 0000 0864 5483

3. Service Type

- Priority Mail Express®
- Registered Mail™
- Adult Signature Restricted Delivery
- Certified Mail®
- Certified Mail Restricted Delivery
- Signature Confirmation™
- Signature Confirmation Restricted Delivery
- Collect on Delivery
- Collect on Delivery Restricted Delivery

A. Signature *[Signature]* Agent Addressee

B. Received by (Printed Name) _____ Addressed to

C. Date of Delivery _____

D. Is delivery address different from item 1? Yes No
If YES, enter delivery address below:

3. Service Type

- Priority Mail Express®
- Registered Mail™
- Adult Signature Restricted Delivery
- Certified Mail®
- Certified Mail Restricted Delivery
- Signature Confirmation™
- Signature Confirmation Restricted Delivery
- Collect on Delivery
- Collect on Delivery Restricted Delivery

Domestic Return Receipt

PS Form 3811, July 2020 PSN 7530-02-000-9053

M - JER

U.S. Postal Service™
CERTIFIED MAIL® RECEIPT
Domestic Mail Only

For delivery information, visit our website at www.usps.com®

OFFICIAL USE

Certified Mail Fee \$ _____

Extra Services & Fees (check box, add fee as appropriate)

- Return Receipt (hardcopy) \$ _____
- Return Receipt (electronic) \$ _____
- Certified Mail Restricted Delivery \$ _____
- Adult Signature Required \$ _____
- Adult Signature Restricted Delivery \$ _____

Postage \$ _____

Total Postage and Fees \$ _____

Sent To Devon Energy Production Company, L.P.
333 West Sheridan Ave.
Oklahoma City, OK 73102

Street and Apt. No., or PO Box _____

City, State, ZIP+4® _____

PS Form 3800, April 2015 PSN 7530-02-000-9047 See Reverse for Instructions

U.S. Postal Service™
CERTIFIED MAIL® RECEIPT
Domestic Mail Only

For delivery information, visit our website at www.usps.com®

OFFICIAL USE

Certified Mail Fee \$ _____

Extra Services & Fees (check box, add fee as appropriate)

- Return Receipt (hardcopy) \$ _____
- Return Receipt (electronic) \$ _____
- Certified Mail Restricted Delivery \$ _____
- Adult Signature Required \$ _____
- Adult Signature Restricted Delivery \$ _____

Postage \$ _____

Total Postage and Fees \$ _____

Sent To Davoil, Inc.
No. 1208
6300 Ridglen Place
Fort Worth, TX 76116

Street and Apt. No., or PO Box _____

City, State, ZIP+4® _____

PS Form 3800, April 2015 PSN 7530-02-000-9047 See Reverse for Instructions

SENDER: COMPLETE THIS SECTION

- Complete items 1, 2, and 3.
- Print your name and address on the reverse so that we can return the card to you.
- Attach this card to the back of the mailpiece, or on the front if space permits.

1. Article Addressed to:

Davoil, Inc.
No. 1208
6300 Ridglen Place
Fort Worth, TX 76116

9590 9402 8411 3156 6442 16

2. Article 7020 0090 0000 0864 542J (over \$500)

3. Service Type

- Priority Mail Express®
- Registered Mail™
- Adult Signature Restricted Delivery
- Certified Mail®
- Certified Mail Restricted Delivery
- Signature Confirmation™
- Signature Confirmation Restricted Delivery
- Collect on Delivery
- Collect on Delivery Restricted Delivery

A. Signature *[Signature]* Agent Addressee

B. Received by (Printed Name) *Kathryn Munoz* Addressed to

C. Date of Delivery *6-17-24*

D. Is delivery address different from item 1? Yes No
If YES, enter delivery address below:

Domestic Return Receipt

PS Form 3811, July 2020 PSN 7530-02-000-9053

MOL - JER

7020 0090 0000 0864 5438

U.S. Postal Service™
CERTIFIED MAIL® RECEIPT
Not Javiercho
 Domestic Mail Only

For delivery information, visit our website at www.usps.com®.

OFFICIAL USE

Certified Mail Fee \$	Postmark Here
Extra Services & Fees (check box, add fee as appropriate)	
<input type="checkbox"/> Return Receipt (hardcopy) \$	
<input type="checkbox"/> Return Receipt (electronic) \$	
<input type="checkbox"/> Certified Mail Restricted Delivery \$	
<input type="checkbox"/> Adult Signature Required \$	
<input type="checkbox"/> Adult Signature Restricted Delivery \$	
Postage \$	
Total Postage and Fees \$	
Sent To EOG Resources, Inc. Modland Division - Land Dept. P.O. Box 2267 Midland, TX 79702	
Street and Apt. No., or P.O. Box City, State, ZIP+4®	

PS Form 3800, April 2015 PSN 7530-02-000-9047 See Reverse for Instructions

7020 0090 0000 0864 5469

U.S. Postal Service™
CERTIFIED MAIL® RECEIPT
Not Javier
 Domestic Mail Only

For delivery information, visit our website at www.usps.com®.

OFFICIAL USE

Certified Mail Fee \$	Postmark Here
Extra Services & Fees (check box, add fee as appropriate)	
<input type="checkbox"/> Return Receipt (hardcopy) \$	
<input type="checkbox"/> Return Receipt (electronic) \$	
<input type="checkbox"/> Certified Mail Restricted Delivery \$	
<input type="checkbox"/> Adult Signature Required \$	
<input type="checkbox"/> Adult Signature Restricted Delivery \$	
Postage \$	
Total Postage and Fees \$	
Sent To Estate of Howard C. Warden Suite 3100 161 North Clark Street Chicago, IL 60601	
Street and Apt. No., or P.O. Box City, State, ZIP+4®	

PS Form 3800, April 2015 PSN 7530-02-000-9047 See Reverse for Instructions

CASE NOS. 24556-24558 & 24571-24573

STATUS OF CERTIFIED NOTICE

<u>INTEREST OWNER</u>	<u>MAILING DATE</u>	<u>RECEIPT DATE</u>	<u>CARD RETURNED</u>
EIG RESOURCES, INC.	June 5, 2024	Unknown	No
DAVOIL, INC.	June 5, 2024	June 11, 2024	Yes
DEVON ENERGY COMPANY, L.P.	June 5, 2024	June 11, 2024	Yes
MAGNUM HUNTER REOURCES, INC.	June 5, 2024	Unknown	Yes
ESTATE OF HOWARD C. WARDEN	June 5, 2024	unknown	No
WPX ENERGY PERMIAN, LLC	June 5, 2024	June 11, 2024	Yes
ESTATE OF E.J. ROUSACK (Address Unknown)			

EXHIBIT 4-B



PO Box 631667 Cincinnati, OH 45263-1667

AFFIDAVIT OF PUBLICATION

Mr James Bruce
James Bruce Attorney At Law
Pobox 1056
Santa Fe NM 87504

STATE OF WISCONSIN, COUNTY OF BROWN

The Carlsbad Current Argus, a newspaper published in the city of Carlsbad, Eddy County, State of New Mexico, and personal knowledge of the facts herein state and that the notice hereto annexed was Published in said newspapers in the issue:

06/12/2024

and that the fees charged are legal.
Sworn to and subscribed before on 06/12/2024

A Heyman

Legal Clerk

Kathleen Allen

Notary, State of WI, County of Brown

1-7-25

My commission expires

Publication Cost: \$304.60
Tax Amount: \$22.53
Payment Cost: \$327.13
Order No: 10268394
Customer No: 1360617
PO #:

of Copies:
1

EXHIBIT 5

THIS IS NOT AN INVOICE!

Please do not use this form for payment remittance.

KATHLEEN ALLEN
Notary Public
State of Wisconsin

20

To: EOG Resources, Inc., Davoil, Inc., Devon Energy Production Company, L.P., Magnum Hunter Resources, Inc., Howard C. Warden, WPX Energy Permian, LLC, and E.J. Rousuck, or your heirs, devisees, successors, or assigns: Mewbourne Oil Company has filed six applications with the New Mexico Oil Conservation Division requesting the following relief:

Case No. 24556: Mewbourne Oil Company seeks an order pooling all uncommitted mineral interest owners in the Bone Spring formation underlying a horizontal spacing unit comprised of the N/2N/2 of Section 8 and the N/2N/2 of Section 7, Township 20 South, Range 29 East, N.M.P.M., Eddy County, New Mexico (containing 320 acres). The unit will be dedicated to the Jericho 8/7 Fed. Com. Well No. 611H, with a first take point in the NE/4NE/4 of Section 8 and a last take point in the NW/4NW/4 of Section 7.

Case No. 24557: Mewbourne Oil Company seeks an order pooling all uncommitted mineral interest owners in the Bone Spring formation underlying a horizontal spacing unit comprised of the S/2N/2 of Section 8 and the S/2N/2 of Section 7, Township 20 South, Range 29 East, N.M.P.M., Eddy County, New Mexico (containing 320 acres). The unit will be dedicated to the Jericho 8/7 Fed. Com. Well No. 614H, with a first take point in the SE/4NE/4 of Section 8 and a last take point in the SW/4NW/4 of Section 7.

Case No. 24558: Mewbourne Oil Company seeks an order pooling all uncommitted mineral interest owners in the Bone Spring formation underlying a proximity tract horizontal spacing unit comprised of the S/2 of Section 8 and the S/2 of Section 7, Township 20 South, Range 29 East, N.M.P.M., Eddy County, New Mexico (containing 640 acres). The unit will be dedicated to the Jericho 8/7 Fed. Com. Well No. 617H, with a first take point in the SE/4SE/4 of Section 8 and a last take point in the SW/4SW/4 of Section 7.

Case No. 24571: Mewbourne Oil Company seeks an order pooling all uncommitted mineral interest owners in the Wolfcamp formation underlying a proximity tract horizontal spacing unit comprised of the N/2 of Section 8 and the N/2 of Section 7, Township 20 South, Range 29 East, N.M.P.M., Eddy County, New Mexico (containing 640 acres). The unit will be dedicated to the Jericho 8/7 Fed. Com. Well No. 712H, with a first take point in the NE/4NE/4 of Section 8 and a last take point in the NW/4NW/4 of Section 7.

Case No. 24572: Mewbourne Oil Company seeks an order pooling all uncommitted mineral interest owners in the Wolfcamp formation underlying a horizontal spacing unit comprised of the N/2S/2 of Section 8 and the N/2S/2 of Section 7, Township 20 South, Range 29 East, N.M.P.M., Eddy County, New Mexico (containing 320 acres). The unit will be dedicated to the Jericho 8/7 Fed. Com. Well No. 715H, with a first take point in the NE/4SE/4 of Section 8 and a last take point in the NW/4SW/4 of Section 7.

Case No. 24573: Mewbourne Oil Company seeks an order pooling all uncommitted mineral interest owners in the Wolfcamp formation underlying a horizontal spacing unit comprised of the S/2S/2 of Section 8 and the S/2S/2 of Section 7, Township 20 South, Range 29 East, N.M.P.M., Eddy County, New Mexico (containing 320 acres). The unit will be dedicated to the Jericho 8/7 Fed. Com. Well No. 718H, with a first take point in the SE/4SE/4 of Section 8 and a last take point in the SW/4SW/4 of Section 7.

Also to be considered will be the cost of drilling, completing, testing, and equipping the well and the allocation of the cost thereof, as well as actual operating costs and charges for supervision, designation of applicant as operator of the well, and a 200% charge for the risk involved in drilling, completing, testing, and equipping the well.

These matters are scheduled for hearing at 8:30 a.m. on Thursday, June 27, 2024. The hearing may be attended (a) in person in Pecos Hall of the Wendell Chino Building, 1st Floor, 1220 South St. Francis Drive, Santa Fe New Mexico 87505, or (b) via the WebEx virtual meeting platform. To view the hearing docket and to determine how to participate in an electronic hearing, go to <https://www.emnrd.nm.gov/ocd/hearing-info/>, or contact

Freya Tschantz at freya.tschantz@emnrd.nm.gov. You are not required to attend this hearing, but as an owner of an interest who may be affected by the applications, you may appear and present testimony. Failure to appear at that time and become a party of record will preclude you from contesting these matters at a later date. A party appearing in a Division case is required by Division Rules to file a Pre-Hearing Statement no later than five business days before the hearing date. This statement may be filed online with the Division at ocd.hearings@emnrd.nm.gov, and should include: The name of the party and his or her attorney; a concise statement of the case; the name(s) of the witness(es) the party will call to testify at the hearing; the approximate time the party will need to present his or her case; and identification of any procedural matters that need to be resolved prior to the hearing. The Pre-Hearing Statement must also be provided to the attorney for applicant, James Bruce, P.O. Box 1056, Santa Fe, New Mexico 87504, jamesbruc@aol.com. The units are located approximately 1 1/2 miles east of Seven Rivers, New Mexico.

BEFORE THE NEW MEXICO OIL CONSERVATION DIVISION

**APPLICATION OF MEWBOURNE OIL COMPANY
FOR COMPULSORY POOLING, EDDY COUNTY,
NEW MEXICO.**

Case No. 24556

APPLICATION

Mewbourne Oil Company applies for an order pooling all uncommitted mineral interest owners in the Bone Spring formation underlying a horizontal spacing unit comprised of the N/2N/2 of Section 8 and the N/2N/2 of Section 7, Township 20 South, Range 29 East, N.M.P.M., Eddy County, New Mexico, and in support thereof, states:

1. Applicant is an interest owner in the N/2N/2 of Section 8 and the N/2N/2 of Section 7 (containing 320 acres), and has the right to drill a well or wells thereon.
2. Applicant proposes to drill the Jericho 8/7 Fed. Com. Well No. 611H, with a first take point in the NE/4NE/4 of Section 8 and a last take point in the NW/4NW/4 of Section 7, to a depth sufficient to test the Bone Spring formation.
3. Applicant has in good faith sought to obtain the voluntary joinder of all other mineral interest owners in the N/2N/2 of Section 8 and the N/2N/2 of Section 7 for the purposes set forth herein.
4. Although applicant attempted to obtain voluntary agreements from all mineral interest owners to participate in the drilling of the well or to otherwise commit their interests to the well, certain interest owners have failed or refused to join in dedicating their interests. Therefore, applicant seeks an order pooling all uncommitted mineral interest owners in the Bone Spring formation underlying the N/2N/2 of Section 8 and the N/2N/2 of Section 7, pursuant to NMSA 1978 §70-2-17.

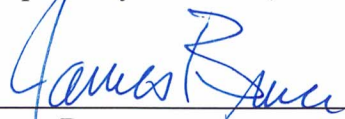
EXHIBIT 6

5. The pooling of all uncommitted mineral interest owners in the Bone Spring formation underlying the N/2N/2 of Section 8 and the N/2N/2 of Section 7 will prevent the drilling of unnecessary wells, prevent waste, and protect correlative rights.

WHEREFORE, applicant requests that, after notice and hearing, the Division enter its order:

- A. Pooling all uncommitted mineral interest owners in the Bone Spring formation (Winchester; Bone Spring/Pool Code 65010) underlying the N/2N/2 of Section 8 and the N/2N/2 of Section 7;
- B. Designating applicant as operator of the well;
- C. Considering the cost of drilling, completing, equipping, and testing the well, and allocating the cost among the well's working interest owners;
- D. Approving actual operating charges and costs charged for supervision, together with a provision adjusting the rates pursuant to the COPAS accounting procedure; and
- E. Setting a 200% charge for the risk involved in drilling, completing, equipping, and testing the well in the event a working interest owner elects not to participate in the well.

Respectfully submitted,



James Bruce
Post Office Box 1056
Santa Fe, New Mexico 87504
(505) 982-2043

Attorney for Mewbourne Oil Company

Application of Mewbourne Oil Company for compulsory pooling, Eddy County, New Mexico.

Mewbourne Oil Company seeks an order pooling all uncommitted mineral interest owners in the Bone Spring formation underlying a horizontal spacing unit comprised of the N/2N/2 of Section 8 and the N/2N/2 of Section 7, Township 20 South, Range 29 East, N.M.P.M., Eddy County, New Mexico (containing 320 acres). The unit will be dedicated to the Jericho 8/7 Fed. Com. Well No. 611H, with a first take point in the NE/4NE/4 of Section 8 and a last take point in the NW/4NW/4 of Section 7. Also to be considered will be the cost of drilling, completing, equipping, and testing the well and the allocation of the cost thereof, as well as actual operating costs and charges for supervision, designation of applicant as operator of the well, and a 200% charge for the risk involved in drilling, completing, equipping, and testing the well. The unit is located approximately 18-1/2 miles east of Seven Rivers, New Mexico.

24