

**STATE OF NEW MEXICO
ENERGY, MINERALS AND NATURAL RESOURCES DEPARTMENT
OIL CONSERVATION DIVISION**

**APPLICATIONS OF FRANKLIN MOUNTAIN
ENERGY 3, LLC FOR COMPULSORY POOLING
AND NOTICE OF OVERLAPPING SPACING UNIT,
LEA COUNTY, NEW MEXICO**

Case Nos. 24356, 24358-24360

**APPLICATIONS OF MRC PERMIAN COMPANY
FOR APPROVAL OF AN OVERLAPPING HORIZONTAL
WELL SPACING UNIT AND COMPULSORY POOLING,
LEA COUNTY, NEW MEXICO**

CASE NOS. 24314-24319

NOTICE OF SUPPLEMENTAL EXHIBIT PACKET

Pursuant to the Oil Conservation Division's direction, Franklin Mountain Energy 3, LLC is providing a Supplemental Exhibit packet in the above-referenced matters. The Supplemental Exhibit packet includes exhibits only for the purposes of providing better resolution exhibits and clarifying exhibit labels from the original packet submitted to the Division on June 19, 2024. The Supplemental Exhibit packet includes the following exhibits: (1) Geology Cross-Section Exhibits C-4-b, C-4-e, C-5-b, and C-5-e; and (2) Notice Lists with additional labels for the corresponding case numbers (Exhibit D-2).

Respectfully submitted,

MODRALL, SPERLING, ROEHL, HARRIS
& SISK, P.A.

By: /s/ Deana M. Bennett

Earl E. DeBrine, Jr.

Deana M. Bennett

Yarithza Peña

Post Office Box 2168

500 Fourth Street NW, Suite 1000

Albuquerque, New Mexico 87103-2168

Telephone: 505.848.1800
earl.debrine@modrall.com
deana.bennett@modrall.com
yarithza.pena@modrall.com
Attorneys for Franklin Mountain Energy 3, LLC

CERTIFICATE OF SERVICE

I hereby certify that a true and correct copy of the foregoing was served on counsel of record by electronic mail on July 3, 2024.

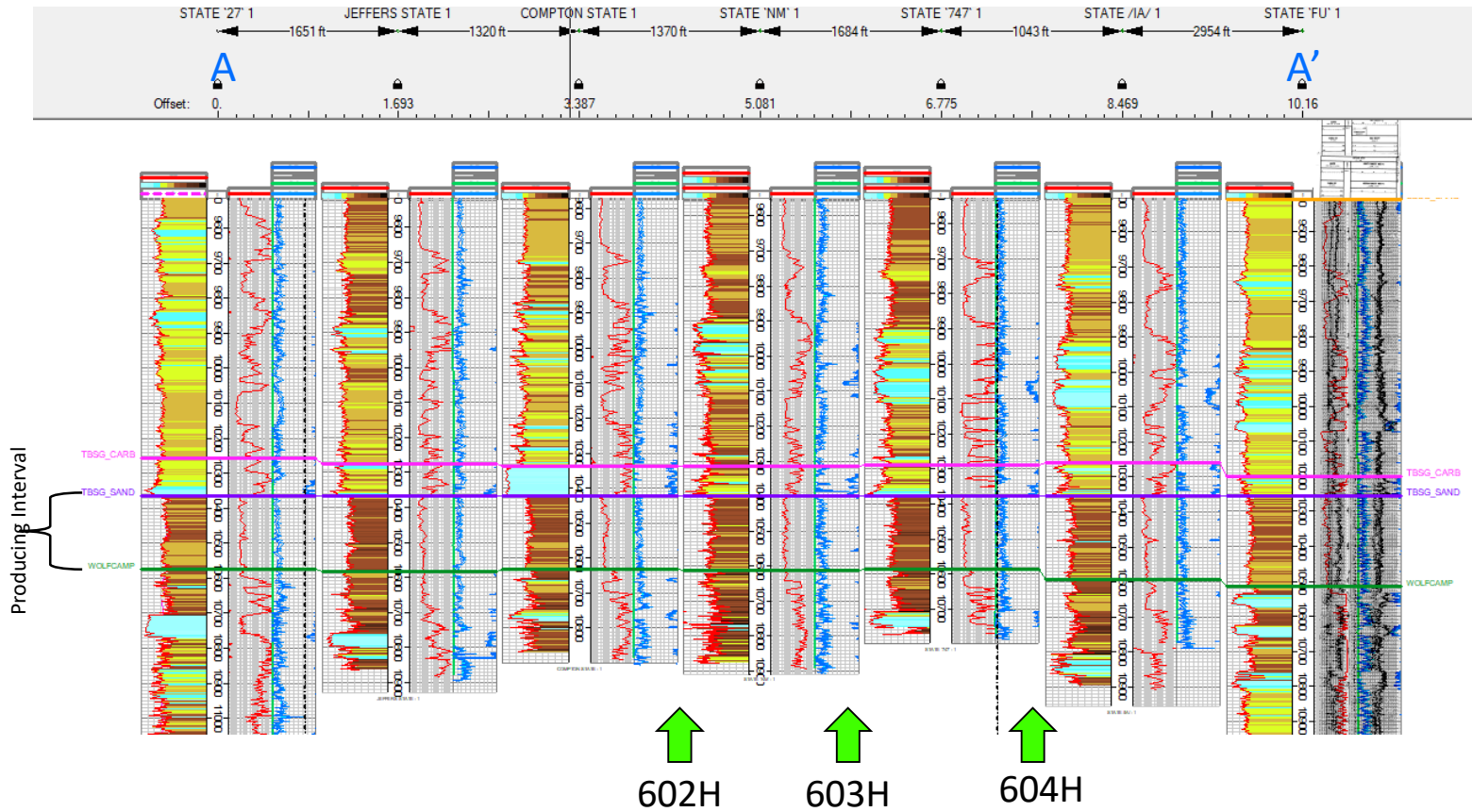
Michael H. Feldewert
Adam G. Rankin
Paula M. Vance
P.O. Box 2208
Santa Fe, NM 87504-2208
(505) 988-4421
mfeldewert@hollandhart.com
agrarkin@hollandhart.com
pmvance@hollandhart.com
*Attorneys for Matador Production Company
and MRC Permian Company*

Dana S. Hardy
Jaclyn McLean
P.O. Box 2068
Santa Fe, NM 87504-2068
Phone: (505) 982-4554
Facsimile: (505) 982-8623
dhardy@hinklelawfirm.com
jmclean@hinklelawfirm.com
*Counsel for Slash Exploration LP & Armstrong
Energy Corporation*

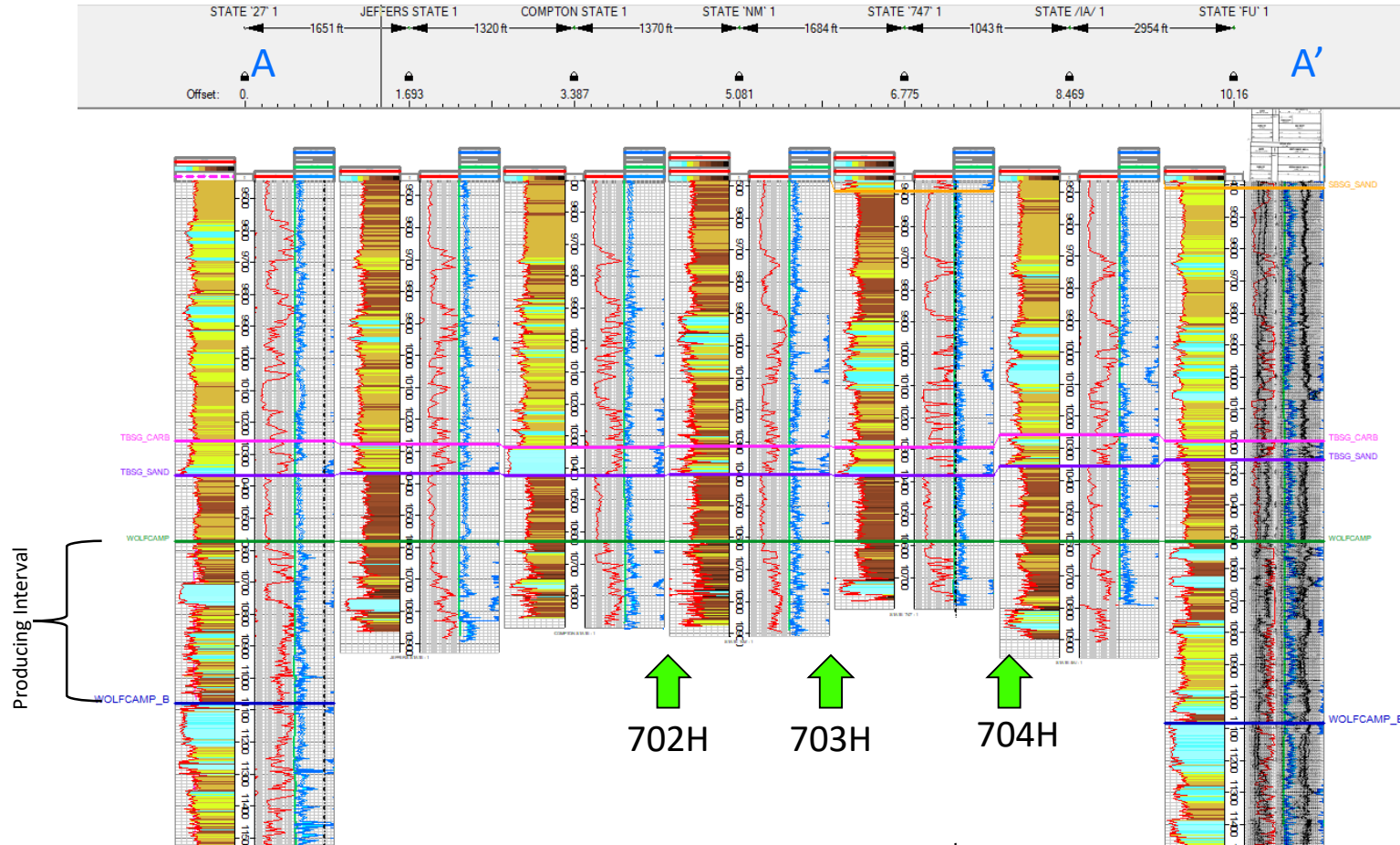
Jordan L. Kessler
125 Lincoln Avenue, Suite 213
Santa Fe, New Mexico 87501
(432) 488-6108
jordan_kessler@eogresources.com
Attorney for EOG Resources, Inc.



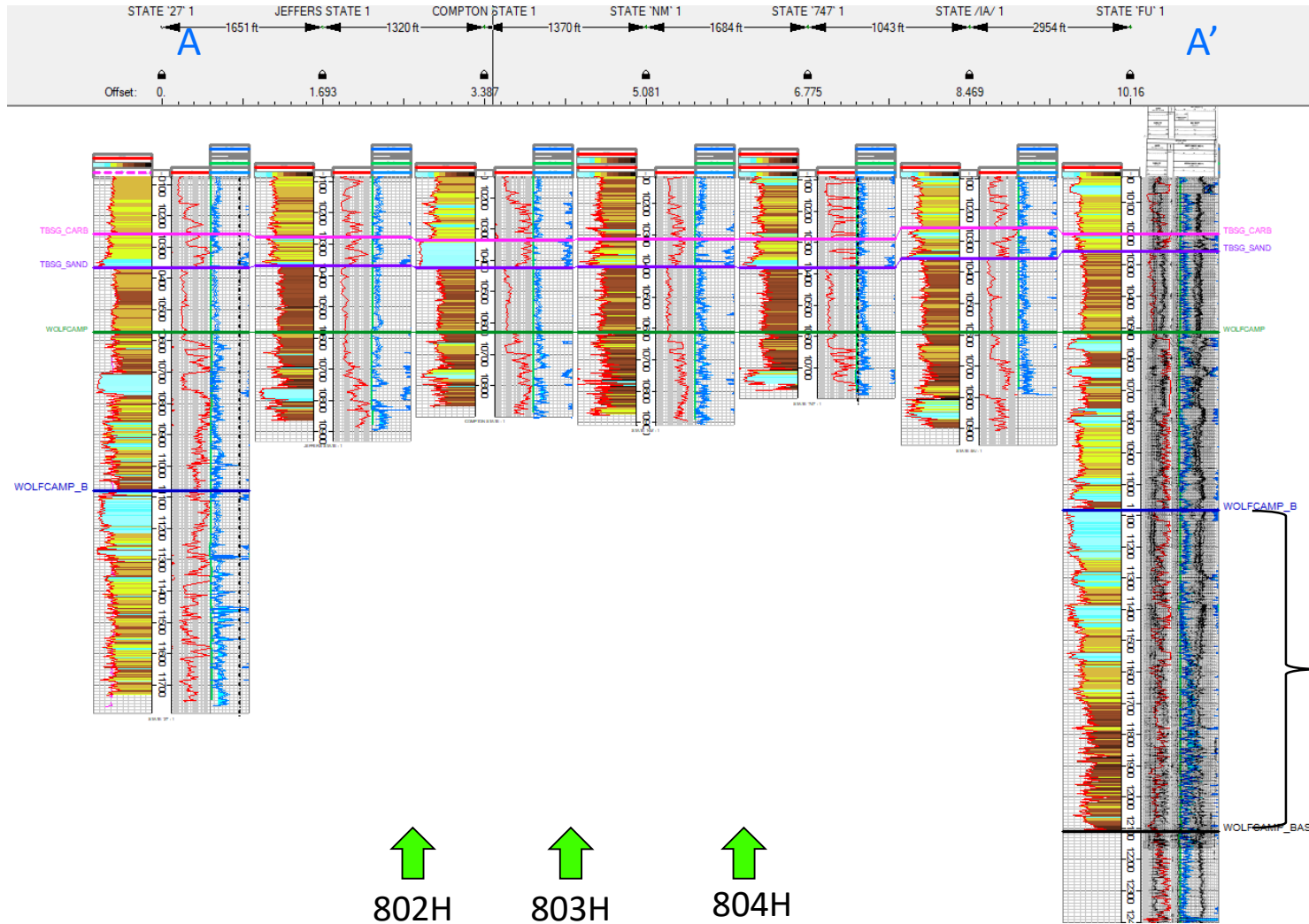
Deana M. Bennett



Franklin Mountain Energy 3, LLC
Case Nos. 24356, 24358-24360
Exhibit C-4-e



Franklin Mountain Energy 3, LLC
Case Nos. 24356, 24358-24360
Exhibit C-5-b



Franklin Mountain Energy 3, LLC
Case Nos. 24356, 24358-24360
Exhibit C-5-e

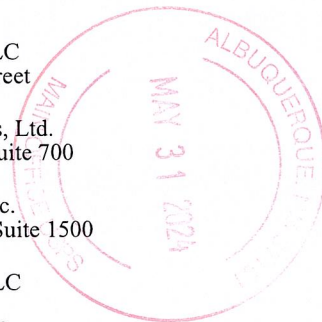
Karlene Schuman
 Modrall Sperlberg Roehl Harris & Sisk P.A.
 500 Fourth Street, Suite 1000
 Albuquerque NM 87102

PS Form 3877

Type of Mailing: CERTIFIED MAIL
 05/31/2024

Firm Mailing Book ID: 266962

Line	USPS Article Number	Name, Street, City, State, Zip	Postage	Service Fee	RR Fee	Rest.Del.Fee	Reference Contents
1	9314 8699 0430 0121 7914 47	TH McElvain Oil & Gas, LLLP 1819 Denver West Drive Ste 260 Lakewood CO 80401	\$1.63	\$4.40	\$2.32	\$0.00	10154.0010.24356. Notice
2	9314 8699 0430 0121 7914 54	COG Operating, LLC Operating, LLC 600 West Illinois Ave Midland TX 79701	\$1.63	\$4.40	\$2.32	\$0.00	10154.0010.24356. Notice
3	9314 8699 0430 0121 7914 61	Concho Oil & Gas, LLC Oil & Gas, LLC 600 West Illinois Ave Midland TX 79701	\$1.63	\$4.40	\$2.32	\$0.00	10154.0010.24356. Notice
4	9314 8699 0430 0121 7914 78	Crump Family Partnership, Ltd. PO Box 50820 Midland TX 79710	\$1.63	\$4.40	\$2.32	\$0.00	10154.0010.24356. Notice
5	9314 8699 0430 0121 7914 85	Warren Ventures, Ltd. 808 West Wall Midland TX 79701	\$1.63	\$4.40	\$2.32	\$0.00	10154.0010.24356. Notice
6	9314 8699 0430 0121 7914 92	Tarpon Industries Corp. PO Box 52002 Midland TX 79710	\$1.63	\$4.40	\$2.32	\$0.00	10154.0010.24356. Notice
7	9314 8699 0430 0121 7915 08	Charles D. Ray PO Box 51608 Midland TX 79710	\$1.63	\$4.40	\$2.32	\$0.00	10154.0010.24356. Notice
8	9314 8699 0430 0121 7915 15	Buckhorn Energy, LLC 505 N. Big Spring Street Midland TX 79701	\$1.63	\$4.40	\$2.32	\$0.00	10154.0010.24356. Notice
9	9314 8699 0430 0121 7915 22	Sharktooth Resources, Ltd. 300 N. Marienfeld, Suite 700 Midland TX 79701	\$1.63	\$4.40	\$2.32	\$0.00	10154.0010.24356. Notice
10	9314 8699 0430 0121 7915 39	Hanley Petroleum, Inc. 415 W. Wall Street, Suite 1500 Midland TX 79701	\$1.63	\$4.40	\$2.32	\$0.00	10154.0010.24356. Notice
11	9314 8699 0430 0121 7915 46	LHAH Properties, LLC 250 Jungle Road Palm Beach FL 33480	\$1.63	\$4.40	\$2.32	\$0.00	10154.0010.24356. Notice
12	9314 8699 0430 0121 7915 53	H6 Holdings, LLC 16275 NE 85th Street, Suite A Redmond WA 98052	\$1.63	\$4.40	\$2.32	\$0.00	10154.0010.24356. Notice
13	9314 8699 0430 0121 7915 60	TBO Oil & Gas, LLC PO Box 10502 Midland TX 79702	\$1.63	\$4.40	\$2.32	\$0.00	10154.0010.24356. Notice
14	9314 8699 0430 0121 7915 77	Mavros Oil Company, LLC PO Box 50820 Midland TX 79710	\$1.63	\$4.40	\$2.32	\$0.00	10154.0010.24356. Notice
15	9314 8699 0430 0121 7915 84	TSF WI LP PO Box 222 Midland TX 79702	\$1.63	\$4.40	\$2.32	\$0.00	10154.0010.24356. Notice



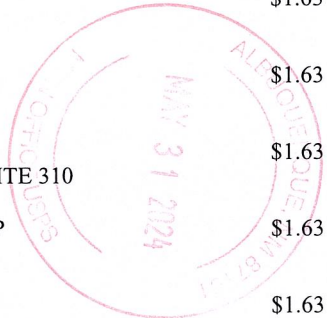
Karlene Schuman
Modrall Sperlberg Roehl Harris & Sisk P.A.
 500 Fourth Street, Suite 1000
 Albuquerque NM 87102

PS Form 3877

Type of Mailing: CERTIFIED MAIL
 05/31/2024

Firm Mailing Book ID: 266962

Line	USPS Article Number	Name, Street, City, State, Zip	Postage	Service Fee	RR Fee	Rest.Del.Fee	Reference Contents
16	9314 8699 0430 0121 7915 91	Hanley Petroleum, LLC 1999 Bryan Street, Suite 900 Dallas TX 75201	\$1.63	\$4.40	\$2.32	\$0.00	10154.0010.24356. Notice
17	9314 8699 0430 0121 7916 07	Marathon Oil Permian LLC 990 Town & Country Blvd Houston TX 77024	\$1.63	\$4.40	\$2.32	\$0.00	10154.0010.24356. Notice
18	9314 8699 0430 0121 7916 14	Crown Oil Partners, LP PO BOX 50820 MIDLAND TX 79710	\$1.63	\$4.40	\$2.32	\$0.00	10154.0010.24356. Notice
19	9314 8699 0430 0121 7916 21	Nestegg Energy Corporation 2308 SIERRA VISTA ROAD ARTESIA NM 88210	\$1.63	\$4.40	\$2.32	\$0.00	10154.0010.24356. Notice
20	9314 8699 0430 0121 7916 38	Good News Minerals, LLC 4000 NORTH BIG SPRING, SUITE 310 MIDLAND TX 79705	\$1.63	\$4.40	\$2.32	\$0.00	10154.0010.24356. Notice
21	9314 8699 0430 0121 7916 45	Oak Valley Mineral and Land, LP PO BOX 50820 MIDLAND TX 79710	\$1.63	\$4.40	\$2.32	\$0.00	10154.0010.24356. Notice
22	9314 8699 0430 0121 7916 52	Post Oak Crown IV-B, LLC 34 SOUTH WYNDEN DRIVE, SUTIE 210 HOUSTON TX 77056	\$1.63	\$4.40	\$2.32	\$0.00	10154.0010.24356. Notice
23	9314 8699 0430 0121 7916 69	Post Oak Crown IV, LLC 34 SOUTH WYNDEN DRIVE, SUTIE 210 HOUSTON TX 77056	\$1.63	\$4.40	\$2.32	\$0.00	10154.0010.24356. Notice
24	9314 8699 0430 0121 7916 76	Collins & Jones Investments, LLC 508 WEST WALL STREET, SUITE 1200 MIDLAND TX 79701	\$1.63	\$4.40	\$2.32	\$0.00	10154.0010.24356. Notice
25	9314 8699 0430 0121 7916 83	Post Oak Mavros II, LLC 34 SOUTH WYNDEN DRIVE, SUTIE 210 HOUSTON TX 77056	\$1.63	\$4.40	\$2.32	\$0.00	10154.0010.24356. Notice
26	9314 8699 0430 0121 7916 90	LMC Energy, LLC 550 WEST TEXAS AVENUE, SUITE 945 MIDLAND TX 79701	\$1.63	\$4.40	\$2.32	\$0.00	10154.0010.24356. Notice
27	9314 8699 0430 0121 7917 06	H. Jason Wacker 5601 HILLCREST MIDLAND TX 79707	\$1.63	\$4.40	\$2.32	\$0.00	10154.0010.24356. Notice
28	9314 8699 0430 0121 7917 13	David W. Cromwell 2008 COUNTRY CLUB DRIVE MIDLAND TX 79701	\$1.63	\$4.40	\$2.32	\$0.00	10154.0010.24356. Notice
29	9314 8699 0430 0121 7917 20	Sortida Resources, LLC PO BOX 50820 MIDLAND TX 79710	\$1.63	\$4.40	\$2.32	\$0.00	10154.0010.24356. Notice
30	9314 8699 0430 0121 7917 37	Mike Moylett PO BOX 50820 MIDLAND TX 79710	\$1.63	\$4.40	\$2.32	\$0.00	10154.0010.24356. Notice

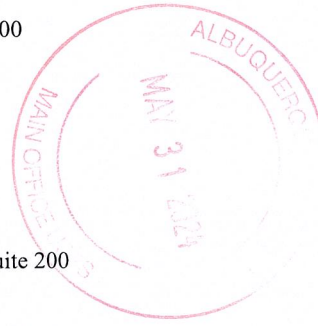


Karlene Schuman
 Modrall Sperling Roehl Harris & Sisk P.A.
 500 Fourth Street, Suite 1000
 Albuquerque NM 87102

PS Form 3877
 Type of Mailing: CERTIFIED MAIL
 05/31/2024

Firm Mailing Book ID: 266962

Line	USPS Article Number	Name, Street, City, State, Zip	Postage	Service Fee	RR Fee	Rest.Del.Fee	Reference Contents
31	9314 8699 0430 0121 7917 44	Kaleb Smith PO BOX 50620 MIDLAND TX 79710	\$1.63	\$4.40	\$2.32	\$0.00	10154.0010.24356. Notice
32	9314 8699 0430 0121 7917 51	Deane Durham PO BOX 50820 MIDLAND TX 79710	\$1.63	\$4.40	\$2.32	\$0.00	10154.0010.24356. Notice
33	9314 8699 0430 0121 7917 68	State of New Mexico Commissioner of Public Lands PO BOX 1148 SANTA FE NM 87504	\$1.63	\$4.40	\$2.32	\$0.00	10154.0010.24356. Notice
34	9314 8699 0430 0121 7917 75	MRC Permian Company Matador 5400 LBJ Freeway Ste 1500 Dallas TX 75240	\$1.63	\$4.40	\$2.32	\$0.00	10154.0010.24356. Notice
35	9314 8699 0430 0121 7917 82	EG3 Development, LLC PO Box 1567 Graham TX 76450	\$1.63	\$4.40	\$2.32	\$0.00	10154.0010.24356. Notice
36	9314 8699 0430 0121 7917 99	Allar Development, LLC PO Box 1567 Graham TX 76450	\$1.63	\$4.40	\$2.32	\$0.00	10154.0010.24356. Notice
37	9314 8699 0430 0121 7918 05	Slash Exploration LP 500 North Main Street, Suite 200 Roswell NM 88201	\$1.63	\$4.40	\$2.32	\$0.00	10154.0010.24356. Notice
38	9314 8699 0430 0121 7918 12	MCT Energy Ltd. 262 CARROLL STREET SUITE 100 FORT WORTH TX 76107	\$1.63	\$4.40	\$2.32	\$0.00	10154.0010.24356. Notice
39	9314 8699 0430 0121 7918 29	SHG Energy, LLC 4101 KINGWOOD COURT MIDLAND TX 79707	\$1.63	\$4.40	\$2.32	\$0.00	10154.0010.24356. Notice
40	9314 8699 0430 0121 7918 36	Sitka Consulting, LLC 5907 NORTH OSSINEKE DRIVE SPRING TX 77386	\$1.63	\$4.40	\$2.32	\$0.00	10154.0010.24356. Notice
41	9314 8699 0430 0121 7918 43	Ridge Runner Holdings, LLC 4000 NORTH BIG SPRING SUITE 210 MIDLAND TX 79705	\$1.63	\$4.40	\$2.32	\$0.00	10154.0010.24356. Notice
42	9314 8699 0430 0121 7918 50	John Lawrence Thoma, Trustee of the Cornerstone Family Trust 10864 MCKISSICK ROAD PEYTON CO 80813	\$1.63	\$4.40	\$2.32	\$0.00	10154.0010.24356. Notice
43	9314 8699 0430 0121 7918 67	CrownRock Minerals, L.P. PO Box 51933 Midland TX 79710	\$1.63	\$4.40	\$2.32	\$0.00	10154.0010.24356. Notice
44	9314 8699 0430 0121 7918 74	The Allar Company PO Box 1567 Graham TX 76450	\$1.63	\$4.40	\$2.32	\$0.00	10154.0010.24356. Notice



Karlene Schuman
 Modrall Sperling Roehl Harris & Sisk P.A.
 500 Fourth Street, Suite 1000
 Albuquerque NM 87102

PS Form 3877

Type of Mailing: CERTIFIED MAIL
 05/31/2024

Firm Mailing Book ID: 266962

Line	USPS Article Number	Name, Street, City, State, Zip	Postage	Service Fee	RR Fee	Rest.Del.Fee	Reference Contents
45	9314 8699 0430 0121 7918 81	EG3, Inc. PO Box 1567 Graham TX 76450	\$1.63	\$4.40	\$2.32	\$0.00	10154.0010.24356. Notice
46	9314 8699 0430 0121 7918 98	GMT New Mexico Royalty Company LLC 1560 BROADWAY SUITE 2000 DENVER CO 80202	\$1.63	\$4.40	\$2.32	\$0.00	10154.0010.24356. Notice
47	9314 8699 0430 0121 7919 04	Armstrong Energy Corporation PO BOX 1973 ROSWELL NM 88202	\$1.63	\$4.40	\$2.32	\$0.00	10154.0010.24356. Notice
48	9314 8699 0430 0121 7919 11	Blue Ridge Royalties, LLC PO BOX 1973 ROSWELL NM 88202	\$1.63	\$4.40	\$2.32	\$0.00	10154.0010.24356. Notice
49	9314 8699 0430 0121 7919 28	Chimney Rock Oil & Gas, LLC 500 NORTH MAIN STREET SUITE 1000 ROSWELL NM 88201	\$1.63	\$4.40	\$2.32	\$0.00	10154.0010.24356. Notice
Totals:			\$79.87	\$215.60	\$113.68	\$0.00	
Grand Total:						\$409.15	

List Number of Pieces Listed by Sender	Total Number of Pieces Received at Post Office	Postmaster: Name of receiving employee	Dated:
49			



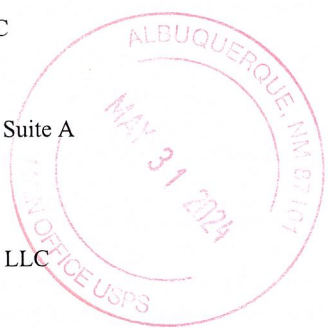
Karlene Schuman
 Modrall Sperlberg Roehl Harris & Sisk P.A.
 500 Fourth Street, Suite 1000
 Albuquerque NM 87102

PS Form 3877

Type of Mailing: CERTIFIED MAIL
 05/31/2024

Firm Mailing Book ID: 266965

Line	USPS Article Number	Name, Street, City, State, Zip	Postage	Service Fee	RR Fee	Rest.Del.Fee	Reference Contents
1	9314 8699 0430 0121 7930 14	TH McElvain Oil & Gas, LLLP 1819 Denver West Drive Ste 260 Lakewood CO 80401	\$1.63	\$4.40	\$2.32	\$0.00	10154.0010.24358. Notice
2	9314 8699 0430 0121 7930 21	Otter Creek, LLC PO Box 1557 Sealy TX 77474	\$1.63	\$4.40	\$2.32	\$0.00	10154.0010.24358. Notice
3	9314 8699 0430 0121 7930 38	COG Operating, LLC Operating, LLC 600 West Illinois Ave Midland TX 79701	\$1.63	\$4.40	\$2.32	\$0.00	10154.0010.24358. Notice
4	9314 8699 0430 0121 7930 45	Concho Oil & Gas, LLC Oil & Gas, LLC 600 West Illinois Ave Midland TX 79701	\$1.63	\$4.40	\$2.32	\$0.00	10154.0010.24358. Notice
5	9314 8699 0430 0121 7930 52	Crump Family Partnership, Ltd. PO Box 50820 Midland TX 79710	\$1.63	\$4.40	\$2.32	\$0.00	10154.0010.24358. Notice
6	9314 8699 0430 0121 7930 69	Warren Ventures, Ltd. 808 West Wall Midland TX 79701	\$1.63	\$4.40	\$2.32	\$0.00	10154.0010.24358. Notice
7	9314 8699 0430 0121 7930 76	Tarpon Industries Corp. PO Box 52002 Midland TX 79710	\$1.63	\$4.40	\$2.32	\$0.00	10154.0010.24358. Notice
8	9314 8699 0430 0121 7930 83	Charles D. Ray PO Box 51608 Midland TX 79710	\$1.63	\$4.40	\$2.32	\$0.00	10154.0010.24358. Notice
9	9314 8699 0430 0121 7930 90	Buckhorn Energy, LLC 407 N. Big Spring Street, Ste 240 Midland TX 79701	\$1.63	\$4.40	\$2.32	\$0.00	10154.0010.24358. Notice
10	9314 8699 0430 0121 7931 06	Sharktooth Resources, Ltd. 407 N. Big Spring Street, Ste 240 Midland TX 79701	\$1.63	\$4.40	\$2.32	\$0.00	10154.0010.24358. Notice
11	9314 8699 0430 0121 7931 13	Hanley Petroleum, Inc. 415 W. Wall Street, Suite 1500 Midland TX 79701	\$1.63	\$4.40	\$2.32	\$0.00	10154.0010.24358. Notice
12	9314 8699 0430 0121 7931 20	LHAH Properties, LLC 250 Jungle Road Palm Beach FL 33480	\$1.63	\$4.40	\$2.32	\$0.00	10154.0010.24358. Notice
13	9314 8699 0430 0121 7931 37	H6 Holdings, LLC 16275 NE 85th Street, Suite A Redmond WA 98052	\$1.63	\$4.40	\$2.32	\$0.00	10154.0010.24358. Notice
14	9314 8699 0430 0121 7931 44	TBO Oil & Gas, LLC PO Box 10502 Midland TX 79702	\$1.63	\$4.40	\$2.32	\$0.00	10154.0010.24358. Notice
15	9314 8699 0430 0121 7931 51	Mavros Oil Company, LLC PO Box 50820 Midland TX 79710	\$1.63	\$4.40	\$2.32	\$0.00	10154.0010.24358. Notice



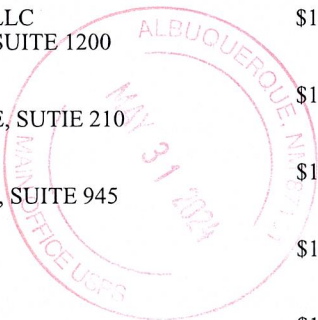
Karlene Schuman
 Modrall Sperlberg Roehl Harris & Sisk P.A.
 500 Fourth Street, Suite 1000
 Albuquerque NM 87102

PS Form 3877

Type of Mailing: CERTIFIED MAIL
 05/31/2024

Firm Mailing Book ID: 266965

Line	USPS Article Number	Name, Street, City, State, Zip	Postage	Service Fee	RR Fee	Rest.Del.Fee	Reference Contents
16	9314 8699 0430 0121 7931 68	TSF WI LP PO Box 222 Midland TX 79702	\$1.63	\$4.40	\$2.32	\$0.00	10154.0010.24358. Notice
17	9314 8699 0430 0121 7931 75	Hanley Petroleum, LLC 415 West Wall, Ste 1500 Midland TX 79701	\$1.63	\$4.40	\$2.32	\$0.00	10154.0010.24358. Notice
18	9314 8699 0430 0121 7931 82	Marathon Oil Permian LLC 990 Town & Country Blvd Houston TX 77024	\$1.63	\$4.40	\$2.32	\$0.00	10154.0010.24358. Notice
19	9314 8699 0430 0121 7931 99	Crown Oil Partners, LP PO BOX 50820 MIDLAND TX 79710	\$1.63	\$4.40	\$2.32	\$0.00	10154.0010.24358. Notice
20	9314 8699 0430 0121 7932 05	Nestegg Energy Corporation 2308 SIERRA VISTA ROAD ARTESIA NM 88210	\$1.63	\$4.40	\$2.32	\$0.00	10154.0010.24358. Notice
21	9314 8699 0430 0121 7932 12	Good News Minerals, LLC 4000 NORTH BIG SPRING, SUITE 310 MIDLAND TX 79705	\$1.63	\$4.40	\$2.32	\$0.00	10154.0010.24358. Notice
22	9314 8699 0430 0121 7932 29	Oak Valley Mineral and Land, LP PO BOX 50820 MIDLAND TX 79710	\$1.63	\$4.40	\$2.32	\$0.00	10154.0010.24358. Notice
23	9314 8699 0430 0121 7932 36	Post Oak Crown IV-B, LLC 34 SOUTH WYNDEN DRIVE, SUTIE 210 HOUSTON TX 77056	\$1.63	\$4.40	\$2.32	\$0.00	10154.0010.24358. Notice
24	9314 8699 0430 0121 7932 43	Post Oak Crown IV, LLC 34 SOUTH WYNDEN DRIVE, SUTIE 210 HOUSTON TX 77056	\$1.63	\$4.40	\$2.32	\$0.00	10154.0010.24358. Notice
25	9314 8699 0430 0121 7932 50	Collins & Jones Investments, LLC 508 WEST WALL STREET, SUITE 1200 MIDLAND TX 79701	\$1.63	\$4.40	\$2.32	\$0.00	10154.0010.24358. Notice
26	9314 8699 0430 0121 7932 67	Post Oak Mavros II, LLC 34 SOUTH WYNDEN DRIVE, SUTIE 210 HOUSTON TX 77056	\$1.63	\$4.40	\$2.32	\$0.00	10154.0010.24358. Notice
27	9314 8699 0430 0121 7932 74	LMC Energy, LLC 550 WEST TEXAS AVENUE, SUITE 945 MIDLAND TX 79701	\$1.63	\$4.40	\$2.32	\$0.00	10154.0010.24358. Notice
28	9314 8699 0430 0121 7932 81	H. Jason Wacker 5601 HILLCREST MIDLAND TX 79707	\$1.63	\$4.40	\$2.32	\$0.00	10154.0010.24358. Notice
29	9314 8699 0430 0121 7932 98	David W. Cromwell 2008 COUNTRY CLUB DRIVE MIDLAND TX 79701	\$1.63	\$4.40	\$2.32	\$0.00	10154.0010.24358. Notice
30	9314 8699 0430 0121 7933 04	Sortida Resources, LLC PO BOX 50820 MIDLAND TX 79710	\$1.63	\$4.40	\$2.32	\$0.00	10154.0010.24358. Notice



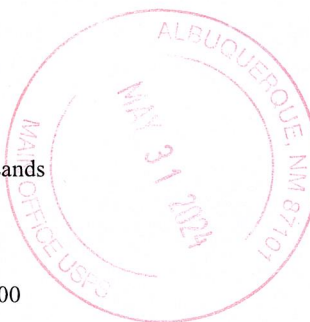
Karlene Schuman
 Modrall Sperling Roehl Harris & Sisk P.A.
 500 Fourth Street, Suite 1000
 Albuquerque NM 87102

PS Form 3877

Type of Mailing: CERTIFIED MAIL
 05/31/2024

Firm Mailing Book ID: 266965

Line	USPS Article Number	Name, Street, City, State, Zip	Postage	Service Fee	RR Fee	Rest.Del.Fee	Reference Contents
31	9314 8699 0430 0121 7933 11	Mike Moylett PO BOX 50820 MIDLAND TX 79710	\$1.63	\$4.40	\$2.32	\$0.00	10154.0010.24358. Notice
32	9314 8699 0430 0121 7933 28	Kaleb Smith PO BOX 50620 MIDLAND TX 79710	\$1.63	\$4.40	\$2.32	\$0.00	10154.0010.24358. Notice
33	9314 8699 0430 0121 7933 35	Deane Durham PO BOX 50820 MIDLAND TX 79710	\$1.63	\$4.40	\$2.32	\$0.00	10154.0010.24358. Notice
34	9314 8699 0430 0121 7933 42	State of New Mexico Commissioner of Public Lands PO BOX 1148 SANTA FE NM 87504	\$1.63	\$4.40	\$2.32	\$0.00	10154.0010.24358. Notice
35	9314 8699 0430 0121 7933 59	MRC Permian Company Matador 5400 LBJ Freeway Ste 1500 Dallas TX 75240	\$1.63	\$4.40	\$2.32	\$0.00	10154.0010.24358. Notice
36	9314 8699 0430 0121 7933 66	EG3 Development, LLC PO Box 1567 Graham TX 76450	\$1.63	\$4.40	\$2.32	\$0.00	10154.0010.24358. Notice
37	9314 8699 0430 0121 7933 73	Allar Development, LLC PO Box 1567 Graham TX 76450	\$1.63	\$4.40	\$2.32	\$0.00	10154.0010.24358. Notice
38	9314 8699 0430 0121 7933 80	ConocoPhillips Company 600 West Illinois Ave Midland TX 76450	\$1.63	\$4.40	\$2.32	\$0.00	10154.0010.24358. Notice
39	9314 8699 0430 0121 7933 97	MCT Energy Ltd. 262 CARROLL STREET SUITE 100 FORT WORTH TX 76107	\$1.63	\$4.40	\$2.32	\$0.00	10154.0010.24358. Notice
40	9314 8699 0430 0121 7934 03	SHG Energy, LLC 4101 KINGWOOD COURT MIDLAND TX 79707	\$1.63	\$4.40	\$2.32	\$0.00	10154.0010.24358. Notice
41	9314 8699 0430 0121 7934 10	Sitka Consulting, LLC 5907 NORTH OSSINEKE DRIVE SPRING TX 77386	\$1.63	\$4.40	\$2.32	\$0.00	10154.0010.24358. Notice
42	9314 8699 0430 0121 7934 27	Ridge Runner Holdings, LLC 4000 NORTH BIG SPRING SUITE 210 MIDLAND TX 79705	\$1.63	\$4.40	\$2.32	\$0.00	10154.0010.24358. Notice
43	9314 8699 0430 0121 7934 34	John Lawrence Thoma, Trustee of the Cornerstone Family Trust 10864 MCKISSICK ROAD PEYTON CO 80813	\$1.63	\$4.40	\$2.32	\$0.00	10154.0010.24358. Notice
44	9314 8699 0430 0121 7934 41	CrownRock Minerals, L.P. PO Box 51933 Midland TX 79710	\$1.63	\$4.40	\$2.32	\$0.00	10154.0010.24358. Notice



Karlene Schuman
 Modrall Sperlberg Roehl Harris & Sisk P.A.
 500 Fourth Street, Suite 1000
 Albuquerque NM 87102

PS Form 3877

Type of Mailing: CERTIFIED MAIL
 05/31/2024

Firm Mailing Book ID: 266965

Line	USPS Article Number	Name, Street, City, State, Zip	Postage	Service Fee	RR Fee	Rest.Del.Fee	Reference Contents
45	9314 8699 0430 0121 7934 58	The Allar Company PO Box 1567 Graham TX 76450	\$1.63	\$4.40	\$2.32	\$0.00	10154.0010.24358. Notice
46	9314 8699 0430 0121 7934 65	EG3, Inc. PO Box 1567 Graham TX 76450	\$1.63	\$4.40	\$2.32	\$0.00	10154.0010.24358. Notice
47	9314 8699 0430 0121 7934 72	GMT New Mexico Royalty Company LLC 1560 BROADWAY SUITE 2000 DENVER CO 80202	\$1.63	\$4.40	\$2.32	\$0.00	10154.0010.24358. Notice
48	9314 8699 0430 0121 7934 89	Brazos, LP PO Box 911 Breckenridge TX 76424	\$1.63	\$4.40	\$2.32	\$0.00	10154.0010.24358. Notice
49	9314 8699 0430 0121 7934 96	Slash Exploration LP 500 North Main Street, Suite 200 Roswell NM 88201	\$1.63	\$4.40	\$2.32	\$0.00	10154.0010.24358. Notice
50	9314 8699 0430 0121 7935 02	Armstrong Energy Corporation PO BOX 1973 ROSWELL NM 88202	\$1.63	\$4.40	\$2.32	\$0.00	10154.0010.24358. Notice
51	9314 8699 0430 0121 7935 19	Blue Ridge Royalties, LLC PO BOX 1973 ROSWELL NM 88202	\$1.63	\$4.40	\$2.32	\$0.00	10154.0010.24358. Notice
52	9314 8699 0430 0121 7935 26	Chimney Rock Oil & Gas, LLC 500 NORTH MAIN STREET SUITE 1000 ROSWELL NM 88201	\$1.63	\$4.40	\$2.32	\$0.00	10154.0010.24358. Notice
Totals:			\$84.76	\$228.80	\$120.64	\$0.00	
Grand Total:						\$434.20	

List Number of Pieces Listed by Sender Total Number of Pieces Received at Post Office Postmaster: Name of receiving employee Dated:

52

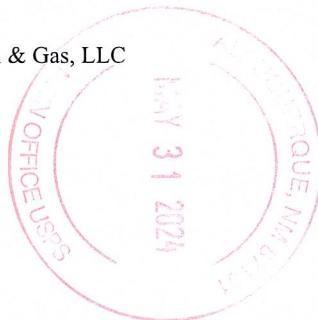


Karlene Schuman
 Modrall Sperlberg Roehl Harris & Sisk P.A.
 500 Fourth Street, Suite 1000
 Albuquerque NM 87102

PS Form 3877
 Type of Mailing: CERTIFIED MAIL
 05/31/2024

Firm Mailing Book ID: 266963

Line	USPS Article Number	Name, Street, City, State, Zip	Postage	Service Fee	RR Fee	Rest.Del.Fee	Reference Contents
1	9314 8699 0430 0121 7923 07	EG3 Development, LLC PO Box 1567 Graham TX 76450	\$1.63	\$4.40	\$2.32	\$0.00	10154.0010.59, 60. Notice
2	9314 8699 0430 0121 7923 14	Allar Development, LLC PO Box 1567 Graham TX 76450	\$1.63	\$4.40	\$2.32	\$0.00	10154.0010.59, 60. Notice
3	9314 8699 0430 0121 7923 21	Marathon Oil Permian, LLC 990 Town and Country Blvd Houston TX 77024	\$1.63	\$4.40	\$2.32	\$0.00	10154.0010.59, 60. Notice
4	9314 8699 0430 0121 7923 38	TH McElvain Oil & Gas, LLLP 1819 Denver West Dr, Ste 260 Lakewood CO 80401	\$1.63	\$4.40	\$2.32	\$0.00	10154.0010.59, 60. Notice
5	9314 8699 0430 0121 7923 45	COG Operating, LLC 600 West Illinois Ave Midland TX 76450	\$1.63	\$4.40	\$2.32	\$0.00	10154.0010.59, 60. Notice
6	9314 8699 0430 0121 7923 52	Concho Oil & Gas, LLC Oil & Gas, LLC 600 West Illinois Ave Midland TX 76450	\$1.63	\$4.40	\$2.32	\$0.00	10154.0010.59, 60. Notice
7	9314 8699 0430 0121 7923 69	ConocoPhillips Company 600 West Illinois Ave Midland TX 76450	\$1.63	\$4.40	\$2.32	\$0.00	10154.0010.59, 60. Notice
8	9314 8699 0430 0121 7923 76	State of New Mexico 310 Old Santa Fe Trail Santa Fe NM 87508	\$1.63	\$4.40	\$2.32	\$0.00	10154.0010.59, 60. Notice
9	9314 8699 0430 0121 7923 83	Good News Minerals, LLC PO BOX 50820 MIDLAND TX 79710	\$1.63	\$4.40	\$2.32	\$0.00	10154.0010.59, 60. Notice
10	9314 8699 0430 0121 7923 90	Post Oak Crown IV, LLC 34 SOUTH WYNDEN DRIVE SUITE 210 HOUSTON TX 77056	\$1.63	\$4.40	\$2.32	\$0.00	10154.0010.59, 60. Notice
11	9314 8699 0430 0121 7924 06	Post Oak Mavros II, LLC 34 SOUTH WYNDEN DRIVE SUITE 210 HOUSTON TX 77056	\$1.63	\$4.40	\$2.32	\$0.00	10154.0010.59, 60. Notice
12	9314 8699 0430 0121 7924 13	Sortida Resources, LLC PO BOX 50820 MIDLAND TX 79710	\$1.63	\$4.40	\$2.32	\$0.00	10154.0010.59, 60. Notice
13	9314 8699 0430 0121 7924 20	Oak Valley Mineral and Land, LP 4000 NORTH BIG SPRING SUITE 310 MIDLAND TX 79705	\$1.63	\$4.40	\$2.32	\$0.00	10154.0010.59, 60. Notice
14	9314 8699 0430 0121 7924 37	Crown Oil Partners, LP PO BOX 50820 MIDLAND TX 79710	\$1.63	\$4.40	\$2.32	\$0.00	10154.0010.59, 60. Notice
15	9314 8699 0430 0121 7924 44	Collins & Jones Investments, LLC 508 WEST WALL STREET SUITE 1200 MIDLAND TX 79701	\$1.63	\$4.40	\$2.32	\$0.00	10154.0010.59, 60. Notice



Karlene Schuman
 Modrall Sperlberg Roehl Harris & Sisk P.A.
 500 Fourth Street, Suite 1000
 Albuquerque NM 87102

PS Form 3877

Type of Mailing: CERTIFIED MAIL
 05/31/2024

Firm Mailing Book ID: 266963

Line	USPS Article Number	Name, Street, City, State, Zip	Postage	Service Fee	RR Fee	Rest.Del.Fee	Reference Contents
16	9314 8699 0430 0121 7924 51	MCT Energy Ltd. 262 CARROLL STREET SUITE 100 FORT WORTH TX 76107	\$1.63	\$4.40	\$2.32	\$0.00	10154.0010.59, 60. Notice
17	9314 8699 0430 0121 7924 68	H. Jason Wacker 5601 HILLCREST MIDLAND TX 79707	\$1.63	\$4.40	\$2.32	\$0.00	10154.0010.59, 60. Notice
18	9314 8699 0430 0121 7924 75	David W. Cromwell 2008 COUNTRY CLUB DRIVE MIDLAND TX 79701	\$1.63	\$4.40	\$2.32	\$0.00	10154.0010.59, 60. Notice
19	9314 8699 0430 0121 7924 82	SHG Energy, LLC 4101 KINGWOOD COURT MIDLAND TX 79707	\$1.63	\$4.40	\$2.32	\$0.00	10154.0010.59, 60. Notice
20	9314 8699 0430 0121 7924 99	Sitka Consulting, LLC 5907 NORTH OSSINEKE DRIVE SPRING TX 77386	\$1.63	\$4.40	\$2.32	\$0.00	10154.0010.59, 60. Notice
21	9314 8699 0430 0121 7925 05	Ridge Runner Holdings, LLC 4000 NORTH BIG SPRING SUITE 210 MIDLAND TX 79705	\$1.63	\$4.40	\$2.32	\$0.00	10154.0010.59, 60. Notice
22	9314 8699 0430 0121 7925 12	John Lawrence Thoma, Trustee of the Cornerstone Family Trust 10864 MCKISSICK ROAD PEYTON CO 80813	\$1.63	\$4.40	\$2.32	\$0.00	10154.0010.59, 60. Notice
23	9314 8699 0430 0121 7925 29	CrownRock Minerals, L.P. PO Box 51933 Midland TX 79710	\$1.63	\$4.40	\$2.32	\$0.00	10154.0010.59, 60. Notice
24	9314 8699 0430 0121 7925 36	The Allar Company PO Box 1567 Graham TX 76450	\$1.63	\$4.40	\$2.32	\$0.00	10154.0010.59, 60. Notice
25	9314 8699 0430 0121 7925 43	EG3, Inc. PO Box 1567 Graham TX 76450	\$1.63	\$4.40	\$2.32	\$0.00	10154.0010.59, 60. Notice
26	9314 8699 0430 0121 7925 50	GMT New Mexico Royalty Company LLC 1560 BROADWAY SUITE 2000 DENVER CO 80202	\$1.63	\$4.40	\$2.32	\$0.00	10154.0010.59, 60. Notice
27	9314 8699 0430 0121 7925 67	Nestegg Energy Corporation 2308 Sierra Vista Artesia NM 88210	\$1.63	\$4.40	\$2.32	\$0.00	10154.0010.59, 60. Notice
28	9314 8699 0430 0121 7925 74	Brazos, LP PO Box 911 Breckenridge TX 76424	\$1.63	\$4.40	\$2.32	\$0.00	10154.0010.59, 60. Notice
29	9314 8699 0430 0121 7925 81	Permian Resources Operating, LLC 300 N. Marienfeld Ste. 1000 Midland TX 79701	\$1.63	\$4.40	\$2.32	\$0.00	10154.0010.59, 60. Notice
30	9314 8699 0430 0121 7925 98	MRC Permian Company Matador 5400 LBJ Freeway, Ste 1500 Dallas TX Dallas TX 75240	\$1.63	\$4.40	\$2.32	\$0.00	10154.0010.59, 60. Notice

Karlene Schuman
Modrall Sperlberg Roehl Harris & Sisk P.A.
500 Fourth Street, Suite 1000
Albuquerque NM 87102

PS Form 3877

Type of Mailing: CERTIFIED MAIL
05/31/2024

Firm Mailing Book ID: 266963

Line	USPS Article Number	Name, Street, City, State, Zip	Postage	Service Fee	RR Fee	Rest.Del.Fee	Reference Contents
			Totals:	\$48.90	\$132.00	\$69.60	\$0.00
			Grand Total:		\$250.50		

List Number of Pieces Listed by Sender	Total Number of Pieces Received at Post Office	Postmaster: Name of receiving employee	Dated:
--	--	--	--------

30

