

STATE OF NEW MEXICO
ENERGY, MINERALS AND NATURAL RESOURCES DEPARTMENT
OIL CONSERVATION COMMISSION

BEFORE THE OIL CONSERVATION COMMISSION

Santa Fe, New Mexico

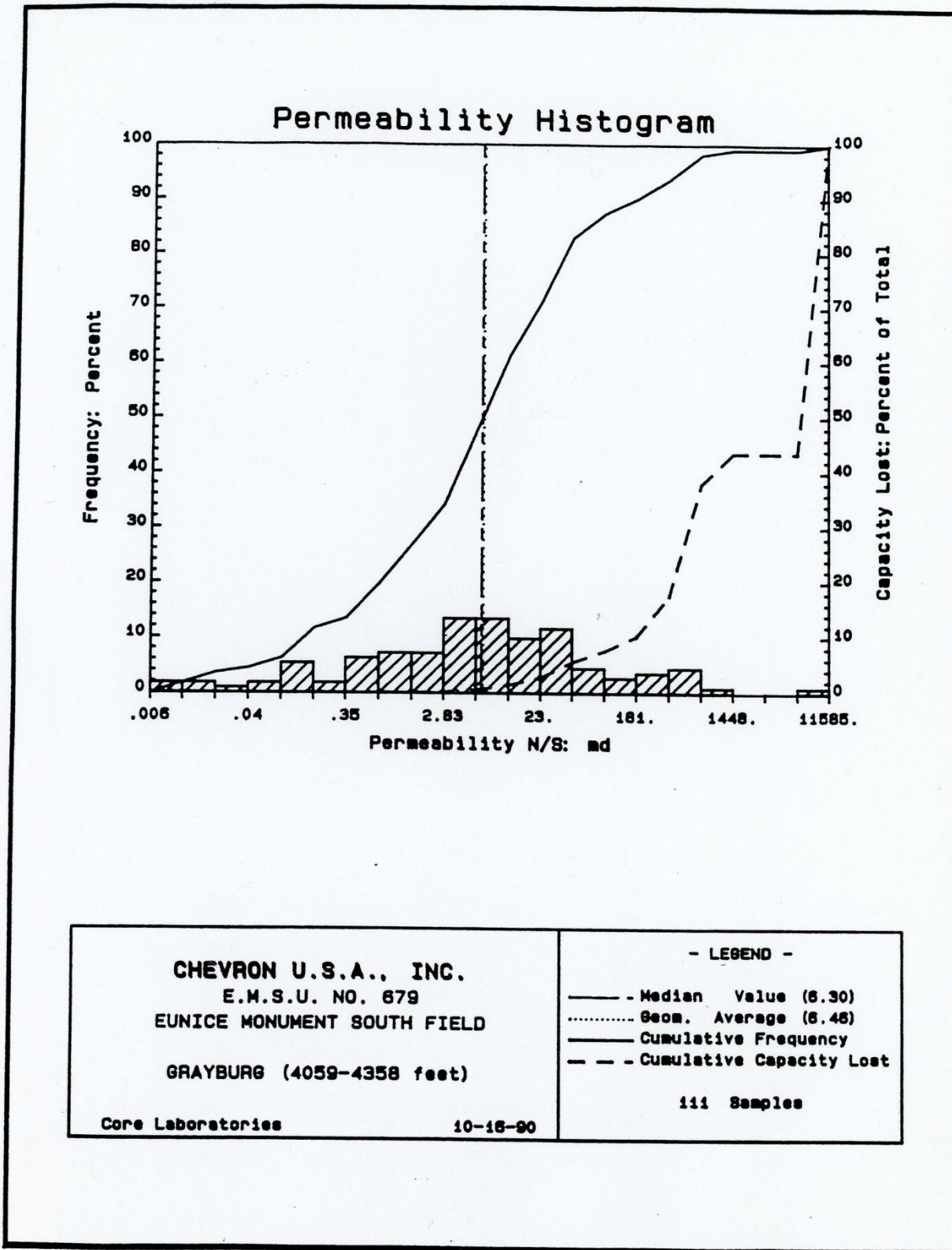
Submitted by: Goodnight Midstream Permian, LLC

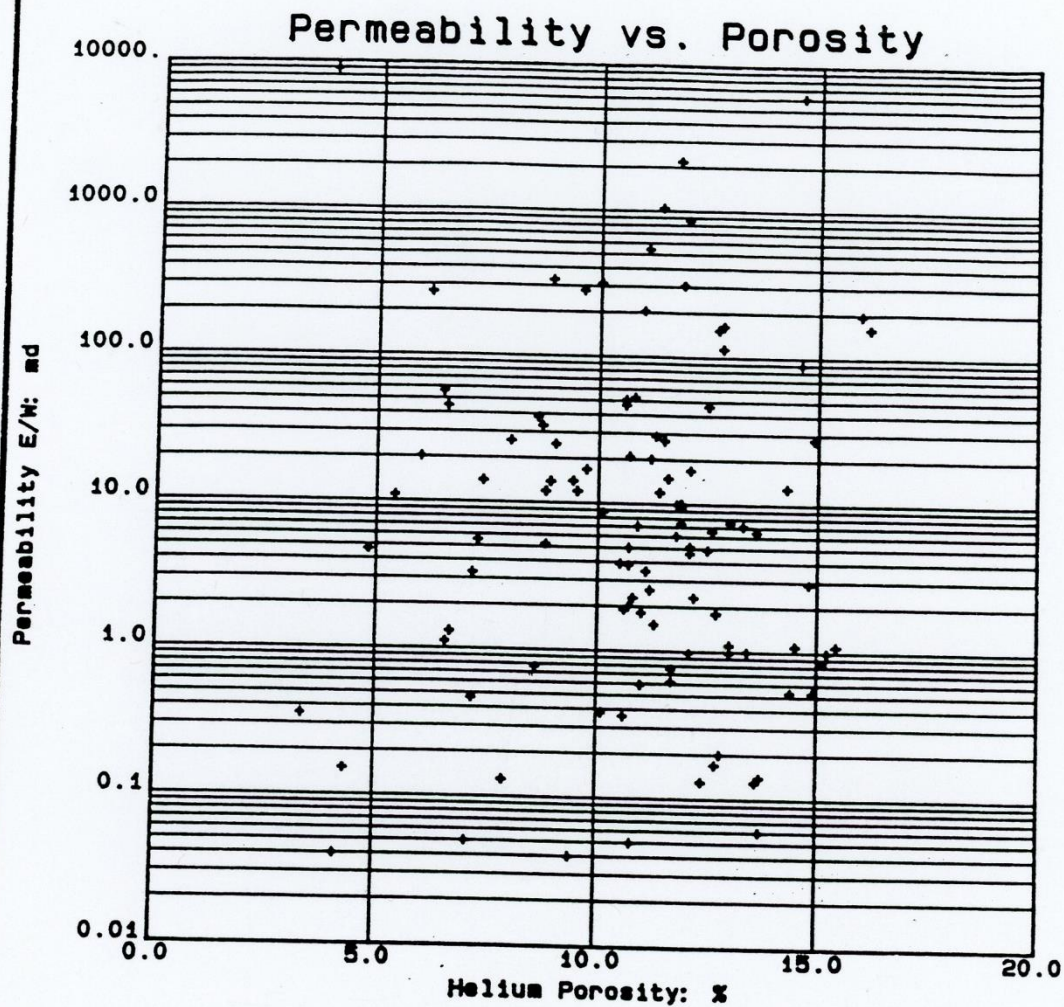
Hearing Date: September 23, 2024

Case Nos. 23614-23617, 23775, 24018 – 24020, 24025, 24123

MCGUIRE TESTIMONY AND EXHIBIT PACKET

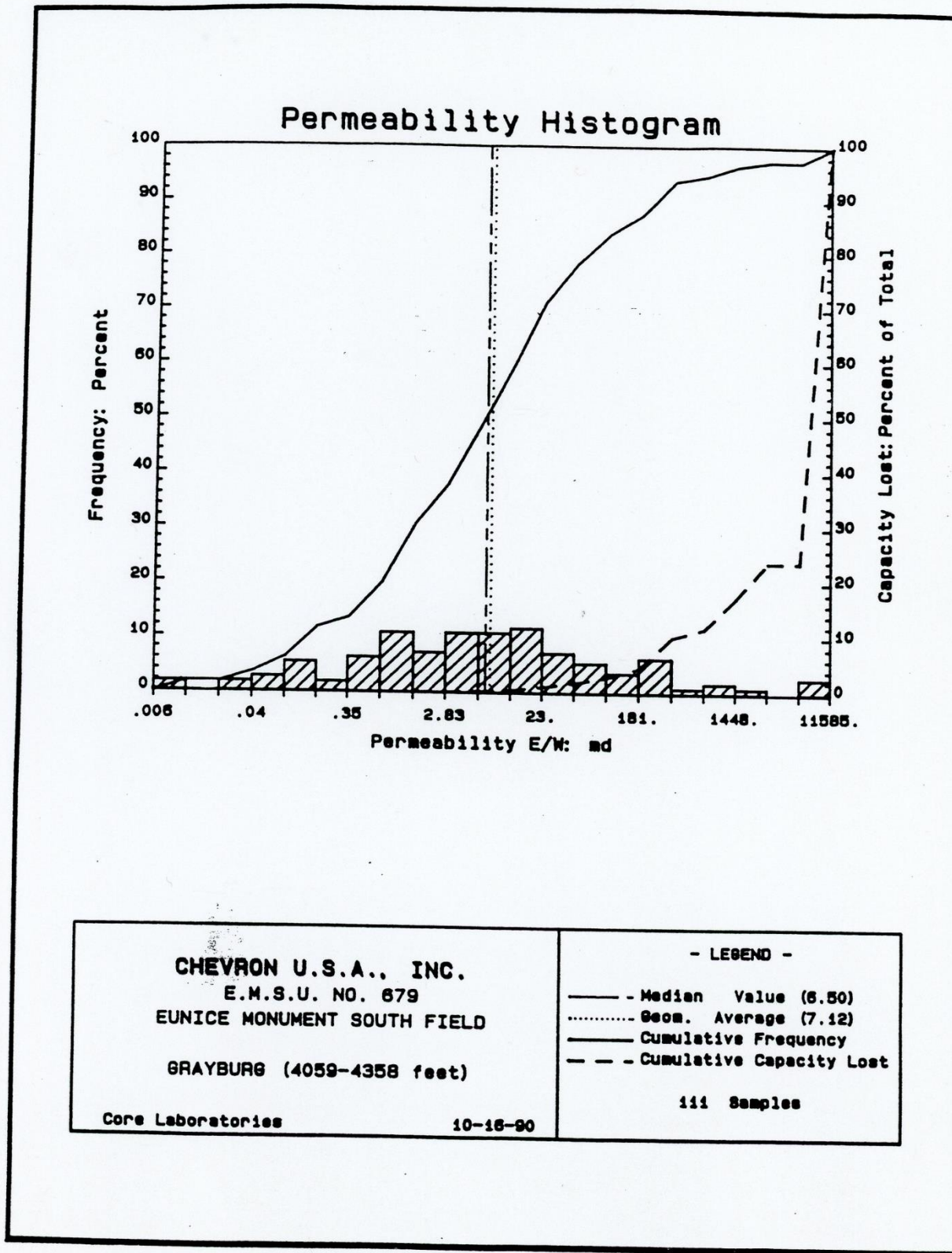
PART 2 OF 3



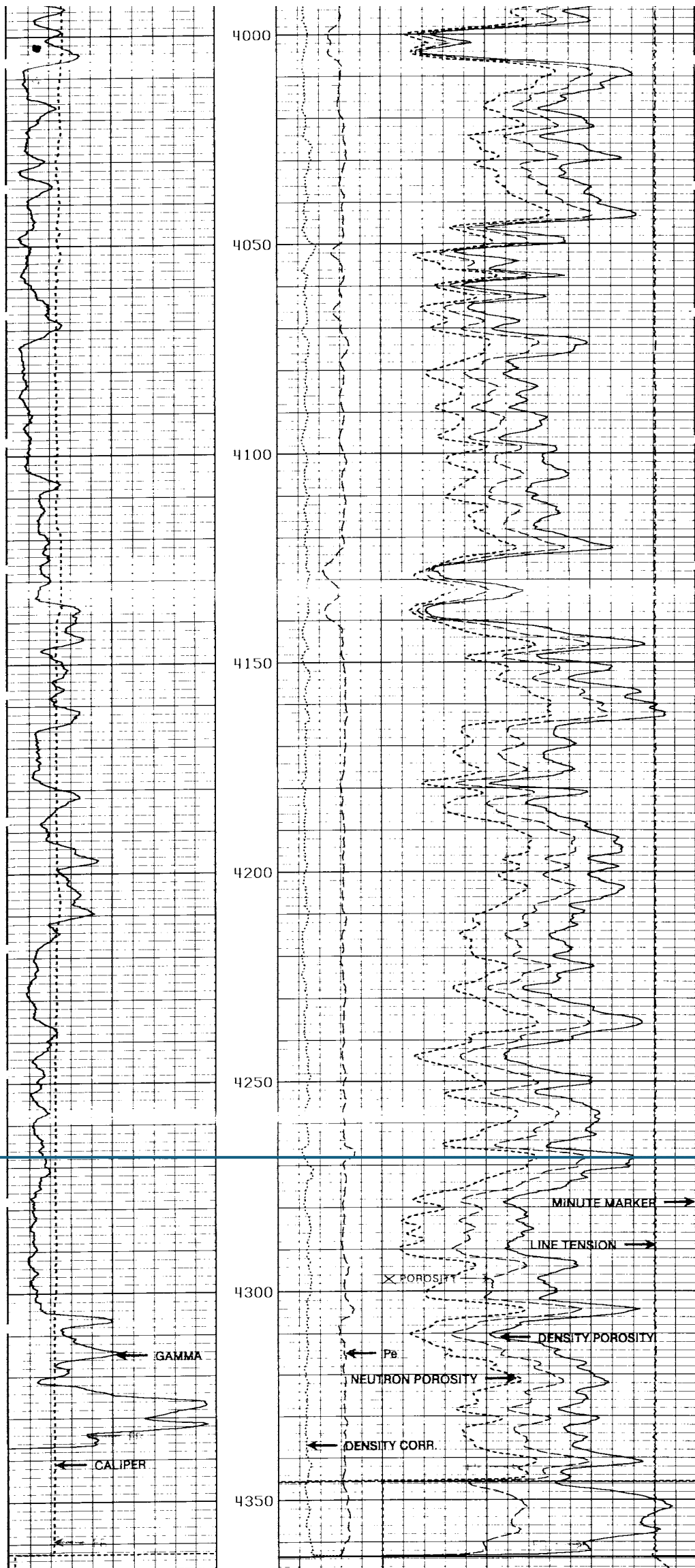


<p>CHEVRON U.S.A., INC. E.M.S.U. NO. 679 EUNICE MONUMENT SOUTH FIELD GRAYBURG (4059-4358 feet) Core Laboratories</p>	<p style="text-align: center;">- LEGEND - GRAYBURG</p>
---	--

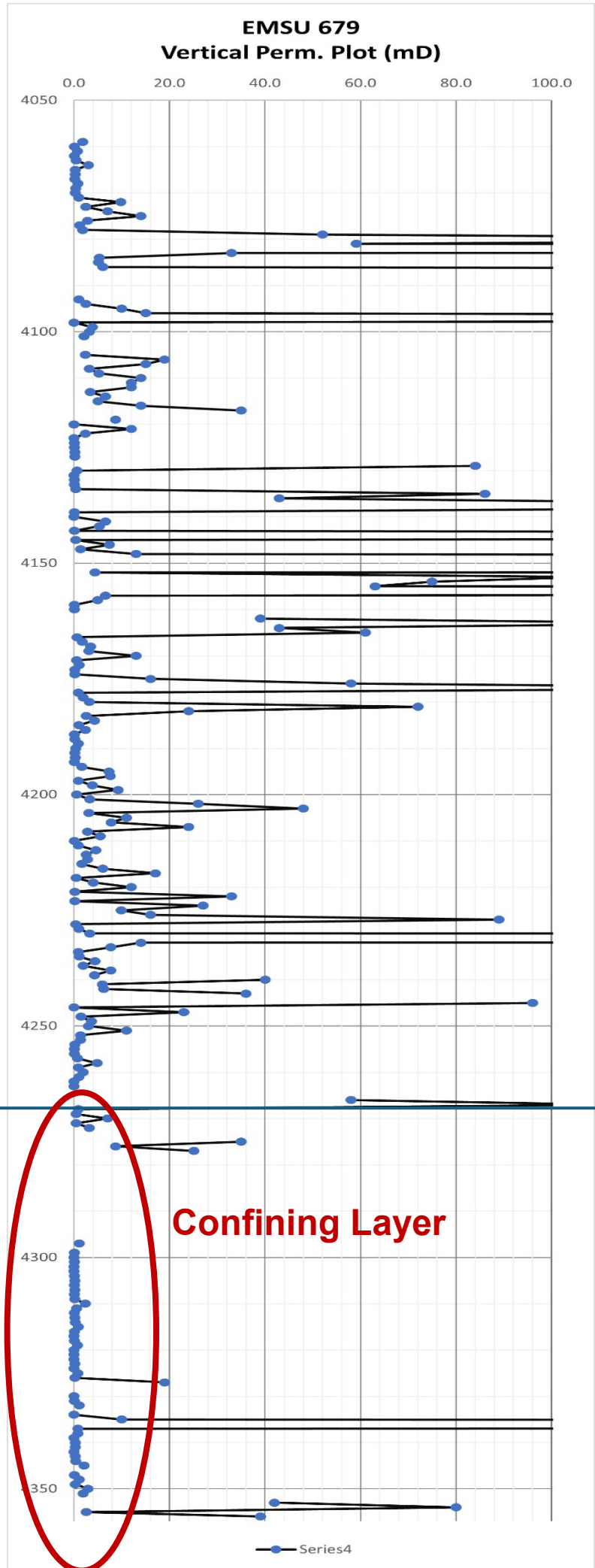
10-16-90



EMSU #679
30-025-31009
8-21S-36E
KB: 3596



Core Data



DEN CORR		GM/CC		0.9	
-0.1					
SDL PE		TENSION		POUNDS	
0		10		10000	
X-PLOT POR					
30				-10	
NEU POROS					
30		LIME		-10	
DEN POROS					
30		2.71		-10	

GAMMA			
0		100	
CALIPER			
6		16	

BEFORE THE OIL CONSERVATION COMMISSION
 Santa Fe, New Mexico
 Exhibit No. B-27
 Submitted by: Goodnight Midstream Permian, LLC
 Hearing Date: September 23, 2024
 Case Nos. 23614-23617, 23775,
 24018 - 24020, 24025, 24123

Alt ID=04478

1321 ft

Alt ID=04468

1553 ft

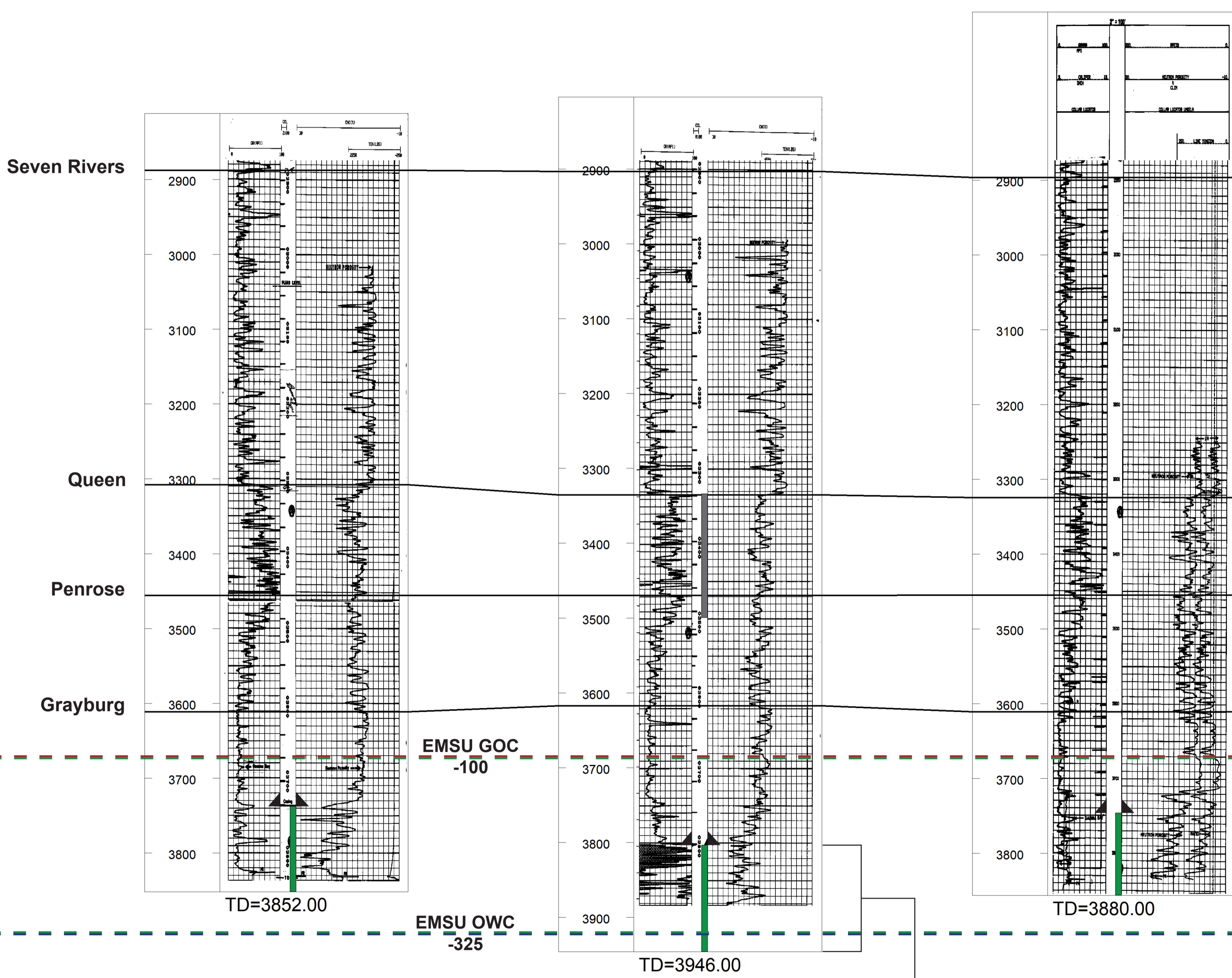
Alt ID=04466

EMPIRE NEW MEXICO LLC
EMSU 230
TWP: 21 S - Range: 36 E - Sec. 4
Datum = 3574.00

Empire New Mexico LLC
EMSU 239
TWP: 21 S - Range: 36 E - Sec. 4
Datum = 3588.00

Empire New Mexico LLC
EMSU 238
TWP: 21 S - Range: 36 E - Sec. 4
Datum = 3573.00

*Mechanical Well Configuration as of 1981

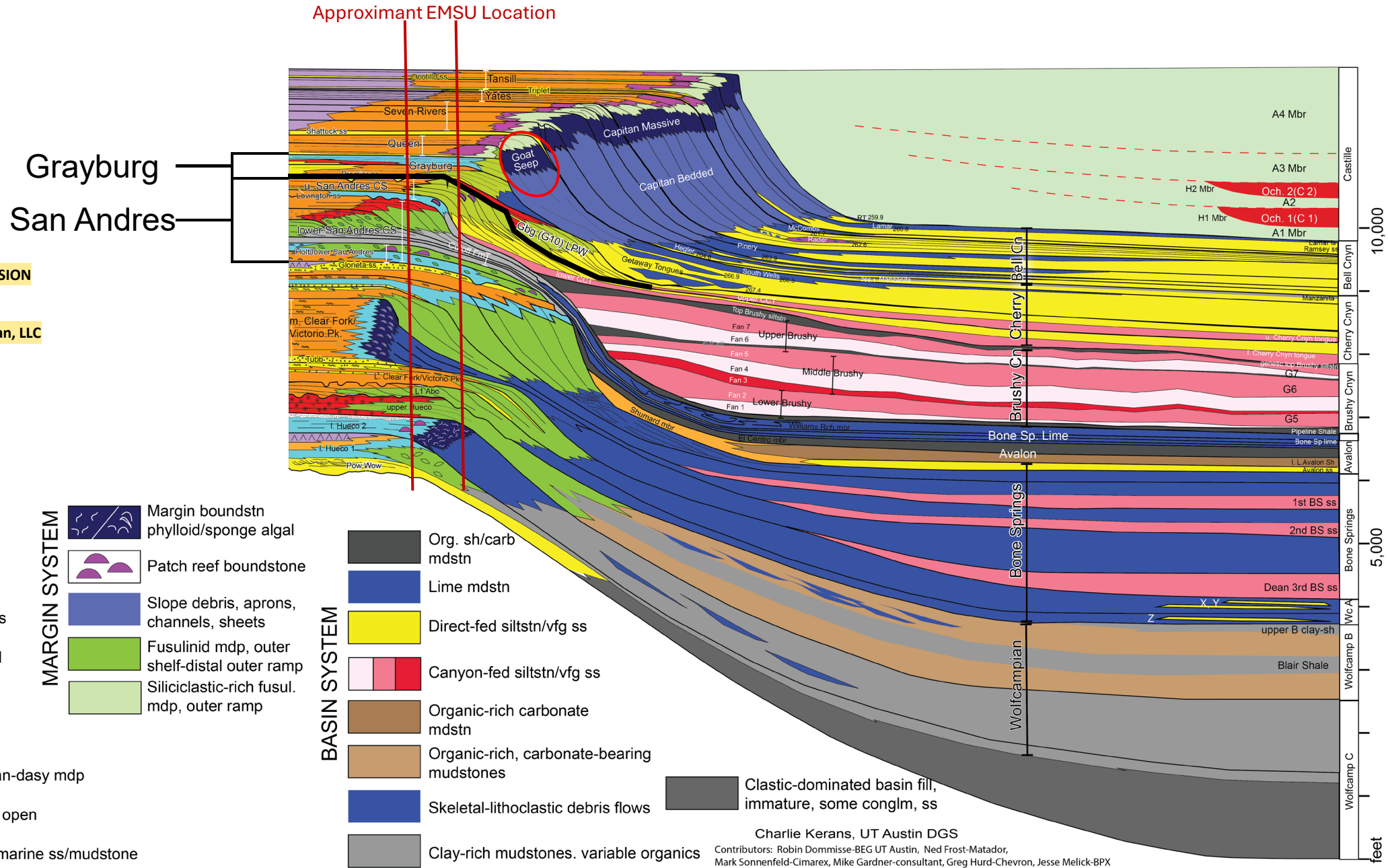


The EMSU #239 was open hole completed from 3800'-3946'. This well was open and producing from below the oil-water contact

BEFORE THE OIL CONSERVATION COMMISSION
Santa Fe, New Mexico
Exhibit No. B-28
Submitted by: Goodnight Midstream Permian, LLC
Hearing Date: September 23, 2024
Case Nos. 23614-23617, 23775, 24018 - 24020, 24025, 24123

UT-BEG Central Basin Platform to Delaware Basin Stratigraphic Model

BEFORE THE OIL CONSERVATION COMMISSION
Santa Fe, New Mexico
Exhibit No. B-29
Submitted by: Goodnight Midstream Permian, LLC
Hearing Date: September 23, 2024
Case Nos. 23614-23617, 23775,
24018 – 24020, 24025, 24123



Charlie Kerans, UT Austin DGS
 Contributors: Robin Domnisse-BEG UT Austin, Ned Frost-Matador,
 Mark Sonnenfeld-Cimarex, Mike Gardner-consultant, Greg Hurd-Chevron, Jesse Melick-BPX



Commercial Exploitation and the Origin of Residual Oil Zones: Developing a Case History in the Permian Basin of New Mexico and West Texas

RPSEA PROJECT NUMBER.FINAL

**Commercial Exploitation and the Origin of Residual Oil Zones:
Developing a Case History in the Permian Basin of New Mexico
and West Texas**

Contract 81.089 08123-19-RPSEA

June 28, 2012

Dr. Robert Trentham
Director, Center for Energy and Economic Diversification
The University of Texas of the Permian Basin
Odessa, Texas 79762

L. Steven Melzer
Melzer Consulting
Midland, Texas 79701

David Vance
Arcadis, U. S.
Midland, Texas 79701

BEFORE THE OIL CONSERVATION COMMISSION
Santa Fe, New Mexico
Exhibit No. B-30
Submitted by: Goodnight Midstream Permian, LLC
Hearing Date: September 23, 2024
Case Nos. 23614-23617, 23775,
24018 – 24020, 24025, 24123

southwestern corner of the platform in Pecos County also provided an exit pathway for the flushing fluids, completing the trend from source through trend to exit pathway.

A number of fields along the Northwest Shelf portion of the trend have been identified that have tilted oil water contacts, ROZ's, and pilots where CO₂ is, or is planned to be, injected into the ROZ beneath the existing Main Pay CO₂ flood. In addition, there are other Brownfield and Greenfield opportunities along the trend.

Using donated north-south 2-D seismic lines that had been shot across the San Simon Channel along the Texas–New Mexico border, and cross sections constructed parallel to the seismic lines, it became apparent that by the middle San Andres, shelf debris had filled that portion of the San Simon Channel and that the pathway of migration from the Northwest Shelf across the Channel and onto the Central Basin Platform through shelf carbonates had been established. It appears that the channel in the area of the state line was filled earliest and during the middle and upper San Andres, the entire channel was filled.

On the western margin of the Central Basin Platform there is substantial evidence of the effects of meteoric derived flushing and identified ROZ's. In the Monument to Eunice Monument South area, work by Lindsay has documented that there is a thick San Andres ROZ beneath a minor San Andres and major Grayburg Main Pay Zone (mostly in the Grayburg, although the production is comingled). He also documented that the San Andres has a sulfate rich “bottom water drive” which is sourced from the Sacramento Mountains and a sulfate poor “edge water drive” in the Grayburg, sourced from the Guadalupe Mountains. This supports the concept that the San Andres is hydrologically separated from the Goat Seep Reef (Grayburg) and therefore separate from the Capitan Reef.

South of Jal, New Mexico there is only minor San Andres production in the Texas portion of the Artesia Trend. There are, however, a number of documented ROZ's in the San Andres in the trend without associated main pays. This trend has effectively been swept of all but minor producing intervals where the permeability is so low the meteoric derived waters were unable to sweep the reservoir. Although much of the production along the west side of the Central Basin Platform is upper Guadalupian, there are a large number of wells drilled for Pennsylvanian and deeper reservoirs that provide vital information on this pathway. The lack of large fields producing from the San Andres is actually of benefit to the selection of the trend. Although this limits the amount of data available, it results in a data set that is both appropriate and manageable for analysis.

The presence of the sulfur mines at the southwestern corner of the platform in Pecos County provides documentation for an exit pathway for the flushing fluids. Although these mines are not necessarily exit points from the system, they are along the exit pathways and provide a “grounded” data point for the model.

5.1.1 Fairway Boundaries

The delineation and refinement of the trend was an effort by a number of participants in the study. Bob Trentham identified the outline of the two low permeability flanks that acted as boundaries to horizontal flow, and the central high permeability pathway. Arcadis provided regional maps with well control onto which the outlines were plotted. ROZ team members Phil Eager and Saswati Chakraborty gathered wells to populate the cross section network. They ensured that wells with DST, well pressure tests, water chemistry, core reports, and other data were included in the cross section network.



Preston McGuire
Geology and Reservoir Engineering Manager
Goodnight Midstream, LLC
5910 North Central Expressway, Suite 850
Dallas, Texas 75206

RE: Goodnight Midstream, LLC Doc Gooden SWD well permit

Lot P, Section 3, Township 21S Range 36E
Lea County, New Mexico

Goodnight Midstream conducted a hydrogeologic investigation related to the proposed injection well. The scope of the investigation was to determine if there is any hydrologic connection between the proposed injection interval and any sources of underground drinking water.

Goodnight geologist performed an analysis of subsurface well log data. It is our conclusion that there is no evidence of faulting in the data we evaluated at the depths that are being considered. There are small scale flexures which may or may not be associated with small scale faults. None of these flexures extend above the Wolfcamp unconformity and are not seen in the Leonard intervals.

Goodnight acquired and evaluated 3D seismic to the west but does not cover the lands that this salt water disposal well is located upon. This data shows the geologic setting in the area. No faults are seen in the Artesia Group, San Andres, Glorieta, or Leonard series. The San Andres contains small scale flexures and changes in seismic velocity that may indicate karsting. These flexures and velocity anomalies are being used to target disposal reservoir opportunities. The Grayburg thickens over the San Andres sag. There is also a thickening of the Yates relative to the low in the San Andres. These stratigraphic changes do not indicate the presence of faulting and there is no communication between these intervals.

Water has been disposed into the San Andres in this area since 1966. There is a good record of pressure separation. Production from the Artesia group has proceeded without interruption or encroachment from San Andres disposal for more than 50 years. Containment and isolation from the hydrocarbon intervals would then also be isolated from any sources of fresh water above.

We see no evidence of faulting that would extend to or form a connection between the injection zone and any underground sources of drinking water.

Preston McGuire
Geology and Reservoir Engineering Manager
Goodnight Midstream, LLC

10/23/23

Date

BEFORE THE OIL CONSERVATION COMMISSION
Santa Fe, New Mexico
Exhibit No. B-31

Submitted by: Goodnight Midstream Permian, LLC
Hearing Date: September 23, 2024
Case Nos. 23614-23617, 23775, 24018 – 24020, 24025, 24123



Preston McGuire
Geology and Reservoir Engineering Manager
Goodnight Midstream, LLC
5910 North Central Expressway, Suite 850
Dallas, Texas 75206

RE: Goodnight Midstream, LLC Hernandez SWD well permit

Lot P, Section 10, Township 21S Range 36E
Lea County, New Mexico

Goodnight Midstream conducted a hydrogeologic investigation related to the proposed injection well. The scope of the investigation was to determine if there is any hydrologic connection between the proposed injection interval and any sources of underground drinking water.

Goodnight geologist performed an analysis of subsurface well log data. It is our conclusion that there is no evidence of faulting in the data we evaluated at the depths that are being considered. There are small scale flexures which may or may not be associated with small scale faults. None of these flexures extend above the Wolfcamp unconformity and are not seen in the Leonard intervals.

Goodnight acquired and evaluated 3D seismic to the west but does not cover the lands that this salt water disposal well is located upon. This data shows the geologic setting in the area. No faults are seen in the Artesia Group, San Andres, Glorieta, or Leonard series. The San Andres contains small scale flexures and changes in seismic velocity that may indicate karsting. These flexures and velocity anomalies are being used to target disposal reservoir opportunities. The Grayburg thickens over the San Andres sag. There is also a thickening of the Yates relative to the low in the San Andres. These stratigraphic changes do not indicate the presence of faulting and there is no communication between these intervals.

Water has been disposed into the San Andres in this area since 1966. There is a good record of pressure separation. Production from the Artesia group has proceeded without interruption or encroachment from San Andres disposal for more than 50 years. Containment and isolation from the hydrocarbon intervals would then also be isolated from any sources of fresh water above.

We see no evidence of faulting that would extend to or form a connection between the injection zone and any underground sources of drinking water.

A handwritten signature in black ink, appearing to read 'Preston McGuire', is written over a horizontal line.

Preston McGuire
Geology and Reservoir Engineering Manager
Goodnight Midstream, LLC

A handwritten date '10/23/23' is written in black ink above a horizontal line.

Date



Preston McGuire
Geology and Reservoir Engineering Manager
Goodnight Midstream, LLC
5910 North Central Expressway, Suite 850
Dallas, Texas 75206

RE: Goodnight Midstream, LLC Hodges SWD well permit

Lot 11, Section 4, Township 21S Range 36E
Lea County, New Mexico

Goodnight Midstream conducted a hydrogeologic investigation related to the proposed injection well. The scope of the investigation was to determine if there is any hydrologic connection between the proposed injection interval and any sources of underground drinking water.

Goodnight geologist performed an analysis of subsurface well log data. It is our conclusion that there is no evidence of faulting in the data we evaluated at the depths that are being considered. There are small scale flexures which may or may not be associated with small scale faults. None of these flexures extend above the Wolfcamp unconformity and are not seen in the Leonard intervals.

Goodnight acquired and evaluated 3D seismic covering the lands that this salt water disposal well is located upon. This data shows the geologic setting in the area. No faults are seen in the Artesia Group, San Andres, Glorieta, or Leonard series. The San Andres contains small scale flexures and changes in seismic velocity that may indicate karsting. These flexures and velocity anomalies are being used to target disposal reservoir opportunities. The Grayburg thickens over the San Andres sag. There is also a thickening of the Yates relative to the low in the San Andres. These stratigraphic changes do not indicate the presence of faulting and there is no communication between these intervals.

Water has been disposed into the San Andres in this area since 1966. There is a good record of pressure separation. Production from the Artesia group has proceeded without interruption or encroachment from San Andres disposal for more than 50 years. Containment and isolation from the hydrocarbon intervals would then also be isolated from any sources of fresh water above.

We see no evidence of faulting that would extend to or form a connection between the injection zone and any underground sources of drinking water.

A handwritten signature in black ink, appearing to read 'P. McGuire', is written over a horizontal line.

Preston McGuire
Geology and Reservoir Engineering Manager
Goodnight Midstream, LLC

10/23/23

Date



Preston McGuire
Geology and Reservoir Engineering Manager
Goodnight Midstream, LLC
5910 North Central Expressway, Suite 850
Dallas, Texas 75206

RE: Goodnight Midstream, LLC Seaver SWD well permit

Lot K, Section 10, Township 21S Range 36E
Lea County, New Mexico

Goodnight Midstream conducted a hydrogeologic investigation related to the proposed injection well. The scope of the investigation was to determine if there is any hydrologic connection between the proposed injection interval and any sources of underground drinking water.

Goodnight geologist performed an analysis of subsurface well log data. It is our conclusion that there is no evidence of faulting in the data we evaluated at the depths that are being considered. There are small scale flexures which may or may not be associated with small scale faults. None of these flexures extend above the Wolfcamp unconformity and are not seen in the Leonard intervals.

Goodnight acquired and evaluated 3D seismic to the west but does not cover the lands that this salt water disposal well is located upon. This data shows the geologic setting in the area. No faults are seen in the Artesia Group, San Andres, Glorieta, or Leonard series. The San Andres contains small scale flexures and changes in seismic velocity that may indicate karsting. These flexures and velocity anomalies are being used to target disposal reservoir opportunities. The Grayburg thickens over the San Andres sag. There is also a thickening of the Yates relative to the low in the San Andres. These stratigraphic changes do not indicate the presence of faulting and there is no communication between these intervals.

Water has been disposed into the San Andres in this area since 1966. There is a good record of pressure separation. Production from the Artesia group has proceeded without interruption or encroachment from San Andres disposal for more than 50 years. Containment and isolation from the hydrocarbon intervals would then also be isolated from any sources of fresh water above.

We see no evidence of faulting that would extend to or form a connection between the injection zone and any underground sources of drinking water.

A handwritten signature in black ink, appearing to read 'P McGuire', written over a horizontal line.

Preston McGuire
Geology and Reservoir Engineering Manager
Goodnight Midstream, LLC

10/23/23

Date



Preston McGuire
Geology and Reservoir Engineering Manager
Goodnight Midstream, LLC
5910 North Central Expressway, Suite 850
Dallas, Texas 75206

RE: Goodnight Midstream, LLC Piazza SWD #1 well permit

Lot J, Section 9, Township 21S Range 36E
Lea County, New Mexico

Goodnight Midstream conducted a hydrogeologic investigation related to the proposed injection well. The scope of the investigation was to determine if there is any hydrologic connection between the proposed injection interval and any sources of underground drinking water.

Goodnight geologist performed an analysis of subsurface well log data. It is our conclusion that there is no evidence of faulting in the data we evaluated at the depths that are being considered. There are small scale flexures which may or may not be associated with small scale faults. None of these flexures extend above the Wolfcamp unconformity and are not seen in the Leonard intervals.

Goodnight acquired and evaluated 3D seismic covering the lands that this saltwater disposal well is located upon. This data shows the geologic setting in the area. No faults are seen in the Artesia Group, San Andres, Glorieta, or Leonard series. The San Andres contains small scale flexures and changes in seismic velocity that may indicate karsting. These flexures and velocity anomalies are being used to target disposal reservoir opportunities. The Grayburg thickens over the San Andres sag. There is also a thickening of the Yates relative to the low in the San Andres. These stratigraphic changes do not indicate the presence of faulting and there is no communication between these intervals.

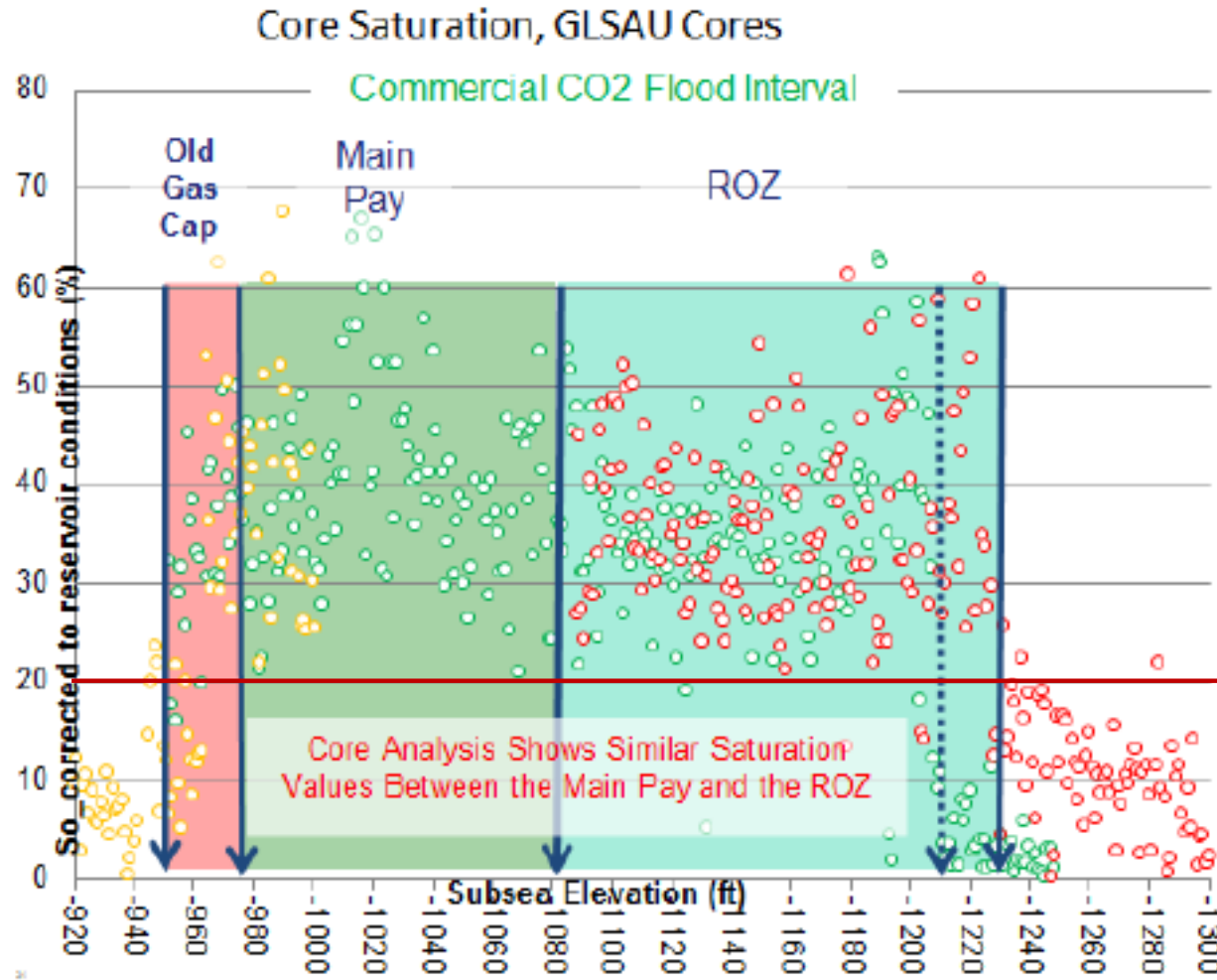
Water has been disposed into the San Andres in this area since 1966. There is a good record of pressure separation. Production from the Artesia group has proceeded without interruption or encroachment from San Andres disposal for more than 50 years. Containment and isolation from the hydrocarbon intervals would then also be isolated from any sources of fresh water above.

We see no evidence of faulting that would extend to or form a connection between the injection zone and any underground sources of drinking water.

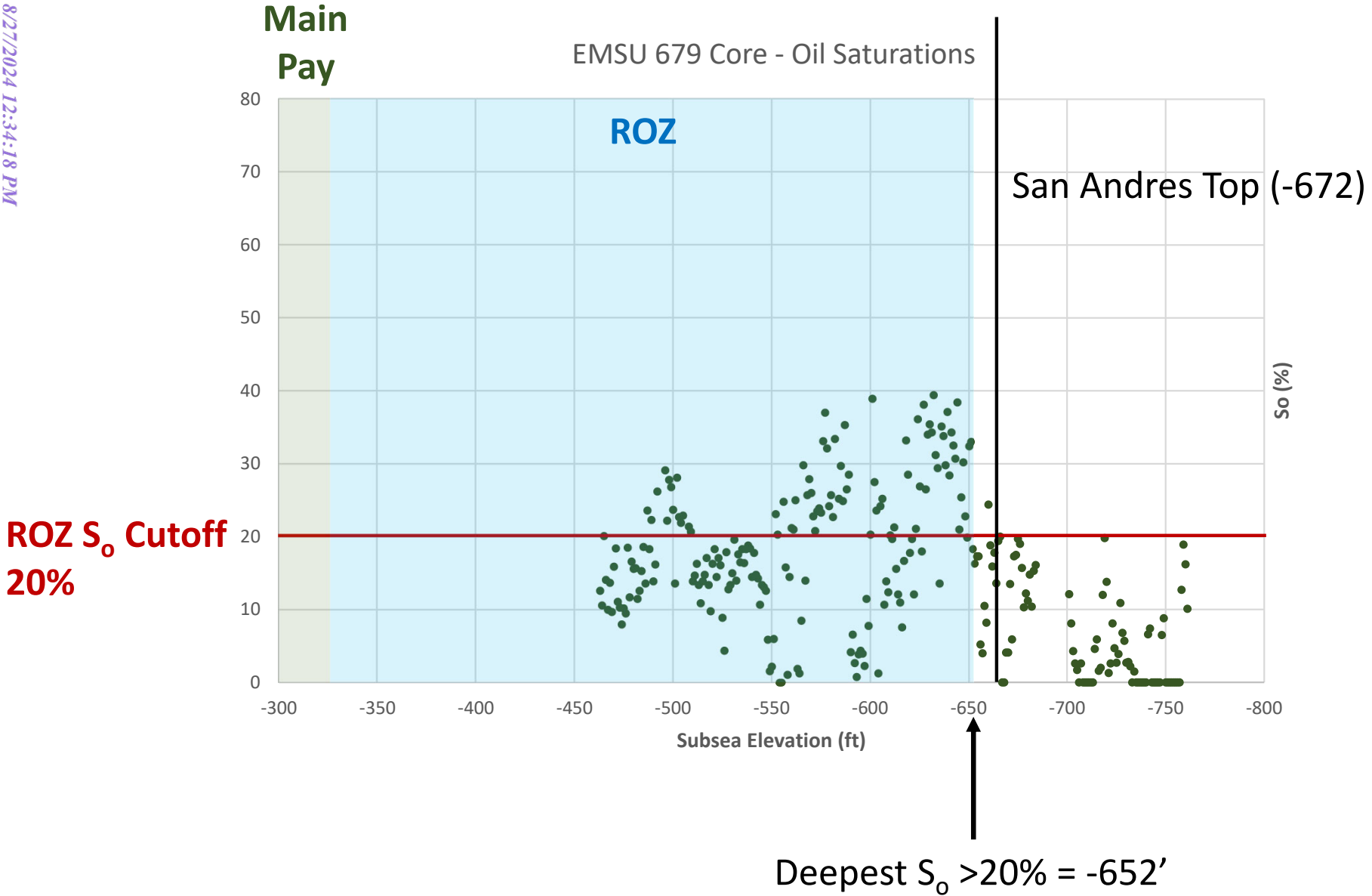
A handwritten signature in black ink, appearing to read 'P McGuire', written over a horizontal line.

Preston McGuire
Geology and Reservoir Engineering Manager
Goodnight Midstream, LLC

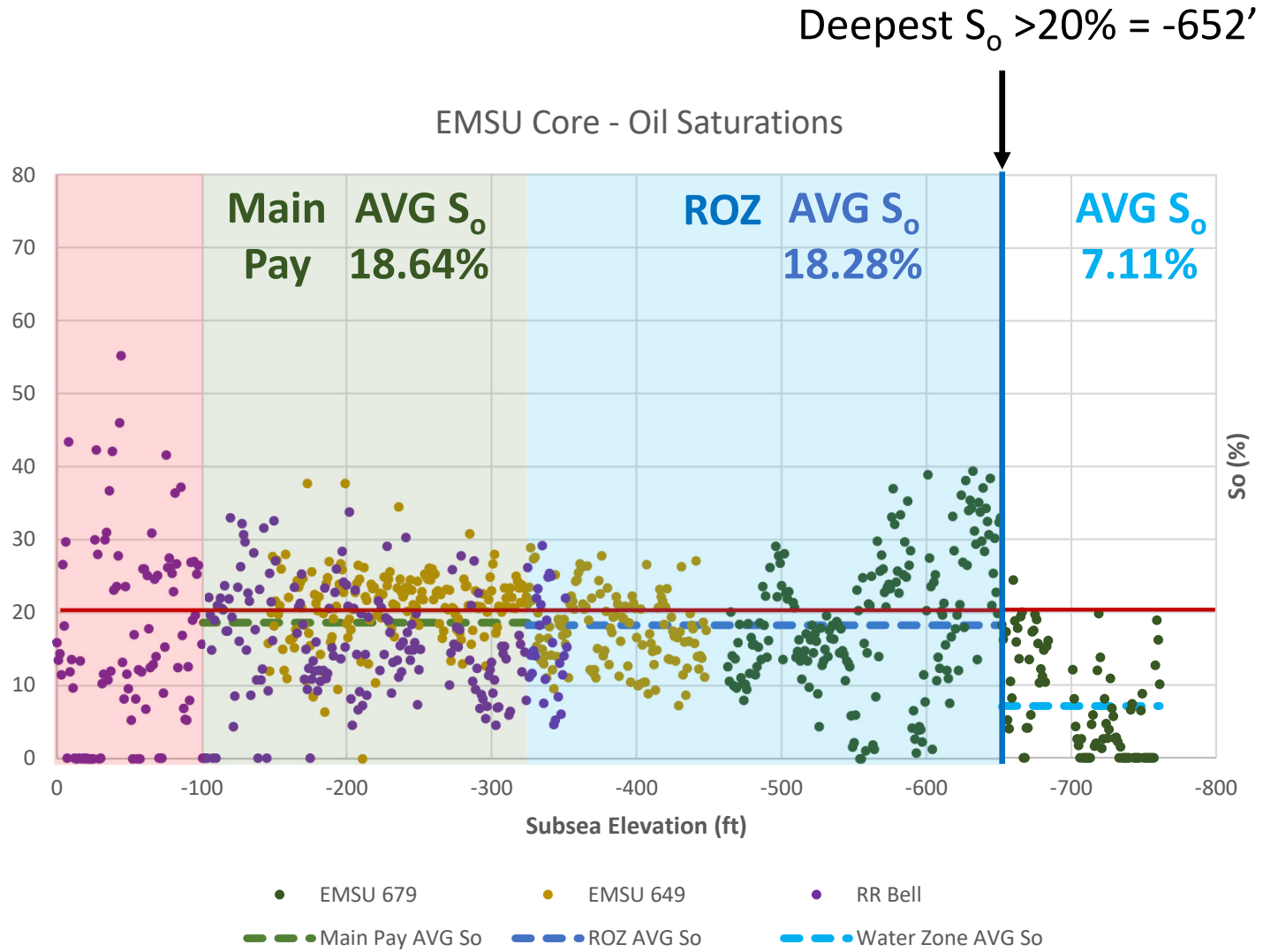
8-19-24
Date



BEFORE THE OIL CONSERVATION COMMISSION
 Santa Fe, New Mexico
 Exhibit No. B-32
 Submitted by: Goodnight Midstream Permian, LLC
 Hearing Date: September 23, 2024
 Case Nos. 23614-23617, 23775,
 24018 – 24020, 24025, 24123

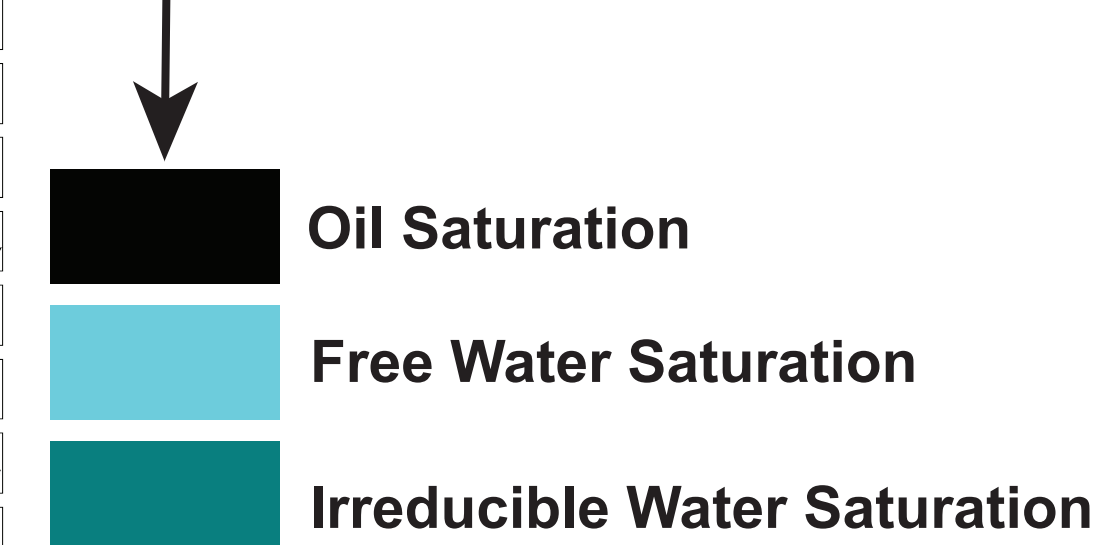


ROZ S_o Cutoff
20%



EMSU 746
30-025-37356
15-21S-36E
KB: 3584

Sw/So
Track



Perforations Tested Oil

Perforations Tested 100% Water

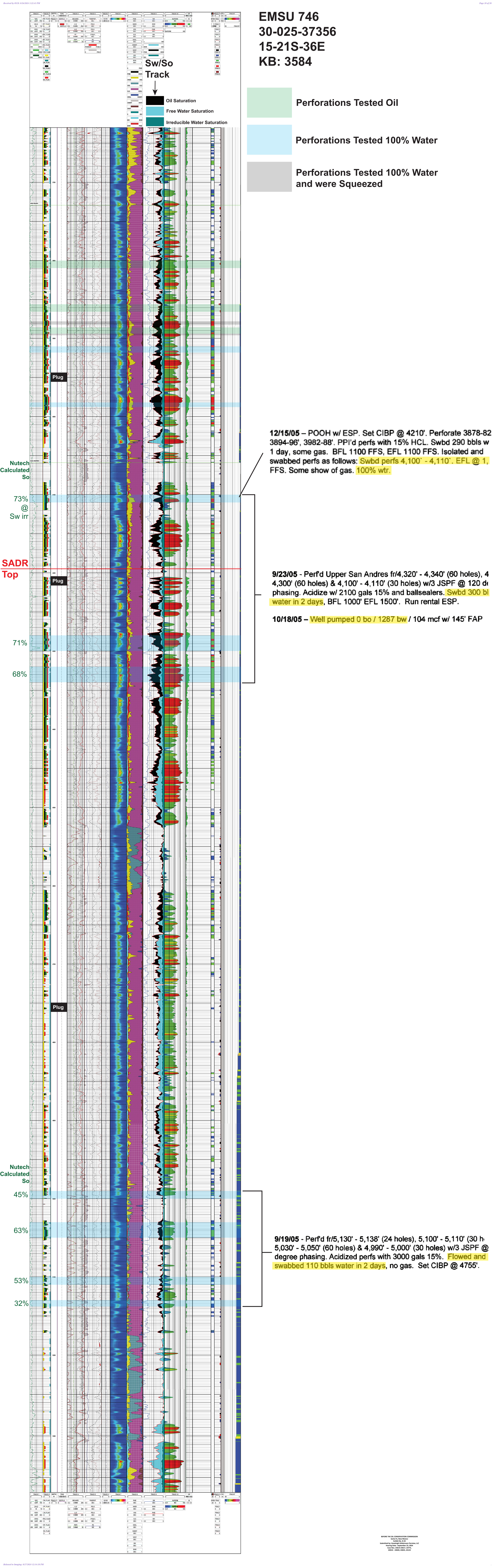
Perforations Tested 100% Water and were Squeezed

12/15/05 – POOH w/ ESP. Set CIBP @ 4210'. Perforate 3878-82 3894-96', 3982-88'. PPI'd perfs with 15% HCL. Swbd 290 bbls w 1 day, some gas. BFL 1100 FFS, EFL 1100 FFS. Isolated and swabbed perfs as follows: Swbd perfs 4,100' - 4,110'. EFL @ 1, FFS. Some show of gas. 100% wtr.

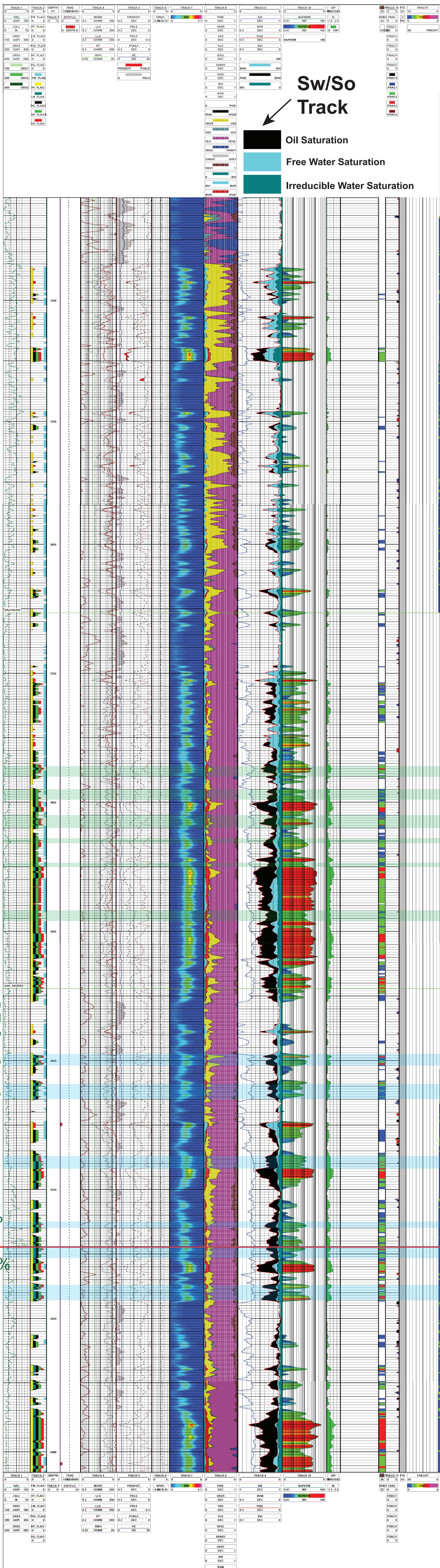
9/23/05 - Perf'd Upper San Andres fr/4,320' - 4,340' (60 holes), 4 4,300' (60 holes) & 4,100' - 4,110' (30 holes) w/3 JSPF @ 120 d phasing. Acidize w/ 2100 gals 15% and ballsealers. Swbd 300 bl water in 2 days, BFL 1000' EFL 1500'. Run rental ESP.

10/18/05 – Well pumped 0 bo / 1287 bw / 104 mcf w/ 145' FAP

9/19/05 - Perf'd fr/5,130' - 5,138' (24 holes), 5,100' - 5,110' (30 h 5,030' - 5,050' (60 holes) & 4,990' - 5,000' (30 holes) w/3 JSPF @ degree phasing. Acidize perfs with 3000 gals 15%. Flowed and swabbed 110 bbls water in 2 days, no gas. Set CIBP @ 4755'.



EMSU 658 30-025-37280 3-21S-36E KB: 3609



Sw/So Track

- Oil Saturation
- Free Water Saturation
- Irreducible Water Saturation

Perforations Tested Oil

Perforations Tested 100% Water

Nutech
Calculated
So

57%

62%

70%

69%

SADR
Top 68%

70%

2/8/06 perforated the following intervals : 4,174' - 4,186', 4,144' -4,153', 4,125' - 4,130', 4,074' - 4,084', 4,018' - 4,030' & 3,995' -4004'

2/9/06 straddling perfs @ 4,174' to 4,186'. Press up to 780 psig to break down perfs. Pmpd 600 gals of 15% 90/10 HCL acid, min press - Vac & AIR .6 BPM.

straddling perfs @ 4,144' to 4,153'. Pmpd 450 gals of 15% 90/10 HCL acid. Break down perfs @ 1,380 psig, Min press - Vac & AIR - .6 BPM.

straddling @ 4,125'to 4,130'. Pmpd 250 gals of 15% 90/10 HCL acid. Saw no Press, treated on VAC.

straddling perfs @ 4,074' to 4,084'. Pmpd 500 gals of 15% 90/10 HCL acid. Break down perfs @ 1,160 psig, Min press - Vac & AIR - .6 BPM.

straddling perfs @ 4,018' to 4,030'. Pmpd 600 gals of 15% 90/10 HCL acid. Perfs on a Vac & AIR - 1.2 BPM

straddling perfs @ 3,995' to 4,004'. Pmpd 450 gals of 15% 90/10 HCL acid. Break dwn perfs @ 860 psig, Min press - Vac & AIR - .6 BPM

Made 23 swab runs, swbda a total of 125 bbls 100% water. BFL @ 1,200' & EFL @ 1,200'

2/10/06 SITP 35 psig. RU swab. Made 42 swab runs, swbda a total of 222 bbls 100% water. Well did show some gas. BFL @ 1,100' & EFL @ 1,200'.

2/11/06 Swab perfs fr 4,174' to 4,186'. BFL @ 1,200 FFS. Made 6 swab runs. Swbda dry. Rec 29 BW. Showed some gas. EFL 3,900' FFS

Swab perfs fr 4,144' to 4,153'. BFL @ 1,100 FFS. Made 9 swab runs. Rec 59 BW. Showed no gas. EFL 1,200 FFS.

Swab perfs fr 4,125' to 4,130'. BFL @ 1,200 FFS. Made 8 runs. Rec 54 BW. Showed some gas. EFL @ 1,500 FFS.

Swab perfs fr 4,074' to 4,084'. BFL @ 1,100 FFS. Made 9 runs. Rec 55 BW. Showed some gas. EFL @ 1,300 FFS

Straddled perfs fr 4,018' to 4,030'. BFL @ 1,100 FFS. Made 12 swab runs. Rec 70 BW. Showed some gas. EFL 1,000' FFS.

Straddled perfs fr 3,995' to 4,004'. BFL @ 1,000 FFS. Made 8 swab runs. Swbda dry. Rec 53 BW. Showed some gas. EFL 3,400 FFS

EMSU 660

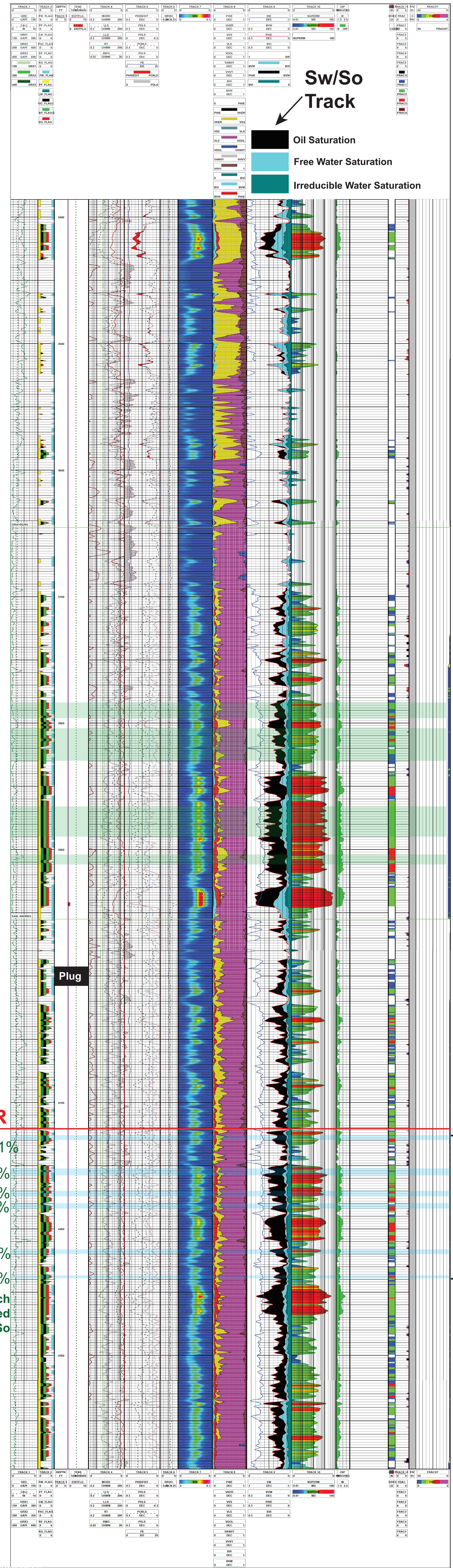
30-025-37319

3-21S-36E

KB: 3578

Perforations Tested Oil

Perforations Tested 99% Water



- Rig:** Pulling Unit
12/9/2005 RU Cudd Acidizing Services. Loaded tbg w/1 BW. Dropped fluid control bar. RIH w/5 jts of 2-7/8" XTO WS. Rel PPI tool. RIH & straddled perfs fr 4,237' - 4,239'. Spotted 2 bbls of acid to end of tbg. Set tools. Press tbg to 800#. Waited for perfs to break. Perfs broke. Bled press off. Rel pkr. PUH & straddled perfs fr 4,216' - 4,220'. Pmpd in 3-1/2 bbls of acid w/5 BW. Set bk dwn on pkr. Press up on perfs to 800#. Perfs broke. PUH straddled perfs fr 4,170' - 4,174'. Pmpd in 7 bbls of acid w/7 BW. Press perfs to 800#. Perfs broke. PUH straddled perfs fr 4,152' - 4,158'. Pmpd in 1.5 bbls of acid in 2 hrs. Press up on perfs to 1,500 psig. Perfs never did break. PUH straddled perfs fr 4,126' - 4,130'. Pmpd in 7 bbls of acid w/6 BW. Perfs broke @ 800#. Flushed acid to btm w/25 BW. Set PPI tool @ 4,080'. RU sd line. RIH & retrieved fluid control bar. Open bypass on pkr. Pmpd 10 BW dwn TCA to flush any acid out of TCA. SD. RD Cudd Acidizing. 5" SITP vac. 148 BLWTR. AIR - 0.4 BPM, max press - 1,500 psig, min press - 0 psig. avg press - 700 psig. SWI & SDON.
- Rig:** Pulling Unit
12/10/2005 SITP 0 psig. RU swab equipment. BFL 1,300' FFS. Made 42 swab runs. Rec 0 BO, 240 BW & very little gas. EFL 1,000' FFS. RD swab. SWI & SDON.
- Rig:** Pulling Unit
12/13/2005 SITP 300 psig. RU swab equipment. BFL 1,300' FFS. Made 56 swab runs. Rec 0 BO, 315 BW & some descent gas. EFL 1,100' FFS. RD swab. SWI & SDON.
- Rig:** Pulling Unit
12/14/2005 SITP 250 psig. Rel PPI assy. POOH w/tbg & tools. RIH w/5-1/2" pkr, TS retrieving head, RBP & 134 jts of 2-7/8", 6.5#, N-80, EUE, 8rd WS. Left RBP swinging free below pkr. Set pkr @ 4,194'. RU swab equipment. Swab perfs fr 4,216 to 4,239'. BFL @ 1,300' FFS. Made 6 swab runs. Rec 25 BW. Swab run #3 showed some gas. EFL 1,300' FFS. Rel pkr. PUH & set RBP @ 4,200'. Set pkr @ 4,177'. Swab perfs fr 4,180' to 4,184'. BFL @ 1,000' FFS. Made 5 swab runs. Rec 41 BW. Showed some gas. EFL 1,600' FFS. Rel pkr. PUH & set RBP @ 4,177'. Set pkr @ 4,162'. Swab perfs fr 4,170' to 4,174'. BFL @ 1,100' FFS. Made 5 runs. Rec 39 BW. Showed some gas. EFL @ 1,600' FFS. Rel pkr. PUH & set RBP @ 4,164'. Set pkr @ 4,140'. Swab perfs fr 4,152' to 4,158'. BFL @ 900' FFS. Made 5 runs. Rec 20 BW. Showed no gas & swabbed dry on last run. Rel pkr. PUH & set RBP @ 4,141'. Set pkr @ 4,102'. Swab perfs fr 4,126' to 4,130'. BFL @ 1,200' FFS. Made 4 runs. Rec 19 BW. EFL 1,300' FFS. Showed some gas. Total fluid rec 144 BW. Rel pkr. RIH & latched on to RBP. Rel RBP. POOH & LD 60 its of 2-7/8" WS. SWI & SDON.
- Rig:** Pulling Unit
12/28/2005 In 24 hrs, well made 1,100 BW, trace of oil & 300 mcf. FL is @ 300 FAP. Will speed up Wednesday if FL is still @ 300 FAP.
- Rig:** Pulling Unit
12/31/2005 In 24 hrs, well pmpd 4 BO, 1200 BW & 305 Mcf. Running 70 HZ. FAP 700'. Will increase to 75 HZ.
- Rig:** Pulling Unit
1/11/2006 In 24 hrs, well pmpd 3 BO, 1057 BW & 190 Mcf. Running 75 HZ. FAP 60'. Final Report.