

**STATE OF NEW MEXICO  
ENERGY, MINERALS AND NATURAL RESOURCES DEPARTMENT  
OIL CONSERVATION DIVISION**

**APPLICATION OF READ & STEVENS, INC.  
FOR CREATION OF A SPECIAL  
WOLFBONE POOL IN SECTIONS 4, 5, 8,  
AND 9 IN TOWNSHIP 20 SOUTH, RANGE 34  
EAST, NMPM, LEA COUNTY, NEW  
MEXICO.**

**CASE NO. 24528**

**APPLICATION OF CIMAREX  
ENERGY CO. FOR THE CREATION  
OF A SPECIAL POOL, A WOLFBONE POOL,  
PURSUANT TO ORDER NO. R-23089 AND TO  
REOPEN CASE NOS. 23448 – 23455, 23594 –  
23601, AND 23508 – 23523, LEA COUNTY,  
NEW MEXICO.**

**CASE NO. 24541**

**NOTICE OF REVISED EXHIBIT PACKAGE**

Read & Stevens, Inc. (“Read & Stevens”), the applicant in Case No. 24528, and Permian Resources Operating, LLC (“Permian Resources”) (OGRID No. 372165) (collectively “Permian Resources”), gives notice pursuant to the Hearing Examiner’s instruction at the special Division hearing on August 13, 2024, that it is filing a *revised* exhibit packet to include only the exhibits that were admitted to the record at the special hearing with the Joint Amended Application for a Special Pool that the parties have filed together. Accordingly, attached hereto for admission into the record in support of the testimony given by Permian Resource’s witnesses at the August 13, 2024, special hearing, are Permian Resource’s Amended Exhibits, B-7, C-1, and C-2.

**Exhibit B-7** is an exhibit reflecting the acreage within the proposed special pool, identifying the federal leases that comprise the acreage, and identifies the notice area and offset notice area. The second page of the exhibit is a list of all the affected parties subject to notice.

**Exhibit C-1** is a type log of the proposed special Wolfbone Pool reflecting its vertical limits as addressed in the accompanying testimony provided at the special hearing.

**Exhibit C-2** is an exhibit comparing the type logs offered by Permian Resources and Cimarex confirming that there is no material difference in the vertical extent of the proposed special Wolfbone pool as proposed by Permian Resources and Cimarex.

We respectfully request that this revised exhibit packet be accepted into the record in these cases and that the Division take these cases under advisement.

Respectfully submitted,

HOLLAND & HART LLP

By: 

---

Michael H. Feldewert  
Adam G. Rankin  
Paula M. Vance  
Post Office Box 2208  
Santa Fe, NM 87504  
505-988-4421  
505-983-6043 Facsimile  
mfeldewert@hollandhart.com  
agrarkin@hollandhart.com  
pmvance@hollandhart.com

**ATTORNEYS FOR READ & STEVENS, INC. &  
PERMIAN RESOURCES OPERATING, LLC**

**CERTIFICATE OF SERVICE**

I hereby certify that on August 27, 2024, I served a copy of the foregoing document and witness testimony and exhibits to the following counsel of record via Electronic Mail to:

Darin C. Savage  
Andrew D. Schill  
William E. Zimsky  
214 McKenzie Street  
Santa Fe, New Mexico 87501  
Telephone: 970.385.4401  
Facsimile: 970.385.4901  
darin@abadieschill.com  
andrew@abadieschill.com  
bill@abadieschill.com

***Attorneys for Cimarex Energy Co.***

James Bruce  
Post Office Box 1056  
Santa Fe, New Mexico 87504  
505-982-2043  
jamesbruc@aol.com

***Attorney for MRC Permian Company  
& Foran Oil Company***



---

Adam G. Rankin



# Wolfbone Pool Boundaries – Surface Visual

## Exhibit B-7

Lease Overview (100% Federal)

Sec 5 NMM-101115	<b>LC-0065607</b>	
<b>LC-064194</b>		

General Overview (Offset Notice)

Sec 31	Sec 32	Sec 33	Sec 34
<i>Offset Notice Area</i>			
Sec 6	<b>Wolfbone Pool</b>		Sec 3
Sec 7	Sec 8	Sec 9	Sec 10
<i>Offset Notice Area</i>			
Sec 18	Sec 17	Sec 16	Sec 15

\*Interest & Offset notice owners on next slide



# Wolfbone Pool Boundaries – Surface Visual

# Exhibit B-7

## Internal & Offset Notice Parties

2023 Permian Basin JV	Dennis, Jamie	Hoshi Kanri LLC	Mewbourne Oil Company	Rubie Crosby Bell Family LP #1 (Now Rubie Crosby Bell Family LLC)
Abby Corporation	Devon Energy Production Co. LP	Hudson, William A., II	Mike Moylett	S & E Royalty, LLC
Alan M. Hannifin, as his sole and separate property	Diamond Star Production Company, LLC	Jan C. Ice	Milestone Oil, LLC	S.N.S. Oil & Gas Properties, Inc.
AmeriPermian Holdings, LLC	DNR Oil and Gas, Inc.	Jan E. Mills Testamentary Trust, c/o JPMorgan Chase Bank, N.A.	Moore & Shelton Company, Ltd.	Sandstone Properties, LLC
Apache Corporation	Doug J. Schutz, a married man dealing with his sole and separate property	Javelina Partners Zorro Partners	Moore & Shelton Company, Ltd.	Sarvis Permian Land Fund I LLC
Ard Oil Ltd.	Earthstone Permian LLC, wholly owned subsidiary of Permian Resources Operating, LLC	Jetstream Royalty Partners LP	Motowi, LLC	Schertz Energy, LLC
Avant Operating, LLC	EAU Rouge, LLC	Joann E. Jensen Family Trust	MW Oil Investment Company, Inc.	Sealy Hutchings Cavin, Inc.
B&N Energy, LLC	EC Ohara Trust	John C. Maxey (CLM)	New Mexico State Land Office	Sharron Stone Trollinger Trust
Bernhardt Oil Corporation	Echols, Marjorie C. - Estate	John C. Mills Testamentary Trust, c/o JP Morgan Chase Bank, N.A.	New Mexico Western Minerals, Inc.	Slayton Investments, LLC
Blasco, LLC	EG3 Inc.	Jonathan S. Roderick, Trustee of the Jonathan S. Roderick Living Trust dated February 8, 2007	Northern Oil and Gas, Inc.	Stevens Oil & Gas, LLC
Bowtie Slash Energy, Inc.	Eileen M. Grooms, Trustee of the EMG Revocable Trust, U/A/D 11/01/2004	Josephine T. Hudson Testamentary Trust FBO J. Terrell Ard, Frost Bank, Trustee	Nuevo Seis, LP	Stevens, David M.
Breckenridge Partnership Ltd	Elizabeth Jane Kay Family Trust, Elizabeth Jane Kay, Trustee	JPT Family JV #1, c/o The Thompson Co.	Oak Valley Mineral and Land, LP	Stevens, N.L., III
Brothers Prod Properties Ltd	Ergodic Resources Company	Jupiter JV LP	Pear Resources	Sunburst Energy, LLC
Bureau of Land Management	Estate of Bruce C. Monroe, Deceased	Kaleb Smith	Pegasus Resources II LLC	Susan Bonner Mead, Trustee
BXP Partners VLP	Estate of Clarence Hyde	Kent Production Co	Penasco Petroleum, LLC	The Allar Company
Carolyn J. Chester Trust dated 8/11/1995	Fasken Land & Minerals Ltd	Laura K. Read, LLC	Penroc Oil Corp	Thomas M. & Carolyn Beall
Caza Petroleum LLC	FFF, Inc.	Lindy's Living Trust, Francis H. Hudson, Trustee	Penroc Oil Corporation	Tierra Encantada LLC
CBR Oil Properties LLC	First Roswell Company, Ltd.	LMC Energy, LLC	Permian Resources Operating, LLC	Turner Royalties, LLC
CEP Minerals, LLC	FISCO Inc.	Loveless Land Holdings, LLC	Phillip D. Dunford	Turner, Marion T.
Chad Barbe and wife, Marci Barbe	Foran Oil Company	Loveless, Lucinda	Phillip D. Dunford, Jr.	Union Hill Oil & Gas Co., Inc.
Challenger Crude, Ltd.	Frannifin, LLC	Lucinda Loveless Revocable Trust 12/21/2006	Pioneer Natural Resources, Inc.	Vrooman Energy LLC
Chase Oil Corporation	Fred Andrew Grooms, a/k/a F. Andrew Grooms, Trustee of the F. Andrew Grooms, SSP Trust U/A/D March 24, 2014	Luna, David	Post Oak Crown IV, LLC	W A Moncrief Jr. Trust
Chevron U.S.A., Inc.	Free Ride, LLC	Lynne M. Romanchuk	Post Oak Crown IV-B, LLC	Warren Associates
Christopher R. F. Eckels	Good Earth Minerals, LLC	MAP 92-96 MGD, an Oklahoma general partnership, c/o Mineral Acquisition Partners, Inc.	Prime Rock Resources AgentCo, Inc., as Nominee F/B/O Prime Rock Resources	Watson Properties LLC
Cimarex Energy Co. Magnum Hunter Coterra Energy	Good News Minerals, LLC	MAP Holdings, an Oklahoma general partnership, c/o Mineral Acquisition Partners, Inc.	Prospector, LLC	Weimer, Inc.
Clay Rufus G Trust	Grimshaw, Jane Scisson	Marathon Oil Permian	Pruitt, Pat	Western Oil Company, Inc.
Collins & Jones Investments, LLC	H. Jason Wacker	Margaret Couch Trust	Pumpkin Buttes LLC	Wilbanks Properties Inc.
Communities Foundation of Texas, Inc., c/o JPMorgan Chase Bank, N.A.	HHB Limited Partnership	Marks Oil, Inc.	PXP Gulf Coast, Inc.	Wilbanks Reserve Corporation
Cowboy Minerals LLC	High Divide, LLC	Matador Resources MRC Permian MRC Delaware Hat Mesa MRC Spiral Resources LLC	RBCM, Inc.	Wilbanks Reserve Partners, LLC
Crown Oil Partners V, LP	Highland (Texas) Energy Company	Matlock Minerals Ltd. Company	Read & Stevens, Inc., wholly owned subsidiary of Permian Resources Operating, LLC	William N. Heiss Profit Sharing Plan
Crown Oil Partners, LP	Hightower Exploration LLC	Mavros Minerals II, LLC	Richardson Oil Company, LLC	Wise Oil & Gas No. 6 Ltd
David W. Cromwell	Hillier, LLC	McBride Oil & Gas Corp	Richter, Glenda L.	Wood Family Non-Exempt Trust FBO James Ralph Wood, III
Deane Duham	HM Investments, Ltd.	McMullen Minerals, LLC	Robert Edward Eckels, Jr., LLC	Wyotex Oil Company
Delmar Hudson Lewis Living Trust, Bank of America, N.A., Trustee	HOG Partnership, LP	Merit Energy Partners	Rolla Hinkle III	Yates Energy Corporation



# Typelog for the Special Wolfbone Pool

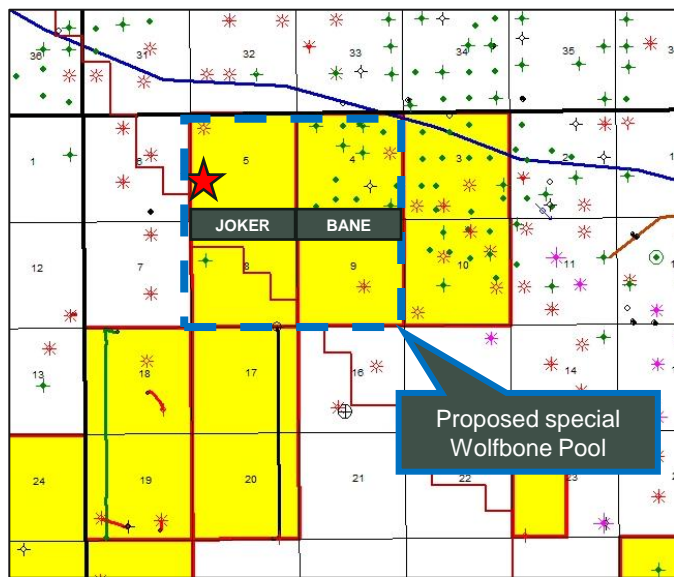
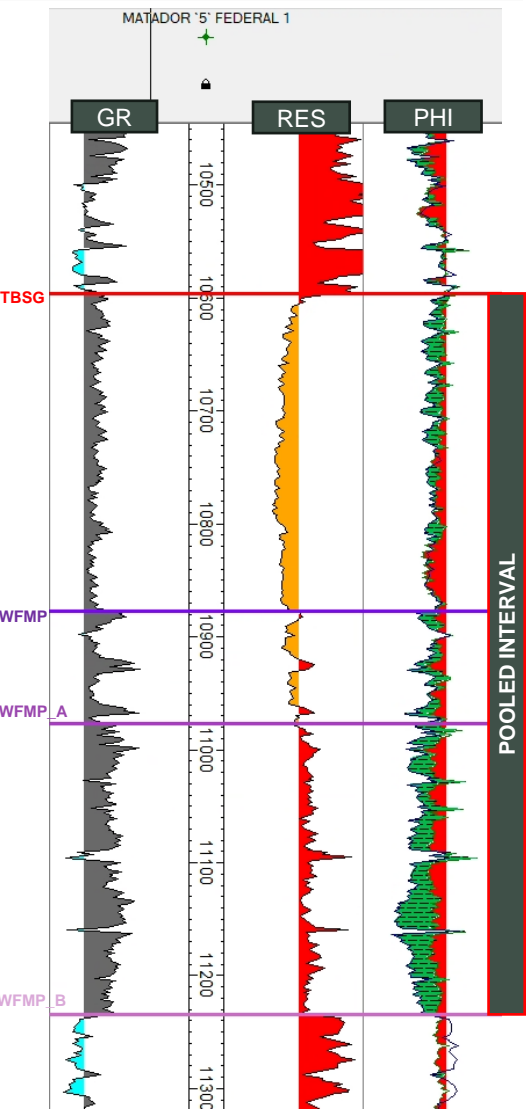
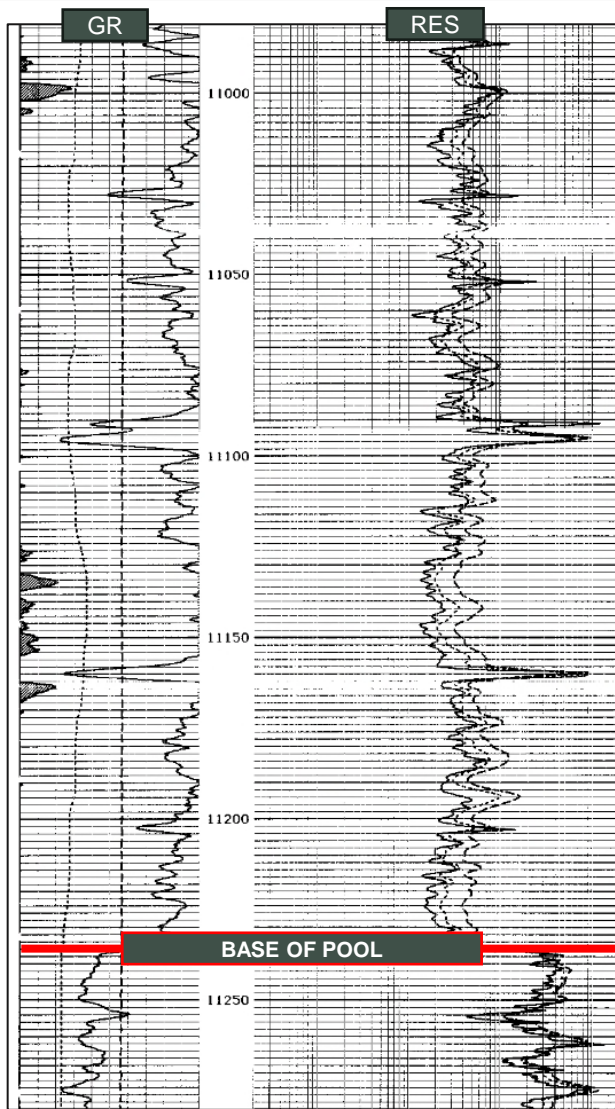
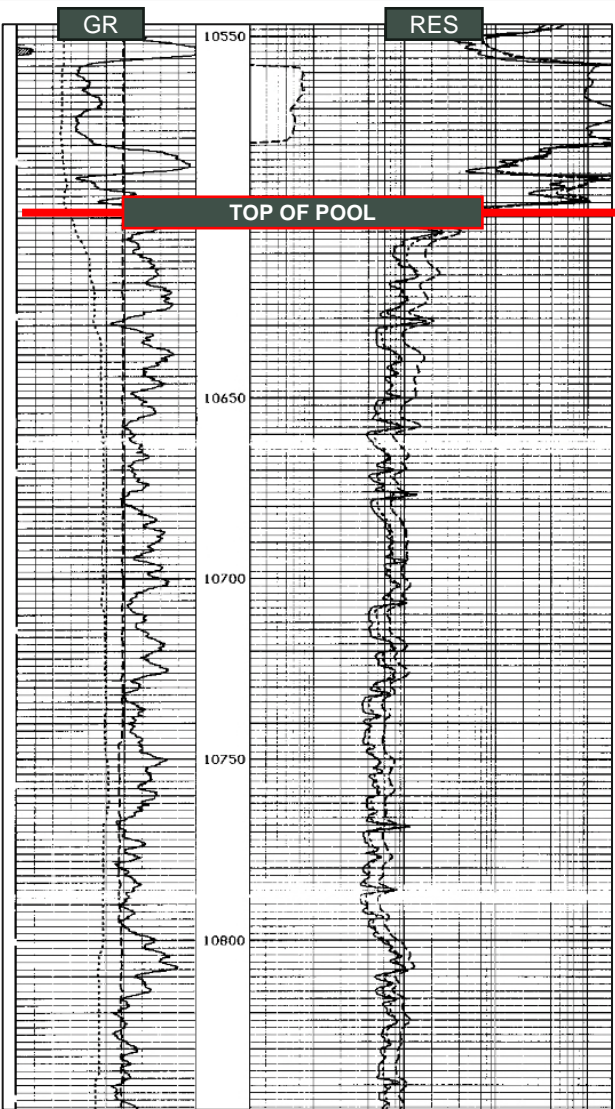
## 10,598' MD – 11,263' on the 5"/100' Matador 5 #1 Dual Lateralog Micro SFL Log

**HALLIBURTON**  
LOGGING SERVICES, INC.

**DUAL LATERALOG MICRO SFL**

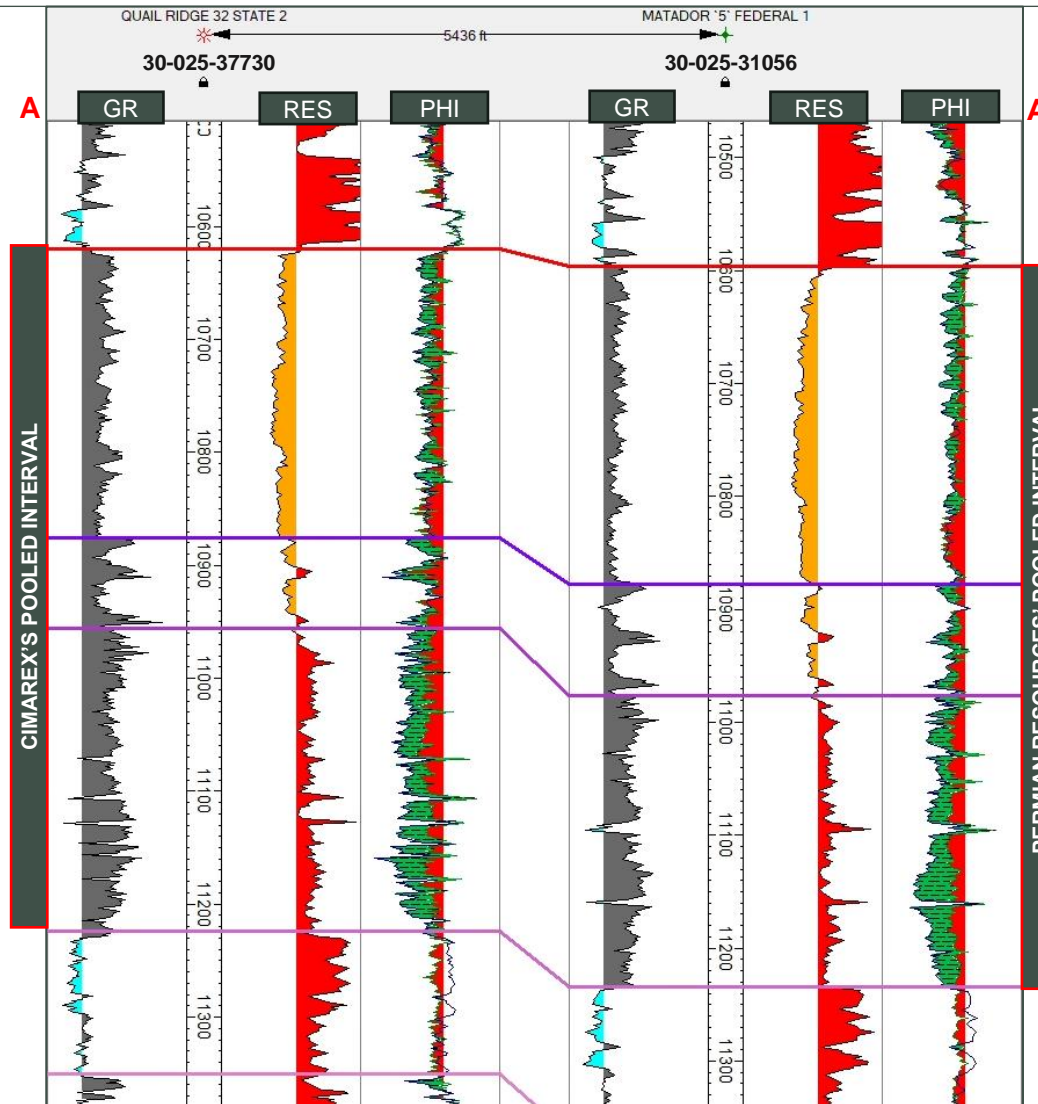
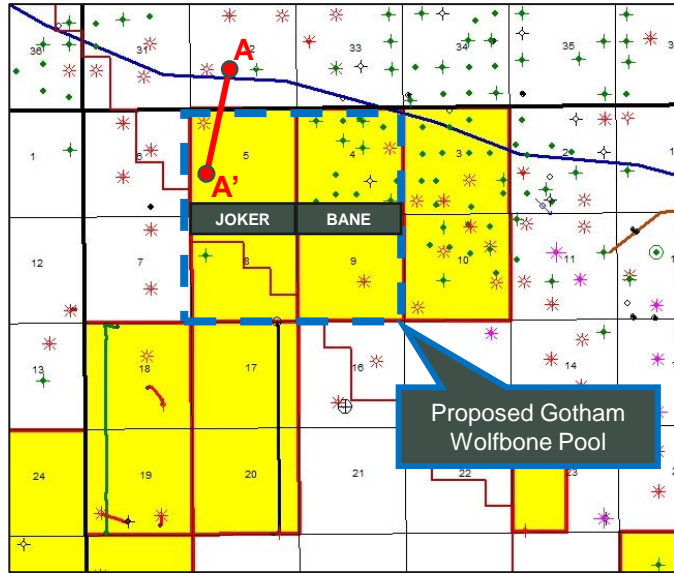
COMPANY	WARRIOR OPERATING COMPANY
WELL	MATADOR 5 NO. 1
FIELD	00011 R100E
COUNTY	LEA
RPT NO. W/R	
LOCATION	1980 P1S AND 710 P4E
STATE	NM
OTHER SERVICES	

PERMEAMETER DATA: C.T. 1.8, ELEV.: 3817, R.E. 34-E, ELEV.: 3817  
 LOG HEAD LOSS: 1.8, ELEV.: 3817, R.E. 34-E, ELEV.: 3817  
 LOG TEMPERATURE: 135.8, ELEV.: 3817, R.E. 34-E, ELEV.: 3817  
 LOG PRESSURE: 135.8, ELEV.: 3817, R.E. 34-E, ELEV.: 3817  
 LOG RHO: 1.0, ELEV.: 3817, R.E. 34-E, ELEV.: 3817  
 LOG BULK MODULUS: 1.0, ELEV.: 3817, R.E. 34-E, ELEV.: 3817  
 LOG SHEAR MODULUS: 1.0, ELEV.: 3817, R.E. 34-E, ELEV.: 3817  
 LOG POISSON'S RATIO: 1.0, ELEV.: 3817, R.E. 34-E, ELEV.: 3817  
 LOG RESISTIVITY: 1.0, ELEV.: 3817, R.E. 34-E, ELEV.: 3817  
 LOG SLOPE: 1.0, ELEV.: 3817, R.E. 34-E, ELEV.: 3817  
 LOG CORRECTION: 1.0, ELEV.: 3817, R.E. 34-E, ELEV.: 3817





# Cimarex's Wolfbone Pool vs Permian Resources' Wolfbone Pool



There is no material difference in the stratigraphic unit being proposed by Cimarex and Permian Resources

BEFORE THE OIL CONSERVATION DIVISION  
 Santa Fe, New Mexico  
 Revised Exhibit No. C-2  
 Submitted by: Read & Stevens, Inc.  
 Hearing Date: August 13, 2024  
 Case No. 24528