

**STATE OF NEW MEXICO
ENERGY, MINERALS AND NATURAL RESOURCES DEPARTMENT
OIL CONSERVATION DIVISION**

**APPLICATIONS OF FRANKLIN MOUNTAIN ENERGY 3, LLC
FOR COMPULSORY POOLING AND, TO THE EXTENT
NECESSARY, APPROVAL OF AN OVERLAPPING SPACING UNIT,
LEA COUNTY, NEW MEXICO**

CASE NOS. 24457, 24459 & 24479

**APPLICATIONS OF FRANKLIN MOUNTAIN ENERGY 3, LLC
FOR COMPULSORY POOLING,
LEA COUNTY, NEW MEXICO**

CASE NOS. 24898-24901

**APPLICATIONS OF MRC PERMIAN COMPANY
FOR APPROVAL OF AN OVERLAPPING HORIZONTAL
WELL SPACING UNIT AND COMPULSORY POOLING,
LEA COUNTY, NEW MEXICO**

CASE NOS. 24778-24783

**APPLICATIONS OF MRC PERMIAN COMPANY
FOR APPROVAL COMPULSORY POOLING,
LEA COUNTY, NEW MEXICO**

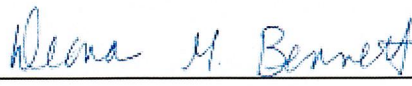
CASE NOS. 24784-24786

SUPPLEMENTAL EXHIBITS

Franklin Mountain Energy 3, LLC ("FME3"), by and through its undersigned counsel, hereby provides the following supplemental exhibits as indicated in its Exhibit Packet filed on November 13, 2024: **Exhibit A-20-a**, C-102s for Rope State Com 703H and 803H wells in Case No. 24898; **Exhibit A-21-a**, C-102s for the Rope State Com 701H and 801H wells in Case No. 24899; **Exhibit A-22-a**, C-102s for the Rope State Com 702H and 802H wells in Case No. 24900; and **Exhibit A-23-a**, C-102s for the Rope 704H and 804H wells in Case No. 24901. At this time, FME3 is filing the Wolfcamp Well C-102s as a supplement to the exhibit packet filed on November

13. FME3 will file a full exhibit packet at the close of the hearing, which will include these supplemental Wolfcamp C-102s and any other changes raised at the hearing.

Respectfully submitted,
MODRALL, SPERLING, ROEHL, HARRIS
& SISK, P.A.

By: 

Deana M. Bennett

Earl E. DeBrine

Yarithza Peña

Post Office Box 2168

500 Fourth Street NW, Suite 1000

Albuquerque, New Mexico 87103-2168

Telephone: 505.848.1800

Deana.Bennett@modrall.com

eed@modrall.com

yarithza.pena@modrall.com

Attorneys for Franklin Mountain Energy 3, LLC

CERTIFICATE OF SERVICE

I hereby certify that a true and correct copy of the foregoing was served on counsel of record by electronic mail on November 15, 2024.

Michael H. Feldewert
Adam G. Rankin
Paula M. Vance
HOLLAND & HART
Post Office Box 2208
Santa Fe, NM 87504
mfeldewert@hollandhart.com
agrarkin@hollandhart.com
pmvance@hollandhart.com

Attorneys MRC Permian Company



Deana M. Bennett

| | | |
|---|--|--|
| C-102 Submit Electronically Via OCD Permitting | State of New Mexico Energy, Minerals & Natural Resources Department OIL CONSERVATION DIVISION | Revised July 9, 2024 |
| | | Submittal Type: <input checked="" type="checkbox"/> Initial Submittal <input type="checkbox"/> Amended Report <input type="checkbox"/> As Drilled |

WELL LOCATION INFORMATION

| | | |
|--|--|--|
| API Number | Pool Code 970 | Pool Name AIR STRIP, WOLFCAMP |
| Property Code | Property Name ROPE STATE COM | Well Number 703H |
| OGRID No. 331595 | Operator Name FRANKLIN MOUNTAIN ENERGY 3, LLC | Ground Level Elevation 3939.3' |
| Surface Owner: <input checked="" type="checkbox"/> State <input type="checkbox"/> Fee <input type="checkbox"/> Tribal <input type="checkbox"/> Federal | | Mineral Owner: <input checked="" type="checkbox"/> State <input type="checkbox"/> Fee <input type="checkbox"/> Tribal <input type="checkbox"/> Federal |

Surface Location

| UL | Section | Township | Range | Lot | Ft. from N/S | Ft. from E/W | Latitude (NAD 83) | Longitude (NAD 83) | County |
|----|---------|----------|-------|-----|--------------|--------------|-------------------|--------------------|--------|
| P | 30 | 18S | 35E | | 338 SOUTH | 1163 EAST | 32.712397° | -103.491983° | LEA |

Bottom Hole Location

| UL | Section | Township | Range | Lot | Ft. from N/S | Ft. from E/W | Latitude (NAD 83) | Longitude (NAD 83) | County |
|----|---------|----------|-------|-----|--------------|--------------|-------------------|--------------------|--------|
| B | 19 | 18S | 35E | | 100 NORTH | 1490 EAST | 32.740277° | -103.493102° | LEA |

| | | | | |
|------------------------|-------------------------|---|-------------------------------------|-------------------------|
| Dedicated Acres 640 | Infill or Defining Well | Defining Well API | Overlapping Spacing Unit (Y/N) N | Consolidation Code P |
| Order Numbers. Pending | | Well setbacks are under Common Ownership: <input checked="" type="checkbox"/> Yes <input type="checkbox"/> No | | |

Kick Off Point (KOP)

| UL | Section | Township | Range | Lot | Ft. from N/S | Ft. from E/W | Latitude (NAD 83) | Longitude (NAD 83) | County |
|----|---------|----------|-------|-----|--------------|--------------|-------------------|--------------------|--------|
| O | 30 | 18S | 35E | | 50 SOUTH | 1491 EAST | 32.711611° | -103.493047° | LEA |

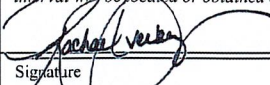
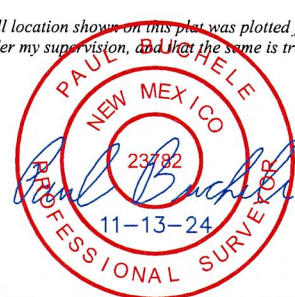
First Take Point (FTP)

| UL | Section | Township | Range | Lot | Ft. from N/S | Ft. from E/W | Latitude (NAD 83) | Longitude (NAD 83) | County |
|----|---------|----------|-------|-----|--------------|--------------|-------------------|--------------------|--------|
| O | 30 | 18S | 35E | | 623 SOUTH | 1491 EAST | 32.713186° | -103.493051° | LEA |

Last Take Point (LTP)

| UL | Section | Township | Range | Lot | Ft. from N/S | Ft. from E/W | Latitude (NAD 83) | Longitude (NAD 83) | County |
|----|---------|----------|-------|-----|--------------|--------------|-------------------|--------------------|--------|
| B | 19 | 18S | 35E | | 100 NORTH | 1490 EAST | 32.740277° | -103.493102° | LEA |

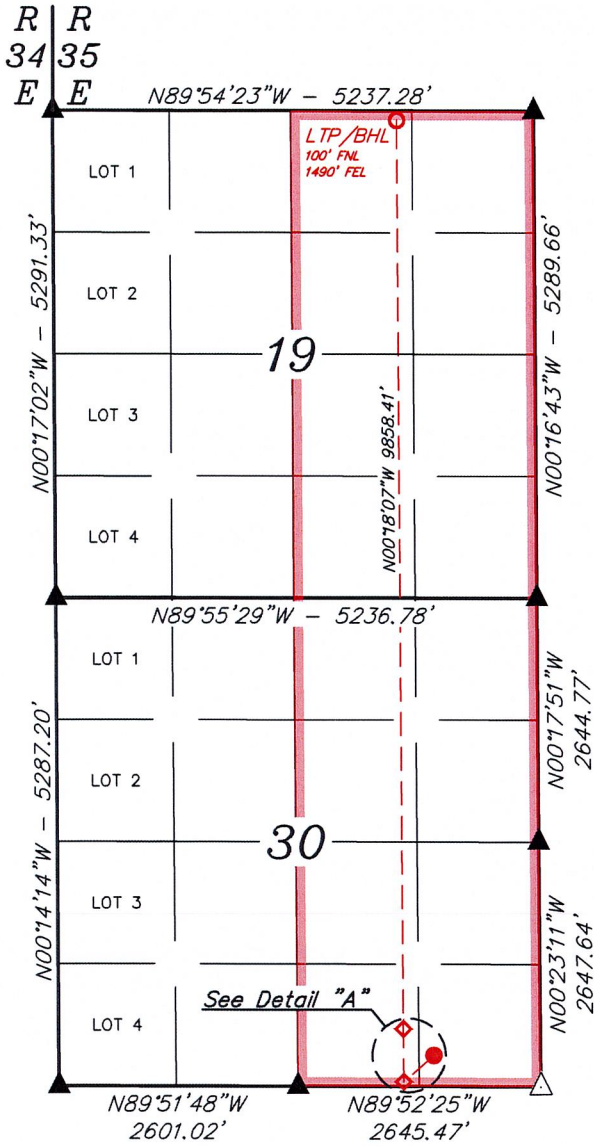
| | | |
|---|--|-------------------------|
| Unitized Area or Area of Uniform Interest | Spacing Unit Type <input checked="" type="checkbox"/> Horizontal <input type="checkbox"/> Vertical | Ground Floor Elevation: |
|---|--|-------------------------|

| | |
|--|--|
| <p>OPERATOR CERTIFICATIONS</p> <p><i>I hereby certify that the information contained herein is true and complete to the best of my knowledge and belief, and, if the well is a vertical or directional well, that this organization either owns a working interest or unleased mineral interest in the land including the proposed bottom hole location or has a right to drill this well at this location pursuant to a contract with an owner of a working interest or unleased mineral interest, or to a voluntary pooling agreement or a compulsory pooling order heretofore entered by the division.</i></p> <p><i>If this well is a horizontal well, I further certify that this organization has received the consent of at least one lessee or owner of a working interest or unleased mineral interest in each tract (in the target pool or formation) in which any part of the well's completed interval will be located or obtained a compulsory pooling order from the division.</i></p> <p> 10/29/2024</p> <p>Signature _____ Date</p> <p>Rachael Overbey</p> <p>Printed Name</p> <p>roverbey@fmellc.com</p> <p>Email Address</p> | <p>SURVEYOR CERTIFICATIONS</p> <p><i>I hereby certify that the well location shown on this plat was plotted from the field notes of actual surveys made by me or under my supervision, and that the same is true and correct to the best of my belief.</i></p> <div style="text-align: center;">  </div> <p>Signature and Seal of Professional Surveyor</p> <p>23782 February 21, 2024</p> <p>Certificate Number Date of Survey</p> |
|--|--|

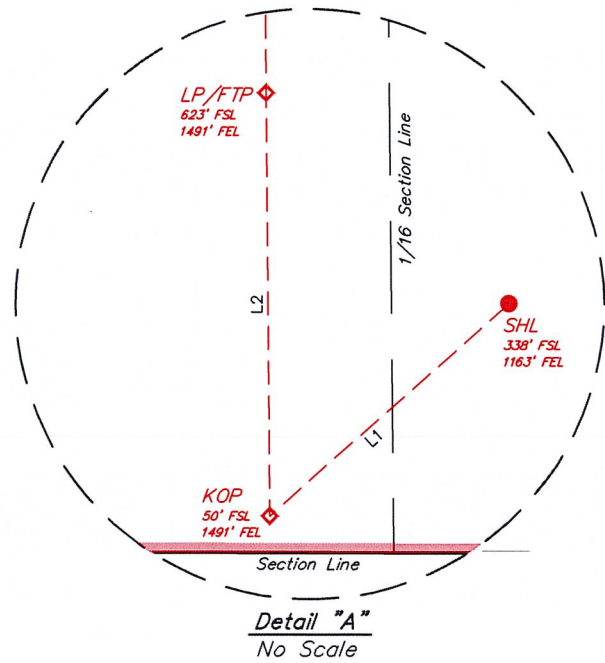
Note: No allowable will be assigned to this completion until all interest have been consolidated or a non-standard unitization is approved.



| | | | |
|---------------------------------|---------------------|---------------------------|---|
| Property Name ROPE STATE COM | Well Number 703H | Drawn By N.R. 02-23-24 | Revised By REV: 2 T.I.R. 11-13-24 (UPDATE BHL) |
|---------------------------------|---------------------|---------------------------|---|



| | |
|--|---|
| NAD 83 (SURFACE HOLE LOCATION) LATITUDE = 32°42'44.63" (32.712397°) LONGITUDE = -103°29'31.14" (-103.491983°) | NAD 83 (KICK OFF POINT) LATITUDE = 32°42'41.80" (32.711611°) LONGITUDE = -103°29'34.97" (-103.493047°) |
| NAD 27 (SURFACE HOLE LOCATION) LATITUDE = 32°42'44.18" (32.712273°) LONGITUDE = -103°29'29.36" (-103.491489°) | NAD 27 (KICK OFF POINT) LATITUDE = 32°42'41.35" (32.711487°) LONGITUDE = -103°29'33.19" (-103.492553°) |
| STATE PLANE NAD 83 (N.M. EAST) N: 623928.41' E: 800113.29' | STATE PLANE NAD 83 (N.M. EAST) N: 623639.84' E: 799788.29' |
| STATE PLANE NAD 27 (N.M. EAST) N: 623864.09' E: 758933.56' | STATE PLANE NAD 27 (N.M. EAST) N: 623575.52' E: 758608.56' |
| NAD 83 (LTP/FTP) LATITUDE = 32°42'47.47" (32.713186°) LONGITUDE = -103°29'34.99" (-103.493051°) | NAD 83 (LTP/BHL) LATITUDE = 32°44'25.00" (32.740277°) LONGITUDE = -103°29'35.17" (-103.493102°) |
| NAD 27 (LTP/FTP) LATITUDE = 32°42'47.02" (32.713062°) LONGITUDE = -103°29'33.21" (-103.492558°) | NAD 27 (LTP/BHL) LATITUDE = 32°44'24.55" (32.740153°) LONGITUDE = -103°29'33.39" (-103.492608°) |
| STATE PLANE NAD 83 (N.M. EAST) N: 624212.77' E: 799782.36' | STATE PLANE NAD 83 (N.M. EAST) N: 634069.13' E: 799688.55' |
| STATE PLANE NAD 27 (N.M. EAST) N: 624148.43' E: 758602.64' | STATE PLANE NAD 27 (N.M. EAST) N: 634004.47' E: 758509.12' |



| LINE TABLE | | |
|------------|-------------|---------|
| LINE | DIRECTION | LENGTH |
| L1 | S48°38'30"W | 434.69' |
| L2 | N00°20'59"W | 573.05' |

NOTE:

- Distances referenced on plat to section lines are perpendicular.
- Basis of Bearings is a Transverse Mercator Projection with a Central Meridian of W103°53'00" (NAD 83)
- Section breakdown information for this plan may be obtained from Uintah Engineering and Land Surveying.

- = SURFACE HOLE LOCATION
- ◆ = KICK OFF POINT/LANDING POINT/FIRST TAKE POINT
- = LAST TAKE POINT/BOTTOM HOLE LOCATION
- ▲ = SECTION CORNER LOCATED
- △ = SECTION CORNER RE-ESTABLISHED. (Not Set on Ground.)
- = DRILLING SPACING UNIT



| | | |
|---|--|--|
| C-102 Submit Electronically Via OCD Permitting | State of New Mexico Energy, Minerals & Natural Resources Department OIL CONSERVATION DIVISION | Revised July 9, 2024 |
| | | Submittal Type: <input checked="" type="checkbox"/> Initial Submittal <input type="checkbox"/> Amended Report <input type="checkbox"/> As Drilled |

WELL LOCATION INFORMATION

| | | |
|--|--|--|
| API Number | Pool Code 970 | Pool Name AIRSTRIP; WOLFCAMP |
| Property Code | Property Name ROPE STATE COM | Well Number 803H |
| OGRID No. 331595 | Operator Name FRANKLIN MOUNTAIN ENERGY 3, LLC | Ground Level Elevation 3,945.0' |
| Surface Owner: <input checked="" type="checkbox"/> State <input type="checkbox"/> Fee <input type="checkbox"/> Tribal <input type="checkbox"/> Federal | | Mineral Owner: <input checked="" type="checkbox"/> State <input type="checkbox"/> Fee <input type="checkbox"/> Tribal <input type="checkbox"/> Federal |

Surface Location

| UL | Section | Township | Range | Lot | Ft. from N/S | Ft. from E/W | Latitude (NAD 83) | Longitude (NAD 83) | County |
|----|---------|----------|-------|-----|--------------|--------------|-------------------|--------------------|--------|
| O | 30 | 18S | 35E | | 335 SOUTH | 2,433 EAST | 32.712412° | -103.496111° | LEA |

Bottom Hole Location

| UL | Section | Township | Range | Lot | Ft. from N/S | Ft. from E/W | Latitude (NAD 83) | Longitude (NAD 83) | County |
|----|---------|----------|-------|-----|--------------|--------------|-------------------|--------------------|--------|
| B | 19 | 18S | 35E | | 100 NORTH | 2,190 EAST | 32.740288° | -103.495378° | LEA |

| | | | | |
|---|-------------------------|-------------------|-------------------------------------|-------------------------|
| Dedicated Acres 320 | Infill or Defining Well | Defining Well API | Overlapping Spacing Unit (Y/N) N | Consolidation Code P |
| Order Numbers. | Pending | | | |
| Well setbacks are under Common Ownership: <input checked="" type="checkbox"/> Yes <input type="checkbox"/> No | | | | |

Kick Off Point (KOP)

| UL | Section | Township | Range | Lot | Ft. from N/S | Ft. from E/W | Latitude (NAD 83) | Longitude (NAD 83) | County |
|----|---------|----------|-------|-----|--------------|--------------|-------------------|--------------------|--------|
| O | 30 | 18S | 35E | | 53 SOUTH | 2,193 EAST | 32.711633° | -103.495329° | LEA |

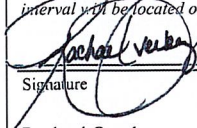

First Take Point (FTP)

| UL | Section | Township | Range | Lot | Ft. from N/S | Ft. from E/W | Latitude (NAD 83) | Longitude (NAD 83) | County |
|----|---------|----------|-------|-----|--------------|--------------|-------------------|--------------------|--------|
| O | 30 | 18S | 35E | | 626 SOUTH | 2,192 EAST | 32.713207° | -103.495333° | LEA |

Last Take Point (LTP)

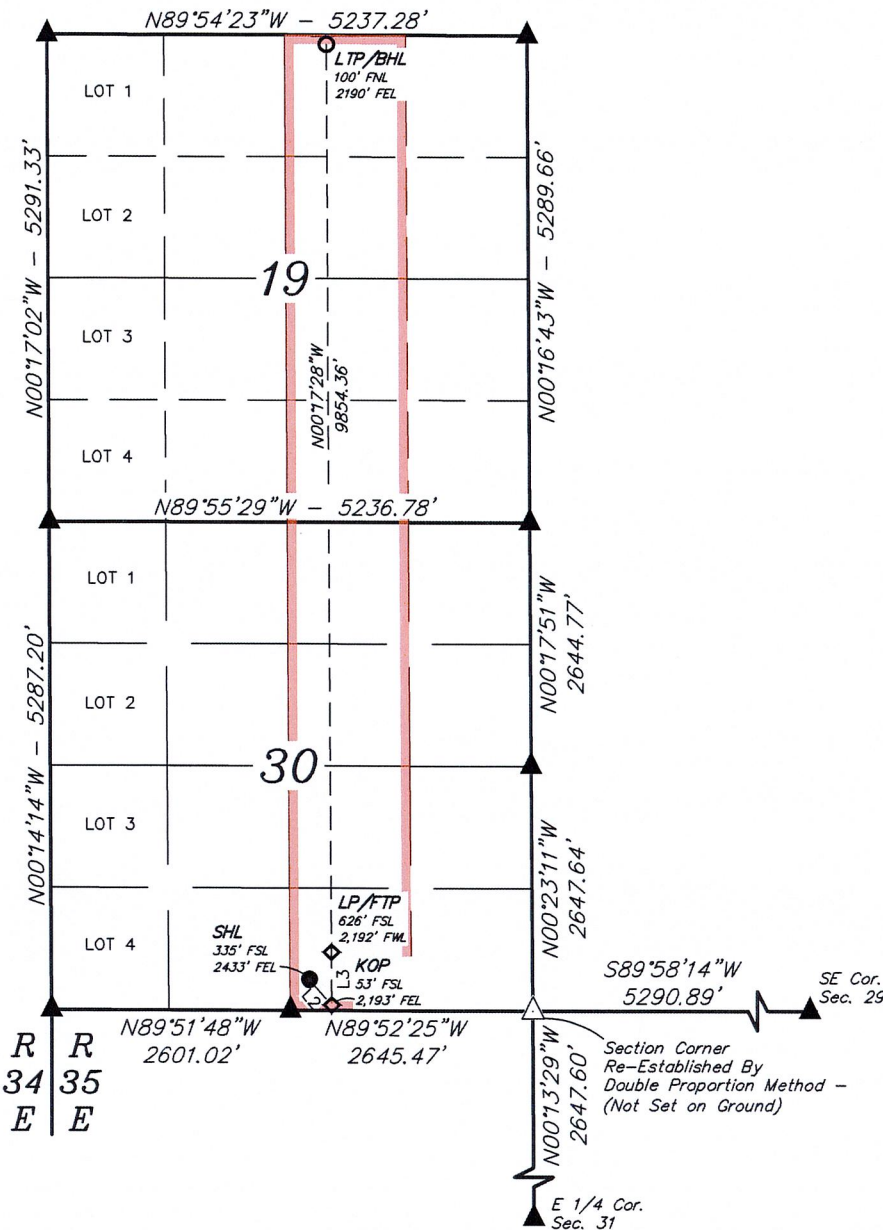
| UL | Section | Township | Range | Lot | Ft. from N/S | Ft. from E/W | Latitude (NAD 83) | Longitude (NAD 83) | County |
|----|---------|----------|-------|-----|--------------|--------------|-------------------|--------------------|--------|
| B | 19 | 18S | 35E | | 100 NORTH | 2,190 EAST | 32.740288° | -103.495378° | LEA |

| | | |
|---|--|-------------------------|
| Unitized Area or Area of Uniform Interest | Spacing Unit Type <input checked="" type="checkbox"/> Horizontal <input type="checkbox"/> Vertical | Ground Floor Elevation: |
|---|--|-------------------------|

| | |
|--|--|
| <p>OPERATOR CERTIFICATIONS</p> <p><i>I hereby certify that the information contained herein is true and complete to the best of my knowledge and belief, and, if the well is a vertical or directional well, that this organization either owns a working interest or unleased mineral interest in the land including the proposed bottom hole location or has a right to drill this well at this location pursuant to a contract with an owner of a working interest or unleased mineral interest, or to a voluntary pooling agreement or a compulsory pooling order heretofore entered by the division.</i></p> <p><i>If this well is a horizontal well, I further certify that this organization has received the consent of at least one lessee or owner of a working interest or unleased mineral interest in each tract (in the target pool or formation) in which any part of the well's completed interval will be located or obtained a compulsory pooling order from the division.</i></p> <p> 10/29/2024</p> <p>Signature _____ Date _____</p> <p>Rachael Overbey</p> <p>Printed Name _____</p> <p>roverbey@fmellc.com</p> <p>Email Address _____</p> | <p>SURVEYOR CERTIFICATIONS</p> <p><i>I hereby certify that the well location shown on this plat was plotted from the field notes of actual surveys made by me or under my supervision, and that the same is true and correct to the best of my belief.</i></p> <div style="text-align: center;">  </div> <p>Signature and Seal of Professional Surveyor _____</p> <p>23782 February 21, 2024</p> <p>Certificate Number _____ Date of Survey _____</p> |
|--|--|

Note: No allowable will be assigned to this completion until all interest have been consolidated or a non-standard unit has been approved by the division.

| | | | |
|---------------------------------|---------------------|-----------------------------|---|
| Property Name ROPE STATE COM | Well Number 803H | Drawn By C.S.C. 02-27-24 | Revised By REV. 2 T.I.R. 11-13-24 (UPDATE BHL) |
|---------------------------------|---------------------|-----------------------------|---|



- = SURFACE HOLE LOCATION
- ◇ = KICK OFF POINT/LANDING POINT/FIRST TAKE POINT
- = LAST TAKE POINT/BOTTOM HOLE LOCATION
- ▲ = SECTION CORNER LOCATED
- △ = SECTION CORNER RE-ESTABLISHED. (Not Set on Ground.)
- = DRILLING SPACING UNIT

NOTE:

- Distances referenced on plat to section lines are perpendicular.
- Basis of Bearings is a Transverse Mercator Projection with a Central Meridian of W103°53'00" (NAD 83)

| LINE TABLE | | |
|------------|-------------|----------|
| LINE | DIRECTION | LENGTH |
| L1 | N00°29'20"W | 2644.93' |
| L2 | S40°33'06"E | 371.85' |
| L3 | N00°20'34"W | 573.05' |

| |
|---|
| NAD 83 (SURFACE HOLE LOCATION) |
| LATITUDE = 32°42'44.68" (32.712412°) |
| LONGITUDE = -103°29'46.00" (-103.496111°) |
| NAD 27 (SURFACE HOLE LOCATION) |
| LATITUDE = 32°42'44.23" (32.712287°) |
| LONGITUDE = -103°29'44.22" (-103.495617°) |
| STATE PLANE NAD 83 (N.M. EAST) |
| N: 623923.51' E: 798843.51' |
| STATE PLANE NAD 27 (N.M. EAST) |
| N: 623859.16' E: 757663.79' |

| |
|---|
| NAD 83 (KICK OFF POINT) |
| LATITUDE = 32°42'41.88" (32.711633°) |
| LONGITUDE = -103°29'43.18" (-103.495329°) |
| NAD 27 (KICK OFF POINT) |
| LATITUDE = 32°42'41.43" (32.711509°) |
| LONGITUDE = -103°29'41.41" (-103.494835°) |
| STATE PLANE NAD 83 (N.M. EAST) |
| N: 623642.05' E: 799086.42' |
| STATE PLANE NAD 27 (N.M. EAST) |
| N: 623577.71' E: 757906.69' |

| |
|---|
| NAD 83 (LP/FTP) |
| LATITUDE = 32°42'47.55" (32.713207°) |
| LONGITUDE = -103°29'43.20" (-103.495333°) |
| NAD 27 (LP/FTP) |
| LATITUDE = 32°42'47.10" (32.713083°) |
| LONGITUDE = -103°29'41.42" (-103.494839°) |
| STATE PLANE NAD 83 (N.M. EAST) |
| N: 624214.98' E: 799080.56' |
| STATE PLANE NAD 27 (N.M. EAST) |
| N: 624150.62' E: 757900.85' |

| |
|---|
| NAD 83 (LTP/BHL) |
| LATITUDE = 32°44'25.04" (32.740288°) |
| LONGITUDE = -103°29'43.36" (-103.495378°) |
| NAD 27 (LTP/BHL) |
| LATITUDE = 32°44'24.59" (32.740163°) |
| LONGITUDE = -103°29'41.58" (-103.494884°) |
| STATE PLANE NAD 83 (N.M. EAST) |
| N: 634067.30' E: 798988.65' |
| STATE PLANE NAD 27 (N.M. EAST) |
| N: 634002.62' E: 757809.23' |

| | | | | |
|--|---|---|-------------------------------------|--|
| C-102 Submit Electronically Via OCD Permitting | State of New Mexico Energy, Minerals & Natural Resources Department OIL CONSERVATION DIVISION | | Revised July 9, 2024 | |
| | Submittal Type: | <input checked="" type="checkbox"/> Initial Submittal | | |
| | | <input type="checkbox"/> Amended Report | | |
| | | | <input type="checkbox"/> As Drilled | |

WELL LOCATION INFORMATION

| | | |
|--|--|--|
| API Number | Pool Code 970 | Pool Name AIRSTRIP, WOLFCAMP |
| Property Code | Property Name ROPE STATE COM | Well Number 701H |
| OGRID No. 331595 | Operator Name FRANKLIN MOUNTAIN ENERGY 3, LLC | Ground Level Elevation 3951.5' |
| Surface Owner: <input checked="" type="checkbox"/> State <input type="checkbox"/> Fee <input type="checkbox"/> Tribal <input type="checkbox"/> Federal | | Mineral Owner: <input checked="" type="checkbox"/> State <input type="checkbox"/> Fee <input type="checkbox"/> Tribal <input type="checkbox"/> Federal |

Surface Location

| UL | Section | Township | Range | Lot | Ft. from N/S | Ft. from E/W | Latitude (NAD 83) | Longitude (NAD 83) | County |
|----|---------|----------|-------|-----|--------------|--------------|-------------------|--------------------|--------|
| 4 | 30 | 18S | 35E | | 330 SOUTH | 1,008 WEST | 32.712426° | -103.501978° | LEA |

Bottom Hole Location

| UL | Section | Township | Range | Lot | Ft. from N/S | Ft. from E/W | Latitude (NAD 83) | Longitude (NAD 83) | County |
|----|---------|----------|-------|-----|--------------|--------------|-------------------|--------------------|--------|
| 1 | 19 | 18S | 35E | | 100 NORTH | 800 WEST | 32.740320° | -103.502685° | LEA |

| | | | | |
|---------------------------|-------------------------|---|-------------------------------------|-------------------------|
| Dedicated Acres 306.92 | Infill or Defining Well | Defining Well API | Overlapping Spacing Unit (Y/N) N | Consolidation Code P |
| Order Numbers. Pending | | Well setbacks are under Common Ownership: <input checked="" type="checkbox"/> Yes <input type="checkbox"/> No | | |

Kick Off Point (KOP)

| UL | Section | Township | Range | Lot | Ft. from N/S | Ft. from E/W | Latitude (NAD 83) | Longitude (NAD 83) | County |
|----|---------|----------|-------|-----|--------------|--------------|-------------------|--------------------|--------|
| 4 | 30 | 18S | 35E | | 53 SOUTH | 895 WEST | 32.711666° | -103.502343° | LEA |

First Take Point (FTP)

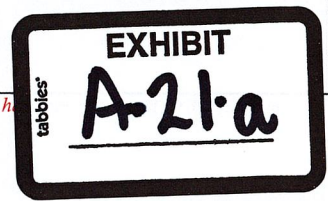
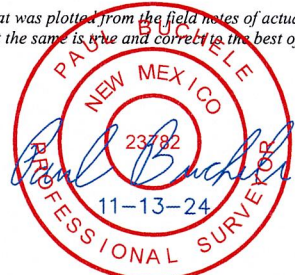
| UL | Section | Township | Range | Lot | Ft. from N/S | Ft. from E/W | Latitude (NAD 83) | Longitude (NAD 83) | County |
|----|---------|----------|-------|-----|--------------|--------------|-------------------|--------------------|--------|
| 4 | 30 | 18S | 35E | | 621 SOUTH | 822 WEST | 32.713228° | -103.502581° | LEA |

Last Take Point (LTP)

| UL | Section | Township | Range | Lot | Ft. from N/S | Ft. from E/W | Latitude (NAD 83) | Longitude (NAD 83) | County |
|----|---------|----------|-------|-----|--------------|--------------|-------------------|--------------------|--------|
| 1 | 19 | 18S | 35E | | 100 NORTH | 800 WEST | 32.740320° | -103.502685° | LEA |

| | | |
|---|--|-------------------------|
| Unitized Area or Area of Uniform Interest | Spacing Unit Type <input checked="" type="checkbox"/> Horizontal <input type="checkbox"/> Vertical | Ground Floor Elevation: |
|---|--|-------------------------|

| | | | |
|--|--------------------|--|-------------------------------------|
| OPERATOR CERTIFICATIONS <i>I hereby certify that the information contained herein is true and complete to the best of my knowledge and belief, and, if the well is a vertical or directional well, that this organization either owns a working interest or unleased mineral interest in the land including the proposed bottom hole location or has a right to drill this well at this location pursuant to a contract with an owner of a working interest or unleased mineral interest, or to a voluntary pooling agreement or a compulsory pooling order heretofore entered by the division.</i> <i>If this well is a horizontal well, I further certify that this organization has received the consent of at least one lessee or owner of a working interest or unleased mineral interest in each tract (in the target pool or formation) in which any part of the well's completed interval will be located or obtained a compulsory pooling order from the division.</i> | | SURVEYOR CERTIFICATIONS <i>I hereby certify that the well location shown on this plat was plotted from the field notes of actual surveys made by me or under my supervision, and that the same is true and correct to the best of my belief.</i> | |
| Signature <i>Rachael Overbey</i> | Date 10/29/2024 | Signature and Seal of Professional Surveyor <i>Paul Buckler</i> | |
| Printed Name Rachael Overbey | | Certificate Number 23782 | Date of Survey February 20, 2024 |
| Email Address roverbey@fmellc.com | | | |



Note: No allowable will be assigned to this completion until all interest have been consolidated or a non-standard unit h

| | | | |
|---------------------------------|---------------------|---------------------------|---|
| Property Name ROPE STATE COM | Well Number 701H | Drawn By N.R. 02-21-24 | Revised By REV. 2 T.I.R. 11-13-24 (UPDATE BHL) |
|---------------------------------|---------------------|---------------------------|---|

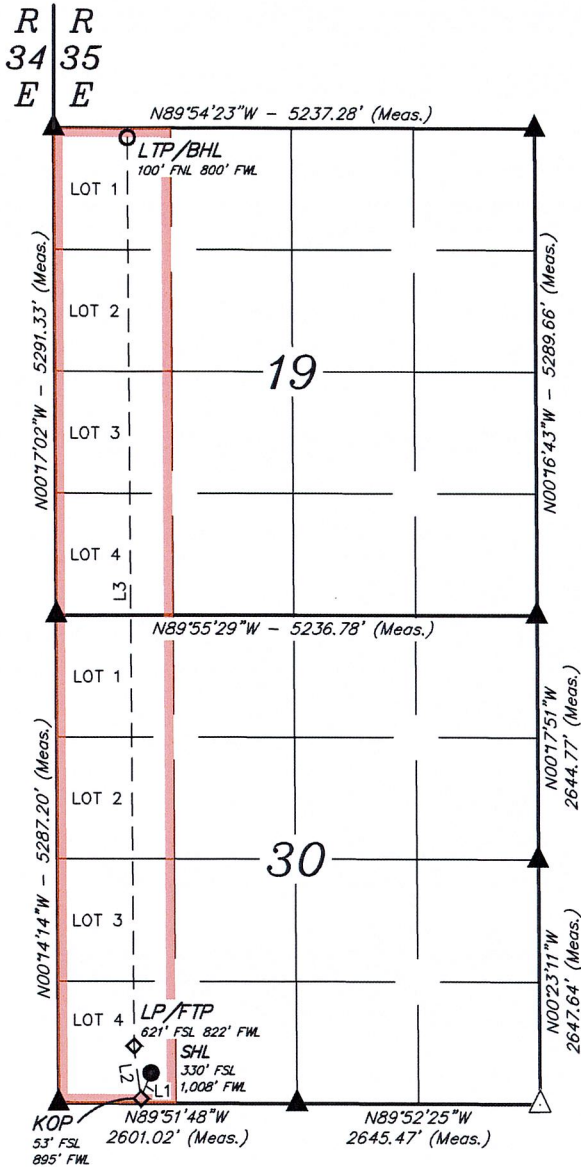
| LINE TABLE | | |
|------------|-------------|----------|
| LINE | DIRECTION | LENGTH |
| L1 | S21°52'01"W | 298.55' |
| L2 | N07°33'25"W | 573.06' |
| L3 | N00°23'33"W | 9858.74' |

| | |
|---|--|
| NAD 83 (SURFACE HOLE LOCATION) | |
| LATITUDE = 32°42'44.74" (32.712426°) | |
| LONGITUDE = -103°30'07.12" (-103.501978°) | |
| NAD 27 (SURFACE HOLE LOCATION) | |
| LATITUDE = 32°42'44.29" (32.712302°) | |
| LONGITUDE = -103°30'05.34" (-103.501484°) | |
| STATE PLANE NAD 83 (N.M. EAST) | |
| N: 623914.74' E: 797038.96' | |
| STATE PLANE NAD 27 (N.M. EAST) | |
| N: 623850.35' E: 755859.26' | |

| | |
|---|--|
| NAD 83 (KICK OFF POINT) | |
| LATITUDE = 32°42'42.00" (32.711666°) | |
| LONGITUDE = -103°30'08.43" (-103.502343°) | |
| NAD 27 (KICK OFF POINT) | |
| LATITUDE = 32°42'41.55" (32.711542°) | |
| LONGITUDE = -103°30'06.66" (-103.501849°) | |
| STATE PLANE NAD 83 (N.M. EAST) | |
| N: 623637.25' E: 796928.96' | |
| STATE PLANE NAD 27 (N.M. EAST) | |
| N: 623572.87' E: 755749.26' | |

| | |
|---|--|
| NAD 83 (LP/FTP) | |
| LATITUDE = 32°42'47.62" (32.713228°) | |
| LONGITUDE = -103°30'09.29" (-103.502581°) | |
| NAD 27 (LP/FTP) | |
| LATITUDE = 32°42'47.17" (32.713104°) | |
| LONGITUDE = -103°30'07.51" (-103.502087°) | |
| STATE PLANE NAD 83 (N.M. EAST) | |
| N: 624204.91' E: 796851.20' | |
| STATE PLANE NAD 27 (N.M. EAST) | |
| N: 624140.51' E: 755671.51' | |

| | |
|---|--|
| NAD 83 (LTP/BHL) | |
| LATITUDE = 32°44'25.15" (32.740320°) | |
| LONGITUDE = -103°30'09.67" (-103.502685°) | |
| NAD 27 (LTP/BHL) | |
| LATITUDE = 32°44'24.70" (32.740196°) | |
| LONGITUDE = -103°30'07.89" (-103.502190°) | |
| STATE PLANE NAD 83 (N.M. EAST) | |
| N: 634061.43' E: 796741.82' | |
| STATE PLANE NAD 27 (N.M. EAST) | |
| N: 633996.70' E: 755562.41' | |



NOTE:

- Distances referenced on plat to section lines are perpendicular.
- Basis of Bearings is a Transverse Mercator Projection with a Central Meridian of W103°53'00" (NAD 83)
- Section breakdown information for this plat may be obtained from Uintah Engineering and Land Surveying.



- = SURFACE HOLE LOCATION
- ◆ = KICK OFF POINT/LANDING POINT/FIRST TAKE POINT
- = LAST TAKE POINT/BOTTOM HOLE LOCATION
- ▲ = SECTION CORNER LOCATED
- △ = SECTION CORNER RE-ESTABLISHED. (Not Set on Ground.)
- = DRILLING SPACING UNIT

| | | |
|---|--|--|
| C-102 Submit Electronically Via OCD Permitting | State of New Mexico Energy, Minerals & Natural Resources Department OIL CONSERVATION DIVISION | Revised July 9, 2024 |
| | | Submittal Type: <input checked="" type="checkbox"/> Initial Submittal <input type="checkbox"/> Amended Report <input type="checkbox"/> As Drilled |

WELL LOCATION INFORMATION

| | | |
|--|--|--|
| API Number | Pool Code 970 | Pool Name AIRSTRIP, WOLFCAMP |
| Property Code | Property Name ROPE STATE COM | Well Number 801H |
| OGRID No. 331595 | Operator Name FRANKLIN MOUNTAIN ENERGY 3, LLC | Ground Level Elevation 3952.0' |
| Surface Owner: <input checked="" type="checkbox"/> State <input type="checkbox"/> Fee <input type="checkbox"/> Tribal <input type="checkbox"/> Federal | | Mineral Owner: <input checked="" type="checkbox"/> State <input type="checkbox"/> Fee <input type="checkbox"/> Tribal <input type="checkbox"/> Federal |

Surface Location

| UL | Section | Township | Range | Lot | Ft. from N/S | Ft. from E/W | Latitude (NAD 83) | Longitude (NAD 83) | County |
|----|---------|----------|-------|-----|--------------|--------------|-------------------|--------------------|--------|
| 4 | 30 | 18S | 35E | | 330 SOUTH | 918 WEST | 32.712428° | -103.502270° | LEA |

Bottom Hole Location

| UL | Section | Township | Range | Lot | Ft. from N/S | Ft. from E/W | Latitude (NAD 83) | Longitude (NAD 83) | County |
|----|---------|----------|-------|-----|--------------|--------------|-------------------|--------------------|--------|
| 1 | 19 | 18S | 35E | | 100 NORTH | 400 WEST | 32.740326° | -103.503986° | LEA |

| | | | | |
|---------------------------|-------------------------|-------------------|---|-------------------------|
| Dedicated Acres 306.92 | Infill or Defining Well | Defining Well API | Overlapping Spacing Unit (Y/N) N | Consolidation Code P |
| Order Numbers. | Pending | | Well setbacks are under Common Ownership: <input checked="" type="checkbox"/> Yes <input type="checkbox"/> No | |

Kick Off Point (KOP)

| UL | Section | Township | Range | Lot | Ft. from N/S | Ft. from E/W | Latitude (NAD 83) | Longitude (NAD 83) | County |
|----|---------|----------|-------|-----|--------------|--------------|-------------------|--------------------|--------|
| 4 | 30 | 18S | 35E | | 54 SOUTH | 425 WEST | 32.711679° | -103.503870° | LEA |


First Take Point (FTP)

| UL | Section | Township | Range | Lot | Ft. from N/S | Ft. from E/W | Latitude (NAD 83) | Longitude (NAD 83) | County |
|----|---------|----------|-------|-----|--------------|--------------|-------------------|--------------------|--------|
| 4 | 30 | 18S | 35E | | 625 SOUTH | 372 WEST | 32.713246° | -103.504044° | LEA |

Last Take Point (LTP)

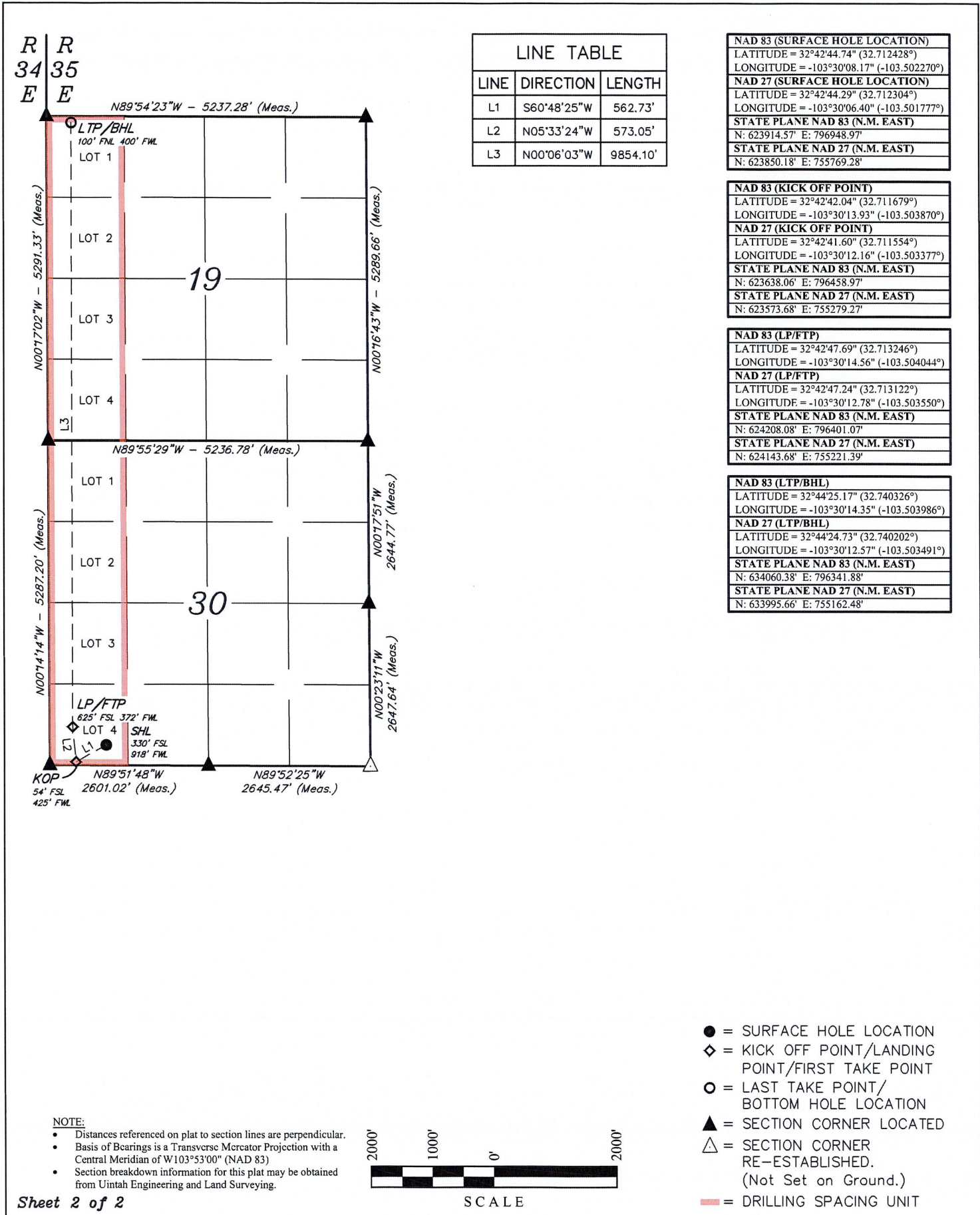
| UL | Section | Township | Range | Lot | Ft. from N/S | Ft. from E/W | Latitude (NAD 83) | Longitude (NAD 83) | County |
|----|---------|----------|-------|-----|--------------|--------------|-------------------|--------------------|--------|
| 1 | 19 | 18S | 35E | | 100 NORTH | 400 WEST | 32.740326° | -103.503986° | LEA |

| | | |
|---|--|-------------------------|
| Unitized Area or Area of Uniform Interest | Spacing Unit Type <input checked="" type="checkbox"/> Horizontal <input type="checkbox"/> Vertical | Ground Floor Elevation: |
|---|--|-------------------------|

| | |
|--|---|
| <p>OPERATOR CERTIFICATIONS</p> <p><i>I hereby certify that the information contained herein is true and complete to the best of my knowledge and belief, and, if the well is a vertical or directional well, that this organization either owns a working interest or unleased mineral interest in the land including the proposed bottom hole location or has a right to drill this well at this location pursuant to a contract with an owner of a working interest or unleased mineral interest, or to a voluntary pooling agreement or a compulsory pooling order heretofore entered by the division.</i></p> <p><i>If this well is a horizontal well, I further certify that this organization has received the consent of at least one lessee or owner of a working interest or unleased mineral interest in each tract (in the target pool or formation) in which any part of the well's completed interval will be located or obtained a compulsory pooling order from the division.</i></p> <p><i>Rachael Overbey</i> Signature 10/29/2024 Date</p> <p>Rachael Overbey Printed Name</p> <p>roverbey@fmellc.com Email Address</p> | <p>SURVEYOR CERTIFICATIONS</p> <p><i>I hereby certify that the well location shown on this plat was plotted from the field notes of actual surveys made by me or under my supervision, and that the same is true and correct to the best of my belief.</i></p> <div style="text-align: center;">  </div> <p><i>Paul Buckler</i> Signature and Seal of Professional Surveyor</p> <p>23782 Certificate Number</p> <p>February 20, 2024 Date of Survey</p> |
|--|---|

Note: No allowable will be assigned to this completion until all interest have been consolidated or a non-standard unit has been approved by the division.

| | | | |
|---------------------------------|---------------------|---------------------------|---|
| Property Name ROPE STATE COM | Well Number 801H | Drawn By N.R. 02-21-24 | Revised By REV. 2 T.I.R. 11-13-24 (UPDATE BHL) |
|---------------------------------|---------------------|---------------------------|---|



| LINE TABLE | | |
|------------|-------------|----------|
| LINE | DIRECTION | LENGTH |
| L1 | S60°48'25"W | 562.73' |
| L2 | N05°33'24"W | 573.05' |
| L3 | N00°06'03"W | 9854.10' |

| |
|--|
| NAD 83 (SURFACE HOLE LOCATION) LATITUDE = 32°42'44.74" (32.712428°) LONGITUDE = -103°30'08.17" (-103.502270°) |
| NAD 27 (SURFACE HOLE LOCATION) LATITUDE = 32°42'44.29" (32.712304°) LONGITUDE = -103°30'06.40" (-103.501777°) |
| STATE PLANE NAD 83 (N.M. EAST) N: 623914.57' E: 796948.97' |
| STATE PLANE NAD 27 (N.M. EAST) N: 623850.18' E: 755769.28' |

| |
|---|
| NAD 83 (KICK OFF POINT) LATITUDE = 32°42'42.04" (32.711679°) LONGITUDE = -103°30'13.93" (-103.503870°) |
| NAD 27 (KICK OFF POINT) LATITUDE = 32°42'41.60" (32.711554°) LONGITUDE = -103°30'12.16" (-103.503377°) |
| STATE PLANE NAD 83 (N.M. EAST) N: 623638.06' E: 796458.97' |
| STATE PLANE NAD 27 (N.M. EAST) N: 623573.68' E: 755279.27' |

| |
|---|
| NAD 83 (LP/FTP) LATITUDE = 32°42'47.69" (32.713246°) LONGITUDE = -103°30'14.56" (-103.504044°) |
| NAD 27 (LP/FTP) LATITUDE = 32°42'47.24" (32.713122°) LONGITUDE = -103°30'12.78" (-103.503550°) |
| STATE PLANE NAD 83 (N.M. EAST) N: 624208.08' E: 796401.07' |
| STATE PLANE NAD 27 (N.M. EAST) N: 624143.68' E: 755221.39' |

| |
|--|
| NAD 83 (LTP/BHL) LATITUDE = 32°44'25.17" (32.740326°) LONGITUDE = -103°30'14.35" (-103.503986°) |
| NAD 27 (LTP/BHL) LATITUDE = 32°44'24.73" (32.740202°) LONGITUDE = -103°30'12.57" (-103.503491°) |
| STATE PLANE NAD 83 (N.M. EAST) N: 634060.38' E: 796341.88' |
| STATE PLANE NAD 27 (N.M. EAST) N: 633995.66' E: 755162.48' |

NOTE:

- Distances referenced on plat to section lines are perpendicular.
- Basis of Bearings is a Transverse Mercator Projection with a Central Meridian of W103°53'00" (NAD 83)
- Section breakdown information for this plat may be obtained from Uintah Engineering and Land Surveying.



- = SURFACE HOLE LOCATION
- ◆ = KICK OFF POINT/LANDING POINT/FIRST TAKE POINT
- = LAST TAKE POINT/BOTTOM HOLE LOCATION
- ▲ = SECTION CORNER LOCATED
- △ = SECTION CORNER RE-ESTABLISHED. (Not Set on Ground.)
- = DRILLING SPACING UNIT

| | | |
|---|--|---|
| C-102 Submit Electronically Via OCD Permitting | State of New Mexico Energy, Minerals & Natural Resources Department OIL CONSERVATION DIVISION | Revised July 9, 2024 |
| | | Submittal Type: <input checked="" type="checkbox"/> Initial Submittal <input type="checkbox"/> Amended Report <input type="checkbox"/> As Drilled |

WELL LOCATION INFORMATION

| | | |
|--|--|--|
| API Number | Pool Code 970 | Pool Name AIRSTRIP; WOLFCAMP |
| Property Code | Property Name ROPE STATE COM | Well Number 702H |
| OGRID No. 331595 | Operator Name FRANKLIN MOUNTAIN ENERGY 3, LLC | Ground Level Elevation 3,945.2' |
| Surface Owner: <input checked="" type="checkbox"/> State <input type="checkbox"/> Fee <input type="checkbox"/> Tribal <input type="checkbox"/> Federal | | Mineral Owner: <input checked="" type="checkbox"/> State <input type="checkbox"/> Fee <input type="checkbox"/> Tribal <input type="checkbox"/> Federal |

Surface Location

| UL | Section | Township | Range | Lot | Ft. from N/S | Ft. from E/W | Latitude (NAD 83) | Longitude (NAD 83) | County |
|----|---------|----------|-------|-----|--------------|--------------|-------------------|--------------------|--------|
| O | 30 | 18S | 35E | | 335 SOUTH | 2,463 EAST | 32.712412° | -103.496209° | LEA |

Bottom Hole Location

| UL | Section | Township | Range | Lot | Ft. from N/S | Ft. from E/W | Latitude (NAD 83) | Longitude (NAD 83) | County |
|----|---------|----------|-------|-----|--------------|--------------|-------------------|--------------------|--------|
| C | 19 | 18S | 35E | | 100 NORTH | 2,290 WEST | 32.740299° | -103.497840° | LEA |

| | | | | |
|------------------------|-------------------------|---|-------------------------------------|-------------------------|
| Dedicated Acres 320 | Infill or Defining Well | Defining Well API | Overlapping Spacing Unit (Y/N) N | Consolidation Code P |
| Order Numbers. Pending | | Well setbacks are under Common Ownership: <input checked="" type="checkbox"/> Yes <input type="checkbox"/> No | | |

Kick Off Point (KOP)

| UL | Section | Township | Range | Lot | Ft. from N/S | Ft. from E/W | Latitude (NAD 83) | Longitude (NAD 83) | County |
|----|---------|----------|-------|-----|--------------|--------------|-------------------|--------------------|--------|
| N | 30 | 18S | 35E | | 53 SOUTH | 2,288 WEST | 32.711645° | -103.497817° | LEA |

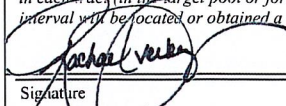
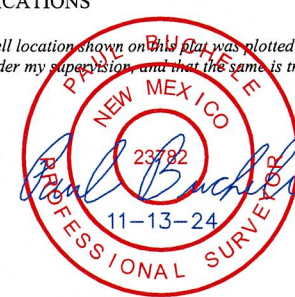
First Take Point (FTP)

| UL | Section | Township | Range | Lot | Ft. from N/S | Ft. from E/W | Latitude (NAD 83) | Longitude (NAD 83) | County |
|----|---------|----------|-------|-----|--------------|--------------|-------------------|--------------------|--------|
| N | 30 | 18S | 35E | | 626 SOUTH | 2,288 WEST | 32.713220° | -103.497819° | LEA |

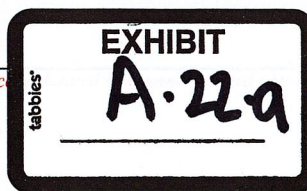
Last Take Point (LTP)

| UL | Section | Township | Range | Lot | Ft. from N/S | Ft. from E/W | Latitude (NAD 83) | Longitude (NAD 83) | County |
|----|---------|----------|-------|-----|--------------|--------------|-------------------|--------------------|--------|
| C | 19 | 18S | 35E | | 100 NORTH | 2,290 WEST | 32.740299° | -103.497840° | LEA |

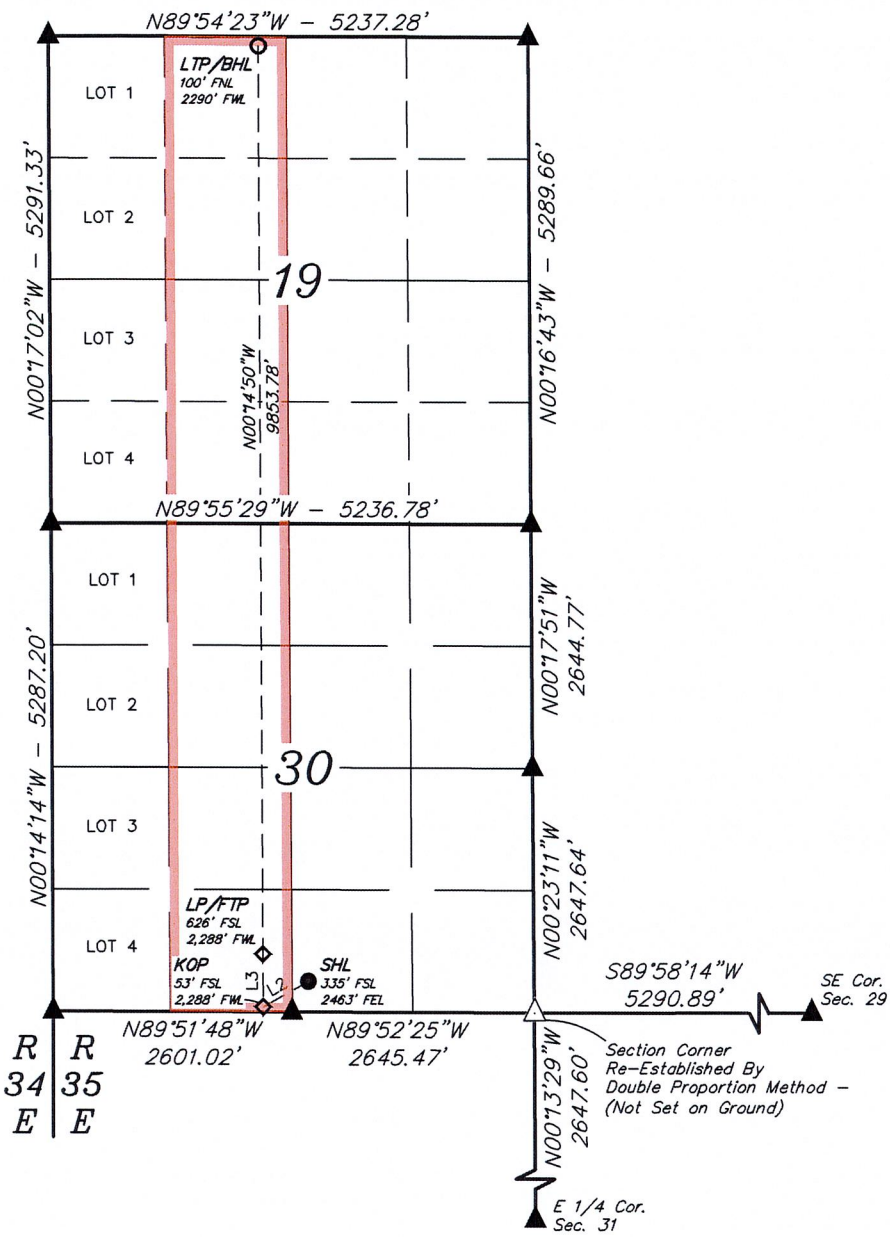
| | | |
|---|--|-------------------------|
| Unitized Area or Area of Uniform Interest | Spacing Unit Type <input checked="" type="checkbox"/> Horizontal <input type="checkbox"/> Vertical | Ground Floor Elevation: |
|---|--|-------------------------|

| | |
|---|---|
| <p>OPERATOR CERTIFICATIONS</p> <p><i>I hereby certify that the information contained herein is true and complete to the best of my knowledge and belief, and, if the well is a vertical or directional well, that this organization either owns a working interest or unleased mineral interest in the land including the proposed bottom hole location or has a right to drill this well at this location pursuant to a contract with an owner of a working interest or unleased mineral interest, or to a voluntary pooling agreement or a compulsory pooling order heretofore entered by the division.</i></p> <p><i>If this well is a horizontal well, I further certify that this organization has received the consent of at least one lessee or owner of a working interest or unleased mineral interest in each tract (in the target pool or formation) in which any part of the well's completed interval will be located or obtained a compulsory pooling order from the division.</i></p> <p style="text-align: right;">  Signature _____ Date 10/29/2024 </p> <p> Printed Name Rachael Overbey roverbey@fmellc.com Email Address </p> | <p>SURVEYOR CERTIFICATIONS</p> <p><i>I hereby certify that the well location shown on this plat was plotted from the field notes of actual surveys made by me or under my supervision, and that the same is true and correct to the best of my belief.</i></p> <div style="text-align: center;">  </div> <p style="text-align: right;"> Signature and Seal of Professional Surveyor 23782 February 21, 2024 Certificate Number Date of Survey </p> |
|---|---|

Note: No allowable will be assigned to this completion until all interest have been approved by the division.



| | | | |
|---------------------------------|---------------------|-----------------------------|---|
| Property Name ROPE STATE COM | Well Number 702H | Drawn By C.S.C. 02-27-24 | Revised By REV. 2 T.I.R. 11-13-24 (UPDATE BHL) |
|---------------------------------|---------------------|-----------------------------|---|



- = SURFACE HOLE LOCATION
- ◇ = KICK OFF POINT/LANDING POINT/FIRST TAKE POINT
- = LAST TAKE POINT/BOTTOM HOLE LOCATION
- ▲ = SECTION CORNER LOCATED
- △ = SECTION CORNER RE-ESTABLISHED. (Not Set on Ground.)
- = DRILLING SPACING UNIT

NOTE:

- Distances referenced on plat to section lines are perpendicular.
- Basis of Bearings is a Transverse Mercator Projection with a Central Meridian of W103°53'00" (NAD 83)

| LINE TABLE | | |
|------------|-------------|----------|
| LINE | DIRECTION | LENGTH |
| L1 | N00°29'20"W | 2644.93' |
| L2 | S60°22'14"W | 567.92' |
| L3 | N00°16'22"W | 573.05' |

| |
|--|
| NAD 83 (SURFACE HOLE LOCATION) LATITUDE = 32°42'44.68" (32.712412°) LONGITUDE = -103°29'46.35" (-103.496209°) |
| NAD 27 (SURFACE HOLE LOCATION) LATITUDE = 32°42'44.24" (32.712288°) LONGITUDE = -103°29'44.57" (-103.495715°) |
| STATE PLANE NAD 83 (N.M. EAST) N: 623923.40' E: 798813.51' |
| STATE PLANE NAD 27 (N.M. EAST) N: 623859.04' E: 757633.80' |

| |
|---|
| NAD 83 (KICK OFF POINT) LATITUDE = 32°42'41.92" (32.711645°) LONGITUDE = -103°29'52.14" (-103.497817°) |
| NAD 27 (KICK OFF POINT) LATITUDE = 32°42'41.48" (32.711521°) LONGITUDE = -103°29'50.36" (-103.497323°) |
| STATE PLANE NAD 83 (N.M. EAST) N: 623640.58' E: 798321.13' |
| STATE PLANE NAD 27 (N.M. EAST) N: 623576.22' E: 757141.41' |

| |
|---|
| NAD 83 (LP/FTP) LATITUDE = 32°42'47.59" (32.713220°) LONGITUDE = -103°29'52.15" (-103.497819°) |
| NAD 27 (LP/FTP) LATITUDE = 32°42'47.15" (32.713096°) LONGITUDE = -103°29'50.37" (-103.497325°) |
| STATE PLANE NAD 83 (N.M. EAST) N: 624213.51' E: 798315.97' |
| STATE PLANE NAD 27 (N.M. EAST) N: 624149.13' E: 757136.27' |

| |
|--|
| NAD 83 (LTP/BHL) LATITUDE = 32°44'25.07" (32.740299°) LONGITUDE = -103°29'52.23" (-103.497840°) |
| NAD 27 (LTP/BHL) LATITUDE = 32°44'24.63" (32.740174°) LONGITUDE = -103°29'50.44" (-103.497346°) |
| STATE PLANE NAD 83 (N.M. EAST) N: 634065.32' E: 798231.60' |
| STATE PLANE NAD 27 (N.M. EAST) N: 634000.61' E: 757052.18' |

| | | |
|---|--|---|
| C-102 Submit Electronically Via OCD Permitting | State of New Mexico Energy, Minerals & Natural Resources Department OIL CONSERVATION DIVISION | Revised July 9, 2024 |
| | | Submittal Type: <input checked="" type="checkbox"/> Initial Submittal <input type="checkbox"/> Amended Report <input type="checkbox"/> As Drilled |

WELL LOCATION INFORMATION

| | | |
|--|--|--|
| API Number | Pool Code 970 | Pool Name AIRSTRIP, WOLFCAMP |
| Property Code | Property Name ROPE STATE COM | Well Number 802H |
| OGRID No. 331595 | Operator Name FRANKLIN MOUNTAIN ENERGY 3, LLC | Ground Level Elevation 3951.1' |
| Surface Owner: <input checked="" type="checkbox"/> State <input type="checkbox"/> Fee <input type="checkbox"/> Tribal <input type="checkbox"/> Federal | | Mineral Owner: <input checked="" type="checkbox"/> State <input type="checkbox"/> Fee <input type="checkbox"/> Tribal <input type="checkbox"/> Federal |

Surface Location

| UL | Section | Township | Range | Lot | Ft. from N/S | Ft. from E/W | Latitude (NAD 83) | Longitude (NAD 83) | County |
|----|---------|----------|-------|-----|--------------|--------------|-------------------|--------------------|--------|
| 4 | 30 | 18S | 35E | | 330 SOUTH | 1,068 WEST | 32.712425° | -103.501783° | LEA |

Bottom Hole Location

| UL | Section | Township | Range | Lot | Ft. from N/S | Ft. from E/W | Latitude (NAD 83) | Longitude (NAD 83) | County |
|----|---------|----------|-------|-----|--------------|--------------|-------------------|--------------------|--------|
| C | 19 | 18S | 35E | | 100 NORTH | 1,660 WEST | 32.740308° | -103.499889° | LEA |

| | | | | |
|------------------------|-------------------------|---|-------------------------------------|-------------------------|
| Dedicated Acres 320 | Infill or Defining Well | Defining Well API | Overlapping Spacing Unit (Y/N) N | Consolidation Code P |
| Order Numbers. Pending | | Well setbacks are under Common Ownership: <input checked="" type="checkbox"/> Yes <input type="checkbox"/> No | | |

Kick Off Point (KOP)

| UL | Section | Township | Range | Lot | Ft. from N/S | Ft. from E/W | Latitude (NAD 83) | Longitude (NAD 83) | County |
|----|---------|----------|-------|-----|--------------|--------------|-------------------|--------------------|--------|
| N | 30 | 18S | 35E | | 55 SOUTH | 1,742 WEST | 32.711658° | -103.499591° | LEA |

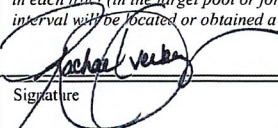
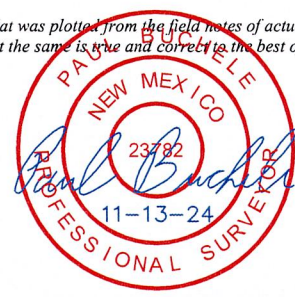
First Take Point (FTP)

| UL | Section | Township | Range | Lot | Ft. from N/S | Ft. from E/W | Latitude (NAD 83) | Longitude (NAD 83) | County |
|----|---------|----------|-------|-----|--------------|--------------|-------------------|--------------------|--------|
| N | 30 | 18S | 35E | | 624 SOUTH | 1,677 WEST | 32.713223° | -103.499803° | LEA |

Last Take Point (LTP)

| UL | Section | Township | Range | Lot | Ft. from N/S | Ft. from E/W | Latitude (NAD 83) | Longitude (NAD 83) | County |
|----|---------|----------|-------|-----|--------------|--------------|-------------------|--------------------|--------|
| C | 19 | 18S | 35E | | 100 NORTH | 1,660 WEST | 32.740308° | -103.499889° | LEA |

| | | |
|---|--|-------------------------|
| Unitized Area or Area of Uniform Interest | Spacing Unit Type <input checked="" type="checkbox"/> Horizontal <input type="checkbox"/> Vertical | Ground Floor Elevation: |
|---|--|-------------------------|

| | |
|---|--|
| <p>OPERATOR CERTIFICATIONS</p> <p><i>I hereby certify that the information contained herein is true and complete to the best of my knowledge and belief, and, if the well is a vertical or directional well, that this organization either owns a working interest or unleased mineral interest in the land including the proposed bottom hole location or has a right to drill this well at this location pursuant to a contract with an owner of a working interest or unleased mineral interest, or to a voluntary pooling agreement or a compulsory pooling order heretofore entered by the division.</i></p> <p><i>If this well is a horizontal well, I further certify that this organization has received the consent of at least one lessee or owner of a working interest or unleased mineral interest in each tract (in the target pool or formation) in which any part of the well's completed interval will be located or obtained a compulsory pooling order from the division.</i></p> <p style="text-align: right;">  Signature _____ Date 10/29/2024 Printed Name Rachael Overbey Email Address roverbey@fmellc.com </p> | <p>SURVEYOR CERTIFICATIONS</p> <p><i>I hereby certify that the well location shown on this plat was plotted from the field notes of actual surveys made by me or under my supervision, and that the same is true and correct to the best of my belief.</i></p> <div style="text-align: center;">  </div> <p style="text-align: right;"> Signature and Seal of Professional Surveyor 23782 February 20, 2024 Certificate Number Date of Survey </p> |
|---|--|

Note: No allowable will be assigned to this completion until all interest have been consolidated or a non-standard unit has been approved by the division.

| | | | |
|---------------------------------|---------------------|---------------------------|---|
| Property Name ROPE STATE COM | Well Number 802H | Drawn By N.R. 02-21-24 | Revised By REV. 2 T.I.R. 11-13-24 (UPDATE BHL) |
|---------------------------------|---------------------|---------------------------|---|

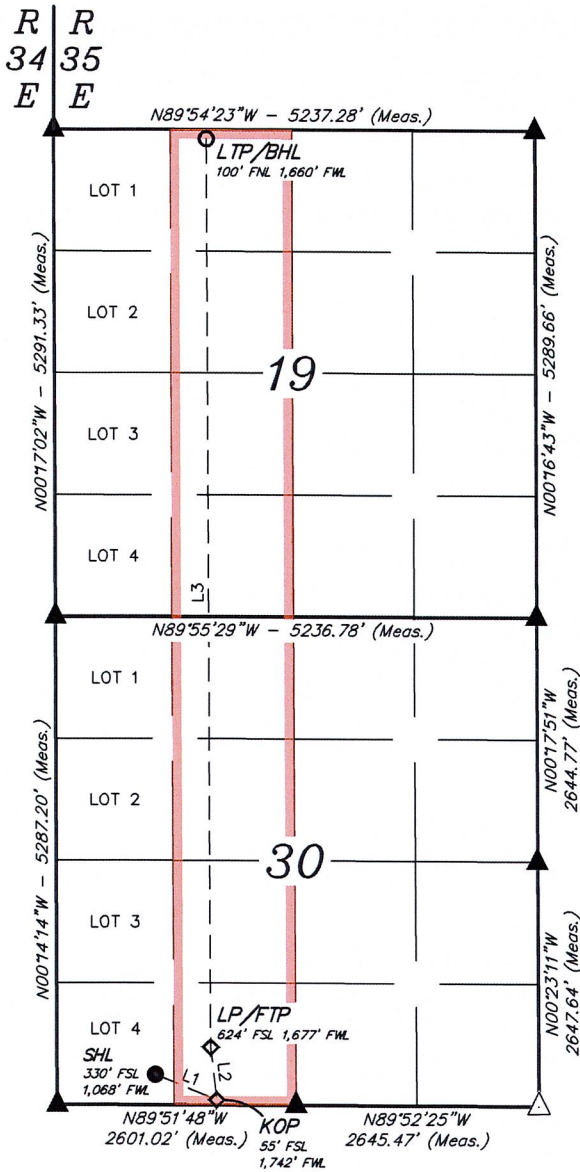
| LINE TABLE | | |
|------------|-------------|----------|
| LINE | DIRECTION | LENGTH |
| L1 | S67°43'13"E | 729.90' |
| L2 | N06°45'26"W | 573.05' |
| L3 | N00°21'39"W | 9856.11' |

| |
|---|
| NAD 83 (SURFACE HOLE LOCATION) |
| LATITUDE = 32°42'44.73" (32.712425°) |
| LONGITUDE = -103°30'06.42" (-103.501783°) |
| NAD 27 (SURFACE HOLE LOCATION) |
| LATITUDE = 32°42'44.28" (32.712301°) |
| LONGITUDE = -103°30'04.64" (-103.501289°) |
| STATE PLANE NAD 83 (N.M. EAST) |
| N: 623914.85' E: 797098.95' |
| STATE PLANE NAD 27 (N.M. EAST) |
| N: 623850.46' E: 755919.25' |

| |
|---|
| NAD 83 (KICK OFF POINT) |
| LATITUDE = 32°42'41.97" (32.711658°) |
| LONGITUDE = -103°29'58.53" (-103.499591°) |
| NAD 27 (KICK OFF POINT) |
| LATITUDE = 32°42'41.52" (32.711534°) |
| LONGITUDE = -103°29'56.75" (-103.499097°) |
| STATE PLANE NAD 83 (N.M. EAST) |
| N: 623641.04' E: 797775.42' |
| STATE PLANE NAD 27 (N.M. EAST) |
| N: 623576.66' E: 756595.71' |

| |
|---|
| NAD 83 (LP/FTP) |
| LATITUDE = 32°42'47.60" (32.713223°) |
| LONGITUDE = -103°29'59.29" (-103.499803°) |
| NAD 27 (LP/FTP) |
| LATITUDE = 32°42'47.16" (32.713099°) |
| LONGITUDE = -103°29'57.51" (-103.499309°) |
| STATE PLANE NAD 83 (N.M. EAST) |
| N: 624209.73' E: 797705.59' |
| STATE PLANE NAD 27 (N.M. EAST) |
| N: 624145.33' E: 756525.90' |

| |
|---|
| NAD 83 (LTP/BHL) |
| LATITUDE = 32°44'25.11" (32.740308°) |
| LONGITUDE = -103°29'59.60" (-103.499889°) |
| NAD 27 (LTP/BHL) |
| LATITUDE = 32°44'24.66" (32.740183°) |
| LONGITUDE = -103°29'57.82" (-103.499394°) |
| STATE PLANE NAD 83 (N.M. EAST) |
| N: 634063.68' E: 797601.69' |
| STATE PLANE NAD 27 (N.M. EAST) |
| N: 633998.94' E: 756422.28' |



NOTE:

- Distances referenced on plat to section lines are perpendicular.
- Basis of Bearings is a Transverse Mercator Projection with a Central Meridian of W103°53'00" (NAD 83)
- Section breakdown information for this plat may be obtained from Uintah Engineering and Land Surveying.



- = SURFACE HOLE LOCATION
- ◇ = KICK OFF POINT/LANDING POINT/FIRST TAKE POINT
- = LAST TAKE POINT/BOTTOM HOLE LOCATION
- ▲ = SECTION CORNER LOCATED
- △ = SECTION CORNER RE-ESTABLISHED. (Not Set on Ground.)
- = DRILLING SPACING UNIT

| | | |
|---|--|--|
| C-102 Submit Electronically Via OCD Permitting | State of New Mexico Energy, Minerals & Natural Resources Department OIL CONSERVATION DIVISION | Revised July 9, 2024 Submittal Type: <input checked="" type="checkbox"/> Initial Submittal <input type="checkbox"/> Amended Report <input type="checkbox"/> As Drilled |
|---|--|--|

WELL LOCATION INFORMATION

| | | |
|--|--|--|
| API Number | Pool Code 970 | Pool Name AIR STRIP, WOLFCAMP |
| Property Code | Property Name ROPE STATE COM | Well Number 704H |
| OGRID No. 331595 | Operator Name FRANKLIN MOUNTAIN ENERGY 3, LLC | Ground Level Elevation 3938.7' |
| Surface Owner: <input checked="" type="checkbox"/> State <input type="checkbox"/> Fee <input type="checkbox"/> Tribal <input type="checkbox"/> Federal | | Mineral Owner: <input checked="" type="checkbox"/> State <input type="checkbox"/> Fee <input type="checkbox"/> Tribal <input type="checkbox"/> Federal |

Surface Location

| UL | Section | Township | Range | Lot | Ft. from N/S | Ft. from E/W | Latitude (NAD 83) | Longitude (NAD 83) | County |
|----|---------|----------|-------|-----|--------------|--------------|-------------------|--------------------|--------|
| P | 30 | 18S | 35E | | 338 SOUTH | 1043 EAST | 32.712396° | -103.491593° | LEA |

Bottom Hole Location

| UL | Section | Township | Range | Lot | Ft. from N/S | Ft. from E/W | Latitude (NAD 83) | Longitude (NAD 83) | County |
|----|---------|----------|-------|-----|--------------|--------------|-------------------|--------------------|--------|
| A | 19 | 18S | 35E | | 100 NORTH | 360 EAST | 32.740261° | -103.489428° | LEA |

| | | | | |
|------------------------|-------------------------|---|-------------------------------------|-------------------------|
| Dedicated Acres 640 | Infill or Defining Well | Defining Well API | Overlapping Spacing Unit (Y/N) N | Consolidation Code P |
| Order Numbers. Pending | | Well setbacks are under Common Ownership: <input checked="" type="checkbox"/> Yes <input type="checkbox"/> No | | |

Kick Off Point (KOP)

| UL | Section | Township | Range | Lot | Ft. from N/S | Ft. from E/W | Latitude (NAD 83) | Longitude (NAD 83) | County |
|----|---------|----------|-------|-----|--------------|--------------|-------------------|--------------------|--------|
| P | 30 | 18S | 35E | | 53 SOUTH | 334 EAST | 32.711603° | -103.489286° | LEA |

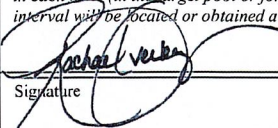
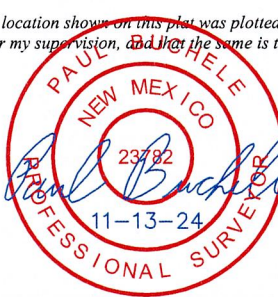
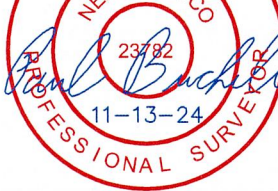
First Take Point (FTP)

| UL | Section | Township | Range | Lot | Ft. from N/S | Ft. from E/W | Latitude (NAD 83) | Longitude (NAD 83) | County |
|----|---------|----------|-------|-----|--------------|--------------|-------------------|--------------------|--------|
| P | 30 | 18S | 35E | | 626 SOUTH | 358 EAST | 32.713176° | -103.489369° | LEA |

Last Take Point (LTP)

| UL | Section | Township | Range | Lot | Ft. from N/S | Ft. from E/W | Latitude (NAD 83) | Longitude (NAD 83) | County |
|----|---------|----------|-------|-----|--------------|--------------|-------------------|--------------------|--------|
| A | 19 | 18S | 35E | | 100 NORTH | 360 EAST | 32.740261° | -103.489428° | LEA |

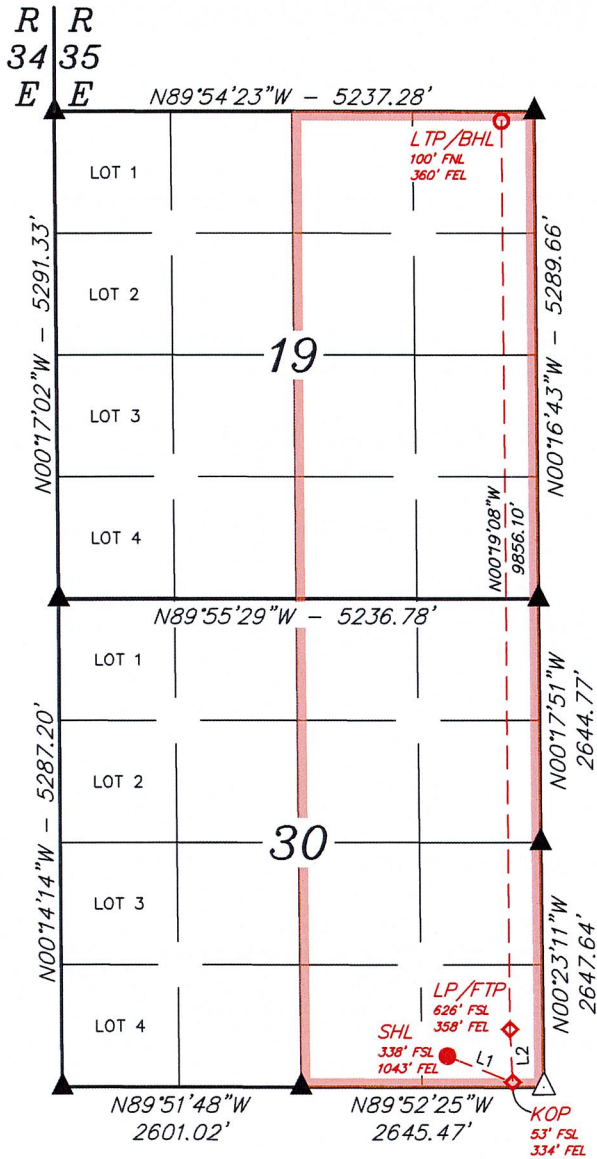
| | | |
|---|--|-------------------------|
| Unitized Area or Area of Uniform Interest | Spacing Unit Type <input checked="" type="checkbox"/> Horizontal <input type="checkbox"/> Vertical | Ground Floor Elevation: |
|---|--|-------------------------|

| | |
|---|---|
| <p>OPERATOR CERTIFICATIONS</p> <p><i>I hereby certify that the information contained herein is true and complete to the best of my knowledge and belief, and, if the well is a vertical or directional well, that this organization either owns a working interest or unleased mineral interest in the land including the proposed bottom hole location or has a right to drill this well at this location pursuant to a contract with an owner of a working interest or unleased mineral interest, or to a voluntary pooling agreement or a compulsory pooling order heretofore entered by the division.</i></p> <p><i>If this well is a horizontal well, I further certify that this organization has received the consent of at least one lessee or owner of a working interest or unleased mineral interest in each tract (in the target pool or formation) in which any part of the well's completed interval will be located or obtained a compulsory pooling order from the division.</i></p> <p>Signature:  Date: 10/29/2024</p> <p>Printed Name: Rachael Overbey</p> <p>Email Address: roverbey@fmellc.com</p> | <p>SURVEYOR CERTIFICATIONS</p> <p><i>I hereby certify that the well location shown on this plat was plotted from the field notes of actual surveys made by me or under my supervision, and that the same is true and correct to the best of my belief.</i></p> <div style="text-align: center;">  </div> <p>Signature and Seal of Professional Surveyor: </p> <p>Certificate Number: 23782 Date of Survey: February 21, 2024</p> |
|---|---|

Note: No allowable will be assigned to this completion until all interest have been consolidated or a non-standard unit is approved.



| | | | |
|---------------------------------|---------------------|---------------------------|---|
| Property Name ROPE STATE COM | Well Number 704H | Drawn By N.R. 02-23-24 | Revised By REV: 2 T.I.R. 11-13-24 (UPDATE BHL) |
|---------------------------------|---------------------|---------------------------|---|



| |
|--|
| NAD 83 (SURFACE HOLE LOCATION) LATITUDE = 32°42'44.63" (32.712396°) LONGITUDE = -103°29'29.73" (-103.491593°) |
| NAD 27 (SURFACE HOLE LOCATION) LATITUDE = 32°42'44.18" (32.712272°) LONGITUDE = -103°29'27.96" (-103.491099°) |
| STATE PLANE NAD 83 (N.M. EAST) N: 623928.87' E: 800233.27' |
| STATE PLANE NAD 27 (N.M. EAST) N: 623864.56' E: 759053.54' |
| NAD 83 (KICK OFF POINT) LATITUDE = 32°42'41.77" (32.711603°) LONGITUDE = -103°29'21.43" (-103.489286°) |
| NAD 27 (KICK OFF POINT) LATITUDE = 32°42'41.32" (32.711479°) LONGITUDE = -103°29'19.65" (-103.488793°) |
| STATE PLANE NAD 83 (N.M. EAST) N: 623645.89' E: 800945.05' |
| STATE PLANE NAD 27 (N.M. EAST) N: 623581.61' E: 759765.31' |
| NAD 83 (LP/FTP) LATITUDE = 32°42'47.43" (32.713176°) LONGITUDE = -103°29'21.73" (-103.489369°) |
| NAD 27 (LP/FTP) LATITUDE = 32°42'46.99" (32.713052°) LONGITUDE = -103°29'19.95" (-103.488876°) |
| STATE PLANE NAD 83 (N.M. EAST) N: 624218.06' E: 800915.06' |
| STATE PLANE NAD 27 (N.M. EAST) N: 624153.76' E: 759735.33' |
| NAD 83 (LTP/BHL) LATITUDE = 32°44'24.94" (32.740261°) LONGITUDE = -103°29'21.94" (-103.489428°) |
| NAD 27 (LTP/BHL) LATITUDE = 32°44'24.49" (32.740137°) LONGITUDE = -103°29'20.16" (-103.488934°) |
| STATE PLANE NAD 83 (N.M. EAST) N: 634072.08' E: 800818.39' |
| STATE PLANE NAD 27 (N.M. EAST) N: 634007.47' E: 759638.95' |

| LINE | DIRECTION | LENGTH |
|------|-------------|---------|
| L1 | S68°04'33"E | 766.09' |
| L2 | N02°45'26"W | 573.05' |

- NOTE:**
- Distances referenced on plat to section lines are perpendicular.
 - Basis of Bearings is a Transverse Mercator Projection with a Central Meridian of W103°53'00" (NAD 83)
 - Section breakdown information for this plan may be obtained from Uintah Engineering and Land Surveying.
- = SURFACE HOLE LOCATION
 - ◆ = KICK OFF POINT/LANDING POINT/FIRST TAKE POINT
 - = LAST TAKE POINT/BOTTOM HOLE LOCATION
 - ▲ = SECTION CORNER LOCATED
 - △ = SECTION CORNER RE-ESTABLISHED. (Not Set on Ground.)
 - = DRILLING SPACING UNIT



| | | |
|---|--|--|
| C-102 Submit Electronically Via OCD Permitting | State of New Mexico Energy, Minerals & Natural Resources Department OIL CONSERVATION DIVISION | Revised July 9, 2024 Submittal Type: <input checked="" type="checkbox"/> Initial Submittal <input type="checkbox"/> Amended Report <input type="checkbox"/> As Drilled |
|---|--|--|

WELL LOCATION INFORMATION

| | | |
|--|--|--|
| API Number | Pool Code 970 | Pool Name AIR STRIP, WOLFCAMP |
| Property Code | Property Name ROPE STATE COM | Well Number 804H |
| OGRID No. 331595 | Operator Name FRANKLIN MOUNTAIN ENERGY 3, LLC | Ground Level Elevation 3939.0' |
| Surface Owner: <input checked="" type="checkbox"/> State <input type="checkbox"/> Fee <input type="checkbox"/> Tribal <input type="checkbox"/> Federal | | Mineral Owner: <input checked="" type="checkbox"/> State <input type="checkbox"/> Fee <input type="checkbox"/> Tribal <input type="checkbox"/> Federal |

Surface Location

| UL P | Section 30 | Township 18S | Range 35E | Lot | Ft. from N/S 338 SOUTH | Ft. from E/W 1103 EAST | Latitude (NAD 83) 32.712397° | Longitude (NAD 83) -103.491788° | County LEA |
|------|------------|--------------|-----------|-----|---------------------------|---------------------------|---------------------------------|------------------------------------|---------------|
|------|------------|--------------|-----------|-----|---------------------------|---------------------------|---------------------------------|------------------------------------|---------------|

Bottom Hole Location

| UL A | Section 19 | Township 18S | Range 35E | Lot | Ft. from N/S 100 NORTH | Ft. from E/W 925 EAST | Latitude (NAD 83) 32.740269° | Longitude (NAD 83) -103.491265° | County LEA |
|------|------------|--------------|-----------|-----|---------------------------|--------------------------|---------------------------------|------------------------------------|---------------|
|------|------------|--------------|-----------|-----|---------------------------|--------------------------|---------------------------------|------------------------------------|---------------|

| | | | | |
|------------------------|-------------------------|--|-------------------------------------|-------------------------|
| Dedicated Acres 640 | Infill or Defining Well | Defining Well API | Overlapping Spacing Unit (Y/N) N | Consolidation Code P |
| Order Numbers. Pending | | Well setbacks are under Common Ownership: <input type="checkbox"/> Yes <input type="checkbox"/> No | | |

Kick Off Point (KOP)

| UL P | Section 30 | Township 18S | Range 35E | Lot | Ft. from N/S 55 SOUTH | Ft. from E/W 840 EAST | Latitude (NAD 83) 32.711615° | Longitude (NAD 83) -103.490930° | County LEA |
|------|------------|--------------|-----------|-----|--------------------------|--------------------------|---------------------------------|------------------------------------|---------------|
|------|------------|--------------|-----------|-----|--------------------------|--------------------------|---------------------------------|------------------------------------|---------------|


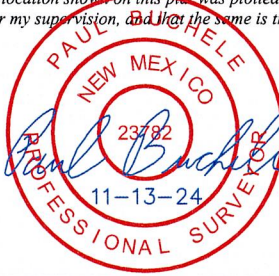
First Take Point (FTP)

| UL P | Section 30 | Township 18S | Range 35E | Lot | Ft. from N/S 623 SOUTH | Ft. from E/W 907 EAST | Latitude (NAD 83) 32.713178° | Longitude (NAD 83) -103.491155° | County LEA |
|------|------------|--------------|-----------|-----|---------------------------|--------------------------|---------------------------------|------------------------------------|---------------|
|------|------------|--------------|-----------|-----|---------------------------|--------------------------|---------------------------------|------------------------------------|---------------|

Last Take Point (LTP)

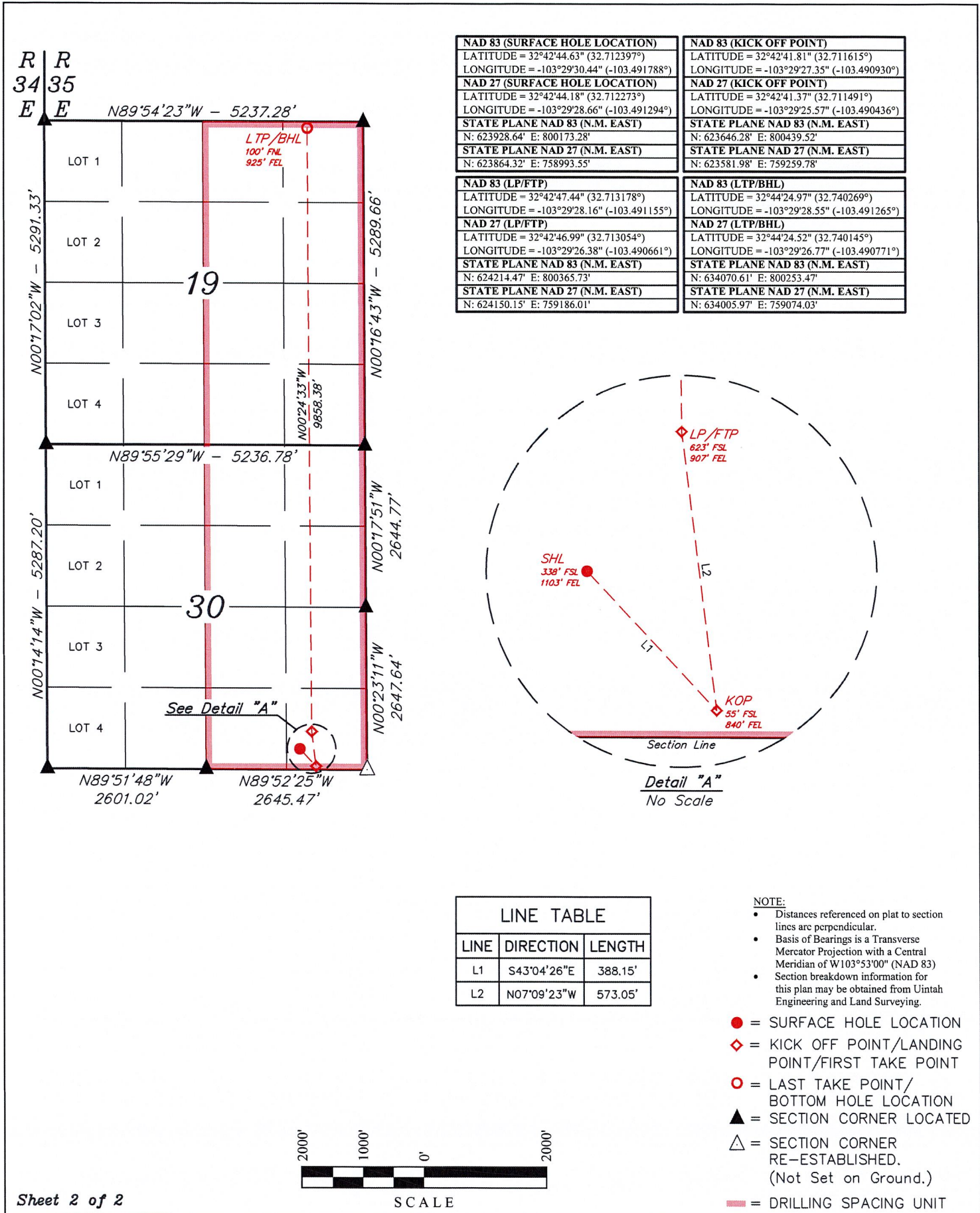
| UL A | Section 19 | Township 18S | Range 35E | Lot | Ft. from N/S 100 NORTH | Ft. from E/W 925 EAST | Latitude (NAD 83) 32.740269° | Longitude (NAD 83) -103.491265° | County LEA |
|------|------------|--------------|-----------|-----|---------------------------|--------------------------|---------------------------------|------------------------------------|---------------|
|------|------------|--------------|-----------|-----|---------------------------|--------------------------|---------------------------------|------------------------------------|---------------|

| | | |
|---|--|-------------------------|
| Unitized Area or Area of Uniform Interest | Spacing Unit Type <input checked="" type="checkbox"/> Horizontal <input type="checkbox"/> Vertical | Ground Floor Elevation: |
|---|--|-------------------------|

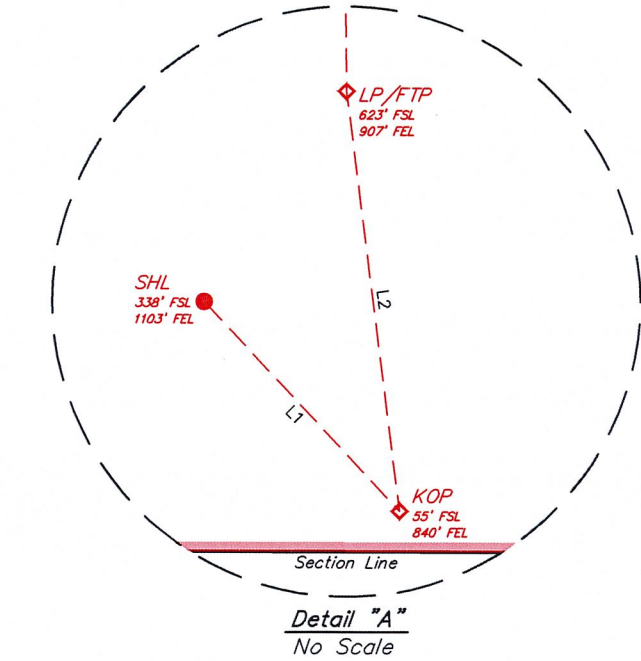
| | |
|---|---|
| <p>OPERATOR CERTIFICATIONS</p> <p><i>I hereby certify that the information contained herein is true and complete to the best of my knowledge and belief, and, if the well is a vertical or directional well, that this organization either owns a working interest or unleased mineral interest in the land including the proposed bottom hole location or has a right to drill this well at this location pursuant to a contract with an owner of a working interest or unleased mineral interest, or to a voluntary pooling agreement or a compulsory pooling order heretofore entered by the division.</i></p> <p><i>If this well is a horizontal well, I further certify that this organization has received the consent of at least one lessee or owner of a working interest or unleased mineral interest in each tract (in the target pool or formation) in which any part of the well's completed interval will be located or obtained a compulsory pooling order from the division.</i></p> <p> Signature _____ Date 10/29/2024</p> <p>Rachael Overbey Printed Name</p> <p>roverbey@fmellc.com Email Address</p> | <p>SURVEYOR CERTIFICATIONS</p> <p><i>I hereby certify that the well location shown on this plat was plotted from the field notes of actual surveys made by me or under my supervision, and that the same is true and correct to the best of my belief.</i></p> <div style="text-align: center;">  </div> <p>Signature and Seal of Professional Surveyor _____</p> <p>23782 February 21, 2024 Certificate Number Date of Survey</p> |
|---|---|

Note: No allowable will be assigned to this completion until all interest have been consolidated or a non-standard unit has been approved by the division.

| | | | |
|---------------------------------|---------------------|---------------------------|---|
| Property Name ROPE STATE COM | Well Number 804H | Drawn By N.R. 02-23-24 | Revised By REV: 2 T.I.R. 11-13-24 (UPDATE BHL) |
|---------------------------------|---------------------|---------------------------|---|



| | |
|--|---|
| NAD 83 (SURFACE HOLE LOCATION) LATITUDE = 32°42'44.63" (32.712397°) LONGITUDE = -103°29'30.44" (-103.491788°) | NAD 83 (KICK OFF POINT) LATITUDE = 32°42'41.81" (32.711615°) LONGITUDE = -103°29'27.35" (-103.490930°) |
| NAD 27 (SURFACE HOLE LOCATION) LATITUDE = 32°42'44.18" (32.712273°) LONGITUDE = -103°29'28.66" (-103.491294°) | NAD 27 (KICK OFF POINT) LATITUDE = 32°42'41.37" (32.711491°) LONGITUDE = -103°29'25.57" (-103.490436°) |
| STATE PLANE NAD 83 (N.M. EAST) N: 623928.64' E: 800173.28' | STATE PLANE NAD 83 (N.M. EAST) N: 623646.28' E: 800439.52' |
| STATE PLANE NAD 27 (N.M. EAST) N: 623864.32' E: 758993.55' | STATE PLANE NAD 27 (N.M. EAST) N: 623581.98' E: 759259.78' |
| NAD 83 (LP/FTP) LATITUDE = 32°42'47.44" (32.713178°) LONGITUDE = -103°29'28.16" (-103.491155°) | NAD 83 (LTP/BHL) LATITUDE = 32°44'24.97" (32.740269°) LONGITUDE = -103°29'28.55" (-103.491265°) |
| NAD 27 (LP/FTP) LATITUDE = 32°42'46.99" (32.713054°) LONGITUDE = -103°29'26.38" (-103.490661°) | NAD 27 (LTP/BHL) LATITUDE = 32°44'24.52" (32.740145°) LONGITUDE = -103°29'26.77" (-103.490771°) |
| STATE PLANE NAD 83 (N.M. EAST) N: 624214.47' E: 800365.73' | STATE PLANE NAD 83 (N.M. EAST) N: 634070.61' E: 800253.47' |
| STATE PLANE NAD 27 (N.M. EAST) N: 624150.15' E: 759186.01' | STATE PLANE NAD 27 (N.M. EAST) N: 634005.97' E: 759074.03' |



| LINE TABLE | | |
|------------|-------------|---------|
| LINE | DIRECTION | LENGTH |
| L1 | S43°04'26"E | 388.15' |
| L2 | N07°09'23"W | 573.05' |

- NOTE:**
- Distances referenced on plat to section lines are perpendicular.
 - Basis of Bearings is a Transverse Mercator Projection with a Central Meridian of W103°53'00" (NAD 83)
 - Section breakdown information for this plan may be obtained from Uintah Engineering and Land Surveying.
- = SURFACE HOLE LOCATION
 - ◆ = KICK OFF POINT/LANDING POINT/FIRST TAKE POINT
 - = LAST TAKE POINT/BOTTOM HOLE LOCATION
 - ▲ = SECTION CORNER LOCATED
 - △ = SECTION CORNER RE-ESTABLISHED. (Not Set on Ground.)
 - = DRILLING SPACING UNIT

