

**STATE OF NEW MEXICO
DEPARTMENT OF ENERGY, MINERALS AND NATURAL RESOURCES
OIL CONSERVATION DIVISION**

**APPLICATIONS OF TUMBLER OPERATING
PARTNERS, LLC, FOR COMPULSORY POOLING,
LEA COUNTY, NEW MEXICO**

Case Nos. 25462-25465

**APPLICATION OF TUMBLER OPERATING
PARTNERS, LLC, FOR APPROVAL OF NON-STANDARD
SPACING UNIT AND FOR COMPULSORY POOLING,
LEA COUNTY, NEW MEXICO**

Case No. 25466

**APPLICATIONS OF MARATHON OIL PERMIAN LLC
FOR COMPULSORY POOLING AND APPROVAL OF
NON-STANDARD SPACING UNITS,
LEA COUNTY, NEW MEXICO.**

Case Nos. 25541-25542

TUMBLER OPERATING PARTNER LLC'S REVISED REBUTTAL EXHIBIT INDEX

~~**Exhibit A-7**~~ Rebuttal to MRO Ex. A #39, 40

~~**Exhibit A-8**~~ Rebuttal to MRO Ex. A #44

~~**Exhibit B-6**~~ Rebuttal to MRO Ex. B-5

~~**Exhibit B-7**~~ Rebuttal to MRO Ex. B-6

~~**Exhibit B-8**~~ Rebuttal to MRO Ex. B-7

~~**Exhibit C-5**~~ Rebuttal to MRO Ex. A #41

Exhibit D-15 Rebuttal to MRO Ex. A #12 – REVISED

Respectfully submitted,

SPENCER FANE LLP

By: /s/Sharon T. Shaheen
Sharon T. Shaheen
Post Office Box 2307
Santa Fe, NM 87504-2307
(505) 986-2678
sshaheen@spencerfane.com
[ec: dortiz@spencerfane.com](mailto:dortiz@spencerfane.com)

*Attorney for TUMBLER OPERATING PARTNERS,
LLC*

CERTIFICATE OF SERVICE

I hereby certify that a true and correct copy of the foregoing was served on counsel of record, by electronic mail on October 7, 2025:

Dana S. Hardy
Jaclyn M. McLean
HARDY MCLEAN LLC
125 Lincoln Avenue, Suite 223
Santa Fe, NM 87501
dhardy@hardymclean.com
jmclean@hardymclean.com

Attorneys for Marathon Oil Permian, LLC

Jennifer Bradfute
Matthias Sayer
BRADFUTE SAYER, P.C.
P.O. Box 90233
Albuquerque, NM 87199
matthias@bradfutelaw.com
jennifer@bradfutelaw.com

Attorneys for EOG Resources

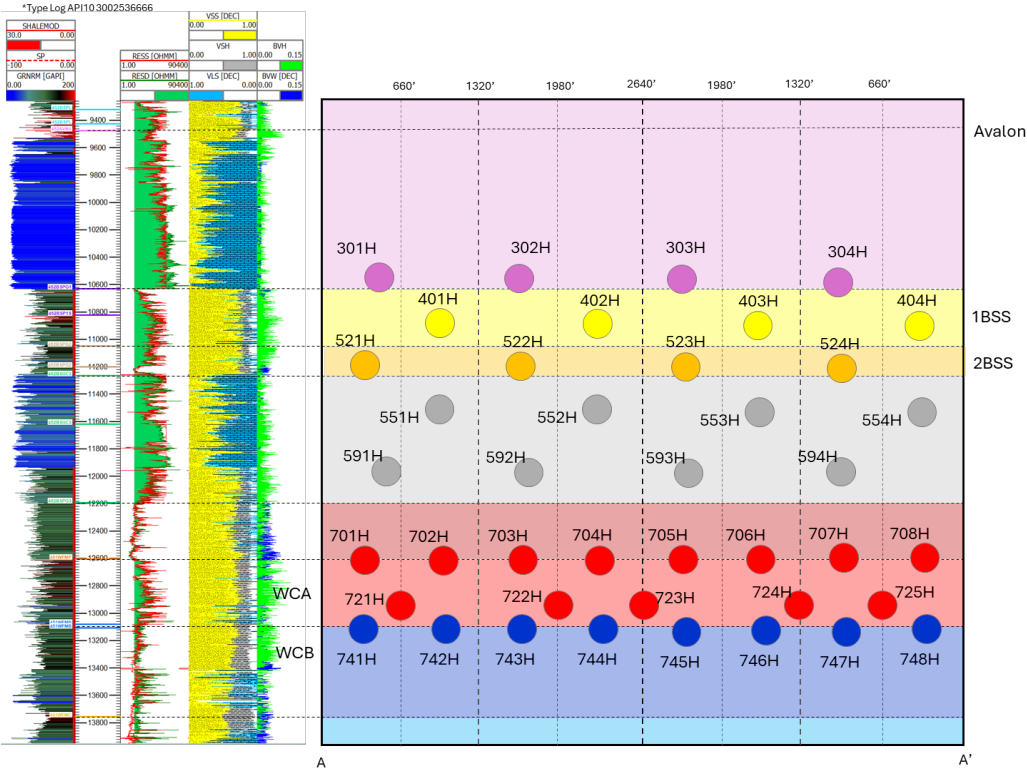
/s/ Sharon S. Shaheen
Sharon T. Shaheen

Rebuttal to MRO Ex. A #12 – MRO’s full development plan fails to develop viable targets and prevent waste

D-15

Well proposals received from EOG Resources (32% WI owner in David/Goliath) from July of 2025, indicate a plan to develop the Avalon, 3rd Bone Carb, and 3rd Bone Spring Sand. EOG later withdrew its well proposals.

See MRO’s Chronology of Contacts, ex. A-11.



underlying Sections 24, 25, and irregular Section 36, Township 26 South, Range 34 East, Lea County, New Mexico. Marathon is a wholly owned subsidiary of ConocoPhillips Company (“ConocoPhillips”) and will operate the proposed spacing unit and wells included in these applications. Marathon’s proposal fully develops two formations underlying three sections of land and is the best plan to prevent waste and protect correlative rights, including Marathon’s ownership

Marathon pre-hearing statement

Total wells per section comparison

Marathon Goliath	Tumbler David	EOG Ringo
July ‘25	April ‘25	July ‘25
17	31	41