

## Closure Report

### nRM2020928148

#### Site Description

Site Name:	FEDERAL 27-1 CTB
Company:	OXY
Legal Description:	U/L: N, SECTION 27, T22S, R32E
County:	LEA COUNTY, NM
GPS Coordinates:	N 32.35598 W 103.66345

#### Release Data

Date of Release:	7/8/2020
Type of Release:	CRUDE AND PRODUCED OIL
Source of Release:	3" POLY FLOW LINE TEE FAILUR
Volume of Release:	4BBLS CRUDE/ 30 BBLS PRODUCED
Volume Recovered:	2BBLS CRUDE/ 10 BBLS PRODUCED

#### Remediation Specifications

Remediation Parameters:	REMEDIAION ACTIVITIES WERE CONDUCTED ACCORDING TO THE APPROVED REMEDIATION PLAN.
Remediation Activities:	8/13/2021 & 8/16/2021

Plan Sent to OCD:	2/17/2021	From Cliff to spill@blm.gov and wade
OCD Approval of Plan:	3/30/2021	From Cliff to Jennifer and Isabel
Plan Sent to BLM:	2/8/2021	From Cliff to Spill@blm.gov and Wade
BLM Approval of Plan:	2/17/2021	From Cliff to Ken, Jennifer and Renee

#### Supporting Documentation

Initial C-141	signed and included	
C-141, page 6	signed and included	
Site Diagram	Google Earth map with excavation depths & confirmation sample points	
Pictures	Remediation photos	
Lab Summary/Analysis	Confirmation lab summary/analysis	
Sampling Notification	8/2/2021	

#### Request for Closure

Based on the completion of the remediation plan as agreed upon, BBC International requests closure approval from NMOCD.

Cliff Brunson, President of BBC International Inc.

8/23/2021

Form C-141

Page 6

State of New Mexico  
Oil Conservation Division

Incident ID	nRM20220928148
District RP	
Facility ID	
Application ID	

## Closure

The responsible party must attach information demonstrating they have complied with all applicable closure requirements and any conditions or directives of the OCD. This demonstration should be in the form of a comprehensive report (electronic submittals in .pdf format are preferred) including a scaled site map, sampling diagrams, relevant field notes, photographs of any excavation prior to backfilling, laboratory data including chain of custody documents of final sampling, and a narrative of the remedial activities. Refer to 19.15.29.12 NMAC.

**Closure Report Attachment Checklist:** *Each of the following items must be included in the closure report.*

- ☒ A scaled site and sampling diagram as described in 19.15.29.11 NMAC
- ☒ Photographs of the remediated site prior to backfill or photos of the liner integrity if applicable (Note: appropriate OCD District office must be notified 2 days prior to liner inspection)
- ☒ Laboratory analyses of final sampling (Note: appropriate ODC District office must be notified 2 days prior to final sampling)
- ☒ Description of remediation activities

I hereby certify that the information given above is true and complete to the best of my knowledge and understand that pursuant to OCD rules and regulations all operators are required to report and/or file certain release notifications and perform corrective actions for releases which may endanger public health or the environment. The acceptance of a C-141 report by the OCD does not relieve the operator of liability should their operations have failed to adequately investigate and remediate contamination that pose a threat to groundwater, surface water, human health or the environment. In addition, OCD acceptance of a C-141 report does not relieve the operator of responsibility for compliance with any other federal, state, or local laws and/or regulations. The responsible party acknowledges they must substantially restore, reclaim, and re-vegetate the impacted surface area to the conditions that existed prior to the release or their final land use in accordance with 19.15.29.13 NMAC including notification to the OCD when reclamation and re-vegetation are complete.

Printed Name: Wade Dittrich Title: Environmental CoordinatorSignature:  Date: 8-23-21email: wade\_dittrich@oxy.com Telephone: (575) 390-2828**OCD Only**

Received by: \_\_\_\_\_ Date: \_\_\_\_\_

Closure approval by the OCD does not relieve the responsible party of liability should their operations have failed to adequately investigate and remediate contamination that poses a threat to groundwater, surface water, human health, or the environment nor does not relieve the responsible party of compliance with any other federal, state, or local laws and/or regulations.

Closure Approved by: Jennifer Nobui Date: 04/27/2022Printed Name: Jennifer Nobui Title: Environmental Specialist A

**From:** [Cliff Brunson](#)  
**To:** ["Enviro. OCD, EMNRD"](#)  
**Cc:** ["Wade Ditttrich"](#); [Ken Swinney](#); ["Jennifer Gilkey"](#); [Julia French](#)  
**Subject:** Oxy - Federal 27-1 CTB - Sampling Notification  
**Date:** Monday, August 2, 2021 5:08:00 PM

---

This is a notification that BBC will conduct confirmation sampling on behalf of OXY at the Federal 27-1 CTB (Incident ID # nRM2020928148) on Wednesday, August 4 at 9:30 a.m.

Cliff P. Brunson, CEI, CRS  
President  
BBC International, Inc.  
World-Wide Environmental Specialists  
Mailing Address:  
P. O. Box 805  
Hobbs, NM 88241-0805 USA  
Shipping Address:  
1324 W. Marland St.  
Hobbs, NM 88240 USA  
Phone: (575) 397-6388  
Fax: (575) 397-0397  
E-Mail: [cbrunson@bbcinternational.com](mailto:cbrunson@bbcinternational.com)



\*\*\*\*\*

Confidentiality Notice: This electronic transmission (and any attached documents) is intended only for the person(s) to whom it is addressed and may contain information that is privileged, confidential, or otherwise protected from disclosure. If you have received this transmission in error, please immediately notify the sender by e-mail or by telephone call to (575) 397-6388 for handling instructions. Any disclosure or distribution of the contents of this transmission by anyone other than the named recipient(s) is strictly prohibited.

\*\*\*\*\*



# Oxy, Federal 27-1 CTB

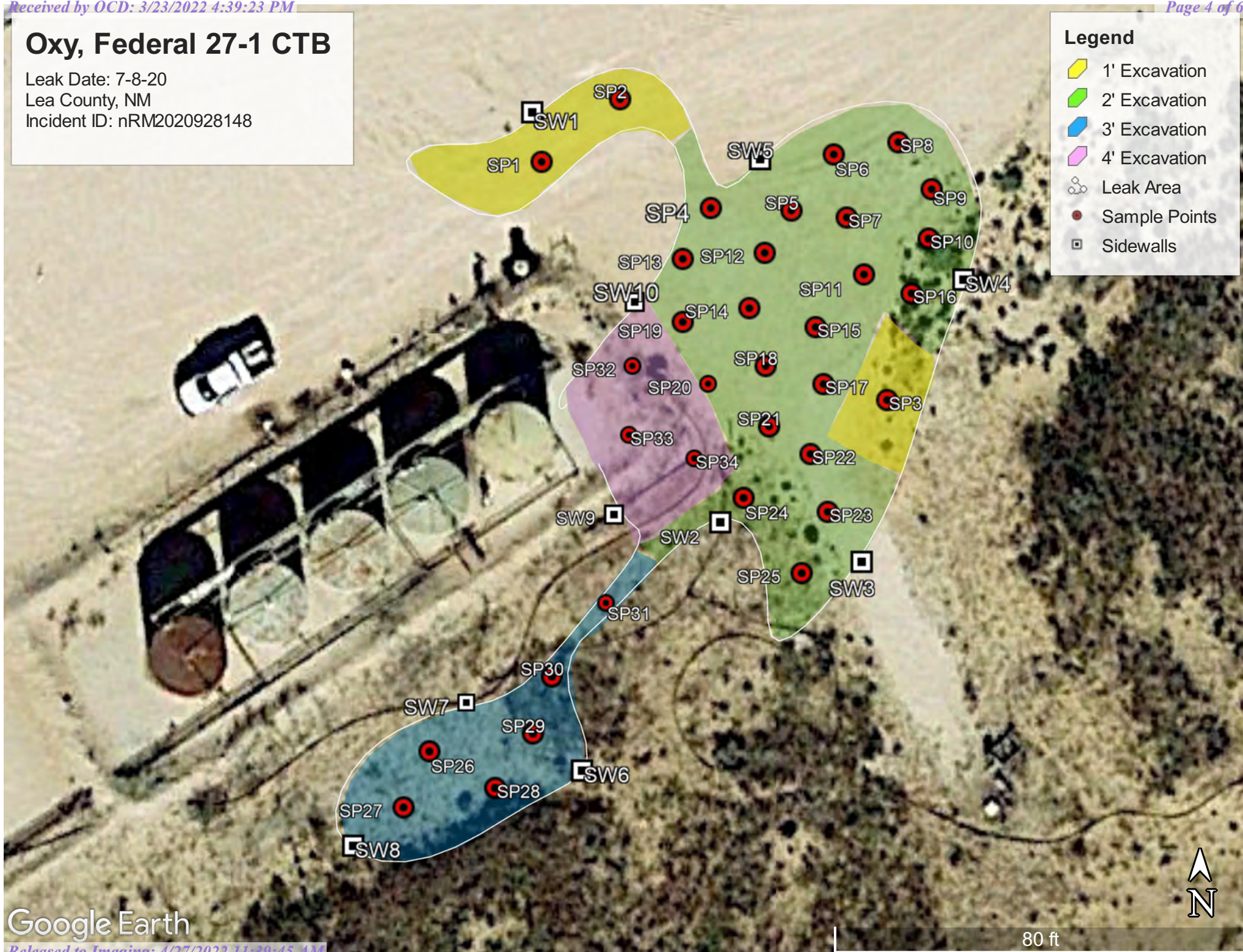
Leak Date: 7-8-20

Lea County, NM

Incident ID: nRM2020928148

## Legend

- 1' Excavation
- 2' Excavation
- 3' Excavation
- 4' Excavation
- Leak Area
- Sample Points
- Sidewalls



OXY FED 27-1 CTB (7/8/20)  
CONFIRMATION SAMPLE POINTS

SIDEWALL 1 @ 1'	N32.356228	W103.663368
SIDEWALL 2 @ 2'	N32.356010	W103.663250
SIDEWALL 3 @ 2'	N32.355989	W103.663161
SIDEWALL 4 @ 2'	N32.356139	W103.663097
SIDEWALL 5 @ 2'	N32.356203	W103.663225
SIDEWALL 6 @ 3'	N32.355878	W103.663337
SIDEWALL 7 @ 3'	N32.355914	W103.663410
SIDEWALL 8 @ 3'	N32.355838	W103.663481
SIDEWALL 9 @ 4'	N32.356014	W103.663317
SIDEWALL 10 @ 4'	N32.356127	W103.663304

SP1 @ 1'	N32.356202	W103.663363
SP2 @ 1'	N32.356235	W103.663313
SP3 @ 1'	N32.356075	W103.663145
SP4 @ 2'	N32.356177	W103.663256
SP5 @ 2'	N32.356172	W103.663215
SP6 @ 2'	N32.356205	W103.663179
SP7 @ 2'	N32.356191	W103.663151
SP8 @ 2'	N32.356212	W103.663138
SP9 @ 2'	N32.356187	W103.663117
SP10 @ 2'	N32.356161	W103.663119
SP11 @ 2'	N32.356158	W103.663141
SP12 @ 2'	N32.356153	W103.663222
SP13 @ 2'	N32.356151	W103.663237
SP14 @ 2'	N32.356124	W103.663232



SP15 @ 2'	N32.356129	W103.663210
SP16 @ 2'	N32.356130	W103.663152
SP17 @ 2'	N32.356092	W103.663186
SP18 @ 2'	N32.356093	W103.663221
SP19 @ 2'	N32.356112	W103.663271
SP20 @ 2'	N32.356085	W103.663249
SP21 @ 2'	N32.356061	W103.663219
SP22 @ 2'	N32.356046	W103.663193
SP23 @ 2'	N32.356016	W103.663182
SP24 @ 2'	N32.356023	W103.663235
SP25 @ 2'	N32.355983	W103.663199
SP26 @ 3'	N32.355888	W103.663433
SP27 @ 3'	N32.355858	W103.663449
SP28 @ 3'	N32.355869	W103.663392
SP29 @ 3'	N32.35589	W103.663368
SP30 @ 3'	N32.355928	W103.663356
SP31 @ 3'	N32.355967	W103.663322
SP32 @ 4'	N32.356093	W103.663306
SP33 @ 4'	N32.356056	W103.663308
SP34 @ 4'	N32.356044	W103.663267

		Sample ID	Bottom 1 @ 1'	Bottom 2 @ 1'	Bottom 3 @ 1'
Analyte	Method	Date	8/4/21	8/4/21	8/4/21
			mg/kg	mg/kg	mg/kg
Benzene	BTEX 8021B		<0.050	<0.050	<0.050
Toluene	BTEX 8021B		<0.050	<0.050	<0.050
Ethylbenzene	BTEX 8021B		<0.050	<0.050	<0.050
Total Xylenes	BTEX 8021B		<0.150	<0.150	<0.150
Total BTEX	BTEX 8021B		<0.300	<0.300	<0.300
Chloride	SM4500Cl-B		16.0	16.0	<16.0
GRO	TPH 8015M		<10.0	<10.0	<10.0
DRO	TPH 8015M		<10.0	<10.0	<10.0
EXT DRO	TPH 8015M		<10.0	<10.0	<10.0

		Sample ID	Bottom 4 @ 2'	Bottom 5 @ 2'	Bottom 6 @ 2'	Bottom 7 @ 2'	Bottom 8 @ 2'	Bottom 9 @ 2'	Bottom 10 @ 2'	Bottom 11 @ 2'	Bottom 12 @ 2'	Bottom 13 @ 2'	Bottom 14 @ 2'	Bottom 15 @ 2'	Bottom 16 @ 2'	Bottom 17 @ 2'	Bottom 18 @ 2'	Bottom 19 @ 2'
Analyte	Method	Date	8/4/21	8/4/21	8/4/21	8/4/21	8/4/21	8/4/21	6/21/21	6/21/21	8/4/21	8/4/21	8/4/21	8/4/21	8/4/21	8/4/21	6/21/21	6/21/21
			mg/kg	mg/kg	mg/kg	mg/kg	mg/kg	mg/kg	mg/kg	mg/kg	mg/kg	mg/kg	mg/kg	mg/kg	mg/kg	mg/kg	mg/kg	mg/kg
Benzene	BTEX 8021B		<0.050	<0.050	<0.050	<0.050	<0.050	<0.050	<0.050	<0.050	<0.050	<0.050	<0.050	<0.050	<0.050	<0.050	<0.050	<0.050
Toluene	BTEX 8021B		<0.050	<0.050	<0.050	<0.050	<0.050	<0.050	<0.050	<0.050	<0.050	<0.050	<0.050	<0.050	<0.050	<0.050	<0.050	<0.050
Ethylbenzene	BTEX 8021B		<0.050	<0.050	<0.050	<0.050	<0.050	<0.050	<0.050	<0.050	<0.050	<0.050	<0.050	<0.050	<0.050	<0.050	<0.050	<0.050
Total Xylenes	BTEX 8021B		<0.150	<0.150	<0.150	<0.150	<0.150	<0.150	<0.150	<0.150	<0.150	<0.150	<0.150	<0.150	<0.150	<0.150	<0.150	<0.150
Total BTEX	BTEX 8021B		<0.300	<0.300	<0.300	<0.300	<0.300	<0.300	<0.300	<0.300	<0.300	<0.300	<0.300	<0.300	<0.300	<0.300	<0.300	<0.300
Chloride	SM4500Cl-B		<16.0	<16.0	<16.0	<16.0	<16.0	<16.0	<16.0	<16.0	<16.0	<16.0	<16.0	<16.0	<16.0	<16.0	<16.0	<16.0
GRO	TPH 8015M		<10.0	<10.0	<10.0	<10.0	<10.0	<10.0	<10.0	<10.0	<10.0	<10.0	<10.0	<10.0	<10.0	<10.0	<10.0	<10.0
DRO	TPH 8015M		<10.0	<10.0	<10.0	<10.0	<10.0	<10.0	<10.0	<10.0	<10.0	<10.0	<10.0	<10.0	<10.0	<10.0	<10.0	<10.0
EXT DRO	TPH 8015M		<10.0	<10.0	<10.0	<10.0	<10.0	<10.0	<10.0	<10.0	<10.0	<10.0	<10.0	<10.0	<10.0	<10.0	<10.0	<10.0

## Continued Bottom 2'

		Sample ID	Bottom 20 @ 2'	Bottom 21 @ 2'	Bottom 22 @ 2'	Bottom 23 @ 2'	Bottom 24 @ 2'	Bottom 25 @ 2'
Analyte	Method	Date	8/4/21	8/4/21	8/4/21	6/21/21	6/21/21	6/21/21
			mg/kg	mg/kg	mg/kg	mg/kg	mg/kg	mg/kg
Benzene	BTEX 8021B		<0.050	<0.050	<0.050	<0.050	<0.050	<0.050
Toluene	BTEX 8021B		<0.050	<0.050	<0.050	<0.050	<0.050	<0.050
Ethylbenzene	BTEX 8021B		<0.050	<0.050	<0.050	<0.050	<0.050	<0.050
Total Xylenes	BTEX 8021B		<0.150	<0.150	<0.150	<0.150	<0.150	<0.150
Total BTEX	BTEX 8021B		<0.300	<0.300	<0.300	<0.300	<0.300	<0.300
Chloride	SM4500Cl-B		<16.0	<16.0	<16.0	<16.0	<16.0	<16.0
GRO	TPH 8015M		<10.0	<10.0	<10.0	<10.0	<10.0	<10.0
DRO	TPH 8015M		<10.0	<10.0	<10.0	<10.0	<10.0	<10.0
EXT DRO	TPH 8015M		<10.0	<10.0	<10.0	<10.0	<10.0	<10.0

		Sample ID	Bottom 26 @ 3'	Bottom 27 @ 3'	Bottom 28 @ 3'	Bottom 29 @ 3'	Bottom 30 @ 3'	Bottom 31 @ 3'
Analyte	Method	Date	8/4/21	8/4/21	8/4/21	6/21/21	6/21/21	6/21/21
			mg/kg	mg/kg	mg/kg	mg/kg	mg/kg	mg/kg
Benzene	BTEX 8021B		<0.050	<0.050	<0.050	<0.050	<0.050	<0.050
Toluene	BTEX 8021B		<0.050	<0.050	<0.050	<0.050	<0.050	<0.050
Ethylbenzene	BTEX 8021B		<0.050	<0.050	<0.050	<0.050	<0.050	<0.050
Total Xylenes	BTEX 8021B		<0.150	<0.150	<0.150	<0.150	<0.150	<0.150
Total BTEX	BTEX 8021B		<0.300	<0.300	<0.300	<0.300	<0.300	<0.300
Chloride	SM4500Cl-B		<16.0	<16.0	<16.0	<16.0	<16.0	<16.0
GRO	TPH 8015M		<10.0	<10.0	<10.0	<10.0	<10.0	<10.0
DRO	TPH 8015M		<10.0	<10.0	<10.0	<10.0	<10.0	<10.0
EXT DRO	TPH 8015M		<10.0	<10.0	<10.0	<10.0	<10.0	<10.0

		Sample ID	Bottom 32 @ 4'	Bottom 33 @ 4'	Bottom 34 @ 4'
Analyte	Method	Date	8/4/21	8/4/21	8/4/21
			mg/kg	mg/kg	mg/kg
Benzene	BTEX 8021B		<0.050	<0.050	<0.050
Toluene	BTEX 8021B		<0.050	<0.050	<0.050
Ethylbenzene	BTEX 8021B		<0.050	<0.050	<0.050
Total Xylenes	BTEX 8021B		<0.150	<0.150	<0.150
Total BTEX	BTEX 8021B		<0.300	<0.300	<0.300
Chloride	SM4500Cl-B		<16.0	<16.0	<16.0
GRO	TPH 8015M		<10.0	<10.0	<10.0
DRO	TPH 8015M		<10.0	<10.0	<10.0
EXT DRO	TPH 8015M		<10.0	<10.0	<10.0

		Sample ID	SW 1	SW 2	SW3	SW 4	SW 5	SW 6	SW 7	SW 8	SW 9	SW 10
Analyte	Method	Date	8/4/21	8/4/21	8/4/21	8/4/21	8/4/21	8/4/21	6/21/21	6/21/21	8/4/21	8/4/21
			mg/kg	mg/kg	mg/kg	mg/kg	mg/kg	mg/kg	mg/kg	mg/kg	mg/kg	mg/kg
Benzene	BTEX 8021B		<0.050	<0.050	<0.050	<0.050	<0.050	<0.050	<0.050	<0.050	<0.050	<0.050
Toluene	BTEX 8021B		<0.050	<0.050	<0.050	<0.050	<0.050	<0.050	<0.050	<0.050	<0.050	<0.050
Ethylbenzene	BTEX 8021B		<0.050	<0.050	<0.050	<0.050	<0.050	<0.050	<0.050	<0.050	<0.050	<0.050
Total Xylenes	BTEX 8021B		<0.150	<0.150	<0.150	<0.150	<0.150	<0.150	<0.150	<0.150	<0.150	<0.150
Total BTEX	BTEX 8021B		<0.300	<0.300	<0.300	<0.300	<0.300	<0.300	<0.300	<0.300	<0.300	<0.300
Chloride	SM4500Cl-B		<16.0	<16.0	<16.0	<16.0	<16.0	<16.0	<16.0	<16.0	<16.0	<16.0
GRO	TPH 8015M		<10.0	<10.0	<10.0	<10.0	<10.0	<10.0	<10.0	<10.0	<10.0	<10.0
DRO	TPH 8015M		<10.0	<10.0	<10.0	<10.0	<10.0	<10.0	<10.0	<10.0	<10.0	<10.0
EXT DRO	TPH 8015M		<10.0	<10.0	<10.0	<10.0	<10.0	<10.0	<10.0	<10.0	<10.0	<10.0



FEDERAL 27-1 CTB

7/8/2020





FEDERAL 27-1 CTB

7/8/2020





FEDERAL 27-1 CTB  
7/8/2020



FEDERAL 27-1 CTB  
7/8/2020





FEDERAL 27-1 CTB  
7/8/2020



FEDERAL 27-1 CTB  
7/8/2020





PHONE (575) 393-2326 ° 101 E. MARLAND ° HOBBS, NM 88240

---

August 11, 2021

Cliff Brunson

BBC International, Inc.

P.O. Box 805

Hobbs, NM 88241

RE: FEDERAL 27 - 1 CTB

Enclosed are the results of analyses for samples received by the laboratory on 08/05/21 12:45.

Cardinal Laboratories is accredited through Texas NELAP under certificate number T104704398-20-13. Accreditation applies to drinking water, non-potable water and solid and chemical materials. All accredited analytes are denoted by an asterisk (\*). For a complete list of accredited analytes and matrices visit the TCEQ website at [www.tceq.texas.gov/field/qa/lab\\_accred\\_certif.html](http://www.tceq.texas.gov/field/qa/lab_accred_certif.html).

Cardinal Laboratories is accredited through the State of Colorado Department of Public Health and Environment for:

Method EPA 552.2	Haloacetic Acids (HAA-5)
Method EPA 524.2	Total Trihalomethanes (TTHM)
Method EPA 524.4	Regulated VOCs (V1, V2, V3)

Accreditation applies to public drinking water matrices.

This report meets NELAP requirements and is made up of a cover page, analytical results, and a copy of the original chain-of-custody. If you have any questions concerning this report, please feel free to contact me.

Sincerely,

A handwritten signature in black ink that reads "Celey D. Keene". The signature is written in a cursive style with a large, stylized 'C' and 'K'.

Celey D. Keene

Lab Director/Quality Manager



PHONE (575) 393-2326 ° 101 E. MARLAND ° HOBBS, NM 88240

**Analytical Results For:**

BBC International, Inc.  
 Cliff Brunson  
 P.O. Box 805  
 Hobbs NM, 88241  
 Fax To: (575) 397-0397

Received:	08/05/2021	Sampling Date:	08/04/2021
Reported:	08/11/2021	Sampling Type:	Soil
Project Name:	FEDERAL 27 - 1 CTB	Sampling Condition:	Cool & Intact
Project Number:	NONE GIVEN	Sample Received By:	Jodi Henson
Project Location:	OXY - LEA COUNTY, NM		

**Sample ID: BOTTOM 1 @ 1' (H212089-01)**

BTEX 8021B		mg/kg		Analyzed By: MS					
Analyte	Result	Reporting Limit	Analyzed	Method Blank	BS	% Recovery	True Value QC	RPD	Qualifier
Benzene*	<0.050	0.050	08/09/2021	ND	1.88	94.2	2.00	3.37	
Toluene*	<0.050	0.050	08/09/2021	ND	2.05	103	2.00	4.18	
Ethylbenzene*	<0.050	0.050	08/09/2021	ND	1.97	98.7	2.00	3.58	
Total Xylenes*	<0.150	0.150	08/09/2021	ND	5.91	98.5	6.00	3.72	
Total BTEX	<0.300	0.300	08/09/2021	ND					

Surrogate: 4-Bromofluorobenzene (PID) 99.4 % 69.9-140

Chloride, SM4500Cl-B		mg/kg		Analyzed By: GM						
Analyte	Result	Reporting Limit	Analyzed	Method Blank	BS	% Recovery	True Value QC	RPD	Qualifier	
Chloride	16.0	16.0	08/09/2021	ND	416	104	400	0.00		

TPH 8015M		mg/kg		Analyzed By: MS					
Analyte	Result	Reporting Limit	Analyzed	Method Blank	BS	% Recovery	True Value QC	RPD	Qualifier
GRO C6-C10*	<10.0	10.0	08/09/2021	ND	186	93.2	200	5.42	
DRO >C10-C28*	<10.0	10.0	08/09/2021	ND	205	103	200	0.826	
EXT DRO >C28-C36	<10.0	10.0	08/09/2021	ND					

Surrogate: 1-Chlorooctane 99.7 % 44.3-133

Surrogate: 1-Chlorooctadecane 112 % 38.9-142

Cardinal Laboratories

\*=Accredited Analyte

PLEASE NOTE: Liability and Damages. Cardinal's liability and client's exclusive remedy for any claim arising, whether based in contract or tort, shall be limited to the amount paid by client for analyses. All claims, including those for negligence and any other cause whatsoever shall be deemed waived unless made in writing and received by Cardinal within thirty (30) days after completion of the applicable service. In no event shall Cardinal be liable for incidental or consequential damages, including, without limitation, business interruptions, loss of use, or loss of profits incurred by client, its subsidiaries, affiliates or successors arising out of or related to the performance of the services hereunder by Cardinal, regardless of whether such claim is based upon any of the above stated reasons or otherwise. Results relate only to the samples identified above. This report shall not be reproduced except in full with written approval of Cardinal Laboratories.

Celey D. Keene, Lab Director/Quality Manager





PHONE (575) 393-2326 ° 101 E. MARLAND ° HOBBS, NM 88240

**Analytical Results For:**

BBC International, Inc.  
 Cliff Brunson  
 P.O. Box 805  
 Hobbs NM, 88241  
 Fax To: (575) 397-0397

Received:	08/05/2021	Sampling Date:	08/04/2021
Reported:	08/11/2021	Sampling Type:	Soil
Project Name:	FEDERAL 27 - 1 CTB	Sampling Condition:	Cool & Intact
Project Number:	NONE GIVEN	Sample Received By:	Jodi Henson
Project Location:	OXY - LEA COUNTY, NM		

**Sample ID: BOTTOM 2 @ 1' (H212089-02)**

BTEx 8021B		mg/kg		Analyzed By: MS						
Analyte	Result	Reporting Limit	Analyzed	Method Blank	BS	% Recovery	True Value QC	RPD	Qualifier	
Benzene*	<0.050	0.050	08/09/2021	ND	1.88	94.2	2.00	3.37		
Toluene*	<0.050	0.050	08/09/2021	ND	2.05	103	2.00	4.18		
Ethylbenzene*	<0.050	0.050	08/09/2021	ND	1.97	98.7	2.00	3.58		
Total Xylenes*	<0.150	0.150	08/09/2021	ND	5.91	98.5	6.00	3.72		
Total BTEx	<0.300	0.300	08/09/2021	ND						

Surrogate: 4-Bromofluorobenzene (PID) 99.6 % 69.9-140

Chloride, SM4500CI-B		mg/kg		Analyzed By: GM						
Analyte	Result	Reporting Limit	Analyzed	Method Blank	BS	% Recovery	True Value QC	RPD	Qualifier	
Chloride	16.0	16.0	08/09/2021	ND	416	104	400	0.00		

TPH 8015M		mg/kg		Analyzed By: MS					
Analyte	Result	Reporting Limit	Analyzed	Method Blank	BS	% Recovery	True Value QC	RPD	Qualifier
GRO C6-C10*	<10.0	10.0	08/09/2021	ND	186	93.2	200	5.42	
DRO >C10-C28*	<10.0	10.0	08/09/2021	ND	205	103	200	0.826	
EXT DRO >C28-C36	<10.0	10.0	08/09/2021	ND					

Surrogate: 1-Chlorooctane 101 % 44.3-133

Surrogate: 1-Chlorooctadecane 114 % 38.9-142

Cardinal Laboratories

\*=Accredited Analyte

PLEASE NOTE: Liability and Damages. Cardinal's liability and client's exclusive remedy for any claim arising, whether based in contract or tort, shall be limited to the amount paid by client for analyses. All claims, including those for negligence and any other cause whatsoever shall be deemed waived unless made in writing and received by Cardinal within thirty (30) days after completion of the applicable service. In no event shall Cardinal be liable for incidental or consequential damages, including, without limitation, business interruptions, loss of use, or loss of profits incurred by client, its subsidiaries, affiliates or successors arising out of or related to the performance of the services hereunder by Cardinal, regardless of whether such claim is based upon any of the above stated reasons or otherwise. Results relate only to the samples identified above. This report shall not be reproduced except in full with written approval of Cardinal Laboratories.

Celey D. Keene, Lab Director/Quality Manager



PHONE (575) 393-2326 ° 101 E. MARLAND ° HOBBS, NM 88240

**Analytical Results For:**

BBC International, Inc.  
 Cliff Brunson  
 P.O. Box 805  
 Hobbs NM, 88241  
 Fax To: (575) 397-0397

Received:	08/05/2021	Sampling Date:	08/04/2021
Reported:	08/11/2021	Sampling Type:	Soil
Project Name:	FEDERAL 27 - 1 CTB	Sampling Condition:	Cool & Intact
Project Number:	NONE GIVEN	Sample Received By:	Jodi Henson
Project Location:	OXY - LEA COUNTY, NM		

**Sample ID: BOTTOM 3 @ 1' (H212089-03)**

BTEx 8021B		mg/kg		Analyzed By: MS						
Analyte	Result	Reporting Limit	Analyzed	Method Blank	BS	% Recovery	True Value QC	RPD	Qualifier	
Benzene*	<0.050	0.050	08/09/2021	ND	1.88	94.2	2.00	3.37		
Toluene*	<0.050	0.050	08/09/2021	ND	2.05	103	2.00	4.18		
Ethylbenzene*	<0.050	0.050	08/09/2021	ND	1.97	98.7	2.00	3.58		
Total Xylenes*	<0.150	0.150	08/09/2021	ND	5.91	98.5	6.00	3.72		
Total BTEx	<0.300	0.300	08/09/2021	ND						

Surrogate: 4-Bromofluorobenzene (PID) 100 % 69.9-140

Chloride, SM4500CI-B		mg/kg		Analyzed By: GM						
Analyte	Result	Reporting Limit	Analyzed	Method Blank	BS	% Recovery	True Value QC	RPD	Qualifier	
Chloride	<16.0	16.0	08/09/2021	ND	416	104	400	0.00		

TPH 8015M		mg/kg		Analyzed By: MS					
Analyte	Result	Reporting Limit	Analyzed	Method Blank	BS	% Recovery	True Value QC	RPD	Qualifier
GRO C6-C10*	<10.0	10.0	08/09/2021	ND	186	93.2	200	5.42	
DRO >C10-C28*	<10.0	10.0	08/09/2021	ND	205	103	200	0.826	
EXT DRO >C28-C36	<10.0	10.0	08/09/2021	ND					

Surrogate: 1-Chlorooctane 93.9 % 44.3-133

Surrogate: 1-Chlorooctadecane 106 % 38.9-142

Cardinal Laboratories

\*=Accredited Analyte

PLEASE NOTE: Liability and Damages. Cardinal's liability and client's exclusive remedy for any claim arising, whether based in contract or tort, shall be limited to the amount paid by client for analyses. All claims, including those for negligence and any other cause whatsoever shall be deemed waived unless made in writing and received by Cardinal within thirty (30) days after completion of the applicable service. In no event shall Cardinal be liable for incidental or consequential damages, including, without limitation, business interruptions, loss of use, or loss of profits incurred by client, its subsidiaries, affiliates or successors arising out of or related to the performance of the services hereunder by Cardinal, regardless of whether such claim is based upon any of the above stated reasons or otherwise. Results relate only to the samples identified above. This report shall not be reproduced except in full with written approval of Cardinal Laboratories.

Celey D. Keene, Lab Director/Quality Manager



PHONE (575) 393-2326 ° 101 E. MARLAND ° HOBBS, NM 88240

**Analytical Results For:**

BBC International, Inc.  
 Cliff Brunson  
 P.O. Box 805  
 Hobbs NM, 88241  
 Fax To: (575) 397-0397

Received:	08/05/2021	Sampling Date:	08/04/2021
Reported:	08/11/2021	Sampling Type:	Soil
Project Name:	FEDERAL 27 - 1 CTB	Sampling Condition:	Cool & Intact
Project Number:	NONE GIVEN	Sample Received By:	Jodi Henson
Project Location:	OXY - LEA COUNTY, NM		

**Sample ID: BOTTOM 4 @ 2' (H212089-04)**

BTEx 8021B		mg/kg		Analyzed By: MS						
Analyte	Result	Reporting Limit	Analyzed	Method Blank	BS	% Recovery	True Value QC	RPD	Qualifier	
Benzene*	<0.050	0.050	08/09/2021	ND	1.88	94.2	2.00	3.37		
Toluene*	<0.050	0.050	08/09/2021	ND	2.05	103	2.00	4.18		
Ethylbenzene*	<0.050	0.050	08/09/2021	ND	1.97	98.7	2.00	3.58		
Total Xylenes*	<0.150	0.150	08/09/2021	ND	5.91	98.5	6.00	3.72		
Total BTEX	<0.300	0.300	08/09/2021	ND						

Surrogate: 4-Bromofluorobenzene (PID) 100 % 69.9-140

Chloride, SM4500Cl-B		mg/kg		Analyzed By: GM						
Analyte	Result	Reporting Limit	Analyzed	Method Blank	BS	% Recovery	True Value QC	RPD	Qualifier	
Chloride	<16.0	16.0	08/09/2021	ND	416	104	400	0.00		

TPH 8015M		mg/kg		Analyzed By: MS					
Analyte	Result	Reporting Limit	Analyzed	Method Blank	BS	% Recovery	True Value QC	RPD	Qualifier
GRO C6-C10*	<10.0	10.0	08/09/2021	ND	186	93.2	200	5.42	
DRO >C10-C28*	<10.0	10.0	08/09/2021	ND	205	103	200	0.826	
EXT DRO >C28-C36	<10.0	10.0	08/09/2021	ND					

Surrogate: 1-Chlorooctane 102 % 44.3-133

Surrogate: 1-Chlorooctadecane 116 % 38.9-142

Cardinal Laboratories

\*=Accredited Analyte

PLEASE NOTE: Liability and Damages. Cardinal's liability and client's exclusive remedy for any claim arising, whether based in contract or tort, shall be limited to the amount paid by client for analyses. All claims, including those for negligence and any other cause whatsoever shall be deemed waived unless made in writing and received by Cardinal within thirty (30) days after completion of the applicable service. In no event shall Cardinal be liable for incidental or consequential damages, including, without limitation, business interruptions, loss of use, or loss of profits incurred by client, its subsidiaries, affiliates or successors arising out of or related to the performance of the services hereunder by Cardinal, regardless of whether such claim is based upon any of the above stated reasons or otherwise. Results relate only to the samples identified above. This report shall not be reproduced except in full with written approval of Cardinal Laboratories.

Celey D. Keene, Lab Director/Quality Manager



PHONE (575) 393-2326 ° 101 E. MARLAND ° HOBBS, NM 88240

**Analytical Results For:**

BBC International, Inc.  
 Cliff Brunson  
 P.O. Box 805  
 Hobbs NM, 88241  
 Fax To: (575) 397-0397

Received:	08/05/2021	Sampling Date:	08/04/2021
Reported:	08/11/2021	Sampling Type:	Soil
Project Name:	FEDERAL 27 - 1 CTB	Sampling Condition:	Cool & Intact
Project Number:	NONE GIVEN	Sample Received By:	Jodi Henson
Project Location:	OXY - LEA COUNTY, NM		

**Sample ID: BOTTOM 5 @ 2' (H212089-05)**

BTX 8021B		mg/kg		Analyzed By: MS						
Analyte	Result	Reporting Limit	Analyzed	Method Blank	BS	% Recovery	True Value QC	RPD	Qualifier	
Benzene*	<0.050	0.050	08/09/2021	ND	1.88	94.2	2.00	3.37		
Toluene*	<0.050	0.050	08/09/2021	ND	2.05	103	2.00	4.18		
Ethylbenzene*	<0.050	0.050	08/09/2021	ND	1.97	98.7	2.00	3.58		
Total Xylenes*	<0.150	0.150	08/09/2021	ND	5.91	98.5	6.00	3.72		
Total BTX	<0.300	0.300	08/09/2021	ND						

Surrogate: 4-Bromofluorobenzene (PID) 99.5 % 69.9-140

Chloride, SM4500CI-B		mg/kg		Analyzed By: GM						
Analyte	Result	Reporting Limit	Analyzed	Method Blank	BS	% Recovery	True Value QC	RPD	Qualifier	
Chloride	<16.0	16.0	08/09/2021	ND	416	104	400	0.00		

TPH 8015M		mg/kg		Analyzed By: MS					
Analyte	Result	Reporting Limit	Analyzed	Method Blank	BS	% Recovery	True Value QC	RPD	Qualifier
GRO C6-C10*	<10.0	10.0	08/09/2021	ND	186	93.2	200	5.42	
DRO >C10-C28*	<10.0	10.0	08/09/2021	ND	205	103	200	0.826	
EXT DRO >C28-C36	<10.0	10.0	08/09/2021	ND					

Surrogate: 1-Chlorooctane 103 % 44.3-133

Surrogate: 1-Chlorooctadecane 116 % 38.9-142

Cardinal Laboratories

\*=Accredited Analyte

PLEASE NOTE: Liability and Damages. Cardinal's liability and client's exclusive remedy for any claim arising, whether based in contract or tort, shall be limited to the amount paid by client for analyses. All claims, including those for negligence and any other cause whatsoever shall be deemed waived unless made in writing and received by Cardinal within thirty (30) days after completion of the applicable service. In no event shall Cardinal be liable for incidental or consequential damages, including, without limitation, business interruptions, loss of use, or loss of profits incurred by client, its subsidiaries, affiliates or successors arising out of or related to the performance of the services hereunder by Cardinal, regardless of whether such claim is based upon any of the above stated reasons or otherwise. Results relate only to the samples identified above. This report shall not be reproduced except in full with written approval of Cardinal Laboratories.

Celey D. Keene, Lab Director/Quality Manager





PHONE (575) 393-2326 ° 101 E. MARLAND ° HOBBS, NM 88240

**Analytical Results For:**

BBC International, Inc.  
 Cliff Brunson  
 P.O. Box 805  
 Hobbs NM, 88241  
 Fax To: (575) 397-0397

Received:	08/05/2021	Sampling Date:	08/04/2021
Reported:	08/11/2021	Sampling Type:	Soil
Project Name:	FEDERAL 27 - 1 CTB	Sampling Condition:	Cool & Intact
Project Number:	NONE GIVEN	Sample Received By:	Jodi Henson
Project Location:	OXY - LEA COUNTY, NM		

**Sample ID: BOTTOM 6 @ 2' (H212089-06)**

BTX 8021B			mg/kg							
			Analyzed By: MS							
Analyte	Result	Reporting Limit	Analyzed	Method Blank	BS	% Recovery	True Value QC	RPD	Qualifier	
Benzene*	<0.050	0.050	08/09/2021	ND	1.88	94.2	2.00	3.37		
Toluene*	<0.050	0.050	08/09/2021	ND	2.05	103	2.00	4.18		
Ethylbenzene*	<0.050	0.050	08/09/2021	ND	1.97	98.7	2.00	3.58		
Total Xylenes*	<0.150	0.150	08/09/2021	ND	5.91	98.5	6.00	3.72		
Total BTX	<0.300	0.300	08/09/2021	ND						

Surrogate: 4-Bromofluorobenzene (PID) 99.2 % 69.9-140

Chloride, SM4500CI-B			mg/kg							
			Analyzed By: GM							
Analyte	Result	Reporting Limit	Analyzed	Method Blank	BS	% Recovery	True Value QC	RPD	Qualifier	
Chloride	<16.0	16.0	08/09/2021	ND	432	108	400	0.00		

TPH 8015M			mg/kg							
			Analyzed By: MS							
Analyte	Result	Reporting Limit	Analyzed	Method Blank	BS	% Recovery	True Value QC	RPD	Qualifier	
GRO C6-C10*	<10.0	10.0	08/09/2021	ND	186	93.2	200	5.42		
DRO >C10-C28*	<10.0	10.0	08/09/2021	ND	205	103	200	0.826		
EXT DRO >C28-C36	<10.0	10.0	08/09/2021	ND						

Surrogate: 1-Chlorooctane 97.3 % 44.3-133

Surrogate: 1-Chlorooctadecane 110 % 38.9-142

Cardinal Laboratories

\*=Accredited Analyte

PLEASE NOTE: Liability and Damages. Cardinal's liability and client's exclusive remedy for any claim arising, whether based in contract or tort, shall be limited to the amount paid by client for analyses. All claims, including those for negligence and any other cause whatsoever shall be deemed waived unless made in writing and received by Cardinal within thirty (30) days after completion of the applicable service. In no event shall Cardinal be liable for incidental or consequential damages, including, without limitation, business interruptions, loss of use, or loss of profits incurred by client, its subsidiaries, affiliates or successors arising out of or related to the performance of the services hereunder by Cardinal, regardless of whether such claim is based upon any of the above stated reasons or otherwise. Results relate only to the samples identified above. This report shall not be reproduced except in full with written approval of Cardinal Laboratories.

Celey D. Keene, Lab Director/Quality Manager



PHONE (575) 393-2326 ° 101 E. MARLAND ° HOBBS, NM 88240

**Analytical Results For:**

BBC International, Inc.  
 Cliff Brunson  
 P.O. Box 805  
 Hobbs NM, 88241  
 Fax To: (575) 397-0397

Received:	08/05/2021	Sampling Date:	08/04/2021
Reported:	08/11/2021	Sampling Type:	Soil
Project Name:	FEDERAL 27 - 1 CTB	Sampling Condition:	Cool & Intact
Project Number:	NONE GIVEN	Sample Received By:	Jodi Henson
Project Location:	OXY - LEA COUNTY, NM		

**Sample ID: BOTTOM 7 @ 2' (H212089-07)**

BTX 8021B		mg/kg		Analyzed By: MS						
Analyte	Result	Reporting Limit	Analyzed	Method Blank	BS	% Recovery	True Value QC	RPD	Qualifier	
Benzene*	<0.050	0.050	08/09/2021	ND	1.88	94.2	2.00	3.37		
Toluene*	<0.050	0.050	08/09/2021	ND	2.05	103	2.00	4.18		
Ethylbenzene*	<0.050	0.050	08/09/2021	ND	1.97	98.7	2.00	3.58		
Total Xylenes*	<0.150	0.150	08/09/2021	ND	5.91	98.5	6.00	3.72		
Total BTX	<0.300	0.300	08/09/2021	ND						

Surrogate: 4-Bromofluorobenzene (PID) 98.2 % 69.9-140

Chloride, SM4500CI-B		mg/kg		Analyzed By: GM						
Analyte	Result	Reporting Limit	Analyzed	Method Blank	BS	% Recovery	True Value QC	RPD	Qualifier	
Chloride	<16.0	16.0	08/09/2021	ND	432	108	400	0.00		

TPH 8015M		mg/kg		Analyzed By: MS					
Analyte	Result	Reporting Limit	Analyzed	Method Blank	BS	% Recovery	True Value QC	RPD	Qualifier
GRO C6-C10*	<10.0	10.0	08/09/2021	ND	186	93.2	200	5.42	
DRO >C10-C28*	<10.0	10.0	08/09/2021	ND	205	103	200	0.826	
EXT DRO >C28-C36	<10.0	10.0	08/09/2021	ND					

Surrogate: 1-Chlorooctane 89.2 % 44.3-133

Surrogate: 1-Chlorooctadecane 101 % 38.9-142

Cardinal Laboratories

\*=Accredited Analyte

PLEASE NOTE: Liability and Damages. Cardinal's liability and client's exclusive remedy for any claim arising, whether based in contract or tort, shall be limited to the amount paid by client for analyses. All claims, including those for negligence and any other cause whatsoever shall be deemed waived unless made in writing and received by Cardinal within thirty (30) days after completion of the applicable service. In no event shall Cardinal be liable for incidental or consequential damages, including, without limitation, business interruptions, loss of use, or loss of profits incurred by client, its subsidiaries, affiliates or successors arising out of or related to the performance of the services hereunder by Cardinal, regardless of whether such claim is based upon any of the above stated reasons or otherwise. Results relate only to the samples identified above. This report shall not be reproduced except in full with written approval of Cardinal Laboratories.

Celey D. Keene, Lab Director/Quality Manager



PHONE (575) 393-2326 ° 101 E. MARLAND ° HOBBS, NM 88240

**Analytical Results For:**

BBC International, Inc.  
 Cliff Brunson  
 P.O. Box 805  
 Hobbs NM, 88241  
 Fax To: (575) 397-0397

Received:	08/05/2021	Sampling Date:	08/04/2021
Reported:	08/11/2021	Sampling Type:	Soil
Project Name:	FEDERAL 27 - 1 CTB	Sampling Condition:	Cool & Intact
Project Number:	NONE GIVEN	Sample Received By:	Jodi Henson
Project Location:	OXY - LEA COUNTY, NM		

**Sample ID: BOTTOM 8 @ 2' (H212089-08)**

BTX 8021B		mg/kg		Analyzed By: MS						
Analyte	Result	Reporting Limit	Analyzed	Method Blank	BS	% Recovery	True Value QC	RPD	Qualifier	
Benzene*	<0.050	0.050	08/09/2021	ND	1.88	94.2	2.00	3.37		
Toluene*	<0.050	0.050	08/09/2021	ND	2.05	103	2.00	4.18		
Ethylbenzene*	<0.050	0.050	08/09/2021	ND	1.97	98.7	2.00	3.58		
Total Xylenes*	<0.150	0.150	08/09/2021	ND	5.91	98.5	6.00	3.72		
Total BTX	<0.300	0.300	08/09/2021	ND						

Surrogate: 4-Bromofluorobenzene (PID) 98.9 % 69.9-140

Chloride, SM4500Cl-B		mg/kg		Analyzed By: GM						
Analyte	Result	Reporting Limit	Analyzed	Method Blank	BS	% Recovery	True Value QC	RPD	Qualifier	
Chloride	<16.0	16.0	08/09/2021	ND	432	108	400	0.00		

TPH 8015M		mg/kg		Analyzed By: MS					
Analyte	Result	Reporting Limit	Analyzed	Method Blank	BS	% Recovery	True Value QC	RPD	Qualifier
GRO C6-C10*	<10.0	10.0	08/09/2021	ND	186	93.2	200	5.42	
DRO >C10-C28*	<10.0	10.0	08/09/2021	ND	205	103	200	0.826	
EXT DRO >C28-C36	<10.0	10.0	08/09/2021	ND					

Surrogate: 1-Chlorooctane 93.2 % 44.3-133

Surrogate: 1-Chlorooctadecane 104 % 38.9-142

Cardinal Laboratories

\*=Accredited Analyte

PLEASE NOTE: Liability and Damages. Cardinal's liability and client's exclusive remedy for any claim arising, whether based in contract or tort, shall be limited to the amount paid by client for analyses. All claims, including those for negligence and any other cause whatsoever shall be deemed waived unless made in writing and received by Cardinal within thirty (30) days after completion of the applicable service. In no event shall Cardinal be liable for incidental or consequential damages, including, without limitation, business interruptions, loss of use, or loss of profits incurred by client, its subsidiaries, affiliates or successors arising out of or related to the performance of the services hereunder by Cardinal, regardless of whether such claim is based upon any of the above stated reasons or otherwise. Results relate only to the samples identified above. This report shall not be reproduced except in full with written approval of Cardinal Laboratories.

Celey D. Keene, Lab Director/Quality Manager



PHONE (575) 393-2326 ° 101 E. MARLAND ° HOBBS, NM 88240

**Analytical Results For:**

BBC International, Inc.  
 Cliff Brunson  
 P.O. Box 805  
 Hobbs NM, 88241  
 Fax To: (575) 397-0397

Received:	08/05/2021	Sampling Date:	08/04/2021
Reported:	08/11/2021	Sampling Type:	Soil
Project Name:	FEDERAL 27 - 1 CTB	Sampling Condition:	Cool & Intact
Project Number:	NONE GIVEN	Sample Received By:	Jodi Henson
Project Location:	OXY - LEA COUNTY, NM		

**Sample ID: BOTTOM 9 @ 2' (H212089-09)**

BTX 8021B		mg/kg		Analyzed By: MS						
Analyte	Result	Reporting Limit	Analyzed	Method Blank	BS	% Recovery	True Value QC	RPD	Qualifier	
Benzene*	<0.050	0.050	08/09/2021	ND	2.14	107	2.00	3.37		
Toluene*	<0.050	0.050	08/09/2021	ND	2.23	111	2.00	4.71		
Ethylbenzene*	<0.050	0.050	08/09/2021	ND	2.13	107	2.00	5.18		
Total Xylenes*	<0.150	0.150	08/09/2021	ND	6.36	106	6.00	4.37		
Total BTX	<0.300	0.300	08/09/2021	ND						

Surrogate: 4-Bromofluorobenzene (PID) 102 % 69.9-140

Chloride, SM4500CI-B		mg/kg		Analyzed By: GM						
Analyte	Result	Reporting Limit	Analyzed	Method Blank	BS	% Recovery	True Value QC	RPD	Qualifier	
Chloride	<16.0	16.0	08/09/2021	ND	432	108	400	0.00		

TPH 8015M		mg/kg		Analyzed By: MS					
Analyte	Result	Reporting Limit	Analyzed	Method Blank	BS	% Recovery	True Value QC	RPD	Qualifier
GRO C6-C10*	<10.0	10.0	08/09/2021	ND	186	93.2	200	5.42	
DRO >C10-C28*	<10.0	10.0	08/09/2021	ND	205	103	200	0.826	
EXT DRO >C28-C36	<10.0	10.0	08/09/2021	ND					

Surrogate: 1-Chlorooctane 95.8 % 44.3-133

Surrogate: 1-Chlorooctadecane 109 % 38.9-142

Cardinal Laboratories

\*=Accredited Analyte

PLEASE NOTE: Liability and Damages. Cardinal's liability and client's exclusive remedy for any claim arising, whether based in contract or tort, shall be limited to the amount paid by client for analyses. All claims, including those for negligence and any other cause whatsoever shall be deemed waived unless made in writing and received by Cardinal within thirty (30) days after completion of the applicable service. In no event shall Cardinal be liable for incidental or consequential damages, including, without limitation, business interruptions, loss of use, or loss of profits incurred by client, its subsidiaries, affiliates or successors arising out of or related to the performance of the services hereunder by Cardinal, regardless of whether such claim is based upon any of the above stated reasons or otherwise. Results relate only to the samples identified above. This report shall not be reproduced except in full with written approval of Cardinal Laboratories.

Celey D. Keene, Lab Director/Quality Manager





PHONE (575) 393-2326 ° 101 E. MARLAND ° HOBBS, NM 88240

**Analytical Results For:**

BBC International, Inc.  
 Cliff Brunson  
 P.O. Box 805  
 Hobbs NM, 88241  
 Fax To: (575) 397-0397

Received:	08/05/2021	Sampling Date:	08/04/2021
Reported:	08/11/2021	Sampling Type:	Soil
Project Name:	FEDERAL 27 - 1 CTB	Sampling Condition:	Cool & Intact
Project Number:	NONE GIVEN	Sample Received By:	Jodi Henson
Project Location:	OXY - LEA COUNTY, NM		

**Sample ID: BOTTOM 10 @ 2' (H212089-10)**

BTX 8021B		mg/kg		Analyzed By: MS					
Analyte	Result	Reporting Limit	Analyzed	Method Blank	BS	% Recovery	True Value QC	RPD	Qualifier
Benzene*	<0.050	0.050	08/09/2021	ND	2.14	107	2.00	3.37	
Toluene*	<0.050	0.050	08/09/2021	ND	2.23	111	2.00	4.71	
Ethylbenzene*	<0.050	0.050	08/09/2021	ND	2.13	107	2.00	5.18	
Total Xylenes*	<0.150	0.150	08/09/2021	ND	6.36	106	6.00	4.37	
Total BTX	<0.300	0.300	08/09/2021	ND					

Surrogate: 4-Bromofluorobenzene (PID) 105 % 69.9-140

Chloride, SM4500Cl-B		mg/kg		Analyzed By: GM						
Analyte	Result	Reporting Limit	Analyzed	Method Blank	BS	% Recovery	True Value QC	RPD	Qualifier	
Chloride	<16.0	16.0	08/09/2021	ND	432	108	400	0.00		

TPH 8015M		mg/kg		Analyzed By: MS					
Analyte	Result	Reporting Limit	Analyzed	Method Blank	BS	% Recovery	True Value QC	RPD	Qualifier
GRO C6-C10*	<10.0	10.0	08/09/2021	ND	186	93.2	200	5.42	
DRO >C10-C28*	<10.0	10.0	08/09/2021	ND	205	103	200	0.826	
EXT DRO >C28-C36	<10.0	10.0	08/09/2021	ND					

Surrogate: 1-Chlorooctane 98.6 % 44.3-133

Surrogate: 1-Chlorooctadecane 113 % 38.9-142

Cardinal Laboratories

\*=Accredited Analyte

PLEASE NOTE: Liability and Damages. Cardinal's liability and client's exclusive remedy for any claim arising, whether based in contract or tort, shall be limited to the amount paid by client for analyses. All claims, including those for negligence and any other cause whatsoever shall be deemed waived unless made in writing and received by Cardinal within thirty (30) days after completion of the applicable service. In no event shall Cardinal be liable for incidental or consequential damages, including, without limitation, business interruptions, loss of use, or loss of profits incurred by client, its subsidiaries, affiliates or successors arising out of or related to the performance of the services hereunder by Cardinal, regardless of whether such claim is based upon any of the above stated reasons or otherwise. Results relate only to the samples identified above. This report shall not be reproduced except in full with written approval of Cardinal Laboratories.

Celey D. Keene, Lab Director/Quality Manager



PHONE (575) 393-2326 • 101 E. MARLAND • HOBBS, NM 88240

**Analytical Results For:**

BBC International, Inc.  
 Cliff Brunson  
 P.O. Box 805  
 Hobbs NM, 88241  
 Fax To: (575) 397-0397

Received:	08/05/2021	Sampling Date:	08/04/2021
Reported:	08/11/2021	Sampling Type:	Soil
Project Name:	FEDERAL 27 - 1 CTB	Sampling Condition:	Cool & Intact
Project Number:	NONE GIVEN	Sample Received By:	Jodi Henson
Project Location:	OXY - LEA COUNTY, NM		

**Sample ID: BOTTOM 11 @ 2' (H212089-11)**

BTX 8021B		mg/kg		Analyzed By: MS						
Analyte	Result	Reporting Limit	Analyzed	Method Blank	BS	% Recovery	True Value QC	RPD	Qualifier	
Benzene*	<0.050	0.050	08/09/2021	ND	2.14	107	2.00	3.37		
Toluene*	<0.050	0.050	08/09/2021	ND	2.23	111	2.00	4.71		
Ethylbenzene*	<0.050	0.050	08/09/2021	ND	2.13	107	2.00	5.18		
Total Xylenes*	<0.150	0.150	08/09/2021	ND	6.36	106	6.00	4.37		
Total BTX	<0.300	0.300	08/09/2021	ND						

Surrogate: 4-Bromofluorobenzene (PID) 102 % 69.9-140

Chloride, SM4500CI-B		mg/kg		Analyzed By: GM						
Analyte	Result	Reporting Limit	Analyzed	Method Blank	BS	% Recovery	True Value QC	RPD	Qualifier	
Chloride	<16.0	16.0	08/09/2021	ND	432	108	400	0.00		

TPH 8015M		mg/kg		Analyzed By: MS					
Analyte	Result	Reporting Limit	Analyzed	Method Blank	BS	% Recovery	True Value QC	RPD	Qualifier
GRO C6-C10*	<10.0	10.0	08/09/2021	ND	186	93.2	200	5.42	
DRO >C10-C28*	<10.0	10.0	08/09/2021	ND	205	103	200	0.826	
EXT DRO >C28-C36	<10.0	10.0	08/09/2021	ND					

Surrogate: 1-Chlorooctane 94.0 % 44.3-133

Surrogate: 1-Chlorooctadecane 105 % 38.9-142

Cardinal Laboratories

\*=Accredited Analyte

PLEASE NOTE: Liability and Damages. Cardinal's liability and client's exclusive remedy for any claim arising, whether based in contract or tort, shall be limited to the amount paid by client for analyses. All claims, including those for negligence and any other cause whatsoever shall be deemed waived unless made in writing and received by Cardinal within thirty (30) days after completion of the applicable service. In no event shall Cardinal be liable for incidental or consequential damages, including, without limitation, business interruptions, loss of use, or loss of profits incurred by client, its subsidiaries, affiliates or successors arising out of or related to the performance of the services hereunder by Cardinal, regardless of whether such claim is based upon any of the above stated reasons or otherwise. Results relate only to the samples identified above. This report shall not be reproduced except in full with written approval of Cardinal Laboratories.

Celey D. Keene, Lab Director/Quality Manager



PHONE (575) 393-2326 ° 101 E. MARLAND ° HOBBS, NM 88240

**Analytical Results For:**

BBC International, Inc.  
 Cliff Brunson  
 P.O. Box 805  
 Hobbs NM, 88241  
 Fax To: (575) 397-0397

Received:	08/05/2021	Sampling Date:	08/04/2021
Reported:	08/11/2021	Sampling Type:	Soil
Project Name:	FEDERAL 27 - 1 CTB	Sampling Condition:	Cool & Intact
Project Number:	NONE GIVEN	Sample Received By:	Jodi Henson
Project Location:	OXY - LEA COUNTY, NM		

**Sample ID: BOTTOM 12 @ 2' (H212089-12)**

BTX 8021B		mg/kg		Analyzed By: MS					
Analyte	Result	Reporting Limit	Analyzed	Method Blank	BS	% Recovery	True Value QC	RPD	Qualifier
Benzene*	<0.050	0.050	08/09/2021	ND	2.14	107	2.00	3.37	
Toluene*	<0.050	0.050	08/09/2021	ND	2.23	111	2.00	4.71	
Ethylbenzene*	<0.050	0.050	08/09/2021	ND	2.13	107	2.00	5.18	
Total Xylenes*	<0.150	0.150	08/09/2021	ND	6.36	106	6.00	4.37	
Total BTX	<0.300	0.300	08/09/2021	ND					

Surrogate: 4-Bromofluorobenzene (PID) 106 % 69.9-140

Chloride, SM4500Cl-B		mg/kg		Analyzed By: GM						
Analyte	Result	Reporting Limit	Analyzed	Method Blank	BS	% Recovery	True Value QC	RPD	Qualifier	
Chloride	<16.0	16.0	08/09/2021	ND	432	108	400	0.00		

TPH 8015M		mg/kg		Analyzed By: MS					
Analyte	Result	Reporting Limit	Analyzed	Method Blank	BS	% Recovery	True Value QC	RPD	Qualifier
GRO C6-C10*	<10.0	10.0	08/09/2021	ND	186	93.2	200	5.42	
DRO >C10-C28*	<10.0	10.0	08/09/2021	ND	205	103	200	0.826	
EXT DRO >C28-C36	<10.0	10.0	08/09/2021	ND					

Surrogate: 1-Chlorooctane 93.6 % 44.3-133

Surrogate: 1-Chlorooctadecane 106 % 38.9-142

Cardinal Laboratories

\*=Accredited Analyte

PLEASE NOTE: Liability and Damages. Cardinal's liability and client's exclusive remedy for any claim arising, whether based in contract or tort, shall be limited to the amount paid by client for analyses. All claims, including those for negligence and any other cause whatsoever shall be deemed waived unless made in writing and received by Cardinal within thirty (30) days after completion of the applicable service. In no event shall Cardinal be liable for incidental or consequential damages, including, without limitation, business interruptions, loss of use, or loss of profits incurred by client, its subsidiaries, affiliates or successors arising out of or related to the performance of the services hereunder by Cardinal, regardless of whether such claim is based upon any of the above stated reasons or otherwise. Results relate only to the samples identified above. This report shall not be reproduced except in full with written approval of Cardinal Laboratories.

Celey D. Keene, Lab Director/Quality Manager



PHONE (575) 393-2326 • 101 E. MARLAND • HOBBS, NM 88240

**Analytical Results For:**

BBC International, Inc.  
 Cliff Brunson  
 P.O. Box 805  
 Hobbs NM, 88241  
 Fax To: (575) 397-0397

Received:	08/05/2021	Sampling Date:	08/04/2021
Reported:	08/11/2021	Sampling Type:	Soil
Project Name:	FEDERAL 27 - 1 CTB	Sampling Condition:	Cool & Intact
Project Number:	NONE GIVEN	Sample Received By:	Jodi Henson
Project Location:	OXY - LEA COUNTY, NM		

**Sample ID: BOTTOM 13 @ 2' (H212089-13)**

BTEx 8021B		mg/kg		Analyzed By: MS						
Analyte	Result	Reporting Limit	Analyzed	Method Blank	BS	% Recovery	True Value QC	RPD	Qualifier	
Benzene*	<0.050	0.050	08/09/2021	ND	2.14	107	2.00	3.37		
Toluene*	<0.050	0.050	08/09/2021	ND	2.23	111	2.00	4.71		
Ethylbenzene*	<0.050	0.050	08/09/2021	ND	2.13	107	2.00	5.18		
Total Xylenes*	<0.150	0.150	08/09/2021	ND	6.36	106	6.00	4.37		
Total BTEx	<0.300	0.300	08/09/2021	ND						

Surrogate: 4-Bromofluorobenzene (PID) 106 % 69.9-140

Chloride, SM4500Cl-B		mg/kg		Analyzed By: GM						
Analyte	Result	Reporting Limit	Analyzed	Method Blank	BS	% Recovery	True Value QC	RPD	Qualifier	
Chloride	<16.0	16.0	08/09/2021	ND	432	108	400	0.00		

TPH 8015M		mg/kg		Analyzed By: MS					
Analyte	Result	Reporting Limit	Analyzed	Method Blank	BS	% Recovery	True Value QC	RPD	Qualifier
GRO C6-C10*	<10.0	10.0	08/09/2021	ND	186	93.2	200	5.42	
DRO >C10-C28*	<10.0	10.0	08/09/2021	ND	205	103	200	0.826	
EXT DRO >C28-C36	<10.0	10.0	08/09/2021	ND					

Surrogate: 1-Chlorooctane 96.8 % 44.3-133

Surrogate: 1-Chlorooctadecane 109 % 38.9-142

Cardinal Laboratories

\*=Accredited Analyte

PLEASE NOTE: Liability and Damages. Cardinal's liability and client's exclusive remedy for any claim arising, whether based in contract or tort, shall be limited to the amount paid by client for analyses. All claims, including those for negligence and any other cause whatsoever shall be deemed waived unless made in writing and received by Cardinal within thirty (30) days after completion of the applicable service. In no event shall Cardinal be liable for incidental or consequential damages, including, without limitation, business interruptions, loss of use, or loss of profits incurred by client, its subsidiaries, affiliates or successors arising out of or related to the performance of the services hereunder by Cardinal, regardless of whether such claim is based upon any of the above stated reasons or otherwise. Results relate only to the samples identified above. This report shall not be reproduced except in full with written approval of Cardinal Laboratories.

Celey D. Keene, Lab Director/Quality Manager



PHONE (575) 393-2326 • 101 E. MARLAND • HOBBS, NM 88240

**Analytical Results For:**

BBC International, Inc.  
 Cliff Brunson  
 P.O. Box 805  
 Hobbs NM, 88241  
 Fax To: (575) 397-0397

Received:	08/05/2021	Sampling Date:	08/04/2021
Reported:	08/11/2021	Sampling Type:	Soil
Project Name:	FEDERAL 27 - 1 CTB	Sampling Condition:	Cool & Intact
Project Number:	NONE GIVEN	Sample Received By:	Jodi Henson
Project Location:	OXY - LEA COUNTY, NM		

**Sample ID: BOTTOM 14 @ 2' (H212089-14)**

BTX 8021B		mg/kg		Analyzed By: MS					
Analyte	Result	Reporting Limit	Analyzed	Method Blank	BS	% Recovery	True Value QC	RPD	Qualifier
Benzene*	<0.050	0.050	08/09/2021	ND	2.14	107	2.00	3.37	
Toluene*	<0.050	0.050	08/09/2021	ND	2.23	111	2.00	4.71	
Ethylbenzene*	<0.050	0.050	08/09/2021	ND	2.13	107	2.00	5.18	
Total Xylenes*	<0.150	0.150	08/09/2021	ND	6.36	106	6.00	4.37	
Total BTX	<0.300	0.300	08/09/2021	ND					

Surrogate: 4-Bromofluorobenzene (PID) 103 % 69.9-140

Chloride, SM4500Cl-B		mg/kg		Analyzed By: GM						
Analyte	Result	Reporting Limit	Analyzed	Method Blank	BS	% Recovery	True Value QC	RPD	Qualifier	
Chloride	<16.0	16.0	08/09/2021	ND	432	108	400	0.00		

TPH 8015M		mg/kg		Analyzed By: MS					
Analyte	Result	Reporting Limit	Analyzed	Method Blank	BS	% Recovery	True Value QC	RPD	Qualifier
GRO C6-C10*	<10.0	10.0	08/09/2021	ND	186	93.2	200	5.42	
DRO >C10-C28*	<10.0	10.0	08/09/2021	ND	205	103	200	0.826	
EXT DRO >C28-C36	<10.0	10.0	08/09/2021	ND					

Surrogate: 1-Chlorooctane 94.5 % 44.3-133

Surrogate: 1-Chlorooctadecane 105 % 38.9-142

Cardinal Laboratories

\*=Accredited Analyte

PLEASE NOTE: Liability and Damages. Cardinal's liability and client's exclusive remedy for any claim arising, whether based in contract or tort, shall be limited to the amount paid by client for analyses. All claims, including those for negligence and any other cause whatsoever shall be deemed waived unless made in writing and received by Cardinal within thirty (30) days after completion of the applicable service. In no event shall Cardinal be liable for incidental or consequential damages, including, without limitation, business interruptions, loss of use, or loss of profits incurred by client, its subsidiaries, affiliates or successors arising out of or related to the performance of the services hereunder by Cardinal, regardless of whether such claim is based upon any of the above stated reasons or otherwise. Results relate only to the samples identified above. This report shall not be reproduced except in full with written approval of Cardinal Laboratories.

Celey D. Keene, Lab Director/Quality Manager





PHONE (575) 393-2326 • 101 E. MARLAND • HOBBS, NM 88240

**Analytical Results For:**

BBC International, Inc.  
 Cliff Brunson  
 P.O. Box 805  
 Hobbs NM, 88241  
 Fax To: (575) 397-0397

Received:	08/05/2021	Sampling Date:	08/04/2021
Reported:	08/11/2021	Sampling Type:	Soil
Project Name:	FEDERAL 27 - 1 CTB	Sampling Condition:	Cool & Intact
Project Number:	NONE GIVEN	Sample Received By:	Jodi Henson
Project Location:	OXY - LEA COUNTY, NM		

**Sample ID: BOTTOM 15 @ 2' (H212089-15)**

BTX 8021B		mg/kg		Analyzed By: MS					
Analyte	Result	Reporting Limit	Analyzed	Method Blank	BS	% Recovery	True Value QC	RPD	Qualifier
Benzene*	<0.050	0.050	08/09/2021	ND	2.14	107	2.00	3.37	
Toluene*	<0.050	0.050	08/09/2021	ND	2.23	111	2.00	4.71	
Ethylbenzene*	<0.050	0.050	08/09/2021	ND	2.13	107	2.00	5.18	
Total Xylenes*	<0.150	0.150	08/09/2021	ND	6.36	106	6.00	4.37	
Total BTX	<0.300	0.300	08/09/2021	ND					

Surrogate: 4-Bromofluorobenzene (PID) 104 % 69.9-140

Chloride, SM4500Cl-B		mg/kg		Analyzed By: GM						
Analyte	Result	Reporting Limit	Analyzed	Method Blank	BS	% Recovery	True Value QC	RPD	Qualifier	
Chloride	<16.0	16.0	08/09/2021	ND	432	108	400	0.00		

TPH 8015M		mg/kg		Analyzed By: MS					
Analyte	Result	Reporting Limit	Analyzed	Method Blank	BS	% Recovery	True Value QC	RPD	Qualifier
GRO C6-C10*	<10.0	10.0	08/09/2021	ND	186	93.2	200	5.42	
DRO >C10-C28*	<10.0	10.0	08/09/2021	ND	205	103	200	0.826	
EXT DRO >C28-C36	<10.0	10.0	08/09/2021	ND					

Surrogate: 1-Chlorooctane 95.1 % 44.3-133

Surrogate: 1-Chlorooctadecane 107 % 38.9-142

Cardinal Laboratories

\*=Accredited Analyte

PLEASE NOTE: Liability and Damages. Cardinal's liability and client's exclusive remedy for any claim arising, whether based in contract or tort, shall be limited to the amount paid by client for analyses. All claims, including those for negligence and any other cause whatsoever shall be deemed waived unless made in writing and received by Cardinal within thirty (30) days after completion of the applicable service. In no event shall Cardinal be liable for incidental or consequential damages, including, without limitation, business interruptions, loss of use, or loss of profits incurred by client, its subsidiaries, affiliates or successors arising out of or related to the performance of the services hereunder by Cardinal, regardless of whether such claim is based upon any of the above stated reasons or otherwise. Results relate only to the samples identified above. This report shall not be reproduced except in full with written approval of Cardinal Laboratories.

Celey D. Keene, Lab Director/Quality Manager



PHONE (575) 393-2326 • 101 E. MARLAND • HOBBS, NM 88240

**Analytical Results For:**

BBC International, Inc.  
 Cliff Brunson  
 P.O. Box 805  
 Hobbs NM, 88241  
 Fax To: (575) 397-0397

Received:	08/05/2021	Sampling Date:	08/04/2021
Reported:	08/11/2021	Sampling Type:	Soil
Project Name:	FEDERAL 27 - 1 CTB	Sampling Condition:	Cool & Intact
Project Number:	NONE GIVEN	Sample Received By:	Jodi Henson
Project Location:	OXY - LEA COUNTY, NM		

**Sample ID: BOTTOM 16 @ 2' (H212089-16)**

BTX 8021B		mg/kg		Analyzed By: MS					
Analyte	Result	Reporting Limit	Analyzed	Method Blank	BS	% Recovery	True Value QC	RPD	Qualifier
Benzene*	<0.050	0.050	08/09/2021	ND	2.14	107	2.00	3.37	
Toluene*	<0.050	0.050	08/09/2021	ND	2.23	111	2.00	4.71	
Ethylbenzene*	<0.050	0.050	08/09/2021	ND	2.13	107	2.00	5.18	
Total Xylenes*	<0.150	0.150	08/09/2021	ND	6.36	106	6.00	4.37	
Total BTX	<0.300	0.300	08/09/2021	ND					

Surrogate: 4-Bromofluorobenzene (PID) 106 % 69.9-140

Chloride, SM4500CI-B		mg/kg		Analyzed By: GM						
Analyte	Result	Reporting Limit	Analyzed	Method Blank	BS	% Recovery	True Value QC	RPD	Qualifier	
Chloride	<16.0	16.0	08/09/2021	ND	432	108	400	0.00		

TPH 8015M		mg/kg		Analyzed By: MS					
Analyte	Result	Reporting Limit	Analyzed	Method Blank	BS	% Recovery	True Value QC	RPD	Qualifier
GRO C6-C10*	<10.0	10.0	08/09/2021	ND	186	93.2	200	5.42	
DRO >C10-C28*	<10.0	10.0	08/09/2021	ND	205	103	200	0.826	
EXT DRO >C28-C36	<10.0	10.0	08/09/2021	ND					

Surrogate: 1-Chlorooctane 95.6 % 44.3-133

Surrogate: 1-Chlorooctadecane 106 % 38.9-142

Cardinal Laboratories

\*=Accredited Analyte

PLEASE NOTE: Liability and Damages. Cardinal's liability and client's exclusive remedy for any claim arising, whether based in contract or tort, shall be limited to the amount paid by client for analyses. All claims, including those for negligence and any other cause whatsoever shall be deemed waived unless made in writing and received by Cardinal within thirty (30) days after completion of the applicable service. In no event shall Cardinal be liable for incidental or consequential damages, including, without limitation, business interruptions, loss of use, or loss of profits incurred by client, its subsidiaries, affiliates or successors arising out of or related to the performance of the services hereunder by Cardinal, regardless of whether such claim is based upon any of the above stated reasons or otherwise. Results relate only to the samples identified above. This report shall not be reproduced except in full with written approval of Cardinal Laboratories.

Celey D. Keene, Lab Director/Quality Manager



PHONE (575) 393-2326 • 101 E. MARLAND • HOBBS, NM 88240

**Analytical Results For:**

BBC International, Inc.  
 Cliff Brunson  
 P.O. Box 805  
 Hobbs NM, 88241  
 Fax To: (575) 397-0397

Received:	08/05/2021	Sampling Date:	08/04/2021
Reported:	08/11/2021	Sampling Type:	Soil
Project Name:	FEDERAL 27 - 1 CTB	Sampling Condition:	Cool & Intact
Project Number:	NONE GIVEN	Sample Received By:	Jodi Henson
Project Location:	OXY - LEA COUNTY, NM		

**Sample ID: BOTTOM 17 @ 2' (H212089-17)**

BTX 8021B		mg/kg		Analyzed By: MS					
Analyte	Result	Reporting Limit	Analyzed	Method Blank	BS	% Recovery	True Value QC	RPD	Qualifier
Benzene*	<0.050	0.050	08/09/2021	ND	2.14	107	2.00	3.37	
Toluene*	<0.050	0.050	08/09/2021	ND	2.23	111	2.00	4.71	
Ethylbenzene*	<0.050	0.050	08/09/2021	ND	2.13	107	2.00	5.18	
Total Xylenes*	<0.150	0.150	08/09/2021	ND	6.36	106	6.00	4.37	
Total BTX	<0.300	0.300	08/09/2021	ND					

Surrogate: 4-Bromofluorobenzene (PID) 103 % 69.9-140

Chloride, SM4500CI-B		mg/kg		Analyzed By: GM						
Analyte	Result	Reporting Limit	Analyzed	Method Blank	BS	% Recovery	True Value QC	RPD	Qualifier	
Chloride	<16.0	16.0	08/09/2021	ND	432	108	400	0.00		

TPH 8015M		mg/kg		Analyzed By: MS					
Analyte	Result	Reporting Limit	Analyzed	Method Blank	BS	% Recovery	True Value QC	RPD	Qualifier
GRO C6-C10*	<10.0	10.0	08/09/2021	ND	186	93.2	200	5.42	
DRO >C10-C28*	<10.0	10.0	08/09/2021	ND	205	103	200	0.826	
EXT DRO >C28-C36	<10.0	10.0	08/09/2021	ND					

Surrogate: 1-Chlorooctane 96.9 % 44.3-133

Surrogate: 1-Chlorooctadecane 108 % 38.9-142

Cardinal Laboratories

\*=Accredited Analyte

PLEASE NOTE: Liability and Damages. Cardinal's liability and client's exclusive remedy for any claim arising, whether based in contract or tort, shall be limited to the amount paid by client for analyses. All claims, including those for negligence and any other cause whatsoever shall be deemed waived unless made in writing and received by Cardinal within thirty (30) days after completion of the applicable service. In no event shall Cardinal be liable for incidental or consequential damages, including, without limitation, business interruptions, loss of use, or loss of profits incurred by client, its subsidiaries, affiliates or successors arising out of or related to the performance of the services hereunder by Cardinal, regardless of whether such claim is based upon any of the above stated reasons or otherwise. Results relate only to the samples identified above. This report shall not be reproduced except in full with written approval of Cardinal Laboratories.

Celey D. Keene, Lab Director/Quality Manager



PHONE (575) 393-2326 • 101 E. MARLAND • HOBBS, NM 88240

**Analytical Results For:**

BBC International, Inc.  
 Cliff Brunson  
 P.O. Box 805  
 Hobbs NM, 88241  
 Fax To: (575) 397-0397

Received:	08/05/2021	Sampling Date:	08/04/2021
Reported:	08/11/2021	Sampling Type:	Soil
Project Name:	FEDERAL 27 - 1 CTB	Sampling Condition:	Cool & Intact
Project Number:	NONE GIVEN	Sample Received By:	Jodi Henson
Project Location:	OXY - LEA COUNTY, NM		

**Sample ID: BOTTOM 18 @ 2' (H212089-18)**

BTX 8021B		mg/kg		Analyzed By: MS					
Analyte	Result	Reporting Limit	Analyzed	Method Blank	BS	% Recovery	True Value QC	RPD	Qualifier
Benzene*	<0.050	0.050	08/09/2021	ND	2.14	107	2.00	3.37	
Toluene*	<0.050	0.050	08/09/2021	ND	2.23	111	2.00	4.71	
Ethylbenzene*	<0.050	0.050	08/09/2021	ND	2.13	107	2.00	5.18	
Total Xylenes*	<0.150	0.150	08/09/2021	ND	6.36	106	6.00	4.37	
Total BTX	<0.300	0.300	08/09/2021	ND					

Surrogate: 4-Bromofluorobenzene (PID) 106 % 69.9-140

Chloride, SM4500CI-B		mg/kg		Analyzed By: GM						
Analyte	Result	Reporting Limit	Analyzed	Method Blank	BS	% Recovery	True Value QC	RPD	Qualifier	
Chloride	<16.0	16.0	08/09/2021	ND	432	108	400	0.00		

TPH 8015M		mg/kg		Analyzed By: MS					
Analyte	Result	Reporting Limit	Analyzed	Method Blank	BS	% Recovery	True Value QC	RPD	Qualifier
GRO C6-C10*	<10.0	10.0	08/09/2021	ND	186	93.2	200	5.42	
DRO >C10-C28*	<10.0	10.0	08/09/2021	ND	205	103	200	0.826	
EXT DRO >C28-C36	<10.0	10.0	08/09/2021	ND					

Surrogate: 1-Chlorooctane 99.7 % 44.3-133

Surrogate: 1-Chlorooctadecane 112 % 38.9-142

Cardinal Laboratories

\*=Accredited Analyte

PLEASE NOTE: Liability and Damages. Cardinal's liability and client's exclusive remedy for any claim arising, whether based in contract or tort, shall be limited to the amount paid by client for analyses. All claims, including those for negligence and any other cause whatsoever shall be deemed waived unless made in writing and received by Cardinal within thirty (30) days after completion of the applicable service. In no event shall Cardinal be liable for incidental or consequential damages, including, without limitation, business interruptions, loss of use, or loss of profits incurred by client, its subsidiaries, affiliates or successors arising out of or related to the performance of the services hereunder by Cardinal, regardless of whether such claim is based upon any of the above stated reasons or otherwise. Results relate only to the samples identified above. This report shall not be reproduced except in full with written approval of Cardinal Laboratories.

Celey D. Keene, Lab Director/Quality Manager



PHONE (575) 393-2326 • 101 E. MARLAND • HOBBS, NM 88240

**Analytical Results For:**

BBC International, Inc.  
 Cliff Brunson  
 P.O. Box 805  
 Hobbs NM, 88241  
 Fax To: (575) 397-0397

Received:	08/05/2021	Sampling Date:	08/04/2021
Reported:	08/11/2021	Sampling Type:	Soil
Project Name:	FEDERAL 27 - 1 CTB	Sampling Condition:	Cool & Intact
Project Number:	NONE GIVEN	Sample Received By:	Jodi Henson
Project Location:	OXY - LEA COUNTY, NM		

**Sample ID: BOTTOM 19 @ 2' (H212089-19)**

BTX 8021B		mg/kg		Analyzed By: MS					
Analyte	Result	Reporting Limit	Analyzed	Method Blank	BS	% Recovery	True Value QC	RPD	Qualifier
Benzene*	<0.050	0.050	08/09/2021	ND	2.14	107	2.00	3.37	
Toluene*	<0.050	0.050	08/09/2021	ND	2.23	111	2.00	4.71	
Ethylbenzene*	<0.050	0.050	08/09/2021	ND	2.13	107	2.00	5.18	
Total Xylenes*	<0.150	0.150	08/09/2021	ND	6.36	106	6.00	4.37	
Total BTX	<0.300	0.300	08/09/2021	ND					

Surrogate: 4-Bromofluorobenzene (PID) 106 % 69.9-140

Chloride, SM4500CI-B		mg/kg		Analyzed By: GM						
Analyte	Result	Reporting Limit	Analyzed	Method Blank	BS	% Recovery	True Value QC	RPD	Qualifier	
Chloride	<16.0	16.0	08/09/2021	ND	432	108	400	0.00		

TPH 8015M		mg/kg		Analyzed By: MS					
Analyte	Result	Reporting Limit	Analyzed	Method Blank	BS	% Recovery	True Value QC	RPD	Qualifier
GRO C6-C10*	<10.0	10.0	08/09/2021	ND	186	93.2	200	5.42	
DRO >C10-C28*	<10.0	10.0	08/09/2021	ND	205	103	200	0.826	
EXT DRO >C28-C36	<10.0	10.0	08/09/2021	ND					

Surrogate: 1-Chlorooctane 113 % 44.3-133

Surrogate: 1-Chlorooctadecane 127 % 38.9-142

Cardinal Laboratories

\*=Accredited Analyte

PLEASE NOTE: Liability and Damages. Cardinal's liability and client's exclusive remedy for any claim arising, whether based in contract or tort, shall be limited to the amount paid by client for analyses. All claims, including those for negligence and any other cause whatsoever shall be deemed waived unless made in writing and received by Cardinal within thirty (30) days after completion of the applicable service. In no event shall Cardinal be liable for incidental or consequential damages, including, without limitation, business interruptions, loss of use, or loss of profits incurred by client, its subsidiaries, affiliates or successors arising out of or related to the performance of the services hereunder by Cardinal, regardless of whether such claim is based upon any of the above stated reasons or otherwise. Results relate only to the samples identified above. This report shall not be reproduced except in full with written approval of Cardinal Laboratories.

Celey D. Keene, Lab Director/Quality Manager





PHONE (575) 393-2326 • 101 E. MARLAND • HOBBS, NM 88240

**Analytical Results For:**

BBC International, Inc.  
 Cliff Brunson  
 P.O. Box 805  
 Hobbs NM, 88241  
 Fax To: (575) 397-0397

Received:	08/05/2021	Sampling Date:	08/04/2021
Reported:	08/11/2021	Sampling Type:	Soil
Project Name:	FEDERAL 27 - 1 CTB	Sampling Condition:	Cool & Intact
Project Number:	NONE GIVEN	Sample Received By:	Jodi Henson
Project Location:	OXY - LEA COUNTY, NM		

**Sample ID: BOTTOM 20 @ 2' (H212089-20)**

BTX 8021B		mg/kg		Analyzed By: MS					
Analyte	Result	Reporting Limit	Analyzed	Method Blank	BS	% Recovery	True Value QC	RPD	Qualifier
Benzene*	<0.050	0.050	08/09/2021	ND	2.14	107	2.00	3.37	
Toluene*	<0.050	0.050	08/09/2021	ND	2.23	111	2.00	4.71	
Ethylbenzene*	<0.050	0.050	08/09/2021	ND	2.13	107	2.00	5.18	
Total Xylenes*	<0.150	0.150	08/09/2021	ND	6.36	106	6.00	4.37	
Total BTX	<0.300	0.300	08/09/2021	ND					

Surrogate: 4-Bromofluorobenzene (PID) 106 % 69.9-140

Chloride, SM4500CI-B		mg/kg		Analyzed By: GM						
Analyte	Result	Reporting Limit	Analyzed	Method Blank	BS	% Recovery	True Value QC	RPD	Qualifier	
Chloride	<16.0	16.0	08/09/2021	ND	432	108	400	0.00		

TPH 8015M		mg/kg		Analyzed By: MS					
Analyte	Result	Reporting Limit	Analyzed	Method Blank	BS	% Recovery	True Value QC	RPD	Qualifier
GRO C6-C10*	<10.0	10.0	08/09/2021	ND	186	93.2	200	5.42	
DRO >C10-C28*	<10.0	10.0	08/09/2021	ND	205	103	200	0.826	
EXT DRO >C28-C36	<10.0	10.0	08/09/2021	ND					

Surrogate: 1-Chlorooctane 102 % 44.3-133

Surrogate: 1-Chlorooctadecane 112 % 38.9-142

Cardinal Laboratories

\*=Accredited Analyte

PLEASE NOTE: Liability and Damages. Cardinal's liability and client's exclusive remedy for any claim arising, whether based in contract or tort, shall be limited to the amount paid by client for analyses. All claims, including those for negligence and any other cause whatsoever shall be deemed waived unless made in writing and received by Cardinal within thirty (30) days after completion of the applicable service. In no event shall Cardinal be liable for incidental or consequential damages, including, without limitation, business interruptions, loss of use, or loss of profits incurred by client, its subsidiaries, affiliates or successors arising out of or related to the performance of the services hereunder by Cardinal, regardless of whether such claim is based upon any of the above stated reasons or otherwise. Results relate only to the samples identified above. This report shall not be reproduced except in full with written approval of Cardinal Laboratories.

Celey D. Keene, Lab Director/Quality Manager



PHONE (575) 393-2326 • 101 E. MARLAND • HOBBS, NM 88240

**Analytical Results For:**

BBC International, Inc.  
 Cliff Brunson  
 P.O. Box 805  
 Hobbs NM, 88241  
 Fax To: (575) 397-0397

Received:	08/05/2021	Sampling Date:	08/04/2021
Reported:	08/11/2021	Sampling Type:	Soil
Project Name:	FEDERAL 27 - 1 CTB	Sampling Condition:	Cool & Intact
Project Number:	NONE GIVEN	Sample Received By:	Jodi Henson
Project Location:	OXY - LEA COUNTY, NM		

**Sample ID: BOTTOM 21 @ 2' (H212089-21)**

BTX 8021B		mg/kg		Analyzed By: MS						
Analyte	Result	Reporting Limit	Analyzed	Method Blank	BS	% Recovery	True Value QC	RPD	Qualifier	
Benzene*	<0.050	0.050	08/09/2021	ND	2.14	107	2.00	3.37		
Toluene*	<0.050	0.050	08/09/2021	ND	2.23	111	2.00	4.71		
Ethylbenzene*	<0.050	0.050	08/09/2021	ND	2.13	107	2.00	5.18		
Total Xylenes*	<0.150	0.150	08/09/2021	ND	6.36	106	6.00	4.37		
Total BTX	<0.300	0.300	08/09/2021	ND						

Surrogate: 4-Bromofluorobenzene (PID) 104 % 69.9-140

Chloride, SM4500Cl-B		mg/kg		Analyzed By: GM						
Analyte	Result	Reporting Limit	Analyzed	Method Blank	BS	% Recovery	True Value QC	RPD	Qualifier	
Chloride	<16.0	16.0	08/09/2021	ND	432	108	400	0.00		

TPH 8015M		mg/kg		Analyzed By: MS					
Analyte	Result	Reporting Limit	Analyzed	Method Blank	BS	% Recovery	True Value QC	RPD	Qualifier
GRO C6-C10*	<10.0	10.0	08/09/2021	ND	210	105	200	1.27	
DRO >C10-C28*	<10.0	10.0	08/09/2021	ND	202	101	200	2.05	
EXT DRO >C28-C36	<10.0	10.0	08/09/2021	ND					

Surrogate: 1-Chlorooctane 84.4 % 44.3-133

Surrogate: 1-Chlorooctadecane 83.0 % 38.9-142

Cardinal Laboratories

\*=Accredited Analyte

PLEASE NOTE: Liability and Damages. Cardinal's liability and client's exclusive remedy for any claim arising, whether based in contract or tort, shall be limited to the amount paid by client for analyses. All claims, including those for negligence and any other cause whatsoever shall be deemed waived unless made in writing and received by Cardinal within thirty (30) days after completion of the applicable service. In no event shall Cardinal be liable for incidental or consequential damages, including, without limitation, business interruptions, loss of use, or loss of profits incurred by client, its subsidiaries, affiliates or successors arising out of or related to the performance of the services hereunder by Cardinal, regardless of whether such claim is based upon any of the above stated reasons or otherwise. Results relate only to the samples identified above. This report shall not be reproduced except in full with written approval of Cardinal Laboratories.

Celey D. Keene, Lab Director/Quality Manager



PHONE (575) 393-2326 • 101 E. MARLAND • HOBBS, NM 88240

**Analytical Results For:**

BBC International, Inc.  
 Cliff Brunson  
 P.O. Box 805  
 Hobbs NM, 88241  
 Fax To: (575) 397-0397

Received:	08/05/2021	Sampling Date:	08/04/2021
Reported:	08/11/2021	Sampling Type:	Soil
Project Name:	FEDERAL 27 - 1 CTB	Sampling Condition:	Cool & Intact
Project Number:	NONE GIVEN	Sample Received By:	Jodi Henson
Project Location:	OXY - LEA COUNTY, NM		

**Sample ID: BOTTOM 22 @ 2' (H212089-22)**

BTX 8021B		mg/kg		Analyzed By: MS						
Analyte	Result	Reporting Limit	Analyzed	Method Blank	BS	% Recovery	True Value QC	RPD	Qualifier	
Benzene*	<0.050	0.050	08/09/2021	ND	2.14	107	2.00	3.37		
Toluene*	<0.050	0.050	08/09/2021	ND	2.23	111	2.00	4.71		
Ethylbenzene*	<0.050	0.050	08/09/2021	ND	2.13	107	2.00	5.18		
Total Xylenes*	<0.150	0.150	08/09/2021	ND	6.36	106	6.00	4.37		
Total BTX	<0.300	0.300	08/09/2021	ND						

Surrogate: 4-Bromofluorobenzene (PID) 105 % 69.9-140

Chloride, SM4500CI-B		mg/kg		Analyzed By: GM						
Analyte	Result	Reporting Limit	Analyzed	Method Blank	BS	% Recovery	True Value QC	RPD	Qualifier	
Chloride	<16.0	16.0	08/09/2021	ND	432	108	400	0.00		

TPH 8015M		mg/kg		Analyzed By: MS					
Analyte	Result	Reporting Limit	Analyzed	Method Blank	BS	% Recovery	True Value QC	RPD	Qualifier
GRO C6-C10*	<10.0	10.0	08/09/2021	ND	210	105	200	1.27	
DRO >C10-C28*	<10.0	10.0	08/09/2021	ND	202	101	200	2.05	
EXT DRO >C28-C36	<10.0	10.0	08/09/2021	ND					

Surrogate: 1-Chlorooctane 85.1 % 44.3-133

Surrogate: 1-Chlorooctadecane 82.3 % 38.9-142

Cardinal Laboratories

\*=Accredited Analyte

PLEASE NOTE: Liability and Damages. Cardinal's liability and client's exclusive remedy for any claim arising, whether based in contract or tort, shall be limited to the amount paid by client for analyses. All claims, including those for negligence and any other cause whatsoever shall be deemed waived unless made in writing and received by Cardinal within thirty (30) days after completion of the applicable service. In no event shall Cardinal be liable for incidental or consequential damages, including, without limitation, business interruptions, loss of use, or loss of profits incurred by client, its subsidiaries, affiliates or successors arising out of or related to the performance of the services hereunder by Cardinal, regardless of whether such claim is based upon any of the above stated reasons or otherwise. Results relate only to the samples identified above. This report shall not be reproduced except in full with written approval of Cardinal Laboratories.

Celey D. Keene, Lab Director/Quality Manager



PHONE (575) 393-2326 • 101 E. MARLAND • HOBBS, NM 88240

**Analytical Results For:**

BBC International, Inc.  
 Cliff Brunson  
 P.O. Box 805  
 Hobbs NM, 88241  
 Fax To: (575) 397-0397

Received:	08/05/2021	Sampling Date:	08/04/2021
Reported:	08/11/2021	Sampling Type:	Soil
Project Name:	FEDERAL 27 - 1 CTB	Sampling Condition:	Cool & Intact
Project Number:	NONE GIVEN	Sample Received By:	Jodi Henson
Project Location:	OXY - LEA COUNTY, NM		

**Sample ID: BOTTOM 23 @ 2' (H212089-23)**

BTX 8021B		mg/kg		Analyzed By: MS						
Analyte	Result	Reporting Limit	Analyzed	Method Blank	BS	% Recovery	True Value QC	RPD	Qualifier	
Benzene*	<0.050	0.050	08/09/2021	ND	2.14	107	2.00	3.37		
Toluene*	<0.050	0.050	08/09/2021	ND	2.23	111	2.00	4.71		
Ethylbenzene*	<0.050	0.050	08/09/2021	ND	2.13	107	2.00	5.18		
Total Xylenes*	<0.150	0.150	08/09/2021	ND	6.36	106	6.00	4.37		
Total BTX	<0.300	0.300	08/09/2021	ND						

Surrogate: 4-Bromofluorobenzene (PID) 109 % 69.9-140

Chloride, SM4500CI-B		mg/kg		Analyzed By: GM						
Analyte	Result	Reporting Limit	Analyzed	Method Blank	BS	% Recovery	True Value QC	RPD	Qualifier	
Chloride	<16.0	16.0	08/09/2021	ND	432	108	400	0.00		

TPH 8015M		mg/kg		Analyzed By: MS					
Analyte	Result	Reporting Limit	Analyzed	Method Blank	BS	% Recovery	True Value QC	RPD	Qualifier
GRO C6-C10*	<10.0	10.0	08/09/2021	ND	210	105	200	1.27	
DRO >C10-C28*	<10.0	10.0	08/09/2021	ND	202	101	200	2.05	
EXT DRO >C28-C36	<10.0	10.0	08/09/2021	ND					

Surrogate: 1-Chlorooctane 85.4 % 44.3-133

Surrogate: 1-Chlorooctadecane 84.2 % 38.9-142

Cardinal Laboratories

\*=Accredited Analyte

PLEASE NOTE: Liability and Damages. Cardinal's liability and client's exclusive remedy for any claim arising, whether based in contract or tort, shall be limited to the amount paid by client for analyses. All claims, including those for negligence and any other cause whatsoever shall be deemed waived unless made in writing and received by Cardinal within thirty (30) days after completion of the applicable service. In no event shall Cardinal be liable for incidental or consequential damages, including, without limitation, business interruptions, loss of use, or loss of profits incurred by client, its subsidiaries, affiliates or successors arising out of or related to the performance of the services hereunder by Cardinal, regardless of whether such claim is based upon any of the above stated reasons or otherwise. Results relate only to the samples identified above. This report shall not be reproduced except in full with written approval of Cardinal Laboratories.

Celey D. Keene, Lab Director/Quality Manager





PHONE (575) 393-2326 • 101 E. MARLAND • HOBBS, NM 88240

**Analytical Results For:**

BBC International, Inc.  
 Cliff Brunson  
 P.O. Box 805  
 Hobbs NM, 88241  
 Fax To: (575) 397-0397

Received:	08/05/2021	Sampling Date:	08/04/2021
Reported:	08/11/2021	Sampling Type:	Soil
Project Name:	FEDERAL 27 - 1 CTB	Sampling Condition:	Cool & Intact
Project Number:	NONE GIVEN	Sample Received By:	Jodi Henson
Project Location:	OXY - LEA COUNTY, NM		

**Sample ID: BOTTOM 24 @ 2' (H212089-24)**

BTX 8021B		mg/kg		Analyzed By: MS					
Analyte	Result	Reporting Limit	Analyzed	Method Blank	BS	% Recovery	True Value QC	RPD	Qualifier
Benzene*	<0.050	0.050	08/09/2021	ND	2.14	107	2.00	3.37	
Toluene*	<0.050	0.050	08/09/2021	ND	2.23	111	2.00	4.71	
Ethylbenzene*	<0.050	0.050	08/09/2021	ND	2.13	107	2.00	5.18	
Total Xylenes*	<0.150	0.150	08/09/2021	ND	6.36	106	6.00	4.37	
Total BTX	<0.300	0.300	08/09/2021	ND					

Surrogate: 4-Bromofluorobenzene (PID) 106 % 69.9-140

Chloride, SM4500CI-B		mg/kg		Analyzed By: GM						
Analyte	Result	Reporting Limit	Analyzed	Method Blank	BS	% Recovery	True Value QC	RPD	Qualifier	
Chloride	<16.0	16.0	08/09/2021	ND	432	108	400	0.00		

TPH 8015M		mg/kg		Analyzed By: MS					
Analyte	Result	Reporting Limit	Analyzed	Method Blank	BS	% Recovery	True Value QC	RPD	Qualifier
GRO C6-C10*	<10.0	10.0	08/09/2021	ND	210	105	200	1.27	
DRO >C10-C28*	<10.0	10.0	08/09/2021	ND	202	101	200	2.05	
EXT DRO >C28-C36	<10.0	10.0	08/09/2021	ND					

Surrogate: 1-Chlorooctane 82.0 % 44.3-133

Surrogate: 1-Chlorooctadecane 80.3 % 38.9-142

Cardinal Laboratories

\*=Accredited Analyte

PLEASE NOTE: Liability and Damages. Cardinal's liability and client's exclusive remedy for any claim arising, whether based in contract or tort, shall be limited to the amount paid by client for analyses. All claims, including those for negligence and any other cause whatsoever shall be deemed waived unless made in writing and received by Cardinal within thirty (30) days after completion of the applicable service. In no event shall Cardinal be liable for incidental or consequential damages, including, without limitation, business interruptions, loss of use, or loss of profits incurred by client, its subsidiaries, affiliates or successors arising out of or related to the performance of the services hereunder by Cardinal, regardless of whether such claim is based upon any of the above stated reasons or otherwise. Results relate only to the samples identified above. This report shall not be reproduced except in full with written approval of Cardinal Laboratories.

Celey D. Keene, Lab Director/Quality Manager



PHONE (575) 393-2326 • 101 E. MARLAND • HOBBS, NM 88240

**Analytical Results For:**

BBC International, Inc.  
 Cliff Brunson  
 P.O. Box 805  
 Hobbs NM, 88241  
 Fax To: (575) 397-0397

Received:	08/05/2021	Sampling Date:	08/04/2021
Reported:	08/11/2021	Sampling Type:	Soil
Project Name:	FEDERAL 27 - 1 CTB	Sampling Condition:	Cool & Intact
Project Number:	NONE GIVEN	Sample Received By:	Jodi Henson
Project Location:	OXY - LEA COUNTY, NM		

**Sample ID: BOTTOM 25 @ 2' (H212089-25)**

BTX 8021B		mg/kg		Analyzed By: MS						
Analyte	Result	Reporting Limit	Analyzed	Method Blank	BS	% Recovery	True Value QC	RPD	Qualifier	
Benzene*	<0.050	0.050	08/09/2021	ND	2.14	107	2.00	3.37		
Toluene*	<0.050	0.050	08/09/2021	ND	2.23	111	2.00	4.71		
Ethylbenzene*	<0.050	0.050	08/09/2021	ND	2.13	107	2.00	5.18		
Total Xylenes*	<0.150	0.150	08/09/2021	ND	6.36	106	6.00	4.37		
Total BTX	<0.300	0.300	08/09/2021	ND						

Surrogate: 4-Bromofluorobenzene (PID) 106 % 69.9-140

Chloride, SM4500CI-B		mg/kg		Analyzed By: GM						
Analyte	Result	Reporting Limit	Analyzed	Method Blank	BS	% Recovery	True Value QC	RPD	Qualifier	
Chloride	<16.0	16.0	08/09/2021	ND	432	108	400	0.00		

TPH 8015M		mg/kg		Analyzed By: MS					
Analyte	Result	Reporting Limit	Analyzed	Method Blank	BS	% Recovery	True Value QC	RPD	Qualifier
GRO C6-C10*	<10.0	10.0	08/09/2021	ND	210	105	200	1.27	
DRO >C10-C28*	<10.0	10.0	08/09/2021	ND	202	101	200	2.05	
EXT DRO >C28-C36	<10.0	10.0	08/09/2021	ND					

Surrogate: 1-Chlorooctane 89.4 % 44.3-133

Surrogate: 1-Chlorooctadecane 85.7 % 38.9-142

Cardinal Laboratories

\*=Accredited Analyte

PLEASE NOTE: Liability and Damages. Cardinal's liability and client's exclusive remedy for any claim arising, whether based in contract or tort, shall be limited to the amount paid by client for analyses. All claims, including those for negligence and any other cause whatsoever shall be deemed waived unless made in writing and received by Cardinal within thirty (30) days after completion of the applicable service. In no event shall Cardinal be liable for incidental or consequential damages, including, without limitation, business interruptions, loss of use, or loss of profits incurred by client, its subsidiaries, affiliates or successors arising out of or related to the performance of the services hereunder by Cardinal, regardless of whether such claim is based upon any of the above stated reasons or otherwise. Results relate only to the samples identified above. This report shall not be reproduced except in full with written approval of Cardinal Laboratories.

Celey D. Keene, Lab Director/Quality Manager



PHONE (575) 393-2326 • 101 E. MARLAND • HOBBS, NM 88240

**Analytical Results For:**

BBC International, Inc.  
 Cliff Brunson  
 P.O. Box 805  
 Hobbs NM, 88241  
 Fax To: (575) 397-0397

Received:	08/05/2021	Sampling Date:	08/04/2021
Reported:	08/11/2021	Sampling Type:	Soil
Project Name:	FEDERAL 27 - 1 CTB	Sampling Condition:	Cool & Intact
Project Number:	NONE GIVEN	Sample Received By:	Jodi Henson
Project Location:	OXY - LEA COUNTY, NM		

**Sample ID: BOTTOM 26 @ 3' (H212089-26)**

BTX 8021B		mg/kg		Analyzed By: MS						
Analyte	Result	Reporting Limit	Analyzed	Method Blank	BS	% Recovery	True Value QC	RPD	Qualifier	
Benzene*	<0.050	0.050	08/09/2021	ND	2.14	107	2.00	3.37		
Toluene*	<0.050	0.050	08/09/2021	ND	2.23	111	2.00	4.71		
Ethylbenzene*	<0.050	0.050	08/09/2021	ND	2.13	107	2.00	5.18		
Total Xylenes*	<0.150	0.150	08/09/2021	ND	6.36	106	6.00	4.37		
Total BTX	<0.300	0.300	08/09/2021	ND						

Surrogate: 4-Bromofluorobenzene (PID) 106 % 69.9-140

Chloride, SM4500CI-B		mg/kg		Analyzed By: GM						
Analyte	Result	Reporting Limit	Analyzed	Method Blank	BS	% Recovery	True Value QC	RPD	Qualifier	
Chloride	<16.0	16.0	08/09/2021	ND	416	104	400	0.00		

TPH 8015M		mg/kg		Analyzed By: MS					
Analyte	Result	Reporting Limit	Analyzed	Method Blank	BS	% Recovery	True Value QC	RPD	Qualifier
GRO C6-C10*	<10.0	10.0	08/09/2021	ND	210	105	200	1.27	
DRO >C10-C28*	<10.0	10.0	08/09/2021	ND	202	101	200	2.05	
EXT DRO >C28-C36	<10.0	10.0	08/09/2021	ND					

Surrogate: 1-Chlorooctane 76.6 % 44.3-133

Surrogate: 1-Chlorooctadecane 73.4 % 38.9-142

Cardinal Laboratories

\*=Accredited Analyte

PLEASE NOTE: Liability and Damages. Cardinal's liability and client's exclusive remedy for any claim arising, whether based in contract or tort, shall be limited to the amount paid by client for analyses. All claims, including those for negligence and any other cause whatsoever shall be deemed waived unless made in writing and received by Cardinal within thirty (30) days after completion of the applicable service. In no event shall Cardinal be liable for incidental or consequential damages, including, without limitation, business interruptions, loss of use, or loss of profits incurred by client, its subsidiaries, affiliates or successors arising out of or related to the performance of the services hereunder by Cardinal, regardless of whether such claim is based upon any of the above stated reasons or otherwise. Results relate only to the samples identified above. This report shall not be reproduced except in full with written approval of Cardinal Laboratories.

Celey D. Keene, Lab Director/Quality Manager



PHONE (575) 393-2326 ° 101 E. MARLAND ° HOBBS, NM 88240

**Analytical Results For:**

BBC International, Inc.  
 Cliff Brunson  
 P.O. Box 805  
 Hobbs NM, 88241  
 Fax To: (575) 397-0397

Received:	08/05/2021	Sampling Date:	08/04/2021
Reported:	08/11/2021	Sampling Type:	Soil
Project Name:	FEDERAL 27 - 1 CTB	Sampling Condition:	Cool & Intact
Project Number:	NONE GIVEN	Sample Received By:	Jodi Henson
Project Location:	OXY - LEA COUNTY, NM		

**Sample ID: BOTTOM 27 @ 3' (H212089-27)**

BTX 8021B		mg/kg		Analyzed By: MS						
Analyte	Result	Reporting Limit	Analyzed	Method Blank	BS	% Recovery	True Value QC	RPD	Qualifier	
Benzene*	<0.050	0.050	08/09/2021	ND	2.14	107	2.00	3.37		
Toluene*	<0.050	0.050	08/09/2021	ND	2.23	111	2.00	4.71		
Ethylbenzene*	<0.050	0.050	08/09/2021	ND	2.13	107	2.00	5.18		
Total Xylenes*	<0.150	0.150	08/09/2021	ND	6.36	106	6.00	4.37		
Total BTX	<0.300	0.300	08/09/2021	ND						

Surrogate: 4-Bromofluorobenzene (PID) 107 % 69.9-140

Chloride, SM4500CI-B		mg/kg		Analyzed By: GM						
Analyte	Result	Reporting Limit	Analyzed	Method Blank	BS	% Recovery	True Value QC	RPD	Qualifier	
Chloride	<16.0	16.0	08/09/2021	ND	416	104	400	0.00		

TPH 8015M		mg/kg		Analyzed By: MS					
Analyte	Result	Reporting Limit	Analyzed	Method Blank	BS	% Recovery	True Value QC	RPD	Qualifier
GRO C6-C10*	<10.0	10.0	08/09/2021	ND	210	105	200	1.27	
DRO >C10-C28*	<10.0	10.0	08/09/2021	ND	202	101	200	2.05	
EXT DRO >C28-C36	<10.0	10.0	08/09/2021	ND					

Surrogate: 1-Chlorooctane 83.3 % 44.3-133

Surrogate: 1-Chlorooctadecane 81.0 % 38.9-142

Cardinal Laboratories

\*=Accredited Analyte

PLEASE NOTE: Liability and Damages. Cardinal's liability and client's exclusive remedy for any claim arising, whether based in contract or tort, shall be limited to the amount paid by client for analyses. All claims, including those for negligence and any other cause whatsoever shall be deemed waived unless made in writing and received by Cardinal within thirty (30) days after completion of the applicable service. In no event shall Cardinal be liable for incidental or consequential damages, including, without limitation, business interruptions, loss of use, or loss of profits incurred by client, its subsidiaries, affiliates or successors arising out of or related to the performance of the services hereunder by Cardinal, regardless of whether such claim is based upon any of the above stated reasons or otherwise. Results relate only to the samples identified above. This report shall not be reproduced except in full with written approval of Cardinal Laboratories.

Celey D. Keene, Lab Director/Quality Manager





PHONE (575) 393-2326 • 101 E. MARLAND • HOBBS, NM 88240

**Analytical Results For:**

BBC International, Inc.  
 Cliff Brunson  
 P.O. Box 805  
 Hobbs NM, 88241  
 Fax To: (575) 397-0397

Received:	08/05/2021	Sampling Date:	08/04/2021
Reported:	08/11/2021	Sampling Type:	Soil
Project Name:	FEDERAL 27 - 1 CTB	Sampling Condition:	Cool & Intact
Project Number:	NONE GIVEN	Sample Received By:	Jodi Henson
Project Location:	OXY - LEA COUNTY, NM		

**Sample ID: BOTTOM 28 @ 3' (H212089-28)**

BTX 8021B		mg/kg		Analyzed By: MS						
Analyte	Result	Reporting Limit	Analyzed	Method Blank	BS	% Recovery	True Value QC	RPD	Qualifier	
Benzene*	<0.050	0.050	08/09/2021	ND	2.14	107	2.00	3.37		
Toluene*	<0.050	0.050	08/09/2021	ND	2.23	111	2.00	4.71		
Ethylbenzene*	<0.050	0.050	08/09/2021	ND	2.13	107	2.00	5.18		
Total Xylenes*	<0.150	0.150	08/09/2021	ND	6.36	106	6.00	4.37		
Total BTX	<0.300	0.300	08/09/2021	ND						

Surrogate: 4-Bromofluorobenzene (PID) 103 % 69.9-140

Chloride, SM4500CI-B		mg/kg		Analyzed By: GM						
Analyte	Result	Reporting Limit	Analyzed	Method Blank	BS	% Recovery	True Value QC	RPD	Qualifier	
Chloride	<16.0	16.0	08/09/2021	ND	416	104	400	0.00		

TPH 8015M		mg/kg		Analyzed By: MS					
Analyte	Result	Reporting Limit	Analyzed	Method Blank	BS	% Recovery	True Value QC	RPD	Qualifier
GRO C6-C10*	<10.0	10.0	08/09/2021	ND	210	105	200	1.27	
DRO >C10-C28*	<10.0	10.0	08/09/2021	ND	202	101	200	2.05	
EXT DRO >C28-C36	<10.0	10.0	08/09/2021	ND					

Surrogate: 1-Chlorooctane 85.4 % 44.3-133

Surrogate: 1-Chlorooctadecane 83.0 % 38.9-142

Cardinal Laboratories

\*=Accredited Analyte

PLEASE NOTE: Liability and Damages. Cardinal's liability and client's exclusive remedy for any claim arising, whether based in contract or tort, shall be limited to the amount paid by client for analyses. All claims, including those for negligence and any other cause whatsoever shall be deemed waived unless made in writing and received by Cardinal within thirty (30) days after completion of the applicable service. In no event shall Cardinal be liable for incidental or consequential damages, including, without limitation, business interruptions, loss of use, or loss of profits incurred by client, its subsidiaries, affiliates or successors arising out of or related to the performance of the services hereunder by Cardinal, regardless of whether such claim is based upon any of the above stated reasons or otherwise. Results relate only to the samples identified above. This report shall not be reproduced except in full with written approval of Cardinal Laboratories.

Celey D. Keene, Lab Director/Quality Manager



PHONE (575) 393-2326 • 101 E. MARLAND • HOBBS, NM 88240

**Analytical Results For:**

BBC International, Inc.  
 Cliff Brunson  
 P.O. Box 805  
 Hobbs NM, 88241  
 Fax To: (575) 397-0397

Received:	08/05/2021	Sampling Date:	08/04/2021
Reported:	08/11/2021	Sampling Type:	Soil
Project Name:	FEDERAL 27 - 1 CTB	Sampling Condition:	Cool & Intact
Project Number:	NONE GIVEN	Sample Received By:	Jodi Henson
Project Location:	OXY - LEA COUNTY, NM		

**Sample ID: BOTTOM 29 @ 3' (H212089-29)**

BTX 8021B		mg/kg		Analyzed By: MS						
Analyte	Result	Reporting Limit	Analyzed	Method Blank	BS	% Recovery	True Value QC	RPD	Qualifier	
Benzene*	<0.050	0.050	08/09/2021	ND	2.10	105	2.00	7.76		
Toluene*	<0.050	0.050	08/09/2021	ND	2.24	112	2.00	8.77		
Ethylbenzene*	<0.050	0.050	08/09/2021	ND	2.18	109	2.00	8.23		
Total Xylenes*	<0.150	0.150	08/09/2021	ND	6.51	108	6.00	8.25		
Total BTX	<0.300	0.300	08/09/2021	ND						

Surrogate: 4-Bromofluorobenzene (PID) 103 % 69.9-140

Chloride, SM4500CI-B		mg/kg		Analyzed By: GM						
Analyte	Result	Reporting Limit	Analyzed	Method Blank	BS	% Recovery	True Value QC	RPD	Qualifier	
Chloride	<16.0	16.0	08/09/2021	ND	416	104	400	0.00		

TPH 8015M		mg/kg		Analyzed By: MS					
Analyte	Result	Reporting Limit	Analyzed	Method Blank	BS	% Recovery	True Value QC	RPD	Qualifier
GRO C6-C10*	<10.0	10.0	08/09/2021	ND	210	105	200	1.27	
DRO >C10-C28*	<10.0	10.0	08/09/2021	ND	202	101	200	2.05	
EXT DRO >C28-C36	<10.0	10.0	08/09/2021	ND					

Surrogate: 1-Chlorooctane 85.3 % 44.3-133

Surrogate: 1-Chlorooctadecane 80.8 % 38.9-142

Cardinal Laboratories

\*=Accredited Analyte

PLEASE NOTE: Liability and Damages. Cardinal's liability and client's exclusive remedy for any claim arising, whether based in contract or tort, shall be limited to the amount paid by client for analyses. All claims, including those for negligence and any other cause whatsoever shall be deemed waived unless made in writing and received by Cardinal within thirty (30) days after completion of the applicable service. In no event shall Cardinal be liable for incidental or consequential damages, including, without limitation, business interruptions, loss of use, or loss of profits incurred by client, its subsidiaries, affiliates or successors arising out of or related to the performance of the services hereunder by Cardinal, regardless of whether such claim is based upon any of the above stated reasons or otherwise. Results relate only to the samples identified above. This report shall not be reproduced except in full with written approval of Cardinal Laboratories.

Celey D. Keene, Lab Director/Quality Manager



PHONE (575) 393-2326 • 101 E. MARLAND • HOBBS, NM 88240

**Analytical Results For:**

BBC International, Inc.  
 Cliff Brunson  
 P.O. Box 805  
 Hobbs NM, 88241  
 Fax To: (575) 397-0397

Received:	08/05/2021	Sampling Date:	08/04/2021
Reported:	08/11/2021	Sampling Type:	Soil
Project Name:	FEDERAL 27 - 1 CTB	Sampling Condition:	Cool & Intact
Project Number:	NONE GIVEN	Sample Received By:	Jodi Henson
Project Location:	OXY - LEA COUNTY, NM		

**Sample ID: BOTTOM 30 @ 3' (H212089-30)**

BTEx 8021B		mg/kg		Analyzed By: MS						
Analyte	Result	Reporting Limit	Analyzed	Method Blank	BS	% Recovery	True Value QC	RPD	Qualifier	
Benzene*	<0.050	0.050	08/09/2021	ND	2.10	105	2.00	7.76		
Toluene*	<0.050	0.050	08/09/2021	ND	2.24	112	2.00	8.77		
Ethylbenzene*	<0.050	0.050	08/09/2021	ND	2.18	109	2.00	8.23		
Total Xylenes*	<0.150	0.150	08/09/2021	ND	6.51	108	6.00	8.25		
Total BTEx	<0.300	0.300	08/09/2021	ND						

Surrogate: 4-Bromofluorobenzene (PID) 104 % 69.9-140

Chloride, SM4500CI-B		mg/kg		Analyzed By: GM						
Analyte	Result	Reporting Limit	Analyzed	Method Blank	BS	% Recovery	True Value QC	RPD	Qualifier	
Chloride	<16.0	16.0	08/09/2021	ND	416	104	400	0.00		

TPH 8015M		mg/kg		Analyzed By: MS					
Analyte	Result	Reporting Limit	Analyzed	Method Blank	BS	% Recovery	True Value QC	RPD	Qualifier
GRO C6-C10*	<10.0	10.0	08/09/2021	ND	210	105	200	1.27	
DRO >C10-C28*	<10.0	10.0	08/09/2021	ND	202	101	200	2.05	
EXT DRO >C28-C36	<10.0	10.0	08/09/2021	ND					

Surrogate: 1-Chlorooctane 76.2 % 44.3-133

Surrogate: 1-Chlorooctadecane 76.0 % 38.9-142

Cardinal Laboratories

\*=Accredited Analyte

PLEASE NOTE: Liability and Damages. Cardinal's liability and client's exclusive remedy for any claim arising, whether based in contract or tort, shall be limited to the amount paid by client for analyses. All claims, including those for negligence and any other cause whatsoever shall be deemed waived unless made in writing and received by Cardinal within thirty (30) days after completion of the applicable service. In no event shall Cardinal be liable for incidental or consequential damages, including, without limitation, business interruptions, loss of use, or loss of profits incurred by client, its subsidiaries, affiliates or successors arising out of or related to the performance of the services hereunder by Cardinal, regardless of whether such claim is based upon any of the above stated reasons or otherwise. Results relate only to the samples identified above. This report shall not be reproduced except in full with written approval of Cardinal Laboratories.

Celey D. Keene, Lab Director/Quality Manager



PHONE (575) 393-2326 • 101 E. MARLAND • HOBBS, NM 88240

**Analytical Results For:**

BBC International, Inc.  
 Cliff Brunson  
 P.O. Box 805  
 Hobbs NM, 88241  
 Fax To: (575) 397-0397

Received:	08/05/2021	Sampling Date:	08/04/2021
Reported:	08/11/2021	Sampling Type:	Soil
Project Name:	FEDERAL 27 - 1 CTB	Sampling Condition:	Cool & Intact
Project Number:	NONE GIVEN	Sample Received By:	Jodi Henson
Project Location:	OXY - LEA COUNTY, NM		

**Sample ID: BOTTOM 31 @ 3' (H212089-31)**

BTEx 8021B		mg/kg		Analyzed By: MS						
Analyte	Result	Reporting Limit	Analyzed	Method Blank	BS	% Recovery	True Value QC	RPD	Qualifier	
Benzene*	<0.050	0.050	08/09/2021	ND	2.10	105	2.00	7.76		
Toluene*	<0.050	0.050	08/09/2021	ND	2.24	112	2.00	8.77		
Ethylbenzene*	<0.050	0.050	08/09/2021	ND	2.18	109	2.00	8.23		
Total Xylenes*	<0.150	0.150	08/09/2021	ND	6.51	108	6.00	8.25		
Total BTEx	<0.300	0.300	08/09/2021	ND						

Surrogate: 4-Bromofluorobenzene (PID) 100 % 69.9-140

Chloride, SM4500CI-B		mg/kg		Analyzed By: GM						
Analyte	Result	Reporting Limit	Analyzed	Method Blank	BS	% Recovery	True Value QC	RPD	Qualifier	
Chloride	<16.0	16.0	08/09/2021	ND	416	104	400	0.00		

TPH 8015M		mg/kg		Analyzed By: MS					
Analyte	Result	Reporting Limit	Analyzed	Method Blank	BS	% Recovery	True Value QC	RPD	Qualifier
GRO C6-C10*	<10.0	10.0	08/09/2021	ND	210	105	200	1.27	
DRO >C10-C28*	<10.0	10.0	08/09/2021	ND	202	101	200	2.05	
EXT DRO >C28-C36	<10.0	10.0	08/09/2021	ND					

Surrogate: 1-Chlorooctane 81.4 % 44.3-133

Surrogate: 1-Chlorooctadecane 81.0 % 38.9-142

Cardinal Laboratories

\*=Accredited Analyte

PLEASE NOTE: Liability and Damages. Cardinal's liability and client's exclusive remedy for any claim arising, whether based in contract or tort, shall be limited to the amount paid by client for analyses. All claims, including those for negligence and any other cause whatsoever shall be deemed waived unless made in writing and received by Cardinal within thirty (30) days after completion of the applicable service. In no event shall Cardinal be liable for incidental or consequential damages, including, without limitation, business interruptions, loss of use, or loss of profits incurred by client, its subsidiaries, affiliates or successors arising out of or related to the performance of the services hereunder by Cardinal, regardless of whether such claim is based upon any of the above stated reasons or otherwise. Results relate only to the samples identified above. This report shall not be reproduced except in full with written approval of Cardinal Laboratories.

Celey D. Keene, Lab Director/Quality Manager



PHONE (575) 393-2326 • 101 E. MARLAND • HOBBS, NM 88240

**Analytical Results For:**

BBC International, Inc.  
 Cliff Brunson  
 P.O. Box 805  
 Hobbs NM, 88241  
 Fax To: (575) 397-0397

Received:	08/05/2021	Sampling Date:	08/04/2021
Reported:	08/11/2021	Sampling Type:	Soil
Project Name:	FEDERAL 27 - 1 CTB	Sampling Condition:	Cool & Intact
Project Number:	NONE GIVEN	Sample Received By:	Jodi Henson
Project Location:	OXY - LEA COUNTY, NM		

**Sample ID: BOTTOM 32 @ 4' (H212089-32)**

BTX 8021B		mg/kg		Analyzed By: MS						
Analyte	Result	Reporting Limit	Analyzed	Method Blank	BS	% Recovery	True Value QC	RPD	Qualifier	
Benzene*	<0.050	0.050	08/09/2021	ND	2.10	105	2.00	7.76		
Toluene*	<0.050	0.050	08/09/2021	ND	2.24	112	2.00	8.77		
Ethylbenzene*	<0.050	0.050	08/09/2021	ND	2.18	109	2.00	8.23		
Total Xylenes*	<0.150	0.150	08/09/2021	ND	6.51	108	6.00	8.25		
Total BTX	<0.300	0.300	08/09/2021	ND						

Surrogate: 4-Bromofluorobenzene (PID) 103 % 69.9-140

Chloride, SM4500CI-B		mg/kg		Analyzed By: GM						
Analyte	Result	Reporting Limit	Analyzed	Method Blank	BS	% Recovery	True Value QC	RPD	Qualifier	
Chloride	<16.0	16.0	08/09/2021	ND	416	104	400	0.00		

TPH 8015M		mg/kg		Analyzed By: MS					
Analyte	Result	Reporting Limit	Analyzed	Method Blank	BS	% Recovery	True Value QC	RPD	Qualifier
GRO C6-C10*	<10.0	10.0	08/09/2021	ND	210	105	200	1.27	
DRO >C10-C28*	<10.0	10.0	08/09/2021	ND	202	101	200	2.05	
EXT DRO >C28-C36	<10.0	10.0	08/09/2021	ND					

Surrogate: 1-Chlorooctane 82.2 % 44.3-133

Surrogate: 1-Chlorooctadecane 82.0 % 38.9-142

Cardinal Laboratories

\*=Accredited Analyte

PLEASE NOTE: Liability and Damages. Cardinal's liability and client's exclusive remedy for any claim arising, whether based in contract or tort, shall be limited to the amount paid by client for analyses. All claims, including those for negligence and any other cause whatsoever shall be deemed waived unless made in writing and received by Cardinal within thirty (30) days after completion of the applicable service. In no event shall Cardinal be liable for incidental or consequential damages, including, without limitation, business interruptions, loss of use, or loss of profits incurred by client, its subsidiaries, affiliates or successors arising out of or related to the performance of the services hereunder by Cardinal, regardless of whether such claim is based upon any of the above stated reasons or otherwise. Results relate only to the samples identified above. This report shall not be reproduced except in full with written approval of Cardinal Laboratories.

Celey D. Keene, Lab Director/Quality Manager





PHONE (575) 393-2326 • 101 E. MARLAND • HOBBS, NM 88240

**Analytical Results For:**

BBC International, Inc.  
 Cliff Brunson  
 P.O. Box 805  
 Hobbs NM, 88241  
 Fax To: (575) 397-0397

Received:	08/05/2021	Sampling Date:	08/04/2021
Reported:	08/11/2021	Sampling Type:	Soil
Project Name:	FEDERAL 27 - 1 CTB	Sampling Condition:	Cool & Intact
Project Number:	NONE GIVEN	Sample Received By:	Jodi Henson
Project Location:	OXY - LEA COUNTY, NM		

**Sample ID: BOTTOM 33 @ 4' (H212089-33)**

BTEx 8021B		mg/kg		Analyzed By: MS						
Analyte	Result	Reporting Limit	Analyzed	Method Blank	BS	% Recovery	True Value QC	RPD	Qualifier	
Benzene*	<0.050	0.050	08/09/2021	ND	2.10	105	2.00	7.76		
Toluene*	<0.050	0.050	08/09/2021	ND	2.24	112	2.00	8.77		
Ethylbenzene*	<0.050	0.050	08/09/2021	ND	2.18	109	2.00	8.23		
Total Xylenes*	<0.150	0.150	08/09/2021	ND	6.51	108	6.00	8.25		
Total BTEx	<0.300	0.300	08/09/2021	ND						

Surrogate: 4-Bromofluorobenzene (PID) 104 % 69.9-140

Chloride, SM4500CI-B		mg/kg		Analyzed By: GM						
Analyte	Result	Reporting Limit	Analyzed	Method Blank	BS	% Recovery	True Value QC	RPD	Qualifier	
Chloride	<16.0	16.0	08/09/2021	ND	416	104	400	0.00		

TPH 8015M		mg/kg		Analyzed By: MS					
Analyte	Result	Reporting Limit	Analyzed	Method Blank	BS	% Recovery	True Value QC	RPD	Qualifier
GRO C6-C10*	<10.0	10.0	08/09/2021	ND	210	105	200	1.27	
DRO >C10-C28*	<10.0	10.0	08/09/2021	ND	202	101	200	2.05	
EXT DRO >C28-C36	<10.0	10.0	08/09/2021	ND					

Surrogate: 1-Chlorooctane 82.2 % 44.3-133

Surrogate: 1-Chlorooctadecane 81.7 % 38.9-142

Cardinal Laboratories

\*=Accredited Analyte

PLEASE NOTE: Liability and Damages. Cardinal's liability and client's exclusive remedy for any claim arising, whether based in contract or tort, shall be limited to the amount paid by client for analyses. All claims, including those for negligence and any other cause whatsoever shall be deemed waived unless made in writing and received by Cardinal within thirty (30) days after completion of the applicable service. In no event shall Cardinal be liable for incidental or consequential damages, including, without limitation, business interruptions, loss of use, or loss of profits incurred by client, its subsidiaries, affiliates or successors arising out of or related to the performance of the services hereunder by Cardinal, regardless of whether such claim is based upon any of the above stated reasons or otherwise. Results relate only to the samples identified above. This report shall not be reproduced except in full with written approval of Cardinal Laboratories.

Celey D. Keene, Lab Director/Quality Manager



PHONE (575) 393-2326 ° 101 E. MARLAND ° HOBBS, NM 88240

**Analytical Results For:**

BBC International, Inc.  
 Cliff Brunson  
 P.O. Box 805  
 Hobbs NM, 88241  
 Fax To: (575) 397-0397

Received:	08/05/2021	Sampling Date:	08/04/2021
Reported:	08/11/2021	Sampling Type:	Soil
Project Name:	FEDERAL 27 - 1 CTB	Sampling Condition:	Cool & Intact
Project Number:	NONE GIVEN	Sample Received By:	Jodi Henson
Project Location:	OXY - LEA COUNTY, NM		

**Sample ID: BOTTOM 34 @ 4' (H212089-34)**

BTX 8021B		mg/kg		Analyzed By: MS						
Analyte	Result	Reporting Limit	Analyzed	Method Blank	BS	% Recovery	True Value QC	RPD	Qualifier	
Benzene*	<0.050	0.050	08/09/2021	ND	2.10	105	2.00	7.76		
Toluene*	<0.050	0.050	08/09/2021	ND	2.24	112	2.00	8.77		
Ethylbenzene*	<0.050	0.050	08/09/2021	ND	2.18	109	2.00	8.23		
Total Xylenes*	<0.150	0.150	08/09/2021	ND	6.51	108	6.00	8.25		
Total BTX	<0.300	0.300	08/09/2021	ND						

Surrogate: 4-Bromofluorobenzene (PID) 103 % 69.9-140

Chloride, SM4500CI-B		mg/kg		Analyzed By: GM						
Analyte	Result	Reporting Limit	Analyzed	Method Blank	BS	% Recovery	True Value QC	RPD	Qualifier	
Chloride	<16.0	16.0	08/09/2021	ND	416	104	400	0.00		

TPH 8015M		mg/kg		Analyzed By: MS					
Analyte	Result	Reporting Limit	Analyzed	Method Blank	BS	% Recovery	True Value QC	RPD	Qualifier
GRO C6-C10*	<10.0	10.0	08/09/2021	ND	210	105	200	1.27	
DRO >C10-C28*	<10.0	10.0	08/09/2021	ND	202	101	200	2.05	
EXT DRO >C28-C36	<10.0	10.0	08/09/2021	ND					

Surrogate: 1-Chlorooctane 85.7 % 44.3-133

Surrogate: 1-Chlorooctadecane 84.5 % 38.9-142

Cardinal Laboratories

\*=Accredited Analyte

PLEASE NOTE: Liability and Damages. Cardinal's liability and client's exclusive remedy for any claim arising, whether based in contract or tort, shall be limited to the amount paid by client for analyses. All claims, including those for negligence and any other cause whatsoever shall be deemed waived unless made in writing and received by Cardinal within thirty (30) days after completion of the applicable service. In no event shall Cardinal be liable for incidental or consequential damages, including, without limitation, business interruptions, loss of use, or loss of profits incurred by client, its subsidiaries, affiliates or successors arising out of or related to the performance of the services hereunder by Cardinal, regardless of whether such claim is based upon any of the above stated reasons or otherwise. Results relate only to the samples identified above. This report shall not be reproduced except in full with written approval of Cardinal Laboratories.

Celey D. Keene, Lab Director/Quality Manager



PHONE (575) 393-2326 ° 101 E. MARLAND ° HOBBS, NM 88240

**Analytical Results For:**

BBC International, Inc.  
 Cliff Brunson  
 P.O. Box 805  
 Hobbs NM, 88241  
 Fax To: (575) 397-0397

Received:	08/05/2021	Sampling Date:	08/04/2021
Reported:	08/11/2021	Sampling Type:	Soil
Project Name:	FEDERAL 27 - 1 CTB	Sampling Condition:	Cool & Intact
Project Number:	NONE GIVEN	Sample Received By:	Jodi Henson
Project Location:	OXY - LEA COUNTY, NM		

**Sample ID: SIDEWALL 1 (H212089-35)**

BTX 8021B			mg/kg							
			Analyzed By: MS							
Analyte	Result	Reporting Limit	Analyzed	Method Blank	BS	% Recovery	True Value QC	RPD	Qualifier	
Benzene*	<0.050	0.050	08/09/2021	ND	2.10	105	2.00	7.76		
Toluene*	<0.050	0.050	08/09/2021	ND	2.24	112	2.00	8.77		
Ethylbenzene*	<0.050	0.050	08/09/2021	ND	2.18	109	2.00	8.23		
Total Xylenes*	<0.150	0.150	08/09/2021	ND	6.51	108	6.00	8.25		
Total BTX	<0.300	0.300	08/09/2021	ND						

Surrogate: 4-Bromofluorobenzene (PID) 107 % 69.9-140

Chloride, SM4500CI-B			mg/kg							
			Analyzed By: GM							
Analyte	Result	Reporting Limit	Analyzed	Method Blank	BS	% Recovery	True Value QC	RPD	Qualifier	
Chloride	<16.0	16.0	08/09/2021	ND	416	104	400	0.00		

TPH 8015M			mg/kg							
			Analyzed By: MS							
Analyte	Result	Reporting Limit	Analyzed	Method Blank	BS	% Recovery	True Value QC	RPD	Qualifier	
GRO C6-C10*	<10.0	10.0	08/09/2021	ND	210	105	200	1.27		
DRO >C10-C28*	<10.0	10.0	08/09/2021	ND	202	101	200	2.05		
EXT DRO >C28-C36	<10.0	10.0	08/09/2021	ND						

Surrogate: 1-Chlorooctane 85.6 % 44.3-133

Surrogate: 1-Chlorooctadecane 82.1 % 38.9-142

Cardinal Laboratories

\*=Accredited Analyte

PLEASE NOTE: Liability and Damages. Cardinal's liability and client's exclusive remedy for any claim arising, whether based in contract or tort, shall be limited to the amount paid by client for analyses. All claims, including those for negligence and any other cause whatsoever shall be deemed waived unless made in writing and received by Cardinal within thirty (30) days after completion of the applicable service. In no event shall Cardinal be liable for incidental or consequential damages, including, without limitation, business interruptions, loss of use, or loss of profits incurred by client, its subsidiaries, affiliates or successors arising out of or related to the performance of the services hereunder by Cardinal, regardless of whether such claim is based upon any of the above stated reasons or otherwise. Results relate only to the samples identified above. This report shall not be reproduced except in full with written approval of Cardinal Laboratories.

Celey D. Keene, Lab Director/Quality Manager



PHONE (575) 393-2326 ° 101 E. MARLAND ° HOBBS, NM 88240

**Analytical Results For:**

BBC International, Inc.  
 Cliff Brunson  
 P.O. Box 805  
 Hobbs NM, 88241  
 Fax To: (575) 397-0397

Received:	08/05/2021	Sampling Date:	08/04/2021
Reported:	08/11/2021	Sampling Type:	Soil
Project Name:	FEDERAL 27 - 1 CTB	Sampling Condition:	Cool & Intact
Project Number:	NONE GIVEN	Sample Received By:	Jodi Henson
Project Location:	OXY - LEA COUNTY, NM		

**Sample ID: SIDEWALL 2 (H212089-36)**

BTEx 8021B		mg/kg		Analyzed By: MS					
Analyte	Result	Reporting Limit	Analyzed	Method Blank	BS	% Recovery	True Value QC	RPD	Qualifier
Benzene*	<0.050	0.050	08/09/2021	ND	2.10	105	2.00	7.76	
Toluene*	<0.050	0.050	08/09/2021	ND	2.24	112	2.00	8.77	
Ethylbenzene*	<0.050	0.050	08/09/2021	ND	2.18	109	2.00	8.23	
Total Xylenes*	<0.150	0.150	08/09/2021	ND	6.51	108	6.00	8.25	
Total BTEx	<0.300	0.300	08/09/2021	ND					

Surrogate: 4-Bromofluorobenzene (PID) 103 % 69.9-140

Chloride, SM4500CI-B		mg/kg		Analyzed By: GM						
Analyte	Result	Reporting Limit	Analyzed	Method Blank	BS	% Recovery	True Value QC	RPD	Qualifier	
Chloride	<16.0	16.0	08/09/2021	ND	416	104	400	0.00		

TPH 8015M		mg/kg		Analyzed By: MS					
Analyte	Result	Reporting Limit	Analyzed	Method Blank	BS	% Recovery	True Value QC	RPD	Qualifier
GRO C6-C10*	<10.0	10.0	08/09/2021	ND	210	105	200	1.27	
DRO >C10-C28*	<10.0	10.0	08/09/2021	ND	202	101	200	2.05	
EXT DRO >C28-C36	<10.0	10.0	08/09/2021	ND					

Surrogate: 1-Chlorooctane 90.0 % 44.3-133

Surrogate: 1-Chlorooctadecane 85.4 % 38.9-142

Cardinal Laboratories

\*=Accredited Analyte

PLEASE NOTE: Liability and Damages. Cardinal's liability and client's exclusive remedy for any claim arising, whether based in contract or tort, shall be limited to the amount paid by client for analyses. All claims, including those for negligence and any other cause whatsoever shall be deemed waived unless made in writing and received by Cardinal within thirty (30) days after completion of the applicable service. In no event shall Cardinal be liable for incidental or consequential damages, including, without limitation, business interruptions, loss of use, or loss of profits incurred by client, its subsidiaries, affiliates or successors arising out of or related to the performance of the services hereunder by Cardinal, regardless of whether such claim is based upon any of the above stated reasons or otherwise. Results relate only to the samples identified above. This report shall not be reproduced except in full with written approval of Cardinal Laboratories.

Celey D. Keene, Lab Director/Quality Manager



PHONE (575) 393-2326 ° 101 E. MARLAND ° HOBBS, NM 88240

**Analytical Results For:**

BBC International, Inc.  
 Cliff Brunson  
 P.O. Box 805  
 Hobbs NM, 88241  
 Fax To: (575) 397-0397

Received:	08/05/2021	Sampling Date:	08/04/2021
Reported:	08/11/2021	Sampling Type:	Soil
Project Name:	FEDERAL 27 - 1 CTB	Sampling Condition:	Cool & Intact
Project Number:	NONE GIVEN	Sample Received By:	Jodi Henson
Project Location:	OXY - LEA COUNTY, NM		

**Sample ID: SIDEWALL 3 (H212089-37)**

BTEx 8021B		mg/kg		Analyzed By: MS						
Analyte	Result	Reporting Limit	Analyzed	Method Blank	BS	% Recovery	True Value QC	RPD	Qualifier	
Benzene*	<0.050	0.050	08/09/2021	ND	2.10	105	2.00	7.76		
Toluene*	<0.050	0.050	08/09/2021	ND	2.24	112	2.00	8.77		
Ethylbenzene*	<0.050	0.050	08/09/2021	ND	2.18	109	2.00	8.23		
Total Xylenes*	<0.150	0.150	08/09/2021	ND	6.51	108	6.00	8.25		
Total BTEx	<0.300	0.300	08/09/2021	ND						

Surrogate: 4-Bromofluorobenzene (PID) 99.8 % 69.9-140

Chloride, SM4500CI-B		mg/kg		Analyzed By: GM						
Analyte	Result	Reporting Limit	Analyzed	Method Blank	BS	% Recovery	True Value QC	RPD	Qualifier	
Chloride	<16.0	16.0	08/09/2021	ND	416	104	400	0.00		

TPH 8015M		mg/kg		Analyzed By: MS					
Analyte	Result	Reporting Limit	Analyzed	Method Blank	BS	% Recovery	True Value QC	RPD	Qualifier
GRO C6-C10*	<10.0	10.0	08/09/2021	ND	210	105	200	1.27	
DRO >C10-C28*	<10.0	10.0	08/09/2021	ND	202	101	200	2.05	
EXT DRO >C28-C36	<10.0	10.0	08/09/2021	ND					

Surrogate: 1-Chlorooctane 85.3 % 44.3-133

Surrogate: 1-Chlorooctadecane 80.6 % 38.9-142

Cardinal Laboratories

\*=Accredited Analyte

PLEASE NOTE: Liability and Damages. Cardinal's liability and client's exclusive remedy for any claim arising, whether based in contract or tort, shall be limited to the amount paid by client for analyses. All claims, including those for negligence and any other cause whatsoever shall be deemed waived unless made in writing and received by Cardinal within thirty (30) days after completion of the applicable service. In no event shall Cardinal be liable for incidental or consequential damages, including, without limitation, business interruptions, loss of use, or loss of profits incurred by client, its subsidiaries, affiliates or successors arising out of or related to the performance of the services hereunder by Cardinal, regardless of whether such claim is based upon any of the above stated reasons or otherwise. Results relate only to the samples identified above. This report shall not be reproduced except in full with written approval of Cardinal Laboratories.

Celey D. Keene, Lab Director/Quality Manager





PHONE (575) 393-2326 ° 101 E. MARLAND ° HOBBS, NM 88240

**Analytical Results For:**

BBC International, Inc.  
 Cliff Brunson  
 P.O. Box 805  
 Hobbs NM, 88241  
 Fax To: (575) 397-0397

Received:	08/05/2021	Sampling Date:	08/04/2021
Reported:	08/11/2021	Sampling Type:	Soil
Project Name:	FEDERAL 27 - 1 CTB	Sampling Condition:	Cool & Intact
Project Number:	NONE GIVEN	Sample Received By:	Jodi Henson
Project Location:	OXY - LEA COUNTY, NM		

**Sample ID: SIDEWALL 4 (H212089-38)**

BTEx 8021B		mg/kg		Analyzed By: MS						
Analyte	Result	Reporting Limit	Analyzed	Method Blank	BS	% Recovery	True Value QC	RPD	Qualifier	
Benzene*	<0.050	0.050	08/09/2021	ND	2.10	105	2.00	7.76		
Toluene*	<0.050	0.050	08/09/2021	ND	2.24	112	2.00	8.77		
Ethylbenzene*	<0.050	0.050	08/09/2021	ND	2.18	109	2.00	8.23		
Total Xylenes*	<0.150	0.150	08/09/2021	ND	6.51	108	6.00	8.25		
Total BTEx	<0.300	0.300	08/09/2021	ND						

Surrogate: 4-Bromofluorobenzene (PID) 102 % 69.9-140

Chloride, SM4500CI-B		mg/kg		Analyzed By: GM						
Analyte	Result	Reporting Limit	Analyzed	Method Blank	BS	% Recovery	True Value QC	RPD	Qualifier	
Chloride	<16.0	16.0	08/09/2021	ND	416	104	400	0.00		

TPH 8015M		mg/kg		Analyzed By: MS					
Analyte	Result	Reporting Limit	Analyzed	Method Blank	BS	% Recovery	True Value QC	RPD	Qualifier
GRO C6-C10*	<10.0	10.0	08/09/2021	ND	210	105	200	1.27	
DRO >C10-C28*	<10.0	10.0	08/09/2021	ND	202	101	200	2.05	
EXT DRO >C28-C36	<10.0	10.0	08/09/2021	ND					

Surrogate: 1-Chlorooctane 85.5 % 44.3-133

Surrogate: 1-Chlorooctadecane 81.0 % 38.9-142

Cardinal Laboratories

\*=Accredited Analyte

PLEASE NOTE: Liability and Damages. Cardinal's liability and client's exclusive remedy for any claim arising, whether based in contract or tort, shall be limited to the amount paid by client for analyses. All claims, including those for negligence and any other cause whatsoever shall be deemed waived unless made in writing and received by Cardinal within thirty (30) days after completion of the applicable service. In no event shall Cardinal be liable for incidental or consequential damages, including, without limitation, business interruptions, loss of use, or loss of profits incurred by client, its subsidiaries, affiliates or successors arising out of or related to the performance of the services hereunder by Cardinal, regardless of whether such claim is based upon any of the above stated reasons or otherwise. Results relate only to the samples identified above. This report shall not be reproduced except in full with written approval of Cardinal Laboratories.

Celey D. Keene, Lab Director/Quality Manager



PHONE (575) 393-2326 ° 101 E. MARLAND ° HOBBS, NM 88240

**Analytical Results For:**

BBC International, Inc.  
 Cliff Brunson  
 P.O. Box 805  
 Hobbs NM, 88241  
 Fax To: (575) 397-0397

Received:	08/05/2021	Sampling Date:	08/04/2021
Reported:	08/11/2021	Sampling Type:	Soil
Project Name:	FEDERAL 27 - 1 CTB	Sampling Condition:	Cool & Intact
Project Number:	NONE GIVEN	Sample Received By:	Jodi Henson
Project Location:	OXY - LEA COUNTY, NM		

**Sample ID: SIDEWALL 5 (H212089-39)**

BTEx 8021B		mg/kg		Analyzed By: MS						
Analyte	Result	Reporting Limit	Analyzed	Method Blank	BS	% Recovery	True Value QC	RPD	Qualifier	
Benzene*	<0.050	0.050	08/09/2021	ND	2.10	105	2.00	7.76		
Toluene*	<0.050	0.050	08/09/2021	ND	2.24	112	2.00	8.77		
Ethylbenzene*	<0.050	0.050	08/09/2021	ND	2.18	109	2.00	8.23		
Total Xylenes*	<0.150	0.150	08/09/2021	ND	6.51	108	6.00	8.25		
Total BTEx	<0.300	0.300	08/09/2021	ND						

Surrogate: 4-Bromofluorobenzene (PID) 101 % 69.9-140

Chloride, SM4500CI-B		mg/kg		Analyzed By: GM						
Analyte	Result	Reporting Limit	Analyzed	Method Blank	BS	% Recovery	True Value QC	RPD	Qualifier	
Chloride	<16.0	16.0	08/09/2021	ND	416	104	400	0.00		

TPH 8015M		mg/kg		Analyzed By: MS					
Analyte	Result	Reporting Limit	Analyzed	Method Blank	BS	% Recovery	True Value QC	RPD	Qualifier
GRO C6-C10*	<10.0	10.0	08/09/2021	ND	210	105	200	1.27	
DRO >C10-C28*	<10.0	10.0	08/09/2021	ND	202	101	200	2.05	
EXT DRO >C28-C36	<10.0	10.0	08/09/2021	ND					

Surrogate: 1-Chlorooctane 82.2 % 44.3-133

Surrogate: 1-Chlorooctadecane 78.3 % 38.9-142

Cardinal Laboratories

\*=Accredited Analyte

PLEASE NOTE: Liability and Damages. Cardinal's liability and client's exclusive remedy for any claim arising, whether based in contract or tort, shall be limited to the amount paid by client for analyses. All claims, including those for negligence and any other cause whatsoever shall be deemed waived unless made in writing and received by Cardinal within thirty (30) days after completion of the applicable service. In no event shall Cardinal be liable for incidental or consequential damages, including, without limitation, business interruptions, loss of use, or loss of profits incurred by client, its subsidiaries, affiliates or successors arising out of or related to the performance of the services hereunder by Cardinal, regardless of whether such claim is based upon any of the above stated reasons or otherwise. Results relate only to the samples identified above. This report shall not be reproduced except in full with written approval of Cardinal Laboratories.

Celey D. Keene, Lab Director/Quality Manager



PHONE (575) 393-2326 ° 101 E. MARLAND ° HOBBS, NM 88240

**Analytical Results For:**

BBC International, Inc.  
 Cliff Brunson  
 P.O. Box 805  
 Hobbs NM, 88241  
 Fax To: (575) 397-0397

Received:	08/05/2021	Sampling Date:	08/04/2021
Reported:	08/11/2021	Sampling Type:	Soil
Project Name:	FEDERAL 27 - 1 CTB	Sampling Condition:	Cool & Intact
Project Number:	NONE GIVEN	Sample Received By:	Jodi Henson
Project Location:	OXY - LEA COUNTY, NM		

**Sample ID: SIDEWALL 6 (H212089-40)**

BTEx 8021B		mg/kg		Analyzed By: MS						
Analyte	Result	Reporting Limit	Analyzed	Method Blank	BS	% Recovery	True Value QC	RPD	Qualifier	
Benzene*	<0.050	0.050	08/09/2021	ND	2.10	105	2.00	7.76		
Toluene*	<0.050	0.050	08/09/2021	ND	2.24	112	2.00	8.77		
Ethylbenzene*	<0.050	0.050	08/09/2021	ND	2.18	109	2.00	8.23		
Total Xylenes*	<0.150	0.150	08/09/2021	ND	6.51	108	6.00	8.25		
Total BTEx	<0.300	0.300	08/09/2021	ND						

Surrogate: 4-Bromofluorobenzene (PID) 101 % 69.9-140

Chloride, SM4500CI-B		mg/kg		Analyzed By: GM						
Analyte	Result	Reporting Limit	Analyzed	Method Blank	BS	% Recovery	True Value QC	RPD	Qualifier	
Chloride	<16.0	16.0	08/09/2021	ND	416	104	400	0.00		

TPH 8015M		mg/kg		Analyzed By: MS					
Analyte	Result	Reporting Limit	Analyzed	Method Blank	BS	% Recovery	True Value QC	RPD	Qualifier
GRO C6-C10*	<10.0	10.0	08/09/2021	ND	210	105	200	1.27	
DRO >C10-C28*	<10.0	10.0	08/09/2021	ND	202	101	200	2.05	
EXT DRO >C28-C36	<10.0	10.0	08/09/2021	ND					

Surrogate: 1-Chlorooctane 83.4 % 44.3-133

Surrogate: 1-Chlorooctadecane 77.7 % 38.9-142

Cardinal Laboratories

\*=Accredited Analyte

PLEASE NOTE: Liability and Damages. Cardinal's liability and client's exclusive remedy for any claim arising, whether based in contract or tort, shall be limited to the amount paid by client for analyses. All claims, including those for negligence and any other cause whatsoever shall be deemed waived unless made in writing and received by Cardinal within thirty (30) days after completion of the applicable service. In no event shall Cardinal be liable for incidental or consequential damages, including, without limitation, business interruptions, loss of use, or loss of profits incurred by client, its subsidiaries, affiliates or successors arising out of or related to the performance of the services hereunder by Cardinal, regardless of whether such claim is based upon any of the above stated reasons or otherwise. Results relate only to the samples identified above. This report shall not be reproduced except in full with written approval of Cardinal Laboratories.

Celey D. Keene, Lab Director/Quality Manager



PHONE (575) 393-2326 ° 101 E. MARLAND ° HOBBS, NM 88240

**Analytical Results For:**

BBC International, Inc.  
 Cliff Brunson  
 P.O. Box 805  
 Hobbs NM, 88241  
 Fax To: (575) 397-0397

Received:	08/05/2021	Sampling Date:	08/04/2021
Reported:	08/11/2021	Sampling Type:	Soil
Project Name:	FEDERAL 27 - 1 CTB	Sampling Condition:	Cool & Intact
Project Number:	NONE GIVEN	Sample Received By:	Jodi Henson
Project Location:	OXY - LEA COUNTY, NM		

**Sample ID: SIDEWALL 7 (H212089-41)**

BTEx 8021B		mg/kg		Analyzed By: MS						
Analyte	Result	Reporting Limit	Analyzed	Method Blank	BS	% Recovery	True Value QC	RPD	Qualifier	
Benzene*	<0.050	0.050	08/09/2021	ND	2.10	105	2.00	7.76		
Toluene*	<0.050	0.050	08/09/2021	ND	2.24	112	2.00	8.77		
Ethylbenzene*	<0.050	0.050	08/09/2021	ND	2.18	109	2.00	8.23		
Total Xylenes*	<0.150	0.150	08/09/2021	ND	6.51	108	6.00	8.25		
Total BTEx	<0.300	0.300	08/09/2021	ND						

Surrogate: 4-Bromofluorobenzene (PID) 103 % 69.9-140

Chloride, SM4500CI-B		mg/kg		Analyzed By: GM						
Analyte	Result	Reporting Limit	Analyzed	Method Blank	BS	% Recovery	True Value QC	RPD	Qualifier	
Chloride	<16.0	16.0	08/09/2021	ND	416	104	400	0.00		

TPH 8015M		mg/kg		Analyzed By: MS					
Analyte	Result	Reporting Limit	Analyzed	Method Blank	BS	% Recovery	True Value QC	RPD	Qualifier
GRO C6-C10*	<10.0	10.0	08/06/2021	ND	199	99.3	200	0.347	
DRO >C10-C28*	<10.0	10.0	08/06/2021	ND	210	105	200	1.42	
EXT DRO >C28-C36	<10.0	10.0	08/06/2021	ND					

Surrogate: 1-Chlorooctane 90.8 % 44.3-133

Surrogate: 1-Chlorooctadecane 102 % 38.9-142

Cardinal Laboratories

\*=Accredited Analyte

PLEASE NOTE: Liability and Damages. Cardinal's liability and client's exclusive remedy for any claim arising, whether based in contract or tort, shall be limited to the amount paid by client for analyses. All claims, including those for negligence and any other cause whatsoever shall be deemed waived unless made in writing and received by Cardinal within thirty (30) days after completion of the applicable service. In no event shall Cardinal be liable for incidental or consequential damages, including, without limitation, business interruptions, loss of use, or loss of profits incurred by client, its subsidiaries, affiliates or successors arising out of or related to the performance of the services hereunder by Cardinal, regardless of whether such claim is based upon any of the above stated reasons or otherwise. Results relate only to the samples identified above. This report shall not be reproduced except in full with written approval of Cardinal Laboratories.

Celey D. Keene, Lab Director/Quality Manager



PHONE (575) 393-2326 ° 101 E. MARLAND ° HOBBS, NM 88240

**Analytical Results For:**

BBC International, Inc.  
 Cliff Brunson  
 P.O. Box 805  
 Hobbs NM, 88241  
 Fax To: (575) 397-0397

Received:	08/05/2021	Sampling Date:	08/04/2021
Reported:	08/11/2021	Sampling Type:	Soil
Project Name:	FEDERAL 27 - 1 CTB	Sampling Condition:	Cool & Intact
Project Number:	NONE GIVEN	Sample Received By:	Jodi Henson
Project Location:	OXY - LEA COUNTY, NM		

**Sample ID: SIDEWALL 8 (H212089-42)**

BTX 8021B			mg/kg							
			Analyzed By: MS							
Analyte	Result	Reporting Limit	Analyzed	Method Blank	BS	% Recovery	True Value QC	RPD	Qualifier	
Benzene*	<0.050	0.050	08/09/2021	ND	2.10	105	2.00	7.76		
Toluene*	<0.050	0.050	08/09/2021	ND	2.24	112	2.00	8.77		
Ethylbenzene*	<0.050	0.050	08/09/2021	ND	2.18	109	2.00	8.23		
Total Xylenes*	<0.150	0.150	08/09/2021	ND	6.51	108	6.00	8.25		
Total BTX	<0.300	0.300	08/09/2021	ND						

Surrogate: 4-Bromofluorobenzene (PID) 100 % 69.9-140

Chloride, SM4500CI-B			mg/kg							
			Analyzed By: GM							
Analyte	Result	Reporting Limit	Analyzed	Method Blank	BS	% Recovery	True Value QC	RPD	Qualifier	
Chloride	<16.0	16.0	08/09/2021	ND	416	104	400	0.00		

TPH 8015M			mg/kg							
			Analyzed By: MS							
Analyte	Result	Reporting Limit	Analyzed	Method Blank	BS	% Recovery	True Value QC	RPD	Qualifier	
GRO C6-C10*	<10.0	10.0	08/06/2021	ND	215	107	200	1.11		
DRO >C10-C28*	<10.0	10.0	08/06/2021	ND	207	103	200	0.104		
EXT DRO >C28-C36	<10.0	10.0	08/06/2021	ND						

Surrogate: 1-Chlorooctane 79.7 % 44.3-133

Surrogate: 1-Chlorooctadecane 80.4 % 38.9-142

Cardinal Laboratories

\*=Accredited Analyte

PLEASE NOTE: Liability and Damages. Cardinal's liability and client's exclusive remedy for any claim arising, whether based in contract or tort, shall be limited to the amount paid by client for analyses. All claims, including those for negligence and any other cause whatsoever shall be deemed waived unless made in writing and received by Cardinal within thirty (30) days after completion of the applicable service. In no event shall Cardinal be liable for incidental or consequential damages, including, without limitation, business interruptions, loss of use, or loss of profits incurred by client, its subsidiaries, affiliates or successors arising out of or related to the performance of the services hereunder by Cardinal, regardless of whether such claim is based upon any of the above stated reasons or otherwise. Results relate only to the samples identified above. This report shall not be reproduced except in full with written approval of Cardinal Laboratories.

Celey D. Keene, Lab Director/Quality Manager



PHONE (575) 393-2326 ° 101 E. MARLAND ° HOBBS, NM 88240

**Analytical Results For:**

BBC International, Inc.  
 Cliff Brunson  
 P.O. Box 805  
 Hobbs NM, 88241  
 Fax To: (575) 397-0397

Received:	08/05/2021	Sampling Date:	08/04/2021
Reported:	08/11/2021	Sampling Type:	Soil
Project Name:	FEDERAL 27 - 1 CTB	Sampling Condition:	Cool & Intact
Project Number:	NONE GIVEN	Sample Received By:	Jodi Henson
Project Location:	OXY - LEA COUNTY, NM		

**Sample ID: SIDEWALL 9 (H212089-43)**

BTX 8021B			mg/kg							
			Analyzed By: MS							
Analyte	Result	Reporting Limit	Analyzed	Method Blank	BS	% Recovery	True Value QC	RPD	Qualifier	
Benzene*	<0.050	0.050	08/09/2021	ND	2.10	105	2.00	7.76		
Toluene*	<0.050	0.050	08/09/2021	ND	2.24	112	2.00	8.77		
Ethylbenzene*	<0.050	0.050	08/09/2021	ND	2.18	109	2.00	8.23		
Total Xylenes*	<0.150	0.150	08/09/2021	ND	6.51	108	6.00	8.25		
Total BTX	<0.300	0.300	08/09/2021	ND						

Surrogate: 4-Bromofluorobenzene (PID) 102 % 69.9-140

Chloride, SM4500CI-B			mg/kg							
			Analyzed By: GM							
Analyte	Result	Reporting Limit	Analyzed	Method Blank	BS	% Recovery	True Value QC	RPD	Qualifier	
Chloride	<16.0	16.0	08/09/2021	ND	416	104	400	0.00		

TPH 8015M			mg/kg							
			Analyzed By: MS							
Analyte	Result	Reporting Limit	Analyzed	Method Blank	BS	% Recovery	True Value QC	RPD	Qualifier	
GRO C6-C10*	<10.0	10.0	08/09/2021	ND	198	98.9	200	5.64		
DRO >C10-C28*	<10.0	10.0	08/09/2021	ND	214	107	200	7.06		
EXT DRO >C28-C36	<10.0	10.0	08/09/2021	ND						

Surrogate: 1-Chlorooctane 68.6 % 44.3-133

Surrogate: 1-Chlorooctadecane 61.9 % 38.9-142

Cardinal Laboratories

\*=Accredited Analyte

PLEASE NOTE: Liability and Damages. Cardinal's liability and client's exclusive remedy for any claim arising, whether based in contract or tort, shall be limited to the amount paid by client for analyses. All claims, including those for negligence and any other cause whatsoever shall be deemed waived unless made in writing and received by Cardinal within thirty (30) days after completion of the applicable service. In no event shall Cardinal be liable for incidental or consequential damages, including, without limitation, business interruptions, loss of use, or loss of profits incurred by client, its subsidiaries, affiliates or successors arising out of or related to the performance of the services hereunder by Cardinal, regardless of whether such claim is based upon any of the above stated reasons or otherwise. Results relate only to the samples identified above. This report shall not be reproduced except in full with written approval of Cardinal Laboratories.

Celey D. Keene, Lab Director/Quality Manager





PHONE (575) 393-2326 ° 101 E. MARLAND ° HOBBS, NM 88240

**Analytical Results For:**

BBC International, Inc.  
 Cliff Brunson  
 P.O. Box 805  
 Hobbs NM, 88241  
 Fax To: (575) 397-0397

Received:	08/05/2021	Sampling Date:	08/04/2021
Reported:	08/11/2021	Sampling Type:	Soil
Project Name:	FEDERAL 27 - 1 CTB	Sampling Condition:	Cool & Intact
Project Number:	NONE GIVEN	Sample Received By:	Jodi Henson
Project Location:	OXY - LEA COUNTY, NM		

**Sample ID: SIDEWALL 10 (H212089-44)**

BTX 8021B			mg/kg							
			Analyzed By: MS							
Analyte	Result	Reporting Limit	Analyzed	Method Blank	BS	% Recovery	True Value QC	RPD	Qualifier	
Benzene*	<0.050	0.050	08/09/2021	ND	2.10	105	2.00	7.76		
Toluene*	<0.050	0.050	08/09/2021	ND	2.24	112	2.00	8.77		
Ethylbenzene*	<0.050	0.050	08/09/2021	ND	2.18	109	2.00	8.23		
Total Xylenes*	<0.150	0.150	08/09/2021	ND	6.51	108	6.00	8.25		
Total BTX	<0.300	0.300	08/09/2021	ND						

Surrogate: 4-Bromofluorobenzene (PID) 99.8 % 69.9-140

Chloride, SM4500CI-B			mg/kg							
			Analyzed By: GM							
Analyte	Result	Reporting Limit	Analyzed	Method Blank	BS	% Recovery	True Value QC	RPD	Qualifier	
Chloride	<16.0	16.0	08/09/2021	ND	416	104	400	0.00		

TPH 8015M			mg/kg							
			Analyzed By: MS							
Analyte	Result	Reporting Limit	Analyzed	Method Blank	BS	% Recovery	True Value QC	RPD	Qualifier	
GRO C6-C10*	<10.0	10.0	08/09/2021	ND	198	98.9	200	5.64		
DRO >C10-C28*	<10.0	10.0	08/09/2021	ND	214	107	200	7.06		
EXT DRO >C28-C36	<10.0	10.0	08/09/2021	ND						

Surrogate: 1-Chlorooctane 80.1 % 44.3-133

Surrogate: 1-Chlorooctadecane 74.3 % 38.9-142

Cardinal Laboratories

\*=Accredited Analyte

PLEASE NOTE: Liability and Damages. Cardinal's liability and client's exclusive remedy for any claim arising, whether based in contract or tort, shall be limited to the amount paid by client for analyses. All claims, including those for negligence and any other cause whatsoever shall be deemed waived unless made in writing and received by Cardinal within thirty (30) days after completion of the applicable service. In no event shall Cardinal be liable for incidental or consequential damages, including, without limitation, business interruptions, loss of use, or loss of profits incurred by client, its subsidiaries, affiliates or successors arising out of or related to the performance of the services hereunder by Cardinal, regardless of whether such claim is based upon any of the above stated reasons or otherwise. Results relate only to the samples identified above. This report shall not be reproduced except in full with written approval of Cardinal Laboratories.

Celey D. Keene, Lab Director/Quality Manager



---

PHONE (575) 393-2326 ° 101 E. MARLAND ° HOBBS, NM 88240

---

### Notes and Definitions

BS-3	Blank spike recovery outside of lab established statistical limits, but still within method limits. Data is not adversely affected.
ND	Analyte NOT DETECTED at or above the reporting limit
RPD	Relative Percent Difference
**	Samples not received at proper temperature of 6°C or below.
***	Insufficient time to reach temperature.
-	Chloride by SM4500Cl-B does not require samples be received at or below 6°C Samples reported on an as received basis (wet) unless otherwise noted on report

---

Cardinal Laboratories

\*=Accredited Analyte

PLEASE NOTE: Liability and Damages. Cardinal's liability and client's exclusive remedy for any claim arising, whether based in contract or tort, shall be limited to the amount paid by client for analyses. All claims, including those for negligence and any other cause whatsoever shall be deemed waived unless made in writing and received by Cardinal within thirty (30) days after completion of the applicable service. In no event shall Cardinal be liable for incidental or consequential damages, including, without limitation, business interruptions, loss of use, or loss of profits incurred by client, its subsidiaries, affiliates or successors arising out of or related to the performance of the services hereunder by Cardinal, regardless of whether such claim is based upon any of the above stated reasons or otherwise. Results relate only to the samples identified above. This report shall not be reproduced except in full with written approval of Cardinal Laboratories.

A handwritten signature in black ink, appearing to read "Celey D. Keene".

---

Celey D. Keene, Lab Director/Quality Manager



## CHAIN-OF-CUSTODY AND ANALYSIS REQUEST

101 East Marland, Hobbs, NM 88240  
(505) 393-2326 FAX (505) 393-2476

<b>Company Name:</b> BBC International, Inc.										<b>BILL TO</b>										<b>ANALYSIS REQUEST</b>									
<b>Project Manager:</b> Cliff Brunson										<b>P.O. #:</b>																			
<b>Address:</b> P.O. Box 805										<b>Company:</b> OXY																			
<b>City:</b> Hobbs										<b>Attn:</b> WADE																			
<b>State:</b> NM <b>Zip:</b> 88241										<b>Address:</b>																			
<b>Phone #:</b> 575-397-6388										<b>Fax #:</b> 575-397-0397																			
<b>Project #:</b>										<b>City:</b>																			
<b>Project Owner:</b> Oxy										<b>State:</b>																			
<b>Project Location:</b>										<b>Zip:</b>																			
<b>Project Name:</b> Federal 27-City										<b>Phone #:</b>																			
<b>Sample Name:</b> ROGER HERNANDEZ										<b>Fax #:</b>																			
<b>FOR LAB USE ONLY</b>																													
Lab I.D.		Sample I.D.		(G)RAB OR (C)OMP.	# CONTAINERS	MATRIX					PRESERV.	SAMPLING																	
						GROUNDWATER	WASTEWATER	SOIL	OIL	SLUDGE	OTHER :	ACID/BASE:	ICE / COOL	OTHER :	DATE	TIME	CL	BTEX	TPH EXT										
H212089		Bottom 1	1'	G	1			<input checked="" type="checkbox"/>							8.4.71	850	<input checked="" type="checkbox"/>	<input checked="" type="checkbox"/>	<input checked="" type="checkbox"/>										
		Bottom 2	1'	G	1			<input checked="" type="checkbox"/>							8.4.71	900	<input checked="" type="checkbox"/>	<input checked="" type="checkbox"/>	<input checked="" type="checkbox"/>										
		Bottom 3	1'	G	1			<input checked="" type="checkbox"/>							8.4.71	910	<input checked="" type="checkbox"/>	<input checked="" type="checkbox"/>	<input checked="" type="checkbox"/>										
		Bottom 4	2'	G	1			<input checked="" type="checkbox"/>							8.4.71	920	<input checked="" type="checkbox"/>	<input checked="" type="checkbox"/>	<input checked="" type="checkbox"/>										
		Bottom 5	2'	G	1			<input checked="" type="checkbox"/>							8.4.71	930	<input checked="" type="checkbox"/>	<input checked="" type="checkbox"/>	<input checked="" type="checkbox"/>										
		Bottom 6	2'	G	1			<input checked="" type="checkbox"/>							8.4.71	940	<input checked="" type="checkbox"/>	<input checked="" type="checkbox"/>	<input checked="" type="checkbox"/>										
		Bottom 7	2'	G	1			<input checked="" type="checkbox"/>							8.4.71	950	<input checked="" type="checkbox"/>	<input checked="" type="checkbox"/>	<input checked="" type="checkbox"/>										
		Bottom 8	2'	G	1			<input checked="" type="checkbox"/>							8.4.71	1000	<input checked="" type="checkbox"/>	<input checked="" type="checkbox"/>	<input checked="" type="checkbox"/>										
		Bottom 9	2'	G	1			<input checked="" type="checkbox"/>							8.4.71	1010	<input checked="" type="checkbox"/>	<input checked="" type="checkbox"/>	<input checked="" type="checkbox"/>										
		Bottom 10	2'	G	1			<input checked="" type="checkbox"/>							8.4.71	1070	<input checked="" type="checkbox"/>	<input checked="" type="checkbox"/>	<input checked="" type="checkbox"/>										

PLEASE NOTE: Liability and Damages. Customer's liability and client's exclusive remedy for any claim arising whether based in contract or tort, shall be limited to the amount paid by the client for the service. All claims, including those for negligence and any other cause whatsoever shall be deemed waived unless made in writing and received by Cardinal within 30 days after completion of the applicable service. In no event shall Cardinal be liable for incidental or consequential damages, including without limitation, business interruptions, loss of use, or loss of profits incurred by client, its subsidiaries, affiliates or successors arising out of or related to the performance of services hereunder by Cardinal, regardless of whether such claim is based upon any of the above stated reasons or otherwise.

<b>Relinquished By:</b> Roger Hernandez		<b>Date:</b> 8.5.71	<b>Received By:</b> Sean, for Gabely	<b>Phone Result:</b> <input type="checkbox"/> Yes <input type="checkbox"/> No	<b>Add'l Phone #:</b>
<b>Relinquished By:</b>		<b>Date:</b>	<b>Received By:</b>	<b>Fax Result:</b> <input type="checkbox"/> Yes <input type="checkbox"/> No	<b>Add'l Fax #:</b>
<b>Delivered By:</b> Gabely		<b>Date:</b> 8.6.71	<b>Received By:</b> Jack Henderson	<b>REMARKS:</b>	
<b>Delivered By:</b> (Circle One)		<b>Time:</b> 2:45	<b>Sample Condition:</b> Cool <input checked="" type="checkbox"/> Intact <input checked="" type="checkbox"/> <input type="checkbox"/> Yes <input type="checkbox"/> No	<b>CHECKED BY:</b> (Initials) JH	
<b>Sampler - UPS - Bus - Other:</b>					

† Cardinal cannot accept verbal changes. Please fax written changes to 505-393-2476





**ARDINAL LABORATORIES**  
101 East Marland, Hobbs, NM 88240  
(505) 393-2326 FAX (505) 393-2476

CHAIN-OF-CUSTODY AND ANALYSIS REQUEST

**BILL TO**

**ANALYSIS REQUEST**

Company Name: BBC International, Inc.		P.O. #:																			
Project Manager: Cliff Brunson		Company: OXY																			
Address: P.O. Box 805		Attn: WADE																			
City: Hobbs		Address:																			
Phone #: 575-397-6388		City:																			
Fax #: 575-397-0397		State:																			
Project #:		Zip:																			
Project Name:		Project Owner: Oxy																			
Project Location:		FEDERAL 27-1																			
Sampler Name: ROGER HERNANDEZ		Phone #:																			
Fax #:																					
FOR LAB USE ONLY																					
Lab I.D.	Sample I.D.	(G)RAB OR (C)OMP.	# CONTAINERS	MATRIX					PRESERV	SAMPLING											
				GROUNDWATER	WASTEWATER	SOIL	OIL	SLUDGE	OTHER :	ACID/BASE:	ICE / COOL	OTHER :	DATE	TIME	CL	BTEX	TPH EXT				
4212089	Bottom 1' @ 2'	G	1										8.4.21	1030							
11	Bottom 1' @ 2'	G	1										8.4.21	1040							
12	Bottom 1' @ 2'	G	1										8.4.21	1050							
13	Bottom 1' @ 2'	G	1										8.4.21	1100							
14	Bottom 1' @ 2'	G	1										8.4.21	1110							
15	Bottom 1' @ 2'	G	1										8.4.21	1120							
16	Bottom 1' @ 2'	G	1										8.4.21	1130							
17	Bottom 1' @ 2'	G	1										8.4.21	1140							
18	Bottom 1' @ 2'	G	1										8.4.21	1150							
19	Bottom 1' @ 2'	G	1										8.4.21	1200							
20	Bottom 1' @ 2'	G	1										8.4.21	1210							
PLEASE NOTE: Liability and Damages. Cardinal's liability and clients exclusive remedy for any claim arising whether based in contract or tort, shall be limited to the amount paid by the client for the analysis. All claims including those for negligence and any other cause whatsoever shall be deemed waived unless made in writing and received by Cardinal within 30 days after completion of the applicable service. In no event shall Cardinal be liable for incidental or consequential damages, including without limitation, business interruptions, loss of use, or loss of profits incurred by client, its subsidiaries, affiliates or successors arising out of or related to the performance of services rendered by Cardinal. Repetition of whether such claim is based upon any of the above stated reasons or otherwise.																					
Relinquished By:	Date: 8-5-21	Received By:																			
Time: 8:00		Time: 8:45																			
Relinquished By: Roger Hernandez		Received By: J. C. Kelly																			
Delivered By: (Circle One)	Date: 8/5/21	Time: 12:45	Sample Condition	Checked By: (Initials)																	
Sampler - UPS - Bus - Other:	0.421 #113		Cool Intact	Yes	No	Yes	No	Yes	No	Yes	No	Yes	No	Yes	No	Yes	No	Yes	No	Yes	No

† Cardinal cannot accept verbal changes. Please fax written changes to 505-393-2476





**CARDINAL LABORATORIES**  
101 East Marland, Hobbs, NM 88240  
(505) 393-2326 FAX (505) 393-2476

CHAIN-OF-CUSTODY AND ANALYSIS REQUEST

38

**BILL TO**

**ANALYSIS REQUEST**

Company Name: BBC International, Inc.		P.O. #:	
Project Manager: Cliff Brunson		Company: OXY	
Address: P.O. Box 805		Attn: WADE	
City: Hobbs		Address:	
Phone #: 575-397-6388		City:	
Fax #: 575-397-0397		State:	
Project #:		Zip:	
Project Name: Federal 27-1 CTB		Phone #:	
Project Location:		Fax #:	
Sampler Name: ROGER HERNANDEZ			

Lab I.D.	Sample I.D.	(G)RAB OR (C)OMP.	# CONTAINERS	MATRIX						DATE	TIME	CL	BTEX	TPH EXT						
				GROUNDWATER	WASTEWATER	SOIL	OIL	SLUDGE	OTHER :											
H2172589	21	21	21	G	1															
	22	22	22	G	1															
	23	23	23	G	1															
	24	24	24	G	1															
	25	25	25	G	1															
	26	26	26	G	1															
	27	27	27	G	1															
	28	28	28	G	1															
	29	29	29	G	1															
	30	30	30	G	1															

PLEASE NOTE: Liability and Damages. Cardinal's liability and client's exclusive remedy for any claim arising out of or related to the performance of services rendered by Cardinal, regardless of whether such claim is based upon any of the above stated reasons or otherwise, shall be limited to the amount paid by the client for the analyses. All claims, including those for negligence and any other cause whatsoever shall be deemed waived unless made in writing and received by Cardinal within 30 days after completion of the applicable service. In no event shall Cardinal be liable for incidental or consequential damages, including without limitation, business interruptions, loss of use, or loss of profits incurred by client, its subcontractors, affiliates or successors arising out of or related to the performance of services rendered by Cardinal.

Relinquished By: Q. Hernandez	Date: 8-5-21	Received By: Q. Beckey	Phone Result: <input type="checkbox"/> Yes <input type="checkbox"/> No	Add'l Phone #:
Relinquished By:	Date:	Received By:	Fax Result: <input type="checkbox"/> Yes <input type="checkbox"/> No	Add'l Fax #:
REMARKS:				

Delivered By: (Circle One) Q. Beckey	Date: 8/5/21	Sample Condition: <input checked="" type="checkbox"/> Intact <input type="checkbox"/> Yes <input type="checkbox"/> No	CHECKED BY: (Initials) [Signature]
Sampler - UPS - Bus - Other: 0.42 / #113			

\* Cardinal cannot accept verbal changes. Please fax written changes to 505-393-2476





CARDINAL LABORATORIES

101 East Marland, Hobbs, NM 88240  
(505) 393-2326 FAX (505) 393-2476

CHAIN-OF-CUSTODY AND ANALYSIS REQUEST

BILL TO

ANALYSIS REQUEST

Company Name: BBC International, Inc.		P.O. #:
Project Manager: Cliff Brunson		Company: OXY
Address: P.O. Box 805		Attn: WADE
City: Hobbs		Address:
Phone #: 575-397-6388		City:
Fax #: 575-397-0397		State:
Project #:		Zip:
Project Name: Federal 27-1 CTA		Phone #:
Project Location:		Fax #:
Sampler Name: ROGER HERNANDEZ		

Lab I.D.	Sample I.D.	(G)RAB OR (C)OMP.	# CONTAINERS	MATRIX						DATE	TIME	CL	BTX	TPH EXT
				GROUNDWATER	WASTEWATER	SOIL	OIL	SLUDGE	OTHER :					
HL12089	BOTTOM 31 @ 3'	G	1							8:21	1:50			
	BOTTOM 32 @ 4'	G	1							8:21	7:00			
	BOTTOM 33 @ 4'	G	1							8:21	2:05			
	BOTTOM 34 @ 4'	G	1							8:21	2:10			
	SIDEWALL 35 @ 1'	C	1							8:21	2:15			
	SIDEWALL 36 @ 1'	C	1							8:21	2:20			
	SIDEWALL 37 @ 1'	C	1							8:21	2:25			
	SIDEWALL 38 @ 1'	C	1							8:21	2:30			
	SIDEWALL 39 @ 1'	C	1							8:21	2:40			
	SIDEWALL 40 @ 1'	C	1							8:21	2:45			

Relinquished By: [Signature]	Date: 8-5-21	Received By: Q. E. Hernandez	Sample Condition: <input checked="" type="checkbox"/> Intact <input type="checkbox"/> Cool <input type="checkbox"/> Yes <input type="checkbox"/> No	CHECKED BY: [Signature]
Delivered By: (Circle One) Q. E. Hernandez	Date: 8/5/21	Time: 12:45		
Sampler - UPS - Bus - Other: D.42 / #113				

PLEASE NOTE: Liability and Damages. Cardinal's liability and client's exclusive remedy for any claim arising out of this contract or tort, shall be limited to the amount paid by the client for the analyses. All claims, including those for negligence and any other cause whatsoever shall be deemed waived unless made in writing and received by Cardinal within 30 days after completion of the applicable service. In no event shall Cardinal be liable for incidental or consequential damages, including without limitation, business interruptions, loss of use, or loss of profits incurred by client, its subsidiaries, affiliates or successors arising out of or related to the performance of services rendered by Cardinal, regardless of whether such claim is based upon any of the above stated theories of recovery.

Phone Result: ☐ Yes ☐ No Add'l Phone #:   
Fax Result: ☐ Yes ☐ No Add'l Fax #:   
REMARKS:



**ARDINAL LABORATORIES**
 101 East Marland, Hobbs, NM 88240  
 (505) 393-2326 FAX (505) 393-2476
CHAIN-OF-CUSTODY AND ANALYSIS REQUEST

Company Name: BBC International, Inc.		<b>BILL TO</b>		<b>ANALYSIS REQUEST</b>										
Project Manager: Cliff Brunson		P.O. #:												
Address: P.O. Box 805		Company: OXY												
City: Hobbs		Attn: WADE												
Phone #: 575-397-6388		Address:												
Fax #: 575-397-0397		City:												
Project #:		State: ZIP:												
Project Name: <i>Federal 27-1 CTS</i>		Phone #:												
Project Location:		Fax #:												
Sampler Name: ROGER HERNANDEZ														
FOR LAB USE ONLY														
Lab I.D.	Sample I.D.	(G)RAB OR (C)OMP.	# CONTAINERS	MATRIX			PRESERV	SAMPLING	CL	BTEX	TPH EXT			
				GROUNDWATER	WASTEWATER	SOIL	OIL	SLUDGE	OTHER :	ACID/BASE:	ICE / COOL	OTHER :	DATE	TIME
<i>H212589</i>	<i>3 IDE WALL 7</i>	<i>G</i>	<i>1</i>	<i>✓</i>	<i>✓</i>	<i>✓</i>	<i>✓</i>	<i>✓</i>	<i>✓</i>	<i>✓</i>	<i>✓</i>	<i>✓</i>	<i>8/21/14</i>	<i>140</i>
<i>41</i>	<i>3 IDE WALL 8</i>	<i>G</i>	<i>1</i>	<i>✓</i>	<i>✓</i>	<i>✓</i>	<i>✓</i>	<i>✓</i>	<i>✓</i>	<i>✓</i>	<i>✓</i>	<i>✓</i>	<i>8/21/14</i>	<i>150</i>
<i>42</i>	<i>3 IDE WALL 9</i>	<i>G</i>	<i>1</i>	<i>✓</i>	<i>✓</i>	<i>✓</i>	<i>✓</i>	<i>✓</i>	<i>✓</i>	<i>✓</i>	<i>✓</i>	<i>✓</i>	<i>8/21/14</i>	<i>155</i>
<i>43</i>	<i>3 IDE WALL 10</i>	<i>G</i>	<i>1</i>	<i>✓</i>	<i>✓</i>	<i>✓</i>	<i>✓</i>	<i>✓</i>	<i>✓</i>	<i>✓</i>	<i>✓</i>	<i>✓</i>	<i>8/21/14</i>	<i>160</i>
<i>44</i>	<i>3 IDE WALL 10</i>	<i>G</i>	<i>1</i>	<i>✓</i>	<i>✓</i>	<i>✓</i>	<i>✓</i>	<i>✓</i>	<i>✓</i>	<i>✓</i>	<i>✓</i>	<i>✓</i>	<i>8/21/14</i>	<i>165</i>

PLEASE NOTE: Liability and Damages: Cardinal's liability and client's exclusive remedy for any claim arising whether based in contract or tort, shall be limited to the amount paid by the client for the analyses. All claims, including those for negligence and any other cause whatsoever shall be deemed waived unless made in writing and received by Cardinal within 30 days after completion of the applicable service. In no event shall Cardinal be liable for incidental or consequential damages, including without limitation, business interruptions, loss of use, or loss of profits incurred by client, its subsidiaries, affiliates or successors arising out of or related to the performance of services hereunder by Cardinal, regardless of whether such claim is based upon any of the above stated reasons or otherwise.

Relinquished By: <i>Roger Hernandez</i>	Date: <i>8/21</i>	Time: <i>8:54</i>	Received By: <i>J. G. Kelly</i>	Date: <i>8/21</i>	Time: <i>12:45</i>	Sample Condition	CHECKED BY: <i>J. G. Kelly</i>
Relinquished By:	Date:	Time:	Received By:	Date:	Time:	Cool <input checked="" type="checkbox"/> Intact <input checked="" type="checkbox"/>	Initials: <i>JGK</i>
Delivered By: (Circle One)	Sample Condition <input checked="" type="checkbox"/> Yes <input checked="" type="checkbox"/> No Intact <input checked="" type="checkbox"/> Yes <input checked="" type="checkbox"/> No						
Sampler - UPS - Bus - Other: <i>8:40 / #113</i>	CHECKED BY: <i>J. G. Kelly</i> Initials: <i>JGK</i>						

Phone Result: ☐ Yes ☐ No Add'l Phone #: \_\_\_\_\_  
 Fax Result: ☐ Yes ☐ No Add'l Fax #: \_\_\_\_\_  
 REMARKS:

**District I**  
1625 N. French Dr., Hobbs, NM 88240  
Phone:(575) 393-6161 Fax:(575) 393-0720  
**District II**  
811 S. First St., Artesia, NM 88210  
Phone:(575) 748-1283 Fax:(575) 748-9720  
**District III**  
1000 Rio Brazos Rd., Aztec, NM 87410  
Phone:(505) 334-6178 Fax:(505) 334-6170  
**District IV**  
1220 S. St Francis Dr., Santa Fe, NM 87505  
Phone:(505) 476-3470 Fax:(505) 476-3462

**State of New Mexico**  
**Energy, Minerals and Natural Resources**  
**Oil Conservation Division**  
**1220 S. St Francis Dr.**  
**Santa Fe, NM 87505**

CONDITIONS  
  
Action 92721

CONDITIONS

Operator: OXY USA INC P.O. Box 4294 Houston, TX 772104294	OGRID: 16696
	Action Number: 92721
	Action Type: [C-141] Release Corrective Action (C-141)

CONDITIONS

Created By	Condition	Condition Date
jnobui	Closure Report Approved.	4/27/2022