



**Pima Environmental Services
5614 N. Lovington Highway
Hobbs, NM 88240
575-964-7740**

May 22, 2022

NMOCD District 2
811 S. First St
Artesia, NM, 88210

**RE: Liner Inspection and Closure Report
Yale State #003 Battery
API No. 30-015-37452
GPS: Latitude 32.85726 Longitude -103.94536
UL N, Section 2, Township 17S, Range 30E
NMOCD Reference No. NAPP2123027043**

Pima Environmental Services, LLC (Pima) has been contracted by Spur Energy Partners, LLC. (Spur) to perform a liner inspection and prepare this closure report for a produced water release that happened at the Yale State #003 Battery (Yale). An initial C-141 was submitted on August 9, 2021, and can be found in Appendix B. This incident was assigned Incident ID NAPP2123027043, by the New Mexico Oil Conservation Division (NMOCD).

Site Information and Site Characterization

The Yale is located approximately three (3) miles northeast of Loco Hills, NM. This spill site is in Unit N, Section 2, Township 17S, Range 30E, Latitude 32.85726, Longitude -103.94536, Eddy County, NM. A Location Map can be found in Figure 1.

Based upon New Mexico Office of the State Engineer well water data, depth to the nearest groundwater in this area is 80 feet below grade surface (BGS). According to the United States Geological Survey well water data, depth to the nearest groundwater in this area is 361 feet BGS. See Appendix A for referenced water surveys. The Yale is in a low karst area (Figure 3). See Figure 2 for a Topographic Map.

Release Information

NAPP2123027043: On July 23, 2021, the produced water tank ruptured causing the release of fluid. All fluid released was contained within the gravel/lined, secondary containment. The fluid released was calculated to be approximately 93 barrels (bbls) of produced water. A vacuum truck was dispatched to the site and was able to recover all the fluid inside containment.

Site Assessment and Liner Inspection

On September 1, 2021, after sending the 48-hour notification email, Pima Environmental conducted a liner inspection at this location. We concluded that this liner maintained its integrity and was able to contain this release. However, there was still gravel inside the containment around the release area which needed to be removed.

Liner Inspection

On February 18, 2022, Pima returned to the site to remove the gravel from inside the containment around the area of the release. The contaminated material was transported to Lea Land, a NMOCD approved disposal site.

On May 1, 2022, after sending the 48-hour notification email, Pima Environmental conducted another liner inspection at this location. The liner inspection form and photographic documentation can be found in Appendix C.

Closure Request

After careful review, Pima requests that this incident, NAPP2123027043, be closed. Spur has complied with the applicable closure requirements.

Should you have any questions or need additional information, please feel free to contact Tom Bynum at 575-964-7740 or tom@pimaoil.com.

Respectfully,

Tom Bynum

Tom Bynum
Project Manager
Pima Environmental Services, LLC

Attachments

Figures:

- 1- Location Map
- 2- Topographic Map
- 3- Karst Map
- 4- Site Map

Appendices:

- Appendix A- Referenced Water Surveys
- Appendix B- C-141 Form & 48 Hour Notification
- Appendix C- Liner Inspection Form & Photographic Documentation



Pima Environmental Services

Figures:

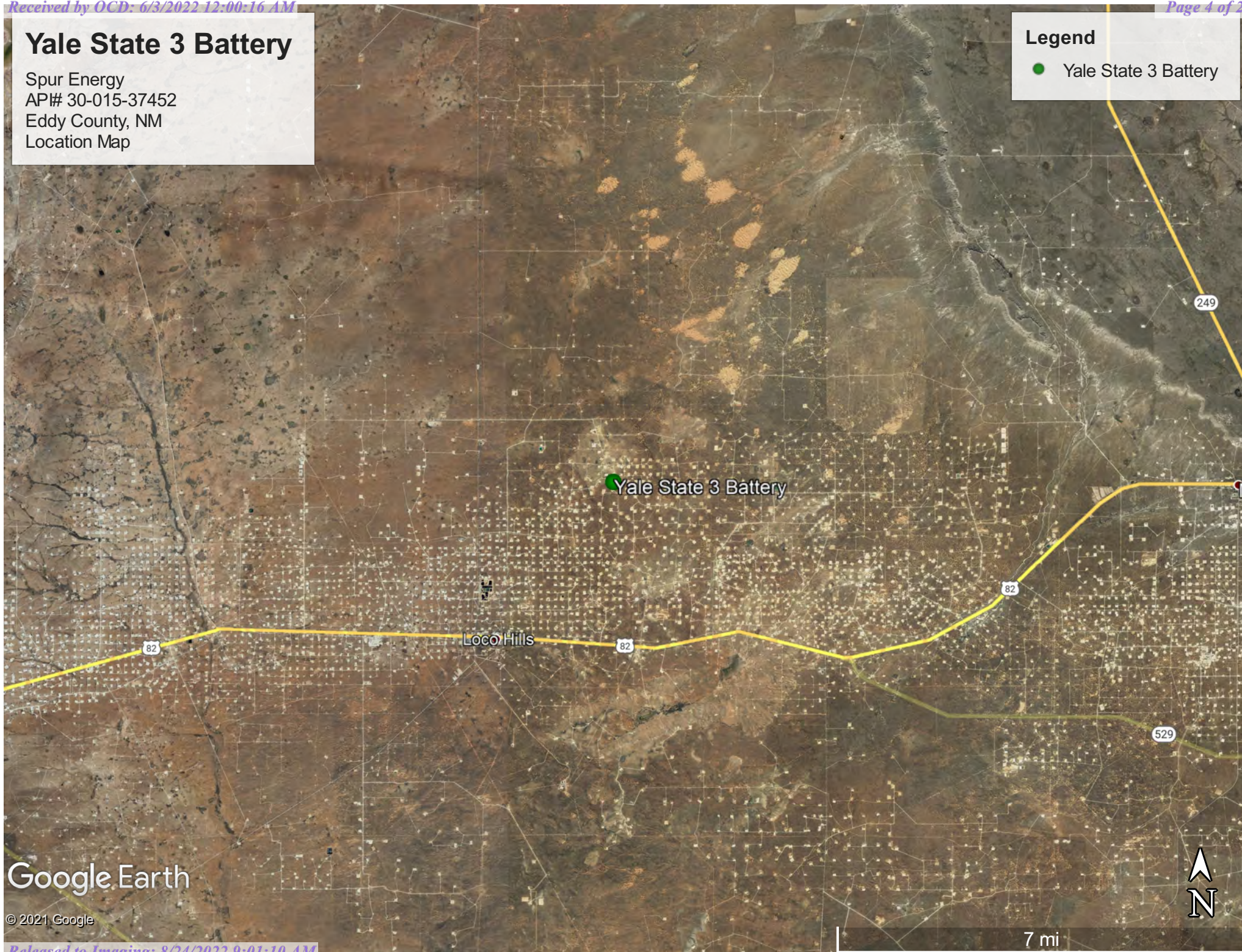
- 1 - Location Map
- 2 - Topographic Map
- 3 - Karst Map
- 4 - Site Map

Yale State 3 Battery

Spur Energy
AP# 30-015-37452
Eddy County, NM
Location Map

Legend

● Yale State 3 Battery



Google Earth

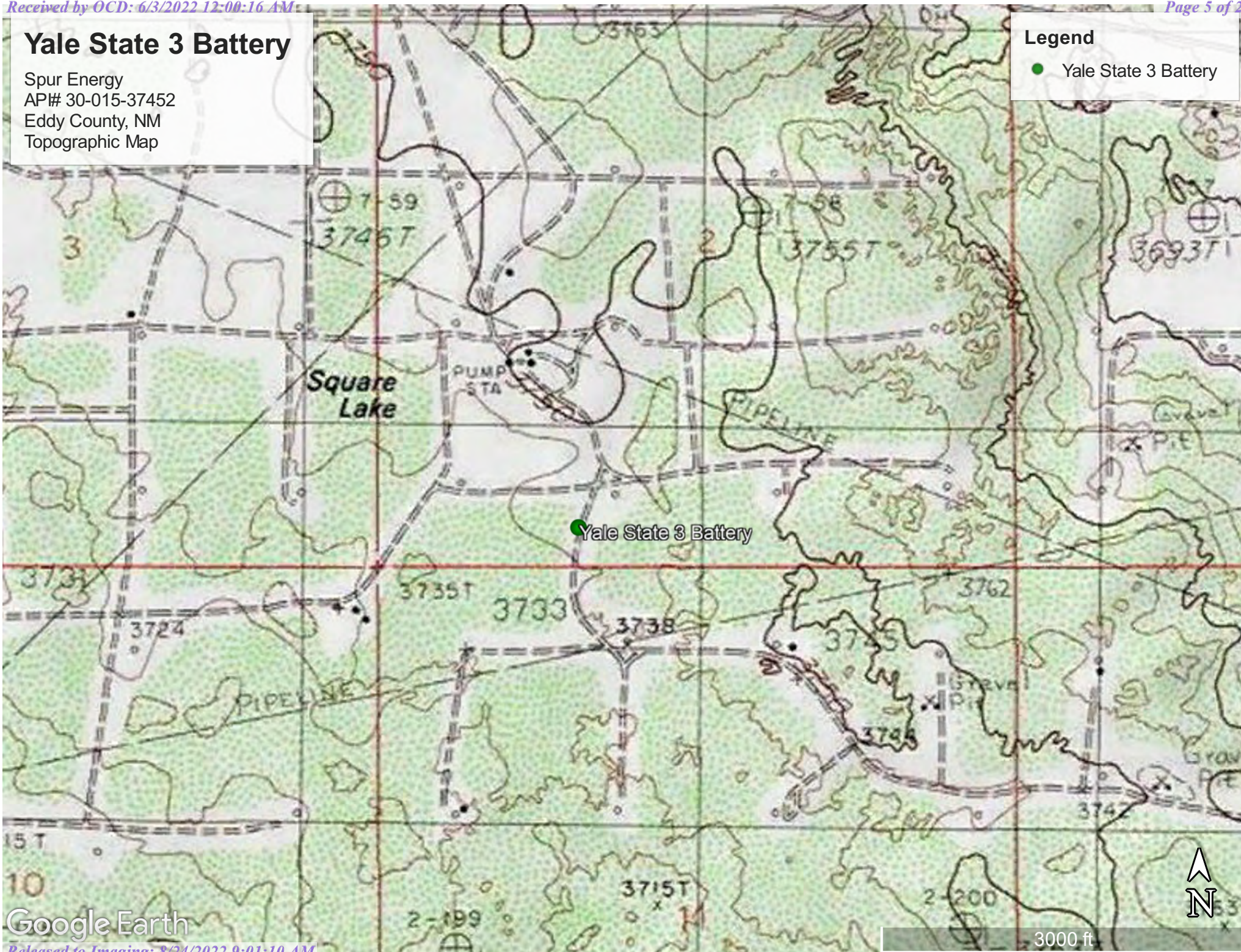
© 2021 Google

Yale State 3 Battery

Spur Energy
AP# 30-015-37452
Eddy County, NM
Topographic Map

Legend

● Yale State 3 Battery



Google Earth

Yale State 3 Battery

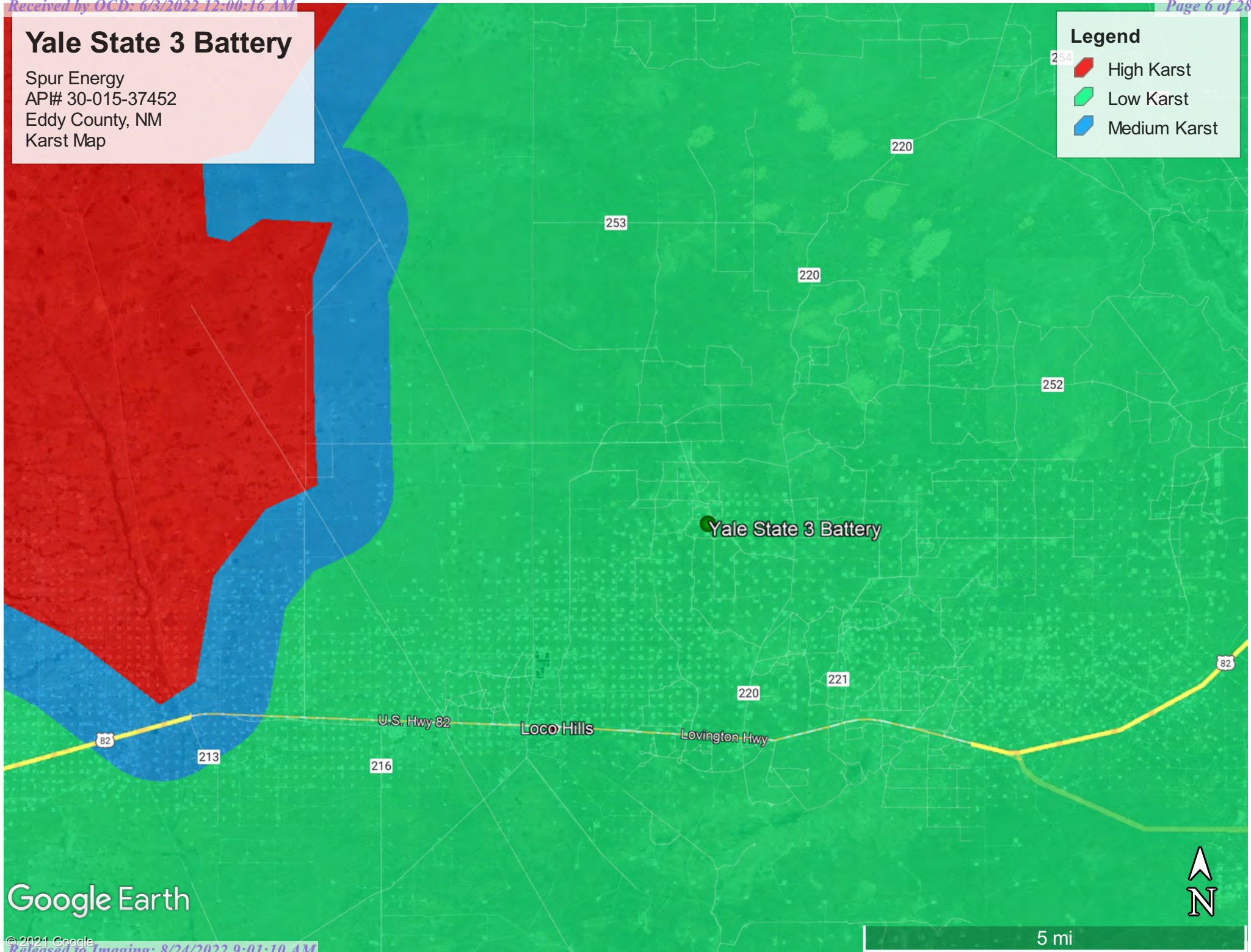
Spur Energy
AP# 30-015-37452
Eddy County, NM
Karst Map

Legend

High Karst

Low Karst

Medium Karst






Google Earth


Yale State #3

Spur Energy
API #30-015-37452
Eddy County, NM
Site Map

Legend

-  Spill Area
-  Yale State #003

 32.857531, -103.946134

 Yale State #003

Google Earth

Released to Imaging: 8/24/2022 9:01:10 AM



100 ft



Pima Environmental Services

Appendix A

Water Surveys:

OSE

USGS

Surface Water Map



New Mexico Office of the State Engineer

Water Column/Average Depth to Water

(A CLW##### in the POD suffix indicates the POD has been replaced & no longer serves a water right file.)

(R=POD has been replaced,
O=orphaned,
C=the file is closed)

(quarters are 1=NW 2=NE 3=SW 4=SE)

(quarters are smallest to largest)

(NAD83 UTM in meters)

(In feet)

POD Number	Code	POD Sub-basin	County	Q 64	Q 16	Q 4	Sec	Tws	Rng	X	Y	Distance	DepthWell	DepthWater	Water Column
RA 11914 POD1		RA	ED	2	4	2	20	17S	30E	594801	3632002	5509	85	80	5
L 14207 POD3		L	LE	2	3	3	31	16S	37E	606117	3636977	7573	240	96	144
RA 11590 POD4		RA	ED	4	1	1	32	17S	31E	603308	3629253	8208	55		
RA 11590 POD3		RA	ED	3	1	2	32	17S	31E	603932	3629260	8576	60		
RA 11590 POD1		RA	ED	2	1	3	32	17S	31E	603315	3628545	8802	158		

Average Depth to Water: **88 feet**

Minimum Depth: **80 feet**

Maximum Depth: **96 feet**

Record Count: 5

UTMNAD83 Radius Search (in meters):

Easting (X): 598608.86

Northing (Y): 3635984.46

Radius: 10000

The data is furnished by the NMOSE/ISC and is accepted by the recipient with the expressed understanding that the OSE/ISC make no warranties, expressed or implied, concerning the accuracy, completeness, reliability, usability, or suitability for any particular purpose of the data.

9/7/21 12:01 PM

WATER COLUMN/ AVERAGE DEPTH TO
WATER



[USGS Home](#)
[Contact USGS](#)
[Search USGS](#)

National Water Information System: Web Interface

USGS Water Resources

Data Category:


Groundwater

Geographic Area:

United States

GO

Click to hide News Bulletins

- Explore the *NEW* [USGS National Water Dashboard](#) interactive map to access real-time water data from over 13,500 stations nationwide.
- [Full News](#) 

Groundwater levels for the Nation

 Important: [Next Generation Monitoring Location Page](#)

Search Results -- 1 sites found

site_no list =

- 325210103580101

Minimum number of levels = 1

[Save file of selected sites](#) to local disk for future upload

USGS 325210103580101 16S.30E.33.44233

Available data for this site

Groundwater: Field measurements

GO

Eddy County, New Mexico

Hydrologic Unit Code 13060011

Latitude 32°52'10", Longitude 103°58'01" NAD27

Land-surface elevation 3,725 feet above NAVD88

The depth of the well is 433 feet below land surface.

This well is completed in the Other aquifers (N9999OTHER) national aquifer.

This well is completed in the Santa Rosa Sandstone (231SNRS) local aquifer.

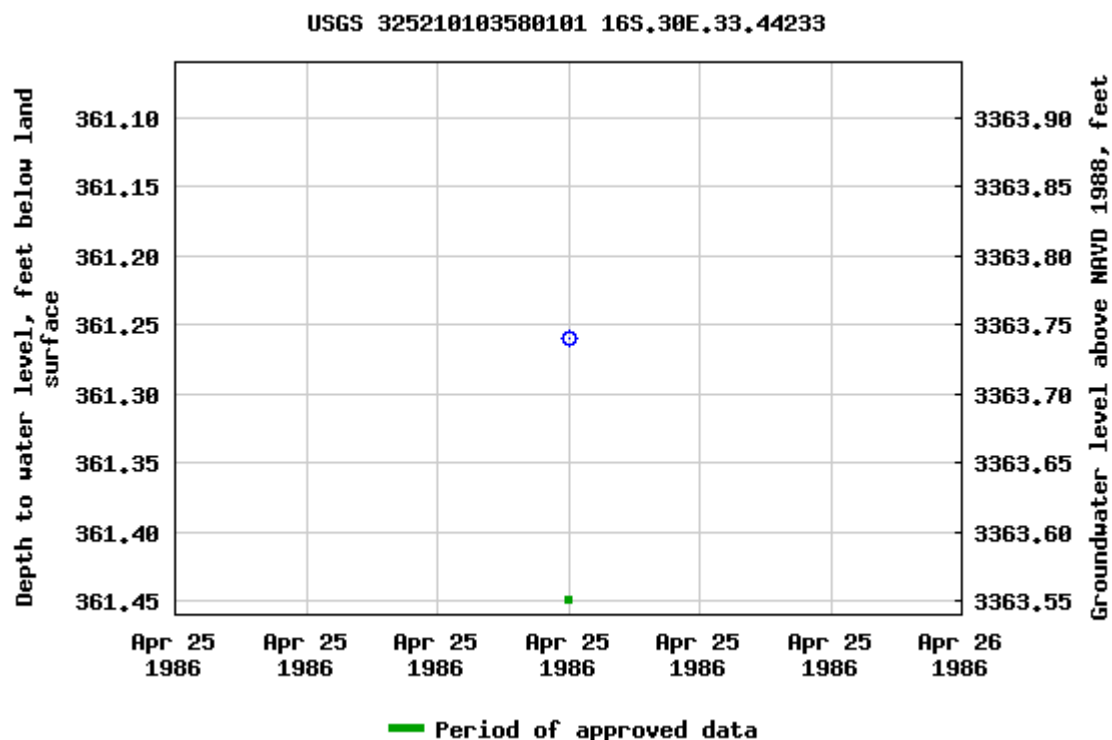
Output formats

[Table of data](#)

[Tab-separated data](#)

[Graph of data](#)

[Reselect period](#)



Breaks in the plot represent a gap of at least one year between field measurements.

[Download a presentation-quality graph](#)

[Questions about sites/data?](#)

[Feedback on this web site](#)

[Automated retrievals](#)

[Help](#)

[Data Tips](#)

[Explanation of terms](#)

[Subscribe for system changes](#)

[News](#)

[Accessibility](#)

[FOIA](#)

[Privacy](#)

[Policies and Notices](#)

[U.S. Department of the Interior](#) | [U.S. Geological Survey](#)

Title: Groundwater for USA: Water Levels

URL: <https://nwis.waterdata.usgs.gov/nwis/gwlevels?>

Page Contact Information: [USGS Water Data Support Team](#)

Page Last Modified: 2021-09-07 14:02:49 EDT

0.59 0.48 nadww01





[USGS Home](#)
[Contact USGS](#)
[Search USGS](#)

National Water Information System: Web Interface

USGS Water Resources

Data Category:

Groundwater

Geographic Area:

United States

GO

Click to hide News Bulletins

- Explore the *NEW* [USGS National Water Dashboard](#) interactive map to access real-time water data from over 13,500 stations nationwide.
- [Full News](#) 

Groundwater levels for the Nation

 Important: [Next Generation Monitoring Location Page](#)

Search Results -- 1 sites found

site_no list =

- 325216103575701

Minimum number of levels = 1

[Save file of selected sites](#) to local disk for future upload

USGS 325216103575701 16S.30E.33.42443

Available data for this site

Groundwater: Field measurements

GO

Eddy County, New Mexico

Hydrologic Unit Code 13060011

Latitude 32°52'16", Longitude 103°57'57" NAD27

Land-surface elevation 3,729 feet above NAVD88

The depth of the well is 385 feet below land surface.

This well is completed in the Other aquifers (N9999OTHER) national aquifer.

This well is completed in the Santa Rosa Sandstone (231SNRS) local aquifer.

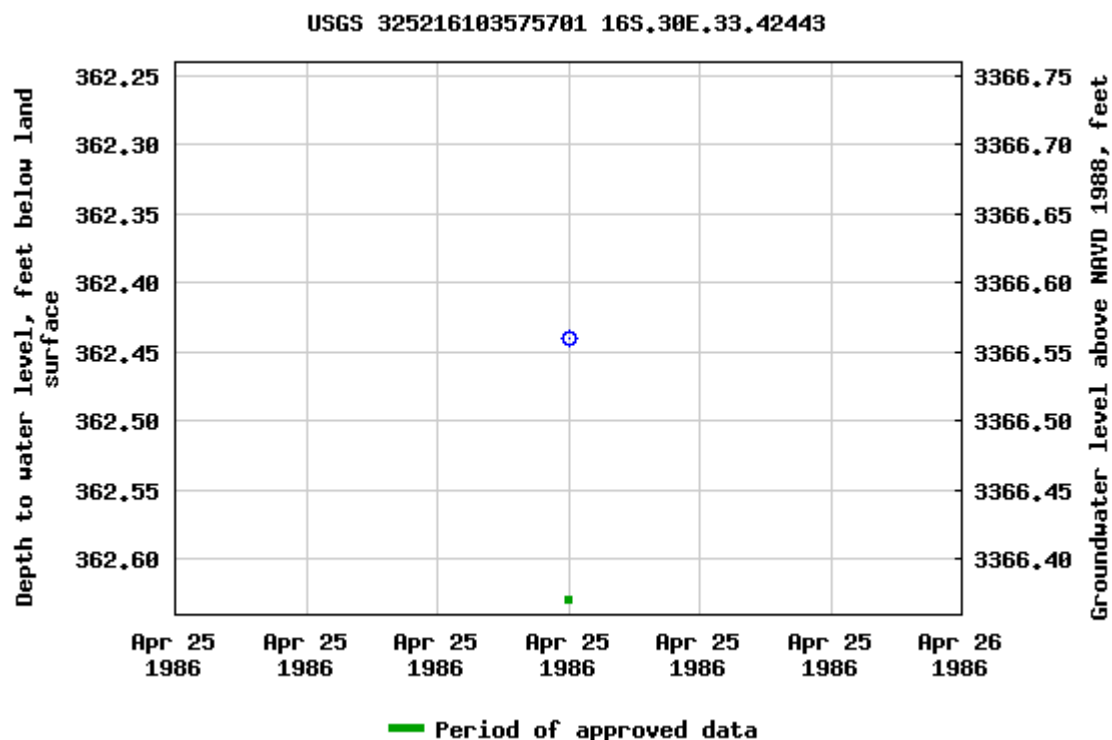
Output formats

[Table of data](#)

[Tab-separated data](#)

[Graph of data](#)

[Reselect period](#)



Breaks in the plot represent a gap of at least one year between field measurements.

[Download a presentation-quality graph](#)

[Questions about sites/data?](#)

[Feedback on this web site](#)

[Automated retrievals](#)

[Help](#)

[Data Tips](#)

[Explanation of terms](#)

[Subscribe for system changes](#)

[News](#)

[Accessibility](#)

[FOIA](#)

[Privacy](#)

[Policies and Notices](#)

[U.S. Department of the Interior](#) | [U.S. Geological Survey](#)

Title: Groundwater for USA: Water Levels

URL: <https://nwis.waterdata.usgs.gov/nwis/gwlevels?>



Page Contact Information: [USGS Water Data Support Team](#)


Page Last Modified: 2021-09-07 14:03:28 EDT


0.59 0.47 nadww01

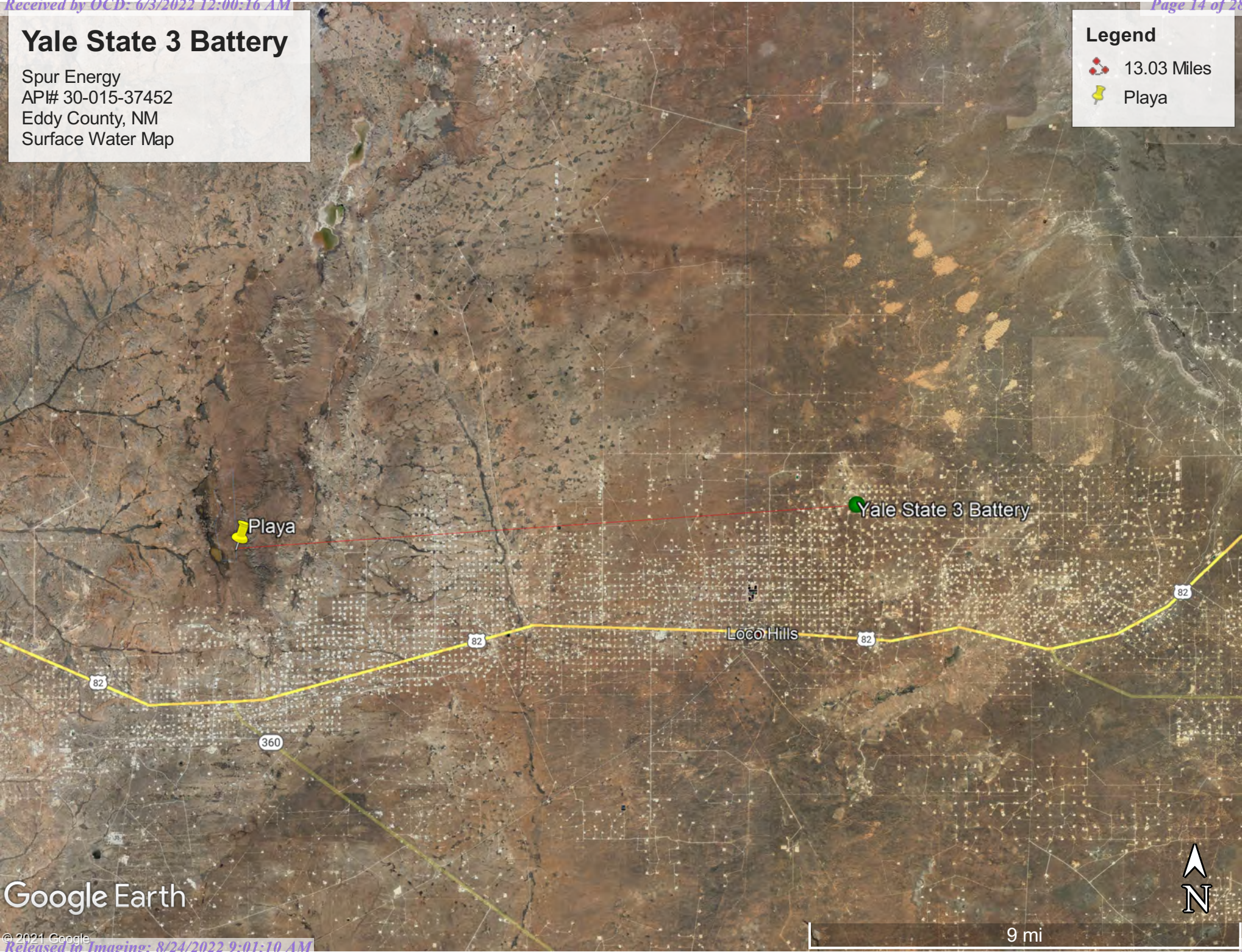
Yale State 3 Battery

Spur Energy
AP# 30-015-37452
Eddy County, NM
Surface Water Map

Legend

 13.03 Miles

 Playa



Google Earth



Pima Environmental Services

Appendix B

C-141 Form

48-Hour Notification

District I
1625 N. French Dr., Hobbs, NM 88240
District II
811 S. First St., Artesia, NM 88210
District III
1000 Rio Brazos Road, Aztec, NM 87410
District IV
1220 S. St. Francis Dr., Santa Fe, NM 87505

State of New Mexico
Energy Minerals and Natural
Resources Department
Oil Conservation Division
1220 South St. Francis Dr.
Santa Fe, NM 87505

Form C-141
Revised August 24, 2018
Submit to appropriate OCD District office

Incident ID	NAPP2123027043
District RP	
Facility ID	
Application ID	

Release Notification

Responsible Party

Responsible Party	Spur Energy Partners LLC	OGRID	328947
Contact Name	Braidy Moulder	Contact Telephone	713-264-2517
Contact email	bmoulder@spurepllc.com	Incident # (assigned by OCD)	NAPP2123027043
Contact mailing address	2407 Pecos Avenue, Artesia, NM 88210		

Location of Release Source

Latitude 32.85726 Longitude -103.94536
(NAD 83 in decimal degrees to 5 decimal places)

Site Name	Yale State #3 Battery	Site Type	Production
Date Release Discovered	07/23/2021	API# (if applicable)	

Unit Letter	Section	Township	Range	County
N	02	17S	30E	Eddy

Surface Owner: ☒ State ☐ Federal ☐ Tribal ☐ Private (Name: _____)

Nature and Volume of Release

Material(s) Released (Select all that apply and attach calculations or specific justification for the volumes provided below)

<input type="checkbox"/> Crude Oil	Volume Released (bbls)	Volume Recovered (bbls)
<input checked="" type="checkbox"/> Produced Water	Volume Released (bbls) 93	Volume Recovered (bbls) 93
	Is the concentration of dissolved chloride in the produced water >10,000 mg/l?	<input checked="" type="checkbox"/> Yes <input type="checkbox"/> No
<input type="checkbox"/> Condensate	Volume Released (bbls)	Volume Recovered (bbls)
<input type="checkbox"/> Natural Gas	Volume Released (Mcf)	Volume Recovered (Mcf)
<input type="checkbox"/> Other (describe)	Volume/Weight Released (provide units)	Volume/Weight Recovered (provide units)

Cause of Release The produced water tank ruptured causing the release.

State of New Mexico
Oil Conservation Division

Incident ID	NAPP2123027043
District RP	
Facility ID	
Application ID	

Was this a major release as defined by 19.15.29.7(A) NMAC?

☒ Yes ☐ No

If YES, for what reason(s) does the responsible party consider this a major release?
>25 bbls

If YES, was immediate notice given to the OCD? By whom? To whom? When and by what means (phone, email, etc)?

Dakota Neel (SPUR) sent an email to Mike Bratcher and Jim Griswold on 7/23/2021.

Initial Response

The responsible party must undertake the following actions immediately unless they could create a safety hazard that would result in injury

- ☒ The source of the release has been stopped.
- ☒ The impacted area has been secured to protect human health and the environment.
- ☒ Released materials have been contained via the use of berms or dikes, absorbent pads, or other containment devices.
- ☒ All free liquids and recoverable materials have been removed and managed appropriately.

If all the actions described above have not been undertaken, explain why:

Per 19.15.29.8 B. (4) NMAC the responsible party may commence remediation immediately after discovery of a release. If remediation has begun, please attach a narrative of actions to date. If remedial efforts have been successfully completed or if the release occurred within a lined containment area (see 19.15.29.11(A)(5)(a) NMAC), please attach all information needed for closure evaluation.

I hereby certify that the information given above is true and complete to the best of my knowledge and understand that pursuant to OCD rules and regulations all operators are required to report and/or file certain release notifications and perform corrective actions for releases which may endanger public health or the environment. The acceptance of a C-141 report by the OCD does not relieve the operator of liability should their operations have failed to adequately investigate and remediate contamination that pose a threat to groundwater, surface water, human health or the environment. In addition, OCD acceptance of a C-141 report does not relieve the operator of responsibility for compliance with any other federal, state, or local laws and/or regulations.

Printed Name: Dakota Neel

Title: HSE Coordinator

Signature: 

Date: 8/9/2021

email: dneel@spurepllc.com

Telephone: 832-849-7837

OCD Only

Received by: _____ Date: _____

Incident ID	NAPP2123027043
District RP	
Facility ID	
Application ID	

Site Assessment/Characterization

This information must be provided to the appropriate district office no later than 90 days after the release discovery date.

What is the shallowest depth to groundwater beneath the area affected by the release?	<u>80</u> (ft bgs)
Did this release impact groundwater or surface water?	<input type="checkbox"/> Yes <input checked="" type="checkbox"/> No
Are the lateral extents of the release within 300 feet of a continuously flowing watercourse or any other significant watercourse?	<input type="checkbox"/> Yes <input checked="" type="checkbox"/> No
Are the lateral extents of the release within 200 feet of any lakebed, sinkhole, or playa lake (measured from the ordinary high-water mark)?	<input type="checkbox"/> Yes <input checked="" type="checkbox"/> No
Are the lateral extents of the release within 300 feet of an occupied permanent residence, school, hospital, institution, or church?	<input type="checkbox"/> Yes <input checked="" type="checkbox"/> No
Are the lateral extents of the release within 500 horizontal feet of a spring or a private domestic fresh water well used by less than five households for domestic or stock watering purposes?	<input type="checkbox"/> Yes <input checked="" type="checkbox"/> No
Are the lateral extents of the release within 1000 feet of any other fresh water well or spring?	<input type="checkbox"/> Yes <input checked="" type="checkbox"/> No
Are the lateral extents of the release within incorporated municipal boundaries or within a defined municipal fresh water well field?	<input type="checkbox"/> Yes <input checked="" type="checkbox"/> No
Are the lateral extents of the release within 300 feet of a wetland?	<input type="checkbox"/> Yes <input checked="" type="checkbox"/> No
Are the lateral extents of the release overlying a subsurface mine?	<input type="checkbox"/> Yes <input checked="" type="checkbox"/> No
Are the lateral extents of the release overlying an unstable area such as karst geology?	<input type="checkbox"/> Yes <input checked="" type="checkbox"/> No
Are the lateral extents of the release within a 100-year floodplain?	<input type="checkbox"/> Yes <input checked="" type="checkbox"/> No
Did the release impact areas not on an exploration, development, production, or storage site?	<input type="checkbox"/> Yes <input checked="" type="checkbox"/> No

Attach a comprehensive report (electronic submittals in .pdf format are preferred) demonstrating the lateral and vertical extents of soil contamination associated with the release have been determined. Refer to 19.15.29.11 NMAC for specifics.

Characterization Report Checklist: *Each of the following items must be included in the report.*

- ☒ Scaled site map showing impacted area, surface features, subsurface features, delineation points, and monitoring wells.
- ☒ Field data
- ☐ Data table of soil contaminant concentration data
- ☒ Depth to water determination
- ☒ Determination of water sources and significant watercourses within ½-mile of the lateral extents of the release
- ☐ Boring or excavation logs
- ☒ Photographs including date and GIS information
- ☒ Topographic/Aerial maps
- ☐ Laboratory data including chain of custody

If the site characterization report does not include completed efforts at remediation of the release, the report must include a proposed remediation plan. That plan must include the estimated volume of material to be remediated, the proposed remediation technique, proposed sampling plan and methods, anticipated timelines for beginning and completing the remediation. The closure criteria for a release are contained in Table 1 of 19.15.29.12 NMAC, however, use of the table is modified by site- and release-specific parameters.

State of New Mexico
Oil Conservation Division

Page 4

Incident ID	NAPP2123027043
District RP	
Facility ID	
Application ID	

I hereby certify that the information given above is true and complete to the best of my knowledge and understand that pursuant to OCD rules and regulations all operators are required to report and/or file certain release notifications and perform corrective actions for releases which may endanger public health or the environment. The acceptance of a C-141 report by the OCD does not relieve the operator of liability should their operations have failed to adequately investigate and remediate contamination that pose a threat to groundwater, surface water, human health or the environment. In addition, OCD acceptance of a C-141 report does not relieve the operator of responsibility for compliance with any other federal, state, or local laws and/or regulations.

Printed Name: Braidy Moulder

Title: HSE Coordinator

Signature: Braidy Moulder

Date: 5/22/2022

email: bmoulder@spurepllc.com

Telephone: 713-264-2517

OCD Only

Received by: _____

Date: _____

Incident ID	NAPP2123027043
District RP	
Facility ID	
Application ID	

Closure

The responsible party must attach information demonstrating they have complied with all applicable closure requirements and any conditions or directives of the OCD. This demonstration should be in the form of a comprehensive report (electronic submittals in .pdf format are preferred) including a scaled site map, sampling diagrams, relevant field notes, photographs of any excavation prior to backfilling, laboratory data including chain of custody documents of final sampling, and a narrative of the remedial activities. Refer to 19.15.29.12 NMAC.

Closure Report Attachment Checklist: *Each of the following items must be included in the closure report.*

- ☐ A scaled site and sampling diagram as described in 19.15.29.11 NMAC
- ☒ Photographs of the remediated site prior to backfill or photos of the liner integrity if applicable (Note: appropriate OCD District office must be notified 2 days prior to liner inspection)
- ☐ Laboratory analyses of final sampling (Note: appropriate ODC District office must be notified 2 days prior to final sampling)
- ☐ Description of remediation activities

I hereby certify that the information given above is true and complete to the best of my knowledge and understand that pursuant to OCD rules and regulations all operators are required to report and/or file certain release notifications and perform corrective actions for releases which may endanger public health or the environment. The acceptance of a C-141 report by the OCD does not relieve the operator of liability should their operations have failed to adequately investigate and remediate contamination that pose a threat to groundwater, surface water, human health or the environment. In addition, OCD acceptance of a C-141 report does not relieve the operator of responsibility for compliance with any other federal, state, or local laws and/or regulations. The responsible party acknowledges they must substantially restore, reclaim, and re-vegetate the impacted surface area to the conditions that existed prior to the release or their final land use in accordance with 19.15.29.13 NMAC including notification to the OCD when reclamation and re-vegetation are complete.

Printed Name: Chad Hensley

Title: HSE Coordinator

Signature: 

Date: 5/22/2022

email: chensley@spurenergy.com

Telephone: (346) 339-1494

OCD Only

Received by: _____

Date: _____

Closure approval by the OCD does not relieve the responsible party of liability should their operations have failed to adequately investigate and remediate contamination that poses a threat to groundwater, surface water, human health, or the environment nor does not relieve the responsible party of compliance with any other federal, state, or local laws and/or regulations.

Closure Approved by: 

Date: 08/24/2022

Printed Name: Jennifer Nobui

Title: Environmental Specialist A



Gio PimaOil <gio@pimaoil.com>

Yale State #3 Battery Liner Inspection

1 message

Gio PimaOil <gio@pimaoil.com>

Thu, Apr 28, 2022 at 2:26 PM

To: ocdonline@state.nm.us, Tom Pima Oil <tom@pimaoil.com>, Ned Pima Oil <ned@pimaoil.com>

Good afternoon,

Pima Environmental would like to notify you that we will be conducting a liner Inspection at the Yale State #3 Battery for incident NAPP2123027043. Pima personnel are scheduled to be on site for this Inspection event at approximately 7:00 a.m. On Sunday, May 1st, 2022. If you have any questions or concerns, please let me know. Thank you.

Gio Gomez
Environmental Project Manager
cell-806-782-1151
Office- 575-964-7740
Pima Environmental Services, LLC.



Pima Environmental Services

Appendix C

Liner Inspection Form

Photographic Documentation



Pima Environmental Services, LLC

Liner Inspection FormCompany Name: Spur Energy Partners, LLCSite: Yale State #3 BatteryLat/Long: 32.857531,-103.946134NMOCD Incident ID
& Incident Date: NAPP212302743--7/23/20212-Day Notification
Sent: 4/28/2022Inspection Date: 5/1/2022

Liner Type: **Earthen w/liner** Earthen no liner Polystar
Steel w/poly liner Steel w/spray epoxy No Liner

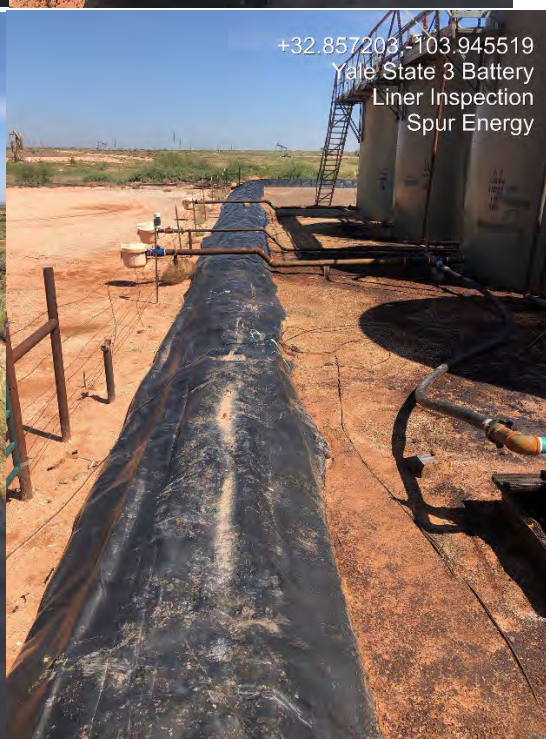
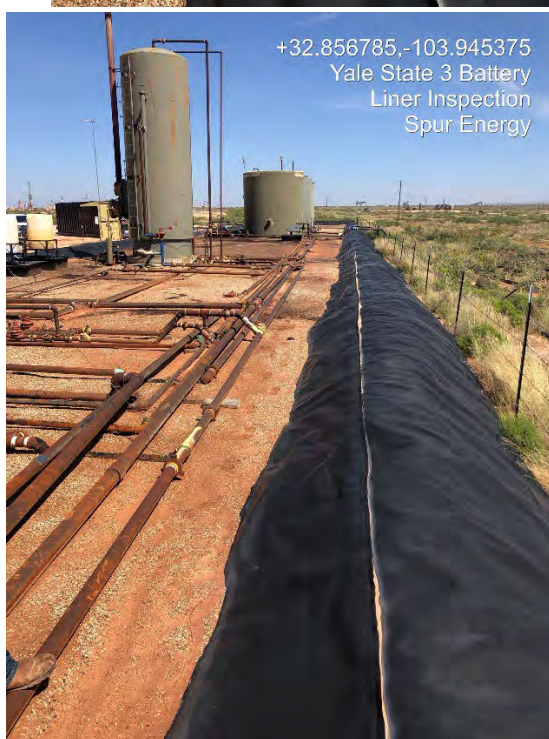
Other: _____

Visualization	Yes	No	Comments
Is there a tear in the liner?		X	
Are there holes in the liner?		X	
Is the liner retaining any fluids?		X	
Does the liner have integrity to contain a leak?	X		

Comments: _____

Inspector Name: Ned Rogers Inspector Signature: Ned Rogers









District I
1625 N. French Dr., Hobbs, NM 88240
Phone:(575) 393-6161 Fax:(575) 393-0720
District II
811 S. First St., Artesia, NM 88210
Phone:(575) 748-1283 Fax:(575) 748-9720
District III
1000 Rio Brazos Rd., Aztec, NM 87410
Phone:(505) 334-6178 Fax:(505) 334-6170
District IV
1220 S. St Francis Dr., Santa Fe, NM 87505
Phone:(505) 476-3470 Fax:(505) 476-3462

State of New Mexico
Energy, Minerals and Natural Resources
Oil Conservation Division
1220 S. St Francis Dr.
Santa Fe, NM 87505

CONDITIONS

Action 113095

CONDITIONS

Operator: Spur Energy Partners LLC 9655 Katy Freeway Houston, TX 77024	OGRID: 328947
	Action Number: 113095
	Action Type: [C-141] Release Corrective Action (C-141)

CONDITIONS

Created By	Condition	Condition Date
jnobui	Closure Approved.	8/24/2022