

Closure Report

Site Description

Site Name:	Pygmy 27 State #003H
Company:	COG Operating, LLC
Legal Description:	U/L P, Section 28, T21S, R33E
County:	Lea County, NM
GPS Coordinates:	N 32.44483° W-103.57282°

Release Data

Date of Release:	5/6/18
Type of Release:	Produced Water
Source of Release:	Hole in flex pipe
Volume of Release:	1/50 bbls
Volume Recovered:	25 bbls

Remediation Specifications

Remediation Parameters:	Excavate the areas of SP1-SP6 and SP11-SP12 to a depth of 1.5 feet. Excavate the remaining areas to a depth of 6 inches. Obtain confirmation bottom and sidewall samples. Backfill the site with clean soil.	
Remediation Activities:	12/21/18 to 1/23/19	
Plan Sent to OCD:	9/13/18	Email from Cliff Brunson to Christina Hernandez
OCD Approval of Plan:	10/22/18	Email from Christina Hernandez to Cliff Brunson
Plan Sent to BLM:	n/a	n/a
BLM Approval of Plan:	n/a	n/a

Supporting Documentation

Initial C-141	Signed 5/9/18
Final C-141	Signed 1/30/19
Site Diagram	September 2018
Pictures	Remediation photos prior to backfill

Request for Closure

Based on the completion of the remediation plan, BBC International, Inc. requests closure approval from NMOCD.

Cliff Brunson, President, BBC International, Inc.

02/04/2019

COG, Pygmy 27 State #003H

Leak date: 5/6/18
Lea County, NM
API# 30-025-42068
1RP-5051

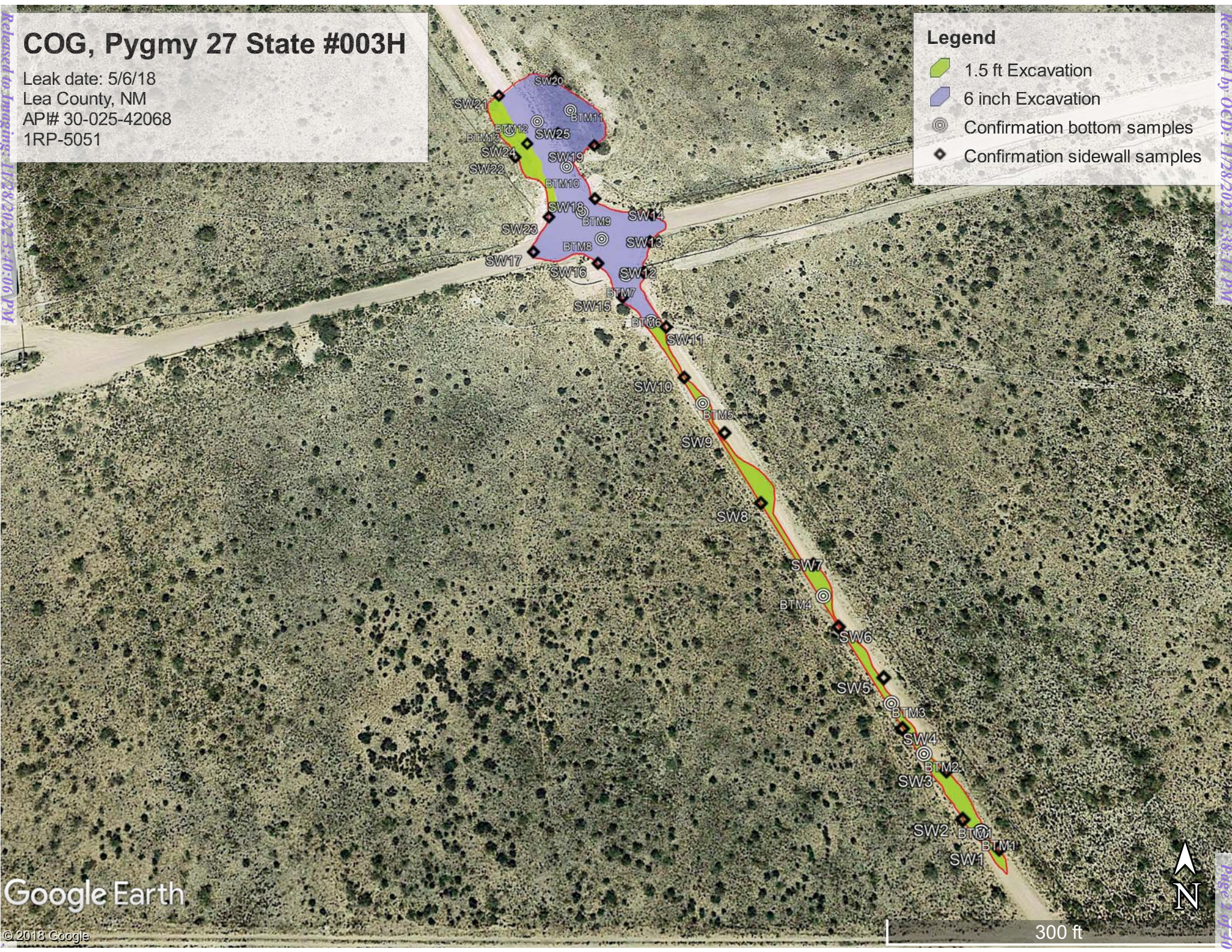
Legend

1.5 ft Excavation

6 inch Excavation

Confirmation bottom samples

Confirmation sidewall samples



COG, Pygmy 27 State #003H

Confirmation sample points

SIDEWALL 1, N 32.44297 W-103.57161
SIDEWALL 2, N 32.44304 W-103.57170
SIDEWALL 3, N 32.44316 W-103.57174
SIDEWALL 4, N 32.44327 W-103.57186
SIDEWALL 5, N 32.44340 W-103.57190
SIDEWALL 6, N 32.44354 W-103.57202
SIDEWALL 7, N 32.44372 W-103.57209
SIDEWALL 8, N 32.44390 W-103.57224
SIDEWALL 9, N 32.44411 W-103.57235
SIDEWALL 10, N 32.44429 W-103.57248
SIDEWALL 11, N 32.44446 W-103.57254
SIDEWALL 12, N 32.44465 W-103.57262
SIDEWALL 13, N 32.44476 W-103.57259
SIDEWALL 14, N 32.44486 W-103.57258
SIDEWALL 15, N 32.44457 W-103.57269
SIDEWALL 16, N 32.44468 W-103.57278
SIDEWALL 17, N 32.44473 W-103.57301
SIDEWALL 18, N 32.44492 W-103.57279
SIDEWALL 19, N 32.44513 W-103.57279
SIDEWALL 20, N 32.44540 W-103.57294
SIDEWALL 21, N 32.44533 W-103.57316
SIDEWALL 22, N 32.44508 W-103.57308
SIDEWALL 23, N 32.44485 W-103.57295
SIDEWALL 24, N 32.44514 W-103.57304
SIDEWALL 25, N 32.44518 W-103.57293

BOTTOM 1, N 32.44301 W-103.57165
BOTTOM 2, N 32.44321 W-103.57180
BOTTOM 3, N 32.44334 W-103.57188
BOTTOM 4, N 32.44363 W-103.57206
BOTTOM 5, N 32.44121 W-103.57242
BOTTOM 6, N 32.44487 W-103.57259
BOTTOM 7, N 32.44464 W-103.57268
BOTTOM 8, N 32.44477 W-103.57276
BOTTOM 9, N 32.44487 W-103.57284
BOTTOM 10, N 32.44505 W-103.57289
BOTTOM 11, N 32.44527 W-103.57289
BOTTOM 12, N 32.44519 W-103.57301
BOTTOM 13, N 32.44519 W-103.57311





Laboratory Analytical Results Summary
Pygmy 27 State #003H (5/6/18)

Confirmation		Sample ID	SIDEWALL 1 @ 1'
Analyte	Method	Date	12/28/18
			mg/kg
Chloride	SM4500Cl-B		<16.0

Confirmation		Sample ID	SIDEWALL 2 @ 1'
Analyte	Method	Date	12/28/18
			mg/kg
Chloride	SM4500Cl-B		<16.0

Confirmation		Sample ID	SIDEWALL 3 @ 1'
Analyte	Method	Date	12/28/18
			mg/kg
Chloride	SM4500Cl-B		<16.0

Confirmation		Sample ID	SIDEWALL 4 @ 1'
Analyte	Method	Date	12/28/18
			mg/kg
Chloride	SM4500Cl-B		<16.0

Confirmation		Sample ID	SIDEWALL 5 @ 1'
Analyte	Method	Date	12/29/18
			mg/kg
Chloride	SM4500Cl-B		<16.0

Confirmation		Sample ID	SIDEWALL 6 @ 1'
Analyte	Method	Date	12/29/18
			mg/kg
Chloride	SM4500Cl-B		<16.0

Confirmation		Sample ID	SIDEWALL 7 @ 1'
Analyte	Method	Date	12/29/18
			mg/kg
Chloride	SM4500Cl-B		<16.0

Confirmation		Sample ID	SIDEWALL 8 @ 1'
Analyte	Method	Date	12/29/18
			mg/kg
Chloride	SM4500Cl-B		<16.0

Confirmation		Sample ID	SIDEWALL 9 @ 1'
Analyte	Method	Date	1/4/19
			mg/kg
Chloride	SM4500Cl-B		<16.0

Confirmation		Sample ID	SIDEWALL 10 @ 1'
Analyte	Method	Date	1/4/19
			mg/kg
Chloride	SM4500Cl-B		<16.0

Confirmation		Sample ID	SIDEWALL 11 @ 1'
Analyte	Method	Date	1/4/19
			mg/kg
Chloride	SM4500Cl-B		<16.0

Confirmation		Sample ID	SIDEWALL 12
Analyte	Method	Date	1/15/19
			mg/kg
Chloride	SM4500Cl-B		32

Confirmation		Sample ID	SIDEWALL 13
Analyte	Method	Date	1/15/19
			mg/kg
Chloride	SM4500Cl-B		16

Confirmation		Sample ID	SIDEWALL 14
Analyte	Method	Date	1/15/19
			mg/kg
Chloride	SM4500Cl-B		<16.0

Confirmation		Sample ID	SIDEWALL 15
Analyte	Method	Date	1/15/19
			mg/kg
Chloride	SM4500Cl-B		32

Confirmation		Sample ID	SIDEWALL 16
Analyte	Method	Date	1/15/19
			mg/kg
Chloride	SM4500Cl-B		16

Confirmation		Sample ID	SIDEWALL 17
Analyte	Method	Date	1/15/19
			mg/kg
Chloride	SM4500Cl-B		<16.0

Laboratory Analytical Results Summary
Pygmy 27 State #003H (5/6/18)

		Sample ID	SIDEWALL 18
Analyte	Method	Date	1/16/19
			mg/kg
Benzene	BTEX 8021B		<0.050
Toluene	BTEX 8021B		<0.050
Ethylbenzene	BTEX 8021B		<0.050
Total Xylenes	BTEX 8021B		<0.150
Total BTEX	BTEX 8021B		<0.300
Chloride	SM4500Cl-B		16
GRO	TPH 8015M		<10.0
DRO	TPH 8015M		153
EXT DRO	TPH 8015M		78.3

		Sample ID	SIDEWALL 19
Analyte	Method	Date	1/16/19
			mg/kg
Benzene	BTEX 8021B		<0.050
Toluene	BTEX 8021B		<0.050
Ethylbenzene	BTEX 8021B		<0.050
Total Xylenes	BTEX 8021B		<0.150
Total BTEX	BTEX 8021B		<0.300
Chloride	SM4500Cl-B		<16.0
GRO	TPH 8015M		<10.0
DRO	TPH 8015M		<10.0
EXT DRO	TPH 8015M		<10.0

		Sample ID	SIDEWALL 20
Analyte	Method	Date	1/16/19
			mg/kg
Benzene	BTEX 8021B		<0.050
Toluene	BTEX 8021B		<0.050
Ethylbenzene	BTEX 8021B		<0.050
Total Xylenes	BTEX 8021B		<0.150
Total BTEX	BTEX 8021B		<0.300
Chloride	SM4500Cl-B		16
GRO	TPH 8015M		<10.0
DRO	TPH 8015M		<10.0
EXT DRO	TPH 8015M		<10.0

		Sample ID	SIDEWALL 21
Analyte	Method	Date	1/16/19
			mg/kg
Benzene	BTEX 8021B		<0.050
Toluene	BTEX 8021B		<0.050
Ethylbenzene	BTEX 8021B		<0.050
Total Xylenes	BTEX 8021B		<0.150
Total BTEX	BTEX 8021B		<0.300
Chloride	SM4500Cl-B		<16.0
GRO	TPH 8015M		<10.0
DRO	TPH 8015M		<10.0
EXT DRO	TPH 8015M		<10.0

		Sample ID	SIDEWALL 22
Analyte	Method	Date	1/16/19
			mg/kg
Benzene	BTEX 8021B		<0.050
Toluene	BTEX 8021B		<0.050
Ethylbenzene	BTEX 8021B		<0.050
Total Xylenes	BTEX 8021B		<0.150
Total BTEX	BTEX 8021B		<0.300
Chloride	SM4500Cl-B		<16.0
GRO	TPH 8015M		<10.0
DRO	TPH 8015M		<10.0
EXT DRO	TPH 8015M		<10.0

		Sample ID	SIDEWALL 23
Analyte	Method	Date	1/16/19
			mg/kg
Benzene	BTEX 8021B		<0.050
Toluene	BTEX 8021B		<0.050
Ethylbenzene	BTEX 8021B		<0.050
Total Xylenes	BTEX 8021B		<0.150
Total BTEX	BTEX 8021B		<0.300
Chloride	SM4500Cl-B		16
GRO	TPH 8015M		<10.0
DRO	TPH 8015M		<10.0
EXT DRO	TPH 8015M		<10.0

		Sample ID	SIDEWALL 24
Analyte	Method	Date	1/16/19
			mg/kg
Benzene	BTEX 8021B		<0.050
Toluene	BTEX 8021B		<0.050
Ethylbenzene	BTEX 8021B		<0.050
Total Xylenes	BTEX 8021B		<0.150
Total BTEX	BTEX 8021B		<0.300
Chloride	SM4500Cl-B		<16.0
GRO	TPH 8015M		<10.0
DRO	TPH 8015M		<10.0
EXT DRO	TPH 8015M		<10.0

		Sample ID	SIDEWALL 25
Analyte	Method	Date	1/16/19
			mg/kg
Benzene	BTEX 8021B		<0.050
Toluene	BTEX 8021B		<0.050
Ethylbenzene	BTEX 8021B		<0.050
Total Xylenes	BTEX 8021B		<0.150
Total BTEX	BTEX 8021B		<0.300
Chloride	SM4500Cl-B		16
GRO	TPH 8015M		<10.0
DRO	TPH 8015M		<10.0
EXT DRO	TPH 8015M		<10.0

Laboratory Analytical Results Summary
Pygmy 27 State #003H (5/6/18)

Confirmation		Sample ID	BOTTOM 1 @ 1.5'
Analyte	Method	Date	12/28/18
			mg/kg
Chloride	SM4500Cl-B		<16.0

Confirmation		Sample ID	BOTTOM 2 @ 1.5'
Analyte	Method	Date	12/28/18
			mg/kg
Chloride	SM4500Cl-B		<16.0

Confirmation		Sample ID	BOTTOM 3 @ 1.5'
Analyte	Method	Date	12/29/18
			mg/kg
Chloride	SM4500Cl-B		<16.0

Confirmation		Sample ID	BOTTOM 4 @ 1.5'
Analyte	Method	Date	12/29/18
			mg/kg
Chloride	SM4500Cl-B		<16.0

Confirmation		Sample ID	BOTTOM 5 @ 1.5'
Analyte	Method	Date	1/4/19
			mg/kg
Chloride	SM4500Cl-B		<16.0

Confirmation		Sample ID	BOTTOM 6 @ 1.5'
Analyte	Method	Date	1/4/19
			mg/kg
Chloride	SM4500Cl-B		<16.0

Confirmation		Sample ID	BOTTOM 7
Analyte	Method	Date	1/15/19
			mg/kg
Chloride	SM4500Cl-B		16

Confirmation		Sample ID	BOTTOM 8
Analyte	Method	Date	1/15/19
			mg/kg
Chloride	SM4500Cl-B		16

Confirmation		Sample ID	BOTTOM 9
Analyte	Method	Date	1/15/19
			mg/kg
Chloride	SM4500Cl-B		16

Laboratory Analytical Results Summary
Pygmy 27 State #003H (5/6/18)

		Sample ID	BOTTOM 10
Analyte	Method	Date	1/16/19
			mg/kg
Benzene	BTEX 8021B		<0.050
Toluene	BTEX 8021B		<0.050
Ethylbenzene	BTEX 8021B		<0.050
Total Xylenes	BTEX 8021B		<0.150
Total BTEX	BTEX 8021B		<0.300
Chloride	SM4500Cl-B		16
GRO	TPH 8015M		<10.0
DRO	TPH 8015M		<10.0
EXT DRO	TPH 8015M		<10.0

		Sample ID	BOTTOM 11
Analyte	Method	Date	1/16/19
			mg/kg
Benzene	BTEX 8021B		<0.050
Toluene	BTEX 8021B		<0.050
Ethylbenzene	BTEX 8021B		<0.050
Total Xylenes	BTEX 8021B		<0.150
Total BTEX	BTEX 8021B		<0.300
Chloride	SM4500Cl-B		<16.0
GRO	TPH 8015M		<10.0
DRO	TPH 8015M		<10.0
EXT DRO	TPH 8015M		<10.0

		Sample ID	BOTTOM 12
Analyte	Method	Date	1/16/19
			mg/kg
Benzene	BTEX 8021B		<0.050
Toluene	BTEX 8021B		<0.050
Ethylbenzene	BTEX 8021B		<0.050
Total Xylenes	BTEX 8021B		<0.150
Total BTEX	BTEX 8021B		<0.300
Chloride	SM4500Cl-B		16
GRO	TPH 8015M		<10.0
DRO	TPH 8015M		<10.0
EXT DRO	TPH 8015M		<10.0

		Sample ID	BOTTOM 13
Analyte	Method	Date	1/16/19
			mg/kg
Benzene	BTEX 8021B		<0.050
Toluene	BTEX 8021B		<0.050
Ethylbenzene	BTEX 8021B		<0.050
Total Xylenes	BTEX 8021B		<0.150
Total BTEX	BTEX 8021B		<0.300
Chloride	SM4500Cl-B		16
GRO	TPH 8015M		<10.0
DRO	TPH 8015M		<10.0
EXT DRO	TPH 8015M		<10.0



PHONE (575) 393-2326 ° 101 E. MARLAND ° HOBBS, NM 88240

January 17, 2019

Cliff Brunson

BBC International, Inc.

P.O. Box 805

Hobbs, NM 88241

RE: PYGMY 27 STATE #003H

Enclosed are the results of analyses for samples received by the laboratory on 01/15/19 10:30.

Cardinal Laboratories is accredited through Texas NELAP under certificate number T104704398-18-11. Accreditation applies to drinking water, non-potable water and solid and chemical materials. All accredited analytes are denoted by an asterisk (*). For a complete list of accredited analytes and matrices visit the TCEQ website at www.tceq.texas.gov/field/qa/lab_accred_certif.html.

Cardinal Laboratories is accredited through the State of Colorado Department of Public Health and Environment for:

Method EPA 552.2	Haloacetic Acids (HAA-5)
Method EPA 524.2	Total Trihalomethanes (TTHM)
Method EPA 524.4	Regulated VOCs (V1, V2, V3)

Accreditation applies to public drinking water matrices.

This report meets NELAP requirements and is made up of a cover page, analytical results, and a copy of the original chain-of-custody. If you have any questions concerning this report, please feel free to contact me.

Sincerely,

A handwritten signature in black ink that reads "Celey D. Keene". The signature is written in a cursive style with a large, stylized 'C' and 'K'.

Celey D. Keene

Lab Director/Quality Manager



PHONE (575) 393-2326 ° 101 E. MARLAND ° HOBBS, NM 88240

Analytical Results For:

BBC International, Inc.
 Cliff Brunson
 P.O. Box 805
 Hobbs NM, 88241
 Fax To: (575) 397-0397

Received:	01/15/2019	Sampling Date:	12/28/2018
Reported:	01/17/2019	Sampling Type:	Soil
Project Name:	PYGMY 27 STATE #003H	Sampling Condition:	Cool & Intact
Project Number:	(5-6-18)	Sample Received By:	Tamara Oldaker
Project Location:	LEA COUNTY		

Sample ID: SIDEWALL 1 @ 1' (H900122-01)

Chloride, SM4500Cl-B		mg/kg		Analyzed By: JH						
Analyte	Result	Reporting Limit	Analyzed	Method Blank	BS	% Recovery	True Value QC	RPD	Qualifier	
Chloride	<16.0	16.0	01/16/2019	ND	432	108	400	0.00		

Sample ID: SIDEWALL 2 @ 1' (H900122-02)

Chloride, SM4500Cl-B		mg/kg		Analyzed By: JH						
Analyte	Result	Reporting Limit	Analyzed	Method Blank	BS	% Recovery	True Value QC	RPD	Qualifier	
Chloride	<16.0	16.0	01/16/2019	ND	432	108	400	0.00		

Sample ID: SIDEWALL 3 @ 1' (H900122-03)

Chloride, SM4500Cl-B		mg/kg		Analyzed By: JH						
Analyte	Result	Reporting Limit	Analyzed	Method Blank	BS	% Recovery	True Value QC	RPD	Qualifier	
Chloride	<16.0	16.0	01/16/2019	ND	416	104	400	0.00		

Sample ID: SIDEWALL 4 @ 1' (H900122-04)

Chloride, SM4500Cl-B		mg/kg		Analyzed By: JH						
Analyte	Result	Reporting Limit	Analyzed	Method Blank	BS	% Recovery	True Value QC	RPD	Qualifier	
Chloride	<16.0	16.0	01/16/2019	ND	416	104	400	0.00		

Cardinal Laboratories

*=Accredited Analyte

PLEASE NOTE: Liability and Damages. Cardinal's liability and client's exclusive remedy for any claim arising, whether based in contract or tort, shall be limited to the amount paid by client for analyses. All claims, including those for negligence and any other cause whatsoever shall be deemed waived unless made in writing and received by Cardinal within thirty (30) days after completion of the applicable service. In no event shall Cardinal be liable for incidental or consequential damages, including, without limitation, business interruptions, loss of use, or loss of profits incurred by client, its subsidiaries, affiliates or successors arising out of or related to the performance of the services hereunder by Cardinal, regardless of whether such claim is based upon any of the above stated reasons or otherwise. Results relate only to the samples identified above. This report shall not be reproduced except in full with written approval of Cardinal Laboratories.

Celey D. Keene, Lab Director/Quality Manager



PHONE (575) 393-2326 ° 101 E. MARLAND ° HOBBS, NM 88240

Analytical Results For:

BBC International, Inc.
 Cliff Brunson
 P.O. Box 805
 Hobbs NM, 88241
 Fax To: (575) 397-0397

Received:	01/15/2019	Sampling Date:	12/28/2018
Reported:	01/17/2019	Sampling Type:	Soil
Project Name:	PYGMY 27 STATE #003H	Sampling Condition:	Cool & Intact
Project Number:	(5-6-18)	Sample Received By:	Tamara Oldaker
Project Location:	LEA COUNTY		

Sample ID: BOTTOM 1 @ 1.5' (H900122-05)

Chloride, SM4500Cl-B		mg/kg		Analyzed By: JH						
Analyte	Result	Reporting Limit	Analyzed	Method Blank	BS	% Recovery	True Value QC	RPD	Qualifier	
Chloride	<16.0	16.0	01/16/2019	ND	416	104	400	0.00		

Sample ID: BOTTOM 2 @ 1.5' (H900122-06)

Chloride, SM4500Cl-B		mg/kg		Analyzed By: JH						
Analyte	Result	Reporting Limit	Analyzed	Method Blank	BS	% Recovery	True Value QC	RPD	Qualifier	
Chloride	<16.0	16.0	01/16/2019	ND	416	104	400	0.00		

Sample ID: SIDEWALL 5 @ 1' (H900122-07)

Chloride, SM4500Cl-B		mg/kg		Analyzed By: JH						
Analyte	Result	Reporting Limit	Analyzed	Method Blank	BS	% Recovery	True Value QC	RPD	Qualifier	
Chloride	<16.0	16.0	01/16/2019	ND	416	104	400	0.00		

Sample ID: SIDEWALL 6 @ 1' (H900122-08)

Chloride, SM4500Cl-B		mg/kg		Analyzed By: JH						
Analyte	Result	Reporting Limit	Analyzed	Method Blank	BS	% Recovery	True Value QC	RPD	Qualifier	
Chloride	<16.0	16.0	01/16/2019	ND	416	104	400	0.00		

Sample ID: SIDEWALL 7 @ 1' (H900122-09)

Chloride, SM4500Cl-B		mg/kg		Analyzed By: JH						
Analyte	Result	Reporting Limit	Analyzed	Method Blank	BS	% Recovery	True Value QC	RPD	Qualifier	
Chloride	<16.0	16.0	01/16/2019	ND	416	104	400	0.00		

Cardinal Laboratories

*=Accredited Analyte

PLEASE NOTE: Liability and Damages. Cardinal's liability and client's exclusive remedy for any claim arising, whether based in contract or tort, shall be limited to the amount paid by client for analyses. All claims, including those for negligence and any other cause whatsoever shall be deemed waived unless made in writing and received by Cardinal within thirty (30) days after completion of the applicable service. In no event shall Cardinal be liable for incidental or consequential damages, including, without limitation, business interruptions, loss of use, or loss of profits incurred by client, its subsidiaries, affiliates or successors arising out of or related to the performance of the services hereunder by Cardinal, regardless of whether such claim is based upon any of the above stated reasons or otherwise. Results relate only to the samples identified above. This report shall not be reproduced except in full with written approval of Cardinal Laboratories.

Celey D. Keene, Lab Director/Quality Manager



PHONE (575) 393-2326 ° 101 E. MARLAND ° HOBBS, NM 88240

Analytical Results For:

BBC International, Inc.
 Cliff Brunson
 P.O. Box 805
 Hobbs NM, 88241
 Fax To: (575) 397-0397

Received:	01/15/2019	Sampling Date:	12/29/2018
Reported:	01/17/2019	Sampling Type:	Soil
Project Name:	PYGMY 27 STATE #003H	Sampling Condition:	Cool & Intact
Project Number:	(5-6-18)	Sample Received By:	Tamara Oldaker
Project Location:	LEA COUNTY		

Sample ID: SIDEWALL 8 @ 1' (H900122-10)

Chloride, SM4500Cl-B		mg/kg		Analyzed By: JH						
Analyte	Result	Reporting Limit	Analyzed	Method Blank	BS	% Recovery	True Value QC	RPD	Qualifier	
Chloride	<16.0	16.0	01/16/2019	ND	416	104	400	0.00		

Sample ID: BOTTOM 3 @ 1.5' (H900122-11)

Chloride, SM4500Cl-B		mg/kg		Analyzed By: JH						
Analyte	Result	Reporting Limit	Analyzed	Method Blank	BS	% Recovery	True Value QC	RPD	Qualifier	
Chloride	<16.0	16.0	01/16/2019	ND	416	104	400	0.00		

Sample ID: BOTTOM 4 @ 1.5' (H900122-12)

Chloride, SM4500Cl-B		mg/kg		Analyzed By: JH						
Analyte	Result	Reporting Limit	Analyzed	Method Blank	BS	% Recovery	True Value QC	RPD	Qualifier	
Chloride	<16.0	16.0	01/16/2019	ND	416	104	400	0.00		

Sample ID: SIDEWALL 9 @ 1' (H900122-13)

Chloride, SM4500Cl-B		mg/kg		Analyzed By: JH						
Analyte	Result	Reporting Limit	Analyzed	Method Blank	BS	% Recovery	True Value QC	RPD	Qualifier	
Chloride	<16.0	16.0	01/16/2019	ND	416	104	400	0.00		

Sample ID: SIDEWALL 10 @ 1' (H900122-14)

Chloride, SM4500Cl-B		mg/kg		Analyzed By: JH						
Analyte	Result	Reporting Limit	Analyzed	Method Blank	BS	% Recovery	True Value QC	RPD	Qualifier	
Chloride	<16.0	16.0	01/16/2019	ND	416	104	400	0.00		

Cardinal Laboratories

*=Accredited Analyte

PLEASE NOTE: Liability and Damages. Cardinal's liability and client's exclusive remedy for any claim arising, whether based in contract or tort, shall be limited to the amount paid by client for analyses. All claims, including those for negligence and any other cause whatsoever shall be deemed waived unless made in writing and received by Cardinal within thirty (30) days after completion of the applicable service. In no event shall Cardinal be liable for incidental or consequential damages, including, without limitation, business interruptions, loss of use, or loss of profits incurred by client, its subsidiaries, affiliates or successors arising out of or related to the performance of the services hereunder by Cardinal, regardless of whether such claim is based upon any of the above stated reasons or otherwise. Results relate only to the samples identified above. This report shall not be reproduced except in full with written approval of Cardinal Laboratories.

Celey D. Keene, Lab Director/Quality Manager



PHONE (575) 393-2326 ° 101 E. MARLAND ° HOBBS, NM 88240

Analytical Results For:

BBC International, Inc.
 Cliff Brunson
 P.O. Box 805
 Hobbs NM, 88241
 Fax To: (575) 397-0397

Received:	01/15/2019	Sampling Date:	01/04/2019
Reported:	01/17/2019	Sampling Type:	Soil
Project Name:	PYGMY 27 STATE #003H	Sampling Condition:	Cool & Intact
Project Number:	(5-6-18)	Sample Received By:	Tamara Oldaker
Project Location:	LEA COUNTY		

Sample ID: SIDEWALL 11 @ 1' (H900122-15)

Chloride, SM4500Cl-B		mg/kg		Analyzed By: JH						
Analyte	Result	Reporting Limit	Analyzed	Method Blank	BS	% Recovery	True Value QC	RPD	Qualifier	
Chloride	<16.0	16.0	01/16/2019	ND	416	104	400	0.00		

Sample ID: BOTTOM 5 @ 1.5' (H900122-16)

Chloride, SM4500CI-B		mg/kg		Analyzed By: JH						
Analyte	Result	Reporting Limit	Analyzed	Method Blank	BS	% Recovery	True Value QC	RPD	Qualifier	
Chloride	<16.0	16.0	01/16/2019	ND	416	104	400	0.00		

Sample ID: BOTTOM 6 @ 1.5' (H900122-17)

Chloride, SM4500Cl-B		mg/kg		Analyzed By: JH						
Analyte	Result	Reporting Limit	Analyzed	Method Blank	BS	% Recovery	True Value QC	RPD	Qualifier	
Chloride	<16.0	16.0	01/16/2019	ND	416	104	400	0.00		

Cardinal Laboratories

*=Accredited Analyte

PLEASE NOTE: Liability and Damages. Cardinal's liability and client's exclusive remedy for any claim arising, whether based in contract or tort, shall be limited to the amount paid by client for analyses. All claims, including those for negligence and any other cause whatsoever shall be deemed waived unless made in writing and received by Cardinal within thirty (30) days after completion of the applicable service. In no event shall Cardinal be liable for incidental or consequential damages, including, without limitation, business interruptions, loss of use, or loss of profits incurred by client, its subsidiaries, affiliates or successors arising out of or related to the performance of the services hereunder by Cardinal, regardless of whether such claim is based upon any of the above stated reasons or otherwise. Results relate only to the samples identified above. This report shall not be reproduced except in full with written approval of Cardinal Laboratories.

Celey D. Keene, Lab Director/Quality Manager



PHONE (575) 393-2326 ° 101 E. MARLAND ° HOBBS, NM 88240

Notes and Definitions

ND	Analyte NOT DETECTED at or above the reporting limit
RPD	Relative Percent Difference
**	Samples not received at proper temperature of 6°C or below.
***	Insufficient time to reach temperature.
-	Chloride by SM4500Cl-B does not require samples be received at or below 6°C Samples reported on an as received basis (wet) unless otherwise noted on report

Cardinal Laboratories

*=Accredited Analyte

PLEASE NOTE: Liability and Damages. Cardinal's liability and client's exclusive remedy for any claim arising, whether based in contract or tort, shall be limited to the amount paid by client for analyses. All claims, including those for negligence and any other cause whatsoever shall be deemed waived unless made in writing and received by Cardinal within thirty (30) days after completion of the applicable service. In no event shall Cardinal be liable for incidental or consequential damages, including, without limitation, business interruptions, loss of use, or loss of profits incurred by client, its subsidiaries, affiliates or successors arising out of or related to the performance of the services hereunder by Cardinal, regardless of whether such claim is based upon any of the above stated reasons or otherwise. Results relate only to the samples identified above. This report shall not be reproduced except in full with written approval of Cardinal Laboratories.

A handwritten signature in cursive script, appearing to read "C. D. Keene", written in black ink.

Celey D. Keene, Lab Director/Quality Manager

**CARDINAL LABORATORIES**

101 East Marland, Hobbs, NM 88240

(505) 393-2326 FAX (505) 393-2476

CHAIN-OF-CUSTODY AND ANALYSIS REQUEST

1 of 2

Company Name: BBC International, Inc.				BILL TO				ANALYSIS REQUEST																													
Project Manager: Cliff Brunson				P.O. #:																																	
Address: P.O. Box 805				Company: <u>COG</u>																																	
City: Hobbs		State: NM		Zip: 88241		Attn: <u>R. Haskell</u>																															
Phone #: 575-397-6388		Fax #: 575-397-0397		Address:		City:																															
Project #:		Project Owner: <u>COG</u>		State:		Zip:																															
Project Name: Pygmy 27 State #003H - 5-6-18				Phone #:																																	
Project Location:				Fax #:																																	
Sampler Name: Roger Hernandez																																					
FOR LAB USE ONLY																																					
Lab I.D.		Sample I.D.		(GRAB OR (C)OMP.		# CONTAINERS		MATRIX		PRESERV.		SAMPLING																									
				GROUNDWATER		WASTEWATER		SOIL		OIL		SLUDGE		OTHER:		ACID/BASE:		ICE / COOL		OTHER:		DATE		TIME													
<u>H900122</u>				<u>G</u>		<u>1</u>																<u>12-28-18</u>		<u>1:00</u>		<u>-10</u>											
<u>1</u>		SIDEWALL 1 @ 1'																				<u>12-28-18</u>		<u>1:10</u>													
<u>2</u>		SIDEWALL 2 @ 1'																				<u>12-28-18</u>		<u>1:15</u>													
<u>3</u>		SIDEWALL 3 @ 1'																				<u>12-28-18</u>		<u>1:25</u>													
<u>4</u>		SIDEWALL 4 @ 1'																				<u>12-28-18</u>		<u>12:00</u>													
<u>5</u>		BOTTOM 1 @ 1.5'																				<u>12-28-18</u>		<u>12:20</u>													
<u>6</u>		BOTTOM 2 @ 1.5'																				<u>12-28-18</u>		<u>11:10</u>													
<u>7</u>		SIDEWALL 5 @ 1'																				<u>12-29-18</u>		<u>11:25</u>													
<u>8</u>		SIDEWALL 6 @ 1'																				<u>12-29-18</u>		<u>11:35</u>													
<u>9</u>		SIDEWALL 7 @ 1'																				<u>12-29-18</u>		<u>11:45</u>													
<u>10</u>		SIDEWALL 8 @ 1'																				<u>12-29-18</u>		<u>11:45</u>													

PLEASE NOTE: Liability and Damages. Cardinal's liability and client's exclusive remedy for any claim arising whether based in contract or tort, shall be limited to the amount paid by the client for the analyses. All claims including those for negligence and any other cause whatsoever shall be deemed waived unless made in writing and received by Cardinal within 30 days after completion of the applicable service. In no event shall Cardinal be liable for incidental or consequential damages, including without limitation, business interruptions, loss of use, or loss of profits incurred by client, its subsidiaries, affiliates or successors arising out of or related to the performance of services hereunder by Cardinal, regardless of whether such claim is based upon any of the above stated reasons or otherwise.

Relinquished By:	Date:	Received By:	Phone Result: <input type="checkbox"/> Yes <input type="checkbox"/> No	Add'l Phone #:
	Time:		Fax Result: <input type="checkbox"/> Yes <input type="checkbox"/> No	Add'l Fax #:
Relinquished By:	Date: <u>1-15-18</u>	Received By: <u>Juanita D. Delgado</u>	REMARKS:	
	Time: <u>10:30 am</u>			
Delivered By: (Circle One)	Sample Condition	CHECKED BY:		
Sampler - UPS - Bus - Other: <u>- 8.4° #97</u>	Cool Intact	(Initials)		
	<input checked="" type="checkbox"/> Yes <input type="checkbox"/> No	<u>vo</u>		

† Cardinal cannot accept verbal changes. Please fax written changes to 505-393-2476

CHAIN-OF-CUSTODY AND ANALYSIS REQUEST



CARDINAL LABORATORIES

101 East Marland, Hobbs, NM 88240

(505) 393-2326 FAX (505) 393-2476

Company Name: BBC International, Inc.				BILL TO				ANALYSIS REQUEST																				
Project Manager: Cliff Brunson				P.O. #:																								
Address: P.O. Box 805				Company: <i>LOG</i>																								
City: Hobbs State: NM Zip: 88241				Attn: <i>R. Haskell</i>																								
Phone #: 575-397-6388 Fax #: 575-397-0397				Address:																								
Project #: Project Owner: <i>LOG</i>				City:																								
Project Name: Pygmy 27 State #003H - 5-6-18				State: Zip:																								
Project Location:				Phone #:																								
Sampler Name: Roger Hernandez				Fax #:																								
FOR LAB USE ONLY																												
Lab I.D.		Sample I.D.		(G)RAB OR (C)OMP.	# CONTAINERS	MATRIX				PRESERV.		SAMPLING		C/														
						GROUNDWATER	WASTEWATER	SOIL	OIL	SLUDGE	OTHER :	ACID/BASE:	ICE / COOL													OTHER :	DATE	TIME
<i>H900122</i>																												
<i>11</i>		BOTTOM 3 @ 1.5'		<i>G</i>	<i>1</i>			✓				✓														12-29-18	<i>12:00</i>	
<i>12</i>		BOTTOM 4 @ 1.5'																								12-29-18	<i>12:20</i>	
<i>13</i>		SIDEWALL 9 @ 1'																								1-4-19	<i>1:20</i>	
<i>14</i>		SIDEWALL 10 @ 1'																								1-4-19	<i>1:30</i>	
<i>15</i>		SIDEWALL 11 @ 1'												1-4-19	<i>1:40</i>													
<i>16</i>		BOTTOM 5 @ 1.5'												1-4-19	<i>1:50</i>													
<i>17</i>		BOTTOM 6 @ 1.5'												1-4-19	<i>2:00</i>													

PLEASE NOTE: Liability and Damages. Cardinal's liability and client's exclusive remedy for any claim arising whether based in contract or tort, shall be limited to the amount paid by the client for the analyses. All claims including those for negligence and any other cause whatsoever shall be deemed waived unless made in writing and received by Cardinal within 30 days after completion of the applicable service. In no event shall Cardinal be liable for incidental or consequential damages, including without limitation, business interruptions, loss of use, or loss of profits incurred by client, its subsidiaries, affiliates or successors arising out of or related to the performance of services hereunder by Cardinal, regardless of whether such claim is based upon any of the above stated reasons or otherwise.

Relinquished By:		Date:	Received By:		Phone Result: <input type="checkbox"/> Yes <input type="checkbox"/> No		Add'l Phone #:
		Time:			Fax Result: <input type="checkbox"/> Yes <input type="checkbox"/> No		Add'l Fax #:
Relinquished By:		Date: <i>11-5-19</i>	Received By:		REMARKS:		
		Time: <i>10:30 AM</i>	<i>Jamara P. D. K.</i>				
Delivered By: (Circle One)		Sample Condition		CHECKED BY:			
Sampler - UPS - Bus - Other:		Cool Intact		(Initials)			
<i>- 8:40 #97</i>		<input type="checkbox"/> Yes <input type="checkbox"/> No		<i>TO</i>			

† Cardinal cannot accept verbal changes. Please fax written changes to 505-393-2476



PHONE (575) 393-2326 ° 101 E. MARLAND ° HOBBS, NM 88240

January 18, 2019

Cliff Brunson

BBC International, Inc.

P.O. Box 805

Hobbs, NM 88241

RE: PYGMY 27 STATE #003H

Enclosed are the results of analyses for samples received by the laboratory on 01/17/19 16:05.

Cardinal Laboratories is accredited through Texas NELAP under certificate number T104704398-18-11. Accreditation applies to drinking water, non-potable water and solid and chemical materials. All accredited analytes are denoted by an asterisk (*). For a complete list of accredited analytes and matrices visit the TCEQ website at www.tceq.texas.gov/field/qa/lab_accred_certif.html.

Cardinal Laboratories is accredited through the State of Colorado Department of Public Health and Environment for:

Method EPA 552.2	Haloacetic Acids (HAA-5)
Method EPA 524.2	Total Trihalomethanes (TTHM)
Method EPA 524.4	Regulated VOCs (V1, V2, V3)

Accreditation applies to public drinking water matrices.

This report meets NELAP requirements and is made up of a cover page, analytical results, and a copy of the original chain-of-custody. If you have any questions concerning this report, please feel free to contact me.

Sincerely,

A handwritten signature in black ink that reads "Celey D. Keene". The signature is written in a cursive, flowing style.

Celey D. Keene

Lab Director/Quality Manager



PHONE (575) 393-2326 ° 101 E. MARLAND ° HOBBS, NM 88240

Analytical Results For:

BBC International, Inc.
 Cliff Brunson
 P.O. Box 805
 Hobbs NM, 88241
 Fax To: (575) 397-0397

Received:	01/17/2019	Sampling Date:	01/15/2019
Reported:	01/18/2019	Sampling Type:	Soil
Project Name:	PYGYM 27 STATE #003H	Sampling Condition:	Cool & Intact
Project Number:	(5/16/18)	Sample Received By:	Tamara Oldaker
Project Location:	LEA COUNTY		

Sample ID: SIDEWALL 12 (H900174-01)

Chloride, SM4500CI-B		mg/kg		Analyzed By: JH					
Analyte	Result	Reporting Limit	Analyzed	Method Blank	BS	% Recovery	True Value QC	RPD	Qualifier
Chloride	32.0	16.0	01/18/2019	ND	416	104	400	0.00	

Sample ID: SIDEWALL 13 (H900174-02)

Chloride, SM4500CI-B		mg/kg		Analyzed By: JH					
Analyte	Result	Reporting Limit	Analyzed	Method Blank	BS	% Recovery	True Value QC	RPD	Qualifier
Chloride	16.0	16.0	01/18/2019	ND	416	104	400	0.00	

Sample ID: SIDEWALL 14 (H900174-03)

Chloride, SM4500CI-B		mg/kg		Analyzed By: JH					
Analyte	Result	Reporting Limit	Analyzed	Method Blank	BS	% Recovery	True Value QC	RPD	Qualifier
Chloride	<16.0	16.0	01/18/2019	ND	416	104	400	0.00	

Sample ID: SIDEWALL 15 (H900174-04)

Chloride, SM4500CI-B		mg/kg		Analyzed By: JH					
Analyte	Result	Reporting Limit	Analyzed	Method Blank	BS	% Recovery	True Value QC	RPD	Qualifier
Chloride	32.0	16.0	01/18/2019	ND	416	104	400	0.00	

Cardinal Laboratories

*=Accredited Analyte

PLEASE NOTE: Liability and Damages. Cardinal's liability and client's exclusive remedy for any claim arising, whether based in contract or tort, shall be limited to the amount paid by client for analyses. All claims, including those for negligence and any other cause whatsoever shall be deemed waived unless made in writing and received by Cardinal within thirty (30) days after completion of the applicable service. In no event shall Cardinal be liable for incidental or consequential damages, including, without limitation, business interruptions, loss of use, or loss of profits incurred by client, its subsidiaries, affiliates or successors arising out of or related to the performance of the services hereunder by Cardinal, regardless of whether such claim is based upon any of the above stated reasons or otherwise. Results relate only to the samples identified above. This report shall not be reproduced except in full with written approval of Cardinal Laboratories.

Celey D. Keene, Lab Director/Quality Manager



PHONE (575) 393-2326 ° 101 E. MARLAND ° HOBBS, NM 88240

Analytical Results For:

BBC International, Inc.
 Cliff Brunson
 P.O. Box 805
 Hobbs NM, 88241
 Fax To: (575) 397-0397

Received:	01/17/2019	Sampling Date:	01/15/2019
Reported:	01/18/2019	Sampling Type:	Soil
Project Name:	PYGMY 27 STATE #003H	Sampling Condition:	Cool & Intact
Project Number:	(5/16/18)	Sample Received By:	Tamara Oldaker
Project Location:	LEA COUNTY		

Sample ID: SIDEWALL 16 (H900174-05)

Chloride, SM4500Cl-B		mg / kg		Analyzed By: JH						
Analyte	Result	Reporting Limit	Analyzed	Method Blank	BS	% Recovery	True Value QC	RPD	Qualifier	
Chloride	16.0	16.0	01/18/2019	ND	416	104	400	0.00		

Sample ID: SIDEWALL 17 (H900174-06)

Chloride, SM4500Cl-B		mg/kg		Analyzed By: JH						
Analyte	Result	Reporting Limit	Analyzed	Method Blank	BS	% Recovery	True Value QC	RPD	Qualifier	
Chloride	<16.0	16.0	01/18/2019	ND	416	104	400	0.00		

Sample ID: BOTTOM 7 (H900174-07)

Chloride, SM4500Cl-B		mg/kg		Analyzed By: JH						
Analyte	Result	Reporting Limit	Analyzed	Method Blank	BS	% Recovery	True Value QC	RPD	Qualifier	
Chloride	16.0	16.0	01/18/2019	ND	416	104	400	0.00		

Sample ID: BOTTOM 8 (H900174-08)

Chloride, SM4500Cl-B		mg/kg		Analyzed By: JH						
Analyte	Result	Reporting Limit	Analyzed	Method Blank	BS	% Recovery	True Value QC	RPD	Qualifier	
Chloride	16.0	16.0	01/18/2019	ND	416	104	400	0.00		

Sample ID: BOTTOM 9 (H900174-09)

Chloride, SM4500Cl-B		mg/kg		Analyzed By: JH						
Analyte	Result	Reporting Limit	Analyzed	Method Blank	BS	% Recovery	True Value QC	RPD	Qualifier	
Chloride	16.0	16.0	01/18/2019	ND	416	104	400	0.00		

Cardinal Laboratories

*=Accredited Analyte

PLEASE NOTE: Liability and Damages. Cardinal's liability and client's exclusive remedy for any claim arising, whether based in contract or tort, shall be limited to the amount paid by client for analyses. All claims, including those for negligence and any other cause whatsoever shall be deemed waived unless made in writing and received by Cardinal within thirty (30) days after completion of the applicable service. In no event shall Cardinal be liable for incidental or consequential damages, including, without limitation, business interruptions, loss of use, or loss of profits incurred by client, its subsidiaries, affiliates or successors arising out of or related to the performance of the services hereunder by Cardinal, regardless of whether such claim is based upon any of the above stated reasons or otherwise. Results relate only to the samples identified above. This report shall not be reproduced except in full with written approval of Cardinal Laboratories.

Celey D. Keene, Lab Director/Quality Manager



PHONE (575) 393-2326 • 101 E. MARLAND • HOBBS, NM 88240

Analytical Results For:

BBC International, Inc.
 Cliff Brunson
 P.O. Box 805
 Hobbs NM, 88241
 Fax To: (575) 397-0397

Received:	01/17/2019	Sampling Date:	01/16/2019
Reported:	01/18/2019	Sampling Type:	Soil
Project Name:	PYGMY 27 STATE #003H	Sampling Condition:	Cool & Intact
Project Number:	(5/16/18)	Sample Received By:	Tamara Oldaker
Project Location:	LEA COUNTY		

Sample ID: SIDEWALL 18 (H900174-10)

BTEx 8021B		mg/kg		Analyzed By: MS						
Analyte	Result	Reporting Limit	Analyzed	Method Blank	BS	% Recovery	True Value QC	RPD	Qualifier	
Benzene*	<0.050	0.050	01/17/2019	ND	1.90	94.9	2.00	3.85		
Toluene*	<0.050	0.050	01/17/2019	ND	2.10	105	2.00	3.13		
Ethylbenzene*	<0.050	0.050	01/17/2019	ND	1.94	96.8	2.00	8.73		
Total Xylenes*	<0.150	0.150	01/17/2019	ND	5.69	94.8	6.00	5.30		
Total BTEx	<0.300	0.300	01/17/2019	ND						

Surrogate: 4-Bromofluorobenzene (PID) 85.0 % 73.3-129

Chloride, SM4500Cl-B		mg/kg		Analyzed By: JH					
Analyte	Result	Reporting Limit	Analyzed	Method Blank	BS	% Recovery	True Value QC	RPD	Qualifier
Chloride	16.0	16.0	01/18/2019	ND	416	104	400	0.00	

TPH 8015M		mg/kg		Analyzed By: MS					
Analyte	Result	Reporting Limit	Analyzed	Method Blank	BS	% Recovery	True Value QC	RPD	Qualifier
GRO C6-C10*	<10.0	10.0	01/17/2019	ND	182	90.8	200	6.58	
DRO >C10-C28*	153	10.0	01/17/2019	ND	195	97.7	200	4.93	
EXT DRO >C28-C36	78.3	10.0	01/17/2019	ND					

Surrogate: 1-Chlorooctane 94.8 % 41-142

Surrogate: 1-Chlorooctadecane 105 % 37.6-147

Cardinal Laboratories

*=Accredited Analyte

PLEASE NOTE: Liability and Damages. Cardinal's liability and client's exclusive remedy for any claim arising, whether based in contract or tort, shall be limited to the amount paid by client for analyses. All claims, including those for negligence and any other cause whatsoever shall be deemed waived unless made in writing and received by Cardinal within thirty (30) days after completion of the applicable service. In no event shall Cardinal be liable for incidental or consequential damages, including, without limitation, business interruptions, loss of use, or loss of profits incurred by client, its subsidiaries, affiliates or successors arising out of or related to the performance of the services hereunder by Cardinal, regardless of whether such claim is based upon any of the above stated reasons or otherwise. Results relate only to the samples identified above. This report shall not be reproduced except in full with written approval of Cardinal Laboratories.

Celey D. Keene, Lab Director/Quality Manager



PHONE (575) 393-2326 • 101 E. MARLAND • HOBBS, NM 88240

Analytical Results For:

BBC International, Inc.
 Cliff Brunson
 P.O. Box 805
 Hobbs NM, 88241
 Fax To: (575) 397-0397

Received:	01/17/2019	Sampling Date:	01/16/2019
Reported:	01/18/2019	Sampling Type:	Soil
Project Name:	PYGMY 27 STATE #003H	Sampling Condition:	Cool & Intact
Project Number:	(5/16/18)	Sample Received By:	Tamara Oldaker
Project Location:	LEA COUNTY		

Sample ID: SIDEWALL 19 (H900174-11)

BTEx 8021B		mg/kg		Analyzed By: MS						
Analyte	Result	Reporting Limit	Analyzed	Method Blank	BS	% Recovery	True Value QC	RPD	Qualifier	
Benzene*	<0.050	0.050	01/17/2019	ND	1.90	94.9	2.00	3.85		
Toluene*	<0.050	0.050	01/17/2019	ND	2.10	105	2.00	3.13		
Ethylbenzene*	<0.050	0.050	01/17/2019	ND	1.94	96.8	2.00	8.73		
Total Xylenes*	<0.150	0.150	01/17/2019	ND	5.69	94.8	6.00	5.30		
Total BTEx	<0.300	0.300	01/17/2019	ND						

Surrogate: 4-Bromofluorobenzene (PID) 98.8 % 73.3-129

Chloride, SM4500CI-B		mg/kg		Analyzed By: JH						
Analyte	Result	Reporting Limit	Analyzed	Method Blank	BS	% Recovery	True Value QC	RPD	Qualifier	
Chloride	<16.0	16.0	01/18/2019	ND	416	104	400	0.00		

TPH 8015M		mg/kg		Analyzed By: MS					
Analyte	Result	Reporting Limit	Analyzed	Method Blank	BS	% Recovery	True Value QC	RPD	Qualifier
GRO C6-C10*	<10.0	10.0	01/17/2019	ND	182	90.8	200	6.58	
DRO >C10-C28*	<10.0	10.0	01/17/2019	ND	195	97.7	200	4.93	
EXT DRO >C28-C36	<10.0	10.0	01/17/2019	ND					

Surrogate: 1-Chlorooctane 76.6 % 41-142

Surrogate: 1-Chlorooctadecane 77.5 % 37.6-147

Cardinal Laboratories

*=Accredited Analyte

PLEASE NOTE: Liability and Damages. Cardinal's liability and client's exclusive remedy for any claim arising, whether based in contract or tort, shall be limited to the amount paid by client for analyses. All claims, including those for negligence and any other cause whatsoever shall be deemed waived unless made in writing and received by Cardinal within thirty (30) days after completion of the applicable service. In no event shall Cardinal be liable for incidental or consequential damages, including, without limitation, business interruptions, loss of use, or loss of profits incurred by client, its subsidiaries, affiliates or successors arising out of or related to the performance of the services hereunder by Cardinal, regardless of whether such claim is based upon any of the above stated reasons or otherwise. Results relate only to the samples identified above. This report shall not be reproduced except in full with written approval of Cardinal Laboratories.

Celey D. Keene, Lab Director/Quality Manager



PHONE (575) 393-2326 • 101 E. MARLAND • HOBBS, NM 88240

Analytical Results For:

BBC International, Inc.
 Cliff Brunson
 P.O. Box 805
 Hobbs NM, 88241
 Fax To: (575) 397-0397

Received: 01/17/2019
 Reported: 01/18/2019
 Project Name: PYGMY 27 STATE #003H
 Project Number: (5/16/18)
 Project Location: LEA COUNTY

Sampling Date: 01/16/2019
 Sampling Type: Soil
 Sampling Condition: Cool & Intact
 Sample Received By: Tamara Oldaker

Sample ID: SIDEWALL 20 (H900174-12)

BTEX 8021B		mg/kg		Analyzed By: MS					
Analyte	Result	Reporting Limit	Analyzed	Method Blank	BS	% Recovery	True Value QC	RPD	Qualifier
Benzene*	<0.050	0.050	01/17/2019	ND	1.90	94.9	2.00	3.85	
Toluene*	<0.050	0.050	01/17/2019	ND	2.10	105	2.00	3.13	
Ethylbenzene*	<0.050	0.050	01/17/2019	ND	1.94	96.8	2.00	8.73	
Total Xylenes*	<0.150	0.150	01/17/2019	ND	5.69	94.8	6.00	5.30	
Total BTEX	<0.300	0.300	01/17/2019	ND					

Surrogate: 4-Bromofluorobenzene (PID) 91.8 % 73.3-129

Chloride, SM4500CI-B		mg/kg		Analyzed By: JH					
Analyte	Result	Reporting Limit	Analyzed	Method Blank	BS	% Recovery	True Value QC	RPD	Qualifier
Chloride	16.0	16.0	01/18/2019	ND	432	108	400	3.77	

TPH 8015M		mg/kg		Analyzed By: MS					
Analyte	Result	Reporting Limit	Analyzed	Method Blank	BS	% Recovery	True Value QC	RPD	Qualifier
GRO C6-C10*	<10.0	10.0	01/17/2019	ND	182	90.8	200	6.58	
DRO >C10-C28*	<10.0	10.0	01/17/2019	ND	195	97.7	200	4.93	
EXT DRO >C28-C36	<10.0	10.0	01/17/2019	ND					

Surrogate: 1-Chlorooctane 85.7 % 41-142

Surrogate: 1-Chlorooctadecane 86.7 % 37.6-147

Cardinal Laboratories

*=Accredited Analyte

PLEASE NOTE: Liability and Damages. Cardinal's liability and client's exclusive remedy for any claim arising, whether based in contract or tort, shall be limited to the amount paid by client for analyses. All claims, including those for negligence and any other cause whatsoever shall be deemed waived unless made in writing and received by Cardinal within thirty (30) days after completion of the applicable service. In no event shall Cardinal be liable for incidental or consequential damages, including, without limitation, business interruptions, loss of use, or loss of profits incurred by client, its subsidiaries, affiliates or successors arising out of or related to the performance of the services hereunder by Cardinal, regardless of whether such claim is based upon any of the above stated reasons or otherwise. Results relate only to the samples identified above. This report shall not be reproduced except in full with written approval of Cardinal Laboratories.

Celey D. Keene, Lab Director/Quality Manager



PHONE (575) 393-2326 • 101 E. MARLAND • HOBBS, NM 88240

Analytical Results For:

BBC International, Inc.
 Cliff Brunson
 P.O. Box 805
 Hobbs NM, 88241
 Fax To: (575) 397-0397

Received:	01/17/2019	Sampling Date:	01/16/2019
Reported:	01/18/2019	Sampling Type:	Soil
Project Name:	PYGMY 27 STATE #003H	Sampling Condition:	Cool & Intact
Project Number:	(5/16/18)	Sample Received By:	Tamara Oldaker
Project Location:	LEA COUNTY		

Sample ID: SIDEWALL 21 (H900174-13)

BTEx 8021B		mg/kg		Analyzed By: MS						
Analyte	Result	Reporting Limit	Analyzed	Method Blank	BS	% Recovery	True Value QC	RPD	Qualifier	
Benzene*	<0.050	0.050	01/17/2019	ND	1.90	94.9	2.00	3.85		
Toluene*	<0.050	0.050	01/17/2019	ND	2.10	105	2.00	3.13		
Ethylbenzene*	<0.050	0.050	01/17/2019	ND	1.94	96.8	2.00	8.73		
Total Xylenes*	<0.150	0.150	01/17/2019	ND	5.69	94.8	6.00	5.30		
Total BTEx	<0.300	0.300	01/17/2019	ND						

Surrogate: 4-Bromofluorobenzene (PID) 97.0 % 73.3-129

Chloride, SM4500Cl-B		mg/kg		Analyzed By: JH						
Analyte	Result	Reporting Limit	Analyzed	Method Blank	BS	% Recovery	True Value QC	RPD	Qualifier	
Chloride	<16.0	16.0	01/18/2019	ND	432	108	400	3.77		

TPH 8015M		mg/kg		Analyzed By: MS					
Analyte	Result	Reporting Limit	Analyzed	Method Blank	BS	% Recovery	True Value QC	RPD	Qualifier
GRO C6-C10*	<10.0	10.0	01/17/2019	ND	182	90.8	200	6.58	
DRO >C10-C28*	<10.0	10.0	01/17/2019	ND	195	97.7	200	4.93	
EXT DRO >C28-C36	<10.0	10.0	01/17/2019	ND					

Surrogate: 1-Chlorooctane 88.5 % 41-142

Surrogate: 1-Chlorooctadecane 89.3 % 37.6-147

Cardinal Laboratories

*=Accredited Analyte

PLEASE NOTE: Liability and Damages. Cardinal's liability and client's exclusive remedy for any claim arising, whether based in contract or tort, shall be limited to the amount paid by client for analyses. All claims, including those for negligence and any other cause whatsoever shall be deemed waived unless made in writing and received by Cardinal within thirty (30) days after completion of the applicable service. In no event shall Cardinal be liable for incidental or consequential damages, including, without limitation, business interruptions, loss of use, or loss of profits incurred by client, its subsidiaries, affiliates or successors arising out of or related to the performance of the services hereunder by Cardinal, regardless of whether such claim is based upon any of the above stated reasons or otherwise. Results relate only to the samples identified above. This report shall not be reproduced except in full with written approval of Cardinal Laboratories.

Celey D. Keene, Lab Director/Quality Manager



PHONE (575) 393-2326 • 101 E. MARLAND • HOBBS, NM 88240

Analytical Results For:

BBC International, Inc.
 Cliff Brunson
 P.O. Box 805
 Hobbs NM, 88241
 Fax To: (575) 397-0397

Received:	01/17/2019	Sampling Date:	01/16/2019
Reported:	01/18/2019	Sampling Type:	Soil
Project Name:	PYGMY 27 STATE #003H	Sampling Condition:	Cool & Intact
Project Number:	(5/16/18)	Sample Received By:	Tamara Oldaker
Project Location:	LEA COUNTY		

Sample ID: SIDEWALL 22 (H900174-14)

BTEX 8021B		mg/ kg		Analyzed By: MS						
Analyte	Result	Reporting Limit	Analyzed	Method Blank	BS	% Recovery	True Value QC	RPD	Qualifier	
Benzene*	<0.050	0.050	01/17/2019	ND	1.90	94.9	2.00	3.85		
Toluene*	<0.050	0.050	01/17/2019	ND	2.10	105	2.00	3.13		
Ethylbenzene*	<0.050	0.050	01/17/2019	ND	1.94	96.8	2.00	8.73		
Total Xylenes*	<0.150	0.150	01/17/2019	ND	5.69	94.8	6.00	5.30		
Total BTEX	<0.300	0.300	01/17/2019	ND						

Surrogate: 4-Bromofluorobenzene (PID) 96.3 % 73.3-129

Chloride, SM4500Cl-B		mg/kg		Analyzed By: JH						
Analyte	Result	Reporting Limit	Analyzed	Method Blank	BS	% Recovery	True Value QC	RPD	Qualifier	
Chloride	<16.0	16.0	01/18/2019	ND	432	108	400	3.77		

TPH 8015M		mg/kg		Analyzed By: MS					
Analyte	Result	Reporting Limit	Analyzed	Method Blank	BS	% Recovery	True Value QC	RPD	Qualifier
GRO C6-C10*	<10.0	10.0	01/17/2019	ND	182	90.8	200	6.58	
DRO >C10-C28*	<10.0	10.0	01/17/2019	ND	195	97.7	200	4.93	
EXT DRO >C28-C36	<10.0	10.0	01/17/2019	ND					

Surrogate: 1-Chlorooctane 79.6 % 41-142

Surrogate: 1-Chlorooctadecane 80.7 % 37.6-147

Cardinal Laboratories

*=Accredited Analyte

PLEASE NOTE: Liability and Damages. Cardinal's liability and client's exclusive remedy for any claim arising, whether based in contract or tort, shall be limited to the amount paid by client for analyses. All claims, including those for negligence and any other cause whatsoever shall be deemed waived unless made in writing and received by Cardinal within thirty (30) days after completion of the applicable service. In no event shall Cardinal be liable for incidental or consequential damages, including, without limitation, business interruptions, loss of use, or loss of profits incurred by client, its subsidiaries, affiliates or successors arising out of or related to the performance of the services hereunder by Cardinal, regardless of whether such claim is based upon any of the above stated reasons or otherwise. Results relate only to the samples identified above. This report shall not be reproduced except in full with written approval of Cardinal Laboratories.

Celey D. Keene, Lab Director/Quality Manager



PHONE (575) 393-2326 ° 101 E. MARLAND ° HOBBS, NM 88240

Analytical Results For:

BBC International, Inc.
 Cliff Brunson
 P.O. Box 805
 Hobbs NM, 88241
 Fax To: (575) 397-0397

Received: 01/17/2019
 Reported: 01/18/2019
 Project Name: PYGMY 27 STATE #003H
 Project Number: (5/16/18)
 Project Location: LEA COUNTY

Sampling Date: 01/16/2019
 Sampling Type: Soil
 Sampling Condition: Cool & Intact
 Sample Received By: Tamara Oldaker

Sample ID: SIDEWALL 23 (H900174-15)

BTX 8021B		mg/kg		Analyzed By: MS					
Analyte	Result	Reporting Limit	Analyzed	Method Blank	BS	% Recovery	True Value QC	RPD	Qualifier
Benzene*	<0.050	0.050	01/17/2019	ND	1.90	94.9	2.00	3.85	
Toluene*	<0.050	0.050	01/17/2019	ND	2.10	105	2.00	3.13	
Ethylbenzene*	<0.050	0.050	01/17/2019	ND	1.94	96.8	2.00	8.73	
Total Xylenes*	<0.150	0.150	01/17/2019	ND	5.69	94.8	6.00	5.30	
Total BTX	<0.300	0.300	01/17/2019	ND					

Surrogate: 4-Bromofluorobenzene (PID) 93.3 % 73.3-129

Chloride, SM4500CI-B		mg/kg		Analyzed By: JH						
Analyte	Result	Reporting Limit	Analyzed	Method Blank	BS	% Recovery	True Value QC	RPD	Qualifier	
Chloride	16.0	16.0	01/18/2019	ND	432	108	400	3.77		

TPH 8015M		mg/kg		Analyzed By: MS					
Analyte	Result	Reporting Limit	Analyzed	Method Blank	BS	% Recovery	True Value QC	RPD	Qualifier
GRO C6-C10*	<10.0	10.0	01/17/2019	ND	182	90.8	200	6.58	
DRO >C10-C28*	<10.0	10.0	01/17/2019	ND	195	97.7	200	4.93	
EXT DRO >C28-C36	<10.0	10.0	01/17/2019	ND					

Surrogate: 1-Chlorooctane 85.7 % 41-142

Surrogate: 1-Chlorooctadecane 86.8 % 37.6-147

Cardinal Laboratories

*=Accredited Analyte

PLEASE NOTE: Liability and Damages. Cardinal's liability and client's exclusive remedy for any claim arising, whether based in contract or tort, shall be limited to the amount paid by client for analyses. All claims, including those for negligence and any other cause whatsoever shall be deemed waived unless made in writing and received by Cardinal within thirty (30) days after completion of the applicable service. In no event shall Cardinal be liable for incidental or consequential damages, including, without limitation, business interruptions, loss of use, or loss of profits incurred by client, its subsidiaries, affiliates or successors arising out of or related to the performance of the services hereunder by Cardinal, regardless of whether such claim is based upon any of the above stated reasons or otherwise. Results relate only to the samples identified above. This report shall not be reproduced except in full with written approval of Cardinal Laboratories.

Celey D. Keene, Lab Director/Quality Manager



PHONE (575) 393-2326 ° 101 E. MARLAND ° HOBBS, NM 88240

Analytical Results For:

BBC International, Inc.
 Cliff Brunson
 P.O. Box 805
 Hobbs NM, 88241
 Fax To: (575) 397-0397

Received:	01/17/2019	Sampling Date:	01/16/2019
Reported:	01/18/2019	Sampling Type:	Soil
Project Name:	PYGMY 27 STATE #003H	Sampling Condition:	Cool & Intact
Project Number:	(5/16/18)	Sample Received By:	Tamara Oldaker
Project Location:	LEA COUNTY		

Sample ID: SIDEWALL 24 (H900174-16)

BTEx 8021B		mg/kg		Analyzed By: MS						
Analyte	Result	Reporting Limit	Analyzed	Method Blank	BS	% Recovery	True Value QC	RPD	Qualifier	
Benzene*	<0.050	0.050	01/17/2019	ND	1.90	94.9	2.00	3.85		
Toluene*	<0.050	0.050	01/17/2019	ND	2.10	105	2.00	3.13		
Ethylbenzene*	<0.050	0.050	01/17/2019	ND	1.94	96.8	2.00	8.73		
Total Xylenes*	<0.150	0.150	01/17/2019	ND	5.69	94.8	6.00	5.30		
Total BTEx	<0.300	0.300	01/17/2019	ND						

Surrogate: 4-Bromofluorobenzene (PID) 92.8 % 73.3-129

Chloride, SM4500Cl-B		mg/kg		Analyzed By: JH						
Analyte	Result	Reporting Limit	Analyzed	Method Blank	BS	% Recovery	True Value QC	RPD	Qualifier	
Chloride	<16.0	16.0	01/18/2019	ND	432	108	400	3.77		

TPH 8015M		mg/kg		Analyzed By: MS					
Analyte	Result	Reporting Limit	Analyzed	Method Blank	BS	% Recovery	True Value QC	RPD	Qualifier
GRO C6-C10*	<10.0	10.0	01/17/2019	ND	182	90.8	200	6.58	
DRO >C10-C28*	<10.0	10.0	01/17/2019	ND	195	97.7	200	4.93	
EXT DRO >C28-C36	<10.0	10.0	01/17/2019	ND					

Surrogate: 1-Chlorooctane 91.3 % 41-142

Surrogate: 1-Chlorooctadecane 93.3 % 37.6-147

Cardinal Laboratories

*=Accredited Analyte

PLEASE NOTE: Liability and Damages. Cardinal's liability and client's exclusive remedy for any claim arising, whether based in contract or tort, shall be limited to the amount paid by client for analyses. All claims, including those for negligence and any other cause whatsoever shall be deemed waived unless made in writing and received by Cardinal within thirty (30) days after completion of the applicable service. In no event shall Cardinal be liable for incidental or consequential damages, including, without limitation, business interruptions, loss of use, or loss of profits incurred by client, its subsidiaries, affiliates or successors arising out of or related to the performance of the services hereunder by Cardinal, regardless of whether such claim is based upon any of the above stated reasons or otherwise. Results relate only to the samples identified above. This report shall not be reproduced except in full with written approval of Cardinal Laboratories.

Celey D. Keene, Lab Director/Quality Manager



PHONE (575) 393-2326 • 101 E. MARLAND • HOBBS, NM 88240

Analytical Results For:

BBC International, Inc.
 Cliff Brunson
 P.O. Box 805
 Hobbs NM, 88241
 Fax To: (575) 397-0397

Received:	01/17/2019	Sampling Date:	01/16/2019
Reported:	01/18/2019	Sampling Type:	Soil
Project Name:	PYGMY 27 STATE #003H	Sampling Condition:	Cool & Intact
Project Number:	(5/16/18)	Sample Received By:	Tamara Oldaker
Project Location:	LEA COUNTY		

Sample ID: SIDEWALL 25 (H900174-17)

BTX 8021B		mg/kg		Analyzed By: MS						
Analyte	Result	Reporting Limit	Analyzed	Method Blank	BS	% Recovery	True Value QC	RPD	Qualifier	
Benzene*	<0.050	0.050	01/17/2019	ND	1.90	94.9	2.00	3.85		
Toluene*	<0.050	0.050	01/17/2019	ND	2.10	105	2.00	3.13		
Ethylbenzene*	<0.050	0.050	01/17/2019	ND	1.94	96.8	2.00	8.73		
Total Xylenes*	<0.150	0.150	01/17/2019	ND	5.69	94.8	6.00	5.30		
Total BTX	<0.300	0.300	01/17/2019	ND						

Surrogate: 4-Bromofluorobenzene (PID) 90.9 % 73.3-129

Chloride, SM4500CI-B		mg/kg		Analyzed By: JH						
Analyte	Result	Reporting Limit	Analyzed	Method Blank	BS	% Recovery	True Value QC	RPD	Qualifier	
Chloride	16.0	16.0	01/18/2019	ND	432	108	400	3.77		

TPH 8015M		mg/kg		Analyzed By: MS					
Analyte	Result	Reporting Limit	Analyzed	Method Blank	BS	% Recovery	True Value QC	RPD	Qualifier
GRO C6-C10*	<10.0	10.0	01/17/2019	ND	182	90.8	200	6.58	
DRO >C10-C28*	<10.0	10.0	01/17/2019	ND	195	97.7	200	4.93	
EXT DRO >C28-C36	<10.0	10.0	01/17/2019	ND					

Surrogate: 1-Chlorooctane 88.9 % 41-142

Surrogate: 1-Chlorooctadecane 90.1 % 37.6-147

Cardinal Laboratories

*=Accredited Analyte

PLEASE NOTE: Liability and Damages. Cardinal's liability and client's exclusive remedy for any claim arising, whether based in contract or tort, shall be limited to the amount paid by client for analyses. All claims, including those for negligence and any other cause whatsoever shall be deemed waived unless made in writing and received by Cardinal within thirty (30) days after completion of the applicable service. In no event shall Cardinal be liable for incidental or consequential damages, including, without limitation, business interruptions, loss of use, or loss of profits incurred by client, its subsidiaries, affiliates or successors arising out of or related to the performance of the services hereunder by Cardinal, regardless of whether such claim is based upon any of the above stated reasons or otherwise. Results relate only to the samples identified above. This report shall not be reproduced except in full with written approval of Cardinal Laboratories.

Celey D. Keene, Lab Director/Quality Manager



PHONE (575) 393-2326 • 101 E. MARLAND • HOBBS, NM 88240

Analytical Results For:

BBC International, Inc.
 Cliff Brunson
 P.O. Box 805
 Hobbs NM, 88241
 Fax To: (575) 397-0397

Received:	01/17/2019	Sampling Date:	01/16/2019
Reported:	01/18/2019	Sampling Type:	Soil
Project Name:	PYGMY 27 STATE #003H	Sampling Condition:	Cool & Intact
Project Number:	(5/16/18)	Sample Received By:	Tamara Oldaker
Project Location:	LEA COUNTY		

Sample ID: BOTTOM 10 (H900174-18)

BTEx 8021B		mg/kg		Analyzed By: MS						
Analyte	Result	Reporting Limit	Analyzed	Method Blank	BS	% Recovery	True Value QC	RPD	Qualifier	
Benzene*	<0.050	0.050	01/17/2019	ND	1.90	94.9	2.00	3.85		
Toluene*	<0.050	0.050	01/17/2019	ND	2.10	105	2.00	3.13		
Ethylbenzene*	<0.050	0.050	01/17/2019	ND	1.94	96.8	2.00	8.73		
Total Xylenes*	<0.150	0.150	01/17/2019	ND	5.69	94.8	6.00	5.30		
Total BTEx	<0.300	0.300	01/17/2019	ND						

Surrogate: 4-Bromofluorobenzene (PID) 97.3 % 73.3-129

Chloride, SM4500Cl-B		mg/kg		Analyzed By: JH						
Analyte	Result	Reporting Limit	Analyzed	Method Blank	BS	% Recovery	True Value QC	RPD	Qualifier	
Chloride	16.0	16.0	01/18/2019	ND	432	108	400	3.77		

TPH 8015M		mg/kg		Analyzed By: MS					
Analyte	Result	Reporting Limit	Analyzed	Method Blank	BS	% Recovery	True Value QC	RPD	Qualifier
GRO C6-C10*	<10.0	10.0	01/18/2019	ND	182	90.8	200	6.58	
DRO >C10-C28*	<10.0	10.0	01/18/2019	ND	195	97.7	200	4.93	
EXT DRO >C28-C36	<10.0	10.0	01/18/2019	ND					

Surrogate: 1-Chlorooctane 90.6 % 41-142

Surrogate: 1-Chlorooctadecane 92.1 % 37.6-147

Cardinal Laboratories

*=Accredited Analyte

PLEASE NOTE: Liability and Damages. Cardinal's liability and client's exclusive remedy for any claim arising, whether based in contract or tort, shall be limited to the amount paid by client for analyses. All claims, including those for negligence and any other cause whatsoever shall be deemed waived unless made in writing and received by Cardinal within thirty (30) days after completion of the applicable service. In no event shall Cardinal be liable for incidental or consequential damages, including, without limitation, business interruptions, loss of use, or loss of profits incurred by client, its subsidiaries, affiliates or successors arising out of or related to the performance of the services hereunder by Cardinal, regardless of whether such claim is based upon any of the above stated reasons or otherwise. Results relate only to the samples identified above. This report shall not be reproduced except in full with written approval of Cardinal Laboratories.

Celey D. Keene, Lab Director/Quality Manager



PHONE (575) 393-2326 ° 101 E. MARLAND ° HOBBS, NM 88240

Analytical Results For:

BBC International, Inc.
 Cliff Brunson
 P.O. Box 805
 Hobbs NM, 88241
 Fax To: (575) 397-0397

Received:	01/17/2019	Sampling Date:	01/16/2019
Reported:	01/18/2019	Sampling Type:	Soil
Project Name:	PYGMY 27 STATE #003H	Sampling Condition:	Cool & Intact
Project Number:	(5/16/18)	Sample Received By:	Tamara Oldaker
Project Location:	LEA COUNTY		

Sample ID: BOTTOM 11 (H900174-19)

BTX 8021B		mg/kg		Analyzed By: MS						
Analyte	Result	Reporting Limit	Analyzed	Method Blank	BS	% Recovery	True Value QC	RPD	Qualifier	
Benzene*	<0.050	0.050	01/18/2019	ND	1.90	94.9	2.00	3.85		
Toluene*	<0.050	0.050	01/18/2019	ND	2.10	105	2.00	3.13		
Ethylbenzene*	<0.050	0.050	01/18/2019	ND	1.94	96.8	2.00	8.73		
Total Xylenes*	<0.150	0.150	01/18/2019	ND	5.69	94.8	6.00	5.30		
Total BTX	<0.300	0.300	01/18/2019	ND						

Surrogate: 4-Bromofluorobenzene (PID) 90.7 % 73.3-129

Chloride, SM4500CI-B		mg/kg		Analyzed By: JH						
Analyte	Result	Reporting Limit	Analyzed	Method Blank	BS	% Recovery	True Value QC	RPD	Qualifier	
Chloride	<16.0	16.0	01/18/2019	ND	432	108	400	3.77		

TPH 8015M		mg/kg		Analyzed By: MS					
Analyte	Result	Reporting Limit	Analyzed	Method Blank	BS	% Recovery	True Value QC	RPD	Qualifier
GRO C6-C10*	<10.0	10.0	01/18/2019	ND	182	90.8	200	6.58	
DRO >C10-C28*	<10.0	10.0	01/18/2019	ND	195	97.7	200	4.93	
EXT DRO >C28-C36	<10.0	10.0	01/18/2019	ND					

Surrogate: 1-Chlorooctane 85.6 % 41-142

Surrogate: 1-Chlorooctadecane 86.7 % 37.6-147

Cardinal Laboratories

*=Accredited Analyte

PLEASE NOTE: Liability and Damages. Cardinal's liability and client's exclusive remedy for any claim arising, whether based in contract or tort, shall be limited to the amount paid by client for analyses. All claims, including those for negligence and any other cause whatsoever shall be deemed waived unless made in writing and received by Cardinal within thirty (30) days after completion of the applicable service. In no event shall Cardinal be liable for incidental or consequential damages, including, without limitation, business interruptions, loss of use, or loss of profits incurred by client, its subsidiaries, affiliates or successors arising out of or related to the performance of the services hereunder by Cardinal, regardless of whether such claim is based upon any of the above stated reasons or otherwise. Results relate only to the samples identified above. This report shall not be reproduced except in full with written approval of Cardinal Laboratories.

Celey D. Keene, Lab Director/Quality Manager



PHONE (575) 393-2326 ° 101 E. MARLAND ° HOBBS, NM 88240

Analytical Results For:

BBC International, Inc.
 Cliff Brunson
 P.O. Box 805
 Hobbs NM, 88241
 Fax To: (575) 397-0397

Received:	01/17/2019	Sampling Date:	01/16/2019
Reported:	01/18/2019	Sampling Type:	Soil
Project Name:	PYGMY 27 STATE #003H	Sampling Condition:	Cool & Intact
Project Number:	(5/16/18)	Sample Received By:	Tamara Oldaker
Project Location:	LEA COUNTY		

Sample ID: BOTTOM 12 (H900174-20)

BTEx 8021B		mg/kg		Analyzed By: MS						
Analyte	Result	Reporting Limit	Analyzed	Method Blank	BS	% Recovery	True Value QC	RPD	Qualifier	
Benzene*	<0.050	0.050	01/18/2019	ND	1.90	94.9	2.00	3.85		
Toluene*	<0.050	0.050	01/18/2019	ND	2.10	105	2.00	3.13		
Ethylbenzene*	<0.050	0.050	01/18/2019	ND	1.94	96.8	2.00	8.73		
Total Xylenes*	<0.150	0.150	01/18/2019	ND	5.69	94.8	6.00	5.30		
Total BTEx	<0.300	0.300	01/18/2019	ND						

Surrogate: 4-Bromofluorobenzene (PID) 92.4 % 73.3-129

Chloride, SM4500Cl-B		mg/kg		Analyzed By: JH						
Analyte	Result	Reporting Limit	Analyzed	Method Blank	BS	% Recovery	True Value QC	RPD	Qualifier	
Chloride	16.0	16.0	01/18/2019	ND	432	108	400	3.77		

TPH 8015M		mg/kg		Analyzed By: MS					
Analyte	Result	Reporting Limit	Analyzed	Method Blank	BS	% Recovery	True Value QC	RPD	Qualifier
GRO C6-C10*	<10.0	10.0	01/18/2019	ND	182	90.8	200	6.58	
DRO >C10-C28*	<10.0	10.0	01/18/2019	ND	195	97.7	200	4.93	
EXT DRO >C28-C36	<10.0	10.0	01/18/2019	ND					

Surrogate: 1-Chlorooctane 88.4 % 41-142

Surrogate: 1-Chlorooctadecane 90.0 % 37.6-147

Cardinal Laboratories

*=Accredited Analyte

PLEASE NOTE: Liability and Damages. Cardinal's liability and client's exclusive remedy for any claim arising, whether based in contract or tort, shall be limited to the amount paid by client for analyses. All claims, including those for negligence and any other cause whatsoever shall be deemed waived unless made in writing and received by Cardinal within thirty (30) days after completion of the applicable service. In no event shall Cardinal be liable for incidental or consequential damages, including, without limitation, business interruptions, loss of use, or loss of profits incurred by client, its subsidiaries, affiliates or successors arising out of or related to the performance of the services hereunder by Cardinal, regardless of whether such claim is based upon any of the above stated reasons or otherwise. Results relate only to the samples identified above. This report shall not be reproduced except in full with written approval of Cardinal Laboratories.

Celey D. Keene, Lab Director/Quality Manager



PHONE (575) 393-2326 ° 101 E. MARLAND ° HOBBS, NM 88240

Analytical Results For:

BBC International, Inc.
 Cliff Brunson
 P.O. Box 805
 Hobbs NM, 88241
 Fax To: (575) 397-0397

Received:	01/17/2019	Sampling Date:	01/16/2019
Reported:	01/18/2019	Sampling Type:	Soil
Project Name:	PYGMY 27 STATE #003H	Sampling Condition:	Cool & Intact
Project Number:	(5/16/18)	Sample Received By:	Tamara Oldaker
Project Location:	LEA COUNTY		

Sample ID: BOTTOM 13 (H900174-21)

BTEX 8021B		mg/kg		Analyzed By: MS						
Analyte	Result	Reporting Limit	Analyzed	Method Blank	BS	% Recovery	True Value QC	RPD	Qualifier	
Benzene*	<0.050	0.050	01/18/2019	ND	1.90	94.9	2.00	3.85		
Toluene*	<0.050	0.050	01/18/2019	ND	2.10	105	2.00	3.13		
Ethylbenzene*	<0.050	0.050	01/18/2019	ND	1.94	96.8	2.00	8.73		
Total Xylenes*	<0.150	0.150	01/18/2019	ND	5.69	94.8	6.00	5.30		
Total BTEX	<0.300	0.300	01/18/2019	ND						

Surrogate: 4-Bromofluorobenzene (PID) 101 % 73.3-129

Chloride, SM4500CI-B		mg/kg		Analyzed By: JH						
Analyte	Result	Reporting Limit	Analyzed	Method Blank	BS	% Recovery	True Value QC	RPD	Qualifier	
Chloride	16.0	16.0	01/18/2019	ND	432	108	400	3.77		

TPH 8015M		mg/kg		Analyzed By: MS					
Analyte	Result	Reporting Limit	Analyzed	Method Blank	BS	% Recovery	True Value QC	RPD	Qualifier
GRO C6-C10*	<10.0	10.0	01/18/2019	ND	182	90.8	200	6.58	
DRO >C10-C28*	<10.0	10.0	01/18/2019	ND	195	97.7	200	4.93	
EXT DRO >C28-C36	<10.0	10.0	01/18/2019	ND					

Surrogate: 1-Chlorooctane 91.0 % 41-142

Surrogate: 1-Chlorooctadecane 92.3 % 37.6-147

Cardinal Laboratories

*=Accredited Analyte

PLEASE NOTE: Liability and Damages. Cardinal's liability and client's exclusive remedy for any claim arising, whether based in contract or tort, shall be limited to the amount paid by client for analyses. All claims, including those for negligence and any other cause whatsoever shall be deemed waived unless made in writing and received by Cardinal within thirty (30) days after completion of the applicable service. In no event shall Cardinal be liable for incidental or consequential damages, including, without limitation, business interruptions, loss of use, or loss of profits incurred by client, its subsidiaries, affiliates or successors arising out of or related to the performance of the services hereunder by Cardinal, regardless of whether such claim is based upon any of the above stated reasons or otherwise. Results relate only to the samples identified above. This report shall not be reproduced except in full with written approval of Cardinal Laboratories.

Celey D. Keene, Lab Director/Quality Manager

PHONE (575) 393-2326 • 101 E. MARLAND • HOBBS, NM 88240

Notes and Definitions

S-04	The surrogate recovery for this sample is outside of established control limits due to a sample matrix effect.
QR-02	The RPD result exceeded the QC control limits; however, both percent recoveries were acceptable. Sample results for the QC batch were accepted based on percent recoveries and completeness of QC data.
QM-07	The spike recovery was outside acceptance limits for the MS and/or MSD. The batch was accepted based on acceptable LCS recovery.
ND	Analyte NOT DETECTED at or above the reporting limit
RPD	Relative Percent Difference
**	Samples not received at proper temperature of 6°C or below.
***	Insufficient time to reach temperature.
-	Chloride by SM4500Cl-B does not require samples be received at or below 6°C Samples reported on an as received basis (wet) unless otherwise noted on report

Cardinal Laboratories

*=Accredited Analyte

PLEASE NOTE: Liability and Damages. Cardinal's liability and client's exclusive remedy for any claim arising, whether based in contract or tort, shall be limited to the amount paid by client for analyses. All claims, including those for negligence and any other cause whatsoever shall be deemed waived unless made in writing and received by Cardinal within thirty (30) days after completion of the applicable service. In no event shall Cardinal be liable for incidental or consequential damages, including, without limitation, business interruptions, loss of use, or loss of profits incurred by client, its subsidiaries, affiliates or successors arising out of or related to the performance of the services hereunder by Cardinal, regardless of whether such claim is based upon any of the above stated reasons or otherwise. Results relate only to the samples identified above. This report shall not be reproduced except in full with written approval of Cardinal Laboratories.

A handwritten signature in black ink, appearing to read "Celey D. Keene", is written over a horizontal line.

Celey D. Keene, Lab Director/Quality Manager

CARDINAL LABORATORIES
101 East Marland, Hobbs, NM 88240
(505) 393-2326 FAX (505) 393-2476

CHAIN-OF-CUSTODY AND ANALYSIS REQUEST

Received by OCD: 11/28/2022 3:38:14 PM

Company Name: BBC International, Inc.				BILL TO				ANALYSIS REQUEST											
Project Manager: Cliff Brunson				P.O. #:															
Address: P.O. Box 805				Company:															
City: Hobbs State: NM Zip: 88241				Attn:															
Phone #: 575-397-6388 Fax #: 575-397-0397				Address: COG															
Project #: Project Owner: C.O.C.				City:															
Project Name: Pugmy 27 ST # 0034				State: Zip:															
Project Location: (516118)				Phone #:															
Sampler Name: ROGER HERNANDEZ				Fax #:															
FOR LAB USE ONLY																			
Lab I.D.	Sample I.D.	GRAB OR (COMB. # CONTAINERS)	MATRIX					PRESERV.		SAMPLING		DATE	TIME						
			GROUNDWATER	WASTEWATER	SOIL	OIL	SLUDGE	OTHER:	ACID/BASE:	ICE / COOL	OTHER:								
H900174																			
1	SIDEWALL 12	G-1			✓				✓			1-15-19	100	✓					
2	SIDEWALL 13	G-1			✓				✓			1-15-19	115	✓					
3	SIDEWALL 14	G-1			✓				✓			1-15-19	120	✓					
4	SIDEWALL 15	G-1			✓				✓			1-15-19	130	✓					
5	SIDEWALL 16	G-1			✓				✓			1-15-19	140	✓					
6	SIDEWALL 17	G-1			✓				✓			1-15-19	150	✓					
7	BOTTOM 7	G-1			✓				✓			1-15-19	200	✓					
8	BOTTOM 8	G-1			✓				✓			1-15-19	215	✓					
9	BOTTOM 9	G-1			✓				✓			1-15-19	230	✓					

Chloride

PLEASE NOTE: Liability and Damages. Cardinal's liability and client's exclusive remedy for any claim arising whether based in contract or tort, shall be limited to the amount paid by the client for the analyses. All claims including those for negligence and any other cause whatsoever shall be deemed waived unless made in writing and received by Cardinal within 30 days after completion of the applicable service. In no event shall Cardinal be liable for incidental or consequential damages, including without limitation, business interruptions, loss of use, or loss of profits incurred by client, its subsidiaries, affiliates or successors arising out of or related to the performance of services hereunder by Cardinal, regardless of whether such claim is based upon any of the above stated reasons or otherwise.

Relinquished By: Roger Hernandez		Date: 1-16-19	Received By: Jennifer Gilkey		Phone Result: <input type="checkbox"/> Yes <input type="checkbox"/> No Add'l Phone #:
		Time: 5:00			Fax Result: <input type="checkbox"/> Yes <input type="checkbox"/> No Add'l Fax #:
Relinquished By: Jennifer Gilkey		Date: 1-17-19	Received By: Janara Oldaboe		REMARKS: Push
		Time: 4:05 pm			
Delivered By: (Circle One) Sampler - UPS - Bus - Other: 2.6i #97		Sample Condition: Cool Intact <input type="checkbox"/> Yes <input type="checkbox"/> No <input type="checkbox"/> Yes <input type="checkbox"/> No		CHECKED BY: (Initials) TO.	

† Cardinal cannot accept verbal changes. Please fax written changes to 505-393-2476

CARDINAL LABORATORIES
 101 East Marland, Hobbs, NM 88240
 (505) 393-2326 FAX (505) 393-2476

CHAIN-OF-CUSTODY AND ANALYSIS REQUEST

2 of 3

Company Name: BBC International, Inc.
 Project Manager: Cliff Brunson
 Address: P.O. Box 805
 City: Hobbs State: NM Zip: 88241
 Phone #: 575-397-6388 Fax #: 575-397-0397
 Project #: Project Owner: C.O.G.
 Project Name: Pycmy 27 ST #0034
 Project Location: (5/6/18)
 Sampler Name: Roger Hernandez
 P.O. #:
 Company:
 Attn: C06
 Address:
 City:
 State: Zip:
 Phone #:
 Fax #:

FOR LAB USE ONLY		MATRIX										PRESERV.		SAMPLING		ANALYSIS REQUEST									
Lab I.D.	Sample I.D.	(GRAB OR C/OMP)	# CONTAINERS	GROUNDWATER	WASTEWATER	SOIL	OIL	SLUDGE	OTHER	ACID/BASE	ICE / COOL	OTHER	DATE	TIME											
H900174																									
10	SIDEWALL 18	G	1			✓				✓			1-16-19	1030	✓	✓	✓								
11	SIDEWALL 19	G	1			✓				✓			1-16-19	1045	✓	✓	✓								
12	SIDEWALL 20	G	1			✓				✓			1-16-19	1100	✓	✓	✓								
13	SIDEWALL 21	G	1			✓				✓			1-16-19	1115	✓	✓	✓								
14	SIDEWALL 22	G	1			✓				✓			1-16-19	1130	✓	✓	✓								
15	SIDEWALL 23	G	1			✓				✓			1-16-19	1145	✓	✓	✓								
16	SIDEWALL 24	G	1			✓				✓			1-16-19	1200	✓	✓	✓								
17	SIDEWALL 25	G	1			✓				✓			1-16-19	1215	✓	✓	✓								
18	Bottom 10	G	1			✓				✓			1-16-19	1230	✓	✓	✓								
19	Bottom 11	G	1			✓				✓			1-16-19	100	✓	✓	✓								

PLEASE NOTE: Liability and Damages. Cardinal's liability and client's exclusive remedy for any claim arising whether based in contract or tort, shall be limited to the amount paid by the client for the analyses. All claims including those for negligence and any other cause whatsoever shall be deemed waived unless made in writing and received by Cardinal within 30 days after completion of the applicable service. In no event shall Cardinal be liable for incidental or consequential damages, including without limitation, business interruptions, loss of use, or loss of profits incurred by client, its subsidiaries, affiliates or successors arising out of or related to the performance of services hereunder by Cardinal, regardless of whether such claim is based upon any of the above stated reasons or otherwise.

Relinquished By: Roger Hernandez Date: 1-16-19 Time: 5:00 Received By: Jennifer Culley
 Relinquished By: Jennifer Culley Date: 1-17-19 Time: 4:05 pm Received By: Tamara Olden
 Delivered By: (Circle One) Sampler - UPS - Bus - Other: 260 #97
 Sample Condition: Cool Intact
 Phone Result: ☐ Yes ☐ No Add'l Phone #:
 Fax Result: ☐ Yes ☐ No Add'l Fax #:
 REMARKS: Rush
 CHECKED BY: (Initials) T.O.

† Cardinal cannot accept verbal changes. Please fax written changes to 505-393-2476

† Cardinal cannot accept verbal changes. Please fax written changes to 505-393-2476

Form C-141

Page 6

State of New Mexico
Oil Conservation Division

Incident ID	
District RP	1RP-4465
Facility ID	
Application ID	

Closure

The responsible party must attach information demonstrating they have complied with all applicable closure requirements and any conditions or directives of the OCD. This demonstration should be in the form of a comprehensive report (electronic submittals in .pdf format are preferred) including a scaled site map, sampling diagrams, relevant field notes, photographs of any excavation prior to backfilling, laboratory data including chain of custody documents of final sampling, and a narrative of the remedial activities. Refer to 19.15.29.12 NMAC.

Closure Report Attachment Checklist: *Each of the following items must be included in the closure report.*

- ☐ A scaled site and sampling diagram as described in 19.15.29.11 NMAC
- ☐ Photographs of the remediated site prior to backfill or photos of the liner integrity if applicable (Note: appropriate OCD District office must be notified 2 days prior to liner inspection)
- ☐ Laboratory analyses of final sampling (Note: appropriate OCD District office must be notified 2 days prior to final sampling)
- ☐ Description of remediation activities

I hereby certify that the information given above is true and complete to the best of my knowledge and understand that pursuant to OCD rules and regulations all operators are required to report and/or file certain release notifications and perform corrective actions for releases which may endanger public health or the environment. The acceptance of a C-141 report by the OCD does not relieve the operator of liability should their operations have failed to adequately investigate and remediate contamination that pose a threat to groundwater, surface water, human health or the environment. In addition, OCD acceptance of a C-141 report does not relieve the operator of responsibility for compliance with any other federal, state, or local laws and/or regulations. The responsible party acknowledges they must substantially restore, reclaim, and re-vegetate the impacted surface area to the conditions that existed prior to the release or their final land use in accordance with 19.15.29.13 NMAC including notification to the OCD when reclamation and re-vegetation are complete.

Printed Name: Rebecca Haskell Title: Senior HSE Coordinator
Signature: Rebecca Haskell Date: 1/30/19
email: rhaskell@concho.com Telephone: (432) 683-7443

OCD Only

Received by: _____ Date: _____

Closure approval by the OCD does not relieve the responsible party of liability should their operations have failed to adequately investigate and remediate contamination that poses a threat to groundwater, surface water, human health, or the environment nor does not relieve the responsible party of compliance with any other federal, state, or local laws and/or regulations.

Closure Approved by: Brittany Hall Date: 11/28/2022
Printed Name: Brittany Hall Title: Environmental Specialist

From: [Hernandez, Christina, EMNRD](#)
To: [Rebecca Haskell](#); [Mann, Ryan](#); "Cliff Brunson"
Cc: [DeAnn Grant](#); [Dakota Neel](#); [Sheldon Hitchcock](#); "Ken Swinney"; "Jennifer Gilkey"; [Kathy Purvis](#); [Billings, Bradford, EMNRD](#)
Subject: [External] RE: COG Pygmy 27 State #003H (1RP-5051) - Delineation Workplan
Date: Friday, January 18, 2019 10:00:12 AM

Ms. Haskell:

Your extension request is to submit your closure report is approved for **1RP-5051**. Please submit by February 8, 2019.

Thanks,
Christina Hernandez
EMNRD-OC
Environmental Specialist
1625 N. French Drive
Hobbs, NM 88240
575-393-6161 ext. 111
Christina.Hernandez@state.nm.us

From: Rebecca Haskell <RHaskell@concho.com>
Sent: Thursday, January 17, 2019 3:55 PM
To: Hernandez, Christina, EMNRD <Christina.Hernandez@state.nm.us>; Mann, Ryan <rmann@slo.state.nm.us>; 'Cliff Brunson' <cbrunson@bbcinational.com>; Yu, Olivia, EMNRD <Olivia.Yu@state.nm.us>
Cc: DeAnn Grant <agrant@concho.com>; Dakota Neel <DNeel2@concho.com>; Sheldon Hitchcock <SLHitchcock@concho.com>; 'Ken Swinney' <kswinney@bbcinational.com>; 'Jennifer Gilkey' <jgilkey@bbcinational.com>; 'Kathy Purvis' <kathy@bbcinational.com>; Billings, Bradford, EMNRD <Bradford.Billings@state.nm.us>
Subject: [EXT] RE: COG Pygmy 27 State #003H (1RP-5051) - Delineation Workplan

Ms. Hernandez,

COG is requesting an extension to submit a closure report for the above project until February 8, 2019. BBC is currently conducting remediation activities for this site and need some additional time.

Thank You,

Becky Haskell
Senior HSE Coordinator
COG Operating LLC
600 W Illinois Avenue | Midland, TX 79701
Direct: 432-818-2372 | Main: 432.683.7443
Cell: 432-556-5130
rhaskell@concho.com



CONFIDENTIALITY NOTICE: The information in this email may be confidential and/or privileged. If you are not the intended recipient or an authorized representative of the intended recipient, you are hereby notified that any review, dissemination or copying of this email and its attachments, if any, or the information herein, is prohibited. If you received this email in error, please immediately notify the sender by return email and delete this email from your system. Thank you.

From: Hernandez, Christina, EMNRD [<mailto:Christina.Hernandez@state.nm.us>]
Sent: Monday, October 22, 2018 12:04 PM
To: Mann, Ryan <rmann@slo.state.nm.us>; 'Cliff Brunson' <cbrunson@bbcinational.com>; Yu, Olivia, EMNRD <Olivia.Yu@state.nm.us>
Cc: Rebecca Haskell <RHaskell@concho.com>; DeAnn Grant <agrant@concho.com>; Dakota Neel <DNeel2@concho.com>; Sheldon Hitchcock <SLHitchcock@concho.com>; 'Ken Swinney' <kswinney@bbcinational.com>; 'Jennifer Gilkey' <jgilkey@bbcinational.com>; 'Kathy Purvis' <kathy@bbcinational.com>
Subject: [External] RE: COG Pygmy 27 State #003H (1RP-5051) - Delineation Workplan

**** External email. Use caution. ****

Dear Mr. Brunson:

NMOCD approves of the delineation completed and proposed delineation for **1RP-5051** with these conditions:

- Confirmation bottom and sidewall samples are required. At least one of the sidewall/edge samples is to be at the border between the different depths of excavation areas.
- Please extend the excavation areas to include the proposed white zone areas as no laboratory data was provided within this area to show non-impact.
- Dated photo documentation of the remedial activities.
- Scaled map with the confirmation sample locations in relation to the delineation sample points. Please also identify the release point.

Thanks,
Christina Hernandez
EMNRD-OC
Environmental Specialist
1625 N. French Drive
Hobbs, NM 88240
575-393-6161 x111
Christina.Hernandez@state.nm.us

OCD approval does not relieve the operator of liability should their operations fail to adequately investigate and remediate contamination that may pose a threat to ground water, surface water, human health or the environment. In addition, OCD approval does not relieve the operator of responsibility for compliance with any other federal, state, local laws and/or regulations.

From: Mann, Ryan <rmann@slo.state.nm.us>
Sent: Friday, October 19, 2018 4:01 PM
To: 'Cliff Brunson' <cbrunson@bbcinational.com>; Yu, Olivia, EMNRD <Olivia.Yu@state.nm.us>
Cc: Hernandez, Christina, EMNRD <Christina.Hernandez@state.nm.us>; 'Becky Haskell' <rhaskell@concho.com>; DeAnn Grant <agrant@concho.com>; 'Dakota Neel' <DNeel2@concho.com>; 'Sheldon Hitchcock' <SLHitchcock@concho.com>; 'Ken Swinney' <kswinney@bbcinational.com>; 'Jennifer Gilkey' <jgilkey@bbcinational.com>; 'Kathy Purvis' <kathy@bbcinational.com>
Subject: [EXT] RE: COG Pygmy 27 State #003H (1RP-5051) - Delineation Workplan

NMSLO approves of the plan as written. As stated in the proposal, anything the is not part of the caliche road must be reclaimed to the prior condition, this includes vegetation. Additionally, NMSLO will not issue closure until revegetation achieved, this results in conflict with the 90 day turn around stipulation because the site shouldn't be seeded until next year. Let me know if you have any questions.

Ryan Mann
Remediation Specialist
Field Operation Division
(575) 392-3697
(505) 699-1989

New Mexico State Land Office
2827 N. Dal Paso Suite 117
Hobbs, NM 88240

From: Cliff Brunson [<mailto:cbrunson@bbcinternational.com>]
Sent: Thursday, September 13, 2018 6:10 PM
To: 'Olivia Yu' <Olivia.Yu@state.nm.us>; Mann, Ryan <rmann@slo.state.nm.us>
Cc: 'Hernandez, Christina, EMNRD' <Christina.Hernandez@state.nm.us>; 'Becky Haskell' <rhaskell@concho.com>; DeAnn Grant <agrant@concho.com>; 'Dakota Neel' <DNeel2@concho.com>; 'Sheldon Hitchcock' <SHitchcock@concho.com>; 'Ken Swinney' <kswinney@bbcinternational.com>; 'Jennifer Gilkey' <jgilkey@bbcinternational.com>; 'Kathy Purvis' <kathy@bbcinternational.com>
Subject: COG Pygmy 27 State #003H (1RP-5051) - Delineation Workplan

Olivia and Ryan,

Please find the attached Delineation Workplan and remediation proposal for the COG Pygmy 27 State #003H (1RP-5051). Page 5 (Remediation) of the C-141 is attached in the submitted plan. COG is requesting that you review this plan and is looking forward to the OCD's and SLO's approval.

If you have any questions, please let me know.

Thanks, Cliff

Cliff P. Brunson, CEI, CRS
President
BBC International, Inc.
World-Wide Environmental Specialists
Mailing Address:
P. O. Box 805
Hobbs, NM 88241-0805 USA
Shipping Address:
1324 W. Marland St.
Hobbs, NM 88240 USA
Phone: (575) 397-6388
Fax: (575) 397-0397
E-Mail: cbrunson@bbcinternational.com
BBC INTL LOGO3



Confidentiality Notice: This electronic transmission (and any attached documents) is intended only for the person(s) to whom it is addressed and may contain information that is privileged, confidential, or otherwise protected from disclosure. If you have received this transmission in error, please immediately notify the sender by e-mail or by telephone call to (575) 397-6388 for handling instructions. Any disclosure or distribution of the contents of this transmission by anyone other than the named recipient(s) is strictly prohibited.

This email has been scanned by the Symantec Email Security.cloud service.
For more information please visit <http://www.symanteccloud.com>

This email has been scanned by the Symantec Email Security.cloud service.
For more information please visit https://clicktime.symantec.com/a/1/7VtsevwFbNLCWbLu075mdz5Qo8EgOEj8Dero06yaQJl=?d=3rc9F3jI5sEHESH3ycrphS29K-2M8yNeQm81Y3CB13zP1YwIsFxygAjpL9MPz2GKtEZbTNzCihdkMPbP2CQ2iAsiXxNb_rbiVbYR16P_XeqcU3Y3kLtsGZjLTl3vYeqXNoBC_00Q5_nicsMXyPkjRACaffti8_3PeuFRXixOw/IPMSOIMYtk8XTxOO3ORJelsjtb3Hhmlhv-EIXFASbCO7NMafE9PrsZMPU-NCsmjNPF3ylpjOkihAWPDFOvuqTur-11Tr2fAw6E3KcYpODrHHzmF-gDKeuzDXyPG88VrTeOV75meAEXDJtgGbekOTgidk0t8ep_gp26nyBgQlWhMwg_Gi-KcGYwy7i2LGUtuqM3d0Feqxfl1vftznR54hj96sF9AiXh7Caer3omlYjd2Y2VkcZ4iiCpE2A%3D%3D&u=http%3A%2F%2Fwww.symanteccloud.com

District I
1625 N. French Dr., Hobbs, NM 88240
Phone:(575) 393-6161 Fax:(575) 393-0720
District II
811 S. First St., Artesia, NM 88210
Phone:(575) 748-1283 Fax:(575) 748-9720
District III
1000 Rio Brazos Rd., Aztec, NM 87410
Phone:(505) 334-6178 Fax:(505) 334-6170
District IV
1220 S. St Francis Dr., Santa Fe, NM 87505
Phone:(505) 476-3470 Fax:(505) 476-3462

State of New Mexico
Energy, Minerals and Natural Resources
Oil Conservation Division
1220 S. St Francis Dr.
Santa Fe, NM 87505

CONDITIONS

Action 161800

CONDITIONS

Operator: COG OPERATING LLC 600 W Illinois Ave Midland, TX 79701	OGRID: 229137
	Action Number: 161800
	Action Type: [IM-SD] Incident File Support Doc (ENV) (IM-BNF)

CONDITIONS

Created By	Condition	Condition Date
bhall	None	11/28/2022