



February 14, 2023

New Mexico Oil Conservation Division  
1220 South St. Francis Drive  
Santa Fe, New Mexico 87505

**Re: Closure Request  
Rojo 26 Oil Dump Valve Failure  
Incident Number nAPP2224256412  
Lea County, New Mexico**

To Whom It May Concern:

Ensolum, LLC (Ensolum), on behalf of BTA Oil Producers, LLC (BTA), has prepared this *Closure Request* to document assessment, delineation, and soil sampling activities performed at the Rojo 26 Oil Dump Valve Failure (Site). Based on the delineation activities completed and laboratory analytical results from the soil sampling events, BTA is submitting this *Closure Request* describing remediation that has occurred and requesting closure for Incident Number nAPP2224256412.

## **SITE DESCRIPTION AND RELEASE SUMMARY**

The Site is located in Unit O, Section 22, Township 25 South, Range 33 East, in Lea County, New Mexico (32.11026°, -103.55605°) and is associated with oil and gas exploration and production operations on Federal Land managed by the Bureau of Land Management (BLM).

On August 16, 2022, the malfunction of an oil dump controller caused crude oil to overflow from the Site's separator to the compressor catch tank, resulting in the release of approximately 10 barrels (bbls) of crude oil onto the caliche well pad, with 8 bbls recovered. BTA reported the release to the New Mexico Oil Conservation Division (NMOCD) and submitted a Release Notification Form C-141 (Form C-141) on August 30, 2022. The release was assigned Incident Number nAPP2224256412.

## **SITE CHARACTERIZATION AND CLOSURE CRITERIA**

The Site was characterized to assess the applicability of Table I, Closure Criteria for Soils Impacted by a Release, of Title 19, Chapter 15, Part 29 (19.15.29) of the New Mexico Administrative Code (NMAC). Results from the characterization desktop review are presented on page 3 of the Form C-141, Site Assessment/Characterization. Potential Site receptors are identified on Figure 1.

Depth to groundwater at the Site is estimated to be between 51 feet and 100 feet below ground surface (bgs) based on a recent soil boring drilled for determination of regional groundwater depth. On January 3, 2023, a borehole (BH01) was advanced to a depth of 60 feet bgs via air rotary drill rig. The borehole was located approximately 0.39 miles southeast of the Site and is depicted on Figure 1. A field geologist logged and described soils continuously. The borehole was left open for over 72 hours to allow for potential slow infill of groundwater. After the 72-hour waiting period without observing groundwater, it was confirmed that groundwater beneath the Site is greater than 60 feet bgs. The borehole was properly

BTA Oil Producers, LLC  
Closure Request  
Rojo 26 Oil Dump Valve Failure

abandoned using drill cuttings and hydrated bentonite chips. All wells used for depth to groundwater determination are depicted on Figure 1 and the referenced well records are included in Appendix A.

The closest continuously flowing or significant watercourse to the Site is a dry wash, located approximately 12,551 feet northeast of the Site. The Site is greater than 200 feet from a lakebed, sinkhole, or playa lake and greater than 300 feet from an occupied residence, school, hospital, institution, church, or wetland. The Site is greater than 1,000 feet to a freshwater well or spring and is not within a 100-year floodplain or overlying a subsurface mine. The Site is not underlain by unstable geology (low potential karst designation area). Site receptors are identified on Figure 1.

Based on the results of the Site Characterization, the following NMOCD Table I Closure Criteria (Closure Criteria) apply:

- Benzene: 10 milligrams per kilogram (mg/kg)
- Benzene, toluene, ethylbenzene, and total xylenes (BTEX): 50 mg/kg
- Total petroleum hydrocarbons (TPH)- gasoline range organics (GRO) and TPH-diesel range organics (DRO): 1,000 mg/kg
- TPH: 2,500 mg/kg
- Chloride: 10,000 mg/kg

## SITE ASSESSMENT ACTIVITIES AND ANALYTICAL RESULTS

Between October 17 and November 8, 2022, Ensolum personnel were at the Site to evaluate the release extent based on information provided on the Form C-141 and visual observations. Nine assessment soil samples (SS01 through SS09) were collected within and around the release extent at a depth of approximately 0.5 feet bgs to assess the release. The soil samples were field screened for volatile organic compounds (VOCs) utilizing a calibrated photoionization detector (PID) and chloride utilizing Hach® chloride QuanTab® test strips. The soil sample locations were mapped utilizing a handheld Global Positioning System (GPS) unit and are depicted on Figure 2. Photographic documentation was completed during the Site visit and a photographic log is included in Appendix B.

The soil samples were placed directly into pre-cleaned glass jars, labeled with the location, date, time, sampler name, method of analysis, and immediately placed on ice. The soil samples were transported under strict chain-of-custody procedures to Cardinal Laboratories (Cardinal) in Hobbs, New Mexico, for analysis of the following chemicals of concern (COCs): BTEX following United States Environmental Protection Agency (EPA) Method 8021B; TPH-GRO, TPH-DRO, and TPH-oil range organics (ORO) following EPA Method 8015M/D; and chloride following EPA Method SM4500.

Laboratory analytical results for soil samples SS01 through SS09, collected within the release extent, indicated all COC concentrations were compliant with the Closure Criteria; to confirm the vertical extent of the release, additional delineation activities were warranted. Table 1 summarizes soil analytical results. The laboratory analytical report and chain of custody documentation are included in Appendix C.

## DELINEATION ACTIVITIES AND ANALYTICAL RESULTS

On November 28, 2022, Ensolum personnel were at the Site to perform delineation activities. Five delineation samples (SS05A through SS09A) were advanced via hand-auger to a depth of 1-foot bgs. Soil from the delineation samples was field screened for VOCs and chloride. The soil samples were handled as described above. The delineation soil sample locations are depicted in Figure 2. A photographic log is included in Appendix B.

BTA Oil Producers, LLC  
Closure Request  
Rojo 26 Oil Dump Valve Failure

Laboratory analytical results for delineation soil samples indicated all COC concentrations were compliant with the most stringent Table I Closure Criteria. Laboratory analytical results are summarized in Table 1 and the complete analytical reports are included as Appendix C.

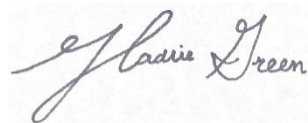
## CLOSURE REQUEST

Site assessment and delineation activities were conducted at the Site to address the August 16, 2022, crude oil release. Laboratory analytical results for all soil samples, collected from the Site, indicated all COC concentrations were compliant with the strictest Table I Closure. Based on the soil sample analytical results, no further remediation appears to be required.

Depth to groundwater is estimated to be greater than 60 feet bgs based on a recent soil boring installed less than 1/2-mile from the Site and no other sensitive receptors have been identified. BTA believes these remedial actions have been protective of human health, the environment, and groundwater. The NMOCD notifications are included as Appendix D and the Final C-141 is included as Appendix E. BTA respectfully requests closure for Incident Number nAPP2224256412.

If you have any questions or comments, please contact Ms. Tacoma Morrissey at (337) 257-8307 or [tmorrissey@ensolum.com](mailto:tmorrissey@ensolum.com).

Sincerely,  
**Ensolum, LLC**



Hadlie Green  
Staff Geologist



Tacoma Morrissey  
Senior Geologist

cc: Bob Hall, BTA Oil Producers, LLC  
Bureau of Land Management

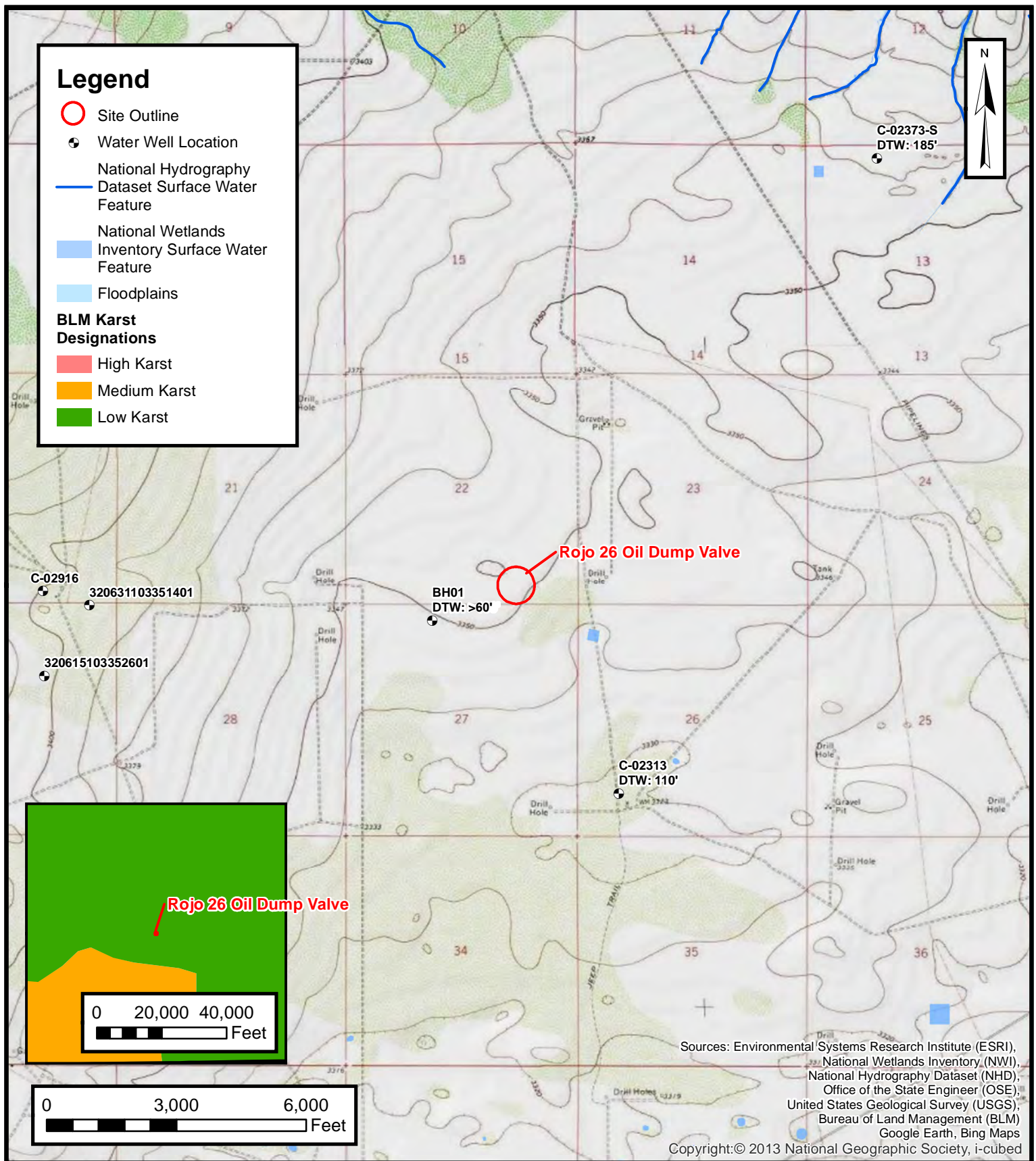
### Appendices:

Figure 1	Site Receptor Map
Figure 2	Soil Sample Locations
Table 1	Soil Sample Analytical Results
Appendix A	Referenced Well Records
Appendix B	Photographic Log
Appendix C	Laboratory Analytical Reports & Chain-of-Custody Documentation
Appendix D	NMOCD Notifications
Appendix E	Final C-141



FIGURES



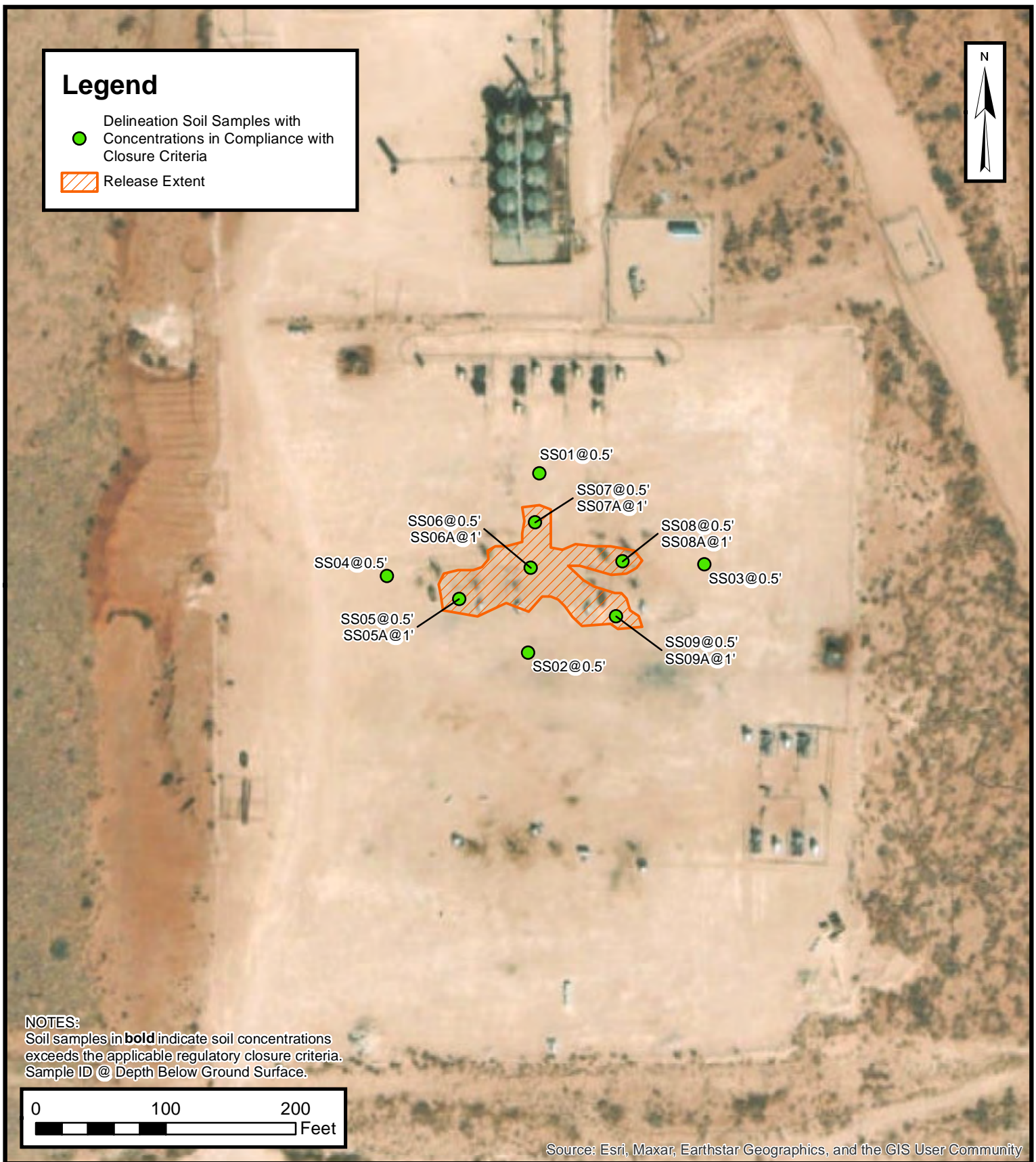


## Site Receptor Map

BTA Oil Producers, LLC  
Rojo 26 Oil Dump Valve  
Incident Number nAPP2224256412  
Unit Letter O, Sec 22, T25S, R33E  
Lea County, New Mexico

**FIGURE**  
**1**





## Soil Sample Locations

BTA Oil Producers, LLC  
 Rojo 26 Oil Dump Valve  
 Incident Number  
 Unit Letter O, Sec 22, T25S, R33E  
 Lea County, New Mexico

FIGURE

2





TABLES



**TABLE 1**  
**SOIL SAMPLE ANALYTICAL RESULTS**  
 Rojo 26 Oil Dump Valve  
 BTA Oil Producers, LLC  
 Lea County, New Mexico

Sample I.D.	Sample Date	Sample Depth (feet bgs)	Benzene (mg/kg)	Total BTEX (mg/kg)	TPH GRO (mg/kg)	TPH DRO (mg/kg)	TPH ORO (mg/kg)	GRO+DRO (mg/kg)	Total TPH (mg/kg)	Chloride (mg/kg)
NMOCD Table I Closure Criteria (NMAC 19.15.29)			10	50	NE	NE	NE	1,000	2,500	10,000
Delineation Soil Samples										
SS01	10/17/2022	0.5	<0.050	<0.300	<10.0	<10.0	<10.0	<10.0	<10.0	16.0
SS02	10/17/2022	0.5	<0.050	<0.300	<10.0	<10.0	<10.0	<10.0	<10.0	32.0
SS03	10/17/2022	0.5	<0.050	<0.300	<10.0	<10.0	<10.0	<10.0	<10.0	160
SS04	10/17/2022	0.5	<0.050	<0.300	<10.0	<10.0	<10.0	<10.0	<10.0	64.0
SS05	11/08/2022	0.5	<0.050	<0.300	<10.0	10.1	<10.0	10.1	10.1	480
SS05A	11/28/2022	1	<0.050	<0.300	<10.0	<10.0	<10.0	<10.0	<10.0	272
SS06	11/08/2022	0.5	<0.050	<0.300	<10.0	<10.0	<10.0	<10.0	<10.0	3,160
SS06A	11/28/2022	1	<0.050	<0.300	<10.0	<10.0	<10.0	<10.0	<10.0	288
SS07	11/08/2022	0.5	<0.050	<0.300	<10.0	<10.0	<10.0	<10.0	<10.0	352
SS07A	11/28/2022	1	<0.050	<0.300	<10.0	<10.0	<10.0	<10.0	<10.0	288
SS08	11/08/2022	0.5	<0.050	<0.300	<10.0	<10.0	<10.0	<10.0	<10.0	352
SS08A	11/28/2022	1	<0.050	<0.300	<10.0	<10.0	<10.0	<10.0	<10.0	240
SS09	11/08/2022	0.5	<0.050	<0.300	<10.0	<10.0	<10.0	<10.0	<10.0	1,470
SS09A	11/28/2022	1	<0.050	<0.300	<10.0	<10.0	<10.0	<10.0	<10.0	304

## Notes:

bgs: below ground surface

mg/kg: milligrams per kilogram

NMOCD: New Mexico Oil Conservation Division

BTEX: Benzene, Toluene, Ethylbenzene, and Xylenes

Concentrations in bold exceed the NMOCD Table I Closure Criteria or reclamation standard where applicable.

GRO: Gasoline Range Organics

DRO: Diesel Range Organics

ORO: Oil Range Organics

TPH: Total Petroleum Hydrocarbon






## APPENDIX A

### Referenced Well Records

---

								Sample Name: BH01		Date: 1/3/2023	
								Site Name: Rojo 26 Oil Dump Valve Failure			
								Incident Number: nAPP2224256412			
								Job Number: 03C2012006			
<b>LITHOLOGIC / SOIL SAMPLING LOG</b>								Logged By: CS / MR		Method: Air Rotary	
Coordinates: 32.107784, -103.562235								Hole Diameter: 6"		Total Depth: 60'	
Comments: Soil boring was advanced to a total depth of 60' bgs. No water was observed within the soil boring after at least 72 hours. On 1/16/2023 the soil boring was plugged and abandoned using hydrated bentonite chips.											
Moisture Content	Chloride (ppm)	Vapor (ppm)	Staining	Sample ID	Sample Depth (ft bgs)	Depth (ft bgs)	USCS/Rock Symbol	Lithologic Descriptions			
						0	CCHE	(0-30'), CALICHE, coarse grain, well graded, white to tan, dry, no stain or odor.			
Dry	-	-	N	-	-	10					
Dry	-	-	N	-	-	20		@20' color change to pink/tan			
Dry	-	-	N	-	-	30	SP-SM	(30-78'), SAND, medium to fine grain, poorly graded with trace caliche nodules, red to orange, dry, no stain, no odor.			
Dry	-	-	N	-	-	40					
Dry	-	-	N	-	-	50		@50', slightly cohesive with trace clay			
Dry	-	-	N	-	-	60		NOTE: refusal @ 60' using air rotary drill rig due to abundant sand.			
Total Depth @ 60 feet bgs											



# New Mexico Office of the State Engineer

## Water Right Summary



**WR File Number:** C 02313      **Subbasin:** CUB      **Cross Reference:** -  
**Primary Purpose:** STK 72-12-1 LIVESTOCK WATERING  
**Primary Status:** DCL DECLARATION  
**Total Acres:** 0      **Subfile:** -      **Header:** -  
**Total Diversion:** 3      **Cause/Case:** -  
**Owner:** NGL WATER SOLUTIONS PERMIAN  
**Contact:** R CHARLES WILKIN

### Documents on File

Trn #	Doc	File/Act	Status		Transaction Desc.	From/		Acres	Diversion	Consumptive
			1	2		To				
<a href="#">633160</a>	<a href="#">COWNF</a>	<a href="#">2018-09-17</a>	CHG	PRC	C 02313	T		0	0	
<a href="#">207100</a>	<a href="#">COWNF</a>	<a href="#">2001-01-03</a>	CHG	PRC	C 02313	T		0	0	
<a href="#">144654</a>	<a href="#">DCL</a>	<a href="#">1998-02-09</a>	DCL	PRC	C 02313 AMENDMENT	T		0	3	
<a href="#">198282</a>	<a href="#">DCL</a>	<a href="#">1993-04-20</a>	DCL	PRC	C 02313	T		0	3	

### Current Points of Diversion

POD Number	Well Tag	Source	Q		Tw	Rng	(NAD83 UTM in meters)		X	Y	Other Location Desc
			64	Q16			Q4Sec				
<a href="#">C 02313</a>			2	3	3	26	25S	33E	636971	3552098*	

\*An (\*) after northing value indicates UTM location was derived from PLSS - see Help

### Priority Summary

Priority	Status	Acres	Diversion	Pod Number
12/31/1925	DCL	0	3	<a href="#">C 02313</a>

### Place of Use

Q	Q	Acres	Diversion	CU	Use	Priority	Status	Other Location Desc
256	64 Q16 Q4Sec							
	Tw							
	Rng							
		0	3		STK		DCL	NO PLACE OF USE GIVEN
		0	3		STK	06/30/1925	DCL	NO PLACE OF USE GIVEN

### Source

Acres	Diversion	CU	Use	Priority	Source Description
0	3		STK		GW
0	3		STK	06/30/1925	GW

The data is furnished by the NMOSE/ISC and is accepted by the recipient with the expressed understanding that the OSE/ISC make no warranties, expressed or implied, concerning the accuracy, completeness, reliability, usability, or suitability for any particular purpose of the data.

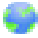
10/10/22 3:37 PM

WATER RIGHT  
SUMMARY



# New Mexico Office of the State Engineer

## Point of Diversion Summary

		(quarters are 1=NW 2=NE 3=SW 4=SE) (quarters are smallest to largest)						(NAD83 UTM in meters)	
Well Tag	POD Number	Q64	Q16	Q4	Sec	Tws	Rng	X	Y
	C 02313	2	3	3	26	25S	33E	636971	3552098*
									
<b>Driller License:</b>					<b>Driller Company:</b>				
<b>Driller Name:</b> UNKNOWN									
<b>Drill Start Date:</b> 01/01/1925		<b>Drill Finish Date:</b>			06/30/1925		<b>Plug Date:</b>		
<b>Log File Date:</b>		<b>PCW Rev Date:</b>					<b>Source:</b>		
<b>Pump Type:</b>		<b>Pipe Discharge Size:</b>					<b>Estimated Yield:</b> 60 GPM		
<b>Casing Size:</b> 6.88		<b>Depth Well:</b>			150 feet		<b>Depth Water:</b> 110 feet		

\*UTM location was derived from PLSS - see Help

The data is furnished by the NMOSE/ISC and is accepted by the recipient with the expressed understanding that the OSE/ISC make no warranties, expressed or implied, concerning the accuracy, completeness, reliability, usability, or suitability for any particular purpose of the data.

10/10/22 3:38 PM

POINT OF DIVERSION SUMMARY





[USGS Home](#)  
[Contact USGS](#)  
[Search USGS](#)

## National Water Information System: Web Interface

USGS Water Resources

Data Category:

Site Information ▼

Geographic Area:

United States ▼

GO

Click to hide News Bulletins

- Explore the *NEW* [USGS National Water Dashboard](#) interactive map to access real-time water data from over 13,500 stations nationwide.
- [Full News](#) 

# USGS 320631103351401 25S.33E.20.443313

Available data for this site

SUMMARY OF ALL AVAILABLE DATA ▼

GO

## Well Site

### DESCRIPTION:

Latitude 32°06'31", Longitude 103°35'14" NAD27

Lea County, New Mexico , Hydrologic Unit 13070007

Well depth: not determined.

Land surface altitude: 3,398 feet above NAVD88.

Well completed in "Other aquifers" (N9999OTHER) national aquifer.

Well completed in "Chinle Formation" (231CHNL) local aquifer

### AVAILABLE DATA:

Data Type	Begin Date	End Date	Count
<a href="#">Field groundwater-level measurements</a>	1981-03-25	1981-03-25	1
<a href="#">Revisions</a>	Unavailable (site:0) (timeseries:0)		

### OPERATION:

Record for this site is maintained by the USGS New Mexico Water Science Center

Email questions about this site to [New Mexico Water Science Center Water-Data Inquiries](#)

---

[Questions about sites/data?](#)

[Feedback on this web site](#)

[Automated retrievals](#)

[Help](#)

[Data Tips](#)

[Explanation of terms](#)

[Subscribe for system changes](#)

[News](#)

[Accessibility](#) [FOIA](#) [Privacy](#) [Policies and Notices](#)

[U.S. Department of the Interior](#) | [U.S. Geological Survey](#)

**Title: NWIS Site Information for USA: Site Inventory**

**URL: [https://waterdata.usgs.gov/nwis/inventory?](https://waterdata.usgs.gov/nwis/inventory?agency_code=USGS&site_no=320631103351401)**

**[agency\\_code=USGS&site\\_no=320631103351401](https://waterdata.usgs.gov/nwis/inventory?agency_code=USGS&site_no=320631103351401)**



Page Contact Information: [New Mexico Water Data Support Team](#)

Page Last Modified: 2022-10-10 17:43:53 EDT

0.3 0.28 caww01

National Water Information System: Web Interface


USGS Water Resources

Data Category:  
Groundwater

Geographic Area:  
United States

GO

Click to hideNews Bulletins

- Explore the NEW [USGS National Water Dashboard](#) interactive map to access real-time water data from over 13,500 stations nationwide.
- [Full News](#) 

Groundwater levels for the Nation

 Important: [Next Generation Monitoring Location Page](#)

Search Results -- 1 sites found

Agency code = usgs  
site\_no list =

- 320631103351401

Minimum number of levels = 1  
[Save file of selected sites](#) to local disk for future upload

USGS 320631103351401 25S.33E.20.443313

Lea County, New Mexico  
Latitude 32°06'31", Longitude 103°35'14" NAD27  
Land-surface elevation 3,398 feet above NAVD88  
This well is completed in the Other aquifers (N9999OTHER) national aquifer.  
This well is completed in the Chinle Formation (231CHNL) local aquifer.

Output formats

<a href="#">Table of data</a>
<a href="#">Tab-separated data</a>
<a href="#">Graph of data</a>
<a href="#">Reselect period</a>

Date	Time	? Water-level date-time accuracy	? Parameter code	Water level, feet below land surface	Water level, feet above specific vertical datum	Referenced vertical datum	? Status	? Method of measurement	? Measuring agency	? Source measu
1981-03-25			D	62610	3192.01	NGVD29	1		Z	
1981-03-25			D	62611	3193.64	NAVD88	1		Z	
1981-03-25			D	72019	204.36		1		Z	

Explanation

Section	Code	Description
Water-level date-time accuracy	D	Date is accurate to the Day
Parameter code	62610	Groundwater level above NGVD 1929, feet
Parameter code	62611	Groundwater level above NAVD 1988, feet
Parameter code	72019	Depth to water level, feet below land surface
Referenced vertical datum	NAVD88	North American Vertical Datum of 1988
Referenced vertical datum	NGVD29	National Geodetic Vertical Datum of 1929
Status	1	Static
Method of measurement	Z	Other.
Measuring agency		Not determined
Source of measurement		Not determined

Section	Code	Description
Water-level approval status	A	Approved for publication -- Processing and review completed.

[Questions about sites/data?](#)  
[Feedback on this web site](#)  
[Automated retrievals](#)  
[Help](#)  
[Data Tips](#)  
[Explanation of terms](#)  
[Subscribe for system changes](#)  
[News](#)

[Accessibility](#)   [FOIA](#)   [Privacy](#)   [Policies and Notices](#)  
[U.S. Department of the Interior](#) | [U.S. Geological Survey](#)  
**Title: Groundwater for USA: Water Levels**  
**URL: <https://nwis.waterdata.usgs.gov/nwis/gwlevels?>**



Page Contact Information: [USGS Water Data Support Team](#)  
Page Last Modified: 2022-10-10 17:44:23 EDT  
0.26 0.23 nadww01





## APPENDIX B

### Photographic Log

---

**Photographic Log**

BTA Oil Producers, LLC

Rojo 26 Oil Dump Valve

Incident Number nAPP2224256412



Photograph: 1                      Date: 8/16/2022  
Description: Soil staining observed during fluid recovery.  
View: Northeast



Photograph: 2                      Date: 11/8/2022  
Description: View of release during Site assessment.  
View: North



Photograph: 3                      Date: 11/8/2022  
Description: View of release during Site assessment.  
View: Southeast



Photograph: 4                      Date: 11/28/2022  
Description: View during delineation activities  
View: East



## APPENDIX C

### Laboratory Analytical Reports & Chain of Custody Documentation

---



PHONE (575) 393-2326 ° 101 E. MARLAND ° HOBBS, NM 88240

---

October 21, 2022

BEAUX JENNINGS  
ENSOLUM, LLC  
705 W WADLEY AVE.  
MIDLAND, TX 79705

RE: ROJO 26 OIL DUMP VALVE FAILURE

Enclosed are the results of analyses for samples received by the laboratory on 10/18/22 14:33.

Cardinal Laboratories is accredited through Texas NELAP under certificate number T104704398-22-15. Accreditation applies to drinking water, non-potable water and solid and chemical materials. All accredited analytes are denoted by an asterisk (\*). For a complete list of accredited analytes and matrices visit the TCEQ website at [www.tceq.texas.gov/field/qa/lab\\_accred\\_certif.html](http://www.tceq.texas.gov/field/qa/lab_accred_certif.html).

Cardinal Laboratories is accredited through the State of Colorado Department of Public Health and Environment for:

Method EPA 552.2	Haloacetic Acids (HAA-5)
Method EPA 524.2	Total Trihalomethanes (TTHM)
Method EPA 524.4	Regulated VOCs (V1, V2, V3)

Accreditation applies to public drinking water matrices.

This report meets NELAP requirements and is made up of a cover page, analytical results, and a copy of the original chain-of-custody. If you have any questions concerning this report, please feel free to contact me.

Sincerely,

A handwritten signature in black ink that reads "Celey D. Keene". The signature is written in a cursive, flowing style.

Celey D. Keene  
Lab Director/Quality Manager





PHONE (575) 393-2326 ° 101 E. MARLAND ° HOBBS, NM 88240

**Analytical Results For:**

ENSOLUM, LLC  
 BEAUX JENNINGS  
 705 W WADLEY AVE.  
 MIDLAND TX, 79705  
 Fax To:

Received:	10/18/2022	Sampling Date:	10/17/2022
Reported:	10/21/2022	Sampling Type:	Soil
Project Name:	ROJO 26 OIL DUMP VALVE FAILURE	Sampling Condition:	Cool & Intact
Project Number:	03C2012006	Sample Received By:	Tamara Oldaker
Project Location:	BTA		

**Sample ID: SS01 .5' (H224888-01)**

BTEx 8021B		mg/kg		Analyzed By: JH					
Analyte	Result	Reporting Limit	Analyzed	Method Blank	BS	% Recovery	True Value QC	RPD	Qualifier
Benzene*	<0.050	0.050	10/20/2022	ND	1.92	96.1	2.00	2.27	
Toluene*	<0.050	0.050	10/20/2022	ND	2.10	105	2.00	0.197	
Ethylbenzene*	<0.050	0.050	10/20/2022	ND	1.96	98.0	2.00	1.79	
Total Xylenes*	<0.150	0.150	10/20/2022	ND	5.91	98.4	6.00	1.83	
Total BTEX	<0.300	0.300	10/20/2022	ND					

Surrogate: 4-Bromofluorobenzene (PID) 98.8 % 69.9-140

Chloride, SM4500Cl-B		mg/kg		Analyzed By: AC						
Analyte	Result	Reporting Limit	Analyzed	Method Blank	BS	% Recovery	True Value QC	RPD	Qualifier	
Chloride	16.0	16.0	10/19/2022	ND	416	104	400	3.77		

TPH 8015M		mg/kg		Analyzed By: MS					
Analyte	Result	Reporting Limit	Analyzed	Method Blank	BS	% Recovery	True Value QC	RPD	Qualifier
GRO C6-C10*	<10.0	10.0	10/19/2022	ND	209	105	200	5.87	
DRO >C10-C28*	<10.0	10.0	10/19/2022	ND	210	105	200	5.25	
EXT DRO >C28-C36	<10.0	10.0	10/19/2022	ND					

Surrogate: 1-Chlorooctane 98.3 % 45.3-161

Surrogate: 1-Chlorooctadecane 109 % 46.3-178

Cardinal Laboratories

\*=Accredited Analyte

PLEASE NOTE: Liability and Damages. Cardinal's liability and client's exclusive remedy for any claim arising, whether based in contract or tort, shall be limited to the amount paid by client for analyses. All claims, including those for negligence and any other cause whatsoever shall be deemed waived unless made in writing and received by Cardinal within thirty (30) days after completion of the applicable service. In no event shall Cardinal be liable for incidental or consequential damages, including, without limitation, business interruptions, loss of use, or loss of profits incurred by client, its subsidiaries, affiliates or successors arising out of or related to the performance of the services hereunder by Cardinal, regardless of whether such claim is based upon any of the above stated reasons or otherwise. Results relate only to the samples identified above. This report shall not be reproduced except in full with written approval of Cardinal Laboratories.

Celey D. Keene, Lab Director/Quality Manager



PHONE (575) 393-2326 ° 101 E. MARLAND ° HOBBS, NM 88240

**Analytical Results For:**

ENSOLUM, LLC  
 BEAUX JENNINGS  
 705 W WADLEY AVE.  
 MIDLAND TX, 79705  
 Fax To:

Received:	10/18/2022	Sampling Date:	10/17/2022
Reported:	10/21/2022	Sampling Type:	Soil
Project Name:	ROJO 26 OIL DUMP VALVE FAILURE	Sampling Condition:	Cool & Intact
Project Number:	03C2012006	Sample Received By:	Tamara Oldaker
Project Location:	BTA		

**Sample ID: SS02 .5' (H224888-02)**

BTEx 8021B		mg/kg		Analyzed By: JH					
Analyte	Result	Reporting Limit	Analyzed	Method Blank	BS	% Recovery	True Value QC	RPD	Qualifier
Benzene*	<0.050	0.050	10/20/2022	ND	1.92	96.1	2.00	2.27	
Toluene*	<0.050	0.050	10/20/2022	ND	2.10	105	2.00	0.197	
Ethylbenzene*	<0.050	0.050	10/20/2022	ND	1.96	98.0	2.00	1.79	
Total Xylenes*	<0.150	0.150	10/20/2022	ND	5.91	98.4	6.00	1.83	
Total BTEX	<0.300	0.300	10/20/2022	ND					

Surrogate: 4-Bromofluorobenzene (PID) 98.5 % 69.9-140

Chloride, SM4500CI-B		mg/kg		Analyzed By: AC						
Analyte	Result	Reporting Limit	Analyzed	Method Blank	BS	% Recovery	True Value QC	RPD	Qualifier	
Chloride	32.0	16.0	10/19/2022	ND	416	104	400	3.77		

TPH 8015M		mg/kg		Analyzed By: MS					
Analyte	Result	Reporting Limit	Analyzed	Method Blank	BS	% Recovery	True Value QC	RPD	Qualifier
GRO C6-C10*	<10.0	10.0	10/19/2022	ND	209	105	200	5.87	
DRO >C10-C28*	<10.0	10.0	10/19/2022	ND	210	105	200	5.25	
EXT DRO >C28-C36	<10.0	10.0	10/19/2022	ND					

Surrogate: 1-Chlorooctane 99.4 % 45.3-161

Surrogate: 1-Chlorooctadecane 107 % 46.3-178

Cardinal Laboratories

\*=Accredited Analyte

PLEASE NOTE: Liability and Damages. Cardinal's liability and client's exclusive remedy for any claim arising, whether based in contract or tort, shall be limited to the amount paid by client for analyses. All claims, including those for negligence and any other cause whatsoever shall be deemed waived unless made in writing and received by Cardinal within thirty (30) days after completion of the applicable service. In no event shall Cardinal be liable for incidental or consequential damages, including, without limitation, business interruptions, loss of use, or loss of profits incurred by client, its subsidiaries, affiliates or successors arising out of or related to the performance of the services hereunder by Cardinal, regardless of whether such claim is based upon any of the above stated reasons or otherwise. Results relate only to the samples identified above. This report shall not be reproduced except in full with written approval of Cardinal Laboratories.

Celey D. Keene, Lab Director/Quality Manager



PHONE (575) 393-2326 ° 101 E. MARLAND ° HOBBS, NM 88240

**Analytical Results For:**

ENSOLUM, LLC  
 BEAUX JENNINGS  
 705 W WADLEY AVE.  
 MIDLAND TX, 79705  
 Fax To:

Received:	10/18/2022	Sampling Date:	10/17/2022
Reported:	10/21/2022	Sampling Type:	Soil
Project Name:	ROJO 26 OIL DUMP VALVE FAILURE	Sampling Condition:	Cool & Intact
Project Number:	03C2012006	Sample Received By:	Tamara Oldaker
Project Location:	BTA		

**Sample ID: SS03 .5' (H224888-03)**

BTEx 8021B		mg/kg		Analyzed By: JH						
Analyte	Result	Reporting Limit	Analyzed	Method Blank	BS	% Recovery	True Value QC	RPD	Qualifier	
Benzene*	<0.050	0.050	10/20/2022	ND	1.92	96.1	2.00	2.27		
Toluene*	<0.050	0.050	10/20/2022	ND	2.10	105	2.00	0.197		
Ethylbenzene*	<0.050	0.050	10/20/2022	ND	1.96	98.0	2.00	1.79		
Total Xylenes*	<0.150	0.150	10/20/2022	ND	5.91	98.4	6.00	1.83		
Total BTEX	<0.300	0.300	10/20/2022	ND						

Surrogate: 4-Bromofluorobenzene (PID) 99.3 % 69.9-140

Chloride, SM4500Cl-B		mg/kg		Analyzed By: AC						
Analyte	Result	Reporting Limit	Analyzed	Method Blank	BS	% Recovery	True Value QC	RPD	Qualifier	
Chloride	160	16.0	10/19/2022	ND	432	108	400	3.77		

TPH 8015M		mg/kg		Analyzed By: MS					
Analyte	Result	Reporting Limit	Analyzed	Method Blank	BS	% Recovery	True Value QC	RPD	Qualifier
GRO C6-C10*	<10.0	10.0	10/19/2022	ND	209	105	200	5.87	
DRO >C10-C28*	<10.0	10.0	10/19/2022	ND	210	105	200	5.25	
EXT DRO >C28-C36	<10.0	10.0	10/19/2022	ND					

Surrogate: 1-Chlorooctane 91.9 % 45.3-161

Surrogate: 1-Chlorooctadecane 100 % 46.3-178

Cardinal Laboratories

\*=Accredited Analyte

PLEASE NOTE: Liability and Damages. Cardinal's liability and client's exclusive remedy for any claim arising, whether based in contract or tort, shall be limited to the amount paid by client for analyses. All claims, including those for negligence and any other cause whatsoever shall be deemed waived unless made in writing and received by Cardinal within thirty (30) days after completion of the applicable service. In no event shall Cardinal be liable for incidental or consequential damages, including, without limitation, business interruptions, loss of use, or loss of profits incurred by client, its subsidiaries, affiliates or successors arising out of or related to the performance of the services hereunder by Cardinal, regardless of whether such claim is based upon any of the above stated reasons or otherwise. Results relate only to the samples identified above. This report shall not be reproduced except in full with written approval of Cardinal Laboratories.

Celey D. Keene, Lab Director/Quality Manager



PHONE (575) 393-2326 ° 101 E. MARLAND ° HOBBS, NM 88240

**Analytical Results For:**

ENSOLUM, LLC  
 BEAUX JENNINGS  
 705 W WADLEY AVE.  
 MIDLAND TX, 79705  
 Fax To:

Received:	10/18/2022	Sampling Date:	10/17/2022
Reported:	10/21/2022	Sampling Type:	Soil
Project Name:	ROJO 26 OIL DUMP VALVE FAILURE	Sampling Condition:	Cool & Intact
Project Number:	03C2012006	Sample Received By:	Tamara Oldaker
Project Location:	BTA		

**Sample ID: SS04 .5' (H224888-04)**

BTEx 8021B		mg/kg		Analyzed By: JH						
Analyte	Result	Reporting Limit	Analyzed	Method Blank	BS	% Recovery	True Value QC	RPD	Qualifier	
Benzene*	<0.050	0.050	10/20/2022	ND	1.92	96.1	2.00	2.27		
Toluene*	<0.050	0.050	10/20/2022	ND	2.10	105	2.00	0.197		
Ethylbenzene*	<0.050	0.050	10/20/2022	ND	1.96	98.0	2.00	1.79		
Total Xylenes*	<0.150	0.150	10/20/2022	ND	5.91	98.4	6.00	1.83		
Total BTEx	<0.300	0.300	10/20/2022	ND						

Surrogate: 4-Bromofluorobenzene (PID) 98.8 % 69.9-140

Chloride, SM4500CI-B		mg/kg		Analyzed By: AC						
Analyte	Result	Reporting Limit	Analyzed	Method Blank	BS	% Recovery	True Value QC	RPD	Qualifier	
Chloride	64.0	16.0	10/19/2022	ND	432	108	400	3.77		

TPH 8015M		mg/kg		Analyzed By: MS					
Analyte	Result	Reporting Limit	Analyzed	Method Blank	BS	% Recovery	True Value QC	RPD	Qualifier
GRO C6-C10*	<10.0	10.0	10/19/2022	ND	209	105	200	5.87	
DRO >C10-C28*	<10.0	10.0	10/19/2022	ND	210	105	200	5.25	
EXT DRO >C28-C36	<10.0	10.0	10/19/2022	ND					

Surrogate: 1-Chlorooctane 99.4 % 45.3-161

Surrogate: 1-Chlorooctadecane 108 % 46.3-178

Cardinal Laboratories

\*=Accredited Analyte

PLEASE NOTE: Liability and Damages. Cardinal's liability and client's exclusive remedy for any claim arising, whether based in contract or tort, shall be limited to the amount paid by client for analyses. All claims, including those for negligence and any other cause whatsoever shall be deemed waived unless made in writing and received by Cardinal within thirty (30) days after completion of the applicable service. In no event shall Cardinal be liable for incidental or consequential damages, including, without limitation, business interruptions, loss of use, or loss of profits incurred by client, its subsidiaries, affiliates or successors arising out of or related to the performance of the services hereunder by Cardinal, regardless of whether such claim is based upon any of the above stated reasons or otherwise. Results relate only to the samples identified above. This report shall not be reproduced except in full with written approval of Cardinal Laboratories.

Celey D. Keene, Lab Director/Quality Manager





---

PHONE (575) 393-2326 • 101 E. MARLAND • HOBBS, NM 88240

---

### Notes and Definitions

QR-03	The RPD value for the sample duplicate or MS/MSD was outside of QC acceptance limits due to matrix interference. QC batch accepted based on LCS and/or LCSD recovery and/or RPD values.
ND	Analyte NOT DETECTED at or above the reporting limit
RPD	Relative Percent Difference
**	Samples not received at proper temperature of 6°C or below.
***	Insufficient time to reach temperature.
-	Chloride by SM4500Cl-B does not require samples be received at or below 6°C Samples reported on an as received basis (wet) unless otherwise noted on report

---

Cardinal Laboratories

\*=Accredited Analyte

PLEASE NOTE: Liability and Damages. Cardinal's liability and client's exclusive remedy for any claim arising, whether based in contract or tort, shall be limited to the amount paid by client for analyses. All claims, including those for negligence and any other cause whatsoever shall be deemed waived unless made in writing and received by Cardinal within thirty (30) days after completion of the applicable service. In no event shall Cardinal be liable for incidental or consequential damages, including, without limitation, business interruptions, loss of use, or loss of profits incurred by client, its subsidiaries, affiliates or successors arising out of or related to the performance of the services hereunder by Cardinal, regardless of whether such claim is based upon any of the above stated reasons or otherwise. Results relate only to the samples identified above. This report shall not be reproduced except in full with written approval of Cardinal Laboratories.

A handwritten signature in black ink, appearing to read "Celey D. Keene".

---

Celey D. Keene, Lab Director/Quality Manager



101 East Marland, Hobbs, NM 88240  
(575) 393-2326 FAX (575) 393-2476

## CHAIN-OF-CUSTODY AND ANALYSIS REQUEST

[illegible]



PHONE (575) 393-2326 ° 101 E. MARLAND ° HOBBS, NM 88240

November 11, 2022

HADLIE GREEN

ENSOLUM

3122 NATIONAL PARKS HWY

CARLSBAD, NM 88220

RE: ROJO 26 OIL DUMP VALVE RELEASE

Enclosed are the results of analyses for samples received by the laboratory on 11/09/22 14:30.

Cardinal Laboratories is accredited through Texas NELAP under certificate number T104704398-22-15. Accreditation applies to drinking water, non-potable water and solid and chemical materials. All accredited analytes are denoted by an asterisk (\*). For a complete list of accredited analytes and matrices visit the TCEQ website at [www.tceq.texas.gov/field/qa/lab\\_accred\\_certif.html](http://www.tceq.texas.gov/field/qa/lab_accred_certif.html).

Cardinal Laboratories is accredited through the State of Colorado Department of Public Health and Environment for:

Method EPA 552.2	Haloacetic Acids (HAA-5)
Method EPA 524.2	Total Trihalomethanes (TTHM)
Method EPA 524.4	Regulated VOCs (V1, V2, V3)

Accreditation applies to public drinking water matrices.

This report meets NELAP requirements and is made up of a cover page, analytical results, and a copy of the original chain-of-custody. If you have any questions concerning this report, please feel free to contact me.

Sincerely,

Celey D. Keene

Lab Director/Quality Manager



PHONE (575) 393-2326 ° 101 E. MARLAND ° HOBBS, NM 88240

**Analytical Results For:**

ENSOLUM  
HADLIE GREEN  
3122 NATIONAL PARKS HWY  
CARLSBAD NM, 88220  
Fax To:

Received:	11/09/2022	Sampling Date:	11/08/2022
Reported:	11/11/2022	Sampling Type:	Soil
Project Name:	ROJO 26 OIL DUMP VALVE RELEASE	Sampling Condition:	Cool & Intact
Project Number:	03C2012006	Sample Received By:	Shalyn Rodriguez
Project Location:	BTA - LEA CO NM		

**Sample ID: SS05 @ 0.5' (H225287-01)**

BTX 8021B		mg/kg		Analyzed By: JH					
Analyte	Result	Reporting Limit	Analyzed	Method Blank	BS	% Recovery	True Value QC	RPD	Qualifier
Benzene*	<0.050	0.050	11/11/2022	ND	1.94	96.9	2.00	9.64	
Toluene*	<0.050	0.050	11/11/2022	ND	2.14	107	2.00	8.94	
Ethylbenzene*	<0.050	0.050	11/11/2022	ND	2.02	101	2.00	8.10	
Total Xylenes*	<0.150	0.150	11/11/2022	ND	6.04	101	6.00	9.16	
Total BTX	<0.300	0.300	11/11/2022	ND					

Surrogate: 4-Bromofluorobenzene (PID) 96.5 % 69.9-140

Chloride, SM4500Cl-B		mg/kg		Analyzed By: GM					
Analyte	Result	Reporting Limit	Analyzed	Method Blank	BS	% Recovery	True Value QC	RPD	Qualifier
Chloride	480	16.0	11/10/2022	ND	416	104	400	3.92	

TPH 8015M		mg/kg		Analyzed By: MS					
Analyte	Result	Reporting Limit	Analyzed	Method Blank	BS	% Recovery	True Value QC	RPD	Qualifier
GRO C6-C10*	<10.0	10.0	11/09/2022	ND	233	117	200	24.7	
DRO >C10-C28*	10.1	10.0	11/09/2022	ND	254	127	200	21.4	
EXT DRO >C28-C36	<10.0	10.0	11/09/2022	ND					

Surrogate: 1-Chlorooctane 72.2 % 45.3-161

Surrogate: 1-Chlorooctadecane 69.5 % 46.3-178

Cardinal Laboratories

\*=Accredited Analyte

PLEASE NOTE: Liability and Damages. Cardinal's liability and client's exclusive remedy for any claim arising, whether based in contract or tort, shall be limited to the amount paid by client for analyses. All claims, including those for negligence and any other cause whatsoever shall be deemed waived unless made in writing and received by Cardinal within thirty (30) days after completion of the applicable service. In no event shall Cardinal be liable for incidental or consequential damages, including, without limitation, business interruptions, loss of use, or loss of profits incurred by client, its subsidiaries, affiliates or successors arising out of or related to the performance of the services hereunder by Cardinal, regardless of whether such claim is based upon any of the above stated reasons or otherwise. Results relate only to the samples identified above. This report shall not be reproduced except in full with written approval of Cardinal Laboratories.

Celey D. Keene, Lab Director/Quality Manager



PHONE (575) 393-2326 • 101 E. MARLAND • HOBBS, NM 88240

**Analytical Results For:**

ENSOLUM  
HADLIE GREEN  
3122 NATIONAL PARKS HWY  
CARLSBAD NM, 88220  
Fax To:

Received: 11/09/2022  
Reported: 11/11/2022  
Project Name: ROJO 26 OIL DUMP VALVE RELEASE  
Project Number: 03C2012006  
Project Location: BTA - LEA CO NM

Sampling Date: 11/08/2022  
Sampling Type: Soil  
Sampling Condition: Cool & Intact  
Sample Received By: Shalyn Rodriguez

**Sample ID: SS06 @ 0.5' (H225287-02)**

BTEx 8021B		mg/kg		Analyzed By: JH						
Analyte	Result	Reporting Limit	Analyzed	Method Blank	BS	% Recovery	True Value QC	RPD	Qualifier	
Benzene*	<0.050	0.050	11/11/2022	ND	1.94	96.9	2.00	9.64		
Toluene*	<0.050	0.050	11/11/2022	ND	2.14	107	2.00	8.94		
Ethylbenzene*	<0.050	0.050	11/11/2022	ND	2.02	101	2.00	8.10		
Total Xylenes*	<0.150	0.150	11/11/2022	ND	6.04	101	6.00	9.16		
Total BTEx	<0.300	0.300	11/11/2022	ND						

Surrogate: 4-Bromofluorobenzene (PID) 98.7 % 69.9-140

Chloride, SM4500CI-B		mg/kg		Analyzed By: GM						
Analyte	Result	Reporting Limit	Analyzed	Method Blank	BS	% Recovery	True Value QC	RPD	Qualifier	
Chloride	3160	16.0	11/10/2022	ND	416	104	400	3.92		

TPH 8015M		mg/kg		Analyzed By: MS					
Analyte	Result	Reporting Limit	Analyzed	Method Blank	BS	% Recovery	True Value QC	RPD	Qualifier
GRO C6-C10*	<10.0	10.0	11/09/2022	ND	233	117	200	24.7	
DRO >C10-C28*	<10.0	10.0	11/09/2022	ND	254	127	200	21.4	
EXT DRO >C28-C36	<10.0	10.0	11/09/2022	ND					

Surrogate: 1-Chlorooctane 75.8 % 45.3-161

Surrogate: 1-Chlorooctadecane 74.7 % 46.3-178

Cardinal Laboratories

\*=Accredited Analyte

PLEASE NOTE: Liability and Damages. Cardinal's liability and client's exclusive remedy for any claim arising, whether based in contract or tort, shall be limited to the amount paid by client for analyses. All claims, including those for negligence and any other cause whatsoever shall be deemed waived unless made in writing and received by Cardinal within thirty (30) days after completion of the applicable service. In no event shall Cardinal be liable for incidental or consequential damages, including, without limitation, business interruptions, loss of use, or loss of profits incurred by client, its subsidiaries, affiliates or successors arising out of or related to the performance of the services hereunder by Cardinal, regardless of whether such claim is based upon any of the above stated reasons or otherwise. Results relate only to the samples identified above. This report shall not be reproduced except in full with written approval of Cardinal Laboratories.

Celey D. Keene, Lab Director/Quality Manager



PHONE (575) 393-2326 • 101 E. MARLAND • HOBBS, NM 88240

**Analytical Results For:**

ENSOLUM  
HADLIE GREEN  
3122 NATIONAL PARKS HWY  
CARLSBAD NM, 88220  
Fax To:

Received: 11/09/2022  
Reported: 11/11/2022  
Project Name: ROJO 26 OIL DUMP VALVE RELEASE  
Project Number: 03C2012006  
Project Location: BTA - LEA CO NM

Sampling Date: 11/08/2022  
Sampling Type: Soil  
Sampling Condition: Cool & Intact  
Sample Received By: Shalyn Rodriguez

**Sample ID: SS07 @ 0.5' (H225287-03)**

BTEx 8021B		mg/kg		Analyzed By: JH						
Analyte	Result	Reporting Limit	Analyzed	Method Blank	BS	% Recovery	True Value QC	RPD	Qualifier	
Benzene*	<0.050	0.050	11/11/2022	ND	1.94	96.9	2.00	9.64		
Toluene*	<0.050	0.050	11/11/2022	ND	2.14	107	2.00	8.94		
Ethylbenzene*	<0.050	0.050	11/11/2022	ND	2.02	101	2.00	8.10		
Total Xylenes*	<0.150	0.150	11/11/2022	ND	6.04	101	6.00	9.16		
Total BTEx	<0.300	0.300	11/11/2022	ND						

Surrogate: 4-Bromofluorobenzene (PID) 97.0 % 69.9-140

Chloride, SM4500CI-B		mg/kg		Analyzed By: GM						
Analyte	Result	Reporting Limit	Analyzed	Method Blank	BS	% Recovery	True Value QC	RPD	Qualifier	
Chloride	352	16.0	11/10/2022	ND	416	104	400	3.92		

TPH 8015M		mg/kg		Analyzed By: MS					
Analyte	Result	Reporting Limit	Analyzed	Method Blank	BS	% Recovery	True Value QC	RPD	Qualifier
GRO C6-C10*	<10.0	10.0	11/09/2022	ND	233	117	200	24.7	
DRO >C10-C28*	<10.0	10.0	11/09/2022	ND	254	127	200	21.4	
EXT DRO >C28-C36	<10.0	10.0	11/09/2022	ND					

Surrogate: 1-Chlorooctane 89.7 % 45.3-161

Surrogate: 1-Chlorooctadecane 89.5 % 46.3-178

Cardinal Laboratories

\*=Accredited Analyte

PLEASE NOTE: Liability and Damages. Cardinal's liability and client's exclusive remedy for any claim arising, whether based in contract or tort, shall be limited to the amount paid by client for analyses. All claims, including those for negligence and any other cause whatsoever shall be deemed waived unless made in writing and received by Cardinal within thirty (30) days after completion of the applicable service. In no event shall Cardinal be liable for incidental or consequential damages, including, without limitation, business interruptions, loss of use, or loss of profits incurred by client, its subsidiaries, affiliates or successors arising out of or related to the performance of the services hereunder by Cardinal, regardless of whether such claim is based upon any of the above stated reasons or otherwise. Results relate only to the samples identified above. This report shall not be reproduced except in full with written approval of Cardinal Laboratories.

Celey D. Keene, Lab Director/Quality Manager





PHONE (575) 393-2326 ° 101 E. MARLAND ° HOBBS, NM 88240

**Analytical Results For:**

ENSOLUM  
HADLIE GREEN  
3122 NATIONAL PARKS HWY  
CARLSBAD NM, 88220  
Fax To:

Received:	11/09/2022	Sampling Date:	11/08/2022
Reported:	11/11/2022	Sampling Type:	Soil
Project Name:	ROJO 26 OIL DUMP VALVE RELEASE	Sampling Condition:	Cool & Intact
Project Number:	03C2012006	Sample Received By:	Shalyn Rodriguez
Project Location:	BTA - LEA CO NM		

**Sample ID: SS08 @ 0.5' (H225287-04)**

BTEx 8021B		mg/kg		Analyzed By: JH						
Analyte	Result	Reporting Limit	Analyzed	Method Blank	BS	% Recovery	True Value QC	RPD	Qualifier	
Benzene*	<0.050	0.050	11/11/2022	ND	1.94	96.9	2.00	9.64		
Toluene*	<0.050	0.050	11/11/2022	ND	2.14	107	2.00	8.94		
Ethylbenzene*	<0.050	0.050	11/11/2022	ND	2.02	101	2.00	8.10		
Total Xylenes*	<0.150	0.150	11/11/2022	ND	6.04	101	6.00	9.16		
Total BTEx	<0.300	0.300	11/11/2022	ND						

Surrogate: 4-Bromofluorobenzene (PID) 96.2 % 69.9-140

Chloride, SM4500CI-B		mg/kg		Analyzed By: GM						
Analyte	Result	Reporting Limit	Analyzed	Method Blank	BS	% Recovery	True Value QC	RPD	Qualifier	
Chloride	352	16.0	11/10/2022	ND	416	104	400	3.92		

TPH 8015M		mg/kg		Analyzed By: MS					
Analyte	Result	Reporting Limit	Analyzed	Method Blank	BS	% Recovery	True Value QC	RPD	Qualifier
GRO C6-C10*	<10.0	10.0	11/09/2022	ND	233	117	200	24.7	
DRO >C10-C28*	<10.0	10.0	11/09/2022	ND	254	127	200	21.4	
EXT DRO >C28-C36	<10.0	10.0	11/09/2022	ND					

Surrogate: 1-Chlorooctane 63.3 % 45.3-161

Surrogate: 1-Chlorooctadecane 61.7 % 46.3-178

Cardinal Laboratories

\*=Accredited Analyte

PLEASE NOTE: Liability and Damages. Cardinal's liability and client's exclusive remedy for any claim arising, whether based in contract or tort, shall be limited to the amount paid by client for analyses. All claims, including those for negligence and any other cause whatsoever shall be deemed waived unless made in writing and received by Cardinal within thirty (30) days after completion of the applicable service. In no event shall Cardinal be liable for incidental or consequential damages, including, without limitation, business interruptions, loss of use, or loss of profits incurred by client, its subsidiaries, affiliates or successors arising out of or related to the performance of the services hereunder by Cardinal, regardless of whether such claim is based upon any of the above stated reasons or otherwise. Results relate only to the samples identified above. This report shall not be reproduced except in full with written approval of Cardinal Laboratories.

Celey D. Keene, Lab Director/Quality Manager



PHONE (575) 393-2326 • 101 E. MARLAND • HOBBS, NM 88240

**Analytical Results For:**

ENSOLUM  
HADLIE GREEN  
3122 NATIONAL PARKS HWY  
CARLSBAD NM, 88220  
Fax To:

Received: 11/09/2022  
Reported: 11/11/2022  
Project Name: ROJO 26 OIL DUMP VALVE RELEASE  
Project Number: 03C2012006  
Project Location: BTA - LEA CO NM

Sampling Date: 11/08/2022  
Sampling Type: Soil  
Sampling Condition: Cool & Intact  
Sample Received By: Shalyn Rodriguez

**Sample ID: SS09 @ 0.5' (H225287-05)**

BTEx 8021B		mg/kg		Analyzed By: JH						
Analyte	Result	Reporting Limit	Analyzed	Method Blank	BS	% Recovery	True Value QC	RPD	Qualifier	
Benzene*	<0.050	0.050	11/11/2022	ND	1.94	96.9	2.00	9.64		
Toluene*	<0.050	0.050	11/11/2022	ND	2.14	107	2.00	8.94		
Ethylbenzene*	<0.050	0.050	11/11/2022	ND	2.02	101	2.00	8.10		
Total Xylenes*	<0.150	0.150	11/11/2022	ND	6.04	101	6.00	9.16		
Total BTEx	<0.300	0.300	11/11/2022	ND						

Surrogate: 4-Bromofluorobenzene (PID) 97.0 % 69.9-140

Chloride, SM4500CI-B		mg/kg		Analyzed By: GM					
Analyte	Result	Reporting Limit	Analyzed	Method Blank	BS	% Recovery	True Value QC	RPD	Qualifier
Chloride	1470	16.0	11/10/2022	ND	416	104	400	3.92	

TPH 8015M		mg/kg		Analyzed By: MS					
Analyte	Result	Reporting Limit	Analyzed	Method Blank	BS	% Recovery	True Value QC	RPD	Qualifier
GRO C6-C10*	<10.0	10.0	11/09/2022	ND	233	117	200	24.7	
DRO >C10-C28*	<10.0	10.0	11/09/2022	ND	254	127	200	21.4	
EXT DRO >C28-C36	<10.0	10.0	11/09/2022	ND					

Surrogate: 1-Chlorooctane 78.6 % 45.3-161

Surrogate: 1-Chlorooctadecane 77.5 % 46.3-178

Cardinal Laboratories

\*=Accredited Analyte

PLEASE NOTE: Liability and Damages. Cardinal's liability and client's exclusive remedy for any claim arising, whether based in contract or tort, shall be limited to the amount paid by client for analyses. All claims, including those for negligence and any other cause whatsoever shall be deemed waived unless made in writing and received by Cardinal within thirty (30) days after completion of the applicable service. In no event shall Cardinal be liable for incidental or consequential damages, including, without limitation, business interruptions, loss of use, or loss of profits incurred by client, its subsidiaries, affiliates or successors arising out of or related to the performance of the services hereunder by Cardinal, regardless of whether such claim is based upon any of the above stated reasons or otherwise. Results relate only to the samples identified above. This report shall not be reproduced except in full with written approval of Cardinal Laboratories.

Celey D. Keene, Lab Director/Quality Manager



---

PHONE (575) 393-2326 ° 101 E. MARLAND ° HOBBS, NM 88240

---

### Notes and Definitions

QR-04	The RPD for the BS/BSD was outside of historical limits.
ND	Analyte NOT DETECTED at or above the reporting limit
RPD	Relative Percent Difference
**	Samples not received at proper temperature of 6°C or below.
***	Insufficient time to reach temperature.
-	Chloride by SM4500Cl-B does not require samples be received at or below 6°C Samples reported on an as received basis (wet) unless otherwise noted on report

---

Cardinal Laboratories

\*=Accredited Analyte

PLEASE NOTE: Liability and Damages. Cardinal's liability and client's exclusive remedy for any claim arising, whether based in contract or tort, shall be limited to the amount paid by client for analyses. All claims, including those for negligence and any other cause whatsoever shall be deemed waived unless made in writing and received by Cardinal within thirty (30) days after completion of the applicable service. In no event shall Cardinal be liable for incidental or consequential damages, including, without limitation, business interruptions, loss of use, or loss of profits incurred by client, its subsidiaries, affiliates or successors arising out of or related to the performance of the services hereunder by Cardinal, regardless of whether such claim is based upon any of the above stated reasons or otherwise. Results relate only to the samples identified above. This report shall not be reproduced except in full with written approval of Cardinal Laboratories.

A handwritten signature in black ink, appearing to read "Celey D. Keene".

---

Celey D. Keene, Lab Director/Quality Manager



101 East Marland, Hobbs, NM 88240  
(575) 393-2326 FAX (575) 393-2476

## CHAIN-OF-CUSTODY AND ANALYSIS REQUEST

<b>Company Name:</b> Ensolum LLC <b>Project Manager:</b> Hadie Green <b>Address:</b> 307 National Parks Hwy. <b>City:</b> Carlsbad <b>State:</b> NM <b>Zip:</b> 86200 <b>Phone #:</b> 505.557.8495 <b>Fax #:</b> <b>Project #:</b> 0362012006 <b>Project Owner:</b> <b>Project Name:</b> R030 26 oil pump valve failure <b>Project Location:</b> bla county nmn <b>Sample Name:</b> Lynner Short		<b>P.O. #:</b> <b>Company:</b> JTA oil <b>Attn:</b> Bob Hall <b>Address:</b> 104 S. Pecos ST <b>City:</b> Midland <b>State:</b> TX <b>Zip:</b> 79701 <b>Phone #:</b> <b>Fax #:</b>	
---	--	---	--

Lab I.D.	Sample I.D.	(G)RAB OR (C)OMP.	# CONTAINERS	MATRIX						PRESERV.	SAMPLING	DATE	TIME	BTEX	TPH	Chlorides	
				GROUNDWATER	WASTEWATER	SOIL	OIL	SLUDGE	OTHER :	ACID/BASE:	ICE / COOL	OTHER :					
1	SS05 @ 0.5'	X	1			X					X		11-8-22	1015	X	X	X
2	SS06 @ 0.5'	X	1			X					X		11-8-22	1030	X	X	X
3	SS07 @ 0.5'	X	1			X					X		11-8-22	1035	X	X	X
4	SS08 @ 0.5'	X	1			X					X		11-8-22	1030	X	X	X
5	SS09 @ 0.5'	X	1			X					X		11-8-22	1035	X	X	X

PLEASE NOTE: Liability and Damages. Cardinal's liability and client's exclusive remedy for any claim arising whether based in contract or tort, shall be limited to the amount paid by the client for the service. In no event shall Cardinal be liable for negligence and any other cause whatsoever shall be deemed waived unless made in writing and received by Cardinal within 30 days after completion of the applicable service. In no event shall Cardinal be liable for incidental or consequential damages, including without limitation, business interruptions, loss of use, or loss of profits incurred by client, its subsidiaries, affiliates or successors arising out of or related to the performance of services hereunder by Cardinal, regardless of whether such claim is based upon any of the above stated reasons or otherwise.

<b>Relinquished By:</b> <i>Conor Short</i> <b>Date:</b> 11/9/22 <b>Time:</b> 1430 <b>Received By:</b> <i>Shedrick</i> <b>Date:</b> 11/9/22 <b>Time:</b> 1430	<b>Relinquished By:</b> <b>Date:</b> <b>Time:</b> <b>Received By:</b>	<b>REMARKS:</b> 3 DAY TAT
---	--	------------------------------

<b>Delivered By:</b> (Circle One) UPS <input checked="" type="checkbox"/> Bus <input type="checkbox"/> Other <input type="checkbox"/>	<b>Observed Temp. °C:</b> 3.80 <b>Corrected Temp. °C:</b> 3.22	<b>Sample Condition</b> Cool <input checked="" type="checkbox"/> Intact <input checked="" type="checkbox"/> No <input type="checkbox"/> Yes <input type="checkbox"/>	<b>CHECKED BY:</b> <i>SK</i> <b>Thermometer ID #113</b> <b>Correction Factor</b> 0.6°C	<b>Standard</b> <input type="checkbox"/> <b>Bacteria (only)</b> <input type="checkbox"/> Rush <input checked="" type="checkbox"/> Cool <input type="checkbox"/> Intact <input type="checkbox"/> No <input type="checkbox"/> Yes <input type="checkbox"/>	<b>Sample Condition</b> Observed Temp. °C Corrected Temp. °C
--	---	--	--	--	--



PHONE (575) 393-2326 ° 101 E. MARLAND ° HOBBS, NM 88240

---

December 02, 2022

HADLIE GREEN

ENSOLUM

3122 NATIONAL PARKS HWY

CARLSBAD, NM 88220

RE: ROJO 26 OIL DUMP VALVE RELEASE

Enclosed are the results of analyses for samples received by the laboratory on 11/30/22 13:34.

Cardinal Laboratories is accredited through Texas NELAP under certificate number T104704398-22-15. Accreditation applies to drinking water, non-potable water and solid and chemical materials. All accredited analytes are denoted by an asterisk (\*). For a complete list of accredited analytes and matrices visit the TCEQ website at [www.tceq.texas.gov/field/qa/lab\\_accred\\_certif.html](http://www.tceq.texas.gov/field/qa/lab_accred_certif.html).

Cardinal Laboratories is accredited through the State of Colorado Department of Public Health and Environment for:

Method EPA 552.2	Haloacetic Acids (HAA-5)
Method EPA 524.2	Total Trihalomethanes (TTHM)
Method EPA 524.4	Regulated VOCs (V1, V2, V3)

Accreditation applies to public drinking water matrices.

This report meets NELAP requirements and is made up of a cover page, analytical results, and a copy of the original chain-of-custody. If you have any questions concerning this report, please feel free to contact me.

Sincerely,

A handwritten signature in black ink that reads "Celey D. Keene". The signature is written in a cursive, flowing style.

Celey D. Keene

Lab Director/Quality Manager



PHONE (575) 393-2326 ° 101 E. MARLAND ° HOBBS, NM 88240

**Analytical Results For:**

ENSOLUM  
HADLIE GREEN  
3122 NATIONAL PARKS HWY  
CARLSBAD NM, 88220  
Fax To:

Received:	11/30/2022	Sampling Date:	11/28/2022
Reported:	12/02/2022	Sampling Type:	Soil
Project Name:	ROJO 26 OIL DUMP VALVE RELEASE	Sampling Condition:	Cool & Intact
Project Number:	03C2012006	Sample Received By:	Shalyn Rodriguez
Project Location:	BTA - LEA CO NM		

**Sample ID: SS05 A (H225590-01)**

BTX 8021B		mg/kg		Analyzed By: JH					
Analyte	Result	Reporting Limit	Analyzed	Method Blank	BS	% Recovery	True Value QC	RPD	Qualifier
Benzene*	<0.050	0.050	12/01/2022	ND	1.82	90.8	2.00	9.53	
Toluene*	<0.050	0.050	12/01/2022	ND	2.01	101	2.00	9.28	
Ethylbenzene*	<0.050	0.050	12/01/2022	ND	2.11	105	2.00	9.42	
Total Xylenes*	<0.150	0.150	12/01/2022	ND	6.37	106	6.00	9.10	
Total BTX	<0.300	0.300	12/01/2022	ND					

Surrogate: 4-Bromofluorobenzene (PID) 110 % 69.9-140

Chloride, SM4500Cl-B		mg/kg		Analyzed By: AC					
Analyte	Result	Reporting Limit	Analyzed	Method Blank	BS	% Recovery	True Value QC	RPD	Qualifier
Chloride	272	16.0	12/01/2022	ND	432	108	400	0.00	

TPH 8015M		mg/kg		Analyzed By: MS					
Analyte	Result	Reporting Limit	Analyzed	Method Blank	BS	% Recovery	True Value QC	RPD	Qualifier
GRO C6-C10*	<10.0	10.0	12/01/2022	ND	242	121	200	5.49	
DRO >C10-C28*	<10.0	10.0	12/01/2022	ND	252	126	200	13.9	
EXT DRO >C28-C36	<10.0	10.0	12/01/2022	ND					

Surrogate: 1-Chlorooctane 93.9 % 45.3-161

Surrogate: 1-Chlorooctadecane 103 % 46.3-178

Cardinal Laboratories

\*=Accredited Analyte

PLEASE NOTE: Liability and Damages. Cardinal's liability and client's exclusive remedy for any claim arising, whether based in contract or tort, shall be limited to the amount paid by client for analyses. All claims, including those for negligence and any other cause whatsoever shall be deemed waived unless made in writing and received by Cardinal within thirty (30) days after completion of the applicable service. In no event shall Cardinal be liable for incidental or consequential damages, including, without limitation, business interruptions, loss of use, or loss of profits incurred by client, its subsidiaries, affiliates or successors arising out of or related to the performance of the services hereunder by Cardinal, regardless of whether such claim is based upon any of the above stated reasons or otherwise. Results relate only to the samples identified above. This report shall not be reproduced except in full with written approval of Cardinal Laboratories.

Celey D. Keene, Lab Director/Quality Manager



PHONE (575) 393-2326 ° 101 E. MARLAND ° HOBBS, NM 88240

**Analytical Results For:**

ENSOLUM  
HADLIE GREEN  
3122 NATIONAL PARKS HWY  
CARLSBAD NM, 88220  
Fax To:

Received:	11/30/2022	Sampling Date:	11/28/2022
Reported:	12/02/2022	Sampling Type:	Soil
Project Name:	ROJO 26 OIL DUMP VALVE RELEASE	Sampling Condition:	Cool & Intact
Project Number:	03C2012006	Sample Received By:	Shalyn Rodriguez
Project Location:	BTA - LEA CO NM		

**Sample ID: SS06 A (H225590-02)**

BTEx 8021B		mg/kg		Analyzed By: JH						
Analyte	Result	Reporting Limit	Analyzed	Method Blank	BS	% Recovery	True Value QC	RPD	Qualifier	
Benzene*	<0.050	0.050	12/01/2022	ND	1.82	90.8	2.00	9.53		
Toluene*	<0.050	0.050	12/01/2022	ND	2.01	101	2.00	9.28		
Ethylbenzene*	<0.050	0.050	12/01/2022	ND	2.11	105	2.00	9.42		
Total Xylenes*	<0.150	0.150	12/01/2022	ND	6.37	106	6.00	9.10		
Total BTEx	<0.300	0.300	12/01/2022	ND						

Surrogate: 4-Bromofluorobenzene (PID) 112 % 69.9-140

Chloride, SM4500CI-B		mg/kg		Analyzed By: AC						
Analyte	Result	Reporting Limit	Analyzed	Method Blank	BS	% Recovery	True Value QC	RPD	Qualifier	
Chloride	288	16.0	12/01/2022	ND	432	108	400	0.00		

TPH 8015M		mg/kg		Analyzed By: MS					
Analyte	Result	Reporting Limit	Analyzed	Method Blank	BS	% Recovery	True Value QC	RPD	Qualifier
GRO C6-C10*	<10.0	10.0	12/01/2022	ND	242	121	200	5.49	
DRO >C10-C28*	<10.0	10.0	12/01/2022	ND	252	126	200	13.9	
EXT DRO >C28-C36	<10.0	10.0	12/01/2022	ND					

Surrogate: 1-Chlorooctane 103 % 45.3-161

Surrogate: 1-Chlorooctadecane 110 % 46.3-178

Cardinal Laboratories

\*=Accredited Analyte

PLEASE NOTE: Liability and Damages. Cardinal's liability and client's exclusive remedy for any claim arising, whether based in contract or tort, shall be limited to the amount paid by client for analyses. All claims, including those for negligence and any other cause whatsoever shall be deemed waived unless made in writing and received by Cardinal within thirty (30) days after completion of the applicable service. In no event shall Cardinal be liable for incidental or consequential damages, including, without limitation, business interruptions, loss of use, or loss of profits incurred by client, its subsidiaries, affiliates or successors arising out of or related to the performance of the services hereunder by Cardinal, regardless of whether such claim is based upon any of the above stated reasons or otherwise. Results relate only to the samples identified above. This report shall not be reproduced except in full with written approval of Cardinal Laboratories.

Celey D. Keene, Lab Director/Quality Manager





PHONE (575) 393-2326 ° 101 E. MARLAND ° HOBBS, NM 88240

**Analytical Results For:**

ENSOLUM  
HADLIE GREEN  
3122 NATIONAL PARKS HWY  
CARLSBAD NM, 88220  
Fax To:

Received:	11/30/2022	Sampling Date:	11/28/2022
Reported:	12/02/2022	Sampling Type:	Soil
Project Name:	ROJO 26 OIL DUMP VALVE RELEASE	Sampling Condition:	Cool & Intact
Project Number:	03C2012006	Sample Received By:	Shalyn Rodriguez
Project Location:	BTA - LEA CO NM		

**Sample ID: SS07 A (H225590-03)**

BTEx 8021B		mg/kg		Analyzed By: JH						
Analyte	Result	Reporting Limit	Analyzed	Method Blank	BS	% Recovery	True Value QC	RPD	Qualifier	
Benzene*	<0.050	0.050	12/01/2022	ND	1.82	90.8	2.00	9.53		
Toluene*	<0.050	0.050	12/01/2022	ND	2.01	101	2.00	9.28		
Ethylbenzene*	<0.050	0.050	12/01/2022	ND	2.11	105	2.00	9.42		
Total Xylenes*	<0.150	0.150	12/01/2022	ND	6.37	106	6.00	9.10		
Total BTEx	<0.300	0.300	12/01/2022	ND						

Surrogate: 4-Bromofluorobenzene (PID) 109 % 69.9-140

Chloride, SM4500Cl-B		mg/kg		Analyzed By: AC						
Analyte	Result	Reporting Limit	Analyzed	Method Blank	BS	% Recovery	True Value QC	RPD	Qualifier	
Chloride	288	16.0	12/01/2022	ND	432	108	400	0.00		

TPH 8015M		mg/kg		Analyzed By: MS					
Analyte	Result	Reporting Limit	Analyzed	Method Blank	BS	% Recovery	True Value QC	RPD	Qualifier
GRO C6-C10*	<10.0	10.0	12/01/2022	ND	242	121	200	5.49	
DRO >C10-C28*	<10.0	10.0	12/01/2022	ND	252	126	200	13.9	
EXT DRO >C28-C36	<10.0	10.0	12/01/2022	ND					

Surrogate: 1-Chlorooctane 98.3 % 45.3-161

Surrogate: 1-Chlorooctadecane 109 % 46.3-178

Cardinal Laboratories

\*=Accredited Analyte

PLEASE NOTE: Liability and Damages. Cardinal's liability and client's exclusive remedy for any claim arising, whether based in contract or tort, shall be limited to the amount paid by client for analyses. All claims, including those for negligence and any other cause whatsoever shall be deemed waived unless made in writing and received by Cardinal within thirty (30) days after completion of the applicable service. In no event shall Cardinal be liable for incidental or consequential damages, including, without limitation, business interruptions, loss of use, or loss of profits incurred by client, its subsidiaries, affiliates or successors arising out of or related to the performance of the services hereunder by Cardinal, regardless of whether such claim is based upon any of the above stated reasons or otherwise. Results relate only to the samples identified above. This report shall not be reproduced except in full with written approval of Cardinal Laboratories.

Celey D. Keene, Lab Director/Quality Manager



PHONE (575) 393-2326 ° 101 E. MARLAND ° HOBBS, NM 88240

**Analytical Results For:**

ENSOLUM  
HADLIE GREEN  
3122 NATIONAL PARKS HWY  
CARLSBAD NM, 88220  
Fax To:

Received:	11/30/2022	Sampling Date:	11/28/2022
Reported:	12/02/2022	Sampling Type:	Soil
Project Name:	ROJO 26 OIL DUMP VALVE RELEASE	Sampling Condition:	Cool & Intact
Project Number:	03C2012006	Sample Received By:	Shalyn Rodriguez
Project Location:	BTA - LEA CO NM		

**Sample ID: SS08 A (H225590-04)**

BTEX 8021B		mg/kg		Analyzed By: JH						
Analyte	Result	Reporting Limit	Analyzed	Method Blank	BS	% Recovery	True Value QC	RPD	Qualifier	
Benzene*	<0.050	0.050	12/01/2022	ND	1.82	90.8	2.00	9.53		
Toluene*	<0.050	0.050	12/01/2022	ND	2.01	101	2.00	9.28		
Ethylbenzene*	<0.050	0.050	12/01/2022	ND	2.11	105	2.00	9.42		
Total Xylenes*	<0.150	0.150	12/01/2022	ND	6.37	106	6.00	9.10		
Total BTEX	<0.300	0.300	12/01/2022	ND						

Surrogate: 4-Bromofluorobenzene (PID) 109 % 69.9-140

Chloride, SM4500Cl-B		mg/kg		Analyzed By: AC						
Analyte	Result	Reporting Limit	Analyzed	Method Blank	BS	% Recovery	True Value QC	RPD	Qualifier	
Chloride	240	16.0	12/01/2022	ND	432	108	400	0.00		

TPH 8015M		mg/kg		Analyzed By: MS					
Analyte	Result	Reporting Limit	Analyzed	Method Blank	BS	% Recovery	True Value QC	RPD	Qualifier
GRO C6-C10*	<10.0	10.0	12/01/2022	ND	242	121	200	5.49	
DRO >C10-C28*	<10.0	10.0	12/01/2022	ND	252	126	200	13.9	
EXT DRO >C28-C36	<10.0	10.0	12/01/2022	ND					

Surrogate: 1-Chlorooctane 105 % 45.3-161

Surrogate: 1-Chlorooctadecane 116 % 46.3-178

Cardinal Laboratories

\*=Accredited Analyte

PLEASE NOTE: Liability and Damages. Cardinal's liability and client's exclusive remedy for any claim arising, whether based in contract or tort, shall be limited to the amount paid by client for analyses. All claims, including those for negligence and any other cause whatsoever shall be deemed waived unless made in writing and received by Cardinal within thirty (30) days after completion of the applicable service. In no event shall Cardinal be liable for incidental or consequential damages, including, without limitation, business interruptions, loss of use, or loss of profits incurred by client, its subsidiaries, affiliates or successors arising out of or related to the performance of the services hereunder by Cardinal, regardless of whether such claim is based upon any of the above stated reasons or otherwise. Results relate only to the samples identified above. This report shall not be reproduced except in full with written approval of Cardinal Laboratories.

Celey D. Keene, Lab Director/Quality Manager



PHONE (575) 393-2326 ° 101 E. MARLAND ° HOBBS, NM 88240

**Analytical Results For:**

ENSOLUM  
HADLIE GREEN  
3122 NATIONAL PARKS HWY  
CARLSBAD NM, 88220  
Fax To:

Received:	11/30/2022	Sampling Date:	11/28/2022
Reported:	12/02/2022	Sampling Type:	Soil
Project Name:	ROJO 26 OIL DUMP VALVE RELEASE	Sampling Condition:	Cool & Intact
Project Number:	03C2012006	Sample Received By:	Shalyn Rodriguez
Project Location:	BTA - LEA CO NM		

**Sample ID: SS09 A (H225590-05)**

BTEx 8021B		mg/kg		Analyzed By: JH						
Analyte	Result	Reporting Limit	Analyzed	Method Blank	BS	% Recovery	True Value QC	RPD	Qualifier	
Benzene*	<0.050	0.050	12/01/2022	ND	1.82	90.8	2.00	9.53		
Toluene*	<0.050	0.050	12/01/2022	ND	2.01	101	2.00	9.28		
Ethylbenzene*	<0.050	0.050	12/01/2022	ND	2.11	105	2.00	9.42		
Total Xylenes*	<0.150	0.150	12/01/2022	ND	6.37	106	6.00	9.10		
Total BTEx	<0.300	0.300	12/01/2022	ND						

Surrogate: 4-Bromofluorobenzene (PID) 110 % 69.9-140

Chloride, SM4500CI-B		mg/kg		Analyzed By: AC						
Analyte	Result	Reporting Limit	Analyzed	Method Blank	BS	% Recovery	True Value QC	RPD	Qualifier	
Chloride	304	16.0	12/01/2022	ND	432	108	400	0.00		

TPH 8015M		mg/kg		Analyzed By: MS					
Analyte	Result	Reporting Limit	Analyzed	Method Blank	BS	% Recovery	True Value QC	RPD	Qualifier
GRO C6-C10*	<10.0	10.0	12/01/2022	ND	242	121	200	5.49	
DRO >C10-C28*	<10.0	10.0	12/01/2022	ND	252	126	200	13.9	
EXT DRO >C28-C36	<10.0	10.0	12/01/2022	ND					

Surrogate: 1-Chlorooctane 106 % 45.3-161

Surrogate: 1-Chlorooctadecane 114 % 46.3-178

Cardinal Laboratories

\*=Accredited Analyte

PLEASE NOTE: Liability and Damages. Cardinal's liability and client's exclusive remedy for any claim arising, whether based in contract or tort, shall be limited to the amount paid by client for analyses. All claims, including those for negligence and any other cause whatsoever shall be deemed waived unless made in writing and received by Cardinal within thirty (30) days after completion of the applicable service. In no event shall Cardinal be liable for incidental or consequential damages, including, without limitation, business interruptions, loss of use, or loss of profits incurred by client, its subsidiaries, affiliates or successors arising out of or related to the performance of the services hereunder by Cardinal, regardless of whether such claim is based upon any of the above stated reasons or otherwise. Results relate only to the samples identified above. This report shall not be reproduced except in full with written approval of Cardinal Laboratories.

Celey D. Keene, Lab Director/Quality Manager



---

PHONE (575) 393-2326 ° 101 E. MARLAND ° HOBBS, NM 88240

---

### Notes and Definitions

BS-3	Blank spike recovery outside of lab established statistical limits, but still within method limits. Data is not adversely affected.
ND	Analyte NOT DETECTED at or above the reporting limit
RPD	Relative Percent Difference
**	Samples not received at proper temperature of 6°C or below.
***	Insufficient time to reach temperature.
-	Chloride by SM4500Cl-B does not require samples be received at or below 6°C Samples reported on an as received basis (wet) unless otherwise noted on report

---

Cardinal Laboratories

\*=Accredited Analyte

PLEASE NOTE: Liability and Damages. Cardinal's liability and client's exclusive remedy for any claim arising, whether based in contract or tort, shall be limited to the amount paid by client for analyses. All claims, including those for negligence and any other cause whatsoever shall be deemed waived unless made in writing and received by Cardinal within thirty (30) days after completion of the applicable service. In no event shall Cardinal be liable for incidental or consequential damages, including, without limitation, business interruptions, loss of use, or loss of profits incurred by client, its subsidiaries, affiliates or successors arising out of or related to the performance of the services hereunder by Cardinal, regardless of whether such claim is based upon any of the above stated reasons or otherwise. Results relate only to the samples identified above. This report shall not be reproduced except in full with written approval of Cardinal Laboratories.

A handwritten signature in black ink, appearing to read "Celey D. Keene", is written over a horizontal line.

Celey D. Keene, Lab Director/Quality Manager



101 East Marland, Hobbs, NM 88240  
(575) 393-2326 FAX (575) 393-2476

**CHAIN-OF-CUSTODY AND ANALYSIS REQUEST**

[illegible]



## APPENDIX D

### NMOCD Notifications

---

**Tacoma Morrissey**

---

**From:** Nobui, Jennifer, EMNRD <Jennifer.Nobui@emnrd.nm.gov>  
**Sent:** Thursday, November 10, 2022 9:34 AM  
**To:** Tacoma Morrissey  
**Cc:** Bratcher, Michael, EMNRD; Hamlet, Robert, EMNRD; Harimon, Jocelyn, EMNRD  
**Subject:** FW: [EXTERNAL] BTA-Extension Request - Rojo 26 Oil Dump Valve Failure (Incident Number nAPP2224256412)

[ \*\*EXTERNAL EMAIL\*\* ]

Tacoma

OCD approves your request for a 90-day extension to February 12, 2023 to submit a remediation plan/closure report to the OCD portal. Please include a copy of this and all notifications in the remedial and/or closure reports to ensure the notifications are documented in the project file.

Thanks,  
Jennifer Nobui

---

**From:** Enviro, OCD, EMNRD <OCD.Enviro@emnrd.nm.gov>  
**Sent:** Thursday, November 10, 2022 8:20 AM  
**To:** Nobui, Jennifer, EMNRD <Jennifer.Nobui@emnrd.nm.gov>; Bratcher, Michael, EMNRD <mike.bratcher@emnrd.nm.gov>  
**Subject:** FW: [EXTERNAL] BTA-Extension Request - Rojo 26 Oil Dump Valve Failure (Incident Number nAPP2224256412)

**Jocelyn Harimon** • Environmental Specialist  
Environmental Bureau  
EMNRD - Oil Conservation Division  
1220 South St. Francis Drive | Santa Fe, NM 87505  
(505)469-2821 | [Jocelyn.Harimon@state.nm.us](mailto:Jocelyn.Harimon@state.nm.us)  
[http:// www.emnrd.nm.gov](http://www.emnrd.nm.gov)



---

**From:** Tacoma Morrissey <[tmorrissey@ensolum.com](mailto:tmorrissey@ensolum.com)>  
**Sent:** Thursday, November 10, 2022 8:17 AM  
**To:** Enviro, OCD, EMNRD <[OCD.Enviro@emnrd.nm.gov](mailto:OCD.Enviro@emnrd.nm.gov)>  
**Cc:** Bob Hall <[BBHall@btaoil.com](mailto:BBHall@btaoil.com)>; Hadlie Green <[hgreen@ensolum.com](mailto:hgreen@ensolum.com)>  
**Subject:** [EXTERNAL] BTA-Extension Request - Rojo 26 Oil Dump Valve Failure (Incident Number nAPP2224256412)

CAUTION: This email originated outside of our organization. Exercise caution prior to clicking on links or opening attachments.



All,

BTA is requesting an extension for the current deadline of November 14, 2022 for submitting a remediation work plan or closure request required in 19.15.29.12.B.(1) NMAC at the Rojo 26 Oil Dump Valve Failure (Incident Number nAPP2224256412). The release occurred on August 16, 2022. Initial assessment of the release has been completed and remediation is ongoing. In order to complete the remediation activities and submit a remediation work plan or closure request, BTA is requesting a 90-day extension until February 12, 2023.

Thank you,



**Tacoma Morrissey**

Senior Geologist

337-257-8307

**Ensolum, LLC**





APPENDIX E

Final C-141

---

District I  
1625 N. French Dr., Hobbs, NM 88240  
District II  
811 S. First St., Artesia, NM 88210  
District III  
1000 Rio Brazos Road, Aztec, NM 87410  
District IV  
1220 S. St. Francis Dr., Santa Fe, NM 87505

State of New Mexico  
Energy Minerals and Natural  
Resources Department  
Oil Conservation Division  
1220 South St. Francis Dr.  
Santa Fe, NM 87505

Form C-141  
Revised August 24, 2018  
Submit to appropriate OCD District office

Incident ID	nAPP2224256412
District RP	
Facility ID	fAPP2130123218
Application ID	

## Release Notification

### Responsible Party

Responsible Party: BTA Oil Producers, LLC	OGRID: 260297
Contact Name: Bob Hall	Contact Telephone: 432-682-3753
Contact email: bhall@btaoil.com	Incident # (assigned by OCD) nAPP2224256412
Contact mailing address: 104 S. Pecos St., Midland, TX 79701	

### Location of Release Source

Latitude: 32.11026 Longitude: -103.55605

(NAD 83 in decimal degrees to 5 decimal places)

Site Name: Rojo 26 Oil Dump Valve Failure	Site Type: Tank Battery
Date Release Discovered: 8/16/2022	API# (if applicable) Nearest well:

Unit Letter	Section	Township	Range	County
O	22	25S	33E	Lea

Surface Owner: ☐ State ☒ Federal ☐ Tribal ☐ Private (Name:)

### Nature and Volume of Release

Material(s) Released (Select all that apply and attach calculations or specific justification for the volumes provided below)

<input checked="" type="checkbox"/> Crude Oil	Volume Released (bbls) 10 BBL	Volume Recovered (bbls) 8 BBL
<input type="checkbox"/> Produced Water	Volume Released (bbls)	Volume Recovered (bbls)
	Is the concentration of dissolved chloride in the produced water >10,000 mg/l?	<input checked="" type="checkbox"/> Yes <input type="checkbox"/> No
<input type="checkbox"/> Condensate	Volume Released (bbls)	Volume Recovered (bbls)
<input type="checkbox"/> Natural Gas	Volume Released (Mcf)	Volume Recovered (Mcf)
<input type="checkbox"/> Other (describe)	Volume/Weight Released (provide units)	Volume/Weight Recovered (provide units)

#### Cause of Release

Oil Dump Controller Malfunction. Oil dump valve was replaced, and the snap controller did not seat properly causing oil to overflow from the Rojo #26H separator to the compressor catch tank. Catch tank overflowed for less than 30 minutes, releasing 10 BO onto the caliche well pad. Recovered 8 BO with vacuum truck. Spill volume calculation is included.

Incident ID	nAPP2224256412
District RP	
Facility ID	fAPP2130123218
Application ID	

Was this a major release as defined by 19.15.29.7(A) NMAC?  <input type="checkbox"/> Yes <input checked="" type="checkbox"/> No	If YES, for what reason(s) does the responsible party consider this a major release?
If YES, was immediate notice given to the OCD? By whom? To whom? When and by what means (phone, email, etc)?	

### Initial Response

*The responsible party must undertake the following actions immediately unless they could create a safety hazard that would result in injury*

<input checked="" type="checkbox"/> The source of the release has been stopped. <input checked="" type="checkbox"/> The impacted area has been secured to protect human health and the environment. <input checked="" type="checkbox"/> Released materials have been contained via the use of berms or dikes, absorbent pads, or other containment devices. <input checked="" type="checkbox"/> All free liquids and recoverable materials have been removed and managed appropriately.
If all the actions described above have <u>not</u> been undertaken, explain why:
Per 19.15.29.8 B. (4) NMAC the responsible party may commence remediation immediately after discovery of a release. If remediation has begun, please attach a narrative of actions to date. If remedial efforts have been successfully completed or if the release occurred within a lined containment area (see 19.15.29.11(A)(5)(a) NMAC), please attach all information needed for closure evaluation.
I hereby certify that the information given above is true and complete to the best of my knowledge and understand that pursuant to OCD rules and regulations all operators are required to report and/or file certain release notifications and perform corrective actions for releases which may endanger public health or the environment. The acceptance of a C-141 report by the OCD does not relieve the operator of liability should their operations have failed to adequately investigate and remediate contamination that pose a threat to groundwater, surface water, human health or the environment. In addition, OCD acceptance of a C-141 report does not relieve the operator of responsibility for compliance with any other federal, state, or local laws and/or regulations.  Printed Name: <b>Bob Hall</b> Title: <b>Environmental Manager</b>  Signature: <u>Bob Hall</u> Date: <b>8/30/2022</b>  email: <b>bhall@btaoil.com</b> Telephone: <b>432-682-3753</b>
<b><u>OCD Only</u></b>  Received by: _____ Date: _____

**Location** Rojo 14Y-17H / Rojo 26 Oil Dump Valve Failure

**API #**

**Spill Date** 8/16/2022

**Spill Dimensions**

**ENTER** - Length of Spill

43 feet

**ENTER** - Width of Spill

43 feet

**ENTER** - Saturation Depth of Spill

2 inches

**ENTER** - Porosity Factor

0.03 decimal

**Oil Cut - Well Test / Vessel Throughput or Contents**

Oil

99.99

Water

0.01

Calculated Oil Cut

0.9999

**Volume Recovered in Truck / Containment**

**ENTER** - Recovered Oil

8 BBL

**ENTER** - Recovered Water

0 BBL

**Calculated Values**

Release of Oil in Soil - Unrecovered

calculated  
2 BBL

Release of Water in Soil - Unrecovered

0 BBL

Unrecovered Total Release

2 BBL

**Calculated Values**

Total Release of Oil

calculated  
10 BBL

Total Release of Water

0 BBL

Total Release

10 BBL

Types of Soil	Porosity Factor
Gravel	0.25
Sand	0.20
Clay/silt/sand Mix	0.15
Clay	0.05
Caliche	0.03
Unknown	0.25

(Length X Width X Depth X 1 ft/12 in) X Porosity

5.615 ft<sup>3</sup> / BBL

X

Oil Cut  
(or Water Cut)

Rojo 14Y-17H Tank Battery  
Rojo 26 Oil Dump Valve Failure

8/16/2022



Incident ID	nAPP2224256412
District RP	
Facility ID	fAPP2130123218
Application ID	

## Site Assessment/Characterization

*This information must be provided to the appropriate district office no later than 90 days after the release discovery date.*

What is the shallowest depth to groundwater beneath the area affected by the release?	<u>51-100</u> (ft bgs)
Did this release impact groundwater or surface water?	<input type="checkbox"/> Yes <input checked="" type="checkbox"/> No
Are the lateral extents of the release within 300 feet of a continuously flowing watercourse or any other significant watercourse?	<input type="checkbox"/> Yes <input checked="" type="checkbox"/> No
Are the lateral extents of the release within 200 feet of any lakebed, sinkhole, or playa lake (measured from the ordinary high-water mark)?	<input type="checkbox"/> Yes <input checked="" type="checkbox"/> No
Are the lateral extents of the release within 300 feet of an occupied permanent residence, school, hospital, institution, or church?	<input type="checkbox"/> Yes <input checked="" type="checkbox"/> No
Are the lateral extents of the release within 500 horizontal feet of a spring or a private domestic fresh water well used by less than five households for domestic or stock watering purposes?	<input type="checkbox"/> Yes <input checked="" type="checkbox"/> No
Are the lateral extents of the release within 1000 feet of any other fresh water well or spring?	<input type="checkbox"/> Yes <input checked="" type="checkbox"/> No
Are the lateral extents of the release within incorporated municipal boundaries or within a defined municipal fresh water well field?	<input type="checkbox"/> Yes <input checked="" type="checkbox"/> No
Are the lateral extents of the release within 300 feet of a wetland?	<input type="checkbox"/> Yes <input checked="" type="checkbox"/> No
Are the lateral extents of the release overlying a subsurface mine?	<input type="checkbox"/> Yes <input checked="" type="checkbox"/> No
Are the lateral extents of the release overlying an unstable area such as karst geology?	<input type="checkbox"/> Yes <input checked="" type="checkbox"/> No
Are the lateral extents of the release within a 100-year floodplain?	<input type="checkbox"/> Yes <input checked="" type="checkbox"/> No
Did the release impact areas <b>not</b> on an exploration, development, production, or storage site?	<input type="checkbox"/> Yes <input checked="" type="checkbox"/> No

Attach a comprehensive report (electronic submittals in .pdf format are preferred) demonstrating the lateral and vertical extents of soil contamination associated with the release have been determined. Refer to 19.15.29.11 NMAC for specifics.

### **Characterization Report Checklist:** *Each of the following items must be included in the report.*

- ☒ Scaled site map showing impacted area, surface features, subsurface features, delineation points, and monitoring wells.
- ☒ Field data
- ☒ Data table of soil contaminant concentration data
- ☒ Depth to water determination
- ☒ Determination of water sources and significant watercourses within ½-mile of the lateral extents of the release
- ☒ Boring or excavation logs
- ☒ Photographs including date and GIS information
- ☒ Topographic/Aerial maps
- ☒ Laboratory data including chain of custody

If the site characterization report does not include completed efforts at remediation of the release, the report must include a proposed remediation plan. That plan must include the estimated volume of material to be remediated, the proposed remediation technique, proposed sampling plan and methods, anticipated timelines for beginning and completing the remediation. The closure criteria for a release are contained in Table 1 of 19.15.29.12 NMAC, however, use of the table is modified by site- and release-specific parameters.



Form C-141

State of New Mexico  
Oil Conservation Division

Page 4

Incident ID	nAPP2224256412
District RP	
Facility ID	fAPP2130123218
Application ID	

I hereby certify that the information given above is true and complete to the best of my knowledge and understand that pursuant to OCD rules and regulations all operators are required to report and/or file certain release notifications and perform corrective actions for releases which may endanger public health or the environment. The acceptance of a C-141 report by the OCD does not relieve the operator of liability should their operations have failed to adequately investigate and remediate contamination that pose a threat to groundwater, surface water, human health or the environment. In addition, OCD acceptance of a C-141 report does not relieve the operator of responsibility for compliance with any other federal, state, or local laws and/or regulations.

Printed Name: Bob HallTitle: Environmental ManagerSignature: Date: 2/14/2023email: bhall@btaoil.comTelephone: 432-682-3753**OCD Only**Received by: Jocelyn HarimonDate: 02/14/2023

Form C-141

Page 6

State of New Mexico  
Oil Conservation Division

Incident ID	nAPP2224256412
District RP	
Facility ID	fAPP2130123218
Application ID	

## Closure

The responsible party must attach information demonstrating they have complied with all applicable closure requirements and any conditions or directives of the OCD. This demonstration should be in the form of a comprehensive report (electronic submittals in .pdf format are preferred) including a scaled site map, sampling diagrams, relevant field notes, photographs of any excavation prior to backfilling, laboratory data including chain of custody documents of final sampling, and a narrative of the remedial activities. Refer to 19.15.29.12 NMAC.

**Closure Report Attachment Checklist:** *Each of the following items must be included in the closure report.*

- ☒ A scaled site and sampling diagram as described in 19.15.29.11 NMAC
- ☒ Photographs of the remediated site prior to backfill or photos of the liner integrity if applicable (Note: appropriate OCD District office must be notified 2 days prior to liner inspection)
- ☒ Laboratory analyses of final sampling (Note: appropriate ODC District office must be notified 2 days prior to final sampling)
- ☒ Description of remediation activities

I hereby certify that the information given above is true and complete to the best of my knowledge and understand that pursuant to OCD rules and regulations all operators are required to report and/or file certain release notifications and perform corrective actions for releases which may endanger public health or the environment. The acceptance of a C-141 report by the OCD does not relieve the operator of liability should their operations have failed to adequately investigate and remediate contamination that pose a threat to groundwater, surface water, human health or the environment. In addition, OCD acceptance of a C-141 report does not relieve the operator of responsibility for compliance with any other federal, state, or local laws and/or regulations. The responsible party acknowledges they must substantially restore, reclaim, and re-vegetate the impacted surface area to the conditions that existed prior to the release or their final land use in accordance with 19.15.29.13 NMAC including notification to the OCD when reclamation and re-vegetation are complete.

Printed Name: Bob Hall Title: Environmental Manager  
Signature:  Date: 2/14/2023  
email: bhall@btaoil.com Telephone: 432-682-3753

**OCD Only**

Received by: Jocelyn Harimon Date: 02/14/2023

Closure approval by the OCD does not relieve the responsible party of liability should their operations have failed to adequately investigate and remediate contamination that poses a threat to groundwater, surface water, human health, or the environment nor does not relieve the responsible party of compliance with any other federal, state, or local laws and/or regulations.

Closure Approved by:  Date: 02/23/2023  
Printed Name: Jennifer Nobui Title: Environmental Specialist A

**District I**  
1625 N. French Dr., Hobbs, NM 88240  
Phone:(575) 393-6161 Fax:(575) 393-0720  
**District II**  
811 S. First St., Artesia, NM 88210  
Phone:(575) 748-1283 Fax:(575) 748-9720  
**District III**  
1000 Rio Brazos Rd., Aztec, NM 87410  
Phone:(505) 334-6178 Fax:(505) 334-6170  
**District IV**  
1220 S. St Francis Dr., Santa Fe, NM 87505  
Phone:(505) 476-3470 Fax:(505) 476-3462

**State of New Mexico**  
**Energy, Minerals and Natural Resources**  
**Oil Conservation Division**  
**1220 S. St Francis Dr.**  
**Santa Fe, NM 87505**

CONDITIONS  
  
Action 186036

CONDITIONS

Operator: BTA OIL PRODUCERS, LLC 104 S Pecos Midland, TX 79701	OGRID: 260297
	Action Number: 186036
	Action Type: [C-141] Release Corrective Action (C-141)

CONDITIONS

Created By	Condition	Condition Date
jnobui	Closure Report Approved. Please implement 19.15.29.13 NMAC when completing P&A.	2/23/2023