

Incident ID	nAPP2208340165
District RP	
Facility ID	
Application ID	

## Closure

The responsible party must attach information demonstrating they have complied with all applicable closure requirements and any conditions or directives of the OCD. This demonstration should be in the form of a comprehensive report (electronic submittals in .pdf format are preferred) including a scaled site map, sampling diagrams, relevant field notes, photographs of any excavation prior to backfilling, laboratory data including chain of custody documents of final sampling, and a narrative of the remedial activities. Refer to 19.15.29.12 NMAC.

**Closure Report Attachment Checklist:** *Each of the following items must be included in the closure report.*

- ☒ A scaled site and sampling diagram as described in 19.15.29.11 NMAC
- ☒ Photographs of the remediated site prior to backfill or photos of the liner integrity if applicable (Note: appropriate OCD District office must be notified 2 days prior to liner inspection)
- ☒ Laboratory analyses of final sampling (Note: appropriate ODC District office must be notified 2 days prior to final sampling)
- ☒ Description of remediation activities

I hereby certify that the information given above is true and complete to the best of my knowledge and understand that pursuant to OCD rules and regulations all operators are required to report and/or file certain release notifications and perform corrective actions for releases which may endanger public health or the environment. The acceptance of a C-141 report by the OCD does not relieve the operator of liability should their operations have failed to adequately investigate and remediate contamination that pose a threat to groundwater, surface water, human health or the environment. In addition, OCD acceptance of a C-141 report does not relieve the operator of responsibility for compliance with any other federal, state, or local laws and/or regulations. The responsible party acknowledges they must substantially restore, reclaim, and re-vegetate the impacted surface area to the conditions that existed prior to the release or their final land use in accordance with 19.15.29.13 NMAC including notification to the OCD when reclamation and re-vegetation are complete.

Printed Name: Chase Settle Title: Rep Safety & Environmental Sr  
Signature: Chase Settle Date: 12/20/2022  
email: Chase\_Settle@eogresources.com Telephone: 575-748-1471

**OCD Only**

Received by: Jocelyn Harimon Date: 12/20/2022

Closure approval by the OCD does not relieve the responsible party of liability should their operations have failed to adequately investigate and remediate contamination that poses a threat to groundwater, surface water, human health, or the environment nor does not relieve the responsible party of compliance with any other federal, state, or local laws and/or regulations.

Closure Approved by: Robert Hamlet Date: 3/31/2023  
Printed Name: Robert Hamlet Title: Environmetal Specialist - Advanced



## **SITE REMEDIATION AND CLOSURE REPORT**

**FEDERAL CM COM #1 (SOUTHERN AREA)  
UNIT M, SECTION 12, TOWNSHIP 19S, RANGE 24E  
EDDY COUNTY, NEW MEXICO  
32.67054, -104.54807  
RANGER REFERENCE NO. 5375**

### **PREPARED FOR:**

**EOG RESOURCES, INC.  
ARTESIA DIVISION  
105 S 4TH STREET  
ARTESIA, NEW MEXICO 88210**

### **PREPARED BY:**

**RANGER ENVIRONMENTAL SERVICES, LLC  
P.O. BOX 201179  
AUSTIN, TEXAS 78720**

**DECEMBER 20, 2022**

A blue ink signature of Patrick K. Finn, consisting of a stylized 'P' followed by a horizontal line and a small flourish.

**Patrick K. Finn, P.G. (TX)  
Project Geologist**

A blue ink signature of William Kierdorf, consisting of a stylized 'W' followed by a horizontal line and a small flourish.

**William Kierdorf, REM  
Project Manager**

## TABLE OF CONTENTS

---

1.0	SITE LOCATION AND BACKGROUND .....	1
2.0	SITE REMEDIATION .....	2
2.1	Closure Criteria .....	2
2.2	Impacted Soil Removal and Confirmation Soil Sampling .....	2
2.3	Final Cleanup Confirmation Sample Results .....	3
2.4	Waste Disposal .....	3
3.0	SITE CLOSURE .....	4
3.1	Site Backfill & Revegetation .....	4
3.2	Closure Request .....	4

### FORM C-141

#### FIGURES

- Topographic Map
- Area Map
- Final Excavation Area and Confirmation Sample Location Map

#### TABLES

- Confirmation Soil Sample BTEX (EPA 8260), TPH (EPA 8015) & Chloride (EPA 300) Analytical Data

#### ATTACHMENTS

- Attachment 1 – Photographic Documentation
- Attachment 2 – Laboratory Analytical Reports
- Attachment 3 – Howell Ranch Seed Mixture
- Attachment 3 – NMOCD Correspondence



**SITE REMEDIATION AND CLOSURE REPORT  
FEDERAL CM COM #1 (SOUTHERN AREA)  
UNIT M, SECTION 12, TOWNSHIP 19S, RANGE 25E  
EDDY COUNTY, NEW MEXICO  
32.67054, -104.54807  
RANGER REFERENCE NO. 5375**

## **1.0 SITE LOCATION AND BACKGROUND**

The Federal CM COM #1 (Site) is located on private property, approximately 15 miles southwest of Artesia, within Eddy County, New Mexico. The Site is situated in Unit M, Section 12, T19S-R24E at GPS coordinates 32.67054, -104.54807. On December 9, 2021, Howell Ranch Revocable Trust (Howell Ranch) representatives reported an area of potential impact located south of the former well pad area and immediately west of a completed remediation area (NMOCD Incident ID# nAPP2124432801). The information provided was limited to a general area and notes of potential elevated chloride concentrations and lack of vegetation.

EOG Resources, Inc. (EOG) subsequently engaged Ranger Environmental Services, LLC (Ranger) to assist in the assessment, remediation, and reclamation efforts at the Site. On December 17, 2021, Ranger representatives conducted a preliminary inspection of the reported area of concern. During the inspection of the area, several locations were observed to be lacking vegetation growth and density compared to that of surrounding areas. Based on the observed conditions, Ranger personnel conducted site assessment activities in January 2022, February 2022, and March 2022. Based on the findings of the site assessment activities and the apparent size of the impacted area, the incident was reported to the New Mexico Oil Conservation Division (NMOCD) on March 24, 2022 (NMOCD Incident # nAPP2208340165).

The results of the site assessment activities were summarized in Ranger's June 16, 2022 "*Site Assessment/Characterization Report*." In addition to summarizing the results of the site assessment activities, the report also provided site characterization details and proposed site characterization confirmation activities. On October 24, 2022, the NMOCD approved the *Site Assessment/Characterization Report*."

Due to the lack of recent (<25 years old) depth to groundwater data within a one-half mile radius of the Site, the depth-to-groundwater at the Site required confirmation via the installation of a soil boring/temporary monitor well. In September 2022, the depth-to-groundwater boring was completed and the depth-to-groundwater was confirmed to be greater than 100 feet below ground surface (bgs). A Ranger prepared "*Site Characterization Update and Proposed Remediation Plan*" dated October 18, 2022, was submitted to the NMOCD. The plan included full details of the depth-to-groundwater confirmation activities and proposed remedial efforts to address the Site. The proposed remedial efforts were initiated at the Site in November 2022.

This *Site Remediation and Closure Report* has been prepared to document the remediation activities and cleanup confirmation soil sampling activities completed at the Site.

A copy of the previously submitted Form C-141 *Release Notification and Assessment/Characterization and Remediation Plan* sections of Form C-141 are attached. A recent Form C-141 *Closure* section is also attached.

A *Topographic Map* and *Area Map* noting the location of the subject Site and surrounding areas are provided in the Figures section. A *Final Excavation Area and Confirmation Sample Location Map* is also provided in the Figures section which illustrates the excavation boundaries and depths and the locations of the cleanup confirmation soil samples.

## 2.0 SITE REMEDIATION

### 2.1 Closure Criteria

Based upon Site characterization details<sup>1</sup> provided in the June 16, 2022 “*Site Assessment/Characterization Report*” and the October 18, 2022 “*Site Characterization Update and Proposed Remediation Plan*,” the Site was remediated to the Table 1 19.15.29.12 NMAC (groundwater >100 feet) criteria. Additionally, the remediation activities were completed to bring the surface to four-foot depth interval into compliance with the Restoration, Reclamation and Re-Vegetation criteria (Reclamation Criteria) detailed in 19.15.29.13 NMAC. The site closure criteria are detailed below:

**SITE CLOSURE CRITERIA**

REGULATORY STANDARD	CHLORIDE	TPH (GRO+DRO +MRO)	TPH (GRO+DRO)	BTEX	BENZENE
19.15.29.12 NMAC Table 1 Closure Criteria for Soils Impacted by a Release (GW >100')	20,000	2,500	1,000	50	10
19.15.29.13 NMAC Restoration, Reclamation and Re-Vegetation (Soils 0'-4')	600	100 <sup>2</sup>	---	50 <sup>2</sup>	10 <sup>2</sup>

*All Values Presented in Parts Per Million (mg/Kg)*

1. Full site characterization details are included in the June 16, 2022, “*Site Assessment/Characterization Report*” and October 18, 2022, “*Site Characterization Update and Proposed Remediation Plan*”.
2. Value derived from the State of New Mexico Energy, Minerals and Natural Resources Department document “*Procedures for the Implementation of the Spill Rule*” (19.15.29 NMAC) dated September 6, 2019.

### 2.2 Impacted Soil Removal and Confirmation Soil Sampling

From November 2, 2022 to December 7, 2022, soil removal operations were conducted at the Site. During the excavation process, Ranger personnel collected field readings from the excavated areas utilizing an organic vapor monitor (OVM) and field chloride titration kit to assist in guiding the excavation to appropriate boundaries. Upon completion, the excavation in the southern pad area had maximum dimensions of approximately 95 feet by 93 feet and was completed to depths of approximately two to four feet below ground surface (bgs).

To confirm that the excavation had been completed to appropriate boundaries, initial cleanup confirmation soil sampling activities were conducted on November 11, 2022. The cleanup



confirmation soil samples were collected from various locations in the excavation base and along the excavation side walls in accordance with NMAC 19.15.29.12(D), as five-part composite samples representative of no more than 200 square feet. A total of 44 soil samples were collected on November 11, 2022.

Upon collection, the cleanup confirmation soil samples were submitted to Hall Environmental in Albuquerque, New Mexico for analysis of total petroleum hydrocarbons (TPH) using EPA Method 8015; benzene, toluene, ethylbenzene and xylenes (BTEX) using EPA Method 8021; and total chloride using EPA Method 300. The samples were collected and managed using standard QA/QC and chain-of-custody procedures.

Upon review of the laboratory analytical results for the confirmation samples collected on November 11, 2022, all samples collected from the excavation base were documented to have BTEX, TPH and chloride concentrations below the site closure criteria. The excavation sidewall samples also documented attainment of the site closure criteria with the exception of sample "SW-4." This sidewall sample was documented to have a chloride concentration of 770 mg/Kg which exceeded the 600 mg/kg chloride closure criteria for the 0'-4' bgs soils.

Additional soil removal operations and cleanup confirmation sampling activities were subsequently completed to address the remaining area of elevated soil chloride concentrations in the sample "SW-4" area. On December 6, 2022, Ranger personnel and representatives for EOG returned to the Site and completed over-excavation of the sample "SW-4" area. Ranger personnel collected field readings from the over-excavation area utilizing an OVM and field chloride titration kit to assist in guiding the excavation to an appropriate boundary. On December 7, 2022, Ranger personnel collected a cleanup confirmation soil sample from the over-excavated area. The December 7, 2022 cleanup confirmation soil sample was collected in accordance with NMAC 19.15.29.12(D), as a five-part composite sample representative of no more than 200 square feet.

Prior to each confirmation sampling event, notice was provided to the NMOCD in accordance with NMAC 19.15.29.12(D). Copies of the notifications are attached.

A *Final Excavation Area and Confirmation Sample Location Map* is provided in the Figures section which illustrates the excavation boundaries and depths and the locations of the cleanup confirmation soil samples.

### **2.3 Final Cleanup Confirmation Sample Results**

The final cleanup confirmation sample results documented that the excavated area had attained the site closure criteria. A comprehensive sample results table summarizing the laboratory analytical results for the cleanup confirmation soil samples collected during the remediation process is attached. Copies of the laboratory analytical reports including chain-of-custody documentation are also attached.

### **2.4 Waste Disposal**

All soils generated during the remedial excavation activities were transported and disposed of at Lea Land disposal facility in Eddy County, New Mexico.



### **3.0 SITE CLOSURE**

#### **3.1 Site Backfill & Revegetation**

Based on the cleanup confirmation sampling results which documented removal of all soils in excess of the site closure criteria, the excavated area will be backfilled with clean fill material in accordance with NMAC 19.15.29.12 and NMAC 19.15.29.13.

Upon completion of the site backfill activities, the area will be re-seeded with the surface owner directed seed mixture. A copy of the seed mixture is attached.

#### **3.2 Closure Request**

Based on the completed site remediation and cleanup confirmation soil sampling activities, the site has been properly addressed pursuant to NMAC 19.15.29 and EOG respectfully requests closure of the incident. A final C-141 form is attached.



FORM C-141



District I  
1625 N. French Dr., Hobbs, NM 88240  
District II  
811 S. First St., Artesia, NM 88210  
District III  
1000 Rio Brazos Road, Aztec, NM 87410  
District IV  
1220 S. St. Francis Dr., Santa Fe, NM 87505

State of New Mexico  
Energy Minerals and Natural  
Resources Department

Oil Conservation Division  
1220 South St. Francis Dr.  
Santa Fe, NM 87505

Form C-141  
Revised August 24, 2018  
Submit to appropriate OCD District office

Incident ID	nAPP2208340165
District RP	
Facility ID	
Application ID	

## Release Notification

### Responsible Party

Responsible Party EOG Resources, Inc.	OGRID 7377
Contact Name Chase Settle	Contact Telephone 575-748-1471
Contact email Chase_Settle@eogresources.com	Incident # nAPP2208340165
Contact mailing address 104 S. 4th Street, Artesia, NM 88210	

### Location of Release Source

Latitude 32.67019 Longitude -104.54812  
(NAD 83 in decimal degrees to 5 decimal places)

Site Name Federal CM Com #1 - Southern Area	Site Type Pipeline
Date Release Discovered 03/23/2022	API# 30-015-20800

Unit Letter	Section	Township	Range	County
M	12	19S	24E	Eddy

Surface Owner: ☐ State ☐ Federal ☐ Tribal ☒ Private (Name: Howell Ranch)

### Nature and Volume of Release

Material(s) Released (Select all that apply and attach calculations or specific justification for the volumes provided below)

<input type="checkbox"/> Crude Oil	Volume Released (bbls)	Volume Recovered (bbls)
<input checked="" type="checkbox"/> Produced Water	Volume Released (bbls) Unknown	Volume Recovered (bbls) 0
	Is the concentration of dissolved chloride in the produced water >10,000 mg/l?	<input checked="" type="checkbox"/> Yes <input type="checkbox"/> No
<input type="checkbox"/> Condensate	Volume Released (bbls)	Volume Recovered (bbls)
<input type="checkbox"/> Natural Gas	Volume Released (Mcf)	Volume Recovered (Mcf)
<input type="checkbox"/> Other (describe)	Volume/Weight Released (provide units)	Volume/Weight Recovered (provide units)

Cause of Release A notice was submitted by the landowner for an area south of the previously reclaimed well pad, and west of previously remediated area, that appeared to be impacted. The consultant retained to investigate the area provided notice that it most likely meets reportable criteria on 3/23/2022, based on the initial delineation assessment that has been completed to date.

Incident ID	nAPP2208340165
District RP	
Facility ID	
Application ID	

Was this a major release as defined by 19.15.29.7(A) NMAC?  <input type="checkbox"/> Yes <input checked="" type="checkbox"/> No	If YES, for what reason(s) does the responsible party consider this a major release?
If YES, was immediate notice given to the OCD? By whom? To whom? When and by what means (phone, email, etc)?	

### Initial Response

*The responsible party must undertake the following actions immediately unless they could create a safety hazard that would result in injury*

<input checked="" type="checkbox"/> The source of the release has been stopped. <input checked="" type="checkbox"/> The impacted area has been secured to protect human health and the environment. <input checked="" type="checkbox"/> Released materials have been contained via the use of berms or dikes, absorbent pads, or other containment devices. <input checked="" type="checkbox"/> All free liquids and recoverable materials have been removed and managed appropriately.	
If all the actions described above have <u>not</u> been undertaken, explain why:	
Per 19.15.29.8 B. (4) NMAC the responsible party may commence remediation immediately after discovery of a release. If remediation has begun, please attach a narrative of actions to date. If remedial efforts have been successfully completed or if the release occurred within a lined containment area (see 19.15.29.11(A)(5)(a) NMAC), please attach all information needed for closure evaluation.	
I hereby certify that the information given above is true and complete to the best of my knowledge and understand that pursuant to OCD rules and regulations all operators are required to report and/or file certain release notifications and perform corrective actions for releases which may endanger public health or the environment. The acceptance of a C-141 report by the OCD does not relieve the operator of liability should their operations have failed to adequately investigate and remediate contamination that pose a threat to groundwater, surface water, human health or the environment. In addition, OCD acceptance of a C-141 report does not relieve the operator of responsibility for compliance with any other federal, state, or local laws and/or regulations.	
Printed Name: <u>Chase Settle</u>	Title: <u>Rep Safety &amp; Environmental Sr</u>
Signature: <u>Chase Settle</u>	Date: <u>03/24/2022</u>
email: <u>Chase_Settle@eogresources.com</u>	Telephone: <u>575-748-1471</u>
<b><u>OCD Only</u></b>	
Received by: <u>Jocelyn Harimon</u>	Date: <u>03/24/2022</u>

Incident ID	
District RP	
Facility ID	
Application ID	

## Site Assessment/Characterization

*This information must be provided to the appropriate district office no later than 90 days after the release discovery date.*

What is the shallowest depth to groundwater beneath the area affected by the release?	_____ (ft bgs)
Did this release impact groundwater or surface water?	<input type="checkbox"/> Yes <input type="checkbox"/> No
Are the lateral extents of the release within 300 feet of a continuously flowing watercourse or any other significant watercourse?	<input type="checkbox"/> Yes <input type="checkbox"/> No
Are the lateral extents of the release within 200 feet of any lakebed, sinkhole, or playa lake (measured from the ordinary high-water mark)?	<input type="checkbox"/> Yes <input type="checkbox"/> No
Are the lateral extents of the release within 300 feet of an occupied permanent residence, school, hospital, institution, or church?	<input type="checkbox"/> Yes <input type="checkbox"/> No
Are the lateral extents of the release within 500 horizontal feet of a spring or a private domestic fresh water well used by less than five households for domestic or stock watering purposes?	<input type="checkbox"/> Yes <input type="checkbox"/> No
Are the lateral extents of the release within 1000 feet of any other fresh water well or spring?	<input type="checkbox"/> Yes <input type="checkbox"/> No
Are the lateral extents of the release within incorporated municipal boundaries or within a defined municipal fresh water well field?	<input type="checkbox"/> Yes <input type="checkbox"/> No
Are the lateral extents of the release within 300 feet of a wetland?	<input type="checkbox"/> Yes <input type="checkbox"/> No
Are the lateral extents of the release overlying a subsurface mine?	<input type="checkbox"/> Yes <input type="checkbox"/> No
Are the lateral extents of the release overlying an unstable area such as karst geology?	<input type="checkbox"/> Yes <input type="checkbox"/> No
Are the lateral extents of the release within a 100-year floodplain?	<input type="checkbox"/> Yes <input type="checkbox"/> No
Did the release impact areas <b>not</b> on an exploration, development, production, or storage site?	<input type="checkbox"/> Yes <input type="checkbox"/> No

Attach a comprehensive report (electronic submittals in .pdf format are preferred) demonstrating the lateral and vertical extents of soil contamination associated with the release have been determined. Refer to 19.15.29.11 NMAC for specifics.

### **Characterization Report Checklist:** *Each of the following items must be included in the report.*

- ☐ Scaled site map showing impacted area, surface features, subsurface features, delineation points, and monitoring wells.
- ☐ Field data
- ☐ Data table of soil contaminant concentration data
- ☐ Depth to water determination
- ☐ Determination of water sources and significant watercourses within ½-mile of the lateral extents of the release
- ☐ Boring or excavation logs
- ☐ Photographs including date and GIS information
- ☐ Topographic/Aerial maps
- ☐ Laboratory data including chain of custody

If the site characterization report does not include completed efforts at remediation of the release, the report must include a proposed remediation plan. That plan must include the estimated volume of material to be remediated, the proposed remediation technique, proposed sampling plan and methods, anticipated timelines for beginning and completing the remediation. The closure criteria for a release are contained in Table 1 of 19.15.29.12 NMAC, however, use of the table is modified by site- and release-specific parameters.

State of New Mexico  
Oil Conservation Division

Page 4

Incident ID	
District RP	
Facility ID	
Application ID	

I hereby certify that the information given above is true and complete to the best of my knowledge and understand that pursuant to OCD rules and regulations all operators are required to report and/or file certain release notifications and perform corrective actions for releases which may endanger public health or the environment. The acceptance of a C-141 report by the OCD does not relieve the operator of liability should their operations have failed to adequately investigate and remediate contamination that pose a threat to groundwater, surface water, human health or the environment. In addition, OCD acceptance of a C-141 report does not relieve the operator of responsibility for compliance with any other federal, state, or local laws and/or regulations.

Printed Name: \_\_\_\_\_ Title: \_\_\_\_\_

Signature: \_\_\_\_\_ Date: \_\_\_\_\_

email: \_\_\_\_\_ Telephone: \_\_\_\_\_

**OCD Only**

Received by: \_\_\_\_\_ Date: \_\_\_\_\_

Incident ID	
District RP	
Facility ID	
Application ID	

## Remediation Plan

**Remediation Plan Checklist:** *Each of the following items must be included in the plan.*

- ☐ Detailed description of proposed remediation technique
- ☐ Scaled sitemap with GPS coordinates showing delineation points
- ☐ Estimated volume of material to be remediated
- ☐ Closure criteria is to Table 1 specifications subject to 19.15.29.12(C)(4) NMAC
- ☐ Proposed schedule for remediation (note if remediation plan timeline is more than 90 days OCD approval is required)

**Deferral Requests Only:** *Each of the following items must be confirmed as part of any request for deferral of remediation.*

- ☐ Contamination must be in areas immediately under or around production equipment where remediation could cause a major facility deconstruction.
- ☐ Extents of contamination must be fully delineated.
- ☐ Contamination does not cause an imminent risk to human health, the environment, or groundwater.

I hereby certify that the information given above is true and complete to the best of my knowledge and understand that pursuant to OCD rules and regulations all operators are required to report and/or file certain release notifications and perform corrective actions for releases which may endanger public health or the environment. The acceptance of a C-141 report by the OCD does not relieve the operator of liability should their operations have failed to adequately investigate and remediate contamination that pose a threat to groundwater, surface water, human health or the environment. In addition, OCD acceptance of a C-141 report does not relieve the operator of responsibility for compliance with any other federal, state, or local laws and/or regulations.

Printed Name: \_\_\_\_\_ Title: \_\_\_\_\_  
Signature: \_\_\_\_\_ Date: \_\_\_\_\_  
email: \_\_\_\_\_ Telephone: \_\_\_\_\_

**OCD Only**

Received by: \_\_\_\_\_ Date: \_\_\_\_\_

☐ Approved ☐ Approved with Attached Conditions of Approval ☐ Denied ☐ Deferral Approved

Signature: \_\_\_\_\_ Date: \_\_\_\_\_

Incident ID	
District RP	
Facility ID	
Application ID	

## Closure

The responsible party must attach information demonstrating they have complied with all applicable closure requirements and any conditions or directives of the OCD. This demonstration should be in the form of a comprehensive report (electronic submittals in .pdf format are preferred) including a scaled site map, sampling diagrams, relevant field notes, photographs of any excavation prior to backfilling, laboratory data including chain of custody documents of final sampling, and a narrative of the remedial activities. Refer to 19.15.29.12 NMAC.

**Closure Report Attachment Checklist: Each of the following items must be included in the closure report.**

- ☐ A scaled site and sampling diagram as described in 19.15.29.11 NMAC
- ☐ Photographs of the remediated site prior to backfill or photos of the liner integrity if applicable (Note: appropriate OCD District office must be notified 2 days prior to liner inspection)
- ☐ Laboratory analyses of final sampling (Note: appropriate OCD District office must be notified 2 days prior to final sampling)
- ☐ Description of remediation activities

I hereby certify that the information given above is true and complete to the best of my knowledge and understand that pursuant to OCD rules and regulations all operators are required to report and/or file certain release notifications and perform corrective actions for releases which may endanger public health or the environment. The acceptance of a C-141 report by the OCD does not relieve the operator of liability should their operations have failed to adequately investigate and remediate contamination that pose a threat to groundwater, surface water, human health or the environment. In addition, OCD acceptance of a C-141 report does not relieve the operator of responsibility for compliance with any other federal, state, or local laws and/or regulations. The responsible party acknowledges they must substantially restore, reclaim, and re-vegetate the impacted surface area to the conditions that existed prior to the release or their final land use in accordance with 19.15.29.13 NMAC including notification to the OCD when reclamation and re-vegetation are complete.

Printed Name: \_\_\_\_\_ Title: \_\_\_\_\_

Signature: \_\_\_\_\_ Date: \_\_\_\_\_

email: \_\_\_\_\_ Telephone: \_\_\_\_\_

**OCD Only**

Received by: \_\_\_\_\_ Date: \_\_\_\_\_

Closure approval by the OCD does not relieve the responsible party of liability should their operations have failed to adequately investigate and remediate contamination that poses a threat to groundwater, surface water, human health, or the environment nor does not relieve the responsible party of compliance with any other federal, state, or local laws and/or regulations.

Closure Approved by: \_\_\_\_\_ Date: \_\_\_\_\_

Printed Name: \_\_\_\_\_ Title: \_\_\_\_\_

**District I**  
1625 N. French Dr., Hobbs, NM 88240  
Phone:(575) 393-6161 Fax:(575) 393-0720  
**District II**  
811 S. First St., Artesia, NM 88210  
Phone:(575) 748-1283 Fax:(575) 748-9720  
**District III**  
1000 Rio Brazos Rd., Aztec, NM 87410  
Phone:(505) 334-6178 Fax:(505) 334-6170  
**District IV**  
1220 S. St Francis Dr., Santa Fe, NM 87505  
Phone:(505) 476-3470 Fax:(505) 476-3462

State of New Mexico  
Energy, Minerals and Natural Resources  
Oil Conservation Division  
1220 S. St Francis Dr.  
Santa Fe, NM 87505

CONDITIONS  
  
Action 92911

CONDITIONS

Operator: EOG RESOURCES INC P.O. Box 2267 Midland, TX 79702	OGRID: 7377
	Action Number: 92911
	Action Type: [C-141] Release Corrective Action (C-141)

CONDITIONS

Created By	Condition	Condition Date
jharimon	When submitting future reports regarding this release, please submit the calculations used or specific justification for the volumes reported on the initial C-141	3/24/2022

Incident ID	nAPP2208340165
District RP	
Facility ID	
Application ID	

## Site Assessment/Characterization

*This information must be provided to the appropriate district office no later than 90 days after the release discovery date.*

What is the shallowest depth to groundwater beneath the area affected by the release? *\*The depth to groundwater has been confirmed via the installation of a temporary monitoring well.*

>108' (ft bgs)

Did this release impact groundwater or surface water?

☐ Yes ☒ No

Are the lateral extents of the release within 300 feet of a continuously flowing watercourse or any other significant watercourse?

☐ Yes ☒ No

Are the lateral extents of the release within 200 feet of any lakebed, sinkhole, or playa lake (measured from the ordinary high-water mark)?

☐ Yes ☒ No

Are the lateral extents of the release within 300 feet of an occupied permanent residence, school, hospital, institution, or church?

☐ Yes ☒ No

Are the lateral extents of the release within 500 horizontal feet of a spring or a private domestic fresh water well used by less than five households for domestic or stock watering purposes?

☐ Yes ☒ No

Are the lateral extents of the release within 1000 feet of any other fresh water well or spring?

☐ Yes ☒ No

Are the lateral extents of the release within incorporated municipal boundaries or within a defined municipal fresh water well field?

☐ Yes ☒ No

Are the lateral extents of the release within 300 feet of a wetland?

☐ Yes ☒ No

Are the lateral extents of the release overlying a subsurface mine?

☐ Yes ☒ No

Are the lateral extents of the release overlying an unstable area such as karst geology?

☐ Yes ☒ No

Are the lateral extents of the release within a 100-year floodplain?

☐ Yes ☒ No

Did the release impact areas **not** on an exploration, development, production, or storage site?

☐ Yes ☒ No

Attach a comprehensive report (electronic submittals in .pdf format are preferred) demonstrating the lateral and vertical extents of soil contamination associated with the release have been determined. Refer to 19.15.29.11 NMAC for specifics.

### **Characterization Report Checklist:** *Each of the following items must be included in the report.*

- ☒ Scaled site map showing impacted area, surface features, subsurface features, delineation points, and monitoring wells.
- ☒ Field data
- ☒ Data table of soil contaminant concentration data
- ☒ Depth to water determination
- ☒ Determination of water sources and significant watercourses within ½-mile of the lateral extents of the release
- ☒ Boring or excavation logs
- ☒ Photographs including date and GIS information
- ☒ Topographic/Aerial maps
- ☒ Laboratory data including chain of custody



## Oil Conservation Division

Incident ID	nAPP2208340165
District RP	
Facility ID	
Application ID	

If the site characterization report does not include completed efforts at remediation of the release, the report must include a proposed remediation plan. That plan must include the estimated volume of material to be remediated, the proposed remediation technique, proposed sampling plan and methods, anticipated timelines for beginning and completing the remediation. The closure criteria for a release are contained in Table 1 of 19.15.29.12 NMAC, however, use of the table is modified by site- and release-specific parameters.

I hereby certify that the information given above is true and complete to the best of my knowledge and understand that pursuant to OCD rules and regulations all operators are required to report and/or file certain release notifications and perform corrective actions for releases which may endanger public health or the environment. The acceptance of a C-141 report by the OCD does not relieve the operator of liability should their operations have failed to adequately investigate and remediate contamination that pose a threat to groundwater, surface water, human health or the environment. In addition, OCD acceptance of a C-141 report does not relieve the operator of responsibility for compliance with any other federal, state, or local laws and/or regulations.

Printed Name: Chase Settle Title: Rep Safety & Environmental Sr

Signature: Chase Settle Date: 10/27/2022

email: Chase\_Settle@eogresources.com Telephone: 575-748-1471

**OCD Only**

Received by: Jocelyn Harimon Date: 12/20/2022

Incident ID	nAPP2208340165
District RP	
Facility ID	
Application ID	

## Remediation Plan

**Remediation Plan Checklist:** *Each of the following items must be included in the plan.*

- ☒ Detailed description of proposed remediation technique
- ☒ Scaled sitemap with GPS coordinates showing delineation points
- ☒ Estimated volume of material to be remediated
- ☒ Closure criteria is to Table 1 specifications subject to 19.15.29.12(C)(4) NMAC
- ☒ Proposed schedule for remediation (note if remediation plan timeline is more than 90 days OCD approval is required)

**Deferral Requests Only:** *Each of the following items must be confirmed as part of any request for deferral of remediation.*

- ☐ Contamination must be in areas immediately under or around production equipment where remediation could cause a major facility deconstruction.
- ☐ Extents of contamination must be fully delineated.
- ☐ Contamination does not cause an imminent risk to human health, the environment, or groundwater.

I hereby certify that the information given above is true and complete to the best of my knowledge and understand that pursuant to OCD rules and regulations all operators are required to report and/or file certain release notifications and perform corrective actions for releases which may endanger public health or the environment. The acceptance of a C-141 report by the OCD does not relieve the operator of liability should their operations have failed to adequately investigate and remediate contamination that pose a threat to groundwater, surface water, human health or the environment. In addition, OCD acceptance of a C-141 report does not relieve the operator of responsibility for compliance with any other federal, state, or local laws and/or regulations.

Printed Name: Chase Settle Title: Rep Safety & Environmental Sr

Signature: Chase Settle Date: 10/27/2022

email: Chase\_Settle@eogresources.com Telephone: 575-748-1471

**OCD Only**

Received by: Jocelyn Harimon Date: 12/20/2022

☐ Approved ☐ Approved with Attached Conditions of Approval ☐ Denied ☐ Deferral Approved

Signature: \_\_\_\_\_ Date: \_\_\_\_\_

Incident ID	nAPP2208340165
District RP	
Facility ID	
Application ID	

## Closure

The responsible party must attach information demonstrating they have complied with all applicable closure requirements and any conditions or directives of the OCD. This demonstration should be in the form of a comprehensive report (electronic submittals in .pdf format are preferred) including a scaled site map, sampling diagrams, relevant field notes, photographs of any excavation prior to backfilling, laboratory data including chain of custody documents of final sampling, and a narrative of the remedial activities. Refer to 19.15.29.12 NMAC.

**Closure Report Attachment Checklist:** *Each of the following items must be included in the closure report.*

- ☒ A scaled site and sampling diagram as described in 19.15.29.11 NMAC
- ☒ Photographs of the remediated site prior to backfill or photos of the liner integrity if applicable (Note: appropriate OCD District office must be notified 2 days prior to liner inspection)
- ☒ Laboratory analyses of final sampling (Note: appropriate ODC District office must be notified 2 days prior to final sampling)
- ☒ Description of remediation activities

I hereby certify that the information given above is true and complete to the best of my knowledge and understand that pursuant to OCD rules and regulations all operators are required to report and/or file certain release notifications and perform corrective actions for releases which may endanger public health or the environment. The acceptance of a C-141 report by the OCD does not relieve the operator of liability should their operations have failed to adequately investigate and remediate contamination that pose a threat to groundwater, surface water, human health or the environment. In addition, OCD acceptance of a C-141 report does not relieve the operator of responsibility for compliance with any other federal, state, or local laws and/or regulations. The responsible party acknowledges they must substantially restore, reclaim, and re-vegetate the impacted surface area to the conditions that existed prior to the release or their final land use in accordance with 19.15.29.13 NMAC including notification to the OCD when reclamation and re-vegetation are complete.

Printed Name: Chase Settle Title: Rep Safety & Environmental Sr  
Signature: Chase Settle Date: 12/20/2022  
email: Chase\_Settle@eogresources.com Telephone: 575-748-1471

**OCD Only**

Received by: Jocelyn Harimon Date: 12/20/2022

Closure approval by the OCD does not relieve the responsible party of liability should their operations have failed to adequately investigate and remediate contamination that poses a threat to groundwater, surface water, human health, or the environment nor does not relieve the responsible party of compliance with any other federal, state, or local laws and/or regulations.

Closure Approved by: \_\_\_\_\_ Date: \_\_\_\_\_

Printed Name: \_\_\_\_\_ Title: \_\_\_\_\_

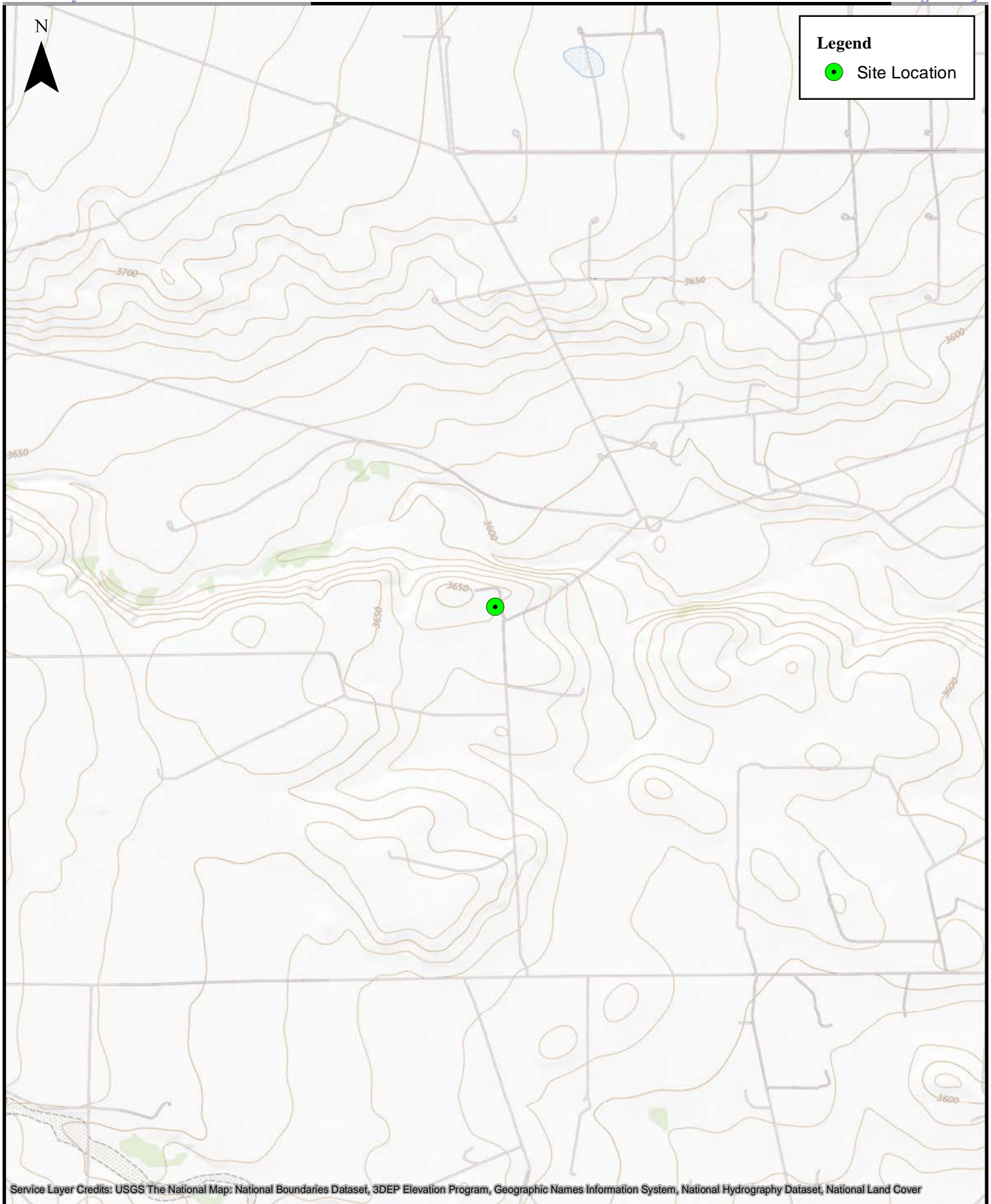
## FIGURES

Topographic Map

Area Map

**Final** Excavation Area and Confirmation Sample

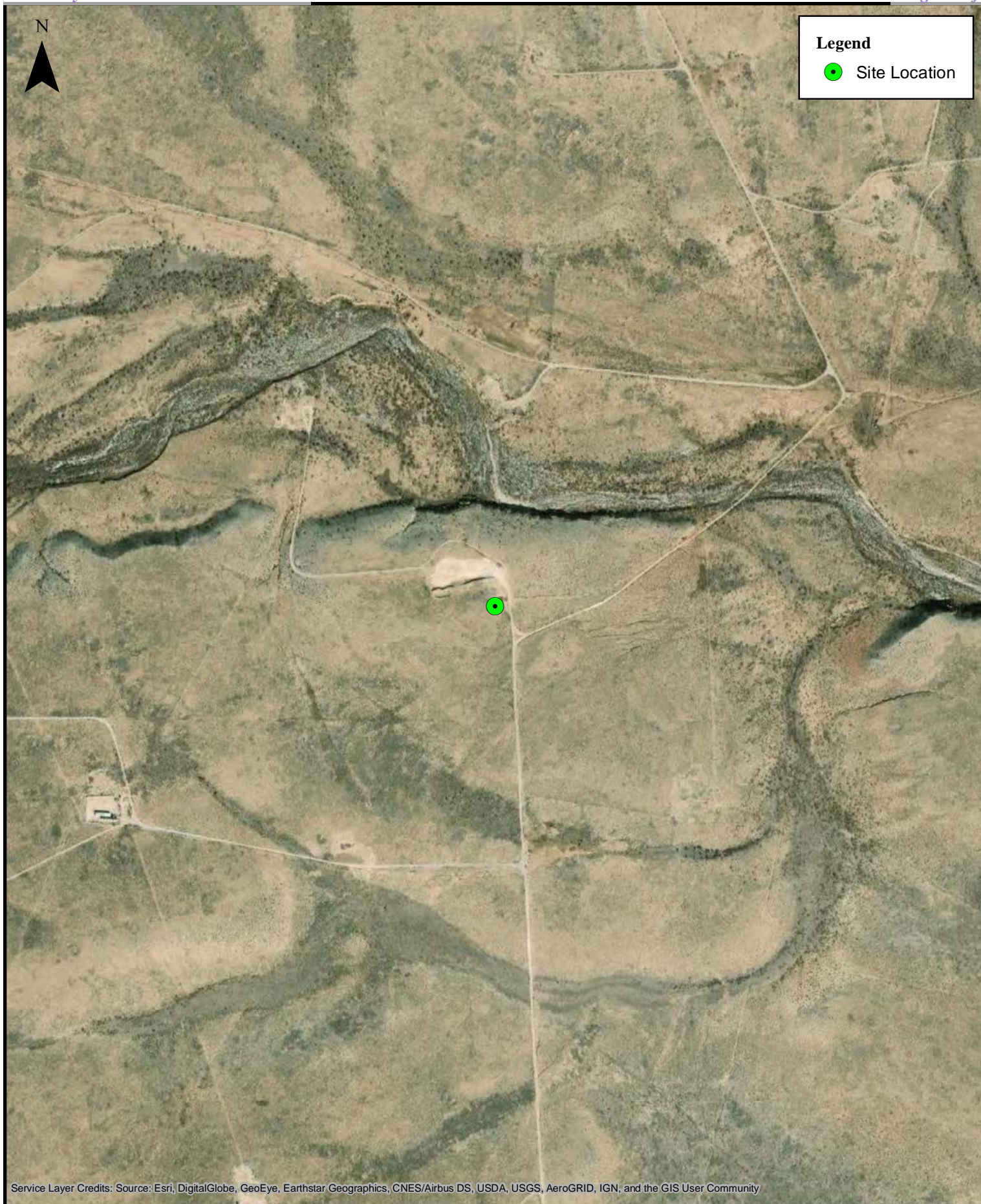
Location Map



0 600 1,200 2,400 3,600 4,800 Feet  
1:24,000

**Topographic Map**  
Federal CM #1 (Southern Area)  
EOG Resources, Inc.

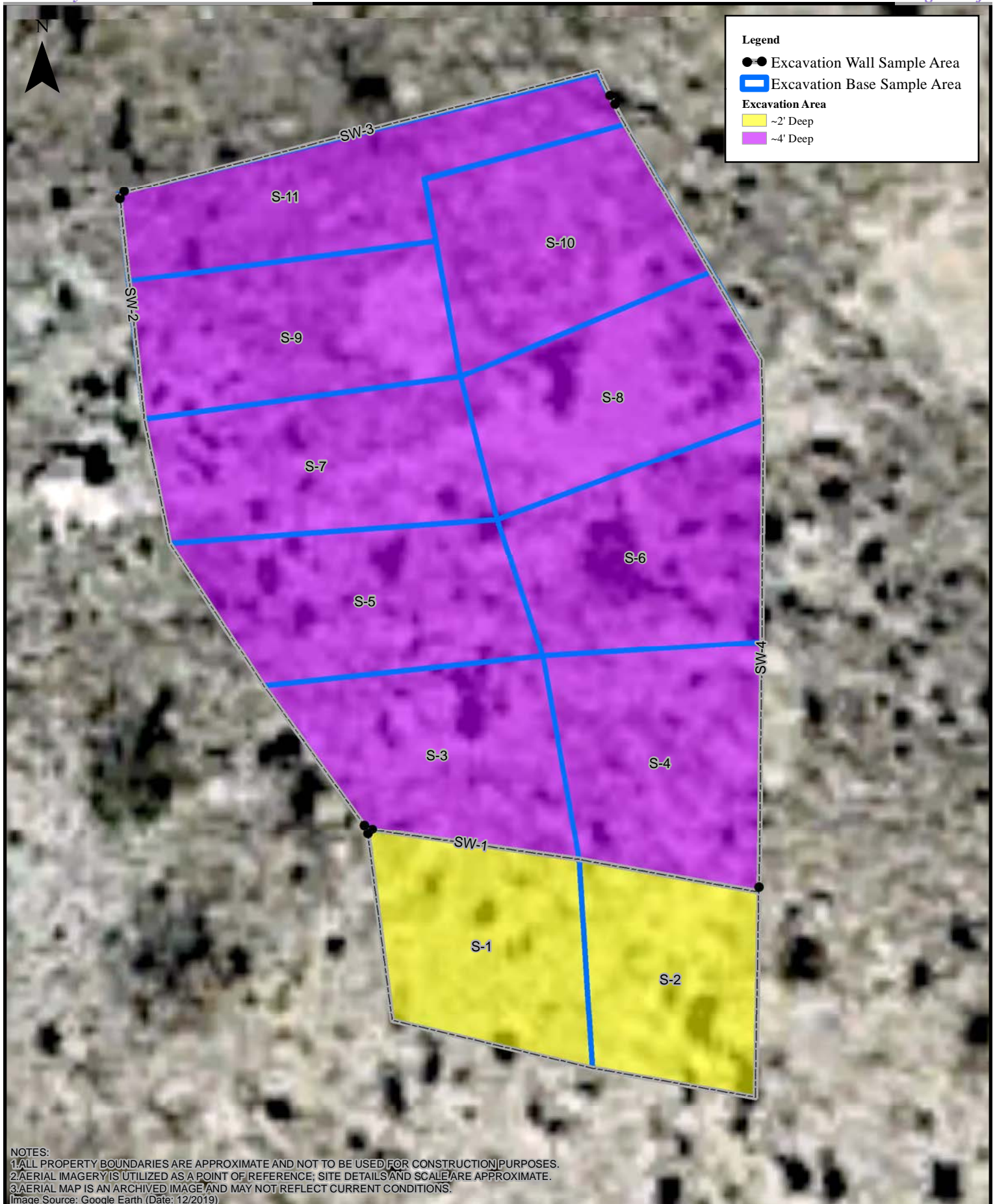




0 250 500 1,000 1,500 2,000 Feet  
1:10,000

**Area Map**  
Federal CM #1 (Southern Area)  
EOG Resources, Inc.





0 2.25 4.5 9 13.5 18 Feet

1:100

**Final Excavation and Confirmation Sample Location Map**

Federal CM #1 (Southern Area)  
EOG Resources, Inc.

## TABLES

Confirmation Soil Sample BTEX (EPA 8260), TPH (EPA 8015) &  
Chloride (EPA 300) Analytical Data



**CONFIRMATION SOIL SAMPLE SAMPLE BTEX (EPA 8021), TPH (SW 8015) & CHLORIDE (EPA 300) ANALYTICAL DATA**

**EOG RESOURCES, INC.**

**FEDERAL CM COM #1 (SOUTHERN AREA)**

All values presented in parts per million (mg/Kg)

SAMPLE ID	DATE	DEPTH (FT)	BENZENE	TOLUENE	ETHYL-BENZENE	TOTAL XYLENES	TOTAL BTEX	TPH GRO C6-C10	TPH DRO C10-C28	TPH MRO C28-C36	TPH (GRO+DRO)	TPH (GRO+DRO+MRO)	CHLORIDE
S-1	11/11/2022	2'	<0.024	<0.049	<0.049	<0.097	<0.10	<4.9	<14	<48	<14	<48	73
S-2	11/11/2022	2'	<0.024	<0.049	<0.049	<0.098	<0.10	<4.9	<14	<47	<14	<47	<60
S-3	11/11/2022	4'	<0.025	<0.050	<0.050	<0.099	<0.10	<15	<50	<15	<15	<50	630
S-4	11/11/2022	4'	<0.024	<0.047	<0.047	<0.095	<0.09	<4.7	<14	<46	<14	<46	620
S-5	11/11/2022	4'	<0.025	<0.049	<0.049	<0.098	<0.10	<4.9	<15	<48	<15	<48	1,400
S-6	11/11/2022	4'	<0.024	<0.048	<0.048	<0.095	<0.10	<4.8	<14	<47	<14	<47	330
S-7	11/11/2022	4'	<0.023	<0.046	<0.046	<0.093	<0.09	<4.6	15	<14	15	15	1,800
S-8	11/11/2022	4'	<0.024	<0.049	<0.049	<0.097	<0.10	<4.9	<14	<45	<14	<45	1,900
S-9	11/11/2022	4'	<0.024	<0.049	<0.049	<0.097	<0.10	<4.9	<14	<48	<14	<48	3,800
S-10	11/11/2022	4'	<0.025	<0.050	<0.050	<0.099	<0.10	<5.0	<14	<47	<14	<47	1,500
S-11	11/11/2022	4'	<0.024	<0.049	<0.049	<0.098	<0.10	<4.9	<14	<48	<14	<48	2,200
SW-1	11/11/2022	0'-4'	<0.025	<0.050	<0.050	<0.10	<0.10	<5.0	<14	<48	<14	<48	81
SW-2	11/11/2022	0'-4'	<0.025	<0.050	<0.050	<0.10	<0.10	<5.0	<15	<49	<15	<49	<60
SW-3	11/11/2022	0'-4'	<0.025	<0.049	<0.049	<0.099	<0.10	<4.9	<15	<50	<15	<50	560
SW-4	11/11/2022	0'-4'	<0.024	<0.049	<0.049	<0.097	<0.10	<4.9	<14	<48	<14	<48	770
SW-4	12/7/2022	0'-4'	<0.022	<0.044	<0.044	<0.088	<0.09	<4.4	20	76	20	96	140
<b>19.15.29.12 NMAC Table 1 Closure Criteria for Soils Impacted by a Release (GW &gt;100')</b>			<b>10</b>	---	---	---	<b>50</b>	---	---	---	<b>1,000</b>	<b>2,500</b>	<b>20,000</b>
<b>19.15.29.13 NMAC Reclamation Criteria (0'-4' Soils Only)</b>			<b>10<sup>3</sup></b>	---	---	---	<b>50<sup>3</sup></b>	---	---	---	---	<b>100<sup>3</sup></b>	<b>600</b>

**Notes:**

- Results exceeding the Table 1 Closure Criteria are presented in bold type and are highlighted yellow.
- Results exceeding the NMAC Restoration, Reclamation and re-vegetation chloride concentration requirements are presented in bold red type.
- Value derived from the State of New Mexico Energy, Minerals and Natural Resources Department document Procedures for the Implementation of the Spill Rule (19.15.29 NMAC) dated September 6, 2019.

## ATTACHMENT 1 – PHOTOGRAPHIC DOCUMENTATION



**PHOTOGRAPH NO. 1 – A view of the excavation/remediation area upon completion of the soil removal operations. The view is towards the north.**

*(Approximate GPS: 32.670008, -104.548120)*



**PHOTOGRAPH NO. 2 – An additional view of the excavation/remediation area upon completion of the soil removal operations. The view is towards the southeast.**

*(Approximate GPS: 32.670232, -104.548231)*

## ATTACHMENT 2 – LABORATORY ANALYTICAL REPORTS



Hall Environmental Analysis Laboratory  
4901 Hawkins NE  
Albuquerque, NM 87109  
TEL: 505-345-3975 FAX: 505-345-4107  
Website: [www.hallenvironmental.com](http://www.hallenvironmental.com)

November 30, 2022

Will Kierdorf

EOG

105 South Fourth Street

Artesia, NM 88210

TEL:

FAX:

RE: Federal CM 1

OrderNo.: 2211801

Dear Will Kierdorf:

Hall Environmental Analysis Laboratory received 19 sample(s) on 11/15/2022 for the analyses presented in the following report.

These were analyzed according to EPA procedures or equivalent. To access our accredited tests please go to [www.hallenvironmental.com](http://www.hallenvironmental.com) or the state specific web sites. In order to properly interpret your results, it is imperative that you review this report in its entirety. See the sample checklist and/or the Chain of Custody for information regarding the sample receipt temperature and preservation. Data qualifiers or a narrative will be provided if the sample analysis or analytical quality control parameters require a flag. When necessary, data qualifiers are provided on both the sample analysis report and the QC summary report, both sections should be reviewed. All samples are reported, as received, unless otherwise indicated. Lab measurement of analytes considered field parameters that require analysis within 15 minutes of sampling such as pH and residual chlorine are qualified as being analyzed outside of the recommended holding time.

Please don't hesitate to contact HEAL for any additional information or clarifications.

ADHS Cert #AZ0682 -- NMED-DWB Cert #NM9425 -- NMED-Micro Cert #NM0901

Sincerely,

A handwritten signature in black ink, appearing to read "Andy Freeman", is written over a horizontal line.

Andy Freeman

Laboratory Manager

4901 Hawkins NE

Albuquerque, NM 87109

## Analytical Report

Lab Order 2211801

Date Reported: 11/30/2022

## Hall Environmental Analysis Laboratory, Inc.

CLIENT: EOG

Client Sample ID: S-1

Project: Federal CM 1

Collection Date: 11/11/2022 10:00:00 AM

Lab ID: 2211801-001

Matrix: SOIL

Received Date: 11/15/2022 7:30:00 AM

Analyses	Result	RL	Qual	Units	DF	Date Analyzed	Batch
<b>EPA METHOD 300.0: ANIONS</b>							Analyst: JTT
Chloride	73	60		mg/Kg	20	11/21/2022 2:52:01 PM	71616
<b>EPA METHOD 8015M/D: DIESEL RANGE ORGANICS</b>							Analyst: DGH
Diesel Range Organics (DRO)	ND	14		mg/Kg	1	11/17/2022 3:33:52 PM	71554
Motor Oil Range Organics (MRO)	ND	48		mg/Kg	1	11/17/2022 3:33:52 PM	71554
Surr: DNOP	83.2	21-129		%Rec	1	11/17/2022 3:33:52 PM	71554
<b>EPA METHOD 8015D: GASOLINE RANGE</b>							Analyst: CCM
Gasoline Range Organics (GRO)	ND	4.9		mg/Kg	1	11/19/2022 1:57:00 AM	71544
Surr: BFB	107	37.7-212		%Rec	1	11/19/2022 1:57:00 AM	71544
<b>EPA METHOD 8021B: VOLATILES</b>							Analyst: CCM
Benzene	ND	0.024		mg/Kg	1	11/19/2022 1:57:00 AM	71544
Toluene	ND	0.049		mg/Kg	1	11/19/2022 1:57:00 AM	71544
Ethylbenzene	ND	0.049		mg/Kg	1	11/19/2022 1:57:00 AM	71544
Xylenes, Total	ND	0.097		mg/Kg	1	11/19/2022 1:57:00 AM	71544
Surr: 4-Bromofluorobenzene	127	70-130		%Rec	1	11/19/2022 1:57:00 AM	71544

Refer to the QC Summary report and sample login checklist for flagged QC data and preservation information.

Qualifiers:	*	Value exceeds Maximum Contaminant Level.	B	Analyte detected in the associated Method Blank
	D	Sample Diluted Due to Matrix	E	Above Quantitation Range/Estimated Value
	H	Holding times for preparation or analysis exceeded	J	Analyte detected below quantitation limits
	ND	Not Detected at the Reporting Limit	P	Sample pH Not In Range
	PQL	Practical Quantitative Limit	RL	Reporting Limit
	S	% Recovery outside of standard limits. If undiluted results may be estimated.		

## Analytical Report

Lab Order 2211801

Date Reported: 11/30/2022

## Hall Environmental Analysis Laboratory, Inc.

CLIENT: EOG

Client Sample ID: S-2

Project: Federal CM 1

Collection Date: 11/11/2022 10:02:00 AM

Lab ID: 2211801-002

Matrix: SOIL

Received Date: 11/15/2022 7:30:00 AM

Analyses	Result	RL	Qual	Units	DF	Date Analyzed	Batch
<b>EPA METHOD 300.0: ANIONS</b>							Analyst: JTT
Chloride	ND	60		mg/Kg	20	11/21/2022 3:29:03 PM	71616
<b>EPA METHOD 8015M/D: DIESEL RANGE ORGANICS</b>							Analyst: DGH
Diesel Range Organics (DRO)	ND	14		mg/Kg	1	11/17/2022 3:44:30 PM	71554
Motor Oil Range Organics (MRO)	ND	47		mg/Kg	1	11/17/2022 3:44:30 PM	71554
Surr: DNOP	70.0	21-129		%Rec	1	11/17/2022 3:44:30 PM	71554
<b>EPA METHOD 8015D: GASOLINE RANGE</b>							Analyst: CCM
Gasoline Range Organics (GRO)	ND	4.9		mg/Kg	1	11/19/2022 2:36:00 AM	71544
Surr: BFB	104	37.7-212		%Rec	1	11/19/2022 2:36:00 AM	71544
<b>EPA METHOD 8021B: VOLATILES</b>							Analyst: CCM
Benzene	ND	0.024		mg/Kg	1	11/19/2022 2:36:00 AM	71544
Toluene	ND	0.049		mg/Kg	1	11/19/2022 2:36:00 AM	71544
Ethylbenzene	ND	0.049		mg/Kg	1	11/19/2022 2:36:00 AM	71544
Xylenes, Total	ND	0.098		mg/Kg	1	11/19/2022 2:36:00 AM	71544
Surr: 4-Bromofluorobenzene	126	70-130		%Rec	1	11/19/2022 2:36:00 AM	71544

Refer to the QC Summary report and sample login checklist for flagged QC data and preservation information.

<b>Qualifiers:</b>	*	Value exceeds Maximum Contaminant Level.	B	Analyte detected in the associated Method Blank
	D	Sample Diluted Due to Matrix	E	Above Quantitation Range/Estimated Value
	H	Holding times for preparation or analysis exceeded	J	Analyte detected below quantitation limits
	ND	Not Detected at the Reporting Limit	P	Sample pH Not In Range
	PQL	Practical Quantitative Limit	RL	Reporting Limit
	S	% Recovery outside of standard limits. If undiluted results may be estimated.		

Page 2 of 23



## Analytical Report

Lab Order 2211801

Date Reported: 11/30/2022

## Hall Environmental Analysis Laboratory, Inc.

CLIENT: EOG

Client Sample ID: S-3

Project: Federal CM 1

Collection Date: 11/11/2022 10:04:00 AM

Lab ID: 2211801-003

Matrix: SOIL

Received Date: 11/15/2022 7:30:00 AM

Analyses	Result	RL	Qual	Units	DF	Date Analyzed	Batch
<b>EPA METHOD 300.0: ANIONS</b>							Analyst: JTT
Chloride	630	59		mg/Kg	20	11/21/2022 3:41:24 PM	71616
<b>EPA METHOD 8015M/D: DIESEL RANGE ORGANICS</b>							Analyst: DGH
Diesel Range Organics (DRO)	ND	15		mg/Kg	1	11/17/2022 3:55:06 PM	71554
Motor Oil Range Organics (MRO)	ND	50		mg/Kg	1	11/17/2022 3:55:06 PM	71554
Surr: DNOP	83.3	21-129		%Rec	1	11/17/2022 3:55:06 PM	71554
<b>EPA METHOD 8015D: GASOLINE RANGE</b>							Analyst: CCM
Gasoline Range Organics (GRO)	ND	5.0		mg/Kg	1	11/19/2022 2:56:00 AM	71544
Surr: BFB	102	37.7-212		%Rec	1	11/19/2022 2:56:00 AM	71544
<b>EPA METHOD 8021B: VOLATILES</b>							Analyst: CCM
Benzene	ND	0.025		mg/Kg	1	11/19/2022 2:56:00 AM	71544
Toluene	ND	0.050		mg/Kg	1	11/19/2022 2:56:00 AM	71544
Ethylbenzene	ND	0.050		mg/Kg	1	11/19/2022 2:56:00 AM	71544
Xylenes, Total	ND	0.099		mg/Kg	1	11/19/2022 2:56:00 AM	71544
Surr: 4-Bromofluorobenzene	125	70-130		%Rec	1	11/19/2022 2:56:00 AM	71544

Refer to the QC Summary report and sample login checklist for flagged QC data and preservation information.

Qualifiers:	*	Value exceeds Maximum Contaminant Level.	B	Analyte detected in the associated Method Blank
	D	Sample Diluted Due to Matrix	E	Above Quantitation Range/Estimated Value
	H	Holding times for preparation or analysis exceeded	J	Analyte detected below quantitation limits
	ND	Not Detected at the Reporting Limit	P	Sample pH Not In Range
	PQL	Practical Quantitative Limit	RL	Reporting Limit
	S	% Recovery outside of standard limits. If undiluted results may be estimated.		

Page 3 of 23



## Analytical Report

Lab Order 2211801

Date Reported: 11/30/2022

## Hall Environmental Analysis Laboratory, Inc.

CLIENT: EOG

Client Sample ID: S-4

Project: Federal CM 1

Collection Date: 11/11/2022 10:06:00 AM

Lab ID: 2211801-004

Matrix: SOIL

Received Date: 11/15/2022 7:30:00 AM

Analyses	Result	RL	Qual	Units	DF	Date Analyzed	Batch
<b>EPA METHOD 300.0: ANIONS</b>							Analyst: JTT
Chloride	620	60		mg/Kg	20	11/21/2022 3:53:45 PM	71616
<b>EPA METHOD 8015M/D: DIESEL RANGE ORGANICS</b>							Analyst: DGH
Diesel Range Organics (DRO)	ND	14		mg/Kg	1	11/17/2022 4:05:43 PM	71554
Motor Oil Range Organics (MRO)	ND	46		mg/Kg	1	11/17/2022 4:05:43 PM	71554
Surr: DNOP	73.6	21-129		%Rec	1	11/17/2022 4:05:43 PM	71554
<b>EPA METHOD 8015D: GASOLINE RANGE</b>							Analyst: CCM
Gasoline Range Organics (GRO)	ND	4.7		mg/Kg	1	11/19/2022 3:16:00 AM	71544
Surr: BFB	107	37.7-212		%Rec	1	11/19/2022 3:16:00 AM	71544
<b>EPA METHOD 8021B: VOLATILES</b>							Analyst: CCM
Benzene	ND	0.024		mg/Kg	1	11/19/2022 3:16:00 AM	71544
Toluene	ND	0.047		mg/Kg	1	11/19/2022 3:16:00 AM	71544
Ethylbenzene	ND	0.047		mg/Kg	1	11/19/2022 3:16:00 AM	71544
Xylenes, Total	ND	0.095		mg/Kg	1	11/19/2022 3:16:00 AM	71544
Surr: 4-Bromofluorobenzene	126	70-130		%Rec	1	11/19/2022 3:16:00 AM	71544

Refer to the QC Summary report and sample login checklist for flagged QC data and preservation information.

Qualifiers:	*	Value exceeds Maximum Contaminant Level.	B	Analyte detected in the associated Method Blank
	D	Sample Diluted Due to Matrix	E	Above Quantitation Range/Estimated Value
	H	Holding times for preparation or analysis exceeded	J	Analyte detected below quantitation limits
	ND	Not Detected at the Reporting Limit	P	Sample pH Not In Range
	PQL	Practical Quantitative Limit	RL	Reporting Limit
	S	% Recovery outside of standard limits. If undiluted results may be estimated.		

Page 4 of 23

## Analytical Report

Lab Order 2211801

Date Reported: 11/30/2022

## Hall Environmental Analysis Laboratory, Inc.

CLIENT: EOG

Client Sample ID: S-5

Project: Federal CM 1

Collection Date: 11/11/2022 10:08:00 AM

Lab ID: 2211801-005

Matrix: SOIL

Received Date: 11/15/2022 7:30:00 AM

Analyses	Result	RL	Qual	Units	DF	Date Analyzed	Batch
<b>EPA METHOD 300.0: ANIONS</b>							Analyst: JTT
Chloride	1400	60		mg/Kg	20	11/21/2022 4:06:05 PM	71616
<b>EPA METHOD 8015M/D: DIESEL RANGE ORGANICS</b>							Analyst: DGH
Diesel Range Organics (DRO)	ND	15		mg/Kg	1	11/18/2022 3:02:30 PM	71554
Motor Oil Range Organics (MRO)	ND	48		mg/Kg	1	11/18/2022 3:02:30 PM	71554
Surr: DNOP	84.2	21-129		%Rec	1	11/18/2022 3:02:30 PM	71554
<b>EPA METHOD 8015D: GASOLINE RANGE</b>							Analyst: CCM
Gasoline Range Organics (GRO)	ND	4.9		mg/Kg	1	11/19/2022 3:35:00 AM	71544
Surr: BFB	105	37.7-212		%Rec	1	11/19/2022 3:35:00 AM	71544
<b>EPA METHOD 8021B: VOLATILES</b>							Analyst: CCM
Benzene	ND	0.025		mg/Kg	1	11/19/2022 3:35:00 AM	71544
Toluene	ND	0.049		mg/Kg	1	11/19/2022 3:35:00 AM	71544
Ethylbenzene	ND	0.049		mg/Kg	1	11/19/2022 3:35:00 AM	71544
Xylenes, Total	ND	0.098		mg/Kg	1	11/19/2022 3:35:00 AM	71544
Surr: 4-Bromofluorobenzene	124	70-130		%Rec	1	11/19/2022 3:35:00 AM	71544

Refer to the QC Summary report and sample login checklist for flagged QC data and preservation information.

Qualifiers:	*	Value exceeds Maximum Contaminant Level.	B	Analyte detected in the associated Method Blank
	D	Sample Diluted Due to Matrix	E	Above Quantitation Range/Estimated Value
	H	Holding times for preparation or analysis exceeded	J	Analyte detected below quantitation limits
	ND	Not Detected at the Reporting Limit	P	Sample pH Not In Range
	PQL	Practical Quantitative Limit	RL	Reporting Limit
	S	% Recovery outside of standard limits. If undiluted results may be estimated.		

## Analytical Report

Lab Order 2211801

Date Reported: 11/30/2022

## Hall Environmental Analysis Laboratory, Inc.

CLIENT: EOG

Client Sample ID: S-6

Project: Federal CM 1

Collection Date: 11/11/2022 10:10:00 AM

Lab ID: 2211801-006

Matrix: SOIL

Received Date: 11/15/2022 7:30:00 AM

Analyses	Result	RL	Qual	Units	DF	Date Analyzed	Batch
<b>EPA METHOD 300.0: ANIONS</b>							Analyst: JTT
Chloride	330	60		mg/Kg	20	11/21/2022 4:18:26 PM	71616
<b>EPA METHOD 8015M/D: DIESEL RANGE ORGANICS</b>							Analyst: DGH
Diesel Range Organics (DRO)	ND	14		mg/Kg	1	11/17/2022 4:26:51 PM	71554
Motor Oil Range Organics (MRO)	ND	47		mg/Kg	1	11/17/2022 4:26:51 PM	71554
Surr: DNOP	68.7	21-129		%Rec	1	11/17/2022 4:26:51 PM	71554
<b>EPA METHOD 8015D: GASOLINE RANGE</b>							Analyst: CCM
Gasoline Range Organics (GRO)	ND	4.8		mg/Kg	1	11/19/2022 3:55:00 AM	71544
Surr: BFB	102	37.7-212		%Rec	1	11/19/2022 3:55:00 AM	71544
<b>EPA METHOD 8021B: VOLATILES</b>							Analyst: CCM
Benzene	ND	0.024		mg/Kg	1	11/19/2022 3:55:00 AM	71544
Toluene	ND	0.048		mg/Kg	1	11/19/2022 3:55:00 AM	71544
Ethylbenzene	ND	0.048		mg/Kg	1	11/19/2022 3:55:00 AM	71544
Xylenes, Total	ND	0.095		mg/Kg	1	11/19/2022 3:55:00 AM	71544
Surr: 4-Bromofluorobenzene	128	70-130		%Rec	1	11/19/2022 3:55:00 AM	71544

Refer to the QC Summary report and sample login checklist for flagged QC data and preservation information.

Qualifiers:	*	Value exceeds Maximum Contaminant Level.	B	Analyte detected in the associated Method Blank
	D	Sample Diluted Due to Matrix	E	Above Quantitation Range/Estimated Value
	H	Holding times for preparation or analysis exceeded	J	Analyte detected below quantitation limits
	ND	Not Detected at the Reporting Limit	P	Sample pH Not In Range
	PQL	Practical Quantitative Limit	RL	Reporting Limit
	S	% Recovery outside of standard limits. If undiluted results may be estimated.		

Page 6 of 23

## Analytical Report

Lab Order 2211801

Date Reported: 11/30/2022

## Hall Environmental Analysis Laboratory, Inc.

CLIENT: EOG

Client Sample ID: S-7

Project: Federal CM 1

Collection Date: 11/11/2022 10:12:00 AM

Lab ID: 2211801-007

Matrix: SOIL

Received Date: 11/15/2022 7:30:00 AM

Analyses	Result	RL	Qual	Units	DF	Date Analyzed	Batch
<b>EPA METHOD 300.0: ANIONS</b>							Analyst: JTT
Chloride	1800	60		mg/Kg	20	11/21/2022 4:30:47 PM	71616
<b>EPA METHOD 8015M/D: DIESEL RANGE ORGANICS</b>							Analyst: DGH
Diesel Range Organics (DRO)	15	14		mg/Kg	1	11/17/2022 4:37:23 PM	71554
Motor Oil Range Organics (MRO)	ND	47		mg/Kg	1	11/17/2022 4:37:23 PM	71554
Surr: DNOP	78.5	21-129		%Rec	1	11/17/2022 4:37:23 PM	71554
<b>EPA METHOD 8015D: GASOLINE RANGE</b>							Analyst: CCM
Gasoline Range Organics (GRO)	ND	4.6		mg/Kg	1	11/19/2022 4:15:00 AM	71544
Surr: BFB	110	37.7-212		%Rec	1	11/19/2022 4:15:00 AM	71544
<b>EPA METHOD 8021B: VOLATILES</b>							Analyst: CCM
Benzene	ND	0.023		mg/Kg	1	11/19/2022 4:15:00 AM	71544
Toluene	ND	0.046		mg/Kg	1	11/19/2022 4:15:00 AM	71544
Ethylbenzene	ND	0.046		mg/Kg	1	11/19/2022 4:15:00 AM	71544
Xylenes, Total	ND	0.093		mg/Kg	1	11/19/2022 4:15:00 AM	71544
Surr: 4-Bromofluorobenzene	132	70-130	S	%Rec	1	11/19/2022 4:15:00 AM	71544

Refer to the QC Summary report and sample login checklist for flagged QC data and preservation information.

Qualifiers:	*	Value exceeds Maximum Contaminant Level.	B	Analyte detected in the associated Method Blank
	D	Sample Diluted Due to Matrix	E	Above Quantitation Range/Estimated Value
	H	Holding times for preparation or analysis exceeded	J	Analyte detected below quantitation limits
	ND	Not Detected at the Reporting Limit	P	Sample pH Not In Range
	PQL	Practical Quantitative Limit	RL	Reporting Limit
	S	% Recovery outside of standard limits. If undiluted results may be estimated.		

Page 7 of 23

## Analytical Report

Lab Order 2211801

Date Reported: 11/30/2022

## Hall Environmental Analysis Laboratory, Inc.

CLIENT: EOG

Client Sample ID: S-8

Project: Federal CM 1

Collection Date: 11/11/2022 10:14:00 AM

Lab ID: 2211801-008

Matrix: SOIL

Received Date: 11/15/2022 7:30:00 AM

Analyses	Result	RL	Qual	Units	DF	Date Analyzed	Batch
<b>EPA METHOD 300.0: ANIONS</b>							Analyst: JTT
Chloride	1900	60		mg/Kg	20	11/21/2022 5:20:09 PM	71616
<b>EPA METHOD 8015M/D: DIESEL RANGE ORGANICS</b>							Analyst: DGH
Diesel Range Organics (DRO)	ND	14		mg/Kg	1	11/17/2022 4:47:54 PM	71554
Motor Oil Range Organics (MRO)	ND	45		mg/Kg	1	11/17/2022 4:47:54 PM	71554
Surr: DNOP	71.0	21-129		%Rec	1	11/17/2022 4:47:54 PM	71554
<b>EPA METHOD 8015D: GASOLINE RANGE</b>							Analyst: CCM
Gasoline Range Organics (GRO)	ND	4.9		mg/Kg	1	11/19/2022 4:35:00 AM	71544
Surr: BFB	106	37.7-212		%Rec	1	11/19/2022 4:35:00 AM	71544
<b>EPA METHOD 8021B: VOLATILES</b>							Analyst: CCM
Benzene	ND	0.024		mg/Kg	1	11/19/2022 4:35:00 AM	71544
Toluene	ND	0.049		mg/Kg	1	11/19/2022 4:35:00 AM	71544
Ethylbenzene	ND	0.049		mg/Kg	1	11/19/2022 4:35:00 AM	71544
Xylenes, Total	ND	0.097		mg/Kg	1	11/19/2022 4:35:00 AM	71544
Surr: 4-Bromofluorobenzene	129	70-130		%Rec	1	11/19/2022 4:35:00 AM	71544

Refer to the QC Summary report and sample login checklist for flagged QC data and preservation information.

Qualifiers:	*	Value exceeds Maximum Contaminant Level.	B	Analyte detected in the associated Method Blank
	D	Sample Diluted Due to Matrix	E	Above Quantitation Range/Estimated Value
	H	Holding times for preparation or analysis exceeded	J	Analyte detected below quantitation limits
	ND	Not Detected at the Reporting Limit	P	Sample pH Not In Range
	PQL	Practical Quantitative Limit	RL	Reporting Limit
	S	% Recovery outside of standard limits. If undiluted results may be estimated.		

## Analytical Report

Lab Order 2211801

Date Reported: 11/30/2022

## Hall Environmental Analysis Laboratory, Inc.

CLIENT: EOG

Client Sample ID: S-9

Project: Federal CM 1

Collection Date: 11/11/2022 10:16:00 AM

Lab ID: 2211801-009

Matrix: SOIL

Received Date: 11/15/2022 7:30:00 AM

Analyses	Result	RL	Qual	Units	DF	Date Analyzed	Batch
<b>EPA METHOD 300.0: ANIONS</b>							Analyst: <b>NAI</b>
Chloride	3800	150		mg/Kg	50	11/22/2022 2:41:35 PM	71616
<b>EPA METHOD 8015M/D: DIESEL RANGE ORGANICS</b>							Analyst: <b>DGH</b>
Diesel Range Organics (DRO)	ND	14		mg/Kg	1	11/17/2022 4:58:25 PM	71554
Motor Oil Range Organics (MRO)	ND	48		mg/Kg	1	11/17/2022 4:58:25 PM	71554
Surr: DNOP	73.9	21-129		%Rec	1	11/17/2022 4:58:25 PM	71554
<b>EPA METHOD 8015D: GASOLINE RANGE</b>							Analyst: <b>CCM</b>
Gasoline Range Organics (GRO)	ND	4.9		mg/Kg	1	11/19/2022 4:55:00 AM	71544
Surr: BFB	107	37.7-212		%Rec	1	11/19/2022 4:55:00 AM	71544
<b>EPA METHOD 8021B: VOLATILES</b>							Analyst: <b>CCM</b>
Benzene	ND	0.024		mg/Kg	1	11/19/2022 4:55:00 AM	71544
Toluene	ND	0.049		mg/Kg	1	11/19/2022 4:55:00 AM	71544
Ethylbenzene	ND	0.049		mg/Kg	1	11/19/2022 4:55:00 AM	71544
Xylenes, Total	ND	0.097		mg/Kg	1	11/19/2022 4:55:00 AM	71544
Surr: 4-Bromofluorobenzene	134	70-130	S	%Rec	1	11/19/2022 4:55:00 AM	71544

Refer to the QC Summary report and sample login checklist for flagged QC data and preservation information.

<b>Qualifiers:</b>	*	Value exceeds Maximum Contaminant Level.	B	Analyte detected in the associated Method Blank
	D	Sample Diluted Due to Matrix	E	Above Quantitation Range/Estimated Value
	H	Holding times for preparation or analysis exceeded	J	Analyte detected below quantitation limits
	ND	Not Detected at the Reporting Limit	P	Sample pH Not In Range
	PQL	Practical Quantitative Limit	RL	Reporting Limit
	S	% Recovery outside of standard limits. If undiluted results may be estimated.		

## Analytical Report

Lab Order 2211801

Date Reported: 11/30/2022

## Hall Environmental Analysis Laboratory, Inc.

CLIENT: EOG

Client Sample ID: S-10

Project: Federal CM 1

Collection Date: 11/11/2022 10:18:00 AM

Lab ID: 2211801-010

Matrix: SOIL

Received Date: 11/15/2022 7:30:00 AM

Analyses	Result	RL	Qual	Units	DF	Date Analyzed	Batch
<b>EPA METHOD 300.0: ANIONS</b>							Analyst: JTT
Chloride	1500	60		mg/Kg	20	11/21/2022 5:44:52 PM	71616
<b>EPA METHOD 8015M/D: DIESEL RANGE ORGANICS</b>							Analyst: DGH
Diesel Range Organics (DRO)	ND	14		mg/Kg	1	11/17/2022 5:08:54 PM	71554
Motor Oil Range Organics (MRO)	ND	47		mg/Kg	1	11/17/2022 5:08:54 PM	71554
Surr: DNOP	79.5	21-129		%Rec	1	11/17/2022 5:08:54 PM	71554
<b>EPA METHOD 8015D: GASOLINE RANGE</b>							Analyst: CCM
Gasoline Range Organics (GRO)	ND	5.0		mg/Kg	1	11/19/2022 5:14:00 AM	71544
Surr: BFB	110	37.7-212		%Rec	1	11/19/2022 5:14:00 AM	71544
<b>EPA METHOD 8021B: VOLATILES</b>							Analyst: CCM
Benzene	ND	0.025		mg/Kg	1	11/19/2022 5:14:00 AM	71544
Toluene	ND	0.050		mg/Kg	1	11/19/2022 5:14:00 AM	71544
Ethylbenzene	ND	0.050		mg/Kg	1	11/19/2022 5:14:00 AM	71544
Xylenes, Total	ND	0.099		mg/Kg	1	11/19/2022 5:14:00 AM	71544
Surr: 4-Bromofluorobenzene	133	70-130	S	%Rec	1	11/19/2022 5:14:00 AM	71544

Refer to the QC Summary report and sample login checklist for flagged QC data and preservation information.

Qualifiers:	*	Value exceeds Maximum Contaminant Level.	B	Analyte detected in the associated Method Blank
	D	Sample Diluted Due to Matrix	E	Above Quantitation Range/Estimated Value
	H	Holding times for preparation or analysis exceeded	J	Analyte detected below quantitation limits
	ND	Not Detected at the Reporting Limit	P	Sample pH Not In Range
	PQL	Practical Quantitative Limit	RL	Reporting Limit
	S	% Recovery outside of standard limits. If undiluted results may be estimated.		

Page 10 of 23

## Analytical Report

Lab Order 2211801

Date Reported: 11/30/2022

## Hall Environmental Analysis Laboratory, Inc.

CLIENT: EOG

Client Sample ID: S-11

Project: Federal CM 1

Collection Date: 11/11/2022 10:20:00 AM

Lab ID: 2211801-011

Matrix: SOIL

Received Date: 11/15/2022 7:30:00 AM

Analyses	Result	RL	Qual	Units	DF	Date Analyzed	Batch
<b>EPA METHOD 300.0: ANIONS</b>							Analyst: <b>NAI</b>
Chloride	2200	150		mg/Kg	50	11/22/2022 2:53:59 PM	71616
<b>EPA METHOD 8015M/D: DIESEL RANGE ORGANICS</b>							Analyst: <b>DGH</b>
Diesel Range Organics (DRO)	ND	14		mg/Kg	1	11/17/2022 5:19:28 PM	71554
Motor Oil Range Organics (MRO)	ND	48		mg/Kg	1	11/17/2022 5:19:28 PM	71554
Surr: DNOP	72.1	21-129		%Rec	1	11/17/2022 5:19:28 PM	71554
<b>EPA METHOD 8015D: GASOLINE RANGE</b>							Analyst: <b>CCM</b>
Gasoline Range Organics (GRO)	ND	4.9		mg/Kg	1	11/19/2022 5:34:00 AM	71544
Surr: BFB	106	37.7-212		%Rec	1	11/19/2022 5:34:00 AM	71544
<b>EPA METHOD 8021B: VOLATILES</b>							Analyst: <b>CCM</b>
Benzene	ND	0.024		mg/Kg	1	11/19/2022 5:34:00 AM	71544
Toluene	ND	0.049		mg/Kg	1	11/19/2022 5:34:00 AM	71544
Ethylbenzene	ND	0.049		mg/Kg	1	11/19/2022 5:34:00 AM	71544
Xylenes, Total	ND	0.098		mg/Kg	1	11/19/2022 5:34:00 AM	71544
Surr: 4-Bromofluorobenzene	128	70-130		%Rec	1	11/19/2022 5:34:00 AM	71544

Refer to the QC Summary report and sample login checklist for flagged QC data and preservation information.

<b>Qualifiers:</b>	*	Value exceeds Maximum Contaminant Level.	B	Analyte detected in the associated Method Blank
	D	Sample Diluted Due to Matrix	E	Above Quantitation Range/Estimated Value
	H	Holding times for preparation or analysis exceeded	J	Analyte detected below quantitation limits
	ND	Not Detected at the Reporting Limit	P	Sample pH Not In Range
	PQL	Practical Quantitative Limit	RL	Reporting Limit
	S	% Recovery outside of standard limits. If undiluted results may be estimated.		

Page 11 of 23



## Analytical Report

Lab Order 2211801

Date Reported: 11/30/2022

## Hall Environmental Analysis Laboratory, Inc.

CLIENT: EOG

Client Sample ID: SW-1

Project: Federal CM 1

Collection Date: 11/11/2022 11:00:00 AM

Lab ID: 2211801-012

Matrix: SOIL

Received Date: 11/15/2022 7:30:00 AM

Analyses	Result	RL	Qual	Units	DF	Date Analyzed	Batch
<b>EPA METHOD 300.0: ANIONS</b>							Analyst: JTT
Chloride	81	60		mg/Kg	20	11/19/2022 3:56:34 PM	71602
<b>EPA METHOD 8015M/D: DIESEL RANGE ORGANICS</b>							Analyst: DGH
Diesel Range Organics (DRO)	ND	14		mg/Kg	1	11/18/2022 10:40:39 PM	71576
Motor Oil Range Organics (MRO)	ND	48		mg/Kg	1	11/18/2022 10:40:39 PM	71576
Surr: DNOP	99.4	21-129		%Rec	1	11/18/2022 10:40:39 PM	71576
<b>EPA METHOD 8015D: GASOLINE RANGE</b>							Analyst: CCM
Gasoline Range Organics (GRO)	ND	5.0		mg/Kg	1	11/19/2022 7:33:00 AM	71547
Surr: BFB	100	37.7-212		%Rec	1	11/19/2022 7:33:00 AM	71547
<b>EPA METHOD 8021B: VOLATILES</b>							Analyst: CCM
Benzene	ND	0.025		mg/Kg	1	11/21/2022 10:20:00 AM	71547
Toluene	ND	0.050		mg/Kg	1	11/21/2022 10:20:00 AM	71547
Ethylbenzene	ND	0.050		mg/Kg	1	11/21/2022 10:20:00 AM	71547
Xylenes, Total	ND	0.10		mg/Kg	1	11/21/2022 10:20:00 AM	71547
Surr: 4-Bromofluorobenzene	140	70-130	S	%Rec	1	11/21/2022 10:20:00 AM	71547

Refer to the QC Summary report and sample login checklist for flagged QC data and preservation information.

Qualifiers:	*	Value exceeds Maximum Contaminant Level.	B	Analyte detected in the associated Method Blank
	D	Sample Diluted Due to Matrix	E	Above Quantitation Range/Estimated Value
	H	Holding times for preparation or analysis exceeded	J	Analyte detected below quantitation limits
	ND	Not Detected at the Reporting Limit	P	Sample pH Not In Range
	PQL	Practical Quantitative Limit	RL	Reporting Limit
	S	% Recovery outside of standard limits. If undiluted results may be estimated.		

Page 12 of 23

## Analytical Report

Lab Order 2211801

Date Reported: 11/30/2022

## Hall Environmental Analysis Laboratory, Inc.

CLIENT: EOG

Client Sample ID: SW-2

Project: Federal CM 1

Collection Date: 11/11/2022 11:02:00 AM

Lab ID: 2211801-013

Matrix: SOIL

Received Date: 11/15/2022 7:30:00 AM

Analyses	Result	RL	Qual	Units	DF	Date Analyzed	Batch
<b>EPA METHOD 300.0: ANIONS</b>							Analyst: JTT
Chloride	ND	60		mg/Kg	20	11/19/2022 4:33:49 PM	71602
<b>EPA METHOD 8015M/D: DIESEL RANGE ORGANICS</b>							Analyst: DGH
Diesel Range Organics (DRO)	ND	15		mg/Kg	1	11/18/2022 11:12:33 PM	71576
Motor Oil Range Organics (MRO)	ND	49		mg/Kg	1	11/18/2022 11:12:33 PM	71576
Surr: DNOP	82.1	21-129		%Rec	1	11/18/2022 11:12:33 PM	71576
<b>EPA METHOD 8015D: GASOLINE RANGE</b>							Analyst: CCM
Gasoline Range Organics (GRO)	ND	5.0		mg/Kg	1	11/19/2022 8:32:00 AM	71547
Surr: BFB	107	37.7-212		%Rec	1	11/19/2022 8:32:00 AM	71547
<b>EPA METHOD 8021B: VOLATILES</b>							Analyst: CCM
Benzene	ND	0.025		mg/Kg	1	11/21/2022 10:40:00 AM	71547
Toluene	ND	0.050		mg/Kg	1	11/21/2022 10:40:00 AM	71547
Ethylbenzene	ND	0.050		mg/Kg	1	11/21/2022 10:40:00 AM	71547
Xylenes, Total	ND	0.10		mg/Kg	1	11/21/2022 10:40:00 AM	71547
Surr: 4-Bromofluorobenzene	140	70-130	S	%Rec	1	11/21/2022 10:40:00 AM	71547

Refer to the QC Summary report and sample login checklist for flagged QC data and preservation information.

Qualifiers:	*	Value exceeds Maximum Contaminant Level.	B	Analyte detected in the associated Method Blank
	D	Sample Diluted Due to Matrix	E	Above Quantitation Range/Estimated Value
	H	Holding times for preparation or analysis exceeded	J	Analyte detected below quantitation limits
	ND	Not Detected at the Reporting Limit	P	Sample pH Not In Range
	PQL	Practical Quantitative Limit	RL	Reporting Limit
	S	% Recovery outside of standard limits. If undiluted results may be estimated.		

Page 13 of 23

## Analytical Report

Lab Order 2211801

Date Reported: 11/30/2022

## Hall Environmental Analysis Laboratory, Inc.

CLIENT: EOG

Client Sample ID: SW-3

Project: Federal CM 1

Collection Date: 11/11/2022 11:04:00 AM

Lab ID: 2211801-014

Matrix: SOIL

Received Date: 11/15/2022 7:30:00 AM

Analyses	Result	RL	Qual	Units	DF	Date Analyzed	Batch
<b>EPA METHOD 300.0: ANIONS</b>							Analyst: JTT
Chloride	560	60		mg/Kg	20	11/19/2022 4:46:13 PM	71602
<b>EPA METHOD 8015M/D: DIESEL RANGE ORGANICS</b>							Analyst: DGH
Diesel Range Organics (DRO)	ND	15		mg/Kg	1	11/18/2022 11:23:08 PM	71576
Motor Oil Range Organics (MRO)	ND	50		mg/Kg	1	11/18/2022 11:23:08 PM	71576
Surr: DNOP	87.5	21-129		%Rec	1	11/18/2022 11:23:08 PM	71576
<b>EPA METHOD 8015D: GASOLINE RANGE</b>							Analyst: CCM
Gasoline Range Organics (GRO)	ND	4.9		mg/Kg	1	11/19/2022 9:32:00 AM	71547
Surr: BFB	110	37.7-212		%Rec	1	11/19/2022 9:32:00 AM	71547
<b>EPA METHOD 8021B: VOLATILES</b>							Analyst: CCM
Benzene	ND	0.025		mg/Kg	1	11/21/2022 11:39:00 AM	71547
Toluene	ND	0.049		mg/Kg	1	11/21/2022 11:39:00 AM	71547
Ethylbenzene	ND	0.049		mg/Kg	1	11/21/2022 11:39:00 AM	71547
Xylenes, Total	ND	0.099		mg/Kg	1	11/21/2022 11:39:00 AM	71547
Surr: 4-Bromofluorobenzene	140	70-130	S	%Rec	1	11/21/2022 11:39:00 AM	71547

Refer to the QC Summary report and sample login checklist for flagged QC data and preservation information.

Qualifiers:	*	Value exceeds Maximum Contaminant Level.	B	Analyte detected in the associated Method Blank
	D	Sample Diluted Due to Matrix	E	Above Quantitation Range/Estimated Value
	H	Holding times for preparation or analysis exceeded	J	Analyte detected below quantitation limits
	ND	Not Detected at the Reporting Limit	P	Sample pH Not In Range
	PQL	Practical Quantitative Limit	RL	Reporting Limit
	S	% Recovery outside of standard limits. If undiluted results may be estimated.		

Page 14 of 23

## Analytical Report

Lab Order 2211801

Date Reported: 11/30/2022

## Hall Environmental Analysis Laboratory, Inc.

CLIENT: EOG

Client Sample ID: SW-4

Project: Federal CM 1

Collection Date: 11/11/2022 11:06:00 AM

Lab ID: 2211801-015

Matrix: SOIL

Received Date: 11/15/2022 7:30:00 AM

Analyses	Result	RL	Qual	Units	DF	Date Analyzed	Batch
<b>EPA METHOD 300.0: ANIONS</b>							Analyst: JMT
Chloride	770	60		mg/Kg	20	11/21/2022 12:26:31 PM	71606
<b>EPA METHOD 8015M/D: DIESEL RANGE ORGANICS</b>							Analyst: DGH
Diesel Range Organics (DRO)	ND	14		mg/Kg	1	11/18/2022 11:33:42 PM	71576
Motor Oil Range Organics (MRO)	ND	48		mg/Kg	1	11/18/2022 11:33:42 PM	71576
Surr: DNOP	79.2	21-129		%Rec	1	11/18/2022 11:33:42 PM	71576
<b>EPA METHOD 8015D: GASOLINE RANGE</b>							Analyst: CCM
Gasoline Range Organics (GRO)	ND	4.9		mg/Kg	1	11/19/2022 9:51:00 AM	71547
Surr: BFB	110	37.7-212		%Rec	1	11/19/2022 9:51:00 AM	71547
<b>EPA METHOD 8021B: VOLATILES</b>							Analyst: CCM
Benzene	ND	0.024		mg/Kg	1	11/21/2022 11:59:00 AM	71547
Toluene	ND	0.049		mg/Kg	1	11/21/2022 11:59:00 AM	71547
Ethylbenzene	ND	0.049		mg/Kg	1	11/21/2022 11:59:00 AM	71547
Xylenes, Total	ND	0.097		mg/Kg	1	11/21/2022 11:59:00 AM	71547
Surr: 4-Bromofluorobenzene	139	70-130	S	%Rec	1	11/21/2022 11:59:00 AM	71547

Refer to the QC Summary report and sample login checklist for flagged QC data and preservation information.

Qualifiers:	*	Value exceeds Maximum Contaminant Level.	B	Analyte detected in the associated Method Blank
	D	Sample Diluted Due to Matrix	E	Above Quantitation Range/Estimated Value
	H	Holding times for preparation or analysis exceeded	J	Analyte detected below quantitation limits
	ND	Not Detected at the Reporting Limit	P	Sample pH Not In Range
	PQL	Practical Quantitative Limit	RL	Reporting Limit
	S	% Recovery outside of standard limits. If undiluted results may be estimated.		

Page 15 of 23

## Analytical Report

Lab Order 2211801

Date Reported: 11/30/2022

## Hall Environmental Analysis Laboratory, Inc.

CLIENT: EOG

Client Sample ID: NW-1

Project: Federal CM 1

Collection Date: 11/11/2022 1:30:00 PM

Lab ID: 2211801-016

Matrix: SOIL

Received Date: 11/15/2022 7:30:00 AM

Analyses	Result	RL	Qual	Units	DF	Date Analyzed	Batch
<b>EPA METHOD 300.0: ANIONS</b>							Analyst: JMT
Chloride	410	59		mg/Kg	20	11/21/2022 12:38:56 PM	71606
<b>EPA METHOD 8015M/D: DIESEL RANGE ORGANICS</b>							Analyst: DGH
Diesel Range Organics (DRO)	ND	14		mg/Kg	1	11/18/2022 11:44:16 PM	71576
Motor Oil Range Organics (MRO)	ND	46		mg/Kg	1	11/18/2022 11:44:16 PM	71576
Surr: DNOP	75.8	21-129		%Rec	1	11/18/2022 11:44:16 PM	71576
<b>EPA METHOD 8015D: GASOLINE RANGE</b>							Analyst: CCM
Gasoline Range Organics (GRO)	ND	5.0		mg/Kg	1	11/19/2022 10:11:00 AM	71547
Surr: BFB	106	37.7-212		%Rec	1	11/19/2022 10:11:00 AM	71547
<b>EPA METHOD 8021B: VOLATILES</b>							Analyst: CCM
Benzene	ND	0.025		mg/Kg	1	11/21/2022 12:19:00 PM	71547
Toluene	ND	0.050		mg/Kg	1	11/21/2022 12:19:00 PM	71547
Ethylbenzene	ND	0.050		mg/Kg	1	11/21/2022 12:19:00 PM	71547
Xylenes, Total	ND	0.10		mg/Kg	1	11/21/2022 12:19:00 PM	71547
Surr: 4-Bromofluorobenzene	139	70-130	S	%Rec	1	11/21/2022 12:19:00 PM	71547

Refer to the QC Summary report and sample login checklist for flagged QC data and preservation information.

Qualifiers:	*	Value exceeds Maximum Contaminant Level.	B	Analyte detected in the associated Method Blank
	D	Sample Diluted Due to Matrix	E	Above Quantitation Range/Estimated Value
	H	Holding times for preparation or analysis exceeded	J	Analyte detected below quantitation limits
	ND	Not Detected at the Reporting Limit	P	Sample pH Not In Range
	PQL	Practical Quantitative Limit	RL	Reporting Limit
	S	% Recovery outside of standard limits. If undiluted results may be estimated.		

Page 16 of 23

## Analytical Report

Lab Order 2211801

Date Reported: 11/30/2022

## Hall Environmental Analysis Laboratory, Inc.

CLIENT: EOG

Client Sample ID: NW-2

Project: Federal CM 1

Collection Date: 11/11/2022 1:32:00 PM

Lab ID: 2211801-017

Matrix: SOIL

Received Date: 11/15/2022 7:30:00 AM

Analyses	Result	RL	Qual	Units	DF	Date Analyzed	Batch
<b>EPA METHOD 300.0: ANIONS</b>							Analyst: JMT
Chloride	230	60		mg/Kg	20	11/21/2022 1:16:09 PM	71606
<b>EPA METHOD 8015M/D: DIESEL RANGE ORGANICS</b>							Analyst: DGH
Diesel Range Organics (DRO)	ND	14		mg/Kg	1	11/19/2022 12:05:09 AM	71576
Motor Oil Range Organics (MRO)	ND	47		mg/Kg	1	11/19/2022 12:05:09 AM	71576
Surr: DNOP	75.1	21-129		%Rec	1	11/19/2022 12:05:09 AM	71576
<b>EPA METHOD 8015D: GASOLINE RANGE</b>							Analyst: CCM
Gasoline Range Organics (GRO)	ND	4.7		mg/Kg	1	11/19/2022 10:31:00 AM	71547
Surr: BFB	105	37.7-212		%Rec	1	11/19/2022 10:31:00 AM	71547
<b>EPA METHOD 8021B: VOLATILES</b>							Analyst: CCM
Benzene	ND	0.024		mg/Kg	1	11/21/2022 12:38:00 PM	71547
Toluene	ND	0.047		mg/Kg	1	11/21/2022 12:38:00 PM	71547
Ethylbenzene	ND	0.047		mg/Kg	1	11/21/2022 12:38:00 PM	71547
Xylenes, Total	ND	0.094		mg/Kg	1	11/21/2022 12:38:00 PM	71547
Surr: 4-Bromofluorobenzene	138	70-130	S	%Rec	1	11/21/2022 12:38:00 PM	71547

Refer to the QC Summary report and sample login checklist for flagged QC data and preservation information.

Qualifiers:	*	Value exceeds Maximum Contaminant Level.	B	Analyte detected in the associated Method Blank
	D	Sample Diluted Due to Matrix	E	Above Quantitation Range/Estimated Value
	H	Holding times for preparation or analysis exceeded	J	Analyte detected below quantitation limits
	ND	Not Detected at the Reporting Limit	P	Sample pH Not In Range
	PQL	Practical Quantitative Limit	RL	Reporting Limit
	S	% Recovery outside of standard limits. If undiluted results may be estimated.		

Page 17 of 23

## Analytical Report

Lab Order 2211801

Date Reported: 11/30/2022

## Hall Environmental Analysis Laboratory, Inc.

CLIENT: EOG

Client Sample ID: NW-3

Project: Federal CM 1

Collection Date: 11/11/2022 1:34:00 PM

Lab ID: 2211801-018

Matrix: SOIL

Received Date: 11/15/2022 7:30:00 AM

Analyses	Result	RL	Qual	Units	DF	Date Analyzed	Batch
<b>EPA METHOD 300.0: ANIONS</b>							Analyst: JMT
Chloride	220	60		mg/Kg	20	11/21/2022 1:28:34 PM	71606
<b>EPA METHOD 8015M/D: DIESEL RANGE ORGANICS</b>							Analyst: DGH
Diesel Range Organics (DRO)	ND	14		mg/Kg	1	11/19/2022 12:15:41 AM	71576
Motor Oil Range Organics (MRO)	ND	48		mg/Kg	1	11/19/2022 12:15:41 AM	71576
Surr: DNOP	73.6	21-129		%Rec	1	11/19/2022 12:15:41 AM	71576
<b>EPA METHOD 8015D: GASOLINE RANGE</b>							Analyst: CCM
Gasoline Range Organics (GRO)	ND	4.8		mg/Kg	1	11/19/2022 10:51:00 AM	71547
Surr: BFB	109	37.7-212		%Rec	1	11/19/2022 10:51:00 AM	71547
<b>EPA METHOD 8021B: VOLATILES</b>							Analyst: CCM
Benzene	ND	0.024		mg/Kg	1	11/21/2022 12:58:00 PM	71547
Toluene	ND	0.048		mg/Kg	1	11/21/2022 12:58:00 PM	71547
Ethylbenzene	ND	0.048		mg/Kg	1	11/21/2022 12:58:00 PM	71547
Xylenes, Total	ND	0.097		mg/Kg	1	11/21/2022 12:58:00 PM	71547
Surr: 4-Bromofluorobenzene	140	70-130	S	%Rec	1	11/21/2022 12:58:00 PM	71547

Refer to the QC Summary report and sample login checklist for flagged QC data and preservation information.

Qualifiers:	*	Value exceeds Maximum Contaminant Level.	B	Analyte detected in the associated Method Blank
	D	Sample Diluted Due to Matrix	E	Above Quantitation Range/Estimated Value
	H	Holding times for preparation or analysis exceeded	J	Analyte detected below quantitation limits
	ND	Not Detected at the Reporting Limit	P	Sample pH Not In Range
	PQL	Practical Quantitative Limit	RL	Reporting Limit
	S	% Recovery outside of standard limits. If undiluted results may be estimated.		

Page 18 of 23

## Analytical Report

Lab Order 2211801

Date Reported: 11/30/2022

## Hall Environmental Analysis Laboratory, Inc.

CLIENT: EOG

Client Sample ID: NW-4

Project: Federal CM 1

Collection Date: 11/11/2022 1:36:00 PM

Lab ID: 2211801-019

Matrix: SOIL

Received Date: 11/15/2022 7:30:00 AM

Analyses	Result	RL	Qual	Units	DF	Date Analyzed	Batch
<b>EPA METHOD 300.0: ANIONS</b>							Analyst: JMT
Chloride	180	61		mg/Kg	20	11/21/2022 1:40:59 PM	71606
<b>EPA METHOD 8015M/D: DIESEL RANGE ORGANICS</b>							Analyst: DGH
Diesel Range Organics (DRO)	ND	14		mg/Kg	1	11/19/2022 12:26:11 AM	71576
Motor Oil Range Organics (MRO)	ND	47		mg/Kg	1	11/19/2022 12:26:11 AM	71576
Surr: DNOP	66.2	21-129		%Rec	1	11/19/2022 12:26:11 AM	71576
<b>EPA METHOD 8015D: GASOLINE RANGE</b>							Analyst: CCM
Gasoline Range Organics (GRO)	ND	4.8		mg/Kg	1	11/19/2022 11:11:00 AM	71547
Surr: BFB	106	37.7-212		%Rec	1	11/19/2022 11:11:00 AM	71547
<b>EPA METHOD 8021B: VOLATILES</b>							Analyst: CCM
Benzene	ND	0.024		mg/Kg	1	11/21/2022 1:18:00 PM	71547
Toluene	ND	0.048		mg/Kg	1	11/21/2022 1:18:00 PM	71547
Ethylbenzene	ND	0.048		mg/Kg	1	11/21/2022 1:18:00 PM	71547
Xylenes, Total	ND	0.096		mg/Kg	1	11/21/2022 1:18:00 PM	71547
Surr: 4-Bromofluorobenzene	137	70-130	S	%Rec	1	11/21/2022 1:18:00 PM	71547

Refer to the QC Summary report and sample login checklist for flagged QC data and preservation information.

Qualifiers:	*	Value exceeds Maximum Contaminant Level.	B	Analyte detected in the associated Method Blank
	D	Sample Diluted Due to Matrix	E	Above Quantitation Range/Estimated Value
	H	Holding times for preparation or analysis exceeded	J	Analyte detected below quantitation limits
	ND	Not Detected at the Reporting Limit	P	Sample pH Not In Range
	PQL	Practical Quantitative Limit	RL	Reporting Limit
	S	% Recovery outside of standard limits. If undiluted results may be estimated.		

Page 19 of 23



**QC SUMMARY REPORT****Hall Environmental Analysis Laboratory, Inc.**

WO#: 2211801

30-Nov-22

**Client:** EOG  
**Project:** Federal CM 1

Sample ID: <b>MB-71602</b>	SampType: <b>MBLK</b>	TestCode: <b>EPA Method 300.0: Anions</b>								
Client ID: <b>PBS</b>	Batch ID: <b>71602</b>	RunNo: <b>92733</b>								
Prep Date: <b>11/18/2022</b>	Analysis Date: <b>11/19/2022</b>	SeqNo: <b>3337377</b>	Units: <b>mg/Kg</b>							
Analyte	Result	PQL	SPK value	SPK Ref Val	%REC	LowLimit	HighLimit	%RPD	RPDLimit	Qual
Chloride	ND	1.5								

Sample ID: <b>LCS-71602</b>	SampType: <b>LCS</b>	TestCode: <b>EPA Method 300.0: Anions</b>								
Client ID: <b>LCSS</b>	Batch ID: <b>71602</b>	RunNo: <b>92733</b>								
Prep Date: <b>11/18/2022</b>	Analysis Date: <b>11/19/2022</b>	SeqNo: <b>3337378</b>	Units: <b>mg/Kg</b>							
Analyte	Result	PQL	SPK value	SPK Ref Val	%REC	LowLimit	HighLimit	%RPD	RPDLimit	Qual
Chloride	14	1.5	15.00	0	95.4	90	110			

Sample ID: <b>LCS-71616</b>	SampType: <b>LCS</b>	TestCode: <b>EPA Method 300.0: Anions</b>								
Client ID: <b>LCSS</b>	Batch ID: <b>71616</b>	RunNo: <b>92751</b>								
Prep Date: <b>11/21/2022</b>	Analysis Date: <b>11/21/2022</b>	SeqNo: <b>3338145</b>	Units: <b>mg/Kg</b>							
Analyte	Result	PQL	SPK value	SPK Ref Val	%REC	LowLimit	HighLimit	%RPD	RPDLimit	Qual
Chloride	14	1.5	15.00	0	91.2	90	110			

Sample ID: <b>MB-71606</b>	SampType: <b>mblk</b>	TestCode: <b>EPA Method 300.0: Anions</b>								
Client ID: <b>PBS</b>	Batch ID: <b>71606</b>	RunNo: <b>92763</b>								
Prep Date: <b>11/21/2022</b>	Analysis Date: <b>11/21/2022</b>	SeqNo: <b>3338670</b>	Units: <b>mg/Kg</b>							
Analyte	Result	PQL	SPK value	SPK Ref Val	%REC	LowLimit	HighLimit	%RPD	RPDLimit	Qual
Chloride	ND	1.5								

Sample ID: <b>LCS-71606</b>	SampType: <b>lcs</b>	TestCode: <b>EPA Method 300.0: Anions</b>								
Client ID: <b>LCSS</b>	Batch ID: <b>71606</b>	RunNo: <b>92763</b>								
Prep Date: <b>11/21/2022</b>	Analysis Date: <b>11/21/2022</b>	SeqNo: <b>3338671</b>	Units: <b>mg/Kg</b>							
Analyte	Result	PQL	SPK value	SPK Ref Val	%REC	LowLimit	HighLimit	%RPD	RPDLimit	Qual
Chloride	14	1.5	15.00	0	94.7	90	110			

**Qualifiers:**

\* Value exceeds Maximum Contaminant Level.  
D Sample Diluted Due to Matrix  
H Holding times for preparation or analysis exceeded  
ND Not Detected at the Reporting Limit  
PQL Practical Quantitative Limit  
S % Recovery outside of standard limits. If undiluted results may be estimated.

B Analyte detected in the associated Method Blank  
E Above Quantitation Range/Estimated Value  
J Analyte detected below quantitation limits  
P Sample pH Not In Range  
RL Reporting Limit

**QC SUMMARY REPORT****Hall Environmental Analysis Laboratory, Inc.**

WO#: 2211801

30-Nov-22

**Client:** EOG  
**Project:** Federal CM 1

Sample ID: <b>LCS-71554</b>	SampType: <b>LCS</b>			TestCode: <b>EPA Method 8015M/D: Diesel Range Organics</b>						
Client ID: <b>LCSS</b>	Batch ID: <b>71554</b>			RunNo: <b>92653</b>						
Prep Date: <b>11/16/2022</b>	Analysis Date: <b>11/17/2022</b>			SeqNo: <b>3334669</b>	Units: <b>mg/Kg</b>					
Analyte	Result	PQL	SPK value	SPK Ref Val	%REC	LowLimit	HighLimit	%RPD	RPDLimit	Qual
Diesel Range Organics (DRO)	55	15	50.00	0	109	64.4	127			
Surr: DNOP	5.4		5.000		108	21	129			

Sample ID: <b>MB-71554</b>	SampType: <b>MBLK</b>			TestCode: <b>EPA Method 8015M/D: Diesel Range Organics</b>						
Client ID: <b>PBS</b>	Batch ID: <b>71554</b>			RunNo: <b>92653</b>						
Prep Date: <b>11/16/2022</b>	Analysis Date: <b>11/17/2022</b>			SeqNo: <b>3334671</b>	Units: <b>mg/Kg</b>					
Analyte	Result	PQL	SPK value	SPK Ref Val	%REC	LowLimit	HighLimit	%RPD	RPDLimit	Qual
Diesel Range Organics (DRO)	ND	15								
Motor Oil Range Organics (MRO)	ND	50								
Surr: DNOP	10		10.00		99.7	21	129			

Sample ID: <b>LCS-71576</b>	SampType: <b>LCS</b>			TestCode: <b>EPA Method 8015M/D: Diesel Range Organics</b>						
Client ID: <b>LCSS</b>	Batch ID: <b>71576</b>			RunNo: <b>92689</b>						
Prep Date: <b>11/17/2022</b>	Analysis Date: <b>11/18/2022</b>			SeqNo: <b>3337333</b>	Units: <b>mg/Kg</b>					
Analyte	Result	PQL	SPK value	SPK Ref Val	%REC	LowLimit	HighLimit	%RPD	RPDLimit	Qual
Diesel Range Organics (DRO)	44	15	50.00	0	88.8	64.4	127			
Surr: DNOP	5.4		5.000		108	21	129			

Sample ID: <b>MB-71576</b>	SampType: <b>MBLK</b>			TestCode: <b>EPA Method 8015M/D: Diesel Range Organics</b>						
Client ID: <b>PBS</b>	Batch ID: <b>71576</b>			RunNo: <b>92689</b>						
Prep Date: <b>11/17/2022</b>	Analysis Date: <b>11/18/2022</b>			SeqNo: <b>3337336</b>	Units: <b>mg/Kg</b>					
Analyte	Result	PQL	SPK value	SPK Ref Val	%REC	LowLimit	HighLimit	%RPD	RPDLimit	Qual
Diesel Range Organics (DRO)	ND	15								
Motor Oil Range Organics (MRO)	ND	50								
Surr: DNOP	9.9		10.00		99.2	21	129			

**Qualifiers:**

\* Value exceeds Maximum Contaminant Level.  
D Sample Diluted Due to Matrix  
H Holding times for preparation or analysis exceeded  
ND Not Detected at the Reporting Limit  
PQL Practical Quantitative Limit  
S % Recovery outside of standard limits. If undiluted results may be estimated.

B Analyte detected in the associated Method Blank  
E Above Quantitation Range/Estimated Value  
J Analyte detected below quantitation limits  
P Sample pH Not In Range  
RL Reporting Limit

Page 21 of 23

**QC SUMMARY REPORT****Hall Environmental Analysis Laboratory, Inc.**

WO#: 2211801

30-Nov-22

**Client:** EOG  
**Project:** Federal CM 1

Sample ID: <b>ics-71544</b>	SampType: <b>LCS</b>				TestCode: <b>EPA Method 8015D: Gasoline Range</b>					
Client ID: <b>LCSS</b>	Batch ID: <b>71544</b>				RunNo: <b>92710</b>					
Prep Date: <b>11/16/2022</b>	Analysis Date: <b>11/18/2022</b>				SeqNo: <b>3335934</b>	Units: <b>mg/Kg</b>				
Analyte	Result	PQL	SPK value	SPK Ref Val	%REC	LowLimit	HighLimit	%RPD	RPDLimit	Qual
Gasoline Range Organics (GRO)	25	5.0	25.00	0	101	72.3	137			
Surr: BFB	2300		1000		233	37.7	212			S

Sample ID: <b>mb-71544</b>	SampType: <b>MBLK</b>				TestCode: <b>EPA Method 8015D: Gasoline Range</b>					
Client ID: <b>PBS</b>	Batch ID: <b>71544</b>				RunNo: <b>92710</b>					
Prep Date: <b>11/16/2022</b>	Analysis Date: <b>11/18/2022</b>				SeqNo: <b>3335935</b>	Units: <b>mg/Kg</b>				
Analyte	Result	PQL	SPK value	SPK Ref Val	%REC	LowLimit	HighLimit	%RPD	RPDLimit	Qual
Gasoline Range Organics (GRO)	ND	5.0								
Surr: BFB	1000		1000		103	37.7	212			

Sample ID: <b>ics-71547</b>	SampType: <b>LCS</b>				TestCode: <b>EPA Method 8015D: Gasoline Range</b>					
Client ID: <b>LCSS</b>	Batch ID: <b>71547</b>				RunNo: <b>92710</b>					
Prep Date: <b>11/16/2022</b>	Analysis Date: <b>11/19/2022</b>				SeqNo: <b>3335981</b>	Units: <b>mg/Kg</b>				
Analyte	Result	PQL	SPK value	SPK Ref Val	%REC	LowLimit	HighLimit	%RPD	RPDLimit	Qual
Gasoline Range Organics (GRO)	25	5.0	25.00	0	101	72.3	137			
Surr: BFB	2200		1000		225	37.7	212			S

Sample ID: <b>mb-71547</b>	SampType: <b>MBLK</b>				TestCode: <b>EPA Method 8015D: Gasoline Range</b>					
Client ID: <b>PBS</b>	Batch ID: <b>71547</b>				RunNo: <b>92710</b>					
Prep Date: <b>11/16/2022</b>	Analysis Date: <b>11/19/2022</b>				SeqNo: <b>3335982</b>	Units: <b>mg/Kg</b>				
Analyte	Result	PQL	SPK value	SPK Ref Val	%REC	LowLimit	HighLimit	%RPD	RPDLimit	Qual
Gasoline Range Organics (GRO)	ND	5.0								
Surr: BFB	1000		1000		103	37.7	212			

**Qualifiers:**

\* Value exceeds Maximum Contaminant Level.  
D Sample Diluted Due to Matrix  
H Holding times for preparation or analysis exceeded  
ND Not Detected at the Reporting Limit  
PQL Practical Quantitative Limit  
S % Recovery outside of standard limits. If undiluted results may be estimated.

B Analyte detected in the associated Method Blank  
E Above Quantitation Range/Estimated Value  
J Analyte detected below quantitation limits  
P Sample pH Not In Range  
RL Reporting Limit

Page 22 of 23

**QC SUMMARY REPORT****Hall Environmental Analysis Laboratory, Inc.**

WO#: 2211801

30-Nov-22

**Client:** EOG  
**Project:** Federal CM 1

Sample ID: <b>ics-71544</b>	SampType: <b>LCS</b>			TestCode: <b>EPA Method 8021B: Volatiles</b>						
Client ID: <b>LCSS</b>	Batch ID: <b>71544</b>			RunNo: <b>92710</b>						
Prep Date: <b>11/16/2022</b>	Analysis Date: <b>11/18/2022</b>			SeqNo: <b>3336246</b>		Units: <b>mg/Kg</b>				
Analyte	Result	PQL	SPK value	SPK Ref Val	%REC	LowLimit	HighLimit	%RPD	RPDLimit	Qual
Benzene	1.2	0.025	1.000	0	124	80	120			S
Toluene	1.3	0.050	1.000	0	125	80	120			S
Ethylbenzene	1.3	0.050	1.000	0	127	80	120			S
Xylenes, Total	3.8	0.10	3.000	0	126	80	120			S
Surr: 4-Bromofluorobenzene	1.3		1.000		127	70	130			

Sample ID: <b>mb-71544</b>	SampType: <b>MBLK</b>			TestCode: <b>EPA Method 8021B: Volatiles</b>						
Client ID: <b>PBS</b>	Batch ID: <b>71544</b>			RunNo: <b>92710</b>						
Prep Date: <b>11/16/2022</b>	Analysis Date: <b>11/18/2022</b>			SeqNo: <b>3336247</b>		Units: <b>mg/Kg</b>				
Analyte	Result	PQL	SPK value	SPK Ref Val	%REC	LowLimit	HighLimit	%RPD	RPDLimit	Qual
Benzene	ND	0.025								
Toluene	ND	0.050								
Ethylbenzene	ND	0.050								
Xylenes, Total	ND	0.10								
Surr: 4-Bromofluorobenzene	1.2		1.000		123	70	130			

Sample ID: <b>ics-71547</b>	SampType: <b>LCS</b>			TestCode: <b>EPA Method 8021B: Volatiles</b>						
Client ID: <b>LCSS</b>	Batch ID: <b>71547</b>			RunNo: <b>92755</b>						
Prep Date: <b>11/16/2022</b>	Analysis Date: <b>11/21/2022</b>			SeqNo: <b>3338367</b>		Units: <b>mg/Kg</b>				
Analyte	Result	PQL	SPK value	SPK Ref Val	%REC	LowLimit	HighLimit	%RPD	RPDLimit	Qual
Benzene	1.2	0.025	1.000	0	119	80	120			
Toluene	1.2	0.050	1.000	0	122	80	120			S
Ethylbenzene	1.2	0.050	1.000	0	122	80	120			S
Xylenes, Total	3.6	0.10	3.000	0	122	80	120			S
Surr: 4-Bromofluorobenzene	1.4		1.000		136	70	130			S

Sample ID: <b>mb-71547</b>	SampType: <b>MBLK</b>			TestCode: <b>EPA Method 8021B: Volatiles</b>						
Client ID: <b>PBS</b>	Batch ID: <b>71547</b>			RunNo: <b>92755</b>						
Prep Date: <b>11/16/2022</b>	Analysis Date: <b>11/21/2022</b>			SeqNo: <b>3338368</b>		Units: <b>mg/Kg</b>				
Analyte	Result	PQL	SPK value	SPK Ref Val	%REC	LowLimit	HighLimit	%RPD	RPDLimit	Qual
Benzene	ND	0.025								
Toluene	ND	0.050								
Ethylbenzene	ND	0.050								
Xylenes, Total	ND	0.10								
Surr: 4-Bromofluorobenzene	1.4		1.000		141	70	130			S

**Qualifiers:**

\* Value exceeds Maximum Contaminant Level.  
D Sample Diluted Due to Matrix  
H Holding times for preparation or analysis exceeded  
ND Not Detected at the Reporting Limit  
PQL Practical Quantitative Limit  
S % Recovery outside of standard limits. If undiluted results may be estimated.

B Analyte detected in the associated Method Blank  
E Above Quantitation Range/Estimated Value  
J Analyte detected below quantitation limits  
P Sample pH Not In Range  
RL Reporting Limit

Page 23 of 23



Hall Environmental Analysis Laboratory  
4901 Hawkins NE  
Albuquerque, NM 87109  
TEL: 505-345-3975 FAX: 505-345-4107  
Website: www.hallenvironmental.com

# Sample Log-In Check List

Client Name: EOG

Work Order Number: 2211801

RcptNo: 1

Received By: Juan Rojas 11/15/2022 7:30:00 AM

*[Signature]*

Completed By: Cheyenne Cason 11/15/2022 8:30:13 AM

*[Signature]*

Reviewed By: *[Signature]* 11-15-22

## Chain of Custody

1. Is Chain of Custody complete? Yes ☒ No ☐ Not Present ☐

2. How was the sample delivered? Courier

## Log In

3. Was an attempt made to cool the samples? Yes ☒ No ☐ NA ☐

4. Were all samples received at a temperature of >0° C to 6.0°C Yes ☒ No ☐ NA ☐

5. Sample(s) in proper container(s)? Yes ☒ No ☐

6. Sufficient sample volume for indicated test(s)? Yes ☒ No ☐

7. Are samples (except VOA and ONG) properly preserved? Yes ☒ No ☐

8. Was preservative added to bottles? Yes ☐ No ☒ NA ☐

9. Received at least 1 vial with headspace <1/4" for AQ VOA? Yes ☒ No ☐ NA ☐

10. Were any sample containers received broken? Yes ☐ No ☒

11. Does paperwork match bottle labels? Yes ☒ No ☐  
(Note discrepancies on chain of custody)

12. Are matrices correctly identified on Chain of Custody? Yes ☒ No ☐

13. Is it clear what analyses were requested? Yes ☒ No ☐

14. Were all holding times able to be met? Yes ☒ No ☐  
(If no, notify customer for authorization.)

# of preserved bottles checked for pH:

(<2 or >12 unless noted)

Adjusted?

Checked by: *[Signature]* 11/15/22

## Special Handling (if applicable)

15. Was client notified of all discrepancies with this order? Yes ☐ No ☐ NA ☒

Person Notified:

Date:

By Whom:

Via:

☐ eMail ☐ Phone ☐ Fax ☐ In Person

Regarding:

Client Instructions:

16. Additional remarks:

## 17. Cooler Information

Cooler No	Temp °C	Condition	Seal Intact	Seal No	Seal Date	Signed By
1	0.3	Good	Not Present			









Hall Environmental Analysis Laboratory  
4901 Hawkins NE  
Albuquerque, NM 87109  
TEL: 505-345-3975 FAX: 505-345-4107  
Website: [www.hallenvironmental.com](http://www.hallenvironmental.com)

December 15, 2022

Will Kierdorf

EOG

105 South Fourth Street

Artesia, NM 88210

TEL:

FAX:

RE: Federal CM 1

OrderNo.: 2212580

Dear Will Kierdorf:

Hall Environmental Analysis Laboratory received 1 sample(s) on 12/9/2022 for the analyses presented in the following report.

These were analyzed according to EPA procedures or equivalent. To access our accredited tests please go to [www.hallenvironmental.com](http://www.hallenvironmental.com) or the state specific web sites. In order to properly interpret your results, it is imperative that you review this report in its entirety. See the sample checklist and/or the Chain of Custody for information regarding the sample receipt temperature and preservation. Data qualifiers or a narrative will be provided if the sample analysis or analytical quality control parameters require a flag. When necessary, data qualifiers are provided on both the sample analysis report and the QC summary report, both sections should be reviewed. All samples are reported, as received, unless otherwise indicated. Lab measurement of analytes considered field parameters that require analysis within 15 minutes of sampling such as pH and residual chlorine are qualified as being analyzed outside of the recommended holding time.

Please don't hesitate to contact HEAL for any additional information or clarifications.

ADHS Cert #AZ0682 -- NMED-DWB Cert #NM9425 -- NMED-Micro Cert #NM0901

Sincerely,

A handwritten signature in black ink, appearing to read "Andy Freeman", is written over a light blue horizontal line.

Andy Freeman

Laboratory Manager

4901 Hawkins NE

Albuquerque, NM 87109



## Analytical Report

Lab Order 2212580

Date Reported: 12/15/2022

## Hall Environmental Analysis Laboratory, Inc.

CLIENT: EOG

Client Sample ID: SW-4

Project: Federal CM 1

Collection Date: 12/7/2022 11:00:00 AM

Lab ID: 2212580-001

Matrix: MEOH (SOIL)

Received Date: 12/9/2022 7:55:00 AM

Analyses	Result	RL	Qual	Units	DF	Date Analyzed	Batch
<b>EPA METHOD 300.0: ANIONS</b>							Analyst: <b>NAI</b>
Chloride	140	60		mg/Kg	20	12/9/2022 11:11:42 PM	72002
<b>EPA METHOD 8015M/D: DIESEL RANGE ORGANICS</b>							Analyst: <b>DGH</b>
Diesel Range Organics (DRO)	20	14		mg/Kg	1	12/12/2022 2:45:16 PM	71978
Motor Oil Range Organics (MRO)	76	48		mg/Kg	1	12/12/2022 2:45:16 PM	71978
Surr: DNOP	106	21-129		%Rec	1	12/12/2022 2:45:16 PM	71978
<b>EPA METHOD 8015D: GASOLINE RANGE</b>							Analyst: <b>NSB</b>
Gasoline Range Organics (GRO)	ND	4.4		mg/Kg	1	12/9/2022 2:28:37 PM	R93146
Surr: BFB	94.7	37.7-212		%Rec	1	12/9/2022 2:28:37 PM	R93146
<b>EPA METHOD 8021B: VOLATILES</b>							Analyst: <b>NSB</b>
Benzene	ND	0.022		mg/Kg	1	12/9/2022 2:28:37 PM	R93146
Toluene	ND	0.044		mg/Kg	1	12/9/2022 2:28:37 PM	R93146
Ethylbenzene	ND	0.044		mg/Kg	1	12/9/2022 2:28:37 PM	R93146
Xylenes, Total	ND	0.088		mg/Kg	1	12/9/2022 2:28:37 PM	R93146
Surr: 4-Bromofluorobenzene	95.5	70-130		%Rec	1	12/9/2022 2:28:37 PM	R93146

Refer to the QC Summary report and sample login checklist for flagged QC data and preservation information.

<b>Qualifiers:</b>	*	Value exceeds Maximum Contaminant Level.	B	Analyte detected in the associated Method Blank
	D	Sample Diluted Due to Matrix	E	Above Quantitation Range/Estimated Value
	H	Holding times for preparation or analysis exceeded	J	Analyte detected below quantitation limits
	ND	Not Detected at the Reporting Limit	P	Sample pH Not In Range
	PQL	Practical Quantitative Limit	RL	Reporting Limit
	S	% Recovery outside of standard limits. If undiluted results may be estimated.		

Page 1 of 5

**QC SUMMARY REPORT****Hall Environmental Analysis Laboratory, Inc.**

WO#: 2212580

15-Dec-22

**Client:** EOG  
**Project:** Federal CM 1

Sample ID: <b>MB-72002</b>	SampType: <b>mblk</b>	TestCode: <b>EPA Method 300.0: Anions</b>								
Client ID: <b>PBS</b>	Batch ID: <b>72002</b>	RunNo: <b>93190</b>								
Prep Date: <b>12/9/2022</b>	Analysis Date: <b>12/9/2022</b>	SeqNo: <b>3357982</b>	Units: <b>mg/Kg</b>							
Analyte	Result	PQL	SPK value	SPK Ref Val	%REC	LowLimit	HighLimit	%RPD	RPDLimit	Qual
Chloride	ND	1.5								

Sample ID: <b>LCS-72002</b>	SampType: <b>lcs</b>	TestCode: <b>EPA Method 300.0: Anions</b>								
Client ID: <b>LCSS</b>	Batch ID: <b>72002</b>	RunNo: <b>93190</b>								
Prep Date: <b>12/9/2022</b>	Analysis Date: <b>12/9/2022</b>	SeqNo: <b>3357983</b>	Units: <b>mg/Kg</b>							
Analyte	Result	PQL	SPK value	SPK Ref Val	%REC	LowLimit	HighLimit	%RPD	RPDLimit	Qual
Chloride	14	1.5	15.00	0	96.3	90	110			

**Qualifiers:**

\* Value exceeds Maximum Contaminant Level.  
D Sample Diluted Due to Matrix  
H Holding times for preparation or analysis exceeded  
ND Not Detected at the Reporting Limit  
PQL Practical Quantitative Limit  
S % Recovery outside of standard limits. If undiluted results may be estimated.

B Analyte detected in the associated Method Blank  
E Above Quantitation Range/Estimated Value  
J Analyte detected below quantitation limits  
P Sample pH Not In Range  
RL Reporting Limit

**QC SUMMARY REPORT****Hall Environmental Analysis Laboratory, Inc.**

WO#: 2212580

15-Dec-22

**Client:** EOG**Project:** Federal CM 1

Sample ID: <b>LCS-71978</b>	SampType: <b>LCS</b>			TestCode: <b>EPA Method 8015M/D: Diesel Range Organics</b>						
Client ID: <b>LCSS</b>	Batch ID: <b>71978</b>			RunNo: <b>93160</b>						
Prep Date: <b>12/9/2022</b>	Analysis Date: <b>12/9/2022</b>			SeqNo: <b>3356394</b>	Units: <b>mg/Kg</b>					
Analyte	Result	PQL	SPK value	SPK Ref Val	%REC	LowLimit	HighLimit	%RPD	RPDLimit	Qual
Diesel Range Organics (DRO)	42	15	50.00	0	84.7	64.4	127			
Surr: DNOP	5.3		5.000		107	21	129			

Sample ID: <b>MB-71978</b>	SampType: <b>MBLK</b>			TestCode: <b>EPA Method 8015M/D: Diesel Range Organics</b>						
Client ID: <b>PBS</b>	Batch ID: <b>71978</b>			RunNo: <b>93160</b>						
Prep Date: <b>12/9/2022</b>	Analysis Date: <b>12/9/2022</b>			SeqNo: <b>3356396</b>	Units: <b>mg/Kg</b>					
Analyte	Result	PQL	SPK value	SPK Ref Val	%REC	LowLimit	HighLimit	%RPD	RPDLimit	Qual
Diesel Range Organics (DRO)	ND	15								
Motor Oil Range Organics (MRO)	ND	50								
Surr: DNOP	11		10.00		113	21	129			

Sample ID: <b>MB-71951</b>	SampType: <b>MBLK</b>			TestCode: <b>EPA Method 8015M/D: Diesel Range Organics</b>						
Client ID: <b>PBS</b>	Batch ID: <b>71951</b>			RunNo: <b>93161</b>						
Prep Date: <b>12/8/2022</b>	Analysis Date: <b>12/9/2022</b>			SeqNo: <b>3358851</b>	Units: <b>%Rec</b>					
Analyte	Result	PQL	SPK value	SPK Ref Val	%REC	LowLimit	HighLimit	%RPD	RPDLimit	Qual
Surr: DNOP	11		10.00		110	21	129			

Sample ID: <b>LCS-71951</b>	SampType: <b>LCS</b>			TestCode: <b>EPA Method 8015M/D: Diesel Range Organics</b>						
Client ID: <b>LCSS</b>	Batch ID: <b>71951</b>			RunNo: <b>93161</b>						
Prep Date: <b>12/8/2022</b>	Analysis Date: <b>12/9/2022</b>			SeqNo: <b>3358853</b>	Units: <b>%Rec</b>					
Analyte	Result	PQL	SPK value	SPK Ref Val	%REC	LowLimit	HighLimit	%RPD	RPDLimit	Qual
Surr: DNOP	5.5		5.000		109	21	129			

Sample ID: <b>MB-71961</b>	SampType: <b>MBLK</b>			TestCode: <b>EPA Method 8015M/D: Diesel Range Organics</b>						
Client ID: <b>PBS</b>	Batch ID: <b>71961</b>			RunNo: <b>93161</b>						
Prep Date: <b>12/8/2022</b>	Analysis Date: <b>12/9/2022</b>			SeqNo: <b>3358878</b>	Units: <b>%Rec</b>					
Analyte	Result	PQL	SPK value	SPK Ref Val	%REC	LowLimit	HighLimit	%RPD	RPDLimit	Qual
Surr: DNOP	11		10.00		112	21	129			

Sample ID: <b>LCS-71961</b>	SampType: <b>LCS</b>			TestCode: <b>EPA Method 8015M/D: Diesel Range Organics</b>						
Client ID: <b>LCSS</b>	Batch ID: <b>71961</b>			RunNo: <b>93161</b>						
Prep Date: <b>12/8/2022</b>	Analysis Date: <b>12/9/2022</b>			SeqNo: <b>3358879</b>	Units: <b>%Rec</b>					
Analyte	Result	PQL	SPK value	SPK Ref Val	%REC	LowLimit	HighLimit	%RPD	RPDLimit	Qual
Surr: DNOP	5.6		5.000		111	21	129			

**Qualifiers:**

\* Value exceeds Maximum Contaminant Level.  
D Sample Diluted Due to Matrix  
H Holding times for preparation or analysis exceeded  
ND Not Detected at the Reporting Limit  
PQL Practical Quantitative Limit  
S % Recovery outside of standard limits. If undiluted results may be estimated.

B Analyte detected in the associated Method Blank  
E Above Quantitation Range/Estimated Value  
J Analyte detected below quantitation limits  
P Sample pH Not In Range  
RL Reporting Limit

**QC SUMMARY REPORT****Hall Environmental Analysis Laboratory, Inc.**

WO#: 2212580

15-Dec-22

**Client:** EOG  
**Project:** Federal CM 1

Sample ID: <b>mb</b>	SampType: <b>MBLK</b>		TestCode: <b>EPA Method 8015D: Gasoline Range</b>							
Client ID: <b>PBS</b>	Batch ID: <b>R93146</b>		RunNo: <b>93146</b>							
Prep Date:	Analysis Date: <b>12/9/2022</b>		SeqNo: <b>3357225</b>		Units: <b>mg/Kg</b>					
Analyte	Result	PQL	SPK value	SPK Ref Val	%REC	LowLimit	HighLimit	%RPD	RPDLimit	Qual
Gasoline Range Organics (GRO)	ND	5.0								
Surr: BFB	900		1000		89.7	37.7	212			

Sample ID: <b>2.5ug gro lcs</b>	SampType: <b>LCS</b>		TestCode: <b>EPA Method 8015D: Gasoline Range</b>							
Client ID: <b>LCSS</b>	Batch ID: <b>R93146</b>		RunNo: <b>93146</b>							
Prep Date:	Analysis Date: <b>12/9/2022</b>		SeqNo: <b>3357226</b>		Units: <b>mg/Kg</b>					
Analyte	Result	PQL	SPK value	SPK Ref Val	%REC	LowLimit	HighLimit	%RPD	RPDLimit	Qual
Gasoline Range Organics (GRO)	23	5.0	25.00	0	93.8	72.3	137			
Surr: BFB	1800		1000		182	37.7	212			

**Qualifiers:**

\* Value exceeds Maximum Contaminant Level.  
D Sample Diluted Due to Matrix  
H Holding times for preparation or analysis exceeded  
ND Not Detected at the Reporting Limit  
PQL Practical Quantitative Limit  
S % Recovery outside of standard limits. If undiluted results may be estimated.

B Analyte detected in the associated Method Blank  
E Above Quantitation Range/Estimated Value  
J Analyte detected below quantitation limits  
P Sample pH Not In Range  
RL Reporting Limit

**QC SUMMARY REPORT****Hall Environmental Analysis Laboratory, Inc.**

WO#: 2212580

15-Dec-22

**Client:** EOG  
**Project:** Federal CM 1

Sample ID: <b>mb</b>	SampType: <b>MBLK</b>	TestCode: <b>EPA Method 8021B: Volatiles</b>								
Client ID: <b>PBS</b>	Batch ID: <b>R93146</b>	RunNo: <b>93146</b>								
Prep Date:	Analysis Date: <b>12/9/2022</b>	SeqNo: <b>3357380</b> Units: <b>mg/Kg</b>								
Analyte	Result	PQL	SPK value	SPK Ref Val	%REC	LowLimit	HighLimit	%RPD	RPDLimit	Qual
Benzene	ND	0.025								
Toluene	ND	0.050								
Ethylbenzene	ND	0.050								
Xylenes, Total	ND	0.10								
Surr: 4-Bromofluorobenzene	0.92		1.000		92.4	70	130			

Sample ID: <b>100ng btex lcs</b>	SampType: <b>LCS</b>	TestCode: <b>EPA Method 8021B: Volatiles</b>								
Client ID: <b>LCSS</b>	Batch ID: <b>R93146</b>	RunNo: <b>93146</b>								
Prep Date:	Analysis Date: <b>12/9/2022</b>	SeqNo: <b>3357381</b> Units: <b>mg/Kg</b>								
Analyte	Result	PQL	SPK value	SPK Ref Val	%REC	LowLimit	HighLimit	%RPD	RPDLimit	Qual
Benzene	0.92	0.025	1.000	0	92.5	80	120			
Toluene	0.95	0.050	1.000	0	94.6	80	120			
Ethylbenzene	0.95	0.050	1.000	0	94.7	80	120			
Xylenes, Total	2.8	0.10	3.000	0	94.7	80	120			
Surr: 4-Bromofluorobenzene	0.95		1.000		95.0	70	130			

**Qualifiers:**

\* Value exceeds Maximum Contaminant Level.  
D Sample Diluted Due to Matrix  
H Holding times for preparation or analysis exceeded  
ND Not Detected at the Reporting Limit  
PQL Practical Quantitative Limit  
S % Recovery outside of standard limits. If undiluted results may be estimated.

B Analyte detected in the associated Method Blank  
E Above Quantitation Range/Estimated Value  
J Analyte detected below quantitation limits  
P Sample pH Not In Range  
RL Reporting Limit



Hall Environmental Analysis Laboratory  
4901 Hawkins NE  
Albuquerque, NM 87109  
TEL: 505-345-3975 FAX: 505-345-4107  
Website: www.hallenvironmental.com

## Sample Log-In Check List

Client Name: EOG

Work Order Number: 2212580

RcptNo: 1

Received By: Juan Rojas

12/9/2022 7:55:00 AM

*[Signature]*

Completed By: Sean Livingston

12/9/2022 8:35:25 AM

*[Signature]*

Reviewed By: *[Signature]* 12-9-22

### Chain of Custody

1. Is Chain of Custody complete? Yes ☒ No ☐ Not Present ☐
2. How was the sample delivered? Courier

### Log In

3. Was an attempt made to cool the samples? Yes ☒ No ☐ NA ☐
4. Were all samples received at a temperature of  $>0^{\circ}\text{C}$  to  $6.0^{\circ}\text{C}$ ? Yes ☒ No ☐ NA ☐
5. Sample(s) in proper container(s)? Yes ☒ No ☐
6. Sufficient sample volume for indicated test(s)? Yes ☒ No ☐
7. Are samples (except VOA and ONG) properly preserved? Yes ☒ No ☐
8. Was preservative added to bottles? Yes ☐ No ☒ NA ☐
9. Received at least 1 vial with headspace  $<1/4"$  for AQ VOA? Yes ☐ No ☐ NA ☒
10. Were any sample containers received broken? Yes ☐ No ☒
11. Does paperwork match bottle labels?  
(Note discrepancies on chain of custody) Yes ☒ No ☐
12. Are matrices correctly identified on Chain of Custody? Yes ☒ No ☐
13. Is it clear what analyses were requested? Yes ☒ No ☐
14. Were all holding times able to be met?  
(If no, notify customer for authorization.) Yes ☒ No ☐

# of preserved  
bottles checked  
for pH:

( $<2$  or  $>12$  unless noted)

Adjusted? \_\_\_\_\_

Checked by: *[Signature]* 12/9/22

### Special Handling (if applicable)

15. Was client notified of all discrepancies with this order? Yes ☐ No ☐ NA ☒

Person Notified: \_\_\_\_\_

Date: \_\_\_\_\_

By Whom: \_\_\_\_\_

Via: ☐ eMail ☐ Phone ☐ Fax ☐ In Person

Regarding: \_\_\_\_\_

Client Instructions: \_\_\_\_\_

16. Additional remarks:

### 17. Cooler Information

Cooler No	Temp $^{\circ}\text{C}$	Condition	Seal Intact	Seal No	Seal Date	Signed By
1	0.3	Good				

# THE UNIVERSITY OF CHICAGO

by *OCD: 12/20/2022 1:43:15 PM*  
**Chain-of-Custody Record**

Client: EOG-Artesia / Ranger Env.	<input type="checkbox"/> Standard <input checked="" type="checkbox"/> Rush <u>24-hr</u>
Mailing Address: EOG - 105 S 4th St, Artesia NM, 88210	Project Name: <u>Federal cm # 1</u>
Ranger: PO Box 201179, Austin TX 78720	Project #: 5375
Phone #: 521-335-1785	Project Manager: W. Kierdorf
email or Fax#: Will@RangerEnv.com	
QA/QC Package: <input checked="" type="checkbox"/> Standard <input type="checkbox"/> Level 4 (Full Validation)	
Accreditation: <input type="checkbox"/> Az Compliance	Sampler: <u>J. Martinez</u>
<input checked="" type="checkbox"/> NELAC <input type="checkbox"/> Other _____	On Ice: <input checked="" type="checkbox"/> Yes <input type="checkbox"/> No
<input checked="" type="checkbox"/> EDD (Type) Excel	# of Coolers: <u>1</u>

[illegible][illegible]

Remarks: Bill to EOG Artesia

If necessary, samples submitted to Hall Environmental may be subcontracted to other accredited laboratories. This serves as notice of this possibility. Any sub-contracted data will be clearly notated on the analytical report.



## ATTACHMENT 3 – HOWELL RANCH SEED MIXTURE

## **James H & Betty R Howell Revocable Trust Seed Mix**

**1lb per acre of Plains Bristlegrass**

**2lbs per acre of Green Sprangletop**

**3lbs per acre of Side Oats Gramma**

**2lbs per acre of Blue Gramma**

**Increase to 16lbs per acre if broadcast.**

## **Add Reclamation Mix**

**40% Ryegrass (Annual)**

**10% Millet**

**7.5% Kleingrass**

**5.7% Sideoats**

**5% Green Sprangletop**

**7.5% Bristlegrass**

**10% Western Wheatgrass**

**10% Buffalograss**

**2.5% Blue Grama**

**PLANTING RATE 20 lbs. per acre**

**Updated 5/23/2021**

## ATTACHMENT **4** – NMOCD CORRESPONDENCE

From: [OCDOnline@state.nm.us](mailto:OCDOnline@state.nm.us) <[OCDOnline@state.nm.us](mailto:OCDOnline@state.nm.us)>  
Sent: Thursday, March 24, 2022 1:12 PM  
To: Tina Huerta <[Tina\\_Huerta@eogresources.com](mailto:Tina_Huerta@eogresources.com)>  
Subject: The Oil Conservation Division (OCD) has approved the application, Application ID: 92911

**CAUTION:** This email originated from outside of the organization. Do not click links or open attachments unless you recognize the sender and know the content is safe.

To whom it may concern (c/o Tina Huerta for EOG RESOURCES INC),

The OCD has approved the submitted *Application for administrative approval of a release notification and corrective action* (C-141), for incident ID (n#) nAPP2208340165, with the following conditions:

- When submitting future reports regarding this release, please submit the calculations used or specific justification for the volumes reported on the initial C-141

The signed C-141 can be found in the OCD Online: Imaging under the incident ID (n#).

If you have any questions regarding this application, please contact me.

Thank you,  
Jocelyn Harimon  
Environmental Specialist  
575-748-1283  
[Jocelyn.Harimon@state.nm.us](mailto:Jocelyn.Harimon@state.nm.us)

New Mexico Energy, Minerals and Natural Resources Department  
1220 South St. Francis Drive  
Santa Fe, NM 87505



**From:** [OCDOnline@state.nm.us](mailto:OCDOnline@state.nm.us) <[OCDOnline@state.nm.us](mailto:OCDOnline@state.nm.us)>

**Sent:** Thursday, October 27, 2022 1:38 PM

**To:** Tina Huerta <[Tina.Huerta@eogresources.com](mailto:Tina.Huerta@eogresources.com)>

**Subject:** The Oil Conservation Division (OCD) has approved the application, Application ID: 119174

**CAUTION:** This email originated from outside of the organization. Do not click links or open attachments unless you recognize the sender and know the content is safe.

To whom it may concern (c/o Tina Huerta for EOG RESOURCES INC),

The OCD has approved the submitted *Application for administrative approval of a release notification and corrective action* (C-141), for incident ID (n#) nAPP2208340165, with the following conditions:

- **Thank you for the site assessment. Please make sure all sample locations are fully delineated. Floor confirmation samples should be delineated/excavated to meet closure criteria standards for site assessment/characterization/proven depth to water determination. All off pad areas must contain a minimum of 4 feet non-waste containing uncontaminated, earthen material with chloride concentrations less than 600 mg/kg and less than 100 mg/kg for TPH. Sidewall samples should be delineated/excavated to 600 mg/kg for chlorides and 100 mg/kg for TPH to define the edge of the release. Samples must be analyzed for all constituents listed in Table I of 19.15.29.12 NMAC. Confirmation samples should be collected every 200 ft<sup>2</sup>. A remediation plan should be submitted within 90 days of the date of discovery.**

The signed C-141 can be found in the OCD Online: Imaging under the incident ID (n#).

If you have any questions regarding this application, please contact me.

Thank you,

Robert Hamlet

575-748-1283

[Robert.Hamlet@emnrd.nm.gov](mailto:Robert.Hamlet@emnrd.nm.gov)

**New Mexico Energy, Minerals and Natural Resources Department**

1220 South St. Francis Drive

Santa Fe, NM 87505

One attachment • Scanned by Gmail ⓘ



---

**From:** Tina Huerta <[Tina\\_Huerta@eogresources.com](mailto:Tina_Huerta@eogresources.com)>

**Sent:** Tuesday, November 8, 2022 3:00 PM

**To:** [ocd.enviro@emnrd.nm.gov](mailto:ocd.enviro@emnrd.nm.gov); [blm\\_nm\\_cfo\\_spill@blm.gov](mailto:blm_nm_cfo_spill@blm.gov); Alan & Cheryl <[ahowell@pvt.net](mailto:ahowell@pvt.net)>; Austin Weyant <[austin@atkinseng.com](mailto:austin@atkinseng.com)>

**Cc:** Andrea Felix <[Andrea\\_Felix@eogresources.com](mailto:Andrea_Felix@eogresources.com)>; Katie Jamison <[Katie\\_Jamison@eogresources.com](mailto:Katie_Jamison@eogresources.com)>; Michael Yemm <[Michael\\_Yemm@eogresources.com](mailto:Michael_Yemm@eogresources.com)>; Terrence Gant <[Terry\\_Gant@eogresources.com](mailto:Terry_Gant@eogresources.com)>

**Subject:** Federal CM 1 (nAPP2208339578 & nAPP2208340165) Sampling Notification

Good Afternoon,

EOG Resources, Inc. respectfully submits notification of sampling activities to be conducted at the below location.

Federal CM 1

nAPP2208339578 & nAPP2208340165

Sampling will begin at 8:00 a.m. on Friday, November 11, 2022.

Thank you,

*Tina Huerta*

*Regulatory Specialist*

*Direct: 575.748.4168*

*Cell: 575.703.3121*

*Email: [tina\\_huerta@eogresources.com](mailto:tina_huerta@eogresources.com)*



**Artesia Division**



## Subject: Federal CM 1 (nAPP2208340165) Sampling Notification



**Tina Huerta** <Tina\_Huerta@eogresources.com>

8:56 AM (4 hours ago)

to ocd.enviro@emnrd.nm.gov, blm\_nm\_cfo\_spill@blm.gov, Alan & Cheryl, Austin Weyant, Andrea Felix, Katie Jamison, Michael Yemm, Terreni ▼

You are viewing an attached message. Rangerenv.com Mail can't verify the authenticity of attached messages.



Good Morning,

EOG Resources, Inc. respectfully submits notification (2) business days prior to conducting sampling on the following location.

Federal CM 1  
M-12-19S-24E  
Eddy County, NM  
nAPP2208340165

Sampling will begin at 8:00 a.m. on Wednesday, December 7, 2022.

Thank you,

*Tina Huerta*  
*Regulatory Specialist*  
*Direct: 575.748.4168*  
*Cell: 575.703.3121*  
*Email: [tina\\_huerta@eogresources.com](mailto:tina_huerta@eogresources.com)*



**Artesia Division**

**District I**  
1625 N. French Dr., Hobbs, NM 88240  
Phone:(575) 393-6161 Fax:(575) 393-0720  
**District II**  
811 S. First St., Artesia, NM 88210  
Phone:(575) 748-1283 Fax:(575) 748-9720  
**District III**  
1000 Rio Brazos Rd., Aztec, NM 87410  
Phone:(505) 334-6178 Fax:(505) 334-6170  
**District IV**  
1220 S. St Francis Dr., Santa Fe, NM 87505  
Phone:(505) 476-3470 Fax:(505) 476-3462

**State of New Mexico**  
**Energy, Minerals and Natural Resources**  
**Oil Conservation Division**  
**1220 S. St Francis Dr.**  
**Santa Fe, NM 87505**

CONDITIONS  
  
Action 169013

CONDITIONS

Operator: EOG RESOURCES INC P.O. Box 2267 Midland, TX 79702	OGRID: 7377
	Action Number: 169013
	Action Type: [C-141] Release Corrective Action (C-141)

CONDITIONS

Created By	Condition	Condition Date
rhamlet	We have received your closure report and final C-141 for Incident #NAPP2208340165 FEDERAL CM COM #1 -SOUTHERN AREA, thank you. This closure is approved.	3/31/2023