

District I
1625 N. French Dr., Hobbs, NM 88240
District II
811 S. First St., Artesia, NM 88210
District III
1000 Rio Brazos Road, Aztec, NM 87410
District IV
1220 S. St. Francis Dr., Santa Fe, NM 87505

State of New Mexico
Energy Minerals and Natural
Resources Department

Oil Conservation Division
1220 South St. Francis Dr.
Santa Fe, NM 87505

Form C-141
Revised August 24, 2018
Submit to appropriate OCD District office

Incident ID	
District RP	
Facility ID	
Application ID	

Closure

The responsible party must attach information demonstrating they have complied with all applicable closure requirements and any conditions or directives of the OCD. This demonstration should be in the form of a comprehensive report (electronic submittals in .pdf format are preferred) including a scaled site map, sampling diagrams, relevant field notes, photographs of any excavation prior to backfilling, laboratory data including chain of custody documents of final sampling, and a narrative of the remedial activities. Refer to 19.15.29.12 NMAC.

Closure Report Attachment Checklist: *Each of the following items must be included in the closure report.*

- ☒ A scaled site and sampling diagram as described in 19.15.29.11 NMAC
- ☒ Photographs of the remediated site prior to backfill or photos of the liner integrity if applicable (Note: appropriate OCD District office must be notified 2 days prior to liner inspection)
- ☒ Laboratory analyses of final sampling (Note: appropriate ODC District office must be notified 2 days prior to final sampling)
- ☒ Description of remediation activities

I hereby certify that the information given above is true and complete to the best of my knowledge and understand that pursuant to OCD rules and regulations all operators are required to report and/or file certain release notifications and perform corrective actions for releases which may endanger public health or the environment. The acceptance of a C-141 report by the OCD does not relieve the operator of liability should their operations have failed to adequately investigate and remediate contamination that pose a threat to groundwater, surface water, human health or the environment. In addition, OCD acceptance of a C-141 report does not relieve the operator of responsibility for compliance with any other federal, state, or local laws and/or regulations. The responsible party acknowledges they must substantially restore, reclaim, and re-vegetate the impacted surface area to the conditions that existed prior to the release or their final land use in accordance with 19.15.29.13 NMAC including notification to the OCD when reclamation and re-vegetation are complete.

Printed Name: Robert Dunaway Title: Senior Environmental Engineer
Signature:  Date: 1/12/23
email: rhodunaway@eprod.com Telephone: 575-628-6802

Incident ID	
District RP	
Facility ID	
Application ID	

OCD Only

Received by: _____ Date: _____

Closure approval by the OCD does not relieve the responsible party of liability should their operations have failed to adequately investigate and remediate contamination that poses a threat to groundwater, surface water, human health, or the environment nor does not relieve the responsible party of compliance with any other federal, state, or local laws and/or regulations.

Closure Approved by: _____ Date: _____

Printed Name: _____ Title: _____

District I
1625 N. French Dr., Hobbs, NM 88240
District II
811 S. First St., Artesia, NM 88210
District III
1000 Rio Brazos Road, Aztec, NM 87410
District IV
1220 S. St. Francis Dr., Santa Fe, NM 87505

State of New Mexico
Energy Minerals and Natural
Resources Department

Oil Conservation Division
1220 South St. Francis Dr.
Santa Fe, NM 87505

Form C-141
Revised August 24, 2018
Submit to appropriate OCD District office

Incident ID	NAPP2210932844
District RP	
Facility ID	
Application ID	

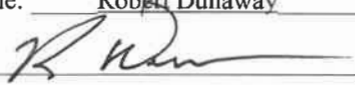
Closure

The responsible party must attach information demonstrating they have complied with all applicable closure requirements and any conditions or directives of the OCD. This demonstration should be in the form of a comprehensive report (electronic submittals in .pdf format are preferred) including a scaled site map, sampling diagrams, relevant field notes, photographs of any excavation prior to backfilling, laboratory data including chain of custody documents of final sampling, and a narrative of the remedial activities. Refer to 19.15.29.12 NMAC.

Closure Report Attachment Checklist: *Each of the following items must be included in the closure report.*

- ☒ A scaled site and sampling diagram as described in 19.15.29.11 NMAC
- ☒ Photographs of the remediated site prior to backfill or photos of the liner integrity if applicable (Note: appropriate OCD District office must be notified 2 days prior to liner inspection)
- ☒ Laboratory analyses of final sampling (Note: appropriate ODC District office must be notified 2 days prior to final sampling)
- ☒ Description of remediation activities

I hereby certify that the information given above is true and complete to the best of my knowledge and understand that pursuant to OCD rules and regulations all operators are required to report and/or file certain release notifications and perform corrective actions for releases which may endanger public health or the environment. The acceptance of a C-141 report by the OCD does not relieve the operator of liability should their operations have failed to adequately investigate and remediate contamination that pose a threat to groundwater, surface water, human health or the environment. In addition, OCD acceptance of a C-141 report does not relieve the operator of responsibility for compliance with any other federal, state, or local laws and/or regulations. The responsible party acknowledges they must substantially restore, reclaim, and re-vegetate the impacted surface area to the conditions that existed prior to the release or their final land use in accordance with 19.15.29.13 NMAC including notification to the OCD when reclamation and re-vegetation are complete.

Printed Name: Robert Dunaway Title: Senior Environmental Engineer
Signature:  Date: 1/12/23
email: rhunaway@eprod.com Telephone: 575-628-6802

Incident ID	
District RP	
Facility ID	
Application ID	

OCD Only

Received by: Robert Hamlet Date: 4/14/2023

Closure approval by the OCD does not relieve the responsible party of liability should their operations have failed to adequately investigate and remediate contamination that poses a threat to groundwater, surface water, human health, or the environment nor does not relieve the responsible party of compliance with any other federal, state, or local laws and/or regulations.

Closure Approved by: Robert Hamlet Date: 4/14/2023

Printed Name: Robert Hamlet Title: Environmental Specialist - Advanced



Souder, Miller & Associates ♦ 201 S. Halagueno St. ♦ Carlsbad, NM 88220
(575) 689-8801

January 11, 2023

#5E31002-BG7

NMOCD District 2
506 West Texas Street
Artesia, New Mexico 88210

SUBJECT: Remediation Closure Report for the Poker Lake Discharge (Line 16-24-30) Release (nAPP2210932844), Eddy County, New Mexico

1.0 Executive Summary

On behalf of Enterprise Field Services LLC (Enterprise), Souder, Miller & Associates (SMA) has prepared this Remediation Closure Report that describes the remediation of a natural gas and condensate release related to oil and gas production activities at the Poker Lake Discharge (Line 16-24-30) Release (nAPP2210932844). The release site is located in Unit B, Section 30, Township 24S, Range 30E, Eddy County, New Mexico, on public land administered by the Bureau of Land Management (BLM). Figure 1 illustrates the vicinity and site location on a United States Geological Survey (USGS) 7.5-minute quadrangle map.

This report demonstrates that the release area has been remediated to meet the standards of Table I of 19.15.29.12 New Mexico Administrative Code (NMAC). The information provided in this report is intended to fulfill final New Mexico Oil Conservation Division (NMOCD) closure requirements.

The gas portion of this release constitutes venting that occurred during an emergency or malfunction, as authorized by NMOCD regulations at NMAC 19.15.28.8.A and B(1). This release therefore is not prohibited by NMAC 19.15.29.8.A.

SMA recommends no further action and requests that the release associated with the Poker Lake Discharge (Line 16-24-30) Release (nAPP2210932844) be closed.

Table 1: Release Information and Closure Criteria

Name	Poker Lake Discharge (Line 16-24-30)	Company	Enterprise Field Services LLC
API Number	N/A	Location	32.194002, -103.917758
Tracking Number	nAPP2210932844	Land Status	Federal (BLM)
Date Release Discovered	April 18, 2022	Source of Release	Hole in gathering pipeline
Released Volume	6 barrels (bbls) Produced Water 331 Mcf Natural Gas	Recovered Volume	0 bbls Produced Water 0 Mcf Natural Gas
NMOCD Closure Criteria	51 to 100 feet to groundwater		

2.0 Background

On April 18, 2022, a produced water and natural gas release was discovered at the Poker Lake Discharge (Line 16-2-30) site due to a hole in the gathering pipeline. Initial response activities were conducted by Enterprise, and included source elimination and site security, containment, and site stabilization activities. An initial site

Poker Lake Discharge (Line 16-24-30) Closure Report
January 11, 2023

Page 2 of 3

characterization was conducted at the site and is detailed in SMA's *Remediation Plan for the Poker Lake Discharge (Line 16-24-30) Release* dated September 13, 2022. Figure 1 illustrates the vicinity and site location; Figure 2 illustrates the release location. A copy of the initial C-141 form is included in Appendix A.

3.0 Site Information and Closure Criteria

The release site is located approximately 11 miles southeast of Malaga, New Mexico on Federal (BLM) land at an elevation of approximately 3,160 feet above mean sea level (amsl).

Depth to Groundwater

A search of the New Mexico Office of the State Engineer (NMOSE) New Mexico Water Rights Reporting System (NMWRRS) and the USGS National Water Information System did not yield any results within ½-mile of the site (Appendix B). Registered wells in the vicinity are shown on Figure 1. A boring was advanced to 56 feet below grade surface (bgs) and allowed to remain open for greater than 48-hours during site characterization activities. Thus, depth to groundwater is considered to be between 51 and 100 feet bgs for Closure Criteria determinations.

Wellhead Protection Area

There are no known water sources within ½-mile of the location, according to the NMOSE NMWRRS and USGS National Water Information System. Registered wells in the vicinity are shown on Figure 1.

Distance to Nearest Significant Watercourse

The release site is located approximately 1,200 feet north of Pierce Canyon.

Closure Criteria

Table 2 demonstrates the Closure Criteria applicable to this location. Figures 1 and 2 illustrate the 500 and 1,000-foot and the 0.5-mile radii which indicate that the site does not lie within a sensitive area as described in Paragraph (4) of Subsection (C) of 19.15.29.12 NMAC.

Based on the information presented herein, the applicable NMOCD Closure Criteria for this site is for a groundwater depth of 51 to 100 feet bgs in addition to the requirements of reclamation for the upper four feet of impacted soil.

4.0 Release Characterization and Remediation Activities

Based on the results of the site characterization activities described in SMA's *Remediation Plan for the Poker Lake Discharge (Line 16-24-30) Release* dated September 13, 2022, the impacted area was excavated, and confirmation samples were collected from the final excavation walls and base. Due to the length and depth of the remedial excavation, the final excavation was dug and sampled in phases to maintain the ability to reach the necessary portions of the excavation with the heavy equipment and ensure the safety of the pipeline.

Excavation confirmation samples were collected on November 17 and 23, 2022, as well as December 6 and 14, 2022. The confirmation samples were analyzed for total chloride using United States Environmental Protection Agency (USEPA) Method 300.0; benzene, toluene, ethylbenzene and total xylenes (BTEX) using USEPA Method 8021B; and total petroleum hydrocarbons (TPH) as gasoline, diesel and motor oil range organics (GRO, DRO, and DRO) by USEPA Method 8015D. Excavation samples were composed of 5-point composites collected every 200 square feet or less in accordance with the sampling protocol included in Appendix C. Field notes are included in Appendix D. Copies of the sampling notification emails are included in Appendix A.

The final remediation excavation measured approximately 30 feet wide by 44 feet long at the greatest extents with depths ranging from 9 to 31 feet bgs.

Poker Lake Discharge (Line 16-24-30) Closure Report
January 11, 2023

Page 3 of 3

Excavation extents and closure confirmation sample locations are depicted in Figure 3. A photo log is included in Appendix D. Confirmation sample laboratory results are summarized in Table 3. Laboratory reports are included in Appendix E.

5.0 Recommendations

As demonstrated in Table 3, all final excavation closure confirmation samples meet NMOCD Closure Criteria as described in Table I of 19.15.29.12 NMAC as well as the reclamation requirements of Paragraph (D) of 19.15.29.13 NMAC.

Excavated soils were removed and replaced with clean backfill material to return the surface to previous contours. All excavated soil was transported and disposed of at Lea Land LLC, Hobbs, New Mexico, an NMOCD-permitted disposal facility.

SMA recommends no further action and requests closure of Incident Number nAPP2210932844.

6.0 Scope and Limitations

The scope of our services included: assessment sampling; verifying release stabilization; regulatory liaison; remediation guidance; and preparing this report. All work has been performed in accordance with generally accepted professional environmental consulting practices for oil and gas releases in the Permian Basin in New Mexico.

If there are any questions regarding this report, please contact Heather Woods at 505-325-7535.

Submitted by:
SOUDER, MILLER & ASSOCIATES

Reviewed by:



Sarahmay Schlea
Staff Scientist



Heather M. Woods, P.G.
Project Geoscientist

Poker Lake Discharge (Line 16-24-30) Closure Report
January 11, 2023

Page 4 of 1

REFERENCES:

Souder, Miller, & Associates; *Remediation plan for the Poker Lake Discharge (Line 16-24-30) Release* (nAPP2210932844), Eddy County, New Mexico, dated September 13, 2022.

ATTACHMENTS:

Figures:

Figure 1: Topographic Site Map

Figure 2: Aerial Site Map

Figure 3: Site and Sample Location Map

Tables:

Table 2: NMOCD Closure Criteria

Table 3: Summary of Laboratory Analytical Results

Appendices:

Appendix A: Form C-141 and Sampling Notifications

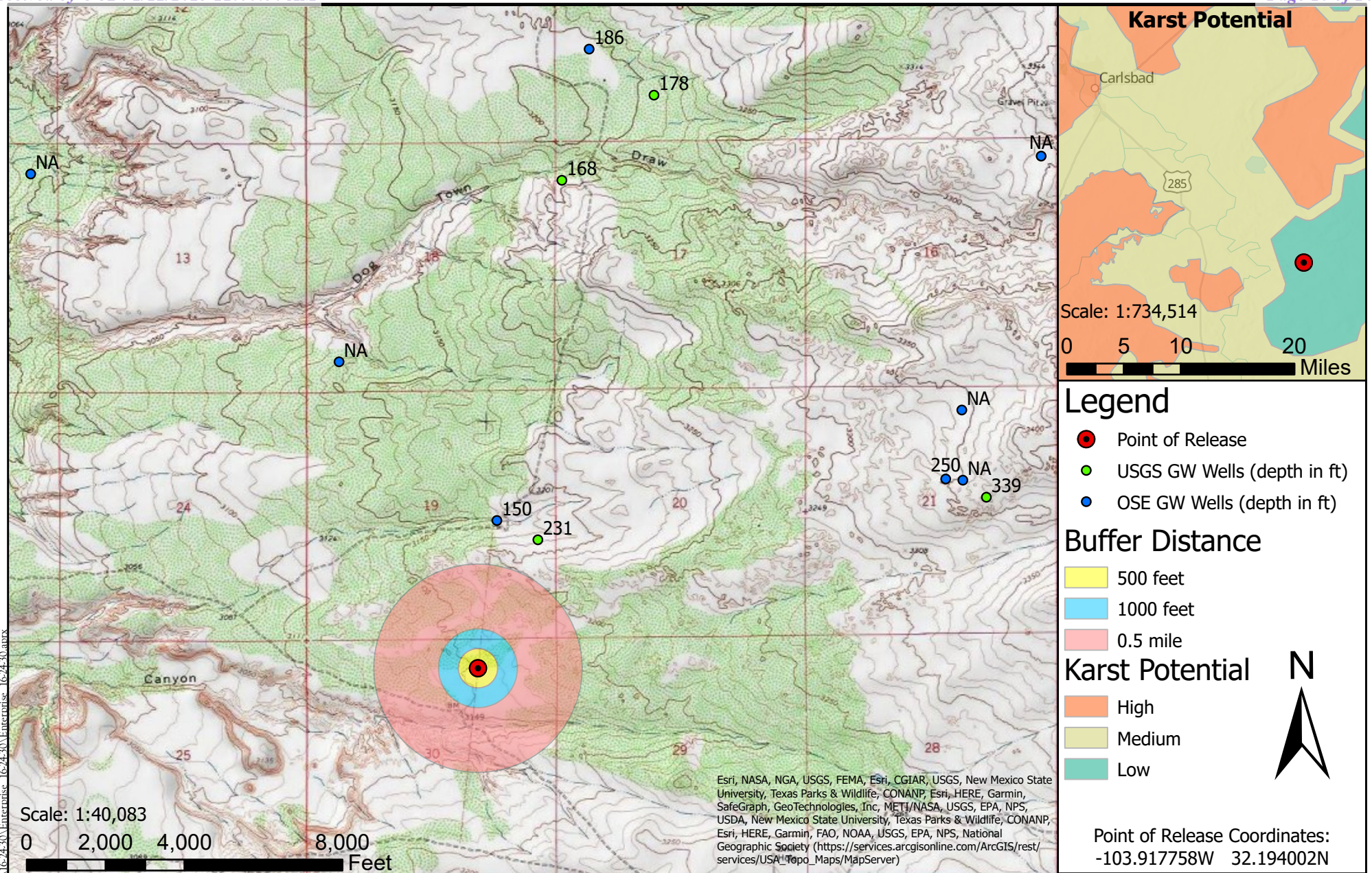
Appendix B: Water Well Data

Appendix C: Sampling Protocol

Appendix D: Field Notes and Photo Log

Appendix E: Laboratory Analytical Reports

FIGURES



Topographic Site Map
Poker Lake Line 16-24-30 - Enterprise Field Services LLC
UL: B S: 30 T: 24S R: 30E, Eddy County, New Mexico

Figure 1

Revisions

By:	Date:	Descr:
By: _____	Date: _____	Descr: _____
By: _____	Date: _____	Descr: _____

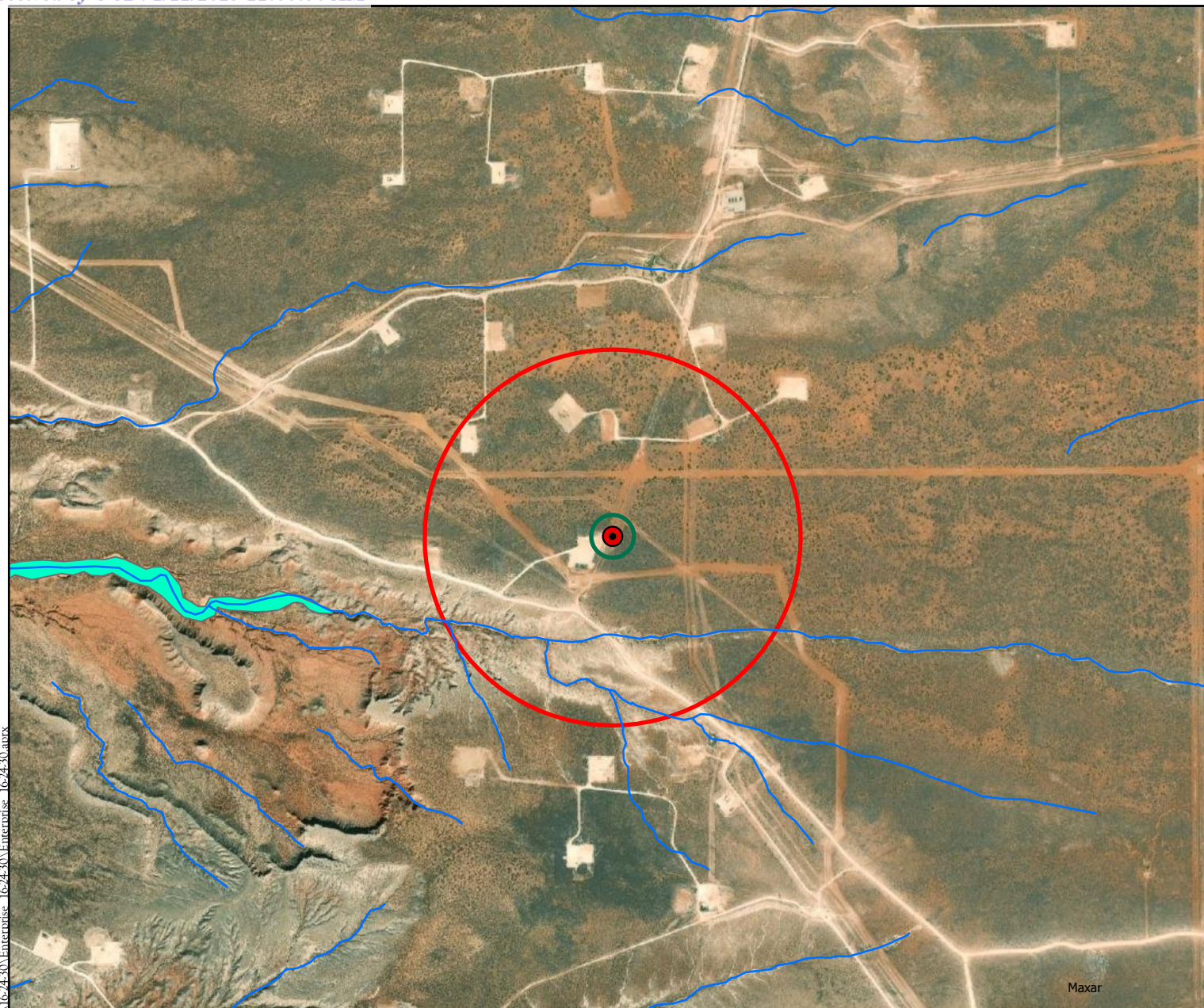
Drawn
Date
Checked
Approved

Sarahmay Schlea
9/13/2022



201 South Halagueno Street
 Carlsbad, New Mexico 88221
 (575) 689-7040
 Serving the Southwest & Rocky Mountains

© Souder, Miller & Associates, 2021, All Rights Reserved



Legend

- Point of Release
- Streams/Canals/Flowlines
- FEMA Flood Zones
- 0.5 Mile Radius
- 300 Foot Radius



0 1,000 2,000 4,000

Feet

Scale: 1:25,653

Point of Release Coordinates:
-103.917758W 32.194002N

Aerial Site Map

Poker Lake Line 16-24-30 - Enterprise Field Services LLC
UL: B S: 30 T: 24S R: 30E, Eddy County, New Mexico

Figure 2

Revisions

By: _____ Date: _____ Descr: _____
By: _____ Date: _____ Descr: _____

Drawn
Date
Checked
Approved

Sarahmay Schlea
9/13/2022



201 South Halagueno Street
Carlsbad, New Mexico 88221
(575) 689-7040
Serving the Southwest & Rocky Mountains

© Souder, Miller & Associates, 2021, All Rights Reserved



Confirmation Site and Sample Location Map
Poker Lake Line 16-24-30 - Enterprise Field Services LLC
UL: B S: 30 T: 24S R: 30E, Eddy County, New Mexico

Figure

Revisions

By: _____ Date: _____ Descr: _____
By: _____ Date: _____ Descr: _____

Drawn
Date
Checked
Approved

Sarahmay Schlea
1/11/2023



201 South Halagueno Street
Carlsbad, New Mexico 88221
(575) 689-7040
Serving the Southwest & Rocky Mountains

© Souder, Miller & Associates, 2021, All Rights Reserved

TABLES

Table 2:
NMOCD Closure CriteriaEnterprise Field Services LLC
Poker Lake Discharge (Line 16-24-30)

Site Information (19.15.29.11.A(2, 3, and 4) NMAC)		Source/Notes
Depth to Groundwater (feet bgs)	>56.5	Onsite Measurement within Borehole (not encountered)
Horizontal Distance From All Water Sources Within 1/2 Mile (mi)	>0.5	NMOSE and USGS Water Well Data
Horizontal Distance to Nearest Significant Watercourse (ft)	880	USGS 7.5 quadrangle map

Closure Criteria (19.15.29.12.B(4) and Table 1 NMAC)						
Depth to Groundwater		Closure Criteria (units in mg/kg)				
		Chloride *numerical limit or background, whichever is greater	TPH	GRO + DRO	BTEX	Benzene
< 50' BGS		600	100		50	10
51' to 100'	X	10000	2500	1000	50	10
>100'		20000	2500	1000	50	10
Surface Water	yes or no	if yes, then				
<300' from continuously flowing watercourse or other significant watercourse?	No	600	100		50	10
<200' from lakebed, sinkhole or playa lake?	No					
Water Well or Water Source						
<500 feet from spring or a private, domestic fresh water well used by less than 5 households for domestic or stock watering purposes?	No					
<1000' from fresh water well or spring?	No					
Human and Other Areas						
<300' from an occupied permanent residence, school, hospital, institution or church?	No					
within incorporated municipal boundaries or within a defined municipal fresh water well field?	No					
<100' from wetland?	No					
within area overlying a subsurface mine	No					
within an unstable area?	No					
within a 100-year floodplain?	No					



Table 3:
Summary of Laboratory Analytical Results

Enterprise Field Services LLC
Poker Lake Discharge (Line 16-24-30)

Sample ID	Sample Date	Depth of Sample (feet bgs)	Method 8021B		Method 8015D					Method 300.0
			BTEX	Benzene	GRO	DRO	GRO + DRO	MRO	Total TPH	Chloride
			mg/kg	mg/kg	mg/kg	mg/kg	mg/kg	mg/kg	mg/kg	mg/kg
NMOCD Reclamation Standard (<4 ft)			50	10	--	--	--	--	100	600
NMOCD Closure Criteria (<4 ft)			50	10	--	--	1,000	--	2,500	10,000
Final Excavation Confirmation Samples										
BS01	11/17/2022	26	<0.025	<0.025	<20.0	<25.0	<45.0	<50.0	<95.0	23.1
BS02	11/17/2022	20	<0.025	<0.025	<20.0	<25.0	<45.0	<50.0	<95.0	157
BSW	12/6/2022	9	<0.025	<0.025	<20.0	<25.0	<45.0	<50.0	<95.0	51.3
BSE1	12/6/2022	31	<0.025	<0.025	<20.0	<25.0	<45.0	<50.0	<95.0	345
BSE2	12/6/2022	31	<0.025	<0.025	<20.0	47.5	47.5	<50.0	47.5	323
SW1	11/23/2022	0-9	<0.025	<0.025	<20.0	<25.0	<45.0	<50.0	<95.0	<20.0
		9-18	<0.025	<0.025	<20.0	<25.0	<45.0	<50.0	<95.0	<20.0
	11/17/2022	18-26	<0.025	<0.025	<20.0	<25.0	<45.0	<50.0	<95.0	<20.0
SW2	11/17/2022	0-9	<0.025	<0.025	<20.0	<25.0	<45.0	<50.0	<95.0	<20.0
		9-18	<0.025	<0.025	<20.0	<25.0	<45.0	<50.0	<95.0	24.7
		18-26	<0.025	<0.025	<20.0	<25.0	<45.0	<50.0	<95.0	20.5
SW3	11/17/2022	0-10	<0.025	<0.025	<20.0	<25.0	<45.0	<50.0	<95.0	41.7
		10-20	<0.025	<0.025	<20.0	<25.0	<45.0	<50.0	<95.0	<20.0
SW4	11/17/2022	0-7	<0.025	<0.025	<20.0	<25.0	<45.0	<50.0	<95.0	<20.0
		7-14	<0.025	<0.025	<20.0	<25.0	<45.0	<50.0	<95.0	<20.0
		14-20	<0.025	<0.025	<20.0	<25.0	<45.0	<50.0	<95.0	<20.0
SWE	12/14/2022	0-10	<0.025	<0.025	<20.0	<25.0	<45.0	<50.0	<95.0	<20.0
	12/6/2022	10-20	<0.025	<0.025	<20.0	<25.0	<45.0	<50.0	<95.0	44.0
		20-31	<0.025	<0.025	<20.0	<25.0	<45.0	<50.0	<95.0	26.6
NESW	12/6/2022	0-10	<0.025	<0.025	<20.0	<25.0	<45.0	<50.0	<95.0	<20.0
		10-20	<0.025	<0.025	<20.0	<25.0	<45.0	<50.0	<95.0	90.0
		20-31	<0.025	<0.025	<20.0	<25.0	<45.0	<50.0	<95.0	35.5
SWW	12/6/2022	0 to 9	<0.025	<0.025	<20.0	<25.0	<45.0	<50.0	<95.0	51.5
NWSW	12/6/2022	0 to 9	<0.025	<0.025	<20.0	<25.0	<45.0	<50.0	<95.0	<20.0
Samples Removed by Excavation										
SW1	11/17/2022	0-9	<0.025	<0.025	<20.0	<25.0	<45.0	<50.0	<95.0	37.2
		9-18	<0.025	<0.025	<20.0	57.2	57.2	65.6	122.8	174
SWE	12/6/2022	0-10	<0.025	<0.025	<20.0	180	180	184	364	301

Notes: NMOCD - New Mexico Oil Conservation Division
bgs - below grade surface
mg/kg - milligram per kilogram
"--" indicates not analyzed or not applicable
BTEX - benzene, toluene, ethylbenzene, and xylenes

GRO - gasoline range organics
DRO - diesel range organics
MRO - motor oil range organics
TPH - total petroleum hydrocarbons



APPENDIX A

FORM C141 AND SAMPLING NOTIFICATIONS

District I
1625 N. French Dr., Hobbs, NM 88240
District II
811 S. First St., Artesia, NM 88210
District III
1000 Rio Brazos Road, Aztec, NM 87410
District IV
1220 S. St. Francis Dr., Santa Fe, NM 87505

State of New Mexico
Energy Minerals and Natural
Resources Department

Oil Conservation Division
1220 South St. Francis Dr.
Santa Fe, NM 87505

Form C-141
Revised August 24, 2018
Submit to appropriate OCD District office

Incident ID	NAPP2210932844
District RP	
Facility ID	
Application ID	

Release Notification

Responsible Party

Responsible Party	Enterprise Field Services LLC	OGRID	241602
Contact Name	Robert Dunaway	Contact Telephone	575-628-6802
Contact email	rhunaway@eprod.com	Incident # (assigned by OCD)	
Contact mailing address	PO Box 4324, Houston, TX 77210		

Location of Release Source

Latitude 32.194002 Longitude -103.917758
(NAD 83 in decimal degrees to 5 decimal places)

Site Name	Line 16-24-30	Site Type	Gathering Pipeline
Date Release Discovered	4/18/22	API# (if applicable)	

Unit Letter	Section	Township	Range	County
B	30	24S	30	Eddy

Surface Owner: ☐ State ☒ Federal ☐ Tribal ☐ Private (Name: _____)

Nature and Volume of Release

Material(s) Released (Select all that apply and attach calculations or specific justification for the volumes provided below)

<input type="checkbox"/> Crude Oil	Volume Released (bbls)	Volume Recovered (bbls)
<input checked="" type="checkbox"/> Produced Water	Volume Released (bbls) 6	Volume Recovered (bbls) -0-
	Is the concentration of dissolved chloride in the produced water >10,000 mg/l?	<input type="checkbox"/> Yes <input checked="" type="checkbox"/> No
<input type="checkbox"/> Condensate	Volume Released (bbls)	Volume Recovered (bbls)
<input checked="" type="checkbox"/> Natural Gas	Volume Released (Mcf) 331	Volume Recovered (Mcf) -0-
<input type="checkbox"/> Other (describe)	Volume/Weight Released (provide units)	Volume/Weight Recovered (provide units)

Cause of Release

Found a leak on a gathering pipeline, cause is to be determined.

State of New Mexico
Oil Conservation Division

Incident ID	NAPP2210932844
District RP	
Facility ID	
Application ID	

Was this a major release as defined by 19.15.29.7(A) NMAC? <input type="checkbox"/> Yes <input checked="" type="checkbox"/> No	If YES, for what reason(s) does the responsible party consider this a major release?
If YES, was immediate notice given to the OCD? By whom? To whom? When and by what means (phone, email, etc)? 	

Initial Response

The responsible party must undertake the following actions immediately unless they could create a safety hazard that would result in injury

- ☒ The source of the release has been stopped.
- ☒ The impacted area has been secured to protect human health and the environment.
- ☒ Released materials have been contained via the use of berms or dikes, absorbent pads, or other containment devices.
- ☒ All free liquids and recoverable materials have been removed and managed appropriately.

If all the actions described above have not been undertaken, explain why:

Per 19.15.29.8 B. (4) NMAC the responsible party may commence remediation immediately after discovery of a release. If remediation has begun, please attach a narrative of actions to date. If remedial efforts have been successfully completed or if the release occurred within a lined containment area (see 19.15.29.11(A)(5)(a) NMAC), please attach all information needed for closure evaluation.

I hereby certify that the information given above is true and complete to the best of my knowledge and understand that pursuant to OCD rules and regulations all operators are required to report and/or file certain release notifications and perform corrective actions for releases which may endanger public health or the environment. The acceptance of a C-141 report by the OCD does not relieve the operator of liability should their operations have failed to adequately investigate and remediate contamination that pose a threat to groundwater, surface water, human health or the environment. In addition, OCD acceptance of a C-141 report does not relieve the operator of responsibility for compliance with any other federal, state, or local laws and/or regulations.

Printed Name: Robert Dunaway

Title: Senior Environmental Engineer

Signature: 

Date: 4/19/22

email: rhunaway@eprod.com

Telephone: 575-628-6802

OCD Only

Received by: Jocelyn Harimon

Date: 04/19/2022

Hours of leak	1
Diameter of hole (inches)	0.025
Line Pressure at Leak	1046
Volume of Gas Leaked	0.66

Calculations:

Volume of Gas Leaked (MSCF) = Diameter*²*Diameter*(Upstream C
 **Reference: Pipeline Rules of Thumb Handbook, 3rd Edition, McA

Footage of Pipe blowdown	5039
Initial line pressure	1046
Diameter of Pipe (inches)	12

Released to Imaging: 4/14/2023 11:50:37 AM
 Volume of Gas Blow Down 836.67156

District I
1625 N. French Dr., Hobbs, NM 88240
Phone:(575) 393-6161 Fax:(575) 393-0720
District II
811 S. First St., Artesia, NM 88210
Phone:(575) 748-1283 Fax:(575) 748-9720
District III
1000 Rio Brazos Rd., Aztec, NM 87410
Phone:(505) 334-6178 Fax:(505) 334-6170
District IV
1220 S. St Francis Dr., Santa Fe, NM 87505
Phone:(505) 476-3470 Fax:(505) 476-3462

State of New Mexico
Energy, Minerals and Natural Resources
Oil Conservation Division
1220 S. St Francis Dr.
Santa Fe, NM 87505

CONDITIONS

Action 99701

CONDITIONS

Operator: Enterprise Field Services, LLC PO Box 4324 Houston, TX 77210	OGRID: 241602
	Action Number: 99701
	Action Type: [C-141] Release Corrective Action (C-141)

CONDITIONS

Created By	Condition	Condition Date
jharimon	None	4/19/2022

From: [Hamlet, Robert, EMNRD](#)
To: [Dunaway, Robert](#)
Cc: [Reinermann, Paul](#); [Mendez, Brenda](#); [Bratcher, Mike, EMNRD](#); [Nobui, Jennifer, EMNRD](#); [Harimon, Jocelyn, EMNRD](#)
Subject: RE: [EXTERNAL] Extension Request for nAPP2210932844
Date: Wednesday, June 1, 2022 10:16:55 AM

[Use caution with links/attachments]

Please send all future extension requests to the OCD Enviro email box at
OCD.Enviro@state.nm.us

RE: Incident #NAPP2210932844

Robert,

Your request for an extension to **October 17th, 2022** is approved. Please include this e-mail correspondence in the remediation and/or closure report.

Robert Hamlet • Environmental Specialist - Advanced

Environmental Bureau

EMNRD - Oil Conservation Division

811 S. First Street | Artesia, NM 88210

575.909.0302 | robert.hamlet@state.nm.us

<http://www.emnrd.state.nm.us/OCD/>



From: Dunaway, Robert <rhodunaway@eprod.com>

Sent: Wednesday, June 1, 2022 10:10 AM

To: Hamlet, Robert, EMNRD <Robert.Hamlet@state.nm.us>

Cc: Reinermann, Paul <PSREINERMANN@eprod.com>; Mendez, Brenda <BJMendez@eprod.com>

Subject: RE: [EXTERNAL] Extension Request for nAPP2210932844

Robert,

I am requesting a 90 day extension.



Robert Dunaway

Senior Environmental Engineer

W: 575-628-6802

C: 361-815-0990
rhunaway@eprod.com

From: Hamlet, Robert, EMNRD <Robert.Hamlet@state.nm.us>
Sent: Wednesday, June 1, 2022 10:08 AM
To: Dunaway, Robert <rhunaway@eprod.com>
Cc: Reinermann, Paul <PSREINERMANN@eprod.com>; Mendez, Brenda <BJMendez@eprod.com>
Subject: RE: [EXTERNAL] Extension Request for nAPP2210932844

[Use caution with links/attachments]

Robert,

How long of an extension are you requesting?

Robert Hamlet • Environmental Specialist - Advanced
Environmental Bureau
EMNRD - Oil Conservation Division
811 S. First Street | Artesia, NM 88210
575.909.0302 | robert.hamlet@state.nm.us
<http://www.emnrd.state.nm.us/OCD/>



From: Dunaway, Robert <rhunaway@eprod.com>
Sent: Wednesday, June 1, 2022 9:32 AM
To: Hamlet, Robert, EMNRD <Robert.Hamlet@state.nm.us>
Cc: Reinermann, Paul <PSREINERMANN@eprod.com>; Mendez, Brenda <BJMendez@eprod.com>
Subject: [EXTERNAL] Extension Request for nAPP2210932844

CAUTION: This email originated outside of our organization. Exercise caution prior to clicking on links or opening attachments.

Good morning, Mr. Hamlet:

I would like to request an extension for nAPP2210932844 (Line 16-24-30, Poker Lake Discharge). There are logistical issues with digging including soft sand, loose fill, and parallel pipelines. I am bringing out a drilling rig to fully delineate the release in early July and plan to call y'all to discuss next steps once I get the results back. This will not be complete by the July 17, 2022 deadline.

Note that I am doing this sampling at the same time as nAPP2131670294 (A-18 lateral along the county road) and this is the earliest I could schedule a drill rig.

If you have any questions, please let me know.



Robert Dunaway

Senior Environmental Engineer

W: 575-628-6802

C: 361-815-0990

rhodunaway@eprod.com

This message (including any attachments) is confidential and intended for a specific individual and purpose. If you are not the intended recipient, please notify the sender immediately and delete this message.

From: OCDOnline@state.nm.us
To: [Dunaway, Robert](#)
Subject: [EXTERNAL] The Oil Conservation Division (OCD) has rejected the application, Application ID: 143139
Date: Monday, December 12, 2022 2:20:56 PM

[Use caution with links/attachments]

To whom it may concern (c/o Robert Dunaway for Enterprise Field Services, LLC),

The OCD has rejected the submitted *Application for administrative approval of a release notification and corrective action* (C-141), for incident ID (n#) nAPP2210932844, for the following reasons:

- **The Remediation Plan is Denied. Please make sure C-141 page 5 “Remediation Plan” is signed and filled out at resubmission. Samples must be analyzed for all constituents listed in Table I of [19.15.29.12](#) NMAC. Floor confirmation samples should be delineated/excavated to meet closure criteria standards for site assessment/characterization/proven depth to water determination. Sidewall samples should be delineated/excavated to 600 mg/kg for chlorides and 100 mg/kg for TPH to define the edge of the release. Confirmation samples should be collected every 200 ft². All off pad areas must contain a minimum of 4 feet non-waste containing uncontaminated, earthen material with chloride concentrations less than 600 mg/kg and less than 100 mg/kg for TPH. The work will need to occur in 90 days after the work plan has been reviewed.**

The rejected C-141 can be found in the OCD Online: Permitting - Action Status, under the Application ID: 143139.

Please review and make the required correction(s) prior to resubmitting.

If you have any questions why this application was rejected or believe it was rejected in error, please contact me prior to submitting an additional C-141.

Thank you,
Robert Hamlet
575-748-1283
Robert.Hamlet@emnrd.nm.gov

New Mexico Energy, Minerals and Natural Resources Department
1220 South St. Francis Drive
Santa Fe, NM 87505

Heather Woods

From: Enviro, OCD, EMNRD <OCD.Enviro@emnrd.nm.gov>
Sent: Tuesday, November 15, 2022 1:18 PM
To: Heather Woods
Cc: Bratcher, Michael, EMNRD; Hamlet, Robert, EMNRD
Subject: RE: [EXTERNAL] Confirmation Sampling Notification Enterprise Line 16-24-30 (nAPP2210932844)

Please be aware that notification requirements are **two business days**, per rule. Please proceed on your schedule. Also, please include this, and all correspondence, in the closure report to insure inclusion in the project file.

Jocelyn Harimon • Environmental Specialist
Environmental Bureau
EMNRD - Oil Conservation Division
1220 South St. Francis Drive | Santa Fe, NM 87505
(505)469-2821 | Jocelyn.Harimon@emnrd.nm.gov
<http://www.emnrd.nm.gov>



From: Heather Woods <Heather.Woods@soudermiller.com>
Sent: Tuesday, November 15, 2022 12:29 PM
To: Enviro, OCD, EMNRD <OCD.Enviro@emnrd.nm.gov>
Cc: rhdunaway@eprod.com; Sarahmay Schlea <sarahmay.schlea@soudermiller.com>; Georgeann Goodman <Georgeann.Goodman@soudermiller.com>
Subject: [EXTERNAL] Confirmation Sampling Notification Enterprise Line 16-24-30 (nAPP2210932844)

CAUTION: This email originated outside of our organization. Exercise caution prior to clicking on links or opening attachments.

Good Afternoon,

Souder, Miller & Associates will be onsite to collect confirmation samples at the Enterprise Line 16-24-30 release (nAPP2210932844) located at 32.194002, -103.917758 on Thursday, November 17th beginning at 9:00am.

Many Thanks,
Heather

Heather Woods, P.G.
Project Geoscientist

Personal Registrations: UT Professional Geologist

Corporate Registrations: AZ Engineering/Geology/Surveying Firm (14070), FL Engineering Firm (34203), ID Engineering/Surveying Firm (C-3564), ND Engineering Firm (28545PE), OK Engineering Firm (8498), SD Surveying Firm (C-7436), TX Engineering Firm (8877), TX Geology Firm (50254), TX PST CAPM (CS-0000051), TX Surveying Firm (10162200), WY Engineering/Surveying Firm (S-1704)



Souder, Miller & Associates

Engineering ♦ Environmental ♦ Geomatics

401 West Broadway

Farmington, NM 87401

(505) 716-2787 (mobile)

(505) 325-7535 (office)

Heather.Woods@soudermiller.com

www.soudermiller.com



Notice of Confidentiality and Privileged Status: This electronic mail message, including all attachments, is for the sole use of the intended recipient(s) and may contain confidential and/or privileged information or otherwise may be protected from disclosure. Any unauthorized review, use, disclosure, distribution or actions which rely on the contents of this information is prohibited. If you are not the intended recipient, please contact the sender and delete the message and any attachment(s) from your system.

Statement on Viruses and Harmful Software: While the message and attachment(s) have been scanned with anti-virus software, SMA does not guarantee that this message or any attachment(s) is free of computer viruses or other harmful software. SMA does not accept liability for any damages caused by any computer virus or other harmful software transmitted herewith.

Heather Woods

From: Enviro, OCD, EMNRD <OCD.Enviro@emnrd.nm.gov>
Sent: Monday, November 21, 2022 10:04 AM
To: Heather Woods
Cc: Bratcher, Michael, EMNRD; Hamlet, Robert, EMNRD
Subject: RE: [EXTERNAL] Confirmation Sampling Notification Enterprise Line 16-24-30 (nAPP2210932844)

Thank you for the notification. Please include a copy of this and all notifications in the remedial and/or closure reports to ensure the notifications are documented in the project file.

Jocelyn Harimon • Environmental Specialist
Environmental Bureau
EMNRD - Oil Conservation Division
1220 South St. Francis Drive | Santa Fe, NM 87505
(505)469-2821 | Jocelyn.Harimon@emnrd.nm.gov
<http://www.emnrd.nm.gov>



From: Heather Woods <Heather.Woods@soudermiller.com>
Sent: Monday, November 21, 2022 9:45 AM
To: Enviro, OCD, EMNRD <OCD.Enviro@emnrd.nm.gov>
Cc: rhdunaway@eprod.com; Sarahmay Schlea <sarahmay.schlea@soudermiller.com>; Georgeann Goodman <Georgeann.Goodman@soudermiller.com>
Subject: [EXTERNAL] Confirmation Sampling Notification Enterprise Line 16-24-30 (nAPP2210932844)

CAUTION: This email originated outside of our organization. Exercise caution prior to clicking on links or opening attachments.

Good Afternoon,

Souder, Miller & Associates will be onsite to collect confirmation samples at the Enterprise Line 16-24-30 release (nAPP2210932844) located at 32.194002, -103.917758 on Wednesday, November 23rd beginning at 9:45am.

Many Thanks,
Heather

Heather Woods, P.G.
Project Geoscientist

Personal Registrations: UT Professional Geologist
Corporate Registrations: AZ Engineering/Geology/Surveying Firm (14070), FL Engineering Firm (34203), ID Engineering/Surveying Firm (C-3564), ND Engineering Firm (28545PE), OK Engineering Firm (8498), SD Surveying Firm (C-7436), TX Engineering Firm (8877), TX Geology Firm (50254), TX PST CAPM (CS-0000051), TX Surveying Firm (10162200), WY Engineering/Surveying Firm (S-1704)



Souder, Miller & Associates

Engineering ♦ Environmental ♦ Geomatics

401 West Broadway

Farmington, NM 87401

(505) 716-2787 (mobile)

(505) 325-7535 (office)

Heather.Woods@soudermiller.com

www.soudermiller.com



Notice of Confidentiality and Privileged Status: This electronic mail message, including all attachments, is for the sole use of the intended recipient(s) and may contain confidential and/or privileged information or otherwise may be protected from disclosure. Any unauthorized review, use, disclosure, distribution or actions which rely on the contents of this information is prohibited. If you are not the intended recipient, please contact the sender and delete the message and any attachment(s) from your system.

Statement on Viruses and Harmful Software: While the message and attachment(s) have been scanned with anti-virus software, SMA does not guarantee that this message or any attachment(s) is free of computer viruses or other harmful software. SMA does not accept liability for any damages caused by any computer virus or other harmful software transmitted herewith.

Heather Woods

From: Hamlet, Robert, EMNRD <Robert.Hamlet@emnrd.nm.gov>
Sent: Tuesday, December 6, 2022 10:55 AM
To: Heather Woods
Cc: Dunaway, Robert; Georgeann Goodman; Sarahmay Schlea; Bratcher, Michael, EMNRD; Nobui, Jennifer, EMNRD; Harimon, Jocelyn, EMNRD
Subject: [EXTERNAL]Request for Variance: Confirmation Sampling Notification Enterprise Line 16-24-30 (nAPP2210934844)

Heather,

Two business days' notice should be given to the OCD to conduct confirmation samples. The illness is an understandable reason for missing the confirmation sampling date. The variance is approved to collect confirmation samples today. In the future please make the OCD is aware of any changes in case an Environmental Specialist would like to be on site to witness the sampling process.

Regards,

Robert Hamlet • Environmental Specialist - Advanced
Environmental Bureau
EMNRD - Oil Conservation Division
506 W. Texas Ave. | Artesia, NM 88210
575.909.0302 | robert.hamlet@state.nm.us
<http://www.emnrd.state.nm.us/OCD/>



From: Enviro, OCD, EMNRD <OCD.Enviro@emnrd.nm.gov>
Sent: Tuesday, December 6, 2022 10:13 AM
To: Bratcher, Michael, EMNRD <mike.bratcher@emnrd.nm.gov>; Hamlet, Robert, EMNRD <Robert.Hamlet@emnrd.nm.gov>
Subject: FW: [EXTERNAL] Request for Variance: Confirmation Sampling Notification Enterprise Line 16-24-30 (nAPP2210934844)

Jocelyn Harimon • Environmental Specialist
Environmental Bureau
EMNRD - Oil Conservation Division
1220 South St. Francis Drive | Santa Fe, NM 87505
(505)469-2821 | Jocelyn.Harimon@emnrd.nm.gov
[http:// www.emnrd.nm.gov](http://www.emnrd.nm.gov)



From: Heather Woods <Heather.Woods@soudermiller.com>
Sent: Friday, December 2, 2022 10:01 AM
To: Enviro, OCD, EMNRD <OCD.Enviro@emnrd.nm.gov>
Cc: rhduaway@eprod.com; Georgeann Goodman <Georgeann.Goodman@soudermiller.com>; Sarahmay Schlea <sarahmay.schlea@soudermiller.com>
Subject: [EXTERNAL] Request for Variance: Confirmation Sampling Notification Enterprise Line 16-24-30 (nAPP2210934844)

CAUTION: This email originated outside of our organization. Exercise caution prior to clicking on links or opening attachments.

Good Morning,

SMA was unable to collect confirmation samples at the Enterprise Line 16-24-30 (nAPP2210934844) yesterday due to illness. May we request a variance to the notification requirement to allow us to collect the confirmation samples today?

Many Thanks,
 Heather

From: Sarahmay Schlea <sarahmay.schlea@soudermiller.com>
Sent: Tuesday, November 29, 2022 7:03 AM
To: Enviro, OCD, EMNRD <ocd.enviro@state.nm.us>
Cc: rhduaway@eprod.com <rhduaway@eprod.com>; Heather Woods <Heather.Woods@soudermiller.com>; Georgeann Goodman <Georgeann.Goodman@soudermiller.com>
Subject: Confirmation Sampling Notification Enterprise Line 16-24-30 (nAPP2210934844)

Good morning,

Souder Miller & Associates will be on-site to collect confirmation samples at the Enterprise Line 16-24-30 release (nAPP2210932844) located at 32.194002, -103.917758 on Thursday December 1st, beginning at 8:00am

Thanks a bunch,
 Sarahmay Schlea

Stronger Communities by Design

www.soudermiller.com

Sarahmay Schlea

Staff Scientist I
(she/her)

Direct/Mobile: 330-958-5689
 Office: 575-449-2758

201 S Halagueno St
Carlsbad, NM 88220

Corporate Registrations: AZ Engineering/Geology/Surveying Firm (14070), FL Engineering Firm (34203), ID Engineering/Surveying Firm (C-3564), ND Engineering Firm (28545PE), OK Engineering Firm (8498), SD Surveying Firm (C-7436), TX Engineering Firm (8877), TX Geology Firm (50254), TX Surveying Firm (10162200), WY Engineering/Surveying Firm (S-1704)

Notice of Confidentiality and Privileged Status: *This electronic mail message, including all attachments, is for the sole use of the intended recipient(s) and may contain confidential and/or privileged information or otherwise may be protected from disclosure. Any unauthorized review, use, disclosure, distribution or actions which rely on the contents of this information is prohibited. If you are not the intended recipient, please contact the sender and delete the message and any attachment(s) from your system.*

Statement on Viruses and Harmful Software: *While the message and attachment(s) have been scanned with anti-virus software, SMA does not guarantee that this message or any attachment(s) is free of computer viruses or other harmful software. SMA does not accept liability for any damages caused by any computer virus or other harmful software transmitted herewith.*

Heather Woods

From: Enviro, OCD, EMNRD <OCD.Enviro@emnrd.nm.gov>
Sent: Monday, December 12, 2022 11:04 AM
To: Heather Woods
Cc: Bratcher, Michael, EMNRD; Hamlet, Robert, EMNRD
Subject: RE: [EXTERNAL] Confirmation Sampling Notification Enterprise Line 16-24-30 (nAPP2210934844)

Heather,

Thank you for the notification. Please include a copy of this and all notifications in the remedial and/or closure reports to ensure the notifications are documented in the project file.

Jocelyn Harimon

Jocelyn Harimon • Environmental Specialist
Environmental Bureau
EMNRD - Oil Conservation Division
1220 South St. Francis Drive | Santa Fe, NM 87505
(505)469-2821 | Jocelyn.Harimon@emnrd.nm.gov
[http:// www.emnrd.nm.gov](http://www.emnrd.nm.gov)



From: Heather Woods <Heather.Woods@soudermiller.com>
Sent: Monday, December 12, 2022 10:39 AM
To: Enviro, OCD, EMNRD <OCD.Enviro@emnrd.nm.gov>
Cc: rhdunaway@eprod.com; Sarahmay Schlea <sarahmay.schlea@soudermiller.com>; Georgeann Goodman <Georgeann.Goodman@soudermiller.com>
Subject: [EXTERNAL] Confirmation Sampling Notification Enterprise Line 16-24-30 (nAPP2210934844)

CAUTION: This email originated outside of our organization. Exercise caution prior to clicking on links or opening attachments.

Good morning,

Souder Miller & Associates will be on-site to collect confirmation samples at the Enterprise Line 16-24-30 release (nAPP2210932844) located at 32.194002, -103.917758 on Wednesday, December 14, beginning at 10:30am.

Many Thanks,
Heather

Heather Woods, P.G.
Project Geoscientist

Personal Registrations: UT Professional Geologist
Corporate Registrations: AZ Engineering/Geology/Surveying Firm (14070), FL Engineering Firm (34203), ID Engineering/Surveying Firm (C-3564), ND Engineering Firm (28545PE), OK Engineering Firm (8498), SD Surveying Firm (C-7436), TX Engineering Firm (8877), TX Geology Firm (50254), TX PST CAPM (CS-0000051), TX Surveying Firm (10162200), WY Engineering/Surveying Firm (S-1704)



Souder, Miller & Associates

Engineering ♦ Environmental ♦ Geomatics

401 West Broadway

Farmington, NM 87401

(505) 716-2787 (mobile)

(505) 325-7535 (office)

Heather.Woods@soudermiller.com

www.soudermiller.com



Notice of Confidentiality and Privileged Status: This electronic mail message, including all attachments, is for the sole use of the intended recipient(s) and may contain confidential and/or privileged information or otherwise may be protected from disclosure. Any unauthorized review, use, disclosure, distribution or actions which rely on the contents of this information is prohibited. If you are not the intended recipient, please contact the sender and delete the message and any attachment(s) from your system.

Statement on Viruses and Harmful Software: While the message and attachment(s) have been scanned with anti-virus software, SMA does not guarantee that this message or any attachment(s) is free of computer viruses or other harmful software. SMA does not accept liability for any damages caused by any computer virus or other harmful software transmitted herewith.

APPENDIX B

WATER WELL DATA



Souder, Miller & Associates
3500 Sedona Hills Parkway
Las Cruces, NM 88011
Telephone: 575-647-0799
Fax: 575-647-0680

BORING NUMBER BH-1

PAGE 1 OF 3

CLIENT Enterprise Field Services**PROJECT NAME** Poker Lake Discharge (Line 16-24-30)**PROJECT NUMBER** 5E13002**PROJECT LOCATION** Eddy County, New Mexico**DATE STARTED** 7/20/2022**COMPLETED** 7/20/2022**GROUND ELEVATION** _____ **HOLE SIZE** 7.25-inches**DRILLING CONTRACTOR** Enviro-Drill, Inc.**GROUND WATER LEVELS:****DRILLING METHOD** Hollow-Stem Auger/Air-Rotary**AT TIME OF DRILLING** --- Not Encountered**LOGGED BY** HW**CHECKED BY** HW**AT END OF DRILLING** --- Not Encountered**NOTES** 32.19394, -103.91769**AFTER DRILLING** --- Not Encountered

DEPTH (ft)	SAMPLE TYPE NUMBER	ENVIRONMENTAL DATA	GRAPHIC LOG	MATERIAL DESCRIPTION	WELL DIAGRAM
0					
5				Backfill - Silty Sand with siltstone rock, red brown and tan, dry.	
10					
15					
	GB	PID = 36.6 TPH = ND CI = ND			
	GB	PID = 23.1 TPH = ND CI = 26.8		(SM) Silty Sand, pinkish white, dry, heavy to moderate odor, no staining.	
20					

ENVIRONMENTAL BH - GINT STD US.GDT - 12/9/22 16:30 - C:\USERS\PUBLIC\DOCUMENTS\BENTLEY\GINTCL\PROJECTS\GINT STD US.GPJ

(Continued Next Page)



Souder, Miller & Associates
3500 Sedona Hills Parkway
Las Cruces, NM 88011
Telephone: 575-647-0799
Fax: 575-647-0680

BORING NUMBER BH-1

PAGE 2 OF 3

CLIENT Enterprise Field ServicesPROJECT NAME Poker Lake Discharge (Line 16-24-30)PROJECT NUMBER 5E31002PROJECT LOCATION Eddy County, New Mexico

DEPTH (ft)	SAMPLE TYPE NUMBER	ENVIRONMENTAL DATA	GRAPHIC LOG	MATERIAL DESCRIPTION	WELL DIAGRAM
20					
	GB	PID = 50.4 TPH = ND CI = 22.9	x x x x	Siltstone, reddish white to red brown, dry to slightly moist, moderate odor decreasing to no odor, no staining, varying degrees of lithification, some caliche, very thin bedding when identifiable.	
			x x x x		
	GB	PID = 93.1 TPH = ND CL = 73.7	x x x x		
			x x x x		
25			x x x x		
	GB	PID = 102.1 TPH = ND CI = 125	x x x x		
			x x x x		
	GB	PID = 82.1 TPH = ND CI = 146	x x x x		
			x x x x		
30			x x x x		
	GB	PID = 54.3 TPH = ND CI = 150	x x x x		
			x x x x		
	GB	PID = 8.1 TPH = ND CI = 241	x x x x		
			x x x x		
35			x x x x		
	GB	PID = 41.4 TPH = ND CI = 117	x x x x		
			x x x x		
	GB	PID = 31.4 TPH = ND CL = 245	x x x x		
			x x x x		
40			x x x x		
	GB	PID = 0 TPH = ND CI = 92.4	x x x x		
			x x x x		
	GB	PID = 1.4	x x x x		

(Continued Next Page)



PAGE 3 OF 3

PROJECT LOCATION Eddy County, New Mexico

ENVIRONMENTAL BH - GINT STD US.GDT - 12/9/22 16:30 - C:\USERS\PUBLIC\DOCUMENTS\BENTLEY\GINTCL\PROJECTS\GINT STD US.GPJ



New Mexico Office of the State Engineer

Water Column/Average Depth to Water

(A CLW##### in the POD suffix indicates the POD has been replaced & no longer serves a water right file.)

(R=POD has been replaced,
O=orphaned,
C=the file is closed)

(quarters are 1=NW 2=NE 3=SW 4=SE)

(quarters are smallest to largest)

(NAD83 UTM in meters)

(In feet)

POD Number	POD Sub-Code	basin	County	Q 6	Q 4	Q 16	Sec	Tws	Rng	X	Y	Depth Well	Depth Water	Water Column
C 02109		CUB	ED	1	2	4	19	24S	30E	602130	3563412	130	150	-20

Average Depth to Water: **150 feet**

Minimum Depth: **150 feet**

Maximum Depth: **150 feet**

Record Count: 1

PLSS Search:

Section(s): 19, 30, 31, 20, 29, 32 **Township:** 24S **Range:** 30E

The data is furnished by the NMOSE/ISC and is accepted by the recipient with the expressed understanding that the OSE/ISC make no warranties, expressed or implied, concerning the accuracy, completeness, reliability, usability, or suitability for any particular purpose of the data.

5/24/22 3:39 PM

Page 1 of 1

WATER COLUMN/ AVERAGE
DEPTH TO WATER



New Mexico Office of the State Engineer

Water Column/Average Depth to Water

No records found.

PLSS Search:

Section(s): 24, 25, 36

Township: 24S

Range: 29E

The data is furnished by the NMOSE/ISC and is accepted by the recipient with the expressed understanding that the OSE/ISC make no warranties, expressed or implied, concerning the accuracy, completeness, reliability, usability, or suitability for any particular purpose of the data.

5/24/22 3:38 PM

Page 1 of 1

WATER COLUMN/ AVERAGE
DEPTH TO WATER



National Water Information System: Web Interface


USGS Water Resources

Data Category:
Groundwater

Geographic Area:
United States

GO

Click to hideNews Bulletins

- Explore the NEW [USGS National Water Dashboard](#) interactive map to access real-time water data from over 13,500 stations nationwide.
- [Full News](#) 

Groundwater levels for the Nation

 Important: [Next Generation Monitoring Location Page](#)

Search Results -- 1 sites found

Agency code = usgs
site_no list =

- 321205103544701

Minimum number of levels = 1
[Save file of selected sites](#) to local disk for future upload

USGS 321205103544701 24S.30E.19.42113

Eddy County, New Mexico
Latitude 32°12'05", Longitude 103°54'47" NAD27
Land-surface elevation 3,188 feet above NAVD88
The depth of the well is 452 feet below land surface.
This well is completed in the Pecos River Basin alluvial aquifer (N100PCSRVR) national aquifer.
This well is completed in the Rustler Formation (312RSLR) local aquifer.

Output formats

Table of data
Tab-separated data
Graph of data
Reselect period

Date	Time	? Water-level date-time accuracy	? Parameter code	Water level, feet below land surface	Water level, feet above specific vertical datum	Referenced vertical datum	? Status	? Method of measurement	? Measuring agency	? Source of measurement	? Water-level approval status
1958-10-24			D	62610	2958.66	NGVD29	1	Z			A
1958-10-24			D	62611	2960.30	NAVD88	1	Z			A
1958-10-24			D	72019	227.70		1	Z			A
1959-03-19			D	62610	2958.61	NGVD29	1	Z			A
1959-03-19			D	62611	2960.25	NAVD88	1	Z			A
1959-03-19			D	72019	227.75		1	Z			A
1975-12-10			D	62610	2954.58	NGVD29	1	Z			A
1975-12-10			D	62611	2956.22	NAVD88	1	Z			A
1975-12-10			D	72019	231.78		1	Z			A
1976-01-16			D	62610	2949.10	NGVD29	1	Z			A
1976-01-16			D	62611	2950.74	NAVD88	1	Z			A
1976-01-16			D	72019	237.26		1	Z			A
1976-12-01			D	62610	2955.63	NGVD29	1	Z			A
1976-12-01			D	62611	2957.27	NAVD88	1	Z			A
1976-12-01			D	72019	230.73		1	Z			A
1977-01-14			D	62610	2955.74	NGVD29	1	Z			A
1977-01-14			D	62611	2957.38	NAVD88	1	Z			A
1977-01-14			D	72019	230.62		1	Z			A
1983-02-01			D	62610	2950.43	NGVD29	1	Z			A
1983-02-01			D	62611	2952.07	NAVD88	1	Z			A
1983-02-01			D	72019	235.93		1	Z			A
1987-10-15			D	62610	2953.06	NGVD29	1	S			A
1987-10-15			D	62611	2954.70	NAVD88	1	S			A
1987-10-15			D	72019	233.30		1	S			A
1998-01-27			D	62610	2955.34	NGVD29	1	S			A
1998-01-27			D	62611	2956.98	NAVD88	1	S			A
1998-01-27			D	72019	231.02		1	S			A

Explanation

Section	Code	Description
Water-level date-time accuracy	D	Date is accurate to the Day
Parameter code	62610	Groundwater level above NGVD 1929, feet
Parameter code	62611	Groundwater level above NAVD 1988, feet
Parameter code	72019	Depth to water level, feet below land surface
Referenced vertical datum	NAVD88	North American Vertical Datum of 1988
Referenced vertical datum	NGVD29	National Geodetic Vertical Datum of 1929
Status	1	Static
Method of measurement	S	Steel-tape measurement.
Method of measurement	Z	Other.
Measuring agency		Not determined
Source of measurement		Not determined
Water-level approval status	A	Approved for publication -- Processing and review completed.

[Questions about sites/data?](#)
[Feedback on this web site](#)
[Automated retrievals](#)
[Help](#)
[Data Tips](#)
[Explanation of terms](#)
[Subscribe for system changes](#)
[News](#)

[Accessibility](#) [FOIA](#) [Privacy](#) [Policies and Notices](#)
[U.S. Department of the Interior](#) | [U.S. Geological Survey](#)
Title: Groundwater for USA: Water Levels
URL: <https://nwis.waterdata.usgs.gov/nwis/gwlevels?>



Page Contact Information: [USGS Water Data Support Team](#)
Page Last Modified: 2022-05-24 17:42:06 EDT
0.33 0.29 nadww01

APPENDIX C

SAMPLING PROTOCOL



Sampling Protocol

The soil samples were collected in laboratory supplied containers in accordance with this sampling protocol, immediately placed on ice and sent under standard chain-of-custody protocols to Envirotech Laboratory in Farmington, New Mexico for analysis. Samples collected for laboratory analysis were analyzed for total chloride using EPA Method 300.0; benzene, toluene, ethylbenzene and total xylenes (BTEX) using EPA Method 8021B; and motor, diesel and gasoline range organics (MRO, DRO, and GRO) by EPA Method 8015D.

Sampling Analysis Field Quality Assurance Procedures

A unique sample numbering was used to identify each sample collected and designated for on-site and off-site laboratory analysis. The purpose of this numbering scheme was to provide a tracking system for the retrieval of analytical and field data on each sample. Sample identification numbers were recorded on sample labels or tags, field notes, chain-of-custody records (COC) and all other applicable documentation used during the project. Sample labels were affixed to all sample containers during sampling activities. Information was recorded on each sample container label at the time of sample collection. The information recorded on the labels were as follows: sample identification number; sample type (discrete or composite); site name and area/location number; analysis to be performed; type of chemical preservative present in container; date and time of sample collection; and sample collector's name and initials. All samples were packed in ice in an approved rigid body container, custody sealed signed and shipped to the appropriate laboratory via insured courier service.

COC procedures implemented for the project provided documentation of the handling of each sample from the time of collection until completion of laboratory analysis. A COC form serves as a legal record of possession of the sample. A sample is considered to be under custody if one or more of the following criteria are met: the sample is in the sampler's possession; the sample is in the sampler's view after being in possession; the sample was in the sampler's possession and then was placed into a locked area to prevent tampering; and/or the sample is in a designated secure area. Custody was documented throughout the project field sampling activities by a chain-of custody form initiated each day during which samples are collected. Container custody seals placed on either individual samples or on the rigid body container were used to ensure that no sample tampering occurs between the time the samples are placed into the containers and the time the containers are opened for analysis at the laboratory. Container custody seals were signed and dated by the individual responsible for completing the COC form contained within the container.

APPENDIX D

FIELD NOTES AND PHOTOLOG



FIELD SCREENING

LOCATION NAME: Poker Lake 116-24-30 EnterpriseSAMPLING DATE: November 15, 2022

SAMPLE NAME	Collection Time	PID Reading	EC (mS)	Temp (°C)	PetroFlag	NOTES/REMARKS/SOIL DESCRIPTION
SC-14@12	1059	863.6				
SC-16@12	1100	365.7				
SC-12@12	1102	47.3				
SC-10@12	1103	257.3				
SC-16@16	1120	60.6				
SC-14@16	1128	6.7				
SC-10@16	1138	60.3				
SC-1@17	1155	165.9				
SC-2@17	1347	338				
SC-1@18	1352	246.7				
SC-2@20	1403	14.9				Soil became darker; a reddish brown @ 20ft; was more clay
SC-1@20	1413	123.3				like in that it held its shape slightly when compressed but
SC-1@20	1419	210				broke apart easily.
SC-1@24	1429	233				

soil color: light, dark, tan, brown, yellow, red, olive, gray

soil type: gravel, rock, sand, silty, clay

moisture level: dry, moist, wet

20 rows/sheet

soil color: light, dark, tan, brown, yellow, red, olive, gray
soil type: gravel, rock, sand, silty, clay
moisture level: dry, moist, wet



soil color: light, dark, tan, brown, yellow, red, olive, gray
soil type: gravel, rock, sand, silty, clay
moisture level: dry, moist, wet

Photograph Log
Poker Lake Discharge (Line 16-24-30)
Enterprise Field Services



Photograph #1	
Client: Enterprise Field Services	
Site Name: Poker Lake Discharge (Line 16-24-30)	
Date Photo Taken: November 16, 2022	
Release Location: N32.194002, W103.917758 B-Sec 30-T24S-R30E Eddy County, New Mexico	
Photo Taken by: Sarahmay Schlea	Description: Facing north, view of the excavation area on November 16, 2022.

Photograph Log
Poker Lake Discharge (Line 16-24-30)
Enterprise Field Services



Photograph #2	A photograph of an excavation site. In the background, a white pickup truck is parked on a dirt road. The foreground shows a deep, reddish-brown soil excavation with some water at the bottom. A green pipe is visible in the lower part of the excavation. The image has a compass overlay at the top with directions SW, W, NW, and N, and a scale from 210 to 330. Below the scale, the coordinates are displayed: 279°W (T), 32.193926°N, 103.917717°W ±13ft, and an elevation of 3164ft. A green pipe is visible in the lower part of the excavation. The date and time '11/16/2022, 09:09:10 MST' are printed in green at the bottom right of the photo.
Client: Enterprise Field Services	
Site Name: Poker Lake Discharge (Line 16-24-30)	
Date Photo Taken: November 16, 2022	
Release Location: N32.194002, W103.917758 B-Sec 30-T24S-R30E Eddy County, New Mexico	
Photo Taken by: Sarahmay Schlea	Description: Facing west, view of the excavation area on November 16, 2022.

Photograph Log
Poker Lake Discharge (Line 16-24-30)
Enterprise Field Services



Photograph #3	
Client: Enterprise Field Services	
Site Name: Poker Lake Discharge (Line 16-24-30)	
Date Photo Taken: November 16, 2022	
Release Location: N32.194002, W103.917758 B-Sec 30-T24S-R30E Eddy County, New Mexico	
Photo Taken by: Sarahmay Schlea	Description: Facing south, view of the base confirmation sample BS02 as sampled on November 17, 2022, photo taken on November 16, 2022.

Photograph Log
Poker Lake Discharge (Line 16-24-30)
Enterprise Field Services



Photograph #4	
Client: Enterprise Field Services	
Site Name: Poker Lake Discharge (Line 16-24-30)	
Date Photo Taken: November 16, 2022	
Release Location: N32.194002, W103.917758 B-Sec 30-T24S-R30E Eddy County, New Mexico	
Photo Taken by: Sarahmay Schlea	Description: Facing south, view of the base confirmation sample BS01 as sampled on November 17, 2022, photo taken on November 16, 2022.

Photograph Log
Poker Lake Discharge (Line 16-24-30)
Enterprise Field Services



Photograph #5	
Client: Enterprise Field Services	
Site Name: Poker Lake Discharge (Line 16-24-30)	
Date Photo Taken: November 16, 2022	
Release Location: N32.194002, W103.917758 B-Sec 30-T24S-R30E Eddy County, New Mexico	
Photo Taken by: Sarahmay Schlea	Description: Facing east, view of the excavation area on November 16, 2022.

Photograph Log
Poker Lake Discharge (Line 16-24-30)
Enterprise Field Services



Photograph #6	
Client: Enterprise Field Services	
Site Name: Poker Lake Discharge (Line 16-24-30)	
Date Photo Taken: November 17, 2022	
Release Location: N32.194002, W103.917758 B-Sec 30-T24S-R30E Eddy County, New Mexico	
Photo Taken by: Sarahmay Schlea	Description: Facing east, view of the excavation bench area on November 17, 2022.

Photograph Log
Poker Lake Discharge (Line 16-24-30)
Enterprise Field Services



Photograph #7	
Client: Enterprise Field Services	
Site Name: Poker Lake Discharge (Line 16-24-30)	
Date Photo Taken: November 17, 2022	
Release Location: N32.194002, W103.917758 B-Sec 30-T24S-R30E Eddy County, New Mexico	
Photo Taken by: Sarahmay Schlea	Description: Facing south-southeast, view of sidewall confirmation sample SW4 on November 17, 2022.

Photograph Log
Poker Lake Discharge (Line 16-24-30)
Enterprise Field Services



Photograph #8	
Client: Enterprise Field Services	
Site Name: Poker Lake Discharge (Line 16-24-30)	
Date Photo Taken: November 17, 2022	
Release Location: N32.194002, W103.917758 B-Sec 30-T24S-R30E Eddy County, New Mexico	
Photo Taken by: Sarahmay Schlea	Description: Facing west-southwest, view of the sidewall confirmation sample SW2 on November 17, 2022.

Photograph Log
Poker Lake Discharge (Line 16-24-30)
Enterprise Field Services



Photograph #9	
Client: Enterprise Field Services	
Site Name: Poker Lake Discharge (Line 16-24-30)	
Date Photo Taken: November 17, 2022	
Release Location: N32.194002, W103.917758 B-Sec 30-T24S-R30E Eddy County, New Mexico	
Photo Taken by: Sarahmay Schlea	Description: Facing west-southwest, view of the sidewall confirmation sample SW3 on November 17, 2022.

Photograph Log
Poker Lake Discharge (Line 16-24-30)
Enterprise Field Services



Photograph #10	
Client: Enterprise Field Services	
Site Name: Poker Lake Discharge (Line 16-24-30)	
Date Photo Taken: November 17, 2022	
Release Location: N32.194002, W103.917758 B-Sec 30-T24S-R30E Eddy County, New Mexico	
Photo Taken by: Sarahmay Schlea	Description: Facing northwest, view of sidewall confirmation sample SW1 on November 17, 2022.

Photograph Log
Poker Lake Discharge (Line 16-24-30)
Enterprise Field Services



Photograph #11	
Client: Enterprise Field Services	
Site Name: Poker Lake Discharge (Line 16-24-30)	
Date Photo Taken: November 17, 2022	
Release Location: N32.194002, W103.917758 B-Sec 30-T24S-R30E Eddy County, New Mexico	
Photo Taken by: Sarahmay Schlea	Description: Facing east-northeast, view of the excavation area on November 17, 2022.

Photograph Log
Poker Lake Discharge (Line 16-24-30)
Enterprise Field Services



Photograph #12	
Client: Enterprise Field Services	
Site Name: Poker Lake Discharge (Line 16-24-30)	
Date Photo Taken: November 23, 2022	
Release Location: N32.194002, W103.917758 B-Sec 30-T24S-R30E Eddy County, New Mexico	
Photo Taken by: Sarahmay Schlea	Description: Facing south-southwest, view of the sample area SW1 on November 23, 2022.

Photograph Log
Poker Lake Discharge (Line 16-24-30)
Enterprise Field Services



Photograph #13	
Client: Enterprise Field Services	
Site Name: Poker Lake Discharge (Line 16-24-30)	
Date Photo Taken: December 6, 2022	
Release Location: N32.194002, W103.917758 B-Sec 30-T24S-R30E Eddy County, New Mexico	
Photo Taken by: Sarahmay Schlea	Description: Facing east-north, view of the excavation area on December 6, 2022.

Photograph Log
Poker Lake Discharge (Line 16-24-30)
Enterprise Field Services



Photograph #14	
Client: Enterprise Field Services	
Site Name: Poker Lake Discharge (Line 16-24-30)	
Date Photo Taken: December 6, 2022	
Release Location: N32.194002, W103.917758 B-Sec 30-T24S-R30E Eddy County, New Mexico	
Photo Taken by: Sarahmay Schlea	Description: Facing northwest, view of the excavation area on December 6, 2022.


Photograph Log
Poker Lake Discharge (Line 16-24-30)
Enterprise Field Services



Photograph #15	
Client: Enterprise Field Services	
Site Name: Poker Lake Discharge (Line 16-24-30)	
Date Photo Taken: December 6, 2022	
Release Location: N32.194002, W103.917758 B-Sec 30-T24S-R30E Eddy County, New Mexico	
Photo Taken by: Sarahmay Schlea	Description: Facing north-northeast, view of the excavation area on December 6, 2022.


Photograph Log
Poker Lake Discharge (Line 16-24-30)
Enterprise Field Services



Photograph #16	
Client: Enterprise Field Services	
Site Name: Poker Lake Discharge (Line 16-24-30)	
Date Photo Taken: December 6, 2022	
Release Location: N32.194002, W103.917758 B-Sec 30-T24S-R30E Eddy County, New Mexico	
Photo Taken by: Sarahmay Schlea	Description: Facing south-southwest, view of the excavation area on December 6, 2022.

Photograph Log
Poker Lake Discharge (Line 16-24-30)
Enterprise Field Services



Photograph #17	
Client: Enterprise Field Services	
Site Name: Poker Lake Discharge (Line 16-24-30)	
Date Photo Taken: December 6, 2022	
Release Location: N32.194002, W103.917758 B-Sec 30-T24S-R30E Eddy County, New Mexico	
Photo Taken by: Sarahmay Schlea	Description: Facing south-southwest, view of the excavation area on December 6, 2022.

APPENDIX E

LABORATORY ANALYTICAL REPORTS

Report to:
Heather Woods



envirotech

Practical Solutions for a Better Tomorrow

Analytical Report

Souder Miller Associates - Carlsbad

Project Name: Poker Lake 16-24-30

Work Order: E211102

Job Number: 97057-0001

Received: 11/18/2022

Revision: 1

Report Reviewed By:

Walter Hinchman
Laboratory Director
11/21/22

5796 U.S. Hwy 64
Farmington, NM 87401

Phone: (505) 632-1881
Envirotech-inc.com



Envirotech Inc. certifies the test results meet all requirements of TNI unless noted otherwise.
Statement of Data Authenticity: Envirotech Inc. attests the data reported has not been altered in any way.
Partial or incomplete reproduction of this report is prohibited, unless approved by Envirotech Inc.
Envirotech Inc. holds the Utah TNI certification NM00979 for data reported.
Envirotech Inc. holds the Texas TNI certification T104704557 for data reported.
Envirotech Inc. holds the NM SDWA certification for data reported. (Lab #NM00979)

Date Reported: 11/21/22

Heather Woods
201 S Halagueno St.
Carlsbad, NM 88220



Project Name: Poker Lake 16-24-30
Workorder: E211102
Date Received: 11/18/2022 6:30:00AM

Heather Woods,

Thank you for choosing Envirotech, Inc. as your analytical testing laboratory for the sample(s) received on, 11/18/2022 6:30:00AM, under the Project Name: Poker Lake 16-24-30.

The analytical test results summarized in this report with the Project Name: Poker Lake 16-24-30 apply to the individual samples collected, identified and submitted bearing the project name on the enclosed chain-of-custody. Subcontracted sample analyses not conducted by Envirotech, Inc., are attached in full as issued by the subcontract laboratory.

Please review the Chain-of-Custody (COC) and Sample Receipt Checklist (SRC) for any issues regarding sample receipt temperature, containers, preservation etc. To best understand your test results, review the entire report summarizing your sample data and the associated quality control batch data.

All reported data in this analytical report were analyzed according to the referenced method(s) and are in compliance with the latest NELAC/TNI standards, unless otherwise noted. Samples or analytical quality control parameters not meeting specific QC criteria are qualified with a data flag. Data flag definitions are located in the Notes and Definitions section of this analytical report.

If you have any questions concerning this report, please feel free to contact Envirotech, Inc.

Respectfully,

Walter Hinchman
Laboratory Director
Office: 505-632-1881
Cell: 775-287-1762
whinchman@envirotech-inc.com

Raina Schwanz
Laboratory Administrator
Office: 505-632-1881
rainaschwanz@envirotech-inc.com

Alexa Michaels
Sample Custody Officer
Office: 505-632-1881
labadmin@envirotech-inc.com

Field Offices:

Southern New Mexico Area
Lynn Jarboe
Technical Representative/Client Services
Office: 505-421-LABS(5227)
Cell: 505-320-4759
ljjarboe@envirotech-inc.com

West Texas Midland/Odessa Area
Rayny Hagan
Technical Representative
Office: 505-421-LABS(5227)

Envirotech Web Address: www.envirotech-inc.com

Table of Contents

Title Page	1
Cover Page	2
Table of Contents	3
Sample Summary	4
Sample Data	5
BS01 @ 26	5
BS02 @ 20	6
SW1 @ 0 - 9'	7
SW1 @ 9 - 18'	8
SW1 @ 18 - 26'	9
SW2 @ 0 - 9'	10
SW2 @ 9 - 18'	11
SW2 @ 18 - 26'	12
SW3 @ 0 - 10'	13
SW3 @ 10 - 20'	14
SW4 @ 0 - 7'	15
SW4 @ 7 - 14'	16
SW4 @ 14 - 20'	17
QC Summary Data	18
QC - Volatile Organics by EPA 8021B	18
QC - Nonhalogenated Organics by EPA 8015D - GRO	19
QC - Nonhalogenated Organics by EPA 8015D - DRO/ORO	20
QC - Anions by EPA 300.0/9056A	21
Definitions and Notes	22
Chain of Custody etc.	23

Sample Summary

Souder Miller Associates - Carlsbad	Project Name:	Poker Lake 16-24-30	Reported:
201 S Halagueno St.	Project Number:	97057-0001	
Carlsbad NM, 88220	Project Manager:	Heather Woods	11/21/22 07:25

Client Sample ID	Lab Sample ID	Matrix	Sampled	Received	Container
BS01 @ 26	E211102-01A	Soil	11/17/22	11/18/22	Glass Jar, 4 oz.
BS02 @ 20	E211102-02A	Soil	11/17/22	11/18/22	Glass Jar, 4 oz.
SW1 @ 0 - 9'	E211102-03A	Soil	11/17/22	11/18/22	Glass Jar, 4 oz.
SW1 @ 9 - 18'	E211102-04A	Soil	11/17/22	11/18/22	Glass Jar, 4 oz.
SW1 @ 18 - 26'	E211102-05A	Soil	11/17/22	11/18/22	Glass Jar, 4 oz.
SW2 @ 0 - 9'	E211102-06A	Soil	11/17/22	11/18/22	Glass Jar, 4 oz.
SW2 @ 9 - 18'	E211102-07A	Soil	11/17/22	11/18/22	Glass Jar, 4 oz.
SW2 @ 18 - 26'	E211102-08A	Soil	11/17/22	11/18/22	Glass Jar, 4 oz.
SW3 @ 0 - 10'	E211102-09A	Soil	11/17/22	11/18/22	Glass Jar, 4 oz.
SW3 @ 10 - 20'	E211102-10A	Soil	11/17/22	11/18/22	Glass Jar, 4 oz.
SW4 @ 0 - 7'	E211102-11A	Soil	11/17/22	11/18/22	Glass Jar, 4 oz.
SW4 @ 7 - 14'	E211102-12A	Soil	11/17/22	11/18/22	Glass Jar, 4 oz.
SW4 @ 14 - 20'	E211102-13A	Soil	11/17/22	11/18/22	Glass Jar, 4 oz.



Sample Data

Souder Miller Associates - Carlsbad	Project Name:	Poker Lake 16-24-30	
201 S Halagueno St.	Project Number:	97057-0001	Reported:
Carlsbad NM, 88220	Project Manager:	Heather Woods	11/21/2022 7:25:55AM

BS01 @ 26

E211102-01

Analyte	Result	Reporting Limit	Dilution	Prepared	Analyzed	Notes
Volatile Organics by EPA 8021B	mg/kg	mg/kg	Analyst: IY		Batch: 2247076	
Benzene	ND	0.0250	1	11/17/22	11/18/22	
Ethylbenzene	ND	0.0250	1	11/17/22	11/18/22	
Toluene	ND	0.0250	1	11/17/22	11/18/22	
o-Xylene	ND	0.0250	1	11/17/22	11/18/22	
p,m-Xylene	ND	0.0500	1	11/17/22	11/18/22	
Total Xylenes	ND	0.0250	1	11/17/22	11/18/22	
<i>Surrogate: 4-Bromochlorobenzene-PID</i>	98.2 %	70-130		11/17/22	11/18/22	
Nonhalogenated Organics by EPA 8015D - GRO	mg/kg	mg/kg	Analyst: IY		Batch: 2247076	
Gasoline Range Organics (C6-C10)	ND	20.0	1	11/17/22	11/18/22	
<i>Surrogate: 1-Chloro-4-fluorobenzene-FID</i>	82.3 %	70-130		11/17/22	11/18/22	
Nonhalogenated Organics by EPA 8015D - DRO/ORO	mg/kg	mg/kg	Analyst: RAS		Batch: 2247074	
Diesel Range Organics (C10-C28)	ND	25.0	1	11/17/22	11/18/22	
Oil Range Organics (C28-C36)	ND	50.0	1	11/17/22	11/18/22	
<i>Surrogate: n-Nonane</i>	100 %	50-200		11/17/22	11/18/22	
Anions by EPA 300.0/9056A	mg/kg	mg/kg	Analyst: KL		Batch: 2247093	
Chloride	23.1	20.0	1	11/18/22	11/18/22	



Sample Data

Souder Miller Associates - Carlsbad
201 S Halagueno St.
Carlsbad NM, 88220

Project Name: Poker Lake 16-24-30
Project Number: 97057-0001
Project Manager: Heather Woods

Reported:
11/21/2022 7:25:55AM

BS02 @ 20

E211102-02

Analyte	Result	Reporting Limit	Dilution	Prepared	Analyzed	Notes
Volatile Organics by EPA 8021B						
	mg/kg	mg/kg		Analyst: IY		Batch: 2247076
Benzene	ND	0.0250	1	11/17/22	11/18/22	
Ethylbenzene	ND	0.0250	1	11/17/22	11/18/22	
Toluene	ND	0.0250	1	11/17/22	11/18/22	
o-Xylene	ND	0.0250	1	11/17/22	11/18/22	
p,m-Xylene	ND	0.0500	1	11/17/22	11/18/22	
Total Xylenes	ND	0.0250	1	11/17/22	11/18/22	
<i>Surrogate: 4-Bromochlorobenzene-PID</i>						
		103 %	70-130	11/17/22	11/18/22	
Nonhalogenated Organics by EPA 8015D - GRO						
	mg/kg	mg/kg		Analyst: IY		Batch: 2247076
Gasoline Range Organics (C6-C10)	ND	20.0	1	11/17/22	11/18/22	
<i>Surrogate: 1-Chloro-4-fluorobenzene-FID</i>						
		81.3 %	70-130	11/17/22	11/18/22	
Nonhalogenated Organics by EPA 8015D - DRO/ORO						
	mg/kg	mg/kg		Analyst: RAS		Batch: 2247074
Diesel Range Organics (C10-C28)	ND	25.0	1	11/17/22	11/18/22	
Oil Range Organics (C28-C36)	ND	50.0	1	11/17/22	11/18/22	
<i>Surrogate: n-Nonane</i>						
		99.1 %	50-200	11/17/22	11/18/22	
Anions by EPA 300.0/9056A						
	mg/kg	mg/kg		Analyst: KL		Batch: 2247093
Chloride	157	20.0	1	11/18/22	11/18/22	



Sample Data

Souder Miller Associates - Carlsbad
201 S Halagueno St.
Carlsbad NM, 88220

Project Name: Poker Lake 16-24-30
Project Number: 97057-0001
Project Manager: Heather Woods

Reported:
11/21/2022 7:25:55AM

SW1 @ 0 - 9'

E211102-03

Analyte	Result	Reporting Limit	Dilution	Prepared	Analyzed	Notes
Volatile Organics by EPA 8021B						
	mg/kg	mg/kg		Analyst: IY		Batch: 2247076
Benzene	ND	0.0250	1	11/17/22	11/18/22	
Ethylbenzene	ND	0.0250	1	11/17/22	11/18/22	
Toluene	ND	0.0250	1	11/17/22	11/18/22	
o-Xylene	ND	0.0250	1	11/17/22	11/18/22	
p,m-Xylene	ND	0.0500	1	11/17/22	11/18/22	
Total Xylenes	ND	0.0250	1	11/17/22	11/18/22	
<i>Surrogate: 4-Bromochlorobenzene-PID</i>						
		103 %	70-130	11/17/22	11/18/22	
Nonhalogenated Organics by EPA 8015D - GRO						
	mg/kg	mg/kg		Analyst: IY		Batch: 2247076
Gasoline Range Organics (C6-C10)	ND	20.0	1	11/17/22	11/18/22	
<i>Surrogate: 1-Chloro-4-fluorobenzene-FID</i>						
		82.3 %	70-130	11/17/22	11/18/22	
Nonhalogenated Organics by EPA 8015D - DRO/ORO						
	mg/kg	mg/kg		Analyst: RAS		Batch: 2247074
Diesel Range Organics (C10-C28)	ND	25.0	1	11/17/22	11/18/22	
Oil Range Organics (C28-C36)	ND	50.0	1	11/17/22	11/18/22	
<i>Surrogate: n-Nonane</i>						
		103 %	50-200	11/17/22	11/18/22	
Anions by EPA 300.0/9056A						
	mg/kg	mg/kg		Analyst: KL		Batch: 2247093
Chloride	37.2	20.0	1	11/18/22	11/18/22	



Sample Data

Souder Miller Associates - Carlsbad
201 S Halagueno St.
Carlsbad NM, 88220

Project Name: Poker Lake 16-24-30
Project Number: 97057-0001
Project Manager: Heather Woods

Reported:
11/21/2022 7:25:55AM

SW1 @ 9 - 18'

E211102-04

Analyte	Result	Reporting Limit	Dilution	Prepared	Analyzed	Notes
Volatile Organics by EPA 8021B						
	mg/kg	mg/kg		Analyst: IY		Batch: 2247076
Benzene	ND	0.0250	1	11/17/22	11/18/22	
Ethylbenzene	ND	0.0250	1	11/17/22	11/18/22	
Toluene	ND	0.0250	1	11/17/22	11/18/22	
o-Xylene	ND	0.0250	1	11/17/22	11/18/22	
p,m-Xylene	ND	0.0500	1	11/17/22	11/18/22	
Total Xylenes	ND	0.0250	1	11/17/22	11/18/22	
<i>Surrogate: 4-Bromochlorobenzene-PID</i>						
		105 %	70-130	11/17/22	11/18/22	
Nonhalogenated Organics by EPA 8015D - GRO						
	mg/kg	mg/kg		Analyst: IY		Batch: 2247076
Gasoline Range Organics (C6-C10)	ND	20.0	1	11/17/22	11/18/22	
<i>Surrogate: 1-Chloro-4-fluorobenzene-FID</i>						
		81.5 %	70-130	11/17/22	11/18/22	
Nonhalogenated Organics by EPA 8015D - DRO/ORO						
	mg/kg	mg/kg		Analyst: RAS		Batch: 2247074
Diesel Range Organics (C10-C28)	57.2	25.0	1	11/17/22	11/18/22	
Oil Range Organics (C28-C36)	65.6	50.0	1	11/17/22	11/18/22	
<i>Surrogate: n-Nonane</i>						
		104 %	50-200	11/17/22	11/18/22	
Anions by EPA 300.0/9056A						
	mg/kg	mg/kg		Analyst: KL		Batch: 2247093
Chloride	174	20.0	1	11/18/22	11/18/22	



Sample Data

Souder Miller Associates - Carlsbad
201 S Halagueno St.
Carlsbad NM, 88220

Project Name: Poker Lake 16-24-30
Project Number: 97057-0001
Project Manager: Heather Woods

Reported:
11/21/2022 7:25:55AM

SW1 @ 18 - 26'

E211102-05

Analyte	Result	Reporting Limit	Dilution	Prepared	Analyzed	Notes
Volatile Organics by EPA 8021B						
	mg/kg	mg/kg		Analyst: IY		Batch: 2247076
Benzene	ND	0.0250	1	11/17/22	11/18/22	
Ethylbenzene	ND	0.0250	1	11/17/22	11/18/22	
Toluene	ND	0.0250	1	11/17/22	11/18/22	
o-Xylene	ND	0.0250	1	11/17/22	11/18/22	
p,m-Xylene	ND	0.0500	1	11/17/22	11/18/22	
Total Xylenes	ND	0.0250	1	11/17/22	11/18/22	
<i>Surrogate: 4-Bromochlorobenzene-PID</i>						
		103 %	70-130	11/17/22	11/18/22	
Nonhalogenated Organics by EPA 8015D - GRO						
	mg/kg	mg/kg		Analyst: IY		Batch: 2247076
Gasoline Range Organics (C6-C10)	ND	20.0	1	11/17/22	11/18/22	
<i>Surrogate: 1-Chloro-4-fluorobenzene-FID</i>						
		81.8 %	70-130	11/17/22	11/18/22	
Nonhalogenated Organics by EPA 8015D - DRO/ORO						
	mg/kg	mg/kg		Analyst: RAS		Batch: 2247074
Diesel Range Organics (C10-C28)	ND	25.0	1	11/17/22	11/18/22	
Oil Range Organics (C28-C36)	ND	50.0	1	11/17/22	11/18/22	
<i>Surrogate: n-Nonane</i>						
		94.8 %	50-200	11/17/22	11/18/22	
Anions by EPA 300.0/9056A						
	mg/kg	mg/kg		Analyst: KL		Batch: 2247093
Chloride	ND	20.0	1	11/18/22	11/18/22	



Sample Data

Souder Miller Associates - Carlsbad
201 S Halagueno St.
Carlsbad NM, 88220

Project Name: Poker Lake 16-24-30
Project Number: 97057-0001
Project Manager: Heather Woods

Reported:
11/21/2022 7:25:55AM

SW2 @ 0 - 9'

E211102-06

Analyte	Result	Reporting Limit	Dilution	Prepared	Analyzed	Notes
Volatile Organics by EPA 8021B						
	mg/kg	mg/kg		Analyst: IY		Batch: 2247076
Benzene	ND	0.0250	1	11/17/22	11/18/22	
Ethylbenzene	ND	0.0250	1	11/17/22	11/18/22	
Toluene	ND	0.0250	1	11/17/22	11/18/22	
o-Xylene	ND	0.0250	1	11/17/22	11/18/22	
p,m-Xylene	ND	0.0500	1	11/17/22	11/18/22	
Total Xylenes	ND	0.0250	1	11/17/22	11/18/22	
<i>Surrogate: 4-Bromochlorobenzene-PID</i>						
		104 %	70-130	11/17/22	11/18/22	
Nonhalogenated Organics by EPA 8015D - GRO						
	mg/kg	mg/kg		Analyst: IY		Batch: 2247076
Gasoline Range Organics (C6-C10)	ND	20.0	1	11/17/22	11/18/22	
<i>Surrogate: 1-Chloro-4-fluorobenzene-FID</i>						
		81.7 %	70-130	11/17/22	11/18/22	
Nonhalogenated Organics by EPA 8015D - DRO/ORO						
	mg/kg	mg/kg		Analyst: RAS		Batch: 2247074
Diesel Range Organics (C10-C28)	ND	25.0	1	11/17/22	11/18/22	
Oil Range Organics (C28-C36)	ND	50.0	1	11/17/22	11/18/22	
<i>Surrogate: n-Nonane</i>						
		97.4 %	50-200	11/17/22	11/18/22	
Anions by EPA 300.0/9056A						
	mg/kg	mg/kg		Analyst: KL		Batch: 2247093
Chloride	ND	20.0	1	11/18/22	11/18/22	



Sample Data

Souder Miller Associates - Carlsbad
201 S Halagueno St.
Carlsbad NM, 88220

Project Name: Poker Lake 16-24-30
Project Number: 97057-0001
Project Manager: Heather Woods

Reported:
11/21/2022 7:25:55AM

SW2 @ 9 - 18'

E211102-07

Analyte	Result	Reporting Limit	Dilution	Prepared	Analyzed	Notes
Volatile Organics by EPA 8021B						
	mg/kg	mg/kg	Analyst: IY		Batch: 2247076	
Benzene	ND	0.0250	1	11/17/22	11/18/22	
Ethylbenzene	ND	0.0250	1	11/17/22	11/18/22	
Toluene	ND	0.0250	1	11/17/22	11/18/22	
o-Xylene	ND	0.0250	1	11/17/22	11/18/22	
p,m-Xylene	ND	0.0500	1	11/17/22	11/18/22	
Total Xylenes	ND	0.0250	1	11/17/22	11/18/22	
<i>Surrogate: 4-Bromochlorobenzene-PID</i>						
		104 %	70-130	11/17/22	11/18/22	
Nonhalogenated Organics by EPA 8015D - GRO						
	mg/kg	mg/kg	Analyst: IY		Batch: 2247076	
Gasoline Range Organics (C6-C10)	ND	20.0	1	11/17/22	11/18/22	
<i>Surrogate: 1-Chloro-4-fluorobenzene-FID</i>						
		76.6 %	70-130	11/17/22	11/18/22	
Nonhalogenated Organics by EPA 8015D - DRO/ORO						
	mg/kg	mg/kg	Analyst: RAS		Batch: 2247074	
Diesel Range Organics (C10-C28)	ND	25.0	1	11/17/22	11/18/22	
Oil Range Organics (C28-C36)	ND	50.0	1	11/17/22	11/18/22	
<i>Surrogate: n-Nonane</i>						
		98.2 %	50-200	11/17/22	11/18/22	
Anions by EPA 300.0/9056A						
	mg/kg	mg/kg	Analyst: KL		Batch: 2247093	
Chloride	24.7	20.0	1	11/18/22	11/18/22	



Sample Data

Souder Miller Associates - Carlsbad
201 S Halagueno St.
Carlsbad NM, 88220

Project Name: Poker Lake 16-24-30
Project Number: 97057-0001
Project Manager: Heather Woods

Reported:
11/21/2022 7:25:55AM

SW2 @ 18 - 26'

E211102-08

Analyte	Result	Reporting Limit	Dilution	Prepared	Analyzed	Notes
Volatile Organics by EPA 8021B						
	mg/kg	mg/kg		Analyst: IY		Batch: 2247076
Benzene	ND	0.0250	1	11/17/22	11/18/22	
Ethylbenzene	ND	0.0250	1	11/17/22	11/18/22	
Toluene	ND	0.0250	1	11/17/22	11/18/22	
o-Xylene	ND	0.0250	1	11/17/22	11/18/22	
p,m-Xylene	ND	0.0500	1	11/17/22	11/18/22	
Total Xylenes	ND	0.0250	1	11/17/22	11/18/22	
<i>Surrogate: 4-Bromochlorobenzene-PID</i>						
		104 %	70-130	11/17/22	11/18/22	
Nonhalogenated Organics by EPA 8015D - GRO						
	mg/kg	mg/kg		Analyst: IY		Batch: 2247076
Gasoline Range Organics (C6-C10)	ND	20.0	1	11/17/22	11/18/22	
<i>Surrogate: 1-Chloro-4-fluorobenzene-FID</i>						
		80.7 %	70-130	11/17/22	11/18/22	
Nonhalogenated Organics by EPA 8015D - DRO/ORO						
	mg/kg	mg/kg		Analyst: RAS		Batch: 2247074
Diesel Range Organics (C10-C28)	ND	25.0	1	11/17/22	11/18/22	
Oil Range Organics (C28-C36)	ND	50.0	1	11/17/22	11/18/22	
<i>Surrogate: n-Nonane</i>						
		97.2 %	50-200	11/17/22	11/18/22	
Anions by EPA 300.0/9056A						
	mg/kg	mg/kg		Analyst: KL		Batch: 2247093
Chloride	20.5	20.0	1	11/18/22	11/18/22	



Sample Data

Souder Miller Associates - Carlsbad
201 S Halagueno St.
Carlsbad NM, 88220

Project Name: Poker Lake 16-24-30
Project Number: 97057-0001
Project Manager: Heather Woods

Reported:
11/21/2022 7:25:55AM

SW3 @ 0 - 10'

E211102-09

Analyte	Result	Reporting Limit	Dilution	Prepared	Analyzed	Notes
Volatile Organics by EPA 8021B						
	mg/kg	mg/kg		Analyst: IY		Batch: 2247076
Benzene	ND	0.0250	1	11/17/22	11/18/22	
Ethylbenzene	ND	0.0250	1	11/17/22	11/18/22	
Toluene	ND	0.0250	1	11/17/22	11/18/22	
o-Xylene	ND	0.0250	1	11/17/22	11/18/22	
p,m-Xylene	ND	0.0500	1	11/17/22	11/18/22	
Total Xylenes	ND	0.0250	1	11/17/22	11/18/22	
<i>Surrogate: 4-Bromochlorobenzene-PID</i>						
		101 %	70-130	11/17/22	11/18/22	
Nonhalogenated Organics by EPA 8015D - GRO						
	mg/kg	mg/kg		Analyst: IY		Batch: 2247076
Gasoline Range Organics (C6-C10)	ND	20.0	1	11/17/22	11/18/22	
<i>Surrogate: 1-Chloro-4-fluorobenzene-FID</i>						
		95.9 %	70-130	11/17/22	11/18/22	
Nonhalogenated Organics by EPA 8015D - DRO/ORO						
	mg/kg	mg/kg		Analyst: RAS		Batch: 2247074
Diesel Range Organics (C10-C28)	ND	25.0	1	11/17/22	11/18/22	
Oil Range Organics (C28-C36)	ND	50.0	1	11/17/22	11/18/22	
<i>Surrogate: n-Nonane</i>						
		101 %	50-200	11/17/22	11/18/22	
Anions by EPA 300.0/9056A						
	mg/kg	mg/kg		Analyst: KL		Batch: 2247093
Chloride	41.7	20.0	1	11/18/22	11/18/22	



Sample Data

Souder Miller Associates - Carlsbad
201 S Halagueno St.
Carlsbad NM, 88220

Project Name: Poker Lake 16-24-30
Project Number: 97057-0001
Project Manager: Heather Woods

Reported:
11/21/2022 7:25:55AM

SW3 @ 10 - 20'

E211102-10

Analyte	Result	Reporting Limit	Dilution	Prepared	Analyzed	Notes
Volatile Organics by EPA 8021B						
	mg/kg	mg/kg		Analyst: IY		Batch: 2247076
Benzene	ND	0.0250	1	11/17/22	11/18/22	
Ethylbenzene	ND	0.0250	1	11/17/22	11/18/22	
Toluene	ND	0.0250	1	11/17/22	11/18/22	
o-Xylene	ND	0.0250	1	11/17/22	11/18/22	
p,m-Xylene	ND	0.0500	1	11/17/22	11/18/22	
Total Xylenes	ND	0.0250	1	11/17/22	11/18/22	
<i>Surrogate: 4-Bromochlorobenzene-PID</i>						
		101 %	70-130	11/17/22	11/18/22	
Nonhalogenated Organics by EPA 8015D - GRO						
	mg/kg	mg/kg		Analyst: IY		Batch: 2247076
Gasoline Range Organics (C6-C10)	ND	20.0	1	11/17/22	11/18/22	
<i>Surrogate: 1-Chloro-4-fluorobenzene-FID</i>						
		92.7 %	70-130	11/17/22	11/18/22	
Nonhalogenated Organics by EPA 8015D - DRO/ORO						
	mg/kg	mg/kg		Analyst: RAS		Batch: 2247074
Diesel Range Organics (C10-C28)	ND	25.0	1	11/17/22	11/18/22	
Oil Range Organics (C28-C36)	ND	50.0	1	11/17/22	11/18/22	
<i>Surrogate: n-Nonane</i>						
		101 %	50-200	11/17/22	11/18/22	
Anions by EPA 300.0/9056A						
	mg/kg	mg/kg		Analyst: KL		Batch: 2247093
Chloride	ND	20.0	1	11/18/22	11/18/22	



Sample Data

Souder Miller Associates - Carlsbad
201 S Halagueno St.
Carlsbad NM, 88220

Project Name: Poker Lake 16-24-30
Project Number: 97057-0001
Project Manager: Heather Woods

Reported:
11/21/2022 7:25:55AM

SW4 @ 0 - 7'

E211102-11

Analyte	Result	Reporting Limit	Dilution	Prepared	Analyzed	Notes
Volatile Organics by EPA 8021B						
	mg/kg	mg/kg		Analyst: IY		Batch: 2247076
Benzene	ND	0.0250	1	11/17/22	11/18/22	
Ethylbenzene	ND	0.0250	1	11/17/22	11/18/22	
Toluene	ND	0.0250	1	11/17/22	11/18/22	
o-Xylene	ND	0.0250	1	11/17/22	11/18/22	
p,m-Xylene	ND	0.0500	1	11/17/22	11/18/22	
Total Xylenes	ND	0.0250	1	11/17/22	11/18/22	
<i>Surrogate: 4-Bromochlorobenzene-PID</i>						
		101 %	70-130	11/17/22	11/18/22	
Nonhalogenated Organics by EPA 8015D - GRO						
	mg/kg	mg/kg		Analyst: IY		Batch: 2247076
Gasoline Range Organics (C6-C10)	ND	20.0	1	11/17/22	11/18/22	
<i>Surrogate: 1-Chloro-4-fluorobenzene-FID</i>						
		93.6 %	70-130	11/17/22	11/18/22	
Nonhalogenated Organics by EPA 8015D - DRO/ORO						
	mg/kg	mg/kg		Analyst: RAS		Batch: 2247074
Diesel Range Organics (C10-C28)	ND	25.0	1	11/17/22	11/18/22	
Oil Range Organics (C28-C36)	ND	50.0	1	11/17/22	11/18/22	
<i>Surrogate: n-Nonane</i>						
		103 %	50-200	11/17/22	11/18/22	
Anions by EPA 300.0/9056A						
	mg/kg	mg/kg		Analyst: KL		Batch: 2247093
Chloride	ND	20.0	1	11/18/22	11/18/22	



Sample Data

Souder Miller Associates - Carlsbad
201 S Halagueno St.
Carlsbad NM, 88220

Project Name: Poker Lake 16-24-30
Project Number: 97057-0001
Project Manager: Heather Woods

Reported:
11/21/2022 7:25:55AM

SW4 @ 7 - 14'

E211102-12

Analyte	Result	Reporting Limit	Dilution	Prepared	Analyzed	Notes
Volatile Organics by EPA 8021B						
	mg/kg	mg/kg		Analyst: IY		Batch: 2247076
Benzene	ND	0.0250	1	11/17/22	11/18/22	
Ethylbenzene	ND	0.0250	1	11/17/22	11/18/22	
Toluene	ND	0.0250	1	11/17/22	11/18/22	
o-Xylene	ND	0.0250	1	11/17/22	11/18/22	
p,m-Xylene	ND	0.0500	1	11/17/22	11/18/22	
Total Xylenes	ND	0.0250	1	11/17/22	11/18/22	
<i>Surrogate: 4-Bromochlorobenzene-PID</i>						
		102 %	70-130	11/17/22	11/18/22	
Nonhalogenated Organics by EPA 8015D - GRO						
	mg/kg	mg/kg		Analyst: IY		Batch: 2247076
Gasoline Range Organics (C6-C10)	ND	20.0	1	11/17/22	11/18/22	
<i>Surrogate: 1-Chloro-4-fluorobenzene-FID</i>						
		96.6 %	70-130	11/17/22	11/18/22	
Nonhalogenated Organics by EPA 8015D - DRO/ORO						
	mg/kg	mg/kg		Analyst: RAS		Batch: 2247074
Diesel Range Organics (C10-C28)	ND	25.0	1	11/17/22	11/18/22	
Oil Range Organics (C28-C36)	ND	50.0	1	11/17/22	11/18/22	
<i>Surrogate: n-Nonane</i>						
		105 %	50-200	11/17/22	11/18/22	
Anions by EPA 300.0/9056A						
	mg/kg	mg/kg		Analyst: KL		Batch: 2247093
Chloride	ND	20.0	1	11/18/22	11/18/22	



Sample Data

Souder Miller Associates - Carlsbad
201 S Halagueno St.
Carlsbad NM, 88220

Project Name: Poker Lake 16-24-30
Project Number: 97057-0001
Project Manager: Heather Woods

Reported:
11/21/2022 7:25:55AM

SW4 @ 14 - 20'

E211102-13

Analyte	Result	Reporting Limit	Dilution	Prepared	Analyzed	Notes
Volatile Organics by EPA 8021B						
	mg/kg	mg/kg		Analyst: IY		Batch: 2247076
Benzene	ND	0.0250	1	11/17/22	11/18/22	
Ethylbenzene	ND	0.0250	1	11/17/22	11/18/22	
Toluene	ND	0.0250	1	11/17/22	11/18/22	
o-Xylene	ND	0.0250	1	11/17/22	11/18/22	
p,m-Xylene	ND	0.0500	1	11/17/22	11/18/22	
Total Xylenes	ND	0.0250	1	11/17/22	11/18/22	
<i>Surrogate: 4-Bromochlorobenzene-PID</i>						
		102 %	70-130	11/17/22	11/18/22	
Nonhalogenated Organics by EPA 8015D - GRO						
	mg/kg	mg/kg		Analyst: IY		Batch: 2247076
Gasoline Range Organics (C6-C10)	ND	20.0	1	11/17/22	11/18/22	
<i>Surrogate: 1-Chloro-4-fluorobenzene-FID</i>						
		96.8 %	70-130	11/17/22	11/18/22	
Nonhalogenated Organics by EPA 8015D - DRO/ORO						
	mg/kg	mg/kg		Analyst: RAS		Batch: 2247074
Diesel Range Organics (C10-C28)	ND	25.0	1	11/17/22	11/18/22	
Oil Range Organics (C28-C36)	ND	50.0	1	11/17/22	11/18/22	
<i>Surrogate: n-Nonane</i>						
		106 %	50-200	11/17/22	11/18/22	
Anions by EPA 300.0/9056A						
	mg/kg	mg/kg		Analyst: KL		Batch: 2247093
Chloride	ND	20.0	1	11/18/22	11/18/22	



QC Summary Data

Souder Miller Associates - Carlsbad	Project Name:	Poker Lake 16-24-30	Reported:
201 S Halagueno St.	Project Number:	97057-0001	
Carlsbad NM, 88220	Project Manager:	Heather Woods	11/21/2022 7:25:55AM

Volatile Organics by EPA 8021B

Analyst: IY

Analyte	Result mg/kg	Reporting Limit mg/kg	Spike Level mg/kg	Source Result mg/kg	Rec %	Rec Limits %	RPD %	RPD Limit %	Notes
---------	-----------------	-----------------------------	-------------------------	---------------------------	----------	--------------------	----------	-------------------	-------

Blank (2247076-BLK1)

Prepared: 11/17/22 Analyzed: 11/18/22

Benzene	ND	0.0250							
Ethylbenzene	ND	0.0250							
Toluene	ND	0.0250							
o-Xylene	ND	0.0250							
p,m-Xylene	ND	0.0500							
Total Xylenes	ND	0.0250							
Surrogate: 4-Bromochlorobenzene-PID	8.23		8.00		103	70-130			

LCS (2247076-BS1)

Prepared: 11/17/22 Analyzed: 11/18/22

Benzene	5.93	0.0250	5.00		119	70-130			
Ethylbenzene	4.57	0.0250	5.00		91.3	70-130			
Toluene	4.96	0.0250	5.00		99.2	70-130			
o-Xylene	4.63	0.0250	5.00		92.7	70-130			
p,m-Xylene	9.26	0.0500	10.0		92.6	70-130			
Total Xylenes	13.9	0.0250	15.0		92.6	70-130			
Surrogate: 4-Bromochlorobenzene-PID	8.32		8.00		104	70-130			

LCS Dup (2247076-BSD1)

Prepared: 11/17/22 Analyzed: 11/18/22

Benzene	5.91	0.0250	5.00		118	70-130	0.325	20	
Ethylbenzene	4.57	0.0250	5.00		91.5	70-130	0.161	20	
Toluene	4.93	0.0250	5.00		98.7	70-130	0.557	20	
o-Xylene	4.67	0.0250	5.00		93.4	70-130	0.819	20	
p,m-Xylene	9.28	0.0500	10.0		92.8	70-130	0.221	20	
Total Xylenes	14.0	0.0250	15.0		93.0	70-130	0.421	20	
Surrogate: 4-Bromochlorobenzene-PID	8.41		8.00		105	70-130			



QC Summary Data

Souder Miller Associates - Carlsbad	Project Name:	Poker Lake 16-24-30	Reported:
201 S Halagueno St.	Project Number:	97057-0001	
Carlsbad NM, 88220	Project Manager:	Heather Woods	11/21/2022 7:25:55AM

Nonhalogenated Organics by EPA 8015D - GRO

Analyst: IY

Analyte	Result mg/kg	Reporting Limit mg/kg	Spike Level mg/kg	Source Result mg/kg	Rec %	Rec Limits %	RPD %	RPD Limit %	Notes
---------	-----------------	-----------------------------	-------------------------	---------------------------	----------	--------------------	----------	-------------------	-------

Blank (2247076-BLK1) Prepared: 11/17/22 Analyzed: 11/18/22

Gasoline Range Organics (C6-C10)	ND	20.0							
Surrogate: 1-Chloro-4-fluorobenzene-FID	6.50		8.00		81.2	70-130			

LCS (2247076-BS2) Prepared: 11/17/22 Analyzed: 11/18/22

Gasoline Range Organics (C6-C10)	47.8	20.0	50.0		95.6	70-130			
Surrogate: 1-Chloro-4-fluorobenzene-FID	6.48		8.00		80.9	70-130			

LCS Dup (2247076-BSD2) Prepared: 11/17/22 Analyzed: 11/18/22

Gasoline Range Organics (C6-C10)	48.8	20.0	50.0		97.7	70-130	2.09	20	
Surrogate: 1-Chloro-4-fluorobenzene-FID	6.60		8.00		82.5	70-130			



QC Summary Data

Souder Miller Associates - Carlsbad	Project Name:	Poker Lake 16-24-30	Reported:
201 S Halagueno St.	Project Number:	97057-0001	
Carlsbad NM, 88220	Project Manager:	Heather Woods	11/21/2022 7:25:55AM

Nonhalogenated Organics by EPA 8015D - DRO/ORO

Analyst: RAS

Analyte	Result mg/kg	Reporting Limit mg/kg	Spike Level mg/kg	Source Result mg/kg	Rec %	Rec Limits %	RPD %	RPD Limit %	Notes
---------	-----------------	-----------------------------	-------------------------	---------------------------	----------	--------------------	----------	-------------------	-------

Blank (2247074-BLK1)

Prepared: 11/17/22 Analyzed: 11/18/22

Diesel Range Organics (C10-C28)	ND	25.0							
Oil Range Organics (C28-C36)	ND	50.0							
Surrogate: <i>n</i> -Nonane	51.1		50.0		102	50-200			

LCS (2247074-BS1)

Prepared: 11/17/22 Analyzed: 11/18/22

Diesel Range Organics (C10-C28)	240	25.0	250		95.8	38-132			
Surrogate: <i>n</i> -Nonane	49.9		50.0		99.7	50-200			

Matrix Spike (2247074-MS1)

Source: E211102-04

Prepared: 11/17/22 Analyzed: 11/18/22

Diesel Range Organics (C10-C28)	274	25.0	250	57.2	86.8	38-132			
Surrogate: <i>n</i> -Nonane	49.6		50.0		99.1	50-200			

Matrix Spike Dup (2247074-MSD1)

Source: E211102-04

Prepared: 11/17/22 Analyzed: 11/18/22

Diesel Range Organics (C10-C28)	294	25.0	250	57.2	94.5	38-132	6.84	20	
Surrogate: <i>n</i> -Nonane	48.7		50.0		97.3	50-200			



QC Summary Data

Souder Miller Associates - Carlsbad	Project Name:	Poker Lake 16-24-30	Reported:
201 S Halagueno St.	Project Number:	97057-0001	
Carlsbad NM, 88220	Project Manager:	Heather Woods	11/21/2022 7:25:55AM

Anions by EPA 300.0/9056A

Analyst: KL

Analyte	Result	Reporting Limit	Spike Level	Source Result	Rec	Rec Limits	RPD	RPD Limit	Notes
	mg/kg	mg/kg	mg/kg	mg/kg	%	%	%	%	

Blank (2247093-BLK1)					Prepared: 11/18/22 Analyzed: 11/18/22				
Chloride	ND	20.0							
LCS (2247093-BS1)					Prepared: 11/18/22 Analyzed: 11/18/22				
Chloride	250	20.0	250		100	90-110			
LCS Dup (2247093-BSD1)					Prepared: 11/18/22 Analyzed: 11/18/22				
Chloride	256	20.0	250		102	90-110	2.39	20	

QC Summary Report Comment:
Calculations are based off of the raw (non-rounded) data. However, for reporting purposes all QC data is rounded to three significant figures.
Therefore, hand calculated values may differ slightly.



Definitions and Notes

Souder Miller Associates - Carlsbad	Project Name:	Poker Lake 16-24-30	
201 S Halagueno St.	Project Number:	97057-0001	Reported:
Carlsbad NM, 88220	Project Manager:	Heather Woods	11/21/22 07:25

- ND Analyte NOT DETECTED at or above the reporting limit
- NR Not Reported
- RPD Relative Percent Difference
- DNI Did Not Ignite

Note (1): Methods marked with ** are non-accredited methods.

Note (2): Soil data is reported on an "as received" weight basis, unless reported otherwise.



Project Information

Chain of Custody

Client: Sudley Miller & Associates
 Project: Peter Lake No-24-30
 Project Manager: Heather Woods
 Address: 201 S. Halagueno St
 City, State, Zip: Carlsbad, NM 88220
 Phone: _____
 Email: _____
 Report due by: _____

Bill To
 Attention: Enterprise
 Address: _____
 City, State, Zip: _____
 Phone: _____
 Email: _____
PO 325484

Lab Use Only
 Lab WO#: PE211102 Job Number: 97057-0001
 Analysis and Method

EPA Program
 TAT: 1D ☒ 3D ☐
 RCRA ☐ CWA ☐ SDWA ☐
 State: NM ☒ CO ☐ UT ☐ AZ ☐
 TX ☐ OK ☐
 Remarks: _____

Time Sampled	Date Sampled	Matrix	No Containers	Sample ID	Lab Number	PbO/RO by 8015	GRO/DRO by 8015	BTEX by 8021	VOC by 8260	Metals 6010	Chloride 30010	UGDOC - NM	UGDOC - TX
0938	11/17/22	Soil	1	BS01 @ 26	1							X	
0947	11/17/22	Soil	1	BS02 @ 20	2							X	
0937	11/17/22	Soil	1	SW1 @ 0-9'	3							X	
0936	11/17/22	Soil	1	SW1 @ 9-18'	4							X	
0934	11/17/22	Soil	1	SW1 @ 18-26'	5							X	
0941	11/17/22	Soil	1	SW2 @ 0-9'	6							X	
0940	11/17/22	Soil	1	SW2 @ 9-18'	7							X	
0929	11/17/22	Soil	1	SW2 @ 18-26'	8							X	
0950	11/17/22	Soil	1	SW3 @ 0-10'	9							X	
0927	11/17/22	Soil	1	SW3 @ 10-20'	10							X	

Additional Instructions: please send reports to Sarahmay Schlegel, Georgeann Goodman + Heather Woods
 (Field sampler), attest to the validity and authenticity of this sample. I am aware that tampering with or intentionally mislabeling the sample location, date or time of collection is considered fraud and may be grounds for legal action. Sampled by: Sarahmay Schlegel
 Samples requiring thermal preservation must be received on ice the day they are sampled or returned packed in ice at an avg temp above 0 but less than 4°C on subsequent days

Relinquished by: (Signature)	Date	Time	Received by: (Signature)	Date	Time
<u>[Signature]</u>	11/17/22	1130	<u>[Signature]</u>	11-17-22	1130
<u>[Signature]</u>	11-17-22	1620	<u>[Signature]</u>	11/17/22	16:30
<u>[Signature]</u>			<u>[Signature]</u>		

Lab Use Only
 Received on ice: ☒ Y ☐ N
 T1 _____ T2 _____ T3 _____
 AVG Temp °C 4

Container Type: g - glass, p - poly/plastic, ag - amber glass, v - VOA
 Sample Matrix: S - Soil, Sd - Solid, Sg - Sludge, A - Aqueous, O - Other _____
 Note: Samples are discarded 30 days after results are reported unless other arrangements are made. Hazardous samples will be returned to client or disposed of at the client expense. The report for the analysis of the above samples is applicable only to those samples received by the laboratory with this COC. The liability of the laboratory is limited to the amount paid for on the report.

envirotech

Project Information

[illegible]

Envirotech Analytical Laboratory

Printed: 11/18/2022 10:11:04AM

Sample Receipt Checklist (SRC)

Instructions: Please take note of any NO checkmarks.

If we receive no response concerning these items within 24 hours of the date of this notice, all the samples will be analyzed as requested.

Client:	Souder Miller Associates - Carlsbad	Date Received:	11/18/22 06:30	Work Order ID:	E211102
Phone:	(575) 200-5443	Date Logged In:	11/17/22 14:43	Logged In By:	Caitlin Christian
Email:		Due Date:	11/18/22 17:00 (0 day TAT)		

Chain of Custody (COC)

1. Does the sample ID match the COC? Yes
2. Does the number of samples per sampling site location match the COC? Yes
3. Were samples dropped off by client or carrier? Yes
4. Was the COC complete, i.e., signatures, dates/times, requested analyses? Yes
5. Were all samples received within holding time? Yes

Note: Analysis, such as pH which should be conducted in the field, i.e., 15 minute hold time, are not included in this discussion.

Carrier: CourierComments/ResolutionSample Turn Around Time (TAT)

6. Did the COC indicate standard TAT, or Expedited TAT? Yes

Sample Cooler

7. Was a sample cooler received? Yes
8. If yes, was cooler received in good condition? Yes
9. Was the sample(s) received intact, i.e., not broken? Yes
10. Were custody/security seals present? No
11. If yes, were custody/security seals intact? NA
12. Was the sample received on ice? If yes, the recorded temp is 4°C, i.e., 6°±2°C? Yes

Note: Thermal preservation is not required, if samples are received w/i 15 minutes of sampling

13. If no visible ice, record the temperature. Actual sample temperature: 4°C

Sample Container

14. Are aqueous VOC samples present? No
15. Are VOC samples collected in VOA Vials? NA
16. Is the head space less than 6-8 mm (pea sized or less)? NA
17. Was a trip blank (TB) included for VOC analyses? NA
18. Are non-VOC samples collected in the correct containers? Yes
19. Is the appropriate volume/weight or number of sample containers collected? Yes

Field Label

20. Were field sample labels filled out with the minimum information:
 - Sample ID? Yes
 - Date/Time Collected? Yes
 - Collectors name? No

Sample Preservation

21. Does the COC or field labels indicate the samples were preserved? No
22. Are sample(s) correctly preserved? NA
24. Is lab filtration required and/or requested for dissolved metals? No

Multiphase Sample Matrix

26. Does the sample have more than one phase, i.e., multiphase? No
27. If yes, does the COC specify which phase(s) is to be analyzed? NA

Subcontract Laboratory

28. Are samples required to get sent to a subcontract laboratory? No
29. Was a subcontract laboratory specified by the client and if so who? NA Subcontract Lab: na

Client Instruction

Signature of client authorizing changes to the COC or sample disposition.

Date



envirotech Inc.

Report to:
Heather Woods



envirotech

Practical Solutions for a Better Tomorrow

Analytical Report

Souder Miller Associates - Carlsbad

Project Name: Poker Lake 16-24-30

Work Order: E211153

Job Number: 97057-0001

Received: 11/28/2022

Revision: 3

Report Reviewed By:

Walter Hinchman
Laboratory Director
11/29/22

5796 U.S. Hwy 64
Farmington, NM 87401

Phone: (505) 632-1881
Envirotech-inc.com



Envirotech Inc. certifies the test results meet all requirements of TNI unless noted otherwise.
Statement of Data Authenticity: Envirotech Inc. attests the data reported has not been altered in any way.
Partial or incomplete reproduction of this report is prohibited, unless approved by Envirotech Inc.
Envirotech Inc. holds the Utah TNI certification NM00979 for data reported.
Envirotech Inc. holds the Texas TNI certification T104704557 for data reported.
Envirotech Inc. holds the NM SDWA certification for data reported. (Lab #NM00979)

Date Reported: 11/29/22



Heather Woods
201 S Halagueno St.
Carlsbad, NM 88220

Project Name: Poker Lake 16-24-30
Workorder: E211153
Date Received: 11/28/2022 10:00:00AM

Heather Woods,

Thank you for choosing Envirotech, Inc. as your analytical testing laboratory for the sample(s) received on, 11/28/2022 10:00:00AM, under the Project Name: Poker Lake 16-24-30.

The analytical test results summarized in this report with the Project Name: Poker Lake 16-24-30 apply to the individual samples collected, identified and submitted bearing the project name on the enclosed chain-of-custody. Subcontracted sample analyses not conducted by Envirotech, Inc., are attached in full as issued by the subcontract laboratory.

Please review the Chain-of-Custody (COC) and Sample Receipt Checklist (SRC) for any issues regarding sample receipt temperature, containers, preservation etc. To best understand your test results, review the entire report summarizing your sample data and the associated quality control batch data.

All reported data in this analytical report were analyzed according to the referenced method(s) and are in compliance with the latest NELAC/TNI standards, unless otherwise noted. Samples or analytical quality control parameters not meeting specific QC criteria are qualified with a data flag. Data flag definitions are located in the Notes and Definitions section of this analytical report.

If you have any questions concerning this report, please feel free to contact Envirotech, Inc.

Respectfully,

Walter Hinchman
Laboratory Director
Office: 505-632-1881
Cell: 775-287-1762
whinchman@envirotech-inc.com

Raina Schwanz
Laboratory Administrator
Office: 505-632-1881
rainaschwanz@envirotech-inc.com

Alexa Michaels
Sample Custody Officer
Office: 505-632-1881
labadmin@envirotech-inc.com

Field Offices:

Southern New Mexico Area
Lynn Jarboe
Technical Representative/Client Services
Office: 505-421-LABS(5227)
Cell: 505-320-4759
ljjarboe@envirotech-inc.com

West Texas Midland/Odessa Area
Rayny Hagan
Technical Representative
Office: 505-421-LABS(5227)

Envirotech Web Address: www.envirotech-inc.com

Table of Contents

Title Page	1
Cover Page	2
Table of Contents	3
Sample Summary	4
Sample Data	5
SW1 @ 0 - 9'	5
SW1 @ 9 - 18'	6
QC Summary Data	7
QC - Volatile Organic Compounds by EPA 8260B	7
QC - Nonhalogenated Organics by EPA 8015D - GRO	8
QC - Nonhalogenated Organics by EPA 8015D - DRO/ORO	9
QC - Anions by EPA 300.0/9056A	10
Definitions and Notes	11
Chain of Custody etc.	12

Sample Summary

Souder Miller Associates - Carlsbad	Project Name:	Poker Lake 16-24-30	Reported:
201 S Halagueno St.	Project Number:	97057-0001	
Carlsbad NM, 88220	Project Manager:	Heather Woods	11/29/22 16:33

Client Sample ID	Lab Sample ID	Matrix	Sampled	Received	Container
SW1 @ 0 - 9'	E211153-01A	Soil	11/23/22	11/28/22	Glass Jar, 4 oz.
SW1 @ 9 - 18'	E211153-02A	Soil	11/23/22	11/28/22	Glass Jar, 4 oz.



Sample Data

Souder Miller Associates - Carlsbad
201 S Halagueno St.
Carlsbad NM, 88220

Project Name: Poker Lake 16-24-30
Project Number: 97057-0001
Project Manager: Heather Woods

Reported:
11/29/2022 4:33:28PM

SW1 @ 0 - 9'

E211153-01

Analyte	Result	Reporting Limit	Dilution	Prepared	Analyzed	Notes
Volatile Organic Compounds by EPA 8260B						
	mg/kg	mg/kg		Analyst: IY		Batch: 2249007
Benzene	ND	0.0250	1	11/28/22	11/28/22	
Ethylbenzene	ND	0.0250	1	11/28/22	11/28/22	
Toluene	ND	0.0250	1	11/28/22	11/28/22	
o-Xylene	ND	0.0250	1	11/28/22	11/28/22	
p,m-Xylene	ND	0.0500	1	11/28/22	11/28/22	
Total Xylenes	ND	0.0250	1	11/28/22	11/28/22	
Surrogate: Bromofluorobenzene	97.5 %	70-130		11/28/22	11/28/22	
Surrogate: 1,2-Dichloroethane-d4	100 %	70-130		11/28/22	11/28/22	
Surrogate: Toluene-d8	103 %	70-130		11/28/22	11/28/22	
Nonhalogenated Organics by EPA 8015D - GRO						
	mg/kg	mg/kg		Analyst: IY		Batch: 2249007
Gasoline Range Organics (C6-C10)	ND	20.0	1	11/28/22	11/28/22	
Surrogate: Bromofluorobenzene	97.5 %	70-130		11/28/22	11/28/22	
Surrogate: 1,2-Dichloroethane-d4	100 %	70-130		11/28/22	11/28/22	
Surrogate: Toluene-d8	103 %	70-130		11/28/22	11/28/22	
Nonhalogenated Organics by EPA 8015D - DRO/ORO						
	mg/kg	mg/kg		Analyst: JL		Batch: 2249005
Diesel Range Organics (C10-C28)	ND	25.0	1	11/28/22	11/28/22	
Oil Range Organics (C28-C36)	ND	50.0	1	11/28/22	11/28/22	
Surrogate: n-Nonane	86.6 %	50-200		11/28/22	11/28/22	
Anions by EPA 300.0/9056A						
	mg/kg	mg/kg		Analyst: RAS		Batch: 2249006
Chloride	ND	20.0	1	11/28/22	11/28/22	



Sample Data

Souder Miller Associates - Carlsbad
201 S Halagueno St.
Carlsbad NM, 88220

Project Name: Poker Lake 16-24-30
Project Number: 97057-0001
Project Manager: Heather Woods

Reported:
11/29/2022 4:33:28PM

SW1 @ 9 - 18'

E211153-02

Analyte	Result	Reporting Limit	Dilution	Prepared	Analyzed	Notes
Volatile Organic Compounds by EPA 8260B						
	mg/kg	mg/kg		Analyst: IY		Batch: 2249007
Benzene	ND	0.0250	1	11/28/22	11/28/22	
Ethylbenzene	ND	0.0250	1	11/28/22	11/28/22	
Toluene	ND	0.0250	1	11/28/22	11/28/22	
o-Xylene	ND	0.0250	1	11/28/22	11/28/22	
p,m-Xylene	ND	0.0500	1	11/28/22	11/28/22	
Total Xylenes	ND	0.0250	1	11/28/22	11/28/22	
Surrogate: Bromofluorobenzene	95.9 %	70-130		11/28/22	11/28/22	
Surrogate: 1,2-Dichloroethane-d4	100 %	70-130		11/28/22	11/28/22	
Surrogate: Toluene-d8	105 %	70-130		11/28/22	11/28/22	
Nonhalogenated Organics by EPA 8015D - GRO						
	mg/kg	mg/kg		Analyst: IY		Batch: 2249007
Gasoline Range Organics (C6-C10)	ND	20.0	1	11/28/22	11/28/22	
Surrogate: Bromofluorobenzene	95.9 %	70-130		11/28/22	11/28/22	
Surrogate: 1,2-Dichloroethane-d4	100 %	70-130		11/28/22	11/28/22	
Surrogate: Toluene-d8	105 %	70-130		11/28/22	11/28/22	
Nonhalogenated Organics by EPA 8015D - DRO/ORO						
	mg/kg	mg/kg		Analyst: JL		Batch: 2249005
Diesel Range Organics (C10-C28)	ND	25.0	1	11/28/22	11/28/22	
Oil Range Organics (C28-C36)	ND	50.0	1	11/28/22	11/28/22	
Surrogate: n-Nonane	117 %	50-200		11/28/22	11/28/22	
Anions by EPA 300.0/9056A						
	mg/kg	mg/kg		Analyst: RAS		Batch: 2249006
Chloride	ND	20.0	1	11/28/22	11/28/22	



QC Summary Data

Souder Miller Associates - Carlsbad	Project Name:	Poker Lake 16-24-30	Reported:
201 S Halagueno St.	Project Number:	97057-0001	
Carlsbad NM, 88220	Project Manager:	Heather Woods	11/29/2022 4:33:28PM

Volatile Organic Compounds by EPA 8260B

Analyst: IY

Analyte	Result mg/kg	Reporting Limit mg/kg	Spike Level mg/kg	Source Result mg/kg	Rec %	Rec Limits %	RPD %	RPD Limit %	Notes
---------	-----------------	-----------------------------	-------------------------	---------------------------	----------	--------------------	----------	-------------------	-------

Blank (2249007-BLK1)

Prepared: 11/28/22 Analyzed: 11/28/22

Benzene	ND	0.0250							
Ethylbenzene	ND	0.0250							
Toluene	ND	0.0250							
o-Xylene	ND	0.0250							
p,m-Xylene	ND	0.0500							
Total Xylenes	ND	0.0250							
Surrogate: Bromofluorobenzene	0.476		0.500		95.1	70-130			
Surrogate: 1,2-Dichloroethane-d4	0.502		0.500		100	70-130			
Surrogate: Toluene-d8	0.522		0.500		104	70-130			

LCS (2249007-BS1)

Prepared: 11/28/22 Analyzed: 11/29/22

Benzene	2.31	0.0250	2.50		92.3	70-130			
Ethylbenzene	2.33	0.0250	2.50		93.1	70-130			
Toluene	2.28	0.0250	2.50		91.1	70-130			
o-Xylene	2.22	0.0250	2.50		88.7	70-130			
p,m-Xylene	4.43	0.0500	5.00		88.5	70-130			
Total Xylenes	6.64	0.0250	7.50		88.6	70-130			
Surrogate: Bromofluorobenzene	0.505		0.500		101	70-130			
Surrogate: 1,2-Dichloroethane-d4	0.507		0.500		101	70-130			
Surrogate: Toluene-d8	0.526		0.500		105	70-130			

Matrix Spike (2249007-MS1)

Source: E211151-02

Prepared: 11/28/22 Analyzed: 11/28/22

Benzene	2.35	0.0250	2.50	ND	94.0	48-131			
Ethylbenzene	2.36	0.0250	2.50	ND	94.4	45-135			
Toluene	2.33	0.0250	2.50	ND	93.2	48-130			
o-Xylene	2.21	0.0250	2.50	ND	88.4	43-135			
p,m-Xylene	4.46	0.0500	5.00	ND	89.2	43-135			
Total Xylenes	6.67	0.0250	7.50	ND	88.9	43-135			
Surrogate: Bromofluorobenzene	0.510		0.500		102	70-130			
Surrogate: 1,2-Dichloroethane-d4	0.517		0.500		103	70-130			
Surrogate: Toluene-d8	0.521		0.500		104	70-130			

Matrix Spike Dup (2249007-MSD1)

Source: E211151-02

Prepared: 11/28/22 Analyzed: 11/28/22

Benzene	2.49	0.0250	2.50	ND	99.6	48-131	5.79	23	
Ethylbenzene	2.52	0.0250	2.50	ND	101	45-135	6.62	27	
Toluene	2.48	0.0250	2.50	ND	99.1	48-130	6.16	24	
o-Xylene	2.44	0.0250	2.50	ND	97.6	43-135	9.91	27	
p,m-Xylene	4.80	0.0500	5.00	ND	95.9	43-135	7.27	27	
Total Xylenes	7.24	0.0250	7.50	ND	96.5	43-135	8.16	27	
Surrogate: Bromofluorobenzene	0.509		0.500		102	70-130			
Surrogate: 1,2-Dichloroethane-d4	0.478		0.500		95.5	70-130			
Surrogate: Toluene-d8	0.528		0.500		106	70-130			



QC Summary Data

Souder Miller Associates - Carlsbad	Project Name:	Poker Lake 16-24-30	Reported:
201 S Halagueno St.	Project Number:	97057-0001	
Carlsbad NM, 88220	Project Manager:	Heather Woods	11/29/2022 4:33:28PM

Nonhalogenated Organics by EPA 8015D - GRO

Analyst: IY

Analyte	Result mg/kg	Reporting Limit mg/kg	Spike Level mg/kg	Source Result mg/kg	Rec %	Rec Limits %	RPD %	RPD Limit %	Notes
---------	-----------------	-----------------------------	-------------------------	---------------------------	----------	--------------------	----------	-------------------	-------

Blank (2249007-BLK1)

Prepared: 11/28/22 Analyzed: 11/28/22

Gasoline Range Organics (C6-C10)	ND	20.0							
Surrogate: Bromofluorobenzene	0.476		0.500		95.1	70-130			
Surrogate: 1,2-Dichloroethane-d4	0.502		0.500		100	70-130			
Surrogate: Toluene-d8	0.522		0.500		104	70-130			

LCS (2249007-BS2)

Prepared: 11/28/22 Analyzed: 11/28/22

Gasoline Range Organics (C6-C10)	51.0	20.0	50.0		102	70-130			
Surrogate: Bromofluorobenzene	0.497		0.500		99.3	70-130			
Surrogate: 1,2-Dichloroethane-d4	0.492		0.500		98.4	70-130			
Surrogate: Toluene-d8	0.527		0.500		105	70-130			

Matrix Spike (2249007-MS2)

Source: E211151-02

Prepared: 11/28/22 Analyzed: 11/28/22

Gasoline Range Organics (C6-C10)	53.0	20.0	50.0	ND	106	70-130			
Surrogate: Bromofluorobenzene	0.487		0.500		97.4	70-130			
Surrogate: 1,2-Dichloroethane-d4	0.483		0.500		96.6	70-130			
Surrogate: Toluene-d8	0.532		0.500		106	70-130			

Matrix Spike Dup (2249007-MSD2)

Source: E211151-02

Prepared: 11/28/22 Analyzed: 11/28/22

Gasoline Range Organics (C6-C10)	52.3	20.0	50.0	ND	105	70-130	1.31	20	
Surrogate: Bromofluorobenzene	0.490		0.500		98.0	70-130			
Surrogate: 1,2-Dichloroethane-d4	0.490		0.500		97.9	70-130			
Surrogate: Toluene-d8	0.524		0.500		105	70-130			



QC Summary Data

Souder Miller Associates - Carlsbad	Project Name:	Poker Lake 16-24-30	Reported:
201 S Halagueno St.	Project Number:	97057-0001	
Carlsbad NM, 88220	Project Manager:	Heather Woods	11/29/2022 4:33:28PM

Nonhalogenated Organics by EPA 8015D - DRO/ORO

Analyst: JL

Analyte	Result mg/kg	Reporting Limit mg/kg	Spike Level mg/kg	Source Result mg/kg	Rec %	Rec Limits %	RPD %	RPD Limit %	Notes
---------	-----------------	-----------------------------	-------------------------	---------------------------	----------	--------------------	----------	-------------------	-------

Blank (2249005-BLK1)

Prepared: 11/28/22 Analyzed: 11/28/22

Diesel Range Organics (C10-C28)	ND	25.0							
Oil Range Organics (C28-C36)	ND	50.0							
Surrogate: n-Nonane	45.4		50.0		90.7	50-200			

LCS (2249005-BS1)

Prepared: 11/28/22 Analyzed: 11/28/22

Diesel Range Organics (C10-C28)	255	25.0	250		102	38-132			
Surrogate: n-Nonane	34.2		50.0		68.3	50-200			

Matrix Spike (2249005-MS1)

Source: E211151-02

Prepared: 11/28/22 Analyzed: 11/28/22

Diesel Range Organics (C10-C28)	251	25.0	250	ND	100	38-132			
Surrogate: n-Nonane	35.5		50.0		70.9	50-200			

Matrix Spike Dup (2249005-MSD1)

Source: E211151-02

Prepared: 11/28/22 Analyzed: 11/28/22

Diesel Range Organics (C10-C28)	253	25.0	250	ND	101	38-132	0.676	20	
Surrogate: n-Nonane	36.7		50.0		73.4	50-200			



QC Summary Data

Souder Miller Associates - Carlsbad	Project Name:	Poker Lake 16-24-30	Reported:
201 S Halagueno St.	Project Number:	97057-0001	
Carlsbad NM, 88220	Project Manager:	Heather Woods	11/29/2022 4:33:28PM

Anions by EPA 300.0/9056A

Analyst: RAS

Analyte	Result	Reporting Limit	Spike Level	Source Result	Rec	Rec Limits	RPD	RPD Limit	Notes
	mg/kg	mg/kg	mg/kg	mg/kg	%	%	%	%	

Blank (2249006-BLK1)					Prepared: 11/28/22 Analyzed: 11/28/22				
Chloride	ND	20.0							
LCS (2249006-BS1)					Prepared: 11/28/22 Analyzed: 11/28/22				
Chloride	255	20.0	250		102	90-110			
Matrix Spike (2249006-MS1)					Source: E211151-01		Prepared: 11/28/22 Analyzed: 11/28/22		
Chloride	570	20.0	250	295	110	80-120			
Matrix Spike Dup (2249006-MSD1)					Source: E211151-01		Prepared: 11/28/22 Analyzed: 11/28/22		
Chloride	571	20.0	250	295	110	80-120	0.0871	20	

QC Summary Report Comment:
Calculations are based off of the raw (non-rounded) data. However, for reporting purposes all QC data is rounded to three significant figures.
Therefore, hand calculated values may differ slightly.



Definitions and Notes

Souder Miller Associates - Carlsbad	Project Name:	Poker Lake 16-24-30	
201 S Halagueno St.	Project Number:	97057-0001	Reported:
Carlsbad NM, 88220	Project Manager:	Heather Woods	11/29/22 16:33

- ND Analyte NOT DETECTED at or above the reporting limit
- NR Not Reported
- RPD Relative Percent Difference
- DNI Did Not Ignite

Note (1): Methods marked with ** are non-accredited methods.

Note (2): Soil data is reported on an "as received" weight basis, unless reported otherwise.



[illegible]

Page 12 of 13

Envirotech Analytical Laboratory

Printed: 11/28/2022 10:54:47AM

Sample Receipt Checklist (SRC)

Instructions: Please take note of any NO checkmarks.

If we receive no response concerning these items within 24 hours of the date of this notice, all the samples will be analyzed as requested.

Client:	Souder Miller Associates - Carlsbad	Date Received:	11/28/22 10:00	Work Order ID:	E211153
Phone:	(575) 200-5443	Date Logged In:	11/28/22 10:20	Logged In By:	Caitlin Christian
Email:		Due Date:	11/28/22 17:00 (0 day TAT)		

Chain of Custody (COC)

1. Does the sample ID match the COC? Yes
2. Does the number of samples per sampling site location match the COC? Yes
3. Were samples dropped off by client or carrier? Yes
4. Was the COC complete, i.e., signatures, dates/times, requested analyses? Yes
5. Were all samples received within holding time? Yes

Note: Analysis, such as pH which should be conducted in the field, i.e., 15 minute hold time, are not included in this discussion.

Carrier: CourierComments/ResolutionSample Turn Around Time (TAT)

6. Did the COC indicate standard TAT, or Expedited TAT? Yes

Sample Cooler

7. Was a sample cooler received? Yes
8. If yes, was cooler received in good condition? Yes
9. Was the sample(s) received intact, i.e., not broken? Yes
10. Were custody/security seals present? No
11. If yes, were custody/security seals intact? NA
12. Was the sample received on ice? If yes, the recorded temp is 4°C, i.e., 6°±2°C? Yes

Note: Thermal preservation is not required, if samples are received w/i 15 minutes of sampling

13. If no visible ice, record the temperature. Actual sample temperature: 4°C

Sample Container

14. Are aqueous VOC samples present? No
15. Are VOC samples collected in VOA Vials? NA
16. Is the head space less than 6-8 mm (pea sized or less)? NA
17. Was a trip blank (TB) included for VOC analyses? NA
18. Are non-VOC samples collected in the correct containers? Yes
19. Is the appropriate volume/weight or number of sample containers collected? Yes

Field Label

20. Were field sample labels filled out with the minimum information:
 - Sample ID? Yes
 - Date/Time Collected? Yes
 - Collectors name? No

Sample Preservation

21. Does the COC or field labels indicate the samples were preserved? No
22. Are sample(s) correctly preserved? NA
24. Is lab filtration required and/or requested for dissolved metals? No

Multiphase Sample Matrix

26. Does the sample have more than one phase, i.e., multiphase? No
27. If yes, does the COC specify which phase(s) is to be analyzed? NA

Subcontract Laboratory

28. Are samples required to get sent to a subcontract laboratory? No
29. Was a subcontract laboratory specified by the client and if so who? NA Subcontract Lab: na

Client Instruction

Signature of client authorizing changes to the COC or sample disposition.

Date



envirotech Inc.

Report to:
Heather Woods



envirotech

Practical Solutions for a Better Tomorrow

Analytical Report

Souder Miller Associates - Carlsbad

Project Name: Poker Lake 16-24-30

Work Order: E212048

Job Number: 97057-0001

Received: 12/8/2022

Revision: 2

Report Reviewed By:

Walter Hinchman
Laboratory Director
12/9/22

5796 U.S. Hwy 64
Farmington, NM 87401

Phone: (505) 632-1881
Envirotech-inc.com



Envirotech Inc. certifies the test results meet all requirements of TNI unless noted otherwise.
Statement of Data Authenticity: Envirotech Inc. attests the data reported has not been altered in any way.
Partial or incomplete reproduction of this report is prohibited, unless approved by Envirotech Inc.
Envirotech Inc. holds the Utah TNI certification NM00979 for data reported.
Envirotech Inc. holds the Texas TNI certification T104704557 for data reported.
Envirotech Inc. holds the NM SDWA certification for data reported. (Lab #NM00979)

Date Reported: 12/9/22

Heather Woods
201 S Halagueno St.
Carlsbad, NM 88220



Project Name: Poker Lake 16-24-30
Workorder: E212048
Date Received: 12/8/2022 11:15:00AM

Heather Woods,

Thank you for choosing Envirotech, Inc. as your analytical testing laboratory for the sample(s) received on, 12/8/2022 11:15:00AM, under the Project Name: Poker Lake 16-24-30.

The analytical test results summarized in this report with the Project Name: Poker Lake 16-24-30 apply to the individual samples collected, identified and submitted bearing the project name on the enclosed chain-of-custody. Subcontracted sample analyses not conducted by Envirotech, Inc., are attached in full as issued by the subcontract laboratory.

Please review the Chain-of-Custody (COC) and Sample Receipt Checklist (SRC) for any issues regarding sample receipt temperature, containers, preservation etc. To best understand your test results, review the entire report summarizing your sample data and the associated quality control batch data.

All reported data in this analytical report were analyzed according to the referenced method(s) and are in compliance with the latest NELAC/TNI standards, unless otherwise noted. Samples or analytical quality control parameters not meeting specific QC criteria are qualified with a data flag. Data flag definitions are located in the Notes and Definitions section of this analytical report.

If you have any questions concerning this report, please feel free to contact Envirotech, Inc.

Respectfully,

Walter Hinchman
Laboratory Director
Office: 505-632-1881
Cell: 775-287-1762
whinchman@envirotech-inc.com

Raina Schwanz
Laboratory Administrator
Office: 505-632-1881
rainaschwanz@envirotech-inc.com

Alexa Michaels
Sample Custody Officer
Office: 505-632-1881
labadmin@envirotech-inc.com

Field Offices:

Southern New Mexico Area
Lynn Jarboe
Technical Representative/Client Services
Office: 505-421-LABS(5227)
Cell: 505-320-4759
ljjarboe@envirotech-inc.com

West Texas Midland/Odessa Area
Rayny Hagan
Technical Representative
Office: 505-421-LABS(5227)

Envirotech Web Address: www.envirotech-inc.com

Table of Contents

Title Page	1
Cover Page	2
Table of Contents	3
Sample Summary	4
Sample Data	5
SWE @ 0 - 10	5
SWE @ 10 - 20	6
SWE @ 20 - 31'	7
BSE 1 @ 31	8
BSE 2 @ 31	9
NESW @ 0 - 10	10
NESW @ 10 - 20	11
NESW @ 20 - 31	12
SWW	13
NWSW	14
BSW @ 9	15
QC Summary Data	16
QC - Volatile Organics by EPA 8021B	16
QC - Nonhalogenated Organics by EPA 8015D - GRO	17
QC - Nonhalogenated Organics by EPA 8015D - DRO/ORO	18
QC - Anions by EPA 300.0/9056A	19
Definitions and Notes	20
Chain of Custody etc.	21

Sample Summary

Souder Miller Associates - Carlsbad	Project Name:	Poker Lake 16-24-30	Reported:
201 S Halagueno St.	Project Number:	97057-0001	
Carlsbad NM, 88220	Project Manager:	Heather Woods	12/09/22 12:38

Client Sample ID	Lab Sample ID	Matrix	Sampled	Received	Container
SWE @ 0 - 10	E212048-01A	Soil	12/06/22	12/08/22	Glass Jar, 2 oz.
SWE @ 10 - 20	E212048-02A	Soil	12/06/22	12/08/22	Glass Jar, 2 oz.
SWE @ 20 - 31'	E212048-03A	Soil	12/06/22	12/08/22	Glass Jar, 2 oz.
BSE 1 @ 31	E212048-04A	Soil	12/06/22	12/08/22	Glass Jar, 2 oz.
BSE 2 @ 31	E212048-05A	Soil	12/06/22	12/08/22	Glass Jar, 2 oz.
NESW @ 0 - 10	E212048-06A	Soil	12/06/22	12/08/22	Glass Jar, 2 oz.
NESW @ 10 - 20	E212048-07A	Soil	12/06/22	12/08/22	Glass Jar, 2 oz.
NESW @ 20 - 31	E212048-08A	Soil	12/06/22	12/08/22	Glass Jar, 2 oz.
SWW	E212048-09A	Soil	12/06/22	12/08/22	Glass Jar, 2 oz.
NWSW	E212048-10A	Soil	12/06/22	12/08/22	Glass Jar, 2 oz.
BSW @ 9	E212048-11A	Soil	12/06/22	12/08/22	Glass Jar, 2 oz.



Sample Data

Souder Miller Associates - Carlsbad	Project Name:	Poker Lake 16-24-30	
201 S Halagueno St.	Project Number:	97057-0001	Reported:
Carlsbad NM, 88220	Project Manager:	Heather Woods	12/9/2022 12:38:15PM

SWE @ 0 - 10

E212048-01

Analyte	Result	Reporting Limit	Dilution	Prepared	Analyzed	Notes
Volatile Organics by EPA 8021B	mg/kg	mg/kg	Analyst: SL			Batch: 2250066
Benzene	ND	0.0250	1	12/08/22	12/08/22	
Ethylbenzene	ND	0.0250	1	12/08/22	12/08/22	
Toluene	ND	0.0250	1	12/08/22	12/08/22	
o-Xylene	ND	0.0250	1	12/08/22	12/08/22	
p,m-Xylene	ND	0.0500	1	12/08/22	12/08/22	
Total Xylenes	ND	0.0250	1	12/08/22	12/08/22	
<i>Surrogate: 4-Bromochlorobenzene-PID</i>	105 %	70-130		12/08/22	12/08/22	
Nonhalogenated Organics by EPA 8015D - GRO	mg/kg	mg/kg	Analyst: SL			Batch: 2250066
Gasoline Range Organics (C6-C10)	ND	20.0	1	12/08/22	12/08/22	
<i>Surrogate: 1-Chloro-4-fluorobenzene-FID</i>	98.8 %	70-130		12/08/22	12/08/22	
Nonhalogenated Organics by EPA 8015D - DRO/ORO	mg/kg	mg/kg	Analyst: JL			Batch: 2250068
Diesel Range Organics (C10-C28)	180	25.0	1	12/08/22	12/08/22	
Oil Range Organics (C28-C36)	184	50.0	1	12/08/22	12/08/22	
<i>Surrogate: n-Nonane</i>	105 %	50-200		12/08/22	12/08/22	
Anions by EPA 300.0/9056A	mg/kg	mg/kg	Analyst: KL			Batch: 2250071
Chloride	301	20.0	1	12/08/22	12/08/22	



Sample Data

Souder Miller Associates - Carlsbad
201 S Halagueno St.
Carlsbad NM, 88220

Project Name: Poker Lake 16-24-30
Project Number: 97057-0001
Project Manager: Heather Woods

Reported:
12/9/2022 12:38:15PM

SWE @ 10 - 20

E212048-02

Analyte	Result	Reporting Limit	Dilution	Prepared	Analyzed	Notes
Volatile Organics by EPA 8021B						
	mg/kg	mg/kg		Analyst: SL		Batch: 2250066
Benzene	ND	0.0250	1	12/08/22	12/08/22	
Ethylbenzene	ND	0.0250	1	12/08/22	12/08/22	
Toluene	ND	0.0250	1	12/08/22	12/08/22	
o-Xylene	ND	0.0250	1	12/08/22	12/08/22	
p,m-Xylene	ND	0.0500	1	12/08/22	12/08/22	
Total Xylenes	ND	0.0250	1	12/08/22	12/08/22	
<i>Surrogate: 4-Bromochlorobenzene-PID</i>						
		105 %	70-130	12/08/22	12/08/22	
Nonhalogenated Organics by EPA 8015D - GRO						
	mg/kg	mg/kg		Analyst: SL		Batch: 2250066
Gasoline Range Organics (C6-C10)	ND	20.0	1	12/08/22	12/08/22	
<i>Surrogate: 1-Chloro-4-fluorobenzene-FID</i>						
		100 %	70-130	12/08/22	12/08/22	
Nonhalogenated Organics by EPA 8015D - DRO/ORO						
	mg/kg	mg/kg		Analyst: JL		Batch: 2250068
Diesel Range Organics (C10-C28)	ND	25.0	1	12/08/22	12/08/22	
Oil Range Organics (C28-C36)	ND	50.0	1	12/08/22	12/08/22	
<i>Surrogate: n-Nonane</i>						
		107 %	50-200	12/08/22	12/08/22	
Anions by EPA 300.0/9056A						
	mg/kg	mg/kg		Analyst: KL		Batch: 2250071
Chloride	44.0	20.0	1	12/08/22	12/08/22	



Sample Data

Souder Miller Associates - Carlsbad
201 S Halagueno St.
Carlsbad NM, 88220

Project Name: Poker Lake 16-24-30
Project Number: 97057-0001
Project Manager: Heather Woods

Reported:
12/9/2022 12:38:15PM

SWE @ 20 - 31'

E212048-03

Analyte	Result	Reporting Limit	Dilution	Prepared	Analyzed	Notes
Volatile Organics by EPA 8021B						
	mg/kg	mg/kg	Analyst: SL		Batch: 2250066	
Benzene	ND	0.0250	1	12/08/22	12/08/22	
Ethylbenzene	ND	0.0250	1	12/08/22	12/08/22	
Toluene	ND	0.0250	1	12/08/22	12/08/22	
o-Xylene	ND	0.0250	1	12/08/22	12/08/22	
p,m-Xylene	ND	0.0500	1	12/08/22	12/08/22	
Total Xylenes	ND	0.0250	1	12/08/22	12/08/22	
<i>Surrogate: 4-Bromochlorobenzene-PID</i>						
		105 %	70-130	12/08/22	12/08/22	
Nonhalogenated Organics by EPA 8015D - GRO						
	mg/kg	mg/kg	Analyst: SL		Batch: 2250066	
Gasoline Range Organics (C6-C10)	ND	20.0	1	12/08/22	12/08/22	
<i>Surrogate: 1-Chloro-4-fluorobenzene-FID</i>						
		99.4 %	70-130	12/08/22	12/08/22	
Nonhalogenated Organics by EPA 8015D - DRO/ORO						
	mg/kg	mg/kg	Analyst: JL		Batch: 2250068	
Diesel Range Organics (C10-C28)	ND	25.0	1	12/08/22	12/08/22	
Oil Range Organics (C28-C36)	ND	50.0	1	12/08/22	12/08/22	
<i>Surrogate: n-Nonane</i>						
		85.0 %	50-200	12/08/22	12/08/22	
Anions by EPA 300.0/9056A						
	mg/kg	mg/kg	Analyst: KL		Batch: 2250071	
Chloride	26.6	20.0	1	12/08/22	12/08/22	



Sample Data

Souder Miller Associates - Carlsbad
201 S Halagueno St.
Carlsbad NM, 88220

Project Name: Poker Lake 16-24-30
Project Number: 97057-0001
Project Manager: Heather Woods

Reported:
12/9/2022 12:38:15PM

BSE 1 @ 31

E212048-04

Analyte	Result	Reporting Limit	Dilution	Prepared	Analyzed	Notes
Volatile Organics by EPA 8021B						
	mg/kg	mg/kg		Analyst: SL		Batch: 2250066
Benzene	ND	0.0250	1	12/08/22	12/08/22	
Ethylbenzene	ND	0.0250	1	12/08/22	12/08/22	
Toluene	ND	0.0250	1	12/08/22	12/08/22	
o-Xylene	ND	0.0250	1	12/08/22	12/08/22	
p,m-Xylene	ND	0.0500	1	12/08/22	12/08/22	
Total Xylenes	ND	0.0250	1	12/08/22	12/08/22	
<i>Surrogate: 4-Bromochlorobenzene-PID</i>						
		106 %	70-130	12/08/22	12/08/22	
Nonhalogenated Organics by EPA 8015D - GRO						
	mg/kg	mg/kg		Analyst: SL		Batch: 2250066
Gasoline Range Organics (C6-C10)	ND	20.0	1	12/08/22	12/08/22	
<i>Surrogate: 1-Chloro-4-fluorobenzene-FID</i>						
		98.9 %	70-130	12/08/22	12/08/22	
Nonhalogenated Organics by EPA 8015D - DRO/ORO						
	mg/kg	mg/kg		Analyst: JL		Batch: 2250068
Diesel Range Organics (C10-C28)	ND	25.0	1	12/08/22	12/08/22	
Oil Range Organics (C28-C36)	ND	50.0	1	12/08/22	12/08/22	
<i>Surrogate: n-Nonane</i>						
		79.9 %	50-200	12/08/22	12/08/22	
Anions by EPA 300.0/9056A						
	mg/kg	mg/kg		Analyst: KL		Batch: 2250071
Chloride	345	20.0	1	12/08/22	12/08/22	



Sample Data

Souder Miller Associates - Carlsbad
201 S Halagueno St.
Carlsbad NM, 88220

Project Name: Poker Lake 16-24-30
Project Number: 97057-0001
Project Manager: Heather Woods

Reported:
12/9/2022 12:38:15PM

BSE 2 @ 31

E212048-05

Analyte	Result	Reporting Limit	Dilution	Prepared	Analyzed	Notes
Volatile Organics by EPA 8021B	mg/kg	mg/kg	Analyst: SL		Batch: 2250066	
Benzene	ND	0.0250	1	12/08/22	12/08/22	
Ethylbenzene	ND	0.0250	1	12/08/22	12/08/22	
Toluene	ND	0.0250	1	12/08/22	12/08/22	
o-Xylene	ND	0.0250	1	12/08/22	12/08/22	
p,m-Xylene	ND	0.0500	1	12/08/22	12/08/22	
Total Xylenes	ND	0.0250	1	12/08/22	12/08/22	
<i>Surrogate: 4-Bromochlorobenzene-PID</i>	99.7 %	70-130		12/08/22	12/08/22	
Nonhalogenated Organics by EPA 8015D - GRO	mg/kg	mg/kg	Analyst: SL		Batch: 2250066	
Gasoline Range Organics (C6-C10)	ND	20.0	1	12/08/22	12/08/22	
<i>Surrogate: 1-Chloro-4-fluorobenzene-FID</i>	91.2 %	70-130		12/08/22	12/08/22	
Nonhalogenated Organics by EPA 8015D - DRO/ORO	mg/kg	mg/kg	Analyst: JL		Batch: 2250068	
Diesel Range Organics (C10-C28)	47.5	25.0	1	12/08/22	12/08/22	
Oil Range Organics (C28-C36)	ND	50.0	1	12/08/22	12/08/22	
<i>Surrogate: n-Nonane</i>	73.2 %	50-200		12/08/22	12/08/22	
Anions by EPA 300.0/9056A	mg/kg	mg/kg	Analyst: KL		Batch: 2250071	
Chloride	323	20.0	1	12/08/22	12/08/22	



Sample Data

Souder Miller Associates - Carlsbad
201 S Halagueno St.
Carlsbad NM, 88220

Project Name: Poker Lake 16-24-30
Project Number: 97057-0001
Project Manager: Heather Woods

Reported:
12/9/2022 12:38:15PM

NESW @ 0 - 10

E212048-06

Analyte	Result	Reporting Limit	Dilution	Prepared	Analyzed	Notes
Volatile Organics by EPA 8021B						
	mg/kg	mg/kg		Analyst: SL		Batch: 2250066
Benzene	ND	0.0250	1	12/08/22	12/08/22	
Ethylbenzene	ND	0.0250	1	12/08/22	12/08/22	
Toluene	ND	0.0250	1	12/08/22	12/08/22	
o-Xylene	ND	0.0250	1	12/08/22	12/08/22	
p,m-Xylene	ND	0.0500	1	12/08/22	12/08/22	
Total Xylenes	ND	0.0250	1	12/08/22	12/08/22	
<i>Surrogate: 4-Bromochlorobenzene-PID</i>						
	98.6 %	70-130		12/08/22	12/08/22	
Nonhalogenated Organics by EPA 8015D - GRO						
	mg/kg	mg/kg		Analyst: SL		Batch: 2250066
Gasoline Range Organics (C6-C10)	ND	20.0	1	12/08/22	12/08/22	
<i>Surrogate: 1-Chloro-4-fluorobenzene-FID</i>						
	95.0 %	70-130		12/08/22	12/08/22	
Nonhalogenated Organics by EPA 8015D - DRO/ORO						
	mg/kg	mg/kg		Analyst: JL		Batch: 2250068
Diesel Range Organics (C10-C28)	ND	25.0	1	12/08/22	12/08/22	
Oil Range Organics (C28-C36)	ND	50.0	1	12/08/22	12/08/22	
<i>Surrogate: n-Nonane</i>						
	105 %	50-200		12/08/22	12/08/22	
Anions by EPA 300.0/9056A						
	mg/kg	mg/kg		Analyst: KL		Batch: 2250071
Chloride	ND	20.0	1	12/08/22	12/08/22	



Sample Data

Souder Miller Associates - Carlsbad
201 S Halagueno St.
Carlsbad NM, 88220

Project Name: Poker Lake 16-24-30
Project Number: 97057-0001
Project Manager: Heather Woods

Reported:
12/9/2022 12:38:15PM

NESW @ 10 - 20

E212048-07

Analyte	Result	Reporting Limit	Dilution	Prepared	Analyzed	Notes
Volatile Organics by EPA 8021B						
	mg/kg	mg/kg		Analyst: SL		Batch: 2250066
Benzene	ND	0.0250	1	12/08/22	12/08/22	
Ethylbenzene	ND	0.0250	1	12/08/22	12/08/22	
Toluene	ND	0.0250	1	12/08/22	12/08/22	
o-Xylene	ND	0.0250	1	12/08/22	12/08/22	
p,m-Xylene	ND	0.0500	1	12/08/22	12/08/22	
Total Xylenes	ND	0.0250	1	12/08/22	12/08/22	
<i>Surrogate: 4-Bromochlorobenzene-PID</i>						
		100 %	70-130	12/08/22	12/08/22	
Nonhalogenated Organics by EPA 8015D - GRO						
	mg/kg	mg/kg		Analyst: SL		Batch: 2250066
Gasoline Range Organics (C6-C10)	ND	20.0	1	12/08/22	12/08/22	
<i>Surrogate: 1-Chloro-4-fluorobenzene-FID</i>						
		91.2 %	70-130	12/08/22	12/08/22	
Nonhalogenated Organics by EPA 8015D - DRO/ORO						
	mg/kg	mg/kg		Analyst: JL		Batch: 2250068
Diesel Range Organics (C10-C28)	ND	25.0	1	12/08/22	12/08/22	
Oil Range Organics (C28-C36)	ND	50.0	1	12/08/22	12/08/22	
<i>Surrogate: n-Nonane</i>						
		112 %	50-200	12/08/22	12/08/22	
Anions by EPA 300.0/9056A						
	mg/kg	mg/kg		Analyst: KL		Batch: 2250071
Chloride	90.0	20.0	1	12/08/22	12/08/22	



Sample Data

Souder Miller Associates - Carlsbad
201 S Halagueno St.
Carlsbad NM, 88220

Project Name: Poker Lake 16-24-30
Project Number: 97057-0001
Project Manager: Heather Woods

Reported:
12/9/2022 12:38:15PM

NESW @ 20 - 31

E212048-08

Analyte	Result	Reporting Limit	Dilution	Prepared	Analyzed	Notes
Volatile Organics by EPA 8021B						
	mg/kg	mg/kg		Analyst: SL		Batch: 2250066
Benzene	ND	0.0250	1	12/08/22	12/08/22	
Ethylbenzene	ND	0.0250	1	12/08/22	12/08/22	
Toluene	ND	0.0250	1	12/08/22	12/08/22	
o-Xylene	ND	0.0250	1	12/08/22	12/08/22	
p,m-Xylene	ND	0.0500	1	12/08/22	12/08/22	
Total Xylenes	ND	0.0250	1	12/08/22	12/08/22	
<i>Surrogate: 4-Bromochlorobenzene-PID</i>						
	99.5 %	70-130		12/08/22	12/08/22	
Nonhalogenated Organics by EPA 8015D - GRO						
	mg/kg	mg/kg		Analyst: SL		Batch: 2250066
Gasoline Range Organics (C6-C10)	ND	20.0	1	12/08/22	12/08/22	
<i>Surrogate: 1-Chloro-4-fluorobenzene-FID</i>						
	91.8 %	70-130		12/08/22	12/08/22	
Nonhalogenated Organics by EPA 8015D - DRO/ORO						
	mg/kg	mg/kg		Analyst: JL		Batch: 2250068
Diesel Range Organics (C10-C28)	ND	25.0	1	12/08/22	12/08/22	
Oil Range Organics (C28-C36)	ND	50.0	1	12/08/22	12/08/22	
<i>Surrogate: n-Nonane</i>						
	118 %	50-200		12/08/22	12/08/22	
Anions by EPA 300.0/9056A						
	mg/kg	mg/kg		Analyst: KL		Batch: 2250071
Chloride	35.5	20.0	1	12/08/22	12/08/22	



Sample Data

Souder Miller Associates - Carlsbad
201 S Halagueno St.
Carlsbad NM, 88220

Project Name: Poker Lake 16-24-30
Project Number: 97057-0001
Project Manager: Heather Woods

Reported:
12/9/2022 12:38:15PM

SWW

E212048-09

Analyte	Result	Reporting Limit	Dilution	Prepared	Analyzed	Notes
Volatile Organics by EPA 8021B						
	mg/kg	mg/kg		Analyst: SL		Batch: 2250066
Benzene	ND	0.0250	1	12/08/22	12/08/22	
Ethylbenzene	ND	0.0250	1	12/08/22	12/08/22	
Toluene	ND	0.0250	1	12/08/22	12/08/22	
o-Xylene	ND	0.0250	1	12/08/22	12/08/22	
p,m-Xylene	ND	0.0500	1	12/08/22	12/08/22	
Total Xylenes	ND	0.0250	1	12/08/22	12/08/22	
<i>Surrogate: 4-Bromochlorobenzene-PID</i>						
		102 %	70-130	12/08/22	12/08/22	
Nonhalogenated Organics by EPA 8015D - GRO						
	mg/kg	mg/kg		Analyst: SL		Batch: 2250066
Gasoline Range Organics (C6-C10)	ND	20.0	1	12/08/22	12/08/22	
<i>Surrogate: 1-Chloro-4-fluorobenzene-FID</i>						
		94.0 %	70-130	12/08/22	12/08/22	
Nonhalogenated Organics by EPA 8015D - DRO/ORO						
	mg/kg	mg/kg		Analyst: JL		Batch: 2250068
Diesel Range Organics (C10-C28)	ND	25.0	1	12/08/22	12/08/22	
Oil Range Organics (C28-C36)	ND	50.0	1	12/08/22	12/08/22	
<i>Surrogate: n-Nonane</i>						
		119 %	50-200	12/08/22	12/08/22	
Anions by EPA 300.0/9056A						
	mg/kg	mg/kg		Analyst: KL		Batch: 2250071
Chloride	51.5	20.0	1	12/08/22	12/08/22	



Sample Data

Souder Miller Associates - Carlsbad
201 S Halagueno St.
Carlsbad NM, 88220

Project Name: Poker Lake 16-24-30
Project Number: 97057-0001
Project Manager: Heather Woods

Reported:
12/9/2022 12:38:15PM

NWSW

E212048-10

Analyte	Result	Reporting Limit	Dilution	Prepared	Analyzed	Notes
Volatile Organics by EPA 8021B						
	mg/kg	mg/kg		Analyst: SL		Batch: 2250066
Benzene	ND	0.0250	1	12/08/22	12/08/22	
Ethylbenzene	ND	0.0250	1	12/08/22	12/08/22	
Toluene	ND	0.0250	1	12/08/22	12/08/22	
o-Xylene	ND	0.0250	1	12/08/22	12/08/22	
p,m-Xylene	ND	0.0500	1	12/08/22	12/08/22	
Total Xylenes	ND	0.0250	1	12/08/22	12/08/22	
<i>Surrogate: 4-Bromochlorobenzene-PID</i>						
		101 %	70-130	12/08/22	12/08/22	
Nonhalogenated Organics by EPA 8015D - GRO						
	mg/kg	mg/kg		Analyst: SL		Batch: 2250066
Gasoline Range Organics (C6-C10)	ND	20.0	1	12/08/22	12/08/22	
<i>Surrogate: 1-Chloro-4-fluorobenzene-FID</i>						
		91.8 %	70-130	12/08/22	12/08/22	
Nonhalogenated Organics by EPA 8015D - DRO/ORO						
	mg/kg	mg/kg		Analyst: JL		Batch: 2250068
Diesel Range Organics (C10-C28)	ND	25.0	1	12/08/22	12/08/22	
Oil Range Organics (C28-C36)	ND	50.0	1	12/08/22	12/08/22	
<i>Surrogate: n-Nonane</i>						
		118 %	50-200	12/08/22	12/08/22	
Anions by EPA 300.0/9056A						
	mg/kg	mg/kg		Analyst: KL		Batch: 2250071
Chloride	ND	20.0	1	12/08/22	12/08/22	



Sample Data

Souder Miller Associates - Carlsbad
201 S Halagueno St.
Carlsbad NM, 88220

Project Name: Poker Lake 16-24-30
Project Number: 97057-0001
Project Manager: Heather Woods

Reported:
12/9/2022 12:38:15PM

BSW @ 9

E212048-11

Analyte	Result	Reporting Limit	Dilution	Prepared	Analyzed	Notes
Volatile Organics by EPA 8021B						
	mg/kg	mg/kg		Analyst: SL		Batch: 2250066
Benzene	ND	0.0250	1	12/08/22	12/08/22	
Ethylbenzene	ND	0.0250	1	12/08/22	12/08/22	
Toluene	ND	0.0250	1	12/08/22	12/08/22	
o-Xylene	ND	0.0250	1	12/08/22	12/08/22	
p,m-Xylene	ND	0.0500	1	12/08/22	12/08/22	
Total Xylenes	ND	0.0250	1	12/08/22	12/08/22	
<i>Surrogate: 4-Bromochlorobenzene-PID</i>						
		100 %	70-130	12/08/22	12/08/22	
Nonhalogenated Organics by EPA 8015D - GRO						
	mg/kg	mg/kg		Analyst: SL		Batch: 2250066
Gasoline Range Organics (C6-C10)	ND	20.0	1	12/08/22	12/08/22	
<i>Surrogate: 1-Chloro-4-fluorobenzene-FID</i>						
		93.3 %	70-130	12/08/22	12/08/22	
Nonhalogenated Organics by EPA 8015D - DRO/ORO						
	mg/kg	mg/kg		Analyst: JL		Batch: 2250068
Diesel Range Organics (C10-C28)	ND	25.0	1	12/08/22	12/08/22	
Oil Range Organics (C28-C36)	ND	50.0	1	12/08/22	12/08/22	
<i>Surrogate: n-Nonane</i>						
		115 %	50-200	12/08/22	12/08/22	
Anions by EPA 300.0/9056A						
	mg/kg	mg/kg		Analyst: KL		Batch: 2250071
Chloride	51.3	20.0	1	12/08/22	12/08/22	



QC Summary Data

Souder Miller Associates - Carlsbad	Project Name:	Poker Lake 16-24-30	Reported:
201 S Halagueno St.	Project Number:	97057-0001	
Carlsbad NM, 88220	Project Manager:	Heather Woods	12/9/2022 12:38:15PM

Volatile Organics by EPA 8021B

Analyst: SL

Analyte	Result mg/kg	Reporting Limit mg/kg	Spike Level mg/kg	Source Result mg/kg	Rec %	Rec Limits %	RPD %	RPD Limit %	Notes
---------	-----------------	-----------------------------	-------------------------	---------------------------	----------	--------------------	----------	-------------------	-------

Blank (2250066-BLK1)

Prepared: 12/08/22 Analyzed: 12/08/22

Benzene	ND	0.0250							
Ethylbenzene	ND	0.0250							
Toluene	ND	0.0250							
o-Xylene	ND	0.0250							
p,m-Xylene	ND	0.0500							
Total Xylenes	ND	0.0250							
Surrogate: 4-Bromochlorobenzene-PID	7.91		8.00		98.9	70-130			

LCS (2250066-BS1)

Prepared: 12/08/22 Analyzed: 12/08/22

Benzene	4.66	0.0250	5.00		93.1	70-130			
Ethylbenzene	4.80	0.0250	5.00		96.0	70-130			
Toluene	4.89	0.0250	5.00		97.8	70-130			
o-Xylene	4.96	0.0250	5.00		99.2	70-130			
p,m-Xylene	9.74	0.0500	10.0		97.4	70-130			
Total Xylenes	14.7	0.0250	15.0		98.0	70-130			
Surrogate: 4-Bromochlorobenzene-PID	8.26		8.00		103	70-130			

LCS Dup (2250066-BS1)

Prepared: 12/08/22 Analyzed: 12/08/22

Benzene	4.13	0.0250	5.00		82.6	70-130	11.9	20	
Ethylbenzene	4.27	0.0250	5.00		85.5	70-130	11.6	20	
Toluene	4.35	0.0250	5.00		86.9	70-130	11.8	20	
o-Xylene	4.42	0.0250	5.00		88.4	70-130	11.6	20	
p,m-Xylene	8.67	0.0500	10.0		86.7	70-130	11.7	20	
Total Xylenes	13.1	0.0250	15.0		87.3	70-130	11.6	20	
Surrogate: 4-Bromochlorobenzene-PID	8.03		8.00		100	70-130			



QC Summary Data

Souder Miller Associates - Carlsbad	Project Name:	Poker Lake 16-24-30	Reported:
201 S Halagueno St.	Project Number:	97057-0001	
Carlsbad NM, 88220	Project Manager:	Heather Woods	12/9/2022 12:38:15PM

Nonhalogenated Organics by EPA 8015D - GRO

Analyst: SL

Analyte	Result mg/kg	Reporting Limit mg/kg	Spike Level mg/kg	Source Result mg/kg	Rec %	Rec Limits %	RPD %	RPD Limit %	Notes
---------	-----------------	-----------------------------	-------------------------	---------------------------	----------	--------------------	----------	-------------------	-------

Blank (2250066-BLK1)

Prepared: 12/08/22 Analyzed: 12/08/22

Gasoline Range Organics (C6-C10)	ND	20.0							
Surrogate: 1-Chloro-4-fluorobenzene-FID	7.45		8.00		93.2	70-130			

LCS (2250066-BS2)

Prepared: 12/08/22 Analyzed: 12/08/22

Gasoline Range Organics (C6-C10)	46.3	20.0	50.0		92.7	70-130			
Surrogate: 1-Chloro-4-fluorobenzene-FID	7.70		8.00		96.2	70-130			

LCS Dup (2250066-BSD2)

Prepared: 12/08/22 Analyzed: 12/08/22

Gasoline Range Organics (C6-C10)	46.2	20.0	50.0		92.4	70-130	0.319	20	
Surrogate: 1-Chloro-4-fluorobenzene-FID	7.77		8.00		97.1	70-130			



QC Summary Data

Souder Miller Associates - Carlsbad	Project Name:	Poker Lake 16-24-30	Reported:
201 S Halagueno St.	Project Number:	97057-0001	
Carlsbad NM, 88220	Project Manager:	Heather Woods	12/9/2022 12:38:15PM

Nonhalogenated Organics by EPA 8015D - DRO/ORO

Analyst: JL

Analyte	Result mg/kg	Reporting Limit mg/kg	Spike Level mg/kg	Source Result mg/kg	Rec %	Rec Limits %	RPD %	RPD Limit %	Notes
---------	-----------------	-----------------------------	-------------------------	---------------------------	----------	--------------------	----------	-------------------	-------

Blank (2250068-BLK1)

Prepared: 12/08/22 Analyzed: 12/08/22

Diesel Range Organics (C10-C28)	ND	25.0							
Oil Range Organics (C28-C36)	ND	50.0							
Surrogate: <i>n</i> -Nonane	58.9		50.0		118	50-200			

LCS (2250068-BS1)

Prepared: 12/08/22 Analyzed: 12/08/22

Diesel Range Organics (C10-C28)	246	25.0	250		98.6	38-132			
Surrogate: <i>n</i> -Nonane	60.6		50.0		121	50-200			

Matrix Spike (2250068-MS1)

Source: E212048-06

Prepared: 12/08/22 Analyzed: 12/08/22

Diesel Range Organics (C10-C28)	267	25.0	250	ND	107	38-132			
Surrogate: <i>n</i> -Nonane	53.7		50.0		107	50-200			

Matrix Spike Dup (2250068-MSD1)

Source: E212048-06

Prepared: 12/08/22 Analyzed: 12/08/22

Diesel Range Organics (C10-C28)	255	25.0	250	ND	102	38-132	4.49	20	
Surrogate: <i>n</i> -Nonane	54.0		50.0		108	50-200			



QC Summary Data

Souder Miller Associates - Carlsbad	Project Name:	Poker Lake 16-24-30	Reported:
201 S Halagueno St.	Project Number:	97057-0001	
Carlsbad NM, 88220	Project Manager:	Heather Woods	12/9/2022 12:38:15PM

Anions by EPA 300.0/9056A

Analyst: KL

Analyte	Result	Reporting Limit	Spike Level	Source Result	Rec	Rec Limits	RPD	RPD Limit	Notes
	mg/kg	mg/kg	mg/kg	mg/kg	%	%	%	%	

Blank (2250071-BLK1)					Prepared: 12/08/22 Analyzed: 12/08/22				
Chloride	ND	20.0							
LCS (2250071-BS1)					Prepared: 12/08/22 Analyzed: 12/08/22				
Chloride	252	20.0	250		101	90-110			
Matrix Spike (2250071-MS1)					Source: E212047-01		Prepared: 12/08/22 Analyzed: 12/09/22		
Chloride	1060	200	250	804	101	80-120			
Matrix Spike Dup (2250071-MSD1)					Source: E212047-01		Prepared: 12/08/22 Analyzed: 12/09/22		
Chloride	1090	200	250	804	113	80-120	2.87	20	

QC Summary Report Comment:
Calculations are based off of the raw (non-rounded) data. However, for reporting purposes all QC data is rounded to three significant figures.
Therefore, hand calculated values may differ slightly.



Definitions and Notes

Souder Miller Associates - Carlsbad	Project Name:	Poker Lake 16-24-30	
201 S Halagueno St.	Project Number:	97057-0001	Reported:
Carlsbad NM, 88220	Project Manager:	Heather Woods	12/09/22 12:38

- ND Analyte NOT DETECTED at or above the reporting limit
- NR Not Reported
- RPD Relative Percent Difference
- DNI Did Not Ignite

Note (1): Methods marked with ** are non-accredited methods.

Note (2): Soil data is reported on an "as received" weight basis, unless reported otherwise.

Chain of Custody

Project Information

Client: <u>Southern Miner & Associates</u> Project: <u>Poker Lake 110-24-30</u> Project Manager: <u>Heather Woods</u> Address: _____ City, State, Zip: <u>Carlsbad</u> Phone: _____ Email: _____ Report due by: _____					Bill To Attention: <u>Enterprise</u> Address: _____ City, State, Zip: _____ Phone: _____ Email: _____ <u>PO 325484</u>					Lab Use Only Lab WO#: <u>PE212048</u> Job Number: <u>97057-0001</u> Analysis and Method: _____					TAT <input checked="" type="checkbox"/> 1D <input type="checkbox"/> 3D		EPA Program RCRA <input type="checkbox"/> CWA <input type="checkbox"/> SDWA <input type="checkbox"/> State: _____ NM <input checked="" type="checkbox"/> CO <input type="checkbox"/> UT <input type="checkbox"/> AZ <input type="checkbox"/> TX <input type="checkbox"/> OK <input type="checkbox"/> Remarks: _____			
Time Sampled	Date Sampled	Matrix	No Containers	Sample ID	Lab Number	DRO by 8015	GRO/DRO by 8015	RTEX by 8021	VOC by R260	Metals 6010	Chloride 300.0	BCDOC NM	BCDOC TX	Remarks						
1334	12/6/22	soil	1	SWE@0-10	1							X								
1332	12/6/22	soil	1	SWE@10-20	2							X								
1330	12/6/22	soil	1	SWE@20-31	3							X								
1324	12/6/22	soil	1	BSE1@31	4							X								
1325	12/6/22	soil	1	BSE2@31	5							X								
1327	12/6/22	soil	1	NESW@0-10	6							X								
1326	12/6/22	soil	1	NESW@10-20	7							X								
1328	12/6/22	soil	1	NESW@20-31	8							X								
1321	12/6/22	soil	1	SNW	9							X								
1320	12/6/22	soil	1	NWSW	10							X								
Additional Instructions: <u>Please send to Georgann Goodman, Sarahman Schlee & Heather Woods</u> (Field sampler), attest to the validity and authenticity of this sample. I am aware that tampering with or intentionally mislabeling the sample location, date or time of collection is considered fraud and may be grounds for legal action. Sampled by: _____ Relinquished by: (Signature) _____ Date: <u>12/6/2022</u> Time: <u>1515</u> Relinquished by: (Signature) _____ Date: <u>12-7-22</u> Time: <u>1545</u> Relinquished by: (Signature) _____ Date: _____ Time: _____ Received by: (Signature) _____ Date: <u>12-7-22</u> Time: <u>0918</u> Received by: (Signature) _____ Date: <u>12/8/22</u> Time: <u>11:15</u> Received by: (Signature) _____ Date: _____ Time: _____ Lab Use Only Received on ice: <input checked="" type="checkbox"/> Y <input type="checkbox"/> N T1 _____ T2 _____ T3 _____ AVG Temp °C <u>4</u> Container Type: g - glass, p - poly/plastic, ag - amber glass, v - VOA Sample Matrix: S - Soil, sd - Solid, sg - Sludge, A - Aqueous, O - Other Note: Samples are discarded 30 days after results are reported unless other arrangements are made. Hazardous samples will be returned to client or disposed of at the client expense. The report for the analysis of the above samples is applicable only to those samples received by the laboratory with this COC. The liability of the laboratory is limited to the amount paid for on the report.																				

envirotech

envirotech

Envirotech Analytical Laboratory

Printed: 12/8/2022 12:32:50PM

Sample Receipt Checklist (SRC)

Instructions: Please take note of any NO checkmarks.

If we receive no response concerning these items within 24 hours of the date of this notice, all the samples will be analyzed as requested.

Client:	Souder Miller Associates - Carlsbad	Date Received:	12/08/22 11:15	Work Order ID:	E212048
Phone:	(575) 200-5443	Date Logged In:	12/08/22 08:35	Logged In By:	Caitlin Christian
Email:		Due Date:	12/08/22 17:00 (0 day TAT)		

Chain of Custody (COC)

1. Does the sample ID match the COC? Yes
2. Does the number of samples per sampling site location match the COC? Yes
3. Were samples dropped off by client or carrier? Yes
4. Was the COC complete, i.e., signatures, dates/times, requested analyses? Yes
5. Were all samples received within holding time? Yes

Note: Analysis, such as pH which should be conducted in the field, i.e., 15 minute hold time, are not included in this discussion.

Carrier: UPSComments/ResolutionSample Turn Around Time (TAT)

6. Did the COC indicate standard TAT, or Expedited TAT? Yes

Sample Cooler

7. Was a sample cooler received? Yes
8. If yes, was cooler received in good condition? Yes
9. Was the sample(s) received intact, i.e., not broken? Yes
10. Were custody/security seals present? No
11. If yes, were custody/security seals intact? NA
12. Was the sample received on ice? If yes, the recorded temp is 4°C, i.e., 6°±2°C Yes

Note: Thermal preservation is not required, if samples are received w/i 15 minutes of sampling

13. If no visible ice, record the temperature. Actual sample temperature: 4°C

Sample Container

14. Are aqueous VOC samples present? No
15. Are VOC samples collected in VOA Vials? NA
16. Is the head space less than 6-8 mm (pea sized or less)? NA
17. Was a trip blank (TB) included for VOC analyses? NA
18. Are non-VOC samples collected in the correct containers? Yes
19. Is the appropriate volume/weight or number of sample containers collected? Yes

Field Label

20. Were field sample labels filled out with the minimum information:
 - Sample ID? Yes
 - Date/Time Collected? Yes
 - Collectors name? No

Sample Preservation

21. Does the COC or field labels indicate the samples were preserved? No
22. Are sample(s) correctly preserved? NA
24. Is lab filtration required and/or requested for dissolved metals? No

Multiphase Sample Matrix

26. Does the sample have more than one phase, i.e., multiphase? No
27. If yes, does the COC specify which phase(s) is to be analyzed? NA

Subcontract Laboratory

28. Are samples required to get sent to a subcontract laboratory? No
29. Was a subcontract laboratory specified by the client and if so who? NA Subcontract Lab: na

Client Instruction

Signature of client authorizing changes to the COC or sample disposition.

Date



envirotech Inc.

Report to:
Heather Woods



5796 U.S. Hwy 64
Farmington, NM 87401

Phone: (505) 632-1881
Envirotech-inc.com



envirotech

Practical Solutions for a Better Tomorrow

Analytical Report

Souder Miller Associates - Carlsbad

Project Name: Poker Lake 16-24-30

Work Order: E212085

Job Number: 97057-0001

Received: 12/15/2022

Revision: 1

Report Reviewed By:

Walter Hinchman
Laboratory Director
12/16/22

Envirotech Inc. certifies the test results meet all requirements of TNI unless noted otherwise.
Statement of Data Authenticity: Envirotech Inc. attests the data reported has not been altered in any way.
Partial or incomplete reproduction of this report is prohibited, unless approved by Envirotech Inc.
Envirotech Inc. holds the Utah TNI certification NM00979 for data reported.
Envirotech Inc. holds the Texas TNI certification T104704557 for data reported.
Envirotech Inc. holds the NM SDWA certification for data reported. (Lab #NM00979)

Date Reported: 12/16/22

Heather Woods
201 S Halagueno St.
Carlsbad, NM 88220



Project Name: Poker Lake 16-24-30
Workorder: E212085
Date Received: 12/15/2022 10:30:00AM

Heather Woods,

Thank you for choosing Envirotech, Inc. as your analytical testing laboratory for the sample(s) received on, 12/15/2022 10:30:00AM, under the Project Name: Poker Lake 16-24-30.

The analytical test results summarized in this report with the Project Name: Poker Lake 16-24-30 apply to the individual samples collected, identified and submitted bearing the project name on the enclosed chain-of-custody. Subcontracted sample analyses not conducted by Envirotech, Inc., are attached in full as issued by the subcontract laboratory.

Please review the Chain-of-Custody (COC) and Sample Receipt Checklist (SRC) for any issues regarding sample receipt temperature, containers, preservation etc. To best understand your test results, review the entire report summarizing your sample data and the associated quality control batch data.

All reported data in this analytical report were analyzed according to the referenced method(s) and are in compliance with the latest NELAC/TNI standards, unless otherwise noted. Samples or analytical quality control parameters not meeting specific QC criteria are qualified with a data flag. Data flag definitions are located in the Notes and Definitions section of this analytical report.

If you have any questions concerning this report, please feel free to contact Envirotech, Inc.

Respectfully,

Walter Hinchman
Laboratory Director
Office: 505-632-1881
Cell: 775-287-1762
whinchman@envirotech-inc.com

Raina Schwanz
Laboratory Administrator
Office: 505-632-1881
rainaschwanz@envirotech-inc.com

Alexa Michaels
Sample Custody Officer
Office: 505-632-1881
labadmin@envirotech-inc.com

Field Offices:

Southern New Mexico Area
Lynn Jarboe
Technical Representative/Client Services
Office: 505-421-LABS(5227)
Cell: 505-320-4759
ljjarboe@envirotech-inc.com

West Texas Midland/Odessa Area
Rayny Hagan
Technical Representative
Office: 505-421-LABS(5227)

Envirotech Web Address: www.envirotech-inc.com

Table of Contents

Title Page	1
Cover Page	2
Table of Contents	3
Sample Summary	4
Sample Data	5
SWE @ 0 - 10	5
QC Summary Data	6
QC - Volatile Organics by EPA 8021B	6
QC - Nonhalogenated Organics by EPA 8015D - GRO	7
QC - Nonhalogenated Organics by EPA 8015D - DRO/ORO	8
QC - Anions by EPA 300.0/9056A	9
Definitions and Notes	10
Chain of Custody etc.	11

Sample Summary

Souder Miller Associates - Carlsbad	Project Name:	Poker Lake 16-24-30	Reported:
201 S Halagueno St.	Project Number:	97057-0001	
Carlsbad NM, 88220	Project Manager:	Heather Woods	12/16/22 14:35

Client Sample ID	Lab Sample ID	Matrix	Sampled	Received	Container
SWE @ 0 - 10	E212085-01A	Soil	12/14/22	12/15/22	Glass Jar, 2 oz.



Sample Data

Souder Miller Associates - Carlsbad	Project Name:	Poker Lake 16-24-30	
201 S Halagueno St.	Project Number:	97057-0001	Reported:
Carlsbad NM, 88220	Project Manager:	Heather Woods	12/16/2022 2:35:34PM

SWE @ 0 - 10

E212085-01

Analyte	Result	Reporting Limit	Dilution	Prepared	Analyzed	Notes
Volatile Organics by EPA 8021B	mg/kg	mg/kg	Analyst: IY			Batch: 2251070
Benzene	ND	0.0250	1	12/15/22	12/15/22	
Ethylbenzene	ND	0.0250	1	12/15/22	12/15/22	
Toluene	ND	0.0250	1	12/15/22	12/15/22	
o-Xylene	ND	0.0250	1	12/15/22	12/15/22	
p,m-Xylene	ND	0.0500	1	12/15/22	12/15/22	
Total Xylenes	ND	0.0250	1	12/15/22	12/15/22	
<i>Surrogate: 4-Bromochlorobenzene-PID</i>	94.7 %	70-130		12/15/22	12/15/22	
Nonhalogenated Organics by EPA 8015D - GRO	mg/kg	mg/kg	Analyst: IY			Batch: 2251070
Gasoline Range Organics (C6-C10)	ND	20.0	1	12/15/22	12/15/22	
<i>Surrogate: 1-Chloro-4-fluorobenzene-FID</i>	97.8 %	70-130		12/15/22	12/15/22	
Nonhalogenated Organics by EPA 8015D - DRO/ORO	mg/kg	mg/kg	Analyst: JL			Batch: 2251066
Diesel Range Organics (C10-C28)	ND	25.0	1	12/15/22	12/15/22	
Oil Range Organics (C28-C36)	ND	50.0	1	12/15/22	12/15/22	
<i>Surrogate: n-Nonane</i>	109 %	50-200		12/15/22	12/15/22	
Anions by EPA 300.0/9056A	mg/kg	mg/kg	Analyst: KL			Batch: 2251021
Chloride	ND	20.0	1	12/15/22	12/16/22	



QC Summary Data

Souder Miller Associates - Carlsbad	Project Name:	Poker Lake 16-24-30	Reported:
201 S Halagueno St.	Project Number:	97057-0001	
Carlsbad NM, 88220	Project Manager:	Heather Woods	12/16/2022 2:35:34PM

Volatile Organics by EPA 8021B

Analyst: IY

Analyte	Result mg/kg	Reporting Limit mg/kg	Spike Level mg/kg	Source Result mg/kg	Rec %	Rec Limits %	RPD %	RPD Limit %	Notes
---------	-----------------	-----------------------------	-------------------------	---------------------------	----------	--------------------	----------	-------------------	-------

Blank (2251070-BLK1)

Prepared: 12/15/22 Analyzed: 12/15/22

Benzene	ND	0.0250							
Ethylbenzene	ND	0.0250							
Toluene	ND	0.0250							
o-Xylene	ND	0.0250							
p,m-Xylene	ND	0.0500							
Total Xylenes	ND	0.0250							
Surrogate: 4-Bromochlorobenzene-PID	7.81		8.00		97.7	70-130			

LCS (2251070-BS1)

Prepared: 12/15/22 Analyzed: 12/15/22

Benzene	4.53	0.0250	5.00		90.5	70-130			
Ethylbenzene	4.69	0.0250	5.00		93.7	70-130			
Toluene	4.76	0.0250	5.00		95.2	70-130			
o-Xylene	4.80	0.0250	5.00		95.9	70-130			
p,m-Xylene	9.50	0.0500	10.0		95.0	70-130			
Total Xylenes	14.3	0.0250	15.0		95.3	70-130			
Surrogate: 4-Bromochlorobenzene-PID	7.94		8.00		99.3	70-130			

Matrix Spike (2251070-MS1)

Source: E212085-01

Prepared: 12/15/22 Analyzed: 12/15/22

Benzene	4.34	0.0250	5.00	ND	86.8	54-133			
Ethylbenzene	4.49	0.0250	5.00	ND	89.8	61-133			
Toluene	4.58	0.0250	5.00	ND	91.6	61-130			
o-Xylene	4.61	0.0250	5.00	ND	92.1	63-131			
p,m-Xylene	9.13	0.0500	10.0	ND	91.3	63-131			
Total Xylenes	13.7	0.0250	15.0	ND	91.6	63-131			
Surrogate: 4-Bromochlorobenzene-PID	7.90		8.00		98.7	70-130			

Matrix Spike Dup (2251070-MSD1)

Source: E212085-01

Prepared: 12/15/22 Analyzed: 12/15/22

Benzene	4.62	0.0250	5.00	ND	92.4	54-133	6.22	20	
Ethylbenzene	4.78	0.0250	5.00	ND	95.5	61-133	6.14	20	
Toluene	4.85	0.0250	5.00	ND	97.1	61-130	5.82	20	
o-Xylene	4.89	0.0250	5.00	ND	97.9	63-131	6.08	20	
p,m-Xylene	9.69	0.0500	10.0	ND	96.9	63-131	5.96	20	
Total Xylenes	14.6	0.0250	15.0	ND	97.2	63-131	6.00	20	
Surrogate: 4-Bromochlorobenzene-PID	7.91		8.00		98.9	70-130			



QC Summary Data

Souder Miller Associates - Carlsbad	Project Name:	Poker Lake 16-24-30	Reported:
201 S Halagueno St.	Project Number:	97057-0001	
Carlsbad NM, 88220	Project Manager:	Heather Woods	12/16/2022 2:35:34PM

Nonhalogenated Organics by EPA 8015D - GRO

Analyst: IY

Analyte	Result mg/kg	Reporting Limit mg/kg	Spike Level mg/kg	Source Result mg/kg	Rec %	Rec Limits %	RPD %	RPD Limit %	Notes
---------	-----------------	-----------------------------	-------------------------	---------------------------	----------	--------------------	----------	-------------------	-------

Blank (2251070-BLK1)

Prepared: 12/15/22 Analyzed: 12/15/22

Gasoline Range Organics (C6-C10)	ND	20.0							
Surrogate: 1-Chloro-4-fluorobenzene-FID	7.93		8.00		99.1	70-130			

LCS (2251070-BS2)

Prepared: 12/15/22 Analyzed: 12/15/22

Gasoline Range Organics (C6-C10)	53.0	20.0	50.0		106	70-130			
Surrogate: 1-Chloro-4-fluorobenzene-FID	8.04		8.00		101	70-130			

Matrix Spike (2251070-MS2)

Source: E212085-01

Prepared: 12/15/22 Analyzed: 12/15/22

Gasoline Range Organics (C6-C10)	52.4	20.0	50.0	ND	105	70-130			
Surrogate: 1-Chloro-4-fluorobenzene-FID	7.92		8.00		99.0	70-130			

Matrix Spike Dup (2251070-MSD2)

Source: E212085-01

Prepared: 12/15/22 Analyzed: 12/15/22

Gasoline Range Organics (C6-C10)	53.0	20.0	50.0	ND	106	70-130	1.18	20	
Surrogate: 1-Chloro-4-fluorobenzene-FID	7.81		8.00		97.7	70-130			



QC Summary Data

Souder Miller Associates - Carlsbad	Project Name:	Poker Lake 16-24-30	Reported:
201 S Halagueno St.	Project Number:	97057-0001	
Carlsbad NM, 88220	Project Manager:	Heather Woods	12/16/2022 2:35:34PM

Nonhalogenated Organics by EPA 8015D - DRO/ORO

Analyst: JL

Analyte	Result mg/kg	Reporting Limit mg/kg	Spike Level mg/kg	Source Result mg/kg	Rec %	Rec Limits %	RPD %	RPD Limit %	Notes
---------	-----------------	-----------------------------	-------------------------	---------------------------	----------	--------------------	----------	-------------------	-------

Blank (2251066-BLK1)

Prepared: 12/15/22 Analyzed: 12/15/22

Diesel Range Organics (C10-C28)	ND	25.0							
Oil Range Organics (C28-C36)	ND	50.0							
Surrogate: n-Nonane	54.3		50.0		109	50-200			

LCS (2251066-BS1)

Prepared: 12/15/22 Analyzed: 12/15/22

Diesel Range Organics (C10-C28)	247	25.0	250		98.6	38-132			
Surrogate: n-Nonane	51.2		50.0		102	50-200			

Matrix Spike (2251066-MS1)

Source: E212077-08

Prepared: 12/15/22 Analyzed: 12/15/22

Diesel Range Organics (C10-C28)	250	25.0	250	ND	100	38-132			
Surrogate: n-Nonane	52.4		50.0		105	50-200			

Matrix Spike Dup (2251066-MSD1)

Source: E212077-08

Prepared: 12/15/22 Analyzed: 12/15/22

Diesel Range Organics (C10-C28)	246	25.0	250	ND	98.4	38-132	1.65	20	
Surrogate: n-Nonane	51.1		50.0		102	50-200			



QC Summary Data

Souder Miller Associates - Carlsbad	Project Name:	Poker Lake 16-24-30	Reported:
201 S Halagueno St.	Project Number:	97057-0001	
Carlsbad NM, 88220	Project Manager:	Heather Woods	12/16/2022 2:35:34PM

Anions by EPA 300.0/9056A

Analyst: KL

Analyte	Result mg/kg	Reporting Limit mg/kg	Spike Level mg/kg	Source Result mg/kg	Rec %	Rec Limits %	RPD %	RPD Limit %	Notes
---------	-----------------	-----------------------------	-------------------------	---------------------------	----------	--------------------	----------	-------------------	-------

Blank (2251021-BLK1)

Prepared: 12/13/22 Analyzed: 12/16/22

Chloride ND 20.0

LCS (2251021-BS1)

Prepared: 12/13/22 Analyzed: 12/16/22

Chloride 255 20.0 250 102 90-110

Matrix Spike (2251021-MS1)

Source: E212066-01

Prepared: 12/13/22 Analyzed: 12/16/22

Chloride 831 200 250 621 84.0 80-120

Matrix Spike Dup (2251021-MSD1)

Source: E212066-01

Prepared: 12/13/22 Analyzed: 12/16/22

Chloride 847 200 250 621 90.4 80-120 1.89 20

QC Summary Report Comment:

Calculations are based off of the raw (non-rounded) data. However, for reporting purposes all QC data is rounded to three significant figures. Therefore, hand calculated values may differ slightly.



Definitions and Notes

Souder Miller Associates - Carlsbad	Project Name:	Poker Lake 16-24-30	
201 S Halagueno St.	Project Number:	97057-0001	Reported:
Carlsbad NM, 88220	Project Manager:	Heather Woods	12/16/22 14:35

- ND Analyte NOT DETECTED at or above the reporting limit
- NR Not Reported
- RPD Relative Percent Difference
- DNI Did Not Ignite

Note (1): Methods marked with ** are non-accredited methods.

Note (2): Soil data is reported on an "as received" weight basis, unless reported otherwise.

envirotech

Page 11 of 12

Envirotech Analytical Laboratory

Printed: 12/15/2022 2:32:39PM

Sample Receipt Checklist (SRC)

Instructions: Please take note of any NO checkmarks.

If we receive no response concerning these items within 24 hours of the date of this notice, all the samples will be analyzed as requested.

Client:	Souder Miller Associates - Carlsbad	Date Received:	12/15/22 10:30	Work Order ID:	E212085
Phone:	(575) 200-5443	Date Logged In:	12/14/22 16:41	Logged In By:	Caitlin Christian
Email:		Due Date:	12/15/22 17:00 (0 day TAT)		

Chain of Custody (COC)

1. Does the sample ID match the COC? Yes
2. Does the number of samples per sampling site location match the COC? Yes
3. Were samples dropped off by client or carrier? Yes
4. Was the COC complete, i.e., signatures, dates/times, requested analyses? Yes
5. Were all samples received within holding time? Yes

Note: Analysis, such as pH which should be conducted in the field, i.e., 15 minute hold time, are not included in this discussion.

Carrier: UPSComments/ResolutionSample Turn Around Time (TAT)

6. Did the COC indicate standard TAT, or Expedited TAT? Yes

Sample Cooler

7. Was a sample cooler received? Yes
8. If yes, was cooler received in good condition? Yes
9. Was the sample(s) received intact, i.e., not broken? Yes
10. Were custody/security seals present? No
11. If yes, were custody/security seals intact? NA
12. Was the sample received on ice? If yes, the recorded temp is 4°C, i.e., 6°±2°C Yes

Note: Thermal preservation is not required, if samples are received w/i 15 minutes of sampling

13. If no visible ice, record the temperature. Actual sample temperature: 4°C

Sample Container

14. Are aqueous VOC samples present? No
15. Are VOC samples collected in VOA Vials? NA
16. Is the head space less than 6-8 mm (pea sized or less)? NA
17. Was a trip blank (TB) included for VOC analyses? NA
18. Are non-VOC samples collected in the correct containers? Yes
19. Is the appropriate volume/weight or number of sample containers collected? Yes

Field Label

20. Were field sample labels filled out with the minimum information:
 - Sample ID? Yes
 - Date/Time Collected? Yes
 - Collectors name? No

Sample Preservation

21. Does the COC or field labels indicate the samples were preserved? No
22. Are sample(s) correctly preserved? NA
24. Is lab filtration required and/or requested for dissolved metals? No

Multiphase Sample Matrix

26. Does the sample have more than one phase, i.e., multiphase? No
27. If yes, does the COC specify which phase(s) is to be analyzed? NA

Subcontract Laboratory

28. Are samples required to get sent to a subcontract laboratory? No
29. Was a subcontract laboratory specified by the client and if so who? NA Subcontract Lab: na

Client Instruction

Signature of client authorizing changes to the COC or sample disposition.

Date



envirotech Inc.

District I
1625 N. French Dr., Hobbs, NM 88240
Phone:(575) 393-6161 Fax:(575) 393-0720
District II
811 S. First St., Artesia, NM 88210
Phone:(575) 748-1283 Fax:(575) 748-9720
District III
1000 Rio Brazos Rd., Aztec, NM 87410
Phone:(505) 334-6178 Fax:(505) 334-6170
District IV
1220 S. St Francis Dr., Santa Fe, NM 87505
Phone:(505) 476-3470 Fax:(505) 476-3462

State of New Mexico
Energy, Minerals and Natural Resources
Oil Conservation Division
1220 S. St Francis Dr.
Santa Fe, NM 87505

CONDITIONS

Action 175468

CONDITIONS

Operator: Enterprise Field Services, LLC PO Box 4324 Houston, TX 77210	OGRID: 241602
	Action Number: 175468
	Action Type: [C-141] Release Corrective Action (C-141)

CONDITIONS

Created By	Condition	Condition Date
rhamlet	We have received your closure report and final C-141 for Incident #NAPP2210932844 LINE 16-24-30, thank you. This closure is approved.	4/14/2023