



February 28, 2024

New Mexico Oil Conservation Division

New Mexico Energy, Minerals, and Natural Resources Department
1220 South St. Francis Drive
Santa Fe, New Mexico 87505

**Re: Remediation Work Plan
Twin Lakes SA Unit #027 Flow Line Release
Incident Number nAPP2405243873
Chaves County, New Mexico**

To Whom It May Concern:

Ensolum, LLC (Ensolum), on behalf of Oxy USA Inc. (Oxy), has prepared the following *Remediation Work Plan* (*Work Plan*) to document site assessment and delineation activities completed to date and propose remedial actions to address historically impacted soil identified at the Twin Lakes SA Unit #027 flow line release (Site). The following *Work Plan* proposes excavation of impacted soil within the historical release area and submittal of a subsequent *Closure Request*, documenting the excavation activities and confirmation soil sample analytical results.

SITE DESCRIPTION AND RELEASE SUMMARY

The Site is located in Unit G, Section 36, Township 8 South, Range 28 East, in Chaves County, New Mexico (33.577075, -104.041651) and is associated with oil and gas exploration and production operations on state land managed by the New Mexico State Land Office (NMSLO).

During 2021, the NMSLO completed an aerial imagery review of plugged and abandoned wells located on state land in Chaves County. Visible indications of a potential historical release were identified at the Site, and as the lease holder, Oxy was notified by the NMSLO of the need to investigate potential impacts to soil. Oxy contracted BBC International, Inc. (BBC) to conduct assessment and delineation activities within the historical release area. Based on the delineation soil sample analytical results, a Notification of Release was submitted to the New Mexico Oil Conservation Division (NMOCD) on February 21, 2024. The release was assigned Incident Number nAPP2405243873.

Oxy is not the Operator of the Twin Lakes SA Unit #027 well, and has no independent knowledge of the facts or circumstances surrounding the nature, content or volume of any release(s), contemporaneous to any such release(s). All information submitted by Oxy herein is based on Oxy's present day observations of the site. Oxy submits this *Work Plan* pursuant to an agreement with the NMSLO, as lessee of record.

SITE CHARACTERIZATION AND CLOSURE CRITERIA

The Site was characterized to assess the applicability of Table I, Closure Criteria for Soils Impacted by a Release, of Title 19, Chapter 15, Part 29 (19.15.29) of the New Mexico Administrative Code (NMAC).

Oxy USA Inc.
Remediation Work Plan
Twin Lakes SA Unit #027 Flow Line Release

Results from the characterization desktop review are summarized below and detailed in the NMOCD permitting portal Form C-141 Site Characterization section. Potential Site receptors are identified on Figure 1.

Depth to groundwater at the Site is estimated to be less than 50 feet below ground surface (bgs) based on the nearest groundwater well data. The closest permitted groundwater well with depth to groundwater data is United States Geologic Survey (USGS) well 333423104032401, located approximately 0.93 miles southwest of the Site. The well has a recorded depth to groundwater of 35.77 feet bgs and a total depth of 157 feet. The referenced well records are included in Appendix A. All wells used for depth to groundwater determination are depicted on Figure 1.

The closest continuously flowing or significant watercourse is greater than 300 feet from the Site. The Site is greater than 200 feet from a lakebed, sinkhole, or playa lake and greater than 300 feet from an occupied residence, school, hospital, institution, church, or wetland. The Site is greater than 1,000 feet to a freshwater well or spring and is not within a 100-year floodplain or overlying a subsurface mine. The Site is not underlain by unstable geology. Site receptors are identified on Figure 1.

Based on the results of the Site Characterization, the following NMOCD Table I Closure Criteria (Closure Criteria) apply:

- Benzene: 10 milligrams per kilogram (mg/kg)
- Benzene, toluene, ethylbenzene, and total xylenes (BTEX): 50 mg/kg
- Total petroleum hydrocarbons (TPH): 100 mg/kg
- Chloride: 600 mg/kg

SITE ASSESSMENT AND DELINEATION ACTIVITIES

During November 2021, BBC personnel were at the Site to evaluate the release extent based on information provided by the NMSLO and visual observations. Four surface soil samples (North, East, West, and South) were collected around the visible release extent to confirm the lateral extent of the surface release. Potholes were advanced at 8 sample points (SP1 through SP8) within the release extent to delineate the vertical extent of the release. The potholes were advanced to depths ranging from 2 feet to 7 feet bgs. Discrete delineation soil samples were collected from sample points SP1 through SP8 at depths ranging from the ground surface to 7 feet bgs.

The delineation soil samples were placed directly into pre-cleaned glass jars, labeled with the location, date, time, sampler name, method of analysis, and immediately placed on ice. The soil samples were transported under strict chain-of-custody procedures to Cardinal Laboratories (Cardinal) in Hobbs, New Mexico, for analysis of the following constituents of concern (COCs): BTEX following United States Environmental Protection Agency (EPA) Method 8021B; TPH-gasoline range organics (GRO), TPH-diesel range organics (DRO), and TPH-oil range organics (ORO) following EPA Method 8015M/D; and chloride following Standard Method SM4500.

The release extent and delineation soil sample locations were mapped utilizing a handheld Global Positioning System (GPS) unit and are depicted on Figure 2. Photographic documentation of the Site was completed, and a photographic log is included in Appendix B.

LABORATORY ANALYTICAL RESULTS

Laboratory analytical results for surface soil samples North, East, West, and South indicated all COC concentrations were compliant with the Site Closure Criteria and confirmed the lateral extent of the

Oxy USA Inc.
Remediation Work Plan
Twin Lakes SA Unit #027 Flow Line Release

surface release. Laboratory analytical results for the delineation soil samples collected from sample points SP2 and SP3, collected at depths ranging from the ground surface to 3 feet bgs, indicated all COC concentrations were compliant with the Site Closure Criteria. Laboratory analytical results for the delineation soil samples collected from sample points SP1 and SP4 through SP8 indicated that TPH concentrations exceeded the Site Closure Criteria at depths ranging from the ground surface to a maximum depth of 5 feet bgs. Chloride concentrations exceeded the Site Closure Criteria in the surface sample collected at sample point SP6. The terminal depth delineation sample from each sample point (SP1 through SP8) was compliant with the Site Closure Criteria and successfully delineated the vertical extent of impacted soil. Laboratory analytical results are summarized on the attached Table 1 and the complete laboratory analytical reports are included in Appendix C.

Based on the soil sample analytical results, additional remediation activities are warranted and are proposed below.

PROPOSED REMEDIATION WORKPLAN

The release occurred in an off-pad pasture area; therefore, the release location will be assessed for determination of whether the release encroached into undisturbed areas, to comply with the Cultural Properties Protection Rule (CPP). The delineation activities described above were completed prior to the December 1, 2022, effective date of the CPP rule.

The delineation soil sample results indicated soil containing chloride and/or TPH concentrations exceeding the Site Closure Criteria is present across an approximate 14,000 square foot area and extends to a depth of 1-foot to 2 feet bgs in the areas around sample points SP1 and SP5 through SP8, and to a depth of 5 feet bgs in the area around sample point SP4. Based on the delineation soil sample analytical results, Oxy proposes to complete the following remediation activities:

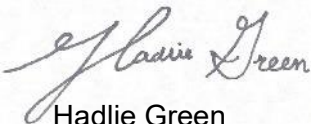
- The impacted soil identified within the release area will be excavated. Excavation will proceed laterally and vertically until excavation sidewall and floor samples confirm all COC concentrations are compliant with the Site Closure Criteria.
 - 5-point composite soil samples will be collected from the sidewalls and floor of the final excavation extent. The 5-point composite samples will be collected by placing five equivalent aliquots of soil into a 1-gallon, resealable plastic bag and homogenizing the samples by thoroughly mixing.
 - The excavation sidewall samples will be collected at a frequency of every 200 square feet.
 - Due to the estimated size of the excavation (14,000 square feet), Oxy requests a variance for frequency of excavation floor samples. Oxy proposes collecting floor samples at a frequency of every 400 square feet from the floor of the excavation.
 - The excavation confirmation soil samples will be handled as described above and analyzed for BTEX, TPH, and chloride.
- An estimated 1,400 cubic yards of impacted soil will be excavated. The excavated soil will be transported to an approved landfill facility for disposal.
- Upon completion of excavation activities, the excavation will be backfilled with locally procured backfill and topsoil and recontoured to match pre-existing conditions. The disturbed area will be seeded with a NMSLO approved seed mixture. A Reclamation Plan for the disturbed area is included in Appendix D.
- A *Closure Request* detailing the excavation activities will be submitted to the NMOCD and NMSLO upon completion of excavation activities and receipt of final laboratory analytical results.

Oxy USA Inc.
Remediation Work Plan
Twin Lakes SA Unit #027 Flow Line Release

Oxy will complete the excavation activities within 90 days of the date of approval of this *Work Plan* by the NMOCD. Oxy believes the scope of work described above meets the requirements set forth in 19.15.29 NMAC and is protective of human health, the environment, and groundwater and respectfully requests approval of this *Work Plan* for Incident Number nAPP2405243873.

If you have any questions or comments, please contact Ms. Aimee Cole at (720) 384-7365 or acole@ensolum.com.

Sincerely,
Ensolum, LLC



Hadlie Green
Project Geologist



Aimee Cole
Senior Managing Scientist

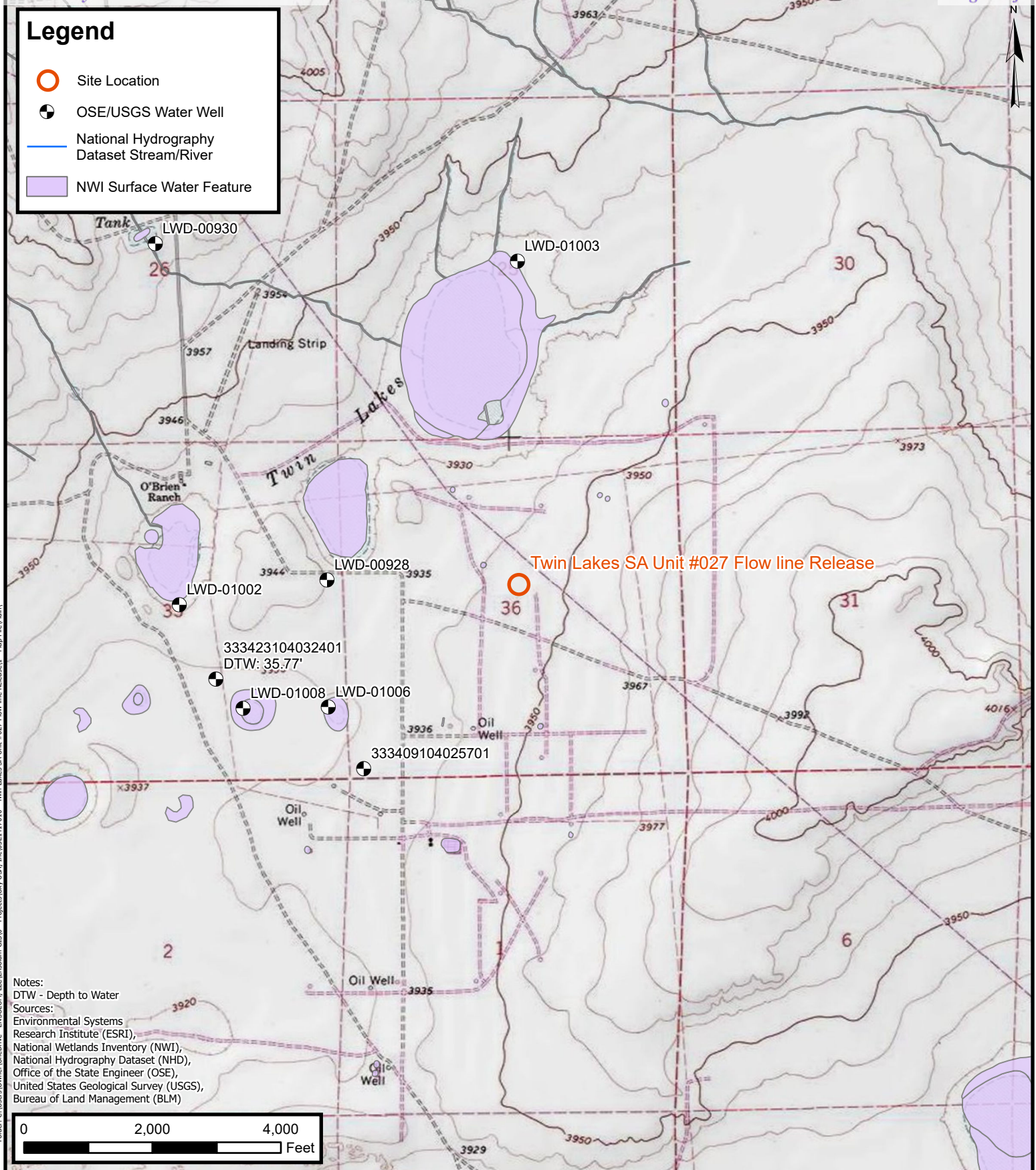
cc: Kalei Jennings, Oxy USA Inc.
New Mexico State Land Office

Appendices:

Figure 1	Site Receptor Map
Figure 2	Delineation Soil Sample Locations
Figure 3	Proposed Excavation Extent
Table 1	Soil Sample Analytical Results
Appendix A	Referenced Well Records
Appendix B	Photographic Log
Appendix C	Laboratory Analytical Reports & Chain-of-Custody Documentation
Appendix D	Reclamation Plan



FIGURES

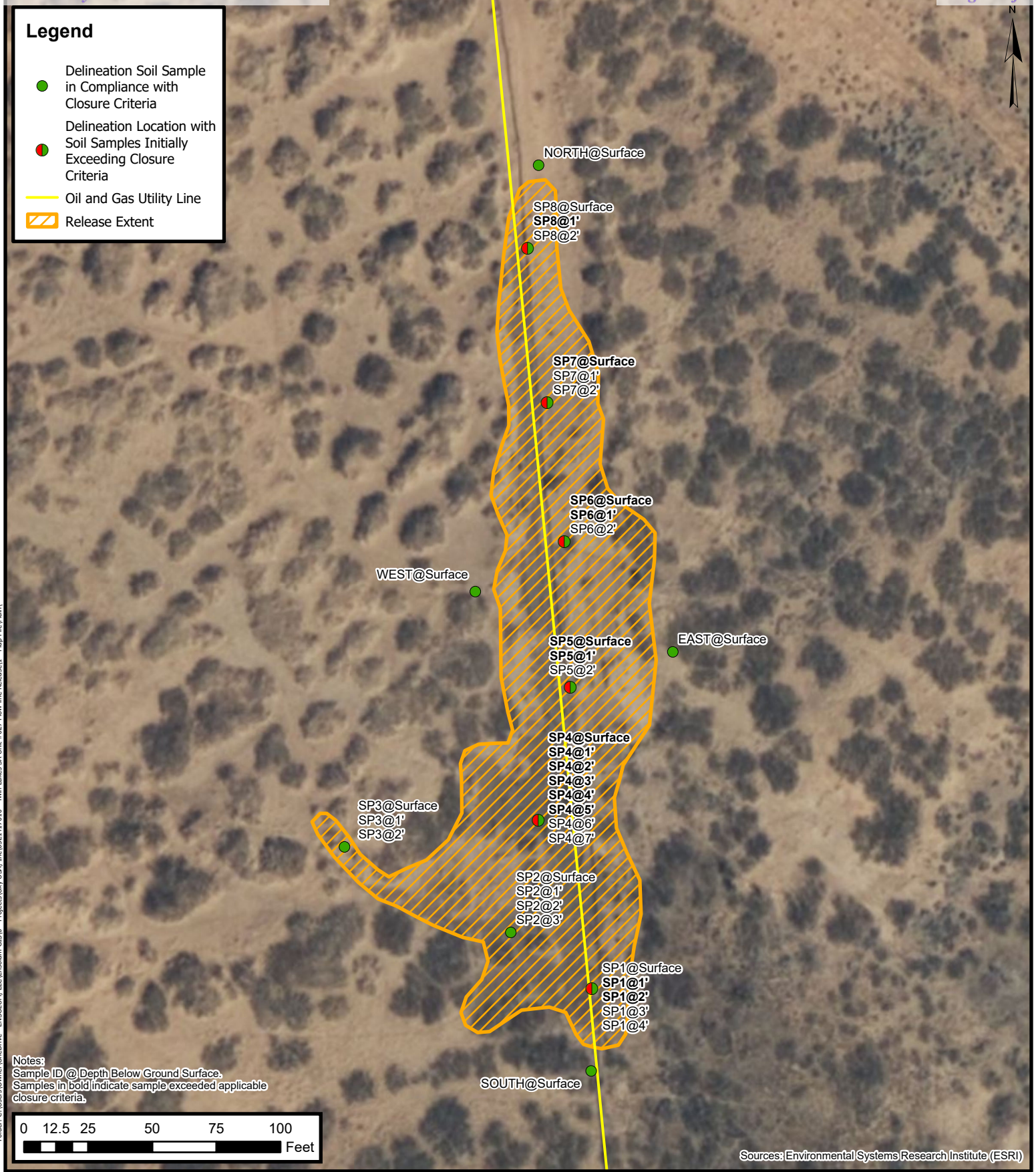


Site Receptor Map

Oxy USA Inc.
Twin Lakes SA Unit #027 Flow line Release
Incident Number: nAPP2405243873
Unit G-Sec 36-T08S-R28E
Chaves County, New Mexico

FIGURE

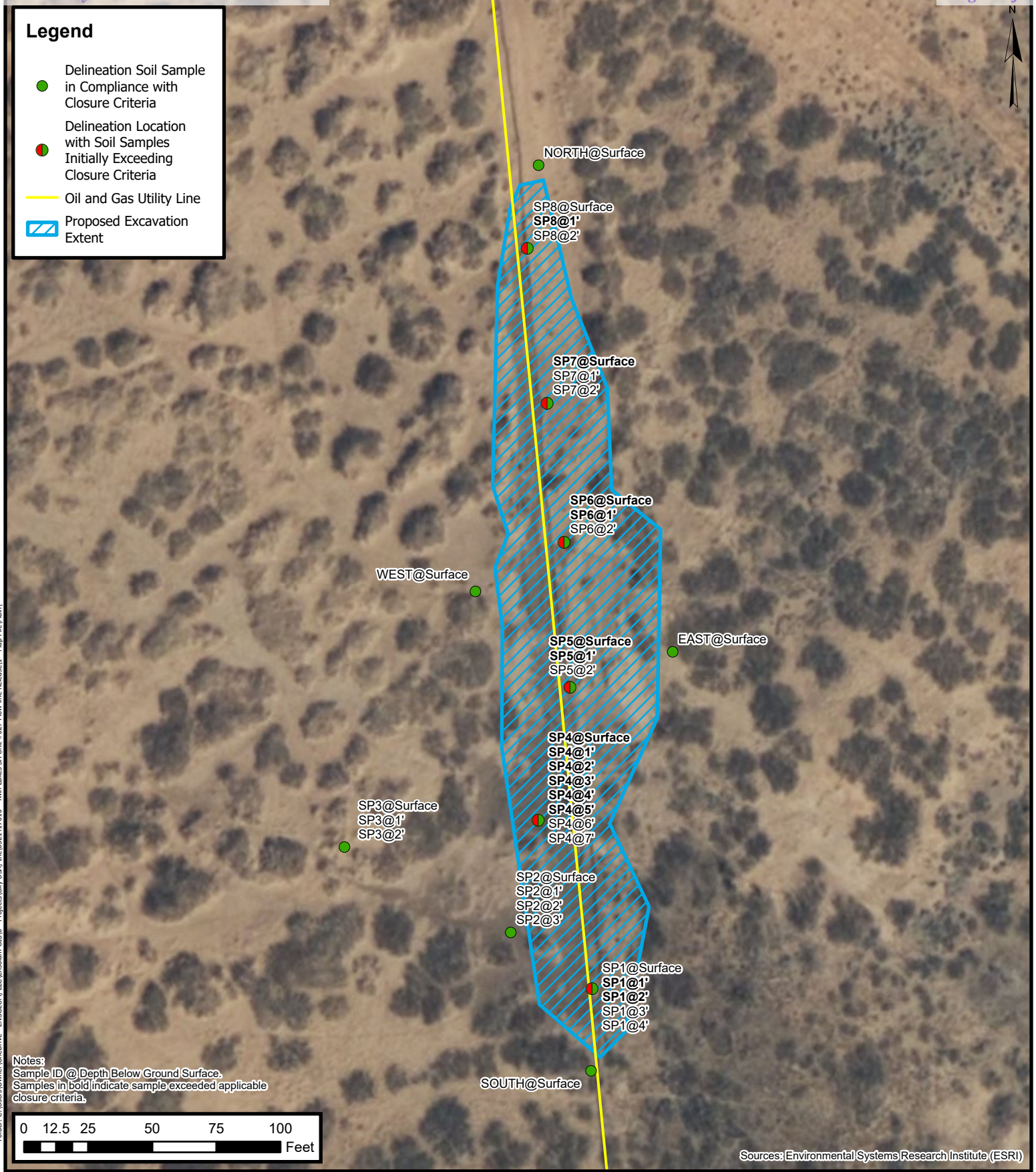
1



Delineation Soil Sample Locations

Oxy USA Inc.
Twin Lakes SA Unit #027 Flow line Release
Incident Number: nAPP2405243873
Unit G-Sec 36-T08S-R28E
Chaves County, New Mexico

FIGURE
2



Proposed Excavation Extent

Oxy USA Inc.
Twin Lakes SA Unit #027 Flow line Release
Incident Number: nAPP2405243873
Unit G-Sec 36-T08S-R28E
Chaves County, New Mexico

FIGURE

3



TABLES



TABLE 1

SOIL SAMPLE ANALYTICAL RESULTS
Twin Lakes SA Unit #027 Flow Line Release
Oxy USA Inc.
Chaves County, New Mexico

Sample Designation	Date	Depth (feet bgs)	Benzene (mg/kg)	Total BTEX (mg/kg)	TPH GRO (mg/kg)	TPH DRO (mg/kg)	TPH ORO (mg/kg)	GRO+DRO (mg/kg)	Total TPH (mg/kg)	Chloride (mg/kg)
NMOCD Table I Closure Criteria (NMAC 19.15.29)			10	50	NE	NE	NE	NE	100	600
Delineation Soil Samples										
North	11/16/2021	Surface	0.124	0.346	<10.0	<10.0	<10.0	<10.0	<10.0	16.0
East	11/16/2021	Surface	0.273	1.12	<10.0	<10.0	<10.0	<10.0	<10.0	16.0
West	11/16/2021	Surface	0.061	<0.300	<10.0	<10.0	<10.0	<10.0	<10.0	16.0
South	11/16/2021	Surface	0.138	<0.300	<10.0	<10.0	<10.0	<10.0	<10.0	16.0
SP1	11/16/2021	Surface	0.446	0.941	<10.0	17.0	46.8	17.0	63.8	<16.0
SP1	11/16/2021	1	0.183	0.422	<10.0	1,570	1,720	1,570	3,290	<16.0
SP1	11/16/2021	2	0.162	0.404	<10.0	1,270	1,370	1,270	2,640	<16.0
SP1	11/30/2021	3	<0.050	<0.300	<10.0	<10.0	<10.0	<10.0	<10.0	176
SP1	11/30/2021	4	<0.050	<0.300	<10.0	<10.0	<10.0	<10.0	<10.0	208
SP2	11/16/2021	Surface	0.269	0.539	<10.0	<10.0	11.8	<10.0	11.8	<16.0
SP2	11/16/2021	1	<0.050	<0.300	<10.0	<10.0	<10.0	<10.0	<10.0	32.0
SP2	11/16/2021	2	<0.050	<0.300	<10.0	<10.0	<10.0	<10.0	<10.0	368
SP2	11/16/2021	3	<0.050	<0.300	<10.0	<10.0	<10.0	<10.0	<10.0	16.0
SP3	11/16/2021	Surface	0.050	<0.300	<10.0	<10.0	<10.0	<10.0	<10.0	32.0
SP3	11/16/2021	1	<0.050	<0.300	<10.0	<10.0	<10.0	<10.0	<10.0	32.0
SP3	11/16/2021	2	<0.050	<0.300	<10.0	<10.0	<10.0	<10.0	<10.0	16.0
SP4	11/16/2021	Surface	0.286	0.606	15.3	1,040	1,120	1,055	2,175	16.0
SP4	11/16/2021	1	<0.500	25.0	758	11,800	2,550	12,558	15,108	480
SP4	11/16/2021	2	0.091	<0.300	<10.0	667	678	667	1,345	192
SP4	11/16/2021	3	0.199	0.406	<10.0	1,480	1,260	1,480	2,740	<16.0
SP4	11/16/2021	4	0.134	0.374	<50.0	2,060	2,260	2,060	4,320	32.0
SP4	11/16/2021	5	0.151	0.838	<10.0	1,350	1,080	1,350	2,430	16.0
SP4	11/30/2021	6	<0.050	<0.300	<10.0	<10.0	<10.0	<10.0	<10.0	192
SP4	11/30/2021	7	<0.050	<0.300	<10.0	<10.0	<10.0	<10.0	<10.0	224



TABLE 1

SOIL SAMPLE ANALYTICAL RESULTS
Twin Lakes SA Unit #027 Flow Line Release
Oxy USA Inc.
Chaves County, New Mexico

Sample Designation	Date	Depth (feet bgs)	Benzene (mg/kg)	Total BTEX (mg/kg)	TPH GRO (mg/kg)	TPH DRO (mg/kg)	TPH ORO (mg/kg)	GRO+DRO (mg/kg)	Total TPH (mg/kg)	Chloride (mg/kg)
NMOCD Table I Closure Criteria (NMAC 19.15.29)			10	50	NE	NE	NE	NE	100	600
SP5	11/18/2021	Surface	0.060	0.631	<100	29,500	11,300	29,500	40,800	208
SP5	11/18/2021	1	0.108	<0.300	<10.0	848	684	848	1,532	112
SP5	11/18/2021	2	<0.050	<0.300	<10.0	<10.0	<10.0	<10.0	<10.0	<16.0
SP6	11/18/2021	Surface	0.187	0.423	<50.0	32,100	8,830	32,100	40,930	2,480
SP6	11/18/2021	1	0.058	<0.300	<10.0	985	672	985	1,657	32.0
SP6	11/18/2021	2	0.059	<0.300	<10.0	<10.0	<10.0	<10.0	<10.0	48.0
SP7	11/18/2021	Surface	0.268	0.634	<50.0	2,080	2,270	2,080	4,350	80.0
SP7	11/18/2021	1	<0.050	<0.300	<10.0	<10.0	<10.0	<10.0	<10.0	32.0
SP7	11/18/2021	2	<0.050	<0.300	<10.0	<10.0	<10.0	<10.0	<10.0	32.0
SP8	11/18/2021	Surface	0.218	0.491	<10.0	39.0	15.5	39.0	54.5	16.0
SP8	11/18/2021	1	0.052	<0.300	<10.0	296	415	296	711	16.0
SP8	11/18/2021	2	<0.050	<0.300	<10.0	<10.0	<10.0	<10.0	<10.0	<16.0

Notes:

bgs: below ground surface

mg/kg: milligrams per kilogram

NMOCD: New Mexico Oil Conservation Division

NMAC: New Mexico Administrative Code

BTEX: Benzene, Toluene, Ethylbenzene, and Xylenes
Concentrations in **bold** exceed the NMOCD Table I
Closure Criteria or reclamation standard where
applicable.

GRO: Gasoline Range Organics

DRO: Diesel Range Organics

ORO: Oil Range Organics

TPH: Total Petroleum Hydrocarbon



APPENDIX A

Referenced Well Records



USGS Home
Contact USGS
Search USGS

National Water Information System: Web Interface


USGS Water Resources

Data Category:
Groundwater

Geographic Area:
New Mexico

GO

Click to hideNews Bulletins

- Explore the NEW [USGS National Water Dashboard](#) interactive map to access real-time water data from over 13,500 stations nationwide.
- [Full News](#) 

Groundwater levels for New Mexico

Click to hide state-specific text

 Important: [Next Generation Monitoring Location Page](#)

Search Results -- 1 sites found

Agency code = usgs
site_no list =

- 333423104032401

Minimum number of levels = 1
[Save file of selected sites](#) to local disk for future upload

USGS 333423104032401 08S.28E.35.41334

Chaves County, New Mexico
Latitude 33°34'23", Longitude 104°03'24" NAD27
Land-surface elevation 3,931 feet above NAVD88
The depth of the well is 157 feet below land surface.
This well is completed in the Other aquifers (N9999OTHER) national aquifer.
This well is completed in the Alluvium, Bolson Deposits and Other Surface Deposits (110AVMB) local aquifer.

Output formats

Table of data
Tab-separated data
Graph of data
Reselect period

Date	Time	? Water-level date-time accuracy	? Parameter code	Water level, feet below land surface	Water level, feet above specific vertical datum	Referenced vertical datum	? Status	? Method of measurement	? Measuring agency	? Source of measurement	? Water-level approval status
1978-10-18		D	62610		3895.00	NGVD29	1	Z			A
1978-10-18		D	62611		3896.86	NAVD88	1	Z			A
1978-10-18		D	72019	34.14			1	Z			A
1984-02-16		D	62610		3893.37	NGVD29	1	Z			A
1984-02-16		D	62611		3895.23	NAVD88	1	Z			A
1984-02-16		D	72019	35.77			1	Z			A

Explanation

Section	Code	Description
Water-level date-time accuracy	D	Date is accurate to the Day
Parameter code	62610	Groundwater level above NGVD 1929, feet
Parameter code	62611	Groundwater level above NAVD 1988, feet
Parameter code	72019	Depth to water level, feet below land surface
Referenced vertical datum	NAVD88	North American Vertical Datum of 1988
Referenced vertical datum	NGVD29	National Geodetic Vertical Datum of 1929
Status	1	Static
Method of measurement	Z	Other.
Measuring agency		Not determined
Source of measurement		Not determined
Water-level approval status	A	Approved for publication -- Processing and review completed.

- [Questions or Comments](#)
[Automated retrievals](#)
[Help](#)
[Data Tips](#)
[Explanation of terms](#)
[Subscribe for system changes](#)
[News](#)

[U.S. Department of the Interior](#) | [U.S. Geological Survey](#)

Title: Groundwater for New Mexico: Water Levels

URL: <https://nwis.waterdata.usgs.gov/nm/nwis/gwlevels?>

Page Contact Information: [New Mexico Water Data Maintainer](#)

Page Last Modified: 2024-02-07 16:44:11 EST


0.36 0.31 nadww02





New Mexico Office of the State Engineer

Point of Diversion Summary

		(quarters are 1=NW 2=NE 3=SW 4=SE)				(NAD83 UTM in meters)			
		(quarters are smallest to largest)							
Well Tag	POD Number	Q64	Q16	Q4	Sec	Tws	Rng	X	Y
	RA 09732			1	22	08S	28E	585283	3719179* 
<hr/>									
Driller License:	1082	Driller Company:				SPEARS, JACK DRILLING CO.			
Driller Name:	SPEARS, JACK								
Drill Start Date:	05/14/1999	Drill Finish Date:				06/17/1999		Plug Date:	
Log File Date:	06/22/1999	PCW Rcv Date:						Source:	Shallow
Pump Type:		Pipe Discharge Size:						Estimated Yield:	10 GPM
Casing Size:	5.00	Depth Well:				922 feet		Depth Water:	600 feet
<hr/>									
Water Bearing Stratifications:				Top	Bottom	Description			
				862	920	Shallow Alluvium/Basin Fill			
<hr/>									
Casing Perforations:				Top	Bottom				
				832	922				
<hr/>									

*UTM location was derived from PLSS - see Help

The data is furnished by the NMOSE/ISC and is accepted by the recipient with the expressed understanding that the OSE/ISC make no warranties, expressed or implied, concerning the accuracy, completeness, reliability, usability, or suitability for any particular purpose of the data.

2/7/24 2:46 PM

POINT OF DIVERSION SUMMARY



APPENDIX B

Photographic Log

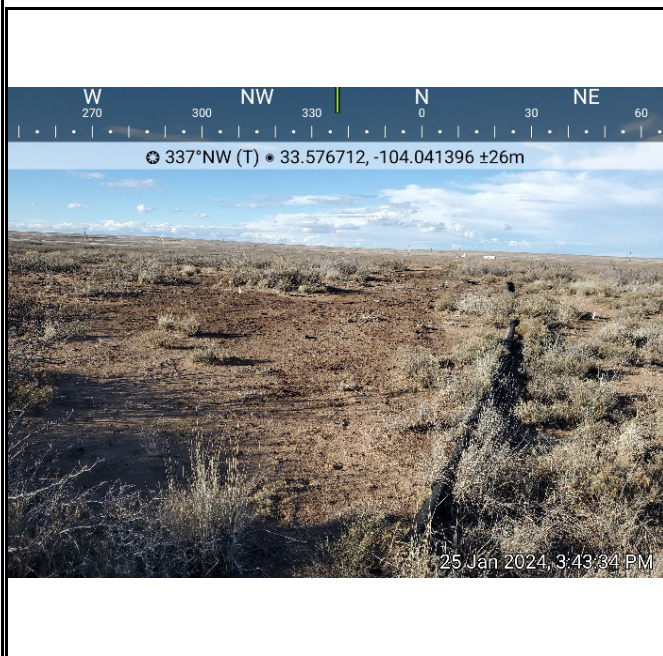


Photographic Log

Oxy USA Inc.

Twin Lakes SA Unit #027 Flow Line Release

Incident Number: nAPP2405243873



Photograph 1 Date: 1/25/2024
Description View of the release area.
View: Northwest



Photograph 2 Date: 1/25/2024
Description View of the release area.
View: North



Photograph 3 Date: 1/25/2024
Description View of the release area.
View: East



Photograph 4 Date: 1/25/2024
Description View of the release area.
View: North

**Photographic Log**

Oxy USA Inc.

Twin Lakes SA Unit #027 Flow Line Release

Incident Number: nAPP2405243873



Photograph 5 Date: 1/25/2024
Description View of the release area.
View: North



Photograph 6 Date: 1/25/2024
Description View of the release area.
View: South



Photograph 7 Date: 1/25/2024
Description View of the release area.
View: South



Photograph 8 Date: 1/25/2024
Description View of the release area.
View: South



APPENDIX C

Laboratory Analytical Reports & Chain of Custody Documentation



PHONE (575) 393-2326 ° 101 E. MARLAND ° HOBBS, NM 88240

November 24, 2021

Cliff Brunson

BBC International, Inc.

P.O. Box 805

Hobbs, NM 88241

RE: TWIN LAKES FLOWLINE LEAK

Enclosed are the results of analyses for samples received by the laboratory on 11/19/21 15:05.

Cardinal Laboratories is accredited through Texas NELAP under certificate number T104704398-21-14. Accreditation applies to drinking water, non-potable water and solid and chemical materials. All accredited analytes are denoted by an asterisk (*). For a complete list of accredited analytes and matrices visit the TCEQ website at www.tceq.texas.gov/field/qa/lab_accred_certif.html.

Cardinal Laboratories is accredited through the State of Colorado Department of Public Health and Environment for:

Method EPA 552.2	Haloacetic Acids (HAA-5)
Method EPA 524.2	Total Trihalomethanes (TTHM)
Method EPA 524.4	Regulated VOCs (V1, V2, V3)

Accreditation applies to public drinking water matrices.

This report meets NELAP requirements and is made up of a cover page, analytical results, and a copy of the original chain-of-custody. If you have any questions concerning this report, please feel free to contact me.

Sincerely,

A handwritten signature in black ink that reads "Mike Snyder". The signature is fluid and cursive, with the first name "Mike" and last name "Snyder" clearly distinguishable.

Mike Snyder For Celey D. Keene

Lab Director/Quality Manager



PHONE (575) 393-2326 ° 101 E. MARLAND ° HOBBS, NM 88240

Analytical Results For:

BBC International, Inc.
 Cliff Brunson
 P.O. Box 805
 Hobbs NM, 88241
 Fax To: (575) 397-0397

Received:	11/19/2021	Sampling Date:	11/16/2021
Reported:	11/24/2021	Sampling Type:	Soil
Project Name:	TWIN LAKES FLOWLINE LEAK	Sampling Condition:	Cool & Intact
Project Number:	NONE GIVEN	Sample Received By:	Tamara Oldaker
Project Location:	OXY - NEW MEXICO		

Sample ID: SP NORTH @ SURFACE (H213340-01)

BTEX 8021B		mg/kg		Analyzed By: JH					
Analyte	Result	Reporting Limit	Analyzed	Method Blank	BS	% Recovery	True Value QC	RPD	Qualifier
Benzene*	0.124	0.050	11/23/2021	ND	1.77	88.7	2.00	7.68	
Toluene*	0.222	0.050	11/23/2021	ND	1.97	98.3	2.00	6.23	
Ethylbenzene*	<0.050	0.050	11/23/2021	ND	2.04	102	2.00	5.58	
Total Xylenes*	<0.150	0.150	11/23/2021	ND	6.23	104	6.00	5.62	
Total BTEX	0.346	0.300	11/23/2021	ND					

Surrogate: 4-Bromofluorobenzene (PID) 97.4 % 69.9-140

Chloride, SM4500Cl-B		mg/kg		Analyzed By: GM					
Analyte	Result	Reporting Limit	Analyzed	Method Blank	BS	% Recovery	True Value QC	RPD	Qualifier
Chloride	16.0	16.0	11/22/2021	ND	416	104	400	3.77	

TPH 8015M		mg/kg		Analyzed By: MS					
Analyte	Result	Reporting Limit	Analyzed	Method Blank	BS	% Recovery	True Value QC	RPD	Qualifier
GRO C6-C10*	<10.0	10.0	11/22/2021	ND	194	96.9	200	11.7	
DRO >C10-C28*	<10.0	10.0	11/22/2021	ND	214	107	200	14.6	
EXT DRO >C28-C36	<10.0	10.0	11/22/2021	ND					

Surrogate: 1-Chlorooctane 111 % 44.3-133

Surrogate: 1-Chlorooctadecane 112 % 38.9-142

Cardinal Laboratories

*=Accredited Analyte

PLEASE NOTE: Liability and Damages. Cardinal's liability and client's exclusive remedy for any claim arising, whether based in contract or tort, shall be limited to the amount paid by client for analyses. All claims, including those for negligence and any other cause whatsoever shall be deemed waived unless made in writing and received by Cardinal within thirty (30) days after completion of the applicable service. In no event shall Cardinal be liable for incidental or consequential damages, including, without limitation, business interruptions, loss of use, or loss of profits incurred by client, its subsidiaries, affiliates or successors arising out of or related to the performance of the services hereunder by Cardinal, regardless of whether such claim is based upon any of the above stated reasons or otherwise. Results relate only to the samples identified above. This report shall not be reproduced except in full with written approval of Cardinal Laboratories.

Mike Snyder For Celey D. Keene, Lab Director/Quality Manager



PHONE (575) 393-2326 • 101 E. MARLAND • HOBBS, NM 88240

Analytical Results For:

BBC International, Inc.
 Cliff Brunson
 P.O. Box 805
 Hobbs NM, 88241
 Fax To: (575) 397-0397

Received:	11/19/2021	Sampling Date:	11/16/2021
Reported:	11/24/2021	Sampling Type:	Soil
Project Name:	TWIN LAKES FLOWLINE LEAK	Sampling Condition:	Cool & Intact
Project Number:	NONE GIVEN	Sample Received By:	Tamara Oldaker
Project Location:	OXY - NEW MEXICO		

Sample ID: SP EAST @ SURFACE (H213340-02)

BTX 8021B		mg/kg		Analyzed By: JH					
Analyte	Result	Reporting Limit	Analyzed	Method Blank	BS	% Recovery	True Value QC	RPD	Qualifier
Benzene*	0.273	0.050	11/23/2021	ND	1.77	88.7	2.00	7.68	
Toluene*	0.309	0.050	11/23/2021	ND	1.97	98.3	2.00	6.23	
Ethylbenzene*	0.348	0.050	11/23/2021	ND	2.04	102	2.00	5.58	
Total Xylenes*	0.189	0.150	11/23/2021	ND	6.23	104	6.00	5.62	
Total BTX	1.12	0.300	11/23/2021	ND					

Surrogate: 4-Bromofluorobenzene (PID) 98.8 % 69.9-140

Chloride, SM4500CI-B		mg/kg		Analyzed By: GM					
Analyte	Result	Reporting Limit	Analyzed	Method Blank	BS	% Recovery	True Value QC	RPD	Qualifier
Chloride	16.0	16.0	11/22/2021	ND	416	104	400	3.77	

TPH 8015M		mg/kg		Analyzed By: MS					
Analyte	Result	Reporting Limit	Analyzed	Method Blank	BS	% Recovery	True Value QC	RPD	Qualifier
GRO C6-C10*	<10.0	10.0	11/22/2021	ND	194	96.9	200	11.7	
DRO >C10-C28*	<10.0	10.0	11/22/2021	ND	214	107	200	14.6	
EXT DRO >C28-C36	<10.0	10.0	11/22/2021	ND					

Surrogate: 1-Chlorooctane 106 % 44.3-133

Surrogate: 1-Chlorooctadecane 111 % 38.9-142

Cardinal Laboratories

*=Accredited Analyte

PLEASE NOTE: Liability and Damages. Cardinal's liability and client's exclusive remedy for any claim arising, whether based in contract or tort, shall be limited to the amount paid by client for analyses. All claims, including those for negligence and any other cause whatsoever shall be deemed waived unless made in writing and received by Cardinal within thirty (30) days after completion of the applicable service. In no event shall Cardinal be liable for incidental or consequential damages, including, without limitation, business interruptions, loss of use, or loss of profits incurred by client, its subsidiaries, affiliates or successors arising out of or related to the performance of the services hereunder by Cardinal, regardless of whether such claim is based upon any of the above stated reasons or otherwise. Results relate only to the samples identified above. This report shall not be reproduced except in full with written approval of Cardinal Laboratories.

Mike Snyder For Celey D. Keene, Lab Director/Quality Manager



PHONE (575) 393-2326 ° 101 E. MARLAND ° HOBBS, NM 88240

Analytical Results For:

BBC International, Inc.
 Cliff Brunson
 P.O. Box 805
 Hobbs NM, 88241
 Fax To: (575) 397-0397

Received:	11/19/2021	Sampling Date:	11/16/2021
Reported:	11/24/2021	Sampling Type:	Soil
Project Name:	TWIN LAKES FLOWLINE LEAK	Sampling Condition:	Cool & Intact
Project Number:	NONE GIVEN	Sample Received By:	Tamara Oldaker
Project Location:	OXY - NEW MEXICO		

Sample ID: SP WEST @ SURFACE (H213340-03)

BTX 8021B		mg/kg		Analyzed By: JH						
Analyte	Result	Reporting Limit	Analyzed	Method Blank	BS	% Recovery	True Value QC	RPD	Qualifier	
Benzene*	0.061	0.050	11/23/2021	ND	1.77	88.7	2.00	7.68		
Toluene*	0.093	0.050	11/23/2021	ND	1.97	98.3	2.00	6.23		
Ethylbenzene*	<0.050	0.050	11/23/2021	ND	2.04	102	2.00	5.58		
Total Xylenes*	<0.150	0.150	11/23/2021	ND	6.23	104	6.00	5.62		
Total BTX	<0.300	0.300	11/23/2021	ND						

Surrogate: 4-Bromofluorobenzene (PID) 97.0 % 69.9-140

Chloride, SM4500CI-B		mg/kg		Analyzed By: GM						
Analyte	Result	Reporting Limit	Analyzed	Method Blank	BS	% Recovery	True Value QC	RPD	Qualifier	
Chloride	16.0	16.0	11/22/2021	ND	416	104	400	3.77		

TPH 8015M		mg/kg		Analyzed By: MS					
Analyte	Result	Reporting Limit	Analyzed	Method Blank	BS	% Recovery	True Value QC	RPD	Qualifier
GRO C6-C10*	<10.0	10.0	11/22/2021	ND	194	96.9	200	11.7	
DRO >C10-C28*	<10.0	10.0	11/22/2021	ND	214	107	200	14.6	
EXT DRO >C28-C36	<10.0	10.0	11/22/2021	ND					

Surrogate: 1-Chlorooctane 114 % 44.3-133

Surrogate: 1-Chlorooctadecane 117 % 38.9-142

Cardinal Laboratories

*=Accredited Analyte

PLEASE NOTE: Liability and Damages. Cardinal's liability and client's exclusive remedy for any claim arising, whether based in contract or tort, shall be limited to the amount paid by client for analyses. All claims, including those for negligence and any other cause whatsoever shall be deemed waived unless made in writing and received by Cardinal within thirty (30) days after completion of the applicable service. In no event shall Cardinal be liable for incidental or consequential damages, including, without limitation, business interruptions, loss of use, or loss of profits incurred by client, its subsidiaries, affiliates or successors arising out of or related to the performance of the services hereunder by Cardinal, regardless of whether such claim is based upon any of the above stated reasons or otherwise. Results relate only to the samples identified above. This report shall not be reproduced except in full with written approval of Cardinal Laboratories.

Mike Snyder For Celey D. Keene, Lab Director/Quality Manager



PHONE (575) 393-2326 ° 101 E. MARLAND ° HOBBS, NM 88240

Analytical Results For:

BBC International, Inc.
 Cliff Brunson
 P.O. Box 805
 Hobbs NM, 88241
 Fax To: (575) 397-0397

Received:	11/19/2021	Sampling Date:	11/16/2021
Reported:	11/24/2021	Sampling Type:	Soil
Project Name:	TWIN LAKES FLOWLINE LEAK	Sampling Condition:	Cool & Intact
Project Number:	NONE GIVEN	Sample Received By:	Tamara Oldaker
Project Location:	OXY - NEW MEXICO		

Sample ID: SP SOUTH @ SURFACE (H213340-04)

BTEx 8021B		mg/kg		Analyzed By: JH						
Analyte	Result	Reporting Limit	Analyzed	Method Blank	BS	% Recovery	True Value QC	RPD	Qualifier	
Benzene*	0.138	0.050	11/23/2021	ND	1.77	88.7	2.00	7.68		
Toluene*	0.141	0.050	11/23/2021	ND	1.97	98.3	2.00	6.23		
Ethylbenzene*	<0.050	0.050	11/23/2021	ND	2.04	102	2.00	5.58		
Total Xylenes*	<0.150	0.150	11/23/2021	ND	6.23	104	6.00	5.62		
Total BTEX	<0.300	0.300	11/23/2021	ND						

Surrogate: 4-Bromofluorobenzene (PID) 95.8 % 69.9-140

Chloride, SM4500Cl-B		mg/kg		Analyzed By: GM						
Analyte	Result	Reporting Limit	Analyzed	Method Blank	BS	% Recovery	True Value QC	RPD	Qualifier	
Chloride	16.0	16.0	11/22/2021	ND	416	104	400	3.77		

TPH 8015M		mg/kg		Analyzed By: MS					
Analyte	Result	Reporting Limit	Analyzed	Method Blank	BS	% Recovery	True Value QC	RPD	Qualifier
GRO C6-C10*	<10.0	10.0	11/22/2021	ND	194	96.9	200	11.7	
DRO >C10-C28*	<10.0	10.0	11/22/2021	ND	214	107	200	14.6	
EXT DRO >C28-C36	<10.0	10.0	11/22/2021	ND					

Surrogate: 1-Chlorooctane 103 % 44.3-133

Surrogate: 1-Chlorooctadecane 108 % 38.9-142

Cardinal Laboratories

*=Accredited Analyte

PLEASE NOTE: Liability and Damages. Cardinal's liability and client's exclusive remedy for any claim arising, whether based in contract or tort, shall be limited to the amount paid by client for analyses. All claims, including those for negligence and any other cause whatsoever shall be deemed waived unless made in writing and received by Cardinal within thirty (30) days after completion of the applicable service. In no event shall Cardinal be liable for incidental or consequential damages, including, without limitation, business interruptions, loss of use, or loss of profits incurred by client, its subsidiaries, affiliates or successors arising out of or related to the performance of the services hereunder by Cardinal, regardless of whether such claim is based upon any of the above stated reasons or otherwise. Results relate only to the samples identified above. This report shall not be reproduced except in full with written approval of Cardinal Laboratories.

Mike Snyder For Celey D. Keene, Lab Director/Quality Manager



PHONE (575) 393-2326 ° 101 E. MARLAND ° HOBBS, NM 88240

Analytical Results For:

BBC International, Inc.
 Cliff Brunson
 P.O. Box 805
 Hobbs NM, 88241
 Fax To: (575) 397-0397

Received:	11/19/2021	Sampling Date:	11/16/2021
Reported:	11/24/2021	Sampling Type:	Soil
Project Name:	TWIN LAKES FLOWLINE LEAK	Sampling Condition:	Cool & Intact
Project Number:	NONE GIVEN	Sample Received By:	Tamara Oldaker
Project Location:	OXY - NEW MEXICO		

Sample ID: SP 1 @ SURFACE (H213340-05)

BTEx 8021B		mg/kg		Analyzed By: JH					
Analyte	Result	Reporting Limit	Analyzed	Method Blank	BS	% Recovery	True Value QC	RPD	Qualifier
Benzene*	0.446	0.050	11/23/2021	ND	1.77	88.7	2.00	7.68	
Toluene*	0.434	0.050	11/23/2021	ND	1.97	98.3	2.00	6.23	
Ethylbenzene*	0.061	0.050	11/23/2021	ND	2.04	102	2.00	5.58	
Total Xylenes*	<0.150	0.150	11/23/2021	ND	6.23	104	6.00	5.62	
Total BTEX	0.941	0.300	11/23/2021	ND					

Surrogate: 4-Bromofluorobenzene (PID) 91.4 % 69.9-140

Chloride, SM4500Cl-B		mg/kg		Analyzed By: GM					
Analyte	Result	Reporting Limit	Analyzed	Method Blank	BS	% Recovery	True Value QC	RPD	Qualifier
Chloride	<16.0	16.0	11/22/2021	ND	416	104	400	3.77	

TPH 8015M		mg/kg		Analyzed By: MS					
Analyte	Result	Reporting Limit	Analyzed	Method Blank	BS	% Recovery	True Value QC	RPD	Qualifier
GRO C6-C10*	<10.0	10.0	11/22/2021	ND	194	96.9	200	11.7	
DRO >C10-C28*	17.0	10.0	11/22/2021	ND	214	107	200	14.6	
EXT DRO >C28-C36	46.8	10.0	11/22/2021	ND					

Surrogate: 1-Chlorooctane 98.9 % 44.3-133

Surrogate: 1-Chlorooctadecane 101 % 38.9-142

Cardinal Laboratories

*=Accredited Analyte

PLEASE NOTE: Liability and Damages. Cardinal's liability and client's exclusive remedy for any claim arising, whether based in contract or tort, shall be limited to the amount paid by client for analyses. All claims, including those for negligence and any other cause whatsoever shall be deemed waived unless made in writing and received by Cardinal within thirty (30) days after completion of the applicable service. In no event shall Cardinal be liable for incidental or consequential damages, including, without limitation, business interruptions, loss of use, or loss of profits incurred by client, its subsidiaries, affiliates or successors arising out of or related to the performance of the services hereunder by Cardinal, regardless of whether such claim is based upon any of the above stated reasons or otherwise. Results relate only to the samples identified above. This report shall not be reproduced except in full with written approval of Cardinal Laboratories.

Mike Snyder For Celey D. Keene, Lab Director/Quality Manager



PHONE (575) 393-2326 ° 101 E. MARLAND ° HOBBS, NM 88240

Analytical Results For:

BBC International, Inc.
 Cliff Brunson
 P.O. Box 805
 Hobbs NM, 88241
 Fax To: (575) 397-0397

Received:	11/19/2021	Sampling Date:	11/16/2021
Reported:	11/24/2021	Sampling Type:	Soil
Project Name:	TWIN LAKES FLOWLINE LEAK	Sampling Condition:	Cool & Intact
Project Number:	NONE GIVEN	Sample Received By:	Tamara Oldaker
Project Location:	OXY - NEW MEXICO		

Sample ID: SP 1 @ 1' (H213340-06)

BTEx 8021B		mg/kg		Analyzed By: JH						
Analyte	Result	Reporting Limit	Analyzed	Method Blank	BS	% Recovery	True Value QC	RPD	Qualifier	
Benzene*	0.183	0.050	11/23/2021	ND	1.77	88.7	2.00	7.68		
Toluene*	0.159	0.050	11/23/2021	ND	1.97	98.3	2.00	6.23		
Ethylbenzene*	0.080	0.050	11/23/2021	ND	2.04	102	2.00	5.58		
Total Xylenes*	<0.150	0.150	11/23/2021	ND	6.23	104	6.00	5.62		
Total BTEX	0.422	0.300	11/23/2021	ND						

Surrogate: 4-Bromofluorobenzene (PID) 96.1 % 69.9-140

Chloride, SM4500Cl-B		mg/kg		Analyzed By: GM						
Analyte	Result	Reporting Limit	Analyzed	Method Blank	BS	% Recovery	True Value QC	RPD	Qualifier	
Chloride	<16.0	16.0	11/22/2021	ND	416	104	400	3.77		

TPH 8015M		mg/kg		Analyzed By: MS				S-06	
Analyte	Result	Reporting Limit	Analyzed	Method Blank	BS	% Recovery	True Value QC	RPD	Qualifier
GRO C6-C10*	<10.0	10.0	11/23/2021	ND	194	96.9	200	11.7	
DRO >C10-C28*	1570	10.0	11/23/2021	ND	214	107	200	14.6	
EXT DRO >C28-C36	1720	10.0	11/23/2021	ND					

Surrogate: 1-Chlorooctane 105 % 44.3-133

Surrogate: 1-Chlorooctadecane 141 % 38.9-142

Cardinal Laboratories

*=Accredited Analyte

PLEASE NOTE: Liability and Damages. Cardinal's liability and client's exclusive remedy for any claim arising, whether based in contract or tort, shall be limited to the amount paid by client for analyses. All claims, including those for negligence and any other cause whatsoever shall be deemed waived unless made in writing and received by Cardinal within thirty (30) days after completion of the applicable service. In no event shall Cardinal be liable for incidental or consequential damages, including, without limitation, business interruptions, loss of use, or loss of profits incurred by client, its subsidiaries, affiliates or successors arising out of or related to the performance of the services hereunder by Cardinal, regardless of whether such claim is based upon any of the above stated reasons or otherwise. Results relate only to the samples identified above. This report shall not be reproduced except in full with written approval of Cardinal Laboratories.

Mike Snyder For Celey D. Keene, Lab Director/Quality Manager



PHONE (575) 393-2326 ° 101 E. MARLAND ° HOBBS, NM 88240

Analytical Results For:

BBC International, Inc.
 Cliff Brunson
 P.O. Box 805
 Hobbs NM, 88241
 Fax To: (575) 397-0397

Received:	11/19/2021	Sampling Date:	11/16/2021
Reported:	11/24/2021	Sampling Type:	Soil
Project Name:	TWIN LAKES FLOWLINE LEAK	Sampling Condition:	Cool & Intact
Project Number:	NONE GIVEN	Sample Received By:	Tamara Oldaker
Project Location:	OXY - NEW MEXICO		

Sample ID: SP 1 @ 2' (H213340-07)

BTEx 8021B		mg/kg		Analyzed By: MS					
Analyte	Result	Reporting Limit	Analyzed	Method Blank	BS	% Recovery	True Value QC	RPD	Qualifier
Benzene*	0.162	0.050	11/23/2021	ND	2.03	102	2.00	5.49	
Toluene*	0.170	0.050	11/23/2021	ND	1.93	96.4	2.00	6.29	
Ethylbenzene*	0.072	0.050	11/23/2021	ND	1.90	95.0	2.00	6.09	
Total Xylenes*	<0.150	0.150	11/23/2021	ND	5.80	96.6	6.00	5.23	
Total BTEX	0.404	0.300	11/23/2021	ND					

Surrogate: 4-Bromofluorobenzene (PID) 93.1 % 69.9-140

Chloride, SM4500Cl-B		mg/kg		Analyzed By: GM					
Analyte	Result	Reporting Limit	Analyzed	Method Blank	BS	% Recovery	True Value QC	RPD	Qualifier
Chloride	<16.0	16.0	11/22/2021	ND	416	104	400	3.77	

TPH 8015M		mg/kg		Analyzed By: MS						S-06
Analyte	Result	Reporting Limit	Analyzed	Method Blank	BS	% Recovery	True Value QC	RPD	Qualifier	
GRO C6-C10*	<10.0	10.0	11/23/2021	ND	194	96.9	200	11.7		
DRO >C10-C28*	1270	10.0	11/23/2021	ND	214	107	200	14.6		
EXT DRO >C28-C36	1370	10.0	11/23/2021	ND						

Surrogate: 1-Chlorooctane 105 % 44.3-133

Surrogate: 1-Chlorooctadecane 140 % 38.9-142

Cardinal Laboratories

*=Accredited Analyte

PLEASE NOTE: Liability and Damages. Cardinal's liability and client's exclusive remedy for any claim arising, whether based in contract or tort, shall be limited to the amount paid by client for analyses. All claims, including those for negligence and any other cause whatsoever shall be deemed waived unless made in writing and received by Cardinal within thirty (30) days after completion of the applicable service. In no event shall Cardinal be liable for incidental or consequential damages, including, without limitation, business interruptions, loss of use, or loss of profits incurred by client, its subsidiaries, affiliates or successors arising out of or related to the performance of the services hereunder by Cardinal, regardless of whether such claim is based upon any of the above stated reasons or otherwise. Results relate only to the samples identified above. This report shall not be reproduced except in full with written approval of Cardinal Laboratories.

Mike Snyder For Celey D. Keene, Lab Director/Quality Manager



PHONE (575) 393-2326 ° 101 E. MARLAND ° HOBBS, NM 88240

Analytical Results For:

BBC International, Inc.
 Cliff Brunson
 P.O. Box 805
 Hobbs NM, 88241
 Fax To: (575) 397-0397

Received:	11/19/2021	Sampling Date:	11/16/2021
Reported:	11/24/2021	Sampling Type:	Soil
Project Name:	TWIN LAKES FLOWLINE LEAK	Sampling Condition:	Cool & Intact
Project Number:	NONE GIVEN	Sample Received By:	Tamara Oldaker
Project Location:	OXY - NEW MEXICO		

Sample ID: SP 2 @ SURFACE (H213340-08)

BTEx 8021B		mg/kg		Analyzed By: MS					
Analyte	Result	Reporting Limit	Analyzed	Method Blank	BS	% Recovery	True Value QC	RPD	Qualifier
Benzene*	0.269	0.050	11/23/2021	ND	2.03	102	2.00	5.49	
Toluene*	0.270	0.050	11/23/2021	ND	1.93	96.4	2.00	6.29	
Ethylbenzene*	<0.050	0.050	11/23/2021	ND	1.90	95.0	2.00	6.09	
Total Xylenes*	<0.150	0.150	11/23/2021	ND	5.80	96.6	6.00	5.23	
Total BTEX	0.539	0.300	11/23/2021	ND					

Surrogate: 4-Bromofluorobenzene (PID) 93.6 % 69.9-140

Chloride, SM4500Cl-B		mg/kg		Analyzed By: GM						
Analyte	Result	Reporting Limit	Analyzed	Method Blank	BS	% Recovery	True Value QC	RPD	Qualifier	
Chloride	<16.0	16.0	11/22/2021	ND	400	100	400	3.92		

TPH 8015M		mg/kg		Analyzed By: MS					
Analyte	Result	Reporting Limit	Analyzed	Method Blank	BS	% Recovery	True Value QC	RPD	Qualifier
GRO C6-C10*	<10.0	10.0	11/22/2021	ND	194	96.9	200	11.7	
DRO >C10-C28*	<10.0	10.0	11/22/2021	ND	214	107	200	14.6	
EXT DRO >C28-C36	11.8	10.0	11/22/2021	ND					

Surrogate: 1-Chlorooctane 90.6 % 44.3-133

Surrogate: 1-Chlorooctadecane 90.6 % 38.9-142

Cardinal Laboratories

*=Accredited Analyte

PLEASE NOTE: Liability and Damages. Cardinal's liability and client's exclusive remedy for any claim arising, whether based in contract or tort, shall be limited to the amount paid by client for analyses. All claims, including those for negligence and any other cause whatsoever shall be deemed waived unless made in writing and received by Cardinal within thirty (30) days after completion of the applicable service. In no event shall Cardinal be liable for incidental or consequential damages, including, without limitation, business interruptions, loss of use, or loss of profits incurred by client, its subsidiaries, affiliates or successors arising out of or related to the performance of the services hereunder by Cardinal, regardless of whether such claim is based upon any of the above stated reasons or otherwise. Results relate only to the samples identified above. This report shall not be reproduced except in full with written approval of Cardinal Laboratories.

Mike Snyder For Celey D. Keene, Lab Director/Quality Manager



PHONE (575) 393-2326 ° 101 E. MARLAND ° HOBBS, NM 88240

Analytical Results For:

BBC International, Inc.
 Cliff Brunson
 P.O. Box 805
 Hobbs NM, 88241
 Fax To: (575) 397-0397

Received:	11/19/2021	Sampling Date:	11/16/2021
Reported:	11/24/2021	Sampling Type:	Soil
Project Name:	TWIN LAKES FLOWLINE LEAK	Sampling Condition:	Cool & Intact
Project Number:	NONE GIVEN	Sample Received By:	Tamara Oldaker
Project Location:	OXY - NEW MEXICO		

Sample ID: SP 2 @ 1' (H213340-09)

BTEx 8021B		mg/kg		Analyzed By: MS						
Analyte	Result	Reporting Limit	Analyzed	Method Blank	BS	% Recovery	True Value QC	RPD	Qualifier	
Benzene*	<0.050	0.050	11/24/2021	ND	2.02	101	2.00	5.07		
Toluene*	<0.050	0.050	11/24/2021	ND	1.87	93.6	2.00	7.82		
Ethylbenzene*	<0.050	0.050	11/24/2021	ND	1.83	91.4	2.00	5.88		
Total Xylenes*	<0.150	0.150	11/24/2021	ND	5.68	94.7	6.00	6.16		
Total BTEx	<0.300	0.300	11/24/2021	ND						

Surrogate: 4-Bromofluorobenzene (PID) 94.8 % 69.9-140

Chloride, SM4500CI-B		mg/kg		Analyzed By: GM						
Analyte	Result	Reporting Limit	Analyzed	Method Blank	BS	% Recovery	True Value QC	RPD	Qualifier	
Chloride	32.0	16.0	11/22/2021	ND	400	100	400	3.92		

TPH 8015M		mg/kg		Analyzed By: MS					
Analyte	Result	Reporting Limit	Analyzed	Method Blank	BS	% Recovery	True Value QC	RPD	Qualifier
GRO C6-C10*	<10.0	10.0	11/22/2021	ND	194	96.9	200	11.7	
DRO >C10-C28*	<10.0	10.0	11/22/2021	ND	214	107	200	14.6	
EXT DRO >C28-C36	<10.0	10.0	11/22/2021	ND					

Surrogate: 1-Chlorooctane 95.1 % 44.3-133

Surrogate: 1-Chlorooctadecane 95.1 % 38.9-142

Cardinal Laboratories

*=Accredited Analyte

PLEASE NOTE: Liability and Damages. Cardinal's liability and client's exclusive remedy for any claim arising, whether based in contract or tort, shall be limited to the amount paid by client for analyses. All claims, including those for negligence and any other cause whatsoever shall be deemed waived unless made in writing and received by Cardinal within thirty (30) days after completion of the applicable service. In no event shall Cardinal be liable for incidental or consequential damages, including, without limitation, business interruptions, loss of use, or loss of profits incurred by client, its subsidiaries, affiliates or successors arising out of or related to the performance of the services hereunder by Cardinal, regardless of whether such claim is based upon any of the above stated reasons or otherwise. Results relate only to the samples identified above. This report shall not be reproduced except in full with written approval of Cardinal Laboratories.

Mike Snyder For Celey D. Keene, Lab Director/Quality Manager



PHONE (575) 393-2326 ° 101 E. MARLAND ° HOBBS, NM 88240

Analytical Results For:

BBC International, Inc.
 Cliff Brunson
 P.O. Box 805
 Hobbs NM, 88241
 Fax To: (575) 397-0397

Received:	11/19/2021	Sampling Date:	11/16/2021
Reported:	11/24/2021	Sampling Type:	Soil
Project Name:	TWIN LAKES FLOWLINE LEAK	Sampling Condition:	Cool & Intact
Project Number:	NONE GIVEN	Sample Received By:	Tamara Oldaker
Project Location:	OXY - NEW MEXICO		

Sample ID: SP 2 @ 2' (H213340-10)

BTEx 8021B		mg/kg		Analyzed By: MS						
Analyte	Result	Reporting Limit	Analyzed	Method Blank	BS	% Recovery	True Value QC	RPD	Qualifier	
Benzene*	<0.050	0.050	11/24/2021	ND	2.02	101	2.00	5.07		
Toluene*	<0.050	0.050	11/24/2021	ND	1.87	93.6	2.00	7.82		
Ethylbenzene*	<0.050	0.050	11/24/2021	ND	1.83	91.4	2.00	5.88		
Total Xylenes*	<0.150	0.150	11/24/2021	ND	5.68	94.7	6.00	6.16		
Total BTEx	<0.300	0.300	11/24/2021	ND						

Surrogate: 4-Bromofluorobenzene (PID) 91.4 % 69.9-140

Chloride, SM4500CI-B		mg/kg		Analyzed By: GM						
Analyte	Result	Reporting Limit	Analyzed	Method Blank	BS	% Recovery	True Value QC	RPD	Qualifier	
Chloride	368	16.0	11/22/2021	ND	400	100	400	3.92		

TPH 8015M		mg/kg		Analyzed By: MS					
Analyte	Result	Reporting Limit	Analyzed	Method Blank	BS	% Recovery	True Value QC	RPD	Qualifier
GRO C6-C10*	<10.0	10.0	11/22/2021	ND	194	96.9	200	11.7	
DRO >C10-C28*	<10.0	10.0	11/22/2021	ND	214	107	200	14.6	
EXT DRO >C28-C36	<10.0	10.0	11/22/2021	ND					

Surrogate: 1-Chlorooctane 101 % 44.3-133

Surrogate: 1-Chlorooctadecane 103 % 38.9-142

Cardinal Laboratories

*=Accredited Analyte

PLEASE NOTE: Liability and Damages. Cardinal's liability and client's exclusive remedy for any claim arising, whether based in contract or tort, shall be limited to the amount paid by client for analyses. All claims, including those for negligence and any other cause whatsoever shall be deemed waived unless made in writing and received by Cardinal within thirty (30) days after completion of the applicable service. In no event shall Cardinal be liable for incidental or consequential damages, including, without limitation, business interruptions, loss of use, or loss of profits incurred by client, its subsidiaries, affiliates or successors arising out of or related to the performance of the services hereunder by Cardinal, regardless of whether such claim is based upon any of the above stated reasons or otherwise. Results relate only to the samples identified above. This report shall not be reproduced except in full with written approval of Cardinal Laboratories.

Mike Snyder For Celey D. Keene, Lab Director/Quality Manager



PHONE (575) 393-2326 ° 101 E. MARLAND ° HOBBS, NM 88240

Analytical Results For:

BBC International, Inc.
 Cliff Brunson
 P.O. Box 805
 Hobbs NM, 88241
 Fax To: (575) 397-0397

Received:	11/19/2021	Sampling Date:	11/16/2021
Reported:	11/24/2021	Sampling Type:	Soil
Project Name:	TWIN LAKES FLOWLINE LEAK	Sampling Condition:	Cool & Intact
Project Number:	NONE GIVEN	Sample Received By:	Tamara Oldaker
Project Location:	OXY - NEW MEXICO		

Sample ID: SP 2 @ 3' (H213340-11)

BTEx 8021B		mg/kg		Analyzed By: MS						
Analyte	Result	Reporting Limit	Analyzed	Method Blank	BS	% Recovery	True Value QC	RPD	Qualifier	
Benzene*	<0.050	0.050	11/24/2021	ND	2.02	101	2.00	5.07		
Toluene*	<0.050	0.050	11/24/2021	ND	1.87	93.6	2.00	7.82		
Ethylbenzene*	<0.050	0.050	11/24/2021	ND	1.83	91.4	2.00	5.88		
Total Xylenes*	<0.150	0.150	11/24/2021	ND	5.68	94.7	6.00	6.16		
Total BTEX	<0.300	0.300	11/24/2021	ND						

Surrogate: 4-Bromofluorobenzene (PID) 94.5 % 69.9-140

Chloride, SM4500Cl-B		mg/kg		Analyzed By: GM						
Analyte	Result	Reporting Limit	Analyzed	Method Blank	BS	% Recovery	True Value QC	RPD	Qualifier	
Chloride	16.0	16.0	11/22/2021	ND	400	100	400	3.92		

TPH 8015M		mg/kg		Analyzed By: MS					
Analyte	Result	Reporting Limit	Analyzed	Method Blank	BS	% Recovery	True Value QC	RPD	Qualifier
GRO C6-C10*	<10.0	10.0	11/22/2021	ND	194	96.9	200	11.7	
DRO >C10-C28*	<10.0	10.0	11/22/2021	ND	214	107	200	14.6	
EXT DRO >C28-C36	<10.0	10.0	11/22/2021	ND					

Surrogate: 1-Chlorooctane 86.9 % 44.3-133

Surrogate: 1-Chlorooctadecane 87.3 % 38.9-142

Cardinal Laboratories

*=Accredited Analyte

PLEASE NOTE: Liability and Damages. Cardinal's liability and client's exclusive remedy for any claim arising, whether based in contract or tort, shall be limited to the amount paid by client for analyses. All claims, including those for negligence and any other cause whatsoever shall be deemed waived unless made in writing and received by Cardinal within thirty (30) days after completion of the applicable service. In no event shall Cardinal be liable for incidental or consequential damages, including, without limitation, business interruptions, loss of use, or loss of profits incurred by client, its subsidiaries, affiliates or successors arising out of or related to the performance of the services hereunder by Cardinal, regardless of whether such claim is based upon any of the above stated reasons or otherwise. Results relate only to the samples identified above. This report shall not be reproduced except in full with written approval of Cardinal Laboratories.

Mike Snyder For Celey D. Keene, Lab Director/Quality Manager



PHONE (575) 393-2326 ° 101 E. MARLAND ° HOBBS, NM 88240

Analytical Results For:

BBC International, Inc.
 Cliff Brunson
 P.O. Box 805
 Hobbs NM, 88241
 Fax To: (575) 397-0397

Received:	11/19/2021	Sampling Date:	11/16/2021
Reported:	11/24/2021	Sampling Type:	Soil
Project Name:	TWIN LAKES FLOWLINE LEAK	Sampling Condition:	Cool & Intact
Project Number:	NONE GIVEN	Sample Received By:	Tamara Oldaker
Project Location:	OXY - NEW MEXICO		

Sample ID: SP 3 @ SURFACE (H213340-12)

BTEx 8021B		mg/kg		Analyzed By: MS					
Analyte	Result	Reporting Limit	Analyzed	Method Blank	BS	% Recovery	True Value QC	RPD	Qualifier
Benzene*	0.050	0.050	11/24/2021	ND	2.02	101	2.00	5.07	
Toluene*	0.090	0.050	11/24/2021	ND	1.87	93.6	2.00	7.82	
Ethylbenzene*	<0.050	0.050	11/24/2021	ND	1.83	91.4	2.00	5.88	
Total Xylenes*	<0.150	0.150	11/24/2021	ND	5.68	94.7	6.00	6.16	
Total BTEX	<0.300	0.300	11/24/2021	ND					

Surrogate: 4-Bromofluorobenzene (PID) 92.8 % 69.9-140

Chloride, SM4500Cl-B		mg/kg		Analyzed By: GM						
Analyte	Result	Reporting Limit	Analyzed	Method Blank	BS	% Recovery	True Value QC	RPD	Qualifier	
Chloride	32.0	16.0	11/22/2021	ND	400	100	400	3.92		

TPH 8015M		mg/kg		Analyzed By: MS					
Analyte	Result	Reporting Limit	Analyzed	Method Blank	BS	% Recovery	True Value QC	RPD	Qualifier
GRO C6-C10*	<10.0	10.0	11/22/2021	ND	222	111	200	0.982	
DRO >C10-C28*	<10.0	10.0	11/22/2021	ND	213	106	200	0.432	
EXT DRO >C28-C36	<10.0	10.0	11/22/2021	ND					

Surrogate: 1-Chlorooctane 91.6 % 44.3-133

Surrogate: 1-Chlorooctadecane 91.5 % 38.9-142

Cardinal Laboratories

*=Accredited Analyte

PLEASE NOTE: Liability and Damages. Cardinal's liability and client's exclusive remedy for any claim arising, whether based in contract or tort, shall be limited to the amount paid by client for analyses. All claims, including those for negligence and any other cause whatsoever shall be deemed waived unless made in writing and received by Cardinal within thirty (30) days after completion of the applicable service. In no event shall Cardinal be liable for incidental or consequential damages, including, without limitation, business interruptions, loss of use, or loss of profits incurred by client, its subsidiaries, affiliates or successors arising out of or related to the performance of the services hereunder by Cardinal, regardless of whether such claim is based upon any of the above stated reasons or otherwise. Results relate only to the samples identified above. This report shall not be reproduced except in full with written approval of Cardinal Laboratories.

Mike Snyder For Celey D. Keene, Lab Director/Quality Manager



PHONE (575) 393-2326 ° 101 E. MARLAND ° HOBBS, NM 88240

Analytical Results For:

BBC International, Inc.
 Cliff Brunson
 P.O. Box 805
 Hobbs NM, 88241
 Fax To: (575) 397-0397

Received:	11/19/2021	Sampling Date:	11/16/2021
Reported:	11/24/2021	Sampling Type:	Soil
Project Name:	TWIN LAKES FLOWLINE LEAK	Sampling Condition:	Cool & Intact
Project Number:	NONE GIVEN	Sample Received By:	Tamara Oldaker
Project Location:	OXY - NEW MEXICO		

Sample ID: SP 3 @ 1' (H213340-13)

BTEx 8021B		mg/kg		Analyzed By: MS						
Analyte	Result	Reporting Limit	Analyzed	Method Blank	BS	% Recovery	True Value QC	RPD	Qualifier	
Benzene*	<0.050	0.050	11/24/2021	ND	2.02	101	2.00	5.07		
Toluene*	<0.050	0.050	11/24/2021	ND	1.87	93.6	2.00	7.82		
Ethylbenzene*	<0.050	0.050	11/24/2021	ND	1.83	91.4	2.00	5.88		
Total Xylenes*	<0.150	0.150	11/24/2021	ND	5.68	94.7	6.00	6.16		
Total BTEx	<0.300	0.300	11/24/2021	ND						

Surrogate: 4-Bromofluorobenzene (PID) 96.2 % 69.9-140

Chloride, SM4500Cl-B		mg/kg		Analyzed By: GM						
Analyte	Result	Reporting Limit	Analyzed	Method Blank	BS	% Recovery	True Value QC	RPD	Qualifier	
Chloride	32.0	16.0	11/22/2021	ND	400	100	400	3.92		

TPH 8015M		mg/kg		Analyzed By: MS					
Analyte	Result	Reporting Limit	Analyzed	Method Blank	BS	% Recovery	True Value QC	RPD	Qualifier
GRO C6-C10*	<10.0	10.0	11/22/2021	ND	222	111	200	0.982	
DRO >C10-C28*	<10.0	10.0	11/22/2021	ND	213	106	200	0.432	
EXT DRO >C28-C36	<10.0	10.0	11/22/2021	ND					

Surrogate: 1-Chlorooctane 102 % 44.3-133

Surrogate: 1-Chlorooctadecane 97.6 % 38.9-142

Cardinal Laboratories

*=Accredited Analyte

PLEASE NOTE: Liability and Damages. Cardinal's liability and client's exclusive remedy for any claim arising, whether based in contract or tort, shall be limited to the amount paid by client for analyses. All claims, including those for negligence and any other cause whatsoever shall be deemed waived unless made in writing and received by Cardinal within thirty (30) days after completion of the applicable service. In no event shall Cardinal be liable for incidental or consequential damages, including, without limitation, business interruptions, loss of use, or loss of profits incurred by client, its subsidiaries, affiliates or successors arising out of or related to the performance of the services hereunder by Cardinal, regardless of whether such claim is based upon any of the above stated reasons or otherwise. Results relate only to the samples identified above. This report shall not be reproduced except in full with written approval of Cardinal Laboratories.

Mike Snyder For Celey D. Keene, Lab Director/Quality Manager



PHONE (575) 393-2326 ° 101 E. MARLAND ° HOBBS, NM 88240

Analytical Results For:

BBC International, Inc.
 Cliff Brunson
 P.O. Box 805
 Hobbs NM, 88241
 Fax To: (575) 397-0397

Received:	11/19/2021	Sampling Date:	11/16/2021
Reported:	11/24/2021	Sampling Type:	Soil
Project Name:	TWIN LAKES FLOWLINE LEAK	Sampling Condition:	Cool & Intact
Project Number:	NONE GIVEN	Sample Received By:	Tamara Oldaker
Project Location:	OXY - NEW MEXICO		

Sample ID: SP 3 @ 2' (H213340-14)

BTX 8021B		mg/kg		Analyzed By: MS					
Analyte	Result	Reporting Limit	Analyzed	Method Blank	BS	% Recovery	True Value QC	RPD	Qualifier
Benzene*	<0.050	0.050	11/24/2021	ND	2.02	101	2.00	5.07	
Toluene*	<0.050	0.050	11/24/2021	ND	1.87	93.6	2.00	7.82	
Ethylbenzene*	<0.050	0.050	11/24/2021	ND	1.83	91.4	2.00	5.88	
Total Xylenes*	<0.150	0.150	11/24/2021	ND	5.68	94.7	6.00	6.16	
Total BTX	<0.300	0.300	11/24/2021	ND					

Surrogate: 4-Bromofluorobenzene (PID) 92.0 % 69.9-140

Chloride, SM4500CI-B		mg/kg		Analyzed By: GM						
Analyte	Result	Reporting Limit	Analyzed	Method Blank	BS	% Recovery	True Value QC	RPD	Qualifier	
Chloride	16.0	16.0	11/22/2021	ND	400	100	400	3.92		

TPH 8015M		mg/kg		Analyzed By: MS					
Analyte	Result	Reporting Limit	Analyzed	Method Blank	BS	% Recovery	True Value QC	RPD	Qualifier
GRO C6-C10*	<10.0	10.0	11/22/2021	ND	222	111	200	0.982	
DRO >C10-C28*	<10.0	10.0	11/22/2021	ND	213	106	200	0.432	
EXT DRO >C28-C36	<10.0	10.0	11/22/2021	ND					

Surrogate: 1-Chlorooctane 103 % 44.3-133

Surrogate: 1-Chlorooctadecane 104 % 38.9-142

Cardinal Laboratories

*=Accredited Analyte

PLEASE NOTE: Liability and Damages. Cardinal's liability and client's exclusive remedy for any claim arising, whether based in contract or tort, shall be limited to the amount paid by client for analyses. All claims, including those for negligence and any other cause whatsoever shall be deemed waived unless made in writing and received by Cardinal within thirty (30) days after completion of the applicable service. In no event shall Cardinal be liable for incidental or consequential damages, including, without limitation, business interruptions, loss of use, or loss of profits incurred by client, its subsidiaries, affiliates or successors arising out of or related to the performance of the services hereunder by Cardinal, regardless of whether such claim is based upon any of the above stated reasons or otherwise. Results relate only to the samples identified above. This report shall not be reproduced except in full with written approval of Cardinal Laboratories.

Mike Snyder For Celey D. Keene, Lab Director/Quality Manager



PHONE (575) 393-2326 ° 101 E. MARLAND ° HOBBS, NM 88240

Analytical Results For:

BBC International, Inc.
 Cliff Brunson
 P.O. Box 805
 Hobbs NM, 88241
 Fax To: (575) 397-0397

Received:	11/19/2021	Sampling Date:	11/16/2021
Reported:	11/24/2021	Sampling Type:	Soil
Project Name:	TWIN LAKES FLOWLINE LEAK	Sampling Condition:	Cool & Intact
Project Number:	NONE GIVEN	Sample Received By:	Tamara Oldaker
Project Location:	OXY - NEW MEXICO		

Sample ID: SP 4 @ SURFACE (H213340-15)

BTEx 8021B		mg/kg		Analyzed By: MS					
Analyte	Result	Reporting Limit	Analyzed	Method Blank	BS	% Recovery	True Value QC	RPD	Qualifier
Benzene*	0.286	0.050	11/22/2021	ND	2.04	102	2.00	3.68	
Toluene*	0.257	0.050	11/22/2021	ND	1.93	96.7	2.00	4.29	
Ethylbenzene*	0.063	0.050	11/22/2021	ND	1.91	95.3	2.00	4.29	
Total Xylenes*	<0.150	0.150	11/22/2021	ND	5.83	97.2	6.00	4.24	
Total BTEX	0.606	0.300	11/22/2021	ND					

Surrogate: 4-Bromofluorobenzene (PID) 92.4 % 69.9-140

Chloride, SM4500Cl-B		mg/kg		Analyzed By: GM					
Analyte	Result	Reporting Limit	Analyzed	Method Blank	BS	% Recovery	True Value QC	RPD	Qualifier
Chloride	16.0	16.0	11/22/2021	ND	400	100	400	3.92	

TPH 8015M		mg/kg		Analyzed By: MS					
Analyte	Result	Reporting Limit	Analyzed	Method Blank	BS	% Recovery	True Value QC	RPD	Qualifier
GRO C6-C10*	15.3	10.0	11/23/2021	ND	222	111	200	0.982	
DRO >C10-C28*	1040	10.0	11/23/2021	ND	213	106	200	0.432	
EXT DRO >C28-C36	1120	10.0	11/23/2021	ND					

Surrogate: 1-Chlorooctane 96.3 % 44.3-133

Surrogate: 1-Chlorooctadecane 118 % 38.9-142

Cardinal Laboratories

*=Accredited Analyte

PLEASE NOTE: Liability and Damages. Cardinal's liability and client's exclusive remedy for any claim arising, whether based in contract or tort, shall be limited to the amount paid by client for analyses. All claims, including those for negligence and any other cause whatsoever shall be deemed waived unless made in writing and received by Cardinal within thirty (30) days after completion of the applicable service. In no event shall Cardinal be liable for incidental or consequential damages, including, without limitation, business interruptions, loss of use, or loss of profits incurred by client, its subsidiaries, affiliates or successors arising out of or related to the performance of the services hereunder by Cardinal, regardless of whether such claim is based upon any of the above stated reasons or otherwise. Results relate only to the samples identified above. This report shall not be reproduced except in full with written approval of Cardinal Laboratories.

Mike Snyder For Celey D. Keene, Lab Director/Quality Manager



PHONE (575) 393-2326 ° 101 E. MARLAND ° HOBBS, NM 88240

Analytical Results For:

BBC International, Inc.
 Cliff Brunson
 P.O. Box 805
 Hobbs NM, 88241
 Fax To: (575) 397-0397

Received:	11/19/2021	Sampling Date:	11/16/2021
Reported:	11/24/2021	Sampling Type:	Soil
Project Name:	TWIN LAKES FLOWLINE LEAK	Sampling Condition:	Cool & Intact
Project Number:	NONE GIVEN	Sample Received By:	Tamara Oldaker
Project Location:	OXY - NEW MEXICO		

Sample ID: SP 4 @ 1' (H213340-16)

BTEx 8021B		mg/kg		Analyzed By: MS					
Analyte	Result	Reporting Limit	Analyzed	Method Blank	BS	% Recovery	True Value QC	RPD	Qualifier
Benzene*	<0.500	0.500	11/23/2021	ND	1.78	89.0	2.00	5.82	
Toluene*	<0.500	0.500	11/23/2021	ND	1.96	98.2	2.00	6.55	
Ethylbenzene*	18.6	0.500	11/23/2021	ND	2.02	101	2.00	6.92	
Total Xylenes*	6.37	1.50	11/23/2021	ND	6.17	103	6.00	5.64	
Total BTEX	25.0	3.00	11/23/2021	ND					

Surrogate: 4-Bromofluorobenzene (PID) 111 % 69.9-140

Chloride, SM4500Cl-B		mg/kg		Analyzed By: GM						
Analyte	Result	Reporting Limit	Analyzed	Method Blank	BS	% Recovery	True Value QC	RPD	Qualifier	
Chloride	480	16.0	11/22/2021	ND	400	100	400	3.92		
TPH 8015M		mg/kg		Analyzed By: MS						S-06

TPH 8015M	mg/kg		Analyzed By: MS					S-06	
Analyte	Result	Reporting Limit	Analyzed	Method Blank	BS	% Recovery	True Value QC	RPD	Qualifier
GRO C6-C10*	758	50.0	11/22/2021	ND	222	111	200	0.982	
DRO >C10-C28*	11800	50.0	11/22/2021	ND	213	106	200	0.432	
EXT DRO >C28-C36	2550	50.0	11/22/2021	ND					

Surrogate: 1-Chlorooctane 179 % 44.3-133

Surrogate: 1-Chlorooctadecane 274 % 38.9-142

Cardinal Laboratories

*=Accredited Analyte

PLEASE NOTE: Liability and Damages. Cardinal's liability and client's exclusive remedy for any claim arising, whether based in contract or tort, shall be limited to the amount paid by client for analyses. All claims, including those for negligence and any other cause whatsoever shall be deemed waived unless made in writing and received by Cardinal within thirty (30) days after completion of the applicable service. In no event shall Cardinal be liable for incidental or consequential damages, including, without limitation, business interruptions, loss of use, or loss of profits incurred by client, its subsidiaries, affiliates or successors arising out of or related to the performance of the services hereunder by Cardinal, regardless of whether such claim is based upon any of the above stated reasons or otherwise. Results relate only to the samples identified above. This report shall not be reproduced except in full with written approval of Cardinal Laboratories.

Mike Snyder For Celey D. Keene, Lab Director/Quality Manager



PHONE (575) 393-2326 ° 101 E. MARLAND ° HOBBS, NM 88240

Analytical Results For:

BBC International, Inc.
 Cliff Brunson
 P.O. Box 805
 Hobbs NM, 88241
 Fax To: (575) 397-0397

Received:	11/19/2021	Sampling Date:	11/16/2021
Reported:	11/24/2021	Sampling Type:	Soil
Project Name:	TWIN LAKES FLOWLINE LEAK	Sampling Condition:	Cool & Intact
Project Number:	NONE GIVEN	Sample Received By:	Tamara Oldaker
Project Location:	OXY - NEW MEXICO		

Sample ID: SP 4 @ 2' (H213340-17)

BTX 8021B		mg/kg		Analyzed By: MS					
Analyte	Result	Reporting Limit	Analyzed	Method Blank	BS	% Recovery	True Value QC	RPD	Qualifier
Benzene*	0.091	0.050	11/23/2021	ND	1.78	89.0	2.00	5.82	
Toluene*	0.125	0.050	11/23/2021	ND	1.96	98.2	2.00	6.55	
Ethylbenzene*	0.081	0.050	11/23/2021	ND	2.02	101	2.00	6.92	
Total Xylenes*	<0.150	0.150	11/23/2021	ND	6.17	103	6.00	5.64	
Total BTX	<0.300	0.300	11/23/2021	ND					

Surrogate: 4-Bromofluorobenzene (PID) 99.3 % 69.9-140

Chloride, SM4500CI-B		mg/kg		Analyzed By: GM					
Analyte	Result	Reporting Limit	Analyzed	Method Blank	BS	% Recovery	True Value QC	RPD	Qualifier
Chloride	192	16.0	11/22/2021	ND	400	100	400	3.92	

TPH 8015M		mg/kg		Analyzed By: MS					
Analyte	Result	Reporting Limit	Analyzed	Method Blank	BS	% Recovery	True Value QC	RPD	Qualifier
GRO C6-C10*	<10.0	10.0	11/23/2021	ND	222	111	200	0.982	
DRO >C10-C28*	667	10.0	11/23/2021	ND	213	106	200	0.432	
EXT DRO >C28-C36	678	10.0	11/23/2021	ND					

Surrogate: 1-Chlorooctane 103 % 44.3-133

Surrogate: 1-Chlorooctadecane 122 % 38.9-142

Cardinal Laboratories

*=Accredited Analyte

PLEASE NOTE: Liability and Damages. Cardinal's liability and client's exclusive remedy for any claim arising, whether based in contract or tort, shall be limited to the amount paid by client for analyses. All claims, including those for negligence and any other cause whatsoever shall be deemed waived unless made in writing and received by Cardinal within thirty (30) days after completion of the applicable service. In no event shall Cardinal be liable for incidental or consequential damages, including, without limitation, business interruptions, loss of use, or loss of profits incurred by client, its subsidiaries, affiliates or successors arising out of or related to the performance of the services hereunder by Cardinal, regardless of whether such claim is based upon any of the above stated reasons or otherwise. Results relate only to the samples identified above. This report shall not be reproduced except in full with written approval of Cardinal Laboratories.

Mike Snyder For Celey D. Keene, Lab Director/Quality Manager



PHONE (575) 393-2326 ° 101 E. MARLAND ° HOBBS, NM 88240

Analytical Results For:

BBC International, Inc.
 Cliff Brunson
 P.O. Box 805
 Hobbs NM, 88241
 Fax To: (575) 397-0397

Received:	11/19/2021	Sampling Date:	11/16/2021
Reported:	11/24/2021	Sampling Type:	Soil
Project Name:	TWIN LAKES FLOWLINE LEAK	Sampling Condition:	Cool & Intact
Project Number:	NONE GIVEN	Sample Received By:	Tamara Oldaker
Project Location:	OXY - NEW MEXICO		

Sample ID: SP 4 @ 3' (H213340-18)

BTEx 8021B		mg/kg		Analyzed By: MS					
Analyte	Result	Reporting Limit	Analyzed	Method Blank	BS	% Recovery	True Value QC	RPD	Qualifier
Benzene*	0.199	0.050	11/23/2021	ND	1.78	89.0	2.00	5.82	
Toluene*	0.207	0.050	11/23/2021	ND	1.96	98.2	2.00	6.55	
Ethylbenzene*	<0.050	0.050	11/23/2021	ND	2.02	101	2.00	6.92	
Total Xylenes*	<0.150	0.150	11/23/2021	ND	6.17	103	6.00	5.64	
Total BTEX	0.406	0.300	11/23/2021	ND					

Surrogate: 4-Bromofluorobenzene (PID) 94.6 % 69.9-140

Chloride, SM4500Cl-B		mg/kg		Analyzed By: GM						
Analyte	Result	Reporting Limit	Analyzed	Method Blank	BS	% Recovery	True Value QC	RPD	Qualifier	
Chloride	<16.0	16.0	11/22/2021	ND	400	100	400	3.92		

TPH 8015M		mg/kg		Analyzed By: MS				S-04	
Analyte	Result	Reporting Limit	Analyzed	Method Blank	BS	% Recovery	True Value QC	RPD	Qualifier
GRO C6-C10*	<10.0	10.0	11/23/2021	ND	222	111	200	0.982	
DRO >C10-C28*	1480	10.0	11/23/2021	ND	213	106	200	0.432	
EXT DRO >C28-C36	1260	10.0	11/23/2021	ND					

Surrogate: 1-Chlorooctane 99.1 % 44.3-133

Surrogate: 1-Chlorooctadecane 133 % 38.9-142

Cardinal Laboratories

*=Accredited Analyte

PLEASE NOTE: Liability and Damages. Cardinal's liability and client's exclusive remedy for any claim arising, whether based in contract or tort, shall be limited to the amount paid by client for analyses. All claims, including those for negligence and any other cause whatsoever shall be deemed waived unless made in writing and received by Cardinal within thirty (30) days after completion of the applicable service. In no event shall Cardinal be liable for incidental or consequential damages, including, without limitation, business interruptions, loss of use, or loss of profits incurred by client, its subsidiaries, affiliates or successors arising out of or related to the performance of the services hereunder by Cardinal, regardless of whether such claim is based upon any of the above stated reasons or otherwise. Results relate only to the samples identified above. This report shall not be reproduced except in full with written approval of Cardinal Laboratories.

Mike Snyder For Celey D. Keene, Lab Director/Quality Manager



PHONE (575) 393-2326 ° 101 E. MARLAND ° HOBBS, NM 88240

Analytical Results For:

BBC International, Inc.
 Cliff Brunson
 P.O. Box 805
 Hobbs NM, 88241
 Fax To: (575) 397-0397

Received:	11/19/2021	Sampling Date:	11/16/2021
Reported:	11/24/2021	Sampling Type:	Soil
Project Name:	TWIN LAKES FLOWLINE LEAK	Sampling Condition:	Cool & Intact
Project Number:	NONE GIVEN	Sample Received By:	Tamara Oldaker
Project Location:	OXY - NEW MEXICO		

Sample ID: SP 4 @ 4' (H213340-19)

BTEx 8021B		mg/kg		Analyzed By: MS					
Analyte	Result	Reporting Limit	Analyzed	Method Blank	BS	% Recovery	True Value QC	RPD	Qualifier
Benzene*	0.134	0.050	11/23/2021	ND	1.78	89.0	2.00	5.82	
Toluene*	0.144	0.050	11/23/2021	ND	1.96	98.2	2.00	6.55	
Ethylbenzene*	0.096	0.050	11/23/2021	ND	2.02	101	2.00	6.92	
Total Xylenes*	<0.150	0.150	11/23/2021	ND	6.17	103	6.00	5.64	
Total BTEX	0.374	0.300	11/23/2021	ND					

Surrogate: 4-Bromofluorobenzene (PID) 95.1 % 69.9-140

Chloride, SM4500Cl-B		mg/kg		Analyzed By: GM					
Analyte	Result	Reporting Limit	Analyzed	Method Blank	BS	% Recovery	True Value QC	RPD	Qualifier
Chloride	32.0	16.0	11/22/2021	ND	400	100	400	3.92	

TPH 8015M		mg/kg		Analyzed By: MS						S-06
Analyte	Result	Reporting Limit	Analyzed	Method Blank	BS	% Recovery	True Value QC	RPD	Qualifier	
GRO C6-C10*	<50.0	50.0	11/22/2021	ND	222	111	200	0.982		
DRO >C10-C28*	2060	50.0	11/22/2021	ND	213	106	200	0.432		
EXT DRO >C28-C36	2260	50.0	11/22/2021	ND						

Surrogate: 1-Chlorooctane 117 % 44.3-133

Surrogate: 1-Chlorooctadecane 187 % 38.9-142

Cardinal Laboratories

*=Accredited Analyte

PLEASE NOTE: Liability and Damages. Cardinal's liability and client's exclusive remedy for any claim arising, whether based in contract or tort, shall be limited to the amount paid by client for analyses. All claims, including those for negligence and any other cause whatsoever shall be deemed waived unless made in writing and received by Cardinal within thirty (30) days after completion of the applicable service. In no event shall Cardinal be liable for incidental or consequential damages, including, without limitation, business interruptions, loss of use, or loss of profits incurred by client, its subsidiaries, affiliates or successors arising out of or related to the performance of the services hereunder by Cardinal, regardless of whether such claim is based upon any of the above stated reasons or otherwise. Results relate only to the samples identified above. This report shall not be reproduced except in full with written approval of Cardinal Laboratories.

Mike Snyder For Celey D. Keene, Lab Director/Quality Manager



PHONE (575) 393-2326 ° 101 E. MARLAND ° HOBBS, NM 88240

Analytical Results For:

BBC International, Inc.
 Cliff Brunson
 P.O. Box 805
 Hobbs NM, 88241
 Fax To: (575) 397-0397

Received:	11/19/2021	Sampling Date:	11/16/2021
Reported:	11/24/2021	Sampling Type:	Soil
Project Name:	TWIN LAKES FLOWLINE LEAK	Sampling Condition:	Cool & Intact
Project Number:	NONE GIVEN	Sample Received By:	Tamara Oldaker
Project Location:	OXY - NEW MEXICO		

Sample ID: SP 4 @ 5' (H213340-20)

BTEx 8021B		mg/kg		Analyzed By: MS					
Analyte	Result	Reporting Limit	Analyzed	Method Blank	BS	% Recovery	True Value QC	RPD	Qualifier
Benzene*	0.151	0.050	11/23/2021	ND	1.78	89.0	2.00	5.82	
Toluene*	0.183	0.050	11/23/2021	ND	1.96	98.2	2.00	6.55	
Ethylbenzene*	0.357	0.050	11/23/2021	ND	2.02	101	2.00	6.92	
Total Xylenes*	0.167	0.150	11/23/2021	ND	6.17	103	6.00	5.64	
Total BTEX	0.838	0.300	11/23/2021	ND					

Surrogate: 4-Bromofluorobenzene (PID) 95.7 % 69.9-140

Chloride, SM4500Cl-B		mg/kg		Analyzed By: GM					
Analyte	Result	Reporting Limit	Analyzed	Method Blank	BS	% Recovery	True Value QC	RPD	Qualifier
Chloride	16.0	16.0	11/22/2021	ND	400	100	400	3.92	

TPH 8015M		mg/kg		Analyzed By: MS						S-04
Analyte	Result	Reporting Limit	Analyzed	Method Blank	BS	% Recovery	True Value QC	RPD	Qualifier	
GRO C6-C10*	<10.0	10.0	11/23/2021	ND	222	111	200	0.982		
DRO >C10-C28*	1350	10.0	11/23/2021	ND	213	106	200	0.432		
EXT DRO >C28-C36	1080	10.0	11/23/2021	ND						

Surrogate: 1-Chlorooctane 121 % 44.3-133

Surrogate: 1-Chlorooctadecane 148 % 38.9-142

Cardinal Laboratories

*=Accredited Analyte

PLEASE NOTE: Liability and Damages. Cardinal's liability and client's exclusive remedy for any claim arising, whether based in contract or tort, shall be limited to the amount paid by client for analyses. All claims, including those for negligence and any other cause whatsoever shall be deemed waived unless made in writing and received by Cardinal within thirty (30) days after completion of the applicable service. In no event shall Cardinal be liable for incidental or consequential damages, including, without limitation, business interruptions, loss of use, or loss of profits incurred by client, its subsidiaries, affiliates or successors arising out of or related to the performance of the services hereunder by Cardinal, regardless of whether such claim is based upon any of the above stated reasons or otherwise. Results relate only to the samples identified above. This report shall not be reproduced except in full with written approval of Cardinal Laboratories.

Mike Snyder For Celey D. Keene, Lab Director/Quality Manager



PHONE (575) 393-2326 ° 101 E. MARLAND ° HOBBS, NM 88240

Analytical Results For:

BBC International, Inc.
 Cliff Brunson
 P.O. Box 805
 Hobbs NM, 88241
 Fax To: (575) 397-0397

Received:	11/19/2021	Sampling Date:	11/18/2021
Reported:	11/24/2021	Sampling Type:	Soil
Project Name:	TWIN LAKES FLOWLINE LEAK	Sampling Condition:	Cool & Intact
Project Number:	NONE GIVEN	Sample Received By:	Tamara Oldaker
Project Location:	OXY - NEW MEXICO		

Sample ID: SP 5 @ SURFACE (H213340-21)

BTEx 8021B		mg/kg		Analyzed By: MS					
Analyte	Result	Reporting Limit	Analyzed	Method Blank	BS	% Recovery	True Value QC	RPD	Qualifier
Benzene*	0.060	0.050	11/24/2021	ND	1.78	89.0	2.00	5.82	
Toluene*	0.086	0.050	11/24/2021	ND	1.96	98.2	2.00	6.55	
Ethylbenzene*	0.155	0.050	11/24/2021	ND	2.02	101	2.00	6.92	
Total Xylenes*	0.331	0.150	11/24/2021	ND	6.17	103	6.00	5.64	
Total BTEX	0.631	0.300	11/24/2021	ND					

Surrogate: 4-Bromofluorobenzene (PID) 99.7 % 69.9-140

Chloride, SM4500Cl-B		mg/kg		Analyzed By: GM						
Analyte	Result	Reporting Limit	Analyzed	Method Blank	BS	% Recovery	True Value QC	RPD	Qualifier	
Chloride	208	16.0	11/22/2021	ND	400	100	400	3.92		

TPH 8015M		mg/kg		Analyzed By: MS				S-06	
Analyte	Result	Reporting Limit	Analyzed	Method Blank	BS	% Recovery	True Value QC	RPD	Qualifier
GRO C6-C10*	<100	100	11/22/2021	ND	222	111	200	0.982	
DRO >C10-C28*	29500	100	11/22/2021	ND	213	106	200	0.432	
EXT DRO >C28-C36	11300	100	11/22/2021	ND					

Surrogate: 1-Chlorooctane 101 % 44.3-133

Surrogate: 1-Chlorooctadecane 626 % 38.9-142

Cardinal Laboratories

*=Accredited Analyte

PLEASE NOTE: Liability and Damages. Cardinal's liability and client's exclusive remedy for any claim arising, whether based in contract or tort, shall be limited to the amount paid by client for analyses. All claims, including those for negligence and any other cause whatsoever shall be deemed waived unless made in writing and received by Cardinal within thirty (30) days after completion of the applicable service. In no event shall Cardinal be liable for incidental or consequential damages, including, without limitation, business interruptions, loss of use, or loss of profits incurred by client, its subsidiaries, affiliates or successors arising out of or related to the performance of the services hereunder by Cardinal, regardless of whether such claim is based upon any of the above stated reasons or otherwise. Results relate only to the samples identified above. This report shall not be reproduced except in full with written approval of Cardinal Laboratories.

Mike Snyder For Celey D. Keene, Lab Director/Quality Manager



PHONE (575) 393-2326 ° 101 E. MARLAND ° HOBBS, NM 88240

Analytical Results For:

BBC International, Inc.
 Cliff Brunson
 P.O. Box 805
 Hobbs NM, 88241
 Fax To: (575) 397-0397

Received:	11/19/2021	Sampling Date:	11/18/2021
Reported:	11/24/2021	Sampling Type:	Soil
Project Name:	TWIN LAKES FLOWLINE LEAK	Sampling Condition:	Cool & Intact
Project Number:	NONE GIVEN	Sample Received By:	Tamara Oldaker
Project Location:	OXY - NEW MEXICO		

Sample ID: SP 5 @ 1' (H213340-22)

BTEx 8021B		mg/kg		Analyzed By: MS					
Analyte	Result	Reporting Limit	Analyzed	Method Blank	BS	% Recovery	True Value QC	RPD	Qualifier
Benzene*	0.108	0.050	11/23/2021	ND	1.78	89.0	2.00	5.82	
Toluene*	0.107	0.050	11/23/2021	ND	1.96	98.2	2.00	6.55	
Ethylbenzene*	<0.050	0.050	11/23/2021	ND	2.02	101	2.00	6.92	
Total Xylenes*	<0.150	0.150	11/23/2021	ND	6.17	103	6.00	5.64	
Total BTEX	<0.300	0.300	11/23/2021	ND					

Surrogate: 4-Bromofluorobenzene (PID) 94.5 % 69.9-140

Chloride, SM4500Cl-B		mg/kg		Analyzed By: GM						
Analyte	Result	Reporting Limit	Analyzed	Method Blank	BS	% Recovery	True Value QC	RPD	Qualifier	
Chloride	112	16.0	11/22/2021	ND	400	100	400	3.92		

TPH 8015M	mg/kg		Analyzed By: MS					S-04	
Analyte	Result	Reporting Limit	Analyzed	Method Blank	BS	% Recovery	True Value QC	RPD	Qualifier
GRO C6-C10*	<10.0	10.0	11/23/2021	ND	222	111	200	0.982	
DRO >C10-C28*	848	10.0	11/23/2021	ND	213	106	200	0.432	
EXT DRO >C28-C36	684	10.0	11/23/2021	ND					

Surrogate: 1-Chlorooctane 108 % 44.3-133

Surrogate: 1-Chlorooctadecane 129 % 38.9-142

Cardinal Laboratories

*=Accredited Analyte

PLEASE NOTE: Liability and Damages. Cardinal's liability and client's exclusive remedy for any claim arising, whether based in contract or tort, shall be limited to the amount paid by client for analyses. All claims, including those for negligence and any other cause whatsoever shall be deemed waived unless made in writing and received by Cardinal within thirty (30) days after completion of the applicable service. In no event shall Cardinal be liable for incidental or consequential damages, including, without limitation, business interruptions, loss of use, or loss of profits incurred by client, its subsidiaries, affiliates or successors arising out of or related to the performance of the services hereunder by Cardinal, regardless of whether such claim is based upon any of the above stated reasons or otherwise. Results relate only to the samples identified above. This report shall not be reproduced except in full with written approval of Cardinal Laboratories.

Mike Snyder For Celey D. Keene, Lab Director/Quality Manager



PHONE (575) 393-2326 ° 101 E. MARLAND ° HOBBS, NM 88240

Analytical Results For:

BBC International, Inc.
 Cliff Brunson
 P.O. Box 805
 Hobbs NM, 88241
 Fax To: (575) 397-0397

Received:	11/19/2021	Sampling Date:	11/18/2021
Reported:	11/24/2021	Sampling Type:	Soil
Project Name:	TWIN LAKES FLOWLINE LEAK	Sampling Condition:	Cool & Intact
Project Number:	NONE GIVEN	Sample Received By:	Tamara Oldaker
Project Location:	OXY - NEW MEXICO		

Sample ID: SP 5 @ 2' (H213340-23)

BTEx 8021B		mg/kg		Analyzed By: MS						
Analyte	Result	Reporting Limit	Analyzed	Method Blank	BS	% Recovery	True Value QC	RPD	Qualifier	
Benzene*	<0.050	0.050	11/23/2021	ND	1.78	89.0	2.00	5.82		
Toluene*	<0.050	0.050	11/23/2021	ND	1.96	98.2	2.00	6.55		
Ethylbenzene*	<0.050	0.050	11/23/2021	ND	2.02	101	2.00	6.92		
Total Xylenes*	<0.150	0.150	11/23/2021	ND	6.17	103	6.00	5.64		
Total BTEx	<0.300	0.300	11/23/2021	ND						

Surrogate: 4-Bromofluorobenzene (PID) 94.7 % 69.9-140

Chloride, SM4500Cl-B		mg/kg		Analyzed By: GM						
Analyte	Result	Reporting Limit	Analyzed	Method Blank	BS	% Recovery	True Value QC	RPD	Qualifier	
Chloride	<16.0	16.0	11/22/2021	ND	400	100	400	3.92		

TPH 8015M		mg/kg		Analyzed By: MS					
Analyte	Result	Reporting Limit	Analyzed	Method Blank	BS	% Recovery	True Value QC	RPD	Qualifier
GRO C6-C10*	<10.0	10.0	11/22/2021	ND	222	111	200	0.982	
DRO >C10-C28*	<10.0	10.0	11/22/2021	ND	213	106	200	0.432	
EXT DRO >C28-C36	<10.0	10.0	11/22/2021	ND					

Surrogate: 1-Chlorooctane 89.1 % 44.3-133

Surrogate: 1-Chlorooctadecane 88.1 % 38.9-142

Cardinal Laboratories

*=Accredited Analyte

PLEASE NOTE: Liability and Damages. Cardinal's liability and client's exclusive remedy for any claim arising, whether based in contract or tort, shall be limited to the amount paid by client for analyses. All claims, including those for negligence and any other cause whatsoever shall be deemed waived unless made in writing and received by Cardinal within thirty (30) days after completion of the applicable service. In no event shall Cardinal be liable for incidental or consequential damages, including, without limitation, business interruptions, loss of use, or loss of profits incurred by client, its subsidiaries, affiliates or successors arising out of or related to the performance of the services hereunder by Cardinal, regardless of whether such claim is based upon any of the above stated reasons or otherwise. Results relate only to the samples identified above. This report shall not be reproduced except in full with written approval of Cardinal Laboratories.

Mike Snyder For Celey D. Keene, Lab Director/Quality Manager



PHONE (575) 393-2326 ° 101 E. MARLAND ° HOBBS, NM 88240

Analytical Results For:

BBC International, Inc.
 Cliff Brunson
 P.O. Box 805
 Hobbs NM, 88241
 Fax To: (575) 397-0397

Received:	11/19/2021	Sampling Date:	11/18/2021
Reported:	11/24/2021	Sampling Type:	Soil
Project Name:	TWIN LAKES FLOWLINE LEAK	Sampling Condition:	Cool & Intact
Project Number:	NONE GIVEN	Sample Received By:	Tamara Oldaker
Project Location:	OXY - NEW MEXICO		

Sample ID: SP 6 @ SURFACE (H213340-24)

BTEx 8021B		mg/kg		Analyzed By: MS					
Analyte	Result	Reporting Limit	Analyzed	Method Blank	BS	% Recovery	True Value QC	RPD	Qualifier
Benzene*	0.187	0.050	11/24/2021	ND	1.78	89.0	2.00	5.82	
Toluene*	0.235	0.050	11/24/2021	ND	1.96	98.2	2.00	6.55	
Ethylbenzene*	<0.050	0.050	11/24/2021	ND	2.02	101	2.00	6.92	
Total Xylenes*	<0.150	0.150	11/24/2021	ND	6.17	103	6.00	5.64	
Total BTEX	0.423	0.300	11/24/2021	ND					

Surrogate: 4-Bromofluorobenzene (PID) 78.8 % 69.9-140

Chloride, SM4500Cl-B		mg/kg		Analyzed By: GM						
Analyte	Result	Reporting Limit	Analyzed	Method Blank	BS	% Recovery	True Value QC	RPD	Qualifier	
Chloride	2480	16.0	11/22/2021	ND	400	100	400	3.92		

TPH 8015M		mg/kg		Analyzed By: MS				S-06	
Analyte	Result	Reporting Limit	Analyzed	Method Blank	BS	% Recovery	True Value QC	RPD	Qualifier
GRO C6-C10*	<50.0	50.0	11/22/2021	ND	222	111	200	0.982	
DRO >C10-C28*	32100	50.0	11/22/2021	ND	213	106	200	0.432	
EXT DRO >C28-C36	8830	50.0	11/22/2021	ND					

Surrogate: 1-Chlorooctane 128 % 44.3-133

Surrogate: 1-Chlorooctadecane 831 % 38.9-142

Cardinal Laboratories

*=Accredited Analyte

PLEASE NOTE: Liability and Damages. Cardinal's liability and client's exclusive remedy for any claim arising, whether based in contract or tort, shall be limited to the amount paid by client for analyses. All claims, including those for negligence and any other cause whatsoever shall be deemed waived unless made in writing and received by Cardinal within thirty (30) days after completion of the applicable service. In no event shall Cardinal be liable for incidental or consequential damages, including, without limitation, business interruptions, loss of use, or loss of profits incurred by client, its subsidiaries, affiliates or successors arising out of or related to the performance of the services hereunder by Cardinal, regardless of whether such claim is based upon any of the above stated reasons or otherwise. Results relate only to the samples identified above. This report shall not be reproduced except in full with written approval of Cardinal Laboratories.

Mike Snyder For Celey D. Keene, Lab Director/Quality Manager



PHONE (575) 393-2326 ° 101 E. MARLAND ° HOBBS, NM 88240

Analytical Results For:

BBC International, Inc.
 Cliff Brunson
 P.O. Box 805
 Hobbs NM, 88241
 Fax To: (575) 397-0397

Received:	11/19/2021	Sampling Date:	11/18/2021
Reported:	11/24/2021	Sampling Type:	Soil
Project Name:	TWIN LAKES FLOWLINE LEAK	Sampling Condition:	Cool & Intact
Project Number:	NONE GIVEN	Sample Received By:	Tamara Oldaker
Project Location:	OXY - NEW MEXICO		

Sample ID: SP 6 @ 1' (H213340-25)

BTEx 8021B		mg/kg		Analyzed By: MS					
Analyte	Result	Reporting Limit	Analyzed	Method Blank	BS	% Recovery	True Value QC	RPD	Qualifier
Benzene*	0.058	0.050	11/23/2021	ND	1.78	89.0	2.00	5.82	
Toluene*	0.060	0.050	11/23/2021	ND	1.96	98.2	2.00	6.55	
Ethylbenzene*	<0.050	0.050	11/23/2021	ND	2.02	101	2.00	6.92	
Total Xylenes*	<0.150	0.150	11/23/2021	ND	6.17	103	6.00	5.64	
Total BTEX	<0.300	0.300	11/23/2021	ND					

Surrogate: 4-Bromofluorobenzene (PID) 95.5 % 69.9-140

Chloride, SM4500Cl-B		mg/kg		Analyzed By: GM						
Analyte	Result	Reporting Limit	Analyzed	Method Blank	BS	% Recovery	True Value QC	RPD	Qualifier	
Chloride	32.0	16.0	11/22/2021	ND	400	100	400	3.92		

TPH 8015M		mg/kg		Analyzed By: MS					
Analyte	Result	Reporting Limit	Analyzed	Method Blank	BS	% Recovery	True Value QC	RPD	Qualifier
GRO C6-C10*	<10.0	10.0	11/23/2021	ND	222	111	200	0.982	
DRO >C10-C28*	985	10.0	11/23/2021	ND	213	106	200	0.432	
EXT DRO >C28-C36	672	10.0	11/23/2021	ND					

Surrogate: 1-Chlorooctane 94.5 % 44.3-133

Surrogate: 1-Chlorooctadecane 116 % 38.9-142

Cardinal Laboratories

*=Accredited Analyte

PLEASE NOTE: Liability and Damages. Cardinal's liability and client's exclusive remedy for any claim arising, whether based in contract or tort, shall be limited to the amount paid by client for analyses. All claims, including those for negligence and any other cause whatsoever shall be deemed waived unless made in writing and received by Cardinal within thirty (30) days after completion of the applicable service. In no event shall Cardinal be liable for incidental or consequential damages, including, without limitation, business interruptions, loss of use, or loss of profits incurred by client, its subsidiaries, affiliates or successors arising out of or related to the performance of the services hereunder by Cardinal, regardless of whether such claim is based upon any of the above stated reasons or otherwise. Results relate only to the samples identified above. This report shall not be reproduced except in full with written approval of Cardinal Laboratories.

Mike Snyder For Celey D. Keene, Lab Director/Quality Manager



PHONE (575) 393-2326 ° 101 E. MARLAND ° HOBBS, NM 88240

Analytical Results For:

BBC International, Inc.
 Cliff Brunson
 P.O. Box 805
 Hobbs NM, 88241
 Fax To: (575) 397-0397

Received:	11/19/2021	Sampling Date:	11/18/2021
Reported:	11/24/2021	Sampling Type:	Soil
Project Name:	TWIN LAKES FLOWLINE LEAK	Sampling Condition:	Cool & Intact
Project Number:	NONE GIVEN	Sample Received By:	Tamara Oldaker
Project Location:	OXY - NEW MEXICO		

Sample ID: SP 6 @ 2' (H213340-26)

BTEx 8021B		mg/kg		Analyzed By: MS						
Analyte	Result	Reporting Limit	Analyzed	Method Blank	BS	% Recovery	True Value QC	RPD	Qualifier	
Benzene*	0.059	0.050	11/23/2021	ND	1.78	89.0	2.00	5.82		
Toluene*	0.118	0.050	11/23/2021	ND	1.96	98.2	2.00	6.55		
Ethylbenzene*	<0.050	0.050	11/23/2021	ND	2.02	101	2.00	6.92		
Total Xylenes*	<0.150	0.150	11/23/2021	ND	6.17	103	6.00	5.64		
Total BTEX	<0.300	0.300	11/23/2021	ND						

Surrogate: 4-Bromofluorobenzene (PID) 97.0 % 69.9-140

Chloride, SM4500Cl-B		mg/kg		Analyzed By: GM						
Analyte	Result	Reporting Limit	Analyzed	Method Blank	BS	% Recovery	True Value QC	RPD	Qualifier	
Chloride	48.0	16.0	11/22/2021	ND	400	100	400	3.92		

TPH 8015M		mg/kg		Analyzed By: MS					
Analyte	Result	Reporting Limit	Analyzed	Method Blank	BS	% Recovery	True Value QC	RPD	Qualifier
GRO C6-C10*	<10.0	10.0	11/22/2021	ND	222	111	200	0.982	
DRO >C10-C28*	<10.0	10.0	11/22/2021	ND	213	106	200	0.432	
EXT DRO >C28-C36	<10.0	10.0	11/22/2021	ND					

Surrogate: 1-Chlorooctane 85.3 % 44.3-133

Surrogate: 1-Chlorooctadecane 83.7 % 38.9-142

Cardinal Laboratories

*=Accredited Analyte

PLEASE NOTE: Liability and Damages. Cardinal's liability and client's exclusive remedy for any claim arising, whether based in contract or tort, shall be limited to the amount paid by client for analyses. All claims, including those for negligence and any other cause whatsoever shall be deemed waived unless made in writing and received by Cardinal within thirty (30) days after completion of the applicable service. In no event shall Cardinal be liable for incidental or consequential damages, including, without limitation, business interruptions, loss of use, or loss of profits incurred by client, its subsidiaries, affiliates or successors arising out of or related to the performance of the services hereunder by Cardinal, regardless of whether such claim is based upon any of the above stated reasons or otherwise. Results relate only to the samples identified above. This report shall not be reproduced except in full with written approval of Cardinal Laboratories.

Mike Snyder For Celey D. Keene, Lab Director/Quality Manager



PHONE (575) 393-2326 ° 101 E. MARLAND ° HOBBS, NM 88240

Analytical Results For:

BBC International, Inc.
 Cliff Brunson
 P.O. Box 805
 Hobbs NM, 88241
 Fax To: (575) 397-0397

Received:	11/19/2021	Sampling Date:	11/18/2021
Reported:	11/24/2021	Sampling Type:	Soil
Project Name:	TWIN LAKES FLOWLINE LEAK	Sampling Condition:	Cool & Intact
Project Number:	NONE GIVEN	Sample Received By:	Tamara Oldaker
Project Location:	OXY - NEW MEXICO		

Sample ID: SP 7 @ SURFACE (H213340-27)

BTEx 8021B		mg/kg		Analyzed By: MS					
Analyte	Result	Reporting Limit	Analyzed	Method Blank	BS	% Recovery	True Value QC	RPD	Qualifier
Benzene*	0.268	0.050	11/23/2021	ND	1.78	89.0	2.00	5.82	
Toluene*	0.272	0.050	11/23/2021	ND	1.96	98.2	2.00	6.55	
Ethylbenzene*	0.094	0.050	11/23/2021	ND	2.02	101	2.00	6.92	
Total Xylenes*	<0.150	0.150	11/23/2021	ND	6.17	103	6.00	5.64	
Total BTEX	0.634	0.300	11/23/2021	ND					

Surrogate: 4-Bromofluorobenzene (PID) 107 % 69.9-140

Chloride, SM4500Cl-B		mg/kg		Analyzed By: GM					
Analyte	Result	Reporting Limit	Analyzed	Method Blank	BS	% Recovery	True Value QC	RPD	Qualifier
Chloride	80.0	16.0	11/22/2021	ND	400	100	400	3.92	

TPH 8015M		mg/kg		Analyzed By: MS						S-06
Analyte	Result	Reporting Limit	Analyzed	Method Blank	BS	% Recovery	True Value QC	RPD	Qualifier	
GRO C6-C10*	<50.0	50.0	11/22/2021	ND	222	111	200	0.982		
DRO >C10-C28*	2080	50.0	11/22/2021	ND	213	106	200	0.432		
EXT DRO >C28-C36	2270	50.0	11/22/2021	ND						

Surrogate: 1-Chlorooctane 113 % 44.3-133

Surrogate: 1-Chlorooctadecane 157 % 38.9-142

Cardinal Laboratories

*=Accredited Analyte

PLEASE NOTE: Liability and Damages. Cardinal's liability and client's exclusive remedy for any claim arising, whether based in contract or tort, shall be limited to the amount paid by client for analyses. All claims, including those for negligence and any other cause whatsoever shall be deemed waived unless made in writing and received by Cardinal within thirty (30) days after completion of the applicable service. In no event shall Cardinal be liable for incidental or consequential damages, including, without limitation, business interruptions, loss of use, or loss of profits incurred by client, its subsidiaries, affiliates or successors arising out of or related to the performance of the services hereunder by Cardinal, regardless of whether such claim is based upon any of the above stated reasons or otherwise. Results relate only to the samples identified above. This report shall not be reproduced except in full with written approval of Cardinal Laboratories.

Mike Snyder For Celey D. Keene, Lab Director/Quality Manager



PHONE (575) 393-2326 ° 101 E. MARLAND ° HOBBS, NM 88240

Analytical Results For:

BBC International, Inc.
 Cliff Brunson
 P.O. Box 805
 Hobbs NM, 88241
 Fax To: (575) 397-0397

Received:	11/19/2021	Sampling Date:	11/18/2021
Reported:	11/24/2021	Sampling Type:	Soil
Project Name:	TWIN LAKES FLOWLINE LEAK	Sampling Condition:	Cool & Intact
Project Number:	NONE GIVEN	Sample Received By:	Tamara Oldaker
Project Location:	OXY - NEW MEXICO		

Sample ID: SP 7 @ 1' (H213340-28)

BTEx 8021B		mg/kg		Analyzed By: MS						
Analyte	Result	Reporting Limit	Analyzed	Method Blank	BS	% Recovery	True Value QC	RPD	Qualifier	
Benzene*	<0.050	0.050	11/23/2021	ND	1.78	89.0	2.00	5.82		
Toluene*	0.066	0.050	11/23/2021	ND	1.96	98.2	2.00	6.55		
Ethylbenzene*	<0.050	0.050	11/23/2021	ND	2.02	101	2.00	6.92		
Total Xylenes*	<0.150	0.150	11/23/2021	ND	6.17	103	6.00	5.64		
Total BTEX	<0.300	0.300	11/23/2021	ND						

Surrogate: 4-Bromofluorobenzene (PID) 90.4 % 69.9-140

Chloride, SM4500Cl-B		mg/kg		Analyzed By: GM						
Analyte	Result	Reporting Limit	Analyzed	Method Blank	BS	% Recovery	True Value QC	RPD	Qualifier	
Chloride	32.0	16.0	11/22/2021	ND	416	104	400	0.00		

TPH 8015M		mg/kg		Analyzed By: MS					
Analyte	Result	Reporting Limit	Analyzed	Method Blank	BS	% Recovery	True Value QC	RPD	Qualifier
GRO C6-C10*	<10.0	10.0	11/23/2021	ND	200	99.9	200	0.378	
DRO >C10-C28*	<10.0	10.0	11/23/2021	ND	224	112	200	1.67	
EXT DRO >C28-C36	<10.0	10.0	11/23/2021	ND					

Surrogate: 1-Chlorooctane 76.3 % 44.3-133

Surrogate: 1-Chlorooctadecane 77.3 % 38.9-142

Cardinal Laboratories

*=Accredited Analyte

PLEASE NOTE: Liability and Damages. Cardinal's liability and client's exclusive remedy for any claim arising, whether based in contract or tort, shall be limited to the amount paid by client for analyses. All claims, including those for negligence and any other cause whatsoever shall be deemed waived unless made in writing and received by Cardinal within thirty (30) days after completion of the applicable service. In no event shall Cardinal be liable for incidental or consequential damages, including, without limitation, business interruptions, loss of use, or loss of profits incurred by client, its subsidiaries, affiliates or successors arising out of or related to the performance of the services hereunder by Cardinal, regardless of whether such claim is based upon any of the above stated reasons or otherwise. Results relate only to the samples identified above. This report shall not be reproduced except in full with written approval of Cardinal Laboratories.

Mike Snyder For Celey D. Keene, Lab Director/Quality Manager



PHONE (575) 393-2326 ° 101 E. MARLAND ° HOBBS, NM 88240

Analytical Results For:

BBC International, Inc.
 Cliff Brunson
 P.O. Box 805
 Hobbs NM, 88241
 Fax To: (575) 397-0397

Received:	11/19/2021	Sampling Date:	11/18/2021
Reported:	11/24/2021	Sampling Type:	Soil
Project Name:	TWIN LAKES FLOWLINE LEAK	Sampling Condition:	Cool & Intact
Project Number:	NONE GIVEN	Sample Received By:	Tamara Oldaker
Project Location:	OXY - NEW MEXICO		

Sample ID: SP 7 @ 2' (H213340-29)

BTX 8021B		mg/kg		Analyzed By: MS					
Analyte	Result	Reporting Limit	Analyzed	Method Blank	BS	% Recovery	True Value QC	RPD	Qualifier
Benzene*	<0.050	0.050	11/23/2021	ND	1.78	89.0	2.00	5.82	
Toluene*	0.066	0.050	11/23/2021	ND	1.96	98.2	2.00	6.55	
Ethylbenzene*	<0.050	0.050	11/23/2021	ND	2.02	101	2.00	6.92	
Total Xylenes*	<0.150	0.150	11/23/2021	ND	6.17	103	6.00	5.64	
Total BTX	<0.300	0.300	11/23/2021	ND					

Surrogate: 4-Bromofluorobenzene (PID) 98.9 % 69.9-140

Chloride, SM4500CI-B		mg/kg		Analyzed By: GM						
Analyte	Result	Reporting Limit	Analyzed	Method Blank	BS	% Recovery	True Value QC	RPD	Qualifier	
Chloride	32.0	16.0	11/22/2021	ND	416	104	400	0.00		

TPH 8015M		mg/kg		Analyzed By: MS					
Analyte	Result	Reporting Limit	Analyzed	Method Blank	BS	% Recovery	True Value QC	RPD	Qualifier
GRO C6-C10*	<10.0	10.0	11/23/2021	ND	200	99.9	200	0.378	
DRO >C10-C28*	<10.0	10.0	11/23/2021	ND	224	112	200	1.67	
EXT DRO >C28-C36	<10.0	10.0	11/23/2021	ND					

Surrogate: 1-Chlorooctane 82.5 % 44.3-133

Surrogate: 1-Chlorooctadecane 83.0 % 38.9-142

Cardinal Laboratories

*=Accredited Analyte

PLEASE NOTE: Liability and Damages. Cardinal's liability and client's exclusive remedy for any claim arising, whether based in contract or tort, shall be limited to the amount paid by client for analyses. All claims, including those for negligence and any other cause whatsoever shall be deemed waived unless made in writing and received by Cardinal within thirty (30) days after completion of the applicable service. In no event shall Cardinal be liable for incidental or consequential damages, including, without limitation, business interruptions, loss of use, or loss of profits incurred by client, its subsidiaries, affiliates or successors arising out of or related to the performance of the services hereunder by Cardinal, regardless of whether such claim is based upon any of the above stated reasons or otherwise. Results relate only to the samples identified above. This report shall not be reproduced except in full with written approval of Cardinal Laboratories.

Mike Snyder For Celey D. Keene, Lab Director/Quality Manager



PHONE (575) 393-2326 ° 101 E. MARLAND ° HOBBS, NM 88240

Analytical Results For:

BBC International, Inc.
 Cliff Brunson
 P.O. Box 805
 Hobbs NM, 88241
 Fax To: (575) 397-0397

Received:	11/19/2021	Sampling Date:	11/18/2021
Reported:	11/24/2021	Sampling Type:	Soil
Project Name:	TWIN LAKES FLOWLINE LEAK	Sampling Condition:	Cool & Intact
Project Number:	NONE GIVEN	Sample Received By:	Tamara Oldaker
Project Location:	OXY - NEW MEXICO		

Sample ID: SP 8 @ SURFACE (H213340-30)

BTEx 8021B		mg/kg		Analyzed By: MS					
Analyte	Result	Reporting Limit	Analyzed	Method Blank	BS	% Recovery	True Value QC	RPD	Qualifier
Benzene*	0.218	0.050	11/23/2021	ND	1.78	89.0	2.00	5.82	
Toluene*	0.273	0.050	11/23/2021	ND	1.96	98.2	2.00	6.55	
Ethylbenzene*	<0.050	0.050	11/23/2021	ND	2.02	101	2.00	6.92	
Total Xylenes*	<0.150	0.150	11/23/2021	ND	6.17	103	6.00	5.64	
Total BTEX	0.491	0.300	11/23/2021	ND					

Surrogate: 4-Bromofluorobenzene (PID) 100 % 69.9-140

Chloride, SM4500Cl-B		mg/kg		Analyzed By: GM						
Analyte	Result	Reporting Limit	Analyzed	Method Blank	BS	% Recovery	True Value QC	RPD	Qualifier	
Chloride	16.0	16.0	11/22/2021	ND	416	104	400	0.00		

TPH 8015M		mg/kg		Analyzed By: MS					
Analyte	Result	Reporting Limit	Analyzed	Method Blank	BS	% Recovery	True Value QC	RPD	Qualifier
GRO C6-C10*	<10.0	10.0	11/23/2021	ND	200	99.9	200	0.378	
DRO >C10-C28*	39.0	10.0	11/23/2021	ND	224	112	200	1.67	
EXT DRO >C28-C36	15.5	10.0	11/23/2021	ND					

Surrogate: 1-Chlorooctane 85.9 % 44.3-133

Surrogate: 1-Chlorooctadecane 88.8 % 38.9-142

Cardinal Laboratories

*=Accredited Analyte

PLEASE NOTE: Liability and Damages. Cardinal's liability and client's exclusive remedy for any claim arising, whether based in contract or tort, shall be limited to the amount paid by client for analyses. All claims, including those for negligence and any other cause whatsoever shall be deemed waived unless made in writing and received by Cardinal within thirty (30) days after completion of the applicable service. In no event shall Cardinal be liable for incidental or consequential damages, including, without limitation, business interruptions, loss of use, or loss of profits incurred by client, its subsidiaries, affiliates or successors arising out of or related to the performance of the services hereunder by Cardinal, regardless of whether such claim is based upon any of the above stated reasons or otherwise. Results relate only to the samples identified above. This report shall not be reproduced except in full with written approval of Cardinal Laboratories.

Mike Snyder For Celey D. Keene, Lab Director/Quality Manager



PHONE (575) 393-2326 ° 101 E. MARLAND ° HOBBS, NM 88240

Analytical Results For:

BBC International, Inc.
 Cliff Brunson
 P.O. Box 805
 Hobbs NM, 88241
 Fax To: (575) 397-0397

Received:	11/19/2021	Sampling Date:	11/18/2021
Reported:	11/24/2021	Sampling Type:	Soil
Project Name:	TWIN LAKES FLOWLINE LEAK	Sampling Condition:	Cool & Intact
Project Number:	NONE GIVEN	Sample Received By:	Tamara Oldaker
Project Location:	OXY - NEW MEXICO		

Sample ID: SP 8 @ 1' (H213340-31)

BTEx 8021B		mg/kg		Analyzed By: MS						
Analyte	Result	Reporting Limit	Analyzed	Method Blank	BS	% Recovery	True Value QC	RPD	Qualifier	
Benzene*	0.052	0.050	11/23/2021	ND	1.78	89.0	2.00	5.82		
Toluene*	0.100	0.050	11/23/2021	ND	1.96	98.2	2.00	6.55		
Ethylbenzene*	<0.050	0.050	11/23/2021	ND	2.02	101	2.00	6.92		
Total Xylenes*	<0.150	0.150	11/23/2021	ND	6.17	103	6.00	5.64		
Total BTEX	<0.300	0.300	11/23/2021	ND						

Surrogate: 4-Bromofluorobenzene (PID) 92.2 % 69.9-140

Chloride, SM4500Cl-B		mg/kg		Analyzed By: GM						
Analyte	Result	Reporting Limit	Analyzed	Method Blank	BS	% Recovery	True Value QC	RPD	Qualifier	
Chloride	16.0	16.0	11/22/2021	ND	416	104	400	0.00		

TPH 8015M		mg/kg		Analyzed By: MS					
Analyte	Result	Reporting Limit	Analyzed	Method Blank	BS	% Recovery	True Value QC	RPD	Qualifier
GRO C6-C10*	<10.0	10.0	11/23/2021	ND	219	109	200	0.593	
DRO >C10-C28*	296	10.0	11/23/2021	ND	212	106	200	4.88	
EXT DRO >C28-C36	415	10.0	11/23/2021	ND					

Surrogate: 1-Chlorooctane 116 % 44.3-133

Surrogate: 1-Chlorooctadecane 125 % 38.9-142

Cardinal Laboratories

*=Accredited Analyte

PLEASE NOTE: Liability and Damages. Cardinal's liability and client's exclusive remedy for any claim arising, whether based in contract or tort, shall be limited to the amount paid by client for analyses. All claims, including those for negligence and any other cause whatsoever shall be deemed waived unless made in writing and received by Cardinal within thirty (30) days after completion of the applicable service. In no event shall Cardinal be liable for incidental or consequential damages, including, without limitation, business interruptions, loss of use, or loss of profits incurred by client, its subsidiaries, affiliates or successors arising out of or related to the performance of the services hereunder by Cardinal, regardless of whether such claim is based upon any of the above stated reasons or otherwise. Results relate only to the samples identified above. This report shall not be reproduced except in full with written approval of Cardinal Laboratories.

Mike Snyder For Celey D. Keene, Lab Director/Quality Manager



PHONE (575) 393-2326 ° 101 E. MARLAND ° HOBBS, NM 88240

Analytical Results For:

BBC International, Inc.
 Cliff Brunson
 P.O. Box 805
 Hobbs NM, 88241
 Fax To: (575) 397-0397

Received:	11/19/2021	Sampling Date:	11/18/2021
Reported:	11/24/2021	Sampling Type:	Soil
Project Name:	TWIN LAKES FLOWLINE LEAK	Sampling Condition:	Cool & Intact
Project Number:	NONE GIVEN	Sample Received By:	Tamara Oldaker
Project Location:	OXY - NEW MEXICO		

Sample ID: SP 8 @ 2' (H213340-32)

BTEx 8021B		mg/kg		Analyzed By: MS						
Analyte	Result	Reporting Limit	Analyzed	Method Blank	BS	% Recovery	True Value QC	RPD	Qualifier	
Benzene*	<0.050	0.050	11/23/2021	ND	1.78	89.0	2.00	5.82		
Toluene*	<0.050	0.050	11/23/2021	ND	1.96	98.2	2.00	6.55		
Ethylbenzene*	<0.050	0.050	11/23/2021	ND	2.02	101	2.00	6.92		
Total Xylenes*	<0.150	0.150	11/23/2021	ND	6.17	103	6.00	5.64		
Total BTEx	<0.300	0.300	11/23/2021	ND						

Surrogate: 4-Bromofluorobenzene (PID) 94.9 % 69.9-140

Chloride, SM4500Cl-B		mg/kg		Analyzed By: GM						
Analyte	Result	Reporting Limit	Analyzed	Method Blank	BS	% Recovery	True Value QC	RPD	Qualifier	
Chloride	<16.0	16.0	11/22/2021	ND	416	104	400	0.00		

TPH 8015M		mg/kg		Analyzed By: MS					
Analyte	Result	Reporting Limit	Analyzed	Method Blank	BS	% Recovery	True Value QC	RPD	Qualifier
GRO C6-C10*	<10.0	10.0	11/23/2021	ND	219	109	200	0.593	
DRO >C10-C28*	<10.0	10.0	11/23/2021	ND	212	106	200	4.88	
EXT DRO >C28-C36	<10.0	10.0	11/23/2021	ND					

Surrogate: 1-Chlorooctane 99.7 % 44.3-133

Surrogate: 1-Chlorooctadecane 99.6 % 38.9-142

Cardinal Laboratories

*=Accredited Analyte

PLEASE NOTE: Liability and Damages. Cardinal's liability and client's exclusive remedy for any claim arising, whether based in contract or tort, shall be limited to the amount paid by client for analyses. All claims, including those for negligence and any other cause whatsoever shall be deemed waived unless made in writing and received by Cardinal within thirty (30) days after completion of the applicable service. In no event shall Cardinal be liable for incidental or consequential damages, including, without limitation, business interruptions, loss of use, or loss of profits incurred by client, its subsidiaries, affiliates or successors arising out of or related to the performance of the services hereunder by Cardinal, regardless of whether such claim is based upon any of the above stated reasons or otherwise. Results relate only to the samples identified above. This report shall not be reproduced except in full with written approval of Cardinal Laboratories.

Mike Snyder For Celey D. Keene, Lab Director/Quality Manager



PHONE (575) 393-2326 • 101 E. MARLAND • HOBBS, NM 88240

Notes and Definitions

S-06	The recovery of this surrogate is outside control limits due to sample dilution required from high analyte concentration and/or matrix interference's.
S-04	The surrogate recovery for this sample is outside of established control limits due to a sample matrix effect.
ND	Analyte NOT DETECTED at or above the reporting limit
RPD	Relative Percent Difference
**	Samples not received at proper temperature of 6°C or below.
***	Insufficient time to reach temperature.
-	Chloride by SM4500Cl-B does not require samples be received at or below 6°C Samples reported on an as received basis (wet) unless otherwise noted on report

Cardinal Laboratories

*=Accredited Analyte

PLEASE NOTE: Liability and Damages. Cardinal's liability and client's exclusive remedy for any claim arising, whether based in contract or tort, shall be limited to the amount paid by client for analyses. All claims, including those for negligence and any other cause whatsoever shall be deemed waived unless made in writing and received by Cardinal within thirty (30) days after completion of the applicable service. In no event shall Cardinal be liable for incidental or consequential damages, including, without limitation, business interruptions, loss of use, or loss of profits incurred by client, its subsidiaries, affiliates or successors arising out of or related to the performance of the services hereunder by Cardinal, regardless of whether such claim is based upon any of the above stated reasons or otherwise. Results relate only to the samples identified above. This report shall not be reproduced except in full with written approval of Cardinal Laboratories.

A handwritten signature in black ink, appearing to read "Mike Snyder", is written over a horizontal line.

Mike Snyder For Celey D. Keene, Lab Director/Quality Manager



• CARDINAL LABORATORIES

101 East Marland, Hobbs, NM 88240

(505) 393-2326 FAX (505) 393-2476

CHAIN-OF-CUSTODY AND ANALYSIS REQUEST

(505) 393-2326 FAX (505) 393-2476

Company Name: BBC International, Inc.

Project Manager: Cliff Brunson

Address: P.O. Box 805

City: Hobbs State: NM Zip: 88241

Phone #: 575-397-6388 Fax #: 575-397-0397

Project #: Project Owner: Oxy

Project Name: TWIN LAKES FLOWLINE LEAK

Project Location: NEW MEXICO

Sampler Name: SIMON

BILL TO

ANALYSIS REQUEST

P.O. #:

Company:

Attn:

Address:

City:

State: Zip:

Phone #:

Fax #:

FOR LAB USE ONLY

Lab I.D.

Sample I.D.

(GRAB OR C)OMP.

CONTAINERS

GROUNDWATER

WASTEWATER

SOIL

OIL

SLUDGE

OTHER :

ACID/BASE:

ICE / COOL

OTHER :

DATE

TIME

11/16/21 10:15AM

11/16/21 10:20AM

11/16/21 10:30AM

11/16/21 10:52AM

11/16/21 11:08AM

11/16/21 11:17AM

11/16/21 11:24AM

11/16/21 11:31AM

11/16/21 11:40AM

11/16/21 11:52AM

✓

✓

✓

✓

✓

✓

✓

✓

✓

✓

✓

✓

✓

✓

✓

✓

✓

✓

✓

✓

✓

✓

✓

✓

✓

✓

✓

✓

✓

✓

PLEASE NOTE: Liability and Damages. Cardinal's liability and client's exclusive remedy for any claim arising whether based in contract or tort, shall be limited to the amount paid by the client for the analyses. All claims including those for negligence and any other cause whatsoever shall be deemed waived unless made in writing and received by Cardinal within 30 days after completion of the applicable service. In no event shall Cardinal be liable for incidental or consequential damages, including without limitation, business interruptions, loss of use, or loss of profits incurred by client, its subsidiaries, affiliates or successors arising out of or related to the performance of services hereunder by Cardinal regardless of whether such claim is based upon any of the above stated reasons or otherwise.

Relinquished By:

Date:

Received By:

Time:

Relinquished By:

Date:

Received By:

Time:

Delivered By: (Circle One)

Sampler - UPS - Bus - Other:

Sample Condition

Cool Intact

☒ Yes ☐ No

CHECKED BY:

(Initials)

Phone Result:

☐ Yes

☐ No

Add'l Phone #:

Fax Result:

☐ Yes

☐ No

Add'l Fax #:

REMARKS:

† Cardinal cannot accept verbal changes. Please fax written changes to 505-393-2476

**CARDINAL LABORATORIES**

101 East Marland, Hobbs, NM 88240

(505) 393-2326 FAX (505) 393-2476

CHAIN-OF-CUSTODY AND ANALYSIS REQUEST

Company Name: BBC International, Inc.				BILL TO				ANALYSIS REQUEST															
Project Manager: Cliff Brunson				P.O. #:																			
Address: P.O. Box 805				Company: <i>Oxy</i>																			
City: Hobbs State: NM Zip: 88241				Attn:																			
Phone #: 575-397-6388 Fax #: 575-397-0397				Address:																			
Project #: Project Owner: Oxy				City:																			
Project Name: TWIN LAKES FLOWLINE LEAK				State: Zip:																			
Project Location: NEW MEXICO				Phone #:																			
Sampler Name: SIMON				Fax #:																			
FOR LAB USE ONLY																							
Lab I.D.	Sample I.D.	(G)RAB OR (C)OMP.	# CONTAINERS	MATRIX			PRESERV.	SAMPLING															
				GROUNDWATER	WASTEWATER	SOIL	OIL	SLUDGE	OTHER:	ACID/BASE:	ICE / COOL	OTHER:	DATE	TIME									
<i>H213340</i>																							
<i>11</i>	SP 2 @ 3'												11/16/21	12:04PM	✓	✓	✓						
<i>12</i>	SP 3 @ SURFACE												11/16/21	12:47PM	✓	✓	✓						
<i>13</i>	SP 3 @ 1'												11/16/21	12:54PM	✓	✓	✓						
<i>14</i>	SP 3 @ 2'												11/16/21	1:04PM	✓	✓	✓						
<i>15</i>	SP 4 @ SURFACE												11/16/21	1:12PM	✓	✓	✓						
<i>16</i>	SP 4 @ 1'												11/16/21	1:20PM	✓	✓	✓						
<i>17</i>	SP 4 @ 2'												11/16/21	1:31PM	✓	✓	✓						
<i>18</i>	SP 4 @ 3'												11/16/21	1:42PM	✓	✓	✓						
<i>19</i>	SP 4 @ 4'												11/16/21	1:55PM	✓	✓	✓						
<i>20</i>	SP 4 @ 5'												11/16/21	2:08PM	✓	✓	✓						

PLEASE NOTE: Liability and Damages. Cardinal's liability and client's exclusive remedy for any claim arising whether based in contract or tort, shall be limited to the amount paid by the client for the analyses. All claims, including those for negligence and any other cause whatsoever shall be deemed waived unless made in writing and received by Cardinal within 30 days after completion of the applicable service. In no event shall Cardinal be liable for incidental or consequential damages, including without limitation, business interruptions, loss of use, or loss of profits incurred by client, its subsidiaries, affiliates or successors arising out of or related to the performance of services hereunder by Cardinal, regardless of whether such claim is based upon any of the above stated reasons or otherwise.

Relinquished By: <i>[Signature]</i>	Date: <i>10:30</i>	Received By: <i>[Signature]</i>	Phone Result: <input type="checkbox"/> Yes <input type="checkbox"/> No	Add'l Phone #:
Relinquished By: <i>[Signature]</i>	Date: <i>11-19-21</i>	Received By: <i>[Signature]</i>	Fax Result: <input type="checkbox"/> Yes <input type="checkbox"/> No	Add'l Fax #:
Delivered By: (Circle One) <i>-2.9°C</i>	<i>11-19-21</i>	Sample Condition: Cool <input checked="" type="checkbox"/> Intact <input checked="" type="checkbox"/>	REMARKS:	
Sampler - UPS - Bus - Other: <i>-3.4°C #113</i>	<i>1505</i>	CHECKED BY: (Initials) <i>YB</i>		

† Cardinal cannot accept verbal changes. Please fax written changes to 505-393-2476

**CARDINAL LABORATORIES**

101 East Marland, Hobbs, NM 88240

(505) 393-2326 FAX (505) 393-2476

CHAIN-OF-CUSTODY AND ANALYSIS REQUEST

Company Name: BBC International, Inc.				BILL TO				ANALYSIS REQUEST															
Project Manager: Cliff Brunson				P.O. #:				<div style="display: flex; flex-direction: column; align-items: center;"> <div style="margin-bottom: 10px;">Company: <u>Oxy</u></div> <div>Attn:</div> <div>Address:</div> <div>City:</div> <div>State: Zip:</div> <div>Phone #:</div> <div>Fax #:</div> </div>															
Address: P.O. Box 805				Company:																			
City: Hobbs State: NM Zip: 88241				Attn:																			
Phone #: 575-397-6388 Fax #: 575-397-0397				Address:																			
Project #: Project Owner: Oxy				City:																			
Project Name: TWIN LAKES FLOWLINE LEAK				State: Zip:																			
Project Location: NEW MEXICO				Phone #:																			
Sampler Name: SIMON				Fax #:																			
FOR LAB USE ONLY				MATRIX		PRESERV.		SAMPLING															
Lab I.D.	Sample I.D.	GRAB OR (C)OMP.	# CONTAINERS	GROUNDWATER	WASTEWATER	SOIL	OIL	SLUDGE	OTHER:	ACID/BASE:	ICE / COOL	OTHER:	DATE	TIME									
<u>H213340</u>																							
<u>21</u>	SP 5 @ SURFACE												11/18/21	9:30AM	✓	✓	✓						
<u>22</u>	SP 5 @ 1'												11/18/21	9:44AM	✓	✓	✓						
<u>23</u>	SP 5 @ 2'												11/18/21	9:57AM	✓	✓	✓						
<u>24</u>	SP 6 @ SURFACE												11/18/21	10:12AM	✓	✓	✓						
<u>25</u>	SP 6 @ 1'												11/18/21	10:23AM	✓	✓	✓						
<u>26</u>	SP 6 @ 2'												11/18/21	10:34AM	✓	✓	✓						
<u>27</u>	SP 7 @ SURFACE												11/18/21	10:50AM	✓	✓	✓						
<u>28</u>	SP 7 @ 1'												11/18/21	11:04AM	✓	✓	✓						
<u>29</u>	SP 7 @ 2'												11/18/21	11:12AM	✓	✓	✓						
<u>30</u>	SP 8 @ SURFACE												11/18/21	11:23AM	✓	✓	✓						

PLEASE NOTE: Liability and Damages. Cardinal's liability and client's exclusive remedy for any claim arising whether based in contract or tort, shall be limited to the amount paid by the client for the analyses. All claims including those for negligence and any other cause whatsoever shall be deemed waived unless made in writing and received by Cardinal within 30 days after completion of the applicable service. In no event shall Cardinal be liable for incidental or consequential damages, including without limitation, business interruptions, loss of use, or loss of profits incurred by client, its subsidiaries, affiliates or successors arising out of or related to the performance of services hereunder by Cardinal, regardless of whether such claim is based upon any of the above stated reasons or otherwise.

Relinquished By: <u>[Signature]</u>	Date: <u>11-18-21</u>	Received By: <u>[Signature]</u>	Phone Result: <input type="checkbox"/> Yes <input type="checkbox"/> No	Add'l Phone #:
	Time: <u>11:25</u>		Fax Result: <input type="checkbox"/> Yes <input type="checkbox"/> No	Add'l Fax #:
Relinquished By: <u>[Signature]</u>	Date: <u>11-19-21</u>	Received By: <u>[Signature]</u>	REMARKS:	
	Time: <u>1:05</u>			
Delivered By: (Circle One) <u>-2.9°C -0.5°C</u>	Sample Condition	CHECKED BY: <u>[Signature]</u>		
Sampler - UPS - Bus - Other: <u>-3.4°C #13</u>	Cool Intact <input type="checkbox"/> Yes <input type="checkbox"/> No	(Initials)		

† Cardinal cannot accept verbal changes. Please fax written changes to 505-393-2476

(505) 393-2326 FAX (505) 393-2476

[illegible]

† Cardinal cannot accept verbal changes. Please fax written changes to 505-393-2476



PHONE (575) 393-2326 ° 101 E. MARLAND ° HOBBS, NM 88240

December 03, 2021

Cliff Brunson

BBC International, Inc.

P.O. Box 805

Hobbs, NM 88241

RE: TWIN LAKES FLOWLINE LEAK

Enclosed are the results of analyses for samples received by the laboratory on 12/01/21 16:30.

Cardinal Laboratories is accredited through Texas NELAP under certificate number T104704398-21-14. Accreditation applies to drinking water, non-potable water and solid and chemical materials. All accredited analytes are denoted by an asterisk (*). For a complete list of accredited analytes and matrices visit the TCEQ website at www.tceq.texas.gov/field/qa/lab_accred_certif.html.

Cardinal Laboratories is accredited through the State of Colorado Department of Public Health and Environment for:

Method EPA 552.2	Haloacetic Acids (HAA-5)
Method EPA 524.2	Total Trihalomethanes (TTHM)
Method EPA 524.4	Regulated VOCs (V1, V2, V3)

Accreditation applies to public drinking water matrices.

This report meets NELAP requirements and is made up of a cover page, analytical results, and a copy of the original chain-of-custody. If you have any questions concerning this report, please feel free to contact me.

Sincerely,

A handwritten signature in black ink that reads "Celey D. Keene". The signature is written in a cursive, flowing style.

Celey D. Keene

Lab Director/Quality Manager



PHONE (575) 393-2326 ° 101 E. MARLAND ° HOBBS, NM 88240

Analytical Results For:

BBC International, Inc.
 Cliff Brunson
 P.O. Box 805
 Hobbs NM, 88241
 Fax To: (575) 397-0397

Received:	12/01/2021	Sampling Date:	11/30/2021
Reported:	12/03/2021	Sampling Type:	Soil
Project Name:	TWIN LAKES FLOWLINE LEAK	Sampling Condition:	Cool & Intact
Project Number:	NONE GIVEN	Sample Received By:	Tamara Oldaker
Project Location:	OXY - NEW MEXICO		

Sample ID: SP 1 @ 3' (H213445-01)

BTEX 8021B		mg/kg		Analyzed By: JH						
Analyte	Result	Reporting Limit	Analyzed	Method Blank	BS	% Recovery	True Value QC	RPD	Qualifier	
Benzene*	<0.050	0.050	12/03/2021	ND	1.93	96.3	2.00	5.89		
Toluene*	<0.050	0.050	12/03/2021	ND	1.98	99.0	2.00	5.26		
Ethylbenzene*	<0.050	0.050	12/03/2021	ND	1.97	98.3	2.00	4.13		
Total Xylenes*	<0.150	0.150	12/03/2021	ND	5.99	99.8	6.00	4.40		
Total BTEX	<0.300	0.300	12/03/2021	ND						

Surrogate: 4-Bromofluorobenzene (PID) 100 % 69.9-140

Chloride, SM4500Cl-B		mg/kg		Analyzed By: GM						
Analyte	Result	Reporting Limit	Analyzed	Method Blank	BS	% Recovery	True Value QC	RPD	Qualifier	
Chloride	176	16.0	12/02/2021	ND	416	104	400	3.92		

TPH 8015M		mg/kg		Analyzed By: MS					
Analyte	Result	Reporting Limit	Analyzed	Method Blank	BS	% Recovery	True Value QC	RPD	Qualifier
GRO C6-C10*	<10.0	10.0	12/02/2021	ND	223	112	200	3.87	
DRO >C10-C28*	<10.0	10.0	12/02/2021	ND	236	118	200	0.132	
EXT DRO >C28-C36	<10.0	10.0	12/02/2021	ND					

Surrogate: 1-Chlorooctane 93.6 % 44.3-133

Surrogate: 1-Chlorooctadecane 96.4 % 38.9-142

Cardinal Laboratories

*=Accredited Analyte

PLEASE NOTE: Liability and Damages. Cardinal's liability and client's exclusive remedy for any claim arising, whether based in contract or tort, shall be limited to the amount paid by client for analyses. All claims, including those for negligence and any other cause whatsoever shall be deemed waived unless made in writing and received by Cardinal within thirty (30) days after completion of the applicable service. In no event shall Cardinal be liable for incidental or consequential damages, including, without limitation, business interruptions, loss of use, or loss of profits incurred by client, its subsidiaries, affiliates or successors arising out of or related to the performance of the services hereunder by Cardinal, regardless of whether such claim is based upon any of the above stated reasons or otherwise. Results relate only to the samples identified above. This report shall not be reproduced except in full with written approval of Cardinal Laboratories.

Celey D. Keene, Lab Director/Quality Manager



PHONE (575) 393-2326 ° 101 E. MARLAND ° HOBBS, NM 88240

Analytical Results For:

BBC International, Inc.
 Cliff Brunson
 P.O. Box 805
 Hobbs NM, 88241
 Fax To: (575) 397-0397

Received:	12/01/2021	Sampling Date:	11/30/2021
Reported:	12/03/2021	Sampling Type:	Soil
Project Name:	TWIN LAKES FLOWLINE LEAK	Sampling Condition:	Cool & Intact
Project Number:	NONE GIVEN	Sample Received By:	Tamara Oldaker
Project Location:	OXY - NEW MEXICO		

Sample ID: SP 1 @ 4' (H213445-02)

BTEx 8021B		mg/kg		Analyzed By: JH						
Analyte	Result	Reporting Limit	Analyzed	Method Blank	BS	% Recovery	True Value QC	RPD	Qualifier	
Benzene*	<0.050	0.050	12/03/2021	ND	1.93	96.3	2.00	5.89		
Toluene*	<0.050	0.050	12/03/2021	ND	1.98	99.0	2.00	5.26		
Ethylbenzene*	<0.050	0.050	12/03/2021	ND	1.97	98.3	2.00	4.13		
Total Xylenes*	<0.150	0.150	12/03/2021	ND	5.99	99.8	6.00	4.40		
Total BTEx	<0.300	0.300	12/03/2021	ND						

Surrogate: 4-Bromofluorobenzene (PID) 97.7 % 69.9-140

Chloride, SM4500CI-B		mg/kg		Analyzed By: GM						
Analyte	Result	Reporting Limit	Analyzed	Method Blank	BS	% Recovery	True Value QC	RPD	Qualifier	
Chloride	208	16.0	12/02/2021	ND	416	104	400	3.92		

TPH 8015M		mg/kg		Analyzed By: MS					
Analyte	Result	Reporting Limit	Analyzed	Method Blank	BS	% Recovery	True Value QC	RPD	Qualifier
GRO C6-C10*	<10.0	10.0	12/02/2021	ND	223	112	200	3.87	
DRO >C10-C28*	<10.0	10.0	12/02/2021	ND	236	118	200	0.132	
EXT DRO >C28-C36	<10.0	10.0	12/02/2021	ND					

Surrogate: 1-Chlorooctane 127 % 44.3-133

Surrogate: 1-Chlorooctadecane 132 % 38.9-142

Cardinal Laboratories

*=Accredited Analyte

PLEASE NOTE: Liability and Damages. Cardinal's liability and client's exclusive remedy for any claim arising, whether based in contract or tort, shall be limited to the amount paid by client for analyses. All claims, including those for negligence and any other cause whatsoever shall be deemed waived unless made in writing and received by Cardinal within thirty (30) days after completion of the applicable service. In no event shall Cardinal be liable for incidental or consequential damages, including, without limitation, business interruptions, loss of use, or loss of profits incurred by client, its subsidiaries, affiliates or successors arising out of or related to the performance of the services hereunder by Cardinal, regardless of whether such claim is based upon any of the above stated reasons or otherwise. Results relate only to the samples identified above. This report shall not be reproduced except in full with written approval of Cardinal Laboratories.

Celey D. Keene, Lab Director/Quality Manager



PHONE (575) 393-2326 ° 101 E. MARLAND ° HOBBS, NM 88240

Analytical Results For:

BBC International, Inc.
 Cliff Brunson
 P.O. Box 805
 Hobbs NM, 88241
 Fax To: (575) 397-0397

Received:	12/01/2021	Sampling Date:	11/30/2021
Reported:	12/03/2021	Sampling Type:	Soil
Project Name:	TWIN LAKES FLOWLINE LEAK	Sampling Condition:	Cool & Intact
Project Number:	NONE GIVEN	Sample Received By:	Tamara Oldaker
Project Location:	OXY - NEW MEXICO		

Sample ID: SP 4 @ 6' (H213445-03)

BTEx 8021B		mg/kg		Analyzed By: JH						
Analyte	Result	Reporting Limit	Analyzed	Method Blank	BS	% Recovery	True Value QC	RPD	Qualifier	
Benzene*	<0.050	0.050	12/03/2021	ND	1.93	96.3	2.00	5.89		
Toluene*	<0.050	0.050	12/03/2021	ND	1.98	99.0	2.00	5.26		
Ethylbenzene*	<0.050	0.050	12/03/2021	ND	1.97	98.3	2.00	4.13		
Total Xylenes*	<0.150	0.150	12/03/2021	ND	5.99	99.8	6.00	4.40		
Total BTEx	<0.300	0.300	12/03/2021	ND						

Surrogate: 4-Bromofluorobenzene (PID) 99.6 % 69.9-140

Chloride, SM4500Cl-B		mg/kg		Analyzed By: GM						
Analyte	Result	Reporting Limit	Analyzed	Method Blank	BS	% Recovery	True Value QC	RPD	Qualifier	
Chloride	192	16.0	12/02/2021	ND	416	104	400	3.92		

TPH 8015M		mg/kg		Analyzed By: MS					
Analyte	Result	Reporting Limit	Analyzed	Method Blank	BS	% Recovery	True Value QC	RPD	Qualifier
GRO C6-C10*	<10.0	10.0	12/02/2021	ND	223	112	200	3.87	
DRO >C10-C28*	<10.0	10.0	12/02/2021	ND	236	118	200	0.132	
EXT DRO >C28-C36	<10.0	10.0	12/02/2021	ND					

Surrogate: 1-Chlorooctane 123 % 44.3-133

Surrogate: 1-Chlorooctadecane 128 % 38.9-142

Cardinal Laboratories

*=Accredited Analyte

PLEASE NOTE: Liability and Damages. Cardinal's liability and client's exclusive remedy for any claim arising, whether based in contract or tort, shall be limited to the amount paid by client for analyses. All claims, including those for negligence and any other cause whatsoever shall be deemed waived unless made in writing and received by Cardinal within thirty (30) days after completion of the applicable service. In no event shall Cardinal be liable for incidental or consequential damages, including, without limitation, business interruptions, loss of use, or loss of profits incurred by client, its subsidiaries, affiliates or successors arising out of or related to the performance of the services hereunder by Cardinal, regardless of whether such claim is based upon any of the above stated reasons or otherwise. Results relate only to the samples identified above. This report shall not be reproduced except in full with written approval of Cardinal Laboratories.

Celey D. Keene, Lab Director/Quality Manager



PHONE (575) 393-2326 ° 101 E. MARLAND ° HOBBS, NM 88240

Analytical Results For:

BBC International, Inc.
 Cliff Brunson
 P.O. Box 805
 Hobbs NM, 88241
 Fax To: (575) 397-0397

Received:	12/01/2021	Sampling Date:	11/30/2021
Reported:	12/03/2021	Sampling Type:	Soil
Project Name:	TWIN LAKES FLOWLINE LEAK	Sampling Condition:	Cool & Intact
Project Number:	NONE GIVEN	Sample Received By:	Tamara Oldaker
Project Location:	OXY - NEW MEXICO		

Sample ID: SP 4 @ 7' (H213445-04)

BTEx 8021B		mg/kg		Analyzed By: JH						
Analyte	Result	Reporting Limit	Analyzed	Method Blank	BS	% Recovery	True Value QC	RPD	Qualifier	
Benzene*	<0.050	0.050	12/03/2021	ND	1.93	96.3	2.00	5.89		
Toluene*	<0.050	0.050	12/03/2021	ND	1.98	99.0	2.00	5.26		
Ethylbenzene*	<0.050	0.050	12/03/2021	ND	1.97	98.3	2.00	4.13		
Total Xylenes*	<0.150	0.150	12/03/2021	ND	5.99	99.8	6.00	4.40		
Total BTEX	<0.300	0.300	12/03/2021	ND						

Surrogate: 4-Bromofluorobenzene (PID) 101 % 69.9-140

Chloride, SM4500Cl-B		mg/kg		Analyzed By: GM						
Analyte	Result	Reporting Limit	Analyzed	Method Blank	BS	% Recovery	True Value QC	RPD	Qualifier	
Chloride	224	16.0	12/02/2021	ND	416	104	400	3.92		

TPH 8015M		mg/kg		Analyzed By: MS					
Analyte	Result	Reporting Limit	Analyzed	Method Blank	BS	% Recovery	True Value QC	RPD	Qualifier
GRO C6-C10*	<10.0	10.0	12/03/2021	ND	223	112	200	3.87	
DRO >C10-C28*	<10.0	10.0	12/03/2021	ND	236	118	200	0.132	
EXT DRO >C28-C36	<10.0	10.0	12/03/2021	ND					

Surrogate: 1-Chlorooctane 118 % 44.3-133

Surrogate: 1-Chlorooctadecane 122 % 38.9-142

Cardinal Laboratories

*=Accredited Analyte

PLEASE NOTE: Liability and Damages. Cardinal's liability and client's exclusive remedy for any claim arising, whether based in contract or tort, shall be limited to the amount paid by client for analyses. All claims, including those for negligence and any other cause whatsoever shall be deemed waived unless made in writing and received by Cardinal within thirty (30) days after completion of the applicable service. In no event shall Cardinal be liable for incidental or consequential damages, including, without limitation, business interruptions, loss of use, or loss of profits incurred by client, its subsidiaries, affiliates or successors arising out of or related to the performance of the services hereunder by Cardinal, regardless of whether such claim is based upon any of the above stated reasons or otherwise. Results relate only to the samples identified above. This report shall not be reproduced except in full with written approval of Cardinal Laboratories.

Celey D. Keene, Lab Director/Quality Manager

PHONE (575) 393-2326 ° 101 E. MARLAND ° HOBBS, NM 88240

Notes and Definitions

ND	Analyte NOT DETECTED at or above the reporting limit
RPD	Relative Percent Difference
**	Samples not received at proper temperature of 6°C or below.
***	Insufficient time to reach temperature.
-	Chloride by SM4500Cl-B does not require samples be received at or below 6°C Samples reported on an as received basis (wet) unless otherwise noted on report

Cardinal Laboratories

*=Accredited Analyte

PLEASE NOTE: Liability and Damages. Cardinal's liability and client's exclusive remedy for any claim arising, whether based in contract or tort, shall be limited to the amount paid by client for analyses. All claims, including those for negligence and any other cause whatsoever shall be deemed waived unless made in writing and received by Cardinal within thirty (30) days after completion of the applicable service. In no event shall Cardinal be liable for incidental or consequential damages, including, without limitation, business interruptions, loss of use, or loss of profits incurred by client, its subsidiaries, affiliates or successors arising out of or related to the performance of the services hereunder by Cardinal, regardless of whether such claim is based upon any of the above stated reasons or otherwise. Results relate only to the samples identified above. This report shall not be reproduced except in full with written approval of Cardinal Laboratories.

A handwritten signature in cursive script, appearing to read "Celey D. Keene", written in black ink.

Celey D. Keene, Lab Director/Quality Manager

† Cardinal cannot accept verbal changes. Please fax written changes to 505-393-2476



APPENDIX D

RECLAMATION PLAN

Oxy USA Inc.
Reclamation Plan
Twin Lakes SA Unit #027 Flow Line Release

RECLAMATION PLAN

The release occurred in an off-pad pasture area and as such, a reclamation requirement of 600 mg/kg chloride and 100 mg/kg TPH applies to the top 4 feet of the area that was impacted by the release per 19.15.29.13.D (1)) NMAC for the top 4 feet of areas that will be reclaimed following remediation. The following Reclamation Plan addresses reclamation of the disturbed pasture area:

- The excavation will be backfilled with locally sourced caliche and topsoil to match surrounding grade. Approximately 1 foot of topsoil will be placed on top of the caliche to support vegetative growth within the disturbed area;
- Soil in the vicinity of the release includes: Loam and sandy clay loam;
- The backfilled areas will be seeded with a weed-free seed mix designed by the NMSLO to meet reclamation standards for this region, which will be the loamy sites (L) seed mix as described in the NMSLO Revegetation Guidelines Handbook for Southeastern New Mexico, dated 2018;
- The seed mix will be distributed with either a push broadcast seed spreader, tractor operated broadcast seed spreader, and/or drill seeding method(s);
- Application of the seed mix will be at a coverage of 10 pounds of seed per acre of reclaimed pasture with distribution by a drill seed method or 20 pounds of seed per acre of reclaimed pasture with distribution by a broadcast method;
- If necessary, erosion control management will potentially include:
 - The placement of waddles in areas with a propensity for high run off rates;
 - Straw cover if high winds are anticipated to support moisture retention and limit wind from blowing seeds away before they have had time to germinate; and/or
 - Other erosional control best management practices (BMP) as necessary to support timely and healthy regrowth of vegetation in disturbed areas.
- Seeding is anticipated to be completed in the spring or fall when temperatures and precipitation are most conducive to vegetation growth. In general, seeding should occur approximately one month after the last frost in the spring up until approximately one month prior to the first fall frost.
- Annual inspections (at a minimum), will take place at the location until revegetation is consistent with local natural vegetation density. The Site will be inspected the following spring/fall to assess the success of regrowth. If necessary, an additional application of the NMSLO-approved pure live seed mix will be applied and any needed BMPs will be installed to support growth and limit erosion.

Upon completion of revegetation, a copy of the C-103 submitted to NMOCD will also be submitted to NMSLO for final inspection and release.

District I
1625 N. French Dr., Hobbs, NM 88240
Phone:(575) 393-6161 Fax:(575) 393-0720
District II
811 S. First St., Artesia, NM 88210
Phone:(575) 748-1283 Fax:(575) 748-9720
District III
1000 Rio Brazos Rd., Aztec, NM 87410
Phone:(505) 334-6178 Fax:(505) 334-6170
District IV
1220 S. St Francis Dr., Santa Fe, NM 87505
Phone:(505) 476-3470 Fax:(505) 476-3462

State of New Mexico
Energy, Minerals and Natural Resources
Oil Conservation Division
1220 S. St Francis Dr.
Santa Fe, NM 87505

QUESTIONS

Action 318620

QUESTIONS

Operator: OXY USA INC P.O. Box 4294 Houston, TX 772104294	OGRID: 16696
	Action Number: 318620
	Action Type: [C-141] Site Char./Remediation Plan C-141 (C-141-v-Plan)

QUESTIONS

Prerequisites	
Incident ID (n#)	nAPP2405243873
Incident Name	NAPP2405243873 TWIN LAKES SA UNIT #027 FLOW LINE RELEASE @ 30-005-60521
Incident Type	Oil Release
Incident Status	Remediation Plan Received
Incident Well	[30-005-60521] TWIN LAKES SAN ANDRES UNIT #027

Location of Release Source	
Please answer all the questions in this group.	
Site Name	Twin Lakes SA Unit #027 Flow line Release
Date Release Discovered	11/01/2021
Surface Owner	State

Incident Details	
Please answer all the questions in this group.	
Incident Type	Oil Release
Did this release result in a fire or is the result of a fire	No
Did this release result in any injuries	No
Has this release reached or does it have a reasonable probability of reaching a watercourse	No
Has this release endangered or does it have a reasonable probability of endangering public health	No
Has this release substantially damaged or will it substantially damage property or the environment	No
Is this release of a volume that is or may with reasonable probability be detrimental to fresh water	No

Nature and Volume of Release	
Material(s) released, please answer all that apply below. Any calculations or specific justifications for the volumes provided should be attached to the follow-up C-141 submission.	
Crude Oil Released (bbls) Details	Cause: Other Unknown Crude Oil Released: 0 BBL (Unknown Released Amount) Recovered: 0 BBL Lost: 0 BBL.
Produced Water Released (bbls) Details	Cause: Other Unknown Produced Water Released: 0 BBL (Unknown Released Amount) Recovered: 0 BBL Lost: 0 BBL.
Is the concentration of chloride in the produced water >10,000 mg/l	No
Condensate Released (bbls) Details	Not answered.
Natural Gas Vented (Mcf) Details	Not answered.
Natural Gas Flared (Mcf) Details	Not answered.
Other Released Details	Not answered.
Are there additional details for the questions above (i.e. any answer containing Other, Specify, Unknown, and/or Fire, or any negative lost amounts)	Historical release, volume is unknown. Oxy is not the Operator of the Incident Well and has no independent knowledge of the facts or circumstances surrounding the nature, content or volume of any release(s), contemporaneous to any such release(s). All information submitted by Oxy herein is based on Oxy's present day observations of the site, and educated guesses based on those observations. Oxy submits this Notification of Release pursuant to an agreement with the New Mexico State Land Office, as lessee of record.

District I

1625 N. French Dr., Hobbs, NM 88240
Phone:(575) 393-6161 Fax:(575) 393-0720

District II

811 S. First St., Artesia, NM 88210
Phone:(575) 748-1283 Fax:(575) 748-9720

District III

1000 Rio Brazos Rd., Aztec, NM 87410
Phone:(505) 334-6178 Fax:(505) 334-6170

District IV

1220 S. St Francis Dr., Santa Fe, NM 87505
Phone:(505) 476-3470 Fax:(505) 476-3462

State of New Mexico
Energy, Minerals and Natural Resources
Oil Conservation Division
1220 S. St Francis Dr.
Santa Fe, NM 87505

QUESTIONS, Page 2

Action 318620

QUESTIONS (continued)

Operator: OXY USA INC P.O. Box 4294 Houston, TX 772104294	OGRID:	16696
	Action Number:	318620
	Action Type:	[C-141] Site Char./Remediation Plan C-141 (C-141-v-Plan)

QUESTIONS

Nature and Volume of Release (continued)	
Is this a gas only submission (i.e. only significant Mcf values reported)	No, according to supplied volumes this does not appear to be a "gas only" report.
Was this a major release as defined by Subsection A of 19.15.29.7 NMAC	Yes
Reasons why this would be considered a submission for a notification of a major release	From paragraph A. "Major release" determine using: (1) an unauthorized release of a volume, excluding gases, of 25 barrels or more.
With the implementation of the 19.15.27 NMAC (05/25/2021), venting and/or flaring of natural gas (i.e. gas only) are to be submitted on the C-129 form.	

Initial Response

The responsible party must undertake the following actions immediately unless they could create a safety hazard that would result in injury.

The source of the release has been stopped	True
The impacted area has been secured to protect human health and the environment	True
Released materials have been contained via the use of berms or dikes, absorbent pads, or other containment devices	False
All free liquids and recoverable materials have been removed and managed appropriately	True
If all the actions described above have not been undertaken, explain why	Historical release.

Per Paragraph (4) of Subsection B of 19.15.29.8 NMAC the responsible party may commence remediation immediately after discovery of a release. If remediation has begun, please prepare and attach a narrative of actions to date in the follow-up C-141 submission. If remedial efforts have been successfully completed or if the release occurred within a lined containment area (see Subparagraph (a) of Paragraph (5) of Subsection A of 19.15.29.11 NMAC), please prepare and attach all information needed for closure evaluation in the follow-up C-141 submission.

I hereby certify that the information given above is true and complete to the best of my knowledge and understand that pursuant to OCD rules and regulations all operators are required to report and/or file certain release notifications and perform corrective actions for releases which may endanger public health or the environment. The acceptance of a C-141 report by the OCD does not relieve the operator of liability should their operations have failed to adequately investigate and remediate contamination that pose a threat to groundwater, surface water, human health or the environment. In addition, OCD acceptance of a C-141 report does not relieve the operator of responsibility for compliance with any other federal, state, or local laws and/or regulations.

I hereby agree and sign off to the above statement	Name: Wade Dittrich Title: Environmental Coordinator Email: wade_dittrich@oxy.com Date: 02/29/2024
--	---

District I

1625 N. French Dr., Hobbs, NM 88240
Phone:(575) 393-6161 Fax:(575) 393-0720

District II

811 S. First St., Artesia, NM 88210
Phone:(575) 748-1283 Fax:(575) 748-9720

District III

1000 Rio Brazos Rd., Aztec, NM 87410
Phone:(505) 334-6178 Fax:(505) 334-6170

District IV

1220 S. St Francis Dr., Santa Fe, NM 87505
Phone:(505) 476-3470 Fax:(505) 476-3462

State of New Mexico
Energy, Minerals and Natural Resources
Oil Conservation Division
1220 S. St Francis Dr.
Santa Fe, NM 87505

QUESTIONS, Page 3

Action 318620

QUESTIONS (continued)

Operator: OXY USA INC P.O. Box 4294 Houston, TX 772104294	OGRID:
	16696
	Action Number:
	318620
Action Type:	
[C-141] Site Char./Remediation Plan C-141 (C-141-v-Plan)	

QUESTIONS**Site Characterization**

Please answer all the questions in this group (only required when seeking remediation plan approval and beyond). This information must be provided to the appropriate district office no later than 90 days after the release discovery date.

What is the shallowest depth to groundwater beneath the area affected by the release in feet below ground surface (ft bgs)	Between 26 and 50 (ft.)
What method was used to determine the depth to ground water	U.S. Geological Survey
Did this release impact groundwater or surface water	No
What is the minimum distance, between the closest lateral extents of the release and the following surface areas:	
A continuously flowing watercourse or any other significant watercourse	Between 1000 (ft.) and ½ (mi.)
Any lakebed, sinkhole, or playa lake (measured from the ordinary high-water mark)	Between 1000 (ft.) and ½ (mi.)
An occupied permanent residence, school, hospital, institution, or church	Greater than 5 (mi.)
A spring or a private domestic fresh water well used by less than five households for domestic or stock watering purposes	Between ½ and 1 (mi.)
Any other fresh water well or spring	Between ½ and 1 (mi.)
Incorporated municipal boundaries or a defined municipal fresh water well field	Greater than 5 (mi.)
A wetland	Between 1000 (ft.) and ½ (mi.)
A subsurface mine	Greater than 5 (mi.)
An (non-karst) unstable area	Greater than 5 (mi.)
Categorize the risk of this well / site being in a karst geology	Low
A 100-year floodplain	Between 1 and 5 (mi.)
Did the release impact areas not on an exploration, development, production, or storage site	Yes

Remediation Plan

Please answer all the questions that apply or are indicated. This information must be provided to the appropriate district office no later than 90 days after the release discovery date.

Requesting a remediation plan approval with this submission	Yes
Attach a comprehensive report demonstrating the lateral and vertical extents of soil contamination associated with the release have been determined, pursuant to 19.15.29.11 NMAC and 19.15.29.13 NMAC.	
Have the lateral and vertical extents of contamination been fully delineated	Yes
Was this release entirely contained within a lined containment area	No

Soil Contamination Sampling: (Provide the highest observable value for each, in milligrams per kilograms.)

Chloride	(EPA 300.0 or SM4500 Cl B)	2480
TPH (GRO+DRO+MRO)	(EPA SW-846 Method 8015M)	40930
GRO+DRO	(EPA SW-846 Method 8015M)	32100
BTEX	(EPA SW-846 Method 8021B or 8260B)	25
Benzene	(EPA SW-846 Method 8021B or 8260B)	0.4

Per Subsection B of 19.15.29.11 NMAC unless the site characterization report includes completed efforts at remediation, the report must include a proposed remediation plan in accordance with 19.15.29.12 NMAC, which includes the anticipated timelines for beginning and completing the remediation.

On what estimated date will the remediation commence	06/01/2024
On what date will (or did) the final sampling or liner inspection occur	08/30/2024
On what date will (or was) the remediation complete(d)	08/30/2024
What is the estimated surface area (in square feet) that will be reclaimed	14000
What is the estimated volume (in cubic yards) that will be reclaimed	1400
What is the estimated surface area (in square feet) that will be remediated	14000
What is the estimated volume (in cubic yards) that will be remediated	1400

These estimated dates and measurements are recognized to be the best guess or calculation at the time of submission and may (be) change(d) over time as more remediation efforts are completed.

The OCD recognizes that proposed remediation measures may have to be minimally adjusted in accordance with the physical realities encountered during remediation. If the responsible party has any need to significantly deviate from the remediation plan proposed, then it should consult with the division to determine if another remediation plan submission is required.

District I

1625 N. French Dr., Hobbs, NM 88240
Phone:(575) 393-6161 Fax:(575) 393-0720

District II

811 S. First St., Artesia, NM 88210
Phone:(575) 748-1283 Fax:(575) 748-9720

District III

1000 Rio Brazos Rd., Aztec, NM 87410
Phone:(505) 334-6178 Fax:(505) 334-6170

District IV

1220 S. St Francis Dr., Santa Fe, NM 87505
Phone:(505) 476-3470 Fax:(505) 476-3462

State of New Mexico
Energy, Minerals and Natural Resources
Oil Conservation Division
1220 S. St Francis Dr.
Santa Fe, NM 87505

QUESTIONS, Page 4

Action 318620

QUESTIONS (continued)

Operator: OXY USA INC P.O. Box 4294 Houston, TX 772104294	OGRID:	16696
	Action Number:	318620
	Action Type:	[C-141] Site Char./Remediation Plan C-141 (C-141-v-Plan)

QUESTIONS**Remediation Plan (continued)**

Please answer all the questions that apply or are indicated. This information must be provided to the appropriate district office no later than 90 days after the release discovery date.

This remediation will (or is expected to) utilize the following processes to remediate / reduce contaminants:

(Select all answers below that apply.)

(Ex Situ) Excavation and off-site disposal (i.e. dig and haul, hydrovac, etc.)	Yes
Which OCD approved facility will be used for off-site disposal	R360 Artesia LLC LANDFARM [FEEM0112340644]
OR which OCD approved well (API) will be used for off-site disposal	Not answered.
OR is the off-site disposal site, to be used, out-of-state	Not answered.
OR is the off-site disposal site, to be used, an NMED facility	Not answered.
(Ex Situ) Excavation and on-site remediation (i.e. On-Site Land Farms)	Not answered.
(In Situ) Soil Vapor Extraction	Not answered.
(In Situ) Chemical processing (i.e. Soil Shredding, Potassium Permanganate, etc.)	Not answered.
(In Situ) Biological processing (i.e. Microbes / Fertilizer, etc.)	Not answered.
(In Situ) Physical processing (i.e. Soil Washing, Gypsum, Disking, etc.)	Not answered.
Ground Water Abatement pursuant to 19.15.30 NMAC	Not answered.
OTHER (Non-listed remedial process)	Not answered.

Per Subsection B of 19.15.29.11 NMAC unless the site characterization report includes completed efforts at remediation, the report must include a proposed remediation plan in accordance with 19.15.29.12 NMAC, which includes the anticipated timelines for beginning and completing the remediation.

I hereby certify that the information given above is true and complete to the best of my knowledge and understand that pursuant to OCD rules and regulations all operators are required to report and/or file certain release notifications and perform corrective actions for releases which may endanger public health or the environment. The acceptance of a C-141 report by the OCD does not relieve the operator of liability should their operations have failed to adequately investigate and remediate contamination that pose a threat to groundwater, surface water, human health or the environment. In addition, OCD acceptance of a C-141 report does not relieve the operator of responsibility for compliance with any other federal, state, or local laws and/or regulations.

I hereby agree and sign off to the above statement	Name: Wade Dittrich Title: Environmental Coordinator Email: wade_dittrich@oxy.com Date: 02/29/2024
--	---

The OCD recognizes that proposed remediation measures may have to be minimally adjusted in accordance with the physical realities encountered during remediation. If the responsible party has any need to significantly deviate from the remediation plan proposed, then it should consult with the division to determine if another remediation plan submission is required.

District I
1625 N. French Dr., Hobbs, NM 88240
Phone:(575) 393-6161 Fax:(575) 393-0720

District II
811 S. First St., Artesia, NM 88210
Phone:(575) 748-1283 Fax:(575) 748-9720

District III
1000 Rio Brazos Rd., Aztec, NM 87410
Phone:(505) 334-6178 Fax:(505) 334-6170

District IV
1220 S. St Francis Dr., Santa Fe, NM 87505
Phone:(505) 476-3470 Fax:(505) 476-3462

State of New Mexico
Energy, Minerals and Natural Resources
Oil Conservation Division
1220 S. St Francis Dr.
Santa Fe, NM 87505

QUESTIONS, Page 5

Action 318620

QUESTIONS (continued)

Operator: OXY USA INC P.O. Box 4294 Houston, TX 772104294	OGRID:	16696
	Action Number:	318620
	Action Type:	
	[C-141] Site Char./Remediation Plan C-141 (C-141-v-Plan)	

QUESTIONS

Deferral Requests Only	
Only answer the questions in this group if seeking a deferral upon approval this submission. Each of the following items must be confirmed as part of any request for deferral of remediation.	
Requesting a deferral of the remediation closure due date with the approval of this submission	No

District I
1625 N. French Dr., Hobbs, NM 88240
Phone:(575) 393-6161 Fax:(575) 393-0720

District II
811 S. First St., Artesia, NM 88210
Phone:(575) 748-1283 Fax:(575) 748-9720

District III
1000 Rio Brazos Rd., Aztec, NM 87410
Phone:(505) 334-6178 Fax:(505) 334-6170

District IV
1220 S. St Francis Dr., Santa Fe, NM 87505
Phone:(505) 476-3470 Fax:(505) 476-3462

State of New Mexico
Energy, Minerals and Natural Resources
Oil Conservation Division
1220 S. St Francis Dr.
Santa Fe, NM 87505

QUESTIONS, Page 6

Action 318620

QUESTIONS (continued)

Operator: OXY USA INC P.O. Box 4294 Houston, TX 772104294	OGRID:	16696
	Action Number:	318620
	Action Type:	[C-141] Site Char./Remediation Plan C-141 (C-141-v-Plan)

QUESTIONS

Sampling Event Information	
Last sampling notification (C-141N) recorded	{Unavailable.}

Remediation Closure Request	
Only answer the questions in this group if seeking remediation closure for this release because all remediation steps have been completed.	
Requesting a remediation closure approval with this submission	No

District I
1625 N. French Dr., Hobbs, NM 88240
Phone:(575) 393-6161 Fax:(575) 393-0720
District II
811 S. First St., Artesia, NM 88210
Phone:(575) 748-1283 Fax:(575) 748-9720
District III
1000 Rio Brazos Rd., Aztec, NM 87410
Phone:(505) 334-6178 Fax:(505) 334-6170
District IV
1220 S. St Francis Dr., Santa Fe, NM 87505
Phone:(505) 476-3470 Fax:(505) 476-3462

State of New Mexico
Energy, Minerals and Natural Resources
Oil Conservation Division
1220 S. St Francis Dr.
Santa Fe, NM 87505

CONDITIONS

Action 318620

CONDITIONS

Operator: OXY USA INC P.O. Box 4294 Houston, TX 772104294	OGRID:
	16696
	Action Number:
	318620
Action Type:	
[C-141] Site Char./Remediation Plan C-141 (C-141-v-Plan)	

CONDITIONS

Created By	Condition	Condition Date
michael.buchanan	The Remediation Plan is Conditionally Approved. All samples must be analyzed for all constituents listed in Table I of 19.15.29.12 NMAC. Floor confirmation samples should be delineated/excavated to meet closure criteria standards for site assessment/characterization/proven depth to water determination. Sidewall samples should be delineated/excavated to 600 mg/kg for chlorides and 100 mg/kg for TPH to define the edge of the release. Confirmation samples should be collected every 200 ft2. All off pad areas must meet reclamation standards set forth in the OCD Spill Rule. The work will need to occur in 90 days after the work plan has been reviewed.	3/11/2024