

***** LIQUID SPILLS - VOLUME CALCULATIONS *****

Location of spill: East Lusk 15 Federal Com 2 Date of Spill: 3/2/2024

If the leak/spill is associated with production equipment, i.e. - wellhead, stuffing box, flowline, tank battery, production vessel, transfer pump, or storage tank place an "X" here: ☐

Input Data:

If spill volumes from measurement, i.e. metering, tank volumes, etc. are known enter the volumes here: OIL: 0.0000 BBL WATER: 0.0000 BBL

If "known" spill volumes are given, input data for the following "Area Calculations" is optional. The above will override the calculated volumes.

Total Area Calculations					Standing Liquid Calculations				
Total Surface Area	width	length	wet soil depth	oil (%)	Standing Liquid Area	width	length	liquid depth	oil (%)
Rectangle Area #1	40 ft X	147 ft X	1.50 in	48%	Rectangle Area #1	0 ft X	0 ft X	0.00 in	0%
Rectangle Area #2	60 ft X	61 ft X	1.50 in	48%	Rectangle Area #2	0 ft X	0 ft X	0.00 in	0%
Rectangle Area #3	6 ft X	16 ft X	1.50 in	48%	Rectangle Area #3	0 ft X	0 ft X	0.00 in	0%
Rectangle Area #4	0 ft X	0 ft X	0.00 in	0%	Rectangle Area #4	0 ft X	0 ft X	0.00 in	0%
Rectangle Area #5	0 ft X	0 ft X	0.00 in	0%	Rectangle Area #5	0 ft X	0 ft X	0.00 in	0%
Rectangle Area #6	0 ft X	0 ft X	0.00 in	0%	Rectangle Area #6	0 ft X	0 ft X	0.00 in	0%
Rectangle Area #7	0 ft X	0 ft X	0.00 in	0%	Rectangle Area #7	0 ft X	0 ft X	0.00 in	0%
Rectangle Area #8	0 ft X	0 ft X	0.00 in	0%	Rectangle Area #8	0 ft X	0 ft X	0.00 in	0%

okay

Production Data NOT Required

Average Daily Production: Oil 0 BBL Water 0 BBL

Did leak occur before the separator?: ☐ YES ☐ N/A (place an "X")

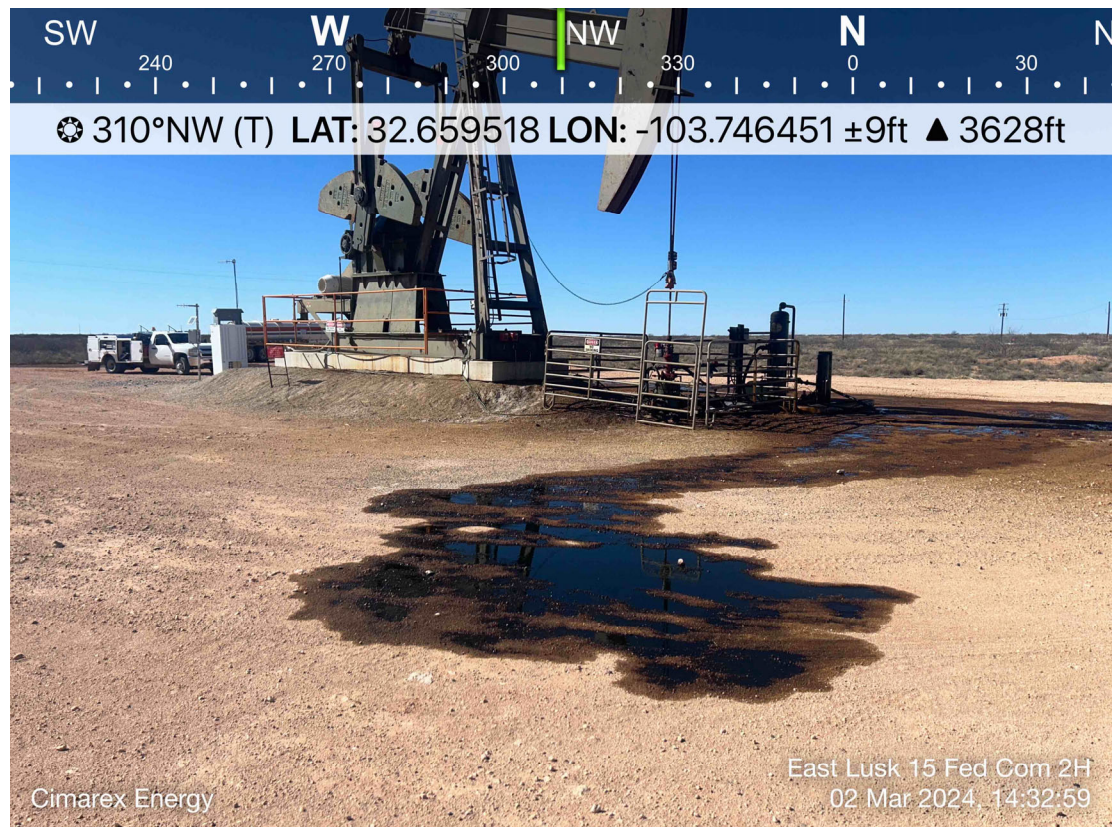
Amount of Free Liquid Recovered: 0 BBL okay Percentage of Oil in Free Liquid Recovered: 0% (percentage)

Liquid holding factor *: 0.14 gal per gal Use the following when the spill wets the grains of the soil. Use the following when the liquid completely fills the pore space of the soil.
* sand = .08 gallon liquid per gallon volume of soil. Occurs when the spill soaked soil is contained by barriers, natural (or not).
* gravelly (caliche) loam = .14 gallon liquid per gallon volume of soil. * gravelly (caliche) loam = .25 gallon liquid per gallon volume of soil.
* sandy clay loam soil = .14 gallon liquid per gallon volume of soil. * sandy loam = .5 gallon liquid per gallon volume of soil.
* clay loam = .16 gallon liquid per gallon volume of soil.

Saturated Soil Volume Calculations:			Free Liquid Volume Calculations:		
Total Solid/Liquid Volume:	9,636 sq. ft.	H2O 626 cu. ft. OIL 578 cu. ft.	Total Free Liquid Volume:	sq. ft.	H2O .000 cu. ft. OIL .000 cu. ft.
<u>Estimated Volumes Spilled</u>			<u>Estimated Production Volumes Lost</u>		
Liquid in Soil:	15.6 BBL	OIL 14.4 BBL	Estimated Production Spilled:	0.000000 BBL	OIL 0.000000 BBL
Free Liquid:	0.0 BBL	OIL 0.0 BBL	<u>Estimated Surface Damage</u>		
Totals:	15.617 BBL	14.415 BBL	Surface Area:	9,636 sq. ft.	
Total Liquid Spill Liquid:	15.617 BBL	14.415 BBL	Surface Area:	.2212 acre	
<u>Recovered Volumes</u>			<u>Estimated Weights and Volumes</u>		
Estimated oil recovered:	0.0 BBL	check - okay	Saturated Soil =	134,904 lbs	1,205 cu.ft. 45 cu.yds.
Estimated water recovered:	0.0 BBL	check - okay	Total Liquid =	30 BBL	1,261.35 gallon 10,494 lbs



CIMAREX ENERGY
EAST LUSK 15 FEDERAL COM 2
LEA, NM





CIMAREX ENERGY
EAST LUSK 15 FEDERAL COM 2
LEA, NM





CIMAREX ENERGY
EAST LUSK 15 FEDERAL COM 2
LEA, NM





CIMAREX ENERGY
EAST LUSK 15 FEDERAL COM 2
LEA, NM



District I
1625 N. French Dr., Hobbs, NM 88240
Phone:(575) 393-6161 Fax:(575) 393-0720
District II
811 S. First St., Artesia, NM 88210
Phone:(575) 748-1283 Fax:(575) 748-9720
District III
1000 Rio Brazos Rd., Aztec, NM 87410
Phone:(505) 334-6178 Fax:(505) 334-6170
District IV
1220 S. St Francis Dr., Santa Fe, NM 87505
Phone:(505) 476-3470 Fax:(505) 476-3462

State of New Mexico
Energy, Minerals and Natural Resources
Oil Conservation Division
1220 S. St Francis Dr.
Santa Fe, NM 87505

QUESTIONS

Action 321843

QUESTIONS

Operator: CIMAREX ENERGY CO. OF COLORADO 6001 Deauville Blvd, Ste 300N Midland, TX 79706	OGRID: 162683
	Action Number: 321843
	Action Type: [C-141] Initial C-141 (C-141-v-Initial)

QUESTIONS

Prerequisites	
Incident ID (n#)	nAPP2406276831
Incident Name	NAPP2406276831 EAST LUSK 15 FEDERAL COM 2 @ 30-025-40557
Incident Type	Oil Release
Incident Status	Initial C-141 Received
Incident Well	[30-025-40557] EAST LUSK 15 FEDERAL COM #002

Location of Release Source	
Please answer all the questions in this group.	
Site Name	East Lusk 15 Federal Com 2
Date Release Discovered	03/02/2024
Surface Owner	Federal

Incident Details	
Please answer all the questions in this group.	
Incident Type	Oil Release
Did this release result in a fire or is the result of a fire	No
Did this release result in any injuries	No
Has this release reached or does it have a reasonable probability of reaching a watercourse	No
Has this release endangered or does it have a reasonable probability of endangering public health	No
Has this release substantially damaged or will it substantially damage property or the environment	No
Is this release of a volume that is or may with reasonable probability be detrimental to fresh water	No

Nature and Volume of Release	
Material(s) released, please answer all that apply below. Any calculations or specific justifications for the volumes provided should be attached to the follow-up C-141 submission.	
Crude Oil Released (bbls) Details	Cause: Equipment Failure Valve Crude Oil Released: 14 BBL Recovered: 10 BBL Lost: 4 BBL.
Produced Water Released (bbls) Details	Cause: Equipment Failure Valve Produced Water Released: 15 BBL Recovered: 10 BBL Lost: 5 BBL.
Is the concentration of chloride in the produced water >10,000 mg/l	Yes
Condensate Released (bbls) Details	Not answered.
Natural Gas Vented (Mcf) Details	Not answered.
Natural Gas Flared (Mcf) Details	Not answered.
Other Released Details	Not answered.
Are there additional details for the questions above (i.e. any answer containing Other, Specify, Unknown, and/or Fire, or any negative lost amounts)	The Baird back pressure valve became plugged off with debris. The pumping unit did shut down but the tubing pressure gauge failed, allowing a total of 29 barrels of fluids to release onto the well pad. A vac truck recovered a total of 20 barrels of fluid. The site will be assessed and remediation will take place in the coming weeks. Released: 29 barrels of fluid (14 barrels oil + 15 barrels water) Recovered: 20 barrels of fluid

District I

1625 N. French Dr., Hobbs, NM 88240
Phone:(575) 393-6161 Fax:(575) 393-0720

District II

811 S. First St., Artesia, NM 88210
Phone:(575) 748-1283 Fax:(575) 748-9720

District III

1000 Rio Brazos Rd., Aztec, NM 87410
Phone:(505) 334-6178 Fax:(505) 334-6170

District IV

1220 S. St Francis Dr., Santa Fe, NM 87505
Phone:(505) 476-3470 Fax:(505) 476-3462

State of New Mexico
Energy, Minerals and Natural Resources
Oil Conservation Division
1220 S. St Francis Dr.
Santa Fe, NM 87505

QUESTIONS, Page 2

Action 321843

QUESTIONS (continued)

Operator: CIMAREX ENERGY CO. OF COLORADO 6001 Deauville Blvd, Ste 300N Midland, TX 79706	OGRID: 162683
	Action Number: 321843
	Action Type: [C-141] Initial C-141 (C-141-v-Initial)

QUESTIONS

Nature and Volume of Release (continued)	
Is this a gas only submission (i.e. only significant Mcf values reported)	No, according to supplied volumes this does not appear to be a "gas only" report.
Was this a major release as defined by Subsection A of 19.15.29.7 NMAC	Yes
Reasons why this would be considered a submission for a notification of a major release	From paragraph A. "Major release" determine using: (1) an unauthorized release of a volume, excluding gases, of 25 barrels or more.
With the implementation of the 19.15.27 NMAC (05/25/2021), venting and/or flaring of natural gas (i.e. gas only) are to be submitted on the C-129 form.	

Initial Response

The responsible party must undertake the following actions immediately unless they could create a safety hazard that would result in injury.

The source of the release has been stopped	True
The impacted area has been secured to protect human health and the environment	True
Released materials have been contained via the use of berms or dikes, absorbent pads, or other containment devices	True
All free liquids and recoverable materials have been removed and managed appropriately	True
If all the actions described above have not been undertaken, explain why	Not answered.

Per Paragraph (4) of Subsection B of 19.15.29.8 NMAC the responsible party may commence remediation immediately after discovery of a release. If remediation has begun, please prepare and attach a narrative of actions to date in the follow-up C-141 submission. If remedial efforts have been successfully completed or if the release occurred within a lined containment area (see Subparagraph (a) of Paragraph (5) of Subsection A of 19.15.29.11 NMAC), please prepare and attach all information needed for closure evaluation in the follow-up C-141 submission.

I hereby certify that the information given above is true and complete to the best of my knowledge and understand that pursuant to OCD rules and regulations all operators are required to report and/or file certain release notifications and perform corrective actions for releases which may endanger public health or the environment. The acceptance of a C-141 report by the OCD does not relieve the operator of liability should their operations have failed to adequately investigate and remediate contamination that pose a threat to groundwater, surface water, human health or the environment. In addition, OCD acceptance of a C-141 report does not relieve the operator of responsibility for compliance with any other federal, state, or local laws and/or regulations.

I hereby agree and sign off to the above statement	Name: Laci Luig Title: ES&H Specialist Email: DL_PermianEnvironmental@coterra.com Date: 03/08/2024
--	---

District I

1625 N. French Dr., Hobbs, NM 88240
Phone:(575) 393-6161 Fax:(575) 393-0720

District II

811 S. First St., Artesia, NM 88210
Phone:(575) 748-1283 Fax:(575) 748-9720

District III

1000 Rio Brazos Rd., Aztec, NM 87410
Phone:(505) 334-6178 Fax:(505) 334-6170

District IV

1220 S. St Francis Dr., Santa Fe, NM 87505
Phone:(505) 476-3470 Fax:(505) 476-3462

State of New Mexico
Energy, Minerals and Natural Resources
Oil Conservation Division
1220 S. St Francis Dr.
Santa Fe, NM 87505

QUESTIONS, Page 3

Action 321843

QUESTIONS (continued)

Operator: CIMAREX ENERGY CO. OF COLORADO 6001 Deauville Blvd, Ste 300N Midland, TX 79706	OGRID: 162683
	Action Number: 321843
	Action Type: [C-141] Initial C-141 (C-141-v-Initial)

QUESTIONS**Site Characterization**

Please answer all the questions in this group (only required when seeking remediation plan approval and beyond). This information must be provided to the appropriate district office no later than 90 days after the release discovery date.

What is the shallowest depth to groundwater beneath the area affected by the release in feet below ground surface (ft bgs)	Between 100 and 500 (ft.)
What method was used to determine the depth to ground water	NM OSE iWaters Database Search
Did this release impact groundwater or surface water	No
What is the minimum distance, between the closest lateral extents of the release and the following surface areas:	
A continuously flowing watercourse or any other significant watercourse	Between 1 and 5 (mi.)
Any lakebed, sinkhole, or playa lake (measured from the ordinary high-water mark)	Between 1 and 5 (mi.)
An occupied permanent residence, school, hospital, institution, or church	Greater than 5 (mi.)
A spring or a private domestic fresh water well used by less than five households for domestic or stock watering purposes	Between 1 and 5 (mi.)
Any other fresh water well or spring	Between 1 and 5 (mi.)
Incorporated municipal boundaries or a defined municipal fresh water well field	Greater than 5 (mi.)
A wetland	Between 1 and 5 (mi.)
A subsurface mine	Greater than 5 (mi.)
An (non-karst) unstable area	Greater than 5 (mi.)
Categorize the risk of this well / site being in a karst geology	Low
A 100-year floodplain	Greater than 5 (mi.)
Did the release impact areas not on an exploration, development, production, or storage site	No

Remediation Plan

Please answer all the questions that apply or are indicated. This information must be provided to the appropriate district office no later than 90 days after the release discovery date.

Requesting a remediation plan approval with this submission	No
<i>The OCD recognizes that proposed remediation measures may have to be minimally adjusted in accordance with the physical realities encountered during remediation. If the responsible party has any need to significantly deviate from the remediation plan proposed, then it should consult with the division to determine if another remediation plan submission is required.</i>	

District I
1625 N. French Dr., Hobbs, NM 88240
Phone:(575) 393-6161 Fax:(575) 393-0720
District II
811 S. First St., Artesia, NM 88210
Phone:(575) 748-1283 Fax:(575) 748-9720
District III
1000 Rio Brazos Rd., Aztec, NM 87410
Phone:(505) 334-6178 Fax:(505) 334-6170
District IV
1220 S. St Francis Dr., Santa Fe, NM 87505
Phone:(505) 476-3470 Fax:(505) 476-3462

State of New Mexico
Energy, Minerals and Natural Resources
Oil Conservation Division
1220 S. St Francis Dr.
Santa Fe, NM 87505

CONDITIONS

Action 321843

CONDITIONS

Operator: CIMAREX ENERGY CO. OF COLORADO 6001 Deauville Blvd, Ste 300N Midland, TX 79706	OGRID: 162683
	Action Number: 321843
	Action Type: [C-141] Initial C-141 (C-141-v-Initial)

CONDITIONS

Created By	Condition	Condition Date
scwells	None	3/11/2024