



## SITE INFORMATION

---

### Closure Report

**Dos Equis 11 Federal CTB (01.20.2024)**

**Incident ID: NAPP2402156989**

**Lea County, New Mexico**

**Unit A Sec 11 T24S R32E**

**32.23847°, -103.63894°**

### Flare Fire

**Point of Release: Sales scrubber dump valve shut causing the vessel to high level, during that time, Targa had a high-line pressure event that swept the fluid out of the flare, causing a fire.**

**Release Date: 01.20.2024**

**Volume Released: Unknown**

**Volume Recovered: All fluid burned off during fire**

**CARMONA RESOURCES**



### Prepared for:

**Cimarex Energy Co.  
600 N. Marienfeld Street  
Suite 300N  
Midland, Texas 79701**

### Prepared by:

**Carmona Resources, LLC  
310 West Wall Street  
Suite 500  
Midland, Texas 79701**



## TABLE OF CONTENTS

---

### 1.0 SITE INFORMATION AND BACKGROUND

### 2.0 SITE CHARACTERIZATION AND GROUNDWATER

### 3.0 NMAC REGULATORY CRITERIA

### 4.0 SITE ASSESSMENT ACTIVITIES

### 5.0 CONCLUSION

#### FIGURES

FIGURE 1                      OVERVIEW                      FIGURE 2                      TOPOGRAPHIC

FIGURE 3                      SAMPLE LOCATION

#### APPENDICES

APPENDIX A                      TABLES

APPENDIX B                      PHOTOS

APPENDIX C                      NMOCD CORRESPONDENCE

APPENDIX D                      SITE CHARACTERIZATION AND GROUNDWATER

APPENDIX E                      LABORATORY REPORTS

March 8, 2024

New Mexico Oil Conservation Division  
1220 South St, Francis Drive  
Santa Fe, New Mexico 87505

**Re: Closure Report**  
**Dos Equis 11 Federal CTB (1.20.2024)**  
**Cimarex Energy Co.**  
**Site Location: Unit A, S11 T24S, R32E**  
**(Lat 32.23847°, Long -103.63894°)**  
**Lea County, New Mexico**

To whom it may concern:

On behalf of Cimarex Energy Co. (Cimarex), Carmona Resources, LLC has prepared this letter to document site activities for the Dos Equis 11 Federal CTB (1.20.2024). The site is located at 32.23847°, -103.63894° within Unit A, S11, T24S, R32E, in Lea County, New Mexico (Figures 1 and 2).

### **1.0 Site Information and Background**

Based on the initial C-141 obtained from the New Mexico Oil Conservation Division (NMOCD), the flare fire was discovered on January 20, 2024, caused by a sales scrubber dump valve that was closed off, resulting in the vessel to high level. During this time, Targa Resources had a high-pressure line event that swept the fluid out of the flare. This resulted in a flare fire that released an unknown volume of fluid. However, all fluid was burned off during the fire resulting in zero recovery. The impacted area is located off the pad. Refer to Figure 3 for release overview. The initial C-141 form is attached in Appendix C.

### **2.0 Site Characterization and Groundwater**

The site is located within a low karst area. Based on a review of the New Mexico Office of State Engineers and USGS databases, no known water sources are within a 0.50-mile radius of the location. The nearest groundwater determination bore is located approximately 0.52 miles West of the site in S12, T24S, R32E and was drilled in 2023.

On April 6, 2023, H&R Enterprises drilled a groundwater determination bore to 105' below ground surface on a nearby location, 0.52 miles of the location. The bore was left open for 72 hours and tagged with a water level meter. No water was detected at 105' below the surface. The coordinates for the groundwater determination bore are 32.238879°, -103.63003°. See Appendix D for the log.

### **3.0 NMAC Regulatory Criteria**

Per the NMOCD regulatory criteria established in 19.15.29.12 NMAC, the following criteria were utilized in assessing the site.

- Benzene: 10 milligrams per kilogram (mg/kg).
- Benzene, toluene, ethylbenzene, and total xylenes (BTEX): 50 mg/kg.
- TPH: 2,500 mg/kg (GRO + DRO + MRO).
- TPH: 1,000 mg/kg (GRO + DRO).
- Chloride: 20,000 mg/kg.



#### **4.0 Site Assessment Activities**

On January 31, 2024, Carmona Resources performed site assessment activities to evaluate soil impacts. To assess the vertical and horizontal extent, three (3) sample points (S-1 through S-3) and four (4) horizontal sample points (H-1 through H-4) were advanced to depths ranging from the surface to 2' bgs inside the area of concern. For chemical analysis, the soil samples were collected and placed directly into laboratory-provided sample containers, stored on ice, and transported under the proper chain-of-custody protocol to Cardinal Laboratories in Hobbs, New Mexico. The samples were analyzed for total petroleum hydrocarbons (TPH) by EPA method 8015, modified benzene, toluene, ethylbenzene, and xylenes (BTEX) by EPA Method 8021B, and chloride by EPA method 4500. The laboratory reports, including analytical methods, results, and chain-of-custody documents, are attached in Appendix E. Refer to Table 1. See Figure 3 for the sample locations.

#### **5.0 Conclusion**

Based on the assessment results and the analytical data, no further actions are required at the site. Cimarex formally requests the closure of this release. If you have any questions regarding this report or need additional information, please get in touch with us at 432-813-1992.

Sincerely,

**Carmona Resources, LLC**

Ivan Ramos  
Project Manager

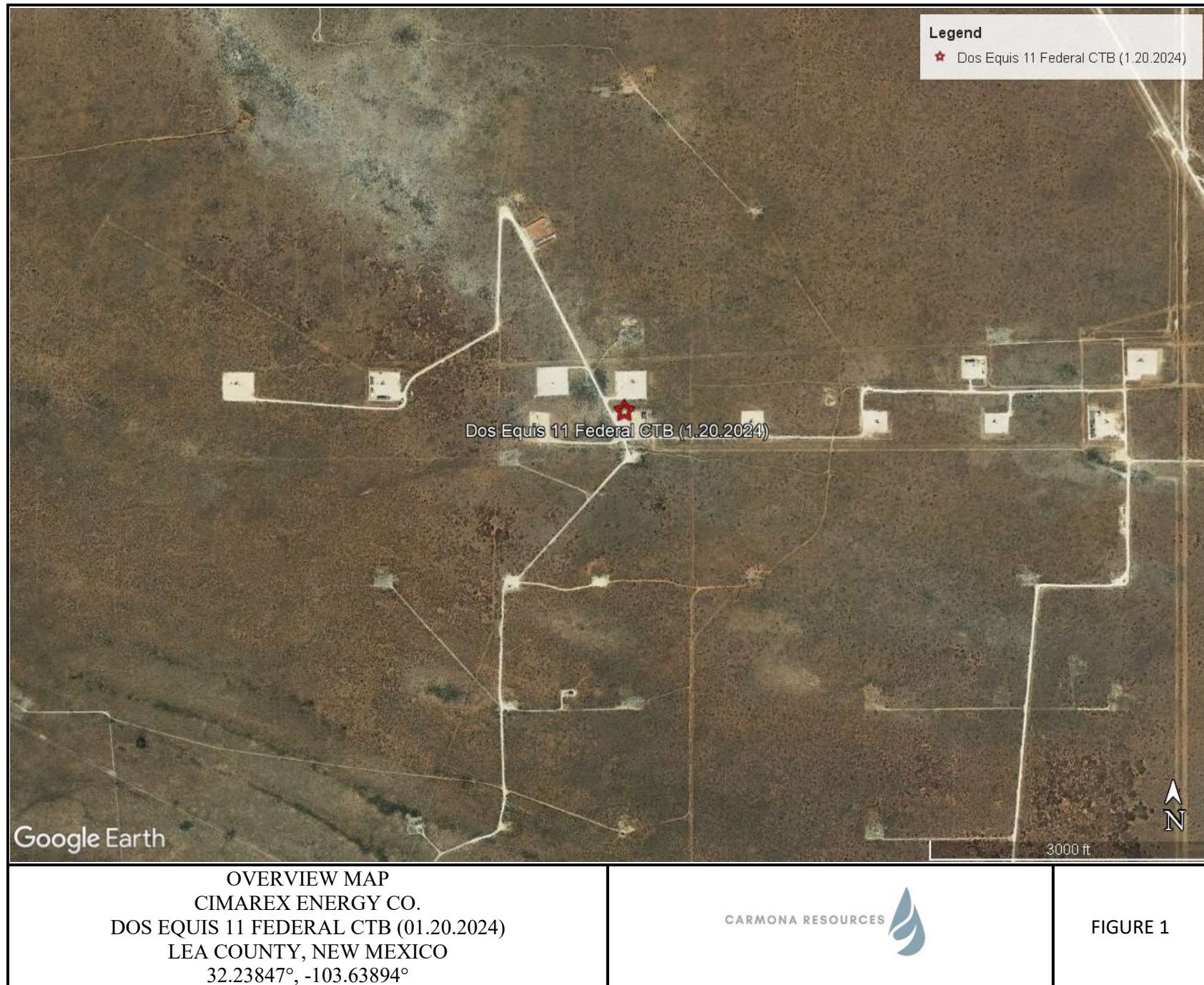
Ashton Thielke  
Sr. Project Manager

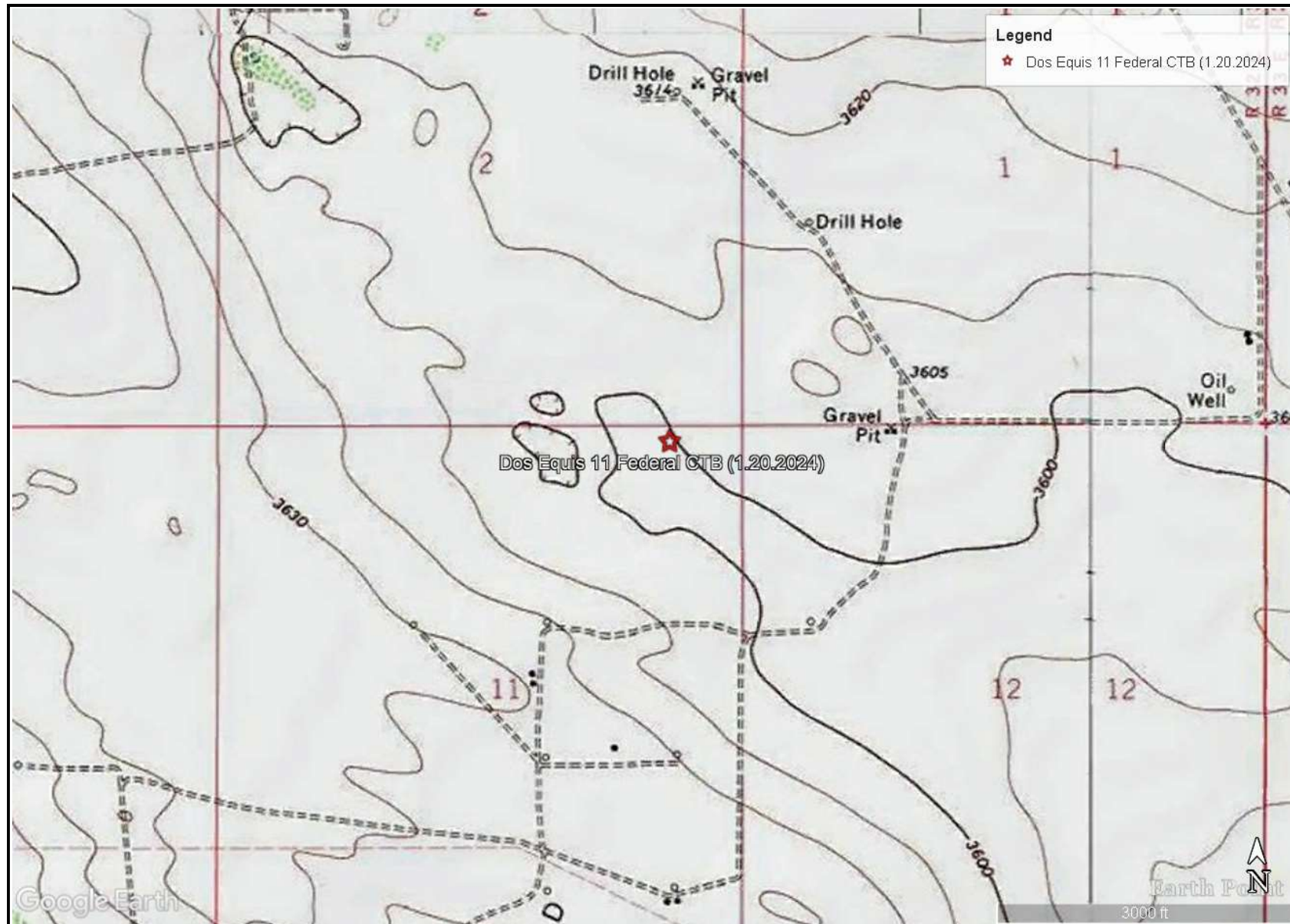


## FIGURES

CARMONA RESOURCES





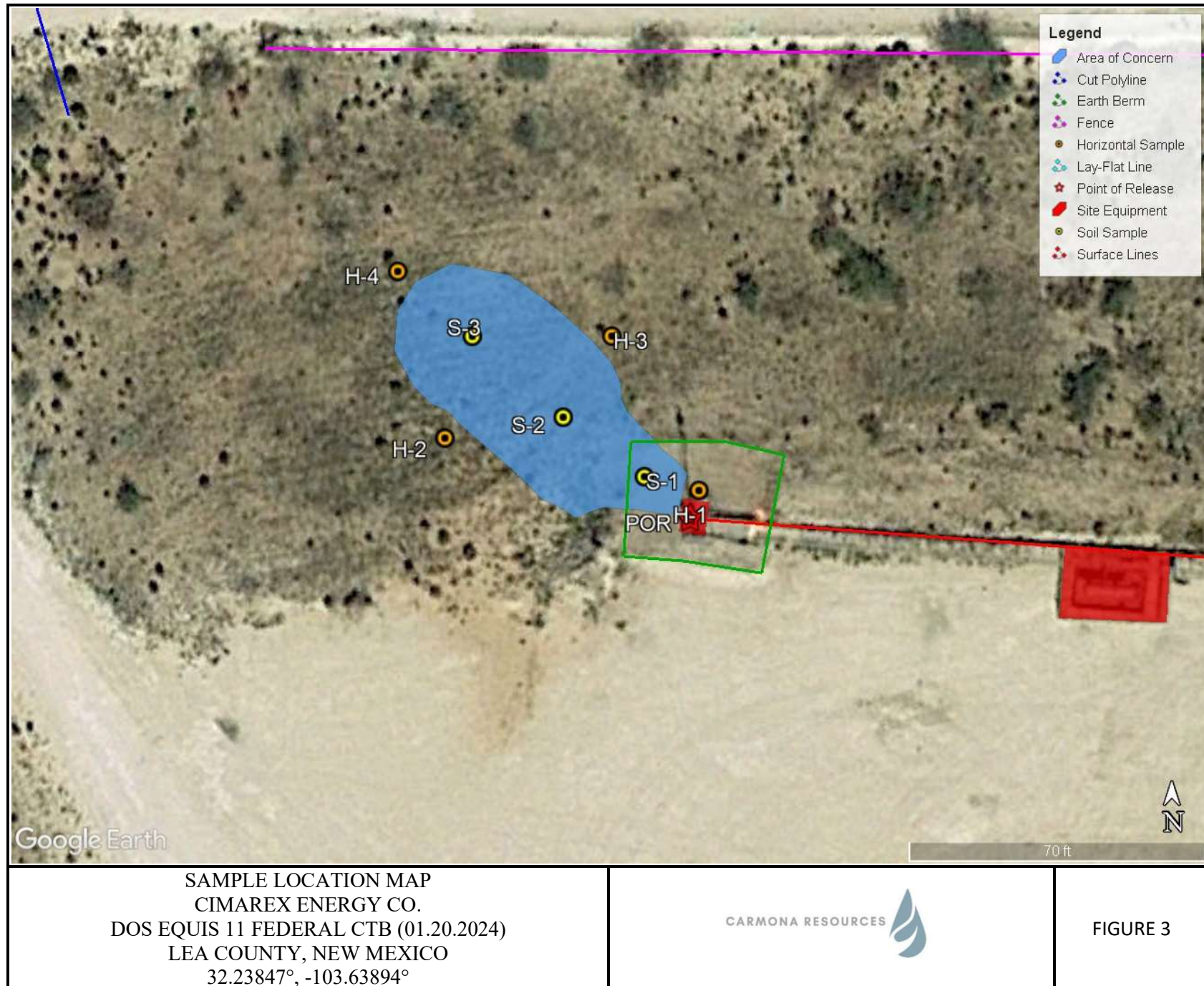


TOPOGRAPHIC MAP  
CIMAREX ENERGY CO.  
DOS EQUIS 11 FEDERAL CTB (01.20.2024)  
LEA COUNTY, NEW MEXICO  
32.23847°, -103.63894°



FIGURE 2





## APPENDIX A

CARMONA RESOURCES



**Table 1**  
**Cimarex Energy Co.**  
**Dos Equis 11 Federal CTB (01.20.2024)**  
**Lea County, New Mexico**

Sample ID	Date	Depth (ft)	TPH (mg/kg)				Benzene (mg/kg)	Toluene (mg/kg)	Ethlybenzene (mg/kg)	Xylene (mg/kg)	Total BTEX (mg/kg)	Chloride (mg/kg)
			GRO	DRO	MRO	Total						
<b>S-1</b>	1/31/2024	0-1.0	<10.0	<10.0	<10.0	<10.0	<0.050	<0.050	<0.050	<0.150	<0.300	32.0
	"	1.5	<10.0	<10.0	<10.0	<10.0	<0.050	<0.050	<0.050	<0.150	<0.300	32.0
	"	2.0	<10.0	<10.0	<10.0	<10.0	<0.050	<0.050	<0.050	<0.150	<0.300	32.0
<b>S-2</b>	1/31/2024	0-1.0	<10.0	<10.0	<10.0	<10.0	<0.050	<0.050	<0.050	<0.150	<0.300	16.0
	"	1.5	<10.0	<10.0	<10.0	<10.0	<0.050	<0.050	<0.050	<0.150	<0.300	16.0
	"	2.0	<10.0	<10.0	<10.0	<10.0	<0.050	<0.050	<0.050	<0.150	<0.300	16.0
<b>S-3</b>	1/31/2024	0-1.0	<10.0	<10.0	<10.0	<10.0	<0.050	<0.050	<0.050	<0.150	<0.300	16.0
	"	1.5	<10.0	<10.0	<10.0	<10.0	<0.050	<0.050	<0.050	<0.150	<0.300	16.0
	"	2.0	<10.0	<10.0	<10.0	<10.0	<0.050	<0.050	<0.050	<0.150	<0.300	16.0
<b>Regulatory Criteria<sup>A</sup></b>			<b>1,000 mg/kg</b>			<b>2,500 mg/kg</b>	<b>10 mg/kg</b>				<b>50 mg/kg</b>	<b>20,000 mg/kg</b>

(-) Not Analyzed

<sup>A</sup> – Table 1 - 19.15.29 NMAC

mg/kg - milligram per kilogram

TPH - Total Petroleum Hydrocarbons

ft - feet

(S) Soil Sample

**Table 1**  
**Cimarex Energy Co.**  
**Dos Equis 11 Federal CTB (01.20.2024)**  
**Lea County, New Mexico**

Sample ID	Date	Depth (ft)	TPH (mg/kg)				Benzene (mg/kg)	Toluene (mg/kg)	Ethlybenzene (mg/kg)	Xylene (mg/kg)	Total BTEX (mg/kg)	Chloride (mg/kg)
			GRO	DRO	MRO	Total						
H-1	1/31/2024	0-0.5	<10.0	<10.0	<10.0	<10.0	<0.050	<0.050	<0.050	<0.150	<0.300	32.0
H-2	1/31/2024	0-0.5	<10.0	<10.0	<10.0	<10.0	<0.050	<0.050	<0.050	<0.150	<0.300	16.0
H-3	1/31/2024	0-0.5	<10.0	<10.0	<10.0	<10.0	<0.050	<0.050	<0.050	<0.150	<0.300	32.0
H-4	1/31/2024	0-0.5	<10.0	<10.0	<10.0	<10.0	<0.050	<0.050	<0.050	<0.150	<0.300	<16.0
Regulatory Criteria <sup>A</sup>			1,000 mg/kg			2,500 mg/kg	10 mg/kg				50 mg/kg	20,000 mg/kg

(-) Not Analyzed

<sup>A</sup> – Table 1 - 19.15.29 NMAC

mg/kg - milligram per kilogram

TPH - Total Petroleum Hydrocarbons

ft - feet

(H) Horizontal Sample

## APPENDIX B

CARMONA RESOURCES





# PHOTOGRAPHIC LOG

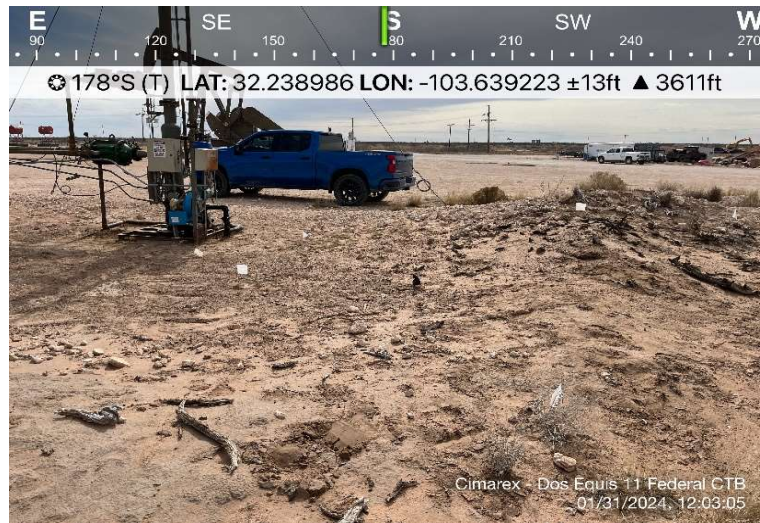
Cimarex Energy Co.

## Photograph No. 1

**Facility:** Dos Equis 11 Federal CTB  
(01.20.2024)

**County:** Lea County, New Mexico

**Description:**  
View South, area of S-1.



## Photograph No. 2

**Facility:** Dos Equis 11 Federal CTB  
(01.20.2024)

**County:** Lea County, New Mexico

**Description:**  
View West, area of S-2 & S-3.



## Photograph No. 3

**Facility:** Dos Equis 11 Federal CTB  
(01.20.2024)

**County:** Lea County, New Mexico

**Description:**  
View Southeast, area of S-1 through S-3.



# PHOTOGRAPHIC LOG

Cimarex Energy Co.

## Photograph No. 4

**Facility:** Dos Equis 11 Federal CTB  
(01.20.2024)

**County:** Lea County, New Mexico

**Description:**

View East, area of S-1 through S-3.



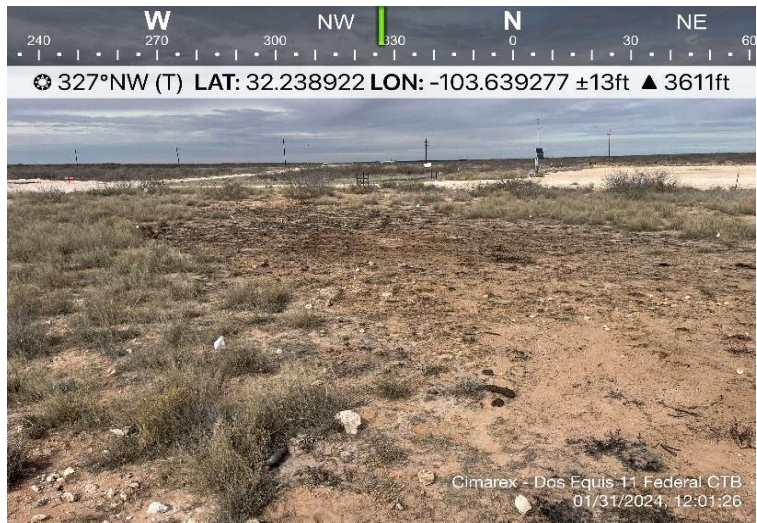
## Photograph No. 5

**Facility:** Dos Equis 11 Federal CTB  
(01.20.2024)

**County:** Lea County, New Mexico

**Description:**

View Northwest, area of S-2 & S-3.





## APPENDIX C

CARMONA RESOURCES



**District I**  
1625 N. French Dr., Hobbs, NM 88240  
Phone:(575) 393-6161 Fax:(575) 393-0720  
**District II**  
811 S. First St., Artesia, NM 88210  
Phone:(575) 748-1283 Fax:(575) 748-9720  
**District III**  
1000 Rio Brazos Rd., Aztec, NM 87410  
Phone:(505) 334-6178 Fax:(505) 334-6170  
**District IV**  
1220 S. St Francis Dr., Santa Fe, NM 87505  
Phone:(505) 476-3470 Fax:(505) 476-3462

State of New Mexico  
Energy, Minerals and Natural Resources  
Oil Conservation Division  
1220 S. St Francis Dr.  
Santa Fe, NM 87505

QUESTIONS

Action 305917

QUESTIONS

Operator: CIMAREX ENERGY CO. 6001 Deauville Blvd Midland, TX 79706	OGRID: 215099
	Action Number: 305917
	Action Type: [NOTIFY] Notification Of Release (NOR)

QUESTIONS

Location of Release Source	
Please answer all the questions in this group.	
Site Name	Dos Equis 11 Federal CTB
Date Release Discovered	01/20/2024
Surface Owner	Federal

Incident Details	
Please answer all the questions in this group.	
Incident Type	Fire
Did this release result in a fire or is the result of a fire	Yes
Did this release result in any injuries	No
Has this release reached or does it have a reasonable probability of reaching a watercourse	No
Has this release endangered or does it have a reasonable probability of endangering public health	No
Has this release substantially damaged or will it substantially damage property or the environment	No
Is this release of a volume that is or may with reasonable probability be detrimental to fresh water	No

Nature and Volume of Release	
Material(s) released, please answer all that apply below. Any calculations or specific justifications for the volumes provided should be attached to the follow-up C-141 submission.	
Crude Oil Released (bbls) Details	Cause: Fire   Other (Specify)   Crude Oil   Released: 0 BBL   Recovered: 0 BBL   Lost: 0 BBL.
Produced Water Released (bbls) Details	Not answered.
Is the concentration of chloride in the produced water >10,000 mg/l	Not answered.
Condensate Released (bbls) Details	Not answered.
Natural Gas Vented (Mcf) Details	Not answered.
Natural Gas Flared (Mcf) Details	Not answered.
Other Released Details	Not answered.
Are there additional details for the questions above (i.e. any answer containing Other, Specify, Unknown, and/or Fire, or any negative lost amounts)	The sales scrubber dump valve shut, causing the vessel to high level; we are investigating why the ball valve was shut. The facility shut in on the sales scrubber high-level and shut in both wells. During the shutdown, Targa had a high-line pressure event that swept the fluid out of the flare, causing a fire. There was no damage to the flare, but we did burn a small pasture area of 90’X40’. Wells will remain shut-in until a root cause analysis is done. No injuries were associated with this incident, and the fire was extinguished with a fire extinguisher.

**District I**  
1625 N. French Dr., Hobbs, NM 88240  
Phone:(575) 393-6161 Fax:(575) 393-0720

**District II**  
811 S. First St., Artesia, NM 88210  
Phone:(575) 748-1283 Fax:(575) 748-9720

**District III**  
1000 Rio Brazos Rd., Aztec, NM 87410  
Phone:(505) 334-6178 Fax:(505) 334-6170

**District IV**  
1220 S. St Francis Dr., Santa Fe, NM 87505  
Phone:(505) 476-3470 Fax:(505) 476-3462

State of New Mexico  
Energy, Minerals and Natural Resources  
Oil Conservation Division  
1220 S. St Francis Dr.  
Santa Fe, NM 87505

QUESTIONS, Page 2

Action 305917

QUESTIONS (continued)

Operator: CIMAREX ENERGY CO. 6001 Deauville Blvd Midland, TX 79706	OGRID: 215099
	Action Number: 305917
	Action Type: [NOTIFY] Notification Of Release (NOR)

QUESTIONS

Nature and Volume of Release (continued)	
Is this a gas only submission (i.e. only significant Mcf values reported)	More volume information must be supplied to determine if this will be treated as a "gas only" report.
Was this a major release as defined by Subsection A of 19.15.29.7 NMAC	Yes
Reasons why this would be considered a submission for a notification of a major release	From paragraph A. "Major release" determine using: (2) an unauthorized release of a volume that: (a) results in a fire or is the result of a fire.
With the implementation of the 19.15.27 NMAC (05/25/2021), venting and/or flaring of natural gas (i.e. gas only) are to be submitted on the C-129 form.	

Initial Response	
The responsible party must undertake the following actions immediately unless they could create a safety hazard that would result in injury.	
The source of the release has been stopped	True
The impacted area has been secured to protect human health and the environment	True
Released materials have been contained via the use of berms or dikes, absorbent pads, or other containment devices	True
All free liquids and recoverable materials have been removed and managed appropriately	True
If all the actions described above have not been undertaken, explain why	Not answered.
Per Paragraph 4 of Subsection B of 19.15.29.8 NMAC the responsible party may commence remediation immediately after discovery of a release. If remediation has begun, please prepare and attach a narrative of actions to date in the follow-up C-141 submission. If remedial efforts have been successfully completed or if the release occurred within a lined containment area (see 19.15.29.11(A)(5)(a) NMAC), please prepare and attach all information needed for closure evaluation in the follow-up C-141 submission.	

**District I**  
1625 N. French Dr., Hobbs, NM 88240  
Phone:(575) 393-6161 Fax:(575) 393-0720

**District II**  
811 S. First St., Artesia, NM 88210  
Phone:(575) 748-1283 Fax:(575) 748-9720

**District III**  
1000 Rio Brazos Rd., Aztec, NM 87410  
Phone:(505) 334-6178 Fax:(505) 334-6170

**District IV**  
1220 S. St Francis Dr., Santa Fe, NM 87505  
Phone:(505) 476-3470 Fax:(505) 476-3462

State of New Mexico

Energy, Minerals and Natural Resources

Oil Conservation Division

1220 S. St Francis Dr.

Santa Fe, NM 87505

ACKNOWLEDGMENTS

Action 305917

ACKNOWLEDGMENTS

Operator: CIMAREX ENERGY CO. 6001 Deauville Blvd Midland, TX 79706	OGRID: 215099
	Action Number: 305917
	Action Type: [NOTIFY] Notification Of Release (NOR)

ACKNOWLEDGMENTS

<input checked="" type="checkbox"/>	I acknowledge that I am authorized to submit notification of a release on behalf of my operator.
<input checked="" type="checkbox"/>	I acknowledge that upon submitting this application, I will be creating a new incident file (assigned to my operator) to track the notification(s) and corrective action(s) for a release, pursuant to NMAC 19.15.29.
<input checked="" type="checkbox"/>	I acknowledge that creating a new incident file will require my operator to file subsequent submission(s) of form "C-141, Application for administrative approval of a release notification and corrective action", pursuant to NMAC 19.15.29.
<input checked="" type="checkbox"/>	I hereby certify that the information given above is true and complete to the best of my knowledge and understand that pursuant to OCD rules and regulations all operators are required to report and/or file certain release notifications and perform corrective actions for releases which may endanger public health or the environment.
<input checked="" type="checkbox"/>	I acknowledge the fact that the acceptance of a C-141 report by the OCD does not relieve the operator of liability should their operations have failed to adequately investigate and remediate contamination that pose a threat to groundwater, surface water, human health or the environment.
<input checked="" type="checkbox"/>	I acknowledge the fact that, in addition, OCD acceptance of a C-141 report does not relieve the operator of responsibility for compliance with any other federal, state, or local laws and/or regulations.

**District I**  
1625 N. French Dr., Hobbs, NM 88240  
Phone:(575) 393-6161 Fax:(575) 393-0720  
**District II**  
811 S. First St., Artesia, NM 88210  
Phone:(575) 748-1283 Fax:(575) 748-9720  
**District III**  
1000 Rio Brazos Rd., Aztec, NM 87410  
Phone:(505) 334-6178 Fax:(505) 334-6170  
**District IV**  
1220 S. St Francis Dr., Santa Fe, NM 87505  
Phone:(505) 476-3470 Fax:(505) 476-3462

**State of New Mexico**  
**Energy, Minerals and Natural Resources**  
**Oil Conservation Division**  
**1220 S. St Francis Dr.**  
**Santa Fe, NM 87505**

CONDITIONS  
  
Action 305917

CONDITIONS

Operator: CIMAREX ENERGY CO. 6001 Deauville Blvd Midland, TX 79706	OGRID: 215099
	Action Number: 305917
	Action Type: [NOTIFY] Notification Of Release (NOR)

CONDITIONS

Created By	Condition	Condition Date
lluig	When submitting future reports regarding this release, please submit the calculations used or specific justification for the volumes reported on the initial C-141.	1/21/2024

< SVC-Pro

### Saturated Soil Calculation

Dos Equis 11 CTB flare fire

L(Ft)

W(Ft)

D(In)

Oil %

20

40

.2

100



Soil Definitions



SOIL TYPE FACTOR

0.08

0.14

0.16

0.25

0.15

H2O Spill Total: 0.00 Bbls

Oil Spill Total: 0.19 Bbls

Total Spilled: 0.19 Bbls

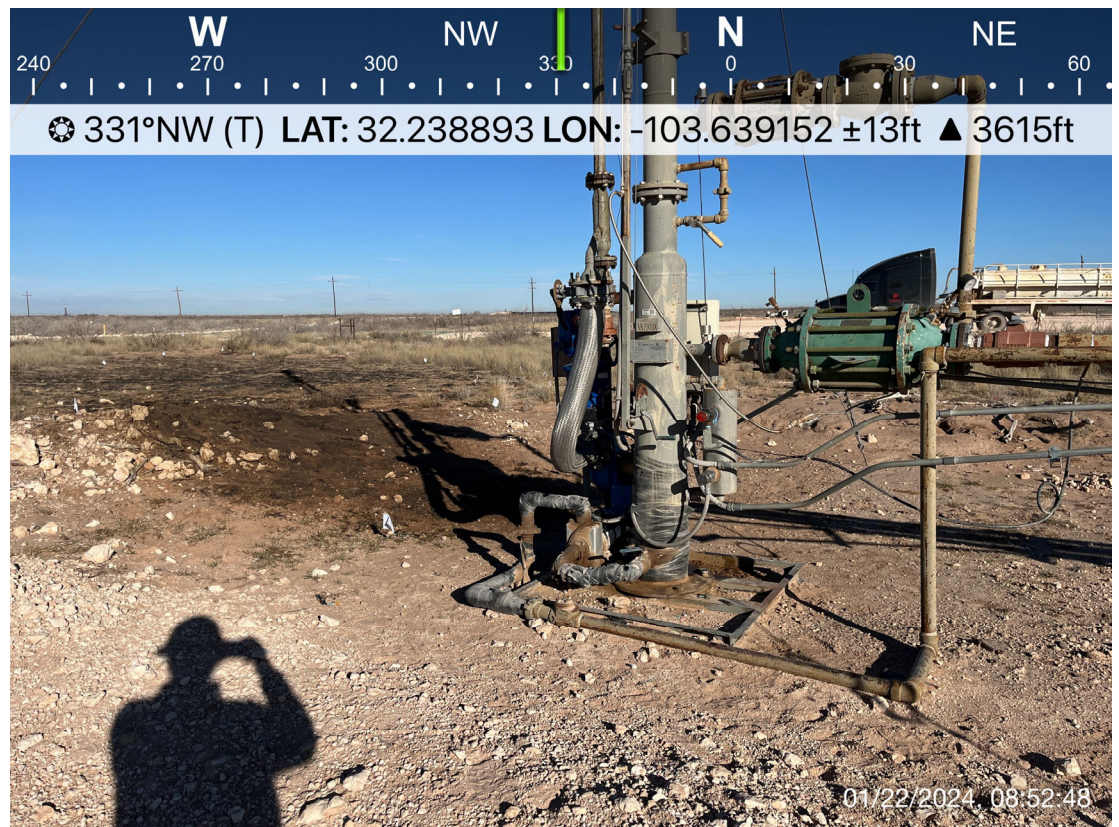
Total Spilled: 7.98 Gals

Screenshot for future reference!





CIMAREX ENERGY  
DOS EQUIS 11 FEDERAL CTB  
LEA, NM







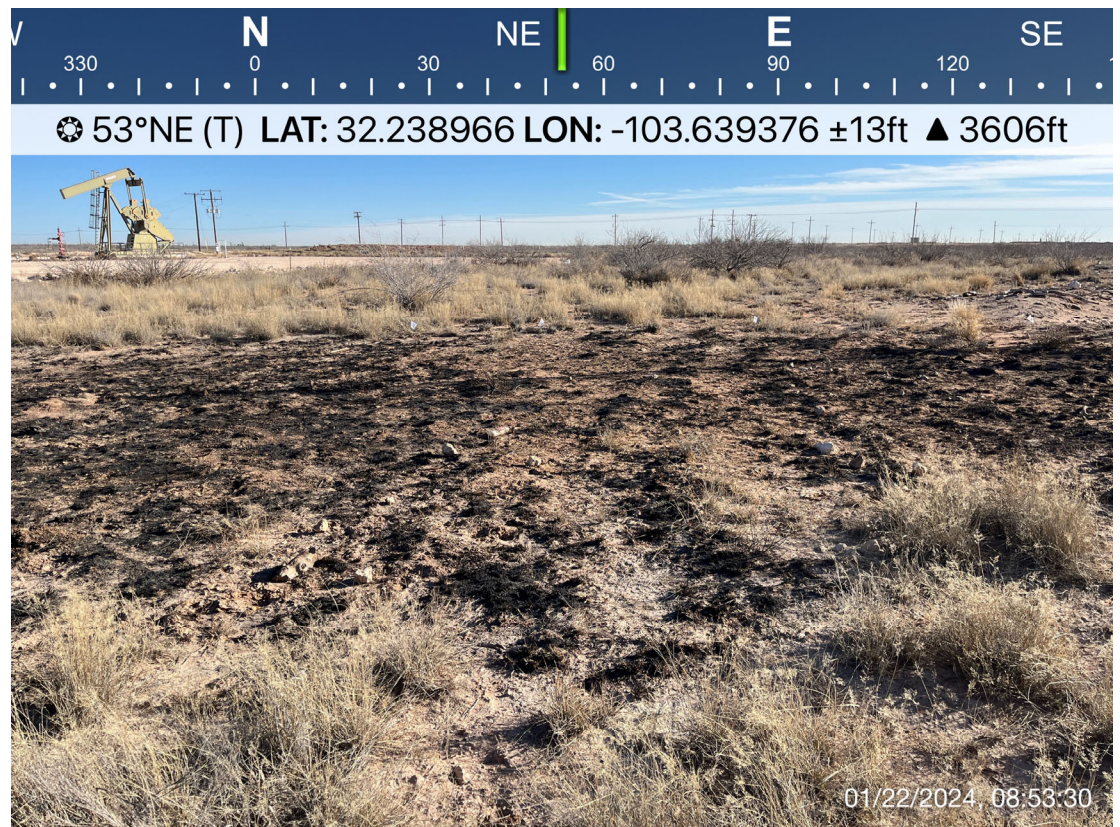
CIMAREX ENERGY  
DOS EQUIS 11 FEDERAL CTB  
LEA, NM







CIMAREX ENERGY  
DOS EQUIS 11 FEDERAL CTB  
LEA, NM







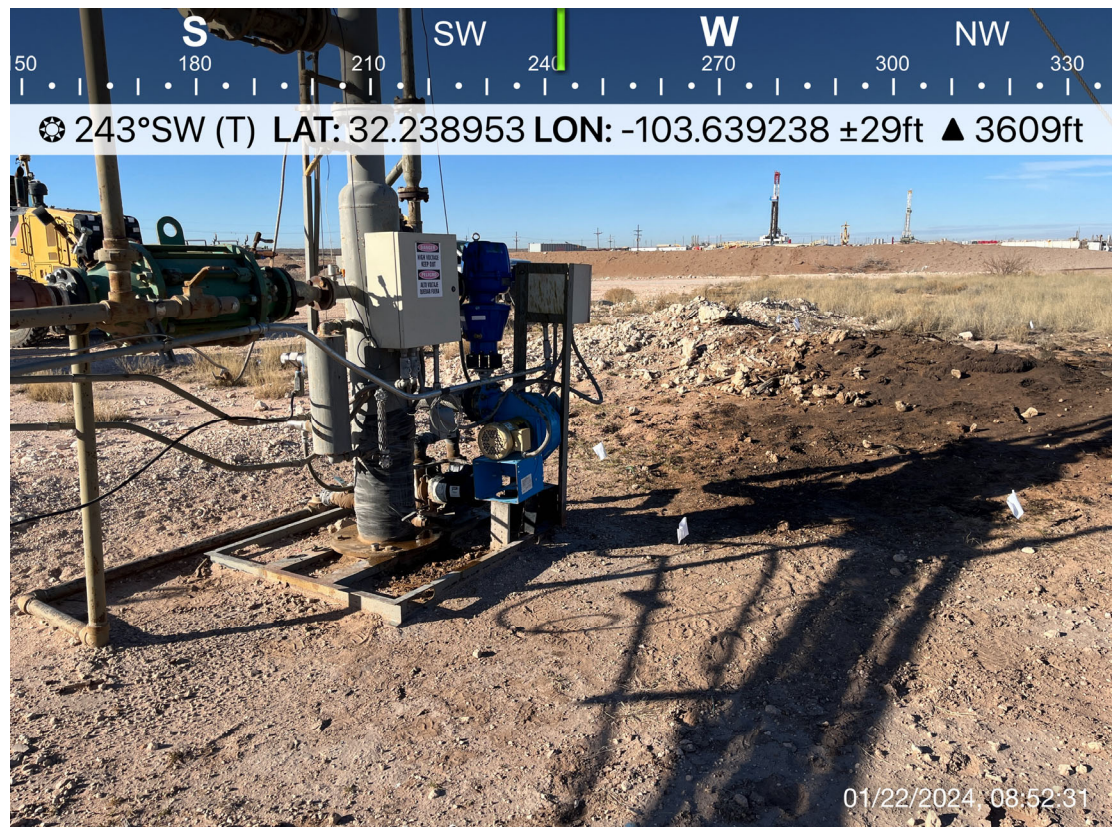
CIMAREX ENERGY  
DOS EQUIS 11 FEDERAL CTB  
LEA, NM







CIMAREX ENERGY  
DOS EQUIS 11 FEDERAL CTB  
LEA, NM



**District I**  
1625 N. French Dr., Hobbs, NM 88240  
Phone:(575) 393-6161 Fax:(575) 393-0720  
**District II**  
811 S. First St., Artesia, NM 88210  
Phone:(575) 748-1283 Fax:(575) 748-9720  
**District III**  
1000 Rio Brazos Rd., Aztec, NM 87410  
Phone:(505) 334-6178 Fax:(505) 334-6170  
**District IV**  
1220 S. St Francis Dr., Santa Fe, NM 87505  
Phone:(505) 476-3470 Fax:(505) 476-3462

State of New Mexico  
Energy, Minerals and Natural Resources  
Oil Conservation Division  
1220 S. St Francis Dr.  
Santa Fe, NM 87505

QUESTIONS

Action 308158

QUESTIONS

Operator: CIMAREX ENERGY CO. 6001 Deauville Blvd Midland, TX 79706	OGRID: 215099
	Action Number: 308158
	Action Type: [C-141] Initial C-141 (C-141-v-Initial)

QUESTIONS

Prerequisites	
Incident ID (n#)	nAPP2402156989
Incident Name	NAPP2402156989 DOS EQUIS 11 FEDERAL CTB @ 0
Incident Type	Fire
Incident Status	Initial C-141 Received
Incident Facility	[fAPP2202670522] DOS EQUIS 11 FED

Location of Release Source	
Please answer all the questions in this group.	
Site Name	Dos Equis 11 Federal CTB
Date Release Discovered	01/20/2024
Surface Owner	Federal

Incident Details	
Please answer all the questions in this group.	
Incident Type	Fire
Did this release result in a fire or is the result of a fire	Yes
Did this release result in any injuries	No
Has this release reached or does it have a reasonable probability of reaching a watercourse	No
Has this release endangered or does it have a reasonable probability of endangering public health	No
Has this release substantially damaged or will it substantially damage property or the environment	No
Is this release of a volume that is or may with reasonable probability be detrimental to fresh water	No

Nature and Volume of Release	
Material(s) released, please answer all that apply below. Any calculations or specific justifications for the volumes provided should be attached to the follow-up C-141 submission.	
Crude Oil Released (bbls) Details	Cause: Fire   Other (Specify)   Crude Oil   Released: 0 BBL   Recovered: 0 BBL   Lost: 0 BBL.
Produced Water Released (bbls) Details	Not answered.
Is the concentration of chloride in the produced water >10,000 mg/l	Yes
Condensate Released (bbls) Details	Not answered.
Natural Gas Vented (Mcf) Details	Not answered.
Natural Gas Flared (Mcf) Details	Not answered.
Other Released Details	Not answered.
Are there additional details for the questions above (i.e. any answer containing Other, Specify, Unknown, and/or Fire, or any negative lost amounts)	The sales scrubber dump valve shut, causing the vessel to high level; we are investigating why the ball valve was shut. The facility shut in on the sales scrubber high-level and shut in both wells. During the shutdown, Targa had a high-line pressure event that swept the fluid out of the flare, causing a fire. There was no damage to the flare, but we did burn a small pasture area of 90'X40'. Wells will remain shut-in until a root cause analysis is done. No injuries were associated with this incident, and the fire was extinguished with a fire extinguisher.



**District I**  
1625 N. French Dr., Hobbs, NM 88240  
Phone:(575) 393-6161 Fax:(575) 393-0720

**District II**  
811 S. First St., Artesia, NM 88210  
Phone:(575) 748-1283 Fax:(575) 748-9720

**District III**  
1000 Rio Brazos Rd., Aztec, NM 87410  
Phone:(505) 334-6178 Fax:(505) 334-6170

**District IV**  
1220 S. St Francis Dr., Santa Fe, NM 87505  
Phone:(505) 476-3470 Fax:(505) 476-3462

State of New Mexico  
Energy, Minerals and Natural Resources  
Oil Conservation Division  
1220 S. St Francis Dr.  
Santa Fe, NM 87505

QUESTIONS, Page 2

Action 308158

QUESTIONS (continued)

Operator: CIMAREX ENERGY CO. 6001 Deauville Blvd Midland, TX 79706	OGRID: 215099
	Action Number: 308158
	Action Type: [C-141] Initial C-141 (C-141-v-Initial)

QUESTIONS

Nature and Volume of Release (continued)	
Is this a gas only submission (i.e. only significant Mcf values reported)	More info needed to determine if this will be treated as a "gas only" report.
Was this a major release as defined by Subsection A of 19.15.29.7 NMAC	Yes
Reasons why this would be considered a submission for a notification of a major release	From paragraph A. "Major release" determine using: (2) an unauthorized release of a volume that: (a) results in a fire or is the result of a fire.
With the implementation of the 19.15.27 NMAC (05/25/2021), venting and/or flaring of natural gas (i.e. gas only) are to be submitted on the C-129 form.	

Initial Response

The responsible party must undertake the following actions immediately unless they could create a safety hazard that would result in injury.

The source of the release has been stopped	True
The impacted area has been secured to protect human health and the environment	True
Released materials have been contained via the use of berms or dikes, absorbent pads, or other containment devices	True
All free liquids and recoverable materials have been removed and managed appropriately	True
If all the actions described above have not been undertaken, explain why	Not answered.

Per Paragraph (4) of Subsection B of 19.15.29.8 NMAC the responsible party may commence remediation immediately after discovery of a release. If remediation has begun, please prepare and attach a narrative of actions to date in the follow-up C-141 submission. If remedial efforts have been successfully completed or if the release occurred within a lined containment area (see Subparagraph (a) of Paragraph (5) of Subsection A of 19.15.29.11 NMAC), please prepare and attach all information needed for closure evaluation in the follow-up C-141 submission.

I hereby certify that the information given above is true and complete to the best of my knowledge and understand that pursuant to OCD rules and regulations all operators are required to report and/or file certain release notifications and perform corrective actions for releases which may endanger public health or the environment. The acceptance of a C-141 report by the OCD does not relieve the operator of liability should their operations have failed to adequately investigate and remediate contamination that pose a threat to groundwater, surface water, human health or the environment. In addition, OCD acceptance of a C-141 report does not relieve the operator of responsibility for compliance with any other federal, state, or local laws and/or regulations.

I hereby agree and sign off to the above statement	Name: Laci Luig Title: ES&H Specialist Email: DL_PermianEnvironmental@coterra.com Date: 01/25/2024
----------------------------------------------------	-------------------------------------------------------------------------------------------------------------

**District I**  
1625 N. French Dr., Hobbs, NM 88240  
Phone:(575) 393-6161 Fax:(575) 393-0720  
**District II**  
811 S. First St., Artesia, NM 88210  
Phone:(575) 748-1283 Fax:(575) 748-9720  
**District III**  
1000 Rio Brazos Rd., Aztec, NM 87410  
Phone:(505) 334-6178 Fax:(505) 334-6170  
**District IV**  
1220 S. St Francis Dr., Santa Fe, NM 87505  
Phone:(505) 476-3470 Fax:(505) 476-3462

**State of New Mexico**  
**Energy, Minerals and Natural Resources**  
**Oil Conservation Division**  
**1220 S. St Francis Dr.**  
**Santa Fe, NM 87505**

QUESTIONS, Page 3  
  
Action 308158

**QUESTIONS (continued)**

Operator: CIMAREX ENERGY CO. 6001 Deauville Blvd Midland, TX 79706	OGRID: 215099
	Action Number: 308158
	Action Type: [C-141] Initial C-141 (C-141-v-Initial)

**QUESTIONS**

<b>Site Characterization</b>	
<i>Please answer all the questions in this group (only required when seeking remediation plan approval and beyond). This information must be provided to the appropriate district office no later than 90 days after the release discovery date.</i>	
What is the shallowest depth to groundwater beneath the area affected by the release in feet below ground surface (ft bgs)	Between 100 and 500 (ft.)
What method was used to determine the depth to ground water	Direct Measurement
Did this release impact groundwater or surface water	No
<b>What is the minimum distance, between the closest lateral extents of the release and the following surface areas:</b>	
A continuously flowing watercourse or any other significant watercourse	Greater than 5 (mi.)
Any lakebed, sinkhole, or playa lake (measured from the ordinary high-water mark)	Between 1 and 5 (mi.)
An occupied permanent residence, school, hospital, institution, or church	Greater than 5 (mi.)
A spring or a private domestic fresh water well used by less than five households for domestic or stock watering purposes	Greater than 5 (mi.)
Any other fresh water well or spring	Between 1 and 5 (mi.)
Incorporated municipal boundaries or a defined municipal fresh water well field	Greater than 5 (mi.)
A wetland	Between 1 and 5 (mi.)
A subsurface mine	Greater than 5 (mi.)
An (non-karst) unstable area	Greater than 5 (mi.)
Categorize the risk of this well / site being in a karst geology	Low
A 100-year floodplain	Greater than 5 (mi.)
Did the release impact areas not on an exploration, development, production, or storage site	No

<b>Remediation Plan</b>	
<i>Please answer all the questions that apply or are indicated. This information must be provided to the appropriate district office no later than 90 days after the release discovery date.</i>	
Requesting a remediation plan approval with this submission	No
<i>The OCD recognizes that proposed remediation measures may have to be minimally adjusted in accordance with the physical realities encountered during remediation. If the responsible party has any need to significantly deviate from the remediation plan proposed, then it should consult with the division to determine if another remediation plan submission is required.</i>	



**District I**  
1625 N. French Dr., Hobbs, NM 88240  
Phone:(575) 393-6161 Fax:(575) 393-0720  
**District II**  
811 S. First St., Artesia, NM 88210  
Phone:(575) 748-1283 Fax:(575) 748-9720  
**District III**  
1000 Rio Brazos Rd., Aztec, NM 87410  
Phone:(505) 334-6178 Fax:(505) 334-6170  
**District IV**  
1220 S. St Francis Dr., Santa Fe, NM 87505  
Phone:(505) 476-3470 Fax:(505) 476-3462

State of New Mexico  
Energy, Minerals and Natural Resources  
Oil Conservation Division  
1220 S. St Francis Dr.  
Santa Fe, NM 87505

CONDITIONS  
  
Action 308158

CONDITIONS

Operator: CIMAREX ENERGY CO. 6001 Deauville Blvd Midland, TX 79706	OGRID: 215099
	Action Number: 308158
	Action Type: [C-141] Initial C-141 (C-141-v-Initial)

CONDITIONS

Created By	Condition	Condition Date
scwells	None	1/26/2024

**Ashton Thielke**

---

**From:** Velez, Nelson, EMNRD <Nelson.Velez@emnrd.nm.gov>  
**Sent:** Monday, April 8, 2024 11:46 AM  
**To:** Ashton Thielke  
**Cc:** Laci Luig  
**Subject:** Re: [EXTERNAL] nAPP2402156989 - DOS EQUIS 11 FEDERAL CTB - NMAC 19.15.29.12.D.1.A - 48 Hour Sampling Variance

**WARNING:** This email originated from outside of Coterra Energy. Do not click links or open attachments unless you recognize the sender, are expecting the content and know it is safe.

Ashton,

Thank you for the inquiry. The variance request toward 19.15.29.12D (1) NMAC [*not just 19.15.29.12D (1a) NMAC*] is hereby approved.

Please keep a copy of this communication for inclusion within the appropriate report submittal.

Regards,

**Nelson Velez** • Environmental Specialist - Adv  
Environmental Bureau | EMNRD - Oil Conservation Division  
1000 Rio Brazos Road | Aztec, NM 87410  
(505) 469-6146 | [nelson.velez@emnrd.nm.gov](mailto:nelson.velez@emnrd.nm.gov)  
<http://www.emnrd.state.nm.us/OCD/>



---

**From:** Ashton Thielke <Ashton.Thielke@coterra.com>  
**Sent:** Monday, April 8, 2024 10:02 AM  
**To:** Velez, Nelson, EMNRD <Nelson.Velez@emnrd.nm.gov>  
**Cc:** Laci Luig <Laci.Luig@coterra.com>  
**Subject:** [EXTERNAL] nAPP2402156989 - DOS EQUIS 11 FEDERAL CTB - NMAC 19.15.29.12.D.1.A - 48 Hour Sampling Variance

CAUTION: This email originated outside of our organization. Exercise caution prior to clicking on links or opening attachments.

Good morning Mr. Velez

Cimarex requesting a variance to NMAC 19.15.29.12.D.1.A for the above mentioned NMOCD incident #.

The above-mentioned site recently had a release on January 20, 2024 and was assessed on January 31, 2024 to delineate the area.

After receiving laboratory results from the initial soil sampling assessment event, it was determined that no excavation needed to take place, as all samples were below reclamation requirements set in Table I [19.15.29.12](#) NMAC.

As discussed, going forward, we will submit sampling notifications for any sites that are anticipated to be closed out in similar manners (use of groundwater, low karst, on pad, no hazard to the environment, etc...) Please let me know if you have any questions.

Thanks!



**Ashton Thielke** | PBU - Environmental Consultant

T: 432.813.8988 | M: 281.753.5659 | [Ashton.Thielke@coterra.com](mailto:Ashton.Thielke@coterra.com) | [www.coterra.com](http://www.coterra.com)

Coterra Energy Inc. | 6001 Deauville Blvd., Suite 300N | Midland, TX 79706

Coterra Energy Inc. is the result of the merger of Cimarex Energy Co. and Cabot Oil & Gas Corporation on October 1, 2021.

This message may contain confidential and/or privileged information. If you are not the addressee or authorized to receive this for the addressee, you must not use, copy, disclose or take any action based on this message or any information herein. If you have received this message in error, please advise the sender immediately by reply e-mail and delete this message.

## APPENDIX D

CARMONA RESOURCES





Nearest water well

Cimarex Energy Co.

**Legend**

- 0.50 Mile Radius
- 0.52 Miles
- 0.94 Miles
- 1.24 Miles
- 1.60 Miles
- 1.67 Miles
- Dos Equis 11 Federal CTB (1.20.2024)
- Groundwater Determination Bore
- NMSEO Water Well
- USGS Water Well

454.43' - Drilled 1976

55' GWDB - Drilled 2022

105' GWDB - Drilled 2023

Dos Equis 11 Federal CTB (1.20.2024)

133' - Drilled 2012

55' GWDB - Drilled 2021

4000 ft



N




**Low Karst**


Cimarex Energy Co.

**Legend**

-  Dos Equis 11 Federal CTB (1.20.2024)
-  Low

Dos Equis 11 Federal CTB (1.20.2024) 

  
N

  
4000 ft



# New Mexico Office of the State Engineer

## Water Column/Average Depth to Water

(A CLW##### in the POD suffix indicates the POD has been replaced & no longer serves a water right file.)

(R=POD has been replaced,  
O=orphaned,  
C=the file is closed)

(quarters are 1=NW 2=NE 3=SW 4=SE)

(quarters are smallest to largest)

(NAD83 UTM in meters)

(In feet)

POD Number	POD Sub-Code	basin	County	Q 64	Q 16	Q 4	Sec	Tws	Rng	X	Y	Distance	Depth Well	Depth Water	Water Column
<a href="#">C 01932</a>	C	ED		3	1	12	24S	32E		628633	3567188*	636	492		
<a href="#">C 03527 POD1</a>	C	LE		1	2	3	03	24S	32E	625770	3568487	2589	500		
<a href="#">C 03528 POD1</a>	C	LE		1	1	2	15	24S	32E	626040	3566129	2684	541	133	408
<a href="#">C 02350</a>	CUB	ED		4	3	10	24S	32E		625826	3566333*	2756	60		
<a href="#">C 04551 POD1</a>	CUB	LE		4	4	3	31	23S	33E	630671	3569556	3077			

Average Depth to Water: **133 feet**

Minimum Depth: **133 feet**

Maximum Depth: **133 feet**

Record Count: 5

### UTM NAD83 Radius Search (in meters):

**Easting (X):** 628230.78

**Northing (Y):** 3567681.35

**Radius:** 4000

\*UTM location was derived from PLSS - see Help

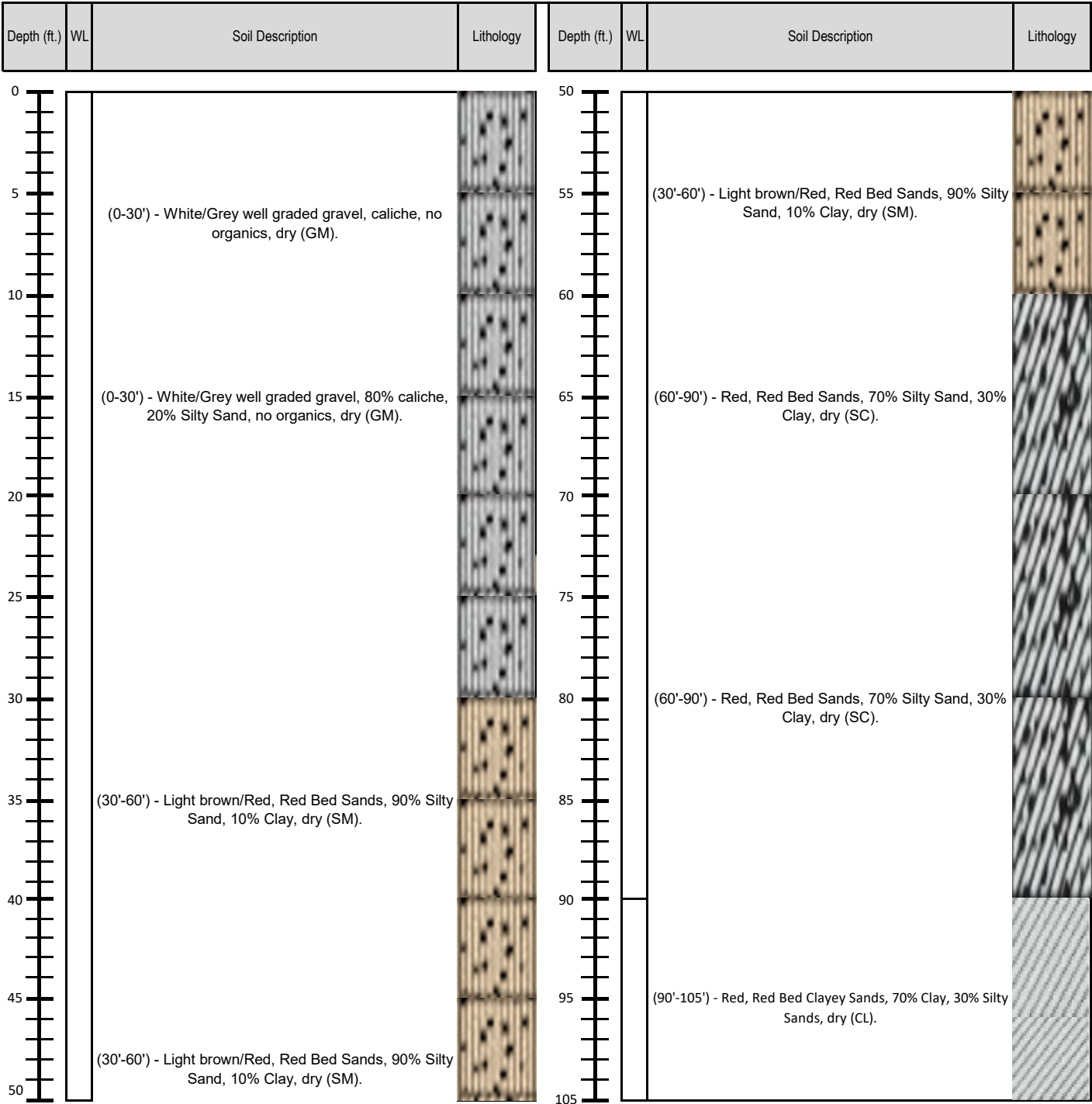
The data is furnished by the NMOSE/ISC and is accepted by the recipient with the expressed understanding that the OSE/ISC make no warranties, expressed or implied, concerning the accuracy, completeness, reliability, usability, or suitability for any particular purpose of the data.

1/22/24 7:02 AM

Page 1 of 1

WATER COLUMN/ AVERAGE  
DEPTH TO WATER


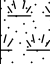



Project Name :	Dos Equis 12 Federal Com 3H	Date :	Thursday, April 6, 2023
Project No. :		Sampler :	Michael Collier
Location :	Lea County, New Mexico		
Coordinates :	32.238879°, -103.63003°	Driller :	H&R Enterprises
Elevation :	3,606'	Method :	Air Rotary



Comments : Boring terminated at 105' with no presence of groundwater or moisture.  
Well measured 4/10/2023 with no detection of groundwater

Dry @ 105'



212C-MD-02921		 TETRA TECH		LOG OF BORING DTW				Page 1 of 1						
Project Name: Shurvessa Interconnect Release														
Borehole LocationGPS Coordinate: 32.241447, -103.623363						Surface Elevation: ft								
Borehole Number: GWDB				Borehole Diameter (in.):		Date Started: 12/1/2022		Date Finished: 12/1/2022						
DEPTH (ft)	OPERATION TYPE	SAMPLE	CHLORIDE FIELD SCREENING (ppm)	VOC FIELD SCREENING (ppm)	SAMPLE RECOVERY (%)	MOISTURE CONTENT (%)	DRY DENSITY (pcf)	LIQUID LIMIT	PLASTICITY INDEX	MINUS NO. 200 (%)	GRAPHIC LOG	WATER LEVEL OBSERVATIONS		
												While Drilling <u>▽</u> DRY ft Upon Completion of Drilling <u>▽</u> DRY ft		
Remarks:												DEPTH (ft)	REMARKS	
MATERIAL DESCRIPTION														
5												-SM- TOPSOIL (Sand): Reddish brown, loose, dry	4	
												-SM- SAND: Brown, loose, dry	8	
10												-SM- SAND: Brown to reddish brown, medium dense, dry, moderately cemented, with frequent clay seams	20	
15												-SM- SAND: Brown, very loose, dry, trace gravel		
20												-- Transitions to with occasional cemented layers		
25														
30														
35														
40														
45														
50														
55														
Bottom of borehole at 55.0 feet.														
Sampler Types:		<input checked="" type="checkbox"/> Split Spoon	<input type="checkbox"/> Acetate Liner	Operation Types:		<input type="checkbox"/> Mud Rotary	<input type="checkbox"/> Air Rotary	Notes:						
		<input checked="" type="checkbox"/> Shelby	<input type="checkbox"/> Vane Shear			<input type="checkbox"/> Continuous Flight Auger	<input type="checkbox"/> Direct Push	Surface elevation is an estimated value from Google Earth data.						
		<input type="checkbox"/> Bulk Sample	<input checked="" type="checkbox"/> Discrete Sample			<input type="checkbox"/> Wash Rotary	<input type="checkbox"/> Core Barrel							
		<input type="checkbox"/> Grab Sample	<input type="checkbox"/> Test Pit											
Logger: Joe Tyler				Drilling Equipment: Air Rotary				Driller: Scarborough Drilling						



USGS Home  
Contact USGS  
Search USGS

National Water Information System: Web Interface


USGS Water Resources

Data Category:  
Groundwater

Geographic Area:  
New Mexico

GO

Click to hideNews Bulletins

- Explore the NEW [USGS National Water Dashboard](#) interactive map to access real-time water data from over 13,500 stations nationwide.
- [Full News](#) 

Groundwater levels for New Mexico

Click to hide state-specific text

 Important: [Next Generation Monitoring Location Page](#)

Search Results -- 1 sites found

Agency code = usgs  
site\_no list =

- 321428103395801

Minimum number of levels = 1  
[Save file of selected sites](#) to local disk for future upload

USGS 321428103395801 24S.32E.03.32124

Lea County, New Mexico  
Latitude 32°14'28", Longitude 103°39'58" NAD27  
Land-surface elevation 3,653 feet above NAVD88  
The depth of the well is 550 feet below land surface.  
This well is completed in the Other aquifers (N9999OTHER) national aquifer.  
This well is completed in the Santa Rosa Sandstone (231SNRS) local aquifer.

Output formats

Table of data

Tab-separated data

Graph of data

Reselect period

Date	Time	? Water-level date-time accuracy	? Parameter code	Water level, feet below land surface	Water level, feet above specific vertical datum	Referenced vertical datum	? Status	? Method of measurement	? Measuring agency	? Source of measurement
1976-01-22			D	62610	3196.84	NGVD29	1	Z		
1976-01-22			D	62611	3198.57	NAVD88	1	Z		
1976-01-22			D	72019	454.43		1	Z		

Explanation

Section	Code	Description
Water-level date-time accuracy	D	Date is accurate to the Day
Parameter code	62610	Groundwater level above NGVD 1929, feet
<a href="#">Parameter code</a>	62611	<a href="#">Groundwater level above NAVD 1988, feet</a>
Parameter code	72019	Depth to water level, feet below land surface
<a href="#">Referenced vertical datum</a>	NAVD88	<a href="#">North American Vertical Datum of 1988</a>
Referenced vertical datum	NGVD29	National Geodetic Vertical Datum of 1929
Status	1	Static

Section	Code	Description
Method of measurement	Z	Other.
Measuring agency		Not determined
Source of measurement		Not determined
Water-level approval status	A	Approved for publication -- Processing and review completed.

[Questions or Comments](#)  
[Automated retrievals](#)  
[Help](#)  
[Data Tips](#)  
[Explanation of terms](#)  
[Subscribe for system changes](#)  
[News](#)

[Accessibility](#)   [FOIA](#)   [Privacy](#)   [Policies and Notices](#)  
[U.S. Department of the Interior](#) | [U.S. Geological Survey](#)  
**Title: Groundwater for New Mexico: Water Levels**  
**URL: <https://nwis.waterdata.usgs.gov/nm/nwis/gwlevels?>**




Page Contact Information: [New Mexico Water Data Maintainer](#)  
Page Last Modified: 2024-01-22 09:05:53 EST  
0.29 0.25 nadww01



# New Mexico Office of the State Engineer

## Point of Diversion Summary

		(quarters are 1=NW 2=NE 3=SW 4=SE)				(quarters are smallest to largest)		(NAD83 UTM in meters)	
<b>Well Tag</b>	<b>POD Number</b>	<b>Q64</b>	<b>Q16</b>	<b>Q4</b>	<b>Sec</b>	<b>Tws</b>	<b>Rng</b>	<b>X</b>	<b>Y</b>
	C 03528 POD1	1	1	2	15	24S	32E	626040	3566129 
<hr/>									
<b>Driller License:</b>	1682	<b>Driller Company:</b>		HUNGRY HORSE, LLC.					
<b>Driller Name:</b>	NORRIS, JOHN D. (LD)								
<b>Drill Start Date:</b>	02/20/2012	<b>Drill Finish Date:</b>		03/12/2012		<b>Plug Date:</b>			
<b>Log File Date:</b>	04/30/2012	<b>PCW Rcv Date:</b>				<b>Source:</b> Shallow			
<b>Pump Type:</b>	SUBMER	<b>Pipe Discharge Size:</b>				<b>Estimated Yield:</b>			
<b>Casing Size:</b>	6.38	<b>Depth Well:</b>		541 feet		<b>Depth Water:</b> 133 feet			
<hr/>									
<b>Water Bearing Stratifications:</b>		<b>Top</b>	<b>Bottom</b>	<b>Description</b>					
		133	152	Sandstone/Gravel/Conglomerate					
<hr/>									
<b>Casing Perforations:</b>		<b>Top</b>	<b>Bottom</b>						
		0	541						
<hr/>									

The data is furnished by the NMOSE/ISC and is accepted by the recipient with the expressed understanding that the OSE/ISC make no warranties, expressed or implied, concerning the accuracy, completeness, reliability, usability, or suitability for any particular purpose of the data.

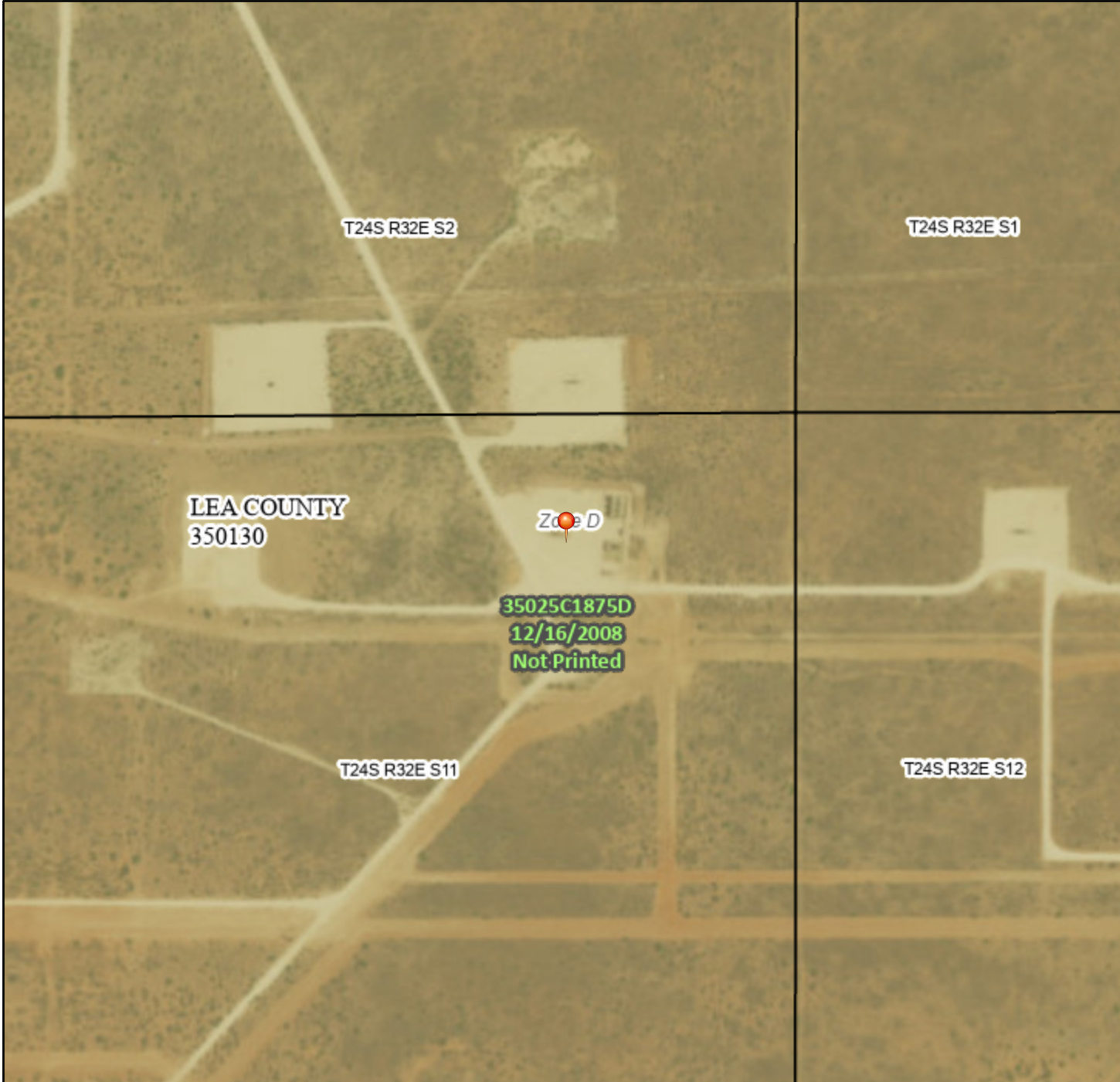
1/22/24 7:04 AM

POINT OF DIVERSION SUMMARY

# National Flood Hazard Layer FIRMette



103°38'39"W 32°14'34"N



## Legend

SEE FIS REPORT FOR DETAILED LEGEND AND INDEX MAP FOR FIRM PANEL LAYOUT

SPECIAL FLOOD HAZARD AREAS		Without Base Flood Elevation (BFE) Zone A, V, A99
		With BFE or Depth Zone AE, AO, AH, VE, AR
		Regulatory Floodway
OTHER AREAS OF FLOOD HAZARD		0.2% Annual Chance Flood Hazard, Areas of 1% annual chance flood with average depth less than one foot or with drainage areas of less than one square mile Zone X
		Future Conditions 1% Annual Chance Flood Hazard Zone X
		Area with Reduced Flood Risk due to Levee. See Notes. Zone X
		Area with Flood Risk due to Levee Zone D
OTHER AREAS		NO SCREEN Area of Minimal Flood Hazard Zone X
		Effective LOMRs
		Area of Undetermined Flood Hazard Zone D
GENERAL STRUCTURES		Channel, Culvert, or Storm Sewer
		Levee, Dike, or Floodwall
OTHER FEATURES		20.2 Cross Sections with 1% Annual Chance Water Surface Elevation
		17.5 Cross Sections with 1% Annual Chance Water Surface Elevation
		Coastal Transect
		Base Flood Elevation Line (BFE)
		Limit of Study
		Jurisdiction Boundary
		Coastal Transect Baseline
MAP PANELS		Digital Data Available
		No Digital Data Available
		Unmapped



The pin displayed on the map is an approximate point selected by the user and does not represent an authoritative property location.

This map complies with FEMA's standards for the use of digital flood maps if it is not void as described below. The basemap shown complies with FEMA's basemap accuracy standards

The flood hazard information is derived directly from the authoritative NFHL web services provided by FEMA. This map was exported on 1/22/2024 at 8:58 AM and does not reflect changes or amendments subsequent to this date and time. The NFHL and effective information may change or become superseded by new data over time.

This map image is void if the one or more of the following map elements do not appear: basemap imagery, flood zone labels, legend, scale bar, map creation date, community identifiers, FIRM panel number, and FIRM effective date. Map images for unmapped and unmodernized areas cannot be used for regulatory purposes.

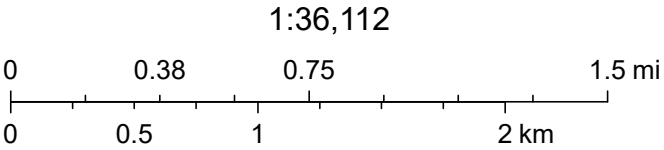


# Dos Equis 11 Federal CTB (1.20.2024)



1/22/2024, 7:59:25 AM

 OSW Water Bodys



Esri, NASA, NGA, USGS, FEMA, Texas Parks & Wildlife, CONANP, Esri, TomTom, Garmin, SafeGraph, GeoTechnologies, Inc, METI/NASA, USGS, EPA, NPS, US Census Bureau, USDA, USFWS, NM OSE

## APPENDIX E

CARMONA RESOURCES





PHONE (575) 393-2326 ° 101 E. MARLAND ° HOBBS, NM 88240

February 05, 2024

ASHTON THIELKE

CARMONA RESOURCES

310 W WALL ST SUITE 415

MIDLAND, TX 79701

RE: DOS EQUIS 11 FEDERAL CTB ( 01.20.2024 )

Enclosed are the results of analyses for samples received by the laboratory on 01/31/24 13:51.

Cardinal Laboratories is accredited through Texas NELAP under certificate number T104704398-23-16. Accreditation applies to drinking water, non-potable water and solid and chemical materials. All accredited analytes are denoted by an asterisk (\*). For a complete list of accredited analytes and matrices visit the TCEQ website at [www.tceq.texas.gov/field/qa/lab\\_accred\\_certif.html](http://www.tceq.texas.gov/field/qa/lab_accred_certif.html).

Cardinal Laboratories is accredited through the State of Colorado Department of Public Health and Environment for:

Method EPA 552.2	Haloacetic Acids (HAA-5)
Method EPA 524.2	Total Trihalomethanes (TTHM)
Method EPA 524.4	Regulated VOCs (V1, V2, V3)

Accreditation applies to public drinking water matrices.

This report meets NELAP requirements and is made up of a cover page, analytical results, and a copy of the original chain-of-custody. If you have any questions concerning this report, please feel free to contact me.

Sincerely,

A handwritten signature in black ink that reads "Mike Snyder". The signature is fluid and cursive, with the first name "Mike" and last name "Snyder" clearly distinguishable.

Mike Snyder For Celey D. Keene

Lab Director/Quality Manager





PHONE (575) 393-2326 ° 101 E. MARLAND ° HOBBS, NM 88240

**Analytical Results For:**

CARMONA RESOURCES  
 ASHTON THIELKE  
 310 W WALL ST SUITE 415  
 MIDLAND TX, 79701  
 Fax To:

Received: 01/31/2024  
 Reported: 02/05/2024  
 Project Name: DOS EQUIS 11 FEDERAL CTB ( 01.20.20  
 Project Number: 2248  
 Project Location: CIMAREX - LEA COUNTY, NEW MEXICO

Sampling Date: 01/31/2024  
 Sampling Type: Soil  
 Sampling Condition: Cool & Intact  
 Sample Received By: Tamara Oldaker

**Sample ID: H - 1 ( 0-0.5' ) (H240436-01)**

BTX 8021B		mg/kg		Analyzed By: JH					
Analyte	Result	Reporting Limit	Analyzed	Method Blank	BS	% Recovery	True Value QC	RPD	Qualifier
Benzene*	<0.050	0.050	01/31/2024	ND	2.08	104	2.00	2.77	
Toluene*	<0.050	0.050	01/31/2024	ND	2.20	110	2.00	0.612	
Ethylbenzene*	<0.050	0.050	01/31/2024	ND	2.33	117	2.00	2.38	
Total Xylenes*	<0.150	0.150	01/31/2024	ND	7.03	117	6.00	3.16	
Total BTX	<0.300	0.300	01/31/2024	ND					

Surrogate: 4-Bromofluorobenzene (PID) 97.1 % 71.5-134

Chloride, SM4500Cl-B		mg/kg		Analyzed By: AC					
Analyte	Result	Reporting Limit	Analyzed	Method Blank	BS	% Recovery	True Value QC	RPD	Qualifier
Chloride	32.0	16.0	01/31/2024	ND	416	104	400	7.41	

TPH 8015M		mg/kg		Analyzed By: MS					
Analyte	Result	Reporting Limit	Analyzed	Method Blank	BS	% Recovery	True Value QC	RPD	Qualifier
GRO C6-C10*	<10.0	10.0	01/31/2024	ND	192	96.1	200	1.97	
DRO >C10-C28*	<10.0	10.0	01/31/2024	ND	222	111	200	5.16	
EXT DRO >C28-C36	<10.0	10.0	01/31/2024	ND					

Surrogate: 1-Chlorooctane 89.4 % 48.2-134

Surrogate: 1-Chlorooctadecane 90.0 % 49.1-148

Cardinal Laboratories

\*=Accredited Analyte

PLEASE NOTE: Liability and Damages. Cardinal's liability and client's exclusive remedy for any claim arising, whether based in contract or tort, shall be limited to the amount paid by client for analyses. All claims, including those for negligence and any other cause whatsoever shall be deemed waived unless made in writing and received by Cardinal within thirty (30) days after completion of the applicable service. In no event shall Cardinal be liable for incidental or consequential damages, including, without limitation, business interruptions, loss of use, or loss of profits incurred by client, its subsidiaries, affiliates or successors arising out of or related to the performance of the services hereunder by Cardinal, regardless of whether such claim is based upon any of the above stated reasons or otherwise. Results relate only to the samples identified above. This report shall not be reproduced except in full with written approval of Cardinal Laboratories.

Mike Snyder For Celey D. Keene, Lab Director/Quality Manager



PHONE (575) 393-2326 ° 101 E. MARLAND ° HOBBS, NM 88240

**Analytical Results For:**

CARMONA RESOURCES  
 ASHTON THIELKE  
 310 W WALL ST SUITE 415  
 MIDLAND TX, 79701  
 Fax To:

Received:	01/31/2024	Sampling Date:	01/31/2024
Reported:	02/05/2024	Sampling Type:	Soil
Project Name:	DOS EQUIS 11 FEDERAL CTB ( 01.20.20	Sampling Condition:	Cool & Intact
Project Number:	2248	Sample Received By:	Tamara Oldaker
Project Location:	CIMAREX - LEA COUNTY, NEW MEXICO		

**Sample ID: H - 2 ( 0-0.5' ) (H240436-02)**

BTEX 8021B		mg/kg		Analyzed By: JH						
Analyte	Result	Reporting Limit	Analyzed	Method Blank	BS	% Recovery	True Value QC	RPD	Qualifier	
Benzene*	<0.050	0.050	01/31/2024	ND	2.08	104	2.00	2.77		
Toluene*	<0.050	0.050	01/31/2024	ND	2.20	110	2.00	0.612		
Ethylbenzene*	<0.050	0.050	01/31/2024	ND	2.33	117	2.00	2.38		
Total Xylenes*	<0.150	0.150	01/31/2024	ND	7.03	117	6.00	3.16		
Total BTEX	<0.300	0.300	01/31/2024	ND						

Surrogate: 4-Bromofluorobenzene (PID) 104 % 71.5-134

Chloride, SM4500Cl-B		mg/kg		Analyzed By: AC						
Analyte	Result	Reporting Limit	Analyzed	Method Blank	BS	% Recovery	True Value QC	RPD	Qualifier	
Chloride	16.0	16.0	01/31/2024	ND	416	104	400	7.41		

TPH 8015M		mg/kg		Analyzed By: MS					
Analyte	Result	Reporting Limit	Analyzed	Method Blank	BS	% Recovery	True Value QC	RPD	Qualifier
GRO C6-C10*	<10.0	10.0	01/31/2024	ND	192	96.1	200	1.97	
DRO >C10-C28*	<10.0	10.0	01/31/2024	ND	222	111	200	5.16	
EXT DRO >C28-C36	<10.0	10.0	01/31/2024	ND					

Surrogate: 1-Chlorooctane 91.4 % 48.2-134

Surrogate: 1-Chlorooctadecane 89.5 % 49.1-148

Cardinal Laboratories

\*=Accredited Analyte

PLEASE NOTE: Liability and Damages. Cardinal's liability and client's exclusive remedy for any claim arising, whether based in contract or tort, shall be limited to the amount paid by client for analyses. All claims, including those for negligence and any other cause whatsoever shall be deemed waived unless made in writing and received by Cardinal within thirty (30) days after completion of the applicable service. In no event shall Cardinal be liable for incidental or consequential damages, including, without limitation, business interruptions, loss of use, or loss of profits incurred by client, its subsidiaries, affiliates or successors arising out of or related to the performance of the services hereunder by Cardinal, regardless of whether such claim is based upon any of the above stated reasons or otherwise. Results relate only to the samples identified above. This report shall not be reproduced except in full with written approval of Cardinal Laboratories.

Mike Snyder For Celey D. Keene, Lab Director/Quality Manager



PHONE (575) 393-2326 ° 101 E. MARLAND ° HOBBS, NM 88240

**Analytical Results For:**

CARMONA RESOURCES  
 ASHTON THIELKE  
 310 W WALL ST SUITE 415  
 MIDLAND TX, 79701  
 Fax To:

Received:	01/31/2024	Sampling Date:	01/31/2024
Reported:	02/05/2024	Sampling Type:	Soil
Project Name:	DOS EQUIS 11 FEDERAL CTB ( 01.20.20	Sampling Condition:	Cool & Intact
Project Number:	2248	Sample Received By:	Tamara Oldaker
Project Location:	CIMAREX - LEA COUNTY, NEW MEXICO		

**Sample ID: H - 3 ( 0-0.5' ) (H240436-03)**

BTEX 8021B		mg/kg		Analyzed By: JH						
Analyte	Result	Reporting Limit	Analyzed	Method Blank	BS	% Recovery	True Value QC	RPD	Qualifier	
Benzene*	<0.050	0.050	01/31/2024	ND	2.08	104	2.00	2.77		
Toluene*	<0.050	0.050	01/31/2024	ND	2.20	110	2.00	0.612		
Ethylbenzene*	<0.050	0.050	01/31/2024	ND	2.33	117	2.00	2.38		
Total Xylenes*	<0.150	0.150	01/31/2024	ND	7.03	117	6.00	3.16		
Total BTEX	<0.300	0.300	01/31/2024	ND						

Surrogate: 4-Bromofluorobenzene (PID) 98.3 % 71.5-134

Chloride, SM4500Cl-B		mg/kg		Analyzed By: AC						
Analyte	Result	Reporting Limit	Analyzed	Method Blank	BS	% Recovery	True Value QC	RPD	Qualifier	
Chloride	32.0	16.0	01/31/2024	ND	416	104	400	7.41		

TPH 8015M		mg/kg		Analyzed By: MS					
Analyte	Result	Reporting Limit	Analyzed	Method Blank	BS	% Recovery	True Value QC	RPD	Qualifier
GRO C6-C10*	<10.0	10.0	01/31/2024	ND	192	96.1	200	1.97	
DRO >C10-C28*	<10.0	10.0	01/31/2024	ND	222	111	200	5.16	
EXT DRO >C28-C36	<10.0	10.0	01/31/2024	ND					

Surrogate: 1-Chlorooctane 91.1 % 48.2-134

Surrogate: 1-Chlorooctadecane 89.7 % 49.1-148

Cardinal Laboratories

\*=Accredited Analyte

PLEASE NOTE: Liability and Damages. Cardinal's liability and client's exclusive remedy for any claim arising, whether based in contract or tort, shall be limited to the amount paid by client for analyses. All claims, including those for negligence and any other cause whatsoever shall be deemed waived unless made in writing and received by Cardinal within thirty (30) days after completion of the applicable service. In no event shall Cardinal be liable for incidental or consequential damages, including, without limitation, business interruptions, loss of use, or loss of profits incurred by client, its subsidiaries, affiliates or successors arising out of or related to the performance of the services hereunder by Cardinal, regardless of whether such claim is based upon any of the above stated reasons or otherwise. Results relate only to the samples identified above. This report shall not be reproduced except in full with written approval of Cardinal Laboratories.

Mike Snyder For Celey D. Keene, Lab Director/Quality Manager





PHONE (575) 393-2326 ° 101 E. MARLAND ° HOBBS, NM 88240

**Analytical Results For:**

CARMONA RESOURCES  
 ASHTON THIELKE  
 310 W WALL ST SUITE 415  
 MIDLAND TX, 79701  
 Fax To:

Received:	01/31/2024	Sampling Date:	01/31/2024
Reported:	02/05/2024	Sampling Type:	Soil
Project Name:	DOS EQUIS 11 FEDERAL CTB ( 01.20.20	Sampling Condition:	Cool & Intact
Project Number:	2248	Sample Received By:	Tamara Oldaker
Project Location:	CIMAREX - LEA COUNTY, NEW MEXICO		

**Sample ID: H - 4 ( 0-0.5' ) (H240436-04)**

BTEX 8021B		mg/kg		Analyzed By: JH						
Analyte	Result	Reporting Limit	Analyzed	Method Blank	BS	% Recovery	True Value QC	RPD	Qualifier	
Benzene*	<0.050	0.050	01/31/2024	ND	2.08	104	2.00	2.77		
Toluene*	<0.050	0.050	01/31/2024	ND	2.20	110	2.00	0.612		
Ethylbenzene*	<0.050	0.050	01/31/2024	ND	2.33	117	2.00	2.38		
Total Xylenes*	<0.150	0.150	01/31/2024	ND	7.03	117	6.00	3.16		
Total BTEX	<0.300	0.300	01/31/2024	ND						

Surrogate: 4-Bromofluorobenzene (PID) 114 % 71.5-134

Chloride, SM4500Cl-B		mg/kg		Analyzed By: AC						
Analyte	Result	Reporting Limit	Analyzed	Method Blank	BS	% Recovery	True Value QC	RPD	Qualifier	
Chloride	<16.0	16.0	01/31/2024	ND	416	104	400	7.41		

TPH 8015M		mg/kg		Analyzed By: MS					
Analyte	Result	Reporting Limit	Analyzed	Method Blank	BS	% Recovery	True Value QC	RPD	Qualifier
GRO C6-C10*	<10.0	10.0	01/31/2024	ND	192	96.1	200	1.97	
DRO >C10-C28*	<10.0	10.0	01/31/2024	ND	222	111	200	5.16	
EXT DRO >C28-C36	<10.0	10.0	01/31/2024	ND					

Surrogate: 1-Chlorooctane 94.2 % 48.2-134

Surrogate: 1-Chlorooctadecane 92.9 % 49.1-148

Cardinal Laboratories

\*=Accredited Analyte

PLEASE NOTE: Liability and Damages. Cardinal's liability and client's exclusive remedy for any claim arising, whether based in contract or tort, shall be limited to the amount paid by client for analyses. All claims, including those for negligence and any other cause whatsoever shall be deemed waived unless made in writing and received by Cardinal within thirty (30) days after completion of the applicable service. In no event shall Cardinal be liable for incidental or consequential damages, including, without limitation, business interruptions, loss of use, or loss of profits incurred by client, its subsidiaries, affiliates or successors arising out of or related to the performance of the services hereunder by Cardinal, regardless of whether such claim is based upon any of the above stated reasons or otherwise. Results relate only to the samples identified above. This report shall not be reproduced except in full with written approval of Cardinal Laboratories.

Mike Snyder For Celey D. Keene, Lab Director/Quality Manager



PHONE (575) 393-2326 ° 101 E. MARLAND ° HOBBS, NM 88240

### Notes and Definitions

ND	Analyte NOT DETECTED at or above the reporting limit
RPD	Relative Percent Difference
**	Samples not received at proper temperature of 6°C or below.
***	Insufficient time to reach temperature.
-	Chloride by SM4500Cl-B does not require samples be received at or below 6°C Samples reported on an as received basis (wet) unless otherwise noted on report

Cardinal Laboratories

\*=Accredited Analyte

PLEASE NOTE: Liability and Damages. Cardinal's liability and client's exclusive remedy for any claim arising, whether based in contract or tort, shall be limited to the amount paid by client for analyses. All claims, including those for negligence and any other cause whatsoever shall be deemed waived unless made in writing and received by Cardinal within thirty (30) days after completion of the applicable service. In no event shall Cardinal be liable for incidental or consequential damages, including, without limitation, business interruptions, loss of use, or loss of profits incurred by client, its subsidiaries, affiliates or successors arising out of or related to the performance of the services hereunder by Cardinal, regardless of whether such claim is based upon any of the above stated reasons or otherwise. Results relate only to the samples identified above. This report shall not be reproduced except in full with written approval of Cardinal Laboratories.

A handwritten signature in black ink, appearing to read "Mike Snyder", is written over a horizontal line.

Mike Snyder For Celey D. Keene, Lab Director/Quality Manager

# Chain of Custody

Work Order No: H240436

Page 1 of 1

Project Manager:	Ashton Thielke	Bill to: (if different)	Laci Luig
Company Name:	Carmona Resources	Company Name:	Cimarex Energy
Address:	310 W Wall St Ste 500	Address:	6001 Deauville Blvd, Suite 300N
City, State ZIP:	Midland, TX 79701	City, State ZIP:	Midland, TX 79706
Phone:	432-813-8988	Email:	laci.luig@coterra.com ashton.thielke@coterra.com

Work Order Comments	
Program: UST/PST	<input type="checkbox"/> PRP <input type="checkbox"/> Brownfields <input type="checkbox"/> RC <input type="checkbox"/> Superfund <input type="checkbox"/>
State of Project:	
Reporting: Level II	<input type="checkbox"/> Level III <input type="checkbox"/> ST/UST <input type="checkbox"/> RRP <input type="checkbox"/> Level IV <input type="checkbox"/>
Deliverables: EDD	<input type="checkbox"/> ADaPT <input type="checkbox"/> Other:

Project Name:		Turn Around		ANALYSIS REQUEST																Preservative Codes				
Dos Equis 11 Federal CTB (01.20.2024)		<input checked="" type="checkbox"/> Routine <input type="checkbox"/> Rush																		None: NO DI Water: H <sub>2</sub> O				
Project Number: 2248		Due Date: Normal																		Cool: Cool MeOH: Me				
Project Location: Lea County, New Mexico																				HCL: HC HNO <sub>3</sub> : HN				
Sampler's Name: GPJ																				H <sub>2</sub> SO <sub>4</sub> : H <sub>2</sub> NaOH: Na				
PO #:																				H <sub>3</sub> PO <sub>4</sub> : HP				
<b>SAMPLE RECEIPT</b>		Temp Blank: Yes <input checked="" type="checkbox"/> No <input type="checkbox"/>		Wet Ice: Yes <input type="checkbox"/> No <input checked="" type="checkbox"/>																		NaHSO <sub>4</sub> : NABIS		
Received Intact: Yes <input checked="" type="checkbox"/> No <input type="checkbox"/>		Thermometer ID: 140																		Na <sub>2</sub> S <sub>2</sub> O <sub>3</sub> : NaSO <sub>3</sub>				
Cooler Custody Seals: Yes <input type="checkbox"/> No <input checked="" type="checkbox"/> N/A		Correction Factor: 4.9																		Zn Acetate+NaOH: Zn				
Sample Custody Seals: Yes <input type="checkbox"/> No <input checked="" type="checkbox"/> N/A		Temperature Reading: 4.9																		NaOH+Ascorbic Acid: SAPC				
Total Containers:		Corrected Temperature:																		<b>Sample Comments</b>				
Sample Identification	Date	Time	Soil	Water	Grab/Comp	# of Cont																		
H-1 (0-0.5')	1/31/2024		X		G	1	X	X	X															
H-2 (0-0.5')	1/31/2024		X		G	1	X	X	X															
H-3 (0-0.5')	1/31/2024		X		G	1	X	X	X															
H-4 (0-0.5')	1/31/2024		X		G	1	X	X	X															

Comments:

Relinquished by: (Signature)	Date/Time	Received by: (Signature)	Date/Time
	1-31-24 1351		





PHONE (575) 393-2326 ° 101 E. MARLAND ° HOBBS, NM 88240

February 05, 2024

ASHTON THIELKE

CARMONA RESOURCES

310 W WALL ST SUITE 415

MIDLAND, TX 79701

RE: DOS EQUIS 11 FEDERAL CTB ( 01.20.2024 )

Enclosed are the results of analyses for samples received by the laboratory on 01/31/24 13:51.

Cardinal Laboratories is accredited through Texas NELAP under certificate number T104704398-23-16. Accreditation applies to drinking water, non-potable water and solid and chemical materials. All accredited analytes are denoted by an asterisk (\*). For a complete list of accredited analytes and matrices visit the TCEQ website at [www.tceq.texas.gov/field/qa/lab\\_accred\\_certif.html](http://www.tceq.texas.gov/field/qa/lab_accred_certif.html).

Cardinal Laboratories is accredited through the State of Colorado Department of Public Health and Environment for:

Method EPA 552.2	Haloacetic Acids (HAA-5)
Method EPA 524.2	Total Trihalomethanes (TTHM)
Method EPA 524.4	Regulated VOCs (V1, V2, V3)

Accreditation applies to public drinking water matrices.

This report meets NELAP requirements and is made up of a cover page, analytical results, and a copy of the original chain-of-custody. If you have any questions concerning this report, please feel free to contact me.

Sincerely,

A handwritten signature in black ink that reads "Mike Snyder". The signature is fluid and cursive, with the first name "Mike" and last name "Snyder" clearly distinguishable.

Mike Snyder For Celey D. Keene

Lab Director/Quality Manager



PHONE (575) 393-2326 ° 101 E. MARLAND ° HOBBS, NM 88240

**Analytical Results For:**

CARMONA RESOURCES  
 ASHTON THIELKE  
 310 W WALL ST SUITE 415  
 MIDLAND TX, 79701  
 Fax To:

Received:	01/31/2024	Sampling Date:	01/31/2024
Reported:	02/05/2024	Sampling Type:	Soil
Project Name:	DOS EQUIS 11 FEDERAL CTB ( 01.20.20	Sampling Condition:	Cool & Intact
Project Number:	2248	Sample Received By:	Tamara Oldaker
Project Location:	CIMAREX - LEA COUNTY, NEW MEXICO		

**Sample ID: S - 1 ( 0-1.0' ) (H240437-01)**

BTX 8021B		mg/kg		Analyzed By: JH					
Analyte	Result	Reporting Limit	Analyzed	Method Blank	BS	% Recovery	True Value QC	RPD	Qualifier
Benzene*	<0.050	0.050	01/31/2024	ND	2.08	104	2.00	2.77	
Toluene*	<0.050	0.050	01/31/2024	ND	2.20	110	2.00	0.612	
Ethylbenzene*	<0.050	0.050	01/31/2024	ND	2.33	117	2.00	2.38	
Total Xylenes*	<0.150	0.150	01/31/2024	ND	7.03	117	6.00	3.16	
Total BTX	<0.300	0.300	01/31/2024	ND					

Surrogate: 4-Bromofluorobenzene (PID) 108 % 71.5-134

Chloride, SM4500Cl-B		mg/kg		Analyzed By: AC					
Analyte	Result	Reporting Limit	Analyzed	Method Blank	BS	% Recovery	True Value QC	RPD	Qualifier
Chloride	32.0	16.0	02/01/2024	ND	416	104	400	7.41	

TPH 8015M		mg/kg		Analyzed By: MS					
Analyte	Result	Reporting Limit	Analyzed	Method Blank	BS	% Recovery	True Value QC	RPD	Qualifier
GRO C6-C10*	<10.0	10.0	01/31/2024	ND	192	96.1	200	1.97	
DRO >C10-C28*	<10.0	10.0	01/31/2024	ND	222	111	200	5.16	
EXT DRO >C28-C36	<10.0	10.0	01/31/2024	ND					

Surrogate: 1-Chlorooctane 88.8 % 48.2-134

Surrogate: 1-Chlorooctadecane 87.6 % 49.1-148

Cardinal Laboratories

\*=Accredited Analyte

PLEASE NOTE: Liability and Damages. Cardinal's liability and client's exclusive remedy for any claim arising, whether based in contract or tort, shall be limited to the amount paid by client for analyses. All claims, including those for negligence and any other cause whatsoever shall be deemed waived unless made in writing and received by Cardinal within thirty (30) days after completion of the applicable service. In no event shall Cardinal be liable for incidental or consequential damages, including, without limitation, business interruptions, loss of use, or loss of profits incurred by client, its subsidiaries, affiliates or successors arising out of or related to the performance of the services hereunder by Cardinal, regardless of whether such claim is based upon any of the above stated reasons or otherwise. Results relate only to the samples identified above. This report shall not be reproduced except in full with written approval of Cardinal Laboratories.

Mike Snyder For Celey D. Keene, Lab Director/Quality Manager



PHONE (575) 393-2326 ° 101 E. MARLAND ° HOBBS, NM 88240

**Analytical Results For:**

CARMONA RESOURCES  
 ASHTON THIELKE  
 310 W WALL ST SUITE 415  
 MIDLAND TX, 79701  
 Fax To:

Received: 01/31/2024  
 Reported: 02/05/2024  
 Project Name: DOS EQUIS 11 FEDERAL CTB ( 01.20.20  
 Project Number: 2248  
 Project Location: CIMAREX - LEA COUNTY, NEW MEXICO

Sampling Date: 01/31/2024  
 Sampling Type: Soil  
 Sampling Condition: Cool & Intact  
 Sample Received By: Tamara Oldaker

**Sample ID: S - 1 ( 1.5' ) (H240437-02)**

BTEX 8021B		mg/kg		Analyzed By: JH						
Analyte	Result	Reporting Limit	Analyzed	Method Blank	BS	% Recovery	True Value QC	RPD	Qualifier	
Benzene*	<0.050	0.050	01/31/2024	ND	2.08	104	2.00	2.77		
Toluene*	<0.050	0.050	01/31/2024	ND	2.20	110	2.00	0.612		
Ethylbenzene*	<0.050	0.050	01/31/2024	ND	2.33	117	2.00	2.38		
Total Xylenes*	<0.150	0.150	01/31/2024	ND	7.03	117	6.00	3.16		
Total BTEX	<0.300	0.300	01/31/2024	ND						

Surrogate: 4-Bromofluorobenzene (PID) 97.6 % 71.5-134

Chloride, SM4500CI-B		mg/kg		Analyzed By: CT						
Analyte	Result	Reporting Limit	Analyzed	Method Blank	BS	% Recovery	True Value QC	RPD	Qualifier	
Chloride	32.0	16.0	02/01/2024	ND	416	104	400	10.9		

TPH 8015M		mg/kg		Analyzed By: MS					
Analyte	Result	Reporting Limit	Analyzed	Method Blank	BS	% Recovery	True Value QC	RPD	Qualifier
GRO C6-C10*	<10.0	10.0	01/31/2024	ND	192	96.1	200	1.97	
DRO >C10-C28*	<10.0	10.0	01/31/2024	ND	222	111	200	5.16	
EXT DRO >C28-C36	<10.0	10.0	01/31/2024	ND					

Surrogate: 1-Chlorooctane 94.3 % 48.2-134

Surrogate: 1-Chlorooctadecane 91.4 % 49.1-148

Cardinal Laboratories

\*=Accredited Analyte

PLEASE NOTE: Liability and Damages. Cardinal's liability and client's exclusive remedy for any claim arising, whether based in contract or tort, shall be limited to the amount paid by client for analyses. All claims, including those for negligence and any other cause whatsoever shall be deemed waived unless made in writing and received by Cardinal within thirty (30) days after completion of the applicable service. In no event shall Cardinal be liable for incidental or consequential damages, including, without limitation, business interruptions, loss of use, or loss of profits incurred by client, its subsidiaries, affiliates or successors arising out of or related to the performance of the services hereunder by Cardinal, regardless of whether such claim is based upon any of the above stated reasons or otherwise. Results relate only to the samples identified above. This report shall not be reproduced except in full with written approval of Cardinal Laboratories.

Mike Snyder For Celey D. Keene, Lab Director/Quality Manager





PHONE (575) 393-2326 ° 101 E. MARLAND ° HOBBS, NM 88240

**Analytical Results For:**

CARMONA RESOURCES  
 ASHTON THIELKE  
 310 W WALL ST SUITE 415  
 MIDLAND TX, 79701  
 Fax To:

Received:	01/31/2024	Sampling Date:	01/31/2024
Reported:	02/05/2024	Sampling Type:	Soil
Project Name:	DOS EQUIS 11 FEDERAL CTB ( 01.20.20	Sampling Condition:	Cool & Intact
Project Number:	2248	Sample Received By:	Tamara Oldaker
Project Location:	CIMAREX - LEA COUNTY, NEW MEXICO		

**Sample ID: S - 1 ( 2.0' ) (H240437-03)**

BTEX 8021B		mg/kg		Analyzed By: JH						
Analyte	Result	Reporting Limit	Analyzed	Method Blank	BS	% Recovery	True Value QC	RPD	Qualifier	
Benzene*	<0.050	0.050	01/31/2024	ND	2.08	104	2.00	2.77		
Toluene*	<0.050	0.050	01/31/2024	ND	2.20	110	2.00	0.612		
Ethylbenzene*	<0.050	0.050	01/31/2024	ND	2.33	117	2.00	2.38		
Total Xylenes*	<0.150	0.150	01/31/2024	ND	7.03	117	6.00	3.16		
Total BTEX	<0.300	0.300	01/31/2024	ND						

Surrogate: 4-Bromofluorobenzene (PID) 98.7 % 71.5-134

Chloride, SM4500Cl-B		mg/kg		Analyzed By: CT						
Analyte	Result	Reporting Limit	Analyzed	Method Blank	BS	% Recovery	True Value QC	RPD	Qualifier	
Chloride	32.0	16.0	02/01/2024	ND	416	104	400	10.9		

TPH 8015M		mg/kg		Analyzed By: MS					
Analyte	Result	Reporting Limit	Analyzed	Method Blank	BS	% Recovery	True Value QC	RPD	Qualifier
GRO C6-C10*	<10.0	10.0	01/31/2024	ND	192	96.1	200	1.97	
DRO >C10-C28*	<10.0	10.0	01/31/2024	ND	222	111	200	5.16	
EXT DRO >C28-C36	<10.0	10.0	01/31/2024	ND					

Surrogate: 1-Chlorooctane 91.3 % 48.2-134

Surrogate: 1-Chlorooctadecane 88.3 % 49.1-148

Cardinal Laboratories

\*=Accredited Analyte

PLEASE NOTE: Liability and Damages. Cardinal's liability and client's exclusive remedy for any claim arising, whether based in contract or tort, shall be limited to the amount paid by client for analyses. All claims, including those for negligence and any other cause whatsoever shall be deemed waived unless made in writing and received by Cardinal within thirty (30) days after completion of the applicable service. In no event shall Cardinal be liable for incidental or consequential damages, including, without limitation, business interruptions, loss of use, or loss of profits incurred by client, its subsidiaries, affiliates or successors arising out of or related to the performance of the services hereunder by Cardinal, regardless of whether such claim is based upon any of the above stated reasons or otherwise. Results relate only to the samples identified above. This report shall not be reproduced except in full with written approval of Cardinal Laboratories.

Mike Snyder For Celey D. Keene, Lab Director/Quality Manager



PHONE (575) 393-2326 ° 101 E. MARLAND ° HOBBS, NM 88240

**Analytical Results For:**

CARMONA RESOURCES  
 ASHTON THIELKE  
 310 W WALL ST SUITE 415  
 MIDLAND TX, 79701  
 Fax To:

Received: 01/31/2024  
 Reported: 02/05/2024  
 Project Name: DOS EQUIS 11 FEDERAL CTB ( 01.20.20  
 Project Number: 2248  
 Project Location: CIMAREX - LEA COUNTY, NEW MEXICO

Sampling Date: 01/31/2024  
 Sampling Type: Soil  
 Sampling Condition: Cool & Intact  
 Sample Received By: Tamara Oldaker

**Sample ID: S - 2 ( 0-1.0' ) (H240437-04)**

BTEx 8021B		mg/kg		Analyzed By: JH					
Analyte	Result	Reporting Limit	Analyzed	Method Blank	BS	% Recovery	True Value QC	RPD	Qualifier
Benzene*	<0.050	0.050	01/31/2024	ND	2.08	104	2.00	2.77	
Toluene*	<0.050	0.050	01/31/2024	ND	2.20	110	2.00	0.612	
Ethylbenzene*	<0.050	0.050	01/31/2024	ND	2.33	117	2.00	2.38	
Total Xylenes*	<0.150	0.150	01/31/2024	ND	7.03	117	6.00	3.16	
Total BTEX	<0.300	0.300	01/31/2024	ND					

Surrogate: 4-Bromofluorobenzene (PID) 105 % 71.5-134

Chloride, SM4500Cl-B		mg/kg		Analyzed By: CT					
Analyte	Result	Reporting Limit	Analyzed	Method Blank	BS	% Recovery	True Value QC	RPD	Qualifier
Chloride	16.0	16.0	02/01/2024	ND	416	104	400	10.9	

TPH 8015M		mg/kg		Analyzed By: MS					
Analyte	Result	Reporting Limit	Analyzed	Method Blank	BS	% Recovery	True Value QC	RPD	Qualifier
GRO C6-C10*	<10.0	10.0	01/31/2024	ND	192	96.1	200	1.97	
DRO >C10-C28*	<10.0	10.0	01/31/2024	ND	222	111	200	5.16	
EXT DRO >C28-C36	<10.0	10.0	01/31/2024	ND					

Surrogate: 1-Chlorooctane 93.9 % 48.2-134

Surrogate: 1-Chlorooctadecane 89.9 % 49.1-148

Cardinal Laboratories

\*=Accredited Analyte

PLEASE NOTE: Liability and Damages. Cardinal's liability and client's exclusive remedy for any claim arising, whether based in contract or tort, shall be limited to the amount paid by client for analyses. All claims, including those for negligence and any other cause whatsoever shall be deemed waived unless made in writing and received by Cardinal within thirty (30) days after completion of the applicable service. In no event shall Cardinal be liable for incidental or consequential damages, including, without limitation, business interruptions, loss of use, or loss of profits incurred by client, its subsidiaries, affiliates or successors arising out of or related to the performance of the services hereunder by Cardinal, regardless of whether such claim is based upon any of the above stated reasons or otherwise. Results relate only to the samples identified above. This report shall not be reproduced except in full with written approval of Cardinal Laboratories.

Mike Snyder For Celey D. Keene, Lab Director/Quality Manager



PHONE (575) 393-2326 ° 101 E. MARLAND ° HOBBS, NM 88240

**Analytical Results For:**

CARMONA RESOURCES  
 ASHTON THIELKE  
 310 W WALL ST SUITE 415  
 MIDLAND TX, 79701  
 Fax To:

Received:	01/31/2024	Sampling Date:	01/31/2024
Reported:	02/05/2024	Sampling Type:	Soil
Project Name:	DOS EQUIS 11 FEDERAL CTB ( 01.20.20	Sampling Condition:	Cool & Intact
Project Number:	2248	Sample Received By:	Tamara Oldaker
Project Location:	CIMAREX - LEA COUNTY, NEW MEXICO		

**Sample ID: S - 2 ( 1.5' ) (H240437-05)**

BTX 8021B		mg/kg		Analyzed By: JH						
Analyte	Result	Reporting Limit	Analyzed	Method Blank	BS	% Recovery	True Value QC	RPD	Qualifier	
Benzene*	<0.050	0.050	01/31/2024	ND	2.08	104	2.00	2.77		
Toluene*	<0.050	0.050	01/31/2024	ND	2.20	110	2.00	0.612		
Ethylbenzene*	<0.050	0.050	01/31/2024	ND	2.33	117	2.00	2.38		
Total Xylenes*	<0.150	0.150	01/31/2024	ND	7.03	117	6.00	3.16		
Total BTX	<0.300	0.300	01/31/2024	ND						

Surrogate: 4-Bromofluorobenzene (PID) 103 % 71.5-134

Chloride, SM4500CI-B		mg/kg		Analyzed By: CT						
Analyte	Result	Reporting Limit	Analyzed	Method Blank	BS	% Recovery	True Value QC	RPD	Qualifier	
Chloride	16.0	16.0	02/01/2024	ND	416	104	400	10.9		

TPH 8015M		mg/kg		Analyzed By: MS					
Analyte	Result	Reporting Limit	Analyzed	Method Blank	BS	% Recovery	True Value QC	RPD	Qualifier
GRO C6-C10*	<10.0	10.0	01/31/2024	ND	192	96.1	200	1.97	
DRO >C10-C28*	<10.0	10.0	01/31/2024	ND	222	111	200	5.16	
EXT DRO >C28-C36	<10.0	10.0	01/31/2024	ND					

Surrogate: 1-Chlorooctane 93.3 % 48.2-134

Surrogate: 1-Chlorooctadecane 90.8 % 49.1-148

Cardinal Laboratories

\*=Accredited Analyte

PLEASE NOTE: Liability and Damages. Cardinal's liability and client's exclusive remedy for any claim arising, whether based in contract or tort, shall be limited to the amount paid by client for analyses. All claims, including those for negligence and any other cause whatsoever shall be deemed waived unless made in writing and received by Cardinal within thirty (30) days after completion of the applicable service. In no event shall Cardinal be liable for incidental or consequential damages, including, without limitation, business interruptions, loss of use, or loss of profits incurred by client, its subsidiaries, affiliates or successors arising out of or related to the performance of the services hereunder by Cardinal, regardless of whether such claim is based upon any of the above stated reasons or otherwise. Results relate only to the samples identified above. This report shall not be reproduced except in full with written approval of Cardinal Laboratories.

Mike Snyder For Celey D. Keene, Lab Director/Quality Manager





PHONE (575) 393-2326 ° 101 E. MARLAND ° HOBBS, NM 88240

**Analytical Results For:**

CARMONA RESOURCES  
 ASHTON THIELKE  
 310 W WALL ST SUITE 415  
 MIDLAND TX, 79701  
 Fax To:

Received:	01/31/2024	Sampling Date:	01/31/2024
Reported:	02/05/2024	Sampling Type:	Soil
Project Name:	DOS EQUIS 11 FEDERAL CTB ( 01.20.20	Sampling Condition:	Cool & Intact
Project Number:	2248	Sample Received By:	Tamara Oldaker
Project Location:	CIMAREX - LEA COUNTY, NEW MEXICO		

**Sample ID: S - 2 ( 2.0' ) (H240437-06)**

BTEX 8021B		mg/kg		Analyzed By: JH						
Analyte	Result	Reporting Limit	Analyzed	Method Blank	BS	% Recovery	True Value QC	RPD	Qualifier	
Benzene*	<0.050	0.050	01/31/2024	ND	2.26	113	2.00	9.03		
Toluene*	<0.050	0.050	01/31/2024	ND	2.41	120	2.00	15.0		
Ethylbenzene*	<0.050	0.050	01/31/2024	ND	2.58	129	2.00	16.8		
Total Xylenes*	<0.150	0.150	01/31/2024	ND	7.79	130	6.00	16.9		
Total BTEX	<0.300	0.300	01/31/2024	ND						

Surrogate: 4-Bromofluorobenzene (PID) 107 % 71.5-134

Chloride, SM4500Cl-B		mg/kg		Analyzed By: CT						
Analyte	Result	Reporting Limit	Analyzed	Method Blank	BS	% Recovery	True Value QC	RPD	Qualifier	
Chloride	16.0	16.0	02/01/2024	ND	416	104	400	10.9		

TPH 8015M		mg/kg		Analyzed By: MS					
Analyte	Result	Reporting Limit	Analyzed	Method Blank	BS	% Recovery	True Value QC	RPD	Qualifier
GRO C6-C10*	<10.0	10.0	01/31/2024	ND	192	96.1	200	1.97	
DRO >C10-C28*	<10.0	10.0	01/31/2024	ND	222	111	200	5.16	
EXT DRO >C28-C36	<10.0	10.0	01/31/2024	ND					

Surrogate: 1-Chlorooctane 86.3 % 48.2-134

Surrogate: 1-Chlorooctadecane 83.1 % 49.1-148

Cardinal Laboratories

\*=Accredited Analyte

PLEASE NOTE: Liability and Damages. Cardinal's liability and client's exclusive remedy for any claim arising, whether based in contract or tort, shall be limited to the amount paid by client for analyses. All claims, including those for negligence and any other cause whatsoever shall be deemed waived unless made in writing and received by Cardinal within thirty (30) days after completion of the applicable service. In no event shall Cardinal be liable for incidental or consequential damages, including, without limitation, business interruptions, loss of use, or loss of profits incurred by client, its subsidiaries, affiliates or successors arising out of or related to the performance of the services hereunder by Cardinal, regardless of whether such claim is based upon any of the above stated reasons or otherwise. Results relate only to the samples identified above. This report shall not be reproduced except in full with written approval of Cardinal Laboratories.

Mike Snyder For Celey D. Keene, Lab Director/Quality Manager



PHONE (575) 393-2326 ° 101 E. MARLAND ° HOBBS, NM 88240

**Analytical Results For:**

CARMONA RESOURCES  
 ASHTON THIELKE  
 310 W WALL ST SUITE 415  
 MIDLAND TX, 79701  
 Fax To:

Received:	01/31/2024	Sampling Date:	01/31/2024
Reported:	02/05/2024	Sampling Type:	Soil
Project Name:	DOS EQUIS 11 FEDERAL CTB ( 01.20.20	Sampling Condition:	Cool & Intact
Project Number:	2248	Sample Received By:	Tamara Oldaker
Project Location:	CIMAREX - LEA COUNTY, NEW MEXICO		

**Sample ID: S - 3 ( 0-1.0' ) (H240437-07)**

BTEX 8021B		mg/kg		Analyzed By: JH						
Analyte	Result	Reporting Limit	Analyzed	Method Blank	BS	% Recovery	True Value QC	RPD	Qualifier	
Benzene*	<0.050	0.050	01/31/2024	ND	2.26	113	2.00	9.03		
Toluene*	<0.050	0.050	01/31/2024	ND	2.41	120	2.00	15.0		
Ethylbenzene*	<0.050	0.050	01/31/2024	ND	2.58	129	2.00	16.8		
Total Xylenes*	<0.150	0.150	01/31/2024	ND	7.79	130	6.00	16.9		
Total BTEX	<0.300	0.300	01/31/2024	ND						

Surrogate: 4-Bromofluorobenzene (PID) 108 % 71.5-134

Chloride, SM4500Cl-B		mg/kg		Analyzed By: CT						
Analyte	Result	Reporting Limit	Analyzed	Method Blank	BS	% Recovery	True Value QC	RPD	Qualifier	
Chloride	16.0	16.0	02/01/2024	ND	416	104	400	10.9		

TPH 8015M		mg/kg		Analyzed By: MS					
Analyte	Result	Reporting Limit	Analyzed	Method Blank	BS	% Recovery	True Value QC	RPD	Qualifier
GRO C6-C10*	<10.0	10.0	01/31/2024	ND	192	96.1	200	1.97	
DRO >C10-C28*	<10.0	10.0	01/31/2024	ND	222	111	200	5.16	
EXT DRO >C28-C36	<10.0	10.0	01/31/2024	ND					

Surrogate: 1-Chlorooctane 94.7 % 48.2-134

Surrogate: 1-Chlorooctadecane 91.5 % 49.1-148

Cardinal Laboratories

\*=Accredited Analyte

PLEASE NOTE: Liability and Damages. Cardinal's liability and client's exclusive remedy for any claim arising, whether based in contract or tort, shall be limited to the amount paid by client for analyses. All claims, including those for negligence and any other cause whatsoever shall be deemed waived unless made in writing and received by Cardinal within thirty (30) days after completion of the applicable service. In no event shall Cardinal be liable for incidental or consequential damages, including, without limitation, business interruptions, loss of use, or loss of profits incurred by client, its subsidiaries, affiliates or successors arising out of or related to the performance of the services hereunder by Cardinal, regardless of whether such claim is based upon any of the above stated reasons or otherwise. Results relate only to the samples identified above. This report shall not be reproduced except in full with written approval of Cardinal Laboratories.

Mike Snyder For Celey D. Keene, Lab Director/Quality Manager



PHONE (575) 393-2326 ° 101 E. MARLAND ° HOBBS, NM 88240

**Analytical Results For:**

CARMONA RESOURCES  
 ASHTON THIELKE  
 310 W WALL ST SUITE 415  
 MIDLAND TX, 79701  
 Fax To:

Received: 01/31/2024  
 Reported: 02/05/2024  
 Project Name: DOS EQUIS 11 FEDERAL CTB ( 01.20.20  
 Project Number: 2248  
 Project Location: CIMAREX - LEA COUNTY, NEW MEXICO

Sampling Date: 01/31/2024  
 Sampling Type: Soil  
 Sampling Condition: Cool & Intact  
 Sample Received By: Tamara Oldaker

**Sample ID: S - 3 ( 1.5' ) (H240437-08)**

BTEX 8021B		mg/kg		Analyzed By: JH					
Analyte	Result	Reporting Limit	Analyzed	Method Blank	BS	% Recovery	True Value QC	RPD	Qualifier
Benzene*	<0.050	0.050	01/31/2024	ND	2.26	113	2.00	9.03	
Toluene*	<0.050	0.050	01/31/2024	ND	2.41	120	2.00	15.0	
Ethylbenzene*	<0.050	0.050	01/31/2024	ND	2.58	129	2.00	16.8	
Total Xylenes*	<0.150	0.150	01/31/2024	ND	7.79	130	6.00	16.9	
Total BTEX	<0.300	0.300	01/31/2024	ND					

Surrogate: 4-Bromofluorobenzene (PID) 108 % 71.5-134

Chloride, SM4500Cl-B		mg/kg		Analyzed By: CT					
Analyte	Result	Reporting Limit	Analyzed	Method Blank	BS	% Recovery	True Value QC	RPD	Qualifier
Chloride	16.0	16.0	02/01/2024	ND	416	104	400	10.9	

TPH 8015M		mg/kg		Analyzed By: MS					
Analyte	Result	Reporting Limit	Analyzed	Method Blank	BS	% Recovery	True Value QC	RPD	Qualifier
GRO C6-C10*	<10.0	10.0	01/31/2024	ND	192	96.1	200	1.97	
DRO >C10-C28*	<10.0	10.0	01/31/2024	ND	222	111	200	5.16	
EXT DRO >C28-C36	<10.0	10.0	01/31/2024	ND					

Surrogate: 1-Chlorooctane 87.0 % 48.2-134

Surrogate: 1-Chlorooctadecane 83.8 % 49.1-148

Cardinal Laboratories

\*=Accredited Analyte

PLEASE NOTE: Liability and Damages. Cardinal's liability and client's exclusive remedy for any claim arising, whether based in contract or tort, shall be limited to the amount paid by client for analyses. All claims, including those for negligence and any other cause whatsoever shall be deemed waived unless made in writing and received by Cardinal within thirty (30) days after completion of the applicable service. In no event shall Cardinal be liable for incidental or consequential damages, including, without limitation, business interruptions, loss of use, or loss of profits incurred by client, its subsidiaries, affiliates or successors arising out of or related to the performance of the services hereunder by Cardinal, regardless of whether such claim is based upon any of the above stated reasons or otherwise. Results relate only to the samples identified above. This report shall not be reproduced except in full with written approval of Cardinal Laboratories.

Mike Snyder For Celey D. Keene, Lab Director/Quality Manager





PHONE (575) 393-2326 ° 101 E. MARLAND ° HOBBS, NM 88240

**Analytical Results For:**

CARMONA RESOURCES  
 ASHTON THIELKE  
 310 W WALL ST SUITE 415  
 MIDLAND TX, 79701  
 Fax To:

Received:	01/31/2024	Sampling Date:	01/31/2024
Reported:	02/05/2024	Sampling Type:	Soil
Project Name:	DOS EQUIS 11 FEDERAL CTB ( 01.20.20	Sampling Condition:	Cool & Intact
Project Number:	2248	Sample Received By:	Tamara Oldaker
Project Location:	CIMAREX - LEA COUNTY, NEW MEXICO		

**Sample ID: S - 3 ( 2.0' ) (H240437-09)**

BTEx 8021B		mg/kg		Analyzed By: JH					
Analyte	Result	Reporting Limit	Analyzed	Method Blank	BS	% Recovery	True Value QC	RPD	Qualifier
Benzene*	<0.050	0.050	01/31/2024	ND	2.26	113	2.00	9.03	
Toluene*	<0.050	0.050	01/31/2024	ND	2.41	120	2.00	15.0	
Ethylbenzene*	<0.050	0.050	01/31/2024	ND	2.58	129	2.00	16.8	
Total Xylenes*	<0.150	0.150	01/31/2024	ND	7.79	130	6.00	16.9	
Total BTEX	<0.300	0.300	01/31/2024	ND					

Surrogate: 4-Bromofluorobenzene (PID) 108 % 71.5-134

Chloride, SM4500Cl-B		mg/kg		Analyzed By: CT						
Analyte	Result	Reporting Limit	Analyzed	Method Blank	BS	% Recovery	True Value QC	RPD	Qualifier	
Chloride	16.0	16.0	02/01/2024	ND	416	104	400	10.9		

TPH 8015M		mg/kg		Analyzed By: MS					
Analyte	Result	Reporting Limit	Analyzed	Method Blank	BS	% Recovery	True Value QC	RPD	Qualifier
GRO C6-C10*	<10.0	10.0	02/01/2024	ND	192	96.1	200	1.97	
DRO >C10-C28*	<10.0	10.0	02/01/2024	ND	222	111	200	5.16	
EXT DRO >C28-C36	<10.0	10.0	02/01/2024	ND					

Surrogate: 1-Chlorooctane 92.3 % 48.2-134

Surrogate: 1-Chlorooctadecane 89.6 % 49.1-148

Cardinal Laboratories

\*=Accredited Analyte

PLEASE NOTE: Liability and Damages. Cardinal's liability and client's exclusive remedy for any claim arising, whether based in contract or tort, shall be limited to the amount paid by client for analyses. All claims, including those for negligence and any other cause whatsoever shall be deemed waived unless made in writing and received by Cardinal within thirty (30) days after completion of the applicable service. In no event shall Cardinal be liable for incidental or consequential damages, including, without limitation, business interruptions, loss of use, or loss of profits incurred by client, its subsidiaries, affiliates or successors arising out of or related to the performance of the services hereunder by Cardinal, regardless of whether such claim is based upon any of the above stated reasons or otherwise. Results relate only to the samples identified above. This report shall not be reproduced except in full with written approval of Cardinal Laboratories.

Mike Snyder For Celey D. Keene, Lab Director/Quality Manager



PHONE (575) 393-2326 ° 101 E. MARLAND ° HOBBS, NM 88240

### Notes and Definitions

QR-04	The RPD for the BS/BSD was outside of historical limits.
QR-03	The RPD value for the sample duplicate or MS/MSD was outside of QC acceptance limits due to matrix interference. QC batch accepted based on LCS and/or LCSD recovery and/or RPD values.
BS-3	Blank spike recovery outside of lab established statistical limits, but still within method limits. Data is not adversely affected.
BS1	Blank spike recovery above laboratory acceptance criteria. Results for analyte potentially biased high.
ND	Analyte NOT DETECTED at or above the reporting limit
RPD	Relative Percent Difference
**	Samples not received at proper temperature of 6°C or below.
***	Insufficient time to reach temperature.
-	Chloride by SM4500Cl-B does not require samples be received at or below 6°C Samples reported on an as received basis (wet) unless otherwise noted on report

Cardinal Laboratories

\*=Accredited Analyte

PLEASE NOTE: Liability and Damages. Cardinal's liability and client's exclusive remedy for any claim arising, whether based in contract or tort, shall be limited to the amount paid by client for analyses. All claims, including those for negligence and any other cause whatsoever shall be deemed waived unless made in writing and received by Cardinal within thirty (30) days after completion of the applicable service. In no event shall Cardinal be liable for incidental or consequential damages, including, without limitation, business interruptions, loss of use, or loss of profits incurred by client, its subsidiaries, affiliates or successors arising out of or related to the performance of the services hereunder by Cardinal, regardless of whether such claim is based upon any of the above stated reasons or otherwise. Results relate only to the samples identified above. This report shall not be reproduced except in full with written approval of Cardinal Laboratories.

A handwritten signature in black ink, appearing to read "Mike Snyder".

Mike Snyder For Celey D. Keene, Lab Director/Quality Manager

# Chain of Custody

Work Order No: H240437

Page 1 of 1

Project Manager:	Ashton Thielke	Bill to: (if different)	Laci Luig
Company Name:	Carmona Resources	Company Name:	Cimarex Energy
Address:	310 W Wall St Ste 500	Address:	6001 Deauville Blvd, Suite 300N
City, State ZIP:	Midland, TX 79701	City, State ZIP:	Midland, TX 79706
Phone:	432-813-8988	Email:	laci.luig@coterra.com ashton.thielke@coterra.com

Work Order Comments	
Program: UST/PST	<input type="checkbox"/> PRP <input type="checkbox"/> rownfields <input type="checkbox"/> RC <input type="checkbox"/> perfund <input type="checkbox"/>
State of Project:	
Reporting: Level II	<input type="checkbox"/> Level III <input type="checkbox"/> ST/UST <input type="checkbox"/> RRP <input type="checkbox"/> Level IV <input type="checkbox"/>
Deliverables: EDD	<input type="checkbox"/> ADaPT <input type="checkbox"/> Other:

Project Name:		Turn Around		ANALYSIS REQUEST																Preservative Codes							
Dos Equis 11 Federal CTB (01.20.2024)		<input checked="" type="checkbox"/> Routine <input type="checkbox"/> Rush																		None: NO DI Water: H <sub>2</sub> O							
Project Number: 2248		Due Date: Normal																		Cool: Cool MeOH: Me							
Project Location: Lea County, New Mexico																				HCL: HC HNO <sub>3</sub> : HN							
Sampler's Name: GPJ																				H <sub>2</sub> SO <sub>4</sub> : H <sub>2</sub> NaOH: Na							
PO #:																				H <sub>3</sub> PO <sub>4</sub> : HP							
SAMPLE RECEIPT		Temp Blank:		Yes No		Wet Ice:		Yes No																			
Received Intact:		<input checked="" type="checkbox"/> Yes <input type="checkbox"/> No		Thermometer ID:		140																					
Cooler Custody Seals:		Yes No <input checked="" type="checkbox"/> N/A		Correction Factor:																							
Sample Custody Seals:		Yes No <input checked="" type="checkbox"/> N/A		Temperature Reading:		4.9.2																					
Total Containers:				Corrected Temperature:																							
Sample Identification	Date	Time	Soil	Water	Grab/Comp	# of Cont																	Sample Comments				
S-1 (0-1.0')	1/31/2024		X		G	1	X	X	X																		
S-1 (1.5')	1/31/2024		X		G	1	X	X	X																		
S-1 (2.0')	1/31/2024		X		G	1	X	X	X																		
S-2 (0-1.0')	1/31/2024		X		G	1	X	X	X																		
S-2 (1.5')	1/31/2024		X		G	1	X	X	X																		
S-2 (2.0')	1/31/2024		X		G	1	X	X	X																		
S-3 (0-1.0')	1/31/2024		X		G	1	X	X	X																		
S-3 (1.5')	1/31/2024		X		G	1	X	X	X																		
S-3 (2.0')	1/31/2024		X		G	1	X	X	X																		

Comments:			

Relinquished by: (Signature)	Date/Time	Received by: (Signature)	Date/Time
	1-31-24 1351		

**District I**  
1625 N. French Dr., Hobbs, NM 88240  
Phone:(575) 393-6161 Fax:(575) 393-0720  
**District II**  
811 S. First St., Artesia, NM 88210  
Phone:(575) 748-1283 Fax:(575) 748-9720  
**District III**  
1000 Rio Brazos Rd., Aztec, NM 87410  
Phone:(505) 334-6178 Fax:(505) 334-6170  
**District IV**  
1220 S. St Francis Dr., Santa Fe, NM 87505  
Phone:(505) 476-3470 Fax:(505) 476-3462

State of New Mexico  
Energy, Minerals and Natural Resources  
Oil Conservation Division  
1220 S. St Francis Dr.  
Santa Fe, NM 87505

QUESTIONS

Action 331040

QUESTIONS

Operator: CIMAREX ENERGY CO. 6001 Deauville Blvd Midland, TX 79706	OGRID:	215099
	Action Number:	331040
	Action Type:	[C-141] Revegetation Report C-141 (C-141-v-Revegetation)

QUESTIONS

Prerequisites	
Incident ID (n#)	nAPP2402156989
Incident Name	NAPP2402156989 DOS EQUIS 11 FEDERAL CTB @ 0
Incident Type	Fire
Incident Status	Re-vegetation Report Received
Incident Facility	[fAPP2202670522] DOS EQUIS 11 FED

Location of Release Source	
Please answer all the questions in this group.	
Site Name	DOS EQUIS 11 FEDERAL CTB
Date Release Discovered	01/20/2024
Surface Owner	Federal

Incident Details	
Please answer all the questions in this group.	
Incident Type	Fire
Did this release result in a fire or is the result of a fire	No
Did this release result in any injuries	No
Has this release reached or does it have a reasonable probability of reaching a watercourse	No
Has this release endangered or does it have a reasonable probability of endangering public health	No
Has this release substantially damaged or will it substantially damage property or the environment	No
Is this release of a volume that is or may with reasonable probability be detrimental to fresh water	No

Nature and Volume of Release	
Material(s) released, please answer all that apply below. Any calculations or specific justifications for the volumes provided should be attached to the follow-up C-141 submission.	
Crude Oil Released (bbls) Details	Cause: Fire   Other (Specify)   Crude Oil   Released: 0 BBL   Recovered: 0 BBL   Lost: 0 BBL.
Produced Water Released (bbls) Details	Not answered.
Is the concentration of chloride in the produced water >10,000 mg/l	Yes
Condensate Released (bbls) Details	Not answered.
Natural Gas Vented (Mcf) Details	Not answered.
Natural Gas Flared (Mcf) Details	Not answered.
Other Released Details	Not answered.
Are there additional details for the questions above (i.e. any answer containing Other, Specify, Unknown, and/or Fire, or any negative lost amounts)	The sales scrubber dump valve shut, causing the vessel to high level; we are investigating why the ball valve was shut. The facility shut in on the sales scrubber high-level and shut in both wells. During the shutdown, Targa had a high-line pressure event that swept the fluid out of the flare, causing a fire. There was no damage to the flare, but we did burn a small pasture area of 90'X40'. Wells will remain shut-in until a root cause analysis is done. No injuries were associated with this incident, and the fire was extinguished with a fire extinguisher.



**District I**

1625 N. French Dr., Hobbs, NM 88240  
Phone:(575) 393-6161 Fax:(575) 393-0720

**District II**

811 S. First St., Artesia, NM 88210  
Phone:(575) 748-1283 Fax:(575) 748-9720

**District III**

1000 Rio Brazos Rd., Aztec, NM 87410  
Phone:(505) 334-6178 Fax:(505) 334-6170

**District IV**

1220 S. St Francis Dr., Santa Fe, NM 87505  
Phone:(505) 476-3470 Fax:(505) 476-3462

**State of New Mexico**  
**Energy, Minerals and Natural Resources**  
**Oil Conservation Division**  
**1220 S. St Francis Dr.**  
**Santa Fe, NM 87505**

QUESTIONS, Page 2

Action 331040

**QUESTIONS (continued)**

Operator: CIMAREX ENERGY CO. 6001 Deauville Blvd Midland, TX 79706	OGRID: 215099
	Action Number: 331040
	Action Type: [C-141] Revegetation Report C-141 (C-141-v-Revegetation)

**QUESTIONS**

<b>Nature and Volume of Release (continued)</b>	
Is this a gas only submission (i.e. only significant Mcf values reported)	<b>More info needed to determine if this will be treated as a "gas only" report.</b>
Was this a major release as defined by Subsection A of 19.15.29.7 NMAC	<b>Yes</b>
Reasons why this would be considered a submission for a notification of a major release	<b>From paragraph A. "Major release" determine using: (2) an unauthorized release of a volume that: (a) results in a fire or is the result of a fire.</b>
<i>With the implementation of the 19.15.27 NMAC (05/25/2021), venting and/or flaring of natural gas (i.e. gas only) are to be submitted on the C-129 form.</i>	

**Initial Response**

*The responsible party must undertake the following actions immediately unless they could create a safety hazard that would result in injury.*

The source of the release has been stopped	<b>True</b>
The impacted area has been secured to protect human health and the environment	<b>True</b>
Released materials have been contained via the use of berms or dikes, absorbent pads, or other containment devices	<b>True</b>
All free liquids and recoverable materials have been removed and managed appropriately	<b>True</b>
If all the actions described above have not been undertaken, explain why	<b>Not answered.</b>

*Per Paragraph (4) of Subsection B of 19.15.29.8 NMAC the responsible party may commence remediation immediately after discovery of a release. If remediation has begun, please prepare and attach a narrative of actions to date in the follow-up C-141 submission. If remedial efforts have been successfully completed or if the release occurred within a lined containment area (see Subparagraph (a) of Paragraph (5) of Subsection A of 19.15.29.11 NMAC), please prepare and attach all information needed for closure evaluation in the follow-up C-141 submission.*

I hereby certify that the information given above is true and complete to the best of my knowledge and understand that pursuant to OCD rules and regulations all operators are required to report and/or file certain release notifications and perform corrective actions for releases which may endanger public health or the environment. The acceptance of a C-141 report by the OCD does not relieve the operator of liability should their operations have failed to adequately investigate and remediate contamination that pose a threat to groundwater, surface water, human health or the environment. In addition, OCD acceptance of a C-141 report does not relieve the operator of responsibility for compliance with any other federal, state, or local laws and/or regulations.

I hereby agree and sign off to the above statement	<b>Name:</b> Laci Luig <b>Title:</b> ES&H Specialist <b>Email:</b> DL_PermianEnvironmental@coterra.com <b>Date:</b> 04/08/2024
----------------------------------------------------	-----------------------------------------------------------------------------------------------------------------------------------------

**District I**

1625 N. French Dr., Hobbs, NM 88240  
Phone:(575) 393-6161 Fax:(575) 393-0720

**District II**

811 S. First St., Artesia, NM 88210  
Phone:(575) 748-1283 Fax:(575) 748-9720

**District III**

1000 Rio Brazos Rd., Aztec, NM 87410  
Phone:(505) 334-6178 Fax:(505) 334-6170

**District IV**

1220 S. St Francis Dr., Santa Fe, NM 87505  
Phone:(505) 476-3470 Fax:(505) 476-3462

**State of New Mexico**  
**Energy, Minerals and Natural Resources**  
**Oil Conservation Division**  
**1220 S. St Francis Dr.**  
**Santa Fe, NM 87505**

QUESTIONS, Page 3

Action 331040

**QUESTIONS (continued)**

Operator: CIMAREX ENERGY CO. 6001 Deauville Blvd Midland, TX 79706	OGRID:	215099
	Action Number:	331040
	Action Type:	[C-141] Revegetation Report C-141 (C-141-v-Revegetation)

**QUESTIONS****Site Characterization**

Please answer all the questions in this group (only required when seeking remediation plan approval and beyond). This information must be provided to the appropriate district office no later than 90 days after the release discovery date.

What is the shallowest depth to groundwater beneath the area affected by the release in feet below ground surface (ft bgs)	Between 100 and 500 (ft.)
What method was used to determine the depth to ground water	Direct Measurement
Did this release impact groundwater or surface water	No
<b>What is the minimum distance, between the closest lateral extents of the release and the following surface areas:</b>	
A continuously flowing watercourse or any other significant watercourse	Greater than 5 (mi.)
Any lakebed, sinkhole, or playa lake (measured from the ordinary high-water mark)	Between 1 and 5 (mi.)
An occupied permanent residence, school, hospital, institution, or church	Greater than 5 (mi.)
A spring or a private domestic fresh water well used by less than five households for domestic or stock watering purposes	Greater than 5 (mi.)
Any other fresh water well or spring	Between 1 and 5 (mi.)
Incorporated municipal boundaries or a defined municipal fresh water well field	Greater than 5 (mi.)
A wetland	Between 1 and 5 (mi.)
A subsurface mine	Greater than 5 (mi.)
An (non-karst) unstable area	Greater than 5 (mi.)
Categorize the risk of this well / site being in a karst geology	Low
A 100-year floodplain	Greater than 5 (mi.)
Did the release impact areas not on an exploration, development, production, or storage site	No

**Remediation Plan**

Please answer all the questions that apply or are indicated. This information must be provided to the appropriate district office no later than 90 days after the release discovery date.

Requesting a remediation plan approval with this submission	Yes
Attach a comprehensive report demonstrating the lateral and vertical extents of soil contamination associated with the release have been determined, pursuant to 19.15.29.11 NMAC and 19.15.29.13 NMAC.	
Have the lateral and vertical extents of contamination been fully delineated	Yes
Was this release entirely contained within a lined containment area	No

**Soil Contamination Sampling:** (Provide the highest observable value for each, in milligrams per kilograms.)

Chloride	(EPA 300.0 or SM4500 Cl B)	32
TPH (GRO+DRO+MRO)	(EPA SW-846 Method 8015M)	0
GRO+DRO	(EPA SW-846 Method 8015M)	0
BTEX	(EPA SW-846 Method 8021B or 8260B)	0
Benzene	(EPA SW-846 Method 8021B or 8260B)	0

Per Subsection B of 19.15.29.11 NMAC unless the site characterization report includes completed efforts at remediation, the report must include a proposed remediation plan in accordance with 19.15.29.12 NMAC, which includes the anticipated timelines for beginning and completing the remediation.

On what estimated date will the remediation commence	01/20/2024
On what date will (or did) the final sampling or liner inspection occur	01/31/2024
On what date will (or was) the remediation complete(d)	01/20/2024
What is the estimated surface area (in square feet) that will be reclaimed	0
What is the estimated volume (in cubic yards) that will be reclaimed	0
What is the estimated surface area (in square feet) that will be remediated	0
What is the estimated volume (in cubic yards) that will be remediated	0

These estimated dates and measurements are recognized to be the best guess or calculation at the time of submission and may (be) change(d) over time as more remediation efforts are completed.

The OCD recognizes that proposed remediation measures may have to be minimally adjusted in accordance with the physical realities encountered during remediation. If the responsible party has any need to significantly deviate from the remediation plan proposed, then it should consult with the division to determine if another remediation plan submission is required.

**District I**

1625 N. French Dr., Hobbs, NM 88240  
Phone:(575) 393-6161 Fax:(575) 393-0720

**District II**

811 S. First St., Artesia, NM 88210  
Phone:(575) 748-1283 Fax:(575) 748-9720

**District III**

1000 Rio Brazos Rd., Aztec, NM 87410  
Phone:(505) 334-6178 Fax:(505) 334-6170

**District IV**

1220 S. St Francis Dr., Santa Fe, NM 87505  
Phone:(505) 476-3470 Fax:(505) 476-3462

**State of New Mexico**  
**Energy, Minerals and Natural Resources**  
**Oil Conservation Division**  
**1220 S. St Francis Dr.**  
**Santa Fe, NM 87505**

QUESTIONS, Page 4

Action 331040

**QUESTIONS (continued)**

Operator: CIMAREX ENERGY CO. 6001 Deauville Blvd Midland, TX 79706	OGRID:	215099
	Action Number:	331040
	Action Type:	[C-141] Revegetation Report C-141 (C-141-v-Revegetation)

**QUESTIONS****Remediation Plan (continued)**

Please answer all the questions that apply or are indicated. This information must be provided to the appropriate district office no later than 90 days after the release discovery date.

**This remediation will (or is expected to) utilize the following processes to remediate / reduce contaminants:**

(Select all answers below that apply.)

(Ex Situ) Excavation and <b>off-site</b> disposal (i.e. dig and haul, hydrovac, etc.)	Not answered.
(Ex Situ) Excavation and <b>on-site</b> remediation (i.e. On-Site Land Farms)	Not answered.
(In Situ) Soil Vapor Extraction	Not answered.
(In Situ) Chemical processing (i.e. Soil Shredding, Potassium Permanganate, etc.)	Not answered.
(In Situ) Biological processing (i.e. Microbes / Fertilizer, etc.)	Not answered.
(In Situ) Physical processing (i.e. Soil Washing, Gypsum, Disking, etc.)	Not answered.
Ground Water Abatement pursuant to 19.15.30 NMAC	Not answered.
OTHER (Non-listed remedial process)	Yes
Other Non-listed Remedial Process. Please specify	Site assessment samples resulted in no need for remediation efforts.

Per Subsection B of 19.15.29.11 NMAC unless the site characterization report includes completed efforts at remediation, the report must include a proposed remediation plan in accordance with 19.15.29.12 NMAC, which includes the anticipated timelines for beginning and completing the remediation.

I hereby certify that the information given above is true and complete to the best of my knowledge and understand that pursuant to OCD rules and regulations all operators are required to report and/or file certain release notifications and perform corrective actions for releases which may endanger public health or the environment. The acceptance of a C-141 report by the OCD does not relieve the operator of liability should their operations have failed to adequately investigate and remediate contamination that pose a threat to groundwater, surface water, human health or the environment. In addition, OCD acceptance of a C-141 report does not relieve the operator of responsibility for compliance with any other federal, state, or local laws and/or regulations.

I hereby agree and sign off to the above statement	Name: Laci Luig Title: ES&H Specialist Email: DL_PermianEnvironmental@coterra.com Date: 04/08/2024
----------------------------------------------------	-------------------------------------------------------------------------------------------------------------

The OCD recognizes that proposed remediation measures may have to be minimally adjusted in accordance with the physical realities encountered during remediation. If the responsible party has any need to significantly deviate from the remediation plan proposed, then it should consult with the division to determine if another remediation plan submission is required.

**District I**  
1625 N. French Dr., Hobbs, NM 88240  
Phone:(575) 393-6161 Fax:(575) 393-0720  
**District II**  
811 S. First St., Artesia, NM 88210  
Phone:(575) 748-1283 Fax:(575) 748-9720  
**District III**  
1000 Rio Brazos Rd., Aztec, NM 87410  
Phone:(505) 334-6178 Fax:(505) 334-6170  
**District IV**  
1220 S. St Francis Dr., Santa Fe, NM 87505  
Phone:(505) 476-3470 Fax:(505) 476-3462

**State of New Mexico**  
**Energy, Minerals and Natural Resources**  
**Oil Conservation Division**  
**1220 S. St Francis Dr.**  
**Santa Fe, NM 87505**

QUESTIONS, Page 5  
  
Action 331040

QUESTIONS (continued)

Operator:  CIMAREX ENERGY CO. 6001 Deauville Blvd Midland, TX 79706	OGRID:  215099
	Action Number:  331040
	Action Type:  [C-141] Revegetation Report C-141 (C-141-v-Revegetation)

QUESTIONS

<b>Deferral Requests Only</b>	
Only answer the questions in this group if seeking a deferral upon approval this submission. Each of the following items must be confirmed as part of any request for deferral of remediation.	
Requesting a deferral of the remediation closure due date with the approval of this submission	No



**District I**

1625 N. French Dr., Hobbs, NM 88240  
Phone:(575) 393-6161 Fax:(575) 393-0720

**District II**

811 S. First St., Artesia, NM 88210  
Phone:(575) 748-1283 Fax:(575) 748-9720

**District III**

1000 Rio Brazos Rd., Aztec, NM 87410  
Phone:(505) 334-6178 Fax:(505) 334-6170

**District IV**

1220 S. St Francis Dr., Santa Fe, NM 87505  
Phone:(505) 476-3470 Fax:(505) 476-3462

**State of New Mexico**  
**Energy, Minerals and Natural Resources**  
**Oil Conservation Division**  
**1220 S. St Francis Dr.**  
**Santa Fe, NM 87505**

QUESTIONS, Page 6

Action 331040

**QUESTIONS (continued)**

Operator: CIMAREX ENERGY CO. 6001 Deauville Blvd Midland, TX 79706	OGRID: 215099
	Action Number: 331040
	Action Type: [C-141] Revegetation Report C-141 (C-141-v-Revegetation)

**QUESTIONS**

Sampling Event Information	
Last sampling notification (C-141N) recorded	312689
Sampling date pursuant to Subparagraph (a) of Paragraph (1) of Subsection D of 19.15.29.12 NMAC	01/31/2024
What was the (estimated) number of samples that were to be gathered	7
What was the sampling surface area in square feet	1700

**Remediation Closure Request**

Only answer the questions in this group if seeking remediation closure for this release because all remediation steps have been completed.

Requesting a remediation closure approval with this submission	Yes
Have the lateral and vertical extents of contamination been fully delineated	Yes
Was this release entirely contained within a lined containment area	No
All areas reasonably needed for production or subsequent drilling operations have been stabilized, returned to the sites existing grade, and have a soil cover that prevents ponding of water, minimizing dust and erosion	Yes
What was the total surface area (in square feet) remediated	0
What was the total volume (cubic yards) remediated	0
All areas not reasonably needed for production or subsequent drilling operations have been reclaimed to contain a minimum of four feet of non-waste contain earthen material with concentrations less than 600 mg/kg chlorides, 100 mg/kg TPH, 50 mg/kg BTEX, and 10 mg/kg Benzene	Yes
What was the total surface area (in square feet) reclaimed	0
What was the total volume (in cubic yards) reclaimed	0
Summarize any additional remediation activities not included by answers (above)	Site assessment samples resulted in no need for remediation efforts.

The responsible party must attach information demonstrating they have complied with all applicable closure requirements and any conditions or directives of the OCD. This demonstration should be in the form of a comprehensive report (in .pdf format) including a scaled site map, sampling diagrams, relevant field notes, photographs of any excavation prior to backfilling, laboratory data including chain of custody documents of final sampling, and a narrative of the remedial activities. Refer to 19.15.29.12 NMAC.

I hereby certify that the information given above is true and complete to the best of my knowledge and understand that pursuant to OCD rules and regulations all operators are required to report and/or file certain release notifications and perform corrective actions for releases which may endanger public health or the environment. The acceptance of a C-141 report by the OCD does not relieve the operator of liability should their operations have failed to adequately investigate and remediate contamination that pose a threat to groundwater, surface water, human health or the environment. In addition, OCD acceptance of a C-141 report does not relieve the operator of responsibility for compliance with any other federal, state, or local laws and/or regulations. The responsible party acknowledges they must substantially restore, reclaim, and re-vegetate the impacted surface area to the conditions that existed prior to the release or their final land use in accordance with 19.15.29.13 NMAC including notification to the OCD when reclamation and re-vegetation are complete.

I hereby agree and sign off to the above statement	Name: Laci Luig Title: ES&H Specialist Email: DL_PermianEnvironmental@coterra.com Date: 04/08/2024
----------------------------------------------------	-------------------------------------------------------------------------------------------------------------

**District I**

1625 N. French Dr., Hobbs, NM 88240  
Phone:(575) 393-6161 Fax:(575) 393-0720

**District II**

811 S. First St., Artesia, NM 88210  
Phone:(575) 748-1283 Fax:(575) 748-9720

**District III**

1000 Rio Brazos Rd., Aztec, NM 87410  
Phone:(505) 334-6178 Fax:(505) 334-6170

**District IV**

1220 S. St Francis Dr., Santa Fe, NM 87505  
Phone:(505) 476-3470 Fax:(505) 476-3462

**State of New Mexico**  
**Energy, Minerals and Natural Resources**  
**Oil Conservation Division**  
**1220 S. St Francis Dr.**  
**Santa Fe, NM 87505**

QUESTIONS, Page 7

Action 331040

**QUESTIONS (continued)**

Operator: CIMAREX ENERGY CO. 6001 Deauville Blvd Midland, TX 79706	OGRID:	215099
	Action Number:	331040
	Action Type:	[C-141] Revegetation Report C-141 (C-141-v-Revegetation)

**QUESTIONS****Reclamation Report**

*Only answer the questions in this group if all reclamation steps have been completed.*

Requesting a reclamation approval with this submission	Yes
What was the total reclamation surface area (in square feet) for this site	0
What was the total volume of replacement material (in cubic yards) for this site	0

*Per Paragraph (1) of Subsection D of 19.15.29.13 NMAC the reclamation must contain a minimum of four feet of non-waste containing, uncontaminated, earthen material with chloride concentrations less than 600 mg/kg as analyzed by EPA Method 300.0, or other test methods approved by the division. The soil cover must include a top layer, which is either the background thickness of topsoil or one foot of suitable material to establish vegetation at the site, whichever is greater.*

Is the soil top layer complete and is it suitable material to establish vegetation	Yes
On what (estimated) date will (or was) the reseeding commence(d)	01/20/2024

Summarize any additional reclamation activities not included by answers (above)	Site assessment samples resulted in no need for remediation/reclamation efforts.
---------------------------------------------------------------------------------	----------------------------------------------------------------------------------

*The responsible party must attach information demonstrating they have complied with all applicable reclamation requirements and any conditions or directives of the OCD. This demonstration should be in the form of attachments (in .pdf format) including a scaled site map, any proposed reseeding plans or relevant field notes, photographs of reclaimed area, and a narrative of the reclamation activities. Refer to 19.15.29.13 NMAC.*

I hereby certify that the information given above is true and complete to the best of my knowledge and understand that pursuant to OCD rules and regulations all operators are required to report and/or file certain release notifications and perform corrective actions for releases which may endanger public health or the environment. The acceptance of a C-141 report by the OCD does not relieve the operator of liability should their operations have failed to adequately investigate and remediate contamination that pose a threat to groundwater, surface water, human health or the environment. In addition, OCD acceptance of a C-141 report does not relieve the operator of responsibility for compliance with any other federal, state, or local laws and/or regulations. The responsible party acknowledges they must substantially restore, reclaim, and re-vegetate the impacted surface area to the conditions that existed prior to the release or their final land use in accordance with 19.15.29.13 NMAC including notification to the OCD when reclamation and re-vegetation are complete.

I hereby agree and sign off to the above statement	Name: Laci Luig Title: ES&H Specialist Email: DL_PermianEnvironmental@coterra.com Date: 04/08/2024
----------------------------------------------------	-------------------------------------------------------------------------------------------------------------

**District I**

1625 N. French Dr., Hobbs, NM 88240  
Phone:(575) 393-6161 Fax:(575) 393-0720

**District II**

811 S. First St., Artesia, NM 88210  
Phone:(575) 748-1283 Fax:(575) 748-9720

**District III**

1000 Rio Brazos Rd., Aztec, NM 87410  
Phone:(505) 334-6178 Fax:(505) 334-6170

**District IV**

1220 S. St Francis Dr., Santa Fe, NM 87505  
Phone:(505) 476-3470 Fax:(505) 476-3462

**State of New Mexico**  
**Energy, Minerals and Natural Resources**  
**Oil Conservation Division**  
**1220 S. St Francis Dr.**  
**Santa Fe, NM 87505**

QUESTIONS, Page 8

Action 331040

**QUESTIONS (continued)**

Operator: CIMAREX ENERGY CO. 6001 Deauville Blvd Midland, TX 79706	OGRID:	215099
	Action Number:	331040
	Action Type:	[C-141] Revegetation Report C-141 (C-141-v-Revegetation)

**QUESTIONS**

<b>Revegetation Report</b>	
<i>Only answer the questions in this group if all surface restoration, reclamation and re-vegetation obligations have been satisfied.</i>	
Requesting a restoration complete approval with this submission	Yes
What was the total revegetation surface area (in square feet) for this site	0
<i>Per Paragraph (2) of Subsection D of 19.15.29.13 NMAC the responsible party must reseed disturbed area in the first favorable growing season following closure of the site.</i>	
On what date did the reseeded commence	01/20/2024
On what date was the vegetative cover inspected	01/31/2024
What was the life form ratio compared to pre-disturbance levels	80
What was the total percent plant cover compared to pre-disturbance levels	80
Summarize any additional revegetation activities not included by answers (above)	Site assessment samples resulted in no need for remediation efforts. Small fire in the pasture that will naturally regrow with nearby plants spreading naturally.
<i>The responsible party must attach information demonstrating they have complied with all applicable re-vegetation requirements and any conditions or directives of the OCD. This demonstration should be in the form of attachments (in .pdf format) including a scaled site map, any life form ratio and percent plant cover sampling diagrams or other relevant field notes, photographs of re-vegetated areas, and a narrative of the re-vegetation activities. Refer to 19.15.29.13 NMAC.</i>	
I hereby certify that the information given above is true and complete to the best of my knowledge and understand that pursuant to OCD rules and regulations all operators are required to report and/or file certain release notifications and perform corrective actions for releases which may endanger public health or the environment. The acceptance of a C-141 report by the OCD does not relieve the operator of liability should their operations have failed to adequately investigate and remediate contamination that pose a threat to groundwater, surface water, human health or the environment. In addition, OCD acceptance of a C-141 report does not relieve the operator of responsibility for compliance with any other federal, state, or local laws and/or regulations. The responsible party acknowledges they must substantially restore, reclaim, and re-vegetate the impacted surface area to the conditions that existed prior to the release or their final land use in accordance with 19.15.29.13 NMAC including notification to the OCD when reclamation and re-vegetation are complete.	
I hereby agree and sign off to the above statement	Name: Laci Luig Title: ES&H Specialist Email: DL_PermianEnvironmental@coterra.com Date: 04/08/2024
<i>Per Paragraph (4) of Subsection (D) of 19.15.29.13 NMAC for any major or minor release containing liquids, the responsible party must notify the division when reclamation and re-vegetation are complete.</i>	

**District I**  
1625 N. French Dr., Hobbs, NM 88240  
Phone:(575) 393-6161 Fax:(575) 393-0720  
**District II**  
811 S. First St., Artesia, NM 88210  
Phone:(575) 748-1283 Fax:(575) 748-9720  
**District III**  
1000 Rio Brazos Rd., Aztec, NM 87410  
Phone:(505) 334-6178 Fax:(505) 334-6170  
**District IV**  
1220 S. St Francis Dr., Santa Fe, NM 87505  
Phone:(505) 476-3470 Fax:(505) 476-3462

**State of New Mexico**  
**Energy, Minerals and Natural Resources**  
**Oil Conservation Division**  
**1220 S. St Francis Dr.**  
**Santa Fe, NM 87505**

CONDITIONS  
  
Action 331040

CONDITIONS

Operator: CIMAREX ENERGY CO. 6001 Deauville Blvd Midland, TX 79706	OGRID: 215099
	Action Number: 331040
	Action Type: [C-141] Revegetation Report C-141 (C-141-v-Revegetation)

CONDITIONS

Created By	Condition	Condition Date
nvelez	None	5/8/2024