



Pima Environmental Services
5614 N. Lovington Highway
Hobbs, NM 88240
575-964-7740

June 3, 2024

NMOCD District 2
811 S. First St
Artesia, NM, 88210

RE: Liner Inspection and Closure Report
Pronghorn SWD #1
API No. 30-025-32735
GPS: Latitude 32.65212 Longitude -103.71653
UL- B, Section 24, Township 19S, Range 32E
NMOCD Reference No. NAPP2413630318

Spur Energy Partners (Spur) has contracted Pima Environmental Services, LLC (Pima) to perform a liner inspection and prepare this closure report for the release of produced water that happened at the Pronghorn SWD #1 (Pronghorn). On May 15, 2024, the initial C-141 was formally submitted. The corresponding release received the designation Incident ID NAPP2413630318 from the New Mexico Oil Conservation Division (NMOCD).

Site Information and Site Characterization

The Pronghorn is located approximately 15 miles southeast of Maljamar, NM. This spill site is in Unit B, Section 24, Township 19S, Range 32E, Latitude 32.65212 Longitude -103.71653, Lea County, NM. A Location Map can be found in Figure 1.

Based on well water data from the New Mexico Office of the State Engineer, the nearest groundwater in this area (CP 01967 POD1) is 110 feet below the ground surface (BGS), located about 0.23 miles from the Pronghorn, with drilling completed on June 13, 2023. In contrast, the United States Geological Survey reports the nearest water well (USGS 323936103423301) in this region at a depth of 168.11 feet BGS, approximately 0.75 miles from the Pronghorn, with the last measurement taken on December 17, 2015. For detailed water survey references and precise well locations, see Appendix A, which includes relevant maps. It is notable that the Pronghorn is situated in an area with a low potential for karst, as shown in Figure 3. A comprehensive Topographic Map can be found in Figure 2.

Release Information

NAPP2413630318: On May 15, 2024, a high-pressure line caused a hole to develop in a fiberglass line, releasing produced water into the lined containment. Approximately 1,786 barrels of produced water were released and contained within the secondary lined containment. Several vacuum trucks were deployed to the Pronghorn site and successfully recovered all 1,786 barrels of produced water. All liquids remained within the secondary containment, and nothing reached the engineered pad.

A Site Map can be found in Figure 4.

Site Assessment and Liner Inspection

Between May 15 and May 20, 2024, the Pima personnel assembled their team at the Pronghorn site to carry out remediation activities within the lined containment area, spanning approximately 12,700 square feet. The team employed a power washing unit to cleanse any lingering oil or residue from the exposed plastic liner. Additionally, a vacuum truck was utilized to extract standing fluid, and this procedure was iterated until all traces of oil residue were effectively eradicated. Subsequently, a meticulous inspection for tears and rips was conducted.

On May 21, 2024, Spur personnel submitted a notification for a liner inspection, adhering to the necessary 48-hour notice period. The details of the 48-hour notification can be referenced in Appendix C.

On May 23, 2024, Pima Environmental conducted a liner inspection at this location. We concluded that this liner and containment

maintained its integrity and was able to retain the fluids. The liner inspection form and photographic documentation can be found in Appendix C.

Closure Request

After careful review, Pima requests that this incident Napp2413630318 be closed. Spur has complied with the applicable closure requirements.

Should you have any questions or need additional information, please feel free to contact Sebastian Orozco at 619-721-4813 or sebastian@pimaoil.com.

Respectfully,

Sebastian Orozco

Sebastian Orozco
Project Manager
Pima Environmental Services, LLC

Attachments

Figures:

- 1- Location Map
- 2- Topographic Map
- 3- Karst Map
- 4- Site Map

Appendices:

- Appendix A- Referenced Water Surveys
- Appendix B- 48 Hour Notification
- Appendix C- Liner Inspection Form & Photographic Documentation



Pima Environmental Services

Figures:

1-Location Map

2- Topographic Map


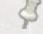
3- Karst Map

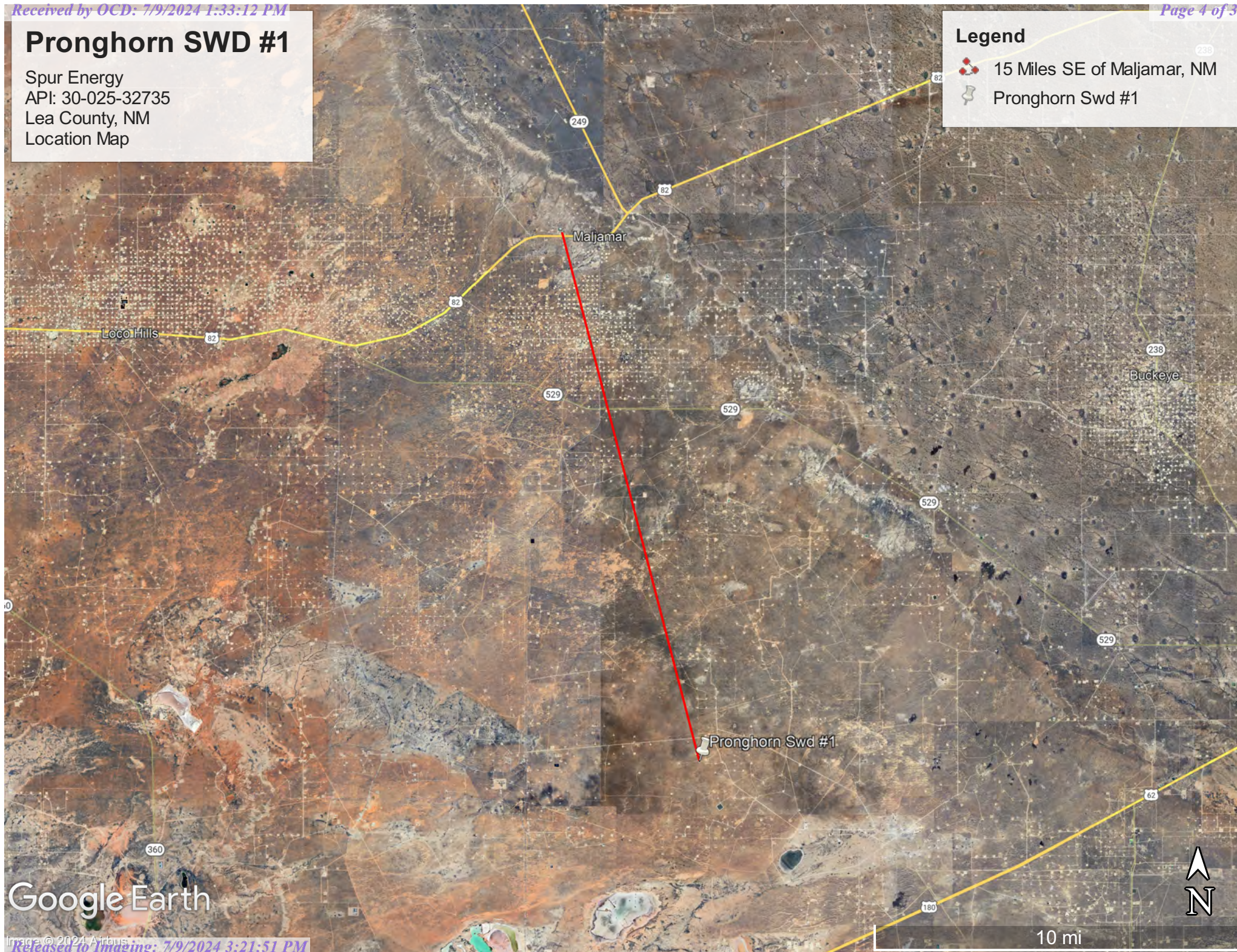
4- Site Map

Pronghorn SWD #1

Spur Energy
API: 30-025-32735
Lea County, NM
Location Map

Legend

-  15 Miles SE of Maljamar, NM
-  Pronghorn Swd #1



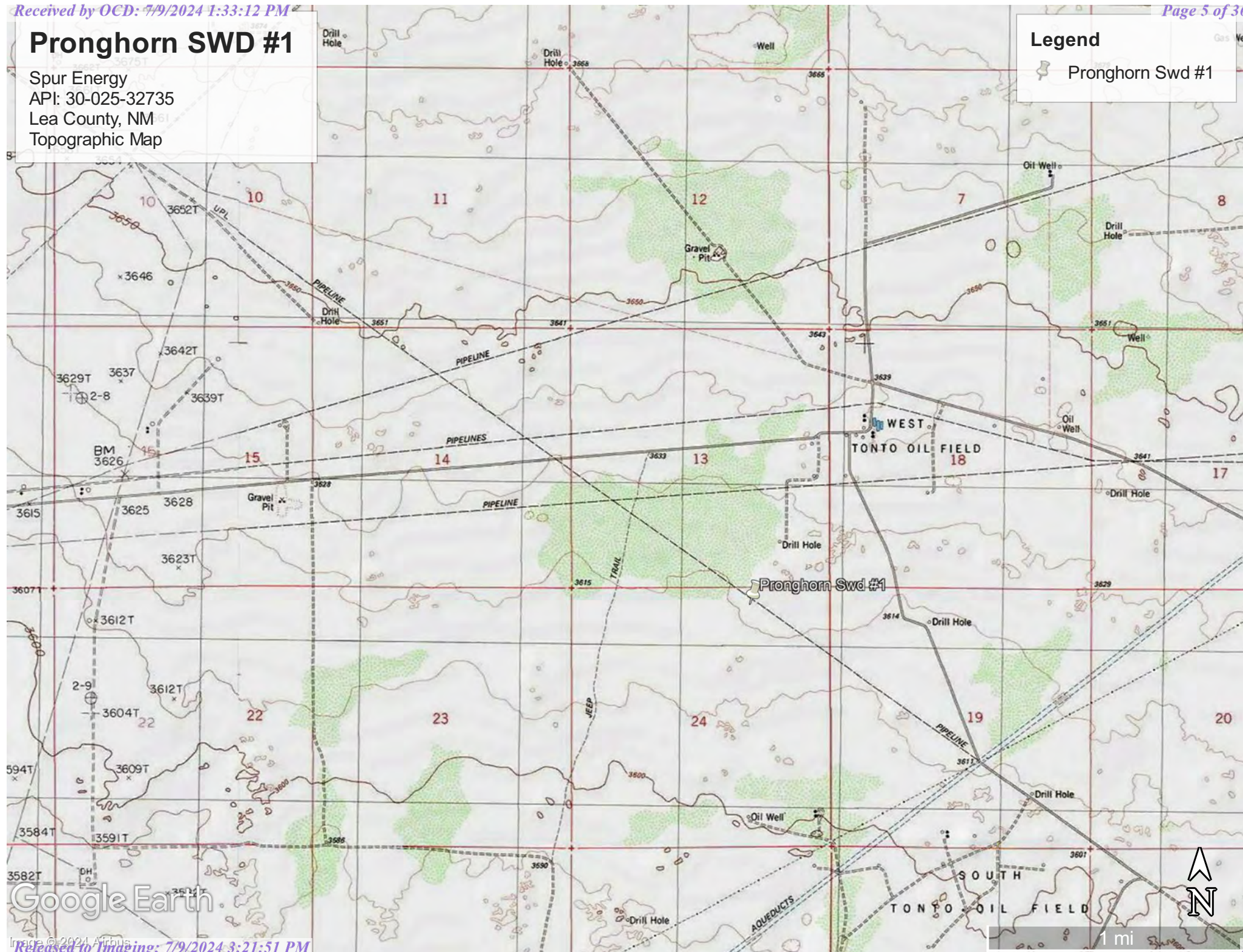
Google Earth

Pronghorn SWD #1

Spur Energy
API: 30-025-32735
Lea County, NM
Topographic Map

Legend

Pronghorn Swd #1



Google Earth





1 mi


Pronghorn SWD #1


Spur Energy
API: 30-025-32735
Lea County, NM
Karst Map

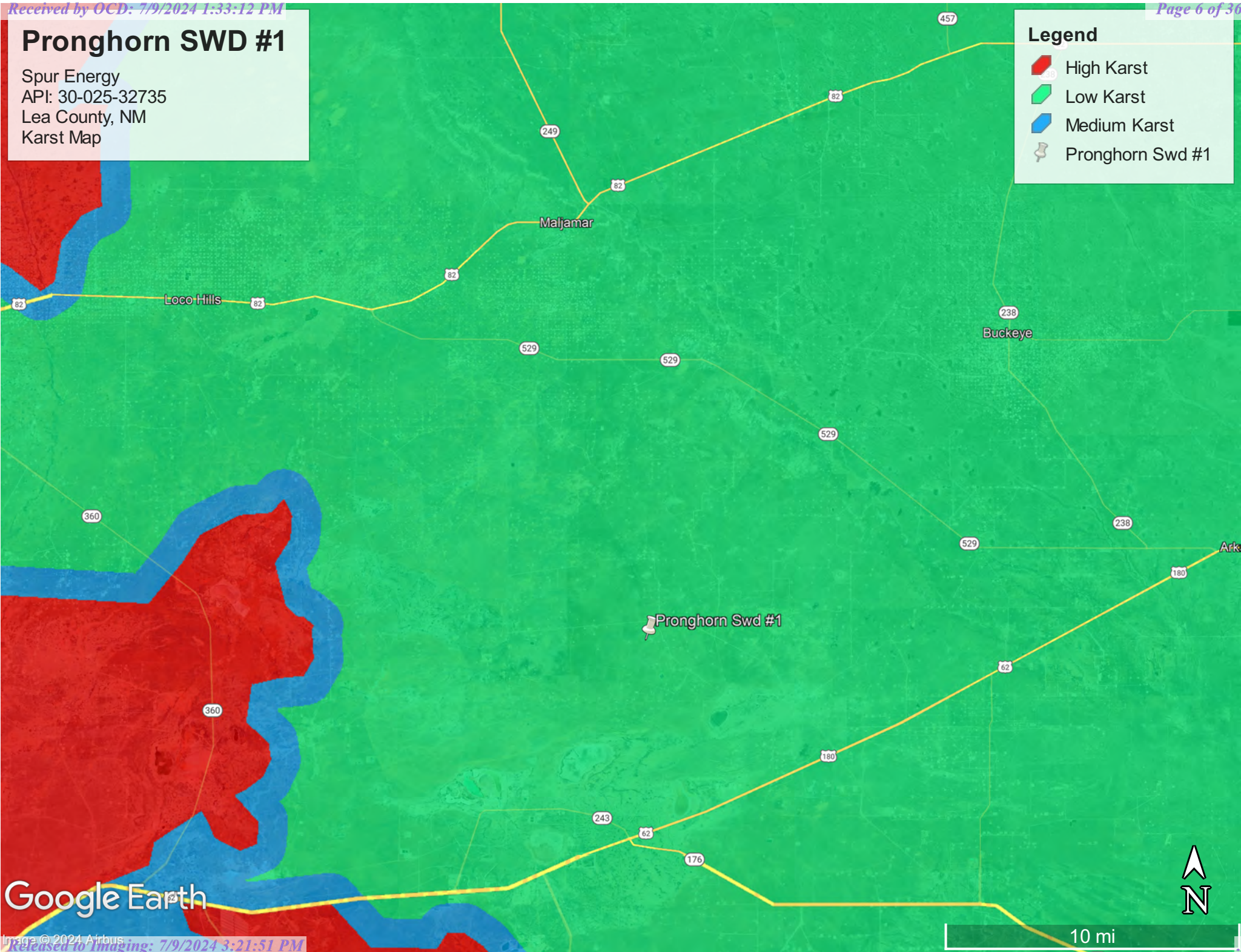
Legend

 High Karst

 Low Karst

 Medium Karst

 Pronghorn Swd #1






Google Earth

Pronghorn SWD #1

Spur Energy
API: 30-025-32735
Lea County, NM
Site Map

Legend

-  Pronghorn SWD #1
-  Remediation Area ~12,700 ft^2

Pronghorn SWD #1 



Google Earth



100 ft



Pima Environmental Services

Appendix A

Water Surveys:

OSE

USGS

Surface Water Map

Wetlands Map


FEMA

SOIL



New Mexico Office of the State Engineer

Point of Diversion Summary

		(quarters are 1=NW 2=NE 3=SW 4=SE)						(NAD83 UTM in meters)	
		(quarters are smallest to largest)						X	Y
Well Tag	POD Number	Q64	Q16	Q4	Sec	Tws	Rng		
NA	CP 01967 POD1	2	2	2	24	19S	32E	620720	3613546 
x									
Driller License:	1670	Driller Company:				HARRISON & COOPER, INC., DBA HCI DRILLING			
Driller Name:	KENNY COOPER								
Drill Start Date:	06/13/2023	Drill Finish Date:				06/13/2023	Plug Date:	06/19/2023	
Log File Date:	06/28/2023	PCW Rcv Date:					Source:		
Pump Type:		Pipe Discharge Size:					Estimated Yield:		
Casing Size:	2.00	Depth Well:				110 feet	Depth Water:		
x									

The data is furnished by the NMOSE/ISC and is accepted by the recipient with the expressed understanding that the OSE/ISC make no warranties, expressed or implied, concerning the accuracy, completeness, reliability, usability, or suitability for any particular purpose of the data.



New Mexico Office of the State Engineer

Water Column/Average Depth to Water

(A CLW##### in the
POD suffix indicates the
POD has been replaced
& no longer serves a
water right file.)

(R=POD has been
replaced,
O=orphaned,
C=the file is
closed)

(quarters are 1=NW 2=NE 3=SW 4=SE)

(quarters are smallest to largest) (NAD83 UTM in meters)

(In feet)

POD Number	Code	POD Sub-basin	County	Q 64	Q 16	Q 4	Sec	Tws	Rng	X	Y	Distance	DepthWell	DepthWater	Water Column
CP 01967 POD1		CP	LE	2	2	2	24	19S	32E	620720	3613546	363	110		
CP 00805 POD1		CP	LE		3	1	18	19S	33E	621057	3614563*	1308	450		
CP 00810 POD1		CP	LE		3	3	08	19S	33E	622675	3615385*	3010	110		
CP 00812 POD1		CP	LE		4	4	01	19S	32E	620623	3616973*	3533	200		
CP 01935 POD1		CP	LE	2	2	1	10	19S	32E	616648	3616591	4870	101		

Average Depth to Water: --

Minimum Depth: --

Maximum Depth: --

Record Count: 5

UTM NAD83 Radius Search (in meters):

Easting (X): 620369.83

Northing (Y): 3613448.88

Radius: 5000

*UTM location was derived from PLSS - see Help

The data is furnished by the NMOSE/ISC and is accepted by the recipient with the expressed understanding that the OSE/ISC make no warranties, expressed or implied, concerning the accuracy, completeness, reliability, usability, or suitability for any particular purpose of the data.

5/23/24 10:29 AM

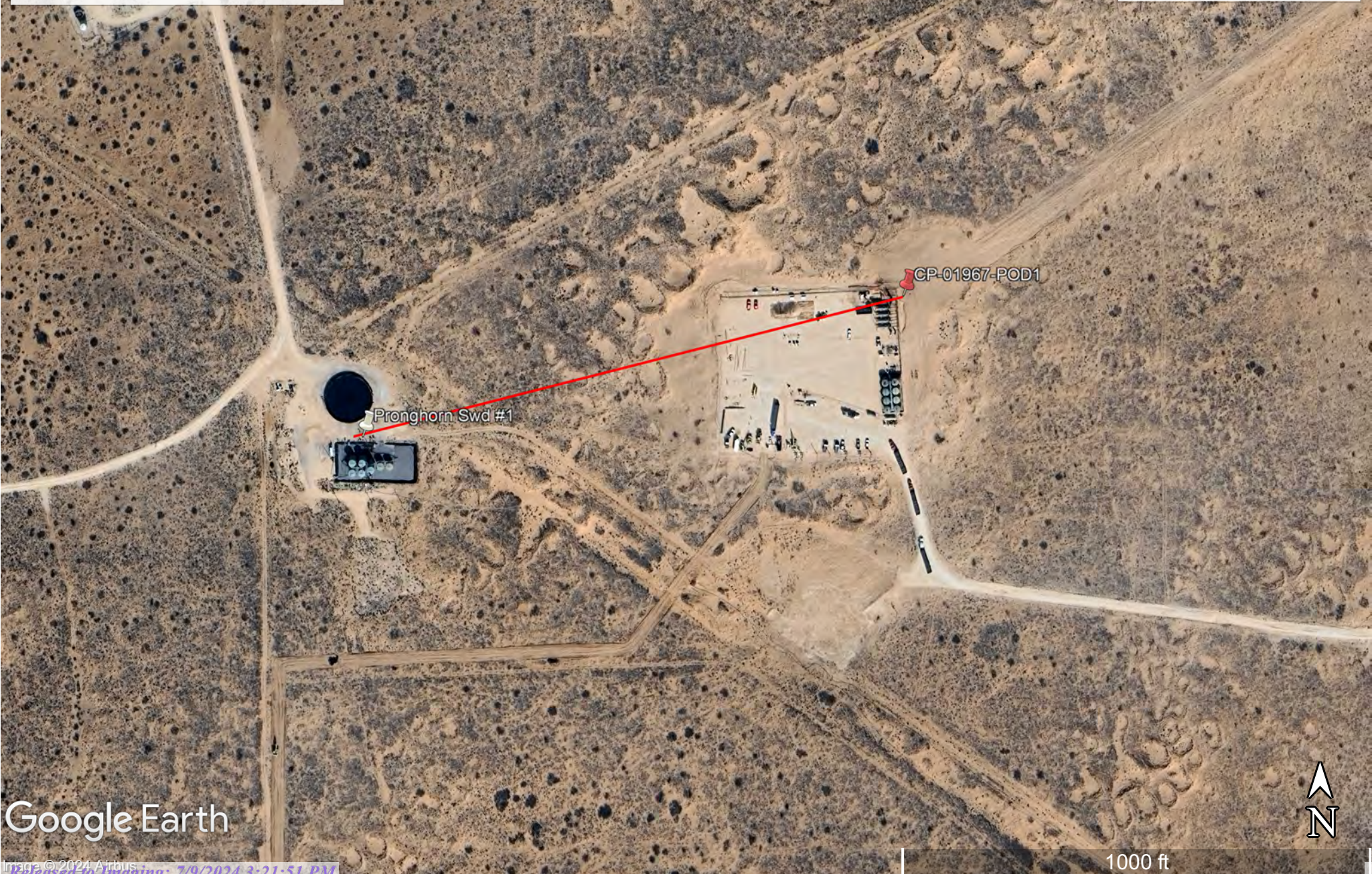
WATER COLUMN/ AVERAGE DEPTH TO
WATER

Pronghorn SWD #1

Spur Energy
API: 30-025-32735
Lea County, NM
OSE Pod Map

Legend

- 0.23 of a mile
- CP-01967-POD1
- Pronghorn Swd #1



Google Earth



[USGS Home](#)
[Contact USGS](#)
[Search USGS](#)

National Water Information System: Web Interface

USGS Water Resources

Data Category:


Groundwater

Geographic Area:

United States

GO

Click to hide News Bulletins

- Explore the *NEW* [USGS National Water Dashboard](#) interactive map to access real-time water data from over 13,500 stations nationwide.
- [Full News](#) 

Groundwater levels for the Nation



Important: [Next Generation Monitoring Location Page](#)

Search Results -- 1 sites found

site_no list =

- 323936103423301

Minimum number of levels = 1

[Save file of selected sites](#) to local disk for future upload

USGS 323936103423301 19S.33E.18.133213

Available data for this site

Groundwater: Field measurements



GO

Lea County, New Mexico

Hydrologic Unit Code 13060011

Latitude 32°39'41.5", Longitude 103°42'36.1" NAD83

Land-surface elevation 3,639 feet above NAVD88

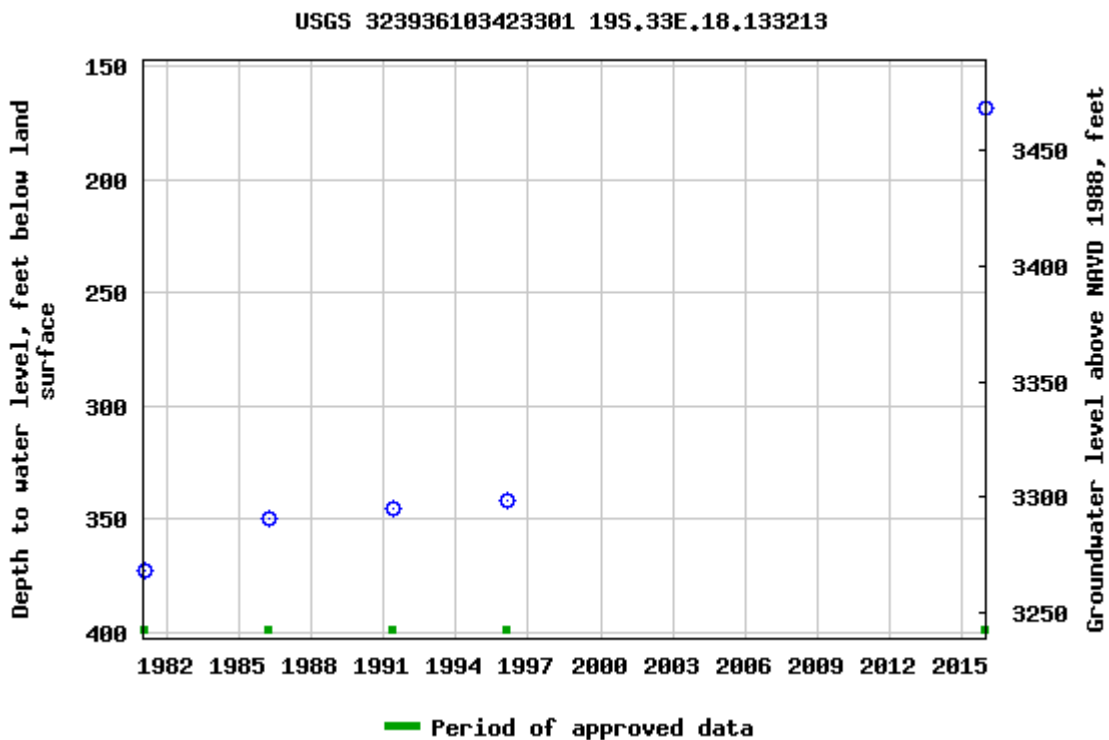
The depth of the well is 850 feet below land surface.

This well is completed in the Other aquifers (N9999OTHER) national aquifer.

This well is completed in the Santa Rosa Sandstone (231SNRS) local aquifer.

Output formats

Table of data
Tab-separated data
Graph of data
Reselect period



Breaks in the plot represent a gap of at least one year between field measurements.
[Download a presentation-quality graph](#)

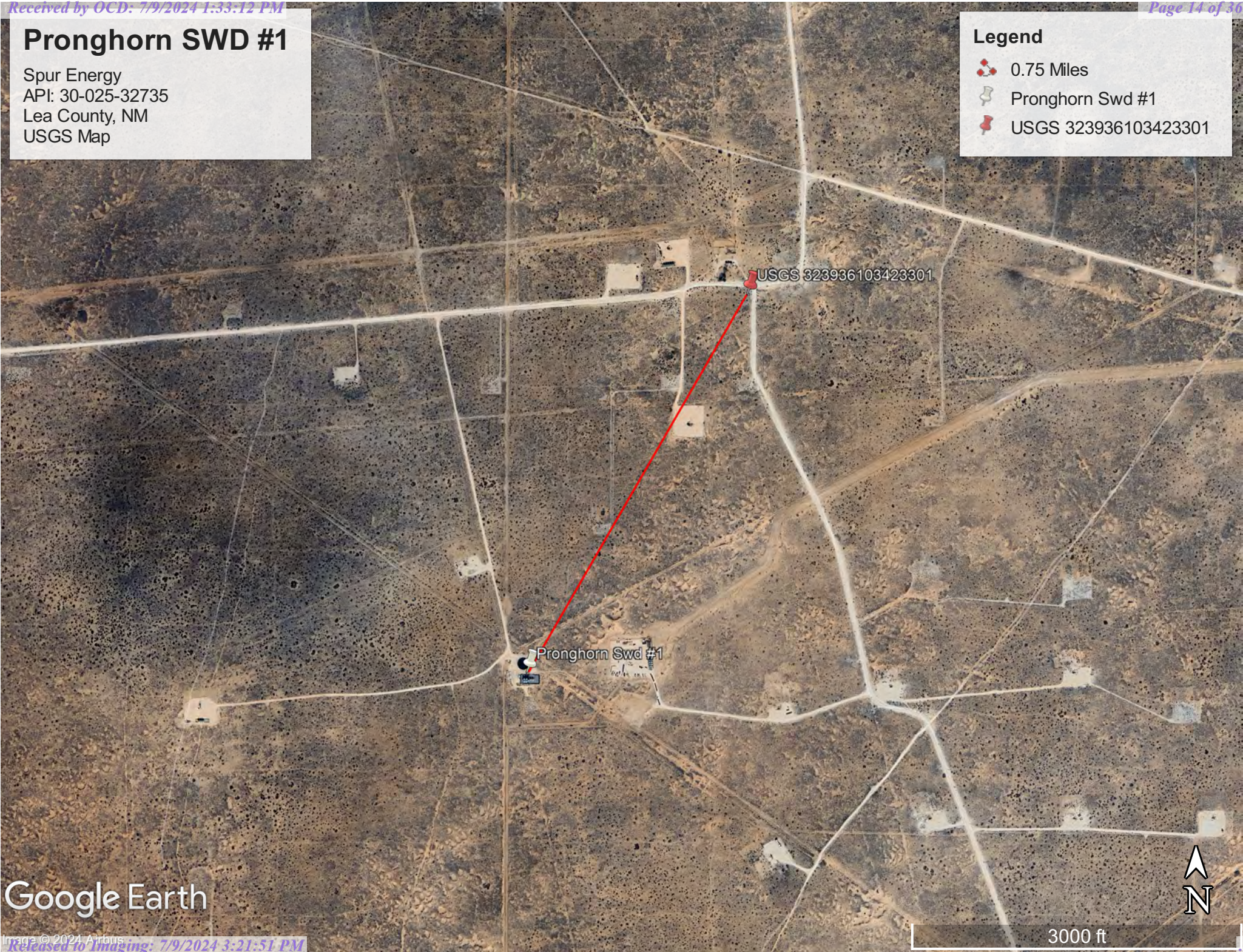
- [Questions or Comments](#)
- [Automated retrievals](#)
- [Help](#)
- [Data Tips](#)
- [Explanation of terms](#)
- [Subscribe for system changes](#)
- [News](#)

Pronghorn SWD #1

Spur Energy
API: 30-025-32735
Lea County, NM
USGS Map

Legend

- 0.75 Miles
- Pronghorn Swd #1
- USGS 323936103423301



Google Earth

3000 ft



May 23, 2024

Wetlands

- | | | | | | |
|---|--------------------------------|---|-----------------------------------|---|----------|
|  | Estuarine and Marine Deepwater |  | Freshwater Emergent Wetland |  | Lake |
|  | Estuarine and Marine Wetland |  | Freshwater Forested/Shrub Wetland |  | Other |
|  | |  | Freshwater Pond |  | Riverine |

This map is for general reference only. The US Fish and Wildlife Service is not responsible for the accuracy or currentness of the base data shown on this map. All wetlands related data should be used in accordance with the layer metadata found on the Wetlands Mapper web site.

Released to Imaging: 7/9/2024 3:21:51 PM

National Flood Hazard Layer FIRMette



103°43'18"W 32°39'23"N



0 250 500 1,000 1,500 2,000 Feet

1:6,000

103°42'41"W 32°38'53"N

Basemap Imagery Source: USGS National Map 2023

Legend

SEE FIS REPORT FOR DETAILED LEGEND AND INDEX MAP FOR FIRM PANEL LAYOUT

SPECIAL FLOOD HAZARD AREAS		Without Base Flood Elevation (BFE) Zone A, V, A99
		With BFE or Depth Zone AE, AO, AH, VE, AR
		Regulatory Floodway
OTHER AREAS OF FLOOD HAZARD		0.2% Annual Chance Flood Hazard, Areas of 1% annual chance flood with average depth less than one foot or with drainage areas of less than one square mile
		Future Conditions 1% Annual Chance Flood Hazard Zone X
		Area with Reduced Flood Risk due to Levee. See Notes. Zone X
		Area with Flood Risk due to Levee Zone X
OTHER AREAS		NO SCREEN Area of Minimal Flood Hazard Zone X
		Effective LOMRs
		Area of Undetermined Flood Hazard Zone D
GENERAL STRUCTURES		Channel, Culvert, or Storm Sewer
		Levee, Dike, or Floodwall
OTHER FEATURES		20.2 Cross Sections with 1% Annual Chance
		17.5 Water Surface Elevation
		Coastal Transect
		Base Flood Elevation Line (BFE)
		Limit of Study
		Jurisdiction Boundary
		Coastal Transect Baseline
		Profile Baseline
MAP PANELS		Digital Data Available
		No Digital Data Available
		Unmapped



The pin displayed on the map is an approximate point selected by the user and does not represent an authoritative property location.

This map complies with FEMA's standards for the use of digital flood maps if it is not void as described below. The basemap shown complies with FEMA's basemap accuracy standards

The flood hazard information is derived directly from the authoritative NFHL web services provided by FEMA. This map was exported on 5/23/2024 at 12:32 PM and does not reflect changes or amendments subsequent to this date and time. The NFHL and effective information may change or become superseded by new data over time.

This map image is void if the one or more of the following map elements do not appear: basemap imagery, flood zone labels, legend, scale bar, map creation date, community identifiers, FIRM panel number, and FIRM effective date. Map images for unmapped and unmodernized areas cannot be used for regulatory purposes.

Received by OCD: 7/9/2024 1:33:12 PM

Page 16 of 36

Map Unit Description: Pyote and Maljamar fine sands---Lea County, New Mexico

Lea County, New Mexico

PU—Pyote and Maljamar fine sands

Map Unit Setting

National map unit symbol: dmqq

Elevation: 3,000 to 3,900 feet

Mean annual precipitation: 10 to 12 inches

Mean annual air temperature: 60 to 62 degrees F

Frost-free period: 190 to 205 days

Farmland classification: Not prime farmland

Map Unit Composition

Pyote and similar soils: 46 percent

Maljamar and similar soils: 44 percent

Minor components: 10 percent

Estimates are based on observations, descriptions, and transects of the mapunit.

Description of Pyote

Setting

Landform: Plains

Landform position (three-dimensional): Rise

Down-slope shape: Linear

Across-slope shape: Linear

Parent material: Sandy eolian deposits derived from sedimentary rock

Typical profile

A - 0 to 30 inches: fine sand

Bt - 30 to 60 inches: fine sandy loam

Properties and qualities

Slope: 0 to 3 percent

Depth to restrictive feature: More than 80 inches

Drainage class: Well drained

Runoff class: Negligible

Capacity of the most limiting layer to transmit water (Ksat): High
(2.00 to 6.00 in/hr)

Depth to water table: More than 80 inches

Frequency of flooding: None

Frequency of ponding: None

Calcium carbonate, maximum content: 5 percent

Gypsum, maximum content: 1 percent

Maximum salinity: Nonsaline to very slightly saline (0.0 to 2.0 mmhos/cm)

Sodium adsorption ratio, maximum: 2.0

Available water supply, 0 to 60 inches: Low (about 5.1 inches)

Interpretive groups

Land capability classification (irrigated): 6e

Map Unit Description: Pyote and Maljamar fine sands---Lea County, New Mexico

Land capability classification (nonirrigated): 7s
Hydrologic Soil Group: A
Ecological site: R070BD003NM - Loamy Sand
Hydric soil rating: No

Description of Maljamar

Setting

Landform: Plains
Landform position (three-dimensional): Rise
Down-slope shape: Linear
Across-slope shape: Linear
Parent material: Sandy eolian deposits derived from sedimentary rock

Typical profile

A - 0 to 24 inches: fine sand
Bt - 24 to 50 inches: sandy clay loam
Bkm - 50 to 60 inches: cemented material

Properties and qualities

Slope: 0 to 3 percent
Depth to restrictive feature: 40 to 60 inches to petrocalcic
Drainage class: Well drained
Runoff class: Very low
Capacity of the most limiting layer to transmit water (Ksat): Very low to moderately low (0.00 to 0.06 in/hr)
Depth to water table: More than 80 inches
Frequency of flooding: None
Frequency of ponding: None
Calcium carbonate, maximum content: 5 percent
Gypsum, maximum content: 1 percent
Maximum salinity: Nonsaline to very slightly saline (0.0 to 2.0 mmhos/cm)
Sodium adsorption ratio, maximum: 2.0
Available water supply, 0 to 60 inches: Low (about 5.6 inches)

Interpretive groups

Land capability classification (irrigated): 6e
Land capability classification (nonirrigated): 7e
Hydrologic Soil Group: B
Ecological site: R070BD003NM - Loamy Sand
Hydric soil rating: No

Minor Components

Kermit

Percent of map unit: 10 percent
Ecological site: R070BC022NM - Sandhills

Map Unit Description: Pyote and Maljamar fine sands---Lea County, New Mexico

Hydric soil rating: No

Data Source Information







Soil Survey Area: Lea County, New Mexico

Survey Area Data: Version 20, Sep 6, 2023

Pronghorn SWD #1

Spur Energy
API: 30-025-32735
Lea County, NM
Geological Map

Legend

-  Eolian and piedmont deposits
-  Pronghorn Swd #1
-  Quartermaster and Rustler Formations
-  Quartermaster Formation; red sandstone and siltstone; Upper Permian
-  Rustler Formation
-  Upper Chinle Group, Garita Creek through Redonda Formations, undivided

Pronghorn Swd #1

Google Earth

Image © 2024 Airbus

Released to Imaging: 7/9/2024 3:21:51 PM



1 mi

(<https://www.usgs.gov/>)

Mineral Resources (<https://www.usgs.gov/energy-and-minerals/mineral-resources-program>)
/ Online Spatial Data (/) / Geology (/geology/) / by state (/geology/state/)
/ New Mexico (/geology/state/state.php?state=NM)

Eolian and piedmont deposits

XML (/geology/state/xml/NMQep;0)	JSON (/geology/state/json/NMQep;0)
Shapefile (/geology/state/unit-shape.php?unit=NMQep;0)	

Interlayered eolian sands and piedmont-slope deposits along the eastern flank of the Pecos River valley, primarily between Roswell and Carlsbad. Typically capped by thin eolian deposits.

State	New Mexico (/geology/state/state.php?state=NM)		
Name	Eolian and piedmont deposits		
Geologic age	Holocene to middle Pleistocene		
Lithologic constituents	Major Unconsolidated (Eolian) Interlayered eolian sands and piedmont-slope deposits		
References	New Mexico Bureau of Geology and Mineral Resources, 2003, Geologic Map of New Mexico, scale 1:500,000 (includes some new polygons, faults, and attributes not in NM001 - heads up digitizing by JHorton).		
NGMDB product	NGMDB product page for 22974 (https://ngmdb.usgs.gov/Prodesc/proddesc_22974.htm)		
Counties	Chaves (/geology/state/fips-unit.php?code=f35005) - DeBaca (/geology/state/fips-unit.php?code=f35011) - Eddy (/geology/state/fips-unit.php?code=f35015) - Lea (/geology/state/fips-unit.php?code=f35025) - Roosevelt (/geology/state/fips-unit.php?code=f35041)		

DOI Privacy Policy (<https://www.doi.gov/privacy>) | Legal (https://www.usgs.gov/laws/policies_notices.html) |
Accessibility (<https://www2.usgs.gov/laws/accessibility.html>) | Site Map (<https://www.usgs.gov/sitemap.html>) |
Contact USGS (<https://answers.usgs.gov/>)

U.S. Department of the Interior (<https://www.doi.gov/>) | DOI Inspector General (<https://www.doiig.gov/>) |

White House (<https://www.whitehouse.gov/>) | E-gov (<https://www.whitehouse.gov/omb/management/egov/>) |

No Fear Act (<https://www.doi.gov/pmb/eeo/no-fear-act>) | FOIA (<https://www2.usgs.gov/foia>)



Pima Environmental Services

Appendix B

48-Hour Notification

OCD Permitting

Home Operator Data Action Status Action Search Results Action Status Item Details

[NOTIFY] Notification Of Liner Inspection (C-141L) Application

Submission Information

Submission ID:	346138	Districts:	Hobbs
Operator:	[328947] Spur Energy Partners LLC	Counties:	Lea
Description:	Spur Energy Partners LLC [328947] , PRONGHORN SWD #1 , nAPP2413630318		
Status:	APPROVED		
Status Date:	05/21/2024		
References (2):	30-025-32735, nAPP2413630318		

Forms

This application type does not have attachments.

Questions

Prerequisites

Incident ID (n#)	nAPP2413630318
Incident Name	NAPP2413630318 PRONGHORN SWD #1 @ 30-025-32735
Incident Type	Produced Water Release
Incident Status	Initial C-141 Approved
Incident Well	[30-025-32735] PRONGHORN SWD #001

Location of Release Source

Site Name	PRONGHORN SWD #1
Date Release Discovered	05/15/2024
Surface Owner	State

Liner Inspection Event Information

Please answer all the questions in this group.

What is the liner inspection surface area in square feet	12,700
Have all the impacted materials been removed from the liner	Yes
Liner inspection date pursuant to Subparagraph (a) of Paragraph (5) of Subsection A of 19.15.29.11 NMAC	05/23/2024
Time liner inspection will commence	08:30 AM
Warning: Notification can not be less than two business days prior to conducting liner inspection.	
Please provide any information necessary for observers to liner inspection	Andrew Franco 806-200-0054
Please provide any information necessary for navigation to liner inspection site	32.652151°-103.716667°

Comments

No comments found for this submission.

Conditions

Summary: *pima (5/21/2024)*, Failure to notify the OCD of liner inspections including any changes in date/time per the requirements of 19.15.29.11.A(5)(a)(ii) NMAC, may result in the inspection not being accepted.

Reasons

No reasons found for this submission.

Go Back



Pima Environmental Services

Appendix C

Liner Inspection Form

Photographic Documentation



Pima Environmental Services, LLC

Liner Inspection FormCompany Name: Spur EnergySite: Pronghorn SWD #1Lat/Long: 32.652151, -103.716667NMOCD Incident ID
& Incident Date: NAPP2413630318 05/15/20242-Day Notification
Sent: via OCD Portal by Sebastian Orozco 05/21/2024Inspection Date: 05/23/2024

Liner Type: Earthen w/liner Earthen no liner Polyester

Steel w/poly liner Steel w/spray epoxy No Liner

Other: _____

Visualization	Yes	No	Comments
Is there a tear in the liner?		X	
Are there holes in the liner?		X	
Is the liner retaining any fluids?		X	
Does the liner have integrity to contain a leak?	X		

Comments: _____

Inspector Name: Andrew Franco Inspector Signature: Andrew Franco



SPUR ENERGY PARTNERS

PRONGHORN SWD #1

SITE PHOTOGRAPHS

LINER INSPECTION-







District I
1625 N. French Dr., Hobbs, NM 88240
Phone:(575) 393-6161 Fax:(575) 393-0720
District II
811 S. First St., Artesia, NM 88210
Phone:(575) 748-1283 Fax:(575) 748-9720
District III
1000 Rio Brazos Rd., Aztec, NM 87410
Phone:(505) 334-6178 Fax:(505) 334-6170
District IV
1220 S. St Francis Dr., Santa Fe, NM 87505
Phone:(505) 476-3470 Fax:(505) 476-3462

State of New Mexico
Energy, Minerals and Natural Resources
Oil Conservation Division
1220 S. St Francis Dr.
Santa Fe, NM 87505

QUESTIONS

Action 362290

QUESTIONS

Operator: Spur Energy Partners LLC 9655 Katy Freeway Houston, TX 77024	OGRID:	328947
	Action Number:	362290
	Action Type:	[C-141] Remediation Closure Request C-141 (C-141-v-Closure)

QUESTIONS

Prerequisites	
Incident ID (n#)	nAPP2413630318
Incident Name	NAPP2413630318 PRONGHORN SWD #1 @ 30-025-32735
Incident Type	Produced Water Release
Incident Status	Remediation Closure Report Received
Incident Well	[30-025-32735] PRONGHORN SWD #001

Location of Release Source	
Please answer all the questions in this group.	
Site Name	PRONGHORN SWD #1
Date Release Discovered	05/15/2024
Surface Owner	State

Incident Details	
Please answer all the questions in this group.	
Incident Type	Produced Water Release
Did this release result in a fire or is the result of a fire	No
Did this release result in any injuries	No
Has this release reached or does it have a reasonable probability of reaching a watercourse	No
Has this release endangered or does it have a reasonable probability of endangering public health	No
Has this release substantially damaged or will it substantially damage property or the environment	No
Is this release of a volume that is or may with reasonable probability be detrimental to fresh water	No

Nature and Volume of Release	
Material(s) released, please answer all that apply below. Any calculations or specific justifications for the volumes provided should be attached to the follow-up C-141 submission.	
Crude Oil Released (bbls) Details	Not answered.
Produced Water Released (bbls) Details	Cause: High Line Pressure Pipeline (Any) Produced Water Released: 1,786 BBL Recovered: 1,785 BBL Lost: 1 BBL.
Is the concentration of chloride in the produced water >10,000 mg/l	No
Condensate Released (bbls) Details	Not answered.
Natural Gas Vented (Mcf) Details	Not answered.
Natural Gas Flared (Mcf) Details	Not answered.
Other Released Details	Not answered.
Are there additional details for the questions above (i.e. any answer containing Other, Specify, Unknown, and/or Fire, or any negative lost amounts)	HIGH LINE PRESSURE CAUSED A HOLE TO DEVELOP IN A FIBER GLASS LINE RELEASING PW INTO LINED CONTAINMENT

District I

1625 N. French Dr., Hobbs, NM 88240
Phone:(575) 393-6161 Fax:(575) 393-0720

District II

811 S. First St., Artesia, NM 88210
Phone:(575) 748-1283 Fax:(575) 748-9720

District III

1000 Rio Brazos Rd., Aztec, NM 87410
Phone:(505) 334-6178 Fax:(505) 334-6170

District IV

1220 S. St Francis Dr., Santa Fe, NM 87505
Phone:(505) 476-3470 Fax:(505) 476-3462

State of New Mexico
Energy, Minerals and Natural Resources
Oil Conservation Division
1220 S. St Francis Dr.
Santa Fe, NM 87505

QUESTIONS, Page 2

Action 362290

QUESTIONS (continued)

Operator: Spur Energy Partners LLC 9655 Katy Freeway Houston, TX 77024	OGRID:	328947
	Action Number:	362290
	Action Type:	[C-141] Remediation Closure Request C-141 (C-141-v-Closure)

QUESTIONS

Nature and Volume of Release (continued)	
Is this a gas only submission (i.e. only significant Mcf values reported)	No, according to supplied volumes this does not appear to be a "gas only" report.
Was this a major release as defined by Subsection A of 19.15.29.7 NMAC	Yes
Reasons why this would be considered a submission for a notification of a major release	From paragraph A. "Major release" determine using: (1) an unauthorized release of a volume, excluding gases, of 25 barrels or more.
With the implementation of the 19.15.27 NMAC (05/25/2021), venting and/or flaring of natural gas (i.e. gas only) are to be submitted on the C-129 form.	

Initial Response

The responsible party must undertake the following actions immediately unless they could create a safety hazard that would result in injury.

The source of the release has been stopped	True
The impacted area has been secured to protect human health and the environment	True
Released materials have been contained via the use of berms or dikes, absorbent pads, or other containment devices	True
All free liquids and recoverable materials have been removed and managed appropriately	True
If all the actions described above have not been undertaken, explain why	N/A

Per Paragraph (4) of Subsection B of 19.15.29.8 NMAC the responsible party may commence remediation immediately after discovery of a release. If remediation has begun, please prepare and attach a narrative of actions to date in the follow-up C-141 submission. If remedial efforts have been successfully completed or if the release occurred within a lined containment area (see Subparagraph (a) of Paragraph (5) of Subsection A of 19.15.29.11 NMAC), please prepare and attach all information needed for closure evaluation in the follow-up C-141 submission.

I hereby certify that the information given above is true and complete to the best of my knowledge and understand that pursuant to OCD rules and regulations all operators are required to report and/or file certain release notifications and perform corrective actions for releases which may endanger public health or the environment. The acceptance of a C-141 report by the OCD does not relieve the operator of liability should their operations have failed to adequately investigate and remediate contamination that pose a threat to groundwater, surface water, human health or the environment. In addition, OCD acceptance of a C-141 report does not relieve the operator of responsibility for compliance with any other federal, state, or local laws and/or regulations.

I hereby agree and sign off to the above statement	Name: Katherine Purvis Title: EHS Coordinator Email: katherine.purvis@spurenergy.com Date: 05/15/2024
--	--

District I

1625 N. French Dr., Hobbs, NM 88240
Phone:(575) 393-6161 Fax:(575) 393-0720

District II

811 S. First St., Artesia, NM 88210
Phone:(575) 748-1283 Fax:(575) 748-9720

District III

1000 Rio Brazos Rd., Aztec, NM 87410
Phone:(505) 334-6178 Fax:(505) 334-6170

District IV

1220 S. St Francis Dr., Santa Fe, NM 87505
Phone:(505) 476-3470 Fax:(505) 476-3462

State of New Mexico
Energy, Minerals and Natural Resources
Oil Conservation Division
1220 S. St Francis Dr.
Santa Fe, NM 87505

QUESTIONS, Page 3

Action 362290

QUESTIONS (continued)

Operator: Spur Energy Partners LLC 9655 Katy Freeway Houston, TX 77024	OGRID:	328947
	Action Number:	362290
	Action Type:	[C-141] Remediation Closure Request C-141 (C-141-v-Closure)

QUESTIONS**Site Characterization**

Please answer all the questions in this group (only required when seeking remediation plan approval and beyond). This information must be provided to the appropriate district office no later than 90 days after the release discovery date.

What is the shallowest depth to groundwater beneath the area affected by the release in feet below ground surface (ft bgs)	Between 100 and 500 (ft.)
What method was used to determine the depth to ground water	NM OSE iWaters Database Search
Did this release impact groundwater or surface water	No
What is the minimum distance, between the closest lateral extents of the release and the following surface areas:	
A continuously flowing watercourse or any other significant watercourse	Between 1 and 5 (mi.)
Any lakebed, sinkhole, or playa lake (measured from the ordinary high-water mark)	Between 1 and 5 (mi.)
An occupied permanent residence, school, hospital, institution, or church	Between 1 and 5 (mi.)
A spring or a private domestic fresh water well used by less than five households for domestic or stock watering purposes	Between 1 and 5 (mi.)
Any other fresh water well or spring	Between 1 and 5 (mi.)
Incorporated municipal boundaries or a defined municipal fresh water well field	Between 1 and 5 (mi.)
A wetland	Between 1 and 5 (mi.)
A subsurface mine	Between 1 and 5 (mi.)
An (non-karst) unstable area	Between 1 and 5 (mi.)
Categorize the risk of this well / site being in a karst geology	Low
A 100-year floodplain	Between 1 and 5 (mi.)
Did the release impact areas not on an exploration, development, production, or storage site	No

Remediation Plan

Please answer all the questions that apply or are indicated. This information must be provided to the appropriate district office no later than 90 days after the release discovery date.

Requesting a remediation plan approval with this submission	Yes
<i>Attach a comprehensive report demonstrating the lateral and vertical extents of soil contamination associated with the release have been determined, pursuant to 19.15.29.11 NMAC and 19.15.29.13 NMAC.</i>	
Have the lateral and vertical extents of contamination been fully delineated	Yes
Was this release entirely contained within a lined containment area	Yes
<i>Per Subsection B of 19.15.29.11 NMAC unless the site characterization report includes completed efforts at remediation, the report must include a proposed remediation plan in accordance with 19.15.29.12 NMAC, which includes the anticipated timelines for beginning and completing the remediation.</i>	
On what estimated date will the remediation commence	05/15/2024
On what date will (or did) the final sampling or liner inspection occur	05/23/2024
On what date will (or was) the remediation complete(d)	05/20/2024
What is the estimated surface area (in square feet) that will be remediated	12700
What is the estimated volume (in cubic yards) that will be remediated	0
<i>These estimated dates and measurements are recognized to be the best guess or calculation at the time of submission and may (be) change(d) over time as more remediation efforts are completed.</i>	
<i>The OCD recognizes that proposed remediation measures may have to be minimally adjusted in accordance with the physical realities encountered during remediation. If the responsible party has any need to significantly deviate from the remediation plan proposed, then it should consult with the division to determine if another remediation plan submission is required.</i>	

District I

1625 N. French Dr., Hobbs, NM 88240
Phone:(575) 393-6161 Fax:(575) 393-0720

District II

811 S. First St., Artesia, NM 88210
Phone:(575) 748-1283 Fax:(575) 748-9720

District III

1000 Rio Brazos Rd., Aztec, NM 87410
Phone:(505) 334-6178 Fax:(505) 334-6170

District IV

1220 S. St Francis Dr., Santa Fe, NM 87505
Phone:(505) 476-3470 Fax:(505) 476-3462

State of New Mexico
Energy, Minerals and Natural Resources
Oil Conservation Division
1220 S. St Francis Dr.
Santa Fe, NM 87505

QUESTIONS, Page 4

Action 362290

QUESTIONS (continued)

Operator: Spur Energy Partners LLC 9655 Katy Freeway Houston, TX 77024	OGRID:	328947
	Action Number:	362290
	Action Type:	[C-141] Remediation Closure Request C-141 (C-141-v-Closure)

QUESTIONS

Remediation Plan (continued)	
<i>Please answer all the questions that apply or are indicated. This information must be provided to the appropriate district office no later than 90 days after the release discovery date.</i>	
This remediation will (or is expected to) utilize the following processes to remediate / reduce contaminants:	
<i>(Select all answers below that apply.)</i>	
Is (or was) there affected material present needing to be removed	No
Is (or was) there a power wash of the lined containment area (to be) performed	Yes
OTHER (Non-listed remedial process)	Not answered.
<i>Per Subsection B of 19.15.29.11 NMAC unless the site characterization report includes completed efforts at remediation, the report must include a proposed remediation plan in accordance with 19.15.29.12 NMAC, which includes the anticipated timelines for beginning and completing the remediation.</i>	
I hereby certify that the information given above is true and complete to the best of my knowledge and understand that pursuant to OCD rules and regulations all operators are required to report and/or file certain release notifications and perform corrective actions for releases which may endanger public health or the environment. The acceptance of a C-141 report by the OCD does not relieve the operator of liability should their operations have failed to adequately investigate and remediate contamination that pose a threat to groundwater, surface water, human health or the environment. In addition, OCD acceptance of a C-141 report does not relieve the operator of responsibility for compliance with any other federal, state, or local laws and/or regulations.	
I hereby agree and sign off to the above statement	Name: Katherine Purvis Title: EHS Coordinator Email: katherine.purvis@spurenergy.com Date: 07/09/2024
<i>The OCD recognizes that proposed remediation measures may have to be minimally adjusted in accordance with the physical realities encountered during remediation. If the responsible party has any need to significantly deviate from the remediation plan proposed, then it should consult with the division to determine if another remediation plan submission is required.</i>	

District I

1625 N. French Dr., Hobbs, NM 88240
Phone:(575) 393-6161 Fax:(575) 393-0720

District II

811 S. First St., Artesia, NM 88210
Phone:(575) 748-1283 Fax:(575) 748-9720

District III

1000 Rio Brazos Rd., Aztec, NM 87410
Phone:(505) 334-6178 Fax:(505) 334-6170

District IV

1220 S. St Francis Dr., Santa Fe, NM 87505
Phone:(505) 476-3470 Fax:(505) 476-3462

State of New Mexico
Energy, Minerals and Natural Resources
Oil Conservation Division
1220 S. St Francis Dr.
Santa Fe, NM 87505

QUESTIONS, Page 6

Action 362290

QUESTIONS (continued)

Operator: Spur Energy Partners LLC 9655 Katy Freeway Houston, TX 77024	OGRID:	328947
	Action Number:	362290
	Action Type:	[C-141] Remediation Closure Request C-141 (C-141-v-Closure)

QUESTIONS

Liner Inspection Information	
Last liner inspection notification (C-141L) recorded	346138
Liner inspection date pursuant to Subparagraph (a) of Paragraph (5) of Subsection A of 19.15.29.11 NMAC	05/23/2024
Was all the impacted materials removed from the liner	Yes
What was the liner inspection surface area in square feet	12700

Remediation Closure Request

Only answer the questions in this group if seeking remediation closure for this release because all remediation steps have been completed.

Requesting a remediation closure approval with this submission	Yes
Have the lateral and vertical extents of contamination been fully delineated	Yes
Was this release entirely contained within a lined containment area	Yes
What was the total surface area (in square feet) remediated	12700
What was the total volume (cubic yards) remediated	0
Summarize any additional remediation activities not included by answers (above)	LINER WAS POWERWASHED AND INSPECTED AND FOUND TO HAVE THE ABILITY TO CONTAIN FLUIDS

The responsible party must attach information demonstrating they have complied with all applicable closure requirements and any conditions or directives of the OCD. This demonstration should be in the form of a comprehensive report (in .pdf format) including a scaled site map, sampling diagrams, relevant field notes, photographs of any excavation prior to backfilling, laboratory data including chain of custody documents of final sampling, and a narrative of the remedial activities. Refer to 19.15.29.12 NMAC.

I hereby certify that the information given above is true and complete to the best of my knowledge and understand that pursuant to OCD rules and regulations all operators are required to report and/or file certain release notifications and perform corrective actions for releases which may endanger public health or the environment. The acceptance of a C-141 report by the OCD does not relieve the operator of liability should their operations have failed to adequately investigate and remediate contamination that pose a threat to groundwater, surface water, human health or the environment. In addition, OCD acceptance of a C-141 report does not relieve the operator of responsibility for compliance with any other federal, state, or local laws and/or regulations. The responsible party acknowledges they must substantially restore, reclaim, and re-vegetate the impacted surface area to the conditions that existed prior to the release or their final land use in accordance with 19.15.29.13 NMAC including notification to the OCD when reclamation and re-vegetation are complete.

I hereby agree and sign off to the above statement	Name: Katherine Purvis Title: EHS Coordinator Email: katherine.purvis@spurenergy.com Date: 07/09/2024
--	--

District I
1625 N. French Dr., Hobbs, NM 88240
Phone:(575) 393-6161 Fax:(575) 393-0720
District II
811 S. First St., Artesia, NM 88210
Phone:(575) 748-1283 Fax:(575) 748-9720
District III
1000 Rio Brazos Rd., Aztec, NM 87410
Phone:(505) 334-6178 Fax:(505) 334-6170
District IV
1220 S. St Francis Dr., Santa Fe, NM 87505
Phone:(505) 476-3470 Fax:(505) 476-3462

State of New Mexico
Energy, Minerals and Natural Resources
Oil Conservation Division
1220 S. St Francis Dr.
Santa Fe, NM 87505

CONDITIONS

Action 362290

CONDITIONS

Operator: Spur Energy Partners LLC 9655 Katy Freeway Houston, TX 77024	OGRID: 328947
	Action Number: 362290
	Action Type: [C-141] Remediation Closure Request C-141 (C-141-v-Closure)

CONDITIONS

Created By	Condition	Condition Date
scwells	None	7/9/2024