

L Peter Galusky, Jr PE

5935 Exeter Circle Norcross, GA 30071 | 470 955-5335 | peter@bluerock.com

April 1st, 2024

REVIEWED

By Mike Buchanan at 3:18 pm, Aug 01, 2024

Nelson Velez

New Mexico Energy, Minerals & Natural Resources
Oil Conservation Division, Environmental Bureau
1220 S. St. Francis Drive
Santa Fe, New Mexico 87505

RE: **2023 Annual Report**

Rice Operating Company

BD P-26-1 and BD P-26-2 (AP-97-111 P, Sec. 26, T21S, R37E

NMOCD Application ID: 202242, Please provide a APP2109639893

Sent by E-mail

Mr. Velez:

This letter summarizes progress made over the past calendar year pursuant to the NMOCD's approval email letter of April 10th, 2023, for this site (Appendix, Exhibit 1, Figures 1 & 2), which is operated by Rice Operating Company (ROC). The average depth to groundwater across these locations averages approximately 47 +/- ft below ground surface and flows toward the southeast (Appendix, Figures 3a & 3b).

BD P-26-1

Groundwater analyte concentrations for BD P-26-1 are given in Figure 4 (average annual values), Table 1 (annual averages) and Table 3 (the complete dataset) in the Appendix.

Average annual groundwater chloride concentrations in the near-source monitor well (MW-1) were essentially unchanged at 314 mg/l in 2023 versus 315 mg/l in 2022. Groundwater chloride concentrations in the up-gradient monitor well (MW-2) were also essentially unchanged, measuring 223 mg/l in 2023 versus 224 mg/l in 2022. Groundwater chloride concentrations in the down-gradient monitor well (MW-3) also remained relatively stable at 236 mg/l in 2023 versus 234 mg/l in 2022. ROC ceased measuring groundwater BTEX concentrations in 2021, with NMOCD approval, since these have been below laboratory detection limits in all samples from all monitor wells from the beginning of sampling in 2007

Rice Operating Company BD P-26-1&2 Annual Report

through 2020. The depth to groundwater at this location averaged approximately 47 ft bgs in the near-source monitor well (MW-1) during 2023.

BD P-26-2

Groundwater analyte concentrations for BD P-26-2 are given in Figure 5 (average annual values), Table 2 (annual averages) and Table 4 (the complete dataset) in the Appendix.

The average annual groundwater chloride concentration in the near-source monitor well (MW-1) dropped slightly to 815 mg/l in 2023 from 825 mg/l in 2022. Average annual groundwater chloride concentrations in the down-gradient well (MW-2) dropped to 823 mg/l in 2023 from 855 mg/l in 2022. Average annual groundwater chloride concentrations in the far down-gradient monitor well, MW-3, dropped to 645 mg/l in 2023 from 768 mg/l in 2022. Sampling and analysis for groundwater BTEX ceased in 2021, as noted above. The depth to groundwater at this location averaged approximately 45 ft bgs in the near-source monitor well (MW-1) during 2023.

Summary and Path Forward

Groundwater chloride concentrations in the near-source monitor well (MW-1) at BD P-26-1 have paused from their previous and substantial multi-year decline but overall are tending toward the 250 mg/l OCD standard. However, considering that the chloride concentrations in the up-gradient well at this location measured 223 mg/l in 2023 it may yet take some time for chloride concentrations in the near-source well to decline further. Chloride concentrations in the down-gradient monitor well (MW-3) remain below 250 mg/l.

Groundwater chloride concentrations BD P-26-2 are presently several times lower than the peak annual average of 5,325 mg/l observed in the at-source well in 2008. Groundwater chloride concentrations in the down-gradient monitor well (MW-2) remain substantially lower than the highest concentration of 1,735 mg/l in 2018, but we anticipate that it will take some time for them to decline to the OCD standard of 250 mg/l.

ROC will continue to monitor groundwater at BD P-26-1 and BD P-26-2 quarterly during 2024.

ROC is the service provider (agent) for the BD Salt Water Disposal System and has no ownership of any portion of pipeline, well or facility. The BD SWD System is owned by a consortium of oil producers, System Parties, who provide all operating capital on a percentage ownership/usage basis.

Rice Operating Company BD P-26-1&2 Annual Report

Please contact either Katie Davis at Rice Operating Company or me if you have any questions or need additional information. Thank you for your consideration.

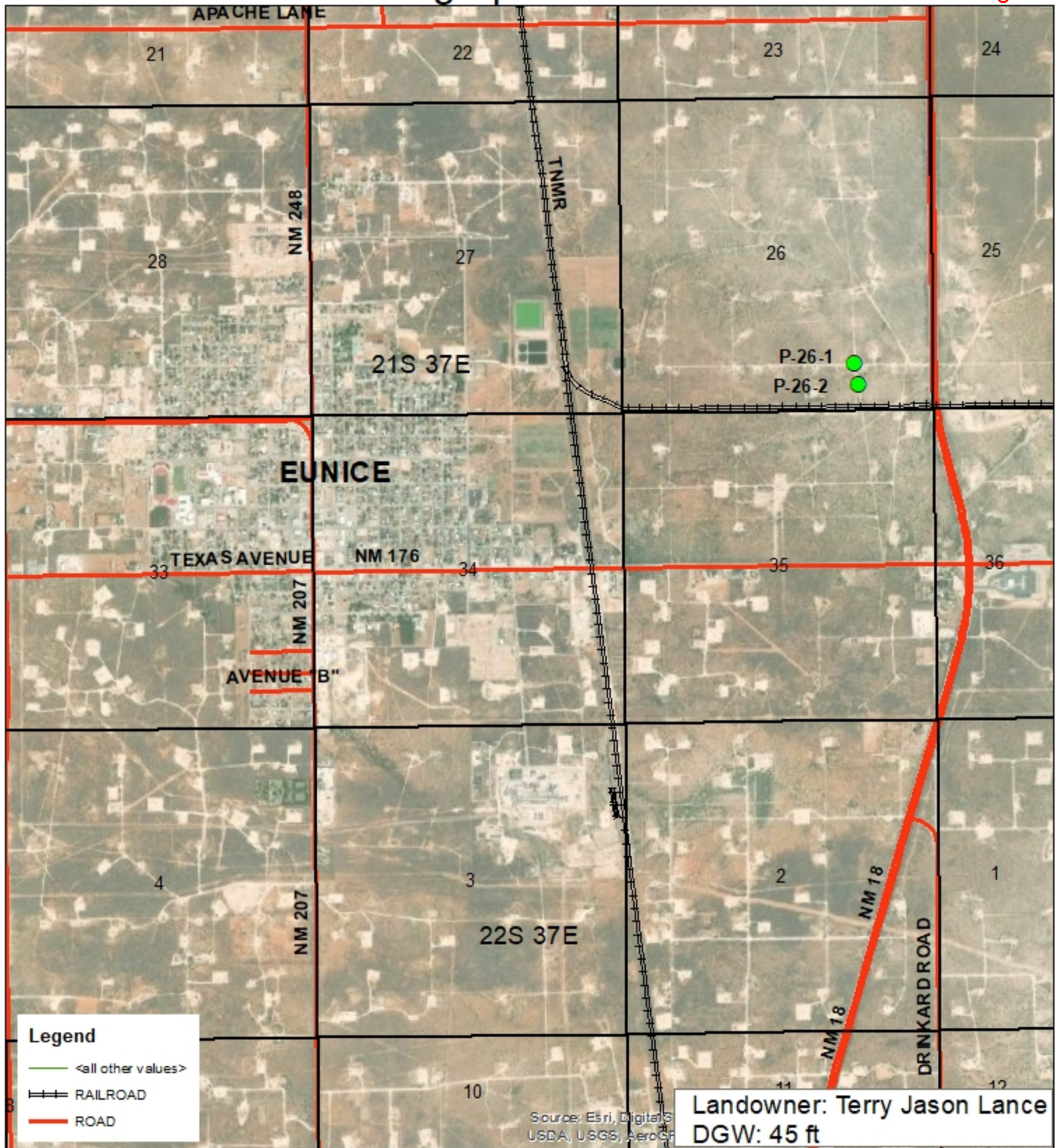
Sincerely,



L. Peter Galusky, Jr. P.E.
NM Prof. Engineer No. 22561

Copy: Rice Operating Company
Attachments: ... as noted, above.

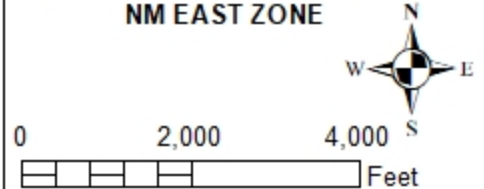
Geographic Location



BD P-26-1 & 2
AP-97

UL/P SECTION 26
T-21-S R-37-E
LEA COUNTY, NM

GPS: 32.444314 -103.129287
NAD83 STATE PLANE PROJ
NM EAST ZONE



Drawing date: 2/3/20
Drafted by: T. Grieco

Site Map



BD P-26-1 & 2
AP-97

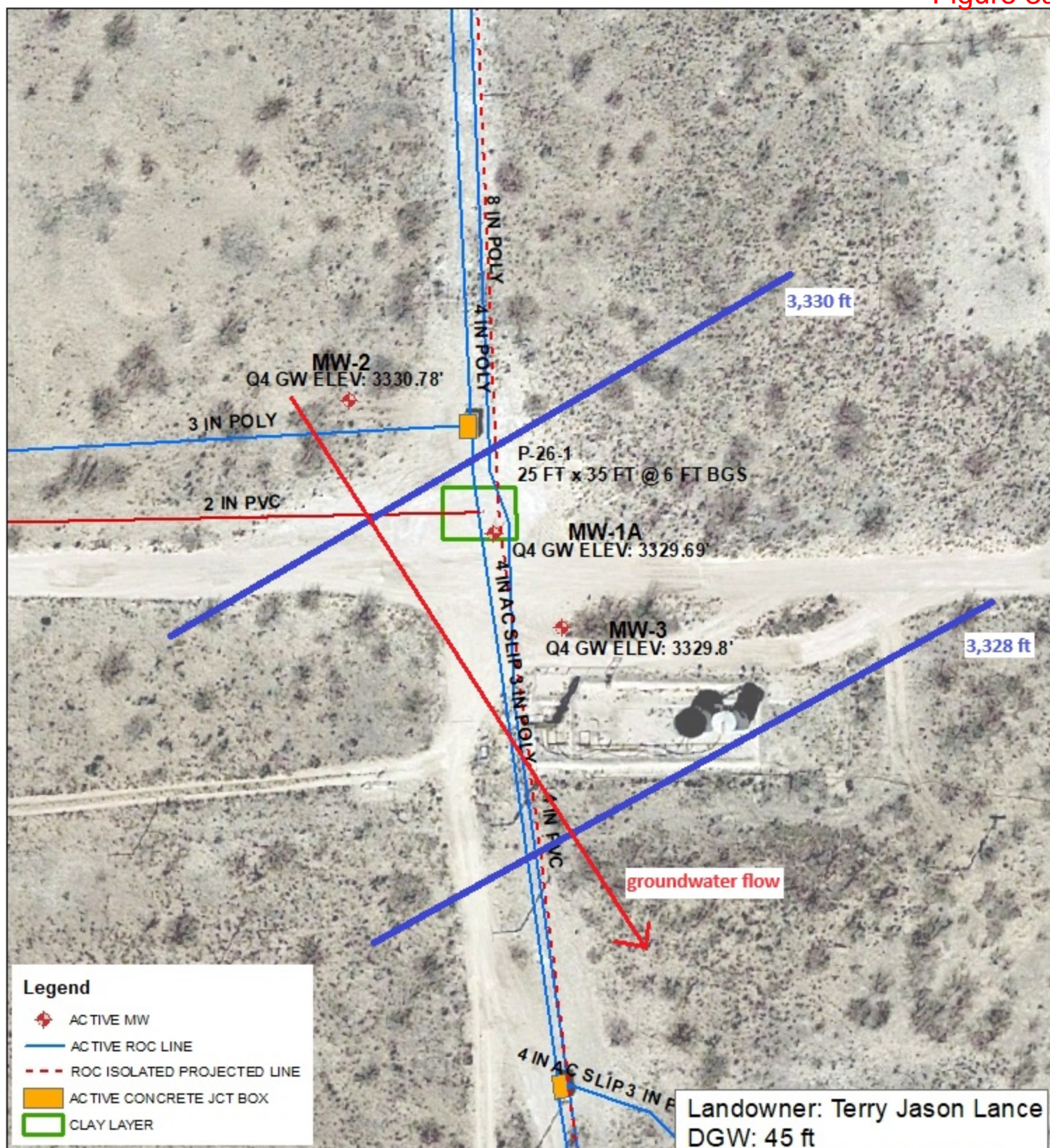
UL/P SECTION 26
T-21-S R-37-E
LEA COUNTY, NM

GPS: 32.444314 -103.129287
NAD83 STATE PLANE PROJ
NM EAST ZONE

0 50 100
Feet

Drawing date: 2/3/20
Drafted by: T. Grieco





BD P-26-1
AP-97

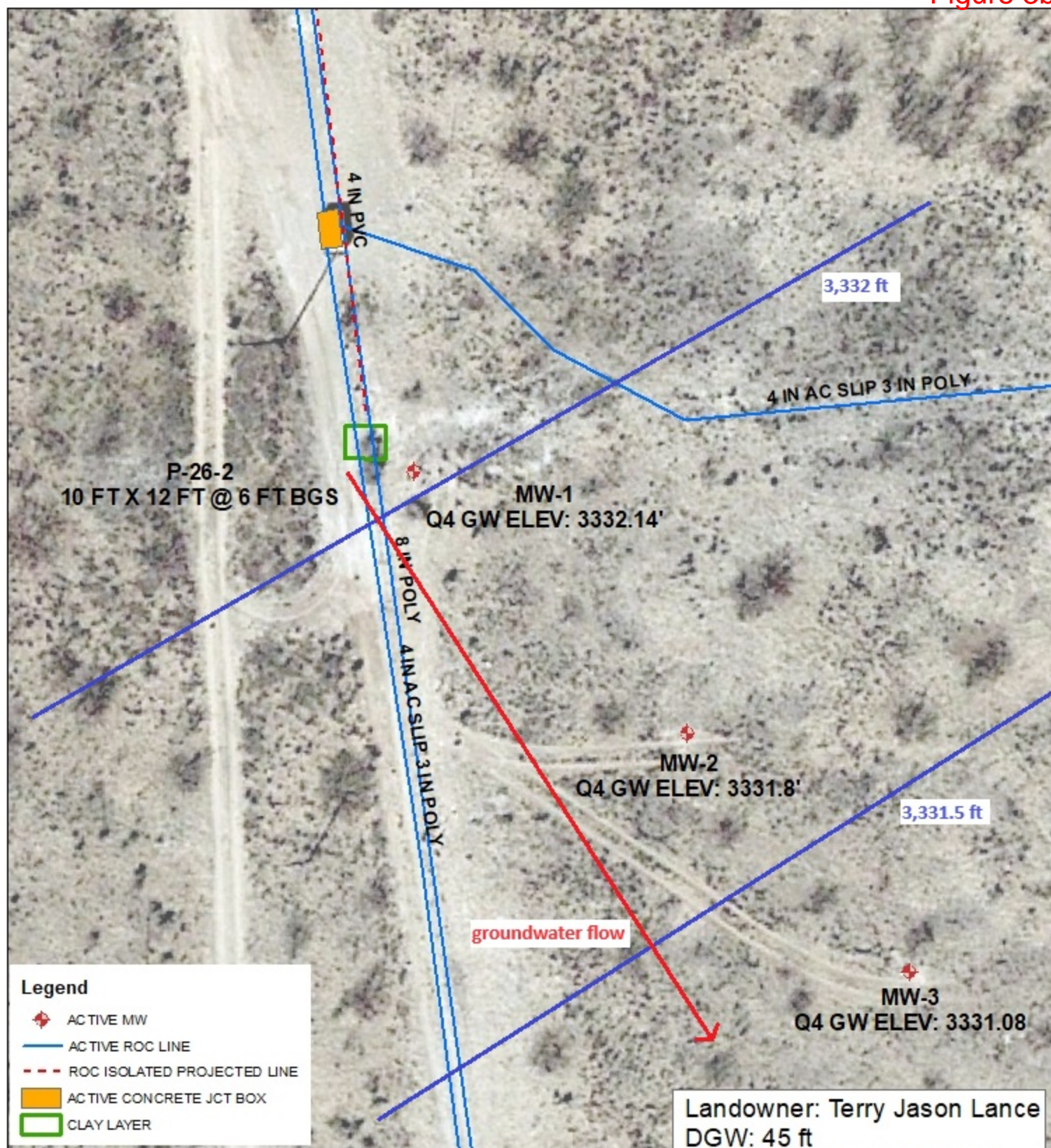
UL/P SECTION 26
T-21-S R-37-E
LEA COUNTY, NM

GPS: 32.444314 -103.129287
NAD83 STATE PLANE PROJ
NM EAST ZONE

0 25 50
Feet

Drawing date: 3/12/24
Drafted by: T. Grieco





BD P-26-2
AP-97

UL/P SECTION 26
T-21-S R-37-E
LEA COUNTY, NM

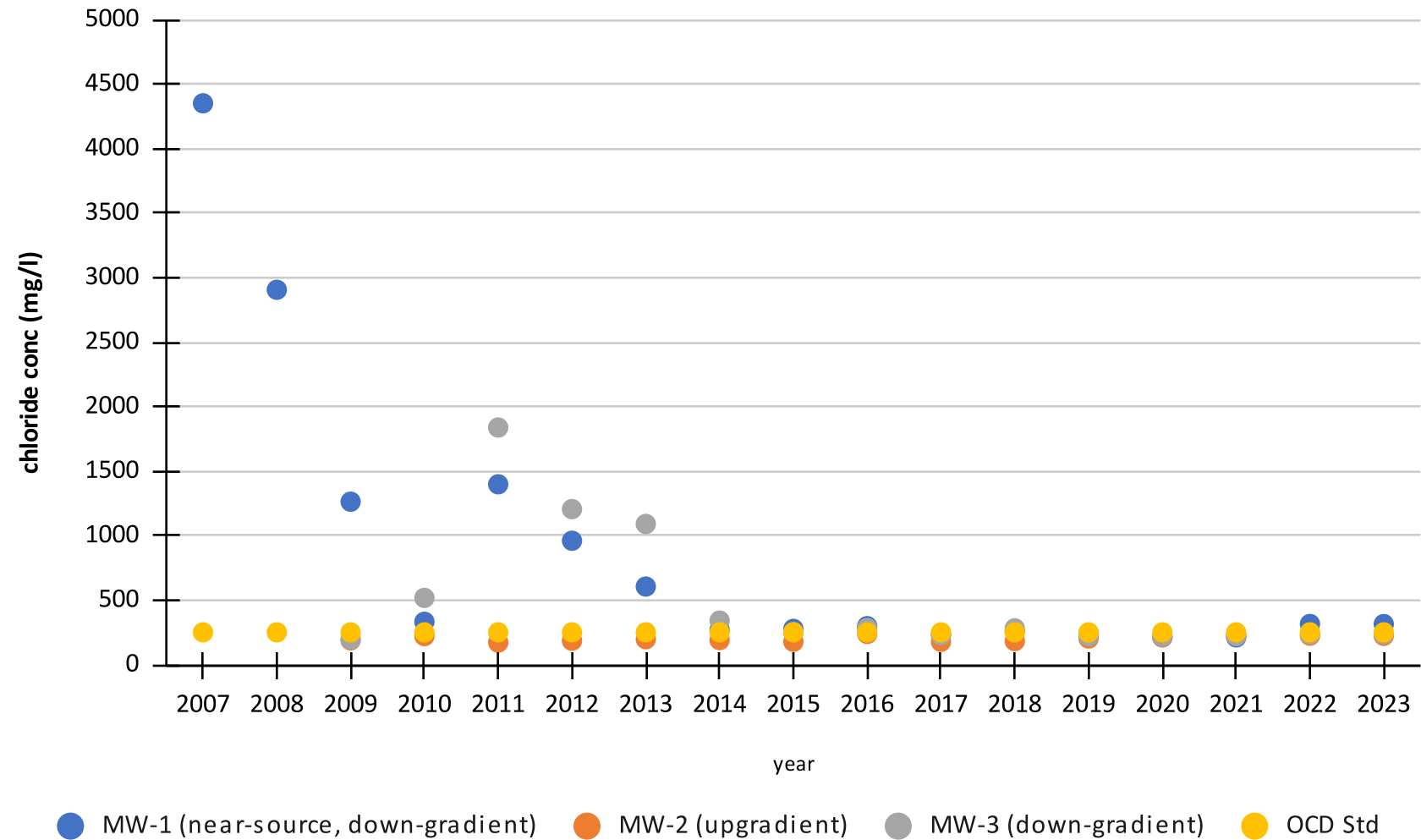
GPS: 32.444314 -103.129287
NAD83 STATE PLANE PROJ
NM EAST ZONE

0 25 50
Feet

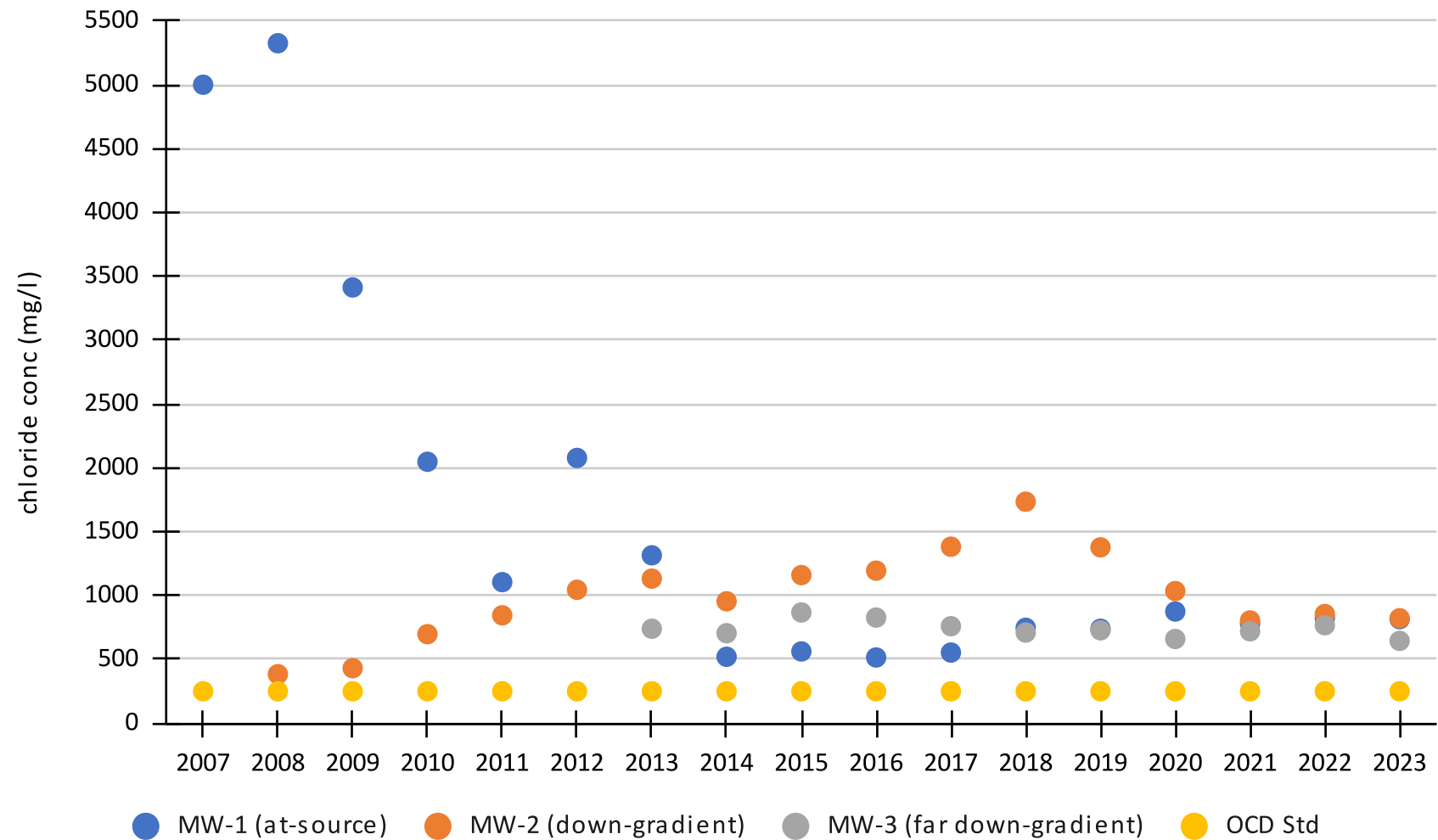
Drawing date: 3/12/24
Drafted by: T. Grieco



BD P-26-1 Vent
Groundwater Chloride Concentrations



BD P-26-2 Vent
Groundwater Chloride Concentrations



ROC - BD P-26-1 (AP-97)
Groundwater Chloride Concentrations
Annual Averages (mg/l)

year	MW-1 (near-source, down-gradient)	MW-2 (upgradient)	MW-3 (down-gradient)	OCD Std
2007	4,350			250
2008	2,905			250
2009	1,263	188	195	250
2010	332	221	517	250
2011	1,398	171	1,838	250
2012	960	185	1,205	250
2013	605	197	1,090	250
2014	268	190	341	250
2015	277	177	253	250
2016	298	238	283	250
2017	233	177	229	250
2018	258	182	281	250
2019	242	202	219	250
2020	212	212	218	250
2021	211	225	221	250
2022	315	224	234	250
2023	314	223	236	250

ROC - BD P-26-2 (AP-97)**Groundwater Chloride Concentrations****Annual Averages (mg/l)**

year	MW-1 (at-source)	MW-2 (down-gradient)	MW-3 (far down-gradient)	OCD Std
2007	5,000			250
2008	5,325	384		250
2009	3,413	431		250
2010	2,048	698		250
2011	1,105	845		250
2012	2,078	1,045		250
2013	1,315	1,133	740	250
2014	521	955	705	250
2015	562	1,160	868	250
2016	515	1,195	828	250
2017	554	1,383	760	250
2018	748	1,735	710	250
2019	740	1,378	728	250
2020	875	1,035	660	250
2021	783	805	720	250
2022	825	855	768	250
2023	815	823	645	250

ROC - BD P-26-1 (AP-97)

Unit Letter P, Section 26, T21S, R37E

MW	Depth to Water	Total Depth	Well Volume	Volume Purged	Sample Date	CI	ann. avg CI	TDS	Benzene	Toluene	Ethyl Benzene	Total Xylenes	Sulfate	Comments
1	50.37	58.6	1.3	6	11/12/2007	4,350	4,350	8,396	<0.002	<0.002	<0.002	<0.006	347	Clear No odor
1	49.8	58.65	1.4	6	1/14/2008	3,900		7,655	<0.001	<0.001	<0.001	<0.003	355	Clear No odor
1	50	58.65	1.4	6	4/4/2008	3,000		6,340	<0.001	<0.001	<0.001	<0.003	304	Sand to clear No odor
1	50.28	58.65	1.3	6	7/16/2008	2,160		4,930	<0.001	<0.001	<0.001	<0.003	299	Sand to clear No odor
1	50.89	58.65	1.2	6	10/6/2008	2,560	2,905	5,940	<0.001	<0.001	<0.001	<0.003	309	Sand to clear No odor
1	50.56	58.61	1.3	6	1/16/2009	2,160		4,300	<0.001	<0.001	<0.001	<0.003	310	Sand to clear No odor
1	50.48	58.61	1.3	6	4/15/2009	1,700		3,420	<0.001	<0.001	<0.001	<0.003	289	Sand to clear No odor
1	49.43	58.61	1.5	6	7/15/2009	650		1,740	<0.001	<0.001	<0.001	<0.003	233	Sand to clear No odor
1	49.13	58.61	1.5	6	10/9/2009	540	1,263	1,520	<0.001	<0.001	<0.001	<0.003	230	Sand to clear No odor
1	49.63	58.67	1.4	6	1/15/2010	560		1,400	<0.001	<0.001	<0.001	<0.003	216	Sand to clear No odor
1	50.15	58.67	1.4	6	4/13/2010	220		941	<0.001	<0.001	<0.001	<0.003	223	Sand to clear No odor
1	49.93	58.67	1.4	6	7/13/2010	316		1,120	<0.001	<0.001	<0.001	<0.003	205	Sand to clear No odor
1	48.57	58.67	1.6	6	10/8/2010	232	332	920	<0.001	<0.001	<0.001	<0.003	182	Sand to clear No odor
1	48.23	58.68	1.7	6	1/18/2011	1,640		3,880	<0.001	<0.001	<0.001	<0.003	348	Sand to clear No odor
1	48.12	58.68	1.7	6	4/14/2011	1,670		3,270	<0.001	<0.001	<0.001	<0.003	347	Sand to clear No odor
1	48.33	58.68	1.7	6	7/21/2011	1,300		2,740	<0.001	<0.001	<0.001	<0.003	279	Sand to clear No odor
1	48.58	58.68	1.6	6	10/17/2011	980	1,398	2,290	<0.001	<0.001	<0.001	<0.003	215	Sand to clear No odor
1	48.59	58.68	1.6	6	1/20/2012	1,040		2,280	<0.001	<0.001	<0.001	<0.003	243	Sand to clear No odor
1	48.63	58.68	1.6	6	4/19/2012	1,180		2,580	<0.001	<0.001	<0.001	<0.003	226	Sand to clear No odor
1	53.31	58.68	0.9	6	7/17/2012	920		1,900	<0.001	<0.001	<0.001	<0.003	152	Sand to clear No odor
1	51.89	58.68	1.1	6	10/15/2012	700	960	1,720	<0.001	<0.001	<0.001	<0.003	245	Sand to clear No odor
1	54.1	58.68	0.7	6	1/9/2013	920		1,960	<0.001	<0.001	<0.001	<0.003	165	Sand to clear No odor
1	53.98	58.68	0.8	6	4/22/2013	630		1,580	<0.001	<0.001	<0.001	<0.003	228	Sand to clear No odor
1	52.84	58.68	0.9	6	7/18/2013	590		1,610	<0.001	<0.001	<0.001	<0.003	183	Sand to clear No odor
1	54.23	58.68	0.7	6	10/18/2013	280	605	1,060	<0.001	<0.001	<0.001	<0.003	177	Sand to clear No odor
1	55.72	58.68	0.5	6	1/24/2014	392		1,260	<0.001	<0.001	<0.001	<0.003	184	Sand to clear No odor
1	56.54	58.68	0.3	6	4/8/2014	232		940	<0.001	<0.001	<0.001	<0.003	199	Sand to clear No odor
1	57.14	58.68	0.2	6	7/22/2014	244		980	<0.001	<0.001	<0.001	<0.003	196	Sand to clear No odor
1	52.63	58.68	1	3	10/24/2014	204	268	904	<0.001	<0.001	<0.001	<0.003	173	Sand to clear No odor

ROC - BD P-26-1 (AP-97)

Unit Letter P, Section 26, T21S, R37E

MW	Depth to Water	Total Depth	Well Volume	Volume Purged	Sample Date	CI	ann. avg CI	TDS	Benzene	Toluene	Ethyl Benzene	Total Xylenes	Sulfate	Comments
1	52.95	58.68	0.9	3	2/4/2015	235		1,010	<0.001	<0.001	<0.001	<0.003	103	Sand to clear No odor
1	54.25	58.68	0.7	3	4/22/2015	224		1,000	<0.001	<0.001	<0.001	<0.003	163	Sand to clear No odor
1	54.85	58.68	0.61	3	7/30/2015	224		1,010	<0.001	<0.001	<0.001	<0.003	139	Sand to clear No odor
1	53.45	58.68	0.84	3	10/23/2015	424	277	1,330	<0.001	<0.001	<0.001	<0.003	179	Sand to clear No odor
1	51.88	56.68	1.1	3	2/1/2016	292		1,120	<0.001	<0.001	<0.001	<0.003	201	Sand to clear No odor
1	52.63	56.68	1	3	4/25/2016	284		1,120	<0.001	<0.001	<0.001	<0.003	240	Sand to clear No odor
1	51.47	56.68	1.2	4	7/25/2016	284		1,140	<0.001	<0.001	<0.001	<0.003	218	Sand to clear No odor
1	51.77	56.68	1.1	4	10/31/2016	332	298	1,230	<0.001	<0.001	<0.001	<0.003	224	Sand to clear No odor
1	51.8	56.68	1.1	4	2/8/2017	176		898	<0.001	<0.001	<0.001	<0.003	194	Sand to clear No odor
1	51.16	56.68	1.2	4	4/13/2017	312		1,150	<0.001	<0.001	<0.001	<0.003	180	Sand to clear No odor
1	49.8	56.58	1.4	4	8/17/2017	228		1,070	<0.001	<0.001	<0.001	<0.003	188	Sand to clear No odor
1	49.74	56.58	1.4	4	10/26/2017	216	233	1,080	<0.001	<0.001	<0.001	<0.003	174	Sand to clear No odor
1	48.96	58.68	1.6	4	1/18/2018	228		736	<0.001	<0.001	<0.001	<0.003	189	Sand to clear No odor
1	48.61	58.68	1.6	4	4/30/2018	264		1,030	<0.001	<0.001	<0.001	<0.003	244	Sand to clear No odor
1	48.4	58.68	1.6	4	8/14/2018	280		1,080	<0.001	<0.001	<0.001	<0.003	210	Sand to clear No odor
1	48.32	58.68	1.7	4	11/1/2018	260	258	806	<0.001	<0.001	<0.001	<0.003	258	Sand to clear No odor
1	48.08	56.58	1.7	4	2/12/2019	220		1,060	<0.001	<0.001	<0.001	<0.003	244	Sand to clear No odor
1	47.96	56.58	1.7	4	4/26/2019	208		953	<0.001	<0.001	<0.001	<0.003	158	Sand to clear No odor
1	47.85	56.58	1.7	4	7/29/2019	296		1,080	<0.001	<0.001	<0.001	<0.003	175	Sand to clear No odor
1	47.88	56.58	1.7	4	10/28/2019	244	242	879	<0.001	<0.001	<0.001	<0.003	151	Sand to clear No odor
1	47.74	58.68	1.8	4	2/10/2020	200		1,000	<0.001	<0.001	<0.001	<0.003	185	Sand to clear No odor
1	47.57	58.68	1.8	4	8/13/2020	224	212	967	XXX	XXX	XXX	XXX	199	Sand to clear No odor
1	47.5	56.58	1.8	4	2/24/2021	184		889	XXX	XXX	XXX	XXX	214	Sand to clear No odor
1	47.42	56.58	1.8	6	5/13/2021	220		967	XXX	XXX	XXX	XXX	234	Sand to clear No odor
1	47.47	56.58	1.8	6	8/25/2021	216		1,010	XXX	XXX	XXX	XXX	238	Sand to clear No odor
1	47.56	56.58	1.8	6	10/25/2021	224	211	1,000	XXX	XXX	XXX	XXX	160	Sand to clear No odor
1	47.54	58.68	1.8	4	2/10/2022	308		1,130	XXX	XXX	XXX	XXX	212	Sand to clear No odor
1	47.52	58.68	1.8	4	5/2/2022	356		1,220	XXX	XXX	XXX	XXX	219	Sand to clear No odor
1	47.74	58.68	1.8	4	8/19/2022	304		1,190	XXX	XXX	XXX	XXX	185	Sand to clear No odor

ROC - BD P-26-1 (AP-97)

Unit Letter P, Section 26, T21S, R37E

MW	Depth to Water	Total Depth	Well Volume	Volume Purged	Sample Date	CI	ann. avg CI	TDS	Benzene	Toluene	Ethyl Benzene	Total Xylenes	Sulfate	Comments
1	47.89	58.68	1.7	4	10/31/2022	292	315	1,100	XXX	XXX	XXX	XXX	164	Sand to clear No odor
1	47.84	58.68	1.7	4	3/4/2023	228		905	XXX	XXX	XXX	XXX	170	Sand to clear No odor
1	47.69	58.68	1.8	4	5/8/2023	324		1,140	XXX	XXX	XXX	XXX	166	Sand to clear No odor
1	47.81	58.68	1.7	4	8/1/2023	360		1,270	XXX	XXX	XXX	XXX	253	Sand to clear No odor
1	47.85	58.68	1.7	4	10/9/2023	344	314	1,130	XXX	XXX	XXX	XXX	243	Sand to clear No odor

MW	Depth to Water	Total Depth	Well Volume	Volume Purged	Sample Date	CI	ann. avg CI	TDS	Benzene	Toluene	Ethyl Benzene	Total Xylenes	Sulfate	Comments
2	50.14	64.39	2.3	10	10/6/2008	184	184	933	<0.001	<0.001	<0.001	<0.003	216	Sand to clear No odor
2	49.72	64.87	2.4	10	1/16/2009	192		913	<0.001	<0.001	<0.001	<0.003	207	Sand to clear No odor
2	49.71	64.87	2.4	10	4/15/2009	188		932	<0.001	<0.001	<0.001	<0.003	186	Sand to clear No odor
2	48.62	65.03	2.6	10	7/15/2009	192		887	<0.001	<0.001	<0.001	<0.003	180	Sand to clear No odor
2	48.46	65.03	2.7	10	10/9/2009	180	188	895	<0.001	<0.001	<0.001	<0.003	182	Sand to clear No odor
2	48.62	65.08	2.6	10	1/15/2010	328		1,040	<0.001	<0.001	<0.001	<0.003	185	Sand to clear No odor
2	49.13	65.08	2.6	10	4/13/2010	192		896	<0.001	<0.001	<0.001	<0.003	210	Sand to clear No odor
2	48.97	65.08	2.6	10	7/13/2010	196		848	<0.001	<0.001	<0.001	<0.003	203	Sand to clear No odor
2	48.01	65.08	2.7	10	10/8/2010	168	221	888	<0.001	<0.001	<0.001	<0.003	167	Sand to clear No odor
2	47.68	65.1	2.8	10	1/18/2011	164		881	<0.001	<0.001	<0.001	<0.003	191	Sand to clear No odor
2	47.61	65.1	2.8	10	4/14/2011	168		867	<0.001	<0.001	<0.001	<0.003	189	Sand to clear No odor
2	47.76	65.1	2.8	10	7/21/2011	180		825	<0.001	<0.001	<0.001	<0.003	170	Sand to clear No odor
2	48.06	65.1	2.7	10	10/17/2011	172	171	813	<0.001	<0.001	<0.001	<0.003	136	Sand to clear No odor
2	48.08	65.1	2.7	10	1/20/2012	176		924	<0.001	<0.001	<0.001	<0.003	189	Sand to clear No odor
2	48.12	65.1	2.7	10	4/19/2012	168		868	<0.001	<0.001	<0.001	<0.003	187	Sand to clear No odor
2	52.33	65.1	2	10	7/17/2012	204		968	<0.001	<0.001	<0.001	<0.003	194	Sand to clear No odor
2	51.02	65.1	2.3	10	10/15/2012	192	185	937	<0.001	<0.001	<0.001	<0.003	220	Sand to clear No odor
2	53.14	65.1	1.9	10	1/9/2013	196		862	<0.001	<0.001	<0.001	<0.003	193	Sand to clear No odor
2	53.02	65.1	1.9	10	4/22/2013	196		894	<0.001	<0.001	<0.001	<0.003	186	Sand to clear No odor

ROC - BD P-26-1 (AP-97)

Unit Letter P, Section 26, T21S, R37E

MW	Depth to Water	Total Depth	Well Volume	Volume Purged	Sample Date	CI	ann. avg CI	TDS	Benzene	Toluene	Ethyl Benzene	Total Xylenes	Sulfate	Comments
2	52.09	65.1	2.1	10	7/18/2013	208		946	<0.001	<0.001	<0.001	<0.003	185	Sand to clear No odor
2	53.29	65.1	1.9	10	10/18/2013	188	197	878	<0.001	<0.001	<0.001	<0.003	160	Sand to clear No odor
2	54.61	65.1	1.7	10	1/24/2014	192		868	<0.001	<0.001	<0.001	<0.003	193	Sand to clear No odor
2	55.48	65.1	1.5	10	4/8/2014	204		878	<0.001	<0.001	<0.001	<0.003	180	Sand to clear No odor
2	56.04	65.1	1.4	10	7/22/2014	192		934	<0.001	<0.001	<0.001	<0.003	190	Sand to clear No odor
2	51.93	65.1	2.1	10	10/24/2014	172	190	882	<0.001	<0.001	<0.001	<0.003	165	Sand to clear No odor
2	52.13	65.1	2.1	10	2/4/2015	176		870	<0.001	<0.001	<0.001	<0.003	149	Sand to clear No odor
2	52.82	65.1	2	10	4/22/2015	188		938	<0.001	<0.001	<0.001	<0.003	129	Sand to clear No odor
2	53.33	65.1	1.88	10	7/30/2015	172		912	<0.001	<0.001	<0.001	<0.003	140	Sand to clear No odor
2	51.95	65.1	2.1	10	10/23/2015	172	177	884	<0.001	<0.001	<0.001	<0.003	152	Sand to clear No odor
2	51.27	65.1	2.2	10	2/1/2016	280		842	<0.001	<0.001	<0.001	<0.003	104	Sand to clear No odor
2	52.01	65.1	2.1	8	4/25/2016	208		904	<0.001	<0.001	<0.001	<0.003	166	Sand to clear No odor
2	51.11	65.1	2.2	8	7/25/2016	280		1,110	<0.001	<0.001	<0.001	<0.003	212	Sand to clear No odor
2	51.18	65.1	2.2	8	10/31/2016	184	238	878	<0.001	<0.001	<0.001	<0.003	211	Sand to clear No odor
2	51.3	65.1	2.2	8	2/8/2017	184		794	<0.001	<0.001	<0.001	<0.003	175	Sand to clear No odor
2	50.64	65.1	2.3	8	4/13/2017	180		850	<0.001	<0.001	<0.001	<0.003	195	Sand to clear No odor
2	49.27	65.1	2.5	8	8/17/2017	168		954	<0.001	<0.001	<0.001	<0.003	174	Sand to clear No odor
2	49.23	65.1	2.5	8	10/26/2017	176	177	882	<0.001	<0.001	<0.001	<0.003	173	Sand to clear No odor
2	48.38	65.1	2.7	8	1/18/2018	172		932	<0.001	<0.001	<0.001	<0.003	178	Sand to clear No odor
2	48.03	65.1	2.7	8	4/30/2018	180		840	<0.001	<0.001	<0.001	<0.003	224	Sand to clear No odor
2	47.84	65.1	2.8	8	8/14/2018	188		936	<0.001	<0.001	<0.001	<0.003	149	Sand to clear No odor
2	47.77	65.1	2.8	8	11/1/2018	188	182	1,000	<0.001	<0.001	<0.001	<0.003	179	Sand to clear No odor
2	47.58	65.1	2.8	8	2/12/2019	196		839	<0.001	<0.001	<0.001	<0.003	196	Sand to clear No odor
2	47.45	65.1	2.8	8	4/26/2019	192		944	<0.001	<0.001	<0.001	<0.003	178	Sand to clear No odor
2	47.35	65.1	2.8	8	7/29/2019	208		931	<0.001	<0.001	<0.001	<0.003	185	Sand to clear No odor
2	47.36	65.1	2.8	8	10/28/2019	212	202	949	<0.001	<0.001	<0.001	<0.003	166	Sand to clear No odor
2	47.22	65.1	2.9	8	2/10/2020	204		933	<0.001	<0.001	<0.001	<0.003	171	Sand to clear No odor
2	47.05	65.1	2.9	8	8/13/2020	220	212	1,000	XXX	XXX	XXX	XXX	165	Sand to clear No odor
2	46.99	65.1	2.9	8	2/24/2021	200		689	XXX	XXX	XXX	XXX	196	Sand to clear No odor

ROC - BD P-26-1 (AP-97)

Unit Letter P, Section 26, T21S, R37E

MW	Depth to Water	Total Depth	Well Volume	Volume Purged	Sample Date	CI	ann. avg CI	TDS	Benzene	Toluene	Ethyl Benzene	Total Xylenes	Sulfate	Comments
2	46.92	65.1	2.9	9	5/13/2021	228		991	XXX	XXX	XXX	XXX	219	Sand to clear No odor
2	46.96	65.1	2.9	9	8/25/2021	244		995	XXX	XXX	XXX	XXX	244	Sand to clear No odor
2	47.05	65.1	2.9	9	10/25/2021	228	225	1,020	XXX	XXX	XXX	XXX	176	Sand to clear No odor
2	47.03	65.1	2.9	8	2/10/2022	220		941	XXX	XXX	XXX	XXX	174	Sand to clear No odor
2	47.02	65.1	2.9	8	5/2/2022	228		1,010	XXX	XXX	XXX	XXX	174	Sand to clear No odor
2	47.23	65.1	2.9	8	8/19/2022	228		1,030	XXX	XXX	XXX	XXX	160	Sand to clear No odor
2	47.38	65.1	2.8	8	10/31/2022	220	224	973	XXX	XXX	XXX	XXX	178	Sand to clear No odor
2	47.33	65.1	2.8	8	3/4/2023	228		922	XXX	XXX	XXX	XXX	186	Sand to clear No odor
2	47.29	65.1	2.8	8	5/8/2023	204		911	XXX	XXX	XXX	XXX	179	Sand to clear No odor
2	47.29	65.1	2.8	8	8/1/2023	220		934	XXX	XXX	XXX	XXX	169	Sand to clear No odor
2	47.32	65.1	2.8	8	10/9/2023	240	223	884	XXX	XXX	XXX	XXX	142	Sand to clear No odor

MW	Depth to Water	Total Depth	Well Volume	Volume Purged	Sample Date	CI	ann. avg CI	TDS	Benzene	Toluene	Ethyl Benzene	Total Xylenes	Sulfate	Comments
3	49.31	64.59	2.4	10	4/15/2009	204		924	<0.001	<0.001	<0.001	<0.003	190	Sand to clear No odor
3	48.06	64.49	2.6	10	7/15/2009	176		895	<0.001	<0.001	<0.001	<0.003	169	Sand to clear No odor
3	48.02	64.49	2.6	10	10/9/2009	204	195	930	<0.001	<0.001	<0.001	<0.003	169	Sand to clear No odor
3	48.36	64.46	2.6	10	1/15/2010	328		1,150	<0.001	<0.001	<0.001	<0.003	176	Sand to clear No odor
3	49.12	64.46	2.5	10	4/13/2010	460		1,290	<0.001	<0.001	<0.001	<0.003	197	Sand to clear No odor
3	48.91	64.46	2.5	10	7/13/2010	450		1,170	<0.001	<0.001	<0.001	<0.003	189	Sand to clear No odor
3	47.22	64.46	2.8	10	10/8/2010	830	517	1,840	<0.001	<0.001	<0.001	<0.003	142	Sand to clear No odor
3	46.9	64.63	2.8	10	1/18/2011	1,800		3,670	<0.001	<0.001	<0.001	<0.003	259	Sand to clear No odor
3	46.77	64.63	2.9	10	4/14/2011	2,450		4,430	<0.001	<0.001	<0.001	<0.003	329	Sand to clear No odor
3	46.96	64.63	2.8	10	7/21/2011	1,860		3,700	<0.001	<0.001	<0.001	<0.003	323	Sand to clear No odor
3	47.26	64.63	2.8	10	10/17/2011	1,240	1,838	2,870	<0.001	<0.001	<0.001	<0.003	252	Sand to clear No odor
3	47.21	64.63	2.8	10	1/20/2012	1,040		2,600	<0.001	<0.001	<0.001	<0.003	322	Sand to clear No odor

ROC - BD P-26-1 (AP-97)

Unit Letter P, Section 26, T21S, R37E

MW	Depth to Water	Total Depth	Well Volume	Volume Purged	Sample Date	CI	ann. avg CI	TDS	Benzene	Toluene	Ethyl Benzene	Total Xylenes	Sulfate	Comments
3	47.31	64.63	2.8	10	4/19/2012	920		2,340	<0.001	<0.001	<0.001	<0.003	268	Sand to clear No odor
3	52.36	64.63	2	10	7/17/2012	1,950		3,760	<0.001	<0.001	<0.001	<0.003	297	Sand to clear No odor
3	50.53	64.63	2.3	10	10/15/2012	910	1,205	2,100	<0.001	<0.001	<0.001	<0.003	234	Sand to clear No odor
3	52.98	64.63	1.9	10	1/9/2013	2,020		3,800	<0.001	<0.001	<0.001	<0.003	323	Sand to clear No odor
3	53.04	64.63	1.9	10	4/22/2013	1,240		2,620	<0.001	<0.001	<0.001	<0.003	286	Sand to clear No odor
3	51.82	64.63	2	10	7/18/2013	500		1,440	<0.001	<0.001	<0.001	<0.003	199	Sand to clear No odor
3	53.16	64.63	1.8	10	10/18/2013	600	1,090	1,640	<0.001	<0.001	<0.001	<0.003	234	Sand to clear No odor
3	54.68	64.63	1.6	10	1/24/2014	390		854	<0.001	<0.001	<0.001	<0.003	196	Sand to clear No odor
3	55.62	64.63	1.4	10	4/8/2014	390		1,220	<0.001	<0.001	<0.001	<0.003	238	Sand to clear No odor
3	56.18	64.63	1.4	10	7/22/2014	380		1,270	<0.001	<0.001	<0.001	<0.003	225	Sand to clear No odor
3	51.36	64.63	2.1	10	10/24/2014	204	341	968	<0.001	<0.001	<0.001	<0.003	189	Sand to clear No odor
3	51.41	64.63	2.1	10	2/4/2015	304		1,120	<0.001	<0.001	<0.001	<0.003	195	Sand to clear No odor
3	52.77	64.63	1.9	10	4/22/2015	236		1,030	<0.001	<0.001	<0.001	<0.003	151	Sand to clear No odor
3	53.28	64.63	1.82	10	7/30/2015	212		950	<0.001	<0.001	<0.001	<0.003	128	Sand to clear No odor
3	51.89	64.63	2.04	10	10/23/2015	260	253	1,280	<0.001	<0.001	<0.001	<0.003	227	Sand to clear No odor
3	50.53	64.63	2.3	10	2/1/2016	264		1,130	<0.001	<0.001	<0.001	<0.003	163	Sand to clear No odor
3	51.28	64.63	2.1	8	4/25/2016	280		944	<0.001	<0.001	<0.001	<0.003	193	Sand to clear No odor
3	50.13	64.63	2.3	8	7/25/2016	268		1,130	<0.001	<0.001	<0.001	<0.003	209	Sand to clear No odor
3	50.43	64.63	2.3	8	10/31/2016	320	283	1,140	<0.001	<0.001	<0.001	<0.003	271	Sand to clear No odor
3	50.31	64.63	2.3	8	2/8/2017	284		914	<0.001	<0.001	<0.001	<0.003	214	Sand to clear No odor
3	48.52	64.63	2.4	8	4/13/2017	188		906	<0.001	<0.001	<0.001	<0.003	190	Sand to clear No odor
3	48.52	64.63	2.4	8	8/17/2017	220		1,090	<0.001	<0.001	<0.001	<0.003	199	Sand to clear No odor
3	48.47	64.63	2.4	8	10/26/2017	224	229	1,060	<0.001	<0.001	<0.001	<0.003	220	Sand to clear No odor
3	47.58	64.63	2.7	8	1/18/2018	212		1,140	<0.001	<0.001	<0.001	<0.003	202	Sand to clear No odor
3	47.2	64.63	2.8	8	4/30/2018	280		1,080	<0.001	<0.001	<0.001	<0.003	276	Sand to clear No odor
3	46.99	64.63	2.8	8	8/14/2018	344		1,420	<0.001	<0.001	<0.001	<0.003	240	Sand to clear No odor
3	46.93	64.63	2.8	8	11/1/2018	288	281	1,250	<0.001	<0.001	<0.001	<0.003	237	Sand to clear No odor
3	46.74	64.63	2.9	8	2/12/2019	228		977	<0.001	<0.001	<0.001	<0.003	247	Sand to clear No odor
3	46.62	64.43	2.9	8	4/26/2019	220		977	<0.001	<0.001	<0.001	<0.003	247	Sand to clear No odor

ROC - BD P-26-1 (AP-97)

Unit Letter P, Section 26, T21S, R37E

MW	Depth to Water	Total Depth	Well Volume	Volume Purged	Sample Date	CI	ann. avg CI	TDS	Benzene	Toluene	Ethyl Benzene	Total Xylenes	Sulfate	Comments
3	46.51	64.43	2.9	8	7/29/2019	212		931	<0.001	<0.001	<0.001	<0.003	142	Sand to clear No odor
3	46.55	64.43	2.9	8	10/28/2019	216	219	1,080	<0.001	<0.001	<0.001	<0.003	198	Sand to clear No odor
3	46.38	64.63	2.9	8	2/10/2020	216		964	<0.001	<0.001	<0.001	<0.003	205	Sand to clear No odor
3	46.2	64.63	2.9	8	8/13/2020	220	218	1,020	XXX	XXX	XXX	XXX	167	Sand to clear No odor
3	46.14	64.43	3	8	2/24/2021	212		782	XXX	XXX	XXX	XXX	236	Sand to clear No odor
3	46.06	64.43	3	9	5/13/2021	220		998	XXX	XXX	XXX	XXX	196	Sand to clear No odor
3	46.12	64.43	3	9	8/25/2021	228		978	XXX	XXX	XXX	XXX	227	Sand to clear No odor
3	46.22	64.43	2.9	9	10/25/2021	224	221	991	XXX	XXX	XXX	XXX	177	Sand to clear No odor
3	46.2	64.63	2.9	8	2/10/2022	232		982	XXX	XXX	XXX	XXX	169	Sand to clear No odor
3	46.18	64.63	3	8	5/2/2022	236		1,020	XXX	XXX	XXX	XXX	169	Sand to clear No odor
3	46.4	64.63	2.9	8	8/19/2022	236		1,010	XXX	XXX	XXX	XXX	165	Sand to clear No odor
3	46.54	64.63	2.9	8	10/31/2022	232	234	969	XXX	XXX	XXX	XXX	158	Sand to clear No odor
3	46.45	64.63	2.9	8	3/4/2023	224		933	XXX	XXX	XXX	XXX	185	Sand to clear No odor
3	46.31	64.63	2.9	8	5/8/2023	224		985	XXX	XXX	XXX	XXX	170	Sand to clear No odor
3	46.48	64.63	2.9	8	8/1/2023	220		918	XXX	XXX	XXX	XXX	150	Sand to clear No odor
3	46.46	64.63	2.9	8	10/9/2023	276	236	912	XXX	XXX	XXX	XXX	181	Sand to clear No odor

ROC - BD P-26-2 (AP-97)

Unit Letter P, Section 26, T21S, R37E

MW	Depth to Water	Total Depth	Well Volume	Volume Purged	Sample Date	Cl	ann. avg Cl	TDS	Benzene	Toluene	Ethyl Benzene	Total Xylenes	Sulfate	Comments
1	47.84	59.43	1.9	6	11/12/2007	5,000	5,000	9,415	<0.002	<0.002	<0.002	<0.006	430	Clear No odor
1	47.39	59.45	1.9	8	1/14/2008	5,100		9,453	<0.001	<0.001	<0.001	<0.003	469	Clear No odor
1	47.45	59.45	1.9	8	4/4/2008	5,300		10,100	<0.001	<0.001	<0.001	<0.003	437	Sand to clear No odor
1	48.07	59.45	1.8	8	7/16/2008	5,300		9,870	<0.001	<0.001	<0.001	<0.003	448	Sand to clear No odor
1	48.35	59.45	1.8	8	10/6/2008	5,600	5,325	10,700	<0.001	<0.001	<0.001	<0.003	473	Sand to clear No odor
1	48.76	59.43	1.7	8	1/16/2009	4,000		7,680	<0.001	<0.001	<0.001	<0.003	497	Sand to clear No odor
1	47.94	59.43	1.8	6	4/15/2009	4,500		8,190	<0.001	<0.001	<0.001	<0.003	462	Sand to clear No odor
1	47.23	59.43	2	6	7/15/2009	3,050		6,000	<0.001	<0.001	<0.001	<0.003	403	Sand to clear No odor
1	46.92	59.43	2	6	10/9/2009	2,100	3,413	4,360	<0.001	<0.001	<0.001	<0.003	516	Sand to clear No odor
1	47.18	59.45	2	6	1/15/2010	2,120		4,600	<0.001	<0.001	<0.001	<0.003	410	Sand to clear No odor
1	47.42	59.45	1.9	6	4/13/2010	2,850		5,530	<0.001	<0.001	<0.001	<0.003	489	Sand to clear No odor
1	47.25	59.45	2	6	7/13/2010	2,300		4,750	<0.001	<0.001	<0.001	<0.003	453	Sand to clear No odor
1	46.5	59.45	2.1	6	10/8/2010	920	2,048	2,540	<0.001	<0.001	<0.001	<0.003	437	Sand to clear No odor
1	46.15	59.45	2.1	6	1/18/2011	820		2,140	<0.001	<0.001	<0.001	<0.003	319	Sand to clear No odor
1	46.03	59.45	2.1	6	4/14/2011	800		2,100	<0.001	<0.001	<0.001	<0.003	356	Sand to clear No odor
1	46.19	59.45	2.1	6	7/19/2011	1,320		2,760	<0.001	<0.001	<0.001	<0.003	327	Sand to clear No odor
1	46.51	59.45	2.1	6	10/17/2011	1,480	1,105	3,260	<0.001	<0.001	<0.001	<0.003	281	Sand to clear No odor
1	46.49	59.45	2.1	6	1/20/2012	2,370		4,630	<0.001	<0.001	<0.001	<0.003	392	Sand to clear No odor
1	46.53	59.45	2.1	6	4/19/2012	2,100		4,190	<0.001	<0.001	<0.001	<0.003	384	Sand to clear No odor
1	51.57	59.45	1.3	6	7/17/2012	2,220		3,810	<0.001	<0.001	<0.001	<0.003	376	Sand to clear No odor
1	49.56	59.45	1.6	6	10/15/2012	1,620	2,078	3,480	<0.001	<0.001	<0.001	<0.003	427	Sand to clear No odor
1	51.04	59.45	1.3	6	1/9/2013	1,780		4,100	<0.001	<0.001	<0.001	<0.003	370	Sand to clear No odor
1	52.03	59.45	1.2	6	4/22/2013	1,900		3,800	<0.001	<0.001	<0.001	<0.003	368	Sand to clear No odor
1	51.04	59.45	1.3	6	7/18/2013	840		2,190	<0.001	<0.001	<0.001	<0.003	284	Sand to clear No odor
1	52.31	59.45	1.1	6	10/18/2013	740	1,315	2,110	<0.001	<0.001	<0.001	<0.003	312	Sand to clear No odor
1	53.98	59.45	0.9	6	1/24/2014	600		1,760	<0.001	<0.001	<0.001	<0.003	284	Sand to clear No odor
1	54.91	59.45	0.7	6	4/8/2014	620		1,710	<0.001	<0.001	<0.001	<0.003	276	Sand to clear No odor
1	55.52	59.45	0.6	6	7/22/2014	490		1,570	<0.001	<0.001	<0.001	<0.003	307	Sand to clear No odor
1	50.6	59.45	1.4	6	10/24/2014	372	521	1,260	<0.001	<0.001	<0.001	<0.003	188	Sand to clear No odor

ROC - BD P-26-2 (AP-97)

Unit Letter P, Section 26, T21S, R37E

MW	Depth to Water	Total Depth	Well Volume	Volume Purged	Sample Date	CI	ann. avg CI	TDS	Benzene	Toluene	Ethyl Benzene	Total Xylenes	Sulfate	Comments
1	50.94	59.45	1.4	6	2/4/2015	460		1,560	<0.001	<0.001	<0.001	<0.003	270	Sand to clear No odor
1	51.13	59.45	1.3	6	4/22/2015	540		1,640	<0.001	<0.001	<0.001	<0.003	245	Sand to clear No odor
1	52.18	59.45	1.16	6	7/30/2015	749		2,140	<0.001	<0.001	<0.001	<0.003	252	Sand to clear No odor
1	50.98	59.45	1.36	6	10/23/2015	500	562	1,600	<0.001	<0.001	<0.001	<0.003	192	Sand to clear No odor
1	50.11	59.45	1.5	6	2/1/2016	384		1,390	<0.001	<0.001	<0.001	<0.003	199	Sand to clear No odor
1	51.15	59.45	1.3	6	4/25/2016	560		1,500	<0.001	<0.001	<0.001	<0.003	250	Sand to clear No odor
1	49.68	59.45	1.6	6	7/25/2016	396		1,410	<0.001	<0.001	<0.001	<0.003	226	Sand to clear No odor
1	50.14	59.45	1.5	6	10/31/2016	720	515	2,120	<0.001	<0.001	<0.001	<0.003	360	Sand to clear No odor
1	49.29	59.45	1.6	6	2/8/2017	700		1,880	<0.001	<0.001	<0.001	<0.003	240	Sand to clear No odor
1	48.86	59.45	1.7	6	4/13/2017	790		1,900	<0.001	<0.001	<0.001	<0.003	256	Sand to clear No odor
1	47.88	59.45	1.9	6	8/17/2017	356		1,300	<0.001	<0.001	<0.001	<0.003	229	Sand to clear No odor
1	47.82	59.45	1.9	6	10/26/2017	368	554	1,400	<0.001	<0.001	<0.001	<0.003	204	Sand to clear No odor
1	46.79	59.45	2	6	1/18/2018	740		1,370	<0.001	<0.001	<0.001	<0.003	245	Sand to clear No odor
1	46.39	59.45	2.1	8	4/30/2018	710		1,590	<0.001	<0.001	<0.001	<0.003	250	Sand to clear No odor
1	46.28	59.45	2.1	8	8/14/2018	730		1,760	<0.001	<0.001	<0.001	<0.003	211	Sand to clear No odor
1	46.15	59.45	2.1	8	11/1/2018	810	748	1,770	<0.001	<0.001	<0.001	<0.003	264	Sand to clear No odor
1	45.91	59.45	2.2	8	2/12/2019	760		1,650	<0.001	<0.001	<0.001	<0.003	273	Sand to clear No odor
1	45.74	59.45	2.2	8	4/26/2019	710		1,700	<0.001	<0.001	<0.001	<0.003	230	Sand to clear No odor
1	46.67	59.45	2.2	8	7/29/2019	730		1,870	<0.001	<0.001	<0.001	<0.003	230	Sand to clear No odor
1	45.78	59.45	2.2	8	10/28/2019	760	740	1,860	<0.001	<0.001	<0.001	<0.003	224	Sand to clear No odor
1	45.56	59.45	2.2	6	2/10/2020	890		2,110	<0.001	<0.001	<0.001	<0.003	307	Sand to clear No odor
1	45.43	59.45	2.2	6	8/13/2020	860	875	2,250	XXX	XXX	XXX	XXX	322	Sand to clear No odor
1	45.29	59.45	2.3	8	2/24/2021	720		1,840	XXX	XXX	XXX	XXX	440	Sand to clear No odor
1	45.25	59.45	2.3	8	5/13/2021	770		2,230	XXX	XXX	XXX	XXX	442	Sand to clear No odor
1	45.33	59.45	2.3	8	8/25/2021	800		2,340	XXX	XXX	XXX	XXX	569	Sand to clear No odor
1	45.05	59.45	2.3	8	10/25/2021	840	783	2,360	XXX	XXX	XXX	XXX	405	Sand to clear No odor
1	45.01	59.45	2.3	6	2/10/2022	820		2,380	XXX	XXX	XXX	XXX	468	Sand to clear No odor
1	45	59.45	2.3	6	5/2/2022	820		2,260	XXX	XXX	XXX	XXX	438	Sand to clear No odor
1	45.22	59.45	2.3	6	8/19/2022	860		2,250	XXX	XXX	XXX	XXX	399	Sand to clear No odor

ROC - BD P-26-2 (AP-97)

Unit Letter P, Section 26, T21S, R37E

MW	Depth to Water	Total Depth	Well Volume	Volume Purged	Sample Date	Cl	ann. avg Cl	TDS	Benzene	Toluene	Ethyl Benzene	Total Xylenes	Sulfate	Comments
1	45.3	59.45	2.3	6	10/31/2022	800	825	2,040	XXX	XXX	XXX	XXX	364	Sand to clear No odor
1	45.04	59.45	2.3	8	3/4/2023	760		1,760	XXX	XXX	XXX	XXX	268	Sand to clear No odor
1	44.9	59.45	2.3	6	5/8/2023	1,000		2,230	XXX	XXX	XXX	XXX	237	Sand to clear No odor
1	45.02	59.45	2.3	8	8/1/2023	750		1,880	XXX	XXX	XXX	XXX	242	Sand to clear No odor
1	45.06	59.45	2.3	8	10/9/2023	750	815	1,550	XXX	XXX	XXX	XXX	163	Sand to clear No odor

MW	Depth to Water	Total Depth	Well Volume	Volume Purged	Sample Date	Cl	ann. avg Cl	TDS	Benzene	Toluene	Ethyl Benzene	Total Xylenes	Sulfate	Comments
2	47.38	59.92	2	10	10/6/2008	384	384	1,350	<0.001	<0.001	<0.001	<0.003	289	Sand to clear No odor
2	47.83	60.39	2	10	1/16/2009	400		1,360	<0.001	<0.001	<0.001	<0.003	262	Sand to clear No odor
2	46.99	60.39	2.1	10	4/15/2009	412		1,370	<0.001	<0.001	<0.001	<0.003	259	Sand to clear No odor
2	46.47	60.39	2.2	10	7/15/2009	432		1,420	<0.001	<0.001	<0.001	<0.003	268	Sand to clear No odor
2	46.11	60.39	2.3	10	10/9/2009	480	431	1,470	<0.001	<0.001	<0.001	<0.003	237	Sand to clear No odor
2	46.35	60.52	2.3	10	1/15/2010	590		1,660	<0.001	<0.001	<0.001	<0.003	215	Sand to clear No odor
2	46.52	60.52	2.2	10	4/13/2010	690		1,720	<0.001	<0.001	<0.001	<0.003	261	Sand to clear No odor
2	46.37	60.52	2.3	10	7/13/2010	820		1,940	<0.001	<0.001	<0.001	<0.003	255	Sand to clear No odor
2	45.76	60.52	2.4	10	10/8/2010	690	698	1,760	<0.001	<0.001	<0.001	<0.003	246	Sand to clear No odor
2	45.42	60.54	2.4	10	1/18/2011	900		2,400	<0.001	<0.001	<0.001	<0.003	361	Sand to clear No odor
2	45.29	60.54	2.4	10	4/14/2011	890		2,010	<0.001	<0.001	<0.001	<0.003	319	Sand to clear No odor
2	45.46	60.54	2.4	10	7/19/2011	810		1,900	<0.001	<0.001	<0.001	<0.003	283	Sand to clear No odor
2	45.78	60.54	2.4	10	10/17/2011	780	845	1,950	<0.001	<0.001	<0.001	<0.003	237	Sand to clear No odor
2	45.74	60.54	2.4	10	1/20/2012	830		1,950	<0.001	<0.001	<0.001	<0.003	323	Sand to clear No odor
2	45.78	60.54	2.4	10	4/19/2012	870		2,100	<0.001	<0.001	<0.001	<0.003	363	Sand to clear No odor
2	50.67	60.54	1.6	10	7/17/2012	1,340		2,870	<0.001	<0.001	<0.001	<0.003	278	Sand to clear No odor
2	48.64	60.54	1.9	10	10/15/2012	1,140	1,045	2,470	<0.001	<0.001	<0.001	<0.003	373	Sand to clear No odor
2	49.78	60.54	1.7	10	1/9/2013	1,090		2,410	<0.001	<0.001	<0.001	<0.003	298	Sand to clear No odor
2	51.11	60.54	1.5	10	4/22/2013	1,340		2,700	<0.001	<0.001	<0.001	<0.003	284	Sand to clear No odor

ROC - BD P-26-2 (AP-97)

Unit Letter P, Section 26, T21S, R37E

MW	Depth to Water	Total Depth	Well Volume	Volume Purged	Sample Date	Cl	ann. avg Cl	TDS	Benzene	Toluene	Ethyl Benzene	Total Xylenes	Sulfate	Comments
2	50.24	60.54	1.6	10	7/18/2013	980		2,400	<0.001	<0.001	<0.001	<0.003	222	Sand to clear No odor
2	51.45	60.54	1.5	10	10/18/2013	1,120	1,133	2,560	<0.001	<0.001	<0.001	<0.003	304	Sand to clear No odor
2	52.98	60.54	1.2	10	1/24/2014	1,000		2,580	<0.001	<0.001	<0.001	<0.003	251	Sand to clear No odor
2	53.92	60.54	1.1	10	4/8/2014	1,160		2,510	<0.001	<0.001	<0.001	<0.003	229	Sand to clear No odor
2	54.57	60.54	1	10	7/22/2014	970		2,390	<0.001	<0.001	<0.001	<0.003	245	Sand to clear No odor
2	49.96	60.54	1.7	10	10/24/2014	690	955	1,890	<0.001	<0.001	<0.001	<0.003	196	Sand to clear No odor
2	50.17	60.54	1.7	10	2/4/2015	1,140		2,510	<0.001	<0.001	<0.001	<0.003	285	Sand to clear No odor
2	51.08	60.54	1.5	10	4/22/2015	1,300		2,810	<0.001	<0.001	<0.001	<0.003	296	Sand to clear No odor
2	51.41	60.54	1.46	10	7/30/2015	980		2,770	<0.001	<0.001	<0.001	<0.003	162	Sand to clear No odor
2	50.28	60.54	1.64	10	10/23/2015	1,220	1,160	2,680	<0.001	<0.001	<0.001	<0.003	205	Sand to clear No odor
2	49.43	60.54	1.8	10	2/1/2016	1,260		2,900	<0.001	<0.001	<0.001	<0.003	258	Sand to clear No odor
2	50.46	60.54	1.6	10	4/25/2016	1,100		2,350	<0.001	<0.001	<0.001	<0.003	288	Sand to clear No odor
2	48.95	60.54	1.9	10	7/25/2016	1,160		2,520	<0.001	<0.001	<0.001	<0.003	276	Sand to clear No odor
2	49.41	60.54	1.8	10	10/31/2016	1,260	1,195	2,400	<0.001	<0.001	<0.001	<0.003	304	Sand to clear No odor
2	48.33	60.54	2	10	2/8/2017	1,020		2,510	<0.001	<0.001	<0.001	<0.003	291	Sand to clear No odor
2	47.89	60.54	2	10	4/13/2017	1,340		2,710	<0.001	<0.001	<0.001	<0.003	294	Sand to clear No odor
2	47.17	60.54	2	10	8/17/2017	1,570		3,160	<0.001	<0.001	<0.001	<0.003	260	Sand to clear No odor
2	47.14	60.54	2	10	10/26/2017	1,600	1,383	3,430	<0.001	<0.001	<0.001	<0.003	272	Sand to clear No odor
2	46.03	60.54	2.3	8	1/18/2018	1,700		3,310	<0.001	<0.001	<0.001	<0.003	351	Sand to clear No odor
2	45.58	60.54	2.4	8	4/30/2018	1,580		3,360	<0.001	<0.001	<0.001	<0.003	395	Sand to clear No odor
2	45.48	60.54	2.4	8	8/14/2018	1,580		3,040	<0.001	<0.001	<0.001	<0.003	276	Sand to clear No odor
2	45.38	60.54	2.4	8	11/1/2018	2,080	1,735	3,170	<0.001	<0.001	<0.001	<0.003	302	Sand to clear No odor
2	45.18	60.54	2.5	8	2/12/2019	1,540		3,030	<0.001	<0.001	<0.001	<0.003	365	Sand to clear No odor
2	45.05	60.54	2.5	8	4/26/2019	1,580		3,080	<0.001	<0.001	<0.001	<0.003	351	Sand to clear No odor
2	44.98	60.54	2.5	8	7/29/2019	1,220		2,840	<0.001	<0.001	<0.001	<0.003	317	Sand to clear No odor
2	45.03	60.54	2.8	8	10/28/2019	1,170	1,378	2,660	<0.001	<0.001	<0.001	<0.003	324	Sand to clear No odor
2	44.86	60.54	2.5	8	2/10/2020	1,110		2,550	<0.001	<0.001	<0.001	<0.003	399	Sand to clear No odor
2	44.72	60.54	2.5	8	8/13/2020	960	1,035	2,500	XXX	XXX	XXX	XXX	371	Sand to clear No odor
2	44.58	60.54	2.6	8	2/24/2021	750		2,170	XXX	XXX	XXX	XXX	529	Sand to clear No odor

ROC - BD P-26-2 (AP-97)

Unit Letter P, Section 26, T21S, R37E

MW	Depth to Water	Total Depth	Well Volume	Volume Purged	Sample Date	Cl	ann. avg Cl	TDS	Benzene	Toluene	Ethyl Benzene	Total Xylenes	Sulfate	Comments
2	44.56	60.24	2.6	8	5/13/2021	810		2,330	XXX	XXX	XXX	XXX	430	Sand to clear No odor
2	44.65	60.24	2.5	8	8/25/2021	800		2,290	XXX	XXX	XXX	XXX	532	Sand to clear No odor
2	44.73	60.24	2.5	8	10/25/2021	860	805	2,290	XXX	XXX	XXX	XXX	427	Sand to clear No odor
2	44.68	60.54	2.5	8	2/10/2022	830		2,280	XXX	XXX	XXX	XXX	453	Sand to clear No odor
2	44.64	60.54	2.5	8	5/2/2022	860		2,370	XXX	XXX	XXX	XXX	438	Sand to clear No odor
2	44.93	60.54	2.5	8	8/19/2022	880		2,340	XXX	XXX	XXX	XXX	413	Sand to clear No odor
2	45.01	60.54	2.5	8	10/31/2022	850	855	2,420	XXX	XXX	XXX	XXX	486	Sand to clear No odor
2	44.95	60.54	2.5	8	3/4/2023	870		2,400	XXX	XXX	XXX	XXX	350	Sand to clear No odor
2	44.82	60.54	2.5	8	5/8/2023	790		1,880	XXX	XXX	XXX	XXX	246	Sand to clear No odor
2	44.98	60.54	2.5	8	8/1/2023	800		2,300	XXX	XXX	XXX	XXX	470	Sand to clear No odor
2	45	60.54	2.5	8	10/9/2023	830	823	2,360	XXX	XXX	XXX	XXX	626	Sand to clear No odor

MW	Depth to Water	Total Depth	Well Volume	Volume Purged	Sample Date	Cl	ann. avg Cl	TDS	Benzene	Toluene	Ethyl Benzene	Total Xylenes	Sulfate	Comments
3	52.19	62.13	1.6	8	10/18/2013	740	740	1,710	<0.001	<0.001	<0.001	<0.003	216	Sand to clear No odor
3	53.64	62.13	1.4	8	1/24/2014	680		1,780	<0.001	<0.001	<0.001	<0.003	213	Sand to clear No odor
3	54.53	62.13	1.2	8	4/8/2014	820		1,760	<0.001	<0.001	<0.001	<0.003	223	Sand to clear No odor
3	55.17	62.13	1.1	8	7/22/2014	500		1,980	<0.001	<0.001	<0.001	<0.003	201	Sand to clear No odor
3	50.87	62.13	1.8	8	10/24/2014	820	705	2,190	<0.001	<0.001	<0.001	<0.003	224	Sand to clear No odor
3	50.97	62.13	1.8	8	2/4/2015	820		1,970	<0.001	<0.001	<0.001	<0.003	214	Sand to clear No odor
3	51.82	62.13	1.6	8	4/22/2015	870		2,100	<0.001	<0.001	<0.001	<0.003	213	Sand to clear No odor
3	52.28	62.13	1.58	8	7/30/2015	910		2,360	<0.001	<0.001	<0.001	<0.003	163	Sand to clear No odor
3	51.13	62.13	1.76	8	10/23/2015	870	868	2,170	<0.001	<0.001	<0.001	<0.003	221	Sand to clear No odor
3	50.25	62.13	1.9	8	2/1/2016	860		2,040	<0.001	<0.001	<0.001	<0.003	209	Sand to clear No odor
3	51.22	62.13	1.7	8	4/25/2016	830		2,030	<0.001	<0.001	<0.001	<0.003	262	Sand to clear No odor
3	49.83	62.13	2	8	7/25/2016	820		1,920	<0.001	<0.001	<0.001	<0.003	249	Sand to clear No odor
3	50.28	62.13	1.9	8	10/31/2016	800	828	1,990	<0.001	<0.001	<0.001	<0.003	242	Sand to clear No odor

ROC - BD P-26-2 (AP-97)

Unit Letter P, Section 26, T21S, R37E

MW	Depth to Water	Total Depth	Well Volume	Volume Purged	Sample Date	CI	ann. avg CI	TDS	Benzene	Toluene	Ethyl Benzene	Total Xylenes	Sulfate	Comments
3	49.13	62.13	2.1	8	2/8/2017	760		1,720	<0.001	<0.001	<0.001	<0.003	223	Sand to clear No odor
3	48.72	62.13	2.1	8	4/13/2017	810		1,970	<0.001	<0.001	<0.001	<0.003	225	Sand to clear No odor
3	48.09	62.13	2.2	8	8/17/2017	780		1,920	<0.001	<0.001	<0.001	<0.003	222	Sand to clear No odor
3	48.03	62.13	2.3	8	10/26/2017	690	760	1,850	<0.001	<0.001	<0.001	<0.003	233	Sand to clear No odor
3	46.92	62.13	2.4	8	1/18/2018	610		1,530	<0.001	<0.001	<0.001	<0.003	236	Sand to clear No odor
3	46.51	62.13	2.5	8	4/30/2018	720		1,630	<0.001	<0.001	<0.001	<0.003	287	Sand to clear No odor
3	46.39	62.13	2.5	8	8/14/2018	730		1,760	<0.001	<0.001	<0.001	<0.003	186	Sand to clear No odor
3	46.27	62.13	2.5	8	11/1/2018	780	710	1,700	<0.001	<0.001	<0.001	<0.003	237	Sand to clear No odor
3	46.06	62.13	2.6	8	2/12/2019	710		1,740	<0.001	<0.001	<0.001	<0.003	253	Sand to clear No odor
3	45.98	62.13	2.6	8	4/26/2019	730		1,720	<0.001	<0.001	<0.001	<0.003	242	Sand to clear No odor
3	45.89	62.13	2.6	8	7/29/2019	750		1,740	<0.001	<0.001	<0.001	<0.003	235	Sand to clear No odor
3	45.92	62.13	2.6	8	10/28/2019	720	728	1,780	<0.001	<0.001	<0.001	<0.003	206	Sand to clear No odor
3	45.78	62.13	2.6	8	2/10/2020	660		1,550	<0.001	<0.001	<0.001	<0.003	232	Sand to clear No odor
3	45.64	62.13	2.6	8	8/13/2020	660	660	1,670	XXX	XXX	XXX	XXX	209	Sand to clear No odor
3	45.49	62.13	2.7	8	2/24/2021	630		1,410	XXX	XXX	XXX	XXX	259	Sand to clear No odor
3	45.53	62.13	2.7	8	5/13/2021	690		1,890	XXX	XXX	XXX	XXX	280	Sand to clear No odor
3	45.54	62.13	2.6	8	8/25/2021	780		1,770	XXX	XXX	XXX	XXX	358	Sand to clear No odor
3	45.62	62.13	2.6	8	10/25/2021	780	720	1,900	XXX	XXX	XXX	XXX	241	Sand to clear No odor
3	45.57	62.13	2.6	8	2/10/2022	820		1,890	XXX	XXX	XXX	XXX	272	Sand to clear No odor
3	45.55	62.13	2.7	8	5/2/2022	880		2,000	XXX	XXX	XXX	XXX	245	Sand to clear No odor
3	45.82	62.13	2.6	8	8/19/2022	740		2,060	XXX	XXX	XXX	XXX	292	Sand to clear No odor
3	45.89	62.13	2.6	8	10/31/2022	630	768	1,740	XXX	XXX	XXX	XXX	239	Sand to clear No odor
3	45.86	62.13	2.6	8	3/4/2023	670		1,680	XXX	XXX	XXX	XXX	244	Sand to clear No odor
3	45.72	62.13	2.6	8	5/8/2023	640		1,690	XXX	XXX	XXX	XXX	277	Sand to clear No odor
3	45.87	62.13	2.6	8	8/1/2023	600		1,710	XXX	XXX	XXX	XXX	221	Sand to clear No odor
3	45.92	62.13	2.6	8	10/9/2023	670	645	1,720	XXX	XXX	XXX	XXX	318	Sand to clear No odor



PHONE (575) 393-2326 ° 101 E. MARLAND ° HOBBS, NM 88240

March 20, 2023

KATIE JONES

Rice Operating Company

112 W. Taylor

Hobbs, NM 88240

RE: BD P-26-1 VENT

Enclosed are the results of analyses for samples received by the laboratory on 03/08/23 15:40.

Cardinal Laboratories is accredited through Texas NELAP under certificate number T104704398-22-15. Accreditation applies to drinking water, non-potable water and solid and chemical materials. All accredited analytes are denoted by an asterisk (*). For a complete list of accredited analytes and matrices visit the TCEQ website at www.tceq.texas.gov/field/qa/lab_accred_certif.html.

Cardinal Laboratories is accredited through the State of Colorado Department of Public Health and Environment for:

Method EPA 552.2	Haloacetic Acids (HAA-5)
Method EPA 524.2	Total Trihalomethanes (TTHM)
Method EPA 524.4	Regulated VOCs (V1, V2, V3)

Accreditation applies to public drinking water matrices.

This report meets NELAP requirements and is made up of a cover page, analytical results, and a copy of the original chain-of-custody. If you have any questions concerning this report, please feel free to contact me.

Sincerely,

A handwritten signature in black ink that reads "Celey D. Keene".

Celey D. Keene

Lab Director/Quality Manager



PHONE (575) 393-2326 ° 101 E. MARLAND ° HOBBS, NM 88240

Analytical Results For:

Rice Operating Company
KATIE JONES
112 W. Taylor
Hobbs NM, 88240
Fax To: (575) 397-1471

Received:	03/08/2023	Sampling Date:	03/04/2023
Reported:	03/20/2023	Sampling Type:	Water
Project Name:	BD P-26-1 VENT	Sampling Condition:	Cool & Intact
Project Number:	NONE GIVEN	Sample Received By:	Tamara Oldaker
Project Location:	T21S R37E SEC 26 P~ LEA CO NM		

Sample ID: MONITOR WELL #1 (H231060-01)

Chloride, SM4500Cl-B		mg/L		Analyzed By: AC						
Analyte	Result	Reporting Limit	Analyzed	Method Blank	BS	% Recovery	True Value QC	RPD	Qualifier	
Chloride*	228	4.00	03/09/2023	ND	100	100	100	3.92		
Sulfate 375.4		mg/L		Analyzed By: AC						
Analyte	Result	Reporting Limit	Analyzed	Method Blank	BS	% Recovery	True Value QC	RPD	Qualifier	
Sulfate*	170	25.0	03/20/2023	ND	18.2	91.0	20.0	16.5		
TDS 160.1		mg/L		Analyzed By: GM						
Analyte	Result	Reporting Limit	Analyzed	Method Blank	BS	% Recovery	True Value QC	RPD	Qualifier	
TDS*	905	5.00	03/14/2023	ND	806	80.6	1000	0.00		

Sample ID: MONITOR WELL #2 (H231060-02)

Chloride, SM4500Cl-B		mg/L		Analyzed By: AC						
Analyte	Result	Reporting Limit	Analyzed	Method Blank	BS	% Recovery	True Value QC	RPD	Qualifier	
Chloride*	228	4.00	03/09/2023	ND	100	100	100	3.92		
Sulfate 375.4		mg/L		Analyzed By: AC						
Analyte	Result	Reporting Limit	Analyzed	Method Blank	BS	% Recovery	True Value QC	RPD	Qualifier	
Sulfate*	186	25.0	03/20/2023	ND	18.2	91.0	20.0	16.5		
TDS 160.1		mg/L		Analyzed By: GM						
Analyte	Result	Reporting Limit	Analyzed	Method Blank	BS	% Recovery	True Value QC	RPD	Qualifier	
TDS*	922	5.00	03/14/2023	ND	806	80.6	1000	0.00		

Cardinal Laboratories

*=Accredited Analyte

PLEASE NOTE: Liability and Damages. Cardinal's liability and client's exclusive remedy for any claim arising, whether based in contract or tort, shall be limited to the amount paid by client for analyses. All claims, including those for negligence and any other cause whatsoever shall be deemed waived unless made in writing and received by Cardinal within thirty (30) days after completion of the applicable service. In no event shall Cardinal be liable for incidental or consequential damages, including, without limitation, business interruptions, loss of use, or loss of profits incurred by client, its subsidiaries, affiliates or successors arising out of or related to the performance of the services hereunder by Cardinal, regardless of whether such claim is based upon any of the above stated reasons or otherwise. Results relate only to the samples identified above. This report shall not be reproduced except in full with written approval of Cardinal Laboratories.

Celey D. Keene, Lab Director/Quality Manager



PHONE (575) 393-2326 • 101 E. MARLAND • HOBBS, NM 88240

Analytical Results For:

Rice Operating Company
KATIE JONES
112 W. Taylor
Hobbs NM, 88240
Fax To: (575) 397-1471

Received:	03/08/2023	Sampling Date:	03/04/2023
Reported:	03/20/2023	Sampling Type:	Water
Project Name:	BD P-26-1 VENT	Sampling Condition:	Cool & Intact
Project Number:	NONE GIVEN	Sample Received By:	Tamara Oldaker
Project Location:	T21S R37E SEC 26 P~ LEA CO NM		

Sample ID: MONITOR WELL #3 (H231060-03)

Chloride, SM4500Cl-B		mg/L		Analyzed By: AC						
Analyte	Result	Reporting Limit	Analyzed	Method Blank	BS	% Recovery	True Value QC	RPD	Qualifier	
Chloride*	224	4.00	03/09/2023	ND	100	100	100	3.92		
Sulfate 375.4		mg/L		Analyzed By: AC						
Analyte	Result	Reporting Limit	Analyzed	Method Blank	BS	% Recovery	True Value QC	RPD	Qualifier	
Sulfate*	185	25.0	03/20/2023	ND	18.2	91.0	20.0	16.5		
TDS 160.1		mg/L		Analyzed By: GM						
Analyte	Result	Reporting Limit	Analyzed	Method Blank	BS	% Recovery	True Value QC	RPD	Qualifier	
TDS*	933	5.00	03/14/2023	ND	806	80.6	1000	0.00		

Cardinal Laboratories

*=Accredited Analyte

PLEASE NOTE: Liability and Damages. Cardinal's liability and client's exclusive remedy for any claim arising, whether based in contract or tort, shall be limited to the amount paid by client for analyses. All claims, including those for negligence and any other cause whatsoever shall be deemed waived unless made in writing and received by Cardinal within thirty (30) days after completion of the applicable service. In no event shall Cardinal be liable for incidental or consequential damages, including, without limitation, business interruptions, loss of use, or loss of profits incurred by client, its subsidiaries, affiliates or successors arising out of or related to the performance of the services hereunder by Cardinal, regardless of whether such claim is based upon any of the above stated reasons or otherwise. Results relate only to the samples identified above. This report shall not be reproduced except in full with written approval of Cardinal Laboratories.

Celey D. Keene, Lab Director/Quality Manager



PHONE (575) 393-2326 ° 101 E. MARLAND ° HOBBS, NM 88240

Notes and Definitions

ND	Analyte NOT DETECTED at or above the reporting limit
RPD	Relative Percent Difference
**	Samples not received at proper temperature of 6°C or below.
***	Insufficient time to reach temperature.
-	Chloride by SM4500Cl-B does not require samples be received at or below 6°C Samples reported on an as received basis (wet) unless otherwise noted on report

Cardinal Laboratories

*=Accredited Analyte

PLEASE NOTE: Liability and Damages. Cardinal's liability and client's exclusive remedy for any claim arising, whether based in contract or tort, shall be limited to the amount paid by client for analyses. All claims, including those for negligence and any other cause whatsoever shall be deemed waived unless made in writing and received by Cardinal within thirty (30) days after completion of the applicable service. In no event shall Cardinal be liable for incidental or consequential damages, including, without limitation, business interruptions, loss of use, or loss of profits incurred by client, its subsidiaries, affiliates or successors arising out of or related to the performance of the services hereunder by Cardinal, regardless of whether such claim is based upon any of the above stated reasons or otherwise. Results relate only to the samples identified above. This report shall not be reproduced except in full with written approval of Cardinal Laboratories.

A handwritten signature in black ink, appearing to read "C. D. Keene".

Celey D. Keene, Lab Director/Quality Manager

Cardinal Laboratories, Inc.

Company Name:	RICE Operating Company
Project Manager:	Katie Jones
Address:	(Street, City, Zip)
	122 W Taylor Street ~ Hobbs, New Mexico 88240
Phone #:	(575) 393-9174

BILL TO	Company:	PO#
RICE Operating Company		
Address:		(Street, City, Zip)
122 W Taylor Street ~ Hobbs, New Mexico 88240		
Phone#:		Fax#:
(575) 393-9174		(575) 397-1471

Phone #: (575) 393-9174 Fax #: (575) 397-1471

Project #:	Project Name:
	BD P-26-1 Vent

Project Location: T21S R37E Sec26 P ~ Lea County New Mexico

[illegible]

Relinquished by:	Date:	Time:
Rozanne Johnson	3/8/2023	15:40
Relinquished by:	Date:	Time:

Received by:	Date:	Time: 1540
<i>[Signature]</i>		3-8-23
Received By: (Laboratory Staff)	Date:	Time:

Delivered By: (Circle One)

Sampler - UPS - Bus - Other:

Sample Condition		CHECKED BY:
	Cool	Intact
Yes	<input checked="" type="checkbox"/>	<input checked="" type="checkbox"/>
No	<input type="checkbox"/>	<input type="checkbox"/>

(Initials) *[Signature]*

CHAIN-OF-CUSTODY AND ANALYSIS REQUEST

LAB Order ID # _____

ANALYSIS REQUEST

(Circle or Specify Method No.)

[illegible]

Phone Results	Yes	No
Fax Results	Yes	No Additional Fax Number:

REMARKS:

Email Results: kjones@riceswd.com
rozanne@sdacres.com



PHONE (575) 393-2326 ° 101 E. MARLAND ° HOBBS, NM 88240

May 17, 2023

KATIE JONES

Rice Operating Company

112 W. Taylor

Hobbs, NM 88240

RE: BD P-26-1 VENT

Enclosed are the results of analyses for samples received by the laboratory on 05/11/23 14:55.

Cardinal Laboratories is accredited through Texas NELAP under certificate number T104704398-22-15. Accreditation applies to drinking water, non-potable water and solid and chemical materials. All accredited analytes are denoted by an asterisk (*). For a complete list of accredited analytes and matrices visit the TCEQ website at www.tceq.texas.gov/field/qa/lab_accred_certif.html.

Cardinal Laboratories is accredited through the State of Colorado Department of Public Health and Environment for:

Method EPA 552.2	Haloacetic Acids (HAA-5)
Method EPA 524.2	Total Trihalomethanes (TTHM)
Method EPA 524.4	Regulated VOCs (V1, V2, V3)

Accreditation applies to public drinking water matrices.

This report meets NELAP requirements and is made up of a cover page, analytical results, and a copy of the original chain-of-custody. If you have any questions concerning this report, please feel free to contact me.

Sincerely,

A handwritten signature in black ink that reads "Celey D. Keene". The signature is written in a cursive, flowing style.

Celey D. Keene

Lab Director/Quality Manager



PHONE (575) 393-2326 ° 101 E. MARLAND ° HOBBS, NM 88240

Analytical Results For:

Rice Operating Company
KATIE JONES
112 W. Taylor
Hobbs NM, 88240
Fax To: (575) 397-1471

Received:	05/11/2023	Sampling Date:	05/08/2023
Reported:	05/17/2023	Sampling Type:	Water
Project Name:	BD P-26-1 VENT	Sampling Condition:	Cool & Intact
Project Number:	NONE GIVEN	Sample Received By:	Tamara Oldaker
Project Location:	T21S R37E SEC 26 P~ LEA CO NM		

Sample ID: MONITOR WELL #1 (H232369-01)

Chloride, SM4500Cl-B		mg/L		Analyzed By: GM						
Analyte	Result	Reporting Limit	Analyzed	Method Blank	BS	% Recovery	True Value QC	RPD	Qualifier	
Chloride*	324	4.00	05/12/2023	ND	104	104	100	3.92		
Sulfate 375.4		mg/L		Analyzed By: GM						
Analyte	Result	Reporting Limit	Analyzed	Method Blank	BS	% Recovery	True Value QC	RPD	Qualifier	
Sulfate*	166	50.0	05/16/2023	ND	21.5	107	20.0	17.5		
TDS 160.1		mg/L		Analyzed By: AC						
Analyte	Result	Reporting Limit	Analyzed	Method Blank	BS	% Recovery	True Value QC	RPD	Qualifier	
TDS*	1140	5.00	05/16/2023	ND	827	82.7	1000	1.83		

Sample ID: MONITOR WELL #2 (H232369-02)

Chloride, SM4500Cl-B		mg/L		Analyzed By: GM						
Analyte	Result	Reporting Limit	Analyzed	Method Blank	BS	% Recovery	True Value QC	RPD	Qualifier	
Chloride*	204	4.00	05/12/2023	ND	104	104	100	3.92		
Sulfate 375.4		mg/L		Analyzed By: GM						
Analyte	Result	Reporting Limit	Analyzed	Method Blank	BS	% Recovery	True Value QC	RPD	Qualifier	
Sulfate*	179	50.0	05/16/2023	ND	21.5	107	20.0	17.5		
TDS 160.1		mg/L		Analyzed By: AC						
Analyte	Result	Reporting Limit	Analyzed	Method Blank	BS	% Recovery	True Value QC	RPD	Qualifier	
TDS*	911	5.00	05/16/2023	ND	827	82.7	1000	1.83		

Cardinal Laboratories

*=Accredited Analyte

PLEASE NOTE: Liability and Damages. Cardinal's liability and client's exclusive remedy for any claim arising, whether based in contract or tort, shall be limited to the amount paid by client for analyses. All claims, including those for negligence and any other cause whatsoever shall be deemed waived unless made in writing and received by Cardinal within thirty (30) days after completion of the applicable service. In no event shall Cardinal be liable for incidental or consequential damages, including, without limitation, business interruptions, loss of use, or loss of profits incurred by client, its subsidiaries, affiliates or successors arising out of or related to the performance of the services hereunder by Cardinal, regardless of whether such claim is based upon any of the above stated reasons or otherwise. Results relate only to the samples identified above. This report shall not be reproduced except in full with written approval of Cardinal Laboratories.

Celey D. Keene, Lab Director/Quality Manager



PHONE (575) 393-2326 • 101 E. MARLAND • HOBBS, NM 88240

Analytical Results For:

Rice Operating Company
KATIE JONES
112 W. Taylor
Hobbs NM, 88240
Fax To: (575) 397-1471

Received:	05/11/2023	Sampling Date:	05/08/2023
Reported:	05/17/2023	Sampling Type:	Water
Project Name:	BD P-26-1 VENT	Sampling Condition:	Cool & Intact
Project Number:	NONE GIVEN	Sample Received By:	Tamara Oldaker
Project Location:	T21S R37E SEC 26 P~ LEA CO NM		

Sample ID: MONITOR WELL #3 (H232369-03)

Chloride, SM4500Cl-B		mg/L		Analyzed By: GM						
Analyte	Result	Reporting Limit	Analyzed	Method Blank	BS	% Recovery	True Value QC	RPD	Qualifier	
Chloride*	224	4.00	05/12/2023	ND	104	104	100	3.92		
Sulfate 375.4		mg/L		Analyzed By: GM						
Analyte	Result	Reporting Limit	Analyzed	Method Blank	BS	% Recovery	True Value QC	RPD	Qualifier	
Sulfate*	170	50.0	05/16/2023	ND	21.5	107	20.0	17.5		
TDS 160.1		mg/L		Analyzed By: AC						
Analyte	Result	Reporting Limit	Analyzed	Method Blank	BS	% Recovery	True Value QC	RPD	Qualifier	
TDS*	985	5.00	05/16/2023	ND	827	82.7	1000	1.83		

Cardinal Laboratories

*=Accredited Analyte

PLEASE NOTE: Liability and Damages. Cardinal's liability and client's exclusive remedy for any claim arising, whether based in contract or tort, shall be limited to the amount paid by client for analyses. All claims, including those for negligence and any other cause whatsoever shall be deemed waived unless made in writing and received by Cardinal within thirty (30) days after completion of the applicable service. In no event shall Cardinal be liable for incidental or consequential damages, including, without limitation, business interruptions, loss of use, or loss of profits incurred by client, its subsidiaries, affiliates or successors arising out of or related to the performance of the services hereunder by Cardinal, regardless of whether such claim is based upon any of the above stated reasons or otherwise. Results relate only to the samples identified above. This report shall not be reproduced except in full with written approval of Cardinal Laboratories.

Celey D. Keene, Lab Director/Quality Manager



PHONE (575) 393-2326 ° 101 E. MARLAND ° HOBBS, NM 88240

Notes and Definitions

ND	Analyte NOT DETECTED at or above the reporting limit
RPD	Relative Percent Difference
**	Samples not received at proper temperature of 6°C or below.
***	Insufficient time to reach temperature.
-	Chloride by SM4500Cl-B does not require samples be received at or below 6°C Samples reported on an as received basis (wet) unless otherwise noted on report

Cardinal Laboratories

*=Accredited Analyte

PLEASE NOTE: Liability and Damages. Cardinal's liability and client's exclusive remedy for any claim arising, whether based in contract or tort, shall be limited to the amount paid by client for analyses. All claims, including those for negligence and any other cause whatsoever shall be deemed waived unless made in writing and received by Cardinal within thirty (30) days after completion of the applicable service. In no event shall Cardinal be liable for incidental or consequential damages, including, without limitation, business interruptions, loss of use, or loss of profits incurred by client, its subsidiaries, affiliates or successors arising out of or related to the performance of the services hereunder by Cardinal, regardless of whether such claim is based upon any of the above stated reasons or otherwise. Results relate only to the samples identified above. This report shall not be reproduced except in full with written approval of Cardinal Laboratories.

A handwritten signature in black ink, appearing to read "Celey D. Keene".

Celey D. Keene, Lab Director/Quality Manager

Cardinal Laboratories, Inc.

Company Name: RICE Operating Company		BILL TO Company: RICE Operating Company		PO#
Project Manager: Katie Jones		Address: (Street, City, Zip) 122 W Taylor Street ~ Hobbs, New Mexico 88240		
Address: (Street, City, Zip) 122 W Taylor Street ~ Hobbs, New Mexico 88240		Phone#: (575) 393-9174		Fax#: (575)397-1471
Phone #: (575) 393-9174		Fax #: (575) 397-1471		

Project #: BD P-26-1 Vent

Project Location: T21S R37E Sec26 P ~ Lea County New Mexico

[illegible]

Relinquished by: <i>[Signature]</i>	Date: <i>5/11/2023</i>	Time: <i>14:45</i>	Received by: <i>[Signature]</i>	Date: <i>5-11-23</i>	Time: <i>14:55</i>
Frozanne Johnson					
Relinquished by:	Date:	Time:	Received By: (Laboratory Staff)	Date:	Time:

Delivered By: (Circle One) UPS - Bus - Other:	Sample Condition Cool Intact Yes Yes No No	CHECKED BY: (Initials)
--	---	---------------------------

CHAIN-OF-CUSTODY AND ANALYSIS REQUEST

LAB Order ID # _____

ANALYSIS REQUEST

(Circle or Specify Method No.)

[illegible]

Phone Results	Yes	No
Fax Results	Yes	No Additional Fax Number:

REMARKS:	
Email Results:	kjones@riceswd.com rozanne@sdacres.com



PHONE (575) 393-2326 ° 101 E. MARLAND ° HOBBS, NM 88240

August 08, 2023

KATIE JONES

Rice Operating Company

112 W. Taylor

Hobbs, NM 88240

RE: BD P-26-1 VENT

Enclosed are the results of analyses for samples received by the laboratory on 08/02/23 14:32.

Cardinal Laboratories is accredited through Texas NELAP under certificate number T104704398-22-15. Accreditation applies to drinking water, non-potable water and solid and chemical materials. All accredited analytes are denoted by an asterisk (*). For a complete list of accredited analytes and matrices visit the TCEQ website at www.tceq.texas.gov/field/qa/lab_accred_certif.html.

Cardinal Laboratories is accredited through the State of Colorado Department of Public Health and Environment for:

Method EPA 552.2	Haloacetic Acids (HAA-5)
Method EPA 524.2	Total Trihalomethanes (TTHM)
Method EPA 524.4	Regulated VOCs (V1, V2, V3)

Accreditation applies to public drinking water matrices.

This report meets NELAP requirements and is made up of a cover page, analytical results, and a copy of the original chain-of-custody. If you have any questions concerning this report, please feel free to contact me.

Sincerely,

A handwritten signature in black ink that reads "Celey D. Keene".

Celey D. Keene

Lab Director/Quality Manager



PHONE (575) 393-2326 ° 101 E. MARLAND ° HOBBS, NM 88240

Analytical Results For:

Rice Operating Company
KATIE JONES
112 W. Taylor
Hobbs NM, 88240
Fax To: (575) 397-1471

Received:	08/02/2023	Sampling Date:	08/01/2023
Reported:	08/08/2023	Sampling Type:	Water
Project Name:	BD P-26-1 VENT	Sampling Condition:	Cool & Intact
Project Number:	NONE GIVEN	Sample Received By:	Tamara Oldaker
Project Location:	T21S R37E SEC 26 P~ LEA CO NM		

Sample ID: MONITOR WELL #1 (H234083-01)

Chloride, SM4500Cl-B		mg/L		Analyzed By: AC						
Analyte	Result	Reporting Limit	Analyzed	Method Blank	BS	% Recovery	True Value QC	RPD	Qualifier	
Chloride*	360	4.00	08/03/2023	ND	100	100	100	0.00		
Sulfate 375.4		mg/L		Analyzed By: AC						
Analyte	Result	Reporting Limit	Analyzed	Method Blank	BS	% Recovery	True Value QC	RPD	Qualifier	
Sulfate*	253	50.0	08/07/2023	ND	22.6	113	20.0	1.83		
TDS 160.1		mg/L		Analyzed By: AC						
Analyte	Result	Reporting Limit	Analyzed	Method Blank	BS	% Recovery	True Value QC	RPD	Qualifier	
TDS*	1270	5.00	08/07/2023	ND	814	81.4	1000	2.49		

Sample ID: MONITOR WELL #2 (H234083-02)

Chloride, SM4500Cl-B		mg/L		Analyzed By: AC						
Analyte	Result	Reporting Limit	Analyzed	Method Blank	BS	% Recovery	True Value QC	RPD	Qualifier	
Chloride*	220	4.00	08/03/2023	ND	100	100	100	0.00		
Sulfate 375.4		mg/L		Analyzed By: AC						
Analyte	Result	Reporting Limit	Analyzed	Method Blank	BS	% Recovery	True Value QC	RPD	Qualifier	
Sulfate*	169	50.0	08/07/2023	ND	22.6	113	20.0	1.83		
TDS 160.1		mg/L		Analyzed By: AC						
Analyte	Result	Reporting Limit	Analyzed	Method Blank	BS	% Recovery	True Value QC	RPD	Qualifier	
TDS*	934	5.00	08/07/2023	ND	814	81.4	1000	2.49		

Cardinal Laboratories

*=Accredited Analyte

PLEASE NOTE: Liability and Damages. Cardinal's liability and client's exclusive remedy for any claim arising, whether based in contract or tort, shall be limited to the amount paid by client for analyses. All claims, including those for negligence and any other cause whatsoever shall be deemed waived unless made in writing and received by Cardinal within thirty (30) days after completion of the applicable service. In no event shall Cardinal be liable for incidental or consequential damages, including, without limitation, business interruptions, loss of use, or loss of profits incurred by client, its subsidiaries, affiliates or successors arising out of or related to the performance of the services hereunder by Cardinal, regardless of whether such claim is based upon any of the above stated reasons or otherwise. Results relate only to the samples identified above. This report shall not be reproduced except in full with written approval of Cardinal Laboratories.

Celey D. Keene, Lab Director/Quality Manager



PHONE (575) 393-2326 • 101 E. MARLAND • HOBBS, NM 88240

Analytical Results For:

Rice Operating Company
KATIE JONES
112 W. Taylor
Hobbs NM, 88240
Fax To: (575) 397-1471

Received:	08/02/2023	Sampling Date:	08/01/2023
Reported:	08/08/2023	Sampling Type:	Water
Project Name:	BD P-26-1 VENT	Sampling Condition:	Cool & Intact
Project Number:	NONE GIVEN	Sample Received By:	Tamara Oldaker
Project Location:	T21S R37E SEC 26 P~ LEA CO NM		

Sample ID: MONITOR WELL #3 (H234083-03)

Chloride, SM4500Cl-B		mg/L		Analyzed By: AC						
Analyte	Result	Reporting Limit	Analyzed	Method Blank	BS	% Recovery	True Value QC	RPD	Qualifier	
Chloride*	220	4.00	08/03/2023	ND	100	100	100	0.00		
Sulfate 375.4		mg/L		Analyzed By: AC						
Analyte	Result	Reporting Limit	Analyzed	Method Blank	BS	% Recovery	True Value QC	RPD	Qualifier	
Sulfate*	150	50.0	08/07/2023	ND	22.6	113	20.0	1.83		
TDS 160.1		mg/L		Analyzed By: AC						
Analyte	Result	Reporting Limit	Analyzed	Method Blank	BS	% Recovery	True Value QC	RPD	Qualifier	
TDS*	918	5.00	08/07/2023	ND	814	81.4	1000	2.49		

Cardinal Laboratories

*=Accredited Analyte

PLEASE NOTE: Liability and Damages. Cardinal's liability and client's exclusive remedy for any claim arising, whether based in contract or tort, shall be limited to the amount paid by client for analyses. All claims, including those for negligence and any other cause whatsoever shall be deemed waived unless made in writing and received by Cardinal within thirty (30) days after completion of the applicable service. In no event shall Cardinal be liable for incidental or consequential damages, including, without limitation, business interruptions, loss of use, or loss of profits incurred by client, its subsidiaries, affiliates or successors arising out of or related to the performance of the services hereunder by Cardinal, regardless of whether such claim is based upon any of the above stated reasons or otherwise. Results relate only to the samples identified above. This report shall not be reproduced except in full with written approval of Cardinal Laboratories.

Celey D. Keene, Lab Director/Quality Manager



PHONE (575) 393-2326 ° 101 E. MARLAND ° HOBBS, NM 88240

Notes and Definitions

- ND Analyte NOT DETECTED at or above the reporting limit
- RPD Relative Percent Difference
- ** Samples not received at proper temperature of 6°C or below.
- *** Insufficient time to reach temperature.
- Chloride by SM4500Cl-B does not require samples be received at or below 6°C
Samples reported on an as received basis (wet) unless otherwise noted on report

Cardinal Laboratories

*=Accredited Analyte

PLEASE NOTE: Liability and Damages. Cardinal's liability and client's exclusive remedy for any claim arising, whether based in contract or tort, shall be limited to the amount paid by client for analyses. All claims, including those for negligence and any other cause whatsoever shall be deemed waived unless made in writing and received by Cardinal within thirty (30) days after completion of the applicable service. In no event shall Cardinal be liable for incidental or consequential damages, including, without limitation, business interruptions, loss of use, or loss of profits incurred by client, its subsidiaries, affiliates or successors arising out of or related to the performance of the services hereunder by Cardinal, regardless of whether such claim is based upon any of the above stated reasons or otherwise. Results relate only to the samples identified above. This report shall not be reproduced except in full with written approval of Cardinal Laboratories.

A handwritten signature in black ink, appearing to read "Celey D. Keene".

Celey D. Keene, Lab Director/Quality Manager

Cardinal Laboratories, Inc.

CHAIN-OF-CUSTODY AND ANALYSIS REQUEST

LAB Order ID # _____

ANALYSIS REQUEST

(Circle or Specify Method No.)

Company Name: RICE Operating Company		BILL TO Company: RICE Operating Company		PO#
Project Manager: Katie Jones		Address: (Street, City, Zip) 122 W Taylor Street ~ Hobbs, New Mexico 88240		
Address: (Street, City, Zip) 122 W Taylor Street ~ Hobbs, New Mexico 88240		Phone#: (575) 393-9174		Fax#: (575)397-1471
Phone #: (575) 393-9174		Fax #: (575) 397-1471		

Project #: (513) 551-1471
Project Name: BD P-26-1 Vent 21

Project Location: T21S R37E Sec26 P ~ Lea County New Mexico

[illegible]

Relinquished by: <i>[Signature]</i>	Date: <i>8/2/2003</i>	Time: <i>14:30</i>	Received by: <i>[Signature]</i>	Date: <i>8-2-23</i>	Time: <i>1432</i>
Lozanne Johnson			Received By: (Laboratory Staff)		
Relinquished by:	Date:	Time:	Received By: (Laboratory Staff)	Date:	Time:

Delivered By: (Circle One)

Sampler - UPS - Bus - Other:

Sample Condition

	Cool	Intact
Yes	<input checked="" type="checkbox"/>	<input checked="" type="checkbox"/>
No	<input type="checkbox"/>	<input type="checkbox"/>

CHECKED BY:

(Initials)

Phone Results	Yes	No
Fax Results	Yes	No Additional Fax Number:

REMARKS:

Email Results: kjones@riceswd.com
rozanne@sdacres.com

Released to Imaging: 8/1/2024 4:06:59 PM



PHONE (575) 393-2326 ° 101 E. MARLAND ° HOBBS, NM 88240

October 18, 2023

KATIE JONES

Rice Operating Company

112 W. Taylor

Hobbs, NM 88240

RE: BD P-26-1 VENT

Enclosed are the results of analyses for samples received by the laboratory on 10/11/23 16:03.

Cardinal Laboratories is accredited through Texas NELAP under certificate number T104704398-22-15. Accreditation applies to drinking water, non-potable water and solid and chemical materials. All accredited analytes are denoted by an asterisk (*). For a complete list of accredited analytes and matrices visit the TCEQ website at www.tceq.texas.gov/field/qa/lab_accred_certif.html.

Cardinal Laboratories is accredited through the State of Colorado Department of Public Health and Environment for:

Method EPA 552.2	Haloacetic Acids (HAA-5)
Method EPA 524.2	Total Trihalomethanes (TTHM)
Method EPA 524.4	Regulated VOCs (V1, V2, V3)

Accreditation applies to public drinking water matrices.

This report meets NELAP requirements and is made up of a cover page, analytical results, and a copy of the original chain-of-custody. If you have any questions concerning this report, please feel free to contact me.

Sincerely,

A handwritten signature in black ink that reads "Celey D. Keene".

Celey D. Keene

Lab Director/Quality Manager



PHONE (575) 393-2326 ° 101 E. MARLAND ° HOBBS, NM 88240

Analytical Results For:

Rice Operating Company
KATIE JONES
112 W. Taylor
Hobbs NM, 88240
Fax To: (575) 397-1471

Received:	10/11/2023	Sampling Date:	10/09/2023
Reported:	10/18/2023	Sampling Type:	Water
Project Name:	BD P-26-1 VENT	Sampling Condition:	Cool & Intact
Project Number:	NONE GIVEN	Sample Received By:	Shalyn Rodriguez
Project Location:	T21S R37E SEC 26 P~ LEA CO NM		

Sample ID: MONITOR WELL #1 (H235552-01)

Chloride, SM4500Cl-B		mg/L		Analyzed By: AC						
Analyte	Result	Reporting Limit	Analyzed	Method Blank	BS	% Recovery	True Value QC	RPD	Qualifier	
Chloride*	344	4.00	10/12/2023	ND	100	100	100	3.92		
Sulfate 375.4		mg/L		Analyzed By: AC						
Analyte	Result	Reporting Limit	Analyzed	Method Blank	BS	% Recovery	True Value QC	RPD	Qualifier	
Sulfate*	243	50.0	10/12/2023	ND	22.6	113	20.0	13.7		
TDS 160.1		mg/L		Analyzed By: AC						
Analyte	Result	Reporting Limit	Analyzed	Method Blank	BS	% Recovery	True Value QC	RPD	Qualifier	
TDS*	1130	5.00	10/17/2023	ND	404	80.8	500	2.41		

Sample ID: MONITOR WELL #2 (H235552-02)

Chloride, SM4500Cl-B		mg/L		Analyzed By: AC						
Analyte	Result	Reporting Limit	Analyzed	Method Blank	BS	% Recovery	True Value QC	RPD	Qualifier	
Chloride*	240	4.00	10/12/2023	ND	100	100	100	3.92		
Sulfate 375.4		mg/L		Analyzed By: AC						
Analyte	Result	Reporting Limit	Analyzed	Method Blank	BS	% Recovery	True Value QC	RPD	Qualifier	
Sulfate*	142	50.0	10/12/2023	ND	22.6	113	20.0	13.7		
TDS 160.1		mg/L		Analyzed By: AC						
Analyte	Result	Reporting Limit	Analyzed	Method Blank	BS	% Recovery	True Value QC	RPD	Qualifier	
TDS*	884	5.00	10/17/2023	ND	404	80.8	500	2.41		

Cardinal Laboratories

*=Accredited Analyte

PLEASE NOTE: Liability and Damages. Cardinal's liability and client's exclusive remedy for any claim arising, whether based in contract or tort, shall be limited to the amount paid by client for analyses. All claims, including those for negligence and any other cause whatsoever shall be deemed waived unless made in writing and received by Cardinal within thirty (30) days after completion of the applicable service. In no event shall Cardinal be liable for incidental or consequential damages, including, without limitation, business interruptions, loss of use, or loss of profits incurred by client, its subsidiaries, affiliates or successors arising out of or related to the performance of the services hereunder by Cardinal, regardless of whether such claim is based upon any of the above stated reasons or otherwise. Results relate only to the samples identified above. This report shall not be reproduced except in full with written approval of Cardinal Laboratories.

Celey D. Keene, Lab Director/Quality Manager



PHONE (575) 393-2326 • 101 E. MARLAND • HOBBS, NM 88240

Analytical Results For:

Rice Operating Company
KATIE JONES
112 W. Taylor
Hobbs NM, 88240
Fax To: (575) 397-1471

Received:	10/11/2023	Sampling Date:	10/09/2023
Reported:	10/18/2023	Sampling Type:	Water
Project Name:	BD P-26-1 VENT	Sampling Condition:	Cool & Intact
Project Number:	NONE GIVEN	Sample Received By:	Shalyn Rodriguez
Project Location:	T21S R37E SEC 26 P~ LEA CO NM		

Sample ID: MONITOR WELL #3 (H235552-03)

Chloride, SM4500Cl-B		mg/L		Analyzed By: AC						
Analyte	Result	Reporting Limit	Analyzed	Method Blank	BS	% Recovery	True Value QC	RPD	Qualifier	
Chloride*	276	4.00	10/12/2023	ND	100	100	100	3.92		
Sulfate 375.4		mg/L		Analyzed By: AC						
Analyte	Result	Reporting Limit	Analyzed	Method Blank	BS	% Recovery	True Value QC	RPD	Qualifier	
Sulfate*	181	50.0	10/12/2023	ND	22.6	113	20.0	13.7		
TDS 160.1		mg/L		Analyzed By: AC						
Analyte	Result	Reporting Limit	Analyzed	Method Blank	BS	% Recovery	True Value QC	RPD	Qualifier	
TDS*	912	5.00	10/17/2023	ND	404	80.8	500	2.41		

Cardinal Laboratories

*=Accredited Analyte

PLEASE NOTE: Liability and Damages. Cardinal's liability and client's exclusive remedy for any claim arising, whether based in contract or tort, shall be limited to the amount paid by client for analyses. All claims, including those for negligence and any other cause whatsoever shall be deemed waived unless made in writing and received by Cardinal within thirty (30) days after completion of the applicable service. In no event shall Cardinal be liable for incidental or consequential damages, including, without limitation, business interruptions, loss of use, or loss of profits incurred by client, its subsidiaries, affiliates or successors arising out of or related to the performance of the services hereunder by Cardinal, regardless of whether such claim is based upon any of the above stated reasons or otherwise. Results relate only to the samples identified above. This report shall not be reproduced except in full with written approval of Cardinal Laboratories.

Celey D. Keene, Lab Director/Quality Manager



PHONE (575) 393-2326 ° 101 E. MARLAND ° HOBBS, NM 88240

Notes and Definitions

QM-07	The spike recovery was outside acceptance limits for the MS and/or MSD. The batch was accepted based on acceptable LCS recovery.
ND	Analyte NOT DETECTED at or above the reporting limit
RPD	Relative Percent Difference
**	Samples not received at proper temperature of 6°C or below.
***	Insufficient time to reach temperature.
-	Chloride by SM4500Cl-B does not require samples be received at or below 6°C Samples reported on an as received basis (wet) unless otherwise noted on report

Cardinal Laboratories

*=Accredited Analyte

PLEASE NOTE: Liability and Damages. Cardinal's liability and client's exclusive remedy for any claim arising, whether based in contract or tort, shall be limited to the amount paid by client for analyses. All claims, including those for negligence and any other cause whatsoever shall be deemed waived unless made in writing and received by Cardinal within thirty (30) days after completion of the applicable service. In no event shall Cardinal be liable for incidental or consequential damages, including, without limitation, business interruptions, loss of use, or loss of profits incurred by client, its subsidiaries, affiliates or successors arising out of or related to the performance of the services hereunder by Cardinal, regardless of whether such claim is based upon any of the above stated reasons or otherwise. Results relate only to the samples identified above. This report shall not be reproduced except in full with written approval of Cardinal Laboratories.

A handwritten signature in black ink, appearing to read "Celey D. Keene", written over a horizontal line.

Celey D. Keene, Lab Director/Quality Manager

Cardinal Laboratories, Inc.

CHAIN-OF-CUSTODY AND ANALYSIS REQUEST

LAB Order ID # _____

Company Name: RICE Operating Company		BILL TO Company: RICE Operating Company		PO#
Project Manager: Katie Jones		Address: (Street, City, Zip) 122 W Taylor Street ~ Hobbs, New Mexico 88240		
Address: (Street, City, Zip) 122 W Taylor Street ~ Hobbs, New Mexico 88240		Phone#: (575) 393-9174		Fax#: (575) 397-1471
Phone #: (575) 393-9174		Fax #: (575) 397-1471		
Project #:		Project Name: BD P-26-1 Vent		
Project Location: T21S R37E Sec26 P ~ Lea County New Mexico				
Sampler Signature: Rozanne Johnson (575) 631-9310				

ANALYSIS REQUEST

(Circle or Specify Method No.)

[illegible]



PHONE (575) 393-2326 ° 101 E. MARLAND ° HOBBS, NM 88240

March 20, 2023

KATIE JONES

Rice Operating Company

112 W. Taylor

Hobbs, NM 88240

RE: BD JUNCTION P-26-2

Enclosed are the results of analyses for samples received by the laboratory on 03/08/23 15:40.

Cardinal Laboratories is accredited through Texas NELAP under certificate number T104704398-22-15. Accreditation applies to drinking water, non-potable water and solid and chemical materials. All accredited analytes are denoted by an asterisk (*). For a complete list of accredited analytes and matrices visit the TCEQ website at www.tceq.texas.gov/field/qa/lab_accred_certif.html.

Cardinal Laboratories is accredited through the State of Colorado Department of Public Health and Environment for:

Method EPA 552.2	Haloacetic Acids (HAA-5)
Method EPA 524.2	Total Trihalomethanes (TTHM)
Method EPA 524.4	Regulated VOCs (V1, V2, V3)

Accreditation applies to public drinking water matrices.

This report meets NELAP requirements and is made up of a cover page, analytical results, and a copy of the original chain-of-custody. If you have any questions concerning this report, please feel free to contact me.

Sincerely,

A handwritten signature in black ink that reads "Celey D. Keene".

Celey D. Keene

Lab Director/Quality Manager



PHONE (575) 393-2326 • 101 E. MARLAND • HOBBS, NM 88240

Analytical Results For:

Rice Operating Company
KATIE JONES
112 W. Taylor
Hobbs NM, 88240
Fax To: (575) 397-1471

Received: 03/08/2023
Reported: 03/20/2023
Project Name: BD JUNCTION P-26-2
Project Number: NONE GIVEN
Project Location: T21S R37E SEC 26 P ~ LEA CTY, NM

Sampling Date: 03/04/2023
Sampling Type: Water
Sampling Condition: Cool & Intact
Sample Received By: Tamara Oldaker

Sample ID: MONITOR WELL #1 (H231059-01)

Chloride, SM4500Cl-B		mg/L		Analyzed By: AC						
Analyte	Result	Reporting Limit	Analyzed	Method Blank	BS	% Recovery	True Value QC	RPD	Qualifier	
Chloride*	760	4.00	03/09/2023	ND	100	100	100	3.92		
Sulfate 375.4		mg/L		Analyzed By: AC						
Analyte	Result	Reporting Limit	Analyzed	Method Blank	BS	% Recovery	True Value QC	RPD	Qualifier	
Sulfate*	268	50.0	03/20/2023	ND	18.2	91.0	20.0	16.5		
TDS 160.1		mg/L		Analyzed By: GM						
Analyte	Result	Reporting Limit	Analyzed	Method Blank	BS	% Recovery	True Value QC	RPD	Qualifier	
TDS*	1760	5.00	03/14/2023	ND	806	80.6	1000	0.00		

Sample ID: MONITOR WELL #2 (H231059-02)

Chloride, SM4500Cl-B		mg/L		Analyzed By: AC						
Analyte	Result	Reporting Limit	Analyzed	Method Blank	BS	% Recovery	True Value QC	RPD	Qualifier	
Chloride*	870	4.00	03/09/2023	ND	100	100	100	3.92		
Sulfate 375.4		mg/L		Analyzed By: AC						
Analyte	Result	Reporting Limit	Analyzed	Method Blank	BS	% Recovery	True Value QC	RPD	Qualifier	
Sulfate*	350	83.3	03/20/2023	ND	18.2	91.0	20.0	16.5		
TDS 160.1		mg/L		Analyzed By: GM						
Analyte	Result	Reporting Limit	Analyzed	Method Blank	BS	% Recovery	True Value QC	RPD	Qualifier	
TDS*	2400	5.00	03/14/2023	ND	806	80.6	1000	0.00		

Cardinal Laboratories

*=Accredited Analyte

PLEASE NOTE: Liability and Damages. Cardinal's liability and client's exclusive remedy for any claim arising, whether based in contract or tort, shall be limited to the amount paid by client for analyses. All claims, including those for negligence and any other cause whatsoever shall be deemed waived unless made in writing and received by Cardinal within thirty (30) days after completion of the applicable service. In no event shall Cardinal be liable for incidental or consequential damages, including, without limitation, business interruptions, loss of use, or loss of profits incurred by client, its subsidiaries, affiliates or successors arising out of or related to the performance of the services hereunder by Cardinal, regardless of whether such claim is based upon any of the above stated reasons or otherwise. Results relate only to the samples identified above. This report shall not be reproduced except in full with written approval of Cardinal Laboratories.

Celey D. Keene, Lab Director/Quality Manager



PHONE (575) 393-2326 ° 101 E. MARLAND ° HOBBS, NM 88240

Analytical Results For:

Rice Operating Company
KATIE JONES
112 W. Taylor
Hobbs NM, 88240
Fax To: (575) 397-1471

Received: 03/08/2023
Reported: 03/20/2023
Project Name: BD JUNCTION P-26-2
Project Number: NONE GIVEN
Project Location: T21S R37E SEC 26 P ~ LEA CTY, NM

Sampling Date: 03/04/2023
Sampling Type: Water
Sampling Condition: Cool & Intact
Sample Received By: Tamara Oldaker

Sample ID: MONITOR WELL #3 (H231059-03)

Chloride, SM4500Cl-B		mg/L		Analyzed By: AC						
Analyte	Result	Reporting Limit	Analyzed	Method Blank	BS	% Recovery	True Value QC	RPD	Qualifier	
Chloride*	670	4.00	03/09/2023	ND	100	100	100	3.92		
Sulfate 375.4		mg/L		Analyzed By: AC						
Analyte	Result	Reporting Limit	Analyzed	Method Blank	BS	% Recovery	True Value QC	RPD	Qualifier	
Sulfate*	244	50.0	03/20/2023	ND	18.2	91.0	20.0	16.5		
TDS 160.1		mg/L		Analyzed By: GM						
Analyte	Result	Reporting Limit	Analyzed	Method Blank	BS	% Recovery	True Value QC	RPD	Qualifier	
TDS*	1680	5.00	03/14/2023	ND	806	80.6	1000	0.00		

Cardinal Laboratories

*=Accredited Analyte

PLEASE NOTE: Liability and Damages. Cardinal's liability and client's exclusive remedy for any claim arising, whether based in contract or tort, shall be limited to the amount paid by client for analyses. All claims, including those for negligence and any other cause whatsoever shall be deemed waived unless made in writing and received by Cardinal within thirty (30) days after completion of the applicable service. In no event shall Cardinal be liable for incidental or consequential damages, including, without limitation, business interruptions, loss of use, or loss of profits incurred by client, its subsidiaries, affiliates or successors arising out of or related to the performance of the services hereunder by Cardinal, regardless of whether such claim is based upon any of the above stated reasons or otherwise. Results relate only to the samples identified above. This report shall not be reproduced except in full with written approval of Cardinal Laboratories.

Celey D. Keene, Lab Director/Quality Manager



PHONE (575) 393-2326 ° 101 E. MARLAND ° HOBBS, NM 88240

Notes and Definitions

ND	Analyte NOT DETECTED at or above the reporting limit
RPD	Relative Percent Difference
**	Samples not received at proper temperature of 6°C or below.
***	Insufficient time to reach temperature.
-	Chloride by SM4500Cl-B does not require samples be received at or below 6°C Samples reported on an as received basis (wet) unless otherwise noted on report

Cardinal Laboratories

*=Accredited Analyte

PLEASE NOTE: Liability and Damages. Cardinal's liability and client's exclusive remedy for any claim arising, whether based in contract or tort, shall be limited to the amount paid by client for analyses. All claims, including those for negligence and any other cause whatsoever shall be deemed waived unless made in writing and received by Cardinal within thirty (30) days after completion of the applicable service. In no event shall Cardinal be liable for incidental or consequential damages, including, without limitation, business interruptions, loss of use, or loss of profits incurred by client, its subsidiaries, affiliates or successors arising out of or related to the performance of the services hereunder by Cardinal, regardless of whether such claim is based upon any of the above stated reasons or otherwise. Results relate only to the samples identified above. This report shall not be reproduced except in full with written approval of Cardinal Laboratories.


A handwritten signature in black ink, appearing to read "Celey D. Keene".

Celey D. Keene, Lab Director/Quality Manager

Cardinal Laboratories, Inc.

CHAIN-OF-CUSTODY AND ANALYSIS REQUEST

LAB Order ID # _____

Company Name: RICE Operating Company		BILL TO Company: RICE Operating Company		PO#:	
Project Manager: Katie Jones		Address: (Street, City, Zip) 122 W Taylor Street ~ Hobbs, New Mexico 88240			
Address: (Street, City, Zip) 122 W Taylor Street ~ Hobbs, New Mexico 88240		Phone#: (575) 393-9174		Fax#: (575) 397-1471	
Phone #: (575) 393-9174		Fax #: (575) 397-1471			
Project #:		Project Name: BD Junction P-26-2			
Project Location: T21S R37E Sec26 P ~ Lea County New Mexico		Sampler Signature:  Rozanne Johnson (575) 631-9310			

ANALYSIS REQUEST

(Circle or Specify Method No.)

[illegible]

Page 5 of 5

Released to Imaging: 8/1/2024 4:06:59 PM



PHONE (575) 393-2326 ° 101 E. MARLAND ° HOBBS, NM 88240

May 17, 2023

KATIE JONES

Rice Operating Company

112 W. Taylor

Hobbs, NM 88240

RE: BD JUNCTION P-26-2

Enclosed are the results of analyses for samples received by the laboratory on 05/11/23 14:55.

Cardinal Laboratories is accredited through Texas NELAP under certificate number T104704398-22-15. Accreditation applies to drinking water, non-potable water and solid and chemical materials. All accredited analytes are denoted by an asterisk (*). For a complete list of accredited analytes and matrices visit the TCEQ website at www.tceq.texas.gov/field/qa/lab_accred_certif.html.

Cardinal Laboratories is accredited through the State of Colorado Department of Public Health and Environment for:

Method EPA 552.2	Haloacetic Acids (HAA-5)
Method EPA 524.2	Total Trihalomethanes (TTHM)
Method EPA 524.4	Regulated VOCs (V1, V2, V3)

Accreditation applies to public drinking water matrices.

This report meets NELAP requirements and is made up of a cover page, analytical results, and a copy of the original chain-of-custody. If you have any questions concerning this report, please feel free to contact me.

Sincerely,

A handwritten signature in black ink that reads "Celey D. Keene".

Celey D. Keene

Lab Director/Quality Manager



PHONE (575) 393-2326 ° 101 E. MARLAND ° HOBBS, NM 88240

Analytical Results For:

Rice Operating Company
KATIE JONES
112 W. Taylor
Hobbs NM, 88240
Fax To: (575) 397-1471

Received: 05/11/2023
Reported: 05/17/2023
Project Name: BD JUNCTION P-26-2
Project Number: NONE GIVEN
Project Location: T21S R37E SEC 26 P ~ LEA CTY, NM

Sampling Date: 05/08/2023
Sampling Type: Water
Sampling Condition: Cool & Intact
Sample Received By: Tamara Oldaker

Sample ID: MONITOR WELL #1 (H232368-01)

Chloride, SM4500Cl-B		mg/L		Analyzed By: GM						
Analyte	Result	Reporting Limit	Analyzed	Method Blank	BS	% Recovery	True Value QC	RPD	Qualifier	
Chloride*	1000	4.00	05/12/2023	ND	104	104	100	3.92		
Sulfate 375.4		mg/L		Analyzed By: GM						
Analyte	Result	Reporting Limit	Analyzed	Method Blank	BS	% Recovery	True Value QC	RPD	Qualifier	
Sulfate*	237	50.0	05/16/2023	ND	21.5	107	20.0	17.5		
TDS 160.1		mg/L		Analyzed By: AC						
Analyte	Result	Reporting Limit	Analyzed	Method Blank	BS	% Recovery	True Value QC	RPD	Qualifier	
TDS*	2230	5.00	05/16/2023	ND	827	82.7	1000	1.83		

Sample ID: MONITOR WELL #2 (H232368-02)

Chloride, SM4500Cl-B		mg/L		Analyzed By: GM						
Analyte	Result	Reporting Limit	Analyzed	Method Blank	BS	% Recovery	True Value QC	RPD	Qualifier	
Chloride*	790	4.00	05/12/2023	ND	104	104	100	3.92		
Sulfate 375.4		mg/L		Analyzed By: GM						
Analyte	Result	Reporting Limit	Analyzed	Method Blank	BS	% Recovery	True Value QC	RPD	Qualifier	
Sulfate*	246	83.3	05/16/2023	ND	21.5	107	20.0	17.5		
TDS 160.1		mg/L		Analyzed By: AC						
Analyte	Result	Reporting Limit	Analyzed	Method Blank	BS	% Recovery	True Value QC	RPD	Qualifier	
TDS*	1880	5.00	05/16/2023	ND	827	82.7	1000	1.83		

Cardinal Laboratories

*=Accredited Analyte

PLEASE NOTE: Liability and Damages. Cardinal's liability and client's exclusive remedy for any claim arising, whether based in contract or tort, shall be limited to the amount paid by client for analyses. All claims, including those for negligence and any other cause whatsoever shall be deemed waived unless made in writing and received by Cardinal within thirty (30) days after completion of the applicable service. In no event shall Cardinal be liable for incidental or consequential damages, including, without limitation, business interruptions, loss of use, or loss of profits incurred by client, its subsidiaries, affiliates or successors arising out of or related to the performance of the services hereunder by Cardinal, regardless of whether such claim is based upon any of the above stated reasons or otherwise. Results relate only to the samples identified above. This report shall not be reproduced except in full with written approval of Cardinal Laboratories.

Celey D. Keene, Lab Director/Quality Manager



PHONE (575) 393-2326 ° 101 E. MARLAND ° HOBBS, NM 88240

Analytical Results For:

Rice Operating Company
KATIE JONES
112 W. Taylor
Hobbs NM, 88240
Fax To: (575) 397-1471

Received:	05/11/2023	Sampling Date:	05/08/2023
Reported:	05/17/2023	Sampling Type:	Water
Project Name:	BD JUNCTION P-26-2	Sampling Condition:	Cool & Intact
Project Number:	NONE GIVEN	Sample Received By:	Tamara Oldaker
Project Location:	T21S R37E SEC 26 P ~ LEA CTY, NM		

Sample ID: MONITOR WELL #3 (H232368-03)

Chloride, SM4500Cl-B		mg/L		Analyzed By: GM						
	Analyte	Result	Reporting Limit	Analyzed	Method Blank	BS	% Recovery	True Value QC	RPD	Qualifier
Chloride*		640	4.00	05/12/2023	ND	104	104	100	3.92	
Sulfate 375.4		mg/L		Analyzed By: GM						
	Analyte	Result	Reporting Limit	Analyzed	Method Blank	BS	% Recovery	True Value QC	RPD	Qualifier
Sulfate*		277	50.0	05/16/2023	ND	21.5	107	20.0	17.5	
TDS 160.1		mg/L		Analyzed By: AC						
	Analyte	Result	Reporting Limit	Analyzed	Method Blank	BS	% Recovery	True Value QC	RPD	Qualifier
TDS*		1690	5.00	05/16/2023	ND	827	82.7	1000	1.83	

Cardinal Laboratories

*=Accredited Analyte

PLEASE NOTE: Liability and Damages. Cardinal's liability and client's exclusive remedy for any claim arising, whether based in contract or tort, shall be limited to the amount paid by client for analyses. All claims, including those for negligence and any other cause whatsoever shall be deemed waived unless made in writing and received by Cardinal within thirty (30) days after completion of the applicable service. In no event shall Cardinal be liable for incidental or consequential damages, including, without limitation, business interruptions, loss of use, or loss of profits incurred by client, its subsidiaries, affiliates or successors arising out of or related to the performance of the services hereunder by Cardinal, regardless of whether such claim is based upon any of the above stated reasons or otherwise. Results relate only to the samples identified above. This report shall not be reproduced except in full with written approval of Cardinal Laboratories.

Celey D. Keene, Lab Director/Quality Manager



PHONE (575) 393-2326 ° 101 E. MARLAND ° HOBBS, NM 88240

Notes and Definitions

ND	Analyte NOT DETECTED at or above the reporting limit
RPD	Relative Percent Difference
**	Samples not received at proper temperature of 6°C or below.
***	Insufficient time to reach temperature.
-	Chloride by SM4500Cl-B does not require samples be received at or below 6°C Samples reported on an as received basis (wet) unless otherwise noted on report

Cardinal Laboratories

*=Accredited Analyte

PLEASE NOTE: Liability and Damages. Cardinal's liability and client's exclusive remedy for any claim arising, whether based in contract or tort, shall be limited to the amount paid by client for analyses. All claims, including those for negligence and any other cause whatsoever shall be deemed waived unless made in writing and received by Cardinal within thirty (30) days after completion of the applicable service. In no event shall Cardinal be liable for incidental or consequential damages, including, without limitation, business interruptions, loss of use, or loss of profits incurred by client, its subsidiaries, affiliates or successors arising out of or related to the performance of the services hereunder by Cardinal, regardless of whether such claim is based upon any of the above stated reasons or otherwise. Results relate only to the samples identified above. This report shall not be reproduced except in full with written approval of Cardinal Laboratories.

A handwritten signature in black ink, appearing to read "Celey D. Keene", is written over a horizontal line.

Celey D. Keene, Lab Director/Quality Manager

Cardinal Laboratories, Inc.

CHAIN-OF-CUSTODY AND ANALYSIS REQUEST

LAB Order ID # _____

(Circle or Specify Method No.)

Sampler Signature: Rozanne Johnson (575)631-9310

MATRIX	PRESERVATIVE METHOD	SAMPLING
--------	---------------------	----------

MTBE 8021B/602

BTEX 8021B/602

TPH 418.1/TX1005 / TX1005 Extended (C35)

PAH 8270C

Total Metals Ag As Ba Cd Cr Pb Se Hg 6010B/200.7

TCLP Metals Ag As Ba Cd Cr Pb Se Hg

TCLP Volatiles

TCLP Semi Volatiles

TCLP Pesticides

BCI

RCI

GC/MS Vol. 8260B/624

GC/MS Semi. Vol. 8270C/625

PCB's 8082/608

Postcodes 9002/000

Pesticides 8081A/608

BOD, TSS, pH

Moisture Content

Anions (Cl, SO₄, CO₃, HCO₃)

Cations (Ca, Mg, Na, K)

Sulfates (SO₄)

Total Dissolved

Total Dissolved Solids

Chlorides

Turn Around Time ~ 24 Hours

Received by: MJ Date: _____ Time: 1450

Received By: (Laboratory Staff) Date: Time:

Sample Condition

CHECKED BY:

Sampler - UPS - Bus - Other:

	Cool	Intact
Yes	<input checked="" type="checkbox"/>	<input checked="" type="checkbox"/>
No	<input type="checkbox"/>	<input type="checkbox"/>

(Initials)

Phone Results	Yes	No
---------------	-----	----

Fax Results	Yes	No
-------------	-----	----

Additional Fax Number:

REMARKS:

Email Results: kjones@riceswd.com
rozanne@sdacres.com



PHONE (575) 393-2326 ° 101 E. MARLAND ° HOBBS, NM 88240

August 08, 2023

KATIE JONES

Rice Operating Company

112 W. Taylor

Hobbs, NM 88240

RE: BD JUNCTION P-26-2

Enclosed are the results of analyses for samples received by the laboratory on 08/02/23 14:32.

Cardinal Laboratories is accredited through Texas NELAP under certificate number T104704398-22-15. Accreditation applies to drinking water, non-potable water and solid and chemical materials. All accredited analytes are denoted by an asterisk (*). For a complete list of accredited analytes and matrices visit the TCEQ website at www.tceq.texas.gov/field/qa/lab_accred_certif.html.

Cardinal Laboratories is accredited through the State of Colorado Department of Public Health and Environment for:

Method EPA 552.2	Haloacetic Acids (HAA-5)
Method EPA 524.2	Total Trihalomethanes (TTHM)
Method EPA 524.4	Regulated VOCs (V1, V2, V3)

Accreditation applies to public drinking water matrices.

This report meets NELAP requirements and is made up of a cover page, analytical results, and a copy of the original chain-of-custody. If you have any questions concerning this report, please feel free to contact me.

Sincerely,

A handwritten signature in black ink that reads "Celey D. Keene". The signature is written in a cursive, flowing style.

Celey D. Keene

Lab Director/Quality Manager



PHONE (575) 393-2326 ° 101 E. MARLAND ° HOBBS, NM 88240

Analytical Results For:

Rice Operating Company
KATIE JONES
112 W. Taylor
Hobbs NM, 88240
Fax To: (575) 397-1471

Received: 08/02/2023
Reported: 08/08/2023
Project Name: BD JUNCTION P-26-2
Project Number: NONE GIVEN
Project Location: T21S R37E SEC 26 P ~ LEA CTY, NM

Sampling Date: 08/01/2023
Sampling Type: Water
Sampling Condition: Cool & Intact
Sample Received By: Tamara Oldaker

Sample ID: MONITOR WELL #1 (H234084-01)

Chloride, SM4500Cl-B		mg/L		Analyzed By: AC						
Analyte	Result	Reporting Limit	Analyzed	Method Blank	BS	% Recovery	True Value QC	RPD	Qualifier	
Chloride*	750	4.00	08/03/2023	ND	100	100	100	3.92		
Sulfate 375.4		mg/L		Analyzed By: AC						
Analyte	Result	Reporting Limit	Analyzed	Method Blank	BS	% Recovery	True Value QC	RPD	Qualifier	
Sulfate*	242	50.0	08/07/2023	ND	22.6	113	20.0	1.83		
TDS 160.1		mg/L		Analyzed By: AC						
Analyte	Result	Reporting Limit	Analyzed	Method Blank	BS	% Recovery	True Value QC	RPD	Qualifier	
TDS*	1880	5.00	08/07/2023	ND	814	81.4	1000	2.49		

Sample ID: MONITOR WELL #2 (H234084-02)

Chloride, SM4500Cl-B		mg/L		Analyzed By: AC						
Analyte	Result	Reporting Limit	Analyzed	Method Blank	BS	% Recovery	True Value QC	RPD	Qualifier	
Chloride*	800	4.00	08/03/2023	ND	100	100	100	3.92		
Sulfate 375.4		mg/L		Analyzed By: AC						
Analyte	Result	Reporting Limit	Analyzed	Method Blank	BS	% Recovery	True Value QC	RPD	Qualifier	
Sulfate*	470	125	08/07/2023	ND	22.6	113	20.0	1.83		
TDS 160.1		mg/L		Analyzed By: AC						
Analyte	Result	Reporting Limit	Analyzed	Method Blank	BS	% Recovery	True Value QC	RPD	Qualifier	
TDS*	2300	5.00	08/07/2023	ND	814	81.4	1000	2.49		

Cardinal Laboratories

*=Accredited Analyte

PLEASE NOTE: Liability and Damages. Cardinal's liability and client's exclusive remedy for any claim arising, whether based in contract or tort, shall be limited to the amount paid by client for analyses. All claims, including those for negligence and any other cause whatsoever shall be deemed waived unless made in writing and received by Cardinal within thirty (30) days after completion of the applicable service. In no event shall Cardinal be liable for incidental or consequential damages, including, without limitation, business interruptions, loss of use, or loss of profits incurred by client, its subsidiaries, affiliates or successors arising out of or related to the performance of the services hereunder by Cardinal, regardless of whether such claim is based upon any of the above stated reasons or otherwise. Results relate only to the samples identified above. This report shall not be reproduced except in full with written approval of Cardinal Laboratories.

Celey D. Keene, Lab Director/Quality Manager



PHONE (575) 393-2326 ° 101 E. MARLAND ° HOBBS, NM 88240

Analytical Results For:

Rice Operating Company
KATIE JONES
112 W. Taylor
Hobbs NM, 88240
Fax To: (575) 397-1471

Received: 08/02/2023
Reported: 08/08/2023
Project Name: BD JUNCTION P-26-2
Project Number: NONE GIVEN
Project Location: T21S R37E SEC 26 P ~ LEA CTY, NM

Sampling Date: 08/01/2023
Sampling Type: Water
Sampling Condition: Cool & Intact
Sample Received By: Tamara Oldaker

Sample ID: MONITOR WELL #3 (H234084-03)

Chloride, SM4500Cl-B		mg/L		Analyzed By: AC						
Analyte	Result	Reporting Limit	Analyzed	Method Blank	BS	% Recovery	True Value QC	RPD	Qualifier	
Chloride*	600	4.00	08/03/2023	ND	100	100	100	3.92		
Sulfate 375.4		mg/L		Analyzed By: AC						
Analyte	Result	Reporting Limit	Analyzed	Method Blank	BS	% Recovery	True Value QC	RPD	Qualifier	
Sulfate*	221	50.0	08/07/2023	ND	22.6	113	20.0	1.83		
TDS 160.1		mg/L		Analyzed By: AC						
Analyte	Result	Reporting Limit	Analyzed	Method Blank	BS	% Recovery	True Value QC	RPD	Qualifier	
TDS*	1710	5.00	08/07/2023	ND	814	81.4	1000	2.49		

Cardinal Laboratories

*=Accredited Analyte

PLEASE NOTE: Liability and Damages. Cardinal's liability and client's exclusive remedy for any claim arising, whether based in contract or tort, shall be limited to the amount paid by client for analyses. All claims, including those for negligence and any other cause whatsoever shall be deemed waived unless made in writing and received by Cardinal within thirty (30) days after completion of the applicable service. In no event shall Cardinal be liable for incidental or consequential damages, including, without limitation, business interruptions, loss of use, or loss of profits incurred by client, its subsidiaries, affiliates or successors arising out of or related to the performance of the services hereunder by Cardinal, regardless of whether such claim is based upon any of the above stated reasons or otherwise. Results relate only to the samples identified above. This report shall not be reproduced except in full with written approval of Cardinal Laboratories.

Celey D. Keene, Lab Director/Quality Manager



PHONE (575) 393-2326 ° 101 E. MARLAND ° HOBBS, NM 88240

Notes and Definitions

- ND Analyte NOT DETECTED at or above the reporting limit
- RPD Relative Percent Difference
- ** Samples not received at proper temperature of 6°C or below.
- *** Insufficient time to reach temperature.
- Chloride by SM4500Cl-B does not require samples be received at or below 6°C
Samples reported on an as received basis (wet) unless otherwise noted on report

Cardinal Laboratories

*=Accredited Analyte

PLEASE NOTE: Liability and Damages. Cardinal's liability and client's exclusive remedy for any claim arising, whether based in contract or tort, shall be limited to the amount paid by client for analyses. All claims, including those for negligence and any other cause whatsoever shall be deemed waived unless made in writing and received by Cardinal within thirty (30) days after completion of the applicable service. In no event shall Cardinal be liable for incidental or consequential damages, including, without limitation, business interruptions, loss of use, or loss of profits incurred by client, its subsidiaries, affiliates or successors arising out of or related to the performance of the services hereunder by Cardinal, regardless of whether such claim is based upon any of the above stated reasons or otherwise. Results relate only to the samples identified above. This report shall not be reproduced except in full with written approval of Cardinal Laboratories.

A handwritten signature in black ink, appearing to read "Celey D. Keene", is written over a horizontal line.

Celey D. Keene, Lab Director/Quality Manager


Cardinal Laboratories, Inc.

CHAIN-OF-CUSTODY AND ANALYSIS REQUEST

LAB Order ID # _____

(Circle or Specify Method No.)

Relinquished by: <u>Rozanne Johnson</u> Date: <u>8/2/03</u> Time: <u>14:30</u>	Received by: <u>Nemara DelaLuz</u> Date: <u>1432</u> Time: <u>8-2-23</u>	Phone Results	Yes	No	
		Fax Results	Yes	No Additional Fax Number:	
Relinquished by: _____ Date: _____ Time: _____	Received By: (Laboratory Staff) _____ Date: _____ Time: _____	REMARKS: Email Results: kjones@riceswd.com rozanne@sdacres.com			
Delivered By: (Circle One)	Sample Condition Cool Intact Yes <input checked="" type="checkbox"/> Yes <input checked="" type="checkbox"/> No <input type="checkbox"/> No <input type="checkbox"/>				CHECKED BY: (Initials) <u>YO</u>
<u>Sampler</u> - UPS - Bus - Other: _____					

Sample Condition		Cool	Intact	CHECK
Yes	<input checked="" type="checkbox"/>	Yes	<input checked="" type="checkbox"/>	(Initials) 
No	<input type="checkbox"/>	No	<input type="checkbox"/>	

CHECKED BY:

Email Results: kjones@riceswd.com
rozanne@sdacres.com



PHONE (575) 393-2326 ° 101 E. MARLAND ° HOBBS, NM 88240

October 18, 2023

KATIE JONES

Rice Operating Company

112 W. Taylor

Hobbs, NM 88240

RE: BD JUNCTION P-26-2

Enclosed are the results of analyses for samples received by the laboratory on 10/11/23 16:03.

Cardinal Laboratories is accredited through Texas NELAP under certificate number T104704398-22-15. Accreditation applies to drinking water, non-potable water and solid and chemical materials. All accredited analytes are denoted by an asterisk (*). For a complete list of accredited analytes and matrices visit the TCEQ website at www.tceq.texas.gov/field/qa/lab_accred_certif.html.

Cardinal Laboratories is accredited through the State of Colorado Department of Public Health and Environment for:

Method EPA 552.2	Haloacetic Acids (HAA-5)
Method EPA 524.2	Total Trihalomethanes (TTHM)
Method EPA 524.4	Regulated VOCs (V1, V2, V3)

Accreditation applies to public drinking water matrices.

This report meets NELAP requirements and is made up of a cover page, analytical results, and a copy of the original chain-of-custody. If you have any questions concerning this report, please feel free to contact me.

Sincerely,

A handwritten signature in black ink that reads "Celey D. Keene".

Celey D. Keene

Lab Director/Quality Manager



PHONE (575) 393-2326 ° 101 E. MARLAND ° HOBBS, NM 88240

Analytical Results For:

Rice Operating Company
KATIE JONES
112 W. Taylor
Hobbs NM, 88240
Fax To: (575) 397-1471

Received:	10/11/2023	Sampling Date:	10/09/2023
Reported:	10/18/2023	Sampling Type:	Water
Project Name:	BD JUNCTION P-26-2	Sampling Condition:	Cool & Intact
Project Number:	NONE GIVEN	Sample Received By:	Shalyn Rodriguez
Project Location:	T21S R37E SEC26P ~ LEA CTY, NM		

Sample ID: MONITOR WELL #1 (H235551-01)

Chloride, SM4500Cl-B		mg/L		Analyzed By: AC						
Analyte	Result	Reporting Limit	Analyzed	Method Blank	BS	% Recovery	True Value QC	RPD	Qualifier	
Chloride*	750	4.00	10/12/2023	ND	100	100	100	3.92		
Sulfate 375.4		mg/L		Analyzed By: AC						
Analyte	Result	Reporting Limit	Analyzed	Method Blank	BS	% Recovery	True Value QC	RPD	Qualifier	
Sulfate*	163	25.0	10/12/2023	ND	22.6	113	20.0	13.7		
TDS 160.1		mg/L		Analyzed By: AC						
Analyte	Result	Reporting Limit	Analyzed	Method Blank	BS	% Recovery	True Value QC	RPD	Qualifier	
TDS*	1550	5.00	10/17/2023	ND	404	80.8	500	2.41		

Sample ID: MONITOR WELL #2 (H235551-02)

Chloride, SM4500Cl-B		mg/L		Analyzed By: AC						
Analyte	Result	Reporting Limit	Analyzed	Method Blank	BS	% Recovery	True Value QC	RPD	Qualifier	
Chloride*	830	4.00	10/12/2023	ND	100	100	100	3.92		
Sulfate 375.4		mg/L		Analyzed By: AC						
Analyte	Result	Reporting Limit	Analyzed	Method Blank	BS	% Recovery	True Value QC	RPD	Qualifier	
Sulfate*	626	83.3	10/12/2023	ND	22.6	113	20.0	13.7		
TDS 160.1		mg/L		Analyzed By: AC						
Analyte	Result	Reporting Limit	Analyzed	Method Blank	BS	% Recovery	True Value QC	RPD	Qualifier	
TDS*	2360	5.00	10/17/2023	ND	404	80.8	500	2.41		

Cardinal Laboratories

*=Accredited Analyte

PLEASE NOTE: Liability and Damages. Cardinal's liability and client's exclusive remedy for any claim arising, whether based in contract or tort, shall be limited to the amount paid by client for analyses. All claims, including those for negligence and any other cause whatsoever shall be deemed waived unless made in writing and received by Cardinal within thirty (30) days after completion of the applicable service. In no event shall Cardinal be liable for incidental or consequential damages, including, without limitation, business interruptions, loss of use, or loss of profits incurred by client, its subsidiaries, affiliates or successors arising out of or related to the performance of the services hereunder by Cardinal, regardless of whether such claim is based upon any of the above stated reasons or otherwise. Results relate only to the samples identified above. This report shall not be reproduced except in full with written approval of Cardinal Laboratories.

Celey D. Keene, Lab Director/Quality Manager



PHONE (575) 393-2326 ° 101 E. MARLAND ° HOBBS, NM 88240

Analytical Results For:

Rice Operating Company
KATIE JONES
112 W. Taylor
Hobbs NM, 88240
Fax To: (575) 397-1471

Received:	10/11/2023	Sampling Date:	10/09/2023
Reported:	10/18/2023	Sampling Type:	Water
Project Name:	BD JUNCTION P-26-2	Sampling Condition:	Cool & Intact
Project Number:	NONE GIVEN	Sample Received By:	Shalyn Rodriguez
Project Location:	T21S R37E SEC26P ~ LEA CTY, NM		

Sample ID: MONITOR WELL #3 (H235551-03)

Chloride, SM4500Cl-B		mg/L		Analyzed By: AC						
Analyte	Result	Reporting Limit	Analyzed	Method Blank	BS	% Recovery	True Value QC	RPD	Qualifier	
Chloride*	670	4.00	10/12/2023	ND	100	100	100	3.92		
Sulfate 375.4		mg/L		Analyzed By: AC						
Analyte	Result	Reporting Limit	Analyzed	Method Blank	BS	% Recovery	True Value QC	RPD	Qualifier	
Sulfate*	318	50.0	10/12/2023	ND	22.6	113	20.0	13.7		
TDS 160.1		mg/L		Analyzed By: AC						
Analyte	Result	Reporting Limit	Analyzed	Method Blank	BS	% Recovery	True Value QC	RPD	Qualifier	
TDS*	1720	5.00	10/17/2023	ND	404	80.8	500	2.41		

Cardinal Laboratories

*=Accredited Analyte

PLEASE NOTE: Liability and Damages. Cardinal's liability and client's exclusive remedy for any claim arising, whether based in contract or tort, shall be limited to the amount paid by client for analyses. All claims, including those for negligence and any other cause whatsoever shall be deemed waived unless made in writing and received by Cardinal within thirty (30) days after completion of the applicable service. In no event shall Cardinal be liable for incidental or consequential damages, including, without limitation, business interruptions, loss of use, or loss of profits incurred by client, its subsidiaries, affiliates or successors arising out of or related to the performance of the services hereunder by Cardinal, regardless of whether such claim is based upon any of the above stated reasons or otherwise. Results relate only to the samples identified above. This report shall not be reproduced except in full with written approval of Cardinal Laboratories.

Celey D. Keene, Lab Director/Quality Manager

PHONE (575) 393-2326 ° 101 E. MARLAND ° HOBBS, NM 88240

Notes and Definitions

QM-07	The spike recovery was outside acceptance limits for the MS and/or MSD. The batch was accepted based on acceptable LCS recovery.
ND	Analyte NOT DETECTED at or above the reporting limit
RPD	Relative Percent Difference
**	Samples not received at proper temperature of 6°C or below.
***	Insufficient time to reach temperature.
-	Chloride by SM4500Cl-B does not require samples be received at or below 6°C Samples reported on an as received basis (wet) unless otherwise noted on report

Cardinal Laboratories

*=Accredited Analyte

PLEASE NOTE: Liability and Damages. Cardinal's liability and client's exclusive remedy for any claim arising, whether based in contract or tort, shall be limited to the amount paid by client for analyses. All claims, including those for negligence and any other cause whatsoever shall be deemed waived unless made in writing and received by Cardinal within thirty (30) days after completion of the applicable service. In no event shall Cardinal be liable for incidental or consequential damages, including, without limitation, business interruptions, loss of use, or loss of profits incurred by client, its subsidiaries, affiliates or successors arising out of or related to the performance of the services hereunder by Cardinal, regardless of whether such claim is based upon any of the above stated reasons or otherwise. Results relate only to the samples identified above. This report shall not be reproduced except in full with written approval of Cardinal Laboratories.

A handwritten signature in black ink, appearing to read "Celey D. Keene", is written over a horizontal line.

Celey D. Keene, Lab Director/Quality Manager

Cardinal Laboratories, Inc.

CHAIN-OF-CUSTODY AND ANALYSIS REQUEST

LAB Order ID # _____

ANALYSIS REQUEST

(Circle or Specify Method No.)

Company Name: RICE Operating Company		BILL TO Company: RICE Operating Company	PO#
Project Manager: Katie Jones		Address: (Street, City, Zip) 122 W Taylor Street ~ Hobbs, New Mexico 88240	
Address: (Street, City, Zip) 122 W Taylor Street ~ Hobbs, New Mexico 88240		Phone#: (575) 393-9174	Fax#: (575)397-1471
Phone #: (575) 393-9174		Fax #: (575) 397-1471	
Project #:		Project Name: BD Junction P-26-2	
Project Location: T21S R37E Sec26 P ~ Lea County New Mexico		Sampler Signature: Rozanne Johnson (575) 831-9310	

Sampler Signature: Rozanne Johnson (575)631-9310

[illegible]

Relinquished by: <i>Rozanne Johnson</i>	Date: <i>10/11/23</i>	Time: <i>16:03</i>	Received by: <i>S. Rodriguez</i>	Date: <i>10-11-23</i>	Time: <i>1603</i>
Relinquished by:	Date:	Time:	Received By: (Laboratory Staff)	Date:	Time:

Delivered By: (Circle One)

Sample Condition

CHECKED BY:

Sampler - UPS - Bus - Other:

	Cool	Intact
Yes	<input checked="" type="checkbox"/>	<input checked="" type="checkbox"/>
No	<input type="checkbox"/>	<input type="checkbox"/>

(Initials) 

Phone Results	Yes	No
Fax Results	Yes	No Additional Fax Number:

Email Results: kjones@riceswd.com
rozanne@sdacres.com

Released to Imaging: 8/1/2024 4:06:59 PM

From: OCDOnline@state.nm.us
To: [Katie Jones](#)
Subject: The Oil Conservation Division (OCD) has approved the application, Application ID: 202249
Date: Monday, April 10, 2023 2:04:17 PM

To whom it may concern (c/o Katie Davis for RICE OPERATING COMPANY),

The OCD has approved the submitted *Ground Water Abatement* (GROUND WATER ABATEMENT), for incident ID (n#) nAPP2109639893, with the following conditions:

- **Review of 2022 Annual Report: Content satisfactory 1. Continue sampling on a semi-annual schedule at a minimum 2. Submit summarized activities completed and their results in a 2023 Annual Report. Submittal to OCD expected no later than April 1, 2024.**

The signed GROUND WATER ABATEMENT can be found in the OCD Online: Imaging under the incident ID (n#).

If you have any questions regarding this application, please contact me.

Thank you,
Nelson Velez
Environmental Specialist - Advanced
505-469-6146
Nelson.Velez@emnrd.nm.gov

New Mexico Energy, Minerals and Natural Resources Department
1220 South St. Francis Drive
Santa Fe, NM 87505

District I
1625 N. French Dr., Hobbs, NM 88240
Phone:(575) 393-6161 Fax:(575) 393-0720

District II
811 S. First St., Artesia, NM 88210
Phone:(575) 748-1283 Fax:(575) 748-9720

District III
1000 Rio Brazos Rd., Aztec, NM 87410
Phone:(505) 334-6178 Fax:(505) 334-6170

District IV
1220 S. St Francis Dr., Santa Fe, NM 87505
Phone:(505) 476-3470 Fax:(505) 476-3462

State of New Mexico

Energy, Minerals and Natural Resources

Oil Conservation Division

1220 S. St Francis Dr.

Santa Fe, NM 87505

CONDITIONS

Action 327822

CONDITIONS

Operator: RICE OPERATING COMPANY 122 W Taylor Hobbs, NM 88240	OGRID: 19174
	Action Number: 327822
	Action Type: [UF-GWA] Ground Water Abatement (GROUND WATER ABATEMENT)

CONDITIONS

Created By	Condition	Condition Date
michael.buchanan	Review of the 2023 Annual Report for ROC, BD P-26-1, BD P-26-2 9AP-97): content satisfactory 1. As prescribed, please continue to conduct groundwater monitoring on a semi-annual basis, at a minimum 2. Please provide a section in the next annual report on the status of the pump-and-use groundwater restoration program and if it is practicable to utilize again going forward. 3. Provide the 2024 annual groundwater monitoring report to the OCD, electronically, by April 1, 2025.	8/1/2024