

BIG CAT 19 CTB 9

6-29-2024

OCD incident napp2418140217

Spills In Lined Containment	
Measurements Of Standing Fluid	
Length(Ft)	96
Width(Ft)	81
Depth(in.)	0.125
Total Capacity without tank displacements (bbls)	14.43
No. of 500 bbl Tanks In Standing Fluid	8
No. of Other Tanks In Standing Fluid	
OD Of Other Tanks In Standing Fluid(feet)	
Total Volume of standing fluid accounting for tank displacement.	11.63



LINER INSPECTION CLOSURE REPORT

Incident ID NAPP2418140217

Big Cat 16 CTB 9

Facility ID fAPP2129926862

Prepared By:

Pima Environmental Services, LLC

Prepared For:

Devon Energy Production, LP

July 22, 2024

Pima Environmental Services, LLC
5614 N Lovington Hwy, Hobbs, NM 88240

July 22, 2024

NMOCD District 2
811 S. First St
Artesia, NM, 88210

RE: Liner Inspection and Closure Report
Big Cat 16 CTB 9
API No. N/A
GPS : Latitude 32.30099102 Longitude -103.680727
UL- K, Section 16, Township 23S, Range 32E
Lea County, NM
NMOCD Reference No. NAPP2418140217

Devon Energy Production Company (Devon) has contracted Pima Environmental Services, LLC (Pima) to perform a liner inspection and prepare this closure report for a produced water release that occurred at the Big Cat 16 CTB 9 (Big Cat). This incident was assigned Incident ID:NAPP2418140217, by the New Mexico Oil Conservation Division (NMOCD).

Site Information and Site Characterization

The Big Cat is located approximately twenty-four (24) miles east of Loving, NM. This spill site is in Unit K, Section 16, Township 23S, Range 32E, Latitude 32.30099102 Longitude -103.680727, Lea County, NM. A Location Map can be found in Figure 1.

Based upon New Mexico Office of the State Engineer (C-04712 POD 2) well water data, depth to the nearest groundwater in this area is 55 feet belowgrade surface (BGS). located approximately 0.56 miles from the Big Cat. According to the United States Geological Survey (USGS 321952103400801 23S.32E.03.311114) well water data, depth to the nearest groundwater in this area is 488 feet BGS. See Appendix A for referenced water surveys and water related maps. The Big Cat is in a low karst area (Figure 3). A Topographic Map can be found in Figure 2.

Release Information

NAPP2418140217: On June 28, 2024, A leak at water transfer pump occurred in the lined containment. Approximately 12 barrels (bbls) of produced fluid were released from the pump into the lined secondary containment. A vacuum truck was dispatched and recovered approximately 10 bbls of fluid from the lined SPCC containment ring. Once the standing fluids were removed, the liner was visually inspected by Devon field staff for any pinholes or punctures, and none were found. Based on this inspection, there is no evidence that the spilled fluids left the containment. The remaining 2 bbls were recovered during the cleanup of the containment.

A Site Map can be found in Figure 4.

Site Assessment and Liner Inspection

On July 15, 2024, Pima personnel mobilized equipment to the site to perform power washing of the liner and containment. A vacuum truck accompanied the crew to recover the power washing fluids. During this process, the remaining 2 bbls of fluid missed during the initial recovery effort were also recovered.

On July 19, 2024, after submitting the 48-hour notification application ID: 364703 to the OCD, Pima Environmental conducted a liner inspection at this location. Pima concluded that the liner and containment maintained their integrity and successfully retained the fluids. The liner inspection form and photographic documentation can be found in Appendix C.

Closure Request

After careful review, Pima requests that this incident ID: NAPP2418140217, be closed. Devon has complied with the applicable closure requirements.

Should you have any questions or need additional information, please feel free to contact:

Devon Energy – Dale Woodall at 575-748-0167 or Dale.Woodall@devon.com.

Pima Environmental – Gio Gomez at 806-782-1151 or Gio@pimaoil.com.

Respectfully,

Gio Gomez

Gio Gomez

Project Manager

Pima Environmental Services, LLC

Attachments

Figures:

- 1- Location Map
- 2- Topographic Map
- 3- Karst Map
- 4- Site Map

Appendices:

Appendix A- Referenced Water Surveys

Appendix B- Soil Survey & Soil Maps, Geologic Data, FEMA, Wetlands

Appendix C- 48 Hour Notification, Liner Inspection Form

Appendix D- Photographic Documentation

Figures:

Figure 1- Location Map

Figure 2- Topographic Map



Figure 3- Karst Map

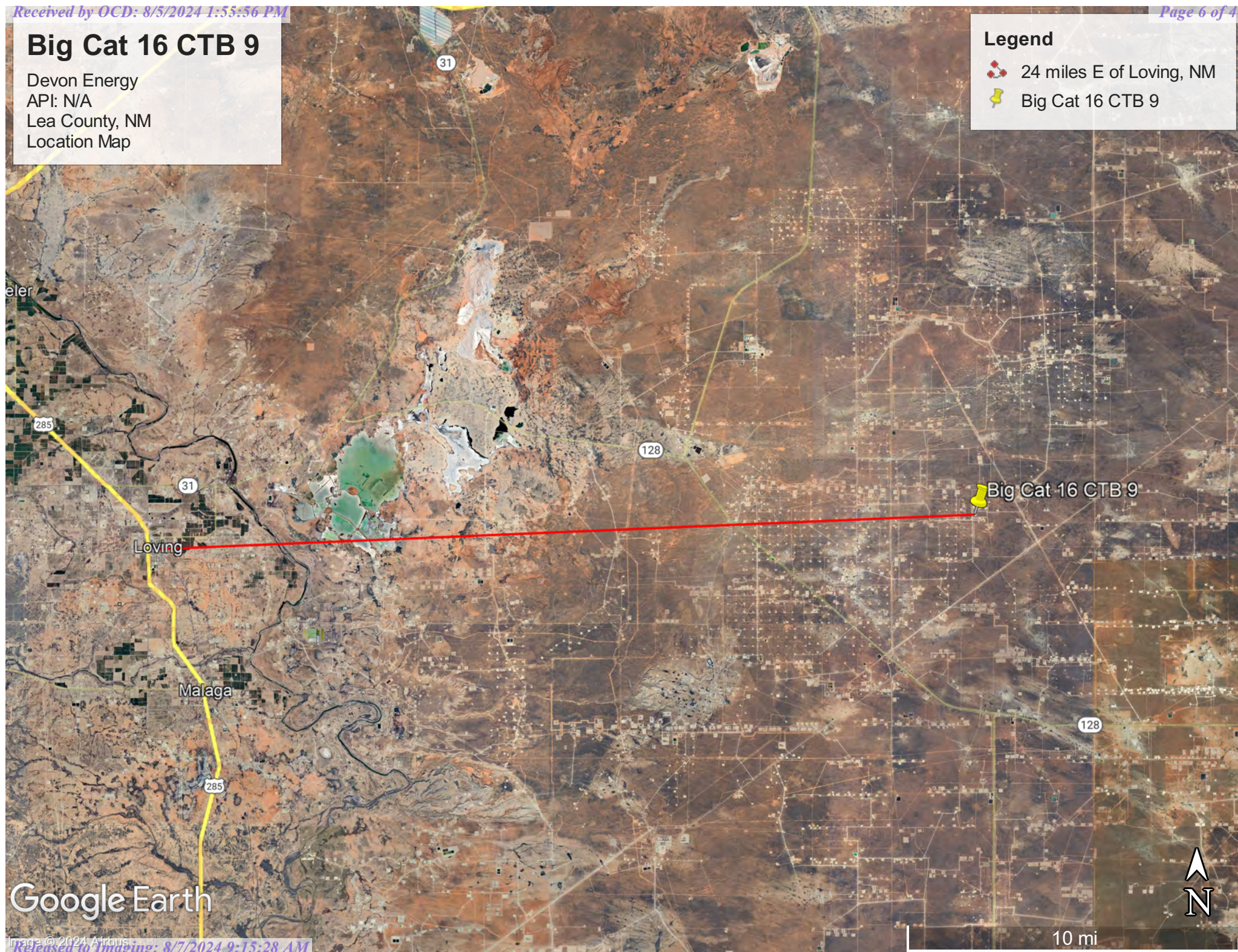
Figure 4- Site Map

Big Cat 16 CTB 9

Devon Energy
API: N/A
Lea County, NM
Location Map


Legend

-  24 miles E of Loving, NM
-  Big Cat 16 CTB 9



Google Earth

Devon Energy
API: N/A
Lea County, NM
Topographic Map

 Big Cat 16 CTB 9



Released to Imaging: 8/7/2024 9:15:28 AM

10 mi

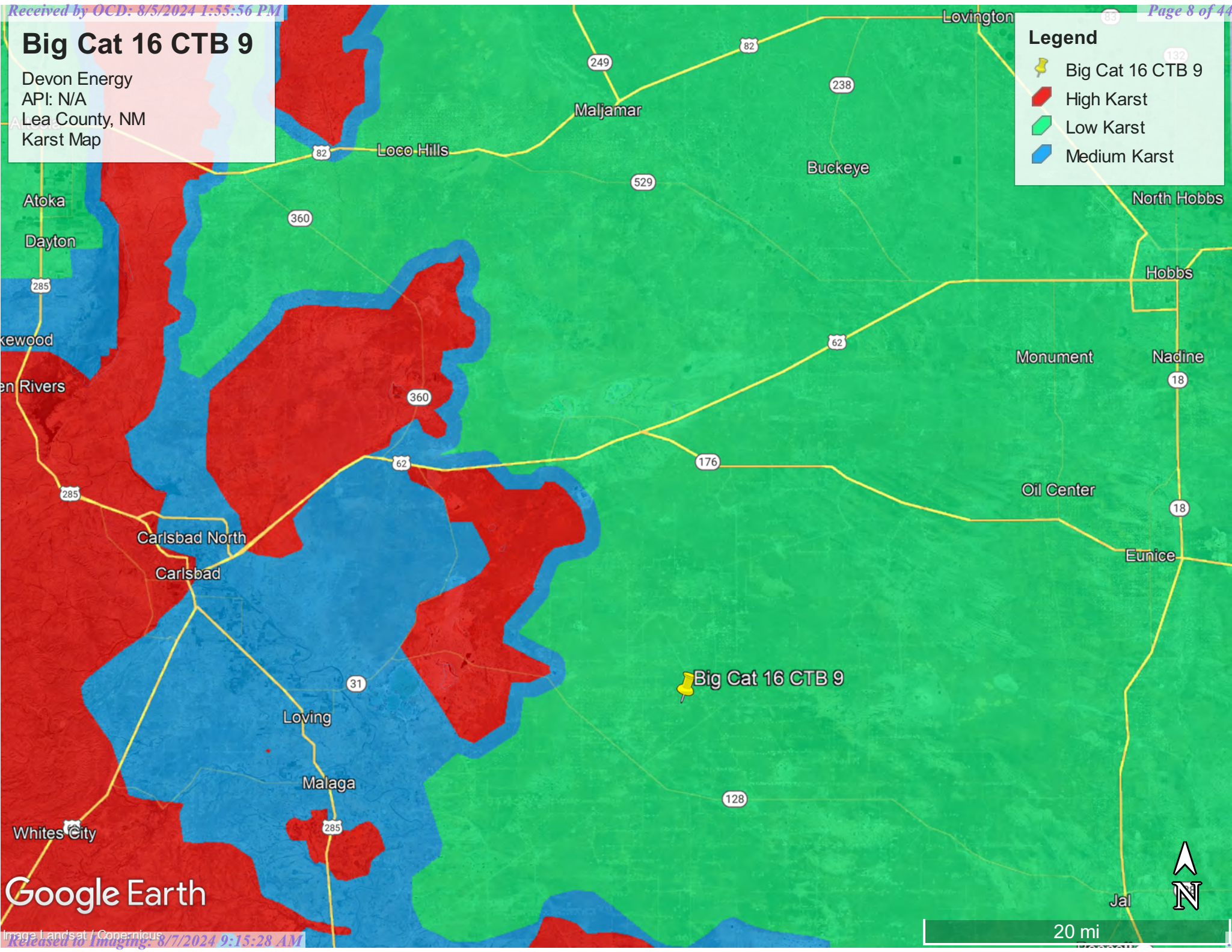


Big Cat 16 CTB 9

Devon Energy
API: N/A
Lea County, NM
Karst Map

Legend

- Big Cat 16 CTB 9
- High Karst
- Low Karst
- Medium Karst



Google Earth

Big Cat 16 CTB 9

Devon Energy
API: N/A
Lea County, NM
NAPP2418140217
Site Map

Legend

- 8,808 Sqft Big Cat 16 CTB 9
- Big Cat 16 CTB 9



Big Cat 16 CTB 9

Google Earth

Released to Imaging: 8/7/2024 9:15:28 AM



100 ft

Appendix A

Water Surveys:

- OSE
- USGS
- Surface Water Map



New Mexico Office of the State Engineer

Water Column/Average Depth to Water

(A CLW##### in the POD suffix indicates the POD has been replaced & no longer serves a water right file.)

(R=POD has been replaced,
O=orphaned,
C=the file is closed)

(quarters are 1=NW 2=NE 3=SW 4=SE)
(quarters are smallest to largest) (NAD83 UTM in meters)

(In feet)

POD Number	Code	POD Sub-basin	County	Q 64	Q 16	Q 4	Sec	Tws	Rng	X	Y	Distance	DepthWell	DepthWater	Water Column
C 04712 POD2		CUB	LE	4	4	4	17	23S	32E	623332	3574331	907	55		
C 02216		CUB	LE	2	2	4	21	23S	32E	625035	3573261*	1541	585	400	185
C 03851 POD1		CUB	LE	3	3	4	20	23S	32E	622880	3572660	2321	1392	713	679
C 04815 POD1		CUB	LE	1	4	3	08	23S	32E	622392	3576025	2333	55		
C 03529 POD1		C	LE	2	4	3	29	23S	32E	622651	3571212	3694	550		
C 02349		CUB	ED		2	3	03	23S	32E	625678	3578004*	3741	525		
C 04780 POD1		CUB	LE	1	3	1	34	23S	32E	625364	3570521	4202	80		
C 04704 POD1		CUB	ED	3	2	2	13	23S	31E	619854	3575363	4427			
C 04712 POD3		CUB	ED	4	1	2	24	23S	31E	619651	3573877	4609	55		

Average Depth to Water: **556 feet**

Minimum Depth: **400 feet**

Maximum Depth: **713 feet**

Record Count: 9

UTM NAD83 Radius Search (in meters):

Easting (X): 624209.2

Northing (Y): 3574562.7

Radius: 5000

*UTM location was derived from PLSS - see Help

The data is furnished by the NMOSE/ISC and is accepted by the recipient with the expressed understanding that the OSE/TSC make no warranties, expressed or implied, concerning the accuracy, completeness, reliability, usability, or suitability for any particular purpose of the data.


7/10/24 11:09 AM

WATER COLUMN/ AVERAGE DEPTH TO
WATER



New Mexico Office of the State Engineer

Point of Diversion Summary

		(quarters are 1=NW 2=NE 3=SW 4=SE)				(quarters are smallest to largest)				(NAD83 UTM in meters)	
Well Tag	POD Number	Q64	Q16	Q4	Sec	Tws	Rng	X	Y		
NA	C 04712 POD2	4	4	4	17	23S	32E	623332	3574331		
x											
Driller License:	1833	Driller Company:				VISION RESOURCES, INC					
Driller Name:	JASON MALEY										
Drill Start Date:	03/09/2023	Drill Finish Date:				03/09/2023		Plug Date:	03/14/2023		
Log File Date:	04/04/2023	PCW Rcv Date:				Source:					
Pump Type:	Pipe Discharge Size:				Estimated Yield:						
Casing Size:	Depth Well:				55 feet		Depth Water:				

The data is furnished by the NMOSE/ISC and is accepted by the recipient with the expressed understanding that the OSE/ISC make no warranties, expressed or implied, concerning the accuracy, completeness, reliability, usability, or suitability for any particular purpose of the data.




7/10/24 11:10 AM

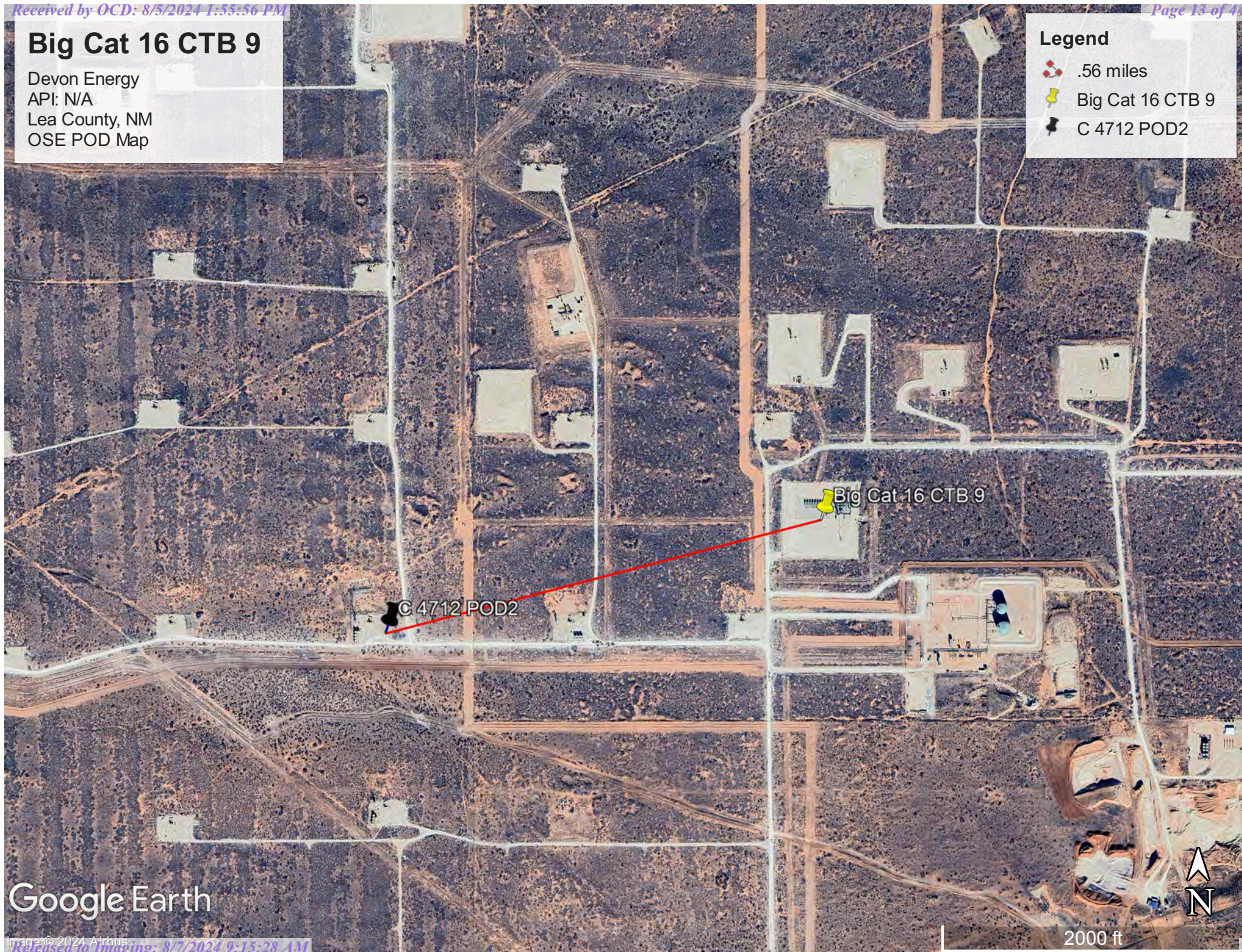
POINT OF DIVERSION SUMMARY

Big Cat 16 CTB 9

Devon Energy
API: N/A
Lea County, NM
OSE POD Map

Legend

-  .56 miles
-  Big Cat 16 CTB 9
-  C 4712 POD2



Google Earth

2000 ft



[USGS Home](#)
[Contact USGS](#)
[Search USGS](#)

National Water Information System: Web Interface

USGS Water Resources

Data Category:

Groundwater

Geographic Area:

United States

GO

Click to hide News Bulletins

- Explore the *NEW* [USGS National Water Dashboard](#) interactive map to access real-time water data from over 13,500 stations nationwide.

Groundwater levels for the Nation



Important: [Next Generation Monitoring Location Page](#)

Search Results -- 1 sites found

site_no list =

- 321952103400801

Minimum number of levels = 1

[Save file of selected sites](#) to local disk for future upload

USGS 321952103400801 23S.32E.03.311114

Available data for this site

Groundwater: Field measurements

GO

Lea County, New Mexico

Hydrologic Unit Code 13060011

Latitude 32°19'59.2", Longitude 103°40'12.6" NAD83

Land-surface elevation 3,648.00 feet above NGVD29

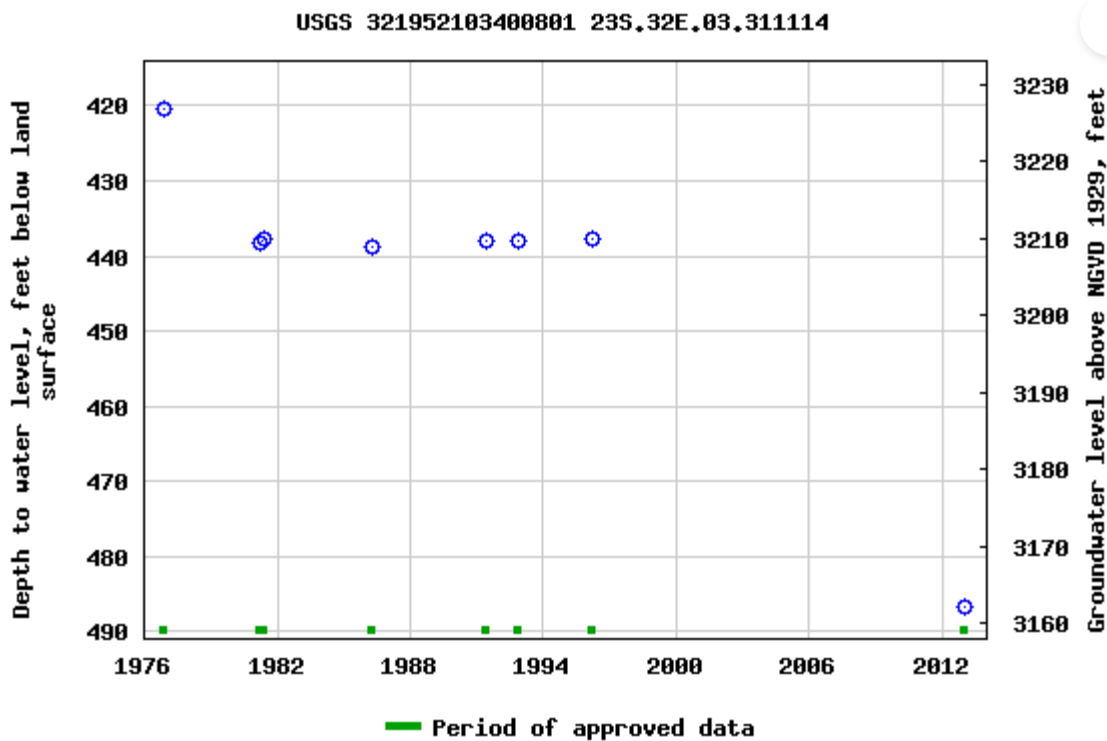
The depth of the well is 630 feet below land surface.

This well is completed in the Other aquifers (N9999OTHER) national aquifer.

This well is completed in the Sunrise Formation (231SNRS) local aquifer.

Output formats

Table of data
Tab-separated data
Graph of data
Reselect period



Breaks in the plot represent a gap of at least one year between field measurements.

[Download a presentation-quality graph](#)

[Questions or Comments](#)

[Help](#)

[Data Tips](#)

[Explanation of terms](#)

[Subscribe for system changes](#)

[Accessibility](#)

[FOIA](#)

[Privacy](#)

[Policies and Notices](#)

[U.S. Department of the Interior](#) | [U.S. Geological Survey](#)

Title: Groundwater for USA: Water Levels

URL: <https://nwis.waterdata.usgs.gov/nwis/gwlevels?>



Page Contact Information: [USGS Water Data Support Team](#)




Page Last Modified: 2024-07-10 13:06:41 EDT

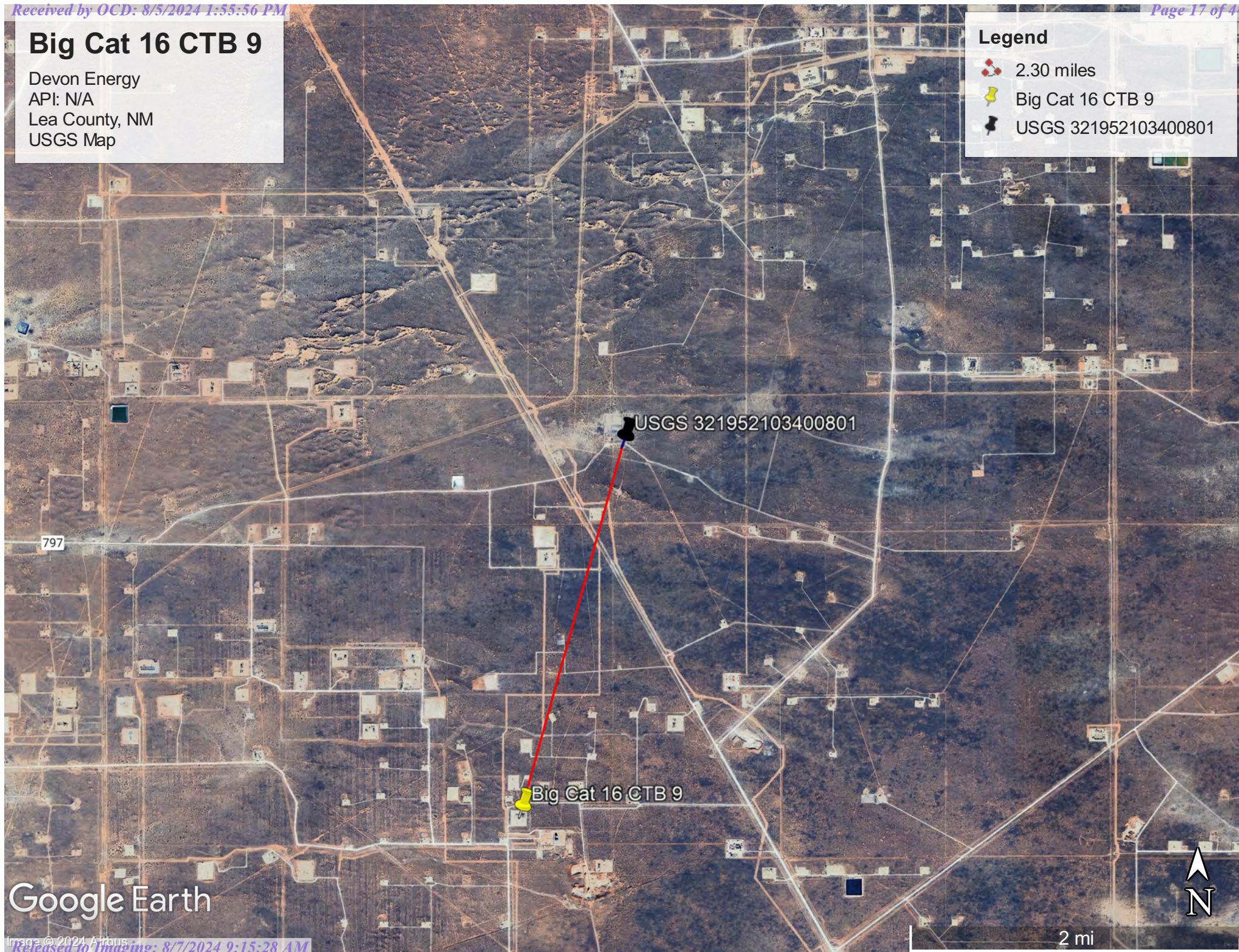
0.55 0.49 nadww02

Big Cat 16 CTB 9

Devon Energy
API: N/A
Lea County, NM
USGS Map

Legend

-  2.30 miles
-  Big Cat 16 CTB 9
-  USGS 321952103400801



Google Earth

Appendix B

- Soil Survey & Soil Maps
- Geological Data
- FEMA Flood Map
- Wetlands Map

Map Unit Description: Kermit-Palomas fine sands, 0 to 12 percent slopes---Lea County, New Mexico

Lea County, New Mexico

KD—Kermit-Palomas fine sands, 0 to 12 percent slopes

Map Unit Setting

National map unit symbol: dmpv

Elevation: 3,000 to 4,400 feet

Mean annual precipitation: 10 to 12 inches

Mean annual air temperature: 60 to 62 degrees F

Frost-free period: 190 to 205 days

Farmland classification: Not prime farmland

Map Unit Composition

Kermit and similar soils: 70 percent

Palomas and similar soils: 20 percent

Minor components: 10 percent

Estimates are based on observations, descriptions, and transects of the mapunit.

Description of Kermit

Setting

Landform: Dunes

Landform position (two-dimensional): Shoulder, backslope, footslope

Landform position (three-dimensional): Side slope

Down-slope shape: Concave, convex, linear

Across-slope shape: Convex

Parent material: Calcareous sandy eolian deposits derived from sedimentary rock

Typical profile

A - 0 to 8 inches: fine sand

C - 8 to 60 inches: fine sand

Properties and qualities

Slope: 3 to 12 percent

Depth to restrictive feature: More than 80 inches

Drainage class: Excessively drained

Runoff class: Very low

Capacity of the most limiting layer to transmit water (Ksat): Very high (20.00 in/hr)

Depth to water table: More than 80 inches

Frequency of flooding: None

Frequency of ponding: None

Maximum salinity: Nonsaline (0.0 to 1.0 mmhos/cm)

Sodium adsorption ratio, maximum: 2.0

Available water supply, 0 to 60 inches: Low (about 3.1 inches)

Interpretive groups

Land capability classification (irrigated): None specified

Land capability classification (nonirrigated): 7e

Map Unit Description: Kermit-Palomas fine sands, 0 to 12 percent slopes---Lea County, New Mexico

Hydrologic Soil Group: A
Ecological site: R070BD005NM - Deep Sand
Hydric soil rating: No

Description of Palomas

Setting

Landform: Dunes
Landform position (two-dimensional): Shoulder, backslope, footslope
Landform position (three-dimensional): Side slope
Down-slope shape: Concave, convex, linear
Across-slope shape: Convex
Parent material: Alluvium derived from sandstone

Typical profile

A - 0 to 16 inches: fine sand
Bt - 16 to 60 inches: sandy clay loam
Bk - 60 to 66 inches: sandy loam

Properties and qualities

Slope: 0 to 5 percent
Depth to restrictive feature: More than 80 inches
Drainage class: Well drained
Runoff class: Low
Capacity of the most limiting layer to transmit water (Ksat): Moderately high to high (0.60 to 2.00 in/hr)
Depth to water table: More than 80 inches
Frequency of flooding: None
Frequency of ponding: None
Calcium carbonate, maximum content: 50 percent
Gypsum, maximum content: 1 percent
Maximum salinity: Nonsaline to very slightly saline (0.0 to 2.0 mmhos/cm)
Sodium adsorption ratio, maximum: 2.0
Available water supply, 0 to 60 inches: Moderate (about 7.5 inches)

Interpretive groups

Land capability classification (irrigated): None specified
Land capability classification (nonirrigated): 7e
Hydrologic Soil Group: B
Ecological site: R070BD003NM - Loamy Sand
Hydric soil rating: No

Minor Components

Pyote

Percent of map unit: 4 percent
Ecological site: R070BD003NM - Loamy Sand
Hydric soil rating: No

Maljamar

Percent of map unit: 4 percent

Map Unit Description: Kermit-Palomas fine sands, 0 to 12 percent slopes---Lea County, New Mexico

Ecological site: R070BD003NM - Loamy Sand
Hydric soil rating: No

Palomas

Percent of map unit: 1 percent
Ecological site: R070BD003NM - Loamy Sand
Hydric soil rating: No

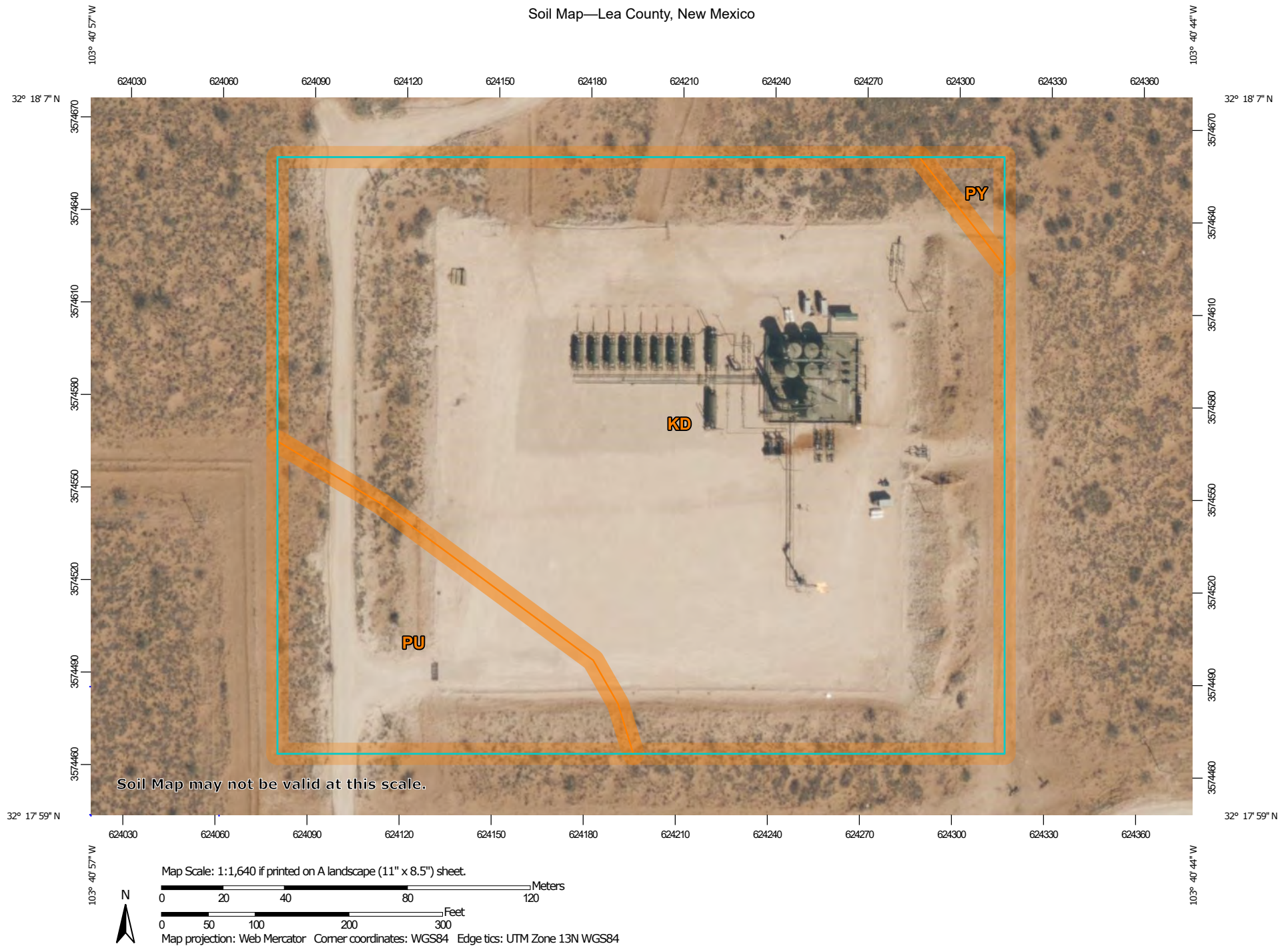
Dune land

Percent of map unit: 1 percent
Hydric soil rating: No

Data Source Information

Soil Survey Area: Lea County, New Mexico
Survey Area Data: Version 20, Sep 6, 2023

Soil Map—Lea County, New Mexico



Soil Map may not be valid at this scale.

Map Scale: 1:1,640 if printed on A landscape (11" x 8.5") sheet.

0 20 40 80 120 Meters

0 50 100 200 300 Feet

Map projection: Web Mercator Corner coordinates: WGS84 Edge tics: UTM Zone 13N WGS84



Natural Resources
Conservation Service

Web Soil Survey
National Cooperative Soil Survey

7/10/2024
Page 1 of 3

Soil Map—Lea County, New Mexico

MAP LEGEND

Area of Interest (AOI)

 Area of Interest (AOI)

Soils

 Soil Map Unit Polygons

 Soil Map Unit Lines

 Soil Map Unit Points

Special Point Features



Blowout



Borrow Pit



Clay Spot



Closed Depression



Gravel Pit



Gravelly Spot



Landfill



Lava Flow



Marsh or swamp



Mine or Quarry



Miscellaneous Water



Perennial Water



Rock Outcrop



Saline Spot



Sandy Spot



Severely Eroded Spot



Sinkhole



Slide or Slip



Sodic Spot



Spoil Area



Stony Spot



Very Stony Spot



Wet Spot



Other



Special Line Features

Water Features



Streams and Canals

Transportation



Rails



Interstate Highways



US Routes



Major Roads



Local Roads

Background



Aerial Photography

MAP INFORMATION

The soil surveys that comprise your AOI were mapped at 1:20,000.

Warning: Soil Map may not be valid at this scale.

Enlargement of maps beyond the scale of mapping can cause misunderstanding of the detail of mapping and accuracy of soil line placement. The maps do not show the small areas of contrasting soils that could have been shown at a more detailed scale.

Please rely on the bar scale on each map sheet for map measurements.

Source of Map: Natural Resources Conservation Service

Web Soil Survey URL:

Coordinate System: Web Mercator (EPSG:3857)

Maps from the Web Soil Survey are based on the Web Mercator projection, which preserves direction and shape but distorts distance and area. A projection that preserves area, such as the Albers equal-area conic projection, should be used if more accurate calculations of distance or area are required.

This product is generated from the USDA-NRCS certified data as of the version date(s) listed below.

Soil Survey Area: Lea County, New Mexico

Survey Area Data: Version 20, Sep 6, 2023

Soil map units are labeled (as space allows) for map scales 1:50,000 or larger.

Date(s) aerial images were photographed: Feb 7, 2020—May 12, 2020

The orthophoto or other base map on which the soil lines were compiled and digitized probably differs from the background imagery displayed on these maps. As a result, some minor shifting of map unit boundaries may be evident.



Map Unit Legend

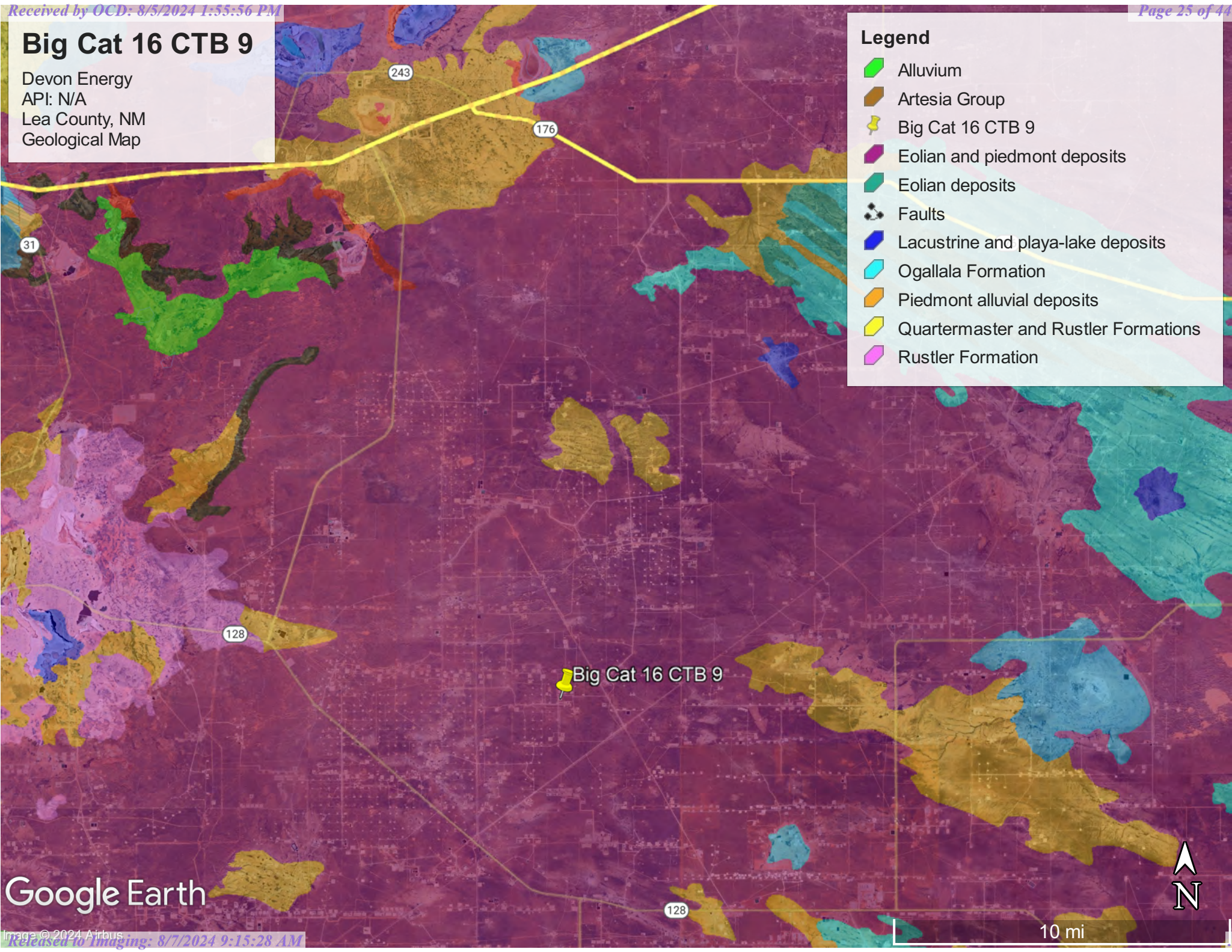
Map Unit Symbol	Map Unit Name	Acres in AOI	Percent of AOI
KD	Kermit-Palomas fine sands, 0 to 12 percent slopes	9.5	83.3%
PU	Pyote and Maljamar fine sands	1.8	15.6%
PY	Pyote soils and Dune land	0.1	1.1%
Totals for Area of Interest		11.4	100.0%

Big Cat 16 CTB 9

Devon Energy
API: N/A
Lea County, NM
Geological Map

Legend

- Alluvium
- Artesia Group
- Big Cat 16 CTB 9
- Eolian and piedmont deposits
- Eolian deposits
- Faults
- Lacustrine and playa-lake deposits
- Ogallala Formation
- Piedmont alluvial deposits
- Quartermaster and Rustler Formations
- Rustler Formation



Google Earth

10 mi

National Flood Hazard Layer FIRMette



103°41'9"W 32°18'19"N



0 250 500 1,000 1,500 2,000 Feet

1:6,000

103°40'32"W 32°17'48"N

Released to Imaging: 8/7/2024 9:19:28 AM

Basemap Imagery Source: USGS National Map 2023

Legend

SEE FIS REPORT FOR DETAILED LEGEND AND INDEX MAP FOR FIRM PANEL LAYOUT

SPECIAL FLOOD HAZARD AREAS		Without Base Flood Elevation (BFE) Zone A, V, A99
		With BFE or Depth Zone AE, AO, AH, VE, AR
		Regulatory Floodway
OTHER AREAS OF FLOOD HAZARD		0.2% Annual Chance Flood Hazard, Areas of 1% annual chance flood with average depth less than one foot or with drainage areas of less than one square mile Zone X
		Future Conditions 1% Annual Chance Flood Hazard Zone X
		Area with Reduced Flood Risk due to Levee. See Notes. Zone X
		Area with Flood Risk due to Levee Zone D
OTHER AREAS		NO SCREEN Area of Minimal Flood Hazard Zone X
		Effective LOMRs
		Area of Undetermined Flood Hazard Zone D
GENERAL STRUCTURES		Channel, Culvert, or Storm Sewer
		Levee, Dike, or Floodwall
OTHER FEATURES		Cross Sections with 1% Annual Chance Water Surface Elevation
		Coastal Transect
		Base Flood Elevation Line (BFE)
		Limit of Study
		Jurisdiction Boundary
		Coastal Transect Baseline
		Profile Baseline
MAP PANELS		Digital Data Available
		No Digital Data Available
		Unmapped



The pin displayed on the map is an approximate point selected by the user and does not represent an authoritative property location.

This map complies with FEMA's standards for the use of digital flood maps if it is not void as described below. The basemap shown complies with FEMA's basemap accuracy standards

The flood hazard information is derived directly from the authoritative NFHL web services provided by FEMA. This map was exported on 7/10/2024 at 1:17 PM and does not reflect changes or amendments subsequent to this date and time. The NFHL and effective information may change or become superseded by new data over time.

This map image is void if the one or more of the following map elements do not appear: basemap imagery, flood zone labels, legend, scale bar, map creation date, community identifiers, FIRM panel number, and FIRM effective date. Map images for unmapped and unmodernized areas cannot be used for regulatory purposes.



Wetlands



July 10, 2024

Wetlands

- Estuarine and Marine Deepwater
- Estuarine and Marine Wetland

- Freshwater Emergent Wetland
- Freshwater Forested/Shrub Wetland
- Freshwater Pond

- Lake
- Other
- Riverine

This map is for general reference only. The US Fish and Wildlife Service is not responsible for the accuracy or currentness of the base data shown on this map. All wetlands related data should be used in accordance with the layer metadata found on the Wetlands Mapper web site.

Appendix C

- 48-Hour Notification
- Liner Inspection Form

lynsey@pimaoil.com

From: Woodall, Dale <Dale.Woodall@dvn.com>
Sent: Tuesday, July 16, 2024 7:32 PM
To: 'Gio PimaOil'; Tom Pima Oil; Delrae Pima Oil; Lynsey Pima Oil
Subject: Fwd: [EXTERNAL] The Oil Conservation Division (OCD) has accepted the application, Application ID: 364703

I just saw this. Here you go.

Dale Woodall
Environmental Professional
Hobbs, NM
Office: 575-748-1838
Mobile: 405-318-4697
Dale.Woodall@dvn.com

From: OCDOnline@state.nm.us <OCDOnline@state.nm.us>
Sent: Tuesday, July 16, 2024 7:30:41 PM
To: Woodall, Dale <Dale.Woodall@dvn.com>
Subject: [EXTERNAL] The Oil Conservation Division (OCD) has accepted the application, Application ID: 364703

To whom it may concern (c/o Dale Woodall for DEVON ENERGY PRODUCTION COMPANY, LP),

The OCD has received the submitted *Notification for Liner Inspection for a Release (C-141L)*, for incident ID (n#) nAPP2418140217.

The liner inspection is expected to take place:

When: 07/19/2024 @ 08:00

Where: K-16-23S-32E 1326 FSL 2292 FWL (32.30099102,-103.680727)

Additional Information: Andrew Franco 806-200-0054

Additional Instructions: K-16-25S-32E, (32.30099102,-103.680727 NAD83) From the intersection of NM 128 and County Rd 2, travel west on NM 128 for 1.65 miles, turn north on Lease Rd for 7.30 miles, turn west on lease Rd for 1.41 miles, arriving to location on the left.

An OCD representative may be available onsite at the date and time reported. In the absence or presence of an OCD representative, liner inspection pursuant to 19.15.29.11.A(5)(a) NMAC is required. Should there be a change in the scheduled date and time of the sampling event, then another notification should be resubmitted through OCD permitting as soon as possible.

- **Failure to notify the OCD of liner inspections including any changes in date/time per the requirements of 19.15.29.11.A(5)(a)(ii) NMAC, may result in the inspection not being accepted.**

If you have any questions regarding this application, or don't know why you have received this email, please contact us.

New Mexico Energy, Minerals and Natural Resources Department

1220 South St. Francis Drive

Santa Fe, NM 87505

Confidentiality Warning: This message and any attachments are intended only for the use of the intended recipient(s), are confidential, and may be privileged. If you are not the intended recipient, you are hereby notified that any review, retransmission, conversion to hard copy, copying, circulation or other use of all or any portion of this message and any attachments is strictly prohibited. If you are not the intended recipient, please notify the sender immediately by return e-mail, and delete this message and any attachments from your system.



Pima Environmental Services, LLC

Liner Inspection FormCompany Name: Devon EnergySite: Big Cat 16 CTB 9Lat/Long: 32.30099102, -103.680727

NMOCD Incident ID

& Incident Date: NAPP2418140217 6/28/2024

2-Day Notification

Sent: via Email by Dale Woodall on OCD portal 7/16/2024
application ID: 364703.Inspection Date: 7/19/2024

Liner Type:	Earthen w/liner	Earthen no liner	Polystar
	Steel w/poly liner	Steel w/spray epoxy	No Liner

Other: _____

Visualization	Yes	No	Comments
Is there a tear in the liner?		X	
Are there holes in the liner?		X	
Is the liner retaining any fluids?	X		Fluid from power washing the Liner
Does the liner have integrity to contain a leak?	X		

Comments: _____

Inspector Name: Andrew Franco Inspector Signature: Andrew Franco

Appendix D

○ Photographic Documentation

PHOTOGRAPHIC DOCUMENTATION

SITE NAME: Big Cat 16 CTB 9

Initial Liner Photos:



Site information sign.



Photo of liner prior to power washing, taken facing North.

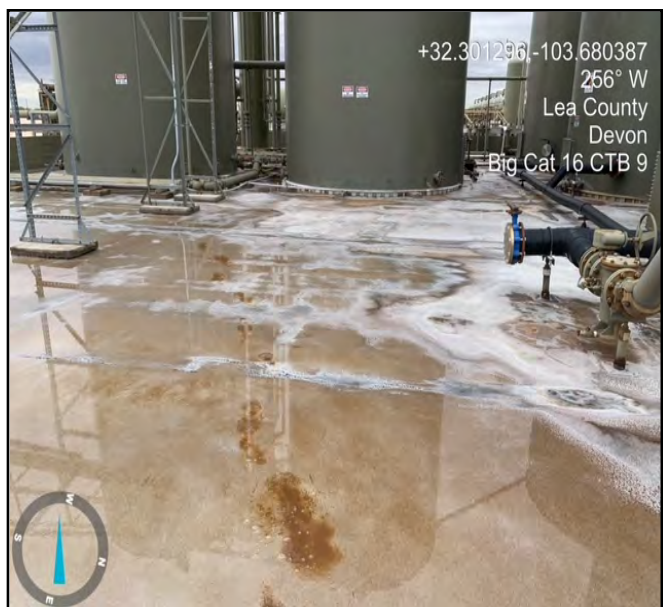


Photo of liner prior to power washing, taken facing West.



Photo of liner prior to power washing, taken facing Northeast.

PHOTOGRAPHIC DOCUMENTATION

SITE NAME: Big Cat 16 CTB 9

Liner Inspection:



Photo taken of liner after power washing, taken facing North.



Photo taken of liner after power washing, taken facing Northwest.

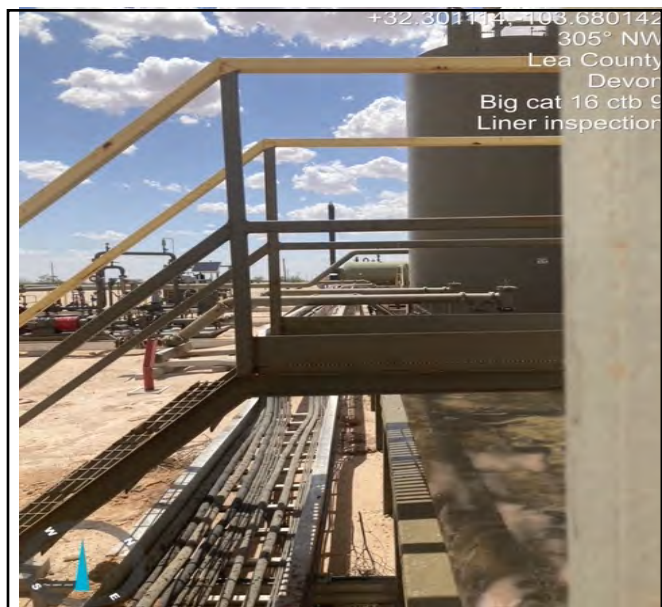


Photo taken of liner after power washing, taken facing Northwest.



Photo taken of liner after power washing, taken facing Southeast.

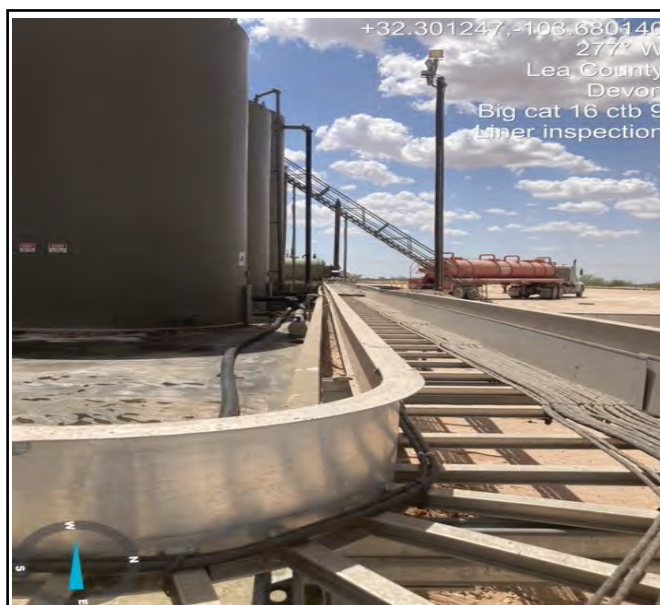


Photo of liner taken after power washing, taken facing Northwest.



Photo of liner after power washing, taken facing Southeast.



Photo of liner taken after power washing, taken facing Southwest.



Photo of liner taken after power washing, taken facing Northeast.

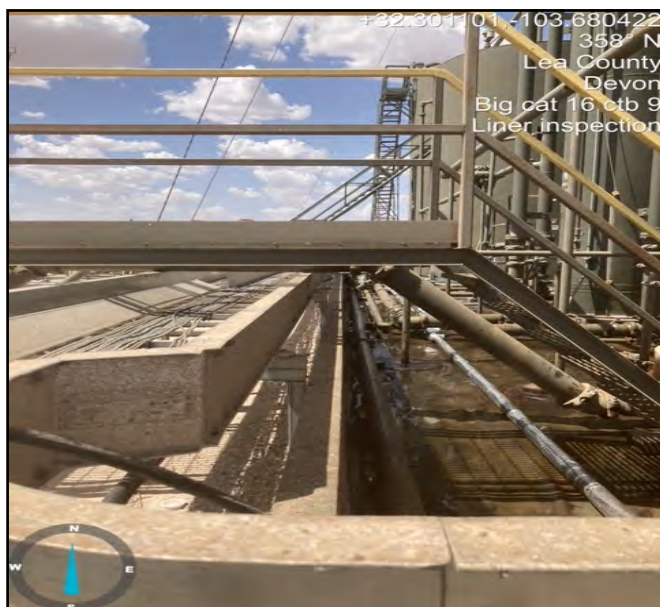


Photo of liner taken after power washing,
taken facing North.

PHOTOGRAPHIC DOCUMENTATION

SITE NAME: Big Cat 16 CTB 9

Aerial Liner Photos:



Aerial photo of liner.



Aerial photo of liner.



Aerial photo of liner.



Aerial photo of liner.



Aerial photo of liner.

District I
1625 N. French Dr., Hobbs, NM 88240
Phone:(575) 393-6161 Fax:(575) 393-0720
District II
811 S. First St., Artesia, NM 88210
Phone:(575) 748-1283 Fax:(575) 748-9720
District III
1000 Rio Brazos Rd., Aztec, NM 87410
Phone:(505) 334-6178 Fax:(505) 334-6170
District IV
1220 S. St Francis Dr., Santa Fe, NM 87505
Phone:(505) 476-3470 Fax:(505) 476-3462

State of New Mexico
Energy, Minerals and Natural Resources
Oil Conservation Division
1220 S. St Francis Dr.
Santa Fe, NM 87505

QUESTIONS

Action 370537

QUESTIONS

Operator: DEVON ENERGY PRODUCTION COMPANY, LP 333 West Sheridan Ave. Oklahoma City, OK 73102	OGRID:	6137
	Action Number:	370537
	Action Type:	[C-141] Remediation Closure Request C-141 (C-141-v-Closure)

QUESTIONS

Prerequisites	
Incident ID (n#)	nAPP2418140217
Incident Name	NAPP2418140217 BIG CAT 16 CTB 9 @ 0
Incident Type	Produced Water Release
Incident Status	Remediation Closure Report Received
Incident Facility	[fAPP2129926862] BIG CAT 16 CTB 9

Location of Release Source	
Please answer all the questions in this group.	
Site Name	BIG CAT 16 CTB 9
Date Release Discovered	06/28/2024
Surface Owner	State

Incident Details	
Please answer all the questions in this group.	
Incident Type	Produced Water Release
Did this release result in a fire or is the result of a fire	No
Did this release result in any injuries	No
Has this release reached or does it have a reasonable probability of reaching a watercourse	No
Has this release endangered or does it have a reasonable probability of endangering public health	No
Has this release substantially damaged or will it substantially damage property or the environment	No
Is this release of a volume that is or may with reasonable probability be detrimental to fresh water	No

Nature and Volume of Release	
Material(s) released, please answer all that apply below. Any calculations or specific justifications for the volumes provided should be attached to the follow-up C-141 submission.	
Crude Oil Released (bbls) Details	Not answered.
Produced Water Released (bbls) Details	Cause: Equipment Failure Pump Produced Water Released: 12 BBL Recovered: 10 BBL Lost: 2 BBL.
Is the concentration of chloride in the produced water >10,000 mg/l	Yes
Condensate Released (bbls) Details	Not answered.
Natural Gas Vented (Mcf) Details	Not answered.
Natural Gas Flared (Mcf) Details	Not answered.
Other Released Details	Not answered.
Are there additional details for the questions above (i.e. any answer containing Other, Specify, Unknown, and/or Fire, or any negative lost amounts)	Leak at water transfer pump in lined containment. 11.6 estimated released. 10 bbls recovered. Pump was isolated to stop the leak.

District I
1625 N. French Dr., Hobbs, NM 88240
Phone:(575) 393-6161 Fax:(575) 393-0720

District II
811 S. First St., Artesia, NM 88210
Phone:(575) 748-1283 Fax:(575) 748-9720

District III
1000 Rio Brazos Rd., Aztec, NM 87410
Phone:(505) 334-6178 Fax:(505) 334-6170

District IV
1220 S. St Francis Dr., Santa Fe, NM 87505
Phone:(505) 476-3470 Fax:(505) 476-3462

State of New Mexico
Energy, Minerals and Natural Resources
Oil Conservation Division
1220 S. St Francis Dr.
Santa Fe, NM 87505

QUESTIONS, Page 2

Action 370537

QUESTIONS (continued)

Operator: DEVON ENERGY PRODUCTION COMPANY, LP 333 West Sheridan Ave. Oklahoma City, OK 73102	OGRID: 6137
	Action Number: 370537
	Action Type: [C-141] Remediation Closure Request C-141 (C-141-v-Closure)

QUESTIONS

Nature and Volume of Release (continued)	
Is this a gas only submission (i.e. only significant Mcf values reported)	No, according to supplied volumes this does not appear to be a "gas only" report.
Was this a major release as defined by Subsection A of 19.15.29.7 NMAC	No
Reasons why this would be considered a submission for a notification of a major release	Unavailable.
With the implementation of the 19.15.27 NMAC (05/25/2021), venting and/or flaring of natural gas (i.e. gas only) are to be submitted on the C-129 form.	

Initial Response

The responsible party must undertake the following actions immediately unless they could create a safety hazard that would result in injury.

The source of the release has been stopped	True
The impacted area has been secured to protect human health and the environment	True
Released materials have been contained via the use of berms or dikes, absorbent pads, or other containment devices	True
All free liquids and recoverable materials have been removed and managed appropriately	True
If all the actions described above have not been undertaken, explain why	Not answered.

Per Paragraph (4) of Subsection B of 19.15.29.8 NMAC the responsible party may commence remediation immediately after discovery of a release. If remediation has begun, please prepare and attach a narrative of actions to date in the follow-up C-141 submission. If remedial efforts have been successfully completed or if the release occurred within a lined containment area (see Subparagraph (a) of Paragraph (5) of Subsection A of 19.15.29.11 NMAC), please prepare and attach all information needed for closure evaluation in the follow-up C-141 submission.

I hereby certify that the information given above is true and complete to the best of my knowledge and understand that pursuant to OCD rules and regulations all operators are required to report and/or file certain release notifications and perform corrective actions for releases which may endanger public health or the environment. The acceptance of a C-141 report by the OCD does not relieve the operator of liability should their operations have failed to adequately investigate and remediate contamination that pose a threat to groundwater, surface water, human health or the environment. In addition, OCD acceptance of a C-141 report does not relieve the operator of responsibility for compliance with any other federal, state, or local laws and/or regulations.

I hereby agree and sign off to the above statement	Name: Dale Woodall Title: EHS Professional Email: Dale.Woodall@dvn.com Date: 08/05/2024
--	--

District I

1625 N. French Dr., Hobbs, NM 88240
Phone:(575) 393-6161 Fax:(575) 393-0720

District II

811 S. First St., Artesia, NM 88210
Phone:(575) 748-1283 Fax:(575) 748-9720

District III

1000 Rio Brazos Rd., Aztec, NM 87410
Phone:(505) 334-6178 Fax:(505) 334-6170

District IV

1220 S. St Francis Dr., Santa Fe, NM 87505
Phone:(505) 476-3470 Fax:(505) 476-3462

State of New Mexico
Energy, Minerals and Natural Resources
Oil Conservation Division
1220 S. St Francis Dr.
Santa Fe, NM 87505

QUESTIONS, Page 3

Action 370537

QUESTIONS (continued)

Operator: DEVON ENERGY PRODUCTION COMPANY, LP 333 West Sheridan Ave. Oklahoma City, OK 73102	OGRID:	6137
	Action Number:	370537
	Action Type:	[C-141] Remediation Closure Request C-141 (C-141-v-Closure)

QUESTIONS**Site Characterization**

Please answer all the questions in this group (only required when seeking remediation plan approval and beyond). This information must be provided to the appropriate district office no later than 90 days after the release discovery date.

What is the shallowest depth to groundwater beneath the area affected by the release in feet below ground surface (ft bgs)	Between 51 and 75 (ft.)
What method was used to determine the depth to ground water	NM OSE iWaters Database Search
Did this release impact groundwater or surface water	No
What is the minimum distance, between the closest lateral extents of the release and the following surface areas:	
A continuously flowing watercourse or any other significant watercourse	Greater than 5 (mi.)
Any lakebed, sinkhole, or playa lake (measured from the ordinary high-water mark)	Greater than 5 (mi.)
An occupied permanent residence, school, hospital, institution, or church	Greater than 5 (mi.)
A spring or a private domestic fresh water well used by less than five households for domestic or stock watering purposes	Greater than 5 (mi.)
Any other fresh water well or spring	Greater than 5 (mi.)
Incorporated municipal boundaries or a defined municipal fresh water well field	Greater than 5 (mi.)
A wetland	Greater than 5 (mi.)
A subsurface mine	Greater than 5 (mi.)
An (non-karst) unstable area	Zero feet, overlying, or within area
Categorize the risk of this well / site being in a karst geology	Low
A 100-year floodplain	Greater than 5 (mi.)
Did the release impact areas not on an exploration, development, production, or storage site	No

Remediation Plan

Please answer all the questions that apply or are indicated. This information must be provided to the appropriate district office no later than 90 days after the release discovery date.

Requesting a remediation plan approval with this submission	Yes
Attach a comprehensive report demonstrating the lateral and vertical extents of soil contamination associated with the release have been determined, pursuant to 19.15.29.11 NMAC and 19.15.29.13 NMAC.	
Have the lateral and vertical extents of contamination been fully delineated	Yes
Was this release entirely contained within a lined containment area	Yes
Per Subsection B of 19.15.29.11 NMAC unless the site characterization report includes completed efforts at remediation, the report must include a proposed remediation plan in accordance with 19.15.29.12 NMAC, which includes the anticipated timelines for beginning and completing the remediation.	
On what estimated date will the remediation commence	07/19/2024
On what date will (or did) the final sampling or liner inspection occur	07/19/2024
On what date will (or was) the remediation complete(d)	07/19/2024
What is the estimated surface area (in square feet) that will be remediated	0
What is the estimated volume (in cubic yards) that will be remediated	0
These estimated dates and measurements are recognized to be the best guess or calculation at the time of submission and may (be) change(d) over time as more remediation efforts are completed.	
The OCD recognizes that proposed remediation measures may have to be minimally adjusted in accordance with the physical realities encountered during remediation. If the responsible party has any need to significantly deviate from the remediation plan proposed, then it should consult with the division to determine if another remediation plan submission is required.	

District I

1625 N. French Dr., Hobbs, NM 88240
Phone:(575) 393-6161 Fax:(575) 393-0720

District II

811 S. First St., Artesia, NM 88210
Phone:(575) 748-1283 Fax:(575) 748-9720

District III

1000 Rio Brazos Rd., Aztec, NM 87410
Phone:(505) 334-6178 Fax:(505) 334-6170

District IV

1220 S. St Francis Dr., Santa Fe, NM 87505
Phone:(505) 476-3470 Fax:(505) 476-3462

State of New Mexico
Energy, Minerals and Natural Resources
Oil Conservation Division
1220 S. St Francis Dr.
Santa Fe, NM 87505

QUESTIONS, Page 4

Action 370537

QUESTIONS (continued)

Operator: DEVON ENERGY PRODUCTION COMPANY, LP 333 West Sheridan Ave. Oklahoma City, OK 73102	OGRID:	6137
	Action Number:	370537
	Action Type:	[C-141] Remediation Closure Request C-141 (C-141-v-Closure)

QUESTIONS**Remediation Plan (continued)**

Please answer all the questions that apply or are indicated. This information must be provided to the appropriate district office no later than 90 days after the release discovery date.

This remediation will (or is expected to) utilize the following processes to remediate / reduce contaminants:

(Select all answers below that apply.)

Is (or was) there affected material present needing to be removed	Yes
Is (or was) there a power wash of the lined containment area (to be) performed	Yes
OTHER (Non-listed remedial process)	No

Per Subsection B of 19.15.29.11 NMAC unless the site characterization report includes completed efforts at remediation, the report must include a proposed remediation plan in accordance with 19.15.29.12 NMAC, which includes the anticipated timelines for beginning and completing the remediation.

I hereby certify that the information given above is true and complete to the best of my knowledge and understand that pursuant to OCD rules and regulations all operators are required to report and/or file certain release notifications and perform corrective actions for releases which may endanger public health or the environment. The acceptance of a C-141 report by the OCD does not relieve the operator of liability should their operations have failed to adequately investigate and remediate contamination that pose a threat to groundwater, surface water, human health or the environment. In addition, OCD acceptance of a C-141 report does not relieve the operator of responsibility for compliance with any other federal, state, or local laws and/or regulations.

I hereby agree and sign off to the above statement	Name: Dale Woodall Title: EHS Professional Email: Dale.Woodall@dmn.com Date: 08/05/2024
--	--

The OCD recognizes that proposed remediation measures may have to be minimally adjusted in accordance with the physical realities encountered during remediation. If the responsible party has any need to significantly deviate from the remediation plan proposed, then it should consult with the division to determine if another remediation plan submission is required.

District I

1625 N. French Dr., Hobbs, NM 88240
Phone:(575) 393-6161 Fax:(575) 393-0720

District II

811 S. First St., Artesia, NM 88210
Phone:(575) 748-1283 Fax:(575) 748-9720

District III

1000 Rio Brazos Rd., Aztec, NM 87410
Phone:(505) 334-6178 Fax:(505) 334-6170

District IV

1220 S. St Francis Dr., Santa Fe, NM 87505
Phone:(505) 476-3470 Fax:(505) 476-3462

State of New Mexico
Energy, Minerals and Natural Resources
Oil Conservation Division
1220 S. St Francis Dr.
Santa Fe, NM 87505

QUESTIONS, Page 6

Action 370537

QUESTIONS (continued)

Operator: DEVON ENERGY PRODUCTION COMPANY, LP 333 West Sheridan Ave. Oklahoma City, OK 73102	OGRID:	6137
	Action Number:	370537
	Action Type:	[C-141] Remediation Closure Request C-141 (C-141-v-Closure)

QUESTIONS

Liner Inspection Information	
Last liner inspection notification (C-141L) recorded	364703
Liner inspection date pursuant to Subparagraph (a) of Paragraph (5) of Subsection A of 19.15.29.11 NMAC	07/19/2024
Was all the impacted materials removed from the liner	Yes
What was the liner inspection surface area in square feet	8808

Remediation Closure Request

Only answer the questions in this group if seeking remediation closure for this release because all remediation steps have been completed.

Requesting a remediation closure approval with this submission	Yes
Have the lateral and vertical extents of contamination been fully delineated	Yes
Was this release entirely contained within a lined containment area	Yes
What was the total surface area (in square feet) remediated	0
What was the total volume (cubic yards) remediated	0
Summarize any additional remediation activities not included by answers (above)	SEE REPORT. LINER INSPECTION DID NOT FIND ANY HOLES, RIPS OR TEARS IN THE LINER. NO EVIDENCE FLUIDS LEFT THE LINER

The responsible party must attach information demonstrating they have complied with all applicable closure requirements and any conditions or directives of the OCD. This demonstration should be in the form of a comprehensive report (in .pdf format) including a scaled site map, sampling diagrams, relevant field notes, photographs of any excavation prior to backfilling, laboratory data including chain of custody documents of final sampling, and a narrative of the remedial activities. Refer to 19.15.29.12 NMAC.

I hereby certify that the information given above is true and complete to the best of my knowledge and understand that pursuant to OCD rules and regulations all operators are required to report and/or file certain release notifications and perform corrective actions for releases which may endanger public health or the environment. The acceptance of a C-141 report by the OCD does not relieve the operator of liability should their operations have failed to adequately investigate and remediate contamination that pose a threat to groundwater, surface water, human health or the environment. In addition, OCD acceptance of a C-141 report does not relieve the operator of responsibility for compliance with any other federal, state, or local laws and/or regulations. The responsible party acknowledges they must substantially restore, reclaim, and re-vegetate the impacted surface area to the conditions that existed prior to the release or their final land use in accordance with 19.15.29.13 NMAC including notification to the OCD when reclamation and re-vegetation are complete.

I hereby agree and sign off to the above statement	Name: Dale Woodall Title: EHS Professional Email: Dale.Woodall@dmn.com Date: 08/05/2024
--	--

District I
1625 N. French Dr., Hobbs, NM 88240
Phone:(575) 393-6161 Fax:(575) 393-0720
District II
811 S. First St., Artesia, NM 88210
Phone:(575) 748-1283 Fax:(575) 748-9720
District III
1000 Rio Brazos Rd., Aztec, NM 87410
Phone:(505) 334-6178 Fax:(505) 334-6170
District IV
1220 S. St Francis Dr., Santa Fe, NM 87505
Phone:(505) 476-3470 Fax:(505) 476-3462

State of New Mexico
Energy, Minerals and Natural Resources
Oil Conservation Division
1220 S. St Francis Dr.
Santa Fe, NM 87505

CONDITIONS

Action 370537

CONDITIONS

Operator: DEVON ENERGY PRODUCTION COMPANY, LP 333 West Sheridan Ave. Oklahoma City, OK 73102	OGRID:
	6137
	Action Number: 370537
	Action Type: [C-141] Remediation Closure Request C-141 (C-141-v-Closure)

CONDITIONS

Created By	Condition	Condition Date
scwells	None	8/7/2024