



**Pima Environmental Services**  
**5614 N. Lovington Highway**  
**Hobbs, NM 88240**  
**575-964-7740**

July 1, 2024

NMOCD District 2  
811 S. First St  
Artesia, NM, 88210

Bureau of Land Management  
620 E Green St.  
Carlsbad, NM 88220

**RE: Liner Inspection and Closure Report**  
**Fighting Okra 18 CTB 3**  
**API No. N/A**  
**GPS : Latitude 32.05002 Longitude -103.516**  
**UL- D, Section 18, Township 26S, Range 34E**  
**Lea County, NM**  
**NMOCD Reference No. NAPP2415971627**

Devon Energy Production Company (Devon) has contracted Pima Environmental Services, LLC (Pima) to perform a liner inspection and prepare this closure report for a produced water release that happened at the Fighting Okra 18 CTB 3 (Fighting Okra). This incident was assigned Incident ID: NAPP2415971627, by the New Mexico Oil Conservation Division (NMOCD).

#### **Site Information and Site Characterization**

The Fighting Okra is located approximately nineteen (19) miles southeast of Jal, NM. This spill site is in Unit D, Section 18, Township 26S, Range 34E, Latitude 32.05002 Longitude -103.516, Lea County, NM. A Location Map can be found in Figure 1.

Based upon New Mexico Office of the State Engineer (C-04626-POD 1) well water data, depth to the nearest groundwater in this area is 55 feet belowgrade surface (BGS), located approximately 0.38 miles from the Fighting Okra. According to the United States Geological Survey (USGS320245103335901) well water data, depth to the nearest groundwater in this area is 124 feet BGS. See Appendix A for referenced water surveys. The Fighting Okra is in a low karst area (Figure 3). A Topographic Map can be found in Figure 2.

#### **Release Information**

**NAPP2415971627:** On June 7, 2024, LO found a leak on a 6-inch T on water dump line. Approximately 1125 barrels (bbls) of produced water were released from the water dump line, into the lined containment. A vacuum truck was called and was able to recover 1125 bbls of standing fluid. The liner was visually inspected by Devon field staff for any pinholes or punctures; none were found. Based on this inspection there is no evidence that the spilled fluids left containment.

A Site Map can be found in Figure 4.

#### **Site Assessment and Liner Inspection**

On June 28, 2024, after submitting the 48-hour notification application ID:357807 to the OCD, Pima Environmental conducted a liner inspection at this location. Pima concluded that this liner and containment maintained its integrity and was able to retain the fluids. The liner inspection form and photographic documentation can be found in Appendix C.

**Closure Request**

After careful review, Pima requests that this incident ID: NAPP2415971627, be closed. Devon has complied with the applicable closure requirements.

Should you have any questions or need additional information, please feel free to contact Gio Gomez at 575-964-7740 or [Gio@pimaoil.com](mailto:Gio@pimaoil.com).

Respectfully,

*Gio Gomez*

Gio Gomez

Project Manager

Pima Environmental Services, LLC

**Attachments**

Figures:

- 1- Location Map
- 2- Topographic Map
- 3- Karst Map
- 4- Site Map

Appendices:

- Appendix A- Referenced Water Surveys
- Appendix B- SOIL Survey, Geological Map, FEMA Flood Map, Wetlands Map
- Appendix C- 48- Hour Notification & Liner inspection Form
- Appendix D- Photographic Documentation

## Figures:

Figure 1- Location Map

Figure 2- Topographic Map

Figure 3- Karst Map



Figure 4- Site Map

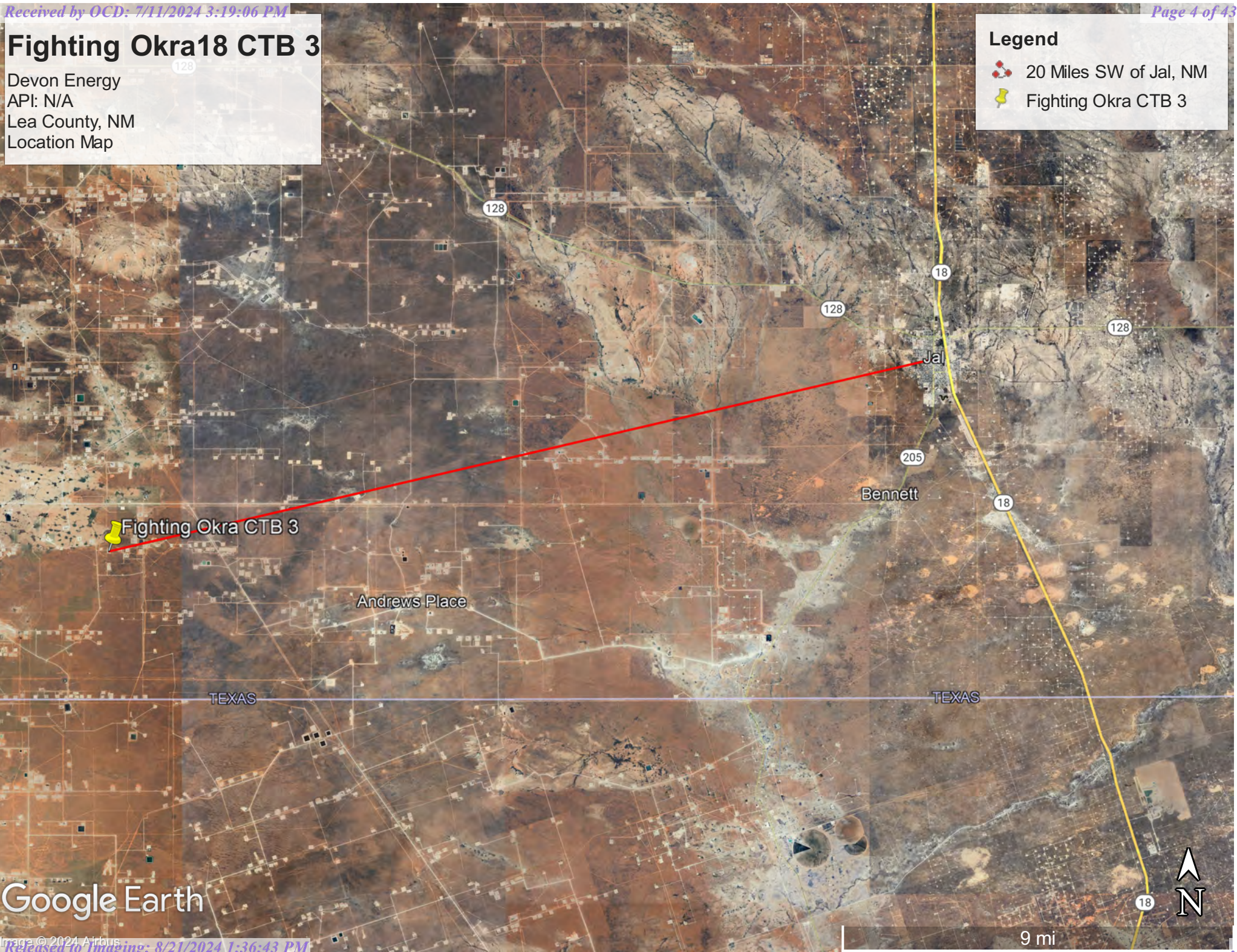


# Fighting Okra18 CTB 3

Devon Energy  
API: N/A  
Lea County, NM  
Location Map

## Legend

-  20 Miles SW of Jal, NM
-  Fighting Okra CTB 3




Google Earth

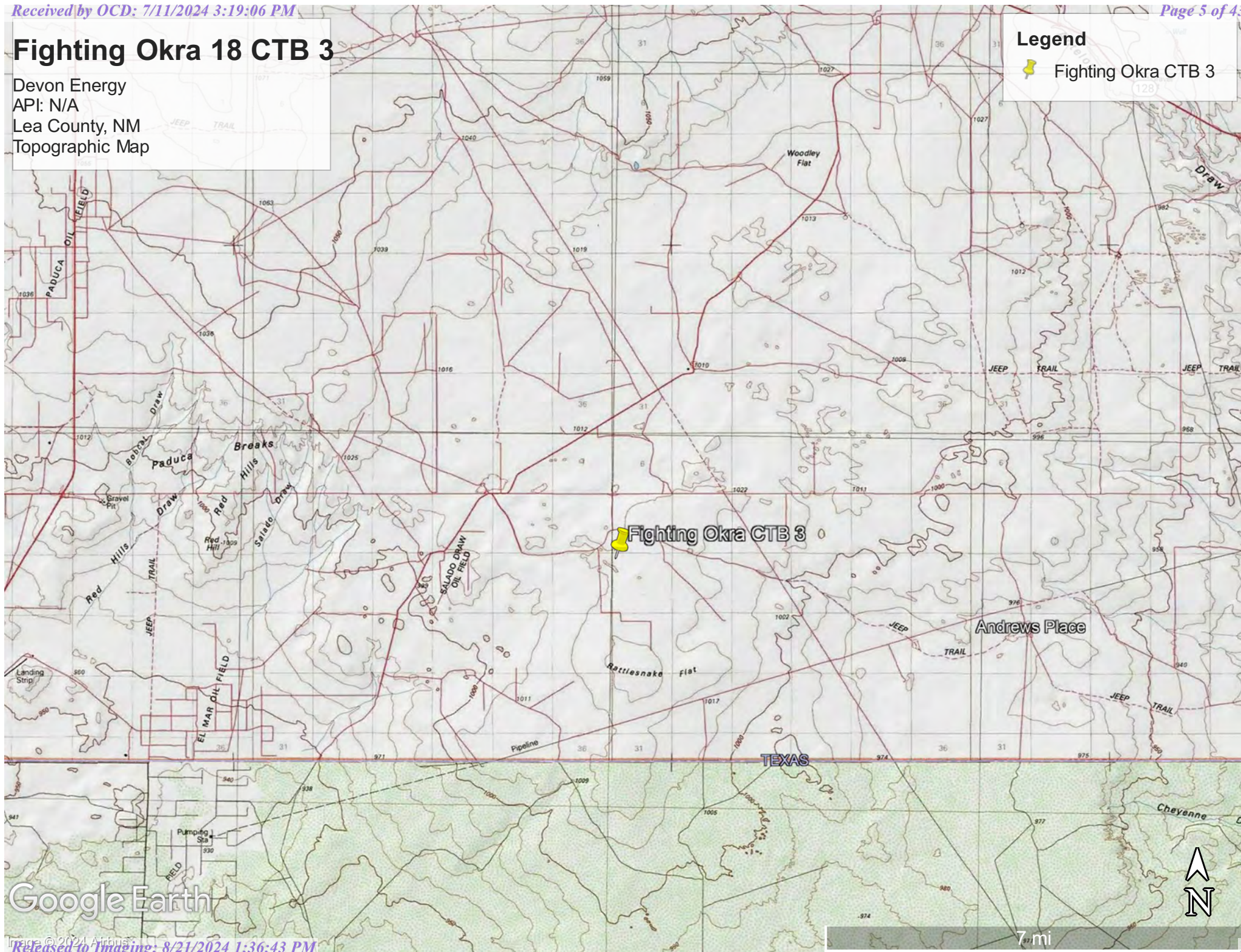


# Fighting Okra 18 CTB 3

Devon Energy  
API: N/A  
Lea County, NM  
Topographic Map

## Legend

 Fighting Okra CTB 3







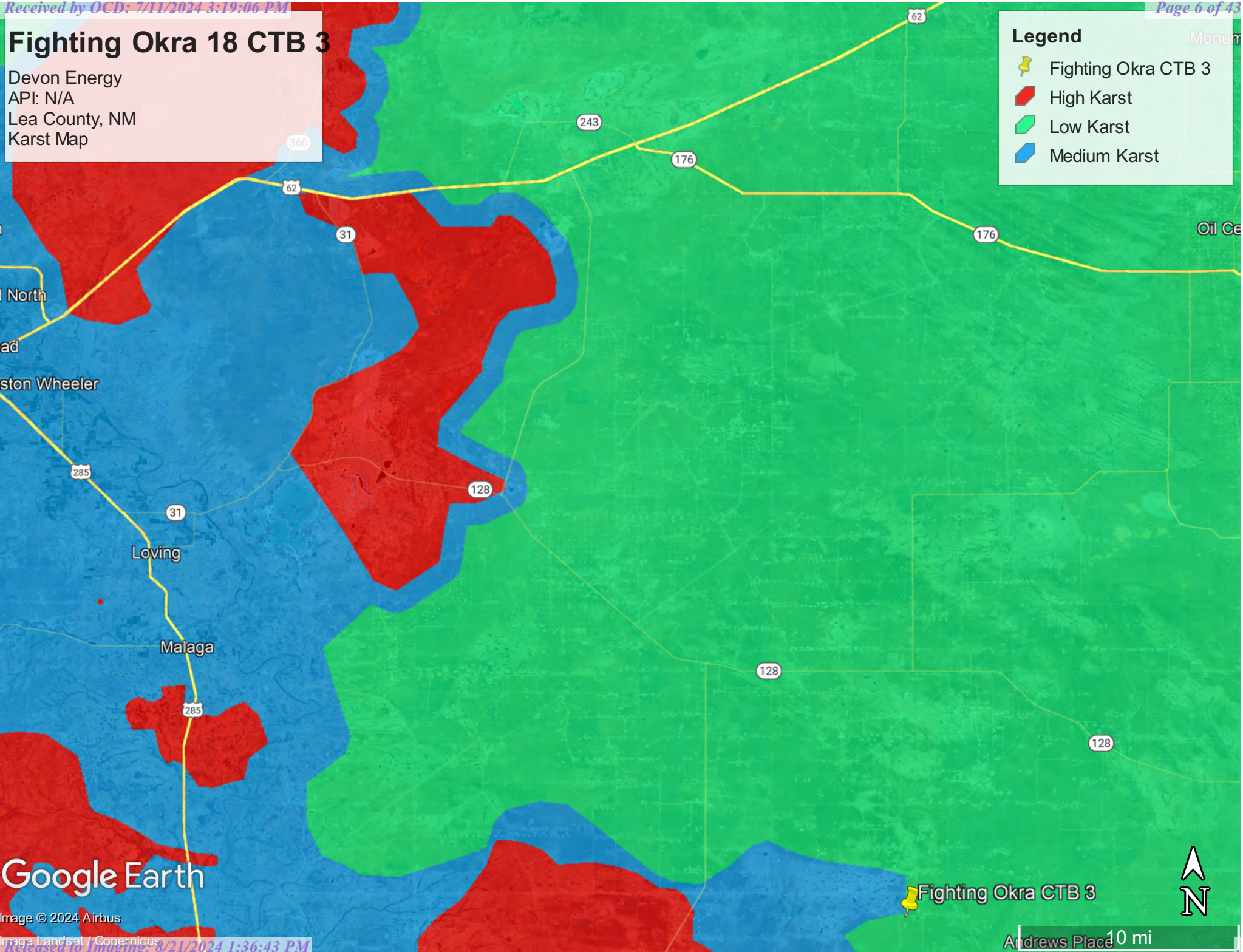
Google Earth



# Fighting Okra 18 CTB 3

Devon Energy  
API: N/A  
Lea County, NM  
Karst Map

- Legend**
-  Fighting Okra CTB 3
  -  High Karst
  -  Low Karst
  -  Medium Karst



Google Earth

Image © 2024 Airbus

Image Landsat / Copernicus

Released to Imaging: 8/21/2024 1:36:43 PM



Andrews Place 10 mi



## Fighting Okra 18 CTB 3

Devon Energy  
API: N/A  
Lea County, NM  
Site Map

### Legend

-  5,838 Sqft Fighting Okra 18 CTB 3
-  Fighting Okra 18 CTB 3

Fighting Okra 18 CTB 3



100 ft

Google Earth

## Appendix A

### Water Surveys:

- OSE
- USGS
- Surface Water Map





# New Mexico Office of the State Engineer

## Water Column/Average Depth to Water

(A CLW##### in the POD suffix indicates the POD has been replaced & no longer serves a water right file.)

(R=POD has been replaced,  
O=orphaned,  
C=the file is closed)

(quarters are 1=NW 2=NE 3=SW 4=SE)

(quarters are smallest to largest) (NAD83 UTM in meters)

(In feet)

POD Number	Code	POD Sub-basin	County	Q 64	Q 16	Q 4	Sec	Tws	Rng	X	Y	Distance	DepthWell	DepthWater	Water Column
<a href="#">C 04626 POD1</a>		CUB	LE	4	2	1	18	26S	34E	640644	3546672	604			
<a href="#">C 02295</a>		CUB	LE	2	2	4	12	26S	33E	639865	3547624	722	250	200	50
<a href="#">C 02293</a>		CUB	LE	2	2	1	14	26S	33E	637501	3546975	2602	200	135	65
<a href="#">C 02294</a>		CUB	LE	4	4	3	11	26S	33E	637465	3547003	2638	200	145	55
<a href="#">C 02292 POD1</a>		CUB	LE	4	1	2	06	26S	34E	640992	3549987	3171	200	140	60
<a href="#">C 03441 POD1</a>		C	LE	4	1	2	06	26S	34E	640971	3550039	3216	250		
<a href="#">C 03442 POD1</a>		C	LE	4	1	2	06	26S	34E	641056	3550028	3229	251		
<a href="#">C 02291</a>		CUB	LE	1	1	2	06	26S	34E	640825	3550140*	3278	220	160	60
<a href="#">C 04628 POD1</a>		CUB	LE	1	1	2	01	26S	33E	639121	3550219	3421			
<a href="#">C 02289</a>		CUB	LE	4	4	4	03	26S	33E	636612	3548675*	3897	200	160	40
<a href="#">C 02288</a>		CUB	LE	4	4	4	03	26S	33E	636646	3548758	3905	220	180	40
<a href="#">C 02285 POD1</a>		CUB	LE	1	4	4	03	26S	33E	636613	3548855	3980	220	220	0
<a href="#">C 02290</a>		CUB	LE	4	4	4	03	26S	33E	636538	3548770	4006	200	160	40
<a href="#">C 02286</a>		CUB	LE	3	4	4	03	26S	33E	636470	3548714	4043	220	175	45
<a href="#">C 02287</a>		C	LE	3	4	4	03	26S	33E	636427	3548708	4078	220		
<a href="#">C 04583 POD1</a>		CUB	LE	3	3	3	15	26S	34E	644920	3545643	4988	55		


Average Depth to Water: **167 feet**

Minimum Depth: **135 feet**



# New Mexico Office of the State Engineer

## Point of Diversion Summary

		(quarters are 1=NW 2=NE 3=SW 4=SE)							
		(quarters are smallest to largest)				(NAD83 UTM in meters)			
<b>Well Tag</b>	<b>POD Number</b>	<b>Q64</b>	<b>Q16</b>	<b>Q4</b>	<b>Sec</b>	<b>Tws</b>	<b>Rng</b>	<b>X</b>	<b>Y</b>
NA	C 04626 POD1	4	2	1	18	26S	34E	640644	3546672 
<hr/>									
<b>Driller License:</b> 1249		<b>Driller Company:</b>		ATKINS ENGINEERING ASSOC. INC.					
<b>Driller Name:</b> JACKIE ATKINS									
<b>Drill Start Date:</b> 06/09/2022		<b>Drill Finish Date:</b>		06/09/2022		<b>Plug Date:</b>			
<b>Log File Date:</b> 06/16/2022		<b>PCW Rev Date:</b>				<b>Source:</b>			
<b>Pump Type:</b>		<b>Pipe Discharge Size:</b>				<b>Estimated Yield:</b>			
<b>Casing Size:</b>		<b>Depth Well:</b>				<b>Depth Water:</b>			
<hr/>									
		<b>Casing Perforations:</b>		<b>Top</b>	<b>Bottom</b>				
				0	55				
<hr/>									

The data is furnished by the NMOSE/ISC and is accepted by the recipient with the expressed understanding that the OSE/ISC make no warranties, expressed or implied, concerning the accuracy, completeness, reliability, usability, or suitability for any particular purpose of the data.

6/25/24 4:06 PM

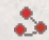


POINT OF DIVERSION SUMMARY

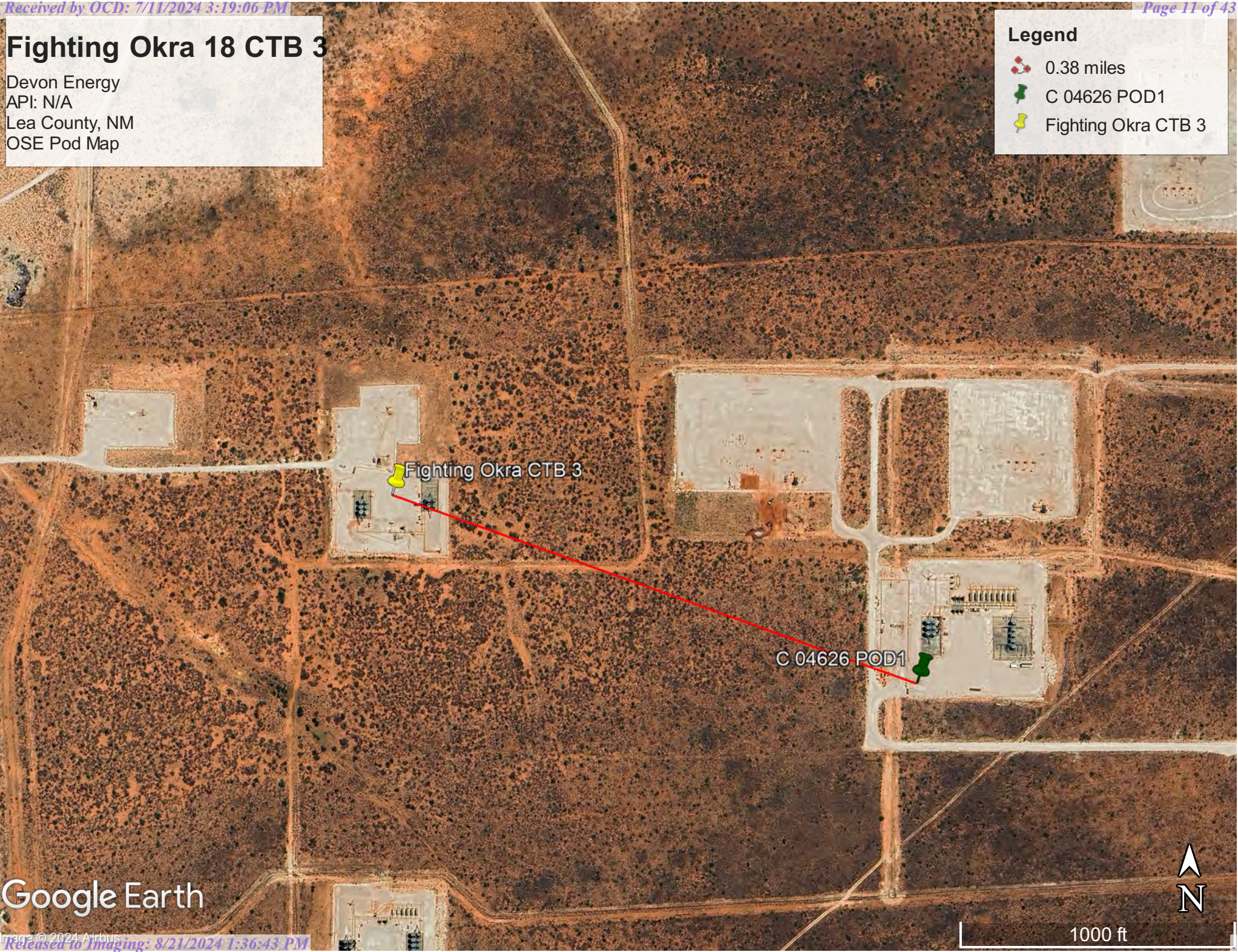


# Fighting Okra 18 CTB 3

Devon Energy  
API: N/A  
Lea County, NM  
OSE Pod Map

## Legend

-  0.38 miles
-  C 04626 POD1
-  Fighting Okra CTB 3



Google Earth





[USGS Home](#)  
[Contact USGS](#)  
[Search USGS](#)

## National Water Information System: Web Interface

USGS Water Resources

Data Category:

Groundwater ▼

Geographic Area:

United States ▼

GO

Click to hideNews Bulletins

- Explore the *NEW* [USGS National Water Dashboard](#) interactive map to access real-time water data from over 13,500 stations nationwide.

Groundwater levels for the Nation



Important: [Next Generation Monitoring Location Page](#)

### Search Results -- 1 sites found

site\_no list =

- 320245103335901

Minimum number of levels = 1

[Save file of selected sites](#) to local disk for future upload

### USGS 320245103335901 26S.33E.10.334343

Available data for this site

Groundwater: Field measurements ▼

GO

Lea County, New Mexico

Hydrologic Unit Code 13070001

Latitude 32°02'45", Longitude 103°33'59" NAD27

Land-surface elevation 3,291 feet above NAVD88

This well is completed in the Other aquifers (N9999OTHER) national aquifer.

This well is completed in the Alluvium, Bolson Deposits and Other Surface Deposits (110AVMB) local aquifer.

**Output formats**

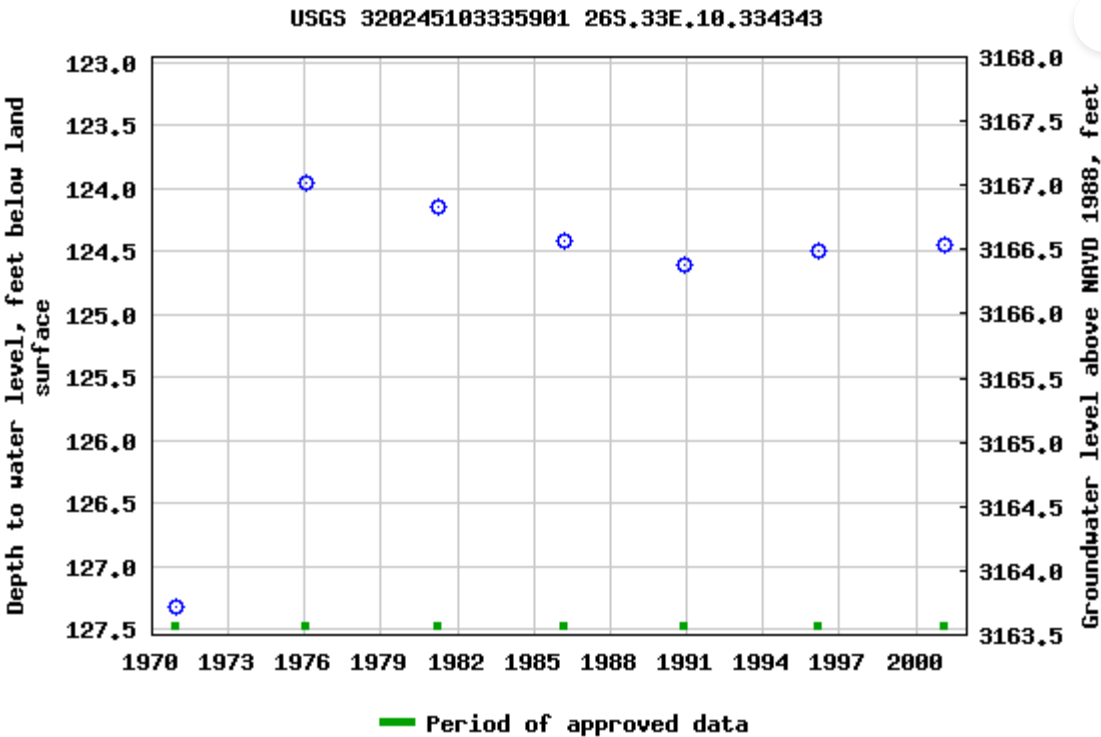


[Table of data](#)

[Tab-separated data](#)

[Graph of data](#)

[Reselect period](#)



Breaks in the plot represent a gap of at least one year between field measurements.

[Download a presentation-quality graph](#)

[Questions or Comments](#)

[Help](#)

[Data Tips](#)

[Explanation of terms](#)

[Subscribe for system changes](#)

[Accessibility](#)

[FOIA](#)

[Privacy](#)

[Policies and Notices](#)

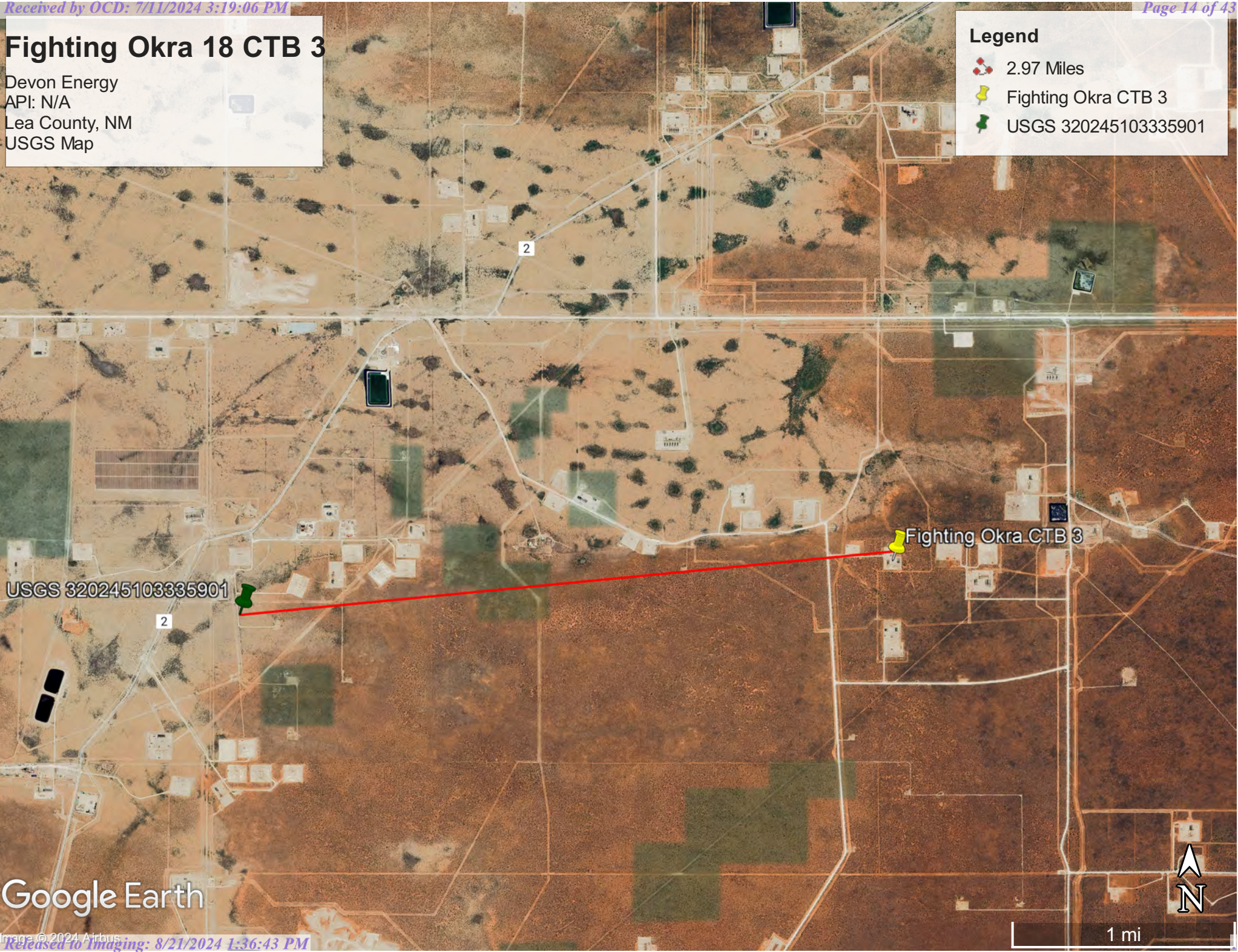


# Fighting Okra 18 CTB 3

Devon Energy  
API: N/A  
Lea County, NM  
USGS Map

## Legend

- 2.97 Miles
- Fighting Okra CTB 3
- USGS 320245103335901



Google Earth





# Fighting Okra 18 CTB 3

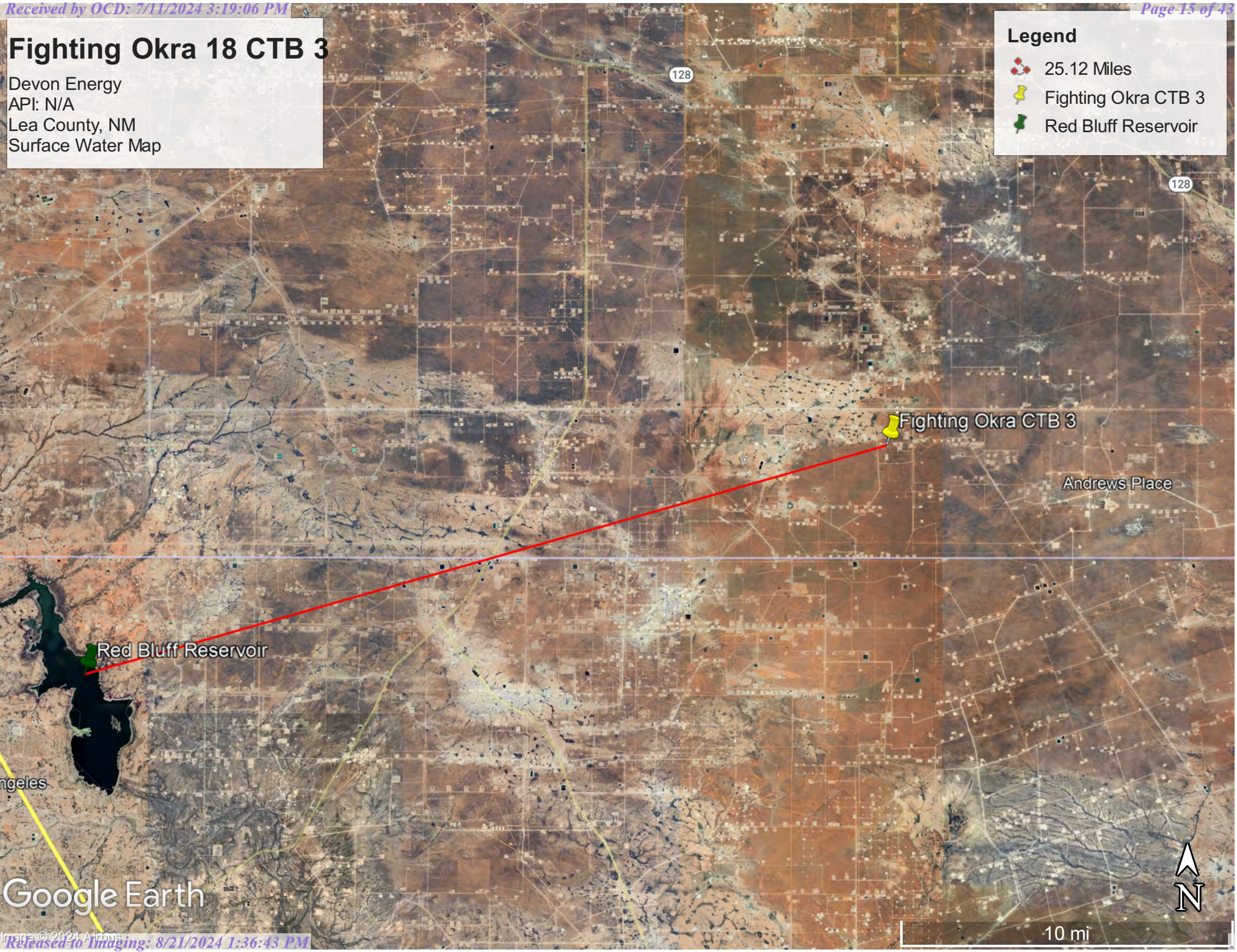
Devon Energy  
API: N/A  
Lea County, NM  
Surface Water Map

Legend

 25.12 Miles

 Fighting Okra CTB 3

 Red Bluff Reservoir



Google Earth



## Appendix B

- Soil Survey & Soil Maps
- Geological Data
- FEMA Flood Map
- Wetlands Map



Map Unit Description: Pyote and Maljamar fine sands---Lea County, New Mexico

---

## Lea County, New Mexico

### PU—Pyote and Maljamar fine sands

#### Map Unit Setting

*National map unit symbol:* dmqq

*Elevation:* 3,000 to 3,900 feet

*Mean annual precipitation:* 10 to 12 inches

*Mean annual air temperature:* 60 to 62 degrees F

*Frost-free period:* 190 to 205 days

*Farmland classification:* Not prime farmland

#### Map Unit Composition

*Pyote and similar soils:* 46 percent

*Maljamar and similar soils:* 44 percent

*Minor components:* 10 percent

*Estimates are based on observations, descriptions, and transects of the mapunit.*

#### Description of Pyote

##### Setting

*Landform:* Plains

*Landform position (three-dimensional):* Rise

*Down-slope shape:* Linear

*Across-slope shape:* Linear

*Parent material:* Sandy eolian deposits derived from sedimentary rock

##### Typical profile

*A - 0 to 30 inches:* fine sand

*Bt - 30 to 60 inches:* fine sandy loam

##### Properties and qualities

*Slope:* 0 to 3 percent

*Depth to restrictive feature:* More than 80 inches

*Drainage class:* Well drained

*Runoff class:* Negligible

*Capacity of the most limiting layer to transmit water (Ksat):* High  
(2.00 to 6.00 in/hr)

*Depth to water table:* More than 80 inches

*Frequency of flooding:* None

*Frequency of ponding:* None

*Calcium carbonate, maximum content:* 5 percent

*Gypsum, maximum content:* 1 percent

*Maximum salinity:* Nonsaline to very slightly saline (0.0 to 2.0 mmhos/cm)

*Sodium adsorption ratio, maximum:* 2.0

*Available water supply, 0 to 60 inches:* Low (about 5.1 inches)

##### Interpretive groups

*Land capability classification (irrigated):* 6e

Map Unit Description: Pyote and Maljamar fine sands---Lea County, New Mexico

---

*Land capability classification (nonirrigated): 7s*  
*Hydrologic Soil Group: A*  
*Ecological site: R070BD003NM - Loamy Sand*  
*Hydric soil rating: No*

## Description of Maljamar

### Setting

*Landform: Plains*  
*Landform position (three-dimensional): Rise*  
*Down-slope shape: Linear*  
*Across-slope shape: Linear*  
*Parent material: Sandy eolian deposits derived from sedimentary rock*

### Typical profile

*A - 0 to 24 inches: fine sand*  
*Bt - 24 to 50 inches: sandy clay loam*  
*Bkm - 50 to 60 inches: cemented material*

### Properties and qualities

*Slope: 0 to 3 percent*  
*Depth to restrictive feature: 40 to 60 inches to petrocalcic*  
*Drainage class: Well drained*  
*Runoff class: Very low*  
*Capacity of the most limiting layer to transmit water (Ksat): Very low to moderately low (0.00 to 0.06 in/hr)*  
*Depth to water table: More than 80 inches*  
*Frequency of flooding: None*  
*Frequency of ponding: None*  
*Calcium carbonate, maximum content: 5 percent*  
*Gypsum, maximum content: 1 percent*  
*Maximum salinity: Nonsaline to very slightly saline (0.0 to 2.0 mmhos/cm)*  
*Sodium adsorption ratio, maximum: 2.0*  
*Available water supply, 0 to 60 inches: Low (about 5.6 inches)*

### Interpretive groups

*Land capability classification (irrigated): 6e*  
*Land capability classification (nonirrigated): 7e*  
*Hydrologic Soil Group: B*  
*Ecological site: R070BD003NM - Loamy Sand*  
*Hydric soil rating: No*

## Minor Components

### Kermit

*Percent of map unit: 10 percent*  
*Ecological site: R070BC022NM - Sandhills*



Map Unit Description: Pyote and Maljamar fine sands---Lea County, New Mexico

---

*Hydric soil rating:* No

## Data Source Information

Soil Survey Area: Lea County, New Mexico  
Survey Area Data: Version 20, Sep 6, 2023

Soil Map—Lea County, New Mexico



Natural Resources  
Conservation Service

Web Soil Survey  
National Cooperative Soil Survey

6/26/2024  
Page 1 of 3



## Soil Map—Lea County, New Mexico

## MAP LEGEND

## Area of Interest (AOI)

 Area of Interest (AOI)

## Soils

 Soil Map Unit Polygons

 Soil Map Unit Lines

 Soil Map Unit Points

## Special Point Features



Blowout



Borrow Pit



Clay Spot



Closed Depression



Gravel Pit



Gravelly Spot



Landfill



Lava Flow



Marsh or swamp



Mine or Quarry



Miscellaneous Water



Perennial Water



Rock Outcrop



Saline Spot



Sandy Spot



Severely Eroded Spot



Sinkhole



Slide or Slip



Sodic Spot



Spoil Area



Stony Spot



Very Stony Spot



Wet Spot



Other



Special Line Features

## Water Features



Streams and Canals

## Transportation



Rails



Interstate Highways



US Routes



Major Roads



Local Roads

## Background



Aerial Photography

## MAP INFORMATION

The soil surveys that comprise your AOI were mapped at 1:20,000.

Warning: Soil Map may not be valid at this scale.

Enlargement of maps beyond the scale of mapping can cause misunderstanding of the detail of mapping and accuracy of soil line placement. The maps do not show the small areas of contrasting soils that could have been shown at a more detailed scale.

Please rely on the bar scale on each map sheet for map measurements.

Source of Map: Natural Resources Conservation Service

Web Soil Survey URL:

Coordinate System: Web Mercator (EPSG:3857)

Maps from the Web Soil Survey are based on the Web Mercator projection, which preserves direction and shape but distorts distance and area. A projection that preserves area, such as the Albers equal-area conic projection, should be used if more accurate calculations of distance or area are required.

This product is generated from the USDA-NRCS certified data as of the version date(s) listed below.

Soil Survey Area: Lea County, New Mexico

Survey Area Data: Version 20, Sep 6, 2023

Soil map units are labeled (as space allows) for map scales 1:50,000 or larger.

Date(s) aerial images were photographed: Feb 7, 2020—May 12, 2020

The orthophoto or other base map on which the soil lines were compiled and digitized probably differs from the background imagery displayed on these maps. As a result, some minor shifting of map unit boundaries may be evident.

Map Unit Legend


Map Unit Symbol	Map Unit Name	Acres in AOI	Percent of AOI
PU	Pyote and Maljamar fine sands	21.5	100.0%
Totals for Area of Interest		21.5	100.0%





# Fighting Okra 18 CTB 3

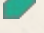
Devon Energy  
API: N/A  
Lea County, NM  
Geological Map


Legend

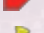
 Alluvium


 Artesia Group


 Eolian and piedmont deposits


 Eolian deposits


 Faults


 Feature 1


 Fighting Okra CTB 3

 Lacustrine and playa-lake deposits

 Ogallala Formation

 Piedmont alluvial deposits

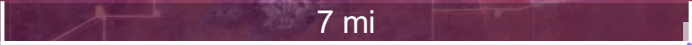
 Quartermaster and Rustler Formations

 Rustler Formation

Google Earth

Fighting Okra CTB 3

Andrews Place

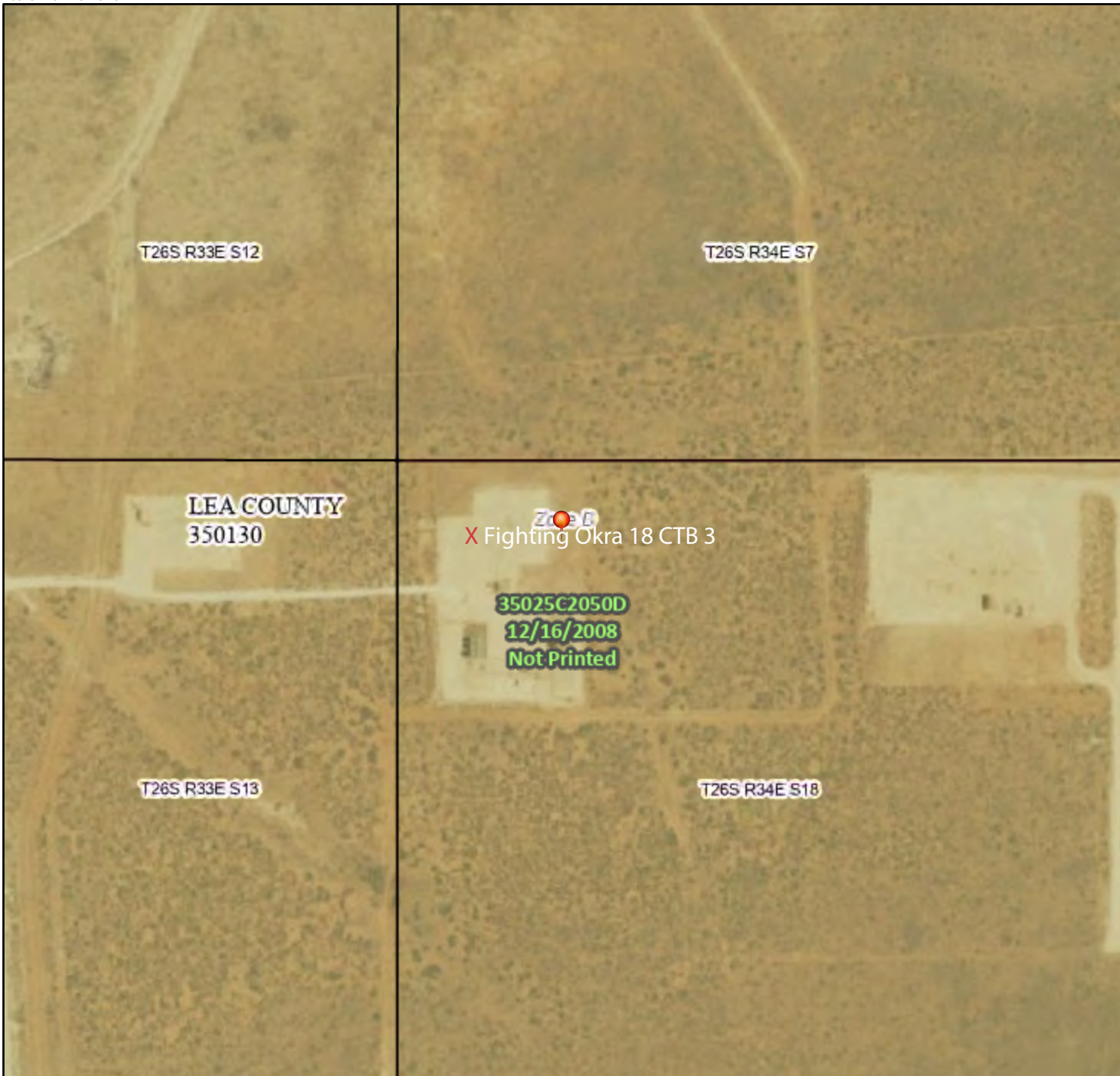




# National Flood Hazard Layer FIRMette



103°31'16"W 32°3'15"N



## Legend

SEE FIS REPORT FOR DETAILED LEGEND AND INDEX MAP FOR FIRM PANEL LAYOUT

SPECIAL FLOOD HAZARD AREAS		Without Base Flood Elevation (BFE) Zone A, V, A99
		With BFE or Depth Zone AE, AO, AH, VE, AR
		Regulatory Floodway
OTHER AREAS OF FLOOD HAZARD		0.2% Annual Chance Flood Hazard, Areas of 1% annual chance flood with average depth less than one foot or with drainage areas of less than one square mile Zone X
		Future Conditions 1% Annual Chance Flood Hazard Zone X
		Area with Reduced Flood Risk due to Levee. See Notes. Zone X
		Area with Flood Risk due to Levee Zone D
OTHER AREAS		NO SCREEN Area of Minimal Flood Hazard Zone X
		Effective LOMRs
GENERAL STRUCTURES		Area of Undetermined Flood Hazard Zone D
		Channel, Culvert, or Storm Sewer
		Levee, Dike, or Floodwall
OTHER FEATURES		20.2 Cross Sections with 1% Annual Chance Water Surface Elevation
		17.5
		Coastal Transect
		Base Flood Elevation Line (BFE)
		Limit of Study
		Jurisdiction Boundary
		Coastal Transect Baseline
MAP PANELS		Digital Data Available
		No Digital Data Available
		Unmapped



The pin displayed on the map is an approximate point selected by the user and does not represent an authoritative property location.

This map complies with FEMA's standards for the use of digital flood maps if it is not void as described below. The basemap shown complies with FEMA's basemap accuracy standards

The flood hazard information is derived directly from the authoritative NFHL web services provided by FEMA. This map was exported on 6/25/2024 at 5:32 PM and does not reflect changes or amendments subsequent to this date and time. The NFHL and effective information may change or become superseded by new data over time.

This map image is void if the one or more of the following map elements do not appear: basemap imagery, flood zone labels, legend, scale bar, map creation date, community identifiers, FIRM panel number, and FIRM effective date. Map images for unmapped and unmodernized areas cannot be used for regulatory purposes.

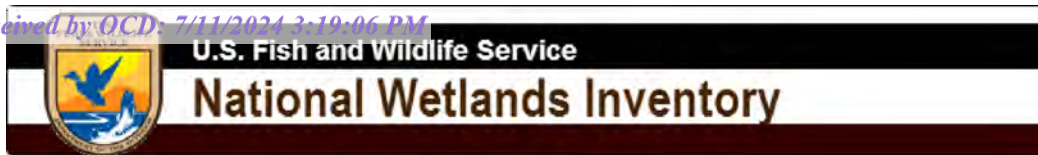
Released to Imaging: 8/21/2024 1:36:43 PM

1:6,000

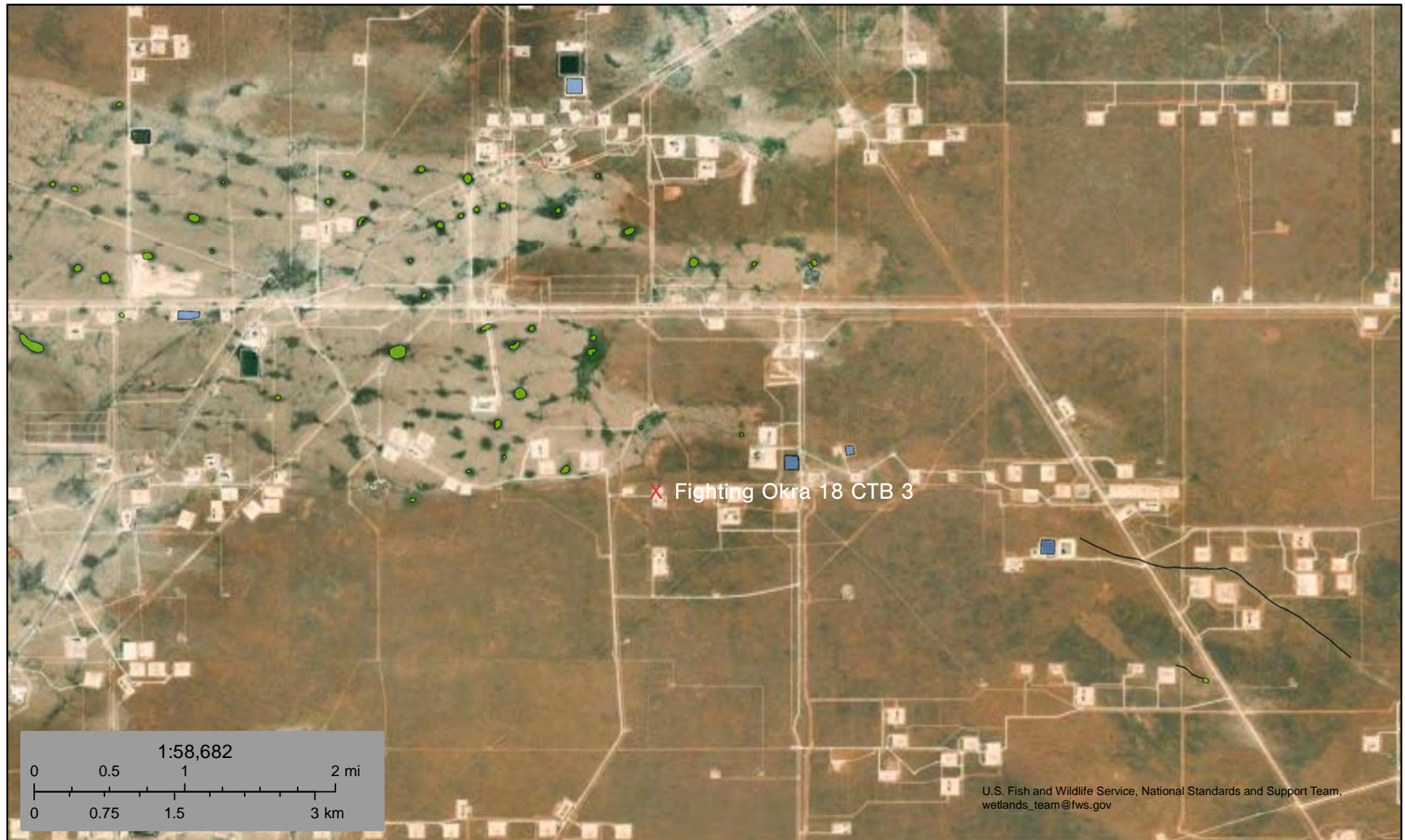
103°30'39"W 32°2'45"N

Basemap Imagery Source: USGS National Map 2023





# Wetlands Map



June 25, 2024

## Wetlands

- Estuarine and Marine Deepwater
- Estuarine and Marine Wetland

- Freshwater Emergent Wetland
- Freshwater Forested/Shrub Wetland
- Freshwater Pond

- Lake
- Other
- Riverine

This map is for general reference only. The US Fish and Wildlife Service is not responsible for the accuracy or currentness of the base data shown on this map. All wetlands related data should be used in accordance with the layer metadata found on the Wetlands Mapper web site.



## Appendix C

- 48-Hour Notification
- Liner Inspection Form



**lynsey@pimaoil.com**

---

**From:** Woodall, Dale <Dale.Woodall@dvn.com>  
**Sent:** Wednesday, June 26, 2024 11:59 AM  
**To:** 'Gio PimaOil'; Lynsey Pima Oil; Tom Pima Oil; Delrae Pima Oil  
**Subject:** Fwd: [EXTERNAL] The Oil Conservation Division (OCD) has accepted the application, Application ID: 357807

Dale Woodall  
*Environmental Professional*  
Hobbs, NM  
Office: 575-748-1838  
Mobile: 405-318-4697  
[Dale.Woodall@dvn.com](mailto:Dale.Woodall@dvn.com)

---

**From:** OCDOnline@state.nm.us <OCDOnline@state.nm.us>  
**Sent:** Wednesday, June 26, 2024 11:57:37 AM  
**To:** Woodall, Dale <Dale.Woodall@dvn.com>  
**Subject:** [EXTERNAL] The Oil Conservation Division (OCD) has accepted the application, Application ID: 357807

To whom it may concern (c/o Dale Woodall for DEVON ENERGY PRODUCTION COMPANY, LP),

The OCD has received the submitted *Notification for Liner Inspection for a Release (C-141L)*, for incident ID (n#) nAPP2415971627.

The liner inspection is expected to take place:

**When:** 06/28/2024 @ 13:20  
**Where:** D-18-26S-34E 200 FNL 330 FWL (32.05002,-103.516)

**Additional Information:** visually inspected for any pinholes or punctures, will be conducted by Andrew Franco 806-200-0054

**Additional Instructions:** D-18-26S-34E, ( 32.05002,-103.516 NAD83) From the intersection of NM 128 and County Rd 2 (Battle Axe Rd), travel southwest on County Rd 2 for 11.55 miles, turn east on Lease Rd for 2.57 miles, turn south on lease Rd for 1.56 miles, turn west on lease Rd for 1.04 miles, turn North on lease Rd for 0.57 of a mile, turn east on lease Rd for 0.25 of a mile, arriving to location on the right.

An OCD representative may be available onsite at the date and time reported. In the absence or presence of an OCD representative, liner inspection pursuant to 19.15.29.11.A(5)(a) NMAC is required. Should there be a change in the scheduled date and time of the sampling event, then another notification should be resubmitted through OCD permitting as soon as possible.

- **Failure to notify the OCD of liner inspections including any changes in date/time per the requirements of 19.15.29.11.A(5)(a)(ii) NMAC, may result in the inspection not being accepted.**

If you have any questions regarding this application, or don't know why you have received this email, please contact us.

**New Mexico Energy, Minerals and Natural Resources Department**

1220 South St. Francis Drive  
Santa Fe, NM 87505

Confidentiality Warning: This message and any attachments are intended only for the use of the intended recipient(s), are confidential, and may be privileged. If you are not the intended recipient, you are hereby notified that any review, retransmission, conversion to hard copy, copying, circulation or other use of all or any portion of this message and any attachments is strictly prohibited. If you are not the intended recipient, please notify the sender immediately by return e-mail, and delete this message and any attachments from your system.





Pima Environmental Services, LLC

**Liner Inspection Form**Company Name: Devon EnergySite: Fighting Okra 18 CTB 3Lat/Long: 32.05002, -103.516NMOCD Incident ID  
& Incident Date: NAPP2415971627 6/7/20242-Day Notification  
Sent: via Email by Dale Woodall on OCD portal 6/26/2024  
application ID: 357807.Inspection Date: 6/28/2024

Liner Type:	Earthen w/liner	Earthen no liner	Polystar
	<b>Steel w/poly liner</b>	Steel w/spray epoxy	No Liner

Other: \_\_\_\_\_

Visualization	Yes	No	Comments
Is there a tear in the liner?		X	
Are there holes in the liner?		X	
Is the liner retaining any fluids?	X		Fluid from power washing the Liner
Does the liner have integrity to contain a leak?	X		

Comments: \_\_\_\_\_

Inspector Name: Andrew Franco Inspector Signature: Andrew Franco



## Appendix D

### ○ Photographic Documentation

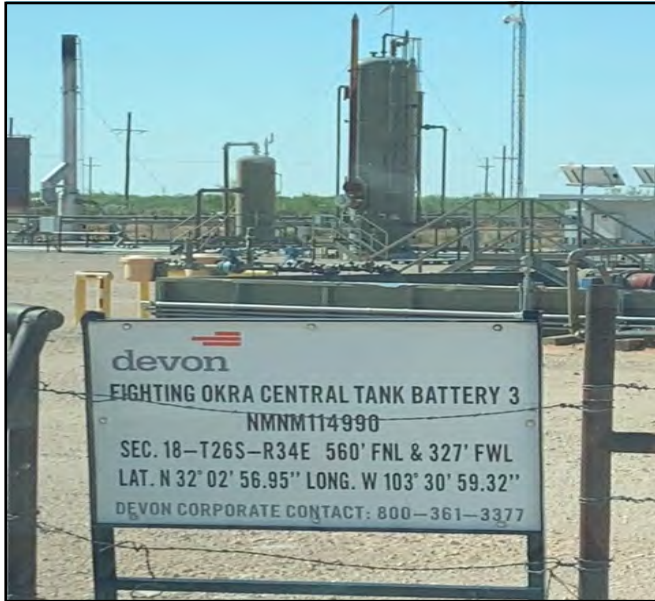




## PHOTOGRAPHIC DOCUMENTATION

**SITE NAME: Fighting Okra 18 CTB 3**

Initial Liner Assessment:



Site Information Sign



Northwest facing South photo of lined containment prior to power washing. (Fluid from release.)



Northwest facing West photo of lined containment prior to power washing. (Fluid from release.)



Northeast facing South photo of lined containment prior to power washing. (Fluid from release.)





Northeast facing West photo of lined containment prior to power washing. (Fluid from release.)



Southwest facing West photo of lined containment prior to power washing. (Fluid from release.)



Southeast facing North photo of lined containment prior to power washing. (Fluid from release.)



Southwest facing North photo of lined containment prior to power washing. (Fluid from release.)





Southwest facing East photo of lined containment prior to power washing. (Fluid from release.)



## PHOTOGRAPHIC DOCUMENTATION

SITE NAME: Fighting Okra 18 CTB 4

Liner Inspection: Inspection was performed on June 28, 2024



Site Information Sign



Northwest facing South photo of lined containment after power washing. (Fluid from power washing.)



Southeast facing North photo of lined containment after power washing. (Fluid from power washing.)



Southeast facing West photo of lined containment after power washing. (Fluid from power washing.)





Southwest facing East photo of lined containment after power washing. (Fluid from power washing.)



Southwest facing North photo of lined containment after power washing. (Fluid from power washing.)



Northeast facing South photo of lined containment after power washing. (Fluid from power washing.)



Northeast facing West photo of lined containment after power washing. (Fluid from power washing.)



Northwest facing East photo of lined containment  
after power washing. (Fluid from power washing.)





Aerial Photos:



East facing West Aerial photo of lined containment after power washing.



North facing South Aerial photo of lined containment after power washing.



West facing East Aerial photo of lined containment after power washing.



South facing North Aerial photo of lined containment after power washing.

**District I**  
1625 N. French Dr., Hobbs, NM 88240  
Phone:(575) 393-6161 Fax:(575) 393-0720  
**District II**  
811 S. First St., Artesia, NM 88210  
Phone:(575) 748-1283 Fax:(575) 748-9720  
**District III**  
1000 Rio Brazos Rd., Aztec, NM 87410  
Phone:(505) 334-6178 Fax:(505) 334-6170  
**District IV**  
1220 S. St Francis Dr., Santa Fe, NM 87505  
Phone:(505) 476-3470 Fax:(505) 476-3462

**State of New Mexico**  
**Energy, Minerals and Natural Resources**  
**Oil Conservation Division**  
**1220 S. St Francis Dr.**  
**Santa Fe, NM 87505**

QUESTIONS  
  
Action 363465

QUESTIONS

Operator: DEVON ENERGY PRODUCTION COMPANY, LP 333 West Sheridan Ave. Oklahoma City, OK 73102	OGRID:	6137
	Action Number:	363465
	Action Type:	[C-141] Remediation Closure Request C-141 (C-141-v-Closure)

QUESTIONS

Prerequisites	
Incident ID (n#)	nAPP2415971627
Incident Name	NAPP2415971627 FIGHTING OKRA 18 CTB 3 @ 0
Incident Type	Produced Water Release
Incident Status	Remediation Closure Report Received
Incident Facility	[fAPP2123646509] FIGHTING OKRA 18 CTB 3

Location of Release Source	
Please answer all the questions in this group.	
Site Name	FIGHTING OKRA 18 CTB 3
Date Release Discovered	06/07/2024
Surface Owner	Federal

Incident Details	
Please answer all the questions in this group.	
Incident Type	Produced Water Release
Did this release result in a fire or is the result of a fire	No
Did this release result in any injuries	No
Has this release reached or does it have a reasonable probability of reaching a watercourse	No
Has this release endangered or does it have a reasonable probability of endangering public health	No
Has this release substantially damaged or will it substantially damage property or the environment	No
Is this release of a volume that is or may with reasonable probability be detrimental to fresh water	No

Nature and Volume of Release	
Material(s) released, please answer all that apply below. Any calculations or specific justifications for the volumes provided should be attached to the follow-up C-141 submission.	
Crude Oil Released (bbls) Details	Not answered.
Produced Water Released (bbls) Details	Cause: Equipment Failure   Fitting   Produced Water   Released: 1,125 BBL   Recovered: 1,125 BBL   Lost: 0 BBL.
Is the concentration of chloride in the produced water >10,000 mg/l	No
Condensate Released (bbls) Details	Not answered.
Natural Gas Vented (Mcf) Details	Not answered.
Natural Gas Flared (Mcf) Details	Not answered.
Other Released Details	Not answered.
Are there additional details for the questions above (i.e. any answer containing Other, Specify, Unknown, and/or Fire, or any negative lost amounts)	LO found leak on 6-inch T on water dump line. Well was shut in and leak was isolated. Vac truck is on location now. 1125 bbls spilled in a lined containment.



**District I**

1625 N. French Dr., Hobbs, NM 88240  
Phone:(575) 393-6161 Fax:(575) 393-0720

**District II**

811 S. First St., Artesia, NM 88210  
Phone:(575) 748-1283 Fax:(575) 748-9720

**District III**

1000 Rio Brazos Rd., Aztec, NM 87410  
Phone:(505) 334-6178 Fax:(505) 334-6170

**District IV**

1220 S. St Francis Dr., Santa Fe, NM 87505  
Phone:(505) 476-3470 Fax:(505) 476-3462

**State of New Mexico**  
**Energy, Minerals and Natural Resources**  
**Oil Conservation Division**  
**1220 S. St Francis Dr.**  
**Santa Fe, NM 87505**

QUESTIONS, Page 2

Action 363465

**QUESTIONS (continued)**

Operator: DEVON ENERGY PRODUCTION COMPANY, LP 333 West Sheridan Ave. Oklahoma City, OK 73102	OGRID:	6137
	Action Number:	363465
	Action Type:	[C-141] Remediation Closure Request C-141 (C-141-v-Closure)

**QUESTIONS**

<b>Nature and Volume of Release (continued)</b>	
Is this a gas only submission (i.e. only significant Mcf values reported)	No, according to supplied volumes this does not appear to be a "gas only" report.
Was this a major release as defined by Subsection A of 19.15.29.7 NMAC	Yes
Reasons why this would be considered a submission for a notification of a major release	From paragraph A. "Major release" determine using: (1) an unauthorized release of a volume, excluding gases, of 25 barrels or more.
With the implementation of the 19.15.27 NMAC (05/25/2021), venting and/or flaring of natural gas (i.e. gas only) are to be submitted on the C-129 form.	

**Initial Response**

The responsible party must undertake the following actions immediately unless they could create a safety hazard that would result in injury.

The source of the release has been stopped	True
The impacted area has been secured to protect human health and the environment	True
Released materials have been contained via the use of berms or dikes, absorbent pads, or other containment devices	True
All free liquids and recoverable materials have been removed and managed appropriately	True
If all the actions described above have not been undertaken, explain why	Not answered.

Per Paragraph (4) of Subsection B of 19.15.29.8 NMAC the responsible party may commence remediation immediately after discovery of a release. If remediation has begun, please prepare and attach a narrative of actions to date in the follow-up C-141 submission. If remedial efforts have been successfully completed or if the release occurred within a lined containment area (see Subparagraph (a) of Paragraph (5) of Subsection A of 19.15.29.11 NMAC), please prepare and attach all information needed for closure evaluation in the follow-up C-141 submission.

I hereby certify that the information given above is true and complete to the best of my knowledge and understand that pursuant to OCD rules and regulations all operators are required to report and/or file certain release notifications and perform corrective actions for releases which may endanger public health or the environment. The acceptance of a C-141 report by the OCD does not relieve the operator of liability should their operations have failed to adequately investigate and remediate contamination that pose a threat to groundwater, surface water, human health or the environment. In addition, OCD acceptance of a C-141 report does not relieve the operator of responsibility for compliance with any other federal, state, or local laws and/or regulations.

I hereby agree and sign off to the above statement	Name: Dale Woodall Title: EHS Professional Email: Dale.Woodall@dmn.com Date: 07/11/2024
--	--

**District I**

1625 N. French Dr., Hobbs, NM 88240  
Phone:(575) 393-6161 Fax:(575) 393-0720

**District II**

811 S. First St., Artesia, NM 88210  
Phone:(575) 748-1283 Fax:(575) 748-9720

**District III**

1000 Rio Brazos Rd., Aztec, NM 87410  
Phone:(505) 334-6178 Fax:(505) 334-6170

**District IV**

1220 S. St Francis Dr., Santa Fe, NM 87505  
Phone:(505) 476-3470 Fax:(505) 476-3462

**State of New Mexico**  
**Energy, Minerals and Natural Resources**  
**Oil Conservation Division**  
**1220 S. St Francis Dr.**  
**Santa Fe, NM 87505**

QUESTIONS, Page 3

Action 363465

**QUESTIONS (continued)**

Operator: DEVON ENERGY PRODUCTION COMPANY, LP 333 West Sheridan Ave. Oklahoma City, OK 73102	OGRID:	6137
	Action Number:	363465
	Action Type:	[C-141] Remediation Closure Request C-141 (C-141-v-Closure)

**QUESTIONS****Site Characterization**

*Please answer all the questions in this group (only required when seeking remediation plan approval and beyond). This information must be provided to the appropriate district office no later than 90 days after the release discovery date.*

What is the shallowest depth to groundwater beneath the area affected by the release in feet below ground surface (ft bgs)	Between 100 and 500 (ft.)
What method was used to determine the depth to ground water	NM OSE iWaters Database Search
Did this release impact groundwater or surface water	No
<b>What is the minimum distance, between the closest lateral extents of the release and the following surface areas:</b>	
A continuously flowing watercourse or any other significant watercourse	Greater than 5 (mi.)
Any lakebed, sinkhole, or playa lake (measured from the ordinary high-water mark)	Greater than 5 (mi.)
An occupied permanent residence, school, hospital, institution, or church	Greater than 5 (mi.)
A spring or a private domestic fresh water well used by less than five households for domestic or stock watering purposes	Greater than 5 (mi.)
Any other fresh water well or spring	Greater than 5 (mi.)
Incorporated municipal boundaries or a defined municipal fresh water well field	Greater than 5 (mi.)
A wetland	Between 1 and 5 (mi.)
A subsurface mine	Greater than 5 (mi.)
An (non-karst) unstable area	Greater than 5 (mi.)
Categorize the risk of this well / site being in a karst geology	Low
A 100-year floodplain	Greater than 5 (mi.)
Did the release impact areas not on an exploration, development, production, or storage site	No

**Remediation Plan**

*Please answer all the questions that apply or are indicated. This information must be provided to the appropriate district office no later than 90 days after the release discovery date.*

Requesting a remediation plan approval with this submission	Yes
<i>Attach a comprehensive report demonstrating the lateral and vertical extents of soil contamination associated with the release have been determined, pursuant to 19.15.29.11 NMAC and 19.15.29.13 NMAC.</i>	
Have the lateral and vertical extents of contamination been fully delineated	Yes
Was this release entirely contained within a lined containment area	Yes
<i>Per Subsection B of 19.15.29.11 NMAC unless the site characterization report includes completed efforts at remediation, the report must include a proposed remediation plan in accordance with 19.15.29.12 NMAC, which includes the anticipated timelines for beginning and completing the remediation.</i>	
On what estimated date will the remediation commence	06/28/2024
On what date will (or did) the final sampling or liner inspection occur	06/28/2024
On what date will (or was) the remediation complete(d)	06/28/2024
What is the estimated surface area (in square feet) that will be remediated	0
What is the estimated volume (in cubic yards) that will be remediated	0
<i>These estimated dates and measurements are recognized to be the best guess or calculation at the time of submission and may (be) change(d) over time as more remediation efforts are completed.</i>	
<i>The OCD recognizes that proposed remediation measures may have to be minimally adjusted in accordance with the physical realities encountered during remediation. If the responsible party has any need to significantly deviate from the remediation plan proposed, then it should consult with the division to determine if another remediation plan submission is required.</i>	



**District I**  
1625 N. French Dr., Hobbs, NM 88240  
Phone:(575) 393-6161 Fax:(575) 393-0720

**District II**  
811 S. First St., Artesia, NM 88210  
Phone:(575) 748-1283 Fax:(575) 748-9720

**District III**  
1000 Rio Brazos Rd., Aztec, NM 87410  
Phone:(505) 334-6178 Fax:(505) 334-6170

**District IV**  
1220 S. St Francis Dr., Santa Fe, NM 87505  
Phone:(505) 476-3470 Fax:(505) 476-3462

**State of New Mexico**  
**Energy, Minerals and Natural Resources**  
**Oil Conservation Division**  
**1220 S. St Francis Dr.**  
**Santa Fe, NM 87505**

QUESTIONS, Page 4

Action 363465

**QUESTIONS (continued)**

Operator: DEVON ENERGY PRODUCTION COMPANY, LP 333 West Sheridan Ave. Oklahoma City, OK 73102	OGRID: 6137
	Action Number: 363465
	Action Type: [C-141] Remediation Closure Request C-141 (C-141-v-Closure)

**QUESTIONS**

<b>Remediation Plan (continued)</b>	
<i>Please answer all the questions that apply or are indicated. This information must be provided to the appropriate district office no later than 90 days after the release discovery date.</i>	
<b>This remediation will (or is expected to) utilize the following processes to remediate / reduce contaminants:</b>	
<i>(Select all answers below that apply.)</i>	
Is (or was) there affected material present needing to be removed	Yes
Is (or was) there a power wash of the lined containment area (to be) performed	Yes
OTHER (Non-listed remedial process)	No
<i>Per Subsection B of 19.15.29.11 NMAC unless the site characterization report includes completed efforts at remediation, the report must include a proposed remediation plan in accordance with 19.15.29.12 NMAC, which includes the anticipated timelines for beginning and completing the remediation.</i>	
I hereby certify that the information given above is true and complete to the best of my knowledge and understand that pursuant to OCD rules and regulations all operators are required to report and/or file certain release notifications and perform corrective actions for releases which may endanger public health or the environment. The acceptance of a C-141 report by the OCD does not relieve the operator of liability should their operations have failed to adequately investigate and remediate contamination that pose a threat to groundwater, surface water, human health or the environment. In addition, OCD acceptance of a C-141 report does not relieve the operator of responsibility for compliance with any other federal, state, or local laws and/or regulations.	
I hereby agree and sign off to the above statement	Name: Dale Woodall Title: EHS Professional Email: Dale.Woodall@dvn.com Date: 07/11/2024
<i>The OCD recognizes that proposed remediation measures may have to be minimally adjusted in accordance with the physical realities encountered during remediation. If the responsible party has any need to significantly deviate from the remediation plan proposed, then it should consult with the division to determine if another remediation plan submission is required.</i>	

**District I**

1625 N. French Dr., Hobbs, NM 88240  
Phone:(575) 393-6161 Fax:(575) 393-0720

**District II**

811 S. First St., Artesia, NM 88210  
Phone:(575) 748-1283 Fax:(575) 748-9720

**District III**

1000 Rio Brazos Rd., Aztec, NM 87410  
Phone:(505) 334-6178 Fax:(505) 334-6170

**District IV**

1220 S. St Francis Dr., Santa Fe, NM 87505  
Phone:(505) 476-3470 Fax:(505) 476-3462

**State of New Mexico**  
**Energy, Minerals and Natural Resources**  
**Oil Conservation Division**  
**1220 S. St Francis Dr.**  
**Santa Fe, NM 87505**

QUESTIONS, Page 6

Action 363465

**QUESTIONS (continued)**

Operator: DEVON ENERGY PRODUCTION COMPANY, LP 333 West Sheridan Ave. Oklahoma City, OK 73102	OGRID:	6137
	Action Number:	363465
	Action Type:	[C-141] Remediation Closure Request C-141 (C-141-v-Closure)

**QUESTIONS**

<b>Liner Inspection Information</b>	
Last liner inspection notification (C-141L) recorded	357807
Liner inspection date pursuant to Subparagraph (a) of Paragraph (5) of Subsection A of 19.15.29.11 NMAC	06/28/2024
Was all the impacted materials removed from the liner	Yes
What was the liner inspection surface area in square feet	5838

**Remediation Closure Request**

*Only answer the questions in this group if seeking remediation closure for this release because all remediation steps have been completed.*

Requesting a remediation closure approval with this submission	Yes
Have the lateral and vertical extents of contamination been fully delineated	Yes
Was this release entirely contained within a lined containment area	Yes
What was the total surface area (in square feet) remediated	0
What was the total volume (cubic yards) remediated	0
Summarize any additional remediation activities not included by answers (above)	no holes or tears seen n liner

*The responsible party must attach information demonstrating they have complied with all applicable closure requirements and any conditions or directives of the OCD. This demonstration should be in the form of a comprehensive report (in .pdf format) including a scaled site map, sampling diagrams, relevant field notes, photographs of any excavation prior to backfilling, laboratory data including chain of custody documents of final sampling, and a narrative of the remedial activities. Refer to 19.15.29.12 NMAC.*

I hereby certify that the information given above is true and complete to the best of my knowledge and understand that pursuant to OCD rules and regulations all operators are required to report and/or file certain release notifications and perform corrective actions for releases which may endanger public health or the environment. The acceptance of a C-141 report by the OCD does not relieve the operator of liability should their operations have failed to adequately investigate and remediate contamination that pose a threat to groundwater, surface water, human health or the environment. In addition, OCD acceptance of a C-141 report does not relieve the operator of responsibility for compliance with any other federal, state, or local laws and/or regulations. The responsible party acknowledges they must substantially restore, reclaim, and re-vegetate the impacted surface area to the conditions that existed prior to the release or their final land use in accordance with 19.15.29.13 NMAC including notification to the OCD when reclamation and re-vegetation are complete.

I hereby agree and sign off to the above statement	Name: Dale Woodall Title: EHS Professional Email: Dale.Woodall@dmn.com Date: 07/11/2024
--	--



**District I**  
1625 N. French Dr., Hobbs, NM 88240  
Phone:(575) 393-6161 Fax:(575) 393-0720  
**District II**  
811 S. First St., Artesia, NM 88210  
Phone:(575) 748-1283 Fax:(575) 748-9720  
**District III**  
1000 Rio Brazos Rd., Aztec, NM 87410  
Phone:(505) 334-6178 Fax:(505) 334-6170  
**District IV**  
1220 S. St Francis Dr., Santa Fe, NM 87505  
Phone:(505) 476-3470 Fax:(505) 476-3462

**State of New Mexico**  
**Energy, Minerals and Natural Resources**  
**Oil Conservation Division**  
**1220 S. St Francis Dr.**  
**Santa Fe, NM 87505**

CONDITIONS  
  
Action 363465

CONDITIONS

Operator: DEVON ENERGY PRODUCTION COMPANY, LP 333 West Sheridan Ave. Oklahoma City, OK 73102	OGRID: 6137
	Action Number: 363465
	Action Type: [C-141] Remediation Closure Request C-141 (C-141-v-Closure)

CONDITIONS

Created By	Condition	Condition Date
nvelez	Liner inspection approved, release resolved.	8/21/2024