

BIG CAT 16 CTB 9

7/27/2024

OCD INCIDENT nAPP2421123414

Spills In Lined Containment	
Measurements Of Standing Fluid	
Length(Ft)	86
Width(Ft)	86
Depth(in.)	1.5468
Total Capacity without tank displacements (bbls)	169.80
No. of 500 bbl Tanks In Standing Fluid	4
No. of Other Tanks In Standing Fluid	0
OD Of Other Tanks In Standing Fluid(feet)	0
Total Volume of standing fluid accounting for tank displacement.	152.48



---

# LINER INSPECTION CLOSURE REPORT

---

Incident ID NAPP2421123414

**Big Cat 16 CTB 9**

Facility ID fAPP2129926862

Prepared By:  
Pima Environmental Services, LLC

Prepared For:  
Devon Energy Production, LP

August 30, 2024  
Pima Environmental Services, LLC  
5614 N Lovington Hwy, Hobbs, NM 88240

August 30, 2024

NMOCD District 2  
811 S. First St  
Artesia, NM, 88210

**RE: Liner Inspection and Closure Report**  
**Big Cat 16 CTB 9**  
**Facility ID: fAPP2129926862**  
**GPS : Latitude 32.30099102 Longitude -103.680727**  
**UL- K, Section 16, Township 23S, Range 32E**  
**Lea County, NM**  
**NMOCD Reference No. NAPP2421123414**

Devon Energy Production Company (Devon) has contracted Pima Environmental Services, LLC (Pima) to perform a liner inspection and prepare this closure report for a produced water release that occurred at the Big Cat 16 CTB 9 (Big Cat). This incident was assigned Incident ID:NAPP2421123414, by the New Mexico Oil Conservation Division (NMOCD).

#### Site Information and Site Characterization

The Big Cat is located approximately twenty-four (24) miles east of Loving, NM. This spill site is in Unit K, Section 16, Township 23S, Range 32E, Latitude 32.30099102 Longitude -103.680727, Lea County, NM. A Location Map can be found in Figure 1.

Based upon New Mexico Office of the State Engineer ( C-04712 POD 2) well water data, depth to the nearest groundwater in this area is 55 feet belowgrade surface (BGS). located approximately 0.56 miles from the Big Cat. According to the United States Geological Survey ( USGS 321952103400801 23S.32E.03.311114) well water data, depth to the nearest groundwater in this area is 488 feet BGS. See Appendix A for referenced water surveys and water related maps. The Big Cat is in a low karst area (Figure 3). A Topographic Map can be found in Figure 2.

#### Release Information

**NAPP2421123414:** On July 27, 2024, A pump failure caused a release in the lined containment. Approximately 153 barrels (bbls) of produced fluid were released from the pump into the lined secondary containment. A vacuum truck was dispatched and recovered approximately 150 bbls of fluid from the lined SPCC containment ring. Once the standing fluids were removed, the liner was visually inspected by Devon field staff for any pinholes or punctures, and none were found. Based on this inspection, there is no evidence that the spilled fluids left the containment. The remaining 3 bbls were recovered during the cleanup of the containment.

A Site Map can be found in Figure 4.

#### Site Assessment and Liner Inspection

On August 23, 2024, Devon personnel mobilized equipment to the site to perform power washing of the liner and containment. A vacuum truck accompanied the crew to recover the power washing fluids. During this process, the remaining 3 bbls of fluid missed during the initial recovery effort were also recovered.

On August 29, 2024, after submitting the 48-hour notification application ID: 378020 to the OCD, Pima Environmental conducted a liner inspection at this location. Pima concluded that the liner and containment maintained their integrity and successfully retained the fluids. The liner inspection form and photographic documentation can be found in Appendix C.

**Closure Request**

After careful review, Pima requests that this incident ID: NAPP2421123414, be closed. Devon has complied with the applicable closure requirements.

Should you have any questions or need additional information, please feel free to contact:

Devon Energy – Dale Woodall at 575-748-0167 or Dale.Woodall@dvn.com.

Pima Environmental – Gio Gomez at 806-782-1151 or Gio@pimaoil.com.

Respectfully,

*Gio Gomez*

Gio Gomez

Project Manager

Pima Environmental Services, LLC

**Attachments**

Figures:

- 1- Location Map
- 2- Topographic Map
- 3- Karst Map
- 4- Site Map

Appendices:

Appendix A- Referenced Water Surveys

Appendix B- Soil Survey & Soil Maps, Geologic Data, FEMA, Wetlands

Appendix C- 48 Hour Notification, Liner Inspection Form

Appendix D- Photographic Documentation



## Figures:

Figure 1- Location Map

Figure 2- Topographic Map

Figure 3- Karst Map



Figure 4- Site Map

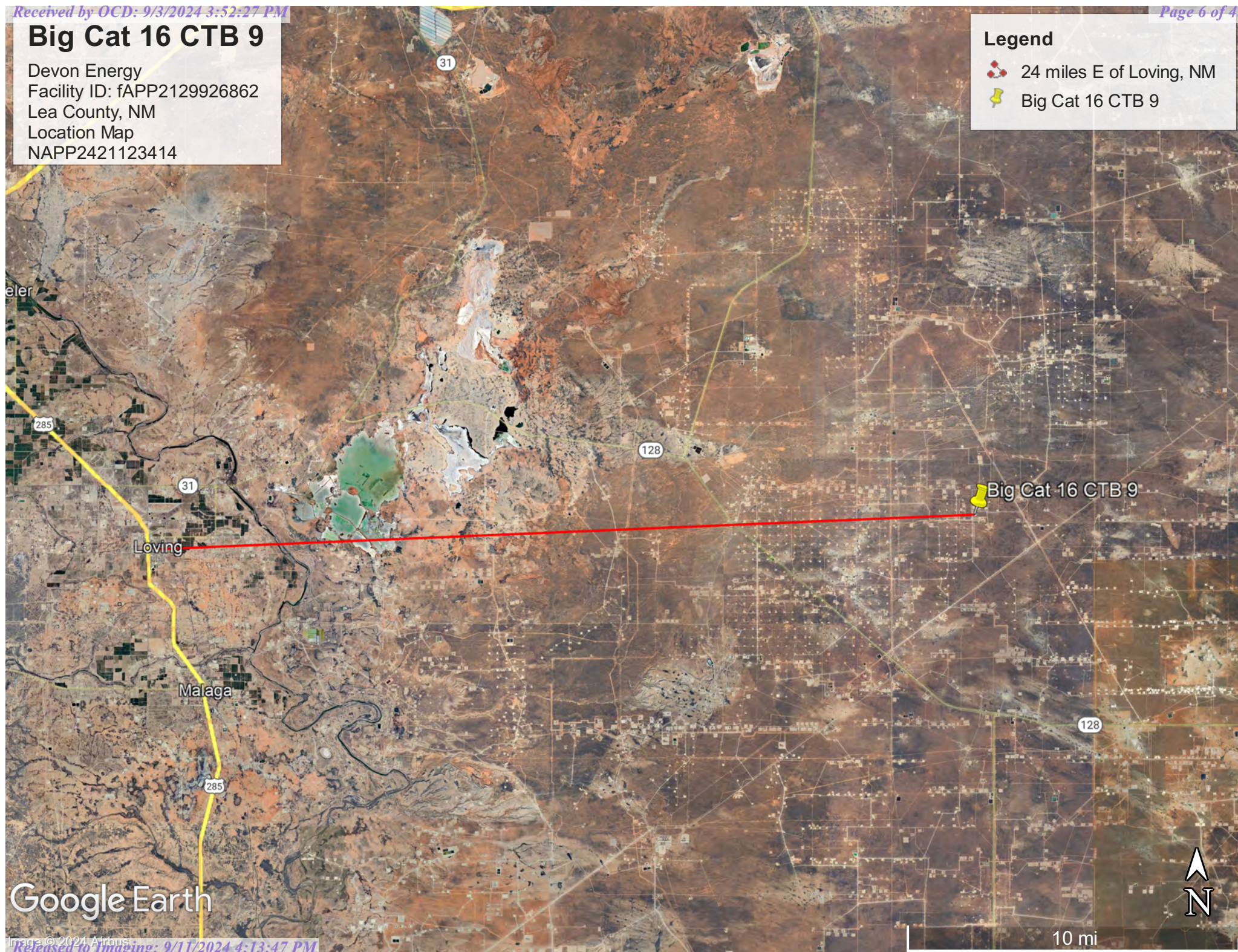


# Big Cat 16 CTB 9

Devon Energy  
Facility ID: fAPP2129926862  
Lea County, NM  
Location Map  
NAPP2421123414

## Legend

-  24 miles E of Loving, NM
-  Big Cat 16 CTB 9




Google Earth

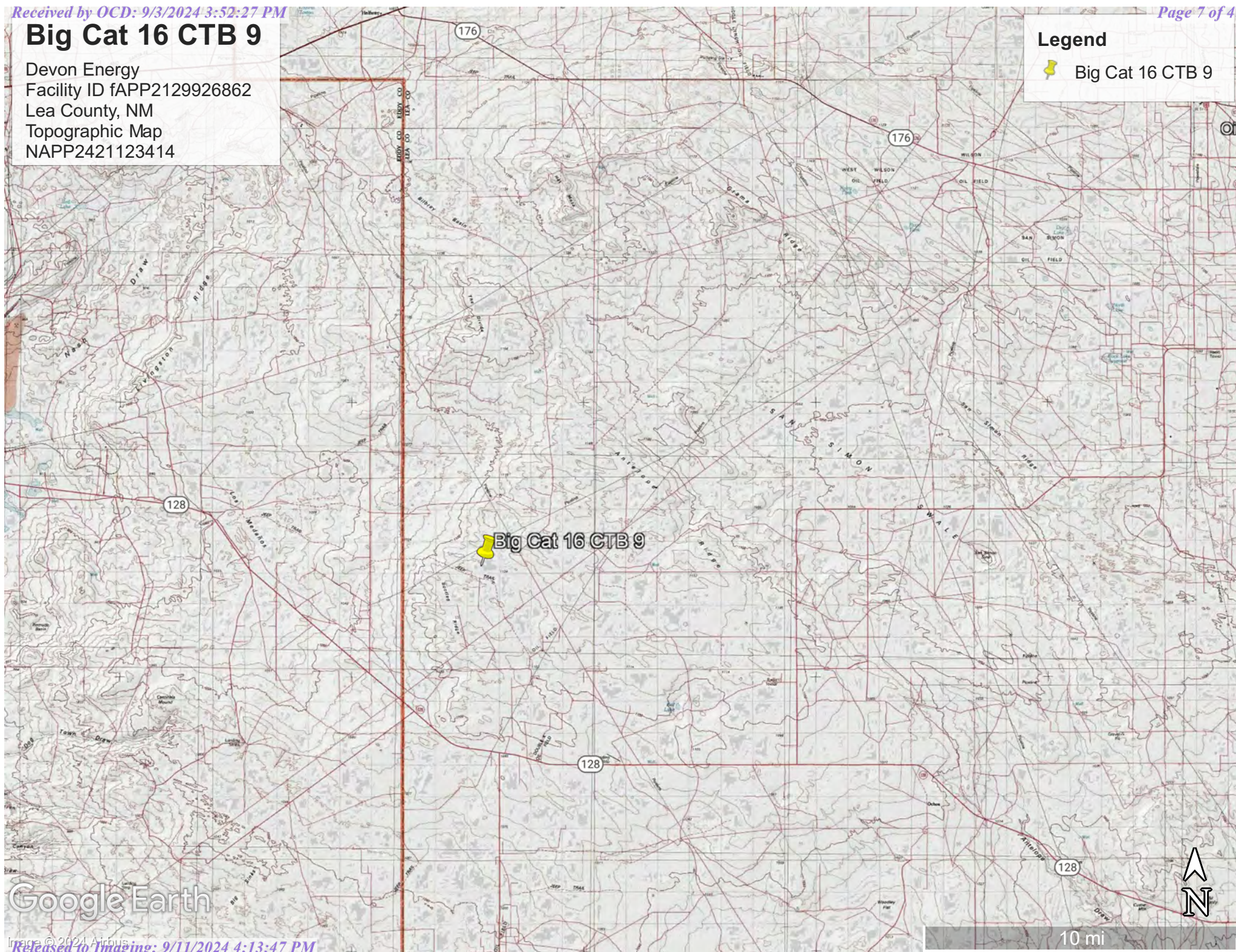


# Big Cat 16 CTB 9

Devon Energy  
Facility ID fAPP2129926862  
Lea County, NM  
Topographic Map  
NAPP2421123414

## Legend

 Big Cat 16 CTB 9




Google Earth





# Big Cat 16 CTB 9

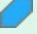
Devon Energy  
Facility ID fAPP2129926862  
Lea County, NM  
Karst Map  
NAPP2421123414

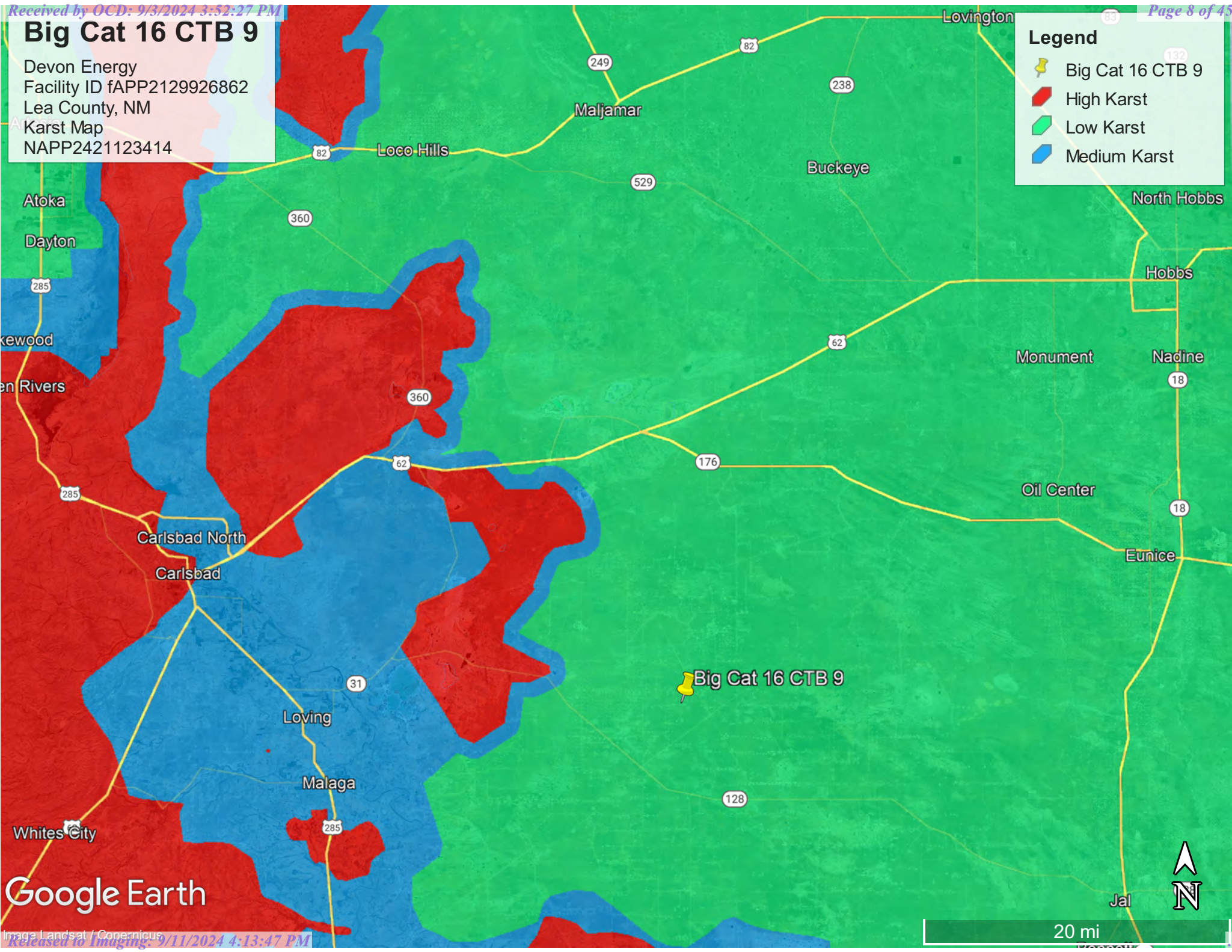
Legend

 Big Cat 16 CTB 9

 High Karst

 Low Karst

 Medium Karst



Google Earth

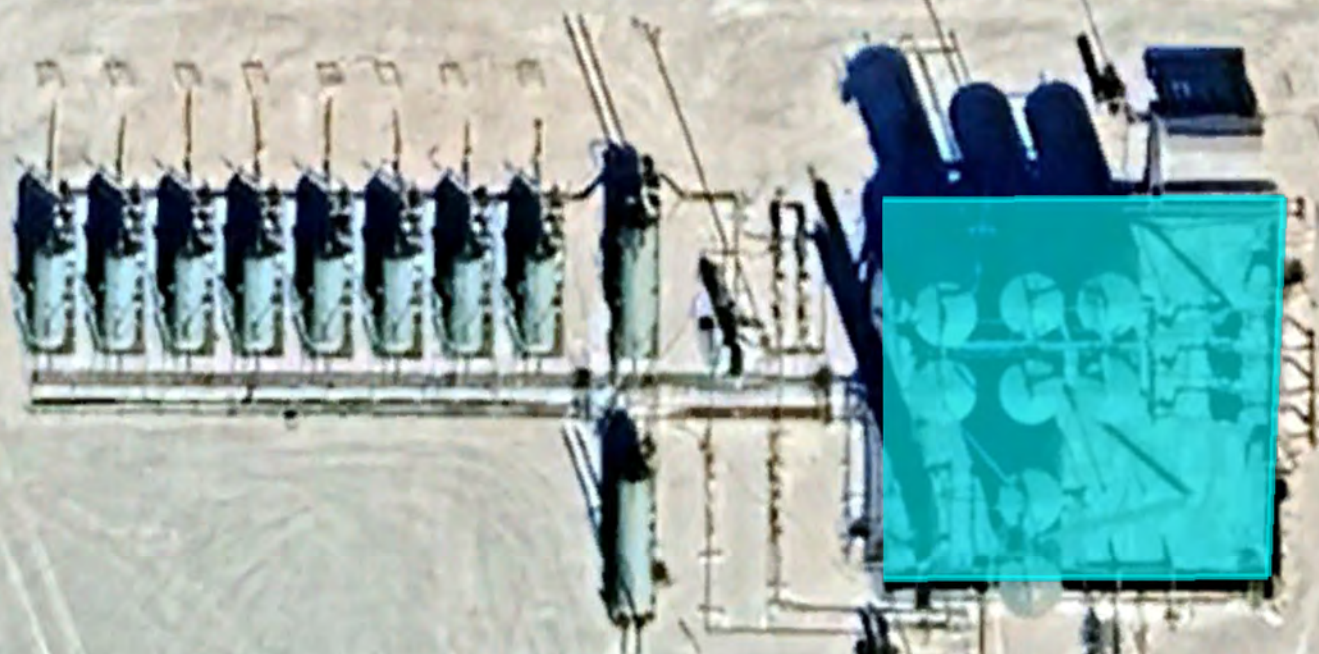


# Big Cat 16 CTB 9

Devon Energy  
Facility ID fAPP2129926862  
Lea County, NM  
Site Map  
NAPP2421123414

## Legend

- 8,808 Sqft Big Cat 16 CTB 9
- Big Cat 16 CTB 9



Big Cat 16 CTB 9

Google Earth



100 ft



## Appendix A

### Water Surveys:

- OSE
- USGS
- Surface Water Map



# New Mexico Office of the State Engineer

## Water Column/Average Depth to Water

(A CLW##### in the POD suffix indicates the POD has been replaced & no longer serves a water right file.)

(R=POD has been replaced,  
O=orphaned,  
C=the file is closed)

(quarters are 1=NW 2=NE 3=SW 4=SE)

(quarters are smallest to largest) (NAD83 UTM in meters)

(In feet)

POD Number	Code	POD Sub-basin	County	Q 64	Q 16	Q 4	Sec	Tws	Rng	X	Y	Distance	DepthWell	DepthWater	Water Column
<a href="#">C 04712 POD2</a>		CUB	LE	4	4	4	17	23S	32E	623332	3574331	907	55		
<a href="#">C 02216</a>		CUB	LE	2	2	4	21	23S	32E	625035	3573261*	1541	585	400	185
<a href="#">C 03851 POD1</a>		CUB	LE	3	3	4	20	23S	32E	622880	3572660	2321	1392	713	679
<a href="#">C 04815 POD1</a>		CUB	LE	1	4	3	08	23S	32E	622392	3576025	2333	55		
<a href="#">C 03529 POD1</a>		C	LE	2	4	3	29	23S	32E	622651	3571212	3694	550		
<a href="#">C 02349</a>		CUB	ED		2	3	03	23S	32E	625678	3578004*	3741	525		
<a href="#">C 04780 POD1</a>		CUB	LE	1	3	1	34	23S	32E	625364	3570521	4202	80		
<a href="#">C 04704 POD1</a>		CUB	ED	3	2	2	13	23S	31E	619854	3575363	4427			
<a href="#">C 04712 POD3</a>		CUB	ED	4	1	2	24	23S	31E	619651	3573877	4609	55		

Average Depth to Water: **556 feet**

Minimum Depth: **400 feet**

Maximum Depth: **713 feet**

**Record Count:** 9

### UTM NAD83 Radius Search (in meters):

**Easting (X):** 624209.2

**Northing (Y):** 3574562.7

**Radius:** 5000

\*UTM location was derived from PLSS - see Help

The data is furnished by the NMOSE/ISC and is accepted by the recipient with the expressed understanding that the OSE/TSC make no warranties, expressed or implied, concerning the accuracy, completeness, reliability, usability, or suitability for any particular purpose of the data.

7/10/24 11:09 AM


WATER COLUMN/ AVERAGE DEPTH TO WATER





# New Mexico Office of the State Engineer

## Point of Diversion Summary

		(quarters are 1=NW 2=NE 3=SW 4=SE)				(quarters are smallest to largest)				(NAD83 UTM in meters)	
Well Tag	POD Number	Q64	Q16	Q4	Sec	Tws	Rng	X	Y		
NA	C 04712 POD2	4	4	4	17	23S	32E	623332	3574331		
<hr/>											
Driller License: 1833		Driller Company:				VISION RESOURCES, INC					
Driller Name: JASON MALEY											
Drill Start Date: 03/09/2023		Drill Finish Date:				03/09/2023		Plug Date:		03/14/2023	
Log File Date: 04/04/2023		PCW Rev Date:						Source:			
Pump Type:		Pipe Discharge Size:						Estimated Yield:			
Casing Size:		Depth Well:				55 feet		Depth Water:			
<hr/>											

The data is furnished by the NMOSE/ISC and is accepted by the recipient with the expressed understanding that the OSE/ISC make no warranties, expressed or implied, concerning the accuracy, completeness, reliability, usability, or suitability for any particular purpose of the data.

7/10/24 11:10 AM




POINT OF DIVERSION SUMMARY

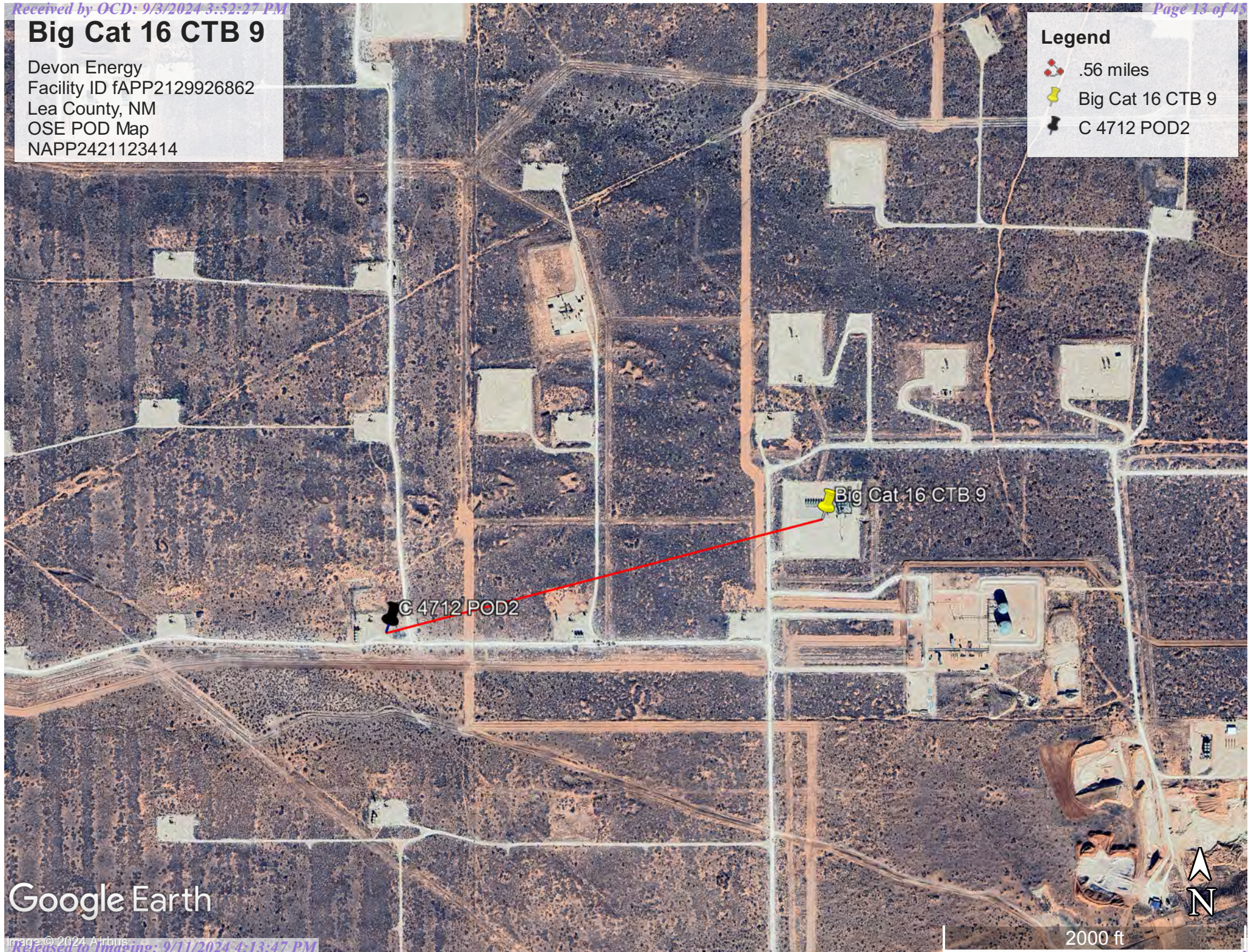


# Big Cat 16 CTB 9

Devon Energy  
Facility ID fAPP2129926862  
Lea County, NM  
OSE POD Map  
NAPP2421123414

## Legend

-  .56 miles
-  Big Cat 16 CTB 9
-  C 4712 POD2



Google Earth





[USGS Home](#)  
[Contact USGS](#)  
[Search USGS](#)

## National Water Information System: Web Interface

USGS Water Resources

Data Category:

Groundwater ▼

Geographic Area:

United States ▼

GO

Click to hide News Bulletins

- Explore the *NEW* [USGS National Water Dashboard](#) interactive map to access real-time water data from over 13,500 stations nationwide.

Groundwater levels for the Nation



Important: [Next Generation Monitoring Location Page](#)

### Search Results -- 1 sites found

site\_no list =

- 321952103400801

Minimum number of levels = 1

[Save file of selected sites](#) to local disk for future upload

### USGS 321952103400801 23S.32E.03.311114

Available data for this site

Groundwater: Field measurements ▼

GO

Lea County, New Mexico

Hydrologic Unit Code 13060011

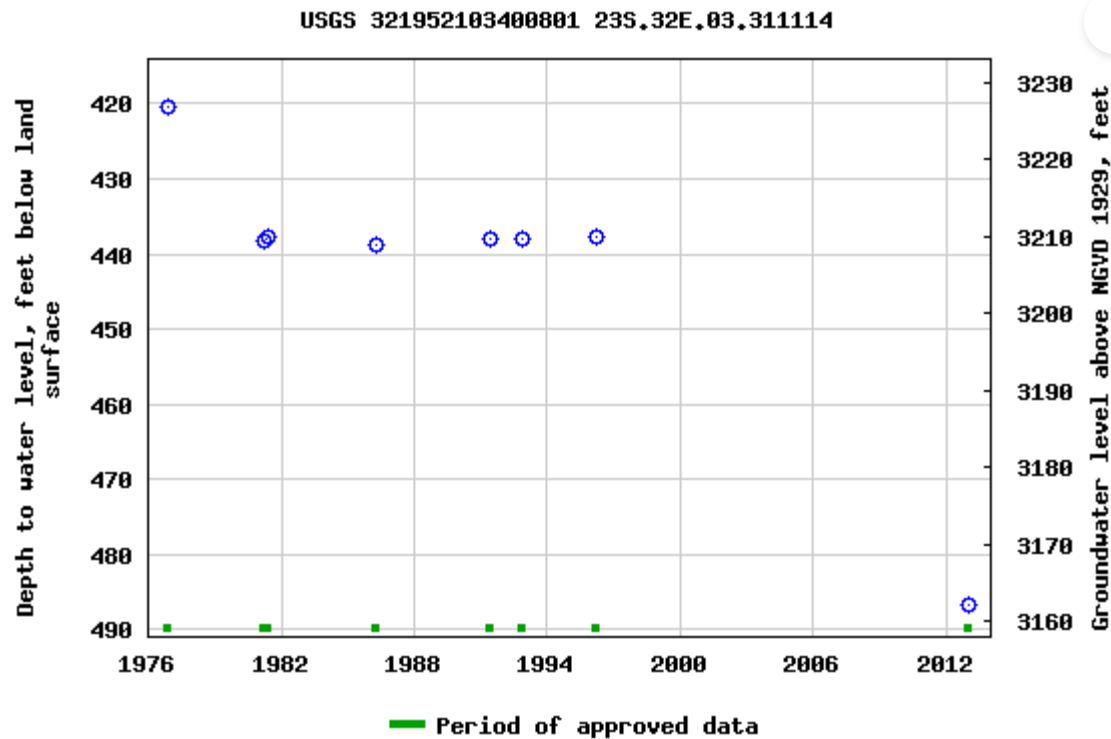
Latitude 32°19'59.2", Longitude 103°40'12.6" NAD83

Land-surface elevation 3,648.00 feet above NGVD29

The depth of the well is 630 feet below land surface.

This well is completed in the Other aquifers (N9999OTHER) national aquifer.

This well is completed in the Sunrise Formation (231SNRS) local aquifer.

**Output formats**[Table of data](#)[Tab-separated data](#)[Graph of data](#)[Reselect period](#)

Breaks in the plot represent a gap of at least one year between field measurements.

[Download a presentation-quality graph](#)

[Questions or Comments](#)

[Help](#)

[Data Tips](#)

[Explanation of terms](#)

[Subscribe for system changes](#)

[Accessibility](#)

[FOIA](#)

[Privacy](#)

[Policies and Notices](#)

[U.S. Department of the Interior](#) | [U.S. Geological Survey](#)

**Title: Groundwater for USA: Water Levels**

**URL: <https://nwis.waterdata.usgs.gov/nwis/gwlevels?>**



Page Contact Information: [USGS Water Data Support Team](#)

Page Last Modified: 2024-07-10 13:06:41 EDT

0.55 0.49 nadww02

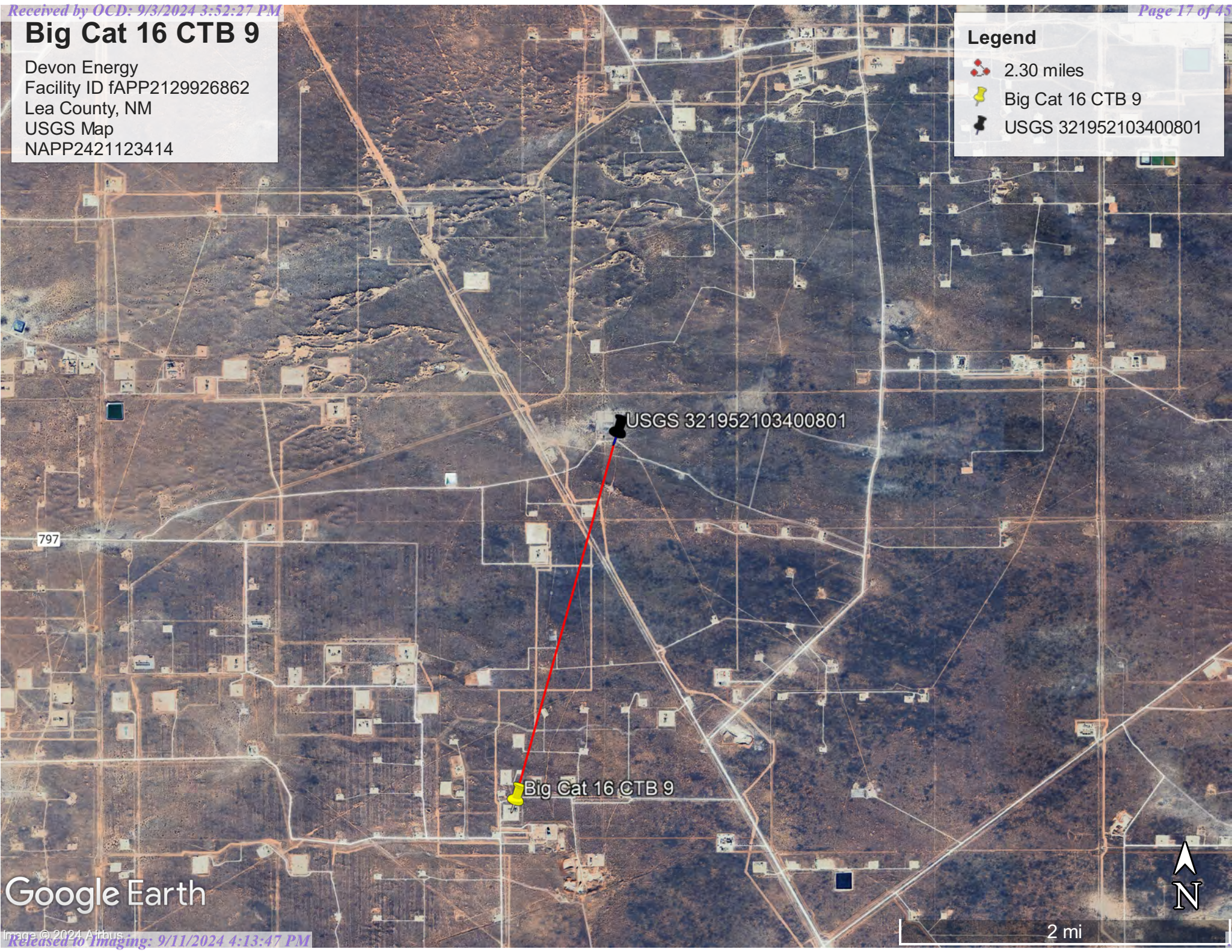


# Big Cat 16 CTB 9

Devon Energy  
Facility ID fAPP2129926862  
Lea County, NM  
USGS Map  
NAPP2421123414

## Legend

- 2.30 miles
- Big Cat 16 CTB 9
- USGS 321952103400801



Google Earth



## Appendix B

- Soil Survey & Soil Maps
- Geological Data
- FEMA Flood Map
- Wetlands Map

Map Unit Description: Kermit-Palomas fine sands, 0 to 12 percent slopes---Lea County, New Mexico

---

## Lea County, New Mexico

### KD—Kermit-Palomas fine sands, 0 to 12 percent slopes

#### Map Unit Setting

*National map unit symbol:* dmpv

*Elevation:* 3,000 to 4,400 feet

*Mean annual precipitation:* 10 to 12 inches

*Mean annual air temperature:* 60 to 62 degrees F

*Frost-free period:* 190 to 205 days

*Farmland classification:* Not prime farmland

#### Map Unit Composition

*Kermit and similar soils:* 70 percent

*Palomas and similar soils:* 20 percent

*Minor components:* 10 percent

*Estimates are based on observations, descriptions, and transects of the mapunit.*

#### Description of Kermit

##### Setting

*Landform:* Dunes

*Landform position (two-dimensional):* Shoulder, backslope, footslope

*Landform position (three-dimensional):* Side slope

*Down-slope shape:* Concave, convex, linear

*Across-slope shape:* Convex

*Parent material:* Calcareous sandy eolian deposits derived from sedimentary rock

##### Typical profile

*A - 0 to 8 inches:* fine sand

*C - 8 to 60 inches:* fine sand

##### Properties and qualities

*Slope:* 3 to 12 percent

*Depth to restrictive feature:* More than 80 inches

*Drainage class:* Excessively drained

*Runoff class:* Very low

*Capacity of the most limiting layer to transmit water (Ksat):* Very high (20.00 in/hr)

*Depth to water table:* More than 80 inches

*Frequency of flooding:* None

*Frequency of ponding:* None

*Maximum salinity:* Nonsaline (0.0 to 1.0 mmhos/cm)

*Sodium adsorption ratio, maximum:* 2.0

*Available water supply, 0 to 60 inches:* Low (about 3.1 inches)

##### Interpretive groups

*Land capability classification (irrigated):* None specified

*Land capability classification (nonirrigated):* 7e

Map Unit Description: Kermit-Palomas fine sands, 0 to 12 percent slopes---Lea County, New Mexico

---

*Hydrologic Soil Group:* A  
*Ecological site:* R070BD005NM - Deep Sand  
*Hydric soil rating:* No

### **Description of Palomas**

#### **Setting**

*Landform:* Dunes  
*Landform position (two-dimensional):* Shoulder, backslope, footslope  
*Landform position (three-dimensional):* Side slope  
*Down-slope shape:* Concave, convex, linear  
*Across-slope shape:* Convex  
*Parent material:* Alluvium derived from sandstone

#### **Typical profile**

*A - 0 to 16 inches:* fine sand  
*Bt - 16 to 60 inches:* sandy clay loam  
*Bk - 60 to 66 inches:* sandy loam

#### **Properties and qualities**

*Slope:* 0 to 5 percent  
*Depth to restrictive feature:* More than 80 inches  
*Drainage class:* Well drained  
*Runoff class:* Low  
*Capacity of the most limiting layer to transmit water (Ksat):* Moderately high to high (0.60 to 2.00 in/hr)  
*Depth to water table:* More than 80 inches  
*Frequency of flooding:* None  
*Frequency of ponding:* None  
*Calcium carbonate, maximum content:* 50 percent  
*Gypsum, maximum content:* 1 percent  
*Maximum salinity:* Nonsaline to very slightly saline (0.0 to 2.0 mmhos/cm)  
*Sodium adsorption ratio, maximum:* 2.0  
*Available water supply, 0 to 60 inches:* Moderate (about 7.5 inches)

#### **Interpretive groups**

*Land capability classification (irrigated):* None specified  
*Land capability classification (nonirrigated):* 7e  
*Hydrologic Soil Group:* B  
*Ecological site:* R070BD003NM - Loamy Sand  
*Hydric soil rating:* No

### **Minor Components**

#### **Pyote**

*Percent of map unit:* 4 percent  
*Ecological site:* R070BD003NM - Loamy Sand  
*Hydric soil rating:* No

#### **Maljamar**

*Percent of map unit:* 4 percent



Map Unit Description: Kermit-Palomas fine sands, 0 to 12 percent slopes---Lea County, New Mexico

---

*Ecological site:* R070BD003NM - Loamy Sand  
*Hydric soil rating:* No

**Palomas**

*Percent of map unit:* 1 percent  
*Ecological site:* R070BD003NM - Loamy Sand  
*Hydric soil rating:* No

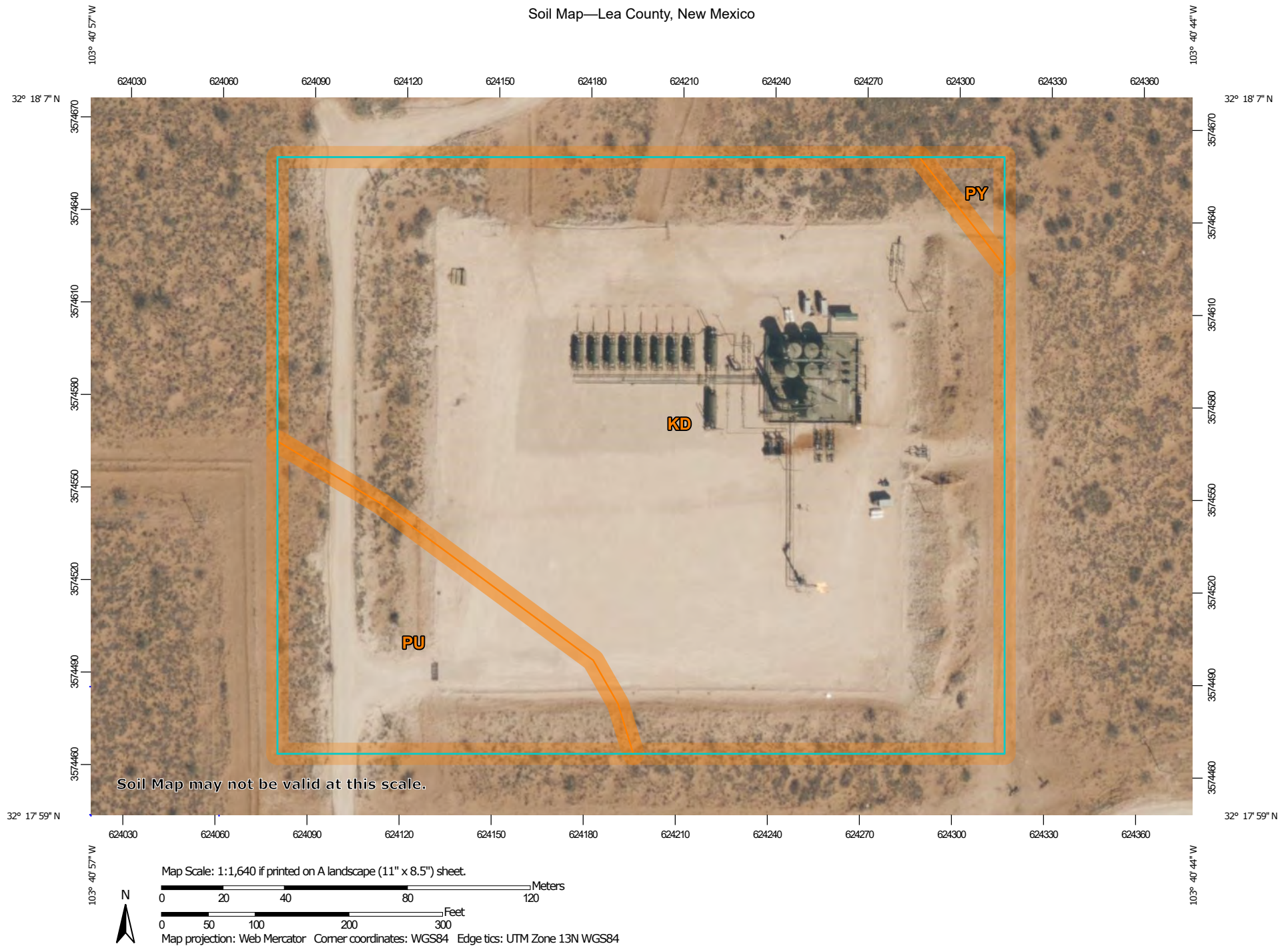
**Dune land**

*Percent of map unit:* 1 percent  
*Hydric soil rating:* No

## Data Source Information

Soil Survey Area: Lea County, New Mexico  
Survey Area Data: Version 20, Sep 6, 2023

## Soil Map—Lea County, New Mexico



Natural Resources  
Conservation Service

Web Soil Survey  
National Cooperative Soil Survey

7/10/2024  
Page 1 of 3

## Soil Map—Lea County, New Mexico

## MAP LEGEND

## Area of Interest (AOI)

 Area of Interest (AOI)

## Soils

 Soil Map Unit Polygons

 Soil Map Unit Lines

 Soil Map Unit Points

## Special Point Features



Blowout



Borrow Pit



Clay Spot



Closed Depression



Gravel Pit



Gravelly Spot



Landfill



Lava Flow



Marsh or swamp



Mine or Quarry



Miscellaneous Water



Perennial Water



Rock Outcrop



Saline Spot



Sandy Spot



Severely Eroded Spot



Sinkhole



Slide or Slip



Sodic Spot



Spoil Area



Stony Spot



Very Stony Spot



Wet Spot



Other



Special Line Features

## Water Features



Streams and Canals

## Transportation



Rails



Interstate Highways



US Routes



Major Roads



Local Roads

## Background



Aerial Photography

## MAP INFORMATION

The soil surveys that comprise your AOI were mapped at 1:20,000.

Warning: Soil Map may not be valid at this scale.

Enlargement of maps beyond the scale of mapping can cause misunderstanding of the detail of mapping and accuracy of soil line placement. The maps do not show the small areas of contrasting soils that could have been shown at a more detailed scale.

Please rely on the bar scale on each map sheet for map measurements.

Source of Map: Natural Resources Conservation Service

Web Soil Survey URL:

Coordinate System: Web Mercator (EPSG:3857)

Maps from the Web Soil Survey are based on the Web Mercator projection, which preserves direction and shape but distorts distance and area. A projection that preserves area, such as the Albers equal-area conic projection, should be used if more accurate calculations of distance or area are required.

This product is generated from the USDA-NRCS certified data as of the version date(s) listed below.

Soil Survey Area: Lea County, New Mexico

Survey Area Data: Version 20, Sep 6, 2023

Soil map units are labeled (as space allows) for map scales 1:50,000 or larger.

Date(s) aerial images were photographed: Feb 7, 2020—May 12, 2020

The orthophoto or other base map on which the soil lines were compiled and digitized probably differs from the background imagery displayed on these maps. As a result, some minor shifting of map unit boundaries may be evident.



Map Unit Legend

Map Unit Symbol	Map Unit Name	Acres in AOI	Percent of AOI
KD	Kermit-Palomas fine sands, 0 to 12 percent slopes	9.5	83.3%
PU	Pyote and Maljamar fine sands	1.8	15.6%
PY	Pyote soils and Dune land	0.1	1.1%
Totals for Area of Interest		11.4	100.0%

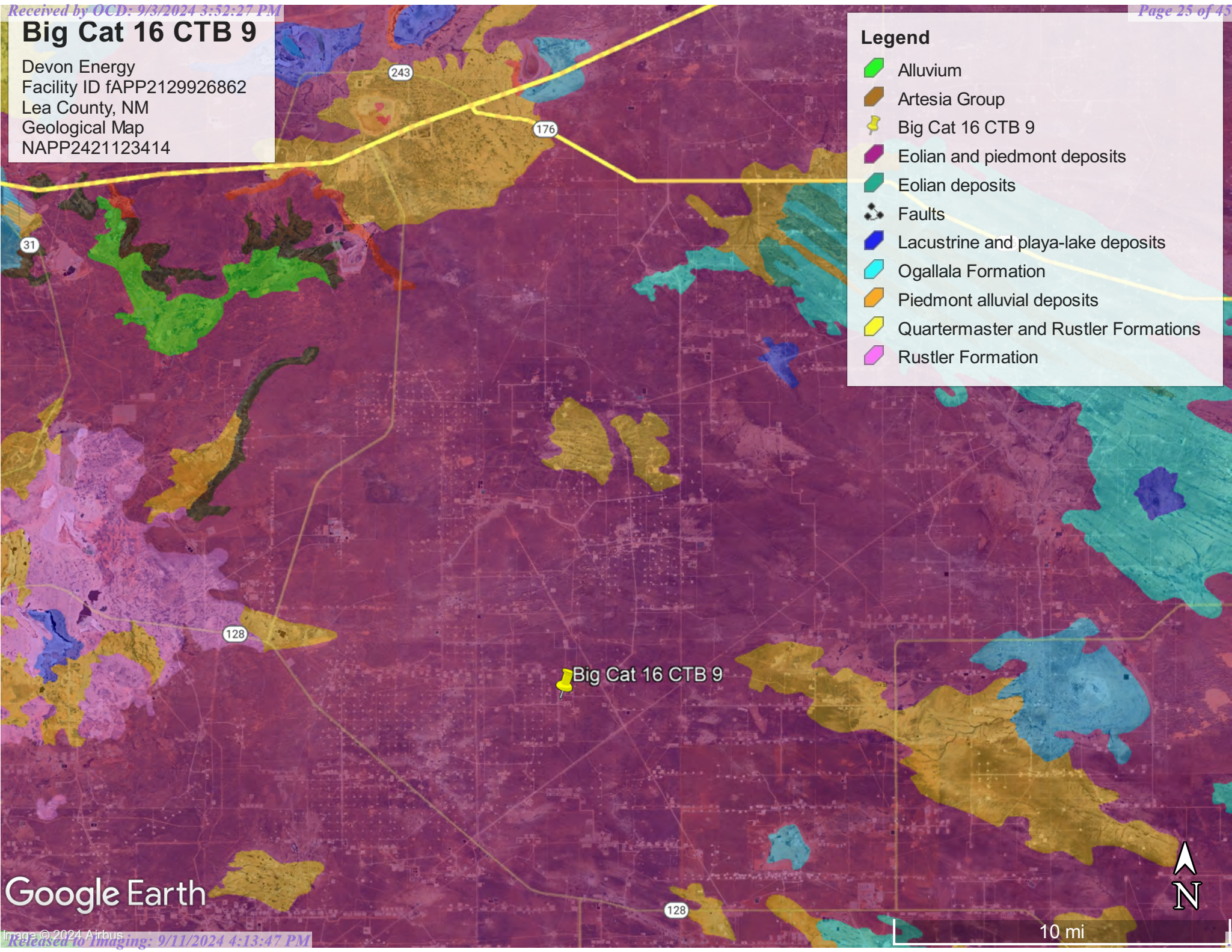


# Big Cat 16 CTB 9

Devon Energy  
Facility ID fAPP2129926862  
Lea County, NM  
Geological Map  
NAPP2421123414

## Legend

- Alluvium
- Artesia Group
- Big Cat 16 CTB 9
- Eolian and piedmont deposits
- Eolian deposits
- Faults
- Lacustrine and playa-lake deposits
- Ogallala Formation
- Piedmont alluvial deposits
- Quartermaster and Rustler Formations
- Rustler Formation



Google Earth

10 mi



# National Flood Hazard Layer FIRMette



103°41'9"W 32°18'19"N



0 250 500 1,000 1,500 2,000 Feet

1:6,000

103°40'32"W 32°17'48"N

Released to Imaging: 9/11/2024 4:13:47 PM

Basemap Imagery Source: USGS National Map 2023

## Legend

SEE FIS REPORT FOR DETAILED LEGEND AND INDEX MAP FOR FIRM PANEL LAYOUT

SPECIAL FLOOD HAZARD AREAS		Without Base Flood Elevation (BFE) Zone A, V, A99
		With BFE or Depth Zone AE, AO, AH, VE, AR
		Regulatory Floodway
OTHER AREAS OF FLOOD HAZARD		0.2% Annual Chance Flood Hazard, Areas of 1% annual chance flood with average depth less than one foot or with drainage areas of less than one square mile Zone X
		Future Conditions 1% Annual Chance Flood Hazard Zone X
		Area with Reduced Flood Risk due to Levee. See Notes. Zone X
		Area with Flood Risk due to Levee Zone D
OTHER AREAS		NO SCREEN Area of Minimal Flood Hazard Zone X
		Effective LOMRs
		Area of Undetermined Flood Hazard Zone D
GENERAL STRUCTURES		Channel, Culvert, or Storm Sewer
		Levee, Dike, or Floodwall
OTHER FEATURES		20.2 Cross Sections with 1% Annual Chance Water Surface Elevation
		17.5 Cross Sections with 1% Annual Chance Water Surface Elevation
		Coastal Transect
		Base Flood Elevation Line (BFE)
		Limit of Study
		Jurisdiction Boundary
		Coastal Transect Baseline
		Profile Baseline
MAP PANELS		Digital Data Available
		No Digital Data Available
		Unmapped



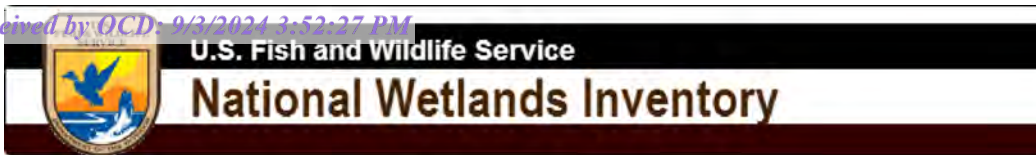
The pin displayed on the map is an approximate point selected by the user and does not represent an authoritative property location.

This map complies with FEMA's standards for the use of digital flood maps if it is not void as described below. The basemap shown complies with FEMA's basemap accuracy standards

The flood hazard information is derived directly from the authoritative NFHL web services provided by FEMA. This map was exported on 7/10/2024 at 1:17 PM and does not reflect changes or amendments subsequent to this date and time. The NFHL and effective information may change or become superseded by new data over time.

This map image is void if the one or more of the following map elements do not appear: basemap imagery, flood zone labels, legend, scale bar, map creation date, community identifiers, FIRM panel number, and FIRM effective date. Map images for unmapped and unmodernized areas cannot be used for regulatory purposes.





## Wetlands



July 10, 2024

**Wetlands**

- Estuarine and Marine Deepwater
- Estuarine and Marine Wetland

- Freshwater Emergent Wetland
- Freshwater Forested/Shrub Wetland
- Freshwater Pond

- Lake
- Other
- Riverine

This map is for general reference only. The US Fish and Wildlife Service is not responsible for the accuracy or currentness of the base data shown on this map. All wetlands related data should be used in accordance with the layer metadata found on the Wetlands Mapper web site.



## Appendix C

- 48-Hour Notification
- Liner Inspection Form



**lynsey@pimaoil.com**

---

**From:** Woodall, Dale <Dale.Woodall@dvn.com>  
**Sent:** Monday, August 26, 2024 4:48 PM  
**To:** 'Gio PimaOil'; Lynsey Pima Oil  
**Subject:** FW: [EXTERNAL] The Oil Conservation Division (OCD) has accepted the application, Application ID: 378020

Dale Woodall  
*Environmental Professional*  
*Hobbs, NM*  
*Office: 575-748-1838*  
*Mobile: 405-318-4697*  
[Dale.Woodall@dvn.com](mailto:Dale.Woodall@dvn.com)

---

**From:** OCDOnline@state.nm.us <OCDOnline@state.nm.us>  
**Sent:** Monday, August 26, 2024 4:47 PM  
**To:** Woodall, Dale <Dale.Woodall@dvn.com>  
**Subject:** [EXTERNAL] The Oil Conservation Division (OCD) has accepted the application, Application ID: 378020

To whom it may concern (c/o Dale Woodall for DEVON ENERGY PRODUCTION COMPANY, LP),

The OCD has received the submitted *Notification for Liner Inspection for a Release* (C-141L), for incident ID (n#) nAPP2421123414.

The liner inspection is expected to take place:

**When:** 07/29/2024 @ 08:00

**Where:** K-16-23S-32E 1326 FNL 2292 FWL (32.30099102,-103.680727)

**Additional Information:** Andrew Franco 806-200-0054

**Additional Instructions:** K-16-25S-32E, ( 32.30099102,-103.680727 NAD83) From the intersection of NM 128 and County Rd 2, travel west on NM 128 for 1.65 miles, turn north on Lease Rd for 7.30 miles, turn west on lease Rd for 1.41 miles, arriving to location on the left.

An OCD representative may be available onsite at the date and time reported. In the absence or presence of an OCD representative, liner inspection pursuant to 19.15.29.11.A(5)(a) NMAC is required. Should there be a change in the scheduled date and time of the sampling event, then another notification should be resubmitted through OCD permitting as soon as possible.

- **Failure to notify the OCD of liner inspections including any changes in date/time per the requirements of 19.15.29.11.A(5)(a)(ii) NMAC, may result in the inspection not being accepted.**

If you have any questions regarding this application, or don't know why you have received this email, please contact us.

**New Mexico Energy, Minerals and Natural Resources Department**

1220 South St. Francis Drive

Santa Fe, NM 87505

Confidentiality Warning: This message and any attachments are intended only for the use of the intended recipient(s), are confidential, and may be privileged. If you are not the intended recipient, you are hereby notified that any review, retransmission, conversion to hard copy, copying, circulation or other use of all or any portion of this message and any attachments is strictly prohibited. If you are not the intended recipient, please notify the sender immediately by return e-mail, and delete this message and any attachments from your system.



Pima Environmental Services, LLC

**Liner Inspection Form**Company Name: Devon EnergySite: Big Cat 16 CTB 9Lat/Long: 32.30099102, -103.680727

NMOCD Incident ID

& Incident Date: NAPP2421123414 7/27/2024

2-Day Notification

Sent: via Email by Dale Woodall on OCD portal 8/26/2024  
application ID: 378020.Inspection Date: 8/29/2024

Liner Type:      Earthen w/liner                      Earthen no liner                      Polystar

Steel w/poly liner                      Steel w/spray epoxy                      No Liner

Other: \_\_\_\_\_

Visualization	Yes	No	Comments
Is there a tear in the liner?		X	
Are there holes in the liner?		X	
Is the liner retaining any fluids?	X		Fluid from the power washing Liner
Does the liner have integrity to contain a leak?	X		

Comments: \_\_\_\_\_

Inspector Name: Andrew Franco      Inspector Signature: Andrew Franco



## Appendix D

### ○ Photographic Documentation

## PHOTOGRAPHIC DOCUMENTATION

SITE NAME: Big Cat 16 CTB 9

### Initial Liner Photos



Site information sign.



Photo documenting point of release, prior too powerwashing.



Photo documenting release, prior to power washing.



Photo documenting release, prior to power washing.





Photograph depicting the condition of the liner following the extraction of produced water by a vacuum truck, oriented facing Southeast.



Photograph depicting the condition of the liner following the extraction of produced water by a vacuum truck, oriented facing Northeast.



Photograph depicting the condition of the liner following the extraction of produced water by a vacuum truck, oriented facing North.



Photograph depicting the condition of the liner following the extraction of produced water by a vacuum truck, oriented facing North.





Photograph depicting the condition of the liner following the extraction of produced water by a vacuum truck, oriented facing North.



Photograph depicting the condition of the liner following the extraction of produced water by a vacuum truck.



Photograph depicting the condition of the liner following the extraction of produced water by a vacuum truck, oriented facing.



Photograph depicting the condition of the liner following the extraction of produced water by a vacuum truck, oriented facing.





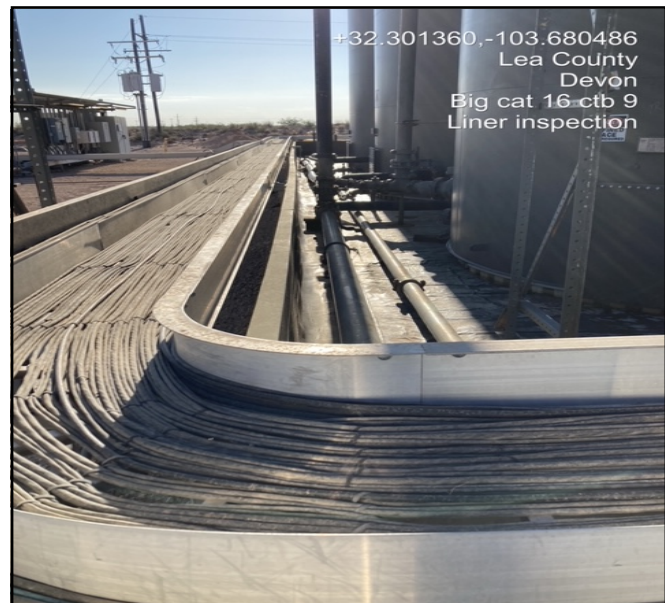
Photograph depicting the condition of the liner following the extraction of produced water by a vacuum truck, oriented facing.



Photograph depicting the condition of the liner following the extraction of produced water by a vacuum truck, oriented facing.



Photograph depicting the condition of the liner following the extraction of produced water by a vacuum truck, oriented facing.



Photograph depicting the condition of the liner following the extraction of produced water by a vacuum truck, oriented facing.





## PHOTOGRAPHIC DOCUMENTATION

SITE NAME: Big Cat 16 CTB 9

### Liner Inspection



Photo of liner pursuant to power washing, taken facing Southeast. (Fluid from power washing.)



Photo of liner pursuant to power washing, taken facing Southwest. (Fluid from power washing.)



Photo of liner pursuant to power washing, taken facing Northeast. (Fluid from power washing.)



Photo of liner pursuant to power washing, taken facing North. (Fluid from power washing.)





Photo of liner pursuant to power washing.  
(Fluid from power washing.)



Photo of liner pursuant to power washing, taken facing North. (Fluid from power washing.)



Photo of liner pursuant to power washing, taken facing Northwest. (Fluid from power washing.)



Photo of liner pursuant to power washing, taken facing Southeast. (Fluid from power washing.)



## PHOTOGRAPHIC DOCUMENTATION

SITE NAME: Big Cat 16 CTB 9

### Aerial Photos



Aerial photo of liner.



Aerial photo of liner.



Aerial photo of liner.



Aerial photo of liner.



**District I**  
1625 N. French Dr., Hobbs, NM 88240  
Phone:(575) 393-6161 Fax:(575) 393-0720  
**District II**  
811 S. First St., Artesia, NM 88210  
Phone:(575) 748-1283 Fax:(575) 748-9720  
**District III**  
1000 Rio Brazos Rd., Aztec, NM 87410  
Phone:(505) 334-6178 Fax:(505) 334-6170  
**District IV**  
1220 S. St Francis Dr., Santa Fe, NM 87505  
Phone:(505) 476-3470 Fax:(505) 476-3462

**State of New Mexico**  
**Energy, Minerals and Natural Resources**  
**Oil Conservation Division**  
**1220 S. St Francis Dr.**  
**Santa Fe, NM 87505**

QUESTIONS

Action 380274

**QUESTIONS**

Operator: DEVON ENERGY PRODUCTION COMPANY, LP 333 West Sheridan Ave. Oklahoma City, OK 73102	OGRID:	6137
	Action Number:	380274
	Action Type:	[C-141] Remediation Closure Request C-141 (C-141-v-Closure)

**QUESTIONS**

<b>Prerequisites</b>	
Incident ID (n#)	nAPP2421123414
Incident Name	NAPP2421123414 BIG CAT 16 CTB 9 @ 0
Incident Type	Produced Water Release
Incident Status	Remediation Closure Report Received
Incident Facility	[fAPP2129926862] BIG CAT 16 CTB 9

<b>Location of Release Source</b>	
Please answer all the questions in this group.	
Site Name	BIG CAT 16 CTB 9
Date Release Discovered	07/27/2024
Surface Owner	State

<b>Incident Details</b>	
Please answer all the questions in this group.	
Incident Type	Produced Water Release
Did this release result in a fire or is the result of a fire	No
Did this release result in any injuries	No
Has this release reached or does it have a reasonable probability of reaching a watercourse	No
Has this release endangered or does it have a reasonable probability of endangering public health	No
Has this release substantially damaged or will it substantially damage property or the environment	No
Is this release of a volume that is or may with reasonable probability be detrimental to fresh water	No

<b>Nature and Volume of Release</b>	
Material(s) released, please answer all that apply below. Any calculations or specific justifications for the volumes provided should be attached to the follow-up C-141 submission.	
Crude Oil Released (bbls) Details	Not answered.
Produced Water Released (bbls) Details	Cause: Equipment Failure   Pump   Produced Water   Released: 153 BBL   Recovered: 150 BBL   Lost: 3 BBL.
Is the concentration of chloride in the produced water >10,000 mg/l	Yes
Condensate Released (bbls) Details	Not answered.
Natural Gas Vented (Mcf) Details	Not answered.
Natural Gas Flared (Mcf) Details	Not answered.
Other Released Details	Not answered.
Are there additional details for the questions above (i.e. any answer containing Other, Specify, Unknown, and/or Fire, or any negative lost amounts)	152.5 bbl release of produced water in lined containment due to pump failure. 150 bbls recovered. E-mail sent to the OCD on 7/27/2024

**District I**

1625 N. French Dr., Hobbs, NM 88240  
Phone:(575) 393-6161 Fax:(575) 393-0720

**District II**

811 S. First St., Artesia, NM 88210  
Phone:(575) 748-1283 Fax:(575) 748-9720

**District III**

1000 Rio Brazos Rd., Aztec, NM 87410  
Phone:(505) 334-6178 Fax:(505) 334-6170

**District IV**

1220 S. St Francis Dr., Santa Fe, NM 87505  
Phone:(505) 476-3470 Fax:(505) 476-3462

**State of New Mexico**  
**Energy, Minerals and Natural Resources**  
**Oil Conservation Division**  
**1220 S. St Francis Dr.**  
**Santa Fe, NM 87505**

QUESTIONS, Page 2

Action 380274

**QUESTIONS (continued)**

Operator: DEVON ENERGY PRODUCTION COMPANY, LP 333 West Sheridan Ave. Oklahoma City, OK 73102	OGRID:	6137
	Action Number:	380274
	Action Type:	[C-141] Remediation Closure Request C-141 (C-141-v-Closure)

**QUESTIONS**

<b>Nature and Volume of Release (continued)</b>	
Is this a gas only submission (i.e. only significant Mcf values reported)	No, according to supplied volumes this does not appear to be a "gas only" report.
Was this a major release as defined by Subsection A of 19.15.29.7 NMAC	Yes
Reasons why this would be considered a submission for a notification of a major release	From paragraph A. "Major release" determine using: (1) an unauthorized release of a volume, excluding gases, of 25 barrels or more.
With the implementation of the 19.15.27 NMAC (05/25/2021), venting and/or flaring of natural gas (i.e. gas only) are to be submitted on the C-129 form.	

**Initial Response**

The responsible party must undertake the following actions immediately unless they could create a safety hazard that would result in injury.

The source of the release has been stopped	True
The impacted area has been secured to protect human health and the environment	True
Released materials have been contained via the use of berms or dikes, absorbent pads, or other containment devices	True
All free liquids and recoverable materials have been removed and managed appropriately	True
If all the actions described above have not been undertaken, explain why	Not answered.

Per Paragraph (4) of Subsection B of 19.15.29.8 NMAC the responsible party may commence remediation immediately after discovery of a release. If remediation has begun, please prepare and attach a narrative of actions to date in the follow-up C-141 submission. If remedial efforts have been successfully completed or if the release occurred within a lined containment area (see Subparagraph (a) of Paragraph (5) of Subsection A of 19.15.29.11 NMAC), please prepare and attach all information needed for closure evaluation in the follow-up C-141 submission.

I hereby certify that the information given above is true and complete to the best of my knowledge and understand that pursuant to OCD rules and regulations all operators are required to report and/or file certain release notifications and perform corrective actions for releases which may endanger public health or the environment. The acceptance of a C-141 report by the OCD does not relieve the operator of liability should their operations have failed to adequately investigate and remediate contamination that pose a threat to groundwater, surface water, human health or the environment. In addition, OCD acceptance of a C-141 report does not relieve the operator of responsibility for compliance with any other federal, state, or local laws and/or regulations.

I hereby agree and sign off to the above statement	Name: Dale Woodall Title: EHS Professional Email: Dale.Woodall@dvn.com Date: 09/03/2024
--	--

**District I**

1625 N. French Dr., Hobbs, NM 88240  
Phone:(575) 393-6161 Fax:(575) 393-0720

**District II**

811 S. First St., Artesia, NM 88210  
Phone:(575) 748-1283 Fax:(575) 748-9720

**District III**

1000 Rio Brazos Rd., Aztec, NM 87410  
Phone:(505) 334-6178 Fax:(505) 334-6170

**District IV**

1220 S. St Francis Dr., Santa Fe, NM 87505  
Phone:(505) 476-3470 Fax:(505) 476-3462

**State of New Mexico**  
**Energy, Minerals and Natural Resources**  
**Oil Conservation Division**  
**1220 S. St Francis Dr.**  
**Santa Fe, NM 87505**

QUESTIONS, Page 3

Action 380274

**QUESTIONS (continued)**

Operator: DEVON ENERGY PRODUCTION COMPANY, LP 333 West Sheridan Ave. Oklahoma City, OK 73102	OGRID:	6137
	Action Number:	380274
	Action Type:	[C-141] Remediation Closure Request C-141 (C-141-v-Closure)

**QUESTIONS****Site Characterization**

*Please answer all the questions in this group (only required when seeking remediation plan approval and beyond). This information must be provided to the appropriate district office no later than 90 days after the release discovery date.*

What is the shallowest depth to groundwater beneath the area affected by the release in feet below ground surface (ft bgs)	Between 51 and 75 (ft.)
What method was used to determine the depth to ground water	NM OSE iWaters Database Search
Did this release impact groundwater or surface water	No
<b>What is the minimum distance, between the closest lateral extents of the release and the following surface areas:</b>	
A continuously flowing watercourse or any other significant watercourse	Greater than 5 (mi.)
Any lakebed, sinkhole, or playa lake (measured from the ordinary high-water mark)	Greater than 5 (mi.)
An occupied permanent residence, school, hospital, institution, or church	Greater than 5 (mi.)
A spring or a private domestic fresh water well used by less than five households for domestic or stock watering purposes	Greater than 5 (mi.)
Any other fresh water well or spring	Greater than 5 (mi.)
Incorporated municipal boundaries or a defined municipal fresh water well field	Greater than 5 (mi.)
A wetland	Greater than 5 (mi.)
A subsurface mine	Greater than 5 (mi.)
An (non-karst) unstable area	Greater than 5 (mi.)
Categorize the risk of this well / site being in a karst geology	Low
A 100-year floodplain	Greater than 5 (mi.)
Did the release impact areas not on an exploration, development, production, or storage site	No

**Remediation Plan**

*Please answer all the questions that apply or are indicated. This information must be provided to the appropriate district office no later than 90 days after the release discovery date.*

Requesting a remediation plan approval with this submission	Yes
<i>Attach a comprehensive report demonstrating the lateral and vertical extents of soil contamination associated with the release have been determined, pursuant to 19.15.29.11 NMAC and 19.15.29.13 NMAC.</i>	
Have the lateral and vertical extents of contamination been fully delineated	Yes
Was this release entirely contained within a lined containment area	Yes
<i>Per Subsection B of 19.15.29.11 NMAC unless the site characterization report includes completed efforts at remediation, the report must include a proposed remediation plan in accordance with 19.15.29.12 NMAC, which includes the anticipated timelines for beginning and completing the remediation.</i>	
On what estimated date will the remediation commence	08/23/2024
On what date will (or did) the final sampling or liner inspection occur	08/29/2024
On what date will (or was) the remediation complete(d)	08/29/2024
What is the estimated surface area (in square feet) that will be remediated	0
What is the estimated volume (in cubic yards) that will be remediated	0
<i>These estimated dates and measurements are recognized to be the best guess or calculation at the time of submission and may (be) change(d) over time as more remediation efforts are completed.</i>	
<i>The OCD recognizes that proposed remediation measures may have to be minimally adjusted in accordance with the physical realities encountered during remediation. If the responsible party has any need to significantly deviate from the remediation plan proposed, then it should consult with the division to determine if another remediation plan submission is required.</i>	



**District I**

1625 N. French Dr., Hobbs, NM 88240  
Phone:(575) 393-6161 Fax:(575) 393-0720

**District II**

811 S. First St., Artesia, NM 88210  
Phone:(575) 748-1283 Fax:(575) 748-9720

**District III**

1000 Rio Brazos Rd., Aztec, NM 87410  
Phone:(505) 334-6178 Fax:(505) 334-6170

**District IV**

1220 S. St Francis Dr., Santa Fe, NM 87505  
Phone:(505) 476-3470 Fax:(505) 476-3462

**State of New Mexico**  
**Energy, Minerals and Natural Resources**  
**Oil Conservation Division**  
**1220 S. St Francis Dr.**  
**Santa Fe, NM 87505**

QUESTIONS, Page 4

Action 380274

**QUESTIONS (continued)**

Operator: DEVON ENERGY PRODUCTION COMPANY, LP 333 West Sheridan Ave. Oklahoma City, OK 73102	OGRID:	6137
	Action Number:	380274
	Action Type:	[C-141] Remediation Closure Request C-141 (C-141-v-Closure)

**QUESTIONS****Remediation Plan (continued)**

*Please answer all the questions that apply or are indicated. This information must be provided to the appropriate district office no later than 90 days after the release discovery date.*

**This remediation will (or is expected to) utilize the following processes to remediate / reduce contaminants:**

*(Select all answers below that apply.)*

Is (or was) there affected material present needing to be removed	Yes
Is (or was) there a power wash of the lined containment area (to be) performed	Yes
OTHER (Non-listed remedial process)	No

*Per Subsection B of 19.15.29.11 NMAC unless the site characterization report includes completed efforts at remediation, the report must include a proposed remediation plan in accordance with 19.15.29.12 NMAC, which includes the anticipated timelines for beginning and completing the remediation.*

I hereby certify that the information given above is true and complete to the best of my knowledge and understand that pursuant to OCD rules and regulations all operators are required to report and/or file certain release notifications and perform corrective actions for releases which may endanger public health or the environment. The acceptance of a C-141 report by the OCD does not relieve the operator of liability should their operations have failed to adequately investigate and remediate contamination that pose a threat to groundwater, surface water, human health or the environment. In addition, OCD acceptance of a C-141 report does not relieve the operator of responsibility for compliance with any other federal, state, or local laws and/or regulations.

I hereby agree and sign off to the above statement	Name: Dale Woodall Title: EHS Professional Email: Dale.Woodall@dmn.com Date: 09/03/2024
--	--

*The OCD recognizes that proposed remediation measures may have to be minimally adjusted in accordance with the physical realities encountered during remediation. If the responsible party has any need to significantly deviate from the remediation plan proposed, then it should consult with the division to determine if another remediation plan submission is required.*

**District I**

1625 N. French Dr., Hobbs, NM 88240  
Phone:(575) 393-6161 Fax:(575) 393-0720

**District II**

811 S. First St., Artesia, NM 88210  
Phone:(575) 748-1283 Fax:(575) 748-9720

**District III**

1000 Rio Brazos Rd., Aztec, NM 87410  
Phone:(505) 334-6178 Fax:(505) 334-6170

**District IV**

1220 S. St Francis Dr., Santa Fe, NM 87505  
Phone:(505) 476-3470 Fax:(505) 476-3462

**State of New Mexico**  
**Energy, Minerals and Natural Resources**  
**Oil Conservation Division**  
**1220 S. St Francis Dr.**  
**Santa Fe, NM 87505**

QUESTIONS, Page 6

Action 380274

**QUESTIONS (continued)**

Operator: DEVON ENERGY PRODUCTION COMPANY, LP 333 West Sheridan Ave. Oklahoma City, OK 73102	OGRID:	6137
	Action Number:	380274
	Action Type:	[C-141] Remediation Closure Request C-141 (C-141-v-Closure)

**QUESTIONS**

<b>Liner Inspection Information</b>	
Last liner inspection notification (C-141L) recorded	378020
Liner inspection date pursuant to Subparagraph (a) of Paragraph (5) of Subsection A of 19.15.29.11 NMAC	07/29/2024
Was all the impacted materials removed from the liner	Yes
What was the liner inspection surface area in square feet	8808

**Remediation Closure Request**

*Only answer the questions in this group if seeking remediation closure for this release because all remediation steps have been completed.*

Requesting a remediation closure approval with this submission	Yes
Have the lateral and vertical extents of contamination been fully delineated	Yes
Was this release entirely contained within a lined containment area	Yes
What was the total surface area (in square feet) remediated	0
What was the total volume (cubic yards) remediated	0
Summarize any additional remediation activities not included by answers (above)	see report

*The responsible party must attach information demonstrating they have complied with all applicable closure requirements and any conditions or directives of the OCD. This demonstration should be in the form of a comprehensive report (in .pdf format) including a scaled site map, sampling diagrams, relevant field notes, photographs of any excavation prior to backfilling, laboratory data including chain of custody documents of final sampling, and a narrative of the remedial activities. Refer to 19.15.29.12 NMAC.*

I hereby certify that the information given above is true and complete to the best of my knowledge and understand that pursuant to OCD rules and regulations all operators are required to report and/or file certain release notifications and perform corrective actions for releases which may endanger public health or the environment. The acceptance of a C-141 report by the OCD does not relieve the operator of liability should their operations have failed to adequately investigate and remediate contamination that pose a threat to groundwater, surface water, human health or the environment. In addition, OCD acceptance of a C-141 report does not relieve the operator of responsibility for compliance with any other federal, state, or local laws and/or regulations. The responsible party acknowledges they must substantially restore, reclaim, and re-vegetate the impacted surface area to the conditions that existed prior to the release or their final land use in accordance with 19.15.29.13 NMAC including notification to the OCD when reclamation and re-vegetation are complete.

I hereby agree and sign off to the above statement	Name: Dale Woodall Title: EHS Professional Email: Dale.Woodall@dmn.com Date: 09/03/2024
--	--

**District I**  
1625 N. French Dr., Hobbs, NM 88240  
Phone:(575) 393-6161 Fax:(575) 393-0720  
**District II**  
811 S. First St., Artesia, NM 88210  
Phone:(575) 748-1283 Fax:(575) 748-9720  
**District III**  
1000 Rio Brazos Rd., Aztec, NM 87410  
Phone:(505) 334-6178 Fax:(505) 334-6170  
**District IV**  
1220 S. St Francis Dr., Santa Fe, NM 87505  
Phone:(505) 476-3470 Fax:(505) 476-3462

**State of New Mexico**  
**Energy, Minerals and Natural Resources**  
**Oil Conservation Division**  
**1220 S. St Francis Dr.**  
**Santa Fe, NM 87505**

CONDITIONS  
  
Action 380274

CONDITIONS

Operator: DEVON ENERGY PRODUCTION COMPANY, LP 333 West Sheridan Ave. Oklahoma City, OK 73102	OGRID: 6137
	Action Number: 380274
	Action Type: [C-141] Remediation Closure Request C-141 (C-141-v-Closure)

CONDITIONS

Created By	Condition	Condition Date
scott.rodgers	App ID 380274 Liner Inspection approved	9/11/2024