

CORAL PWU 28 BATTERY

8/7/2024

OCD INCIDENT nAPP2422072363

Spills In Lined Containment	
Measurements Of Standing Fluid	
Length(Ft)	154
Width(Ft)	28
Depth(in.)	5
Total Capacity without tank displacements (bbls)	320.00
No. of 500 bbl Tanks In Standing Fluid	5
No. of Other Tanks In Standing Fluid	0
OD Of Other Tanks In Standing Fluid(feet)	
Total Volume of standing fluid accounting for tank displacement.	250.02

8/26/2024

# Liner Inspection Closure Report

Incident ID nAPP2422072363

## Coral PWU 28 Battery

Prepared by Pima Environmental Services, LLC for  
Devon Energy Production, LP

August 26, 2024

NMOCD District 2  
811 S. First St  
Artesia, NM, 88210

**RE: Liner Inspection and Closure Report  
Coral PWU 28 Battery  
Facility ID fAPP2130735184  
GPS: Latitude 32.6254213 Longitude -104.074495  
ULSTR – P – 28 – 19S – 29E 335 FSL 974 FEL  
NMOCD Incident ID nAPP2422072363**

**Eddy County, NM**

Devon Energy Production Company (Devon) has contracted Pima Environmental Services, LLC (Pima) to perform a liner inspection and prepare this closure report for a produced water release that happened at the Coral PWU 28 Battery (Coral). This incident was assigned Incident ID nAPP2422072363, by the New Mexico Oil Conservation Division (NMOCD).

#### Site Information and Site Characterization

The Coral is located approximately fifteen (15) miles northeast of Carlsbad, NM. This spill site is in Unit P, Section 28, Township 19S, Range 29E, Latitude 32.6254213 Longitude -104.074495, Eddy County, NM. A Location Map can be found in Figure 1.

Per the New Mexico Bureau of Geology and Mineral Resources, the geology is made up of Piedmont alluvial deposits: Includes deposits of higher gradient tributaries bordering major stream valleys, alluvial veneers of the piedmont slope, and alluvial fans. May locally include uppermost Pliocene deposits. The soil in this area is made up of Reeves-Gypsum land complex, 0 to 3 percent slopes according to the United States Department of Agriculture Natural Resources Conservation Service soil survey (Appendix B). The drainage class in this area is well drained. There is a high potential for karst geology to be present around the Coral (Figure 3). Reference Figure 2 for a Topographic Map.

According to the New Mexico Office of the State Engineer, depth to the nearest groundwater in this area is greater than 55' feet below grade surface (bgs). According to the United States Geological Survey, USGS 323900104052901 19S.29E.20.24111 RATLSNAKE shows the nearest groundwater is 67 feet bgs with the latest gauge being recorded in 1983. See Appendix A for referenced Water Surveys and Water-Related Maps. The closest surface water body is a Salt Pond located approximately 4.67 miles to the southeast of this location.

#### Release Information

**nAPP2422072363:** On August 7, 2024, Butterfly valve on water transfer pump failed. 250 barrels (bbls) of produced water released into lined containment. 250 bbls recovered. The liner was visually inspected by Devon field staff for any pinholes or punctures; none were found. Based on this inspection there is no evidence that the spilled fluids left containment.

A Site Map can be found in Figure 4.

#### Power Washing and Liner Inspection

On August 21, 2024, Pima personnel mobilized equipment to the site to perform power washing of the lined secondary containment. A vacuum truck accompanied the crew to recover the power washing fluids.

On August 22, 2024, Pima returned to the site to complete the power washing of the liner and after Devon submitted the 48-hour notification (Appendix C), application ID: 375375 to the OCD, Pima Environmental personnel conducted a liner inspection at this location. Pima concluded that this liner and containment maintained its integrity and was able to retain the fluids. The liner inspection form and photographic documentation can be found in Appendix D.

#### Closure Request

After careful review, Pima requests that this incident, nAPP2422072363, be closed. Devon has complied with the applicable closure requirements.

Should you have any questions or need additional information, please feel free to contact:  
Devon Energy – Dale Woodall at 575-748-0167 or [Dale.Woodall@devon.com](mailto:Dale.Woodall@devon.com).  
Pima Environmental – Tom Bynum at 580-748-1613 or [tom@pimaoil.com](mailto:tom@pimaoil.com).

#### **Attachments**

##### Figures:

- 1- Location Map
- 2- Topographic Map
- 3- Karst Map
- 4- Site Map

##### Appendices:

- Appendix A – Referenced Water Surveys & Water-Related Maps
- Appendix B – Soil Survey & Geological Data
- Appendix C -- 48-Hour Notification
- Appendix D – Liner Inspection Form & Photographic Documentation

## Figures:

Figure 1- Location Map

Figure 2- Topographic Map

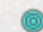
Figure 3- Karst Map

Figure 4- Site Map

# Coral PWU 28 Battery

Devon Energy  
Facility ID fAPP2130735184  
Eddy County, NM  
nAPP2422072363  
Location Map

## Legend

 Coral PWU 28 Battery

82

Loco Hills

 Coral PWU 28 Battery

285

Avalon

62

Google Earth

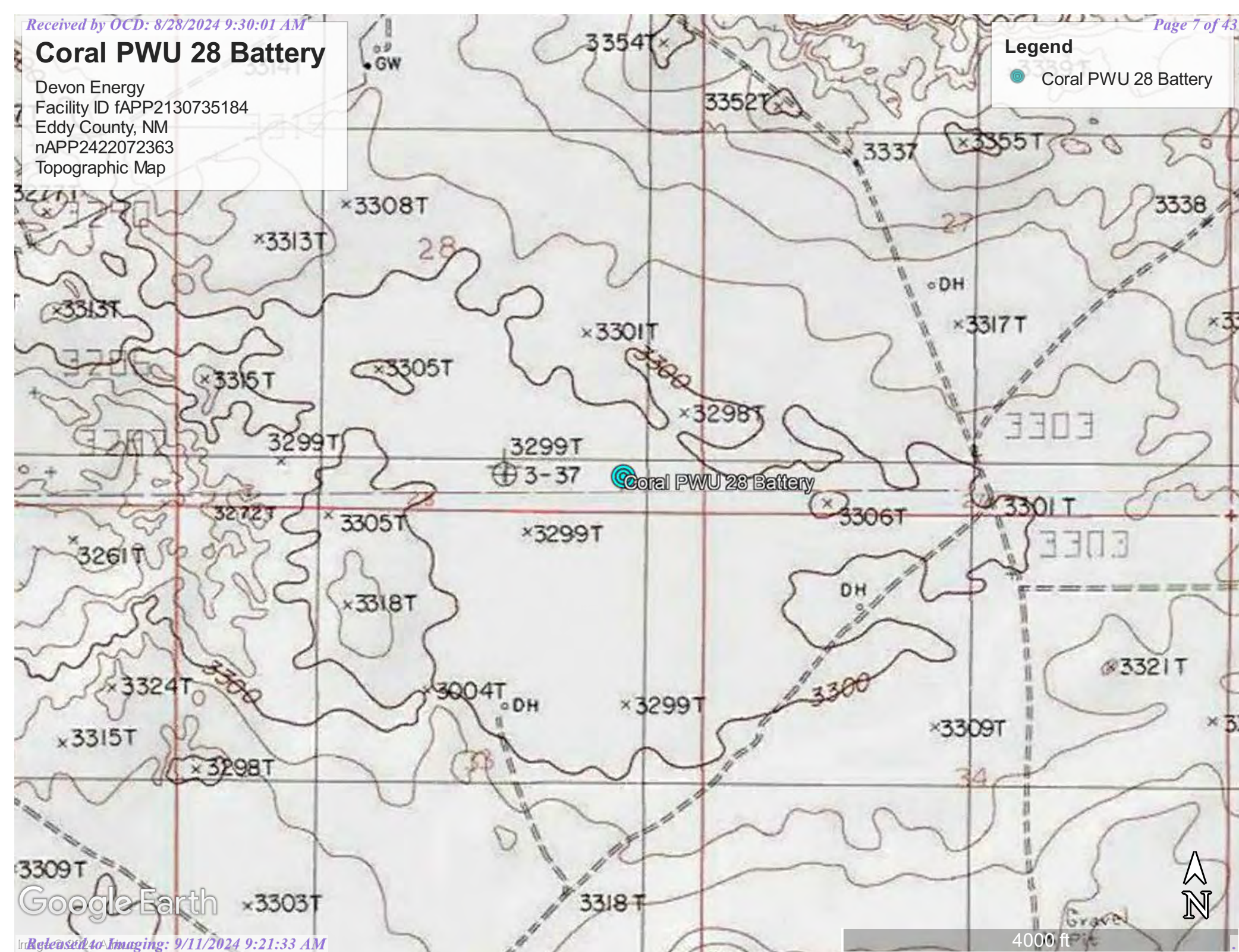
Carlsbad North



10 mi

Devon Energy  
Facility ID fAPP2130735184  
Eddy County, NM  
nAPP2422072363  
Topographic Map




 Coral PWU 28 Battery



# Coral PWU 28 Battery

Devon Energy  
Facility ID fAPP2130735184  
Eddy County, NM  
nAPP2422072363  
Karst Map

## Legend

-  High Karst
-  Low Karst
-  Medium Karst

 Coral PWU 28 Battery






Google Earth


## Coral PWU 28 Battery

Devon Energy  
Facility ID fAPP2130735184  
Eddy County, NM  
nAPP2422072363  
Site Map

### Legend

-  Coral PWU 28 Battery
-  Lined containment - 4,284 sqft

 32.625727, -104.074208

 Coral PWU 28 Battery



100 ft

Google Earth

## Appendix A

### Water Surveys

#### Water-Related Maps:

- OSE
- USGS
- Surface Water Map
- Wetlands Map
- Fema Flood Map



New Mexico Office of the State Engineer

Water Column/Average Depth to Water

(A CLW##### in the POD suffix indicates the POD has been replaced & no longer serves a water right file.)

(R=POD has been replaced, O=orphaned, C=the file is closed)

(quarters are smallest to largest)

(meters)

(In feet)

POD Number	Code	Sub basin	County	Q64	Q16	Q4	Sec	Tws	Range	X	Y	Map	Distance	Well Depth	Depth Water	Water Column
<a href="#">CP 01962 POD1</a>		CP	ED	NE	NE	SE	28	19S	29E	587024.8	3610641.8		541	53		
<a href="#">CP 00681</a>		CP	ED	NW	NW	SW	34	19S	29E	587230.0	3609127.0 *		1091			
<a href="#">CP 01932 POD1</a>		CP	ED	SW	NW	NW	27	19S	29E	587173.7	3611427.8		1334	55		
<a href="#">CP 00741</a>		CP	ED	NW	SW	NE	34	19S	29E	588030.0	3609533.0 *		1351	230	60	170
<a href="#">CP 00698 POD1</a>		CP	ED		SW	NW	03	20S	29E	587392.9	3608010.4		2204			

Average Depth to Water: 60 feet

Minimum Depth: 60 feet

Maximum Depth: 60 feet

Record Count: 5

Basin/County Search:

County: ED

UTM Filters (in meters):

Easting: 586822.76

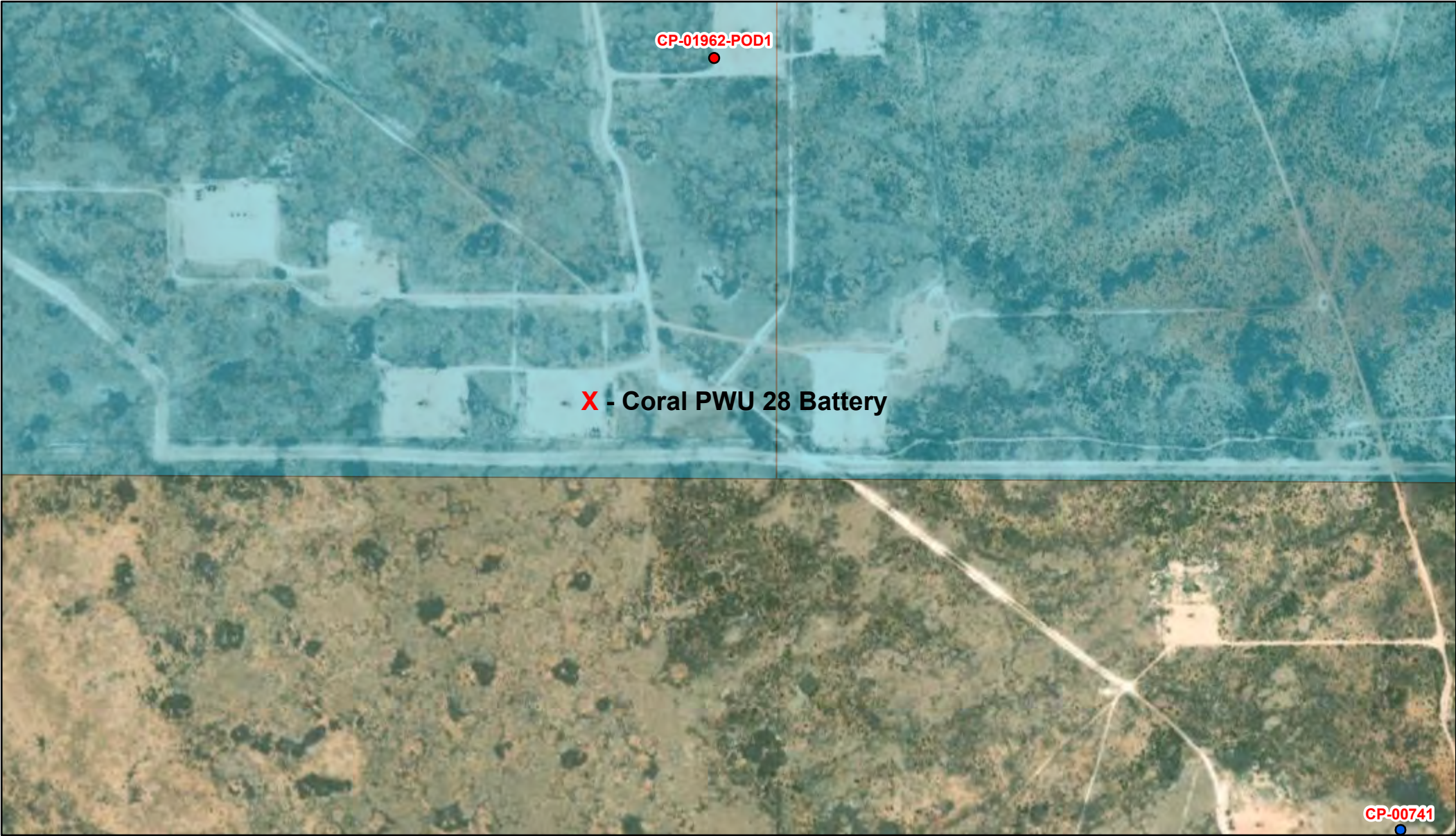
Northing: 3610139.84

Radius: 03000

\* UTM location was derived from PLSS - see Help

The data is furnished by the NMOSE/ISC and is accepted by the recipient with the expressed understanding that the OSE/ISC make no warranties, expressed or implied, concerning the accuracy, completeness, reliability, usability, or suitability for any particular purpose of the data.

# OSE POD Location Map



8/12/2024, 10:16:45 AM

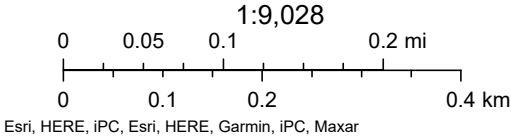
GIS WATERS PODs

- Active
- Plugged

OSE District Boundary

New Mexico State Trust Lands

Both Estates





[USGS Home](#)  
[Contact USGS](#)  
[Search USGS](#)

## National Water Information System: Web Interface

USGS Water Resources

Data Category:

Groundwater

Geographic Area:

United States

GO

Click to hide News Bulletins

- Explore the *NEW* [USGS National Water Dashboard](#) interactive map to access real-time water data from over 13,500 stations nationwide.

Groundwater levels for the Nation



Important: [Next Generation Monitoring Location Page](#)

### Search Results -- 1 sites found

site\_no list =

- 323900104052901

Minimum number of levels = 1

[Save file of selected sites](#) to local disk for future upload

### USGS 323900104052901 19S.29E.20.24111 RATLSNAKE

Available data for this site

Groundwater: Field measurements

GO

Eddy County, New Mexico

Hydrologic Unit Code 13060011

Latitude 32°39'00", Longitude 104°05'29" NAD27

Land-surface elevation 3,306 feet above NAVD88

This well is completed in the Other aquifers (N9999OTHER) national aquifer.

This well is completed in the Rustler Formation (312RSLR) local aquifer.

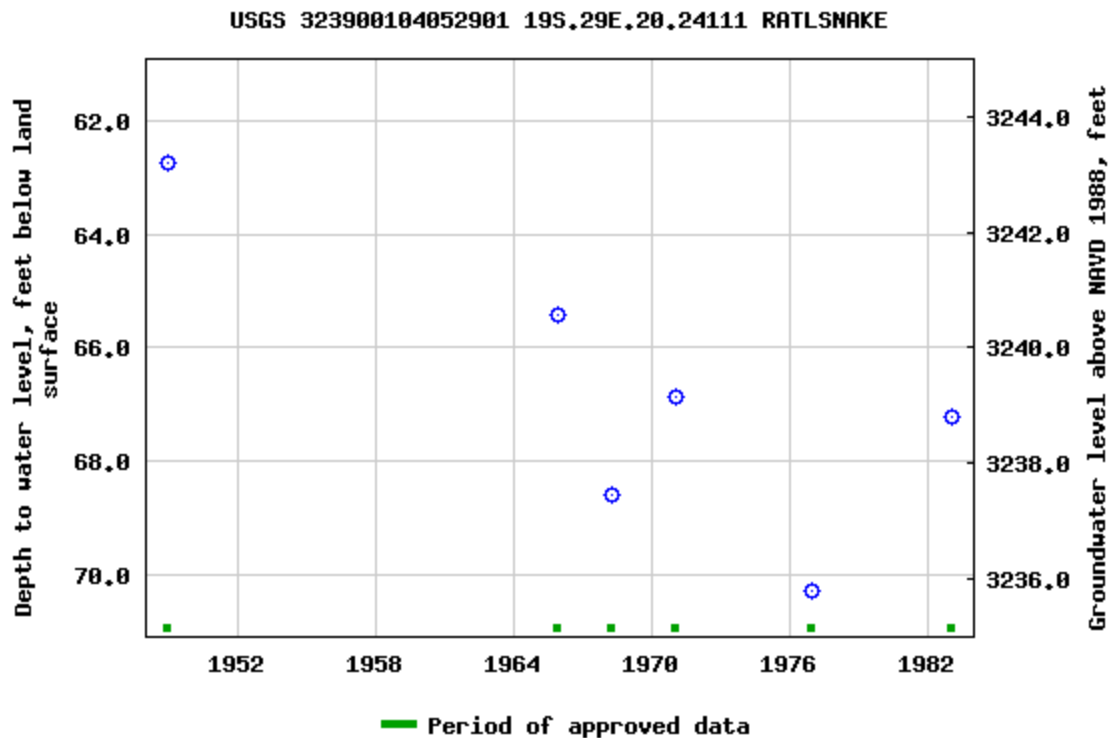
#### Output formats

[Table of data](#)

[Tab-separated data](#)

[Graph of data](#)

[Reselect period](#)



Breaks in the plot represent a gap of at least one year between field measurements.  
[Download a presentation-quality graph](#)

[Questions or Comments](#)

[Help](#)

[Data Tips](#)

[Explanation of terms](#)

[Subscribe for system changes](#)

[Accessibility](#)

[FOIA](#)

[Privacy](#)

[Policies and Notices](#)

[U.S. Department of the Interior](#) | [U.S. Geological Survey](#)

**Title: Groundwater for USA: Water Levels**

**URL: <https://nwis.waterdata.usgs.gov/nwis/gwlevels?>**



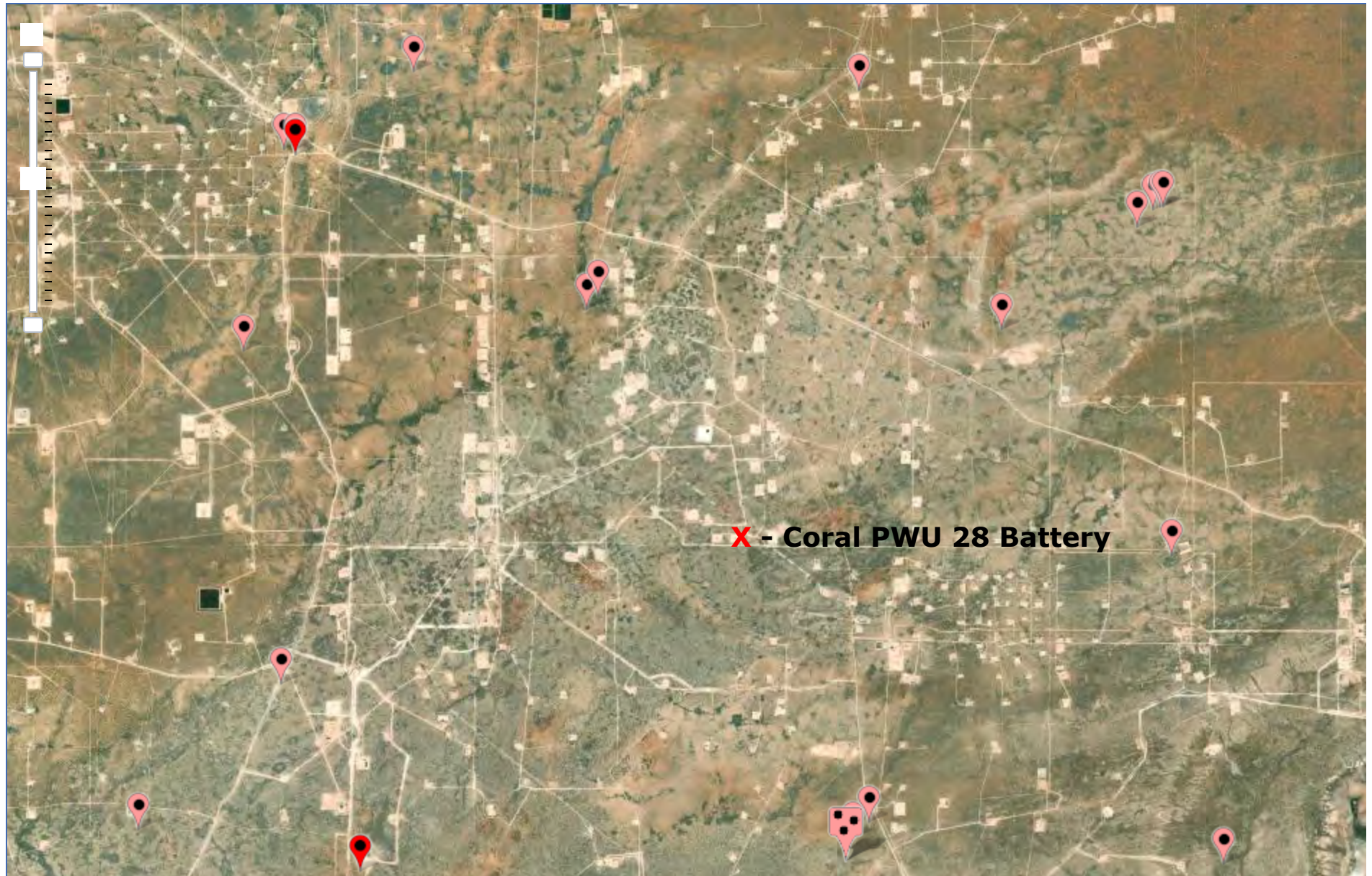
Page Contact Information: [USGS Water Data Support Team](#)

Page Last Modified: 2024-08-12 11:29:13 EDT

0.59 0.52 nadww02





## National Water Information System: Mapper



# Coral PWU 28 Battery

Devon Energy  
Facility ID fAPP2130735184  
Eddy County, NM  
nAPP2422072363  
Surface Water Map

## Legend

-  4.67 Miles
-  Salt Pond

 Coral PWU 28 Battery

 Salt Pond

Google Earth

360

2 mi





## Wetlands Map



August 12, 2024

**Wetlands**

- Estuarine and Marine Deepwater
- Estuarine and Marine Wetland

- Freshwater Emergent Wetland
- Freshwater Forested/Shrub Wetland
- Freshwater Pond

- Lake
- Other
- Riverine

This map is for general reference only. The US Fish and Wildlife Service is not responsible for the accuracy or currentness of the base data shown on this map. All wetlands related data should be used in accordance with the layer metadata found on the Wetlands Mapper web site.

# National Flood Hazard Layer FIRMette



104°4'47"W 32°37'47"N



1:6,000

104°4'9"W 32°37'16"N

Released to Imaging: 9/11/2024 9:21:33 AM

Basemap Imagery Source: USGS National Map 2023

## Legend

SEE FIS REPORT FOR DETAILED LEGEND AND INDEX MAP FOR FIRM PANEL LAYOUT

SPECIAL FLOOD HAZARD AREAS		Without Base Flood Elevation (BFE) Zone A, V, A99
		With BFE or Depth Zone AE, AO, AH, VE, AR
		Regulatory Floodway
OTHER AREAS OF FLOOD HAZARD		0.2% Annual Chance Flood Hazard, Areas of 1% annual chance flood with average depth less than one foot or with drainage areas of less than one square mile Zone X
		Future Conditions 1% Annual Chance Flood Hazard Zone X
		Area with Reduced Flood Risk due to Levee. See Notes. Zone X
		Area with Flood Risk due to Levee Zone D
OTHER AREAS		NO SCREEN Area of Minimal Flood Hazard Zone X
		Effective LOMRs
		Area of Undetermined Flood Hazard Zone D
GENERAL STRUCTURES		Channel, Culvert, or Storm Sewer
		Levee, Dike, or Floodwall
OTHER FEATURES		20.2 Cross Sections with 1% Annual Chance Water Surface Elevation
		17.5
		Coastal Transect
		Base Flood Elevation Line (BFE)
		Limit of Study
		Jurisdiction Boundary
MAP PANELS		Coastal Transect Baseline
		Profile Baseline
		Hydrographic Feature
		Digital Data Available
		No Digital Data Available
		Unmapped



The pin displayed on the map is an approximate point selected by the user and does not represent an authoritative property location.

This map complies with FEMA's standards for the use of digital flood maps if it is not void as described below. The basemap shown complies with FEMA's basemap accuracy standards

The flood hazard information is derived directly from the authoritative NFHL web services provided by FEMA. This map was exported on 8/12/2024 at 11:37 AM and does not reflect changes or amendments subsequent to this date and time. The NFHL and effective information may change or become superseded by new data over time.

This map image is void if the one or more of the following map elements do not appear: basemap imagery, flood zone labels, legend, scale bar, map creation date, community identifiers, FIRM panel number, and FIRM effective date. Map images for unmapped and unmodernized areas cannot be used for regulatory purposes.



## Appendix B

- Soil Survey
- Soil Map
- Geologic Unit Map

Map Unit Description: Reeves-Gypsum land complex, 0 to 3 percent slopes---Eddy Area, New Mexico

---

## Eddy Area, New Mexico

### RG—Reeves-Gypsum land complex, 0 to 3 percent slopes

#### Map Unit Setting

*National map unit symbol:* 1w5f  
*Elevation:* 1,250 to 5,000 feet  
*Mean annual precipitation:* 10 to 25 inches  
*Mean annual air temperature:* 57 to 70 degrees F  
*Frost-free period:* 190 to 235 days  
*Farmland classification:* Not prime farmland

#### Map Unit Composition

*Reeves and similar soils:* 55 percent  
*Gypsum land:* 30 percent  
*Minor components:* 15 percent  
*Estimates are based on observations, descriptions, and transects of the mapunit.*

#### Description of Reeves

##### Setting

*Landform:* Ridges, plains, hills  
*Landform position (two-dimensional):* Shoulder, backslope, footslope, toeslope  
*Landform position (three-dimensional):* Side slope, head slope, nose slope, crest  
*Down-slope shape:* Convex  
*Across-slope shape:* Linear  
*Parent material:* Residuum weathered from gypsum

##### Typical profile

*H1 - 0 to 8 inches:* loam  
*H2 - 8 to 32 inches:* clay loam  
*H3 - 32 to 60 inches:* gypsiferous material

##### Properties and qualities

*Slope:* 0 to 1 percent  
*Depth to restrictive feature:* More than 80 inches  
*Drainage class:* Well drained  
*Runoff class:* High  
*Capacity of the most limiting layer to transmit water (Ksat):* Very low to moderately low (0.00 to 0.06 in/hr)  
*Depth to water table:* More than 80 inches  
*Frequency of flooding:* None  
*Frequency of ponding:* None  
*Calcium carbonate, maximum content:* 25 percent  
*Gypsum, maximum content:* 80 percent  
*Maximum salinity:* Very slightly saline to moderately saline (2.0 to 8.0 mmhos/cm)  
*Sodium adsorption ratio, maximum:* 4.0  
*Available water supply, 0 to 60 inches:* Low (about 4.3 inches)

Map Unit Description: Reeves-Gypsum land complex, 0 to 3 percent slopes---Eddy Area, New Mexico

---

**Interpretive groups**

*Land capability classification (irrigated): 3s*

*Land capability classification (nonirrigated): 7s*

*Hydrologic Soil Group: B*

*Ecological site: R070BC007NM - Loamy*

*Hydric soil rating: No*

**Description of Gypsum Land****Setting**

*Landform: Ridges, plains, hills*

*Landform position (two-dimensional): Shoulder, backslope, footslope, toeslope*

*Landform position (three-dimensional): Side slope, head slope, nose slope, crest*

*Down-slope shape: Convex*

*Across-slope shape: Linear*

*Parent material: Residuum weathered from gypsum*

**Interpretive groups**

*Land capability classification (irrigated): None specified*

*Land capability classification (nonirrigated): 8s*

*Hydric soil rating: No*

**Minor Components****Reagan**

*Percent of map unit: 5 percent*

*Ecological site: R070BC007NM - Loamy*

*Hydric soil rating: No*

**Largo**

*Percent of map unit: 5 percent*

*Ecological site: R070BC007NM - Loamy*

*Hydric soil rating: No*

**Cottonwood**

*Percent of map unit: 5 percent*

*Ecological site: R070BC033NM - Salty Bottomland*

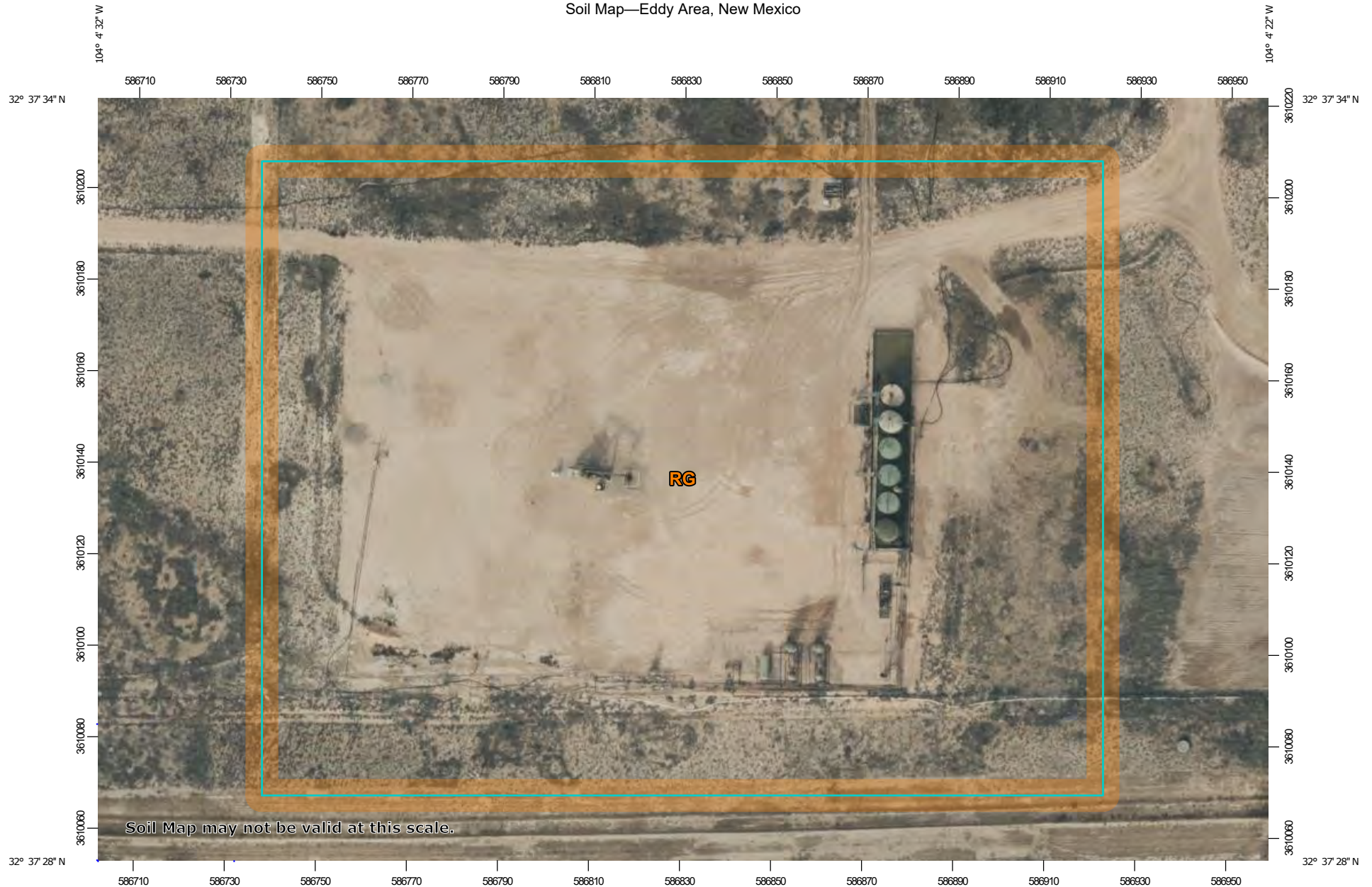
*Hydric soil rating: No*

**Data Source Information**

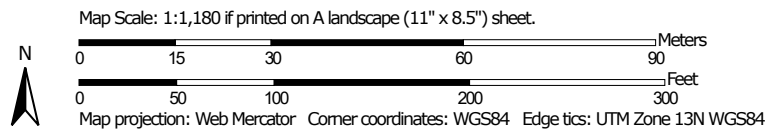
Soil Survey Area: Eddy Area, New Mexico

Survey Area Data: Version 19, Sep 7, 2023

Soil Map—Eddy Area, New Mexico



Soil Map may not be valid at this scale.



Natural Resources  
Conservation Service


Web Soil Survey  
National Cooperative Soil Survey

8/12/2024  
Page 1 of 3

## Soil Map—Eddy Area, New Mexico

## MAP LEGEND

## Area of Interest (AOI)

 Area of Interest (AOI)

## Soils

 Soil Map Unit Polygons

 Soil Map Unit Lines

 Soil Map Unit Points

## Special Point Features



Blowout



Borrow Pit



Clay Spot



Closed Depression



Gravel Pit



Gravelly Spot



Landfill



Lava Flow



Marsh or swamp



Mine or Quarry



Miscellaneous Water



Perennial Water



Rock Outcrop



Saline Spot



Sandy Spot



Severely Eroded Spot



Sinkhole



Slide or Slip



Sodic Spot



Spoil Area



Stony Spot



Very Stony Spot



Wet Spot



Other



Special Line Features

## Water Features



Streams and Canals

## Transportation



Rails



Interstate Highways



US Routes



Major Roads



Local Roads

## Background



Aerial Photography

## MAP INFORMATION

The soil surveys that comprise your AOI were mapped at 1:20,000.

Warning: Soil Map may not be valid at this scale.

Enlargement of maps beyond the scale of mapping can cause misunderstanding of the detail of mapping and accuracy of soil line placement. The maps do not show the small areas of contrasting soils that could have been shown at a more detailed scale.

Please rely on the bar scale on each map sheet for map measurements.

Source of Map: Natural Resources Conservation Service

Web Soil Survey URL:

Coordinate System: Web Mercator (EPSG:3857)

Maps from the Web Soil Survey are based on the Web Mercator projection, which preserves direction and shape but distorts distance and area. A projection that preserves area, such as the Albers equal-area conic projection, should be used if more accurate calculations of distance or area are required.

This product is generated from the USDA-NRCS certified data as of the version date(s) listed below.

Soil Survey Area: Eddy Area, New Mexico

Survey Area Data: Version 19, Sep 7, 2023

Soil map units are labeled (as space allows) for map scales 1:50,000 or larger.

Date(s) aerial images were photographed: Nov 12, 2022—Dec 2, 2022

The orthophoto or other base map on which the soil lines were compiled and digitized probably differs from the background imagery displayed on these maps. As a result, some minor shifting of map unit boundaries may be evident.






Map Unit Legend


Map Unit Symbol	Map Unit Name	Acres in AOI	Percent of AOI
RG	Reeves-Gypsum land complex, 0 to 3 percent slopes	6.4	100.0%
Totals for Area of Interest		6.4	100.0%

# Coral PWU 28 Battery

Devon Energy  
Facility ID fAPP2130735184  
Eddy County, NM  
nAPP2422072363  
Geologic Unit Map

## Legend

-  Older alluvial deposits of upland plains, piedmont areas, calcic soils, eolian cover sediments.....
-  Piedmont alluvial deposits
-  Rustler Formation

 Coral PWU 28 Battery



3000 ft

Google Earth



## Appendix C

### ○ 48-Hour Notification



Tom Pima Oil &lt;tom@pimaoil.com&gt;

---

**Fwd: [EXTERNAL] The Oil Conservation Division (OCD) has accepted the application, Application ID: 375375**

1 message

**Woodall, Dale** <Dale.Woodall@dvn.com>

Mon, Aug 19, 2024 at 9:14 PM

To: Tom Pima Oil &lt;tom@pimaoil.com&gt;, Gio PimaOil &lt;gio@pimaoil.com&gt;, "sebastian@pimaoil.com" &lt;sebastian@pimaoil.com&gt;, Delrae Pima Oil &lt;delrae@pimaoil.com&gt;, Lynsey Pima Oil &lt;lynsey@pimaoil.com&gt;

Dale Woodall

**Environmental Professional****Hobbs, NM**Office: 575-748-1838Mobile: 405-318-4697[Dale.Woodall@dvn.com](mailto:Dale.Woodall@dvn.com)

---

**From:** [OCDOnline@state.nm.us](mailto:OCDOnline@state.nm.us) <[OCDOnline@state.nm.us](mailto:OCDOnline@state.nm.us)>**Sent:** Monday, August 19, 2024 8:14:00 PM**To:** Woodall, Dale <[Dale.Woodall@dvn.com](mailto:Dale.Woodall@dvn.com)>**Subject:** [EXTERNAL] The Oil Conservation Division (OCD) has accepted the application, Application ID: 375375

To whom it may concern (c/o Dale Woodall for DEVON ENERGY PRODUCTION COMPANY, LP),

The OCD has received the submitted *Notification for Liner Inspection for a Release* (C-141L), for incident ID (n#) nAPP2422072363.

The liner inspection is expected to take place:

**When:** 08/22/2024 @ 07:30**Where:** P-28-19S-29E 335 FSL 974 FEL (32.6254213,-104.074495)**Additional Information:** Maris Loya (575) 416-0639**Additional Instructions:** From the intersection of S Old Loco Road and Curry Comb Road in Eddy County, travel southeast on Curry Comb Rd for 1240 feet, stay left at Y for 1 mile, turn west on lease road for 1185 feet, turn south on lease road for 1 mile, turn west on lease road for 270 feet, turn south into location

An OCD representative may be available onsite at the date and time reported. In the absence or presence of an OCD representative, liner inspection pursuant to 19.15.29.11.A(5)(a) NMAC is required. Should there be a change in the scheduled date and time of the sampling event, then another notification should be resubmitted through OCD permitting as soon as possible.

- **Failure to notify the OCD of liner inspections including any changes in date/time per the requirements of 19.15.29.11.A(5)(a)(ii) NMAC, may result in the inspection not being accepted.**

If you have any questions regarding this application, or don't know why you have received this email, please contact us.

**New Mexico Energy, Minerals and Natural Resources Department**[1220 South St. Francis Drive](#)

Santa Fe, NM 87505

Confidentiality Warning: This message and any attachments are intended only for the use of the intended recipient(s), are

confidential, and may be privileged. If you are not the intended recipient, you are hereby notified that any review, retransmission, conversion to hard copy, copying, circulation or other use of all or any portion of this message and any attachments is strictly prohibited. If you are not the intended recipient, please notify the sender immediately by return e-mail, and delete this message and any attachments from your system.



## Appendix D

- Liner Inspection Form
- Photographic Documentation

**Liner Inspection Form**

Company Name: Devon Energy

Site: Coral PWU 28 Battery

Lat/Long: 32.6254213, -104.074495

NMOCD Incident ID & Incident Date: nAPP2422072363 8/7/2024

2-Day Notification Sent: 8/19/2024

Inspection Date: 8/22/2024 @7:30 am

Liner Type:      Earthen w/liner      Earthen no liner      Polystar

**Steel w/poly liner**      Steel w/spray epoxy      No Liner

Other: \_\_\_\_\_

Visualization	Yes	No	Comments
Is there a tear in the liner?		X	
Are there holes in the liner?		X	
Is the liner retaining any fluids?	X		Some from power washing
Does the liner have integrity to contain a leak?	X		

Comments: \_\_\_\_\_

Inspector Name: Marisa Loya      Inspector Signature: *Marisa Loya*

# Devon Energy Production, LP Photographic Documentation Coral PWU 28 Battery – nAPP2422072363



Sign



POR



Contained spill 1



Contained spill 2

# Devon Energy Production, LP Photographic Documentation Coral PWU 28 Battery – nAPP2422072363



NW corner looking E



NW corner looking S



NE corner looking S

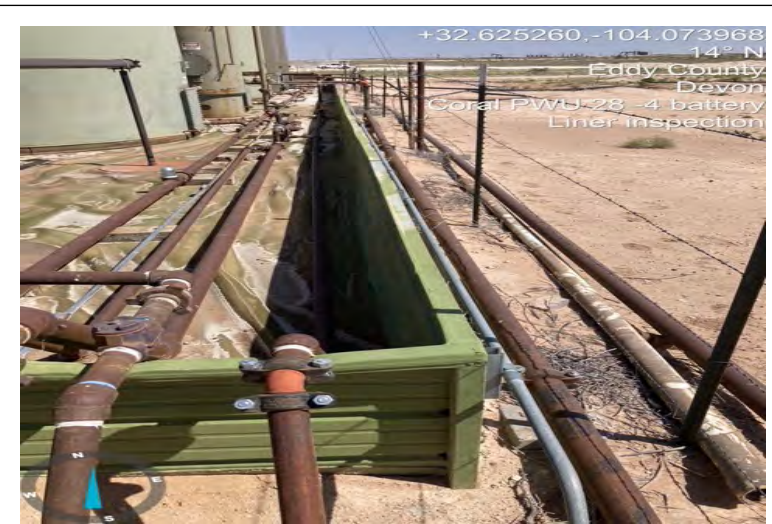


NE corner looking W

**Devon Energy Production, LP  
Photographic Documentation  
Coral PWU 28 Battery – nAPP2422072363**



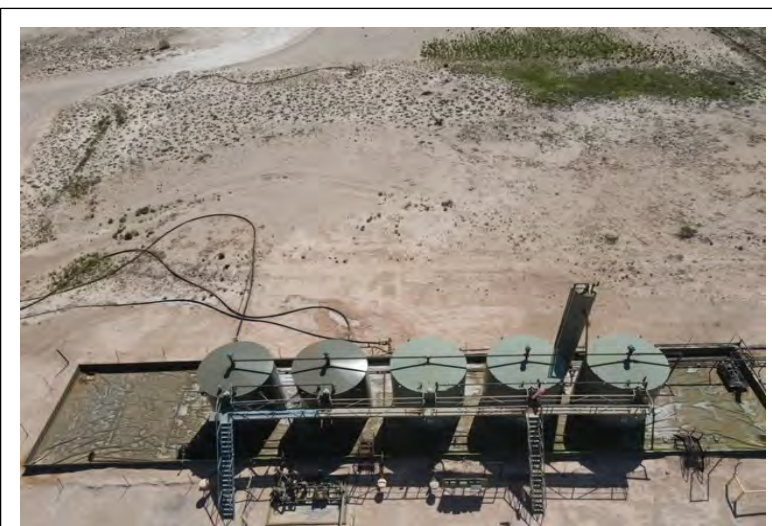
SW corner looking N



SE corner looking N



SE corner looking W



Aerial of W side

**Devon Energy Production, LP  
Photographic Documentation  
Coral PWU 28 Battery – nAPP2422072363**



Aerial of N side



Aerial of E side



Aerial of S side

**Devon Energy Production, LP**  
**Photographic Documentation**  
**Coral PWU 28 Battery – nAPP2422072363**



NW corner looking S



NW corner looking E

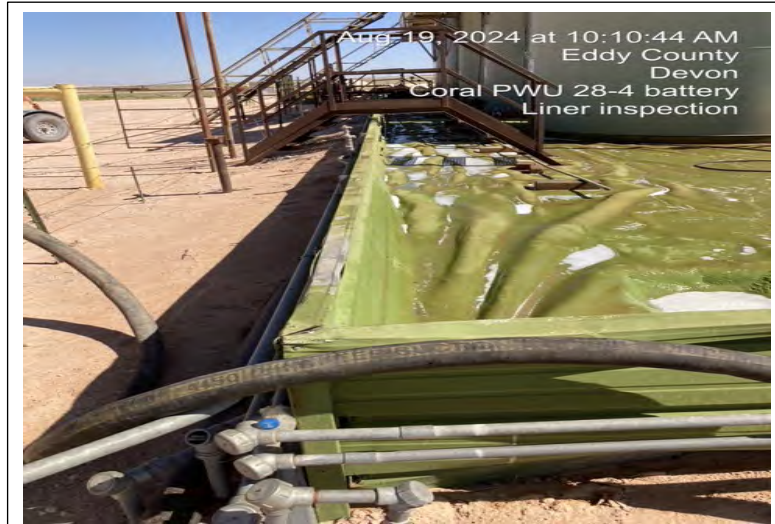


NE corner looking S



NE corner looking W

# Devon Energy Production, LP Photographic Documentation Coral PWU 28 Battery – nAPP2422072363



SW corner looking N



SW corner looking E



SE corner looking N



SE corner looking W

# Devon Energy Production, LP Photographic Documentation Coral PWU 28 Battery – nAPP2422072363



Aerial of S side



Aerial of W side



Aerial of E side



Aerial of N side

**District I**  
1625 N. French Dr., Hobbs, NM 88240  
Phone:(575) 393-6161 Fax:(575) 393-0720  
**District II**  
811 S. First St., Artesia, NM 88210  
Phone:(575) 748-1283 Fax:(575) 748-9720  
**District III**  
1000 Rio Brazos Rd., Aztec, NM 87410  
Phone:(505) 334-6178 Fax:(505) 334-6170  
**District IV**  
1220 S. St Francis Dr., Santa Fe, NM 87505  
Phone:(505) 476-3470 Fax:(505) 476-3462

**State of New Mexico**  
**Energy, Minerals and Natural Resources**  
**Oil Conservation Division**  
**1220 S. St Francis Dr.**  
**Santa Fe, NM 87505**

QUESTIONS

Action 378640

**QUESTIONS**

Operator: DEVON ENERGY PRODUCTION COMPANY, LP 333 West Sheridan Ave. Oklahoma City, OK 73102	OGRID:	6137
	Action Number:	378640
	Action Type:	[C-141] Remediation Closure Request C-141 (C-141-v-Closure)

**QUESTIONS**

<b>Prerequisites</b>	
Incident ID (n#)	nAPP2422072363
Incident Name	NAPP2422072363 CORAL 28 PWU BATTERY @ 0
Incident Type	Produced Water Release
Incident Status	Remediation Closure Report Received
Incident Facility	[fAPP2130735184] CORAL 28 PWU BATTERY

<b>Location of Release Source</b>	
Please answer all the questions in this group.	
Site Name	CORAL 28 PWU BATTERY
Date Release Discovered	08/07/2024
Surface Owner	State

<b>Incident Details</b>	
Please answer all the questions in this group.	
Incident Type	Produced Water Release
Did this release result in a fire or is the result of a fire	No
Did this release result in any injuries	No
Has this release reached or does it have a reasonable probability of reaching a watercourse	No
Has this release endangered or does it have a reasonable probability of endangering public health	No
Has this release substantially damaged or will it substantially damage property or the environment	No
Is this release of a volume that is or may with reasonable probability be detrimental to fresh water	No

<b>Nature and Volume of Release</b>	
Material(s) released, please answer all that apply below. Any calculations or specific justifications for the volumes provided should be attached to the follow-up C-141 submission.	
Crude Oil Released (bbls) Details	Not answered.
Produced Water Released (bbls) Details	Cause: Equipment Failure   Valve   Produced Water   Released: 250 BBL   Recovered: 250 BBL   Lost: 0 BBL.
Is the concentration of chloride in the produced water >10,000 mg/l	Yes
Condensate Released (bbls) Details	Not answered.
Natural Gas Vented (Mcf) Details	Not answered.
Natural Gas Flared (Mcf) Details	Not answered.
Other Released Details	Not answered.
Are there additional details for the questions above (i.e. any answer containing Other, Specify, Unknown, and/or Fire, or any negative lost amounts)	Butterfly valve on water transfer pump failed. 250 bbls produced water released into lined containment. 250 bbls recovered.

**District I**

1625 N. French Dr., Hobbs, NM 88240  
 Phone:(575) 393-6161 Fax:(575) 393-0720

**District II**

811 S. First St., Artesia, NM 88210  
 Phone:(575) 748-1283 Fax:(575) 748-9720

**District III**

1000 Rio Brazos Rd., Aztec, NM 87410  
 Phone:(505) 334-6178 Fax:(505) 334-6170

**District IV**

1220 S. St Francis Dr., Santa Fe, NM 87505  
 Phone:(505) 476-3470 Fax:(505) 476-3462

**State of New Mexico**  
**Energy, Minerals and Natural Resources**  
**Oil Conservation Division**  
**1220 S. St Francis Dr.**  
**Santa Fe, NM 87505**

QUESTIONS, Page 2

Action 378640

**QUESTIONS (continued)**

Operator: DEVON ENERGY PRODUCTION COMPANY, LP 333 West Sheridan Ave. Oklahoma City, OK 73102	OGRID:	6137
	Action Number:	378640
	Action Type:	[C-141] Remediation Closure Request C-141 (C-141-v-Closure)

**QUESTIONS**

<b>Nature and Volume of Release (continued)</b>	
Is this a gas only submission (i.e. only significant Mcf values reported)	No, according to supplied volumes this does not appear to be a "gas only" report.
Was this a major release as defined by Subsection A of 19.15.29.7 NMAC	Yes
Reasons why this would be considered a submission for a notification of a major release	From paragraph A. "Major release" determine using: (1) an unauthorized release of a volume, excluding gases, of 25 barrels or more.
With the implementation of the 19.15.27 NMAC (05/25/2021), venting and/or flaring of natural gas (i.e. gas only) are to be submitted on the C-129 form.	

**Initial Response**

The responsible party must undertake the following actions immediately unless they could create a safety hazard that would result in injury.

The source of the release has been stopped	True
The impacted area has been secured to protect human health and the environment	True
Released materials have been contained via the use of berms or dikes, absorbent pads, or other containment devices	True
All free liquids and recoverable materials have been removed and managed appropriately	True
If all the actions described above have not been undertaken, explain why	Not answered.

Per Paragraph (4) of Subsection B of 19.15.29.8 NMAC the responsible party may commence remediation immediately after discovery of a release. If remediation has begun, please prepare and attach a narrative of actions to date in the follow-up C-141 submission. If remedial efforts have been successfully completed or if the release occurred within a lined containment area (see Subparagraph (a) of Paragraph (5) of Subsection A of 19.15.29.11 NMAC), please prepare and attach all information needed for closure evaluation in the follow-up C-141 submission.

I hereby certify that the information given above is true and complete to the best of my knowledge and understand that pursuant to OCD rules and regulations all operators are required to report and/or file certain release notifications and perform corrective actions for releases which may endanger public health or the environment. The acceptance of a C-141 report by the OCD does not relieve the operator of liability should their operations have failed to adequately investigate and remediate contamination that pose a threat to groundwater, surface water, human health or the environment. In addition, OCD acceptance of a C-141 report does not relieve the operator of responsibility for compliance with any other federal, state, or local laws and/or regulations.

I hereby agree and sign off to the above statement	Name: Dale Woodall Title: EHS Professional Email: Dale.Woodall@dmn.com Date: 08/28/2024
--	--

**District I**

1625 N. French Dr., Hobbs, NM 88240  
Phone:(575) 393-6161 Fax:(575) 393-0720

**District II**

811 S. First St., Artesia, NM 88210  
Phone:(575) 748-1283 Fax:(575) 748-9720

**District III**

1000 Rio Brazos Rd., Aztec, NM 87410  
Phone:(505) 334-6178 Fax:(505) 334-6170

**District IV**

1220 S. St Francis Dr., Santa Fe, NM 87505  
Phone:(505) 476-3470 Fax:(505) 476-3462

**State of New Mexico**  
**Energy, Minerals and Natural Resources**  
**Oil Conservation Division**  
**1220 S. St Francis Dr.**  
**Santa Fe, NM 87505**

QUESTIONS, Page 3

Action 378640

**QUESTIONS (continued)**

Operator: DEVON ENERGY PRODUCTION COMPANY, LP 333 West Sheridan Ave. Oklahoma City, OK 73102	OGRID:	6137
	Action Number:	378640
	Action Type:	[C-141] Remediation Closure Request C-141 (C-141-v-Closure)

**QUESTIONS****Site Characterization**

Please answer all the questions in this group (only required when seeking remediation plan approval and beyond). This information must be provided to the appropriate district office no later than 90 days after the release discovery date.

What is the shallowest depth to groundwater beneath the area affected by the release in feet below ground surface (ft bgs)	Between 51 and 75 (ft.)
What method was used to determine the depth to ground water	NM OSE iWaters Database Search
Did this release impact groundwater or surface water	No
<b>What is the minimum distance, between the closest lateral extents of the release and the following surface areas:</b>	
A continuously flowing watercourse or any other significant watercourse	Between 1 and 5 (mi.)
Any lakebed, sinkhole, or playa lake (measured from the ordinary high-water mark)	Between 1 and 5 (mi.)
An occupied permanent residence, school, hospital, institution, or church	Greater than 5 (mi.)
A spring or a private domestic fresh water well used by less than five households for domestic or stock watering purposes	Between 1 and 5 (mi.)
Any other fresh water well or spring	Between 1 and 5 (mi.)
Incorporated municipal boundaries or a defined municipal fresh water well field	Greater than 5 (mi.)
A wetland	Between 1 and 5 (mi.)
A subsurface mine	Between 1 and 5 (mi.)
An (non-karst) unstable area	Greater than 5 (mi.)
Categorize the risk of this well / site being in a karst geology	High
A 100-year floodplain	Greater than 5 (mi.)
Did the release impact areas not on an exploration, development, production, or storage site	No

**Remediation Plan**

Please answer all the questions that apply or are indicated. This information must be provided to the appropriate district office no later than 90 days after the release discovery date.

Requesting a remediation plan approval with this submission	Yes
Attach a comprehensive report demonstrating the lateral and vertical extents of soil contamination associated with the release have been determined, pursuant to 19.15.29.11 NMAC and 19.15.29.13 NMAC.	
Have the lateral and vertical extents of contamination been fully delineated	Yes
Was this release entirely contained within a lined containment area	Yes
Per Subsection B of 19.15.29.11 NMAC unless the site characterization report includes completed efforts at remediation, the report must include a proposed remediation plan in accordance with 19.15.29.12 NMAC, which includes the anticipated timelines for beginning and completing the remediation.	
On what estimated date will the remediation commence	08/22/2024
On what date will (or did) the final sampling or liner inspection occur	08/22/2024
On what date will (or was) the remediation complete(d)	08/22/2024
What is the estimated surface area (in square feet) that will be remediated	0
What is the estimated volume (in cubic yards) that will be remediated	0
These estimated dates and measurements are recognized to be the best guess or calculation at the time of submission and may (be) change(d) over time as more remediation efforts are completed.	
The OCD recognizes that proposed remediation measures may have to be minimally adjusted in accordance with the physical realities encountered during remediation. If the responsible party has any need to significantly deviate from the remediation plan proposed, then it should consult with the division to determine if another remediation plan submission is required.	

**District I**

1625 N. French Dr., Hobbs, NM 88240  
Phone:(575) 393-6161 Fax:(575) 393-0720

**District II**

811 S. First St., Artesia, NM 88210  
Phone:(575) 748-1283 Fax:(575) 748-9720

**District III**

1000 Rio Brazos Rd., Aztec, NM 87410  
Phone:(505) 334-6178 Fax:(505) 334-6170

**District IV**

1220 S. St Francis Dr., Santa Fe, NM 87505  
Phone:(505) 476-3470 Fax:(505) 476-3462

**State of New Mexico**  
**Energy, Minerals and Natural Resources**  
**Oil Conservation Division**  
**1220 S. St Francis Dr.**  
**Santa Fe, NM 87505**

QUESTIONS, Page 4

Action 378640

**QUESTIONS (continued)**

Operator: DEVON ENERGY PRODUCTION COMPANY, LP 333 West Sheridan Ave. Oklahoma City, OK 73102	OGRID:	6137
	Action Number:	378640
	Action Type:	[C-141] Remediation Closure Request C-141 (C-141-v-Closure)

**QUESTIONS****Remediation Plan (continued)**

*Please answer all the questions that apply or are indicated. This information must be provided to the appropriate district office no later than 90 days after the release discovery date.*

**This remediation will (or is expected to) utilize the following processes to remediate / reduce contaminants:**

*(Select all answers below that apply.)*

Is (or was) there affected material present needing to be removed	Yes
Is (or was) there a power wash of the lined containment area (to be) performed	Yes
OTHER (Non-listed remedial process)	No

*Per Subsection B of 19.15.29.11 NMAC unless the site characterization report includes completed efforts at remediation, the report must include a proposed remediation plan in accordance with 19.15.29.12 NMAC, which includes the anticipated timelines for beginning and completing the remediation.*

I hereby certify that the information given above is true and complete to the best of my knowledge and understand that pursuant to OCD rules and regulations all operators are required to report and/or file certain release notifications and perform corrective actions for releases which may endanger public health or the environment. The acceptance of a C-141 report by the OCD does not relieve the operator of liability should their operations have failed to adequately investigate and remediate contamination that pose a threat to groundwater, surface water, human health or the environment. In addition, OCD acceptance of a C-141 report does not relieve the operator of responsibility for compliance with any other federal, state, or local laws and/or regulations.

I hereby agree and sign off to the above statement	Name: Dale Woodall Title: EHS Professional Email: Dale.Woodall@dmn.com Date: 08/28/2024
--	--

*The OCD recognizes that proposed remediation measures may have to be minimally adjusted in accordance with the physical realities encountered during remediation. If the responsible party has any need to significantly deviate from the remediation plan proposed, then it should consult with the division to determine if another remediation plan submission is required.*

**District I**

1625 N. French Dr., Hobbs, NM 88240  
Phone:(575) 393-6161 Fax:(575) 393-0720

**District II**

811 S. First St., Artesia, NM 88210  
Phone:(575) 748-1283 Fax:(575) 748-9720

**District III**

1000 Rio Brazos Rd., Aztec, NM 87410  
Phone:(505) 334-6178 Fax:(505) 334-6170

**District IV**

1220 S. St Francis Dr., Santa Fe, NM 87505  
Phone:(505) 476-3470 Fax:(505) 476-3462

**State of New Mexico**  
**Energy, Minerals and Natural Resources**  
**Oil Conservation Division**  
**1220 S. St Francis Dr.**  
**Santa Fe, NM 87505**

QUESTIONS, Page 6

Action 378640

**QUESTIONS (continued)**

Operator: DEVON ENERGY PRODUCTION COMPANY, LP 333 West Sheridan Ave. Oklahoma City, OK 73102	OGRID:	6137
	Action Number:	378640
	Action Type:	[C-141] Remediation Closure Request C-141 (C-141-v-Closure)

**QUESTIONS**

<b>Liner Inspection Information</b>	
Last liner inspection notification (C-141L) recorded	375375
Liner inspection date pursuant to Subparagraph (a) of Paragraph (5) of Subsection A of 19.15.29.11 NMAC	08/22/2024
Was all the impacted materials removed from the liner	Yes
What was the liner inspection surface area in square feet	4284

**Remediation Closure Request**

Only answer the questions in this group if seeking remediation closure for this release because all remediation steps have been completed.

Requesting a remediation closure approval with this submission	Yes
Have the lateral and vertical extents of contamination been fully delineated	Yes
Was this release entirely contained within a lined containment area	Yes
What was the total surface area (in square feet) remediated	0
What was the total volume (cubic yards) remediated	0
Summarize any additional remediation activities not included by answers (above)	see report

The responsible party must attach information demonstrating they have complied with all applicable closure requirements and any conditions or directives of the OCD. This demonstration should be in the form of a comprehensive report (in .pdf format) including a scaled site map, sampling diagrams, relevant field notes, photographs of any excavation prior to backfilling, laboratory data including chain of custody documents of final sampling, and a narrative of the remedial activities. Refer to 19.15.29.12 NMAC.

I hereby certify that the information given above is true and complete to the best of my knowledge and understand that pursuant to OCD rules and regulations all operators are required to report and/or file certain release notifications and perform corrective actions for releases which may endanger public health or the environment. The acceptance of a C-141 report by the OCD does not relieve the operator of liability should their operations have failed to adequately investigate and remediate contamination that pose a threat to groundwater, surface water, human health or the environment. In addition, OCD acceptance of a C-141 report does not relieve the operator of responsibility for compliance with any other federal, state, or local laws and/or regulations. The responsible party acknowledges they must substantially restore, reclaim, and re-vegetate the impacted surface area to the conditions that existed prior to the release or their final land use in accordance with 19.15.29.13 NMAC including notification to the OCD when reclamation and re-vegetation are complete.

I hereby agree and sign off to the above statement	Name: Dale Woodall Title: EHS Professional Email: Dale.Woodall@dmn.com Date: 08/28/2024
--	--

**District I**  
1625 N. French Dr., Hobbs, NM 88240  
Phone:(575) 393-6161 Fax:(575) 393-0720  
**District II**  
811 S. First St., Artesia, NM 88210  
Phone:(575) 748-1283 Fax:(575) 748-9720  
**District III**  
1000 Rio Brazos Rd., Aztec, NM 87410  
Phone:(505) 334-6178 Fax:(505) 334-6170  
**District IV**  
1220 S. St Francis Dr., Santa Fe, NM 87505  
Phone:(505) 476-3470 Fax:(505) 476-3462

State of New Mexico  
Energy, Minerals and Natural Resources  
Oil Conservation Division  
1220 S. St Francis Dr.  
Santa Fe, NM 87505

CONDITIONS  
  
Action 378640

CONDITIONS

Operator: DEVON ENERGY PRODUCTION COMPANY, LP 333 West Sheridan Ave. Oklahoma City, OK 73102	OGRID: 6137
	Action Number: 378640
	Action Type: [C-141] Remediation Closure Request C-141 (C-141-v-Closure)

CONDITIONS

Created By	Condition	Condition Date
scott.rodgers	App ID 378640 Liner Inspection approved	9/11/2024