

FLOOFY CAT 21 CTB 2

8/31/2024

OCD INCIDENT nAPP2424476743

Spills In Lined Containment	
Measurements Of Standing Fluid	
Length(Ft)	121
Width(Ft)	42
Depth(in.)	0.4
Total Capacity without tank displacements (bbls)	30.17
No. of 500 bbl Tanks In Standing Fluid	0
No. of Other Tanks In Standing Fluid	
OD Of Other Tanks In Standing Fluid(feet)	
Total Volume of standing fluid accounting for tank displacement.	30.17



---

# LINER INSPECTION CLOSURE REPORT

---

Incident ID NAPP2424476743

**FLOOFY CAT 21 CTB 2**

Facility ID fAPP2311542151

Prepared By:  
Pima Environmental Services, LLC

Prepared For:  
Devon Energy Production, LP

September 12, 2024  
Pima Environmental Services, LLC  
5614 N Lovington Hwy, Hobbs, NM 88240

5614 N Lovington Hwy  
Hobbs, NM 88240  
575-964-7740



September 12, 2024

NMOCD District 2  
811 S. First St  
Artesia, NM, 88210

**RE: Liner Inspection and Closure Report  
Floofy Cat 21 CTB 2  
Facility ID: fAPP2311542151  
GPS : Latitude 32.2856501 Longitude -103.6794717  
UL- O, Section 21, Township 23S, Range 32E  
Lea County, NM  
NMOCD Reference No. NAPP2424476743**

Devon Energy Production Company (Devon) has contracted Pima Environmental Services, LLC (Pima) to perform a liner inspection and prepare this closure report for a produced water release that occurred at the Floofy Cat 21 CTB 2 (Floofy Cat). This incident was assigned Incident ID: NAPP2424476743, by the New Mexico Oil Conservation Division (NMOCD).

#### Site Information and Site Characterization

The Floofy Cat is located approximately twenty-three (23) miles northeast of Malaga, NM. This spill site is in Unit O, Section 21, Township 23S, Range 32E, Latitude 32.2856501 Longitude -103.6794717, Lea County, NM. A Location Map can be found in Figure 1.

Based upon New Mexico Office of the State Engineer (C-03851 POD 1) well water data, depth to the nearest groundwater in this area is 713 feet below grade surface (BGS), located approximately 0.92 miles from the Floofy Cat. According to the United States Geological Survey (USGS 321609103445901 23S.31E.26.34411) well water data, depth to the nearest groundwater in this area is 100 feet BGS. See Appendix A for referenced water surveys and water related maps. The Floofy Cat is in a low karst area (Figure 3). A Topographic Map can be found in Figure 2.

#### Release Information

**NAPP2424476743:** On August 31, 2024, a pinhole in a 6" produced water line caused a release in the lined containment. Approximately 15.8 barrels (bbls) of produced water were released from the pump into the lined secondary containment. A vacuum truck was dispatched and recovered approximately 15 bbls of fluid from the lined SPCC containment ring. Once the standing fluids were removed, the liner was visually inspected by Devon field staff for any pinholes or punctures, and none were found. Based on this inspection, there is no evidence that the spilled fluids left the containment. The remaining fluids were recovered during the cleanup of the containment.

A Site Map can be found in Figure 4.

#### Site Assessment and Liner Inspection

On September 9, 2024, Pima personnel mobilized equipment to the site to perform power washing of the liner and containment. A vacuum truck accompanied the crew to recover the power washing fluids. During this process, the remaining fluid missed during the initial recovery effort was recovered.

On September 11, 2024, after submitting the 48-hour notification application ID: 381656 to the OCD, Pima Environmental conducted a liner inspection at this location. Pima concluded that the liner and containment maintained their integrity and successfully retained the fluids. The 48- hour notification and liner inspection form can be found in Appendix C. Photographic documentation can be found in Appendix D.

Pima Environmental Services

5614 N Lovington Hwy  
Hobbs, NM 88240  
575-964-7740



**Closure Request**

After careful review, Pima requests that this incident ID: NAPP2424476743, be closed. Devon has complied with the applicable closure requirements.

Should you have any questions or need additional information, please feel free to contact:

Devon Energy – Dale Woodall at 575-748-0167 or [dale.woodall@devon.com](mailto:dale.woodall@devon.com).

Pima Environmental – DelRae Geller at 806-724-5391 or [delrae@pimaoil.com](mailto:delrae@pimaoil.com).

Respectfully,

***DelRae Geller***

DelRae Geller  
Project Manager  
Pima Environmental Services, LLC.

**Attachments**

Figures:

- 1- Location Map
- 2- Topographic Map
- 3- Karst Map
- 4- Site Map

Appendices:

- Appendix A- Referenced Water Surveys
- Appendix B- Soil Survey & Soil Maps, Geologic Data, FEMA, Wetlands
- Appendix C- 48-Hour Notification, Liner Inspection Form
- Appendix D- Photographic Documentation

## Figures:

Figure 1- Location Map

Figure 2- Topographic Map

Figure 3- Karst Map



Figure 4- Site Map

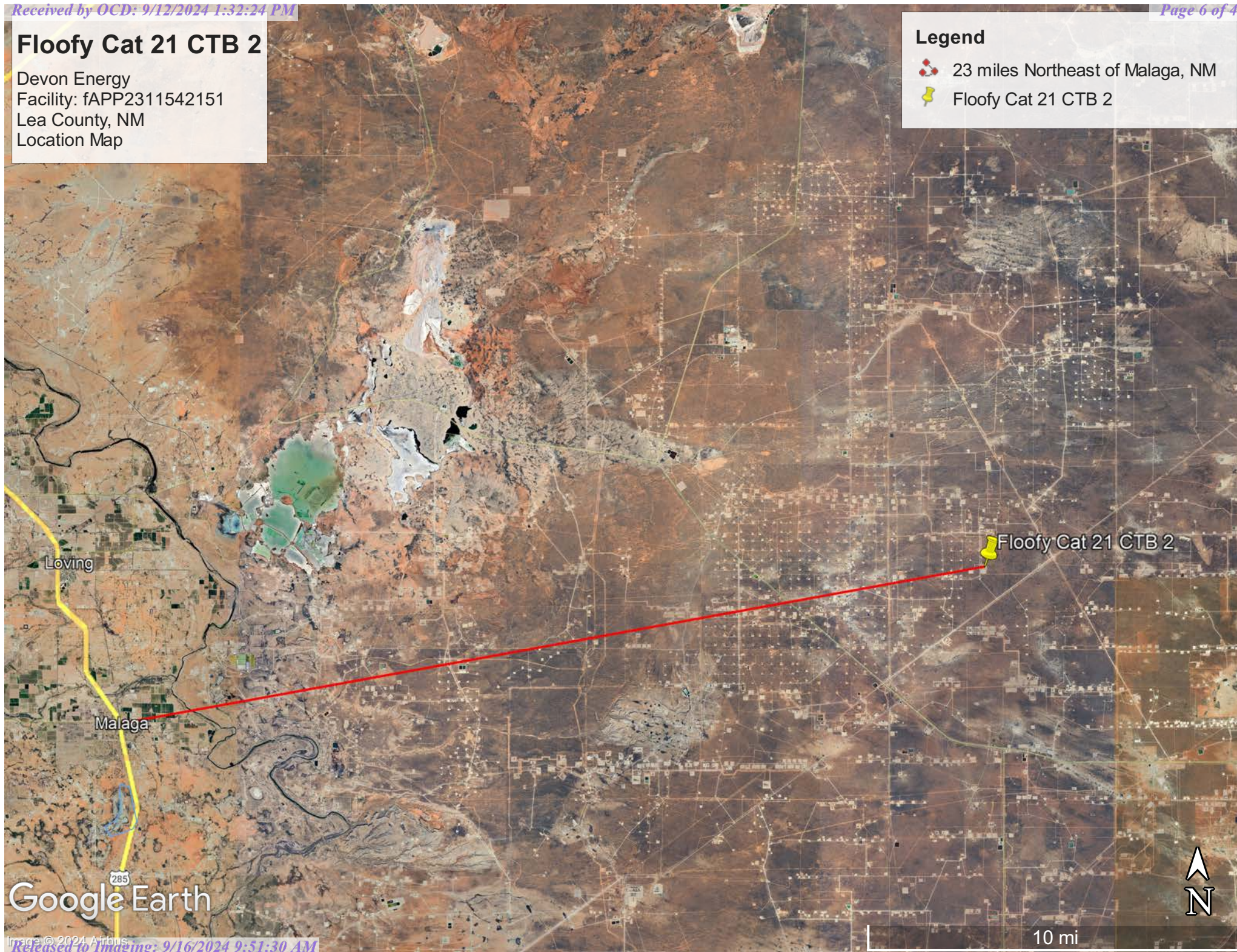


## Floofy Cat 21 CTB 2

Devon Energy  
Facility: fAPP2311542151  
Lea County, NM  
Location Map

### Legend

-  23 miles Northeast of Malaga, NM
-  Floofy Cat 21 CTB 2



Google Earth

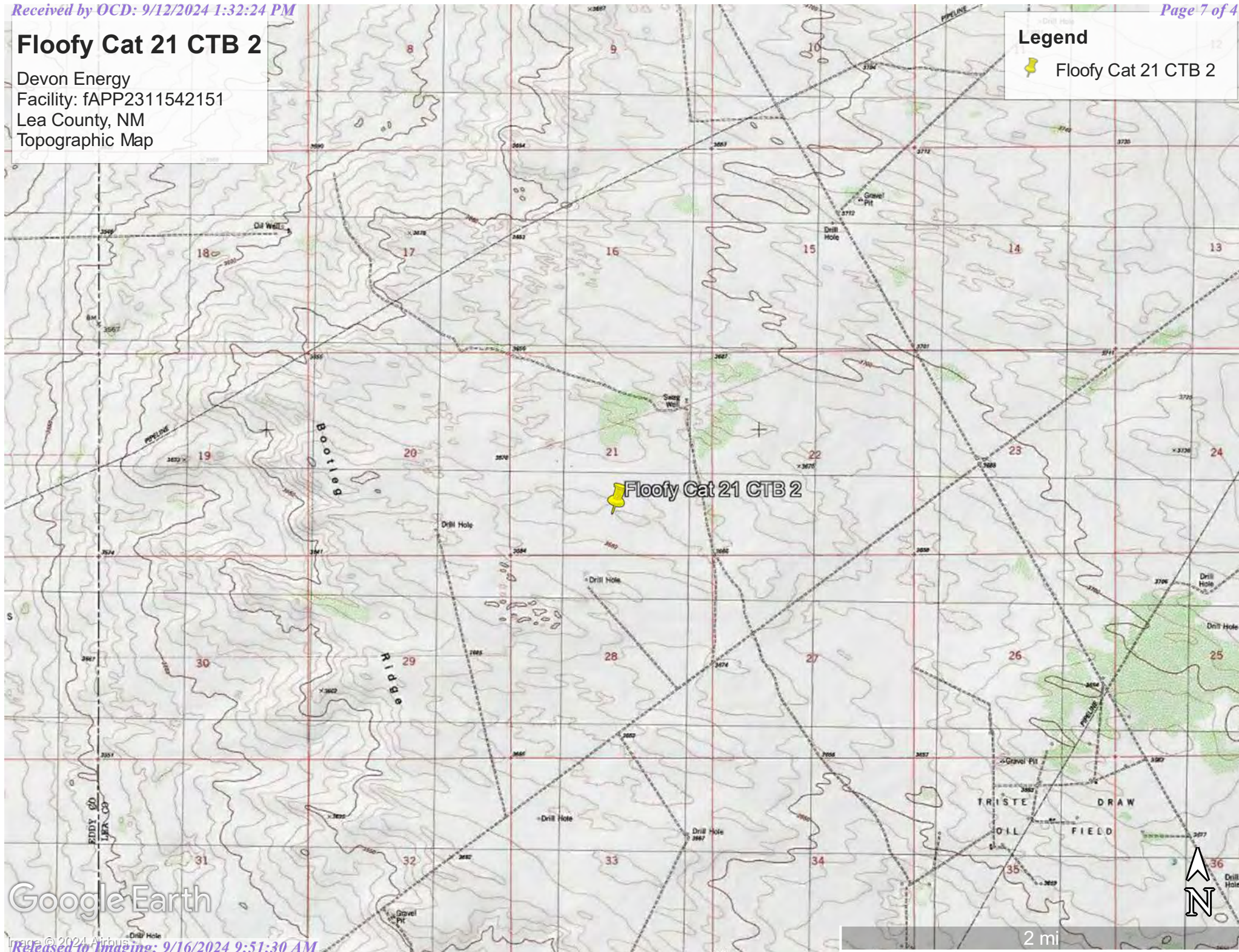


# Floofy Cat 21 CTB 2

Devon Energy  
Facility: fAPP2311542151  
Lea County, NM  
Topographic Map

## Legend

 Floofy Cat 21 CTB 2





Google Earth



## Floofy Cat 21 CTB 2

Devon Energy  
Facility: fAPP2311542151  
Lea County, NM  
Karst Map

### Legend

-  Floofy Cat 21 CTB 2
-  High Karst
-  Low Karst
-  Medium Karst

 Floofy Cat 21 CTB 2

Google Earth

Andrews Place





10 mi

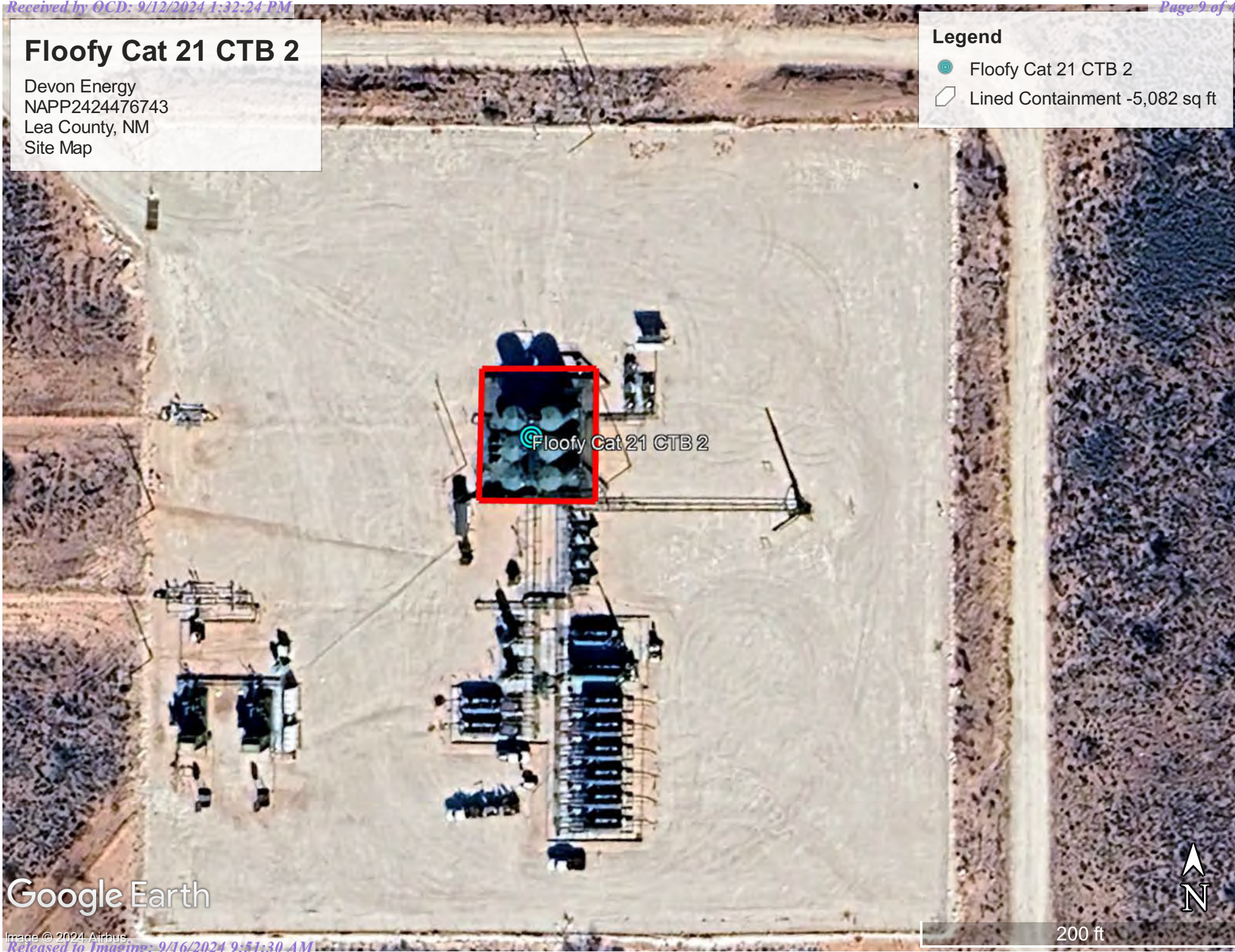


## Floofy Cat 21 CTB 2

Devon Energy  
NAPP2424476743  
Lea County, NM  
Site Map

### Legend

-  Floofy Cat 21 CTB 2
-  Lined Containment -5,082 sq ft



Google Earth











## Appendix A

### Water Surveys:

- OSE
- USGS
- Surface Water Map



Water Column/Average Depth to Water

(A CLW##### in the POD suffix indicates the POD has been replaced & no longer serves a water right file.)	(R=POD has been replaced, O=orphaned, C=the file is closed)															
	(quarters are smallest to largest)				(NAD83 UTM in meters)				(In feet)		(In feet)	(In feet)				
POD Number	Code	Sub basin	County	Q64	Q16	Q4	Sec	Tws	Range	X	Y	Map	Distance	Well Depth	Depth Water	Water Column
<a href="#">C 02216</a>		CUB	LE	NE	NE	SE	21	23S	32E	625035.0	3573261.0 *		793	585	400	185
<a href="#">C 03851 POD1</a>		CUB	LE	SW	SW	SE	20	23S	32E	622879.6	3572660.0		1482	1392	713	679
<a href="#">C 04712 POD2</a>		CUB	LE	SE	SE	SE	17	23S	32E	623331.9	3574331.5		1785	55		
<a href="#">C 03529 POD1</a>		C	LE	NE	SE	SW	29	23S	32E	622651.2	3571212.5		2367	550		
<a href="#">C 04780 POD1</a>		CUB	LE	NW	SW	NW	34	23S	32E	625363.6	3570521.7		2552	80		
<a href="#">C 04815 POD1</a>		CUB	LE	NW	SE	SW	08	23S	32E	622391.9	3576025.7		3718	55		
<a href="#">C 03555 POD1</a>		C	LE	NE	NE	NW	05	24S	32E	622748.5	3569233.6		3966	600	380	220
<a href="#">C 04712 POD1</a>		CUB	LE	NW	SE	NW	31	23S	32E	620917.2	3570289.2		4289	55		
<a href="#">C 03527 POD1</a>		C	LE	NW	NE	SW	03	24S	32E	625769.7	3568487.2		4601	500		
<a href="#">C 04807 POD1</a>		CUB	LE	NW	NE	NW	11	23S	32E	625605.4	3577401.0		4708	105		
														Average Depth to Water: <b>497 feet</b>		
														Minimum Depth: <b>380 feet</b>		
														Maximum Depth: <b>713 feet</b>		

**Record Count:** 10

**Basin/County Search:**  
**County:** LE

**UTM Filters (in meters):**  
**Easting:** 624348.34  
**Northing:** 3572863.46  
**Radius:** 5000.0

\* UTM location was derived from PLSS - see Help


The data is furnished by the NMOSE/ISC and is accepted by the recipient with the expressed understanding that the OSE/ISC make no warranties, expressed or implied, concerning the accuracy, completeness, reliability, usability, or suitability for any particular purpose of the data.

# Point of Diversion Summary

quarters are 1=NW 2=NE 3=SW 4=SE

quarters are smallest to largest

NAD83 UTM in meters

Well Tag	POD Nbr	Q64	Q16	Q4	Sec	Tws	Rng	X	Y	Map
	C 03851 POD1	SW	SW	SE	20	23S	32E	622879.6	3572660.0	

\* UTM location was derived from PLSS - see Help

Driller License:	1723	Driller Company:	SBQ2, LLC DBA STEWART BROTHERS DRILLING CO.			
Driller Name:	STEWART, RANDAL P.					
Drill Start Date:	2015-08-19	Drill Finish Date:	2015-10-02		Plug Date:	
Log File Date:	2015-11-10	PCW Rcv Date:			Source: Artesian	
Pump Type:		Pipe Discharge Size:			Estimated Yield: 3	
Casing Size:	5.00	Depth Well:	1392		Depth Water: 713	

## Water Bearing Stratifications:

Top	Bottom	Description
1354	1380	Limestone/Dolomite/Chalk

## Casing Perforations:

Top	Bottom
1354	1383




The data is furnished by the NMOSE/ISC and is accepted by the recipient with the expressed understanding that the OSE/ISC make no warranties, expressed or implied, concerning the accuracy, completeness, reliability, usability, or suitability for any particular purpose of the data.



## Floofy Cat 21 CTB 2

Devon Energy  
Facility: fAPP2311542151  
Lea County, NM  
OSE POD Map

### Legend

-  0.92 of a mile
-  C 03851 POD1
-  Floofy Cat 21 CTB 2



Bootleg Ridge

Google Earth

3000 ft







[USGS Home](#)  
[Contact USGS](#)  
[Search USGS](#)

## National Water Information System: Web Interface

USGS Water Resources

Data Category:

Groundwater

Geographic Area:

United States

GO

Click to hide News Bulletins

- Explore the *NEW* [USGS National Water Dashboard](#) interactive map to access real-time water data from over 13,500 stations nationwide.

Groundwater levels for the Nation

 Important: [Next Generation Monitoring Location Page](#)

### Search Results -- 1 sites found

site\_no list =

- 321609103445901

Minimum number of levels = 1

[Save file of selected sites](#) to local disk for future upload

### USGS 321609103445901 23S.31E.26.34411

Available data for this site

Groundwater: Field measurements

GO

Eddy County, New Mexico

Hydrologic Unit Code 13060011

Latitude 32°16'11.9", Longitude 103°45'01.2" NAD83

Land-surface elevation 3,451.00 feet above NGVD29

The depth of the well is 365 feet below land surface.

This well is completed in the Other aquifers (N9999OTHER) national aquifer.

This well is completed in the Dewey Lake Redbeds (312DYLK) local aquifer.

#### Output formats

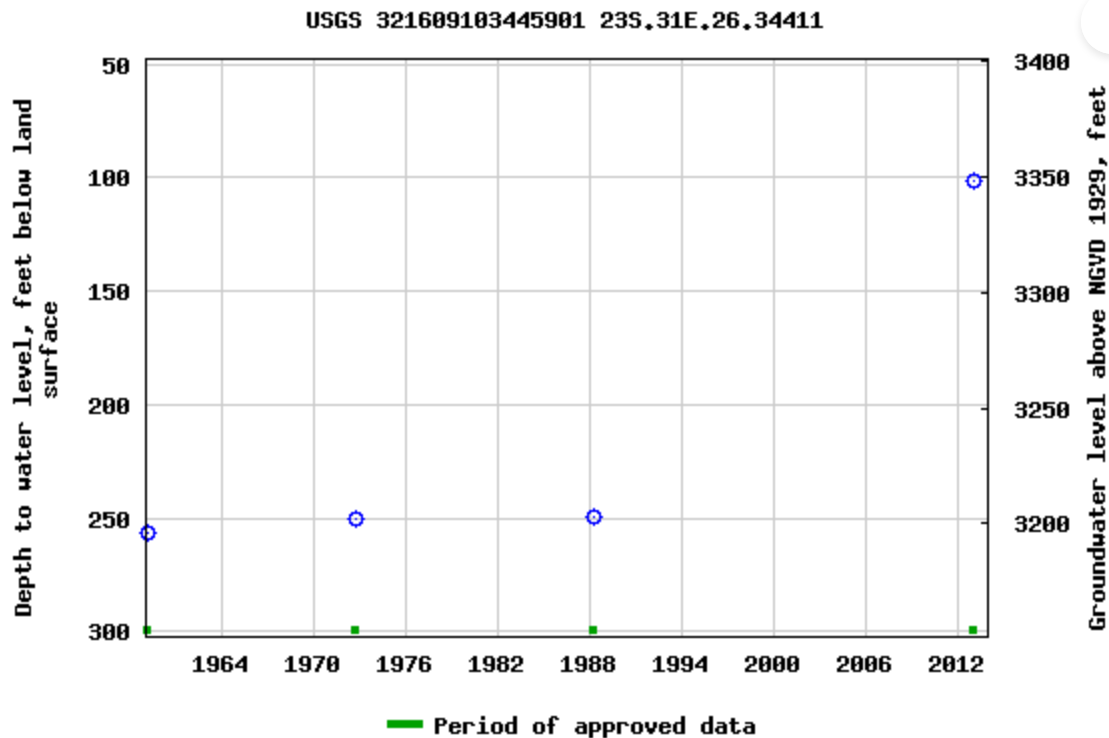
[Table of data](#)

[Tab-separated data](#)

[Graph of data](#)

[Reselect period](#)





Breaks in the plot represent a gap of at least one year between field measurements.

[Download a presentation-quality graph](#)

[Questions or Comments](#)

[Help](#)

[Data Tips](#)

[Explanation of terms](#)

[Subscribe for system changes](#)

[Accessibility](#)

[FOIA](#)

[Privacy](#)

[Policies and Notices](#)

[U.S. Department of the Interior](#) | [U.S. Geological Survey](#)

**Title: Groundwater for USA: Water Levels**

**URL: <https://nwis.waterdata.usgs.gov/nwis/gwlevels?>**

Page Contact Information: [USGS Water Data Support Team](#)

Page Last Modified: 2024-09-03 12:31:50 EDT

0.7 0.5 nadww02





## Floofy Cat 21 CTB 2

Devon Energy  
Facility: fAPP2311542151  
Lea County, NM  
USGS Map

### Legend

- 4.28 miles
- Floofy Cat 21 CTB 2
- USGS 321609103445901

USGS 321609103445901

Floofy Cat 21 CTB 2

Google Earth

Released to Imaging: 9/16/2024 9:51:30 AM






2 mi

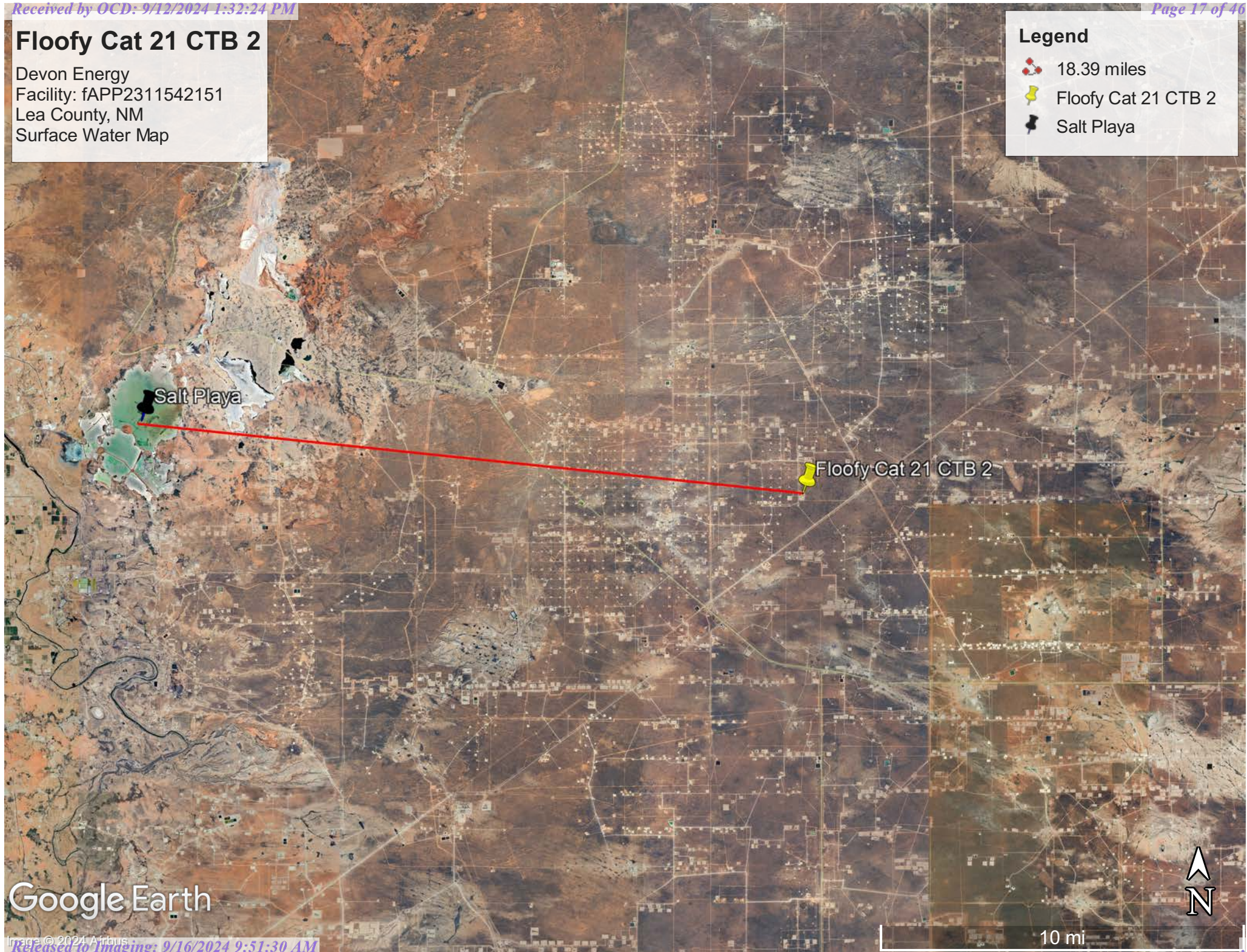


# Floofy Cat 21 CTB 2

Devon Energy  
Facility: fAPP2311542151  
Lea County, NM  
Surface Water Map

## Legend

-  18.39 miles
-  Floofy Cat 21 CTB 2
-  Salt Playa



Google Earth



## Appendix B

- Soil Survey & Soil Maps
- Geological Data
- FEMA Flood Map
- Wetlands Map



Map Unit Description: Pyote and Maljamar fine sands---Lea County, New Mexico

---

## Lea County, New Mexico

### PU—Pyote and Maljamar fine sands

#### Map Unit Setting

*National map unit symbol:* dmqq

*Elevation:* 3,000 to 3,900 feet

*Mean annual precipitation:* 10 to 12 inches

*Mean annual air temperature:* 60 to 62 degrees F

*Frost-free period:* 190 to 205 days

*Farmland classification:* Not prime farmland

#### Map Unit Composition

*Pyote and similar soils:* 46 percent

*Maljamar and similar soils:* 44 percent

*Minor components:* 10 percent

*Estimates are based on observations, descriptions, and transects of the mapunit.*

#### Description of Pyote

##### Setting

*Landform:* Plains

*Landform position (three-dimensional):* Rise

*Down-slope shape:* Linear

*Across-slope shape:* Linear

*Parent material:* Sandy eolian deposits derived from sedimentary rock

##### Typical profile

*A - 0 to 30 inches:* fine sand

*Bt - 30 to 60 inches:* fine sandy loam

##### Properties and qualities

*Slope:* 0 to 3 percent

*Depth to restrictive feature:* More than 80 inches

*Drainage class:* Well drained

*Runoff class:* Negligible

*Capacity of the most limiting layer to transmit water (Ksat):* High  
(2.00 to 6.00 in/hr)

*Depth to water table:* More than 80 inches

*Frequency of flooding:* None

*Frequency of ponding:* None

*Calcium carbonate, maximum content:* 5 percent

*Gypsum, maximum content:* 1 percent

*Maximum salinity:* Nonsaline to very slightly saline (0.0 to 2.0 mmhos/cm)

*Sodium adsorption ratio, maximum:* 2.0

*Available water supply, 0 to 60 inches:* Low (about 5.1 inches)

##### Interpretive groups

*Land capability classification (irrigated):* 6e

Map Unit Description: Pyote and Maljamar fine sands---Lea County, New Mexico

---

*Land capability classification (nonirrigated): 7s*  
*Hydrologic Soil Group: A*  
*Ecological site: R070BD003NM - Loamy Sand*  
*Hydric soil rating: No*

## Description of Maljamar

### Setting

*Landform: Plains*  
*Landform position (three-dimensional): Rise*  
*Down-slope shape: Linear*  
*Across-slope shape: Linear*  
*Parent material: Sandy eolian deposits derived from sedimentary rock*

### Typical profile

*A - 0 to 24 inches: fine sand*  
*Bt - 24 to 50 inches: sandy clay loam*  
*Bkm - 50 to 60 inches: cemented material*

### Properties and qualities

*Slope: 0 to 3 percent*  
*Depth to restrictive feature: 40 to 60 inches to petrocalcic*  
*Drainage class: Well drained*  
*Runoff class: Very low*  
*Capacity of the most limiting layer to transmit water (Ksat): Very low to moderately low (0.00 to 0.06 in/hr)*  
*Depth to water table: More than 80 inches*  
*Frequency of flooding: None*  
*Frequency of ponding: None*  
*Calcium carbonate, maximum content: 5 percent*  
*Gypsum, maximum content: 1 percent*  
*Maximum salinity: Nonsaline to very slightly saline (0.0 to 2.0 mmhos/cm)*  
*Sodium adsorption ratio, maximum: 2.0*  
*Available water supply, 0 to 60 inches: Low (about 5.6 inches)*

### Interpretive groups

*Land capability classification (irrigated): 6e*  
*Land capability classification (nonirrigated): 7e*  
*Hydrologic Soil Group: B*  
*Ecological site: R070BD003NM - Loamy Sand*  
*Hydric soil rating: No*

## Minor Components

### Kermit

*Percent of map unit: 10 percent*  
*Ecological site: R070BC022NM - Sandhills*



Map Unit Description: Pyote and Maljamar fine sands---Lea County, New Mexico

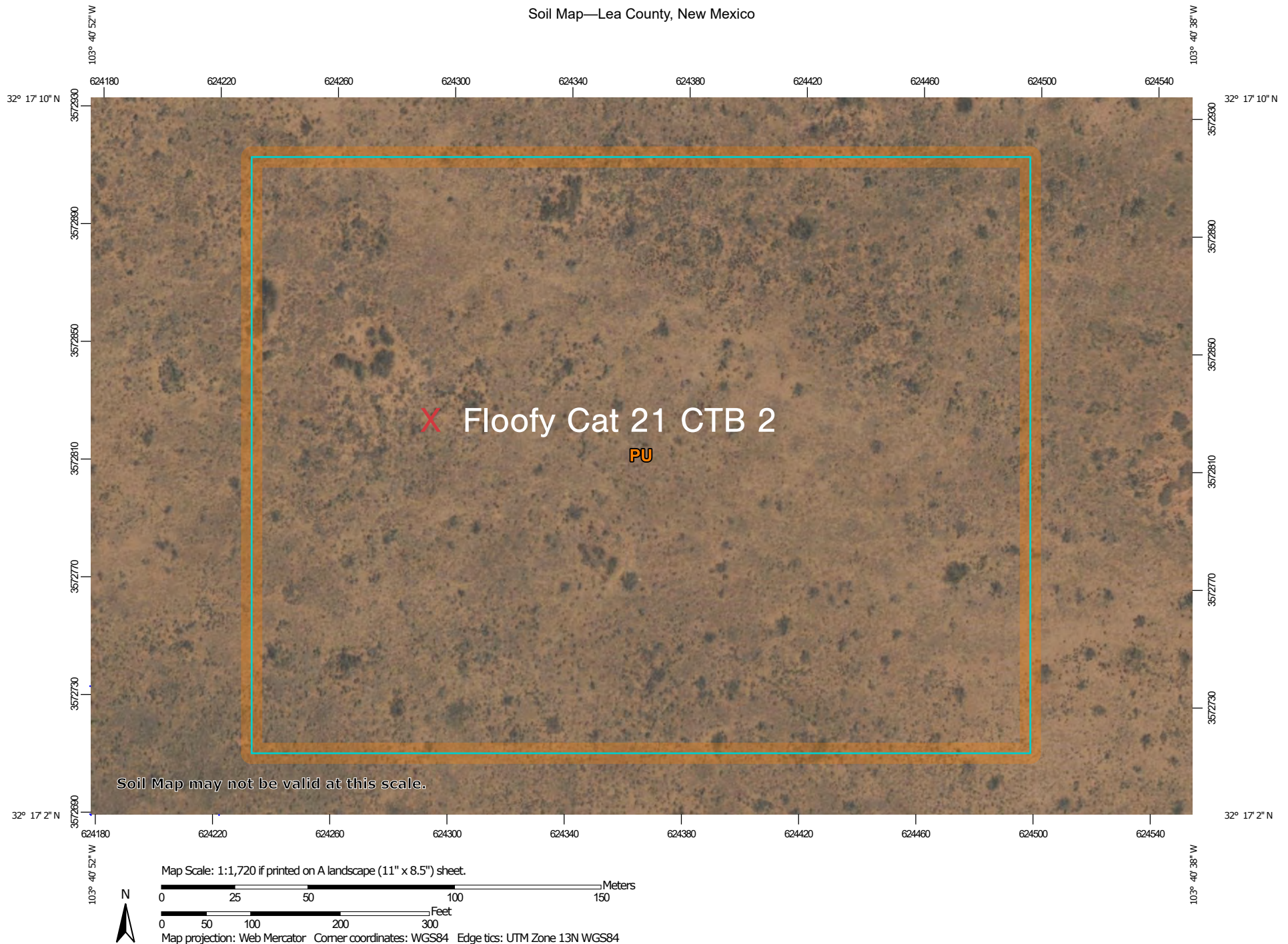
---

*Hydric soil rating:* No

## Data Source Information

Soil Survey Area: Lea County, New Mexico  
Survey Area Data: Version 20, Sep 6, 2023

Soil Map—Lea County, New Mexico



Natural Resources  
Conservation Service

Web Soil Survey  
National Cooperative Soil Survey

9/4/2024  
Page 1 of 3



## Soil Map—Lea County, New Mexico

## MAP LEGEND

## Area of Interest (AOI)

 Area of Interest (AOI)

## Soils

 Soil Map Unit Polygons

 Soil Map Unit Lines

 Soil Map Unit Points

## Special Point Features



Blowout



Borrow Pit



Clay Spot



Closed Depression



Gravel Pit



Gravelly Spot



Landfill



Lava Flow



Marsh or swamp



Mine or Quarry



Miscellaneous Water



Perennial Water



Rock Outcrop



Saline Spot



Sandy Spot



Severely Eroded Spot



Sinkhole



Slide or Slip



Sodic Spot



Spoil Area



Stony Spot



Very Stony Spot



Wet Spot



Other



Special Line Features

## Water Features



Streams and Canals

## Transportation



Rails



Interstate Highways



US Routes



Major Roads



Local Roads

## Background



Aerial Photography

## MAP INFORMATION

The soil surveys that comprise your AOI were mapped at 1:20,000.

Warning: Soil Map may not be valid at this scale.

Enlargement of maps beyond the scale of mapping can cause misunderstanding of the detail of mapping and accuracy of soil line placement. The maps do not show the small areas of contrasting soils that could have been shown at a more detailed scale.

Please rely on the bar scale on each map sheet for map measurements.

Source of Map: Natural Resources Conservation Service

Web Soil Survey URL:

Coordinate System: Web Mercator (EPSG:3857)

Maps from the Web Soil Survey are based on the Web Mercator projection, which preserves direction and shape but distorts distance and area. A projection that preserves area, such as the Albers equal-area conic projection, should be used if more accurate calculations of distance or area are required.

This product is generated from the USDA-NRCS certified data as of the version date(s) listed below.

Soil Survey Area: Lea County, New Mexico

Survey Area Data: Version 20, Sep 6, 2023

Soil map units are labeled (as space allows) for map scales 1:50,000 or larger.

Date(s) aerial images were photographed: Feb 7, 2020—May 12, 2020

The orthophoto or other base map on which the soil lines were compiled and digitized probably differs from the background imagery displayed on these maps. As a result, some minor shifting of map unit boundaries may be evident.



Map Unit Legend

Map Unit Symbol	Map Unit Name	Acres in AOI	Percent of AOI
PU	Pyote and Maljamar fine sands	13.4	100.0%
Totals for Area of Interest		13.4	100.0%



(<https://www.usgs.gov/>)

Mineral Resources (<https://www.usgs.gov/energy-and-minerals/mineral-resources-program>)  
/ Online Spatial Data (/) / Geology (/geology/) / by state (/geology/state/)  
/ New Mexico (/geology/state/state.php?state=NM)

## Eolian and piedmont deposits

XML (/geology/state/xml/NMQep;0)	JSON (/geology/state/json/NMQep;0)
Shapefile (/geology/state/unit-shape.php?unit=NMQep;0)	

*Interlayered eolian sands and piedmont-slope deposits along the eastern flank of the Pecos River valley, primarily between Roswell and Carlsbad. Typically capped by thin eolian deposits.*

State	New Mexico (/geology/state/state.php?state=NM)		
Name	Eolian and piedmont deposits		
Geologic age	Holocene to middle Pleistocene		
Lithologic constituents	Major Unconsolidated (Eolian) Interlayered eolian sands and piedmont-slope deposits		
References	New Mexico Bureau of Geology and Mineral Resources, 2003, Geologic Map of New Mexico, scale 1:500,000 (includes some new polygons, faults, and attributes not in NM001 - heads up digitizing by JHorton).		
NGMDB product	NGMDB product page for 22974 ( <a href="https://ngmdb.usgs.gov/Prodesc/proddesc_22974.htm">https://ngmdb.usgs.gov/Prodesc/proddesc_22974.htm</a> )		
Counties	Chaves (/geology/state/fips-unit.php?code=f35005) - DeBaca (/geology/state/fips-unit.php?code=f35011) - Eddy (/geology/state/fips-unit.php?code=f35015) - Lea (/geology/state/fips-unit.php?code=f35025) - Roosevelt (/geology/state/fips-unit.php?code=f35041)		

DOI Privacy Policy (<https://www.doi.gov/privacy>) | Legal ([https://www.usgs.gov/laws/policies\\_notices.html](https://www.usgs.gov/laws/policies_notices.html)) |  
Accessibility (<https://www2.usgs.gov/laws/accessibility.html>) | Site Map (<https://www.usgs.gov/sitemap.html>) |  
Contact USGS (<https://answers.usgs.gov/>)

U.S. Department of the Interior (<https://www.doi.gov/>) | DOI Inspector General (<https://www.doiig.gov/>) |

White House (<https://www.whitehouse.gov/>) | E-gov (<https://www.whitehouse.gov/omb/management/egov/>) |

No Fear Act (<https://www.doi.gov/pmb/eeo/no-fear-act>) | FOIA (<https://www2.usgs.gov/foia>)

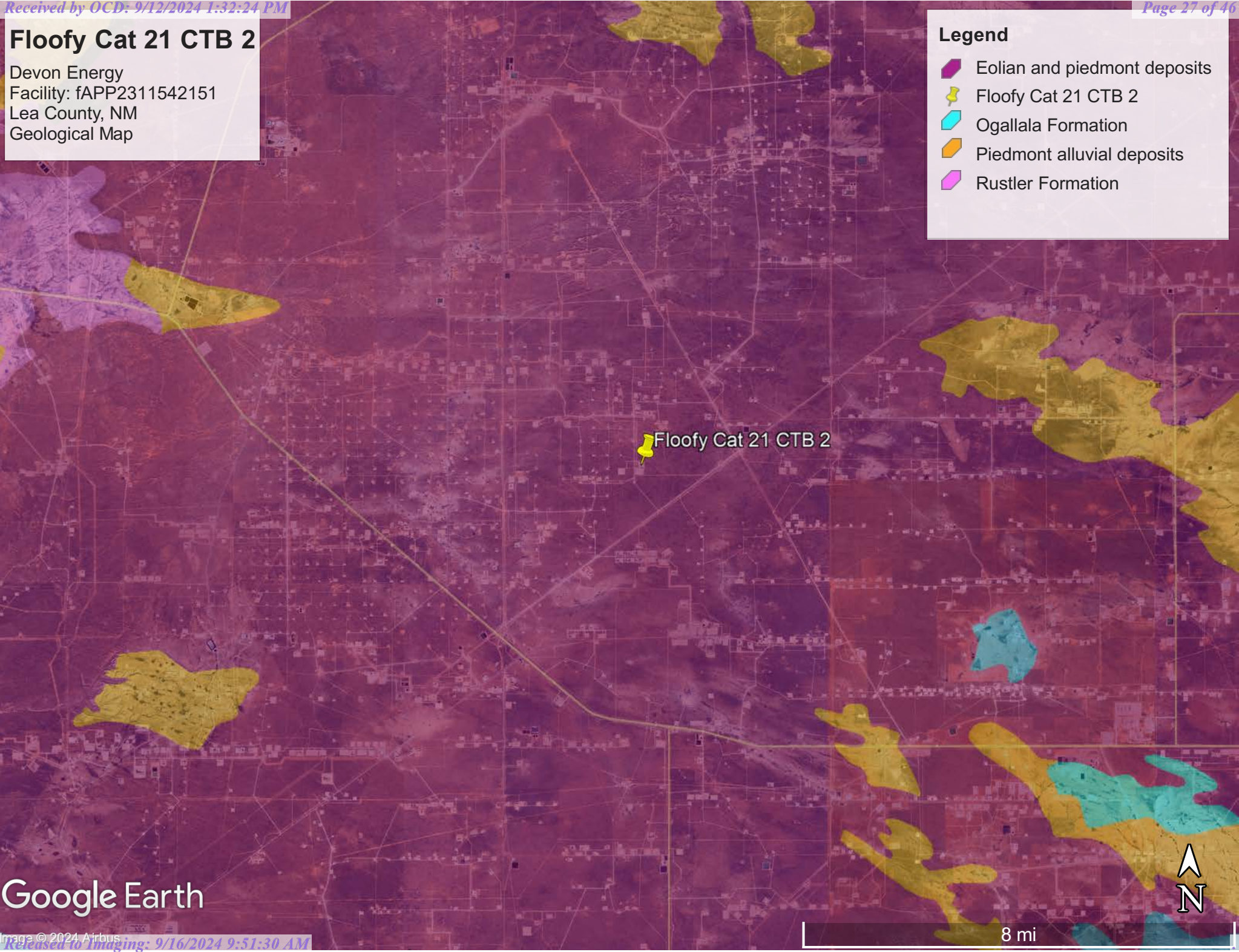


# Floofy Cat 21 CTB 2

Devon Energy  
Facility: fAPP2311542151  
Lea County, NM  
Geological Map

Legend

- Eolian and piedmont deposits
- Floofy Cat 21 CTB 2
- Ogallala Formation
- Piedmont alluvial deposits
- Rustler Formation



Google Earth



# National Flood Hazard Layer FIRMette



103°41'5"W 32°17'24"N



0 250 500 1,000 1,500 2,000 Feet

1:6,000








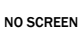
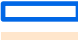



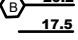
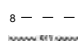








103°40'27"W 32°16'53"N

Released to Imaging: 9/16/2024 9:31:30 AM

Basemap Imagery Source: USGS National Map 2023

## Legend

SEE FIS REPORT FOR DETAILED LEGEND AND INDEX MAP FOR FIRM PANEL LAYOUT

SPECIAL FLOOD HAZARD AREAS		Without Base Flood Elevation (BFE) Zone A, V, A99
		With BFE or Depth Zone AE, AO, AH, VE, AR
		Regulatory Floodway
OTHER AREAS OF FLOOD HAZARD		0.2% Annual Chance Flood Hazard, Areas of 1% annual chance flood with average depth less than one foot or with drainage areas of less than one square mile Zone X
		Future Conditions 1% Annual Chance Flood Hazard Zone X
		Area with Reduced Flood Risk due to Levee. See Notes. Zone X
		Area with Flood Risk due to Levee Zone D
OTHER AREAS		NO SCREEN Area of Minimal Flood Hazard Zone X
		Effective LOMRs
		Area of Undetermined Flood Hazard Zone D
GENERAL STRUCTURES		Channel, Culvert, or Storm Sewer
		Levee, Dike, or Floodwall
OTHER FEATURES		20.2 Cross Sections with 1% Annual Chance Water Surface Elevation
		17.5 Cross Sections with 1% Annual Chance Water Surface Elevation
		Coastal Transect
		Base Flood Elevation Line (BFE)
		Limit of Study
		Jurisdiction Boundary
		Coastal Transect Baseline
MAP PANELS		Digital Data Available
		No Digital Data Available
		Unmapped



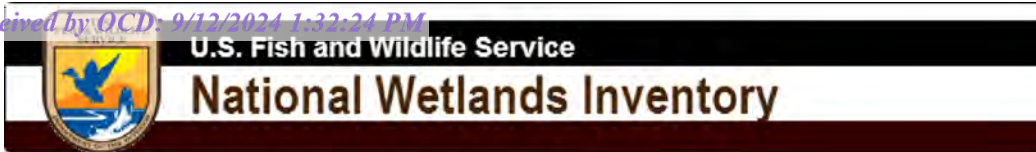
The pin displayed on the map is an approximate point selected by the user and does not represent an authoritative property location.

This map complies with FEMA's standards for the use of digital flood maps if it is not void as described below. The basemap shown complies with FEMA's basemap accuracy standards

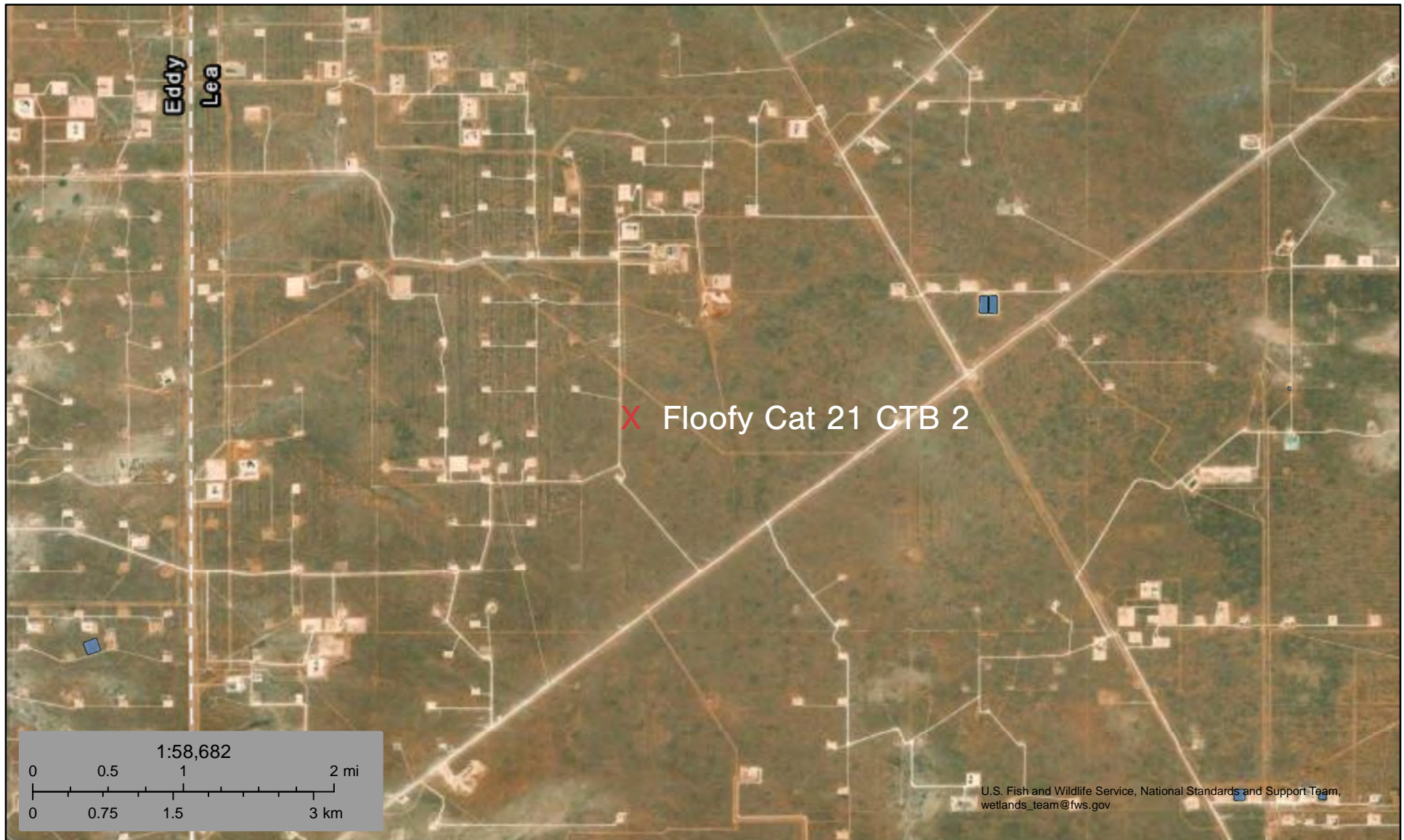
The flood hazard information is derived directly from the authoritative NFHL web services provided by FEMA. This map was exported on 9/3/2024 at 12:53 PM and does not reflect changes or amendments subsequent to this date and time. The NFHL and effective information may change or become superseded by new data over time.

This map image is void if the one or more of the following map elements do not appear: basemap imagery, flood zone labels, legend, scale bar, map creation date, community identifiers, FIRM panel number, and FIRM effective date. Map images for unmapped and unmodernized areas cannot be used for regulatory purposes.





## Wetlands Map



September 3, 2024

**Wetlands**

- Estuarine and Marine Deepwater
- Estuarine and Marine Wetland

- Freshwater Emergent Wetland
- Freshwater Forested/Shrub Wetland
- Freshwater Pond

- Lake
- Other
- Riverine

This map is for general reference only. The US Fish and Wildlife Service is not responsible for the accuracy or currentness of the base data shown on this map. All wetlands related data should be used in accordance with the layer metadata found on the Wetlands Mapper web site.



## Appendix C

- 48-Hour Notification
- Liner Inspection Form



**lynsey@pimaoil.com**

---

**From:** Woodall, Dale <Dale.Woodall@dvn.com>  
**Sent:** Monday, September 9, 2024 11:05 AM  
**To:** Delrae Pima Oil; 'Gio PimaOil'; Tom Pima Oil; Lynsey Pima Oil  
**Subject:** FW: [EXTERNAL] The Oil Conservation Division (OCD) has accepted the application, Application ID: 381656

Dale Woodall  
*Environmental Professional*  
*Hobbs, NM*  
*Office: 575-748-1838*  
*Mobile: 405-318-4697*  
[Dale.Woodall@dvn.com](mailto:Dale.Woodall@dvn.com)

---

**From:** OCDOnline@state.nm.us <OCDOnline@state.nm.us>  
**Sent:** Monday, September 9, 2024 11:04 AM  
**To:** Woodall, Dale <Dale.Woodall@dvn.com>  
**Subject:** [EXTERNAL] The Oil Conservation Division (OCD) has accepted the application, Application ID: 381656

To whom it may concern (c/o Dale Woodall for DEVON ENERGY PRODUCTION COMPANY, LP),

The OCD has received the submitted *Notification for Liner Inspection for a Release (C-141L)*, for incident ID (n#) nAPP2424476743.

The liner inspection is expected to take place:

**When:** 09/11/2024 @ 12:00

**Where:** O-21-23S-32E 1012 FSL 2608 FEL (32.2856501,-103.6794717)

**Additional Information:** Marisa Loya (575) 416-0639

**Additional Instructions:** 32.2856501, -103.6794717

An OCD representative may be available onsite at the date and time reported. In the absence or presence of an OCD representative, liner inspection pursuant to 19.15.29.11.A(5)(a) NMAC is required. Should there be a change in the scheduled date and time of the sampling event, then another notification should be resubmitted through OCD permitting as soon as possible.

- **Failure to notify the OCD of liner inspections including any changes in date/time per the requirements of 19.15.29.11.A(5)(a)(ii) NMAC, may result in the inspection not being accepted.**

If you have any questions regarding this application, or don't know why you have received this email, please contact us.

**New Mexico Energy, Minerals and Natural Resources Department**

1220 South St. Francis Drive

Santa Fe, NM 87505

Confidentiality Warning: This message and any attachments are intended only for the use of the intended recipient(s), are confidential, and may be privileged. If you are not the intended recipient, you are hereby notified that any review, retransmission, conversion to hard copy, copying, circulation or other use of all or any portion of this message and any attachments is strictly prohibited. If you are not the intended recipient, please notify the sender immediately by return e-mail, and delete this message and any attachments from your system.





Pima Environmental Services, LLC

**Liner Inspection Form**Company Name: Devon EnergySite: Floofy Cat 21 CTB 2Lat/Long: 32.2856501, -103.6794717

NMOCD Incident ID

& Incident Date: NAPP2424476743 8/31/2024

2-Day Notification

Sent: via Email by Dale Woodall on OCD portal 9/9/2024  
application ID: 381656.Inspection Date: 9/11/2024

Liner Type:      Earthen w/liner                      Earthen no liner                      Polystar

**Steel w/poly liner**                      Steel w/spray epoxy                      No Liner

Other: \_\_\_\_\_

Visualization	Yes	No	Comments
Is there a tear in the liner?		X	
Are there holes in the liner?		X	
Is the liner retaining any fluids?	X		Fluid from the power washing liner
Does the liner have integrity to contain a leak?	X		

Comments: \_\_\_\_\_

Inspector Name: Marisa Loya      Inspector Signature: Marisa Loya



## Appendix D

### ○ Photographic Documentation





## PHOTOGRAPHIC DOCUMENTATION

SITE NAME: Floofy Cat 21 CTB 2

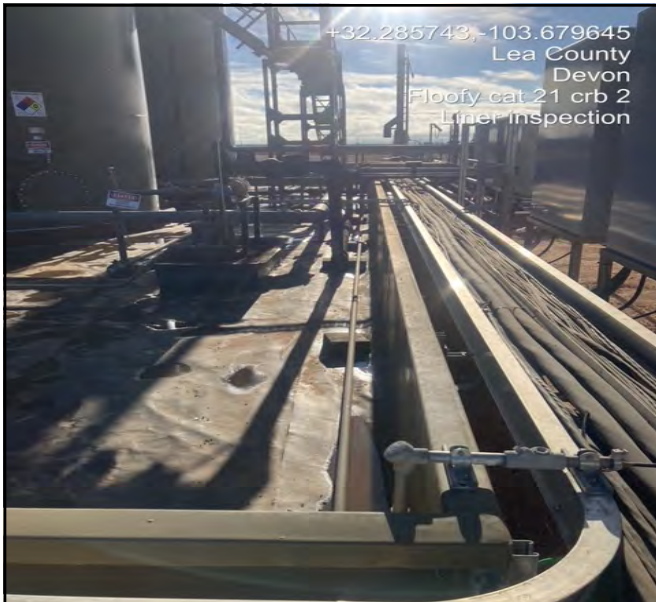
PHOTO LOG TYPE: Initial Liner Inspection



Site Information Sign



Photograph depicting the condition of the liner.



Photograph depicting the condition of the liner.



Photograph depicting the condition of the liner.

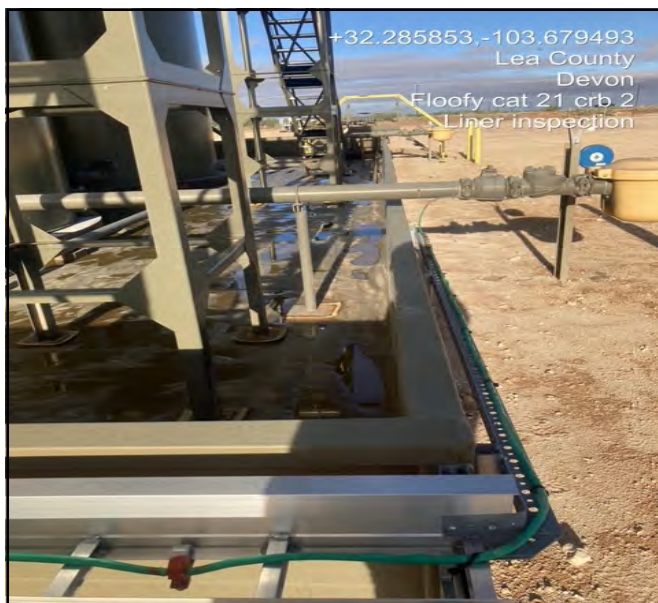




Photograph depicting the condition of the liner.



Photograph depicting the condition of the liner.



Photograph depicting the condition of the liner.



Photograph depicting the condition of the liner.



## Initial Aerial Photos



Photograph depicting the condition of the liner taken from a drone.



Photograph depicting the condition of the liner taken from a drone.



Photograph depicting the condition of the liner taken from a drone.



Photograph depicting the condition of the liner taken from a drone.





## Post Power Wash



+32.285839,-103.679498  
Lea County  
Devon  
Floofy cat 21 ctb 2  
Liner inspection

Photograph capturing the power washing of a liner,  
with fluid runoff visible from the cleaning process.



+32.285876,-103.679585  
Lea County  
Devon  
Floofy cat 21 ctb 2  
Liner inspection

Photograph capturing the power washing of a liner,  
with fluid runoff visible from the cleaning process.



+32.285816,-103.679525  
Lea County  
Devon  
Floofy cat 21 ctb 2  
Liner inspection

Photograph capturing the power washing of a liner,  
with fluid runoff visible from the cleaning process.



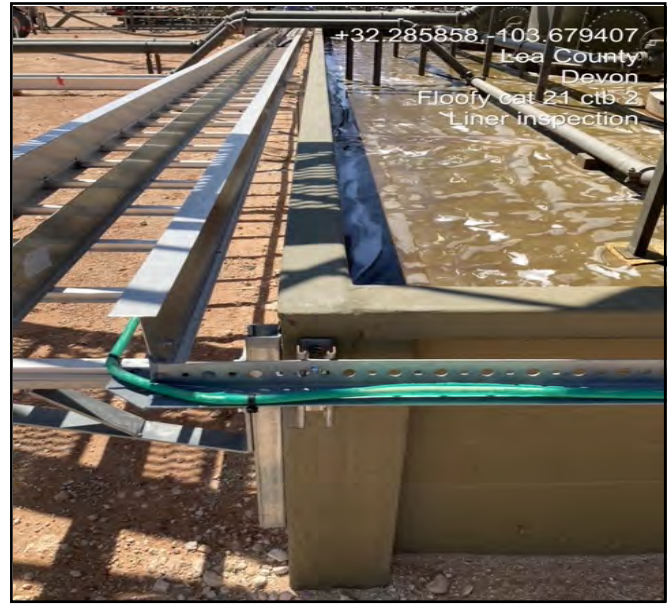
+32.285733,-103.679622  
Lea County  
Devon  
Floofy cat 21 ctb 2  
Liner inspection

Photograph capturing the power washing of a liner,  
with fluid runoff visible from the cleaning process.





Photograph capturing the power washing of a liner, with fluid runoff visible from the cleaning process.



Photograph capturing the power washing of a liner, with fluid runoff visible from the cleaning process.



Photograph capturing the power washing of a liner, with fluid runoff visible from the cleaning process.



Photograph capturing the power washing of a liner, with fluid runoff visible from the cleaning process.





## Post Aerial Photos



Photograph depicting the condition after power washing the liner taken from a drone.



Photograph depicting the condition after power washing the liner taken from a drone.



Photograph depicting the condition after power washing the liner taken from a drone.



Photograph depicting the condition after power washing the liner taken from a drone.

**District I**  
1625 N. French Dr., Hobbs, NM 88240  
Phone:(575) 393-6161 Fax:(575) 393-0720  
**District II**  
811 S. First St., Artesia, NM 88210  
Phone:(575) 748-1283 Fax:(575) 748-9720  
**District III**  
1000 Rio Brazos Rd., Aztec, NM 87410  
Phone:(505) 334-6178 Fax:(505) 334-6170  
**District IV**  
1220 S. St Francis Dr., Santa Fe, NM 87505  
Phone:(505) 476-3470 Fax:(505) 476-3462

State of New Mexico  
Energy, Minerals and Natural Resources  
Oil Conservation Division  
1220 S. St Francis Dr.  
Santa Fe, NM 87505

QUESTIONS

Action 383145

QUESTIONS

Operator: DEVON ENERGY PRODUCTION COMPANY, LP 333 West Sheridan Ave. Oklahoma City, OK 73102	OGRID:	6137
	Action Number:	383145
	Action Type:	[C-141] Remediation Closure Request C-141 (C-141-v-Closure)

QUESTIONS

Prerequisites	
Incident ID (n#)	nAPP2424476743
Incident Name	NAPP2424476743 FLOOFY CAT 21 CTB 2 @ 0
Incident Type	Produced Water Release
Incident Status	Remediation Closure Report Received
Incident Facility	[fAPP2311542151] FLOOFY CAT 21 CTB 2

Location of Release Source	
Please answer all the questions in this group.	
Site Name	FLOOFY CAT 21 CTB 2
Date Release Discovered	08/31/2024
Surface Owner	Federal

Incident Details	
Please answer all the questions in this group.	
Incident Type	Produced Water Release
Did this release result in a fire or is the result of a fire	No
Did this release result in any injuries	No
Has this release reached or does it have a reasonable probability of reaching a watercourse	No
Has this release endangered or does it have a reasonable probability of endangering public health	No
Has this release substantially damaged or will it substantially damage property or the environment	No
Is this release of a volume that is or may with reasonable probability be detrimental to fresh water	No

Nature and Volume of Release	
Material(s) released, please answer all that apply below. Any calculations or specific justifications for the volumes provided should be attached to the follow-up C-141 submission.	
Crude Oil Released (bbls) Details	Not answered.
Produced Water Released (bbls) Details	Cause: Equipment Failure   Flow Line - Production   Produced Water   Released: 30 BBL   Recovered: 30 BBL   Lost: 0 BBL.
Is the concentration of chloride in the produced water >10,000 mg/l	Yes
Condensate Released (bbls) Details	Not answered.
Natural Gas Vented (Mcf) Details	Not answered.
Natural Gas Flared (Mcf) Details	Not answered.
Other Released Details	Not answered.
Are there additional details for the questions above (i.e. any answer containing Other, Specify, Unknown, and/or Fire, or any negative lost amounts)	30.1 bbls spilled in lined containment. 30 bbls recovered. There was a pinhole in a 6" produced water line.



**District I**  
1625 N. French Dr., Hobbs, NM 88240  
Phone:(575) 393-6161 Fax:(575) 393-0720

**District II**  
811 S. First St., Artesia, NM 88210  
Phone:(575) 748-1283 Fax:(575) 748-9720

**District III**  
1000 Rio Brazos Rd., Aztec, NM 87410  
Phone:(505) 334-6178 Fax:(505) 334-6170

**District IV**  
1220 S. St Francis Dr., Santa Fe, NM 87505  
Phone:(505) 476-3470 Fax:(505) 476-3462

**State of New Mexico**  
**Energy, Minerals and Natural Resources**  
**Oil Conservation Division**  
**1220 S. St Francis Dr.**  
**Santa Fe, NM 87505**

QUESTIONS, Page 2

Action 383145

QUESTIONS (continued)

Operator: DEVON ENERGY PRODUCTION COMPANY, LP 333 West Sheridan Ave. Oklahoma City, OK 73102	OGRID:	6137
	Action Number:	383145
	Action Type:	[C-141] Remediation Closure Request C-141 (C-141-v-Closure)

QUESTIONS

Nature and Volume of Release (continued)	
Is this a gas only submission (i.e. only significant Mcf values reported)	No, according to supplied volumes this does not appear to be a "gas only" report.
Was this a major release as defined by Subsection A of 19.15.29.7 NMAC	Yes
Reasons why this would be considered a submission for a notification of a major release	From paragraph A. "Major release" determine using: (1) an unauthorized release of a volume, excluding gases, of 25 barrels or more.
With the implementation of the 19.15.27 NMAC (05/25/2021), venting and/or flaring of natural gas (i.e. gas only) are to be submitted on the C-129 form.	

Initial Response

The responsible party must undertake the following actions immediately unless they could create a safety hazard that would result in injury.

The source of the release has been stopped	True
The impacted area has been secured to protect human health and the environment	True
Released materials have been contained via the use of berms or dikes, absorbent pads, or other containment devices	True
All free liquids and recoverable materials have been removed and managed appropriately	True
If all the actions described above have not been undertaken, explain why	Not answered.

Per Paragraph (4) of Subsection B of 19.15.29.8 NMAC the responsible party may commence remediation immediately after discovery of a release. If remediation has begun, please prepare and attach a narrative of actions to date in the follow-up C-141 submission. If remedial efforts have been successfully completed or if the release occurred within a lined containment area (see Subparagraph (a) of Paragraph (5) of Subsection A of 19.15.29.11 NMAC), please prepare and attach all information needed for closure evaluation in the follow-up C-141 submission.

I hereby certify that the information given above is true and complete to the best of my knowledge and understand that pursuant to OCD rules and regulations all operators are required to report and/or file certain release notifications and perform corrective actions for releases which may endanger public health or the environment. The acceptance of a C-141 report by the OCD does not relieve the operator of liability should their operations have failed to adequately investigate and remediate contamination that pose a threat to groundwater, surface water, human health or the environment. In addition, OCD acceptance of a C-141 report does not relieve the operator of responsibility for compliance with any other federal, state, or local laws and/or regulations.

I hereby agree and sign off to the above statement	Name: Dale Woodall Title: EHS Professional Email: Dale.Woodall@dmv.com Date: 09/12/2024
--	--

**District I**

1625 N. French Dr., Hobbs, NM 88240  
Phone:(575) 393-6161 Fax:(575) 393-0720

**District II**

811 S. First St., Artesia, NM 88210  
Phone:(575) 748-1283 Fax:(575) 748-9720

**District III**

1000 Rio Brazos Rd., Aztec, NM 87410  
Phone:(505) 334-6178 Fax:(505) 334-6170

**District IV**

1220 S. St Francis Dr., Santa Fe, NM 87505  
Phone:(505) 476-3470 Fax:(505) 476-3462

**State of New Mexico**  
**Energy, Minerals and Natural Resources**  
**Oil Conservation Division**  
**1220 S. St Francis Dr.**  
**Santa Fe, NM 87505**

QUESTIONS, Page 3

Action 383145

**QUESTIONS (continued)**

Operator: DEVON ENERGY PRODUCTION COMPANY, LP 333 West Sheridan Ave. Oklahoma City, OK 73102	OGRID:	6137
	Action Number:	383145
	Action Type:	[C-141] Remediation Closure Request C-141 (C-141-v-Closure)

**QUESTIONS****Site Characterization**

Please answer all the questions in this group (only required when seeking remediation plan approval and beyond). This information must be provided to the appropriate district office no later than 90 days after the release discovery date.

What is the shallowest depth to groundwater beneath the area affected by the release in feet below ground surface (ft bgs)	Between 500 and 1000 (ft.)
What method was used to determine the depth to ground water	NM OSE iWaters Database Search
Did this release impact groundwater or surface water	No
<b>What is the minimum distance, between the closest lateral extents of the release and the following surface areas:</b>	
A continuously flowing watercourse or any other significant watercourse	Greater than 5 (mi.)
Any lakebed, sinkhole, or playa lake (measured from the ordinary high-water mark)	Greater than 5 (mi.)
An occupied permanent residence, school, hospital, institution, or church	Greater than 5 (mi.)
A spring or a private domestic fresh water well used by less than five households for domestic or stock watering purposes	Greater than 5 (mi.)
Any other fresh water well or spring	Between 1 and 5 (mi.)
Incorporated municipal boundaries or a defined municipal fresh water well field	Greater than 5 (mi.)
A wetland	Greater than 5 (mi.)
A subsurface mine	Between 1 and 5 (mi.)
An (non-karst) unstable area	Greater than 5 (mi.)
Categorize the risk of this well / site being in a karst geology	Low
A 100-year floodplain	Greater than 5 (mi.)
Did the release impact areas not on an exploration, development, production, or storage site	No

**Remediation Plan**

Please answer all the questions that apply or are indicated. This information must be provided to the appropriate district office no later than 90 days after the release discovery date.

Requesting a remediation plan approval with this submission	Yes
Attach a comprehensive report demonstrating the lateral and vertical extents of soil contamination associated with the release have been determined, pursuant to 19.15.29.11 NMAC and 19.15.29.13 NMAC.	
Have the lateral and vertical extents of contamination been fully delineated	Yes
Was this release entirely contained within a lined containment area	Yes
Per Subsection B of 19.15.29.11 NMAC unless the site characterization report includes completed efforts at remediation, the report must include a proposed remediation plan in accordance with 19.15.29.12 NMAC, which includes the anticipated timelines for beginning and completing the remediation.	
On what estimated date will the remediation commence	09/11/2024
On what date will (or did) the final sampling or liner inspection occur	09/11/2024
On what date will (or was) the remediation complete(d)	09/11/2024
What is the estimated surface area (in square feet) that will be remediated	0
What is the estimated volume (in cubic yards) that will be remediated	0
These estimated dates and measurements are recognized to be the best guess or calculation at the time of submission and may (be) change(d) over time as more remediation efforts are completed.	
The OCD recognizes that proposed remediation measures may have to be minimally adjusted in accordance with the physical realities encountered during remediation. If the responsible party has any need to significantly deviate from the remediation plan proposed, then it should consult with the division to determine if another remediation plan submission is required.	



**District I**  
1625 N. French Dr., Hobbs, NM 88240  
Phone:(575) 393-6161 Fax:(575) 393-0720

**District II**  
811 S. First St., Artesia, NM 88210  
Phone:(575) 748-1283 Fax:(575) 748-9720

**District III**  
1000 Rio Brazos Rd., Aztec, NM 87410  
Phone:(505) 334-6178 Fax:(505) 334-6170

**District IV**  
1220 S. St Francis Dr., Santa Fe, NM 87505  
Phone:(505) 476-3470 Fax:(505) 476-3462

**State of New Mexico**  
**Energy, Minerals and Natural Resources**  
**Oil Conservation Division**  
**1220 S. St Francis Dr.**  
**Santa Fe, NM 87505**

QUESTIONS, Page 4

Action 383145

QUESTIONS (continued)

Operator: DEVON ENERGY PRODUCTION COMPANY, LP 333 West Sheridan Ave. Oklahoma City, OK 73102	OGRID:	6137
	Action Number:	383145
	Action Type:	[C-141] Remediation Closure Request C-141 (C-141-v-Closure)

QUESTIONS

<b>Remediation Plan (continued)</b>	
<i>Please answer all the questions that apply or are indicated. This information must be provided to the appropriate district office no later than 90 days after the release discovery date.</i>	
<b>This remediation will (or is expected to) utilize the following processes to remediate / reduce contaminants:</b>	
<i>(Select all answers below that apply.)</i>	
Is (or was) there affected material present needing to be removed	Yes
Is (or was) there a power wash of the lined containment area (to be) performed	Yes
OTHER (Non-listed remedial process)	No
<i>Per Subsection B of 19.15.29.11 NMAC unless the site characterization report includes completed efforts at remediation, the report must include a proposed remediation plan in accordance with 19.15.29.12 NMAC, which includes the anticipated timelines for beginning and completing the remediation.</i>	
I hereby certify that the information given above is true and complete to the best of my knowledge and understand that pursuant to OCD rules and regulations all operators are required to report and/or file certain release notifications and perform corrective actions for releases which may endanger public health or the environment. The acceptance of a C-141 report by the OCD does not relieve the operator of liability should their operations have failed to adequately investigate and remediate contamination that pose a threat to groundwater, surface water, human health or the environment. In addition, OCD acceptance of a C-141 report does not relieve the operator of responsibility for compliance with any other federal, state, or local laws and/or regulations.	
I hereby agree and sign off to the above statement	Name: Dale Woodall Title: EHS Professional Email: Dale.Woodall@dmr.com Date: 09/12/2024
<i>The OCD recognizes that proposed remediation measures may have to be minimally adjusted in accordance with the physical realities encountered during remediation. If the responsible party has any need to significantly deviate from the remediation plan proposed, then it should consult with the division to determine if another remediation plan submission is required.</i>	

**District I**

1625 N. French Dr., Hobbs, NM 88240  
Phone:(575) 393-6161 Fax:(575) 393-0720

**District II**

811 S. First St., Artesia, NM 88210  
Phone:(575) 748-1283 Fax:(575) 748-9720

**District III**

1000 Rio Brazos Rd., Aztec, NM 87410  
Phone:(505) 334-6178 Fax:(505) 334-6170

**District IV**

1220 S. St Francis Dr., Santa Fe, NM 87505  
Phone:(505) 476-3470 Fax:(505) 476-3462

**State of New Mexico**  
**Energy, Minerals and Natural Resources**  
**Oil Conservation Division**  
**1220 S. St Francis Dr.**  
**Santa Fe, NM 87505**

QUESTIONS, Page 6

Action 383145

**QUESTIONS (continued)**

Operator: DEVON ENERGY PRODUCTION COMPANY, LP 333 West Sheridan Ave. Oklahoma City, OK 73102	OGRID:	6137
	Action Number:	383145
	Action Type:	[C-141] Remediation Closure Request C-141 (C-141-v-Closure)

**QUESTIONS**

Liner Inspection Information	
Last liner inspection notification (C-141L) recorded	381656
Liner inspection date pursuant to Subparagraph (a) of Paragraph (5) of Subsection A of 19.15.29.11 NMAC	09/11/2024
Was all the impacted materials removed from the liner	Yes
What was the liner inspection surface area in square feet	5082

**Remediation Closure Request**

*Only answer the questions in this group if seeking remediation closure for this release because all remediation steps have been completed.*

Requesting a remediation closure approval with this submission	Yes
Have the lateral and vertical extents of contamination been fully delineated	Yes
Was this release entirely contained within a lined containment area	Yes
What was the total surface area (in square feet) remediated	0
What was the total volume (cubic yards) remediated	0
Summarize any additional remediation activities not included by answers (above)	see report

*The responsible party must attach information demonstrating they have complied with all applicable closure requirements and any conditions or directives of the OCD. This demonstration should be in the form of a comprehensive report (in .pdf format) including a scaled site map, sampling diagrams, relevant field notes, photographs of any excavation prior to backfilling, laboratory data including chain of custody documents of final sampling, and a narrative of the remedial activities. Refer to 19.15.29.12 NMAC.*

I hereby certify that the information given above is true and complete to the best of my knowledge and understand that pursuant to OCD rules and regulations all operators are required to report and/or file certain release notifications and perform corrective actions for releases which may endanger public health or the environment. The acceptance of a C-141 report by the OCD does not relieve the operator of liability should their operations have failed to adequately investigate and remediate contamination that pose a threat to groundwater, surface water, human health or the environment. In addition, OCD acceptance of a C-141 report does not relieve the operator of responsibility for compliance with any other federal, state, or local laws and/or regulations. The responsible party acknowledges they must substantially restore, reclaim, and re-vegetate the impacted surface area to the conditions that existed prior to the release or their final land use in accordance with 19.15.29.13 NMAC including notification to the OCD when reclamation and re-vegetation are complete.

I hereby agree and sign off to the above statement	Name: Dale Woodall Title: EHS Professional Email: Dale.Woodall@dmn.com Date: 09/12/2024
--	--



**District I**  
1625 N. French Dr., Hobbs, NM 88240  
Phone:(575) 393-6161 Fax:(575) 393-0720  
**District II**  
811 S. First St., Artesia, NM 88210  
Phone:(575) 748-1283 Fax:(575) 748-9720  
**District III**  
1000 Rio Brazos Rd., Aztec, NM 87410  
Phone:(505) 334-6178 Fax:(505) 334-6170  
**District IV**  
1220 S. St Francis Dr., Santa Fe, NM 87505  
Phone:(505) 476-3470 Fax:(505) 476-3462

**State of New Mexico**  
**Energy, Minerals and Natural Resources**  
**Oil Conservation Division**  
**1220 S. St Francis Dr.**  
**Santa Fe, NM 87505**

CONDITIONS  
  
Action 383145

CONDITIONS

Operator: DEVON ENERGY PRODUCTION COMPANY, LP 333 West Sheridan Ave. Oklahoma City, OK 73102	OGRID: 6137
	Action Number: 383145
	Action Type: [C-141] Remediation Closure Request C-141 (C-141-v-Closure)

CONDITIONS

Created By	Condition	Condition Date
scott.rodgers	App ID 383145 Liner Inspection approved	9/16/2024