

CO2%	80.30%		
HC%	19.70%		
Flare Volume	245 mscfd		
HC Volume	48.2601 mscfd	NHU CTB	80.489
CO2 Volume	196.7399 mscfd	SHU CTB	80.302
		NHU WIB	93.595
		NHU NIB	94.461
		SHU RCF	86.311
		NHU RCF	85.319
		South Indian Basin CMPR STA	0.446


4500LP compressor went down on high suction pressure. Operator was dispatched to try and bring the unit back online and automation was called out to troubleshoot. Operator was able to get unit warmed up and back online. Flaring ended once 4700LP was fully loaded.




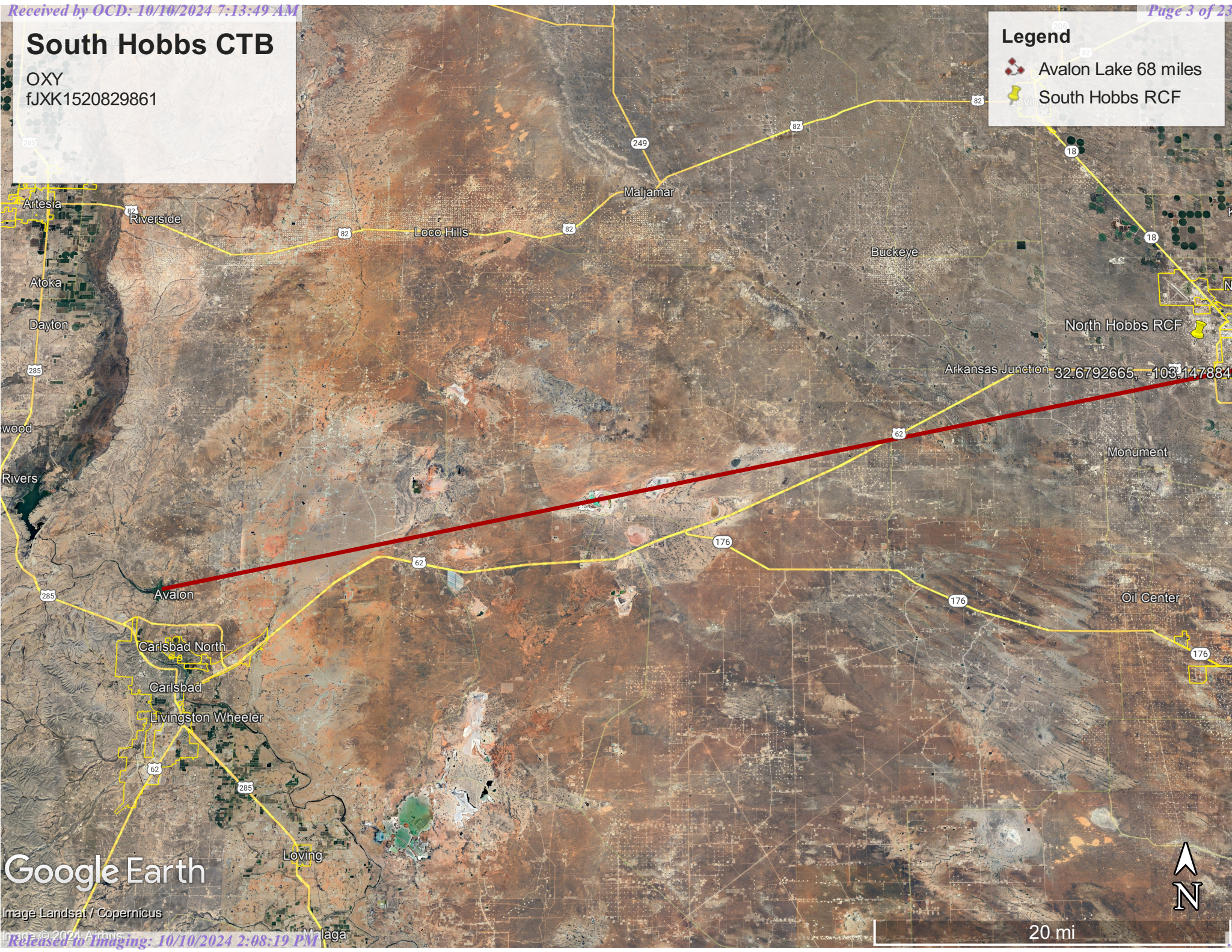
South Hobbs CTB

OXY
fJXK1520829861

Legend

 Avalon Lake 68 miles

 South Hobbs RCF



Google Earth

Image Landsat / Copernicus



20 mi

South Hobbs CTB

OCD Facility ID: fJXK1520829861



Google Earth

900 ft



Map Unit Description: Simona fine sandy loam, 0 to 3 percent slopes---Lea County, New Mexico

SH CTB.1

Lea County, New Mexico

SE—Simona fine sandy loam, 0 to 3 percent slopes

Map Unit Setting

National map unit symbol: dmr2

Elevation: 3,000 to 4,200 feet

Mean annual precipitation: 10 to 15 inches

Mean annual air temperature: 58 to 62 degrees F

Frost-free period: 190 to 205 days

Farmland classification: Not prime farmland

Map Unit Composition

Simona and similar soils: 85 percent

Minor components: 15 percent

Estimates are based on observations, descriptions, and transects of the mapunit.

Description of Simona

Setting

Landform: Plains

Landform position (three-dimensional): Rise

Down-slope shape: Linear

Across-slope shape: Linear

Parent material: Calcareous eolian deposits derived from sedimentary rock

Typical profile

A - 0 to 8 inches: fine sandy loam

Bk - 8 to 16 inches: gravelly fine sandy loam

Bkm - 16 to 26 inches: cemented material

Properties and qualities

Slope: 0 to 3 percent

Depth to restrictive feature: 7 to 20 inches to petrocalcic

Drainage class: Well drained

Runoff class: Very high

Capacity of the most limiting layer to transmit water (Ksat): Very low to moderately low (0.00 to 0.06 in/hr)

Depth to water table: More than 80 inches

Frequency of flooding: None

Frequency of ponding: None

Calcium carbonate, maximum content: 35 percent

Gypsum, maximum content: 1 percent

Maximum salinity: Nonsaline to very slightly saline (0.0 to 2.0 mmhos/cm)

Sodium adsorption ratio, maximum: 2.0

Available water supply, 0 to 60 inches: Very low (about 2.0 inches)

Interpretive groups

Land capability classification (irrigated): 6s

Map Unit Description: Simona fine sandy loam, 0 to 3 percent slopes---Lea County, New Mexico

SH CTB.1

Land capability classification (nonirrigated): 7s
Hydrologic Soil Group: D
Ecological site: R070BD002NM - Shallow Sandy
Hydric soil rating: No

Minor Components

Kimbrough

Percent of map unit: 8 percent
Ecological site: R077CY037TX - Very Shallow 16-21" PZ
Hydric soil rating: No

Lea

Percent of map unit: 7 percent
Ecological site: R077CY028TX - Limy Upland 16-21" PZ
Hydric soil rating: No

Data Source Information

Soil Survey Area: Lea County, New Mexico
Survey Area Data: Version 20, Sep 6, 2023



Map Unit Description: Kimbrough-Lea complex, dry, 0 to 3 percent slopes---Lea County, New Mexico

SH CTB.2

Lea County, New Mexico

KU—Kimbrough-Lea complex, dry, 0 to 3 percent slopes

Map Unit Setting

National map unit symbol: 2tw46

Elevation: 2,500 to 4,800 feet

Mean annual precipitation: 14 to 16 inches

Mean annual air temperature: 57 to 63 degrees F

Frost-free period: 180 to 220 days

Farmland classification: Not prime farmland

Map Unit Composition

Kimbrough and similar soils: 45 percent

Lea and similar soils: 25 percent

Minor components: 30 percent

Estimates are based on observations, descriptions, and transects of the mapunit.

Description of Kimbrough

Setting

Landform: Playa rims, plains

Down-slope shape: Convex, linear

Across-slope shape: Concave, linear

Parent material: Loamy eolian deposits derived from sedimentary rock

Typical profile

A - 0 to 3 inches: gravelly loam

Bw - 3 to 10 inches: loam

Bkkm1 - 10 to 16 inches: cemented material

Bkkm2 - 16 to 80 inches: cemented material

Properties and qualities

Slope: 0 to 3 percent

Depth to restrictive feature: 4 to 18 inches to petrocalcic

Drainage class: Well drained

Runoff class: Very high

Capacity of the most limiting layer to transmit water (Ksat): Very low to moderately low (0.00 to 0.01 in/hr)

Depth to water table: More than 80 inches

Frequency of flooding: None

Frequency of ponding: None

Calcium carbonate, maximum content: 95 percent

Maximum salinity: Nonsaline to very slightly saline (0.0 to 2.0 mmhos/cm)

Sodium adsorption ratio, maximum: 1.0

Available water supply, 0 to 60 inches: Very low (about 1.4 inches)

Interpretive groups

Land capability classification (irrigated): None specified

Map Unit Description: Kimbrough-Lea complex, dry, 0 to 3 percent slopes---Lea County, New Mexico

SH CTB.2

Land capability classification (nonirrigated): 7s
Hydrologic Soil Group: D
Ecological site: R077DY049TX - Very Shallow 12-17" PZ
Hydric soil rating: No

Description of Lea

Setting

Landform: Plains
Down-slope shape: Convex
Across-slope shape: Linear
Parent material: Calcareous, loamy eolian deposits from the blackwater draw formation of pleistocene age over indurated caliche of pliocene age

Typical profile

A - 0 to 10 inches: loam
Bk - 10 to 18 inches: loam
Bkk - 18 to 26 inches: gravelly fine sandy loam
Bkkm - 26 to 80 inches: cemented material

Properties and qualities

Slope: 0 to 3 percent
Depth to restrictive feature: 22 to 30 inches to petrocalcic
Drainage class: Well drained
Runoff class: High
Capacity of the most limiting layer to transmit water (Ksat): Very low to moderately low (0.00 to 0.06 in/hr)
Depth to water table: More than 80 inches
Frequency of flooding: None
Frequency of ponding: None
Calcium carbonate, maximum content: 90 percent
Maximum salinity: Nonsaline to very slightly saline (0.0 to 2.0 mmhos/cm)
Sodium adsorption ratio, maximum: 3.0
Available water supply, 0 to 60 inches: Very low (about 2.9 inches)

Interpretive groups

Land capability classification (irrigated): None specified
Land capability classification (nonirrigated): 7s
Hydrologic Soil Group: D
Ecological site: R077DY047TX - Sandy Loam 12-17" PZ
Hydric soil rating: No

Minor Components

Kenhill

Percent of map unit: 12 percent
Landform: Plains
Down-slope shape: Linear
Across-slope shape: Linear
Ecological site: R077DY038TX - Clay Loam 12-17" PZ
Hydric soil rating: No

Map Unit Description: Kimbrough-Lea complex, dry, 0 to 3 percent slopes---Lea County, New Mexico

SH CTB.2

Douro

Percent of map unit: 12 percent

Landform: Plains

Down-slope shape: Linear

Across-slope shape: Linear

Ecological site: R077DY047TX - Sandy Loam 12-17" PZ

Other vegetative classification: Unnamed (G077DH000TX)

Hydric soil rating: No

Spraberry

Percent of map unit: 6 percent

Landform: Playa rims, plains

Down-slope shape: Convex, linear

Across-slope shape: Linear

Ecological site: R077DY049TX - Very Shallow 12-17" PZ

Other vegetative classification: Unnamed (G077DH000TX)

Hydric soil rating: No

Data Source Information

Soil Survey Area: Lea County, New Mexico

Survey Area Data: Version 20, Sep 6, 2023



Soil Map—Lea County, New Mexico
(SH CTB)



Natural Resources
Conservation Service

Web Soil Survey
National Cooperative Soil Survey

9/30/2024
Page 1 of 3

Soil Map—Lea County, New Mexico
(SH CTB)

MAP LEGEND

Area of Interest (AOI)

 Area of Interest (AOI)

Soils

 Soil Map Unit Polygons

 Soil Map Unit Lines

 Soil Map Unit Points

Special Point Features



Blowout



Borrow Pit



Clay Spot



Closed Depression



Gravel Pit



Gravelly Spot



Landfill



Lava Flow



Marsh or swamp



Mine or Quarry



Miscellaneous Water



Perennial Water



Rock Outcrop



Saline Spot



Sandy Spot



Severely Eroded Spot



Sinkhole



Slide or Slip



Sodic Spot



Spoil Area



Stony Spot



Very Stony Spot



Wet Spot



Other



Special Line Features

Water Features



Streams and Canals

Transportation



Rails



Interstate Highways



US Routes



Major Roads



Local Roads

Background



Aerial Photography

MAP INFORMATION

The soil surveys that comprise your AOI were mapped at 1:20,000.

Warning: Soil Map may not be valid at this scale.

Enlargement of maps beyond the scale of mapping can cause misunderstanding of the detail of mapping and accuracy of soil line placement. The maps do not show the small areas of contrasting soils that could have been shown at a more detailed scale.

Please rely on the bar scale on each map sheet for map measurements.

Source of Map: Natural Resources Conservation Service

Web Soil Survey URL:

Coordinate System: Web Mercator (EPSG:3857)

Maps from the Web Soil Survey are based on the Web Mercator projection, which preserves direction and shape but distorts distance and area. A projection that preserves area, such as the Albers equal-area conic projection, should be used if more accurate calculations of distance or area are required.

This product is generated from the USDA-NRCS certified data as of the version date(s) listed below.

Soil Survey Area: Lea County, New Mexico

Survey Area Data: Version 20, Sep 6, 2023

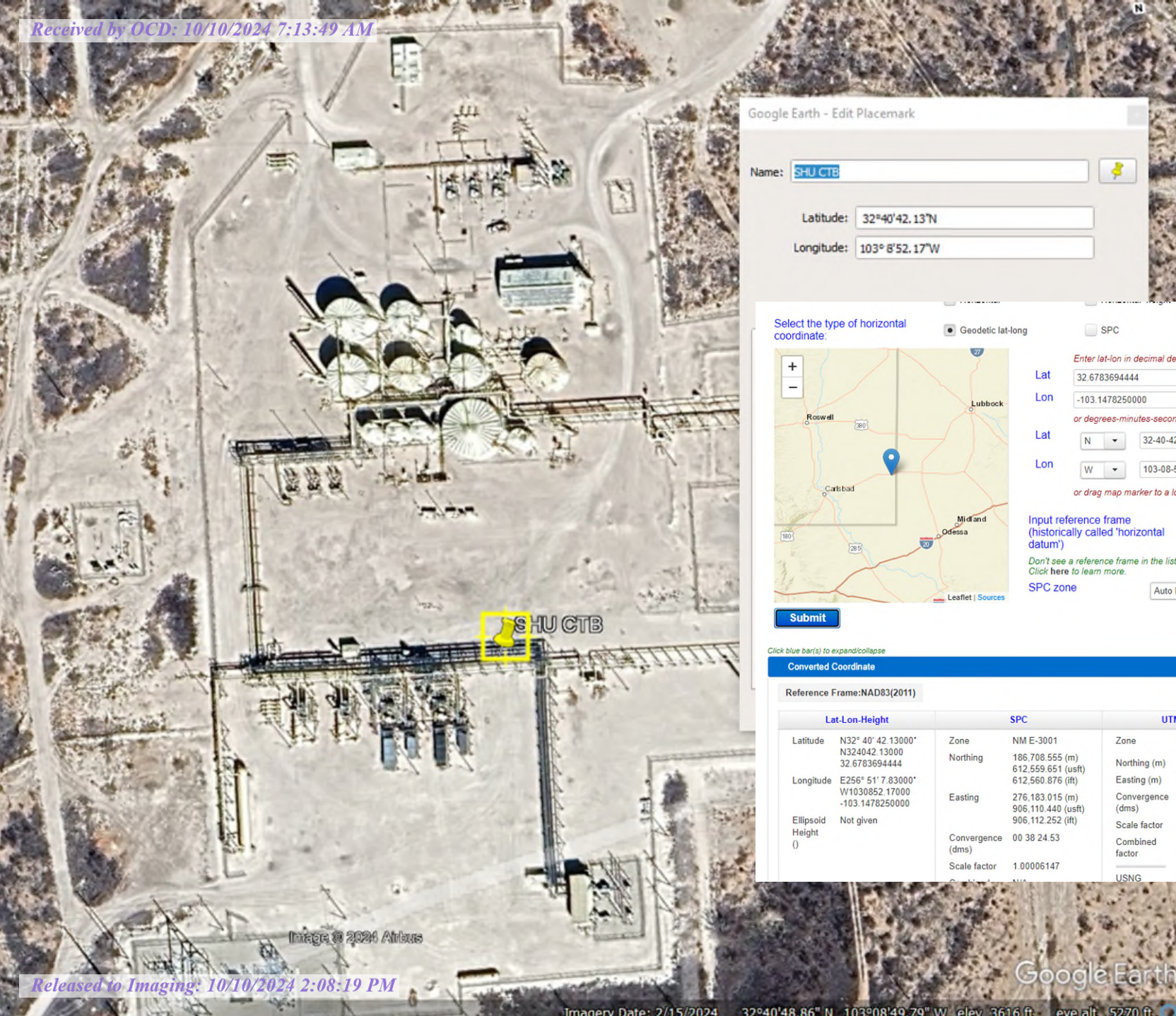
Soil map units are labeled (as space allows) for map scales 1:50,000 or larger.

Date(s) aerial images were photographed: Jan 18, 2020—Feb 17, 2020

The orthophoto or other base map on which the soil lines were compiled and digitized probably differs from the background imagery displayed on these maps. As a result, some minor shifting of map unit boundaries may be evident.

Map Unit Legend

Map Unit Symbol	Map Unit Name	Acres in AOI	Percent of AOI
KU	Kimbrough-Lea complex, dry, 0 to 3 percent slopes	0.2	0.5%
SE	Simona fine sandy loam, 0 to 3 percent slopes	31.6	99.5%
Totals for Area of Interest		31.7	100.0%



Google Earth - Edit Placemark

Name:

Latitude:

Longitude:

Select the type of horizontal coordinate:

☒ Geodetic lat-long ☐ SPC ☐ UTM

Enter lat-lon in decimal degrees

Lat

Lon

or degrees-minutes-seconds

Lat

Lon

or drag map marker to a location of interest

Input reference frame (historically called 'horizontal datum')

Don't see a reference frame in the list? [Click here to learn more.](#)

SPC zone

Click blue bar(s) to expand/collapse

Converted Coordinate							
Reference Frame:NAD83(2011)							
Lat-Lon-Height		SPC		UTM/USNG		XYZ (m)	
Latitude	N32° 40' 42.13000"	Zone	NM E-3001	Zone	<div>13</div>	X	N/A
	N324042.13000	Northing	186,708.555 (m)	Northing (m)	3,617,147.709	Y	N/A
	32.6783694444		612,559.651 (usft)	Easting (m)	673,660.220	Z	N/A
Longitude	E256° 51' 7.83000"		612,560.876 (ft)	Easting (m)	673,660.220		
	W1030852.17000	Easting	276,183.015 (m)	Convergence (dms)	01 00 01.01		
	-103.1478250000		906,110.440 (usft)	Scale factor	0.99997188		
Ellipsoid	Not given		906,112.252 (ft)	Combined factor	N/A		
Height (')		Convergence (dms)	00 38 24.53	factor			
		Scale factor	1.00006147				
				USNG	13SFS7366017148		

Image © 2024 Airbus

Google Earth

Water Column/Average Depth to Water

No report data available.

Basin/County Search:

County: LE

UTM Filters (in meters):

Easting: 276183.015

Northing: 186708.555

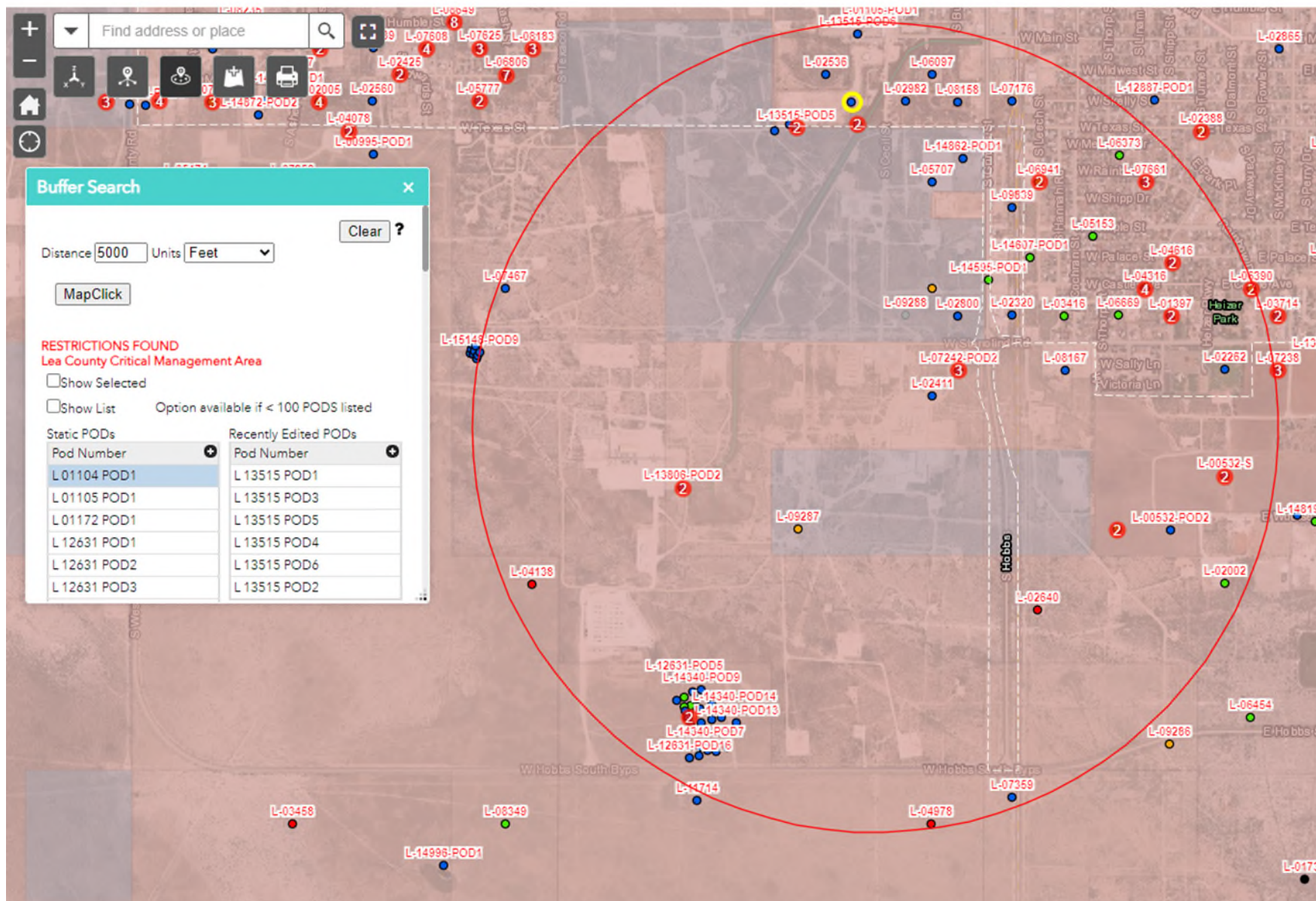
Radius: 50000

* UTM location was derived from PLSS - see Help

<https://nmwrrs.ose.nm.gov/nmwrrs/water-column-form>

SHU CTB water wells
within 5000 ft; see export

https://gis.ose.state.nm.us/gisapps/ose_pod_locations/



District I
1625 N. French Dr., Hobbs, NM 88240
Phone:(575) 393-6161 Fax:(575) 393-0720
District II
811 S. First St., Artesia, NM 88210
Phone:(575) 748-1283 Fax:(575) 748-9720
District III
1000 Rio Brazos Rd., Aztec, NM 87410
Phone:(505) 334-6178 Fax:(505) 334-6170
District IV
1220 S. St Francis Dr., Santa Fe, NM 87505
Phone:(505) 476-3470 Fax:(505) 476-3462

State of New Mexico
Energy, Minerals and Natural Resources
Oil Conservation Division
1220 S. St Francis Dr.
Santa Fe, NM 87505

QUESTIONS

Action 390911

QUESTIONS

Operator: OCCIDENTAL PERMIAN LTD P.O. Box 4294 Houston, TX 772104294	OGRID: 157984
	Action Number: 390911
	Action Type: [C-141] Remediation Closure Request C-141 (C-141-v-Closure)

QUESTIONS

Prerequisites	
Incident ID (n#)	nAPP2428250933
Incident Name	NAPP2428250933 SOUTH HOBBS CTB @ 0
Incident Type	Flare
Incident Status	Remediation Closure Report Received
Incident Facility	[fJXK1520829861] South Hobbs Unit CTB

Location of Release Source	
Please answer all the questions in this group.	
Site Name	South Hobbs CTB
Date Release Discovered	09/22/2024
Surface Owner	Private

Incident Details	
Please answer all the questions in this group.	
Incident Type	Flare
Did this release result in a fire or is the result of a fire	No
Did this release result in any injuries	No
Has this release reached or does it have a reasonable probability of reaching a watercourse	No
Has this release endangered or does it have a reasonable probability of endangering public health	No
Has this release substantially damaged or will it substantially damage property or the environment	No
Is this release of a volume that is or may with reasonable probability be detrimental to fresh water	No

Nature and Volume of Release	
Material(s) released, please answer all that apply below. Any calculations or specific justifications for the volumes provided should be attached to the follow-up C-141 submission.	
Crude Oil Released (bbls) Details	Not answered.
Produced Water Released (bbls) Details	Not answered.
Is the concentration of chloride in the produced water >10,000 mg/l	No
Condensate Released (bbls) Details	Not answered.
Natural Gas Vented (Mcf) Details	Not answered.
Natural Gas Flared (Mcf) Details	Cause: Equipment Failure Producing Well Natural Gas Flared Released: 48 MCF Recovered: 0 MCF Lost: 48 MCF.
Other Released Details	Cause: Equipment Failure Producing Well Carbon Dioxide Released: 197 MCF Recovered: 0 MCF Lost: 197 MCF.
Are there additional details for the questions above (i.e. any answer containing Other, Specify, Unknown, and/or Fire, or any negative lost amounts)	Not answered.

District I

1625 N. French Dr., Hobbs, NM 88240
Phone:(575) 393-6161 Fax:(575) 393-0720

District II

811 S. First St., Artesia, NM 88210
Phone:(575) 748-1283 Fax:(575) 748-9720

District III

1000 Rio Brazos Rd., Aztec, NM 87410
Phone:(505) 334-6178 Fax:(505) 334-6170

District IV

1220 S. St Francis Dr., Santa Fe, NM 87505
Phone:(505) 476-3470 Fax:(505) 476-3462

State of New Mexico
Energy, Minerals and Natural Resources
Oil Conservation Division
1220 S. St Francis Dr.
Santa Fe, NM 87505

QUESTIONS, Page 2

Action 390911

QUESTIONS (continued)

Operator: OCCIDENTAL PERMIAN LTD P.O. Box 4294 Houston, TX 772104294	OGRID: 157984
	Action Number: 390911
	Action Type: [C-141] Remediation Closure Request C-141 (C-141-v-Closure)

QUESTIONS

Nature and Volume of Release (continued)	
Is this a gas only submission (i.e. only significant Mcf values reported)	Yes, according to supplied volumes this appears to be a "gas only" report.
Was this a major release as defined by Subsection A of 19.15.29.7 NMAC	No
Reasons why this would be considered a submission for a notification of a major release	<i>Unavailable.</i>
<i>With the implementation of the 19.15.27 NMAC (05/25/2021), venting and/or flaring of natural gas (i.e. gas only) are to be submitted on the C-129 form.</i>	

Initial Response

The responsible party must undertake the following actions immediately unless they could create a safety hazard that would result in injury.

The source of the release has been stopped	True
The impacted area has been secured to protect human health and the environment	True
Released materials have been contained via the use of berms or dikes, absorbent pads, or other containment devices	True
All free liquids and recoverable materials have been removed and managed appropriately	True
If all the actions described above have not been undertaken, explain why	<i>Not answered.</i>

Per Paragraph (4) of Subsection B of 19.15.29.8 NMAC the responsible party may commence remediation immediately after discovery of a release. If remediation has begun, please prepare and attach a narrative of actions to date in the follow-up C-141 submission. If remedial efforts have been successfully completed or if the release occurred within a lined containment area (see Subparagraph (a) of Paragraph (5) of Subsection A of 19.15.29.11 NMAC), please prepare and attach all information needed for closure evaluation in the follow-up C-141 submission.

I hereby certify that the information given above is true and complete to the best of my knowledge and understand that pursuant to OCD rules and regulations all operators are required to report and/or file certain release notifications and perform corrective actions for releases which may endanger public health or the environment. The acceptance of a C-141 report by the OCD does not relieve the operator of liability should their operations have failed to adequately investigate and remediate contamination that pose a threat to groundwater, surface water, human health or the environment. In addition, OCD acceptance of a C-141 report does not relieve the operator of responsibility for compliance with any other federal, state, or local laws and/or regulations.

I hereby agree and sign off to the above statement	Name: Shaina Rojas Title: Specialist Environmental Email: Shaina_rojas@oxy.com Date: 10/10/2024
--	--

District I

1625 N. French Dr., Hobbs, NM 88240
Phone:(575) 393-6161 Fax:(575) 393-0720

District II

811 S. First St., Artesia, NM 88210
Phone:(575) 748-1283 Fax:(575) 748-9720

District III

1000 Rio Brazos Rd., Aztec, NM 87410
Phone:(505) 334-6178 Fax:(505) 334-6170

District IV

1220 S. St Francis Dr., Santa Fe, NM 87505
Phone:(505) 476-3470 Fax:(505) 476-3462

State of New Mexico
Energy, Minerals and Natural Resources
Oil Conservation Division
1220 S. St Francis Dr.
Santa Fe, NM 87505

QUESTIONS, Page 3

Action 390911

QUESTIONS (continued)

Operator: OCCIDENTAL PERMIAN LTD P.O. Box 4294 Houston, TX 772104294	OGRID:	157984
	Action Number:	390911
	Action Type:	[C-141] Remediation Closure Request C-141 (C-141-v-Closure)

QUESTIONS**Site Characterization**

Please answer all the questions in this group (only required when seeking remediation plan approval and beyond). This information must be provided to the appropriate district office no later than 90 days after the release discovery date.

What is the shallowest depth to groundwater beneath the area affected by the release in feet below ground surface (ft bgs)	Between 75 and 100 (ft.)
What method was used to determine the depth to ground water	NM OSE iWaters Database Search
Did this release impact groundwater or surface water	No
What is the minimum distance, between the closest lateral extents of the release and the following surface areas:	
A continuously flowing watercourse or any other significant watercourse	Greater than 5 (mi.)
Any lakebed, sinkhole, or playa lake (measured from the ordinary high-water mark)	Greater than 5 (mi.)
An occupied permanent residence, school, hospital, institution, or church	Between ½ and 1 (mi.)
A spring or a private domestic fresh water well used by less than five households for domestic or stock watering purposes	Between 500 and 1000 (ft.)
Any other fresh water well or spring	Between ½ and 1 (mi.)
Incorporated municipal boundaries or a defined municipal fresh water well field	Between 500 and 1000 (ft.)
A wetland	Greater than 5 (mi.)
A subsurface mine	Greater than 5 (mi.)
An (non-karst) unstable area	Greater than 5 (mi.)
Categorize the risk of this well / site being in a karst geology	Low
A 100-year floodplain	Between 500 and 1000 (ft.)
Did the release impact areas not on an exploration, development, production, or storage site	No

Remediation Plan

Please answer all the questions that apply or are indicated. This information must be provided to the appropriate district office no later than 90 days after the release discovery date.

Requesting a remediation plan approval with this submission	Yes
Attach a comprehensive report demonstrating the lateral and vertical extents of soil contamination associated with the release have been determined, pursuant to 19.15.29.11 NMAC and 19.15.29.13 NMAC.	
Have the lateral and vertical extents of contamination been fully delineated	Yes
Was this release entirely contained within a lined containment area	No

Soil Contamination Sampling: (Provide the highest observable value for each, in milligrams per kilograms.)

Chloride	(EPA 300.0 or SM4500 Cl B)	0
TPH (GRO+DRO+MRO)	(EPA SW-846 Method 8015M)	0
GRO+DRO	(EPA SW-846 Method 8015M)	0
BTEX	(EPA SW-846 Method 8021B or 8260B)	0
Benzene	(EPA SW-846 Method 8021B or 8260B)	0

Per Subsection B of 19.15.29.11 NMAC unless the site characterization report includes completed efforts at remediation, the report must include a proposed remediation plan in accordance with 19.15.29.12 NMAC, which includes the anticipated timelines for beginning and completing the remediation.

On what estimated date will the remediation commence	09/22/2024
On what date will (or did) the final sampling or liner inspection occur	09/22/2024
On what date will (or was) the remediation complete(d)	09/22/2024
What is the estimated surface area (in square feet) that will be reclaimed	0
What is the estimated volume (in cubic yards) that will be reclaimed	0
What is the estimated surface area (in square feet) that will be remediated	0
What is the estimated volume (in cubic yards) that will be remediated	0

These estimated dates and measurements are recognized to be the best guess or calculation at the time of submission and may (be) change(d) over time as more remediation efforts are completed.

The OCD recognizes that proposed remediation measures may have to be minimally adjusted in accordance with the physical realities encountered during remediation. If the responsible party has any need to significantly deviate from the remediation plan proposed, then it should consult with the division to determine if another remediation plan submission is required.

District I

1625 N. French Dr., Hobbs, NM 88240
Phone:(575) 393-6161 Fax:(575) 393-0720

District II

811 S. First St., Artesia, NM 88210
Phone:(575) 748-1283 Fax:(575) 748-9720

District III

1000 Rio Brazos Rd., Aztec, NM 87410
Phone:(505) 334-6178 Fax:(505) 334-6170

District IV

1220 S. St Francis Dr., Santa Fe, NM 87505
Phone:(505) 476-3470 Fax:(505) 476-3462

State of New Mexico
Energy, Minerals and Natural Resources
Oil Conservation Division
1220 S. St Francis Dr.
Santa Fe, NM 87505

QUESTIONS, Page 4

Action 390911

QUESTIONS (continued)

Operator: OCCIDENTAL PERMIAN LTD P.O. Box 4294 Houston, TX 772104294	OGRID: 157984
	Action Number: 390911
	Action Type: [C-141] Remediation Closure Request C-141 (C-141-v-Closure)

QUESTIONS**Remediation Plan (continued)**

Please answer all the questions that apply or are indicated. This information must be provided to the appropriate district office no later than 90 days after the release discovery date.

This remediation will (or is expected to) utilize the following processes to remediate / reduce contaminants:

(Select all answers below that apply.)

(Ex Situ) Excavation and off-site disposal (i.e. dig and haul, hydrovac, etc.)	Not answered.
(Ex Situ) Excavation and on-site remediation (i.e. On-Site Land Farms)	Not answered.
(In Situ) Soil Vapor Extraction	Not answered.
(In Situ) Chemical processing (i.e. Soil Shredding, Potassium Permanganate, etc.)	Not answered.
(In Situ) Biological processing (i.e. Microbes / Fertilizer, etc.)	Not answered.
(In Situ) Physical processing (i.e. Soil Washing, Gypsum, Disking, etc.)	Not answered.
Ground Water Abatement pursuant to 19.15.30 NMAC	Not answered.
OTHER (Non-listed remedial process)	Yes
Other Non-listed Remedial Process. Please specify	This is a CO2 gas release only and NO spills occurred

Per Subsection B of 19.15.29.11 NMAC unless the site characterization report includes completed efforts at remediation, the report must include a proposed remediation plan in accordance with 19.15.29.12 NMAC, which includes the anticipated timelines for beginning and completing the remediation.

I hereby certify that the information given above is true and complete to the best of my knowledge and understand that pursuant to OCD rules and regulations all operators are required to report and/or file certain release notifications and perform corrective actions for releases which may endanger public health or the environment. The acceptance of a C-141 report by the OCD does not relieve the operator of liability should their operations have failed to adequately investigate and remediate contamination that pose a threat to groundwater, surface water, human health or the environment. In addition, OCD acceptance of a C-141 report does not relieve the operator of responsibility for compliance with any other federal, state, or local laws and/or regulations.

I hereby agree and sign off to the above statement	Name: Shaina Rojas Title: Specialist Environmental Email: Shaina_rojas@oxy.com Date: 10/10/2024
--	--

The OCD recognizes that proposed remediation measures may have to be minimally adjusted in accordance with the physical realities encountered during remediation. If the responsible party has any need to significantly deviate from the remediation plan proposed, then it should consult with the division to determine if another remediation plan submission is required.

District I
1625 N. French Dr., Hobbs, NM 88240
Phone:(575) 393-6161 Fax:(575) 393-0720
District II
811 S. First St., Artesia, NM 88210
Phone:(575) 748-1283 Fax:(575) 748-9720
District III
1000 Rio Brazos Rd., Aztec, NM 87410
Phone:(505) 334-6178 Fax:(505) 334-6170
District IV
1220 S. St Francis Dr., Santa Fe, NM 87505
Phone:(505) 476-3470 Fax:(505) 476-3462

State of New Mexico
Energy, Minerals and Natural Resources
Oil Conservation Division
1220 S. St Francis Dr.
Santa Fe, NM 87505

QUESTIONS, Page 5

Action 390911

QUESTIONS (continued)

Operator: OCCIDENTAL PERMIAN LTD P.O. Box 4294 Houston, TX 772104294	OGRID: 157984
	Action Number: 390911
	Action Type: [C-141] Remediation Closure Request C-141 (C-141-v-Closure)

QUESTIONS

Deferral Requests Only	
<i>Only answer the questions in this group if seeking a deferral upon approval this submission. Each of the following items must be confirmed as part of any request for deferral of remediation.</i>	
Requesting a deferral of the remediation closure due date with the approval of this submission	No

District I

1625 N. French Dr., Hobbs, NM 88240
Phone:(575) 393-6161 Fax:(575) 393-0720

District II

811 S. First St., Artesia, NM 88210
Phone:(575) 748-1283 Fax:(575) 748-9720

District III

1000 Rio Brazos Rd., Aztec, NM 87410
Phone:(505) 334-6178 Fax:(505) 334-6170

District IV

1220 S. St Francis Dr., Santa Fe, NM 87505
Phone:(505) 476-3470 Fax:(505) 476-3462

State of New Mexico
Energy, Minerals and Natural Resources
Oil Conservation Division
1220 S. St Francis Dr.
Santa Fe, NM 87505

QUESTIONS, Page 6

Action 390911

QUESTIONS (continued)

Operator: OCCIDENTAL PERMIAN LTD P.O. Box 4294 Houston, TX 772104294	OGRID: 157984
	Action Number: 390911
	Action Type: [C-141] Remediation Closure Request C-141 (C-141-v-Closure)

QUESTIONS

Sampling Event Information	
Last sampling notification (C-141N) recorded	390903
Sampling date pursuant to Subparagraph (a) of Paragraph (1) of Subsection D of 19.15.29.12 NMAC	09/22/2024
What was the (estimated) number of samples that were to be gathered	0
What was the sampling surface area in square feet	0

Remediation Closure Request

Only answer the questions in this group if seeking remediation closure for this release because all remediation steps have been completed.

Requesting a remediation closure approval with this submission	Yes
Have the lateral and vertical extents of contamination been fully delineated	Yes
Was this release entirely contained within a lined containment area	No
All areas reasonably needed for production or subsequent drilling operations have been stabilized, returned to the sites existing grade, and have a soil cover that prevents ponding of water, minimizing dust and erosion	Yes
What was the total surface area (in square feet) remediated	0
What was the total volume (cubic yards) remediated	0
All areas not reasonably needed for production or subsequent drilling operations have been reclaimed to contain a minimum of four feet of non-waste contain earthen material with concentrations less than 600 mg/kg chlorides, 100 mg/kg TPH, 50 mg/kg BTEX, and 10 mg/kg Benzene	Yes
What was the total surface area (in square feet) reclaimed	0
What was the total volume (in cubic yards) reclaimed	0
Summarize any additional remediation activities not included by answers (above)	This is a CO2 gas release only and NO spills occurred.

The responsible party must attach information demonstrating they have complied with all applicable closure requirements and any conditions or directives of the OCD. This demonstration should be in the form of a comprehensive report (in .pdf format) including a scaled site map, sampling diagrams, relevant field notes, photographs of any excavation prior to backfilling, laboratory data including chain of custody documents of final sampling, and a narrative of the remedial activities. Refer to 19.15.29.12 NMAC.

I hereby certify that the information given above is true and complete to the best of my knowledge and understand that pursuant to OCD rules and regulations all operators are required to report and/or file certain release notifications and perform corrective actions for releases which may endanger public health or the environment. The acceptance of a C-141 report by the OCD does not relieve the operator of liability should their operations have failed to adequately investigate and remediate contamination that pose a threat to groundwater, surface water, human health or the environment. In addition, OCD acceptance of a C-141 report does not relieve the operator of responsibility for compliance with any other federal, state, or local laws and/or regulations. The responsible party acknowledges they must substantially restore, reclaim, and re-vegetate the impacted surface area to the conditions that existed prior to the release or their final land use in accordance with 19.15.29.13 NMAC including notification to the OCD when reclamation and re-vegetation are complete.

I hereby agree and sign off to the above statement	Name: Shaina Rojas Title: Specialist Environmental Email: Shaina_rojas@oxy.com Date: 10/10/2024
--	--

District I
1625 N. French Dr., Hobbs, NM 88240
Phone:(575) 393-6161 Fax:(575) 393-0720
District II
811 S. First St., Artesia, NM 88210
Phone:(575) 748-1283 Fax:(575) 748-9720
District III
1000 Rio Brazos Rd., Aztec, NM 87410
Phone:(505) 334-6178 Fax:(505) 334-6170
District IV
1220 S. St Francis Dr., Santa Fe, NM 87505
Phone:(505) 476-3470 Fax:(505) 476-3462

State of New Mexico
Energy, Minerals and Natural Resources
Oil Conservation Division
1220 S. St Francis Dr.
Santa Fe, NM 87505

QUESTIONS, Page 7

Action 390911

QUESTIONS (continued)

Operator: OCCIDENTAL PERMIAN LTD P.O. Box 4294 Houston, TX 772104294	OGRID:	157984
	Action Number:	390911
	Action Type:	[C-141] Remediation Closure Request C-141 (C-141-v-Closure)

QUESTIONS

Reclamation Report	
Only answer the questions in this group if all reclamation steps have been completed.	
Requesting a reclamation approval with this submission	No

District I
1625 N. French Dr., Hobbs, NM 88240
Phone:(575) 393-6161 Fax:(575) 393-0720
District II
811 S. First St., Artesia, NM 88210
Phone:(575) 748-1283 Fax:(575) 748-9720
District III
1000 Rio Brazos Rd., Aztec, NM 87410
Phone:(505) 334-6178 Fax:(505) 334-6170
District IV
1220 S. St Francis Dr., Santa Fe, NM 87505
Phone:(505) 476-3470 Fax:(505) 476-3462

State of New Mexico
Energy, Minerals and Natural Resources
Oil Conservation Division
1220 S. St Francis Dr.
Santa Fe, NM 87505

CONDITIONS

Action 390911

CONDITIONS

Operator: OCCIDENTAL PERMIAN LTD P.O. Box 4294 Houston, TX 772104294	OGRID:
	157984
	Action Number:
	390911
Action Type:	
[C-141] Remediation Closure Request C-141 (C-141-v-Closure)	

CONDITIONS

Created By	Condition	Condition Date
scott.rodgers	None	10/10/2024