

CARMONA RESOURCES



SITE INFORMATION

Closure Report
Momba 24 Federal Com 003H
Incident #: nAPP2415832103
Eddy County, New Mexico
Unit B Sec 24 T26S R28E
32.0349°, -104.0392°

Produced Water Release
Point of Release: Leaking Check Valve
Release Date: 04.17.24
Volume Released: 13.1364 barrels of Produced Water
Volume Recovered: 13 barrels of Produced Water

CARMONA RESOURCES



Prepared for:
Concho Operating, LLC
15 West London Road
Loving, New Mexico 88256

Prepared by:
Carmona Resources, LLC
310 West Wall Street
Suite 500
Midland, Texas 79701

310 West Wall Street, Suite 500
Midland TX, 79701
432.813.1992



TABLE OF CONTENTS

1.0 SITE INFORMATION AND BACKGROUND

2.0 SITE CHARACTERIZATION AND GROUNDWATER

3.0 NMAC REGULATORY CRITERIA

4.0 LINER INSPECTION ACTIVITIES

5.0 CONCLUSIONS

FIGURES

FIGURE 1 OVERVIEW FIGURE 2 TOPOGRAPHIC

FIGURE 3 SECONDARY CONTAINMENT MAP

APPENDICES

APPENDIX A PHOTOS

APPENDIX B INITIAL AND FINAL C-141

APPENDIX C SITE CHARACTERIZATION AND GROUNDWATER



October 21, 2024

Mike Bratcher
District Supervisor
Oil Conservation Division, District 2
811 S. First Street
Artesia, New Mexico 88210

Re: Closure Report
Momba 24 Federal Com 003H
Concho Operating, LLC
Incident ID: nAPP2415832103
Site Location: Unit B, S24, T26S, R28E
(Lat 32.0349°, Long -104.0392°)
Eddy County, New Mexico

Mr. Bratcher:

On behalf of Concho Operating, LLC (COG), Carmona Resources, LLC has prepared this letter to document site activities for Momba 24 Federal Com 003H. The site is located at 32.0349°, -104.0392° within Unit B, S24, T26S, R28E, in Eddy County, New Mexico (Figures 1 and 2).

1.0 Site information and Background

Based on the initial C-141 obtained from the New Mexico Oil Conservation Division (NMOCD), the release was discovered on April 17, 2024, due to a leak from a check valve due to corrosion. It resulted in approximately thirteen point one three six four (13.1364) barrels of produced water and thirteen (13) barrels of produced water recovered within the gravel lined facility. See figure 3. The initial C-141 form is attached in Appendix B.

2.0 Site Characterization and Groundwater

The site is located within a medium karst area. Based on a review of the New Mexico Office of State Engineers and USGS databases, no known water source within a 0.50-mile radius of the location. The closest well is located approximately 1.46 miles Northeast of the site in S14, T26S, R28E and was drilled in 2003. The well has a reported depth to groundwater of 92.12' feet below ground surface (ft bgs). A copy of the associated point of diversion is attached in Appendix C.

3.0 Site Characterization and Groundwater

Per the NMOCD regulatory criteria established in 19.15.29.12 NMAC, the following criteria were utilized in assessing the site.

- Benzene: 10 milligrams per kilogram (mg/kg).
- Benzene, toluene, ethylbenzene, and total xylenes (BTEX): 50 mg/kg.
- TPH: 100 mg/kg (GRO + DRO + MRO).
- Chloride: 600 mg/kg.



4.0 Liner Inspection Activities

Before performing the liner inspection, a crew was onsite to remove all the impacted pea gravel so the liner would be free of any freestanding fluids. Once the plastic liner was thoroughly cleaned, the NMOCD division office was notified via email on August 15, 2024, per Subsection D of 19.15.29.12 NMAC. See Appendix B for the NMOCD correspondence prior to performing the liner inspection. On August 19, 2024, Carmona Resources, LLC conducted liner inspection activities to assess the liner's integrity within the facility and determined the liner was intact with no integrity issues. Refer to the Photolog.

5.0 Conclusions

Based on the liner inspection throughout the facility, no further actions are required at the site. The final C-141 is attached, and COG formally requests closure of the spill. If you have any questions regarding this report or need additional information, don't hesitate to contact us at 432-813-1992.

Sincerely,

Carmona Resources, LLC

Mike Carmona
Environmental Manager

Clinton Merritt
Sr. Project Manager

FIGURES

CARMONA RESOURCES







CARMONA RESOURCES



FIGURE 2



SECONDARY CONTAINMENT MAP
COG OPERATING, LLC
MOMBA 24 FEDERAL COM 003H
EDDY COUNTY, NEW MEXICO
32.0349°, -104.0392°



FIGURE 3

APPENDIX A

CARMONA RESOURCES



PHOTOGRAPHIC LOG

COG Operating, LLC

Photograph No. 1

Facility: Momba 24 Federal Com 003H

County: Eddy County, New Mexico

Description:

View Northwest of the intact liner after the pea gravel has been removed. Red outline is the area of the liner inspection.



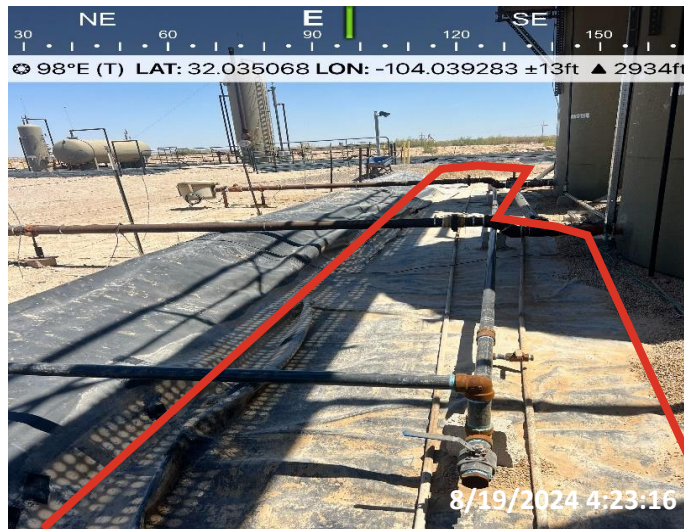
Photograph No. 2

Facility: Momba 24 Federal Com 003H

County: Eddy County, New Mexico

Description:

View East of the intact liner after the pea gravel has been removed. Red outline is the area of the liner inspection.



Photograph No. 3

Facility: Momba 24 Federal Com 003H

County: Eddy County, New Mexico

Description:

View East of the intact liner after the pea gravel has been removed. Red outline is the area of the liner inspection.



APPENDIX B

CARMONA RESOURCES



District I
1625 N. French Dr., Hobbs, NM 88240
District II
811 S. First St., Artesia, NM 88210
District III
1000 Rio Brazos Road, Aztec, NM 87410
District IV
1220 S. St. Francis Dr., Santa Fe, NM 87505

State of New Mexico
Energy Minerals and Natural
Resources Department

Oil Conservation Division
1220 South St. Francis Dr.
Santa Fe, NM 87505

Form C-141
Revised August 24, 2018
Submit to appropriate OCD District office

Incident ID	
District RP	
Facility ID	
Application ID	

Release Notification

Responsible Party

Responsible Party	OGRID
Contact Name	Contact Telephone
Contact email	Incident # (assigned by OCD)
Contact mailing address	

Location of Release Source

Latitude _____ Longitude _____
(NAD 83 in decimal degrees to 5 decimal places)

Site Name	Site Type
Date Release Discovered	API# (if applicable)

Unit Letter	Section	Township	Range	County

Surface Owner: ☐ State ☐ Federal ☐ Tribal ☐ Private (Name: _____)

Nature and Volume of Release

Material(s) Released (Select all that apply and attach calculations or specific justification for the volumes provided below)

<input type="checkbox"/> Crude Oil	Volume Released (bbls)	Volume Recovered (bbls)
<input type="checkbox"/> Produced Water	Volume Released (bbls)	Volume Recovered (bbls)
	Is the concentration of dissolved chloride in the produced water >10,000 mg/l?	<input type="checkbox"/> Yes <input type="checkbox"/> No
<input type="checkbox"/> Condensate	Volume Released (bbls)	Volume Recovered (bbls)
<input type="checkbox"/> Natural Gas	Volume Released (Mcf)	Volume Recovered (Mcf)
<input type="checkbox"/> Other (describe)	Volume/Weight Released (provide units)	Volume/Weight Recovered (provide units)

Cause of Release

Incident ID	
District RP	
Facility ID	
Application ID	

Was this a major release as defined by 19.15.29.7(A) NMAC? <input type="checkbox"/> Yes <input type="checkbox"/> No	If YES, for what reason(s) does the responsible party consider this a major release?
If YES, was immediate notice given to the OCD? By whom? To whom? When and by what means (phone, email, etc)?	

Initial Response

The responsible party must undertake the following actions immediately unless they could create a safety hazard that would result in injury

<input type="checkbox"/> The source of the release has been stopped.	
<input type="checkbox"/> The impacted area has been secured to protect human health and the environment.	
<input type="checkbox"/> Released materials have been contained via the use of berms or dikes, absorbent pads, or other containment devices.	
<input type="checkbox"/> All free liquids and recoverable materials have been removed and managed appropriately.	
If all the actions described above have <u>not</u> been undertaken, explain why:	
Per 19.15.29.8 B. (4) NMAC the responsible party may commence remediation immediately after discovery of a release. If remediation has begun, please attach a narrative of actions to date. If remedial efforts have been successfully completed or if the release occurred within a lined containment area (see 19.15.29.11(A)(5)(a) NMAC), please attach all information needed for closure evaluation.	
I hereby certify that the information given above is true and complete to the best of my knowledge and understand that pursuant to OCD rules and regulations all operators are required to report and/or file certain release notifications and perform corrective actions for releases which may endanger public health or the environment. The acceptance of a C-141 report by the OCD does not relieve the operator of liability should their operations have failed to adequately investigate and remediate contamination that pose a threat to groundwater, surface water, human health or the environment. In addition, OCD acceptance of a C-141 report does not relieve the operator of responsibility for compliance with any other federal, state, or local laws and/or regulations.	
Printed Name: _____	Title: _____
Signature: <u>Patricia Espinoza</u>	Date: _____
email: _____	Telephone: _____
<u>OCD Only</u>	
Received by: _____	Date: _____

L48 Spill Volume Estimate Form - Fill In Gray Cells

Facility Name & Well Number(s):				Momba 24-3		Release Discovery Date & Time:		4.17.24	
Provide any known details about the event:				Momba 24-3 Operator arrived on location and noticed puddle by the transfer pump, leak was coming from 2in check valve on the TP discharge. Plug blew out.		Primary Cause (dropdown):	Procedures not followed	Rain >1/2" in the past 24 hrs:	No
				Secondary Containment Lined or Unlined:		Recovered Volume (bbl.) (if available, not included in volume calculations)	Release Type (dropdown):		Method of Determination (dropdown):
BU:	Permian	Asset Area:	DBW - Gypsum Land Complex	Lined			Produced Water		
Known Volume (dropdown):				No					
Known Area (dropdown):				No					

Spill Calculation - On-Pad Surface Pool Spill

Convert Irregular shape into a series of rectangles	Length (ft.)	Width (ft.)	Average Depth (in.)	Estimated Pool Area (sq. ft.)	Estimated volume of each pool area (bbl.)	Total Estimated Volume of Spill (bbl.)
Rectangle A	15	18	3.1	270.00	4.97	4.97
Rectangle B	30	24	1.0	720.00	4.27	4.27
Rectangle C	45	6	1.0	270.00	1.60	1.60
Rectangle D	45	6	1.0	270.00	1.60	1.60
Rectangle E	15	6	1.0	90.00	0.53	0.53
Rectangle F	15	6	0.3	90.00	0.16	0.16
Rectangle G				0.00	0.00	0.00
Rectangle H				0.00	0.00	0.00
Rectangle I				0.00	0.00	0.00
Rectangle J				0.00	0.00	0.00

District I
1625 N. French Dr., Hobbs, NM 88240
Phone:(575) 393-6161 Fax:(575) 393-0720
District II
811 S. First St., Artesia, NM 88210
Phone:(575) 748-1283 Fax:(575) 748-9720
District III
1000 Rio Brazos Rd., Aztec, NM 87410
Phone:(505) 334-6178 Fax:(505) 334-6170
District IV
1220 S. St Francis Dr., Santa Fe, NM 87505
Phone:(505) 476-3470 Fax:(505) 476-3462

State of New Mexico
Energy, Minerals and Natural Resources
Oil Conservation Division
1220 S. St Francis Dr.
Santa Fe, NM 87505

QUESTIONS

Action 351353

QUESTIONS

Operator: COG PRODUCTION, LLC 600 W. Illinois Ave Midland, TX 79701	OGRID: 217955
	Action Number: 351353
	Action Type: [C-141] Initial C-141 (C-141-v-Initial)

QUESTIONS

Prerequisites	
Incident ID (n#)	nAPP2415832103
Incident Name	NAPP2415832103 MOMBA 24 FEDERAL COM 003H @ 0
Incident Type	Produced Water Release
Incident Status	Initial C-141 Received
Incident Facility	[fAPP2203842302] MOMBA 24 FED COM 3H Battery

Location of Release Source	
Please answer all the questions in this group.	
Site Name	Momba 24 Federal Com 003H
Date Release Discovered	04/17/2024
Surface Owner	Federal

Incident Details	
Please answer all the questions in this group.	
Incident Type	Produced Water Release
Did this release result in a fire or is the result of a fire	No
Did this release result in any injuries	No
Has this release reached or does it have a reasonable probability of reaching a watercourse	No
Has this release endangered or does it have a reasonable probability of endangering public health	No
Has this release substantially damaged or will it substantially damage property or the environment	No
Is this release of a volume that is or may with reasonable probability be detrimental to fresh water	No

Nature and Volume of Release	
Material(s) released, please answer all that apply below. Any calculations or specific justifications for the volumes provided should be attached to the follow-up C-141 submission.	
Crude Oil Released (bbls) Details	Not answered.
Produced Water Released (bbls) Details	Cause: Corrosion Valve Produced Water Released: 13 BBL Recovered: 13 BBL Lost: 0 BBL.
Is the concentration of chloride in the produced water >10,000 mg/l	Yes
Condensate Released (bbls) Details	Not answered.
Natural Gas Vented (Mcf) Details	Not answered.
Natural Gas Flared (Mcf) Details	Not answered.
Other Released Details	Not answered.
Are there additional details for the questions above (i.e. any answer containing Other, Specify, Unknown, and/or Fire, or any negative lost amounts)	Not answered.

District I
1625 N. French Dr., Hobbs, NM 88240
Phone:(575) 393-6161 Fax:(575) 393-0720
District II
811 S. First St., Artesia, NM 88210
Phone:(575) 748-1283 Fax:(575) 748-9720
District III
1000 Rio Brazos Rd., Aztec, NM 87410
Phone:(505) 334-6178 Fax:(505) 334-6170
District IV
1220 S. St Francis Dr., Santa Fe, NM 87505
Phone:(505) 476-3470 Fax:(505) 476-3462

State of New Mexico
Energy, Minerals and Natural Resources
Oil Conservation Division
1220 S. St Francis Dr.
Santa Fe, NM 87505

QUESTIONS, Page 2

Action 351353

QUESTIONS (continued)

Operator: COG PRODUCTION, LLC 600 W. Illinois Ave Midland, TX 79701	OGRID: 217955
	Action Number: 351353
	Action Type: [C-141] Initial C-141 (C-141-v-Initial)

QUESTIONS

Nature and Volume of Release (continued)	
Is this a gas only submission (i.e. only significant Mcf values reported)	No, according to supplied volumes this does not appear to be a "gas only" report.
Was this a major release as defined by Subsection A of 19.15.29.7 NMAC	No
Reasons why this would be considered a submission for a notification of a major release	Unavailable.
With the implementation of the 19.15.27 NMAC (05/25/2021), venting and/or flaring of natural gas (i.e. gas only) are to be submitted on the C-129 form.	

Initial Response

The responsible party must undertake the following actions immediately unless they could create a safety hazard that would result in injury.

The source of the release has been stopped	True
The impacted area has been secured to protect human health and the environment	True
Released materials have been contained via the use of berms or dikes, absorbent pads, or other containment devices	True
All free liquids and recoverable materials have been removed and managed appropriately	True
If all the actions described above have not been undertaken, explain why	Not answered.

Per Paragraph (4) of Subsection B of 19.15.29.8 NMAC the responsible party may commence remediation immediately after discovery of a release. If remediation has begun, please prepare and attach a narrative of actions to date in the follow-up C-141 submission. If remedial efforts have been successfully completed or if the release occurred within a lined containment area (see Subparagraph (a) of Paragraph (5) of Subsection A of 19.15.29.11 NMAC), please prepare and attach all information needed for closure evaluation in the follow-up C-141 submission.

I hereby certify that the information given above is true and complete to the best of my knowledge and understand that pursuant to OCD rules and regulations all operators are required to report and/or file certain release notifications and perform corrective actions for releases which may endanger public health or the environment. The acceptance of a C-141 report by the OCD does not relieve the operator of liability should their operations have failed to adequately investigate and remediate contamination that pose a threat to groundwater, surface water, human health or the environment. In addition, OCD acceptance of a C-141 report does not relieve the operator of responsibility for compliance with any other federal, state, or local laws and/or regulations.

I hereby agree and sign off to the above statement	Name: Brittany Esparza Title: Environmental Technician Email: brittany.Esparza@ConocoPhillips.com Date: 06/06/2024
--	---

District I
1625 N. French Dr., Hobbs, NM 88240
Phone:(575) 393-6161 Fax:(575) 393-0720
District II
811 S. First St., Artesia, NM 88210
Phone:(575) 748-1283 Fax:(575) 748-9720
District III
1000 Rio Brazos Rd., Aztec, NM 87410
Phone:(505) 334-6178 Fax:(505) 334-6170
District IV
1220 S. St Francis Dr., Santa Fe, NM 87505
Phone:(505) 476-3470 Fax:(505) 476-3462

State of New Mexico
Energy, Minerals and Natural Resources
Oil Conservation Division
1220 S. St Francis Dr.
Santa Fe, NM 87505

QUESTIONS, Page 3
Action 351353

QUESTIONS (continued)

Operator: COG PRODUCTION, LLC 600 W. Illinois Ave Midland, TX 79701	OGRID: 217955
	Action Number: 351353
	Action Type: [C-141] Initial C-141 (C-141-v-Initial)

QUESTIONS

Site Characterization <i>Please answer all the questions in this group (only required when seeking remediation plan approval and beyond). This information must be provided to the appropriate district office no later than 90 days after the release discovery date.</i>	
What is the shallowest depth to groundwater beneath the area affected by the release in feet below ground surface (ft bgs)	Not answered.
What method was used to determine the depth to ground water	Not answered.
Did this release impact groundwater or surface water	Not answered.
What is the minimum distance, between the closest lateral extents of the release and the following surface areas:	
A continuously flowing watercourse or any other significant watercourse	Not answered.
Any lakebed, sinkhole, or playa lake (measured from the ordinary high-water mark)	Not answered.
An occupied permanent residence, school, hospital, institution, or church	Not answered.
A spring or a private domestic fresh water well used by less than five households for domestic or stock watering purposes	Not answered.
Any other fresh water well or spring	Not answered.
Incorporated municipal boundaries or a defined municipal fresh water well field	Not answered.
A wetland	Not answered.
A subsurface mine	Not answered.
An (non-karst) unstable area	Not answered.
Categorize the risk of this well / site being in a karst geology	Not answered.
A 100-year floodplain	Not answered.
Did the release impact areas not on an exploration, development, production, or storage site	Not answered.

Remediation Plan <i>Please answer all the questions that apply or are indicated. This information must be provided to the appropriate district office no later than 90 days after the release discovery date.</i>	
Requesting a remediation plan approval with this submission	No
<i>The OCD recognizes that proposed remediation measures may have to be minimally adjusted in accordance with the physical realities encountered during remediation. If the responsible party has any need to significantly deviate from the remediation plan proposed, then it should consult with the division to determine if another remediation plan submission is required.</i>	

District I
1625 N. French Dr., Hobbs, NM 88240
Phone:(575) 393-6161 Fax:(575) 393-0720
District II
811 S. First St., Artesia, NM 88210
Phone:(575) 748-1283 Fax:(575) 748-9720
District III
1000 Rio Brazos Rd., Aztec, NM 87410
Phone:(505) 334-6178 Fax:(505) 334-6170
District IV
1220 S. St Francis Dr., Santa Fe, NM 87505
Phone:(505) 476-3470 Fax:(505) 476-3462

State of New Mexico
Energy, Minerals and Natural Resources
Oil Conservation Division
1220 S. St Francis Dr.
Santa Fe, NM 87505

CONDITIONS

Action 351353

CONDITIONS

Operator: COG PRODUCTION, LLC 600 W. Illinois Ave Midland, TX 79701	OGRID: 217955
	Action Number: 351353
	Action Type: [C-141] Initial C-141 (C-141-v-Initial)

CONDITIONS

Created By	Condition	Condition Date
scott.rodgers	None	6/6/2024

District I
1625 N. French Dr., Hobbs, NM 88240
Phone:(575) 393-6161 Fax:(575) 393-0720
District II
811 S. First St., Artesia, NM 88210
Phone:(575) 748-1283 Fax:(575) 748-9720
District III
1000 Rio Brazos Rd., Aztec, NM 87410
Phone:(505) 334-6178 Fax:(505) 334-6170
District IV
1220 S. St Francis Dr., Santa Fe, NM 87505
Phone:(505) 476-3470 Fax:(505) 476-3462

State of New Mexico
Energy, Minerals and Natural Resources
Oil Conservation Division
1220 S. St Francis Dr.
Santa Fe, NM 87505

QUESTIONS

Action 374500

QUESTIONS

Operator: COG OPERATING LLC 600 W Illinois Ave Midland, TX 79701	OGRID: 229137
	Action Number: 374500
	Action Type: [NOTIFY] Notification Of Liner Inspection (C-141L)

QUESTIONS

Prerequisites	
Incident ID (n#)	nAPP2415832103
Incident Name	NAPP2415832103 MOMBA 24 FEDERAL COM 003H @ 0
Incident Type	Produced Water Release
Incident Status	Initial C-141 Approved
Incident Facility	[fAPP2203842302] MOMBA 24 FED COM 3H Battery

Location of Release Source	
Site Name	Momba 24 Federal Com 003H
Date Release Discovered	04/17/2024
Surface Owner	Federal

Liner Inspection Event Information	
Please answer all the questions in this group.	
What is the liner inspection surface area in square feet	4,500
Have all the impacted materials been removed from the liner	Yes
Liner inspection date pursuant to Subparagraph (a) of Paragraph (5) of Subsection A of 19.15.29.11 NMAC	08/19/2024
Time liner inspection will commence	04:00 PM
Please provide any information necessary for observers to liner inspection	Carmona Resources will do liner inspection
Please provide any information necessary for navigation to liner inspection site	Coordinates on C-141

District I
1625 N. French Dr., Hobbs, NM 88240
Phone:(575) 393-6161 Fax:(575) 393-0720
District II
811 S. First St., Artesia, NM 88210
Phone:(575) 748-1283 Fax:(575) 748-9720
District III
1000 Rio Brazos Rd., Aztec, NM 87410
Phone:(505) 334-6178 Fax:(505) 334-6170
District IV
1220 S. St Francis Dr., Santa Fe, NM 87505
Phone:(505) 476-3470 Fax:(505) 476-3462

State of New Mexico
Energy, Minerals and Natural Resources
Oil Conservation Division
1220 S. St Francis Dr.
Santa Fe, NM 87505

CONDITIONS

Action 374500

CONDITIONS

Operator: COG OPERATING LLC 600 W Illinois Ave Midland, TX 79701	OGRID:
	229137
	Action Number:
	374500
Action Type:	
[NOTIFY] Notification Of Liner Inspection (C-141L)	

CONDITIONS

Created By	Condition	Condition Date
jacquih	Failure to notify the OCD of liner inspections including any changes in date/time per the requirements of 19.15.29.11.A(5)(a)(ii) NMAC, may result in the inspection not being accepted.	8/15/2024

APPENDIX C

CARMONA RESOURCES

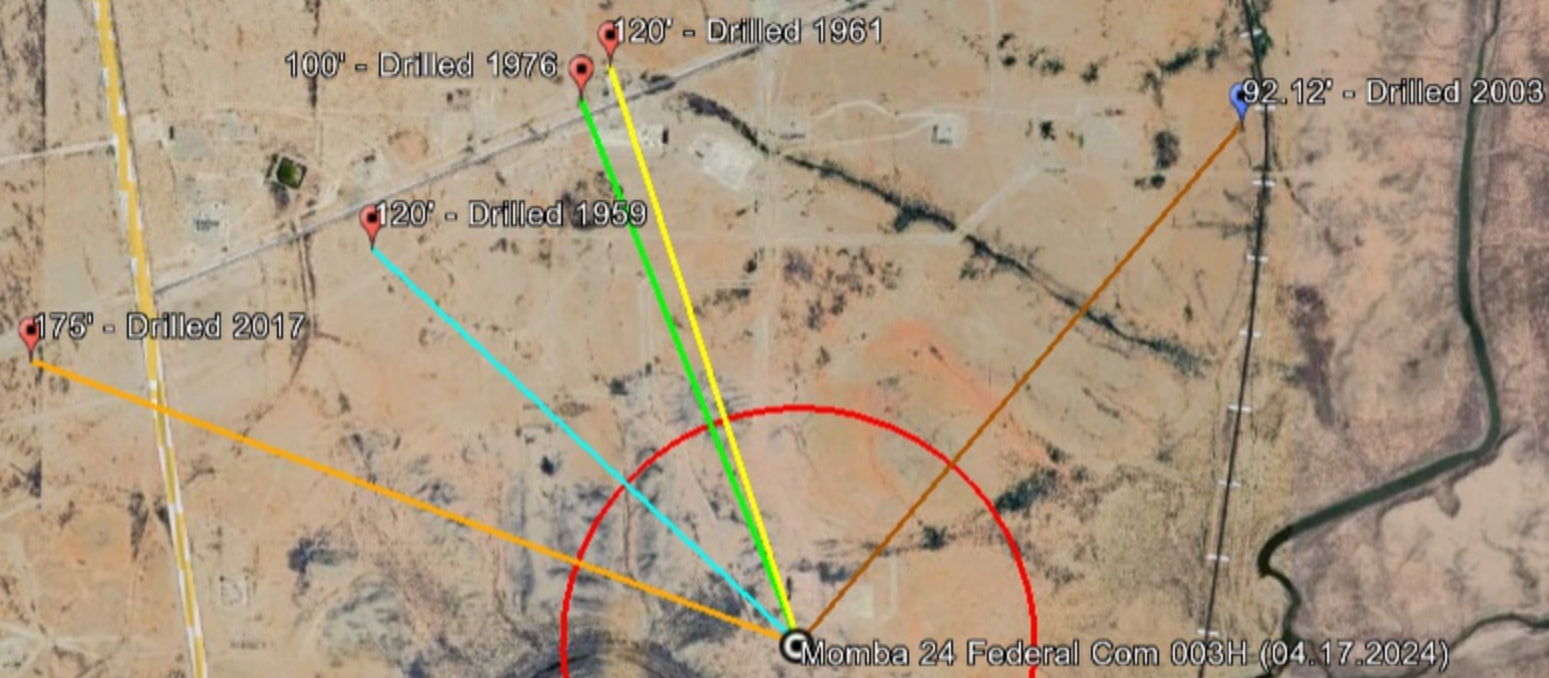


Nearest water well

COG Operating

Legend

- 0.50 Mile Radius
- 1.24 Miles
- 1.24 Miles
- 1.29 Miles
- 1.46 Miles
- 1.74 Miles
- NMSEO Water Well
- Momba 24 Federal Com 003H (04.17.2024)
- USGS Water Well

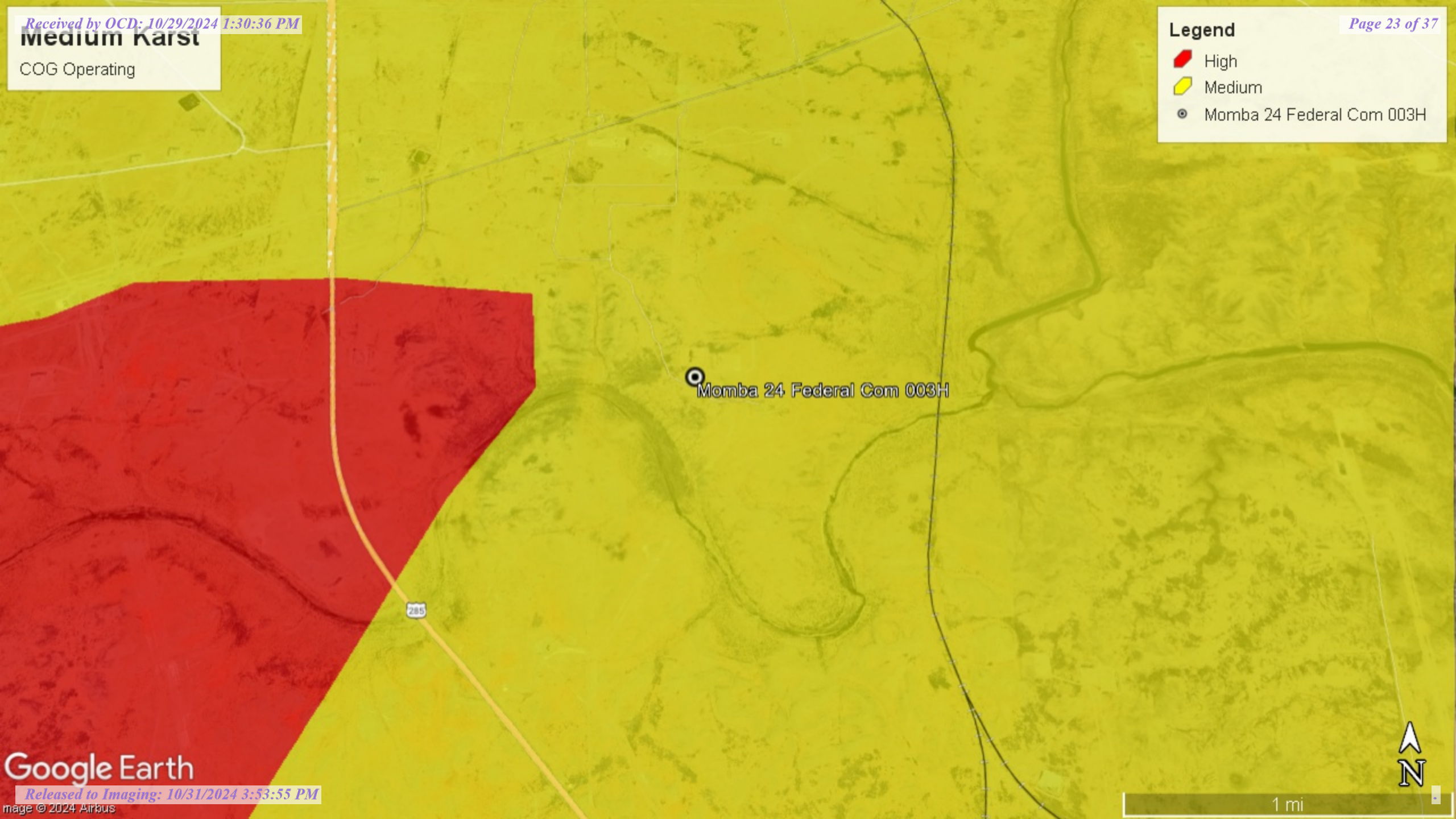


Medium Karst

COG Operating

Legend

- High
- Medium
- Momba 24 Federal Com 003H





New Mexico Office of the State Engineer

Water Column/Average Depth to Water

(A CLW##### in the POD suffix indicates the POD has been replaced & no longer serves a water right file.)

(R=POD has been replaced,
O=orphaned,
C=the file is closed)

(quarters are 1=NW 2=NE 3=SW 4=SE)

(quarters are smallest to largest)

(NAD83 UTM in meters)

(In feet)

POD Number	POD Sub-Code	basin	County	Q 64	Q 16	Q 4	Sec	Tws	Rng	X	Y	Distance	Depth Well	Depth Water	Water Column
C 01668	CUB	ED		3	3	12	26S	28E		589957	3546554*	2263	250	100	150
C 02160 S8	CUB	ED		2	3	3	12	26S	28E	590056	3546653*	2302	200	120	80
C 02160	CUB	ED		4	1	2	14	26S	28E	589243	3546044*	2351	300	120	180
C 02894	C	ED		2	2	3	12	26S	28E	590458	3547061*	2542	240		
C 02160 S	CUB	ED		1	1	2	14	26S	28E	589043	3546244*	2632	300	120	180
C 02160 S2	CUB	ED		1	1	2	14	26S	28E	589043	3546244*	2632	300	120	180
C 02160 S3	CUB	ED		2	2	1	14	26S	28E	588834	3546241*	2796	300	120	180
C 02160 S4	CUB	ED		2	2	1	14	26S	28E	588834	3546241*	2796	300	120	180
C 02160 S6	CUB	ED		3	3	1	14	26S	28E	588232	3545635*	3047	300	120	180
C 02481	CUB	ED		1	1	14	26S	28E		588326	3546138*	3170	200		
C 04022 POD1	CUB	ED		4	4	2	15	26S	28E	588082	3545647	3193	220	175	45
C 02160 S5	CUB	ED		1	1	1	14	26S	28E	588225	3546237*	3307	300	120	180
C 04022 POD2	CUB	ED		2	2	2	27	26S	28E	588106	3543082	3355	250	145	105
C 02924	C	ED		1	3	2	11	26S	28E	589032	3547451*	3521			
C 02479	CUB	ED		4	4	10	26S	28E		587909	3546534*	3730	200		
C 02480	CUB	ED		4	4	10	26S	28E		587909	3546534*	3730	150		

Average Depth to Water: **125 feet**

Minimum Depth: **100 feet**

Maximum Depth: **175 feet**

Record Count: 16

UTMNAD83 Radius Search (in meters):

Easting (X): 591098.87

Northing (Y): 3544600.12

Radius: 4000

*UTM location was derived from PLSS - see Help

The data is furnished by the NMOSE/ISC and is accepted by the recipient with the expressed understanding that the OSE/ISC make no warranties, expressed or implied, concerning the accuracy, completeness, reliability, usability, or suitability for any particular purpose of the data.

4/14/23 6:58 AM

Page 1 of 1

WATER COLUMN/ AVERAGE
DEPTH TO WATER



USGS Home
Contact USGS
Search USGS

National Water Information System: Web Interface

USGS Water Resources

Data Category:

Groundwater

Geographic Area:

New Mexico

GO

Click to hideNews Bulletins

- See the [Water Data for the Nation Blog](#) for the latest news and updates.

Groundwater levels for New Mexico

Click to hide state-specific text

I Important: [Next Generation Monitoring Location Page](#)

Search Results -- 1 sites found

Agency code = usgs
site_no list =

- 320303104012301

Minimum number of levels = 1
[Save file of selected sites](#) to local disk for future upload

USGS 320303104012301 26S.28E.14.21412

Eddy County, New Mexico
Latitude 32°03'03.0", Longitude 104°01'23.0" NAD27
Land-surface elevation 2,972.40 feet above NGVD29
This well is completed in the Other aquifers (N9999OTHER) national aquifer.
This well is completed in the Rustler Formation (312RSLR) local aquifer.

Output formats

Table of data
Tab-separated data
Graph of data
Reselect period

Date	Time	? Water-level date-time accuracy	? Parameter code	Water level, feet below land surface	Water level, feet above specific vertical datum	Referenced vertical datum	? Status	? Method of measurement	? Measuring agency	? Source of measurement	? Water level appr statu
1978-01-13			D 62610		2855.65	NGVD29	1		Z		
1978-01-13			D 62611		2857.19	NAVD88	1		Z		
1978-01-13			D 72019	116.75			1		Z		
1983-01-25			D 62610		2858.75	NGVD29	1		Z		
1983-01-25			D 62611		2860.29	NAVD88	1		Z		
1983-01-25			D 72019	113.65			1		Z		
1987-10-14			D 62610		2873.68	NGVD29	1		Z		
1987-10-14			D 62611		2875.22	NAVD88	1		Z		
1987-10-14			D 72019	98.72			1		Z		
1993-05-04			D 62610		2880.80	NGVD29	1		S		
1993-05-04			D 62611		2882.34	NAVD88	1		S		
1993-05-04			D 72019	91.60			1		S		
1998-01-22			D 62610		2882.55	NGVD29	1		S		
1998-01-22			D 62611		2884.09	NAVD88	1		S		
1998-01-22			D 72019	89.85			1		S		
2003-01-27			D 62610		2880.28	NGVD29	1		S	USGS	S
2003-01-27			D 62611		2881.82	NAVD88	1		S	USGS	S
2003-01-27			D 72019	92.12			1		S	USGS	S

Explanation

Section	Code	Description
---------	------	-------------

Section	Code	Description
Water-level date-time accuracy	D	Date is accurate to the Day
Parameter code	62610	Groundwater level above NGVD 1929, feet
Parameter code	62611	Groundwater level above NAVD 1988, feet
Parameter code	72019	Depth to water level, feet below land surface
Referenced vertical datum	NAVD88	North American Vertical Datum of 1988
Referenced vertical datum	NGVD29	National Geodetic Vertical Datum of 1929
Status	1	Static
Method of measurement	S	Steel-tape measurement.
Method of measurement	Z	Other.
Measuring agency		Not determined
Measuring agency	USGS	U.S. Geological Survey
Source of measurement		Not determined
Source of measurement	S	Measured by personnel of reporting agency.
Water-level approval status	A	Approved for publication -- Processing and review completed.

[Questions about sites/data?](#)
[Feedback on this web site](#)
[Automated retrievals](#)
[Help](#)
[Data Tips](#)
[Explanation of terms](#)
[Subscribe for system changes](#)
[News](#)

[Accessibility](#) [FOIA](#) [Privacy](#) [Policies and Notices](#)
[U.S. Department of the Interior](#) | [U.S. Geological Survey](#)
Title: Groundwater for New Mexico: Water Levels
URL: <https://nwis.waterdata.usgs.gov/nm/nwis/gwlevels?>

Page Contact Information: [New Mexico Water Data Maintainer](#)
Page Last Modified: 2022-12-29 16:09:14 EST
0.28 0.23 nadww02





New Mexico Office of the State Engineer

Point of Diversion Summary

Well Tag	POD Number	(quarters are 1=NW 2=NE 3=SW 4=SE)				(quarters are smallest to largest)		(NAD83 UTM in meters)	
		Q64	Q16	Q4	Sec	Tws	Rng	X	Y
		C	01668	3	3	12	26S	28E	589957 3546554*

Driller License:	224	Driller Company:	MULLIN, R.J.
Driller Name:			
Drill Start Date:	03/22/1976	Drill Finish Date:	04/02/1976
Log File Date:	04/08/1976	PCW Rev Date:	
Pump Type:		Pipe Discharge Size:	
Casing Size:	16.00	Depth Well:	250 feet
		Plug Date:	
		Source:	Shallow
		Estimated Yield:	500 GPM
		Depth Water:	100 feet

Water Bearing Stratifications:	Top	Bottom	Description
	115	135	Limestone/Dolomite/Chalk
	135	147	Limestone/Dolomite/Chalk
	185	196	Limestone/Dolomite/Chalk
	236	238	Limestone/Dolomite/Chalk

Casing Perforations:	Top	Bottom
	0	115
	115	135
	135	147
	147	196
	196	212
	212	234
	234	241
	241	250


*UTM location was derived from PLSS - see Help

The data is furnished by the NMOSE/ISC and is accepted by the recipient with the expressed understanding that the OSE/ISC make no warranties, expressed or implied, concerning the accuracy, completeness, reliability, usability, or suitability for any particular purpose of the data.



New Mexico Office of the State Engineer

Point of Diversion Summary

		(quarters are 1=NW 2=NE 3=SW 4=SE)				(NAD83 UTM in meters)			
		(quarters are smallest to largest)							
Well Tag	POD Number	Q64	Q16	Q4	Sec	Tws	Rng	X	Y
C	01668	3	3	12	26S	28E	589957	3546554*	
x									
Driller License: 224		Driller Company:		MULLIN, R.J.					
Driller Name:									
Drill Start Date: 03/22/1976		Drill Finish Date:		04/02/1976		Plug Date:			
Log File Date: 04/08/1976		PCW Rcv Date:		Source:				Shallow	
Pump Type:		Pipe Discharge Size:		Estimated Yield:				500 GPM	
Casing Size: 16.00		Depth Well:		250 feet		Depth Water:		100 feet	
x									
Water Bearing Stratifications:		Top	Bottom	Description					
		115	135	Limestone/Dolomite/Chalk					
		135	147	Limestone/Dolomite/Chalk					
		185	196	Limestone/Dolomite/Chalk					
		236	238	Limestone/Dolomite/Chalk					
x									
Casing Perforations:		Top	Bottom						
		0	115						
		115	135						
		135	147						
		147	196						
		196	212						
		212	234						
		234	241						
		241	250						

*UTM location was derived from PLSS - see Help

The data is furnished by the NMOSE/ISC and is accepted by the recipient with the expressed understanding that the OSE/ISC make no warranties, expressed or implied, concerning the accuracy, completeness, reliability, usability, or suitability for any particular purpose of the data.


12/29/22 2:00 PM

POINT OF DIVERSION SUMMARY



New Mexico Office of the State Engineer

Point of Diversion Summary

		(quarters are 1=NW 2=NE 3=SW 4=SE)						(NAD83 UTM in meters)	
		(quarters are smallest to largest)							
Well Tag	POD Number	Q64	Q16	Q4	Sec	Tws	Rng	X	Y
	C 02160 S8	2	3	3	12	26S	28E	590056	3546653* 
<hr/>									
Driller License:		Driller Company:							
Driller Name:		HEMLER							
Drill Start Date:		Drill Finish Date:		03/01/1961		Plug Date:			
Log File Date:		PCW Rcv Date:				Source:		Shallow	
Pump Type:		Pipe Discharge Size:				Estimated Yield:			
Casing Size:		Depth Well:		200 feet		Depth Water:		120 feet	
<hr/>									

*UTM location was derived from PLSS - see Help

The data is furnished by the NMOSE/ISC and is accepted by the recipient with the expressed understanding that the OSE/ISC make no warranties, expressed or implied, concerning the accuracy, completeness, reliability, usability, or suitability for any particular purpose of the data.


12/29/22 2:55 PM

POINT OF DIVERSION SUMMARY



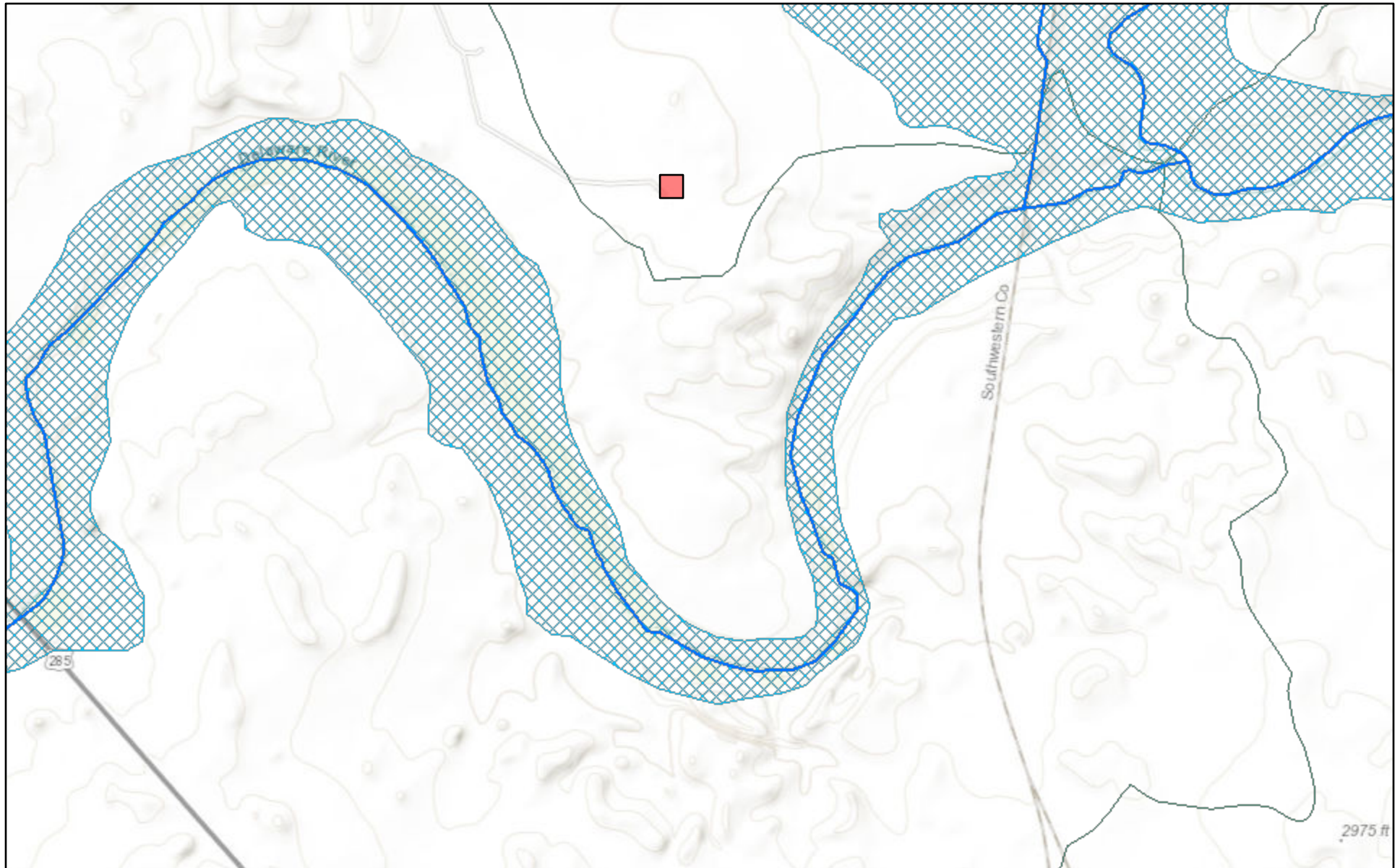
New Mexico Office of the State Engineer

Point of Diversion Summary

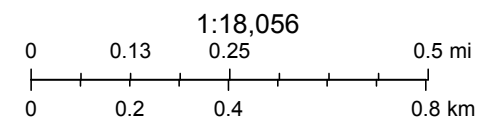
		(quarters are 1=NW 2=NE 3=SW 4=SE)				(quarters are smallest to largest)				(NAD83 UTM in meters)		
Well Tag	POD Number	Q64	Q16	Q4	Sec	Tws	Rng	X	Y			
C	04022 POD1	4	4	2	15	26S	28E	588082	3545647			
x												
Driller License:		1184		Driller Company:			WEST TEXAS WATER WELL SERVICE					
Driller Name:		KEITH, RONNY										
Drill Start Date:		05/01/2017		Drill Finish Date:			05/05/2017		Plug Date:			
Log File Date:		06/05/2017		PCW Rev Date:						Source: Shallow		
Pump Type:					Pipe Discharge Size:						Estimated Yield: 1 GPM	
Casing Size:		12.25		Depth Well:			220 feet		Depth Water:		175 feet	
x												
Water Bearing Stratifications:				Top	Bottom	Description						
				175	180	Sandstone/Gravel/Conglomerate						
x												
Casing Perforations:				Top	Bottom							
				160	220							
x												

The data is furnished by the NMOSE/ISC and is accepted by the recipient with the expressed understanding that the OSE/TSC make no warranties, expressed or implied, concerning the accuracy, completeness, reliability, usability, or suitability for any particular purpose of the data.

New Mexico NFHL Data



April 14, 2023



FEMA, Sources: Esri, HERE, Garmin, Intermap, increment P Corp., GEBCO, USGS, FAO, NPS, NRCAN, GeoBase, IGN, Kadaster NL, Ordnance Survey,

nmflood.org is made possible through a collaboration with NMDHSEM,

This is a non-regulatory product for informational use only. Please consult your local floodplain administrator for further information.

District I
1625 N. French Dr., Hobbs, NM 88240
Phone:(575) 393-6161 Fax:(575) 393-0720
District II
811 S. First St., Artesia, NM 88210
Phone:(575) 748-1283 Fax:(575) 748-9720
District III
1000 Rio Brazos Rd., Aztec, NM 87410
Phone:(505) 334-6178 Fax:(505) 334-6170
District IV
1220 S. St Francis Dr., Santa Fe, NM 87505
Phone:(505) 476-3470 Fax:(505) 476-3462

State of New Mexico
Energy, Minerals and Natural Resources
Oil Conservation Division
1220 S. St Francis Dr.
Santa Fe, NM 87505

QUESTIONS

Action 396819

QUESTIONS

Operator: COG PRODUCTION, LLC 600 W. Illinois Ave Midland, TX 79701	OGRID:	217955
	Action Number:	396819
	Action Type:	
	[C-141] Remediation Closure Request C-141 (C-141-v-Closure)	

QUESTIONS

Prerequisites	
Incident ID (n#)	nAPP2415832103
Incident Name	NAPP2415832103 MOMBA 24 FEDERAL COM 003H @ 0
Incident Type	Produced Water Release
Incident Status	Remediation Closure Report Received
Incident Facility	[fAPP2203842302] MOMBA 24 FED COM 3H Battery

Location of Release Source	
Please answer all the questions in this group.	
Site Name	Momba 24 Federal Com 003H
Date Release Discovered	04/17/2024
Surface Owner	Federal

Incident Details	
Please answer all the questions in this group.	
Incident Type	Produced Water Release
Did this release result in a fire or is the result of a fire	No
Did this release result in any injuries	No
Has this release reached or does it have a reasonable probability of reaching a watercourse	No
Has this release endangered or does it have a reasonable probability of endangering public health	No
Has this release substantially damaged or will it substantially damage property or the environment	No
Is this release of a volume that is or may with reasonable probability be detrimental to fresh water	No

Nature and Volume of Release	
Material(s) released, please answer all that apply below. Any calculations or specific justifications for the volumes provided should be attached to the follow-up C-141 submission.	
Crude Oil Released (bbls) Details	Not answered.
Produced Water Released (bbls) Details	Cause: Corrosion Valve Produced Water Released: 13 BBL Recovered: 13 BBL Lost: 0 BBL.
Is the concentration of chloride in the produced water >10,000 mg/l	Yes
Condensate Released (bbls) Details	Not answered.
Natural Gas Vented (Mcf) Details	Not answered.
Natural Gas Flared (Mcf) Details	Not answered.
Other Released Details	Not answered.
Are there additional details for the questions above (i.e. any answer containing Other, Specify, Unknown, and/or Fire, or any negative lost amounts)	Not answered.

District I

1625 N. French Dr., Hobbs, NM 88240
Phone:(575) 393-6161 Fax:(575) 393-0720

District II

811 S. First St., Artesia, NM 88210
Phone:(575) 748-1283 Fax:(575) 748-9720

District III

1000 Rio Brazos Rd., Aztec, NM 87410
Phone:(505) 334-6178 Fax:(505) 334-6170

District IV

1220 S. St Francis Dr., Santa Fe, NM 87505
Phone:(505) 476-3470 Fax:(505) 476-3462

State of New Mexico
Energy, Minerals and Natural Resources
Oil Conservation Division
1220 S. St Francis Dr.
Santa Fe, NM 87505

QUESTIONS, Page 2

Action 396819

QUESTIONS (continued)

Operator: COG PRODUCTION, LLC 600 W. Illinois Ave Midland, TX 79701	OGRID:	217955
	Action Number:	396819
	Action Type:	[C-141] Remediation Closure Request C-141 (C-141-v-Closure)

QUESTIONS

Nature and Volume of Release (continued)	
Is this a gas only submission (i.e. only significant Mcf values reported)	No, according to supplied volumes this does not appear to be a "gas only" report.
Was this a major release as defined by Subsection A of 19.15.29.7 NMAC	No
Reasons why this would be considered a submission for a notification of a major release	<i>Unavailable.</i>
<i>With the implementation of the 19.15.27 NMAC (05/25/2021), venting and/or flaring of natural gas (i.e. gas only) are to be submitted on the C-129 form.</i>	

Initial Response

The responsible party must undertake the following actions immediately unless they could create a safety hazard that would result in injury.

The source of the release has been stopped	True
The impacted area has been secured to protect human health and the environment	True
Released materials have been contained via the use of berms or dikes, absorbent pads, or other containment devices	True
All free liquids and recoverable materials have been removed and managed appropriately	True
If all the actions described above have not been undertaken, explain why	<i>Not answered.</i>

Per Paragraph (4) of Subsection B of 19.15.29.8 NMAC the responsible party may commence remediation immediately after discovery of a release. If remediation has begun, please prepare and attach a narrative of actions to date in the follow-up C-141 submission. If remedial efforts have been successfully completed or if the release occurred within a lined containment area (see Subparagraph (a) of Paragraph (5) of Subsection A of 19.15.29.11 NMAC), please prepare and attach all information needed for closure evaluation in the follow-up C-141 submission.

I hereby certify that the information given above is true and complete to the best of my knowledge and understand that pursuant to OCD rules and regulations all operators are required to report and/or file certain release notifications and perform corrective actions for releases which may endanger public health or the environment. The acceptance of a C-141 report by the OCD does not relieve the operator of liability should their operations have failed to adequately investigate and remediate contamination that pose a threat to groundwater, surface water, human health or the environment. In addition, OCD acceptance of a C-141 report does not relieve the operator of responsibility for compliance with any other federal, state, or local laws and/or regulations.

I hereby agree and sign off to the above statement	Name: Brittany Esparza Title: Environmental Technician Email: brittany.Esparza@ConocoPhillips.com Date: 06/06/2024
--	---

District I

1625 N. French Dr., Hobbs, NM 88240
Phone:(575) 393-6161 Fax:(575) 393-0720

District II

811 S. First St., Artesia, NM 88210
Phone:(575) 748-1283 Fax:(575) 748-9720

District III

1000 Rio Brazos Rd., Aztec, NM 87410
Phone:(505) 334-6178 Fax:(505) 334-6170

District IV

1220 S. St Francis Dr., Santa Fe, NM 87505
Phone:(505) 476-3470 Fax:(505) 476-3462

State of New Mexico
Energy, Minerals and Natural Resources
Oil Conservation Division
1220 S. St Francis Dr.
Santa Fe, NM 87505

QUESTIONS, Page 3

Action 396819

QUESTIONS (continued)

Operator: COG PRODUCTION, LLC 600 W. Illinois Ave Midland, TX 79701	OGRID:
	217955
	Action Number:
	396819
Action Type:	
[C-141] Remediation Closure Request C-141 (C-141-v-Closure)	

QUESTIONS**Site Characterization**

Please answer all the questions in this group (only required when seeking remediation plan approval and beyond). This information must be provided to the appropriate district office no later than 90 days after the release discovery date.

What is the shallowest depth to groundwater beneath the area affected by the release in feet below ground surface (ft bgs)	Between 100 and 500 (ft.)
What method was used to determine the depth to ground water	NM OSE iWaters Database Search
Did this release impact groundwater or surface water	No
What is the minimum distance, between the closest lateral extents of the release and the following surface areas:	
A continuously flowing watercourse or any other significant watercourse	Between 1000 (ft.) and ½ (mi.)
Any lakebed, sinkhole, or playa lake (measured from the ordinary high-water mark)	Between 1000 (ft.) and ½ (mi.)
An occupied permanent residence, school, hospital, institution, or church	Greater than 5 (mi.)
A spring or a private domestic fresh water well used by less than five households for domestic or stock watering purposes	Greater than 5 (mi.)
Any other fresh water well or spring	Between 1000 (ft.) and ½ (mi.)
Incorporated municipal boundaries or a defined municipal fresh water well field	Greater than 5 (mi.)
A wetland	Between 1000 (ft.) and ½ (mi.)
A subsurface mine	Greater than 5 (mi.)
An (non-karst) unstable area	Between 1 and 5 (mi.)
Categorize the risk of this well / site being in a karst geology	Medium
A 100-year floodplain	Greater than 5 (mi.)
Did the release impact areas not on an exploration, development, production, or storage site	No

Remediation Plan

Please answer all the questions that apply or are indicated. This information must be provided to the appropriate district office no later than 90 days after the release discovery date.

Requesting a remediation plan approval with this submission	Yes
Attach a comprehensive report demonstrating the lateral and vertical extents of soil contamination associated with the release have been determined, pursuant to 19.15.29.11 NMAC and 19.15.29.13 NMAC.	
Have the lateral and vertical extents of contamination been fully delineated	Yes
Was this release entirely contained within a lined containment area	Yes
Per Subsection B of 19.15.29.11 NMAC unless the site characterization report includes completed efforts at remediation, the report must include a proposed remediation plan in accordance with 19.15.29.12 NMAC, which includes the anticipated timelines for beginning and completing the remediation.	
On what estimated date will the remediation commence	08/19/2024
On what date will (or did) the final sampling or liner inspection occur	08/19/2024
On what date will (or was) the remediation complete(d)	08/19/2024
What is the estimated surface area (in square feet) that will be remediated	4500
What is the estimated volume (in cubic yards) that will be remediated	0
These estimated dates and measurements are recognized to be the best guess or calculation at the time of submission and may (be) change(d) over time as more remediation efforts are completed.	
The OCD recognizes that proposed remediation measures may have to be minimally adjusted in accordance with the physical realities encountered during remediation. If the responsible party has any need to significantly deviate from the remediation plan proposed, then it should consult with the division to determine if another remediation plan submission is required.	

District I

1625 N. French Dr., Hobbs, NM 88240
Phone:(575) 393-6161 Fax:(575) 393-0720

District II

811 S. First St., Artesia, NM 88210
Phone:(575) 748-1283 Fax:(575) 748-9720

District III

1000 Rio Brazos Rd., Aztec, NM 87410
Phone:(505) 334-6178 Fax:(505) 334-6170

District IV

1220 S. St Francis Dr., Santa Fe, NM 87505
Phone:(505) 476-3470 Fax:(505) 476-3462

State of New Mexico
Energy, Minerals and Natural Resources
Oil Conservation Division
1220 S. St Francis Dr.
Santa Fe, NM 87505

QUESTIONS, Page 4

Action 396819

QUESTIONS (continued)

Operator: COG PRODUCTION, LLC 600 W. Illinois Ave Midland, TX 79701	OGRID:	217955
	Action Number:	396819
	Action Type:	[C-141] Remediation Closure Request C-141 (C-141-v-Closure)

QUESTIONS**Remediation Plan (continued)**

Please answer all the questions that apply or are indicated. This information must be provided to the appropriate district office no later than 90 days after the release discovery date.

This remediation will (or is expected to) utilize the following processes to remediate / reduce contaminants:

(Select all answers below that apply.)

Is (or was) there affected material present needing to be removed	Yes
Is (or was) there a power wash of the lined containment area (to be) performed	Yes
OTHER (Non-listed remedial process)	No

Per Subsection B of 19.15.29.11 NMAC unless the site characterization report includes completed efforts at remediation, the report must include a proposed remediation plan in accordance with 19.15.29.12 NMAC, which includes the anticipated timelines for beginning and completing the remediation.

I hereby certify that the information given above is true and complete to the best of my knowledge and understand that pursuant to OCD rules and regulations all operators are required to report and/or file certain release notifications and perform corrective actions for releases which may endanger public health or the environment. The acceptance of a C-141 report by the OCD does not relieve the operator of liability should their operations have failed to adequately investigate and remediate contamination that pose a threat to groundwater, surface water, human health or the environment. In addition, OCD acceptance of a C-141 report does not relieve the operator of responsibility for compliance with any other federal, state, or local laws and/or regulations.

I hereby agree and sign off to the above statement	Name: Brittany Esparza Title: Environmental Technician Email: brittany.Esparza@ConocoPhillips.com Date: 10/29/2024
--	---

The OCD recognizes that proposed remediation measures may have to be minimally adjusted in accordance with the physical realities encountered during remediation. If the responsible party has any need to significantly deviate from the remediation plan proposed, then it should consult with the division to determine if another remediation plan submission is required.

District I

1625 N. French Dr., Hobbs, NM 88240
Phone:(575) 393-6161 Fax:(575) 393-0720

District II

811 S. First St., Artesia, NM 88210
Phone:(575) 748-1283 Fax:(575) 748-9720

District III

1000 Rio Brazos Rd., Aztec, NM 87410
Phone:(505) 334-6178 Fax:(505) 334-6170

District IV

1220 S. St Francis Dr., Santa Fe, NM 87505
Phone:(505) 476-3470 Fax:(505) 476-3462

State of New Mexico
Energy, Minerals and Natural Resources
Oil Conservation Division
1220 S. St Francis Dr.
Santa Fe, NM 87505

QUESTIONS, Page 6

Action 396819

QUESTIONS (continued)

Operator: COG PRODUCTION, LLC 600 W. Illinois Ave Midland, TX 79701	OGRID:	217955
	Action Number:	396819
	Action Type:	[C-141] Remediation Closure Request C-141 (C-141-v-Closure)

QUESTIONS

Liner Inspection Information	
Last liner inspection notification (C-141L) recorded	374500
Liner inspection date pursuant to Subparagraph (a) of Paragraph (5) of Subsection A of 19.15.29.11 NMAC	08/19/2024
Was all the impacted materials removed from the liner	Yes
What was the liner inspection surface area in square feet	4500

Remediation Closure Request

Only answer the questions in this group if seeking remediation closure for this release because all remediation steps have been completed.

Requesting a remediation closure approval with this submission	Yes
Have the lateral and vertical extents of contamination been fully delineated	Yes
Was this release entirely contained within a lined containment area	Yes
What was the total surface area (in square feet) remediated	4500
What was the total volume (cubic yards) remediated	0
Summarize any additional remediation activities not included by answers (above)	na

The responsible party must attach information demonstrating they have complied with all applicable closure requirements and any conditions or directives of the OCD. This demonstration should be in the form of a comprehensive report (in .pdf format) including a scaled site map, sampling diagrams, relevant field notes, photographs of any excavation prior to backfilling, laboratory data including chain of custody documents of final sampling, and a narrative of the remedial activities. Refer to 19.15.29.12 NMAC.

I hereby certify that the information given above is true and complete to the best of my knowledge and understand that pursuant to OCD rules and regulations all operators are required to report and/or file certain release notifications and perform corrective actions for releases which may endanger public health or the environment. The acceptance of a C-141 report by the OCD does not relieve the operator of liability should their operations have failed to adequately investigate and remediate contamination that pose a threat to groundwater, surface water, human health or the environment. In addition, OCD acceptance of a C-141 report does not relieve the operator of responsibility for compliance with any other federal, state, or local laws and/or regulations. The responsible party acknowledges they must substantially restore, reclaim, and re-vegetate the impacted surface area to the conditions that existed prior to the release or their final land use in accordance with 19.15.29.13 NMAC including notification to the OCD when reclamation and re-vegetation are complete.

I hereby agree and sign off to the above statement	Name: Brittany Esparza Title: Environmental Technician Email: brittany.Esparza@ConocoPhillips.com Date: 10/29/2024
--	---

District I
1625 N. French Dr., Hobbs, NM 88240
Phone:(575) 393-6161 Fax:(575) 393-0720

District II
811 S. First St., Artesia, NM 88210
Phone:(575) 748-1283 Fax:(575) 748-9720

District III
1000 Rio Brazos Rd., Aztec, NM 87410
Phone:(505) 334-6178 Fax:(505) 334-6170

District IV
1220 S. St Francis Dr., Santa Fe, NM 87505
Phone:(505) 476-3470 Fax:(505) 476-3462

State of New Mexico
Energy, Minerals and Natural Resources
Oil Conservation Division
1220 S. St Francis Dr.
Santa Fe, NM 87505

CONDITIONS

Action 396819

CONDITIONS

Operator: COG PRODUCTION, LLC 600 W. Illinois Ave Midland, TX 79701	OGRID: 217955
	Action Number: 396819
	Action Type: [C-141] Remediation Closure Request C-141 (C-141-v-Closure)

CONDITIONS

Created By	Condition	Condition Date
scott.rodgers	App ID 396819 Liner Inspection approved	10/31/2024