

Closure Report

INCIDENT ID#: nAPP2113042718

Site Description

Site Name:	BRAVO DOME 1835 52E LEG 7
Company:	Oxy USA, Inc.
Legal Description:	U/L G, Section 15, T18N, R35E
County:	UNION COUNTY ,NM
GPS Coordinates:	35.82234,-103.24696

Release Data

Date of Release:	11/2/2020
Type of Release:	PRODUCED WATER
Source of Release:	INTERNAL CORROSION
Volume of Release:	19.2 BBLS
Volume Recovered:	8 BBLS

Remediation Specifications

Remediation Parameters:	<p>OXY was excavated the spill area as depicted on the following site diagram. The leak area near SP1 and SP5 (YELLOW shade on diagram) required zero remediation. The leak area near SP2 (GREEN shade on diagram) was excavated to a depth of 2 feet. The leak area near SP3 (BLUE shade on diagram) was excavated to a depth of 3 feet. The leak area near SP4 (PURPLE shade on diagram) was excavated to a depth of 1 foot.</p> <p>OXY collected bottom and sidewall confirmation samples every 200 square feet</p>
Remediation Activities:	

Plan Sent to OCD:	7/26/2021	
OCD Approval of Plan:	11/15/2022	
Plan Sent to BLM:		
BLM Approval of Plan:		

Supporting Documentation

C-141, page 6	signed and included	
Site Diagram	Google Earth map with excavation depths & confirmation sample points	
Pictures	Remediation photos	
Lab Summary/Analysis	Confirmation lab summary/analysis report for 10/5/23,10/6/23,10/16/23 10/19/23,10/20/23	
Notifications	9/28/23,9/18/2024	

Request for Closure

Based on the completion of the remediation, OXY requests closure approval from the NMOCD.

Cliff Brunson, President of BBC International Inc.

9/20/2024

From: [Rodgers, Scott, EMNRD](#)
To: [Cliff P. Brunson](#); [Velez, Nelson, EMNRD](#); [Bratcher, Michael, EMNRD](#)
Cc: [Wade Dittrich](#); [Tyson Pierce](#); [Kathy Sweeney](#); [Jennifer Gilkey](#)
Subject: RE: [EXTERNAL] OXY - Bravo Dome 1835 52E Leg 7 (11/2/20) (nAPP2113042718) - Sampling Notification
Date: Thursday, September 28, 2023 3:45:53 PM

The OCD has received your notification. Include a copy of this and all notifications in the remedial and/or closure reports to ensure the notifications are documented in the project file.

Scott Rodgers • Environmental Specialist
Environmental Bureau
EMNRD - Oil Conservation Division
8801 Horizon Blvd. NE, Suite 260 | Albuquerque, NM 87113
505.469.1830 | scott.rodgers@emnrd.nm.gov
<http://www.emnrd.nm.gov/oed>



From: Cliff P. Brunson <cbrunson@bbcinternational.com>
Sent: Thursday, September 28, 2023 3:23 PM
To: Enviro, OCD, EMNRD <OCD.Enviro@emnrd.nm.gov>
Cc: Wade Dittrich <Wade_Dittrich@oxy.com>; Tyson Pierce <tyson_pierce@oxy.com>; Kathy Sweeney <kathys@bbcinternational.com>; Jennifer Gilkey <jgilkey@bbcinternational.com>
Subject: [EXTERNAL] OXY - Bravo Dome 1835 52E Leg 7 (11/2/20) (nAPP2113042718) - Sampling Notification

CAUTION: This email originated outside of our organization. Exercise caution prior to clicking on links or opening attachments.

This is a notification that BBC will conduct confirmation sampling on behalf of OXY at the Bravo Dome 1835 52E Leg 7 (11/2/20) (nAPP2113042718) on Thursday, October 5, 2023 at 9:00 a.m.

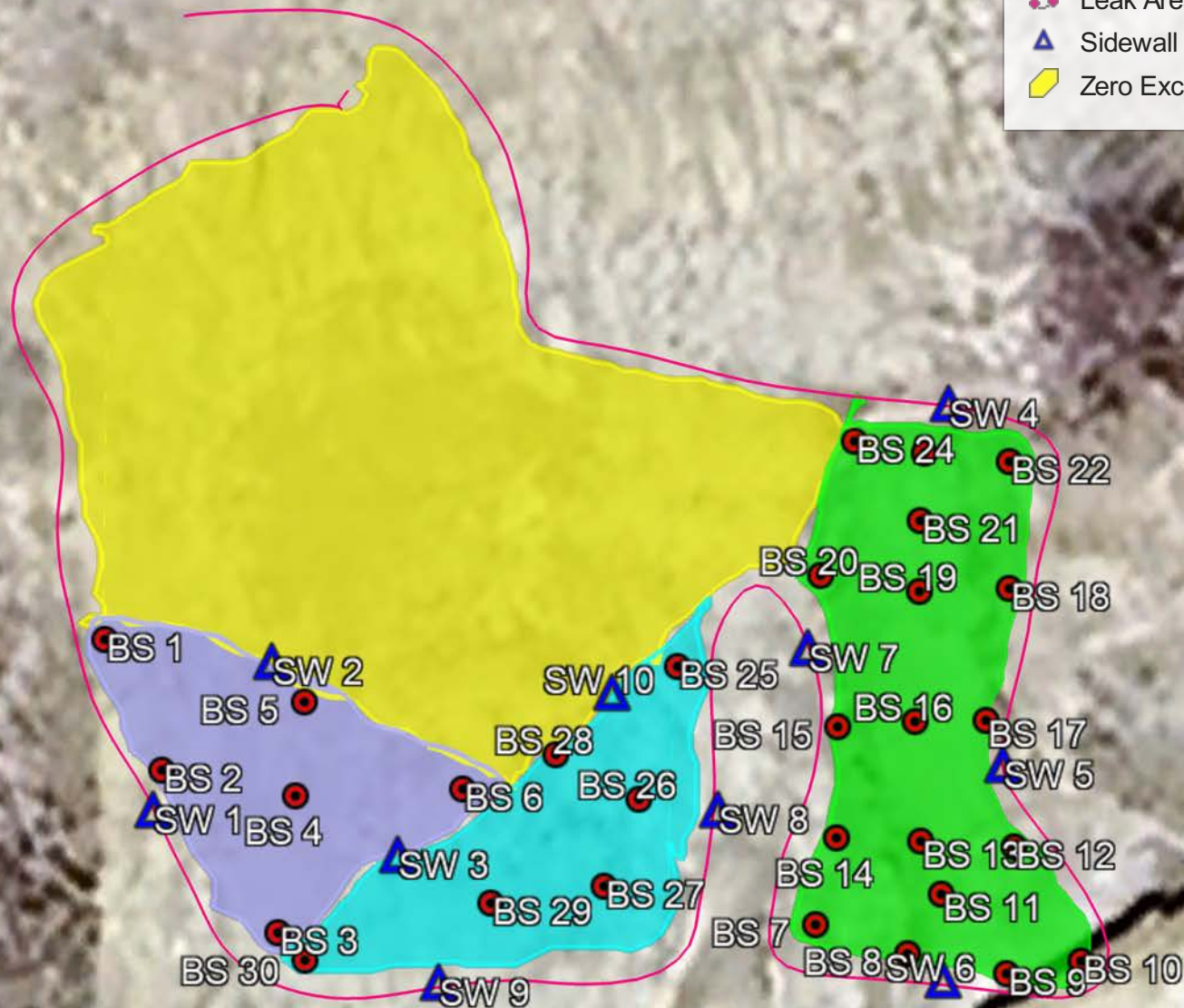
Cliff P. Brunson, CEI, CRS
President
BBC International, Inc.
World-Wide Environmental Specialists
Mailing Address:
P. O. Box 805
Hobbs, NM 88241-0805 USA
Shipping Address:
1324 W. Marland St.
Hobbs, NM 88240 USA
Phone: (575) 397-6388
Fax: (575) 397-0397
E-Mail: cbrunson@bbcinternational.com

OXY, BRAVO DOME 1835 52E LEG 7

LEAK DATE :11/02/2020
UNION COUNTY,NM
ID#nAPP2113042718

Legend

- 1' Excavation
- 2' Excavation
- 3' Excavation
- Bottom Confirmation Sample Points
- Leak Area
- Sidewall Confirmation Samples Points
- Zero Excavation



Google Earth

OXY-BRAVO DOME 1835 52E LEG 7 (11/2/20) SAMPLE DATES 10/5/23, 10/6/23

BOTTOM SAMPLE POINTS

BS 1@1'	N 35.822095	W-103.247011
BS 2@1'	N 35.822050	W-103.246987
BS 3@1'	N 35.821994	W-103.246938
BS 4@1'	N 35.822041	W-103.246930
BS 5@1'	N 35.822074	W-103.246926
BS 6@1'	N 35.822044	W-103.246859
BS 7@2'	N 35.821997	W-103.246709
BS 8@2'	N 35.821987	W-103.246670
BS 9@2'	N 35.821980	W-103.246628
BS 10@2'	N 35.821984	W-103.246596
BS 11@2'	N 35.822007	W-103.246656
BS 12@2'	N 35.822024	W-103.246625
BS 13@2'	N 35.822026	W-103.246665
BS 14@2'	N 35.822027	W-103.246700
BS 15@2'	N 35.822066	W-103.246700
BS 16@2'	N 35.822067	W-103.246667
BS 17@2'	N 35.822068	W-103.246637
BS 18@2'	N 35.822113	W-103.246627
BS 19@2'	N 35.822112	W-103.246666
BS 20@2'	N 35.822118	W-103.246707
BS 21@2'	N 35.822136	W-103.246665
BS 22@2'	N 35.822157	W-103.246627
BS 23@2'	N 35.822160	W-103.246663
BS 24@2'	N 35.822163	W-103.246691
BS 25@3'	N 35.822086	W-103.246768
BS 26@3'	N 35.822041	W-103.246784
BS 27@3'	N 35.822010	W-103.246799
BS 28@3'	N 35.822056	W-103.246820
BS 29@3'	N 35.822004	W-103.246847
BS 30@3'	N 35.821984	W-103.246927

SIDEWALL SAMPLE POINTS

SW 1	N 35.822036	W-103.246992
SW 2	N 35.822087	W-103.246941
SW 3	N 35.822020	W-103.246888
SW 4	N 35.822176	W-103.246654
SW 5	N 35.822052	W-103.246630
SW 6	N 35.821977	W-103.246655
SW 7	N 35.822092	W-103.246713
SW 8	N 35.822036	W-103.246751
SW 9	N 35.821976	W-103.246870
SW 10	N 35.822077	W-103.246796

	Sample ID	BS 1@1'	BS 2@1'	BS 3@1'	BS 4@1'	BS 5@1'	BS 6@1'	BS 7@2'	BS 8@2'	BS 9@2'	BS 10@2'	BS 11@2'	BS 12@2'	BS 13@2'	BS 14@2'	BS 15@2'	BS 16@2'	BS 17@2'	BS 18@2'
Analyte	Date	10/5/23	10/5/23	10/5/23	10/5/23	10/5/23	10/5/23	10/5/23	10/5/23	10/5/23	10/5/23	10/5/23	10/5/23	10/5/23	10/5/23	10/5/23	10/5/23	10/6/23	10/6/23
		mg/kg	mg/kg	mg/kg	mg/kg	mg/kg	mg/kg	mg/kg	mg/kg	mg/kg	mg/kg	mg/kg	mg/kg	mg/kg	mg/kg	mg/kg	mg/kg	mg/kg	mg/kg
Benzene		<0.050	<0.050	<0.050	<0.050	<0.050	<0.050	<0.050	<0.050	<0.050	<0.050	<0.050	<0.050	<0.050	<0.050	<0.050	<0.050	<0.050	<0.050
Toluene		<0.050	<0.050	<0.050	<0.050	<0.050	<0.050	<0.050	<0.050	<0.050	<0.050	<0.050	<0.050	<0.050	<0.050	<0.050	<0.050	<0.050	<0.050
Ethylbenzene		<0.050	<0.050	<0.050	<0.050	<0.050	<0.050	<0.050	<0.050	<0.050	<0.050	<0.050	<0.050	<0.050	<0.050	<0.050	<0.050	<0.050	<0.050
Total Xylenes		<0.150	<0.150	<0.150	<0.150	<0.150	<0.150	<0.150	<0.150	<0.150	<0.150	<0.150	<0.150	<0.150	<0.150	<0.150	<0.150	<0.150	<0.150
Total BTEX		<0.300	<0.300	<0.300	<0.300	<0.300	<0.300	<0.300	<0.300	<0.300	<0.300	<0.300	<0.300	<0.300	<0.300	<0.300	<0.300	<0.300	<0.300
Chloride		<16.0	<16.0	<16.0	<16.0	<16.0	<16.0	<16.0	<16.0	<16.0	<16.0	<16.0	<16.0	<16.0	<16.0	<16.0	<16.0	<16.0	<16.0
GRO		<10.0	<10.0	<10.0	<10.0	<10.0	<10.0	<10.0	<10.0	<10.0	<10.0	<10.0	<10.0	<10.0	<10.0	<10.0	<10.0	<10.0	<10.0
DRO		<10.0	<10.0	<10.0	<10.0	<10.0	<10.0	<10.0	<10.0	<10.0	<10.0	<10.0	<10.0	<10.0	<10.0	<10.0	<10.0	<10.0	<10.0
EXT DRO		<10.0	<10.0	<10.0	<10.0	<10.0	<10.0	<10.0	<10.0	<10.0	<10.0	<10.0	<10.0	<10.0	<10.0	<10.0	<10.0	<10.0	<10.0

	Sample ID	BS 19@2'	BS 20@2'	BS 21@2'	BS 22@2'	BS 23@2'	BS 24@2'	BS 25@3'	BS 26@3'	BS 27@3'	BS 28@3'	BS 29@3'	BS 30@3'
Analyte	Date	10/6/23	10/6/23	10/6/23	10/6/23	10/6/23	10/6/23	10/6/23	10/6/23	10/6/23	10/6/23	10/6/23	10/6/23
		mg/kg	mg/kg	mg/kg	mg/kg	mg/kg	mg/kg	mg/kg	mg/kg	mg/kg	mg/kg	mg/kg	mg/kg
Benzene		<0.050	<0.050	<0.050	<0.050	<0.050	<0.050	<0.050	<0.050	<0.050	<0.050	<0.050	<0.050
Toluene		<0.050	<0.050	<0.050	<0.050	<0.050	<0.050	<0.050	<0.050	<0.050	<0.050	<0.050	<0.050
Ethylbenzene		<0.050	<0.050	<0.050	<0.050	<0.050	<0.050	<0.050	<0.050	<0.050	<0.050	<0.050	<0.050
Total Xylenes		<0.150	<0.150	<0.150	<0.150	<0.150	<0.150	<0.150	<0.150	<0.150	<0.150	<0.150	<0.150
Total BTEX		<0.300	<0.300	<0.300	<0.300	<0.300	<0.300	<0.300	<0.300	<0.300	<0.300	<0.300	<0.300
Chloride		<16.0	32.0	<16.0	<16.0	<16.0	32.0	16.0	32.0	16.0	<16.0	16.0	32.0
GRO		<10.0	<10.0	<10.0	<10.0	<10.0	<10.0	<10.0	<10.0	<10.0	<10.0	<10.0	<10.0
DRO		<10.0	<10.0	<10.0	<10.0	<10.0	<10.0	<10.0	<10.0	<10.0	<10.0	<10.0	<10.0
EXT DRO		<10.0	<10.0	<10.0	<10.0	<10.0	<10.0	<10.0	<10.0	<10.0	<10.0	<10.0	<10.0

	Sample ID	SW 1	SW 2	SW 3	SW 4	SW 5	SW 6	SW 7	SW 8	SW 9	SW 10
Analyte	Date	10/16/23	10/16/23	10/16/23	10/16/23	10/16/23	10/16/23	10/16/23	10/16/23	10/16/23	10/16/23
		mg/kg	mg/kg	mg/kg	mg/kg	mg/kg	mg/kg	mg/kg	mg/kg	mg/kg	mg/kg
Benzene		<0.050	<0.050	<0.050	<0.050	<0.050	<0.050	<0.050	<0.050	<0.050	<0.050
Toluene		<0.050	<0.050	<0.050	<0.050	<0.050	<0.050	<0.050	<0.050	<0.050	<0.050
Ethylbenzene		<0.050	<0.050	<0.050	<0.050	<0.050	<0.050	<0.050	<0.050	<0.050	<0.050
Total Xylenes		<0.150	<0.150	<0.150	<0.150	<0.150	<0.150	<0.150	<0.150	<0.150	<0.150
Total BTEX		<0.300	<0.300	<0.300	<0.300	<0.300	<0.300	<0.300	<0.300	<0.300	<0.300
Chloride		<16.0	32.0	<16.0	<16.0	<16.0	<16.0	<16.0	<16.0	<16.0	<16.0
GRO		<10.0	<10.0	<10.0	<10.0	<10.0	<10.0	<10.0	<10.0	<10.0	<10.0
DRO		<10.0	<10.0	<10.0	<10.0	<10.0	<10.0	<10.0	<10.0	<10.0	<10.0
EXT DRO		<10.0	<10.0	<10.0	<10.0	<10.0	<10.0	<10.0	<10.0	<10.0	<10.0

9/18/24, 2:12 PM

FEMA's National Flood Hazard Layer (NFHL) Viewer



FEMA's National Flood Hazard Layer (NFHL) Viewer

with Web AppBuilder for ArcGIS

35.82234,-103.24696

Show search results for 35.82234,-10...

NFHL Print Tool

Input

Output

OutputMessage

FEMA has not completed a study to determine flood hazard for the selected location; therefore, a flood map has not been published at this time.

OutputFile

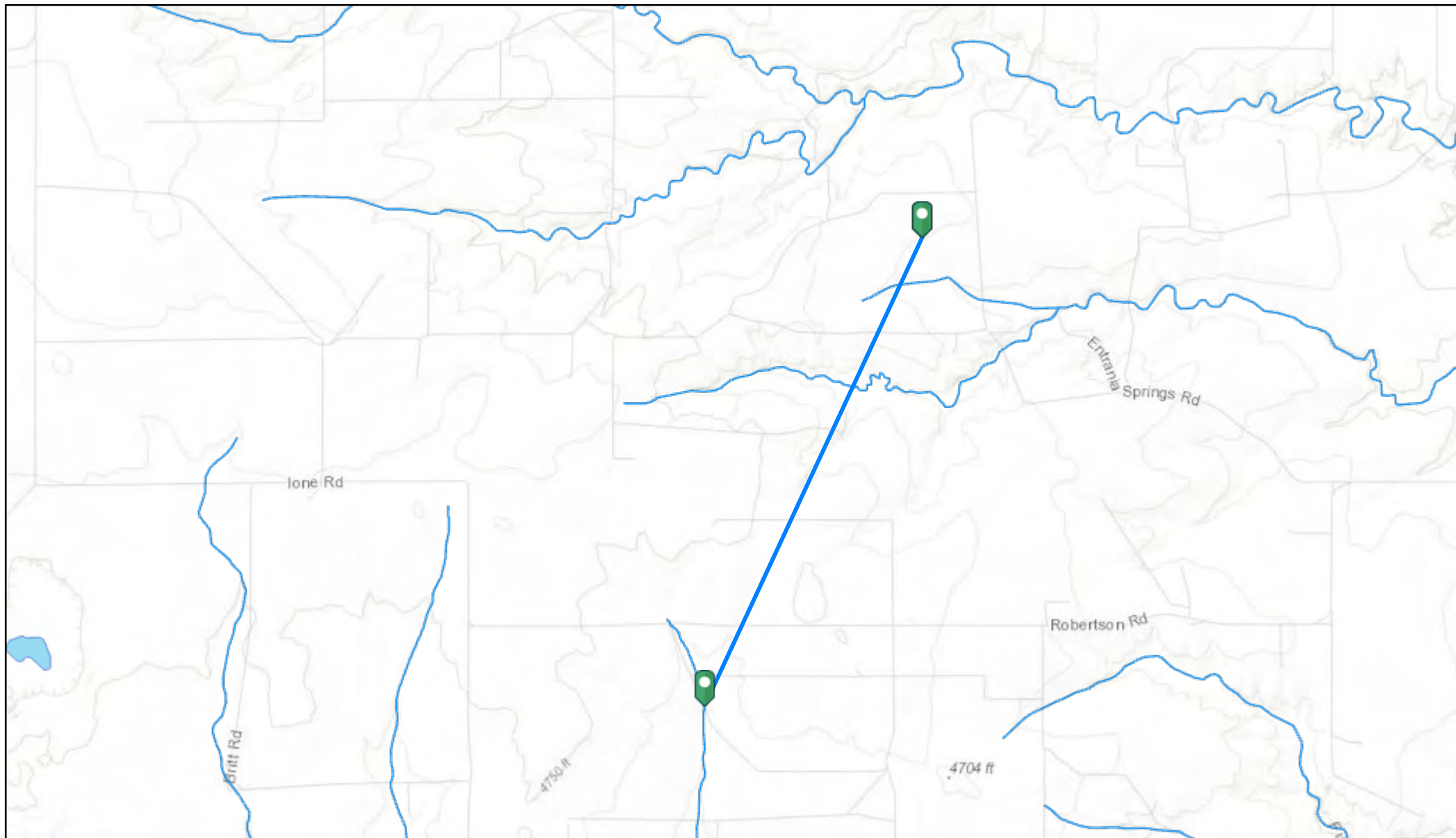
undefined: null

300ft

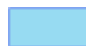
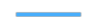
101.248-35.822 Degrées

App State

(Click to restore the map extent and layers visibility where you left off)

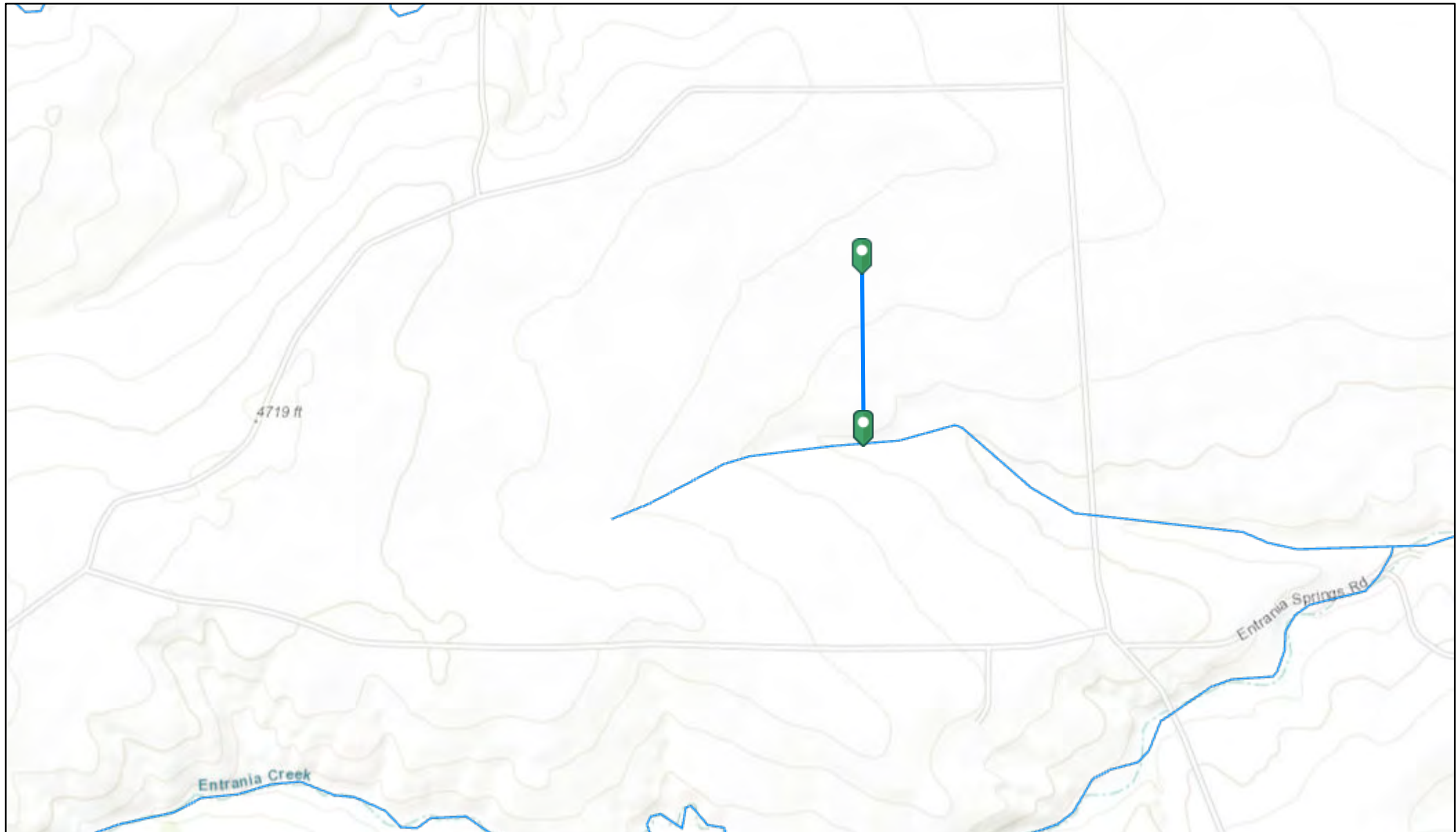


9/18/2024, 2:04:46 PM

-  OSW Water Bodys
-  OSE Streams

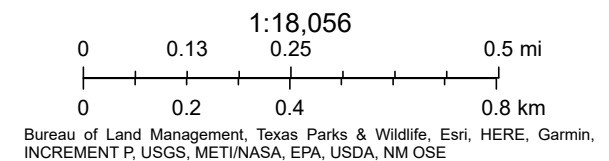
1:72,224
0 0.5 1 2 mi
0 0.75 1.5 3 km
Bureau of Land Management, Texas Parks & Wildlife, Esri, HERE, Garmin, INCREMENT P, USGS, METI/NASA, NGA, EPA, USDA, NM OSE

OXY, BRAVO DOME 1835-52E LEG 7 (11/2/20) 1,570.8 FTOR 0.3 MILES TO H2O



9/18/2024, 1:56:45 PM

— OSE Streams





WELL RECORD & LOG

OFFICE OF THE STATE ENGINEER

www.ose.state.nm.us

Received

OCT 17 2023

Office of the State Engineer
District VII Cimarron Office

TWF

1. GENERAL AND WELL LOCATION	OSE POD NO. (WELL NO.) CT-2494 POD1		WELL TAG ID NO. 70325		OSE FILE NO(S). CT-2494 POD1			
	WELL OWNER NAME(S) Kirk Fly				PHONE (OPTIONAL) 806-333-2176			
	WELL OWNER MAILING ADDRESS 28 Canyon View Dr				CITY Dalhart	STATE TX	ZIP 79022	
	WELL LOCATION (FROM GPS)	DEGREES 35.77557 35	MINUTES 46	SECONDS 32.052 N	* ACCURACY REQUIRED: ONE TENTH OF A SECOND			
	LONGITUDE -103.27411 103	16	26.796 W	* DATUM REQUIRED: WGS 84				
DESCRIPTION RELATING WELL LOCATION TO STREET ADDRESS AND COMMON LANDMARKS - PLSS (SECTION, TOWNSHIP, RANGE) WHERE AVAILABLE Section: 24. Township: 18N. Range: 34E, Union County NW 1/4 NW 1/4 SE 1/4 SECTION 24, TOWNSHIP 18 NORTH, RANGE 34 EAST, N.M.P.M								
2. DRILLING & CASING INFORMATION	LICENSE NO. WD-1831		NAME OF LICENSED DRILLER Raymond Teeter			NAME OF WELL DRILLING COMPANY 3T Drilling, Inc.		
	DRILLING STARTED 09/20/2023	DRILLING ENDED 09/20/2023	DEPTH OF COMPLETED WELL (FT) 275		BORE HOLE DEPTH (FT) 275	DEPTH WATER FIRST ENCOUNTERED (FT) 206		
	COMPLETED WELL IS: <input type="checkbox"/> ARTESIAN *add Centralizer info below <input type="checkbox"/> DRY HOLE <input checked="" type="checkbox"/> SHALLOW (UNCONFINED)					STATIC WATER LEVEL IN COMPLETED WELL (FT) 206		
	DATE STATIC MEASURED 09/20/2023							
	DRILLING FLUID: <input type="checkbox"/> AIR <input checked="" type="checkbox"/> MUD ADDITIVES - SPECIFY:							
	DRILLING METHOD: <input checked="" type="checkbox"/> ROTARY <input type="checkbox"/> HAMMER <input type="checkbox"/> CABLE TOOL <input type="checkbox"/> OTHER - SPECIFY:					CHECK HERE IF PITLESS ADAPTER IS INSTALLED <input checked="" type="checkbox"/>		
	DEPTH (feet bgl)		BORE HOLE DIAM (inches)	CASING MATERIAL AND/OR GRADE (include each casing string, and note sections of screen)	CASING CONNECTION TYPE (add coupling diameter)	CASING INSIDE DIAM. (inches)	CASING WALL THICKNESS (inches)	SLOT SIZE (inches)
	FROM	TO						
	0	30	12.25	PVC SDR 21	6-1/8	5	.0375	
	30	205	10	PVC SDR 21	6-1/8	5	.0375	
205	265	10	PVC SDR 21 - PERF	6-1/8	5	.0375	.050	
265	275	10	PVC SDR 21	6-1/8	5	.0375		
3. ANNULAR MATERIAL	DEPTH (feet bgl)		BORE HOLE DIAM. (inches)	LIST ANNULAR SEAL MATERIAL AND GRAVEL PACK SIZE-RANGE BY INTERVAL <i>*(if using Centralizers for Artesian wells- Indicate the spacing below)</i>	AMOUNT (cubic feet)	METHOD OF PLACEMENT		
	FROM	TO						
	0	30	12.25	Cement	21	Topfill		
	30	275	10	Gravel # 1 Fine KS	100	Topfill		

FOR OSE INTERNAL USE **STOCK**

WR-20 WELL RECORD & LOG (Version 09/22/2022)

FILE NO. **CT-2494**

POD NO. **POD1**

TRN NO. **749198**

Released to Imaging: 12/11/2024 3:13:42 PM

WELL TAG ID NO. **70325**

PAGE 1 OF 2

Mike A. Hamman, P.E.
State Engineer



Cimarron Office
PO BOX 481
CIMARRON, NM 87714

STATE OF NEW MEXICO
OFFICE OF THE STATE ENGINEER

Trn Nbr: 749198
File Nbr: CT 02494
Well File Nbr: CT 02494 POD1

Oct. 31, 2023

KIRK FLY
28 CANYON VIEW DR.
DALHART, TX 79022

Greetings:

Enclosed is your copy of the well record for the above numbered permit, which has been accepted for filing.

Sincerely,


Katherine Behrendsen
(575) 376-2410

Enclosure

wellrrcv

District I
1625 N. French Dr., Hobbs, NM 88240
Phone:(575) 393-6161 Fax:(575) 393-0720
District II
811 S. First St., Artesia, NM 88210
Phone:(575) 748-1283 Fax:(575) 748-9720
District III
1000 Rio Brazos Rd., Aztec, NM 87410
Phone:(505) 334-6178 Fax:(505) 334-6170
District IV
1220 S. St Francis Dr., Santa Fe, NM 87505
Phone:(505) 476-3470 Fax:(505) 476-3462

State of New Mexico
Energy, Minerals and Natural Resources
Oil Conservation Division
1220 S. St Francis Dr.
Santa Fe, NM 87505

QUESTIONS

Action 384823

QUESTIONS

Operator: OXY USA INC P.O. Box 4294 Houston, TX 772104294	OGRID: 16696
	Action Number: 384823
	Action Type: [NOTIFY] Notification Of Sampling (C-141N)

QUESTIONS

Prerequisites	
Incident ID (n#)	nAPP2113042718
Incident Name	NAPP2113042718 BRAVO DOME 1835 52E LEG 7 @ 0
Incident Type	Produced Water Release
Incident Status	Remediation Plan Approved

Location of Release Source	
Site Name	BRAVO DOME 1835 52E LEG 7
Date Release Discovered	11/02/2020
Surface Owner	Private

Sampling Event General Information	
Please answer all the questions in this group.	
What is the sampling surface area in square feet	3,871
What is the estimated number of samples that will be gathered	40
Sampling date pursuant to Subparagraph (a) of Paragraph (1) of Subsection D of 19.15.29.12 NMAC	10/05/2023
Time sampling will commence	08:00 AM
Warning: Notification can not be less than two business days prior to conducting final sampling.	
Please provide any information necessary for observers to contact samplers	SIMON RENDON
Please provide any information necessary for navigation to sampling site	32.2472,-103.7879

District I
1625 N. French Dr., Hobbs, NM 88240
Phone:(575) 393-6161 Fax:(575) 393-0720
District II
811 S. First St., Artesia, NM 88210
Phone:(575) 748-1283 Fax:(575) 748-9720
District III
1000 Rio Brazos Rd., Aztec, NM 87410
Phone:(505) 334-6178 Fax:(505) 334-6170
District IV
1220 S. St Francis Dr., Santa Fe, NM 87505
Phone:(505) 476-3470 Fax:(505) 476-3462

State of New Mexico
Energy, Minerals and Natural Resources
Oil Conservation Division
1220 S. St Francis Dr.
Santa Fe, NM 87505

CONDITIONS

Action 384823

CONDITIONS

Operator: OXY USA INC P.O. Box 4294 Houston, TX 772104294	OGRID: 16696
	Action Number: 384823
	Action Type: [NOTIFY] Notification Of Sampling (C-141N)

CONDITIONS

Created By	Condition	Condition Date
wdittrich	Failure to notify the OCD of sampling events including any changes in date/time per the requirements of 19.15.29.12.D.(1).(a) NMAC, may result in the remediation closure samples not being accepted.	9/18/2024

District I
1625 N. French Dr., Hobbs, NM 88240
Phone:(575) 393-6161 Fax:(575) 393-0720
District II
811 S. First St., Artesia, NM 88210
Phone:(575) 748-1283 Fax:(575) 748-9720
District III
1000 Rio Brazos Rd., Aztec, NM 87410
Phone:(505) 334-6178 Fax:(505) 334-6170
District IV
1220 S. St Francis Dr., Santa Fe, NM 87505
Phone:(505) 476-3470 Fax:(505) 476-3462

State of New Mexico
Energy, Minerals and Natural Resources
Oil Conservation Division
1220 S. St Francis Dr.
Santa Fe, NM 87505

QUESTIONS

Action 384828

QUESTIONS

Operator: OXY USA INC P.O. Box 4294 Houston, TX 772104294	OGRID: 16696
	Action Number: 384828
	Action Type: [NOTIFY] Notification Of Sampling (C-141N)

QUESTIONS

Prerequisites	
Incident ID (n#)	nAPP2113042718
Incident Name	NAPP2113042718 BRAVO DOME 1835 52E LEG 7 @ 0
Incident Type	Produced Water Release
Incident Status	Remediation Plan Approved

Location of Release Source	
Site Name	BRAVO DOME 1835 52E LEG 7
Date Release Discovered	11/02/2020
Surface Owner	Private

Sampling Event General Information	
Please answer all the questions in this group.	
What is the sampling surface area in square feet	3,871
What is the estimated number of samples that will be gathered	40
Sampling date pursuant to Subparagraph (a) of Paragraph (1) of Subsection D of 19.15.29.12 NMAC	10/06/2023
Time sampling will commence	08:00 AM
Warning: Notification can not be less than two business days prior to conducting final sampling.	
Please provide any information necessary for observers to contact samplers	SIMON RENDON
Please provide any information necessary for navigation to sampling site	32.2472,-103.7879

District I
1625 N. French Dr., Hobbs, NM 88240
Phone:(575) 393-6161 Fax:(575) 393-0720
District II
811 S. First St., Artesia, NM 88210
Phone:(575) 748-1283 Fax:(575) 748-9720
District III
1000 Rio Brazos Rd., Aztec, NM 87410
Phone:(505) 334-6178 Fax:(505) 334-6170
District IV
1220 S. St Francis Dr., Santa Fe, NM 87505
Phone:(505) 476-3470 Fax:(505) 476-3462

State of New Mexico
Energy, Minerals and Natural Resources
Oil Conservation Division
1220 S. St Francis Dr.
Santa Fe, NM 87505

CONDITIONS

Action 384828

CONDITIONS

Operator: OXY USA INC P.O. Box 4294 Houston, TX 772104294	OGRID: 16696
	Action Number: 384828
	Action Type: [NOTIFY] Notification Of Sampling (C-141N)

CONDITIONS

Created By	Condition	Condition Date
wdittrich	Failure to notify the OCD of sampling events including any changes in date/time per the requirements of 19.15.29.12.D.(1).(a) NMAC, may result in the remediation closure samples not being accepted.	9/18/2024

District I

1625 N. French Dr., Hobbs, NM 88240
Phone:(575) 393-6161 Fax:(575) 393-0720

District II

811 S. First St., Artesia, NM 88210
Phone:(575) 748-1283 Fax:(575) 748-9720

District III

1000 Rio Brazos Rd., Aztec, NM 87410
Phone:(505) 334-6178 Fax:(505) 334-6170

District IV

1220 S. St Francis Dr., Santa Fe, NM 87505
Phone:(505) 476-3470 Fax:(505) 476-3462

State of New Mexico
Energy, Minerals and Natural Resources
Oil Conservation Division
1220 S. St Francis Dr.
Santa Fe, NM 87505

QUESTIONS

Action 384832

QUESTIONS

Operator: OXY USA INC P.O. Box 4294 Houston, TX 772104294	OGRID: 16696
	Action Number: 384832
	Action Type: [NOTIFY] Notification Of Sampling (C-141N)

QUESTIONS

Prerequisites	
Incident ID (n#)	nAPP2113042718
Incident Name	NAPP2113042718 BRAVO DOME 1835 52E LEG 7 @ 0
Incident Type	Produced Water Release
Incident Status	Remediation Plan Approved

Location of Release Source

Site Name	BRAVO DOME 1835 52E LEG 7
Date Release Discovered	11/02/2020
Surface Owner	Private

Sampling Event General Information

Please answer all the questions in this group.

What is the sampling surface area in square feet	3,871
What is the estimated number of samples that will be gathered	40
Sampling date pursuant to Subparagraph (a) of Paragraph (1) of Subsection D of 19.15.29.12 NMAC	10/16/2023
Time sampling will commence	08:00 AM

Warning: Notification can not be less than two business days prior to conducting final sampling.

Please provide any information necessary for observers to contact samplers	SIMON RENDON
Please provide any information necessary for navigation to sampling site	N 35.82234,W-103.24696

District I
1625 N. French Dr., Hobbs, NM 88240
Phone:(575) 393-6161 Fax:(575) 393-0720
District II
811 S. First St., Artesia, NM 88210
Phone:(575) 748-1283 Fax:(575) 748-9720
District III
1000 Rio Brazos Rd., Aztec, NM 87410
Phone:(505) 334-6178 Fax:(505) 334-6170
District IV
1220 S. St Francis Dr., Santa Fe, NM 87505
Phone:(505) 476-3470 Fax:(505) 476-3462

State of New Mexico
Energy, Minerals and Natural Resources
Oil Conservation Division
1220 S. St Francis Dr.
Santa Fe, NM 87505

CONDITIONS

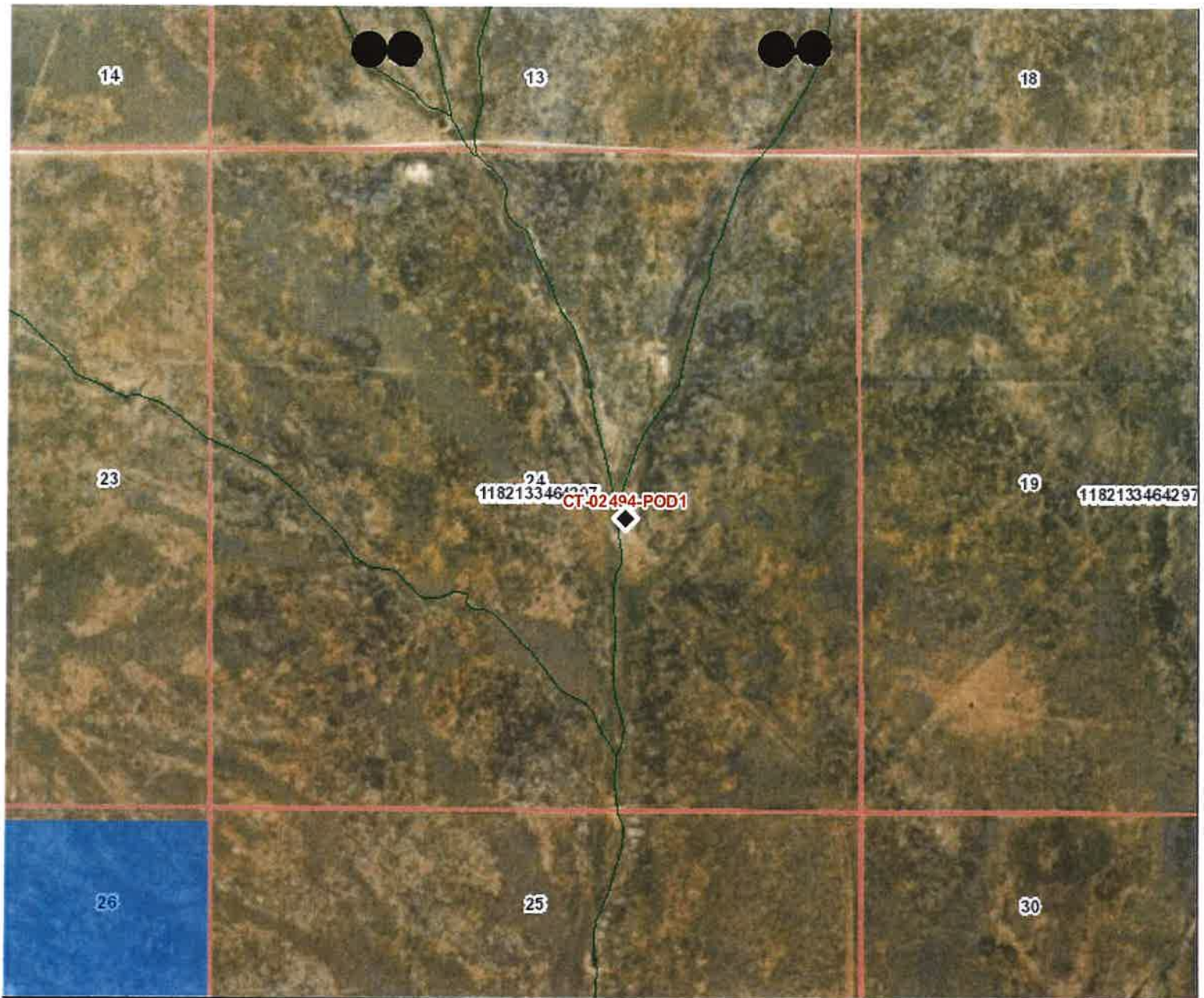
Action 384832

CONDITIONS

Operator: OXY USA INC P.O. Box 4294 Houston, TX 772104294	OGRID: 16696
	Action Number: 384832
	Action Type: [NOTIFY] Notification Of Sampling (C-141N)

CONDITIONS

Created By	Condition	Condition Date
wdittrich	Failure to notify the OCD of sampling events including any changes in date/time per the requirements of 19.15.29.12.D.(1).(a) NMAC, may result in the remediation closure samples not being accepted.	9/18/2024



Coordinates

UTM - NAD 83 (m) - Zone 13

Easting 655998.287

Northing 3960429.504

State Plane - NAD 83 (f) - Zone E

Easting 855533.824

Northing 1739284.658

Degrees Minutes Seconds

Latitude 35 : 46 : 32.052000

Longitude -103 : 16 : 26.796000

Location pulled from Coordinate Search

NEW MEXICO OFFICE OF THE STATE ENGINEER

1:18,056

N



Image Info

Source: Maxar

Date: 9/7/2021

Resolution (m): 0.5

Accuracy (m): 5

Spatial Information

Land Grant: Not in Land Grant

OSE Administrative Area: Union

County: Union

Groundwater Basin: Clayton

Sub-Basin: Middle Canadian-Trujillo

Abstract Area:

Clayton

Regulation Area:

Eastern Portion of the Clayton CMA

PLSS Description

NWNEWSE Qtr of Sec 24 of 018N 034E

Derived from GADN501-01-Sec. boundaries are
collapsed and as it only applies to the

POD Information

Owner: Kirk Fly

File Number: CT-2494

POD Status: NoData

Permit Status: NoData

Permit Use: NoData

Purpose: Livestock

JT

10/19/2023

Coord Search
Location

GIS WATERS
PODs

Pending
OSE District
Boundary

New Mexico State
Trust Lands

Both Estates

NHD Flowlines

Artificial Path
Stream River

☐ Bernalillo
County Parcels
2023

☐ Catron County
Parcels 2023

☐ Chaves County
Parcels 2023

☐ Cibola County
Parcels 2023

☐ Colfax County
Parcels 2023

☐ Curry County
Parcels 2023

☐ De Baca
County Parcels
2023

☐ Doña Ana
County Parcels
2023

☐ Eddy County
Parcels 2023

☐ Grant County
Parcels 2023

☐ Guadalupe
County Parcels
2023

☐ Hidalgo County
Parcels 2023

☐ Lea County
Parcels 2023

☐ Lincoln County
Parcels 2023

☐ Los Alamos
County Parcels
2023

☐ Luna County
Parcels 2023

☐ McKinley
County Parcels
2023

☐ Mora County
Parcels 2023

☐ Otero County
Parcels 2023

☐ Quay County
Parcels 2023

☐ Rio Arriba
County Parcels
2023

☐ Roosevelt
County Parcels
2023

☐ Sandoval
County Parcels
2023

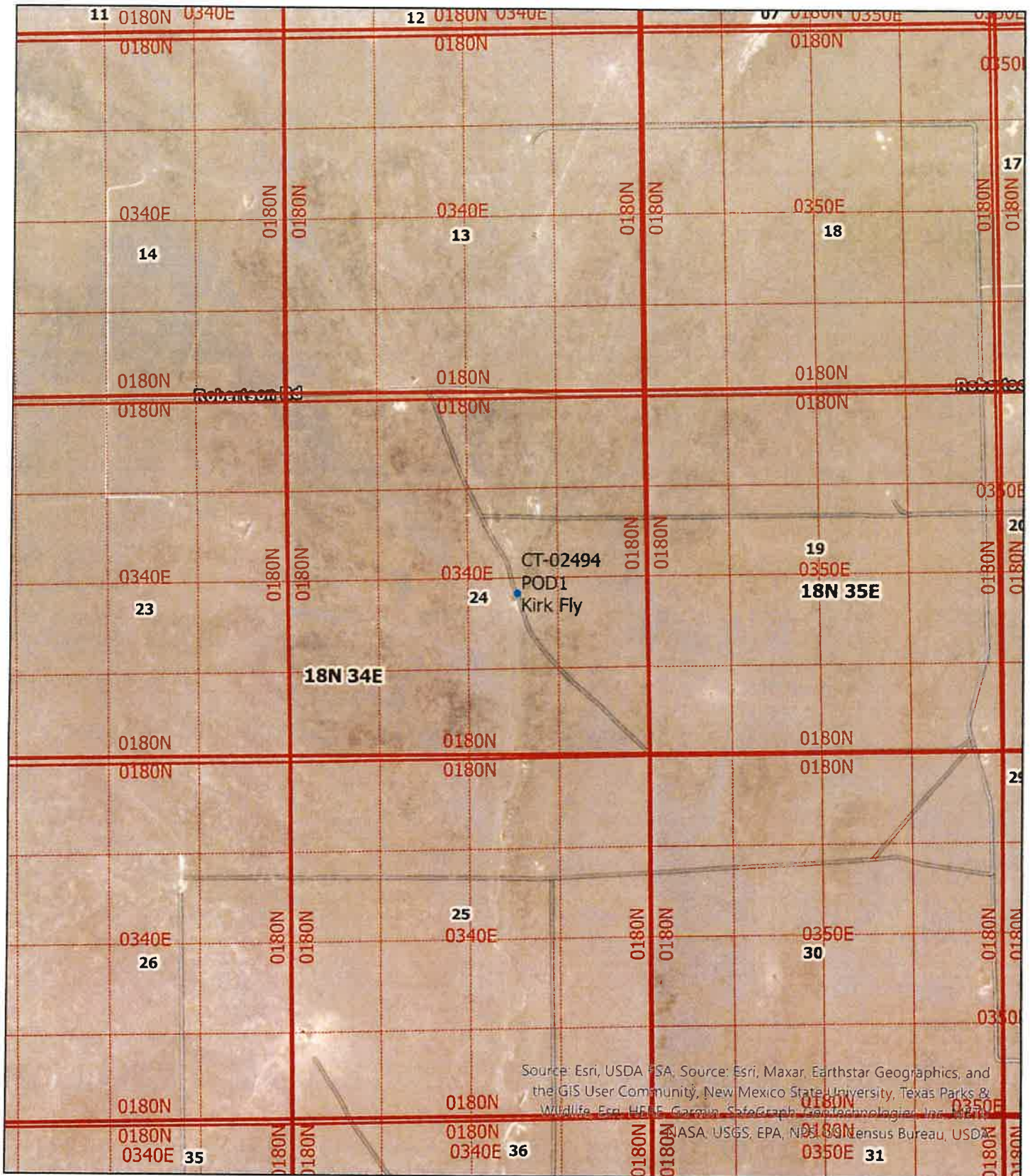
☐ San Juan
County Parcels
2023

☐ San Miguel
County Parcels
2023

☐ Santa Fe
County Parcels
2023

☐ Sierra County
Parcels 2023

CT-02494 POD1
Clayton Basin
Kirk Fly



0 0.2 0.4 0.8 Miles



1:24,000



OXY –BRAVO DOME 1835-52E LEG 7 (11/2/20)





OXY –BRAVO DOME 1835-52E LEG 7 (11/2/20)





OXY –BRAVO DOME 1835-52E LEG 7 (11/2/20)





OXY –BRAVO DOME 1835-52E LEG 7 (11/2/20)





OXY –BRAVO DOME 1835-52E LEG 7 (11/2/20)





OXY –BRAVO DOME 1835-52E LEG 7 (11/2/20)





OXY –BRAVO DOME 1835-52E LEG 7 (11/2/20)





OXY –BRAVO DOME 1835-52E LEG 7 (11/2/20)





OXY –BRAVO DOME 1835-52E LEG 7 (11/2/20)





PHONE (575) 393-2326 ° 101 E. MARLAND ° HOBBS, NM 88240

October 19, 2023

Cliff Brunson

BBC International, Inc.

P.O. Box 805

Hobbs, NM 88241

RE: BRAVO DOME 1835 52E LEG7

Enclosed are the results of analyses for samples received by the laboratory on 10/12/23 16:20.

Cardinal Laboratories is accredited through Texas NELAP under certificate number T104704398-22-15. Accreditation applies to drinking water, non-potable water and solid and chemical materials. All accredited analytes are denoted by an asterisk (*). For a complete list of accredited analytes and matrices visit the TCEQ website at www.tceq.texas.gov/field/qa/lab_accred_certif.html.

Cardinal Laboratories is accredited through the State of Colorado Department of Public Health and Environment for:

Method EPA 552.2	Haloacetic Acids (HAA-5)
Method EPA 524.2	Total Trihalomethanes (TTHM)
Method EPA 524.4	Regulated VOCs (V1, V2, V3)

Accreditation applies to public drinking water matrices.

This report meets NELAP requirements and is made up of a cover page, analytical results, and a copy of the original chain-of-custody. If you have any questions concerning this report, please feel free to contact me.

Sincerely,

A handwritten signature in black ink that reads "Celey D. Keene". The signature is written in a cursive style with a large, stylized 'C' and 'K'.

Celey D. Keene

Lab Director/Quality Manager



PHONE (575) 393-2326 ° 101 E. MARLAND ° HOBBS, NM 88240

Analytical Results For:

BBC International, Inc.
 Cliff Brunson
 P.O. Box 805
 Hobbs NM, 88241
 Fax To: (575) 397-0397

Received: 10/12/2023
 Reported: 10/19/2023
 Project Name: BRAVO DOME 1835 52E LEG7
 Project Number: (11-2-20)
 Project Location: OXY - NEW MEXICO

Sampling Date: 10/05/2023
 Sampling Type: Soil
 Sampling Condition: Cool & Intact
 Sample Received By: Tamara Oldaker

Sample ID: BOTTOM SAMPLE 1 @ 1' (H235593-01)

BTEX 8021B			mg/kg		Analyzed By: JH				
Analyte	Result	Reporting Limit	Analyzed	Method Blank	BS	% Recovery	True Value QC	RPD	Qualifier
Benzene*	<0.050	0.050	10/14/2023	ND	1.89	94.3	2.00	1.64	
Toluene*	<0.050	0.050	10/14/2023	ND	1.80	89.9	2.00	3.00	
Ethylbenzene*	<0.050	0.050	10/14/2023	ND	1.87	93.4	2.00	3.49	
Total Xylenes*	<0.150	0.150	10/14/2023	ND	5.44	90.7	6.00	3.83	
Total BTEX	<0.300	0.300	10/14/2023	ND					

Surrogate: 4-Bromofluorobenzene (PID) 102 % 71.5-134

Chloride, SM4500Cl-B			mg/kg		Analyzed By: AC				
Analyte	Result	Reporting Limit	Analyzed	Method Blank	BS	% Recovery	True Value QC	RPD	Qualifier
Chloride	<16.0	16.0	10/16/2023	ND	432	108	400	0.00	

TPH 8015M			mg/kg		Analyzed By: MS				
Analyte	Result	Reporting Limit	Analyzed	Method Blank	BS	% Recovery	True Value QC	RPD	Qualifier
GRO C6-C10*	<10.0	10.0	10/13/2023	ND	173	86.4	200	0.0411	
DRO >C10-C28*	<10.0	10.0	10/13/2023	ND	205	103	200	6.38	
EXT DRO >C28-C36	<10.0	10.0	10/13/2023	ND					

Surrogate: 1-Chlorooctane 76.0 % 48.2-134

Surrogate: 1-Chlorooctadecane 90.3 % 49.1-148

Cardinal Laboratories

*=Accredited Analyte

PLEASE NOTE: Liability and Damages. Cardinal's liability and client's exclusive remedy for any claim arising, whether based in contract or tort, shall be limited to the amount paid by client for analyses. All claims, including those for negligence and any other cause whatsoever shall be deemed waived unless made in writing and received by Cardinal within thirty (30) days after completion of the applicable service. In no event shall Cardinal be liable for incidental or consequential damages, including, without limitation, business interruptions, loss of use, or loss of profits incurred by client, its subsidiaries, affiliates or successors arising out of or related to the performance of the services hereunder by Cardinal, regardless of whether such claim is based upon any of the above stated reasons or otherwise. Results relate only to the samples identified above. This report shall not be reproduced except in full with written approval of Cardinal Laboratories.

Celey D. Keene, Lab Director/Quality Manager



PHONE (575) 393-2326 ° 101 E. MARLAND ° HOBBS, NM 88240

Analytical Results For:

BBC International, Inc.
 Cliff Brunson
 P.O. Box 805
 Hobbs NM, 88241
 Fax To: (575) 397-0397

Received: 10/12/2023
 Reported: 10/19/2023
 Project Name: BRAVO DOME 1835 52E LEG7
 Project Number: (11-2-20)
 Project Location: OXY - NEW MEXICO

Sampling Date: 10/05/2023
 Sampling Type: Soil
 Sampling Condition: Cool & Intact
 Sample Received By: Tamara Oldaker

Sample ID: BOTTOM SAMPLE 2 @ 1' (H235593-02)

BTEx 8021B		mg/kg		Analyzed By: JH						
Analyte	Result	Reporting Limit	Analyzed	Method Blank	BS	% Recovery	True Value QC	RPD	Qualifier	
Benzene*	<0.050	0.050	10/14/2023	ND	1.89	94.3	2.00	1.64		
Toluene*	<0.050	0.050	10/14/2023	ND	1.80	89.9	2.00	3.00		
Ethylbenzene*	<0.050	0.050	10/14/2023	ND	1.87	93.4	2.00	3.49		
Total Xylenes*	<0.150	0.150	10/14/2023	ND	5.44	90.7	6.00	3.83		
Total BTEX	<0.300	0.300	10/14/2023	ND						

Surrogate: 4-Bromofluorobenzene (PID) 101 % 71.5-134

Chloride, SM4500CI-B		mg/kg		Analyzed By: AC						
Analyte	Result	Reporting Limit	Analyzed	Method Blank	BS	% Recovery	True Value QC	RPD	Qualifier	
Chloride	<16.0	16.0	10/16/2023	ND	432	108	400	0.00		

TPH 8015M		mg/kg		Analyzed By: MS					
Analyte	Result	Reporting Limit	Analyzed	Method Blank	BS	% Recovery	True Value QC	RPD	Qualifier
GRO C6-C10*	<10.0	10.0	10/13/2023	ND	197	98.3	200	1.59	
DRO >C10-C28*	<10.0	10.0	10/13/2023	ND	195	97.7	200	1.32	
EXT DRO >C28-C36	<10.0	10.0	10/13/2023	ND					

Surrogate: 1-Chlorooctane 78.6 % 48.2-134

Surrogate: 1-Chlorooctadecane 89.2 % 49.1-148

Cardinal Laboratories

*=Accredited Analyte

PLEASE NOTE: Liability and Damages. Cardinal's liability and client's exclusive remedy for any claim arising, whether based in contract or tort, shall be limited to the amount paid by client for analyses. All claims, including those for negligence and any other cause whatsoever shall be deemed waived unless made in writing and received by Cardinal within thirty (30) days after completion of the applicable service. In no event shall Cardinal be liable for incidental or consequential damages, including, without limitation, business interruptions, loss of use, or loss of profits incurred by client, its subsidiaries, affiliates or successors arising out of or related to the performance of the services hereunder by Cardinal, regardless of whether such claim is based upon any of the above stated reasons or otherwise. Results relate only to the samples identified above. This report shall not be reproduced except in full with written approval of Cardinal Laboratories.

Celey D. Keene, Lab Director/Quality Manager



PHONE (575) 393-2326 ° 101 E. MARLAND ° HOBBS, NM 88240

Analytical Results For:

BBC International, Inc.
 Cliff Brunson
 P.O. Box 805
 Hobbs NM, 88241
 Fax To: (575) 397-0397

Received: 10/12/2023
 Reported: 10/19/2023
 Project Name: BRAVO DOME 1835 52E LEG7
 Project Number: (11-2-20)
 Project Location: OXY - NEW MEXICO

Sampling Date: 10/05/2023
 Sampling Type: Soil
 Sampling Condition: Cool & Intact
 Sample Received By: Tamara Oldaker

Sample ID: BOTTOM SAMPLE 3 @ 1' (H235593-03)

BTEx 8021B		mg/kg		Analyzed By: JH						
Analyte	Result	Reporting Limit	Analyzed	Method Blank	BS	% Recovery	True Value QC	RPD	Qualifier	
Benzene*	<0.050	0.050	10/14/2023	ND	1.89	94.3	2.00	1.64		
Toluene*	<0.050	0.050	10/14/2023	ND	1.80	89.9	2.00	3.00		
Ethylbenzene*	<0.050	0.050	10/14/2023	ND	1.87	93.4	2.00	3.49		
Total Xylenes*	<0.150	0.150	10/14/2023	ND	5.44	90.7	6.00	3.83		
Total BTEX	<0.300	0.300	10/14/2023	ND						

Surrogate: 4-Bromofluorobenzene (PID) 100 % 71.5-134

Chloride, SM4500Cl-B		mg/kg		Analyzed By: AC						
Analyte	Result	Reporting Limit	Analyzed	Method Blank	BS	% Recovery	True Value QC	RPD	Qualifier	
Chloride	<16.0	16.0	10/16/2023	ND	432	108	400	0.00		

TPH 8015M		mg/kg		Analyzed By: MS					
Analyte	Result	Reporting Limit	Analyzed	Method Blank	BS	% Recovery	True Value QC	RPD	Qualifier
GRO C6-C10*	<10.0	10.0	10/13/2023	ND	197	98.3	200	1.59	
DRO >C10-C28*	<10.0	10.0	10/13/2023	ND	195	97.7	200	1.32	
EXT DRO >C28-C36	<10.0	10.0	10/13/2023	ND					

Surrogate: 1-Chlorooctane 82.3 % 48.2-134

Surrogate: 1-Chlorooctadecane 94.7 % 49.1-148

Cardinal Laboratories

*=Accredited Analyte

PLEASE NOTE: Liability and Damages. Cardinal's liability and client's exclusive remedy for any claim arising, whether based in contract or tort, shall be limited to the amount paid by client for analyses. All claims, including those for negligence and any other cause whatsoever shall be deemed waived unless made in writing and received by Cardinal within thirty (30) days after completion of the applicable service. In no event shall Cardinal be liable for incidental or consequential damages, including, without limitation, business interruptions, loss of use, or loss of profits incurred by client, its subsidiaries, affiliates or successors arising out of or related to the performance of the services hereunder by Cardinal, regardless of whether such claim is based upon any of the above stated reasons or otherwise. Results relate only to the samples identified above. This report shall not be reproduced except in full with written approval of Cardinal Laboratories.

Celey D. Keene, Lab Director/Quality Manager



PHONE (575) 393-2326 ° 101 E. MARLAND ° HOBBS, NM 88240

Analytical Results For:

BBC International, Inc.
 Cliff Brunson
 P.O. Box 805
 Hobbs NM, 88241
 Fax To: (575) 397-0397

Received: 10/12/2023
 Reported: 10/19/2023
 Project Name: BRAVO DOME 1835 52E LEG7
 Project Number: (11-2-20)
 Project Location: OXY - NEW MEXICO

Sampling Date: 10/05/2023
 Sampling Type: Soil
 Sampling Condition: Cool & Intact
 Sample Received By: Tamara Oldaker

Sample ID: BOTTOM SAMPLE 4 @ 1' (H235593-04)

BTEx 8021B		mg/kg		Analyzed By: JH						
Analyte	Result	Reporting Limit	Analyzed	Method Blank	BS	% Recovery	True Value QC	RPD	Qualifier	
Benzene*	<0.050	0.050	10/14/2023	ND	1.89	94.3	2.00	1.64		
Toluene*	<0.050	0.050	10/14/2023	ND	1.80	89.9	2.00	3.00		
Ethylbenzene*	<0.050	0.050	10/14/2023	ND	1.87	93.4	2.00	3.49		
Total Xylenes*	<0.150	0.150	10/14/2023	ND	5.44	90.7	6.00	3.83		
Total BTEX	<0.300	0.300	10/14/2023	ND						

Surrogate: 4-Bromofluorobenzene (PID) 101 % 71.5-134

Chloride, SM4500CI-B		mg/kg		Analyzed By: AC						
Analyte	Result	Reporting Limit	Analyzed	Method Blank	BS	% Recovery	True Value QC	RPD	Qualifier	
Chloride	<16.0	16.0	10/16/2023	ND	432	108	400	0.00		

TPH 8015M		mg/kg		Analyzed By: MS					
Analyte	Result	Reporting Limit	Analyzed	Method Blank	BS	% Recovery	True Value QC	RPD	Qualifier
GRO C6-C10*	<10.0	10.0	10/13/2023	ND	197	98.3	200	1.59	
DRO >C10-C28*	<10.0	10.0	10/13/2023	ND	195	97.7	200	1.32	
EXT DRO >C28-C36	<10.0	10.0	10/13/2023	ND					

Surrogate: 1-Chlorooctane 76.7 % 48.2-134

Surrogate: 1-Chlorooctadecane 88.3 % 49.1-148

Cardinal Laboratories

*=Accredited Analyte

PLEASE NOTE: Liability and Damages. Cardinal's liability and client's exclusive remedy for any claim arising, whether based in contract or tort, shall be limited to the amount paid by client for analyses. All claims, including those for negligence and any other cause whatsoever shall be deemed waived unless made in writing and received by Cardinal within thirty (30) days after completion of the applicable service. In no event shall Cardinal be liable for incidental or consequential damages, including, without limitation, business interruptions, loss of use, or loss of profits incurred by client, its subsidiaries, affiliates or successors arising out of or related to the performance of the services hereunder by Cardinal, regardless of whether such claim is based upon any of the above stated reasons or otherwise. Results relate only to the samples identified above. This report shall not be reproduced except in full with written approval of Cardinal Laboratories.

Celey D. Keene, Lab Director/Quality Manager



PHONE (575) 393-2326 ° 101 E. MARLAND ° HOBBS, NM 88240

Analytical Results For:

BBC International, Inc.
 Cliff Brunson
 P.O. Box 805
 Hobbs NM, 88241
 Fax To: (575) 397-0397

Received: 10/12/2023
 Reported: 10/19/2023
 Project Name: BRAVO DOME 1835 52E LEG7
 Project Number: (11-2-20)
 Project Location: OXY - NEW MEXICO

Sampling Date: 10/05/2023
 Sampling Type: Soil
 Sampling Condition: Cool & Intact
 Sample Received By: Tamara Oldaker

Sample ID: BOTTOM SAMPLE 5 @ 1' (H235593-05)

BTEX 8021B		mg/kg		Analyzed By: JH					
Analyte	Result	Reporting Limit	Analyzed	Method Blank	BS	% Recovery	True Value QC	RPD	Qualifier
Benzene*	<0.050	0.050	10/14/2023	ND	1.89	94.3	2.00	1.64	
Toluene*	<0.050	0.050	10/14/2023	ND	1.80	89.9	2.00	3.00	
Ethylbenzene*	<0.050	0.050	10/14/2023	ND	1.87	93.4	2.00	3.49	
Total Xylenes*	<0.150	0.150	10/14/2023	ND	5.44	90.7	6.00	3.83	
Total BTEX	<0.300	0.300	10/14/2023	ND					

Surrogate: 4-Bromofluorobenzene (PID) 98.3 % 71.5-134

Chloride, SM4500Cl-B		mg/kg		Analyzed By: AC					
Analyte	Result	Reporting Limit	Analyzed	Method Blank	BS	% Recovery	True Value QC	RPD	Qualifier
Chloride	<16.0	16.0	10/16/2023	ND	432	108	400	0.00	

TPH 8015M		mg/kg		Analyzed By: MS					
Analyte	Result	Reporting Limit	Analyzed	Method Blank	BS	% Recovery	True Value QC	RPD	Qualifier
GRO C6-C10*	<10.0	10.0	10/19/2023	ND	197	98.3	200	1.59	
DRO >C10-C28*	<10.0	10.0	10/19/2023	ND	195	97.7	200	1.32	
EXT DRO >C28-C36	<10.0	10.0	10/19/2023	ND					

Surrogate: 1-Chlorooctane 70.2 % 48.2-134

Surrogate: 1-Chlorooctadecane 80.7 % 49.1-148

Cardinal Laboratories

*=Accredited Analyte

PLEASE NOTE: Liability and Damages. Cardinal's liability and client's exclusive remedy for any claim arising, whether based in contract or tort, shall be limited to the amount paid by client for analyses. All claims, including those for negligence and any other cause whatsoever shall be deemed waived unless made in writing and received by Cardinal within thirty (30) days after completion of the applicable service. In no event shall Cardinal be liable for incidental or consequential damages, including, without limitation, business interruptions, loss of use, or loss of profits incurred by client, its subsidiaries, affiliates or successors arising out of or related to the performance of the services hereunder by Cardinal, regardless of whether such claim is based upon any of the above stated reasons or otherwise. Results relate only to the samples identified above. This report shall not be reproduced except in full with written approval of Cardinal Laboratories.

Celey D. Keene, Lab Director/Quality Manager



PHONE (575) 393-2326 ° 101 E. MARLAND ° HOBBS, NM 88240

Analytical Results For:

BBC International, Inc.
 Cliff Brunson
 P.O. Box 805
 Hobbs NM, 88241
 Fax To: (575) 397-0397

Received: 10/12/2023
 Reported: 10/19/2023
 Project Name: BRAVO DOME 1835 52E LEG7
 Project Number: (11-2-20)
 Project Location: OXY - NEW MEXICO

Sampling Date: 10/05/2023
 Sampling Type: Soil
 Sampling Condition: Cool & Intact
 Sample Received By: Tamara Oldaker

Sample ID: BOTTOM SAMPLE 6 @ 1' (H235593-06)

BTEx 8021B		mg/kg		Analyzed By: JH						
Analyte	Result	Reporting Limit	Analyzed	Method Blank	BS	% Recovery	True Value QC	RPD	Qualifier	
Benzene*	<0.050	0.050	10/14/2023	ND	1.89	94.3	2.00	1.64		
Toluene*	<0.050	0.050	10/14/2023	ND	1.80	89.9	2.00	3.00		
Ethylbenzene*	<0.050	0.050	10/14/2023	ND	1.87	93.4	2.00	3.49		
Total Xylenes*	<0.150	0.150	10/14/2023	ND	5.44	90.7	6.00	3.83		
Total BTEX	<0.300	0.300	10/14/2023	ND						

Surrogate: 4-Bromofluorobenzene (PID) 99.7 % 71.5-134

Chloride, SM4500Cl-B		mg/kg		Analyzed By: AC						
Analyte	Result	Reporting Limit	Analyzed	Method Blank	BS	% Recovery	True Value QC	RPD	Qualifier	
Chloride	<16.0	16.0	10/16/2023	ND	432	108	400	0.00		

TPH 8015M		mg/kg		Analyzed By: MS					
Analyte	Result	Reporting Limit	Analyzed	Method Blank	BS	% Recovery	True Value QC	RPD	Qualifier
GRO C6-C10*	<10.0	10.0	10/13/2023	ND	197	98.3	200	1.59	
DRO >C10-C28*	<10.0	10.0	10/13/2023	ND	195	97.7	200	1.32	
EXT DRO >C28-C36	<10.0	10.0	10/13/2023	ND					

Surrogate: 1-Chlorooctane 76.9 % 48.2-134

Surrogate: 1-Chlorooctadecane 89.6 % 49.1-148

Cardinal Laboratories

*=Accredited Analyte

PLEASE NOTE: Liability and Damages. Cardinal's liability and client's exclusive remedy for any claim arising, whether based in contract or tort, shall be limited to the amount paid by client for analyses. All claims, including those for negligence and any other cause whatsoever shall be deemed waived unless made in writing and received by Cardinal within thirty (30) days after completion of the applicable service. In no event shall Cardinal be liable for incidental or consequential damages, including, without limitation, business interruptions, loss of use, or loss of profits incurred by client, its subsidiaries, affiliates or successors arising out of or related to the performance of the services hereunder by Cardinal, regardless of whether such claim is based upon any of the above stated reasons or otherwise. Results relate only to the samples identified above. This report shall not be reproduced except in full with written approval of Cardinal Laboratories.

Celey D. Keene, Lab Director/Quality Manager



PHONE (575) 393-2326 ° 101 E. MARLAND ° HOBBS, NM 88240

Analytical Results For:

BBC International, Inc.
 Cliff Brunson
 P.O. Box 805
 Hobbs NM, 88241
 Fax To: (575) 397-0397

Received: 10/12/2023
 Reported: 10/19/2023
 Project Name: BRAVO DOME 1835 52E LEG7
 Project Number: (11-2-20)
 Project Location: OXY - NEW MEXICO

Sampling Date: 10/05/2023
 Sampling Type: Soil
 Sampling Condition: Cool & Intact
 Sample Received By: Tamara Oldaker

Sample ID: BOTTOM SAMPLE 7 @ 2' (H235593-07)

BTEx 8021B		mg/kg		Analyzed By: JH						
Analyte	Result	Reporting Limit	Analyzed	Method Blank	BS	% Recovery	True Value QC	RPD	Qualifier	
Benzene*	<0.050	0.050	10/14/2023	ND	1.89	94.3	2.00	1.64		
Toluene*	<0.050	0.050	10/14/2023	ND	1.80	89.9	2.00	3.00		
Ethylbenzene*	<0.050	0.050	10/14/2023	ND	1.87	93.4	2.00	3.49		
Total Xylenes*	<0.150	0.150	10/14/2023	ND	5.44	90.7	6.00	3.83		
Total BTEX	<0.300	0.300	10/14/2023	ND						

Surrogate: 4-Bromofluorobenzene (PID) 101 % 71.5-134

Chloride, SM4500Cl-B		mg/kg		Analyzed By: AC						
Analyte	Result	Reporting Limit	Analyzed	Method Blank	BS	% Recovery	True Value QC	RPD	Qualifier	
Chloride	<16.0	16.0	10/16/2023	ND	432	108	400	0.00		

TPH 8015M		mg/kg		Analyzed By: MS					
Analyte	Result	Reporting Limit	Analyzed	Method Blank	BS	% Recovery	True Value QC	RPD	Qualifier
GRO C6-C10*	<10.0	10.0	10/13/2023	ND	197	98.3	200	1.59	
DRO >C10-C28*	<10.0	10.0	10/13/2023	ND	195	97.7	200	1.32	
EXT DRO >C28-C36	<10.0	10.0	10/13/2023	ND					

Surrogate: 1-Chlorooctane 78.2 % 48.2-134

Surrogate: 1-Chlorooctadecane 90.6 % 49.1-148

Cardinal Laboratories

*=Accredited Analyte

PLEASE NOTE: Liability and Damages. Cardinal's liability and client's exclusive remedy for any claim arising, whether based in contract or tort, shall be limited to the amount paid by client for analyses. All claims, including those for negligence and any other cause whatsoever shall be deemed waived unless made in writing and received by Cardinal within thirty (30) days after completion of the applicable service. In no event shall Cardinal be liable for incidental or consequential damages, including, without limitation, business interruptions, loss of use, or loss of profits incurred by client, its subsidiaries, affiliates or successors arising out of or related to the performance of the services hereunder by Cardinal, regardless of whether such claim is based upon any of the above stated reasons or otherwise. Results relate only to the samples identified above. This report shall not be reproduced except in full with written approval of Cardinal Laboratories.

Celey D. Keene, Lab Director/Quality Manager



PHONE (575) 393-2326 ° 101 E. MARLAND ° HOBBS, NM 88240

Analytical Results For:

BBC International, Inc.
 Cliff Brunson
 P.O. Box 805
 Hobbs NM, 88241
 Fax To: (575) 397-0397

Received: 10/12/2023
 Reported: 10/19/2023
 Project Name: BRAVO DOME 1835 52E LEG7
 Project Number: (11-2-20)
 Project Location: OXY - NEW MEXICO

Sampling Date: 10/05/2023
 Sampling Type: Soil
 Sampling Condition: Cool & Intact
 Sample Received By: Tamara Oldaker

Sample ID: BOTTOM SAMPLE 8 @ 2' (H235593-08)

BTEX 8021B		mg/kg		Analyzed By: JH					
Analyte	Result	Reporting Limit	Analyzed	Method Blank	BS	% Recovery	True Value QC	RPD	Qualifier
Benzene*	<0.050	0.050	10/14/2023	ND	1.89	94.3	2.00	1.64	
Toluene*	<0.050	0.050	10/14/2023	ND	1.80	89.9	2.00	3.00	
Ethylbenzene*	<0.050	0.050	10/14/2023	ND	1.87	93.4	2.00	3.49	
Total Xylenes*	<0.150	0.150	10/14/2023	ND	5.44	90.7	6.00	3.83	
Total BTEX	<0.300	0.300	10/14/2023	ND					

Surrogate: 4-Bromofluorobenzene (PID) 98.0 % 71.5-134

Chloride, SM4500Cl-B		mg/kg		Analyzed By: AC					
Analyte	Result	Reporting Limit	Analyzed	Method Blank	BS	% Recovery	True Value QC	RPD	Qualifier
Chloride	<16.0	16.0	10/16/2023	ND	432	108	400	0.00	

TPH 8015M		mg/kg		Analyzed By: MS					
Analyte	Result	Reporting Limit	Analyzed	Method Blank	BS	% Recovery	True Value QC	RPD	Qualifier
GRO C6-C10*	<10.0	10.0	10/19/2023	ND	197	98.3	200	1.59	
DRO >C10-C28*	<10.0	10.0	10/19/2023	ND	195	97.7	200	1.32	
EXT DRO >C28-C36	<10.0	10.0	10/19/2023	ND					

Surrogate: 1-Chlorooctane 102 % 48.2-134

Surrogate: 1-Chlorooctadecane 117 % 49.1-148

Cardinal Laboratories

*=Accredited Analyte

PLEASE NOTE: Liability and Damages. Cardinal's liability and client's exclusive remedy for any claim arising, whether based in contract or tort, shall be limited to the amount paid by client for analyses. All claims, including those for negligence and any other cause whatsoever shall be deemed waived unless made in writing and received by Cardinal within thirty (30) days after completion of the applicable service. In no event shall Cardinal be liable for incidental or consequential damages, including, without limitation, business interruptions, loss of use, or loss of profits incurred by client, its subsidiaries, affiliates or successors arising out of or related to the performance of the services hereunder by Cardinal, regardless of whether such claim is based upon any of the above stated reasons or otherwise. Results relate only to the samples identified above. This report shall not be reproduced except in full with written approval of Cardinal Laboratories.

Celey D. Keene, Lab Director/Quality Manager



PHONE (575) 393-2326 ° 101 E. MARLAND ° HOBBS, NM 88240

Analytical Results For:

BBC International, Inc.
 Cliff Brunson
 P.O. Box 805
 Hobbs NM, 88241
 Fax To: (575) 397-0397

Received: 10/12/2023
 Reported: 10/19/2023
 Project Name: BRAVO DOME 1835 52E LEG7
 Project Number: (11-2-20)
 Project Location: OXY - NEW MEXICO

Sampling Date: 10/05/2023
 Sampling Type: Soil
 Sampling Condition: Cool & Intact
 Sample Received By: Tamara Oldaker

Sample ID: BOTTOM SAMPLE 9 @ 2' (H235593-09)

BTEx 8021B		mg/kg		Analyzed By: MS					
Analyte	Result	Reporting Limit	Analyzed	Method Blank	BS	% Recovery	True Value QC	RPD	Qualifier
Benzene*	<0.050	0.050	10/14/2023	ND	1.94	97.0	2.00	2.32	
Toluene*	<0.050	0.050	10/14/2023	ND	1.98	99.2	2.00	1.62	
Ethylbenzene*	<0.050	0.050	10/14/2023	ND	2.01	100	2.00	2.65	
Total Xylenes*	<0.150	0.150	10/14/2023	ND	6.04	101	6.00	2.53	
Total BTEX	<0.300	0.300	10/14/2023	ND					

Surrogate: 4-Bromofluorobenzene (PID) 98.8 % 71.5-134

Chloride, SM4500Cl-B		mg/kg		Analyzed By: AC					
Analyte	Result	Reporting Limit	Analyzed	Method Blank	BS	% Recovery	True Value QC	RPD	Qualifier
Chloride	<16.0	16.0	10/16/2023	ND	432	108	400	0.00	

TPH 8015M		mg/kg		Analyzed By: MS					
Analyte	Result	Reporting Limit	Analyzed	Method Blank	BS	% Recovery	True Value QC	RPD	Qualifier
GRO C6-C10*	<10.0	10.0	10/13/2023	ND	197	98.3	200	1.59	
DRO >C10-C28*	<10.0	10.0	10/13/2023	ND	195	97.7	200	1.32	
EXT DRO >C28-C36	<10.0	10.0	10/13/2023	ND					

Surrogate: 1-Chlorooctane 84.5 % 48.2-134

Surrogate: 1-Chlorooctadecane 96.5 % 49.1-148

Cardinal Laboratories

*=Accredited Analyte

PLEASE NOTE: Liability and Damages. Cardinal's liability and client's exclusive remedy for any claim arising, whether based in contract or tort, shall be limited to the amount paid by client for analyses. All claims, including those for negligence and any other cause whatsoever shall be deemed waived unless made in writing and received by Cardinal within thirty (30) days after completion of the applicable service. In no event shall Cardinal be liable for incidental or consequential damages, including, without limitation, business interruptions, loss of use, or loss of profits incurred by client, its subsidiaries, affiliates or successors arising out of or related to the performance of the services hereunder by Cardinal, regardless of whether such claim is based upon any of the above stated reasons or otherwise. Results relate only to the samples identified above. This report shall not be reproduced except in full with written approval of Cardinal Laboratories.

Celey D. Keene, Lab Director/Quality Manager



PHONE (575) 393-2326 ° 101 E. MARLAND ° HOBBS, NM 88240

Analytical Results For:

BBC International, Inc.
 Cliff Brunson
 P.O. Box 805
 Hobbs NM, 88241
 Fax To: (575) 397-0397

Received: 10/12/2023
 Reported: 10/19/2023
 Project Name: BRAVO DOME 1835 52E LEG7
 Project Number: (11-2-20)
 Project Location: OXY - NEW MEXICO

Sampling Date: 10/05/2023
 Sampling Type: Soil
 Sampling Condition: Cool & Intact
 Sample Received By: Tamara Oldaker

Sample ID: BOTTOM SAMPLE 10 @ 2' (H235593-10)

BTEx 8021B		mg/kg		Analyzed By: MS					
Analyte	Result	Reporting Limit	Analyzed	Method Blank	BS	% Recovery	True Value QC	RPD	Qualifier
Benzene*	<0.050	0.050	10/14/2023	ND	1.94	97.0	2.00	2.32	
Toluene*	<0.050	0.050	10/14/2023	ND	1.98	99.2	2.00	1.62	
Ethylbenzene*	<0.050	0.050	10/14/2023	ND	2.01	100	2.00	2.65	
Total Xylenes*	<0.150	0.150	10/14/2023	ND	6.04	101	6.00	2.53	
Total BTEx	<0.300	0.300	10/14/2023	ND					

Surrogate: 4-Bromofluorobenzene (PID) 100 % 71.5-134

Chloride, SM4500CI-B		mg/kg		Analyzed By: AC						
Analyte	Result	Reporting Limit	Analyzed	Method Blank	BS	% Recovery	True Value QC	RPD	Qualifier	
Chloride	<16.0	16.0	10/16/2023	ND	432	108	400	0.00		

TPH 8015M		mg/kg		Analyzed By: MS					
Analyte	Result	Reporting Limit	Analyzed	Method Blank	BS	% Recovery	True Value QC	RPD	Qualifier
GRO C6-C10*	<10.0	10.0	10/13/2023	ND	197	98.3	200	1.59	
DRO >C10-C28*	<10.0	10.0	10/13/2023	ND	195	97.7	200	1.32	
EXT DRO >C28-C36	<10.0	10.0	10/13/2023	ND					

Surrogate: 1-Chlorooctane 71.4 % 48.2-134

Surrogate: 1-Chlorooctadecane 79.4 % 49.1-148

Cardinal Laboratories

*=Accredited Analyte

PLEASE NOTE: Liability and Damages. Cardinal's liability and client's exclusive remedy for any claim arising, whether based in contract or tort, shall be limited to the amount paid by client for analyses. All claims, including those for negligence and any other cause whatsoever shall be deemed waived unless made in writing and received by Cardinal within thirty (30) days after completion of the applicable service. In no event shall Cardinal be liable for incidental or consequential damages, including, without limitation, business interruptions, loss of use, or loss of profits incurred by client, its subsidiaries, affiliates or successors arising out of or related to the performance of the services hereunder by Cardinal, regardless of whether such claim is based upon any of the above stated reasons or otherwise. Results relate only to the samples identified above. This report shall not be reproduced except in full with written approval of Cardinal Laboratories.

Celey D. Keene, Lab Director/Quality Manager



PHONE (575) 393-2326 ° 101 E. MARLAND ° HOBBS, NM 88240

Analytical Results For:

BBC International, Inc.
 Cliff Brunson
 P.O. Box 805
 Hobbs NM, 88241
 Fax To: (575) 397-0397

Received: 10/12/2023
 Reported: 10/19/2023
 Project Name: BRAVO DOME 1835 52E LEG7
 Project Number: (11-2-20)
 Project Location: OXY - NEW MEXICO

Sampling Date: 10/05/2023
 Sampling Type: Soil
 Sampling Condition: Cool & Intact
 Sample Received By: Tamara Oldaker

Sample ID: BOTTOM SAMPLE 11 @ 2' (H235593-11)

BTEx 8021B		mg/kg		Analyzed By: MS					
Analyte	Result	Reporting Limit	Analyzed	Method Blank	BS	% Recovery	True Value QC	RPD	Qualifier
Benzene*	<0.050	0.050	10/14/2023	ND	1.94	97.0	2.00	2.32	
Toluene*	<0.050	0.050	10/14/2023	ND	1.98	99.2	2.00	1.62	
Ethylbenzene*	<0.050	0.050	10/14/2023	ND	2.01	100	2.00	2.65	
Total Xylenes*	<0.150	0.150	10/14/2023	ND	6.04	101	6.00	2.53	
Total BTEx	<0.300	0.300	10/14/2023	ND					

Surrogate: 4-Bromofluorobenzene (PID) 100 % 71.5-134

Chloride, SM4500CI-B		mg/kg		Analyzed By: AC						
Analyte	Result	Reporting Limit	Analyzed	Method Blank	BS	% Recovery	True Value QC	RPD	Qualifier	
Chloride	<16.0	16.0	10/16/2023	ND	432	108	400	0.00		

TPH 8015M		mg/kg		Analyzed By: MS					
Analyte	Result	Reporting Limit	Analyzed	Method Blank	BS	% Recovery	True Value QC	RPD	Qualifier
GRO C6-C10*	<10.0	10.0	10/13/2023	ND	197	98.3	200	1.59	
DRO >C10-C28*	<10.0	10.0	10/13/2023	ND	195	97.7	200	1.32	
EXT DRO >C28-C36	<10.0	10.0	10/13/2023	ND					

Surrogate: 1-Chlorooctane 92.5 % 48.2-134

Surrogate: 1-Chlorooctadecane 107 % 49.1-148

Cardinal Laboratories

*=Accredited Analyte

PLEASE NOTE: Liability and Damages. Cardinal's liability and client's exclusive remedy for any claim arising, whether based in contract or tort, shall be limited to the amount paid by client for analyses. All claims, including those for negligence and any other cause whatsoever shall be deemed waived unless made in writing and received by Cardinal within thirty (30) days after completion of the applicable service. In no event shall Cardinal be liable for incidental or consequential damages, including, without limitation, business interruptions, loss of use, or loss of profits incurred by client, its subsidiaries, affiliates or successors arising out of or related to the performance of the services hereunder by Cardinal, regardless of whether such claim is based upon any of the above stated reasons or otherwise. Results relate only to the samples identified above. This report shall not be reproduced except in full with written approval of Cardinal Laboratories.

Celey D. Keene, Lab Director/Quality Manager



PHONE (575) 393-2326 ° 101 E. MARLAND ° HOBBS, NM 88240

Analytical Results For:

BBC International, Inc.
 Cliff Brunson
 P.O. Box 805
 Hobbs NM, 88241
 Fax To: (575) 397-0397

Received: 10/12/2023
 Reported: 10/19/2023
 Project Name: BRAVO DOME 1835 52E LEG7
 Project Number: (11-2-20)
 Project Location: OXY - NEW MEXICO

Sampling Date: 10/05/2023
 Sampling Type: Soil
 Sampling Condition: Cool & Intact
 Sample Received By: Tamara Oldaker

Sample ID: BOTTOM SAMPLE 12 @ 2' (H235593-12)

BTEx 8021B		mg/kg		Analyzed By: MS						
Analyte	Result	Reporting Limit	Analyzed	Method Blank	BS	% Recovery	True Value QC	RPD	Qualifier	
Benzene*	<0.050	0.050	10/14/2023	ND	1.94	97.0	2.00	2.32		
Toluene*	<0.050	0.050	10/14/2023	ND	1.98	99.2	2.00	1.62		
Ethylbenzene*	<0.050	0.050	10/14/2023	ND	2.01	100	2.00	2.65		
Total Xylenes*	<0.150	0.150	10/14/2023	ND	6.04	101	6.00	2.53		
Total BTEx	<0.300	0.300	10/14/2023	ND						

Surrogate: 4-Bromofluorobenzene (PID) 99.8 % 71.5-134

Chloride, SM4500CI-B		mg/kg		Analyzed By: AC						
Analyte	Result	Reporting Limit	Analyzed	Method Blank	BS	% Recovery	True Value QC	RPD	Qualifier	
Chloride	<16.0	16.0	10/16/2023	ND	432	108	400	0.00		

TPH 8015M		mg/kg		Analyzed By: MS					
Analyte	Result	Reporting Limit	Analyzed	Method Blank	BS	% Recovery	True Value QC	RPD	Qualifier
GRO C6-C10*	<10.0	10.0	10/13/2023	ND	197	98.3	200	1.59	
DRO >C10-C28*	<10.0	10.0	10/13/2023	ND	195	97.7	200	1.32	
EXT DRO >C28-C36	<10.0	10.0	10/13/2023	ND					

Surrogate: 1-Chlorooctane 98.2 % 48.2-134

Surrogate: 1-Chlorooctadecane 114 % 49.1-148

Cardinal Laboratories

*=Accredited Analyte

PLEASE NOTE: Liability and Damages. Cardinal's liability and client's exclusive remedy for any claim arising, whether based in contract or tort, shall be limited to the amount paid by client for analyses. All claims, including those for negligence and any other cause whatsoever shall be deemed waived unless made in writing and received by Cardinal within thirty (30) days after completion of the applicable service. In no event shall Cardinal be liable for incidental or consequential damages, including, without limitation, business interruptions, loss of use, or loss of profits incurred by client, its subsidiaries, affiliates or successors arising out of or related to the performance of the services hereunder by Cardinal, regardless of whether such claim is based upon any of the above stated reasons or otherwise. Results relate only to the samples identified above. This report shall not be reproduced except in full with written approval of Cardinal Laboratories.

Celey D. Keene, Lab Director/Quality Manager



PHONE (575) 393-2326 ° 101 E. MARLAND ° HOBBS, NM 88240

Analytical Results For:

BBC International, Inc.
 Cliff Brunson
 P.O. Box 805
 Hobbs NM, 88241
 Fax To: (575) 397-0397

Received: 10/12/2023
 Reported: 10/19/2023
 Project Name: BRAVO DOME 1835 52E LEG7
 Project Number: (11-2-20)
 Project Location: OXY - NEW MEXICO

Sampling Date: 10/05/2023
 Sampling Type: Soil
 Sampling Condition: Cool & Intact
 Sample Received By: Tamara Oldaker

Sample ID: BOTTOM SAMPLE 13 @ 2' (H235593-13)

BTEx 8021B		mg/kg		Analyzed By: MS					
Analyte	Result	Reporting Limit	Analyzed	Method Blank	BS	% Recovery	True Value QC	RPD	Qualifier
Benzene*	<0.050	0.050	10/14/2023	ND	1.94	97.0	2.00	2.32	
Toluene*	<0.050	0.050	10/14/2023	ND	1.98	99.2	2.00	1.62	
Ethylbenzene*	<0.050	0.050	10/14/2023	ND	2.01	100	2.00	2.65	
Total Xylenes*	<0.150	0.150	10/14/2023	ND	6.04	101	6.00	2.53	
Total BTEX	<0.300	0.300	10/14/2023	ND					

Surrogate: 4-Bromofluorobenzene (PID) 94.5 % 71.5-134

Chloride, SM4500CI-B		mg/kg		Analyzed By: AC						
Analyte	Result	Reporting Limit	Analyzed	Method Blank	BS	% Recovery	True Value QC	RPD	Qualifier	
Chloride	<16.0	16.0	10/16/2023	ND	432	108	400	0.00		

TPH 8015M		mg/kg		Analyzed By: MS					
Analyte	Result	Reporting Limit	Analyzed	Method Blank	BS	% Recovery	True Value QC	RPD	Qualifier
GRO C6-C10*	<10.0	10.0	10/13/2023	ND	197	98.3	200	1.59	
DRO >C10-C28*	<10.0	10.0	10/13/2023	ND	195	97.7	200	1.32	
EXT DRO >C28-C36	<10.0	10.0	10/13/2023	ND					

Surrogate: 1-Chlorooctane 92.9 % 48.2-134

Surrogate: 1-Chlorooctadecane 108 % 49.1-148

Cardinal Laboratories

*=Accredited Analyte

PLEASE NOTE: Liability and Damages. Cardinal's liability and client's exclusive remedy for any claim arising, whether based in contract or tort, shall be limited to the amount paid by client for analyses. All claims, including those for negligence and any other cause whatsoever shall be deemed waived unless made in writing and received by Cardinal within thirty (30) days after completion of the applicable service. In no event shall Cardinal be liable for incidental or consequential damages, including, without limitation, business interruptions, loss of use, or loss of profits incurred by client, its subsidiaries, affiliates or successors arising out of or related to the performance of the services hereunder by Cardinal, regardless of whether such claim is based upon any of the above stated reasons or otherwise. Results relate only to the samples identified above. This report shall not be reproduced except in full with written approval of Cardinal Laboratories.

Celey D. Keene, Lab Director/Quality Manager



PHONE (575) 393-2326 ° 101 E. MARLAND ° HOBBS, NM 88240

Analytical Results For:

BBC International, Inc.
 Cliff Brunson
 P.O. Box 805
 Hobbs NM, 88241
 Fax To: (575) 397-0397

Received: 10/12/2023
 Reported: 10/19/2023
 Project Name: BRAVO DOME 1835 52E LEG7
 Project Number: (11-2-20)
 Project Location: OXY - NEW MEXICO

Sampling Date: 10/05/2023
 Sampling Type: Soil
 Sampling Condition: Cool & Intact
 Sample Received By: Tamara Oldaker

Sample ID: BOTTOM SAMPLE 14 @ 2' (H235593-14)

BTEx 8021B		mg/kg		Analyzed By: MS						
Analyte	Result	Reporting Limit	Analyzed	Method Blank	BS	% Recovery	True Value QC	RPD	Qualifier	
Benzene*	<0.050	0.050	10/14/2023	ND	1.94	97.0	2.00	2.32		
Toluene*	<0.050	0.050	10/14/2023	ND	1.98	99.2	2.00	1.62		
Ethylbenzene*	<0.050	0.050	10/14/2023	ND	2.01	100	2.00	2.65		
Total Xylenes*	<0.150	0.150	10/14/2023	ND	6.04	101	6.00	2.53		
Total BTEx	<0.300	0.300	10/14/2023	ND						

Surrogate: 4-Bromofluorobenzene (PID) 99.9 % 71.5-134

Chloride, SM4500CI-B		mg/kg		Analyzed By: AC						
Analyte	Result	Reporting Limit	Analyzed	Method Blank	BS	% Recovery	True Value QC	RPD	Qualifier	
Chloride	<16.0	16.0	10/16/2023	ND	432	108	400	0.00		

TPH 8015M		mg/kg		Analyzed By: MS					
Analyte	Result	Reporting Limit	Analyzed	Method Blank	BS	% Recovery	True Value QC	RPD	Qualifier
GRO C6-C10*	<10.0	10.0	10/13/2023	ND	197	98.3	200	1.59	
DRO >C10-C28*	<10.0	10.0	10/13/2023	ND	195	97.7	200	1.32	
EXT DRO >C28-C36	<10.0	10.0	10/13/2023	ND					

Surrogate: 1-Chlorooctane 91.8 % 48.2-134

Surrogate: 1-Chlorooctadecane 107 % 49.1-148

Cardinal Laboratories

*=Accredited Analyte

PLEASE NOTE: Liability and Damages. Cardinal's liability and client's exclusive remedy for any claim arising, whether based in contract or tort, shall be limited to the amount paid by client for analyses. All claims, including those for negligence and any other cause whatsoever shall be deemed waived unless made in writing and received by Cardinal within thirty (30) days after completion of the applicable service. In no event shall Cardinal be liable for incidental or consequential damages, including, without limitation, business interruptions, loss of use, or loss of profits incurred by client, its subsidiaries, affiliates or successors arising out of or related to the performance of the services hereunder by Cardinal, regardless of whether such claim is based upon any of the above stated reasons or otherwise. Results relate only to the samples identified above. This report shall not be reproduced except in full with written approval of Cardinal Laboratories.

Celey D. Keene, Lab Director/Quality Manager



PHONE (575) 393-2326 • 101 E. MARLAND • HOBBS, NM 88240

Analytical Results For:

BBC International, Inc.
 Cliff Brunson
 P.O. Box 805
 Hobbs NM, 88241
 Fax To: (575) 397-0397

Received: 10/12/2023
 Reported: 10/19/2023
 Project Name: BRAVO DOME 1835 52E LEG7
 Project Number: (11-2-20)
 Project Location: OXY - NEW MEXICO

Sampling Date: 10/05/2023
 Sampling Type: Soil
 Sampling Condition: Cool & Intact
 Sample Received By: Tamara Oldaker

Sample ID: BOTTOM SAMPLE 15 @ 2' (H235593-15)

BTEx 8021B		mg/kg		Analyzed By: MS						
Analyte	Result	Reporting Limit	Analyzed	Method Blank	BS	% Recovery	True Value QC	RPD	Qualifier	
Benzene*	<0.050	0.050	10/14/2023	ND	1.94	97.0	2.00	2.32		
Toluene*	<0.050	0.050	10/14/2023	ND	1.98	99.2	2.00	1.62		
Ethylbenzene*	<0.050	0.050	10/14/2023	ND	2.01	100	2.00	2.65		
Total Xylenes*	<0.150	0.150	10/14/2023	ND	6.04	101	6.00	2.53		
Total BTEx	<0.300	0.300	10/14/2023	ND						

Surrogate: 4-Bromofluorobenzene (PID) 99.8 % 71.5-134

Chloride, SM4500Cl-B		mg/kg		Analyzed By: AC						
Analyte	Result	Reporting Limit	Analyzed	Method Blank	BS	% Recovery	True Value QC	RPD	Qualifier	
Chloride	<16.0	16.0	10/16/2023	ND	432	108	400	0.00		

TPH 8015M		mg/kg		Analyzed By: MS					
Analyte	Result	Reporting Limit	Analyzed	Method Blank	BS	% Recovery	True Value QC	RPD	Qualifier
GRO C6-C10*	<10.0	10.0	10/13/2023	ND	197	98.3	200	1.59	
DRO >C10-C28*	<10.0	10.0	10/13/2023	ND	195	97.7	200	1.32	
EXT DRO >C28-C36	<10.0	10.0	10/13/2023	ND					

Surrogate: 1-Chlorooctane 91.2 % 48.2-134

Surrogate: 1-Chlorooctadecane 106 % 49.1-148

Cardinal Laboratories

*=Accredited Analyte

PLEASE NOTE: Liability and Damages. Cardinal's liability and client's exclusive remedy for any claim arising, whether based in contract or tort, shall be limited to the amount paid by client for analyses. All claims, including those for negligence and any other cause whatsoever shall be deemed waived unless made in writing and received by Cardinal within thirty (30) days after completion of the applicable service. In no event shall Cardinal be liable for incidental or consequential damages, including, without limitation, business interruptions, loss of use, or loss of profits incurred by client, its subsidiaries, affiliates or successors arising out of or related to the performance of the services hereunder by Cardinal, regardless of whether such claim is based upon any of the above stated reasons or otherwise. Results relate only to the samples identified above. This report shall not be reproduced except in full with written approval of Cardinal Laboratories.

Celey D. Keene, Lab Director/Quality Manager



PHONE (575) 393-2326 ° 101 E. MARLAND ° HOBBS, NM 88240

Analytical Results For:

BBC International, Inc.
 Cliff Brunson
 P.O. Box 805
 Hobbs NM, 88241
 Fax To: (575) 397-0397

Received: 10/12/2023
 Reported: 10/19/2023
 Project Name: BRAVO DOME 1835 52E LEG7
 Project Number: (11-2-20)
 Project Location: OXY - NEW MEXICO

Sampling Date: 10/05/2023
 Sampling Type: Soil
 Sampling Condition: Cool & Intact
 Sample Received By: Tamara Oldaker

Sample ID: BOTTOM SAMPLE 16 @ 2' (H235593-16)

BTEx 8021B		mg/kg		Analyzed By: MS						
Analyte	Result	Reporting Limit	Analyzed	Method Blank	BS	% Recovery	True Value QC	RPD	Qualifier	
Benzene*	<0.050	0.050	10/14/2023	ND	1.94	97.0	2.00	2.32		
Toluene*	<0.050	0.050	10/14/2023	ND	1.98	99.2	2.00	1.62		
Ethylbenzene*	<0.050	0.050	10/14/2023	ND	2.01	100	2.00	2.65		
Total Xylenes*	<0.150	0.150	10/14/2023	ND	6.04	101	6.00	2.53		
Total BTEx	<0.300	0.300	10/14/2023	ND						

Surrogate: 4-Bromofluorobenzene (PID) 99.4 % 71.5-134

Chloride, SM4500CI-B		mg/kg		Analyzed By: AC						
Analyte	Result	Reporting Limit	Analyzed	Method Blank	BS	% Recovery	True Value QC	RPD	Qualifier	
Chloride	<16.0	16.0	10/16/2023	ND	432	108	400	0.00		

TPH 8015M		mg/kg		Analyzed By: MS					
Analyte	Result	Reporting Limit	Analyzed	Method Blank	BS	% Recovery	True Value QC	RPD	Qualifier
GRO C6-C10*	<10.0	10.0	10/13/2023	ND	197	98.3	200	1.59	
DRO >C10-C28*	<10.0	10.0	10/13/2023	ND	195	97.7	200	1.32	
EXT DRO >C28-C36	<10.0	10.0	10/13/2023	ND					

Surrogate: 1-Chlorooctane 79.0 % 48.2-134

Surrogate: 1-Chlorooctadecane 92.7 % 49.1-148

Cardinal Laboratories

*=Accredited Analyte

PLEASE NOTE: Liability and Damages. Cardinal's liability and client's exclusive remedy for any claim arising, whether based in contract or tort, shall be limited to the amount paid by client for analyses. All claims, including those for negligence and any other cause whatsoever shall be deemed waived unless made in writing and received by Cardinal within thirty (30) days after completion of the applicable service. In no event shall Cardinal be liable for incidental or consequential damages, including, without limitation, business interruptions, loss of use, or loss of profits incurred by client, its subsidiaries, affiliates or successors arising out of or related to the performance of the services hereunder by Cardinal, regardless of whether such claim is based upon any of the above stated reasons or otherwise. Results relate only to the samples identified above. This report shall not be reproduced except in full with written approval of Cardinal Laboratories.

Celey D. Keene, Lab Director/Quality Manager



PHONE (575) 393-2326 ° 101 E. MARLAND ° HOBBS, NM 88240

Analytical Results For:

BBC International, Inc.
 Cliff Brunson
 P.O. Box 805
 Hobbs NM, 88241
 Fax To: (575) 397-0397

Received: 10/12/2023
 Reported: 10/19/2023
 Project Name: BRAVO DOME 1835 52E LEG7
 Project Number: (11-2-20)
 Project Location: OXY - NEW MEXICO

Sampling Date: 10/06/2023
 Sampling Type: Soil
 Sampling Condition: Cool & Intact
 Sample Received By: Tamara Oldaker

Sample ID: BOTTOM SAMPLE 17 @ 2' (H235593-17)

BTEx 8021B		mg/kg		Analyzed By: MS					
Analyte	Result	Reporting Limit	Analyzed	Method Blank	BS	% Recovery	True Value QC	RPD	Qualifier
Benzene*	<0.050	0.050	10/14/2023	ND	1.94	97.0	2.00	2.32	
Toluene*	<0.050	0.050	10/14/2023	ND	1.98	99.2	2.00	1.62	
Ethylbenzene*	<0.050	0.050	10/14/2023	ND	2.01	100	2.00	2.65	
Total Xylenes*	<0.150	0.150	10/14/2023	ND	6.04	101	6.00	2.53	
Total BTEX	<0.300	0.300	10/14/2023	ND					

Surrogate: 4-Bromofluorobenzene (PID) 98.4 % 71.5-134

Chloride, SM4500CI-B		mg/kg		Analyzed By: AC						
Analyte	Result	Reporting Limit	Analyzed	Method Blank	BS	% Recovery	True Value QC	RPD	Qualifier	
Chloride	<16.0	16.0	10/16/2023	ND	432	108	400	0.00		

TPH 8015M		mg/kg		Analyzed By: MS					
Analyte	Result	Reporting Limit	Analyzed	Method Blank	BS	% Recovery	True Value QC	RPD	Qualifier
GRO C6-C10*	<10.0	10.0	10/13/2023	ND	197	98.3	200	1.59	
DRO >C10-C28*	<10.0	10.0	10/13/2023	ND	195	97.7	200	1.32	
EXT DRO >C28-C36	<10.0	10.0	10/13/2023	ND					

Surrogate: 1-Chlorooctane 83.7 % 48.2-134

Surrogate: 1-Chlorooctadecane 97.2 % 49.1-148

Cardinal Laboratories

*=Accredited Analyte

PLEASE NOTE: Liability and Damages. Cardinal's liability and client's exclusive remedy for any claim arising, whether based in contract or tort, shall be limited to the amount paid by client for analyses. All claims, including those for negligence and any other cause whatsoever shall be deemed waived unless made in writing and received by Cardinal within thirty (30) days after completion of the applicable service. In no event shall Cardinal be liable for incidental or consequential damages, including, without limitation, business interruptions, loss of use, or loss of profits incurred by client, its subsidiaries, affiliates or successors arising out of or related to the performance of the services hereunder by Cardinal, regardless of whether such claim is based upon any of the above stated reasons or otherwise. Results relate only to the samples identified above. This report shall not be reproduced except in full with written approval of Cardinal Laboratories.

Celey D. Keene, Lab Director/Quality Manager



PHONE (575) 393-2326 • 101 E. MARLAND • HOBBS, NM 88240

Analytical Results For:

BBC International, Inc.
 Cliff Brunson
 P.O. Box 805
 Hobbs NM, 88241
 Fax To: (575) 397-0397

Received: 10/12/2023
 Reported: 10/19/2023
 Project Name: BRAVO DOME 1835 52E LEG7
 Project Number: (11-2-20)
 Project Location: OXY - NEW MEXICO

Sampling Date: 10/06/2023
 Sampling Type: Soil
 Sampling Condition: Cool & Intact
 Sample Received By: Tamara Oldaker

Sample ID: BOTTOM SAMPLE 18 @ 2' (H235593-18)

BTEx 8021B		mg/kg		Analyzed By: MS					
Analyte	Result	Reporting Limit	Analyzed	Method Blank	BS	% Recovery	True Value QC	RPD	Qualifier
Benzene*	<0.050	0.050	10/14/2023	ND	1.94	97.0	2.00	2.32	
Toluene*	<0.050	0.050	10/14/2023	ND	1.98	99.2	2.00	1.62	
Ethylbenzene*	<0.050	0.050	10/14/2023	ND	2.01	100	2.00	2.65	
Total Xylenes*	<0.150	0.150	10/14/2023	ND	6.04	101	6.00	2.53	
Total BTEX	<0.300	0.300	10/14/2023	ND					

Surrogate: 4-Bromofluorobenzene (PID) 99.5 % 71.5-134

Chloride, SM4500Cl-B		mg/kg		Analyzed By: AC						
Analyte	Result	Reporting Limit	Analyzed	Method Blank	BS	% Recovery	True Value QC	RPD	Qualifier	
Chloride	<16.0	16.0	10/16/2023	ND	432	108	400	0.00		

TPH 8015M		mg/kg		Analyzed By: MS					
Analyte	Result	Reporting Limit	Analyzed	Method Blank	BS	% Recovery	True Value QC	RPD	Qualifier
GRO C6-C10*	<10.0	10.0	10/13/2023	ND	197	98.3	200	1.59	
DRO >C10-C28*	<10.0	10.0	10/13/2023	ND	195	97.7	200	1.32	
EXT DRO >C28-C36	<10.0	10.0	10/13/2023	ND					

Surrogate: 1-Chlorooctane 87.9 % 48.2-134

Surrogate: 1-Chlorooctadecane 101 % 49.1-148

Cardinal Laboratories

*=Accredited Analyte

PLEASE NOTE: Liability and Damages. Cardinal's liability and client's exclusive remedy for any claim arising, whether based in contract or tort, shall be limited to the amount paid by client for analyses. All claims, including those for negligence and any other cause whatsoever shall be deemed waived unless made in writing and received by Cardinal within thirty (30) days after completion of the applicable service. In no event shall Cardinal be liable for incidental or consequential damages, including, without limitation, business interruptions, loss of use, or loss of profits incurred by client, its subsidiaries, affiliates or successors arising out of or related to the performance of the services hereunder by Cardinal, regardless of whether such claim is based upon any of the above stated reasons or otherwise. Results relate only to the samples identified above. This report shall not be reproduced except in full with written approval of Cardinal Laboratories.

Celey D. Keene, Lab Director/Quality Manager



PHONE (575) 393-2326 ° 101 E. MARLAND ° HOBBS, NM 88240

Analytical Results For:

BBC International, Inc.
 Cliff Brunson
 P.O. Box 805
 Hobbs NM, 88241
 Fax To: (575) 397-0397

Received: 10/12/2023
 Reported: 10/19/2023
 Project Name: BRAVO DOME 1835 52E LEG7
 Project Number: (11-2-20)
 Project Location: OXY - NEW MEXICO

Sampling Date: 10/06/2023
 Sampling Type: Soil
 Sampling Condition: Cool & Intact
 Sample Received By: Tamara Oldaker

Sample ID: BOTTOM SAMPLE 19 @ 2' (H235593-19)

BTEx 8021B		mg/kg		Analyzed By: MS					
Analyte	Result	Reporting Limit	Analyzed	Method Blank	BS	% Recovery	True Value QC	RPD	Qualifier
Benzene*	<0.050	0.050	10/14/2023	ND	1.94	97.0	2.00	2.32	
Toluene*	<0.050	0.050	10/14/2023	ND	1.98	99.2	2.00	1.62	
Ethylbenzene*	<0.050	0.050	10/14/2023	ND	2.01	100	2.00	2.65	
Total Xylenes*	<0.150	0.150	10/14/2023	ND	6.04	101	6.00	2.53	
Total BTEX	<0.300	0.300	10/14/2023	ND					

Surrogate: 4-Bromofluorobenzene (PID) 99.6 % 71.5-134

Chloride, SM4500CI-B		mg/kg		Analyzed By: AC						
Analyte	Result	Reporting Limit	Analyzed	Method Blank	BS	% Recovery	True Value QC	RPD	Qualifier	
Chloride	<16.0	16.0	10/16/2023	ND	432	108	400	0.00		

TPH 8015M		mg/kg		Analyzed By: MS					
Analyte	Result	Reporting Limit	Analyzed	Method Blank	BS	% Recovery	True Value QC	RPD	Qualifier
GRO C6-C10*	<10.0	10.0	10/13/2023	ND	197	98.3	200	1.59	
DRO >C10-C28*	<10.0	10.0	10/13/2023	ND	195	97.7	200	1.32	
EXT DRO >C28-C36	<10.0	10.0	10/13/2023	ND					

Surrogate: 1-Chlorooctane 77.8 % 48.2-134

Surrogate: 1-Chlorooctadecane 87.6 % 49.1-148

Cardinal Laboratories

*=Accredited Analyte

PLEASE NOTE: Liability and Damages. Cardinal's liability and client's exclusive remedy for any claim arising, whether based in contract or tort, shall be limited to the amount paid by client for analyses. All claims, including those for negligence and any other cause whatsoever shall be deemed waived unless made in writing and received by Cardinal within thirty (30) days after completion of the applicable service. In no event shall Cardinal be liable for incidental or consequential damages, including, without limitation, business interruptions, loss of use, or loss of profits incurred by client, its subsidiaries, affiliates or successors arising out of or related to the performance of the services hereunder by Cardinal, regardless of whether such claim is based upon any of the above stated reasons or otherwise. Results relate only to the samples identified above. This report shall not be reproduced except in full with written approval of Cardinal Laboratories.

Celey D. Keene, Lab Director/Quality Manager



PHONE (575) 393-2326 • 101 E. MARLAND • HOBBS, NM 88240

Analytical Results For:

BBC International, Inc.
 Cliff Brunson
 P.O. Box 805
 Hobbs NM, 88241
 Fax To: (575) 397-0397

Received: 10/12/2023
 Reported: 10/19/2023
 Project Name: BRAVO DOME 1835 52E LEG7
 Project Number: (11-2-20)
 Project Location: OXY - NEW MEXICO

Sampling Date: 10/06/2023
 Sampling Type: Soil
 Sampling Condition: Cool & Intact
 Sample Received By: Tamara Oldaker

Sample ID: BOTTOM SAMPLE 20 @ 2' (H235593-20)

BTEx 8021B		mg/kg		Analyzed By: MS						
Analyte	Result	Reporting Limit	Analyzed	Method Blank	BS	% Recovery	True Value QC	RPD	Qualifier	
Benzene*	<0.050	0.050	10/15/2023	ND	1.94	97.0	2.00	2.32		
Toluene*	<0.050	0.050	10/15/2023	ND	1.98	99.2	2.00	1.62		
Ethylbenzene*	<0.050	0.050	10/15/2023	ND	2.01	100	2.00	2.65		
Total Xylenes*	<0.150	0.150	10/15/2023	ND	6.04	101	6.00	2.53		
Total BTEX	<0.300	0.300	10/15/2023	ND						

Surrogate: 4-Bromofluorobenzene (PID) 98.8 % 71.5-134

Chloride, SM4500CI-B		mg/kg		Analyzed By: AC						
Analyte	Result	Reporting Limit	Analyzed	Method Blank	BS	% Recovery	True Value QC	RPD	Qualifier	
Chloride	32.0	16.0	10/16/2023	ND	432	108	400	0.00		

TPH 8015M		mg/kg		Analyzed By: MS					
Analyte	Result	Reporting Limit	Analyzed	Method Blank	BS	% Recovery	True Value QC	RPD	Qualifier
GRO C6-C10*	<10.0	10.0	10/13/2023	ND	197	98.3	200	1.59	
DRO >C10-C28*	<10.0	10.0	10/13/2023	ND	195	97.7	200	1.32	
EXT DRO >C28-C36	<10.0	10.0	10/13/2023	ND					

Surrogate: 1-Chlorooctane 90.9 % 48.2-134

Surrogate: 1-Chlorooctadecane 103 % 49.1-148

Cardinal Laboratories

*=Accredited Analyte

PLEASE NOTE: Liability and Damages. Cardinal's liability and client's exclusive remedy for any claim arising, whether based in contract or tort, shall be limited to the amount paid by client for analyses. All claims, including those for negligence and any other cause whatsoever shall be deemed waived unless made in writing and received by Cardinal within thirty (30) days after completion of the applicable service. In no event shall Cardinal be liable for incidental or consequential damages, including, without limitation, business interruptions, loss of use, or loss of profits incurred by client, its subsidiaries, affiliates or successors arising out of or related to the performance of the services hereunder by Cardinal, regardless of whether such claim is based upon any of the above stated reasons or otherwise. Results relate only to the samples identified above. This report shall not be reproduced except in full with written approval of Cardinal Laboratories.

Celey D. Keene, Lab Director/Quality Manager



PHONE (575) 393-2326 • 101 E. MARLAND • HOBBS, NM 88240

Analytical Results For:

BBC International, Inc.
 Cliff Brunson
 P.O. Box 805
 Hobbs NM, 88241
 Fax To: (575) 397-0397

Received: 10/12/2023
 Reported: 10/19/2023
 Project Name: BRAVO DOME 1835 52E LEG7
 Project Number: (11-2-20)
 Project Location: OXY - NEW MEXICO

Sampling Date: 10/06/2023
 Sampling Type: Soil
 Sampling Condition: Cool & Intact
 Sample Received By: Tamara Oldaker

Sample ID: BOTTOM SAMPLE 21 @ 2' (H235593-21)

BTX 8021B		mg/kg		Analyzed By: MS					
Analyte	Result	Reporting Limit	Analyzed	Method Blank	BS	% Recovery	True Value QC	RPD	Qualifier
Benzene*	<0.050	0.050	10/15/2023	ND	1.94	97.0	2.00	2.32	
Toluene*	<0.050	0.050	10/15/2023	ND	1.98	99.2	2.00	1.62	
Ethylbenzene*	<0.050	0.050	10/15/2023	ND	2.01	100	2.00	2.65	
Total Xylenes*	<0.150	0.150	10/15/2023	ND	6.04	101	6.00	2.53	
Total BTX	<0.300	0.300	10/15/2023	ND					

Surrogate: 4-Bromofluorobenzene (PID) 99.6 % 71.5-134

Chloride, SM4500Cl-B		mg/kg		Analyzed By: AC					
Analyte	Result	Reporting Limit	Analyzed	Method Blank	BS	% Recovery	True Value QC	RPD	Qualifier
Chloride	<16.0	16.0	10/16/2023	ND	432	108	400	0.00	

TPH 8015M		mg/kg		Analyzed By: MS					
Analyte	Result	Reporting Limit	Analyzed	Method Blank	BS	% Recovery	True Value QC	RPD	Qualifier
GRO C6-C10*	<10.0	10.0	10/13/2023	ND	197	98.3	200	1.59	
DRO >C10-C28*	<10.0	10.0	10/13/2023	ND	195	97.7	200	1.32	
EXT DRO >C28-C36	<10.0	10.0	10/13/2023	ND					

Surrogate: 1-Chlorooctane 91.0 % 48.2-134

Surrogate: 1-Chlorooctadecane 104 % 49.1-148

Cardinal Laboratories

*=Accredited Analyte

PLEASE NOTE: Liability and Damages. Cardinal's liability and client's exclusive remedy for any claim arising, whether based in contract or tort, shall be limited to the amount paid by client for analyses. All claims, including those for negligence and any other cause whatsoever shall be deemed waived unless made in writing and received by Cardinal within thirty (30) days after completion of the applicable service. In no event shall Cardinal be liable for incidental or consequential damages, including, without limitation, business interruptions, loss of use, or loss of profits incurred by client, its subsidiaries, affiliates or successors arising out of or related to the performance of the services hereunder by Cardinal, regardless of whether such claim is based upon any of the above stated reasons or otherwise. Results relate only to the samples identified above. This report shall not be reproduced except in full with written approval of Cardinal Laboratories.

Celey D. Keene, Lab Director/Quality Manager



PHONE (575) 393-2326 ° 101 E. MARLAND ° HOBBS, NM 88240

Analytical Results For:

BBC International, Inc.
 Cliff Brunson
 P.O. Box 805
 Hobbs NM, 88241
 Fax To: (575) 397-0397

Received: 10/12/2023
 Reported: 10/19/2023
 Project Name: BRAVO DOME 1835 52E LEG7
 Project Number: (11-2-20)
 Project Location: OXY - NEW MEXICO

Sampling Date: 10/06/2023
 Sampling Type: Soil
 Sampling Condition: Cool & Intact
 Sample Received By: Tamara Oldaker

Sample ID: BOTTOM SAMPLE 22 @ 2' (H235593-22)

BTEx 8021B		mg/kg		Analyzed By: MS						
Analyte	Result	Reporting Limit	Analyzed	Method Blank	BS	% Recovery	True Value QC	RPD	Qualifier	
Benzene*	<0.050	0.050	10/15/2023	ND	1.94	97.0	2.00	2.32		
Toluene*	<0.050	0.050	10/15/2023	ND	1.98	99.2	2.00	1.62		
Ethylbenzene*	<0.050	0.050	10/15/2023	ND	2.01	100	2.00	2.65		
Total Xylenes*	<0.150	0.150	10/15/2023	ND	6.04	101	6.00	2.53		
Total BTEx	<0.300	0.300	10/15/2023	ND						

Surrogate: 4-Bromofluorobenzene (PID) 100 % 71.5-134

Chloride, SM4500CI-B		mg/kg		Analyzed By: AC						
Analyte	Result	Reporting Limit	Analyzed	Method Blank	BS	% Recovery	True Value QC	RPD	Qualifier	
Chloride	<16.0	16.0	10/16/2023	ND	432	108	400	0.00		

TPH 8015M		mg/kg		Analyzed By: MS					
Analyte	Result	Reporting Limit	Analyzed	Method Blank	BS	% Recovery	True Value QC	RPD	Qualifier
GRO C6-C10*	<10.0	10.0	10/13/2023	ND	190	94.9	200	1.08	
DRO >C10-C28*	<10.0	10.0	10/13/2023	ND	175	87.4	200	3.14	
EXT DRO >C28-C36	<10.0	10.0	10/13/2023	ND					

Surrogate: 1-Chlorooctane 85.7 % 48.2-134

Surrogate: 1-Chlorooctadecane 74.1 % 49.1-148

Cardinal Laboratories

*=Accredited Analyte

PLEASE NOTE: Liability and Damages. Cardinal's liability and client's exclusive remedy for any claim arising, whether based in contract or tort, shall be limited to the amount paid by client for analyses. All claims, including those for negligence and any other cause whatsoever shall be deemed waived unless made in writing and received by Cardinal within thirty (30) days after completion of the applicable service. In no event shall Cardinal be liable for incidental or consequential damages, including, without limitation, business interruptions, loss of use, or loss of profits incurred by client, its subsidiaries, affiliates or successors arising out of or related to the performance of the services hereunder by Cardinal, regardless of whether such claim is based upon any of the above stated reasons or otherwise. Results relate only to the samples identified above. This report shall not be reproduced except in full with written approval of Cardinal Laboratories.

Celey D. Keene, Lab Director/Quality Manager



PHONE (575) 393-2326 ° 101 E. MARLAND ° HOBBS, NM 88240

Analytical Results For:

BBC International, Inc.
 Cliff Brunson
 P.O. Box 805
 Hobbs NM, 88241
 Fax To: (575) 397-0397

Received: 10/12/2023
 Reported: 10/19/2023
 Project Name: BRAVO DOME 1835 52E LEG7
 Project Number: (11-2-20)
 Project Location: OXY - NEW MEXICO

Sampling Date: 10/06/2023
 Sampling Type: Soil
 Sampling Condition: Cool & Intact
 Sample Received By: Tamara Oldaker

Sample ID: BOTTOM SAMPLE 23 @ 2' (H235593-23)

BTEx 8021B		mg/kg		Analyzed By: MS						
Analyte	Result	Reporting Limit	Analyzed	Method Blank	BS	% Recovery	True Value QC	RPD	Qualifier	
Benzene*	<0.050	0.050	10/15/2023	ND	1.94	97.0	2.00	2.32		
Toluene*	<0.050	0.050	10/15/2023	ND	1.98	99.2	2.00	1.62		
Ethylbenzene*	<0.050	0.050	10/15/2023	ND	2.01	100	2.00	2.65		
Total Xylenes*	<0.150	0.150	10/15/2023	ND	6.04	101	6.00	2.53		
Total BTEX	<0.300	0.300	10/15/2023	ND						

Surrogate: 4-Bromofluorobenzene (PID) 101 % 71.5-134

Chloride, SM4500CI-B		mg/kg		Analyzed By: AC						
Analyte	Result	Reporting Limit	Analyzed	Method Blank	BS	% Recovery	True Value QC	RPD	Qualifier	
Chloride	<16.0	16.0	10/16/2023	ND	432	108	400	0.00		

TPH 8015M		mg/kg		Analyzed By: MS					
Analyte	Result	Reporting Limit	Analyzed	Method Blank	BS	% Recovery	True Value QC	RPD	Qualifier
GRO C6-C10*	<10.0	10.0	10/13/2023	ND	190	94.9	200	1.08	
DRO >C10-C28*	<10.0	10.0	10/13/2023	ND	175	87.4	200	3.14	
EXT DRO >C28-C36	<10.0	10.0	10/13/2023	ND					

Surrogate: 1-Chlorooctane 89.8 % 48.2-134

Surrogate: 1-Chlorooctadecane 78.0 % 49.1-148

Cardinal Laboratories

*=Accredited Analyte

PLEASE NOTE: Liability and Damages. Cardinal's liability and client's exclusive remedy for any claim arising, whether based in contract or tort, shall be limited to the amount paid by client for analyses. All claims, including those for negligence and any other cause whatsoever shall be deemed waived unless made in writing and received by Cardinal within thirty (30) days after completion of the applicable service. In no event shall Cardinal be liable for incidental or consequential damages, including, without limitation, business interruptions, loss of use, or loss of profits incurred by client, its subsidiaries, affiliates or successors arising out of or related to the performance of the services hereunder by Cardinal, regardless of whether such claim is based upon any of the above stated reasons or otherwise. Results relate only to the samples identified above. This report shall not be reproduced except in full with written approval of Cardinal Laboratories.

Celey D. Keene, Lab Director/Quality Manager



PHONE (575) 393-2326 ° 101 E. MARLAND ° HOBBS, NM 88240

Analytical Results For:

BBC International, Inc.
 Cliff Brunson
 P.O. Box 805
 Hobbs NM, 88241
 Fax To: (575) 397-0397

Received: 10/12/2023
 Reported: 10/19/2023
 Project Name: BRAVO DOME 1835 52E LEG7
 Project Number: (11-2-20)
 Project Location: OXY - NEW MEXICO

Sampling Date: 10/06/2023
 Sampling Type: Soil
 Sampling Condition: Cool & Intact
 Sample Received By: Tamara Oldaker

Sample ID: BOTTOM SAMPLE 24 @ 2' (H235593-24)

BTEx 8021B		mg/kg		Analyzed By: MS					
Analyte	Result	Reporting Limit	Analyzed	Method Blank	BS	% Recovery	True Value QC	RPD	Qualifier
Benzene*	<0.050	0.050	10/15/2023	ND	1.94	97.0	2.00	2.32	
Toluene*	<0.050	0.050	10/15/2023	ND	1.98	99.2	2.00	1.62	
Ethylbenzene*	<0.050	0.050	10/15/2023	ND	2.01	100	2.00	2.65	
Total Xylenes*	<0.150	0.150	10/15/2023	ND	6.04	101	6.00	2.53	
Total BTEX	<0.300	0.300	10/15/2023	ND					

Surrogate: 4-Bromofluorobenzene (PID) 98.5 % 71.5-134

Chloride, SM4500Cl-B		mg/kg		Analyzed By: AC						
Analyte	Result	Reporting Limit	Analyzed	Method Blank	BS	% Recovery	True Value QC	RPD	Qualifier	
Chloride	32.0	16.0	10/16/2023	ND	432	108	400	0.00		

TPH 8015M		mg/kg		Analyzed By: MS					
Analyte	Result	Reporting Limit	Analyzed	Method Blank	BS	% Recovery	True Value QC	RPD	Qualifier
GRO C6-C10*	<10.0	10.0	10/13/2023	ND	190	94.9	200	1.08	
DRO >C10-C28*	<10.0	10.0	10/13/2023	ND	175	87.4	200	3.14	
EXT DRO >C28-C36	<10.0	10.0	10/13/2023	ND					

Surrogate: 1-Chlorooctane 80.0 % 48.2-134

Surrogate: 1-Chlorooctadecane 68.4 % 49.1-148

Cardinal Laboratories

*=Accredited Analyte

PLEASE NOTE: Liability and Damages. Cardinal's liability and client's exclusive remedy for any claim arising, whether based in contract or tort, shall be limited to the amount paid by client for analyses. All claims, including those for negligence and any other cause whatsoever shall be deemed waived unless made in writing and received by Cardinal within thirty (30) days after completion of the applicable service. In no event shall Cardinal be liable for incidental or consequential damages, including, without limitation, business interruptions, loss of use, or loss of profits incurred by client, its subsidiaries, affiliates or successors arising out of or related to the performance of the services hereunder by Cardinal, regardless of whether such claim is based upon any of the above stated reasons or otherwise. Results relate only to the samples identified above. This report shall not be reproduced except in full with written approval of Cardinal Laboratories.

Celey D. Keene, Lab Director/Quality Manager



PHONE (575) 393-2326 ° 101 E. MARLAND ° HOBBS, NM 88240

Analytical Results For:

BBC International, Inc.
 Cliff Brunson
 P.O. Box 805
 Hobbs NM, 88241
 Fax To: (575) 397-0397

Received: 10/12/2023
 Reported: 10/19/2023
 Project Name: BRAVO DOME 1835 52E LEG7
 Project Number: (11-2-20)
 Project Location: OXY - NEW MEXICO

Sampling Date: 10/06/2023
 Sampling Type: Soil
 Sampling Condition: Cool & Intact
 Sample Received By: Tamara Oldaker

Sample ID: BOTTOM SAMPLE 25 @ 3' (H235593-25)

BTX 8021B		mg/kg		Analyzed By: MS					
Analyte	Result	Reporting Limit	Analyzed	Method Blank	BS	% Recovery	True Value QC	RPD	Qualifier
Benzene*	<0.050	0.050	10/15/2023	ND	1.94	97.0	2.00	2.32	
Toluene*	<0.050	0.050	10/15/2023	ND	1.98	99.2	2.00	1.62	
Ethylbenzene*	<0.050	0.050	10/15/2023	ND	2.01	100	2.00	2.65	
Total Xylenes*	<0.150	0.150	10/15/2023	ND	6.04	101	6.00	2.53	
Total BTX	<0.300	0.300	10/15/2023	ND					

Surrogate: 4-Bromofluorobenzene (PID) 99.5 % 71.5-134

Chloride, SM4500Cl-B		mg/kg		Analyzed By: AC					
Analyte	Result	Reporting Limit	Analyzed	Method Blank	BS	% Recovery	True Value QC	RPD	Qualifier
Chloride	16.0	16.0	10/16/2023	ND	432	108	400	0.00	

TPH 8015M		mg/kg		Analyzed By: MS					
Analyte	Result	Reporting Limit	Analyzed	Method Blank	BS	% Recovery	True Value QC	RPD	Qualifier
GRO C6-C10*	<10.0	10.0	10/13/2023	ND	190	94.9	200	1.08	
DRO >C10-C28*	<10.0	10.0	10/13/2023	ND	175	87.4	200	3.14	
EXT DRO >C28-C36	<10.0	10.0	10/13/2023	ND					

Surrogate: 1-Chlorooctane 72.5 % 48.2-134

Surrogate: 1-Chlorooctadecane 62.4 % 49.1-148

Cardinal Laboratories

*=Accredited Analyte

PLEASE NOTE: Liability and Damages. Cardinal's liability and client's exclusive remedy for any claim arising, whether based in contract or tort, shall be limited to the amount paid by client for analyses. All claims, including those for negligence and any other cause whatsoever shall be deemed waived unless made in writing and received by Cardinal within thirty (30) days after completion of the applicable service. In no event shall Cardinal be liable for incidental or consequential damages, including, without limitation, business interruptions, loss of use, or loss of profits incurred by client, its subsidiaries, affiliates or successors arising out of or related to the performance of the services hereunder by Cardinal, regardless of whether such claim is based upon any of the above stated reasons or otherwise. Results relate only to the samples identified above. This report shall not be reproduced except in full with written approval of Cardinal Laboratories.

Celey D. Keene, Lab Director/Quality Manager



PHONE (575) 393-2326 • 101 E. MARLAND • HOBBS, NM 88240

Analytical Results For:

BBC International, Inc.
 Cliff Brunson
 P.O. Box 805
 Hobbs NM, 88241
 Fax To: (575) 397-0397

Received: 10/12/2023
 Reported: 10/19/2023
 Project Name: BRAVO DOME 1835 52E LEG7
 Project Number: (11-2-20)
 Project Location: OXY - NEW MEXICO

Sampling Date: 10/06/2023
 Sampling Type: Soil
 Sampling Condition: Cool & Intact
 Sample Received By: Tamara Oldaker

Sample ID: BOTTOM SAMPLE 26 @ 3' (H235593-26)

BTX 8021B		mg/kg		Analyzed By: MS					
Analyte	Result	Reporting Limit	Analyzed	Method Blank	BS	% Recovery	True Value QC	RPD	Qualifier
Benzene*	<0.050	0.050	10/15/2023	ND	1.94	97.0	2.00	2.32	
Toluene*	<0.050	0.050	10/15/2023	ND	1.98	99.2	2.00	1.62	
Ethylbenzene*	<0.050	0.050	10/15/2023	ND	2.01	100	2.00	2.65	
Total Xylenes*	<0.150	0.150	10/15/2023	ND	6.04	101	6.00	2.53	
Total BTX	<0.300	0.300	10/15/2023	ND					

Surrogate: 4-Bromofluorobenzene (PID) 100 % 71.5-134

Chloride, SM4500Cl-B		mg/kg		Analyzed By: AC					
Analyte	Result	Reporting Limit	Analyzed	Method Blank	BS	% Recovery	True Value QC	RPD	Qualifier
Chloride	32.0	16.0	10/16/2023	ND	432	108	400	0.00	

TPH 8015M		mg/kg		Analyzed By: MS					
Analyte	Result	Reporting Limit	Analyzed	Method Blank	BS	% Recovery	True Value QC	RPD	Qualifier
GRO C6-C10*	<10.0	10.0	10/13/2023	ND	190	94.9	200	1.08	
DRO >C10-C28*	<10.0	10.0	10/13/2023	ND	175	87.4	200	3.14	
EXT DRO >C28-C36	<10.0	10.0	10/13/2023	ND					

Surrogate: 1-Chlorooctane 72.6 % 48.2-134

Surrogate: 1-Chlorooctadecane 61.4 % 49.1-148

Cardinal Laboratories

*=Accredited Analyte

PLEASE NOTE: Liability and Damages. Cardinal's liability and client's exclusive remedy for any claim arising, whether based in contract or tort, shall be limited to the amount paid by client for analyses. All claims, including those for negligence and any other cause whatsoever shall be deemed waived unless made in writing and received by Cardinal within thirty (30) days after completion of the applicable service. In no event shall Cardinal be liable for incidental or consequential damages, including, without limitation, business interruptions, loss of use, or loss of profits incurred by client, its subsidiaries, affiliates or successors arising out of or related to the performance of the services hereunder by Cardinal, regardless of whether such claim is based upon any of the above stated reasons or otherwise. Results relate only to the samples identified above. This report shall not be reproduced except in full with written approval of Cardinal Laboratories.

Celey D. Keene, Lab Director/Quality Manager



PHONE (575) 393-2326 ° 101 E. MARLAND ° HOBBS, NM 88240

Analytical Results For:

BBC International, Inc.
 Cliff Brunson
 P.O. Box 805
 Hobbs NM, 88241
 Fax To: (575) 397-0397

Received: 10/12/2023
 Reported: 10/19/2023
 Project Name: BRAVO DOME 1835 52E LEG7
 Project Number: (11-2-20)
 Project Location: OXY - NEW MEXICO

Sampling Date: 10/06/2023
 Sampling Type: Soil
 Sampling Condition: Cool & Intact
 Sample Received By: Tamara Oldaker

Sample ID: BOTTOM SAMPLE 27 @ 3' (H235593-27)

BTEX 8021B		mg/kg		Analyzed By: MS					
Analyte	Result	Reporting Limit	Analyzed	Method Blank	BS	% Recovery	True Value QC	RPD	Qualifier
Benzene*	<0.050	0.050	10/15/2023	ND	1.94	97.0	2.00	2.32	
Toluene*	<0.050	0.050	10/15/2023	ND	1.98	99.2	2.00	1.62	
Ethylbenzene*	<0.050	0.050	10/15/2023	ND	2.01	100	2.00	2.65	
Total Xylenes*	<0.150	0.150	10/15/2023	ND	6.04	101	6.00	2.53	
Total BTEX	<0.300	0.300	10/15/2023	ND					

Surrogate: 4-Bromofluorobenzene (PID) 99.1 % 71.5-134

Chloride, SM4500CI-B		mg/kg		Analyzed By: AC						
Analyte	Result	Reporting Limit	Analyzed	Method Blank	BS	% Recovery	True Value QC	RPD	Qualifier	
Chloride	16.0	16.0	10/16/2023	ND	432	108	400	0.00		

TPH 8015M		mg/kg		Analyzed By: MS					
Analyte	Result	Reporting Limit	Analyzed	Method Blank	BS	% Recovery	True Value QC	RPD	Qualifier
GRO C6-C10*	<10.0	10.0	10/13/2023	ND	190	94.9	200	1.08	
DRO >C10-C28*	<10.0	10.0	10/13/2023	ND	175	87.4	200	3.14	
EXT DRO >C28-C36	<10.0	10.0	10/13/2023	ND					

Surrogate: 1-Chlorooctane 72.8 % 48.2-134

Surrogate: 1-Chlorooctadecane 61.5 % 49.1-148

Cardinal Laboratories

*=Accredited Analyte

PLEASE NOTE: Liability and Damages. Cardinal's liability and client's exclusive remedy for any claim arising, whether based in contract or tort, shall be limited to the amount paid by client for analyses. All claims, including those for negligence and any other cause whatsoever shall be deemed waived unless made in writing and received by Cardinal within thirty (30) days after completion of the applicable service. In no event shall Cardinal be liable for incidental or consequential damages, including, without limitation, business interruptions, loss of use, or loss of profits incurred by client, its subsidiaries, affiliates or successors arising out of or related to the performance of the services hereunder by Cardinal, regardless of whether such claim is based upon any of the above stated reasons or otherwise. Results relate only to the samples identified above. This report shall not be reproduced except in full with written approval of Cardinal Laboratories.

Celey D. Keene, Lab Director/Quality Manager



PHONE (575) 393-2326 • 101 E. MARLAND • HOBBS, NM 88240

Analytical Results For:

BBC International, Inc.
 Cliff Brunson
 P.O. Box 805
 Hobbs NM, 88241
 Fax To: (575) 397-0397

Received: 10/12/2023
 Reported: 10/19/2023
 Project Name: BRAVO DOME 1835 52E LEG7
 Project Number: (11-2-20)
 Project Location: OXY - NEW MEXICO

Sampling Date: 10/06/2023
 Sampling Type: Soil
 Sampling Condition: Cool & Intact
 Sample Received By: Tamara Oldaker

Sample ID: BOTTOM SAMPLE 28 @ 3' (H235593-28)

BTX 8021B		mg/kg		Analyzed By: MS					
Analyte	Result	Reporting Limit	Analyzed	Method Blank	BS	% Recovery	True Value QC	RPD	Qualifier
Benzene*	<0.050	0.050	10/15/2023	ND	1.94	97.0	2.00	2.32	
Toluene*	<0.050	0.050	10/15/2023	ND	1.98	99.2	2.00	1.62	
Ethylbenzene*	<0.050	0.050	10/15/2023	ND	2.01	100	2.00	2.65	
Total Xylenes*	<0.150	0.150	10/15/2023	ND	6.04	101	6.00	2.53	
Total BTX	<0.300	0.300	10/15/2023	ND					

Surrogate: 4-Bromofluorobenzene (PID) 99.3 % 71.5-134

Chloride, SM4500Cl-B		mg/kg		Analyzed By: AC					
Analyte	Result	Reporting Limit	Analyzed	Method Blank	BS	% Recovery	True Value QC	RPD	Qualifier
Chloride	<16.0	16.0	10/16/2023	ND	432	108	400	0.00	

TPH 8015M		mg/kg		Analyzed By: MS					
Analyte	Result	Reporting Limit	Analyzed	Method Blank	BS	% Recovery	True Value QC	RPD	Qualifier
GRO C6-C10*	<10.0	10.0	10/13/2023	ND	190	94.9	200	1.08	
DRO >C10-C28*	<10.0	10.0	10/13/2023	ND	175	87.4	200	3.14	
EXT DRO >C28-C36	<10.0	10.0	10/13/2023	ND					

Surrogate: 1-Chlorooctane 73.9 % 48.2-134

Surrogate: 1-Chlorooctadecane 61.3 % 49.1-148

Cardinal Laboratories

*=Accredited Analyte

PLEASE NOTE: Liability and Damages. Cardinal's liability and client's exclusive remedy for any claim arising, whether based in contract or tort, shall be limited to the amount paid by client for analyses. All claims, including those for negligence and any other cause whatsoever shall be deemed waived unless made in writing and received by Cardinal within thirty (30) days after completion of the applicable service. In no event shall Cardinal be liable for incidental or consequential damages, including, without limitation, business interruptions, loss of use, or loss of profits incurred by client, its subsidiaries, affiliates or successors arising out of or related to the performance of the services hereunder by Cardinal, regardless of whether such claim is based upon any of the above stated reasons or otherwise. Results relate only to the samples identified above. This report shall not be reproduced except in full with written approval of Cardinal Laboratories.

Celey D. Keene, Lab Director/Quality Manager



PHONE (575) 393-2326 ° 101 E. MARLAND ° HOBBS, NM 88240

Analytical Results For:

BBC International, Inc.
 Cliff Brunson
 P.O. Box 805
 Hobbs NM, 88241
 Fax To: (575) 397-0397

Received: 10/12/2023
 Reported: 10/19/2023
 Project Name: BRAVO DOME 1835 52E LEG7
 Project Number: (11-2-20)
 Project Location: OXY - NEW MEXICO

Sampling Date: 10/06/2023
 Sampling Type: Soil
 Sampling Condition: Cool & Intact
 Sample Received By: Tamara Oldaker

Sample ID: BOTTOM SAMPLE 29 @ 3' (H235593-29)

BTEx 8021B		mg/kg		Analyzed By: MS						
Analyte	Result	Reporting Limit	Analyzed	Method Blank	BS	% Recovery	True Value QC	RPD	Qualifier	
Benzene*	<0.050	0.050	10/15/2023	ND	1.95	97.6	2.00	1.43		
Toluene*	<0.050	0.050	10/15/2023	ND	1.97	98.6	2.00	2.34		
Ethylbenzene*	<0.050	0.050	10/15/2023	ND	2.01	101	2.00	1.52		
Total Xylenes*	<0.150	0.150	10/15/2023	ND	6.03	101	6.00	1.74		
Total BTEX	<0.300	0.300	10/15/2023	ND						

Surrogate: 4-Bromofluorobenzene (PID) 98.7 % 71.5-134

Chloride, SM4500CI-B		mg/kg		Analyzed By: AC						
Analyte	Result	Reporting Limit	Analyzed	Method Blank	BS	% Recovery	True Value QC	RPD	Qualifier	
Chloride	16.0	16.0	10/16/2023	ND	432	108	400	0.00		

TPH 8015M		mg/kg		Analyzed By: MS					
Analyte	Result	Reporting Limit	Analyzed	Method Blank	BS	% Recovery	True Value QC	RPD	Qualifier
GRO C6-C10*	<10.0	10.0	10/13/2023	ND	190	94.9	200	1.08	
DRO >C10-C28*	<10.0	10.0	10/13/2023	ND	175	87.4	200	3.14	
EXT DRO >C28-C36	<10.0	10.0	10/13/2023	ND					

Surrogate: 1-Chlorooctane 67.9 % 48.2-134

Surrogate: 1-Chlorooctadecane 55.9 % 49.1-148

Cardinal Laboratories

*=Accredited Analyte

PLEASE NOTE: Liability and Damages. Cardinal's liability and client's exclusive remedy for any claim arising, whether based in contract or tort, shall be limited to the amount paid by client for analyses. All claims, including those for negligence and any other cause whatsoever shall be deemed waived unless made in writing and received by Cardinal within thirty (30) days after completion of the applicable service. In no event shall Cardinal be liable for incidental or consequential damages, including, without limitation, business interruptions, loss of use, or loss of profits incurred by client, its subsidiaries, affiliates or successors arising out of or related to the performance of the services hereunder by Cardinal, regardless of whether such claim is based upon any of the above stated reasons or otherwise. Results relate only to the samples identified above. This report shall not be reproduced except in full with written approval of Cardinal Laboratories.

Celey D. Keene, Lab Director/Quality Manager



PHONE (575) 393-2326 ° 101 E. MARLAND ° HOBBS, NM 88240

Analytical Results For:

BBC International, Inc.
 Cliff Brunson
 P.O. Box 805
 Hobbs NM, 88241
 Fax To: (575) 397-0397

Received: 10/12/2023
 Reported: 10/19/2023
 Project Name: BRAVO DOME 1835 52E LEG7
 Project Number: (11-2-20)
 Project Location: OXY - NEW MEXICO

Sampling Date: 10/06/2023
 Sampling Type: Soil
 Sampling Condition: Cool & Intact
 Sample Received By: Tamara Oldaker

Sample ID: BOTTOM SAMPLE 30 @ 3' (H235593-30)

BTEx 8021B		mg/kg		Analyzed By: MS					
Analyte	Result	Reporting Limit	Analyzed	Method Blank	BS	% Recovery	True Value QC	RPD	Qualifier
Benzene*	<0.050	0.050	10/15/2023	ND	1.95	97.6	2.00	1.43	
Toluene*	<0.050	0.050	10/15/2023	ND	1.97	98.6	2.00	2.34	
Ethylbenzene*	<0.050	0.050	10/15/2023	ND	2.01	101	2.00	1.52	
Total Xylenes*	<0.150	0.150	10/15/2023	ND	6.03	101	6.00	1.74	
Total BTEX	<0.300	0.300	10/15/2023	ND					

Surrogate: 4-Bromofluorobenzene (PID) 98.0 % 71.5-134

Chloride, SM4500CI-B		mg/kg		Analyzed By: AC						
Analyte	Result	Reporting Limit	Analyzed	Method Blank	BS	% Recovery	True Value QC	RPD	Qualifier	
Chloride	32.0	16.0	10/16/2023	ND	432	108	400	0.00		

TPH 8015M		mg/kg		Analyzed By: MS					
Analyte	Result	Reporting Limit	Analyzed	Method Blank	BS	% Recovery	True Value QC	RPD	Qualifier
GRO C6-C10*	<10.0	10.0	10/13/2023	ND	190	94.9	200	1.08	
DRO >C10-C28*	<10.0	10.0	10/13/2023	ND	175	87.4	200	3.14	
EXT DRO >C28-C36	<10.0	10.0	10/13/2023	ND					

Surrogate: 1-Chlorooctane 63.7 % 48.2-134

Surrogate: 1-Chlorooctadecane 54.0 % 49.1-148

Cardinal Laboratories

*=Accredited Analyte

PLEASE NOTE: Liability and Damages. Cardinal's liability and client's exclusive remedy for any claim arising, whether based in contract or tort, shall be limited to the amount paid by client for analyses. All claims, including those for negligence and any other cause whatsoever shall be deemed waived unless made in writing and received by Cardinal within thirty (30) days after completion of the applicable service. In no event shall Cardinal be liable for incidental or consequential damages, including, without limitation, business interruptions, loss of use, or loss of profits incurred by client, its subsidiaries, affiliates or successors arising out of or related to the performance of the services hereunder by Cardinal, regardless of whether such claim is based upon any of the above stated reasons or otherwise. Results relate only to the samples identified above. This report shall not be reproduced except in full with written approval of Cardinal Laboratories.

Celey D. Keene, Lab Director/Quality Manager



PHONE (575) 393-2326 ° 101 E. MARLAND ° HOBBS, NM 88240

Notes and Definitions

- ND Analyte NOT DETECTED at or above the reporting limit
- RPD Relative Percent Difference
- ** Samples not received at proper temperature of 6°C or below.
- *** Insufficient time to reach temperature.
- Chloride by SM4500Cl-B does not require samples be received at or below 6°C
Samples reported on an as received basis (wet) unless otherwise noted on report

Cardinal Laboratories

*=Accredited Analyte

PLEASE NOTE: Liability and Damages. Cardinal's liability and client's exclusive remedy for any claim arising, whether based in contract or tort, shall be limited to the amount paid by client for analyses. All claims, including those for negligence and any other cause whatsoever shall be deemed waived unless made in writing and received by Cardinal within thirty (30) days after completion of the applicable service. In no event shall Cardinal be liable for incidental or consequential damages, including, without limitation, business interruptions, loss of use, or loss of profits incurred by client, its subsidiaries, affiliates or successors arising out of or related to the performance of the services hereunder by Cardinal, regardless of whether such claim is based upon any of the above stated reasons or otherwise. Results relate only to the samples identified above. This report shall not be reproduced except in full with written approval of Cardinal Laboratories.

Celey D. Keene

Celey D. Keene, Lab Director/Quality Manager

**• ARDINAL LABORATORIES**

101 East Marland, Hobbs, NM 88240

(505) 393-2326 FAX (505) 393-2476

CHAIN-OF-CUSTODY AND ANALYSIS REQUEST

Company Name: BBC International, Inc. Project Manager: Cliff Brunson Address: P.O. Box 805 City: Hobbs State: NM Zip: 88241 Phone #: 575-397-6388 Fax #: 575-397-0397 Project #: Project Owner: Oxy Project Name: BRAVO DOME 1835 52E LEG7 (11/2/20) Project Location: New Mexico Sampler Name: SIMON RENDON				BILL TO				ANALYSIS REQUEST									
				P.O. #:		<i>Chloride BTEX TPHEX</i>											
				Company: Oxy													
				Attn:													
				Address:													
				City:													
				State: Zip:													
				Phone #:													
				Fax #:													

FOR LAB USE ONLY		# CONTAINERS	(G)RAB OR (C)OMP.	MATRIX	PRESERV.	SAMPLING																	
Lab I.D.	Sample I.D.			GROUNDWATER	SLUDGE	OTHER :	ACID/BASE: ICE / COOL OTHER :	DATE	TIME														
H235593	BOTTOM SAMPLE 1@1'	8	1				10/05/23	1:3.0PM	✓	✓	✓												
1	BOTTOM SAMPLE 2@1'						10/05/23	1:42PM	✓	✓	✓												
2	BOTTOM SAMPLE 3@1'						10/05/23	1:55 PM	✓	✓	✓												
3	BOTTOM SAMPLE 4@1'						10/05/23	2:10PM	✓	✓	✓												
4	BOTTOM SAMPLE 5@1'						10/05/23	2:23PM	✓	✓	✓												
5	BOTTOM SAMPLE 6@1'						10/05/23	2:35PM	✓	✓	✓												
6	BOTTOM SAMPLE 7@2'						10/05/23	2:51PM	✓	✓	✓												
7	BOTTOM SAMPLE 8@2'						10/05/23	3:04PM	✓	✓	✓												
8	BOTTOM SAMPLE 9@2'						10/05/23	3:16PM	✓	✓	✓												
9	BOTTOM SAMPLE 10@2'						10/05/23	3:31PM	✓	✓	✓												
10																							

PLEASE NOTE: Liability and Damages: Cardinal's liability and client's exclusive remedy for any claim arising whether based in contract or tort, shall be limited to the amount paid by the client for the analyses. All claims including those for negligence and any other cause whatsoever shall be deemed waived unless made in writing and received by Cardinal within 30 days after completion of the applicable service. In no event shall Cardinal be liable for incidental or consequential damages, including without limitation, business interruptions, loss of use, or loss of profits incurred by client, its subsidiaries, affiliates or successors arising out of or related to the performance of services hereunder by Cardinal regardless of whether such claim is based upon any of the above stated reasons or otherwise.

Relinquished By:	Date: 10-12-23	Received By: [Signature]	Phone Result: <input type="checkbox"/> Yes <input checked="" type="checkbox"/> No	Add'l Phone #:
[Signature]	Time: 1620		Fax Result: <input type="checkbox"/> Yes <input checked="" type="checkbox"/> No	Add'l Fax #:
Relinquished By:	Date:	Received By:	REMARKS:	
	Time:			

Delivered By: (Circle One)	#140	Sample Condition	CHECKED BY: (Initials)
Sampler - UPS - Bus - Other:	1.4c	Cool Intact <input checked="" type="checkbox"/> Yes <input checked="" type="checkbox"/> No	[Signature]

+ Cardinal cannot accept responsibility for results if samples are not properly labeled and sealed.

† Cardinal cannot accept verbal changes. Please fax written changes to 505-393-2476



ARDINAL LABORATORIES

101 East Marland, Hobbs, NM 88240

(505) 393-2326 FAX (505) 393-2476

CHAIN-OF-CUSTODY AND ANALYSIS REQUEST

Company Name: BBC International, Inc.				BILL TO				ANALYSIS REQUEST																			
Project Manager: Cliff Brunson				P.O. #:				<div style="display: flex; justify-content: space-between;"> <div style="writing-mode: vertical-rl; transform: rotate(180deg);">Chloride</div> <div style="writing-mode: vertical-rl; transform: rotate(180deg);">BTEX</div> <div style="writing-mode: vertical-rl; transform: rotate(180deg);">TPH/EXT</div> </div>																			
Address: P.O. Box 805				Company: Oxy																							
City: Hobbs State: NM Zip: 88241				Attn:																							
Phone #: 575-397-6388 Fax #: 575-397-0397				Address:																							
Project #: Project Owner: Oxy				City:																							
Project Name: BRAVO DOME 1835 52E LEG7 (11/2/20)				State: Zip:																							
Project Location: New Mexico				Phone #:																							
Sampler Name: SIMON RENDON				Fax #:																							
FOR LAB USE ONLY																											
Lab I.D.	Sample I.D.	(G)RAB OR (C)OMP.	# CONTAINERS	MATRIX				PRESERV.		SAMPLING																	
				GROUNDWATER	WASTEWATER	SOIL	OIL	SLUDGE	OTHER:	ACID/BASE:	ICE / COOL	OTHER:	DATE	TIME													
H235593	11 BOTTOM SAMPLE 11@2'	6											10/05/23	3:46PM	✓	✓	✓										
	12 BOTTOM SAMPLE 12@2'												10/05/23	3:58PM	✓	✓	✓										
	13 BOTTOM SAMPLE 13@2'												10/05/23	4:12PM	✓	✓	✓										
	14 BOTTOM SAMPLE 14@2'												10/05/23	4:27PM	✓	✓	✓										
	15 BOTTOM SAMPLE 15@2'												10/05/23	4:40PM	✓	✓	✓										
	16 BOTTOM SAMPLE 16@2'												10/05/23	4:53PM	✓	✓	✓										
	17 BOTTOM SAMPLE 17@2'												10/06/23	8:30AM	✓	✓	✓										
	18 BOTTOM SAMPLE 18@2'												10/06/23	8:42AM	✓	✓	✓										
	19 BOTTOM SAMPLE 19@2'												10/06/23	8:55AM	✓	✓	✓										
	20 BOTTOM SAMPLE 20@2'												10/06/23	9:12AM	✓	✓	✓										

PLEASE NOTE: Liability and Damages. Cardinal's liability and client's exclusive remedy for any claim arising whether based in contract or tort, shall be limited to the amount paid by the client for the analyses. All claims, including those for negligence and any other cause whatsoever shall be deemed waived unless made in writing and received by Cardinal within 30 days after completion of the applicable service. In no event shall Cardinal be liable for incidental or consequential damages, including without limitation, business interruptions, loss of use, or loss of profits incurred by client, its subsidiaries, affiliates or successors arising out of or related to the performance of services hereunder by Cardinal, regardless of whether such claim is based upon any of the above stated reasons or otherwise.

Relinquished By:	Date:	Received By:	Phone Result:	Yes	No	Add'l Phone #:
Fabian Folz	10-12-23	[Signature]	Fax Result:	Yes	No	Add'l Fax #:
Relinquished By:	Date:	Received By:	REMARKS:			
Delivered By: (Circle One)	#140	Sample Condition	CHECKED BY:			
Sampler - UPS - Bus - Other:	1,40	Cool Intact	(Initials)			
		Yes Yes				
		No No				

† Cardinal cannot accept verbal changes. Please fax written changes to 505-393-2476



CARDINAL LABORATORIES

101 East Marland, Hobbs, NM 88240
(505) 393-2326 FAX (505) 393-2476

CHAIN-OF-CUSTODY AND ANALYSIS REQUEST

Company Name: BBC International, Inc.

Project Manager: Cliff Brunson

Address: P.O. Box 805

City: Hobbs

State: NM Zip: 88241

Phone #: 575-397-6388

Fax #: 575-397-0397

Project #:

Project Owner: Oxy

Project Name: BRAVO DOME 1835 52E LEG7 (11/2/20)

Project Location: New Mexico

Sampler Name: SIMON RENDON

BILL TO

ANALYSIS REQUEST

P.O. #:

Company: Oxy

Attn:

Address:

City:

State: Zip:

Phone #:

Fax #:

FOR LAB USE ONLY

Lab I.D.

Sample I.D.

H235593

21 BOTTOM SAMPLE 21@2'
22 BOTTOM SAMPLE 22@2'
23 BOTTOM SAMPLE 23@2'
24 BOTTOM SAMPLE 24@2'
25 BOTTOM SAMPLE 25@3'
26 BOTTOM SAMPLE 26@3'
27 BOTTOM SAMPLE 27@3'
28 BOTTOM SAMPLE 28@3'
29 BOTTOM SAMPLE 29@3'
30 BOTTOM SAMPLE 30@3'

(GRAB OR C/COMP.

CONTAINERS

GROUNDWATER

WASTEWATER

SOIL

OIL

SLUDGE

OTHER:

ACID/BASE:

ICE / COOL

OTHER:

MATRIX

PRESERV.

SAMPLING

DATE TIME

10/06/23 9:27AM
10/06/23 9:42AM
10/06/23 9:55AM
10/06/23 10:12AM
10/06/23 10:26AM
10/06/23 10:41AM
10/06/23 11:00AM
10/06/23 11:14AM
10/06/23 11:27AM
10/06/23 11:40AM

Chloride
BTEX
TPHEX

PLEASE NOTE: Liability and Damages. Cardinal's liability and client's exclusive remedy for any claim arising whether based in contract or tort, shall be limited to the amount paid by the client for the analyses. All claims including those for negligence and any other cause whatsoever shall be deemed waived unless made in writing and received by Cardinal within 30 days after completion of the applicable service. In no event shall Cardinal be liable for incidental or consequential damages, including without limitation, business interruptions, loss of use, or loss of profits incurred by client, its subsidiaries, affiliates or successors arising out of or related to the performance of services hereunder by Cardinal, regardless of whether such claim is based upon any of the above stated reasons or otherwise.

Relinquished By:

Fabian Fdz

Date: 10-12-23
Time: 16:20

Received By:

Samira Aldabek

Date:
Time:

Received By:

Phone Result:

☐ Yes ☐ No

Add'l Phone #:

Fax Result:

☐ Yes ☐ No

Add'l Fax #:

REMARKS:

Delivered By: (Circle One)

Sampler - UPS - Bus - Other:

#140
1.4C

Sample Condition

Cool Intact
☒ Yes ☐ No ☐ Yes ☐ No

CHECKED BY:
(Initials)

V.O.

† Cardinal cannot accept verbal changes. Please fax written changes to 505-393-2476



PHONE (575) 393-2326 ° 101 E. MARLAND ° HOBBS, NM 88240

October 20, 2023

Cliff Brunson

BBC International, Inc.

P.O. Box 805

Hobbs, NM 88241

RE: BRAVO DOME 1835 52E LEG7

Enclosed are the results of analyses for samples received by the laboratory on 10/16/23 16:40.

Cardinal Laboratories is accredited through Texas NELAP under certificate number T104704398-22-15. Accreditation applies to drinking water, non-potable water and solid and chemical materials. All accredited analytes are denoted by an asterisk (*). For a complete list of accredited analytes and matrices visit the TCEQ website at www.tceq.texas.gov/field/qa/lab_accred_certif.html.

Cardinal Laboratories is accredited through the State of Colorado Department of Public Health and Environment for:

Method EPA 552.2	Haloacetic Acids (HAA-5)
Method EPA 524.2	Total Trihalomethanes (TTHM)
Method EPA 524.4	Regulated VOCs (V1, V2, V3)

Accreditation applies to public drinking water matrices.

This report meets NELAP requirements and is made up of a cover page, analytical results, and a copy of the original chain-of-custody. If you have any questions concerning this report, please feel free to contact me.

Sincerely,

A handwritten signature in black ink that reads "Celey D. Keene". The signature is written in a cursive style with a large, stylized 'C' and 'K'.

Celey D. Keene

Lab Director/Quality Manager



PHONE (575) 393-2326 ° 101 E. MARLAND ° HOBBS, NM 88240

Analytical Results For:

BBC International, Inc.
 Cliff Brunson
 P.O. Box 805
 Hobbs NM, 88241
 Fax To: (575) 397-0397

Received: 10/16/2023
 Reported: 10/20/2023
 Project Name: BRAVO DOME 1835 52E LEG7
 Project Number: (11-2-20)
 Project Location: OXY - NEW MEXICO

Sampling Date: 10/16/2023
 Sampling Type: Soil
 Sampling Condition: Cool & Intact
 Sample Received By: Dionica Hinojos

Sample ID: SIDEWALL 1 (H235634-01)

BTEX 8021B			mg/kg		Analyzed By: MS				
Analyte	Result	Reporting Limit	Analyzed	Method Blank	BS	% Recovery	True Value QC	RPD	Qualifier
Benzene*	<0.050	0.050	10/17/2023	ND	1.80	89.8	2.00	1.74	
Toluene*	<0.050	0.050	10/17/2023	ND	1.85	92.4	2.00	0.794	
Ethylbenzene*	<0.050	0.050	10/17/2023	ND	1.85	92.3	2.00	0.405	
Total Xylenes*	<0.150	0.150	10/17/2023	ND	5.52	92.1	6.00	0.691	
Total BTEX	<0.300	0.300	10/17/2023	ND					

Surrogate: 4-Bromofluorobenzene (PID) 93.4 % 71.5-134

Chloride, SM4500Cl-B		mg/kg		Analyzed By: AC					
Analyte	Result	Reporting Limit	Analyzed	Method Blank	BS	% Recovery	True Value QC	RPD	Qualifier
Chloride	<16.0	16.0	10/17/2023	ND	416	104	400	3.77	

TPH 8015M		mg/kg		Analyzed By: MS					
Analyte	Result	Reporting Limit	Analyzed	Method Blank	BS	% Recovery	True Value QC	RPD	Qualifier
GRO C6-C10*	<10.0	10.0	10/17/2023	ND	172	86.0	200	3.79	
DRO >C10-C28*	<10.0	10.0	10/17/2023	ND	187	93.5	200	3.11	
EXT DRO >C28-C36	<10.0	10.0	10/17/2023	ND					

Surrogate: 1-Chlorooctane 80.9 % 48.2-134

Surrogate: 1-Chlorooctadecane 95.2 % 49.1-148

Cardinal Laboratories

*=Accredited Analyte

PLEASE NOTE: Liability and Damages. Cardinal's liability and client's exclusive remedy for any claim arising, whether based in contract or tort, shall be limited to the amount paid by client for analyses. All claims, including those for negligence and any other cause whatsoever shall be deemed waived unless made in writing and received by Cardinal within thirty (30) days after completion of the applicable service. In no event shall Cardinal be liable for incidental or consequential damages, including, without limitation, business interruptions, loss of use, or loss of profits incurred by client, its subsidiaries, affiliates or successors arising out of or related to the performance of the services hereunder by Cardinal, regardless of whether such claim is based upon any of the above stated reasons or otherwise. Results relate only to the samples identified above. This report shall not be reproduced except in full with written approval of Cardinal Laboratories.

Celey D. Keene, Lab Director/Quality Manager



PHONE (575) 393-2326 ° 101 E. MARLAND ° HOBBS, NM 88240

Analytical Results For:

BBC International, Inc.
 Cliff Brunson
 P.O. Box 805
 Hobbs NM, 88241
 Fax To: (575) 397-0397

Received: 10/16/2023
 Reported: 10/20/2023
 Project Name: BRAVO DOME 1835 52E LEG7
 Project Number: (11-2-20)
 Project Location: OXY - NEW MEXICO

Sampling Date: 10/16/2023
 Sampling Type: Soil
 Sampling Condition: Cool & Intact
 Sample Received By: Dionica Hinojos

Sample ID: SIDEWALL 2 (H235634-02)

BTEx 8021B			mg/kg		Analyzed By: MS				
Analyte	Result	Reporting Limit	Analyzed	Method Blank	BS	% Recovery	True Value QC	RPD	Qualifier
Benzene*	<0.050	0.050	10/17/2023	ND	1.80	89.8	2.00	1.74	
Toluene*	<0.050	0.050	10/17/2023	ND	1.85	92.4	2.00	0.794	
Ethylbenzene*	<0.050	0.050	10/17/2023	ND	1.85	92.3	2.00	0.405	
Total Xylenes*	<0.150	0.150	10/17/2023	ND	5.52	92.1	6.00	0.691	
Total BTEX	<0.300	0.300	10/17/2023	ND					

Surrogate: 4-Bromofluorobenzene (PID) 94.2 % 71.5-134

Chloride, SM4500Cl-B		mg/kg		Analyzed By: AC					
Analyte	Result	Reporting Limit	Analyzed	Method Blank	BS	% Recovery	True Value QC	RPD	Qualifier
Chloride	32.0	16.0	10/17/2023	ND	416	104	400	3.77	

TPH 8015M		mg/kg		Analyzed By: MS					
Analyte	Result	Reporting Limit	Analyzed	Method Blank	BS	% Recovery	True Value QC	RPD	Qualifier
GRO C6-C10*	<10.0	10.0	10/17/2023	ND	172	86.0	200	3.79	
DRO >C10-C28*	<10.0	10.0	10/17/2023	ND	187	93.5	200	3.11	
EXT DRO >C28-C36	<10.0	10.0	10/17/2023	ND					

Surrogate: 1-Chlorooctane 85.7 % 48.2-134

Surrogate: 1-Chlorooctadecane 99.4 % 49.1-148

Cardinal Laboratories

*=Accredited Analyte

PLEASE NOTE: Liability and Damages. Cardinal's liability and client's exclusive remedy for any claim arising, whether based in contract or tort, shall be limited to the amount paid by client for analyses. All claims, including those for negligence and any other cause whatsoever shall be deemed waived unless made in writing and received by Cardinal within thirty (30) days after completion of the applicable service. In no event shall Cardinal be liable for incidental or consequential damages, including, without limitation, business interruptions, loss of use, or loss of profits incurred by client, its subsidiaries, affiliates or successors arising out of or related to the performance of the services hereunder by Cardinal, regardless of whether such claim is based upon any of the above stated reasons or otherwise. Results relate only to the samples identified above. This report shall not be reproduced except in full with written approval of Cardinal Laboratories.

Celey D. Keene, Lab Director/Quality Manager



PHONE (575) 393-2326 ° 101 E. MARLAND ° HOBBS, NM 88240

Analytical Results For:

BBC International, Inc.
 Cliff Brunson
 P.O. Box 805
 Hobbs NM, 88241
 Fax To: (575) 397-0397

Received: 10/16/2023
 Reported: 10/20/2023
 Project Name: BRAVO DOME 1835 52E LEG7
 Project Number: (11-2-20)
 Project Location: OXY - NEW MEXICO

Sampling Date: 10/16/2023
 Sampling Type: Soil
 Sampling Condition: Cool & Intact
 Sample Received By: Dionica Hinojos

Sample ID: SIDEWALL 3 (H235634-03)

BTEx 8021B		mg/kg		Analyzed By: MS					
Analyte	Result	Reporting Limit	Analyzed	Method Blank	BS	% Recovery	True Value QC	RPD	Qualifier
Benzene*	<0.050	0.050	10/17/2023	ND	1.80	89.8	2.00	1.74	
Toluene*	<0.050	0.050	10/17/2023	ND	1.85	92.4	2.00	0.794	
Ethylbenzene*	<0.050	0.050	10/17/2023	ND	1.85	92.3	2.00	0.405	
Total Xylenes*	<0.150	0.150	10/17/2023	ND	5.52	92.1	6.00	0.691	
Total BTEX	<0.300	0.300	10/17/2023	ND					

Surrogate: 4-Bromofluorobenzene (PID) 93.4 % 71.5-134

Chloride, SM4500Cl-B		mg/kg		Analyzed By: AC						
Analyte	Result	Reporting Limit	Analyzed	Method Blank	BS	% Recovery	True Value QC	RPD	Qualifier	
Chloride	<16.0	16.0	10/17/2023	ND	432	108	400	0.00		

TPH 8015M		mg/kg		Analyzed By: MS					
Analyte	Result	Reporting Limit	Analyzed	Method Blank	BS	% Recovery	True Value QC	RPD	Qualifier
GRO C6-C10*	<10.0	10.0	10/17/2023	ND	172	86.0	200	3.79	
DRO >C10-C28*	<10.0	10.0	10/17/2023	ND	187	93.5	200	3.11	
EXT DRO >C28-C36	<10.0	10.0	10/17/2023	ND					

Surrogate: 1-Chlorooctane 98.2 % 48.2-134

Surrogate: 1-Chlorooctadecane 114 % 49.1-148

Cardinal Laboratories

*=Accredited Analyte

PLEASE NOTE: Liability and Damages. Cardinal's liability and client's exclusive remedy for any claim arising, whether based in contract or tort, shall be limited to the amount paid by client for analyses. All claims, including those for negligence and any other cause whatsoever shall be deemed waived unless made in writing and received by Cardinal within thirty (30) days after completion of the applicable service. In no event shall Cardinal be liable for incidental or consequential damages, including, without limitation, business interruptions, loss of use, or loss of profits incurred by client, its subsidiaries, affiliates or successors arising out of or related to the performance of the services hereunder by Cardinal, regardless of whether such claim is based upon any of the above stated reasons or otherwise. Results relate only to the samples identified above. This report shall not be reproduced except in full with written approval of Cardinal Laboratories.

Celey D. Keene, Lab Director/Quality Manager



PHONE (575) 393-2326 ° 101 E. MARLAND ° HOBBS, NM 88240

Analytical Results For:

BBC International, Inc.
 Cliff Brunson
 P.O. Box 805
 Hobbs NM, 88241
 Fax To: (575) 397-0397

Received: 10/16/2023
 Reported: 10/20/2023
 Project Name: BRAVO DOME 1835 52E LEG7
 Project Number: (11-2-20)
 Project Location: OXY - NEW MEXICO

Sampling Date: 10/16/2023
 Sampling Type: Soil
 Sampling Condition: Cool & Intact
 Sample Received By: Dionica Hinojos

Sample ID: SIDEWALL 4 (H235634-04)

BTEx 8021B		mg/kg		Analyzed By: MS						
Analyte	Result	Reporting Limit	Analyzed	Method Blank	BS	% Recovery	True Value QC	RPD	Qualifier	
Benzene*	<0.050	0.050	10/17/2023	ND	1.80	89.8	2.00	1.74		
Toluene*	<0.050	0.050	10/17/2023	ND	1.85	92.4	2.00	0.794		
Ethylbenzene*	<0.050	0.050	10/17/2023	ND	1.85	92.3	2.00	0.405		
Total Xylenes*	<0.150	0.150	10/17/2023	ND	5.52	92.1	6.00	0.691		
Total BTEX	<0.300	0.300	10/17/2023	ND						

Surrogate: 4-Bromofluorobenzene (PID) 93.3 % 71.5-134

Chloride, SM4500Cl-B		mg/kg		Analyzed By: AC						
Analyte	Result	Reporting Limit	Analyzed	Method Blank	BS	% Recovery	True Value QC	RPD	Qualifier	
Chloride	<16.0	16.0	10/17/2023	ND	432	108	400	0.00		

TPH 8015M		mg/kg		Analyzed By: MS					
Analyte	Result	Reporting Limit	Analyzed	Method Blank	BS	% Recovery	True Value QC	RPD	Qualifier
GRO C6-C10*	<10.0	10.0	10/17/2023	ND	172	86.0	200	3.79	
DRO >C10-C28*	<10.0	10.0	10/17/2023	ND	187	93.5	200	3.11	
EXT DRO >C28-C36	<10.0	10.0	10/17/2023	ND					

Surrogate: 1-Chlorooctane 76.9 % 48.2-134

Surrogate: 1-Chlorooctadecane 89.7 % 49.1-148

Cardinal Laboratories

*=Accredited Analyte

PLEASE NOTE: Liability and Damages. Cardinal's liability and client's exclusive remedy for any claim arising, whether based in contract or tort, shall be limited to the amount paid by client for analyses. All claims, including those for negligence and any other cause whatsoever shall be deemed waived unless made in writing and received by Cardinal within thirty (30) days after completion of the applicable service. In no event shall Cardinal be liable for incidental or consequential damages, including, without limitation, business interruptions, loss of use, or loss of profits incurred by client, its subsidiaries, affiliates or successors arising out of or related to the performance of the services hereunder by Cardinal, regardless of whether such claim is based upon any of the above stated reasons or otherwise. Results relate only to the samples identified above. This report shall not be reproduced except in full with written approval of Cardinal Laboratories.

Celey D. Keene, Lab Director/Quality Manager



PHONE (575) 393-2326 ° 101 E. MARLAND ° HOBBS, NM 88240

Analytical Results For:

BBC International, Inc.
 Cliff Brunson
 P.O. Box 805
 Hobbs NM, 88241
 Fax To: (575) 397-0397

Received: 10/16/2023
 Reported: 10/20/2023
 Project Name: BRAVO DOME 1835 52E LEG7
 Project Number: (11-2-20)
 Project Location: OXY - NEW MEXICO

Sampling Date: 10/16/2023
 Sampling Type: Soil
 Sampling Condition: Cool & Intact
 Sample Received By: Dionica Hinojos

Sample ID: SIDEWALL 5 (H235634-05)

BTEx 8021B		mg/kg		Analyzed By: MS					
Analyte	Result	Reporting Limit	Analyzed	Method Blank	BS	% Recovery	True Value QC	RPD	Qualifier
Benzene*	<0.050	0.050	10/17/2023	ND	1.80	89.8	2.00	1.74	
Toluene*	<0.050	0.050	10/17/2023	ND	1.85	92.4	2.00	0.794	
Ethylbenzene*	<0.050	0.050	10/17/2023	ND	1.85	92.3	2.00	0.405	
Total Xylenes*	<0.150	0.150	10/17/2023	ND	5.52	92.1	6.00	0.691	
Total BTEX	<0.300	0.300	10/17/2023	ND					

Surrogate: 4-Bromofluorobenzene (PID) 93.7 % 71.5-134

Chloride, SM4500Cl-B		mg/kg		Analyzed By: AC						
Analyte	Result	Reporting Limit	Analyzed	Method Blank	BS	% Recovery	True Value QC	RPD	Qualifier	
Chloride	<16.0	16.0	10/17/2023	ND	432	108	400	0.00		

TPH 8015M		mg/kg		Analyzed By: MS					
Analyte	Result	Reporting Limit	Analyzed	Method Blank	BS	% Recovery	True Value QC	RPD	Qualifier
GRO C6-C10*	<10.0	10.0	10/17/2023	ND	172	86.0	200	3.79	
DRO >C10-C28*	<10.0	10.0	10/17/2023	ND	187	93.5	200	3.11	
EXT DRO >C28-C36	<10.0	10.0	10/17/2023	ND					

Surrogate: 1-Chlorooctane 79.5 % 48.2-134

Surrogate: 1-Chlorooctadecane 92.0 % 49.1-148

Cardinal Laboratories

*=Accredited Analyte

PLEASE NOTE: Liability and Damages. Cardinal's liability and client's exclusive remedy for any claim arising, whether based in contract or tort, shall be limited to the amount paid by client for analyses. All claims, including those for negligence and any other cause whatsoever shall be deemed waived unless made in writing and received by Cardinal within thirty (30) days after completion of the applicable service. In no event shall Cardinal be liable for incidental or consequential damages, including, without limitation, business interruptions, loss of use, or loss of profits incurred by client, its subsidiaries, affiliates or successors arising out of or related to the performance of the services hereunder by Cardinal, regardless of whether such claim is based upon any of the above stated reasons or otherwise. Results relate only to the samples identified above. This report shall not be reproduced except in full with written approval of Cardinal Laboratories.

Celey D. Keene, Lab Director/Quality Manager



PHONE (575) 393-2326 ° 101 E. MARLAND ° HOBBS, NM 88240

Analytical Results For:

BBC International, Inc.
 Cliff Brunson
 P.O. Box 805
 Hobbs NM, 88241
 Fax To: (575) 397-0397

Received: 10/16/2023
 Reported: 10/20/2023
 Project Name: BRAVO DOME 1835 52E LEG7
 Project Number: (11-2-20)
 Project Location: OXY - NEW MEXICO

Sampling Date: 10/16/2023
 Sampling Type: Soil
 Sampling Condition: Cool & Intact
 Sample Received By: Dionica Hinojos

Sample ID: SIDEWALL 6 (H235634-06)

BTEx 8021B		mg/kg		Analyzed By: JH					
Analyte	Result	Reporting Limit	Analyzed	Method Blank	BS	% Recovery	True Value QC	RPD	Qualifier
Benzene*	<0.050	0.050	10/19/2023	ND	2.10	105	2.00	4.44	
Toluene*	<0.050	0.050	10/19/2023	ND	2.09	105	2.00	6.90	
Ethylbenzene*	<0.050	0.050	10/19/2023	ND	2.21	111	2.00	7.17	
Total Xylenes*	<0.150	0.150	10/19/2023	ND	6.65	111	6.00	7.86	
Total BTEX	<0.300	0.300	10/19/2023	ND					

Surrogate: 4-Bromofluorobenzene (PID) 110 % 71.5-134

Chloride, SM4500Cl-B		mg/kg		Analyzed By: AC						
Analyte	Result	Reporting Limit	Analyzed	Method Blank	BS	% Recovery	True Value QC	RPD	Qualifier	
Chloride	<16.0	16.0	10/17/2023	ND	432	108	400	0.00		

TPH 8015M		mg/kg		Analyzed By: MS					
Analyte	Result	Reporting Limit	Analyzed	Method Blank	BS	% Recovery	True Value QC	RPD	Qualifier
GRO C6-C10*	<10.0	10.0	10/17/2023	ND	172	86.0	200	3.79	
DRO >C10-C28*	<10.0	10.0	10/17/2023	ND	187	93.5	200	3.11	
EXT DRO >C28-C36	<10.0	10.0	10/17/2023	ND					

Surrogate: 1-Chlorooctane 82.2 % 48.2-134

Surrogate: 1-Chlorooctadecane 94.4 % 49.1-148

Cardinal Laboratories

*=Accredited Analyte

PLEASE NOTE: Liability and Damages. Cardinal's liability and client's exclusive remedy for any claim arising, whether based in contract or tort, shall be limited to the amount paid by client for analyses. All claims, including those for negligence and any other cause whatsoever shall be deemed waived unless made in writing and received by Cardinal within thirty (30) days after completion of the applicable service. In no event shall Cardinal be liable for incidental or consequential damages, including, without limitation, business interruptions, loss of use, or loss of profits incurred by client, its subsidiaries, affiliates or successors arising out of or related to the performance of the services hereunder by Cardinal, regardless of whether such claim is based upon any of the above stated reasons or otherwise. Results relate only to the samples identified above. This report shall not be reproduced except in full with written approval of Cardinal Laboratories.

Celey D. Keene, Lab Director/Quality Manager



PHONE (575) 393-2326 ° 101 E. MARLAND ° HOBBS, NM 88240

Analytical Results For:

BBC International, Inc.
 Cliff Brunson
 P.O. Box 805
 Hobbs NM, 88241
 Fax To: (575) 397-0397

Received: 10/16/2023
 Reported: 10/20/2023
 Project Name: BRAVO DOME 1835 52E LEG7
 Project Number: (11-2-20)
 Project Location: OXY - NEW MEXICO

Sampling Date: 10/16/2023
 Sampling Type: Soil
 Sampling Condition: Cool & Intact
 Sample Received By: Dionica Hinojos

Sample ID: SIDEWALL 7 (H235634-07)

BTEx 8021B		mg/kg		Analyzed By: JH					
Analyte	Result	Reporting Limit	Analyzed	Method Blank	BS	% Recovery	True Value QC	RPD	Qualifier
Benzene*	<0.050	0.050	10/19/2023	ND	2.10	105	2.00	4.44	
Toluene*	<0.050	0.050	10/19/2023	ND	2.09	105	2.00	6.90	
Ethylbenzene*	<0.050	0.050	10/19/2023	ND	2.21	111	2.00	7.17	
Total Xylenes*	<0.150	0.150	10/19/2023	ND	6.65	111	6.00	7.86	
Total BTEX	<0.300	0.300	10/19/2023	ND					

Surrogate: 4-Bromofluorobenzene (PID) 108 % 71.5-134

Chloride, SM4500Cl-B		mg/kg		Analyzed By: AC					
Analyte	Result	Reporting Limit	Analyzed	Method Blank	BS	% Recovery	True Value QC	RPD	Qualifier
Chloride	<16.0	16.0	10/17/2023	ND	432	108	400	0.00	

TPH 8015M		mg/kg		Analyzed By: MS					
Analyte	Result	Reporting Limit	Analyzed	Method Blank	BS	% Recovery	True Value QC	RPD	Qualifier
GRO C6-C10*	<10.0	10.0	10/17/2023	ND	172	86.0	200	3.79	
DRO >C10-C28*	<10.0	10.0	10/17/2023	ND	187	93.5	200	3.11	
EXT DRO >C28-C36	<10.0	10.0	10/17/2023	ND					

Surrogate: 1-Chlorooctane 86.6 % 48.2-134

Surrogate: 1-Chlorooctadecane 98.2 % 49.1-148

Cardinal Laboratories

*=Accredited Analyte

PLEASE NOTE: Liability and Damages. Cardinal's liability and client's exclusive remedy for any claim arising, whether based in contract or tort, shall be limited to the amount paid by client for analyses. All claims, including those for negligence and any other cause whatsoever shall be deemed waived unless made in writing and received by Cardinal within thirty (30) days after completion of the applicable service. In no event shall Cardinal be liable for incidental or consequential damages, including, without limitation, business interruptions, loss of use, or loss of profits incurred by client, its subsidiaries, affiliates or successors arising out of or related to the performance of the services hereunder by Cardinal, regardless of whether such claim is based upon any of the above stated reasons or otherwise. Results relate only to the samples identified above. This report shall not be reproduced except in full with written approval of Cardinal Laboratories.

Celey D. Keene, Lab Director/Quality Manager



PHONE (575) 393-2326 ° 101 E. MARLAND ° HOBBS, NM 88240

Analytical Results For:

BBC International, Inc.
 Cliff Brunson
 P.O. Box 805
 Hobbs NM, 88241
 Fax To: (575) 397-0397

Received: 10/16/2023
 Reported: 10/20/2023
 Project Name: BRAVO DOME 1835 52E LEG7
 Project Number: (11-2-20)
 Project Location: OXY - NEW MEXICO

Sampling Date: 10/16/2023
 Sampling Type: Soil
 Sampling Condition: Cool & Intact
 Sample Received By: Dionica Hinojos

Sample ID: SIDEWALL 8 (H235634-08)

BTEx 8021B		mg/kg		Analyzed By: JH					
Analyte	Result	Reporting Limit	Analyzed	Method Blank	BS	% Recovery	True Value QC	RPD	Qualifier
Benzene*	<0.050	0.050	10/19/2023	ND	2.10	105	2.00	4.44	
Toluene*	<0.050	0.050	10/19/2023	ND	2.09	105	2.00	6.90	
Ethylbenzene*	<0.050	0.050	10/19/2023	ND	2.21	111	2.00	7.17	
Total Xylenes*	<0.150	0.150	10/19/2023	ND	6.65	111	6.00	7.86	
Total BTEX	<0.300	0.300	10/19/2023	ND					

Surrogate: 4-Bromofluorobenzene (PID) 105 % 71.5-134

Chloride, SM4500Cl-B		mg/kg		Analyzed By: AC					
Analyte	Result	Reporting Limit	Analyzed	Method Blank	BS	% Recovery	True Value QC	RPD	Qualifier
Chloride	<16.0	16.0	10/17/2023	ND	432	108	400	0.00	

TPH 8015M		mg/kg		Analyzed By: MS					
Analyte	Result	Reporting Limit	Analyzed	Method Blank	BS	% Recovery	True Value QC	RPD	Qualifier
GRO C6-C10*	<10.0	10.0	10/17/2023	ND	172	86.0	200	3.79	
DRO >C10-C28*	<10.0	10.0	10/17/2023	ND	187	93.5	200	3.11	
EXT DRO >C28-C36	<10.0	10.0	10/17/2023	ND					

Surrogate: 1-Chlorooctane 92.8 % 48.2-134

Surrogate: 1-Chlorooctadecane 106 % 49.1-148

Cardinal Laboratories

*=Accredited Analyte

PLEASE NOTE: Liability and Damages. Cardinal's liability and client's exclusive remedy for any claim arising, whether based in contract or tort, shall be limited to the amount paid by client for analyses. All claims, including those for negligence and any other cause whatsoever shall be deemed waived unless made in writing and received by Cardinal within thirty (30) days after completion of the applicable service. In no event shall Cardinal be liable for incidental or consequential damages, including, without limitation, business interruptions, loss of use, or loss of profits incurred by client, its subsidiaries, affiliates or successors arising out of or related to the performance of the services hereunder by Cardinal, regardless of whether such claim is based upon any of the above stated reasons or otherwise. Results relate only to the samples identified above. This report shall not be reproduced except in full with written approval of Cardinal Laboratories.

Celey D. Keene, Lab Director/Quality Manager



PHONE (575) 393-2326 ° 101 E. MARLAND ° HOBBS, NM 88240

Analytical Results For:

BBC International, Inc.
 Cliff Brunson
 P.O. Box 805
 Hobbs NM, 88241
 Fax To: (575) 397-0397

Received: 10/16/2023
 Reported: 10/20/2023
 Project Name: BRAVO DOME 1835 52E LEG7
 Project Number: (11-2-20)
 Project Location: OXY - NEW MEXICO

Sampling Date: 10/16/2023
 Sampling Type: Soil
 Sampling Condition: Cool & Intact
 Sample Received By: Dionica Hinojos

Sample ID: SIDEWALL 9 (H235634-09)

BTEx 8021B		mg/kg		Analyzed By: JH					
Analyte	Result	Reporting Limit	Analyzed	Method Blank	BS	% Recovery	True Value QC	RPD	Qualifier
Benzene*	<0.050	0.050	10/19/2023	ND	2.10	105	2.00	4.44	
Toluene*	<0.050	0.050	10/19/2023	ND	2.09	105	2.00	6.90	
Ethylbenzene*	<0.050	0.050	10/19/2023	ND	2.21	111	2.00	7.17	
Total Xylenes*	<0.150	0.150	10/19/2023	ND	6.65	111	6.00	7.86	
Total BTEX	<0.300	0.300	10/19/2023	ND					

Surrogate: 4-Bromofluorobenzene (PID) 107 % 71.5-134

Chloride, SM4500Cl-B		mg/kg		Analyzed By: AC					
Analyte	Result	Reporting Limit	Analyzed	Method Blank	BS	% Recovery	True Value QC	RPD	Qualifier
Chloride	<16.0	16.0	10/17/2023	ND	432	108	400	0.00	

TPH 8015M		mg/kg		Analyzed By: MS					
Analyte	Result	Reporting Limit	Analyzed	Method Blank	BS	% Recovery	True Value QC	RPD	Qualifier
GRO C6-C10*	<10.0	10.0	10/17/2023	ND	173	86.5	200	1.33	
DRO >C10-C28*	<10.0	10.0	10/17/2023	ND	165	82.5	200	6.43	
EXT DRO >C28-C36	<10.0	10.0	10/17/2023	ND					

Surrogate: 1-Chlorooctane 71.1 % 48.2-134

Surrogate: 1-Chlorooctadecane 63.3 % 49.1-148

Cardinal Laboratories

*=Accredited Analyte

PLEASE NOTE: Liability and Damages. Cardinal's liability and client's exclusive remedy for any claim arising, whether based in contract or tort, shall be limited to the amount paid by client for analyses. All claims, including those for negligence and any other cause whatsoever shall be deemed waived unless made in writing and received by Cardinal within thirty (30) days after completion of the applicable service. In no event shall Cardinal be liable for incidental or consequential damages, including, without limitation, business interruptions, loss of use, or loss of profits incurred by client, its subsidiaries, affiliates or successors arising out of or related to the performance of the services hereunder by Cardinal, regardless of whether such claim is based upon any of the above stated reasons or otherwise. Results relate only to the samples identified above. This report shall not be reproduced except in full with written approval of Cardinal Laboratories.

Celey D. Keene, Lab Director/Quality Manager



PHONE (575) 393-2326 ° 101 E. MARLAND ° HOBBS, NM 88240

Analytical Results For:

BBC International, Inc.
 Cliff Brunson
 P.O. Box 805
 Hobbs NM, 88241
 Fax To: (575) 397-0397

Received: 10/16/2023
 Reported: 10/20/2023
 Project Name: BRAVO DOME 1835 52E LEG7
 Project Number: (11-2-20)
 Project Location: OXY - NEW MEXICO

Sampling Date: 10/16/2023
 Sampling Type: Soil
 Sampling Condition: Cool & Intact
 Sample Received By: Dionica Hinojos

Sample ID: SIDEWALL 10 (H235634-10)

BTEx 8021B		mg/kg		Analyzed By: JH					
Analyte	Result	Reporting Limit	Analyzed	Method Blank	BS	% Recovery	True Value QC	RPD	Qualifier
Benzene*	<0.050	0.050	10/19/2023	ND	2.10	105	2.00	4.44	
Toluene*	<0.050	0.050	10/19/2023	ND	2.09	105	2.00	6.90	
Ethylbenzene*	<0.050	0.050	10/19/2023	ND	2.21	111	2.00	7.17	
Total Xylenes*	<0.150	0.150	10/19/2023	ND	6.65	111	6.00	7.86	
Total BTEX	<0.300	0.300	10/19/2023	ND					

Surrogate: 4-Bromofluorobenzene (PID) 104 % 71.5-134

Chloride, SM4500CI-B		mg/kg		Analyzed By: AC						
Analyte	Result	Reporting Limit	Analyzed	Method Blank	BS	% Recovery	True Value QC	RPD	Qualifier	
Chloride	<16.0	16.0	10/17/2023	ND	432	108	400	0.00		

TPH 8015M		mg/kg		Analyzed By: MS					
Analyte	Result	Reporting Limit	Analyzed	Method Blank	BS	% Recovery	True Value QC	RPD	Qualifier
GRO C6-C10*	<10.0	10.0	10/17/2023	ND	173	86.5	200	1.33	
DRO >C10-C28*	<10.0	10.0	10/17/2023	ND	165	82.5	200	6.43	
EXT DRO >C28-C36	<10.0	10.0	10/17/2023	ND					

Surrogate: 1-Chlorooctane 56.5 % 48.2-134

Surrogate: 1-Chlorooctadecane 51.0 % 49.1-148

Cardinal Laboratories

*=Accredited Analyte

PLEASE NOTE: Liability and Damages. Cardinal's liability and client's exclusive remedy for any claim arising, whether based in contract or tort, shall be limited to the amount paid by client for analyses. All claims, including those for negligence and any other cause whatsoever shall be deemed waived unless made in writing and received by Cardinal within thirty (30) days after completion of the applicable service. In no event shall Cardinal be liable for incidental or consequential damages, including, without limitation, business interruptions, loss of use, or loss of profits incurred by client, its subsidiaries, affiliates or successors arising out of or related to the performance of the services hereunder by Cardinal, regardless of whether such claim is based upon any of the above stated reasons or otherwise. Results relate only to the samples identified above. This report shall not be reproduced except in full with written approval of Cardinal Laboratories.

Celey D. Keene, Lab Director/Quality Manager



PHONE (575) 393-2326 ° 101 E. MARLAND ° HOBBS, NM 88240

Notes and Definitions

- ND Analyte NOT DETECTED at or above the reporting limit
- RPD Relative Percent Difference
- ** Samples not received at proper temperature of 6°C or below.
- *** Insufficient time to reach temperature.
- Chloride by SM4500Cl-B does not require samples be received at or below 6°C
Samples reported on an as received basis (wet) unless otherwise noted on report

Cardinal Laboratories

*=Accredited Analyte

PLEASE NOTE: Liability and Damages. Cardinal's liability and client's exclusive remedy for any claim arising, whether based in contract or tort, shall be limited to the amount paid by client for analyses. All claims, including those for negligence and any other cause whatsoever shall be deemed waived unless made in writing and received by Cardinal within thirty (30) days after completion of the applicable service. In no event shall Cardinal be liable for incidental or consequential damages, including, without limitation, business interruptions, loss of use, or loss of profits incurred by client, its subsidiaries, affiliates or successors arising out of or related to the performance of the services hereunder by Cardinal, regardless of whether such claim is based upon any of the above stated reasons or otherwise. Results relate only to the samples identified above. This report shall not be reproduced except in full with written approval of Cardinal Laboratories.

A handwritten signature in black ink, appearing to read "Celey D. Keene".

Celey D. Keene, Lab Director/Quality Manager


CARDINAL LABORATORIES

101 East Marland, Hobbs, NM 88240

(505) 393-2326 FAX (505) 393-2476

CHAIN-OF-CUSTODY AND ANALYSIS REQUEST

Company Name: BBC International, Inc.				BILL TO				ANALYSIS REQUEST											
Project Manager: Cliff Brunson				P.O. #:				<div style="display: flex; justify-content: space-between;"> <div style="writing-mode: vertical-rl; transform: rotate(180deg);"> Chlalde BTEX TPHEX </div> </div>											
Address: P.O. Box 805				Company: Oxy															
City: Hobbs State: NM Zip: 88241				Attn:															
Phone #: 575-397-6388 Fax #: 575-397-0397				Address:															
Project #: Project Owner: Oxy				City:															
Project Name: BRAVO DOME 1835 52 E LEG 7 (11/2/20)				State: Zip:															
Project Location: New Mexico				Phone #:															
Sampler Name: SIMON RENDON				Fax #:															
FOR LAB USE ONLY																			
Lab I.D.		Sample I.D.		(GRAB OR (C)OMP. # CONTAINERS		MATRIX		PRESERV.		SAMPLING									
						GROUNDWATER													
						WASTEWATER													
						SOIL													
						OIL													
						SLUDGE													
						OTHER :													
						ACID/BASE:													
						ICE / COOL													
						OTHER :													
										DATE		TIME							
1		SIDEWALL 1		G								10/16/23		10:40AM		✓			
2		SIDEWALL 2										10/16/23		10:52AM		✓			
3		SIDEWALL 3										10/16/23		11:08AM		✓			
4		SIDEWALL 4										10/16/23		11:17AM		✓			
5		SIDEWALL 5										10/16/23		11:29AM		✓			
6		SIDEWALL 6										10/16/23		11:41AM		✓			
7		SIDEWALL 7										10/16/23		11:553am		✓			
8		SIDEWALL 8										10/16/23		12:04pm		✓			
9		SIDEWALL 9										10/16/23		12:15pm		✓			
10		SIDEWALL 10										10/16/23		12:25pm		✓			

PLEASE NOTE: Liability and Damages: Cardinal's liability and client's exclusive remedy for any claim arising whether based in contract or tort, shall be limited to the amount paid by the client for the analyses. All claims, including those for negligence and any other cause whatsoever shall be deemed waived unless made in writing and received by Cardinal within 30 days after completion of the applicable service. In no event shall Cardinal be liable for incidental or consequential damages, including without limitation, business interruptions, loss of use, or loss of profits incurred by client, its subsidiaries, affiliates or successors arising out of or related to the performance of services hereunder by Cardinal, regardless of whether such claim is based upon any of the above stated reasons or otherwise.

Relinquished By:	Date: 10-16-23 Time: 8:00 AM	Received By:	Phone Result: <input type="checkbox"/> Yes <input type="checkbox"/> No	Add'l Phone #:
Relinquished By:	Date: 10-16-23 Time: 16:40	Received By:	Fax Result: <input type="checkbox"/> Yes <input type="checkbox"/> No	Add'l Fax #:
Delivered By: (Circle One)		Sample Condition	CHECKED BY: (Initials)	
Sampler - UPS - Bus - Other:	-2.90C	Cool <input checked="" type="checkbox"/> Intact <input checked="" type="checkbox"/>		
		Yes <input checked="" type="checkbox"/> No <input checked="" type="checkbox"/>		
REMARKS:				

† Cardinal cannot accept verbal changes. Please fax written changes to 505-393-2476

Sante Fe Main Office
Phone: (505) 476-3441

General Information
Phone: (505) 629-6116

Online Phone Directory
<https://www.emnrd.nm.gov/ocd/contact-us>

State of New Mexico
Energy, Minerals and Natural Resources
Oil Conservation Division
1220 S. St Francis Dr.
Santa Fe, NM 87505

QUESTIONS

Action 385504

QUESTIONS

Operator: OXY USA INC P.O. Box 4294 Houston, TX 772104294	OGRID: 16696
	Action Number: 385504
	Action Type: [C-141] Remediation Closure Request C-141 (C-141-v-Closure)

QUESTIONS

Prerequisites	
Incident ID (n#)	nAPP2113042718
Incident Name	NAPP2113042718 BRAVO DOME 1835 52E LEG 7 @ 0
Incident Type	Produced Water Release
Incident Status	Remediation Closure Report Received

Location of Release Source	
Please answer all the questions in this group.	
Site Name	BRAVO DOME 1835 52E LEG 7
Date Release Discovered	11/02/2020
Surface Owner	Private

Incident Details	
Please answer all the questions in this group.	
Incident Type	Produced Water Release
Did this release result in a fire or is the result of a fire	No
Did this release result in any injuries	No
Has this release reached or does it have a reasonable probability of reaching a watercourse	No
Has this release endangered or does it have a reasonable probability of endangering public health	No
Has this release substantially damaged or will it substantially damage property or the environment	No
Is this release of a volume that is or may with reasonable probability be detrimental to fresh water	No

Nature and Volume of Release	
Material(s) released, please answer all that apply below. Any calculations or specific justifications for the volumes provided should be attached to the follow-up C-141 submission.	
Crude Oil Released (bbls) Details	Not answered.
Produced Water Released (bbls) Details	Cause: Corrosion Flow Line - Production Produced Water Released: 19 BBL Recovered: 8 BBL Lost: 11 BBL.
Is the concentration of chloride in the produced water >10,000 mg/l	Yes
Condensate Released (bbls) Details	Not answered.
Natural Gas Vented (Mcf) Details	Not answered.
Natural Gas Flared (Mcf) Details	Not answered.
Other Released Details	Not answered.
Are there additional details for the questions above (i.e. any answer containing Other, Specify, Unknown, and/or Fire, or any negative lost amounts)	Not answered.

Sante Fe Main Office
Phone: (505) 476-3441

General Information
Phone: (505) 629-6116

Online Phone Directory
<https://www.emnrd.nm.gov/ocd/contact-us>

State of New Mexico
Energy, Minerals and Natural Resources
Oil Conservation Division
1220 S. St Francis Dr.
Santa Fe, NM 87505

QUESTIONS, Page 2

Action 385504

QUESTIONS (continued)

Operator: OXY USA INC P.O. Box 4294 Houston, TX 772104294	OGRID: 16696
	Action Number: 385504
	Action Type: [C-141] Remediation Closure Request C-141 (C-141-v-Closure)

QUESTIONS

Nature and Volume of Release (continued)	
Is this a gas only submission (i.e. only significant Mcf values reported)	No, according to supplied volumes this does not appear to be a "gas only" report.
Was this a major release as defined by Subsection A of 19.15.29.7 NMAC	No
Reasons why this would be considered a submission for a notification of a major release	Unavailable.
With the implementation of the 19.15.27 NMAC (05/25/2021), venting and/or flaring of natural gas (i.e. gas only) are to be submitted on the C-129 form.	

Initial Response

The responsible party must undertake the following actions immediately unless they could create a safety hazard that would result in injury.

The source of the release has been stopped	True
The impacted area has been secured to protect human health and the environment	True
Released materials have been contained via the use of berms or dikes, absorbent pads, or other containment devices	True
All free liquids and recoverable materials have been removed and managed appropriately	True
If all the actions described above have not been undertaken, explain why	Not answered.

Per Paragraph (4) of Subsection B of 19.15.29.8 NMAC the responsible party may commence remediation immediately after discovery of a release. If remediation has begun, please prepare and attach a narrative of actions to date in the follow-up C-141 submission. If remedial efforts have been successfully completed or if the release occurred within a lined containment area (see Subparagraph (a) of Paragraph (5) of Subsection A of 19.15.29.11 NMAC), please prepare and attach all information needed for closure evaluation in the follow-up C-141 submission.

I hereby certify that the information given above is true and complete to the best of my knowledge and understand that pursuant to OCD rules and regulations all operators are required to report and/or file certain release notifications and perform corrective actions for releases which may endanger public health or the environment. The acceptance of a C-141 report by the OCD does not relieve the operator of liability should their operations have failed to adequately investigate and remediate contamination that pose a threat to groundwater, surface water, human health or the environment. In addition, OCD acceptance of a C-141 report does not relieve the operator of responsibility for compliance with any other federal, state, or local laws and/or regulations.

I hereby agree and sign off to the above statement	Name: Wade Dittrich Title: Environmental Coordinator Email: wade_dittrich@oxy.com Date: 09/20/2024
--	---

Sante Fe Main Office
Phone: (505) 476-3441

General Information
Phone: (505) 629-6116

Online Phone Directory
<https://www.emnrd.nm.gov/ocd/contact-us>

State of New Mexico
Energy, Minerals and Natural Resources
Oil Conservation Division
1220 S. St Francis Dr.
Santa Fe, NM 87505

QUESTIONS, Page 3

Action 385504

QUESTIONS (continued)

Operator: OXY USA INC P.O. Box 4294 Houston, TX 772104294	OGRID: 16696
	Action Number: 385504
	Action Type: [C-141] Remediation Closure Request C-141 (C-141-v-Closure)

QUESTIONS**Site Characterization**

Please answer all the questions in this group (only required when seeking remediation plan approval and beyond). This information must be provided to the appropriate district office no later than 90 days after the release discovery date.

What is the shallowest depth to groundwater beneath the area affected by the release in feet below ground surface (ft bgs)	Between 100 and 500 (ft.)
What method was used to determine the depth to ground water	NM OSE iWaters Database Search
Did this release impact groundwater or surface water	No
What is the minimum distance, between the closest lateral extents of the release and the following surface areas:	
A continuously flowing watercourse or any other significant watercourse	Between ½ and 1 (mi.)
Any lakebed, sinkhole, or playa lake (measured from the ordinary high-water mark)	Between 1 and 5 (mi.)
An occupied permanent residence, school, hospital, institution, or church	Greater than 5 (mi.)
A spring or a private domestic fresh water well used by less than five households for domestic or stock watering purposes	Between 1 and 5 (mi.)
Any other fresh water well or spring	Between 1 and 5 (mi.)
Incorporated municipal boundaries or a defined municipal fresh water well field	Between 1 and 5 (mi.)
A wetland	Between ½ and 1 (mi.)
A subsurface mine	Between 1 and 5 (mi.)
An (non-karst) unstable area	Between 1 and 5 (mi.)
Categorize the risk of this well / site being in a karst geology	Low
A 100-year floodplain	Between 1 and 5 (mi.)
Did the release impact areas not on an exploration, development, production, or storage site	No

Remediation Plan

Please answer all the questions that apply or are indicated. This information must be provided to the appropriate district office no later than 90 days after the release discovery date.

Requesting a remediation plan approval with this submission	Yes
<i>Attach a comprehensive report demonstrating the lateral and vertical extents of soil contamination associated with the release have been determined, pursuant to 19.15.29.11 NMAC and 19.15.29.13 NMAC.</i>	
Have the lateral and vertical extents of contamination been fully delineated	Yes
Was this release entirely contained within a lined containment area	No

Soil Contamination Sampling: (Provide the highest observable value for each, in milligrams per kilograms.)

Chloride (EPA 300.0 or SM4500 Cl B)	32
TPH (GRO+DRO+MRO) (EPA SW-846 Method 8015M)	10
GRO+DRO (EPA SW-846 Method 8015M)	10
BTEX (EPA SW-846 Method 8021B or 8260B)	0.3
Benzene (EPA SW-846 Method 8021B or 8260B)	0.5

Per Subsection B of 19.15.29.11 NMAC unless the site characterization report includes completed efforts at remediation, the report must include a proposed remediation plan in accordance with 19.15.29.12 NMAC, which includes the anticipated timelines for beginning and completing the remediation.

On what estimated date will the remediation commence	08/28/2023
On what date will (or did) the final sampling or liner inspection occur	10/16/2023
On what date will (or was) the remediation complete(d)	09/17/2024
What is the estimated surface area (in square feet) that will be reclaimed	5059
What is the estimated volume (in cubic yards) that will be reclaimed	952
What is the estimated surface area (in square feet) that will be remediated	5059
What is the estimated volume (in cubic yards) that will be remediated	952

These estimated dates and measurements are recognized to be the best guess or calculation at the time of submission and may (be) change(d) over time as more remediation efforts are completed.

The OCD recognizes that proposed remediation measures may have to be minimally adjusted in accordance with the physical realities encountered during remediation. If the responsible party has any need to significantly deviate from the remediation plan proposed, then it should consult with the division to determine if another remediation plan submission is required.

Sante Fe Main Office
Phone: (505) 476-3441

General Information
Phone: (505) 629-6116

Online Phone Directory
<https://www.emnrd.nm.gov/ocd/contact-us>

State of New Mexico
Energy, Minerals and Natural Resources
Oil Conservation Division
1220 S. St Francis Dr.
Santa Fe, NM 87505

QUESTIONS, Page 4

Action 385504

QUESTIONS (continued)

Operator: OXY USA INC P.O. Box 4294 Houston, TX 772104294	OGRID: 16696
	Action Number: 385504
	Action Type: [C-141] Remediation Closure Request C-141 (C-141-v-Closure)

QUESTIONS

Remediation Plan (continued)	
<i>Please answer all the questions that apply or are indicated. This information must be provided to the appropriate district office no later than 90 days after the release discovery date.</i>	
This remediation will (or is expected to) utilize the following processes to remediate / reduce contaminants:	
<i>(Select all answers below that apply.)</i>	
(Ex Situ) Excavation and off-site disposal (i.e. dig and haul, hydrovac, etc.)	Yes
Which OCD approved facility will be used for off-site disposal	GANDY MARLEY LANDFARM/LANDFILL [FEEM0112338393]
OR which OCD approved well (API) will be used for off-site disposal	Not answered.
OR is the off-site disposal site, to be used, out-of-state	Not answered.
OR is the off-site disposal site, to be used, an NMED facility	Not answered.
(Ex Situ) Excavation and on-site remediation (i.e. On-Site Land Farms)	Not answered.
(In Situ) Soil Vapor Extraction	Not answered.
(In Situ) Chemical processing (i.e. Soil Shredding, Potassium Permanganate, etc.)	Not answered.
(In Situ) Biological processing (i.e. Microbes / Fertilizer, etc.)	Not answered.
(In Situ) Physical processing (i.e. Soil Washing, Gypsum, Disking, etc.)	Not answered.
Ground Water Abatement pursuant to 19.15.30 NMAC	Not answered.
OTHER (Non-listed remedial process)	Not answered.
<i>Per Subsection B of 19.15.29.11 NMAC unless the site characterization report includes completed efforts at remediation, the report must include a proposed remediation plan in accordance with 19.15.29.12 NMAC, which includes the anticipated timelines for beginning and completing the remediation.</i>	
I hereby certify that the information given above is true and complete to the best of my knowledge and understand that pursuant to OCD rules and regulations all operators are required to report and/or file certain release notifications and perform corrective actions for releases which may endanger public health or the environment. The acceptance of a C-141 report by the OCD does not relieve the operator of liability should their operations have failed to adequately investigate and remediate contamination that pose a threat to groundwater, surface water, human health or the environment. In addition, OCD acceptance of a C-141 report does not relieve the operator of responsibility for compliance with any other federal, state, or local laws and/or regulations.	
I hereby agree and sign off to the above statement	Name: Wade Dittrich Title: Environmental Coordinator Email: wade_dittrich@oxy.com Date: 09/20/2024
<i>The OCD recognizes that proposed remediation measures may have to be minimally adjusted in accordance with the physical realities encountered during remediation. If the responsible party has any need to significantly deviate from the remediation plan proposed, then it should consult with the division to determine if another remediation plan submission is required.</i>	

Sante Fe Main Office
Phone: (505) 476-3441

General Information
Phone: (505) 629-6116

Online Phone Directory
<https://www.emnrd.nm.gov/ocd/contact-us>

State of New Mexico
Energy, Minerals and Natural Resources
Oil Conservation Division
1220 S. St Francis Dr.
Santa Fe, NM 87505

QUESTIONS, Page 5

Action 385504

QUESTIONS (continued)

Operator: OXY USA INC P.O. Box 4294 Houston, TX 772104294	OGRID: 16696
	Action Number: 385504
	Action Type: [C-141] Remediation Closure Request C-141 (C-141-v-Closure)

QUESTIONS

Deferral Requests Only	
Only answer the questions in this group if seeking a deferral upon approval this submission. Each of the following items must be confirmed as part of any request for deferral of remediation.	
Requesting a deferral of the remediation closure due date with the approval of this submission	No

Sante Fe Main Office
Phone: (505) 476-3441

General Information
Phone: (505) 629-6116

Online Phone Directory
<https://www.emnrd.nm.gov/ocd/contact-us>

State of New Mexico
Energy, Minerals and Natural Resources
Oil Conservation Division
1220 S. St Francis Dr.
Santa Fe, NM 87505

QUESTIONS, Page 6

Action 385504

QUESTIONS (continued)

Operator: OXY USA INC P.O. Box 4294 Houston, TX 772104294	OGRID:
	16696
	Action Number:
	385504
Action Type:	
[C-141] Remediation Closure Request C-141 (C-141-v-Closure)	

QUESTIONS

Sampling Event Information	
Last sampling notification (C-141N) recorded	384832
Sampling date pursuant to Subparagraph (a) of Paragraph (1) of Subsection D of 19.15.29.12 NMAC	10/16/2023
What was the (estimated) number of samples that were to be gathered	40
What was the sampling surface area in square feet	3871

Remediation Closure Request

Only answer the questions in this group if seeking remediation closure for this release because all remediation steps have been completed.

Requesting a remediation closure approval with this submission	Yes
Have the lateral and vertical extents of contamination been fully delineated	Yes
Was this release entirely contained within a lined containment area	No
All areas reasonably needed for production or subsequent drilling operations have been stabilized, returned to the sites existing grade, and have a soil cover that prevents ponding of water, minimizing dust and erosion	Yes
What was the total surface area (in square feet) remediated	5059
What was the total volume (cubic yards) remediated	952
All areas not reasonably needed for production or subsequent drilling operations have been reclaimed to contain a minimum of four feet of non-waste contain earthen material with concentrations less than 600 mg/kg chlorides, 100 mg/kg TPH, 50 mg/kg BTEX, and 10 mg/kg Benzene	Yes
What was the total surface area (in square feet) reclaimed	5059
What was the total volume (in cubic yards) reclaimed	952
Summarize any additional remediation activities not included by answers (above)	OXY was excavated the spill area as depicted on the following site diagram. The leak area near SP1 and SP5 (YELLOW shade on diagram) required zero remediation. The leak area near SP2 (GREEN shade on diagram) was excavated to a depth of 2 feet. The leak area near SP3 (BLUE shade on diagram) was excavated to a depth of 3 feet. The leak area near SP4 (PURPLE shade on diagram) was excavated to a depth of 1 foot. OXY collected bottom and sidewall confirmation samples every 200 square feet
<i>The responsible party must attach information demonstrating they have complied with all applicable closure requirements and any conditions or directives of the OCD. This demonstration should be in the form of a comprehensive report (in .pdf format) including a scaled site map, sampling diagrams, relevant field notes, photographs of any excavation prior to backfilling, laboratory data including chain of custody documents of final sampling, and a narrative of the remedial activities. Refer to 19.15.29.12 NMAC.</i>	
I hereby certify that the information given above is true and complete to the best of my knowledge and understand that pursuant to OCD rules and regulations all operators are required to report and/or file certain release notifications and perform corrective actions for releases which may endanger public health or the environment. The acceptance of a C-141 report by the OCD does not relieve the operator of liability should their operations have failed to adequately investigate and remediate contamination that pose a threat to groundwater, surface water, human health or the environment. In addition, OCD acceptance of a C-141 report does not relieve the operator of responsibility for compliance with any other federal, state, or local laws and/or regulations. The responsible party acknowledges they must substantially restore, reclaim, and re-vegetate the impacted surface area to the conditions that existed prior to the release or their final land use in accordance with 19.15.29.13 NMAC including notification to the OCD when reclamation and re-vegetation are complete.	
I hereby agree and sign off to the above statement	Name: Wade Dittrich Title: Environmental Coordinator Email: wade_dittrich@oxy.com Date: 09/20/2024

Sante Fe Main Office
Phone: (505) 476-3441

General Information
Phone: (505) 629-6116

Online Phone Directory
<https://www.emnrd.nm.gov/ocd/contact-us>

State of New Mexico
Energy, Minerals and Natural Resources
Oil Conservation Division
1220 S. St Francis Dr.
Santa Fe, NM 87505

QUESTIONS, Page 7

Action 385504

QUESTIONS (continued)

Operator: OXY USA INC P.O. Box 4294 Houston, TX 772104294	OGRID: 16696
	Action Number: 385504
	Action Type: [C-141] Remediation Closure Request C-141 (C-141-v-Closure)

QUESTIONS

Reclamation Report	
Only answer the questions in this group if all reclamation steps have been completed.	
Requesting a reclamation approval with this submission	No

Sante Fe Main Office
Phone: (505) 476-3441

General Information
Phone: (505) 629-6116

Online Phone Directory
<https://www.emnrd.nm.gov/ocd/contact-us>

State of New Mexico
Energy, Minerals and Natural Resources
Oil Conservation Division
1220 S. St Francis Dr.
Santa Fe, NM 87505

CONDITIONS

Action 385504

CONDITIONS

Operator: OXY USA INC P.O. Box 4294 Houston, TX 772104294	OGRID: 16696
	Action Number: 385504
	Action Type: [C-141] Remediation Closure Request C-141 (C-141-v-Closure)

CONDITIONS

Created By	Condition	Condition Date
nvez	Remediation closure report approved, release resolved.	12/11/2024