



PREPARED BY:
PIMA ENVIRONMENTAL SERVICES, LLC

PREPARED FOR:
Spur Energy

DODD FEDERAL UNIT 15A BATTERY

Incident ID NAPP2428942483

Liner Inspection and Closure Report

November 17, 2024



Pima Environmental Services
5614 N. Lovington Highway
Hobbs, NM 88240
575-964-7740

November 17, 2024

NMOCD District 2
811 S. First St
Artesia, NM, 88210

Bureau of Land Management
620 East Green Street
Carlsbad, NM 88220

RE: Liner Inspection and Closure Report
Dodd Federal Unit 15A Battery
API No. N/A
GPS: Latitude 32.82785 Longitude -104.05758
UL- P, Section 15, Township 17S, Range 29E
NMOCD Reference No. NAPP2428942483

Spur Energy Partners (Spur) has contracted Pima Environmental Services, LLC (Pima) to perform a liner inspection and prepare this closure report for the release of crude oil that happened on the Dodd Federal Unit 15A Battery (Dodd). An initial C-141 was submitted on October 21, 2024. This incident was assigned Incident ID NAPP2428942483, by the New Mexico Oil Conservation Division (NMOCD).

Site Information and Site Characterization

Dodd is located approximately 4.50 miles northwest of Loco Hills, NM. This spill site is in Unit P, Section 15, Township 17S, Range 29E, Latitude 32.82785 Longitude -104.05758, Eddy County, NM. A Location Map can be found in Figure 1.

Based on the well water data from the New Mexico Office of the State Engineer, the depth to the nearest groundwater in this vicinity measures 105 feet below grade surface (BGS), positioned roughly 1.45 miles away from the Dodd, drilled on April 05, 2024. Conversely, as per the United States Geological Survey well water data, the nearest groundwater depth in this region is recorded at 78.5 feet BGS, situated approximately 5.94 miles away from the Dodd, with the last gauge conducted on January 13, 1999. For detailed references to water surveys and the precise locations of water wells, please refer to Appendix A, inclusive of the relevant maps. Notably, Dodd is situated within an area with a medium potential for karst, as illustrated in Figure 3. Additionally, a comprehensive Topographic Map is available for reference in Figure 2.

Release Information

NAPP2428942483: On October 15, 2024, a circulating line developed a hole due to corrosion, releasing approximately 23 barrels of crude oil into a lined containment area. Immediate action was taken to stop the release, and a vacuum truck was dispatched to the site. The truck successfully recovered all 23 barrels of crude oil, which were fully contained within the 4,000-square-foot lined containment area.

A Site Map can be found in Figure 4.

Site Assessment and Liner Inspection

On November 6, 2024, Spur personnel submitted a notification for a liner inspection, adhering to the necessary 48-hour notice period. The details of the 48-hour notification can be referenced in Appendix C.

On November 8, 2024, Pima Environmental conducted a thorough inspection of the lined containment area. The evaluation process included cleaning the liner with a power washer and using a vacuum truck to ensure the complete removal of any residual fluids. The inspection confirmed that the system remained intact and successfully retained all fluids. As a result, the liner was deemed functional, preventing any further environmental impact. A detailed report, including photographic evidence, is provided in Appendices C and D.

Closure Request

After careful review, Pima requests that this incident NAPP2428942483 be closed. Spur has complied with the applicable closure requirements.

For questions or additional information, please feel free to contact:
Spur Energy – Katherine Purvis at 575-441-8619 or katherine.purvis@spurenergy.com
Pima Environmental Services – Sebastian Orozco at 619-721-4813 or Sebastian@pimaoil.com.

Attachments

Figures:

- 1- Location Map
- 2- Topographic Map
- 3- Karst Map
- 4- Site Map

Appendices:

- Appendix A- Referenced Water Surveys
- Appendix B- Soil Survey, Geological Data, FEMA Flood Map, Wetland Map
- Appendix C- 48 Hour Notification and Liner Inspection Form
- Appendix C- Photographic Documentation

Figures:

Figure 1- Location Map

Figure 2- Topographic Map



Figure 3- Karst Map

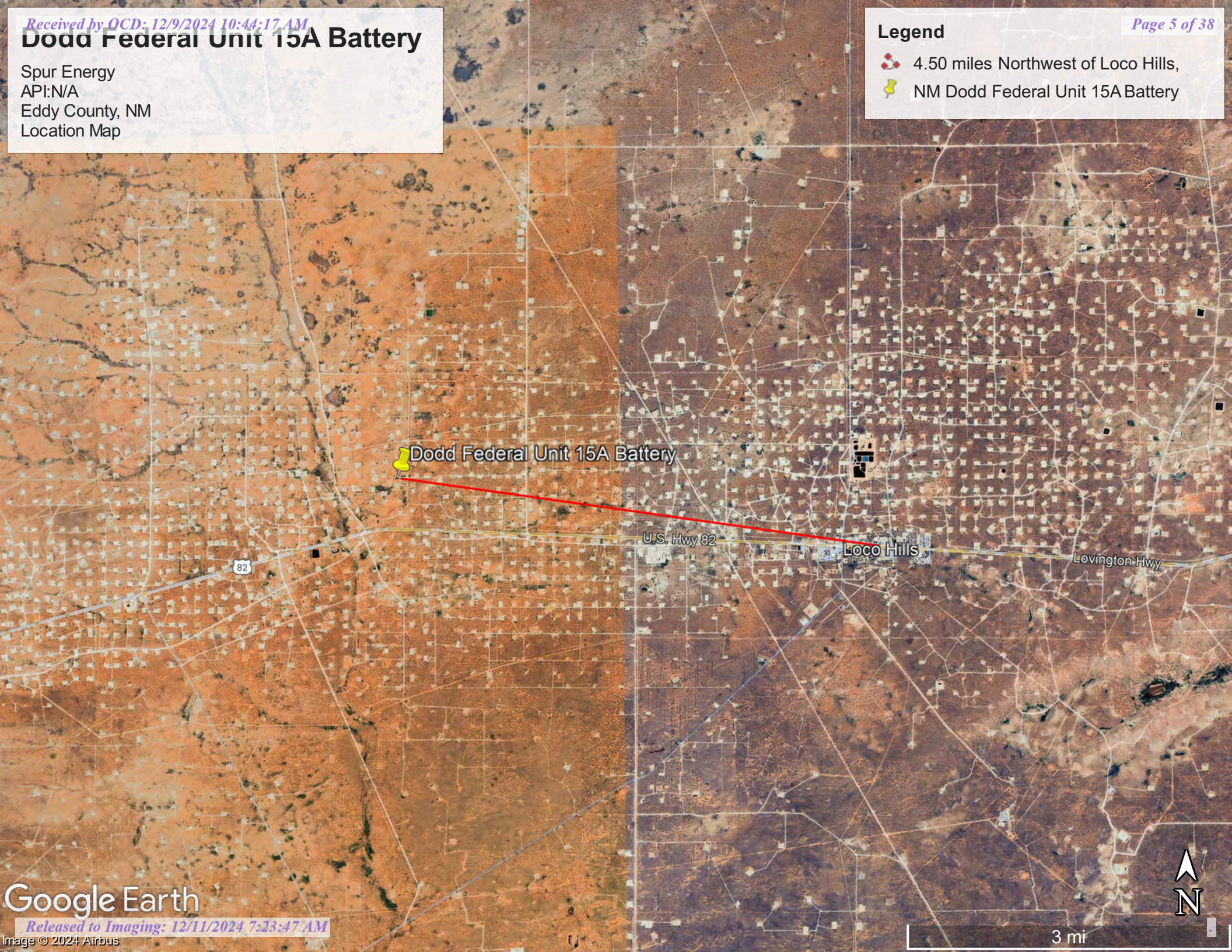
Figure 4- Site Map

Dodd Federal Unit 15A Battery

Spur Energy
API:N/A
Eddy County, NM
Location Map

Legend

-  4.50 miles Northwest of Loco Hills,
-  NM Dodd Federal Unit 15A Battery



Google Earth




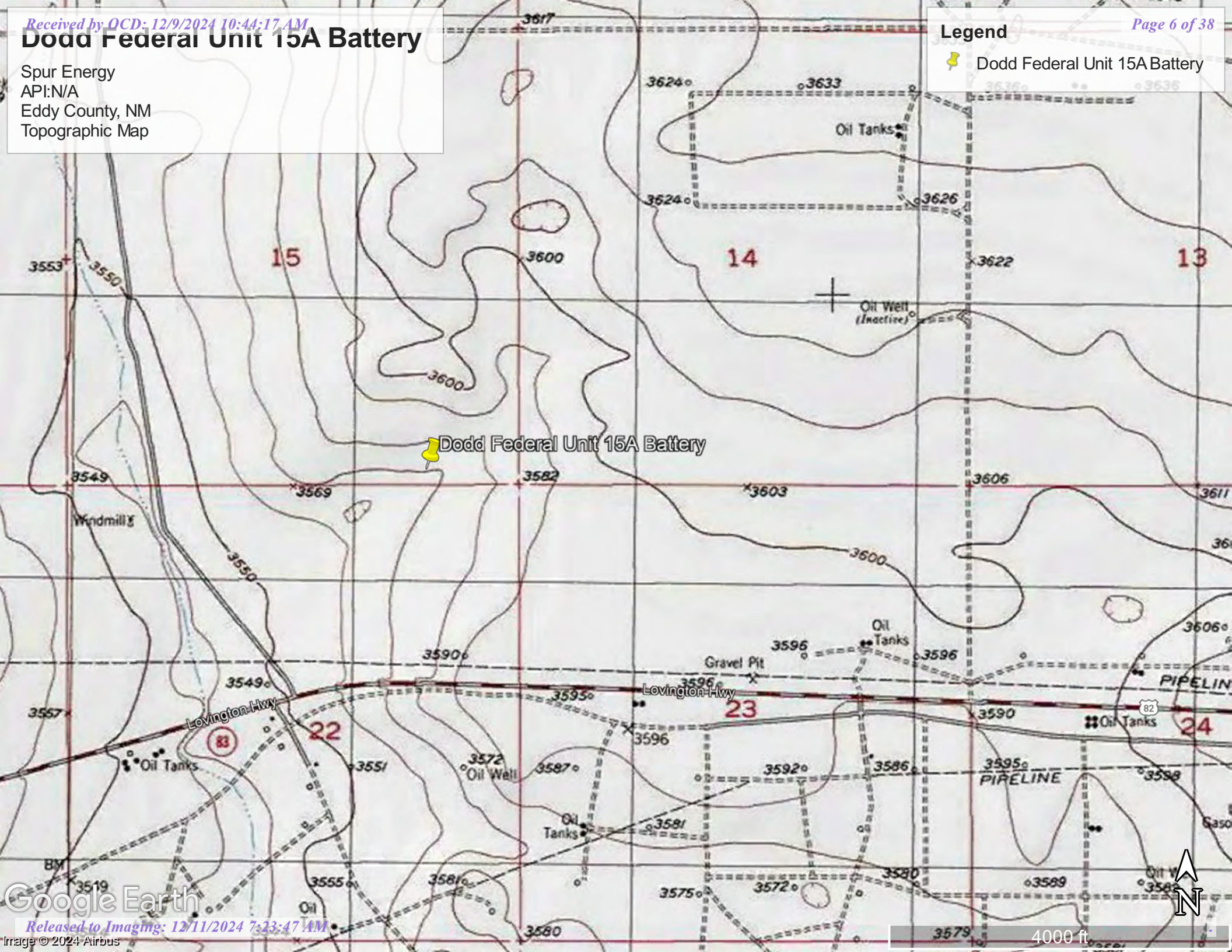
3 mi

Dodd Federal Unit 15A Battery

Spur Energy
API: N/A
Eddy County, NM
Topographic Map

Legend





 Dodd Federal Unit 15A Battery




Dodd Federal Unit 15A Battery

Spur Energy
API:N/A
Eddy County, NM
Karst Map

Legend

-  Dodd Federal Unit 15A Battery
-  High Karst
-  Low Karst
-  Medium Karst

 Dodd Federal Unit 15A Battery

Lovington Hwy

Lovington Hwy

82

Google Earth






4000 ft

Dodd Federal Unit 15A Battery

Spur Energy
API:N/A
Eddy County, NM
Site Map

Legend

-  Dodd Federal Unit 15A Battery
-  Liner Inspection Area

 Dodd Federal Unit 15A Battery



Appendix A


Water Surveys:

- OSE
- USGS
- Surface Water Map

Point of Diversion Summary

quarters are 1=NW 2=NE 3=SW 4=SE
quarters are smallest to largest

NAD83 UTM in meters

Well Tag	POD Nbr	Q64	Q16	Q4	Sec	Tw	Rng	X	Y	Map
NA	RA 13421 POD1	SW	SE	SW	16	17S	29E	585858.5	3632659.6	

* UTM location was derived from PLSS - see Help

Driller License:	1249	Driller Company:	ATKINS ENGINEERING ASSOC. INC.
Driller Name:	JACKIE D ATKINS		
Drill Start Date:	2024-04-05	Drill Finish Date:	2024-04-05
Log File Date:	2024-04-24	PCW Rcv Date:	
Pump Type:		Pipe Discharge Size:	
Casing Size:		Depth Well:	105

The data is furnished by the NMOSE/ISC and is accepted by the recipient with the expressed understanding that the OSE/ISC make no warranties, expressed or implied, concerning the accuracy, completeness, reliability, usability, or suitability for any particular purpose of the data.

Dodd Federal 15A Battery

Spur Energy
API: N/A
Eddy County, NM
OSE Pod Map

Legend

- 1.45 miles
- Dodd Federal Unit 15A Battery
- RA 13421 POD1

RA 13421 POD1

Dodd Federal Unit 15A Battery

Google Earth

Lovington Hwy

4000 ft





[USGS Home](#)
[Contact USGS](#)
[Search USGS](#)

National Water Information System: Web Interface

USGS Water Resources

Data Category:

Groundwater

Geographic Area:

United States

GO

Click to hide News Bulletins

- Explore the *NEW* [USGS National Water Dashboard](#) interactive map to access real-time water data from over 13,500 stations nationwide.
- How are we doing? We want to hear from you. Take our quick [survey](#) to tell us what you think.

Groundwater levels for the Nation

 Important: [Next Generation Monitoring Location Page](#)

Search Results -- 1 sites found

site_no list =

- 324855104093101

Minimum number of levels = 1

[Save file of selected sites](#) to local disk for future upload

USGS 324855104093101 17S.28E.22.34242

Available data for this site

Groundwater: Field measurements

GO

Eddy County, New Mexico

Hydrologic Unit Code 13060011

Latitude 32°48'55", Longitude 104°09'31" NAD27

Land-surface elevation 3,578 feet above NGVD29

The depth of the well is 95.00 feet below land surface.

This well is completed in the Other aquifers (N9999OTHER) national aquifer.

This well is completed in the Alluvium, Bolson Deposits and Other Surface Deposits (110AVMB) local aquifer.

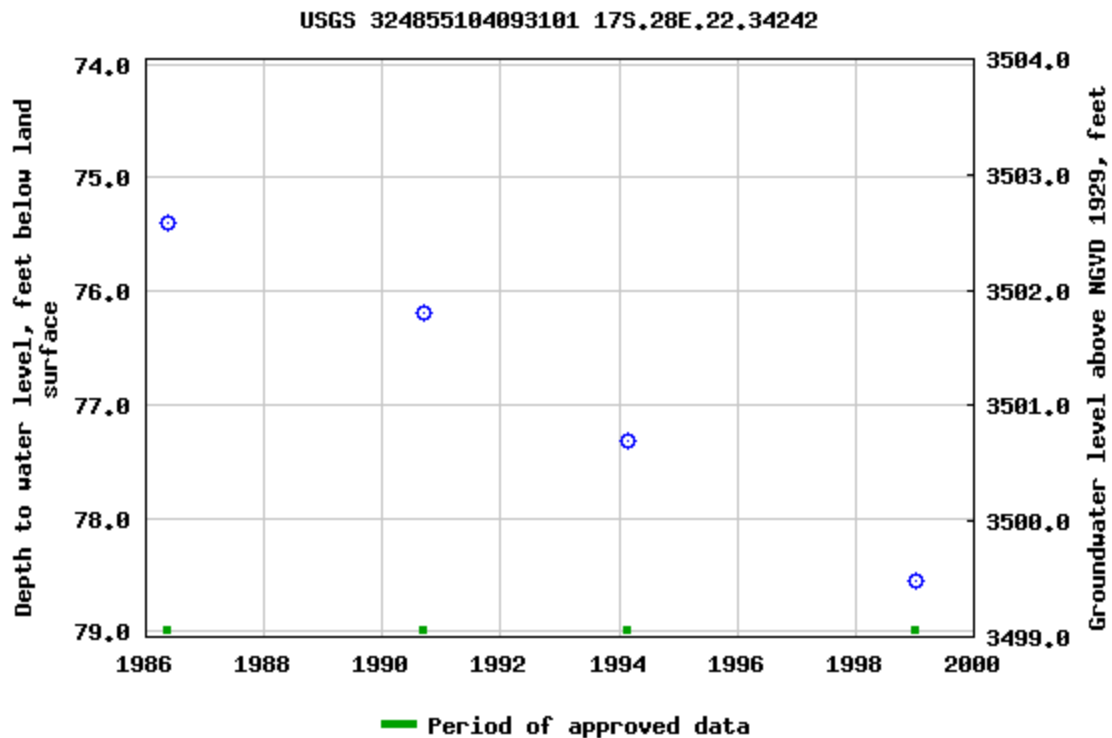
Output formats

[Table of data](#)

[Tab-separated data](#)

[Graph of data](#)

[Reselect period](#)



Breaks in the plot represent a gap of at least one year between field measurements.

[Download a presentation-quality graph](#)

[Questions or Comments](#)

[Help](#)

[Data Tips](#)

[Explanation of terms](#)

[Subscribe for system changes](#)

[Accessibility](#)

[FOIA](#)

[Privacy](#)

[Policies and Notices](#)

[U.S. Department of the Interior](#) | [U.S. Geological Survey](#)

Title: Groundwater for USA: Water Levels

URL: <https://nwis.waterdata.usgs.gov/nwis/gwlevels?>



Page Contact Information: [USGS Water Data Support Team](#)

Page Last Modified: 2024-10-22 12:45:35 EDT

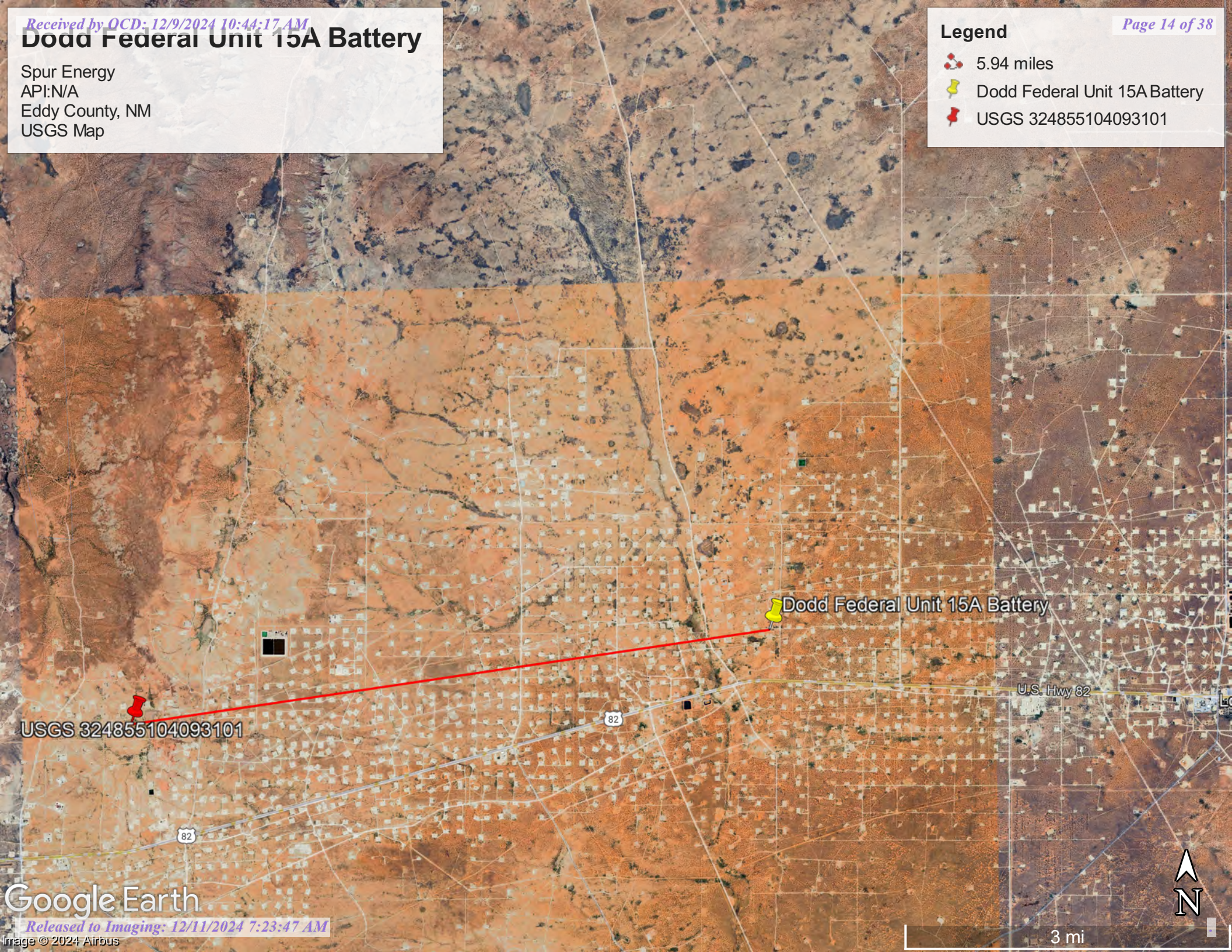
0.67 0.49 nadww01

Dodd Federal Unit 15A Battery

Spur Energy
API:N/A
Eddy County, NM
USGS Map

Legend

- 5.94 miles
- Dodd Federal Unit 15A Battery
- USGS 324855104093101



USGS 324855104093101

Dodd Federal Unit 15A Battery

U.S. Hwy 82

Google Earth

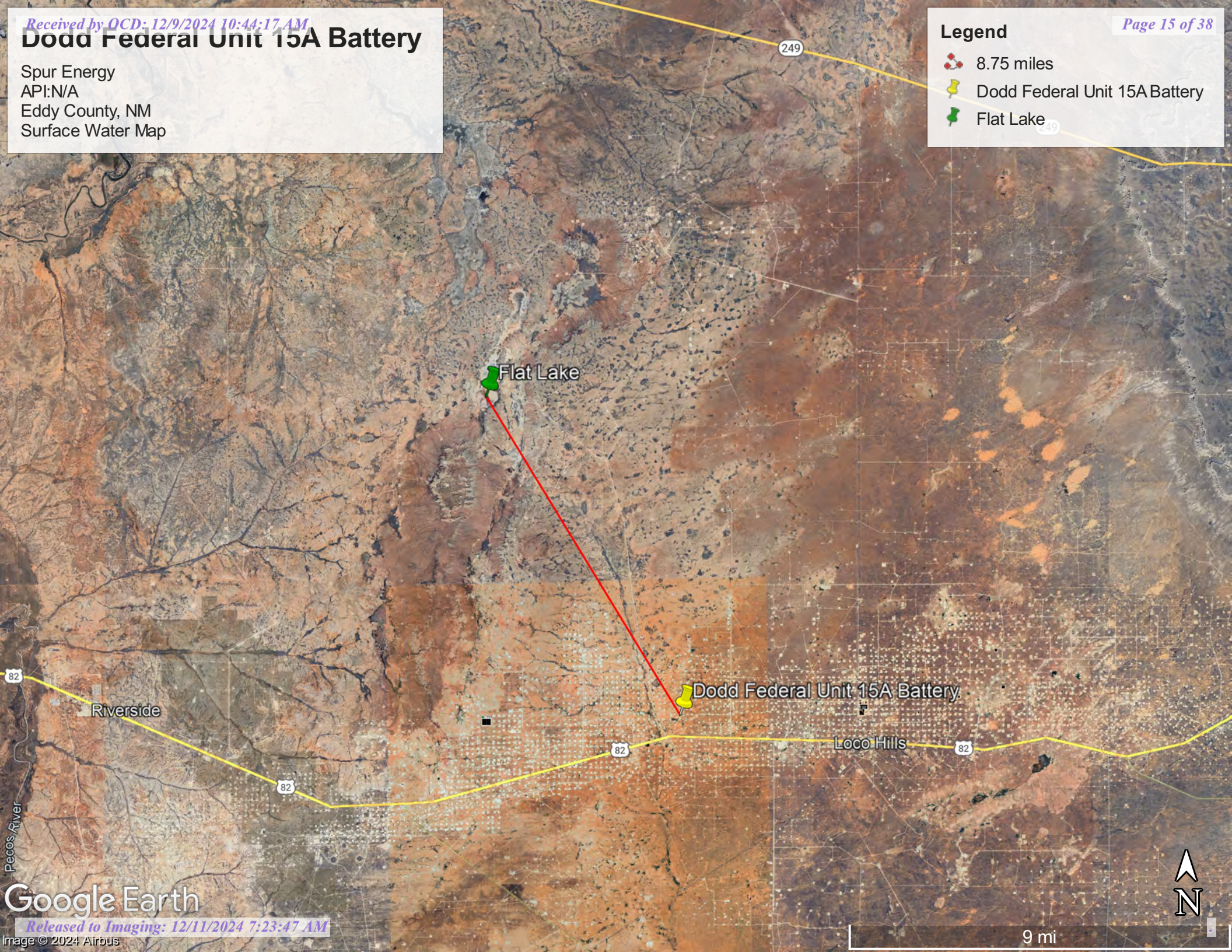
3 mi

Dodd Federal Unit 15A Battery

Spur Energy
API:N/A
Eddy County, NM
Surface Water Map

Legend

- 8.75 miles
- Dodd Federal Unit 15A Battery
- Flat Lake



Appendix B

- Soil Survey & Soil Maps
- Geological Data
- FEMA Flood Map
- Wetlands Map

Map Unit Description: Berino-Dune land complex, 0 to 3 percent slopes---Eddy Area, New Mexico

Eddy Area, New Mexico

BD—Berino-Dune land complex, 0 to 3 percent slopes

Map Unit Setting

National map unit symbol: 1w44

Elevation: 2,450 to 5,500 feet

Mean annual precipitation: 8 to 15 inches

Mean annual air temperature: 57 to 70 degrees F

Frost-free period: 180 to 230 days

Farmland classification: Not prime farmland

Map Unit Composition

Berino and similar soils: 45 percent

Dune land: 40 percent

Minor components: 15 percent

Estimates are based on observations, descriptions, and transects of the mapunit.

Description of Berino

Setting

Landform: Plains, fan piedmonts

Landform position (three-dimensional): Riser

Down-slope shape: Convex

Across-slope shape: Linear

Parent material: Mixed alluvium and/or eolian sands

Typical profile

H1 - 0 to 17 inches: fine sandy loam

H2 - 17 to 50 inches: sandy clay loam

H3 - 50 to 60 inches: loamy sand

Properties and qualities

Slope: 0 to 3 percent

Depth to restrictive feature: More than 80 inches

Drainage class: Well drained

Runoff class: Low

Capacity of the most limiting layer to transmit water

(Ksat): Moderately high to high (0.60 to 2.00 in/hr)

Depth to water table: More than 80 inches

Frequency of flooding: None

Frequency of ponding: None

Calcium carbonate, maximum content: 40 percent

Maximum salinity: Very slightly saline to slightly saline (2.0 to 4.0 mmhos/cm)

Sodium adsorption ratio, maximum: 1.0

Available water supply, 0 to 60 inches: Moderate (about 7.7 inches)

Interpretive groups

Land capability classification (irrigated): 3e

Map Unit Description: Berino-Dune land complex, 0 to 3 percent slopes---Eddy Area, New Mexico

Land capability classification (nonirrigated): 7e
Hydrologic Soil Group: B
Ecological site: R070BC007NM - Loamy
Hydric soil rating: No

Description of Dune Land

Setting

Landform: Dune fields
Landform position (two-dimensional): Shoulder, backslope, footslope
Landform position (three-dimensional): Talf
Down-slope shape: Convex, linear
Across-slope shape: Convex, linear
Parent material: Mixed alluvium and/or eolian sands

Typical profile

H1 - 0 to 6 inches: sandy loam
H2 - 6 to 60 inches: sandy loam

Interpretive groups

Land capability classification (irrigated): None specified
Land capability classification (nonirrigated): 7e
Hydric soil rating: No

Minor Components

Active dune land

Percent of map unit: 5 percent
Hydric soil rating: No

Cacique

Percent of map unit: 5 percent
Ecological site: R070BD004NM - Sandy
Hydric soil rating: No

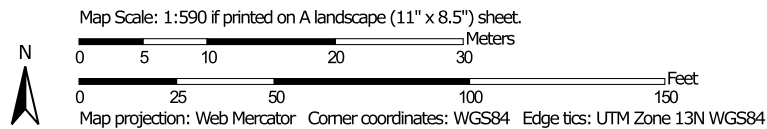
Kermit

Percent of map unit: 5 percent
Ecological site: R070BD005NM - Deep Sand
Hydric soil rating: No

Data Source Information

Soil Survey Area: Eddy Area, New Mexico
Survey Area Data: Version 20, Sep 3, 2024

Soil Map—Eddy Area, New Mexico




Natural Resources
Conservation Service

Web Soil Survey
National Cooperative Soil Survey

10/22/2024
Page 1 of 3

MAP LEGEND

Area of Interest (AOI)

 Area of Interest (AOI)

Soils

 Soil Map Unit Polygons

 Soil Map Unit Lines

 Soil Map Unit Points

Special Point Features



Blowout



Borrow Pit



Clay Spot



Closed Depression



Gravel Pit



Gravelly Spot



Landfill



Lava Flow



Marsh or swamp



Mine or Quarry



Miscellaneous Water



Perennial Water



Rock Outcrop



Saline Spot



Sandy Spot



Severely Eroded Spot



Sinkhole



Slide or Slip



Sodic Spot



Spoil Area



Stony Spot



Very Stony Spot



Wet Spot



Other



Special Line Features

Water Features



Streams and Canals

Transportation



Rails



Interstate Highways



US Routes



Major Roads



Local Roads

Background



Aerial Photography

MAP INFORMATION

The soil surveys that comprise your AOI were mapped at 1:20,000.

Warning: Soil Map may not be valid at this scale.

Enlargement of maps beyond the scale of mapping can cause misunderstanding of the detail of mapping and accuracy of soil line placement. The maps do not show the small areas of contrasting soils that could have been shown at a more detailed scale.

Please rely on the bar scale on each map sheet for map measurements.

Source of Map: Natural Resources Conservation Service
Web Soil Survey URL:
Coordinate System: Web Mercator (EPSG:3857)

Maps from the Web Soil Survey are based on the Web Mercator projection, which preserves direction and shape but distorts distance and area. A projection that preserves area, such as the Albers equal-area conic projection, should be used if more accurate calculations of distance or area are required.

This product is generated from the USDA-NRCS certified data as of the version date(s) listed below.

Soil Survey Area: Eddy Area, New Mexico
Survey Area Data: Version 20, Sep 3, 2024

Soil map units are labeled (as space allows) for map scales 1:50,000 or larger.

Date(s) aerial images were photographed: Nov 12, 2022—Dec 2, 2022

The orthophoto or other base map on which the soil lines were compiled and digitized probably differs from the background imagery displayed on these maps. As a result, some minor shifting of map unit boundaries may be evident.

Map Unit Legend

Map Unit Symbol	Map Unit Name	Acres in AOI	Percent of AOI
BD	Berino-Dune land complex, 0 to 3 percent slopes	1.8	99.5%
PD	Pajarito-Dune land complex, 0 to 3 percent slopes	0.0	0.5%
Totals for Area of Interest		1.8	100.0%

(<https://www.usgs.gov/>)

Mineral Resources (<https://www.usgs.gov/energy-and-minerals/mineral-resources-program>)
/ Online Spatial Data (/) / Geology (/geology/) / by state (/geology/state/)
/ New Mexico (/geology/state/state.php?state=NM)

Eolian and piedmont deposits

XML (/geology/state/xml/NMQep;0)	JSON (/geology/state/json/NMQep;0)
Shapefile (/geology/state/unit-shape.php?unit=NMQep;0)	

Interlayered eolian sands and piedmont-slope deposits along the eastern flank of the Pecos River valley, primarily between Roswell and Carlsbad. Typically capped by thin eolian deposits.

State	New Mexico (/geology/state/state.php?state=NM)
Name	Eolian and piedmont deposits
Geologic age	Holocene to middle Pleistocene
Lithologic constituents	Major Unconsolidated (Eolian) Interlayered eolian sands and piedmont-slope deposits
References	New Mexico Bureau of Geology and Mineral Resources, 2003, Geologic Map of New Mexico, scale 1:500,000 (includes some new polygons, faults, and attributes not in NM001 - heads up digitizing by JHorton).
NGMDB product	NGMDB product page for 22974 (https://ngmdb.usgs.gov/Prodesc/proddesc_22974.htm)
Counties	Chaves (/geology/state/fips-unit.php?code=f35005) - DeBaca (/geology/state/fips-unit.php?code=f35011) - Eddy (/geology/state/fips-unit.php?code=f35015) - Lea (/geology/state/fips-unit.php?code=f35025) - Roosevelt (/geology/state/fips-unit.php?code=f35041)

DOI Privacy Policy (<https://www.doi.gov/privacy>) | Legal (https://www.usgs.gov/laws/policies_notices.html) |
Accessibility (<https://www2.usgs.gov/laws/accessibility.html>) | Site Map (<https://www.usgs.gov/sitemap.html>) |
Contact USGS (<https://answers.usgs.gov/>)

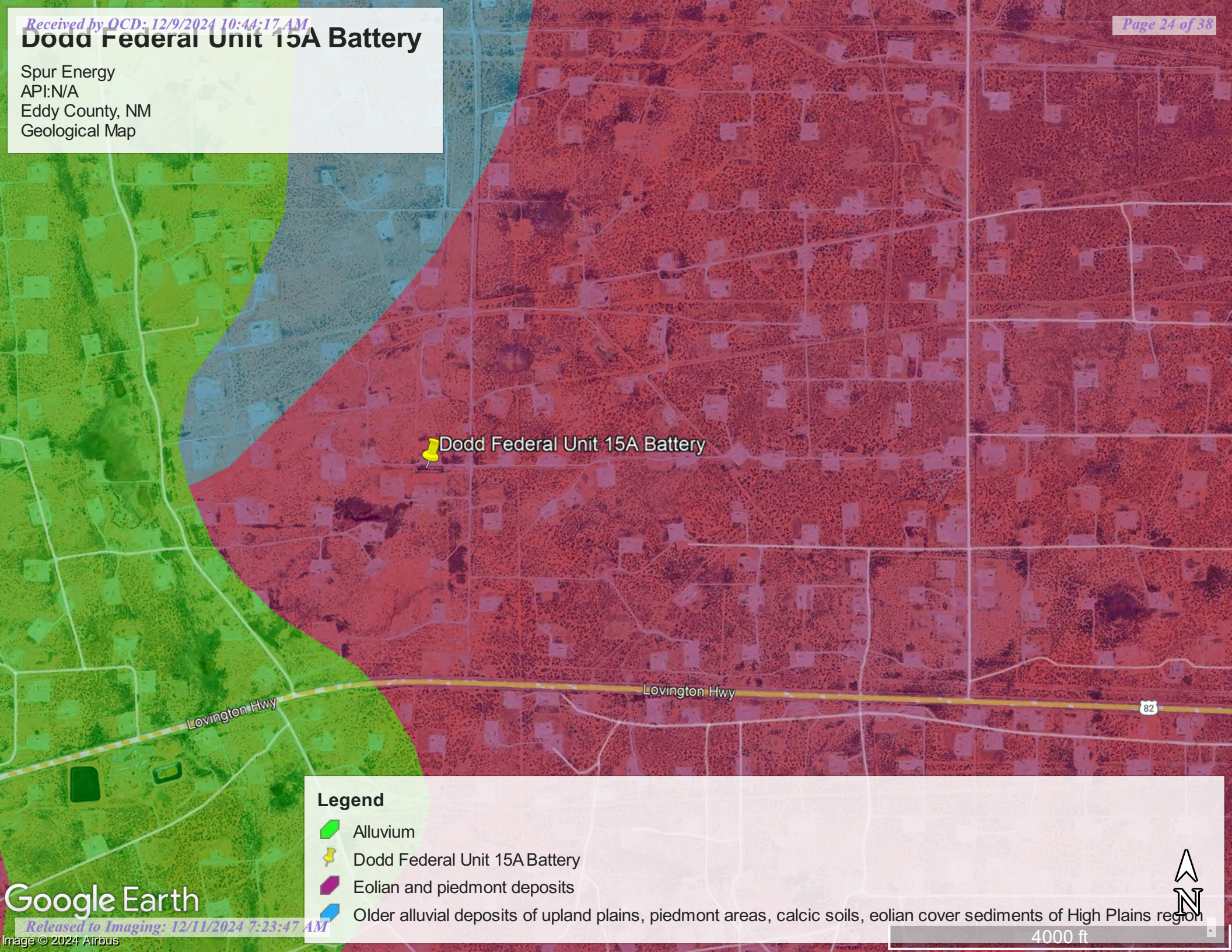
U.S. Department of the Interior (<https://www.doi.gov/>) | DOI Inspector General (<https://www.doiig.gov/>) |

White House (<https://www.whitehouse.gov/>) | E-gov (<https://www.whitehouse.gov/omb/management/egov/>) |

No Fear Act (<https://www.doi.gov/pmb/eeo/no-fear-act>) | FOIA (<https://www2.usgs.gov/foia>)

Dodd Federal Unit 15A Battery

Spur Energy
API:N/A
Eddy County, NM
Geological Map







Dodd Federal Unit 15A Battery

Lovington Hwy

82

Legend

-  Alluvium
-  Dodd Federal Unit 15A Battery
-  Eolian and piedmont deposits
-  Older alluvial deposits of upland plains, piedmont areas, calcic soils, eolian cover sediments of High Plains region

Google Earth

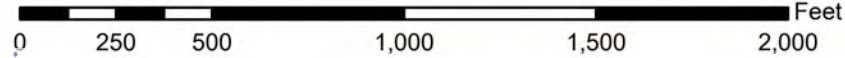
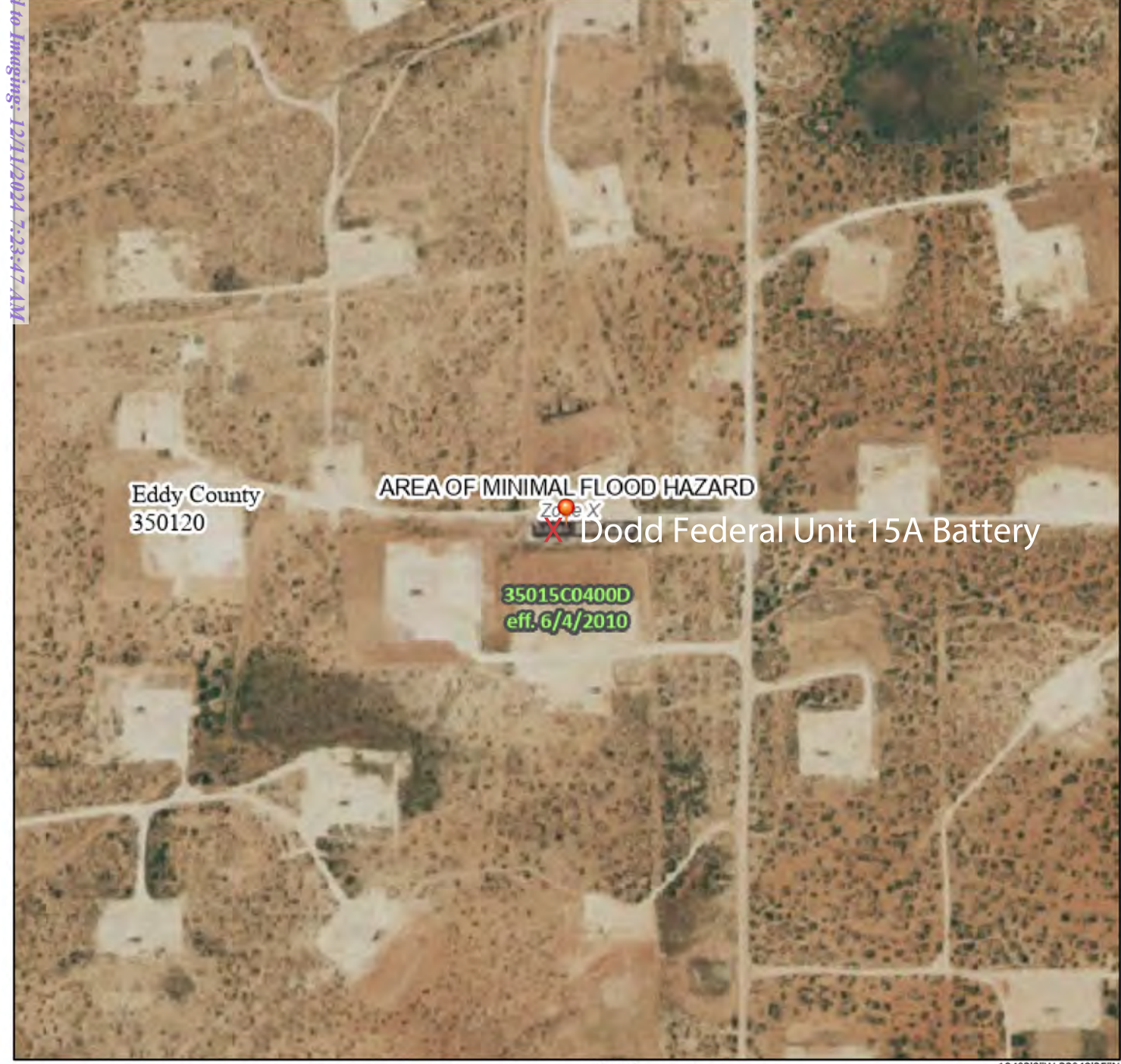


4000 ft

National Flood Hazard Layer FIRMette



104°3'46"W 32°49'55"N



1:6,000

104°3'9"W 32°49'25"N

Basemap Imagery Source: USGS National Map 2023

Legend

SEE FIS REPORT FOR DETAILED LEGEND AND INDEX MAP FOR FIRM PANEL LAYOUT

SPECIAL FLOOD HAZARD AREAS		Without Base Flood Elevation (BFE) Zone A, V, A99
		With BFE or Depth Zone AE, AO, AH, VE, AR
		Regulatory Floodway
OTHER AREAS OF FLOOD HAZARD		0.2% Annual Chance Flood Hazard, Areas of 1% annual chance flood with average depth less than one foot or with drainage areas of less than one square mile Zone X
		Future Conditions 1% Annual Chance Flood Hazard Zone X
		Area with Reduced Flood Risk due to Levee. See Notes. Zone X
		Area with Flood Risk due to Levee Zone X
OTHER AREAS		NO SCREEN Area of Minimal Flood Hazard Zone X
		Effective LOMRs
GENERAL STRUCTURES		Area of Undetermined Flood Hazard Zone D
		Channel, Culvert, or Storm Sewer
OTHER FEATURES		Levee, Dike, or Floodwall
		20.2 Cross Sections with 1% Annual Chance
		17.5 Water Surface Elevation
		Coastal Transect
		Base Flood Elevation Line (BFE)
		Limit of Study
		Jurisdiction Boundary
		Coastal Transect Baseline
		Profile Baseline
		Hydrographic Feature
MAP PANELS		Digital Data Available
		No Digital Data Available
		Unmapped

The pin displayed on the map is an approximate point selected by the user and does not represent an authoritative property location.

This map complies with FEMA's standards for the use of digital flood maps if it is not void as described below. The basemap shown complies with FEMA's basemap accuracy standards

The flood hazard information is derived directly from the authoritative NFHL web services provided by FEMA. This map was exported on **10/22/2024 at 1:05 PM** and does not reflect changes or amendments subsequent to this date and time. The NFHL and effective information may change or become superseded by new data over time.

This map image is void if the one or more of the following map elements do not appear: basemap imagery, flood zone labels, legend, scale bar, map creation date, community identifiers, FIRM panel number, and FIRM effective date. Map images for unmapped and unmodernized areas cannot be used for regulatory purposes.

Released to Imaging: 12/11/2024 7:23:47 AM

Received by OCD: 12/20/2024 10:44:17 AM



October 22, 2024

Wetlands

- | | | | | | |
|---|--------------------------------|---|-----------------------------------|---|----------|
|  | Estuarine and Marine Deepwater |  | Freshwater Emergent Wetland |  | Lake |
|  | Estuarine and Marine Wetland |  | Freshwater Forested/Shrub Wetland |  | Other |
| | |  | Freshwater Pond |  | Riverine |

This map is for general reference only. The US Fish and Wildlife Service is not responsible for the accuracy or currentness of the base data shown on this map. All wetlands related data should be used in accordance with the layer metadata found on the Wetlands Mapper web site.



Appendix C

- 48-Hour Notification
- Liner Inspection Form

Sebastian@pimaoil.com

From: OCDOnline@state.nm.us
Sent: Wednesday, November 6, 2024 5:07 PM
To: sebastian@pimaoil.com
Subject: The Oil Conservation Division (OCD) has accepted the application, Application ID: 400186

To whom it may concern (c/o Sebastian Orozco for Spur Energy Partners LLC),

The OCD has received the submitted *Notification for Liner Inspection for a Release* (C-141L), for incident ID (n#) nAPP2428942483.

The liner inspection is expected to take place:

When: 11/08/2024 @ 17:00

Where: P-15-17S-29E 0 FNL 0 FEL (32.82785,-104.05758)

Additional Information: Marisa Loya
575-408-3446

Additional Instructions: 32.82785,-104.05758

An OCD representative may be available onsite at the date and time reported. In the absence or presence of an OCD representative, liner inspection pursuant to 19.15.29.11.A(5)(a) NMAC is required. Should there be a change in the scheduled date and time of the sampling event, then another notification should be resubmitted through OCD permitting as soon as possible.

- **Failure to notify the OCD of liner inspections including any changes in date/time per the requirements of 19.15.29.11.A(5)(a)(ii) NMAC, may result in the inspection not being accepted.**

If you have any questions regarding this application, or don't know why you have received this email, please contact us.

New Mexico Energy, Minerals and Natural Resources Department
1220 South St. Francis Drive
Santa Fe, NM 87505



Pima Environmental Services, LLC

Liner Inspection FormCompany Name: Spur EnergySite: Dodd Federal Unti 15A BatteryLat/Long: 32.82785, -104.05758

NMOCD Incident ID

& Incident Date: NAPP2428942483 10/15/2024

2-Day Notification

Sent: via Email by Sebastian Orozco on OCD portal 11/06/2024Inspection Date: 11/08/2024

Liner Type: Earthen w/liner Earthen no liner Polystar

 Steel w/poly liner Steel w/spray epoxy No Liner

Other: _____

Visualization	Yes	No	Comments
Is there a tear in the liner?		X	
Are there holes in the liner?		X	
Is the liner retaining any fluids?	X		Residual liquid is visible in the photo log from the power washing cleaning event.
Does the liner have integrity to contain a leak?	X		

Comments: _____

Inspector Name: Marisa Loya Inspector Signature: Marisa Loya



Appendix D

○ Photographic Documentation

PHOTOGRAPHIC DOCUMENTATION

SITE NAME: Dodd Federal Unit 15A Battery

Liner Inspection



Photo of liner pursuant to being power washed facing South. Fluid from power washer.



Photo of liner pursuant to being power washed facing East. Fluid from power washer.



Photo of liner pursuant to being power washed facing West. Fluid from power washer



Photo of liner pursuant to being power washed facing North. Fluid from power washer.

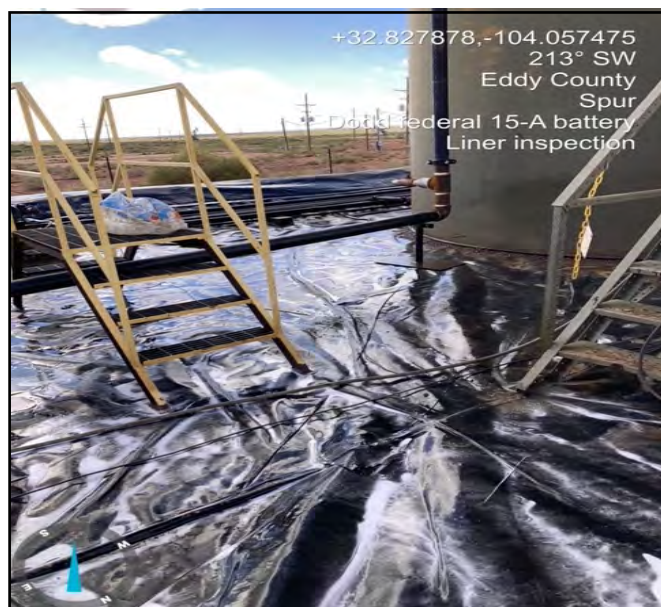


Photo of liner pursuant to being power washed facing Southwest. Fluid from power washer



Photo of liner pursuant to being power washed facing West. Fluid from power washer.



Photo of liner pursuant to being power washed facing East. Fluid from power washer.



Photo of liner pursuant to being power washed facing East. Fluid from power washer

Sante Fe Main Office
Phone: (505) 476-3441

General Information
Phone: (505) 629-6116

Online Phone Directory
<https://www.emnrd.nm.gov/ocd/contact-us>

State of New Mexico
Energy, Minerals and Natural Resources
Oil Conservation Division
1220 S. St Francis Dr.
Santa Fe, NM 87505

QUESTIONS

Action 409873

QUESTIONS

Operator: Spur Energy Partners LLC 9655 Katy Freeway Houston, TX 77024	OGRID: 328947
	Action Number: 409873
	Action Type: [C-141] Remediation Closure Request C-141 (C-141-v-Closure)

QUESTIONS

Prerequisites	
Incident ID (n#)	nAPP2428942483
Incident Name	NAPP2428942483 DODD FEDERAL UNIT 15A BATTERY @ 0
Incident Type	Oil Release
Incident Status	Remediation Closure Report Received

Location of Release Source	
Please answer all the questions in this group.	
Site Name	DODD FEDERAL UNIT 15A BATTERY
Date Release Discovered	10/15/2024
Surface Owner	Federal

Incident Details	
Please answer all the questions in this group.	
Incident Type	Oil Release
Did this release result in a fire or is the result of a fire	No
Did this release result in any injuries	No
Has this release reached or does it have a reasonable probability of reaching a watercourse	No
Has this release endangered or does it have a reasonable probability of endangering public health	No
Has this release substantially damaged or will it substantially damage property or the environment	No
Is this release of a volume that is or may with reasonable probability be detrimental to fresh water	No

Nature and Volume of Release	
Material(s) released, please answer all that apply below. Any calculations or specific justifications for the volumes provided should be attached to the follow-up C-141 submission.	
Crude Oil Released (bbls) Details	Cause: Corrosion Pipeline (Any) Crude Oil Released: 23 BBL Recovered: 23 BBL Lost: 0 BBL.
Produced Water Released (bbls) Details	Not answered.
Is the concentration of chloride in the produced water >10,000 mg/l	No
Condensate Released (bbls) Details	Not answered.
Natural Gas Vented (Mcf) Details	Not answered.
Natural Gas Flared (Mcf) Details	Not answered.
Other Released Details	Not answered.
Are there additional details for the questions above (i.e. any answer containing Other, Specify, Unknown, and/or Fire, or any negative lost amounts)	CIRCULATING LINE DEVELOPED A HOLE DUE TO CORROSION RELEASING OIL INTO LINED CONTAINMENT

Sante Fe Main Office
Phone: (505) 476-3441

General Information
Phone: (505) 629-6116

Online Phone Directory
<https://www.emnrd.nm.gov/ocd/contact-us>

State of New Mexico
Energy, Minerals and Natural Resources
Oil Conservation Division
1220 S. St Francis Dr.
Santa Fe, NM 87505

QUESTIONS, Page 2

Action 409873

QUESTIONS (continued)

Operator: Spur Energy Partners LLC 9655 Katy Freeway Houston, TX 77024	OGRID: 328947
	Action Number: 409873
	Action Type: [C-141] Remediation Closure Request C-141 (C-141-v-Closure)

QUESTIONS

Nature and Volume of Release (continued)	
Is this a gas only submission (i.e. only significant Mcf values reported)	No, according to supplied volumes this does not appear to be a "gas only" report.
Was this a major release as defined by Subsection A of 19.15.29.7 NMAC	No
Reasons why this would be considered a submission for a notification of a major release	Unavailable.
With the implementation of the 19.15.27 NMAC (05/25/2021), venting and/or flaring of natural gas (i.e. gas only) are to be submitted on the C-129 form.	

Initial Response

The responsible party must undertake the following actions immediately unless they could create a safety hazard that would result in injury.

The source of the release has been stopped	True
The impacted area has been secured to protect human health and the environment	True
Released materials have been contained via the use of berms or dikes, absorbent pads, or other containment devices	True
All free liquids and recoverable materials have been removed and managed appropriately	True
If all the actions described above have not been undertaken, explain why	N/A

Per Paragraph (4) of Subsection B of 19.15.29.8 NMAC the responsible party may commence remediation immediately after discovery of a release. If remediation has begun, please prepare and attach a narrative of actions to date in the follow-up C-141 submission. If remedial efforts have been successfully completed or if the release occurred within a lined containment area (see Subparagraph (a) of Paragraph (5) of Subsection A of 19.15.29.11 NMAC), please prepare and attach all information needed for closure evaluation in the follow-up C-141 submission.

I hereby certify that the information given above is true and complete to the best of my knowledge and understand that pursuant to OCD rules and regulations all operators are required to report and/or file certain release notifications and perform corrective actions for releases which may endanger public health or the environment. The acceptance of a C-141 report by the OCD does not relieve the operator of liability should their operations have failed to adequately investigate and remediate contamination that pose a threat to groundwater, surface water, human health or the environment. In addition, OCD acceptance of a C-141 report does not relieve the operator of responsibility for compliance with any other federal, state, or local laws and/or regulations.

I hereby agree and sign off to the above statement	Name: Katherine Purvis Title: EHS Coordinator Email: katherine.purvis@spurenergy.com Date: 10/21/2024
--	---

Sante Fe Main Office
Phone: (505) 476-3441

General Information
Phone: (505) 629-6116

Online Phone Directory
<https://www.emnrd.nm.gov/ocd/contact-us>

State of New Mexico
Energy, Minerals and Natural Resources
Oil Conservation Division
1220 S. St Francis Dr.
Santa Fe, NM 87505

QUESTIONS, Page 3

Action 409873

QUESTIONS (continued)

Operator: Spur Energy Partners LLC 9655 Katy Freeway Houston, TX 77024	OGRID:
	328947
	Action Number:
	409873
Action Type:	
[C-141] Remediation Closure Request C-141 (C-141-v-Closure)	

QUESTIONS

Site Characterization	
<i>Please answer all the questions in this group (only required when seeking remediation plan approval and beyond). This information must be provided to the appropriate district office no later than 90 days after the release discovery date.</i>	
What is the shallowest depth to groundwater beneath the area affected by the release in feet below ground surface (ft bgs)	Between 100 and 500 (ft.)
What method was used to determine the depth to ground water	NM OSE iWaters Database Search
Did this release impact groundwater or surface water	No
What is the minimum distance, between the closest lateral extents of the release and the following surface areas:	
A continuously flowing watercourse or any other significant watercourse	Between 1 and 5 (mi.)
Any lakebed, sinkhole, or playa lake (measured from the ordinary high-water mark)	Between 1 and 5 (mi.)
An occupied permanent residence, school, hospital, institution, or church	Between 1 and 5 (mi.)
A spring or a private domestic fresh water well used by less than five households for domestic or stock watering purposes	Between 1 and 5 (mi.)
Any other fresh water well or spring	Between 1 and 5 (mi.)
Incorporated municipal boundaries or a defined municipal fresh water well field	Between 1 and 5 (mi.)
A wetland	Between 1000 (ft.) and ½ (mi.)
A subsurface mine	Between 1 and 5 (mi.)
An (non-karst) unstable area	Zero feet, overlying, or within area
Categorize the risk of this well / site being in a karst geology	Medium
A 100-year floodplain	Between 1 and 5 (mi.)
Did the release impact areas not on an exploration, development, production, or storage site	No

Remediation Plan	
<i>Please answer all the questions that apply or are indicated. This information must be provided to the appropriate district office no later than 90 days after the release discovery date.</i>	
Requesting a remediation plan approval with this submission	Yes
<i>Attach a comprehensive report demonstrating the lateral and vertical extents of soil contamination associated with the release have been determined, pursuant to 19.15.29.11 NMAC and 19.15.29.13 NMAC.</i>	
Have the lateral and vertical extents of contamination been fully delineated	Yes
Was this release entirely contained within a lined containment area	Yes
<i>Per Subsection B of 19.15.29.11 NMAC unless the site characterization report includes completed efforts at remediation, the report must include a proposed remediation plan in accordance with 19.15.29.12 NMAC, which includes the anticipated timelines for beginning and completing the remediation.</i>	
On what estimated date will the remediation commence	11/08/2024
On what date will (or did) the final sampling or liner inspection occur	11/08/2024
On what date will (or was) the remediation complete(d)	11/08/2024
What is the estimated surface area (in square feet) that will be remediated	4000
What is the estimated volume (in cubic yards) that will be remediated	0
<i>These estimated dates and measurements are recognized to be the best guess or calculation at the time of submission and may (be) change(d) over time as more remediation efforts are completed.</i>	
<i>The OCD recognizes that proposed remediation measures may have to be minimally adjusted in accordance with the physical realities encountered during remediation. If the responsible party has any need to significantly deviate from the remediation plan proposed, then it should consult with the division to determine if another remediation plan submission is required.</i>	

Sante Fe Main Office
Phone: (505) 476-3441

General Information
Phone: (505) 629-6116

Online Phone Directory
<https://www.emnrd.nm.gov/ocd/contact-us>

State of New Mexico
Energy, Minerals and Natural Resources
Oil Conservation Division
1220 S. St Francis Dr.
Santa Fe, NM 87505

QUESTIONS, Page 4

Action 409873

QUESTIONS (continued)

Operator: Spur Energy Partners LLC 9655 Katy Freeway Houston, TX 77024	OGRID: 328947
	Action Number: 409873
	Action Type: [C-141] Remediation Closure Request C-141 (C-141-v-Closure)

QUESTIONS

Remediation Plan (continued)	
<i>Please answer all the questions that apply or are indicated. This information must be provided to the appropriate district office no later than 90 days after the release discovery date.</i>	
This remediation will (or is expected to) utilize the following processes to remediate / reduce contaminants:	
(Select all answers below that apply.)	
Is (or was) there affected material present needing to be removed	No
Is (or was) there a power wash of the lined containment area (to be) performed	Yes
OTHER (Non-listed remedial process)	Not answered.
<i>Per Subsection B of 19.15.29.11 NMAC unless the site characterization report includes completed efforts at remediation, the report must include a proposed remediation plan in accordance with 19.15.29.12 NMAC, which includes the anticipated timelines for beginning and completing the remediation.</i>	
I hereby certify that the information given above is true and complete to the best of my knowledge and understand that pursuant to OCD rules and regulations all operators are required to report and/or file certain release notifications and perform corrective actions for releases which may endanger public health or the environment. The acceptance of a C-141 report by the OCD does not relieve the operator of liability should their operations have failed to adequately investigate and remediate contamination that pose a threat to groundwater, surface water, human health or the environment. In addition, OCD acceptance of a C-141 report does not relieve the operator of responsibility for compliance with any other federal, state, or local laws and/or regulations.	
I hereby agree and sign off to the above statement	Name: Katherine Purvis Title: EHS Coordinator Email: katherine.purvis@spurenergy.com Date: 12/09/2024
<i>The OCD recognizes that proposed remediation measures may have to be minimally adjusted in accordance with the physical realities encountered during remediation. If the responsible party has any need to significantly deviate from the remediation plan proposed, then it should consult with the division to determine if another remediation plan submission is required.</i>	

Sante Fe Main Office
Phone: (505) 476-3441

General Information
Phone: (505) 629-6116

Online Phone Directory
<https://www.emnrd.nm.gov/ocd/contact-us>

State of New Mexico
Energy, Minerals and Natural Resources
Oil Conservation Division
1220 S. St Francis Dr.
Santa Fe, NM 87505

QUESTIONS, Page 6

Action 409873

QUESTIONS (continued)

Operator: Spur Energy Partners LLC 9655 Katy Freeway Houston, TX 77024	OGRID: 328947
	Action Number: 409873
	Action Type: [C-141] Remediation Closure Request C-141 (C-141-v-Closure)

QUESTIONS

Liner Inspection Information	
Last liner inspection notification (C-141L) recorded	400186
Liner inspection date pursuant to Subparagraph (a) of Paragraph (5) of Subsection A of 19.15.29.11 NMAC	11/08/2024
Was all the impacted materials removed from the liner	Yes
What was the liner inspection surface area in square feet	4000

Remediation Closure Request

Only answer the questions in this group if seeking remediation closure for this release because all remediation steps have been completed.

Requesting a remediation closure approval with this submission	Yes
Have the lateral and vertical extents of contamination been fully delineated	Yes
Was this release entirely contained within a lined containment area	Yes
What was the total surface area (in square feet) remediated	4000
What was the total volume (cubic yards) remediated	0
Summarize any additional remediation activities not included by answers (above)	LINER WAS POWERWASHED AND INSPECTED AND FOUND TO HAVE THE ABILITY TO CONTAIN FLUIDS

The responsible party must attach information demonstrating they have complied with all applicable closure requirements and any conditions or directives of the OCD. This demonstration should be in the form of a comprehensive report (in .pdf format) including a scaled site map, sampling diagrams, relevant field notes, photographs of any excavation prior to backfilling, laboratory data including chain of custody documents of final sampling, and a narrative of the remedial activities. Refer to 19.15.29.12 NMAC.

I hereby certify that the information given above is true and complete to the best of my knowledge and understand that pursuant to OCD rules and regulations all operators are required to report and/or file certain release notifications and perform corrective actions for releases which may endanger public health or the environment. The acceptance of a C-141 report by the OCD does not relieve the operator of liability should their operations have failed to adequately investigate and remediate contamination that pose a threat to groundwater, surface water, human health or the environment. In addition, OCD acceptance of a C-141 report does not relieve the operator of responsibility for compliance with any other federal, state, or local laws and/or regulations. The responsible party acknowledges they must substantially restore, reclaim, and re-vegetate the impacted surface area to the conditions that existed prior to the release or their final land use in accordance with 19.15.29.13 NMAC including notification to the OCD when reclamation and re-vegetation are complete.

I hereby agree and sign off to the above statement	Name: Katherine Purvis Title: EHS Coordinator Email: katherine.purvis@spurenergy.com Date: 12/09/2024
--	---

Sante Fe Main Office
Phone: (505) 476-3441

General Information
Phone: (505) 629-6116

Online Phone Directory
<https://www.emnrd.nm.gov/ocd/contact-us>

State of New Mexico
Energy, Minerals and Natural Resources
Oil Conservation Division
1220 S. St Francis Dr.
Santa Fe, NM 87505

CONDITIONS

Action 409873

CONDITIONS

Operator: Spur Energy Partners LLC 9655 Katy Freeway Houston, TX 77024	OGRID: 328947
	Action Number: 409873
	Action Type: [C-141] Remediation Closure Request C-141 (C-141-v-Closure)

CONDITIONS

Created By	Condition	Condition Date
rhamlet	We have received your Remediation Closure Report for Incident #NAPP2428942483 DODD FEDERAL UNIT 15A BATTERY, thank you. This Remediation Closure Report is approved.	12/11/2024