



SITE INFORMATION

Closure Report
Gong Worthy Hefeweizen CTB
Incident ID: nAPP2427622152
Unit B Sec 30 T19S R35E
32.638059°, -103.492371°
Lea County, New Mexico

Produced Water Release
Point of Release: Human Error
Release Date: 10.01.2024
Volume Released: 19 Barrels of Produced Water
Volume Recovered: 19 Barrels of Produced Water

CARMONA RESOURCES



Prepared for:
Marathon Oil Corporation
990 Town and Country Blvd,
Houston, Texas 77024

Prepared by:
Carmona Resources, LLC
310 West Wall Street
Suite 500
Midland, Texas 79701



TABLE OF CONTENTS

1.0 SITE INFORMATION AND BACKGROUND

2.0 SITE CHARACTERIZATION AND GROUNDWATER

3.0 NMAC REGULATORY CRITERIA

4.0 LINER INSPECTION ACTIVITIES

5.0 CONCLUSIONS

FIGURES

FIGURE 1 OVERVIEW FIGURE 2 TOPOGRAPHIC

FIGURE 3 SECONDARY CONTAINMENT MAP

APPENDICES

APPENDIX A PHOTOS

APPENDIX B NOR / INITIAL C-141 / C141 – LINER NOTIFICATIONS /
NMOCD CORRESPONDENCE

APPENDIX C SITE CHARACTERIZATION AND GROUNDWATER

November 21, 2024

New Mexico Oil Conservation Division
1220 South St, Francis Drive
Santa Fe, NM 87505

Re: Closure Report
Gong Worthy Hefeweizen CTB
Marathon Oil Corporation
Incident ID: nAPP2427622152
Site Location: Unit B, S30, T19S, R35E
(Lat 32.638059°, Long -103.492371°)
Lea County, New Mexico

To whom it may concern:

On behalf of Marathon Oil Corporation, Carmona Resources, LLC has prepared this letter to document the Gong Worthy Hefeweizen CTB site activities. The site is located at 32.638059°, -103.492371° within Unit B, S30, T19S, R35E, in Lea County, New Mexico (Figures 1 and 2).

1.0 Site Information and Background

Based on the Notice of Release obtained from the New Mexico Oil Conservation Division (NMOCD), the incident was discovered on October 1, 2024, due to the vent line valve being opened by a water hauler prior to turning on the pump on the water truck. This human error resulted in produced water being released inside the secondary containment. The incident released approximately nineteen (19) barrels of produced water, with nineteen (19) barrels of produced water recovered. All fluids were contained within the lined facility. See Figure 3. The Notice of Release form is attached in Appendix B.

2.0 Site Characterization and Groundwater

The site is located within a low karst area. Based on a review of the New Mexico Office of State Engineers and USGS databases, there are no known water sources within a 0.50-mile radius of the location. The nearest well is located approximately 0.61 miles Northwest of the site in S19, T19S, R35E and was drilled in 1982. The well has a reported groundwater depth of 286' feet below the ground surface (ft bgs). A copy of the associated point of diversion is attached in Appendix C.

3.0 NMAC Regulatory Criteria

Per the NMOCD regulatory criteria established in 19.15.29.12 NMAC, the following criteria were utilized in assessing the site.

- Benzene: 10 milligrams per kilogram (mg/kg).
- Benzene, toluene, ethylbenzene, and total xylenes (BTEX): 50 mg/kg.
- TPH: 100 mg/kg (GRO + DRO + MRO).
- Chloride: 600 mg/kg.

4.0 Liner Inspection Activities

Prior to the liner inspection, the NMOCD division office was notified via web portal on October 2, 2024, per Subsection D of 19.15.29.12 NMAC. See Appendix B. After thoroughly cleaning the plastic liner, Carmona Resources personnel inspected it to assess its structural integrity. On October 16, 2024,



Carmona Resources, LLC conducted the liner inspection activities and confirmed that the liner was intact with no integrity issues. Refer to the Photolog for details.

5.0 Conclusions

Based on the liner inspection throughout the facility, no further actions are required at the site. The final C-141 is attached, and Marathon formally requests the closure of the spill. If you have any questions regarding this report or need additional information, please contact us at 432-813-1992.

Sincerely,

Carmona Resources, LLC

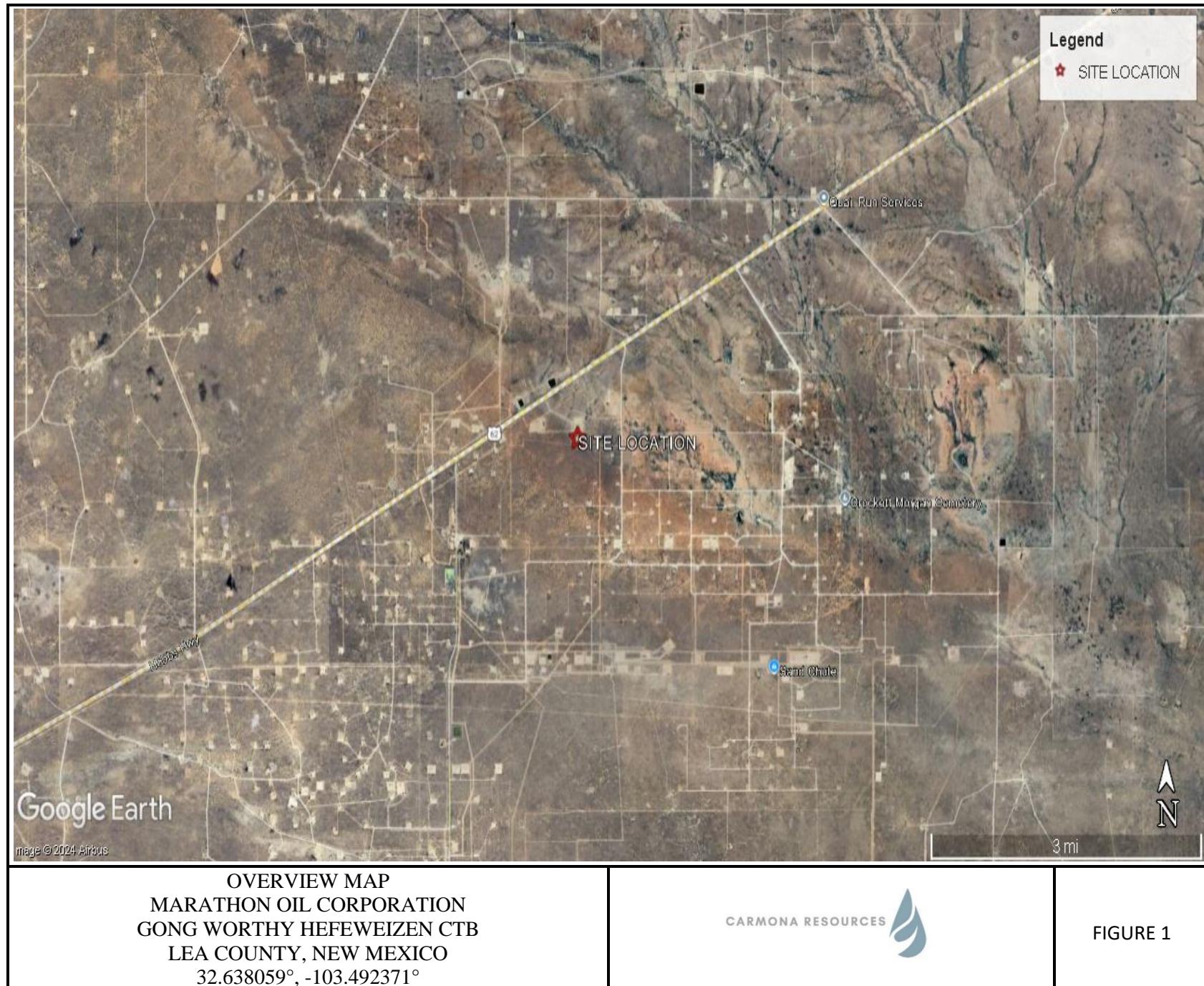
Conner Moehring
Sr. Project Manager

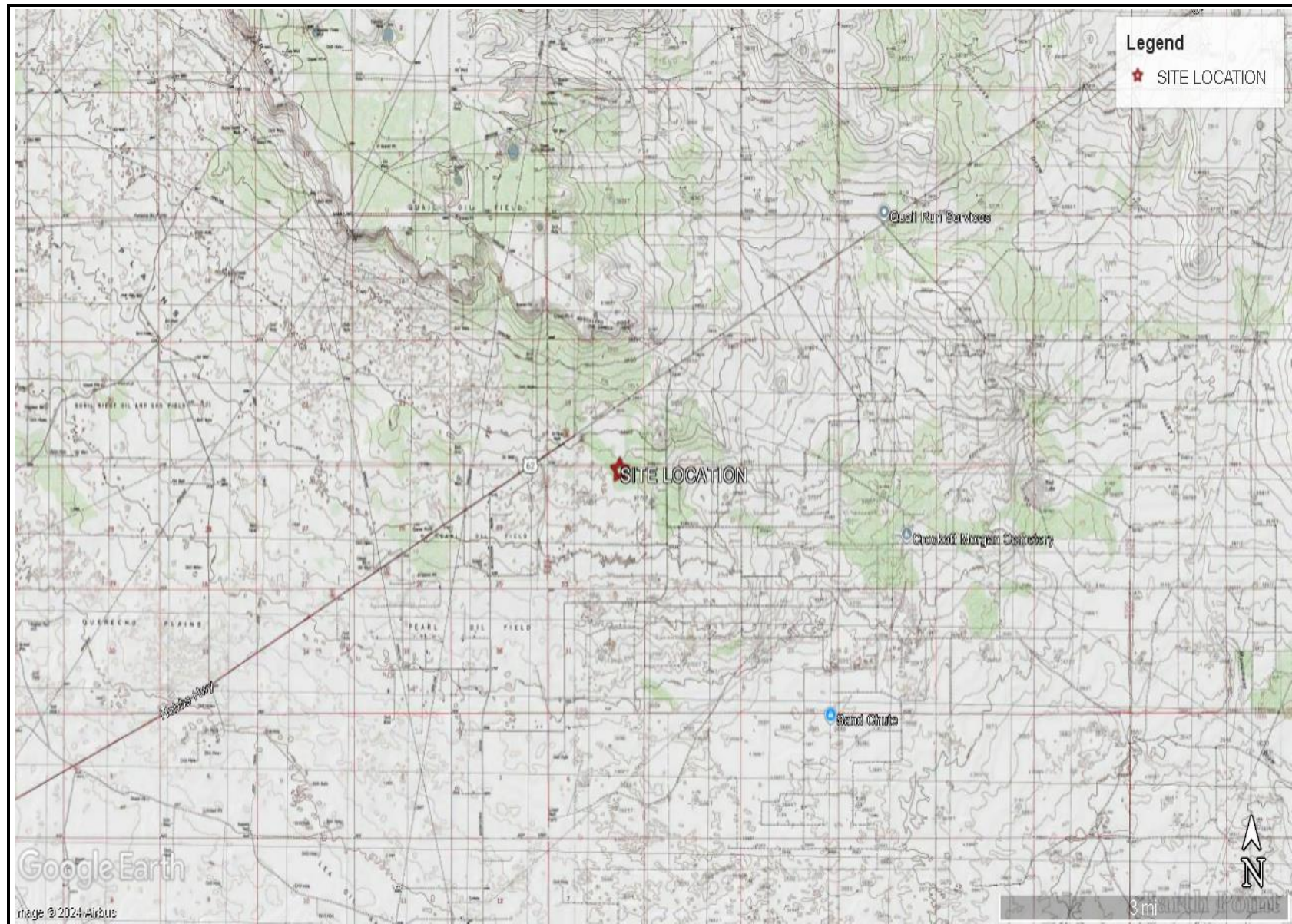
Ashton Thielke
Sr. Project Manager

FIGURES

CARMONA RESOURCES



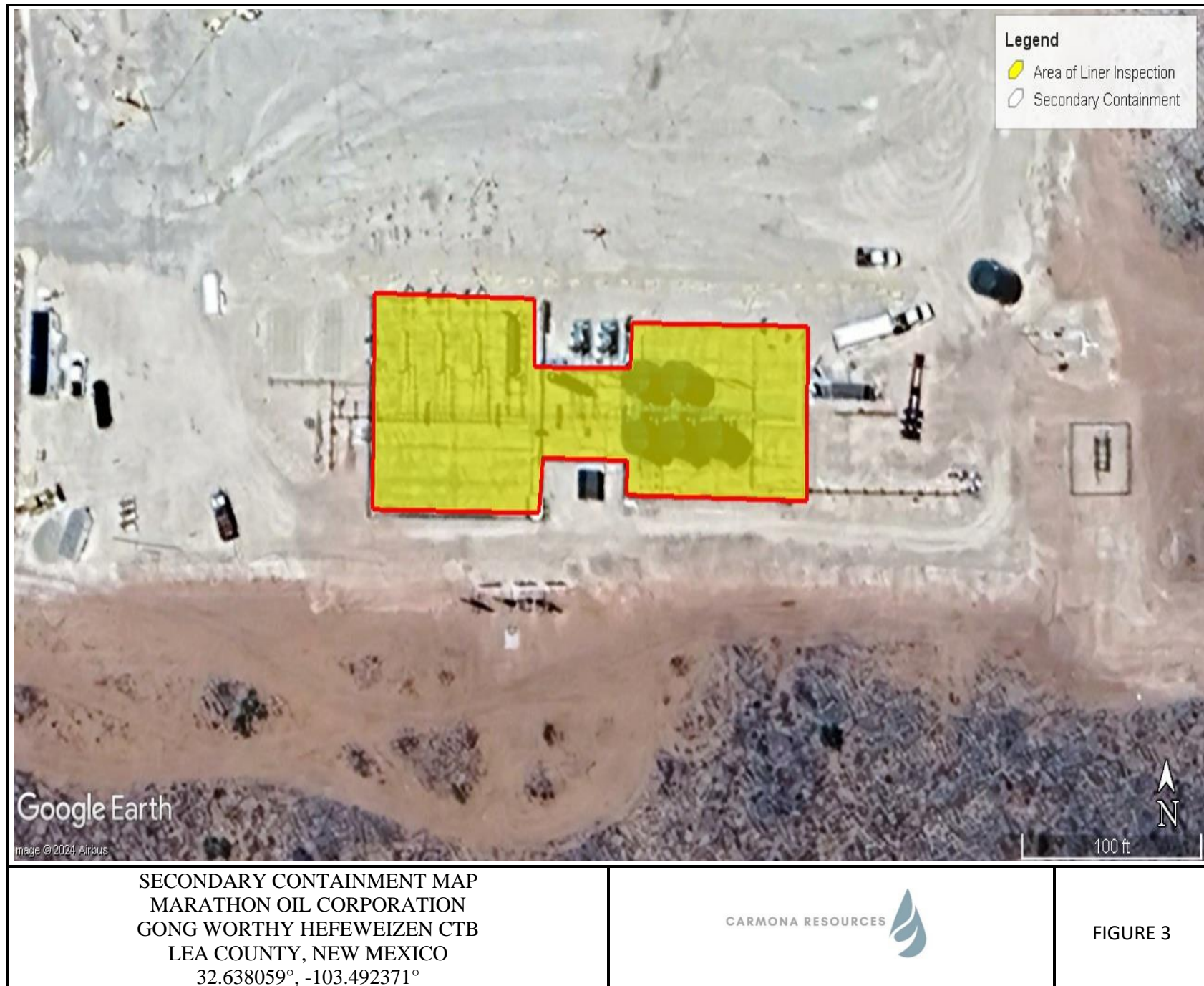




TOPOGRAPHIC MAP
MARATHON OIL CORPORATION
GONG WORTHY HEFEWEIZEN CTB
LEA COUNTY, NEW MEXICO
32.638059°, -103.492371°



FIGURE 2



APPENDIX A

CARMONA RESOURCES



PHOTOGRAPHIC LOG

Marathon Oil Corporation

Photograph No. 1

Facility: Gong Worthy Hefeweizen CTB

County: Lea County, New Mexico

Description:

View Southwest of facility sign.



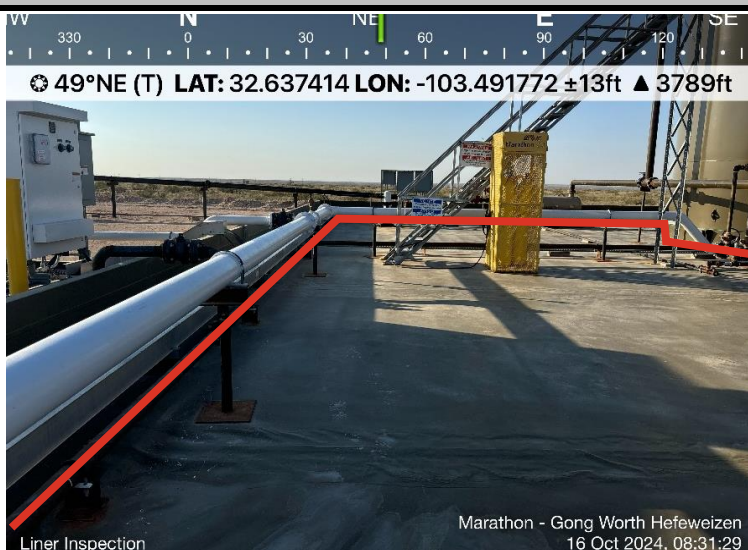
Photograph No. 2

Facility: Gong Worthy Hefeweizen CTB

County: Lea County, New Mexico

Description:

View Northeast of the intact liner. Red outline is the area of the liner inspection.



Photograph No. 3

Facility: Gong Worthy Hefeweizen CTB

County: Lea County, New Mexico

Description:

View East of the intact liner. Red outline is the area of the liner inspection.



PHOTOGRAPHIC LOG**Marathon Oil Corporation****Photograph No. 4****Facility:** Gong Worthy Hefeweizen CTB**County:** Lea County, New Mexico**Description:**

View Southeast of the intact liner. Red outline is the area of the liner inspection.

**Photograph No. 5****Facility:** Gong Worthy Hefeweizen CTB**County:** Lea County, New Mexico**Description:**

View Southeast of the intact liner. Red outline is the area of the liner inspection.

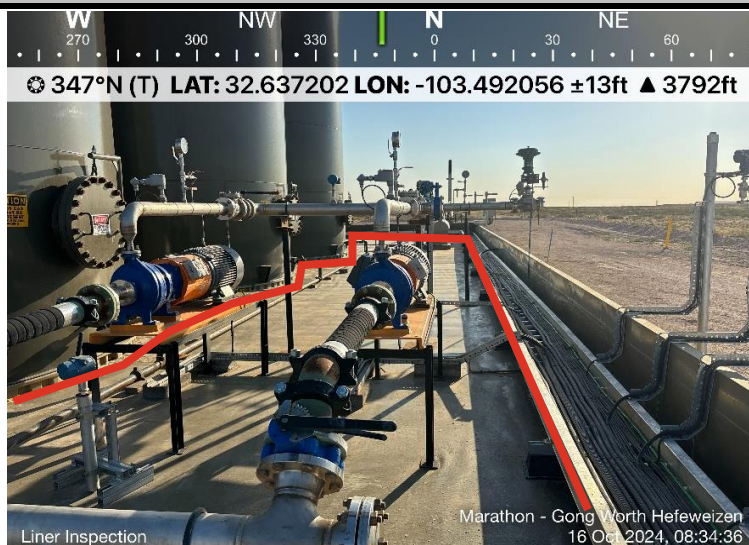
**Photograph No. 6****Facility:** Gong Worthy Hefeweizen CTB**County:** Lea County, New Mexico**Description:**

View South of the intact liner. Red outline is the area of the liner inspection.

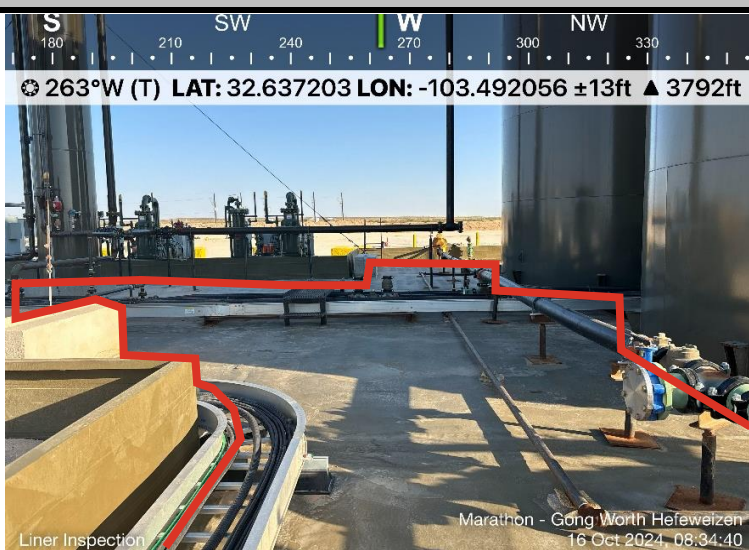


PHOTOGRAPHIC LOG**Marathon Oil Corporation****Photograph No. 7****Facility:** Gong Worthy Hefeweizen CTB**County:** Lea County, New Mexico**Description:**

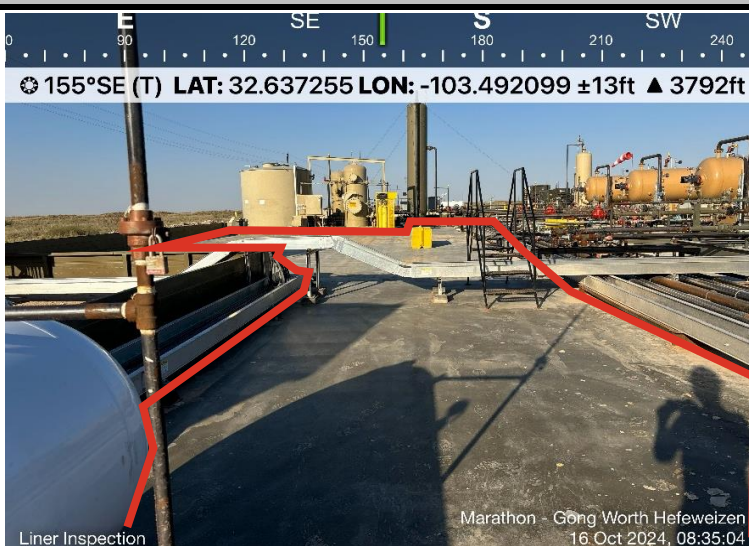
View North of the intact liner. Red outline is the area of the liner inspection.

**Photograph No. 8****Facility:** Gong Worthy Hefeweizen CTB**County:** Lea County, New Mexico**Description:**

View West of the intact liner. Red outline is the area of the liner inspection.

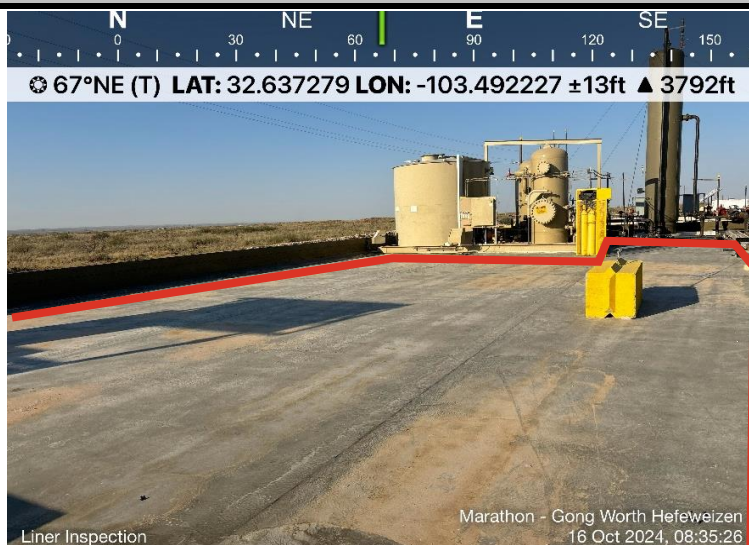
**Photograph No. 9****Facility:** Gong Worthy Hefeweizen CTB**County:** Lea County, New Mexico**Description:**

View Southeast of the intact liner. Red outline is the area of the liner inspection.



PHOTOGRAPHIC LOG**Marathon Oil Corporation****Photograph No. 10****Facility:** Gong Worthy Hefeweizen CTB**County:** Lea County, New Mexico**Description:**

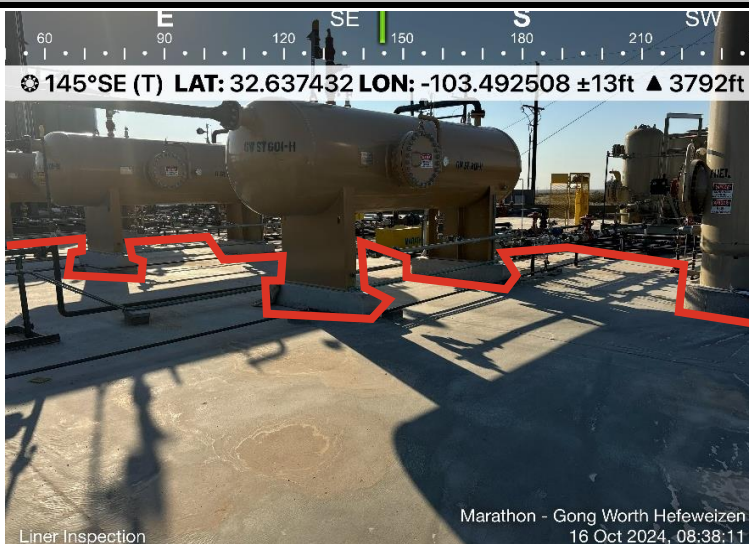
View Northeast of the intact liner. Red outline is the area of the liner inspection.

**Photograph No. 11****Facility:** Gong Worthy Hefeweizen CTB**County:** Lea County, New Mexico**Description:**

View Southeast of the intact liner. Red outline is the area of the liner inspection.

**Photograph No. 12****Facility:** Gong Worthy Hefeweizen CTB**County:** Lea County, New Mexico**Description:**

View Southeast of the intact liner. Red outline is the area of the liner inspection.



PHOTOGRAPHIC LOG

Marathon Oil Corporation

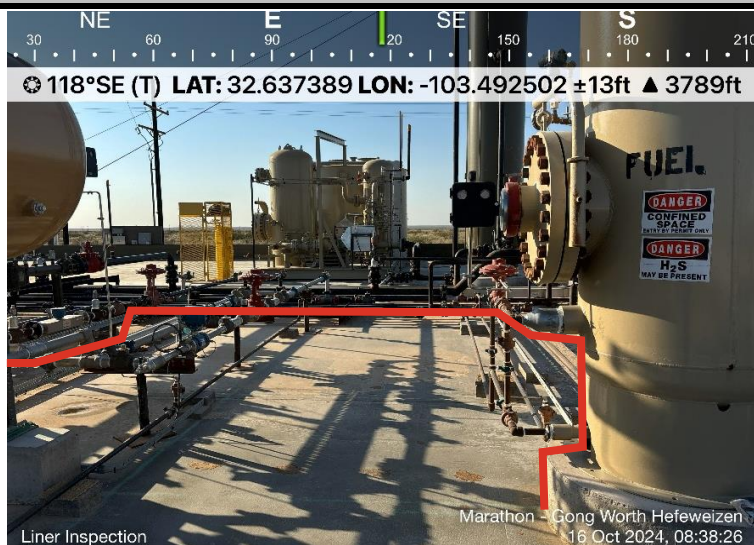
Photograph No. 13

Facility: Gong Worthy Hefeweizen CTB

County: Lea County, New Mexico

Description:

View Southeast of the intact liner. Red outline is the area of the liner inspection.



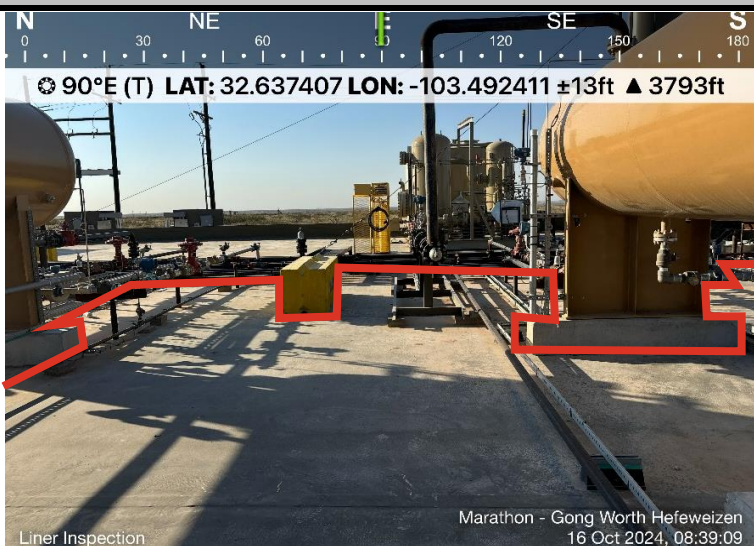
Photograph No. 14

Facility: Gong Worthy Hefeweizen CTB

County: Lea County, New Mexico

Description:

View East of the intact liner. Red outline is the area of the liner inspection.



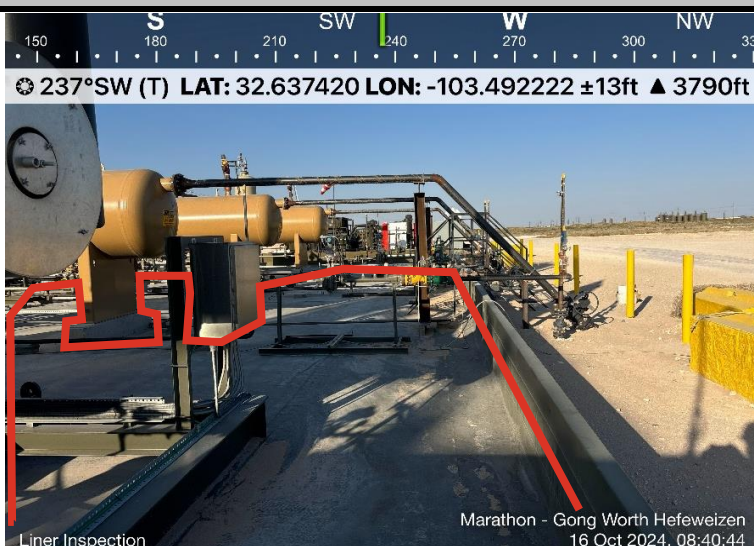
Photograph No. 15

Facility: Gong Worthy Hefeweizen CTB

County: Lea County, New Mexico

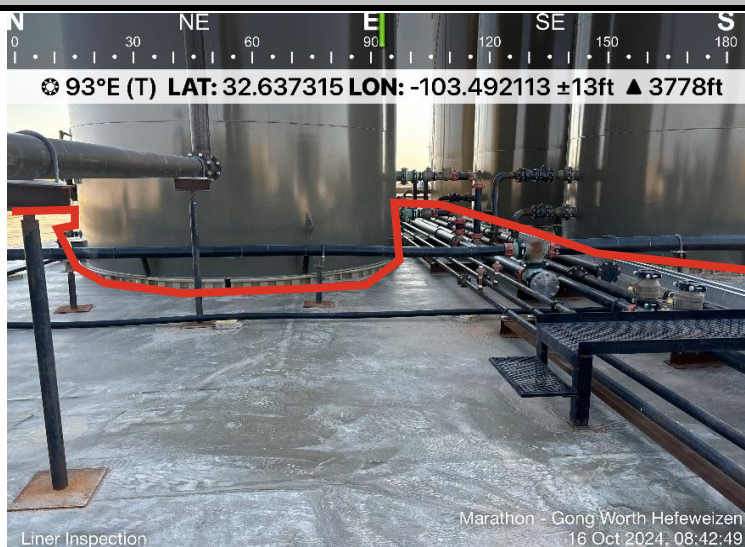
Description:

View Southwest of the intact liner. Red outline is the area of the liner inspection.

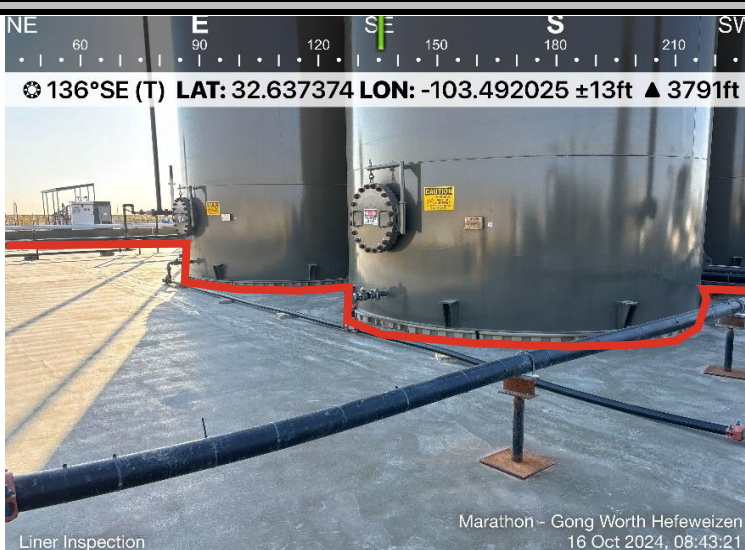


PHOTOGRAPHIC LOG**Marathon Oil Corporation****Photograph No. 16****Facility:** Gong Worthy Hefeweizen CTB**County:** Lea County, New Mexico**Description:**

View East of the intact liner. Red outline is the area of the liner inspection.

**Photograph No. 17****Facility:** Gong Worthy Hefeweizen CTB**County:** Lea County, New Mexico**Description:**

View Southeast of the intact liner. Red outline is the area of the liner inspection.

**Photograph No. 18****Facility:** Gong Worthy Hefeweizen CTB**County:** Lea County, New Mexico**Description:**

View Southwest of the intact liner. Red outline is the area of the liner inspection.



APPENDIX B

CARMONA RESOURCES



District I
1625 N. French Dr., Hobbs, NM 88240
Phone:(575) 393-6161 Fax:(575) 393-0720
District II
811 S. First St., Artesia, NM 88210
Phone:(575) 748-1283 Fax:(575) 748-9720
District III
1000 Rio Brazos Rd., Aztec, NM 87410
Phone:(505) 334-6178 Fax:(505) 334-6170
District IV
1220 S. St Francis Dr., Santa Fe, NM 87505
Phone:(505) 476-3470 Fax:(505) 476-3462

State of New Mexico
Energy, Minerals and Natural Resources
Oil Conservation Division
1220 S. St Francis Dr.
Santa Fe, NM 87505

QUESTIONS

Action 389076

QUESTIONS

Operator: MARATHON OIL PERMIAN LLC 990 Town & Country Blvd. Houston, TX 77024	OGRID: 372098
	Action Number: 389076
	Action Type: [NOTIFY] Notification Of Release (NOR)

QUESTIONS

Location of Release Source <i>Please answer all the questions in this group.</i>	
Site Name	Gong Hefeweizen State CTB TB
Date Release Discovered	10/01/2024
Surface Owner	State

Incident Details <i>Please answer all the questions in this group.</i>	
Incident Type	Produced Water Release
Did this release result in a fire or is the result of a fire	No
Did this release result in any injuries	No
Has this release reached or does it have a reasonable probability of reaching a watercourse	No
Has this release endangered or does it have a reasonable probability of endangering public health	No
Has this release substantially damaged or will it substantially damage property or the environment	No
Is this release of a volume that is or may with reasonable probability be detrimental to fresh water	No

Nature and Volume of Release <i>Material(s) released, please answer all that apply below. Any calculations or specific justifications for the volumes provided should be attached to the follow-up C-141 submission.</i>	
Crude Oil Released (bbls) Details	Not answered.
Produced Water Released (bbls) Details	Cause: Human Error Valve Produced Water Released: 19 BBL Recovered: 19 BBL Lost: 0 BBL.
Is the concentration of chloride in the produced water >10,000 mg/l	Yes
Condensate Released (bbls) Details	Not answered.
Natural Gas Vented (Mcf) Details	Not answered.
Natural Gas Flared (Mcf) Details	Not answered.
Other Released Details	Not answered.
Are there additional details for the questions above (i.e. any answer containing Other, Specify, Unknown, and/or Fire, or any negative lost amounts)	The water hauler on location opened the vent line valve on the load line for produced water before turning on the pump on the truck resulting in 19.15 bbl of produced water being released into lined secondary containment. All standing fluid was recovered.

District I
1625 N. French Dr., Hobbs, NM 88240
Phone:(575) 393-6161 Fax:(575) 393-0720

District II
811 S. First St., Artesia, NM 88210
Phone:(575) 748-1283 Fax:(575) 748-9720

District III
1000 Rio Brazos Rd., Aztec, NM 87410
Phone:(505) 334-6178 Fax:(505) 334-6170

District IV
1220 S. St Francis Dr., Santa Fe, NM 87505
Phone:(505) 476-3470 Fax:(505) 476-3462

State of New Mexico
Energy, Minerals and Natural Resources
Oil Conservation Division
1220 S. St Francis Dr.
Santa Fe, NM 87505

QUESTIONS, Page 2

Action 389076

QUESTIONS (continued)

Operator: MARATHON OIL PERMIAN LLC 990 Town & Country Blvd. Houston, TX 77024	OGRID: 372098
	Action Number: 389076
	Action Type: [NOTIFY] Notification Of Release (NOR)

QUESTIONS

Nature and Volume of Release (continued)	
Is this a gas only submission (i.e. only significant Mcf values reported)	No, according to supplied volumes this does not appear to be a "gas only" report.
Was this a major release as defined by Subsection A of 19.15.29.7 NMAC	No
Reasons why this would be considered a submission for a notification of a major release	Unavailable.
With the implementation of the 19.15.27 NMAC (05/25/2021), venting and/or flaring of natural gas (i.e. gas only) are to be submitted on the C-129 form.	

Initial Response	
The responsible party must undertake the following actions immediately unless they could create a safety hazard that would result in injury.	
The source of the release has been stopped	True
The impacted area has been secured to protect human health and the environment	True
Released materials have been contained via the use of berms or dikes, absorbent pads, or other containment devices	True
All free liquids and recoverable materials have been removed and managed appropriately	True
If all the actions described above have not been undertaken, explain why	Not answered.
Per Paragraph 4 of Subsection B of 19.15.29.8 NMAC the responsible party may commence remediation immediately after discovery of a release. If remediation has begun, please prepare and attach a narrative of actions to date in the follow-up C-141 submission. If remedial efforts have been successfully completed or if the release occurred within a lined containment area (see 19.15.29.11(A)(5)(a) NMAC), please prepare and attach all information needed for closure evaluation in the follow-up C-141 submission.	

District I
1625 N. French Dr., Hobbs, NM 88240
Phone:(575) 393-6161 Fax:(575) 393-0720
District II
811 S. First St., Artesia, NM 88210
Phone:(575) 748-1283 Fax:(575) 748-9720
District III
1000 Rio Brazos Rd., Aztec, NM 87410
Phone:(505) 334-6178 Fax:(505) 334-6170
District IV
1220 S. St Francis Dr., Santa Fe, NM 87505
Phone:(505) 476-3470 Fax:(505) 476-3462

State of New Mexico
Energy, Minerals and Natural Resources
Oil Conservation Division
1220 S. St Francis Dr.
Santa Fe, NM 87505

ACKNOWLEDGMENTS

Action 389076

ACKNOWLEDGMENTS

Operator: MARATHON OIL PERMIAN LLC 990 Town & Country Blvd. Houston, TX 77024	OGRID: 372098
	Action Number: 389076
	Action Type: [NOTIFY] Notification Of Release (NOR)

ACKNOWLEDGMENTS

<input checked="" type="checkbox"/>	I acknowledge that I am authorized to submit notification of a release on behalf of my operator.
<input checked="" type="checkbox"/>	I acknowledge that upon submitting this application, I will be creating a new incident file (assigned to my operator) to track the notification(s) and corrective action(s) for a release, pursuant to NMAC 19.15.29.
<input checked="" type="checkbox"/>	I acknowledge that creating a new incident file will require my operator to file subsequent submission(s) of form "C-141, Application for administrative approval of a release notification and corrective action", pursuant to NMAC 19.15.29.
<input checked="" type="checkbox"/>	I hereby certify that the information given above is true and complete to the best of my knowledge and understand that pursuant to OCD rules and regulations all operators are required to report and/or file certain release notifications and perform corrective actions for releases which may endanger public health or the environment.
<input checked="" type="checkbox"/>	I acknowledge the fact that the acceptance of a C-141 report by the OCD does not relieve the operator of liability should their operations have failed to adequately investigate and remediate contamination that pose a threat to groundwater, surface water, human health or the environment.
<input checked="" type="checkbox"/>	I acknowledge the fact that, in addition, OCD acceptance of a C-141 report does not relieve the operator of responsibility for compliance with any other federal, state, or local laws and/or regulations.

District I
1625 N. French Dr., Hobbs, NM 88240
Phone:(575) 393-6161 Fax:(575) 393-0720
District II
811 S. First St., Artesia, NM 88210
Phone:(575) 748-1283 Fax:(575) 748-9720
District III
1000 Rio Brazos Rd., Aztec, NM 87410
Phone:(505) 334-6178 Fax:(505) 334-6170
District IV
1220 S. St Francis Dr., Santa Fe, NM 87505
Phone:(505) 476-3470 Fax:(505) 476-3462

State of New Mexico
Energy, Minerals and Natural Resources
Oil Conservation Division
1220 S. St Francis Dr.
Santa Fe, NM 87505

CONDITIONS

Action 389076

CONDITIONS

Operator: MARATHON OIL PERMIAN LLC 990 Town & Country Blvd. Houston, TX 77024	OGRID: 372098
	Action Number: 389076
	Action Type: [NOTIFY] Notification Of Release (NOR)

CONDITIONS

Created By	Condition	Condition Date
cswansonsteege	When submitting future reports regarding this release, please submit the calculations used or specific justification for the volumes reported on the initial C-141.	10/2/2024

District I

1625 N. French Dr., Hobbs, NM 88240
Phone:(575) 393-6161 Fax:(575) 393-0720

District II

811 S. First St., Artesia, NM 88210
Phone:(575) 748-1283 Fax:(575) 748-9720

District III

1000 Rio Brazos Rd., Aztec, NM 87410
Phone:(505) 334-6178 Fax:(505) 334-6170

District IV

1220 S. St Francis Dr., Santa Fe, NM 87505
Phone:(505) 476-3470 Fax:(505) 476-3462

State of New Mexico
Energy, Minerals and Natural Resources
Oil Conservation Division
1220 S. St Francis Dr.
Santa Fe, NM 87505

QUESTIONS

Action 389366

QUESTIONS

Operator: MARATHON OIL PERMIAN LLC 990 Town & Country Blvd. Houston, TX 77024	OGRID: 372098
	Action Number: 389366
	Action Type: [NOTIFY] Notification Of Liner Inspection (C-141L)

QUESTIONS

Prerequisites	
Incident ID (n#)	nAPP2427622152
Incident Name	NAPP2427622152 GONG HEFEWEIZEN STATE CTB TB @ 0
Incident Type	Produced Water Release
Incident Status	Initial C-141 Approved
Incident Facility	[fAPP2422738972] Gong Hefeweizen State CTB TB

Location of Release Source

Site Name	Gong Hefeweizen State CTB TB
Date Release Discovered	10/01/2024
Surface Owner	State

Liner Inspection Event Information

Please answer all the questions in this group.

What is the liner inspection surface area in square feet	17,139
Have all the impacted materials been removed from the liner	Yes
Liner inspection date pursuant to Subparagraph (a) of Paragraph (5) of Subsection A of 19.15.29.11 NMAC	10/16/2024
Time liner inspection will commence	08:00 AM
Please provide any information necessary for observers to liner inspection	Clinton Merritt 432-813-9044
Please provide any information necessary for navigation to liner inspection site	From the intersection of interstate 180 and unmarked lease road, turn southeast onto unmarked lease road and travel for 0.37 miles. Pad is on the immediate east side of the lease road.

District I
1625 N. French Dr., Hobbs, NM 88240
Phone:(575) 393-6161 Fax:(575) 393-0720
District II
811 S. First St., Artesia, NM 88210
Phone:(575) 748-1283 Fax:(575) 748-9720
District III
1000 Rio Brazos Rd., Aztec, NM 87410
Phone:(505) 334-6178 Fax:(505) 334-6170
District IV
1220 S. St Francis Dr., Santa Fe, NM 87505
Phone:(505) 476-3470 Fax:(505) 476-3462

State of New Mexico
Energy, Minerals and Natural Resources
Oil Conservation Division
1220 S. St Francis Dr.
Santa Fe, NM 87505

CONDITIONS

Action 389366

CONDITIONS

Operator: MARATHON OIL PERMIAN LLC 990 Town & Country Blvd. Houston, TX 77024	OGRID: 372098
	Action Number: 389366
	Action Type: [NOTIFY] Notification Of Liner Inspection (C-141L)

CONDITIONS

Created By	Condition	Condition Date
cswansonsteege	Failure to notify the OCD of liner inspections including any changes in date/time per the requirements of 19.15.29.11.A(5)(a)(ii) NMAC, may result in the inspection not being accepted.	10/14/2024

APPENDIX C

CARMONA RESOURCES

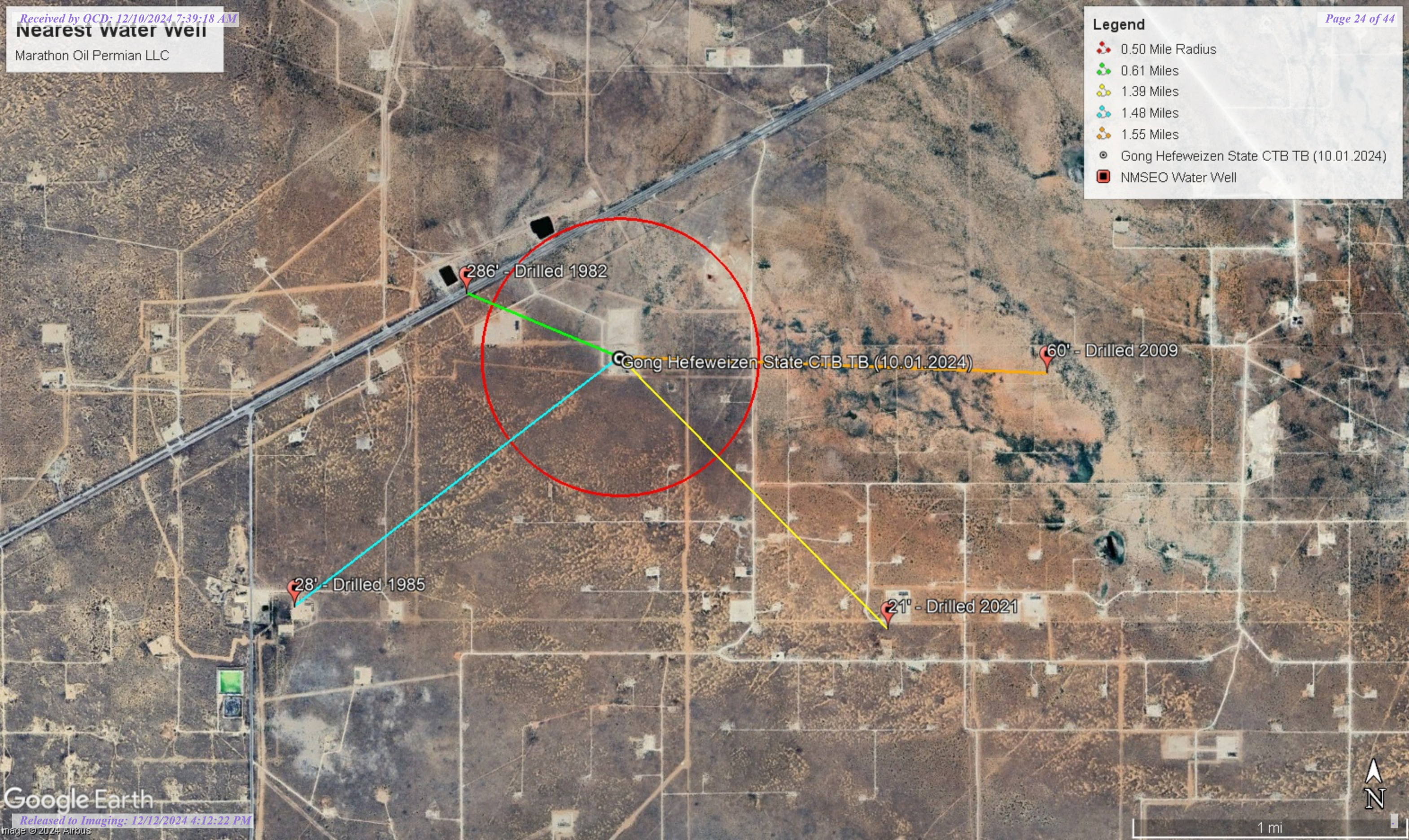


Nearest water well

Marathon Oil Permian LLC

Legend

- 0.50 Mile Radius
- 0.61 Miles
- 1.39 Miles
- 1.48 Miles
- 1.55 Miles
- Gong Hefeweizen State CTB TB (10.01.2024)
- NMSEO Water Well



Low Karst

Marathon Oil Permian LLC

Legend

- Gong Hefeweizen State CTB TB (10.01.2024)
- Low

Gong Hefeweizen State CTB TB (10.01.2024)



New Mexico Office of the State Engineer

Water Column/Average Depth to Water

(A CLW#### in the POD suffix indicates the POD has been replaced & no longer serves a water right file.)

(R=POD has been replaced, O=orphaned, C=the file is closed)

(quarters are smallest to largest)

(meters)

(In feet)

POD Number	Code	Sub basin	County	Q64	Q16	Q4	Sec	Tws	Range	X	Y	Map	Distance	Well Depth	Depth Water	Water Column
L 08941		L	LE	NE	SW	SW	19	19S	35E	640509.6	3612523.3		973	600	286	314
L 09569		L	LE		SE	SW	17	19S	35E	642394.0	3614063.0 *		2133	80	30	50
L 15106 POD3		L	LE	NE	NW	NE	32	19S	35E	642875.2	3610512.5		2206	60	29	31
L 15106 POD1		L	LE	NE	NW	NE	32	19S	35E	643002.4	3610606.5		2225	60	26	34
L 08234 S2		L	LE			SW	17	19S	35E	642192.0	3614259.0 *		2231	126	80	46
L 14876 POD5		L	LE	NE	NW	NE	32	19S	35E	642980.8	3610531.3		2263	27	21	6
L 14876 POD12		L	LE	NE	NW	NE	32	19S	35E	642973.7	3610515.5		2270			
L 14876 POD11		L	LE	NE	NW	NE	32	19S	35E	642989.5	3610522.8		2276			
L 14876 POD8		L	LE	NE	NW	NE	32	19S	35E	642982.9	3610507.6		2282			
L 14876 POD3		L	LE	NE	NW	NE	32	19S	35E	643014.1	3610535.2		2284	40		
L 14876 POD7		L	LE	NE	NW	NE	32	19S	35E	643000.0	3610515.6		2288	19	18	1
L 14876 POD13		L	LE	NE	NW	NE	32	19S	35E	642986.7	3610500.0		2290	27	24	3
L 14876 POD9		L	LE	NE	NW	NE	32	19S	35E	643000.4	3610508.5		2293			
L 14876 POD14		L	LE	NE	NW	NE	32	19S	35E	643023.3	3610529.4		2294			
L 14876 POD10		L	LE	NE	NW	NE	32	19S	35E	642998.2	3610500.1		2298			
L 14876 POD4		L	LE	NE	NW	NE	32	19S	35E	643015.9	3610516.4		2299	22	20	2
L 14876 POD2		L	LE	NE	NW	NE	32	19S	35E	642991.9	3610483.4		2306	37	28	9
L 14876 POD1		L	LE	NE	NW	NE	32	19S	35E	643011.3	3610472.6		2327	25	0	25
L 15106 POD4		L	LE	SE	NW	NE	32	19S	35E	642990.4	3610409.5		2359	61	25	36
L 15106 POD2		L	LE	NW	NE	NE	32	19S	35E	643119.3	3610506.8		2378	60	30	30
CP 00683 POD1		CP	LE	SW	SW	SE	25	19S	34E	639530.0	3610685.0 *		2398	120	28	92
L 12473 POD1		L	LE	NE	NW	NE	27	19S	38E	643912.6	3612109.2		2497	105	60	45
L 12746 POD1		L	LE	SE	NE	SE	27	19S	38E	643912.6	3612109.2		2497	128	58	70
L 08234		L	LE	NE	NE	SW	17	19S	35E	642487.0	3614566.0 *		2627	120	90	30
L 08234 S		L	LE	SE	SE	NW	18	19S	35E	640871.0	3614751.0 *		2640	106	60	46
L 14208 POD1		L	LE	NE	NE	NE	18	19S	35E	641684.9	3615464.5		3308	78		

October 4, 2024 07:16 AM MST

Page 1 of 2

Water Column/Average Depth to Water

Released to Imaging: 12/12/2024 4:12:22 PM






(A CLW##### in the POD suffix indicates the POD has been replaced & no longer serves a water right file.)

(R=POD has been replaced, O=orphaned, C=the file is closed)

(quarters are smallest to largest)

(meters)

(In feet)

POD Number	Code	Sub basin	County	Q64	Q16	Q4	Sec	Tws	Range	X	Y	Map	Distance	Well Depth	Depth Water	Water Column
CP 01672 POD1		CP	LE	NW	SW	NW	36	19S	34E	638735.9	3610009.6		3440	100		
L 02250		L	LE	NW	SW	SW	22	19S	35E	645137.0	3612586.0 *		3745	50	20	30
L 03843		L	LE		SW	SW	22	19S	35E	645238.0	3612487.0 *		3835	73	27	46
L 04101		L	LE		SW	SW	22	19S	35E	645238.0	3612487.0 *		3835	50	35	15
L 03844		L	LE		NW	SW	22	19S	35E	645232.0	3612891.0 *		3884	71	27	44

Average Depth to Water: 46 feet

Minimum Depth: 0 feet

Maximum Depth: 286 feet

Record Count: 31

UTM Filters (in meters):

Easting: 641415.45
Northing: 3612166.88
Radius: 4000

* UTM location was derived from PLSS - see Help


The data is furnished by the NMOSE/ISC and is accepted by the recipient with the expressed understanding that the OSE/ISC make no warranties, expressed or implied, concerning the accuracy, completeness, reliability, usability, or suitability for any particular purpose of the data.

Point of Diversion Summary

quarters are 1=NW 2=NE 3=SW 4=SE

quarters are smallest to largest

NAD83 UTM in meters

Well Tag	POD Nbr	Q64	Q16	Q4	Sec	Tws	Rng	X	Y	Map
NA	L 08941	NE	SW	SW	19	19S	35E	640509.6	3612523.3	

* UTM location was derived from PLSS - see Help

Driller License:	319	Driller Company:	NEW MEXICO STATE HIGHWAY DEPT.		
Driller Name:	LOVELACE				
Drill Start Date:	1982-07-08	Drill Finish Date:	1982-08-09	Plug Date:	
Log File Date:	1982-08-30	PCW Rcv Date:		Source:	Shallow
Pump Type:		Pipe Discharge Size:		Estimated Yield:	12
Casing Size:	6.63	Depth Well:	600	Depth Water:	286

Water Bearing Stratifications:

Top	Bottom	Description
280	295	Sandstone/Gravel/Conglomerate
510	560	Other/Unknown

Casing Perforations:

Top	Bottom
510	530
560	570

Meter Information

Meter Number:	17820	Meter Make:	TURBINES INC
Meter Serial Number:	08051601	Meter Multiplier:	1.0000
Number of Dials:	7	Meter Type:	Diversion
Unit of Measure:	Barrels 42 gal.	Reading Frequency:	Monthly

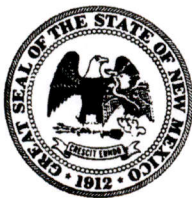
Meter Readings (in Acre-Feet)

Read Date	Year	Mtr Reading	Flag	Rdr	Comment	Mtr Amount	Online
2017-03-01	2017	17259.000	A	ap		0.000	
2017-12-01	2017	42330.000	A	ap		3.231	
2018-01-01	2018	42330.000	A	ap		0.000	
2018-03-01	2018	50271.000	A	ap		1.024	
2018-06-01	2018	62582.000	A	ap		1.587	
2018-07-01	2018	68319.000	A	ap		0.739	
2018-08-01	2018	69669.000	A	ap		0.174	
2018-09-01	2018	70515.000	A	ap		0.109	
2018-11-01	2018	75584.000	A	ap		0.653	
2018-12-01	2018	78697.000	A	ap		0.401	

YTD Meter Amounts:

Year	Amount
2017	3.231
2018	4.687

The data is furnished by the NMOSE/ISC and is accepted by the recipient with the expressed understanding that the OSE/ISC make no warranties, expressed or implied, concerning the accuracy, completeness, reliability, usability, or suitability for any particular purpose of the data.



WELL RECORD & LOG

OFFICE OF THE STATE ENGINEER

www.ose.state.nm.us

1. GENERAL AND WELL LOCATION	OSE POD NO. (WELL NO.) POD1		WELL TAG ID NO. SB20		OSE FILE NO(S). L-15106			
	WELL OWNER NAME(S) Armstrong Energy				PHONE (OPTIONAL)			
	WELL OWNER MAILING ADDRESS P.O. Box 1973				CITY Roswell	STATE NM	ZIP 88202	
	WELL LOCATION (FROM GPS)	DEGREES LATITUDE 103	MINUTES 28	SECONDS 32.51 N	* ACCURACY REQUIRED: ONE TENTH OF A SECOND * DATUM REQUIRED: WGS 84			
DESCRIPTION RELATING WELL LOCATION TO STREET ADDRESS AND COMMON LANDMARKS – PLSS (SECTION, TOWNSHIP, RANGE) WHERE AVAILABLE West Pearl Queen								
2. DRILLING & CASING INFORMATION	LICENSE NO. 1789		NAME OF LICENSED DRILLER Mark Mumby			NAME OF WELL DRILLING COMPANY HRL Compliance Solutions, Inc.		
	DRILLING STARTED 8/23/2021	DRILLING ENDED 8/23/2021	DEPTH OF COMPLETED WELL (FT) 56	BORE HOLE DEPTH (FT) 57	DEPTH WATER FIRST ENCOUNTERED (FT) Moist at ~21 feet			
	COMPLETED WELL IS: <input type="checkbox"/> ARTESIAN <input type="checkbox"/> DRY HOLE <input checked="" type="checkbox"/> SHALLOW (UNCONFINED)				STATIC WATER LEVEL IN COMPLETED WELL (FT) 21			
	DRILLING FLUID: <input checked="" type="checkbox"/> AIR <input type="checkbox"/> MUD ADDITIVES – SPECIFY:							
	DRILLING METHOD: <input checked="" type="checkbox"/> ROTARY <input type="checkbox"/> HAMMER <input type="checkbox"/> CABLE TOOL <input type="checkbox"/> OTHER – SPECIFY:							
	DEPTH (feet bgl)		BORE HOLE DIAM (inches)	CASING MATERIAL AND/OR GRADE (include each casing string, and note sections of screen)	CASING CONNECTION TYPE (add coupling diameter)	CASING INSIDE DIAM. (inches)	CASING WALL THICKNESS (inches)	SLOT SIZE (inches)
	FROM	TO						
	0	51	6	Blank PVC	Flush Thread	2	0.154	N/A
	51	56	6	Pre-Pack Slotted PVC	Flush Thread	2	0.154	0.010
3. ANNULAR MATERIAL	DEPTH (feet bgl)		BORE HOLE DIAM. (inches)	LIST ANNULAR SEAL MATERIAL AND GRAVEL PACK SIZE-RANGE BY INTERVAL	AMOUNT (cubic feet)	METHOD OF PLACEMENT		
	FROM	TO						
	0	2	6	Concrete	0.2	Pour		
	2	48	6	Bentonite	4.05	Tremie		
	48	57	6	10-20 Prepack and bagged clean silica sand	0.81	Tremie		

OSE OIT SEP 28 2021 PM 2:24

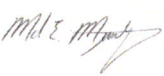
FOR OSE INTERNAL USE

WR-20 WELL RECORD & LOG (Version 04/30/19)

FILE NO. <u>L-15106</u>	POD NO. <u>1</u>	TRN NO. <u>688109</u>
LOCATION <u>19S-35E-32 212</u>	WELL TAG ID NO. <u>N/A</u>	PAGE 1 OF 2

4. HYDROGEOLOGIC LOG OF WELL	DEPTH (feet bgl)		THICKNESS (feet)	COLOR AND TYPE OF MATERIAL ENCOUNTERED - INCLUDE WATER-BEARING CAVITIES OR FRACTURE ZONES (attach supplemental sheets to fully describe all units)	WATER BEARING? (YES / NO)	ESTIMATED YIELD FOR WATER- BEARING ZONES (gpm)
	FROM	TO				
	0	20	20	Reddish Orange Silty sand w/some clay and gravel, occasional caliche soft	Y ✓ N	
	20	~28	~8	White Silty sand w/some clay and gravel, interbedded caliche soft	✓ Y N	
	28	57	29	Reddish Orange to purple poorly graded fine sand and caliche, dry hard	Y ✓ N	
					Y N	
					Y N	
					Y N	
					Y N	
					Y N	
					Y N	
					Y N	
					Y N	
					Y N	
					Y N	
					Y N	
					Y N	
					Y N	
					Y N	
					Y N	
					Y N	
					Y N	
					Y N	
METHOD USED TO ESTIMATE YIELD OF WATER-BEARING STRATA:					TOTAL ESTIMATED WELL YIELD (gpm):	
<input type="checkbox"/> PUMP <input type="checkbox"/> AIR LIFT <input type="checkbox"/> BAILER <input checked="" type="checkbox"/> OTHER – SPECIFY: N/A					0.00	

5. TEST; RIG SUPERVISION	WELL TEST	TEST RESULTS - ATTACH A COPY OF DATA COLLECTED DURING WELL TESTING, INCLUDING DISCHARGE METHOD, START TIME, END TIME, AND A TABLE SHOWING DISCHARGE AND DRAWDOWN OVER THE TESTING PERIOD.
	MISCELLANEOUS INFORMATION:	
	<p style="text-align: right;">USE DIT SEP 28 2021 PM 2:24</p>	
PRINT NAME(S) OF DRILL RIG SUPERVISOR(S) THAT PROVIDED ONSITE SUPERVISION OF WELL CONSTRUCTION OTHER THAN LICENSEE:		
Jesse Cote		

6. SIGNATURE	BY SIGNING BELOW, I CERTIFY THAT TO THE BEST OF MY KNOWLEDGE AND BELIEF, THE FOREGOING IS A TRUE AND CORRECT RECORD OF THE ABOVE DESCRIBED WELL. I ALSO CERTIFY THAT THE WELL TAG, IF REQUIRED, HAS BEEN INSTALLED AND THAT THIS WELL RECORD WILL ALSO BE FILED WITH THE PERMIT HOLDER WITHIN 30 DAYS AFTER THE COMPLETION OF WELL DRILLING.	
	 <div style="font-size: small;"> Digitally signed by Mark Mumby DN: cn=Mark Mumby, o=HRL Comp, ou=Security Division, email=mmumby@hrlcomp.com, c=US Date: 2021.09.23 10:39:25 -06'00' </div> <div style="text-align: right;">Mark E. Mumby</div>	<div style="text-align: right;">9/23/2021</div>
SIGNATURE OF DRILLER / PRINT SIGNEE NAME		DATE

FOR OSE INTERNAL USE

WR-20 WELL RECORD & LOG (Version 04/30/2019)

FILE NO. <u>L-15106</u>	POD NO. <u>1</u>	TRN NO. <u>688109</u>
LOCATION <u>QS-35E-32 212</u>	WELL TAG ID NO. <u>N/A</u>	PAGE 2 OF 2

STATE ENGINEER OFFICE

WELL RECORD

Section 1. GENERAL INFORMATION

Marathon Water Station

(A) Owner of well C.W.Trainer Observation Well

Street or Post Office Address 526 Sandy Mtn. Dr. Owner's Well No. _____

City and State Sunrise Beach, Texas 78643

Well was drilled under Permit No. CP-683 and is located in the:

- a. $\frac{1}{4}$ SW $\frac{1}{4}$ SW $\frac{1}{4}$ SE of Section 25 Township 19S Range 34E N.M.P.M.
- b. Tract No. _____ of Map No. _____ of the _____
- c. Lot No. _____ of Block No. _____ of the _____
- Subdivision, recorded in Lea County.
- d. X= _____ feet, Y= _____ feet, N.M. Coordinate System _____ Zone in the _____ Grant.

(B) Drilling Contractor Abbott Bros. Drilling License No. WD-46

Address P.O. Box 637, Hobbs, New Mexico 88240

Drilling Began 7/18/85 Completed 7/20/85 Type tools Cable Size of hole 8½ in.

Elevation of land surface or _____ at well is _____ ft. Total depth of well 120 ft.

Completed well is ☒ shallow ☐ artesian. Depth to water upon completion of well 28 ft.

Section 2. PRINCIPAL WATER-BEARING STRATA

Depth in Feet		Thickness in Feet	Description of Water-Bearing Formation	Estimated Yield (gallons per minute)
From	To			
<u>28</u>	<u>31</u>	<u>3</u>	<u>Sand</u>	<u>1/2 gal.</u>

Section 3. RECORD OF CASING

Diameter (inches)	Pounds per foot	Threads per in.	Depth in Feet		Length (feet)	Type of Shoe	Perforations	
			Top	Bottom			From	To
<u>4</u>	<u>Plastic 3</u>	<u>Glued</u>	<u>0</u>	<u>120</u>	<u>120</u>	<u>None</u>	<u>4</u>	<u>120</u>

Section 4. RECORD OF MUDDING AND CEMENTING

Depth in Feet		Hole Diameter	Sacks of Mud	Cubic Feet of Cement	Method of Placement
From	To				
			<u>Cement at top.</u>		

Section 5. PLUGGING RECORD

Plugging Contractor _____

Address _____

Plugging Method _____

Date Well Plugged _____

Plugging approved by: _____

State Engineer Representative

No.	Depth in Feet		Cubic Feet of Cement
	Top	Bottom	
<u>1</u>			
<u>2</u>			
<u>3</u>			
<u>4</u>			

FOR USE OF STATE ENGINEER ONLY

Date Received August 16, 1985 Quad _____ FWL _____ FSL _____

File No. CP-683 Use OBS Location No. 19.34.25.43323

[illegible]

Aug 16 8 12 AM '65

Murrell Abbott
Driller W.B.

INSTRUCTIONS: This form should be completed in triplicate, preferably typewritten, and submitted to the appropriate district office of the State Engineer. All questions, except Section 5, shall be answered as completely and accurately as possible when any well is used as a plugging record, only Section 1(a) and Section 5 need be completed.

1 June 1972

STATE ENGINEER OFFICE
WELL RECORD

COPY
481732

Section 1. GENERAL INFORMATION

(A) Owner of well YADIRA ALVAREZ + RENE NAVARETTE Owner's Well No. L-12473
Street or Post Office Address 1236 S PARKWAY
City and State HOBBS NM 88240

Well was drilled under Permit No. L-12473 and is located in the:

a. NE $\frac{1}{4}$ NW $\frac{1}{4}$ NE $\frac{1}{4}$ of Section 27 Township 19 S Range 38 E N.M.P.M.

b. Tract No. _____ of Map No. _____ of the N 32° 38.233

c. Lot No. _____ of Block No. _____ of the W 103° 27.946
Subdivision, recorded in 15A County.

d. X= _____ feet, Y= _____ feet, N.M. Coordinate System _____ Zone in the _____ Grant.

(B) Drilling Contractor DURAN DRILLING License No. WD-1607

Address PO BOX 1561 SEMINOLE TX 79360

Drilling Began 10/1/09 Completed 10/5/09 Type tools MUD ROTARY Size of hole 8 3/4 in.

Elevation of land surface or _____ at well is _____ ft. Total depth of well 105 ft.

Completed well is ☒ shallow ☐ artesian. Depth to water upon completion of well 60 ft.

Section 2. PRINCIPAL WATER-BEARING STRATA

Depth in Feet		Thickness in Feet	Description of Water-Bearing Formation	Estimated Yield (gallons per minute)
From	To			
<u>60</u>	<u>83</u>	<u>23</u>	<u>BROWN SAND</u>	<u>200</u>

Section 3. RECORD OF CASING

Diameter (inches)	Pounds per foot	Threads per in.	Depth in Feet		Length (feet)	Type of Shoe	Perforations	
			Top	Bottom			From	To
<u>5</u>	<u>10</u>	<u>-</u>	<u>0</u>	<u>105</u>	<u>106</u>	<u>-</u>	<u>65</u>	<u>105</u>

Section 4. RECORD OF MUDDING AND CEMENTING

Depth in Feet		Hole Diameter	Sacks of Mud	Cubic Feet of Cement	Method of Placement
From	To				
<u>0</u>	<u>20</u>	<u>8 3/4</u>	<u>10</u>		<u>MIXER</u>

Section 5. PLUGGING RECORD

Plugging Contractor _____
Address _____
Plugging Method _____
Date Well Plugged _____
Plugging approved by: _____

State Engineer Representative

No.	Depth in Feet		Cubic Feet of Cement
	Top	Bottom	
<u>1</u>			
<u>2</u>			
<u>3</u>			
<u>4</u>			

9/30/09
Date Received

FOR USE OF STATE ENGINEER ONLY

Quad _____ FWL _____ FSL _____

File No. _____ Use _____ Location No. _____

Duran Drilling
300 W. Ave A Suite 2
432-955-0915
Fax: 432-955-0935

Luis Duran
432-209-3277
432-209-3351
NM Licence-WD-1607

Mailing Address
PO Box 1561
Seminole, TX 79360

October 16, 2009

Tracy Ikenberry, Administrator
State of New Mexico
Office of the State Engineer
1900 West Second Street
Roswell, NM 88201

STATE ENGINEER OFFICE
ROSWELL, NEW MEXICO
2009 OCT 21 A 11:54

RE: Well Record for Well No. L-12473
Yadira Alvidrez & Rene Navarette, 1236 S. Parkway, Hobbs, NM 88240

Dear Ms. Ikenberry:

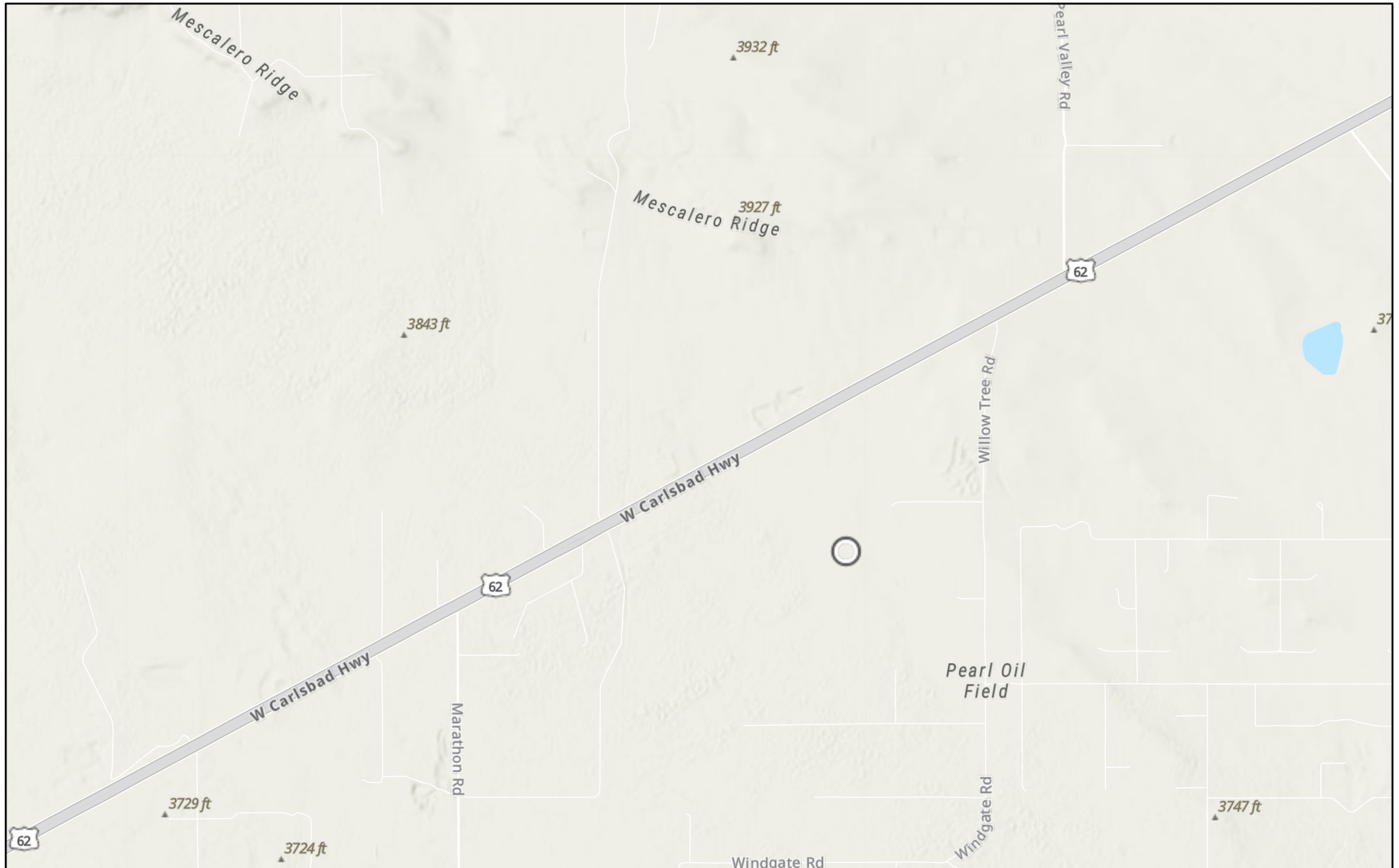
Enclosed please find the original Well Record regarding the above-referenced matter, along with two (2) copies of the same.

Thank you for your attention to this matter.

Sincerely,
Luis A Duran
Luis (Tony) Duran
Duran Drilling

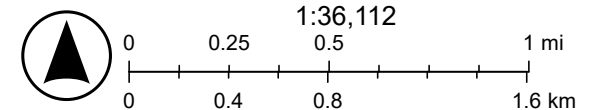
clc
Enclosures

Gong Hefeweizen State CTB TB (10.01.2024)



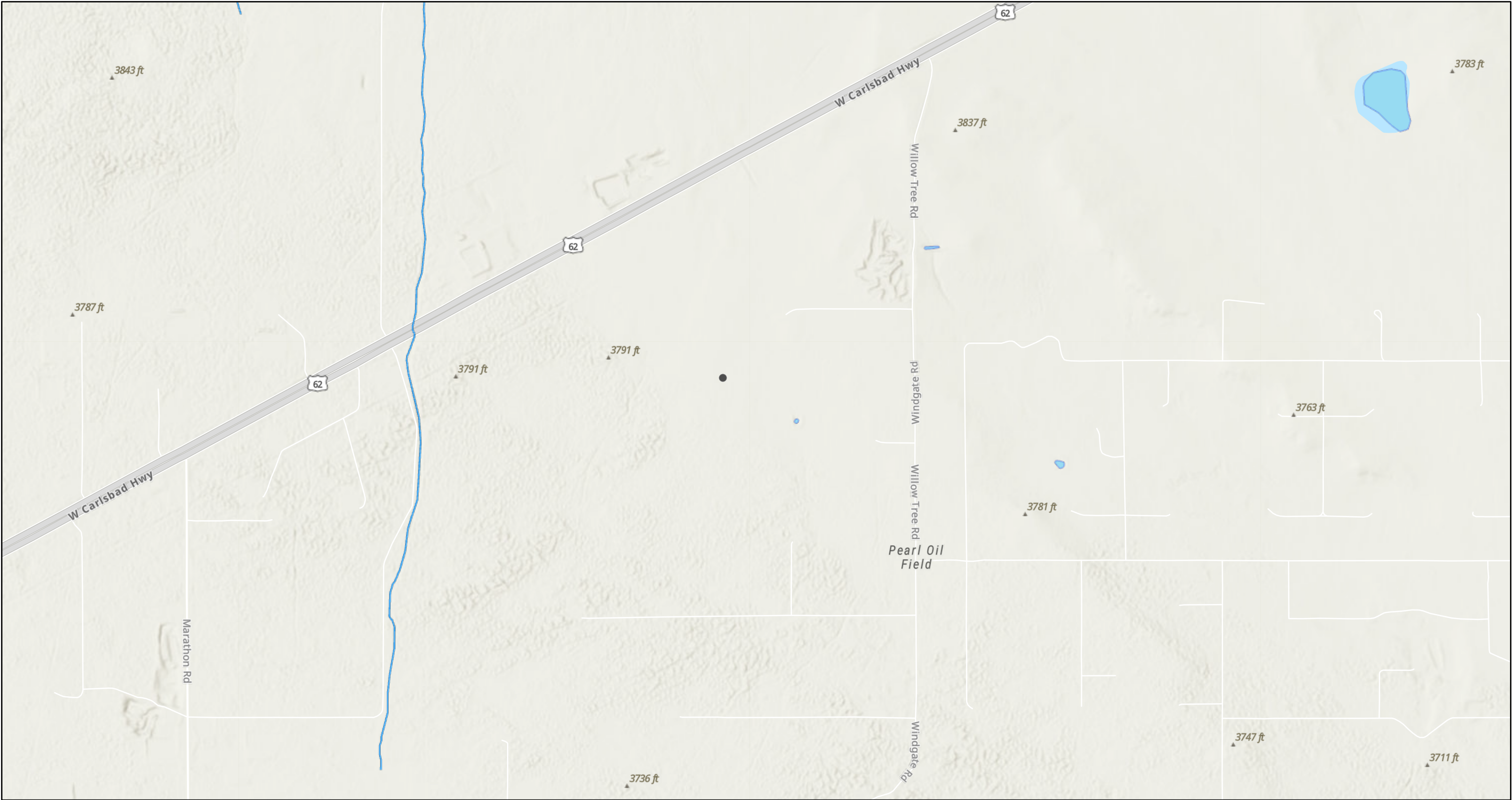
10/4/2024

World Hillshade



Esri, NASA, NGA, USGS, FEMA, Texas Parks & Wildlife, CONANP, Esri, TomTom, Garmin, SafeGraph, GeoTechnologies, Inc, METI/NASA, USGS,

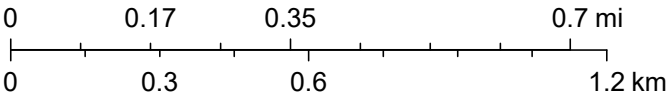
Gong Hefeweizen State CTB TB (10.01.2024)



10/4/2024, 8:15:15 AM

- OSW Water Bodys
- OSE Streams

1:18,056



Esri, NASA, NGA, USGS, FEMA, Esri Community Maps Contributors, New Mexico State University, Texas Parks & Wildlife, CONANP, Esri, TomTom, Garmin, SafeGraph, GeoTechnologies, Inc, METI/NASA, USGS, EPA, NPS, US Census Bureau, USDA, USFWS, NM OSE

Sante Fe Main Office
Phone: (505) 476-3441

General Information
Phone: (505) 629-6116

Online Phone Directory
<https://www.emnrd.nm.gov/ocd/contact-us>

State of New Mexico
Energy, Minerals and Natural Resources
Oil Conservation Division
1220 S. St Francis Dr.
Santa Fe, NM 87505

QUESTIONS

Action 409678

QUESTIONS

Operator: MARATHON OIL PERMIAN LLC 990 Town & Country Blvd. Houston, TX 77024	OGRID: 372098
	Action Number: 409678
	Action Type: [C-141] Remediation Closure Request C-141 (C-141-v-Closure)

QUESTIONS

Prerequisites	
Incident ID (n#)	nAPP2427622152
Incident Name	NAPP2427622152 GONG HEFEWEIZEN STATE CTB TB @ 0
Incident Type	Produced Water Release
Incident Status	Remediation Closure Report Received
Incident Facility	[fAPP2422738972] Gong Hefeweizen State CTB TB

Location of Release Source	
Please answer all the questions in this group.	
Site Name	Gong Hefeweizen State CTB TB
Date Release Discovered	10/01/2024
Surface Owner	State

Incident Details	
Please answer all the questions in this group.	
Incident Type	Produced Water Release
Did this release result in a fire or is the result of a fire	No
Did this release result in any injuries	No
Has this release reached or does it have a reasonable probability of reaching a watercourse	No
Has this release endangered or does it have a reasonable probability of endangering public health	No
Has this release substantially damaged or will it substantially damage property or the environment	No
Is this release of a volume that is or may with reasonable probability be detrimental to fresh water	No

Nature and Volume of Release	
Material(s) released, please answer all that apply below. Any calculations or specific justifications for the volumes provided should be attached to the follow-up C-141 submission.	
Crude Oil Released (bbls) Details	Not answered.
Produced Water Released (bbls) Details	Cause: Human Error Valve Produced Water Released: 19 BBL Recovered: 19 BBL Lost: 0 BBL.
Is the concentration of chloride in the produced water >10,000 mg/l	Yes
Condensate Released (bbls) Details	Not answered.
Natural Gas Vented (Mcf) Details	Not answered.
Natural Gas Flared (Mcf) Details	Not answered.
Other Released Details	Not answered.
Are there additional details for the questions above (i.e. any answer containing Other, Specify, Unknown, and/or Fire, or any negative lost amounts)	The water hauler on location opened the vent line valve on the load line for produced water before turning on the pump on the truck resulting in 19.15 bbl of produced water being released into lined secondary containment. All standing fluid was recovered.

Sante Fe Main Office
Phone: (505) 476-3441

General Information
Phone: (505) 629-6116

Online Phone Directory
<https://www.emnrd.nm.gov/ocd/contact-us>

State of New Mexico
Energy, Minerals and Natural Resources
Oil Conservation Division
1220 S. St Francis Dr.
Santa Fe, NM 87505

QUESTIONS, Page 2

Action 409678

QUESTIONS (continued)

Operator: MARATHON OIL PERMIAN LLC 990 Town & Country Blvd. Houston, TX 77024	OGRID: 372098
	Action Number: 409678
	Action Type: [C-141] Remediation Closure Request C-141 (C-141-v-Closure)

QUESTIONS

Nature and Volume of Release (continued)	
Is this a gas only submission (i.e. only significant Mcf values reported)	No, according to supplied volumes this does not appear to be a "gas only" report.
Was this a major release as defined by Subsection A of 19.15.29.7 NMAC	No
Reasons why this would be considered a submission for a notification of a major release	Unavailable.
With the implementation of the 19.15.27 NMAC (05/25/2021), venting and/or flaring of natural gas (i.e. gas only) are to be submitted on the C-129 form.	

Initial Response

The responsible party must undertake the following actions immediately unless they could create a safety hazard that would result in injury.

The source of the release has been stopped	True
The impacted area has been secured to protect human health and the environment	True
Released materials have been contained via the use of berms or dikes, absorbent pads, or other containment devices	True
All free liquids and recoverable materials have been removed and managed appropriately	True
If all the actions described above have not been undertaken, explain why	Not answered.

Per Paragraph (4) of Subsection B of 19.15.29.8 NMAC the responsible party may commence remediation immediately after discovery of a release. If remediation has begun, please prepare and attach a narrative of actions to date in the follow-up C-141 submission. If remedial efforts have been successfully completed or if the release occurred within a lined containment area (see Subparagraph (a) of Paragraph (5) of Subsection A of 19.15.29.11 NMAC), please prepare and attach all information needed for closure evaluation in the follow-up C-141 submission.

I hereby certify that the information given above is true and complete to the best of my knowledge and understand that pursuant to OCD rules and regulations all operators are required to report and/or file certain release notifications and perform corrective actions for releases which may endanger public health or the environment. The acceptance of a C-141 report by the OCD does not relieve the operator of liability should their operations have failed to adequately investigate and remediate contamination that pose a threat to groundwater, surface water, human health or the environment. In addition, OCD acceptance of a C-141 report does not relieve the operator of responsibility for compliance with any other federal, state, or local laws and/or regulations.

I hereby agree and sign off to the above statement	Name: Cody Swanson Steege Title: Compliance Supervisor Email: swansonste@marathonoil.com Date: 10/02/2024
--	--

Sante Fe Main Office
Phone: (505) 476-3441

General Information
Phone: (505) 629-6116

Online Phone Directory
<https://www.emnrd.nm.gov/ocd/contact-us>

State of New Mexico
Energy, Minerals and Natural Resources
Oil Conservation Division
1220 S. St Francis Dr.
Santa Fe, NM 87505

QUESTIONS, Page 3

Action 409678

QUESTIONS (continued)

Operator: MARATHON OIL PERMIAN LLC 990 Town & Country Blvd. Houston, TX 77024	OGRID: 372098
	Action Number: 409678
	Action Type: [C-141] Remediation Closure Request C-141 (C-141-v-Closure)

QUESTIONS**Site Characterization**

Please answer all the questions in this group (only required when seeking remediation plan approval and beyond). This information must be provided to the appropriate district office no later than 90 days after the release discovery date.

What is the shallowest depth to groundwater beneath the area affected by the release in feet below ground surface (ft bgs)	Between 100 and 500 (ft.)
What method was used to determine the depth to ground water	U.S. Geological Survey
Did this release impact groundwater or surface water	No
What is the minimum distance, between the closest lateral extents of the release and the following surface areas:	
A continuously flowing watercourse or any other significant watercourse	Greater than 5 (mi.)
Any lakebed, sinkhole, or playa lake (measured from the ordinary high-water mark)	Greater than 5 (mi.)
An occupied permanent residence, school, hospital, institution, or church	Greater than 5 (mi.)
A spring or a private domestic fresh water well used by less than five households for domestic or stock watering purposes	Greater than 5 (mi.)
Any other fresh water well or spring	Greater than 5 (mi.)
Incorporated municipal boundaries or a defined municipal fresh water well field	Greater than 5 (mi.)
A wetland	Greater than 5 (mi.)
A subsurface mine	Greater than 5 (mi.)
An (non-karst) unstable area	Greater than 5 (mi.)
Categorize the risk of this well / site being in a karst geology	Low
A 100-year floodplain	Greater than 5 (mi.)
Did the release impact areas not on an exploration, development, production, or storage site	No

Remediation Plan

Please answer all the questions that apply or are indicated. This information must be provided to the appropriate district office no later than 90 days after the release discovery date.

Requesting a remediation plan approval with this submission	Yes
Attach a comprehensive report demonstrating the lateral and vertical extents of soil contamination associated with the release have been determined, pursuant to 19.15.29.11 NMAC and 19.15.29.13 NMAC.	
Have the lateral and vertical extents of contamination been fully delineated	Yes
Was this release entirely contained within a lined containment area	Yes
Per Subsection B of 19.15.29.11 NMAC unless the site characterization report includes completed efforts at remediation, the report must include a proposed remediation plan in accordance with 19.15.29.12 NMAC, which includes the anticipated timelines for beginning and completing the remediation.	
On what estimated date will the remediation commence	10/16/2024
On what date will (or did) the final sampling or liner inspection occur	10/16/2024
On what date will (or was) the remediation complete(d)	10/16/2024
What is the estimated surface area (in square feet) that will be remediated	17139
What is the estimated volume (in cubic yards) that will be remediated	0
These estimated dates and measurements are recognized to be the best guess or calculation at the time of submission and may (be) change(d) over time as more remediation efforts are completed.	
The OCD recognizes that proposed remediation measures may have to be minimally adjusted in accordance with the physical realities encountered during remediation. If the responsible party has any need to significantly deviate from the remediation plan proposed, then it should consult with the division to determine if another remediation plan submission is required.	

Sante Fe Main Office
Phone: (505) 476-3441

General Information
Phone: (505) 629-6116

Online Phone Directory
<https://www.emnrd.nm.gov/ocd/contact-us>

State of New Mexico
Energy, Minerals and Natural Resources
Oil Conservation Division
1220 S. St Francis Dr.
Santa Fe, NM 87505

QUESTIONS, Page 4

Action 409678

QUESTIONS (continued)

Operator: MARATHON OIL PERMIAN LLC 990 Town & Country Blvd. Houston, TX 77024	OGRID: 372098
	Action Number: 409678
	Action Type: [C-141] Remediation Closure Request C-141 (C-141-v-Closure)

QUESTIONS

Remediation Plan (continued)	
<i>Please answer all the questions that apply or are indicated. This information must be provided to the appropriate district office no later than 90 days after the release discovery date.</i>	
This remediation will (or is expected to) utilize the following processes to remediate / reduce contaminants:	
<i>(Select all answers below that apply.)</i>	
Is (or was) there affected material present needing to be removed	Yes
Is (or was) there a power wash of the lined containment area (to be) performed	Yes
OTHER (Non-listed remedial process)	No
<i>Per Subsection B of 19.15.29.11 NMAC unless the site characterization report includes completed efforts at remediation, the report must include a proposed remediation plan in accordance with 19.15.29.12 NMAC, which includes the anticipated timelines for beginning and completing the remediation.</i>	
I hereby certify that the information given above is true and complete to the best of my knowledge and understand that pursuant to OCD rules and regulations all operators are required to report and/or file certain release notifications and perform corrective actions for releases which may endanger public health or the environment. The acceptance of a C-141 report by the OCD does not relieve the operator of liability should their operations have failed to adequately investigate and remediate contamination that pose a threat to groundwater, surface water, human health or the environment. In addition, OCD acceptance of a C-141 report does not relieve the operator of responsibility for compliance with any other federal, state, or local laws and/or regulations.	
I hereby agree and sign off to the above statement	Name: Cody Swanson Steege Title: Compliance Supervisor Email: swansonste@marathonoil.com Date: 12/10/2024
<i>The OCD recognizes that proposed remediation measures may have to be minimally adjusted in accordance with the physical realities encountered during remediation. If the responsible party has any need to significantly deviate from the remediation plan proposed, then it should consult with the division to determine if another remediation plan submission is required.</i>	

Sante Fe Main Office
Phone: (505) 476-3441

General Information
Phone: (505) 629-6116

Online Phone Directory
<https://www.emnrd.nm.gov/ocd/contact-us>

State of New Mexico
Energy, Minerals and Natural Resources
Oil Conservation Division
1220 S. St Francis Dr.
Santa Fe, NM 87505

QUESTIONS, Page 6

Action 409678

QUESTIONS (continued)

Operator: MARATHON OIL PERMIAN LLC 990 Town & Country Blvd. Houston, TX 77024	OGRID: 372098
	Action Number: 409678
	Action Type: [C-141] Remediation Closure Request C-141 (C-141-v-Closure)

QUESTIONS

Liner Inspection Information	
Last liner inspection notification (C-141L) recorded	389366
Liner inspection date pursuant to Subparagraph (a) of Paragraph (5) of Subsection A of 19.15.29.11 NMAC	10/16/2024
Was all the impacted materials removed from the liner	Yes
What was the liner inspection surface area in square feet	17139

Remediation Closure Request

Only answer the questions in this group if seeking remediation closure for this release because all remediation steps have been completed.

Requesting a remediation closure approval with this submission	Yes
Have the lateral and vertical extents of contamination been fully delineated	Yes
Was this release entirely contained within a lined containment area	Yes
What was the total surface area (in square feet) remediated	17139
What was the total volume (cubic yards) remediated	0
Summarize any additional remediation activities not included by answers (above)	power washed and cleaned prior to inspection

The responsible party must attach information demonstrating they have complied with all applicable closure requirements and any conditions or directives of the OCD. This demonstration should be in the form of a comprehensive report (in .pdf format) including a scaled site map, sampling diagrams, relevant field notes, photographs of any excavation prior to backfilling, laboratory data including chain of custody documents of final sampling, and a narrative of the remedial activities. Refer to 19.15.29.12 NMAC.

I hereby certify that the information given above is true and complete to the best of my knowledge and understand that pursuant to OCD rules and regulations all operators are required to report and/or file certain release notifications and perform corrective actions for releases which may endanger public health or the environment. The acceptance of a C-141 report by the OCD does not relieve the operator of liability should their operations have failed to adequately investigate and remediate contamination that pose a threat to groundwater, surface water, human health or the environment. In addition, OCD acceptance of a C-141 report does not relieve the operator of responsibility for compliance with any other federal, state, or local laws and/or regulations. The responsible party acknowledges they must substantially restore, reclaim, and re-vegetate the impacted surface area to the conditions that existed prior to the release or their final land use in accordance with 19.15.29.13 NMAC including notification to the OCD when reclamation and re-vegetation are complete.

I hereby agree and sign off to the above statement	Name: Cody Swanson Steege Title: Compliance Supervisor Email: swansonste@marathonoil.com Date: 12/10/2024
--	--

Sante Fe Main Office
Phone: (505) 476-3441

General Information
Phone: (505) 629-6116

Online Phone Directory
<https://www.emnrd.nm.gov/ocd/contact-us>

State of New Mexico
Energy, Minerals and Natural Resources
Oil Conservation Division
1220 S. St Francis Dr.
Santa Fe, NM 87505

CONDITIONS

Action 409678

CONDITIONS

Operator: MARATHON OIL PERMIAN LLC 990 Town & Country Blvd. Houston, TX 77024	OGRID: 372098
	Action Number: 409678
	Action Type: [C-141] Remediation Closure Request C-141 (C-141-v-Closure)

CONDITIONS

Created By	Condition	Condition Date
scott.rodgers	App ID 409678 Liner Inspection approved	12/12/2024