



McNabb Partners, LLC  
Hobbs • Carlsbad • Midland  
575.397.0050  
www.mcnabbpartnersllc.com

January 3, 2024

NM Oil Conservation Division  
Environmental Bureau  
1220 South St. Francis Dr.  
Santa Fe, NM 87505

RE: Closure Report  
Incident ID: nAPP2431253689  
Schlitz Fed Com CTB A  
Project ID: 20241107-1109-schlitzFedA

NMOCD:

McNabb Partners submits this closure request on behalf of Civitas Permian Operating, LLC. This document describes the liner inspection and remediation activities on Schlitz Fed Com CTB A (Site).

The release was discovered on November 7, 2024, due to the internal corrosion resulted in a pinhole on the SWD line. A total of 10 barrels (bbls) of produced water were released inside and outside of the lined containment. Approximately 8 bbls of produced water were recovered for a net loss of 2 bbls of produced water.

## 1. Characterization

The following sections address items as described in 19.15.29.11.A, paragraphs 1- 4. Please refer to the characterization table below for additional criteria and Plat 02 for verification.

### 1.1. Site Location

Plat 1 shows the Site map with the lined tank battery containment and the release extent outside of the lined containment. The source of the release is located at 32.126227, -104.301955 (Lat, Long; NAD83). The release extent covered an area of approximately 400 sq. ft outside of the lined containment.

**Site Characterization**

What is the shallowest depth to groundwater (ft bgs)	Unknown (less than 25 ft bgs)
What measure was used to determine this?	NM OSE iWaters Database Search
Did this release impact ground or surface water?	No
<b>What is the minimum distance, between the closest lateral extents of the release and the following surface areas:</b>	
<ul style="list-style-type: none"> <li>• A continuously flowing watercourse or any other significant watercourse</li> </ul>	Between 1000 ft and ½ mi
<ul style="list-style-type: none"> <li>• Any lakebed, sinkhole or playa lake (measured from the ordinary high-water mark)</li> </ul>	Between 1 mi and 5 mi
<ul style="list-style-type: none"> <li>• An occupied permanent residence, school, hospital, institution or church</li> </ul>	Between 1 mi and 5 mi
<ul style="list-style-type: none"> <li>• A spring or private domestic fresh water well used by less than five households for domestic or stock watering purposes</li> </ul>	Between ½ and 1 mi
<ul style="list-style-type: none"> <li>• Any other fresh water well or spring</li> </ul>	Between ½ and 1 mi
<ul style="list-style-type: none"> <li>• Incorporated municipal boundaries or a defined municipal fresh water well field</li> </ul>	Greater than 5 mi
<ul style="list-style-type: none"> <li>• A wetland</li> </ul>	Between 1000 ft and ½ mi
<ul style="list-style-type: none"> <li>• A subsurface mine</li> </ul>	Between 1 mi and 5 mi
<ul style="list-style-type: none"> <li>• A (non-karst) unstable area</li> </ul>	Between 1 mi and 5 mi
<ul style="list-style-type: none"> <li>• Categorize the risk of this well/site being in a karst geology</li> </ul>	High
<ul style="list-style-type: none"> <li>• A 100-year floodplain</li> </ul>	Between 1 mi and 5 mi
<ul style="list-style-type: none"> <li>• Did the release impact areas not on an exploration, development, production, or storage site?</li> </ul>	No

## 1.2. Site Characterization

Based on a review of the USGS and NMOSE groundwater databases, there are no known groundwater sources within ½-mile of the Site. The Site is located more than 200 feet from a lakebed, sinkhole, or playa lake, and over 300 feet from any occupied residence, school, hospital, institution, church, or wetland. Site is over 1,000 feet from a freshwater well or spring and is not within a 100-year floodplain or above a subsurface mine. The Site is located within a high Karst potential zone. The complete site characterization is shown in Plat 02 through Plat

Closure Criteria as listed in Table 1 of 19.15.29 NMAC, where the depth-to-water is undetermined is defined as:

DTW - Unknown	Chloride (mg/kg)	GRO+DRO (mg/kg)	TPH Ext. (mg/kg)	Benzene (mg/kg)	BTEX (mg/kg)
0 - 4 feet & "not in-use"	600	--	100	10	50
> 4 ft or "in-use"	600	--	100	10	50

## 2. Liner Inspection and Remediation Activities

Prior to the liner inspection, all released fluids were vacuumed and removed, and the liner was pressure-washed. On December 13, 2024, McNabb Partners were on site to perform a site assessment to evaluate the condition and integrity of the tank battery's secondary containment liner. The inspection revealed that the liner is intact and in a good condition, showing no signs of damage, such as holes, stressed areas or breaches, and was clear of any standing produced water or crude oil. All liquids visible in the photographs (Figures 1 through 6) were the result of a pressure washing.

Along with the liner inspection, McNabb Partners have installed 4 lateral sample points (i.e., H-1 through H-4) to delineate the release impacts outside of the containment at the depth of a pad surface. All samples were analyzed for BTEX, TPH and Chloride by Cardinal Laboratories. Lateral sample points H-1, H-2 and H-3 met the closure criteria for the site. A lateral sample point H-4 exceeded the closure criteria for the chloride concentration at the surface depth. A sample point H-4 was further delineated to the most stringent closure criteria at the depth of 0.5, 1, 2 and 3 feet below ground surface (ft bgs).

Remediation activities were conducted to remove the impacted soil represented by a sample point H-4 at the pad surface outside of the lined containment. An impacted area of 555 sq ft was excavated to a depth of 0.5 ft bgs.

The confirmation soil samples (5-point composite) were collected from areas not greater than 200 square feet (or less) from the excavation bases and sidewalls and analyzed for TPH, BTEX and chloride by a certified laboratory.

3 confirmation samples were collected from the base of the excavation (i.e., BS-01, BS-02 and BS-03 at 0.5 ft bgs) and 4 confirmation samples were collected from the walls of the excavation

(i.e., WS-01 through WS-04). Analytical results indicate that all confirmation samples met NMOCD closure criteria for concentrations listed in Table I (19.15.29 NMAC).

- Plat 1 shows a site map of the entire well pad.
- Plats 2 through 9 provide complete site characterization information.
- Plat 10 shows the lateral delineation sample locations and the total area of inspected liner.
- Plats 11 & 12 show the final excavation extent and confirmation sample locations.
- Table A shows the summary of all laboratory data for each sample collected at Site
- All sampling notifications and communications are included in Appendix A.
- Laboratory Reports and Chains of Custodies for all samples are included in Appendix B.
- Figures 1 through 10 show the photolog of various activities on Site.

### 3. Closure Request

Remediation Closure Request	
Requesting a remediation closure approval with this submission?	Yes
Have the lateral and vertical extents of contamination been fully delineated?	Yes
Was this release entirely contained within a lined containment area?	No
All areas reasonably needed for production or subsequent drilling operations have been stabilized?	Yes
What was the total surface area (in sq ft) remediated?	555
What was the total volume (cubic yards) remediated?	10.3
All areas not reasonably needed for production or subsequent drilling operations have been reclaimed to contain a minimum of 4 ft non waste containing material with concentration less than 600 mg/kg chlorides?	Yes
What was the total surface area (in sq ft) reclaimed?	555
What was the total volume (in cubic yards) reclaimed?	10.3
Summarize any addition remediation activities not included in answers above	Dig and haul disposal

On behalf of Civitas Permian Operating, we respectfully request a closure for the incident ID: nAPP2431253689. Based on the liner inspection, remedial action activities and confirmation samples analytical results, the Site is compliant with applicable closure requirements set forth in rule 19.15.19.12 NMAC and no further actions are required at the site.

Schlitz Fed Com CTB A  
nAPP2431253689

Please contact me with any questions at 917-497-6890.

Sincerely,



Dimitry Nikanorov  
Environmental Project Manager  
McNabb Partners (917) 497-6890



Copy: Joel Lujan, Civitas Permian Operating, LLC  
State Land Office - Environmental Compliance Office

January 22, 2024

Page 5 of 7



Schlitz Fed Com CTB A  
nAPP2431253689

Figure 1. View of the Inspected Liner.



Figure 2. View of the Inspected Liner.



Figure 3. View of the Inspected Liner.



Figure 4. View of the Inspected Liner.

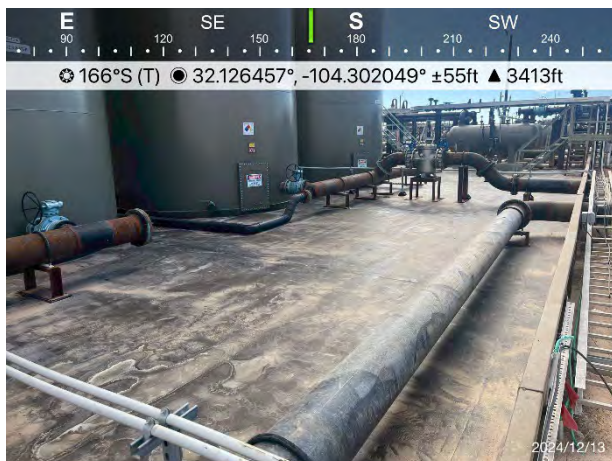


Figure 5. View of the Inspected Liner.



Figure 6. View of the Inspected Liner.





Figure 6. 0.5 ft Excavation.



Figure 7. 0.5 ft Excavation.



Figure 8. 0.5 ft Excavation.



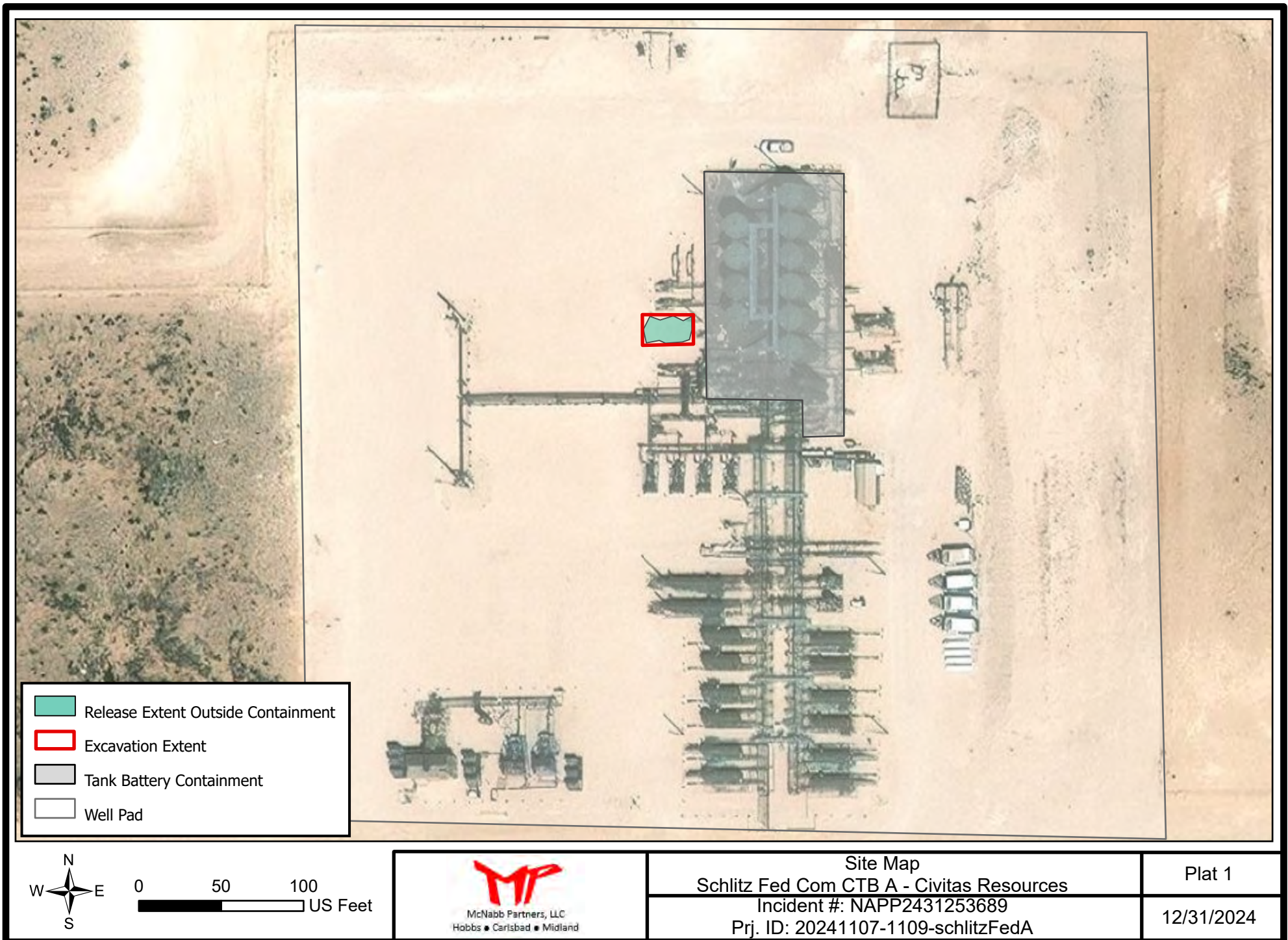
Figure 9. Lateral delineation (H-4 at 3 ft bgs)

# Plats

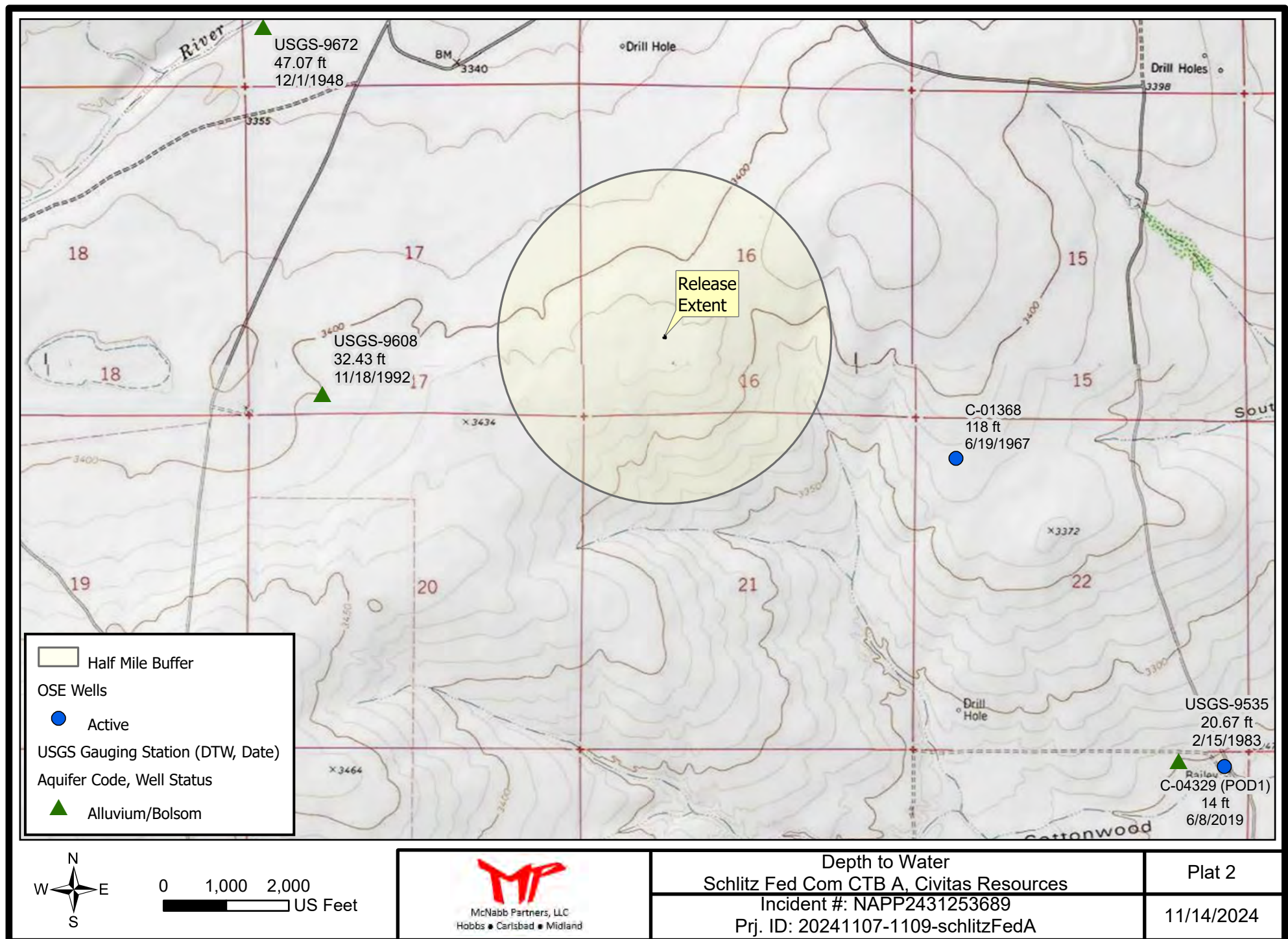


McNabb Partners, LLC  
Hobbs • Carlsbad • Midland

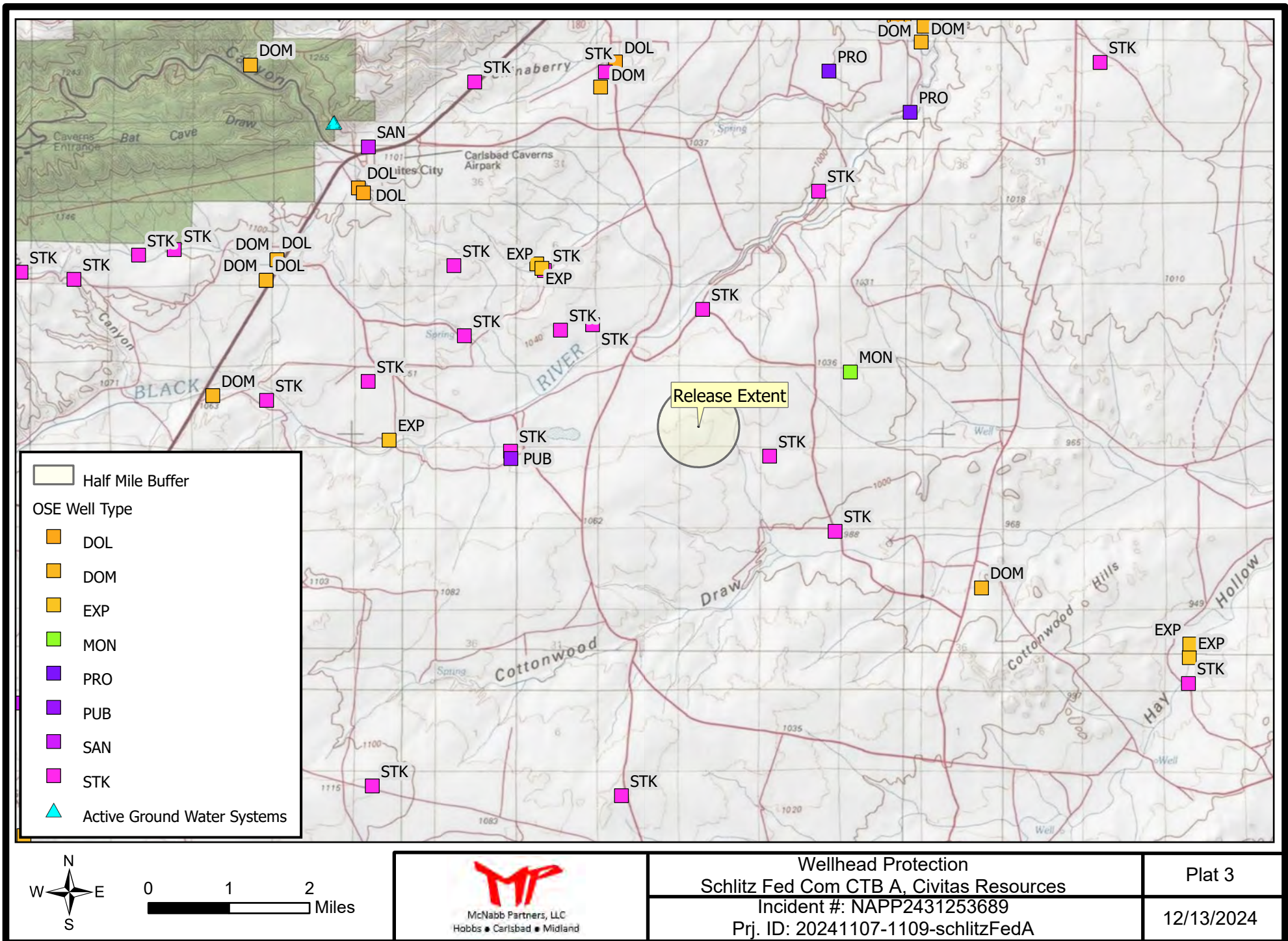








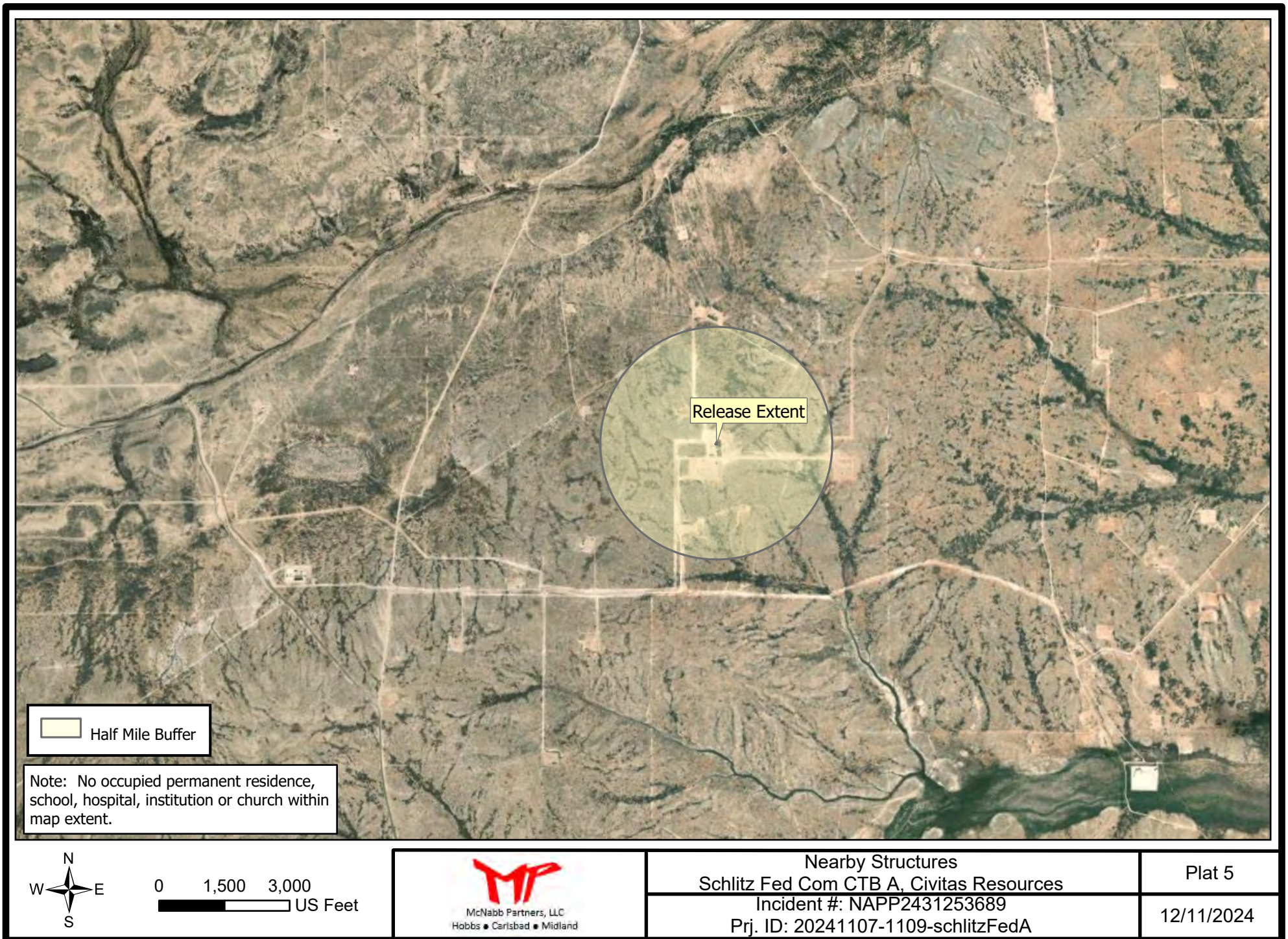




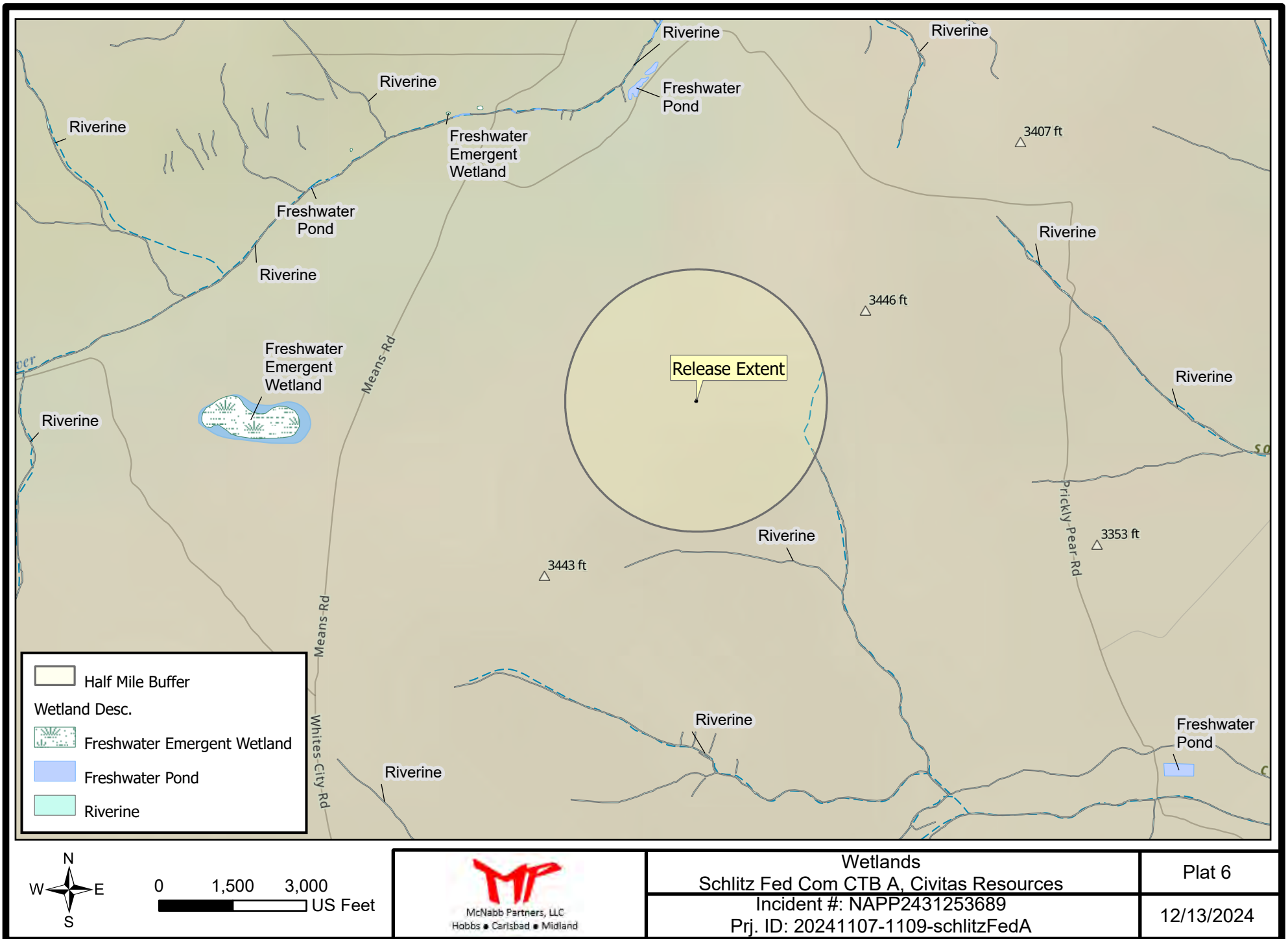






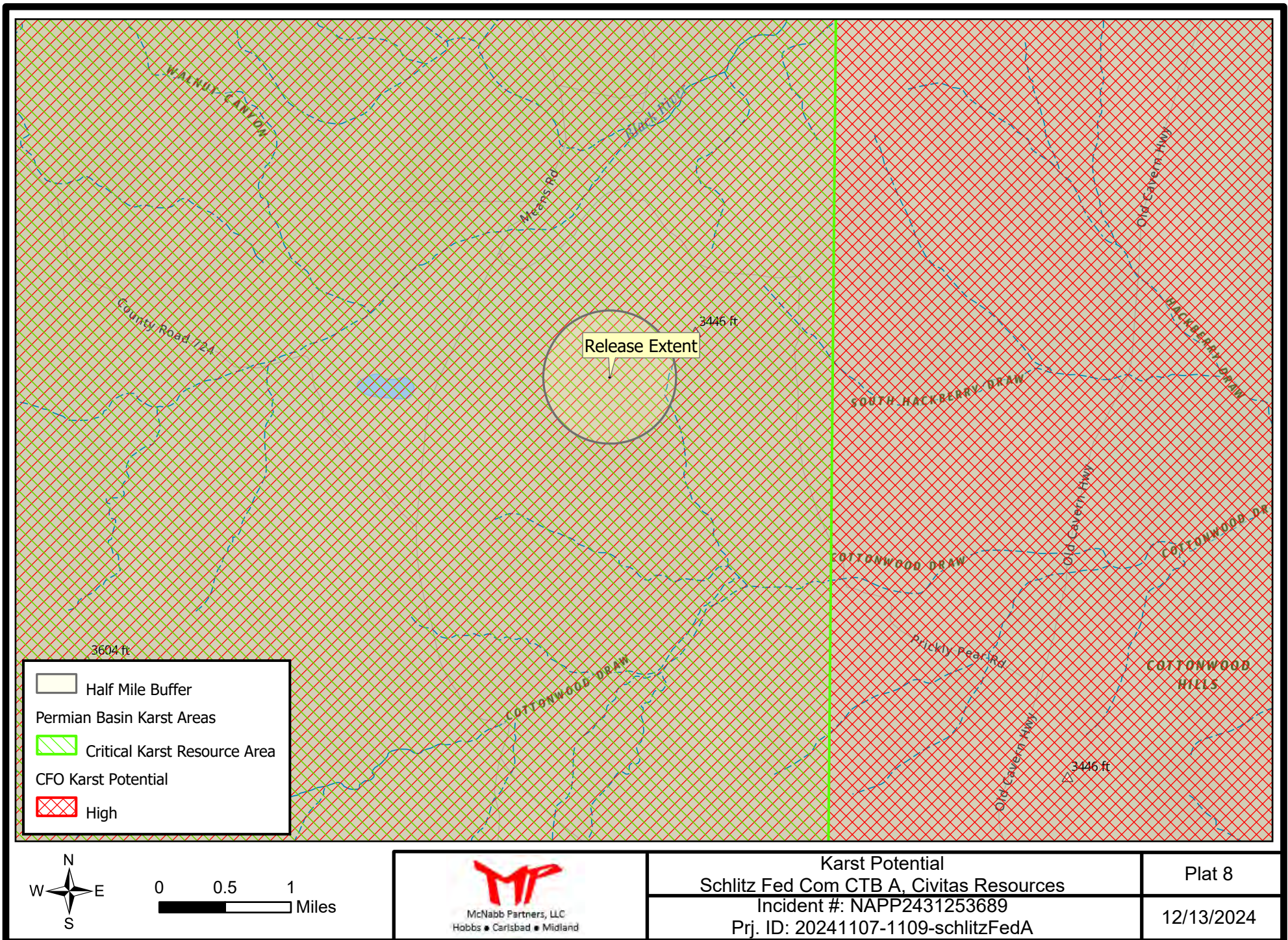




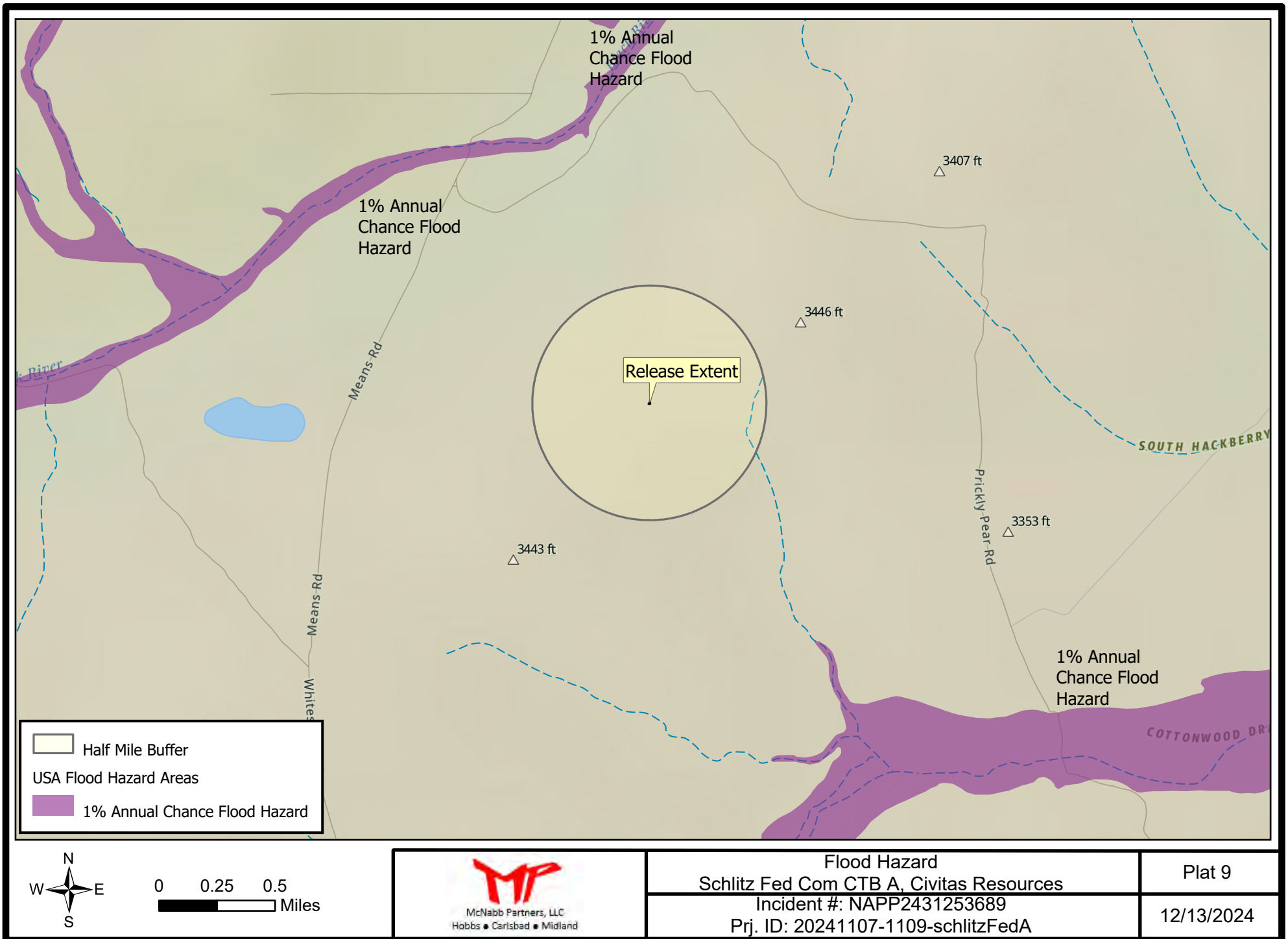


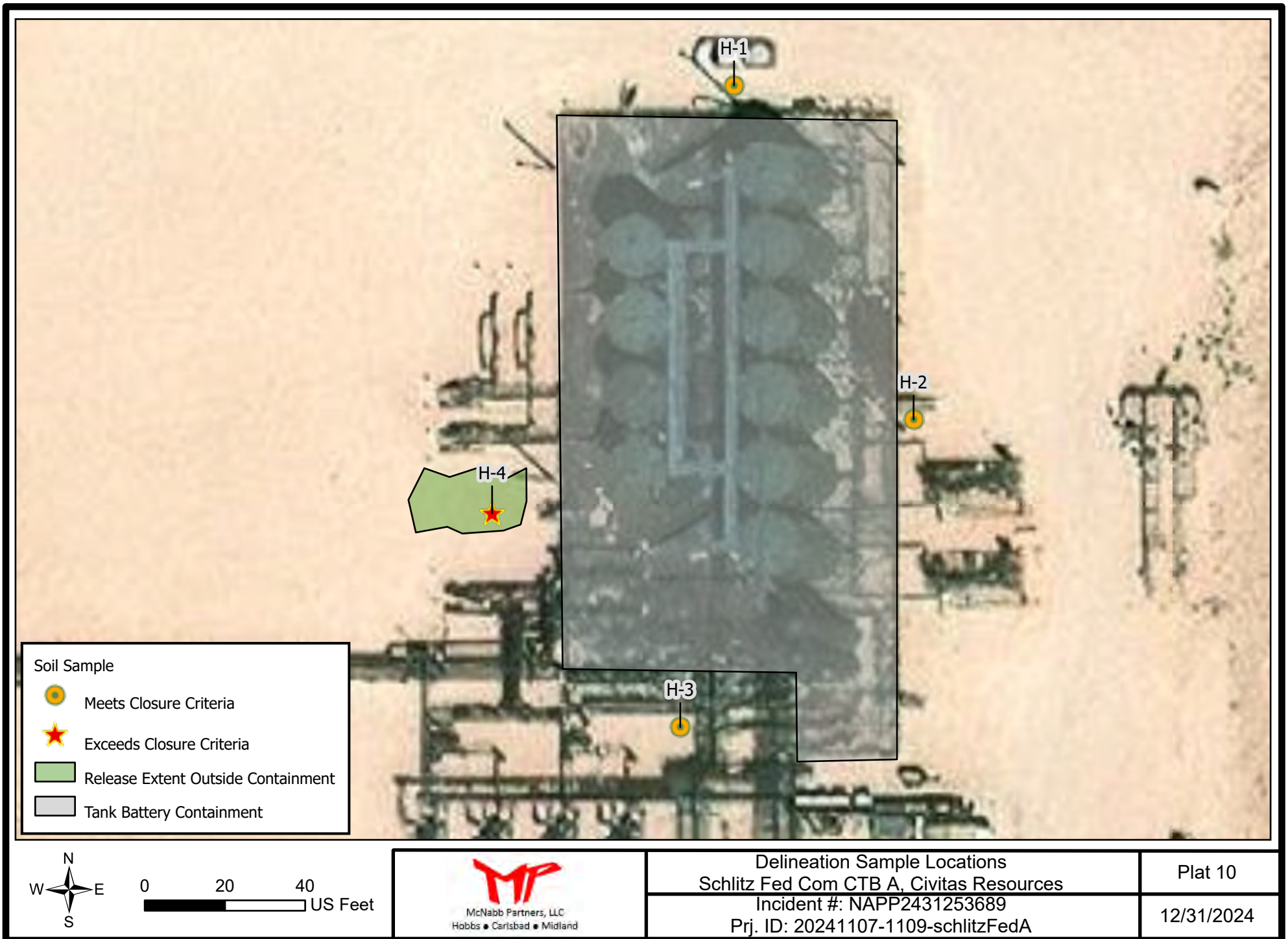


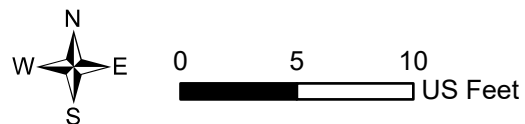
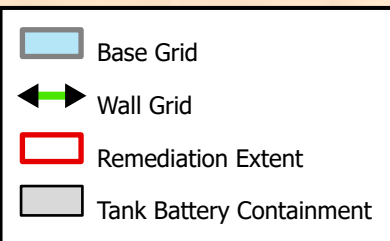
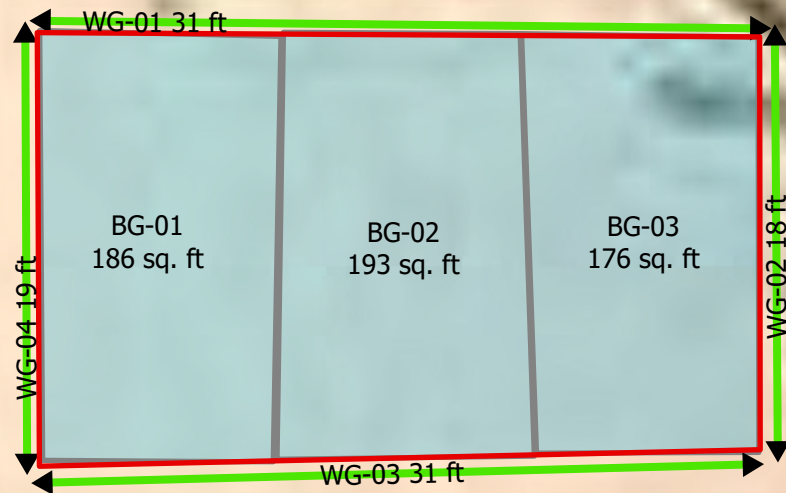
















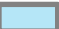
Sample Grid Location and Size  
Schlitz Fed Com CTB A, Civitas Resources  
Incident #: NAPP2431253689  
Prj. ID: 20241107-1109-schlitzFedA

Plat 11  
12/31/2024





## Soil Sample

-  Meets Closure Criteria
-  Remediation Extent
-  Tank Battery Containment
-  Wall Grid
-  Base Grid



0 4 8  
US Feet



Confirmation Sample Locations  
Schlitz Fed Com CTB A, Civitas Resources  
Incident #: NAPP2431253689  
Prj. ID: 20241107-1109-schlitzFedA

Plat 12

12/31/2024



# Tables



McNabb Partners, LLC  
Hobbs • Carlsbad • Midland

Table A. Analytical Summary

Schlitz Fed Com CTB A

Sample ID	Date	Depth (Feet)	Chloride (mg/kg)	GRO (mg/kg)	DRO (mg/kg)	GRO+DRO (mg/kg)	MRO (mg/kg)	TPH Ext. (mg/kg)	Benzene (mg/kg)	BTEX (mg/kg)
NMOCD Closure Criteria			600	--	--	--	--	100	10	50
Lateral Delineation Samples										
H-1	12/13/2024	Surface	80	<10.0	<10.0	<20.0	<10.0	<30.0	<0.050	<0.300
H-2	12/13/2024	Surface	80	<10.0	<10.0	<20.0	<10.0	<30.0	<0.050	<0.300
H-3	12/13/2024	Surface	64	<10.0	<10.0	<20.0	<10.0	<30.0	<0.050	<0.300
H-4	12/13/2024	Surface	1630	<10.0	<10.0	<20.0	<10.0	<30.0	<0.050	<0.300
H-4	12/13/2024	0.5	80	<10.0	<10.0	<20.0	<10.0	<30.0	<0.050	<0.300
H-4	12/13/2024	1	<16	<10.0	<10.0	<20.0	<10.0	<30.0	<0.050	<0.300
H-4	12/13/2024	2	<16	<10.0	<10.0	<20.0	<10.0	<30.0	<0.050	<0.300
H-4	12/13/2024	3	<16	<10.0	<10.0	<20.0	<10.0	<30.0	<0.050	<0.300
Excavation Base Confirmation Samples										
BS-01	12/13/2024	0.5	133	<10.0	<10.0	<20.0	<10.0	<30.0	<0.050	<0.300
BS-02	12/13/2024	0.5	32	<10.0	<10.0	<20.0	<10.0	<30.0	<0.050	<0.300
BS-03	12/13/2024	0.5	32	<10.0	<10.0	<20.0	<10.0	<30.0	<0.050	<0.300
Side Wall Confirmation Samples										
WS-01	12/13/2024	0-0.5	<16	<10.0	<10.0	<20.0	<10.0	<30.0	<0.050	<0.300
WS-02	12/13/2024	0-0.5	16	<10.0	<10.0	<20.0	<10.0	<30.0	<0.050	<0.300
WS-03	12/13/2024	0-0.5	96	<10.0	<10.0	<20.0	<10.0	<30.0	<0.050	<0.300
WS-04	12/13/2024	0-0.5	32	<10.0	<10.0	<20.0	<10.0	<30.0	<0.050	<0.300
Legend:										
Sample exceeds NMOCD Closure Criteria										
Sample point has been excavated										

# Appendix A

## Communications



McNabb Partners, LLC  
Hobbs • Carlsbad • Midland

Sante Fe Main Office  
Phone: (505) 476-3441

General Information  
Phone: (505) 629-6116

Online Phone Directory  
<https://www.emnrd.nm.gov/ocd/contact-us>

State of New Mexico  
Energy, Minerals and Natural Resources  
Oil Conservation Division  
1220 S. St Francis Dr.  
Santa Fe, NM 87505

QUESTIONS

Action 410497

QUESTIONS

Operator: Civitas Permian Operating, LLC 555 17th Street Denver, CO 80202	OGRID: 332195
	Action Number: 410497
	Action Type: [NOTIFY] Notification Of Liner Inspection (C-141L)

QUESTIONS

Prerequisites	
Incident ID (n#)	nAPP2431253689
Incident Name	NAPP2431253689 SCHLITZ FED COM CTB A @ 30-015-54629
Incident Type	Produced Water Release
Incident Status	Initial C-141 Approved
Incident Well	[30-015-54629] SCHLITZ FEDERAL COM #122H
Incident Facility	[fAPP2227132692] SCHLITZ FED COM A CTB

Location of Release Source	
Site Name	Schlitz Fed Com CTB A
Date Release Discovered	11/07/2024
Surface Owner	State

Liner Inspection Event Information	
Please answer all the questions in this group.	
What is the liner inspection surface area in square feet	11,371
Have all the impacted materials been removed from the liner	Yes
Liner inspection date pursuant to Subparagraph (a) of Paragraph (5) of Subsection A of 19.15.29.11 NMAC	11/13/2024
Time liner inspection will commence	11:00 AM
Warning: Notification can not be less than two business days prior to conducting liner inspection.	
Please provide any information necessary for observers to liner inspection	N/A
Please provide any information necessary for navigation to liner inspection site	32.126173, -104.302191



Sante Fe Main Office  
Phone: (505) 476-3441

General Information  
Phone: (505) 629-6116

Online Phone Directory  
<https://www.emnrd.nm.gov/ocd/contact-us>

State of New Mexico  
Energy, Minerals and Natural Resources  
Oil Conservation Division  
1220 S. St Francis Dr.  
Santa Fe, NM 87505

CONDITIONS

Action 410497

CONDITIONS

Operator: Civitas Permian Operating, LLC 555 17th Street Denver, CO 80202	OGRID: 332195
	Action Number: 410497
	Action Type: [NOTIFY] Notification Of Liner Inspection (C-141L)

CONDITIONS

Created By	Condition	Condition Date
jlujan	Failure to notify the OCD of liner inspections including any changes in date/time per the requirements of 19.15.29.11.A(5)(a)(ii) NMAC, may result in the inspection not being accepted.	12/10/2024

Sante Fe Main Office  
Phone: (505) 476-3441

General Information  
Phone: (505) 629-6116

Online Phone Directory  
<https://www.emnrd.nm.gov/ocd/contact-us>

**State of New Mexico**  
**Energy, Minerals and Natural Resources**  
**Oil Conservation Division**  
**1220 S. St Francis Dr.**  
**Santa Fe, NM 87505**

QUESTIONS

Action 410502

**QUESTIONS**

Operator: Civitas Permian Operating, LLC 555 17th Street Denver, CO 80202	OGRID: 332195
	Action Number: 410502
	Action Type: [NOTIFY] Notification Of Sampling (C-141N)

**QUESTIONS**

Prerequisites	
Incident ID (n#)	nAPP2431253689
Incident Name	NAPP2431253689 SCHLITZ FED COM CTB A @ 30-015-54629
Incident Type	Produced Water Release
Incident Status	Initial C-141 Approved
Incident Well	[30-015-54629] SCHLITZ FEDERAL COM #122H
Incident Facility	[fAPP2227132692] SCHLITZ FED COM A CTB

Location of Release Source	
Site Name	Schlitz Fed Com CTB A
Date Release Discovered	11/07/2024
Surface Owner	State

Sampling Event General Information	
Please answer all the questions in this group.	
What is the sampling surface area in square feet	1,200
What is the estimated number of samples that will be gathered	6
Sampling date pursuant to Subparagraph (a) of Paragraph (1) of Subsection D of 19.15.29.12 NMAC	12/13/2024
Time sampling will commence	02:00 PM
Please provide any information necessary for observers to contact samplers	N/A
Please provide any information necessary for navigation to sampling site	32.126173, -104.302191

Sante Fe Main Office  
Phone: (505) 476-3441

General Information  
Phone: (505) 629-6116

Online Phone Directory  
<https://www.emnrd.nm.gov/ocd/contact-us>

State of New Mexico  
Energy, Minerals and Natural Resources  
Oil Conservation Division  
1220 S. St Francis Dr.  
Santa Fe, NM 87505

CONDITIONS

Action 410502

CONDITIONS

Operator: Civitas Permian Operating, LLC 555 17th Street Denver, CO 80202	OGRID: 332195
	Action Number: 410502
	Action Type: [NOTIFY] Notification Of Sampling (C-141N)

CONDITIONS

Created By	Condition	Condition Date
jlujan	Failure to notify the OCD of sampling events including any changes in date/time per the requirements of 19.15.29.12.D.(1).(a) NMAC, may result in the remediation closure samples not being accepted.	12/10/2024

# Appendix B

## Certificates of Analysis



McNabb Partners, LLC  
Hobbs • Carlsbad • Midland



PHONE (575) 393-2326 ° 101 E. MARLAND ° HOBBS, NM 88240

December 23, 2024

MARCUS GIPSON  
MC NABB SERVICES  
P. O. BOX 5753  
HOBBS, NM 88240

RE: SCHLITZ FED COM A

Enclosed are the results of analyses for samples received by the laboratory on 12/17/24 8:41.

Cardinal Laboratories is accredited through Texas NELAP under certificate number TX-C24-00112. Accreditation applies to drinking water, non-potable water and solid and chemical materials. All accredited analytes are denoted by an asterisk (\*). For a complete list of accredited analytes and matrices visit the TCEQ website at [www.tceq.texas.gov/field/qa/lab\\_accred\\_certif.html](http://www.tceq.texas.gov/field/qa/lab_accred_certif.html).

Cardinal Laboratories is accredited through the State of Colorado Department of Public Health and Environment for:

Method EPA 552.2	Haloacetic Acids (HAA-5)
Method EPA 524.2	Total Trihalomethanes (TTHM)
Method EPA 524.4	Regulated VOCs (V1, V2, V3)

Accreditation applies to public drinking water matrices.

This report meets NELAP requirements and is made up of a cover page, analytical results, and a copy of the original chain-of-custody. If you have any questions concerning this report, please feel free to contact me.

Sincerely,

A handwritten signature in black ink that reads "Celey D. Keene". The signature is written in a cursive style with a large, stylized 'C' and 'K'.

Celey D. Keene  
Lab Director/Quality Manager





PHONE (575) 393-2326 ° 101 E. MARLAND ° HOBBS, NM 88240

**Analytical Results For:**

MC NABB SERVICES  
 MARCUS GIPSON  
 P. O. BOX 5753  
 HOBBS NM, 88240  
 Fax To: (575) 391-8484

Received:	12/17/2024	Sampling Date:	12/13/2024
Reported:	12/23/2024	Sampling Type:	Soil
Project Name:	SCHLITZ FED COM A	Sampling Condition:	Cool & Intact
Project Number:	NONE GIVEN	Sample Received By:	Shalyn Rodriguez
Project Location:	CIVITAS - EDDY CO., NM		

**Sample ID: H - 1 SURF (H247595-01)**

BTX 8021B		mg/kg		Analyzed By: JH					
Analyte	Result	Reporting Limit	Analyzed	Method Blank	BS	% Recovery	True Value QC	RPD	Qualifier
Benzene*	<0.050	0.050	12/17/2024	ND	2.00	100	2.00	1.90	
Toluene*	<0.050	0.050	12/17/2024	ND	2.00	100	2.00	1.91	
Ethylbenzene*	<0.050	0.050	12/17/2024	ND	1.99	99.7	2.00	1.48	
Total Xylenes*	<0.150	0.150	12/17/2024	ND	6.01	100	6.00	1.48	
Total BTX	<0.300	0.300	12/17/2024	ND					

Surrogate: 4-Bromofluorobenzene (PID) 99.9 % 71.5-134

Chloride, SM4500Cl-B		mg/kg		Analyzed By: KV						
Analyte	Result	Reporting Limit	Analyzed	Method Blank	BS	% Recovery	True Value QC	RPD	Qualifier	
Chloride	80.0	16.0	12/18/2024	ND	448	112	400	3.64		

TPH 8015M		mg/kg		Analyzed By: ms					
Analyte	Result	Reporting Limit	Analyzed	Method Blank	BS	% Recovery	True Value QC	RPD	Qualifier
GRO C6-C10*	<10.0	10.0	12/17/2024	ND	205	102	200	0.911	
DRO >C10-C28*	<10.0	10.0	12/17/2024	ND	202	101	200	2.25	
EXT DRO >C28-C36	<10.0	10.0	12/17/2024	ND					

Surrogate: 1-Chlorooctane 95.5 % 48.2-134

Surrogate: 1-Chlorooctadecane 100 % 49.1-148

Cardinal Laboratories

\*=Accredited Analyte

PLEASE NOTE: Liability and Damages. Cardinal's liability and client's exclusive remedy for any claim arising, whether based in contract or tort, shall be limited to the amount paid by client for analyses. All claims, including those for negligence and any other cause whatsoever shall be deemed waived unless made in writing and received by Cardinal within thirty (30) days after completion of the applicable service. In no event shall Cardinal be liable for incidental or consequential damages, including, without limitation, business interruptions, loss of use, or loss of profits incurred by client, its subsidiaries, affiliates or successors arising out of or related to the performance of the services hereunder by Cardinal, regardless of whether such claim is based upon any of the above stated reasons or otherwise. Results relate only to the samples identified above. This report shall not be reproduced except in full with written approval of Cardinal Laboratories.

Celey D. Keene, Lab Director/Quality Manager



PHONE (575) 393-2326 ° 101 E. MARLAND ° HOBBS, NM 88240

**Analytical Results For:**

MC NABB SERVICES  
 MARCUS GIPSON  
 P. O. BOX 5753  
 HOBBS NM, 88240  
 Fax To: (575) 391-8484

Received: 12/17/2024  
 Reported: 12/23/2024  
 Project Name: SCHLITZ FED COM A  
 Project Number: NONE GIVEN  
 Project Location: CIVITAS - EDDY CO., NM

Sampling Date: 12/13/2024  
 Sampling Type: Soil  
 Sampling Condition: Cool & Intact  
 Sample Received By: Shalyn Rodriguez

**Sample ID: H - 2 SURF (H247595-02)**

BTEX 8021B		mg/kg		Analyzed By: JH						
Analyte	Result	Reporting Limit	Analyzed	Method Blank	BS	% Recovery	True Value QC	RPD	Qualifier	
Benzene*	<0.050	0.050	12/17/2024	ND	2.00	100	2.00	1.90		
Toluene*	<0.050	0.050	12/17/2024	ND	2.00	100	2.00	1.91		
Ethylbenzene*	<0.050	0.050	12/17/2024	ND	1.99	99.7	2.00	1.48		
Total Xylenes*	<0.150	0.150	12/17/2024	ND	6.01	100	6.00	1.48		
Total BTEX	<0.300	0.300	12/17/2024	ND						

Surrogate: 4-Bromofluorobenzene (PID) 98.5 % 71.5-134

Chloride, SM4500Cl-B		mg/kg		Analyzed By: KV						
Analyte	Result	Reporting Limit	Analyzed	Method Blank	BS	% Recovery	True Value QC	RPD	Qualifier	
Chloride	80.0	16.0	12/18/2024	ND	448	112	400	3.64		

TPH 8015M		mg/kg		Analyzed By: ms					
Analyte	Result	Reporting Limit	Analyzed	Method Blank	BS	% Recovery	True Value QC	RPD	Qualifier
GRO C6-C10*	<10.0	10.0	12/17/2024	ND	205	102	200	0.911	
DRO >C10-C28*	<10.0	10.0	12/17/2024	ND	202	101	200	2.25	
EXT DRO >C28-C36	<10.0	10.0	12/17/2024	ND					

Surrogate: 1-Chlorooctane 92.3 % 48.2-134

Surrogate: 1-Chlorooctadecane 95.7 % 49.1-148

Cardinal Laboratories

\*=Accredited Analyte

PLEASE NOTE: Liability and Damages. Cardinal's liability and client's exclusive remedy for any claim arising, whether based in contract or tort, shall be limited to the amount paid by client for analyses. All claims, including those for negligence and any other cause whatsoever shall be deemed waived unless made in writing and received by Cardinal within thirty (30) days after completion of the applicable service. In no event shall Cardinal be liable for incidental or consequential damages, including, without limitation, business interruptions, loss of use, or loss of profits incurred by client, its subsidiaries, affiliates or successors arising out of or related to the performance of the services hereunder by Cardinal, regardless of whether such claim is based upon any of the above stated reasons or otherwise. Results relate only to the samples identified above. This report shall not be reproduced except in full with written approval of Cardinal Laboratories.

Celey D. Keene, Lab Director/Quality Manager



PHONE (575) 393-2326 ° 101 E. MARLAND ° HOBBS, NM 88240

**Analytical Results For:**

MC NABB SERVICES  
 MARCUS GIPSON  
 P. O. BOX 5753  
 HOBBS NM, 88240  
 Fax To: (575) 391-8484

Received: 12/17/2024  
 Reported: 12/23/2024  
 Project Name: SCHLITZ FED COM A  
 Project Number: NONE GIVEN  
 Project Location: CIVITAS - EDDY CO., NM

Sampling Date: 12/13/2024  
 Sampling Type: Soil  
 Sampling Condition: Cool & Intact  
 Sample Received By: Shalyn Rodriguez

**Sample ID: H - 3 SURF (H247595-03)**

BTX 8021B		mg/kg		Analyzed By: JH						
Analyte	Result	Reporting Limit	Analyzed	Method Blank	BS	% Recovery	True Value QC	RPD	Qualifier	
Benzene*	<0.050	0.050	12/17/2024	ND	2.00	100	2.00	1.90		
Toluene*	<0.050	0.050	12/17/2024	ND	2.00	100	2.00	1.91		
Ethylbenzene*	<0.050	0.050	12/17/2024	ND	1.99	99.7	2.00	1.48		
Total Xylenes*	<0.150	0.150	12/17/2024	ND	6.01	100	6.00	1.48		
Total BTX	<0.300	0.300	12/17/2024	ND						

Surrogate: 4-Bromofluorobenzene (PID) 99.3 % 71.5-134

Chloride, SM4500CI-B		mg/kg		Analyzed By: KV						
Analyte	Result	Reporting Limit	Analyzed	Method Blank	BS	% Recovery	True Value QC	RPD	Qualifier	
Chloride	64.0	16.0	12/18/2024	ND	448	112	400	3.64		

TPH 8015M		mg/kg		Analyzed By: ms					
Analyte	Result	Reporting Limit	Analyzed	Method Blank	BS	% Recovery	True Value QC	RPD	Qualifier
GRO C6-C10*	<10.0	10.0	12/17/2024	ND	205	102	200	0.911	
DRO >C10-C28*	<10.0	10.0	12/17/2024	ND	202	101	200	2.25	
EXT DRO >C28-C36	<10.0	10.0	12/17/2024	ND					

Surrogate: 1-Chlorooctane 92.5 % 48.2-134

Surrogate: 1-Chlorooctadecane 96.8 % 49.1-148

Cardinal Laboratories

\*=Accredited Analyte

PLEASE NOTE: Liability and Damages. Cardinal's liability and client's exclusive remedy for any claim arising, whether based in contract or tort, shall be limited to the amount paid by client for analyses. All claims, including those for negligence and any other cause whatsoever shall be deemed waived unless made in writing and received by Cardinal within thirty (30) days after completion of the applicable service. In no event shall Cardinal be liable for incidental or consequential damages, including, without limitation, business interruptions, loss of use, or loss of profits incurred by client, its subsidiaries, affiliates or successors arising out of or related to the performance of the services hereunder by Cardinal, regardless of whether such claim is based upon any of the above stated reasons or otherwise. Results relate only to the samples identified above. This report shall not be reproduced except in full with written approval of Cardinal Laboratories.

Celey D. Keene, Lab Director/Quality Manager



PHONE (575) 393-2326 ° 101 E. MARLAND ° HOBBS, NM 88240

**Analytical Results For:**

MC NABB SERVICES  
 MARCUS GIPSON  
 P. O. BOX 5753  
 HOBBS NM, 88240  
 Fax To: (575) 391-8484

Received: 12/17/2024  
 Reported: 12/23/2024  
 Project Name: SCHLITZ FED COM A  
 Project Number: NONE GIVEN  
 Project Location: CIVITAS - EDDY CO., NM

Sampling Date: 12/13/2024  
 Sampling Type: Soil  
 Sampling Condition: Cool & Intact  
 Sample Received By: Shalyn Rodriguez

**Sample ID: H - 4 SURF (H247595-04)**

BTEX 8021B		mg/kg		Analyzed By: JH						
Analyte	Result	Reporting Limit	Analyzed	Method Blank	BS	% Recovery	True Value QC	RPD	Qualifier	
Benzene*	<0.050	0.050	12/17/2024	ND	2.00	100	2.00	1.90		
Toluene*	<0.050	0.050	12/17/2024	ND	2.00	100	2.00	1.91		
Ethylbenzene*	<0.050	0.050	12/17/2024	ND	1.99	99.7	2.00	1.48		
Total Xylenes*	<0.150	0.150	12/17/2024	ND	6.01	100	6.00	1.48		
Total BTEX	<0.300	0.300	12/17/2024	ND						

Surrogate: 4-Bromofluorobenzene (PID) 98.8 % 71.5-134

Chloride, SM4500Cl-B		mg/kg		Analyzed By: KV						
Analyte	Result	Reporting Limit	Analyzed	Method Blank	BS	% Recovery	True Value QC	RPD	Qualifier	
Chloride	1630	16.0	12/18/2024	ND	448	112	400	3.64		

TPH 8015M		mg/kg		Analyzed By: ms					
Analyte	Result	Reporting Limit	Analyzed	Method Blank	BS	% Recovery	True Value QC	RPD	Qualifier
GRO C6-C10*	<10.0	10.0	12/18/2024	ND	205	102	200	0.911	
DRO >C10-C28*	<10.0	10.0	12/18/2024	ND	202	101	200	2.25	
EXT DRO >C28-C36	<10.0	10.0	12/18/2024	ND					

Surrogate: 1-Chlorooctane 98.6 % 48.2-134

Surrogate: 1-Chlorooctadecane 102 % 49.1-148

Cardinal Laboratories

\*=Accredited Analyte

PLEASE NOTE: Liability and Damages. Cardinal's liability and client's exclusive remedy for any claim arising, whether based in contract or tort, shall be limited to the amount paid by client for analyses. All claims, including those for negligence and any other cause whatsoever shall be deemed waived unless made in writing and received by Cardinal within thirty (30) days after completion of the applicable service. In no event shall Cardinal be liable for incidental or consequential damages, including, without limitation, business interruptions, loss of use, or loss of profits incurred by client, its subsidiaries, affiliates or successors arising out of or related to the performance of the services hereunder by Cardinal, regardless of whether such claim is based upon any of the above stated reasons or otherwise. Results relate only to the samples identified above. This report shall not be reproduced except in full with written approval of Cardinal Laboratories.

Celey D. Keene, Lab Director/Quality Manager



PHONE (575) 393-2326 ° 101 E. MARLAND ° HOBBS, NM 88240

**Analytical Results For:**

MC NABB SERVICES  
 MARCUS GIPSON  
 P. O. BOX 5753  
 HOBBS NM, 88240  
 Fax To: (575) 391-8484

Received: 12/17/2024  
 Reported: 12/23/2024  
 Project Name: SCHLITZ FED COM A  
 Project Number: NONE GIVEN  
 Project Location: CIVITAS - EDDY CO., NM

Sampling Date: 12/13/2024  
 Sampling Type: Soil  
 Sampling Condition: Cool & Intact  
 Sample Received By: Shalyn Rodriguez

**Sample ID: H - 4 0.5' (H247595-05)**

BTEx 8021B		mg/kg		Analyzed By: JH						
Analyte	Result	Reporting Limit	Analyzed	Method Blank	BS	% Recovery	True Value QC	RPD	Qualifier	
Benzene*	<0.050	0.050	12/17/2024	ND	2.00	100	2.00	1.90		
Toluene*	<0.050	0.050	12/17/2024	ND	2.00	100	2.00	1.91		
Ethylbenzene*	<0.050	0.050	12/17/2024	ND	1.99	99.7	2.00	1.48		
Total Xylenes*	<0.150	0.150	12/17/2024	ND	6.01	100	6.00	1.48		
Total BTEX	<0.300	0.300	12/17/2024	ND						

Surrogate: 4-Bromofluorobenzene (PID) 101 % 71.5-134

Chloride, SM4500Cl-B		mg/kg		Analyzed By: KV						
Analyte	Result	Reporting Limit	Analyzed	Method Blank	BS	% Recovery	True Value QC	RPD	Qualifier	
Chloride	80.0	16.0	12/18/2024	ND	448	112	400	3.64		

TPH 8015M		mg/kg		Analyzed By: MS					
Analyte	Result	Reporting Limit	Analyzed	Method Blank	BS	% Recovery	True Value QC	RPD	Qualifier
GRO C6-C10*	<10.0	10.0	12/17/2024	ND	216	108	200	2.86	
DRO >C10-C28*	<10.0	10.0	12/17/2024	ND	210	105	200	7.87	
EXT DRO >C28-C36	<10.0	10.0	12/17/2024	ND					

Surrogate: 1-Chlorooctane 96.5 % 48.2-134

Surrogate: 1-Chlorooctadecane 104 % 49.1-148

Cardinal Laboratories

\*=Accredited Analyte

PLEASE NOTE: Liability and Damages. Cardinal's liability and client's exclusive remedy for any claim arising, whether based in contract or tort, shall be limited to the amount paid by client for analyses. All claims, including those for negligence and any other cause whatsoever shall be deemed waived unless made in writing and received by Cardinal within thirty (30) days after completion of the applicable service. In no event shall Cardinal be liable for incidental or consequential damages, including, without limitation, business interruptions, loss of use, or loss of profits incurred by client, its subsidiaries, affiliates or successors arising out of or related to the performance of the services hereunder by Cardinal, regardless of whether such claim is based upon any of the above stated reasons or otherwise. Results relate only to the samples identified above. This report shall not be reproduced except in full with written approval of Cardinal Laboratories.

Celey D. Keene, Lab Director/Quality Manager





PHONE (575) 393-2326 ° 101 E. MARLAND ° HOBBS, NM 88240

**Analytical Results For:**

MC NABB SERVICES  
 MARCUS GIPSON  
 P. O. BOX 5753  
 HOBBS NM, 88240  
 Fax To: (575) 391-8484

Received: 12/17/2024  
 Reported: 12/23/2024  
 Project Name: SCHLITZ FED COM A  
 Project Number: NONE GIVEN  
 Project Location: CIVITAS - EDDY CO., NM

Sampling Date: 12/13/2024  
 Sampling Type: Soil  
 Sampling Condition: Cool & Intact  
 Sample Received By: Shalyn Rodriguez

**Sample ID: H - 4 1' (H247595-06)**

BTEx 8021B		mg/kg		Analyzed By: JH						
Analyte	Result	Reporting Limit	Analyzed	Method Blank	BS	% Recovery	True Value QC	RPD	Qualifier	
Benzene*	<0.050	0.050	12/17/2024	ND	2.00	100	2.00	1.90		
Toluene*	<0.050	0.050	12/17/2024	ND	2.00	100	2.00	1.91		
Ethylbenzene*	<0.050	0.050	12/17/2024	ND	1.99	99.7	2.00	1.48		
Total Xylenes*	<0.150	0.150	12/17/2024	ND	6.01	100	6.00	1.48		
Total BTEx	<0.300	0.300	12/17/2024	ND						

Surrogate: 4-Bromofluorobenzene (PID) 99.1 % 71.5-134

Chloride, SM4500CI-B		mg/kg		Analyzed By: KV						
Analyte	Result	Reporting Limit	Analyzed	Method Blank	BS	% Recovery	True Value QC	RPD	Qualifier	
Chloride	<16.0	16.0	12/18/2024	ND	448	112	400	3.64		

TPH 8015M		mg/kg		Analyzed By: MS					
Analyte	Result	Reporting Limit	Analyzed	Method Blank	BS	% Recovery	True Value QC	RPD	Qualifier
GRO C6-C10*	<10.0	10.0	12/17/2024	ND	216	108	200	2.86	
DRO >C10-C28*	<10.0	10.0	12/17/2024	ND	210	105	200	7.87	
EXT DRO >C28-C36	<10.0	10.0	12/17/2024	ND					

Surrogate: 1-Chlorooctane 99.3 % 48.2-134

Surrogate: 1-Chlorooctadecane 103 % 49.1-148

Cardinal Laboratories

\*=Accredited Analyte

PLEASE NOTE: Liability and Damages. Cardinal's liability and client's exclusive remedy for any claim arising, whether based in contract or tort, shall be limited to the amount paid by client for analyses. All claims, including those for negligence and any other cause whatsoever shall be deemed waived unless made in writing and received by Cardinal within thirty (30) days after completion of the applicable service. In no event shall Cardinal be liable for incidental or consequential damages, including, without limitation, business interruptions, loss of use, or loss of profits incurred by client, its subsidiaries, affiliates or successors arising out of or related to the performance of the services hereunder by Cardinal, regardless of whether such claim is based upon any of the above stated reasons or otherwise. Results relate only to the samples identified above. This report shall not be reproduced except in full with written approval of Cardinal Laboratories.

Celey D. Keene, Lab Director/Quality Manager



PHONE (575) 393-2326 ° 101 E. MARLAND ° HOBBS, NM 88240

**Analytical Results For:**

MC NABB SERVICES  
 MARCUS GIPSON  
 P. O. BOX 5753  
 HOBBS NM, 88240  
 Fax To: (575) 391-8484

Received: 12/17/2024  
 Reported: 12/23/2024  
 Project Name: SCHLITZ FED COM A  
 Project Number: NONE GIVEN  
 Project Location: CIVITAS - EDDY CO., NM

Sampling Date: 12/13/2024  
 Sampling Type: Soil  
 Sampling Condition: Cool & Intact  
 Sample Received By: Shalyn Rodriguez

**Sample ID: H - 4 2' (H247595-07)**

BTEX 8021B		mg/kg		Analyzed By: JH						
Analyte	Result	Reporting Limit	Analyzed	Method Blank	BS	% Recovery	True Value QC	RPD	Qualifier	
Benzene*	<0.050	0.050	12/17/2024	ND	2.00	100	2.00	1.90		
Toluene*	<0.050	0.050	12/17/2024	ND	2.00	100	2.00	1.91		
Ethylbenzene*	<0.050	0.050	12/17/2024	ND	1.99	99.7	2.00	1.48		
Total Xylenes*	<0.150	0.150	12/17/2024	ND	6.01	100	6.00	1.48		
Total BTEX	<0.300	0.300	12/17/2024	ND						

Surrogate: 4-Bromofluorobenzene (PID) 99.0 % 71.5-134

Chloride, SM4500Cl-B		mg/kg		Analyzed By: KV						
Analyte	Result	Reporting Limit	Analyzed	Method Blank	BS	% Recovery	True Value QC	RPD	Qualifier	
Chloride	<16.0	16.0	12/18/2024	ND	448	112	400	3.64		

TPH 8015M		mg/kg		Analyzed By: MS					
Analyte	Result	Reporting Limit	Analyzed	Method Blank	BS	% Recovery	True Value QC	RPD	Qualifier
GRO C6-C10*	<10.0	10.0	12/17/2024	ND	216	108	200	2.86	
DRO >C10-C28*	<10.0	10.0	12/17/2024	ND	210	105	200	7.87	
EXT DRO >C28-C36	<10.0	10.0	12/17/2024	ND					

Surrogate: 1-Chlorooctane 108 % 48.2-134

Surrogate: 1-Chlorooctadecane 111 % 49.1-148

Cardinal Laboratories

\*=Accredited Analyte

PLEASE NOTE: Liability and Damages. Cardinal's liability and client's exclusive remedy for any claim arising, whether based in contract or tort, shall be limited to the amount paid by client for analyses. All claims, including those for negligence and any other cause whatsoever shall be deemed waived unless made in writing and received by Cardinal within thirty (30) days after completion of the applicable service. In no event shall Cardinal be liable for incidental or consequential damages, including, without limitation, business interruptions, loss of use, or loss of profits incurred by client, its subsidiaries, affiliates or successors arising out of or related to the performance of the services hereunder by Cardinal, regardless of whether such claim is based upon any of the above stated reasons or otherwise. Results relate only to the samples identified above. This report shall not be reproduced except in full with written approval of Cardinal Laboratories.

Celey D. Keene, Lab Director/Quality Manager



PHONE (575) 393-2326 ° 101 E. MARLAND ° HOBBS, NM 88240

**Analytical Results For:**

MC NABB SERVICES  
 MARCUS GIPSON  
 P. O. BOX 5753  
 HOBBS NM, 88240  
 Fax To: (575) 391-8484

Received: 12/17/2024  
 Reported: 12/23/2024  
 Project Name: SCHLITZ FED COM A  
 Project Number: NONE GIVEN  
 Project Location: CIVITAS - EDDY CO., NM

Sampling Date: 12/13/2024  
 Sampling Type: Soil  
 Sampling Condition: Cool & Intact  
 Sample Received By: Shalyn Rodriguez

**Sample ID: H - 4 3' (H247595-08)**

BTEx 8021B		mg/kg		Analyzed By: JH						
Analyte	Result	Reporting Limit	Analyzed	Method Blank	BS	% Recovery	True Value QC	RPD	Qualifier	
Benzene*	<0.050	0.050	12/17/2024	ND	2.00	100	2.00	1.90		
Toluene*	<0.050	0.050	12/17/2024	ND	2.00	100	2.00	1.91		
Ethylbenzene*	<0.050	0.050	12/17/2024	ND	1.99	99.7	2.00	1.48		
Total Xylenes*	<0.150	0.150	12/17/2024	ND	6.01	100	6.00	1.48		
Total BTEx	<0.300	0.300	12/17/2024	ND						

Surrogate: 4-Bromofluorobenzene (PID) 98.3 % 71.5-134

Chloride, SM4500CI-B		mg/kg		Analyzed By: KV						
Analyte	Result	Reporting Limit	Analyzed	Method Blank	BS	% Recovery	True Value QC	RPD	Qualifier	
Chloride	<16.0	16.0	12/18/2024	ND	448	112	400	3.64		

TPH 8015M		mg/kg		Analyzed By: MS					
Analyte	Result	Reporting Limit	Analyzed	Method Blank	BS	% Recovery	True Value QC	RPD	Qualifier
GRO C6-C10*	<10.0	10.0	12/17/2024	ND	216	108	200	2.86	
DRO >C10-C28*	<10.0	10.0	12/17/2024	ND	210	105	200	7.87	
EXT DRO >C28-C36	<10.0	10.0	12/17/2024	ND					

Surrogate: 1-Chlorooctane 106 % 48.2-134

Surrogate: 1-Chlorooctadecane 110 % 49.1-148

Cardinal Laboratories

\*=Accredited Analyte

PLEASE NOTE: Liability and Damages. Cardinal's liability and client's exclusive remedy for any claim arising, whether based in contract or tort, shall be limited to the amount paid by client for analyses. All claims, including those for negligence and any other cause whatsoever shall be deemed waived unless made in writing and received by Cardinal within thirty (30) days after completion of the applicable service. In no event shall Cardinal be liable for incidental or consequential damages, including, without limitation, business interruptions, loss of use, or loss of profits incurred by client, its subsidiaries, affiliates or successors arising out of or related to the performance of the services hereunder by Cardinal, regardless of whether such claim is based upon any of the above stated reasons or otherwise. Results relate only to the samples identified above. This report shall not be reproduced except in full with written approval of Cardinal Laboratories.

Celey D. Keene, Lab Director/Quality Manager



PHONE (575) 393-2326 ° 101 E. MARLAND ° HOBBS, NM 88240

---

### Notes and Definitions

ND	Analyte NOT DETECTED at or above the reporting limit
RPD	Relative Percent Difference
**	Samples not received at proper temperature of 6°C or below.
***	Insufficient time to reach temperature.
-	Chloride by SM4500Cl-B does not require samples be received at or below 6°C Samples reported on an as received basis (wet) unless otherwise noted on report

---

Cardinal Laboratories

\*=Accredited Analyte

PLEASE NOTE: Liability and Damages. Cardinal's liability and client's exclusive remedy for any claim arising, whether based in contract or tort, shall be limited to the amount paid by client for analyses. All claims, including those for negligence and any other cause whatsoever shall be deemed waived unless made in writing and received by Cardinal within thirty (30) days after completion of the applicable service. In no event shall Cardinal be liable for incidental or consequential damages, including, without limitation, business interruptions, loss of use, or loss of profits incurred by client, its subsidiaries, affiliates or successors arising out of or related to the performance of the services hereunder by Cardinal, regardless of whether such claim is based upon any of the above stated reasons or otherwise. Results relate only to the samples identified above. This report shall not be reproduced except in full with written approval of Cardinal Laboratories.

A handwritten signature in cursive script, appearing to read "Celey D. Keene", written in black ink.

---

Celey D. Keene, Lab Director/Quality Manager

**BILL TO**

ANALYSIS REQUEST

† Cardinal cannot accept verbal changes. Please email changes to [celey.keene@cardinallabsnm.com](mailto:celey.keene@cardinallabsnm.com)



PHONE (575) 393-2326 ° 101 E. MARLAND ° HOBBS, NM 88240

December 23, 2024

MARCUS GIPSON  
MC NABB SERVICES  
P. O. BOX 5753  
HOBBS, NM 88240

RE: SCHLITZ FED COM A

Enclosed are the results of analyses for samples received by the laboratory on 12/17/24 8:41.

Cardinal Laboratories is accredited through Texas NELAP under certificate number TX-C24-00112. Accreditation applies to drinking water, non-potable water and solid and chemical materials. All accredited analytes are denoted by an asterisk (\*). For a complete list of accredited analytes and matrices visit the TCEQ website at [www.tceq.texas.gov/field/qa/lab\\_accred\\_certif.html](http://www.tceq.texas.gov/field/qa/lab_accred_certif.html).

Cardinal Laboratories is accredited through the State of Colorado Department of Public Health and Environment for:

Method EPA 552.2	Haloacetic Acids (HAA-5)
Method EPA 524.2	Total Trihalomethanes (TTHM)
Method EPA 524.4	Regulated VOCs (V1, V2, V3)

Accreditation applies to public drinking water matrices.

This report meets NELAP requirements and is made up of a cover page, analytical results, and a copy of the original chain-of-custody. If you have any questions concerning this report, please feel free to contact me.

Sincerely,

A handwritten signature in black ink that reads "Celey D. Keene". The signature is fluid and cursive, with the first name "Celey" and last name "Keene" clearly distinguishable.

Celey D. Keene  
Lab Director/Quality Manager





PHONE (575) 393-2326 ° 101 E. MARLAND ° HOBBS, NM 88240

**Analytical Results For:**

MC NABB SERVICES  
 MARCUS GIPSON  
 P. O. BOX 5753  
 HOBBS NM, 88240  
 Fax To: (575) 391-8484

Received:	12/17/2024	Sampling Date:	12/13/2024
Reported:	12/23/2024	Sampling Type:	Soil
Project Name:	SCHLITZ FED COM A	Sampling Condition:	Cool & Intact
Project Number:	NONE GIVEN	Sample Received By:	Shalyn Rodriguez
Project Location:	CIVITAS - EDDY CO., NM		

**Sample ID: WS - 01 0-0.5' (H247596-01)**

BTEX 8021B		mg/kg		Analyzed By: JH					
Analyte	Result	Reporting Limit	Analyzed	Method Blank	BS	% Recovery	True Value QC	RPD	Qualifier
Benzene*	<0.050	0.050	12/17/2024	ND	2.00	100	2.00	1.90	
Toluene*	<0.050	0.050	12/17/2024	ND	2.00	100	2.00	1.91	
Ethylbenzene*	<0.050	0.050	12/17/2024	ND	1.99	99.7	2.00	1.48	
Total Xylenes*	<0.150	0.150	12/17/2024	ND	6.01	100	6.00	1.48	
Total BTEX	<0.300	0.300	12/17/2024	ND					

Surrogate: 4-Bromofluorobenzene (PID) 98.9 % 71.5-134

Chloride, SM4500Cl-B		mg/kg		Analyzed By: KV					
Analyte	Result	Reporting Limit	Analyzed	Method Blank	BS	% Recovery	True Value QC	RPD	Qualifier
Chloride	<16.0	16.0	12/18/2024	ND	448	112	400	3.64	

TPH 8015M		mg/kg		Analyzed By: MS					
Analyte	Result	Reporting Limit	Analyzed	Method Blank	BS	% Recovery	True Value QC	RPD	Qualifier
GRO C6-C10*	<10.0	10.0	12/17/2024	ND	216	108	200	2.86	
DRO >C10-C28*	<10.0	10.0	12/17/2024	ND	210	105	200	7.87	
EXT DRO >C28-C36	<10.0	10.0	12/17/2024	ND					

Surrogate: 1-Chlorooctane 107 % 48.2-134

Surrogate: 1-Chlorooctadecane 112 % 49.1-148

Cardinal Laboratories

\*=Accredited Analyte

PLEASE NOTE: Liability and Damages. Cardinal's liability and client's exclusive remedy for any claim arising, whether based in contract or tort, shall be limited to the amount paid by client for analyses. All claims, including those for negligence and any other cause whatsoever shall be deemed waived unless made in writing and received by Cardinal within thirty (30) days after completion of the applicable service. In no event shall Cardinal be liable for incidental or consequential damages, including, without limitation, business interruptions, loss of use, or loss of profits incurred by client, its subsidiaries, affiliates or successors arising out of or related to the performance of the services hereunder by Cardinal, regardless of whether such claim is based upon any of the above stated reasons or otherwise. Results relate only to the samples identified above. This report shall not be reproduced except in full with written approval of Cardinal Laboratories.

Celey D. Keene, Lab Director/Quality Manager



PHONE (575) 393-2326 ° 101 E. MARLAND ° HOBBS, NM 88240

**Analytical Results For:**

MC NABB SERVICES  
 MARCUS GIPSON  
 P. O. BOX 5753  
 HOBBS NM, 88240  
 Fax To: (575) 391-8484

Received: 12/17/2024  
 Reported: 12/23/2024  
 Project Name: SCHLITZ FED COM A  
 Project Number: NONE GIVEN  
 Project Location: CIVITAS - EDDY CO., NM

Sampling Date: 12/13/2024  
 Sampling Type: Soil  
 Sampling Condition: Cool & Intact  
 Sample Received By: Shalyn Rodriguez

**Sample ID: WS - 02 0-0.5' (H247596-02)**

BTEx 8021B		mg/kg		Analyzed By: JH						
Analyte	Result	Reporting Limit	Analyzed	Method Blank	BS	% Recovery	True Value QC	RPD	Qualifier	
Benzene*	<0.050	0.050	12/17/2024	ND	2.00	100	2.00	1.90		
Toluene*	<0.050	0.050	12/17/2024	ND	2.00	100	2.00	1.91		
Ethylbenzene*	<0.050	0.050	12/17/2024	ND	1.99	99.7	2.00	1.48		
Total Xylenes*	<0.150	0.150	12/17/2024	ND	6.01	100	6.00	1.48		
Total BTEx	<0.300	0.300	12/17/2024	ND						

Surrogate: 4-Bromofluorobenzene (PID) 99.6 % 71.5-134

Chloride, SM4500CI-B		mg/kg		Analyzed By: CT						
Analyte	Result	Reporting Limit	Analyzed	Method Blank	BS	% Recovery	True Value QC	RPD	Qualifier	
Chloride	16.0	16.0	12/18/2024	ND	432	108	400	3.77		

TPH 8015M		mg/kg		Analyzed By: MS					
Analyte	Result	Reporting Limit	Analyzed	Method Blank	BS	% Recovery	True Value QC	RPD	Qualifier
GRO C6-C10*	<10.0	10.0	12/17/2024	ND	216	108	200	2.86	
DRO >C10-C28*	<10.0	10.0	12/17/2024	ND	210	105	200	7.87	
EXT DRO >C28-C36	<10.0	10.0	12/17/2024	ND					

Surrogate: 1-Chlorooctane 110 % 48.2-134

Surrogate: 1-Chlorooctadecane 116 % 49.1-148

Cardinal Laboratories

\*=Accredited Analyte

PLEASE NOTE: Liability and Damages. Cardinal's liability and client's exclusive remedy for any claim arising, whether based in contract or tort, shall be limited to the amount paid by client for analyses. All claims, including those for negligence and any other cause whatsoever shall be deemed waived unless made in writing and received by Cardinal within thirty (30) days after completion of the applicable service. In no event shall Cardinal be liable for incidental or consequential damages, including, without limitation, business interruptions, loss of use, or loss of profits incurred by client, its subsidiaries, affiliates or successors arising out of or related to the performance of the services hereunder by Cardinal, regardless of whether such claim is based upon any of the above stated reasons or otherwise. Results relate only to the samples identified above. This report shall not be reproduced except in full with written approval of Cardinal Laboratories.

Celey D. Keene, Lab Director/Quality Manager



PHONE (575) 393-2326 ° 101 E. MARLAND ° HOBBS, NM 88240

**Analytical Results For:**

MC NABB SERVICES  
 MARCUS GIPSON  
 P. O. BOX 5753  
 HOBBS NM, 88240  
 Fax To: (575) 391-8484

Received: 12/17/2024  
 Reported: 12/23/2024  
 Project Name: SCHLITZ FED COM A  
 Project Number: NONE GIVEN  
 Project Location: CIVITAS - EDDY CO., NM

Sampling Date: 12/13/2024  
 Sampling Type: Soil  
 Sampling Condition: Cool & Intact  
 Sample Received By: Shalyn Rodriguez

**Sample ID: WS - 03 0-0.5' (H247596-03)**

BTEx 8021B		mg/kg		Analyzed By: JH						
Analyte	Result	Reporting Limit	Analyzed	Method Blank	BS	% Recovery	True Value QC	RPD	Qualifier	
Benzene*	<0.050	0.050	12/17/2024	ND	2.28	114	2.00	4.39		
Toluene*	<0.050	0.050	12/17/2024	ND	2.28	114	2.00	4.25		
Ethylbenzene*	<0.050	0.050	12/17/2024	ND	2.19	109	2.00	4.55		
Total Xylenes*	<0.150	0.150	12/17/2024	ND	6.93	116	6.00	3.90		
Total BTEx	<0.300	0.300	12/17/2024	ND						

Surrogate: 4-Bromofluorobenzene (PID) 102 % 71.5-134

Chloride, SM4500CI-B		mg/kg		Analyzed By: CT						
Analyte	Result	Reporting Limit	Analyzed	Method Blank	BS	% Recovery	True Value QC	RPD	Qualifier	
Chloride	96.0	16.0	12/18/2024	ND	432	108	400	3.77		

TPH 8015M		mg/kg		Analyzed By: MS					
Analyte	Result	Reporting Limit	Analyzed	Method Blank	BS	% Recovery	True Value QC	RPD	Qualifier
GRO C6-C10*	<10.0	10.0	12/17/2024	ND	216	108	200	2.86	
DRO >C10-C28*	<10.0	10.0	12/17/2024	ND	210	105	200	7.87	
EXT DRO >C28-C36	<10.0	10.0	12/17/2024	ND					

Surrogate: 1-Chlorooctane 126 % 48.2-134

Surrogate: 1-Chlorooctadecane 135 % 49.1-148

Cardinal Laboratories

\*=Accredited Analyte

PLEASE NOTE: Liability and Damages. Cardinal's liability and client's exclusive remedy for any claim arising, whether based in contract or tort, shall be limited to the amount paid by client for analyses. All claims, including those for negligence and any other cause whatsoever shall be deemed waived unless made in writing and received by Cardinal within thirty (30) days after completion of the applicable service. In no event shall Cardinal be liable for incidental or consequential damages, including, without limitation, business interruptions, loss of use, or loss of profits incurred by client, its subsidiaries, affiliates or successors arising out of or related to the performance of the services hereunder by Cardinal, regardless of whether such claim is based upon any of the above stated reasons or otherwise. Results relate only to the samples identified above. This report shall not be reproduced except in full with written approval of Cardinal Laboratories.

Celey D. Keene, Lab Director/Quality Manager





PHONE (575) 393-2326 ° 101 E. MARLAND ° HOBBS, NM 88240

**Analytical Results For:**

MC NABB SERVICES  
 MARCUS GIPSON  
 P. O. BOX 5753  
 HOBBS NM, 88240  
 Fax To: (575) 391-8484

Received: 12/17/2024  
 Reported: 12/23/2024  
 Project Name: SCHLITZ FED COM A  
 Project Number: NONE GIVEN  
 Project Location: CIVITAS - EDDY CO., NM

Sampling Date: 12/13/2024  
 Sampling Type: Soil  
 Sampling Condition: Cool & Intact  
 Sample Received By: Shalyn Rodriguez

**Sample ID: WS - 04 0-0.5' (H247596-04)**

BTEx 8021B		mg/kg		Analyzed By: JH						
Analyte	Result	Reporting Limit	Analyzed	Method Blank	BS	% Recovery	True Value QC	RPD	Qualifier	
Benzene*	<0.050	0.050	12/17/2024	ND	2.28	114	2.00	4.39		
Toluene*	<0.050	0.050	12/17/2024	ND	2.28	114	2.00	4.25		
Ethylbenzene*	<0.050	0.050	12/17/2024	ND	2.19	109	2.00	4.55		
Total Xylenes*	<0.150	0.150	12/17/2024	ND	6.93	116	6.00	3.90		
Total BTEX	<0.300	0.300	12/17/2024	ND						

Surrogate: 4-Bromofluorobenzene (PID) 102 % 71.5-134

Chloride, SM4500Cl-B		mg/kg		Analyzed By: CT						
Analyte	Result	Reporting Limit	Analyzed	Method Blank	BS	% Recovery	True Value QC	RPD	Qualifier	
Chloride	32.0	16.0	12/18/2024	ND	432	108	400	3.77		

TPH 8015M		mg/kg		Analyzed By: MS					
Analyte	Result	Reporting Limit	Analyzed	Method Blank	BS	% Recovery	True Value QC	RPD	Qualifier
GRO C6-C10*	<10.0	10.0	12/17/2024	ND	216	108	200	2.86	
DRO >C10-C28*	<10.0	10.0	12/17/2024	ND	210	105	200	7.87	
EXT DRO >C28-C36	<10.0	10.0	12/17/2024	ND					

Surrogate: 1-Chlorooctane 112 % 48.2-134

Surrogate: 1-Chlorooctadecane 121 % 49.1-148

Cardinal Laboratories

\*=Accredited Analyte

PLEASE NOTE: Liability and Damages. Cardinal's liability and client's exclusive remedy for any claim arising, whether based in contract or tort, shall be limited to the amount paid by client for analyses. All claims, including those for negligence and any other cause whatsoever shall be deemed waived unless made in writing and received by Cardinal within thirty (30) days after completion of the applicable service. In no event shall Cardinal be liable for incidental or consequential damages, including, without limitation, business interruptions, loss of use, or loss of profits incurred by client, its subsidiaries, affiliates or successors arising out of or related to the performance of the services hereunder by Cardinal, regardless of whether such claim is based upon any of the above stated reasons or otherwise. Results relate only to the samples identified above. This report shall not be reproduced except in full with written approval of Cardinal Laboratories.

Celey D. Keene, Lab Director/Quality Manager



PHONE (575) 393-2326 ° 101 E. MARLAND ° HOBBS, NM 88240

**Analytical Results For:**

MC NABB SERVICES  
 MARCUS GIPSON  
 P. O. BOX 5753  
 HOBBS NM, 88240  
 Fax To: (575) 391-8484

Received: 12/17/2024  
 Reported: 12/23/2024  
 Project Name: SCHLITZ FED COM A  
 Project Number: NONE GIVEN  
 Project Location: CIVITAS - EDDY CO., NM

Sampling Date: 12/13/2024  
 Sampling Type: Soil  
 Sampling Condition: Cool & Intact  
 Sample Received By: Shalyn Rodriguez

**Sample ID: BS - 01 0.5' (H247596-05)**

BTX 8021B		mg/kg		Analyzed By: JH					
Analyte	Result	Reporting Limit	Analyzed	Method Blank	BS	% Recovery	True Value QC	RPD	Qualifier
Benzene*	<0.050	0.050	12/17/2024	ND	2.28	114	2.00	4.39	
Toluene*	<0.050	0.050	12/17/2024	ND	2.28	114	2.00	4.25	
Ethylbenzene*	<0.050	0.050	12/17/2024	ND	2.19	109	2.00	4.55	
Total Xylenes*	<0.150	0.150	12/17/2024	ND	6.93	116	6.00	3.90	
Total BTX	<0.300	0.300	12/17/2024	ND					

Surrogate: 4-Bromofluorobenzene (PID) 104 % 71.5-134

Chloride, SM4500CI-B		mg/kg		Analyzed By: CT						
Analyte	Result	Reporting Limit	Analyzed	Method Blank	BS	% Recovery	True Value QC	RPD	Qualifier	
Chloride	144	16.0	12/18/2024	ND	432	108	400	3.77		

TPH 8015M		mg/kg		Analyzed By: MS					
Analyte	Result	Reporting Limit	Analyzed	Method Blank	BS	% Recovery	True Value QC	RPD	Qualifier
GRO C6-C10*	<10.0	10.0	12/17/2024	ND	216	108	200	2.86	
DRO >C10-C28*	<10.0	10.0	12/17/2024	ND	210	105	200	7.87	
EXT DRO >C28-C36	<10.0	10.0	12/17/2024	ND					

Surrogate: 1-Chlorooctane 114 % 48.2-134

Surrogate: 1-Chlorooctadecane 122 % 49.1-148

Cardinal Laboratories

\*=Accredited Analyte

PLEASE NOTE: Liability and Damages. Cardinal's liability and client's exclusive remedy for any claim arising, whether based in contract or tort, shall be limited to the amount paid by client for analyses. All claims, including those for negligence and any other cause whatsoever shall be deemed waived unless made in writing and received by Cardinal within thirty (30) days after completion of the applicable service. In no event shall Cardinal be liable for incidental or consequential damages, including, without limitation, business interruptions, loss of use, or loss of profits incurred by client, its subsidiaries, affiliates or successors arising out of or related to the performance of the services hereunder by Cardinal, regardless of whether such claim is based upon any of the above stated reasons or otherwise. Results relate only to the samples identified above. This report shall not be reproduced except in full with written approval of Cardinal Laboratories.

Celey D. Keene, Lab Director/Quality Manager



PHONE (575) 393-2326 ° 101 E. MARLAND ° HOBBS, NM 88240

**Analytical Results For:**

MC NABB SERVICES  
 MARCUS GIPSON  
 P. O. BOX 5753  
 HOBBS NM, 88240  
 Fax To: (575) 391-8484

Received: 12/17/2024  
 Reported: 12/23/2024  
 Project Name: SCHLITZ FED COM A  
 Project Number: NONE GIVEN  
 Project Location: CIVITAS - EDDY CO., NM

Sampling Date: 12/13/2024  
 Sampling Type: Soil  
 Sampling Condition: Cool & Intact  
 Sample Received By: Shalyn Rodriguez

**Sample ID: BS - 02 0.5' (H247596-06)**

BTEx 8021B		mg/kg		Analyzed By: JH					
Analyte	Result	Reporting Limit	Analyzed	Method Blank	BS	% Recovery	True Value QC	RPD	Qualifier
Benzene*	<0.050	0.050	12/17/2024	ND	2.28	114	2.00	4.39	
Toluene*	<0.050	0.050	12/17/2024	ND	2.28	114	2.00	4.25	
Ethylbenzene*	<0.050	0.050	12/17/2024	ND	2.19	109	2.00	4.55	
Total Xylenes*	<0.150	0.150	12/17/2024	ND	6.93	116	6.00	3.90	
Total BTEX	<0.300	0.300	12/17/2024	ND					

Surrogate: 4-Bromofluorobenzene (PID) 102 % 71.5-134

Chloride, SM4500Cl-B		mg/kg		Analyzed By: CT						
Analyte	Result	Reporting Limit	Analyzed	Method Blank	BS	% Recovery	True Value QC	RPD	Qualifier	
Chloride	32.0	16.0	12/18/2024	ND	432	108	400	3.77		

TPH 8015M		mg/kg		Analyzed By: MS					
Analyte	Result	Reporting Limit	Analyzed	Method Blank	BS	% Recovery	True Value QC	RPD	Qualifier
GRO C6-C10*	<10.0	10.0	12/17/2024	ND	216	108	200	2.86	
DRO >C10-C28*	<10.0	10.0	12/17/2024	ND	210	105	200	7.87	
EXT DRO >C28-C36	<10.0	10.0	12/17/2024	ND					

Surrogate: 1-Chlorooctane 126 % 48.2-134

Surrogate: 1-Chlorooctadecane 134 % 49.1-148

Cardinal Laboratories

\*=Accredited Analyte

PLEASE NOTE: Liability and Damages. Cardinal's liability and client's exclusive remedy for any claim arising, whether based in contract or tort, shall be limited to the amount paid by client for analyses. All claims, including those for negligence and any other cause whatsoever shall be deemed waived unless made in writing and received by Cardinal within thirty (30) days after completion of the applicable service. In no event shall Cardinal be liable for incidental or consequential damages, including, without limitation, business interruptions, loss of use, or loss of profits incurred by client, its subsidiaries, affiliates or successors arising out of or related to the performance of the services hereunder by Cardinal, regardless of whether such claim is based upon any of the above stated reasons or otherwise. Results relate only to the samples identified above. This report shall not be reproduced except in full with written approval of Cardinal Laboratories.

Celey D. Keene, Lab Director/Quality Manager



PHONE (575) 393-2326 ° 101 E. MARLAND ° HOBBS, NM 88240

**Analytical Results For:**

MC NABB SERVICES  
 MARCUS GIPSON  
 P. O. BOX 5753  
 HOBBS NM, 88240  
 Fax To: (575) 391-8484

Received: 12/17/2024  
 Reported: 12/23/2024  
 Project Name: SCHLITZ FED COM A  
 Project Number: NONE GIVEN  
 Project Location: CIVITAS - EDDY CO., NM

Sampling Date: 12/13/2024  
 Sampling Type: Soil  
 Sampling Condition: Cool & Intact  
 Sample Received By: Shalyn Rodriguez

**Sample ID: BS - 03 0.5' (H247596-07)**

BTEx 8021B		mg/kg		Analyzed By: JH						
Analyte	Result	Reporting Limit	Analyzed	Method Blank	BS	% Recovery	True Value QC	RPD	Qualifier	
Benzene*	<0.050	0.050	12/17/2024	ND	2.28	114	2.00	4.39		
Toluene*	<0.050	0.050	12/17/2024	ND	2.28	114	2.00	4.25		
Ethylbenzene*	<0.050	0.050	12/17/2024	ND	2.19	109	2.00	4.55		
Total Xylenes*	<0.150	0.150	12/17/2024	ND	6.93	116	6.00	3.90		
Total BTEx	<0.300	0.300	12/17/2024	ND						

Surrogate: 4-Bromofluorobenzene (PID) 102 % 71.5-134

Chloride, SM4500CI-B		mg/kg		Analyzed By: CT						
Analyte	Result	Reporting Limit	Analyzed	Method Blank	BS	% Recovery	True Value QC	RPD	Qualifier	
Chloride	32.0	16.0	12/18/2024	ND	432	108	400	3.77		

TPH 8015M		mg/kg		Analyzed By: MS					
Analyte	Result	Reporting Limit	Analyzed	Method Blank	BS	% Recovery	True Value QC	RPD	Qualifier
GRO C6-C10*	<10.0	10.0	12/17/2024	ND	216	108	200	2.86	
DRO >C10-C28*	<10.0	10.0	12/17/2024	ND	210	105	200	7.87	
EXT DRO >C28-C36	<10.0	10.0	12/17/2024	ND					

Surrogate: 1-Chlorooctane 109 % 48.2-134

Surrogate: 1-Chlorooctadecane 115 % 49.1-148

Cardinal Laboratories

\*=Accredited Analyte

PLEASE NOTE: Liability and Damages. Cardinal's liability and client's exclusive remedy for any claim arising, whether based in contract or tort, shall be limited to the amount paid by client for analyses. All claims, including those for negligence and any other cause whatsoever shall be deemed waived unless made in writing and received by Cardinal within thirty (30) days after completion of the applicable service. In no event shall Cardinal be liable for incidental or consequential damages, including, without limitation, business interruptions, loss of use, or loss of profits incurred by client, its subsidiaries, affiliates or successors arising out of or related to the performance of the services hereunder by Cardinal, regardless of whether such claim is based upon any of the above stated reasons or otherwise. Results relate only to the samples identified above. This report shall not be reproduced except in full with written approval of Cardinal Laboratories.

Celey D. Keene, Lab Director/Quality Manager





---

PHONE (575) 393-2326 ° 101 E. MARLAND ° HOBBS, NM 88240

---

### Notes and Definitions

ND	Analyte NOT DETECTED at or above the reporting limit
RPD	Relative Percent Difference
**	Samples not received at proper temperature of 6°C or below.
***	Insufficient time to reach temperature.
-	Chloride by SM4500Cl-B does not require samples be received at or below 6°C Samples reported on an as received basis (wet) unless otherwise noted on report

---

Cardinal Laboratories

\*=Accredited Analyte

PLEASE NOTE: Liability and Damages. Cardinal's liability and client's exclusive remedy for any claim arising, whether based in contract or tort, shall be limited to the amount paid by client for analyses. All claims, including those for negligence and any other cause whatsoever shall be deemed waived unless made in writing and received by Cardinal within thirty (30) days after completion of the applicable service. In no event shall Cardinal be liable for incidental or consequential damages, including, without limitation, business interruptions, loss of use, or loss of profits incurred by client, its subsidiaries, affiliates or successors arising out of or related to the performance of the services hereunder by Cardinal, regardless of whether such claim is based upon any of the above stated reasons or otherwise. Results relate only to the samples identified above. This report shall not be reproduced except in full with written approval of Cardinal Laboratories.

A handwritten signature in black ink, appearing to read "Celey D. Keene", written over a horizontal line.

---

Celey D. Keene, Lab Director/Quality Manager



### CHAIN-OF-CUSTODY AND ANALYSIS REQUEST

101 East Marland, Hobbs, NM 88240  
(575) 393-2326 FAX (575) 393-2476

**Company Name:** McNabb Partners

**Project Manager:** Marcus Gispson

**Address:** 5014 W Carlsbad Hwy

**City:** Hobbs

**Phone #:** 9174976890

**Project #:**

**Project Name:** Schlitz Fed Com A

**Project Location:** Eddy Co. NM

**Sample Name:** Dmitry Nikanorov

**P.O. #:**

**Company:** McNabb Partners

**Attn:**

**Address:**

**City:**

**State:** Zip:

**Phone #:**

**Fax #:**

**State:** NM    **Zip:** 88240

**Project Owner:** Civitas

**FOR LAB USE ONLY**

Lab I.D.	Sample I.D.	(G)RAB OR (C)OMP.	# CONTAINERS	MATRIX						DATE	TIME	TPH	Chloride	BTEX							
				GROUNDWATER	WASTEWATER	SOIL	OIL	SLUDGE	OTHER :												
H2175910	WS-01	0-0.5'	C	1	X						12/13/24	2:30	X	X	X						
	WS-02	0-0.5'	C	1	X						12/13/24	2:35	X	X	X						
	WS-03	0-0.5'	C	1	X						12/13/24	2:40	X	X	X						
	WS-04	0-0.5'	C	1	X						12/13/24	2:45	X	X	X						
	BS-01	0.5'	C	1	X						12/13/24	2:50	X	X	X						
	BS-02	0.5'	C	1	X						12/13/24	2:55	X	X	X						
	BS-03	0.5'	C	1	X						12/13/24	3:00	X	X	X						

**Relinquished By:** [Signature]    **Date:** 12-17-24    **Received By:** [Signature]    **Date:** 12-17-24

**Time:** 0841    **Time:** 0841

**Relinquished By:** [Signature]    **Date:** 12-17-24    **Received By:** [Signature]    **Date:** 12-17-24

**Time:**    **Time:**

**Delivered By:** (Circle One)    **Observed Temp. °C:** -3.8    **Sample Condition:** ☒ Cool ☐ Intact ☐ Yes ☐ No    **CHECKED BY:** [Signature]    **Turnaround Time:**    **Standard:** ☒ **rusn**    **Bacteria (only) Sample Condition:** ☒ Cool ☐ Intact ☐ Yes ☐ No    **Observed Temp. °C:**    **Corrected Temp. °C:**

**Sampler - UPS - Bus - Other:**    **Corrected Temp. °C:** 54.4    **Thermometer ID #140**    **Correction Factor -0.5°C**    **Corrected Temp. °C:**

**REMARKS:**

**Verbal Result:** ☐ Yes ☐ No    **Add'l Phone #:**

**All Results are emailed. Please provide Email address:**

**PLATE NOTE:** Liability and Damages. Cardinal's liability and client's exclusive remedy for any claim arising whether based in contract or tort, shall be limited to the amount paid by the client for the analysis. All claims including those for negligence and any other cause whatsoever shall be deemed waived unless made in writing and received by Cardinal within 30 days after completion of the applicable analysis. In no event shall Cardinal be liable for incidental or consequential damages, including without limitation, business interruptions, loss of use, or loss of profits incurred by client, its subsidiaries, affiliates or successors arising out of or related to the performance of services furnished by Cardinal, regardless of whether such claim is based upon any of the above stated reasons or otherwise.

**Cardinal cannot accept verbal changes. Please email changes to cately.keene@cardinallabsnm.com**

**From:** [Dimitry Nikanorov](#)  
**To:** [Wells, Shelly, EMNRD](#)  
**Subject:** [EXTERNAL] Re: NAPP2431253689 SCHLITZ FED COM CTB A  
**Date:** Wednesday, February 5, 2025 8:02:25 AM  
**Attachments:** [Outlook-A red logo](#)

---

CAUTION: This email originated outside of our organization. Exercise caution prior to clicking on links or opening attachments.

Hi Shelly,

Yes, we had a visual cue for the delineation at the west side of the containment, for the release portion outside of the lined containment. I am attaching the picture from the operator that we used for a test pit H-4.

The rest of it was inside the containment and it all was vacuumed out, and we've pressure washed the liner. As far as other delineation samples around the tank battery, we did not find any produced water or hydrocarbon impacts in the field at any point besides around H-4. So H-1, H-2 and H-3 were just collected at cardinal north, east and south directions right outside of the secondary lined containment walls as a standard procedure.

I believe it sprayed from a pinhole both to the lined containment and outside. I am attaching a photo of what it looked inside the containment as well. The operator put C-141 by himself, and it is incorrectly saying 10 bbls were not recovered and released outside of the containment. At least 8 bbls were recovered from the inside of the containment. I am sorry for all the confusion it caused.

Please let me know if you have any questions about this incident, I'll be happy to help.

Thank you,

Dimitry Nikanorov  
Project Manager  
McNabb Partners  
c: (917) 497-6890



---

**From:** Wells, Shelly, EMNRD <Shelly.Wells@emnrd.nm.gov>  
**Sent:** Tuesday, February 4, 2025 4:16 PM  
**To:** Dimitry Nikanorov <Dimitry@mcnabbpartners.com>  
**Subject:** NAPP2431253689 SCHLITZ FED COM CTB A

Hi Dimitry,

I am reviewing the remediation closure report submitted for NAPP2431253689 SCHLITZ FED COM CTB A and have a few questions for you. How did you decide where to collect delineation samples around the tank battery? Were there visual cues? How did it escape the lined containment? All the pertinent information you can give me is appreciated.

Kind regards,

Shelly

Shelly Wells \* Environmental Specialist-Advanced  
Environmental Bureau  
EMNRD-Oil Conservation Division  
1220 S. St. Francis Drive|Santa Fe, NM 87505  
(505)469-7520 [Shelly.Wells@emnrd.nm.gov](mailto:Shelly.Wells@emnrd.nm.gov)  
<http://www.emnrd.state.nm.us/OCD/>



Sante Fe Main Office  
Phone: (505) 476-3441

General Information  
Phone: (505) 629-6116

Online Phone Directory  
<https://www.emnrd.nm.gov/ocd/contact-us>

State of New Mexico  
Energy, Minerals and Natural Resources  
Oil Conservation Division  
1220 S. St Francis Dr.  
Santa Fe, NM 87505

QUESTIONS

Action 426592

QUESTIONS

Operator: Civitas Permian Operating, LLC 555 17th Street Denver, CO 80202	OGRID: 332195
	Action Number: 426592
	Action Type: [C-141] Remediation Closure Request C-141 (C-141-v-Closure)

QUESTIONS

Prerequisites	
Incident ID (n#)	nAPP2431253689
Incident Name	NAPP2431253689 SCHLITZ FED COM CTB A @ 30-015-54629
Incident Type	Produced Water Release
Incident Status	Remediation Closure Report Received
Incident Well	[30-015-54629] SCHLITZ FEDERAL COM #122H
Incident Facility	[fAPP2227132692] SCHLITZ FED COM A CTB

Location of Release Source

Please answer all the questions in this group.

Site Name	SCHLITZ FED COM CTB A
Date Release Discovered	11/07/2024
Surface Owner	State

Incident Details

Please answer all the questions in this group.

Incident Type	Produced Water Release
Did this release result in a fire or is the result of a fire	No
Did this release result in any injuries	No
Has this release reached or does it have a reasonable probability of reaching a watercourse	No
Has this release endangered or does it have a reasonable probability of endangering public health	No
Has this release substantially damaged or will it substantially damage property or the environment	No
Is this release of a volume that is or may with reasonable probability be detrimental to fresh water	No

Nature and Volume of Release

Material(s) released, please answer all that apply below. Any calculations or specific justifications for the volumes provided should be attached to the follow-up C-141 submission.

Crude Oil Released (bbls) Details	Not answered.
Produced Water Released (bbls) Details	Cause: Corrosion   Flow Line - Injection   Produced Water   Released: 10 BBL   Recovered: 8 BBL   Lost: 2 BBL.
Is the concentration of chloride in the produced water >10,000 mg/l	Yes
Condensate Released (bbls) Details	Not answered.
Natural Gas Vented (Mcf) Details	Not answered.
Natural Gas Flared (Mcf) Details	Not answered.
Other Released Details	Not answered.
Are there additional details for the questions above (i.e. any answer containing Other, Specify, Unknown, and/or Fire, or any negative lost amounts)	Internal corrosion on a SWD line resulted in 8 bbls of produced water to be released inside containment and another 2 bbls outside containment. The 8 bbls inside containment were recovered.

Sante Fe Main Office  
Phone: (505) 476-3441

General Information  
Phone: (505) 629-6116

Online Phone Directory  
<https://www.emnrd.nm.gov/ocd/contact-us>

**State of New Mexico**  
**Energy, Minerals and Natural Resources**  
**Oil Conservation Division**  
**1220 S. St Francis Dr.**  
**Santa Fe, NM 87505**

QUESTIONS, Page 2

Action 426592

**QUESTIONS (continued)**

Operator: Civitas Permian Operating, LLC 555 17th Street Denver, CO 80202	OGRID: 332195
	Action Number: 426592
	Action Type: [C-141] Remediation Closure Request C-141 (C-141-v-Closure)

**QUESTIONS**

<b>Nature and Volume of Release (continued)</b>	
Is this a gas only submission (i.e. only significant Mcf values reported)	<b>No, according to supplied volumes this does not appear to be a "gas only" report.</b>
Was this a major release as defined by Subsection A of 19.15.29.7 NMAC	<b>No</b>
Reasons why this would be considered a submission for a notification of a major release	<i>Unavailable.</i>
<i>With the implementation of the 19.15.27 NMAC (05/25/2021), venting and/or flaring of natural gas (i.e. gas only) are to be submitted on the C-129 form.</i>	

**Initial Response**

*The responsible party must undertake the following actions immediately unless they could create a safety hazard that would result in injury.*

The source of the release has been stopped	<b>True</b>
The impacted area has been secured to protect human health and the environment	<b>True</b>
Released materials have been contained via the use of berms or dikes, absorbent pads, or other containment devices	<b>True</b>
All free liquids and recoverable materials have been removed and managed appropriately	<b>True</b>
If all the actions described above have not been undertaken, explain why	<b>All actions have been complete.</b>

*Per Paragraph (4) of Subsection B of 19.15.29.8 NMAC the responsible party may commence remediation immediately after discovery of a release. If remediation has begun, please prepare and attach a narrative of actions to date in the follow-up C-141 submission. If remedial efforts have been successfully completed or if the release occurred within a lined containment area (see Subparagraph (a) of Paragraph (5) of Subsection A of 19.15.29.11 NMAC), please prepare and attach all information needed for closure evaluation in the follow-up C-141 submission.*

I hereby certify that the information given above is true and complete to the best of my knowledge and understand that pursuant to OCD rules and regulations all operators are required to report and/or file certain release notifications and perform corrective actions for releases which may endanger public health or the environment. The acceptance of a C-141 report by the OCD does not relieve the operator of liability should their operations have failed to adequately investigate and remediate contamination that pose a threat to groundwater, surface water, human health or the environment. In addition, OCD acceptance of a C-141 report does not relieve the operator of responsibility for compliance with any other federal, state, or local laws and/or regulations.

I hereby agree and sign off to the above statement	Name: Luke Kelly Title: Manager, Environmental Regulatory Compliance Email: lkelly@civiresources.com Date: 01/30/2025
--	--

Sante Fe Main Office  
Phone: (505) 476-3441

General Information  
Phone: (505) 629-6116

Online Phone Directory  
<https://www.emnrd.nm.gov/ocd/contact-us>

**State of New Mexico**  
**Energy, Minerals and Natural Resources**  
**Oil Conservation Division**  
**1220 S. St Francis Dr.**  
**Santa Fe, NM 87505**

QUESTIONS, Page 3

Action 426592

**QUESTIONS (continued)**

Operator: Civitas Permian Operating, LLC 555 17th Street Denver, CO 80202	OGRID: 332195
	Action Number: 426592
	Action Type: [C-141] Remediation Closure Request C-141 (C-141-v-Closure)

**QUESTIONS**

<b>Site Characterization</b>	
<i>Please answer all the questions in this group (only required when seeking remediation plan approval and beyond). This information must be provided to the appropriate district office no later than 90 days after the release discovery date.</i>	
What is the shallowest depth to groundwater beneath the area affected by the release in feet below ground surface (ft bgs)	Between 26 and 50 (ft.)
What method was used to determine the depth to ground water	NM OSE iWaters Database Search
Did this release impact groundwater or surface water	No
<b>What is the minimum distance, between the closest lateral extents of the release and the following surface areas:</b>	
A continuously flowing watercourse or any other significant watercourse	Between 1000 (ft.) and ½ (mi.)
Any lakebed, sinkhole, or playa lake (measured from the ordinary high-water mark)	Between 1 and 5 (mi.)
An occupied permanent residence, school, hospital, institution, or church	Between 1 and 5 (mi.)
A spring or a private domestic fresh water well used by less than five households for domestic or stock watering purposes	Between ½ and 1 (mi.)
Any other fresh water well or spring	Between ½ and 1 (mi.)
Incorporated municipal boundaries or a defined municipal fresh water well field	Greater than 5 (mi.)
A wetland	Between 1000 (ft.) and ½ (mi.)
A subsurface mine	Between 1 and 5 (mi.)
An (non-karst) unstable area	Between 1 and 5 (mi.)
Categorize the risk of this well / site being in a karst geology	High
A 100-year floodplain	Between 1 and 5 (mi.)
Did the release impact areas not on an exploration, development, production, or storage site	No

<b>Remediation Plan</b>	
<i>Please answer all the questions that apply or are indicated. This information must be provided to the appropriate district office no later than 90 days after the release discovery date.</i>	
Requesting a remediation plan approval with this submission	Yes
<i>Attach a comprehensive report demonstrating the lateral and vertical extents of soil contamination associated with the release have been determined, pursuant to 19.15.29.11 NMAC and 19.15.29.13 NMAC.</i>	
Have the lateral and vertical extents of contamination been fully delineated	Yes
Was this release entirely contained within a lined containment area	No
<b>Soil Contamination Sampling:</b> (Provide the highest observable value for each, in milligrams per kilograms.)	
Chloride (EPA 300.0 or SM4500 Cl B)	1630
TPH (GRO+DRO+MRO) (EPA SW-846 Method 8015M)	30
GRO+DRO (EPA SW-846 Method 8015M)	20
BTEX (EPA SW-846 Method 8021B or 8260B)	0.3
Benzene (EPA SW-846 Method 8021B or 8260B)	0.1
<i>Per Subsection B of 19.15.29.11 NMAC unless the site characterization report includes completed efforts at remediation, the report must include a proposed remediation plan in accordance with 19.15.29.12 NMAC, which includes the anticipated timelines for beginning and completing the remediation.</i>	
On what estimated date will the remediation commence	12/13/2024
On what date will (or did) the final sampling or liner inspection occur	12/13/2024
On what date will (or was) the remediation complete(d)	12/13/2024
What is the estimated surface area (in square feet) that will be reclaimed	555
What is the estimated volume (in cubic yards) that will be reclaimed	10.3
What is the estimated surface area (in square feet) that will be remediated	555
What is the estimated volume (in cubic yards) that will be remediated	10.3
<i>These estimated dates and measurements are recognized to be the best guess or calculation at the time of submission and may (be) change(d) over time as more remediation efforts are completed.</i>	
<i>The OCD recognizes that proposed remediation measures may have to be minimally adjusted in accordance with the physical realities encountered during remediation. If the responsible party has any need to significantly deviate from the remediation plan proposed, then it should consult with the division to determine if another remediation plan submission is required.</i>	

Sante Fe Main Office  
Phone: (505) 476-3441

General Information  
Phone: (505) 629-6116

Online Phone Directory  
<https://www.emnrd.nm.gov/ocd/contact-us>

**State of New Mexico**  
**Energy, Minerals and Natural Resources**  
**Oil Conservation Division**  
**1220 S. St Francis Dr.**  
**Santa Fe, NM 87505**

QUESTIONS, Page 4

Action 426592

**QUESTIONS (continued)**

Operator: Civitas Permian Operating, LLC 555 17th Street Denver, CO 80202	OGRID:
	332195
	Action Number:
	426592
Action Type:	
[C-141] Remediation Closure Request C-141 (C-141-v-Closure)	

**QUESTIONS**

<b>Remediation Plan (continued)</b>	
<i>Please answer all the questions that apply or are indicated. This information must be provided to the appropriate district office no later than 90 days after the release discovery date.</i>	
<b>This remediation will (or is expected to) utilize the following processes to remediate / reduce contaminants:</b>	
<i>(Select all answers below that apply.)</i>	
(Ex Situ) Excavation and <b>off-site</b> disposal (i.e. dig and haul, hydrovac, etc.)	Yes
Which OCD approved facility will be used for <b>off-site</b> disposal	R360 ARTESIA LLC LANDFARM [FEEM0112340644]
<b>OR</b> which OCD approved well (API) will be used for <b>off-site</b> disposal	Not answered.
<b>OR</b> is the <b>off-site</b> disposal site, to be used, out-of-state	Not answered.
<b>OR</b> is the <b>off-site</b> disposal site, to be used, an NMED facility	Not answered.
(Ex Situ) Excavation and <b>on-site</b> remediation (i.e. On-Site Land Farms)	No
(In Situ) Soil Vapor Extraction	No
(In Situ) Chemical processing (i.e. Soil Shredding, Potassium Permanganate, etc.)	No
(In Situ) Biological processing (i.e. Microbes / Fertilizer, etc.)	No
(In Situ) Physical processing (i.e. Soil Washing, Gypsum, Disking, etc.)	No
Ground Water Abatement pursuant to 19.15.30 NMAC	No
OTHER (Non-listed remedial process)	No
<i>Per Subsection B of 19.15.29.11 NMAC unless the site characterization report includes completed efforts at remediation, the report must include a proposed remediation plan in accordance with 19.15.29.12 NMAC, which includes the anticipated timelines for beginning and completing the remediation.</i>	
I hereby certify that the information given above is true and complete to the best of my knowledge and understand that pursuant to OCD rules and regulations all operators are required to report and/or file certain release notifications and perform corrective actions for releases which may endanger public health or the environment. The acceptance of a C-141 report by the OCD does not relieve the operator of liability should their operations have failed to adequately investigate and remediate contamination that pose a threat to groundwater, surface water, human health or the environment. In addition, OCD acceptance of a C-141 report does not relieve the operator of responsibility for compliance with any other federal, state, or local laws and/or regulations.	
I hereby agree and sign off to the above statement	Name: Luke Kelly Title: Manager, Environmental Regulatory Compliance Email: lkelly@civiresources.com Date: 01/30/2025
<i>The OCD recognizes that proposed remediation measures may have to be minimally adjusted in accordance with the physical realities encountered during remediation. If the responsible party has any need to significantly deviate from the remediation plan proposed, then it should consult with the division to determine if another remediation plan submission is required.</i>	



Sante Fe Main Office  
Phone: (505) 476-3441

General Information  
Phone: (505) 629-6116

Online Phone Directory  
<https://www.emnrd.nm.gov/ocd/contact-us>

State of New Mexico  
Energy, Minerals and Natural Resources  
Oil Conservation Division  
1220 S. St Francis Dr.  
Santa Fe, NM 87505

QUESTIONS, Page 5

Action 426592

QUESTIONS (continued)

Operator: Civitas Permian Operating, LLC 555 17th Street Denver, CO 80202	OGRID: 332195
	Action Number: 426592
	Action Type: [C-141] Remediation Closure Request C-141 (C-141-v-Closure)

QUESTIONS

Deferral Requests Only	
Only answer the questions in this group if seeking a deferral upon approval this submission. Each of the following items must be confirmed as part of any request for deferral of remediation.	
Requesting a deferral of the remediation closure due date with the approval of this submission	No

Sante Fe Main Office  
Phone: (505) 476-3441

General Information  
Phone: (505) 629-6116

Online Phone Directory  
<https://www.emnrd.nm.gov/ocd/contact-us>

**State of New Mexico**  
**Energy, Minerals and Natural Resources**  
**Oil Conservation Division**  
**1220 S. St Francis Dr.**  
**Santa Fe, NM 87505**

QUESTIONS, Page 6

Action 426592

**QUESTIONS (continued)**

Operator: Civitas Permian Operating, LLC 555 17th Street Denver, CO 80202	OGRID: 332195
	Action Number: 426592
	Action Type: [C-141] Remediation Closure Request C-141 (C-141-v-Closure)

**QUESTIONS**

Sampling Event Information	
Last sampling notification (C-141N) recorded	410502
Sampling date pursuant to Subparagraph (a) of Paragraph (1) of Subsection D of 19.15.29.12 NMAC	12/13/2024
What was the (estimated) number of samples that were to be gathered	6
What was the sampling surface area in square feet	1200

**Remediation Closure Request**

*Only answer the questions in this group if seeking remediation closure for this release because all remediation steps have been completed.*

Requesting a remediation closure approval with this submission	Yes
Have the lateral and vertical extents of contamination been fully delineated	Yes
Was this release entirely contained within a lined containment area	No
All areas reasonably needed for production or subsequent drilling operations have been stabilized, returned to the sites existing grade, and have a soil cover that prevents ponding of water, minimizing dust and erosion	Yes
What was the total surface area (in square feet) remediated	555
What was the total volume (cubic yards) remediated	10.3
All areas not reasonably needed for production or subsequent drilling operations have been reclaimed to contain a minimum of four feet of non-waste contain earthen material with concentrations less than 600 mg/kg chlorides, 100 mg/kg TPH, 50 mg/kg BTEX, and 10 mg/kg Benzene	Yes
What was the total surface area (in square feet) reclaimed	555
What was the total volume (in cubic yards) reclaimed	10.3
Summarize any additional remediation activities not included by answers (above)	Dig and haul to disposal facility

*The responsible party must attach information demonstrating they have complied with all applicable closure requirements and any conditions or directives of the OCD. This demonstration should be in the form of a comprehensive report (in .pdf format) including a scaled site map, sampling diagrams, relevant field notes, photographs of any excavation prior to backfilling, laboratory data including chain of custody documents of final sampling, and a narrative of the remedial activities. Refer to 19.15.29.12 NMAC.*

I hereby certify that the information given above is true and complete to the best of my knowledge and understand that pursuant to OCD rules and regulations all operators are required to report and/or file certain release notifications and perform corrective actions for releases which may endanger public health or the environment. The acceptance of a C-141 report by the OCD does not relieve the operator of liability should their operations have failed to adequately investigate and remediate contamination that pose a threat to groundwater, surface water, human health or the environment. In addition, OCD acceptance of a C-141 report does not relieve the operator of responsibility for compliance with any other federal, state, or local laws and/or regulations. The responsible party acknowledges they must substantially restore, reclaim, and re-vegetate the impacted surface area to the conditions that existed prior to the release or their final land use in accordance with 19.15.29.13 NMAC including notification to the OCD when reclamation and re-vegetation are complete.

I hereby agree and sign off to the above statement	Name: Luke Kelly Title: Manager, Environmental Regulatory Compliance Email: lkelly@civiresources.com Date: 01/30/2025
--	--

Sante Fe Main Office  
Phone: (505) 476-3441

General Information  
Phone: (505) 629-6116

Online Phone Directory  
<https://www.emnrd.nm.gov/ocd/contact-us>

State of New Mexico  
Energy, Minerals and Natural Resources  
Oil Conservation Division  
1220 S. St Francis Dr.  
Santa Fe, NM 87505

QUESTIONS, Page 7

Action 426592

QUESTIONS (continued)

Operator: Civitas Permian Operating, LLC 555 17th Street Denver, CO 80202	OGRID: 332195
	Action Number: 426592
	Action Type: [C-141] Remediation Closure Request C-141 (C-141-v-Closure)

QUESTIONS

Reclamation Report	
Only answer the questions in this group if all reclamation steps have been completed.	
Requesting a reclamation approval with this submission	No

Sante Fe Main Office  
Phone: (505) 476-3441

General Information  
Phone: (505) 629-6116

Online Phone Directory  
<https://www.emnrd.nm.gov/ocd/contact-us>

State of New Mexico  
Energy, Minerals and Natural Resources  
Oil Conservation Division  
1220 S. St Francis Dr.  
Santa Fe, NM 87505

CONDITIONS

Action 426592

CONDITIONS

Operator: Civitas Permian Operating, LLC 555 17th Street Denver, CO 80202	OGRID: 332195
	Action Number: 426592
	Action Type: [C-141] Remediation Closure Request C-141 (C-141-v-Closure)

CONDITIONS

Created By	Condition	Condition Date
scwells	None	2/5/2025