



February 19, 2025

District Supervisor  
Oil Conservation Division, District 1  
1625 North French Drive  
Hobbs, New Mexico 88240

**Re: Release Characterization and Remediation Work Plan  
Chevron Mid Continent Business Unit  
WTU Battery Release  
Unit Letter G, Section 9, Township 20 South, Range 33 East  
Lea County, New Mexico  
Incident ID# NAPP2426162492**

Sir or Madam:

Tetra Tech, Inc. (Tetra Tech) was contacted by Chevron Mid Continent Business Unit (Chevron MCBU) to assess a release associated with the WTU Battery Facility (fAPP2133339469). The release footprint is located in Public Land Survey System (PLSS) Unit Letter G, Section 9, Township 20 South, and Range 33 East, in Lea County, New Mexico (Site). The approximate release point occurred at coordinates 32.588531°, -103.666694°, as shown on Figures 1 and 2.

## BACKGROUND

According to the State of New Mexico initial C-141 Form, the release was discovered on September 17, 2024, and resulted in the release of 34 bbls of produced water and 2 bbls of crude oil, of which 21 bbls of produced water and 2 bbls of crude oil were recovered. Based on the spill calculator, the release impacted approximately 666 square feet of lease pad area, in a congested area with aboveground production lines and production equipment. The release extent is contained within an earthen berm. The initial response consisted of an approximate 6-inch scrape. The Initial NOR was submitted to the NMOCD on September 17, 2024, and the NMOCD assigned the Incident ID NAPP2426162492. The New Mexico Oil Conservation Division (NMOCD) approved the initial C-141 on September 19, 2024, the initial C-141 form is included in Appendix A.

## LAND OWNERSHIP

According to the NMOCD Oil and Gas Map, the Site is located on federal lands managed by the Bureau of Land Management (BLM). The BLM will be notified prior to any remedial activities commencing for this incident.

## SITE CHARACTERIZATION

A site characterization was performed and no sinkholes, playa lakes, residences, schools, hospitals, institutions, churches, springs, private domestic water wells, stream bodies, wetlands, incorporated municipal boundaries, subsurface mines, or floodplains are located within the distances specified in 19.15.29 NMAC. The Site is in an area of low karst potential.

According to the New Mexico Office of the State Engineers (NMOSE) reporting system, there are no water wells within an 800-meter (approximately 1/2-mile) radius of the site. According to the NMOSE, there is one

Tetra Tech

901 West Wall St., Suite 100, Midland, TX 79701

Tel 432.682.4559 Fax 432.682.3946 www.tetrattech.com

well within 1.37 miles (2,220 meters) with a total well depth of 680 feet and a depth to water of 325 feet. The site characterization is included in Appendix B.

## REGULATORY FRAMEWORK

Based upon the release footprint and in accordance with Subsection E of 19.15.29.12 NMAC, per 19.15.29.11 NMAC, the site characterization data was used to determine recommended remedial action levels (RRALs) for benzene, toluene, ethylbenzene, and xylene (collectively referred to as BTEX), total petroleum hydrocarbons (TPH), and chlorides in soil.

Based on the site characterization and in accordance with Table I of 19.15.29.12 NMAC, the Site RRALs for the on-pad areas at the release Site are as follows:

Constituent	Site RRALs
Chloride	600 mg/kg
TPH	100 mg/kg
BTEX	50 mg/kg
Benzene	10 mg/kg

## INITIAL RESPONSE AND REMEDIAL ACTIVITIES

In accordance with 19.15.29.8. B. (4) NMAC that states “the responsible party may commence remediation immediately after discovery of a release,” Chevron MCBU elected to conduct an initial response in the release. The on-pad material was excavated by scraping the surface to a depth of 3 to 6 inches bgs, resulting in approximately 30 cubic yards of contaminated soil being removed and sent to an NMOCD-approved/permitted facility. Photographic documentation of the release area is included in Appendix C and the initial response area is indicated in Figure 3.

## SITE ASSESSMENT

On December 5, 2024, Tetra Tech was onsite to conduct assessment activities on behalf of Chevron MCBU. Assessment activities included installing a series of hand auger borings. Three (3) hand auger borings (AH-1 through AH-3) were completed to a maximum depth of 6 feet bgs within the release area footprint to achieve vertical delineation. Auger refusal was encountered at the AH-3 boring location. Four (4) borings (AH-4 through AH-7) were installed to a depth of 1-foot bgs outside the release area footprint to achieve horizontal delineation. Collected soil samples were field screened for salinity parts per million (ppm) using an ExStik II EC 400 meter. The approximate release extent, scrape area, and boring locations are shown in Figure 4.

A total of sixteen (16) samples were collected from the seven (7) hand auger boring locations and submitted to Cardinal Laboratories (Cardinal) in Hobbs, New Mexico to be analyzed for chlorides via EPA Method 4500.0, TPH via EPA Method 8015M, and BTEX via EPA Method 8021B. A copy of the laboratory analytical report and chain-of-custody documentation are included in Appendix D. Photographic documentation of Site conditions at the time of the assessment is presented in Appendix C.

An extension was submitted via email to the NMOCD on December 12, 2024. This extension request was received by NMOCD and replied to, although the NMOCD permitting site has not yet been updated. The extension request and corresponding correspondence is included in Appendix E.

## SUMMARY OF RESULTS

The laboratory analytical results from the December 2024 assessment sampling activities are summarized in Table 1. Both horizontal and vertical delineation were achieved. Analytical results associated with surface soil intervals (0-4 feet bgs) at AH-1 exceeded the Site RRALs for TPH (100 mg/kg). All other analytical results were below the applicable Site RRALs.

## REMEDIATION WORK PLAN

Based on the analytical results, Chevron MCBU proposes to remove the remaining impacted material as shown in Figure 5. The release footprint is in an area congested with multiple surface and subsurface lines, therefore soil exceeding the Site RRALs for TPH will be excavated by hand digging to a maximum depth of 0.5-1 feet below the surrounding surface or until a representative sample from the walls and bottom of the excavation is below the Site RRALs. Areas in close proximity to pressurized lines or other production equipment will be hand-dug to the maximum extent practicable. Exclusion zones will be established near any pressurized lines.

Excavated soils will be transported offsite and disposed of at an NMOCD-approved or permitted facility. The responsible party will notify the OCD two (2) business days prior to conducting final confirmation sampling pursuant to 19.15.29.12.D(1)(a) NMAC, using a Notification of Sampling (C-141N) application.

Confirmation bottom and sidewall samples representative of no more than 200 square feet will be collected for verification of remedial activities. Five (5) floor samples and six (6) sidewall samples are proposed to be analyzed for TPH, BTEX, and chlorides as shown in Figure 6. Once results are received, the excavation will then be backfilled with clean material to surface grade. The estimated volume of material to be remediated is approximately 15 cubic yards.

## SITE RECLAMATION

This release is within a bermed area on an active pad; therefore, reclamation (reseeding) activities are not proposed within this work plan. However, once acceptable confirmation sample results are received, the excavation will be backfilled with clean material that is non-waste containing, uncontaminated, earthen material with chloride concentrations less than 600 mg/kg, as analyzed by EPA Method 300.0 or Method 4500.

## CONCLUSION

Based on the results of the 2024 release assessment and the site characterization, Chevron MCBU will remediate soils within the release extent impacted with TPH above Site RRALs. The proposed remediation activities will be conducted within 90 days of acceptance of the proposed plan. If you have any questions concerning the additional assessment activities for the Site or the proposed remediation work plan, please call me at (512) 596-8201.

Sincerely,  
**Tetra Tech, Inc.**



Lisbeth Chavira  
Project Manager



Christian M. Llull, P.G.  
Program Manager

cc:  
Mr. Joe Tyler – Chevron MCBU

## LIST OF ATTACHMENTS

### Figures:

- Figure 1 – Overview Map
- Figure 2 – Topographic Map
- Figure 3 – Approximate Release Extent and Initial Response
- Figure 4 – Approximate Release Extent and Site Assessment
- Figure 5 – Proposed Remediation Extent
- Figure 6 – Alternative Confirmation Sampling Plan

### Tables:

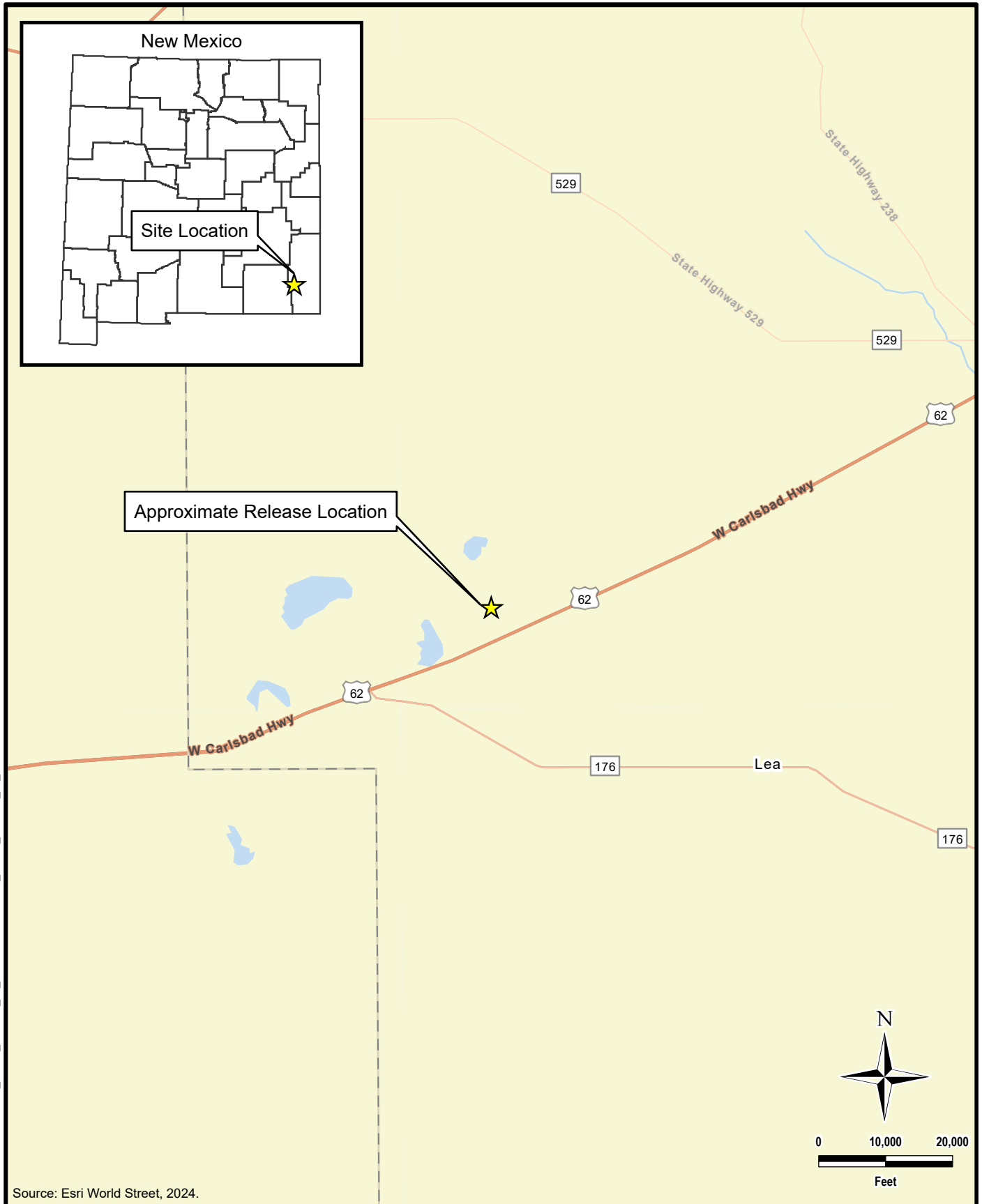
- Table 1 – Summary of Analytical Results –2024 Soil Assessment

### Appendices:

- Appendix A – C-141 Forms
- Appendix B – Site Characterization Data
- Appendix C – Photographic Documentation
- Appendix D – Laboratory Analytical Data
- Appendix E – Regulatory Correspondence



## **FIGURES**



**TETRA TECH**

[www.tetrattech.com](http://www.tetrattech.com)

901 West Wall Street, Suite 100  
Midland, Texas 79701  
Phone: (432) 682-4559  
Fax: (432) 682-3946

**CHEVRON MID CONTINENT BUSINESS UNIT**

NAPP2426162492  
(32.588407°, -103.667026 °)  
LEA COUNTY, NEW MEXICO

**WTU BATTERY RELEASE  
OVERVIEW MAP**

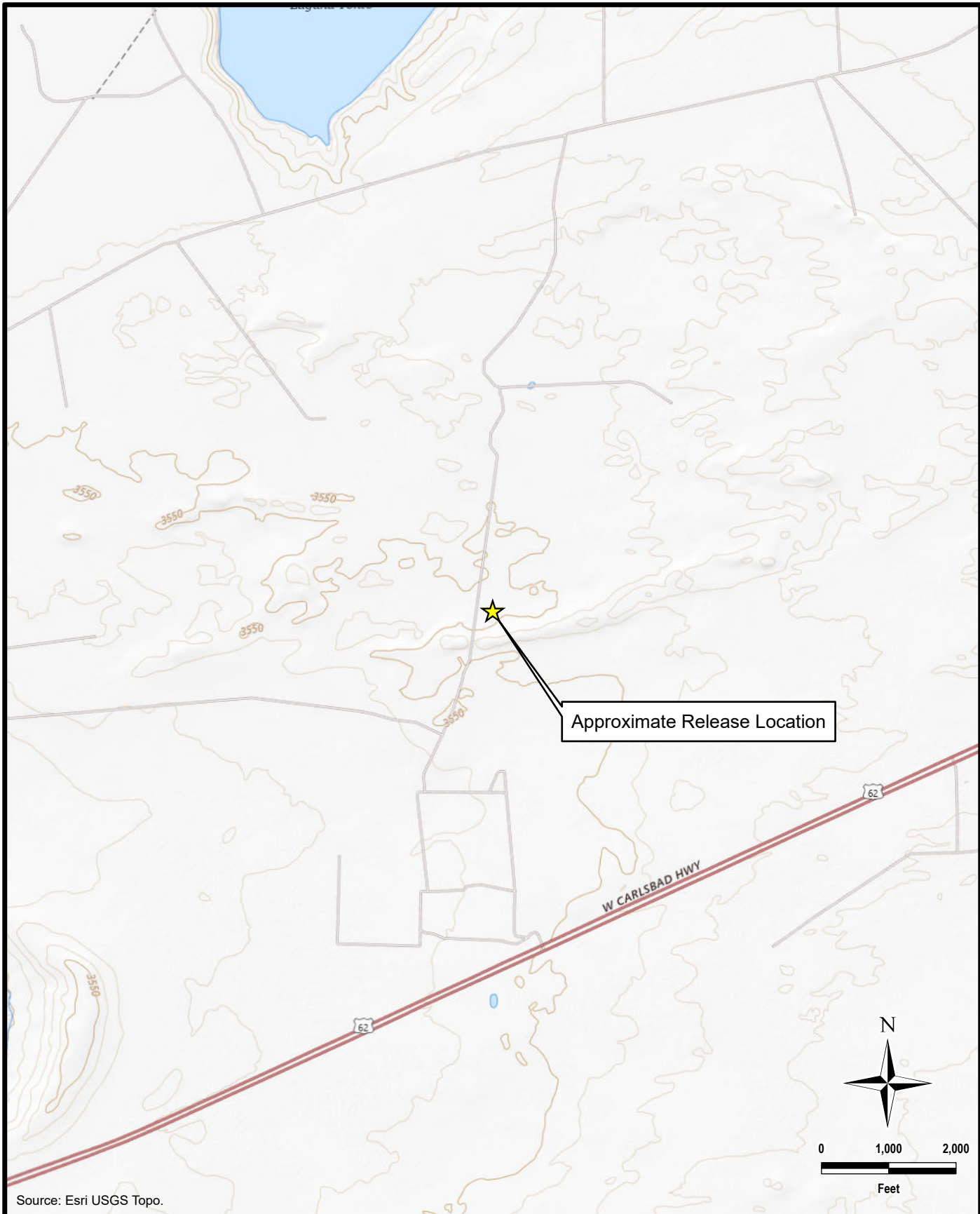
PROJECT NO.: 212C-MD-03722

DATE: DECEMBER 13, 2024

DESIGNED BY: LMV

Figure No.

**1**



Source: Esri USGS Topo.



**TETRA TECH**

[www.tetrattech.com](http://www.tetrattech.com)

901 West Wall Street, Suite 100  
Midland, Texas 79701  
Phone: (432) 682-4559  
Fax: (432) 682-3946

**CHEVRON MID CONTINENT BUSINESS UNIT**

NAPP2426162492  
(32.588407°, -103.667026 °)  
LEA COUNTY, NEW MEXICO

**WTU BATTERY RELEASE  
TOPOGRAPHIC MAP**

PROJECT NO.: 212C-MD-03722

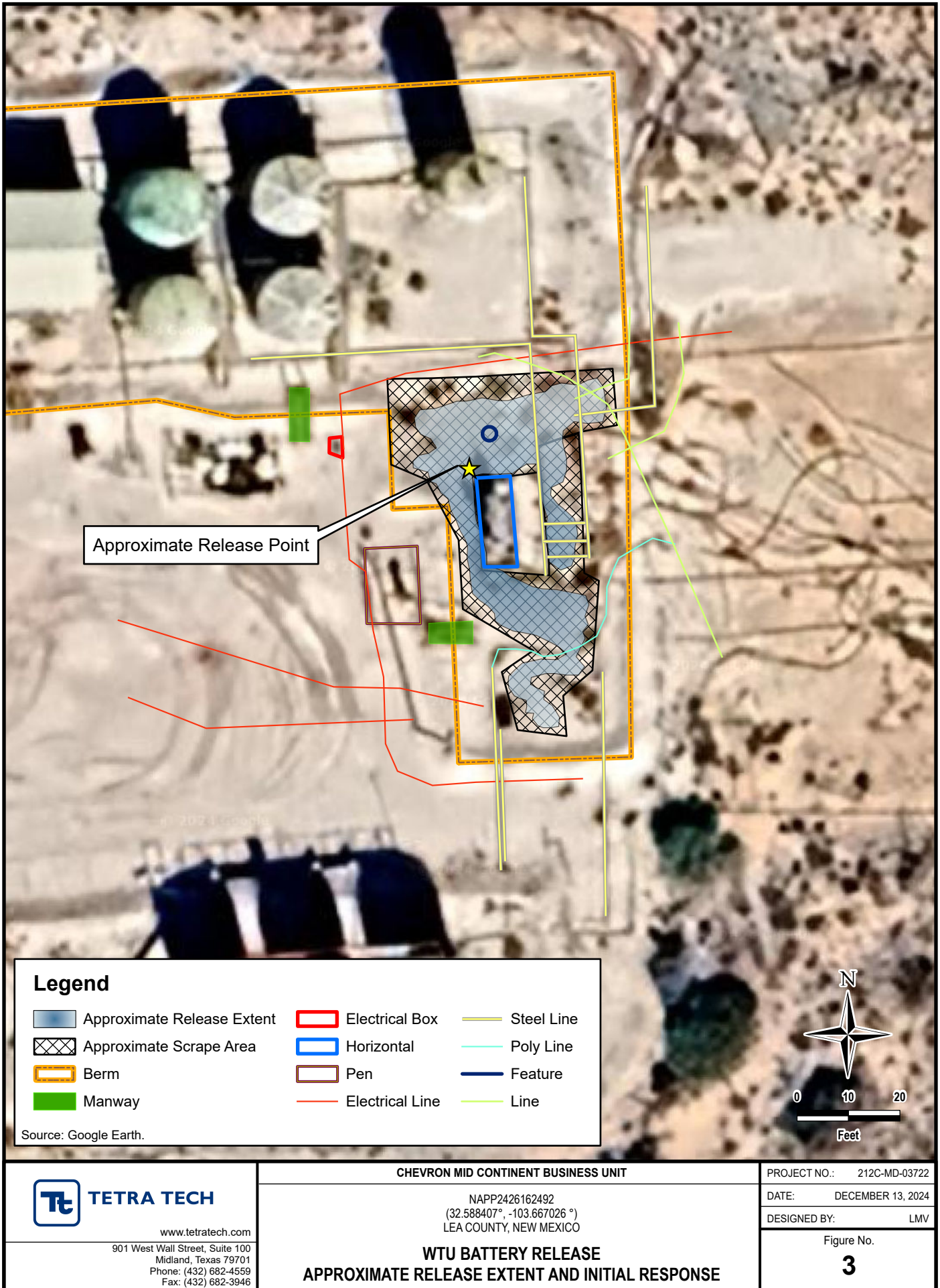
DATE: DECEMBER 13, 2024

DESIGNED BY: LMV

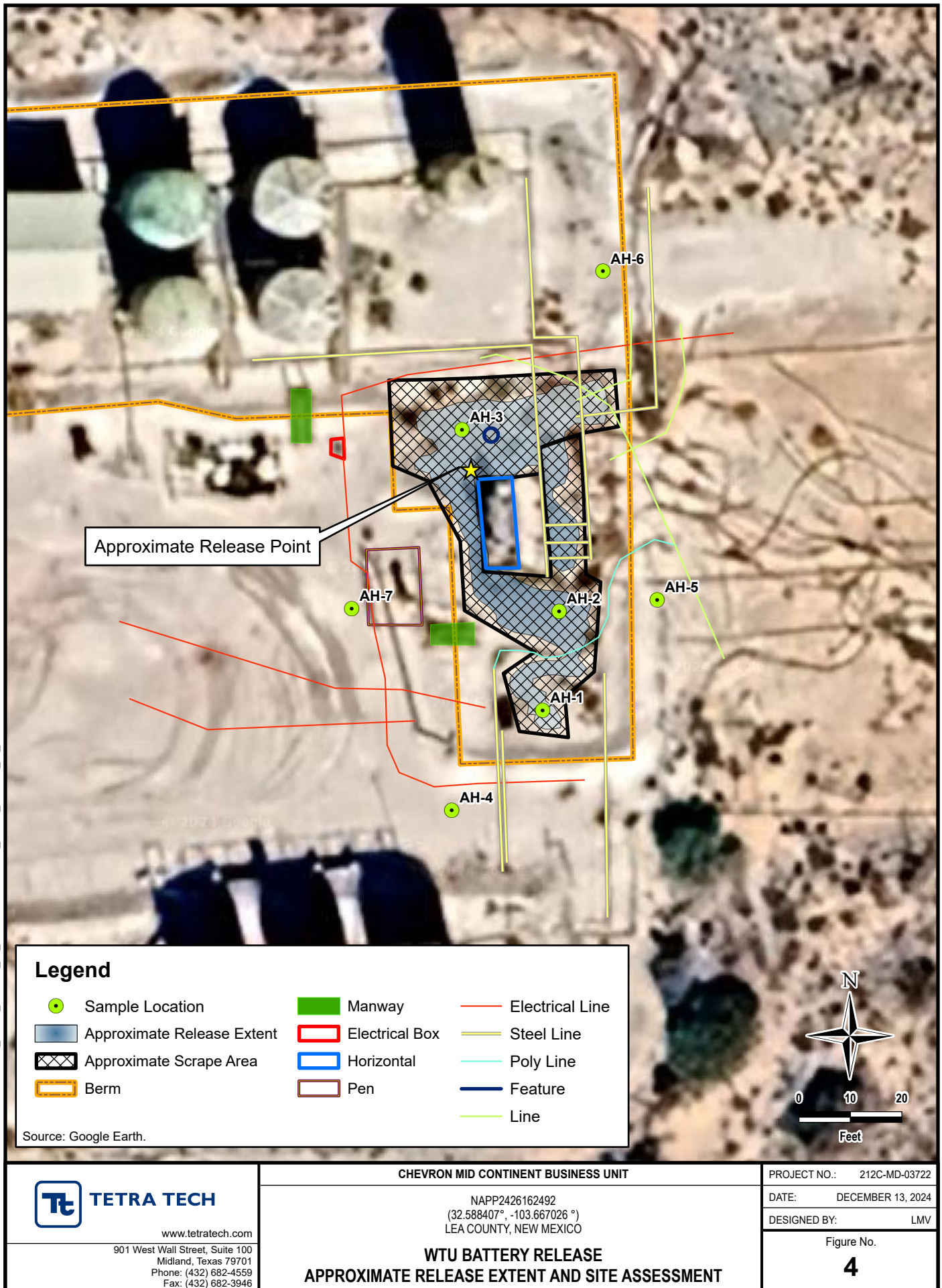
Figure No.

**2**

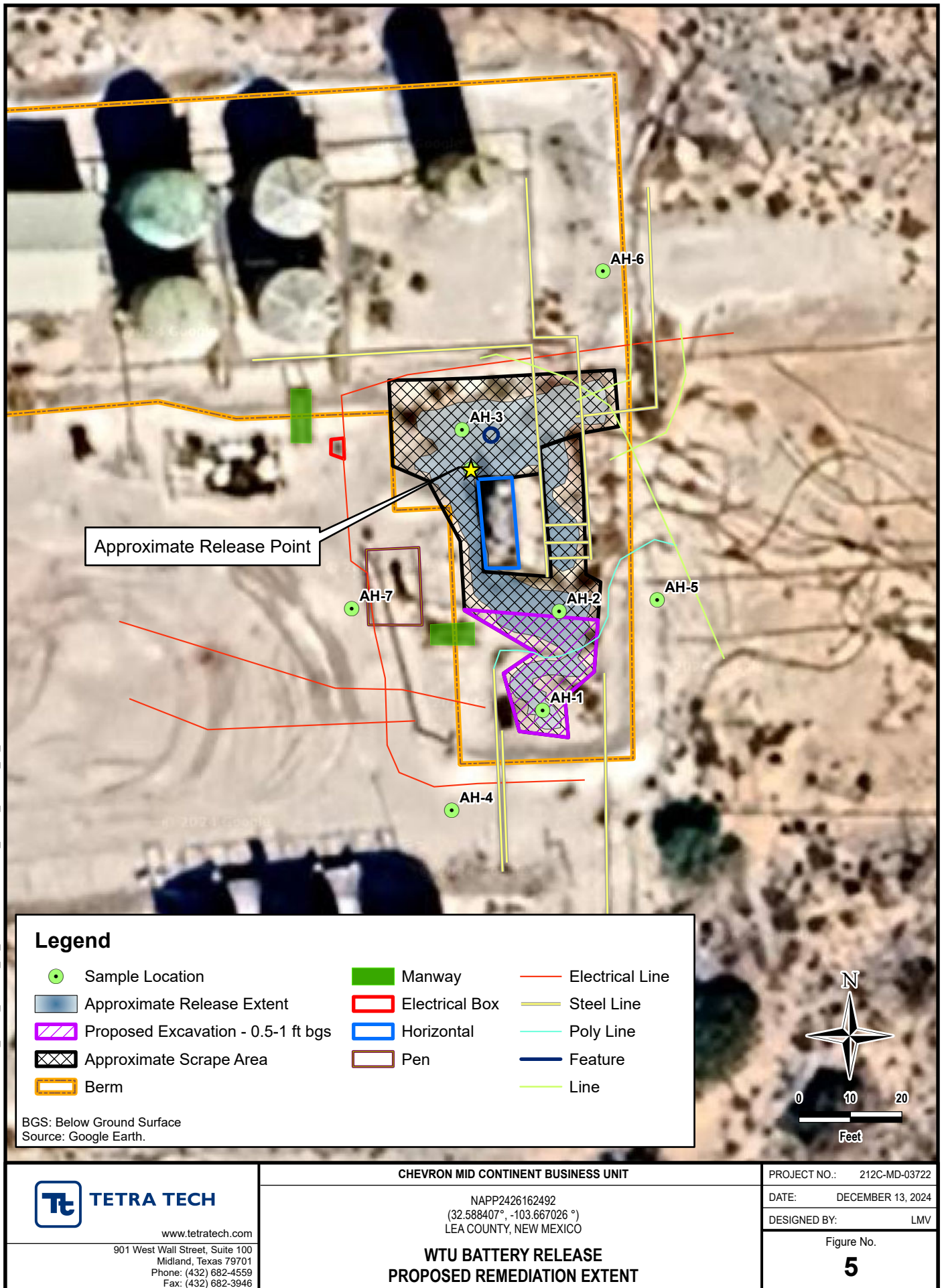
DOCUMENT PATH: Y:\CHEVRON\212C-MD-03723\_SAND\_DUNES\_11\_CS\APRX



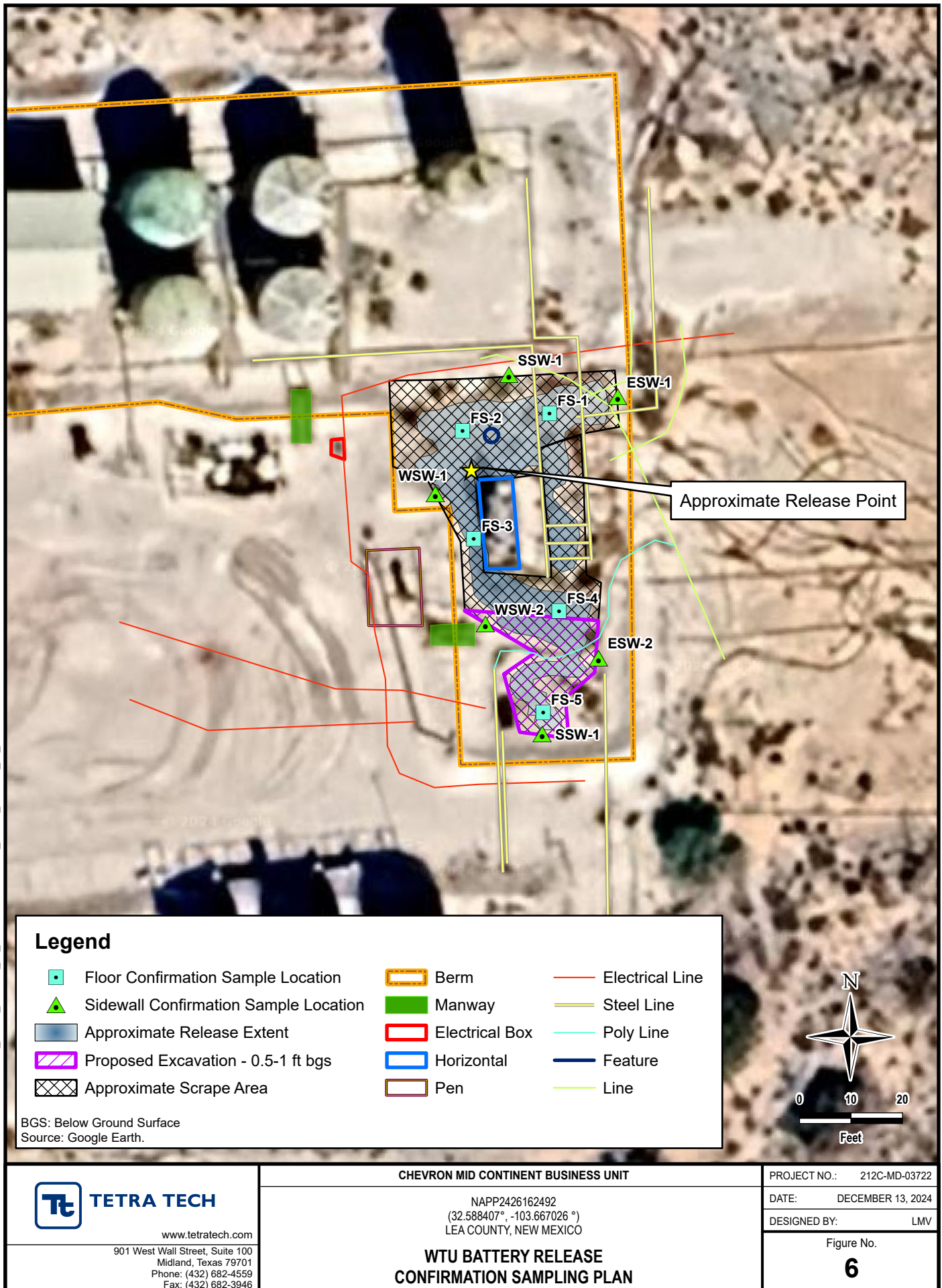












**TETRA TECH**

www.tetrattech.com

901 West Wall Street, Suite 100  
Midland, Texas 79701  
Phone: (432) 682-4559  
Fax: (432) 682-3946

CHEVRON MID CONTINENT BUSINESS UNIT

NAPP2426162492  
(32.588407°, -103.667026 °)  
LEA COUNTY, NEW MEXICO

**WTU BATTERY RELEASE  
CONFIRMATION SAMPLING PLAN**

PROJECT NO.: 212C-MD-03722

DATE: DECEMBER 13, 2024

DESIGNED BY: LMV

Figure No.

**6**

DOCUMENT PATH: Y:\CHEVRON\212C-MD-03723\_SAND\_DUNES\_11\_CS\APRX

## **TABLES**



TABLE 1  
SUMMARY OF ANALYTICAL RESULTS  
SOIL ASSESSMENT- NAPP2426162492  
CHEVRON  
WTU BATTERY RELEASE  
EDDY COUNTY, NM

Sample ID	Sample Date	Sample Depth	Chloride		BTEX <sup>2</sup>										TPH <sup>3</sup>							
					Benzene		Toluene		Ethylbenzene		Total Xylenes		Total BTEX		GRO		DRO		EXT DRO		Total TPH (GRO+DRO+EXT DRO)	
															C <sub>6</sub> - C <sub>10</sub>		> C <sub>10</sub> - C <sub>28</sub>		> C <sub>28</sub> - C <sub>36</sub>			
		ft. bgs	mg/kg	Q	mg/kg	Q	mg/kg	Q	mg/kg	Q	mg/kg	Q	mg/kg	Q	mg/kg	Q	mg/kg	Q	mg/kg			
AH-1	12/5/2024	0.5-1	64		<0.050		<0.050	GC-NC	<0.050		<0.150		<0.300		<10.0		75.3		118		193.3	
		2-3	48		<0.050		<0.050	GC-NC	<0.050		<0.150		<0.300		<10.0		<10.0		<10.0		-	
		3-4	48		<0.050		<0.050	GC-NC	<0.050		<0.150		<0.300		<10.0		<10.0		<10.0		-	
		4-5	160		<0.050		<0.050		<0.050		<0.150		<0.300		<10.0		<10.0		<10.0		-	
		5-6	32		<0.050		<0.050		<0.050		<0.150		<0.300		<10.0		<10.0		<10.0		-	
AH-2	12/5/2024	0.5-1	160		<0.050		<0.050		<0.050		<0.150		<0.300		<10.0		<10.0		<10.0		-	
		2-3	96		<0.050		<0.050		<0.050		<0.150		<0.300		<10.0		<10.0		<10.0		-	
		3-4	96		<0.050		<0.050		<0.050		<0.150		<0.300		<10.0		<10.0		<10.0		-	
		4-5	352		<0.050		<0.050		<0.050		<0.150		<0.300		<10.0		<10.0		<10.0		-	
		5-6	416		<0.050		<0.050		<0.050		<0.150		<0.300		<10.0		<10.0		<10.0		-	
AH-3	12/5/2024	0.5-1	32		<0.050		<0.050		<0.050		<0.150		<0.300		<10.0		28.8		44.4		73.2	
		2-3	160		<0.050		<0.050		<0.050		<0.150		<0.300		<10.0		<10.0		<10.0		-	
AH-4	12/5/2024	0-1	32		<0.050		<0.050		<0.050		<0.150		<0.300		<10.0		<10.0		<10.0		-	
AH-5	12/5/2024	0-1	48		<0.050		<0.050		<0.050		<0.150		<0.300		<10.0		<10.0		<10.0		-	
AH-6	12/5/2024	0-1	304		<0.050		<0.050		<0.050		<0.150		<0.300		<10.0		<10.0		<10.0		-	
AH-7	12/5/2024	0-1	16		<0.050		<0.050		<0.050		<0.150		<0.300		<10.0		<10.0		<10.0		-	

## NOTES:

ft. Feet  
bgs Below ground surface  
mg/kg Milligrams per kilogram  
TPH Total Petroleum Hydrocarbons  
GRO Gasoline range organics  
DRO Diesel range organics  
1 Method SM4500Cl-B  
2 Method 8021B  
3 Method 8015M

***Bold and italicized values indicate exceedance of proposed RRALs and Reclamation Requirements.***

Shaded rows indicate intervals proposed for excavation.

## QUALIFIERS:

GC-NC 8260 confirmation analysis was performed; initial GC results were not supported by GC/MS analysis and are reported as ND.

## **APPENDIX A C-141 Forms**

**District I**  
1625 N. French Dr., Hobbs, NM 88240  
Phone:(575) 393-6161 Fax:(575) 393-0720  
**District II**  
811 S. First St., Artesia, NM 88210  
Phone:(575) 748-1283 Fax:(575) 748-9720  
**District III**  
1000 Rio Brazos Rd., Aztec, NM 87410  
Phone:(505) 334-6178 Fax:(505) 334-6170  
**District IV**  
1220 S. St Francis Dr., Santa Fe, NM 87505  
Phone:(505) 476-3470 Fax:(505) 476-3462

State of New Mexico  
Energy, Minerals and Natural Resources  
Oil Conservation Division  
1220 S. St Francis Dr.  
Santa Fe, NM 87505

QUESTIONS  
  
Action 384421

QUESTIONS

Operator: CHEVRON U S A INC 6301 Deauville Blvd Midland, TX 79706	OGRID: 4323
	Action Number: 384421
	Action Type: [NOTIFY] Notification Of Release (NOR)

QUESTIONS

<b>Location of Release Source</b> <i>Please answer all the questions in this group.</i>	
Site Name	WTU Battery
Date Release Discovered	09/17/2024
Surface Owner	Federal

<b>Incident Details</b> <i>Please answer all the questions in this group.</i>	
Incident Type	Produced Water Release
Did this release result in a fire or is the result of a fire	No
Did this release result in any injuries	No
Has this release reached or does it have a reasonable probability of reaching a watercourse	No
Has this release endangered or does it have a reasonable probability of endangering public health	No
Has this release substantially damaged or will it substantially damage property or the environment	No
Is this release of a volume that is or may with reasonable probability be detrimental to fresh water	No

<b>Nature and Volume of Release</b> <i>Material(s) released, please answer all that apply below. Any calculations or specific justifications for the volumes provided should be attached to the follow-up C-141 submission.</i>	
Crude Oil Released (bbls) Details	Cause: Equipment Failure   Flow Line - Production   Crude Oil   Released: 2 BBL   Recovered: 2 BBL   Lost: 0 BBL.
Produced Water Released (bbls) Details	Cause: Equipment Failure   Flow Line - Production   Produced Water   Released: 34 BBL   Recovered: 21 BBL   Lost: 13 BBL.
Is the concentration of chloride in the produced water >10,000 mg/l	Yes
Condensate Released (bbls) Details	Not answered.
Natural Gas Vented (Mcf) Details	Not answered.
Natural Gas Flared (Mcf) Details	Not answered.
Other Released Details	Not answered.
Are there additional details for the questions above (i.e. any answer containing Other, Specify, Unknown, and/or Fire, or any negative lost amounts)	Not answered.

**District I**

1625 N. French Dr., Hobbs, NM 88240  
Phone:(575) 393-6161 Fax:(575) 393-0720

**District II**

811 S. First St., Artesia, NM 88210  
Phone:(575) 748-1283 Fax:(575) 748-9720

**District III**

1000 Rio Brazos Rd., Aztec, NM 87410  
Phone:(505) 334-6178 Fax:(505) 334-6170

**District IV**

1220 S. St Francis Dr., Santa Fe, NM 87505  
Phone:(505) 476-3470 Fax:(505) 476-3462

**State of New Mexico**  
**Energy, Minerals and Natural Resources**  
**Oil Conservation Division**  
**1220 S. St Francis Dr.**  
**Santa Fe, NM 87505**

QUESTIONS, Page 2

Action 384421

**QUESTIONS (continued)**

Operator: CHEVRON U S A INC 6301 Deauville Blvd Midland, TX 79706	OGRID: 4323
	Action Number: 384421
	Action Type: [NOTIFY] Notification Of Release (NOR)

**QUESTIONS**

<b>Nature and Volume of Release (continued)</b>	
Is this a gas only submission (i.e. only significant Mcf values reported)	No, according to supplied volumes this does not appear to be a "gas only" report.
Was this a major release as defined by Subsection A of 19.15.29.7 NMAC	Yes
Reasons why this would be considered a submission for a notification of a major release	From paragraph A. "Major release" determine using: (1) an unauthorized release of a volume, excluding gases, of 25 barrels or more.
With the implementation of the 19.15.27 NMAC (05/25/2021), venting and/or flaring of natural gas (i.e. gas only) are to be submitted on the C-129 form.	

**Initial Response**

The responsible party must undertake the following actions immediately unless they could create a safety hazard that would result in injury.

The source of the release has been stopped	True
The impacted area has been secured to protect human health and the environment	True
Released materials have been contained via the use of berms or dikes, absorbent pads, or other containment devices	True
All free liquids and recoverable materials have been removed and managed appropriately	True
If all the actions described above have not been undertaken, explain why	Not answered.

Per Paragraph 4 of Subsection B of 19.15.29.8 NMAC the responsible party may commence remediation immediately after discovery of a release. If remediation has begun, please prepare and attach a narrative of actions to date in the follow-up C-141 submission. If remedial efforts have been successfully completed or if the release occurred within a lined containment area (see 19.15.29.11(A)(5)(a) NMAC), please prepare and attach all information needed for closure evaluation in the follow-up C-141 submission.

**District I**

1625 N. French Dr., Hobbs, NM 88240  
Phone:(575) 393-6161 Fax:(575) 393-0720

**District II**

811 S. First St., Artesia, NM 88210  
Phone:(575) 748-1283 Fax:(575) 748-9720

**District III**

1000 Rio Brazos Rd., Aztec, NM 87410  
Phone:(505) 334-6178 Fax:(505) 334-6170

**District IV**

1220 S. St Francis Dr., Santa Fe, NM 87505  
Phone:(505) 476-3470 Fax:(505) 476-3462

**State of New Mexico**  
**Energy, Minerals and Natural Resources**  
**Oil Conservation Division**  
**1220 S. St Francis Dr.**  
**Santa Fe, NM 87505**

ACKNOWLEDGMENTS

Action 384421

**ACKNOWLEDGMENTS**

Operator: CHEVRON U S A INC 6301 Deauville Blvd Midland, TX 79706	OGRID: 4323
	Action Number: 384421
	Action Type: [NOTIFY] Notification Of Release (NOR)

**ACKNOWLEDGMENTS**

<input checked="" type="checkbox"/>	I acknowledge that I am authorized to submit notification of a release on behalf of my operator.
<input checked="" type="checkbox"/>	I acknowledge that upon submitting this application, I will be creating a new incident file (assigned to my operator) to track the notification(s) and corrective action(s) for a release, pursuant to NMAC 19.15.29.
<input checked="" type="checkbox"/>	I acknowledge that creating a new incident file will require my operator to file subsequent submission(s) of form "C-141, Application for administrative approval of a release notification and corrective action", pursuant to NMAC 19.15.29.
<input checked="" type="checkbox"/>	I hereby certify that the information given above is true and complete to the best of my knowledge and understand that pursuant to OCD rules and regulations all operators are required to report and/or file certain release notifications and perform corrective actions for releases which may endanger public health or the environment.
<input checked="" type="checkbox"/>	I acknowledge the fact that the acceptance of a C-141 report by the OCD does not relieve the operator of liability should their operations have failed to adequately investigate and remediate contamination that pose a threat to groundwater, surface water, human health or the environment.
<input checked="" type="checkbox"/>	I acknowledge the fact that, in addition, OCD acceptance of a C-141 report does not relieve the operator of responsibility for compliance with any other federal, state, or local laws and/or regulations.

**District I**  
1625 N. French Dr., Hobbs, NM 88240  
Phone:(575) 393-6161 Fax:(575) 393-0720  
**District II**  
811 S. First St., Artesia, NM 88210  
Phone:(575) 748-1283 Fax:(575) 748-9720  
**District III**  
1000 Rio Brazos Rd., Aztec, NM 87410  
Phone:(505) 334-6178 Fax:(505) 334-6170  
**District IV**  
1220 S. St Francis Dr., Santa Fe, NM 87505  
Phone:(505) 476-3470 Fax:(505) 476-3462

State of New Mexico  
Energy, Minerals and Natural Resources  
Oil Conservation Division  
1220 S. St Francis Dr.  
Santa Fe, NM 87505

CONDITIONS  
  
Action 384421

CONDITIONS

Operator: CHEVRON U S A INC 6301 Deauville Blvd Midland, TX 79706	OGRID: 4323
	Action Number: 384421
	Action Type: [NOTIFY] Notification Of Release (NOR)

CONDITIONS

Created By	Condition	Condition Date
branes	When submitting future reports regarding this release, please submit the calculations used or specific justification for the volumes reported on the initial C-141.	9/17/2024

	Length (feet)	Width (feet)	Above grade Depth (in)	Below grade Depth (in)	Water Cut (%)	Barrels Water	Barrels Oil
Area 1	15	8	0	1	95	0.254	0.013
Area 2	28	3	0	1.5	95	0.171	0.009
Area 3	23	2.5	0	4	95	18.61	0.956
Area 4	12	6	2	3	95	2.487	0.131
Area 5	19	9	3	3	95	8.318	0.438
Area 6	7.5	1.5	0.25	3	95	0.111	0.006
Area 7	6.5	23	1	6	95	4.005	0.211
					Rec Vol	20.5	1.5
					Total	33.956	1.764

**District I**  
1625 N. French Dr., Hobbs, NM 88240  
Phone:(575) 393-6161 Fax:(575) 393-0720  
**District II**  
811 S. First St., Artesia, NM 88210  
Phone:(575) 748-1283 Fax:(575) 748-9720  
**District III**  
1000 Rio Brazos Rd., Aztec, NM 87410  
Phone:(505) 334-6178 Fax:(505) 334-6170  
**District IV**  
1220 S. St Francis Dr., Santa Fe, NM 87505  
Phone:(505) 476-3470 Fax:(505) 476-3462

**State of New Mexico**  
**Energy, Minerals and Natural Resources**  
**Oil Conservation Division**  
**1220 S. St Francis Dr.**  
**Santa Fe, NM 87505**

QUESTIONS

Action 384876

QUESTIONS

Operator: CHEVRON U S A INC 6301 Deauville Blvd Midland, TX 79706	OGRID: 4323
	Action Number: 384876
	Action Type: [C-141] Initial C-141 (C-141-v-Initial)

QUESTIONS

<b>Prerequisites</b>	
Incident ID (n#)	nAPP2426162492
Incident Name	NAPP2426162492 WTU BATTERY @ 0
Incident Type	Produced Water Release
Incident Status	Initial C-141 Received

**Location of Release Source**

Please answer all the questions in this group.

Site Name	WTU Battery
Date Release Discovered	09/17/2024
Surface Owner	Federal

**Incident Details**

Please answer all the questions in this group.

Incident Type	Produced Water Release
Did this release result in a fire or is the result of a fire	No
Did this release result in any injuries	No
Has this release reached or does it have a reasonable probability of reaching a watercourse	No
Has this release endangered or does it have a reasonable probability of endangering public health	No
Has this release substantially damaged or will it substantially damage property or the environment	No
Is this release of a volume that is or may with reasonable probability be detrimental to fresh water	No

**Nature and Volume of Release**

Material(s) released, please answer all that apply below. Any calculations or specific justifications for the volumes provided should be attached to the follow-up C-141 submission.

Crude Oil Released (bbls) Details	Cause: Equipment Failure   Flow Line - Production   Crude Oil   Released: 2 BBL   Recovered: 2 BBL   Lost: 0 BBL.
Produced Water Released (bbls) Details	Cause: Equipment Failure   Flow Line - Production   Produced Water   Released: 34 BBL   Recovered: 21 BBL   Lost: 13 BBL.
Is the concentration of chloride in the produced water >10,000 mg/l	Yes
Condensate Released (bbls) Details	Not answered.
Natural Gas Vented (Mcf) Details	Not answered.
Natural Gas Flared (Mcf) Details	Not answered.
Other Released Details	Not answered.
Are there additional details for the questions above (i.e. any answer containing Other, Specify, Unknown, and/or Fire, or any negative lost amounts)	Not answered.



**District I**

1625 N. French Dr., Hobbs, NM 88240  
Phone:(575) 393-6161 Fax:(575) 393-0720

**District II**

811 S. First St., Artesia, NM 88210  
Phone:(575) 748-1283 Fax:(575) 748-9720

**District III**

1000 Rio Brazos Rd., Aztec, NM 87410  
Phone:(505) 334-6178 Fax:(505) 334-6170

**District IV**

1220 S. St Francis Dr., Santa Fe, NM 87505  
Phone:(505) 476-3470 Fax:(505) 476-3462

**State of New Mexico**  
**Energy, Minerals and Natural Resources**  
**Oil Conservation Division**  
**1220 S. St Francis Dr.**  
**Santa Fe, NM 87505**

QUESTIONS, Page 2

Action 384876

**QUESTIONS (continued)**

Operator: CHEVRON U S A INC 6301 Deauville Blvd Midland, TX 79706	OGRID: 4323
	Action Number: 384876
	Action Type: [C-141] Initial C-141 (C-141-v-Initial)

**QUESTIONS**

<b>Nature and Volume of Release (continued)</b>	
Is this a gas only submission (i.e. only significant Mcf values reported)	No, according to supplied volumes this does not appear to be a "gas only" report.
Was this a major release as defined by Subsection A of 19.15.29.7 NMAC	Yes
Reasons why this would be considered a submission for a notification of a major release	From paragraph A. "Major release" determine using: (1) an unauthorized release of a volume, excluding gases, of 25 barrels or more.
With the implementation of the 19.15.27 NMAC (05/25/2021), venting and/or flaring of natural gas (i.e. gas only) are to be submitted on the C-129 form.	

**Initial Response**

The responsible party must undertake the following actions immediately unless they could create a safety hazard that would result in injury.

The source of the release has been stopped	True
The impacted area has been secured to protect human health and the environment	True
Released materials have been contained via the use of berms or dikes, absorbent pads, or other containment devices	True
All free liquids and recoverable materials have been removed and managed appropriately	True
If all the actions described above have not been undertaken, explain why	Not answered.

Per Paragraph (4) of Subsection B of 19.15.29.8 NMAC the responsible party may commence remediation immediately after discovery of a release. If remediation has begun, please prepare and attach a narrative of actions to date in the follow-up C-141 submission. If remedial efforts have been successfully completed or if the release occurred within a lined containment area (see Subparagraph (a) of Paragraph (5) of Subsection A of 19.15.29.11 NMAC), please prepare and attach all information needed for closure evaluation in the follow-up C-141 submission.

I hereby certify that the information given above is true and complete to the best of my knowledge and understand that pursuant to OCD rules and regulations all operators are required to report and/or file certain release notifications and perform corrective actions for releases which may endanger public health or the environment. The acceptance of a C-141 report by the OCD does not relieve the operator of liability should their operations have failed to adequately investigate and remediate contamination that pose a threat to groundwater, surface water, human health or the environment. In addition, OCD acceptance of a C-141 report does not relieve the operator of responsibility for compliance with any other federal, state, or local laws and/or regulations.

I hereby agree and sign off to the above statement	Name: Bayley Ranes Title: Environmental Specialist Email: Bayleyranes@chevron.com Date: 09/18/2024
--	---

**District I**

1625 N. French Dr., Hobbs, NM 88240  
Phone:(575) 393-6161 Fax:(575) 393-0720

**District II**

811 S. First St., Artesia, NM 88210  
Phone:(575) 748-1283 Fax:(575) 748-9720

**District III**

1000 Rio Brazos Rd., Aztec, NM 87410  
Phone:(505) 334-6178 Fax:(505) 334-6170

**District IV**

1220 S. St Francis Dr., Santa Fe, NM 87505  
Phone:(505) 476-3470 Fax:(505) 476-3462

**State of New Mexico**  
**Energy, Minerals and Natural Resources**  
**Oil Conservation Division**  
**1220 S. St Francis Dr.**  
**Santa Fe, NM 87505**

QUESTIONS, Page 3

Action 384876

**QUESTIONS (continued)**

Operator: CHEVRON U S A INC 6301 Deauville Blvd Midland, TX 79706	OGRID: 4323
	Action Number: 384876
	Action Type: [C-141] Initial C-141 (C-141-v-Initial)

**QUESTIONS****Site Characterization**

Please answer all the questions in this group (only required when seeking remediation plan approval and beyond). This information must be provided to the appropriate district office no later than 90 days after the release discovery date.

What is the shallowest depth to groundwater beneath the area affected by the release in feet below ground surface (ft bgs)	Not answered.
What method was used to determine the depth to ground water	Not answered.
Did this release impact groundwater or surface water	Not answered.
<b>What is the minimum distance, between the closest lateral extents of the release and the following surface areas:</b>	
A continuously flowing watercourse or any other significant watercourse	Not answered.
Any lakebed, sinkhole, or playa lake (measured from the ordinary high-water mark)	Not answered.
An occupied permanent residence, school, hospital, institution, or church	Not answered.
A spring or a private domestic fresh water well used by less than five households for domestic or stock watering purposes	Not answered.
Any other fresh water well or spring	Not answered.
Incorporated municipal boundaries or a defined municipal fresh water well field	Not answered.
A wetland	Not answered.
A subsurface mine	Not answered.
An (non-karst) unstable area	Not answered.
Categorize the risk of this well / site being in a karst geology	Not answered.
A 100-year floodplain	Not answered.
Did the release impact areas not on an exploration, development, production, or storage site	Not answered.

**Remediation Plan**

Please answer all the questions that apply or are indicated. This information must be provided to the appropriate district office no later than 90 days after the release discovery date.

Requesting a remediation plan approval with this submission	No
The OCD recognizes that proposed remediation measures may have to be minimally adjusted in accordance with the physical realities encountered during remediation. If the responsible party has any need to significantly deviate from the remediation plan proposed, then it should consult with the division to determine if another remediation plan submission is required.	

**District I**  
1625 N. French Dr., Hobbs, NM 88240  
Phone:(575) 393-6161 Fax:(575) 393-0720

**District II**  
811 S. First St., Artesia, NM 88210  
Phone:(575) 748-1283 Fax:(575) 748-9720

**District III**  
1000 Rio Brazos Rd., Aztec, NM 87410  
Phone:(505) 334-6178 Fax:(505) 334-6170

**District IV**  
1220 S. St Francis Dr., Santa Fe, NM 87505  
Phone:(505) 476-3470 Fax:(505) 476-3462

State of New Mexico  
Energy, Minerals and Natural Resources  
Oil Conservation Division  
1220 S. St Francis Dr.  
Santa Fe, NM 87505

CONDITIONS

Action 384876

CONDITIONS

Operator: CHEVRON U S A INC 6301 Deauville Blvd Midland, TX 79706	OGRID: 4323
	Action Number: 384876
	Action Type: [C-141] Initial C-141 (C-141-v-Initial)

CONDITIONS

Created By	Condition	Condition Date
scott.rodgers	None	9/19/2024

Incident ID	
District RP	
Facility ID	
Application ID	

## Site Assessment/Characterization

*This information must be provided to the appropriate district office no later than 90 days after the release discovery date.*

What is the shallowest depth to groundwater beneath the area affected by the release?	_____ (ft bgs)
Did this release impact groundwater or surface water?	<input type="checkbox"/> Yes <input type="checkbox"/> No
Are the lateral extents of the release within 300 feet of a continuously flowing watercourse or any other significant watercourse?	<input type="checkbox"/> Yes <input type="checkbox"/> No
Are the lateral extents of the release within 200 feet of any lakebed, sinkhole, or playa lake (measured from the ordinary high-water mark)?	<input type="checkbox"/> Yes <input type="checkbox"/> No
Are the lateral extents of the release within 300 feet of an occupied permanent residence, school, hospital, institution, or church?	<input type="checkbox"/> Yes <input type="checkbox"/> No
Are the lateral extents of the release within 500 horizontal feet of a spring or a private domestic fresh water well used by less than five households for domestic or stock watering purposes?	<input type="checkbox"/> Yes <input type="checkbox"/> No
Are the lateral extents of the release within 1000 feet of any other fresh water well or spring?	<input type="checkbox"/> Yes <input type="checkbox"/> No
Are the lateral extents of the release within incorporated municipal boundaries or within a defined municipal fresh water well field?	<input type="checkbox"/> Yes <input type="checkbox"/> No
Are the lateral extents of the release within 300 feet of a wetland?	<input type="checkbox"/> Yes <input type="checkbox"/> No
Are the lateral extents of the release overlying a subsurface mine?	<input type="checkbox"/> Yes <input type="checkbox"/> No
Are the lateral extents of the release overlying an unstable area such as karst geology?	<input type="checkbox"/> Yes <input type="checkbox"/> No
Are the lateral extents of the release within a 100-year floodplain?	<input type="checkbox"/> Yes <input type="checkbox"/> No
Did the release impact areas <b>not</b> on an exploration, development, production, or storage site?	<input type="checkbox"/> Yes <input type="checkbox"/> No

Attach a comprehensive report (electronic submittals in .pdf format are preferred) demonstrating the lateral and vertical extents of soil contamination associated with the release have been determined. Refer to 19.15.29.11 NMAC for specifics.

### **Characterization Report Checklist:** *Each of the following items must be included in the report.*

- ☐ Scaled site map showing impacted area, surface features, subsurface features, delineation points, and monitoring wells.
- ☐ Field data
- ☐ Data table of soil contaminant concentration data
- ☐ Depth to water determination
- ☐ Determination of water sources and significant watercourses within ½-mile of the lateral extents of the release
- ☐ Boring or excavation logs
- ☐ Photographs including date and GIS information
- ☐ Topographic/Aerial maps
- ☐ Laboratory data including chain of custody

If the site characterization report does not include completed efforts at remediation of the release, the report must include a proposed remediation plan. That plan must include the estimated volume of material to be remediated, the proposed remediation technique, proposed sampling plan and methods, anticipated timelines for beginning and completing the remediation. The closure criteria for a release are contained in Table 1 of 19.15.29.12 NMAC, however, use of the table is modified by site- and release-specific parameters.

State of New Mexico  
Oil Conservation Division

Incident ID	
District RP	
Facility ID	
Application ID	

I hereby certify that the information given above is true and complete to the best of my knowledge and understand that pursuant to OCD rules and regulations all operators are required to report and/or file certain release notifications and perform corrective actions for releases which may endanger public health or the environment. The acceptance of a C-141 report by the OCD does not relieve the operator of liability should their operations have failed to adequately investigate and remediate contamination that pose a threat to groundwater, surface water, human health or the environment. In addition, OCD acceptance of a C-141 report does not relieve the operator of responsibility for compliance with any other federal, state, or local laws and/or regulations.

Printed Name: \_\_\_\_\_ Title: \_\_\_\_\_

Signature: \_\_\_\_\_ Date: \_\_\_\_\_

email: \_\_\_\_\_ Telephone: \_\_\_\_\_

**OCD Only**

Received by: \_\_\_\_\_ Date: \_\_\_\_\_

Incident ID	
District RP	
Facility ID	
Application ID	

## Remediation Plan

**Remediation Plan Checklist:** *Each of the following items must be included in the plan.*

- ☐ Detailed description of proposed remediation technique
- ☐ Scaled sitemap with GPS coordinates showing delineation points
- ☐ Estimated volume of material to be remediated
- ☐ Closure criteria is to Table 1 specifications subject to 19.15.29.12(C)(4) NMAC
- ☐ Proposed schedule for remediation (note if remediation plan timeline is more than 90 days OCD approval is required)

**Deferral Requests Only:** *Each of the following items must be confirmed as part of any request for deferral of remediation.*

- ☐ Contamination must be in areas immediately under or around production equipment where remediation could cause a major facility deconstruction.
- ☐ Extents of contamination must be fully delineated.
- ☐ Contamination does not cause an imminent risk to human health, the environment, or groundwater.

I hereby certify that the information given above is true and complete to the best of my knowledge and understand that pursuant to OCD rules and regulations all operators are required to report and/or file certain release notifications and perform corrective actions for releases which may endanger public health or the environment. The acceptance of a C-141 report by the OCD does not relieve the operator of liability should their operations have failed to adequately investigate and remediate contamination that pose a threat to groundwater, surface water, human health or the environment. In addition, OCD acceptance of a C-141 report does not relieve the operator of responsibility for compliance with any other federal, state, or local laws and/or regulations.

Printed Name: \_\_\_\_\_ Title: \_\_\_\_\_

Signature: \_\_\_\_\_ Date: \_\_\_\_\_

email: \_\_\_\_\_ Telephone: \_\_\_\_\_

**OCD Only**

Received by: \_\_\_\_\_ Date: \_\_\_\_\_

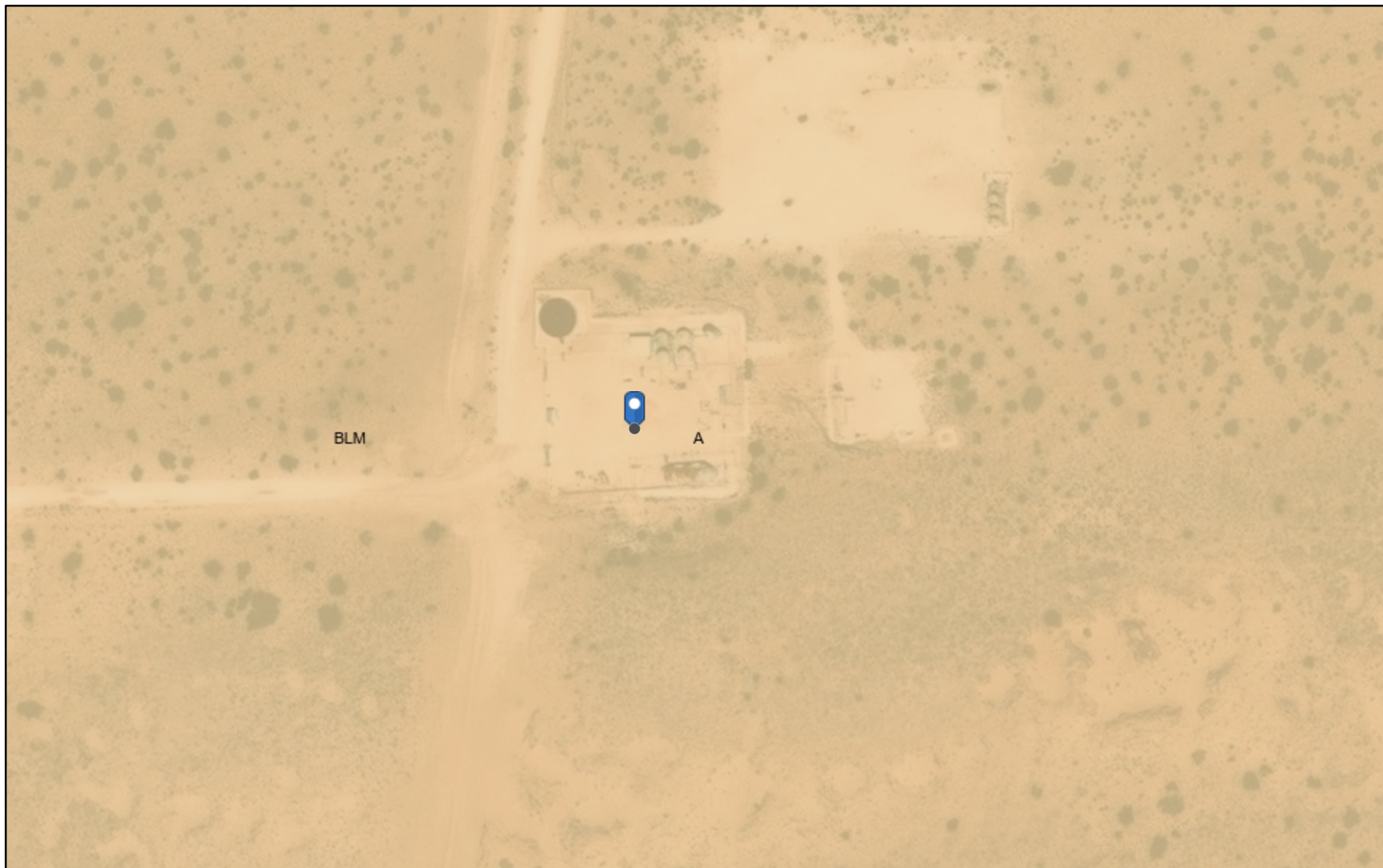
☐ Approved ☐ Approved with Attached Conditions of Approval ☐ Denied ☐ Deferral Approved

Signature: \_\_\_\_\_ Date: \_\_\_\_\_

## **APPENDIX B**

### **Site Characterization Data**

# OCD Land Ownership



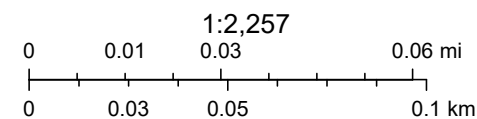
12/5/2024, 8:41:23 AM

Mineral Ownership

Land Ownership

A-All minerals are owned by U.S.

BLM



U.S. BLM, Maxar, Microsoft, Esri, HERE, Garmin, iPC





New Mexico Office of the State Engineer

Water Column/Average Depth to Water

(A CLW##### in the POD suffix indicates the POD has been replaced & no longer serves a water right file.)

(R=POD has been replaced, O=orphaned, C=the file is closed)

(quarters are smallest to largest)

(meters)

(In feet)

POD Number	Code	Sub basin	County	Q64	Q16	Q4	Sec	Tws	Range	X	Y	Map	Distance	Well Depth	Depth Water	Water Column
<a href="#">CP 00653 POD1</a>		CP	LE		SE	SE	04	20S	33E	625573.0	3607367.0 *		1009	60		
<a href="#">CP 00317</a>		CP	LE	SW	SE	SW	05	20S	33E	623054.0	3607235.0 *		2220	680	325	355
<a href="#">CP 01980 POD1</a>		CP	LE	NE	SW	SW	11	20S	33E	627611.5	3605794.6		2564	55	36	19
<a href="#">CP 01865 POD2</a>		CP	LE	SW	NW	SW	02	20S	33E	627454.2	3607733.7		2648	105	0	105

Average Depth to Water: 120 feet

Minimum Depth: 0 feet

Maximum Depth: 325 feet

Record Count: 4

Basin/County Search:

County: LE

UTM Filters (in meters):

Easting: 625133.83

Northing: 3606457.56

Radius: 003000

\* UTM location was derived from PLSS - see Help

The data is furnished by the NMOSE/ISC and is accepted by the recipient with the expressed understanding that the OSE/ISC make no warranties, expressed or implied, concerning the accuracy, completeness, reliability, usability, or suitability for any particular purpose of the data.

## USGS Groundwater Wells



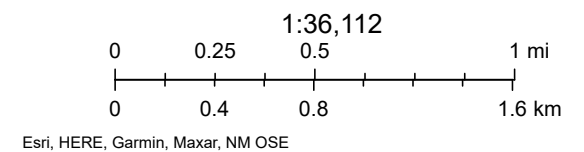


# OCD Water Bodys



12/5/2024, 8:46:42 AM

- OSW Water Bodys
- OSE Streams
- OSE Probable Playas





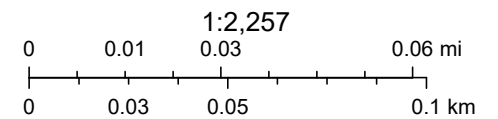
## OCD Karst Potential



12/5/2024, 8:43:29 AM

Karst Occurrence Potential

 Low

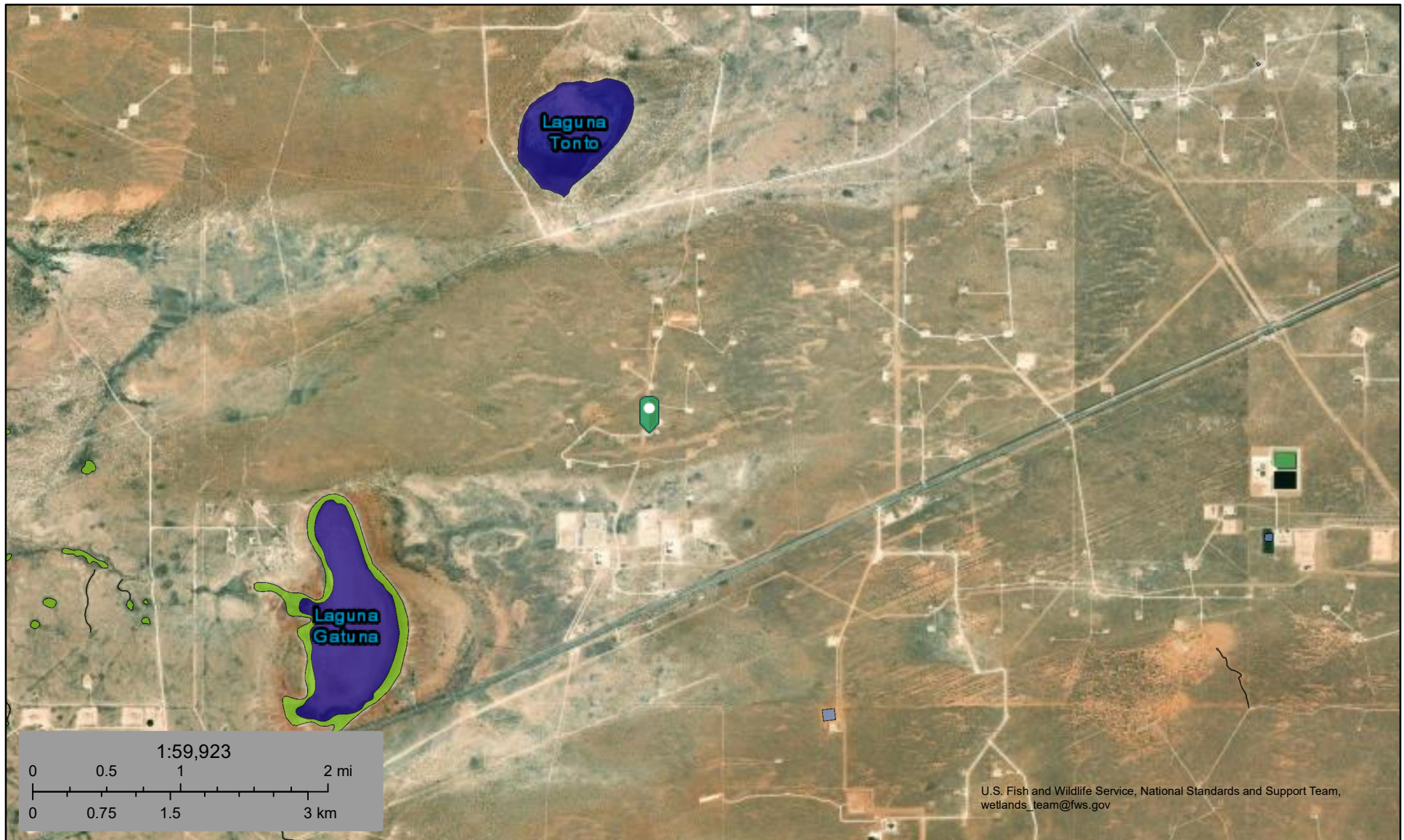


BLM, OCD, New Mexico Tech, Maxar, Microsoft, Esri, HERE, Garmin, iPC





## National Wetlands Inventory



December 5, 2024

**Wetlands**

- Estuarine and Marine Deepwater
- Estuarine and Marine Wetland

- Freshwater Emergent Wetland
- Freshwater Forested/Shrub Wetland
- Freshwater Pond

- Lake
- Other
- Riverine

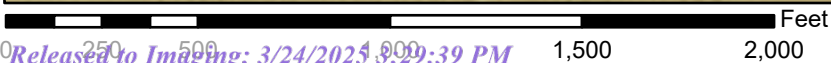
This map is for general reference only. The US Fish and Wildlife Service is not responsible for the accuracy or currentness of the base data shown on this map. All wetlands related data should be used in accordance with the layer metadata found on the Wetlands Mapper web site.



# National Flood Hazard Layer FIRMMette



103°40'20"W 32°35'33"N



1:6,000

103°39'43"W 32°35'3"N

## Legend

SEE FIS REPORT FOR DETAILED LEGEND AND INDEX MAP FOR FIRM PANEL LAYOUT

SPECIAL FLOOD HAZARD AREAS		Without Base Flood Elevation (BFE) Zone A, V, A99
		With BFE or Depth Zone AE, AO, AH, VE, AR
		Regulatory Floodway
OTHER AREAS OF FLOOD HAZARD		0.2% Annual Chance Flood Hazard, Areas of 1% annual chance flood with average depth less than one foot or with drainage areas of less than one square mile Zone X
		Future Conditions 1% Annual Chance Flood Hazard Zone X
		Area with Reduced Flood Risk due to Levee. See Notes. Zone X
		Area with Flood Risk due to Levee Zone D
OTHER AREAS		NO SCREEN Area of Minimal Flood Hazard Zone X
		Effective LOMRs
		Area of Undetermined Flood Hazard Zone D
GENERAL STRUCTURES		Channel, Culvert, or Storm Sewer
		Levee, Dike, or Floodwall
OTHER FEATURES		20.2 Cross Sections with 1% Annual Chance Water Surface Elevation
		17.5 Cross Sections with 1% Annual Chance Water Surface Elevation
		Coastal Transect
		Base Flood Elevation Line (BFE)
		Limit of Study
		Jurisdiction Boundary
		Coastal Transect Baseline
MAP PANELS		Digital Data Available
		No Digital Data Available
		Unmapped



The pin displayed on the map is an approximate point selected by the user and does not represent an authoritative property location.

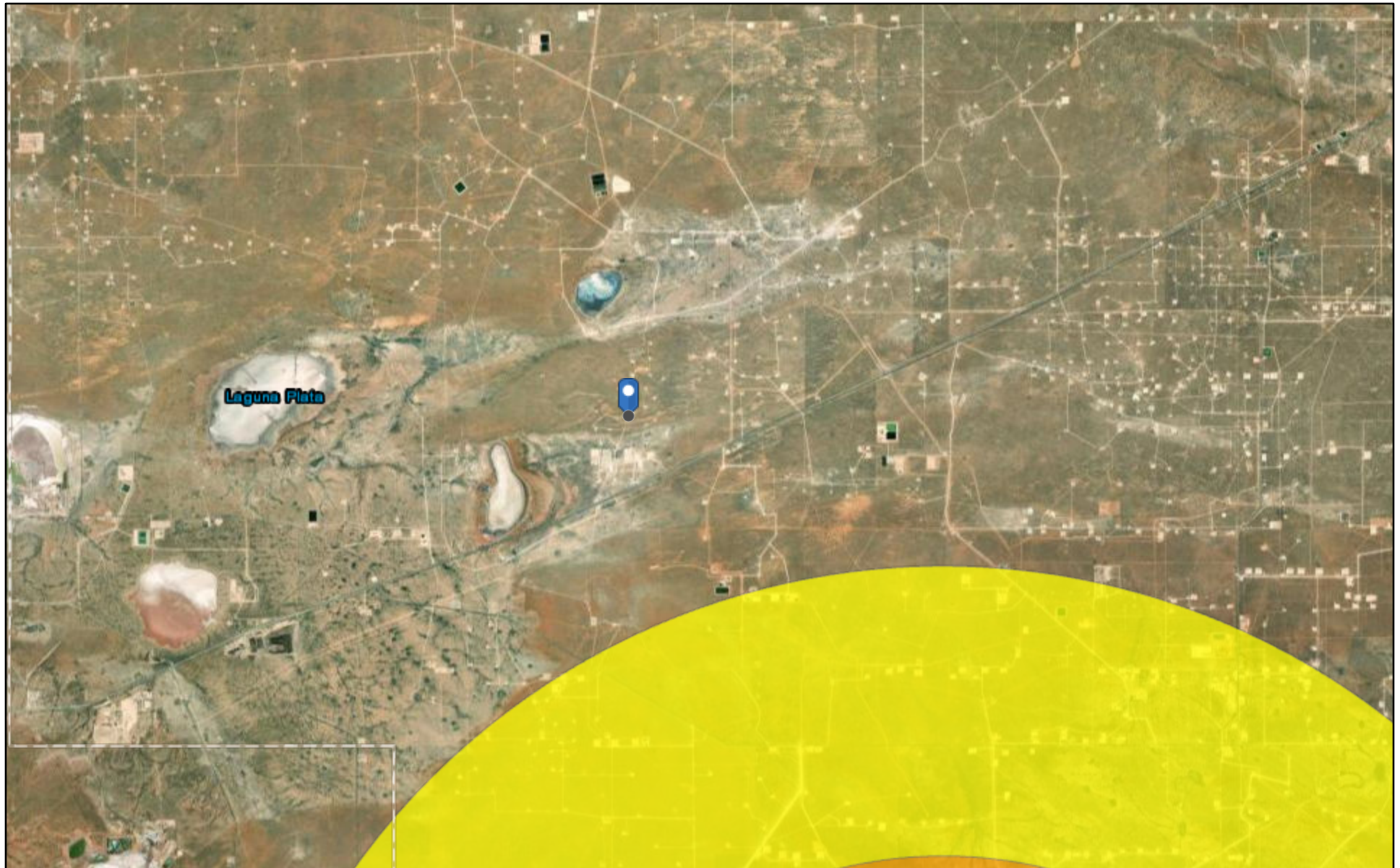
This map complies with FEMA's standards for the use of digital flood maps if it is not void as described below. The basemap shown complies with FEMA's basemap accuracy standards

The flood hazard information is derived directly from the authoritative NFHL web services provided by FEMA. This map was exported on **12/5/2024 at 2:59 PM** and does not reflect changes or amendments subsequent to this date and time. The NFHL and effective information may change or become superseded by new data over time.

This map image is void if the one or more of the following map elements do not appear: basemap imagery, flood zone labels, legend, scale bar, map creation date, community identifiers, FIRM panel number, and FIRM effective date. Map images for unmapped and unmodernized areas cannot be used for regulatory purposes.



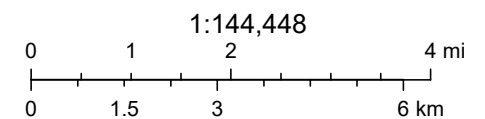
# OCD Induced Seismicity



12/5/2024, 8:55:24 AM

Seismic Response 3.0 to 3.4  10 mi.

6 mi.



Oil Conservation Division (OCD), Energy, Minerals and Natural Resources Department (EMNRD), Esri, HERE, Garmin, Earthstar Geographics

New Mexico Oil Conservation Division



# Active Mines in New Mexico



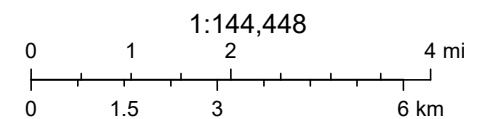
12/5/2024, 9:06:27 AM

Registered Mines

Industrial Minerals (Other)



Potash



U.S. BLM, Esri, HERE, Garmin, Earthstar Geographics



## **APPENDIX C**

### **Laboratory Analytical Data**



PHONE (575) 393-2326 ° 101 E. MARLAND ° HOBBS, NM 88240

---

December 11, 2024

CHRISTIAN LLULL

TETRA TECH

901 WEST WALL STREET , STE 100

MIDLAND, TX 79701

RE: WTU BATTERY RELEASE

Enclosed are the results of analyses for samples received by the laboratory on 12/05/24 17:20.

Cardinal Laboratories is accredited through Texas NELAP under certificate number TX-C24-00112. Accreditation applies to drinking water, non-potable water and solid and chemical materials. All accredited analytes are denoted by an asterisk (\*). For a complete list of accredited analytes and matrices visit the TCEQ website at [www.tceq.texas.gov/field/qa/lab\\_accred\\_certif.html](http://www.tceq.texas.gov/field/qa/lab_accred_certif.html).

Cardinal Laboratories is accredited through the State of Colorado Department of Public Health and Environment for:

Method EPA 552.2	Haloacetic Acids (HAA-5)
Method EPA 524.2	Total Trihalomethanes (TTHM)
Method EPA 524.4	Regulated VOCs (V1, V2, V3)

Accreditation applies to public drinking water matrices.

This report meets NELAP requirements and is made up of a cover page, analytical results, and a copy of the original chain-of-custody. If you have any questions concerning this report, please feel free to contact me.

Sincerely,

A handwritten signature in black ink that reads "Celey D. Keene". The signature is written in a cursive, flowing style.

Celey D. Keene

Lab Director/Quality Manager



PHONE (575) 393-2326 ° 101 E. MARLAND ° HOBBS, NM 88240

**Analytical Results For:**

TETRA TECH  
 CHRISTIAN LLULL  
 901 WEST WALL STREET , STE 100  
 MIDLAND TX, 79701  
 Fax To: (432) 682-3946

Received:	12/05/2024	Sampling Date:	12/05/2024
Reported:	12/11/2024	Sampling Type:	Soil
Project Name:	WTU BATTERY RELEASE	Sampling Condition:	Cool & Intact
Project Number:	212C - MD - 03722	Sample Received By:	Tamara Oldaker
Project Location:	CHEVRON - LEA CO NM		

**Sample ID: AH - 1 ( 0.5-1' ) (H247415-01)**

BTEX 8021B		mg/kg		Analyzed By: JH					
Analyte	Result	Reporting Limit	Analyzed	Method Blank	BS	% Recovery	True Value QC	RPD	Qualifier
Benzene*	<0.050	0.050	12/07/2024	ND	2.15	107	2.00	3.18	
Toluene*	<0.050	0.050	12/07/2024	ND	2.18	109	2.00	6.24	GC-NC
Ethylbenzene*	<0.050	0.050	12/07/2024	ND	2.21	111	2.00	8.07	
Total Xylenes*	<0.150	0.150	12/07/2024	ND	6.51	108	6.00	8.56	
Total BTEX	<0.300	0.300	12/07/2024	ND					

Surrogate: 4-Bromofluorobenzene (PID) 101 % 71.5-134

Chloride, SM4500Cl-B		mg/kg		Analyzed By: CT					
Analyte	Result	Reporting Limit	Analyzed	Method Blank	BS	% Recovery	True Value QC	RPD	Qualifier
Chloride	64.0	16.0	12/09/2024	ND	448	112	400	3.64	

TPH 8015M		mg/kg		Analyzed By: MS					
Analyte	Result	Reporting Limit	Analyzed	Method Blank	BS	% Recovery	True Value QC	RPD	Qualifier
GRO C6-C10*	<10.0	10.0	12/07/2024	ND	230	115	200	1.96	
DRO >C10-C28*	75.3	10.0	12/07/2024	ND	206	103	200	3.64	
EXT DRO >C28-C36	118	10.0	12/07/2024	ND					

Surrogate: 1-Chlorooctane 88.1 % 48.2-134

Surrogate: 1-Chlorooctadecane 84.5 % 49.1-148

Cardinal Laboratories

\*=Accredited Analyte

PLEASE NOTE: Liability and Damages. Cardinal's liability and client's exclusive remedy for any claim arising, whether based in contract or tort, shall be limited to the amount paid by client for analyses. All claims, including those for negligence and any other cause whatsoever shall be deemed waived unless made in writing and received by Cardinal within thirty (30) days after completion of the applicable service. In no event shall Cardinal be liable for incidental or consequential damages, including, without limitation, business interruptions, loss of use, or loss of profits incurred by client, its subsidiaries, affiliates or successors arising out of or related to the performance of the services hereunder by Cardinal, regardless of whether such claim is based upon any of the above stated reasons or otherwise. Results relate only to the samples identified above. This report shall not be reproduced except in full with written approval of Cardinal Laboratories.

Celey D. Keene, Lab Director/Quality Manager



PHONE (575) 393-2326 ° 101 E. MARLAND ° HOBBS, NM 88240

**Analytical Results For:**

TETRA TECH  
 CHRISTIAN LLULL  
 901 WEST WALL STREET , STE 100  
 MIDLAND TX, 79701  
 Fax To: (432) 682-3946

Received:	12/05/2024	Sampling Date:	12/05/2024
Reported:	12/11/2024	Sampling Type:	Soil
Project Name:	WTU BATTERY RELEASE	Sampling Condition:	Cool & Intact
Project Number:	212C - MD - 03722	Sample Received By:	Tamara Oldaker
Project Location:	CHEVRON - LEA CO NM		

**Sample ID: AH - 1 ( 2-3' ) (H247415-02)**

BTEx 8021B		mg/kg		Analyzed By: JH					
Analyte	Result	Reporting Limit	Analyzed	Method Blank	BS	% Recovery	True Value QC	RPD	Qualifier
Benzene*	<0.050	0.050	12/07/2024	ND	2.15	107	2.00	3.18	GC-NC
Toluene*	<0.050	0.050	12/07/2024	ND	2.18	109	2.00	6.24	
Ethylbenzene*	<0.050	0.050	12/07/2024	ND	2.21	111	2.00	8.07	
Total Xylenes*	<0.150	0.150	12/07/2024	ND	6.51	108	6.00	8.56	
Total BTEX	<0.300	0.300	12/07/2024	ND					

Surrogate: 4-Bromofluorobenzene (PID) 106 % 71.5-134

Chloride, SM4500Cl-B		mg/kg		Analyzed By: CT						
Analyte	Result	Reporting Limit	Analyzed	Method Blank	BS	% Recovery	True Value QC	RPD	Qualifier	
Chloride	48.0	16.0	12/09/2024	ND	448	112	400	3.64		

TPH 8015M		mg/kg		Analyzed By: MS					
Analyte	Result	Reporting Limit	Analyzed	Method Blank	BS	% Recovery	True Value QC	RPD	Qualifier
GRO C6-C10*	<10.0	10.0	12/06/2024	ND	230	115	200	1.96	
DRO >C10-C28*	<10.0	10.0	12/06/2024	ND	206	103	200	3.64	
EXT DRO >C28-C36	<10.0	10.0	12/06/2024	ND					

Surrogate: 1-Chlorooctane 99.1 % 48.2-134

Surrogate: 1-Chlorooctadecane 89.1 % 49.1-148

Cardinal Laboratories

\*=Accredited Analyte

PLEASE NOTE: Liability and Damages. Cardinal's liability and client's exclusive remedy for any claim arising, whether based in contract or tort, shall be limited to the amount paid by client for analyses. All claims, including those for negligence and any other cause whatsoever shall be deemed waived unless made in writing and received by Cardinal within thirty (30) days after completion of the applicable service. In no event shall Cardinal be liable for incidental or consequential damages, including, without limitation, business interruptions, loss of use, or loss of profits incurred by client, its subsidiaries, affiliates or successors arising out of or related to the performance of the services hereunder by Cardinal, regardless of whether such claim is based upon any of the above stated reasons or otherwise. Results relate only to the samples identified above. This report shall not be reproduced except in full with written approval of Cardinal Laboratories.

Celey D. Keene, Lab Director/Quality Manager



PHONE (575) 393-2326 ° 101 E. MARLAND ° HOBBS, NM 88240

**Analytical Results For:**

TETRA TECH  
 CHRISTIAN LLULL  
 901 WEST WALL STREET , STE 100  
 MIDLAND TX, 79701  
 Fax To: (432) 682-3946

Received:	12/05/2024	Sampling Date:	12/05/2024
Reported:	12/11/2024	Sampling Type:	Soil
Project Name:	WTU BATTERY RELEASE	Sampling Condition:	Cool & Intact
Project Number:	212C - MD - 03722	Sample Received By:	Tamara Oldaker
Project Location:	CHEVRON - LEA CO NM		

**Sample ID: AH - 1 ( 3-4' ) (H247415-03)**

BTEx 8021B		mg/kg		Analyzed By: JH					
Analyte	Result	Reporting Limit	Analyzed	Method Blank	BS	% Recovery	True Value QC	RPD	Qualifier
Benzene*	<0.050	0.050	12/07/2024	ND	2.15	107	2.00	3.18	GC-NC
Toluene*	<0.050	0.050	12/07/2024	ND	2.18	109	2.00	6.24	
Ethylbenzene*	<0.050	0.050	12/07/2024	ND	2.21	111	2.00	8.07	
Total Xylenes*	<0.150	0.150	12/07/2024	ND	6.51	108	6.00	8.56	
Total BTEX	<0.300	0.300	12/07/2024	ND					

Surrogate: 4-Bromofluorobenzene (PID) 104 % 71.5-134

Chloride, SM4500Cl-B		mg/kg		Analyzed By: CT						
Analyte	Result	Reporting Limit	Analyzed	Method Blank	BS	% Recovery	True Value QC	RPD	Qualifier	
Chloride	48.0	16.0	12/09/2024	ND	448	112	400	3.64		

TPH 8015M		mg/kg		Analyzed By: MS					
Analyte	Result	Reporting Limit	Analyzed	Method Blank	BS	% Recovery	True Value QC	RPD	Qualifier
GRO C6-C10*	<10.0	10.0	12/06/2024	ND	230	115	200	1.96	
DRO >C10-C28*	<10.0	10.0	12/06/2024	ND	206	103	200	3.64	
EXT DRO >C28-C36	<10.0	10.0	12/06/2024	ND					

Surrogate: 1-Chlorooctane 95.1 % 48.2-134

Surrogate: 1-Chlorooctadecane 88.6 % 49.1-148

Cardinal Laboratories

\*=Accredited Analyte

PLEASE NOTE: Liability and Damages. Cardinal's liability and client's exclusive remedy for any claim arising, whether based in contract or tort, shall be limited to the amount paid by client for analyses. All claims, including those for negligence and any other cause whatsoever shall be deemed waived unless made in writing and received by Cardinal within thirty (30) days after completion of the applicable service. In no event shall Cardinal be liable for incidental or consequential damages, including, without limitation, business interruptions, loss of use, or loss of profits incurred by client, its subsidiaries, affiliates or successors arising out of or related to the performance of the services hereunder by Cardinal, regardless of whether such claim is based upon any of the above stated reasons or otherwise. Results relate only to the samples identified above. This report shall not be reproduced except in full with written approval of Cardinal Laboratories.

Celey D. Keene, Lab Director/Quality Manager



PHONE (575) 393-2326 ° 101 E. MARLAND ° HOBBS, NM 88240

**Analytical Results For:**

TETRA TECH  
 CHRISTIAN LLULL  
 901 WEST WALL STREET , STE 100  
 MIDLAND TX, 79701  
 Fax To: (432) 682-3946

Received:	12/05/2024	Sampling Date:	12/05/2024
Reported:	12/11/2024	Sampling Type:	Soil
Project Name:	WTU BATTERY RELEASE	Sampling Condition:	Cool & Intact
Project Number:	212C - MD - 03722	Sample Received By:	Tamara Oldaker
Project Location:	CHEVRON - LEA CO NM		

**Sample ID: AH - 1 ( 4-5' ) (H247415-04)**

BTEX 8021B		mg/kg		Analyzed By: JH						
Analyte	Result	Reporting Limit	Analyzed	Method Blank	BS	% Recovery	True Value QC	RPD	Qualifier	
Benzene*	<0.050	0.050	12/06/2024	ND	2.00	99.8	2.00	2.40		
Toluene*	<0.050	0.050	12/06/2024	ND	2.02	101	2.00	2.22		
Ethylbenzene*	<0.050	0.050	12/06/2024	ND	2.04	102	2.00	2.36		
Total Xylenes*	<0.150	0.150	12/06/2024	ND	6.12	102	6.00	2.03		
Total BTEX	<0.300	0.300	12/06/2024	ND						

Surrogate: 4-Bromofluorobenzene (PID) 100 % 71.5-134

Chloride, SM4500Cl-B		mg/kg		Analyzed By: CT						
Analyte	Result	Reporting Limit	Analyzed	Method Blank	BS	% Recovery	True Value QC	RPD	Qualifier	
Chloride	160	16.0	12/09/2024	ND	448	112	400	3.64		

TPH 8015M		mg/kg		Analyzed By: MS					
Analyte	Result	Reporting Limit	Analyzed	Method Blank	BS	% Recovery	True Value QC	RPD	Qualifier
GRO C6-C10*	<10.0	10.0	12/06/2024	ND	230	115	200	1.96	
DRO >C10-C28*	<10.0	10.0	12/06/2024	ND	206	103	200	3.64	
EXT DRO >C28-C36	<10.0	10.0	12/06/2024	ND					

Surrogate: 1-Chlorooctane 87.6 % 48.2-134

Surrogate: 1-Chlorooctadecane 81.3 % 49.1-148

Cardinal Laboratories

\*=Accredited Analyte

PLEASE NOTE: Liability and Damages. Cardinal's liability and client's exclusive remedy for any claim arising, whether based in contract or tort, shall be limited to the amount paid by client for analyses. All claims, including those for negligence and any other cause whatsoever shall be deemed waived unless made in writing and received by Cardinal within thirty (30) days after completion of the applicable service. In no event shall Cardinal be liable for incidental or consequential damages, including, without limitation, business interruptions, loss of use, or loss of profits incurred by client, its subsidiaries, affiliates or successors arising out of or related to the performance of the services hereunder by Cardinal, regardless of whether such claim is based upon any of the above stated reasons or otherwise. Results relate only to the samples identified above. This report shall not be reproduced except in full with written approval of Cardinal Laboratories.

Celey D. Keene, Lab Director/Quality Manager



PHONE (575) 393-2326 ° 101 E. MARLAND ° HOBBS, NM 88240

**Analytical Results For:**

TETRA TECH  
 CHRISTIAN LLULL  
 901 WEST WALL STREET , STE 100  
 MIDLAND TX, 79701  
 Fax To: (432) 682-3946

Received:	12/05/2024	Sampling Date:	12/05/2024
Reported:	12/11/2024	Sampling Type:	Soil
Project Name:	WTU BATTERY RELEASE	Sampling Condition:	Cool & Intact
Project Number:	212C - MD - 03722	Sample Received By:	Tamara Oldaker
Project Location:	CHEVRON - LEA CO NM		

**Sample ID: AH - 1 ( 5-6' ) (H247415-05)**

BTEx 8021B		mg/kg		Analyzed By: JH						
Analyte	Result	Reporting Limit	Analyzed	Method Blank	BS	% Recovery	True Value QC	RPD	Qualifier	
Benzene*	<0.050	0.050	12/06/2024	ND	2.00	99.8	2.00	2.40		
Toluene*	<0.050	0.050	12/06/2024	ND	2.02	101	2.00	2.22		
Ethylbenzene*	<0.050	0.050	12/06/2024	ND	2.04	102	2.00	2.36		
Total Xylenes*	<0.150	0.150	12/06/2024	ND	6.12	102	6.00	2.03		
Total BTEX	<0.300	0.300	12/06/2024	ND						

Surrogate: 4-Bromofluorobenzene (PID) 101 % 71.5-134

Chloride, SM4500Cl-B		mg/kg		Analyzed By: CT						
Analyte	Result	Reporting Limit	Analyzed	Method Blank	BS	% Recovery	True Value QC	RPD	Qualifier	
Chloride	32.0	16.0	12/09/2024	ND	448	112	400	3.64		

TPH 8015M		mg/kg		Analyzed By: MS					
Analyte	Result	Reporting Limit	Analyzed	Method Blank	BS	% Recovery	True Value QC	RPD	Qualifier
GRO C6-C10*	<10.0	10.0	12/06/2024	ND	230	115	200	1.96	
DRO >C10-C28*	<10.0	10.0	12/06/2024	ND	206	103	200	3.64	
EXT DRO >C28-C36	<10.0	10.0	12/06/2024	ND					

Surrogate: 1-Chlorooctane 81.4 % 48.2-134

Surrogate: 1-Chlorooctadecane 75.0 % 49.1-148

Cardinal Laboratories

\*=Accredited Analyte

PLEASE NOTE: Liability and Damages. Cardinal's liability and client's exclusive remedy for any claim arising, whether based in contract or tort, shall be limited to the amount paid by client for analyses. All claims, including those for negligence and any other cause whatsoever shall be deemed waived unless made in writing and received by Cardinal within thirty (30) days after completion of the applicable service. In no event shall Cardinal be liable for incidental or consequential damages, including, without limitation, business interruptions, loss of use, or loss of profits incurred by client, its subsidiaries, affiliates or successors arising out of or related to the performance of the services hereunder by Cardinal, regardless of whether such claim is based upon any of the above stated reasons or otherwise. Results relate only to the samples identified above. This report shall not be reproduced except in full with written approval of Cardinal Laboratories.

Celey D. Keene, Lab Director/Quality Manager



PHONE (575) 393-2326 ° 101 E. MARLAND ° HOBBS, NM 88240

**Analytical Results For:**

TETRA TECH  
 CHRISTIAN LLULL  
 901 WEST WALL STREET , STE 100  
 MIDLAND TX, 79701  
 Fax To: (432) 682-3946

Received:	12/05/2024	Sampling Date:	12/05/2024
Reported:	12/11/2024	Sampling Type:	Soil
Project Name:	WTU BATTERY RELEASE	Sampling Condition:	Cool & Intact
Project Number:	212C - MD - 03722	Sample Received By:	Tamara Oldaker
Project Location:	CHEVRON - LEA CO NM		

**Sample ID: AH - 2 ( 0.5-1' ) (H247415-06)**

BTEX 8021B		mg/kg		Analyzed By: JH						
Analyte	Result	Reporting Limit	Analyzed	Method Blank	BS	% Recovery	True Value QC	RPD	Qualifier	
Benzene*	<0.050	0.050	12/06/2024	ND	2.00	99.8	2.00	2.40		
Toluene*	<0.050	0.050	12/06/2024	ND	2.02	101	2.00	2.22		
Ethylbenzene*	<0.050	0.050	12/06/2024	ND	2.04	102	2.00	2.36		
Total Xylenes*	<0.150	0.150	12/06/2024	ND	6.12	102	6.00	2.03		
Total BTEX	<0.300	0.300	12/06/2024	ND						

Surrogate: 4-Bromofluorobenzene (PID) 100 % 71.5-134

Chloride, SM4500Cl-B		mg/kg		Analyzed By: CT						
Analyte	Result	Reporting Limit	Analyzed	Method Blank	BS	% Recovery	True Value QC	RPD	Qualifier	
Chloride	160	16.0	12/09/2024	ND	448	112	400	3.64		

TPH 8015M		mg/kg		Analyzed By: MS					
Analyte	Result	Reporting Limit	Analyzed	Method Blank	BS	% Recovery	True Value QC	RPD	Qualifier
GRO C6-C10*	<10.0	10.0	12/06/2024	ND	230	115	200	1.96	
DRO >C10-C28*	<10.0	10.0	12/06/2024	ND	206	103	200	3.64	
EXT DRO >C28-C36	<10.0	10.0	12/06/2024	ND					

Surrogate: 1-Chlorooctane 96.7 % 48.2-134

Surrogate: 1-Chlorooctadecane 89.8 % 49.1-148

Cardinal Laboratories

\*=Accredited Analyte

PLEASE NOTE: Liability and Damages. Cardinal's liability and client's exclusive remedy for any claim arising, whether based in contract or tort, shall be limited to the amount paid by client for analyses. All claims, including those for negligence and any other cause whatsoever shall be deemed waived unless made in writing and received by Cardinal within thirty (30) days after completion of the applicable service. In no event shall Cardinal be liable for incidental or consequential damages, including, without limitation, business interruptions, loss of use, or loss of profits incurred by client, its subsidiaries, affiliates or successors arising out of or related to the performance of the services hereunder by Cardinal, regardless of whether such claim is based upon any of the above stated reasons or otherwise. Results relate only to the samples identified above. This report shall not be reproduced except in full with written approval of Cardinal Laboratories.

Celey D. Keene, Lab Director/Quality Manager





PHONE (575) 393-2326 ° 101 E. MARLAND ° HOBBS, NM 88240

**Analytical Results For:**

TETRA TECH  
 CHRISTIAN LLULL  
 901 WEST WALL STREET , STE 100  
 MIDLAND TX, 79701  
 Fax To: (432) 682-3946

Received:	12/05/2024	Sampling Date:	12/05/2024
Reported:	12/11/2024	Sampling Type:	Soil
Project Name:	WTU BATTERY RELEASE	Sampling Condition:	Cool & Intact
Project Number:	212C - MD - 03722	Sample Received By:	Tamara Oldaker
Project Location:	CHEVRON - LEA CO NM		

**Sample ID: AH - 2 ( 2-3' ) (H247415-07)**

BTEX 8021B		mg/kg		Analyzed By: JH						
Analyte	Result	Reporting Limit	Analyzed	Method Blank	BS	% Recovery	True Value QC	RPD	Qualifier	
Benzene*	<0.050	0.050	12/06/2024	ND	2.00	99.8	2.00	2.40		
Toluene*	<0.050	0.050	12/06/2024	ND	2.02	101	2.00	2.22		
Ethylbenzene*	<0.050	0.050	12/06/2024	ND	2.04	102	2.00	2.36		
Total Xylenes*	<0.150	0.150	12/06/2024	ND	6.12	102	6.00	2.03		
Total BTEX	<0.300	0.300	12/06/2024	ND						

Surrogate: 4-Bromofluorobenzene (PID) 101 % 71.5-134

Chloride, SM4500Cl-B		mg/kg		Analyzed By: CT						
Analyte	Result	Reporting Limit	Analyzed	Method Blank	BS	% Recovery	True Value QC	RPD	Qualifier	
Chloride	96.0	16.0	12/09/2024	ND	448	112	400	3.64		

TPH 8015M		mg/kg		Analyzed By: MS					
Analyte	Result	Reporting Limit	Analyzed	Method Blank	BS	% Recovery	True Value QC	RPD	Qualifier
GRO C6-C10*	<10.0	10.0	12/06/2024	ND	230	115	200	1.96	
DRO >C10-C28*	<10.0	10.0	12/06/2024	ND	206	103	200	3.64	
EXT DRO >C28-C36	<10.0	10.0	12/06/2024	ND					

Surrogate: 1-Chlorooctane 95.3 % 48.2-134

Surrogate: 1-Chlorooctadecane 88.1 % 49.1-148

Cardinal Laboratories

\*=Accredited Analyte

PLEASE NOTE: Liability and Damages. Cardinal's liability and client's exclusive remedy for any claim arising, whether based in contract or tort, shall be limited to the amount paid by client for analyses. All claims, including those for negligence and any other cause whatsoever shall be deemed waived unless made in writing and received by Cardinal within thirty (30) days after completion of the applicable service. In no event shall Cardinal be liable for incidental or consequential damages, including, without limitation, business interruptions, loss of use, or loss of profits incurred by client, its subsidiaries, affiliates or successors arising out of or related to the performance of the services hereunder by Cardinal, regardless of whether such claim is based upon any of the above stated reasons or otherwise. Results relate only to the samples identified above. This report shall not be reproduced except in full with written approval of Cardinal Laboratories.

Celey D. Keene, Lab Director/Quality Manager



PHONE (575) 393-2326 ° 101 E. MARLAND ° HOBBS, NM 88240

**Analytical Results For:**

TETRA TECH  
 CHRISTIAN LLULL  
 901 WEST WALL STREET , STE 100  
 MIDLAND TX, 79701  
 Fax To: (432) 682-3946

Received:	12/05/2024	Sampling Date:	12/05/2024
Reported:	12/11/2024	Sampling Type:	Soil
Project Name:	WTU BATTERY RELEASE	Sampling Condition:	Cool & Intact
Project Number:	212C - MD - 03722	Sample Received By:	Tamara Oldaker
Project Location:	CHEVRON - LEA CO NM		

**Sample ID: AH - 2 ( 3-4' ) (H247415-08)**

BTEX 8021B		mg/kg		Analyzed By: JH						
Analyte	Result	Reporting Limit	Analyzed	Method Blank	BS	% Recovery	True Value QC	RPD	Qualifier	
Benzene*	<0.050	0.050	12/06/2024	ND	2.00	99.8	2.00	2.40		
Toluene*	<0.050	0.050	12/06/2024	ND	2.02	101	2.00	2.22		
Ethylbenzene*	<0.050	0.050	12/06/2024	ND	2.04	102	2.00	2.36		
Total Xylenes*	<0.150	0.150	12/06/2024	ND	6.12	102	6.00	2.03		
Total BTEX	<0.300	0.300	12/06/2024	ND						

Surrogate: 4-Bromofluorobenzene (PID) 101 % 71.5-134

Chloride, SM4500Cl-B		mg/kg		Analyzed By: CT						
Analyte	Result	Reporting Limit	Analyzed	Method Blank	BS	% Recovery	True Value QC	RPD	Qualifier	
Chloride	96.0	16.0	12/09/2024	ND	448	112	400	3.64		

TPH 8015M		mg/kg		Analyzed By: MS					
Analyte	Result	Reporting Limit	Analyzed	Method Blank	BS	% Recovery	True Value QC	RPD	Qualifier
GRO C6-C10*	<10.0	10.0	12/06/2024	ND	230	115	200	1.96	
DRO >C10-C28*	<10.0	10.0	12/06/2024	ND	206	103	200	3.64	
EXT DRO >C28-C36	<10.0	10.0	12/06/2024	ND					

Surrogate: 1-Chlorooctane 96.1 % 48.2-134

Surrogate: 1-Chlorooctadecane 88.0 % 49.1-148

Cardinal Laboratories

\*=Accredited Analyte

PLEASE NOTE: Liability and Damages. Cardinal's liability and client's exclusive remedy for any claim arising, whether based in contract or tort, shall be limited to the amount paid by client for analyses. All claims, including those for negligence and any other cause whatsoever shall be deemed waived unless made in writing and received by Cardinal within thirty (30) days after completion of the applicable service. In no event shall Cardinal be liable for incidental or consequential damages, including, without limitation, business interruptions, loss of use, or loss of profits incurred by client, its subsidiaries, affiliates or successors arising out of or related to the performance of the services hereunder by Cardinal, regardless of whether such claim is based upon any of the above stated reasons or otherwise. Results relate only to the samples identified above. This report shall not be reproduced except in full with written approval of Cardinal Laboratories.

Celey D. Keene, Lab Director/Quality Manager



PHONE (575) 393-2326 ° 101 E. MARLAND ° HOBBS, NM 88240

**Analytical Results For:**

TETRA TECH  
 CHRISTIAN LLULL  
 901 WEST WALL STREET , STE 100  
 MIDLAND TX, 79701  
 Fax To: (432) 682-3946

Received:	12/05/2024	Sampling Date:	12/05/2024
Reported:	12/11/2024	Sampling Type:	Soil
Project Name:	WTU BATTERY RELEASE	Sampling Condition:	Cool & Intact
Project Number:	212C - MD - 03722	Sample Received By:	Tamara Oldaker
Project Location:	CHEVRON - LEA CO NM		

**Sample ID: AH - 2 ( 4-5' ) (H247415-09)**

BTEX 8021B		mg/kg		Analyzed By: JH						
Analyte	Result	Reporting Limit	Analyzed	Method Blank	BS	% Recovery	True Value QC	RPD	Qualifier	
Benzene*	<0.050	0.050	12/06/2024	ND	2.00	99.8	2.00	2.40		
Toluene*	<0.050	0.050	12/06/2024	ND	2.02	101	2.00	2.22		
Ethylbenzene*	<0.050	0.050	12/06/2024	ND	2.04	102	2.00	2.36		
Total Xylenes*	<0.150	0.150	12/06/2024	ND	6.12	102	6.00	2.03		
Total BTEX	<0.300	0.300	12/06/2024	ND						

Surrogate: 4-Bromofluorobenzene (PID) 100 % 71.5-134

Chloride, SM4500Cl-B		mg/kg		Analyzed By: CT						
Analyte	Result	Reporting Limit	Analyzed	Method Blank	BS	% Recovery	True Value QC	RPD	Qualifier	
Chloride	352	16.0	12/09/2024	ND	448	112	400	3.64		

TPH 8015M		mg/kg		Analyzed By: MS					
Analyte	Result	Reporting Limit	Analyzed	Method Blank	BS	% Recovery	True Value QC	RPD	Qualifier
GRO C6-C10*	<10.0	10.0	12/06/2024	ND	230	115	200	1.96	
DRO >C10-C28*	<10.0	10.0	12/06/2024	ND	206	103	200	3.64	
EXT DRO >C28-C36	<10.0	10.0	12/06/2024	ND					

Surrogate: 1-Chlorooctane 81.5 % 48.2-134

Surrogate: 1-Chlorooctadecane 75.0 % 49.1-148

Cardinal Laboratories

\*=Accredited Analyte

PLEASE NOTE: Liability and Damages. Cardinal's liability and client's exclusive remedy for any claim arising, whether based in contract or tort, shall be limited to the amount paid by client for analyses. All claims, including those for negligence and any other cause whatsoever shall be deemed waived unless made in writing and received by Cardinal within thirty (30) days after completion of the applicable service. In no event shall Cardinal be liable for incidental or consequential damages, including, without limitation, business interruptions, loss of use, or loss of profits incurred by client, its subsidiaries, affiliates or successors arising out of or related to the performance of the services hereunder by Cardinal, regardless of whether such claim is based upon any of the above stated reasons or otherwise. Results relate only to the samples identified above. This report shall not be reproduced except in full with written approval of Cardinal Laboratories.

Celey D. Keene, Lab Director/Quality Manager



PHONE (575) 393-2326 ° 101 E. MARLAND ° HOBBS, NM 88240

**Analytical Results For:**

TETRA TECH  
 CHRISTIAN LLULL  
 901 WEST WALL STREET , STE 100  
 MIDLAND TX, 79701  
 Fax To: (432) 682-3946

Received:	12/05/2024	Sampling Date:	12/05/2024
Reported:	12/11/2024	Sampling Type:	Soil
Project Name:	WTU BATTERY RELEASE	Sampling Condition:	Cool & Intact
Project Number:	212C - MD - 03722	Sample Received By:	Tamara Oldaker
Project Location:	CHEVRON - LEA CO NM		

**Sample ID: AH - 2 ( 5-6' ) (H247415-10)**

BTEX 8021B		mg/kg		Analyzed By: JH						
Analyte	Result	Reporting Limit	Analyzed	Method Blank	BS	% Recovery	True Value QC	RPD	Qualifier	
Benzene*	<0.050	0.050	12/06/2024	ND	2.00	99.8	2.00	2.40		
Toluene*	<0.050	0.050	12/06/2024	ND	2.02	101	2.00	2.22		
Ethylbenzene*	<0.050	0.050	12/06/2024	ND	2.04	102	2.00	2.36		
Total Xylenes*	<0.150	0.150	12/06/2024	ND	6.12	102	6.00	2.03		
Total BTEX	<0.300	0.300	12/06/2024	ND						

Surrogate: 4-Bromofluorobenzene (PID) 101 % 71.5-134

Chloride, SM4500Cl-B		mg/kg		Analyzed By: CT						
Analyte	Result	Reporting Limit	Analyzed	Method Blank	BS	% Recovery	True Value QC	RPD	Qualifier	
Chloride	416	16.0	12/09/2024	ND	448	112	400	3.64		

TPH 8015M		mg/kg		Analyzed By: MS					
Analyte	Result	Reporting Limit	Analyzed	Method Blank	BS	% Recovery	True Value QC	RPD	Qualifier
GRO C6-C10*	<10.0	10.0	12/06/2024	ND	230	115	200	1.96	
DRO >C10-C28*	<10.0	10.0	12/06/2024	ND	206	103	200	3.64	
EXT DRO >C28-C36	<10.0	10.0	12/06/2024	ND					

Surrogate: 1-Chlorooctane 92.0 % 48.2-134

Surrogate: 1-Chlorooctadecane 85.6 % 49.1-148

Cardinal Laboratories

\*=Accredited Analyte

PLEASE NOTE: Liability and Damages. Cardinal's liability and client's exclusive remedy for any claim arising, whether based in contract or tort, shall be limited to the amount paid by client for analyses. All claims, including those for negligence and any other cause whatsoever shall be deemed waived unless made in writing and received by Cardinal within thirty (30) days after completion of the applicable service. In no event shall Cardinal be liable for incidental or consequential damages, including, without limitation, business interruptions, loss of use, or loss of profits incurred by client, its subsidiaries, affiliates or successors arising out of or related to the performance of the services hereunder by Cardinal, regardless of whether such claim is based upon any of the above stated reasons or otherwise. Results relate only to the samples identified above. This report shall not be reproduced except in full with written approval of Cardinal Laboratories.

Celey D. Keene, Lab Director/Quality Manager



PHONE (575) 393-2326 ° 101 E. MARLAND ° HOBBS, NM 88240

**Analytical Results For:**

TETRA TECH  
 CHRISTIAN LLULL  
 901 WEST WALL STREET , STE 100  
 MIDLAND TX, 79701  
 Fax To: (432) 682-3946

Received:	12/05/2024	Sampling Date:	12/05/2024
Reported:	12/11/2024	Sampling Type:	Soil
Project Name:	WTU BATTERY RELEASE	Sampling Condition:	Cool & Intact
Project Number:	212C - MD - 03722	Sample Received By:	Tamara Oldaker
Project Location:	CHEVRON - LEA CO NM		

**Sample ID: AH - 3 ( 0.5-1' ) (H247415-11)**

BTEX 8021B		mg/kg		Analyzed By: JH						
Analyte	Result	Reporting Limit	Analyzed	Method Blank	BS	% Recovery	True Value QC	RPD	Qualifier	
Benzene*	<0.050	0.050	12/06/2024	ND	2.00	99.8	2.00	2.40		
Toluene*	<0.050	0.050	12/06/2024	ND	2.02	101	2.00	2.22		
Ethylbenzene*	<0.050	0.050	12/06/2024	ND	2.04	102	2.00	2.36		
Total Xylenes*	<0.150	0.150	12/06/2024	ND	6.12	102	6.00	2.03		
Total BTEX	<0.300	0.300	12/06/2024	ND						

Surrogate: 4-Bromofluorobenzene (PID) 101 % 71.5-134

Chloride, SM4500Cl-B		mg/kg		Analyzed By: CT						
Analyte	Result	Reporting Limit	Analyzed	Method Blank	BS	% Recovery	True Value QC	RPD	Qualifier	
Chloride	32.0	16.0	12/09/2024	ND	448	112	400	3.64		

TPH 8015M		mg/kg		Analyzed By: MS					
Analyte	Result	Reporting Limit	Analyzed	Method Blank	BS	% Recovery	True Value QC	RPD	Qualifier
GRO C6-C10*	<10.0	10.0	12/07/2024	ND	230	115	200	1.96	
DRO >C10-C28*	28.8	10.0	12/07/2024	ND	206	103	200	3.64	
EXT DRO >C28-C36	44.4	10.0	12/07/2024	ND					

Surrogate: 1-Chlorooctane 92.7 % 48.2-134

Surrogate: 1-Chlorooctadecane 87.8 % 49.1-148

Cardinal Laboratories

\*=Accredited Analyte

PLEASE NOTE: Liability and Damages. Cardinal's liability and client's exclusive remedy for any claim arising, whether based in contract or tort, shall be limited to the amount paid by client for analyses. All claims, including those for negligence and any other cause whatsoever shall be deemed waived unless made in writing and received by Cardinal within thirty (30) days after completion of the applicable service. In no event shall Cardinal be liable for incidental or consequential damages, including, without limitation, business interruptions, loss of use, or loss of profits incurred by client, its subsidiaries, affiliates or successors arising out of or related to the performance of the services hereunder by Cardinal, regardless of whether such claim is based upon any of the above stated reasons or otherwise. Results relate only to the samples identified above. This report shall not be reproduced except in full with written approval of Cardinal Laboratories.

Celey D. Keene, Lab Director/Quality Manager



PHONE (575) 393-2326 ° 101 E. MARLAND ° HOBBS, NM 88240

**Analytical Results For:**

TETRA TECH  
 CHRISTIAN LLULL  
 901 WEST WALL STREET , STE 100  
 MIDLAND TX, 79701  
 Fax To: (432) 682-3946

Received:	12/05/2024	Sampling Date:	12/05/2024
Reported:	12/11/2024	Sampling Type:	Soil
Project Name:	WTU BATTERY RELEASE	Sampling Condition:	Cool & Intact
Project Number:	212C - MD - 03722	Sample Received By:	Tamara Oldaker
Project Location:	CHEVRON - LEA CO NM		

**Sample ID: AH - 3 ( 2-3' ) (H247415-12)**

BTEX 8021B		mg/kg		Analyzed By: JH						
Analyte	Result	Reporting Limit	Analyzed	Method Blank	BS	% Recovery	True Value QC	RPD	Qualifier	
Benzene*	<0.050	0.050	12/06/2024	ND	2.00	99.8	2.00	2.40		
Toluene*	<0.050	0.050	12/06/2024	ND	2.02	101	2.00	2.22		
Ethylbenzene*	<0.050	0.050	12/06/2024	ND	2.04	102	2.00	2.36		
Total Xylenes*	<0.150	0.150	12/06/2024	ND	6.12	102	6.00	2.03		
Total BTEX	<0.300	0.300	12/06/2024	ND						

Surrogate: 4-Bromofluorobenzene (PID) 100 % 71.5-134

Chloride, SM4500Cl-B		mg/kg		Analyzed By: CT						
Analyte	Result	Reporting Limit	Analyzed	Method Blank	BS	% Recovery	True Value QC	RPD	Qualifier	
Chloride	160	16.0	12/09/2024	ND	448	112	400	3.64		

TPH 8015M		mg/kg		Analyzed By: MS					
Analyte	Result	Reporting Limit	Analyzed	Method Blank	BS	% Recovery	True Value QC	RPD	Qualifier
GRO C6-C10*	<10.0	10.0	12/07/2024	ND	230	115	200	1.96	
DRO >C10-C28*	<10.0	10.0	12/07/2024	ND	206	103	200	3.64	
EXT DRO >C28-C36	<10.0	10.0	12/07/2024	ND					

Surrogate: 1-Chlorooctane 95.7 % 48.2-134

Surrogate: 1-Chlorooctadecane 90.4 % 49.1-148

Cardinal Laboratories

\*=Accredited Analyte

PLEASE NOTE: Liability and Damages. Cardinal's liability and client's exclusive remedy for any claim arising, whether based in contract or tort, shall be limited to the amount paid by client for analyses. All claims, including those for negligence and any other cause whatsoever shall be deemed waived unless made in writing and received by Cardinal within thirty (30) days after completion of the applicable service. In no event shall Cardinal be liable for incidental or consequential damages, including, without limitation, business interruptions, loss of use, or loss of profits incurred by client, its subsidiaries, affiliates or successors arising out of or related to the performance of the services hereunder by Cardinal, regardless of whether such claim is based upon any of the above stated reasons or otherwise. Results relate only to the samples identified above. This report shall not be reproduced except in full with written approval of Cardinal Laboratories.

Celey D. Keene, Lab Director/Quality Manager



PHONE (575) 393-2326 ° 101 E. MARLAND ° HOBBS, NM 88240

**Analytical Results For:**

TETRA TECH  
 CHRISTIAN LLULL  
 901 WEST WALL STREET , STE 100  
 MIDLAND TX, 79701  
 Fax To: (432) 682-3946

Received:	12/05/2024	Sampling Date:	12/05/2024
Reported:	12/11/2024	Sampling Type:	Soil
Project Name:	WTU BATTERY RELEASE	Sampling Condition:	Cool & Intact
Project Number:	212C - MD - 03722	Sample Received By:	Tamara Oldaker
Project Location:	CHEVRON - LEA CO NM		

**Sample ID: AH - 4 ( 0-1' ) (H247415-13)**

BTEX 8021B		mg/kg		Analyzed By: JH						
Analyte	Result	Reporting Limit	Analyzed	Method Blank	BS	% Recovery	True Value QC	RPD	Qualifier	
Benzene*	<0.050	0.050	12/06/2024	ND	2.00	99.8	2.00	2.40		
Toluene*	<0.050	0.050	12/06/2024	ND	2.02	101	2.00	2.22		
Ethylbenzene*	<0.050	0.050	12/06/2024	ND	2.04	102	2.00	2.36		
Total Xylenes*	<0.150	0.150	12/06/2024	ND	6.12	102	6.00	2.03		
Total BTEX	<0.300	0.300	12/06/2024	ND						

Surrogate: 4-Bromofluorobenzene (PID) 100 % 71.5-134

Chloride, SM4500Cl-B		mg/kg		Analyzed By: CT						
Analyte	Result	Reporting Limit	Analyzed	Method Blank	BS	% Recovery	True Value QC	RPD	Qualifier	
Chloride	32.0	16.0	12/09/2024	ND	448	112	400	3.64		

TPH 8015M		mg/kg		Analyzed By: MS					
Analyte	Result	Reporting Limit	Analyzed	Method Blank	BS	% Recovery	True Value QC	RPD	Qualifier
GRO C6-C10*	<10.0	10.0	12/06/2024	ND	230	115	200	1.96	
DRO >C10-C28*	<10.0	10.0	12/06/2024	ND	206	103	200	3.64	
EXT DRO >C28-C36	<10.0	10.0	12/06/2024	ND					

Surrogate: 1-Chlorooctane 92.4 % 48.2-134

Surrogate: 1-Chlorooctadecane 86.4 % 49.1-148

Cardinal Laboratories

\*=Accredited Analyte

PLEASE NOTE: Liability and Damages. Cardinal's liability and client's exclusive remedy for any claim arising, whether based in contract or tort, shall be limited to the amount paid by client for analyses. All claims, including those for negligence and any other cause whatsoever shall be deemed waived unless made in writing and received by Cardinal within thirty (30) days after completion of the applicable service. In no event shall Cardinal be liable for incidental or consequential damages, including, without limitation, business interruptions, loss of use, or loss of profits incurred by client, its subsidiaries, affiliates or successors arising out of or related to the performance of the services hereunder by Cardinal, regardless of whether such claim is based upon any of the above stated reasons or otherwise. Results relate only to the samples identified above. This report shall not be reproduced except in full with written approval of Cardinal Laboratories.

Celey D. Keene, Lab Director/Quality Manager



PHONE (575) 393-2326 ° 101 E. MARLAND ° HOBBS, NM 88240

**Analytical Results For:**

TETRA TECH  
 CHRISTIAN LLULL  
 901 WEST WALL STREET , STE 100  
 MIDLAND TX, 79701  
 Fax To: (432) 682-3946

Received:	12/05/2024	Sampling Date:	12/05/2024
Reported:	12/11/2024	Sampling Type:	Soil
Project Name:	WTU BATTERY RELEASE	Sampling Condition:	Cool & Intact
Project Number:	212C - MD - 03722	Sample Received By:	Tamara Oldaker
Project Location:	CHEVRON - LEA CO NM		

**Sample ID: AH - 5 ( 0-1' ) (H247415-14)**

BTEx 8021B		mg/kg		Analyzed By: JH					
Analyte	Result	Reporting Limit	Analyzed	Method Blank	BS	% Recovery	True Value QC	RPD	Qualifier
Benzene*	<0.050	0.050	12/06/2024	ND	2.00	99.8	2.00	2.40	
Toluene*	<0.050	0.050	12/06/2024	ND	2.02	101	2.00	2.22	
Ethylbenzene*	<0.050	0.050	12/06/2024	ND	2.04	102	2.00	2.36	
Total Xylenes*	<0.150	0.150	12/06/2024	ND	6.12	102	6.00	2.03	
Total BTEX	<0.300	0.300	12/06/2024	ND					

Surrogate: 4-Bromofluorobenzene (PID) 101 % 71.5-134

Chloride, SM4500Cl-B		mg/kg		Analyzed By: CT						
Analyte	Result	Reporting Limit	Analyzed	Method Blank	BS	% Recovery	True Value QC	RPD	Qualifier	
Chloride	48.0	16.0	12/09/2024	ND	448	112	400	3.64		

TPH 8015M		mg/kg		Analyzed By: MS					
Analyte	Result	Reporting Limit	Analyzed	Method Blank	BS	% Recovery	True Value QC	RPD	Qualifier
GRO C6-C10*	<10.0	10.0	12/06/2024	ND	230	115	200	1.96	
DRO >C10-C28*	<10.0	10.0	12/06/2024	ND	206	103	200	3.64	
EXT DRO >C28-C36	<10.0	10.0	12/06/2024	ND					

Surrogate: 1-Chlorooctane 91.7 % 48.2-134

Surrogate: 1-Chlorooctadecane 85.4 % 49.1-148

Cardinal Laboratories

\*=Accredited Analyte

PLEASE NOTE: Liability and Damages. Cardinal's liability and client's exclusive remedy for any claim arising, whether based in contract or tort, shall be limited to the amount paid by client for analyses. All claims, including those for negligence and any other cause whatsoever shall be deemed waived unless made in writing and received by Cardinal within thirty (30) days after completion of the applicable service. In no event shall Cardinal be liable for incidental or consequential damages, including, without limitation, business interruptions, loss of use, or loss of profits incurred by client, its subsidiaries, affiliates or successors arising out of or related to the performance of the services hereunder by Cardinal, regardless of whether such claim is based upon any of the above stated reasons or otherwise. Results relate only to the samples identified above. This report shall not be reproduced except in full with written approval of Cardinal Laboratories.

Celey D. Keene, Lab Director/Quality Manager





PHONE (575) 393-2326 ° 101 E. MARLAND ° HOBBS, NM 88240

**Analytical Results For:**

TETRA TECH  
 CHRISTIAN LLULL  
 901 WEST WALL STREET , STE 100  
 MIDLAND TX, 79701  
 Fax To: (432) 682-3946

Received:	12/05/2024	Sampling Date:	12/05/2024
Reported:	12/11/2024	Sampling Type:	Soil
Project Name:	WTU BATTERY RELEASE	Sampling Condition:	Cool & Intact
Project Number:	212C - MD - 03722	Sample Received By:	Tamara Oldaker
Project Location:	CHEVRON - LEA CO NM		

**Sample ID: AH - 7 ( 0-1' ) (H247415-15)**

BTEX 8021B		mg/kg		Analyzed By: JH						
Analyte	Result	Reporting Limit	Analyzed	Method Blank	BS	% Recovery	True Value QC	RPD	Qualifier	
Benzene*	<0.050	0.050	12/06/2024	ND	2.00	99.8	2.00	2.40		
Toluene*	<0.050	0.050	12/06/2024	ND	2.02	101	2.00	2.22		
Ethylbenzene*	<0.050	0.050	12/06/2024	ND	2.04	102	2.00	2.36		
Total Xylenes*	<0.150	0.150	12/06/2024	ND	6.12	102	6.00	2.03		
Total BTEX	<0.300	0.300	12/06/2024	ND						

Surrogate: 4-Bromofluorobenzene (PID) 100 % 71.5-134

Chloride, SM4500Cl-B		mg/kg		Analyzed By: CT						
Analyte	Result	Reporting Limit	Analyzed	Method Blank	BS	% Recovery	True Value QC	RPD	Qualifier	
Chloride	16.0	16.0	12/09/2024	ND	448	112	400	3.64		

TPH 8015M		mg/kg		Analyzed By: MS					
Analyte	Result	Reporting Limit	Analyzed	Method Blank	BS	% Recovery	True Value QC	RPD	Qualifier
GRO C6-C10*	<10.0	10.0	12/06/2024	ND	230	115	200	1.96	
DRO >C10-C28*	<10.0	10.0	12/06/2024	ND	206	103	200	3.64	
EXT DRO >C28-C36	<10.0	10.0	12/06/2024	ND					

Surrogate: 1-Chlorooctane 95.6 % 48.2-134

Surrogate: 1-Chlorooctadecane 87.9 % 49.1-148

Cardinal Laboratories

\*=Accredited Analyte

PLEASE NOTE: Liability and Damages. Cardinal's liability and client's exclusive remedy for any claim arising, whether based in contract or tort, shall be limited to the amount paid by client for analyses. All claims, including those for negligence and any other cause whatsoever shall be deemed waived unless made in writing and received by Cardinal within thirty (30) days after completion of the applicable service. In no event shall Cardinal be liable for incidental or consequential damages, including, without limitation, business interruptions, loss of use, or loss of profits incurred by client, its subsidiaries, affiliates or successors arising out of or related to the performance of the services hereunder by Cardinal, regardless of whether such claim is based upon any of the above stated reasons or otherwise. Results relate only to the samples identified above. This report shall not be reproduced except in full with written approval of Cardinal Laboratories.

Celey D. Keene, Lab Director/Quality Manager



---

PHONE (575) 393-2326 ° 101 E. MARLAND ° HOBBS, NM 88240

---

### Notes and Definitions

GC-NC	8260 confirmation analysis was performed; initial GC results were not supported by GC/MS analysis and are reported as ND.
ND	Analyte NOT DETECTED at or above the reporting limit
RPD	Relative Percent Difference
**	Samples not received at proper temperature of 6°C or below.
***	Insufficient time to reach temperature.
-	Chloride by SM4500Cl-B does not require samples be received at or below 6°C Samples reported on an as received basis (wet) unless otherwise noted on report

---

Cardinal Laboratories

\*=Accredited Analyte

PLEASE NOTE: Liability and Damages. Cardinal's liability and client's exclusive remedy for any claim arising, whether based in contract or tort, shall be limited to the amount paid by client for analyses. All claims, including those for negligence and any other cause whatsoever shall be deemed waived unless made in writing and received by Cardinal within thirty (30) days after completion of the applicable service. In no event shall Cardinal be liable for incidental or consequential damages, including, without limitation, business interruptions, loss of use, or loss of profits incurred by client, its subsidiaries, affiliates or successors arising out of or related to the performance of the services hereunder by Cardinal, regardless of whether such claim is based upon any of the above stated reasons or otherwise. Results relate only to the samples identified above. This report shall not be reproduced except in full with written approval of Cardinal Laboratories.

A handwritten signature in black ink, appearing to read "Celey D. Keene".

---

Celey D. Keene, Lab Director/Quality Manager



CHAIN-OF-CUSTODY AND ANALYSIS REQUEST

101 East Marland, Hobbs, NM 88240  
(575) 393-2326 FAX (575) 393-2476

*Handwritten initials*

Company Name: Tetra Tech		<b>BILL TO</b>		<b>ANALYSIS REQUEST</b>									
Project Manager: Christian Lull		P.O. #:											
Address: 8911 Capital Of Texas Hwy, Suite 2310		Company: Tetra Tech											
City: Austin		Attn: Christian Lull											
Phone #: (512) 565-0190		Fax #: (512) 565-0190											
Project #: 212C-MD-03722		Project Owner: Chevron											
Project Name: WTU Battery Release		City: Austin											
Project Location: Lea County, New Mexico		State: TX											
Sample Name: Rob Davis		Phone #: (512) 565-0190											
Lab I.D.:		Fax #: (512) 565-0190											
<b>Sample I.D.</b> <i>Handwritten: H247415</i>		P.O. #:											
		Address:											
		City:											
		State:											
		Zip:											
		Phone #:											
		Fax #:											
		Matrix:											
		Preserv.:											
		Sampling:											
DATE		TIME											
12/20/24		12:20											
12/20/24		12:25											
12/20/24		12:35											
12/20/24		12:45											
12/20/24		13:00											
12/20/24		13:15											
12/20/24		13:25											
12/20/24		13:30											
12/20/24		13:35											
12/20/24		13:40											
12/20/24		13:45											
12/20/24		13:50											
12/20/24		13:55											
12/20/24		14:00											
12/20/24		14:05											
12/20/24		14:10											
12/20/24		14:15											
12/20/24		14:20											
12/20/24		14:25											
12/20/24		14:30											
12/20/24		14:35											
12/20/24		14:40											
12/20/24		14:45											
12/20/24		14:50											
12/20/24		14:55											
12/20/24		15:00											
12/20/24		15:05											
12/20/24		15:10											
12/20/24		15:15											
12/20/24		15:20											
12/20/24		15:25											
12/20/24		15:30											
12/20/24		15:35											
12/20/24		15:40											
12/20/24		15:45											
12/20/24		15:50											
12/20/24		15:55											
12/20/24		16:00											
12/20/24		16:05											
12/20/24		16:10											
12/20/24		16:15											
12/20/24		16:20											
12/20/24		16:25											
12/20/24		16:30											
12/20/24		16:35											
12/20/24		16:40											
12/20/24		16:45											
12/20/24		16:50											
12/20/24		16:55											
12/20/24		17:00											
12/20/24		17:05											
12/20/24		17:10											
12/20/24		17:15											
12/20/24		17:20											
12/20/24		17:25											
12/20/24		17:30											
12/20/24		17:35											
12/20/24		17:40											
12/20/24		17:45											
12/20/24		17:50											
12/20/24		17:55											
12/20/24		18:00											
12/20/24		18:05											
12/20/24		18:10											
12/20/24		18:15											
12/20/24		18:20											
12/20/24		18:25											
12/20/24		18:30											
12/20/24		18:35											
12/20/24		18:40											
12/20/24		18:45											
12/20/24		18:50											
12/20/24		18:55											
12/20/24		19:00											
12/20/24		19:05											
12/20/24		19:10											
12/20/24		19:15											
12/20/24		19:20											
12/20/24		19:25											
12/20/24		19:30											
12/20/24		19:35											
12/20/24		19:40											
12/20/24		19:45											
12/20/24		19:50											
12/20/24		19:55											
12/20/24		20:00											
12/20/24		20:05											
12/20/24		20:10											
12/20/24		20:15											
12/20/24		20:20											
12/20/24		20:25											
12/20/24		20:30											
12/20/24		20:35											
12/20/24		20:40											
12/20/24		20:45											
12/20/24		20:50											
12/20/24		20:55											
12/20/24		21:00											
12/20/24		21:05											
12/20/24		21:10											
12/20/24		21:15											
12/20/24		21:20											
12/20/24		21:25											
12/20/24		21:30											
12/20/24		21:35											
12/20/24		21:40											
12/20/24		21:45											
12/20/24		21:50											
12/20/24		21:55											
12/20/24		22:00											
12/20/24		22:05											
12/20/24		22:10											
12/20/24		22:15											
12/20/24		22:20											
12/20/24		22:25											
12/20/24		22:30											
12/20/24		22:35											
12/20/24		22:40											
12/20/24		22:45											
12/20/24		22:50											
12/20/24		22:55											
12/20/24		23:00											
12/20/24		23:05											
12/20/24		23:10											
12/20/24		23:15											
12/20/24		23:20											
12/20/24		23:25											
12/20/24		23:30											
12/20/24		23:35											
12/20/24		23:40											
12/20/24		23:45											
12/20/24		23:50											
12/20/24		23:55											
12/20/24		24:00											
12/20/24		24:05											
12/20/24		24:10											
12/20/24		24:15											
12/20/24		24:20											
12/20/24		24:25											
12/20/24		24:30											
12/20/24		24:35											
12/20/24		24:40											
12/20/24		24:45											
12/20/24		24:50											
12/20/24		24:55											
12/20/24		25:00											
12/20/24		25:05											
12/20/24		25:10											
12/20/24		25:15											
12/20/24		25:20											
12/20/24		25:25											
12/20/24		25:30											
12/20/24		25:35											
12/20/24		25:40											
12/20/24		25:45											
12/20/24		25:50											
12/20/24		25:55											
12/20/24		26:00											
12/20/24		26:05											
12/20/24		26:10											
12/20/24		26:15											
12/20/24		26:20											
12/20/24		26:25											
12/20/24		26:30											
12/20/24		26:35											
12/20/24		26:40											
12/20/24		26:45											
12/20/24		26:50											
12/20/24		26:55											
12/20/24		27:00											
12/20/24		27:05											
12/20/24		27:10											
12/20/24		27:15											
12/20/24		27:20											
12/20/24		27:25											
12/20/24		27:30											
12/20/24		27:35											
12/20/24		27:40											
12/20/24		27:45											
12/20/24		27:50											
12/20/24		27:55											
12/20/24		28:00											
12/20/24		28:05											
12/20/24		28:10											
12/20/24		28:15											
12/20/24		28:20											
12/20/24		28:25											
12/20/24		28:30											
12/20/24		28:35											
12/20/24		28:40											
12/20/24		28:45											
12/20/24		28:50											
12/20/24		28:55											
12/20/24		29:00											
12/20/24		29:05											
12/20/24		29:10											
12/20/24		29:15											
12/20/24		29:20											
12/20/24		29:25											
12/20/24		29:30											
12/20/24		29:35											
12/20/24		29:40											
12/20/24		29:45											
12/20/24		29:50											
12/20/24		29:55											
12/20/24		30:00											
12/20/24		30:05											
12/20/24		30:10											
12/20/24		30:15											
12/20/24		30:20											
12/20/24		30:25											
12/20/24		30:30											
12/20/24		30:35											
12/20/24		30:40											
12/20/24		30:45											
12/20/24		30:50											
12/20/24		30:55											
12/20/24		31:00											
12/20/24		31:05											
12/20/24		31:10											
12/20/24		31:15											
12/20/24		31:20											
12/20/24		31:25											
12/20/24		31:30											
12/20/24		31:35											
12/20/24		31:40											
12/20/24		31:45											
12/20/24		31:50											
12/20/24		31:55											
12/20/24		32:00											
12/20/24		32:05											
12/20/24		32:10											
12/20/24		32:15											
12/20/24		32:20											
12/20/24		32:25											
12/20/24		32:30											
12/20/24		32:35											
12/20/24		32:40											
12/20/24		32:45											
12/20/24		32:50											
12/20/24		32:55											
12/20/24		33:00											
12/20/24		33:05											
12/20/24		33:10											
12/20/24		33:15											
12/20/24		33:20											
12/20/24		33:25											
12/20/24		33:30											
12/20/24		33:35											
12/20/24		33:40											
12/20/24		33:45											
12/20/24		33:50											
12/20/24		33:55											
12/20/24		34:00											
12/20/24		34:05											
12/20/24		34:10											
12/20/24		34:15											
12/20/24		34:20											
12/20/24		34:25											
12/20/24		34:30											
12/20/24		34:35											
12/20/24		34:40											
12/20/24		34:45											
12/20/24		34:50											
12/20/24		34:55											
12/20/24		35:00											
12/20/24		35:05											
12/20/24		35:10											
12/20/24		35:15											
12/20/24		35:20											
12/20/24		35:25											
12/20/24		35:30											
12/20/24		35:35											
12/20/24		35:40											
12/20/24		35:45											
12/20/24		35:50											



### CHAIN-OF-CUSTODY AND ANALYSIS REQUEST

101 East Marland, Hobbs, NM 88240  
(575) 393-2326 FAX (575) 393-2476

[illegible]



PHONE (575) 393-2326 ° 101 E. MARLAND ° HOBBS, NM 88240

---

December 11, 2024

CHRISTIAN LLULL

TETRA TECH

901 WEST WALL STREET , STE 100

MIDLAND, TX 79701

RE: WTU BATTERY RELEASE

Enclosed are the results of analyses for samples received by the laboratory on 12/05/24 17:20.

Cardinal Laboratories is accredited through Texas NELAP under certificate number TX-C24-00112. Accreditation applies to drinking water, non-potable water and solid and chemical materials. All accredited analytes are denoted by an asterisk (\*). For a complete list of accredited analytes and matrices visit the TCEQ website at [www.tceq.texas.gov/field/qa/lab\\_accred\\_certif.html](http://www.tceq.texas.gov/field/qa/lab_accred_certif.html).

Cardinal Laboratories is accredited through the State of Colorado Department of Public Health and Environment for:

Method EPA 552.2	Haloacetic Acids (HAA-5)
Method EPA 524.2	Total Trihalomethanes (TTHM)
Method EPA 524.4	Regulated VOCs (V1, V2, V3)

Accreditation applies to public drinking water matrices.

This report meets NELAP requirements and is made up of a cover page, analytical results, and a copy of the original chain-of-custody. If you have any questions concerning this report, please feel free to contact me.

Sincerely,

A handwritten signature in black ink that reads "Celey D. Keene".

Celey D. Keene

Lab Director/Quality Manager





PHONE (575) 393-2326 ° 101 E. MARLAND ° HOBBS, NM 88240

**Analytical Results For:**

TETRA TECH  
 CHRISTIAN LLULL  
 901 WEST WALL STREET , STE 100  
 MIDLAND TX, 79701  
 Fax To: (432) 682-3946

Received:	12/05/2024	Sampling Date:	12/05/2024
Reported:	12/11/2024	Sampling Type:	Soil
Project Name:	WTU BATTERY RELEASE	Sampling Condition:	Cool & Intact
Project Number:	212C - MD - 03722	Sample Received By:	Tamara Oldaker
Project Location:	CHEVRON - LEA CO NM		

**Sample ID: AH-6 (0-1') (H247416-01)**

BTEx 8021B		mg/kg		Analyzed By: JH					
Analyte	Result	Reporting Limit	Analyzed	Method Blank	BS	% Recovery	True Value QC	RPD	Qualifier
Benzene*	<0.050	0.050	12/06/2024	ND	2.00	99.8	2.00	2.40	
Toluene*	<0.050	0.050	12/06/2024	ND	2.02	101	2.00	2.22	
Ethylbenzene*	<0.050	0.050	12/06/2024	ND	2.04	102	2.00	2.36	
Total Xylenes*	<0.150	0.150	12/06/2024	ND	6.12	102	6.00	2.03	
Total BTEX	<0.300	0.300	12/06/2024	ND					

Surrogate: 4-Bromofluorobenzene (PID) 101 % 71.5-134

Chloride, SM4500Cl-B		mg/kg		Analyzed By: CT						
Analyte	Result	Reporting Limit	Analyzed	Method Blank	BS	% Recovery	True Value QC	RPD	Qualifier	
Chloride	304	16.0	12/09/2024	ND	448	112	400	3.64		

TPH 8015M		mg/kg		Analyzed By: MS					
Analyte	Result	Reporting Limit	Analyzed	Method Blank	BS	% Recovery	True Value QC	RPD	Qualifier
GRO C6-C10*	<10.0	10.0	12/06/2024	ND	230	115	200	1.96	
DRO >C10-C28*	<10.0	10.0	12/06/2024	ND	206	103	200	3.64	
EXT DRO >C28-C36	<10.0	10.0	12/06/2024	ND					

Surrogate: 1-Chlorooctane 92.5 % 48.2-134

Surrogate: 1-Chlorooctadecane 85.4 % 49.1-148

Cardinal Laboratories

\*=Accredited Analyte

PLEASE NOTE: Liability and Damages. Cardinal's liability and client's exclusive remedy for any claim arising, whether based in contract or tort, shall be limited to the amount paid by client for analyses. All claims, including those for negligence and any other cause whatsoever shall be deemed waived unless made in writing and received by Cardinal within thirty (30) days after completion of the applicable service. In no event shall Cardinal be liable for incidental or consequential damages, including, without limitation, business interruptions, loss of use, or loss of profits incurred by client, its subsidiaries, affiliates or successors arising out of or related to the performance of the services hereunder by Cardinal, regardless of whether such claim is based upon any of the above stated reasons or otherwise. Results relate only to the samples identified above. This report shall not be reproduced except in full with written approval of Cardinal Laboratories.

Celey D. Keene, Lab Director/Quality Manager





---

PHONE (575) 393-2326 ° 101 E. MARLAND ° HOBBS, NM 88240

---

### Notes and Definitions

ND	Analyte NOT DETECTED at or above the reporting limit
RPD	Relative Percent Difference
**	Samples not received at proper temperature of 6°C or below.
***	Insufficient time to reach temperature.
-	Chloride by SM4500Cl-B does not require samples be received at or below 6°C Samples reported on an as received basis (wet) unless otherwise noted on report

---

Cardinal Laboratories

\*=Accredited Analyte

PLEASE NOTE: Liability and Damages. Cardinal's liability and client's exclusive remedy for any claim arising, whether based in contract or tort, shall be limited to the amount paid by client for analyses. All claims, including those for negligence and any other cause whatsoever shall be deemed waived unless made in writing and received by Cardinal within thirty (30) days after completion of the applicable service. In no event shall Cardinal be liable for incidental or consequential damages, including, without limitation, business interruptions, loss of use, or loss of profits incurred by client, its subsidiaries, affiliates or successors arising out of or related to the performance of the services hereunder by Cardinal, regardless of whether such claim is based upon any of the above stated reasons or otherwise. Results relate only to the samples identified above. This report shall not be reproduced except in full with written approval of Cardinal Laboratories.

A handwritten signature in black ink, appearing to read "C. D. Keene", is written over a horizontal line.

---

Celey D. Keene, Lab Director/Quality Manager



101 East Marland, Hobbs, NM 88240  
(575) 393-2326 FAX (575) 393-2476

## CHAIN-OF-CUSTODY AND ANALYSIS REQUEST

<b>Company Name:</b> Tetra Tech				<b>BILL TO</b>				<b>ANALYSIS REQUEST</b>					
<b>Project Manager:</b> Christian Lull				<b>P.O. #:</b>									
<b>Address:</b> 8911 Capital Of Texas Hwy, Suite 2310				<b>Company:</b> Tetra Tech									
<b>City:</b> Austin				<b>State:</b> TX				<b>Attn:</b> Christian Lull					
<b>Phone #:</b> (512) 565-0190				<b>Fax #:</b>				<b>Address:</b> EMAIL					
<b>Project #:</b> 212C-MD-03722				<b>Project Owner:</b> Chevron				<b>City:</b>					
<b>Project Name:</b> WTU Battery Release				<b>State:</b>				<b>Zip:</b>					
<b>Project Location:</b> Lea County, New Mexico				<b>Phone #:</b>									
<b>Sampler Name:</b> Rob Davis				<b>Fax #:</b>									
<b>FOR LAB USE ONLY</b>													
<b>Lab I.D.</b>		<b>Sample I.D.</b>		<b>(G)RAB OR (C)OMP.</b>		<b># CONTAINERS</b>		<b>MATRIX</b>		<b>PRESERV.</b>		<b>SAMPLING</b>	
								<b>GROUNDWATER</b>		<b>WASTEWATER</b>		<b>SOIL</b>	
								<b>OIL</b>		<b>SLUDGE</b>		<b>OTHER :</b>	
								<b>ACID/BASE:</b>		<b>ICE / COOL</b>		<b>OTHER :</b>	
								<b>DATE</b>		<b>TIME</b>		<b>TPH 8015M</b>	
								<b>12/5/2024</b>		<b>11:52</b>		<b>BTEX 8021B</b>	
								<b>12/5/2024</b>		<b>12/5/2024</b>		<b>Chloride SM4500Cl-B</b>	
								<b>12/5/2024</b>		<b>12/5/2024</b>			
								<b>12/5/2024</b>		<b>12/5/2024</b>			
								<b>12/5/2024</b>		<b>12/5/2024</b>			
								<b>12/5/2024</b>		<b>12/5/2024</b>			
								<b>12/5/2024</b>		<b>12/5/2024</b>			
								<b>12/5/2024</b>		<b>12/5/2024</b>			
								<b>12/5/2024</b>		<b>12/5/2024</b>			
								<b>12/5/2024</b>		<b>12/5/2024</b>			
								<b>12/5/2024</b>		<b>12/5/2024</b>			
								<b>12/5/2024</b>		<b>12/5/2024</b>			
								<b>12/5/2024</b>		<b>12/5/2024</b>			
								<b>12/5/2024</b>		<b>12/5/2024</b>			
								<b>12/5/2024</b>		<b>12/5/2024</b>			
								<b>12/5/2024</b>		<b>12/5/2024</b>			
								<b>12/5/2024</b>		<b>12/5/2024</b>			
								<b>12/5/2024</b>		<b>12/5/2024</b>			
								<b>12/5/2024</b>		<b>12/5/2024</b>			
								<b>12/5/2024</b>		<b>12/5/2024</b>			
								<b>12/5/2024</b>		<b>12/5/2024</b>			
								<b>12/5/2024</b>		<b>12/5/2024</b>			
								<b>12/5/2024</b>		<b>12/5/2024</b>			
								<b>12/5/2024</b>		<b>12/5/2024</b>			
								<b>12/5/2024</b>		<b>12/5/2024</b>			
								<b>12/5/2024</b>		<b>12/5/2024</b>			
								<b>12/5/2024</b>		<b>12/5/2024</b>			

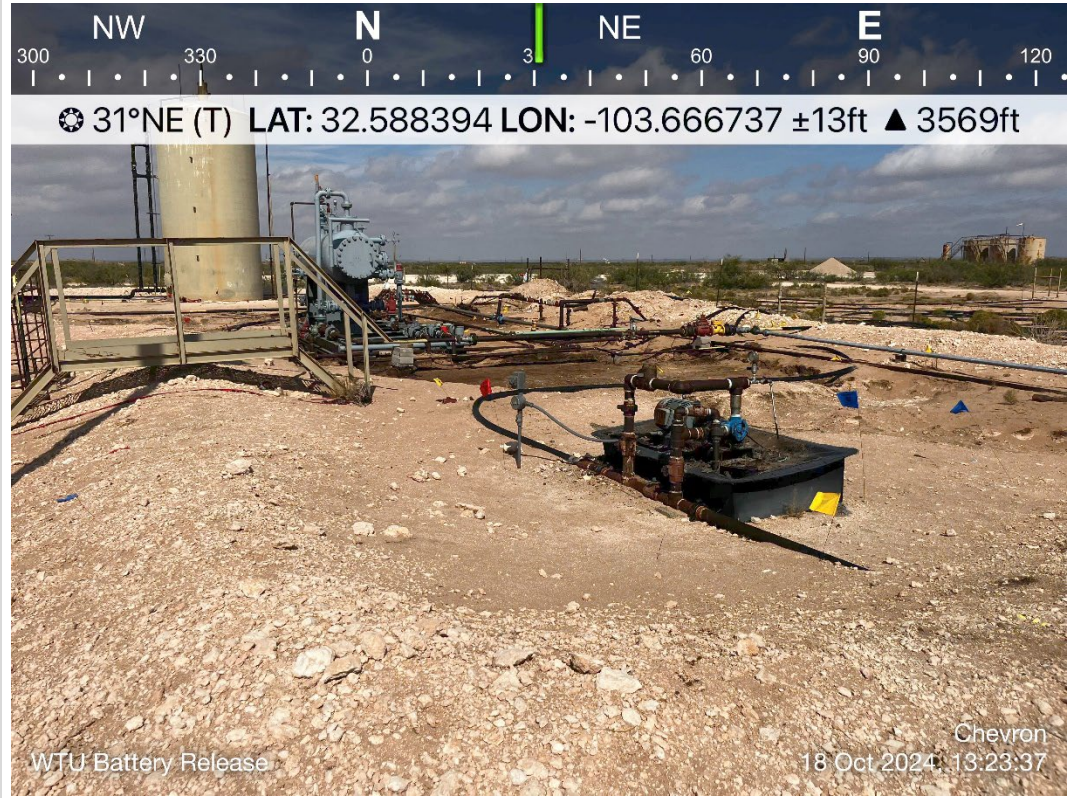
## **APPENDIX D**

# **Photographic Documentation**



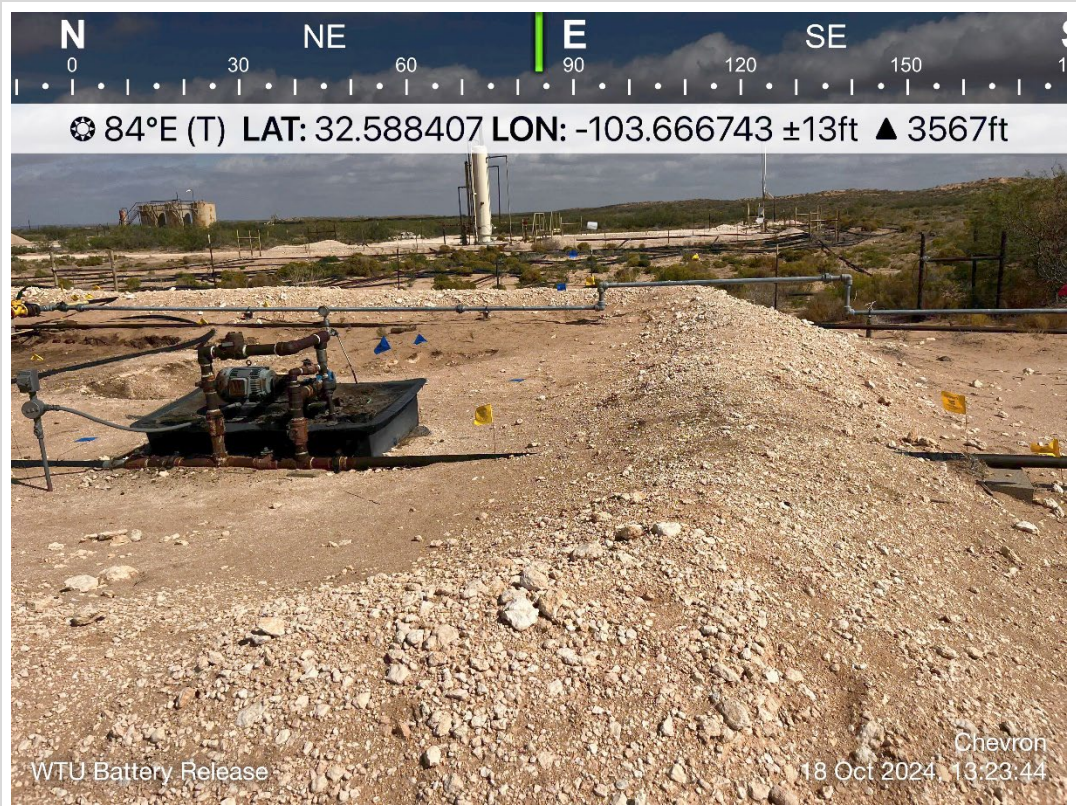


TETRA TECH, INC. PROJECT NO. 212C-MD-03722	DESCRIPTION	View northeast. Overview of the release area and surrounding production equipment.	1
	SITE NAME	WTU Battery Release	10/18/2024



TETRA TECH, INC. PROJECT NO. 212C-MD-03722	DESCRIPTION	View northeast. View of the south end of the release area. View of production equipment.	2
	SITE NAME	WTU Battery Release	10/18/2024



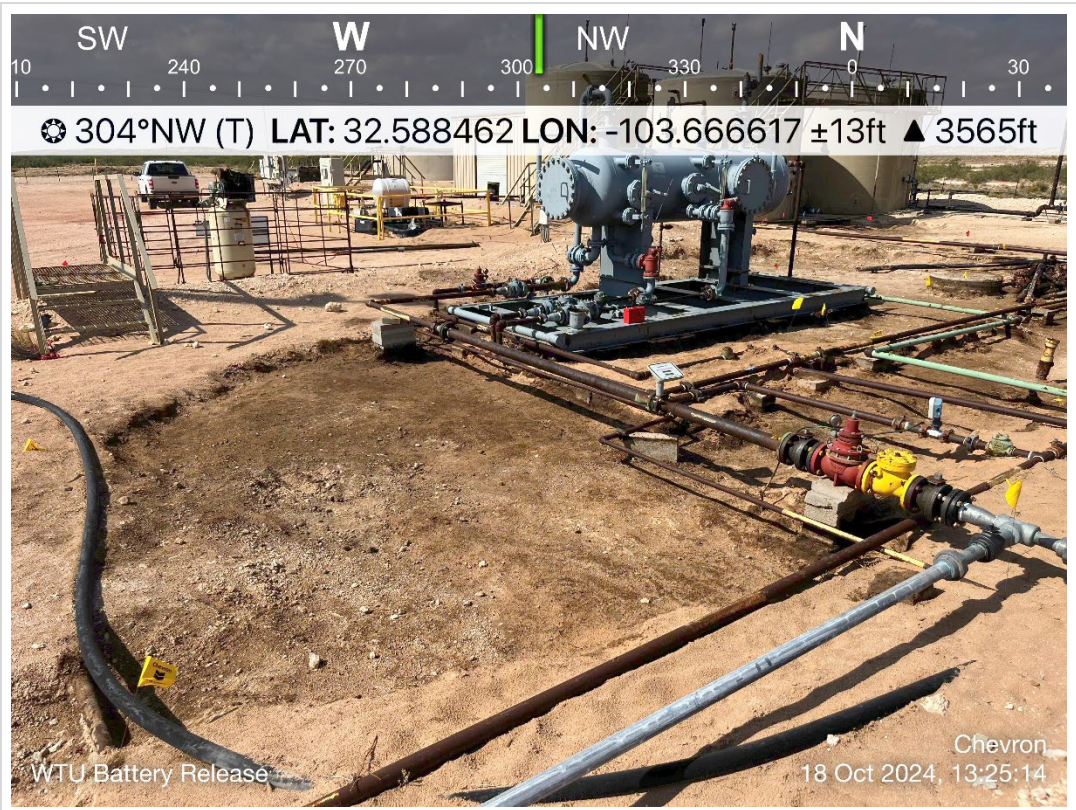


TETRA TECH, INC. PROJECT NO. 212C-MD-03722	DESCRIPTION	View east. View of the south end of the release area. View of production equipment.	3
	SITE NAME	WTU Battery Release	10/18/2024

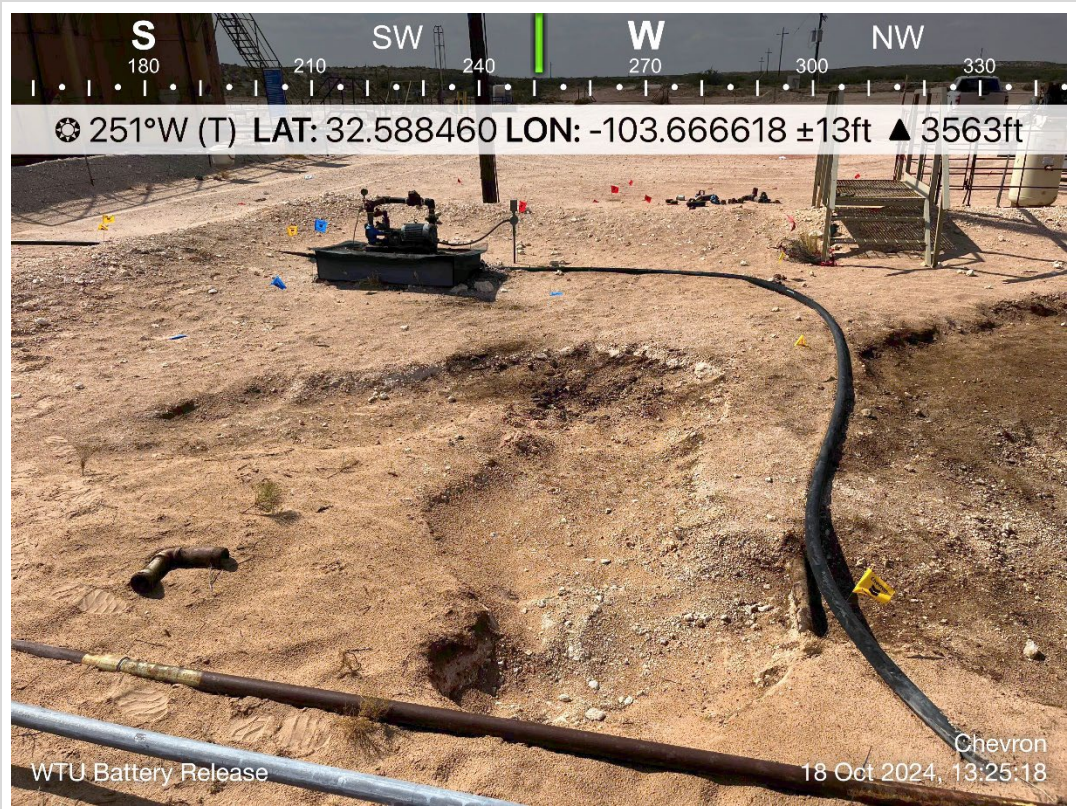


TETRA TECH, INC. PROJECT NO. 212C-MD-03722	DESCRIPTION	View north. View of release area and initial response actions.	4
	SITE NAME	WTU Battery Release	10/18/2024



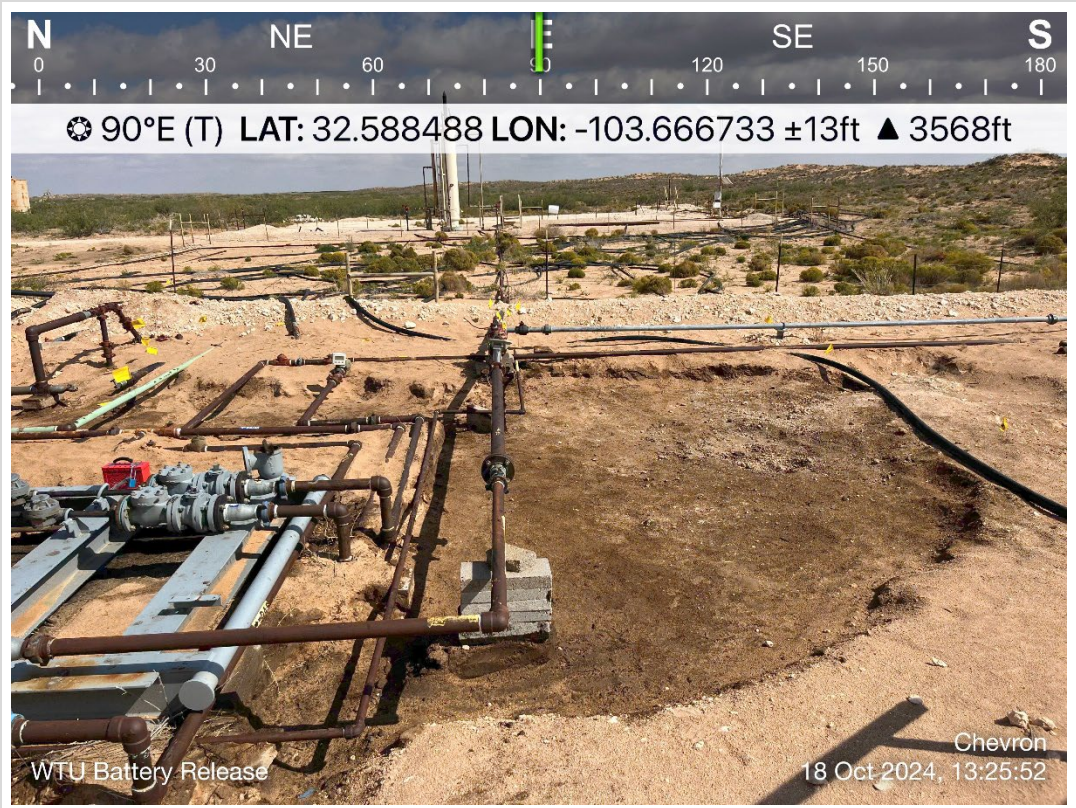


TETRA TECH, INC. PROJECT NO. 212C-MD-03722	DESCRIPTION	View northwest. View of release area and initial response actions. Subsurface steel and polylines present.	5
	SITE NAME	WTU Battery Release	10/18/2024



TETRA TECH, INC. PROJECT NO. 212C-MD-03722	DESCRIPTION	View southwest. View of release area and initial response actions.	6
	SITE NAME	WTU Battery Release	10/18/2024



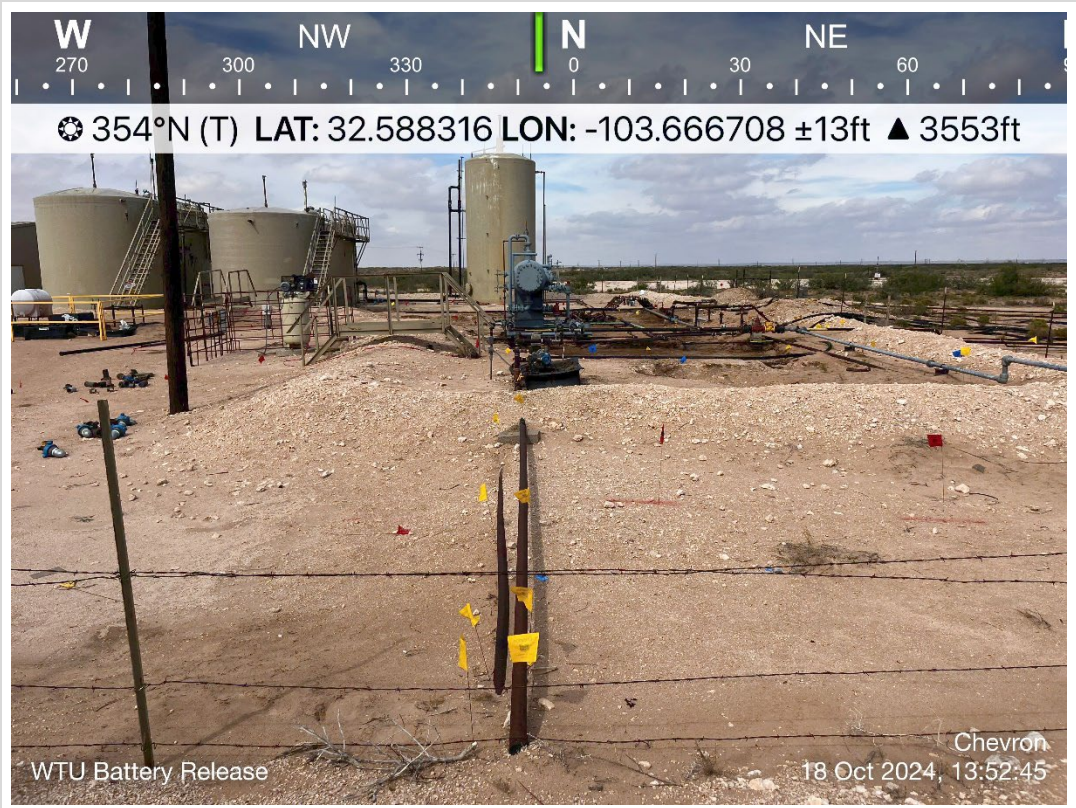


TETRA TECH, INC. PROJECT NO. 212C-MD-03722	DESCRIPTION	View east. View of initial scrape and surface steel lines.	7
	SITE NAME	WTU Battery Release	10/18/2024



TETRA TECH, INC. PROJECT NO. 212C-MD-03722	DESCRIPTION	View of southwest. View of release area and initial scrape area.	8
	SITE NAME	WTU Battery Release	10/18/2024





TETRA TECH, INC. PROJECT NO. 212C-MD-03722	DESCRIPTION	View north. View of surface steel lines and production equipment. View of berm.	9
	SITE NAME	WTU Battery Release	10/18/2024



TETRA TECH, INC. PROJECT NO. 212C-MD-03722	DESCRIPTION	View northwest. View of release area and initial response actions.	10
	SITE NAME	WTU Battery Release	10/18/2024

## **APPENDIX E**

### **Regulatory Correspondence**

**From:** [Tyler, Loyd](#)  
**To:** [Lull, Christian](#)  
**Cc:** [Chavira, Lisbeth](#)  
**Subject:** FW: [EXTERNAL] FW: Extension Request - WTU Battery Release (NAPP2426162492)  
**Date:** Thursday, January 30, 2025 10:31:05 AM

**CAUTION:** This email originated from an external sender. Verify the source before opening links or attachments.

FYI

**Joe Tyler**  
MCBU Field Environmental Advisor  
[loyd.tyler@chevron.com](mailto:loyd.tyler@chevron.com)  
**Mid-Continent Business Unit (MCBU)**  
6301 Deauville Blvd  
Midland, TX 79706  
Mobile: +1 (432) 701-8163

**From:** Rodgers, Scott, EMNRD <Scott.Rodgers@emnrd.nm.gov>  
**Sent:** Thursday, January 30, 2025 10:29 AM  
**To:** Tyler, Loyd <Loyd.Tyler@chevron.com>  
**Subject:** [\*\*EXTERNAL\*\*] RE: [EXTERNAL] FW: Extension Request - WTU Battery Release (NAPP2426162492)

**Be aware this external email contains an attachment and/or link.**  
Ensure the email and contents are expected. If there are concerns, please submit suspicious messages to the Cyber Intelligence Center using the Report Phishing button.

Your time extension request is approved. Please send future extension requests to [OCD.Enviro@emnrd.nm.gov](mailto:OCD.Enviro@emnrd.nm.gov).

Remediation Due date has been updated to March 16, 2025 within the incident page. Ensure that the site characterization/assessment report has been completed and is provided within the final closure report.

Please keep a copy of this communication for inclusion within the appropriate reporting documentation.

The OCD requires a copy of all correspondence related to remedial activities be included in all proposals, weekly/monthly/quarterly/semi-annual/annual, or final closure reports. Correspondence reporting requirements may include, but not limited to, time extension requests, sample event notifications, and variance requests.

If you have any questions, please contact me via email at your convenience.

Thank you.

Regards,

**Scott Rodgers** • Environmental Specialist – Adv.  
Environmental Bureau  
EMNRD - Oil Conservation Division  
5200 Oakland NE, Suite B | Albuquerque, NM 87113  
505.469.1830 | [scott.rodgers@emnrd.nm.gov](mailto:scott.rodgers@emnrd.nm.gov)  
<http://www.emnrd.nm.gov/ocd>



---

**From:** Tyler, Loyd <[Loyd.Tyler@chevron.com](mailto:Loyd.Tyler@chevron.com)>  
**Sent:** Thursday, January 30, 2025 8:40 AM  
**To:** Rodgers, Scott, EMNRD <[Scott.Rodgers@emnrd.nm.gov](mailto:Scott.Rodgers@emnrd.nm.gov)>  
**Subject:** [EXTERNAL] FW: Extension Request - WTU Battery Release (NAPP2426162492)

You don't often get email from [loyd.tyler@chevron.com](mailto:loyd.tyler@chevron.com). [Learn why this is important](#)

**CAUTION:** This email originated outside of our organization. Exercise caution prior to clicking on links or opening attachments.

Hello Scott,

I apologize beforehand if I am sending this to wrong person, but I am forwarding this extension request as I have not received a response to my initial email sent to your NMOCD mailbox in December.

Since then, we have received the analytical results from the assessment activities at the site and have achieved full vertical and horizontal delineation. A work plan is currently being drafted and will be submitted to the NMOCD portal shortly.

Thank you for your attention to this matter.

---

**Joe Tyler**  
MCBU Field Environmental Advisor  
[loyd.tyler@chevron.com](mailto:loyd.tyler@chevron.com)  
**Mid-Continent Business Unit (MCBU)**  
6301 Deauville Blvd



Midland, TX 79706  
Mobile: +1 (432) 701-8163

---

**From:** Tyler, Loyd  
**Sent:** Monday, December 16, 2024 9:12 AM  
**To:** [ocdonline@state.nm.us](mailto:ocdonline@state.nm.us)  
**Subject:** Extension Request - WTU Battery Release (NAPP2426162492)

To whom it may concern,

Chevron would like to request a 90-day extension (until March 16, 2025) to complete assessment and remedial activities and associated reporting for the WTU Battery Release Site (**NAPP2426162492**).

As of this week, Chevron has safely completed assessment activities at the Site to evaluate the status of the identified open incident # NAPP2426162492, however, a path forward has not yet been established.

Given the complexities of this release footprint and site, including numerous surface and subsurface utilities within the release footprint, assessment and delineation work at the project site must be completed safely and in accordance with established Chevron MCBU policies and procedures.

Additional time is required to proceed to remediation of soils to meet the standards of Table I of 19.15.29.12 NMAC or other applicable remediation standards and restore and reclaim the area pursuant to 19.15.29.13 NMAC.

Thank you.

---

**Joe Tyler**  
*MCBU Field Environmental Advisor*  
[loyd.tyler@chevron.com](mailto:loyd.tyler@chevron.com)  
**Mid-Continent Business Unit (MCBU)**  
6301 Deauville Blvd  
Midland, TX 79706  
Mobile: +1 (432) 701-8163

Sante Fe Main Office  
Phone: (505) 476-3441

General Information  
Phone: (505) 629-6116

Online Phone Directory  
<https://www.emnrd.nm.gov/ocd/contact-us>

State of New Mexico  
Energy, Minerals and Natural Resources  
Oil Conservation Division  
1220 S. St Francis Dr.  
Santa Fe, NM 87505

QUESTIONS

Action 442861

QUESTIONS

Operator: CHEVRON U S A INC 6301 Deauville Blvd Midland, TX 79706	OGRID: 4323
	Action Number: 442861
	Action Type: [C-141] Site Char./Remediation Plan C-141 (C-141-v-Plan)

QUESTIONS

<b>Prerequisites</b>	
Incident ID (n#)	nAPP2426162492
Incident Name	NAPP2426162492 WTU BATTERY @ 0
Incident Type	Produced Water Release
Incident Status	Remediation Plan Received
Incident Facility	[fAPP2133339469] WTU Battery

<b>Location of Release Source</b>	
<i>Please answer all the questions in this group.</i>	
Site Name	WTU BATTERY
Date Release Discovered	09/17/2024
Surface Owner	Federal

<b>Incident Details</b>	
<i>Please answer all the questions in this group.</i>	
Incident Type	Produced Water Release
Did this release result in a fire or is the result of a fire	No
Did this release result in any injuries	No
Has this release reached or does it have a reasonable probability of reaching a watercourse	No
Has this release endangered or does it have a reasonable probability of endangering public health	No
Has this release substantially damaged or will it substantially damage property or the environment	No
Is this release of a volume that is or may with reasonable probability be detrimental to fresh water	No

<b>Nature and Volume of Release</b>	
<i>Material(s) released, please answer all that apply below. Any calculations or specific justifications for the volumes provided should be attached to the follow-up C-141 submission.</i>	
Crude Oil Released (bbls) Details	Cause: Equipment Failure   Flow Line - Production   Crude Oil   Released: 2 BBL   Recovered: 2 BBL   Lost: 0 BBL.
Produced Water Released (bbls) Details	Cause: Equipment Failure   Flow Line - Production   Produced Water   Released: 34 BBL   Recovered: 21 BBL   Lost: 13 BBL.
Is the concentration of chloride in the produced water >10,000 mg/l	Yes
Condensate Released (bbls) Details	Not answered.
Natural Gas Vented (Mcf) Details	Not answered.
Natural Gas Flared (Mcf) Details	Not answered.
Other Released Details	Not answered.
Are there additional details for the questions above (i.e. any answer containing Other, Specify, Unknown, and/or Fire, or any negative lost amounts)	Not answered.

Sante Fe Main Office  
Phone: (505) 476-3441

General Information  
Phone: (505) 629-6116

Online Phone Directory  
<https://www.emnrd.nm.gov/ocd/contact-us>

**State of New Mexico**  
**Energy, Minerals and Natural Resources**  
**Oil Conservation Division**  
**1220 S. St Francis Dr.**  
**Santa Fe, NM 87505**

QUESTIONS, Page 2

Action 442861

**QUESTIONS (continued)**

Operator: CHEVRON U S A INC 6301 Deauville Blvd Midland, TX 79706	OGRID: 4323
	Action Number: 442861
	Action Type: [C-141] Site Char./Remediation Plan C-141 (C-141-v-Plan)

**QUESTIONS**

<b>Nature and Volume of Release (continued)</b>	
Is this a gas only submission (i.e. only significant Mcf values reported)	No, according to supplied volumes this does not appear to be a "gas only" report.
Was this a major release as defined by Subsection A of 19.15.29.7 NMAC	Yes
Reasons why this would be considered a submission for a notification of a major release	From paragraph A. "Major release" determine using: (1) an unauthorized release of a volume, excluding gases, of 25 barrels or more.
With the implementation of the 19.15.27 NMAC (05/25/2021), venting and/or flaring of natural gas (i.e. gas only) are to be submitted on the C-129 form.	

**Initial Response**

The responsible party must undertake the following actions immediately unless they could create a safety hazard that would result in injury.

The source of the release has been stopped	True
The impacted area has been secured to protect human health and the environment	True
Released materials have been contained via the use of berms or dikes, absorbent pads, or other containment devices	True
All free liquids and recoverable materials have been removed and managed appropriately	True
If all the actions described above have not been undertaken, explain why	Not answered.

Per Paragraph (4) of Subsection B of 19.15.29.8 NMAC the responsible party may commence remediation immediately after discovery of a release. If remediation has begun, please prepare and attach a narrative of actions to date in the follow-up C-141 submission. If remedial efforts have been successfully completed or if the release occurred within a lined containment area (see Subparagraph (a) of Paragraph (5) of Subsection A of 19.15.29.11 NMAC), please prepare and attach all information needed for closure evaluation in the follow-up C-141 submission.

I hereby certify that the information given above is true and complete to the best of my knowledge and understand that pursuant to OCD rules and regulations all operators are required to report and/or file certain release notifications and perform corrective actions for releases which may endanger public health or the environment. The acceptance of a C-141 report by the OCD does not relieve the operator of liability should their operations have failed to adequately investigate and remediate contamination that pose a threat to groundwater, surface water, human health or the environment. In addition, OCD acceptance of a C-141 report does not relieve the operator of responsibility for compliance with any other federal, state, or local laws and/or regulations.

I hereby agree and sign off to the above statement	Name: Bayley Ranes Title: Environmental Specialist Email: Bayleyranes@chevron.com Date: 09/18/2024
--	---



Sante Fe Main Office  
Phone: (505) 476-3441

General Information  
Phone: (505) 629-6116

Online Phone Directory  
<https://www.emnrd.nm.gov/ocd/contact-us>

**State of New Mexico**  
**Energy, Minerals and Natural Resources**  
**Oil Conservation Division**  
**1220 S. St Francis Dr.**  
**Santa Fe, NM 87505**

QUESTIONS, Page 3

Action 442861

**QUESTIONS (continued)**

Operator:  CHEVRON U S A INC 6301 Deauville Blvd Midland, TX 79706	OGRID:  4323
	Action Number:  442861
	Action Type:  [C-141] Site Char./Remediation Plan C-141 (C-141-v-Plan)

**QUESTIONS****Site Characterization**

Please answer all the questions in this group (only required when seeking remediation plan approval and beyond). This information must be provided to the appropriate district office no later than 90 days after the release discovery date.

What is the shallowest depth to groundwater beneath the area affected by the release in feet below ground surface (ft bgs)	Between 100 and 500 (ft.)
What method was used to determine the depth to ground water	NM OSE iWaters Database Search
Did this release impact groundwater or surface water	No
<b>What is the minimum distance, between the closest lateral extents of the release and the following surface areas:</b>	
A continuously flowing watercourse or any other significant watercourse	Between 1 and 5 (mi.)
Any lakebed, sinkhole, or playa lake (measured from the ordinary high-water mark)	Between 1 and 5 (mi.)
An occupied permanent residence, school, hospital, institution, or church	Between 1 and 5 (mi.)
A spring or a private domestic fresh water well used by less than five households for domestic or stock watering purposes	Greater than 5 (mi.)
Any other fresh water well or spring	Greater than 5 (mi.)
Incorporated municipal boundaries or a defined municipal fresh water well field	Greater than 5 (mi.)
A wetland	Between 1 and 5 (mi.)
A subsurface mine	Greater than 5 (mi.)
An (non-karst) unstable area	Greater than 5 (mi.)
Categorize the risk of this well / site being in a karst geology	Low
A 100-year floodplain	Greater than 5 (mi.)
Did the release impact areas not on an exploration, development, production, or storage site	No

**Remediation Plan**

Please answer all the questions that apply or are indicated. This information must be provided to the appropriate district office no later than 90 days after the release discovery date.

Requesting a remediation plan approval with this submission	Yes
<i>Attach a comprehensive report demonstrating the lateral and vertical extents of soil contamination associated with the release have been determined, pursuant to 19.15.29.11 NMAC and 19.15.29.13 NMAC.</i>	
Have the lateral and vertical extents of contamination been fully delineated	Yes
Was this release entirely contained within a lined containment area	No

**Soil Contamination Sampling:** (Provide the highest observable value for each, in milligrams per kilograms.)

Chloride (EPA 300.0 or SM4500 Cl B)	416
TPH (GRO+DRO+MRO) (EPA SW-846 Method 8015M)	193
GRO+DRO (EPA SW-846 Method 8015M)	75
BTEX (EPA SW-846 Method 8021B or 8260B)	0
Benzene (EPA SW-846 Method 8021B or 8260B)	0

Per Subsection B of 19.15.29.11 NMAC unless the site characterization report includes completed efforts at remediation, the report must include a proposed remediation plan in accordance with 19.15.29.12 NMAC, which includes the anticipated timelines for beginning and completing the remediation.

On what estimated date will the remediation commence	06/02/2025
On what date will (or did) the final sampling or liner inspection occur	06/02/2025
On what date will (or was) the remediation complete(d)	06/04/2025
What is the estimated surface area (in square feet) that will be reclaimed	942
What is the estimated volume (in cubic yards) that will be reclaimed	33
What is the estimated surface area (in square feet) that will be remediated	329
What is the estimated volume (in cubic yards) that will be remediated	16

These estimated dates and measurements are recognized to be the best guess or calculation at the time of submission and may (be) change(d) over time as more remediation efforts are completed.

The OCD recognizes that proposed remediation measures may have to be minimally adjusted in accordance with the physical realities encountered during remediation. If the responsible party has any need to significantly deviate from the remediation plan proposed, then it should consult with the division to determine if another remediation plan submission is required.

Sante Fe Main Office  
Phone: (505) 476-3441

General Information  
Phone: (505) 629-6116

Online Phone Directory  
<https://www.emnrd.nm.gov/ocd/contact-us>

**State of New Mexico**  
**Energy, Minerals and Natural Resources**  
**Oil Conservation Division**  
**1220 S. St Francis Dr.**  
**Santa Fe, NM 87505**

QUESTIONS, Page 4

Action 442861

**QUESTIONS (continued)**

Operator: CHEVRON U S A INC 6301 Deauville Blvd Midland, TX 79706	OGRID: 4323
	Action Number: 442861
	Action Type: [C-141] Site Char./Remediation Plan C-141 (C-141-v-Plan)

**QUESTIONS**

<b>Remediation Plan (continued)</b>	
<i>Please answer all the questions that apply or are indicated. This information must be provided to the appropriate district office no later than 90 days after the release discovery date.</i>	
<b>This remediation will (or is expected to) utilize the following processes to remediate / reduce contaminants:</b>	
<i>(Select all answers below that apply.)</i>	
(Ex Situ) Excavation and <b>off-site</b> disposal (i.e. dig and haul, hydrovac, etc.)	<b>Yes</b>
Which OCD approved facility will be used for <b>off-site</b> disposal	HALFWAY DISPOSAL AND LANDFILL [FEEM0112334510]
<b>OR</b> which OCD approved well (API) will be used for <b>off-site</b> disposal	Not answered.
<b>OR</b> is the <b>off-site</b> disposal site, to be used, out-of-state	Not answered.
<b>OR</b> is the <b>off-site</b> disposal site, to be used, an NMED facility	Not answered.
(Ex Situ) Excavation and <b>on-site</b> remediation (i.e. On-Site Land Farms)	<b>No</b>
(In Situ) Soil Vapor Extraction	Not answered.
(In Situ) Chemical processing (i.e. Soil Shredding, Potassium Permanganate, etc.)	Not answered.
(In Situ) Biological processing (i.e. Microbes / Fertilizer, etc.)	Not answered.
(In Situ) Physical processing (i.e. Soil Washing, Gypsum, Disking, etc.)	Not answered.
Ground Water Abatement pursuant to 19.15.30 NMAC	Not answered.
OTHER (Non-listed remedial process)	Not answered.
<i>Per Subsection B of 19.15.29.11 NMAC unless the site characterization report includes completed efforts at remediation, the report must include a proposed remediation plan in accordance with 19.15.29.12 NMAC, which includes the anticipated timelines for beginning and completing the remediation.</i>	
I hereby certify that the information given above is true and complete to the best of my knowledge and understand that pursuant to OCD rules and regulations all operators are required to report and/or file certain release notifications and perform corrective actions for releases which may endanger public health or the environment. The acceptance of a C-141 report by the OCD does not relieve the operator of liability should their operations have failed to adequately investigate and remediate contamination that pose a threat to groundwater, surface water, human health or the environment. In addition, OCD acceptance of a C-141 report does not relieve the operator of responsibility for compliance with any other federal, state, or local laws and/or regulations.	
I hereby agree and sign off to the above statement	Name: loyd Tyler Title: Environmental Specialist Email: loyd.tyler@chevron.com Date: 03/17/2025
<i>The OCD recognizes that proposed remediation measures may have to be minimally adjusted in accordance with the physical realities encountered during remediation. If the responsible party has any need to significantly deviate from the remediation plan proposed, then it should consult with the division to determine if another remediation plan submission is required.</i>	

Sante Fe Main Office  
Phone: (505) 476-3441

General Information  
Phone: (505) 629-6116

Online Phone Directory  
<https://www.emnrd.nm.gov/ocd/contact-us>

**State of New Mexico**  
**Energy, Minerals and Natural Resources**  
**Oil Conservation Division**  
**1220 S. St Francis Dr.**  
**Santa Fe, NM 87505**

QUESTIONS, Page 5

Action 442861

**QUESTIONS (continued)**

Operator:  CHEVRON U S A INC 6301 Deauville Blvd Midland, TX 79706	OGRID:  4323
	Action Number:  442861
	Action Type:  [C-141] Site Char./Remediation Plan C-141 (C-141-v-Plan)

**QUESTIONS**

<b>Deferral Requests Only</b>	
<i>Only answer the questions in this group if seeking a deferral upon approval this submission. Each of the following items must be confirmed as part of any request for deferral of remediation.</i>	
Requesting a deferral of the remediation closure due date with the approval of this submission	No

Sante Fe Main Office  
Phone: (505) 476-3441

General Information  
Phone: (505) 629-6116

Online Phone Directory  
<https://www.emnrd.nm.gov/ocd/contact-us>

**State of New Mexico**  
**Energy, Minerals and Natural Resources**  
**Oil Conservation Division**  
**1220 S. St Francis Dr.**  
**Santa Fe, NM 87505**

QUESTIONS, Page 6

Action 442861

**QUESTIONS (continued)**

Operator: CHEVRON U S A INC 6301 Deauville Blvd Midland, TX 79706	OGRID: 4323
	Action Number: 442861
	Action Type: [C-141] Site Char./Remediation Plan C-141 (C-141-v-Plan)

**QUESTIONS**

Sampling Event Information	
Last sampling notification (C-141N) recorded	{Unavailable.}

**Remediation Closure Request**

Only answer the questions in this group if seeking remediation closure for this release because all remediation steps have been completed.

Requesting a remediation closure approval with this submission	No
--	----

Sante Fe Main Office  
Phone: (505) 476-3441

General Information  
Phone: (505) 629-6116

Online Phone Directory  
<https://www.emnrd.nm.gov/ocd/contact-us>

State of New Mexico  
Energy, Minerals and Natural Resources  
Oil Conservation Division  
1220 S. St Francis Dr.  
Santa Fe, NM 87505

CONDITIONS

Action 442861

CONDITIONS

Operator:  CHEVRON U S A INC 6301 Deauville Blvd Midland, TX 79706	OGRID:  4323
	Action Number:  442861
	Action Type:  [C-141] Site Char./Remediation Plan C-141 (C-141-v-Plan)

CONDITIONS

Created By	Condition	Condition Date
scott.rodgers	The Remediation Plan is Conditionally Approved. All samples must be analyzed for all constituents listed in Table I of 19.15.29.12 NMAC. Floor confirmation samples should be delineated/excavated to meet closure criteria standards for site assessment/characterization/proven depth to water determination. Sidewall samples should be delineated/excavated to 600 mg/kg for chlorides and 100 mg/kg for TPH to define the edge of the release. Confirmation samples should be collected every 200 ft2. The work will need to occur in 90 days after the work plan has been reviewed.	3/24/2025