



SECREST ET AL #1 SWD

Incident ID nAPP2507027904

PREPARED BY:
PIMA ENVIRONMENTAL SERVICES, LLC

PREPARED FOR:
Spur Energy

Liner Inspection and Closure Report

March 31, 2025



Pima Environmental Services
5614 N. Lovington Highway
Hobbs, NM 88240
575-964-7740

| | |
|------------------------|---------------------|
| FACILITY NAME | Secret ET AL #1 SWD |
| DATE OF RELEASE | 3/8/2025 |
| INCIDENT NO. | NAPP2507027904 |

| | |
|---|---------------------------------|
| Site Characterization | |
| DTGW What is the shallowest DTGW beneath the area affected by the release in ft below ground surface (ft bgs) | Between 75 and 100 ft. |
| GW Depth Determination What method was used to determine the DTGW? | U.S Geological Survey |
| Ground or Surface Water Impacted Did this release impact GW or Surface Water? | No |
| What is the min. distance between the closest lateral extents of the release and the following surace areas? | |
| Distance to Watercourse A continuously flowing watercourse or any other significant watercourse? | > 5 mi. |
| Distance to Lakebed Any lakebed, sinkhole, or playa lake (measured from the ordinary high-water mark)? | > 5 mi. |
| Distance to Public An occupied permanent residence, school, hospital, institution, or church? | > 5 mi. |
| Distance to Private A spring or a private domestic FW well used by less than five households for domestic or stock watering purposes? | > 5 mi. |
| Distance to Fresh Water Any other FW well spring? | Between 1/2 mi. and 1 mi. |
| Within Municipal Boundaries Incorporated municipal boundaries or a defined municipal FW well field? | > 5 mi. |
| Distance to Wetland A wetland? | Between 500 and 1000 ft. |
| Overlying Subsurface Mine A subsurface mine? | > 5 mi. |
| Overlying (Non-Karst) Unstable Area An (non-karst) unstable area? | > 5 mi. |
| Risk of Karst Geology Catergorize the risk of this well/site being in a karst geology? | Medium |
| Distance to or Within 100 yr Floodplain A 100-year floodplain? | 0 ft, overlying, or within area |
| Areas NOT Other Site Did the release impact areas not on exploration, development, production, or storage site? | No |
| Remediation Plan | |
| Have the lateral and vertical extents of contamination been fully delineated? | Yes |
| Lined Containment Area Only Was this release entirely contained within a lined containment area? | Yes |
| Soil Containment Sampling | (EPA 300.00 or SM4500 CI B?) |
| Chloride Constituent Chloride (mg/kg) | 0 |

| | |
|---|-------------------------------------|
| | (EPA SW-846 Method 8015M)? |
| TPH (GRO+DRO+MRO) Constituent TPH (mg/kg) | 0 |
| | (EPA SW-846 Method 8015M)? |
| GRO + DRO Constituent GRO-DRO (mg/kg) | 0 |
| | (EPA SW-846 Method 8021B or 8260B)? |
| BTEX Constituent BTEX (mg/kg) | 0 |
| | (EPA SW-846 Method 8021B or 8260B)? |
| Benzene Constituent Benzene (mg/kg) | 0 |
| Per Subsection B of 19.15.29.11 NMAC unless the site characterization report includes competed efforts at remediation, the report must include a proposed remediation plan in accordance with 19.15.29 NMAC, which includes the anticipated timelines for beginning and completing the remediation. | |
| Start of Remediation On what estimated date will remediation commence? | 3/26/2025 |
| Start of Sampling or Liner Inspection On what date will (or did) the final sampling or liner inspection occur? | 3/27/2025 |
| Finish of Remediation On what date will (or was) the remediation complete(d)? | 3/27/2025 |
| Surface Area (sq ft) To Be Reclaimed What is the estimated surface area (in sq ft) that will be reclaimed? | 0 |
| Surface Area (sq ft) To Be Remediated What is the estimated surface area (in sq ft) that will be remediated? | 7,000 |
| Volume (cu yd) To Be Remediated What is the estimated volume (in cubic yds) that will be remediated? | 0 |
| Remediation Plan (Cont.) Please answer all that apply | |
| Ex Situ Excavation Off-Site (Ex Situ) Excavation and off-site disposal (i.e. dig and haul, hydrovac, etc)? | Yes |
| Ex Situ Excavation On-Site (Ex Situ) Excavation and on-site remediation (i.e. On-Site Land Farms)? | No |
| In Situ Soil Vapor Extraction (SVE)? | No |
| In Situ Chemical Processing (in Situ) Chemical processing (i.e. Soil Shredding, Potassium Permanganate, etc.)? | No |
| In Situ Biological Processing (In Situ) Biological processing (i.e. Microbes/Fertilizer, etc.)? | No |
| In Situ Physical Processing (In Situ) Physical processing (i.e. Soil Washing, Gypsum, Disking, etc.)? | No |
| In Situ Ground Water Abatement GW Abatement pursuant to 19.15.30 NMAC? | No |
| Remediation Other Other (Non-listed remedial process)? | No |
| Deferral Request Only | |
| Requesting a deferral of the remediation closure due date with the approval of this submission | No |

| | |
|---|-----|
| Requesting a remediation closure approval with this submission? | Yes |
| Have the lateral and vertical extents of contamination been fully delineated? | Yes |

| | |
|---|---|
| Was this release entirely contained within a lined containment area? | Yes |
| Restired Areas For Production Use All areas reasonably needed for production or subsequent drilling operations have been stabilized, returned to the sites existing grade, and have a soil cover that prevents ponding of water, minimizing dust and erosion? | Yes |
| Total Surface Area (sq ft) Remediated What was the total surface area (sq ft) remediated? | 7,000 |
| Total Volume (cu yd) Remediated What was the total volume (cubic yards) remediated? | 0 |
| Reclaimed to Condition Prior Release All areas not reasonably needed for production or subsequent drilling operations have been reclaimed to contain a minimum of four ft of non-waste contain earthen material with concentrations less than 600 mg/kg chlorides, 100 mg/kg TPH, 50 mg/kg BTEX and 10 mg/kg Benzene? | Yes |
| Total Surface Area (sq ft) Reclaimed What was the total surface area (in sq ft) reclaimed? | 0 |
| Remediation Summary Summarize any additional remediation activities not included by answers (above). | The lined containment was power-washed, and all standing fluids were recovered using a vacuum truck. Following remediation, a liner inspection was conducted, confirming that the containment liner maintained its integrity. |



Pima Environmental Services
5614 N. Lovington Highway
Hobbs, NM 88240
575-964-7740

March 31, 2025

NMOCD District 2
811 S. First St
Artesia, NM, 88210

RE: Liner Inspection and Closure Report
Secrest ET AL #1 SWD
API No. 30-015-22321
GPS: Latitude 32.68084 Longitude -104.41922
UL- B, Section 07, Township 19S, Range 26E
NMOCD Reference No. NAPP2507027904

Spur Energy Partners (Spur) has contracted Pima Environmental Services, LLC (Pima) to perform a liner inspection and prepare this closure report for the release of produced water that happened on the Secrest ET AL #1 SWD (Secrest). An initial C-141 was submitted on March 11, 2025. This incident was assigned Incident ID NAPP2507027904, by the New Mexico Oil Conservation Division (NMOCD).

Site Information and Site Characterization

Secrest is located approximately 6.32 miles southwest of Atoka, NM. This spill site is in Unit B, Section 07, Township 19S, Range 26E, Latitude 32.68084 Longitude -104.41922, Eddy County, NM. A Location Map can be found in Figure 1.

Based on the well water data from the New Mexico Office of the State Engineer, the depth to the nearest groundwater in this vicinity measures 175 feet below grade surface (BGS), positioned roughly 0.85 miles away from the Secrest, drilled on September 27, 1991. Conversely, as per the United States Geological Survey well water data, the nearest groundwater depth in this region is recorded at 98.74 feet BGS, situated approximately 1.77 miles away from the Secrest, with the last gauge conducted on January 10, 2017. For detailed references to water surveys and the precise locations of water wells, please refer to Appendix A, inclusive of the relevant maps. Notably, Secrest is situated within an area with a medium potential for karst, as illustrated in Figure 3. Additionally, a comprehensive Topographic Map is available for reference in Figure 2.

Release Information

NAPP2507027904: On March 8, 2025, an inlet valve failure caused the tank to overflow into the lined containment, resulting in the release of approximately 22 barrels of produced water into a 7,000-square-foot containment area. Immediate action was taken to stop the release, and a vacuum truck was promptly dispatched to the site. All standing fluids were successfully recovered, and the release remained fully contained within the lined area.

A Site Map can be found in Figure 4.

Site Assessment and Liner Inspection

On March 23, 2025, Spur personnel submitted a notification for a liner inspection, adhering to the necessary 48-hour notice period. The details of the 48-hour notification can be referenced in Appendix C.

On March 27, 2025, Pima Environmental conducted a thorough inspection of the lined containment area. The evaluation process included cleaning the liner with a power washer and using a vacuum truck to ensure the complete removal of any residual fluids. The inspection confirmed that the system remained intact and successfully retained all fluids. As a result, the liner was deemed functional, preventing any further environmental impact. A detailed report, including photographic evidence, is provided in Appendices C and D.

Closure Request

After careful review, Pima requests that this incident nAPP2507027904 be closed. Spur has complied with the applicable closure requirements.

For questions or additional information, please feel free to contact:

Spur Energy – Katherine Purvis at 575-441-8619 or katherine.purvis@spurenergy.com

Pima Environmental Services – Sebastian Orozco at 619-721-4813 or Sebastian@pimaoil.com.

Attachments

Figures:

- 1- Location Map
- 2- Topographic Map
- 3- Karst Map
- 4- Site Map

Appendices:

Appendix A- Referenced Water Surveys

Appendix B- Soil Survey, Geological Data, FEMA Flood Map, Wetland Map

Appendix C-48 Hour Notification and Liner Inspection Form

Appendix D- Photographic Documentation

Figures:

Figure 1- Location Map

Figure 2- Topographic Map



Figure 3- Karst Map

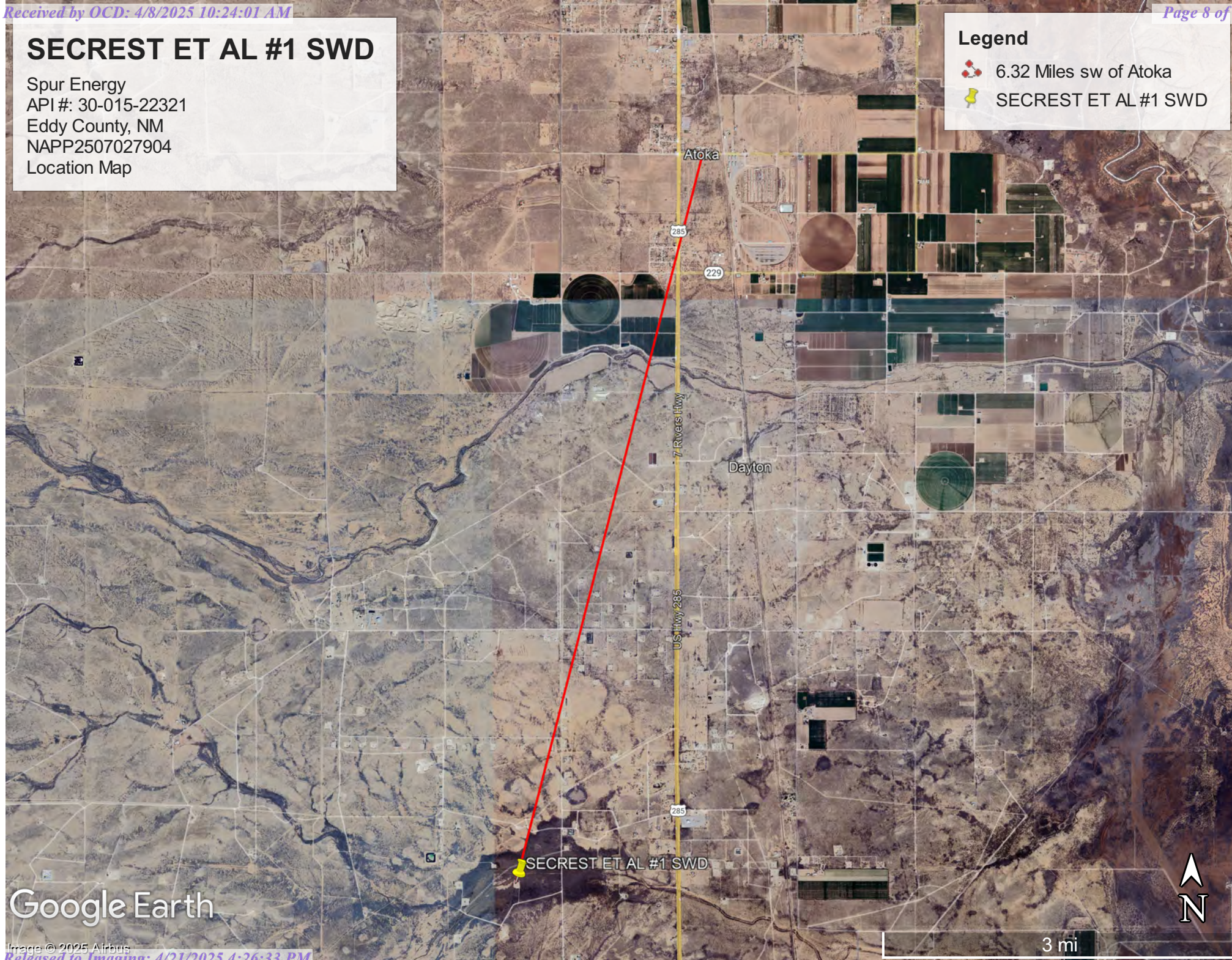
Figure 4- Site Map

SECRET ET AL #1 SWD

Spur Energy
API #: 30-015-22321
Eddy County, NM
NAPP2507027904
Location Map

Legend

-  6.32 Miles sw of Atoka
-  SECRET ET AL #1 SWD




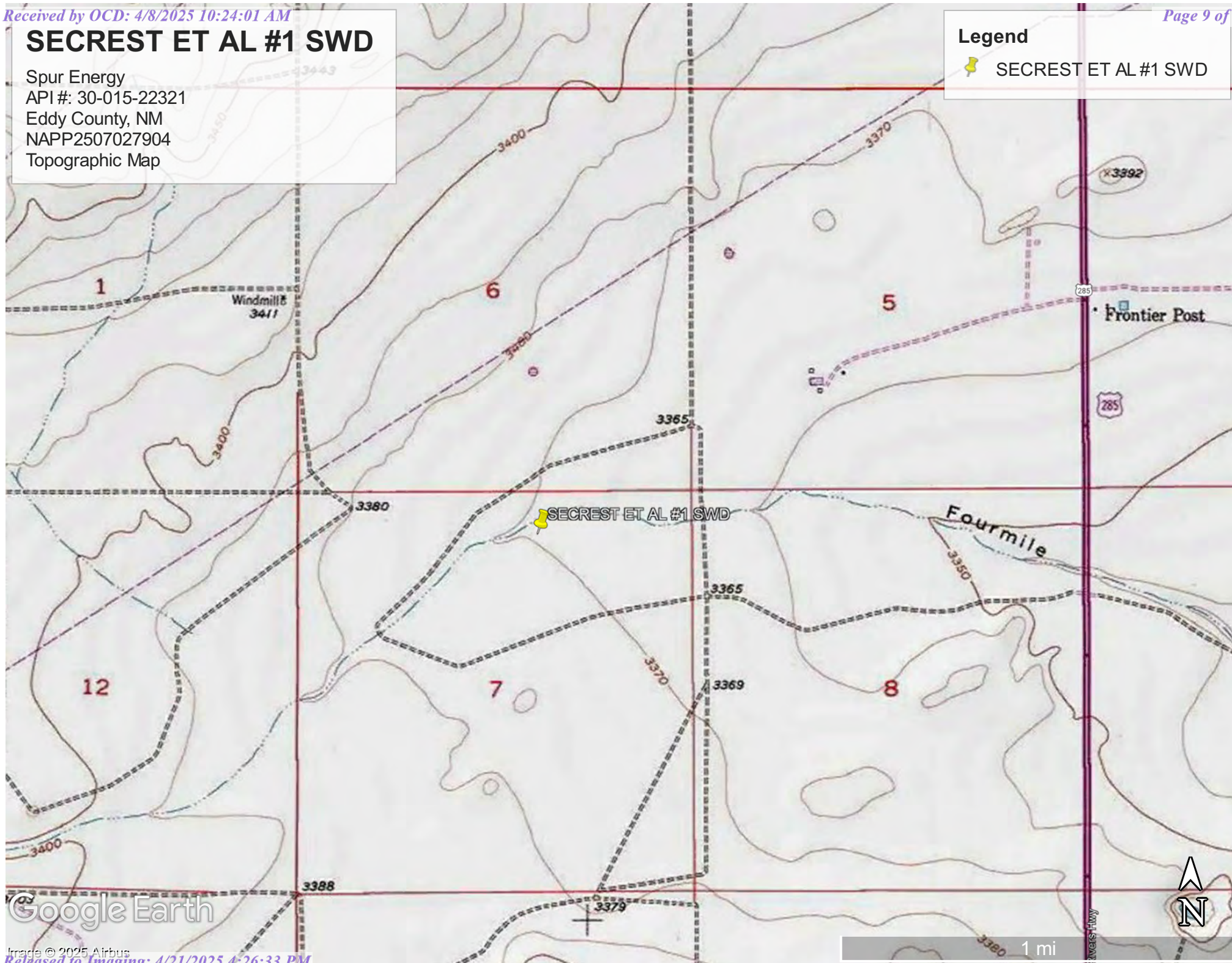
Google Earth

SECRET ET AL #1 SWD

Spur Energy
API #: 30-015-22321
Eddy County, NM
NAPP2507027904
Topographic Map

Legend

 SECRET ET AL #1 SWD



Google Earth




Image © 2025 Airbus

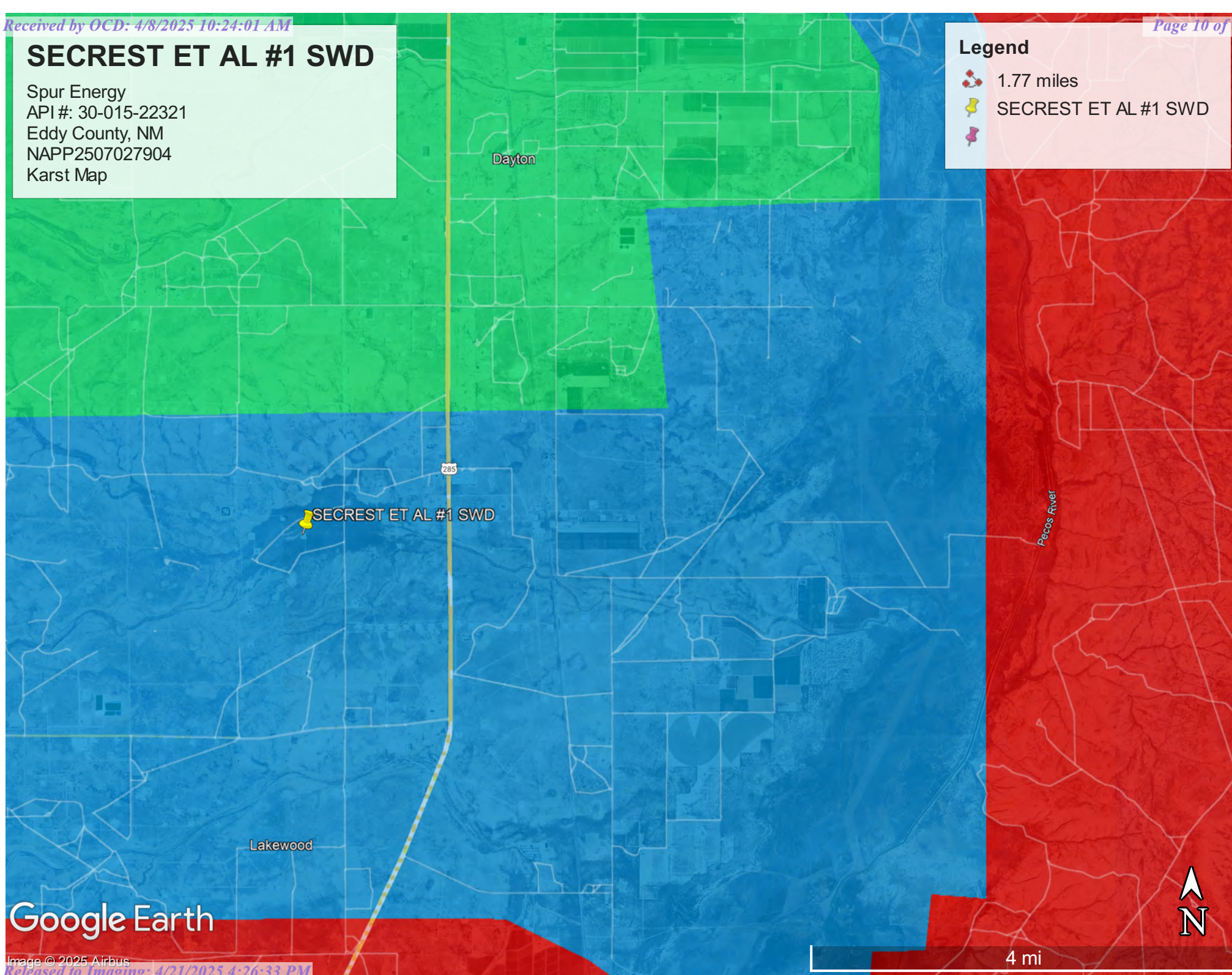
Released to Imaging: 4/21/2025 4:26:33 PM

SECRET ET AL #1 SWD

Spur Energy
API #: 30-015-22321
Eddy County, NM
NAPP2507027904
Karst Map

Legend

-  1.77 miles
-  SECRET ET AL #1 SWD
- 





Google Earth

Image © 2025 Airbus

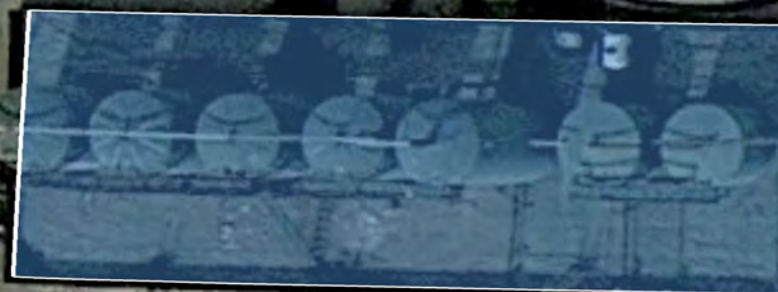
SECRET ET AL #1 SWD

Spur Energy
API #: 30-015-22321
Eddy County, NM
NAPP2507027904
Site Map

Legend

-  Liner Inspection Area
-  SECRET ET AL #1 SWD

SECRET ET AL #1 SWD



Appendix A


Water Surveys:

- OSE
- USGS
- Surface Water Map

Point of Diversion Summary

quarters are 1=NW 2=NE 3=SW 4=SE
quarters are smallest to largest

NAD83 UTM in meters

| Well Tag | POD Nbr | Q64 | Q16 | Q4 | Sec | Tws | Rng | X | Y | Map |
|----------|----------|-----|-----|----|-----|-----|-----|----------|-----------|---|
| NA | RA 07954 | SW | NE | SW | 05 | 19S | 26E | 555614.6 | 3616760.4 |  |

* UTM location was derived from PLSS - see [Help](#)

| | | | | | |
|-------------------|----------------------------|----------------------|-------------------|------------------|---------|
| Driller License: | 1259 | Driller Company: | CAMPBELL DRILLING | | |
| Driller Name: | CAMPBELL, MICHAEL R.RODNEY | | | | |
| Drill Start Date: | 1991-09-27 | Drill Finish Date: | 1991-10-08 | Plug Date: | |
| Log File Date: | 1991-10-16 | PCW Rcv Date: | | Source: | Shallow |
| Pump Type: | | Pipe Discharge Size: | | Estimated Yield: | 15 |
| Casing Size: | 5.00 | Depth Well: | 290 | Depth Water: | 175 |

Water Bearing Stratifications:

| Top | Bottom | Description |
|-----|--------|---------------|
| 268 | 276 | Other/Unknown |

Casing Perforations:

| Top | Bottom |
|-----|--------|
| 230 | 290 |

The data is furnished by the NMOSE/ISC and is accepted by the recipient with the expressed understanding that the OSE/ISC make no warranties, expressed or implied, concerning the accuracy, completeness, reliability, usability, or suitability for any particular purpose of the data.

SECRET ET AL #1 SWD

Spur Energy
API #: 30-015-22321
Eddy County, NM
NAPP2507027904
OSE Pod Map

Legend

- 0.85 miles
- RA 07954
- SECRET ET AL #1 SWD



Google Earth

Image © 2025 Airbus



[USGS Home](#)
[Contact USGS](#)
[Search USGS](#)

National Water Information System: Web Interface

USGS Water Resources

Data Category:

Groundwater ▼

Geographic Area:

United States ▼

GO

Click to hide News Bulletins

- Explore the *NEW* [USGS National Water Dashboard](#) interactive map to access real-time water data from over 13,500 stations nationwide.

Groundwater levels for the Nation



Important: [Next Generation Monitoring Location Page](#)

Search Results -- 1 sites found

site_no list =

- 324042104265801

Minimum number of levels = 1

[Save file of selected sites](#) to local disk for future upload

USGS 324042104265801 19S.25E.11.24333

Available data for this site

Groundwater: Field measurements ▼

GO

Eddy County, New Mexico

Hydrologic Unit Code 13060011

Latitude 32°40'42", Longitude 104°26'58" NAD27

Land-surface elevation 3,418 feet above NAVD88

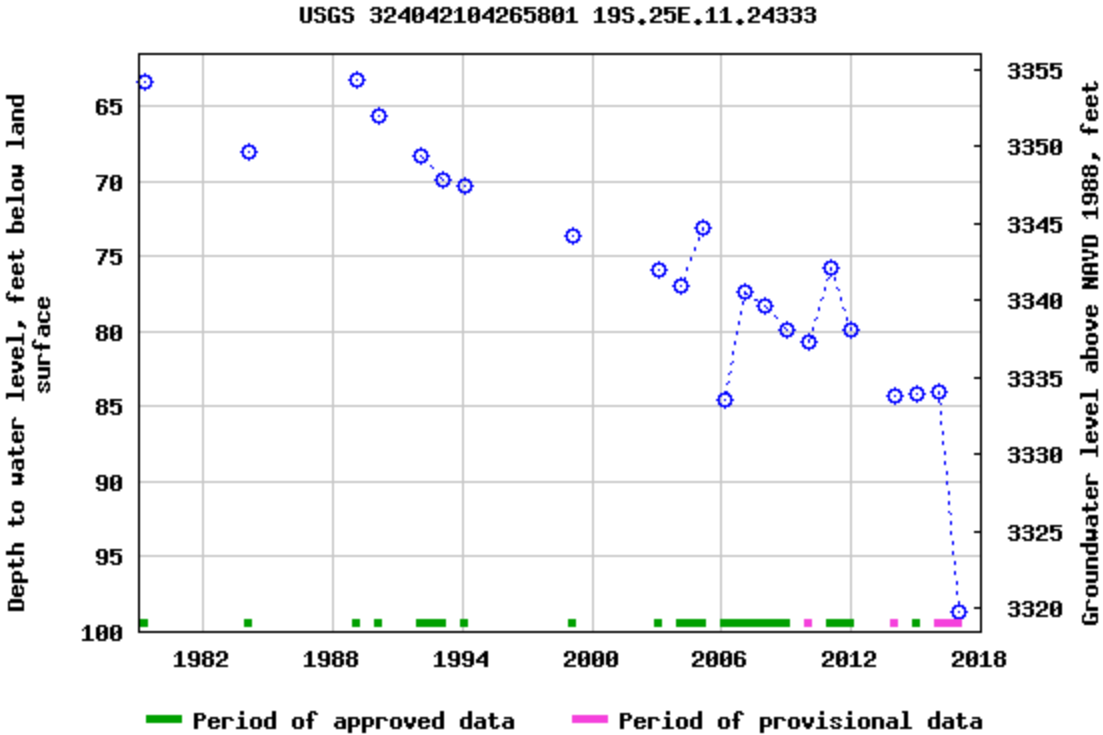
The depth of the well is 211 feet below land surface.

This well is completed in the Roswell Basin aquifer system (S400RSWLBS) national aquifer.

This well is completed in the Alluvium, Bolson Deposits and Other Surface Deposits (110AVMB) local aquifer.

Output formats

| |
|------------------------------------|
| Table of data |
| Tab-separated data |
| Graph of data |
| Reselect period |



Breaks in the plot represent a gap of at least one year between field measurements.

[Download a presentation-quality graph](#)

[Questions or Comments](#)

[Help](#)

[Data Tips](#)

[Explanation of terms](#)

[Subscribe for system changes](#)

[U.S. Department of the Interior](#) | [U.S. Geological Survey](#)

Title: Groundwater for USA: Water Levels

URL: <https://nwis.waterdata.usgs.gov/nwis/gwlevels?>

Page Contact Information: [USGS Water Data Support Team](#)

Page Last Modified: 2025-03-11 11:55:29 EDT



0.8 0.65 nadww01

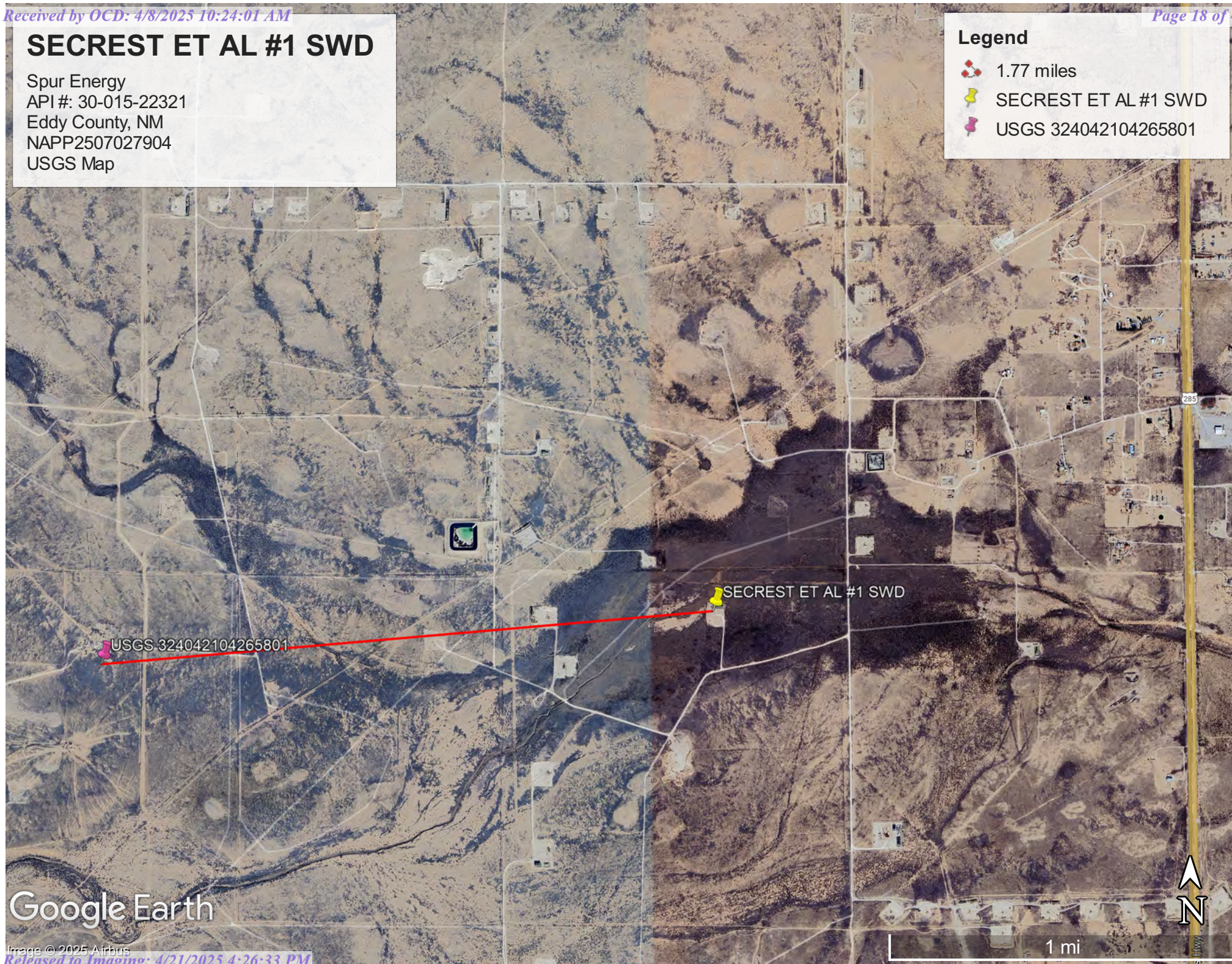


SECRET ET AL #1 SWD

Spur Energy
API #: 30-015-22321
Eddy County, NM
NAPP2507027904
USGS Map

Legend

-  1.77 miles
-  SECRET ET AL #1 SWD
-  USGS 324042104265801



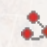


Google Earth

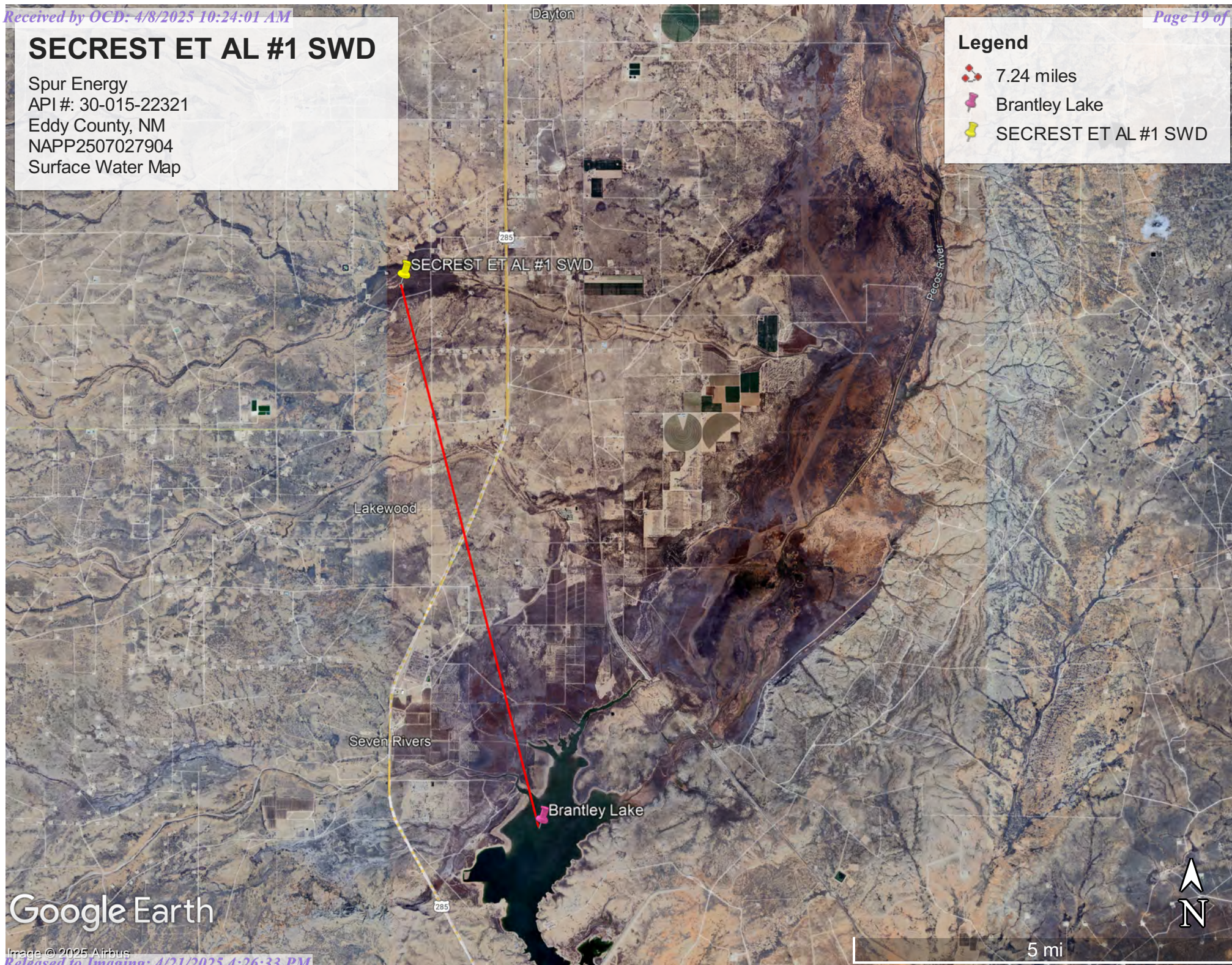
Image © 2025 Airbus

SECRET ET AL #1 SWD

Spur Energy
API #: 30-015-22321
Eddy County, NM
NAPP2507027904
Surface Water Map

Legend

-  7.24 miles
-  Brantley Lake
-  SECRET ET AL #1 SWD



Google Earth

Image © 2025 Airbus

Appendix B

- Soil Survey & Soil Maps
- Geological Data
- FEMA Flood Map
- Wetlands Map

Map Unit Description: Pima silt loam, 0 to 1 percent slopes---Eddy Area, New Mexico

Eddy Area, New Mexico

PM—Pima silt loam, 0 to 1 percent slopes

Map Unit Setting

National map unit symbol: 1w56

Elevation: 600 to 4,200 feet

Mean annual precipitation: 8 to 25 inches

Mean annual air temperature: 60 to 70 degrees F

Frost-free period: 195 to 290 days

Farmland classification: Farmland of statewide importance

Map Unit Composition

Pima and similar soils: 98 percent

Minor components: 2 percent

Estimates are based on observations, descriptions, and transects of the mapunit.

Description of Pima

Setting

Landform: Flood plains, alluvial flats, alluvial fans

Landform position (three-dimensional): Talf, rise

Down-slope shape: Convex, linear

Across-slope shape: Linear, convex

Parent material: Alluvium

Typical profile

H1 - 0 to 3 inches: silt loam

H2 - 3 to 60 inches: silty clay loam

Properties and qualities

Slope: 0 to 1 percent

Depth to restrictive feature: More than 80 inches

Drainage class: Well drained

Runoff class: Medium

Capacity of the most limiting layer to transmit water

(Ksat): Moderately high (0.20 to 0.60 in/hr)

Depth to water table: More than 80 inches

Frequency of flooding: Rare

Frequency of ponding: None

Calcium carbonate, maximum content: 15 percent

Maximum salinity: Nonsaline to slightly saline (0.0 to 4.0 mmhos/cm)

Sodium adsorption ratio, maximum: 1.0

Available water supply, 0 to 60 inches: High (about 11.9 inches)

Interpretive groups

Land capability classification (irrigated): 1

Land capability classification (nonirrigated): 7c

Hydrologic Soil Group: C

Ecological site: R070BC017NM - Bottomland

Map Unit Description: Pima silt loam, 0 to 1 percent slopes---Eddy Area, New Mexico

Hydric soil rating: No

Minor Components

Reagan

Percent of map unit: 1 percent

Ecological site: R070BC007NM - Loamy

Hydric soil rating: No

Dev

Percent of map unit: 1 percent

Ecological site: R070BC017NM - Bottomland

Hydric soil rating: No

Data Source Information

Soil Survey Area: Eddy Area, New Mexico

Survey Area Data: Version 20, Sep 3, 2024

Soil Map—Eddy Area, New Mexico




Natural Resources
Conservation Service

Web Soil Survey
National Cooperative Soil Survey

3/11/2025
Page 1 of 3

MAP LEGEND

Area of Interest (AOI)

 Area of Interest (AOI)




















Soils





 Soil Map Unit Polygons

 Soil Map Unit Lines


 Soil Map Unit Points

Special Point Features






-  Blowout
-  Borrow Pit
-  Clay Spot
-  Closed Depression
-  Gravel Pit
-  Gravelly Spot
-  Landfill
-  Lava Flow
-  Marsh or swamp
-  Mine or Quarry
-  Miscellaneous Water
-  Perennial Water
-  Rock Outcrop
-  Saline Spot
-  Sandy Spot
-  Severely Eroded Spot
-  Sinkhole
-  Slide or Slip
-  Sodic Spot

-  Spoil Area
-  Stony Spot
-  Very Stony Spot
-  Wet Spot
-  Other
-  Special Line Features

Water Features

 Streams and Canals

Transportation

-  Rails
-  Interstate Highways
-  US Routes
-  Major Roads
-  Local Roads

Background

 Aerial Photography

MAP INFORMATION

The soil surveys that comprise your AOI were mapped at 1:20,000.

Warning: Soil Map may not be valid at this scale.
Enlargement of maps beyond the scale of mapping can cause misunderstanding of the detail of mapping and accuracy of soil line placement. The maps do not show the small areas of contrasting soils that could have been shown at a more detailed scale.

Please rely on the bar scale on each map sheet for map measurements.

Source of Map: Natural Resources Conservation Service
Web Soil Survey URL:
Coordinate System: Web Mercator (EPSG:3857)

Maps from the Web Soil Survey are based on the Web Mercator projection, which preserves direction and shape but distorts distance and area. A projection that preserves area, such as the Albers equal-area conic projection, should be used if more accurate calculations of distance or area are required.

This product is generated from the USDA-NRCS certified data as of the version date(s) listed below.

Soil Survey Area: Eddy Area, New Mexico
Survey Area Data: Version 20, Sep 3, 2024

Soil map units are labeled (as space allows) for map scales 1:50,000 or larger.

Date(s) aerial images were photographed: Nov 12, 2022—Dec 2, 2022

The orthophoto or other base map on which the soil lines were compiled and digitized probably differs from the background imagery displayed on these maps. As a result, some minor shifting of map unit boundaries may be evident.



Map Unit Legend

| Map Unit Symbol | Map Unit Name | Acres in AOI | Percent of AOI |
|-----------------------------|---------------------------------------|--------------|----------------|
| PM | Pima silt loam, 0 to 1 percent slopes | 9.2 | 100.0% |
| Totals for Area of Interest | | 9.2 | 100.0% |

(<https://www.usgs.gov/>)

Mineral Resources (<https://www.usgs.gov/energy-and-minerals/mineral-resources-program>)
/ Online Spatial Data (/) / Geology (/geology/) / by state (/geology/state/)
/ New Mexico (/geology/state/state.php?state=NM)

Piedmont alluvial deposits

XML (/geology/state/xml/NMQp;0) JSON (/geology/state/json/NMQp;0)

Shapefile (/geology/state/unit-shape.php?unit=NMQp;0)

Includes deposits of higher gradient tributaries bordering major stream valleys, alluvial veneers of the piedmont slope, and alluvial fans. May locally include uppermost Pliocene deposits.

| | |
|--------------------------------|---|
| State | New Mexico (/geology/state/state.php?state=NM) |
| Name | Piedmont alluvial deposits |
| Geologic age | Holocene to lower Pleistocene |
| Lithologic constituents | Major Unconsolidated (Alluvial) <i>Includes deposits of higher gradient tributaries bordering major stream valleys, alluvial veneers of the piedmont slope, and alluvial fans</i> |

References

Green, G.N., Jones, G.E., and Anderson, O.J., 1997, The Digital Geologic Map of New Mexico in ARC/INFO Format: U.S. Geological Survey Open-File Report 97-0052, 9 p., scale 1:500,000.
<https://pubs.er.usgs.gov/publication/ofr9752>
(<https://pubs.er.usgs.gov/publication/ofr9752>)

| | |
|----------------------|--|
| NGMDB product | NGMDB product page for 59219 (https://ngmdb.usgs.gov/Prodesc/proddesc_59219.htm) NGMDB product page for 22974 (https://ngmdb.usgs.gov/Prodesc/proddesc_22974.htm) |
|----------------------|--|

Counties

Bernalillo (/geology/state/fips-unit.php?code=f35001) - Catron (/geology/state/fips-unit.php?code=f35003) - Chaves (/geology/state/fips-unit.php?code=f35005) - Colfax (/geology/state/fips-unit.php?code=f35007) - DeBaca (/geology/state/fips-unit.php?code=f35011) - Dona Ana (/geology/state/fips-unit.php?code=f35013) - Eddy (/geology/state/fips-unit.php?code=f35015) - Grant (/geology/state/fips-unit.php?code=f35017) - Guadalupe (/geology/state/fips-unit.php?code=f35019) - Hidalgo (/geology/state/fips-unit.php?code=f35023) - Lea (/geology/state/fips-unit.php?code=f35025) - Lincoln (/geology/state/fips-unit.php?code=f35027) - Los Alamos (/geology/state/fips-unit.php?code=f35028) - Luna (/geology/state/fips-unit.php?code=f35029) - Mora (/geology/state/fips-unit.php?code=f35033) - Otero (/geology/state/fips-unit.php?code=f35035) - Quay (/geology/state/fips-unit.php?code=f35037) - Rio Arriba (/geology/state/fips-unit.php?code=f35039) - Roosevelt (/geology/state/fips-unit.php?code=f35041) - Sandoval (/geology/state/fips-unit.php?code=f35043) - San Miguel (/geology/state/fips-unit.php?code=f35047) - Santa Fe (/geology/state/fips-unit.php?code=f35049) - Sierra (/geology/state/fips-unit.php?code=f35051) - Socorro (/geology/state/fips-unit.php?code=f35053) - Taos (/geology/state/fips-unit.php?code=f35055) - Torrance (/geology/state/fips-unit.php?code=f35057) - Valencia (/geology/state/fips-unit.php?code=f35061)

DOI Privacy Policy (<https://www.doi.gov/privacy>) | Legal (https://www.usgs.gov/laws/policies_notices.html) |

Accessibility (<https://www2.usgs.gov/laws/accessibility.html>) | Site Map (<https://www.usgs.gov/sitemap.html>) |

Contact USGS (<https://answers.usgs.gov/>)

U.S. Department of the Interior (<https://www.doi.gov/>) | DOI Inspector General (<https://www.doioig.gov/>) |




White House (<https://www.whitehouse.gov/>) | E-gov (<https://www.whitehouse.gov/omb/management/egov/>) |

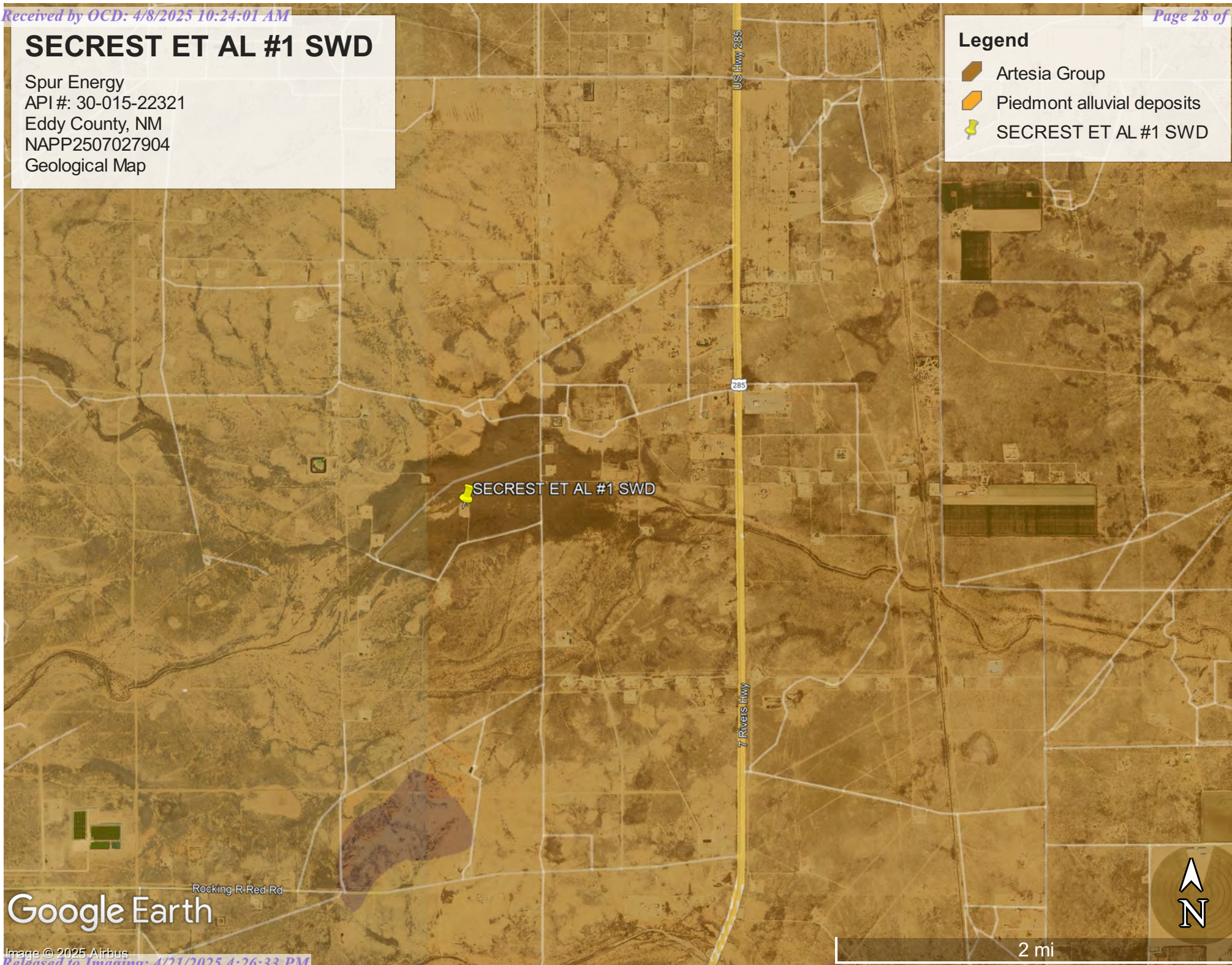
No Fear Act (<https://www.doi.gov/pmb/eeo/no-fear-act>) | FOIA (<https://www2.usgs.gov/foia>)

SECRET ET AL #1 SWD

Spur Energy
API #: 30-015-22321
Eddy County, NM
NAPP2507027904
Geological Map

Legend

-  Artesia Group
-  Piedmont alluvial deposits
-  SECRET ET AL #1 SWD



Google Earth

Image © 2025 Airbus

National Flood Hazard Layer FIRMMette



104°25'28"W 32°41'6"N



0 250 500 1,000 1,500 2,000 Feet

1:6,000

104°24'50"W 32°40'36"N

Basemap Imagery Source: USGS National Map 2023

Legend

SEE FIS REPORT FOR DETAILED LEGEND AND INDEX MAP FOR FIRM PANEL LAYOUT

| | | |
|-----------------------------|--|--|
| SPECIAL FLOOD HAZARD AREAS | | Without Base Flood Elevation (BFE) Zone A, V, A99 |
| | | With BFE or Depth Zone AE, AO, AH, VE, AR |
| | | Regulatory Floodway |
| OTHER AREAS OF FLOOD HAZARD | | 0.2% Annual Chance Flood Hazard, Areas of 1% annual chance flood with average depth less than one foot or with drainage areas of less than one square mile |
| | | Future Conditions 1% Annual Chance Flood Hazard Zone X |
| | | Area with Reduced Flood Risk due to Levee. See Notes. Zone X |
| | | Area with Flood Risk due to Levee |
| OTHER AREAS | | NO SCREEN Area of Minimal Flood Hazard Zone X |
| | | Effective LOMRs |
| GENERAL STRUCTURES | | Channel, Culvert, or Storm Sewer |
| | | Levee, Dike, or Floodwall |
| OTHER FEATURES | | 20.2 Cross Sections with 1% Annual Chance |
| | | 17.5 Water Surface Elevation |
| | | Coastal Transect |
| | | Base Flood Elevation Line (BFE) |
| | | Limit of Study |
| | | Jurisdiction Boundary |
| MAP PANELS | | Coastal Transect Baseline |
| | | Profile Baseline |
| | | Hydrographic Feature |
| | | Digital Data Available |
| | | No Digital Data Available |
| | | Unmapped |

The pin displayed on the map is an approximate point selected by the user and does not represent an authoritative property location.

This map complies with FEMA's standards for the use of digital flood maps if it is not void as described below. The basemap shown complies with FEMA's basemap accuracy standards

The flood hazard information is derived directly from the authoritative NFHL web services provided by FEMA. This map was exported on **3/11/2025 at 3:37 PM** and does not reflect changes or amendments subsequent to this date and time. The NFHL and effective information may change or become superseded by new data over time.

This map image is void if the one or more of the following map elements do not appear: basemap imagery, flood zone labels, legend, scale bar, map creation date, community identifiers, FIRM panel number, and FIRM effective date. Map images for unmapped and unmodernized areas cannot be used for regulatory purposes.

Released to Imaging: 4/21/2025 4:26:33 PM

Received by OCD: 4/8/2025 10:24:01 AM

Wetlands



March 11, 2025

Wetlands

- | | | |
|--|---|--|
|  Estuarine and Marine Deepwater |  Freshwater Emergent Wetland |  Lake |
|  Estuarine and Marine Wetland |  Freshwater Forested/Shrub Wetland |  Other |
| |  Freshwater Pond |  Riverine |

This map is for general reference only. The US Fish and Wildlife Service is not responsible for the accuracy or currentness of the base data shown on this map. All wetlands related data should be used in accordance with the layer metadata found on the Wetlands Mapper web site.

Appendix C

- 48-Hour Notification
- Liner Inspection Form

Sebastian@pimaoil.com

From: OCDOnline@state.nm.us
Sent: Sunday, March 23, 2025 9:09 PM
To: sebastian@pimaoil.com
Subject: The Oil Conservation Division (OCD) has accepted the application, Application ID: 444731

To whom it may concern (c/o Sebastian Orozco for Spur Energy Partners LLC),

The OCD has received the submitted *Notification for Liner Inspection for a Release* (C-141L), for incident ID (n#) nAPP2507027904.

The liner inspection is expected to take place:

When: 03/27/2025 @ 08:00

Where: B-07-19S-26E 0 FNL 0 FEL (32.68084,-104.41922)

Additional Information: Marisa Loya
575-416-0639

Additional Instructions: 32.681130°-104.419039°

An OCD representative may be available onsite at the date and time reported. In the absence or presence of an OCD representative, liner inspection pursuant to 19.15.29.11.A(5)(a) NMAC is required. Should there be a change in the scheduled date and time of the sampling event, then another notification should be resubmitted through OCD permitting as soon as possible.

- **Failure to notify the OCD of liner inspections including any changes in date/time per the requirements of 19.15.29.11.A(5)(a)(ii) NMAC, may result in the inspection not being accepted.**

If you have any questions regarding this application, or don't know why you have received this email, please contact us.

New Mexico Energy, Minerals and Natural Resources Department
1220 South St. Francis Drive
Santa Fe, NM 87505



Pima Environmental Services, LLC

Liner Inspection FormCompany Name: Spur EnergySite: Secrest ET AL #1 SWDLat/Long: 32.68084,-104.41922

NMOCD Incident ID

& Incident Date: NAPP2507027904 03/8/2025

2-Day Notification

Sent: via OCD portal 03/23/2025Inspection Date: 03/27/2025

Liner Type: Earthen w/liner Earthen no liner Polystar

 Steel w/poly liner Steel w/spray epoxy No Liner

Other: _____

| Visualization | Yes | No | Comments |
|--|-----|----|--|
| Is there a tear in the liner? | | X | |
| Are there holes in the liner? | | X | |
| Is the liner retaining any fluids? | X | | Residual liquid is visible in the photo log from the power washing cleaning event. |
| Does the liner have integrity to contain a leak? | X | | |

Comments: _____

Inspector Name: Marisa Loya Inspector Signature: Marisa Loya

Appendix D

○ Photographic Documentation



PHOTOGRAPHIC DOCUMENTATION

SITE NAME: Secret ET AL #1 SWD

Pre - Powerwash Photos



Site information sign.



Photo of liner taken prior to power washing facing west.



Photo of liner taken prior to power washing facing north.



Photo of liner taken prior to power washing facing south.



Photo of liner taken prior to power washing facing north.



Photo of liner taken prior to power washing facing west.

PHOTOGRAPHIC DOCUMENTATION

SITE NAME: Secrest ET AL #1 SWD

Liner Inspection :



Photo taken pursuant to power washing facing north.



Photo taken pursuant to power washing facing east.



Photo taken pursuant to power washing facing north.



Photo taken pursuant to power washing facing south.



Photo taken pursuant to power washing facing west.

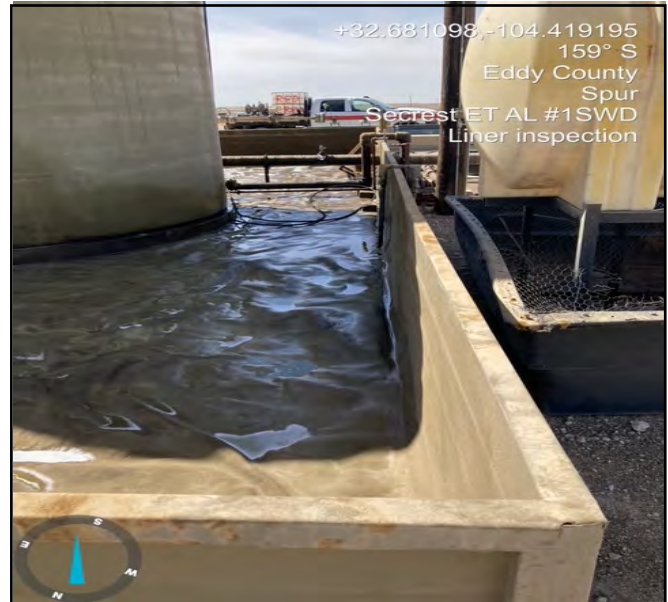


Photo taken pursuant to power washing facing south.

Sante Fe Main Office
Phone: (505) 476-3441

General Information
Phone: (505) 629-6116

Online Phone Directory
<https://www.emnrd.nm.gov/ocd/contact-us>

State of New Mexico
Energy, Minerals and Natural Resources
Oil Conservation Division
1220 S. St Francis Dr.
Santa Fe, NM 87505

QUESTIONS

Action 449643

QUESTIONS

| | |
|---|---|
| Operator: Spur Energy Partners LLC 9655 Katy Freeway Houston, TX 77024 | OGRID: 328947 |
| | Action Number: 449643 |
| | Action Type: [C-141] Remediation Closure Request C-141 (C-141-v-Closure) |

QUESTIONS

| | |
|----------------------|--|
| Prerequisites | |
| Incident ID (n#) | nAPP2507027904 |
| Incident Name | NAPP2507027904 SECREST ET AL #1 SWD @ 30-015-22321 |
| Incident Type | Produced Water Release |
| Incident Status | Remediation Closure Report Received |
| Incident Well | [30-015-22321] SECREST ET AL #001 |

| | |
|---|----------------------|
| Location of Release Source | |
| <i>Please answer all the questions in this group.</i> | |
| Site Name | SECREST ET AL #1 SWD |
| Date Release Discovered | 03/08/2025 |
| Surface Owner | Private |

| | |
|--|------------------------|
| Incident Details | |
| <i>Please answer all the questions in this group.</i> | |
| Incident Type | Produced Water Release |
| Did this release result in a fire or is the result of a fire | No |
| Did this release result in any injuries | No |
| Has this release reached or does it have a reasonable probability of reaching a watercourse | No |
| Has this release endangered or does it have a reasonable probability of endangering public health | No |
| Has this release substantially damaged or will it substantially damage property or the environment | No |
| Is this release of a volume that is or may with reasonable probability be detrimental to fresh water | No |

| | |
|---|---|
| Nature and Volume of Release | |
| <i>Material(s) released, please answer all that apply below. Any calculations or specific justifications for the volumes provided should be attached to the follow-up C-141 submission.</i> | |
| Crude Oil Released (bbls) Details | Not answered. |
| Produced Water Released (bbls) Details | Cause: Equipment Failure Valve Produced Water Released: 22 BBL Recovered: 22 BBL Lost: 0 BBL. |
| Is the concentration of chloride in the produced water >10,000 mg/l | Yes |
| Condensate Released (bbls) Details | Not answered. |
| Natural Gas Vented (Mcf) Details | Not answered. |
| Natural Gas Flared (Mcf) Details | Not answered. |
| Other Released Details | Not answered. |
| Are there additional details for the questions above (i.e. any answer containing Other, Specify, Unknown, and/or Fire, or any negative lost amounts) | INLET VALVE FAILURE CAUSED TANKS TO RUN OVER INTO LINED CONTAINMENT |

Sante Fe Main Office
Phone: (505) 476-3441

General Information
Phone: (505) 629-6116

Online Phone Directory
<https://www.emnrd.nm.gov/ocd/contact-us>

State of New Mexico
Energy, Minerals and Natural Resources
Oil Conservation Division
1220 S. St Francis Dr.
Santa Fe, NM 87505

QUESTIONS, Page 2

Action 449643

QUESTIONS (continued)

| | |
|---|---|
| Operator: Spur Energy Partners LLC 9655 Katy Freeway Houston, TX 77024 | OGRID: 328947 |
| | Action Number: 449643 |
| | Action Type: [C-141] Remediation Closure Request C-141 (C-141-v-Closure) |

QUESTIONS

| Nature and Volume of Release (continued) | |
|--|--|
| Is this a gas only submission (i.e. only significant Mcf values reported) | No, according to supplied volumes this does not appear to be a "gas only" report. |
| Was this a major release as defined by Subsection A of 19.15.29.7 NMAC | No |
| Reasons why this would be considered a submission for a notification of a major release | <i>Unavailable.</i> |
| <i>With the implementation of the 19.15.27 NMAC (05/25/2021), venting and/or flaring of natural gas (i.e. gas only) are to be submitted on the C-129 form.</i> | |

Initial Response

The responsible party must undertake the following actions immediately unless they could create a safety hazard that would result in injury.

| | |
|--|-------------|
| The source of the release has been stopped | True |
| The impacted area has been secured to protect human health and the environment | True |
| Released materials have been contained via the use of berms or dikes, absorbent pads, or other containment devices | True |
| All free liquids and recoverable materials have been removed and managed appropriately | True |
| If all the actions described above have not been undertaken, explain why | N/A |

Per Paragraph (4) of Subsection B of 19.15.29.8 NMAC the responsible party may commence remediation immediately after discovery of a release. If remediation has begun, please prepare and attach a narrative of actions to date in the follow-up C-141 submission. If remedial efforts have been successfully completed or if the release occurred within a lined containment area (see Subparagraph (a) of Paragraph (5) of Subsection A of 19.15.29.11 NMAC), please prepare and attach all information needed for closure evaluation in the follow-up C-141 submission.

I hereby certify that the information given above is true and complete to the best of my knowledge and understand that pursuant to OCD rules and regulations all operators are required to report and/or file certain release notifications and perform corrective actions for releases which may endanger public health or the environment. The acceptance of a C-141 report by the OCD does not relieve the operator of liability should their operations have failed to adequately investigate and remediate contamination that pose a threat to groundwater, surface water, human health or the environment. In addition, OCD acceptance of a C-141 report does not relieve the operator of responsibility for compliance with any other federal, state, or local laws and/or regulations.

| | |
|--|---|
| I hereby agree and sign off to the above statement | Name: Katherine Purvis Title: EHS Coordinator Email: katherine.purvis@spurenergy.com Date: 03/11/2025 |
|--|---|

Sante Fe Main Office
Phone: (505) 476-3441

General Information
Phone: (505) 629-6116

Online Phone Directory
<https://www.emnrd.nm.gov/ocd/contact-us>

State of New Mexico
Energy, Minerals and Natural Resources
Oil Conservation Division
1220 S. St Francis Dr.
Santa Fe, NM 87505

QUESTIONS, Page 3

Action 449643

QUESTIONS (continued)

| | |
|---|----------------|
| Operator: Spur Energy Partners LLC 9655 Katy Freeway Houston, TX 77024 | OGRID: |
| | 328947 |
| | Action Number: |
| | 449643 |
| Action Type: | |
| [C-141] Remediation Closure Request C-141 (C-141-v-Closure) | |

QUESTIONS

| | |
|--|--------------------------------------|
| Site Characterization | |
| <i>Please answer all the questions in this group (only required when seeking remediation plan approval and beyond). This information must be provided to the appropriate district office no later than 90 days after the release discovery date.</i> | |
| What is the shallowest depth to groundwater beneath the area affected by the release in feet below ground surface (ft bgs) | Between 75 and 100 (ft.) |
| What method was used to determine the depth to ground water | U.S. Geological Survey |
| Did this release impact groundwater or surface water | No |
| What is the minimum distance, between the closest lateral extents of the release and the following surface areas: | |
| A continuously flowing watercourse or any other significant watercourse | Greater than 5 (mi.) |
| Any lakebed, sinkhole, or playa lake (measured from the ordinary high-water mark) | Greater than 5 (mi.) |
| An occupied permanent residence, school, hospital, institution, or church | Greater than 5 (mi.) |
| A spring or a private domestic fresh water well used by less than five households for domestic or stock watering purposes | Greater than 5 (mi.) |
| Any other fresh water well or spring | Between ½ and 1 (mi.) |
| Incorporated municipal boundaries or a defined municipal fresh water well field | Greater than 5 (mi.) |
| A wetland | Between 500 and 1000 (ft.) |
| A subsurface mine | Greater than 5 (mi.) |
| An (non-karst) unstable area | Greater than 5 (mi.) |
| Categorize the risk of this well / site being in a karst geology | Medium |
| A 100-year floodplain | Zero feet, overlying, or within area |
| Did the release impact areas not on an exploration, development, production, or storage site | No |

| | |
|---|------------|
| Remediation Plan | |
| <i>Please answer all the questions that apply or are indicated. This information must be provided to the appropriate district office no later than 90 days after the release discovery date.</i> | |
| Requesting a remediation plan approval with this submission | Yes |
| <i>Attach a comprehensive report demonstrating the lateral and vertical extents of soil contamination associated with the release have been determined, pursuant to 19.15.29.11 NMAC and 19.15.29.13 NMAC.</i> | |
| Have the lateral and vertical extents of contamination been fully delineated | Yes |
| Was this release entirely contained within a lined containment area | Yes |
| <i>Per Subsection B of 19.15.29.11 NMAC unless the site characterization report includes completed efforts at remediation, the report must include a proposed remediation plan in accordance with 19.15.29.12 NMAC, which includes the anticipated timelines for beginning and completing the remediation.</i> | |
| On what estimated date will the remediation commence | 03/26/2025 |
| On what date will (or did) the final sampling or liner inspection occur | 03/27/2025 |
| On what date will (or was) the remediation complete(d) | 03/27/2025 |
| What is the estimated surface area (in square feet) that will be remediated | 7000 |
| What is the estimated volume (in cubic yards) that will be remediated | 0 |
| <i>These estimated dates and measurements are recognized to be the best guess or calculation at the time of submission and may (be) change(d) over time as more remediation efforts are completed.</i> | |
| <i>The OCD recognizes that proposed remediation measures may have to be minimally adjusted in accordance with the physical realities encountered during remediation. If the responsible party has any need to significantly deviate from the remediation plan proposed, then it should consult with the division to determine if another remediation plan submission is required.</i> | |

Sante Fe Main Office
Phone: (505) 476-3441

General Information
Phone: (505) 629-6116

Online Phone Directory
<https://www.emnrd.nm.gov/ocd/contact-us>

State of New Mexico
Energy, Minerals and Natural Resources
Oil Conservation Division
1220 S. St Francis Dr.
Santa Fe, NM 87505

QUESTIONS, Page 4

Action 449643

QUESTIONS (continued)

| | |
|---|---|
| Operator: Spur Energy Partners LLC 9655 Katy Freeway Houston, TX 77024 | OGRID: 328947 |
| | Action Number: 449643 |
| | Action Type: [C-141] Remediation Closure Request C-141 (C-141-v-Closure) |

QUESTIONS

| | |
|--|---|
| Remediation Plan (continued) | |
| <i>Please answer all the questions that apply or are indicated. This information must be provided to the appropriate district office no later than 90 days after the release discovery date.</i> | |
| This remediation will (or is expected to) utilize the following processes to remediate / reduce contaminants: | |
| <i>(Select all answers below that apply.)</i> | |
| Is (or was) there affected material present needing to be removed | No |
| Is (or was) there a power wash of the lined containment area (to be) performed | Yes |
| OTHER (Non-listed remedial process) | Not answered. |
| <i>Per Subsection B of 19.15.29.11 NMAC unless the site characterization report includes completed efforts at remediation, the report must include a proposed remediation plan in accordance with 19.15.29.12 NMAC, which includes the anticipated timelines for beginning and completing the remediation.</i> | |
| I hereby certify that the information given above is true and complete to the best of my knowledge and understand that pursuant to OCD rules and regulations all operators are required to report and/or file certain release notifications and perform corrective actions for releases which may endanger public health or the environment. The acceptance of a C-141 report by the OCD does not relieve the operator of liability should their operations have failed to adequately investigate and remediate contamination that pose a threat to groundwater, surface water, human health or the environment. In addition, OCD acceptance of a C-141 report does not relieve the operator of responsibility for compliance with any other federal, state, or local laws and/or regulations. | |
| I hereby agree and sign off to the above statement | Name: Katherine Purvis Title: EHS Coordinator Email: katherine.purvis@spurenergy.com Date: 04/08/2025 |
| <i>The OCD recognizes that proposed remediation measures may have to be minimally adjusted in accordance with the physical realities encountered during remediation. If the responsible party has any need to significantly deviate from the remediation plan proposed, then it should consult with the division to determine if another remediation plan submission is required.</i> | |

Sante Fe Main Office
Phone: (505) 476-3441

General Information
Phone: (505) 629-6116

Online Phone Directory
<https://www.emnrd.nm.gov/ocd/contact-us>

State of New Mexico
Energy, Minerals and Natural Resources
Oil Conservation Division
1220 S. St Francis Dr.
Santa Fe, NM 87505

QUESTIONS, Page 6

Action 449643

QUESTIONS (continued)

| | |
|---|---|
| Operator: Spur Energy Partners LLC 9655 Katy Freeway Houston, TX 77024 | OGRID: 328947 |
| | Action Number: 449643 |
| | Action Type: [C-141] Remediation Closure Request C-141 (C-141-v-Closure) |

QUESTIONS

| Liner Inspection Information | |
|---|------------|
| Last liner inspection notification (C-141L) recorded | 444731 |
| Liner inspection date pursuant to Subparagraph (a) of Paragraph (5) of Subsection A of 19.15.29.11 NMAC | 03/27/2025 |
| Was all the impacted materials removed from the liner | Yes |
| What was the liner inspection surface area in square feet | 7000 |

| Remediation Closure Request | |
|--|---|
| <i>Only answer the questions in this group if seeking remediation closure for this release because all remediation steps have been completed.</i> | |
| Requesting a remediation closure approval with this submission | Yes |
| Have the lateral and vertical extents of contamination been fully delineated | Yes |
| Was this release entirely contained within a lined containment area | Yes |
| What was the total surface area (in square feet) remediated | 7000 |
| What was the total volume (cubic yards) remediated | 0 |
| Summarize any additional remediation activities not included by answers (above) | LINER WAS POWERWASHED AND INSPECTED AND FOUND TO HAVE THE ABILITY TO CONTAIN FLUIDS |
| <i>The responsible party must attach information demonstrating they have complied with all applicable closure requirements and any conditions or directives of the OCD. This demonstration should be in the form of a comprehensive report (in .pdf format) including a scaled site map, sampling diagrams, relevant field notes, photographs of any excavation prior to backfilling, laboratory data including chain of custody documents of final sampling, and a narrative of the remedial activities. Refer to 19.15.29.12 NMAC.</i> | |
| I hereby certify that the information given above is true and complete to the best of my knowledge and understand that pursuant to OCD rules and regulations all operators are required to report and/or file certain release notifications and perform corrective actions for releases which may endanger public health or the environment. The acceptance of a C-141 report by the OCD does not relieve the operator of liability should their operations have failed to adequately investigate and remediate contamination that pose a threat to groundwater, surface water, human health or the environment. In addition, OCD acceptance of a C-141 report does not relieve the operator of responsibility for compliance with any other federal, state, or local laws and/or regulations. The responsible party acknowledges they must substantially restore, reclaim, and re-vegetate the impacted surface area to the conditions that existed prior to the release or their final land use in accordance with 19.15.29.13 NMAC including notification to the OCD when reclamation and re-vegetation are complete. | |
| I hereby agree and sign off to the above statement | Name: Katherine Purvis Title: EHS Coordinator Email: katherine.purvis@spurenergy.com Date: 04/08/2025 |

Sante Fe Main Office
Phone: (505) 476-3441

General Information
Phone: (505) 629-6116

Online Phone Directory
<https://www.emnrd.nm.gov/oecd/contact-us>

State of New Mexico
Energy, Minerals and Natural Resources
Oil Conservation Division
1220 S. St Francis Dr.
Santa Fe, NM 87505

CONDITIONS

Action 449643

CONDITIONS

| | |
|---|---|
| Operator: Spur Energy Partners LLC 9655 Katy Freeway Houston, TX 77024 | OGRID: 328947 |
| | Action Number: 449643 |
| | Action Type: [C-141] Remediation Closure Request C-141 (C-141-v-Closure) |

CONDITIONS

| | | |
|---------------|---|----------------|
| Created By | Condition | Condition Date |
| scott.rodgers | App ID 449643 Liner Inspection approved | 4/21/2025 |