

**RICE** *Operating Company*

112 West Taylor • Hobbs, New Mexico 88240

Phone: (575) 393-9174 • Fax: (575) 397-1471

**April 1, 2025****Michael Buchanan**

Environmental Bureau, Oil Conservation Division

New Mexico Energy, Minerals, &amp; Natural Resources Department

1220 S. St. Francis Drive

Santa Fe, New Mexico 87505

**RE: 2024 Annual Groundwater Report****Rice Operating Company – Hobbs SWD System****Hobbs K-29 EOL Boot (1R428-50): UL/K, Sec. 29, T18S, R38E****NMOCD Incident ID: nAPP2110246888**

Mr. Buchanan:

ROC is the service provider (agent) for the Hobbs SWD System and has no ownership of any portion of the pipeline, well, or facility. The system is owned by a consortium of oil producers, System Parties, who provide all operating capital on a percentage ownership/usage basis. The system is now abandoned.

The site is located approximately 2.37 miles west of Hobbs, New Mexico at UL/K, Sec. 29, T18S, R38E as shown on the Geographical Location Map. Groundwater sampling at the site indicates that the depth to groundwater is located at approximately 68 feet below ground surface (bgs).

An Investigation and Characterization Plan (ICP) was submitted to NMOCD on April 4<sup>th</sup>, 2008 and approved on May 21<sup>st</sup>, 2008. According to the ICP, the site was investigated through vertical and soil bore installation, resulting in elevated chloride concentrations that decreased with depth. Based on the investigation, two monitoring wells were installed to determine groundwater quality and the wells have been sampled regularly since installation.

A Corrective Action Plan (CAP) was submitted and approved by NMOCD on February 5<sup>th</sup>, 2015. According to the NMOCD approved CAP, a 63x53-ft 20-mil reinforced liner was installed and properly seated at 4 ft bgs. The site was backfilled and seeded with a blend of native vegetation. A CAP Report and Soil Closure Request detailing this work was submitted to the NMOCD on September 8<sup>th</sup>, 2015. The report also requested an additional monitoring well (MW-3) be installed down-gradient of the site. NMOCD approved this report and granted 'Soil Closure' on September 15<sup>th</sup>, 2015. On October 2<sup>nd</sup>, 2015, the down-gradient well (MW-3) was installed, and lithology soil samples were collected at regular intervals.

ROC submitted the 2018 Annual Report and Addendum with a request to plug and abandon MW-1 and replace it with a 4-inch well. NMOCD approved the request on September 5<sup>th</sup>, 2019. On November 12<sup>th</sup>, 2019, the well was plugged using a cement grout with 1-3% bentonite and a

three ft cap of cement at the surface. A 4-inch well (MW-1R) was installed approximately 10 ft southeast of the former well and lithology samples were collected at regular intervals.

All wells have been sampled regularly per NMOCD guidelines since installation. The attached table summarizes the analytical results from groundwater samples collected from the monitor wells at the site. The most recent sampling event resulted in a chloride concentration of 332 mg/L in MW-1R, 88 mg/L in MW-2, and 160 mg/L in MW-3. BTEX concentrations have remained below detectable limit in each well since installation. In 2020, ROC received NMOCD approval to cease BTEX sampling. On January 31<sup>st</sup>, 2022, NMOCD granted approval to cease further sampling of MW-2 and MW-3. ROC will continue to grab samples from MW-2, as needed, to ensure there are no non-ROC, up-gradient sources contributing to the degradation of groundwater quality. ROC will continue quarterly sampling in 2025.

Attached is the Appendix, which contains:

1. NMOCD response to the 2023 Annual Report.
2. A Geographical Location Map.
3. An Area Map.
4. A map showing monitoring well locations and estimated groundwater gradient (generated by Peter Galusky of Terrae LLC).
5. A graph showing laboratory results, and a table presenting all laboratory results and depth to groundwater for each well at the site.
6. The laboratory analytical results for 2024.

Rice Operating Company appreciates the opportunity to work with you on this project. Please contact me at (575) 393-9174 if you have any questions or wish to further discuss this site. Thank you for your time and consideration.

Sincerely,



Katie Davis  
Environmental Manager  
RICE Operating Company (ROC)

appendix

**From:** [OCDOnline@state.nm.us](mailto:OCDOnline@state.nm.us)  
**To:** [Katie Jones](#)  
**Subject:** The Oil Conservation Division (OCD) has approved the application, Application ID: 327845  
**Date:** Tuesday, November 19, 2024 9:21:54 AM

---

To whom it may concern (c/o Katie Davis for RICE OPERATING COMPANY),

The OCD has approved the submitted *Ground Water Abatement* (GROUND WATER ABATEMENT), for incident ID (n#) nAPP2110246888, with the following conditions:

- **Review of the 2023 Annual Groundwater Monitoring Report for Hobbs K-29 EOL Boot: content satisfactory 1. Continue quarterly groundwater sampling as prescribed for chloride and TDS. 2. Submit the 2024 groundwater monitoring report by April1, 2025.**

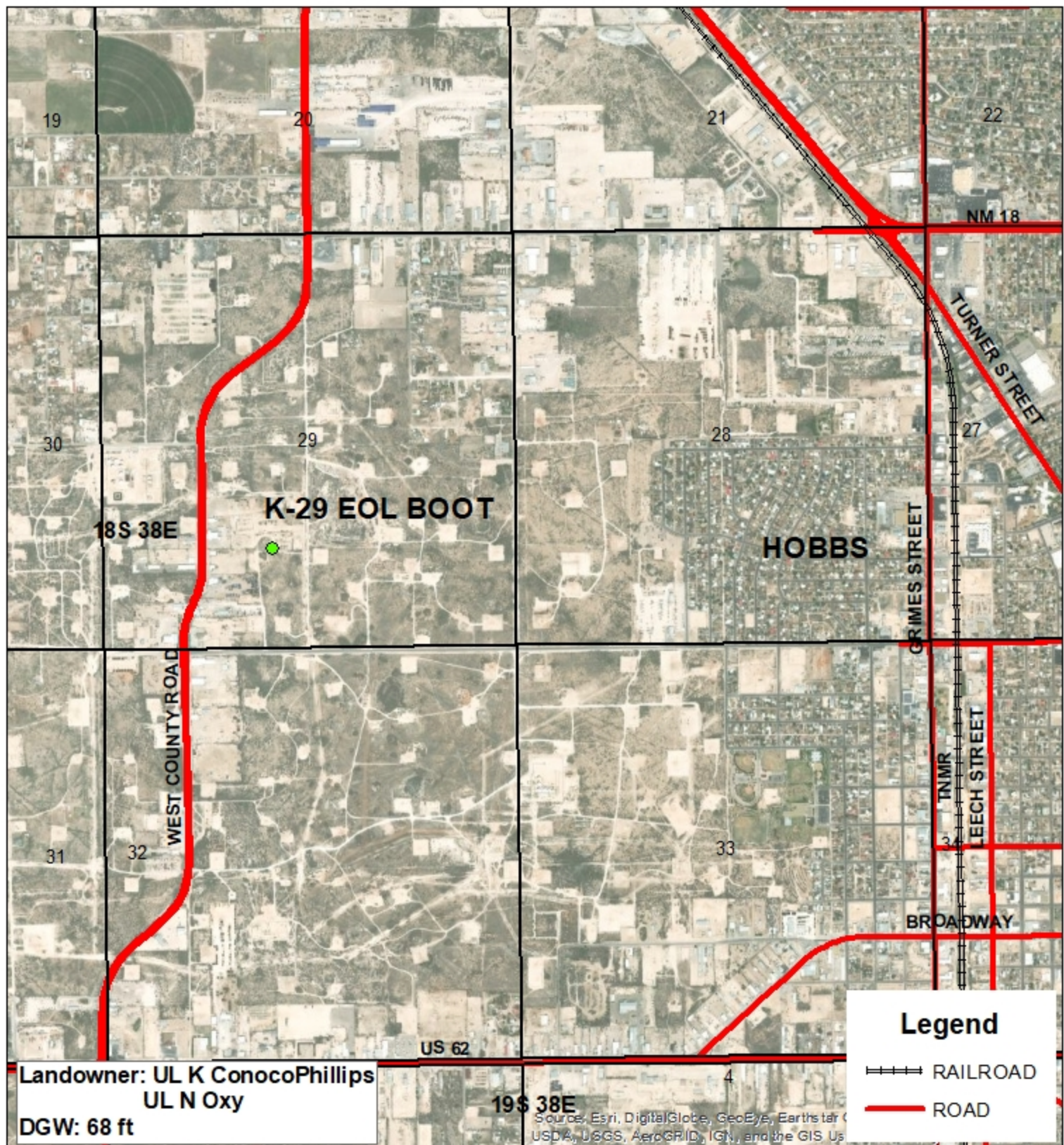
The signed GROUND WATER ABATEMENT can be found in the OCD Online: Imaging under the incident ID (n#).

If you have any questions regarding this application, please contact me.

Thank you,  
Michael Buchanan  
Environmental Specialist  
505-490-0798  
[Michael.Buchanan@emnrd.nm.gov](mailto:Michael.Buchanan@emnrd.nm.gov)

**New Mexico Energy, Minerals and Natural Resources Department**  
1220 South St. Francis Drive  
Santa Fe, NM 87505





## HOBBS K-29 BOOT & EOL

1R428-50

UL K & N SECTION 29  
T-18-S R-38-E  
LEA COUNTY, NM

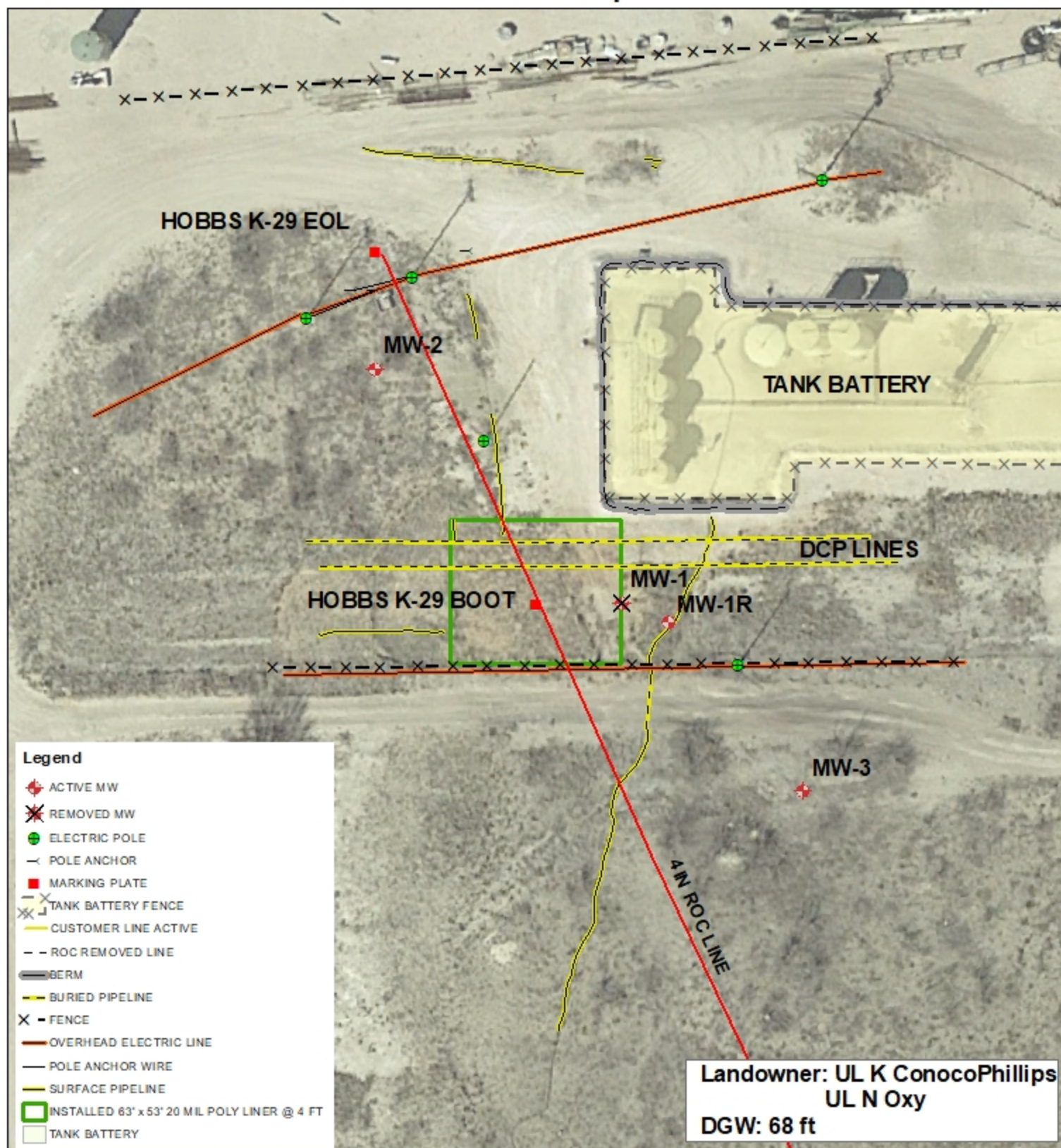
GPS: 32.714915 -103.172174  
NAD83 STATE PLANE PROJ  
NM EAST ZONE

0 1,000 2,000  
Feet

Drawing date: 3/17/25  
Drafted by: T. Grieco







## HOBBS K-29 BOOT & EOL

1R428-50

UL K & N SECTION 29  
T-18-S R-38-E  
LEA COUNTY, NM

GPS: 32.714915 -103.172174  
NAD83 STATE PLANE PROJ  
NM EAST ZONE

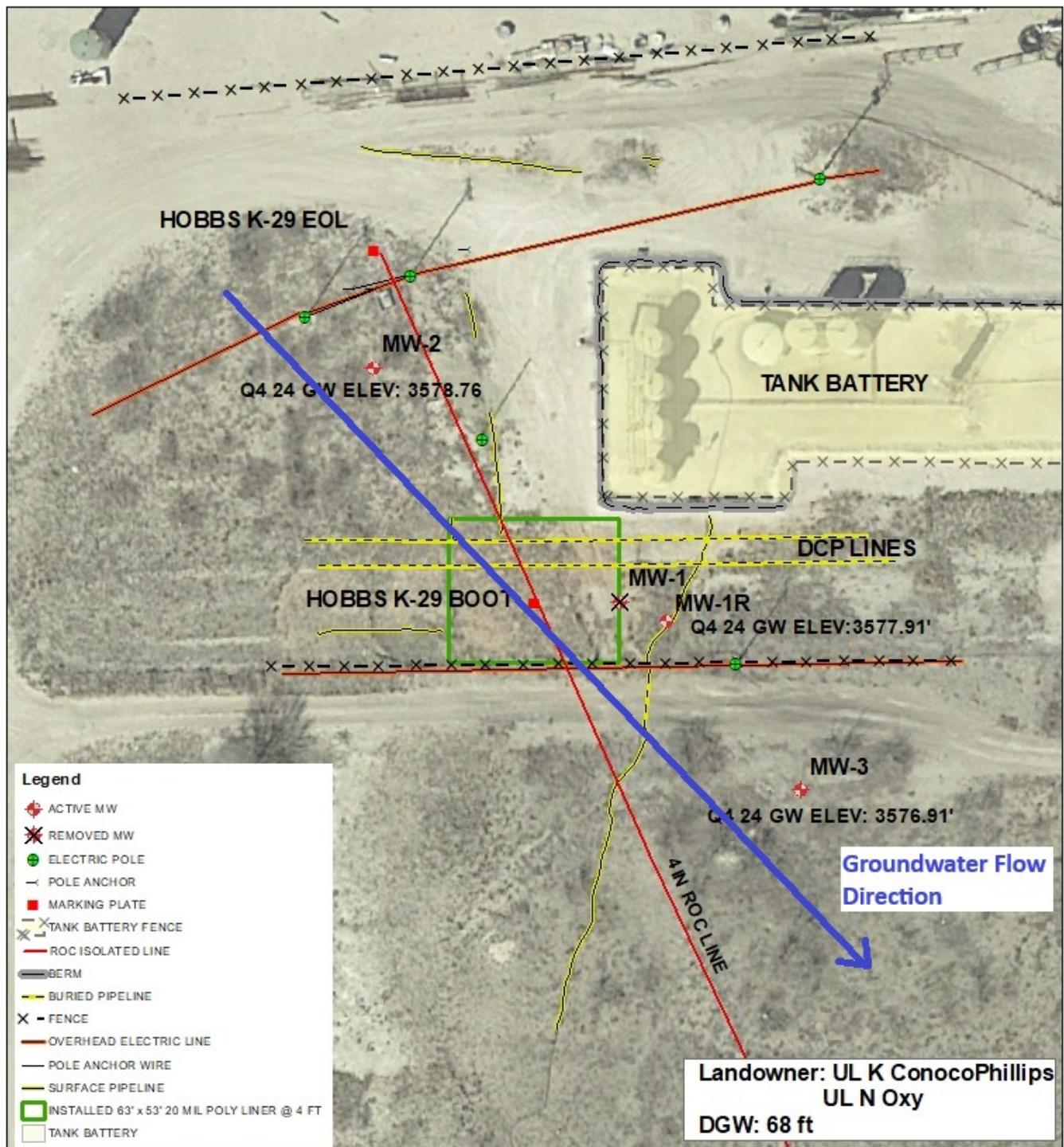
0 25 50  
Feet

GPS date: 11/03/14 TG  
Drawing date: 2/17/25  
Drafted by: T. Grieco





## Groundwater Flow Direction



## HOBBS K-29 BOOT & EOL

1R428-50

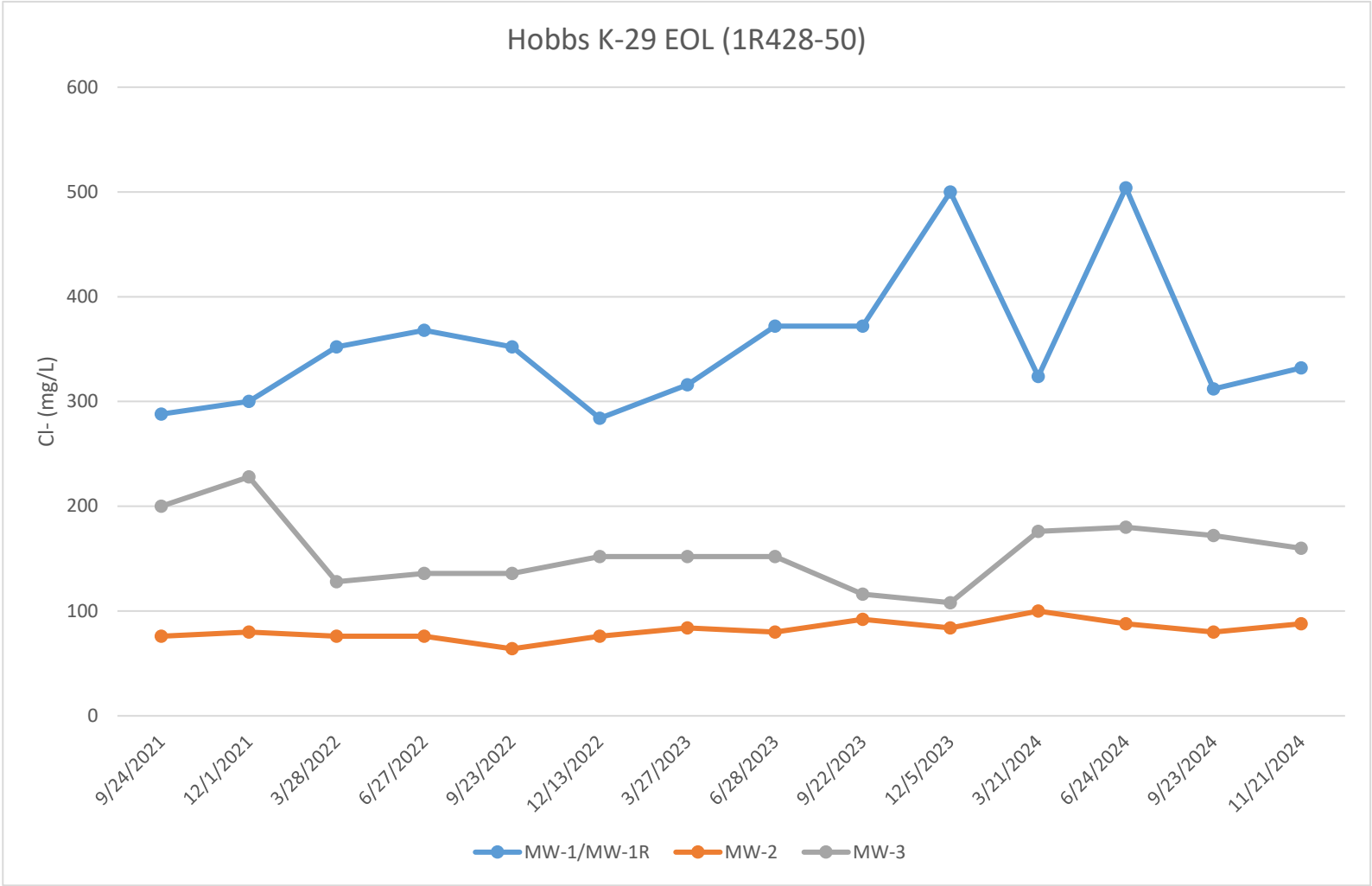
UL K & N SECTION 29  
T-18-S R-38-E  
LEA COUNTY, NM

GPS: 32.714915 -103.172174  
NAD83 STATE PLANE PROJ  
NM EAST ZONE

0 25 50  
Feet

GPS date: 11/03/14 TG  
Drawing date: 2/17/25  
Drafted by: T. Grieco





**ROC - Hobbs K-29 EOL (1R428-50)**  
**Unit Letter K, Section 29, T18S, R38E**

MW	Depth to Water	Total Depth	Well Volume	Volume Purged	Sample Date	Cl	TDS	Benzene	Toluene	Ethyl Benzene	Total Xylenes	Sulfate	Comments
1	62.34	73.6	1.8	6	7/14/2009	520	1,310	<0.001	<0.001	<0.001	<0.003	57	Silt to clear Slight odor
1	62.43	73.6	1.8	6	10/27/2009	332	757	0.001	<0.001	0.002	<0.003	59.5	Silt to clear Slight odor
1	62.72	73.62	1.7	6	3/15/2010	476	1,170	<0.001	<0.001	<0.001	<0.003	71.5	Silt to clear Slight odor
1	62.81	73.62	1.7	6	6/4/2010	432	1,320	<0.001	<0.001	<0.001	<0.003	78	Silt to clear Slight odor
1	62.56	73.62	1.8	6	8/30/2010	540	1,400	<0.001	<0.001	<0.001	<0.003	51.7	Silt to clear Slight odor
1	62.91	73.62	1.7	6	12/10/2010	560	1,280	<0.001	<0.001	<0.001	<0.003	67.9	Silt to clear Slight odor
1	63.05	73.62	1.7	6	3/23/2011	610	1,620	<0.001	<0.001	<0.001	<0.003	76.9	Silt to clear Slight odor
1	63.22	73.62	1.7	6	6/20/2011	540	1,280	<0.001	<0.001	<0.001	<0.003	71.9	Silt to clear Slight odor
1	63.44	73.62	1.6	6	9/20/2011	610	1,470	<0.001	<0.001	<0.001	<0.003	82.1	Silt to clear Slight odor
1	63.62	73.62	1.6	6	12/15/2011	540	1,320	<0.001	<0.001	<0.001	<0.003	87.2	Silt to clear Slight odor
1	63.78	73.62	1.6	6	3/13/2012	570	1,360	0.003	<0.001	<0.001	<0.003	74.2	Silt to clear Slight odor
1	63.93	73.62	1.6	6	6/11/2012	500	1,410	<0.001	<0.001	<0.001	<0.003	85.5	Silt to clear Slight odor
1	64.14	73.62	1.5	6	9/6/2012	500	1,280	<0.001	<0.001	<0.001	<0.003	77.6	Silt to clear Slight odor
1	64.3	73.62	1.5	6	11/29/2012	550	1,340	<0.001	<0.001	<0.001	<0.003	71.5	Silt to clear Slight odor
1	64.48	73.62	1.5	6	3/7/2013	492	1,220	<0.001	<0.001	<0.001	<0.003	88	Silt to clear Slight odor
1	64.69	73.62	1.4	6	6/24/2013	344	1,060	<0.001	<0.001	<0.001	<0.003	63	Silt to clear Slight odor
1	64.95	73.62	1.4	8	9/16/2013	336	987	<0.001	<0.001	<0.001	<0.003	88	Silt to clear Slight odor
1	65.15	73.62	1.4	6	12/12/2013	352	1,130	<0.001	<0.001	<0.001	<0.003	194	Silt to clear Slight odor
1	65.29	73.62	1.3	6	3/19/2014	352	1,080	<0.001	<0.001	<0.001	<0.003	112	Silt to clear Slight odor
1	65.49	73.62	1.3	6	6/16/2014	264	864	<0.001	<0.001	<0.001	<0.003	64.2	Silt to clear Slight odor
1	65.78	73.62	1.3	6	9/10/2014	352	1,150	<0.001	<0.001	<0.001	<0.003	250	Silt to clear Slight odor
1	65.63	73.62	1.3	6	12/17/2014	300	904	<0.001	<0.001	<0.001	<0.003	158	Silt to clear Slight odor
1	65.78	73.62	1.3	6	3/17/2015	264	904	<0.001	<0.001	<0.001	<0.003	73	Silt to clear Slight odor
1	65.88	73.62	1.2	6	6/16/2015	320	1,020	<0.001	<0.001	<0.001	<0.003	86	Silt to clear Slight odor
1	65.93	73.65	1.2	6	9/17/2015	316	1,050	<0.001	<0.001	<0.001	<0.003	144	Silt to clear Slight odor
1	65.65	73.65	1.2	6	12/1/2015	252	764	<0.001	<0.001	<0.001	<0.003	79.9	Silt to clear Slight odor
1	65.9	73.65	1.2	6	3/28/2016	416	1,120	<0.001	<0.001	<0.001	<0.003	58.7	Silt to clear Slight odor
1	66.05	73.65	1.2	6	6/23/2016	490	1,430	<0.001	<0.001	<0.001	<0.003	62.4	Silt to clear Slight odor
1	65.93	73.65	1.2	6	9/26/2016	640	1,940	<0.001	<0.001	<0.001	<0.003	73	Silt to clear Slight odor



**ROC - Hobbs K-29 EOL (1R428-50)**  
**Unit Letter K, Section 29, T18S, R38E**

MW	Depth to Water	Total Depth	Well Volume	Volume Purged	Sample Date	Cl	TDS	Benzene	Toluene	Ethyl Benzene	Total Xylenes	Sulfate	Comments
1	65.67	73.65	1.3	6	12/5/2016	500	1,420	<0.001	<0.001	<0.001	<0.003	72	Silt to clear Slight odor
1	65.91	73.65	1.2	6	3/20/2017	610	1,520	<0.001	<0.001	<0.001	<0.003	78	Silt to clear Slight odor
1	66.26	73.65	1.2	6	6/22/2017	620	1,690	<0.001	<0.001	<0.001	<0.003	81	Silt to clear Slight odor
1	66.28	73.65	1.2	6	9/25/2017	460	1,780	<0.001	<0.001	<0.001	<0.003	74	Silt to clear Slight odor
1	66.32	73.65	1.2	6	12/21/2017	510	1,290	<0.001	<0.001	<0.001	<0.003	80	Silt to clear Slight odor
1	66.46	73.62	1.1	6	3/20/2018	550	1,410	<0.001	<0.001	<0.001	<0.003	70.9	Silt to clear Slight odor
1	66.62	73.62	1.1	6	6/26/2018	550	1,380	<0.001	<0.001	<0.001	<0.003	67.8	Silt to clear Slight odor
1	66.77	73.62	1.1	6	9/18/2018	500	1,240	<0.001	<0.001	<0.001	<0.003	71.6	Silt to clear Slight odor
1	66.81	73.62	1.1	6	12/20/2018	500	1,310	<0.001	<0.001	<0.001	<0.003	89.8	Silt to clear Slight odor
1	66.94	73.65	1.1	6	3/25/2019	660	1,620	<0.001	<0.001	<0.001	<0.003	67	Silt to clear Slight odor
1	67.08	73.65	1	6	6/24/2019	620	1,610	<0.001	<0.001	<0.001	<0.003	66	Silt to clear Slight odor
1	67.15	73.65	1	6	9/23/2019	640	1,670	<0.001	<0.001	<0.001	<0.003	62	Silt to clear Slight odor
1R	67.46	112.78	29	100	12/9/2019	200	730	<0.001	<0.001	<0.001	<0.003	70.7	Silt to clear Slight odor
1R	67.63	112.78	29.3	100	3/19/2020	264	822	<0.001	<0.001	<0.001	<0.003	73.5	Silt to clear Slight odor
1R	67.88	112.78	29.2	100	9/28/2020	284	674	XXX	XXX	XXX	XXX	62	Silt to clear Slight odor
1R	68.15	112.78	29	100	3/25/2021	292	913	XXX	XXX	XXX	XXX	75.5	Silt to clear Slight odor
1R	68.33	112.78	29	100	6/25/2021	236	927	XXX	XXX	XXX	XXX	126	Silt to clear Slight odor
1R	68.27	112.78	29	100	9/24/2021	288	939	XXX	XXX	XXX	XXX	79.3	Silt to clear Slight odor
1R	68.17	112.78	29	100	12/1/2021	300	955	XXX	XXX	XXX	XXX	78	Silt to clear Slight odor
1R	68.58	112.78	29	100	3/28/2022	352	889	XXX	XXX	XXX	XXX	54.6	Silt to clear Slight odor
1R	68.72	112.78	29	100	6/27/2022	368	1,160	XXX	XXX	XXX	XXX	64.2	Silt to clear Slight odor
1R	68.84	112.78	29	100	9/23/2022	352	1,060	XXX	XXX	XXX	XXX	63.6	Silt to clear Slight odor
1R	69.02	112.78	29	100	12/13/2022	284	880	XXX	XXX	XXX	XXX	90.8	Silt to clear Slight odor
1R	69.13	112.78	28.4	100	3/27/2023	316	929	XXX	XXX	XXX	XXX	70.5	Silt to clear Slight odor
1R	69.29	112.78	28.3	100	6/28/2023	372	1,120	XXX	XXX	XXX	XXX	111	Silt to clear Slight odor
1R	69.37	112.78	28.2	100	9/22/2023	372	1,130	XXX	XXX	XXX	XXX	62.8	Silt to clear Slight odor
1R	69.48	112.78	28.1	100	12/5/2023	500	1,530	XXX	XXX	XXX	XXX	229	Silt to clear Slight odor
1R	69.65	112.78	28	100	3/21/2024	324	850	XXX	XXX	XXX	XXX	61.4	Silt to clear Slight odor
1R	69.75	112.78	28	100	6/24/2024	504	1,860	XXX	XXX	XXX	XXX	109	Silt to clear Slight odor

**ROC - Hobbs K-29 EOL (1R428-50)****Unit Letter K, Section 29, T18S, R38E**

MW	Depth to Water	Total Depth	Well Volume	Volume Purged	Sample Date	Cl	TDS	Benzene	Toluene	Ethyl Benzene	Total Xylenes	Sulfate	Comments
1R	69.93	112.78	27.9	100	9/23/2024	312	972	XXX	XXX	XXX	XXX	63.9	Silt to clear Slight odor
1R	70.03	112.78	27.8	100	11/21/2024	332	1,010	XXX	XXX	XXX	XXX	70.4	Silt to clear Slight odor

MW	Depth to Water	Total Depth	Well Volume	Volume Purged	Sample Date	Cl	TDS	Benzene	Toluene	Ethyl Benzene	Total Xylenes	Sulfate	Comments
2	63.67	77.41	2.2	8	3/13/2012	68	522	<0.001	<0.001	<0.001	<0.003	83.2	Silt to clear Slight odor
2	63.87	77.41	2.2	8	6/11/2012	68	474	<0.001	<0.001	<0.001	<0.003	86.4	Silt to clear Slight odor
2	64.02	77.41	2.1	8	9/6/2012	64	500	<0.001	<0.001	<0.001	<0.003	88.2	Silt to clear Slight odor
2	64.22	77.41	2.1	8	11/29/2012	68	521	<0.001	<0.001	<0.001	<0.003	88.5	Silt to clear Slight odor
2	64.41	77.41	2.1	8	3/7/2013	72	478	<0.001	<0.001	<0.001	<0.003	95	Silt to clear Slight odor
2	64.65	77.41	2	8	6/24/2013	68	504	<0.001	<0.001	<0.001	<0.003	83	Silt to clear Slight odor
2	64.86	77.41	2	8	9/16/2013	64	485	<0.001	<0.001	<0.001	<0.003	75.3	Silt to clear Slight odor
2	65.04	77.41	2	8	12/12/2013	64	473	<0.001	<0.001	<0.001	<0.003	93.4	Silt to clear Slight odor
2	65.24	77.41	1.9	8	3/19/2014	68	426	<0.001	<0.001	<0.001	<0.003	88.2	Silt to clear Slight odor
2	65.51	77.41	1.9	8	6/16/2014	68	572	<0.001	<0.001	<0.001	<0.003	82.5	Silt to clear Slight odor
2	65.74	77.41	1.9	8	9/10/2014	64	512	<0.001	<0.001	<0.001	<0.003	98.1	Silt to clear Slight odor
2	65.57	77.41	1.9	8	12/17/2014	68	482	<0.001	<0.001	<0.001	<0.003	87	Silt to clear Slight odor
2	65.72	77.41	1.9	8	3/17/2015	52	452	<0.001	<0.001	<0.001	<0.003	77	Silt to clear Slight odor
2	65.84	77.41	1.9	8	6/16/2015	72	518	<0.001	<0.001	<0.001	<0.003	70	Silt to clear Slight odor
2	65.88	77.41	1.9	8	9/17/2015	72	546	<0.001	<0.001	<0.001	<0.003	63.3	Silt to clear Slight odor
2	65.57	77.41	1.9	8	12/1/2015	72	558	<0.001	<0.001	<0.001	<0.003	87	Silt to clear Slight odor
2	65.84	77.41	1.9	8	3/28/2016	68	556	<0.001	<0.001	<0.001	<0.003	76.8	Silt to clear Slight odor
2	65.96	77.41	1.8	8	6/23/2016	76	506	<0.001	<0.001	<0.001	<0.003	110	Silt to clear Slight odor
2	65.86	77.41	1.8	8	9/26/2016	68	544	<0.001	<0.001	<0.001	<0.003	95	Silt to clear Slight odor
2	65.6	77.41	1.9	8	12/5/2016	92	560	<0.001	<0.001	<0.001	<0.003	107	Silt to clear Slight odor
2	65.84	77.41	1.9	8	3/20/2017	68	540	<0.001	<0.001	<0.001	<0.003	72	Silt to clear Slight odor
2	66.18	77.41	1.8	8	6/22/2017	72	532	<0.001	<0.001	<0.001	<0.003	82	Silt to clear Slight odor
2	66.21	77.41	1.8	8	9/25/2017	72	714	<0.001	<0.001	<0.001	<0.003	92	Silt to clear Slight odor



**ROC - Hobbs K-29 EOL (1R428-50)**  
**Unit Letter K, Section 29, T18S, R38E**

MW	Depth to Water	Total Depth	Well Volume	Volume Purged	Sample Date	Cl	TDS	Benzene	Toluene	Ethyl Benzene	Total Xylenes	Sulfate	Comments
2	66.28	77.41	1.8	8	12/21/2017	92	526	<0.001	<0.001	<0.001	<0.003	98	Silt to clear Slight odor
2	66.41	77.41	1.8	8	3/20/2018	64	404	<0.001	<0.001	<0.001	<0.003	94.7	Silt to clear Slight odor
2	66.55	77.41	1.7	8	6/26/2018	72	638	<0.001	<0.001	<0.001	<0.003	71.6	Silt to clear Slight odor
2	66.71	77.41	1.7	8	9/18/2018	64	520	<0.001	<0.001	<0.001	<0.003	86.2	Silt to clear Slight odor
2	66.74	77.41	1.7	8	12/20/2018	64	510	<0.001	<0.001	<0.001	<0.003	121	Silt to clear Slight odor
2	66.89	77.41	1.7	8	3/25/2019	76	543	<0.001	<0.001	<0.001	<0.003	94	Silt to clear Slight odor
2	67.02	77.41	1.7	8	6/24/2019	68	603	<0.001	<0.001	<0.001	<0.003	34	Silt to clear Slight odor
2	67.09	77.41	1.7	8	9/23/2019	68	496	<0.001	<0.001	<0.001	<0.003	103	Silt to clear Slight odor
2	67.28	77.41	1.6	8	12/9/2019	72	561	<0.001	<0.001	<0.001	<0.003	85	Silt to clear Slight odor
2	67.45	77.41	1.6	8	3/19/2020	72	526	<0.001	<0.001	<0.001	<0.003	72	Silt to clear Slight odor
2	67.72	77.41	1.6	8	9/28/2020	72	460	XXX	XXX	XXX	XXX	79	Silt to clear Slight odor
2	68	77.41	1.5	8	3/25/2021	72	517	XXX	XXX	XXX	XXX	99.6	Silt to clear Slight odor
2	68.18	77.41	1.5	8	6/25/2021	68	539	XXX	XXX	XXX	XXX	91.6	Silt to clear Slight odor
2	68.18	77.41	1.5	8	9/24/2021	76	542	XXX	XXX	XXX	XXX	103	Silt to clear Slight odor
2	68.03	77.41	1.5	8	12/1/2021	80	572	XXX	XXX	XXX	XXX	91	Silt to clear Slight odor
2	68.41	77.41	1.4	8	3/28/2022	76	501	XXX	XXX	XXX	XXX	74.6	Silt to clear Slight odor
2	68.54	77.41	1.4	8	6/27/2022	76	538	XXX	XXX	XXX	XXX	87.1	Silt to clear Slight odor
2	68.69	77.41	1.4	8	9/23/2022	64	450	XXX	XXX	XXX	XXX	76	Silt to clear Slight odor
2	68.83	77.41	1.4	6	12/13/2022	76	526	XXX	XXX	XXX	XXX	80.6	Silt to clear Slight odor
2	68.97	77.41	1.4	6	3/27/2023	84	563	XXX	XXX	XXX	XXX	67.4	Silt to clear Slight odor
2	69.12	77.41	1.3	8	6/28/2023	80	536	XXX	XXX	XXX	XXX	72	Silt to clear Slight odor
2	69.21	77.41	1.3	6	9/22/2023	92	606	XXX	XXX	XXX	XXX	81.4	Silt to clear Slight odor
2	69.32	77.41	1.3	6	12/5/2023	84	591	XXX	XXX	XXX	XXX	106	Silt to clear Slight odor
2	69.48	77.41	1.3	6	3/21/2024	100	577	XXX	XXX	XXX	XXX	118	Silt to clear Slight odor
2	69.61	77.41	1.2	8	6/24/2024	88	676	XXX	XXX	XXX	XXX	138	Silt to clear Slight odor
2	69.78	77.41	1.2	6	9/23/2024	80	640	XXX	XXX	XXX	XXX	131	Silt to clear Slight odor
2	69.86	77.41	1.2	8	11/21/2024	88	668	XXX	XXX	XXX	XXX	99.1	Silt to clear Slight odor

**ROC - Hobbs K-29 EOL (1R428-50)**  
**Unit Letter K, Section 29, T18S, R38E**

MW	Depth to Water	Total Depth	Well Volume	Volume Purged	Sample Date	Cl	TDS	Benzene	Toluene	Ethyl Benzene	Total Xylenes	Sulfate	Comments
3	64.23	110.22	29.9	120	12/1/2015	220	784	<0.001	<0.001	<0.001	<0.003	65	Silt to clear Slight odor
3	64.18	110.22	30	100	3/28/2016	296	960	<0.001	<0.001	<0.001	<0.003	65	Silt to clear Slight odor
3	64.6	110.22	30	100	6/23/2016	510	1,240	<0.001	<0.001	<0.001	<0.003	62	Silt to clear Slight odor
3	64.45	110.22	30	100	9/26/2016	540	1,600	<0.001	<0.001	<0.001	<0.003	67	Silt to clear Slight odor
3	64.18	110.22	30	100	12/5/2016	560	1,400	<0.001	<0.001	<0.001	<0.003	71	Silt to clear Slight odor
3	64.5	110.22	30	100	3/20/2017	570	1,520	<0.001	<0.001	<0.001	<0.003	96	Silt to clear Slight odor
3	64.83	110.22	30	100	6/22/2017	510	1,560	<0.001	<0.001	<0.001	<0.003	78	Silt to clear Slight odor
3	64.85	110.22	30	100	9/25/2017	540	1,800	<0.001	<0.001	<0.001	<0.003	71	Silt to clear Slight odor
3	64.88	110.22	30	100	12/21/2017	300	980	<0.001	<0.001	<0.001	<0.003	45	Silt to clear Slight odor
3	65.02	110.22	29.4	100	3/20/2018	164	662	<0.001	<0.001	<0.001	<0.003	77.2	Silt to clear Slight odor
3	65.11	110.22	29.3	100	6/26/2018	268	984	<0.001	<0.001	<0.001	<0.003	130	Silt to clear Slight odor
3	65.26	110.22	29.2	100	9/18/2018	236	584	<0.001	<0.001	<0.001	<0.003	91.1	Silt to clear Slight odor
3	65.28	110.22	29.2	100	12/20/2018	108	474	<0.001	<0.001	<0.001	<0.003	60.9	Silt to clear Slight odor
3	65.49	110.22	29	100	3/25/2019	88	614	<0.001	<0.001	<0.001	<0.003	88	Silt to clear Slight odor
3	65.63	110.22	29	100	6/24/2019	100	627	<0.001	<0.001	<0.001	<0.003	55	Silt to clear Slight odor
3	65.7	110.22	29	100	9/23/2019	152	634	<0.001	<0.001	<0.001	<0.003	92	Silt to clear Slight odor
3	65.88	110.22	29	100	12/9/2019	96	628	<0.001	<0.001	<0.001	<0.003	58	Silt to clear Slight odor
3	66.03	110.22	28.7	100	3/19/2020	88	616	<0.001	<0.001	<0.001	<0.003	88	Silt to clear Slight odor
3	66.31	110.22	28.5	100	9/28/2020	88	544	XXX	XXX	XXX	XXX	79.8	Silt to clear Slight odor
3	66.57	110.22	28	100	3/25/2021	112	698	XXX	XXX	XXX	XXX	99.2	Silt to clear Slight odor
3	66.62	110.22	28	100	6/25/2021	200	781	XXX	XXX	XXX	XXX	87.6	Silt to clear Slight odor
3	66.69	110.22	28	100	9/24/2021	200	760	XXX	XXX	XXX	XXX	88.2	Silt to clear Slight odor
3	66.55	110.22	28	100	12/1/2021	228	776	XXX	XXX	XXX	XXX	74.4	Silt to clear Slight odor
3	67.01	110.22	28	100	3/28/2022	128	620	XXX	XXX	XXX	XXX	64.4	Silt to clear Slight odor
3	67.08	110.22	28	100	6/27/2022	136	675	XXX	XXX	XXX	XXX	105	Silt to clear Slight odor
3	67.23	110.22	28	100	9/23/2022	136	678	XXX	XXX	XXX	XXX	69.1	Silt to clear Slight odor
3	67.42	110.22	28	100	12/13/2022	152	655	XXX	XXX	XXX	XXX	75.9	Silt to clear Slight odor
3	67.56	110.22	27.7	100	3/27/2023	152	695	XXX	XXX	XXX	XXX	72.9	Silt to clear Slight odor
3	67.72	110.22	28	100	6/28/2023	152	689	XXX	XXX	XXX	XXX	66.2	Silt to clear Slight odor



**ROC - Hobbs K-29 EOL (1R428-50)**  
**Unit Letter K, Section 29, T18S, R38E**

MW	Depth to Water	Total Depth	Well Volume	Volume Purged	Sample Date	Cl	TDS	Benzene	Toluene	Ethyl Benzene	Total Xylenes	Sulfate	Comments
3	67.8	110.22	27.6	100	9/22/2023	116	671	XXX	XXX	XXX	XXX	108	Silt to clear Slight odor
3	67.91	110.22	27.5	100	12/5/2023	108	509	XXX	XXX	XXX	XXX	61.8	Silt to clear Slight odor
3	68.05	110.22	27.4	100	3/21/2024	176	490	XXX	XXX	XXX	XXX	57.2	Silt to clear Slight odor
3	68.19	110.22	27	100	6/24/2024	180	761	XXX	XXX	XXX	XXX	84.1	Silt to clear Slight odor
3	68.35	110.22	27.2	100	9/23/2024	172	698	XXX	XXX	XXX	XXX	88.1	Silt to clear Slight odor
3	68.46	110.22	27	100	11/21/2024	160	757	XXX	XXX	XXX	XXX	76.2	Silt to clear Slight odor



PHONE (575) 393-2326 ° 101 E. MARLAND ° HOBBS, NM 88240

---

April 05, 2024

KATIE JONES

Rice Operating Company

112 W. Taylor

Hobbs, NM 88240

RE: HOBBS K-29 BOOT

Enclosed are the results of analyses for samples received by the laboratory on 03/27/24 9:26.

Cardinal Laboratories is accredited through Texas NELAP under certificate number T104704398-23-16. Accreditation applies to drinking water, non-potable water and solid and chemical materials. All accredited analytes are denoted by an asterisk (\*). For a complete list of accredited analytes and matrices visit the TCEQ website at [www.tceq.texas.gov/field/qa/lab\\_accred\\_certif.html](http://www.tceq.texas.gov/field/qa/lab_accred_certif.html).

Cardinal Laboratories is accredited through the State of Colorado Department of Public Health and Environment for:

Method EPA 552.2	Haloacetic Acids (HAA-5)
Method EPA 524.2	Total Trihalomethanes (TTHM)
Method EPA 524.4	Regulated VOCs (V1, V2, V3)

Accreditation applies to public drinking water matrices.

This report meets NELAP requirements and is made up of a cover page, analytical results, and a copy of the original chain-of-custody. If you have any questions concerning this report, please feel free to contact me.

Sincerely,

A handwritten signature in black ink that reads "Celey D. Keene". The signature is written in a cursive style with a large, stylized 'C' and 'K'.

Celey D. Keene

Lab Director/Quality Manager





PHONE (575) 393-2326 • 101 E. MARLAND • HOBBS, NM 88240

**Analytical Results For:**

Rice Operating Company  
 KATIE JONES  
 112 W. Taylor  
 Hobbs NM, 88240  
 Fax To: (575) 397-1471

Received:	03/27/2024	Sampling Date:	03/21/2024
Reported:	04/05/2024	Sampling Type:	Water
Project Name:	HOBBS K-29 BOOT	Sampling Condition:	Cool & Intact
Project Number:	NOT GIVEN	Sample Received By:	Dionica Hinojos
Project Location:	T18S-R38E-SEC29 K-LEA CTY., NM		

**Sample ID: MONITOR WELL # 1R (H241587-01)**

Chloride, SM4500Cl-B		mg/L		Analyzed By: AC						
Analyte	Result	Reporting Limit	Analyzed	Method Blank	BS	% Recovery	True Value QC	RPD	Qualifier	
Chloride*	324	4.00	03/27/2024	ND	100	100	100	3.92		
Sulfate 375.4		mg/L		Analyzed By: AC						
Analyte	Result	Reporting Limit	Analyzed	Method Blank	BS	% Recovery	True Value QC	RPD	Qualifier	
Sulfate*	61.4	25.0	03/27/2024	ND	19.1	95.4	20.0	10.8		
TDS 160.1		mg/L		Analyzed By: AC						
Analyte	Result	Reporting Limit	Analyzed	Method Blank	BS	% Recovery	True Value QC	RPD	Qualifier	
TDS*	850	5.00	04/02/2024	ND	827	82.7	1000	0.132		

**Sample ID: MONITOR WELL # 2 (H241587-02)**

Chloride, SM4500Cl-B		mg/L		Analyzed By: AC						
Analyte	Result	Reporting Limit	Analyzed	Method Blank	BS	% Recovery	True Value QC	RPD	Qualifier	
Chloride*	100	4.00	03/27/2024	ND	100	100	100	3.92		
Sulfate 375.4		mg/L		Analyzed By: AC						
Analyte	Result	Reporting Limit	Analyzed	Method Blank	BS	% Recovery	True Value QC	RPD	Qualifier	
Sulfate*	118	25.0	03/27/2024	ND	19.1	95.4	20.0	10.8		
TDS 160.1		mg/L		Analyzed By: AC						
Analyte	Result	Reporting Limit	Analyzed	Method Blank	BS	% Recovery	True Value QC	RPD	Qualifier	
TDS*	577	5.00	04/02/2024	ND	827	82.7	1000	0.132		

Cardinal Laboratories

\*=Accredited Analyte

PLEASE NOTE: Liability and Damages. Cardinal's liability and client's exclusive remedy for any claim arising, whether based in contract or tort, shall be limited to the amount paid by client for analyses. All claims, including those for negligence and any other cause whatsoever shall be deemed waived unless made in writing and received by Cardinal within thirty (30) days after completion of the applicable service. In no event shall Cardinal be liable for incidental or consequential damages, including, without limitation, business interruptions, loss of use, or loss of profits incurred by client, its subsidiaries, affiliates or successors arising out of or related to the performance of the services hereunder by Cardinal, regardless of whether such claim is based upon any of the above stated reasons or otherwise. Results relate only to the samples identified above. This report shall not be reproduced except in full with written approval of Cardinal Laboratories.

Celey D. Keene, Lab Director/Quality Manager



PHONE (575) 393-2326 ° 101 E. MARLAND ° HOBBS, NM 88240

**Analytical Results For:**

Rice Operating Company  
 KATIE JONES  
 112 W. Taylor  
 Hobbs NM, 88240  
 Fax To: (575) 397-1471

Received:	03/27/2024	Sampling Date:	03/21/2024
Reported:	04/05/2024	Sampling Type:	Water
Project Name:	HOBBS K-29 BOOT	Sampling Condition:	Cool & Intact
Project Number:	NOT GIVEN	Sample Received By:	Dionica Hinojos
Project Location:	T18S-R38E-SEC29 K-LEA CTY., NM		

**Sample ID: MONITOR WELL # 3 (H241587-03)**

Chloride, SM4500Cl-B		mg/L		Analyzed By: AC						
Analyte	Result	Reporting Limit	Analyzed	Method Blank	BS	% Recovery	True Value QC	RPD	Qualifier	
Chloride*	176	4.00	03/27/2024	ND	100	100	100	3.92		
Sulfate 375.4		mg/L		Analyzed By: AC						
Analyte	Result	Reporting Limit	Analyzed	Method Blank	BS	% Recovery	True Value QC	RPD	Qualifier	
Sulfate*	57.2	25.0	03/27/2024	ND	19.1	95.4	20.0	10.8		
TDS 160.1		mg/L		Analyzed By: AC						
Analyte	Result	Reporting Limit	Analyzed	Method Blank	BS	% Recovery	True Value QC	RPD	Qualifier	
TDS*	490	5.00	04/02/2024	ND	827	82.7	1000	0.132		

Cardinal Laboratories

\*=Accredited Analyte

PLEASE NOTE: Liability and Damages. Cardinal's liability and client's exclusive remedy for any claim arising, whether based in contract or tort, shall be limited to the amount paid by client for analyses. All claims, including those for negligence and any other cause whatsoever shall be deemed waived unless made in writing and received by Cardinal within thirty (30) days after completion of the applicable service. In no event shall Cardinal be liable for incidental or consequential damages, including, without limitation, business interruptions, loss of use, or loss of profits incurred by client, its subsidiaries, affiliates or successors arising out of or related to the performance of the services hereunder by Cardinal, regardless of whether such claim is based upon any of the above stated reasons or otherwise. Results relate only to the samples identified above. This report shall not be reproduced except in full with written approval of Cardinal Laboratories.

Celey D. Keene, Lab Director/Quality Manager



---

PHONE (575) 393-2326 ° 101 E. MARLAND ° HOBBS, NM 88240

---

### Notes and Definitions

ND	Analyte NOT DETECTED at or above the reporting limit
RPD	Relative Percent Difference
**	Samples not received at proper temperature of 6°C or below.
***	Insufficient time to reach temperature.
-	Chloride by SM4500Cl-B does not require samples be received at or below 6°C Samples reported on an as received basis (wet) unless otherwise noted on report

---

Cardinal Laboratories

\*=Accredited Analyte

PLEASE NOTE: Liability and Damages. Cardinal's liability and client's exclusive remedy for any claim arising, whether based in contract or tort, shall be limited to the amount paid by client for analyses. All claims, including those for negligence and any other cause whatsoever shall be deemed waived unless made in writing and received by Cardinal within thirty (30) days after completion of the applicable service. In no event shall Cardinal be liable for incidental or consequential damages, including, without limitation, business interruptions, loss of use, or loss of profits incurred by client, its subsidiaries, affiliates or successors arising out of or related to the performance of the services hereunder by Cardinal, regardless of whether such claim is based upon any of the above stated reasons or otherwise. Results relate only to the samples identified above. This report shall not be reproduced except in full with written approval of Cardinal Laboratories.

A handwritten signature in black ink, appearing to read "Celey D. Keene", written over a horizontal line.

---

Celey D. Keene, Lab Director/Quality Manager



# Cardinal Laboratories, Inc.

## Page 5 of 5

Company Name: <b>RICE Operating Company</b>	BILL TO Company: <b>RICE Operating Company</b>	PO#
Project Manager: <b>Katie Jones</b>	Address: <b>122 W Taylor Street ~ Hobbs, New Mexico 88240</b>	(Street, City, Zip)
Address: <b>122 W Taylor Street ~ Hobbs, New Mexico 88240</b>	Phone#: <b>(575) 393-9174</b>	Fax#: <b>(575) 397-1471</b>
Phone #: <b>(575) 393-9174</b>	Fax #: <b>(575) 397-1471</b>	

Project #:	Project Name:	
	Hobbs K-29 Boot	
Project Location:	Sampler Signature: Rozanne Johnson (575)631-9310	
T18S-R38E-Sec29 K ~ Lea County - New Mexico		

(Circle or Specify Method No.)

Relinquished by: <i>Rozanne Johnson</i>	Date: <i>3/27/2024</i>	Time: <i>7:00</i>	Received by: <i>James Johnson</i>	Date: <i>3/27/2024</i>	Time: <i>7:01</i>
Relinquished by: <i>James Johnson</i>	Date: <i>3/27/2024</i>	Time: <i>9:26</i>	Received By: (Laboratory Staff)	Date: <i>3/27/24</i>	Time: <i>9:26</i>
Delivered By: (Circle One)			Sample Condition	CHECKED BY:	
			Cool <input checked="" type="checkbox"/> Yes No <input type="checkbox"/>	Intact <input checked="" type="checkbox"/> Yes No <input type="checkbox"/>	
Sampler - UPS - Bus - Other: <i>(Other)</i>			(Initials) <i>[Signature]</i>		

Phone Results	Yes	No
Fax Results	Yes	No      Additional Fax Number:

REMARKS:

Email Results: [kjones@riceswd.com](mailto:kjones@riceswd.com)  
[rozanne@sdacres.com](mailto:rozanne@sdacres.com)

Released to Imaging: 4/30/2025 4:34:50 PM





PHONE (575) 393-2326 ° 101 E. MARLAND ° HOBBS, NM 88240

---

July 03, 2024

KATIE JONES

Rice Operating Company

112 W. Taylor

Hobbs, NM 88240

RE: HOBBS K-29 BOOT

Enclosed are the results of analyses for samples received by the laboratory on 06/25/24 9:39.

Cardinal Laboratories is accredited through Texas NELAP under certificate number TX-C24-00112. Accreditation applies to drinking water, non-potable water and solid and chemical materials. All accredited analytes are denoted by an asterisk (\*). For a complete list of accredited analytes and matrices visit the TCEQ website at [www.tceq.texas.gov/field/qa/lab\\_accred\\_certif.html](http://www.tceq.texas.gov/field/qa/lab_accred_certif.html).

Cardinal Laboratories is accredited through the State of Colorado Department of Public Health and Environment for:

Method EPA 552.2	Haloacetic Acids (HAA-5)
Method EPA 524.2	Total Trihalomethanes (TTHM)
Method EPA 524.4	Regulated VOCs (V1, V2, V3)

Accreditation applies to public drinking water matrices.

This report meets NELAP requirements and is made up of a cover page, analytical results, and a copy of the original chain-of-custody. If you have any questions concerning this report, please feel free to contact me.

Sincerely,

A handwritten signature in black ink that reads "Celey D. Keene". The signature is written in a cursive, flowing style.

Celey D. Keene

Lab Director/Quality Manager



PHONE (575) 393-2326 ° 101 E. MARLAND ° HOBBS, NM 88240

**Analytical Results For:**

Rice Operating Company  
 KATIE JONES  
 112 W. Taylor  
 Hobbs NM, 88240  
 Fax To: (575) 397-1471

Received:	06/25/2024	Sampling Date:	06/24/2024
Reported:	07/03/2024	Sampling Type:	Water
Project Name:	HOBBS K-29 BOOT	Sampling Condition:	Cool & Intact
Project Number:	NOT GIVEN	Sample Received By:	Shalyn Rodriguez
Project Location:	T18S-R38E-SEC29 K-LEA CTY., NM		

**Sample ID: MONITOR WELL # 1R (H243758-01)**

Chloride, SM4500Cl-B (Water)		mg/L		Analyzed By: AC						
Analyte	Result	Reporting Limit	Analyzed	Method Blank	BS	% Recovery	True Value QC	RPD	Qualifier	
Chloride*	504	4.00	06/25/2024	ND	96.0	96.0	100	4.08		
Sulfate 375.4		mg/L		Analyzed By: HM						
Analyte	Result	Reporting Limit	Analyzed	Method Blank	BS	% Recovery	True Value QC	RPD	Qualifier	
Sulfate*	109	25.0	06/26/2024	ND	16.8	84.2	20.0	8.47	QM-07	
TDS 160.1		mg/L		Analyzed By: HM						
Analyte	Result	Reporting Limit	Analyzed	Method Blank	BS	% Recovery	True Value QC	RPD	Qualifier	
TDS*	1860	5.00	06/28/2024	ND	850	85.0	1000	3.15		

**Sample ID: MONITOR WELL # 2 (H243758-02)**

Chloride, SM4500Cl-B (Water)		mg/L		Analyzed By: AC						
Analyte	Result	Reporting Limit	Analyzed	Method Blank	BS	% Recovery	True Value QC	RPD	Qualifier	
Chloride*	88.0	4.00	06/25/2024	ND	96.0	96.0	100	4.08		
Sulfate 375.4		mg/L		Analyzed By: HM						
Analyte	Result	Reporting Limit	Analyzed	Method Blank	BS	% Recovery	True Value QC	RPD	Qualifier	
Sulfate*	138	25.0	06/26/2024	ND	16.8	84.2	20.0	8.47		
TDS 160.1		mg/L		Analyzed By: HM						
Analyte	Result	Reporting Limit	Analyzed	Method Blank	BS	% Recovery	True Value QC	RPD	Qualifier	
TDS*	676	5.00	06/27/2024	ND	850	85.0	1000	3.15		

Cardinal Laboratories

\*=Accredited Analyte

PLEASE NOTE: Liability and Damages. Cardinal's liability and client's exclusive remedy for any claim arising, whether based in contract or tort, shall be limited to the amount paid by client for analyses. All claims, including those for negligence and any other cause whatsoever shall be deemed waived unless made in writing and received by Cardinal within thirty (30) days after completion of the applicable service. In no event shall Cardinal be liable for incidental or consequential damages, including, without limitation, business interruptions, loss of use, or loss of profits incurred by client, its subsidiaries, affiliates or successors arising out of or related to the performance of the services hereunder by Cardinal, regardless of whether such claim is based upon any of the above stated reasons or otherwise. Results relate only to the samples identified above. This report shall not be reproduced except in full with written approval of Cardinal Laboratories.

Celey D. Keene, Lab Director/Quality Manager





PHONE (575) 393-2326 ° 101 E. MARLAND ° HOBBS, NM 88240

**Analytical Results For:**

Rice Operating Company  
 KATIE JONES  
 112 W. Taylor  
 Hobbs NM, 88240  
 Fax To: (575) 397-1471

Received:	06/25/2024	Sampling Date:	06/24/2024
Reported:	07/03/2024	Sampling Type:	Water
Project Name:	HOBBS K-29 BOOT	Sampling Condition:	Cool & Intact
Project Number:	NOT GIVEN	Sample Received By:	Shalyn Rodriguez
Project Location:	T18S-R38E-SEC29 K-LEA CTY., NM		

**Sample ID: MONITOR WELL # 3 (H243758-03)**

Chloride, SM4500Cl-B (Water)		mg/L		Analyzed By: AC						
	Analyte	Result	Reporting Limit	Analyzed	Method Blank	BS	% Recovery	True Value QC	RPD	Qualifier
Chloride*		180	4.00	06/25/2024	ND	96.0	96.0	100	4.08	
	Sulfate 375.4									
		mg/L		Analyzed By: HM						
	Analyte	Result	Reporting Limit	Analyzed	Method Blank	BS	% Recovery	True Value QC	RPD	Qualifier
Sulfate*		84.1	25.0	06/26/2024	ND	16.8	84.2	20.0	8.47	
	TDS 160.1									
		mg/L		Analyzed By: HM						
	Analyte	Result	Reporting Limit	Analyzed	Method Blank	BS	% Recovery	True Value QC	RPD	Qualifier
TDS*		761	5.00	06/28/2024	ND	850	85.0	1000	3.15	

Cardinal Laboratories

\*=Accredited Analyte

PLEASE NOTE: Liability and Damages. Cardinal's liability and client's exclusive remedy for any claim arising, whether based in contract or tort, shall be limited to the amount paid by client for analyses. All claims, including those for negligence and any other cause whatsoever shall be deemed waived unless made in writing and received by Cardinal within thirty (30) days after completion of the applicable service. In no event shall Cardinal be liable for incidental or consequential damages, including, without limitation, business interruptions, loss of use, or loss of profits incurred by client, its subsidiaries, affiliates or successors arising out of or related to the performance of the services hereunder by Cardinal, regardless of whether such claim is based upon any of the above stated reasons or otherwise. Results relate only to the samples identified above. This report shall not be reproduced except in full with written approval of Cardinal Laboratories.

Celey D. Keene, Lab Director/Quality Manager



---

PHONE (575) 393-2326 • 101 E. MARLAND • HOBBS, NM 88240

---

### Notes and Definitions

QM-07	The spike recovery was outside acceptance limits for the MS and/or MSD. The batch was accepted based on acceptable LCS recovery.
ND	Analyte NOT DETECTED at or above the reporting limit
RPD	Relative Percent Difference
**	Samples not received at proper temperature of 6°C or below.
***	Insufficient time to reach temperature.
-	Chloride by SM4500Cl-B does not require samples be received at or below 6°C Samples reported on an as received basis (wet) unless otherwise noted on report

---

Cardinal Laboratories

\*=Accredited Analyte

PLEASE NOTE: Liability and Damages. Cardinal's liability and client's exclusive remedy for any claim arising, whether based in contract or tort, shall be limited to the amount paid by client for analyses. All claims, including those for negligence and any other cause whatsoever shall be deemed waived unless made in writing and received by Cardinal within thirty (30) days after completion of the applicable service. In no event shall Cardinal be liable for incidental or consequential damages, including, without limitation, business interruptions, loss of use, or loss of profits incurred by client, its subsidiaries, affiliates or successors arising out of or related to the performance of the services hereunder by Cardinal, regardless of whether such claim is based upon any of the above stated reasons or otherwise. Results relate only to the samples identified above. This report shall not be reproduced except in full with written approval of Cardinal Laboratories.


A handwritten signature in black ink, appearing to read "Celey D. Keene".

---

Celey D. Keene, Lab Director/Quality Manager

# Cardinal Laboratories, Inc.

## Page 5 of 5

Company Name: <b>RICE Operating Company</b>		BILL TO Company: <b>RICE Operating Company</b>		PO#
Project Manager: <b>Katie Jones</b>		Address: (Street, City, Zip) <b>122 W Taylor Street ~ Hobbs, New Mexico 88240</b>		
Address: (Street, City, Zip) <b>122 W Taylor Street ~ Hobbs, New Mexico 88240</b>		Phone#: <b>(575) 393-9174</b>		Fax#: <b>(575)397-1471</b>
Phone #: <b>(575) 393-9174</b>		Fax #: <b>(575) 397-1471</b>		
Project #:		Project Name: <b>Hobbs K-29 Boot</b>		
Project Location: <b>T18S-R38E-Sec29 K ~ Lea County - New Mexico</b>				
		 Sampler Signature: <b>Rozanne Johnson (575)631-9310</b>		

(Circle or Specify Method No.)

[illegible]



PHONE (575) 393-2326 ° 101 E. MARLAND ° HOBBS, NM 88240

---

October 02, 2024

KATIE JONES

Rice Operating Company

112 W. Taylor

Hobbs, NM 88240

RE: HOBBS K-29 BOOT

Enclosed are the results of analyses for samples received by the laboratory on 09/25/24 9:26.

Cardinal Laboratories is accredited through Texas NELAP under certificate number TX-C24-00112. Accreditation applies to drinking water, non-potable water and solid and chemical materials. All accredited analytes are denoted by an asterisk (\*). For a complete list of accredited analytes and matrices visit the TCEQ website at [www.tceq.texas.gov/field/qa/lab\\_accred\\_certif.html](http://www.tceq.texas.gov/field/qa/lab_accred_certif.html).

Cardinal Laboratories is accredited through the State of Colorado Department of Public Health and Environment for:

Method EPA 552.2	Haloacetic Acids (HAA-5)
Method EPA 524.2	Total Trihalomethanes (TTHM)
Method EPA 524.4	Regulated VOCs (V1, V2, V3)

Accreditation applies to public drinking water matrices.

This report meets NELAP requirements and is made up of a cover page, analytical results, and a copy of the original chain-of-custody. If you have any questions concerning this report, please feel free to contact me.

Sincerely,

A handwritten signature in black ink that reads "Celey D. Keene". The signature is written in a cursive style with a large, stylized 'C' and 'K'.

Celey D. Keene

Lab Director/Quality Manager





PHONE (575) 393-2326 ° 101 E. MARLAND ° HOBBS, NM 88240

**Analytical Results For:**

Rice Operating Company  
 KATIE JONES  
 112 W. Taylor  
 Hobbs NM, 88240  
 Fax To: (575) 397-1471

Received:	09/25/2024	Sampling Date:	09/23/2024
Reported:	10/02/2024	Sampling Type:	Water
Project Name:	HOBBS K-29 BOOT	Sampling Condition:	Cool & Intact
Project Number:	NOT GIVEN	Sample Received By:	Alyssa Parras
Project Location:	T18S-R38E-SEC29 K-LEA CTY., NM		

**Sample ID: MONITOR WELL # 1R (H245810-01)**

Chloride, SM4500Cl-B (Water)		mg/L		Analyzed By: KV						
Analyte	Result	Reporting Limit	Analyzed	Method Blank	BS	% Recovery	True Value QC	RPD	Qualifier	
Chloride*	312	4.00	09/25/2024	ND	104	104	100	0.00		
Sulfate 375.4		mg/L		Analyzed By: KV						
Analyte	Result	Reporting Limit	Analyzed	Method Blank	BS	% Recovery	True Value QC	RPD	Qualifier	
Sulfate*	63.9	10.0	09/27/2024	ND	17.4	86.8	20.0	0.746		
TDS 160.1		mg/L		Analyzed By: KV						
Analyte	Result	Reporting Limit	Analyzed	Method Blank	BS	% Recovery	True Value QC	RPD	Qualifier	
TDS*	972	5.00	09/30/2024	ND	826	82.6	1000	0.0879		

**Sample ID: MONITOR WELL # 2 (H245810-02)**

Chloride, SM4500Cl-B (Water)		mg/L		Analyzed By: KV						
Analyte	Result	Reporting Limit	Analyzed	Method Blank	BS	% Recovery	True Value QC	RPD	Qualifier	
Chloride*	80.0	4.00	09/25/2024	ND	104	104	100	0.00		
Sulfate 375.4		mg/L		Analyzed By: KV						
Analyte	Result	Reporting Limit	Analyzed	Method Blank	BS	% Recovery	True Value QC	RPD	Qualifier	
Sulfate*	131	25.0	09/27/2024	ND	17.4	86.8	20.0	0.746		
TDS 160.1		mg/L		Analyzed By: KV						
Analyte	Result	Reporting Limit	Analyzed	Method Blank	BS	% Recovery	True Value QC	RPD	Qualifier	
TDS*	640	5.00	09/30/2024	ND	826	82.6	1000	0.0879		

Cardinal Laboratories

\*=Accredited Analyte

PLEASE NOTE: Liability and Damages. Cardinal's liability and client's exclusive remedy for any claim arising, whether based in contract or tort, shall be limited to the amount paid by client for analyses. All claims, including those for negligence and any other cause whatsoever shall be deemed waived unless made in writing and received by Cardinal within thirty (30) days after completion of the applicable service. In no event shall Cardinal be liable for incidental or consequential damages, including, without limitation, business interruptions, loss of use, or loss of profits incurred by client, its subsidiaries, affiliates or successors arising out of or related to the performance of the services hereunder by Cardinal, regardless of whether such claim is based upon any of the above stated reasons or otherwise. Results relate only to the samples identified above. This report shall not be reproduced except in full with written approval of Cardinal Laboratories.

Celey D. Keene, Lab Director/Quality Manager



PHONE (575) 393-2326 ° 101 E. MARLAND ° HOBBS, NM 88240

**Analytical Results For:**

Rice Operating Company  
 KATIE JONES  
 112 W. Taylor  
 Hobbs NM, 88240  
 Fax To: (575) 397-1471

Received:	09/25/2024	Sampling Date:	09/23/2024
Reported:	10/02/2024	Sampling Type:	Water
Project Name:	HOBBS K-29 BOOT	Sampling Condition:	Cool & Intact
Project Number:	NOT GIVEN	Sample Received By:	Alyssa Parras
Project Location:	T18S-R38E-SEC29 K-LEA CTY., NM		

**Sample ID: MONITOR WELL # 3 (H245810-03)**

Chloride, SM4500Cl-B (Water)			mg/L							
			Analyzed By: KV							
Analyte	Result	Reporting Limit	Analyzed	Method Blank	BS	% Recovery	True Value QC	RPD	Qualifier	
<b>Chloride*</b>	<b>172</b>	4.00	09/25/2024	ND	104	104	100	0.00		
Sulfate 375.4			mg/L							
			Analyzed By: KV							
Analyte	Result	Reporting Limit	Analyzed	Method Blank	BS	% Recovery	True Value QC	RPD	Qualifier	
<b>Sulfate*</b>	<b>88.1</b>	25.0	09/27/2024	ND	17.4	86.8	20.0	0.746		
TDS 160.1			mg/L							
			Analyzed By: KV							
Analyte	Result	Reporting Limit	Analyzed	Method Blank	BS	% Recovery	True Value QC	RPD	Qualifier	
<b>TDS*</b>	<b>698</b>	5.00	09/30/2024	ND	826	82.6	1000	0.0879		

Cardinal Laboratories

\*=Accredited Analyte

PLEASE NOTE: Liability and Damages. Cardinal's liability and client's exclusive remedy for any claim arising, whether based in contract or tort, shall be limited to the amount paid by client for analyses. All claims, including those for negligence and any other cause whatsoever shall be deemed waived unless made in writing and received by Cardinal within thirty (30) days after completion of the applicable service. In no event shall Cardinal be liable for incidental or consequential damages, including, without limitation, business interruptions, loss of use, or loss of profits incurred by client, its subsidiaries, affiliates or successors arising out of or related to the performance of the services hereunder by Cardinal, regardless of whether such claim is based upon any of the above stated reasons or otherwise. Results relate only to the samples identified above. This report shall not be reproduced except in full with written approval of Cardinal Laboratories.

Celey D. Keene, Lab Director/Quality Manager

PHONE (575) 393-2326 ° 101 E. MARLAND ° HOBBS, NM 88240

---

**Notes and Definitions**

ND	Analyte NOT DETECTED at or above the reporting limit
RPD	Relative Percent Difference
**	Samples not received at proper temperature of 6°C or below.
***	Insufficient time to reach temperature.
-	Chloride by SM4500Cl-B does not require samples be received at or below 6°C Samples reported on an as received basis (wet) unless otherwise noted on report

---

Cardinal Laboratories

\*=Accredited Analyte

PLEASE NOTE: Liability and Damages. Cardinal's liability and client's exclusive remedy for any claim arising, whether based in contract or tort, shall be limited to the amount paid by client for analyses. All claims, including those for negligence and any other cause whatsoever shall be deemed waived unless made in writing and received by Cardinal within thirty (30) days after completion of the applicable service. In no event shall Cardinal be liable for incidental or consequential damages, including, without limitation, business interruptions, loss of use, or loss of profits incurred by client, its subsidiaries, affiliates or successors arising out of or related to the performance of the services hereunder by Cardinal, regardless of whether such claim is based upon any of the above stated reasons or otherwise. Results relate only to the samples identified above. This report shall not be reproduced except in full with written approval of Cardinal Laboratories.

A handwritten signature in black ink, appearing to read "Celey D. Keene".

---

Celey D. Keene, Lab Director/Quality Manager

# Cardinal Laboratories, Inc.

## LAB Order ID # \_\_\_\_\_

(Circle or Specify Method No.)

[illegible]

Phone Results	Yes	No
Fax Results	Yes	No Additional Fax Number:
REMARKS:		
Email Results: <a href="mailto:kjones@riceswd.com">kjones@riceswd.com</a> <a href="mailto:rozanne@sdacres.com">rozanne@sdacres.com</a>		





PHONE (575) 393-2326 ° 101 E. MARLAND ° HOBBS, NM 88240

---

December 02, 2024

KATIE JONES

Rice Operating Company

112 W. Taylor

Hobbs, NM 88240

RE: HOBBS K-29 BOOT

Enclosed are the results of analyses for samples received by the laboratory on 11/22/24 8:49.

Cardinal Laboratories is accredited through Texas NELAP under certificate number TX-C24-00112. Accreditation applies to drinking water, non-potable water and solid and chemical materials. All accredited analytes are denoted by an asterisk (\*). For a complete list of accredited analytes and matrices visit the TCEQ website at [www.tceq.texas.gov/field/qa/lab\\_accred\\_certif.html](http://www.tceq.texas.gov/field/qa/lab_accred_certif.html).

Cardinal Laboratories is accredited through the State of Colorado Department of Public Health and Environment for:

Method EPA 552.2	Haloacetic Acids (HAA-5)
Method EPA 524.2	Total Trihalomethanes (TTHM)
Method EPA 524.4	Regulated VOCs (V1, V2, V3)

Accreditation applies to public drinking water matrices.

This report meets NELAP requirements and is made up of a cover page, analytical results, and a copy of the original chain-of-custody. If you have any questions concerning this report, please feel free to contact me.

Sincerely,

A handwritten signature in black ink that reads "Celey D. Keene". The signature is written in a cursive, flowing style.

Celey D. Keene

Lab Director/Quality Manager



PHONE (575) 393-2326 ° 101 E. MARLAND ° HOBBS, NM 88240

**Analytical Results For:**

Rice Operating Company  
 KATIE JONES  
 112 W. Taylor  
 Hobbs NM, 88240  
 Fax To: (575) 397-1471

Received:	11/22/2024	Sampling Date:	11/21/2024
Reported:	12/02/2024	Sampling Type:	Water
Project Name:	HOBBS K-29 BOOT	Sampling Condition:	Cool & Intact
Project Number:	NOT GIVEN	Sample Received By:	Alyssa Parras
Project Location:	T18S-R38E-SEC29 K-LEA CTY., NM		

**Sample ID: MONITOR WELL # 1R (H247164-01)**

Chloride, SM4500Cl-B (Water)		mg/L		Analyzed By: AC						
Analyte	Result	Reporting Limit	Analyzed	Method Blank	BS	% Recovery	True Value QC	RPD	Qualifier	
Chloride*	332	4.00	11/27/2024	ND	100	100	100	3.92		
Sulfate 375.4		mg/L		Analyzed By: HM						
Analyte	Result	Reporting Limit	Analyzed	Method Blank	BS	% Recovery	True Value QC	RPD	Qualifier	
Sulfate*	70.4	10.0	11/22/2024	ND	16.1	80.4	20.0	17.0		
TDS 160.1		mg/L		Analyzed By: HM						
Analyte	Result	Reporting Limit	Analyzed	Method Blank	BS	% Recovery	True Value QC	RPD	Qualifier	
TDS*	1010	5.00	11/26/2024	ND	839	83.9	1000	2.51		

**Sample ID: MONITOR WELL # 2 (H247164-02)**

Chloride, SM4500Cl-B (Water)		mg/L		Analyzed By: AC						
Analyte	Result	Reporting Limit	Analyzed	Method Blank	BS	% Recovery	True Value QC	RPD	Qualifier	
Chloride*	88.0	4.00	11/27/2024	ND	100	100	100	3.92		
Sulfate 375.4		mg/L		Analyzed By: HM						
Analyte	Result	Reporting Limit	Analyzed	Method Blank	BS	% Recovery	True Value QC	RPD	Qualifier	
Sulfate*	99.1	25.0	11/22/2024	ND	16.1	80.4	20.0	17.0		
TDS 160.1		mg/L		Analyzed By: HM						
Analyte	Result	Reporting Limit	Analyzed	Method Blank	BS	% Recovery	True Value QC	RPD	Qualifier	
TDS*	668	5.00	11/27/2024	ND	839	83.9	1000	2.51		

Cardinal Laboratories

\*=Accredited Analyte

PLEASE NOTE: Liability and Damages. Cardinal's liability and client's exclusive remedy for any claim arising, whether based in contract or tort, shall be limited to the amount paid by client for analyses. All claims, including those for negligence and any other cause whatsoever shall be deemed waived unless made in writing and received by Cardinal within thirty (30) days after completion of the applicable service. In no event shall Cardinal be liable for incidental or consequential damages, including, without limitation, business interruptions, loss of use, or loss of profits incurred by client, its subsidiaries, affiliates or successors arising out of or related to the performance of the services hereunder by Cardinal, regardless of whether such claim is based upon any of the above stated reasons or otherwise. Results relate only to the samples identified above. This report shall not be reproduced except in full with written approval of Cardinal Laboratories.

Celey D. Keene, Lab Director/Quality Manager



PHONE (575) 393-2326 ° 101 E. MARLAND ° HOBBS, NM 88240

**Analytical Results For:**

Rice Operating Company  
 KATIE JONES  
 112 W. Taylor  
 Hobbs NM, 88240  
 Fax To: (575) 397-1471

Received:	11/22/2024	Sampling Date:	11/21/2024
Reported:	12/02/2024	Sampling Type:	Water
Project Name:	HOBBS K-29 BOOT	Sampling Condition:	Cool & Intact
Project Number:	NOT GIVEN	Sample Received By:	Alyssa Parras
Project Location:	T18S-R38E-SEC29 K-LEA CTY., NM		

**Sample ID: MONITOR WELL # 3 (H247164-03)**

Chloride, SM4500Cl-B (Water)		mg/L		Analyzed By: AC						
Analyte	Result	Reporting Limit	Analyzed	Method Blank	BS	% Recovery	True Value QC	RPD	Qualifier	
Chloride*	160	4.00	11/27/2024	ND	100	100	100	3.92		
Sulfate 375.4		mg/L		Analyzed By: HM						
Analyte	Result	Reporting Limit	Analyzed	Method Blank	BS	% Recovery	True Value QC	RPD	Qualifier	
Sulfate*	76.2	25.0	11/22/2024	ND	16.1	80.4	20.0	17.0		
TDS 160.1		mg/L		Analyzed By: HM						
Analyte	Result	Reporting Limit	Analyzed	Method Blank	BS	% Recovery	True Value QC	RPD	Qualifier	
TDS*	757	5.00	11/27/2024	ND	839	83.9	1000	2.51		

Cardinal Laboratories

\*=Accredited Analyte

PLEASE NOTE: Liability and Damages. Cardinal's liability and client's exclusive remedy for any claim arising, whether based in contract or tort, shall be limited to the amount paid by client for analyses. All claims, including those for negligence and any other cause whatsoever shall be deemed waived unless made in writing and received by Cardinal within thirty (30) days after completion of the applicable service. In no event shall Cardinal be liable for incidental or consequential damages, including, without limitation, business interruptions, loss of use, or loss of profits incurred by client, its subsidiaries, affiliates or successors arising out of or related to the performance of the services hereunder by Cardinal, regardless of whether such claim is based upon any of the above stated reasons or otherwise. Results relate only to the samples identified above. This report shall not be reproduced except in full with written approval of Cardinal Laboratories.

Celey D. Keene, Lab Director/Quality Manager



---

PHONE (575) 393-2326 ° 101 E. MARLAND ° HOBBS, NM 88240

---

### Notes and Definitions

ND	Analyte NOT DETECTED at or above the reporting limit
RPD	Relative Percent Difference
**	Samples not received at proper temperature of 6°C or below.
***	Insufficient time to reach temperature.
-	Chloride by SM4500Cl-B does not require samples be received at or below 6°C Samples reported on an as received basis (wet) unless otherwise noted on report

---

Cardinal Laboratories

\*=Accredited Analyte

PLEASE NOTE: Liability and Damages. Cardinal's liability and client's exclusive remedy for any claim arising, whether based in contract or tort, shall be limited to the amount paid by client for analyses. All claims, including those for negligence and any other cause whatsoever shall be deemed waived unless made in writing and received by Cardinal within thirty (30) days after completion of the applicable service. In no event shall Cardinal be liable for incidental or consequential damages, including, without limitation, business interruptions, loss of use, or loss of profits incurred by client, its subsidiaries, affiliates or successors arising out of or related to the performance of the services hereunder by Cardinal, regardless of whether such claim is based upon any of the above stated reasons or otherwise. Results relate only to the samples identified above. This report shall not be reproduced except in full with written approval of Cardinal Laboratories.

A handwritten signature in black ink, appearing to read "Celey D. Keene".

---

Celey D. Keene, Lab Director/Quality Manager



# Cardinal Laboratories, Inc.

## CHAIN-OF-CUSTODY AND ANALYSIS REQUEST

LAB Order ID # \_\_\_\_\_

(Circle or Specify Method No.)

Page 5 of 5

Phone Results	Yes	No
Fax Results	Yes	No

Additional Fax Number:

REMARKS:

Email Results: [kjones@riceswd.com](mailto:kjones@riceswd.com)  
[rozanne@sdacres.com](mailto:rozanne@sdacres.com)

Sante Fe Main Office  
Phone: (505) 476-3441

General Information  
Phone: (505) 629-6116

Online Phone Directory  
<https://www.emnrd.nm.gov/ocd/contact-us>

State of New Mexico

Energy, Minerals and Natural Resources

Oil Conservation Division

1220 S. St Francis Dr.

Santa Fe, NM 87505

CONDITIONS

Action 447114

CONDITIONS

Operator: RICE OPERATING COMPANY PO Box 5630 Hobbs, NM 88241	OGRID: 19174
	Action Number: 447114
	Action Type: [UF-GWA] Ground Water Abatement (GROUND WATER ABATEMENT)

CONDITIONS

Created By	Condition	Condition Date
michael.buchanan	Review of the 2024 Annual Groundwater Report for the Hobbs SWD System: content satisfactory. 1. Continue to conduct groundwater monitoring at the site as approved and prescribed. 2. Submit the 2025 Annual Groundwater Report to OCD no later than April 1, 2026.	4/30/2025