



June 18, 2025

New Mexico Oil Conservation Division
1220 South St. Francis Drive
Santa Fe, New Mexico 87505

Re: Closure Request
Nimitz MDP1 12 Federal 002H
API# 30-015-44580
Incident Number: nAPP2431326565
32.225552°N, 103.821365°W
Eddy County, New Mexico

To Whom It May Concern:

Ensolum, LLC (Ensolum), on behalf of Oxy USA, Inc. (Oxy), has prepared this *Closure Request* to document the site assessment activities completed to date to address impacted soil identified at the Nimitz MDP1 12 Federal 002H (Site). The purpose of the site assessment activities was to delineate the vertical and lateral extent of impacted soil resulting from a release of crude oil and produced water at the Site. Based on field observations, field screening activities, and soil sample laboratory analytical results, Oxy is submitting this Closure Request, describing excavation activities that have occurred and requesting no further remediation for Incident Number nAPP2431326565.

SITE DESCRIPTION AND RELEASE SUMMARY

The Site is located in Unit M, Section 07, Township 24 South, Range 31 East, in Eddy County, New Mexico (32.225552°N, 103.821365°W) and is associated with oil and gas exploration and production operations on Federal Land managed by the Bureau of Land Management (BLM).

On November 4, 2024, a flowline malfunctioned resulting in the release of approximately 15 barrels (bbls) of crude oil and 15 bbls of produced water onto the ground surface, with approximately 10 bbls of crude oil and 10 bbls of produced water subsequently recovered utilizing vacuum trucks. Oxy reported the release to the New Mexico Oil Conservation Division (NMOCD) on November 8, 2024, and the release was assigned Incident Number nAPP2431326565.

SITE CHARACTERIZATION AND CLOSURE CRITERIA

The Site was characterized to assess the applicability of Table I, Closure Criteria for Soils Impacted by a Release, of Title 19, Chapter 15, Part 29 (19.15.29) of the New Mexico Administrative Code (NMAC). Results from the characterization desktop review are presented on NMOCD Portal of the Form C-141, Site Assessment/Characterization submitted on November 18, 2024. Potential site receptors are identified on **Figure 1 in Appendix A**.

Depth to groundwater at the Site is between 100 and 500 feet bgs based on the nearest groundwater well data. On June 14, 1961, a United States Geological Survey (USGS) permitted well (USGS 321334103494901) was advanced to a depth of 500 feet bgs. Groundwater was encountered at 367 feet bgs. On January 17, 2013, a USGS permitted well (USGS 321310103482101) was remeasured and measured groundwater to be at a depth of 74 feet bgs. Both wells are depicted on **Figure 1 in Appendix A**. The Well Records are included in **Appendix B**.

The closest continuously flowing or significant watercourse to the Site is a freshwater emergent wetland located approximately 146 feet southeast of the Site. The Site is greater than 200 feet from a lakebed, sinkhole, or playa lake and greater than 300 feet from an occupied residence, school, hospital, institution, church. The site is located approximately 100 to 200 feet from a wetland. The Site is greater than 1,000 feet to a freshwater well or spring and is not within a 100-year floodplain or overlying a subsurface mine. The Site is not underlain by unstable geology (low potential karst designation area).

Based on the results of the Site Characterization, the following NMOCD Table I Closure Criteria (Closure Criteria) apply:

- Benzene: 10 milligrams per kilogram (mg/kg)
- Benzene, toluene, ethylbenzene, and total xylenes (BTEX): 50 mg/kg
- Total petroleum hydrocarbons (TPH): 100 mg/kg
- Chloride: 600 mg/kg

SITE ASSESSMENT AND DELINEATION ACTIVITIES

On January 7, 2025, Ensolum personnel conducted a Site visit to evaluate the release extent based on information provided on the C-141 and visual observations. Ensolum personnel collected five delineation soil samples (DS01 through DS04) outside the release extent from a depth 0.25 feet bgs. The soil samples were field screened for volatile organic compounds (VOCs) utilizing a calibrated photoionization detector (PID), and chloride using Hach® chloride QuanTab® test strips. The delineation soil samples were submitted for laboratory analysis of BTEX, TPH, and chloride. The release extent and soil sample locations were mapped utilizing a handheld Global Positioning System (GPS) unit and are depicted on **Figure 2 (Appendix A)**. Photographic documentation was completed during the Site visit and a Photographic Log is included in **Appendix C**.

BACKGROUND

Ensolum submitted a Remediation Work Plan on January 31, 2025 that included the results of the assessment and delineation activities. NMOCD Accepted the Remediation Work Plan and Extension request on February 17, 2025. Correspondance is recorded in **Appendix E**.

COMPOSITE SAMPLING, EXCAVATION ACTIVITIES, AND LABORATORY ANALYTICAL RESULTS

Between March 3, 2025, and April 14, 2025, Ensolum personnel returned to the Site to collect 5-point composite soil samples every 200 square feet from the excavation extent. The 5-point composite samples were collected by placing five equivalent aliquots of soil into a 1-gallon, resealable plastic bag and homogenizing the samples by thoroughly mixing. A total of 15 composite soil samples were collected from 8 locations from the excavation floor (FS01 through FS08) at depths ranging between 0.25 feet bgs to 2.5 feet bgs to confirm the absence of impacted soil. A total of 5 composite soil samples were collected from 2 locations from the excavation sidewalls (SW01 and SW02) at depths ranging from 0-1 to 0-2.5 feet bgs to confirm the lateral extent of the impacted soil. The soil samples were handled and analyzed following the same procedures as described above.

The soil sample locations were mapped utilizing a handheld Global Positioning System (GPS) unit and are depicted on **Figure 2 (Appendix A)**. Photographic documentation was completed during the Site visits and a photographic log is included as **Appendix C**.

The soil samples were placed directly into pre-cleaned glass jars, labeled with the location, date, time, sampler name, method of analysis, and immediately placed on ice. The soil samples were transported

Oxy USA, Inc.
Closure Report
Nimitz MDP1 12 Federal 002H

June 18, 2025

Page 3

under strict chain-of-custody procedures to Cardinal Laboratories (Cardinal) in Hobbs, New Mexico, for analysis of BTEX, following United States Environmental Protection Agency (EPA) Method 8021B; TPH-gasoline range organics (GRO), TPH-diesel range organics (DRO), and TPH-oil range organics (ORO) following EPA Method 8015M/D; and chloride following Standard Method SM-4500 Cl-B.

Laboratory analytical results for final soil samples FS01 through FS08 indicated all COCs were compliant with the Site Closure Criteria. Laboratory analytical results for sidewall soil samples SW01 and SW02 indicated all COC concentrations were compliant with the most stringent Closure Criteria.

The excavation areas measured approximately 1,688 square feet. A total of 118 cubic yards of impacted soil were removed during the excavation activities. The impacted soil was transported and properly disposed of at the Twin Wells Caliche Pit, New Mexico.

Subsequent to the results of the final confirmation soil sampling, the excavated areas were backfilled with clean fill material and contoured to the original surrounding grade. A representative 5-point composite soil sample (Twin Wells Caliche Pit Caliche) was collected from the backfill material prior to use at the Site. Laboratory analytical results for the backfill soil sample confirmed compliance with the NMOCD requirements for the reclaimed area to be non-waste containing, uncontaminated, earthen material with chloride concentrations less than 600 mg/kg and TPH concentrations less than 100 mg/kg. The laboratory analytical results are summarized in the attached **Table 2** and the complete laboratory analytical report is included in **Appendix E**. The excavation was seeded with a BLM approved seed mixture of 53.10% Bristlegrass Plains (*Setaria Vulpiseta*), 21.08% Dropseed Sand (*Sporobolus Cryptandrus*), and 21.52% Lovegrass Sand (*Eragrostis Richodes*).

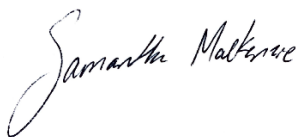
CLOSURE REQUEST

Site assessment and remediation activities were conducted at the Site to address the November 4, 2024, produced water and crude oil release. Laboratory analytical results for the assessment and excavation activities indicated all COC concentrations were compliant with the Site Closure Criteria. Based on the laboratory analytical results, no further remediation is required at this time. The excavation area was backfilled and reseeded in May 2025 with a BLM approved seed mixture in accordance with 19.15.29.13 NMAC.

Depth to groundwater was determined to be between 100 and 500 feet bgs within 0.55 miles of the Site and is located within 300 feet of a wetland, no other sensitive receptors were identified near the release extent. Oxy believes the remedial actions completed are protective of human health, the environment, and groundwater. As such, Oxy respectfully requests closure for Incident Number nAPP2431326565.

If you have any questions or comments, please contact Ms. Samantha MacKenzie at (703) 357-3545 or smackenzie@ensolum.com.

Sincerely,
Ensolum, LLC



Samantha MacKenzie
Staff Geologist



Beaux Jennings
Associate Principal

Oxy USA, Inc.
Closure Report
Nimitz MDP1 12 Federal 002H

June 18, 2025

Page 4

cc: Jessica Kent, Oxy USA, Inc.
Daniel Sparks, Oxy USA, Inc.
New Mexico Bureau of Land Management

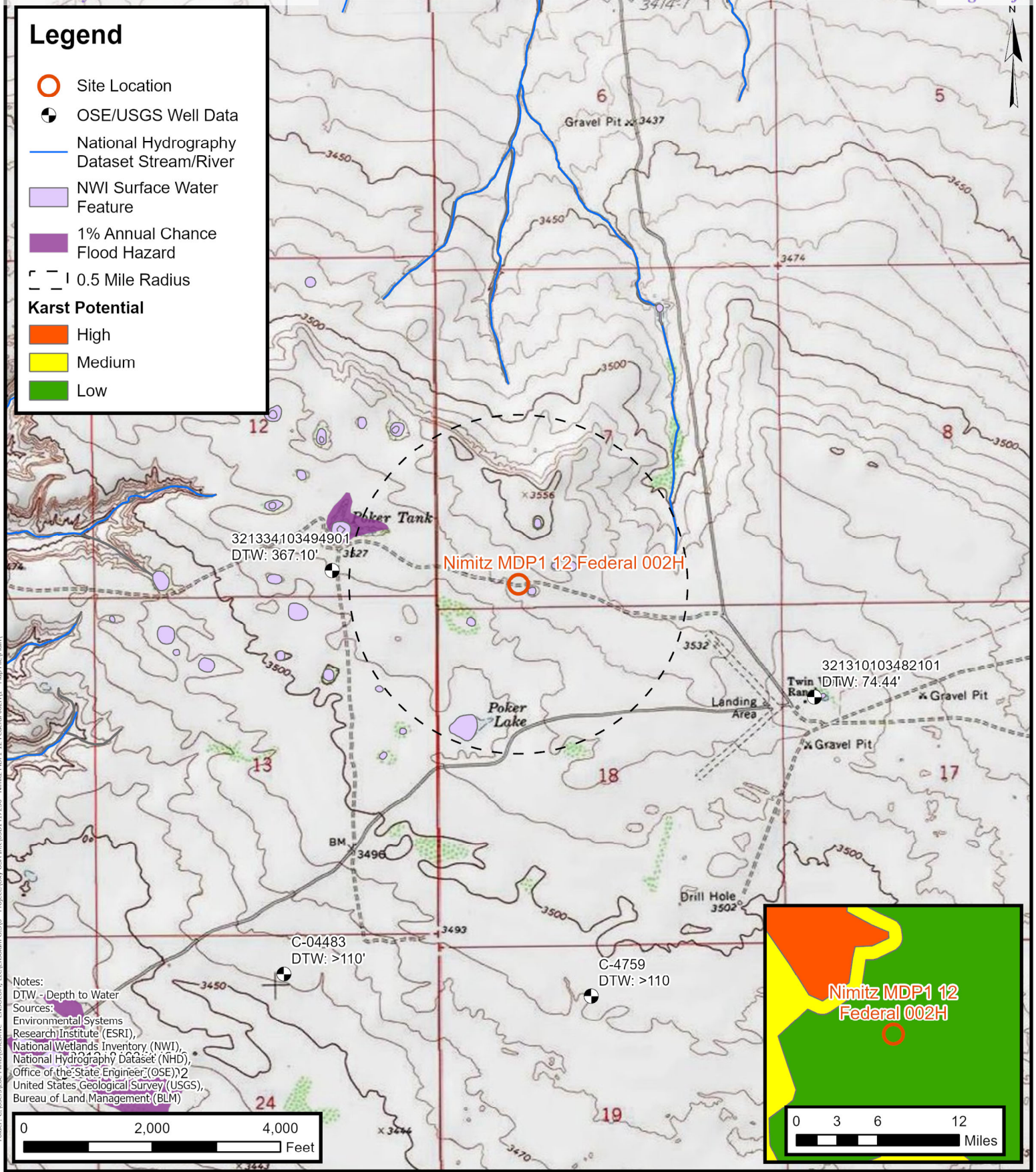
Appendices:

Appendix A Figures
Appendix B Supporting Documentation
Appendix C Photographic Log
Appendix D Tables
Appendix E Laboratory Analytical Reports & Chain-of-Custody Documentation
Appendix F Correspondence



APPENDIX A

Figures





ENSOLUM
Environmental, Engineering and
Hydrogeologic Consultants

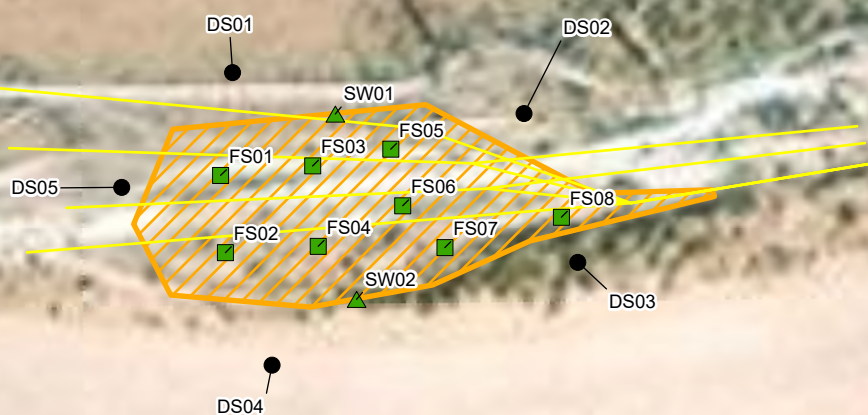
Site Receptor Map

Oxy USA, Inc.
Nimitz MDP1 12 Federal 002H
Incident Number: nAPP2431326565
32.225552, -103.821365
Eddy County, New Mexico

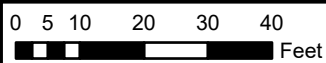
FIGURE 1

Legend

- Delineation Soil Sample in Compliance with Closure Criteria
- Excavation Floor Sample in Compliance with Closure Criteria
- ▲ Excavation Sidewall Sample in Compliance with Closure Criteria
- Oil and Gas Utility Line
- ▨ Release Extent



Notes:
Sample ID @ Depth Below Ground Surface.



Sources: Environmental Systems Research Institute (ESRI)



Delineation Soil Sample Locations

Oxy USA Inc.
Nimitz MDP1 12 Federal 002H
Incident Number: nAPP2431326565
32.225552, -103.821365
Eddy County, New Mexico

FIGURE
2

Legend

- Composite Soil Sample Location

Twin Wells Caliche Pit Composite
Soil Sample Location

0 1,000 2,000
Feet

Sources: Environmental Systems Research Institute (ESRI)



Backfill Site Map

Twin Wells Caliche Pit
32.214924° N, 103.835618° W
Eddy County, New Mexico

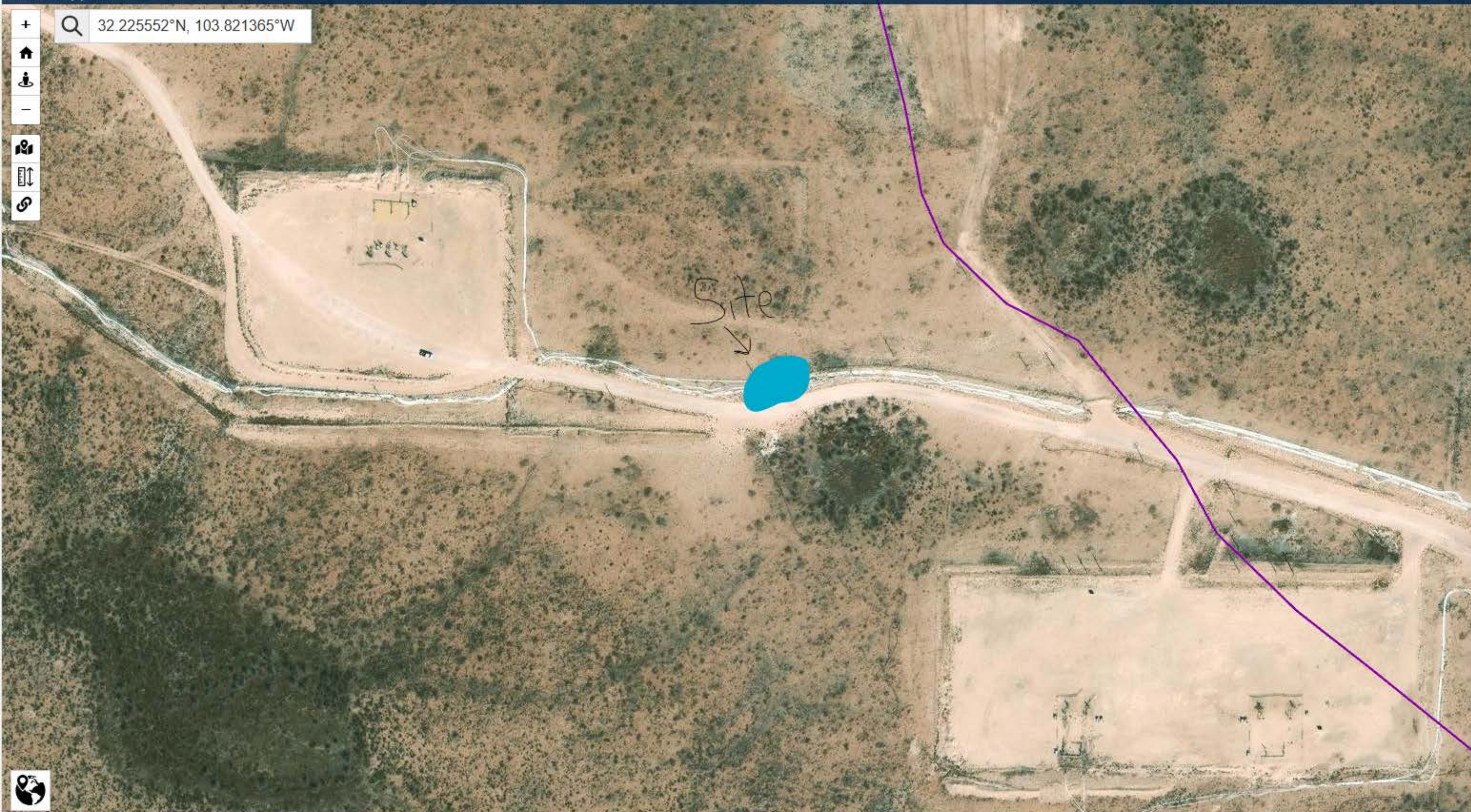
ATTACHMENT

A



APPENDIX B

Supporting Documentation



Close

Legend

Watersheds



Watershed boundary

Comments: Watershed boundaries are determined by [hydrologic units](#). Zooming the map out shows more generalized (regional) watersheds while zooming the map in shows more detailed (local) watersheds.

Source: [USGS National Map](#)

Service: [ArcGIS MapServer](#)

Aquifers



- Blues Unconsolidated and semiconsolidated sand and gravel aquifers
- Yellow Coastal Plain aquifer systems in semiconsolidated sand
- Greens Sandstone aquifers
- Purples Sandstone and carbonate-rock aquifers
- Browns Carbonate-rock aquifers
- Reds Igneous and metamorphic-rock aquifers
- White Other



USGS 321334103494901 24S.30E.12.432344

Eddy County, New Mexico
Latitude 32°13'34", Longitude 103°49'49" NAD27
Land-surface elevation 3,522 feet above NAVD88
The depth of the well is 500 feet below land surface.
This well is completed in the Other aquifers (N9999OTHER) national aquifer.
This well is completed in the Rustler Formation (312RSLR) local aquifer.

Output formats

Table of data

Tab-separated data

Graph of data

Reselect period

Date	Time	² Water level date-time accuracy	² Parameter code	Water level, feet below land surface	Water level, feet above specific vertical datum	Referenced vertical datum	² Status	² Method of measurement	² Measuring agency	² Source of measurement	² Water level approval status
1961-06-14			D	62610		3153.16	NGVD29	1	Z		A
1961-06-14			D	62611		3154.90	NAVD88	1	Z		A
1961-06-14			D	72019	367.10			1	Z		A

US S 321310103482101 24S.31E.17.13120

Edley County, New Mexico
Latitude 32°13'14.1", Longitude 103°48'23.4" NAD83
Land surface elevation 3,530.00 feet above NGVD29
This well is completed in the Other aquifers (N9999OTHER) national aquifer.
This well is completed in the Alluvium, Bolson Deposits and Other Surface Deposits (110AVMB) local aquifer.

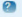
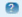
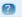


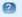

Output formats

[Table of data](#)

[Tab-separated data](#)

[Graph of data](#)

[Reselect period](#)

Date	Time	 Water-level date-time accuracy	 Parameter code	Water level, feet below land surface	Water level, feet above specific vertical datum	Referenced vertical datum	 Status	 Method of measurement	 Measuring agency	 Source of measurement	 Water-level approval status
1959-02-03			D	62610	3459.50	NGVD29	P	Z			A
1959-02-03			D	62611	3461.24	NAVD88	P	Z			A
1959-02-03			D	72019	70.50		P	Z			A
1959-03-25			D	62610	3462.33	NGVD29	1	Z			A
1959-03-25			D	62611	3464.07	NAVD88	1	Z			A
1959-03-25			D	72019	67.67		1	Z			A
1976-12-02			D	62610	3463.98	NGVD29	1	Z			A
1976-12-02			D	62611	3465.72	NAVD88	1	Z			A
1976-12-02			D	72019	66.02		1	Z			A
2013-01-17	21:00 UTC		m	62610	3455.56	NGVD29	1	S	USGS	S	A
2013-01-17	21:00 UTC		m	62611	3457.30	NAVD88	1	S	USGS	S	A
2013-01-17	21:00 UTC		m	72019	74.44		1	S	USGS	S	A



APPENDIX C

Photographic Log



Photographic Log

Oxy USA Inc.

Nimitz MDP1 12 Federal 002H

Incident Number nAPP2431326565



Photograph: 1
Description: Release footprint
View: West

Date: 11/18/2024



Photograph: 2
Description: Initial Sampling
View: Northeast

Date: 1/7/2025



Photograph: 3
Description: Pothole Sampling
View: Northeast

Date: 1/27/2025



Photograph: 4
Description: Pothole Sampling
View: Southwest

Date: 1/27/2025

**Photographic Log**

Oxy USA Inc.

Nimitz MDP1 12 Federal 002H

Incident Number nAPP2431326565



Photograph: 5 Date: 3/3/2025
Description: HydroVAC Activites
View: Northeast



Photograph: 6 Date: 4/14/2025
Description: HydroVAC Activites
View: East



Photograph: 7 Date: 5/15/2025
Description: Backfill and Reseeding Activites
View: Northeast



Photograph: 8 Date: 5/15/2025
Description: Backfill and Reseeding Activites
View: East



APPENDIX D

Table

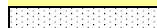
TABLE 1
SOIL SAMPLE ANALYTICAL RESULTS
Nimitz MDP1 12 Federal 002H
Oxy USA, Inc.
Eddy County, New Mexico
Ensolum Project No. 03B1417236

Sample Designation	Date	Depth (feet bgs)	Benzene (mg/kg)	Toluene (mg/kg)	Ethylbenzene (mg/kg)	Total Xylenes (mg/kg)	Total BTEX (mg/kg)	TPH GRO C ₆ -C ₁₂ (mg/kg)	TPH DRO >C ₁₂ -C ₂₈ (mg/kg)	TPH MRO >C ₂₈ -C ₃₅ (mg/kg)	TPH Total C ₆ -C ₃₅ (mg/kg)	Chloride (mg/kg)
New Mexico Oil Conservation Division Closure Criteria for Soils Impacted by a Release			10	NE	NE	NE	50	NE	NE	NE	100	600
Delineation Soil Sample Analytical Results												
DS01	01/07/2025	0.25	<0.050	<0.050	<0.050	<0.150	<0.300	<10.0	<10.0	<10.0	<10.0	<16.0
DS02	01/07/2025	0.25	<0.050	<0.050	<0.050	<0.150	<0.300	<10.0	<10.0	<10.0	<10.0	<16.0
DS03	01/07/2025	0.25	<0.050	<0.050	<0.050	<0.150	<0.300	<10.0	<10.0	<10.0	<10.0	<16.0
DS04	01/07/2025	0.25	<0.050	<0.050	<0.050	<0.150	<0.300	<10.0	<10.0	<10.0	<10.0	<16.0
DS05	01/07/2025	0.25	<0.050	<0.050	<0.050	<0.150	<0.300	<10.0	<10.0	<10.0	<10.0	<16.0
Excavation Soil Sample Analytical Results												
FS01	03/03/2025	0.25	<0.050	<0.050	<0.050	<0.150	<0.300	<10.0	<10.0	<10.0	<10.0	<16.0
FS02	03/03/2025	1	<0.050	<0.050	<0.050	<0.150	<0.300	<10.0	1,180	194	1,374	1,560
	03/27/2025	2	<0.050	0.735	0.762	5.95	7.45	150	5,140	949	6,239	6,240
	04/14/2025	2.5	<0.050	<0.050	<0.050	<0.050	<0.300	<10.0	<10.0	<10.0	<10.0	<16.0
FS03	03/03/2025	0.25	<0.050	<0.050	<0.050	<0.150	<0.300	<10.0	<10.0	<10.0	<10.0	16.0
FS04	03/03/2025	0.25	<0.050	<0.050	<0.050	<0.150	<0.300	<10.0	73.2	17.7	90.9	128
FS05	03/03/2025	0.25	<0.050	<0.050	<0.050	<0.150	<0.300	<10.0	28.2	<10.0	28.2	64.0
FS06	03/03/2025	1	<0.050	0.672	0.984	14.8	16.5	508	6,260	1,170	7,938	1,880
	03/27/2025	2	<0.050	0.068	0.106	1.63	1.81	39.2	1,650	426	2,115	5,280
	04/14/2025	2.5	<0.050	<0.050	<0.050	<0.150	<0.300	<10.0	<10.0	<10.0	<10.0	96.0
FS07	03/03/2025	1	<0.050	<0.050	<0.050	0.519	0.519	10.5	634	168	813	2,480
	03/27/2025	2	<0.050	0.098	0.135	1.58	1.82	21.1	495	92.7	609	6,320
	04/14/2025	2.5	<0.050	<0.050	<0.050	<0.150	<0.300	<10.0	<10.0	<10.0	<10.0	64.0
FS08	03/03/2025	1	<0.050	0.052	0.165	1.93	2.15	99.6	2,990	610	3,700	1,220
	03/27/2025	2	<0.050	<0.050	<0.050	<0.150	<0.300	<10.0	<10.0	<10.0	<10.0	256

TABLE 1
SOIL SAMPLE ANALYTICAL RESULTS
Nimitz MDP1 12 Federal 002H
Oxy USA, Inc.
Eddy County, New Mexico
Ensolum Project No. 03B1417236

Sample Designation	Date	Depth (feet bgs)	Benzene (mg/kg)	Toluene (mg/kg)	Ethylbenzene (mg/kg)	Total Xylenes (mg/kg)	Total BTEX (mg/kg)	TPH GRO C ₆ -C ₁₂ (mg/kg)	TPH DRO >C ₁₂ -C ₂₈ (mg/kg)	TPH MRO >C ₂₈ -C ₃₅ (mg/kg)	TPH Total C ₆ -C ₃₅ (mg/kg)	Chloride (mg/kg)
New Mexico Oil Conservation Division Closure Criteria for Soils Impacted by a Release			10	NE	NE	NE	50	NE	NE	NE	100	600
Sidewall Soil Sample Analytical Results												
SW01	03/03/2025	0-1	<0.050	<0.050	<0.050	<0.150	<0.300	<10.0	111	45.8	157	96.0
	03/27/2025	0-2	<0.050	0.108	<0.050	0.741	0.849	23.4	4,770	1,170	5,963	8,530
	04/14/2025	0-2.5	<0.050	<0.050	<0.050	<0.150	<0.300	<10.0	<10.0	<10.0	<10.0	32.0
SW02	03/03/2025	0-1	<0.050	0.393	0.858	7.35	8.60	244	3,190	504	3,938	3,920
	03/27/2025	0-2	<0.050	<0.050	<0.050	<0.150	<0.300	<10.0	<10.0	<10.0	<10.0	144

Concentrations in **bold** and yellow exceed the New Mexico Oil Conservation Division Closure Criteria for Soils Impacted by a Release

 represents samples that have been excavated

bgs: below ground surface

NE: Not Established

mg/kg: milligrams per kilogram

BTEX: Benzene, Toluene, Ethylbenzene, and Xylenes

GRO: Gasoline Range Organics

DRO: Diesel Range Organics

MRO: Motor Oil/Lube Oil Range Organics

GRO: Gasoline Range Organics

DRO: Diesel Range Organics

TPH: Total Petroleum Hydrocarbons



TABLE 2
BACKFILL SOIL SAMPLE ANALYTICAL RESULTS
TWIN WELLS CALICHE PIT
OXY USA, INC.
EDDY COUNTY, NEW MEXICO

Sample I.D.	Sample Date	Sample Depth (feet bgs)	Benzene (mg/kg)	Total BTEX (mg/kg)	TPH GRO (mg/kg)	TPH DRO (mg/kg)	TPH ORO (mg/kg)	GRO+DRO (mg/kg)	Total TPH (mg/kg)	Chloride (mg/kg)
NMOCD Table 1 Closure Criteria (NMAC 19.15.29)			10	50	NE	NE	NE	NE	100	600
Confirmation Background Soil Sample										
Twin Wells Caliche Pit	09/09/2024	NA	<0.050	<0.300	<10.0	<10.0	<10.0	<10.0	<10.0	32.0

Notes:

bgs: below ground surface
mg/kg: milligrams per kilogram
NMOCD: New Mexico Oil Conservation Division
BTEX: Benzene, Toluene, Ethylbenzene, and Xylenes

GRO: Gasoline Range Organics
DRO: Diesel Range Organics
ORO: Oil Range Organics
TPH: Total Petroleum Hydrocarbon



APPENDIX E

Laboratory Analytical Reports & Chain-of-Custody Documentation



PHONE (575) 393-2326 ° 101 E. MARLAND ° HOBBS, NM 88240

January 13, 2025

SAMANTHA MACKENZIE

ENSOLUM, LLC

705 W WADLEY AVE.

MIDLAND, TX 79705

RE: NIMITZ MDPI 12 FEDERAL 002H

Enclosed are the results of analyses for samples received by the laboratory on 01/07/25 16:03.

Cardinal Laboratories is accredited through Texas NELAP under certificate number TX-C24-00112. Accreditation applies to drinking water, non-potable water and solid and chemical materials. All accredited analytes are denoted by an asterisk (*). For a complete list of accredited analytes and matrices visit the TCEQ website at www.tceq.texas.gov/field/qa/lab_accred_certif.html.

Cardinal Laboratories is accredited through the State of Colorado Department of Public Health and Environment for:

Method EPA 552.2	Haloacetic Acids (HAA-5)
Method EPA 524.2	Total Trihalomethanes (TTHM)
Method EPA 524.4	Regulated VOCs (V1, V2, V3)

Accreditation applies to public drinking water matrices.

This report meets NELAP requirements and is made up of a cover page, analytical results, and a copy of the original chain-of-custody. If you have any questions concerning this report, please feel free to contact me.

Sincerely,

A handwritten signature in black ink that reads "Celey D. Keene". The signature is written in a cursive, flowing style.

Celey D. Keene

Lab Director/Quality Manager



PHONE (575) 393-2326 ° 101 E. MARLAND ° HOBBS, NM 88240

Analytical Results For:

ENSOLUM, LLC
 SAMANTHA MACKENZIE
 705 W WADLEY AVE.
 MIDLAND TX, 79705
 Fax To:

Received: 01/07/2025
 Reported: 01/13/2025
 Project Name: NIMITZ MDPI 12 FEDERAL 002H
 Project Number: 03B1417236
 Project Location: OXY - EDDY CO NM

Sampling Date: 01/07/2025
 Sampling Type: Soil
 Sampling Condition: Cool & Intact
 Sample Received By: Alyssa Parras

Sample ID: DS 01 0.25' (H250066-01)

BTEX 8021B		mg/kg		Analyzed By: JH					
Analyte	Result	Reporting Limit	Analyzed	Method Blank	BS	% Recovery	True Value QC	RPD	Qualifier
Benzene*	<0.050	0.050	01/09/2025	ND	1.91	95.3	2.00	2.44	
Toluene*	<0.050	0.050	01/09/2025	ND	1.87	93.7	2.00	4.26	
Ethylbenzene*	<0.050	0.050	01/09/2025	ND	2.00	100	2.00	5.90	
Total Xylenes*	<0.150	0.150	01/09/2025	ND	6.04	101	6.00	5.76	
Total BTEX	<0.300	0.300	01/09/2025	ND					

Surrogate: 4-Bromofluorobenzene (PID) 107 % 71.5-134

Chloride, SM4500Cl-B		mg/kg		Analyzed By: KV						
Analyte	Result	Reporting Limit	Analyzed	Method Blank	BS	% Recovery	True Value QC	RPD	Qualifier	
Chloride	<16.0	16.0	01/08/2025	ND	416	104	400	3.77		

TPH 8015M		mg/kg		Analyzed By: MS					
Analyte	Result	Reporting Limit	Analyzed	Method Blank	BS	% Recovery	True Value QC	RPD	Qualifier
GRO C6-C10*	<10.0	10.0	01/08/2025	ND	210	105	200	2.90	
DRO >C10-C28*	<10.0	10.0	01/08/2025	ND	205	103	200	2.67	
EXT DRO >C28-C36	<10.0	10.0	01/08/2025	ND					

Surrogate: 1-Chlorooctane 93.5 % 48.2-134

Surrogate: 1-Chlorooctadecane 96.9 % 49.1-148

Cardinal Laboratories

*=Accredited Analyte

PLEASE NOTE: Liability and Damages. Cardinal's liability and client's exclusive remedy for any claim arising, whether based in contract or tort, shall be limited to the amount paid by client for analyses. All claims, including those for negligence and any other cause whatsoever shall be deemed waived unless made in writing and received by Cardinal within thirty (30) days after completion of the applicable service. In no event shall Cardinal be liable for incidental or consequential damages, including, without limitation, business interruptions, loss of use, or loss of profits incurred by client, its subsidiaries, affiliates or successors arising out of or related to the performance of the services hereunder by Cardinal, regardless of whether such claim is based upon any of the above stated reasons or otherwise. Results relate only to the samples identified above. This report shall not be reproduced except in full with written approval of Cardinal Laboratories.

Celey D. Keene, Lab Director/Quality Manager



PHONE (575) 393-2326 ° 101 E. MARLAND ° HOBBS, NM 88240

Analytical Results For:

ENSOLUM, LLC
 SAMANTHA MACKENZIE
 705 W WADLEY AVE.
 MIDLAND TX, 79705
 Fax To:

Received: 01/07/2025
 Reported: 01/13/2025
 Project Name: NIMITZ MDPI 12 FEDERAL 002H
 Project Number: 03B1417236
 Project Location: OXY - EDDY CO NM

Sampling Date: 01/07/2025
 Sampling Type: Soil
 Sampling Condition: Cool & Intact
 Sample Received By: Alyssa Parras

Sample ID: DS 02 0.25' (H250066-02)

BTEx 8021B		mg/kg		Analyzed By: JH					
Analyte	Result	Reporting Limit	Analyzed	Method Blank	BS	% Recovery	True Value QC	RPD	Qualifier
Benzene*	<0.050	0.050	01/09/2025	ND	1.91	95.3	2.00	2.44	
Toluene*	<0.050	0.050	01/09/2025	ND	1.87	93.7	2.00	4.26	
Ethylbenzene*	<0.050	0.050	01/09/2025	ND	2.00	100	2.00	5.90	
Total Xylenes*	<0.150	0.150	01/09/2025	ND	6.04	101	6.00	5.76	
Total BTEX	<0.300	0.300	01/09/2025	ND					

Surrogate: 4-Bromofluorobenzene (PID) 106 % 71.5-134

Chloride, SM4500Cl-B		mg/kg		Analyzed By: KV					
Analyte	Result	Reporting Limit	Analyzed	Method Blank	BS	% Recovery	True Value QC	RPD	Qualifier
Chloride	<16.0	16.0	01/08/2025	ND	416	104	400	3.77	

TPH 8015M		mg/kg		Analyzed By: MS					
Analyte	Result	Reporting Limit	Analyzed	Method Blank	BS	% Recovery	True Value QC	RPD	Qualifier
GRO C6-C10*	<10.0	10.0	01/09/2025	ND	210	105	200	2.90	
DRO >C10-C28*	<10.0	10.0	01/09/2025	ND	205	103	200	2.67	
EXT DRO >C28-C36	<10.0	10.0	01/09/2025	ND					

Surrogate: 1-Chlorooctane 100 % 48.2-134

Surrogate: 1-Chlorooctadecane 106 % 49.1-148

Cardinal Laboratories

*=Accredited Analyte

PLEASE NOTE: Liability and Damages. Cardinal's liability and client's exclusive remedy for any claim arising, whether based in contract or tort, shall be limited to the amount paid by client for analyses. All claims, including those for negligence and any other cause whatsoever shall be deemed waived unless made in writing and received by Cardinal within thirty (30) days after completion of the applicable service. In no event shall Cardinal be liable for incidental or consequential damages, including, without limitation, business interruptions, loss of use, or loss of profits incurred by client, its subsidiaries, affiliates or successors arising out of or related to the performance of the services hereunder by Cardinal, regardless of whether such claim is based upon any of the above stated reasons or otherwise. Results relate only to the samples identified above. This report shall not be reproduced except in full with written approval of Cardinal Laboratories.

Celey D. Keene, Lab Director/Quality Manager



PHONE (575) 393-2326 ° 101 E. MARLAND ° HOBBS, NM 88240

Analytical Results For:

ENSOLUM, LLC
 SAMANTHA MACKENZIE
 705 W WADLEY AVE.
 MIDLAND TX, 79705
 Fax To:

Received: 01/07/2025
 Reported: 01/13/2025
 Project Name: NIMITZ MDPI 12 FEDERAL 002H
 Project Number: 03B1417236
 Project Location: OXY - EDDY CO NM

Sampling Date: 01/07/2025
 Sampling Type: Soil
 Sampling Condition: Cool & Intact
 Sample Received By: Alyssa Parras

Sample ID: DS 03 0.25' (H250066-03)

BTEx 8021B		mg/kg		Analyzed By: JH					
Analyte	Result	Reporting Limit	Analyzed	Method Blank	BS	% Recovery	True Value QC	RPD	Qualifier
Benzene*	<0.050	0.050	01/09/2025	ND	1.91	95.3	2.00	2.44	
Toluene*	<0.050	0.050	01/09/2025	ND	1.87	93.7	2.00	4.26	
Ethylbenzene*	<0.050	0.050	01/09/2025	ND	2.00	100	2.00	5.90	
Total Xylenes*	<0.150	0.150	01/09/2025	ND	6.04	101	6.00	5.76	
Total BTEX	<0.300	0.300	01/09/2025	ND					

Surrogate: 4-Bromofluorobenzene (PID) 113 % 71.5-134

Chloride, SM4500Cl-B		mg/kg		Analyzed By: KV					
Analyte	Result	Reporting Limit	Analyzed	Method Blank	BS	% Recovery	True Value QC	RPD	Qualifier
Chloride	<16.0	16.0	01/08/2025	ND	416	104	400	3.77	

TPH 8015M		mg/kg		Analyzed By: MS					
Analyte	Result	Reporting Limit	Analyzed	Method Blank	BS	% Recovery	True Value QC	RPD	Qualifier
GRO C6-C10*	<10.0	10.0	01/09/2025	ND	210	105	200	2.90	
DRO >C10-C28*	<10.0	10.0	01/09/2025	ND	205	103	200	2.67	
EXT DRO >C28-C36	<10.0	10.0	01/09/2025	ND					

Surrogate: 1-Chlorooctane 94.7 % 48.2-134

Surrogate: 1-Chlorooctadecane 97.4 % 49.1-148

Cardinal Laboratories

*=Accredited Analyte

PLEASE NOTE: Liability and Damages. Cardinal's liability and client's exclusive remedy for any claim arising, whether based in contract or tort, shall be limited to the amount paid by client for analyses. All claims, including those for negligence and any other cause whatsoever shall be deemed waived unless made in writing and received by Cardinal within thirty (30) days after completion of the applicable service. In no event shall Cardinal be liable for incidental or consequential damages, including, without limitation, business interruptions, loss of use, or loss of profits incurred by client, its subsidiaries, affiliates or successors arising out of or related to the performance of the services hereunder by Cardinal, regardless of whether such claim is based upon any of the above stated reasons or otherwise. Results relate only to the samples identified above. This report shall not be reproduced except in full with written approval of Cardinal Laboratories.

Celey D. Keene, Lab Director/Quality Manager



PHONE (575) 393-2326 ° 101 E. MARLAND ° HOBBS, NM 88240

Analytical Results For:

ENSOLUM, LLC
 SAMANTHA MACKENZIE
 705 W WADLEY AVE.
 MIDLAND TX, 79705
 Fax To:

Received: 01/07/2025
 Reported: 01/13/2025
 Project Name: NIMITZ MDPI 12 FEDERAL 002H
 Project Number: 03B1417236
 Project Location: OXY - EDDY CO NM

Sampling Date: 01/07/2025
 Sampling Type: Soil
 Sampling Condition: Cool & Intact
 Sample Received By: Alyssa Parras

Sample ID: DS 04 0.25' (H250066-04)

BTEx 8021B		mg/kg		Analyzed By: JH						
Analyte	Result	Reporting Limit	Analyzed	Method Blank	BS	% Recovery	True Value QC	RPD	Qualifier	
Benzene*	<0.050	0.050	01/08/2025	ND	1.66	83.2	2.00	3.27		
Toluene*	<0.050	0.050	01/08/2025	ND	1.78	88.9	2.00	2.42		
Ethylbenzene*	<0.050	0.050	01/08/2025	ND	1.71	85.3	2.00	2.07		
Total Xylenes*	<0.150	0.150	01/08/2025	ND	4.98	83.0	6.00	1.93		
Total BTEX	<0.300	0.300	01/08/2025	ND						

Surrogate: 4-Bromofluorobenzene (PID) 95.2 % 71.5-134

Chloride, SM4500Cl-B		mg/kg		Analyzed By: KV						
Analyte	Result	Reporting Limit	Analyzed	Method Blank	BS	% Recovery	True Value QC	RPD	Qualifier	
Chloride	<16.0	16.0	01/08/2025	ND	416	104	400	3.77		

TPH 8015M		mg/kg		Analyzed By: MS					
Analyte	Result	Reporting Limit	Analyzed	Method Blank	BS	% Recovery	True Value QC	RPD	Qualifier
GRO C6-C10*	<10.0	10.0	01/09/2025	ND	171	85.7	200	7.39	
DRO >C10-C28*	<10.0	10.0	01/09/2025	ND	165	82.3	200	10.5	
EXT DRO >C28-C36	<10.0	10.0	01/09/2025	ND					

Surrogate: 1-Chlorooctane 82.7 % 48.2-134

Surrogate: 1-Chlorooctadecane 73.6 % 49.1-148

Cardinal Laboratories

*=Accredited Analyte

PLEASE NOTE: Liability and Damages. Cardinal's liability and client's exclusive remedy for any claim arising, whether based in contract or tort, shall be limited to the amount paid by client for analyses. All claims, including those for negligence and any other cause whatsoever shall be deemed waived unless made in writing and received by Cardinal within thirty (30) days after completion of the applicable service. In no event shall Cardinal be liable for incidental or consequential damages, including, without limitation, business interruptions, loss of use, or loss of profits incurred by client, its subsidiaries, affiliates or successors arising out of or related to the performance of the services hereunder by Cardinal, regardless of whether such claim is based upon any of the above stated reasons or otherwise. Results relate only to the samples identified above. This report shall not be reproduced except in full with written approval of Cardinal Laboratories.

Celey D. Keene, Lab Director/Quality Manager



PHONE (575) 393-2326 ° 101 E. MARLAND ° HOBBS, NM 88240

Analytical Results For:

ENSOLUM, LLC
 SAMANTHA MACKENZIE
 705 W WADLEY AVE.
 MIDLAND TX, 79705
 Fax To:

Received: 01/07/2025
 Reported: 01/13/2025
 Project Name: NIMITZ MDPI 12 FEDERAL 002H
 Project Number: 03B1417236
 Project Location: OXY - EDDY CO NM

Sampling Date: 01/07/2025
 Sampling Type: Soil
 Sampling Condition: Cool & Intact
 Sample Received By: Alyssa Parras

Sample ID: DS 05 0.25' (H250066-05)

BTEx 8021B		mg/kg		Analyzed By: JH						
Analyte	Result	Reporting Limit	Analyzed	Method Blank	BS	% Recovery	True Value QC	RPD	Qualifier	
Benzene*	<0.050	0.050	01/08/2025	ND	1.66	83.2	2.00	3.27	QR-03	
Toluene*	<0.050	0.050	01/08/2025	ND	1.78	88.9	2.00	2.42	QR-03	
Ethylbenzene*	<0.050	0.050	01/08/2025	ND	1.71	85.3	2.00	2.07	QR-03	
Total Xylenes*	<0.150	0.150	01/08/2025	ND	4.98	83.0	6.00	1.93	QR-03	
Total BTEx	<0.300	0.300	01/08/2025	ND						

Surrogate: 4-Bromofluorobenzene (PID) 94.4 % 71.5-134

Chloride, SM4500CI-B		mg/kg		Analyzed By: KV						
Analyte	Result	Reporting Limit	Analyzed	Method Blank	BS	% Recovery	True Value QC	RPD	Qualifier	
Chloride	<16.0	16.0	01/08/2025	ND	416	104	400	3.77		

TPH 8015M		mg/kg		Analyzed By: MS					
Analyte	Result	Reporting Limit	Analyzed	Method Blank	BS	% Recovery	True Value QC	RPD	Qualifier
GRO C6-C10*	<10.0	10.0	01/09/2025	ND	171	85.7	200	7.39	
DRO >C10-C28*	<10.0	10.0	01/09/2025	ND	165	82.3	200	10.5	
EXT DRO >C28-C36	<10.0	10.0	01/09/2025	ND					

Surrogate: 1-Chlorooctane 84.5 % 48.2-134

Surrogate: 1-Chlorooctadecane 74.7 % 49.1-148

Cardinal Laboratories

*=Accredited Analyte

PLEASE NOTE: Liability and Damages. Cardinal's liability and client's exclusive remedy for any claim arising, whether based in contract or tort, shall be limited to the amount paid by client for analyses. All claims, including those for negligence and any other cause whatsoever shall be deemed waived unless made in writing and received by Cardinal within thirty (30) days after completion of the applicable service. In no event shall Cardinal be liable for incidental or consequential damages, including, without limitation, business interruptions, loss of use, or loss of profits incurred by client, its subsidiaries, affiliates or successors arising out of or related to the performance of the services hereunder by Cardinal, regardless of whether such claim is based upon any of the above stated reasons or otherwise. Results relate only to the samples identified above. This report shall not be reproduced except in full with written approval of Cardinal Laboratories.

Celey D. Keene, Lab Director/Quality Manager



PHONE (575) 393-2326 • 101 E. MARLAND • HOBBS, NM 88240

Notes and Definitions

QR-03	The RPD value for the sample duplicate or MS/MSD was outside of QC acceptance limits due to matrix interference. QC batch accepted based on LCS and/or LCSD recovery and/or RPD values.
BS-3	Blank spike recovery outside of lab established statistical limits, but still within method limits. Data is not adversely affected.
ND	Analyte NOT DETECTED at or above the reporting limit
RPD	Relative Percent Difference
**	Samples not received at proper temperature of 6°C or below.
***	Insufficient time to reach temperature.
-	Chloride by SM4500Cl-B does not require samples be received at or below 6°C Samples reported on an as received basis (wet) unless otherwise noted on report

Cardinal Laboratories

*=Accredited Analyte

PLEASE NOTE: Liability and Damages. Cardinal's liability and client's exclusive remedy for any claim arising, whether based in contract or tort, shall be limited to the amount paid by client for analyses. All claims, including those for negligence and any other cause whatsoever shall be deemed waived unless made in writing and received by Cardinal within thirty (30) days after completion of the applicable service. In no event shall Cardinal be liable for incidental or consequential damages, including, without limitation, business interruptions, loss of use, or loss of profits incurred by client, its subsidiaries, affiliates or successors arising out of or related to the performance of the services hereunder by Cardinal, regardless of whether such claim is based upon any of the above stated reasons or otherwise. Results relate only to the samples identified above. This report shall not be reproduced except in full with written approval of Cardinal Laboratories.

A handwritten signature in black ink, appearing to read "Celey D. Keene".

Celey D. Keene, Lab Director/Quality Manager



101 East Marland, Hobbs, NM 88240
(575) 393-2326 FAX (575) 393-2476

CHAIN-OF-CUSTODY AND ANALYSIS REQUEST

[illegible]



PHONE (575) 393-2326 ° 101 E. MARLAND ° HOBBS, NM 88240

March 06, 2025

SAMANTHA MACKENZIE

ENSOLUM, LLC

705 W WADLEY AVE.

MIDLAND, TX 79705

RE: NIMITZ MDPI 12 FEDERAL 002H

Enclosed are the results of analyses for samples received by the laboratory on 03/03/25 16:38.

Cardinal Laboratories is accredited through Texas NELAP under certificate number TX-C24-00112. Accreditation applies to drinking water, non-potable water and solid and chemical materials. All accredited analytes are denoted by an asterisk (*). For a complete list of accredited analytes and matrices visit the TCEQ website at www.tceq.texas.gov/field/qa/lab_accred_certif.html.

Cardinal Laboratories is accredited through the State of Colorado Department of Public Health and Environment for:

Method EPA 552.2	Haloacetic Acids (HAA-5)
Method EPA 524.2	Total Trihalomethanes (TTHM)
Method EPA 524.4	Regulated VOCs (V1, V2, V3)

Accreditation applies to public drinking water matrices.

This report meets NELAP requirements and is made up of a cover page, analytical results, and a copy of the original chain-of-custody. If you have any questions concerning this report, please feel free to contact me.

Sincerely,

A handwritten signature in black ink that reads "Celey D. Keene". The signature is written in a cursive style with a large, stylized 'C' and 'K'.

Celey D. Keene

Lab Director/Quality Manager



PHONE (575) 393-2326 ° 101 E. MARLAND ° HOBBS, NM 88240

Analytical Results For:

ENSOLUM, LLC
 SAMANTHA MACKENZIE
 705 W WADLEY AVE.
 MIDLAND TX, 79705
 Fax To:

Received:	03/03/2025	Sampling Date:	03/03/2025
Reported:	03/06/2025	Sampling Type:	Soil
Project Name:	NIMITZ MDPI 12 FEDERAL 002H	Sampling Condition:	Cool & Intact
Project Number:	03B1417236	Sample Received By:	Alyssa Parras
Project Location:	OXY - LOVING CO NM		

Sample ID: FS 01 (0.25') (H251266-01)

BTEx 8021B			mg/kg		Analyzed By: JH				
Analyte	Result	Reporting Limit	Analyzed	Method Blank	BS	% Recovery	True Value QC	RPD	Qualifier
Benzene*	<0.050	0.050	03/04/2025	ND	2.01	100	2.00	1.66	
Toluene*	<0.050	0.050	03/04/2025	ND	2.09	104	2.00	1.68	
Ethylbenzene*	<0.050	0.050	03/04/2025	ND	2.03	101	2.00	2.03	
Total Xylenes*	<0.150	0.150	03/04/2025	ND	5.97	99.4	6.00	1.73	
Total BTEX	<0.300	0.300	03/04/2025	ND					

Surrogate: 4-Bromofluorobenzene (PID) 94.3 % 71.5-134

Chloride, SM4500Cl-B			mg/kg		Analyzed By: AC				
Analyte	Result	Reporting Limit	Analyzed	Method Blank	BS	% Recovery	True Value QC	RPD	Qualifier
Chloride	<16.0	16.0	03/04/2025	ND	416	104	400	0.00	

TPH 8015M			mg/kg		Analyzed By: MS				
Analyte	Result	Reporting Limit	Analyzed	Method Blank	BS	% Recovery	True Value QC	RPD	Qualifier
GRO C6-C10*	<10.0	10.0	03/04/2025	ND	229	115	200	4.20	
DRO >C10-C28*	<10.0	10.0	03/04/2025	ND	207	104	200	4.28	
EXT DRO >C28-C36	<10.0	10.0	03/04/2025	ND					

Surrogate: 1-Chlorooctane 78.7 % 44.4-145

Surrogate: 1-Chlorooctadecane 79.8 % 40.6-153

Cardinal Laboratories

*=Accredited Analyte

PLEASE NOTE: Liability and Damages. Cardinal's liability and client's exclusive remedy for any claim arising, whether based in contract or tort, shall be limited to the amount paid by client for analyses. All claims, including those for negligence and any other cause whatsoever shall be deemed waived unless made in writing and received by Cardinal within thirty (30) days after completion of the applicable service. In no event shall Cardinal be liable for incidental or consequential damages, including, without limitation, business interruptions, loss of use, or loss of profits incurred by client, its subsidiaries, affiliates or successors arising out of or related to the performance of the services hereunder by Cardinal, regardless of whether such claim is based upon any of the above stated reasons or otherwise. Results relate only to the samples identified above. This report shall not be reproduced except in full with written approval of Cardinal Laboratories.

Celey D. Keene, Lab Director/Quality Manager



PHONE (575) 393-2326 ° 101 E. MARLAND ° HOBBS, NM 88240

Analytical Results For:

ENSOLUM, LLC
 SAMANTHA MACKENZIE
 705 W WADLEY AVE.
 MIDLAND TX, 79705
 Fax To:

Received: 03/03/2025
 Reported: 03/06/2025
 Project Name: NIMITZ MDPI 12 FEDERAL 002H
 Project Number: 03B1417236
 Project Location: OXY - LOVING CO NM

Sampling Date: 03/03/2025
 Sampling Type: Soil
 Sampling Condition: Cool & Intact
 Sample Received By: Alyssa Parras

Sample ID: FS 02 (1') (H251266-02)

BTEx 8021B		mg/kg		Analyzed By: JH						
Analyte	Result	Reporting Limit	Analyzed	Method Blank	BS	% Recovery	True Value QC	RPD	Qualifier	
Benzene*	<0.050	0.050	03/04/2025	ND	2.01	100	2.00	1.66		
Toluene*	<0.050	0.050	03/04/2025	ND	2.09	104	2.00	1.68		
Ethylbenzene*	<0.050	0.050	03/04/2025	ND	2.03	101	2.00	2.03		
Total Xylenes*	<0.150	0.150	03/04/2025	ND	5.97	99.4	6.00	1.73		
Total BTEX	<0.300	0.300	03/04/2025	ND						

Surrogate: 4-Bromofluorobenzene (PID) 103 % 71.5-134

Chloride, SM4500Cl-B		mg/kg		Analyzed By: AC						
Analyte	Result	Reporting Limit	Analyzed	Method Blank	BS	% Recovery	True Value QC	RPD	Qualifier	
Chloride	1560	16.0	03/04/2025	ND	416	104	400	0.00		

TPH 8015M		mg/kg		Analyzed By: MS					
Analyte	Result	Reporting Limit	Analyzed	Method Blank	BS	% Recovery	True Value QC	RPD	Qualifier
GRO C6-C10*	<10.0	10.0	03/04/2025	ND	229	115	200	4.20	
DRO >C10-C28*	1180	10.0	03/04/2025	ND	207	104	200	4.28	
EXT DRO >C28-C36	194	10.0	03/04/2025	ND					

Surrogate: 1-Chlorooctane 86.8 % 44.4-145

Surrogate: 1-Chlorooctadecane 109 % 40.6-153

Cardinal Laboratories

*=Accredited Analyte

PLEASE NOTE: Liability and Damages. Cardinal's liability and client's exclusive remedy for any claim arising, whether based in contract or tort, shall be limited to the amount paid by client for analyses. All claims, including those for negligence and any other cause whatsoever shall be deemed waived unless made in writing and received by Cardinal within thirty (30) days after completion of the applicable service. In no event shall Cardinal be liable for incidental or consequential damages, including, without limitation, business interruptions, loss of use, or loss of profits incurred by client, its subsidiaries, affiliates or successors arising out of or related to the performance of the services hereunder by Cardinal, regardless of whether such claim is based upon any of the above stated reasons or otherwise. Results relate only to the samples identified above. This report shall not be reproduced except in full with written approval of Cardinal Laboratories.

Celey D. Keene, Lab Director/Quality Manager



PHONE (575) 393-2326 ° 101 E. MARLAND ° HOBBS, NM 88240

Analytical Results For:

ENSOLUM, LLC
 SAMANTHA MACKENZIE
 705 W WADLEY AVE.
 MIDLAND TX, 79705
 Fax To:

Received: 03/03/2025
 Reported: 03/06/2025
 Project Name: NIMITZ MDPI 12 FEDERAL 002H
 Project Number: 03B1417236
 Project Location: OXY - LOVING CO NM

Sampling Date: 03/03/2025
 Sampling Type: Soil
 Sampling Condition: Cool & Intact
 Sample Received By: Alyssa Parras

Sample ID: FS 03 (0.25') (H251266-03)

BTEx 8021B		mg/kg		Analyzed By: JH						
Analyte	Result	Reporting Limit	Analyzed	Method Blank	BS	% Recovery	True Value QC	RPD	Qualifier	
Benzene*	<0.050	0.050	03/05/2025	ND	1.99	99.3	2.00	5.76		
Toluene*	<0.050	0.050	03/05/2025	ND	2.04	102	2.00	5.46		
Ethylbenzene*	<0.050	0.050	03/05/2025	ND	1.99	99.4	2.00	4.49		
Total Xylenes*	<0.150	0.150	03/05/2025	ND	5.89	98.1	6.00	4.24		
Total BTEX	<0.300	0.300	03/05/2025	ND						

Surrogate: 4-Bromofluorobenzene (PID) 93.3 % 71.5-134

Chloride, SM4500CI-B		mg/kg		Analyzed By: AC						
Analyte	Result	Reporting Limit	Analyzed	Method Blank	BS	% Recovery	True Value QC	RPD	Qualifier	
Chloride	16.0	16.0	03/04/2025	ND	416	104	400	0.00		

TPH 8015M		mg/kg		Analyzed By: MS					
Analyte	Result	Reporting Limit	Analyzed	Method Blank	BS	% Recovery	True Value QC	RPD	Qualifier
GRO C6-C10*	<10.0	10.0	03/04/2025	ND	229	115	200	4.20	
DRO >C10-C28*	<10.0	10.0	03/04/2025	ND	207	104	200	4.28	
EXT DRO >C28-C36	<10.0	10.0	03/04/2025	ND					

Surrogate: 1-Chlorooctane 93.7 % 44.4-145

Surrogate: 1-Chlorooctadecane 95.7 % 40.6-153

Cardinal Laboratories

*=Accredited Analyte

PLEASE NOTE: Liability and Damages. Cardinal's liability and client's exclusive remedy for any claim arising, whether based in contract or tort, shall be limited to the amount paid by client for analyses. All claims, including those for negligence and any other cause whatsoever shall be deemed waived unless made in writing and received by Cardinal within thirty (30) days after completion of the applicable service. In no event shall Cardinal be liable for incidental or consequential damages, including, without limitation, business interruptions, loss of use, or loss of profits incurred by client, its subsidiaries, affiliates or successors arising out of or related to the performance of the services hereunder by Cardinal, regardless of whether such claim is based upon any of the above stated reasons or otherwise. Results relate only to the samples identified above. This report shall not be reproduced except in full with written approval of Cardinal Laboratories.

Celey D. Keene, Lab Director/Quality Manager



PHONE (575) 393-2326 ° 101 E. MARLAND ° HOBBS, NM 88240

Analytical Results For:

ENSOLUM, LLC
 SAMANTHA MACKENZIE
 705 W WADLEY AVE.
 MIDLAND TX, 79705
 Fax To:

Received: 03/03/2025
 Reported: 03/06/2025
 Project Name: NIMITZ MDPI 12 FEDERAL 002H
 Project Number: 03B1417236
 Project Location: OXY - LOVING CO NM

Sampling Date: 03/03/2025
 Sampling Type: Soil
 Sampling Condition: Cool & Intact
 Sample Received By: Alyssa Parras

Sample ID: FS 04 (0.25') (H251266-04)

BTEX 8021B		mg/kg		Analyzed By: JH					
Analyte	Result	Reporting Limit	Analyzed	Method Blank	BS	% Recovery	True Value QC	RPD	Qualifier
Benzene*	<0.050	0.050	03/05/2025	ND	1.99	99.3	2.00	5.76	
Toluene*	<0.050	0.050	03/05/2025	ND	2.04	102	2.00	5.46	
Ethylbenzene*	<0.050	0.050	03/05/2025	ND	1.99	99.4	2.00	4.49	
Total Xylenes*	<0.150	0.150	03/05/2025	ND	5.89	98.1	6.00	4.24	
Total BTEX	<0.300	0.300	03/05/2025	ND					

Surrogate: 4-Bromofluorobenzene (PID) 93.5 % 71.5-134

Chloride, SM4500Cl-B		mg/kg		Analyzed By: AC					
Analyte	Result	Reporting Limit	Analyzed	Method Blank	BS	% Recovery	True Value QC	RPD	Qualifier
Chloride	128	16.0	03/04/2025	ND	416	104	400	0.00	

TPH 8015M		mg/kg		Analyzed By: ms					
Analyte	Result	Reporting Limit	Analyzed	Method Blank	BS	% Recovery	True Value QC	RPD	Qualifier
GRO C6-C10*	<10.0	10.0	03/04/2025	ND	203	101	200	0.290	
DRO >C10-C28*	73.2	10.0	03/04/2025	ND	207	103	200	3.66	
EXT DRO >C28-C36	17.7	10.0	03/04/2025	ND					

Surrogate: 1-Chlorooctane 73.3 % 44.4-145

Surrogate: 1-Chlorooctadecane 77.6 % 40.6-153

Cardinal Laboratories

*=Accredited Analyte

PLEASE NOTE: Liability and Damages. Cardinal's liability and client's exclusive remedy for any claim arising, whether based in contract or tort, shall be limited to the amount paid by client for analyses. All claims, including those for negligence and any other cause whatsoever shall be deemed waived unless made in writing and received by Cardinal within thirty (30) days after completion of the applicable service. In no event shall Cardinal be liable for incidental or consequential damages, including, without limitation, business interruptions, loss of use, or loss of profits incurred by client, its subsidiaries, affiliates or successors arising out of or related to the performance of the services hereunder by Cardinal, regardless of whether such claim is based upon any of the above stated reasons or otherwise. Results relate only to the samples identified above. This report shall not be reproduced except in full with written approval of Cardinal Laboratories.

Celey D. Keene, Lab Director/Quality Manager



PHONE (575) 393-2326 ° 101 E. MARLAND ° HOBBS, NM 88240

Analytical Results For:

ENSOLUM, LLC
 SAMANTHA MACKENZIE
 705 W WADLEY AVE.
 MIDLAND TX, 79705
 Fax To:

Received: 03/03/2025
 Reported: 03/06/2025
 Project Name: NIMITZ MDPI 12 FEDERAL 002H
 Project Number: 03B1417236
 Project Location: OXY - LOVING CO NM

Sampling Date: 03/03/2025
 Sampling Type: Soil
 Sampling Condition: Cool & Intact
 Sample Received By: Alyssa Parras

Sample ID: FS 05 (0.25') (H251266-05)

BTEX 8021B		mg/kg		Analyzed By: JH					
Analyte	Result	Reporting Limit	Analyzed	Method Blank	BS	% Recovery	True Value QC	RPD	Qualifier
Benzene*	<0.050	0.050	03/05/2025	ND	1.99	99.3	2.00	5.76	
Toluene*	<0.050	0.050	03/05/2025	ND	2.04	102	2.00	5.46	
Ethylbenzene*	<0.050	0.050	03/05/2025	ND	1.99	99.4	2.00	4.49	
Total Xylenes*	<0.150	0.150	03/05/2025	ND	5.89	98.1	6.00	4.24	
Total BTEX	<0.300	0.300	03/05/2025	ND					

Surrogate: 4-Bromofluorobenzene (PID) 93.9 % 71.5-134

Chloride, SM4500Cl-B		mg/kg		Analyzed By: AC					
Analyte	Result	Reporting Limit	Analyzed	Method Blank	BS	% Recovery	True Value QC	RPD	Qualifier
Chloride	64.0	16.0	03/04/2025	ND	416	104	400	0.00	

TPH 8015M		mg/kg		Analyzed By: ms					
Analyte	Result	Reporting Limit	Analyzed	Method Blank	BS	% Recovery	True Value QC	RPD	Qualifier
GRO C6-C10*	<10.0	10.0	03/04/2025	ND	203	101	200	0.290	
DRO >C10-C28*	28.2	10.0	03/04/2025	ND	207	103	200	3.66	
EXT DRO >C28-C36	<10.0	10.0	03/04/2025	ND					

Surrogate: 1-Chlorooctane 75.0 % 44.4-145

Surrogate: 1-Chlorooctadecane 76.8 % 40.6-153

Cardinal Laboratories

*=Accredited Analyte

PLEASE NOTE: Liability and Damages. Cardinal's liability and client's exclusive remedy for any claim arising, whether based in contract or tort, shall be limited to the amount paid by client for analyses. All claims, including those for negligence and any other cause whatsoever shall be deemed waived unless made in writing and received by Cardinal within thirty (30) days after completion of the applicable service. In no event shall Cardinal be liable for incidental or consequential damages, including, without limitation, business interruptions, loss of use, or loss of profits incurred by client, its subsidiaries, affiliates or successors arising out of or related to the performance of the services hereunder by Cardinal, regardless of whether such claim is based upon any of the above stated reasons or otherwise. Results relate only to the samples identified above. This report shall not be reproduced except in full with written approval of Cardinal Laboratories.

Celey D. Keene, Lab Director/Quality Manager



PHONE (575) 393-2326 ° 101 E. MARLAND ° HOBBS, NM 88240

Analytical Results For:

ENSOLUM, LLC
 SAMANTHA MACKENZIE
 705 W WADLEY AVE.
 MIDLAND TX, 79705
 Fax To:

Received: 03/03/2025
 Reported: 03/06/2025
 Project Name: NIMITZ MDPI 12 FEDERAL 002H
 Project Number: 03B1417236
 Project Location: OXY - LOVING CO NM

Sampling Date: 03/03/2025
 Sampling Type: Soil
 Sampling Condition: Cool & Intact
 Sample Received By: Alyssa Parras

Sample ID: FS 06 (1') (H251266-06)

BTEx 8021B		mg/kg	Analyzed By: JH					S-04	
Analyte	Result	Reporting Limit	Analyzed	Method Blank	BS	% Recovery	True Value QC	RPD	Qualifier
Benzene*	<0.050	0.050	03/05/2025	ND	1.99	99.3	2.00	5.76	GC-NC
Toluene*	0.672	0.050	03/05/2025	ND	2.04	102	2.00	5.46	GC-NC1
Ethylbenzene*	0.984	0.050	03/05/2025	ND	1.99	99.4	2.00	4.49	GC-NC1
Total Xylenes*	14.8	0.150	03/05/2025	ND	5.89	98.1	6.00	4.24	GC-NC1
Total BTEX	16.5	0.300	03/05/2025	ND					GC-NC1

Surrogate: 4-Bromofluorobenzene (PID) 253 % 71.5-134

Chloride, SM4500Cl-B		mg/kg	Analyzed By: AC						
Analyte	Result	Reporting Limit	Analyzed	Method Blank	BS	% Recovery	True Value QC	RPD	Qualifier
Chloride	1880	16.0	03/04/2025	ND	416	104	400	0.00	

TPH 8015M		mg/kg	Analyzed By: ms						
Analyte	Result	Reporting Limit	Analyzed	Method Blank	BS	% Recovery	True Value QC	RPD	Qualifier
GRO C6-C10*	508	10.0	03/04/2025	ND	203	101	200	0.290	
DRO >C10-C28*	6260	10.0	03/04/2025	ND	207	103	200	3.66	
EXT DRO >C28-C36	1170	10.0	03/04/2025	ND					

Surrogate: 1-Chlorooctane 128 % 44.4-145

Surrogate: 1-Chlorooctadecane 123 % 40.6-153

Cardinal Laboratories

*=Accredited Analyte

PLEASE NOTE: Liability and Damages. Cardinal's liability and client's exclusive remedy for any claim arising, whether based in contract or tort, shall be limited to the amount paid by client for analyses. All claims, including those for negligence and any other cause whatsoever shall be deemed waived unless made in writing and received by Cardinal within thirty (30) days after completion of the applicable service. In no event shall Cardinal be liable for incidental or consequential damages, including, without limitation, business interruptions, loss of use, or loss of profits incurred by client, its subsidiaries, affiliates or successors arising out of or related to the performance of the services hereunder by Cardinal, regardless of whether such claim is based upon any of the above stated reasons or otherwise. Results relate only to the samples identified above. This report shall not be reproduced except in full with written approval of Cardinal Laboratories.

Celey D. Keene, Lab Director/Quality Manager



PHONE (575) 393-2326 ° 101 E. MARLAND ° HOBBS, NM 88240

Analytical Results For:

ENSOLUM, LLC
 SAMANTHA MACKENZIE
 705 W WADLEY AVE.
 MIDLAND TX, 79705
 Fax To:

Received: 03/03/2025
 Reported: 03/06/2025
 Project Name: NIMITZ MDPI 12 FEDERAL 002H
 Project Number: 03B1417236
 Project Location: OXY - LOVING CO NM

Sampling Date: 03/03/2025
 Sampling Type: Soil
 Sampling Condition: Cool & Intact
 Sample Received By: Alyssa Parras

Sample ID: FS 07 (1') (H251266-07)

BTEx 8021B		mg/kg		Analyzed By: JH						
Analyte	Result	Reporting Limit	Analyzed	Method Blank	BS	% Recovery	True Value QC	RPD	Qualifier	
Benzene*	<0.050	0.050	03/05/2025	ND	1.99	99.3	2.00	5.76		
Toluene*	<0.050	0.050	03/05/2025	ND	2.04	102	2.00	5.46		
Ethylbenzene*	<0.050	0.050	03/05/2025	ND	1.99	99.4	2.00	4.49		
Total Xylenes*	0.519	0.150	03/05/2025	ND	5.89	98.1	6.00	4.24	GC-NC1	
Total BTEX	0.519	0.300	03/05/2025	ND					GC-NC1	

Surrogate: 4-Bromofluorobenzene (PID) 106 % 71.5-134

Chloride, SM4500Cl-B		mg/kg		Analyzed By: AC						
Analyte	Result	Reporting Limit	Analyzed	Method Blank	BS	% Recovery	True Value QC	RPD	Qualifier	
Chloride	2480	16.0	03/04/2025	ND	416	104	400	0.00		

TPH 8015M		mg/kg		Analyzed By: ms					
Analyte	Result	Reporting Limit	Analyzed	Method Blank	BS	% Recovery	True Value QC	RPD	Qualifier
GRO C6-C10*	10.5	10.0	03/05/2025	ND	203	101	200	0.290	
DRO >C10-C28*	634	10.0	03/05/2025	ND	207	103	200	3.66	
EXT DRO >C28-C36	168	10.0	03/05/2025	ND					

Surrogate: 1-Chlorooctane 88.8 % 44.4-145

Surrogate: 1-Chlorooctadecane 84.9 % 40.6-153

Cardinal Laboratories

*=Accredited Analyte

PLEASE NOTE: Liability and Damages. Cardinal's liability and client's exclusive remedy for any claim arising, whether based in contract or tort, shall be limited to the amount paid by client for analyses. All claims, including those for negligence and any other cause whatsoever shall be deemed waived unless made in writing and received by Cardinal within thirty (30) days after completion of the applicable service. In no event shall Cardinal be liable for incidental or consequential damages, including, without limitation, business interruptions, loss of use, or loss of profits incurred by client, its subsidiaries, affiliates or successors arising out of or related to the performance of the services hereunder by Cardinal, regardless of whether such claim is based upon any of the above stated reasons or otherwise. Results relate only to the samples identified above. This report shall not be reproduced except in full with written approval of Cardinal Laboratories.

Celey D. Keene, Lab Director/Quality Manager



PHONE (575) 393-2326 ° 101 E. MARLAND ° HOBBS, NM 88240

Analytical Results For:

ENSOLUM, LLC
 SAMANTHA MACKENZIE
 705 W WADLEY AVE.
 MIDLAND TX, 79705
 Fax To:

Received: 03/03/2025
 Reported: 03/06/2025
 Project Name: NIMITZ MDPI 12 FEDERAL 002H
 Project Number: 03B1417236
 Project Location: OXY - LOVING CO NM

Sampling Date: 03/03/2025
 Sampling Type: Soil
 Sampling Condition: Cool & Intact
 Sample Received By: Alyssa Parras

Sample ID: FS 08 (1') (H251266-08)

BTEx 8021B		mg/kg		Analyzed By: JH				S-04	
Analyte	Result	Reporting Limit	Analyzed	Method Blank	BS	% Recovery	True Value QC	RPD	Qualifier
Benzene*	<0.050	0.050	03/05/2025	ND	1.99	99.3	2.00	5.76	
Toluene*	0.052	0.050	03/05/2025	ND	2.04	102	2.00	5.46	GC-NC1
Ethylbenzene*	0.165	0.050	03/05/2025	ND	1.99	99.4	2.00	4.49	GC-NC1
Total Xylenes*	1.93	0.150	03/05/2025	ND	5.89	98.1	6.00	4.24	GC-NC1
Total BTEX	2.15	0.300	03/05/2025	ND					GC-NC1

Surrogate: 4-Bromofluorobenzene (PID) 146 % 71.5-134

Chloride, SM4500Cl-B			mg/kg					Analyzed By: AC	
Analyte	Result	Reporting Limit	Analyzed	Method Blank	BS	% Recovery	True Value QC	RPD	Qualifier
Chloride	1220	16.0	03/04/2025	ND	416	104	400	0.00	

TPH 8015M			mg/kg					Analyzed By: ms	
Analyte	Result	Reporting Limit	Analyzed	Method Blank	BS	% Recovery	True Value QC	RPD	Qualifier
GRO C6-C10*	99.6	10.0	03/05/2025	ND	203	101	200	0.290	
DRO >C10-C28*	2990	10.0	03/05/2025	ND	207	103	200	3.66	
EXT DRO >C28-C36	610	10.0	03/05/2025	ND					

Surrogate: 1-Chlorooctane 102 % 44.4-145

Surrogate: 1-Chlorooctadecane 97.1 % 40.6-153

Cardinal Laboratories

*=Accredited Analyte

PLEASE NOTE: Liability and Damages. Cardinal's liability and client's exclusive remedy for any claim arising, whether based in contract or tort, shall be limited to the amount paid by client for analyses. All claims, including those for negligence and any other cause whatsoever shall be deemed waived unless made in writing and received by Cardinal within thirty (30) days after completion of the applicable service. In no event shall Cardinal be liable for incidental or consequential damages, including, without limitation, business interruptions, loss of use, or loss of profits incurred by client, its subsidiaries, affiliates or successors arising out of or related to the performance of the services hereunder by Cardinal, regardless of whether such claim is based upon any of the above stated reasons or otherwise. Results relate only to the samples identified above. This report shall not be reproduced except in full with written approval of Cardinal Laboratories.

Celey D. Keene, Lab Director/Quality Manager



PHONE (575) 393-2326 ° 101 E. MARLAND ° HOBBS, NM 88240

Analytical Results For:

ENSOLUM, LLC
 SAMANTHA MACKENZIE
 705 W WADLEY AVE.
 MIDLAND TX, 79705
 Fax To:

Received: 03/03/2025
 Reported: 03/06/2025
 Project Name: NIMITZ MDPI 12 FEDERAL 002H
 Project Number: 03B1417236
 Project Location: OXY - LOVING CO NM

Sampling Date: 03/03/2025
 Sampling Type: Soil
 Sampling Condition: Cool & Intact
 Sample Received By: Alyssa Parras

Sample ID: SW 01 (0-1') (H251266-09)

BTEx 8021B		mg/kg		Analyzed By: JH					
Analyte	Result	Reporting Limit	Analyzed	Method Blank	BS	% Recovery	True Value QC	RPD	Qualifier
Benzene*	<0.050	0.050	03/05/2025	ND	1.99	99.3	2.00	5.76	
Toluene*	<0.050	0.050	03/05/2025	ND	2.04	102	2.00	5.46	
Ethylbenzene*	<0.050	0.050	03/05/2025	ND	1.99	99.4	2.00	4.49	
Total Xylenes*	<0.150	0.150	03/05/2025	ND	5.89	98.1	6.00	4.24	
Total BTEX	<0.300	0.300	03/05/2025	ND					

Surrogate: 4-Bromofluorobenzene (PID) 93.7 % 71.5-134

Chloride, SM4500Cl-B		mg/kg		Analyzed By: AC					
Analyte	Result	Reporting Limit	Analyzed	Method Blank	BS	% Recovery	True Value QC	RPD	Qualifier
Chloride	96.0	16.0	03/04/2025	ND	416	104	400	0.00	

TPH 8015M		mg/kg		Analyzed By: ms					
Analyte	Result	Reporting Limit	Analyzed	Method Blank	BS	% Recovery	True Value QC	RPD	Qualifier
GRO C6-C10*	<10.0	10.0	03/05/2025	ND	203	101	200	0.290	
DRO >C10-C28*	111	10.0	03/05/2025	ND	207	103	200	3.66	
EXT DRO >C28-C36	45.8	10.0	03/05/2025	ND					

Surrogate: 1-Chlorooctane 85.5 % 44.4-145

Surrogate: 1-Chlorooctadecane 87.7 % 40.6-153

Cardinal Laboratories

*=Accredited Analyte

PLEASE NOTE: Liability and Damages. Cardinal's liability and client's exclusive remedy for any claim arising, whether based in contract or tort, shall be limited to the amount paid by client for analyses. All claims, including those for negligence and any other cause whatsoever shall be deemed waived unless made in writing and received by Cardinal within thirty (30) days after completion of the applicable service. In no event shall Cardinal be liable for incidental or consequential damages, including, without limitation, business interruptions, loss of use, or loss of profits incurred by client, its subsidiaries, affiliates or successors arising out of or related to the performance of the services hereunder by Cardinal, regardless of whether such claim is based upon any of the above stated reasons or otherwise. Results relate only to the samples identified above. This report shall not be reproduced except in full with written approval of Cardinal Laboratories.

Celey D. Keene, Lab Director/Quality Manager



PHONE (575) 393-2326 ° 101 E. MARLAND ° HOBBS, NM 88240

Analytical Results For:

ENSOLUM, LLC
 SAMANTHA MACKENZIE
 705 W WADLEY AVE.
 MIDLAND TX, 79705
 Fax To:

Received: 03/03/2025
 Reported: 03/06/2025
 Project Name: NIMITZ MDPI 12 FEDERAL 002H
 Project Number: 03B1417236
 Project Location: OXY - LOVING CO NM

Sampling Date: 03/03/2025
 Sampling Type: Soil
 Sampling Condition: Cool & Intact
 Sample Received By: Alyssa Parras

Sample ID: SW 02 (0-1') (H251266-10)

BTEx 8021B		mg/kg	Analyzed By: JH					S-04	
Analyte	Result	Reporting Limit	Analyzed	Method Blank	BS	% Recovery	True Value QC	RPD	Qualifier
Benzene*	<0.050	0.050	03/05/2025	ND	1.99	99.3	2.00	5.76	
Toluene*	0.393	0.050	03/05/2025	ND	2.04	102	2.00	5.46	GC-NC1
Ethylbenzene*	0.858	0.050	03/05/2025	ND	1.99	99.4	2.00	4.49	GC-NC1
Total Xylenes*	7.35	0.150	03/05/2025	ND	5.89	98.1	6.00	4.24	GC-NC1
Total BTEX	8.60	0.300	03/05/2025	ND					GC-NC1

Surrogate: 4-Bromofluorobenzene (PID) 169 % 71.5-134

Chloride, SM4500Cl-B		mg/kg	Analyzed By: AC						
Analyte	Result	Reporting Limit	Analyzed	Method Blank	BS	% Recovery	True Value QC	RPD	Qualifier
Chloride	3920	16.0	03/04/2025	ND	416	104	400	0.00	

TPH 8015M		mg/kg	Analyzed By: ms						
Analyte	Result	Reporting Limit	Analyzed	Method Blank	BS	% Recovery	True Value QC	RPD	Qualifier
GRO C6-C10*	244	10.0	03/05/2025	ND	203	101	200	0.290	
DRO >C10-C28*	3190	10.0	03/05/2025	ND	207	103	200	3.66	
EXT DRO >C28-C36	504	10.0	03/05/2025	ND					

Surrogate: 1-Chlorooctane 116 % 44.4-145

Surrogate: 1-Chlorooctadecane 95.4 % 40.6-153

Cardinal Laboratories

*=Accredited Analyte

PLEASE NOTE: Liability and Damages. Cardinal's liability and client's exclusive remedy for any claim arising, whether based in contract or tort, shall be limited to the amount paid by client for analyses. All claims, including those for negligence and any other cause whatsoever shall be deemed waived unless made in writing and received by Cardinal within thirty (30) days after completion of the applicable service. In no event shall Cardinal be liable for incidental or consequential damages, including, without limitation, business interruptions, loss of use, or loss of profits incurred by client, its subsidiaries, affiliates or successors arising out of or related to the performance of the services hereunder by Cardinal, regardless of whether such claim is based upon any of the above stated reasons or otherwise. Results relate only to the samples identified above. This report shall not be reproduced except in full with written approval of Cardinal Laboratories.

Celey D. Keene, Lab Director/Quality Manager



PHONE (575) 393-2326 • 101 E. MARLAND • HOBBS, NM 88240

Notes and Definitions

S-04	The surrogate recovery for this sample is outside of established control limits due to a sample matrix effect.
GC-NC1	8260 confirmation analysis was performed; initial GC results were not supported by GC/MS analysis and are biased high with interfering compounds.
GC-NC	8260 confirmation analysis was performed; initial GC results were not supported by GC/MS analysis and are reported as ND.
ND	Analyte NOT DETECTED at or above the reporting limit
RPD	Relative Percent Difference
**	Samples not received at proper temperature of 6°C or below.
***	Insufficient time to reach temperature.
-	Chloride by SM4500Cl-B does not require samples be received at or below 6°C Samples reported on an as received basis (wet) unless otherwise noted on report

Cardinal Laboratories

*=Accredited Analyte

PLEASE NOTE: Liability and Damages. Cardinal's liability and client's exclusive remedy for any claim arising, whether based in contract or tort, shall be limited to the amount paid by client for analyses. All claims, including those for negligence and any other cause whatsoever shall be deemed waived unless made in writing and received by Cardinal within thirty (30) days after completion of the applicable service. In no event shall Cardinal be liable for incidental or consequential damages, including, without limitation, business interruptions, loss of use, or loss of profits incurred by client, its subsidiaries, affiliates or successors arising out of or related to the performance of the services hereunder by Cardinal, regardless of whether such claim is based upon any of the above stated reasons or otherwise. Results relate only to the samples identified above. This report shall not be reproduced except in full with written approval of Cardinal Laboratories.

A handwritten signature in black ink, appearing to read "Celey D. Keene".

Celey D. Keene, Lab Director/Quality Manager



101 East Marland, Hobbs, NM 88240
(575) 393-2326 FAX (575) 393-2476

CHAIN-OF-CUSTODY AND ANALYSIS REQUEST

Company Name: ENSOLUM, LLC				BILL TO				ANALYSIS REQUEST																	
Project Manager: SAMANTHA MACKENZIE				P.O. #:				<div style="display: flex; flex-direction: column; align-items: center;"> <div style="writing-mode: vertical-rl; transform: rotate(180deg);">BTEX 8021</div> <div style="writing-mode: vertical-rl; transform: rotate(180deg);">TPH 8015</div> <div style="writing-mode: vertical-rl; transform: rotate(180deg);">CHLORIDE 4500</div> </div>																	
Address: 601 N MARIENFELD				Company:																					
City: MIDLAND State: TX Zip: 79701				Attn: WADE DITTRICH																					
Phone #: 703 357 3545 Fax #:				Address:																					
Project #: 03B1417236 Project Owner: OXY				City:																					
Project Name: NIMITZ MDP1 12 FEDERAL 002H				State: Zip:																					
Project Location: LOVING COUNTY				Phone #:																					
Sampler Name: Udeh Azuka				Fax #:																					
FOR LAB USE ONLY																									
Lab I.D.	Sample I.D.	(GRAB OR C)OMP.	# CONTAINERS	MATRIX				PRESERV.		SAMPLING															
				GROUNDWATER	WASTEWATER	SOIL	OIL	SLUDGE	OTHER:	ACID/BASE:	ICE / COOL	OTHER:	DATE	TIME											
1052000 1052001 1052002 1052003 1052004 1052005 1052006 1052007 1052008 1052009 1052010	FS01 (0.25')	9	1			5					X		3/3/25	1005	X	X	X								
	FS02 (1')													1007	X	X	X								
	FS03 (0.25')													1009	X	X	X								
	FS04 (0.25')													1010	X	X	X								
	FS05 (0.25')													1012	X	X	X								
	FS06 (1')													1014	X	X	X								
	FS07 (1')													1016	X	X	X								
	FS08 (1')													1018	X	X	X								
	SW01 (0-1')													1020	X	X	X								
	SW02 (0-1')	6	1				5				X			3/3/25	1022	X	X	X							

PLEASE NOTE: Liability and Damages. Cardinal's liability and client's exclusive remedy for any claim arising whether based in contract or tort, shall be limited to the amount paid by the client for the analyses. All claims including those for negligence and any other cause whatsoever shall be deemed waived unless made in writing and received by Cardinal within 30 days after completion of the applicable service. In no event shall Cardinal be liable for incidental or consequential damages, including without limitation, business interruptions, loss of use, or loss of profits incurred by client, its subsidiaries, affiliates or successors arising out of or related to the performance of services hereunder by Cardinal, regardless of whether such claim is based upon any of the above stated reasons or otherwise.

Relinquished By:	Date: 3-3-25	Received By:	Verbal Result: <input type="checkbox"/> Yes <input type="checkbox"/> No Add'l Phone #:
Time: 1438			All Results are emailed. Please provide Email address:
Relinquished By:	Date: 3/3/25	Received By:	REMARKS:
Time:			
Delivered By: (Circle One)	Observed Temp. °C 45.0	Sample Condition Cool Intact <input checked="" type="checkbox"/> Yes <input type="checkbox"/> No	CHECKED BY: (Initials)
Sampler - UPS - Bus - Other:	Corrected Temp. °C 48.0		Turnaround Time: Standard <input checked="" type="checkbox"/> Rush <input type="checkbox"/>
			Bacteria (only) Sample Condition Cool Intact Observed Temp. °C <input type="checkbox"/> Yes <input type="checkbox"/> No <input type="checkbox"/> Yes <input type="checkbox"/> No
			Thermometer ID #140 Correction Factor +0.3°C
			Corrected Temp. °C

FORM-000 R 3.0 02/12/23

† Cardinal cannot accept verbal changes. Please email changes to celey.keene@cardinallabsnm.com



PHONE (575) 393-2326 ° 101 E. MARLAND ° HOBBS, NM 88240

April 04, 2025

SAMANTHA MACKENZIE

ENSOLUM, LLC

705 W WADLEY AVE.

MIDLAND, TX 79705

RE: NIMITZ MDPI 12 FEDERAL 002H

Enclosed are the results of analyses for samples received by the laboratory on 03/31/25 12:15.

Cardinal Laboratories is accredited through Texas NELAP under certificate number TX-C24-00112. Accreditation applies to drinking water, non-potable water and solid and chemical materials. All accredited analytes are denoted by an asterisk (*). For a complete list of accredited analytes and matrices visit the TCEQ website at www.tceq.texas.gov/field/qa/lab_accred_certif.html.

Cardinal Laboratories is accredited through the State of Colorado Department of Public Health and Environment for:

Method EPA 552.2	Haloacetic Acids (HAA-5)
Method EPA 524.2	Total Trihalomethanes (TTHM)
Method EPA 524.4	Regulated VOCs (V1, V2, V3)

Accreditation applies to public drinking water matrices.

This report meets NELAP requirements and is made up of a cover page, analytical results, and a copy of the original chain-of-custody. If you have any questions concerning this report, please feel free to contact me.

Sincerely,

A handwritten signature in black ink that reads "Celey D. Keene". The signature is written in a cursive, flowing style.

Celey D. Keene

Lab Director/Quality Manager



PHONE (575) 393-2326 ° 101 E. MARLAND ° HOBBS, NM 88240

Analytical Results For:

ENSOLUM, LLC
 SAMANTHA MACKENZIE
 705 W WADLEY AVE.
 MIDLAND TX, 79705
 Fax To:

Received: 03/31/2025
 Reported: 04/04/2025
 Project Name: NIMITZ MDPI 12 FEDERAL 002H
 Project Number: 03B1417236
 Project Location: OXY - EDDY CO NM

Sampling Date: 03/27/2025
 Sampling Type: Soil
 Sampling Condition: Cool & Intact
 Sample Received By: Tamara Oldaker

Sample ID: FS 02 2' (H251882-01)

BTEx 8021B		mg/kg	Analyzed By: JH					S-04	
Analyte	Result	Reporting Limit	Analyzed	Method Blank	BS	% Recovery	True Value QC	RPD	Qualifier
Benzene*	<0.050	0.050	04/01/2025	ND	2.12	106	2.00	1.56	
Toluene*	0.735	0.050	04/01/2025	ND	2.15	107	2.00	1.55	
Ethylbenzene*	0.762	0.050	04/01/2025	ND	2.07	104	2.00	2.14	
Total Xylenes*	5.95	0.150	04/01/2025	ND	6.10	102	6.00	2.21	
Total BTEx	7.45	0.300	04/01/2025	ND					

Surrogate: 4-Bromofluorobenzene (PID) 149 % 71.5-134

Chloride, SM4500Cl-B		mg/kg	Analyzed By: KV						
Analyte	Result	Reporting Limit	Analyzed	Method Blank	BS	% Recovery	True Value QC	RPD	Qualifier
Chloride	6240	16.0	04/01/2025	ND	416	104	400	0.00	

TPH 8015M		mg/kg	Analyzed By: MS					S-04	
Analyte	Result	Reporting Limit	Analyzed	Method Blank	BS	% Recovery	True Value QC	RPD	Qualifier
GRO C6-C10*	150	10.0	04/01/2025	ND	205	102	200	2.59	
DRO >C10-C28*	5140	10.0	04/01/2025	ND	203	101	200	1.02	
EXT DRO >C28-C36	949	10.0	04/01/2025	ND					

Surrogate: 1-Chlorooctane 176 % 44.4-145

Surrogate: 1-Chlorooctadecane 230 % 40.6-153

Cardinal Laboratories

*=Accredited Analyte

PLEASE NOTE: Liability and Damages. Cardinal's liability and client's exclusive remedy for any claim arising, whether based in contract or tort, shall be limited to the amount paid by client for analyses. All claims, including those for negligence and any other cause whatsoever shall be deemed waived unless made in writing and received by Cardinal within thirty (30) days after completion of the applicable service. In no event shall Cardinal be liable for incidental or consequential damages, including, without limitation, business interruptions, loss of use, or loss of profits incurred by client, its subsidiaries, affiliates or successors arising out of or related to the performance of the services hereunder by Cardinal, regardless of whether such claim is based upon any of the above stated reasons or otherwise. Results relate only to the samples identified above. This report shall not be reproduced except in full with written approval of Cardinal Laboratories.

Celey D. Keene, Lab Director/Quality Manager



PHONE (575) 393-2326 ° 101 E. MARLAND ° HOBBS, NM 88240

Analytical Results For:

ENSOLUM, LLC
 SAMANTHA MACKENZIE
 705 W WADLEY AVE.
 MIDLAND TX, 79705
 Fax To:

Received: 03/31/2025
 Reported: 04/04/2025
 Project Name: NIMITZ MDPI 12 FEDERAL 002H
 Project Number: 03B1417236
 Project Location: OXY - EDDY CO NM

Sampling Date: 03/27/2025
 Sampling Type: Soil
 Sampling Condition: Cool & Intact
 Sample Received By: Tamara Oldaker

Sample ID: FS 06 2' (H251882-02)

BTEx 8021B		mg/kg		Analyzed By: JH					
Analyte	Result	Reporting Limit	Analyzed	Method Blank	BS	% Recovery	True Value QC	RPD	Qualifier
Benzene*	<0.050	0.050	04/01/2025	ND	2.12	106	2.00	1.56	
Toluene*	0.068	0.050	04/01/2025	ND	2.15	107	2.00	1.55	
Ethylbenzene*	0.106	0.050	04/01/2025	ND	2.07	104	2.00	2.14	
Total Xylenes*	1.63	0.150	04/01/2025	ND	6.10	102	6.00	2.21	
Total BTEX	1.81	0.300	04/01/2025	ND					

Surrogate: 4-Bromofluorobenzene (PID) 124 % 71.5-134

Chloride, SM4500Cl-B		mg/kg		Analyzed By: KV					
Analyte	Result	Reporting Limit	Analyzed	Method Blank	BS	% Recovery	True Value QC	RPD	Qualifier
Chloride	5280	16.0	04/01/2025	ND	416	104	400	0.00	

TPH 8015M		mg/kg		Analyzed By: MS					
Analyte	Result	Reporting Limit	Analyzed	Method Blank	BS	% Recovery	True Value QC	RPD	Qualifier
GRO C6-C10*	39.2	10.0	04/01/2025	ND	205	102	200	2.59	
DRO >C10-C28*	1650	10.0	04/01/2025	ND	203	101	200	1.02	
EXT DRO >C28-C36	426	10.0	04/01/2025	ND					

Surrogate: 1-Chlorooctane 97.0 % 44.4-145

Surrogate: 1-Chlorooctadecane 124 % 40.6-153

Cardinal Laboratories

*=Accredited Analyte

PLEASE NOTE: Liability and Damages. Cardinal's liability and client's exclusive remedy for any claim arising, whether based in contract or tort, shall be limited to the amount paid by client for analyses. All claims, including those for negligence and any other cause whatsoever shall be deemed waived unless made in writing and received by Cardinal within thirty (30) days after completion of the applicable service. In no event shall Cardinal be liable for incidental or consequential damages, including, without limitation, business interruptions, loss of use, or loss of profits incurred by client, its subsidiaries, affiliates or successors arising out of or related to the performance of the services hereunder by Cardinal, regardless of whether such claim is based upon any of the above stated reasons or otherwise. Results relate only to the samples identified above. This report shall not be reproduced except in full with written approval of Cardinal Laboratories.

Celey D. Keene, Lab Director/Quality Manager



PHONE (575) 393-2326 ° 101 E. MARLAND ° HOBBS, NM 88240

Analytical Results For:

ENSOLUM, LLC
 SAMANTHA MACKENZIE
 705 W WADLEY AVE.
 MIDLAND TX, 79705
 Fax To:

Received: 03/31/2025
 Reported: 04/04/2025
 Project Name: NIMITZ MDPI 12 FEDERAL 002H
 Project Number: 03B1417236
 Project Location: OXY - EDDY CO NM

Sampling Date: 03/27/2025
 Sampling Type: Soil
 Sampling Condition: Cool & Intact
 Sample Received By: Tamara Oldaker

Sample ID: FS 07 2' (H251882-03)

BTEx 8021B		mg/kg		Analyzed By: JH					
Analyte	Result	Reporting Limit	Analyzed	Method Blank	BS	% Recovery	True Value QC	RPD	Qualifier
Benzene*	<0.050	0.050	04/01/2025	ND	2.12	106	2.00	1.56	
Toluene*	0.098	0.050	04/01/2025	ND	2.15	107	2.00	1.55	
Ethylbenzene*	0.135	0.050	04/01/2025	ND	2.07	104	2.00	2.14	
Total Xylenes*	1.58	0.150	04/01/2025	ND	6.10	102	6.00	2.21	
Total BTEX	1.82	0.300	04/01/2025	ND					

Surrogate: 4-Bromofluorobenzene (PID) 117 % 71.5-134

Chloride, SM4500Cl-B		mg/kg		Analyzed By: KV					
Analyte	Result	Reporting Limit	Analyzed	Method Blank	BS	% Recovery	True Value QC	RPD	Qualifier
Chloride	6320	16.0	04/01/2025	ND	416	104	400	0.00	

TPH 8015M		mg/kg		Analyzed By: MS					
Analyte	Result	Reporting Limit	Analyzed	Method Blank	BS	% Recovery	True Value QC	RPD	Qualifier
GRO C6-C10*	21.1	10.0	04/01/2025	ND	205	102	200	2.59	
DRO >C10-C28*	495	10.0	04/01/2025	ND	203	101	200	1.02	
EXT DRO >C28-C36	92.7	10.0	04/01/2025	ND					

Surrogate: 1-Chlorooctane 95.8 % 44.4-145

Surrogate: 1-Chlorooctadecane 98.2 % 40.6-153

Cardinal Laboratories

*=Accredited Analyte

PLEASE NOTE: Liability and Damages. Cardinal's liability and client's exclusive remedy for any claim arising, whether based in contract or tort, shall be limited to the amount paid by client for analyses. All claims, including those for negligence and any other cause whatsoever shall be deemed waived unless made in writing and received by Cardinal within thirty (30) days after completion of the applicable service. In no event shall Cardinal be liable for incidental or consequential damages, including, without limitation, business interruptions, loss of use, or loss of profits incurred by client, its subsidiaries, affiliates or successors arising out of or related to the performance of the services hereunder by Cardinal, regardless of whether such claim is based upon any of the above stated reasons or otherwise. Results relate only to the samples identified above. This report shall not be reproduced except in full with written approval of Cardinal Laboratories.

Celey D. Keene, Lab Director/Quality Manager



PHONE (575) 393-2326 ° 101 E. MARLAND ° HOBBS, NM 88240

Analytical Results For:

ENSOLUM, LLC
 SAMANTHA MACKENZIE
 705 W WADLEY AVE.
 MIDLAND TX, 79705
 Fax To:

Received: 03/31/2025
 Reported: 04/04/2025
 Project Name: NIMITZ MDPI 12 FEDERAL 002H
 Project Number: 03B1417236
 Project Location: OXY - EDDY CO NM

Sampling Date: 03/27/2025
 Sampling Type: Soil
 Sampling Condition: Cool & Intact
 Sample Received By: Tamara Oldaker

Sample ID: FS 08 2' (H251882-04)

BTEx 8021B		mg/kg		Analyzed By: JH						
Analyte	Result	Reporting Limit	Analyzed	Method Blank	BS	% Recovery	True Value QC	RPD	Qualifier	
Benzene*	<0.050	0.050	04/01/2025	ND	2.11	106	2.00	0.0570		
Toluene*	<0.050	0.050	04/01/2025	ND	2.21	110	2.00	2.71		
Ethylbenzene*	<0.050	0.050	04/01/2025	ND	2.50	125	2.00	4.42		
Total Xylenes*	<0.150	0.150	04/01/2025	ND	7.65	127	6.00	4.85		
Total BTEX	<0.300	0.300	04/01/2025	ND						

Surrogate: 4-Bromofluorobenzene (PID) 117 % 71.5-134

Chloride, SM4500Cl-B		mg/kg		Analyzed By: KV						
Analyte	Result	Reporting Limit	Analyzed	Method Blank	BS	% Recovery	True Value QC	RPD	Qualifier	
Chloride	256	16.0	04/01/2025	ND	416	104	400	0.00		

TPH 8015M		mg/kg		Analyzed By: MS					
Analyte	Result	Reporting Limit	Analyzed	Method Blank	BS	% Recovery	True Value QC	RPD	Qualifier
GRO C6-C10*	<10.0	10.0	04/01/2025	ND	205	102	200	2.59	
DRO >C10-C28*	<10.0	10.0	04/01/2025	ND	203	101	200	1.02	
EXT DRO >C28-C36	<10.0	10.0	04/01/2025	ND					

Surrogate: 1-Chlorooctane 91.9 % 44.4-145

Surrogate: 1-Chlorooctadecane 86.3 % 40.6-153

Cardinal Laboratories

*=Accredited Analyte

PLEASE NOTE: Liability and Damages. Cardinal's liability and client's exclusive remedy for any claim arising, whether based in contract or tort, shall be limited to the amount paid by client for analyses. All claims, including those for negligence and any other cause whatsoever shall be deemed waived unless made in writing and received by Cardinal within thirty (30) days after completion of the applicable service. In no event shall Cardinal be liable for incidental or consequential damages, including, without limitation, business interruptions, loss of use, or loss of profits incurred by client, its subsidiaries, affiliates or successors arising out of or related to the performance of the services hereunder by Cardinal, regardless of whether such claim is based upon any of the above stated reasons or otherwise. Results relate only to the samples identified above. This report shall not be reproduced except in full with written approval of Cardinal Laboratories.

Celey D. Keene, Lab Director/Quality Manager



PHONE (575) 393-2326 ° 101 E. MARLAND ° HOBBS, NM 88240

Analytical Results For:

ENSOLUM, LLC
 SAMANTHA MACKENZIE
 705 W WADLEY AVE.
 MIDLAND TX, 79705
 Fax To:

Received: 03/31/2025
 Reported: 04/04/2025
 Project Name: NIMITZ MDPI 12 FEDERAL 002H
 Project Number: 03B1417236
 Project Location: OXY - EDDY CO NM

Sampling Date: 03/27/2025
 Sampling Type: Soil
 Sampling Condition: Cool & Intact
 Sample Received By: Tamara Oldaker

Sample ID: SW 01 0-2' (H251882-05)

BTEX 8021B		mg/kg		Analyzed By: JH					
Analyte	Result	Reporting Limit	Analyzed	Method Blank	BS	% Recovery	True Value QC	RPD	Qualifier
Benzene*	<0.050	0.050	04/01/2025	ND	2.11	106	2.00	0.0570	
Toluene*	0.108	0.050	04/01/2025	ND	2.21	110	2.00	2.71	
Ethylbenzene*	<0.050	0.050	04/01/2025	ND	2.50	125	2.00	4.42	
Total Xylenes*	0.741	0.150	04/01/2025	ND	7.65	127	6.00	4.85	
Total BTEX	0.849	0.300	04/01/2025	ND					

Surrogate: 4-Bromofluorobenzene (PID) 129 % 71.5-134

Chloride, SM4500Cl-B		mg/kg		Analyzed By: CT						
Analyte	Result	Reporting Limit	Analyzed	Method Blank	BS	% Recovery	True Value QC	RPD	Qualifier	
Chloride	8530	16.0	04/01/2025	ND	432	108	400	3.77	QM-07	
TPH 8015M		mg/kg		Analyzed By: MS						S-04

Surrogate: 1-Chlorooctane 91.4 % 44.4-145

Surrogate: 1-Chlorooctadecane 222 % 40.6-153

Cardinal Laboratories

*=Accredited Analyte

PLEASE NOTE: Liability and Damages. Cardinal's liability and client's exclusive remedy for any claim arising, whether based in contract or tort, shall be limited to the amount paid by client for analyses. All claims, including those for negligence and any other cause whatsoever shall be deemed waived unless made in writing and received by Cardinal within thirty (30) days after completion of the applicable service. In no event shall Cardinal be liable for incidental or consequential damages, including, without limitation, business interruptions, loss of use, or loss of profits incurred by client, its subsidiaries, affiliates or successors arising out of or related to the performance of the services hereunder by Cardinal, regardless of whether such claim is based upon any of the above stated reasons or otherwise. Results relate only to the samples identified above. This report shall not be reproduced except in full with written approval of Cardinal Laboratories.

Celey D. Keene, Lab Director/Quality Manager



PHONE (575) 393-2326 ° 101 E. MARLAND ° HOBBS, NM 88240

Analytical Results For:

ENSOLUM, LLC
 SAMANTHA MACKENZIE
 705 W WADLEY AVE.
 MIDLAND TX, 79705
 Fax To:

Received: 03/31/2025
 Reported: 04/04/2025
 Project Name: NIMITZ MDPI 12 FEDERAL 002H
 Project Number: 03B1417236
 Project Location: OXY - EDDY CO NM

Sampling Date: 03/27/2025
 Sampling Type: Soil
 Sampling Condition: Cool & Intact
 Sample Received By: Tamara Oldaker

Sample ID: SW 02 0-2' (H251882-06)

BTEx 8021B		mg/kg		Analyzed By: JH					
Analyte	Result	Reporting Limit	Analyzed	Method Blank	BS	% Recovery	True Value QC	RPD	Qualifier
Benzene*	<0.050	0.050	04/01/2025	ND	2.11	106	2.00	0.0570	
Toluene*	<0.050	0.050	04/01/2025	ND	2.21	110	2.00	2.71	
Ethylbenzene*	<0.050	0.050	04/01/2025	ND	2.50	125	2.00	4.42	
Total Xylenes*	<0.150	0.150	04/01/2025	ND	7.65	127	6.00	4.85	
Total BTEX	<0.300	0.300	04/01/2025	ND					

Surrogate: 4-Bromofluorobenzene (PID) 114 % 71.5-134

Chloride, SM4500Cl-B		mg/kg		Analyzed By: CT					
Analyte	Result	Reporting Limit	Analyzed	Method Blank	BS	% Recovery	True Value QC	RPD	Qualifier
Chloride	144	16.0	04/01/2025	ND	432	108	400	3.77	

TPH 8015M		mg/kg		Analyzed By: MS					
Analyte	Result	Reporting Limit	Analyzed	Method Blank	BS	% Recovery	True Value QC	RPD	Qualifier
GRO C6-C10*	<10.0	10.0	04/04/2025	ND	205	102	200	2.59	
DRO >C10-C28*	<10.0	10.0	04/04/2025	ND	203	101	200	1.02	
EXT DRO >C28-C36	<10.0	10.0	04/04/2025	ND					

Surrogate: 1-Chlorooctane 82.6 % 44.4-145

Surrogate: 1-Chlorooctadecane 80.0 % 40.6-153

Cardinal Laboratories

*=Accredited Analyte

PLEASE NOTE: Liability and Damages. Cardinal's liability and client's exclusive remedy for any claim arising, whether based in contract or tort, shall be limited to the amount paid by client for analyses. All claims, including those for negligence and any other cause whatsoever shall be deemed waived unless made in writing and received by Cardinal within thirty (30) days after completion of the applicable service. In no event shall Cardinal be liable for incidental or consequential damages, including, without limitation, business interruptions, loss of use, or loss of profits incurred by client, its subsidiaries, affiliates or successors arising out of or related to the performance of the services hereunder by Cardinal, regardless of whether such claim is based upon any of the above stated reasons or otherwise. Results relate only to the samples identified above. This report shall not be reproduced except in full with written approval of Cardinal Laboratories.

Celey D. Keene, Lab Director/Quality Manager



PHONE (575) 393-2326 ° 101 E. MARLAND ° HOBBS, NM 88240

Notes and Definitions

S-04	The surrogate recovery for this sample is outside of established control limits due to a sample matrix effect.
QM-07	The spike recovery was outside acceptance limits for the MS and/or MSD. The batch was accepted based on acceptable LCS recovery.
BS-3	Blank spike recovery outside of lab established statistical limits, but still within method limits. Data is not adversely affected.
ND	Analyte NOT DETECTED at or above the reporting limit
RPD	Relative Percent Difference
**	Samples not received at proper temperature of 6°C or below.
***	Insufficient time to reach temperature.
-	Chloride by SM4500Cl-B does not require samples be received at or below 6°C Samples reported on an as received basis (wet) unless otherwise noted on report

Cardinal Laboratories

*=Accredited Analyte

PLEASE NOTE: Liability and Damages. Cardinal's liability and client's exclusive remedy for any claim arising, whether based in contract or tort, shall be limited to the amount paid by client for analyses. All claims, including those for negligence and any other cause whatsoever shall be deemed waived unless made in writing and received by Cardinal within thirty (30) days after completion of the applicable service. In no event shall Cardinal be liable for incidental or consequential damages, including, without limitation, business interruptions, loss of use, or loss of profits incurred by client, its subsidiaries, affiliates or successors arising out of or related to the performance of the services hereunder by Cardinal, regardless of whether such claim is based upon any of the above stated reasons or otherwise. Results relate only to the samples identified above. This report shall not be reproduced except in full with written approval of Cardinal Laboratories.

A handwritten signature in black ink, appearing to read "Celey D. Keene", written over a horizontal line.

Celey D. Keene, Lab Director/Quality Manager



CHAIN-OF-CUSTODY AND ANALYSIS REQUEST

101 East Marland, Hobbs, NM 88240
(575) 393-2326 FAX (575) 393-2476

Company Name: Ensolum, LLC				BILL TO				ANALYSIS REQUEST											
Project Manager: Sam Mackenzie				P.O. #:				<div style="position: relative; height: 200px;"> <div style="position: absolute; top: 0; right: 0; transform: rotate(45deg); font-size: 2em; font-weight: bold;">NFE</div> <div style="position: absolute; bottom: 0; right: 0; transform: rotate(-45deg); font-size: 2em; font-weight: bold;">6/3/25</div> </div>											
Address: 601 N. Marinfeld St. STE 400				Company: Oxy USA, Inc.															
City: Midland State: TX Zip: 79701				Attn: Wade Dittrich															
Phone #: 703-357-3545 Fax #:				Address:															
Project #: 03B1417236 Project Owner: OXY				City:															
Project Name: NIMTZ MOP1 12 Federal 0024				State: Zip:															
Project Location: Eddy Co, NM				Phone #: 575-390-2828															
Sampler Name: Nicolas Christacos, Kaoru Shimada				Fax #:															
FOR LAB USE ONLY																			
Lab I.D.	Sample I.D.	Sample Depth (feet)	(G/RAB OR (C)OMP. # CONTAINERS	MATRIX				PRESERV.	SAMPLING		<div style="position: relative; height: 200px;"> <div style="position: absolute; top: 0; right: 0; transform: rotate(45deg); font-size: 2em; font-weight: bold;">NFE</div> <div style="position: absolute; bottom: 0; right: 0; transform: rotate(-45deg); font-size: 2em; font-weight: bold;">6/3/25</div> </div>								
				GROUNDWATER	WASTEWATER	SOIL	OIL	SLUDGE	OTHER :	ACID/BASE:						ICE / COOL	OTHER :	DATE	TIME
1	FS02	2'	C 1															3/27/25	13:12
2	FS06	2'	C 1																13:15
3	FS07	2'	C 1																13:18
4	FS08	2'	C 1																13:15
5	SW01	0-2'	C 1																13:15
6	SW02	0-2'	C 1																13:11
NFE 03/27/25																			

PLEASE NOTE: Liability and Damages. Cardinal's liability and client's exclusive remedy for any claim arising whether based in contract or tort, shall be limited to the amount paid by the client for the analyses. All claims including those for negligence and any other cause whatsoever shall be deemed waived unless made in writing and received by Cardinal within 30 days after completion of the applicable service. In no event shall Cardinal be liable for incidental or consequential damages, including without limitation, business interruptions, loss of use, or loss of profits incurred by client, its subsidiaries, affiliates or successors arising out of or related to the performance of services hereunder by Cardinal, regardless of whether such claim is based upon any of the above stated reasons or otherwise.

Relinquished By: <u>Nicolas Christacos</u>		Date: <u>3/31/25</u>		Received By: <u>Kaoru Shimada</u>		Verbal Result: <input type="checkbox"/> Yes <input checked="" type="checkbox"/> No Add'l Phone #:	
Time: <u>12:15</u>		Time:				All Results are emailed. Please provide Email address:	
Relinquished By:		Date:		Received By:		SMackenzie@ensolum.com	
Time:						REMARKS:	
Delivered By: (Circle One)		Observed Temp. °C		Sample Condition		Turnaround Time: <u>Standard</u> <input checked="" type="checkbox"/> <u>Rush</u> <input type="checkbox"/>	
Sampler - UPS - Bus - Other:		Corrected Temp. °C		Cool Intact <input checked="" type="checkbox"/> Yes <input type="checkbox"/> No <input type="checkbox"/> No		Bacteria (only) Sample Condition	
				CHECKED BY: (Initials) <u>TO</u>		Cool Intact <input type="checkbox"/> Yes <input type="checkbox"/> No <input type="checkbox"/> No	
						Thermometer ID #13 #140	
						Correction Factor -0.5°C <u>+0.3°C</u>	
						Corrected Temp. °C	

† Cardinal cannot accept verbal changes. Please email changes to celey.keene@cardinallabsnm.com



PHONE (575) 393-2326 ° 101 E. MARLAND ° HOBBS, NM 88240

April 21, 2025

SAMANTHA MACKENZIE

ENSOLUM, LLC

705 W WADLEY AVE.

MIDLAND, TX 79705

RE: NIMITZ MDPI 12 FEDERAL 002H

Enclosed are the results of analyses for samples received by the laboratory on 04/14/25 13:46.

Cardinal Laboratories is accredited through Texas NELAP under certificate number TX-C24-00112. Accreditation applies to drinking water, non-potable water and solid and chemical materials. All accredited analytes are denoted by an asterisk (*). For a complete list of accredited analytes and matrices visit the TCEQ website at www.tceq.texas.gov/field/qa/lab_accred_certif.html.

Cardinal Laboratories is accredited through the State of Colorado Department of Public Health and Environment for:

Method EPA 552.2	Haloacetic Acids (HAA-5)
Method EPA 524.2	Total Trihalomethanes (TTHM)
Method EPA 524.4	Regulated VOCs (V1, V2, V3)

Accreditation applies to public drinking water matrices.

This report meets NELAP requirements and is made up of a cover page, analytical results, and a copy of the original chain-of-custody. If you have any questions concerning this report, please feel free to contact me.

Sincerely,

A handwritten signature in black ink that reads "Celey D. Keene". The signature is written in a cursive, flowing style.

Celey D. Keene

Lab Director/Quality Manager



PHONE (575) 393-2326 ° 101 E. MARLAND ° HOBBS, NM 88240

Analytical Results For:

ENSOLUM, LLC
 SAMANTHA MACKENZIE
 705 W WADLEY AVE.
 MIDLAND TX, 79705
 Fax To:

Received:	04/14/2025	Sampling Date:	04/14/2025
Reported:	04/21/2025	Sampling Type:	Soil
Project Name:	NIMITZ MDPI 12 FEDERAL 002H	Sampling Condition:	Cool & Intact
Project Number:	03B1417236	Sample Received By:	Alyssa Parras
Project Location:	OXY - EDDY CO NM		

Sample ID: FS 02 2.5 (H252208-01)

BTEx 8021B		mg/kg		Analyzed By: JH					
Analyte	Result	Reporting Limit	Analyzed	Method Blank	BS	% Recovery	True Value QC	RPD	Qualifier
Benzene*	<0.050	0.050	04/16/2025	ND	2.10	105	2.00	3.18	
Toluene*	<0.050	0.050	04/16/2025	ND	2.13	106	2.00	3.00	
Ethylbenzene*	<0.050	0.050	04/16/2025	ND	2.10	105	2.00	2.64	
Total Xylenes*	<0.150	0.150	04/16/2025	ND	6.26	104	6.00	2.03	
Total BTEX	<0.300	0.300	04/16/2025	ND					

Surrogate: 4-Bromofluorobenzene (PID) 100 % 71.5-134

Chloride, SM4500Cl-B		mg/kg		Analyzed By: KV						
Analyte	Result	Reporting Limit	Analyzed	Method Blank	BS	% Recovery	True Value QC	RPD	Qualifier	
Chloride	<16.0	16.0	04/15/2025	ND	400	100	400	7.69		

TPH 8015M		mg/kg		Analyzed By: MS					
Analyte	Result	Reporting Limit	Analyzed	Method Blank	BS	% Recovery	True Value QC	RPD	Qualifier
GRO C6-C10*	<10.0	10.0	04/15/2025	ND	182	91.2	200	0.0674	
DRO >C10-C28*	<10.0	10.0	04/15/2025	ND	170	85.1	200	1.76	
EXT DRO >C28-C36	<10.0	10.0	04/15/2025	ND					

Surrogate: 1-Chlorooctane 81.1 % 44.4-145

Surrogate: 1-Chlorooctadecane 76.7 % 40.6-153

Cardinal Laboratories

*=Accredited Analyte

PLEASE NOTE: Liability and Damages. Cardinal's liability and client's exclusive remedy for any claim arising, whether based in contract or tort, shall be limited to the amount paid by client for analyses. All claims, including those for negligence and any other cause whatsoever shall be deemed waived unless made in writing and received by Cardinal within thirty (30) days after completion of the applicable service. In no event shall Cardinal be liable for incidental or consequential damages, including, without limitation, business interruptions, loss of use, or loss of profits incurred by client, its subsidiaries, affiliates or successors arising out of or related to the performance of the services hereunder by Cardinal, regardless of whether such claim is based upon any of the above stated reasons or otherwise. Results relate only to the samples identified above. This report shall not be reproduced except in full with written approval of Cardinal Laboratories.

Celey D. Keene, Lab Director/Quality Manager



PHONE (575) 393-2326 ° 101 E. MARLAND ° HOBBS, NM 88240

Analytical Results For:

ENSOLUM, LLC
 SAMANTHA MACKENZIE
 705 W WADLEY AVE.
 MIDLAND TX, 79705
 Fax To:

Received: 04/14/2025
 Reported: 04/21/2025
 Project Name: NIMITZ MDPI 12 FEDERAL 002H
 Project Number: 03B1417236
 Project Location: OXY - EDDY CO NM

Sampling Date: 04/14/2025
 Sampling Type: Soil
 Sampling Condition: Cool & Intact
 Sample Received By: Alyssa Parras

Sample ID: FS 06 2.5 (H252208-02)

BTEx 8021B		mg/kg		Analyzed By: JH						
Analyte	Result	Reporting Limit	Analyzed	Method Blank	BS	% Recovery	True Value QC	RPD	Qualifier	
Benzene*	<0.050	0.050	04/16/2025	ND	2.10	105	2.00	3.18		
Toluene*	<0.050	0.050	04/16/2025	ND	2.13	106	2.00	3.00		
Ethylbenzene*	<0.050	0.050	04/16/2025	ND	2.10	105	2.00	2.64		
Total Xylenes*	<0.150	0.150	04/16/2025	ND	6.26	104	6.00	2.03		
Total BTEX	<0.300	0.300	04/16/2025	ND						

Surrogate: 4-Bromofluorobenzene (PID) 99.3 % 71.5-134

Chloride, SM4500Cl-B		mg/kg		Analyzed By: KV						
Analyte	Result	Reporting Limit	Analyzed	Method Blank	BS	% Recovery	True Value QC	RPD	Qualifier	
Chloride	96.0	16.0	04/15/2025	ND	400	100	400	7.69		

TPH 8015M		mg/kg		Analyzed By: MS					
Analyte	Result	Reporting Limit	Analyzed	Method Blank	BS	% Recovery	True Value QC	RPD	Qualifier
GRO C6-C10*	<10.0	10.0	04/15/2025	ND	182	91.2	200	0.0674	
DRO >C10-C28*	<10.0	10.0	04/15/2025	ND	170	85.1	200	1.76	
EXT DRO >C28-C36	<10.0	10.0	04/15/2025	ND					

Surrogate: 1-Chlorooctane 81.2 % 44.4-145

Surrogate: 1-Chlorooctadecane 77.9 % 40.6-153

Cardinal Laboratories

*=Accredited Analyte

PLEASE NOTE: Liability and Damages. Cardinal's liability and client's exclusive remedy for any claim arising, whether based in contract or tort, shall be limited to the amount paid by client for analyses. All claims, including those for negligence and any other cause whatsoever shall be deemed waived unless made in writing and received by Cardinal within thirty (30) days after completion of the applicable service. In no event shall Cardinal be liable for incidental or consequential damages, including, without limitation, business interruptions, loss of use, or loss of profits incurred by client, its subsidiaries, affiliates or successors arising out of or related to the performance of the services hereunder by Cardinal, regardless of whether such claim is based upon any of the above stated reasons or otherwise. Results relate only to the samples identified above. This report shall not be reproduced except in full with written approval of Cardinal Laboratories.

Celey D. Keene, Lab Director/Quality Manager



PHONE (575) 393-2326 ° 101 E. MARLAND ° HOBBS, NM 88240

Analytical Results For:

ENSOLUM, LLC
 SAMANTHA MACKENZIE
 705 W WADLEY AVE.
 MIDLAND TX, 79705
 Fax To:

Received: 04/14/2025
 Reported: 04/21/2025
 Project Name: NIMITZ MDPI 12 FEDERAL 002H
 Project Number: 03B1417236
 Project Location: OXY - EDDY CO NM

Sampling Date: 04/14/2025
 Sampling Type: Soil
 Sampling Condition: Cool & Intact
 Sample Received By: Alyssa Parras

Sample ID: FS 07 2.5 (H252208-03)

BTEx 8021B		mg/kg		Analyzed By: JH					
Analyte	Result	Reporting Limit	Analyzed	Method Blank	BS	% Recovery	True Value QC	RPD	Qualifier
Benzene*	<0.050	0.050	04/16/2025	ND	2.10	105	2.00	3.18	
Toluene*	<0.050	0.050	04/16/2025	ND	2.13	106	2.00	3.00	
Ethylbenzene*	<0.050	0.050	04/16/2025	ND	2.10	105	2.00	2.64	
Total Xylenes*	<0.150	0.150	04/16/2025	ND	6.26	104	6.00	2.03	
Total BTEX	<0.300	0.300	04/16/2025	ND					

Surrogate: 4-Bromofluorobenzene (PID) 99.1 % 71.5-134

Chloride, SM4500Cl-B		mg/kg		Analyzed By: KV					
Analyte	Result	Reporting Limit	Analyzed	Method Blank	BS	% Recovery	True Value QC	RPD	Qualifier
Chloride	64.0	16.0	04/15/2025	ND	400	100	400	7.69	

TPH 8015M		mg/kg		Analyzed By: MS					
Analyte	Result	Reporting Limit	Analyzed	Method Blank	BS	% Recovery	True Value QC	RPD	Qualifier
GRO C6-C10*	<10.0	10.0	04/15/2025	ND	182	91.2	200	0.0674	
DRO >C10-C28*	<10.0	10.0	04/15/2025	ND	170	85.1	200	1.76	
EXT DRO >C28-C36	<10.0	10.0	04/15/2025	ND					

Surrogate: 1-Chlorooctane 73.7 % 44.4-145

Surrogate: 1-Chlorooctadecane 73.2 % 40.6-153

Cardinal Laboratories

*=Accredited Analyte

PLEASE NOTE: Liability and Damages. Cardinal's liability and client's exclusive remedy for any claim arising, whether based in contract or tort, shall be limited to the amount paid by client for analyses. All claims, including those for negligence and any other cause whatsoever shall be deemed waived unless made in writing and received by Cardinal within thirty (30) days after completion of the applicable service. In no event shall Cardinal be liable for incidental or consequential damages, including, without limitation, business interruptions, loss of use, or loss of profits incurred by client, its subsidiaries, affiliates or successors arising out of or related to the performance of the services hereunder by Cardinal, regardless of whether such claim is based upon any of the above stated reasons or otherwise. Results relate only to the samples identified above. This report shall not be reproduced except in full with written approval of Cardinal Laboratories.

Celey D. Keene, Lab Director/Quality Manager



PHONE (575) 393-2326 ° 101 E. MARLAND ° HOBBS, NM 88240

Analytical Results For:

ENSOLUM, LLC
 SAMANTHA MACKENZIE
 705 W WADLEY AVE.
 MIDLAND TX, 79705
 Fax To:

Received: 04/14/2025
 Reported: 04/21/2025
 Project Name: NIMITZ MDPI 12 FEDERAL 002H
 Project Number: 03B1417236
 Project Location: OXY - EDDY CO NM

Sampling Date: 04/14/2025
 Sampling Type: Soil
 Sampling Condition: Cool & Intact
 Sample Received By: Alyssa Parras

Sample ID: SW 01 0-2.5 (H252208-04)

BTEx 8021B		mg/kg		Analyzed By: JH					
Analyte	Result	Reporting Limit	Analyzed	Method Blank	BS	% Recovery	True Value QC	RPD	Qualifier
Benzene*	<0.050	0.050	04/16/2025	ND	2.10	105	2.00	3.18	
Toluene*	<0.050	0.050	04/16/2025	ND	2.13	106	2.00	3.00	
Ethylbenzene*	<0.050	0.050	04/16/2025	ND	2.10	105	2.00	2.64	
Total Xylenes*	<0.150	0.150	04/16/2025	ND	6.26	104	6.00	2.03	
Total BTEX	<0.300	0.300	04/16/2025	ND					

Surrogate: 4-Bromofluorobenzene (PID) 99.5 % 71.5-134

Chloride, SM4500Cl-B		mg/kg		Analyzed By: KV					
Analyte	Result	Reporting Limit	Analyzed	Method Blank	BS	% Recovery	True Value QC	RPD	Qualifier
Chloride	32.0	16.0	04/15/2025	ND	400	100	400	7.69	

TPH 8015M		mg/kg		Analyzed By: MS					
Analyte	Result	Reporting Limit	Analyzed	Method Blank	BS	% Recovery	True Value QC	RPD	Qualifier
GRO C6-C10*	<10.0	10.0	04/15/2025	ND	182	91.2	200	0.0674	
DRO >C10-C28*	<10.0	10.0	04/15/2025	ND	170	85.1	200	1.76	
EXT DRO >C28-C36	<10.0	10.0	04/15/2025	ND					

Surrogate: 1-Chlorooctane 75.6 % 44.4-145

Surrogate: 1-Chlorooctadecane 75.4 % 40.6-153

Cardinal Laboratories

*=Accredited Analyte

PLEASE NOTE: Liability and Damages. Cardinal's liability and client's exclusive remedy for any claim arising, whether based in contract or tort, shall be limited to the amount paid by client for analyses. All claims, including those for negligence and any other cause whatsoever shall be deemed waived unless made in writing and received by Cardinal within thirty (30) days after completion of the applicable service. In no event shall Cardinal be liable for incidental or consequential damages, including, without limitation, business interruptions, loss of use, or loss of profits incurred by client, its subsidiaries, affiliates or successors arising out of or related to the performance of the services hereunder by Cardinal, regardless of whether such claim is based upon any of the above stated reasons or otherwise. Results relate only to the samples identified above. This report shall not be reproduced except in full with written approval of Cardinal Laboratories.

Celey D. Keene, Lab Director/Quality Manager



PHONE (575) 393-2326 • 101 E. MARLAND • HOBBS, NM 88240

Notes and Definitions

QM-07	The spike recovery was outside acceptance limits for the MS and/or MSD. The batch was accepted based on acceptable LCS recovery.
ND	Analyte NOT DETECTED at or above the reporting limit
RPD	Relative Percent Difference
**	Samples not received at proper temperature of 6°C or below.
***	Insufficient time to reach temperature.
-	Chloride by SM4500Cl-B does not require samples be received at or below 6°C Samples reported on an as received basis (wet) unless otherwise noted on report

Cardinal Laboratories

*=Accredited Analyte

PLEASE NOTE: Liability and Damages. Cardinal's liability and client's exclusive remedy for any claim arising, whether based in contract or tort, shall be limited to the amount paid by client for analyses. All claims, including those for negligence and any other cause whatsoever shall be deemed waived unless made in writing and received by Cardinal within thirty (30) days after completion of the applicable service. In no event shall Cardinal be liable for incidental or consequential damages, including, without limitation, business interruptions, loss of use, or loss of profits incurred by client, its subsidiaries, affiliates or successors arising out of or related to the performance of the services hereunder by Cardinal, regardless of whether such claim is based upon any of the above stated reasons or otherwise. Results relate only to the samples identified above. This report shall not be reproduced except in full with written approval of Cardinal Laboratories.

A handwritten signature in black ink, appearing to read "Celey D. Keene".

Celey D. Keene, Lab Director/Quality Manager

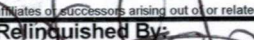
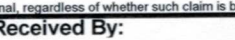
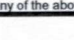


101 East Marland, Hobbs, NM 88240
(575) 393-2326 FAX (575) 393-2476

CHAIN-OF-CUSTODY AND ANALYSIS REQUEST

Company Name: Ensolum, LLC						BILL TO				ANALYSIS REQUEST														
Project Manager: SAMANTHA MACKENZIE						P.O. #:																		
Address: 601 N MARLENFIELD						Company: Oxy																		
City: Midland		State: TX		Zip: 79701		Attn: WADE DITTRICH																		
Phone #: 703 357 3545		Fax #:				Address:																		
Project #: 03B141723G		Project Owner: Oxy				City:																		
Project Name: NIMITZ MOD 12 Federal 002H						State: Zip:																		
Project Location: Eddy county						Phone #:																		
Sampler Name: Udeh Azuka						Fax #:																		
FOR LAB USE ONLY						MATRIX				PRESERV.		SAMPLING												
Lab I.D.	Sample I.D.	Depth (feet)	(G)RAB OR (C)OMP.	# CONTAINERS	GROUNDWATER	WASTEWATER	SOIL	OIL	SLUDGE	OTHER :	ACID/BASE:	ICE / COOL	OTHER :	DATE	TIME									
HAS 2008	F502	2.5	C				X					X		4/14/25	1030	X	X	X						
2	F506	2.5	C				X					X		1	1100	X	X	X						
3	F507	2.5	C				X					X		1	1115	X	X	X						
4	SW01	0-2.5	C				X					X		4/14/25	1145	X	X	X						
N						X/FE																		

PLEASE NOTE: Liability and Damages. Cardinal's liability and client's exclusive remedy for any claim arising whether based in contract or tort, shall be limited to the amount paid by the client for the analyses. All claims including those for negligence and any other cause whatsoever shall be deemed waived unless made in writing and received by Cardinal within 30 days after completion of the applicable service. In no event shall Cardinal be liable for incidental or consequential damages, including without limitation, business interruptions, loss of use, or loss of profits incurred by client, its subsidiaries, affiliates or successors arising out of or related to the performance of services hereunder by Cardinal, regardless of whether such claim is based upon any of the above stated reasons or otherwise.

Relinquished By: 		Date: 4-14-25	Received By: 	Verbal Result: <input type="checkbox"/> Yes <input type="checkbox"/> No Add'l Phone #: _____
Time: 1344				All Results are emailed. Please provide Email address: _____
Relinquished By: 4/14/2025		Date:	Received By:	REMARKS:
Time:				
Delivered By: (Circle One)	Observed Temp. °C 2.1	Sample Condition Cool Intact <input type="checkbox"/> Yes <input checked="" type="checkbox"/> No	CHECKED BY: (Initials) 	Turnaround Time: Standard <input checked="" type="checkbox"/> Rush <input type="checkbox"/>
Sampler - UPS - Bus - Other:	Corrected Temp. °C 2.4	Thermometer ID #113 #145		Bacteria (only) Sample Condition Cool Intact <input type="checkbox"/> Yes <input type="checkbox"/> No Observed Temp. °C <input type="checkbox"/> Yes <input type="checkbox"/> No Corrected Temp. °C <input type="checkbox"/> Yes <input type="checkbox"/> No
				Correction Factor: -0.5°C ±0.3°C

PHONE (575) 393-2326 ° 101 E. MARLAND ° HOBBS, NM 88240

September 18, 2024

KELLY LOWERY

ENSOLUM, LLC

705 W WADLEY AVE.

MIDLAND, TX 79705

RE: TWIN WELLS CALICHE PIT

Enclosed are the results of analyses for samples received by the laboratory on 09/09/24 15:16.

Cardinal Laboratories is accredited through Texas NELAP under certificate number TX-C24-00112. Accreditation applies to drinking water, non-potable water and solid and chemical materials. All accredited analytes are denoted by an asterisk (*). For a complete list of accredited analytes and matrices visit the TCEQ website at

www.tceq.texas.gov/field/ga/lab_accred_certif.html.

Cardinal Laboratories is accredited through the State of Colorado Department of Public Health and Environment for:

Method EPA 552.2	Total Haloacetic Acids (HAA-5)
Method EPA 524.2	Total Trihalomethanes (TTHM)
Method EPA 524.4	Regulated VOCs (V1, V2, V3)

Cardinal Laboratories is accredited through the State of New Mexico Environment Department for:

Method SM 9223-B	Total Coliform and E. coli (Colilert MMO-MUG)
Method EPA 524.2	Regulated VOCs and Total Trihalomethanes (TTHM)
Method EPA 552.2	Total Haloacetic Acids (HAA-5)

Accreditation applies to public drinking water matrices for State of Colorado and New Mexico.

This report meets NELAP requirements and is made up of a cover page, analytical results, and a copy of the original chain-of-custody. If you have any questions concerning this report, please feel free to contact me.

Sincerely,

Celey D. Keene

Lab Director/Quality Manager



PHONE (575) 393-2326 ° 101 E. MARLAND ° HOBBS, NM 88240

Analytical Results For:

ENSOLUM, LLC
705 W WADLEY AVE.
MIDLAND TX, 79705

Project: TWIN WELLS CALICHE PIT
Project Number: 03B1417156
Project Manager: KELLY LOWERY
Fax To:

Reported:
18-Sep-24 09:06

Sample ID	Laboratory ID	Matrix	Date Sampled	Date Received
TWIN WELLS CALICHE PIT	H245437-01	Soil	09-Sep-24 14:00	09-Sep-24 15:16

09/18/24 - Client added BTEX and TPH to sample (see COC). This is the revised report and will replace the one sent on 09/12/24.

Cardinal Laboratories

*=Accredited Analyte

PLEASE NOTE: Liability and Damages. Cardinal's liability and client's exclusive remedy for any claim arising, whether based in contract or tort, shall be limited to the amount paid by client for analyses. All claims, including those for negligence or any other cause whatsoever shall be deemed waived unless made in writing and received by Cardinal within thirty (30) days after completion of the applicable service. In no event shall Cardinal be liable for incidental or consequential damage including, without limitation, business interruptions, loss of use, or loss of profits incurred by client, its subsidiaries, affiliates or successors arising out of or related to the performance of the services hereunder by Cardinal, regardless of whether such claim is based upon any of the above stated reasons or otherwise. Results relate only to the samples identified above. This report shall not be reproduced except in full with written approval of Cardinal Laboratories.

Celey D. Keene, Lab Director/Quality Manager



PHONE (575) 393-2326 ° 101 E. MARLAND ° HOBBS, NM 88240

Analytical Results For:

ENSOLUM, LLC
705 W WADLEY AVE.
MIDLAND TX, 79705

Project: TWIN WELLS CALICHE PIT
Project Number: 03B1417156
Project Manager: KELLY LOWERY
Fax To:

Reported:
18-Sep-24 09:06

TWIN WELLS CALICHE PIT
H245437-01 (Soil)

Analyte	Result	MDL	Reporting Limit	Units	Dilution	Batch	Analyst	Analyzed	Method	Notes
---------	--------	-----	-----------------	-------	----------	-------	---------	----------	--------	-------

Cardinal Laboratories**Inorganic Compounds**

Chloride	32.0		16.0	mg/kg	4	4091017	CT	10-Sep-24	4500-Cl-B	
----------	------	--	------	-------	---	---------	----	-----------	-----------	--

Volatile Organic Compounds by EPA Method 8021

Benzene*	<0.050		0.050	mg/kg	50	4091601	JH	16-Sep-24	8021B	
Toluene*	<0.050		0.050	mg/kg	50	4091601	JH	16-Sep-24	8021B	
Ethylbenzene*	<0.050		0.050	mg/kg	50	4091601	JH	16-Sep-24	8021B	
Total Xylenes*	<0.150		0.150	mg/kg	50	4091601	JH	16-Sep-24	8021B	
Total BTEX	<0.300		0.300	mg/kg	50	4091601	JH	16-Sep-24	8021B	

Surrogate: 4-Bromofluorobenzene (PID)			99.1 %	71.5-134		4091601	JH	16-Sep-24	8021B	
---------------------------------------	--	--	--------	----------	--	---------	----	-----------	-------	--

Petroleum Hydrocarbons by GC FID

GRO C6-C10*	<10.0		10.0	mg/kg	1	4091609	MS	16-Sep-24	8015B	
DRO >C10-C28*	<10.0		10.0	mg/kg	1	4091609	MS	16-Sep-24	8015B	
EXT DRO >C28-C36	<10.0		10.0	mg/kg	1	4091609	MS	16-Sep-24	8015B	

Surrogate: 1-Chlorooctane			77.2 %	48.2-134		4091609	MS	16-Sep-24	8015B	
---------------------------	--	--	--------	----------	--	---------	----	-----------	-------	--

Surrogate: 1-Chlorooctadecane			79.7 %	49.1-148		4091609	MS	16-Sep-24	8015B	
-------------------------------	--	--	--------	----------	--	---------	----	-----------	-------	--

Cardinal Laboratories

*=Accredited Analyte

PLEASE NOTE: Liability and Damages. Cardinal's liability and client's exclusive remedy for any claim arising, whether based in contract or tort, shall be limited to the amount paid by client for analyses. All claims, including those for negligence or any other cause whatsoever shall be deemed waived unless made in writing and received by Cardinal within thirty (30) days after completion of the applicable service. In no event shall Cardinal be liable for incidental or consequential damage including, without limitation, business interruptions, loss of use, or loss of profits incurred by client, its subsidiaries, affiliates or successors arising out of or related to the performance of the services hereunder by Cardinal, regardless of whether such claim is based upon any of the above stated reasons or otherwise. Results relate only to the samples identified above. This report shall not be reproduced except in full with written approval of Cardinal Laboratories.

Celey D. Keene, Lab Director/Quality Manager



PHONE (575) 393-2326 ° 101 E. MARLAND ° HOBBS, NM 88240

Analytical Results For:

ENSOLUM, LLC
705 W WADLEY AVE.
MIDLAND TX, 79705

Project: TWIN WELLS CALICHE PIT
Project Number: 03B1417156
Project Manager: KELLY LOWERY
Fax To:

Reported:
18-Sep-24 09:06

Inorganic Compounds - Quality Control**Cardinal Laboratories**

Analyte	Result	Reporting Limit	Units	Spike Level	Source Result	%REC Limits	RPD	RPD Limit	Notes
Batch 4091017 - 1:4 DI Water									
Blank (4091017-BLK1)									
					Prepared & Analyzed: 10-Sep-24				
Chloride	ND	16.0	mg/kg						
LCS (4091017-BS1)									
					Prepared & Analyzed: 10-Sep-24				
Chloride	400	16.0	mg/kg	400		100	80-120		
LCS Dup (4091017-BSD1)									
					Prepared & Analyzed: 10-Sep-24				
Chloride	400	16.0	mg/kg	400		100	80-120	0.00	20

Cardinal Laboratories

*=Accredited Analyte

PLEASE NOTE: Liability and Damages. Cardinal's liability and client's exclusive remedy for any claim arising, whether based in contract or tort, shall be limited to the amount paid by client for analyses. All claims, including those for negligence or any other cause whatsoever shall be deemed waived unless made in writing and received by Cardinal within thirty (30) days after completion of the applicable service. In no event shall Cardinal be liable for incidental or consequential damage including, without limitation, business interruptions, loss of use, or loss of profits incurred by client, its subsidiaries, affiliates or successors arising out of or related to the performance of the services hereunder by Cardinal, regardless of whether such claim is based upon any of the above stated reasons or otherwise. Results relate only to the samples identified above. This report shall not be reproduced except in full with written approval of Cardinal Laboratories.

Celey D. Keene, Lab Director/Quality Manager



PHONE (575) 393-2326 • 101 E. MARLAND • HOBBS, NM 88240

Analytical Results For:

ENSOLUM, LLC
705 W WADLEY AVE.
MIDLAND TX, 79705

Project: TWIN WELLS CALICHE PIT
Project Number: 03B1417156
Project Manager: KELLY LOWERY
Fax To:

Reported:
18-Sep-24 09:06

Volatile Organic Compounds by EPA Method 8021 - Quality Control**Cardinal Laboratories**

Analyte	Result	Reporting Limit	Units	Spike Level	Source Result	%REC	%REC Limits	RPD	RPD Limit	Notes
---------	--------	--------------------	-------	----------------	------------------	------	----------------	-----	--------------	-------

Batch 4091601 - Volatiles**Blank (4091601-BLK1)**

Prepared & Analyzed: 16-Sep-24

Benzene	ND	0.050	mg/kg							
Toluene	ND	0.050	mg/kg							
Ethylbenzene	ND	0.050	mg/kg							
Total Xylenes	ND	0.150	mg/kg							
Total BTEX	ND	0.300	mg/kg							
Surrogate: 4-Bromofluorobenzene (PID)	ND		mg/kg	0.0500		99.0	71.5-134			

LCS (4091601-BS1)

Prepared & Analyzed: 16-Sep-24

Benzene	2.16	0.050	mg/kg	2.00		108	82.8-130			
Toluene	2.12	0.050	mg/kg	2.00		106	86-128			
Ethylbenzene	2.14	0.050	mg/kg	2.00		107	85.9-128			
m,p-Xylene	4.29	0.100	mg/kg	4.00		107	89-129			
o-Xylene	2.11	0.050	mg/kg	2.00		105	86.1-125			
Total Xylenes	6.40	0.150	mg/kg	6.00		107	88.2-128			
Surrogate: 4-Bromofluorobenzene (PID)	0.0497		mg/kg	0.0500		99.5	71.5-134			

LCS Dup (4091601-BSD1)

Prepared & Analyzed: 16-Sep-24

Benzene	2.10	0.050	mg/kg	2.00		105	82.8-130	2.64	15.8	
Toluene	2.06	0.050	mg/kg	2.00		103	86-128	3.12	15.9	
Ethylbenzene	2.08	0.050	mg/kg	2.00		104	85.9-128	3.13	16	
m,p-Xylene	4.15	0.100	mg/kg	4.00		104	89-129	3.21	16.2	
o-Xylene	2.04	0.050	mg/kg	2.00		102	86.1-125	3.27	16.7	
Total Xylenes	6.19	0.150	mg/kg	6.00		103	88.2-128	3.23	16.3	
Surrogate: 4-Bromofluorobenzene (PID)	0.0494		mg/kg	0.0500		98.8	71.5-134			

Cardinal Laboratories

*=Accredited Analyte

PLEASE NOTE: Liability and Damages. Cardinal's liability and client's exclusive remedy for any claim arising, whether based in contract or tort, shall be limited to the amount paid by client for analyses. All claims, including those for negligence or any other cause whatsoever shall be deemed waived unless made in writing and received by Cardinal within thirty (30) days after completion of the applicable service. In no event shall Cardinal be liable for incidental or consequential damage including, without limitation, business interruptions, loss of use, or loss of profits incurred by client, its subsidiaries, affiliates or successors arising out of or related to the performance of the services hereunder by Cardinal, regardless of whether such claim is based upon any of the above stated reasons or otherwise. Results relate only to the samples identified above. This report shall not be reproduced except in full with written approval of Cardinal Laboratories.

Celey D. Keene, Lab Director/Quality Manager



PHONE (575) 393-2326 ° 101 E. MARLAND ° HOBBS, NM 88240

Analytical Results For:

ENSOLUM, LLC
705 W WADLEY AVE.
MIDLAND TX, 79705

Project: TWIN WELLS CALICHE PIT
Project Number: 03B1417156
Project Manager: KELLY LOWERY
Fax To:

Reported:
18-Sep-24 09:06

Petroleum Hydrocarbons by GC FID - Quality Control**Cardinal Laboratories**

Analyte	Result	Reporting Limit	Units	Spike Level	Source Result	%REC	%REC Limits	RPD	RPD Limit	Notes
---------	--------	--------------------	-------	----------------	------------------	------	----------------	-----	--------------	-------

Batch 4091609 - General Prep - Organics**Blank (4091609-BLK1)**

Prepared & Analyzed: 16-Sep-24

GRO C6-C10	ND	10.0	mg/kg							
DRO >C10-C28	ND	10.0	mg/kg							
EXT DRO >C28-C36	ND	10.0	mg/kg							
Surrogate: 1-Chlorooctane	43.5		mg/kg	50.0		87.0	48.2-134			
Surrogate: 1-Chlorooctadecane	46.0		mg/kg	50.0		92.1	49.1-148			

LCS (4091609-BS1)

Prepared & Analyzed: 16-Sep-24

GRO C6-C10	199	10.0	mg/kg	200		99.5	66.4-123			
DRO >C10-C28	190	10.0	mg/kg	200		95.1	66.5-118			
Total TPH C6-C28	389	10.0	mg/kg	400		97.3	77.6-123			
Surrogate: 1-Chlorooctane	47.1		mg/kg	50.0		94.2	48.2-134			
Surrogate: 1-Chlorooctadecane	49.2		mg/kg	50.0		98.4	49.1-148			

LCS Dup (4091609-BSD1)

Prepared & Analyzed: 16-Sep-24

GRO C6-C10	174	10.0	mg/kg	200		86.8	66.4-123	13.6	17.7	
DRO >C10-C28	160	10.0	mg/kg	200		79.9	66.5-118	17.3	21	
Total TPH C6-C28	333	10.0	mg/kg	400		83.4	77.6-123	15.4	18.5	
Surrogate: 1-Chlorooctane	38.2		mg/kg	50.0		76.5	48.2-134			
Surrogate: 1-Chlorooctadecane	41.4		mg/kg	50.0		82.9	49.1-148			

Cardinal Laboratories

*=Accredited Analyte

PLEASE NOTE: Liability and Damages. Cardinal's liability and client's exclusive remedy for any claim arising, whether based in contract or tort, shall be limited to the amount paid by client for analyses. All claims, including those for negligence or any other cause whatsoever shall be deemed waived unless made in writing and received by Cardinal within thirty (30) days after completion of the applicable service. In no event shall Cardinal be liable for incidental or consequential damage including, without limitation, business interruptions, loss of use, or loss of profits incurred by client, its subsidiaries, affiliates or successors arising out of or related to the performance of the services hereunder by Cardinal, regardless of whether such claim is based upon any of the above stated reasons or otherwise. Results relate only to the samples identified above. This report shall not be reproduced except in full with written approval of Cardinal Laboratories.

Celey D. Keene, Lab Director/Quality Manager



PHONE (575) 393-2326 ° 101 E. MARLAND ° HOBBS, NM 88240

Notes and Definitions

ND	Analyte NOT DETECTED at or above the reporting limit
RPD	Relative Percent Difference
**	Samples not received at proper temperature of 6°C or below.
***	Insufficient time to reach temperature.
-	Chloride by SM4500Cl-B does not require samples be received at or below 6°C Samples reported on an as received basis (wet) unless otherwise noted on report

Cardinal Laboratories

*=Accredited Analyte

PLEASE NOTE: Liability and Damages. Cardinal's liability and client's exclusive remedy for any claim arising, whether based in contract or tort, shall be limited to the amount paid by client for analyses. All claims, including those for negligence or any other cause whatsoever shall be deemed waived unless made in writing and received by Cardinal within thirty (30) days after completion of the applicable service. In no event shall Cardinal be liable for incidental or consequential damage including, without limitation, business interruptions, loss of use, or loss of profits incurred by client, its subsidiaries, affiliates or successors arising out of or related to the performance of the services hereunder by Cardinal, regardless of whether such claim is based upon any of the above stated reasons or otherwise. Results relate only to the samples identified above. This report shall not be reproduced except in full with written approval of Cardinal Laboratories.

A handwritten signature in black ink, appearing to read "C. D. Keene", is written over a horizontal line.

Celey D. Keene, Lab Director/Quality Manager



101 East Marland, Hobbs, NM 88240
(575) 393-2326 FAX (575) 393-2476

CHAIN-OF-CUSTODY AND ANALYSIS REQUEST

[illegible]

PLEASE NOTE: Liability and Damages. Cardinal's liability and client's exclusive remedy for any claim arising whether based in contract or tort, shall be limited to the amount paid by the client for the analyses. All claims, including those for negligence and any other cause whatsoever shall be deemed waived unless made in writing and received by Cardinal within 30 days after completion of the applicable service. In no event shall Cardinal be liable for incidental or consequential damages, including without limitation, business interruptions, loss of use, or loss of profits incurred by client, its subsidiaries, affiliates or successors arising out of or related to the performance of services hereunder by Cardinal, regardless of whether such claim is based upon any of the above stated reasons or otherwise.

Relinquished By:		Date:	Received By:	Verbal Result:	<input type="checkbox"/> Yes <input checked="" type="checkbox"/> No	Add'l Phone #:
Time:		Time:		All Results are emailed. Please provide Email address:		
Relinquished By:		Date:	Received By:	REMARKS:		
Time:		Time:		* Cust. added analysis - to 9/13/24		
Delivered By: (Circle One)	Observed Temp. °C	Sample Condition	CHECKED BY:	Turnaround Time:	Standard <input checked="" type="checkbox"/> Rush <input type="checkbox"/>	Bacteria (only) Sample Condition
Sampler - UPS - Bus - Other:	Corrected Temp. °C	Cool <input type="checkbox"/> Intact <input type="checkbox"/>	(Initials)	Thermometer ID #113		Cool <input type="checkbox"/> Intact <input type="checkbox"/>
		Yes <input type="checkbox"/> No <input type="checkbox"/>		Correction Factor -0.5°C		Yes <input type="checkbox"/> No <input type="checkbox"/>
						Corrected Temp. °C

FORM-006 R 3.2 10/07/21

† Cardinal cannot accept verbal changes. Please email changes to celey.keene@cardinallabsnm.com



APPENDIX F
Correspondence

From: [Dittrich, John W](#)
To: [Kelly Lowery](#); [Hadlie Green](#)
Cc: [Samantha MacKenzie](#); [Georgiana McSwane](#)
Subject: Fw: The Oil Conservation Division (OCD) has approved the application, Application ID: 427119
Date: Tuesday, February 18, 2025 3:53:32 PM

[**EXTERNAL EMAIL**]

Nimitz MDPI 12 Fed. 002H--11/4/2024

Wade Dittrich

Environmental Advisor

New Mexico

575-390-2828

wade_dittrich@oxy.com

From: OCDOnline@state.nm.us <OCDOnline@state.nm.us>
Sent: Monday, February 17, 2025 2:59 PM
To: Dittrich, John W <wade_dittrich@oxy.com>
Subject: [EXTERNAL] The Oil Conservation Division (OCD) has approved the application, Application ID: 427119

WARNING - This message is from an EXTERNAL SENDER - be CAUTIOUS, particularly with links and attachments.

To whom it may concern (c/o Wade Dittrich for OXY USA INC),
The OCD has approved the submitted *Application for administrative approval of a release notification and corrective action* (C-141), for incident ID (n#) nAPP2431326565, with the following conditions:

- Remediation plan is approved with the following conditions; 1. Variance to allow water well data that exceeds 25 years from the time of release is denied. Variance to forgo the wetland setback is also denied. When nearby wells are used to determine depth to groundwater, the wells should be preferably within ½ mile away from the site, and data should be no more than 25 years old. Additionally, with surface owners permission, you could physically measure the depth the water within the well that's 0.55 miles away if the water well is accessible. You may also request through the US Fish and Wildlife, that they may alter or eliminate the wetland category for your specific incident by demonstrating to them that the wetland isn't listed in the USGS National Water Dashboard and does not define this area as a "Freshwater Emergent Wetland".
- 2. Given the determination made in bullet #1, the closure standard for this release must meet Table I of 19.15.29.12 NMAC for groundwater < 50 feet unless the operator has taken the necessary action listed in bullet #1 and amends its remediation plan. 3. Prior to backfilling any open excavations per 19.15.29.12D (2) NMAC, the operator must collect a minimum of one (1) 5pcs from the media being used as backfill to verify that it meets non-waste containing, uncontaminated, earthen material with chloride concentrations less than 600 mg/kg as analyzed by

EPA Method 300.0, or other test methods approved by the division. This is especially important for the material being used within the top four (4) feet from the ground surface. 4. The operator has 90-days (May 19, 2025) to submit to OCD its appropriate or final remediation closure report.

The signed C-141 can be found in the OCD Online: Imaging under the incident ID (n#).

If you have any questions regarding this application, please contact me.

Thank you,

Nelson Velez

Environmental Specialist - Advanced

505-469-6146

Nelson.Velez@emnrd.nm.gov

New Mexico Energy, Minerals and Natural Resources Department

1220 South St. Francis Drive

Santa Fe, NM 87505

Samantha MacKenzie

From: Velez, Nelson, EMNRD <Nelson.Velez@emnrd.nm.gov>
Sent: Monday, May 19, 2025 4:26 PM
To: Samantha MacKenzie
Cc: daniel_sparks@oxy.com; jessica_kent@oxy.com; Beaux Jennings; Wells, Shelly, EMNRD; Bratcher, Michael, EMNRD
Subject: Re: [EXTERNAL] Closure Report - Nimitz MDP1 12 Federal 002H (nAPP2431326565)

[**EXTERNAL EMAIL**]

Good afternoon Samantha,

Your 30-day time extension request is approved. Remediation Due date has been updated to June 18, 2025.

Please keep a copy of this communication for inclusion within the appropriate report submittal.

The OCD requires a copy of all correspondence related to remedial activities be included in all proposals and/or final closure reports. Correspondence required to be included in reports may include, but not limited to, notifications for liner inspections, sample events, spill/release/fire, and request for time extensions or variances.

Regards,

Nelson Velez • Environmental Specialist - Adv
Environmental Bureau | EMNRD - Oil Conservation Division
1000 Rio Brazos Road | Aztec, NM 87410
(505) 469-6146 | nelson.velez@emnrd.nm.gov
<http://www.emnrd.nm.gov/oed>



From: Wells, Shelly, EMNRD <Shelly.Wells@emnrd.nm.gov>
Sent: Monday, May 19, 2025 10:58 AM
To: Velez, Nelson, EMNRD <Nelson.Velez@emnrd.nm.gov>
Cc: Bratcher, Michael, EMNRD <mike.bratcher@emnrd.nm.gov>
Subject: FW: [EXTERNAL] Closure Report - Nimitz MDP1 12 Federal 002H (nAPP2431326565)

From: Samantha MacKenzie <smackenzie@ensolum.com>
Sent: Monday, May 19, 2025 10:19 AM

To: Enviro, OCD, EMNRD <OCD.Enviro@emnrd.nm.gov>; Sparks, Daniel (DANOS LLC) <daniel_sparks@oxy.com>; Kent, Jessica <jessica_kent@oxy.com>; Beaux Jennings <bjennings@ensolum.com>

Subject: [EXTERNAL] Closure Report - Nimitz MDP1 12 Federal 002H (nAPP2431326565)

CAUTION: This email originated outside of our organization. Exercise caution prior to clicking on links or opening attachments.

Hello,

On behalf of Oxy USA, Inc, Ensolum, LLC would like to request a 30-day extension for the Nimitz MDP1 12 Federal 002H (nAPP2431326565). The due date was May 19, 2025, Oxy would appreciate an additional 30 extension making the new deadline June 19, 2025.

The spill extent has been completely excavated to remediation standards and has also been backfilled, and we would like an additional 30 days to complete the drafting of the closure report. Therefore, we humbly ask for an extension so that we may complete the report and so it can be thoroughly reviewed before submitting the final copy to the portal. Please let us know if you have any questions.

Thank you so much for your time!



Samantha MacKenzie

Staff Geologist

703-357-3545

Ensolum, LLC

in f X

Sante Fe Main Office
Phone: (505) 476-3441

General Information
Phone: (505) 629-6116

Online Phone Directory
<https://www.emnrd.nm.gov/ocd/contact-us>

State of New Mexico
Energy, Minerals and Natural Resources
Oil Conservation Division
1220 S. St Francis Dr.
Santa Fe, NM 87505

QUESTIONS

Action 476740

QUESTIONS

Operator: OXY USA INC P.O. Box 4294 Houston, TX 772104294	OGRID: 16696
	Action Number: 476740
	Action Type: [C-141] Remediation Closure Request C-141 (C-141-v-Closure)

QUESTIONS

Prerequisites	
Incident ID (n#)	nAPP2431326565
Incident Name	NAPP2431326565 NIMITZ MDP1 12 FEDERAL 002H @ 30-015-46319
Incident Type	Release Other
Incident Status	Remediation Closure Report Received
Incident Well	[30-015-46319] PALLADIUM MDP1 7 6 FEDERAL COM #172H

Location of Release Source*Please answer all the questions in this group.*

Site Name	NIMITZ MDP1 12 FEDERAL 002H
Date Release Discovered	11/04/2024
Surface Owner	Federal

Incident Details*Please answer all the questions in this group.*

Incident Type	Release Other
Did this release result in a fire or is the result of a fire	No
Did this release result in any injuries	No
Has this release reached or does it have a reasonable probability of reaching a watercourse	No
Has this release endangered or does it have a reasonable probability of endangering public health	No
Has this release substantially damaged or will it substantially damage property or the environment	No
Is this release of a volume that is or may with reasonable probability be detrimental to fresh water	No

Nature and Volume of Release*Material(s) released, please answer all that apply below. Any calculations or specific justifications for the volumes provided should be attached to the follow-up C-141 submission.*

Crude Oil Released (bbls) Details	Cause: Equipment Failure Flow Line - Production Crude Oil Released: 15 BBL Recovered: 10 BBL Lost: 5 BBL.
Produced Water Released (bbls) Details	Cause: Equipment Failure Flow Line - Production Produced Water Released: 15 BBL Recovered: 10 BBL Lost: 5 BBL.
Is the concentration of chloride in the produced water >10,000 mg/l	No
Condensate Released (bbls) Details	Not answered.
Natural Gas Vented (Mcf) Details	Not answered.
Natural Gas Flared (Mcf) Details	Not answered.
Other Released Details	Not answered.
Are there additional details for the questions above (i.e. any answer containing Other, Specify, Unknown, and/or Fire, or any negative lost amounts)	produced water and produced oil release from white flex line

Sante Fe Main Office
Phone: (505) 476-3441

General Information
Phone: (505) 629-6116

Online Phone Directory
<https://www.emnrd.nm.gov/ocd/contact-us>

State of New Mexico
Energy, Minerals and Natural Resources
Oil Conservation Division
1220 S. St Francis Dr.
Santa Fe, NM 87505

QUESTIONS, Page 2

Action 476740

QUESTIONS (continued)

Operator: OXY USA INC P.O. Box 4294 Houston, TX 772104294	OGRID: 16696
	Action Number: 476740
	Action Type: [C-141] Remediation Closure Request C-141 (C-141-v-Closure)

QUESTIONS

Nature and Volume of Release (continued)	
Is this a gas only submission (i.e. only significant Mcf values reported)	No, according to supplied volumes this does not appear to be a "gas only" report.
Was this a major release as defined by Subsection A of 19.15.29.7 NMAC	Yes
Reasons why this would be considered a submission for a notification of a major release	From paragraph A. "Major release" determine using: (1) an unauthorized release of a volume, excluding gases, of 25 barrels or more.
With the implementation of the 19.15.27 NMAC (05/25/2021), venting and/or flaring of natural gas (i.e. gas only) are to be submitted on the C-129 form.	

Initial Response

The responsible party must undertake the following actions immediately unless they could create a safety hazard that would result in injury.

The source of the release has been stopped	True
The impacted area has been secured to protect human health and the environment	True
Released materials have been contained via the use of berms or dikes, absorbent pads, or other containment devices	True
All free liquids and recoverable materials have been removed and managed appropriately	True
If all the actions described above have not been undertaken, explain why	Not answered.

Per Paragraph (4) of Subsection B of 19.15.29.8 NMAC the responsible party may commence remediation immediately after discovery of a release. If remediation has begun, please prepare and attach a narrative of actions to date in the follow-up C-141 submission. If remedial efforts have been successfully completed or if the release occurred within a lined containment area (see Subparagraph (a) of Paragraph (5) of Subsection A of 19.15.29.11 NMAC), please prepare and attach all information needed for closure evaluation in the follow-up C-141 submission.

I hereby certify that the information given above is true and complete to the best of my knowledge and understand that pursuant to OCD rules and regulations all operators are required to report and/or file certain release notifications and perform corrective actions for releases which may endanger public health or the environment. The acceptance of a C-141 report by the OCD does not relieve the operator of liability should their operations have failed to adequately investigate and remediate contamination that pose a threat to groundwater, surface water, human health or the environment. In addition, OCD acceptance of a C-141 report does not relieve the operator of responsibility for compliance with any other federal, state, or local laws and/or regulations.

I hereby agree and sign off to the above statement	Name: Wade Dittrich Title: Environmental Coordinator Email: wade_dittrich@oxy.com Date: 01/31/2025
--	---

Sante Fe Main Office
Phone: (505) 476-3441

General Information
Phone: (505) 629-6116

Online Phone Directory
<https://www.emnrd.nm.gov/ocd/contact-us>

State of New Mexico
Energy, Minerals and Natural Resources
Oil Conservation Division
1220 S. St Francis Dr.
Santa Fe, NM 87505

QUESTIONS, Page 3

Action 476740

QUESTIONS (continued)

Operator: OXY USA INC P.O. Box 4294 Houston, TX 772104294	OGRID: 16696
	Action Number: 476740
	Action Type: [C-141] Remediation Closure Request C-141 (C-141-v-Closure)

QUESTIONS

Site Characterization	
<i>Please answer all the questions in this group (only required when seeking remediation plan approval and beyond). This information must be provided to the appropriate district office no later than 90 days after the release discovery date.</i>	
What is the shallowest depth to groundwater beneath the area affected by the release in feet below ground surface (ft bgs)	Between 100 and 500 (ft.)
What method was used to determine the depth to ground water	NM OSE iWaters Database Search
Did this release impact groundwater or surface water	No
What is the minimum distance, between the closest lateral extents of the release and the following surface areas:	
A continuously flowing watercourse or any other significant watercourse	Greater than 5 (mi.)
Any lakebed, sinkhole, or playa lake (measured from the ordinary high-water mark)	Greater than 5 (mi.)
An occupied permanent residence, school, hospital, institution, or church	Between ½ and 1 (mi.)
A spring or a private domestic fresh water well used by less than five households for domestic or stock watering purposes	Between 1 and 5 (mi.)
Any other fresh water well or spring	Between ½ and 1 (mi.)
Incorporated municipal boundaries or a defined municipal fresh water well field	Greater than 5 (mi.)
A wetland	Between 100 and 200 (ft.)
A subsurface mine	Greater than 5 (mi.)
An (non-karst) unstable area	Between 1 and 5 (mi.)
Categorize the risk of this well / site being in a karst geology	Low
A 100-year floodplain	Between 1000 (ft.) and ½ (mi.)
Did the release impact areas not on an exploration, development, production, or storage site	Yes

Remediation Plan	
<i>Please answer all the questions that apply or are indicated. This information must be provided to the appropriate district office no later than 90 days after the release discovery date.</i>	
Requesting a remediation plan approval with this submission	Yes
<i>Attach a comprehensive report demonstrating the lateral and vertical extents of soil contamination associated with the release have been determined, pursuant to 19.15.29.11 NMAC and 19.15.29.13 NMAC.</i>	
Have the lateral and vertical extents of contamination been fully delineated	Yes
Was this release entirely contained within a lined containment area	No
Soil Contamination Sampling: (Provide the highest observable value for each, in milligrams per kilograms.)	
Chloride (EPA 300.0 or SM4500 Cl B)	0
TPH (GRO+DRO+MRO) (EPA SW-846 Method 8015M)	0
GRO+DRO (EPA SW-846 Method 8015M)	0
BTEX (EPA SW-846 Method 8021B or 8260B)	0
Benzene (EPA SW-846 Method 8021B or 8260B)	0
<i>Per Subsection B of 19.15.29.11 NMAC unless the site characterization report includes completed efforts at remediation, the report must include a proposed remediation plan in accordance with 19.15.29.12 NMAC, which includes the anticipated timelines for beginning and completing the remediation.</i>	
On what estimated date will the remediation commence	11/18/2024
On what date will (or did) the final sampling or liner inspection occur	01/27/2025
On what date will (or was) the remediation complete(d)	01/27/2025
What is the estimated surface area (in square feet) that will be reclaimed	1687
What is the estimated volume (in cubic yards) that will be reclaimed	63
What is the estimated surface area (in square feet) that will be remediated	1687
What is the estimated volume (in cubic yards) that will be remediated	63
<i>These estimated dates and measurements are recognized to be the best guess or calculation at the time of submission and may (be) change(d) over time as more remediation efforts are completed.</i>	
<i>The OCD recognizes that proposed remediation measures may have to be minimally adjusted in accordance with the physical realities encountered during remediation. If the responsible party has any need to significantly deviate from the remediation plan proposed, then it should consult with the division to determine if another remediation plan submission is required.</i>	

Sante Fe Main Office
Phone: (505) 476-3441

General Information
Phone: (505) 629-6116

Online Phone Directory
<https://www.emnrd.nm.gov/ocd/contact-us>

State of New Mexico
Energy, Minerals and Natural Resources
Oil Conservation Division
1220 S. St Francis Dr.
Santa Fe, NM 87505

QUESTIONS, Page 4

Action 476740

QUESTIONS (continued)

Operator: OXY USA INC P.O. Box 4294 Houston, TX 772104294	OGRID:	16696
	Action Number:	476740
	Action Type:	[C-141] Remediation Closure Request C-141 (C-141-v-Closure)

QUESTIONS

Remediation Plan (continued)	
<i>Please answer all the questions that apply or are indicated. This information must be provided to the appropriate district office no later than 90 days after the release discovery date.</i>	
This remediation will (or is expected to) utilize the following processes to remediate / reduce contaminants:	
<i>(Select all answers below that apply.)</i>	
(Ex Situ) Excavation and off-site disposal (i.e. dig and haul, hydrovac, etc.)	Yes
Which OCD approved facility will be used for off-site disposal	LEA LAND LANDFILL [fEEM0112342028]
OR which OCD approved well (API) will be used for off-site disposal	Not answered.
OR is the off-site disposal site, to be used, out-of-state	No
OR is the off-site disposal site, to be used, an NMED facility	No
(Ex Situ) Excavation and on-site remediation (i.e. On-Site Land Farms)	No
(In Situ) Soil Vapor Extraction	No
(In Situ) Chemical processing (i.e. Soil Shredding, Potassium Permanganate, etc.)	No
(In Situ) Biological processing (i.e. Microbes / Fertilizer, etc.)	No
(In Situ) Physical processing (i.e. Soil Washing, Gypsum, Disking, etc.)	No
Ground Water Abatement pursuant to 19.15.30 NMAC	No
OTHER (Non-listed remedial process)	No
<i>Per Subsection B of 19.15.29.11 NMAC unless the site characterization report includes completed efforts at remediation, the report must include a proposed remediation plan in accordance with 19.15.29.12 NMAC, which includes the anticipated timelines for beginning and completing the remediation.</i>	
I hereby certify that the information given above is true and complete to the best of my knowledge and understand that pursuant to OCD rules and regulations all operators are required to report and/or file certain release notifications and perform corrective actions for releases which may endanger public health or the environment. The acceptance of a C-141 report by the OCD does not relieve the operator of liability should their operations have failed to adequately investigate and remediate contamination that pose a threat to groundwater, surface water, human health or the environment. In addition, OCD acceptance of a C-141 report does not relieve the operator of responsibility for compliance with any other federal, state, or local laws and/or regulations.	
I hereby agree and sign off to the above statement	Name: Wade Dittrich Title: Environmental Coordinator Email: wade_dittrich@oxy.com Date: 01/31/2025
<i>The OCD recognizes that proposed remediation measures may have to be minimally adjusted in accordance with the physical realities encountered during remediation. If the responsible party has any need to significantly deviate from the remediation plan proposed, then it should consult with the division to determine if another remediation plan submission is required.</i>	

Sante Fe Main Office
Phone: (505) 476-3441

General Information
Phone: (505) 629-6116

Online Phone Directory
<https://www.emnrd.nm.gov/ocd/contact-us>

State of New Mexico
Energy, Minerals and Natural Resources
Oil Conservation Division
1220 S. St Francis Dr.
Santa Fe, NM 87505

QUESTIONS, Page 5

Action 476740

QUESTIONS (continued)

Operator: OXY USA INC P.O. Box 4294 Houston, TX 772104294	OGRID: 16696
	Action Number: 476740
	Action Type: [C-141] Remediation Closure Request C-141 (C-141-v-Closure)

QUESTIONS

Deferral Requests Only	
Only answer the questions in this group if seeking a deferral upon approval this submission. Each of the following items must be confirmed as part of any request for deferral of remediation.	
Requesting a deferral of the remediation closure due date with the approval of this submission	No

Sante Fe Main Office
Phone: (505) 476-3441

General Information
Phone: (505) 629-6116

Online Phone Directory
<https://www.emnrd.nm.gov/ocd/contact-us>

State of New Mexico
Energy, Minerals and Natural Resources
Oil Conservation Division
1220 S. St Francis Dr.
Santa Fe, NM 87505

QUESTIONS, Page 6

Action 476740

QUESTIONS (continued)

Operator: OXY USA INC P.O. Box 4294 Houston, TX 772104294	OGRID: 16696
	Action Number: 476740
	Action Type: [C-141] Remediation Closure Request C-141 (C-141-v-Closure)

QUESTIONS

Sampling Event Information	
Last sampling notification (C-141N) recorded	450671
Sampling date pursuant to Subparagraph (a) of Paragraph (1) of Subsection D of 19.15.29.12 NMAC	04/14/2025
What was the (estimated) number of samples that were to be gathered	10
What was the sampling surface area in square feet	1687

Remediation Closure Request	
<i>Only answer the questions in this group if seeking remediation closure for this release because all remediation steps have been completed.</i>	
Requesting a remediation closure approval with this submission	Yes
Have the lateral and vertical extents of contamination been fully delineated	Yes
Was this release entirely contained within a lined containment area	No
All areas reasonably needed for production or subsequent drilling operations have been stabilized, returned to the sites existing grade, and have a soil cover that prevents ponding of water, minimizing dust and erosion	Yes
What was the total surface area (in square feet) remediated	1688
What was the total volume (cubic yards) remediated	118
All areas not reasonably needed for production or subsequent drilling operations have been reclaimed to contain a minimum of four feet of non-waste contain earthen material with concentrations less than 600 mg/kg chlorides, 100 mg/kg TPH, 50 mg/kg BTEX, and 10 mg/kg Benzene	Yes
What was the total surface area (in square feet) reclaimed	1688
What was the total volume (in cubic yards) reclaimed	118
Summarize any additional remediation activities not included by answers (above)	N/A
<i>The responsible party must attach information demonstrating they have complied with all applicable closure requirements and any conditions or directives of the OCD. This demonstration should be in the form of a comprehensive report (in .pdf format) including a scaled site map, sampling diagrams, relevant field notes, photographs of any excavation prior to backfilling, laboratory data including chain of custody documents of final sampling, and a narrative of the remedial activities. Refer to 19.15.29.12 NMAC.</i>	
I hereby certify that the information given above is true and complete to the best of my knowledge and understand that pursuant to OCD rules and regulations all operators are required to report and/or file certain release notifications and perform corrective actions for releases which may endanger public health or the environment. The acceptance of a C-141 report by the OCD does not relieve the operator of liability should their operations have failed to adequately investigate and remediate contamination that pose a threat to groundwater, surface water, human health or the environment. In addition, OCD acceptance of a C-141 report does not relieve the operator of responsibility for compliance with any other federal, state, or local laws and/or regulations. The responsible party acknowledges they must substantially restore, reclaim, and re-vegetate the impacted surface area to the conditions that existed prior to the release or their final land use in accordance with 19.15.29.13 NMAC including notification to the OCD when reclamation and re-vegetation are complete.	
I hereby agree and sign off to the above statement	Name: Daniel Sparks Title: Environmental Analyst III Email: daniel_sparks@oxy.com Date: 06/18/2025

Sante Fe Main Office
Phone: (505) 476-3441

General Information
Phone: (505) 629-6116

Online Phone Directory
<https://www.emnrd.nm.gov/ocd/contact-us>

State of New Mexico
Energy, Minerals and Natural Resources
Oil Conservation Division
1220 S. St Francis Dr.
Santa Fe, NM 87505

QUESTIONS, Page 7

Action 476740

QUESTIONS (continued)

Operator: OXY USA INC P.O. Box 4294 Houston, TX 772104294	OGRID: 16696
	Action Number: 476740
	Action Type: [C-141] Remediation Closure Request C-141 (C-141-v-Closure)

QUESTIONS

Reclamation Report	
Only answer the questions in this group if all reclamation steps have been completed.	
Requesting a reclamation approval with this submission	No

Sante Fe Main Office
Phone: (505) 476-3441

General Information
Phone: (505) 629-6116

Online Phone Directory
<https://www.emnrd.nm.gov/ocd/contact-us>

State of New Mexico
Energy, Minerals and Natural Resources
Oil Conservation Division
1220 S. St Francis Dr.
Santa Fe, NM 87505

CONDITIONS

Action 476740

CONDITIONS

Operator: OXY USA INC P.O. Box 4294 Houston, TX 772104294	OGRID: 16696
	Action Number: 476740
	Action Type: [C-141] Remediation Closure Request C-141 (C-141-v-Closure)

CONDITIONS

Created By	Condition	Condition Date
nvez	None	8/1/2025