



SITE INFORMATION

Closure Report
White City 21 Tank Battery (06.07.2025)
Incident ID: NAPP2515843001
Eddy County, New Mexico
Unit C Sec 28 T25S R27E
32.107730°, -104.197943°

Crude Oil Release
Point of Release: Equipment failure resulting in flare fire
Release Date: 06.07.2025
Volume Released: 0 Barrels of Crude Oil
Volume Recovered: 0 Barrels of Crude Oil

CARMONA RESOURCES



Prepared for:
Chevron U.S.A., Inc.
6301 Deauville Blvd
Midland, Texas 79706

Prepared by:
Carmona Resources, LLC
310 West Wall Street
Suite 500
Midland, Texas 79701



TABLE OF CONTENTS

1.0 SITE INFORMATION AND BACKGROUND

2.0 SITE CHARACTERIZATION AND GROUNDWATER

3.0 NMAC REGULATORY CRITERIA

4.0 REMEDIATION ACTIVITIES

5.0 CONCLUSION & VARIANCE

FIGURES

FIGURE 1	OVERVIEW	FIGURE 2	TOPOGRAPHIC
FIGURE 3	EXCAVATION		

APPENDICES

APPENDIX A	TABLES
APPENDIX B	PHOTOS
APPENDIX C	INITIAL C-141/NMOCD CORRESPONDENCE
APPENDIX D	SITE CHARACTERIZATION AND GROUNDWATER
APPENDIX E	LABORATORY REPORTS



June 23, 2025

Mike Bratcher
District Supervisor
Oil Conservation Division, District 2
811 S. First Street
Artesia, New Mexico 88210

Re: Closure Report
White City 21 Tank Battery (06.07.2025)
Chevron U.S.A., Inc.
Incident ID: NAPP2515843001
Site Location: Unit C, S28, T25S, R27E
(Lat 32.107730°, Long -104.197943°)
Eddy County, New Mexico

Mr. Bratcher:

On behalf of Chevron U.S.A., Inc. (Chevron), Carmona Resources, LLC has prepared this letter to document remediation activities for the White City 21 Tank Battery (06.07.2025) flare fire. The site is located at 32.107730°, -104.197943° within Unit C, S28, T25S, R27E, in Eddy County, New Mexico (Figure 1 and Figure 2).

1.0 Site Information and Background

Based on the initial C-141 obtained from the New Mexico Oil Conservation Division (NMOCD), the release was discovered on June 7, 2025, due to equipment failure, resulting in a flare fire. It resulted in approximately zero (0) barrels of crude oil being released and zero (0) barrels of crude oil being recovered. The impacted area occurred on the pad, shown in Figure 3. The initial C-141 form is attached in Appendix C.

2.0 Site Characterization and Groundwater

The site is located within a high karst area. Based on a review of the New Mexico Office of State Engineers and USGS databases, there are no known water sources within a 0.50-mile radius of the location. The nearest well is located approximately 1.03 miles Northwest of the site in S20, T25S, R27E and was last gauged in 2018. The depth of groundwater was 19.67' feet below ground surface (bgs). A copy of the associated point of diversion is attached in Appendix D.

3.0 NMAC Regulatory Criteria

Per the NMOCD regulatory criteria established in 19.15.29.12 NMAC, the following criteria were utilized in assessing the site.

- Benzene: 10 milligrams per kilogram (mg/kg).
- Benzene, toluene, ethylbenzene, and total xylenes (BTEX): 50 mg/kg.
- TPH: 100 mg/kg (GRO + DRO + MRO).
- Chloride: 600 mg/kg.



4.0 Remediation Activities

On June 17, 2025, Carmona Resources personnel were onsite to supervise the remediation activities and to collect confirmation samples. Before collecting composite confirmation samples, the NMOCD division office was notified via NMOCD portal on June 13, 2025, per Subsection D of 19.15.29.12 NMAC. See Appendix C. A total of two (2) confirmation floor samples (CS-1 & CS-2), and four (4) horizontal delineation samples (H-1 through H-4) were collected every 200 square feet to ensure the proper removal of the contaminated soils. For chemical analysis, the soil samples were collected and placed directly into laboratory provided sample containers, stored on ice, and transported under the proper chain-of-custody protocol to Cardinal Laboratories in Hobbs, New Mexico. All collected samples were analyzed for TPH analysis by EPA method 8015 modified, BTEX by EPA Method 8021B, and Chloride by EPA method 4500. Copies of laboratory analysis and chain-of-custody documentation are included in Appendix E. The excavation depths and confirmation sample locations are shown in Figure 3.

All final confirmation samples were below the regulatory requirements for TPH, BTEX, and Chloride. Refer to Table 1. The excavation depth and confirmation sample locations are shown in Figure 3.

Approximately 125 square feet of area was remediated resulting in 4 cubic yards of material excavated and transported offsite for proper disposal.

5.0 Conclusion & Variance

Due to the excavation being less than 6 inches in depth, horizontal delineation samples were collected in place of composite confirmation sidewall samples. Additionally, due to the extremely shallow nature of the surface scrape of the remediation caused by a flare fire, a variance to NMAC 19.15.29.12.D.2 is requested in relation to backfilling the excavated (scraped) area. Excess material from the well pad was pushed up to cover the excavated area. Sample points "H-1, H-2, & H-3" represent the material that was used to backfill the excavated area. Please see Figure 3 & Table 1 for sample locations and analytical results, respectively.

Based on the remediation results and the analytical data, no further actions are required at the site. Chevron formally requests the closure of the spill. Chevron will reclaim and reseed the previously remediated per NMAC 19.15.29.13 when the location is deconstructed. If you have any questions regarding this report or need additional information, please contact us at 432-813-1992.

Sincerely,

Carmona Resources, LLC

Ashton Thielke
Environmental Manager

Gilbert Priego
Project Manager

FIGURES

CARMONA RESOURCES



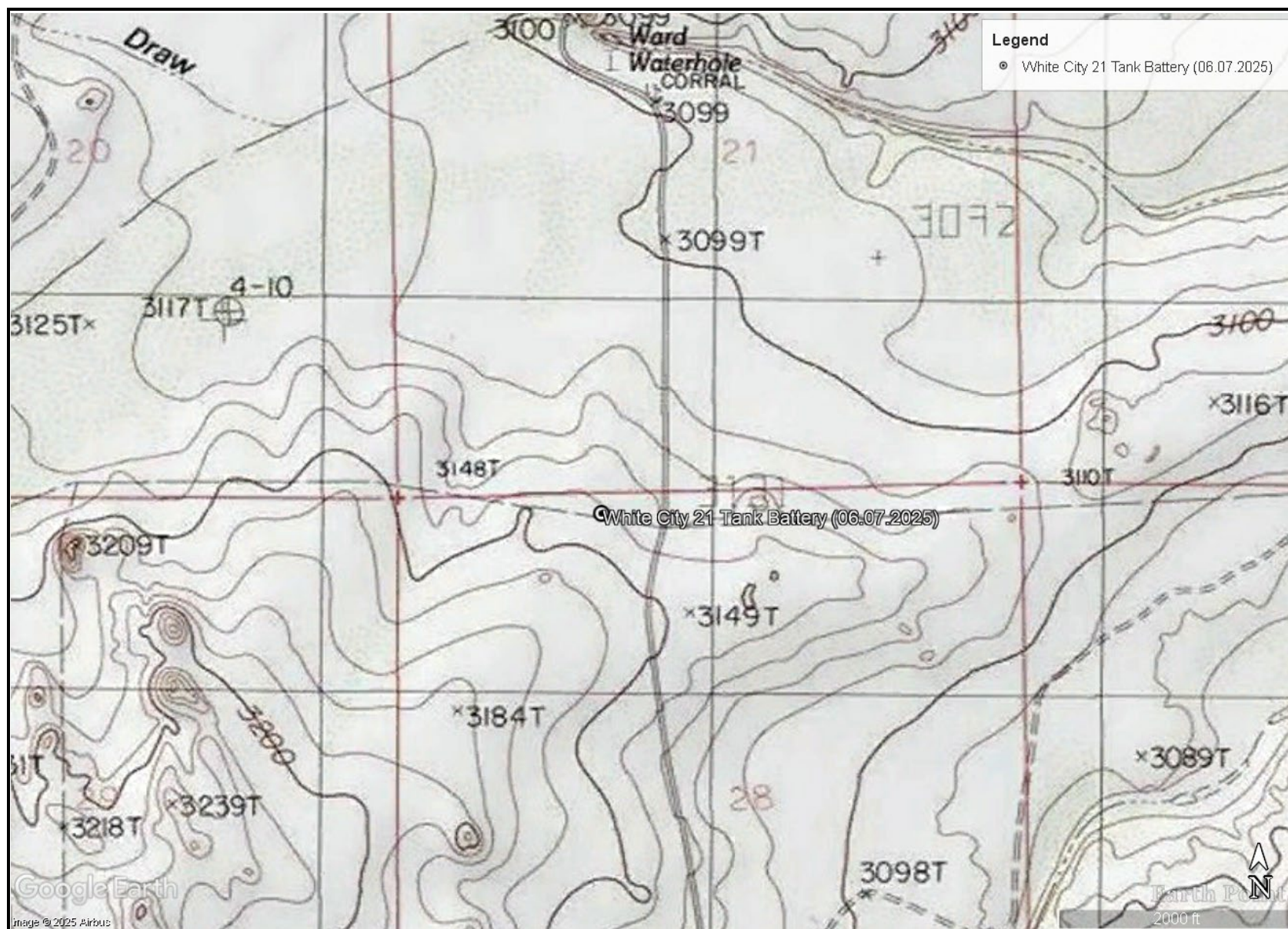


OVERVIEW MAP
CHEVRON U.S.A., INC.
WHITE CITY 21 TANK BATTERY (06.07.2025)
EDDY COUNTY, NEW MEXICO
32.107730°, -104.197943°

CARMONA RESOURCES



FIGURE 1



TOPOGRAPHIC MAP
 CHEVRON U.S.A., INC.
 WHITE CITY 21 TANK BATTERY (06.07.2025)
 EDDY COUNTY, NEW MEXICO
 32.107730°, -104.197943°

CARMONA RESOURCES



FIGURE 2



APPENDIX A

CARMONA RESOURCES



Table 1
Chevron U.S.A., Inc.
White City 21 Tank Battery (06.07.2025)
Eddy County, New Mexico

Sample ID	Date	Depth (In)	TPH (mg/kg)				Benzene (mg/kg)	Toluene (mg/kg)	Ethlybenzene (mg/kg)	Xylene (mg/kg)	Total BTEX (mg/kg)	Chloride (mg/kg)
			GRO	DRO	MRO	Total						
CS-1	6/17/2025	1-2"	<10.0	<10.0	<10.0	<10.0	<0.050	<0.050	<0.050	<0.150	<0.300	144.0
CS-2	6/17/2025	1-2"	<10.0	<10.0	<10.0	<10.0	<0.050	<0.050	<0.050	<0.150	<0.300	128.0
H-1	6/17/2025	0-6"	<10.0	<10.0	<10.0	<10.0	<0.050	<0.050	<0.050	<0.150	<0.300	208.0
H-2	6/17/2025	0-6"	<10.0	<10.0	<10.0	<10.0	<0.050	<0.050	<0.050	<0.150	<0.300	208.0
H-3	6/17/2025	0-6"	<10.0	<10.0	<10.0	<10.0	<0.050	<0.050	<0.050	<0.150	<0.300	224.0
H-4	6/17/2025	0-6"	<10.0	<10.0	<10.0	<10.0	<0.050	<0.050	<0.050	<0.150	<0.300	208.0
Regulatory Criteria^A							100 mg/kg	10 mg/kg			50 mg/kg	600 mg/kg

(-) Not Analyzed

^A – Table 1 - 19.15.29 NMAC

mg/kg - milligram per kilogram

TPH - Total Petroleum Hydrocarbons

ft - feet

(CS) Composite Confirmation Floor Sample

(H) Horizontal Sample

APPENDIX B

CARMONA RESOURCES



PHOTOGRAPHIC LOG

Chevron U.S.A., Inc.

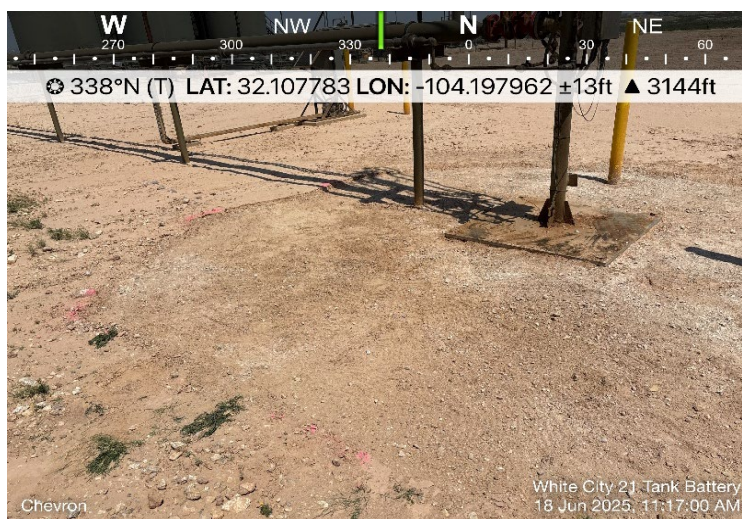
Photograph No. 1

Facility: White City 21 Tank Battery
(06.07.2025)

County: Eddy County, New Mexico

Description:

View Northwest, Area of CS-1 & CS-2.



Photograph No. 2

Facility: White City 21 Tank Battery
(06.07.2025)

County: Eddy County, New Mexico

Description:

View North, Area of CS-1 & CS-2.



Photograph No. 3

Facility: White City 21 Tank Battery
(06.07.2025)

County: Eddy County, New Mexico

Description:

View Southwest, Area of CS-1 & CS-2.



APPENDIX C

CARMONA RESOURCES



Sante Fe Main Office
Phone: (505) 476-3441

General Information
Phone: (505) 629-6116

Online Phone Directory
<https://www.emnrd.nm.gov/ocd/contact-us>

State of New Mexico
Energy, Minerals and Natural Resources
Oil Conservation Division
1220 S. St Francis Dr.
Santa Fe, NM 87505

QUESTIONS

Action 470988

QUESTIONS

Operator: CHEVRON U S A INC 6301 Deauville Blvd Midland, TX 79706	OGRID: 4323
	Action Number: 470988
	Action Type: [NOTIFY] Notification Of Release (NOR)

QUESTIONS

Location of Release Source <i>Please answer all the questions in this group.</i>	
Site Name	White City 21 Tank Battery
Date Release Discovered	06/07/2025
Surface Owner	State

Incident Details <i>Please answer all the questions in this group.</i>	
Incident Type	Fire
Did this release result in a fire or is the result of a fire	Yes
Did this release result in any injuries	No
Has this release reached or does it have a reasonable probability of reaching a watercourse	No
Has this release endangered or does it have a reasonable probability of endangering public health	No
Has this release substantially damaged or will it substantially damage property or the environment	No
Is this release of a volume that is or may with reasonable probability be detrimental to fresh water	No

Nature and Volume of Release <i>Material(s) released, please answer all that apply below. Any calculations or specific justifications for the volumes provided should be attached to the follow-up C-141 submission.</i>	
Crude Oil Released (bbls) Details	Cause: Equipment Failure Valve Crude Oil Released: 0 BBL Recovered: 0 BBL Lost: 0 BBL.
Produced Water Released (bbls) Details	Not answered.
Is the concentration of chloride in the produced water >10,000 mg/l	Not answered.
Condensate Released (bbls) Details	Not answered.
Natural Gas Vented (Mcf) Details	Not answered.
Natural Gas Flared (Mcf) Details	Not answered.
Other Released Details	Not answered.
Are there additional details for the questions above (i.e. any answer containing Other, Specify, Unknown, and/or Fire, or any negative lost amounts)	Not answered.

Sante Fe Main Office
Phone: (505) 476-3441

General Information
Phone: (505) 629-6116

Online Phone Directory
<https://www.emnrd.nm.gov/ocd/contact-us>

State of New Mexico
Energy, Minerals and Natural Resources
Oil Conservation Division
1220 S. St Francis Dr.
Santa Fe, NM 87505

QUESTIONS, Page 2

Action 470988

QUESTIONS (continued)

Operator: CHEVRON U S A INC 6301 Deauville Blvd Midland, TX 79706	OGRID: 4323
	Action Number: 470988
	Action Type: [NOTIFY] Notification Of Release (NOR)

QUESTIONS

Nature and Volume of Release (continued)	
Is this a gas only submission (i.e. only significant Mcf values reported)	More volume information must be supplied to determine if this will be treated as a "gas only" report.
Was this a major release as defined by Subsection A of 19.15.29.7 NMAC	Yes
Reasons why this would be considered a submission for a notification of a major release	From paragraph A. "Major release" determine using: (2) an unauthorized release of a volume that: (a) results in a fire or is the result of a fire.
With the implementation of the 19.15.27 NMAC (05/25/2021), venting and/or flaring of natural gas (i.e. gas only) are to be submitted on the C-129 form.	

Initial Response

The responsible party must undertake the following actions immediately unless they could create a safety hazard that would result in injury.

The source of the release has been stopped	True
The impacted area has been secured to protect human health and the environment	Not answered.
Released materials have been contained via the use of berms or dikes, absorbent pads, or other containment devices	Not answered.
All free liquids and recoverable materials have been removed and managed appropriately	Not answered.
If all the actions described above have not been undertaken, explain why	Not answered.

Per Paragraph 4 of Subsection B of 19.15.29.8 NMAC the responsible party may commence remediation immediately after discovery of a release. If remediation has begun, please prepare and attach a narrative of actions to date in the follow-up C-141 submission. If remedial efforts have been successfully completed or if the release occurred within a lined containment area (see 19.15.29.11(A)(5)(a) NMAC), please prepare and attach all information needed for closure evaluation in the follow-up C-141 submission.

Sante Fe Main Office
Phone: (505) 476-3441

General Information
Phone: (505) 629-6116

Online Phone Directory
<https://www.emnrd.nm.gov/ocd/contact-us>

State of New Mexico
Energy, Minerals and Natural Resources
Oil Conservation Division
1220 S. St Francis Dr.
Santa Fe, NM 87505

ACKNOWLEDGMENTS

Action 470988

ACKNOWLEDGMENTS

Operator: CHEVRON U S A INC 6301 Deauville Blvd Midland, TX 79706	OGRID: 4323
	Action Number: 470988
	Action Type: [NOTIFY] Notification Of Release (NOR)

ACKNOWLEDGMENTS

<input checked="" type="checkbox"/>	I acknowledge that I am authorized to submit notification of a release on behalf of my operator.
<input checked="" type="checkbox"/>	I acknowledge that upon submitting this application, I will be creating a new incident file (assigned to my operator) to track the notification(s) and corrective action(s) for a release, pursuant to NMAC 19.15.29.
<input checked="" type="checkbox"/>	I acknowledge that creating a new incident file will require my operator to file subsequent submission(s) of form "C-141, Application for administrative approval of a release notification and corrective action", pursuant to NMAC 19.15.29.
<input checked="" type="checkbox"/>	I hereby certify that the information given above is true and complete to the best of my knowledge and understand that pursuant to OCD rules and regulations all operators are required to report and/or file certain release notifications and perform corrective actions for releases which may endanger public health or the environment.
<input checked="" type="checkbox"/>	I acknowledge the fact that the acceptance of a C-141 report by the OCD does not relieve the operator of liability should their operations have failed to adequately investigate and remediate contamination that pose a threat to groundwater, surface water, human health or the environment.
<input checked="" type="checkbox"/>	I acknowledge the fact that, in addition, OCD acceptance of a C-141 report does not relieve the operator of responsibility for compliance with any other federal, state, or local laws and/or regulations.

Sante Fe Main Office
Phone: (505) 476-3441

General Information
Phone: (505) 629-6116

Online Phone Directory
<https://www.emnrd.nm.gov/ocd/contact-us>

State of New Mexico
Energy, Minerals and Natural Resources
Oil Conservation Division
1220 S. St Francis Dr.
Santa Fe, NM 87505

CONDITIONS

Action 470988

CONDITIONS

Operator: CHEVRON U S A INC 6301 Deauville Blvd Midland, TX 79706	OGRID: 4323
	Action Number: 470988
	Action Type: [NOTIFY] Notification Of Release (NOR)

CONDITIONS

Created By	Condition	Condition Date
branes	When submitting future reports regarding this release, please submit the calculations used or specific justification for the volumes reported on the initial C-141.	6/7/2025

	Length (feet)	Width (feet)	Above grade Depth (in)	Below grade Depth (in)	Water Cut (%)	Barrels Water	Barrels Oil
Area 1	10	10	0.125	-/125	60	0.128	0.086
Area 2							
Area 3							
Area 4							
Area 5							
					Rec Vol		
					Total	0.128	0.086

Sante Fe Main Office
Phone: (505) 476-3441

General Information
Phone: (505) 629-6116

Online Phone Directory
<https://www.emnrd.nm.gov/ocd/contact-us>

State of New Mexico
Energy, Minerals and Natural Resources
Oil Conservation Division
1220 S. St Francis Dr.
Santa Fe, NM 87505

QUESTIONS

Action 471787

QUESTIONS

Operator: CHEVRON U S A INC 6301 Deauville Blvd Midland, TX 79706	OGRID: 4323
	Action Number: 471787
	Action Type: [C-141] Initial C-141 (C-141-v-Initial)

QUESTIONS

Prerequisites	
Incident ID (n#)	nAPP2515843001
Incident Name	NAPP2515843001 WHITE CITY 21 TANK BATTERY @ 0
Incident Type	Fire
Incident Status	Initial C-141 Received
Incident Facility	[fAPP2132234063] White City 21 Tank Battery

Location of Release Source	
Please answer all the questions in this group.	
Site Name	White City 21 Tank Battery
Date Release Discovered	06/07/2025
Surface Owner	State

Incident Details	
Please answer all the questions in this group.	
Incident Type	Fire
Did this release result in a fire or is the result of a fire	Yes
Did this release result in any injuries	No
Has this release reached or does it have a reasonable probability of reaching a watercourse	No
Has this release endangered or does it have a reasonable probability of endangering public health	No
Has this release substantially damaged or will it substantially damage property or the environment	No
Is this release of a volume that is or may with reasonable probability be detrimental to fresh water	No

Nature and Volume of Release	
Material(s) released, please answer all that apply below. Any calculations or specific justifications for the volumes provided should be attached to the follow-up C-141 submission.	
Crude Oil Released (bbls) Details	Cause: Equipment Failure Valve Crude Oil Released: 0 BBL Recovered: 0 BBL Lost: 0 BBL.
Produced Water Released (bbls) Details	Not answered.
Is the concentration of chloride in the produced water >10,000 mg/l	No
Condensate Released (bbls) Details	Not answered.
Natural Gas Vented (Mcf) Details	Not answered.
Natural Gas Flared (Mcf) Details	Not answered.
Other Released Details	Not answered.
Are there additional details for the questions above (i.e. any answer containing Other, Specify, Unknown, and/or Fire, or any negative lost amounts)	Not answered.

Sante Fe Main Office
Phone: (505) 476-3441

General Information
Phone: (505) 629-6116

Online Phone Directory
<https://www.emnrd.nm.gov/ocd/contact-us>

State of New Mexico
Energy, Minerals and Natural Resources
Oil Conservation Division
1220 S. St Francis Dr.
Santa Fe, NM 87505

QUESTIONS, Page 2

Action 471787

QUESTIONS (continued)

Operator: CHEVRON U S A INC 6301 Deauville Blvd Midland, TX 79706	OGRID: 4323
	Action Number: 471787
	Action Type: [C-141] Initial C-141 (C-141-v-Initial)

QUESTIONS

Nature and Volume of Release (continued)	
Is this a gas only submission (i.e. only significant Mcf values reported)	More info needed to determine if this will be treated as a "gas only" report.
Was this a major release as defined by Subsection A of 19.15.29.7 NMAC	Yes
Reasons why this would be considered a submission for a notification of a major release	From paragraph A. "Major release" determine using: (2) an unauthorized release of a volume that: (a) results in a fire or is the result of a fire.
With the implementation of the 19.15.27 NMAC (05/25/2021), venting and/or flaring of natural gas (i.e. gas only) are to be submitted on the C-129 form.	

Initial Response

The responsible party must undertake the following actions immediately unless they could create a safety hazard that would result in injury.

The source of the release has been stopped	True
The impacted area has been secured to protect human health and the environment	True
Released materials have been contained via the use of berms or dikes, absorbent pads, or other containment devices	True
All free liquids and recoverable materials have been removed and managed appropriately	True
If all the actions described above have not been undertaken, explain why	Not answered.

Per Paragraph (4) of Subsection B of 19.15.29.8 NMAC the responsible party may commence remediation immediately after discovery of a release. If remediation has begun, please prepare and attach a narrative of actions to date in the follow-up C-141 submission. If remedial efforts have been successfully completed or if the release occurred within a lined containment area (see Subparagraph (a) of Paragraph (5) of Subsection A of 19.15.29.11 NMAC), please prepare and attach all information needed for closure evaluation in the follow-up C-141 submission.

I hereby certify that the information given above is true and complete to the best of my knowledge and understand that pursuant to OCD rules and regulations all operators are required to report and/or file certain release notifications and perform corrective actions for releases which may endanger public health or the environment. The acceptance of a C-141 report by the OCD does not relieve the operator of liability should their operations have failed to adequately investigate and remediate contamination that pose a threat to groundwater, surface water, human health or the environment. In addition, OCD acceptance of a C-141 report does not relieve the operator of responsibility for compliance with any other federal, state, or local laws and/or regulations.

I hereby agree and sign off to the above statement	Name: Bayley Ranes Title: Environmental Specialist Email: Bayleyranes@chevron.com Date: 06/07/2025
--	---

Sante Fe Main Office
Phone: (505) 476-3441

General Information
Phone: (505) 629-6116

Online Phone Directory
<https://www.emnrd.nm.gov/ocd/contact-us>

State of New Mexico
Energy, Minerals and Natural Resources
Oil Conservation Division
1220 S. St Francis Dr.
Santa Fe, NM 87505

QUESTIONS, Page 3

Action 471787

QUESTIONS (continued)

Operator: CHEVRON U S A INC 6301 Deauville Blvd Midland, TX 79706	OGRID: 4323
	Action Number: 471787
	Action Type: [C-141] Initial C-141 (C-141-v-Initial)

QUESTIONS

Site Characterization	
<i>Please answer all the questions in this group (only required when seeking remediation plan approval and beyond). This information must be provided to the appropriate district office no later than 90 days after the release discovery date.</i>	
What is the shallowest depth to groundwater beneath the area affected by the release in feet below ground surface (ft bgs)	Not answered.
What method was used to determine the depth to ground water	Not answered.
Did this release impact groundwater or surface water	Not answered.
What is the minimum distance, between the closest lateral extents of the release and the following surface areas:	
A continuously flowing watercourse or any other significant watercourse	Not answered.
Any lakebed, sinkhole, or playa lake (measured from the ordinary high-water mark)	Not answered.
An occupied permanent residence, school, hospital, institution, or church	Not answered.
A spring or a private domestic fresh water well used by less than five households for domestic or stock watering purposes	Not answered.
Any other fresh water well or spring	Not answered.
Incorporated municipal boundaries or a defined municipal fresh water well field	Not answered.
A wetland	Not answered.
A subsurface mine	Not answered.
An (non-karst) unstable area	Not answered.
Categorize the risk of this well / site being in a karst geology	Not answered.
A 100-year floodplain	Not answered.
Did the release impact areas not on an exploration, development, production, or storage site	Not answered.

Remediation Plan	
<i>Please answer all the questions that apply or are indicated. This information must be provided to the appropriate district office no later than 90 days after the release discovery date.</i>	
Requesting a remediation plan approval with this submission	No
<i>The OCD recognizes that proposed remediation measures may have to be minimally adjusted in accordance with the physical realities encountered during remediation. If the responsible party has any need to significantly deviate from the remediation plan proposed, then it should consult with the division to determine if another remediation plan submission is required.</i>	

Sante Fe Main Office
Phone: (505) 476-3441

General Information
Phone: (505) 629-6116

Online Phone Directory
<https://www.emnrd.nm.gov/ocd/contact-us>

State of New Mexico
Energy, Minerals and Natural Resources
Oil Conservation Division
1220 S. St Francis Dr.
Santa Fe, NM 87505

CONDITIONS

Action 471787

CONDITIONS

Operator: CHEVRON U S A INC 6301 Deauville Blvd Midland, TX 79706	OGRID: 4323
	Action Number: 471787
	Action Type: [C-141] Initial C-141 (C-141-v-Initial)

CONDITIONS

Created By	Condition	Condition Date
rhamlet	None	6/9/2025

Sante Fe Main Office
Phone: (505) 476-3441

General Information
Phone: (505) 629-6116

Online Phone Directory
<https://www.emnrd.nm.gov/ocd/contact-us>

State of New Mexico
Energy, Minerals and Natural Resources
Oil Conservation Division
1220 S. St Francis Dr.
Santa Fe, NM 87505

QUESTIONS

Action 474033

QUESTIONS

Operator: CHEVRON U S A INC 6301 Deauville Blvd Midland, TX 79706	OGRID: 4323
	Action Number: 474033
	Action Type: [NOTIFY] Notification Of Sampling (C-141N)

QUESTIONS

Prerequisites	
Incident ID (n#)	nAPP2515843001
Incident Name	NAPP2515843001 WHITE CITY 21 TANK BATTERY @ 0
Incident Type	Fire
Incident Status	Initial C-141 Approved
Incident Facility	[fAPP2132234063] White City 21 Tank Battery

Location of Release Source	
Site Name	White City 21 Tank Battery
Date Release Discovered	06/07/2025
Surface Owner	State

Sampling Event General Information	
<i>Please answer all the questions in this group.</i>	
What is the sampling surface area in square feet	180
What is the estimated number of samples that will be gathered	6
Sampling date pursuant to Subparagraph (a) of Paragraph (1) of Subsection D of 19.15.29.12 NMAC	06/17/2025
Time sampling will commence	12:00 PM
Please provide any information necessary for observers to contact samplers	Carmona Resources – 432-813-8988
Please provide any information necessary for navigation to sampling site	“(32.107842, -104.197922) Carmona Resources will be onsite to collect confirmation floor samples from the recently scraped release area. The contaminated area was scraped to a depth of 1-2inches and all material was disposed properly. Due to the excavation being less than 6inches in depth, horizontal delineation samples will be collected in place of composite confirmation sidewall samples. Additionally, due to extremely shallow nature of the surface scrape of the remediation caused by a flare fire, a variance to NMAC 19.15.29.12.D.2 will be requested in relation to backfilling the “excavated” (scraped) area. The well pad will still be covered with caliche until P/A activities or downsizing, at which point 19.15.29.13 will be enacted.”

Sante Fe Main Office
Phone: (505) 476-3441

General Information
Phone: (505) 629-6116

Online Phone Directory
<https://www.emnrd.nm.gov/oed/contact-us>

State of New Mexico
Energy, Minerals and Natural Resources
Oil Conservation Division
1220 S. St Francis Dr.
Santa Fe, NM 87505

CONDITIONS

Action 474033

CONDITIONS

Operator: CHEVRON U S A INC 6301 Deauville Blvd Midland, TX 79706	OGRID: 4323
	Action Number: 474033
	Action Type: [NOTIFY] Notification Of Sampling (C-141N)

CONDITIONS

Created By	Condition	Condition Date
abarnhill	Failure to notify the OCD of sampling events including any changes in date/time per the requirements of 19.15.29.12.D.(1).(a) NMAC, may result in the remediation closure samples not being accepted.	6/13/2025
abarnhill	If confirmation sampling is going to take place over multiple days, individual C-141N applications must be submitted for each sampling date. Date ranges are not currently accepted on the C-141N application.	6/13/2025

APPENDIX D

CARMONA RESOURCES



Nearest water well

Chevron USA

Legend



- 0.50 Mile Radius
- 1.03 Miles
- 1.69 Miles
- USGS Water Well
- White City 21 Tank Battery (06.07.2025)



High Karst

Chevron USA

Legend

-  High
-  White City 21 Tank Battery (06.07.2025)

White City 21 Tank Battery (06.07.2025)





New Mexico Office of the State Engineer

Water Column/Average Depth to Water

(A CLW##### in the POD suffix indicates the POD has been replaced & no longer serves a water right file.)

(R=POD has been replaced, O=orphaned, C=the file is closed)

(quarters are smallest to largest)

POD Number	Code	Sub basin	County	Q64	Q16	Q4	Sec	Tws	Range	X	Y	Map	Distance (meters)	Well Depth (In feet)	Depth Water	Water Column
C 03261 POD1		CUB	ED	SW	NE	NW	20	25S	27E	574007.0	3554006.0 *		1872	351		
C 04078 POD1		CUB	ED	SW	SE	NW	33	25S	27E	575666.9	3550363.4		2456	157	20	137
C 04079 POD1		CUB	ED	NW	NE	SW	33	25S	27E	575658.4	3550092.4		2725	226	20	206
C 03262 POD1		CUB	ED	NE	NW	NE	22	25S	27E	577837.0	3554244.0 *		2786	75		
C 02588		C	ED	SW	SE	SW	33	25S	27E	575645.0	3549575.0 *		3240	81	19	62

Average Depth to Water: 19 feet

Minimum Depth: 19 feet

Maximum Depth: 20 feet

Record Count: 5

UTM Filters (in meters):

Easting: 575447.52
Northing: 3552809.81
Radius: 4000

* UTM location was derived from PLSS - see Help

The data is furnished by the NMOSE/ISC and is accepted by the recipient with the expressed understanding that the OSE/ISC make no warranties, expressed or implied, concerning the accuracy, completeness, reliability, usability, or suitability for any particular purpose of the data.



USGS Home
Contact USGS
Search USGS

National Water Information System: Web Interface

USGS Water Resources

Data Category: Groundwater Geographic Area: New Mexico GO

Click to hideNews Bulletins

- Explore the NEW [USGS National Water Dashboard](#) interactive map to access real-time water data from over 13,500 stations nationwide.

Groundwater levels for New Mexico

Click to hide state-specific text

Important: [Next Generation Monitoring Location Page](#)

Search Results -- 1 sites found

Agency code = usgs
site_no list =

- 320711104122701

Minimum number of levels = 1
[Save file of selected sites](#) to local disk for future upload

USGS 320711104122701 25S.27E.20.21344

Eddy County, New Mexico
Latitude 32°07'12.5", Longitude 104°12'45.6" NAD83
Land-surface elevation 3,125.10 feet above NGVD29
This well is completed in the Other aquifers (N9999OTHER) national aquifer.
This well is completed in the Alluvium, Bolson Deposits and Other Surface Deposits (110AVMB) local aquifer.

Output formats

Table of data
Tab-separated data
Graph of data
Reselect period

Date	Time	? Water-level date- time accuracy	? Parameter code	Water level, feet below land surface	Water level, feet above specific vertical datum	Referenced vertical datum	? Status	? Method of measurement	? Measuring agency	? Source measur
1983-02-02			D 62610		3106.22	NGVD29	1	Z		
1983-02-02			D 62611		3107.86	NAVD88	1	Z		
1983-02-02			D 72019	18.88			1	Z		
1987-10-09			D 62610		3109.96	NGVD29	1	Z		
1987-10-09			D 62611		3111.60	NAVD88	1	Z		
1987-10-09			D 72019	15.14			1	Z		
1992-11-20			D 62610		3106.49	NGVD29	1	S		
1992-11-20			D 62611		3108.13	NAVD88	1	S		
1992-11-20			D 72019	18.61			1	S		
1998-01-07			D 62610		3104.23	NGVD29	1	S		
1998-01-07			D 62611		3105.87	NAVD88	1	S		
1998-01-07			D 72019	20.87			1	S		
2003-01-29			D 62610		3102.27	NGVD29	1	S		USGS
2003-01-29			D 62611		3103.91	NAVD88	1	S		USGS
2003-01-29			D 72019	22.83			1	S		USGS
2013-01-09	23:30 UTC	m	62610		3101.48	NGVD29	1	S		USGS

Date	Time	? Water-level date-time accuracy	? Parameter code	Water level, feet below land surface	Water level, feet above specific vertical datum	Referenced vertical datum	? Status	? Method of measurement	? Measuring agency	? Source measur
2013-01-09	23:30 UTC		m	62611	3103.12	NAVD88	1		S	USGS
2013-01-09	23:30 UTC		m	72019	23.62		1		S	USGS
2018-01-09	23:24 UTC		m	62610	3105.43	NGVD29	1		V	USGS
2018-01-09	23:24 UTC		m	62611	3107.07	NAVD88	1		V	USGS
2018-01-09	23:24 UTC		m	72019	19.67		1		V	USGS

Explanation

Section	Code	Description
Water-level date-time accuracy	D	Date is accurate to the Day
Water-level date-time accuracy	m	Date is accurate to the Minute
Parameter code	62610	Groundwater level above NGVD 1929, feet
Parameter code	62611	Groundwater level above NAVD 1988, feet
Parameter code	72019	Depth to water level, feet below land surface
Referenced vertical datum	NAVD88	North American Vertical Datum of 1988
Referenced vertical datum	NGVD29	National Geodetic Vertical Datum of 1929
Status	1	Static
Method of measurement	S	Steel-tape measurement.
Method of measurement	V	Calibrated electric-tape measurement.
Method of measurement	Z	Other.
Measuring agency		Not determined
Measuring agency	USGS	U.S. Geological Survey
Source of measurement		Not determined
Source of measurement	S	Measured by personnel of reporting agency.
Water-level approval status	A	Approved for publication -- Processing and review completed.

Questions or Comments

- [Help](#)
- [Data Tips](#)
- [Explanation of terms](#)
- [Subscribe for system changes](#)

Accessibility FOIA Privacy Policies and Notices
[U.S. Department of the Interior](#) | [U.S. Geological Survey](#)
Title: Groundwater for New Mexico: Water Levels
URL: https://nwis.waterdata.usgs.gov/nm/nwis/gwlevels?site_no=320711104122701&agency_cd=USGS&format=html



Page Contact Information: [New Mexico Water Data Maintainer](#)
Page Last Modified: 2025-06-10 09:46:20 EDT
0.39 0.31 nadww01

6/10/25, 8:54 AM

Date

Time

?
Water-level date-time accuracy

?
Parameter code

Water level, feet below land surface

Water level, feet above specific vertical datum

Referenced vertical datum

?
S

GroundwaterNew MexicoGO

Click to hideNews Bulletins

- Explore the *NEW* [USGS National Water Dashboard](#) interactive map to access real-time water data from over 13,500 stations nationwide.

Groundwater levels for New Mexico

Click to hide state-specific text

i Important: [Next Generation Monitoring Location Page](#)

Search Results -- 1 sites found

Agency code = usgs

site_no list =

- 320627104101801

Minimum number of levels = 1

[Save file of selected sites](#) to local disk for future upload

USGS 320627104101801 25S.27E.27.21242 498

Eddy County, New Mexico

Latitude 32°06'25.92", Longitude 104°10'27.98" NAD83

Land-surface elevation 3,064 feet above NAVD88

This well is completed in the Other aquifers (N9999OTHER) national aquifer.

This well is completed in the Rustler Formation (312RSLR) local aquifer.

Output formats

Table of data
Tab-separated data
Graph of data
Reselect period

Date	Time	? Water-level date-time accuracy	? Parameter code	Water level, feet below land surface	Water level, feet above specific vertical datum	Referenced vertical datum	? Status	? Method of measurement	? Measuring agency	? Source measur
1983-02-02			D 62610		3049.96	NGVD29	1		Z	
1983-02-02			D 62611		3051.58	NAVD88	1		Z	
1983-02-02			D 72019	12.42			1		Z	
1987-10-09			D 62610		3051.85	NGVD29	1		Z	
1987-10-09			D 62611		3053.47	NAVD88	1		Z	
1987-10-09			D 72019	10.53			1		Z	
1992-12-08			D 62610		3050.12	NGVD29	1		S	
1992-12-08			D 62611		3051.74	NAVD88	1		S	
1992-12-08			D 72019	12.26			1		S	
1998-01-07			D 62610		3048.19	NGVD29	1		S	
1998-01-07			D 62611		3049.81	NAVD88	1		S	
1998-01-07			D 72019	14.19			1		S	
2003-01-29			D 62610		3045.95	NGVD29	1		S	USGS
2003-01-29			D 62611		3047.57	NAVD88	1		S	USGS
2003-01-29			D 72019	16.43			1		S	USGS
2022-01-13	14:35 UTC	m	62610		3046.65	NGVD29	1		V	USGS

Date	Time		? Water-level date-time accuracy	? Parameter code	Water level, feet below land surface	Water level, feet above specific vertical datum	Referenced vertical datum	? S
2022-01-13	14:35 UTC	m	62611	3048.27	NAVD88	1	V	USGS
2022-01-13	14:35 UTC	m	72019	15.73		1	V	USGS
2023-02-14	16:05 UTC	m	62610	3046.27	NGVD29	1	S	USGS
2023-02-14	16:05 UTC	m	62611	3047.89	NAVD88	1	S	USGS
2023-02-14	16:05 UTC	m	72019	16.11		1	S	USGS
2024-03-08	15:07 UTC	m	62610	3045.89	NGVD29	P	S	USGS
2024-03-08	15:07 UTC	m	62611	3047.51	NAVD88	P	S	USGS
2024-03-08	15:07 UTC	m	72019	16.49		P	S	USGS
2025-01-02	20:38 UTC	m	62610	3045.53	NGVD29	1	S	USGS
2025-01-02	20:38 UTC	m	62611	3047.15	NAVD88	1	S	USGS
2025-01-02	20:38 UTC	m	72019	16.85		1	S	USGS

Explanation

Section	Code	Description
Water-level date-time accuracy	D	Date is accurate to the Day
Water-level date-time accuracy	m	Date is accurate to the Minute
Parameter code	62610	Groundwater level above NGVD 1929, feet
Parameter code	62611	Groundwater level above NAVD 1988, feet
Parameter code	72019	Depth to water level, feet below land surface
Referenced vertical datum	NAVD88	North American Vertical Datum of 1988
Referenced vertical datum	NGVD29	National Geodetic Vertical Datum of 1929
Status	1	Static
Status	P	Pumping
Method of measurement	S	Steel-tape measurement.
Method of measurement	V	Calibrated electric-tape measurement.
Method of measurement	Z	Other.
Measuring agency		Not determined
Measuring agency	USGS	U.S. Geological Survey
Source of measurement		Not determined
Source of measurement	S	Measured by personnel of reporting agency.
Water-level approval status	A	Approved for publication -- Processing and review completed.

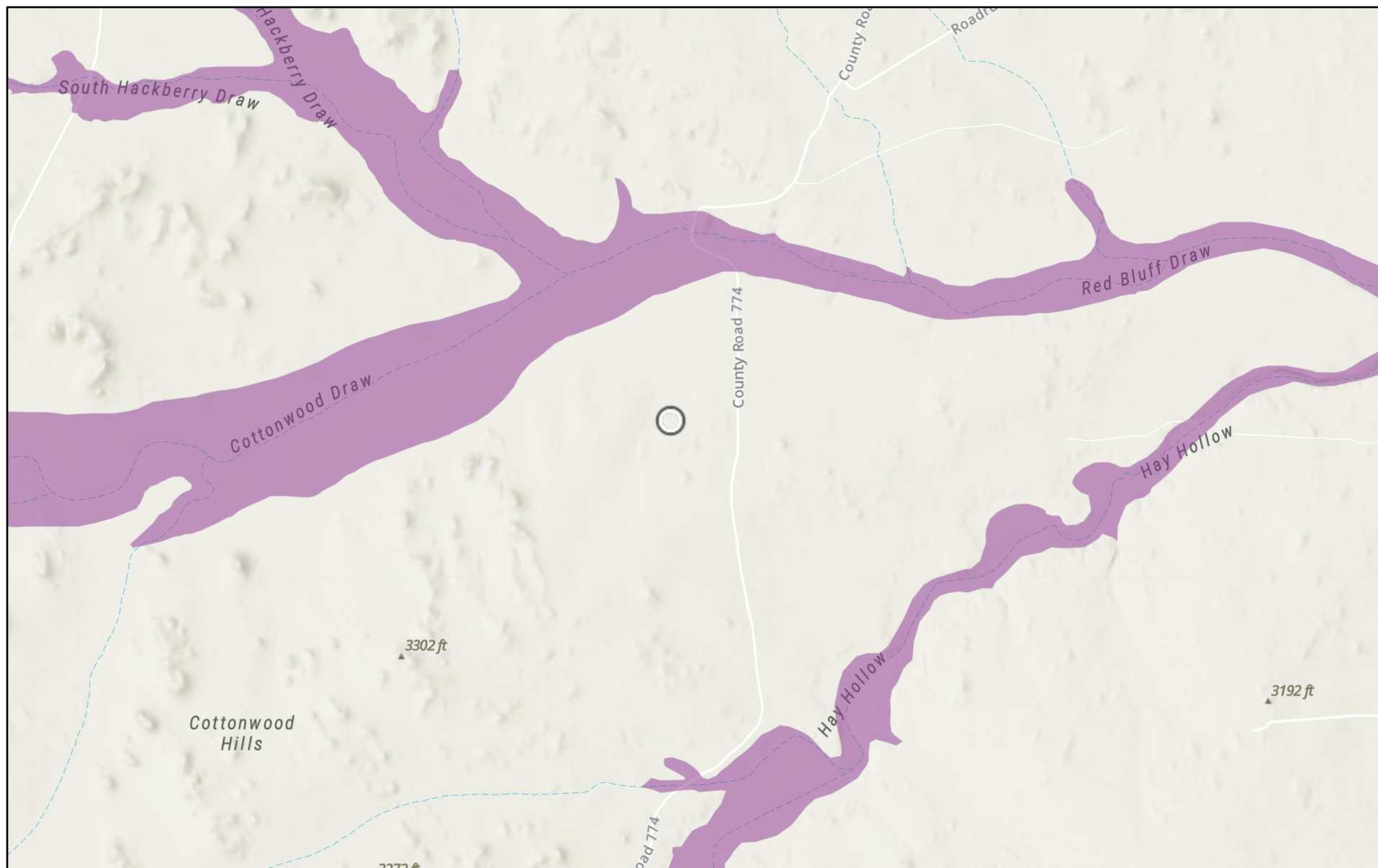
[Questions or Comments](#)
[Help](#)
[Data Tips](#)
[Explanation of terms](#)
[Subscribe for system changes](#)

[Accessibility](#) [FOIA](#) [Privacy](#) [Policies and Notices](#)
[U.S. Department of the Interior](#) | [U.S. Geological Survey](#)
Title: Groundwater for New Mexico: Water Levels
URL: https://nwis.waterdata.usgs.gov/nm/nwis/gwlevels?site_no=320627104101801&agency_cd=USGS&format=html



Page Contact Information: [New Mexico Water Data Maintainer](#)
Page Last Modified: 2025-06-10 09:54:11 EDT
0.39 0.31 nadww02

White City 21 Tank Battery (06.07.2025)

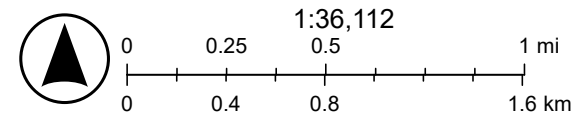


6/10/2025

USA Flood Hazard Areas

 1% Annual Chance Flood Hazard

World_Hillshade





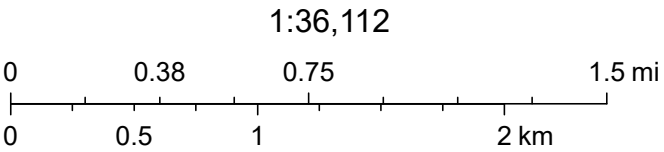
Esri, NASA, NGA, USGS, FEMA, Sources: Esri, TomTom, Garmin, FAO, NOAA, USGS, (c) OpenStreetMap contributors, and the GIS User

White City 21 Tank Battery (06.07.2025)



6/10/2025, 8:42:59 AM

-  OSW Water Bodies
-  OSE Streams



Esri, NASA, NGA, USGS, FEMA, Sources: Esri, TomTom, Garmin, FAO, NOAA, USGS, © OpenStreetMap contributors, and the GIS User Community, NM OSE

APPENDIX E

CARMONA RESOURCES





PHONE (575) 393-2326 ° 101 E. MARLAND ° HOBBS, NM 88240

June 23, 2025

ASHTON THIELKE

CARMONA RESOURCES

310 W WALL ST, SUITE 500

MIDLAND, TX 79701

RE: WHITE CITY 21 TANK BATTERY

Enclosed are the results of analyses for samples received by the laboratory on 06/18/25 14:41.

Cardinal Laboratories is accredited through Texas NELAP under certificate number TX-C25-00101. Accreditation applies to drinking water, non-potable water and solid and chemical materials. All accredited analytes are denoted by an asterisk (*). For a complete list of accredited analytes and matrices visit the TCEQ website at www.tceq.texas.gov/field/qa/lab_accred_certif.html.

Cardinal Laboratories is accredited through the State of Colorado Department of Public Health and Environment for:

Method EPA 552.2	Haloacetic Acids (HAA-5)
Method EPA 524.2	Total Trihalomethanes (TTHM)
Method EPA 524.4	Regulated VOCs (V1, V2, V3)

Accreditation applies to public drinking water matrices.

This report meets NELAP requirements and is made up of a cover page, analytical results, and a copy of the original chain-of-custody. If you have any questions concerning this report, please feel free to contact me.

Sincerely,

A handwritten signature in black ink that reads "Celey D. Keene". The signature is written in a cursive style with a large, stylized 'C' and 'K'.

Celey D. Keene

Lab Director/Quality Manager



PHONE (575) 393-2326 ° 101 E. MARLAND ° HOBBS, NM 88240

Analytical Results For:

CARMONA RESOURCES
 ASHTON THIELKE
 310 W WALL ST, SUITE 500
 MIDLAND TX, 79701
 Fax To:

Received: 06/18/2025
 Reported: 06/23/2025
 Project Name: WHITE CITY 21 TANK BATTERY
 Project Number: 2757
 Project Location: EDDY CO., NM

Sampling Date: 06/17/2025
 Sampling Type: Soil
 Sampling Condition: Cool & Intact
 Sample Received By: Tamara Oldaker

Sample ID: CS - 1 (1-2") (H253623-01)

BTX 8021B		mg/kg		Analyzed By: JH					
Analyte	Result	Reporting Limit	Analyzed	Method Blank	BS	% Recovery	True Value QC	RPD	Qualifier
Benzene*	<0.050	0.050	06/20/2025	ND	1.99	99.5	2.00	5.23	
Toluene*	<0.050	0.050	06/20/2025	ND	2.21	110	2.00	6.46	
Ethylbenzene*	<0.050	0.050	06/20/2025	ND	2.03	102	2.00	5.80	
Total Xylenes*	<0.150	0.150	06/20/2025	ND	6.10	102	6.00	5.98	
Total BTX	<0.300	0.300	06/20/2025	ND					

Surrogate: 4-Bromofluorobenzene (PID) 100 % 71.5-134

Chloride, SM4500Cl-B		mg/kg		Analyzed By: AC						
Analyte	Result	Reporting Limit	Analyzed	Method Blank	BS	% Recovery	True Value QC	RPD	Qualifier	
Chloride	144	16.0	06/19/2025	ND	400	100	400	0.00		

TPH 8015M		mg/kg		Analyzed By: MS					
Analyte	Result	Reporting Limit	Analyzed	Method Blank	BS	% Recovery	True Value QC	RPD	Qualifier
GRO C6-C10*	<10.0	10.0	06/19/2025	ND	201	101	200	2.72	
DRO >C10-C28*	<10.0	10.0	06/19/2025	ND	190	95.1	200	1.85	
EXT DRO >C28-C36	<10.0	10.0	06/19/2025	ND					

Surrogate: 1-Chlorooctane 88.4 % 44.4-145

Surrogate: 1-Chlorooctadecane 82.8 % 40.6-153

Cardinal Laboratories

*=Accredited Analyte

PLEASE NOTE: Liability and Damages. Cardinal's liability and client's exclusive remedy for any claim arising, whether based in contract or tort, shall be limited to the amount paid by client for analyses. All claims, including those for negligence and any other cause whatsoever shall be deemed waived unless made in writing and received by Cardinal within thirty (30) days after completion of the applicable service. In no event shall Cardinal be liable for incidental or consequential damages, including, without limitation, business interruptions, loss of use, or loss of profits incurred by client, its subsidiaries, affiliates or successors arising out of or related to the performance of the services hereunder by Cardinal, regardless of whether such claim is based upon any of the above stated reasons or otherwise. Results relate only to the samples identified above. This report shall not be reproduced except in full with written approval of Cardinal Laboratories.

Celey D. Keene, Lab Director/Quality Manager



PHONE (575) 393-2326 ° 101 E. MARLAND ° HOBBS, NM 88240

Analytical Results For:

CARMONA RESOURCES
 ASHTON THIELKE
 310 W WALL ST, SUITE 500
 MIDLAND TX, 79701
 Fax To:

Received: 06/18/2025
 Reported: 06/23/2025
 Project Name: WHITE CITY 21 TANK BATTERY
 Project Number: 2757
 Project Location: EDDY CO., NM

Sampling Date: 06/17/2025
 Sampling Type: Soil
 Sampling Condition: Cool & Intact
 Sample Received By: Tamara Oldaker

Sample ID: CS - 2 (1-2") (H253623-02)

BTEx 8021B		mg/kg		Analyzed By: JH						
Analyte	Result	Reporting Limit	Analyzed	Method Blank	BS	% Recovery	True Value QC	RPD	Qualifier	
Benzene*	<0.050	0.050	06/20/2025	ND	1.99	99.5	2.00	5.23		
Toluene*	<0.050	0.050	06/20/2025	ND	2.21	110	2.00	6.46		
Ethylbenzene*	<0.050	0.050	06/20/2025	ND	2.03	102	2.00	5.80		
Total Xylenes*	<0.150	0.150	06/20/2025	ND	6.10	102	6.00	5.98		
Total BTEX	<0.300	0.300	06/20/2025	ND						

Surrogate: 4-Bromofluorobenzene (PID) 101 % 71.5-134

Chloride, SM4500Cl-B		mg/kg		Analyzed By: HM						
Analyte	Result	Reporting Limit	Analyzed	Method Blank	BS	% Recovery	True Value QC	RPD	Qualifier	
Chloride	128	16.0	06/19/2025	ND	432	108	400	3.64		

TPH 8015M		mg/kg		Analyzed By: MS					
Analyte	Result	Reporting Limit	Analyzed	Method Blank	BS	% Recovery	True Value QC	RPD	Qualifier
GRO C6-C10*	<10.0	10.0	06/19/2025	ND	201	101	200	2.72	
DRO >C10-C28*	<10.0	10.0	06/19/2025	ND	190	95.1	200	1.85	
EXT DRO >C28-C36	<10.0	10.0	06/19/2025	ND					

Surrogate: 1-Chlorooctane 89.8 % 44.4-145

Surrogate: 1-Chlorooctadecane 83.4 % 40.6-153

Cardinal Laboratories

*=Accredited Analyte

PLEASE NOTE: Liability and Damages. Cardinal's liability and client's exclusive remedy for any claim arising, whether based in contract or tort, shall be limited to the amount paid by client for analyses. All claims, including those for negligence and any other cause whatsoever shall be deemed waived unless made in writing and received by Cardinal within thirty (30) days after completion of the applicable service. In no event shall Cardinal be liable for incidental or consequential damages, including, without limitation, business interruptions, loss of use, or loss of profits incurred by client, its subsidiaries, affiliates or successors arising out of or related to the performance of the services hereunder by Cardinal, regardless of whether such claim is based upon any of the above stated reasons or otherwise. Results relate only to the samples identified above. This report shall not be reproduced except in full with written approval of Cardinal Laboratories.

Celey D. Keene, Lab Director/Quality Manager



PHONE (575) 393-2326 ° 101 E. MARLAND ° HOBBS, NM 88240

Notes and Definitions

ND	Analyte NOT DETECTED at or above the reporting limit
RPD	Relative Percent Difference
**	Samples not received at proper temperature of 6°C or below.
***	Insufficient time to reach temperature.
-	Chloride by SM4500Cl-B does not require samples be received at or below 6°C Samples reported on an as received basis (wet) unless otherwise noted on report

Cardinal Laboratories

*=Accredited Analyte

PLEASE NOTE: Liability and Damages. Cardinal's liability and client's exclusive remedy for any claim arising, whether based in contract or tort, shall be limited to the amount paid by client for analyses. All claims, including those for negligence and any other cause whatsoever shall be deemed waived unless made in writing and received by Cardinal within thirty (30) days after completion of the applicable service. In no event shall Cardinal be liable for incidental or consequential damages, including, without limitation, business interruptions, loss of use, or loss of profits incurred by client, its subsidiaries, affiliates or successors arising out of or related to the performance of the services hereunder by Cardinal, regardless of whether such claim is based upon any of the above stated reasons or otherwise. Results relate only to the samples identified above. This report shall not be reproduced except in full with written approval of Cardinal Laboratories.

A handwritten signature in black ink, appearing to read "Celey D. Keene".

Celey D. Keene, Lab Director/Quality Manager

Chain of Custody

Work Order No:

4253622

Page 5 of 5

Project Manager:	Ashton Thielke	Bill to: (if different)	Carmona Resources
Company Name:	Carmona Resources	Company Name:	
Address:	310 West Wall Ste. 500	Address:	
City, State ZIP:	Midland, TX 79701	City, State ZIP:	
Phone:	432-813-8988	Email:	ThielkeA@Carmonaresources.com

Work Order Comments	
Program: UST/PT <input type="checkbox"/> PRP <input type="checkbox"/> Brownfields <input type="checkbox"/> RRC <input type="checkbox"/> Superfund <input type="checkbox"/>	
State of Project:	
Reporting Level II <input type="checkbox"/> Level III <input type="checkbox"/> PST/UST <input type="checkbox"/> RRP <input type="checkbox"/> Level IV <input type="checkbox"/>	
Deliverables: EDD <input type="checkbox"/> ADAPT <input type="checkbox"/> Other:	

Project Name:	White City 21 Tank Battery	Turn Around		ANALYSIS REQUEST										Preservative Codes			
Project Number:	2757	<input type="checkbox"/> Routine	<input checked="" type="checkbox"/> Rush	Pres. Code												None: NO	DI Water: H ₂ O
Project Location	Eddy Co, New Mexico	Due Date:	72 Hour													Cool: Cool	MeOH: Me
Sampler's Name:	KR	TAT starts the day received by the lab, if received by 4:30pm														HCL: HC	HNO ₃ : HN
PO #:																H ₂ SO ₄ : H ₂	NaOH: Na
SAMPLE RECEIPT	Temp Blank:	Yes <input checked="" type="checkbox"/> No <input type="checkbox"/>	Yes <input checked="" type="checkbox"/> Wet Ice:	Yes <input checked="" type="checkbox"/> No <input type="checkbox"/>	Thermometer ID:	#140										H ₃ PO ₄ : HP	
	Received Intact:	Yes <input checked="" type="checkbox"/> No <input type="checkbox"/>	Thermometer ID:	#140												NaHSO ₄ : NABIS	
	Cooler Custody Seals:	Yes <input checked="" type="checkbox"/> No <input type="checkbox"/>	Correction Factor:	+0.3°C												Na ₂ S ₂ O ₃ : NaSO ₃	
	Sample Custody Seals:	Yes <input checked="" type="checkbox"/> No <input type="checkbox"/>	Temperature Reading:	4.1°C												Zn Acetate+NaOH: Zn	
	Total Containers:		Corrected Temperature:	4.1°C												NaOH+Ascorbic Acid: SAPC	
Parameters					BTEX 8021B		8015M (GRO + DRO + MRO)		Chloride 4500							HOLD	

[illegible]

Please send results to cmoehring@carmonaresources.com and mcarmona@carmonaresources.com

Relinquished by: (Signature)	Received by: (Signature)	Date/Time	Relinquished by: (Signature)	Received by: (Signature)	Date/Time
1 <i>[Signature]</i>	<i>[Signature]</i>	6-18-25 1444	2		
3			4		
5			6		



PHONE (575) 393-2326 ° 101 E. MARLAND ° HOBBS, NM 88240

June 23, 2025

ASHTON THIELKE

CARMONA RESOURCES

310 W WALL ST, SUITE 500

MIDLAND, TX 79701

RE: WHITE CITY 21 TANK BATTERY

Enclosed are the results of analyses for samples received by the laboratory on 06/18/25 14:41.

Cardinal Laboratories is accredited through Texas NELAP under certificate number TX-C25-00101. Accreditation applies to drinking water, non-potable water and solid and chemical materials. All accredited analytes are denoted by an asterisk (*). For a complete list of accredited analytes and matrices visit the TCEQ website at www.tceq.texas.gov/field/qa/lab_accred_certif.html.

Cardinal Laboratories is accredited through the State of Colorado Department of Public Health and Environment for:

Method EPA 552.2	Haloacetic Acids (HAA-5)
Method EPA 524.2	Total Trihalomethanes (TTHM)
Method EPA 524.4	Regulated VOCs (V1, V2, V3)

Accreditation applies to public drinking water matrices.

This report meets NELAP requirements and is made up of a cover page, analytical results, and a copy of the original chain-of-custody. If you have any questions concerning this report, please feel free to contact me.

Sincerely,

A handwritten signature in black ink that reads "Celey D. Keene". The signature is written in a cursive, flowing style.

Celey D. Keene

Lab Director/Quality Manager



PHONE (575) 393-2326 ° 101 E. MARLAND ° HOBBS, NM 88240

Analytical Results For:

CARMONA RESOURCES
 ASHTON THIELKE
 310 W WALL ST, SUITE 500
 MIDLAND TX, 79701
 Fax To:

Received: 06/18/2025
 Reported: 06/23/2025
 Project Name: WHITE CITY 21 TANK BATTERY
 Project Number: 2757
 Project Location: EDDY CO., NM

Sampling Date: 06/17/2025
 Sampling Type: Soil
 Sampling Condition: Cool & Intact
 Sample Received By: Alyssa Parras

Sample ID: H - 1 (0-0.5') (H253624-01)

BTX 8021B		mg/kg		Analyzed By: JH						
Analyte	Result	Reporting Limit	Analyzed	Method Blank	BS	% Recovery	True Value QC	RPD	Qualifier	
Benzene*	<0.050	0.050	06/20/2025	ND	1.99	99.5	2.00	5.23		
Toluene*	<0.050	0.050	06/20/2025	ND	2.21	110	2.00	6.46		
Ethylbenzene*	<0.050	0.050	06/20/2025	ND	2.03	102	2.00	5.80		
Total Xylenes*	<0.150	0.150	06/20/2025	ND	6.10	102	6.00	5.98		
Total BTX	<0.300	0.300	06/20/2025	ND						

Surrogate: 4-Bromofluorobenzene (PID) 99.8 % 71.5-134

Chloride, SM4500Cl-B		mg/kg		Analyzed By: HM						
Analyte	Result	Reporting Limit	Analyzed	Method Blank	BS	% Recovery	True Value QC	RPD	Qualifier	
Chloride	208	16.0	06/19/2025	ND	432	108	400	3.64		

TPH 8015M		mg/kg		Analyzed By: MS					
Analyte	Result	Reporting Limit	Analyzed	Method Blank	BS	% Recovery	True Value QC	RPD	Qualifier
GRO C6-C10*	<10.0	10.0	06/19/2025	ND	201	101	200	2.72	
DRO >C10-C28*	<10.0	10.0	06/19/2025	ND	190	95.1	200	1.85	
EXT DRO >C28-C36	<10.0	10.0	06/19/2025	ND					

Surrogate: 1-Chlorooctane 90.8 % 44.4-145

Surrogate: 1-Chlorooctadecane 85.2 % 40.6-153

Cardinal Laboratories

*=Accredited Analyte

PLEASE NOTE: Liability and Damages. Cardinal's liability and client's exclusive remedy for any claim arising, whether based in contract or tort, shall be limited to the amount paid by client for analyses. All claims, including those for negligence and any other cause whatsoever shall be deemed waived unless made in writing and received by Cardinal within thirty (30) days after completion of the applicable service. In no event shall Cardinal be liable for incidental or consequential damages, including, without limitation, business interruptions, loss of use, or loss of profits incurred by client, its subsidiaries, affiliates or successors arising out of or related to the performance of the services hereunder by Cardinal, regardless of whether such claim is based upon any of the above stated reasons or otherwise. Results relate only to the samples identified above. This report shall not be reproduced except in full with written approval of Cardinal Laboratories.

Celey D. Keene, Lab Director/Quality Manager



PHONE (575) 393-2326 ° 101 E. MARLAND ° HOBBS, NM 88240

Analytical Results For:

CARMONA RESOURCES
 ASHTON THIELKE
 310 W WALL ST, SUITE 500
 MIDLAND TX, 79701
 Fax To:

Received: 06/18/2025
 Reported: 06/23/2025
 Project Name: WHITE CITY 21 TANK BATTERY
 Project Number: 2757
 Project Location: EDDY CO., NM

Sampling Date: 06/17/2025
 Sampling Type: Soil
 Sampling Condition: Cool & Intact
 Sample Received By: Alyssa Parras

Sample ID: H - 2 (0-0.5') (H253624-02)

BTEx 8021B		mg/kg		Analyzed By: JH						
Analyte	Result	Reporting Limit	Analyzed	Method Blank	BS	% Recovery	True Value QC	RPD	Qualifier	
Benzene*	<0.050	0.050	06/20/2025	ND	1.99	99.5	2.00	5.23		
Toluene*	<0.050	0.050	06/20/2025	ND	2.21	110	2.00	6.46		
Ethylbenzene*	<0.050	0.050	06/20/2025	ND	2.03	102	2.00	5.80		
Total Xylenes*	<0.150	0.150	06/20/2025	ND	6.10	102	6.00	5.98		
Total BTEX	<0.300	0.300	06/20/2025	ND						

Surrogate: 4-Bromofluorobenzene (PID) 102 % 71.5-134

Chloride, SM4500Cl-B		mg/kg		Analyzed By: HM						
Analyte	Result	Reporting Limit	Analyzed	Method Blank	BS	% Recovery	True Value QC	RPD	Qualifier	
Chloride	208	16.0	06/19/2025	ND	432	108	400	3.64		

TPH 8015M		mg/kg		Analyzed By: MS					
Analyte	Result	Reporting Limit	Analyzed	Method Blank	BS	% Recovery	True Value QC	RPD	Qualifier
GRO C6-C10*	<10.0	10.0	06/19/2025	ND	201	101	200	2.72	
DRO >C10-C28*	<10.0	10.0	06/19/2025	ND	190	95.1	200	1.85	
EXT DRO >C28-C36	<10.0	10.0	06/19/2025	ND					

Surrogate: 1-Chlorooctane 86.5 % 44.4-145

Surrogate: 1-Chlorooctadecane 81.8 % 40.6-153

Cardinal Laboratories

*=Accredited Analyte

PLEASE NOTE: Liability and Damages. Cardinal's liability and client's exclusive remedy for any claim arising, whether based in contract or tort, shall be limited to the amount paid by client for analyses. All claims, including those for negligence and any other cause whatsoever shall be deemed waived unless made in writing and received by Cardinal within thirty (30) days after completion of the applicable service. In no event shall Cardinal be liable for incidental or consequential damages, including, without limitation, business interruptions, loss of use, or loss of profits incurred by client, its subsidiaries, affiliates or successors arising out of or related to the performance of the services hereunder by Cardinal, regardless of whether such claim is based upon any of the above stated reasons or otherwise. Results relate only to the samples identified above. This report shall not be reproduced except in full with written approval of Cardinal Laboratories.

Celey D. Keene, Lab Director/Quality Manager



PHONE (575) 393-2326 ° 101 E. MARLAND ° HOBBS, NM 88240

Analytical Results For:

CARMONA RESOURCES
 ASHTON THIELKE
 310 W WALL ST, SUITE 500
 MIDLAND TX, 79701
 Fax To:

Received: 06/18/2025
 Reported: 06/23/2025
 Project Name: WHITE CITY 21 TANK BATTERY
 Project Number: 2757
 Project Location: EDDY CO., NM

Sampling Date: 06/17/2025
 Sampling Type: Soil
 Sampling Condition: Cool & Intact
 Sample Received By: Alyssa Parras

Sample ID: H - 3 (0-0.5') (H253624-03)

BTEx 8021B		mg/kg		Analyzed By: JH						
Analyte	Result	Reporting Limit	Analyzed	Method Blank	BS	% Recovery	True Value QC	RPD	Qualifier	
Benzene*	<0.050	0.050	06/20/2025	ND	1.99	99.5	2.00	5.23		
Toluene*	<0.050	0.050	06/20/2025	ND	2.21	110	2.00	6.46		
Ethylbenzene*	<0.050	0.050	06/20/2025	ND	2.03	102	2.00	5.80		
Total Xylenes*	<0.150	0.150	06/20/2025	ND	6.10	102	6.00	5.98		
Total BTEX	<0.300	0.300	06/20/2025	ND						

Surrogate: 4-Bromofluorobenzene (PID) 100 % 71.5-134

Chloride, SM4500Cl-B		mg/kg		Analyzed By: HM						
Analyte	Result	Reporting Limit	Analyzed	Method Blank	BS	% Recovery	True Value QC	RPD	Qualifier	
Chloride	224	16.0	06/19/2025	ND	432	108	400	3.64		

TPH 8015M		mg/kg		Analyzed By: MS					
Analyte	Result	Reporting Limit	Analyzed	Method Blank	BS	% Recovery	True Value QC	RPD	Qualifier
GRO C6-C10*	<10.0	10.0	06/19/2025	ND	201	101	200	2.72	
DRO >C10-C28*	<10.0	10.0	06/19/2025	ND	190	95.1	200	1.85	
EXT DRO >C28-C36	<10.0	10.0	06/19/2025	ND					

Surrogate: 1-Chlorooctane 99.5 % 44.4-145

Surrogate: 1-Chlorooctadecane 94.4 % 40.6-153

Cardinal Laboratories

*=Accredited Analyte

PLEASE NOTE: Liability and Damages. Cardinal's liability and client's exclusive remedy for any claim arising, whether based in contract or tort, shall be limited to the amount paid by client for analyses. All claims, including those for negligence and any other cause whatsoever shall be deemed waived unless made in writing and received by Cardinal within thirty (30) days after completion of the applicable service. In no event shall Cardinal be liable for incidental or consequential damages, including, without limitation, business interruptions, loss of use, or loss of profits incurred by client, its subsidiaries, affiliates or successors arising out of or related to the performance of the services hereunder by Cardinal, regardless of whether such claim is based upon any of the above stated reasons or otherwise. Results relate only to the samples identified above. This report shall not be reproduced except in full with written approval of Cardinal Laboratories.

Celey D. Keene, Lab Director/Quality Manager



PHONE (575) 393-2326 ° 101 E. MARLAND ° HOBBS, NM 88240

Analytical Results For:

CARMONA RESOURCES
 ASHTON THIELKE
 310 W WALL ST, SUITE 500
 MIDLAND TX, 79701
 Fax To:

Received: 06/18/2025
 Reported: 06/23/2025
 Project Name: WHITE CITY 21 TANK BATTERY
 Project Number: 2757
 Project Location: EDDY CO., NM

Sampling Date: 06/17/2025
 Sampling Type: Soil
 Sampling Condition: Cool & Intact
 Sample Received By: Alyssa Parras

Sample ID: H - 4 (0-0.5') (H253624-04)

BTEx 8021B		mg/kg		Analyzed By: JH					
Analyte	Result	Reporting Limit	Analyzed	Method Blank	BS	% Recovery	True Value QC	RPD	Qualifier
Benzene*	<0.050	0.050	06/20/2025	ND	1.99	99.5	2.00	5.23	
Toluene*	<0.050	0.050	06/20/2025	ND	2.21	110	2.00	6.46	
Ethylbenzene*	<0.050	0.050	06/20/2025	ND	2.03	102	2.00	5.80	
Total Xylenes*	<0.150	0.150	06/20/2025	ND	6.10	102	6.00	5.98	
Total BTEX	<0.300	0.300	06/20/2025	ND					

Surrogate: 4-Bromofluorobenzene (PID) 101 % 71.5-134

Chloride, SM4500Cl-B		mg/kg		Analyzed By: HM					
Analyte	Result	Reporting Limit	Analyzed	Method Blank	BS	% Recovery	True Value QC	RPD	Qualifier
Chloride	208	16.0	06/19/2025	ND	432	108	400	3.64	

TPH 8015M		mg/kg		Analyzed By: MS					
Analyte	Result	Reporting Limit	Analyzed	Method Blank	BS	% Recovery	True Value QC	RPD	Qualifier
GRO C6-C10*	<10.0	10.0	06/19/2025	ND	201	101	200	2.72	
DRO >C10-C28*	<10.0	10.0	06/19/2025	ND	190	95.1	200	1.85	
EXT DRO >C28-C36	<10.0	10.0	06/19/2025	ND					

Surrogate: 1-Chlorooctane 108 % 44.4-145

Surrogate: 1-Chlorooctadecane 103 % 40.6-153

Cardinal Laboratories

*=Accredited Analyte

PLEASE NOTE: Liability and Damages. Cardinal's liability and client's exclusive remedy for any claim arising, whether based in contract or tort, shall be limited to the amount paid by client for analyses. All claims, including those for negligence and any other cause whatsoever shall be deemed waived unless made in writing and received by Cardinal within thirty (30) days after completion of the applicable service. In no event shall Cardinal be liable for incidental or consequential damages, including, without limitation, business interruptions, loss of use, or loss of profits incurred by client, its subsidiaries, affiliates or successors arising out of or related to the performance of the services hereunder by Cardinal, regardless of whether such claim is based upon any of the above stated reasons or otherwise. Results relate only to the samples identified above. This report shall not be reproduced except in full with written approval of Cardinal Laboratories.

Celey D. Keene, Lab Director/Quality Manager



PHONE (575) 393-2326 ° 101 E. MARLAND ° HOBBS, NM 88240

Notes and Definitions

ND	Analyte NOT DETECTED at or above the reporting limit
RPD	Relative Percent Difference
**	Samples not received at proper temperature of 6°C or below.
***	Insufficient time to reach temperature.
-	Chloride by SM4500Cl-B does not require samples be received at or below 6°C Samples reported on an as received basis (wet) unless otherwise noted on report

Cardinal Laboratories

*=Accredited Analyte

PLEASE NOTE: Liability and Damages. Cardinal's liability and client's exclusive remedy for any claim arising, whether based in contract or tort, shall be limited to the amount paid by client for analyses. All claims, including those for negligence and any other cause whatsoever shall be deemed waived unless made in writing and received by Cardinal within thirty (30) days after completion of the applicable service. In no event shall Cardinal be liable for incidental or consequential damages, including, without limitation, business interruptions, loss of use, or loss of profits incurred by client, its subsidiaries, affiliates or successors arising out of or related to the performance of the services hereunder by Cardinal, regardless of whether such claim is based upon any of the above stated reasons or otherwise. Results relate only to the samples identified above. This report shall not be reproduced except in full with written approval of Cardinal Laboratories.

A handwritten signature in black ink, appearing to read "Celey D. Keene", is written over a horizontal line.

Celey D. Keene, Lab Director/Quality Manager

Chain of Custody

Work Order No:

4253624

Page 1 of 1

Page 7 of 7

[illegible]

Sante Fe Main Office
Phone: (505) 476-3441

General Information
Phone: (505) 629-6116

Online Phone Directory
<https://www.emnrd.nm.gov/ocd/contact-us>

State of New Mexico
Energy, Minerals and Natural Resources
Oil Conservation Division
1220 S. St Francis Dr.
Santa Fe, NM 87505

QUESTIONS

Action 479304

QUESTIONS

Operator: CHEVRON U S A INC 6301 Deauville Blvd Midland, TX 79706	OGRID: 4323
	Action Number: 479304
	Action Type: [C-141] Remediation Closure Request C-141 (C-141-v-Closure)

QUESTIONS

Prerequisites	
Incident ID (n#)	nAPP2515843001
Incident Name	NAPP2515843001 WHITE CITY 21 TANK BATTERY @ 0
Incident Type	Fire
Incident Status	Remediation Closure Report Received
Incident Facility	[fAPP2132234063] White City 21 Tank Battery

Location of Release Source

Please answer all the questions in this group.

Site Name	White City 21 Tank Battery
Date Release Discovered	06/07/2025
Surface Owner	State

Incident Details

Please answer all the questions in this group.

Incident Type	Fire
Did this release result in a fire or is the result of a fire	Yes
Did this release result in any injuries	No
Has this release reached or does it have a reasonable probability of reaching a watercourse	No
Has this release endangered or does it have a reasonable probability of endangering public health	No
Has this release substantially damaged or will it substantially damage property or the environment	No
Is this release of a volume that is or may with reasonable probability be detrimental to fresh water	No

Nature and Volume of Release

Material(s) released, please answer all that apply below. Any calculations or specific justifications for the volumes provided should be attached to the follow-up C-141 submission.

Crude Oil Released (bbls) Details	Cause: Equipment Failure Valve Crude Oil Released: 0 BBL Recovered: 0 BBL Lost: 0 BBL.
Produced Water Released (bbls) Details	Not answered.
Is the concentration of chloride in the produced water >10,000 mg/l	No
Condensate Released (bbls) Details	Not answered.
Natural Gas Vented (Mcf) Details	Not answered.
Natural Gas Flared (Mcf) Details	Not answered.
Other Released Details	Not answered.
Are there additional details for the questions above (i.e. any answer containing Other, Specify, Unknown, and/or Fire, or any negative lost amounts)	Not answered.

Sante Fe Main Office
Phone: (505) 476-3441

General Information
Phone: (505) 629-6116

Online Phone Directory
<https://www.emnrd.nm.gov/ocd/contact-us>

State of New Mexico
Energy, Minerals and Natural Resources
Oil Conservation Division
1220 S. St Francis Dr.
Santa Fe, NM 87505

QUESTIONS, Page 2

Action 479304

QUESTIONS (continued)

Operator: CHEVRON U S A INC 6301 Deauville Blvd Midland, TX 79706	OGRID: 4323
	Action Number: 479304
	Action Type: [C-141] Remediation Closure Request C-141 (C-141-v-Closure)

QUESTIONS

Nature and Volume of Release (continued)	
Is this a gas only submission (i.e. only significant Mcf values reported)	More info needed to determine if this will be treated as a "gas only" report.
Was this a major release as defined by Subsection A of 19.15.29.7 NMAC	Yes
Reasons why this would be considered a submission for a notification of a major release	From paragraph A. "Major release" determine using: (2) an unauthorized release of a volume that: (a) results in a fire or is the result of a fire.
<i>With the implementation of the 19.15.27 NMAC (05/25/2021), venting and/or flaring of natural gas (i.e. gas only) are to be submitted on the C-129 form.</i>	

Initial Response

The responsible party must undertake the following actions immediately unless they could create a safety hazard that would result in injury.

The source of the release has been stopped	True
The impacted area has been secured to protect human health and the environment	True
Released materials have been contained via the use of berms or dikes, absorbent pads, or other containment devices	True
All free liquids and recoverable materials have been removed and managed appropriately	True
If all the actions described above have not been undertaken, explain why	Not answered.

Per Paragraph (4) of Subsection B of 19.15.29.8 NMAC the responsible party may commence remediation immediately after discovery of a release. If remediation has begun, please prepare and attach a narrative of actions to date in the follow-up C-141 submission. If remedial efforts have been successfully completed or if the release occurred within a lined containment area (see Subparagraph (a) of Paragraph (5) of Subsection A of 19.15.29.11 NMAC), please prepare and attach all information needed for closure evaluation in the follow-up C-141 submission.

I hereby certify that the information given above is true and complete to the best of my knowledge and understand that pursuant to OCD rules and regulations all operators are required to report and/or file certain release notifications and perform corrective actions for releases which may endanger public health or the environment. The acceptance of a C-141 report by the OCD does not relieve the operator of liability should their operations have failed to adequately investigate and remediate contamination that pose a threat to groundwater, surface water, human health or the environment. In addition, OCD acceptance of a C-141 report does not relieve the operator of responsibility for compliance with any other federal, state, or local laws and/or regulations.

I hereby agree and sign off to the above statement	Name: Kennedy Lincoln Title: Environmental Specialist Email: kennedy.lincoln@chevron.com Date: 06/26/2025
--	---

Sante Fe Main Office
Phone: (505) 476-3441

General Information
Phone: (505) 629-6116

Online Phone Directory
<https://www.emnrd.nm.gov/ocd/contact-us>

State of New Mexico
Energy, Minerals and Natural Resources
Oil Conservation Division
1220 S. St Francis Dr.
Santa Fe, NM 87505

QUESTIONS, Page 3

Action 479304

QUESTIONS (continued)

Operator: CHEVRON U S A INC 6301 Deauville Blvd Midland, TX 79706	OGRID: 4323
	Action Number: 479304
	Action Type: [C-141] Remediation Closure Request C-141 (C-141-v-Closure)

QUESTIONS

Site Characterization	
<i>Please answer all the questions in this group (only required when seeking remediation plan approval and beyond). This information must be provided to the appropriate district office no later than 90 days after the release discovery date.</i>	
What is the shallowest depth to groundwater beneath the area affected by the release in feet below ground surface (ft bgs)	Less than or equal 25 (ft.)
What method was used to determine the depth to ground water	U.S. Geological Survey
Did this release impact groundwater or surface water	No
What is the minimum distance, between the closest lateral extents of the release and the following surface areas:	
A continuously flowing watercourse or any other significant watercourse	Greater than 5 (mi.)
Any lakebed, sinkhole, or playa lake (measured from the ordinary high-water mark)	Greater than 5 (mi.)
An occupied permanent residence, school, hospital, institution, or church	Between 1 and 5 (mi.)
A spring or a private domestic fresh water well used by less than five households for domestic or stock watering purposes	Between 1 and 5 (mi.)
Any other fresh water well or spring	Between 1 and 5 (mi.)
Incorporated municipal boundaries or a defined municipal fresh water well field	Greater than 5 (mi.)
A wetland	Between ½ and 1 (mi.)
A subsurface mine	Greater than 5 (mi.)
An (non-karst) unstable area	Zero feet, overlying, or within area
Categorize the risk of this well / site being in a karst geology	High
A 100-year floodplain	Between ½ and 1 (mi.)
Did the release impact areas not on an exploration, development, production, or storage site	No

Remediation Plan	
<i>Please answer all the questions that apply or are indicated. This information must be provided to the appropriate district office no later than 90 days after the release discovery date.</i>	
Requesting a remediation plan approval with this submission	Yes
<i>Attach a comprehensive report demonstrating the lateral and vertical extents of soil contamination associated with the release have been determined, pursuant to 19.15.29.11 NMAC and 19.15.29.13 NMAC.</i>	
Have the lateral and vertical extents of contamination been fully delineated	Yes
Was this release entirely contained within a lined containment area	No
Soil Contamination Sampling: (Provide the highest observable value for each, in milligrams per kilograms.)	
Chloride (EPA 300.0 or SM4500 Cl B)	224
TPH (GRO+DRO+MRO) (EPA SW-846 Method 8015M)	0
GRO+DRO (EPA SW-846 Method 8015M)	0
BTEX (EPA SW-846 Method 8021B or 8260B)	0
Benzene (EPA SW-846 Method 8021B or 8260B)	0
<i>Per Subsection B of 19.15.29.11 NMAC unless the site characterization report includes completed efforts at remediation, the report must include a proposed remediation plan in accordance with 19.15.29.12 NMAC, which includes the anticipated timelines for beginning and completing the remediation.</i>	
On what estimated date will the remediation commence	06/17/2025
On what date will (or did) the final sampling or liner inspection occur	06/17/2025
On what date will (or was) the remediation complete(d)	06/17/2025
What is the estimated surface area (in square feet) that will be reclaimed	0
What is the estimated volume (in cubic yards) that will be reclaimed	0
What is the estimated surface area (in square feet) that will be remediated	125
What is the estimated volume (in cubic yards) that will be remediated	4
<i>These estimated dates and measurements are recognized to be the best guess or calculation at the time of submission and may (be) change(d) over time as more remediation efforts are completed.</i>	
<i>The OCD recognizes that proposed remediation measures may have to be minimally adjusted in accordance with the physical realities encountered during remediation. If the responsible party has any need to significantly deviate from the remediation plan proposed, then it should consult with the division to determine if another remediation plan submission is required.</i>	

Sante Fe Main Office
Phone: (505) 476-3441

General Information
Phone: (505) 629-6116

Online Phone Directory
<https://www.emnrd.nm.gov/ocd/contact-us>

State of New Mexico
Energy, Minerals and Natural Resources
Oil Conservation Division
1220 S. St Francis Dr.
Santa Fe, NM 87505

QUESTIONS, Page 4

Action 479304

QUESTIONS (continued)

Operator: CHEVRON U S A INC 6301 Deauville Blvd Midland, TX 79706	OGRID:
	4323
	Action Number:
	479304
Action Type:	
[C-141] Remediation Closure Request C-141 (C-141-v-Closure)	

QUESTIONS

Remediation Plan (continued)	
<i>Please answer all the questions that apply or are indicated. This information must be provided to the appropriate district office no later than 90 days after the release discovery date.</i>	
This remediation will (or is expected to) utilize the following processes to remediate / reduce contaminants:	
<i>(Select all answers below that apply.)</i>	
(Ex Situ) Excavation and off-site disposal (i.e. dig and haul, hydrovac, etc.)	Yes
Which OCD approved facility will be used for off-site disposal	LEA LAND LANDFILL [fEEM0112342028]
OR which OCD approved well (API) will be used for off-site disposal	Not answered.
OR is the off-site disposal site, to be used, out-of-state	Not answered.
OR is the off-site disposal site, to be used, an NMED facility	Not answered.
(Ex Situ) Excavation and on-site remediation (i.e. On-Site Land Farms)	Not answered.
(In Situ) Soil Vapor Extraction	Not answered.
(In Situ) Chemical processing (i.e. Soil Shredding, Potassium Permanganate, etc.)	Not answered.
(In Situ) Biological processing (i.e. Microbes / Fertilizer, etc.)	Not answered.
(In Situ) Physical processing (i.e. Soil Washing, Gypsum, Disking, etc.)	Not answered.
Ground Water Abatement pursuant to 19.15.30 NMAC	Not answered.
OTHER (Non-listed remedial process)	Not answered.
<i>Per Subsection B of 19.15.29.11 NMAC unless the site characterization report includes completed efforts at remediation, the report must include a proposed remediation plan in accordance with 19.15.29.12 NMAC, which includes the anticipated timelines for beginning and completing the remediation.</i>	
I hereby certify that the information given above is true and complete to the best of my knowledge and understand that pursuant to OCD rules and regulations all operators are required to report and/or file certain release notifications and perform corrective actions for releases which may endanger public health or the environment. The acceptance of a C-141 report by the OCD does not relieve the operator of liability should their operations have failed to adequately investigate and remediate contamination that pose a threat to groundwater, surface water, human health or the environment. In addition, OCD acceptance of a C-141 report does not relieve the operator of responsibility for compliance with any other federal, state, or local laws and/or regulations.	
I hereby agree and sign off to the above statement	Name: Kennedy Lincoln Title: Environmental Specialist Email: kennedy.lincoln@chevron.com Date: 06/26/2025
<i>The OCD recognizes that proposed remediation measures may have to be minimally adjusted in accordance with the physical realities encountered during remediation. If the responsible party has any need to significantly deviate from the remediation plan proposed, then it should consult with the division to determine if another remediation plan submission is required.</i>	

Sante Fe Main Office
Phone: (505) 476-3441

General Information
Phone: (505) 629-6116

Online Phone Directory
<https://www.emnrd.nm.gov/ocd/contact-us>

State of New Mexico
Energy, Minerals and Natural Resources
Oil Conservation Division
1220 S. St Francis Dr.
Santa Fe, NM 87505

QUESTIONS, Page 5

Action 479304

QUESTIONS (continued)

Operator: CHEVRON U S A INC 6301 Deauville Blvd Midland, TX 79706	OGRID: 4323
	Action Number: 479304
	Action Type: [C-141] Remediation Closure Request C-141 (C-141-v-Closure)

QUESTIONS

Deferral Requests Only	
<i>Only answer the questions in this group if seeking a deferral upon approval this submission. Each of the following items must be confirmed as part of any request for deferral of remediation.</i>	
Requesting a deferral of the remediation closure due date with the approval of this submission	No

Sante Fe Main Office
Phone: (505) 476-3441

General Information
Phone: (505) 629-6116

Online Phone Directory
<https://www.emnrd.nm.gov/ocd/contact-us>

State of New Mexico
Energy, Minerals and Natural Resources
Oil Conservation Division
1220 S. St Francis Dr.
Santa Fe, NM 87505

QUESTIONS, Page 6

Action 479304

QUESTIONS (continued)

Operator: CHEVRON U S A INC 6301 Deauville Blvd Midland, TX 79706	OGRID: 4323
	Action Number: 479304
	Action Type: [C-141] Remediation Closure Request C-141 (C-141-v-Closure)

QUESTIONS

Sampling Event Information	
Last sampling notification (C-141N) recorded	474033
Sampling date pursuant to Subparagraph (a) of Paragraph (1) of Subsection D of 19.15.29.12 NMAC	06/17/2025
What was the (estimated) number of samples that were to be gathered	6
What was the sampling surface area in square feet	180

Remediation Closure Request

Only answer the questions in this group if seeking remediation closure for this release because all remediation steps have been completed.

Requesting a remediation closure approval with this submission	Yes
Have the lateral and vertical extents of contamination been fully delineated	Yes
Was this release entirely contained within a lined containment area	No
All areas reasonably needed for production or subsequent drilling operations have been stabilized, returned to the sites existing grade, and have a soil cover that prevents ponding of water, minimizing dust and erosion	Yes
What was the total surface area (in square feet) remediated	125
What was the total volume (cubic yards) remediated	4
All areas not reasonably needed for production or subsequent drilling operations have been reclaimed to contain a minimum of four feet of non-waste contain earthen material with concentrations less than 600 mg/kg chlorides, 100 mg/kg TPH, 50 mg/kg BTEX, and 10 mg/kg Benzene	Yes
What was the total surface area (in square feet) reclaimed	0
What was the total volume (in cubic yards) reclaimed	0
Summarize any additional remediation activities not included by answers (above)	"Area was excavated (scraped) to a depth of 1-2inches to remove possible contaminated soil. Composite confirmation sidewall samples were collected from the floor of the excavation. Due to the excavation being less than 6 inches in depth, horizontal delineation samples were collected in place of composite confirmation sidewall samples. Additionally, due to the extremely shallow nature of the surface scrape of the remediation caused by a flare fire, a variance to NMAC 19.15.29.12.D.2 is requested in relation to backfilling the excavated (scraped) area. Excess material from the well pad was pushed up to cover the excavated area. Sample points "H-1, H-2, & H-3" represent the material that was used to backfill the excavated area. The entire area will be reclaimed/reseeded during P/A activities per NMAC 19.15.29.13."

The responsible party must attach information demonstrating they have complied with all applicable closure requirements and any conditions or directives of the OCD. This demonstration should be in the form of a comprehensive report (in .pdf format) including a scaled site map, sampling diagrams, relevant field notes, photographs of any excavation prior to backfilling, laboratory data including chain of custody documents of final sampling, and a narrative of the remedial activities. Refer to 19.15.29.12 NMAC.

I hereby certify that the information given above is true and complete to the best of my knowledge and understand that pursuant to OCD rules and regulations all operators are required to report and/or file certain release notifications and perform corrective actions for releases which may endanger public health or the environment. The acceptance of a C-141 report by the OCD does not relieve the operator of liability should their operations have failed to adequately investigate and remediate contamination that pose a threat to groundwater, surface water, human health or the environment. In addition, OCD acceptance of a C-141 report does not relieve the operator of responsibility for compliance with any other federal, state, or local laws and/or regulations. The responsible party acknowledges they must substantially restore, reclaim, and re-vegetate the impacted surface area to the conditions that existed prior to the release or their final land use in accordance with 19.15.29.13 NMAC including notification to the OCD when reclamation and re-vegetation are complete.

I hereby agree and sign off to the above statement	Name: Kennedy Lincoln Title: Environmental Specialist Email: kennedy.lincoln@chevron.com Date: 06/26/2025
--	--

Sante Fe Main Office
Phone: (505) 476-3441

General Information
Phone: (505) 629-6116

Online Phone Directory
<https://www.emnrd.nm.gov/ocd/contact-us>

State of New Mexico
Energy, Minerals and Natural Resources
Oil Conservation Division
1220 S. St Francis Dr.
Santa Fe, NM 87505

QUESTIONS, Page 7

Action 479304

QUESTIONS (continued)

Operator: CHEVRON U S A INC 6301 Deauville Blvd Midland, TX 79706	OGRID: 4323
	Action Number: 479304
	Action Type: [C-141] Remediation Closure Request C-141 (C-141-v-Closure)

QUESTIONS

Reclamation Report	
Only answer the questions in this group if all reclamation steps have been completed.	
Requesting a reclamation approval with this submission	No

Sante Fe Main Office
Phone: (505) 476-3441

General Information
Phone: (505) 629-6116

Online Phone Directory
<https://www.emnrd.nm.gov/ocd/contact-us>

State of New Mexico
Energy, Minerals and Natural Resources
Oil Conservation Division
1220 S. St Francis Dr.
Santa Fe, NM 87505

CONDITIONS

Action 479304

CONDITIONS

Operator: CHEVRON U S A INC 6301 Deauville Blvd Midland, TX 79706	OGRID: 4323
	Action Number: 479304
	Action Type: [C-141] Remediation Closure Request C-141 (C-141-v-Closure)

CONDITIONS

Created By	Condition	Condition Date
rhamlet	We have received your Remediation Closure Report for Incident #NAPP2515843001 WHITE CITY 21 TANK BATTERY, thank you. This Remediation Closure Report is approved.	8/8/2025