



August 14, 2025

New Mexico Oil Conservation Division

New Mexico Energy, Minerals, and Natural Resources Department
1220 South St. Francis Drive
Santa Fe, New Mexico 87505

**Re: Reclamation Report
Benelli CTB
Incident Number nAPP2320749536
Eddy County, New Mexico**

To Whom It May Concern:

Ensolum, LLC (Ensolum), on behalf of Oxy USA Inc. (Oxy), has prepared the following *Reclamation Report* for the Benelli CTB (Site). This *Reclamation Report* documents the Site history, reclamation activities completed to date, and proposes a vegetation monitoring plan.

BACKGROUND

The Site is located in Unit D, Section 08, Township 25 South, Range 28 East, in Eddy County, New Mexico (32.149652°, -104.116548°) and is associated with oil and gas exploration and production operations on private land.

On July 19, 2023, a flowline rupture caused by an electrical pole catching fire resulted in the release of 1 barrel (bbl) of crude oil and 1 bbl of produced water into the surrounding pasture. No released fluids were recovered. Oxy reported the release to the New Mexico Oil Conservation Division (NMOCD) on a Notification of Release (NOR) Form on July 26, 2023. The release was assigned Incident Number nAPP2320749536.

Delineation and excavation of impacted soil was completed at the Site between July 2023 and September 2024. The final excavation extent measured approximately 3,452 square feet. A total of approximately 422 cubic yards of impacted soil were removed during the excavation activities. Based on the delineation and excavation soil sample analytical results, a *Closure Request* was submitted to the NMOCD on February 27, 2025. The NMOCD approved the *Closure Request* on March 3, 2025.

Additional details regarding the release, Site Characterization, compliance with the Cultural Properties Protection Rule, delineation and excavation activities, and soil sample analytical results can be referenced in the approved *Closure Request*, included as an attachment to this report. Remediation of the release was completed in accordance with Title 19, Chapter 15, Part 29, Section 12 (19.15.29.12) of the New Mexico Administrative Code (NMAC).

Oxy USA Inc.
Reclamation Report
Benelli CTB

RECLAMATION ACTIVITIES

Upon completion of excavation activities and receipt of final laboratory analytical results, the excavation was backfilled with locally procured soil and the disturbed area was restored to its original condition. The excavation extent and reclamation area are shown on the attached Figure 1. Photographic documentation of the backfilled excavation is included as Appendix A.

As documented in the approved *Closure Request*, one representative 5-point composite sample (Cedar Canyon Pit) was collected from the topsoil backfill material on October 28, 2024. The backfill soil sample was transported under strict chain-of-custody procedures to Cardinal Laboratories in Hobbs, New Mexico, for analysis of the following constituents of concern (COCs): total petroleum hydrocarbons (TPH)—gasoline range organics (GRO), TPH—diesel range organics (DRO), and TPH—oil range organics (ORO) following EPA Method 8015M/D; and chloride following Standard Method 4500.

Laboratory analytical results for the backfill soil sample confirmed compliance with NMOCD requirements for the reclaimed area to contain non-waste containing, uncontaminated, earthen material with chloride concentrations less than 600 milligrams per kilogram (mg/kg) and TPH concentrations less than 100 mg/kg. The laboratory analytical results were summarized on Table 1 of the approved *Closure Request*, attached as Appendix B.

The reclaimed pasture area was seeded on July 29, 2025, with the below BLM seed mixture #1 for loamy sites. The seed was applied with a broadcast seed spreader at double the rate specified in pounds of pure live seed (PLS) per acre to account for the application method.

Species/Cultivar	PLS/Acre
Plains lovegrass (<i>Eragrostis intermedia</i>)	0.5
Sand dropseed (<i>Sporobolus cryptandrus</i>)	1.0
Sideoats grama (<i>Bouteloua curtipendula</i>)	5.0
Plains bristlegrass (<i>Setaria macrostachya</i>)	2.0

Following broadcast seeding, the area was chained to cover the seed. Photographs of the backfilled excavation and seeding of the reclaimed area are provided in Appendix A.

VEGETATION MONITORING

The Site will be monitored for vegetation growth to ensure that reclamation activities were successful. Focus for this phase will be to prevent erosion and Site degradation, and to monitor for and treat invasive and noxious weed species.

- Annual inspections will take place at the location to monitor revegetation progress.
- If necessary, an additional application of the BLM seed mix will be applied.
- Noxious and invasive weeds will be identified and treated by licensed contracted herbicide applicator or mechanically removed.

A *Revegetation Report* will be submitted to the NMOCD once vegetation growth in the reclaimed pasture area has uniform vegetative cover that reflects a life-form ratio of plus or minus 50 percent (%) of pre-disturbance levels and a total percent plant cover of at least 70% of pre-disturbance levels, excluding noxious weeds, per NMAC 19.15.29.13 D.(3).

Oxy USA Inc.
Reclamation Report
Benelli CTB

RECLAMATION APPROVAL REQUEST

Based on the reclamation activities completed to date and proposed vegetation monitoring plan described above, Oxy respectfully requests approval of this *Reclamation Report* and a status update to *Reclamation Report Approved, Pending submission of Re-Vegetation Report* for Incident Number nAPP2320749536.

If you have any questions or comments, please contact Ms. Aimee Cole at (720) 384-7365 or acole@ensolum.com.

Sincerely,
Ensolum, LLC



Hadlie Green
Project Geologist



Aimee Cole
Senior Managing Scientist

cc: Jessica Kent, Oxy

Appendices:

Figure 1	Reclamation Area
Appendix A	Photographic Log
Appendix B	February 27, 2025, <i>Closure Request</i>



FIGURES



Reclamation Area
Oxy USA Inc.
Benelli CTB
Incident Number: nAPP2320749536
Unit D, Section 08, T 25S, R 28E
Eddy County, New Mexico

FIGURE
1



APPENDIX A

Photographic Log

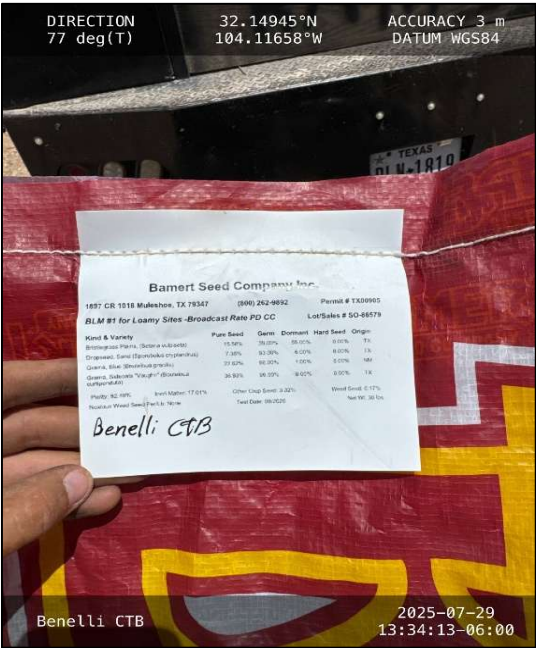


Photographic Log

Oxy USA Inc.

Benelli CTB

Incident Number nAPP2320749536



Photograph: 1
Description: Seed tag
View: Northeast



Photograph: 2
Description: Reseeding activities
View: Northeast



Photograph: 3
Description: Reseeding activities
View: Southeast



Photograph: 4
Description: Reseeding activities
View: Southwest



APPENDIX B

February 27, 2025, *Closure Request*



CLOSURE REPORT

Property:

Benelli CTB

**Unit D, S8, T25S, R28E
32.149652° N, 104.116548° W
Eddy County, New Mexico
NMOCD Incident ID: nAPP2320749536**

February 27, 2025
Ensolum Project No. 03B1417155

Prepared for:

**Oxy USA, Inc.
PO Box 4324
Houston, Texas 77210**

Attn: Wade Dittrich

Prepared by:

Tabitha Guadian
Staff Geologist

Beaux Jennings
Associate Principal

TABLE OF CONTENTS

1.0	INTRODUCTION.....	1
1.1	Site Description and Background.....	1
1.2	Project Objective	1
2.0	CLOSURE CRITERIA.....	1
3.0	SOIL REMEDIATION ACTIVITIES.....	3
4.0	SOIL SAMPLING PROGRAM	4
5.0	SOIL LABORATORY ANALYTICAL METHODS.....	4
6.0	DATA EVALUATION.....	5
7.0	RECLAMATION AND RE-VEGETATION	5
8.0	FINDINGS AND RECOMMENDATIONS.....	6
9.0	STANDARDS OF CARE, LIMITATIONS, AND RELIANCE	7
9.1	Standard of Care	7
9.2	Limitations	7
9.3	Reliance.....	7

APPENDICES

Appendix A:	Figures
Appendix B:	Supporting Documentation
Appendix C:	Photographic Documentation
Appendix D:	Table
Appendix E:	Laboratory Data Sheets & Chain-of-Custody Documentation

CLOSURE REPORT

Benelli CTB
Unit D, S8, T25S, R28E
32.149652° N, 104.116548° W
Eddy County, New Mexico
NMOCD Incident ID: nAPP2320749536

Ensolum Project No. 03B1417155

1.0 INTRODUCTION**1.1 Site Description and Background**

Operator:	Oxy USA, Inc. (Oxy)
Site Name:	Benelli CTB
Location:	Unit D, Section 8, Township 25 South, Range 28 East 32.149652° N, 104.116548° W Eddy County, New Mexico
Property:	Private Land
Regulatory:	New Mexico Energy, Minerals and Natural Resources Department (EMNRD) Oil Conservation Division (OCD)

On July 19, 2023, Oxy had a release of crude oil and produced water at the Site due to an electrical pole catching on fire and causing a flow line to rupture. The flow line was isolated, depressurized, locked, and tagged out. Approximately 1 barrel (bbl) of crude oil and 1 bbl of produced water released onto the ground surface, with no product recovered. Oxy verbally notified the New Mexico EMNRD OCD via email and subsequently reported the release to the New Mexico EMNRD OCD online portal notification of release (NOR) form on July 26, 2023. The release was assigned Incident Number nAPP2320749536.

The **Topographic Map** depicting the location of the Site is included as **Figure 1**, the **Site Vicinity Map** is included as **Figure 2**, the **Site Map** is included as **Figure 3**, and the **Closure Criteria Map** is included as **Figure 4** in **Appendix A**.

1.2 Project Objective

The primary objective of the closure activities was to reduce chemicals of concern (COC) concentrations in the on-Site soil to be in compliance with the applicable New Mexico EMNRD OCD closure criteria concentrations.

2.0 CLOSURE CRITERIA

The Site is subject to regulatory oversight by the New Mexico EMNRD OCD. In order to address activities related to exempt oil and gas releases, the New Mexico EMNRD OCD references New Mexico Administrative Code (NMAC) 19.15.29 *Releases*, which establishes investigation and abatement action requirements for sites subject to reporting and/or corrective action. Ensolum,

LLC (Ensolum) utilized information provided by Oxy, the general Site characteristics, and information available from the New Mexico Office of the State Engineer (OSE) and the New Mexico EMNRD OCD Imaging database to determine the appropriate closure criteria for the Site. Supporting documentation and figures associated with the following bullets are provided in **Appendix B** and included as **Figure 4** in **Appendix A**.

- Two exploratory water wells (United States Geological Survey (USGS) 320920104065801 and USGS 320920104065701) were identified approximately 0.42 miles north of the Site on the OSE Water Rights Reporting System (WRRS) database. The last recorded data from USGS 320920104065801 was from October 9, 1987, with a recorded depth to water of 14.93 feet below ground surface (bgs) and no recorded total depth, and the last recorded data from USGS 320920104065701 was from December 6, 1948, with a recorded depth to water of 59.35 feet bgs and no recorded total depth.
 - Since the data from both of these wells were over 25 years old, the data was not able to be utilized in defining the closure criteria for the Site.
- The Site is not located within 300 feet of a New Mexico ENMRD OCD-defined continuously flowing watercourse or significant watercourse.
- The Site is not located within 200 feet of a lakebed, sinkhole, or playa lake.
- The Site is not located within 300 feet from a permanent residence, school, hospital, institution, or church.
- According to the OSE WRSS database, there are no private, domestic freshwater wells used by less than five households for domestic or stock water purposes identified within 500 feet of the Site.
- According to the OSE WRSS database, there are no freshwater wells identified within 1,000 feet of the Site.
- The Site is not located within incorporated municipal boundaries or within a defined municipal freshwater well field covered under a municipal ordinance adopted pursuant to New Mexico Statute Annotated (NMSA) 1978, Section 3-27-3.
- The Site is not located within 300 feet of a wetland.
- Based on information identified on the New Mexico Mining and Minerals Division's Geographical Information System (GIS), Maps, and Mine Data database, the Site is not located within an area overlying a subsurface mine.
- Based on the Karst Occurrence Potential (.kmz) provided by the BLM, the Site is located within a stable area, also referred to as medium karst potential.
 - This release occurred in 2023 prior to the New Mexico EMNRD OCD Public Notice update for *Karst Potential Occurrence Zones*, effective December 1, 2024. This notice classified "Medium Karst" as an unstable area, and Sites that overlay it would need to be remediated to the most stringent closure criteria found in Table I of 19.15.29 NMAC. This classification can be updated at the discretion of the New Mexico EMNRD OCD and/or if a karst survey is completed by a karst expert on

the Bureau of Land Management (BLM) Carlsbad Field Office Approved Third-Party Cave/Karst Contractors list.

- The Site is not located within a 100-year floodplain.

Based on the identified siting criteria, cleanup goals for soils remaining in place at the Site include:

CLOSURE CRITERIA FOR SOILS IMPACTED BY A RELEASE			
Minimum depth below any point within horizontal boundary of the release to groundwater less than 10,000 mg/l TDS	Constituent	Method	Limit
≤ 50 feet	Chloride	EPA 300.0 or SM4500 Cl B	600 mg/kg
	TPH (GRO+DRO+MRO)	EPA SW-846 Method 8015M	100 mg/kg
	BTEX	EPA SW-846 Method 8021B or 8260B	50 mg/kg
	Benzene	EPA SW-846 Method 8021B or 8260B	10 mg/kg

3.0 SOIL REMEDIATION ACTIVITIES

On July 19, 2023, Oxy had a release of crude oil and produced water at the Site due to an electrical pole catching on fire and causing a flow line to rupture. The flow line was isolated, depressurized, locked, and tagged out. Approximately 1 bbl of crude oil and 1 bbl of produced water released onto the ground surface, with no product recovered.

On February 21, 2024, the project was transferred to Ensolum to begin remediation of the release.

On May 1, 2024, subsequent to initial excavation activities, Ensolum arrived on-Site to collect 17 composite soil samples from the excavation floor (FS-01 through FS-17) and four composite soil samples from the excavation sidewalls (SW-01 through SW-04). The excavation floor samples were collected at a depth of 2 feet bgs, and the excavation sidewall samples were collected at a depth of 0-2 feet bgs. Based on laboratory analytical data, additional excavation and/or remediation was necessary.

On August 20, 2024, subsequent to the completion of additional excavation activities, Ensolum arrived on-Site to collect two composite soil samples from the excavation floor (FS-12 and FS-15) at a depth of 3 feet bgs and 4 feet bgs, respectively. Additionally, one sidewall soil sample (SW-15) was collected at a depth of 0-4 feet bgs in the vicinity of the excavation floor sample FS-15. Based on laboratory analytical data, additional excavation and/or remediation was necessary.

On September 9, 2024, subsequent to the completion of additional excavation activities, Ensolum arrived on-Site to collect eight composite soil samples from the excavation floor (FS-03 through FS-08, FS-10, and FS-11) at depths ranging from 2.5 to 7 feet bgs, and five composite soil samples from four excavation sidewall locations (SW-01, SW-02, SW-05, and SW-06) at depths ranging from 2-2.5 feet bgs, 0-2 feet bgs, 2-7 feet bgs, 0-2.5 feet bgs, and 0-4 feet bgs.

respectively. Based on laboratory analytical data, no additional excavation activities or remediation activities were necessary.

The composite soil samples were analyzed for benzene, toluene, ethylbenzene, and total xylenes (BTEX), total petroleum hydrocarbons (TPH), gasoline range organics (GRO), diesel range organics (DRO), motor oil/lube oil range organics (MRO), and chloride in accordance with the New Mexico EMNRD OCD Closure Criteria for Soils Impacted by a Release (NMOCD Closure Criteria).

The final excavation area measured approximately 89 feet long and 74 feet wide at the maximum extents, with a depth ranging from 2-7 feet bgs.

The lithology encountered during the completion of closure activities consisted of the Reagan-Upton association, 0 to 9 percent slopes (RE) with loam from surface to at least 60 inches bgs.

The excavation measured approximately 3,452 square feet in areal extent. A total of 422 cubic yards (cy) of impacted soil was removed during the excavation activities. The impacted soil was transported and properly disposed of at the Lea Land Facility located in Hobbs, New Mexico. After completion of confirmation sampling, the backfill of the excavation was completed utilizing material from the Cedar Canyon Pit and recontoured to match pre-existing conditions. A BLM-approved seed mixture will be sown into the surface area of the backfill for re-vegetation per the below reclamation and revegetation plan.

Figure 3 is a Site Map that identifies approximate soil sample locations and depicts the approximate dimensions of the impacted soil and excavation extent with respect to the release (**Appendix A**). Photographic documentation of the field activities is included in **Appendix C**.

4.0 SOIL SAMPLING PROGRAM

Ensolum's soil sampling program from May 1, 2024, through September 9, 2024, included the collection of a total of 27 composite soil samples from 17 locations from the excavation floor (FS-01 through FS-17) and 10 composite soil samples from seven locations from the excavation sidewalls (SW-01 through SW-06 and SW-15) for laboratory analysis. Additionally, one composite soil sample was collected from the backfill material (Cedar Canyon Pit) used at the Site on October 28, 2024.

The soil samples were collected and placed in laboratory-prepared glassware, labeled/sealed using laboratory-supplied labels and custody seals, and stored on ice in a cooler. The samples were relinquished to Cardinal Laboratories in Hobbs, New Mexico, under proper chain-of-custody procedures.

5.0 SOIL LABORATORY ANALYTICAL METHODS

The composite soil samples were analyzed for BTEX utilizing the United States Environmental Protection Agency (EPA) SW-846 Method 8021B, TPH GRO/DRO/MRO following EPA SW-846 Method 8015M/D, and chloride utilizing Method SM4500CI-B.

Laboratory analytical results are summarized in **Table 1** and **Table 2** in **Appendix D**. The executed chain-of-custody forms and laboratory data sheets are provided in **Appendix E**.

6.0 DATA EVALUATION

Ensolum compared the benzene, total BTEX, TPH-GRO/DRO/MRO, and chloride concentrations to laboratory sample detection limits (SDLs) associated with the soils remaining in place at the Site to the applicable NMOCD Closure Criteria.

- Laboratory analytical results indicated benzene concentrations for the soils remaining in place at the Site, and the backfill material are below the laboratory SDLs or the applicable NMOCD Closure Criteria of 10 milligrams per kilogram (mg/kg).
- Laboratory analytical results indicated that total BTEX concentrations for the soils remaining in place at the Site and the backfill material are below the laboratory SDLs or the applicable NMOCD Closure Criteria of 50 mg/kg.
- Laboratory analytical results indicated combined TPH-GRO/DRO/MRO concentrations for the soils remaining in place at the Site and the backfill material are below the laboratory SDLs and/or the applicable NMOCD Closure Criteria of 100 mg/kg for depth to groundwater ≤50 feet.
- Laboratory analytical results indicated chloride concentrations for the soils remaining in place at the Site, and the backfill material are below the laboratory SDLs and/or the applicable NMOCD Closure Criteria of 600 mg/kg for depth to groundwater ≤50 feet.

Laboratory analytical results are summarized in **Table 1** and **Table 2** in **Appendix D**.

7.0 RECLAMATION AND RE-VEGETATION

The release occurred off-pad, and as such, a reclamation requirement of 600 mg/kg chloride and 100 mg/kg TPH was applied to the top 4 feet of the off-pad area in the Vegetative Zone that was impacted by the release per 19.15.29.13.D (1) NMAC for the top 4 feet of areas that will be reclaimed following remediation. The following Reclamation Plan addresses the reclamation of the off-pad area. The soil in the vicinity of the release includes RE loam from surface to at least 60 inches bgs.

- The excavation was backfilled with locally sourced topsoil from the Cedar Canyon Pit and recontoured to match the surrounding grade;
- The backfilled areas will be seeded utilizing a weed-free seed mix designed by the BLM to meet reclamation standards for this region, which is Pecos District BLM Seed Mix for Loamy, SD-3 Ecological Site/Loamy CP-2/Gyp Upland CP-2;
- The seed mixture will be distributed with one of the following methods: push broadcaster seed spreader/tractor-operated broadcast seed spreader/drill seeding/other means;
- Application of the seed mixture will be at a coverage of either 10 pounds of seeds per acre of reclaimed pasture with distribution by a drilling method or 20 pounds of seeds per acre of reclaimed pasture with distribution by a broadcast method, whichever was more applicable;
- Erosion control management will potentially include:

- The placement of waddles in areas with a propensity for high runoff rates;
- Straw cover if high winds are anticipated to support moisture retention and limit wind from blowing seeds away before they have had time to germinate; and/or
- Other erosional control best management practices (BMP) as necessary to support timely and healthy regrowth of vegetation in disturbed areas;
- Seeding is anticipated to be completed in the spring/summer when temperatures and precipitation are most conducive for vegetation growth. In general, seeding should occur approximately one month after the last frost in the Spring up until approximately one month prior to the first fall frost. NMSLO has recognized the optimal time to seed is between July and early September, which will be adhered to for this Site; and
- Annual inspections (at a minimum) will take place on the location until revegetation is consistent with local natural vegetation density. The Site will be inspected the following Spring/Fall to assess the success of regrowth. If necessary, an additional application of the BLM-approved pure live seed mixture will be applied as well as any needed BMPs will be installed to support growth and limit erosion.

8.0 FINDINGS AND RECOMMENDATIONS

- On July 19, 2023, Oxy had a release of crude oil and produced water at the Site due to an electrical pole catching on fire and causing a flow line to rupture. The flow line was isolated, depressurized, locked, and tagged out. Approximately 1 bbl of crude oil and 1 bbl of produced water released onto the ground surface, with no product recovered.
- Ensolum's soil sampling program from May 1, 2024, through September 9, 2024, included the collection of a total of 27 composite soil samples from 17 locations from the excavation floor (FS-01 through FS-17) and 10 composite soil samples from seven locations from the excavation sidewalls (SW-01 through SW-06 and SW-15) for laboratory analysis. Additionally, one composite soil sample was collected from the backfill material (Cedar Canyon Pit) used at the Site on October 28, 2024.
- The primary objective of the closure activities was to reduce COC concentrations in the on-Site soil to be in compliance with applicable NMOCD Closure Criteria for Soils Impacted by a Release using the New Mexico EMNRD OCD's NMAC 19.15.29 Releases as guidance.
- The final excavation area measured approximately 89 feet long and 74 feet wide at the maximum extents, with a depth ranging from 2-7 feet bgs.
- Based on laboratory analytical results, the final composite soil samples collected from the excavation floor and sidewalls and the backfill material did not exhibit benzene, total BTEX, TPH GRO/DRO/MRO, or chloride concentrations above the applicable NMOCD Closure Criteria.
- After confirmation sampling was completed, the backfill of the excavation was completed utilizing material purchased locally from the Cedar Canyon Pit, which was then re-contoured to match pre-existing conditions. Once complete, a BLM-approved

seed mixture will be sown into the surface of the backfill for re-vegetation per the above-stated Reclamation Plan.

Based on field observations and laboratory analytical results, no additional investigation or corrective action appears warranted at this time.

9.0 STANDARDS OF CARE, LIMITATIONS, AND RELIANCE

9.1 Standard of Care

Ensolum's services were performed in accordance with standards customarily provided by a firm rendering the same or similar services in the area during the same time period. Ensolum makes no warranties, express or implied, as to the services performed hereunder. Additionally, Ensolum does not warrant the work of third parties supplying information used in the report (e.g., laboratories, regulatory agencies, or other third parties). This scope of services was performed in accordance with the scope of work agreed with the client, as detailed in our proposal.

9.2 Limitations

Findings, conclusions, and recommendations resulting from these services are based upon information derived from the on-site activities and other services performed under this scope of work, and it should be noted that this information is subject to change over time. Certain indicators of the presence of hazardous substances, petroleum products, or other constituents may have been latent, inaccessible, unobservable, or not present during these services, and Ensolum cannot represent that the Site contains no hazardous substances, toxic materials, petroleum products, or other latent conditions beyond those identified during the investigation. Environmental conditions in other areas or portions of the Site may vary from those encountered at actual sample locations. Ensolum's findings and recommendations are based solely upon data available to Ensolum at the time of these services.

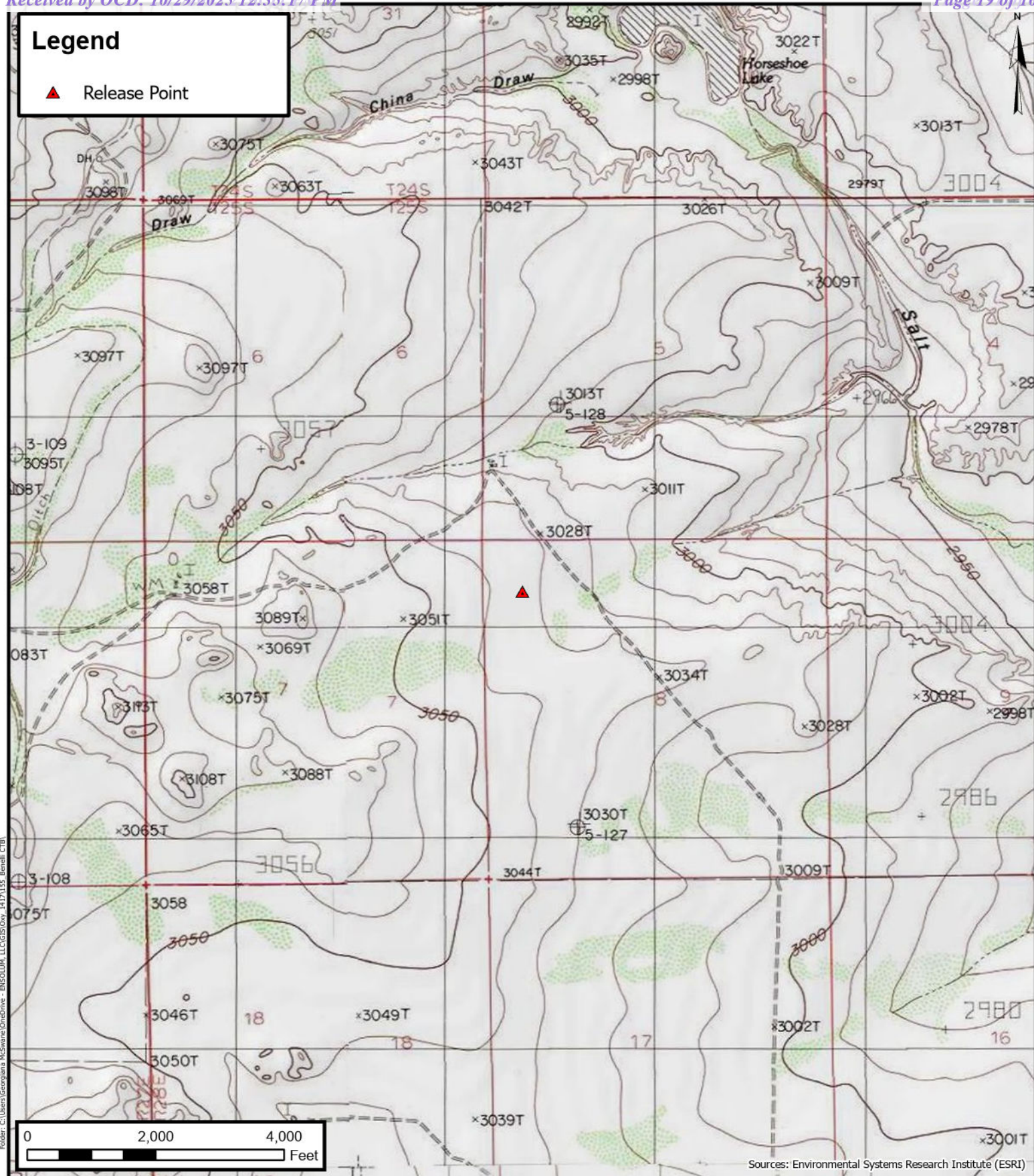
9.3 Reliance

This report has been prepared for the exclusive use of Oxy USA, Inc., and any authorization for use or reliance by any other party (except a governmental entity having jurisdiction over the Site) is prohibited without the express written authorization of Oxy USA, Inc. and Ensolum. Any unauthorized distribution or reuse is at the client's sole risk. Notwithstanding the foregoing, reliance by authorized parties will be subject to the terms, conditions, and limitations stated in the Closure Report and Ensolum's Master Services Agreement. The limitation of liability defined in the agreement is the aggregate limit of Ensolum's liability to the client.



APPENDIX A

Figures



Topographic Map

Oxy USA Inc.

Benelli CTB

32.149652° N, 104.116548° W

Eddy County, New Mexico

PROJECT NUMBER: 03B1417155

FIGURE

1



Site Vicinity Map

Oxy USA Inc.

Benelli CTB

32.149652° N, 104.116548° W

Eddy County, New Mexico

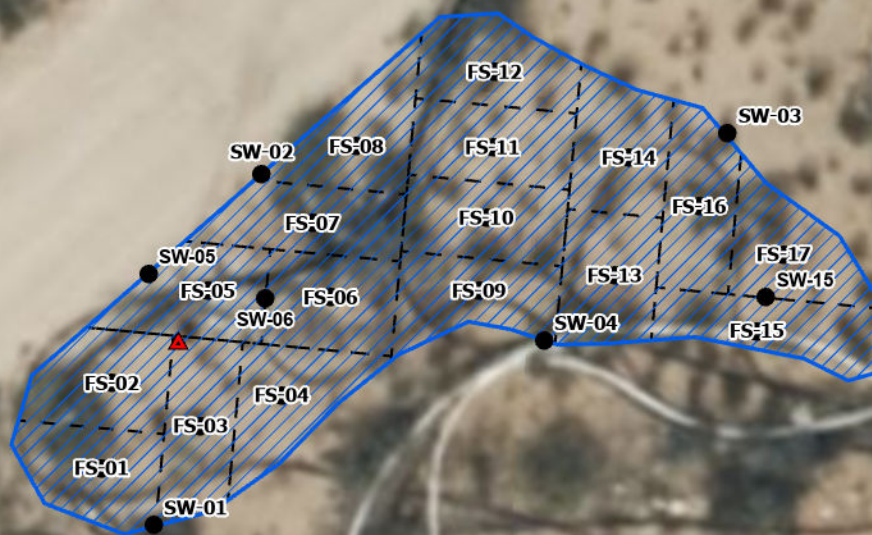
PROJECT NUMBER: 03B1417155

FIGURE

2

Legend

- ▲ Release Point
- Composite Soil Sample Location
- Excavation Extent
- - - Composite Soil Sample Boundary



0 25 50
Feet

Sources: Environmental Systems Research Institute (ESRI)



Site Map

Oxy USA Inc.
Benelli CTB
32.149652° N, 104.116548° W
Eddy County, New Mexico

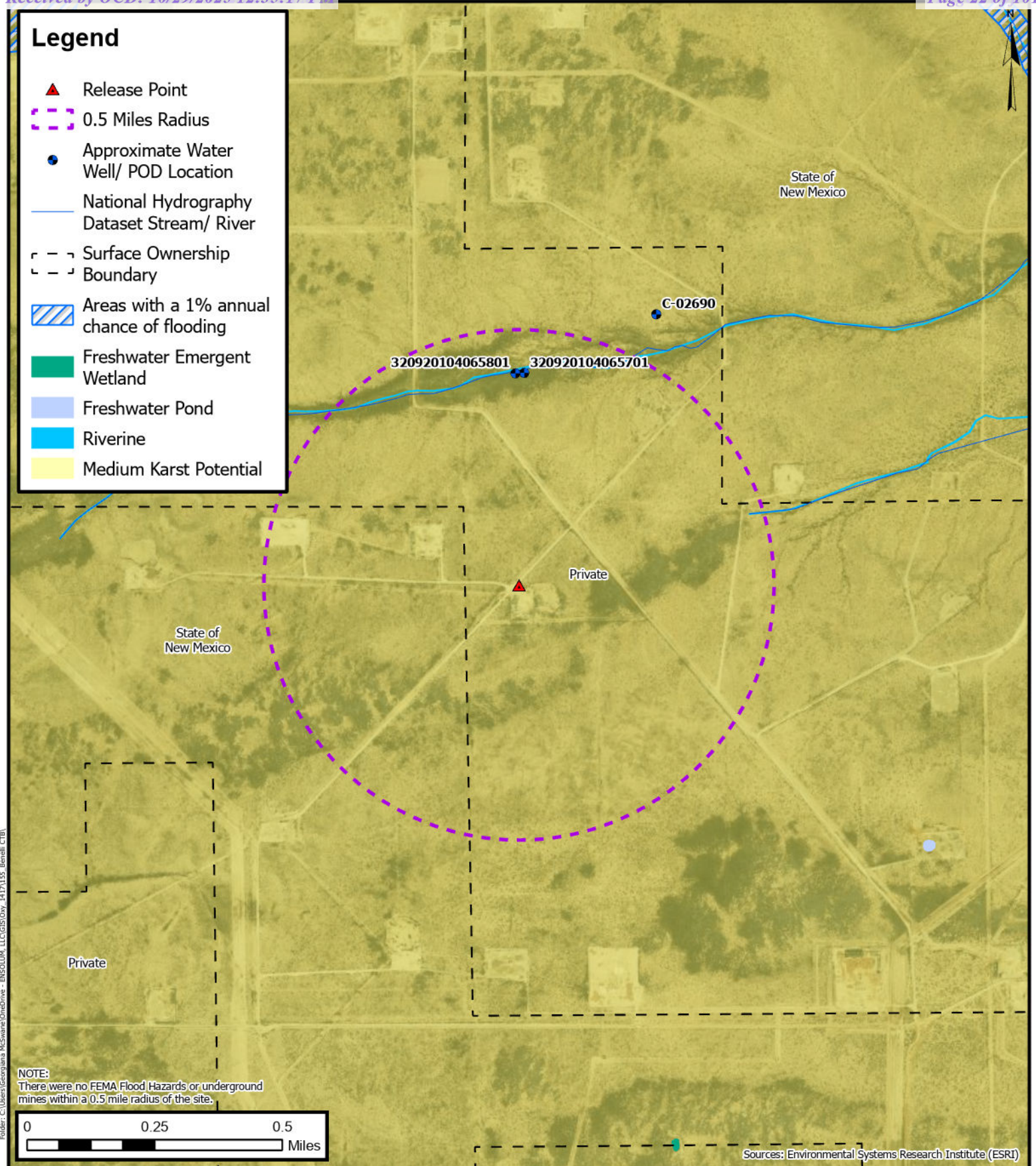
PROJECT NUMBER: 03B1417155

FIGURE

3

Legend

- ▲ Release Point
- ⋯ 0.5 Miles Radius
- Approximate Water Well/ POD Location
- National Hydrography Dataset Stream/ River
- - - Surface Ownership Boundary
- ▨ Areas with a 1% annual chance of flooding
- Freshwater Emergent Wetland
- Freshwater Pond
- Riverine
- Medium Karst Potential

**Closure Criteria Map**

Oxy USA Inc.
Benelli CTB
32.149652° N, 104.116548° W
Eddy County, New Mexico

PROJECT NUMBER: 03B1417155

FIGURE**4**



APPENDIX B

Supporting Documentation

Beaux Jennings

From: Dittrich, John W <Wade_Dittrich@oxy.com>
Sent: Wednesday, February 21, 2024 3:00 PM
To: Beaux Jennings
Subject: FW: Initial Notification

[**EXTERNAL EMAIL**]

From: Dittrich, John W
Sent: Wednesday, July 26, 2023 3:00 PM
To: OCD.Enviro@emnrd.nm.gov
Cc: Cliff Brunson <cbrunson@bbcinternational.com>; Kathy Sweeney <kathys@bbcinternational.com>; 'Jennifer Gilkey' <jgilkey@bbcinternational.com>
Subject: Initial Notification

All,

This is to inform you that Oxy Permian had a **Reportable** release in **Eddy County** at the **Benelli CTB** on 7/19/2023.

- **Release Location:** Legal -8-25S-28E
- **Release Volume:** 1 bbl of Oil and 1 bbl of Produced Water.
- **Recovered:** 0 bbl recovered
- **Cause of Release:** Electric pole caught fire and caught other flowlines on fire spilling oil and water mixed.
- **Approximate Area impacted by release:** 20' x 30' (measurements are subject to change with GPS tracking)
- **GPS Coordinates:** 32.1488823 -104.1162967-Leak GPS

Please let me know if you have any questions.

Wade Dittrich
Environmental Advisor
New Mexico
575-390-2828 cell
Wade_Dittrich@Oxy.com

Map Unit Description: Reagan-Upton association, 0 to 9 percent slopes---Eddy Area, New Mexico

Eddy Area, New Mexico

RE—Reagan-Upton association, 0 to 9 percent slopes

Map Unit Setting

National map unit symbol: 1w5d

Elevation: 1,100 to 5,400 feet

Mean annual precipitation: 6 to 14 inches

Mean annual air temperature: 60 to 64 degrees F

Frost-free period: 180 to 240 days

Farmland classification: Farmland of statewide importance

Map Unit Composition

Reagan and similar soils: 70 percent

Upton and similar soils: 25 percent

Minor components: 5 percent

Estimates are based on observations, descriptions, and transects of the mapunit.

Description of Reagan

Setting

Landform: Fan remnants, alluvial fans

Landform position (three-dimensional): Rise

Down-slope shape: Convex, linear

Across-slope shape: Linear

Parent material: Alluvium and/or eolian deposits

Typical profile

H1 - 0 to 8 inches: loam

H2 - 8 to 60 inches: loam

Properties and qualities

Slope: 0 to 3 percent

Depth to restrictive feature: More than 80 inches

Drainage class: Well drained

Runoff class: Low

Capacity of the most limiting layer to transmit water

(Ksat): Moderately high to high (0.60 to 2.00 in/hr)

Depth to water table: More than 80 inches

Frequency of flooding: None

Frequency of ponding: None

Calcium carbonate, maximum content: 40 percent

Maximum salinity: Very slightly saline to moderately saline (2.0 to 8.0 mmhos/cm)

Sodium adsorption ratio, maximum: 1.0

Available water supply, 0 to 60 inches: Moderate (about 8.2 inches)

Interpretive groups

Land capability classification (irrigated): 2e

Land capability classification (nonirrigated): 6e

Map Unit Description: Reagan-Upton association, 0 to 9 percent slopes---Eddy Area, New Mexico

Hydrologic Soil Group: B
Ecological site: R042CY153NM - Loamy
Hydric soil rating: No

Description of Upton

Setting

Landform: Ridges, fans
Landform position (three-dimensional): Side slope, rise
Down-slope shape: Convex
Across-slope shape: Convex
Parent material: Residuum weathered from limestone

Typical profile

H1 - 0 to 9 inches: gravelly loam
H2 - 9 to 13 inches: gravelly loam
H3 - 13 to 21 inches: cemented
H4 - 21 to 60 inches: very gravelly loam

Properties and qualities

Slope: 0 to 9 percent
Depth to restrictive feature: 7 to 20 inches to petrocalcic
Drainage class: Well drained
Runoff class: High
Capacity of the most limiting layer to transmit water (Ksat): Low to moderately high (0.01 to 0.60 in/hr)
Depth to water table: More than 80 inches
Frequency of flooding: None
Frequency of ponding: None
Calcium carbonate, maximum content: 75 percent
Maximum salinity: Nonsaline to very slightly saline (0.0 to 2.0 mmhos/cm)
Sodium adsorption ratio, maximum: 1.0
Available water supply, 0 to 60 inches: Very low (about 1.4 inches)

Interpretive groups

Land capability classification (irrigated): None specified
Land capability classification (nonirrigated): 7s
Hydrologic Soil Group: D
Ecological site: R042CY159NM - Shallow Loamy
Hydric soil rating: No

Minor Components

Atoka

Percent of map unit: 3 percent
Ecological site: R070BC007NM - Loamy
Hydric soil rating: No

Pima

Percent of map unit: 2 percent
Ecological site: R070BC017NM - Bottomland

Map Unit Description: Reagan-Upton association, 0 to 9 percent slopes---Eddy Area, New Mexico

Hydric soil rating: No

Data Source Information

Soil Survey Area: Eddy Area, New Mexico

Survey Area Data: Version 20, Sep 3, 2024

PECOS DISTRICT, BLM
SEED MIX FOR

The following Soils or Soil Association may represent these ecological sites:

Alama silt loam, dry, 0-3% Slope, Atoka, Bigetty-Pecos, Harkey fine sandy loam, Holloman, Holloman-Gypsum Land, Hollomex loam, 1-9% slope, dry, Largo loams, Milner loam, 0-2% slope, dry, Reagan loam, Reakor, Reakor-Bigetty, Reakor-Tencee, Reeves loam, 0-2% slope, dry, Russler, Shanta, Upton-Reakor

Loamy, SD-3 Ecological Site
Loamy CP-2
Gyp Upland CP-2

April 4, 2006

<u>Common Name and Preferred Variety</u>	<u>Scientific Name</u>	<u>Pounds of Pure Live Seed Per Acre</u>
Blue grama,	(<i>Bouteloua gracilis</i>)	4.0
Sideoats grama,	(<i>Bouteloua curtipendula</i>)	1.0
Sand dropseed	(<i>Sporobolus cryptandrus</i>)	0.5
Vine mesquite	(<i>Panicum obtusum</i>)	1.0
Plains bristlegrass	(<i>Setaria macrostachya</i>)	1.0
Indian blanketflower	(<i>Gaillardia aristata</i>)	0.5
Desert or Scarlet Globemallow	(<i>Sphaeralcea ambigua</i>) or (<i>S. coccinea</i>)	1.0
Annual sunflower	(<i>Helianthus annuus</i>)	0.75
TOTAL POUNDS PURE LIVE SEED (pls) PER ACRE		9.75
Certified Weed Free Seed		

If one species is not available, increase ALL others proportionately.
Use No Less than 4 species, including one forb.

No less than 9.75 pounds pls per acre shall be applied

APPROVED: /s/ Douglas J. Burger
District Manager, Pecos District



APPENDIX C

Photographic Documentation

Project: Benelli CTB
Entity: Oxy USA, Inc
Incident ID: nAPP2320749536



View of Benelli Central Tank Battery sign, facing southeast (February 28, 2024).



View of release extent prior to remediation activities, facing south (February 28, 2024).

Project: Benelli CTB
Entity: Oxy USA, Inc
Incident ID: nAPP2320749536

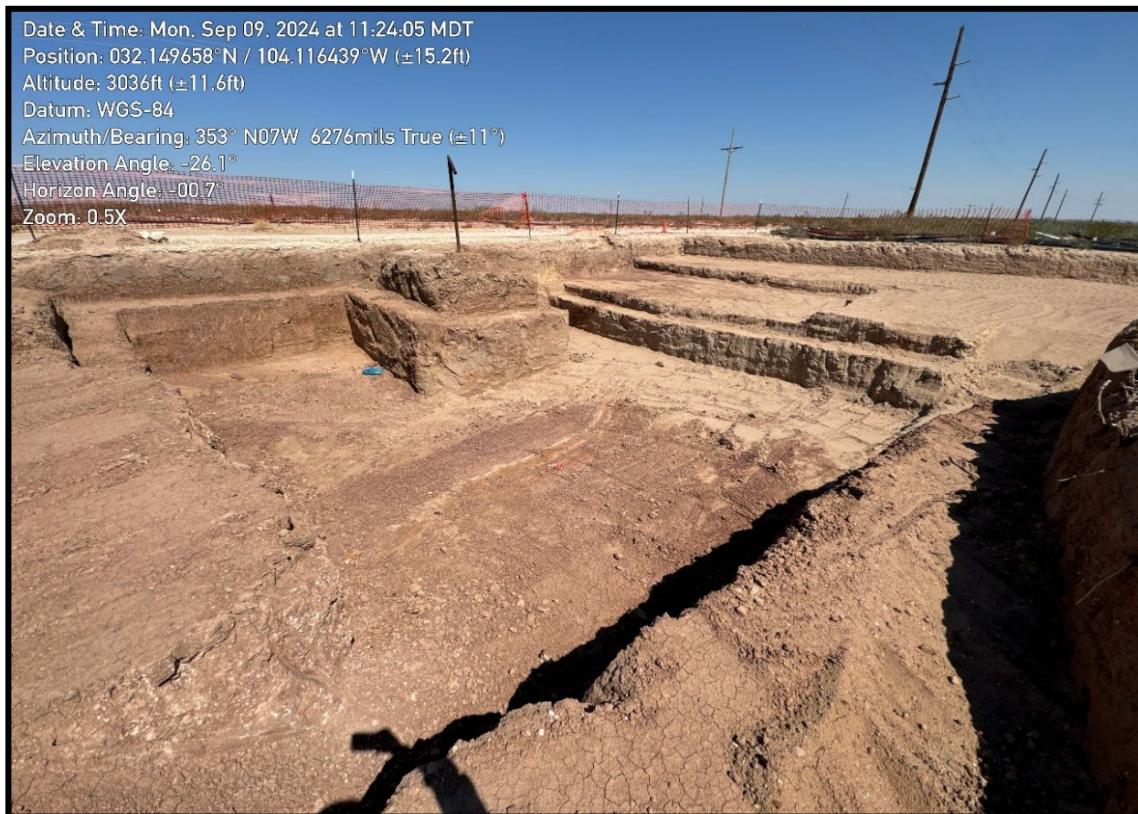


View of excavation extent during remediation activities, facing southwest (August 19, 2024).



View of excavation extent during remediation activities, facing northwest (August 20, 2024).

Project: Benelli CTB
Entity: Oxy USA, Inc
Incident ID: nAPP2320749536



View of excavation extent during remediation activities, facing northwest (September 09, 2024).



View of excavation extent during remediation activities, facing northwest (September 09, 2024).

Project: Benelli CTB
Entity: Oxy USA, Inc
Incident ID: nAPP2320749536



View of excavation extent post backfill activities, facing southwest (October 28, 2024).



View of excavation extent post backfill activities, facing northeast (October 28, 2024).



APPENDIX D

Table

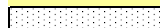
TABLE 1
SOIL SAMPLE ANALYTICAL RESULTS
 Benelli CTB
 Oxy USA, Inc.
 Eddy County, New Mexico
 Ensolum Project No. 03B1417155

Sample Designation	Date	Depth (feet bgs)	Benzene (mg/kg)	Toluene (mg/kg)	Ethylbenzene (mg/kg)	Total Xylenes (mg/kg)	Total BTEX (mg/kg)	TPH GRO (mg/kg)	TPH DRO (mg/kg)	TPH MRO (mg/kg)	Total TPH (GRO+DRO+MRO) (mg/kg)	Chloride (mg/kg)
New Mexico Oil Conservation Division Closure Criteria for Soils Impacted by a Release (≤ 50 feet)			10	NE	NE	NE	50	NE	NE	NE	100	600
Composite Floor Soil Sample Analytical Results												
FS-01	05/01/2024	2	<0.050	<0.050	<0.050	<0.150	<0.300	<10.0	21.9	<10.0	21.9	128
FS-02	05/01/2024	2	<0.050	<0.050	<0.050	<0.150	<0.300	<10.0	<10.0	<10.0	<10.0	464
FS-03	05/01/2024	2	<0.050	<0.050	<0.050	<0.150	<0.300	<10.0	<10.0	<10.0	<10.0	704
	09/09/2024	2.5	NS					NS				112
FS-04	05/01/2024	2	<0.050	<0.050	<0.050	<0.150	<0.300	<10.0	<10.0	<10.0	<10.0	1,060
	09/09/2024	2.5	NS					NS				32.0
FS-05	05/01/2024	2	<0.050	<0.050	<0.050	<0.150	<0.300	<10.0	<10.0	<10.0	<10.0	2,120
	09/09/2024	3	NS					NS				208
FS-06	05/01/2024	2	<0.050	<0.050	<0.050	<0.150	<0.300	<10.0	<10.0	<10.0	<10.0	2,360
	09/09/2024	6	NS					NS				160
FS-07	05/01/2024	2	<0.050	<0.050	<0.050	<0.150	<0.300	<10.0	<10.0	<10.0	<10.0	2,240
	09/09/2024	7	NS					NS				32.0
FS-08	05/01/2024	2	<0.050	<0.050	<0.050	<0.150	<0.300	<10.0	<10.0	<10.0	<10.0	832
	09/09/2024	7	NS					NS				16.0
FS-09	05/01/2024	2	<0.050	<0.050	<0.050	<0.150	<0.300	<10.0	<10.0	<10.0	<10.0	384
FS-10	05/01/2024	2	<0.050	<0.050	<0.050	<0.150	<0.300	<10.0	<10.0	<10.0	<10.0	1,490
	09/09/2024	4	NS					NS				48.0
FS-11	05/01/2024	2	<0.050	<0.050	<0.050	<0.150	<0.300	<10.0	<10.0	<10.0	<10.0	944
	09/09/2024	4	NS					NS				96.0
FS-12	05/01/2024	2	<0.050	<0.050	<0.050	<0.150	<0.300	<10.0	<10.0	<10.0	<10.0	784
	08/20/2024	3	NS					NS				272
FS-13	05/01/2024	2	<0.050	<0.050	<0.050	<0.150	<0.300	<10.0	<10.0	<10.0	<10.0	592
FS-14	05/01/2024	2	<0.050	<0.050	<0.050	<0.150	<0.300	<10.0	<10.0	<10.0	<10.0	528
FS-15	05/01/2024	2	<0.050	<0.050	<0.050	<0.150	<0.300	<10.0	<10.0	<10.0	<10.0	1,140
	08/20/2024	4	NS					NS				32.0
FS-16	05/01/2024	2	<0.050	<0.050	<0.050	<0.150	<0.300	<10.0	<10.0	<10.0	<10.0	448
FS-17	05/01/2024	2	<0.050	<0.050	<0.050	<0.150	<0.300	<10.0	<10.0	<10.0	<10.0	192

TABLE 1
SOIL SAMPLE ANALYTICAL RESULTS
 Benelli CTB
 Oxy USA, Inc.
 Eddy County, New Mexico
 Ensolum Project No. 03B1417155

Sample Designation	Date	Depth (feet bgs)	Benzene (mg/kg)	Toluene (mg/kg)	Ethylbenzene (mg/kg)	Total Xylenes (mg/kg)	Total BTEX (mg/kg)	TPH GRO (mg/kg)	TPH DRO (mg/kg)	TPH MRO (mg/kg)	Total TPH (GRO+DRO+MRO) (mg/kg)	Chloride (mg/kg)
New Mexico Oil Conservation Division Closure Criteria for Soils Impacted by a Release (≤ 50 feet)			10	NE	NE	NE	50	NE	NE	NE	100	600
Composite Sidewall Soil Sample Analytical Results												
SW-01	05/01/2024	0 - 2	<0.050	<0.050	<0.050	<0.150	<0.300	<10.0	<10.0	<10.0	<10.0	272
	09/09/2024	2 - 2.5	<0.050	<0.050	<0.050	<0.150	<0.300	<10.0	<10.0	<10.0	<10.0	16.0
SW-02	05/01/2024	0 - 2	<0.050	<0.050	<0.050	<0.150	<0.300	<10.0	<10.0	<10.0	<10.0	1,150
	09/09/2024	0 - 2	NS					NS				16.0
	09/09/2024	2 - 7	<0.050	<0.050	<0.050	<0.150	<0.300	<10.0	<10.0	<10.0	<10.0	16.0
SW-03	05/01/2024	0 - 2	<0.050	<0.050	<0.050	<0.150	<0.300	<10.0	<10.0	<10.0	<10.0	144
SW-04	05/01/2024	0 - 2	<0.050	<0.050	<0.050	<0.150	<0.300	<10.0	<10.0	<10.0	<10.0	112
SW-05	09/09/2024	0 - 2.5	<0.050	<0.050	<0.050	<0.150	<0.300	<10.0	<10.0	<10.0	<10.0	16.0
SW-06	09/09/2024	0 - 4	<0.050	<0.050	<0.050	<0.150	<0.300	<10.0	<10.0	<10.0	<10.0	16.0
SW-15	08/20/2024	0 - 4	<0.050	<0.050	<0.050	<0.150	<0.300	<10.0	<10.0	<10.0	<10.0	32.0

Concentrations in **bold** and yellow exceed the New Mexico Oil Conservation Division Closure Criteria for Soils Impacted by a Release (≤ 50 feet)

 Additional Excavation and/or Re-Sample

bgs: below ground surface

mg/kg: milligrams per kilogram

NE: Not Established

NS: Not Sampled

BTEX: Benzene, Toluene, Ethylbenzene, and Xylenes

GRO: Gasoline Range Organics

DRO: Diesel Range Organics

MRO: Motor Oil/Lube Oil Range Organics

TPH: Total Petroleum Hydrocarbon



TABLE 2
BACKFILL SOIL SAMPLE ANALYTICAL RESULTS
 Cedar Canyon Pit
 Oxy USA, Inc.
 Eddy County, New Mexico
 Ensolum Project No. NA

Sample Designation	Date	Depth (feet bgs)	Benzene (mg/kg)	Toluene (mg/kg)	Ethylbenzene (mg/kg)	Total Xylenes (mg/kg)	Total BTEX (mg/kg)	TPH GRO (mg/kg)	TPH DRO (mg/kg)	TPH MRO (mg/kg)	Total TPH (GRO+DRO+MRO) (mg/kg)	Chloride (mg/kg)
New Mexico Oil Conservation Division Closure Criteria for Soils Impacted by a Release (≤ 50 feet)			10	NE	NE	NE	50	NE	NE	NE	100	600
Composite Background Soil Sample Analytical Result												
Cedar Canyon Pit	10/28/2024	NA	<0.050	<0.050	<0.050	<0.150	<0.300	<10.0	<10.0	<10.0	<10.0	<16.0

bgs: below ground surface

mg/kg: milligrams per kilogram

NA: Not Applicable

NE: Not Established

BTEX: Benzene, Toluene, Ethylbenzene, and Xylenes

GRO: Gasoline Range Organics

DRO: Diesel Range Organics

MRO: Motor Oil/Lube Oil Range Organics

TPH: Total Petroleum Hydrocarbon



APPENDIX E

Laboratory Analytical Reports & Chain-of-Custody Documentation



PHONE (575) 393-2326 • 101 E. MARLAND • HOBBS, NM 88240

May 07, 2024

BEAUX JENNINGS
ENSOLUM, LLC
705 W WADLEY AVE.
MIDLAND, TX 79705

RE: BENELLI CTB

Enclosed are the results of analyses for samples received by the laboratory on 05/01/24 13:59.

Cardinal Laboratories is accredited through Texas NELAP under certificate number T104704398-23-16. Accreditation applies to drinking water, non-potable water and solid and chemical materials. All accredited analytes are denoted by an asterisk (*). For a complete list of accredited analytes and matrices visit the TCEQ website at www.tceq.texas.gov/field/qa/lab_accred_certif.html.

Cardinal Laboratories is accredited through the State of Colorado Department of Public Health and Environment for:

Method EPA 552.2	Haloacetic Acids (HAA-5)
Method EPA 524.2	Total Trihalomethanes (TTHM)
Method EPA 524.4	Regulated VOCs (V1, V2, V3)

Accreditation applies to public drinking water matrices.

This report meets NELAP requirements and is made up of a cover page, analytical results, and a copy of the original chain-of-custody. If you have any questions concerning this report, please feel free to contact me.

Sincerely,

A handwritten signature in black ink that reads "Celey D. Keene". The signature is written in a cursive, flowing style.

Celey D. Keene
Lab Director/Quality Manager



PHONE (575) 393-2326 • 101 E. MARLAND • HOBBS, NM 88240

Analytical Results For:

ENSOLUM, LLC
 BEAUX JENNINGS
 705 W WADLEY AVE.
 MIDLAND TX, 79705
 Fax To:

Received: 05/01/2024
 Reported: 05/07/2024
 Project Name: BENELLI CTB
 Project Number: 03B1417155
 Project Location: OXY - EDDY CO., NM

Sampling Date: 05/01/2024
 Sampling Type: Soil
 Sampling Condition: Cool & Intact
 Sample Received By: Shalyn Rodriguez

Sample ID: FS - 01 2' (H242336-01)

BTX 8021B		mg/kg		Analyzed By: JH					
Analyte	Result	Reporting Limit	Analyzed	Method Blank	BS	% Recovery	True Value QC	RPD	Qualifier
Benzene*	<0.050	0.050	05/03/2024	ND	2.08	104	2.00	1.45	
Toluene*	<0.050	0.050	05/03/2024	ND	2.03	101	2.00	1.95	
Ethylbenzene*	<0.050	0.050	05/03/2024	ND	1.98	99.2	2.00	1.81	
Total Xylenes*	<0.150	0.150	05/03/2024	ND	5.82	96.9	6.00	1.64	
Total BTX	<0.300	0.300	05/03/2024	ND					

Surrogate: 4-Bromofluorobenzene (PID) 91.5 % 71.5-134

Chloride, SM4500Cl-B		mg/kg		Analyzed By: AC					
Analyte	Result	Reporting Limit	Analyzed	Method Blank	BS	% Recovery	True Value QC	RPD	Qualifier
Chloride	128	16.0	05/04/2024	ND	416	104	400	7.41	

TPH 8015M		mg/kg		Analyzed By: MS					
Analyte	Result	Reporting Limit	Analyzed	Method Blank	BS	% Recovery	True Value QC	RPD	Qualifier
GRO C6-C10*	<10.0	10.0	05/03/2024	ND	209	104	200	3.73	
DRO >C10-C28*	21.9	10.0	05/03/2024	ND	202	101	200	6.89	
EXT DRO >C28-C36	<10.0	10.0	05/03/2024	ND					

Surrogate: 1-Chlorooctane 97.0 % 48.2-134

Surrogate: 1-Chlorooctadecane 82.3 % 49.1-148

Cardinal Laboratories

*=Accredited Analyte

PLEASE NOTE: Liability and Damages. Cardinal's liability and client's exclusive remedy for any claim arising, whether based in contract or tort, shall be limited to the amount paid by client for analyses. All claims, including those for negligence and any other cause whatsoever shall be deemed waived unless made in writing and received by Cardinal within thirty (30) days after completion of the applicable service. In no event shall Cardinal be liable for incidental or consequential damages, including, without limitation, business interruptions, loss of use, or loss of profits incurred by client, its subsidiaries, affiliates or successors arising out of or related to the performance of the services hereunder by Cardinal, regardless of whether such claim is based upon any of the above stated reasons or otherwise. Results relate only to the samples identified above. This report shall not be reproduced except in full with written approval of Cardinal Laboratories.

Celey D. Keene, Lab Director/Quality Manager



PHONE (575) 393-2326 • 101 E. MARLAND • HOBBS, NM 88240

Analytical Results For:

ENSOLUM, LLC
 BEAUX JENNINGS
 705 W WADLEY AVE.
 MIDLAND TX, 79705
 Fax To:

Received: 05/01/2024
 Reported: 05/07/2024
 Project Name: BENELLI CTB
 Project Number: 03B1417155
 Project Location: OXY - EDDY CO., NM

Sampling Date: 05/01/2024
 Sampling Type: Soil
 Sampling Condition: Cool & Intact
 Sample Received By: Shalyn Rodriguez

Sample ID: FS - 02 2' (H242336-02)

BTX 8021B		mg/kg		Analyzed By: JH					
Analyte	Result	Reporting Limit	Analyzed	Method Blank	BS	% Recovery	True Value QC	RPD	Qualifier
Benzene*	<0.050	0.050	05/03/2024	ND	2.08	104	2.00	1.45	
Toluene*	<0.050	0.050	05/03/2024	ND	2.03	101	2.00	1.95	
Ethylbenzene*	<0.050	0.050	05/03/2024	ND	1.98	99.2	2.00	1.81	
Total Xylenes*	<0.150	0.150	05/03/2024	ND	5.82	96.9	6.00	1.64	
Total BTX	<0.300	0.300	05/03/2024	ND					

Surrogate: 4-Bromofluorobenzene (PID) 88.3 % 71.5-134

Chloride, SM4500CI-B		mg/kg		Analyzed By: AC					
Analyte	Result	Reporting Limit	Analyzed	Method Blank	BS	% Recovery	True Value QC	RPD	Qualifier
Chloride	464	16.0	05/04/2024	ND	416	104	400	7.41	

TPH 8015M		mg/kg		Analyzed By: MS					
Analyte	Result	Reporting Limit	Analyzed	Method Blank	BS	% Recovery	True Value QC	RPD	Qualifier
GRO C6-C10*	<10.0	10.0	05/03/2024	ND	209	104	200	3.73	
DRO >C10-C28*	<10.0	10.0	05/03/2024	ND	202	101	200	6.89	
EXT DRO >C28-C36	<10.0	10.0	05/03/2024	ND					

Surrogate: 1-Chlorooctane 98.9 % 48.2-134

Surrogate: 1-Chlorooctadecane 88.7 % 49.1-148

Cardinal Laboratories

*=Accredited Analyte

PLEASE NOTE: Liability and Damages. Cardinal's liability and client's exclusive remedy for any claim arising, whether based in contract or tort, shall be limited to the amount paid by client for analyses. All claims, including those for negligence and any other cause whatsoever shall be deemed waived unless made in writing and received by Cardinal within thirty (30) days after completion of the applicable service. In no event shall Cardinal be liable for incidental or consequential damages, including, without limitation, business interruptions, loss of use, or loss of profits incurred by client, its subsidiaries, affiliates or successors arising out of or related to the performance of the services hereunder by Cardinal, regardless of whether such claim is based upon any of the above stated reasons or otherwise. Results relate only to the samples identified above. This report shall not be reproduced except in full with written approval of Cardinal Laboratories.

Celey D. Keene, Lab Director/Quality Manager



PHONE (575) 393-2326 ° 101 E. MARLAND ° HOBBS, NM 88240

Analytical Results For:

ENSOLUM, LLC
 BEAUX JENNINGS
 705 W WADLEY AVE.
 MIDLAND TX, 79705
 Fax To:

Received: 05/01/2024
 Reported: 05/07/2024
 Project Name: BENELLI CTB
 Project Number: 03B1417155
 Project Location: OXY - EDDY CO., NM

Sampling Date: 05/01/2024
 Sampling Type: Soil
 Sampling Condition: Cool & Intact
 Sample Received By: Shalyn Rodriguez

Sample ID: FS - 03 2' (H242336-03)

BTEx 8021B		mg/kg		Analyzed By: JH					
Analyte	Result	Reporting Limit	Analyzed	Method Blank	BS	% Recovery	True Value QC	RPD	Qualifier
Benzene*	<0.050	0.050	05/03/2024	ND	2.08	104	2.00	1.45	
Toluene*	<0.050	0.050	05/03/2024	ND	2.03	101	2.00	1.95	
Ethylbenzene*	<0.050	0.050	05/03/2024	ND	1.98	99.2	2.00	1.81	
Total Xylenes*	<0.150	0.150	05/03/2024	ND	5.82	96.9	6.00	1.64	
Total BTEX	<0.300	0.300	05/03/2024	ND					

Surrogate: 4-Bromofluorobenzene (PID) 90.5 % 71.5-134

Chloride, SM4500Cl-B		mg/kg		Analyzed By: AC					
Analyte	Result	Reporting Limit	Analyzed	Method Blank	BS	% Recovery	True Value QC	RPD	Qualifier
Chloride	704	16.0	05/04/2024	ND	416	104	400	7.41	

TPH 8015M		mg/kg		Analyzed By: MS					
Analyte	Result	Reporting Limit	Analyzed	Method Blank	BS	% Recovery	True Value QC	RPD	Qualifier
GRO C6-C10*	<10.0	10.0	05/03/2024	ND	209	104	200	3.73	
DRO >C10-C28*	<10.0	10.0	05/03/2024	ND	202	101	200	6.89	
EXT DRO >C28-C36	<10.0	10.0	05/03/2024	ND					

Surrogate: 1-Chlorooctane 99.6 % 48.2-134

Surrogate: 1-Chlorooctadecane 88.5 % 49.1-148

Cardinal Laboratories

*=Accredited Analyte

PLEASE NOTE: Liability and Damages. Cardinal's liability and client's exclusive remedy for any claim arising, whether based in contract or tort, shall be limited to the amount paid by client for analyses. All claims, including those for negligence and any other cause whatsoever shall be deemed waived unless made in writing and received by Cardinal within thirty (30) days after completion of the applicable service. In no event shall Cardinal be liable for incidental or consequential damages, including, without limitation, business interruptions, loss of use, or loss of profits incurred by client, its subsidiaries, affiliates or successors arising out of or related to the performance of the services hereunder by Cardinal, regardless of whether such claim is based upon any of the above stated reasons or otherwise. Results relate only to the samples identified above. This report shall not be reproduced except in full with written approval of Cardinal Laboratories.

Celey D. Keene, Lab Director/Quality Manager



PHONE (575) 393-2326 • 101 E. MARLAND • HOBBS, NM 88240

Analytical Results For:

ENSOLUM, LLC
 BEAUX JENNINGS
 705 W WADLEY AVE.
 MIDLAND TX, 79705
 Fax To:

Received: 05/01/2024
 Reported: 05/07/2024
 Project Name: BENELLI CTB
 Project Number: 03B1417155
 Project Location: OXY - EDDY CO., NM

Sampling Date: 05/01/2024
 Sampling Type: Soil
 Sampling Condition: Cool & Intact
 Sample Received By: Shalyn Rodriguez

Sample ID: FS - 04 2' (H242336-04)

BTEx 8021B		mg/kg		Analyzed By: JH					
Analyte	Result	Reporting Limit	Analyzed	Method Blank	BS	% Recovery	True Value QC	RPD	Qualifier
Benzene*	<0.050	0.050	05/03/2024	ND	2.08	104	2.00	1.45	
Toluene*	<0.050	0.050	05/03/2024	ND	2.03	101	2.00	1.95	
Ethylbenzene*	<0.050	0.050	05/03/2024	ND	1.98	99.2	2.00	1.81	
Total Xylenes*	<0.150	0.150	05/03/2024	ND	5.82	96.9	6.00	1.64	
Total BTEX	<0.300	0.300	05/03/2024	ND					

Surrogate: 4-Bromofluorobenzene (PID) 89.9 % 71.5-134

Chloride, SM4500Cl-B		mg/kg		Analyzed By: AC						
Analyte	Result	Reporting Limit	Analyzed	Method Blank	BS	% Recovery	True Value QC	RPD	Qualifier	
Chloride	1060	16.0	05/04/2024	ND	416	104	400	7.41		

TPH 8015M		mg/kg		Analyzed By: MS					
Analyte	Result	Reporting Limit	Analyzed	Method Blank	BS	% Recovery	True Value QC	RPD	Qualifier
GRO C6-C10*	<10.0	10.0	05/03/2024	ND	209	104	200	3.73	
DRO >C10-C28*	<10.0	10.0	05/03/2024	ND	202	101	200	6.89	
EXT DRO >C28-C36	<10.0	10.0	05/03/2024	ND					

Surrogate: 1-Chlorooctane 93.4 % 48.2-134

Surrogate: 1-Chlorooctadecane 80.2 % 49.1-148

Cardinal Laboratories

*=Accredited Analyte

PLEASE NOTE: Liability and Damages. Cardinal's liability and client's exclusive remedy for any claim arising, whether based in contract or tort, shall be limited to the amount paid by client for analyses. All claims, including those for negligence and any other cause whatsoever shall be deemed waived unless made in writing and received by Cardinal within thirty (30) days after completion of the applicable service. In no event shall Cardinal be liable for incidental or consequential damages, including, without limitation, business interruptions, loss of use, or loss of profits incurred by client, its subsidiaries, affiliates or successors arising out of or related to the performance of the services hereunder by Cardinal, regardless of whether such claim is based upon any of the above stated reasons or otherwise. Results relate only to the samples identified above. This report shall not be reproduced except in full with written approval of Cardinal Laboratories.

Celey D. Keene, Lab Director/Quality Manager



PHONE (575) 393-2326 ° 101 E. MARLAND ° HOBBS, NM 88240

Analytical Results For:

ENSOLUM, LLC
 BEAUX JENNINGS
 705 W WADLEY AVE.
 MIDLAND TX, 79705
 Fax To:

Received: 05/01/2024
 Reported: 05/07/2024
 Project Name: BENELLI CTB
 Project Number: 03B1417155
 Project Location: OXY - EDDY CO., NM

Sampling Date: 05/01/2024
 Sampling Type: Soil
 Sampling Condition: Cool & Intact
 Sample Received By: Shalyn Rodriguez

Sample ID: FS - 05 2' (H242336-05)

BTEx 8021B		mg/kg		Analyzed By: JH					
Analyte	Result	Reporting Limit	Analyzed	Method Blank	BS	% Recovery	True Value QC	RPD	Qualifier
Benzene*	<0.050	0.050	05/03/2024	ND	2.08	104	2.00	1.45	
Toluene*	<0.050	0.050	05/03/2024	ND	2.03	101	2.00	1.95	
Ethylbenzene*	<0.050	0.050	05/03/2024	ND	1.98	99.2	2.00	1.81	
Total Xylenes*	<0.150	0.150	05/03/2024	ND	5.82	96.9	6.00	1.64	
Total BTEx	<0.300	0.300	05/03/2024	ND					

Surrogate: 4-Bromofluorobenzene (PID) 91.3 % 71.5-134

Chloride, SM4500CI-B		mg/kg		Analyzed By: AC						
Analyte	Result	Reporting Limit	Analyzed	Method Blank	BS	% Recovery	True Value QC	RPD	Qualifier	
Chloride	2120	16.0	05/04/2024	ND	416	104	400	7.41		

TPH 8015M		mg/kg		Analyzed By: MS					
Analyte	Result	Reporting Limit	Analyzed	Method Blank	BS	% Recovery	True Value QC	RPD	Qualifier
GRO C6-C10*	<10.0	10.0	05/03/2024	ND	209	104	200	3.73	
DRO >C10-C28*	<10.0	10.0	05/03/2024	ND	202	101	200	6.89	
EXT DRO >C28-C36	<10.0	10.0	05/03/2024	ND					

Surrogate: 1-Chlorooctane 94.7 % 48.2-134

Surrogate: 1-Chlorooctadecane 79.1 % 49.1-148

Cardinal Laboratories

*=Accredited Analyte

PLEASE NOTE: Liability and Damages. Cardinal's liability and client's exclusive remedy for any claim arising, whether based in contract or tort, shall be limited to the amount paid by client for analyses. All claims, including those for negligence and any other cause whatsoever shall be deemed waived unless made in writing and received by Cardinal within thirty (30) days after completion of the applicable service. In no event shall Cardinal be liable for incidental or consequential damages, including, without limitation, business interruptions, loss of use, or loss of profits incurred by client, its subsidiaries, affiliates or successors arising out of or related to the performance of the services hereunder by Cardinal, regardless of whether such claim is based upon any of the above stated reasons or otherwise. Results relate only to the samples identified above. This report shall not be reproduced except in full with written approval of Cardinal Laboratories.

Celey D. Keene, Lab Director/Quality Manager



PHONE (575) 393-2326 • 101 E. MARLAND • HOBBS, NM 88240

Analytical Results For:

ENSOLUM, LLC
 BEAUX JENNINGS
 705 W WADLEY AVE.
 MIDLAND TX, 79705
 Fax To:

Received: 05/01/2024
 Reported: 05/07/2024
 Project Name: BENELLI CTB
 Project Number: 03B1417155
 Project Location: OXY - EDDY CO., NM

Sampling Date: 05/01/2024
 Sampling Type: Soil
 Sampling Condition: Cool & Intact
 Sample Received By: Shalyn Rodriguez

Sample ID: FS - 06 2' (H242336-06)

BTEx 8021B		mg/kg		Analyzed By: JH					
Analyte	Result	Reporting Limit	Analyzed	Method Blank	BS	% Recovery	True Value QC	RPD	Qualifier
Benzene*	<0.050	0.050	05/03/2024	ND	2.08	104	2.00	1.45	
Toluene*	<0.050	0.050	05/03/2024	ND	2.03	101	2.00	1.95	
Ethylbenzene*	<0.050	0.050	05/03/2024	ND	1.98	99.2	2.00	1.81	
Total Xylenes*	<0.150	0.150	05/03/2024	ND	5.82	96.9	6.00	1.64	
Total BTEx	<0.300	0.300	05/03/2024	ND					

Surrogate: 4-Bromofluorobenzene (PID) 89.4 % 71.5-134

Chloride, SM4500CI-B		mg/kg		Analyzed By: AC						
Analyte	Result	Reporting Limit	Analyzed	Method Blank	BS	% Recovery	True Value QC	RPD	Qualifier	
Chloride	2360	16.0	05/04/2024	ND	416	104	400	7.41		

TPH 8015M		mg/kg		Analyzed By: MS					
Analyte	Result	Reporting Limit	Analyzed	Method Blank	BS	% Recovery	True Value QC	RPD	Qualifier
GRO C6-C10*	<10.0	10.0	05/03/2024	ND	209	104	200	3.73	
DRO >C10-C28*	<10.0	10.0	05/03/2024	ND	202	101	200	6.89	
EXT DRO >C28-C36	<10.0	10.0	05/03/2024	ND					

Surrogate: 1-Chlorooctane 88.5 % 48.2-134

Surrogate: 1-Chlorooctadecane 76.1 % 49.1-148

Cardinal Laboratories

*=Accredited Analyte

PLEASE NOTE: Liability and Damages. Cardinal's liability and client's exclusive remedy for any claim arising, whether based in contract or tort, shall be limited to the amount paid by client for analyses. All claims, including those for negligence and any other cause whatsoever shall be deemed waived unless made in writing and received by Cardinal within thirty (30) days after completion of the applicable service. In no event shall Cardinal be liable for incidental or consequential damages, including, without limitation, business interruptions, loss of use, or loss of profits incurred by client, its subsidiaries, affiliates or successors arising out of or related to the performance of the services hereunder by Cardinal, regardless of whether such claim is based upon any of the above stated reasons or otherwise. Results relate only to the samples identified above. This report shall not be reproduced except in full with written approval of Cardinal Laboratories.

Celey D. Keene, Lab Director/Quality Manager



PHONE (575) 393-2326 • 101 E. MARLAND • HOBBS, NM 88240

Analytical Results For:

ENSOLUM, LLC
 BEAUX JENNINGS
 705 W WADLEY AVE.
 MIDLAND TX, 79705
 Fax To:

Received: 05/01/2024
 Reported: 05/07/2024
 Project Name: BENELLI CTB
 Project Number: 03B1417155
 Project Location: OXY - EDDY CO., NM

Sampling Date: 05/01/2024
 Sampling Type: Soil
 Sampling Condition: Cool & Intact
 Sample Received By: Shalyn Rodriguez

Sample ID: FS - 07 2' (H242336-07)

BTEx 8021B		mg/kg		Analyzed By: JH					
Analyte	Result	Reporting Limit	Analyzed	Method Blank	BS	% Recovery	True Value QC	RPD	Qualifier
Benzene*	<0.050	0.050	05/03/2024	ND	2.08	104	2.00	1.45	
Toluene*	<0.050	0.050	05/03/2024	ND	2.03	101	2.00	1.95	
Ethylbenzene*	<0.050	0.050	05/03/2024	ND	1.98	99.2	2.00	1.81	
Total Xylenes*	<0.150	0.150	05/03/2024	ND	5.82	96.9	6.00	1.64	
Total BTEX	<0.300	0.300	05/03/2024	ND					

Surrogate: 4-Bromofluorobenzene (PID) 90.1 % 71.5-134

Chloride, SM4500Cl-B		mg/kg		Analyzed By: AC						
Analyte	Result	Reporting Limit	Analyzed	Method Blank	BS	% Recovery	True Value QC	RPD	Qualifier	
Chloride	2240	16.0	05/04/2024	ND	416	104	400	7.41		

TPH 8015M		mg/kg		Analyzed By: MS					
Analyte	Result	Reporting Limit	Analyzed	Method Blank	BS	% Recovery	True Value QC	RPD	Qualifier
GRO C6-C10*	<10.0	10.0	05/03/2024	ND	209	104	200	3.73	
DRO >C10-C28*	<10.0	10.0	05/03/2024	ND	202	101	200	6.89	
EXT DRO >C28-C36	<10.0	10.0	05/03/2024	ND					

Surrogate: 1-Chlorooctane 98.4 % 48.2-134

Surrogate: 1-Chlorooctadecane 85.8 % 49.1-148

Cardinal Laboratories

*=Accredited Analyte

PLEASE NOTE: Liability and Damages. Cardinal's liability and client's exclusive remedy for any claim arising, whether based in contract or tort, shall be limited to the amount paid by client for analyses. All claims, including those for negligence and any other cause whatsoever shall be deemed waived unless made in writing and received by Cardinal within thirty (30) days after completion of the applicable service. In no event shall Cardinal be liable for incidental or consequential damages, including, without limitation, business interruptions, loss of use, or loss of profits incurred by client, its subsidiaries, affiliates or successors arising out of or related to the performance of the services hereunder by Cardinal, regardless of whether such claim is based upon any of the above stated reasons or otherwise. Results relate only to the samples identified above. This report shall not be reproduced except in full with written approval of Cardinal Laboratories.

Celey D. Keene, Lab Director/Quality Manager



PHONE (575) 393-2326 • 101 E. MARLAND • HOBBS, NM 88240

Analytical Results For:

ENSOLUM, LLC
 BEAUX JENNINGS
 705 W WADLEY AVE.
 MIDLAND TX, 79705
 Fax To:

Received: 05/01/2024
 Reported: 05/07/2024
 Project Name: BENELLI CTB
 Project Number: 03B1417155
 Project Location: OXY - EDDY CO., NM

Sampling Date: 05/01/2024
 Sampling Type: Soil
 Sampling Condition: Cool & Intact
 Sample Received By: Shalyn Rodriguez

Sample ID: FS - 08 2' (H242336-08)

BTX 8021B		mg/kg		Analyzed By: JH					
Analyte	Result	Reporting Limit	Analyzed	Method Blank	BS	% Recovery	True Value QC	RPD	Qualifier
Benzene*	<0.050	0.050	05/03/2024	ND	2.08	104	2.00	1.45	
Toluene*	<0.050	0.050	05/03/2024	ND	2.03	101	2.00	1.95	
Ethylbenzene*	<0.050	0.050	05/03/2024	ND	1.98	99.2	2.00	1.81	
Total Xylenes*	<0.150	0.150	05/03/2024	ND	5.82	96.9	6.00	1.64	
Total BTX	<0.300	0.300	05/03/2024	ND					

Surrogate: 4-Bromofluorobenzene (PID) 90.6 % 71.5-134

Chloride, SM4500CI-B		mg/kg		Analyzed By: AC					
Analyte	Result	Reporting Limit	Analyzed	Method Blank	BS	% Recovery	True Value QC	RPD	Qualifier
Chloride	832	16.0	05/04/2024	ND	416	104	400	7.41	

TPH 8015M		mg/kg		Analyzed By: MS					
Analyte	Result	Reporting Limit	Analyzed	Method Blank	BS	% Recovery	True Value QC	RPD	Qualifier
GRO C6-C10*	<10.0	10.0	05/03/2024	ND	209	104	200	3.73	
DRO >C10-C28*	<10.0	10.0	05/03/2024	ND	202	101	200	6.89	
EXT DRO >C28-C36	<10.0	10.0	05/03/2024	ND					

Surrogate: 1-Chlorooctane 95.9 % 48.2-134

Surrogate: 1-Chlorooctadecane 82.9 % 49.1-148

Cardinal Laboratories

*=Accredited Analyte

PLEASE NOTE: Liability and Damages. Cardinal's liability and client's exclusive remedy for any claim arising, whether based in contract or tort, shall be limited to the amount paid by client for analyses. All claims, including those for negligence and any other cause whatsoever shall be deemed waived unless made in writing and received by Cardinal within thirty (30) days after completion of the applicable service. In no event shall Cardinal be liable for incidental or consequential damages, including, without limitation, business interruptions, loss of use, or loss of profits incurred by client, its subsidiaries, affiliates or successors arising out of or related to the performance of the services hereunder by Cardinal, regardless of whether such claim is based upon any of the above stated reasons or otherwise. Results relate only to the samples identified above. This report shall not be reproduced except in full with written approval of Cardinal Laboratories.

Celey D. Keene, Lab Director/Quality Manager



PHONE (575) 393-2326 • 101 E. MARLAND • HOBBS, NM 88240

Analytical Results For:

ENSOLUM, LLC
 BEAUX JENNINGS
 705 W WADLEY AVE.
 MIDLAND TX, 79705
 Fax To:

Received: 05/01/2024
 Reported: 05/07/2024
 Project Name: BENELLI CTB
 Project Number: 03B1417155
 Project Location: OXY - EDDY CO., NM

Sampling Date: 05/01/2024
 Sampling Type: Soil
 Sampling Condition: Cool & Intact
 Sample Received By: Shalyn Rodriguez

Sample ID: FS - 09 2' (H242336-09)

BTEx 8021B		mg/kg		Analyzed By: JH					
Analyte	Result	Reporting Limit	Analyzed	Method Blank	BS	% Recovery	True Value QC	RPD	Qualifier
Benzene*	<0.050	0.050	05/03/2024	ND	2.08	104	2.00	1.45	
Toluene*	<0.050	0.050	05/03/2024	ND	2.03	101	2.00	1.95	
Ethylbenzene*	<0.050	0.050	05/03/2024	ND	1.98	99.2	2.00	1.81	
Total Xylenes*	<0.150	0.150	05/03/2024	ND	5.82	96.9	6.00	1.64	
Total BTEX	<0.300	0.300	05/03/2024	ND					

Surrogate: 4-Bromofluorobenzene (PID) 90.7 % 71.5-134

Chloride, SM4500Cl-B		mg/kg		Analyzed By: AC					
Analyte	Result	Reporting Limit	Analyzed	Method Blank	BS	% Recovery	True Value QC	RPD	Qualifier
Chloride	384	16.0	05/04/2024	ND	416	104	400	7.41	

TPH 8015M		mg/kg		Analyzed By: MS					
Analyte	Result	Reporting Limit	Analyzed	Method Blank	BS	% Recovery	True Value QC	RPD	Qualifier
GRO C6-C10*	<10.0	10.0	05/03/2024	ND	209	104	200	3.73	
DRO >C10-C28*	<10.0	10.0	05/03/2024	ND	202	101	200	6.89	
EXT DRO >C28-C36	<10.0	10.0	05/03/2024	ND					

Surrogate: 1-Chlorooctane 93.5 % 48.2-134

Surrogate: 1-Chlorooctadecane 81.5 % 49.1-148

Cardinal Laboratories

*=Accredited Analyte

PLEASE NOTE: Liability and Damages. Cardinal's liability and client's exclusive remedy for any claim arising, whether based in contract or tort, shall be limited to the amount paid by client for analyses. All claims, including those for negligence and any other cause whatsoever shall be deemed waived unless made in writing and received by Cardinal within thirty (30) days after completion of the applicable service. In no event shall Cardinal be liable for incidental or consequential damages, including, without limitation, business interruptions, loss of use, or loss of profits incurred by client, its subsidiaries, affiliates or successors arising out of or related to the performance of the services hereunder by Cardinal, regardless of whether such claim is based upon any of the above stated reasons or otherwise. Results relate only to the samples identified above. This report shall not be reproduced except in full with written approval of Cardinal Laboratories.

Celey D. Keene, Lab Director/Quality Manager



PHONE (575) 393-2326 • 101 E. MARLAND • HOBBS, NM 88240

Analytical Results For:

ENSOLUM, LLC
 BEAUX JENNINGS
 705 W WADLEY AVE.
 MIDLAND TX, 79705
 Fax To:

Received: 05/01/2024
 Reported: 05/07/2024
 Project Name: BENELLI CTB
 Project Number: 03B1417155
 Project Location: OXY - EDDY CO., NM

Sampling Date: 05/01/2024
 Sampling Type: Soil
 Sampling Condition: Cool & Intact
 Sample Received By: Shalyn Rodriguez

Sample ID: FS - 10 2' (H242336-10)

BTX 8021B		mg/kg		Analyzed By: JH					
Analyte	Result	Reporting Limit	Analyzed	Method Blank	BS	% Recovery	True Value QC	RPD	Qualifier
Benzene*	<0.050	0.050	05/03/2024	ND	2.08	104	2.00	1.45	
Toluene*	<0.050	0.050	05/03/2024	ND	2.03	101	2.00	1.95	
Ethylbenzene*	<0.050	0.050	05/03/2024	ND	1.98	99.2	2.00	1.81	
Total Xylenes*	<0.150	0.150	05/03/2024	ND	5.82	96.9	6.00	1.64	
Total BTX	<0.300	0.300	05/03/2024	ND					

Surrogate: 4-Bromofluorobenzene (PID) 91.5 % 71.5-134

Chloride, SM4500CI-B		mg/kg		Analyzed By: AC					
Analyte	Result	Reporting Limit	Analyzed	Method Blank	BS	% Recovery	True Value QC	RPD	Qualifier
Chloride	1490	16.0	05/04/2024	ND	416	104	400	7.41	

TPH 8015M		mg/kg		Analyzed By: MS					
Analyte	Result	Reporting Limit	Analyzed	Method Blank	BS	% Recovery	True Value QC	RPD	Qualifier
GRO C6-C10*	<10.0	10.0	05/03/2024	ND	209	104	200	3.73	
DRO >C10-C28*	<10.0	10.0	05/03/2024	ND	202	101	200	6.89	
EXT DRO >C28-C36	<10.0	10.0	05/03/2024	ND					

Surrogate: 1-Chlorooctane 89.6 % 48.2-134

Surrogate: 1-Chlorooctadecane 75.1 % 49.1-148

Cardinal Laboratories

*=Accredited Analyte

PLEASE NOTE: Liability and Damages. Cardinal's liability and client's exclusive remedy for any claim arising, whether based in contract or tort, shall be limited to the amount paid by client for analyses. All claims, including those for negligence and any other cause whatsoever shall be deemed waived unless made in writing and received by Cardinal within thirty (30) days after completion of the applicable service. In no event shall Cardinal be liable for incidental or consequential damages, including, without limitation, business interruptions, loss of use, or loss of profits incurred by client, its subsidiaries, affiliates or successors arising out of or related to the performance of the services hereunder by Cardinal, regardless of whether such claim is based upon any of the above stated reasons or otherwise. Results relate only to the samples identified above. This report shall not be reproduced except in full with written approval of Cardinal Laboratories.

Celey D. Keene, Lab Director/Quality Manager



PHONE (575) 393-2326 • 101 E. MARLAND • HOBBS, NM 88240

Analytical Results For:

ENSOLUM, LLC
 BEAUX JENNINGS
 705 W WADLEY AVE.
 MIDLAND TX, 79705
 Fax To:

Received: 05/01/2024
 Reported: 05/07/2024
 Project Name: BENELLI CTB
 Project Number: 03B1417155
 Project Location: OXY - EDDY CO., NM

Sampling Date: 05/01/2024
 Sampling Type: Soil
 Sampling Condition: Cool & Intact
 Sample Received By: Shalyn Rodriguez

Sample ID: FS - 11 2' (H242336-11)

BTEx 8021B		mg/kg		Analyzed By: JH					
Analyte	Result	Reporting Limit	Analyzed	Method Blank	BS	% Recovery	True Value QC	RPD	Qualifier
Benzene*	<0.050	0.050	05/03/2024	ND	2.08	104	2.00	1.45	
Toluene*	<0.050	0.050	05/03/2024	ND	2.03	101	2.00	1.95	
Ethylbenzene*	<0.050	0.050	05/03/2024	ND	1.98	99.2	2.00	1.81	
Total Xylenes*	<0.150	0.150	05/03/2024	ND	5.82	96.9	6.00	1.64	
Total BTEX	<0.300	0.300	05/03/2024	ND					

Surrogate: 4-Bromofluorobenzene (PID) 91.5 % 71.5-134

Chloride, SM4500Cl-B		mg/kg		Analyzed By: AC					
Analyte	Result	Reporting Limit	Analyzed	Method Blank	BS	% Recovery	True Value QC	RPD	Qualifier
Chloride	944	16.0	05/04/2024	ND	416	104	400	7.41	

TPH 8015M		mg/kg		Analyzed By: MS					
Analyte	Result	Reporting Limit	Analyzed	Method Blank	BS	% Recovery	True Value QC	RPD	Qualifier
GRO C6-C10*	<10.0	10.0	05/03/2024	ND	209	104	200	3.73	
DRO >C10-C28*	<10.0	10.0	05/03/2024	ND	202	101	200	6.89	
EXT DRO >C28-C36	<10.0	10.0	05/03/2024	ND					

Surrogate: 1-Chlorooctane 91.2 % 48.2-134

Surrogate: 1-Chlorooctadecane 77.7 % 49.1-148

Cardinal Laboratories

*=Accredited Analyte

PLEASE NOTE: Liability and Damages. Cardinal's liability and client's exclusive remedy for any claim arising, whether based in contract or tort, shall be limited to the amount paid by client for analyses. All claims, including those for negligence and any other cause whatsoever shall be deemed waived unless made in writing and received by Cardinal within thirty (30) days after completion of the applicable service. In no event shall Cardinal be liable for incidental or consequential damages, including, without limitation, business interruptions, loss of use, or loss of profits incurred by client, its subsidiaries, affiliates or successors arising out of or related to the performance of the services hereunder by Cardinal, regardless of whether such claim is based upon any of the above stated reasons or otherwise. Results relate only to the samples identified above. This report shall not be reproduced except in full with written approval of Cardinal Laboratories.

Celey D. Keene, Lab Director/Quality Manager



PHONE (575) 393-2326 • 101 E. MARLAND • HOBBS, NM 88240

Analytical Results For:

ENSOLUM, LLC
 BEAUX JENNINGS
 705 W WADLEY AVE.
 MIDLAND TX, 79705
 Fax To:

Received: 05/01/2024
 Reported: 05/07/2024
 Project Name: BENELLI CTB
 Project Number: 03B1417155
 Project Location: OXY - EDDY CO., NM

Sampling Date: 05/01/2024
 Sampling Type: Soil
 Sampling Condition: Cool & Intact
 Sample Received By: Shalyn Rodriguez

Sample ID: FS - 12 2' (H242336-12)

BTX 8021B		mg/kg		Analyzed By: JH					
Analyte	Result	Reporting Limit	Analyzed	Method Blank	BS	% Recovery	True Value QC	RPD	Qualifier
Benzene*	<0.050	0.050	05/03/2024	ND	2.08	104	2.00	1.45	
Toluene*	<0.050	0.050	05/03/2024	ND	2.03	101	2.00	1.95	
Ethylbenzene*	<0.050	0.050	05/03/2024	ND	1.98	99.2	2.00	1.81	
Total Xylenes*	<0.150	0.150	05/03/2024	ND	5.82	96.9	6.00	1.64	
Total BTX	<0.300	0.300	05/03/2024	ND					

Surrogate: 4-Bromofluorobenzene (PID) 91.3 % 71.5-134

Chloride, SM4500CI-B		mg/kg		Analyzed By: AC					
Analyte	Result	Reporting Limit	Analyzed	Method Blank	BS	% Recovery	True Value QC	RPD	Qualifier
Chloride	784	16.0	05/04/2024	ND	416	104	400	7.41	

TPH 8015M		mg/kg		Analyzed By: MS					
Analyte	Result	Reporting Limit	Analyzed	Method Blank	BS	% Recovery	True Value QC	RPD	Qualifier
GRO C6-C10*	<10.0	10.0	05/03/2024	ND	209	104	200	3.73	
DRO >C10-C28*	<10.0	10.0	05/03/2024	ND	202	101	200	6.89	
EXT DRO >C28-C36	<10.0	10.0	05/03/2024	ND					

Surrogate: 1-Chlorooctane 98.1 % 48.2-134

Surrogate: 1-Chlorooctadecane 86.3 % 49.1-148

Cardinal Laboratories

*=Accredited Analyte

PLEASE NOTE: Liability and Damages. Cardinal's liability and client's exclusive remedy for any claim arising, whether based in contract or tort, shall be limited to the amount paid by client for analyses. All claims, including those for negligence and any other cause whatsoever shall be deemed waived unless made in writing and received by Cardinal within thirty (30) days after completion of the applicable service. In no event shall Cardinal be liable for incidental or consequential damages, including, without limitation, business interruptions, loss of use, or loss of profits incurred by client, its subsidiaries, affiliates or successors arising out of or related to the performance of the services hereunder by Cardinal, regardless of whether such claim is based upon any of the above stated reasons or otherwise. Results relate only to the samples identified above. This report shall not be reproduced except in full with written approval of Cardinal Laboratories.

Celey D. Keene, Lab Director/Quality Manager



PHONE (575) 393-2326 • 101 E. MARLAND • HOBBS, NM 88240

Analytical Results For:

ENSOLUM, LLC
 BEAUX JENNINGS
 705 W WADLEY AVE.
 MIDLAND TX, 79705
 Fax To:

Received: 05/01/2024
 Reported: 05/07/2024
 Project Name: BENELLI CTB
 Project Number: 03B1417155
 Project Location: OXY - EDDY CO., NM

Sampling Date: 05/01/2024
 Sampling Type: Soil
 Sampling Condition: Cool & Intact
 Sample Received By: Shalyn Rodriguez

Sample ID: FS - 13 2' (H242336-13)

BTX 8021B		mg/kg		Analyzed By: JH						
Analyte	Result	Reporting Limit	Analyzed	Method Blank	BS	% Recovery	True Value QC	RPD	Qualifier	
Benzene*	<0.050	0.050	05/03/2024	ND	1.95	97.3	2.00	6.25		
Toluene*	<0.050	0.050	05/03/2024	ND	1.92	96.1	2.00	6.86		
Ethylbenzene*	<0.050	0.050	05/03/2024	ND	1.90	94.9	2.00	6.78		
Total Xylenes*	<0.150	0.150	05/03/2024	ND	5.56	92.7	6.00	6.88		
Total BTX	<0.300	0.300	05/03/2024	ND						

Surrogate: 4-Bromofluorobenzene (PID) 90.1 % 71.5-134

Chloride, SM4500CI-B		mg/kg		Analyzed By: AC					
Analyte	Result	Reporting Limit	Analyzed	Method Blank	BS	% Recovery	True Value QC	RPD	Qualifier
Chloride	592	16.0	05/04/2024	ND	416	104	400	7.41	

TPH 8015M		mg/kg		Analyzed By: MS					
Analyte	Result	Reporting Limit	Analyzed	Method Blank	BS	% Recovery	True Value QC	RPD	Qualifier
GRO C6-C10*	<10.0	10.0	05/03/2024	ND	209	104	200	3.73	
DRO >C10-C28*	<10.0	10.0	05/03/2024	ND	202	101	200	6.89	
EXT DRO >C28-C36	<10.0	10.0	05/03/2024	ND					

Surrogate: 1-Chlorooctane 97.7 % 48.2-134

Surrogate: 1-Chlorooctadecane 84.0 % 49.1-148

Cardinal Laboratories

*=Accredited Analyte

PLEASE NOTE: Liability and Damages. Cardinal's liability and client's exclusive remedy for any claim arising, whether based in contract or tort, shall be limited to the amount paid by client for analyses. All claims, including those for negligence and any other cause whatsoever shall be deemed waived unless made in writing and received by Cardinal within thirty (30) days after completion of the applicable service. In no event shall Cardinal be liable for incidental or consequential damages, including, without limitation, business interruptions, loss of use, or loss of profits incurred by client, its subsidiaries, affiliates or successors arising out of or related to the performance of the services hereunder by Cardinal, regardless of whether such claim is based upon any of the above stated reasons or otherwise. Results relate only to the samples identified above. This report shall not be reproduced except in full with written approval of Cardinal Laboratories.

Celey D. Keene, Lab Director/Quality Manager



PHONE (575) 393-2326 • 101 E. MARLAND • HOBBS, NM 88240

Analytical Results For:

ENSOLUM, LLC
 BEAUX JENNINGS
 705 W WADLEY AVE.
 MIDLAND TX, 79705
 Fax To:

Received: 05/01/2024
 Reported: 05/07/2024
 Project Name: BENELLI CTB
 Project Number: 03B1417155
 Project Location: OXY - EDDY CO., NM

Sampling Date: 05/01/2024
 Sampling Type: Soil
 Sampling Condition: Cool & Intact
 Sample Received By: Shalyn Rodriguez

Sample ID: FS - 14 2' (H242336-14)

BTX 8021B		mg/kg		Analyzed By: JH						
Analyte	Result	Reporting Limit	Analyzed	Method Blank	BS	% Recovery	True Value QC	RPD	Qualifier	
Benzene*	<0.050	0.050	05/03/2024	ND	1.95	97.3	2.00	6.25		
Toluene*	<0.050	0.050	05/03/2024	ND	1.92	96.1	2.00	6.86		
Ethylbenzene*	<0.050	0.050	05/03/2024	ND	1.90	94.9	2.00	6.78		
Total Xylenes*	<0.150	0.150	05/03/2024	ND	5.56	92.7	6.00	6.88		
Total BTX	<0.300	0.300	05/03/2024	ND						

Surrogate: 4-Bromofluorobenzene (PID) 92.7 % 71.5-134

Chloride, SM4500CI-B		mg/kg		Analyzed By: HM					
Analyte	Result	Reporting Limit	Analyzed	Method Blank	BS	% Recovery	True Value QC	RPD	Qualifier
Chloride	528	16.0	05/06/2024	ND	432	108	400	0.00	

TPH 8015M		mg/kg		Analyzed By: MS					
Analyte	Result	Reporting Limit	Analyzed	Method Blank	BS	% Recovery	True Value QC	RPD	Qualifier
GRO C6-C10*	<10.0	10.0	05/03/2024	ND	209	104	200	3.73	
DRO >C10-C28*	<10.0	10.0	05/03/2024	ND	202	101	200	6.89	
EXT DRO >C28-C36	<10.0	10.0	05/03/2024	ND					

Surrogate: 1-Chlorooctane 101 % 48.2-134

Surrogate: 1-Chlorooctadecane 90.0 % 49.1-148

Cardinal Laboratories

*=Accredited Analyte

PLEASE NOTE: Liability and Damages. Cardinal's liability and client's exclusive remedy for any claim arising, whether based in contract or tort, shall be limited to the amount paid by client for analyses. All claims, including those for negligence and any other cause whatsoever shall be deemed waived unless made in writing and received by Cardinal within thirty (30) days after completion of the applicable service. In no event shall Cardinal be liable for incidental or consequential damages, including, without limitation, business interruptions, loss of use, or loss of profits incurred by client, its subsidiaries, affiliates or successors arising out of or related to the performance of the services hereunder by Cardinal, regardless of whether such claim is based upon any of the above stated reasons or otherwise. Results relate only to the samples identified above. This report shall not be reproduced except in full with written approval of Cardinal Laboratories.

Celey D. Keene, Lab Director/Quality Manager



PHONE (575) 393-2326 • 101 E. MARLAND • HOBBS, NM 88240

Analytical Results For:

ENSOLUM, LLC
 BEAUX JENNINGS
 705 W WADLEY AVE.
 MIDLAND TX, 79705
 Fax To:

Received: 05/01/2024
 Reported: 05/07/2024
 Project Name: BENELLI CTB
 Project Number: 03B1417155
 Project Location: OXY - EDDY CO., NM

Sampling Date: 05/01/2024
 Sampling Type: Soil
 Sampling Condition: Cool & Intact
 Sample Received By: Shalyn Rodriguez

Sample ID: FS - 15 2' (H242336-15)

BTEx 8021B		mg/kg		Analyzed By: JH						
Analyte	Result	Reporting Limit	Analyzed	Method Blank	BS	% Recovery	True Value QC	RPD	Qualifier	
Benzene*	<0.050	0.050	05/03/2024	ND	1.95	97.3	2.00	6.25		
Toluene*	<0.050	0.050	05/03/2024	ND	1.92	96.1	2.00	6.86		
Ethylbenzene*	<0.050	0.050	05/03/2024	ND	1.90	94.9	2.00	6.78		
Total Xylenes*	<0.150	0.150	05/03/2024	ND	5.56	92.7	6.00	6.88		
Total BTEx	<0.300	0.300	05/03/2024	ND						

Surrogate: 4-Bromofluorobenzene (PID) 91.1 % 71.5-134

Chloride, SM4500Cl-B		mg/kg		Analyzed By: HM						
Analyte	Result	Reporting Limit	Analyzed	Method Blank	BS	% Recovery	True Value QC	RPD	Qualifier	
Chloride	1140	16.0	05/06/2024	ND	432	108	400	0.00		

TPH 8015M		mg/kg		Analyzed By: MS					
Analyte	Result	Reporting Limit	Analyzed	Method Blank	BS	% Recovery	True Value QC	RPD	Qualifier
GRO C6-C10*	<10.0	10.0	05/03/2024	ND	209	104	200	3.73	
DRO >C10-C28*	<10.0	10.0	05/03/2024	ND	202	101	200	6.89	
EXT DRO >C28-C36	<10.0	10.0	05/03/2024	ND					

Surrogate: 1-Chlorooctane 99.9 % 48.2-134

Surrogate: 1-Chlorooctadecane 88.6 % 49.1-148

Cardinal Laboratories

*=Accredited Analyte

PLEASE NOTE: Liability and Damages. Cardinal's liability and client's exclusive remedy for any claim arising, whether based in contract or tort, shall be limited to the amount paid by client for analyses. All claims, including those for negligence and any other cause whatsoever shall be deemed waived unless made in writing and received by Cardinal within thirty (30) days after completion of the applicable service. In no event shall Cardinal be liable for incidental or consequential damages, including, without limitation, business interruptions, loss of use, or loss of profits incurred by client, its subsidiaries, affiliates or successors arising out of or related to the performance of the services hereunder by Cardinal, regardless of whether such claim is based upon any of the above stated reasons or otherwise. Results relate only to the samples identified above. This report shall not be reproduced except in full with written approval of Cardinal Laboratories.

Celey D. Keene, Lab Director/Quality Manager



PHONE (575) 393-2326 • 101 E. MARLAND • HOBBS, NM 88240

Analytical Results For:

ENSOLUM, LLC
 BEAUX JENNINGS
 705 W WADLEY AVE.
 MIDLAND TX, 79705
 Fax To:

Received: 05/01/2024
 Reported: 05/07/2024
 Project Name: BENELLI CTB
 Project Number: 03B1417155
 Project Location: OXY - EDDY CO., NM

Sampling Date: 05/01/2024
 Sampling Type: Soil
 Sampling Condition: Cool & Intact
 Sample Received By: Shalyn Rodriguez

Sample ID: FS - 16 2' (H242336-16)

BTX 8021B		mg/kg		Analyzed By: JH						
Analyte	Result	Reporting Limit	Analyzed	Method Blank	BS	% Recovery	True Value QC	RPD	Qualifier	
Benzene*	<0.050	0.050	05/03/2024	ND	1.95	97.3	2.00	6.25		
Toluene*	<0.050	0.050	05/03/2024	ND	1.92	96.1	2.00	6.86		
Ethylbenzene*	<0.050	0.050	05/03/2024	ND	1.90	94.9	2.00	6.78		
Total Xylenes*	<0.150	0.150	05/03/2024	ND	5.56	92.7	6.00	6.88		
Total BTX	<0.300	0.300	05/03/2024	ND						

Surrogate: 4-Bromofluorobenzene (PID) 92.0 % 71.5-134

Chloride, SM4500CI-B		mg/kg		Analyzed By: HM					
Analyte	Result	Reporting Limit	Analyzed	Method Blank	BS	% Recovery	True Value QC	RPD	Qualifier
Chloride	448	16.0	05/06/2024	ND	432	108	400	0.00	

TPH 8015M		mg/kg		Analyzed By: MS					
Analyte	Result	Reporting Limit	Analyzed	Method Blank	BS	% Recovery	True Value QC	RPD	Qualifier
GRO C6-C10*	<10.0	10.0	05/03/2024	ND	209	104	200	3.73	
DRO >C10-C28*	<10.0	10.0	05/03/2024	ND	202	101	200	6.89	
EXT DRO >C28-C36	<10.0	10.0	05/03/2024	ND					

Surrogate: 1-Chlorooctane 98.0 % 48.2-134

Surrogate: 1-Chlorooctadecane 86.2 % 49.1-148

Cardinal Laboratories

*=Accredited Analyte

PLEASE NOTE: Liability and Damages. Cardinal's liability and client's exclusive remedy for any claim arising, whether based in contract or tort, shall be limited to the amount paid by client for analyses. All claims, including those for negligence and any other cause whatsoever shall be deemed waived unless made in writing and received by Cardinal within thirty (30) days after completion of the applicable service. In no event shall Cardinal be liable for incidental or consequential damages, including, without limitation, business interruptions, loss of use, or loss of profits incurred by client, its subsidiaries, affiliates or successors arising out of or related to the performance of the services hereunder by Cardinal, regardless of whether such claim is based upon any of the above stated reasons or otherwise. Results relate only to the samples identified above. This report shall not be reproduced except in full with written approval of Cardinal Laboratories.

Celey D. Keene, Lab Director/Quality Manager



PHONE (575) 393-2326 • 101 E. MARLAND • HOBBS, NM 88240

Analytical Results For:

ENSOLUM, LLC
 BEAUX JENNINGS
 705 W WADLEY AVE.
 MIDLAND TX, 79705
 Fax To:

Received: 05/01/2024
 Reported: 05/07/2024
 Project Name: BENELLI CTB
 Project Number: 03B1417155
 Project Location: OXY - EDDY CO., NM

Sampling Date: 05/01/2024
 Sampling Type: Soil
 Sampling Condition: Cool & Intact
 Sample Received By: Shalyn Rodriguez

Sample ID: FS - 17 2' (H242336-17)

BTX 8021B		mg/kg		Analyzed By: JH						
Analyte	Result	Reporting Limit	Analyzed	Method Blank	BS	% Recovery	True Value QC	RPD	Qualifier	
Benzene*	<0.050	0.050	05/03/2024	ND	1.95	97.3	2.00	6.25		
Toluene*	<0.050	0.050	05/03/2024	ND	1.92	96.1	2.00	6.86		
Ethylbenzene*	<0.050	0.050	05/03/2024	ND	1.90	94.9	2.00	6.78		
Total Xylenes*	<0.150	0.150	05/03/2024	ND	5.56	92.7	6.00	6.88		
Total BTX	<0.300	0.300	05/03/2024	ND						

Surrogate: 4-Bromofluorobenzene (PID) 90.2 % 71.5-134

Chloride, SM4500CI-B		mg/kg		Analyzed By: HM					
Analyte	Result	Reporting Limit	Analyzed	Method Blank	BS	% Recovery	True Value QC	RPD	Qualifier
Chloride	192	16.0	05/06/2024	ND	432	108	400	0.00	

TPH 8015M		mg/kg		Analyzed By: MS					
Analyte	Result	Reporting Limit	Analyzed	Method Blank	BS	% Recovery	True Value QC	RPD	Qualifier
GRO C6-C10*	<10.0	10.0	05/03/2024	ND	209	104	200	3.73	
DRO >C10-C28*	<10.0	10.0	05/03/2024	ND	202	101	200	6.89	
EXT DRO >C28-C36	<10.0	10.0	05/03/2024	ND					

Surrogate: 1-Chlorooctane 86.2 % 48.2-134

Surrogate: 1-Chlorooctadecane 72.9 % 49.1-148

Cardinal Laboratories

*=Accredited Analyte

PLEASE NOTE: Liability and Damages. Cardinal's liability and client's exclusive remedy for any claim arising, whether based in contract or tort, shall be limited to the amount paid by client for analyses. All claims, including those for negligence and any other cause whatsoever shall be deemed waived unless made in writing and received by Cardinal within thirty (30) days after completion of the applicable service. In no event shall Cardinal be liable for incidental or consequential damages, including, without limitation, business interruptions, loss of use, or loss of profits incurred by client, its subsidiaries, affiliates or successors arising out of or related to the performance of the services hereunder by Cardinal, regardless of whether such claim is based upon any of the above stated reasons or otherwise. Results relate only to the samples identified above. This report shall not be reproduced except in full with written approval of Cardinal Laboratories.

Celey D. Keene, Lab Director/Quality Manager



PHONE (575) 393-2326 • 101 E. MARLAND • HOBBS, NM 88240

Analytical Results For:

ENSOLUM, LLC
 BEAUX JENNINGS
 705 W WADLEY AVE.
 MIDLAND TX, 79705
 Fax To:

Received: 05/01/2024
 Reported: 05/07/2024
 Project Name: BENELLI CTB
 Project Number: 03B1417155
 Project Location: OXY - EDDY CO., NM

Sampling Date: 05/01/2024
 Sampling Type: Soil
 Sampling Condition: Cool & Intact
 Sample Received By: Shalyn Rodriguez

Sample ID: SW - 01 0-2' (H242336-18)

BTEx 8021B		mg/kg		Analyzed By: JH						
Analyte	Result	Reporting Limit	Analyzed	Method Blank	BS	% Recovery	True Value QC	RPD	Qualifier	
Benzene*	<0.050	0.050	05/04/2024	ND	1.95	97.3	2.00	6.25		
Toluene*	<0.050	0.050	05/04/2024	ND	1.92	96.1	2.00	6.86		
Ethylbenzene*	<0.050	0.050	05/04/2024	ND	1.90	94.9	2.00	6.78		
Total Xylenes*	<0.150	0.150	05/04/2024	ND	5.56	92.7	6.00	6.88		
Total BTEX	<0.300	0.300	05/04/2024	ND						

Surrogate: 4-Bromofluorobenzene (PID) 90.7 % 71.5-134

Chloride, SM4500Cl-B		mg/kg		Analyzed By: HM						
Analyte	Result	Reporting Limit	Analyzed	Method Blank	BS	% Recovery	True Value QC	RPD	Qualifier	
Chloride	272	16.0	05/06/2024	ND	432	108	400	0.00		

TPH 8015M		mg/kg		Analyzed By: MS					
Analyte	Result	Reporting Limit	Analyzed	Method Blank	BS	% Recovery	True Value QC	RPD	Qualifier
GRO C6-C10*	<10.0	10.0	05/03/2024	ND	209	104	200	3.73	
DRO >C10-C28*	<10.0	10.0	05/03/2024	ND	202	101	200	6.89	
EXT DRO >C28-C36	<10.0	10.0	05/03/2024	ND					

Surrogate: 1-Chlorooctane 79.9 % 48.2-134

Surrogate: 1-Chlorooctadecane 70.5 % 49.1-148

Cardinal Laboratories

*=Accredited Analyte

PLEASE NOTE: Liability and Damages. Cardinal's liability and client's exclusive remedy for any claim arising, whether based in contract or tort, shall be limited to the amount paid by client for analyses. All claims, including those for negligence and any other cause whatsoever shall be deemed waived unless made in writing and received by Cardinal within thirty (30) days after completion of the applicable service. In no event shall Cardinal be liable for incidental or consequential damages, including, without limitation, business interruptions, loss of use, or loss of profits incurred by client, its subsidiaries, affiliates or successors arising out of or related to the performance of the services hereunder by Cardinal, regardless of whether such claim is based upon any of the above stated reasons or otherwise. Results relate only to the samples identified above. This report shall not be reproduced except in full with written approval of Cardinal Laboratories.

Celey D. Keene, Lab Director/Quality Manager



PHONE (575) 393-2326 • 101 E. MARLAND • HOBBS, NM 88240

Analytical Results For:

ENSOLUM, LLC
 BEAUX JENNINGS
 705 W WADLEY AVE.
 MIDLAND TX, 79705
 Fax To:

Received: 05/01/2024
 Reported: 05/07/2024
 Project Name: BENELLI CTB
 Project Number: 03B1417155
 Project Location: OXY - EDDY CO., NM

Sampling Date: 05/01/2024
 Sampling Type: Soil
 Sampling Condition: Cool & Intact
 Sample Received By: Shalyn Rodriguez

Sample ID: SW - 02 0-2' (H242336-19)

BTX 8021B		mg/kg		Analyzed By: JH						
Analyte	Result	Reporting Limit	Analyzed	Method Blank	BS	% Recovery	True Value QC	RPD	Qualifier	
Benzene*	<0.050	0.050	05/04/2024	ND	1.95	97.3	2.00	6.25		
Toluene*	<0.050	0.050	05/04/2024	ND	1.92	96.1	2.00	6.86		
Ethylbenzene*	<0.050	0.050	05/04/2024	ND	1.90	94.9	2.00	6.78		
Total Xylenes*	<0.150	0.150	05/04/2024	ND	5.56	92.7	6.00	6.88		
Total BTX	<0.300	0.300	05/04/2024	ND						

Surrogate: 4-Bromofluorobenzene (PID) 91.6 % 71.5-134

Chloride, SM4500CI-B		mg/kg		Analyzed By: HM						
Analyte	Result	Reporting Limit	Analyzed	Method Blank	BS	% Recovery	True Value QC	RPD	Qualifier	
Chloride	1150	16.0	05/06/2024	ND	432	108	400	0.00		

TPH 8015M		mg/kg		Analyzed By: MS					
Analyte	Result	Reporting Limit	Analyzed	Method Blank	BS	% Recovery	True Value QC	RPD	Qualifier
GRO C6-C10*	<10.0	10.0	05/03/2024	ND	209	104	200	3.73	
DRO >C10-C28*	<10.0	10.0	05/03/2024	ND	202	101	200	6.89	
EXT DRO >C28-C36	<10.0	10.0	05/03/2024	ND					

Surrogate: 1-Chlorooctane 101 % 48.2-134

Surrogate: 1-Chlorooctadecane 88.7 % 49.1-148

Cardinal Laboratories

*=Accredited Analyte

PLEASE NOTE: Liability and Damages. Cardinal's liability and client's exclusive remedy for any claim arising, whether based in contract or tort, shall be limited to the amount paid by client for analyses. All claims, including those for negligence and any other cause whatsoever shall be deemed waived unless made in writing and received by Cardinal within thirty (30) days after completion of the applicable service. In no event shall Cardinal be liable for incidental or consequential damages, including, without limitation, business interruptions, loss of use, or loss of profits incurred by client, its subsidiaries, affiliates or successors arising out of or related to the performance of the services hereunder by Cardinal, regardless of whether such claim is based upon any of the above stated reasons or otherwise. Results relate only to the samples identified above. This report shall not be reproduced except in full with written approval of Cardinal Laboratories.

Celey D. Keene, Lab Director/Quality Manager



PHONE (575) 393-2326 • 101 E. MARLAND • HOBBS, NM 88240

Analytical Results For:

ENSOLUM, LLC
 BEAUX JENNINGS
 705 W WADLEY AVE.
 MIDLAND TX, 79705
 Fax To:

Received: 05/01/2024
 Reported: 05/07/2024
 Project Name: BENELLI CTB
 Project Number: 03B1417155
 Project Location: OXY - EDDY CO., NM

Sampling Date: 05/01/2024
 Sampling Type: Soil
 Sampling Condition: Cool & Intact
 Sample Received By: Shalyn Rodriguez

Sample ID: SW - 03 0-2' (H242336-20)

BTX 8021B		mg/kg		Analyzed By: JH						
Analyte	Result	Reporting Limit	Analyzed	Method Blank	BS	% Recovery	True Value QC	RPD	Qualifier	
Benzene*	<0.050	0.050	05/04/2024	ND	1.95	97.3	2.00	6.25		
Toluene*	<0.050	0.050	05/04/2024	ND	1.92	96.1	2.00	6.86		
Ethylbenzene*	<0.050	0.050	05/04/2024	ND	1.90	94.9	2.00	6.78		
Total Xylenes*	<0.150	0.150	05/04/2024	ND	5.56	92.7	6.00	6.88		
Total BTX	<0.300	0.300	05/04/2024	ND						

Surrogate: 4-Bromofluorobenzene (PID) 91.9 % 71.5-134

Chloride, SM4500CI-B		mg/kg		Analyzed By: HM						
Analyte	Result	Reporting Limit	Analyzed	Method Blank	BS	% Recovery	True Value QC	RPD	Qualifier	
Chloride	144	16.0	05/06/2024	ND	432	108	400	0.00		

TPH 8015M		mg/kg		Analyzed By: MS					
Analyte	Result	Reporting Limit	Analyzed	Method Blank	BS	% Recovery	True Value QC	RPD	Qualifier
GRO C6-C10*	<10.0	10.0	05/03/2024	ND	201	101	200	2.11	
DRO >C10-C28*	<10.0	10.0	05/03/2024	ND	195	97.6	200	0.916	
EXT DRO >C28-C36	<10.0	10.0	05/03/2024	ND					

Surrogate: 1-Chlorooctane 70.9 % 48.2-134

Surrogate: 1-Chlorooctadecane 83.1 % 49.1-148

Cardinal Laboratories

*=Accredited Analyte

PLEASE NOTE: Liability and Damages. Cardinal's liability and client's exclusive remedy for any claim arising, whether based in contract or tort, shall be limited to the amount paid by client for analyses. All claims, including those for negligence and any other cause whatsoever shall be deemed waived unless made in writing and received by Cardinal within thirty (30) days after completion of the applicable service. In no event shall Cardinal be liable for incidental or consequential damages, including, without limitation, business interruptions, loss of use, or loss of profits incurred by client, its subsidiaries, affiliates or successors arising out of or related to the performance of the services hereunder by Cardinal, regardless of whether such claim is based upon any of the above stated reasons or otherwise. Results relate only to the samples identified above. This report shall not be reproduced except in full with written approval of Cardinal Laboratories.

Celey D. Keene, Lab Director/Quality Manager



PHONE (575) 393-2326 • 101 E. MARLAND • HOBBS, NM 88240

Analytical Results For:

ENSOLUM, LLC
 BEAUX JENNINGS
 705 W WADLEY AVE.
 MIDLAND TX, 79705
 Fax To:

Received: 05/01/2024
 Reported: 05/07/2024
 Project Name: BENELLI CTB
 Project Number: 03B1417155
 Project Location: OXY - EDDY CO., NM

Sampling Date: 05/01/2024
 Sampling Type: Soil
 Sampling Condition: Cool & Intact
 Sample Received By: Shalyn Rodriguez

Sample ID: SW - 04 0-2' (H242336-21)

BTX 8021B		mg/kg		Analyzed By: JH						
Analyte	Result	Reporting Limit	Analyzed	Method Blank	BS	% Recovery	True Value QC	RPD	Qualifier	
Benzene*	<0.050	0.050	05/04/2024	ND	1.95	97.3	2.00	6.25		
Toluene*	<0.050	0.050	05/04/2024	ND	1.92	96.1	2.00	6.86		
Ethylbenzene*	<0.050	0.050	05/04/2024	ND	1.90	94.9	2.00	6.78		
Total Xylenes*	<0.150	0.150	05/04/2024	ND	5.56	92.7	6.00	6.88		
Total BTX	<0.300	0.300	05/04/2024	ND						

Surrogate: 4-Bromofluorobenzene (PID) 91.9 % 71.5-134

Chloride, SM4500CI-B		mg/kg		Analyzed By: HM						
Analyte	Result	Reporting Limit	Analyzed	Method Blank	BS	% Recovery	True Value QC	RPD	Qualifier	
Chloride	112	16.0	05/06/2024	ND	432	108	400	0.00		

TPH 8015M		mg/kg		Analyzed By: MS					
Analyte	Result	Reporting Limit	Analyzed	Method Blank	BS	% Recovery	True Value QC	RPD	Qualifier
GRO C6-C10*	<10.0	10.0	05/03/2024	ND	201	101	200	2.11	
DRO >C10-C28*	<10.0	10.0	05/03/2024	ND	195	97.6	200	0.916	
EXT DRO >C28-C36	<10.0	10.0	05/03/2024	ND					

Surrogate: 1-Chlorooctane 89.3 % 48.2-134

Surrogate: 1-Chlorooctadecane 105 % 49.1-148

Cardinal Laboratories

*=Accredited Analyte

PLEASE NOTE: Liability and Damages. Cardinal's liability and client's exclusive remedy for any claim arising, whether based in contract or tort, shall be limited to the amount paid by client for analyses. All claims, including those for negligence and any other cause whatsoever shall be deemed waived unless made in writing and received by Cardinal within thirty (30) days after completion of the applicable service. In no event shall Cardinal be liable for incidental or consequential damages, including, without limitation, business interruptions, loss of use, or loss of profits incurred by client, its subsidiaries, affiliates or successors arising out of or related to the performance of the services hereunder by Cardinal, regardless of whether such claim is based upon any of the above stated reasons or otherwise. Results relate only to the samples identified above. This report shall not be reproduced except in full with written approval of Cardinal Laboratories.

Celey D. Keene, Lab Director/Quality Manager

PHONE (575) 393-2326 • 101 E. MARLAND • HOBBS, NM 88240

Notes and Definitions

ND	Analyte NOT DETECTED at or above the reporting limit
RPD	Relative Percent Difference
**	Samples not received at proper temperature of 6°C or below.
***	Insufficient time to reach temperature.
-	Chloride by SM4500Cl-B does not require samples be received at or below 6°C Samples reported on an as received basis (wet) unless otherwise noted on report

Cardinal Laboratories

*=Accredited Analyte

PLEASE NOTE: Liability and Damages. Cardinal's liability and client's exclusive remedy for any claim arising, whether based in contract or tort, shall be limited to the amount paid by client for analyses. All claims, including those for negligence and any other cause whatsoever shall be deemed waived unless made in writing and received by Cardinal within thirty (30) days after completion of the applicable service. In no event shall Cardinal be liable for incidental or consequential damages, including, without limitation, business interruptions, loss of use, or loss of profits incurred by client, its subsidiaries, affiliates or successors arising out of or related to the performance of the services hereunder by Cardinal, regardless of whether such claim is based upon any of the above stated reasons or otherwise. Results relate only to the samples identified above. This report shall not be reproduced except in full with written approval of Cardinal Laboratories.

A handwritten signature in black ink, appearing to read "Celey D. Keene".

Celey D. Keene, Lab Director/Quality Manager



101 East Marland, Hobbs, NM 88240
(575) 393-2326 FAX (575) 393-2476

CHAIN-OF-CUSTODY AND ANALYSIS REQUEST

Company Name: Ensolum, LLC Project Manager: Beaux Jennings Address: 601 N. Marland St. STE 400 City: Midland State: TX Zip: 79701 Phone #: 210-219-8858 Fax #: Project #: 23B417155 Project Owner: Oxy Project Name: Beatty CTB Project Location: Eddy Co NM Sampler Name: Shane D. He		BILL TO P.O. #: Company: Oxy USA, Inc. Attn: Wade Dittich Address: City: State: Zip: Phone #: 575-390-2828 Fax #:		ANALYSIS REQUEST	
FOR LAB USE ONLY Lab I.D. Sample I.D. Sample Depth (feet) (G)RAB OR (C)OMP. # CONTAINERS GROUNDWATER WASTEWATER SOIL OIL SLUDGE OTHER : ACID/BASE: ICE / COOL OTHER :		MATRIX <input type="checkbox"/> GROUNDWATER <input type="checkbox"/> WASTEWATER <input type="checkbox"/> SOIL <input type="checkbox"/> OIL <input type="checkbox"/> SLUDGE <input type="checkbox"/> OTHER :		PRESERV. <input checked="" type="checkbox"/> YES <input type="checkbox"/> NO	
DATE TIME		DATE TIME		TPH 8015m BTEX 80216 Chlorides 4500	
Relinquished By: Date: 5-1-24 Time: 1359 Received By: Date: Time:		Relinquished By: Date: Time:		REMARKS: 1 of 3	
Delivered By: (Circle One) Sampler - UPS - Bus - Other:		Observed Temp.: °C Corrected Temp.: °C		Sample Condition Cool Intact <input checked="" type="checkbox"/> Yes <input type="checkbox"/> No Checked By: Turnaround Time: Standard <input checked="" type="checkbox"/> Standard <input type="checkbox"/> Rush Bacteria (only) <input type="checkbox"/> Bacteria (only) <input type="checkbox"/> Cool Intact <input type="checkbox"/> Yes <input type="checkbox"/> No Observed Temp.: °C Corrected Temp.: °C	



101 East Marland, Hobbs, NM 88240
(575) 393-2326 FAX (575) 393-2476

CHAIN-OF-CUSTODY AND ANALYSIS REQUEST

Company Name: Ensolum, LLC Project Manager: Beaux Jennings Address: 601 N. Marfield St. STE 400 City: Midland State: TX Zip: 79701 Phone #: 210-219-8858 Fax #: Project #: 0381417155 Project Owner: Project Name: Beneill, CTB Project Location: Eddy Co NM Sample Name: Shore D. 11/- FOR LAB USE ONLY				P.O. #: Company: Oxy USA, Inc. Attn: Wade Dittich Address: City: State: Zip: Phone #: 575-390-2828 Fax #:				BILL TO				ANALYSIS REQUEST							
Lab I.D. 1343334		Sample I.D.		Sample Depth (feet)		(G)RAB OR (C)OMP.		# CONTAINERS		MATRIX GROUNDWATER WASTEWATER SOIL OIL SLUDGE OTHER:		PRESERV. ACID/BASE: ICE / COOL OTHER:		SAMPLING		TPH 8015m BTEX 80215 Chlorides 4500			
11		F5-11		2		C		1		X		5-1-24		1113		X			
12		F5-12		2		C		1		X		5-1-24		1114		X			
13		F5-13		2		C		1		X		5-1-24		1115		X			
14		F5-14		2		C		1		X		5-1-24		1114		X			
15		F5-15		2		C		1		X		5-1-24		1120		X			
16		F5-16		2		C		1		X		5-1-24		1116		X			
17		F5-17		2		C		1		X		5-1-24		1118		X			
18		SW-01		0-2		C		1		X		5-1-24		1126		X			
19		SW-02		0-2		C		1		X		5-1-24		1134		X			
20		SW-03		0-2		C		1		X		5-1-24		1130		X			

PLEASE NOTE: Liability and Damages. Cardholder liability and claims are limited for any claim arising whether based in contract or tort, shall be limited to the amount paid by the client for the analysis. All claims, including those for negligence and any other cause whatsoever shall be deemed waived unless made in writing and received by Cardinal within 30 days after completion of the applicable service. In no event shall Cardholder be liable for incidental or consequential damages, including without limitation, business interruptions, loss of use, or loss of profits incurred by client, its subsidiaries, affiliates or successors arising out of or related to the performance of services hereunder by Cardinal, regardless of whether such claim is based upon any of the above stated reasons or otherwise.

Relinquished By: [Signature]		Date: 5-1-24 Time: 1359		Received By: [Signature]		Date: Time:	
Relinquished By: [Signature]		Date: Time:		Received By: [Signature]		Date: Time:	

Delivered By: (Circle One) ☒ UPS ☐ Bus ☐ Other: _____

Observed Temp. °C: -0.3 **Corrected Temp. °C:** _____

Sample Condition: ☒ Cool ☐ Intact ☐ Yes ☐ No

CHECKED BY: [Signature]

Turnaround Time: Standard ☒ Rush ☐ Bacteria (only) ☐ Sample Condition ☐ Cool ☐ Intact ☐ Yes ☐ No

Thermometer ID #113 #140 **Corrosion Factor -0.5°C** **Corrected Temp. °C:** _____

REMARKS: 2 of 3

Verbal Result: ☐ Yes ☐ No **Add Phone #:** _____

All Results are emailed. Please provide Email address: Blennings@ensolum.com

Cardinal cannot accept verbal changes. Please email changes to celey.keene@cardinalshs.com



101 East Marland, Hobbs, NM 88240
(575) 393-2326 FAX (575) 393-2476

CHAIN-OF-CUSTODY AND ANALYSIS REQUEST

Company Name: Ensolum, LLC Project Manager: Beaux Jennings				BILL TO				ANALYSIS REQUEST			
Address: 601 N. Marinfeld St. STE 400 City: Midland Phone #: 210-219-8858 State: TX Zip: 79701				P.O. #: Company: Oxy USA, Inc. Attn: Wade Dietrich Address: City: State: Zip: Phone #: 575-390-2828 Fax #:							
Project #: 0301417055 Project Owner: Project Name: Beneill: CTB Project Location: Eddy Co NM Sampler Name: Shane D. He											
FOR LAB USE ONLY											
Lab I.D. H41336 21	Sample I.D. SW-04	Sample Depth (feet) 0-2	(G)RAB OR (C)OMP. C 1	# CONTAINERS 1	MATRIX		PRESERV. [X]	SAMPLING	DATE 5-1-24	TIME 1128	TPH 8015m BTEX 80216 Chlorides 4500
					GROUNDWATER WASTEWATER SOIL OIL SLUDGE OTHER :	ACID/BASE: ICE / COOL OTHER :					
PLEASE NOTE: Liability and Damages. Cardinal's liability and clients exclusive remedy for any claim arising whether based in contract or tort, shall be limited to the amount paid by the client for the analysis. All claims, including those for negligence and any other cause whatsoever shall be deemed waived unless made in writing and received by Cardinal within 30 days after completion of the applicable service. In no event shall Cardinal be liable for incidental or consequential damages, including without limitation, business interruptions, loss of use, or loss of profits incurred by client, its subsidiaries, affiliates or successors arising out of or related to the performance of services hereunder by Cardinal. Remedies of whatever kind shall be deemed waived upon any of the above stated reasons or omissions.											
Relinquished By: [Signature]		Date: 5-1-24 Time: 1359		Received By: [Signature]		Verbal Result: <input type="checkbox"/> Yes <input type="checkbox"/> No <input type="checkbox"/> Add'l Phone #: All Results are emailed. Please provide Email address: Bjennings@ensolum.com		REMARKS: 3 of 3			
Delivered By: (Circle One) Sampler - UPS - Bus - Other:		Observed Temp. °C: -0.32 Corrected Temp. °C:		Sample Condition Cool <input checked="" type="checkbox"/> Intact <input checked="" type="checkbox"/> No <input type="checkbox"/> No <input type="checkbox"/>		CHECKED BY: [Signature]		Turnaround Time: Standard <input checked="" type="checkbox"/> Rush <input type="checkbox"/> Thermometer ID: #413 Correction Factor: -0.5C Bacteria (only) <input type="checkbox"/> Sample Condition <input checked="" type="checkbox"/> Cool <input type="checkbox"/> Intact <input checked="" type="checkbox"/> No <input type="checkbox"/> No <input type="checkbox"/> Observed Temp. °C Corrected Temp. °C			



PHONE (575) 393-2326 • 101 E. MARLAND • HOBBS, NM 88240

August 26, 2024

KELLY LOWERY

ENSOLUM, LLC

705 W WADLEY AVE.

MIDLAND, TX 79705

RE: BENELLI CTB

Enclosed are the results of analyses for samples received by the laboratory on 08/21/24 13:00.

Cardinal Laboratories is accredited through Texas NELAP under certificate number TX-C24-00112. Accreditation applies to drinking water, non-potable water and solid and chemical materials. All accredited analytes are denoted by an asterisk (*). For a complete list of accredited analytes and matrices visit the TCEQ website at www.tceq.texas.gov/field/qa/lab_accred_certif.html.

Cardinal Laboratories is accredited through the State of Colorado Department of Public Health and Environment for:

Method EPA 552.2	Haloacetic Acids (HAA-5)
Method EPA 524.2	Total Trihalomethanes (TTHM)
Method EPA 524.4	Regulated VOCs (V1, V2, V3)

Accreditation applies to public drinking water matrices.

This report meets NELAP requirements and is made up of a cover page, analytical results, and a copy of the original chain-of-custody. If you have any questions concerning this report, please feel free to contact me.

Sincerely,

A handwritten signature in black ink that reads "Mike Snyder". The signature is fluid and cursive, with the first name "Mike" and last name "Snyder" clearly distinguishable.

Mike Snyder For Celey D. Keene

Lab Director/Quality Manager



PHONE (575) 393-2326 • 101 E. MARLAND • HOBBS, NM 88240

Analytical Results For:

ENSOLUM, LLC
 KELLY LOWERY
 705 W WADLEY AVE.
 MIDLAND TX, 79705
 Fax To:

Received: 08/21/2024
 Reported: 08/26/2024
 Project Name: BENELLI CTB
 Project Number: 03B1417155
 Project Location: OXY - EDDY CO., NM

Sampling Date: 08/20/2024
 Sampling Type: Soil
 Sampling Condition: Cool & Intact
 Sample Received By: Tamara Oldaker

Sample ID: FS 15 4' (H245090-01)

Chloride, SM4500CI-B			mg/kg		Analyzed By: HM				
Analyte	Result	Reporting Limit	Analyzed	Method Blank	BS	% Recovery	True Value QC	RPD	Qualifier
Chloride	32.0	16.0	08/22/2024	ND	432	108	400	3.64	

Sample ID: FS 12 3' (H245090-02)

Chloride, SM4500CI-B			mg/kg		Analyzed By: CT				
Analyte	Result	Reporting Limit	Analyzed	Method Blank	BS	% Recovery	True Value QC	RPD	Qualifier
Chloride	272	16.0	08/23/2024	ND	416	104	400	7.41	

Sample ID: SW - 15 0-4' (H245090-03)

BTEX 8021B			mg/kg		Analyzed By: JH				
Analyte	Result	Reporting Limit	Analyzed	Method Blank	BS	% Recovery	True Value QC	RPD	Qualifier
Benzene*	<0.050	0.050	08/22/2024	ND	2.05	103	2.00	0.670	
Toluene*	<0.050	0.050	08/22/2024	ND	2.11	105	2.00	2.28	
Ethylbenzene*	<0.050	0.050	08/22/2024	ND	2.13	107	2.00	3.14	
Total Xylenes*	<0.150	0.150	08/22/2024	ND	6.62	110	6.00	2.84	
Total BTEX	<0.300	0.300	08/22/2024	ND					

Surrogate: 4-Bromofluorobenzene (PID) 114 % 71.5-134

Chloride, SM4500CI-B			mg/kg		Analyzed By: CT				
Analyte	Result	Reporting Limit	Analyzed	Method Blank	BS	% Recovery	True Value QC	RPD	Qualifier
Chloride	32.0	16.0	08/23/2024	ND	416	104	400	7.41	

TPH 8015M			mg/kg		Analyzed By: MS				
Analyte	Result	Reporting Limit	Analyzed	Method Blank	BS	% Recovery	True Value QC	RPD	Qualifier

Cardinal Laboratories

*=Accredited Analyte

PLEASE NOTE: Liability and Damages. Cardinal's liability and client's exclusive remedy for any claim arising, whether based in contract or tort, shall be limited to the amount paid by client for analyses. All claims, including those for negligence and any other cause whatsoever shall be deemed waived unless made in writing and received by Cardinal within thirty (30) days after completion of the applicable service. In no event shall Cardinal be liable for incidental or consequential damages, including, without limitation, business interruptions, loss of use, or loss of profits incurred by client, its subsidiaries, affiliates or successors arising out of or related to the performance of the services hereunder by Cardinal, regardless of whether such claim is based upon any of the above stated reasons or otherwise. Results relate only to the samples identified above. This report shall not be reproduced except in full with written approval of Cardinal Laboratories.

Mike Snyder For Celey D. Keene, Lab Director/Quality Manager



PHONE (575) 393-2326 • 101 E. MARLAND • HOBBS, NM 88240

Analytical Results For:

ENSOLUM, LLC
KELLY LOWERY
705 W WADLEY AVE.
MIDLAND TX, 79705
Fax To:

Received: 08/21/2024
Reported: 08/26/2024
Project Name: BENELLI CTB
Project Number: 03B1417155
Project Location: OXY - EDDY CO., NM

Sampling Date: 08/20/2024
Sampling Type: Soil
Sampling Condition: Cool & Intact
Sample Received By: Tamara Oldaker

Sample ID: SW - 15 0-4' (H245090-03)

TPH 8015M		mg/kg		Analyzed By: MS					
Analyte	Result	Reporting Limit	Analyzed	Method Blank	BS	% Recovery	True Value QC	RPD	Qualifier
GRO C6-C10*	<10.0	10.0	08/22/2024	ND	219	109	200	3.39	
DRO >C10-C28*	<10.0	10.0	08/22/2024	ND	213	107	200	4.22	
EXT DRO >C28-C36	<10.0	10.0	08/22/2024	ND					
<hr/>									
Surrogate: 1-Chlorooctane	71.2 %	48.2-134							
Surrogate: 1-Chlorooctadecane	84.6 %	49.1-148							

Cardinal Laboratories

*=Accredited Analyte

PLEASE NOTE: Liability and Damages. Cardinal's liability and client's exclusive remedy for any claim arising, whether based in contract or tort, shall be limited to the amount paid by client for analyses. All claims, including those for negligence and any other cause whatsoever shall be deemed waived unless made in writing and received by Cardinal within thirty (30) days after completion of the applicable service. In no event shall Cardinal be liable for incidental or consequential damages, including, without limitation, business interruptions, loss of use, or loss of profits incurred by client, its subsidiaries, affiliates or successors arising out of or related to the performance of the services hereunder by Cardinal, regardless of whether such claim is based upon any of the above stated reasons or otherwise. Results relate only to the samples identified above. This report shall not be reproduced except in full with written approval of Cardinal Laboratories.

Mike Snyder For Celey D. Keene, Lab Director/Quality Manager



PHONE (575) 393-2326 • 101 E. MARLAND • HOBBS, NM 88240

Notes and Definitions

ND	Analyte NOT DETECTED at or above the reporting limit
RPD	Relative Percent Difference
**	Samples not received at proper temperature of 6°C or below.
***	Insufficient time to reach temperature.
-	Chloride by SM4500Cl-B does not require samples be received at or below 6°C Samples reported on an as received basis (wet) unless otherwise noted on report

Cardinal Laboratories

*=Accredited Analyte

PLEASE NOTE: Liability and Damages. Cardinal's liability and client's exclusive remedy for any claim arising, whether based in contract or tort, shall be limited to the amount paid by client for analyses. All claims, including those for negligence and any other cause whatsoever shall be deemed waived unless made in writing and received by Cardinal within thirty (30) days after completion of the applicable service. In no event shall Cardinal be liable for incidental or consequential damages, including, without limitation, business interruptions, loss of use, or loss of profits incurred by client, its subsidiaries, affiliates or successors arising out of or related to the performance of the services hereunder by Cardinal, regardless of whether such claim is based upon any of the above stated reasons or otherwise. Results relate only to the samples identified above. This report shall not be reproduced except in full with written approval of Cardinal Laboratories.

A handwritten signature in black ink, appearing to read "Mike Snyder".

Mike Snyder For Celey D. Keene, Lab Director/Quality Manager



101 East Marland, Hobbs, NM 88240
(575) 393-2326 FAX (575) 393-2476

CHAIN-OF-CUSTODY AND ANALYSIS REQUEST

Company Name: Ensolum, LLC

Project Manager: Kelly Lowery

Address: 601 N Marlenfeld Street, Suite 400

City: Midland

State: TX Zip: 79701

Phone #: 214-733-3165

Fax #:

Project #: 038147155

Project Owner:

Project Name: Benelli, CTB

Project Location: Eddy County, NM

Sampler Name: NKEB Noah Duker

FOR LAB USE ONLY

Lab I.D. Sample I.D.

Depth (feet)

(G)RAB OR (C)OMP.

CONTAINERS

MATRIX

PRESERV

SAMPLING

BILL TO

ANALYSIS REQUEST

P.O. #:

Address:

City:

State:

Zip:

Phone #

Fax #:

Chlorides 490
TPH 8015m
BTEX 8021

PLEASE NOTE: Liability and Damages. Cardinal's liability and client's exclusive remedy for any claim arising whether based in contract or tort, shall be limited to the amount paid by the client for the analyses. All claims, including those for negligence and any other cause whatsoever shall be deemed waived unless made in writing and received by Cardinal within 30 days after completion of the applicable service. In no event shall Cardinal be liable for incidental or consequential damages, including without limitation, business interruptions, loss of use, or loss of profits incurred by client, its subsidiaries, affiliates or successors arising out of or related to the performance of services hereunder by Cardinal. Regardless of whether such claim is based upon any of the above stated reasons or otherwise.

Relinquished By:

Date: 8-21-24

Received By:

Verbal Result: ☐ Yes ☒ No

Add'l Phone #:

All Results are emailed. Please provide Email address:

Relinquished By:

Date:

Received By:

REMARKS:

Delivered By: (Circle One)

Sampler - UPS - Bus - Other:

Observed Temp.: °C

Corrected Temp.: °C

Sample Condition

CHECKED BY: (Initials)

Turnaround Time:

Standard

Bacteria (only)

Sample Condition

Observed Temp.: °C

† Cardinal cannot accept verbal changes. Please email changes to celey.keene@cardinallabsnm.com



PHONE (575) 393-2326 • 101 E. MARLAND • HOBBS, NM 88240

September 12, 2024

KELLY LOWERY

ENSOLUM, LLC

705 W WADLEY AVE.

MIDLAND, TX 79705

RE: BENELLI CTB

Enclosed are the results of analyses for samples received by the laboratory on 09/09/24 15:16.

Cardinal Laboratories is accredited through Texas NELAP under certificate number TX-C24-00112. Accreditation applies to drinking water, non-potable water and solid and chemical materials. All accredited analytes are denoted by an asterisk (*). For a complete list of accredited analytes and matrices visit the TCEQ website at www.tceq.texas.gov/field/qa/lab_accred_certif.html.

Cardinal Laboratories is accredited through the State of Colorado Department of Public Health and Environment for:

Method EPA 552.2	Haloacetic Acids (HAA-5)
Method EPA 524.2	Total Trihalomethanes (TTHM)
Method EPA 524.4	Regulated VOCs (V1, V2, V3)

Accreditation applies to public drinking water matrices.

This report meets NELAP requirements and is made up of a cover page, analytical results, and a copy of the original chain-of-custody. If you have any questions concerning this report, please feel free to contact me.

Sincerely,

A handwritten signature in black ink that reads "Celey D. Keene". The signature is written in a cursive, flowing style.

Celey D. Keene

Lab Director/Quality Manager



PHONE (575) 393-2326 • 101 E. MARLAND • HOBBS, NM 88240

Analytical Results For:

ENSOLUM, LLC
 KELLY LOWERY
 705 W WADLEY AVE.
 MIDLAND TX, 79705
 Fax To:

Received: 09/09/2024
 Reported: 09/12/2024
 Project Name: BENELLI CTB
 Project Number: 03B1417155
 Project Location: OXY - EDDY CO., NM

Sampling Date: 09/09/2024
 Sampling Type: Soil
 Sampling Condition: Cool & Intact
 Sample Received By: Alyssa Parras

Sample ID: FS - 03 2.5 (H245438-01)

Chloride, SM4500CI-B		mg/kg		Analyzed By: CT					
Analyte	Result	Reporting Limit	Analyzed	Method Blank	BS	% Recovery	True Value QC	RPD	Qualifier
Chloride	112	16.0	09/10/2024	ND	400	100	400	0.00	

Sample ID: FS - 04 2.5 (H245438-02)

Chloride, SM4500CI-B		mg/kg		Analyzed By: CT					
Analyte	Result	Reporting Limit	Analyzed	Method Blank	BS	% Recovery	True Value QC	RPD	Qualifier
Chloride	32.0	16.0	09/10/2024	ND	400	100	400	0.00	

Sample ID: FS - 05 3 (H245438-03)

Chloride, SM4500CI-B		mg/kg		Analyzed By: CT					
Analyte	Result	Reporting Limit	Analyzed	Method Blank	BS	% Recovery	True Value QC	RPD	Qualifier
Chloride	208	16.0	09/10/2024	ND	400	100	400	0.00	

Sample ID: FS - 06 6 (H245438-04)

Chloride, SM4500CI-B		mg/kg		Analyzed By: CT					
Analyte	Result	Reporting Limit	Analyzed	Method Blank	BS	% Recovery	True Value QC	RPD	Qualifier
Chloride	160	16.0	09/10/2024	ND	400	100	400	0.00	

Cardinal Laboratories

*=Accredited Analyte

PLEASE NOTE: Liability and Damages. Cardinal's liability and client's exclusive remedy for any claim arising, whether based in contract or tort, shall be limited to the amount paid by client for analyses. All claims, including those for negligence and any other cause whatsoever shall be deemed waived unless made in writing and received by Cardinal within thirty (30) days after completion of the applicable service. In no event shall Cardinal be liable for incidental or consequential damages, including, without limitation, business interruptions, loss of use, or loss of profits incurred by client, its subsidiaries, affiliates or successors arising out of or related to the performance of the services hereunder by Cardinal, regardless of whether such claim is based upon any of the above stated reasons or otherwise. Results relate only to the samples identified above. This report shall not be reproduced except in full with written approval of Cardinal Laboratories.

Celey D. Keene, Lab Director/Quality Manager



PHONE (575) 393-2326 • 101 E. MARLAND • HOBBS, NM 88240

Analytical Results For:

ENSOLUM, LLC
 KELLY LOWERY
 705 W WADLEY AVE.
 MIDLAND TX, 79705
 Fax To:

Received: 09/09/2024
 Reported: 09/12/2024
 Project Name: BENELLI CTB
 Project Number: 03B1417155
 Project Location: OXY - EDDY CO., NM

Sampling Date: 09/09/2024
 Sampling Type: Soil
 Sampling Condition: Cool & Intact
 Sample Received By: Alyssa Parras

Sample ID: FS - 07 7 (H245438-05)

Chloride, SM4500Cl-B		mg/kg		Analyzed By: CT						
Analyte	Result	Reporting Limit	Analyzed	Method Blank	BS	% Recovery	True Value QC	RPD	Qualifier	
Chloride	32.0	16.0	09/10/2024	ND	400	100	400	0.00		

Sample ID: FS - 08 7 (H245438-06)

Chloride, SM4500Cl-B		mg/kg		Analyzed By: CT					
Analyte	Result	Reporting Limit	Analyzed	Method Blank	BS	% Recovery	True Value QC	RPD	Qualifier
Chloride	16.0	16.0	09/10/2024	ND	400	100	400	0.00	

Sample ID: FS - 10 4 (H245438-07)

Chloride, SM4500Cl-B		mg/kg		Analyzed By: CT						
Analyte	Result	Reporting Limit	Analyzed	Method Blank	BS	% Recovery	True Value QC	RPD	Qualifier	
Chloride	48.0	16.0	09/10/2024	ND	400	100	400	0.00		

Sample ID: FS - 11 4 (H245438-08)

Chloride, SM4500Cl-B		mg/kg		Analyzed By: HM						
Analyte	Result	Reporting Limit	Analyzed	Method Blank	BS	% Recovery	True Value QC	RPD	Qualifier	
Chloride	96.0	16.0	09/10/2024	ND	416	104	400	10.9		

Cardinal Laboratories

*=Accredited Analyte

PLEASE NOTE: Liability and Damages. Cardinal's liability and client's exclusive remedy for any claim arising, whether based in contract or tort, shall be limited to the amount paid by client for analyses. All claims, including those for negligence and any other cause whatsoever shall be deemed waived unless made in writing and received by Cardinal within thirty (30) days after completion of the applicable service. In no event shall Cardinal be liable for incidental or consequential damages, including, without limitation, business interruptions, loss of use, or loss of profits incurred by client, its subsidiaries, affiliates or successors arising out of or related to the performance of the services hereunder by Cardinal, regardless of whether such claim is based upon any of the above stated reasons or otherwise. Results relate only to the samples identified above. This report shall not be reproduced except in full with written approval of Cardinal Laboratories.

Celey D. Keene, Lab Director/Quality Manager



PHONE (575) 393-2326 • 101 E. MARLAND • HOBBS, NM 88240

Analytical Results For:

ENSOLUM, LLC
 KELLY LOWERY
 705 W WADLEY AVE.
 MIDLAND TX, 79705
 Fax To:

Received: 09/09/2024
 Reported: 09/12/2024
 Project Name: BENELLI CTB
 Project Number: 03B1417155
 Project Location: OXY - EDDY CO., NM

Sampling Date: 09/09/2024
 Sampling Type: Soil
 Sampling Condition: Cool & Intact
 Sample Received By: Alyssa Parras

Sample ID: SW - 01 2-2.5 (H245438-09)

BTEx 8021B		mg/kg		Analyzed By: JH						
Analyte	Result	Reporting Limit	Analyzed	Method Blank	BS	% Recovery	True Value QC	RPD	Qualifier	
Benzene*	<0.050	0.050	09/11/2024	ND	1.85	92.4	2.00	6.91		
Toluene*	<0.050	0.050	09/11/2024	ND	2.07	103	2.00	3.77		
Ethylbenzene*	<0.050	0.050	09/11/2024	ND	2.21	111	2.00	3.29		
Total Xylenes*	<0.150	0.150	09/11/2024	ND	6.80	113	6.00	2.44		
Total BTEX	<0.300	0.300	09/11/2024	ND						

Surrogate: 4-Bromofluorobenzene (PID) 134 % 71.5-134

Chloride, SM4500Cl-B		mg/kg		Analyzed By: HM						
Analyte	Result	Reporting Limit	Analyzed	Method Blank	BS	% Recovery	True Value QC	RPD	Qualifier	
Chloride	16.0	16.0	09/10/2024	ND	416	104	400	10.9		

TPH 8015M		mg/kg		Analyzed By: MS					
Analyte	Result	Reporting Limit	Analyzed	Method Blank	BS	% Recovery	True Value QC	RPD	Qualifier
GRO C6-C10*	<10.0	10.0	09/10/2024	ND	211	106	200	2.29	
DRO >C10-C28*	<10.0	10.0	09/10/2024	ND	201	100	200	2.37	
EXT DRO >C28-C36	<10.0	10.0	09/10/2024	ND					

Surrogate: 1-Chlorooctane 81.9 % 48.2-134

Surrogate: 1-Chlorooctadecane 81.9 % 49.1-148

Cardinal Laboratories

*=Accredited Analyte

PLEASE NOTE: Liability and Damages. Cardinal's liability and client's exclusive remedy for any claim arising, whether based in contract or tort, shall be limited to the amount paid by client for analyses. All claims, including those for negligence and any other cause whatsoever shall be deemed waived unless made in writing and received by Cardinal within thirty (30) days after completion of the applicable service. In no event shall Cardinal be liable for incidental or consequential damages, including, without limitation, business interruptions, loss of use, or loss of profits incurred by client, its subsidiaries, affiliates or successors arising out of or related to the performance of the services hereunder by Cardinal, regardless of whether such claim is based upon any of the above stated reasons or otherwise. Results relate only to the samples identified above. This report shall not be reproduced except in full with written approval of Cardinal Laboratories.

Celey D. Keene, Lab Director/Quality Manager



PHONE (575) 393-2326 • 101 E. MARLAND • HOBBS, NM 88240

Analytical Results For:

ENSOLUM, LLC
KELLY LOWERY
705 W WADLEY AVE.
MIDLAND TX, 79705
Fax To:

Received: 09/09/2024
Reported: 09/12/2024
Project Name: BENELLI CTB
Project Number: 03B1417155
Project Location: OXY - EDDY CO., NM

Sampling Date: 09/09/2024
Sampling Type: Soil
Sampling Condition: Cool & Intact
Sample Received By: Alyssa Parras

Sample ID: SW - 02 0-2 (H245438-10)

Chloride, SM4500Cl-B		mg/kg		Analyzed By: HM						
Analyte	Result	Reporting Limit	Analyzed	Method Blank	BS	% Recovery	True Value QC	RPD	Qualifier	
Chloride	16.0	16.0	09/10/2024	ND	416	104	400	10.9		

Cardinal Laboratories

*=Accredited Analyte

PLEASE NOTE: Liability and Damages. Cardinal's liability and client's exclusive remedy for any claim arising, whether based in contract or tort, shall be limited to the amount paid by client for analyses. All claims, including those for negligence and any other cause whatsoever shall be deemed waived unless made in writing and received by Cardinal within thirty (30) days after completion of the applicable service. In no event shall Cardinal be liable for incidental or consequential damages, including, without limitation, business interruptions, loss of use, or loss of profits incurred by client, its subsidiaries, affiliates or successors arising out of or related to the performance of the services hereunder by Cardinal, regardless of whether such claim is based upon any of the above stated reasons or otherwise. Results relate only to the samples identified above. This report shall not be reproduced except in full with written approval of Cardinal Laboratories.

A handwritten signature in cursive script, appearing to read "Celey D. Keene".

Celey D. Keene, Lab Director/Quality Manager



PHONE (575) 393-2326 • 101 E. MARLAND • HOBBS, NM 88240

Analytical Results For:

ENSOLUM, LLC
 KELLY LOWERY
 705 W WADLEY AVE.
 MIDLAND TX, 79705
 Fax To:

Received: 09/09/2024
 Reported: 09/12/2024
 Project Name: BENELLI CTB
 Project Number: 03B1417155
 Project Location: OXY - EDDY CO., NM

Sampling Date: 09/09/2024
 Sampling Type: Soil
 Sampling Condition: Cool & Intact
 Sample Received By: Alyssa Parras

Sample ID: SW - 05 0-2.5 (H245438-11)

BTX 8021B		mg/kg		Analyzed By: JH						
Analyte	Result	Reporting Limit	Analyzed	Method Blank	BS	% Recovery	True Value QC	RPD	Qualifier	
Benzene*	<0.050	0.050	09/10/2024	ND	1.72	85.8	2.00	5.43		
Toluene*	<0.050	0.050	09/10/2024	ND	1.64	82.2	2.00	7.31		
Ethylbenzene*	<0.050	0.050	09/10/2024	ND	1.65	82.5	2.00	7.95		
Total Xylenes*	<0.150	0.150	09/10/2024	ND	4.91	81.8	6.00	8.18		
Total BTX	<0.300	0.300	09/10/2024	ND						

Surrogate: 4-Bromofluorobenzene (PID) 101 % 71.5-134

Chloride, SM4500CI-B		mg/kg		Analyzed By: HM						
Analyte	Result	Reporting Limit	Analyzed	Method Blank	BS	% Recovery	True Value QC	RPD	Qualifier	
Chloride	16.0	16.0	09/10/2024	ND	416	104	400	10.9		

TPH 8015M		mg/kg		Analyzed By: MS					
Analyte	Result	Reporting Limit	Analyzed	Method Blank	BS	% Recovery	True Value QC	RPD	Qualifier
GRO C6-C10*	<10.0	10.0	09/10/2024	ND	211	106	200	2.29	
DRO >C10-C28*	<10.0	10.0	09/10/2024	ND	201	100	200	2.37	
EXT DRO >C28-C36	<10.0	10.0	09/10/2024	ND					

Surrogate: 1-Chlorooctane 72.6 % 48.2-134

Surrogate: 1-Chlorooctadecane 73.5 % 49.1-148

Cardinal Laboratories

*=Accredited Analyte

PLEASE NOTE: Liability and Damages. Cardinal's liability and client's exclusive remedy for any claim arising, whether based in contract or tort, shall be limited to the amount paid by client for analyses. All claims, including those for negligence and any other cause whatsoever shall be deemed waived unless made in writing and received by Cardinal within thirty (30) days after completion of the applicable service. In no event shall Cardinal be liable for incidental or consequential damages, including, without limitation, business interruptions, loss of use, or loss of profits incurred by client, its subsidiaries, affiliates or successors arising out of or related to the performance of the services hereunder by Cardinal, regardless of whether such claim is based upon any of the above stated reasons or otherwise. Results relate only to the samples identified above. This report shall not be reproduced except in full with written approval of Cardinal Laboratories.

Celey D. Keene, Lab Director/Quality Manager



PHONE (575) 393-2326 • 101 E. MARLAND • HOBBS, NM 88240

Analytical Results For:

ENSOLUM, LLC
 KELLY LOWERY
 705 W WADLEY AVE.
 MIDLAND TX, 79705
 Fax To:

Received: 09/09/2024
 Reported: 09/12/2024
 Project Name: BENELLI CTB
 Project Number: 03B1417155
 Project Location: OXY - EDDY CO., NM

Sampling Date: 09/09/2024
 Sampling Type: Soil
 Sampling Condition: Cool & Intact
 Sample Received By: Alyssa Parras

Sample ID: SW - 06 0-4 (H245438-12)

BTEx 8021B		mg/kg		Analyzed By: JH						
Analyte	Result	Reporting Limit	Analyzed	Method Blank	BS	% Recovery	True Value QC	RPD	Qualifier	
Benzene*	<0.050	0.050	09/10/2024	ND	1.72	85.8	2.00	5.43		
Toluene*	<0.050	0.050	09/10/2024	ND	1.64	82.2	2.00	7.31		
Ethylbenzene*	<0.050	0.050	09/10/2024	ND	1.65	82.5	2.00	7.95		
Total Xylenes*	<0.150	0.150	09/10/2024	ND	4.91	81.8	6.00	8.18		
Total BTEX	<0.300	0.300	09/10/2024	ND						

Surrogate: 4-Bromofluorobenzene (PID) 99.8 % 71.5-134

Chloride, SM4500Cl-B		mg/kg		Analyzed By: HM						
Analyte	Result	Reporting Limit	Analyzed	Method Blank	BS	% Recovery	True Value QC	RPD	Qualifier	
Chloride	16.0	16.0	09/10/2024	ND	416	104	400	10.9		

TPH 8015M		mg/kg		Analyzed By: MS					
Analyte	Result	Reporting Limit	Analyzed	Method Blank	BS	% Recovery	True Value QC	RPD	Qualifier
GRO C6-C10*	<10.0	10.0	09/10/2024	ND	211	106	200	2.29	
DRO >C10-C28*	<10.0	10.0	09/10/2024	ND	201	100	200	2.37	
EXT DRO >C28-C36	<10.0	10.0	09/10/2024	ND					

Surrogate: 1-Chlorooctane 83.9 % 48.2-134

Surrogate: 1-Chlorooctadecane 85.3 % 49.1-148

Cardinal Laboratories

*=Accredited Analyte

PLEASE NOTE: Liability and Damages. Cardinal's liability and client's exclusive remedy for any claim arising, whether based in contract or tort, shall be limited to the amount paid by client for analyses. All claims, including those for negligence and any other cause whatsoever shall be deemed waived unless made in writing and received by Cardinal within thirty (30) days after completion of the applicable service. In no event shall Cardinal be liable for incidental or consequential damages, including, without limitation, business interruptions, loss of use, or loss of profits incurred by client, its subsidiaries, affiliates or successors arising out of or related to the performance of the services hereunder by Cardinal, regardless of whether such claim is based upon any of the above stated reasons or otherwise. Results relate only to the samples identified above. This report shall not be reproduced except in full with written approval of Cardinal Laboratories.

Celey D. Keene, Lab Director/Quality Manager



PHONE (575) 393-2326 ° 101 E. MARLAND ° HOBBS, NM 88240

Analytical Results For:

ENSOLUM, LLC
 KELLY LOWERY
 705 W WADLEY AVE.
 MIDLAND TX, 79705
 Fax To:

Received: 09/09/2024
 Reported: 09/12/2024
 Project Name: BENELLI CTB
 Project Number: 03B1417155
 Project Location: OXY - EDDY CO., NM

Sampling Date: 09/09/2024
 Sampling Type: Soil
 Sampling Condition: Cool & Intact
 Sample Received By: Alyssa Parras

Sample ID: SW - 02 2-7 (H245438-13)

BTEx 8021B		mg/kg		Analyzed By: JH						
Analyte	Result	Reporting Limit	Analyzed	Method Blank	BS	% Recovery	True Value QC	RPD	Qualifier	
Benzene*	<0.050	0.050	09/10/2024	ND	1.72	85.8	2.00	5.43		
Toluene*	<0.050	0.050	09/10/2024	ND	1.64	82.2	2.00	7.31		
Ethylbenzene*	<0.050	0.050	09/10/2024	ND	1.65	82.5	2.00	7.95		
Total Xylenes*	<0.150	0.150	09/10/2024	ND	4.91	81.8	6.00	8.18		
Total BTEx	<0.300	0.300	09/10/2024	ND						

Surrogate: 4-Bromofluorobenzene (PID) 101 % 71.5-134

Chloride, SM4500CI-B		mg/kg		Analyzed By: HM						
Analyte	Result	Reporting Limit	Analyzed	Method Blank	BS	% Recovery	True Value QC	RPD	Qualifier	
Chloride	16.0	16.0	09/10/2024	ND	416	104	400	10.9		

TPH 8015M		mg/kg		Analyzed By: MS					
Analyte	Result	Reporting Limit	Analyzed	Method Blank	BS	% Recovery	True Value QC	RPD	Qualifier
GRO C6-C10*	<10.0	10.0	09/10/2024	ND	211	106	200	2.29	
DRO >C10-C28*	<10.0	10.0	09/10/2024	ND	201	100	200	2.37	
EXT DRO >C28-C36	<10.0	10.0	09/10/2024	ND					

Surrogate: 1-Chlorooctane 83.9 % 48.2-134

Surrogate: 1-Chlorooctadecane 85.2 % 49.1-148

Cardinal Laboratories

*=Accredited Analyte

PLEASE NOTE: Liability and Damages. Cardinal's liability and client's exclusive remedy for any claim arising, whether based in contract or tort, shall be limited to the amount paid by client for analyses. All claims, including those for negligence and any other cause whatsoever shall be deemed waived unless made in writing and received by Cardinal within thirty (30) days after completion of the applicable service. In no event shall Cardinal be liable for incidental or consequential damages, including, without limitation, business interruptions, loss of use, or loss of profits incurred by client, its subsidiaries, affiliates or successors arising out of or related to the performance of the services hereunder by Cardinal, regardless of whether such claim is based upon any of the above stated reasons or otherwise. Results relate only to the samples identified above. This report shall not be reproduced except in full with written approval of Cardinal Laboratories.

Celey D. Keene, Lab Director/Quality Manager



PHONE (575) 393-2326 • 101 E. MARLAND • HOBBS, NM 88240

Notes and Definitions

S-04	The surrogate recovery for this sample is outside of established control limits due to a sample matrix effect.
BS-3	Blank spike recovery outside of lab established statistical limits, but still within method limits. Data is not adversely affected.
ND	Analyte NOT DETECTED at or above the reporting limit
RPD	Relative Percent Difference
**	Samples not received at proper temperature of 6°C or below.
***	Insufficient time to reach temperature.
-	Chloride by SM4500Cl-B does not require samples be received at or below 6°C Samples reported on an as received basis (wet) unless otherwise noted on report

Cardinal Laboratories

*=Accredited Analyte

PLEASE NOTE: Liability and Damages. Cardinal's liability and client's exclusive remedy for any claim arising, whether based in contract or tort, shall be limited to the amount paid by client for analyses. All claims, including those for negligence and any other cause whatsoever shall be deemed waived unless made in writing and received by Cardinal within thirty (30) days after completion of the applicable service. In no event shall Cardinal be liable for incidental or consequential damages, including, without limitation, business interruptions, loss of use, or loss of profits incurred by client, its subsidiaries, affiliates or successors arising out of or related to the performance of the services hereunder by Cardinal, regardless of whether such claim is based upon any of the above stated reasons or otherwise. Results relate only to the samples identified above. This report shall not be reproduced except in full with written approval of Cardinal Laboratories.

A handwritten signature in black ink, appearing to read "Celey D. Keene".

Celey D. Keene, Lab Director/Quality Manager



101 East Marland, Hobbs, NM 88240
(575) 393-2326 FAX (575) 393-2476

CHAIN-OF-CUSTODY AND ANALYSIS REQUEST

112

Company Name: Ensolum, LLC

Project Manager: Kelly Lowery

Address: 601 N. Marland St. STE 400

City: Midland State: TX Zip: 79701

Phone #: 214-733-3145 Fax #:

Project #: 038417155 Project Owner:

Project Name: Benelli CTB

Project Location: Eddy County

Sample Name: Tabitha Guadiana

BILL TO

P.O. #:

Company: Oxy USA, Inc.

Attn: Wade Dittich

Address:

City:

State: Zip:

Phone #: 575-390-2828

Fax #:

ANALYSIS REQUEST

Lab I.D.	Sample I.D.	Sample Depth (feet)	(G)RAB OR (C)OMP.	# CONTAINERS	MATRIX						DATE	TIME	Chlorides	BTEx	TPH	
					GROUNDWATER	WASTEWATER	SOIL	OIL	SLUDGE	OTHER :						ACID/BASE:
11245438	FS-03	2.5	C	1								11/24				
2	FS-04	2.5	C	1								11/26				
3	FS-05	3	C	1								11/28				
4	FS-06	6	C	1								11/30				
5	FS-07	7	C	1								11/32				
6	FS-08	7	C	1								11/34				
7	FS-10	4	C	1								11/36				
8	FS-11	4	C	1								11/38				
9	SW-01	2-2.5	C	1								11/40				
10	SW-02	0-2	C	1								11/42				

PLEASE NOTE: Liability and Damages: Cardinal's liability and certain exclusive remedy for any claim arising out of or related to the performance of services rendered by Cardinal, regardless of whether such claim is based upon any of the above stated reasons or otherwise, shall be limited to the amount paid by the client for the analyses. All claims including those for negligence and any other cause whatsoever shall be deemed waived unless made in writing and received by Cardinal within 30 days after completion of the applicable service. In no event shall Cardinal be liable for incidental or consequential damages, including without limitation, business interruption, loss of use, or loss of profits incurred by client, its subsidiaries, affiliates or successors arising out of or related to the performance of services rendered by Cardinal, regardless of whether such claim is based upon any of the above stated reasons or otherwise.

Relinquished By:

Date: 9/17/14 Received By:

Relinquished By:

Date: 10/10/14 Received By:

Relinquished By:

Date: 10/10/14 Received By:

Delivered By: (Circle One)

Sampler - UPS - Bus - Other:

On-site Temp. C: 6.7°C

Sample Condition

Turnaround Time: Standard

Thermometer ID #13740

Standard

Corrected Temp. C

Cardinal cannot accept verbal changes. Please email changes to celey.keene@cardinallabsnm.com



101 East Marland, Hobbs, NM 88240
(575) 393-2326 FAX (575) 393-2476

CHAIN-OF-CUSTODY AND ANALYSIS REQUEST

2/12

Company Name: Ensolum, LLC

Project Manager: Kelly Lowery

Address: 601 N. Marland St. STE 400

City: Midland State: TX Zip: 79701

Phone #: 214-733-3165 Fax #:

Project #: 038447155 Project Owner:

Project Name: Benelli CTB

Project Location: Eddy County

Sample Name: TCBHLE Guardian

BILL TO

P.O. #:

Company: Oxy USA, Inc.

Attn: Wade Dittich

Address:

City:

State: Zip:

Phone #: 575-390-2828

Fax #:

ANALYSIS REQUEST

FOR LAB USE ONLY

Lab I.D. Sample I.D.

Sample Depth (feet)

(G)RAB OR (C)OMP.

CONTAINERS

MATRIX

PRESERV.

SAMPLING

GROUNDWATER

WASTEWATER

SOIL

OIL

SLUDGE

OTHER :

ACID/BASE:

ICE / COOL

OTHER :

DATE

TIME

Chlorides

BTEX

TPH

PLEASE NOTE: Liability and Damages. Cardinal's liability and clients' exclusive remedy for any claim arising from this contract or bill shall be limited to the amount paid by the client for the analysis. All claims including those for negligence and any other cause whatsoever shall be deemed waived unless made in writing and received by Cardinal within 30 days after completion of the applicable service. In no event shall Cardinal be liable for incidental or consequential damages, including without limitation, business interruptions, loss of use, or loss of profits incurred by client, its subsidiaries, affiliates or successors arising out of or related to the performance of services hereunder by Cardinal, regardless of whether such claim is based upon any of the above stated reasons or otherwise.

Relinquished By:

Date: 9/9/24

Received By:

Verbal Result: ☐ Yes ☐ No Add'l Phone #:

All Results are emailed. Please provide Email address:

B.lennings@ensolum.com Kelly Lowery @ensolum.com

Relinquished By:

Date: 9/9/24

Received By:

REMARKS:

Delivered By: (Circle One)

Corrected Temp. °C

Sample Condition

CHECKED BY: (Initials)

Turnaround Time:

Standard

Bacteria (only)

Cool Intact

Observed Temp. °C

Corrected Temp. °C

Sampler - UPS - Bus - Other:

Corrected Temp. °C

Sample Condition

CHECKED BY: (Initials)

Turnaround Time:

Standard

Bacteria (only)

Cool Intact

Observed Temp. °C

Corrected Temp. °C

FORM 000 R 3.2 10/07/21

† Cardinal cannot accept verbal changes. Please email changes to celey.keene@cardinallabsnm.com



PHONE (575) 393-2326 • 101 E. MARLAND • HOBBS, NM 88240

October 31, 2024

KELLY LOWERY

ENSOLUM, LLC

705 W WADLEY AVE.

MIDLAND, TX 79705

RE: CEDAR CANYON PIT

Enclosed are the results of analyses for samples received by the laboratory on 10/28/24 14:53.

Cardinal Laboratories is accredited through Texas NELAP under certificate number TX-C24-00112. Accreditation applies to drinking water, non-potable water and solid and chemical materials. All accredited analytes are denoted by an asterisk (*). For a complete list of accredited analytes and matrices visit the TCEQ website at www.tceq.texas.gov/field/qa/lab_accred_certif.html.

Cardinal Laboratories is accredited through the State of Colorado Department of Public Health and Environment for:

Method EPA 552.2	Haloacetic Acids (HAA-5)
Method EPA 524.2	Total Trihalomethanes (TTHM)
Method EPA 524.4	Regulated VOCs (V1, V2, V3)

Accreditation applies to public drinking water matrices.

This report meets NELAP requirements and is made up of a cover page, analytical results, and a copy of the original chain-of-custody. If you have any questions concerning this report, please feel free to contact me.

Sincerely,

A handwritten signature in black ink that reads "Celey D. Keene". The signature is written in a cursive style with a large, stylized 'C' and 'K'.

Celey D. Keene

Lab Director/Quality Manager



PHONE (575) 393-2326 • 101 E. MARLAND • HOBBS, NM 88240

Analytical Results For:

ENSOLUM, LLC
 KELLY LOWERY
 705 W WADLEY AVE.
 MIDLAND TX, 79705
 Fax To:

Received: 10/28/2024
 Reported: 10/31/2024
 Project Name: CEDAR CANYON PIT
 Project Number: 03B1417155
 Project Location: OXY - EDDY CO.

Sampling Date: 10/28/2024
 Sampling Type: Soil
 Sampling Condition: Cool & Intact
 Sample Received By: Alyssa Parras

Sample ID: CEDAR CANYON PIT (H246545-01)

BTEX 8021B		mg/kg		Analyzed By: JH						
Analyte	Result	Reporting Limit	Analyzed	Method Blank	BS	% Recovery	True Value QC	RPD	Qualifier	
Benzene*	<0.050	0.050	10/29/2024	ND	2.20	110	2.00	1.27		
Toluene*	<0.050	0.050	10/29/2024	ND	2.14	107	2.00	1.16		
Ethylbenzene*	<0.050	0.050	10/29/2024	ND	2.18	109	2.00	1.31		
Total Xylenes*	<0.150	0.150	10/29/2024	ND	6.50	108	6.00	1.88		
Total BTEX	<0.300	0.300	10/29/2024	ND						

Surrogate: 4-Bromofluorobenzene (PID) 99.3 % 71.5-134

Chloride, SM4500Cl-B		mg/kg		Analyzed By: AC						
Analyte	Result	Reporting Limit	Analyzed	Method Blank	BS	% Recovery	True Value QC	RPD	Qualifier	
Chloride	<16.0	16.0	10/29/2024	ND	416	104	400	3.92		

TPH 8015M		mg/kg		Analyzed By: MS					
Analyte	Result	Reporting Limit	Analyzed	Method Blank	BS	% Recovery	True Value QC	RPD	Qualifier
GRO C6-C10*	<10.0	10.0	10/29/2024	ND	221	111	200	0.408	
DRO >C10-C28*	<10.0	10.0	10/29/2024	ND	223	111	200	0.139	
EXT DRO >C28-C36	<10.0	10.0	10/29/2024	ND					

Surrogate: 1-Chlorooctane 95.5 % 48.2-134

Surrogate: 1-Chlorooctadecane 84.0 % 49.1-148

Cardinal Laboratories

*=Accredited Analyte

PLEASE NOTE: Liability and Damages. Cardinal's liability and client's exclusive remedy for any claim arising, whether based in contract or tort, shall be limited to the amount paid by client for analyses. All claims, including those for negligence and any other cause whatsoever shall be deemed waived unless made in writing and received by Cardinal within thirty (30) days after completion of the applicable service. In no event shall Cardinal be liable for incidental or consequential damages, including, without limitation, business interruptions, loss of use, or loss of profits incurred by client, its subsidiaries, affiliates or successors arising out of or related to the performance of the services hereunder by Cardinal, regardless of whether such claim is based upon any of the above stated reasons or otherwise. Results relate only to the samples identified above. This report shall not be reproduced except in full with written approval of Cardinal Laboratories.

Celey D. Keene, Lab Director/Quality Manager

PHONE (575) 393-2326 • 101 E. MARLAND • HOBBS, NM 88240

Notes and Definitions

QM-07	The spike recovery was outside acceptance limits for the MS and/or MSD. The batch was accepted based on acceptable LCS recovery.
ND	Analyte NOT DETECTED at or above the reporting limit
RPD	Relative Percent Difference
**	Samples not received at proper temperature of 6°C or below.
***	Insufficient time to reach temperature.
-	Chloride by SM4500Cl-B does not require samples be received at or below 6°C Samples reported on an as received basis (wet) unless otherwise noted on report

Cardinal Laboratories

*=Accredited Analyte

PLEASE NOTE: Liability and Damages. Cardinal's liability and client's exclusive remedy for any claim arising, whether based in contract or tort, shall be limited to the amount paid by client for analyses. All claims, including those for negligence and any other cause whatsoever shall be deemed waived unless made in writing and received by Cardinal within thirty (30) days after completion of the applicable service. In no event shall Cardinal be liable for incidental or consequential damages, including, without limitation, business interruptions, loss of use, or loss of profits incurred by client, its subsidiaries, affiliates or successors arising out of or related to the performance of the services hereunder by Cardinal, regardless of whether such claim is based upon any of the above stated reasons or otherwise. Results relate only to the samples identified above. This report shall not be reproduced except in full with written approval of Cardinal Laboratories.

A handwritten signature in black ink, appearing to read "C. D. Keene", written over a horizontal line.

Celey D. Keene, Lab Director/Quality Manager



CHAIN-OF-CUSTODY AND ANALYSIS REQUEST

101 East Marland, Hobbs, NM 88240
(575) 393-2326 FAX (575) 393-2476

Company Name: Ensolum, LLC

Project Manager: Kelly Lowery

Address: 601 N. Marland St. STE 400

City: Midland State: TX Zip: 79701

Phone #: 214-733-3165 Email: klowery@ensolum.com

Project #: 038147155 Project Owner:

Project Name: Cedar Canyon Pit

Project Location: Early County NM

Sampler Name: Utech Azuka

BILL TO

ANALYSIS REQUEST

P.O. #: Wade A. Frick

Company: Dxy

Attn:

Address:

City:

State: Zip:

Phone #:

Email:

FOR LAB USE ONLY

Lab I.D.

Sample I.D.

(G)RAB OR (C)OMP.

CONTAINERS

GROUNDWATER

WASTEWATER

SOIL

OIL

SLUDGE

OTHER:

ACID/BASE:

ICE / COOL

OTHER:

DATE

TIME

X BTX 80213

X 1PH 8015M

X chloride 4500

1240545

Cedar Canyon Pit

N/A

C 1

X

N/A

10/28/24

N/A

10/28/24

N/A

10/28/24

N/A

10/28/24

N/A

10/28/24

Sante Fe Main Office
Phone: (505) 476-3441

General Information
Phone: (505) 629-6116

Online Phone Directory
<https://www.emnrd.nm.gov/ocd/contact-us>

State of New Mexico
Energy, Minerals and Natural Resources
Oil Conservation Division
1220 S. St Francis Dr.
Santa Fe, NM 87505

QUESTIONS

Action 436880

QUESTIONS

Operator: OXY USA INC P.O. Box 4294 Houston, TX 772104294	OGRID: 16696
	Action Number: 436880
	Action Type: [C-141] Remediation Closure Request C-141 (C-141-v-Closure)

QUESTIONS

Prerequisites	
Incident ID (n#)	nAPP2320749536
Incident Name	NAPP2320749536 BENELLI CTB 10707151 CRIT 1 @ 0
Incident Type	Fire
Incident Status	Remediation Closure Report Received

Location of Release Source	
<i>Please answer all the questions in this group.</i>	
Site Name	BENELLI CTB 10707151 CRIT 1
Date Release Discovered	07/19/2023
Surface Owner	Private

Incident Details	
<i>Please answer all the questions in this group.</i>	
Incident Type	Fire
Did this release result in a fire or is the result of a fire	Yes
Did this release result in any injuries	No
Has this release reached or does it have a reasonable probability of reaching a watercourse	No
Has this release endangered or does it have a reasonable probability of endangering public health	No
Has this release substantially damaged or will it substantially damage property or the environment	No
Is this release of a volume that is or may with reasonable probability be detrimental to fresh water	No

Nature and Volume of Release	
<i>Material(s) released, please answer all that apply below. Any calculations or specific justifications for the volumes provided should be attached to the follow-up C-141 submission.</i>	
Crude Oil Released (bbls) Details	Cause: Fire Flow Line - Production Crude Oil Released: 1 BBL Recovered: 0 BBL Lost: 1 BBL.
Produced Water Released (bbls) Details	Cause: Fire Flow Line - Production Produced Water Released: 1 BBL Recovered: 0 BBL Lost: 1 BBL.
Is the concentration of chloride in the produced water >10,000 mg/l	Yes
Condensate Released (bbls) Details	Not answered.
Natural Gas Vented (Mcf) Details	Not answered.
Natural Gas Flared (Mcf) Details	Not answered.
Other Released Details	Not answered.
Are there additional details for the questions above (i.e. any answer containing Other, Specify, Unknown, and/or Fire, or any negative lost amounts)	Not answered.

Sante Fe Main Office
Phone: (505) 476-3441

General Information
Phone: (505) 629-6116

Online Phone Directory
<https://www.emnrd.nm.gov/ocd/contact-us>

State of New Mexico
Energy, Minerals and Natural Resources
Oil Conservation Division
1220 S. St Francis Dr.
Santa Fe, NM 87505

QUESTIONS, Page 2

Action 436880

QUESTIONS (continued)

Operator: OXY USA INC P.O. Box 4294 Houston, TX 772104294	OGRID: 16696
	Action Number: 436880
	Action Type: [C-141] Remediation Closure Request C-141 (C-141-v-Closure)

QUESTIONS

Nature and Volume of Release (continued)	
Is this a gas only submission (i.e. only significant Mcf values reported)	More info needed to determine if this will be treated as a "gas only" report.
Was this a major release as defined by Subsection A of 19.15.29.7 NMAC	Yes
Reasons why this would be considered a submission for a notification of a major release	From paragraph A. "Major release" determine using: (2) an unauthorized release of a volume that: (a) results in a fire or is the result of a fire.
With the implementation of the 19.15.27 NMAC (05/25/2021), venting and/or flaring of natural gas (i.e. gas only) are to be submitted on the C-129 form.	

Initial Response

The responsible party must undertake the following actions immediately unless they could create a safety hazard that would result in injury.

The source of the release has been stopped	True
The impacted area has been secured to protect human health and the environment	True
Released materials have been contained via the use of berms or dikes, absorbent pads, or other containment devices	True
All free liquids and recoverable materials have been removed and managed appropriately	True
If all the actions described above have not been undertaken, explain why	Not answered.

Per Paragraph (4) of Subsection B of 19.15.29.8 NMAC the responsible party may commence remediation immediately after discovery of a release. If remediation has begun, please prepare and attach a narrative of actions to date in the follow-up C-141 submission. If remedial efforts have been successfully completed or if the release occurred within a lined containment area (see Subparagraph (a) of Paragraph (5) of Subsection A of 19.15.29.11 NMAC), please prepare and attach all information needed for closure evaluation in the follow-up C-141 submission.

I hereby certify that the information given above is true and complete to the best of my knowledge and understand that pursuant to OCD rules and regulations all operators are required to report and/or file certain release notifications and perform corrective actions for releases which may endanger public health or the environment. The acceptance of a C-141 report by the OCD does not relieve the operator of liability should their operations have failed to adequately investigate and remediate contamination that pose a threat to groundwater, surface water, human health or the environment. In addition, OCD acceptance of a C-141 report does not relieve the operator of responsibility for compliance with any other federal, state, or local laws and/or regulations.

I hereby agree and sign off to the above statement	Name: Wade Dittrich Title: Environmental Coordinator Email: wade_dittrich@oxy.com Date: 02/27/2025
--	---

Sante Fe Main Office
Phone: (505) 476-3441

General Information
Phone: (505) 629-6116

Online Phone Directory
<https://www.emnrd.nm.gov/ocd/contact-us>

State of New Mexico
Energy, Minerals and Natural Resources
Oil Conservation Division
1220 S. St Francis Dr.
Santa Fe, NM 87505

QUESTIONS, Page 3

Action 436880

QUESTIONS (continued)

Operator: OXY USA INC P.O. Box 4294 Houston, TX 772104294	OGRID: 16696
	Action Number: 436880
	Action Type: [C-141] Remediation Closure Request C-141 (C-141-v-Closure)

QUESTIONS

Site Characterization	
<i>Please answer all the questions in this group (only required when seeking remediation plan approval and beyond). This information must be provided to the appropriate district office no later than 90 days after the release discovery date.</i>	
What is the shallowest depth to groundwater beneath the area affected by the release in feet below ground surface (ft bgs)	Less than or equal 25 (ft.)
What method was used to determine the depth to ground water	NM OSE iWaters Database Search
Did this release impact groundwater or surface water	No
What is the minimum distance, between the closest lateral extents of the release and the following surface areas:	
A continuously flowing watercourse or any other significant watercourse	Between 1 and 5 (mi.)
Any lakebed, sinkhole, or playa lake (measured from the ordinary high-water mark)	Between 1 and 5 (mi.)
An occupied permanent residence, school, hospital, institution, or church	Between 1 and 5 (mi.)
A spring or a private domestic fresh water well used by less than five households for domestic or stock watering purposes	Between 1 and 5 (mi.)
Any other fresh water well or spring	Between 1 and 5 (mi.)
Incorporated municipal boundaries or a defined municipal fresh water well field	Between 1 and 5 (mi.)
A wetland	Between 1000 (ft.) and ½ (mi.)
A subsurface mine	Greater than 5 (mi.)
An (non-karst) unstable area	Zero feet, overlying, or within area
Categorize the risk of this well / site being in a karst geology	Medium
A 100-year floodplain	Between 1 and 5 (mi.)
Did the release impact areas not on an exploration, development, production, or storage site	Yes

Remediation Plan	
<i>Please answer all the questions that apply or are indicated. This information must be provided to the appropriate district office no later than 90 days after the release discovery date.</i>	
Requesting a remediation plan approval with this submission	Yes
<i>Attach a comprehensive report demonstrating the lateral and vertical extents of soil contamination associated with the release have been determined, pursuant to 19.15.29.11 NMAC and 19.15.29.13 NMAC.</i>	
Have the lateral and vertical extents of contamination been fully delineated	Yes
Was this release entirely contained within a lined containment area	No
Soil Contamination Sampling: (Provide the highest observable value for each, in milligrams per kilograms.)	
Chloride (EPA 300.0 or SM4500 Cl B)	2360
TPH (GRO+DRO+MRO) (EPA SW-846 Method 8015M)	21.9
GRO+DRO (EPA SW-846 Method 8015M)	21.9
BTEX (EPA SW-846 Method 8021B or 8260B)	0
Benzene (EPA SW-846 Method 8021B or 8260B)	0
<i>Per Subsection B of 19.15.29.11 NMAC unless the site characterization report includes completed efforts at remediation, the report must include a proposed remediation plan in accordance with 19.15.29.12 NMAC, which includes the anticipated timelines for beginning and completing the remediation.</i>	
On what estimated date will the remediation commence	05/01/2024
On what date will (or did) the final sampling or liner inspection occur	09/09/2024
On what date will (or was) the remediation complete(d)	09/09/2024
What is the estimated surface area (in square feet) that will be reclaimed	3452
What is the estimated volume (in cubic yards) that will be reclaimed	422
What is the estimated surface area (in square feet) that will be remediated	3452
What is the estimated volume (in cubic yards) that will be remediated	422
<i>These estimated dates and measurements are recognized to be the best guess or calculation at the time of submission and may (be) change(d) over time as more remediation efforts are completed.</i>	
<i>The OCD recognizes that proposed remediation measures may have to be minimally adjusted in accordance with the physical realities encountered during remediation. If the responsible party has any need to significantly deviate from the remediation plan proposed, then it should consult with the division to determine if another remediation plan submission is required.</i>	

Sante Fe Main Office
Phone: (505) 476-3441

General Information
Phone: (505) 629-6116

Online Phone Directory
<https://www.emnrd.nm.gov/ocd/contact-us>

State of New Mexico
Energy, Minerals and Natural Resources
Oil Conservation Division
1220 S. St Francis Dr.
Santa Fe, NM 87505

QUESTIONS, Page 4

Action 436880

QUESTIONS (continued)

Operator: OXY USA INC P.O. Box 4294 Houston, TX 772104294	OGRID:
	16696
	Action Number:
	436880
	Action Type:
	[C-141] Remediation Closure Request C-141 (C-141-v-Closure)

QUESTIONS

Remediation Plan (continued)	
<i>Please answer all the questions that apply or are indicated. This information must be provided to the appropriate district office no later than 90 days after the release discovery date.</i>	
This remediation will (or is expected to) utilize the following processes to remediate / reduce contaminants:	
<i>(Select all answers below that apply.)</i>	
(Ex Situ) Excavation and off-site disposal (i.e. dig and haul, hydrovac, etc.)	Yes
Which OCD approved facility will be used for off-site disposal	LEA LAND LANDFILL [fEEM0112342028]
OR which OCD approved well (API) will be used for off-site disposal	Not answered.
OR is the off-site disposal site, to be used, out-of-state	Not answered.
OR is the off-site disposal site, to be used, an NMED facility	Not answered.
(Ex Situ) Excavation and on-site remediation (i.e. On-Site Land Farms)	Not answered.
(In Situ) Soil Vapor Extraction	Not answered.
(In Situ) Chemical processing (i.e. Soil Shredding, Potassium Permanganate, etc.)	Not answered.
(In Situ) Biological processing (i.e. Microbes / Fertilizer, etc.)	Not answered.
(In Situ) Physical processing (i.e. Soil Washing, Gypsum, Disking, etc.)	Not answered.
Ground Water Abatement pursuant to 19.15.30 NMAC	Not answered.
OTHER (Non-listed remedial process)	Not answered.
<i>Per Subsection B of 19.15.29.11 NMAC unless the site characterization report includes completed efforts at remediation, the report must include a proposed remediation plan in accordance with 19.15.29.12 NMAC, which includes the anticipated timelines for beginning and completing the remediation.</i>	
I hereby certify that the information given above is true and complete to the best of my knowledge and understand that pursuant to OCD rules and regulations all operators are required to report and/or file certain release notifications and perform corrective actions for releases which may endanger public health or the environment. The acceptance of a C-141 report by the OCD does not relieve the operator of liability should their operations have failed to adequately investigate and remediate contamination that pose a threat to groundwater, surface water, human health or the environment. In addition, OCD acceptance of a C-141 report does not relieve the operator of responsibility for compliance with any other federal, state, or local laws and/or regulations.	
I hereby agree and sign off to the above statement	Name: Wade Dittrich Title: Environmental Coordinator Email: wade_dittrich@oxy.com Date: 02/27/2025
<i>The OCD recognizes that proposed remediation measures may have to be minimally adjusted in accordance with the physical realities encountered during remediation. If the responsible party has any need to significantly deviate from the remediation plan proposed, then it should consult with the division to determine if another remediation plan submission is required.</i>	

Sante Fe Main Office
Phone: (505) 476-3441

General Information
Phone: (505) 629-6116

Online Phone Directory
<https://www.emnrd.nm.gov/ocd/contact-us>

State of New Mexico
Energy, Minerals and Natural Resources
Oil Conservation Division
1220 S. St Francis Dr.
Santa Fe, NM 87505

QUESTIONS, Page 5

Action 436880

QUESTIONS (continued)

Operator: OXY USA INC P.O. Box 4294 Houston, TX 772104294	OGRID: 16696
	Action Number: 436880
	Action Type: [C-141] Remediation Closure Request C-141 (C-141-v-Closure)

QUESTIONS

Deferral Requests Only	
Only answer the questions in this group if seeking a deferral upon approval this submission. Each of the following items must be confirmed as part of any request for deferral of remediation.	
Requesting a deferral of the remediation closure due date with the approval of this submission	No

Sante Fe Main Office
Phone: (505) 476-3441

General Information
Phone: (505) 629-6116

Online Phone Directory
<https://www.emnrd.nm.gov/ocd/contact-us>

State of New Mexico
Energy, Minerals and Natural Resources
Oil Conservation Division
1220 S. St Francis Dr.
Santa Fe, NM 87505

QUESTIONS, Page 6

Action 436880

QUESTIONS (continued)

Operator: OXY USA INC P.O. Box 4294 Houston, TX 772104294	OGRID: 16696
	Action Number: 436880
	Action Type: [C-141] Remediation Closure Request C-141 (C-141-v-Closure)

QUESTIONS

Sampling Event Information	
Last sampling notification (C-141N) recorded	380865
Sampling date pursuant to Subparagraph (a) of Paragraph (1) of Subsection D of 19.15.29.12 NMAC	09/09/2024
What was the (estimated) number of samples that were to be gathered	15
What was the sampling surface area in square feet	3000

Remediation Closure Request	
<i>Only answer the questions in this group if seeking remediation closure for this release because all remediation steps have been completed.</i>	
Requesting a remediation closure approval with this submission	Yes
Have the lateral and vertical extents of contamination been fully delineated	Yes
Was this release entirely contained within a lined containment area	No
All areas reasonably needed for production or subsequent drilling operations have been stabilized, returned to the sites existing grade, and have a soil cover that prevents ponding of water, minimizing dust and erosion	Yes
What was the total surface area (in square feet) remediated	3452
What was the total volume (cubic yards) remediated	422
All areas not reasonably needed for production or subsequent drilling operations have been reclaimed to contain a minimum of four feet of non-waste contain earthen material with concentrations less than 600 mg/kg chlorides, 100 mg/kg TPH, 50 mg/kg BTEX, and 10 mg/kg Benzene	Yes
What was the total surface area (in square feet) reclaimed	3452
What was the total volume (in cubic yards) reclaimed	422
Summarize any additional remediation activities not included by answers (above)	NA
<i>The responsible party must attach information demonstrating they have complied with all applicable closure requirements and any conditions or directives of the OCD. This demonstration should be in the form of a comprehensive report (in .pdf format) including a scaled site map, sampling diagrams, relevant field notes, photographs of any excavation prior to backfilling, laboratory data including chain of custody documents of final sampling, and a narrative of the remedial activities. Refer to 19.15.29.12 NMAC.</i>	
I hereby certify that the information given above is true and complete to the best of my knowledge and understand that pursuant to OCD rules and regulations all operators are required to report and/or file certain release notifications and perform corrective actions for releases which may endanger public health or the environment. The acceptance of a C-141 report by the OCD does not relieve the operator of liability should their operations have failed to adequately investigate and remediate contamination that pose a threat to groundwater, surface water, human health or the environment. In addition, OCD acceptance of a C-141 report does not relieve the operator of responsibility for compliance with any other federal, state, or local laws and/or regulations. The responsible party acknowledges they must substantially restore, reclaim, and re-vegetate the impacted surface area to the conditions that existed prior to the release or their final land use in accordance with 19.15.29.13 NMAC including notification to the OCD when reclamation and re-vegetation are complete.	
I hereby agree and sign off to the above statement	Name: Wade Dittrich Title: Environmental Coordinator Email: wade_dittrich@oxy.com Date: 02/27/2025

Sante Fe Main Office
Phone: (505) 476-3441

General Information
Phone: (505) 629-6116

Online Phone Directory
<https://www.emnrd.nm.gov/ocd/contact-us>

State of New Mexico
Energy, Minerals and Natural Resources
Oil Conservation Division
1220 S. St Francis Dr.
Santa Fe, NM 87505

QUESTIONS, Page 7

Action 436880

QUESTIONS (continued)

Operator: OXY USA INC P.O. Box 4294 Houston, TX 772104294	OGRID: 16696
	Action Number: 436880
	Action Type: [C-141] Remediation Closure Request C-141 (C-141-v-Closure)

QUESTIONS

Reclamation Report	
Only answer the questions in this group if all reclamation steps have been completed.	
Requesting a reclamation approval with this submission	No

Sante Fe Main Office
Phone: (505) 476-3441

General Information
Phone: (505) 629-6116

Online Phone Directory
<https://www.emnrd.nm.gov/ocd/contact-us>

State of New Mexico
Energy, Minerals and Natural Resources
Oil Conservation Division
1220 S. St Francis Dr.
Santa Fe, NM 87505

CONDITIONS

Action 436880

CONDITIONS

Operator: OXY USA INC P.O. Box 4294 Houston, TX 772104294	OGRID: 16696
	Action Number: 436880
	Action Type: [C-141] Remediation Closure Request C-141 (C-141-v-Closure)

CONDITIONS

Created By	Condition	Condition Date
rhamlet	We have received your Remediation Closure Report for Incident #NAPP2320749536 BENELLI CTB 10707151 CRIT 1, thank you. This Remediation Closure Report is approved.	3/3/2025

Sante Fe Main Office
Phone: (505) 476-3441

General Information
Phone: (505) 629-6116

Online Phone Directory
<https://www.emnrd.nm.gov/ocd/contact-us>

State of New Mexico
Energy, Minerals and Natural Resources
Oil Conservation Division
1220 S. St Francis Dr.
Santa Fe, NM 87505

QUESTIONS

Action 521155

QUESTIONS

Operator: OXY USA INC P.O. Box 4294 Houston, TX 772104294	OGRID: 16696
	Action Number: 521155
	Action Type: [C-141] Reclamation Report C-141 (C-141-v-Reclamation)

QUESTIONS

Prerequisites	
Incident ID (n#)	nAPP2320749536
Incident Name	NAPP2320749536 BENELLI CTB 10707151 CRIT 1 @ D-08-25S-28E
Incident Type	Fire
Incident Status	Reclamation Report Received

Location of Release Source	
<i>Please answer all the questions in this group.</i>	
Site Name	BENELLI CTB 10707151 CRIT 1
Date Release Discovered	07/19/2023
Surface Owner	Private

Incident Details	
<i>Please answer all the questions in this group.</i>	
Incident Type	Fire
Did this release result in a fire or is the result of a fire	Yes
Did this release result in any injuries	No
Has this release reached or does it have a reasonable probability of reaching a watercourse	No
Has this release endangered or does it have a reasonable probability of endangering public health	No
Has this release substantially damaged or will it substantially damage property or the environment	No
Is this release of a volume that is or may with reasonable probability be detrimental to fresh water	No

Nature and Volume of Release	
<i>Material(s) released, please answer all that apply below. Any calculations or specific justifications for the volumes provided should be attached to the follow-up C-141 submission.</i>	
Crude Oil Released (bbls) Details	Cause: Fire Flow Line - Production Crude Oil Released: 1 BBL Recovered: 0 BBL Lost: 1 BBL.
Produced Water Released (bbls) Details	Cause: Fire Flow Line - Production Produced Water Released: 1 BBL Recovered: 0 BBL Lost: 1 BBL.
Is the concentration of chloride in the produced water >10,000 mg/l	Yes
Condensate Released (bbls) Details	Not answered.
Natural Gas Vented (Mcf) Details	Not answered.
Natural Gas Flared (Mcf) Details	Not answered.
Other Released Details	Not answered.
Are there additional details for the questions above (i.e. any answer containing Other, Specify, Unknown, and/or Fire, or any negative lost amounts)	Not answered.

Sante Fe Main Office
Phone: (505) 476-3441

General Information
Phone: (505) 629-6116

Online Phone Directory
<https://www.emnrd.nm.gov/ocd/contact-us>

State of New Mexico
Energy, Minerals and Natural Resources
Oil Conservation Division
1220 S. St Francis Dr.
Santa Fe, NM 87505

QUESTIONS, Page 2

Action 521155

QUESTIONS (continued)

Operator: OXY USA INC P.O. Box 4294 Houston, TX 772104294	OGRID: 16696
	Action Number: 521155
	Action Type: [C-141] Reclamation Report C-141 (C-141-v-Reclamation)

QUESTIONS

Nature and Volume of Release (continued)	
Is this a gas only submission (i.e. only significant Mcf values reported)	More info needed to determine if this will be treated as a "gas only" report.
Was this a major release as defined by Subsection A of 19.15.29.7 NMAC	Yes
Reasons why this would be considered a submission for a notification of a major release	From paragraph A. "Major release" determine using: (2) an unauthorized release of a volume that: (a) results in a fire or is the result of a fire.
<i>With the implementation of the 19.15.27 NMAC (05/25/2021), venting and/or flaring of natural gas (i.e. gas only) are to be submitted on the C-129 form.</i>	

Initial Response

The responsible party must undertake the following actions immediately unless they could create a safety hazard that would result in injury.

The source of the release has been stopped	True
The impacted area has been secured to protect human health and the environment	True
Released materials have been contained via the use of berms or dikes, absorbent pads, or other containment devices	True
All free liquids and recoverable materials have been removed and managed appropriately	True
If all the actions described above have not been undertaken, explain why	Not answered.

Per Paragraph (4) of Subsection B of 19.15.29.8 NMAC the responsible party may commence remediation immediately after discovery of a release. If remediation has begun, please prepare and attach a narrative of actions to date in the follow-up C-141 submission. If remedial efforts have been successfully completed or if the release occurred within a lined containment area (see Subparagraph (a) of Paragraph (5) of Subsection A of 19.15.29.11 NMAC), please prepare and attach all information needed for closure evaluation in the follow-up C-141 submission.

I hereby certify that the information given above is true and complete to the best of my knowledge and understand that pursuant to OCD rules and regulations all operators are required to report and/or file certain release notifications and perform corrective actions for releases which may endanger public health or the environment. The acceptance of a C-141 report by the OCD does not relieve the operator of liability should their operations have failed to adequately investigate and remediate contamination that pose a threat to groundwater, surface water, human health or the environment. In addition, OCD acceptance of a C-141 report does not relieve the operator of responsibility for compliance with any other federal, state, or local laws and/or regulations.

I hereby agree and sign off to the above statement	Name: Daniel Sparks Title: Environmental Analyst III Email: daniel_sparks@oxy.com Date: 10/29/2025
--	---

Sante Fe Main Office
Phone: (505) 476-3441

General Information
Phone: (505) 629-6116

Online Phone Directory
<https://www.emnrd.nm.gov/ocd/contact-us>

State of New Mexico
Energy, Minerals and Natural Resources
Oil Conservation Division
1220 S. St Francis Dr.
Santa Fe, NM 87505

QUESTIONS, Page 3

Action 521155

QUESTIONS (continued)

Operator: OXY USA INC P.O. Box 4294 Houston, TX 772104294	OGRID: 16696
	Action Number: 521155
	Action Type: [C-141] Reclamation Report C-141 (C-141-v-Reclamation)

QUESTIONS

Site Characterization	
<i>Please answer all the questions in this group (only required when seeking remediation plan approval and beyond). This information must be provided to the appropriate district office no later than 90 days after the release discovery date.</i>	
What is the shallowest depth to groundwater beneath the area affected by the release in feet below ground surface (ft bgs)	Less than or equal 25 (ft.)
What method was used to determine the depth to ground water	NM OSE iWaters Database Search
Did this release impact groundwater or surface water	No
What is the minimum distance, between the closest lateral extents of the release and the following surface areas:	
A continuously flowing watercourse or any other significant watercourse	Between 1 and 5 (mi.)
Any lakebed, sinkhole, or playa lake (measured from the ordinary high-water mark)	Between 1 and 5 (mi.)
An occupied permanent residence, school, hospital, institution, or church	Between 1 and 5 (mi.)
A spring or a private domestic fresh water well used by less than five households for domestic or stock watering purposes	Between 1 and 5 (mi.)
Any other fresh water well or spring	Between 1 and 5 (mi.)
Incorporated municipal boundaries or a defined municipal fresh water well field	Between 1 and 5 (mi.)
A wetland	Between 1000 (ft.) and ½ (mi.)
A subsurface mine	Greater than 5 (mi.)
An (non-karst) unstable area	Zero feet, overlying, or within area
Categorize the risk of this well / site being in a karst geology	Medium
A 100-year floodplain	Between 1 and 5 (mi.)
Did the release impact areas not on an exploration, development, production, or storage site	Yes

Remediation Plan	
<i>Please answer all the questions that apply or are indicated. This information must be provided to the appropriate district office no later than 90 days after the release discovery date.</i>	
Requesting a remediation plan approval with this submission	Yes
<i>Attach a comprehensive report demonstrating the lateral and vertical extents of soil contamination associated with the release have been determined, pursuant to 19.15.29.11 NMAC and 19.15.29.13 NMAC.</i>	
Have the lateral and vertical extents of contamination been fully delineated	Yes
Was this release entirely contained within a lined containment area	No
Soil Contamination Sampling: (Provide the highest observable value for each, in milligrams per kilograms.)	
Chloride (EPA 300.0 or SM4500 Cl B)	2360
TPH (GRO+DRO+MRO) (EPA SW-846 Method 8015M)	21.9
GRO+DRO (EPA SW-846 Method 8015M)	21.9
BTEX (EPA SW-846 Method 8021B or 8260B)	0
Benzene (EPA SW-846 Method 8021B or 8260B)	0
<i>Per Subsection B of 19.15.29.11 NMAC unless the site characterization report includes completed efforts at remediation, the report must include a proposed remediation plan in accordance with 19.15.29.12 NMAC, which includes the anticipated timelines for beginning and completing the remediation.</i>	
On what estimated date will the remediation commence	05/01/2024
On what date will (or did) the final sampling or liner inspection occur	09/09/2024
On what date will (or was) the remediation complete(d)	09/09/2024
What is the estimated surface area (in square feet) that will be reclaimed	3452
What is the estimated volume (in cubic yards) that will be reclaimed	422
What is the estimated surface area (in square feet) that will be remediated	3452
What is the estimated volume (in cubic yards) that will be remediated	422
<i>These estimated dates and measurements are recognized to be the best guess or calculation at the time of submission and may (be) change(d) over time as more remediation efforts are completed.</i>	
<i>The OCD recognizes that proposed remediation measures may have to be minimally adjusted in accordance with the physical realities encountered during remediation. If the responsible party has any need to significantly deviate from the remediation plan proposed, then it should consult with the division to determine if another remediation plan submission is required.</i>	

Sante Fe Main Office
Phone: (505) 476-3441

General Information
Phone: (505) 629-6116

Online Phone Directory
<https://www.emnrd.nm.gov/ocd/contact-us>

State of New Mexico
Energy, Minerals and Natural Resources
Oil Conservation Division
1220 S. St Francis Dr.
Santa Fe, NM 87505

QUESTIONS, Page 4

Action 521155

QUESTIONS (continued)

Operator: OXY USA INC P.O. Box 4294 Houston, TX 772104294	OGRID: 16696
	Action Number: 521155
	Action Type: [C-141] Reclamation Report C-141 (C-141-v-Reclamation)

QUESTIONS

Remediation Plan (continued)	
<i>Please answer all the questions that apply or are indicated. This information must be provided to the appropriate district office no later than 90 days after the release discovery date.</i>	
This remediation will (or is expected to) utilize the following processes to remediate / reduce contaminants:	
<i>(Select all answers below that apply.)</i>	
(Ex Situ) Excavation and off-site disposal (i.e. dig and haul, hydrovac, etc.)	Yes
Which OCD approved facility will be used for off-site disposal	fEEM0112342028 LEA LAND LANDFILL
OR which OCD approved well (API) will be used for off-site disposal	Not answered.
OR is the off-site disposal site, to be used, out-of-state	No
OR is the off-site disposal site, to be used, an NMED facility	No
(Ex Situ) Excavation and on-site remediation (i.e. On-Site Land Farms)	No
(In Situ) Soil Vapor Extraction	No
(In Situ) Chemical processing (i.e. Soil Shredding, Potassium Permanganate, etc.)	No
(In Situ) Biological processing (i.e. Microbes / Fertilizer, etc.)	No
(In Situ) Physical processing (i.e. Soil Washing, Gypsum, Disking, etc.)	No
Ground Water Abatement pursuant to 19.15.30 NMAC	No
OTHER (Non-listed remedial process)	No
<i>Per Subsection B of 19.15.29.11 NMAC unless the site characterization report includes completed efforts at remediation, the report must include a proposed remediation plan in accordance with 19.15.29.12 NMAC, which includes the anticipated timelines for beginning and completing the remediation.</i>	
I hereby certify that the information given above is true and complete to the best of my knowledge and understand that pursuant to OCD rules and regulations all operators are required to report and/or file certain release notifications and perform corrective actions for releases which may endanger public health or the environment. The acceptance of a C-141 report by the OCD does not relieve the operator of liability should their operations have failed to adequately investigate and remediate contamination that pose a threat to groundwater, surface water, human health or the environment. In addition, OCD acceptance of a C-141 report does not relieve the operator of responsibility for compliance with any other federal, state, or local laws and/or regulations.	
I hereby agree and sign off to the above statement	Name: Daniel Sparks Title: Environmental Analyst III Email: daniel_sparks@oxy.com Date: 10/29/2025
<i>The OCD recognizes that proposed remediation measures may have to be minimally adjusted in accordance with the physical realities encountered during remediation. If the responsible party has any need to significantly deviate from the remediation plan proposed, then it should consult with the division to determine if another remediation plan submission is required.</i>	

Sante Fe Main Office
Phone: (505) 476-3441

General Information
Phone: (505) 629-6116

Online Phone Directory
<https://www.emnrd.nm.gov/ocd/contact-us>

State of New Mexico
Energy, Minerals and Natural Resources
Oil Conservation Division
1220 S. St Francis Dr.
Santa Fe, NM 87505

QUESTIONS, Page 5

Action 521155

QUESTIONS (continued)

Operator: OXY USA INC P.O. Box 4294 Houston, TX 772104294	OGRID: 16696
	Action Number: 521155
	Action Type: [C-141] Reclamation Report C-141 (C-141-v-Reclamation)

QUESTIONS

Deferral Requests Only	
Only answer the questions in this group if seeking a deferral upon approval this submission. Each of the following items must be confirmed as part of any request for deferral of remediation.	
Requesting a deferral of the remediation closure due date with the approval of this submission	No

Sante Fe Main Office
Phone: (505) 476-3441

General Information
Phone: (505) 629-6116

Online Phone Directory
<https://www.emnrd.nm.gov/ocd/contact-us>

State of New Mexico
Energy, Minerals and Natural Resources
Oil Conservation Division
1220 S. St Francis Dr.
Santa Fe, NM 87505

QUESTIONS, Page 6

Action 521155

QUESTIONS (continued)

Operator: OXY USA INC P.O. Box 4294 Houston, TX 772104294	OGRID: 16696
	Action Number: 521155
	Action Type: [C-141] Reclamation Report C-141 (C-141-v-Reclamation)

QUESTIONS

Sampling Event Information	
Last sampling notification (C-141N) recorded	380865
Sampling date pursuant to Subparagraph (a) of Paragraph (1) of Subsection D of 19.15.29.12 NMAC	09/09/2024
What was the (estimated) number of samples that were to be gathered	15
What was the sampling surface area in square feet	3000

Remediation Closure Request	
<i>Only answer the questions in this group if seeking remediation closure for this release because all remediation steps have been completed.</i>	
Requesting a remediation closure approval with this submission	Yes
Have the lateral and vertical extents of contamination been fully delineated	Yes
Was this release entirely contained within a lined containment area	No
All areas reasonably needed for production or subsequent drilling operations have been stabilized, returned to the sites existing grade, and have a soil cover that prevents ponding of water, minimizing dust and erosion	Yes
What was the total surface area (in square feet) remediated	3452
What was the total volume (cubic yards) remediated	422
All areas not reasonably needed for production or subsequent drilling operations have been reclaimed to contain a minimum of four feet of non-waste contain earthen material with concentrations less than 600 mg/kg chlorides, 100 mg/kg TPH, 50 mg/kg BTEX, and 10 mg/kg Benzene	Yes
What was the total surface area (in square feet) reclaimed	3452
What was the total volume (in cubic yards) reclaimed	422
Summarize any additional remediation activities not included by answers (above)	NA
<i>The responsible party must attach information demonstrating they have complied with all applicable closure requirements and any conditions or directives of the OCD. This demonstration should be in the form of a comprehensive report (in .pdf format) including a scaled site map, sampling diagrams, relevant field notes, photographs of any excavation prior to backfilling, laboratory data including chain of custody documents of final sampling, and a narrative of the remedial activities. Refer to 19.15.29.12 NMAC.</i>	
I hereby certify that the information given above is true and complete to the best of my knowledge and understand that pursuant to OCD rules and regulations all operators are required to report and/or file certain release notifications and perform corrective actions for releases which may endanger public health or the environment. The acceptance of a C-141 report by the OCD does not relieve the operator of liability should their operations have failed to adequately investigate and remediate contamination that pose a threat to groundwater, surface water, human health or the environment. In addition, OCD acceptance of a C-141 report does not relieve the operator of responsibility for compliance with any other federal, state, or local laws and/or regulations. The responsible party acknowledges they must substantially restore, reclaim, and re-vegetate the impacted surface area to the conditions that existed prior to the release or their final land use in accordance with 19.15.29.13 NMAC including notification to the OCD when reclamation and re-vegetation are complete.	
I hereby agree and sign off to the above statement	Name: Daniel Sparks Title: Environmental Analyst III Email: daniel_sparks@oxy.com Date: 10/29/2025

Sante Fe Main Office
Phone: (505) 476-3441

General Information
Phone: (505) 629-6116

Online Phone Directory
<https://www.emnrd.nm.gov/ocd/contact-us>

State of New Mexico
Energy, Minerals and Natural Resources
Oil Conservation Division
1220 S. St Francis Dr.
Santa Fe, NM 87505

QUESTIONS, Page 7

Action 521155

QUESTIONS (continued)

Operator: OXY USA INC P.O. Box 4294 Houston, TX 772104294	OGRID: 16696
	Action Number: 521155
	Action Type: [C-141] Reclamation Report C-141 (C-141-v-Reclamation)

QUESTIONS

Reclamation Report	
<i>Only answer the questions in this group if all reclamation steps have been completed.</i>	
Requesting a reclamation approval with this submission	Yes
What was the total reclamation surface area (in square feet) for this site	3452
What was the total volume of replacement material (in cubic yards) for this site	422
<i>Per Paragraph (1) of Subsection D of 19.15.29.13 NMAC the reclamation must contain a minimum of four feet of non-waste containing, uncontaminated, earthen material with chloride concentrations less than 600 mg/kg as analyzed by EPA Method 300.0, or other test methods approved by the division. The soil cover must include a top layer, which is either the background thickness of topsoil or one foot of suitable material to establish vegetation at the site, whichever is greater.</i>	
Is the soil top layer complete and is it suitable material to establish vegetation	Yes
On what (estimated) date will (or was) the reseeded commence(d)	07/29/2025
Summarize any additional reclamation activities not included by answers (above)	N/A
<i>The responsible party must attach information demonstrating they have complied with all applicable reclamation requirements and any conditions or directives of the OCD. This demonstration should be in the form of attachments (in .pdf format) including a scaled site map, any proposed reseeded plans or relevant field notes, photographs of reclaimed area, and a narrative of the reclamation activities. Refer to 19.15.29.13 NMAC.</i>	
I hereby certify that the information given above is true and complete to the best of my knowledge and understand that pursuant to OCD rules and regulations all operators are required to report and/or file certain release notifications and perform corrective actions for releases which may endanger public health or the environment. The acceptance of a C-141 report by the OCD does not relieve the operator of liability should their operations have failed to adequately investigate and remediate contamination that pose a threat to groundwater, surface water, human health or the environment. In addition, OCD acceptance of a C-141 report does not relieve the operator of responsibility for compliance with any other federal, state, or local laws and/or regulations. The responsible party acknowledges they must substantially restore, reclaim, and re-vegetate the impacted surface area to the conditions that existed prior to the release or their final land use in accordance with 19.15.29.13 NMAC including notification to the OCD when reclamation and re-vegetation are complete.	
I hereby agree and sign off to the above statement	Name: Daniel Sparks Title: Environmental Analyst III Email: daniel_sparks@oxy.com Date: 10/29/2025

Sante Fe Main Office
Phone: (505) 476-3441

General Information
Phone: (505) 629-6116

Online Phone Directory
<https://www.emnrd.nm.gov/ocd/contact-us>

State of New Mexico
Energy, Minerals and Natural Resources
Oil Conservation Division
1220 S. St Francis Dr.
Santa Fe, NM 87505

QUESTIONS, Page 8

Action 521155

QUESTIONS (continued)

Operator: OXY USA INC P.O. Box 4294 Houston, TX 772104294	OGRID: 16696
	Action Number: 521155
	Action Type: [C-141] Reclamation Report C-141 (C-141-v-Reclamation)

QUESTIONS

Revegetation Report	
<i>Only answer the questions in this group if all surface restoration, reclamation and re-vegetation obligations have been satisfied.</i>	
Requesting a restoration complete approval with this submission	No
<i>Per Paragraph (4) of Subsection (D) of 19.15.29.13 NMAC for any major or minor release containing liquids, the responsible party must notify the division when reclamation and re-vegetation are complete.</i>	

Sante Fe Main Office
Phone: (505) 476-3441

General Information
Phone: (505) 629-6116

Online Phone Directory
<https://www.emnrd.nm.gov/ocd/contact-us>

State of New Mexico
Energy, Minerals and Natural Resources
Oil Conservation Division
1220 S. St Francis Dr.
Santa Fe, NM 87505

CONDITIONS

Action 521155

CONDITIONS

Operator: OXY USA INC P.O. Box 4294 Houston, TX 772104294	OGRID: 16696
	Action Number: 521155
	Action Type: [C-141] Reclamation Report C-141 (C-141-v-Reclamation)

CONDITIONS

Created By	Condition	Condition Date
rhamlet	We have received your Reclamation Report for Incident #NAPP2320749536 BENELLI CTB 10707151 CRIT 1, thank you. This Reclamation Report is approved.	11/25/2025