



LINER INSPECTION AND CLOSURE REPORT

PREPARED FOR:
DEVON ENERGY PRODUCTION, LP.

PREPARED BY:
PIMA ENVIRONMENTAL SERVICES, LLC.

November 19, 2025
PIMA ENVIRONMENTAL SERVICES, LLC.
5614 N LOVINGTON HWY, HOBBS, NM 88240

November 19, 2025

NMOCD District 2
811 S First Street
Artesia, NM 88210

RE: Liner Inspection and Closure Report

LOCATION: Spud Muffin 31 CTB 2

FACILITY ID: fAPP2123546633

GPS: 32.255697, -104.018315

INCIDENT LOCATION: P-31-T23S-R29E

COUNTY: Eddy

NMOCD REF. NO. NAPP2520228286

Pima Environmental Services, LLC. (Pima) has been contracted by Devon Energy Production Company, LP (Devon) to perform a liner inspection and prepare this closure report for a produced water release that occurred at the Spud Muffin 31 CTB 2 (Spud Muffin). This incident was assigned Incident ID: NAPP2520228286, by the New Mexico Oil Conservation Division (NMOCD).

RELEASE INFORMATION

NAPP2520228286: On July 20, 2025, nipple on water discharge pump broke, allowing approximately 7 bbls of produced water to be released to lined secondary containment. A vacuum truck was able to recover 7 bbls of standing fluid.

A Site Map can be found in Figure 4.

SITE CHARACTERIZATION

The Spud Muffin is located approximately 3.81 miles northeast of Malaga, NM. This spill site is in Unit P, Section 31, Township 23S, Range 29E, Latitude 32.255697 Longitude -104.018315, Eddy County, NM. Figure 1 references a Location Map.

Based on the well water data from the New Mexico Office of the State Engineer water well (C-03615-POD 1), the depth to the nearest groundwater in this vicinity measures 36 feet below grade surface (BGS), positioned 0.54 of a mile away from the Spud Muffin, drilled on May 04, 2013. Conversely, as per the United States Geological Survey well water data (USGS321545104015401 23S.28E.36.244322), the nearest groundwater depth in this region is recorded at 33.7 feet BGS, situated approximately 0.91 of a mile away from the Spud Muffin, with the last gauge conducted in 2003. For detailed references to water surveys and the precise locations of water wells, please refer to Appendix A, inclusive of the relevant maps. Notably, the Spud Muffin is located within an area with a medium potential for karst, as illustrated in Figure 3. Additionally, a comprehensive Topographic Map is available for reference in Figure 2.

SITE ASSESSMENT, AND LINER INSPECTION

On November 14, 2025, Devon personnel mobilized equipment to the site to perform pressure washing of the liner and containment. A vacuum truck accompanied the crew to recover the power washing fluids.



Pima Environmental Services, LLC
5614 N Lovington Hwy, Hobbs, NM 88240
575-964-7740 | www.pimaoil.com

Spud Muffin 31 CTB 2 | NAPP2520228286

Page 1 | 2

On November 19, 2025, after submitting the 48-hour liner inspection notification (application ID: 526941) to the NMOCD, Pima Environmental conducted a thorough inspection of the lined containment area at the Spud Muffin. Pima concluded that the liner and containment maintained their integrity. The liner was deemed functional, preventing any further environmental impact. The 48-hour notification and Liner Inspection Form can be found in Appendix C. Photographic documentation can be found in Appendix D.

After careful review, Pima requests that this incident ID: NAPP2520228286 be closed. Devon has complied with the applicable closure requirements.

Should you have any questions or need additional information, please feel free to contact:

Devon Energy Production – Jim Raley at 575-689-7597 or jim.raley@devon.com.

Pima Environmental – DelRae Geller at 806-724-5391 or delrae@pimaoil.com.

ATTACHMENTS

FIGURES:

- 1- Location Map
- 2- Topographic Map
- 3- Karst Map
- 4- Site Map

APPENDICES:

Appendix A – Water Surveys and Water Related Maps

Appendix B – Soil Survey, Geological Data

Appendix C – 48-Hour Sampling Notification, Liner Inspection Form



Appendix D – Photographic Documentation

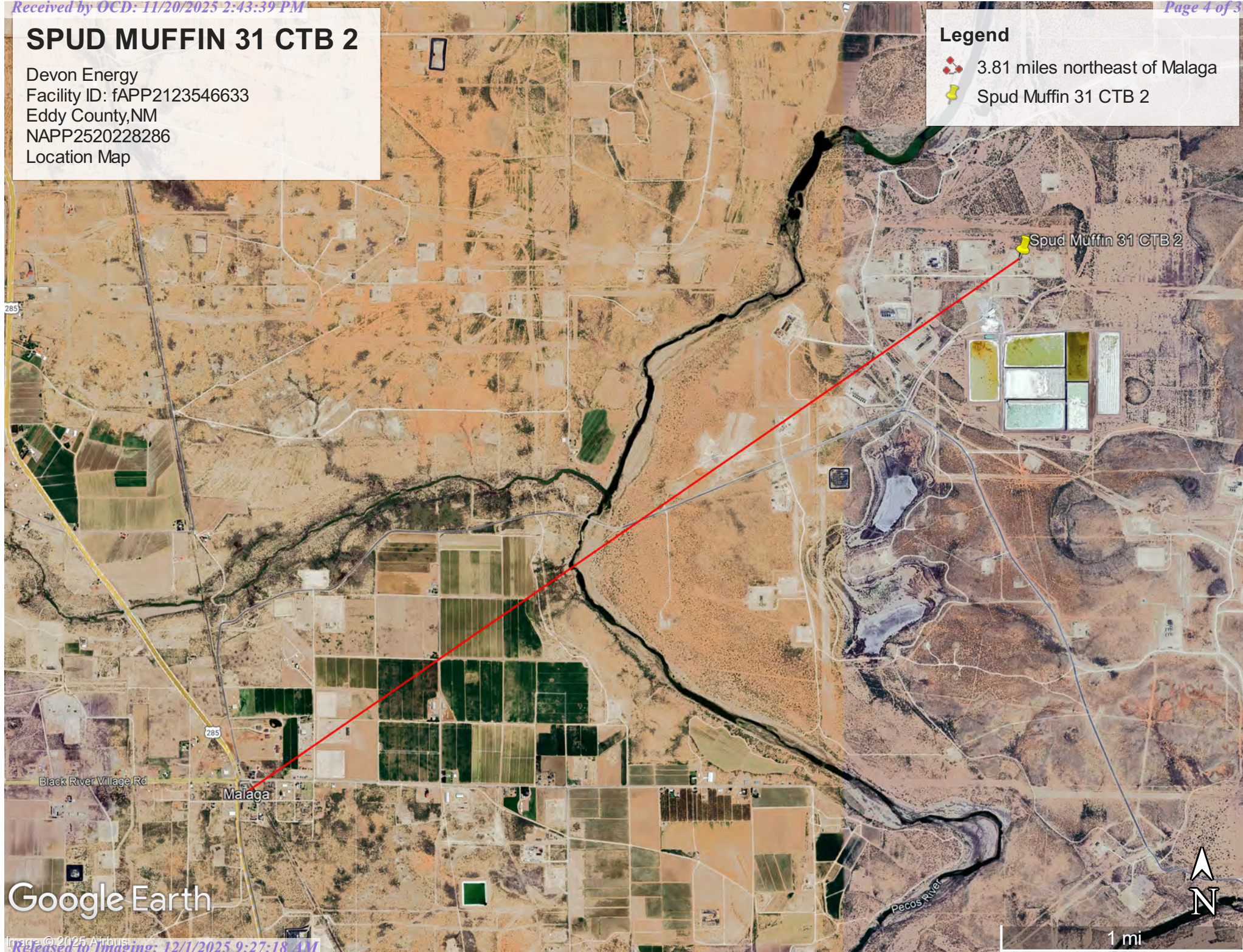


SPUD MUFFIN 31 CTB 2

Devon Energy
Facility ID: fAPP2123546633
Eddy County, NM
NAPP2520228286
Location Map

Legend

-  3.81 miles northeast of Malaga
-  Spud Muffin 31 CTB 2



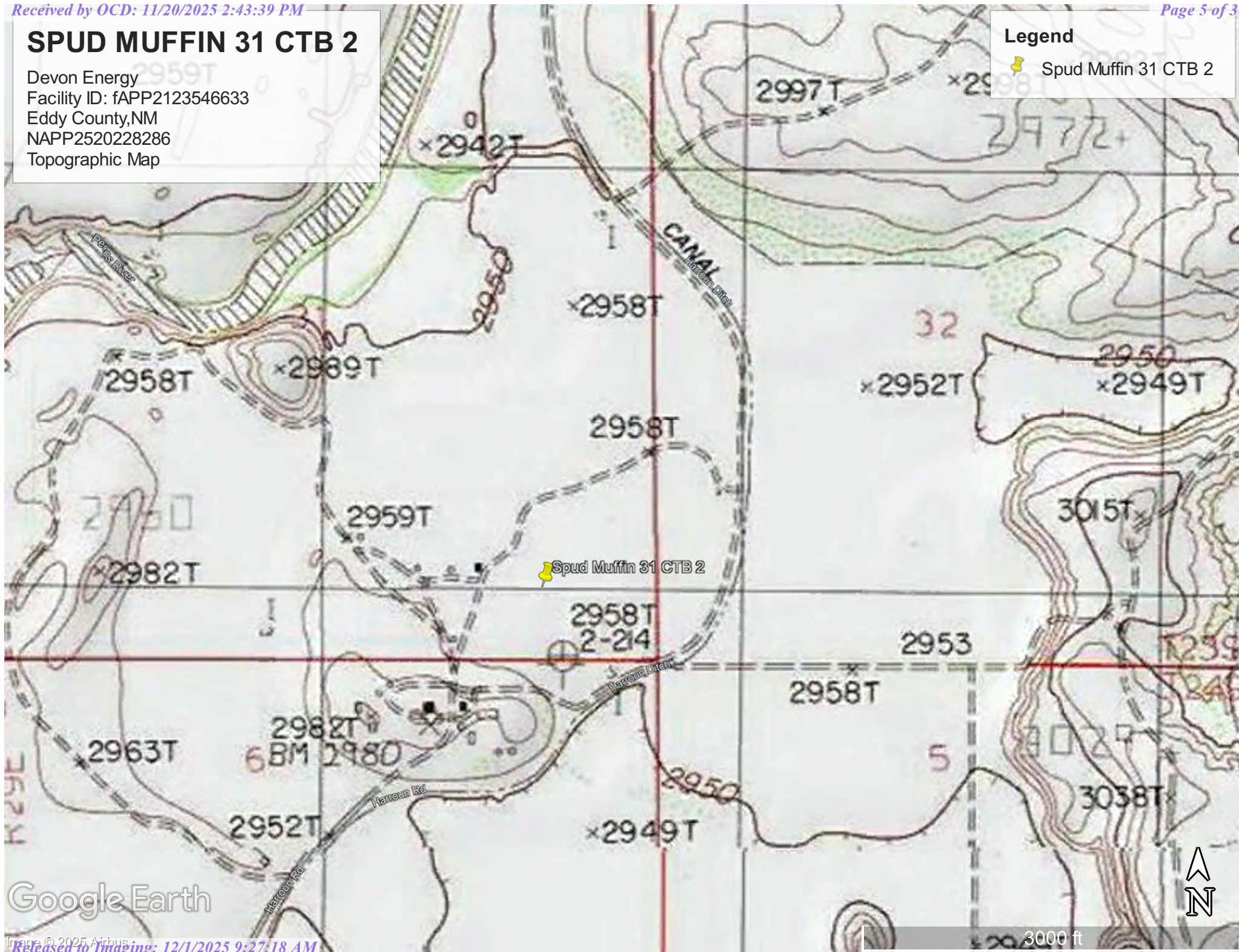
Google Earth

SPUD MUFFIN 31 CTB 2

Devon Energy
Facility ID: fAPP2123546633
Eddy County, NM
NAPP2520228286
Topographic Map

Legend

 Spud Muffin 31 CTB 2



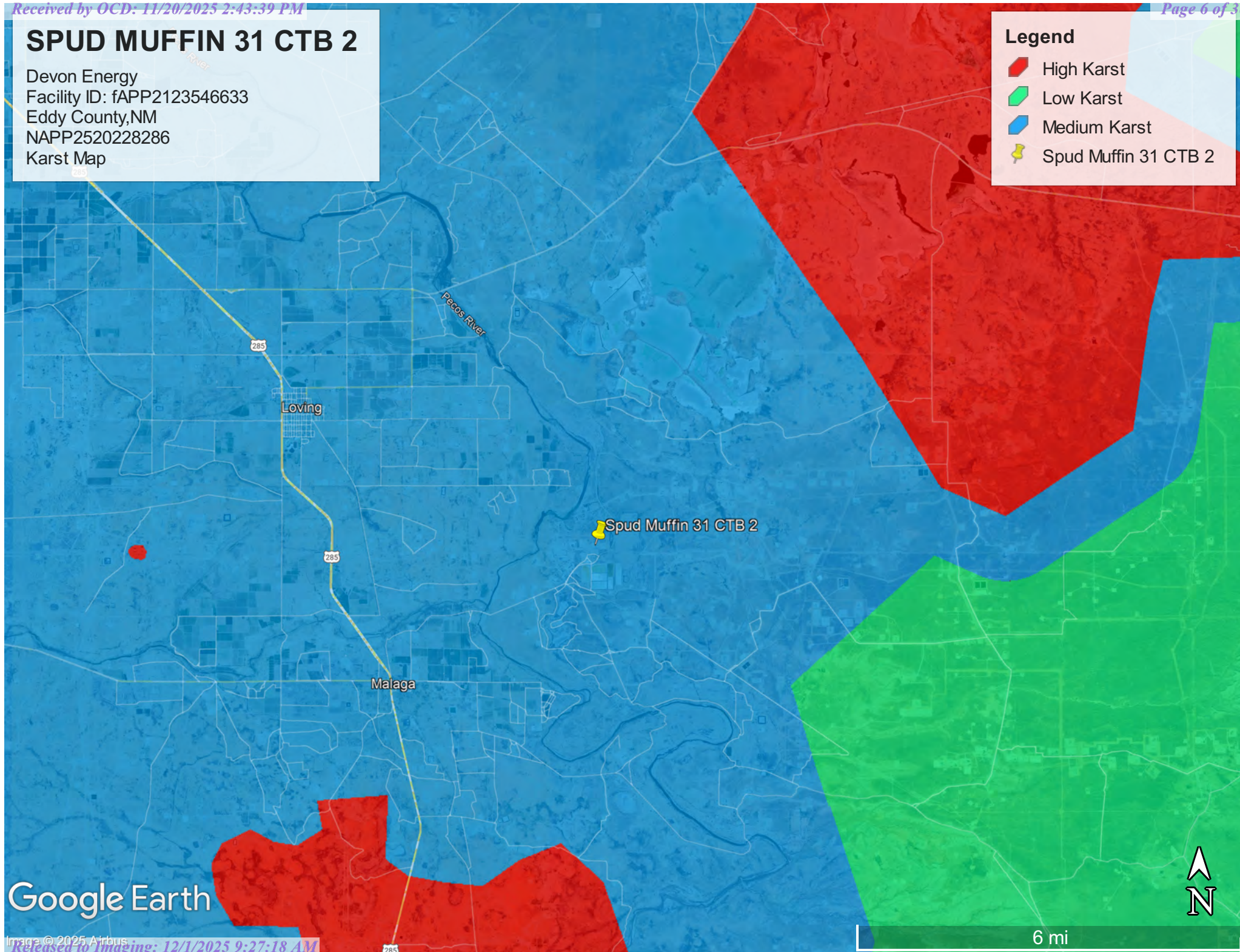
Google Earth

SPUD MUFFIN 31 CTB 2

Devon Energy
Facility ID: fAPP2123546633
Eddy County, NM
NAPP2520228286
Karst Map

Legend

- High Karst
- Low Karst
- Medium Karst
- Spud Muffin 31 CTB 2





Google Earth

SPUD MUFFIN 31 CTB 2

Devon Energy
Facility ID: fAPP2123546633
Eddy County, NM
NAPP2520228286
Site Map

Legend

-  32.255697, -104.018315
-  Lined Containment Area



Spud Muffin 31 CTB 2

32.255697, -104.018315



APPENDIX A

Water Surveys & Water Related Maps




Pima Environmental Services, LLC
5614 N Lovington Hwy, Hobbs, NM 88240
575-964-7740 | www.pimaoil.com

DEVON ENERGY PRODUCTION, LP.

Point of Diversion Summary

quarters are 1=NW 2=NE 3=SW 4=SE
quarters are smallest to largest

NAD83 UTM in meters

Well Tag	POD Nbr	Q64	Q16	Q4	Sec	Tws	Rng	X	Y	Map
	C 03615 POD1	NW	SW	NE	06	24S	29E	591963.5	3568500.3	

* UTM location was derived from PLSS - see Help

Driller License:	1348	Driller Company:	TAYLOR WATER WELL SERVICE		
Driller Name:	TAYLOR, CLINTON E. (LD)				
Drill Start Date:	2013-05-04	Drill Finish Date:	2013-05-04	Plug Date:	
Log File Date:	2013-05-10	PCW Rcv Date:		Source:	Shallow
Pump Type:		Pipe Discharge Size:		Estimated Yield:	5
Casing Size:	2.00	Depth Well:	60	Depth Water:	36

Water Bearing Stratifications:

Top	Bottom	Description
50	60	Sandstone/Gravel/Conglomerate

Casing Perforations:

Top	Bottom
50	60

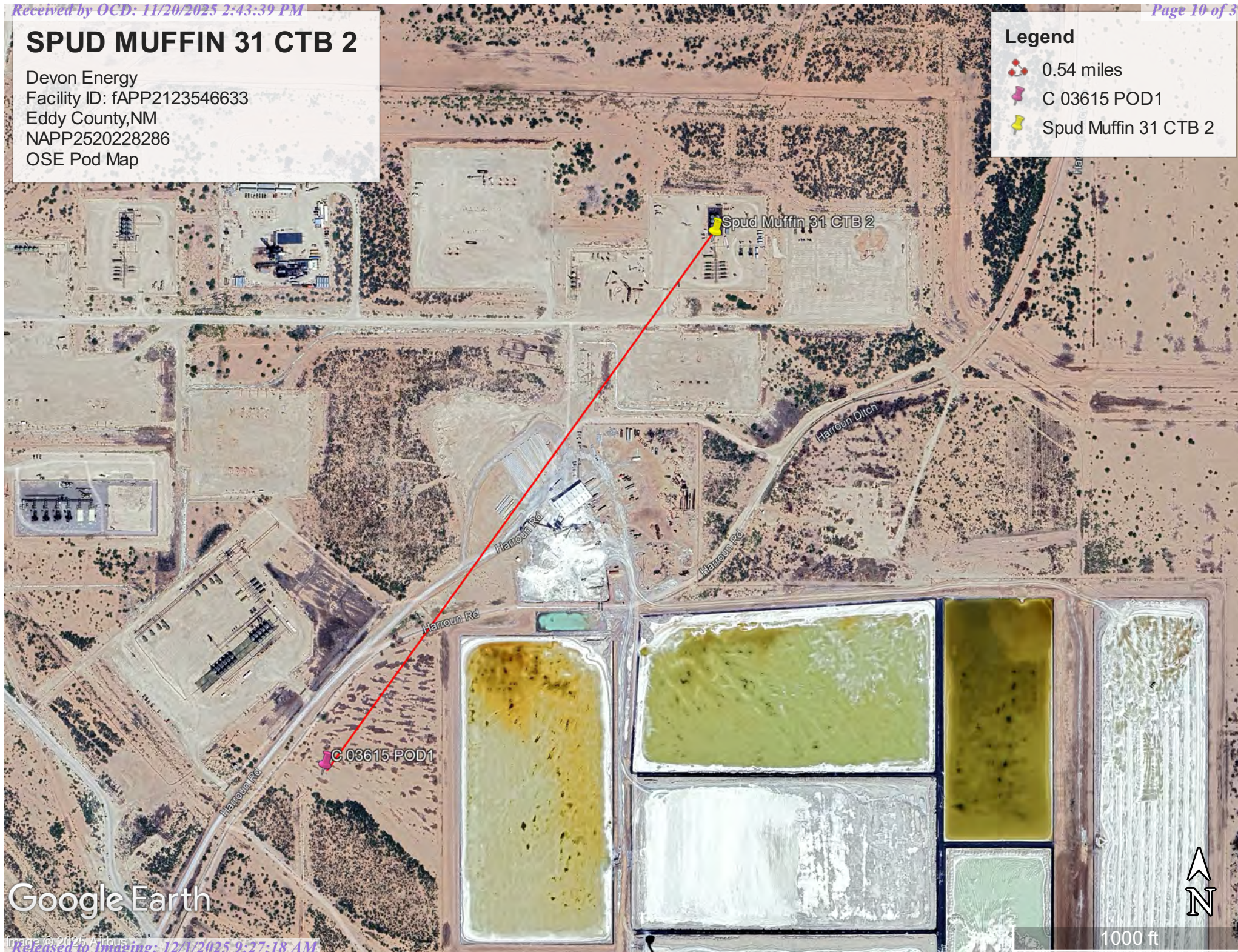
The data is furnished by the NMOSE/ISC and is accepted by the recipient with the expressed understanding that the OSE/ISC make no warranties, expressed or implied, concerning the accuracy, completeness, reliability, usability, or suitability for any particular purpose of the data.

SPUD MUFFIN 31 CTB 2

Devon Energy
Facility ID: fAPP2123546633
Eddy County, NM
NAPP2520228286
OSE Pod Map

Legend

- 0.54 miles
- C 03615 POD1
- Spud Muffin 31 CTB 2





[USGS Home](#)
[Contact USGS](#)
[Search USGS](#)

National Water Information System: Web Interface

USGS Water Resources

Data Category:

Groundwater

Geographic Area:

United States

GO

Click to hide News Bulletins

- Explore the *NEW* [USGS National Water Dashboard](#) interactive map to access real-time water data from over 13,500 stations nationwide.

Groundwater levels for the Nation



Important: [Next Generation Monitoring Location Page](#)

Search Results -- 1 sites found

site_no list =

- 321545104015401

Minimum number of levels = 1

[Save file of selected sites](#) to local disk for future upload

USGS 321545104015401 23S.28E.36.244322

Available data for this site

Groundwater: Field measurements

GO

Eddy County, New Mexico

Hydrologic Unit Code 13060011

Latitude 32°15'45", Longitude 104°01'54" NAD27

Land-surface elevation 2,921 feet above NAVD88

The depth of the well is 75 feet below land surface.

This well is completed in the Other aquifers (N9999OTHER) national aquifer.

This well is completed in the Alluvium, Bolson Deposits and Other Surface Deposits (110AVMB) local aquifer.

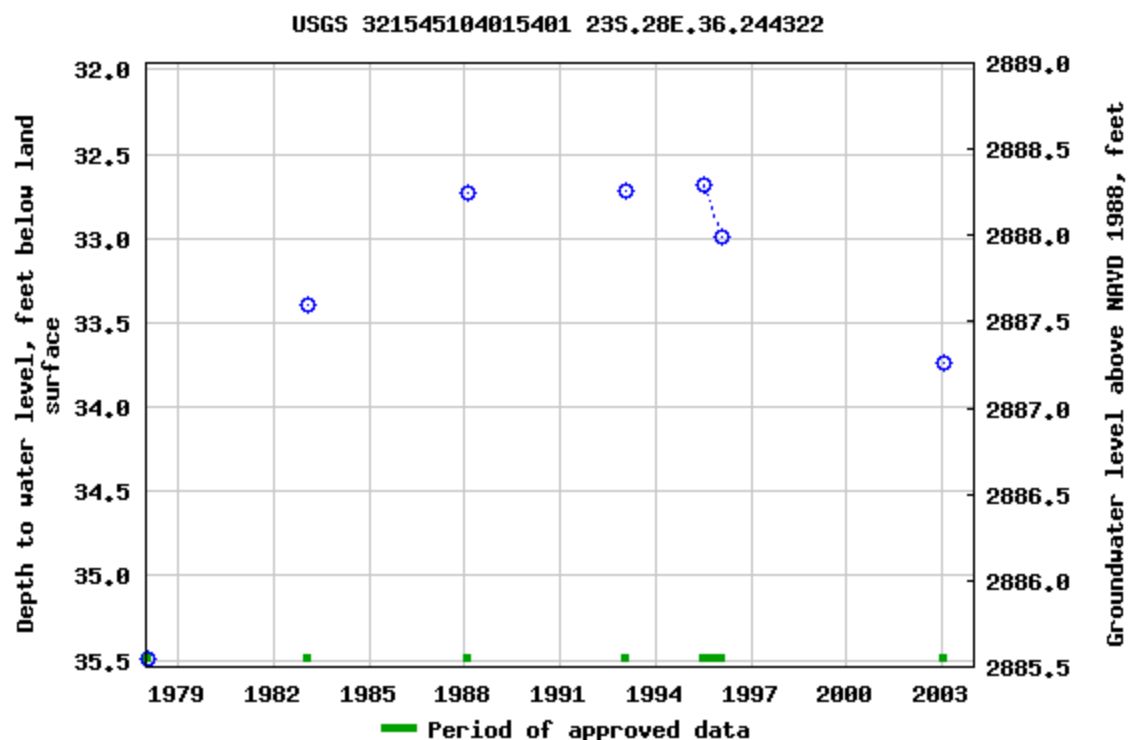
Output formats

[Table of data](#)

[Tab-separated data](#)

[Graph of data](#)

[Reselect period](#)



Breaks in the plot represent a gap of at least one year between field measurements.

[Download a presentation-quality graph](#)

[Questions or Comments](#)

[Help](#)

[Data Tips](#)

[Explanation of terms](#)

[Subscribe for system changes](#)

[Accessibility](#) [FOIA](#) [Privacy](#) [Policies and Notices](#)

[U.S. Department of the Interior](#) | [U.S. Geological Survey](#)

Title: Groundwater for USA: Water Levels

URL: <https://nwis.waterdata.usgs.gov/nwis/gwlevels?>

Page Contact Information: [USGS Water Data Support Team](#)

Page Last Modified: 2025-07-30 14:15:59 EDT

0.71 0.53 nadww02



SPUD MUFFIN 31 CTB 2

Devon Energy
Facility ID: fAPP2123546633
Eddy County, NM
NAPP2520228286
USGS Map

Legend

- 0.91 miles
- Spud Muffin 31 CTB 2
- USGS 321545104015401

Google Earth

Image © 2025 Airbus
Released to Imaging: 12/1/2025 9:27:18 AM

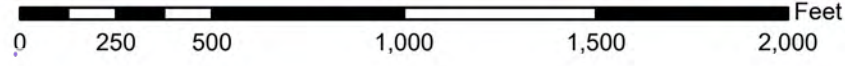
3000 ft



National Flood Hazard Layer FIRMette



104°1'25"W 32°15'36"N



1:6,000

104°0'47"W 32°15'5"N

Basemap Imagery Source: USGS National Map 2023

Legend

SEE FIS REPORT FOR DETAILED LEGEND AND INDEX MAP FOR FIRM PANEL LAYOUT

SPECIAL FLOOD HAZARD AREAS		Without Base Flood Elevation (BFE) Zone A, V, A99
		With BFE or Depth Zone AE, AO, AH, VE, AR
		Regulatory Floodway
OTHER AREAS OF FLOOD HAZARD		0.2% Annual Chance Flood Hazard, Areas of 1% annual chance flood with average depth less than one foot or with drainage areas of less than one square mile Zone X
		Future Conditions 1% Annual Chance Flood Hazard Zone X
		Area with Reduced Flood Risk due to Levee. See Notes. Zone X
		Area with Flood Risk due to Levee Zone X
OTHER AREAS		NO SCREEN Area of Minimal Flood Hazard Zone X
		Effective LOMRs
GENERAL STRUCTURES		Channel, Culvert, or Storm Sewer
		Levee, Dike, or Floodwall
OTHER FEATURES		20.2 Cross Sections with 1% Annual Chance
		17.5 Water Surface Elevation
		Coastal Transect
		Base Flood Elevation Line (BFE)
		Limit of Study
		Jurisdiction Boundary
		Coastal Transect Baseline
		Profile Baseline
		Hydrographic Feature
	MAP PANELS	
		No Digital Data Available
		Unmapped

The pin displayed on the map is an approximate point selected by the user and does not represent an authoritative property location.

This map complies with FEMA's standards for the use of digital flood maps if it is not void as described below. The basemap shown complies with FEMA's basemap accuracy standards

The flood hazard information is derived directly from the authoritative NFHL web services provided by FEMA. This map was exported on **7/30/2025 at 3:40 PM** and does not reflect changes or amendments subsequent to this date and time. The NFHL and effective information may change or become superseded by new data over time.

This map image is void if the one or more of the following map elements do not appear: basemap imagery, flood zone labels, legend, scale bar, map creation date, community identifiers, FIRM panel number, and FIRM effective date. Map images for unmapped and unmodernized areas cannot be used for regulatory purposes.

Released to Imaging: 12/1/2025 9:27:18 AM

Received by OCD: 1/20/2025 2:43:39 PM

Wetlands Map



July 30, 2025

Wetlands

- | | | |
|--|---|--|
|  Estuarine and Marine Deepwater |  Freshwater Emergent Wetland |  Lake |
|  Estuarine and Marine Wetland |  Freshwater Forested/Shrub Wetland |  Other |
| |  Freshwater Pond |  Riverine |

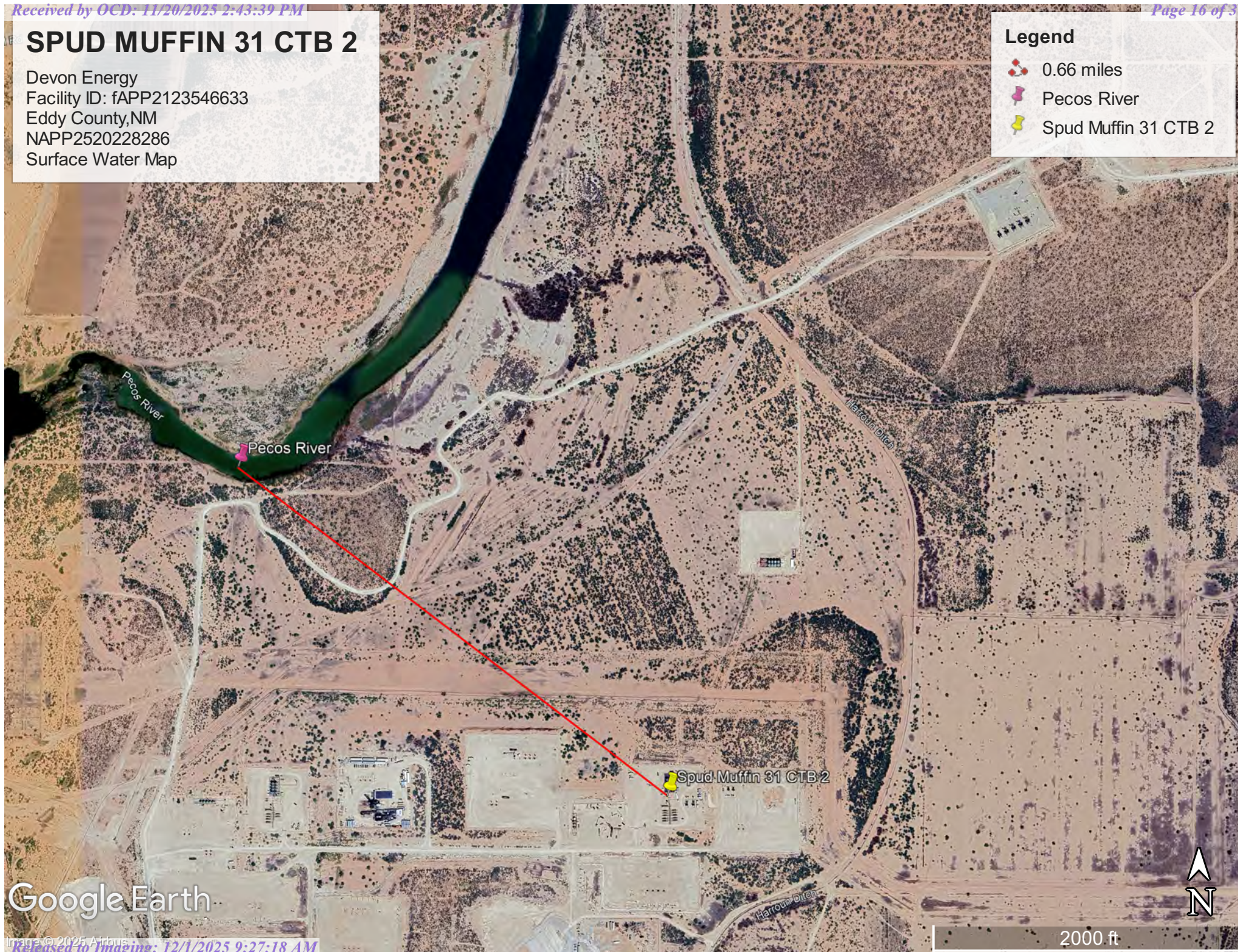
This map is for general reference only. The US Fish and Wildlife Service is not responsible for the accuracy or currentness of the base data shown on this map. All wetlands related data should be used in accordance with the layer metadata found on the Wetlands Mapper web site.

SPUD MUFFIN 31 CTB 2

Devon Energy
Facility ID: fAPP2123546633
Eddy County, NM
NAPP2520228286
Surface Water Map

Legend

- 0.66 miles
- Pecos River
- Spud Muffin 31 CTB 2



Google Earth

APPENDIX B

Soil Survey & Geological Data



Pima Environmental Services, LLC
5614 N Lovington Hwy, Hobbs, NM 88240
575-964-7740 | www.pimaoil.com

DEVON ENERGY PRODUCTION, LP.

Map Unit Description: Anthony sandy loam, 0 to 1 percent slopes---Eddy Area, New Mexico

Eddy Area, New Mexico

Aa—Anthony sandy loam, 0 to 1 percent slopes

Map Unit Setting

National map unit symbol: 1w3w

Elevation: 2,500 to 4,500 feet

Mean annual precipitation: 8 to 14 inches

Mean annual air temperature: 60 to 64 degrees F

Frost-free period: 180 to 240 days

Farmland classification: Farmland of statewide importance

Map Unit Composition

Anthony and similar soils: 99 percent

Minor components: 1 percent

Estimates are based on observations, descriptions, and transects of the mapunit.

Description of Anthony

Setting

Landform: Flood plains, alluvial fans

Landform position (three-dimensional): Talf, rise

Down-slope shape: Convex, linear

Across-slope shape: Linear

Parent material: Alluvium derived from sedimentary rock

Typical profile

H1 - 0 to 6 inches: sandy loam

H2 - 6 to 60 inches: sandy loam

Properties and qualities

Slope: 0 to 1 percent

Depth to restrictive feature: More than 80 inches

Drainage class: Well drained

Runoff class: Very low

Capacity of the most limiting layer to transmit water (Ksat): High
(2.00 to 6.00 in/hr)

Depth to water table: More than 80 inches

Frequency of flooding: None

Frequency of ponding: None

Calcium carbonate, maximum content: 15 percent

Maximum salinity: Nonsaline to slightly saline (0.0 to 4.0
mmhos/cm)

Sodium adsorption ratio, maximum: 1.0

Available water supply, 0 to 60 inches: Moderate (about 7.2
inches)

Interpretive groups

Land capability classification (irrigated): 2s

Land capability classification (nonirrigated): 7s

Hydrologic Soil Group: A

Map Unit Description: Anthony sandy loam, 0 to 1 percent slopes---Eddy Area, New Mexico

Ecological site: R070BD004NM - Sandy
Hydric soil rating: No

Minor Components

Anthony

Percent of map unit: 1 percent
Ecological site: R070BC036NM - Salt Flats
Hydric soil rating: No

Data Source Information

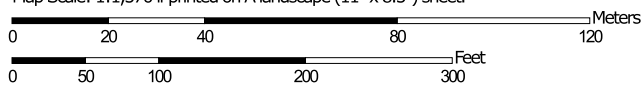
Soil Survey Area: Eddy Area, New Mexico
Survey Area Data: Version 20, Sep 3, 2024

Soil Map—Eddy Area, New Mexico



Soil Map may not be valid at this scale.

Map Scale: 1:1,570 if printed on A landscape (11" x 8.5") sheet.



Map projection: Web Mercator Corner coordinates: WGS84 Edge tics: UTM Zone 13N WGS84




Natural Resources
Conservation Service

Web Soil Survey
National Cooperative Soil Survey

7/30/2025
Page 1 of 3

MAP LEGEND

Area of Interest (AOI)

 Area of Interest (AOI)

Soils

 Soil Map Unit Polygons

 Soil Map Unit Lines

 Soil Map Unit Points

Special Point Features



Blowout



Borrow Pit



Clay Spot



Closed Depression



Gravel Pit



Gravelly Spot



Landfill



Lava Flow



Marsh or swamp



Mine or Quarry



Miscellaneous Water



Perennial Water



Rock Outcrop



Saline Spot



Sandy Spot



Severely Eroded Spot



Sinkhole



Slide or Slip



Sodic Spot



Spoil Area



Stony Spot



Very Stony Spot



Wet Spot



Other



Special Line Features

Water Features



Streams and Canals

Transportation



Rails



Interstate Highways



US Routes



Major Roads



Local Roads

Background



Aerial Photography

MAP INFORMATION

The soil surveys that comprise your AOI were mapped at 1:20,000.

Warning: Soil Map may not be valid at this scale.

Enlargement of maps beyond the scale of mapping can cause misunderstanding of the detail of mapping and accuracy of soil line placement. The maps do not show the small areas of contrasting soils that could have been shown at a more detailed scale.

Please rely on the bar scale on each map sheet for map measurements.

Source of Map: Natural Resources Conservation Service
Web Soil Survey URL:
Coordinate System: Web Mercator (EPSG:3857)

Maps from the Web Soil Survey are based on the Web Mercator projection, which preserves direction and shape but distorts distance and area. A projection that preserves area, such as the Albers equal-area conic projection, should be used if more accurate calculations of distance or area are required.

This product is generated from the USDA-NRCS certified data as of the version date(s) listed below.

Soil Survey Area: Eddy Area, New Mexico
Survey Area Data: Version 20, Sep 3, 2024

Soil map units are labeled (as space allows) for map scales 1:50,000 or larger.

Date(s) aerial images were photographed: Nov 12, 2022—Dec 2, 2022

The orthophoto or other base map on which the soil lines were compiled and digitized probably differs from the background imagery displayed on these maps. As a result, some minor shifting of map unit boundaries may be evident.




Map Unit Legend

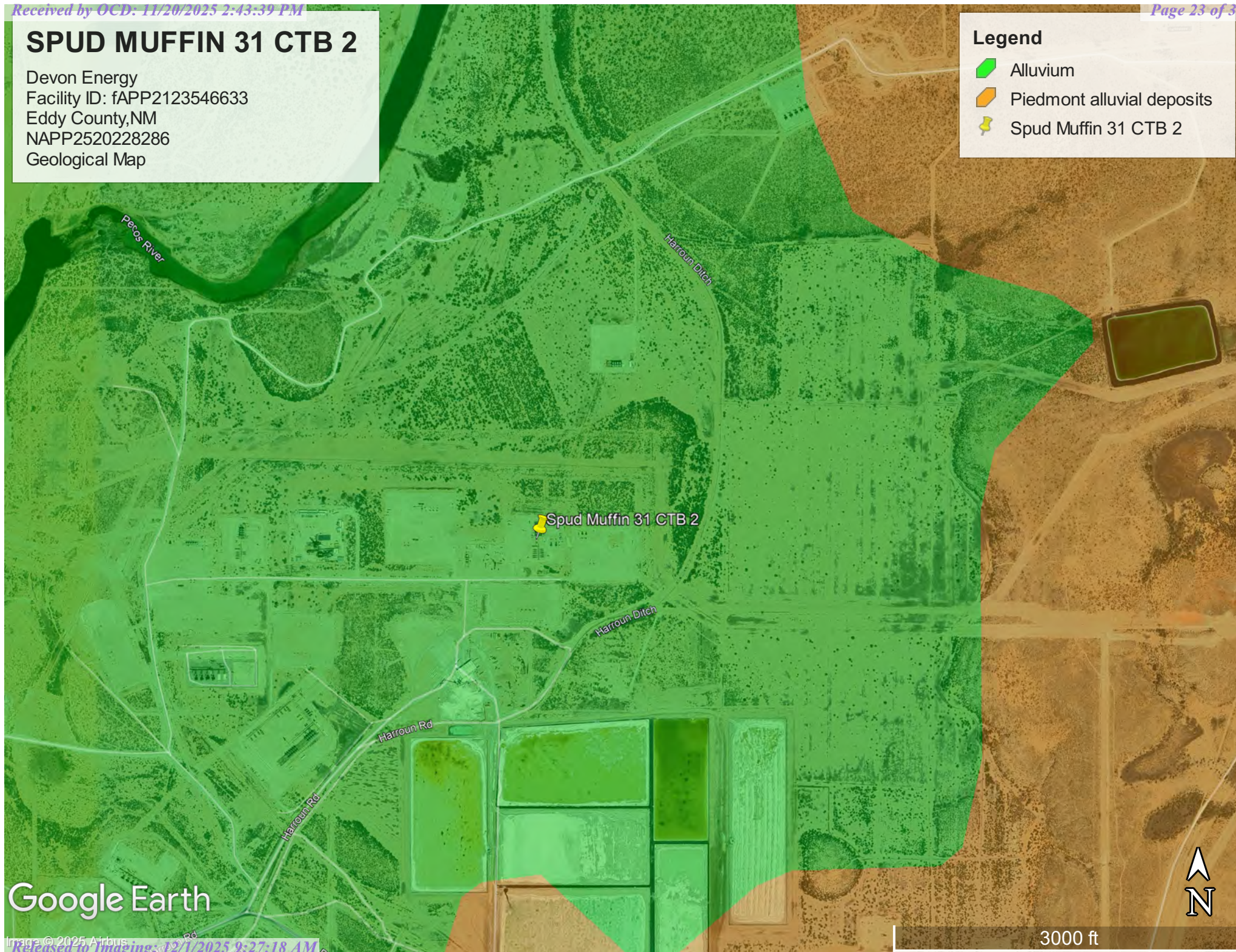
Map Unit Symbol	Map Unit Name	Acres in AOI	Percent of AOI
Aa	Anthony sandy loam, 0 to 1 percent slopes	9.0	100.0%
Totals for Area of Interest		9.0	100.0%

SPUD MUFFIN 31 CTB 2

Devon Energy
Facility ID: fAPP2123546633
Eddy County, NM
NAPP2520228286
Geological Map

Legend

-  Alluvium
-  Piedmont alluvial deposits
-  Spud Muffin 31 CTB 2



APPENDIX C

48-Hour Sampling Notification

Liner Inspection Form



Pima Environmental Services, LLC
5614 N Lovington Hwy, Hobbs, NM 88240
575-964-7740 | www.pimaoil.com

DEVON ENERGY PRODUCTION, LP.

Sante Fe Main Office
Phone: (505) 476-3441

General Information
Phone: (505) 629-6116

Online Phone Directory
<https://www.emnrd.nm.gov/ocd/contact-us>

State of New Mexico
Energy, Minerals and Natural Resources
Oil Conservation Division
1220 S. St Francis Dr.
Santa Fe, NM 87505

QUESTIONS

Action 526941

QUESTIONS

Operator: DEVON ENERGY PRODUCTION COMPANY, LP 333 West Sheridan Ave. Oklahoma City, OK 73102	OGRID: 6137
	Action Number: 526941
	Action Type: [NOTIFY] Notification Of Liner Inspection (C-141L)

QUESTIONS

Prerequisites	
Incident ID (n#)	nAPP2520228286
Incident Name	NAPP2520228286 SPUD MUFFIN 31 CTB 2 @ 0
Incident Type	Produced Water Release
Incident Status	Initial C-141 Approved
Incident Facility	[fAPP2123546633] SPUD MUFFIN 31 CTB 2

Location of Release Source	
Site Name	SPUD MUFFIN 31 CTB 2
Date Release Discovered	07/20/2025
Surface Owner	Private

Liner Inspection Event Information	
<i>Please answer all the questions in this group.</i>	
What is the liner inspection surface area in square feet	5,706
Have all the impacted materials been removed from the liner	Yes
Liner inspection date pursuant to Subparagraph (a) of Paragraph (5) of Subsection A of 19.15.29.11 NMAC	11/19/2025
Time liner inspection will commence	09:00 AM
Please provide any information necessary for observers to liner inspection	Marlon Garcia (575) 416-0639
Please provide any information necessary for navigation to liner inspection site	32.255697, -104.018315

Sante Fe Main Office
Phone: (505) 476-3441

General Information
Phone: (505) 629-6116

Online Phone Directory
<https://www.emnrd.nm.gov/ocd/contact-us>

State of New Mexico
Energy, Minerals and Natural Resources
Oil Conservation Division
1220 S. St Francis Dr.
Santa Fe, NM 87505

CONDITIONS

Action 526941

CONDITIONS

Operator: DEVON ENERGY PRODUCTION COMPANY, LP 333 West Sheridan Ave. Oklahoma City, OK 73102	OGRID: 6137
	Action Number: 526941
	Action Type: [NOTIFY] Notification Of Liner Inspection (C-141L)

CONDITIONS

Created By	Condition	Condition Date
jralej	Failure to notify the OCD of liner inspections including any changes in date/time per the requirements of 19.15.29.11.A(5)(a)(ii) NMAC, may result in the inspection not being accepted.	11/17/2025



Pima Environmental Services, LLC

Liner Inspection FormCompany Name: Devon EnergySite: Spud Muffin 31 CTB 2Lat/Long: 32.255697, -104.018315

NMOCD Incident ID

& Incident Date: NAPP2520228286 7/20/2025

2-Day Notification

Sent: via Email by Jim Raley on OCD portal 11/17/2025
application ID: 526941.Inspection Date: 11/19/2025

Liner Type: Earthen w/liner Earthen no liner Polystar

Steel w/poly liner Steel w/spray epoxy No Liner

Other: _____

Visualization	Yes	No	Comments
Is there a tear in the liner?		X	
Are there holes in the liner?		X	
Is the liner retaining any fluids?		X	
Does the liner have integrity to contain a leak?	X		

Comments: _____

Inspector Name: Andrew Franco Inspector Signature: Andrew Franco

APPENDIX D

Photographic Documentation



Pima Environmental Services, LLC
5614 N Lovington Hwy, Hobbs, NM 88240
575-964-7740 | www.pimaoil.com

DEVON ENERGY PRODUCTION, LP.



PHOTOGRAPHIC DOCUMENTATION

SITE NAME: Spud Muffin 31 CTB 2

Initial Liner Inspection:



Site Information Sign.



Photo of liner taken during initial liner inspection facing south.



Photo of liner taken during initial liner inspection facing southwest.



Photo of liner taken during initial liner inspection facing north.



Photo of liner taken during initial liner inspection facing southeast.



Photo of liner taken during initial liner inspection facing southwest.



Photo of liner taken during initial liner inspection facing southeast.



Photo of liner taken during initial liner inspection facing northwest.

PHOTOGRAPHIC DOCUMENTATION

SITE NAME: Spud Muffin 31 CTB 2

Liner Inspection:



Photo taken pursuant to power washing.
Facing east.



Photo taken pursuant to power washing. Facing
southwest.



Photo taken pursuant to power washing.
Facing south.



Photo taken pursuant to power washing.
Facing northeast.



Photo taken pursuant to power washing.
Facing north.



Photo taken pursuant to power washing.
Facing northwest.



Photo taken pursuant to power washing.
Facing northwest.

Sante Fe Main Office
Phone: (505) 476-3441

General Information
Phone: (505) 629-6116

Online Phone Directory
<https://www.emnrd.nm.gov/ocd/contact-us>

State of New Mexico
Energy, Minerals and Natural Resources
Oil Conservation Division
1220 S. St Francis Dr.
Santa Fe, NM 87505

QUESTIONS

Action 528465

QUESTIONS

Operator: DEVON ENERGY PRODUCTION COMPANY, LP 333 West Sheridan Ave. Oklahoma City, OK 73102	OGRID: 6137
	Action Number: 528465
	Action Type: [C-141] Remediation Closure Request C-141 (C-141-v-Closure)

QUESTIONS

Prerequisites	
Incident ID (n#)	nAPP2520228286
Incident Name	NAPP2520228286 SPUD MUFFIN 31 CTB 2 @ FAPP2123546633
Incident Type	Produced Water Release
Incident Status	Remediation Closure Report Received
Incident Facility	[fAPP2123546633] SPUD MUFFIN 31 CTB 2

Location of Release Source*Please answer all the questions in this group.*

Site Name	SPUD MUFFIN 31 CTB 2
Date Release Discovered	07/20/2025
Surface Owner	Private

Incident Details*Please answer all the questions in this group.*

Incident Type	Produced Water Release
Did this release result in a fire or is the result of a fire	No
Did this release result in any injuries	No
Has this release reached or does it have a reasonable probability of reaching a watercourse	No
Has this release endangered or does it have a reasonable probability of endangering public health	No
Has this release substantially damaged or will it substantially damage property or the environment	No
Is this release of a volume that is or may with reasonable probability be detrimental to fresh water	No

Nature and Volume of Release*Material(s) released, please answer all that apply below. Any calculations or specific justifications for the volumes provided should be attached to the follow-up C-141 submission.*

Crude Oil Released (bbls) Details	Not answered.
Produced Water Released (bbls) Details	Cause: Equipment Failure Pump Produced Water Released: 7 BBL Recovered: 7 BBL Lost: 0 BBL.
Is the concentration of chloride in the produced water >10,000 mg/l	Yes
Condensate Released (bbls) Details	Not answered.
Natural Gas Vented (Mcf) Details	Not answered.
Natural Gas Flared (Mcf) Details	Not answered.
Other Released Details	Not answered.
Are there additional details for the questions above (i.e. any answer containing Other, Specify, Unknown, and/or Fire, or any negative lost amounts)	Nipple on water discharge pump broke, allowing release of produced water to lined secondary containment. Fluids recovered.

Sante Fe Main Office
Phone: (505) 476-3441

General Information
Phone: (505) 629-6116

Online Phone Directory
<https://www.emnrd.nm.gov/ocd/contact-us>

State of New Mexico
Energy, Minerals and Natural Resources
Oil Conservation Division
1220 S. St Francis Dr.
Santa Fe, NM 87505

QUESTIONS, Page 2

Action 528465

QUESTIONS (continued)

Operator: DEVON ENERGY PRODUCTION COMPANY, LP 333 West Sheridan Ave. Oklahoma City, OK 73102	OGRID: 6137
	Action Number: 528465
	Action Type: [C-141] Remediation Closure Request C-141 (C-141-v-Closure)

QUESTIONS

Nature and Volume of Release (continued)	
Is this a gas only submission (i.e. only significant Mcf values reported)	No, according to supplied volumes this does not appear to be a "gas only" report.
Was this a major release as defined by Subsection A of 19.15.29.7 NMAC	No
Reasons why this would be considered a submission for a notification of a major release	<i>Unavailable.</i>
<i>With the implementation of the 19.15.27 NMAC (05/25/2021), venting and/or flaring of natural gas (i.e. gas only) are to be submitted on the C-129 form.</i>	

Initial Response

The responsible party must undertake the following actions immediately unless they could create a safety hazard that would result in injury.

The source of the release has been stopped	True
The impacted area has been secured to protect human health and the environment	True
Released materials have been contained via the use of berms or dikes, absorbent pads, or other containment devices	True
All free liquids and recoverable materials have been removed and managed appropriately	True
If all the actions described above have not been undertaken, explain why	<i>Not answered.</i>

Per Paragraph (4) of Subsection B of 19.15.29.8 NMAC the responsible party may commence remediation immediately after discovery of a release. If remediation has begun, please prepare and attach a narrative of actions to date in the follow-up C-141 submission. If remedial efforts have been successfully completed or if the release occurred within a lined containment area (see Subparagraph (a) of Paragraph (5) of Subsection A of 19.15.29.11 NMAC), please prepare and attach all information needed for closure evaluation in the follow-up C-141 submission.

I hereby certify that the information given above is true and complete to the best of my knowledge and understand that pursuant to OCD rules and regulations all operators are required to report and/or file certain release notifications and perform corrective actions for releases which may endanger public health or the environment. The acceptance of a C-141 report by the OCD does not relieve the operator of liability should their operations have failed to adequately investigate and remediate contamination that pose a threat to groundwater, surface water, human health or the environment. In addition, OCD acceptance of a C-141 report does not relieve the operator of responsibility for compliance with any other federal, state, or local laws and/or regulations.

I hereby agree and sign off to the above statement	Name: James Raley Title: EHS Professional Email: jim.raley@dvsn.com Date: 11/20/2025
--	---

Sante Fe Main Office
Phone: (505) 476-3441

General Information
Phone: (505) 629-6116

Online Phone Directory
<https://www.emnrd.nm.gov/ocd/contact-us>

State of New Mexico
Energy, Minerals and Natural Resources
Oil Conservation Division
1220 S. St Francis Dr.
Santa Fe, NM 87505

QUESTIONS, Page 3

Action 528465

QUESTIONS (continued)

Operator: DEVON ENERGY PRODUCTION COMPANY, LP 333 West Sheridan Ave. Oklahoma City, OK 73102	OGRID: 6137
	Action Number: 528465
	Action Type: [C-141] Remediation Closure Request C-141 (C-141-v-Closure)

QUESTIONS

Site Characterization	
<i>Please answer all the questions in this group (only required when seeking remediation plan approval and beyond). This information must be provided to the appropriate district office no later than 90 days after the release discovery date.</i>	
What is the shallowest depth to groundwater beneath the area affected by the release in feet below ground surface (ft bgs)	Between 26 and 50 (ft.)
What method was used to determine the depth to ground water	NM OSE iWaters Database Search
Did this release impact groundwater or surface water	No
What is the minimum distance, between the closest lateral extents of the release and the following surface areas:	
A continuously flowing watercourse or any other significant watercourse	Between ½ and 1 (mi.)
Any lakebed, sinkhole, or playa lake (measured from the ordinary high-water mark)	Greater than 5 (mi.)
An occupied permanent residence, school, hospital, institution, or church	Greater than 5 (mi.)
A spring or a private domestic fresh water well used by less than five households for domestic or stock watering purposes	Greater than 5 (mi.)
Any other fresh water well or spring	Between 1 and 5 (mi.)
Incorporated municipal boundaries or a defined municipal fresh water well field	Between ½ and 1 (mi.)
A wetland	Between ½ and 1 (mi.)
A subsurface mine	Greater than 5 (mi.)
An (non-karst) unstable area	Greater than 5 (mi.)
Categorize the risk of this well / site being in a karst geology	Medium
A 100-year floodplain	Greater than 5 (mi.)
Did the release impact areas not on an exploration, development, production, or storage site	No

Remediation Plan	
<i>Please answer all the questions that apply or are indicated. This information must be provided to the appropriate district office no later than 90 days after the release discovery date.</i>	
Requesting a remediation plan approval with this submission	Yes
<i>Attach a comprehensive report demonstrating the lateral and vertical extents of soil contamination associated with the release have been determined, pursuant to 19.15.29.11 NMAC and 19.15.29.13 NMAC.</i>	
Have the lateral and vertical extents of contamination been fully delineated	Yes
Was this release entirely contained within a lined containment area	Yes
<i>Per Subsection B of 19.15.29.11 NMAC unless the site characterization report includes completed efforts at remediation, the report must include a proposed remediation plan in accordance with 19.15.29.12 NMAC, which includes the anticipated timelines for beginning and completing the remediation.</i>	
On what estimated date will the remediation commence	11/14/2025
On what date will (or did) the final sampling or liner inspection occur	11/19/2025
On what date will (or was) the remediation complete(d)	11/14/2025
What is the estimated surface area (in square feet) that will be remediated	5706
What is the estimated volume (in cubic yards) that will be remediated	0
<i>These estimated dates and measurements are recognized to be the best guess or calculation at the time of submission and may (be) change(d) over time as more remediation efforts are completed.</i>	
<i>The OCD recognizes that proposed remediation measures may have to be minimally adjusted in accordance with the physical realities encountered during remediation. If the responsible party has any need to significantly deviate from the remediation plan proposed, then it should consult with the division to determine if another remediation plan submission is required.</i>	

Sante Fe Main Office
Phone: (505) 476-3441

General Information
Phone: (505) 629-6116

Online Phone Directory
<https://www.emnrd.nm.gov/ocd/contact-us>

State of New Mexico
Energy, Minerals and Natural Resources
Oil Conservation Division
1220 S. St Francis Dr.
Santa Fe, NM 87505

QUESTIONS, Page 4

Action 528465

QUESTIONS (continued)

Operator: DEVON ENERGY PRODUCTION COMPANY, LP 333 West Sheridan Ave. Oklahoma City, OK 73102	OGRID: 6137
	Action Number: 528465
	Action Type: [C-141] Remediation Closure Request C-141 (C-141-v-Closure)

QUESTIONS

Remediation Plan (continued)	
<i>Please answer all the questions that apply or are indicated. This information must be provided to the appropriate district office no later than 90 days after the release discovery date.</i>	
This remediation will (or is expected to) utilize the following processes to remediate / reduce contaminants:	
<i>(Select all answers below that apply.)</i>	
Is (or was) there affected material present needing to be removed	Yes
Is (or was) there a power wash of the lined containment area (to be) performed	Yes
OTHER (Non-listed remedial process)	Not answered.
<i>Per Subsection B of 19.15.29.11 NMAC unless the site characterization report includes completed efforts at remediation, the report must include a proposed remediation plan in accordance with 19.15.29.12 NMAC, which includes the anticipated timelines for beginning and completing the remediation.</i>	
I hereby certify that the information given above is true and complete to the best of my knowledge and understand that pursuant to OCD rules and regulations all operators are required to report and/or file certain release notifications and perform corrective actions for releases which may endanger public health or the environment. The acceptance of a C-141 report by the OCD does not relieve the operator of liability should their operations have failed to adequately investigate and remediate contamination that pose a threat to groundwater, surface water, human health or the environment. In addition, OCD acceptance of a C-141 report does not relieve the operator of responsibility for compliance with any other federal, state, or local laws and/or regulations.	
I hereby agree and sign off to the above statement	Name: James Raley Title: EHS Professional Email: jim.raley@dv.com Date: 11/20/2025
<i>The OCD recognizes that proposed remediation measures may have to be minimally adjusted in accordance with the physical realities encountered during remediation. If the responsible party has any need to significantly deviate from the remediation plan proposed, then it should consult with the division to determine if another remediation plan submission is required.</i>	

Sante Fe Main Office
Phone: (505) 476-3441

General Information
Phone: (505) 629-6116

Online Phone Directory
<https://www.emnrd.nm.gov/ocd/contact-us>

State of New Mexico
Energy, Minerals and Natural Resources
Oil Conservation Division
1220 S. St Francis Dr.
Santa Fe, NM 87505

QUESTIONS, Page 6

Action 528465

QUESTIONS (continued)

Operator: DEVON ENERGY PRODUCTION COMPANY, LP 333 West Sheridan Ave. Oklahoma City, OK 73102	OGRID: 6137
	Action Number: 528465
	Action Type: [C-141] Remediation Closure Request C-141 (C-141-v-Closure)

QUESTIONS

Liner Inspection Information	
Last liner inspection notification (C-141L) recorded	526941
Liner inspection date pursuant to Subparagraph (a) of Paragraph (5) of Subsection A of 19.15.29.11 NMAC	11/19/2025
Was all the impacted materials removed from the liner	Yes
What was the liner inspection surface area in square feet	5706

Remediation Closure Request

Only answer the questions in this group if seeking remediation closure for this release because all remediation steps have been completed.

Requesting a remediation closure approval with this submission	Yes
Have the lateral and vertical extents of contamination been fully delineated	Yes
Was this release entirely contained within a lined containment area	Yes
What was the total surface area (in square feet) remediated	5706
What was the total volume (cubic yards) remediated	0
Summarize any additional remediation activities not included by answers (above)	Liner Inspected

The responsible party must attach information demonstrating they have complied with all applicable closure requirements and any conditions or directives of the OCD. This demonstration should be in the form of a comprehensive report (in .pdf format) including a scaled site map, sampling diagrams, relevant field notes, photographs of any excavation prior to backfilling, laboratory data including chain of custody documents of final sampling, and a narrative of the remedial activities. Refer to 19.15.29.12 NMAC.

I hereby certify that the information given above is true and complete to the best of my knowledge and understand that pursuant to OCD rules and regulations all operators are required to report and/or file certain release notifications and perform corrective actions for releases which may endanger public health or the environment. The acceptance of a C-141 report by the OCD does not relieve the operator of liability should their operations have failed to adequately investigate and remediate contamination that pose a threat to groundwater, surface water, human health or the environment. In addition, OCD acceptance of a C-141 report does not relieve the operator of responsibility for compliance with any other federal, state, or local laws and/or regulations. The responsible party acknowledges they must substantially restore, reclaim, and re-vegetate the impacted surface area to the conditions that existed prior to the release or their final land use in accordance with 19.15.29.13 NMAC including notification to the OCD when reclamation and re-vegetation are complete.

I hereby agree and sign off to the above statement	Name: James Raley Title: EHS Professional Email: jim.raley@dv.com Date: 11/20/2025
--	---

Sante Fe Main Office
Phone: (505) 476-3441

General Information
Phone: (505) 629-6116

Online Phone Directory
<https://www.emnrd.nm.gov/ocd/contact-us>

State of New Mexico
Energy, Minerals and Natural Resources
Oil Conservation Division
1220 S. St Francis Dr.
Santa Fe, NM 87505

CONDITIONS

Action 528465

CONDITIONS

Operator: DEVON ENERGY PRODUCTION COMPANY, LP 333 West Sheridan Ave. Oklahoma City, OK 73102	OGRID: 6137
	Action Number: 528465
	Action Type: [C-141] Remediation Closure Request C-141 (C-141-v-Closure)

CONDITIONS

Created By	Condition	Condition Date
nvelez	Liner inspection approved, release resolved. Restoration complete.	12/1/2025