



November 17, 2025

District Supervisor  
Oil Conservation Division, District 1  
1625 North French Drive  
Hobbs, New Mexico 88240

**Re: Remediation Closure Request  
ConocoPhillips  
Flowmaster 15 TB 7H Release  
Unit Letter D, Section 15, Township 24 South, Range 34 East  
Lea County, New Mexico  
Incident ID# nAPP2523051178**

Sir or Madam:

Tetra Tech, Inc. (Tetra Tech) was contacted by ConocoPhillips Company (ConocoPhillips) to assess a release at the Flowmaster 15 Tank Battery Fee 007H (API 30-025-44685). The release footprint is located in Public Land Survey System (PLSS) Unit Letter D, Section 15, Township 24 South, and Range 34 East, in Lea County, New Mexico (Site). The approximate release point occurred at coordinates 32.22381389°, -103.46583611°, as shown on Figures 1 and 2.

## BACKGROUND

According to the C-141 Initial Report, the release was discovered on August 18, 2025 and was caused by a ½-inch nipple coming off the blind flange of the tee on the water dump line. Approximately 10 barrels (bbls) of crude oil and 52 bbls of produced water were reported released, of which 9 bbls of crude oil and 50 bbls of produced water were recovered. The release occurred within the lined facility and appeared to have spilled over into the unlined secondary containment area to the east of the facility. The New Mexico Oil Conservation Division (NMOCD) approved the initial C-141 on August 26, 2025, and subsequently assigned the release the Incident ID nAPP2523051178. The initial C-141 form is included in Appendix A.

## LAND OWNERSHIP

According to the NMOCD Oil and Gas Map, the Site is located on private land.

## SITE CHARACTERIZATION

A Site characterization was performed and no sinkholes, residences, schools, hospitals, institutions, churches, stream bodies, springs, playa lakes, wetlands, incorporated municipal boundaries, subsurface mines, or floodplains are located within the distances specified in 19.15.29.11 New Mexico Administrative Code (NMAC). The Site is in an area of low karst potential.

According to the New Mexico Office of the State Engineers (NMOSE) reporting system, there are no water wells within ½ mile (800 meters) of the Site. There are three (3) water wells within 2,362 meters of the Site with an average depth to groundwater of 235 feet below ground surface (bgs). The Site characterization data is included in Appendix B.

Tetra Tech

901 West Wall St., Suite 100, Midland, TX 79701

Tel 432.682.4559 Fax 432.682.3946 www.tetrattech.com

## REGULATORY FRAMEWORK

Based upon the release footprint and in accordance with Subsection E of 19.15.29.12 NMAC, per 19.15.29.11 NMAC, the Site characterization data was used to determine recommended remedial action levels (RRALs) for benzene, toluene, ethylbenzene, and xylene (collectively referred to as BTEX), total petroleum hydrocarbons (TPH), and chlorides in soil.

Based on the absence of water wells within ½ mile of the Site, the strictest Table I closure criteria will be applied to this release incident in lieu of drilling a boring for groundwater depth verification. Thus, based on the Site characterization, and in accordance with Table I of 19.15.29.12 NMAC, the RRALs for the Site are as follows:

Constituent	Remediation RRAL
Chloride	600 mg/kg
TPH (GRO+DRO+ORO)	100 mg/kg
BTEX	50 mg/kg
Benzene	10 mg/kg

## LINER INTEGRITY

In accordance with 19.15.29.11(A)(5)(a) NMAC, notification (C-141L) of a liner inspection at the Flowmaster 15 TB Fee 007H was submitted via the NMOCD portal on September 19, 2025. The liner inspection notification email is included in Appendix C.

Prior to conducting the liner inspection, ConocoPhillips representatives pressure washed and cleaned the liner. Photographic documentation following the pressure washing activities are included in Appendix D. On September 26, 2025, Tetra Tech personnel performed an inspection of the liner within the containment area of the Flowmaster 15 TB Fee 007H. This work was completed to verify the integrity of the liner. The liner was observed to underlie the entirety of the tank battery containment area. The liner was intact with no visible rips or tears and encompassed by an approximately 2-foot-tall muscle wall. The liner extended up the muscle wall and was anchored on the interior. At the time of the inspection, the liner was intact and had the ability to contain the documented release. Photographic documentation of the liner inspection is included in Appendix D.

This portion of Lea County (area of the Flowmaster 15 TB Fee 007H) experienced a rain event after the initial cleaning but prior to the official liner inspection. Photographs of the liner during the inspection indicate areas of standing rainwater from these weather events. It should be recognized that photographs collected after the pressure washing activities indicate no fluids on the liners as these activities occurred prior to the rain events. Nonetheless, the standing fluid observed in the official liner inspection photographs lend further evidence to the integrity of the liner as a competent fluid barrier.

## SITE ASSESSMENT

On September 26, 2025, Tetra Tech personnel were on Site to conduct assessment activities on behalf of ConocoPhillips. Assessment activities included installing four (4) vertical hand auger borings (AH-1 through AH-4) in the release area footprint and five (5) horizontal hand auger borings (AH-5 through AH-9) along the perimeter of the release extent to 1 foot bgs each. Sampling depths within the release footprint were determined by field screening for salinity.

A total of nine (9) soil samples were sent to Cardinal Laboratories in Hobbs, New Mexico to be analyzed for chloride via Standard Method 4500Cl-B, TPH via EPA Method 8015M, and BTEX via EPA Method 8021B. Copies of laboratory analysis and chain-of-custody documentation are included in Appendix E.

The laboratory analytical results from September 26, 2025, assessment sampling activities are summarized in Table 1. All analytical results were below the most stringent RRALs. Vertical and horizontal delineation was achieved.

## REMEDATION ACTIVITIES

ConocoPhillips operations personnel mobilized to the Site to conduct remedial activities from October 22 through October 28, 2025. Prior to confirmation sampling, the NMOCD district office was notified on October 20, 2025, via the OCD Portal (C-141N) in accordance with Subsection D of 19.15.29.12 NMAC. Copies of the regulatory correspondence are included in Appendix C.

Based on the collected analytical results, ConocoPhillips operations excavated the release extent to a maximum depth of 8 inches bgs to remove the visually impacted soils at the surface. All of the excavated material was transported offsite for proper disposal. Approximately eighty-five (85) cubic yards of material were transported to the Northern Delaware Basin in Jal, New Mexico. The remediation area is depicted in Figure 4.

Following excavation, confirmation floor and sidewall samples were collected and submitted for laboratory analysis to verify efficacy of remediation activities. Confirmation samples were collected such that each discrete sample (sidewall and floor) was representative of no more than 200 square feet of excavated area. Confirmation sidewall sample locations were labeled with "SW"-#, and confirmation floor sample locations were labeled with "FS"-#. Final excavated areas, depths, and representative confirmation sample locations are indicated in Figure 4. Photographs from the excavated areas prior to backfill are provided in Appendix D.

A total of nine (9) floor sample locations and eight (8) sidewall sample locations were used during the remedial activities. Collected confirmation samples were placed into laboratory-provided sample containers, transferred under chain-of-custody, and analyzed within appropriate holding times by Cardinal. The soil samples were analyzed for TPH (GRO+DRO+MRO) by EPA Method 8015M, BTEX by EPA Method 8021B, and chloride by SM4500Cl-B. Laboratory analytical data is included in Appendix E.

The results of the October 2025 confirmation sampling events are summarized in Table 2. The analytical results were directly compared to the established Site RRALs to demonstrate compliance. All final confirmation soil samples (floor and sidewall) were below the applicable cleanup levels for all analyzed constituents. Final excavated areas, depths, and representative confirmation sample locations are indicated in Figure 4.

## RECLAMATION ACTIVITIES

Based on 19.15.29.13 NMAC, areas disturbed by the remediation have been reclaimed. Collected confirmation samples were placed into laboratory-provided sample containers, transferred under chain-of-custody, and analyzed within appropriate holding times by Cardinal. The soil samples were analyzed for TPH (GRO+DRO+MRO) by EPA Method 8015M, BTEX by EPA Method 8021B, and chlorides by SM4500Cl-B. The analytical results were directly compared to the reclamation requirements and established Site RRALs to demonstrate compliance. All final confirmation soil samples (floor, sidewall and interstitial) were below Site RRALs for chloride, TPH, and BTEX. Excavated areas, depths and confirmation sample locations are indicated in Figure 4. The results of the October 2025 confirmation sampling events are summarized in Table 2.

Once acceptable confirmation sample results were received, the excavation was backfilled with clean material to pre-release grade. In accordance with 19.15.29.12 NMAC, the reclaimed area contained non-waste containing, uncontaminated, earthen material with chloride concentrations less than 600 mg/kg as analyzed by SM4500Cl-B. One (1) representative 5-point composite sample was collected from the backfill material used for the project site. Soil backfill composite sampling results are summarized in Table 3. Copies of laboratory analysis and chain-of-custody documentation are included in Appendix E. As this is an active facility, final reclamation of the facility shall take place in accordance with 19.15.29.12 NMAC once the Site is no longer being used for oil and gas production.

Remediation Closure Request  
November 17, 2025

ConocoPhillips

## CONCLUSION

ConocoPhillips respectfully requests closure of the release incident based on the confirmation sampling results and remediation activities performed. If you have any questions concerning the remediation activities for the Site, please call me at (512) 596-8201.

Sincerely,  
**Tetra Tech, Inc.**



Lisbeth Chavira  
Project Manager



Samantha K. Abbott, P.G.  
Senior Project Manager

cc:  
Mr. Jacob Laird, GPBU – ConocoPhillips



## LIST OF ATTACHMENTS

### Figures:

- Figure 1 – Overview Map
- Figure 2 – Site Location/Topographic Map
- Figure 3 – Approximate Release Extent and Site Assessment
- Figure 4 – Remediation Extent and Confirmation Sampling

### Tables:

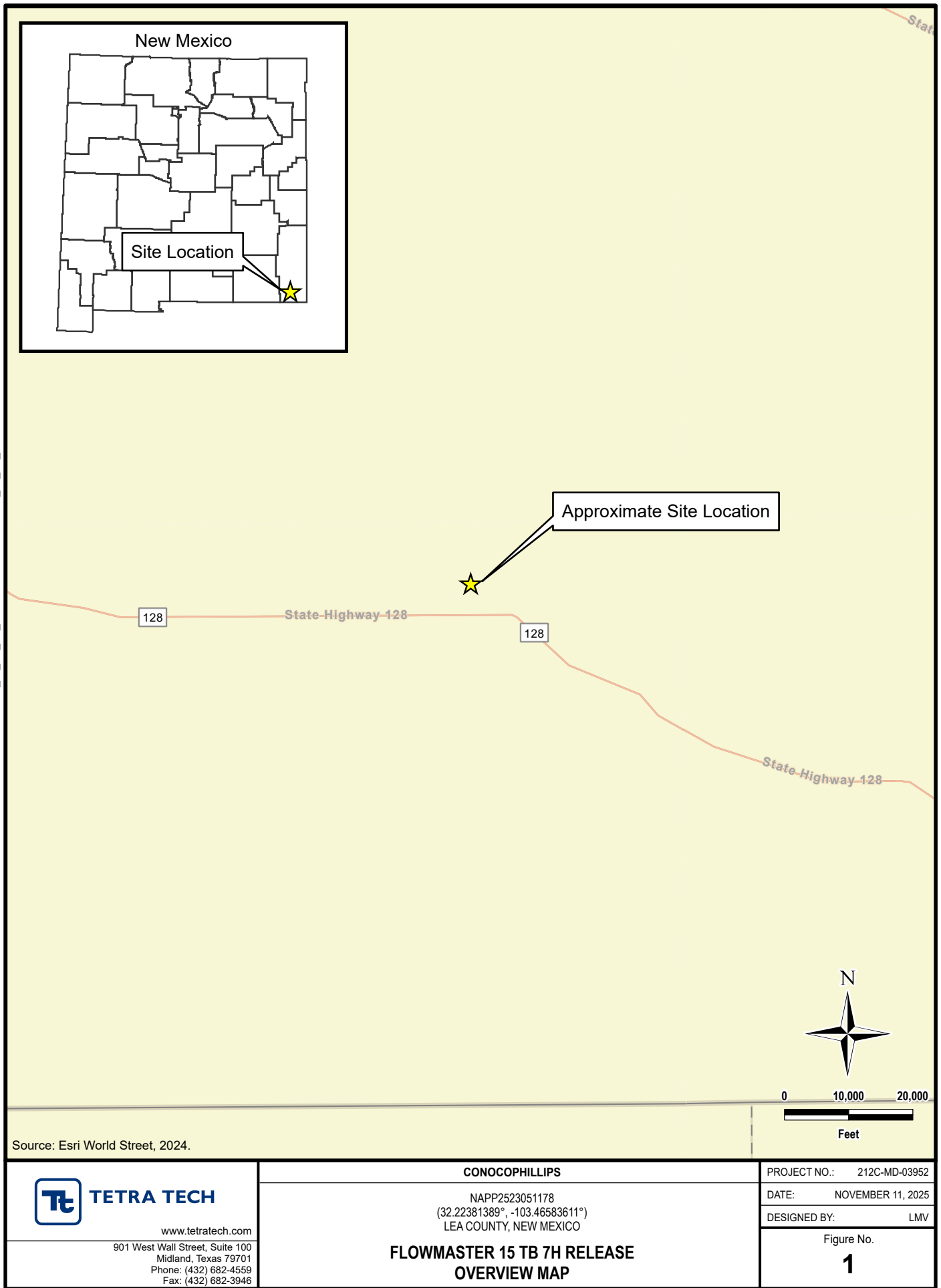
- Table 1 – Summary of Analytical Results – Soil Assessment
- Table 2 – Summary of Analytical Results – Soil Remediation
- Table 1 – Summary of Analytical Results – Composite Backfill

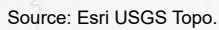
### Appendices:

- Appendix A – NMOCD Documentation
- Appendix B – Site Characterization Data
- Appendix C – Regulatory Correspondence
- Appendix D – Photographic Documentation
- Appendix E – Laboratory Analytical Results

## **FIGURES**

DOCUMENT PATH: C:\USERS\LISSA.VILLAMINON\DRIVE - TETRA TECH\INC\DOCUMENTS\ILLULLICOP\FLOWMASTER\_15\_TB\_7H\APRX





[www.tetratech.com](http://www.tetratech.com)

901 West Wall Street, Suite 100  
Midland, Texas 79701  
Phone: (432) 682-4559  
Fax: (432) 682-3946

NAPP2523051178  
(32.22381389°, -103.46583611°)  
LEA COUNTY, NEW MEXICO

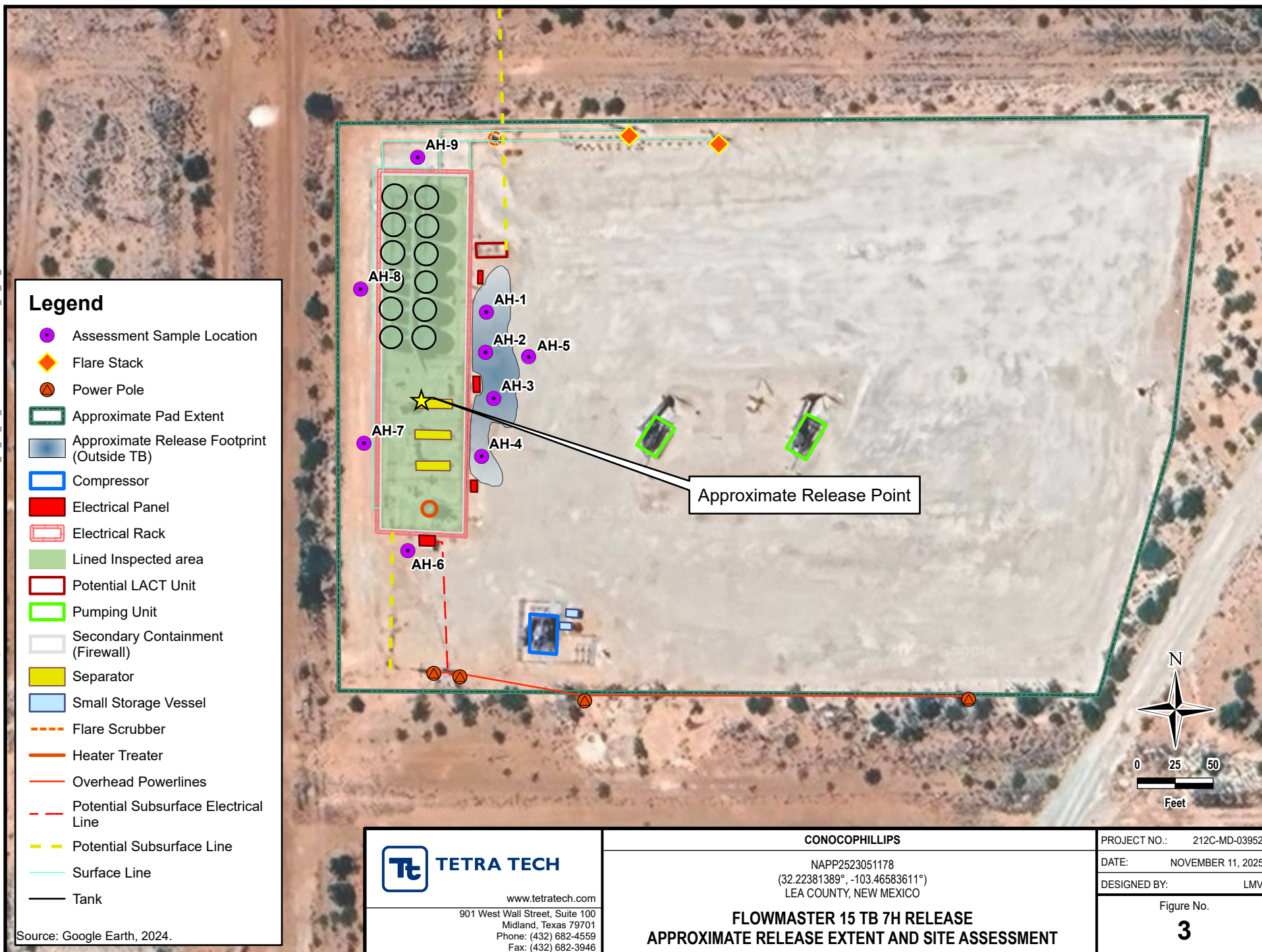
**FLOWMASTER 15 TB 7H RELEASE  
TOPOGRAPHIC MAP**

DESIGNED BY: LMV

Figure No.

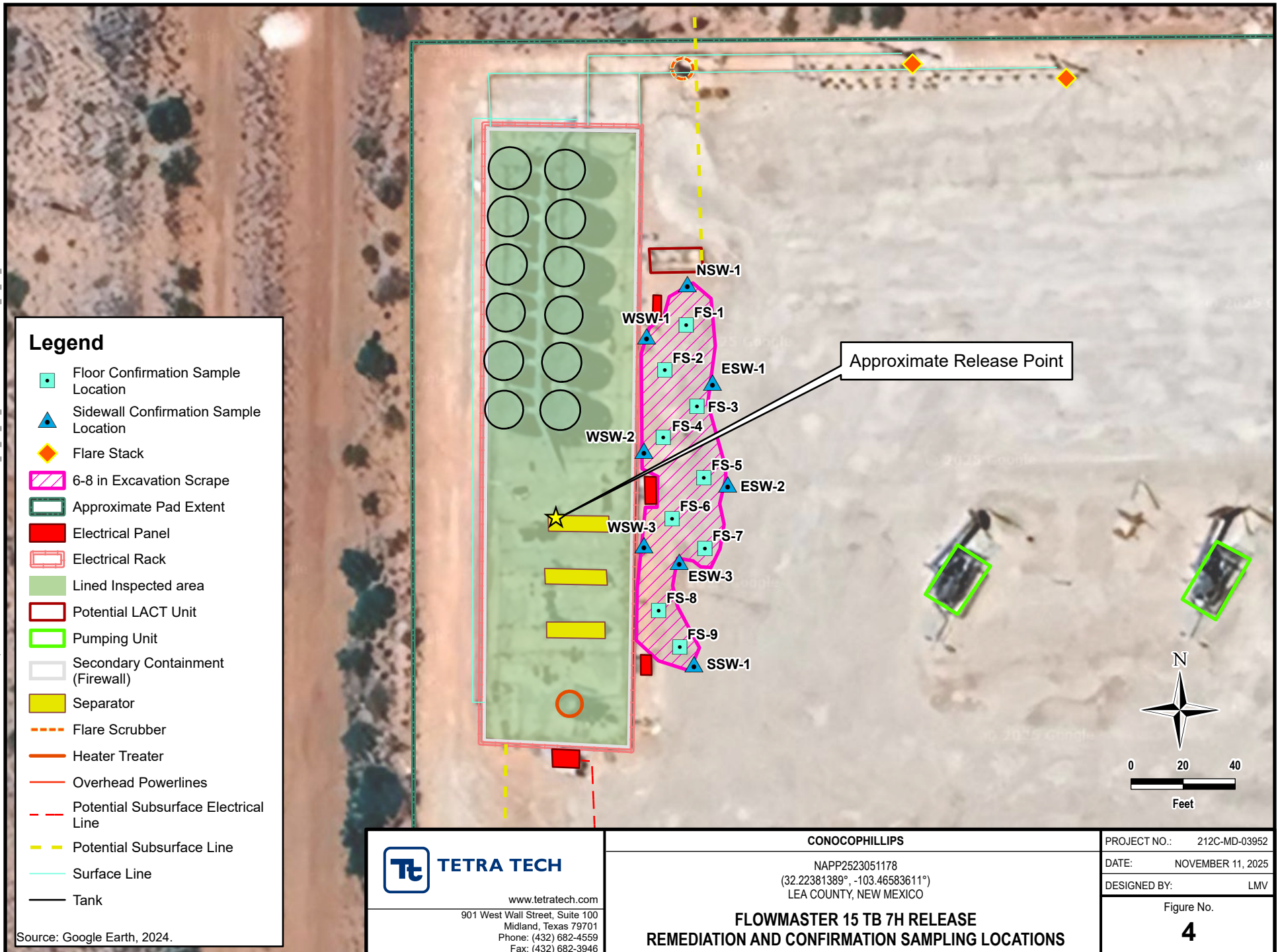
2

DOCUMENT PATH: C:\USERS\ISSA.VILLAMINON\DRIVE - TETRA TECH\INCDOCUMENTS\15\_TB\_7H\_RELEASE\FLOWMASTER\_15\_TB\_7H\_APRX





DOCUMENT PATH: C:\USERS\LISSA.VILLAMINIONEDRIVE - TETRA TECH, INC\DOCUMENTS\ILLULLICOPI\FLOWMASTER\_15\_TB\_7H\_RELEASE\FLOWMASTER\_15\_TB\_7H.APRX



## **TABLES**



TABLE 1  
SUMMARY OF ANALYTICAL RESULTS  
SOIL ASSESSMENT- NAPP2523051178  
CONOCOPHILLIPS  
FLOWMASTER 15 TB 7H RELEASE  
LEA COUNTY, NM

19.15.29.12 NMAC Closure Criteria for Soils Impacted by a Release ( $< 50$ ft):			Chlorides <sup>1</sup>		BTEX <sup>2</sup>										TPH <sup>3</sup>							
			600 mg/kg		$< 10$ mg/kg		Toluene		Ethylbenzene		Total Xylenes		$< 50$ mg/kg		GRO		DRO		EXT DRO		$< 100$ mg/kg	
Sample ID	Sample Date	Sample Depth Interval	Chloride		Benzene								Total BTEX								Total TPH (GRO+DRO+EXT DRO)	
			ft. bgs	mg/kg	Q	mg/kg	Q	mg/kg	Q	mg/kg	Q	mg/kg	Q	mg/kg	Q	mg/kg	Q	mg/kg	Q	mg/kg		
AH-1	9/26/2025	0-1	32.0		$< 0.050$		$< 0.050$		$< 0.050$		$< 0.150$		$< 0.300$		$< 10.0$		$< 10.0$		$< 10.0$		-	
AH-2	9/26/2025	0-1	32.0		$< 0.050$		$< 0.050$		$< 0.050$		$< 0.150$		$< 0.300$		$< 10.0$		$< 10.0$		$< 10.0$		-	
AH-3	9/26/2025	0-1	80.0		$< 0.050$		$< 0.050$		$< 0.050$		$< 0.150$		$< 0.300$		$< 10.0$		$< 10.0$		$< 10.0$		-	
AH-4	9/26/2025	0-1	16.0		$< 0.050$		$< 0.050$		$< 0.050$		$< 0.150$		$< 0.300$		$< 10.0$		$< 10.0$		$< 10.0$		-	
AH-5	9/26/2025	0-1	192		$< 0.050$		$< 0.050$		$< 0.050$		$< 0.150$		$< 0.300$		$< 10.0$		$< 10.0$		$< 10.0$		-	
AH-6	9/26/2025	0-1	48.0		$< 0.050$		$< 0.050$		$< 0.050$		$< 0.150$		$< 0.300$		$< 10.0$		35.4		$< 10.0$		35.4	
AH-7	9/26/2025	0-1	$< 16.0$		$< 0.050$		$< 0.050$		$< 0.050$		$< 0.150$		$< 0.300$		$< 10.0$		$< 10.0$		$< 10.0$		-	
AH-8	9/26/2025	0-1	80.0		$< 0.050$		$< 0.050$		$< 0.050$		$< 0.150$		$< 0.300$		$< 10.0$		$< 10.0$		$< 10.0$		-	
AH-9	9/26/2025	0-1	32.0		$< 0.050$		$< 0.050$		$< 0.050$		$< 0.150$		$< 0.300$		$< 10.0$		$< 10.0$		20.5		20.5	

## NOTES:

ft. Feet

bgs Below ground surface

mg/kg Milligrams per kilogram

TPH Total Petroleum Hydrocarbons

GRO Gasoline range organics

DRO Diesel range organics

1 Method SM4500Cl-B

2 Method 8021B

3 Method 8015M

***Bold and italicized values indicate exceedance of proposed Remediation RRALs and Reclamation Requirements.***

Shaded rows indicate intervals proposed for excavation.

TABLE 2  
SUMMARY OF ANALYTICAL RESULTS  
SOIL REMEDIATION - NAPP2523051178  
CONOCOPHILLIPS  
FLOWMASTER 15 TB 7H RELEASE  
LEA COUNTY, NM

Sample ID	Sample Date	Sample Depth	Chloride <sup>1</sup>		BTEX <sup>2</sup>										TPH <sup>3</sup>							
					Benzene		Toluene		Ethylbenzene		Total Xylenes		Total BTEX		GRO		DRO		EXT DRO		Total TPH	
		in. bgs	mg/kg	Q	mg/kg	Q	mg/kg	Q	mg/kg	Q	mg/kg	Q	mg/kg	Q	mg/kg	Q	mg/kg	Q	mg/kg	Q	(GRO+DRO+EXT DRO)	
FS-1	10/23/2025	8	48.0		<0.050		<0.050		<0.050		<0.150		<0.300		<10.0		<10.0		<10.0		-	
FS-2	10/23/2025	8	48.0		<0.050		<0.050		<0.050		<0.150		<0.300		<10.0		<10.0		<10.0		-	
FS-3	10/23/2025	8	160.0		<0.050		<0.050		<0.050		<0.150		<0.300		<10.0		<10.0		<10.0		-	
FS-4	10/23/2025	8	80.0		<0.050		<0.050		<0.050		<0.150		<0.300		<10.0		<10.0		<10.0		-	
FS-5	10/23/2025	8	64.0		<0.050		<0.050		<0.050		<0.150		<0.300		<10.0		<10.0		<10.0		-	
FS-6	10/23/2025	8	32.0		<0.050		<0.050		<0.050		<0.150		<0.300		<10.0		<10.0		<10.0		-	
FS-7	10/23/2025	8	48.0		<0.050		<0.050		<0.050		<0.150		<0.300		<10.0		<10.0		<10.0		-	
FS-8	10/23/2025	8	32.0		<0.050		<0.050		<0.050		<0.150		<0.300		<10.0		<10.0		<10.0		-	
FS-9	10/23/2025	8	64.0		<0.050		<0.050		<0.050		<0.150		<0.300		<10.0		<10.0		<10.0		-	
NSW-1	10/23/2025	-	32		<0.050		<0.050		<0.050		<0.150		<0.300		<10.0		<10.0		<10.0		-	
WSW-1	10/23/2025	-	48		<0.050		<0.050		<0.050		<0.150		<0.300		<10.0		<10.0		<10.0		-	
WSW-2	10/23/2025	-	80		<0.050		<0.050		<0.050		<0.150		<0.300		<10.0		<10.0		<10.0		-	
WSW-3	10/23/2025	-	32		<0.050		<0.050		<0.050		<0.150		<0.300		<10.0		<10.0		<10.0		-	
SSW-1	10/23/2025	-	80		<0.050		<0.050		<0.050		<0.150		<0.300		<10.0		<10.0		<10.0		-	
ESW-1	10/23/2025	-	144		<0.050		<0.050		<0.050		<0.150		<0.300		<10.0		<10.0		<10.0		-	
ESW-2	10/23/2025	-	48		<0.050		<0.050		<0.050		<0.150		<0.300		<10.0		<10.0		<10.0		-	
ESW-3	10/23/2025	-	48		<0.050		<0.050		<0.050		<0.150		<0.300		<10.0		<10.0		<10.0		-	

## NOTES:

- ft. Feet  
bgs Below ground surface  
mg/kg Milligrams per kilogram  
TPH Total Petroleum Hydrocarbons  
GRO Gasoline range organics  
DRO Diesel range organics  
1 Method SM4500Cl-B  
2 Method 8021B  
3 Method 8015M

TABLE 5  
SUMMARY OF ANALYTICAL RESULTS  
XL PIT - SOIL BACKFILL  
CONOCOPHILLIPS  
32.268462, -103.518590  
LEA COUNTY, NM

Sample ID	Sample Date	Chloride <sup>1</sup>		BTEX <sup>2</sup>										TPH <sup>3</sup>						
				Benzene		Toluene		Ethylbenzene		Total Xylenes		Total BTEX		GRO		DRO		EXT DRO		Total TPH (GRO+DRO+EXT DRO)
		mg/kg	Q	mg/kg	Q	mg/kg	Q	mg/kg	Q	mg/kg	Q	mg/kg	Q	C <sub>6</sub> - C <sub>10</sub>	Q	> C <sub>10</sub> - C <sub>28</sub>	Q	> C <sub>28</sub> - C <sub>36</sub>	Q	
		mg/kg	Q	mg/kg	Q	mg/kg	Q	mg/kg	Q	mg/kg	Q	mg/kg	Q	mg/kg	Q	mg/kg	Q	mg/kg	Q	
BACKFILL - COMPOSITE	10/23/2025	112.0		<0.050		<0.050		<0.050		<0.150		<0.300		<10.0		<10.0		<10.0		-

- NOTES:
- ft. Feet
  - bgs Below ground surface
  - mg/kg Milligrams per kilogram
  - TPH Total Petroleum Hydrocarbons
  - GRO Gasoline range organics
  - DRO Diesel range organics
  - 1 Method SM4500Cl-B
  - 2 Method 8021B
  - 3 Method 8015M

## **APPENDIX A**

### **NMOCD Documentation**

Sante Fe Main Office  
Phone: (505) 476-3441

General Information  
Phone: (505) 629-6116

Online Phone Directory  
<https://www.emnrd.nm.gov/ocd/contact-us>

State of New Mexico  
Energy, Minerals and Natural Resources  
Oil Conservation Division  
1220 S. St Francis Dr.  
Santa Fe, NM 87505

QUESTIONS

Action 496817

QUESTIONS

Operator: MARATHON OIL PERMIAN LLC 600 W Illinois Ave Midland, TX 79701	OGRID: 372098
	Action Number: 496817
	Action Type: [NOTIFY] Notification Of Release (NOR)

QUESTIONS

<b>Location of Release Source</b> <i>Please answer all the questions in this group.</i>	
Site Name	Flowmaster 15 TB 7H
Date Release Discovered	08/18/2025
Surface Owner	Private

<b>Incident Details</b> <i>Please answer all the questions in this group.</i>	
Incident Type	Release Other
Did this release result in a fire or is the result of a fire	No
Did this release result in any injuries	No
Has this release reached or does it have a reasonable probability of reaching a watercourse	No
Has this release endangered or does it have a reasonable probability of endangering public health	No
Has this release substantially damaged or will it substantially damage property or the environment	No
Is this release of a volume that is or may with reasonable probability be detrimental to fresh water	No

<b>Nature and Volume of Release</b> <i>Material(s) released, please answer all that apply below. Any calculations or specific justifications for the volumes provided should be attached to the follow-up C-141 submission.</i>	
Crude Oil Released (bbls) Details	Cause: Normal Operations   Separator   Crude Oil   Released: 10 BBL   Recovered: 10 BBL   Lost: 0 BBL.
Produced Water Released (bbls) Details	Cause: Normal Operations   Separator   Produced Water   Released: 52 BBL   Recovered: 50 BBL   Lost: 2 BBL.
Is the concentration of chloride in the produced water >10,000 mg/l	Yes
Condensate Released (bbls) Details	Not answered.
Natural Gas Vented (Mcf) Details	Not answered.
Natural Gas Flared (Mcf) Details	Not answered.
Other Released Details	Not answered.
Are there additional details for the questions above (i.e. any answer containing Other, Specify, Unknown, and/or Fire, or any negative lost amounts)	Not answered.

Sante Fe Main Office  
Phone: (505) 476-3441

General Information  
Phone: (505) 629-6116

Online Phone Directory  
<https://www.emnrd.nm.gov/ocd/contact-us>

**State of New Mexico**  
**Energy, Minerals and Natural Resources**  
**Oil Conservation Division**  
**1220 S. St Francis Dr.**  
**Santa Fe, NM 87505**

QUESTIONS, Page 2

Action 496817

**QUESTIONS (continued)**

Operator: MARATHON OIL PERMAN LLC 600 W Illinois Ave Midland, TX 79701	OGRID: 372098
	Action Number: 496817
	Action Type: [NOTIFY] Notification Of Release (NOR)

**QUESTIONS**

<b>Nature and Volume of Release (continued)</b>	
Is this a gas only submission (i.e. only significant Mcf values reported)	No, according to supplied volumes this does not appear to be a "gas only" report.
Was this a major release as defined by Subsection A of 19.15.29.7 NMAC	Yes
Reasons why this would be considered a submission for a notification of a major release	From paragraph A. "Major release" determine using: (1) an unauthorized release of a volume, excluding gases, of 25 barrels or more.
With the implementation of the 19.15.27 NMAC (05/25/2021), venting and/or flaring of natural gas (i.e. gas only) are to be submitted on the C-129 form.	

**Initial Response**

The responsible party must undertake the following actions immediately unless they could create a safety hazard that would result in injury.

The source of the release has been stopped	True
The impacted area has been secured to protect human health and the environment	True
Released materials have been contained via the use of berms or dikes, absorbent pads, or other containment devices	True
All free liquids and recoverable materials have been removed and managed appropriately	True
If all the actions described above have not been undertaken, explain why	Not answered.

Per Paragraph 4 of Subsection B of 19.15.29.8 NMAC the responsible party may commence remediation immediately after discovery of a release. If remediation has begun, please prepare and attach a narrative of actions to date in the follow-up C-141 submission. If remedial efforts have been successfully completed or if the release occurred within a lined containment area (see 19.15.29.11(A)(5)(a) NMAC), please prepare and attach all information needed for closure evaluation in the follow-up C-141 submission.

Sante Fe Main Office  
Phone: (505) 476-3441

General Information  
Phone: (505) 629-6116

Online Phone Directory  
<https://www.emnrd.nm.gov/ocd/contact-us>

**State of New Mexico**  
**Energy, Minerals and Natural Resources**  
**Oil Conservation Division**  
**1220 S. St Francis Dr.**  
**Santa Fe, NM 87505**

ACKNOWLEDGMENTS

Action 496817

**ACKNOWLEDGMENTS**

Operator: MARATHON OIL PERMIAN LLC 600 W Illinois Ave Midland, TX 79701	OGRID: 372098
	Action Number: 496817
	Action Type: [NOTIFY] Notification Of Release (NOR)

**ACKNOWLEDGMENTS**

<input checked="" type="checkbox"/>	I acknowledge that I am authorized to submit notification of a release on behalf of my operator.
<input checked="" type="checkbox"/>	I acknowledge that upon submitting this application, I will be creating a new incident file (assigned to my operator) to track the notification(s) and corrective action(s) for a release, pursuant to NMAC 19.15.29.
<input checked="" type="checkbox"/>	I acknowledge that creating a new incident file will require my operator to file subsequent submission(s) of form "C-141, Application for administrative approval of a release notification and corrective action", pursuant to NMAC 19.15.29.
<input checked="" type="checkbox"/>	I hereby certify that the information given above is true and complete to the best of my knowledge and understand that pursuant to OCD rules and regulations all operators are required to report and/or file certain release notifications and perform corrective actions for releases which may endanger public health or the environment.
<input checked="" type="checkbox"/>	I acknowledge the fact that the acceptance of a C-141 report by the OCD does not relieve the operator of liability should their operations have failed to adequately investigate and remediate contamination that pose a threat to groundwater, surface water, human health or the environment.
<input checked="" type="checkbox"/>	I acknowledge the fact that, in addition, OCD acceptance of a C-141 report does not relieve the operator of responsibility for compliance with any other federal, state, or local laws and/or regulations.



Sante Fe Main Office  
Phone: (505) 476-3441

General Information  
Phone: (505) 629-6116

Online Phone Directory  
<https://www.emnrd.nm.gov/ocd/contact-us>

State of New Mexico  
Energy, Minerals and Natural Resources  
Oil Conservation Division  
1220 S. St Francis Dr.  
Santa Fe, NM 87505

CONDITIONS

Action 496817

CONDITIONS

Operator: MARATHON OIL PERMIAN LLC 600 W Illinois Ave Midland, TX 79701	OGRID: 372098
	Action Number: 496817
	Action Type: [NOTIFY] Notification Of Release (NOR)

CONDITIONS

Created By	Condition	Condition Date
jlaire	When submitting future reports regarding this release, please submit the calculations used or specific justification for the volumes reported on the initial C-141.	8/18/2025

Spill Calculation - Subsurface Spill - Rectangle												Remediation Recommendation	
												Page 20 of 99	
Convert Irregular shape into a series of rectangles	Length (ft.)	Width (ft.)	Average Depth (in.)	On/Off Pad (dropdown)	Soil Spilled-Fluid Saturation (%)	Estimated volume of each area (bbl.)	Total Estimated Volume of Spill (bbl.)	Percentage of Oil if Spilled Fluid is a Mixture (%)	Total Estimated Volume of Spilled Oil (bbl.)	Total Estimated Volume of Spilled Liquid other than Oil (bbl.)	Total Estimated Contaminated Soil, uncompacted, 25% (yd³.)	Current Rule of Thumb - RMR Handover Volume, (yd³.)	
Rectangle A	200.0	15.0	0.3	Off-Pad✓	11.45%	13.35	1.53	16%	0.24	1.28	3.47	750	
Rectangle B				✓		0.00					0.00		
Rectangle C				✓		0.00					0.00		
Rectangle D				✓		0.00					0.00		
Rectangle E				✓		0.00					0.00		
Rectangle F				✓		0.00					0.00		
Rectangle G				✓		0.00					0.00		
Rectangle H				✓		0.00					0.00		
Rectangle I				✓		0.00					0.00		
Rectangle J				✓		0.00					0.00		
Total Subsurface Volume Released:							1.5286		0.2446	1.2840	3.47	BU	

Received by OCD: 11/17/2025 4:22:14 PM

Released to Imaging: 12/8/2025 8:24:17 AM

Sante Fe Main Office  
Phone: (505) 476-3441

General Information  
Phone: (505) 629-6116

Online Phone Directory  
<https://www.emnrd.nm.gov/ocd/contact-us>

State of New Mexico  
Energy, Minerals and Natural Resources  
Oil Conservation Division  
1220 S. St Francis Dr.  
Santa Fe, NM 87505

QUESTIONS

Action 499286

QUESTIONS

Operator: MARATHON OIL PERMIAN LLC 600 W Illinois Ave Midland, TX 79701	OGRID: 372098
	Action Number: 499286
	Action Type: [C-141] Initial C-141 (C-141-v-Initial)

QUESTIONS

Prerequisites	
Incident ID (n#)	nAPP2523051178
Incident Name	NAPP2523051178 FLOWMASTER 15 TB FEE 007H @ 30-025-44685
Incident Type	Release Other
Incident Status	Initial C-141 Received
Incident Well	[30-025-44685] FLOWMASTER 15 TB FEE #007H

Location of Release Source	
Please answer all the questions in this group.	
Site Name	Flowmaster 15 TB Fee 007H
Date Release Discovered	08/18/2025
Surface Owner	Private

Incident Details	
Please answer all the questions in this group.	
Incident Type	Release Other
Did this release result in a fire or is the result of a fire	No
Did this release result in any injuries	No
Has this release reached or does it have a reasonable probability of reaching a watercourse	No
Has this release endangered or does it have a reasonable probability of endangering public health	No
Has this release substantially damaged or will it substantially damage property or the environment	No
Is this release of a volume that is or may with reasonable probability be detrimental to fresh water	No

Nature and Volume of Release	
Material(s) released, please answer all that apply below. Any calculations or specific justifications for the volumes provided should be attached to the follow-up C-141 submission.	
Crude Oil Released (bbls) Details	Cause: Normal Operations   Separator   Crude Oil   Released: 10 BBL   Recovered: 9 BBL   Lost: 1 BBL.
Produced Water Released (bbls) Details	Cause: Normal Operations   Separator   Produced Water   Released: 52 BBL   Recovered: 50 BBL   Lost: 2 BBL.
Is the concentration of chloride in the produced water >10,000 mg/l	Yes
Condensate Released (bbls) Details	Not answered.
Natural Gas Vented (Mcf) Details	Not answered.
Natural Gas Flared (Mcf) Details	Not answered.
Other Released Details	Not answered.
Are there additional details for the questions above (i.e. any answer containing Other, Specify, Unknown, and/or Fire, or any negative lost amounts)	Not answered.

Sante Fe Main Office  
Phone: (505) 476-3441

General Information  
Phone: (505) 629-6116

Online Phone Directory  
<https://www.emnrd.nm.gov/ocd/contact-us>

**State of New Mexico**  
**Energy, Minerals and Natural Resources**  
**Oil Conservation Division**  
**1220 S. St Francis Dr.**  
**Santa Fe, NM 87505**

QUESTIONS, Page 2

Action 499286

**QUESTIONS (continued)**

Operator: MARATHON OIL PERMIAN LLC 600 W Illinois Ave Midland, TX 79701	OGRID: 372098
	Action Number: 499286
	Action Type: [C-141] Initial C-141 (C-141-v-Initial)

**QUESTIONS**

<b>Nature and Volume of Release (continued)</b>	
Is this a gas only submission (i.e. only significant Mcf values reported)	No, according to supplied volumes this does not appear to be a "gas only" report.
Was this a major release as defined by Subsection A of 19.15.29.7 NMAC	Yes
Reasons why this would be considered a submission for a notification of a major release	From paragraph A. "Major release" determine using: (1) an unauthorized release of a volume, excluding gases, of 25 barrels or more.
With the implementation of the 19.15.27 NMAC (05/25/2021), venting and/or flaring of natural gas (i.e. gas only) are to be submitted on the C-129 form.	

**Initial Response**

The responsible party must undertake the following actions immediately unless they could create a safety hazard that would result in injury.

The source of the release has been stopped	True
The impacted area has been secured to protect human health and the environment	True
Released materials have been contained via the use of berms or dikes, absorbent pads, or other containment devices	True
All free liquids and recoverable materials have been removed and managed appropriately	True
If all the actions described above have not been undertaken, explain why	Not answered.

Per Paragraph (4) of Subsection B of 19.15.29.8 NMAC the responsible party may commence remediation immediately after discovery of a release. If remediation has begun, please prepare and attach a narrative of actions to date in the follow-up C-141 submission. If remedial efforts have been successfully completed or if the release occurred within a lined containment area (see Subparagraph (a) of Paragraph (5) of Subsection A of 19.15.29.11 NMAC), please prepare and attach all information needed for closure evaluation in the follow-up C-141 submission.

I hereby certify that the information given above is true and complete to the best of my knowledge and understand that pursuant to OCD rules and regulations all operators are required to report and/or file certain release notifications and perform corrective actions for releases which may endanger public health or the environment. The acceptance of a C-141 report by the OCD does not relieve the operator of liability should their operations have failed to adequately investigate and remediate contamination that pose a threat to groundwater, surface water, human health or the environment. In addition, OCD acceptance of a C-141 report does not relieve the operator of responsibility for compliance with any other federal, state, or local laws and/or regulations.

I hereby agree and sign off to the above statement	Name: Brittany Esparza Title: Environmental Technician Email: brittany.Esparza@ConocoPhillips.com Date: 08/26/2025
--	---

Sante Fe Main Office  
Phone: (505) 476-3441

General Information  
Phone: (505) 629-6116

Online Phone Directory  
<https://www.emnrd.nm.gov/ocd/contact-us>

**State of New Mexico**  
**Energy, Minerals and Natural Resources**  
**Oil Conservation Division**  
**1220 S. St Francis Dr.**  
**Santa Fe, NM 87505**

QUESTIONS, Page 3

Action 499286

**QUESTIONS (continued)**

Operator: MARATHON OIL PERMIAN LLC 600 W Illinois Ave Midland, TX 79701	OGRID: 372098
	Action Number: 499286
	Action Type: [C-141] Initial C-141 (C-141-v-Initial)

**QUESTIONS**

<b>Site Characterization</b>	
<i>Please answer all the questions in this group (only required when seeking remediation plan approval and beyond). This information must be provided to the appropriate district office no later than 90 days after the release discovery date.</i>	
What is the shallowest depth to groundwater beneath the area affected by the release in feet below ground surface (ft bgs)	Not answered.
What method was used to determine the depth to ground water	Not answered.
Did this release impact groundwater or surface water	Not answered.
<b>What is the minimum distance, between the closest lateral extents of the release and the following surface areas:</b>	
A continuously flowing watercourse or any other significant watercourse	Not answered.
Any lakebed, sinkhole, or playa lake (measured from the ordinary high-water mark)	Not answered.
An occupied permanent residence, school, hospital, institution, or church	Not answered.
A spring or a private domestic fresh water well used by less than five households for domestic or stock watering purposes	Not answered.
Any other fresh water well or spring	Not answered.
Incorporated municipal boundaries or a defined municipal fresh water well field	Not answered.
A wetland	Not answered.
A subsurface mine	Not answered.
An (non-karst) unstable area	Not answered.
Categorize the risk of this well / site being in a karst geology	Not answered.
A 100-year floodplain	Not answered.
Did the release impact areas not on an exploration, development, production, or storage site	Not answered.

<b>Remediation Plan</b>	
<i>Please answer all the questions that apply or are indicated. This information must be provided to the appropriate district office no later than 90 days after the release discovery date.</i>	
Requesting a remediation plan approval with this submission	No
<i>The OCD recognizes that proposed remediation measures may have to be minimally adjusted in accordance with the physical realities encountered during remediation. If the responsible party has any need to significantly deviate from the remediation plan proposed, then it should consult with the division to determine if another remediation plan submission is required.</i>	

Sante Fe Main Office  
Phone: (505) 476-3441

General Information  
Phone: (505) 629-6116

Online Phone Directory  
<https://www.emnrd.nm.gov/ocd/contact-us>

State of New Mexico  
Energy, Minerals and Natural Resources  
Oil Conservation Division  
1220 S. St Francis Dr.  
Santa Fe, NM 87505

CONDITIONS

Action 499286

CONDITIONS

Operator: MARATHON OIL PERMIAN LLC 600 W Illinois Ave Midland, TX 79701	OGRID: 372098
	Action Number: 499286
	Action Type: [C-141] Initial C-141 (C-141-v-Initial)

CONDITIONS

Created By	Condition	Condition Date
scwells	None	8/26/2025

## **APPENDIX B**

### **Site Characterization Data**





## My Map

### BLM\_NM\_Plant\_Wildlife\_Habitat

Special Status Plant and Wildlife Habitat

Potential Habitat (Planning Area Only)

-  Allred's Flax
-  Guadalupe Mountains and Foothills
-  Gypsum milkvetch
-  Gypsum wild buckwheat
-  Kuenzler's hedgehog cactus
-  Lee's pincushion cactus
-  Scheer's beehive cactus
-  Tharp's blue-star
-  Wright's waterwillow

Dunes Sage Brush Lizard Habitat



Lesser Prairie Chicken Habitat

-  Core Management Area
-  Habitat Evaluation



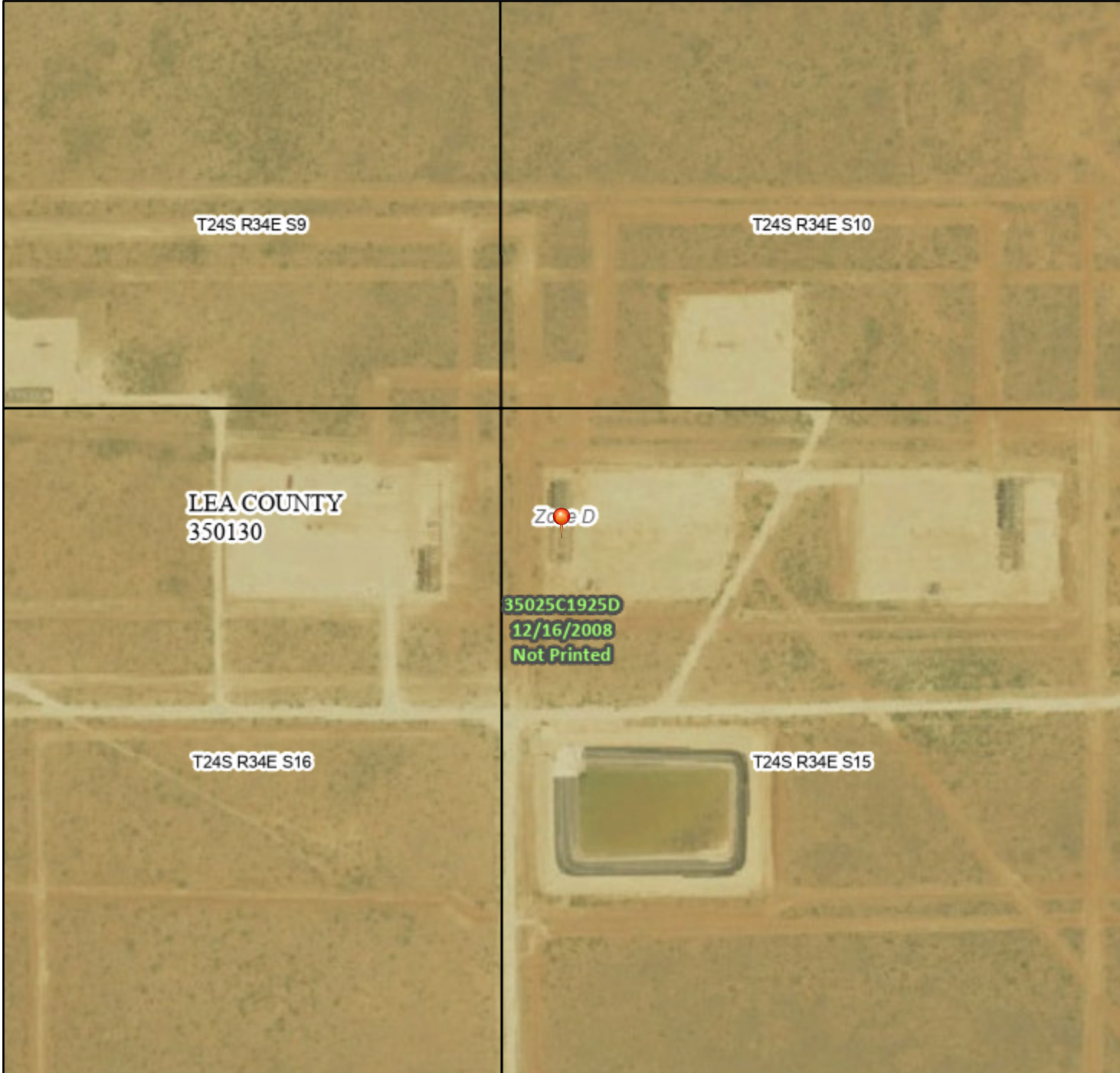
1mi

Bureau of Land Management - New Mexico State Office | Earthstar Geographics

# National Flood Hazard Layer FIRMette



103°28'16"W 32°13'41"N



0 250 500 1,000 1,500 2,000 Feet

1:6,000

103°27'38"W 32°13'11"N

Released to Imaging: 12/8/2025 8:24:17 AM

Basemap Imagery Source: USGS National Map 2023

## Legend

SEE FIS REPORT FOR DETAILED LEGEND AND INDEX MAP FOR FIRM PANEL LAYOUT

SPECIAL FLOOD HAZARD AREAS		Without Base Flood Elevation (BFE) Zone A, V, A99
		With BFE or Depth Zone AE, AO, AH, VE, AR
		Regulatory Floodway
OTHER AREAS OF FLOOD HAZARD		0.2% Annual Chance Flood Hazard, Areas of 1% annual chance flood with average depth less than one foot or with drainage areas of less than one square mile Zone X
		Future Conditions 1% Annual Chance Flood Hazard Zone X
		Area with Reduced Flood Risk due to Levee. See Notes. Zone X
		Area with Flood Risk due to Levee Zone D
OTHER AREAS		NO SCREEN Area of Minimal Flood Hazard Zone X
		Effective LOMRs
		Area of Undetermined Flood Hazard Zone D
GENERAL STRUCTURES		Channel, Culvert, or Storm Sewer
		Levee, Dike, or Floodwall
OTHER FEATURES		20.2 Cross Sections with 1% Annual Chance Water Surface Elevation
		17.5 Cross Sections with 1% Annual Chance Water Surface Elevation
		Coastal Transect
		Base Flood Elevation Line (BFE)
		Limit of Study
		Jurisdiction Boundary
		Coastal Transect Baseline
		Profile Baseline
MAP PANELS		Digital Data Available
		No Digital Data Available
		Unmapped



The pin displayed on the map is an approximate point selected by the user and does not represent an authoritative property location.

This map complies with FEMA's standards for the use of digital flood maps if it is not void as described below. The basemap shown complies with FEMA's basemap accuracy standards

The flood hazard information is derived directly from the authoritative NFHL web services provided by FEMA. This map was exported on 11/3/2025 at 8:08 PM and does not reflect changes or amendments subsequent to this date and time. The NFHL and effective information may change or become superseded by new data over time.

This map image is void if the one or more of the following map elements do not appear: basemap imagery, flood zone labels, legend, scale bar, map creation date, community identifiers, FIRM panel number, and FIRM effective date. Map images for unmapped and unmodernized areas cannot be used for regulatory purposes.





Land Status

0 0.01 0.03 0.05  
mi



New Mexico State Land Office

Disclaimer:  
The New Mexico State Land Office assumes no responsibility or liability for, or in connection with the accuracy, reliability or use of the information provided herein with respect to State Land Office data or data from other sources.

Data pertaining to New Mexico State Trust Lands are provisional and subject to revision, and do not constitute an official record of title. Official records may be reviewed at the New Mexico State Land Office in Santa Fe, New Mexico.

Released to Imaging: 12/8/2025 8:24:17 AM  
Map Created: 11/3/2025



Oil and Gas Leasing Restrictions



Energy Leases



Agricultural Leases



Oil and Gas Leases



Minerals Leases



Commercial Leases

New Mexico State Trust Lands



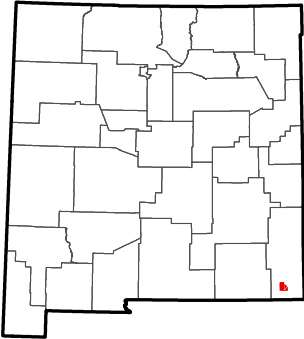
Subsurface Estate



Surface Estate



Both Estates



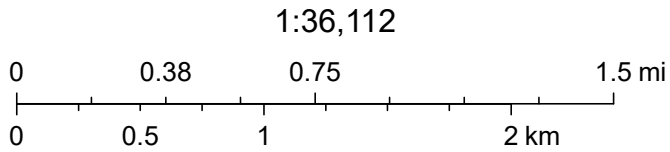


# OCD Hydrology



11/3/2025, 1:57:36 PM

— OSE Streams



Vantor, NM OSE



# OCD Induced Seismicity

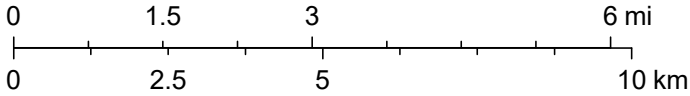


11/3/2025, 1:43:29 PM

Seismic Response 3.0 to 3.4

- 3 mi.
- 6 mi.
- 10 mi.

1:144,448



Oil Conservation Division (OCD), Energy, Minerals and Natural Resources Department (EMNRD), Earthstar Geographics



# OCD Karst Potential (Low)

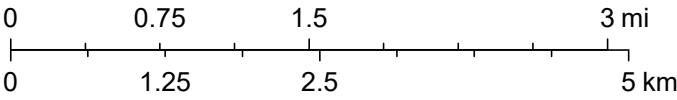


11/3/2025, 1:47:47 PM

Karst Occurrence Potential

Low

1:72,224



BLM, OCD, New Mexico Tech, Earthstar Geographics



# OCD Mineral and Surface Ownership



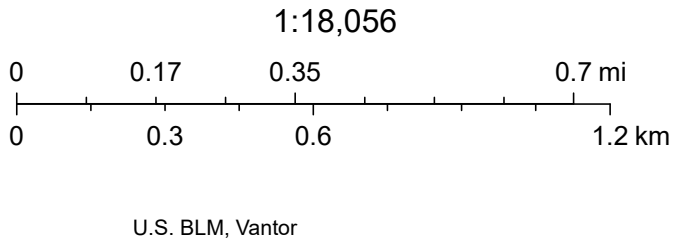
11/3/2025, 1:49:50 PM

Mineral Ownership

- A-All minerals are owned by U.S.
- N-No minerals are owned by the U.S.
- T-Other minerals are owned by the U.S.

Land Ownership

- BLM
- P
- S





# Registered Mines

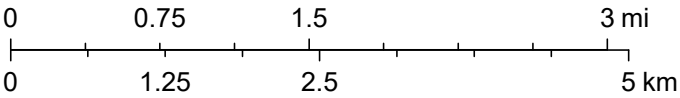


11/3/2025, 2:02:54 PM

Registered Mines

- ✕ Aggregate, Stone etc.
- ✕ Aggregate, Stone etc.

1:72,224



Earthstar Geographics





New Mexico Office of the State Engineer

Water Column/Average Depth to Water

(A CLW##### in the POD suffix indicates the POD has been replaced & no longer serves a water right file.)

(R=POD has been replaced, O=orphaned, C=the file is closed)

(quarters are smallest to largest)

POD Number	Code	Sub basin	County	Q64	Q16	Q4	Sec	Tws	Range	X	Y	Map	Distance (meters)	Well Depth (In feet)	Depth Water (In feet)	Water Column (In feet)
<a href="#">C 03932 POD13</a>		CUB	LE	SE	NE	SW	15	24S	34E	645314.2	3565203.5		1308	90		
<a href="#">C 03943 POD1</a>		CUB	LE	NE	SE	NE	21	24S	34E	644522.6	3564266.6		2010	610	431	179
<a href="#">C 02387</a>		CUB	LE			NW	11	24S	34E	646513.0	3567613.0 *		2362	62	40	22

Average Depth to Water: 235 feet

Minimum Depth: 40 feet

Maximum Depth: 431 feet

Record Count: 3

Basin/County Search:

County: LE

UTM Filters (in meters):

Easting: 644564.39

Northing: 3566276.41

Radius: 2500

\* UTM location was derived from PLSS - see Help

The data is furnished by the NMOSE/ISC and is accepted by the recipient with the expressed understanding that the OSE/ISC make no warranties, expressed or implied, concerning the accuracy, completeness, reliability, usability, or suitability for any particular purpose of the data.

## **APPENDIX C**

### **Regulatory Correspondence**

**Chavira, Lisbeth**

---

**From:** OCDOnline@state.nm.us  
**Sent:** Friday, September 19, 2025 2:16 PM  
**To:** Chavira, Lisbeth  
**Subject:** The Oil Conservation Division (OCD) has accepted the application, Application ID: 507615

You don't often get email from ocdonline@state.nm.us. [Learn why this is important](#)

**⚠ CAUTION:** This email originated from an external sender. Verify the source before opening links or attachments. **⚠**

To whom it may concern (c/o Lisbeth Chavira for MARATHON OIL PERMIAN LLC),

The OCD has received the submitted *Notification for Liner Inspection for a Release (C-141L)*, for incident ID (n#) nAPP2523051178.

The liner inspection is expected to take place:

**When:** 09/26/2025 @ 10:00

**Where:** D-15-24S-34E 0 FNL 0 FEL (32.22381389,-103.46583611)

**Additional Information:** Field Personnel: Andrew Garcia 432-270-0197

**Additional Instructions:** Flowmaster 15 TB Fee 007H

GPS: 32.22381389,-103.46583611

An OCD representative may be available onsite at the date and time reported. In the absence or presence of an OCD representative, liner inspection pursuant to 19.15.29.11.A(5)(a) NMAC is required. Should there be a change in the scheduled date and time of the sampling event, then another notification should be resubmitted through OCD permitting as soon as possible.

- **Failure to notify the OCD of liner inspections including any changes in date/time per the requirements of 19.15.29.11.A(5)(a)(ii) NMAC, may result in the inspection not being accepted.**

If you have any questions regarding this application, or don't know why you have received this email, please contact us.

**New Mexico Energy, Minerals and Natural Resources Department**

1220 South St. Francis Drive

Santa Fe, NM 87505

**Chavira, Lisbeth**

---

**From:** OCDOnline@state.nm.us  
**Sent:** Monday, October 20, 2025 2:52 PM  
**To:** Chavira, Lisbeth  
**Subject:** The Oil Conservation Division (OCD) has accepted the application, Application ID: 518263

**⚠ CAUTION:** This email originated from an external sender. Verify the source before opening links or attachments. **⚠**

To whom it may concern (c/o Lisbeth Chavira for MARATHON OIL PERMIAN LLC),

The OCD has received the submitted *Notification for (Final) Sampling of a Release* (C-141N), for incident ID (n#) nAPP2523051178.

The sampling event is expected to take place:

**When:** 10/23/2025 @ 10:00

**Where:** D-15-24S-34E 0 FNL 0 FEL (32.22381389,-103.46583611)

**Additional Information:** Field Personnel: Andrew Garcia 432-270-0197

**Additional Instructions:** Flowmaster 15 TB Fee 007H GPS: 32.22381389,-103.46583611

An OCD representative may be available onsite at the date and time reported. In the absence or presence of an OCD representative, sampling pursuant to 19.15.29.12.D NMAC is required. Sampling must be performed following an approved sampling plan or pursuant to 19.15.29.12.D.(1).(c) NMAC. Should there be a change in the scheduled date and time of the sampling event, then another notification should be resubmitted through OCD permitting as soon as possible.

- **Failure to notify the OCD of sampling events including any changes in date/time per the requirements of 19.15.29.12.D.(1).(a) NMAC, may result in the remediation closure samples not being accepted.**
- **If confirmation sampling is going to take place over multiple days, individual C-141N applications must be submitted for each sampling date. Date ranges are not currently accepted on the C-141N application.**

If you have any questions regarding this application, or don't know why you have received this email, please contact us.

**New Mexico Energy, Minerals and Natural Resources Department**  
1220 South St. Francis Drive  
Santa Fe, NM 87505

**Chavira, Lisbeth**

---

**From:** OCDOnline@state.nm.us  
**Sent:** Monday, October 20, 2025 2:55 PM  
**To:** Chavira, Lisbeth  
**Subject:** The Oil Conservation Division (OCD) has accepted the application, Application ID: 518271

**⚠ CAUTION:** This email originated from an external sender. Verify the source before opening links or attachments. **⚠**

To whom it may concern (c/o Lisbeth Chavira for MARATHON OIL PERMIAN LLC),

The OCD has received the submitted *Notification for (Final) Sampling of a Release (C-141N)*, for incident ID (n#) nAPP2523051178.

The sampling event is expected to take place:

**When:** 10/24/2025 @ 10:00

**Where:** D-15-24S-34E 0 FNL 0 FEL (32.22381389,-103.46583611)

**Additional Information:** Field Personnel: Andrew Garcia 432-270-0197

**Additional Instructions:** Flowmaster 15 TB Fee 007H GPS: 32.22381389,-103.46583611

An OCD representative may be available onsite at the date and time reported. In the absence or presence of an OCD representative, sampling pursuant to 19.15.29.12.D NMAC is required. Sampling must be performed following an approved sampling plan or pursuant to 19.15.29.12.D.(1).(c) NMAC. Should there be a change in the scheduled date and time of the sampling event, then another notification should be resubmitted through OCD permitting as soon as possible.

- **Failure to notify the OCD of sampling events including any changes in date/time per the requirements of 19.15.29.12.D.(1).(a) NMAC, may result in the remediation closure samples not being accepted.**
- **If confirmation sampling is going to take place over multiple days, individual C-141N applications must be submitted for each sampling date. Date ranges are not currently accepted on the C-141N application.**

If you have any questions regarding this application, or don't know why you have received this email, please contact us.

**New Mexico Energy, Minerals and Natural Resources Department**  
1220 South St. Francis Drive  
Santa Fe, NM 87505

## **APPENDIX D**

# **Photographic Documentation**





TETRA TECH, INC. PROJECT NO. 212C-MD-03952	DESCRIPTION	View West of Well pad signage.	1
	SITE NAME	Conoco Phillips Flow master 15 TB 7H	8/20/2025



TETRA TECH, INC. PROJECT NO. 212C-MD-03952	DESCRIPTION	View southeast. View of release point.	2
	SITE NAME	Conoco Phillips Flow master 15 TB 7H	8/20/2025





TETRA TECH, INC. PROJECT NO. 212C-MD-03952	DESCRIPTION	View northeast. View of release area inside the lined containment.	3
	SITE NAME	Conoco Phillips Flow master 15 TB 7H	8/20/2025



TETRA TECH, INC. PROJECT NO. 212C-MD-03952	DESCRIPTION	View northwest. View of tank batteries and release area.	4
	SITE NAME	Conoco Phillips Flow master 15 TB 7H	8/20/2025





TETRA TECH, INC. PROJECT NO. 212C-MD-03952	DESCRIPTION	View north. View of release outside the lined containment.	5
	SITE NAME	Conoco Phillips Flow master 15 TB 7H	8/20/2025



TETRA TECH, INC. PROJECT NO. 212C-MD-03952	DESCRIPTION	View northwest. View of clean liner and facility.	6
	SITE NAME	Conoco Phillips Flow master 15 TB 7H	9/26/2025



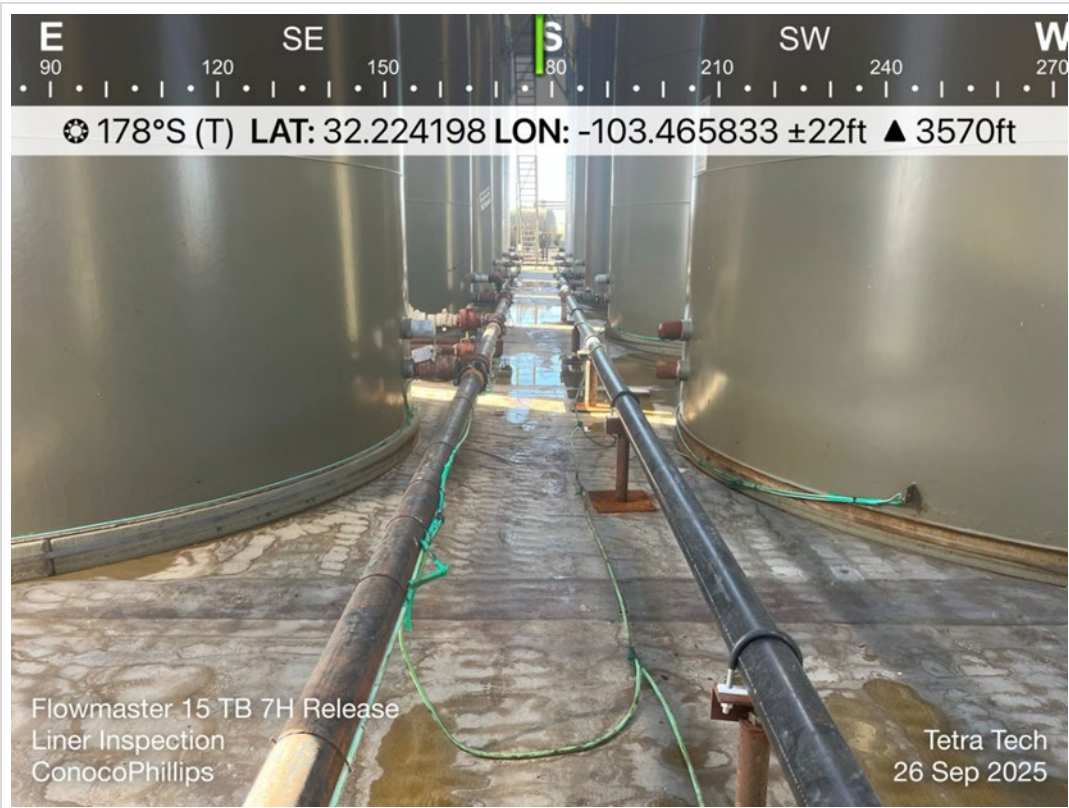


TETRA TECH, INC. PROJECT NO. 212C-MD-03952	DESCRIPTION	View South of intact liner. No tears visible	7
	SITE NAME	Conoco Phillips Flow master 15 TB 7H	9/26/2025

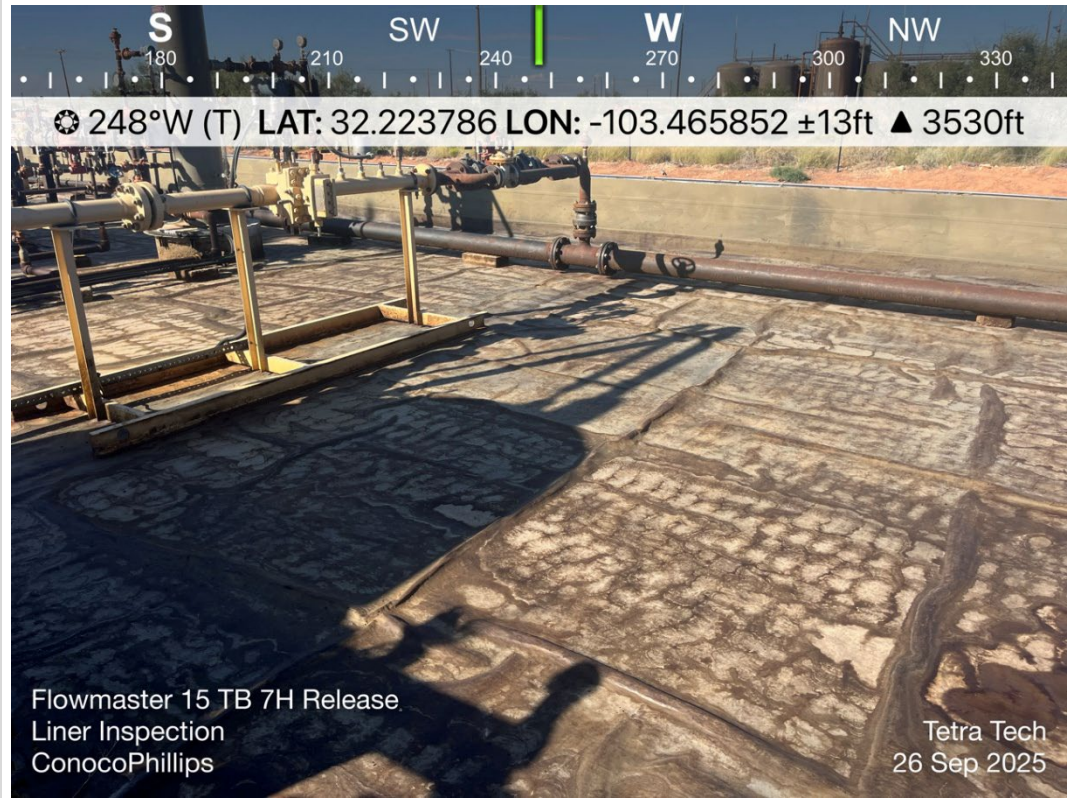


TETRA TECH, INC. PROJECT NO. 212C-MD-03952	DESCRIPTION	View south. View of liner integrity. Standing water from rain event.	8
	SITE NAME	Conoco Phillips Flow master 15 TB 7H	9/26/2025





TETRA TECH, INC. PROJECT NO. 212C-MD-03952	DESCRIPTION	View south. View of liner integrity. Standing water from rain event.	9
	SITE NAME	Conoco Phillips Flow master 15 TB 7H	9/26/2025

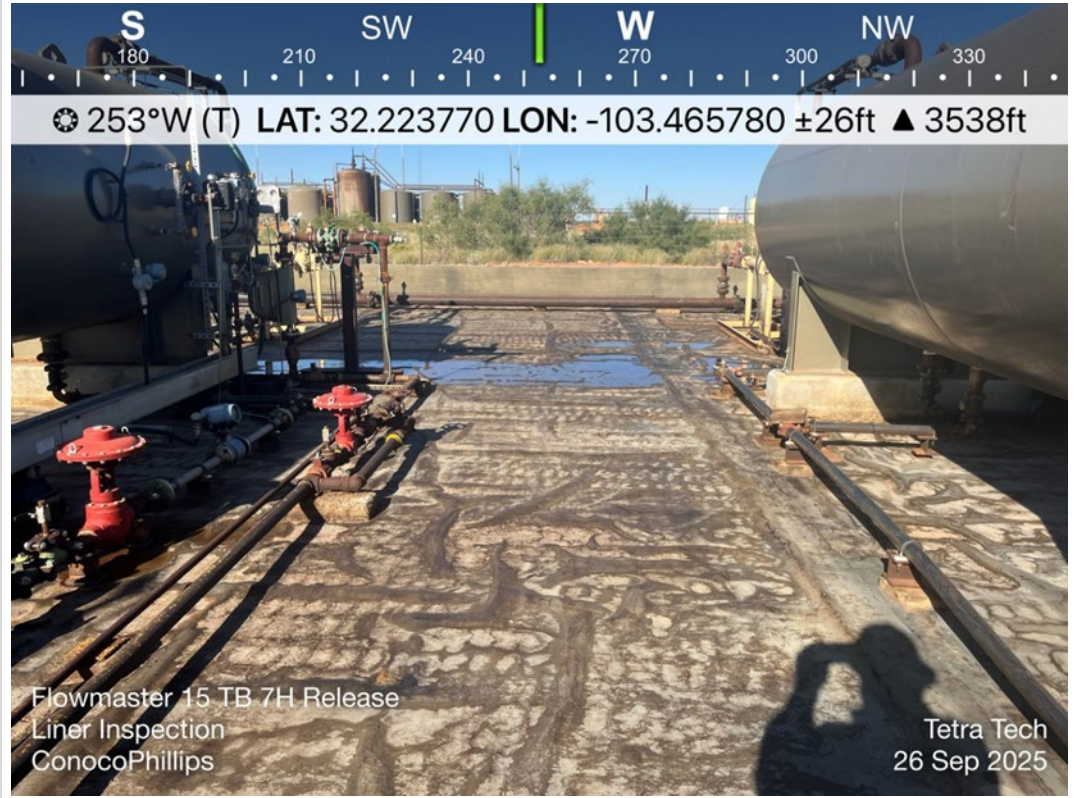


TETRA TECH, INC. PROJECT NO. 212C-MD-03952	DESCRIPTION	View southwest. View of cleaned liner, no impacts or loss of integrity.	10
	SITE NAME	Conoco Phillips Flow master 15 TB 7H	9/26/2025



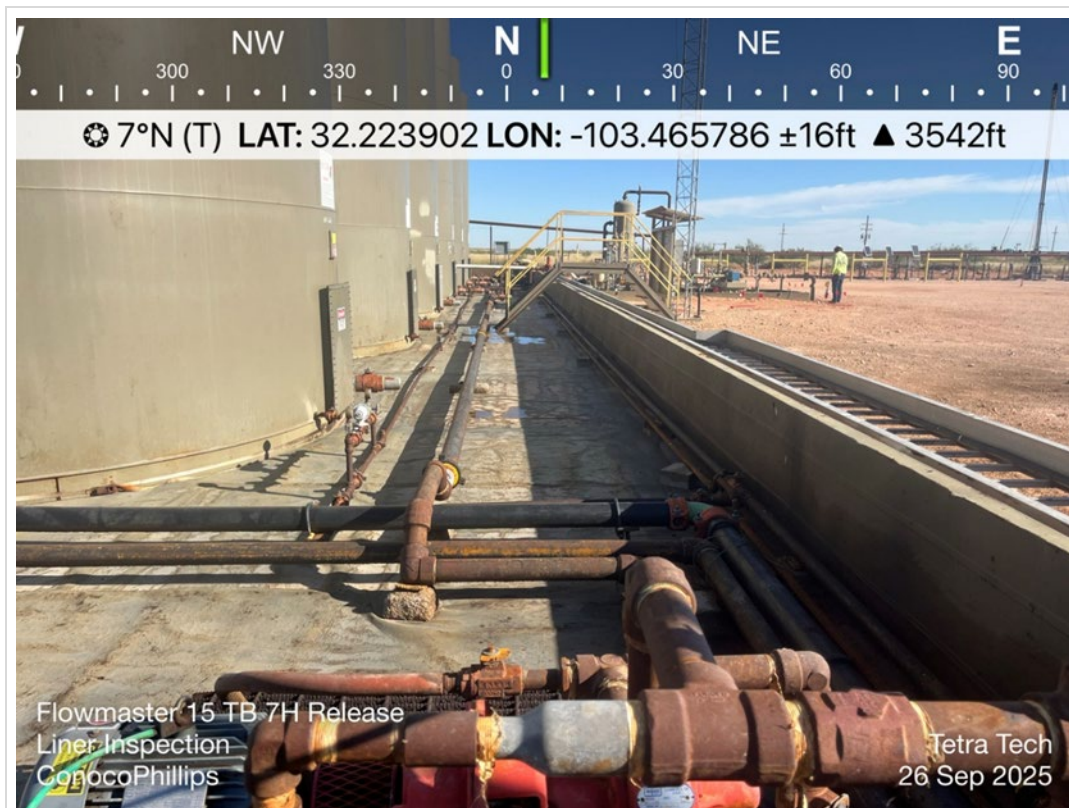


TETRA TECH, INC. PROJECT NO. 212C-MD-03952	DESCRIPTION	View Northwest of intact liner. No tears visible	11
	SITE NAME	Conoco Phillips Flow master 15 TB 7H	9/26/2025



TETRA TECH, INC. PROJECT NO. 212C-MD-03952	DESCRIPTION	View southwest. View of liner integrity. Impacts removed. Standing water from rain event.	12
	SITE NAME	Conoco Phillips Flow master 15 TB 7H	9/26/2025





TETRA TECH, INC. PROJECT NO. 212C-MD-03952	DESCRIPTION	View north. View of liner integrity.	13
	SITE NAME	Conoco Phillips Flow master 15 TB 7H	9/26/2025

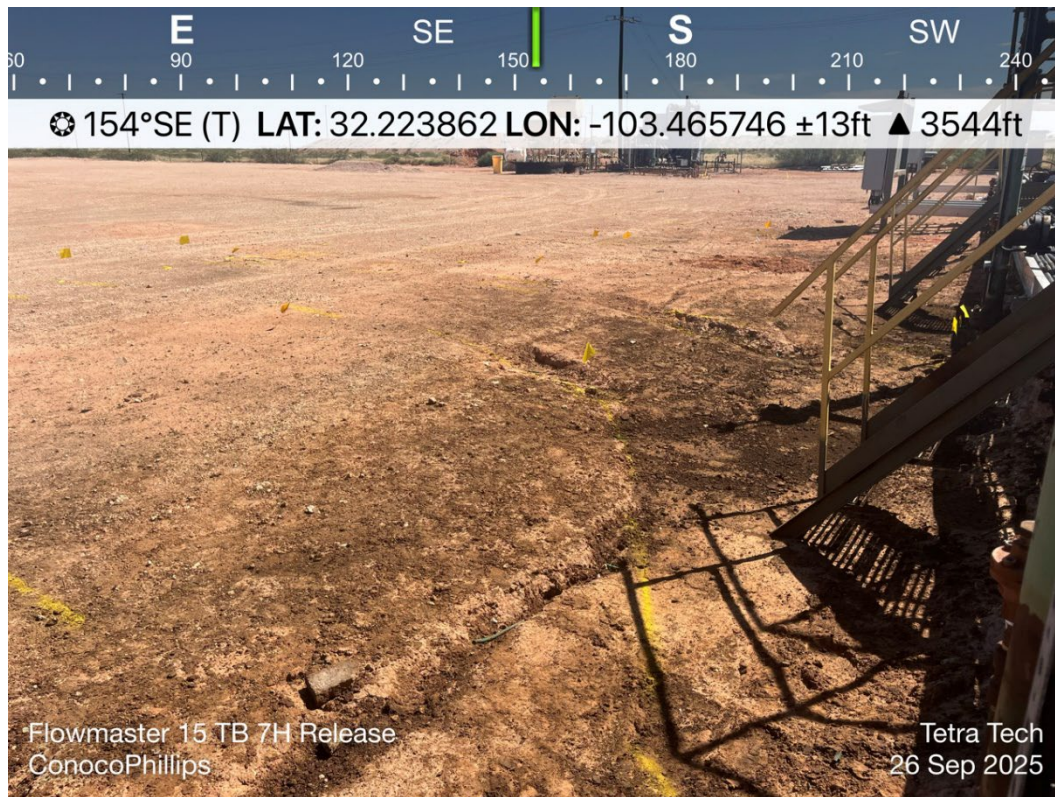


TETRA TECH, INC. PROJECT NO. 212C-MD-03952	DESCRIPTION	View southwest. View of liner integrity.	14
	SITE NAME	Conoco Phillips Flow master 15 TB 7H	9/26/2025



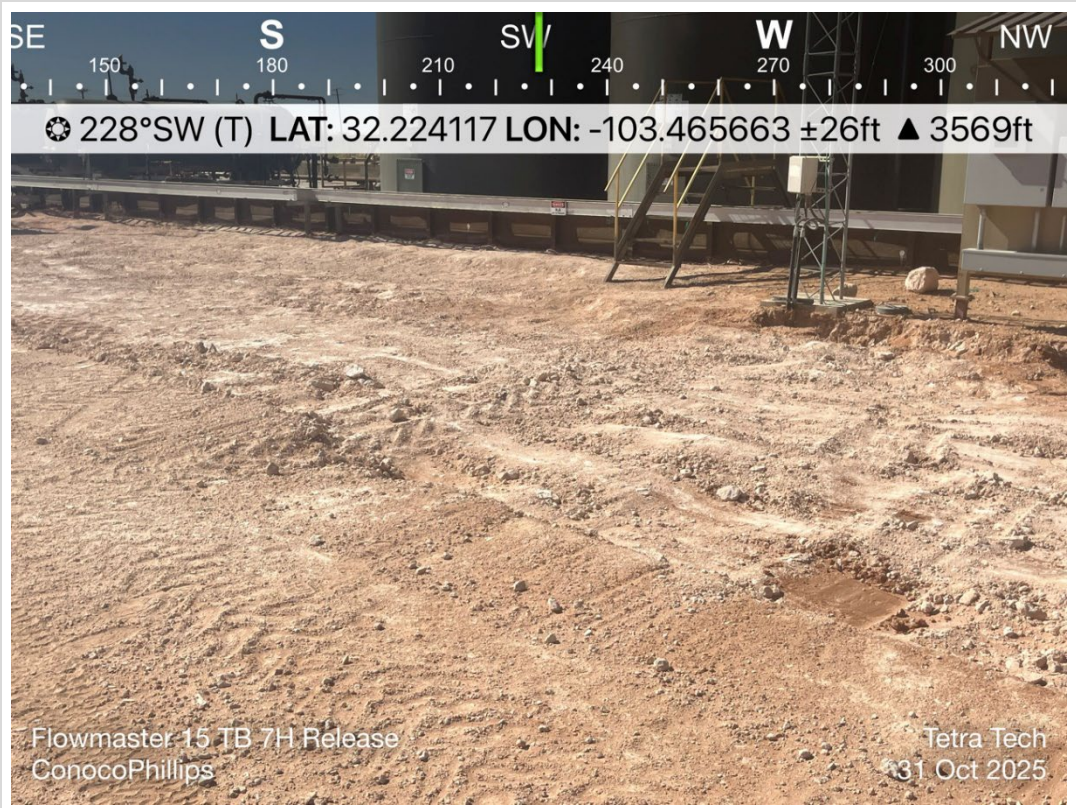


TETRA TECH, INC. PROJECT NO. 212C-MD-03952	DESCRIPTION	View north. View of outside the facility, no impacts present.	15
	SITE NAME	Conoco Phillips Flow master 15 TB 7H	9/26/2025

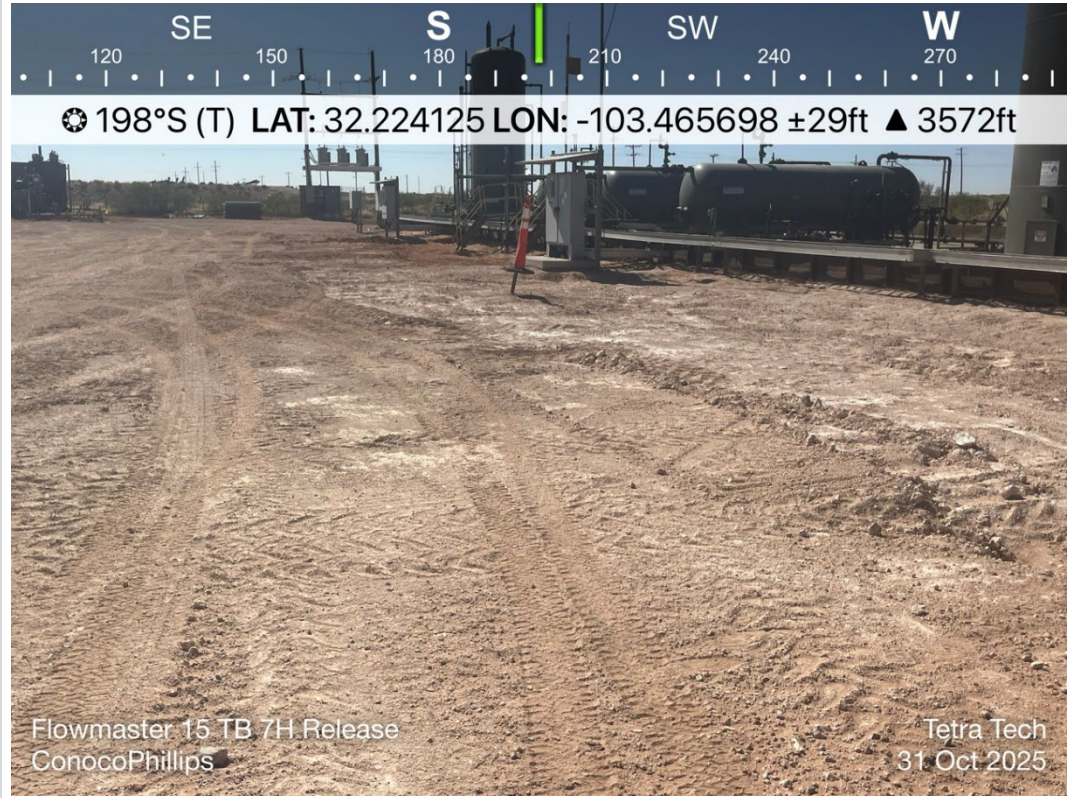


TETRA TECH, INC. PROJECT NO. 212C-MD-03952	DESCRIPTION	View southwest. View of outside facility to the east, visible impacts present.	16
	SITE NAME	Conoco Phillips Flow master 15 TB 7H	9/26/2025





TETRA TECH, INC. PROJECT NO. 212C-MD-03952	DESCRIPTION	View southwest. View of excavation extent.	17
	SITE NAME	Conoco Phillips Flow master 15 TB 7H	10/31/2025

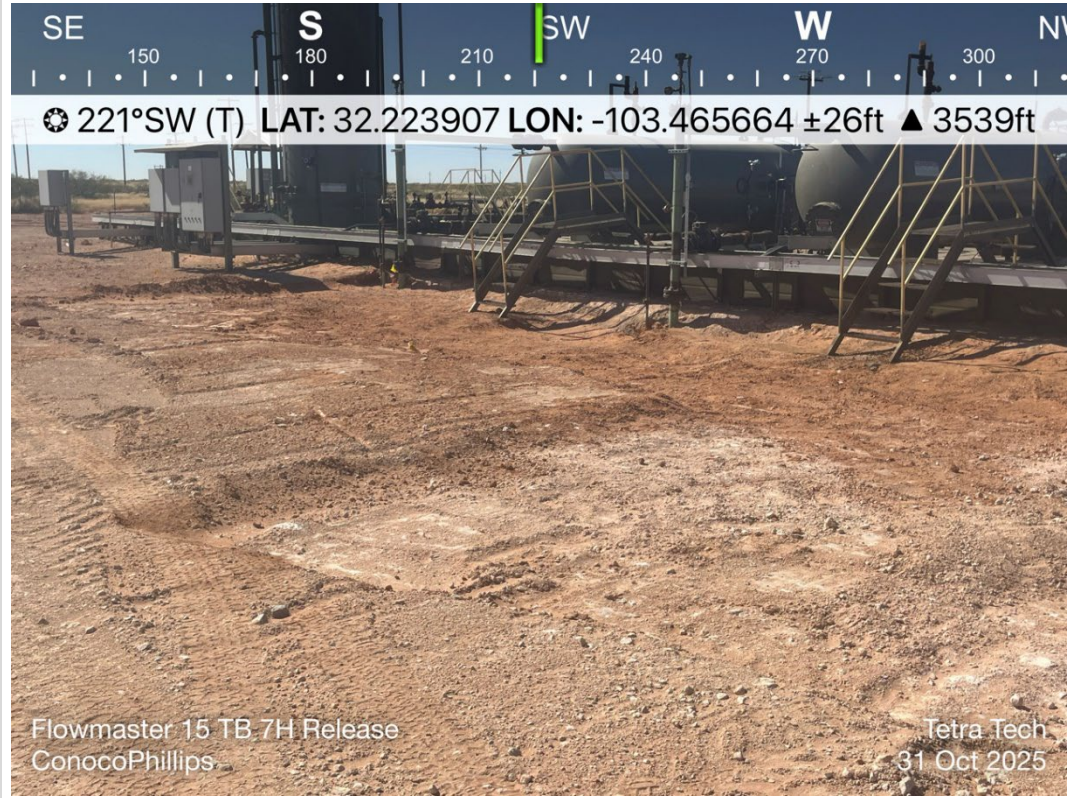


TETRA TECH, INC. PROJECT NO. 212C-MD-03952	DESCRIPTION	View south. View of excavation extent.	18
	SITE NAME	Conoco Phillips Flow master 15 TB 7H	10/31/2025





TETRA TECH, INC. PROJECT NO. 212C-MD-03952	DESCRIPTION	View northwest. View of excavation extent.	19
	SITE NAME	Conoco Phillips Flow master 15 TB 7H	10/31/2025



TETRA TECH, INC. PROJECT NO. 212C-MD-03952	DESCRIPTION	View southwest. View of excavation extent.	20
	SITE NAME	Conoco Phillips Flow master 15 TB 7H	10/31/2025





TETRA TECH, INC. PROJECT NO. 212C-MD-03952	DESCRIPTION	View north. View of backfilled excavation.	21
	SITE NAME	Conoco Phillips Flow master 15 TB 7H	11/3/2025



TETRA TECH, INC. PROJECT NO. 212C-MD-03952	DESCRIPTION	View south. View of backfilled excavation.	22
	SITE NAME	Conoco Phillips Flow master 15 TB 7H	11/3/2025





TETRA TECH, INC. PROJECT NO. 212C-MD-03952	DESCRIPTION	View east. View of backfilled excavation.	21
	SITE NAME	Conoco Phillips Flow master 15 TB 7H	11/3/2025



TETRA TECH, INC. PROJECT NO. 212C-MD-03952	DESCRIPTION	View south. View of backfilled excavation.	22
	SITE NAME	Conoco Phillips Flow master 15 TB 7H	11/3/2025

## **APPENDIX E**

### **Laboratory Analytical Data**



PHONE (575) 393-2326 ° 101 E. MARLAND ° HOBBS, NM 88240

October 02, 2025

LISBETH CHAVIRA

TETRA TECH

901 WEST WALL STREET , STE 100

MIDLAND, TX 79701

RE: FLOW MASTER 15 TB 7H RELEASE

Enclosed are the results of analyses for samples received by the laboratory on 09/26/25 16:39.

Cardinal Laboratories is accredited through Texas NELAP under certificate number TX-C25-00101. Accreditation applies to drinking water, non-potable water and solid and chemical materials. All accredited analytes are denoted by an asterisk (\*). For a complete list of accredited analytes and matrices visit the TCEQ website at [www.tceq.texas.gov/field/qa/lab\\_accred\\_certif.html](http://www.tceq.texas.gov/field/qa/lab_accred_certif.html).

Cardinal Laboratories is accredited through the State of Colorado Department of Public Health and Environment for:

Method EPA 552.2	Haloacetic Acids (HAA-5)
Method EPA 524.2	Total Trihalomethanes (TTHM)
Method EPA 524.4	Regulated VOCs (V1, V2, V3)

Accreditation applies to public drinking water matrices.

This report meets NELAP requirements and is made up of a cover page, analytical results, and a copy of the original chain-of-custody. If you have any questions concerning this report, please feel free to contact me.

Sincerely,

A handwritten signature in black ink that reads "Celey D. Keene". The signature is written in a cursive style with a large, stylized 'C' and 'K'.

Celey D. Keene

Lab Director/Quality Manager



PHONE (575) 393-2326 ° 101 E. MARLAND ° HOBBS, NM 88240

**Analytical Results For:**

TETRA TECH  
 LISBETH CHAVIRA  
 901 WEST WALL STREET , STE 100  
 MIDLAND TX, 79701  
 Fax To: (432) 682-3946

Received:	09/26/2025	Sampling Date:	09/26/2025
Reported:	10/02/2025	Sampling Type:	Soil
Project Name:	FLOW MASTER 15 TB 7H RELEASE	Sampling Condition:	Cool & Intact
Project Number:	212C - MD - 03952	Sample Received By:	Alyssa Parras
Project Location:	LEA COUNTY, NM		

**Sample ID: AH - 1 (0-1') (H256077-01)**

BTX 8021B		mg/kg		Analyzed By: JH					
Analyte	Result	Reporting Limit	Analyzed	Method Blank	BS	% Recovery	True Value QC	RPD	Qualifier
Benzene*	<0.050	0.050	09/30/2025	ND	1.78	89.0	2.00	15.7	
Toluene*	<0.050	0.050	09/30/2025	ND	1.80	90.2	2.00	8.82	
Ethylbenzene*	<0.050	0.050	09/30/2025	ND	1.81	90.3	2.00	5.74	
Total Xylenes*	<0.150	0.150	09/30/2025	ND	5.59	93.2	6.00	4.75	
Total BTX	<0.300	0.300	09/30/2025	ND					

Surrogate: 4-Bromofluorobenzene (PID) 111 % 70.4-141

Chloride, SM4500Cl-B		mg/kg		Analyzed By: KH						
Analyte	Result	Reporting Limit	Analyzed	Method Blank	BS	% Recovery	True Value QC	RPD	Qualifier	
Chloride	32.0	16.0	09/29/2025	ND	416	104	400	0.00		

TPH 8015M		mg/kg		Analyzed By: MS					
Analyte	Result	Reporting Limit	Analyzed	Method Blank	BS	% Recovery	True Value QC	RPD	Qualifier
GRO C6-C10*	<10.0	10.0	09/29/2025	ND	179	89.6	200	1.41	
DRO >C10-C28*	<10.0	10.0	09/29/2025	ND	182	91.0	200	1.85	
EXT DRO >C28-C36	<10.0	10.0	09/29/2025	ND					

Surrogate: 1-Chlorooctane 93.2 % 52.4-130

Surrogate: 1-Chlorooctadecane 89.1 % 39.9-141

Cardinal Laboratories

\*=Accredited Analyte

PLEASE NOTE: Liability and Damages. Cardinal's liability and client's exclusive remedy for any claim arising, whether based in contract or tort, shall be limited to the amount paid by client for analyses. All claims, including those for negligence and any other cause whatsoever shall be deemed waived unless made in writing and received by Cardinal within thirty (30) days after completion of the applicable service. In no event shall Cardinal be liable for incidental or consequential damages, including, without limitation, business interruptions, loss of use, or loss of profits incurred by client, its subsidiaries, affiliates or successors arising out of or related to the performance of the services hereunder by Cardinal, regardless of whether such claim is based upon any of the above stated reasons or otherwise. Results relate only to the samples identified above. This report shall not be reproduced except in full with written approval of Cardinal Laboratories.

Celey D. Keene, Lab Director/Quality Manager



PHONE (575) 393-2326 ° 101 E. MARLAND ° HOBBS, NM 88240

**Analytical Results For:**

TETRA TECH  
 LISBETH CHAVIRA  
 901 WEST WALL STREET , STE 100  
 MIDLAND TX, 79701  
 Fax To: (432) 682-3946

Received:	09/26/2025	Sampling Date:	09/26/2025
Reported:	10/02/2025	Sampling Type:	Soil
Project Name:	FLOW MASTER 15 TB 7H RELEASE	Sampling Condition:	Cool & Intact
Project Number:	212C - MD - 03952	Sample Received By:	Alyssa Parras
Project Location:	LEA COUNTY, NM		

**Sample ID: AH - 2 (0-1') (H256077-04)**

BTEx 8021B		mg/kg		Analyzed By: JH						
Analyte	Result	Reporting Limit	Analyzed	Method Blank	BS	% Recovery	True Value QC	RPD	Qualifier	
Benzene*	<0.050	0.050	09/30/2025	ND	1.78	89.0	2.00	15.7		
Toluene*	<0.050	0.050	09/30/2025	ND	1.80	90.2	2.00	8.82		
Ethylbenzene*	<0.050	0.050	09/30/2025	ND	1.81	90.3	2.00	5.74		
Total Xylenes*	<0.150	0.150	09/30/2025	ND	5.59	93.2	6.00	4.75		
Total BTEX	<0.300	0.300	09/30/2025	ND						

Surrogate: 4-Bromofluorobenzene (PID) 115 % 70.4-141

Chloride, SM4500Cl-B		mg/kg		Analyzed By: KH						
Analyte	Result	Reporting Limit	Analyzed	Method Blank	BS	% Recovery	True Value QC	RPD	Qualifier	
Chloride	32.0	16.0	09/29/2025	ND	416	104	400	0.00		

TPH 8015M		mg/kg		Analyzed By: ms					
Analyte	Result	Reporting Limit	Analyzed	Method Blank	BS	% Recovery	True Value QC	RPD	Qualifier
GRO C6-C10*	<10.0	10.0	09/29/2025	ND	198	98.9	200	0.121	
DRO >C10-C28*	<10.0	10.0	09/29/2025	ND	212	106	200	1.22	
EXT DRO >C28-C36	<10.0	10.0	09/29/2025	ND					

Surrogate: 1-Chlorooctane 85.6 % 52.4-130

Surrogate: 1-Chlorooctadecane 79.5 % 39.9-141

Cardinal Laboratories

\*=Accredited Analyte

PLEASE NOTE: Liability and Damages. Cardinal's liability and client's exclusive remedy for any claim arising, whether based in contract or tort, shall be limited to the amount paid by client for analyses. All claims, including those for negligence and any other cause whatsoever shall be deemed waived unless made in writing and received by Cardinal within thirty (30) days after completion of the applicable service. In no event shall Cardinal be liable for incidental or consequential damages, including, without limitation, business interruptions, loss of use, or loss of profits incurred by client, its subsidiaries, affiliates or successors arising out of or related to the performance of the services hereunder by Cardinal, regardless of whether such claim is based upon any of the above stated reasons or otherwise. Results relate only to the samples identified above. This report shall not be reproduced except in full with written approval of Cardinal Laboratories.

Celey D. Keene, Lab Director/Quality Manager





PHONE (575) 393-2326 ° 101 E. MARLAND ° HOBBS, NM 88240

**Analytical Results For:**

TETRA TECH  
 LISBETH CHAVIRA  
 901 WEST WALL STREET , STE 100  
 MIDLAND TX, 79701  
 Fax To: (432) 682-3946

Received:	09/26/2025	Sampling Date:	09/26/2025
Reported:	10/02/2025	Sampling Type:	Soil
Project Name:	FLOW MASTER 15 TB 7H RELEASE	Sampling Condition:	Cool & Intact
Project Number:	212C - MD - 03952	Sample Received By:	Alyssa Parras
Project Location:	LEA COUNTY, NM		

**Sample ID: AH - 3 (0-1') (H256077-07)**

BTEx 8021B		mg/kg		Analyzed By: JH						
Analyte	Result	Reporting Limit	Analyzed	Method Blank	BS	% Recovery	True Value QC	RPD	Qualifier	
Benzene*	<0.050	0.050	09/30/2025	ND	1.78	89.0	2.00	15.7		
Toluene*	<0.050	0.050	09/30/2025	ND	1.80	90.2	2.00	8.82		
Ethylbenzene*	<0.050	0.050	09/30/2025	ND	1.81	90.3	2.00	5.74		
Total Xylenes*	<0.150	0.150	09/30/2025	ND	5.59	93.2	6.00	4.75		
Total BTEX	<0.300	0.300	09/30/2025	ND						

Surrogate: 4-Bromofluorobenzene (PID) 114 % 70.4-141

Chloride, SM4500Cl-B		mg/kg		Analyzed By: KH						
Analyte	Result	Reporting Limit	Analyzed	Method Blank	BS	% Recovery	True Value QC	RPD	Qualifier	
Chloride	80.0	16.0	09/29/2025	ND	416	104	400	0.00		

TPH 8015M		mg/kg		Analyzed By: ms					
Analyte	Result	Reporting Limit	Analyzed	Method Blank	BS	% Recovery	True Value QC	RPD	Qualifier
GRO C6-C10*	<10.0	10.0	09/29/2025	ND	198	98.9	200	0.121	
DRO >C10-C28*	<10.0	10.0	09/29/2025	ND	212	106	200	1.22	
EXT DRO >C28-C36	<10.0	10.0	09/29/2025	ND					

Surrogate: 1-Chlorooctane 88.6 % 52.4-130

Surrogate: 1-Chlorooctadecane 82.6 % 39.9-141

Cardinal Laboratories

\*=Accredited Analyte

PLEASE NOTE: Liability and Damages. Cardinal's liability and client's exclusive remedy for any claim arising, whether based in contract or tort, shall be limited to the amount paid by client for analyses. All claims, including those for negligence and any other cause whatsoever shall be deemed waived unless made in writing and received by Cardinal within thirty (30) days after completion of the applicable service. In no event shall Cardinal be liable for incidental or consequential damages, including, without limitation, business interruptions, loss of use, or loss of profits incurred by client, its subsidiaries, affiliates or successors arising out of or related to the performance of the services hereunder by Cardinal, regardless of whether such claim is based upon any of the above stated reasons or otherwise. Results relate only to the samples identified above. This report shall not be reproduced except in full with written approval of Cardinal Laboratories.

Celey D. Keene, Lab Director/Quality Manager





PHONE (575) 393-2326 ° 101 E. MARLAND ° HOBBS, NM 88240

**Analytical Results For:**

TETRA TECH  
 LISBETH CHAVIRA  
 901 WEST WALL STREET , STE 100  
 MIDLAND TX, 79701  
 Fax To: (432) 682-3946

Received:	09/26/2025	Sampling Date:	09/26/2025
Reported:	10/02/2025	Sampling Type:	Soil
Project Name:	FLOW MASTER 15 TB 7H RELEASE	Sampling Condition:	Cool & Intact
Project Number:	212C - MD - 03952	Sample Received By:	Alyssa Parras
Project Location:	LEA COUNTY, NM		

**Sample ID: AH - 4 (0-1') (H256077-10)**

BTEx 8021B		mg/kg		Analyzed By: JH						
Analyte	Result	Reporting Limit	Analyzed	Method Blank	BS	% Recovery	True Value QC	RPD	Qualifier	
Benzene*	<0.050	0.050	09/30/2025	ND	1.78	89.0	2.00	15.7		
Toluene*	<0.050	0.050	09/30/2025	ND	1.80	90.2	2.00	8.82		
Ethylbenzene*	<0.050	0.050	09/30/2025	ND	1.81	90.3	2.00	5.74		
Total Xylenes*	<0.150	0.150	09/30/2025	ND	5.59	93.2	6.00	4.75		
Total BTEX	<0.300	0.300	09/30/2025	ND						

Surrogate: 4-Bromofluorobenzene (PID) 114 % 70.4-141

Chloride, SM4500Cl-B		mg/kg		Analyzed By: KH					
Analyte	Result	Reporting Limit	Analyzed	Method Blank	BS	% Recovery	True Value QC	RPD	Qualifier
Chloride	16.0	16.0	09/29/2025	ND	416	104	400	0.00	

TPH 8015M		mg/kg		Analyzed By: ms					
Analyte	Result	Reporting Limit	Analyzed	Method Blank	BS	% Recovery	True Value QC	RPD	Qualifier
GRO C6-C10*	<10.0	10.0	09/29/2025	ND	198	98.9	200	0.121	
DRO >C10-C28*	<10.0	10.0	09/29/2025	ND	212	106	200	1.22	
EXT DRO >C28-C36	<10.0	10.0	09/29/2025	ND					

Surrogate: 1-Chlorooctane 88.5 % 52.4-130

Surrogate: 1-Chlorooctadecane 83.3 % 39.9-141

Cardinal Laboratories

\*=Accredited Analyte

PLEASE NOTE: Liability and Damages. Cardinal's liability and client's exclusive remedy for any claim arising, whether based in contract or tort, shall be limited to the amount paid by client for analyses. All claims, including those for negligence and any other cause whatsoever shall be deemed waived unless made in writing and received by Cardinal within thirty (30) days after completion of the applicable service. In no event shall Cardinal be liable for incidental or consequential damages, including, without limitation, business interruptions, loss of use, or loss of profits incurred by client, its subsidiaries, affiliates or successors arising out of or related to the performance of the services hereunder by Cardinal, regardless of whether such claim is based upon any of the above stated reasons or otherwise. Results relate only to the samples identified above. This report shall not be reproduced except in full with written approval of Cardinal Laboratories.

Celey D. Keene, Lab Director/Quality Manager



PHONE (575) 393-2326 ° 101 E. MARLAND ° HOBBS, NM 88240

**Analytical Results For:**

TETRA TECH  
 LISBETH CHAVIRA  
 901 WEST WALL STREET , STE 100  
 MIDLAND TX, 79701  
 Fax To: (432) 682-3946

Received:	09/26/2025	Sampling Date:	09/26/2025
Reported:	10/02/2025	Sampling Type:	Soil
Project Name:	FLOW MASTER 15 TB 7H RELEASE	Sampling Condition:	Cool & Intact
Project Number:	212C - MD - 03952	Sample Received By:	Alyssa Parras
Project Location:	LEA COUNTY, NM		

**Sample ID: AH - 5 (0-1') (H256077-13)**

BTEx 8021B		mg/kg		Analyzed By: JH						
Analyte	Result	Reporting Limit	Analyzed	Method Blank	BS	% Recovery	True Value QC	RPD	Qualifier	
Benzene*	<0.050	0.050	09/30/2025	ND	1.78	89.0	2.00	15.7		
Toluene*	<0.050	0.050	09/30/2025	ND	1.80	90.2	2.00	8.82		
Ethylbenzene*	<0.050	0.050	09/30/2025	ND	1.81	90.3	2.00	5.74		
Total Xylenes*	<0.150	0.150	09/30/2025	ND	5.59	93.2	6.00	4.75		
Total BTEX	<0.300	0.300	09/30/2025	ND						

Surrogate: 4-Bromofluorobenzene (PID) 115 % 70.4-141

Chloride, SM4500Cl-B		mg/kg		Analyzed By: KH						
Analyte	Result	Reporting Limit	Analyzed	Method Blank	BS	% Recovery	True Value QC	RPD	Qualifier	
Chloride	192	16.0	09/29/2025	ND	416	104	400	0.00		

TPH 8015M		mg/kg		Analyzed By: ms					
Analyte	Result	Reporting Limit	Analyzed	Method Blank	BS	% Recovery	True Value QC	RPD	Qualifier
GRO C6-C10*	<10.0	10.0	09/29/2025	ND	198	98.9	200	0.121	
DRO >C10-C28*	<10.0	10.0	09/29/2025	ND	212	106	200	1.22	
EXT DRO >C28-C36	<10.0	10.0	09/29/2025	ND					

Surrogate: 1-Chlorooctane 87.8 % 52.4-130

Surrogate: 1-Chlorooctadecane 79.9 % 39.9-141

Cardinal Laboratories

\*=Accredited Analyte

PLEASE NOTE: Liability and Damages. Cardinal's liability and client's exclusive remedy for any claim arising, whether based in contract or tort, shall be limited to the amount paid by client for analyses. All claims, including those for negligence and any other cause whatsoever shall be deemed waived unless made in writing and received by Cardinal within thirty (30) days after completion of the applicable service. In no event shall Cardinal be liable for incidental or consequential damages, including, without limitation, business interruptions, loss of use, or loss of profits incurred by client, its subsidiaries, affiliates or successors arising out of or related to the performance of the services hereunder by Cardinal, regardless of whether such claim is based upon any of the above stated reasons or otherwise. Results relate only to the samples identified above. This report shall not be reproduced except in full with written approval of Cardinal Laboratories.

Celey D. Keene, Lab Director/Quality Manager



PHONE (575) 393-2326 ° 101 E. MARLAND ° HOBBS, NM 88240

**Analytical Results For:**

TETRA TECH  
 LISBETH CHAVIRA  
 901 WEST WALL STREET , STE 100  
 MIDLAND TX, 79701  
 Fax To: (432) 682-3946

Received:	09/26/2025	Sampling Date:	09/26/2025
Reported:	10/02/2025	Sampling Type:	Soil
Project Name:	FLOW MASTER 15 TB 7H RELEASE	Sampling Condition:	Cool & Intact
Project Number:	212C - MD - 03952	Sample Received By:	Alyssa Parras
Project Location:	LEA COUNTY, NM		

**Sample ID: AH - 6 (0-1') (H256077-14)**

BTEx 8021B		mg/kg		Analyzed By: JH						
Analyte	Result	Reporting Limit	Analyzed	Method Blank	BS	% Recovery	True Value QC	RPD	Qualifier	
Benzene*	<0.050	0.050	09/30/2025	ND	1.78	89.0	2.00	15.7		
Toluene*	<0.050	0.050	09/30/2025	ND	1.80	90.2	2.00	8.82		
Ethylbenzene*	<0.050	0.050	09/30/2025	ND	1.81	90.3	2.00	5.74		
Total Xylenes*	<0.150	0.150	09/30/2025	ND	5.59	93.2	6.00	4.75		
Total BTEX	<0.300	0.300	09/30/2025	ND						

Surrogate: 4-Bromofluorobenzene (PID) 116 % 70.4-141

Chloride, SM4500Cl-B		mg/kg		Analyzed By: KH						
Analyte	Result	Reporting Limit	Analyzed	Method Blank	BS	% Recovery	True Value QC	RPD	Qualifier	
Chloride	48.0	16.0	09/29/2025	ND	416	104	400	0.00		

TPH 8015M		mg/kg		Analyzed By: ms					
Analyte	Result	Reporting Limit	Analyzed	Method Blank	BS	% Recovery	True Value QC	RPD	Qualifier
GRO C6-C10*	<10.0	10.0	09/29/2025	ND	198	98.9	200	0.121	
DRO >C10-C28*	35.4	10.0	09/29/2025	ND	212	106	200	1.22	
EXT DRO >C28-C36	<10.0	10.0	09/29/2025	ND					

Surrogate: 1-Chlorooctane 83.0 % 52.4-130

Surrogate: 1-Chlorooctadecane 85.7 % 39.9-141

Cardinal Laboratories

\*=Accredited Analyte

PLEASE NOTE: Liability and Damages. Cardinal's liability and client's exclusive remedy for any claim arising, whether based in contract or tort, shall be limited to the amount paid by client for analyses. All claims, including those for negligence and any other cause whatsoever shall be deemed waived unless made in writing and received by Cardinal within thirty (30) days after completion of the applicable service. In no event shall Cardinal be liable for incidental or consequential damages, including, without limitation, business interruptions, loss of use, or loss of profits incurred by client, its subsidiaries, affiliates or successors arising out of or related to the performance of the services hereunder by Cardinal, regardless of whether such claim is based upon any of the above stated reasons or otherwise. Results relate only to the samples identified above. This report shall not be reproduced except in full with written approval of Cardinal Laboratories.

Celey D. Keene, Lab Director/Quality Manager



PHONE (575) 393-2326 ° 101 E. MARLAND ° HOBBS, NM 88240

**Analytical Results For:**

TETRA TECH  
 LISBETH CHAVIRA  
 901 WEST WALL STREET , STE 100  
 MIDLAND TX, 79701  
 Fax To: (432) 682-3946

Received:	09/26/2025	Sampling Date:	09/26/2025
Reported:	10/02/2025	Sampling Type:	Soil
Project Name:	FLOW MASTER 15 TB 7H RELEASE	Sampling Condition:	Cool & Intact
Project Number:	212C - MD - 03952	Sample Received By:	Alyssa Parras
Project Location:	LEA COUNTY, NM		

**Sample ID: AH - 7 (0-1') (H256077-15)**

BTEx 8021B		mg/kg		Analyzed By: JH						
Analyte	Result	Reporting Limit	Analyzed	Method Blank	BS	% Recovery	True Value QC	RPD	Qualifier	
Benzene*	<0.050	0.050	09/30/2025	ND	1.78	89.0	2.00	15.7		
Toluene*	<0.050	0.050	09/30/2025	ND	1.80	90.2	2.00	8.82		
Ethylbenzene*	<0.050	0.050	09/30/2025	ND	1.81	90.3	2.00	5.74		
Total Xylenes*	<0.150	0.150	09/30/2025	ND	5.59	93.2	6.00	4.75		
Total BTEX	<0.300	0.300	09/30/2025	ND						

Surrogate: 4-Bromofluorobenzene (PID) 113 % 70.4-141

Chloride, SM4500Cl-B		mg/kg		Analyzed By: KH						
Analyte	Result	Reporting Limit	Analyzed	Method Blank	BS	% Recovery	True Value QC	RPD	Qualifier	
Chloride	<16.0	16.0	09/29/2025	ND	416	104	400	0.00		

TPH 8015M		mg/kg		Analyzed By: ms					
Analyte	Result	Reporting Limit	Analyzed	Method Blank	BS	% Recovery	True Value QC	RPD	Qualifier
GRO C6-C10*	<10.0	10.0	09/29/2025	ND	198	98.9	200	0.121	
DRO >C10-C28*	<10.0	10.0	09/29/2025	ND	212	106	200	1.22	
EXT DRO >C28-C36	<10.0	10.0	09/29/2025	ND					

Surrogate: 1-Chlorooctane 86.7 % 52.4-130

Surrogate: 1-Chlorooctadecane 82.7 % 39.9-141

Cardinal Laboratories

\*=Accredited Analyte

PLEASE NOTE: Liability and Damages. Cardinal's liability and client's exclusive remedy for any claim arising, whether based in contract or tort, shall be limited to the amount paid by client for analyses. All claims, including those for negligence and any other cause whatsoever shall be deemed waived unless made in writing and received by Cardinal within thirty (30) days after completion of the applicable service. In no event shall Cardinal be liable for incidental or consequential damages, including, without limitation, business interruptions, loss of use, or loss of profits incurred by client, its subsidiaries, affiliates or successors arising out of or related to the performance of the services hereunder by Cardinal, regardless of whether such claim is based upon any of the above stated reasons or otherwise. Results relate only to the samples identified above. This report shall not be reproduced except in full with written approval of Cardinal Laboratories.

Celey D. Keene, Lab Director/Quality Manager



PHONE (575) 393-2326 ° 101 E. MARLAND ° HOBBS, NM 88240

**Analytical Results For:**

TETRA TECH  
 LISBETH CHAVIRA  
 901 WEST WALL STREET , STE 100  
 MIDLAND TX, 79701  
 Fax To: (432) 682-3946

Received:	09/26/2025	Sampling Date:	09/26/2025
Reported:	10/02/2025	Sampling Type:	Soil
Project Name:	FLOW MASTER 15 TB 7H RELEASE	Sampling Condition:	Cool & Intact
Project Number:	212C - MD - 03952	Sample Received By:	Alyssa Parras
Project Location:	LEA COUNTY, NM		

**Sample ID: AH - 8 (0-1') (H256077-16)**

BTEx 8021B		mg/kg		Analyzed By: JH						
Analyte	Result	Reporting Limit	Analyzed	Method Blank	BS	% Recovery	True Value QC	RPD	Qualifier	
Benzene*	<0.050	0.050	09/30/2025	ND	1.78	89.0	2.00	15.7		
Toluene*	<0.050	0.050	09/30/2025	ND	1.80	90.2	2.00	8.82		
Ethylbenzene*	<0.050	0.050	09/30/2025	ND	1.81	90.3	2.00	5.74		
Total Xylenes*	<0.150	0.150	09/30/2025	ND	5.59	93.2	6.00	4.75		
Total BTEX	<0.300	0.300	09/30/2025	ND						

Surrogate: 4-Bromofluorobenzene (PID) 114 % 70.4-141

Chloride, SM4500Cl-B		mg/kg		Analyzed By: KH						
Analyte	Result	Reporting Limit	Analyzed	Method Blank	BS	% Recovery	True Value QC	RPD	Qualifier	
Chloride	80.0	16.0	09/29/2025	ND	416	104	400	0.00		

TPH 8015M		mg/kg		Analyzed By: ms					
Analyte	Result	Reporting Limit	Analyzed	Method Blank	BS	% Recovery	True Value QC	RPD	Qualifier
GRO C6-C10*	<10.0	10.0	09/29/2025	ND	198	98.9	200	0.121	
DRO >C10-C28*	<10.0	10.0	09/29/2025	ND	212	106	200	1.22	
EXT DRO >C28-C36	<10.0	10.0	09/29/2025	ND					

Surrogate: 1-Chlorooctane 83.0 % 52.4-130

Surrogate: 1-Chlorooctadecane 78.8 % 39.9-141

Cardinal Laboratories

\*=Accredited Analyte

PLEASE NOTE: Liability and Damages. Cardinal's liability and client's exclusive remedy for any claim arising, whether based in contract or tort, shall be limited to the amount paid by client for analyses. All claims, including those for negligence and any other cause whatsoever shall be deemed waived unless made in writing and received by Cardinal within thirty (30) days after completion of the applicable service. In no event shall Cardinal be liable for incidental or consequential damages, including, without limitation, business interruptions, loss of use, or loss of profits incurred by client, its subsidiaries, affiliates or successors arising out of or related to the performance of the services hereunder by Cardinal, regardless of whether such claim is based upon any of the above stated reasons or otherwise. Results relate only to the samples identified above. This report shall not be reproduced except in full with written approval of Cardinal Laboratories.

Celey D. Keene, Lab Director/Quality Manager





PHONE (575) 393-2326 ° 101 E. MARLAND ° HOBBS, NM 88240

**Analytical Results For:**

TETRA TECH  
 LISBETH CHAVIRA  
 901 WEST WALL STREET , STE 100  
 MIDLAND TX, 79701  
 Fax To: (432) 682-3946

Received:	09/26/2025	Sampling Date:	09/26/2025
Reported:	10/02/2025	Sampling Type:	Soil
Project Name:	FLOW MASTER 15 TB 7H RELEASE	Sampling Condition:	Cool & Intact
Project Number:	212C - MD - 03952	Sample Received By:	Alyssa Parras
Project Location:	LEA COUNTY, NM		

**Sample ID: AH - 9 (0-1') (H256077-17)**

BTEx 8021B		mg/kg		Analyzed By: JH						
Analyte	Result	Reporting Limit	Analyzed	Method Blank	BS	% Recovery	True Value QC	RPD	Qualifier	
Benzene*	<0.050	0.050	09/30/2025	ND	1.78	89.0	2.00	15.7		
Toluene*	<0.050	0.050	09/30/2025	ND	1.80	90.2	2.00	8.82		
Ethylbenzene*	<0.050	0.050	09/30/2025	ND	1.81	90.3	2.00	5.74		
Total Xylenes*	<0.150	0.150	09/30/2025	ND	5.59	93.2	6.00	4.75		
Total BTEX	<0.300	0.300	09/30/2025	ND						

Surrogate: 4-Bromofluorobenzene (PID) 113 % 70.4-141

Chloride, SM4500Cl-B		mg/kg		Analyzed By: HM						
Analyte	Result	Reporting Limit	Analyzed	Method Blank	BS	% Recovery	True Value QC	RPD	Qualifier	
Chloride	32.0	16.0	09/29/2025	ND	432	108	400	3.77		

TPH 8015M		mg/kg		Analyzed By: ms					
Analyte	Result	Reporting Limit	Analyzed	Method Blank	BS	% Recovery	True Value QC	RPD	Qualifier
GRO C6-C10*	<10.0	10.0	09/29/2025	ND	198	98.9	200	0.121	
DRO >C10-C28*	<10.0	10.0	09/29/2025	ND	212	106	200	1.22	
EXT DRO >C28-C36	20.5	10.0	09/29/2025	ND					

Surrogate: 1-Chlorooctane 90.8 % 52.4-130

Surrogate: 1-Chlorooctadecane 86.0 % 39.9-141

Cardinal Laboratories

\*=Accredited Analyte

PLEASE NOTE: Liability and Damages. Cardinal's liability and client's exclusive remedy for any claim arising, whether based in contract or tort, shall be limited to the amount paid by client for analyses. All claims, including those for negligence and any other cause whatsoever shall be deemed waived unless made in writing and received by Cardinal within thirty (30) days after completion of the applicable service. In no event shall Cardinal be liable for incidental or consequential damages, including, without limitation, business interruptions, loss of use, or loss of profits incurred by client, its subsidiaries, affiliates or successors arising out of or related to the performance of the services hereunder by Cardinal, regardless of whether such claim is based upon any of the above stated reasons or otherwise. Results relate only to the samples identified above. This report shall not be reproduced except in full with written approval of Cardinal Laboratories.

Celey D. Keene, Lab Director/Quality Manager



---

PHONE (575) 393-2326 ° 101 E. MARLAND ° HOBBS, NM 88240

---

### Notes and Definitions

ND	Analyte NOT DETECTED at or above the reporting limit
RPD	Relative Percent Difference
**	Samples not received at proper temperature of 6°C or below.
***	Insufficient time to reach temperature.
-	Chloride by SM4500Cl-B does not require samples be received at or below 6°C Samples reported on an as received basis (wet) unless otherwise noted on report

---

Cardinal Laboratories

\*=Accredited Analyte

PLEASE NOTE: Liability and Damages. Cardinal's liability and client's exclusive remedy for any claim arising, whether based in contract or tort, shall be limited to the amount paid by client for analyses. All claims, including those for negligence and any other cause whatsoever shall be deemed waived unless made in writing and received by Cardinal within thirty (30) days after completion of the applicable service. In no event shall Cardinal be liable for incidental or consequential damages, including, without limitation, business interruptions, loss of use, or loss of profits incurred by client, its subsidiaries, affiliates or successors arising out of or related to the performance of the services hereunder by Cardinal, regardless of whether such claim is based upon any of the above stated reasons or otherwise. Results relate only to the samples identified above. This report shall not be reproduced except in full with written approval of Cardinal Laboratories.

A handwritten signature in black ink, appearing to read "C. D. Keene".

---

Celey D. Keene, Lab Director/Quality Manager



101 East Marland, Hobbs, NM 88240  
(575) 393-2326 FAX (575) 393-2476

**CHAIN-OF-CUSTODY AND ANALYSIS REQUEST**

Page 1 of 2

<b>Company Name:</b> Tetra Tech - Conoco Phillips <b>Project Manager:</b> Lisbeth Chavez <b>Address:</b> <b>City:</b> <b>State:</b> <b>Zip:</b> <b>Phone #:</b> <b>Fax #:</b> <b>Project #:</b> 212C-MD-03952 Project Owner: <b>Project Name:</b> Flowmaster 15 TB 7H Release <b>Project Location:</b> Lea Co, NM <b>Sampler Name:</b> Andrew Garcia <b>FOR LAB USE ONLY</b>				<b>BILL TO</b> <b>P.O. #:</b> <b>Company:</b> Tetra Tech <b>Attn:</b> Lisbeth Chavez <b>Address:</b> <b>City:</b> <b>State:</b> <b>Zip:</b> <b>Phone #:</b> <b>Fax #:</b>			
<b>Lab I.D.</b>				<b>Sample I.D.</b>			
AH-1 (6'-1') AH-1 (2'-2') AH-1 (3'-4') AH-2 (6'-1') AH-2 (2'-3') AH-2 (3'-4') AH-3 (6'-1') AH-3 (2'-3') AH-3 (3'-4') AH-4 (6'-1')				(G)RAB OR (C)OMP. # CONTAINERS GROUNDWATER WASTEWATER SOIL OIL SLUDGE OTHER: ACID/BASE: ICE / COOL OTHER:			
2025 9/26 0800 0815 0830 0845 0900 0915 0930 0945 1000 1015				TPH BTEX Chlorides Hold			
ANALYSIS REQUEST				ANALYSIS REQUEST			

PLEASE NOTE: Liability and Damages. Cardinal's liability and client's exclusive remedy for any claim arising whether based in contract or tort, shall be limited to the amount paid by the client for the analyses. All claims, including those for negligence and any other cause whatsoever shall be deemed waived unless made in writing and received by Cardinal within 30 days after completion of the applicable services. In no event shall Cardinal be liable for incidental or consequential damages, including without limitation, business interruptions, loss of use, or loss of profits incurred by client, its subsidiaries, affiliates or successors arising out of or related to the performance hereunder by Cardinal, regardless of whether such claim is based upon any of the above stated reasons or otherwise.

**Relinquished By:** Andrew Garcia  
**Date:** 9/26/25  
**Time:** 10:39  
**Received By:** [Signature]  
**Date:** 9/26/25  
**Time:** 10:39  
**Received By:** [Signature]

**Delivered By:** (Circle One) UPS   Bus   Other:      **Observed Temp. °C:** -0.9  
**Corrected Temp. °C:** -0.0  
**Sample Condition:** Cool ☒ Intact ☒ Yes ☒ No ☒  
**Checked By:** [Signature]  
**Turnaround Time:** Standard ☒ Rush ☐ **Bacteria (only) Sample Condition:** Cool ☒ Intact ☒ Yes ☒ No ☒  
**Thermometer ID #140** **Correction Factor +0.3°C** **Observed Temp. °C:**      **Corrected Temp. °C:**

**REMARKS:** Verbal Result: ☐ Yes ☐ No ☐ Add'l Phone #:      All Results are emailed. Please provide Email address: Lisbeth.Chavez@cardinallabsnm.com  
 Andrew.Garcia@tetratech.com



# CHAIN-OF-CUSTODY AND ANALYSIS REQUEST

Page 2 of 2

Company Name: <b>Tetra Tech - Conoco Phillips</b>		<b>BILL TO</b>	
Project Manager: <b>Libeth Chavira</b>		P.O. #:	
Address:		Company: <b>Tetra Tech</b>	
City:	State:	Attn: <b>Libeth Chavira</b>	
Phone #:	Fax #:	Address:	
Project #: <b>212C-MD-03952</b> Project Owner:		City:	
Project Name: <b>Flowmaster 15 TB 7H Release</b>		State:	
Project Location: <b>Lea Co, NM</b>		Phone #:	
Sampler Name: <b>Andrew Garcia</b>		Fax #:	

FOR LAB USE ONLY		ANALYSIS REQUEST	
Lab I.D.	Sample I.D.	MATRIX	
		PRESERV	SAMPLING
	(G)RAB OR (C)OMP.		
	# CONTAINERS		
	GROUNDWATER		
	WASTEWATER		
	SOIL		
	OIL		
	SLUDGE		
	OTHER:		
	ACID/BASE:		
	ICE / COOL		
	OTHER:		
	DATE	TIME	
	9/26	1030	
		1045	
		1100	
		1115	
		1130	
		1145	
		1200	
	TPH		
	BTEX		
	Chlorides		
	Hold		

Turnaround Time:		Standard	
Thermometer ID #140	Correction Factor +0.3°C		
Bacteria (only) Sample Condition			
Cool	Intact	Observed Temp. °C	Corrected Temp. °C
<input type="checkbox"/> Yes	<input type="checkbox"/> No		
Remarks:			
Verbal Result: <input type="checkbox"/> Yes <input type="checkbox"/> No		Add'l Phone #:	
All Results are emailed. Please provide Email address:			
REMARKS:			



PHONE (575) 393-2326 ° 101 E. MARLAND ° HOBBS, NM 88240

October 30, 2025

LISBETH CHAVIRA

TETRA TECH

901 WEST WALL STREET , STE 100

MIDLAND, TX 79701

RE: FLOW MASTER 15 TB 7H RELEASE

Enclosed are the results of analyses for samples received by the laboratory on 10/24/25 8:40.

Cardinal Laboratories is accredited through Texas NELAP under certificate number TX-C25-00101. Accreditation applies to drinking water, non-potable water and solid and chemical materials. All accredited analytes are denoted by an asterisk (\*). For a complete list of accredited analytes and matrices visit the TCEQ website at [www.tceq.texas.gov/field/qa/lab\\_accred\\_certif.html](http://www.tceq.texas.gov/field/qa/lab_accred_certif.html).

Cardinal Laboratories is accredited through the State of Colorado Department of Public Health and Environment for:

Method EPA 552.2	Haloacetic Acids (HAA-5)
Method EPA 524.2	Total Trihalomethanes (TTHM)
Method EPA 524.4	Regulated VOCs (V1, V2, V3)

Accreditation applies to public drinking water matrices.

This report meets NELAP requirements and is made up of a cover page, analytical results, and a copy of the original chain-of-custody. If you have any questions concerning this report, please feel free to contact me.

Sincerely,

A handwritten signature in black ink that reads "Celey D. Keene". The signature is written in a cursive style with a large, stylized 'C' and 'K'.

Celey D. Keene

Lab Director/Quality Manager



PHONE (575) 393-2326 ° 101 E. MARLAND ° HOBBS, NM 88240

**Analytical Results For:**

TETRA TECH  
 LISBETH CHAVIRA  
 901 WEST WALL STREET , STE 100  
 MIDLAND TX, 79701  
 Fax To: (432) 682-3946

Received:	10/24/2025	Sampling Date:	10/23/2025
Reported:	10/30/2025	Sampling Type:	Soil
Project Name:	FLOW MASTER 15 TB 7H RELEASE	Sampling Condition:	Cool & Intact
Project Number:	212C - MD - 03952	Sample Received By:	Shalyn Rodriguez
Project Location:	LEA COUNTY, NM		

**Sample ID: FS - 1 (H256711-01)**

BTX 8021B		mg/kg		Analyzed By: JH						
Analyte	Result	Reporting Limit	Analyzed	Method Blank	BS	% Recovery	True Value QC	RPD	Qualifier	
Benzene*	<0.050	0.050	10/26/2025	ND	1.61	80.6	2.00	17.8		
Toluene*	<0.050	0.050	10/26/2025	ND	1.60	79.8	2.00	15.6		
Ethylbenzene*	<0.050	0.050	10/26/2025	ND	1.72	85.8	2.00	16.2		
Total Xylenes*	<0.150	0.150	10/26/2025	ND	5.40	90.0	6.00	16.7		
Total BTX	<0.300	0.300	10/26/2025	ND						

Surrogate: 4-Bromofluorobenzene (PID) 114 % 70.4-141

Chloride, SM4500Cl-B		mg/kg		Analyzed By: HM						
Analyte	Result	Reporting Limit	Analyzed	Method Blank	BS	% Recovery	True Value QC	RPD	Qualifier	
Chloride	48.0	16.0	10/28/2025	ND	432	108	400	0.00		

TPH 8015M		mg/kg		Analyzed By: MS					
Analyte	Result	Reporting Limit	Analyzed	Method Blank	BS	% Recovery	True Value QC	RPD	Qualifier
GRO C6-C10*	<10.0	10.0	10/25/2025	ND	180	90.2	200	2.20	
DRO >C10-C28*	<10.0	10.0	10/25/2025	ND	184	91.9	200	2.42	
EXT DRO >C28-C36	<10.0	10.0	10/25/2025	ND					

Surrogate: 1-Chlorooctane 81.4 % 52.4-130

Surrogate: 1-Chlorooctadecane 82.7 % 39.9-141

Cardinal Laboratories

\*=Accredited Analyte

PLEASE NOTE: Liability and Damages. Cardinal's liability and client's exclusive remedy for any claim arising, whether based in contract or tort, shall be limited to the amount paid by client for analyses. All claims, including those for negligence and any other cause whatsoever shall be deemed waived unless made in writing and received by Cardinal within thirty (30) days after completion of the applicable service. In no event shall Cardinal be liable for incidental or consequential damages, including, without limitation, business interruptions, loss of use, or loss of profits incurred by client, its subsidiaries, affiliates or successors arising out of or related to the performance of the services hereunder by Cardinal, regardless of whether such claim is based upon any of the above stated reasons or otherwise. Results relate only to the samples identified above. This report shall not be reproduced except in full with written approval of Cardinal Laboratories.

Celey D. Keene, Lab Director/Quality Manager



PHONE (575) 393-2326 ° 101 E. MARLAND ° HOBBS, NM 88240

**Analytical Results For:**

TETRA TECH  
 LISBETH CHAVIRA  
 901 WEST WALL STREET , STE 100  
 MIDLAND TX, 79701  
 Fax To: (432) 682-3946

Received:	10/24/2025	Sampling Date:	10/23/2025
Reported:	10/30/2025	Sampling Type:	Soil
Project Name:	FLOW MASTER 15 TB 7H RELEASE	Sampling Condition:	Cool & Intact
Project Number:	212C - MD - 03952	Sample Received By:	Shalyn Rodriguez
Project Location:	LEA COUNTY, NM		

**Sample ID: FS - 2 (H256711-02)**

BTEx 8021B		mg/kg		Analyzed By: JH						
Analyte	Result	Reporting Limit	Analyzed	Method Blank	BS	% Recovery	True Value QC	RPD	Qualifier	
Benzene*	<0.050	0.050	10/26/2025	ND	1.61	80.6	2.00	17.8		
Toluene*	<0.050	0.050	10/26/2025	ND	1.60	79.8	2.00	15.6		
Ethylbenzene*	<0.050	0.050	10/26/2025	ND	1.72	85.8	2.00	16.2		
Total Xylenes*	<0.150	0.150	10/26/2025	ND	5.40	90.0	6.00	16.7		
Total BTEx	<0.300	0.300	10/26/2025	ND						

Surrogate: 4-Bromofluorobenzene (PID) 113 % 70.4-141

Chloride, SM4500CI-B		mg/kg		Analyzed By: KH						
Analyte	Result	Reporting Limit	Analyzed	Method Blank	BS	% Recovery	True Value QC	RPD	Qualifier	
Chloride	48.0	16.0	10/28/2025	ND	400	100	400	11.3		

TPH 8015M		mg/kg		Analyzed By: MS					
Analyte	Result	Reporting Limit	Analyzed	Method Blank	BS	% Recovery	True Value QC	RPD	Qualifier
GRO C6-C10*	<10.0	10.0	10/25/2025	ND	180	90.2	200	2.20	
DRO >C10-C28*	<10.0	10.0	10/25/2025	ND	184	91.9	200	2.42	
EXT DRO >C28-C36	<10.0	10.0	10/25/2025	ND					

Surrogate: 1-Chlorooctane 81.8 % 52.4-130

Surrogate: 1-Chlorooctadecane 84.0 % 39.9-141

Cardinal Laboratories

\*=Accredited Analyte

PLEASE NOTE: Liability and Damages. Cardinal's liability and client's exclusive remedy for any claim arising, whether based in contract or tort, shall be limited to the amount paid by client for analyses. All claims, including those for negligence and any other cause whatsoever shall be deemed waived unless made in writing and received by Cardinal within thirty (30) days after completion of the applicable service. In no event shall Cardinal be liable for incidental or consequential damages, including, without limitation, business interruptions, loss of use, or loss of profits incurred by client, its subsidiaries, affiliates or successors arising out of or related to the performance of the services hereunder by Cardinal, regardless of whether such claim is based upon any of the above stated reasons or otherwise. Results relate only to the samples identified above. This report shall not be reproduced except in full with written approval of Cardinal Laboratories.

Celey D. Keene, Lab Director/Quality Manager





PHONE (575) 393-2326 ° 101 E. MARLAND ° HOBBS, NM 88240

**Analytical Results For:**

TETRA TECH  
 LISBETH CHAVIRA  
 901 WEST WALL STREET , STE 100  
 MIDLAND TX, 79701  
 Fax To: (432) 682-3946

Received:	10/24/2025	Sampling Date:	10/23/2025
Reported:	10/30/2025	Sampling Type:	Soil
Project Name:	FLOW MASTER 15 TB 7H RELEASE	Sampling Condition:	Cool & Intact
Project Number:	212C - MD - 03952	Sample Received By:	Shalyn Rodriguez
Project Location:	LEA COUNTY, NM		

**Sample ID: FS - 3 (H256711-03)**

BTEx 8021B		mg/kg		Analyzed By: JH						
Analyte	Result	Reporting Limit	Analyzed	Method Blank	BS	% Recovery	True Value QC	RPD	Qualifier	
Benzene*	<0.050	0.050	10/26/2025	ND	1.61	80.6	2.00	17.8		
Toluene*	<0.050	0.050	10/26/2025	ND	1.60	79.8	2.00	15.6		
Ethylbenzene*	<0.050	0.050	10/26/2025	ND	1.72	85.8	2.00	16.2		
Total Xylenes*	<0.150	0.150	10/26/2025	ND	5.40	90.0	6.00	16.7		
Total BTEX	<0.300	0.300	10/26/2025	ND						

Surrogate: 4-Bromofluorobenzene (PID) 114 % 70.4-141

Chloride, SM4500Cl-B		mg/kg		Analyzed By: KH						
Analyte	Result	Reporting Limit	Analyzed	Method Blank	BS	% Recovery	True Value QC	RPD	Qualifier	
Chloride	160	16.0	10/28/2025	ND	400	100	400	11.3		

TPH 8015M		mg/kg		Analyzed By: MS					
Analyte	Result	Reporting Limit	Analyzed	Method Blank	BS	% Recovery	True Value QC	RPD	Qualifier
GRO C6-C10*	<10.0	10.0	10/25/2025	ND	180	90.2	200	2.20	
DRO >C10-C28*	<10.0	10.0	10/25/2025	ND	184	91.9	200	2.42	
EXT DRO >C28-C36	<10.0	10.0	10/25/2025	ND					

Surrogate: 1-Chlorooctane 83.5 % 52.4-130

Surrogate: 1-Chlorooctadecane 84.9 % 39.9-141

Cardinal Laboratories

\*=Accredited Analyte

PLEASE NOTE: Liability and Damages. Cardinal's liability and client's exclusive remedy for any claim arising, whether based in contract or tort, shall be limited to the amount paid by client for analyses. All claims, including those for negligence and any other cause whatsoever shall be deemed waived unless made in writing and received by Cardinal within thirty (30) days after completion of the applicable service. In no event shall Cardinal be liable for incidental or consequential damages, including, without limitation, business interruptions, loss of use, or loss of profits incurred by client, its subsidiaries, affiliates or successors arising out of or related to the performance of the services hereunder by Cardinal, regardless of whether such claim is based upon any of the above stated reasons or otherwise. Results relate only to the samples identified above. This report shall not be reproduced except in full with written approval of Cardinal Laboratories.

Celey D. Keene, Lab Director/Quality Manager



PHONE (575) 393-2326 ° 101 E. MARLAND ° HOBBS, NM 88240

**Analytical Results For:**

TETRA TECH  
 LISBETH CHAVIRA  
 901 WEST WALL STREET , STE 100  
 MIDLAND TX, 79701  
 Fax To: (432) 682-3946

Received:	10/24/2025	Sampling Date:	10/23/2025
Reported:	10/30/2025	Sampling Type:	Soil
Project Name:	FLOW MASTER 15 TB 7H RELEASE	Sampling Condition:	Cool & Intact
Project Number:	212C - MD - 03952	Sample Received By:	Shalyn Rodriguez
Project Location:	LEA COUNTY, NM		

**Sample ID: FS - 4 (H256711-04)**

BTEx 8021B		mg/kg		Analyzed By: JH						
Analyte	Result	Reporting Limit	Analyzed	Method Blank	BS	% Recovery	True Value QC	RPD	Qualifier	
Benzene*	<0.050	0.050	10/25/2025	ND	1.84	91.8	2.00	4.38		
Toluene*	<0.050	0.050	10/25/2025	ND	1.94	97.0	2.00	2.88		
Ethylbenzene*	<0.050	0.050	10/25/2025	ND	2.00	100	2.00	1.44		
Total Xylenes*	<0.150	0.150	10/25/2025	ND	6.00	99.9	6.00	1.56		
Total BTEX	<0.300	0.300	10/25/2025	ND						

Surrogate: 4-Bromofluorobenzene (PID) 103 % 70.4-141

Chloride, SM4500Cl-B		mg/kg		Analyzed By: KH						
Analyte	Result	Reporting Limit	Analyzed	Method Blank	BS	% Recovery	True Value QC	RPD	Qualifier	
Chloride	80.0	16.0	10/28/2025	ND	400	100	400	11.3		

TPH 8015M		mg/kg		Analyzed By: MS					
Analyte	Result	Reporting Limit	Analyzed	Method Blank	BS	% Recovery	True Value QC	RPD	Qualifier
GRO C6-C10*	<10.0	10.0	10/25/2025	ND	180	90.2	200	2.20	
DRO >C10-C28*	<10.0	10.0	10/25/2025	ND	184	91.9	200	2.42	
EXT DRO >C28-C36	<10.0	10.0	10/25/2025	ND					

Surrogate: 1-Chlorooctane 77.9 % 52.4-130

Surrogate: 1-Chlorooctadecane 79.5 % 39.9-141

Cardinal Laboratories

\*=Accredited Analyte

PLEASE NOTE: Liability and Damages. Cardinal's liability and client's exclusive remedy for any claim arising, whether based in contract or tort, shall be limited to the amount paid by client for analyses. All claims, including those for negligence and any other cause whatsoever shall be deemed waived unless made in writing and received by Cardinal within thirty (30) days after completion of the applicable service. In no event shall Cardinal be liable for incidental or consequential damages, including, without limitation, business interruptions, loss of use, or loss of profits incurred by client, its subsidiaries, affiliates or successors arising out of or related to the performance of the services hereunder by Cardinal, regardless of whether such claim is based upon any of the above stated reasons or otherwise. Results relate only to the samples identified above. This report shall not be reproduced except in full with written approval of Cardinal Laboratories.

Celey D. Keene, Lab Director/Quality Manager



PHONE (575) 393-2326 ° 101 E. MARLAND ° HOBBS, NM 88240

**Analytical Results For:**

TETRA TECH  
 LISBETH CHAVIRA  
 901 WEST WALL STREET , STE 100  
 MIDLAND TX, 79701  
 Fax To: (432) 682-3946

Received:	10/24/2025	Sampling Date:	10/23/2025
Reported:	10/30/2025	Sampling Type:	Soil
Project Name:	FLOW MASTER 15 TB 7H RELEASE	Sampling Condition:	Cool & Intact
Project Number:	212C - MD - 03952	Sample Received By:	Shalyn Rodriguez
Project Location:	LEA COUNTY, NM		

**Sample ID: FS - 5 (H256711-05)**

BTEx 8021B		mg/kg		Analyzed By: JH						
Analyte	Result	Reporting Limit	Analyzed	Method Blank	BS	% Recovery	True Value QC	RPD	Qualifier	
Benzene*	<0.050	0.050	10/25/2025	ND	1.84	91.8	2.00	4.38		
Toluene*	<0.050	0.050	10/25/2025	ND	1.94	97.0	2.00	2.88		
Ethylbenzene*	<0.050	0.050	10/25/2025	ND	2.00	100	2.00	1.44		
Total Xylenes*	<0.150	0.150	10/25/2025	ND	6.00	99.9	6.00	1.56		
Total BTEX	<0.300	0.300	10/25/2025	ND						

Surrogate: 4-Bromofluorobenzene (PID) 102 % 70.4-141

Chloride, SM4500Cl-B		mg/kg		Analyzed By: KH						
Analyte	Result	Reporting Limit	Analyzed	Method Blank	BS	% Recovery	True Value QC	RPD	Qualifier	
Chloride	64.0	16.0	10/28/2025	ND	400	100	400	11.3		

TPH 8015M		mg/kg		Analyzed By: MS					
Analyte	Result	Reporting Limit	Analyzed	Method Blank	BS	% Recovery	True Value QC	RPD	Qualifier
GRO C6-C10*	<10.0	10.0	10/25/2025	ND	180	90.2	200	2.20	
DRO >C10-C28*	<10.0	10.0	10/25/2025	ND	184	91.9	200	2.42	
EXT DRO >C28-C36	<10.0	10.0	10/25/2025	ND					

Surrogate: 1-Chlorooctane 80.6 % 52.4-130

Surrogate: 1-Chlorooctadecane 82.8 % 39.9-141

Cardinal Laboratories

\*=Accredited Analyte

PLEASE NOTE: Liability and Damages. Cardinal's liability and client's exclusive remedy for any claim arising, whether based in contract or tort, shall be limited to the amount paid by client for analyses. All claims, including those for negligence and any other cause whatsoever shall be deemed waived unless made in writing and received by Cardinal within thirty (30) days after completion of the applicable service. In no event shall Cardinal be liable for incidental or consequential damages, including, without limitation, business interruptions, loss of use, or loss of profits incurred by client, its subsidiaries, affiliates or successors arising out of or related to the performance of the services hereunder by Cardinal, regardless of whether such claim is based upon any of the above stated reasons or otherwise. Results relate only to the samples identified above. This report shall not be reproduced except in full with written approval of Cardinal Laboratories.

Celey D. Keene, Lab Director/Quality Manager





PHONE (575) 393-2326 ° 101 E. MARLAND ° HOBBS, NM 88240

**Analytical Results For:**

TETRA TECH  
 LISBETH CHAVIRA  
 901 WEST WALL STREET , STE 100  
 MIDLAND TX, 79701  
 Fax To: (432) 682-3946

Received:	10/24/2025	Sampling Date:	10/23/2025
Reported:	10/30/2025	Sampling Type:	Soil
Project Name:	FLOW MASTER 15 TB 7H RELEASE	Sampling Condition:	Cool & Intact
Project Number:	212C - MD - 03952	Sample Received By:	Shalyn Rodriguez
Project Location:	LEA COUNTY, NM		

**Sample ID: FS - 6 (H256711-06)**

BTEx 8021B		mg/kg		Analyzed By: JH						
Analyte	Result	Reporting Limit	Analyzed	Method Blank	BS	% Recovery	True Value QC	RPD	Qualifier	
Benzene*	<0.050	0.050	10/25/2025	ND	1.84	91.8	2.00	4.38		
Toluene*	<0.050	0.050	10/25/2025	ND	1.94	97.0	2.00	2.88		
Ethylbenzene*	<0.050	0.050	10/25/2025	ND	2.00	100	2.00	1.44		
Total Xylenes*	<0.150	0.150	10/25/2025	ND	6.00	99.9	6.00	1.56		
Total BTEX	<0.300	0.300	10/25/2025	ND						

Surrogate: 4-Bromofluorobenzene (PID) 102 % 70.4-141

Chloride, SM4500Cl-B		mg/kg		Analyzed By: KH						
Analyte	Result	Reporting Limit	Analyzed	Method Blank	BS	% Recovery	True Value QC	RPD	Qualifier	
Chloride	32.0	16.0	10/28/2025	ND	400	100	400	11.3		

TPH 8015M		mg/kg		Analyzed By: MS					
Analyte	Result	Reporting Limit	Analyzed	Method Blank	BS	% Recovery	True Value QC	RPD	Qualifier
GRO C6-C10*	<10.0	10.0	10/25/2025	ND	180	90.2	200	2.20	
DRO >C10-C28*	<10.0	10.0	10/25/2025	ND	184	91.9	200	2.42	
EXT DRO >C28-C36	<10.0	10.0	10/25/2025	ND					

Surrogate: 1-Chlorooctane 80.4 % 52.4-130

Surrogate: 1-Chlorooctadecane 81.2 % 39.9-141

Cardinal Laboratories

\*=Accredited Analyte

PLEASE NOTE: Liability and Damages. Cardinal's liability and client's exclusive remedy for any claim arising, whether based in contract or tort, shall be limited to the amount paid by client for analyses. All claims, including those for negligence and any other cause whatsoever shall be deemed waived unless made in writing and received by Cardinal within thirty (30) days after completion of the applicable service. In no event shall Cardinal be liable for incidental or consequential damages, including, without limitation, business interruptions, loss of use, or loss of profits incurred by client, its subsidiaries, affiliates or successors arising out of or related to the performance of the services hereunder by Cardinal, regardless of whether such claim is based upon any of the above stated reasons or otherwise. Results relate only to the samples identified above. This report shall not be reproduced except in full with written approval of Cardinal Laboratories.

Celey D. Keene, Lab Director/Quality Manager



PHONE (575) 393-2326 ° 101 E. MARLAND ° HOBBS, NM 88240

**Analytical Results For:**

TETRA TECH  
 LISBETH CHAVIRA  
 901 WEST WALL STREET , STE 100  
 MIDLAND TX, 79701  
 Fax To: (432) 682-3946

Received:	10/24/2025	Sampling Date:	10/23/2025
Reported:	10/30/2025	Sampling Type:	Soil
Project Name:	FLOW MASTER 15 TB 7H RELEASE	Sampling Condition:	Cool & Intact
Project Number:	212C - MD - 03952	Sample Received By:	Shalyn Rodriguez
Project Location:	LEA COUNTY, NM		

**Sample ID: FS - 7 (H256711-07)**

BTEX 8021B		mg/kg		Analyzed By: JH						
Analyte	Result	Reporting Limit	Analyzed	Method Blank	BS	% Recovery	True Value QC	RPD	Qualifier	
Benzene*	<0.050	0.050	10/25/2025	ND	1.84	91.8	2.00	4.38		
Toluene*	<0.050	0.050	10/25/2025	ND	1.94	97.0	2.00	2.88		
Ethylbenzene*	<0.050	0.050	10/25/2025	ND	2.00	100	2.00	1.44		
Total Xylenes*	<0.150	0.150	10/25/2025	ND	6.00	99.9	6.00	1.56		
Total BTEX	<0.300	0.300	10/25/2025	ND						

Surrogate: 4-Bromofluorobenzene (PID) 103 % 70.4-141

Chloride, SM4500Cl-B		mg/kg		Analyzed By: KH						
Analyte	Result	Reporting Limit	Analyzed	Method Blank	BS	% Recovery	True Value QC	RPD	Qualifier	
Chloride	48.0	16.0	10/28/2025	ND	400	100	400	11.3		

TPH 8015M		mg/kg		Analyzed By: MS					
Analyte	Result	Reporting Limit	Analyzed	Method Blank	BS	% Recovery	True Value QC	RPD	Qualifier
GRO C6-C10*	<10.0	10.0	10/25/2025	ND	180	90.2	200	2.20	
DRO >C10-C28*	<10.0	10.0	10/25/2025	ND	184	91.9	200	2.42	
EXT DRO >C28-C36	<10.0	10.0	10/25/2025	ND					

Surrogate: 1-Chlorooctane 77.5 % 52.4-130

Surrogate: 1-Chlorooctadecane 77.4 % 39.9-141

Cardinal Laboratories

\*=Accredited Analyte

PLEASE NOTE: Liability and Damages. Cardinal's liability and client's exclusive remedy for any claim arising, whether based in contract or tort, shall be limited to the amount paid by client for analyses. All claims, including those for negligence and any other cause whatsoever shall be deemed waived unless made in writing and received by Cardinal within thirty (30) days after completion of the applicable service. In no event shall Cardinal be liable for incidental or consequential damages, including, without limitation, business interruptions, loss of use, or loss of profits incurred by client, its subsidiaries, affiliates or successors arising out of or related to the performance of the services hereunder by Cardinal, regardless of whether such claim is based upon any of the above stated reasons or otherwise. Results relate only to the samples identified above. This report shall not be reproduced except in full with written approval of Cardinal Laboratories.

Celey D. Keene, Lab Director/Quality Manager



PHONE (575) 393-2326 ° 101 E. MARLAND ° HOBBS, NM 88240

**Analytical Results For:**

TETRA TECH  
 LISBETH CHAVIRA  
 901 WEST WALL STREET , STE 100  
 MIDLAND TX, 79701  
 Fax To: (432) 682-3946

Received:	10/24/2025	Sampling Date:	10/23/2025
Reported:	10/30/2025	Sampling Type:	Soil
Project Name:	FLOW MASTER 15 TB 7H RELEASE	Sampling Condition:	Cool & Intact
Project Number:	212C - MD - 03952	Sample Received By:	Shalyn Rodriguez
Project Location:	LEA COUNTY, NM		

**Sample ID: FS - 8 (H256711-08)**

BTEX 8021B		mg/kg		Analyzed By: JH						
Analyte	Result	Reporting Limit	Analyzed	Method Blank	BS	% Recovery	True Value QC	RPD	Qualifier	
Benzene*	<0.050	0.050	10/25/2025	ND	1.84	91.8	2.00	4.38		
Toluene*	<0.050	0.050	10/25/2025	ND	1.94	97.0	2.00	2.88		
Ethylbenzene*	<0.050	0.050	10/25/2025	ND	2.00	100	2.00	1.44		
Total Xylenes*	<0.150	0.150	10/25/2025	ND	6.00	99.9	6.00	1.56		
Total BTEX	<0.300	0.300	10/25/2025	ND						

Surrogate: 4-Bromofluorobenzene (PID) 102 % 70.4-141

Chloride, SM4500Cl-B		mg/kg		Analyzed By: KH						
Analyte	Result	Reporting Limit	Analyzed	Method Blank	BS	% Recovery	True Value QC	RPD	Qualifier	
Chloride	32.0	16.0	10/28/2025	ND	400	100	400	11.3		

TPH 8015M		mg/kg		Analyzed By: MS					
Analyte	Result	Reporting Limit	Analyzed	Method Blank	BS	% Recovery	True Value QC	RPD	Qualifier
GRO C6-C10*	<10.0	10.0	10/25/2025	ND	180	90.2	200	2.20	
DRO >C10-C28*	<10.0	10.0	10/25/2025	ND	184	91.9	200	2.42	
EXT DRO >C28-C36	<10.0	10.0	10/25/2025	ND					

Surrogate: 1-Chlorooctane 78.7 % 52.4-130

Surrogate: 1-Chlorooctadecane 80.0 % 39.9-141

Cardinal Laboratories

\*=Accredited Analyte

PLEASE NOTE: Liability and Damages. Cardinal's liability and client's exclusive remedy for any claim arising, whether based in contract or tort, shall be limited to the amount paid by client for analyses. All claims, including those for negligence and any other cause whatsoever shall be deemed waived unless made in writing and received by Cardinal within thirty (30) days after completion of the applicable service. In no event shall Cardinal be liable for incidental or consequential damages, including, without limitation, business interruptions, loss of use, or loss of profits incurred by client, its subsidiaries, affiliates or successors arising out of or related to the performance of the services hereunder by Cardinal, regardless of whether such claim is based upon any of the above stated reasons or otherwise. Results relate only to the samples identified above. This report shall not be reproduced except in full with written approval of Cardinal Laboratories.

Celey D. Keene, Lab Director/Quality Manager





PHONE (575) 393-2326 ° 101 E. MARLAND ° HOBBS, NM 88240

**Analytical Results For:**

TETRA TECH  
 LISBETH CHAVIRA  
 901 WEST WALL STREET , STE 100  
 MIDLAND TX, 79701  
 Fax To: (432) 682-3946

Received:	10/24/2025	Sampling Date:	10/23/2025
Reported:	10/30/2025	Sampling Type:	Soil
Project Name:	FLOW MASTER 15 TB 7H RELEASE	Sampling Condition:	Cool & Intact
Project Number:	212C - MD - 03952	Sample Received By:	Shalyn Rodriguez
Project Location:	LEA COUNTY, NM		

**Sample ID: FS - 9 (H256711-09)**

BTEX 8021B		mg/kg		Analyzed By: JH						
Analyte	Result	Reporting Limit	Analyzed	Method Blank	BS	% Recovery	True Value QC	RPD	Qualifier	
Benzene*	<0.050	0.050	10/25/2025	ND	1.84	91.8	2.00	4.38		
Toluene*	<0.050	0.050	10/25/2025	ND	1.94	97.0	2.00	2.88		
Ethylbenzene*	<0.050	0.050	10/25/2025	ND	2.00	100	2.00	1.44		
Total Xylenes*	<0.150	0.150	10/25/2025	ND	6.00	99.9	6.00	1.56		
Total BTEX	<0.300	0.300	10/25/2025	ND						

Surrogate: 4-Bromofluorobenzene (PID) 102 % 70.4-141

Chloride, SM4500Cl-B		mg/kg		Analyzed By: KH						
Analyte	Result	Reporting Limit	Analyzed	Method Blank	BS	% Recovery	True Value QC	RPD	Qualifier	
Chloride	64.0	16.0	10/28/2025	ND	400	100	400	11.3		

TPH 8015M		mg/kg		Analyzed By: MS					
Analyte	Result	Reporting Limit	Analyzed	Method Blank	BS	% Recovery	True Value QC	RPD	Qualifier
GRO C6-C10*	<10.0	10.0	10/25/2025	ND	180	90.2	200	2.20	
DRO >C10-C28*	<10.0	10.0	10/25/2025	ND	184	91.9	200	2.42	
EXT DRO >C28-C36	<10.0	10.0	10/25/2025	ND					

Surrogate: 1-Chlorooctane 79.5 % 52.4-130

Surrogate: 1-Chlorooctadecane 80.5 % 39.9-141

Cardinal Laboratories

\*=Accredited Analyte

PLEASE NOTE: Liability and Damages. Cardinal's liability and client's exclusive remedy for any claim arising, whether based in contract or tort, shall be limited to the amount paid by client for analyses. All claims, including those for negligence and any other cause whatsoever shall be deemed waived unless made in writing and received by Cardinal within thirty (30) days after completion of the applicable service. In no event shall Cardinal be liable for incidental or consequential damages, including, without limitation, business interruptions, loss of use, or loss of profits incurred by client, its subsidiaries, affiliates or successors arising out of or related to the performance of the services hereunder by Cardinal, regardless of whether such claim is based upon any of the above stated reasons or otherwise. Results relate only to the samples identified above. This report shall not be reproduced except in full with written approval of Cardinal Laboratories.

Celey D. Keene, Lab Director/Quality Manager



PHONE (575) 393-2326 ° 101 E. MARLAND ° HOBBS, NM 88240

**Analytical Results For:**

TETRA TECH  
 LISBETH CHAVIRA  
 901 WEST WALL STREET , STE 100  
 MIDLAND TX, 79701  
 Fax To: (432) 682-3946

Received:	10/24/2025	Sampling Date:	10/23/2025
Reported:	10/30/2025	Sampling Type:	Soil
Project Name:	FLOW MASTER 15 TB 7H RELEASE	Sampling Condition:	Cool & Intact
Project Number:	212C - MD - 03952	Sample Received By:	Shalyn Rodriguez
Project Location:	LEA COUNTY, NM		

**Sample ID: NSW - 1 (H256711-10)**

BTEx 8021B		mg/kg		Analyzed By: JH						
Analyte	Result	Reporting Limit	Analyzed	Method Blank	BS	% Recovery	True Value QC	RPD	Qualifier	
Benzene*	<0.050	0.050	10/25/2025	ND	1.84	91.8	2.00	4.38		
Toluene*	<0.050	0.050	10/25/2025	ND	1.94	97.0	2.00	2.88		
Ethylbenzene*	<0.050	0.050	10/25/2025	ND	2.00	100	2.00	1.44		
Total Xylenes*	<0.150	0.150	10/25/2025	ND	6.00	99.9	6.00	1.56		
Total BTEX	<0.300	0.300	10/25/2025	ND						

Surrogate: 4-Bromofluorobenzene (PID) 102 % 70.4-141

Chloride, SM4500Cl-B		mg/kg		Analyzed By: KH						
Analyte	Result	Reporting Limit	Analyzed	Method Blank	BS	% Recovery	True Value QC	RPD	Qualifier	
Chloride	32.0	16.0	10/28/2025	ND	400	100	400	11.3		

TPH 8015M		mg/kg		Analyzed By: MS					
Analyte	Result	Reporting Limit	Analyzed	Method Blank	BS	% Recovery	True Value QC	RPD	Qualifier
GRO C6-C10*	<10.0	10.0	10/25/2025	ND	180	90.2	200	2.20	
DRO >C10-C28*	<10.0	10.0	10/25/2025	ND	184	91.9	200	2.42	
EXT DRO >C28-C36	<10.0	10.0	10/25/2025	ND					

Surrogate: 1-Chlorooctane 76.1 % 52.4-130

Surrogate: 1-Chlorooctadecane 77.3 % 39.9-141

Cardinal Laboratories

\*=Accredited Analyte

PLEASE NOTE: Liability and Damages. Cardinal's liability and client's exclusive remedy for any claim arising, whether based in contract or tort, shall be limited to the amount paid by client for analyses. All claims, including those for negligence and any other cause whatsoever shall be deemed waived unless made in writing and received by Cardinal within thirty (30) days after completion of the applicable service. In no event shall Cardinal be liable for incidental or consequential damages, including, without limitation, business interruptions, loss of use, or loss of profits incurred by client, its subsidiaries, affiliates or successors arising out of or related to the performance of the services hereunder by Cardinal, regardless of whether such claim is based upon any of the above stated reasons or otherwise. Results relate only to the samples identified above. This report shall not be reproduced except in full with written approval of Cardinal Laboratories.

Celey D. Keene, Lab Director/Quality Manager



PHONE (575) 393-2326 ° 101 E. MARLAND ° HOBBS, NM 88240

**Analytical Results For:**

TETRA TECH  
 LISBETH CHAVIRA  
 901 WEST WALL STREET , STE 100  
 MIDLAND TX, 79701  
 Fax To: (432) 682-3946

Received:	10/24/2025	Sampling Date:	10/23/2025
Reported:	10/30/2025	Sampling Type:	Soil
Project Name:	FLOW MASTER 15 TB 7H RELEASE	Sampling Condition:	Cool & Intact
Project Number:	212C - MD - 03952	Sample Received By:	Shalyn Rodriguez
Project Location:	LEA COUNTY, NM		

**Sample ID: ESW - 1 (H256711-11)**

BTEx 8021B		mg/kg		Analyzed By: JH						
Analyte	Result	Reporting Limit	Analyzed	Method Blank	BS	% Recovery	True Value QC	RPD	Qualifier	
Benzene*	<0.050	0.050	10/25/2025	ND	1.84	91.8	2.00	4.38		
Toluene*	<0.050	0.050	10/25/2025	ND	1.94	97.0	2.00	2.88		
Ethylbenzene*	<0.050	0.050	10/25/2025	ND	2.00	100	2.00	1.44		
Total Xylenes*	<0.150	0.150	10/25/2025	ND	6.00	99.9	6.00	1.56		
Total BTEX	<0.300	0.300	10/25/2025	ND						

Surrogate: 4-Bromofluorobenzene (PID) 103 % 70.4-141

Chloride, SM4500Cl-B		mg/kg		Analyzed By: KH					
Analyte	Result	Reporting Limit	Analyzed	Method Blank	BS	% Recovery	True Value QC	RPD	Qualifier
Chloride	144	16.0	10/28/2025	ND	400	100	400	11.3	

TPH 8015M		mg/kg		Analyzed By: MS					
Analyte	Result	Reporting Limit	Analyzed	Method Blank	BS	% Recovery	True Value QC	RPD	Qualifier
GRO C6-C10*	<10.0	10.0	10/25/2025	ND	180	90.2	200	2.20	
DRO >C10-C28*	<10.0	10.0	10/25/2025	ND	184	91.9	200	2.42	
EXT DRO >C28-C36	<10.0	10.0	10/25/2025	ND					

Surrogate: 1-Chlorooctane 78.4 % 52.4-130

Surrogate: 1-Chlorooctadecane 79.3 % 39.9-141

Cardinal Laboratories

\*=Accredited Analyte

PLEASE NOTE: Liability and Damages. Cardinal's liability and client's exclusive remedy for any claim arising, whether based in contract or tort, shall be limited to the amount paid by client for analyses. All claims, including those for negligence and any other cause whatsoever shall be deemed waived unless made in writing and received by Cardinal within thirty (30) days after completion of the applicable service. In no event shall Cardinal be liable for incidental or consequential damages, including, without limitation, business interruptions, loss of use, or loss of profits incurred by client, its subsidiaries, affiliates or successors arising out of or related to the performance of the services hereunder by Cardinal, regardless of whether such claim is based upon any of the above stated reasons or otherwise. Results relate only to the samples identified above. This report shall not be reproduced except in full with written approval of Cardinal Laboratories.

Celey D. Keene, Lab Director/Quality Manager





PHONE (575) 393-2326 ° 101 E. MARLAND ° HOBBS, NM 88240

**Analytical Results For:**

TETRA TECH  
 LISBETH CHAVIRA  
 901 WEST WALL STREET , STE 100  
 MIDLAND TX, 79701  
 Fax To: (432) 682-3946

Received:	10/24/2025	Sampling Date:	10/23/2025
Reported:	10/30/2025	Sampling Type:	Soil
Project Name:	FLOW MASTER 15 TB 7H RELEASE	Sampling Condition:	Cool & Intact
Project Number:	212C - MD - 03952	Sample Received By:	Shalyn Rodriguez
Project Location:	LEA COUNTY, NM		

**Sample ID: ESW - 2 (H256711-12)**

BTEX 8021B		mg/kg		Analyzed By: JH						
Analyte	Result	Reporting Limit	Analyzed	Method Blank	BS	% Recovery	True Value QC	RPD	Qualifier	
Benzene*	<0.050	0.050	10/25/2025	ND	1.84	91.8	2.00	4.38		
Toluene*	<0.050	0.050	10/25/2025	ND	1.94	97.0	2.00	2.88		
Ethylbenzene*	<0.050	0.050	10/25/2025	ND	2.00	100	2.00	1.44		
Total Xylenes*	<0.150	0.150	10/25/2025	ND	6.00	99.9	6.00	1.56		
Total BTEX	<0.300	0.300	10/25/2025	ND						

Surrogate: 4-Bromofluorobenzene (PID) 103 % 70.4-141

Chloride, SM4500CI-B		mg/kg		Analyzed By: KH						
Analyte	Result	Reporting Limit	Analyzed	Method Blank	BS	% Recovery	True Value QC	RPD	Qualifier	
Chloride	48.0	16.0	10/28/2025	ND	400	100	400	11.3		

TPH 8015M		mg/kg		Analyzed By: MS					
Analyte	Result	Reporting Limit	Analyzed	Method Blank	BS	% Recovery	True Value QC	RPD	Qualifier
GRO C6-C10*	<10.0	10.0	10/25/2025	ND	180	90.2	200	2.20	
DRO >C10-C28*	<10.0	10.0	10/25/2025	ND	184	91.9	200	2.42	
EXT DRO >C28-C36	<10.0	10.0	10/25/2025	ND					

Surrogate: 1-Chlorooctane 80.0 % 52.4-130

Surrogate: 1-Chlorooctadecane 81.3 % 39.9-141

Cardinal Laboratories

\*=Accredited Analyte

PLEASE NOTE: Liability and Damages. Cardinal's liability and client's exclusive remedy for any claim arising, whether based in contract or tort, shall be limited to the amount paid by client for analyses. All claims, including those for negligence and any other cause whatsoever shall be deemed waived unless made in writing and received by Cardinal within thirty (30) days after completion of the applicable service. In no event shall Cardinal be liable for incidental or consequential damages, including, without limitation, business interruptions, loss of use, or loss of profits incurred by client, its subsidiaries, affiliates or successors arising out of or related to the performance of the services hereunder by Cardinal, regardless of whether such claim is based upon any of the above stated reasons or otherwise. Results relate only to the samples identified above. This report shall not be reproduced except in full with written approval of Cardinal Laboratories.

Celey D. Keene, Lab Director/Quality Manager



PHONE (575) 393-2326 ° 101 E. MARLAND ° HOBBS, NM 88240

**Analytical Results For:**

TETRA TECH  
 LISBETH CHAVIRA  
 901 WEST WALL STREET , STE 100  
 MIDLAND TX, 79701  
 Fax To: (432) 682-3946

Received:	10/24/2025	Sampling Date:	10/23/2025
Reported:	10/30/2025	Sampling Type:	Soil
Project Name:	FLOW MASTER 15 TB 7H RELEASE	Sampling Condition:	Cool & Intact
Project Number:	212C - MD - 03952	Sample Received By:	Shalyn Rodriguez
Project Location:	LEA COUNTY, NM		

**Sample ID: ESW - 3 (H256711-13)**

BTEx 8021B		mg/kg		Analyzed By: JH						
Analyte	Result	Reporting Limit	Analyzed	Method Blank	BS	% Recovery	True Value QC	RPD	Qualifier	
Benzene*	<0.050	0.050	10/25/2025	ND	1.84	91.8	2.00	4.38		
Toluene*	<0.050	0.050	10/25/2025	ND	1.94	97.0	2.00	2.88		
Ethylbenzene*	<0.050	0.050	10/25/2025	ND	2.00	100	2.00	1.44		
Total Xylenes*	<0.150	0.150	10/25/2025	ND	6.00	99.9	6.00	1.56		
Total BTEX	<0.300	0.300	10/25/2025	ND						

Surrogate: 4-Bromofluorobenzene (PID) 101 % 70.4-141

Chloride, SM4500Cl-B		mg/kg		Analyzed By: KH						
Analyte	Result	Reporting Limit	Analyzed	Method Blank	BS	% Recovery	True Value QC	RPD	Qualifier	
Chloride	48.0	16.0	10/28/2025	ND	400	100	400	11.3		

TPH 8015M		mg/kg		Analyzed By: MS					
Analyte	Result	Reporting Limit	Analyzed	Method Blank	BS	% Recovery	True Value QC	RPD	Qualifier
GRO C6-C10*	<10.0	10.0	10/25/2025	ND	180	90.2	200	2.20	
DRO >C10-C28*	<10.0	10.0	10/25/2025	ND	184	91.9	200	2.42	
EXT DRO >C28-C36	<10.0	10.0	10/25/2025	ND					

Surrogate: 1-Chlorooctane 82.3 % 52.4-130

Surrogate: 1-Chlorooctadecane 83.2 % 39.9-141

Cardinal Laboratories

\*=Accredited Analyte

PLEASE NOTE: Liability and Damages. Cardinal's liability and client's exclusive remedy for any claim arising, whether based in contract or tort, shall be limited to the amount paid by client for analyses. All claims, including those for negligence and any other cause whatsoever shall be deemed waived unless made in writing and received by Cardinal within thirty (30) days after completion of the applicable service. In no event shall Cardinal be liable for incidental or consequential damages, including, without limitation, business interruptions, loss of use, or loss of profits incurred by client, its subsidiaries, affiliates or successors arising out of or related to the performance of the services hereunder by Cardinal, regardless of whether such claim is based upon any of the above stated reasons or otherwise. Results relate only to the samples identified above. This report shall not be reproduced except in full with written approval of Cardinal Laboratories.

Celey D. Keene, Lab Director/Quality Manager



PHONE (575) 393-2326 ° 101 E. MARLAND ° HOBBS, NM 88240

**Analytical Results For:**

TETRA TECH  
 LISBETH CHAVIRA  
 901 WEST WALL STREET , STE 100  
 MIDLAND TX, 79701  
 Fax To: (432) 682-3946

Received:	10/24/2025	Sampling Date:	10/23/2025
Reported:	10/30/2025	Sampling Type:	Soil
Project Name:	FLOW MASTER 15 TB 7H RELEASE	Sampling Condition:	Cool & Intact
Project Number:	212C - MD - 03952	Sample Received By:	Shalyn Rodriguez
Project Location:	LEA COUNTY, NM		

**Sample ID: SSW - 1 (H256711-14)**

BTEx 8021B		mg/kg		Analyzed By: JH						
Analyte	Result	Reporting Limit	Analyzed	Method Blank	BS	% Recovery	True Value QC	RPD	Qualifier	
Benzene*	<0.050	0.050	10/25/2025	ND	1.84	91.8	2.00	4.38		
Toluene*	<0.050	0.050	10/25/2025	ND	1.94	97.0	2.00	2.88		
Ethylbenzene*	<0.050	0.050	10/25/2025	ND	2.00	100	2.00	1.44		
Total Xylenes*	<0.150	0.150	10/25/2025	ND	6.00	99.9	6.00	1.56		
Total BTEX	<0.300	0.300	10/25/2025	ND						

Surrogate: 4-Bromofluorobenzene (PID) 104 % 70.4-141

Chloride, SM4500Cl-B		mg/kg		Analyzed By: KH						
Analyte	Result	Reporting Limit	Analyzed	Method Blank	BS	% Recovery	True Value QC	RPD	Qualifier	
Chloride	80.0	16.0	10/28/2025	ND	400	100	400	11.3		

TPH 8015M		mg/kg		Analyzed By: ms					
Analyte	Result	Reporting Limit	Analyzed	Method Blank	BS	% Recovery	True Value QC	RPD	Qualifier
GRO C6-C10*	<10.0	10.0	10/27/2025	ND	177	88.3	200	0.578	
DRO >C10-C28*	<10.0	10.0	10/27/2025	ND	181	90.6	200	3.53	
EXT DRO >C28-C36	<10.0	10.0	10/27/2025	ND					

Surrogate: 1-Chlorooctane 77.6 % 52.4-130

Surrogate: 1-Chlorooctadecane 78.5 % 39.9-141

Cardinal Laboratories

\*=Accredited Analyte

PLEASE NOTE: Liability and Damages. Cardinal's liability and client's exclusive remedy for any claim arising, whether based in contract or tort, shall be limited to the amount paid by client for analyses. All claims, including those for negligence and any other cause whatsoever shall be deemed waived unless made in writing and received by Cardinal within thirty (30) days after completion of the applicable service. In no event shall Cardinal be liable for incidental or consequential damages, including, without limitation, business interruptions, loss of use, or loss of profits incurred by client, its subsidiaries, affiliates or successors arising out of or related to the performance of the services hereunder by Cardinal, regardless of whether such claim is based upon any of the above stated reasons or otherwise. Results relate only to the samples identified above. This report shall not be reproduced except in full with written approval of Cardinal Laboratories.

Celey D. Keene, Lab Director/Quality Manager





PHONE (575) 393-2326 ° 101 E. MARLAND ° HOBBS, NM 88240

**Analytical Results For:**

TETRA TECH  
 LISBETH CHAVIRA  
 901 WEST WALL STREET , STE 100  
 MIDLAND TX, 79701  
 Fax To: (432) 682-3946

Received:	10/24/2025	Sampling Date:	10/23/2025
Reported:	10/30/2025	Sampling Type:	Soil
Project Name:	FLOW MASTER 15 TB 7H RELEASE	Sampling Condition:	Cool & Intact
Project Number:	212C - MD - 03952	Sample Received By:	Shalyn Rodriguez
Project Location:	LEA COUNTY, NM		

**Sample ID: WSW - 1 (H256711-15)**

BTEx 8021B		mg/kg		Analyzed By: JH						
Analyte	Result	Reporting Limit	Analyzed	Method Blank	BS	% Recovery	True Value QC	RPD	Qualifier	
Benzene*	<0.050	0.050	10/25/2025	ND	1.84	91.8	2.00	4.38		
Toluene*	<0.050	0.050	10/25/2025	ND	1.94	97.0	2.00	2.88		
Ethylbenzene*	<0.050	0.050	10/25/2025	ND	2.00	100	2.00	1.44		
Total Xylenes*	<0.150	0.150	10/25/2025	ND	6.00	99.9	6.00	1.56		
Total BTEX	<0.300	0.300	10/25/2025	ND						

Surrogate: 4-Bromofluorobenzene (PID) 102 % 70.4-141

Chloride, SM4500Cl-B		mg/kg		Analyzed By: KH						
Analyte	Result	Reporting Limit	Analyzed	Method Blank	BS	% Recovery	True Value QC	RPD	Qualifier	
Chloride	48.0	16.0	10/28/2025	ND	400	100	400	11.3		

TPH 8015M		mg/kg		Analyzed By: ms					
Analyte	Result	Reporting Limit	Analyzed	Method Blank	BS	% Recovery	True Value QC	RPD	Qualifier
GRO C6-C10*	<10.0	10.0	10/27/2025	ND	177	88.3	200	0.578	
DRO >C10-C28*	<10.0	10.0	10/27/2025	ND	181	90.6	200	3.53	
EXT DRO >C28-C36	<10.0	10.0	10/27/2025	ND					

Surrogate: 1-Chlorooctane 85.7 % 52.4-130

Surrogate: 1-Chlorooctadecane 84.0 % 39.9-141

Cardinal Laboratories

\*=Accredited Analyte

PLEASE NOTE: Liability and Damages. Cardinal's liability and client's exclusive remedy for any claim arising, whether based in contract or tort, shall be limited to the amount paid by client for analyses. All claims, including those for negligence and any other cause whatsoever shall be deemed waived unless made in writing and received by Cardinal within thirty (30) days after completion of the applicable service. In no event shall Cardinal be liable for incidental or consequential damages, including, without limitation, business interruptions, loss of use, or loss of profits incurred by client, its subsidiaries, affiliates or successors arising out of or related to the performance of the services hereunder by Cardinal, regardless of whether such claim is based upon any of the above stated reasons or otherwise. Results relate only to the samples identified above. This report shall not be reproduced except in full with written approval of Cardinal Laboratories.

Celey D. Keene, Lab Director/Quality Manager



PHONE (575) 393-2326 ° 101 E. MARLAND ° HOBBS, NM 88240

**Analytical Results For:**

TETRA TECH  
 LISBETH CHAVIRA  
 901 WEST WALL STREET , STE 100  
 MIDLAND TX, 79701  
 Fax To: (432) 682-3946

Received:	10/24/2025	Sampling Date:	10/23/2025
Reported:	10/30/2025	Sampling Type:	Soil
Project Name:	FLOW MASTER 15 TB 7H RELEASE	Sampling Condition:	Cool & Intact
Project Number:	212C - MD - 03952	Sample Received By:	Shalyn Rodriguez
Project Location:	LEA COUNTY, NM		

**Sample ID: WSW - 2 (H256711-16)**

BTEx 8021B		mg/kg		Analyzed By: JH						
Analyte	Result	Reporting Limit	Analyzed	Method Blank	BS	% Recovery	True Value QC	RPD	Qualifier	
Benzene*	<0.050	0.050	10/25/2025	ND	1.84	91.8	2.00	4.38		
Toluene*	<0.050	0.050	10/25/2025	ND	1.94	97.0	2.00	2.88		
Ethylbenzene*	<0.050	0.050	10/25/2025	ND	2.00	100	2.00	1.44		
Total Xylenes*	<0.150	0.150	10/25/2025	ND	6.00	99.9	6.00	1.56		
Total BTEX	<0.300	0.300	10/25/2025	ND						

Surrogate: 4-Bromofluorobenzene (PID) 102 % 70.4-141

Chloride, SM4500Cl-B		mg/kg		Analyzed By: KH						
Analyte	Result	Reporting Limit	Analyzed	Method Blank	BS	% Recovery	True Value QC	RPD	Qualifier	
Chloride	80.0	16.0	10/28/2025	ND	400	100	400	11.3		

TPH 8015M		mg/kg		Analyzed By: ms					
Analyte	Result	Reporting Limit	Analyzed	Method Blank	BS	% Recovery	True Value QC	RPD	Qualifier
GRO C6-C10*	<10.0	10.0	10/27/2025	ND	177	88.3	200	0.578	
DRO >C10-C28*	<10.0	10.0	10/27/2025	ND	181	90.6	200	3.53	
EXT DRO >C28-C36	<10.0	10.0	10/27/2025	ND					

Surrogate: 1-Chlorooctane 79.7 % 52.4-130

Surrogate: 1-Chlorooctadecane 78.6 % 39.9-141

Cardinal Laboratories

\*=Accredited Analyte

PLEASE NOTE: Liability and Damages. Cardinal's liability and client's exclusive remedy for any claim arising, whether based in contract or tort, shall be limited to the amount paid by client for analyses. All claims, including those for negligence and any other cause whatsoever shall be deemed waived unless made in writing and received by Cardinal within thirty (30) days after completion of the applicable service. In no event shall Cardinal be liable for incidental or consequential damages, including, without limitation, business interruptions, loss of use, or loss of profits incurred by client, its subsidiaries, affiliates or successors arising out of or related to the performance of the services hereunder by Cardinal, regardless of whether such claim is based upon any of the above stated reasons or otherwise. Results relate only to the samples identified above. This report shall not be reproduced except in full with written approval of Cardinal Laboratories.

Celey D. Keene, Lab Director/Quality Manager



PHONE (575) 393-2326 ° 101 E. MARLAND ° HOBBS, NM 88240

**Analytical Results For:**

TETRA TECH  
 LISBETH CHAVIRA  
 901 WEST WALL STREET , STE 100  
 MIDLAND TX, 79701  
 Fax To: (432) 682-3946

Received:	10/24/2025	Sampling Date:	10/23/2025
Reported:	10/30/2025	Sampling Type:	Soil
Project Name:	FLOW MASTER 15 TB 7H RELEASE	Sampling Condition:	Cool & Intact
Project Number:	212C - MD - 03952	Sample Received By:	Shalyn Rodriguez
Project Location:	LEA COUNTY, NM		

**Sample ID: WSW - 3 (H256711-17)**

BTEx 8021B		mg/kg		Analyzed By: JH						
Analyte	Result	Reporting Limit	Analyzed	Method Blank	BS	% Recovery	True Value QC	RPD	Qualifier	
Benzene*	<0.050	0.050	10/25/2025	ND	1.84	91.8	2.00	4.38		
Toluene*	<0.050	0.050	10/25/2025	ND	1.94	97.0	2.00	2.88		
Ethylbenzene*	<0.050	0.050	10/25/2025	ND	2.00	100	2.00	1.44		
Total Xylenes*	<0.150	0.150	10/25/2025	ND	6.00	99.9	6.00	1.56		
Total BTEX	<0.300	0.300	10/25/2025	ND						

Surrogate: 4-Bromofluorobenzene (PID) 103 % 70.4-141

Chloride, SM4500Cl-B		mg/kg		Analyzed By: KH						
Analyte	Result	Reporting Limit	Analyzed	Method Blank	BS	% Recovery	True Value QC	RPD	Qualifier	
Chloride	32.0	16.0	10/28/2025	ND	400	100	400	11.3		

TPH 8015M		mg/kg		Analyzed By: ms					
Analyte	Result	Reporting Limit	Analyzed	Method Blank	BS	% Recovery	True Value QC	RPD	Qualifier
GRO C6-C10*	<10.0	10.0	10/27/2025	ND	177	88.3	200	0.578	
DRO >C10-C28*	<10.0	10.0	10/27/2025	ND	181	90.6	200	3.53	
EXT DRO >C28-C36	<10.0	10.0	10/27/2025	ND					

Surrogate: 1-Chlorooctane 82.1 % 52.4-130

Surrogate: 1-Chlorooctadecane 79.5 % 39.9-141

Cardinal Laboratories

\*=Accredited Analyte

PLEASE NOTE: Liability and Damages. Cardinal's liability and client's exclusive remedy for any claim arising, whether based in contract or tort, shall be limited to the amount paid by client for analyses. All claims, including those for negligence and any other cause whatsoever shall be deemed waived unless made in writing and received by Cardinal within thirty (30) days after completion of the applicable service. In no event shall Cardinal be liable for incidental or consequential damages, including, without limitation, business interruptions, loss of use, or loss of profits incurred by client, its subsidiaries, affiliates or successors arising out of or related to the performance of the services hereunder by Cardinal, regardless of whether such claim is based upon any of the above stated reasons or otherwise. Results relate only to the samples identified above. This report shall not be reproduced except in full with written approval of Cardinal Laboratories.

Celey D. Keene, Lab Director/Quality Manager





PHONE (575) 393-2326 ° 101 E. MARLAND ° HOBBS, NM 88240

Notes and Definitions

- QR-04            The RPD for the BS/BSD was outside of historical limits.
- ND               Analyte NOT DETECTED at or above the reporting limit
- RPD              Relative Percent Difference
- \*\*                Samples not received at proper temperature of 6°C or below.
- \*\*\*              Insufficient time to reach temperature.
- Chloride by SM4500Cl-B does not require samples be received at or below 6°C
- Samples reported on an as received basis (wet) unless otherwise noted on report

Cardinal Laboratories

\*=Accredited Analyte

PLEASE NOTE: Liability and Damages. Cardinal's liability and client's exclusive remedy for any claim arising, whether based in contract or tort, shall be limited to the amount paid by client for analyses. All claims, including those for negligence and any other cause whatsoever shall be deemed waived unless made in writing and received by Cardinal within thirty (30) days after completion of the applicable service. In no event shall Cardinal be liable for incidental or consequential damages, including, without limitation, business interruptions, loss of use, or loss of profits incurred by client, its subsidiaries, affiliates or successors arising out of or related to the performance of the services hereunder by Cardinal, regardless of whether such claim is based upon any of the above stated reasons or otherwise. Results relate only to the samples identified above. This report shall not be reproduced except in full with written approval of Cardinal Laboratories.

A handwritten signature in black ink, appearing to read "Celey D. Keene".

Celey D. Keene, Lab Director/Quality Manager

CHAIN-OF-CUSTODY AND ANALYSIS REQUEST

page 1 of 2

Company Name: Tetra Tech - Conoco Phillips						P.O. #:		BILL TO						
Project Manager:						Company:		Tetra Tech						
Address:						Attn:								
City:						State:		Zip:						
Phone #:						Fax #:		Address:						
Project #: 212 C-MD-03952						Project Owner:		City:						
Project Name: Flowmaster 15 TR TH Release						State:		Zip:						
Project Location:						Phone #:		Fax #:						
Sampler Name: Andrew Garcia						PRESERV.		SAMPLING						
FOR LAB USE ONLY						MATRIX								
Lab I.D.						(G)RAB OR (C)OMP.								
Sample I.D.						# CONTAINERS								
						GROUNDWATER								
						WASTEWATER								
						SOIL								
						OIL								
						SLUDGE								
						OTHER :								
						ACID/BASE:								
						ICE / COOL								
						OTHER :								
						DATE		TIME						
1						X		800						
2						X		815						
3						X		830						
4						X		845						
5						X		900						
6						X		915						
7						X		930						
8						X		945						
9						X		1000						
10						X		1015						
NSU-1 FS-4A AS						X		1015						
PLEASE NOTE: Liability and Damages. Cardinal's liability and client's exclusive remedy for any claim arising whether based in contract or tort, shall be limited to the amount paid by the client for the analyses. All claims including those for negligence and any other cause whatsoever shall be deemed waived unless made in writing and received by Cardinal within 30 days after completion of the applicable service. In no event shall Cardinal be liable for incidental or consequential damages, including without limitation, business interruptions, loss of use, or loss of profits incurred by client, its subsidiaries, affiliates or successors arising out of or related to the performance of services hereunder by Cardinal, regardless of whether such claim is based upon any of the above stated reasons or otherwise.						Verbal Result:		All Results are emailed. Please provide Email address:						
Relinquished By: Andrew Garcia						Date: 10/24/05		Received By: Stephanie						
Relinquished By:						Date:		Received By:						
Delivered By: (Circle One)						Observed Temp. °C: 21.1°C		Sample Condition						
Corrected Temp. °C: 44.1°C						Cool Intact		CHECKED BY: (Initials)						
Sampler - UPS - Bus - Other:						Yes No		Standard Rush						
Turnaround Time:						Thermometer ID #140		Bacteria (only) Sample Condition						
Correction Factor +0.3°C						No		Cool Intact Observed Temp. °C						
						No		Corrected Temp. °C						
REMARKS:						Lisbeth: Cherra Andrew Garcia								



Page 2 of 2

## CHAIN-OF-CUSTODY AND ANALYSIS REQUEST

Company Name: <b>Tetra Tech - Coroco Phillips</b> Project Manager:				<b>BILL TO</b>		ANALYSIS REQUEST			
Address: City: State: Zip:				P.O. #:		Company: <b>Tetra Tech</b> Attn:			
Project #: <b>212 C-MD-03952</b> Project Owner:				Address:		City:			
Project Name: <b>Flowmaster 15 TB 7H Release</b>				State:		Zip:			
Project Location:				Phone #:		Fax #:			
Sampler Name: <b>Andrew Garcia</b>				FOR LAB USE ONLY					

Lab I.D.	Sample I.D.	(G)RAB OR (C)OMP.	# CONTAINERS	MATRIX							PRESERV.	SAMPLING DATE	TIME						
				GROUNDWATER	WASTEWATER	SOIL	OIL	SLUDGE	OTHER :	ACID/BASE:				ICE / COOL	OTHER :	TPH	BTEX	Chlorides	
#3510711	AGNSW-2	ESW-1	C									10/25	1030	X	X	X			
11	AGNSW-3	ESW-2										10/23	1045	X	X	X			
12	ESW-3												1100	X	X	X			
13	SW-1												1115	X	X	X			
14	WSW-1												1130	X	X	X			
15	WSW-2												1145	X	X	X			
16	WSW-3												1200	X	X	X			
17																			

LEASE NOTE: Liability and Damages. Cardinal's liability and client's exclusive remedy for any claim arising whether based in contract or tort, shall be limited to the amount paid by the client for the analyses. All claims including those for negligence and any other cause whatsoever shall be deemed waived unless made in writing and received by Cardinal within 30 days after completion of the applicable service. In no event shall Cardinal be liable for incidental or consequential damages, including without limitation, business interruptions, loss of use, or loss of profits incurred by client, its subsidiaries, affiliates or successors arising out of or related to the performance of services hereunder by Cardinal, regardless of whether such claim is based upon any of the above stated provisions or otherwise.

Relinquished By: <b>Andrew Garcia</b> Date: <b>10-24-05</b>		Received By: <b>Steeleigning</b> Date: <b>10-24-05</b>	
Relinquished By:		Received By:	

Delivered By: (Circle One) Sampler - UPS - Bus - Other:	Observed Temp. °C: <b>4.1</b> Corrected Temp. °C: <b>4.4</b>	Sample Condition Cool <input checked="" type="checkbox"/> Yes <input type="checkbox"/> No Intact <input checked="" type="checkbox"/> Yes <input type="checkbox"/> No	CHECKED BY: <b>SG</b> (Initials)	Turnaround Time: <input type="checkbox"/> Standard <input checked="" type="checkbox"/> Rush	Bacteria (only) Sample Condition Cool <input type="checkbox"/> Yes <input type="checkbox"/> No Intact <input type="checkbox"/> Yes <input type="checkbox"/> No
REMARKS: <b>all 04002401K</b> <b>Lisbeth, Chavira</b>		Verbal Result: <input type="checkbox"/> Yes <input type="checkbox"/> No <input type="checkbox"/> Add'l Phone #:		All Results are emailed. Please provide Email address: <b>Andrew.Garcia</b>	





PHONE (575) 393-2326 ° 101 E. MARLAND ° HOBBS, NM 88240

October 30, 2025

ANDREW GARCIA

TETRA TECH

901 WEST WALL STREET , STE 100

MIDLAND, TX 79701

RE: XL PIT

Enclosed are the results of analyses for samples received by the laboratory on 10/24/25 8:40.

Cardinal Laboratories is accredited through Texas NELAP under certificate number TX-C25-00101. Accreditation applies to drinking water, non-potable water and solid and chemical materials. All accredited analytes are denoted by an asterisk (\*). For a complete list of accredited analytes and matrices visit the TCEQ website at [www.tceq.texas.gov/field/qa/lab\\_accred\\_certif.html](http://www.tceq.texas.gov/field/qa/lab_accred_certif.html).

Cardinal Laboratories is accredited through the State of Colorado Department of Public Health and Environment for:

Method EPA 552.2	Haloacetic Acids (HAA-5)
Method EPA 524.2	Total Trihalomethanes (TTHM)
Method EPA 524.4	Regulated VOCs (V1, V2, V3)

Accreditation applies to public drinking water matrices.

This report meets NELAP requirements and is made up of a cover page, analytical results, and a copy of the original chain-of-custody. If you have any questions concerning this report, please feel free to contact me.

Sincerely,

A handwritten signature in black ink that reads "Celey D. Keene". The signature is written in a cursive, flowing style.

Celey D. Keene

Lab Director/Quality Manager



PHONE (575) 393-2326 ° 101 E. MARLAND ° HOBBS, NM 88240

**Analytical Results For:**

TETRA TECH  
 ANDREW GARCIA  
 901 WEST WALL STREET , STE 100  
 MIDLAND TX, 79701  
 Fax To: (432) 682-3946

Received: 10/24/2025  
 Reported: 10/30/2025  
 Project Name: XL PIT  
 Project Number: 212C-MD-03952  
 Project Location: 32.2238389-103.46583611

Sampling Date: 10/23/2025  
 Sampling Type: Soil  
 Sampling Condition: Cool & Intact  
 Sample Received By: Shalyn Rodriguez

**Sample ID: BACKFILL - COMPOSITE (H256712-01)**

BTEX 8021B		mg/kg		Analyzed By: JH					
Analyte	Result	Reporting Limit	Analyzed	Method Blank	BS	% Recovery	True Value QC	RPD	Qualifier
Benzene*	<0.050	0.050	10/25/2025	ND	1.84	91.8	2.00	4.38	
Toluene*	<0.050	0.050	10/25/2025	ND	1.94	97.0	2.00	2.88	
Ethylbenzene*	<0.050	0.050	10/25/2025	ND	2.00	100	2.00	1.44	
Total Xylenes*	<0.150	0.150	10/25/2025	ND	6.00	99.9	6.00	1.56	
Total BTEX	<0.300	0.300	10/25/2025	ND					

Surrogate: 4-Bromofluorobenzene (PID) 102 % 70.4-141

Chloride, SM4500Cl-B		mg/kg		Analyzed By: KH						
Analyte	Result	Reporting Limit	Analyzed	Method Blank	BS	% Recovery	True Value QC	RPD	Qualifier	
Chloride	112	16.0	10/28/2025	ND	400	100	400	11.3		

TPH 8015M		mg/kg		Analyzed By: ms					
Analyte	Result	Reporting Limit	Analyzed	Method Blank	BS	% Recovery	True Value QC	RPD	Qualifier
GRO C6-C10*	<10.0	10.0	10/27/2025	ND	177	88.3	200	0.578	
DRO >C10-C28*	<10.0	10.0	10/27/2025	ND	181	90.6	200	3.53	
EXT DRO >C28-C36	<10.0	10.0	10/27/2025	ND					

Surrogate: 1-Chlorooctane 75.4 % 52.4-130

Surrogate: 1-Chlorooctadecane 71.8 % 39.9-141

Cardinal Laboratories

\*=Accredited Analyte

PLEASE NOTE: Liability and Damages. Cardinal's liability and client's exclusive remedy for any claim arising, whether based in contract or tort, shall be limited to the amount paid by client for analyses. All claims, including those for negligence and any other cause whatsoever shall be deemed waived unless made in writing and received by Cardinal within thirty (30) days after completion of the applicable service. In no event shall Cardinal be liable for incidental or consequential damages, including, without limitation, business interruptions, loss of use, or loss of profits incurred by client, its subsidiaries, affiliates or successors arising out of or related to the performance of the services hereunder by Cardinal, regardless of whether such claim is based upon any of the above stated reasons or otherwise. Results relate only to the samples identified above. This report shall not be reproduced except in full with written approval of Cardinal Laboratories.

Celey D. Keene, Lab Director/Quality Manager



---

PHONE (575) 393-2326 ° 101 E. MARLAND ° HOBBS, NM 88240

---

### Notes and Definitions

ND	Analyte NOT DETECTED at or above the reporting limit
RPD	Relative Percent Difference
**	Samples not received at proper temperature of 6°C or below.
***	Insufficient time to reach temperature.
-	Chloride by SM4500Cl-B does not require samples be received at or below 6°C Samples reported on an as received basis (wet) unless otherwise noted on report

---

Cardinal Laboratories

\*=Accredited Analyte

PLEASE NOTE: Liability and Damages. Cardinal's liability and client's exclusive remedy for any claim arising, whether based in contract or tort, shall be limited to the amount paid by client for analyses. All claims, including those for negligence and any other cause whatsoever shall be deemed waived unless made in writing and received by Cardinal within thirty (30) days after completion of the applicable service. In no event shall Cardinal be liable for incidental or consequential damages, including, without limitation, business interruptions, loss of use, or loss of profits incurred by client, its subsidiaries, affiliates or successors arising out of or related to the performance of the services hereunder by Cardinal, regardless of whether such claim is based upon any of the above stated reasons or otherwise. Results relate only to the samples identified above. This report shall not be reproduced except in full with written approval of Cardinal Laboratories.

A handwritten signature in black ink, appearing to read "Celey D. Keene".

---

Celey D. Keene, Lab Director/Quality Manager





(tot) page

† Cardinal cannot accept verbal changes. Please email changes to [celey.keene@cardinallabsnm.com](mailto:celey.keene@cardinallabsnm.com)

Sante Fe Main Office  
Phone: (505) 476-3441

General Information  
Phone: (505) 629-6116

Online Phone Directory  
<https://www.emnrd.nm.gov/ocd/contact-us>

**State of New Mexico**  
**Energy, Minerals and Natural Resources**  
**Oil Conservation Division**  
**1220 S. St Francis Dr.**  
**Santa Fe, NM 87505**

QUESTIONS

Action 527336

**QUESTIONS**

Operator: MARATHON OIL PERMIAN LLC 600 W Illinois Ave Midland, TX 79701	OGRID: 372098
	Action Number: 527336
	Action Type: [C-141] Reclamation Report C-141 (C-141-v-Reclamation)

**QUESTIONS**

<b>Prerequisites</b>	
Incident ID (n#)	nAPP2523051178
Incident Name	NAPP2523051178 FLOWMASTER 15 TB FEE 007H @ 30-025-44685
Incident Type	Release Other
Incident Status	Reclamation Report Received
Incident Well	[30-025-44685] FLOWMASTER 15 TB FEE #007H

**Location of Release Source**

Please answer all the questions in this group.

Site Name	Flowmaster 15 TB Fee 007H
Date Release Discovered	08/18/2025
Surface Owner	Private

**Incident Details**

Please answer all the questions in this group.

Incident Type	Release Other
Did this release result in a fire or is the result of a fire	No
Did this release result in any injuries	No
Has this release reached or does it have a reasonable probability of reaching a watercourse	No
Has this release endangered or does it have a reasonable probability of endangering public health	No
Has this release substantially damaged or will it substantially damage property or the environment	No
Is this release of a volume that is or may with reasonable probability be detrimental to fresh water	No

**Nature and Volume of Release**

Material(s) released, please answer all that apply below. Any calculations or specific justifications for the volumes provided should be attached to the follow-up C-141 submission.

Crude Oil Released (bbls) Details	Cause: Normal Operations   Separator   Crude Oil   Released: 10 BBL   Recovered: 9 BBL   Lost: 1 BBL.
Produced Water Released (bbls) Details	Cause: Normal Operations   Separator   Produced Water   Released: 52 BBL   Recovered: 50 BBL   Lost: 2 BBL.
Is the concentration of chloride in the produced water >10,000 mg/l	Yes
Condensate Released (bbls) Details	Not answered.
Natural Gas Vented (Mcf) Details	Not answered.
Natural Gas Flared (Mcf) Details	Not answered.
Other Released Details	Not answered.
Are there additional details for the questions above (i.e. any answer containing Other, Specify, Unknown, and/or Fire, or any negative lost amounts)	Not answered.

Sante Fe Main Office  
Phone: (505) 476-3441

General Information  
Phone: (505) 629-6116

Online Phone Directory  
<https://www.emnrd.nm.gov/ocd/contact-us>

**State of New Mexico**  
**Energy, Minerals and Natural Resources**  
**Oil Conservation Division**  
**1220 S. St Francis Dr.**  
**Santa Fe, NM 87505**

QUESTIONS, Page 2

Action 527336

**QUESTIONS (continued)**

Operator: MARATHON OIL PERMAN LLC 600 W Illinois Ave Midland, TX 79701	OGRID: 372098
	Action Number: 527336
	Action Type: [C-141] Reclamation Report C-141 (C-141-v-Reclamation)

**QUESTIONS**

<b>Nature and Volume of Release (continued)</b>	
Is this a gas only submission (i.e. only significant Mcf values reported)	No, according to supplied volumes this does not appear to be a "gas only" report.
Was this a major release as defined by Subsection A of 19.15.29.7 NMAC	Yes
Reasons why this would be considered a submission for a notification of a major release	From paragraph A. "Major release" determine using: (1) an unauthorized release of a volume, excluding gases, of 25 barrels or more.
With the implementation of the 19.15.27 NMAC (05/25/2021), venting and/or flaring of natural gas (i.e. gas only) are to be submitted on the C-129 form.	

**Initial Response**

The responsible party must undertake the following actions immediately unless they could create a safety hazard that would result in injury.

The source of the release has been stopped	True
The impacted area has been secured to protect human health and the environment	True
Released materials have been contained via the use of berms or dikes, absorbent pads, or other containment devices	True
All free liquids and recoverable materials have been removed and managed appropriately	True
If all the actions described above have not been undertaken, explain why	Not answered.

Per Paragraph (4) of Subsection B of 19.15.29.8 NMAC the responsible party may commence remediation immediately after discovery of a release. If remediation has begun, please prepare and attach a narrative of actions to date in the follow-up C-141 submission. If remedial efforts have been successfully completed or if the release occurred within a lined containment area (see Subparagraph (a) of Paragraph (5) of Subsection A of 19.15.29.11 NMAC), please prepare and attach all information needed for closure evaluation in the follow-up C-141 submission.

I hereby certify that the information given above is true and complete to the best of my knowledge and understand that pursuant to OCD rules and regulations all operators are required to report and/or file certain release notifications and perform corrective actions for releases which may endanger public health or the environment. The acceptance of a C-141 report by the OCD does not relieve the operator of liability should their operations have failed to adequately investigate and remediate contamination that pose a threat to groundwater, surface water, human health or the environment. In addition, OCD acceptance of a C-141 report does not relieve the operator of responsibility for compliance with any other federal, state, or local laws and/or regulations.

I hereby agree and sign off to the above statement	Name: Lisbeth Chavira Title: Project Manager Email: Lisbeth.chavira@tetrattech.com Date: 11/17/2025
--	--



Sante Fe Main Office  
Phone: (505) 476-3441

General Information  
Phone: (505) 629-6116

Online Phone Directory  
<https://www.emnrd.nm.gov/ocd/contact-us>

**State of New Mexico**  
**Energy, Minerals and Natural Resources**  
**Oil Conservation Division**  
**1220 S. St Francis Dr.**  
**Santa Fe, NM 87505**

QUESTIONS, Page 3

Action 527336

**QUESTIONS (continued)**

Operator: MARATHON OIL PERMAN LLC 600 W Illinois Ave Midland, TX 79701	OGRID: 372098
	Action Number: 527336
	Action Type: [C-141] Reclamation Report C-141 (C-141-v-Reclamation)

**QUESTIONS**

<b>Site Characterization</b>	
<i>Please answer all the questions in this group (only required when seeking remediation plan approval and beyond). This information must be provided to the appropriate district office no later than 90 days after the release discovery date.</i>	
What is the shallowest depth to groundwater beneath the area affected by the release in feet below ground surface (ft bgs)	Between 26 and 50 (ft.)
What method was used to determine the depth to ground water	NM OSE iWaters Database Search
Did this release impact groundwater or surface water	No
<b>What is the minimum distance, between the closest lateral extents of the release and the following surface areas:</b>	
A continuously flowing watercourse or any other significant watercourse	Between 1 and 5 (mi.)
Any lakebed, sinkhole, or playa lake (measured from the ordinary high-water mark)	Greater than 5 (mi.)
An occupied permanent residence, school, hospital, institution, or church	Greater than 5 (mi.)
A spring or a private domestic fresh water well used by less than five households for domestic or stock watering purposes	Greater than 5 (mi.)
Any other fresh water well or spring	Greater than 5 (mi.)
Incorporated municipal boundaries or a defined municipal fresh water well field	Greater than 5 (mi.)
A wetland	Between 1000 (ft.) and ½ (mi.)
A subsurface mine	Greater than 5 (mi.)
An (non-karst) unstable area	Greater than 5 (mi.)
Categorize the risk of this well / site being in a karst geology	Low
A 100-year floodplain	Greater than 5 (mi.)
Did the release impact areas not on an exploration, development, production, or storage site	No

<b>Remediation Plan</b>	
<i>Please answer all the questions that apply or are indicated. This information must be provided to the appropriate district office no later than 90 days after the release discovery date.</i>	
Requesting a remediation plan approval with this submission	Yes
<i>Attach a comprehensive report demonstrating the lateral and vertical extents of soil contamination associated with the release have been determined, pursuant to 19.15.29.11 NMAC and 19.15.29.13 NMAC.</i>	
Have the lateral and vertical extents of contamination been fully delineated	Yes
Was this release entirely contained within a lined containment area	No
<b>Soil Contamination Sampling:</b> (Provide the highest observable value for each, in milligrams per kilograms.)	
Chloride (EPA 300.0 or SM4500 Cl B)	192
TPH (GRO+DRO+MRO) (EPA SW-846 Method 8015M)	35.4
GRO+DRO (EPA SW-846 Method 8015M)	35.4
BTEX (EPA SW-846 Method 8021B or 8260B)	0.3
Benzene (EPA SW-846 Method 8021B or 8260B)	0
<i>Per Subsection B of 19.15.29.11 NMAC unless the site characterization report includes completed efforts at remediation, the report must include a proposed remediation plan in accordance with 19.15.29.12 NMAC, which includes the anticipated timelines for beginning and completing the remediation.</i>	
On what estimated date will the remediation commence	10/22/2025
On what date will (or did) the final sampling or liner inspection occur	10/23/2025
On what date will (or was) the remediation complete(d)	10/28/2025
What is the estimated surface area (in square feet) that will be reclaimed	3451
What is the estimated volume (in cubic yards) that will be reclaimed	85
What is the estimated surface area (in square feet) that will be remediated	3451
What is the estimated volume (in cubic yards) that will be remediated	85
<i>These estimated dates and measurements are recognized to be the best guess or calculation at the time of submission and may (be) change(d) over time as more remediation efforts are completed.</i>	
<i>The OCD recognizes that proposed remediation measures may have to be minimally adjusted in accordance with the physical realities encountered during remediation. If the responsible party has any need to significantly deviate from the remediation plan proposed, then it should consult with the division to determine if another remediation plan submission is required.</i>	

Sante Fe Main Office  
Phone: (505) 476-3441

General Information  
Phone: (505) 629-6116

Online Phone Directory  
<https://www.emnrd.nm.gov/ocd/contact-us>

**State of New Mexico**  
**Energy, Minerals and Natural Resources**  
**Oil Conservation Division**  
**1220 S. St Francis Dr.**  
**Santa Fe, NM 87505**

QUESTIONS, Page 4

Action 527336

**QUESTIONS (continued)**

Operator: MARATHON OIL PERMIAN LLC 600 W Illinois Ave Midland, TX 79701	OGRID: 372098
	Action Number: 527336
	Action Type: [C-141] Reclamation Report C-141 (C-141-v-Reclamation)

**QUESTIONS**

<b>Remediation Plan (continued)</b>	
<i>Please answer all the questions that apply or are indicated. This information must be provided to the appropriate district office no later than 90 days after the release discovery date.</i>	
<b>This remediation will (or is expected to) utilize the following processes to remediate / reduce contaminants:</b>	
<i>(Select all answers below that apply.)</i>	
(Ex Situ) Excavation and <b>off-site</b> disposal (i.e. dig and haul, hydrovac, etc.)	Yes
Which OCD approved facility will be used for <b>off-site</b> disposal	FEEM0112334510 HALFWAY DISPOSAL AND LANDFILL
<b>OR</b> which OCD approved well (API) will be used for <b>off-site</b> disposal	Not answered.
<b>OR</b> is the <b>off-site</b> disposal site, to be used, out-of-state	No
<b>OR</b> is the <b>off-site</b> disposal site, to be used, an NMED facility	No
(Ex Situ) Excavation and <b>on-site</b> remediation (i.e. On-Site Land Farms)	No
(In Situ) Soil Vapor Extraction	No
(In Situ) Chemical processing (i.e. Soil Shredding, Potassium Permanganate, etc.)	No
(In Situ) Biological processing (i.e. Microbes / Fertilizer, etc.)	No
(In Situ) Physical processing (i.e. Soil Washing, Gypsum, Disking, etc.)	No
Ground Water Abatement pursuant to 19.15.30 NMAC	No
OTHER (Non-listed remedial process)	No
<i>Per Subsection B of 19.15.29.11 NMAC unless the site characterization report includes completed efforts at remediation, the report must include a proposed remediation plan in accordance with 19.15.29.12 NMAC, which includes the anticipated timelines for beginning and completing the remediation.</i>	
I hereby certify that the information given above is true and complete to the best of my knowledge and understand that pursuant to OCD rules and regulations all operators are required to report and/or file certain release notifications and perform corrective actions for releases which may endanger public health or the environment. The acceptance of a C-141 report by the OCD does not relieve the operator of liability should their operations have failed to adequately investigate and remediate contamination that pose a threat to groundwater, surface water, human health or the environment. In addition, OCD acceptance of a C-141 report does not relieve the operator of responsibility for compliance with any other federal, state, or local laws and/or regulations.	
I hereby agree and sign off to the above statement	Name: Lisbeth Chavira Title: Project Manager Email: <a href="mailto:Lisbeth.chavira@tetrattech.com">Lisbeth.chavira@tetrattech.com</a> Date: 11/17/2025
<i>The OCD recognizes that proposed remediation measures may have to be minimally adjusted in accordance with the physical realities encountered during remediation. If the responsible party has any need to significantly deviate from the remediation plan proposed, then it should consult with the division to determine if another remediation plan submission is required.</i>	

Sante Fe Main Office  
Phone: (505) 476-3441

General Information  
Phone: (505) 629-6116

Online Phone Directory  
<https://www.emnrd.nm.gov/ocd/contact-us>

State of New Mexico  
Energy, Minerals and Natural Resources  
Oil Conservation Division  
1220 S. St Francis Dr.  
Santa Fe, NM 87505

QUESTIONS, Page 5

Action 527336

QUESTIONS (continued)

Operator:  MARATHON OIL PERMIAN LLC 600 W Illinois Ave Midland, TX 79701	OGRID:  372098
	Action Number:  527336
	Action Type:  [C-141] Reclamation Report C-141 (C-141-v-Reclamation)

QUESTIONS

Deferral Requests Only	
Only answer the questions in this group if seeking a deferral upon approval this submission. Each of the following items must be confirmed as part of any request for deferral of remediation.	
Requesting a deferral of the remediation closure due date with the approval of this submission	No



Sante Fe Main Office  
Phone: (505) 476-3441

General Information  
Phone: (505) 629-6116

Online Phone Directory  
<https://www.emnrd.nm.gov/ocd/contact-us>

**State of New Mexico**  
**Energy, Minerals and Natural Resources**  
**Oil Conservation Division**  
**1220 S. St Francis Dr.**  
**Santa Fe, NM 87505**

QUESTIONS, Page 6

Action 527336

**QUESTIONS (continued)**

Operator: MARATHON OIL PERMIAN LLC 600 W Illinois Ave Midland, TX 79701	OGRID: 372098
	Action Number: 527336
	Action Type: [C-141] Reclamation Report C-141 (C-141-v-Reclamation)

**QUESTIONS**

Sampling Event Information	
Last sampling notification (C-141N) recorded	518271
Sampling date pursuant to Subparagraph (a) of Paragraph (1) of Subsection D of 19.15.29.12 NMAC	10/24/2025
What was the (estimated) number of samples that were to be gathered	17
What was the sampling surface area in square feet	3451

Remediation Closure Request	
<i>Only answer the questions in this group if seeking remediation closure for this release because all remediation steps have been completed.</i>	
Requesting a remediation closure approval with this submission	Yes
Have the lateral and vertical extents of contamination been fully delineated	Yes
Was this release entirely contained within a lined containment area	No
All areas reasonably needed for production or subsequent drilling operations have been stabilized, returned to the sites existing grade, and have a soil cover that prevents ponding of water, minimizing dust and erosion	Yes
What was the total surface area (in square feet) remediated	3451
What was the total volume (cubic yards) remediated	85
All areas not reasonably needed for production or subsequent drilling operations have been reclaimed to contain a minimum of four feet of non-waste contain earthen material with concentrations less than 600 mg/kg chlorides, 100 mg/kg TPH, 50 mg/kg BTEX, and 10 mg/kg Benzene	Yes
What was the total surface area (in square feet) reclaimed	3451
What was the total volume (in cubic yards) reclaimed	85
Summarize any additional remediation activities not included by answers (above)	Remediation was conducted within 90 days of the release. All confirmation samples were below site RRALs. A liner inspection was also performed during assessment activities.
<i>The responsible party must attach information demonstrating they have complied with all applicable closure requirements and any conditions or directives of the OCD. This demonstration should be in the form of a comprehensive report (in .pdf format) including a scaled site map, sampling diagrams, relevant field notes, photographs of any excavation prior to backfilling, laboratory data including chain of custody documents of final sampling, and a narrative of the remedial activities. Refer to 19.15.29.12 NMAC.</i>	
I hereby certify that the information given above is true and complete to the best of my knowledge and understand that pursuant to OCD rules and regulations all operators are required to report and/or file certain release notifications and perform corrective actions for releases which may endanger public health or the environment. The acceptance of a C-141 report by the OCD does not relieve the operator of liability should their operations have failed to adequately investigate and remediate contamination that pose a threat to groundwater, surface water, human health or the environment. In addition, OCD acceptance of a C-141 report does not relieve the operator of responsibility for compliance with any other federal, state, or local laws and/or regulations. The responsible party acknowledges they must substantially restore, reclaim, and re-vegetate the impacted surface area to the conditions that existed prior to the release or their final land use in accordance with 19.15.29.13 NMAC including notification to the OCD when reclamation and re-vegetation are complete.	
I hereby agree and sign off to the above statement	Name: Lisbeth Chavira Title: Project Manager Email: Lisbeth.chavira@tetrattech.com Date: 11/17/2025

Sante Fe Main Office  
Phone: (505) 476-3441

General Information  
Phone: (505) 629-6116

Online Phone Directory  
<https://www.emnrd.nm.gov/ocd/contact-us>

**State of New Mexico**  
**Energy, Minerals and Natural Resources**  
**Oil Conservation Division**  
**1220 S. St Francis Dr.**  
**Santa Fe, NM 87505**

QUESTIONS, Page 7

Action 527336

**QUESTIONS (continued)**

Operator: MARATHON OIL PERMAN LLC 600 W Illinois Ave Midland, TX 79701	OGRID: 372098
	Action Number: 527336
	Action Type: [C-141] Reclamation Report C-141 (C-141-v-Reclamation)

**QUESTIONS**

<b>Reclamation Report</b>	
<i>Only answer the questions in this group if all reclamation steps have been completed.</i>	
Requesting a reclamation approval with this submission	Yes
What was the total reclamation surface area (in square feet) for this site	3451
What was the total volume of replacement material (in cubic yards) for this site	85
<i>Per Paragraph (1) of Subsection D of 19.15.29.13 NMAC the reclamation must contain a minimum of four feet of non-waste containing, uncontaminated, earthen material with chloride concentrations less than 600 mg/kg as analyzed by EPA Method 300.0, or other test methods approved by the division. The soil cover must include a top layer, which is either the background thickness of topsoil or one foot of suitable material to establish vegetation at the site, whichever is greater.</i>	
Is the soil top layer complete and is it suitable material to establish vegetation	Yes
On what (estimated) date will (or was) the reseeding commence(d)	10/28/2025
Summarize any additional reclamation activities not included by answers (above)	Once acceptable confirmation sample results were received, the excavation was backfilled with clean material to pre-release grade. In accordance with 19.15.29.12 NMAC, the reclaimed area contained nonwaste containing, uncontaminated, earthen material with chloride concentrations less than 600 mg/kg as analyzed by SM4500Cl-B.
<i>The responsible party must attach information demonstrating they have complied with all applicable reclamation requirements and any conditions or directives of the OCD. This demonstration should be in the form of attachments (in .pdf format) including a scaled site map, any proposed reseeding plans or relevant field notes, photographs of reclaimed area, and a narrative of the reclamation activities. Refer to 19.15.29.13 NMAC.</i>	
I hereby certify that the information given above is true and complete to the best of my knowledge and understand that pursuant to OCD rules and regulations all operators are required to report and/or file certain release notifications and perform corrective actions for releases which may endanger public health or the environment. The acceptance of a C-141 report by the OCD does not relieve the operator of liability should their operations have failed to adequately investigate and remediate contamination that pose a threat to groundwater, surface water, human health or the environment. In addition, OCD acceptance of a C-141 report does not relieve the operator of responsibility for compliance with any other federal, state, or local laws and/or regulations. The responsible party acknowledges they must substantially restore, reclaim, and re-vegetate the impacted surface area to the conditions that existed prior to the release or their final land use in accordance with 19.15.29.13 NMAC including notification to the OCD when reclamation and re-vegetation are complete.	
I hereby agree and sign off to the above statement	Name: Lisbeth Chavira Title: Project Manager Email: Lisbeth.chavira@tetrattech.com Date: 11/17/2025

Sante Fe Main Office  
Phone: (505) 476-3441

General Information  
Phone: (505) 629-6116

Online Phone Directory  
<https://www.emnrd.nm.gov/ocd/contact-us>

State of New Mexico  
Energy, Minerals and Natural Resources  
Oil Conservation Division  
1220 S. St Francis Dr.  
Santa Fe, NM 87505

QUESTIONS, Page 8

Action 527336

QUESTIONS (continued)

Operator:  MARATHON OIL PERMIAN LLC 600 W Illinois Ave Midland, TX 79701	OGRID:  372098
	Action Number:  527336
	Action Type:  [C-141] Reclamation Report C-141 (C-141-v-Reclamation)

QUESTIONS

<b>Revegetation Report</b>	
<i>Only answer the questions in this group if all surface restoration, reclamation and re-vegetation obligations have been satisfied.</i>	
Requesting a restoration complete approval with this submission	No
<i>Per Paragraph (4) of Subsection (D) of 19.15.29.13 NMAC for any major or minor release containing liquids, the responsible party must notify the division when reclamation and re-vegetation are complete.</i>	



Sante Fe Main Office  
Phone: (505) 476-3441

General Information  
Phone: (505) 629-6116

Online Phone Directory  
<https://www.emnrd.nm.gov/ocd/contact-us>

State of New Mexico

Energy, Minerals and Natural Resources

Oil Conservation Division

1220 S. St Francis Dr.

Santa Fe, NM 87505

CONDITIONS

Action 527336

CONDITIONS

Operator: MARATHON OIL PERMIAN LLC 600 W Illinois Ave Midland, TX 79701	OGRID: 372098
	Action Number: 527336
	Action Type: [C-141] Reclamation Report C-141 (C-141-v-Reclamation)

CONDITIONS

Created By	Condition	Condition Date
scwells	Reclamation report approved. Note that for future releases at this site, the distance to any lakebed, sinkhole, or playa lake should be updated, as a freshwater emergent wetland (playa) is located 1000 feet to 1/2 mile east of location.	12/8/2025