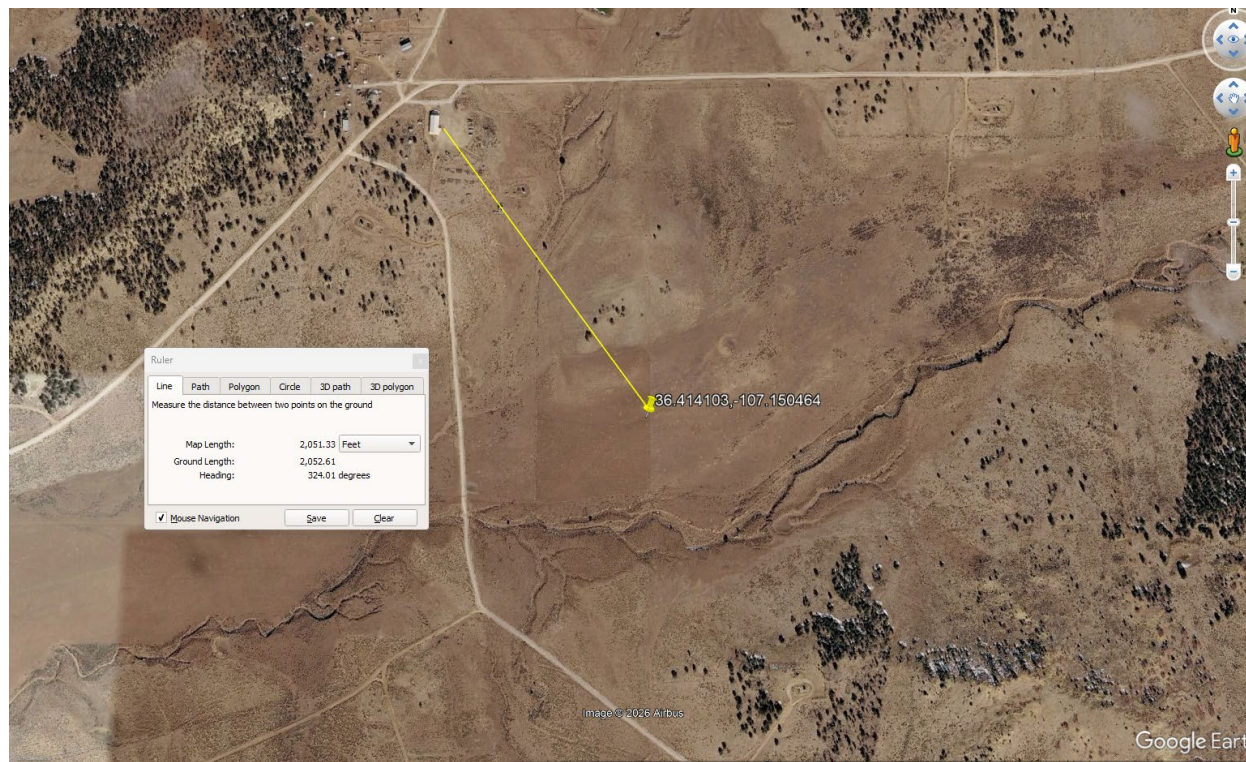


Line identified from elective flyover. Area observed to be saturated with a layer of produced water containing oil. Size of area was determined to be 40'x45'x1'. Amount released is undetermined. Investigation pending.



# National Flood Hazard Layer FIRMMette



107°9'20"W 36°25'5"N



## Legend

SEE FIS REPORT FOR DETAILED LEGEND AND INDEX MAP FOR FIRM PANEL LAYOUT

- SPECIAL FLOOD HAZARD AREAS**
    - Without Base Flood Elevation (BFE) Zone A, V, A99
    - With BFE or Depth Zone AE, AO, AH, VE, AR
    - Regulatory Floodway
  - OTHER AREAS OF FLOOD HAZARD**
    - 0.2% Annual Chance Flood Hazard, Areas of 1% annual chance flood with average depth less than one foot or with drainage areas of less than one square mile Zone X
    - Future Conditions 1% Annual Chance Flood Hazard Zone X
    - Area with Reduced Flood Risk due to Levee. See Notes. Zone X
    - Area with Flood Risk due to Levee Zone D
  - OTHER AREAS**
    - NO SCREEN Area of Minimal Flood Hazard Zone X
    - Effective LOMRs
    - Area of Undetermined Flood Hazard Zone D
  - GENERAL STRUCTURES**
    - Channel, Culvert, or Storm Sewer
    - Levee, Dike, or Floodwall
  - OTHER FEATURES**
    - Cross Sections with 1% Annual Chance Water Surface Elevation: 20.2, 17.5
    - Coastal Transect
    - Base Flood Elevation Line (BFE)
    - Limit of Study
    - Jurisdiction Boundary
    - Coastal Transect Baseline
    - Profile Baseline
    - Hydrographic Feature
  - MAP PANELS**
    - Digital Data Available
    - No Digital Data Available
    - Unmapped
- The pin displayed on the map is an approximate point selected by the user and does not represent an authoritative property location.



1:6,000

107°8'43"W 36°24'36"N

This map complies with FEMA's standards for the use of digital flood maps if it is not void as described below. The basemap shown complies with FEMA's basemap accuracy standards

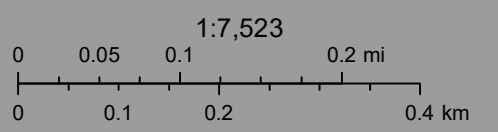
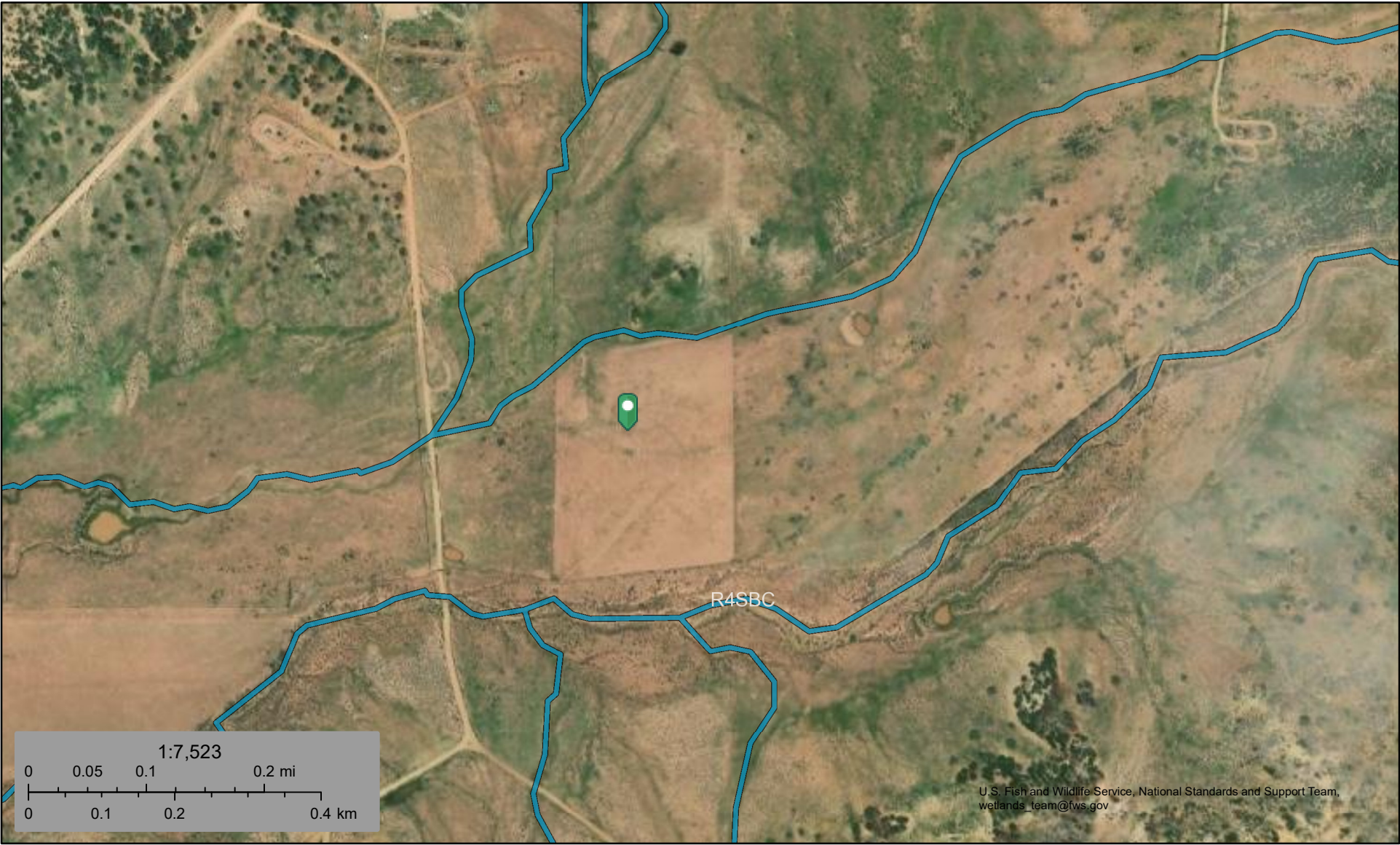
The flood hazard information is derived directly from the authoritative NFHL web services provided by FEMA. This map was exported on 2/24/2026 at 1:40 AM and does not reflect changes or amendments subsequent to this date and time. The NFHL and effective information may change or become superseded by new data over time.

This map image is void if the one or more of the following map elements do not appear: basemap imagery, flood zone labels, legend, scale bar, map creation date, community identifiers, FIRM panel number, and FIRM effective date. Map images for unmapped and unmodernized areas cannot be used for regulatory purposes.



U.S. Fish and Wildlife Service  
National Wetlands Inventory









# McCroden Line



U.S. Fish and Wildlife Service, National Standards and Support Team, wetlands\_team@fws.gov

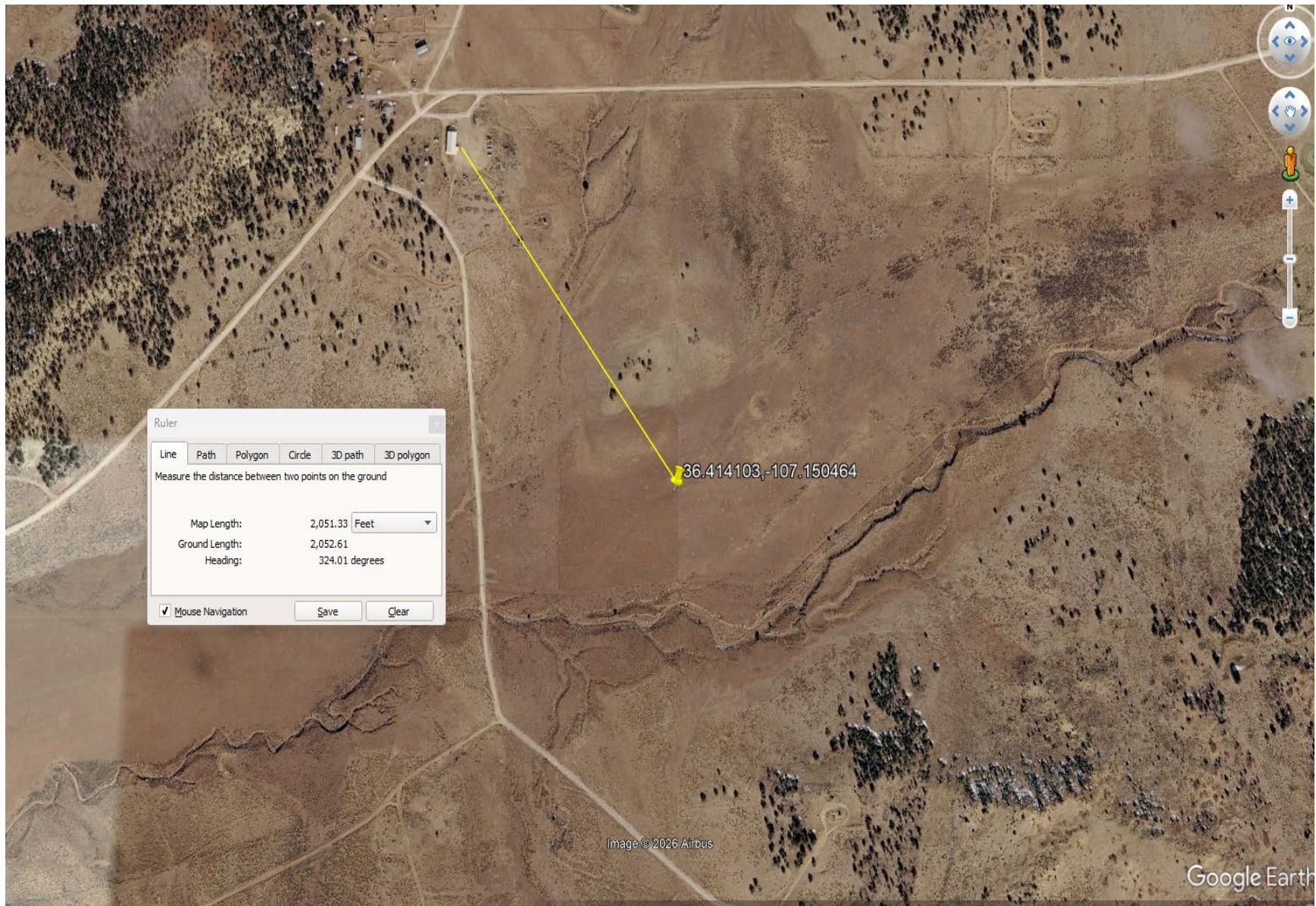
February 24, 2026

### Wetlands

- |  |   |  |
|--|---|--|
|  Estuarine and Marine Deepwater |  Freshwater Emergent Wetland       |  Lake     |
|  Estuarine and Marine Wetland   |  Freshwater Forested/Shrub Wetland |  Other    |
|  |  Freshwater Pond                   |  Riverine |

This map is for general reference only. The US Fish and Wildlife Service is not responsible for the accuracy or currentness of the base data shown on this map. All wetlands related data should be used in accordance with the layer metadata found on the Wetlands Mapper web site.

### Distance to Watercourse, Municipal Boundary



Sante Fe Main Office  
Phone: (505) 476-3441

General Information  
Phone: (505) 629-6116

Online Phone Directory  
<https://www.emnrd.nm.gov/ocd/contact-us>

**State of New Mexico**  
**Energy, Minerals and Natural Resources**  
**Oil Conservation Division**  
**1220 S. St Francis Dr.**  
**Santa Fe, NM 87505**

QUESTIONS

Action 556919

**QUESTIONS**

Operator: LOGOS OPERATING, LLC 2010 Afton Place Farmington, NM 87401	OGRID: 289408
	Action Number: 556919
	Action Type: [C-141] Initial C-141 (C-141-v-Initial)

**QUESTIONS**

<b>Prerequisites</b>	
Incident ID (n#)	nAPP2603834243
Incident Name	NAPP2603834243 MCCRODEN WEST PIPELINE @ F-09-25N-03W
Incident Type	Natural Gas Release
Incident Status	Initial C-141 Received

<b>Location of Release Source</b>	
<i>Please answer all the questions in this group.</i>	
Site Name	McCroden West Pipeline
Date Release Discovered	02/06/2026
Surface Owner	Private

<b>Incident Details</b>	
<i>Please answer all the questions in this group.</i>	
Incident Type	Natural Gas Release
Did this release result in a fire or is the result of a fire	No
Did this release result in any injuries	No
Has this release reached or does it have a reasonable probability of reaching a watercourse	No
Has this release endangered or does it have a reasonable probability of endangering public health	No
Has this release substantially damaged or will it substantially damage property or the environment	No
Is this release of a volume that is or may with reasonable probability be detrimental to fresh water	No

<b>Nature and Volume of Release</b>	
<i>Material(s) released, please answer all that apply below. Any calculations or specific justifications for the volumes provided should be attached to the follow-up C-141 submission.</i>	
Crude Oil Released (bbls) Details	Cause: Normal Operations   Unknown   Crude Oil   Released: 0 BBL (Unknown Released Amount)   Recovered: 0 BBL   Lost: 0 BBL.
Produced Water Released (bbls) Details	Not answered.
Is the concentration of chloride in the produced water >10,000 mg/l	No
Condensate Released (bbls) Details	Not answered.
Natural Gas Vented (Mcf) Details	Cause: Normal Operations   Pipeline (Any)   Natural Gas Vented   Released: 10 MCF   Recovered: 0 MCF   Lost: 10 MCF.
Natural Gas Flared (Mcf) Details	Not answered.
Other Released Details	Not answered.
Are there additional details for the questions above (i.e. any answer containing Other, Specify, Unknown, and/or Fire, or any negative lost amounts)	Line identified by elective flyover and identified a 4" line failure with liquids observed in a 40x45' area. Line was shut in immediately, liquids contained and site secured. Impacted area did no reach or have the potential to reach a watercourse. Surface fee owner notified. release contained and investigation pending.

Sante Fe Main Office  
Phone: (505) 476-3441

General Information  
Phone: (505) 629-6116

Online Phone Directory  
<https://www.emnrd.nm.gov/ocd/contact-us>

**State of New Mexico**  
**Energy, Minerals and Natural Resources**  
**Oil Conservation Division**  
**1220 S. St Francis Dr.**  
**Santa Fe, NM 87505**

QUESTIONS, Page 2

Action 556919

**QUESTIONS (continued)**

Operator: LOGOS OPERATING, LLC 2010 Afton Place Farmington, NM 87401	OGRID: 289408
	Action Number: 556919
	Action Type: [C-141] Initial C-141 (C-141-v-Initial)

**QUESTIONS**

<b>Nature and Volume of Release (continued)</b>	
Is this a gas only submission (i.e. only significant Mcf values reported)	<b>No, according to supplied volumes this does not appear to be a "gas only" report.</b>
Was this a major release as defined by Subsection A of 19.15.29.7 NMAC	<b>Yes</b>
Reasons why this would be considered a submission for a notification of a major release	<b>From paragraph A. "Major release" determine using: (1) an unauthorized release of a volume, excluding gases, of 25 barrels or more.</b>
<i>With the implementation of the 19.15.27 NMAC (05/25/2021), venting and/or flaring of natural gas (i.e. gas only) are to be submitted on the C-129 form.</i>	

**Initial Response**

*The responsible party must undertake the following actions immediately unless they could create a safety hazard that would result in injury.*

The source of the release has been stopped	True
The impacted area has been secured to protect human health and the environment	True
Released materials have been contained via the use of berms or dikes, absorbent pads, or other containment devices	True
All free liquids and recoverable materials have been removed and managed appropriately	True
If all the actions described above have not been undertaken, explain why	Not answered.

*Per Paragraph (4) of Subsection B of 19.15.29.8 NMAC the responsible party may commence remediation immediately after discovery of a release. If remediation has begun, please prepare and attach a narrative of actions to date in the follow-up C-141 submission. If remedial efforts have been successfully completed or if the release occurred within a lined containment area (see Subparagraph (a) of Paragraph (5) of Subsection A of 19.15.29.11 NMAC), please prepare and attach all information needed for closure evaluation in the follow-up C-141 submission.*

I hereby certify that the information given above is true and complete to the best of my knowledge and understand that pursuant to OCD rules and regulations all operators are required to report and/or file certain release notifications and perform corrective actions for releases which may endanger public health or the environment. The acceptance of a C-141 report by the OCD does not relieve the operator of liability should their operations have failed to adequately investigate and remediate contamination that pose a threat to groundwater, surface water, human health or the environment. In addition, OCD acceptance of a C-141 report does not relieve the operator of responsibility for compliance with any other federal, state, or local laws and/or regulations.

I hereby agree and sign off to the above statement	Name: Vanessa Fields Title: Regulatory Manager Email: vfields@logosresourcesllc.com Date: 02/23/2026
--	---

Sante Fe Main Office  
Phone: (505) 476-3441

General Information  
Phone: (505) 629-6116

Online Phone Directory  
<https://www.emnrd.nm.gov/ocd/contact-us>

**State of New Mexico**  
**Energy, Minerals and Natural Resources**  
**Oil Conservation Division**  
**1220 S. St Francis Dr.**  
**Santa Fe, NM 87505**

QUESTIONS, Page 3

Action 556919

**QUESTIONS (continued)**

Operator: LOGOS OPERATING, LLC 2010 Afton Place Farmington, NM 87401	OGRID: 289408
	Action Number: 556919
	Action Type: [C-141] Initial C-141 (C-141-v-Initial)

**QUESTIONS**

**Site Characterization**  
*Please answer all the questions in this group (only required when seeking remediation plan approval and beyond). This information must be provided to the appropriate district office no later than 90 days after the release discovery date.*

What is the shallowest depth to groundwater beneath the area affected by the release in feet below ground surface (ft bgs)	Between 51 and 75 (ft.)
What method was used to determine the depth to ground water	Estimate or Other
Did this release impact groundwater or surface water	No
<b>What is the minimum distance, between the closest lateral extents of the release and the following surface areas:</b>	
A continuously flowing watercourse or any other significant watercourse	Between 100 and 200 (ft.)
Any lakebed, sinkhole, or playa lake (measured from the ordinary high-water mark)	Between 100 and 200 (ft.)
An occupied permanent residence, school, hospital, institution, or church	Between 1/2 and 1 (mi.)
A spring or a private domestic fresh water well used by less than five households for domestic or stock watering purposes	Not answered.
Any other fresh water well or spring	Not answered.
Incorporated municipal boundaries or a defined municipal fresh water well field	Not answered.
A wetland	Between 100 and 200 (ft.)
A subsurface mine	Not answered.
An (non-karst) unstable area	Not answered.
Categorize the risk of this well / site being in a karst geology	Not answered.
A 100-year floodplain	Between 100 and 200 (ft.)
Did the release impact areas not on an exploration, development, production, or storage site	Yes

**Remediation Plan**  
*Please answer all the questions that apply or are indicated. This information must be provided to the appropriate district office no later than 90 days after the release discovery date.*

Requesting a remediation plan approval with this submission	No
---	----

*The OCD recognizes that proposed remediation measures may have to be minimally adjusted in accordance with the physical realities encountered during remediation. If the responsible party has any need to significantly deviate from the remediation plan proposed, then it should consult with the division to determine if another remediation plan submission is required.*

Sante Fe Main Office  
Phone: (505) 476-3441

General Information  
Phone: (505) 629-6116

Online Phone Directory  
<https://www.emnrd.nm.gov/ocd/contact-us>

**State of New Mexico**  
**Energy, Minerals and Natural Resources**  
**Oil Conservation Division**  
**1220 S. St Francis Dr.**  
**Santa Fe, NM 87505**

CONDITIONS

Action 556919

**CONDITIONS**

Operator: LOGOS OPERATING, LLC 2010 Afton Place Farmington, NM 87401	OGRID: 289408
	Action Number: 556919
	Action Type: [C-141] Initial C-141 (C-141-v-Initial)

**CONDITIONS**

Created By	Condition	Condition Date
michael.buchanan	Initial C141 is approved. A remediation work plan, site characterization plan or remediation closure is due to the OCD no later than 90-days after the date of discovery, not to exceed 05/08/2026. Document an approximate amount of liquids in (bbbls) released if certain quantity cannot be confirmed. Include this information in the next report submission.	2/27/2026