



SITE INFORMATION

**Closure Report
Fiji 17 CTB 1
Eddy County, New Mexico
Unit G, S17, T23S, R31E
32.30740934°, -103.7962152°**

Incident ID: nAPP2606122403

Produced Water Release

Point of Release: Water Line Developed Hole Allowing Fluids to Lined Secondary Containment.

Release Date: 02.28.2026

Volume Released: 742 Barrels of Produced Water

Volume Recovered: 742 Barrels of Produced Water

CARMONA RESOURCES



Incident ID: nAPP2606127142

Produced Water Release

Point of Release: Pinhole Leak on 3 Phase Separator Allowed Fluid to be Released on Pad.

Release Date: 02.27.2026

Volume Released: 5 Barrels of Produced Water

Volume Recovered: 0 Barrels of Produced Water

**Prepared for:
Devon Energy
5315 Buena Vista Dr.
Carlsbad, New Mexico 88220**

**Prepared by:
Carmona Resources, LLC
310 West Wall Street
Suite 500
Midland, Texas 79701**

310 West Wall Street, Suite 500
Midland TX, 79701
432.813.1992

TABLE OF CONTENTS

1.0 SITE INFORMATION AND BACKGROUND

2.0 SITE CHARACTERIZATION AND GROUNDWATER

3.0 NMAC REGULATORY CRITERIA

4.0 LINER INSPECTION ACTIVITIES

5.0 CONCLUSIONS

FIGURES

FIGURE 1 OVERVIEW FIGURE 2 TOPOGRAPHIC

FIGURE 3 CONTAINMENT

APPENDICES

APPENDIX A PHOTOS

APPENDIX B NMOCD CORRESPONDENCE

APPENDIX C SITE CHARACTERIZATION AND GROUNDWATER



April 27, 2026

Mike Bratcher
District Supervisor
Oil Conservation Division, District 1
811 S. First Street
Artesia, New Mexico 88210

Re: **Closure Report**
Fiji 17 CTB 1
Incident ID(s): nAPP2606122403 & nAPP2606127142
Devon Energy Production Company
Site Location: Unit G, S17, T23S, R31E
32.30740934°, -103.7962152
Eddy County, New Mexico

Mr. Bratcher:

At the request of Devon Energy Production Company (Devon) Carmona Resources LLC, has prepared this letter to document the liner inspection activities conducted at the Fiji 17 CTB 1 (Site) located at 32.30740934°, -103.7962152° in Eddy County, New Mexico (Figures 1 and 2).

1.0 Site Information and Background

nAPP2606122403

Based on the initial C-141 obtained from the New Mexico Oil Conservation Division (NMOCD), the release was discovered on February 28, 2026, due to the water line developed a leak allowing fluids to be released inside the lined secondary containment. It resulted in approximately seven hundred and forty-two (742) barrels of produced water being released inside the lined secondary containment, with approximately seven hundred and forty-two (742) barrels of produced water being immediately recovered. The containment area is approximately 5,280 sq ft. The containment boundaries are shown in Figure 3. The initial C-141 form is attached in Appendix B.

nAPP2606127142

Based on the initial C-141 obtained from the New Mexico Oil Conservation Division (NMOCD), the release was discovered on February 27, 2026, due to a pinhole leak on the 3-phase separator allowing fluids to be released on pad. It resulted in approximately five (5) barrels of produced water being released with approximately zero (0) barrels of produced water being immediately recovered. The initial C-141 form is attached in Appendix B.

2.0 Site Characterization and Groundwater

The site is located within a low karst area. Based on a review of the New Mexico Office of State Engineers and USGS databases, there is no known water sources within a 0.50-mile radius of the location. The nearest groundwater determination bore is approximately 0.39 miles Northwest of the site in S08, T23S, R31E and was drilled in 2023. The bore was drilled to a depth of 55' (ft bgs). A copy of the associated Summary Report is attached in Appendix C.



3.0 NMAC Regulatory Criteria

Per the NMOCD regulatory criteria established in 19.15.29.12 NMAC, the following criteria were utilized in assessing and remediating the site.

- Benzene: 10 milligrams per kilogram (mg/kg).
- Benzene, toluene, ethylbenzene, and total xylenes (BTEX): 50 mg/kg.
- TPH: 1,000 mg/kg (GRO + DRO).
- TPH: 2,500 mg/kg (GRO + DRO + MRO).
- Chloride: 10,000 mg/kg.

4.0 Liner Inspection Activities

Prior to Carmona Resources conducting a Liner Inspection, Devon contractors removed all fluid and washed the containment on April 23, 2026. The NMOCD division office was notified via NMOCD portal on April 20, 2026, per Subsection D of 19.15.29.12 NMAC. See Appendix B for the NMOCD correspondence prior to performing the liner inspection. On April 24, 2026, Carmona Resources, LLC conducted liner inspection activities to assess the tank batteries lined containment integrity and determined there were no integrity issues. Refer to the Photolog in Appendix A.

A Liner Integrity Certification was issued confirming that the structural integrity of the liner was intact. It can be found in Appendix B. See Figure 3 which illustrates the area that was inspected along with the outline of the containment area.

5.0 Conclusions

Based on the liner integrity inspection taken place onsite, no further actions are required at the site. Devon formally requests the closure of the spill. If you have any questions regarding this report or need additional information, please contact us at 432-813-8988.

Sincerely,
Carmona Resources, LLC

Ashton Thielke
Director of Operations

Riley Plogger
Project Manager

FIGURES

CARMONA RESOURCES

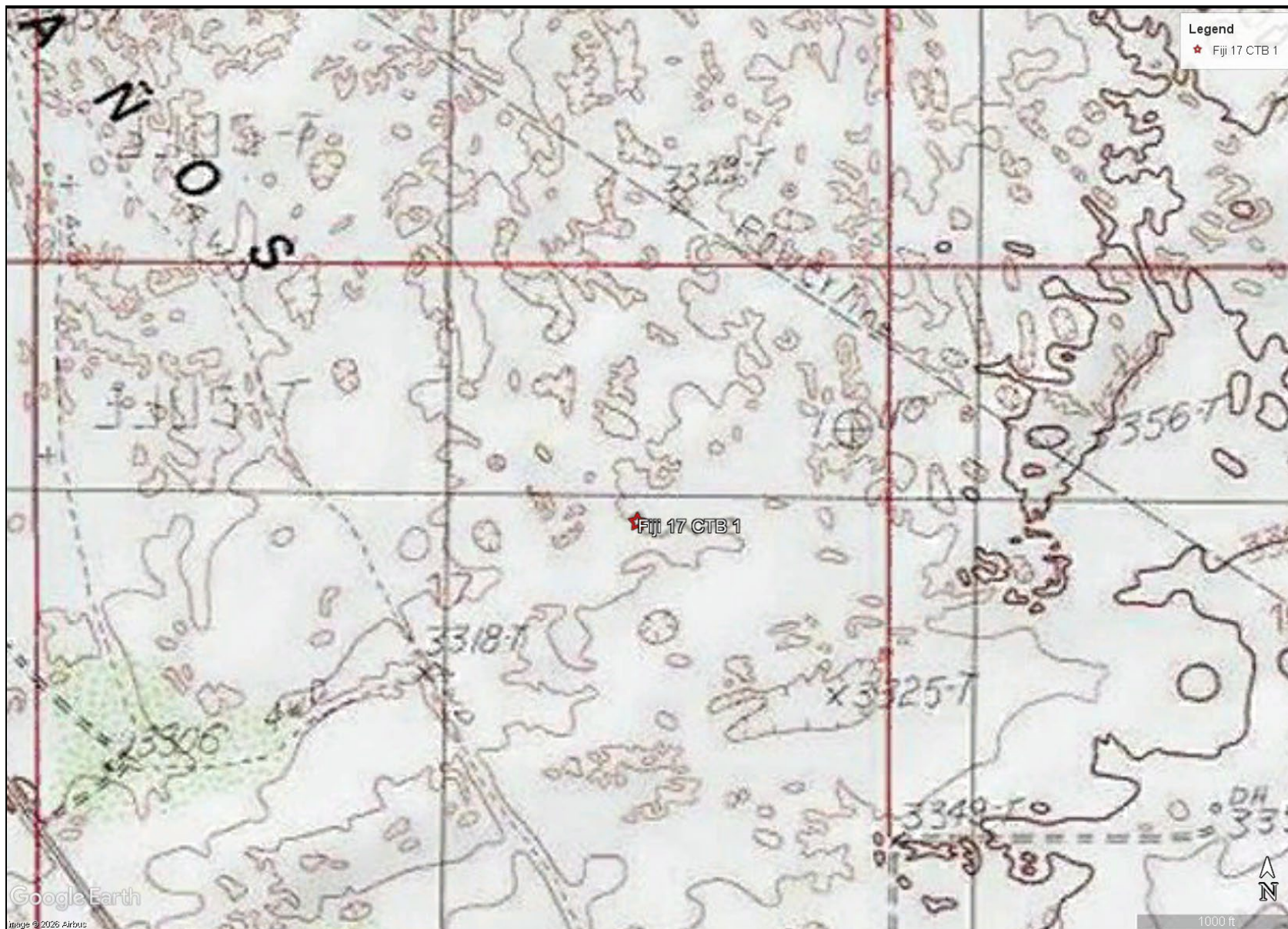




OVERVIEW MAP
DEVON ENERGY PRODUCTION
FIJI 17 CTB 1
EDDY COUNTY, NEW MEXICO
32.30740934, -103.7962152



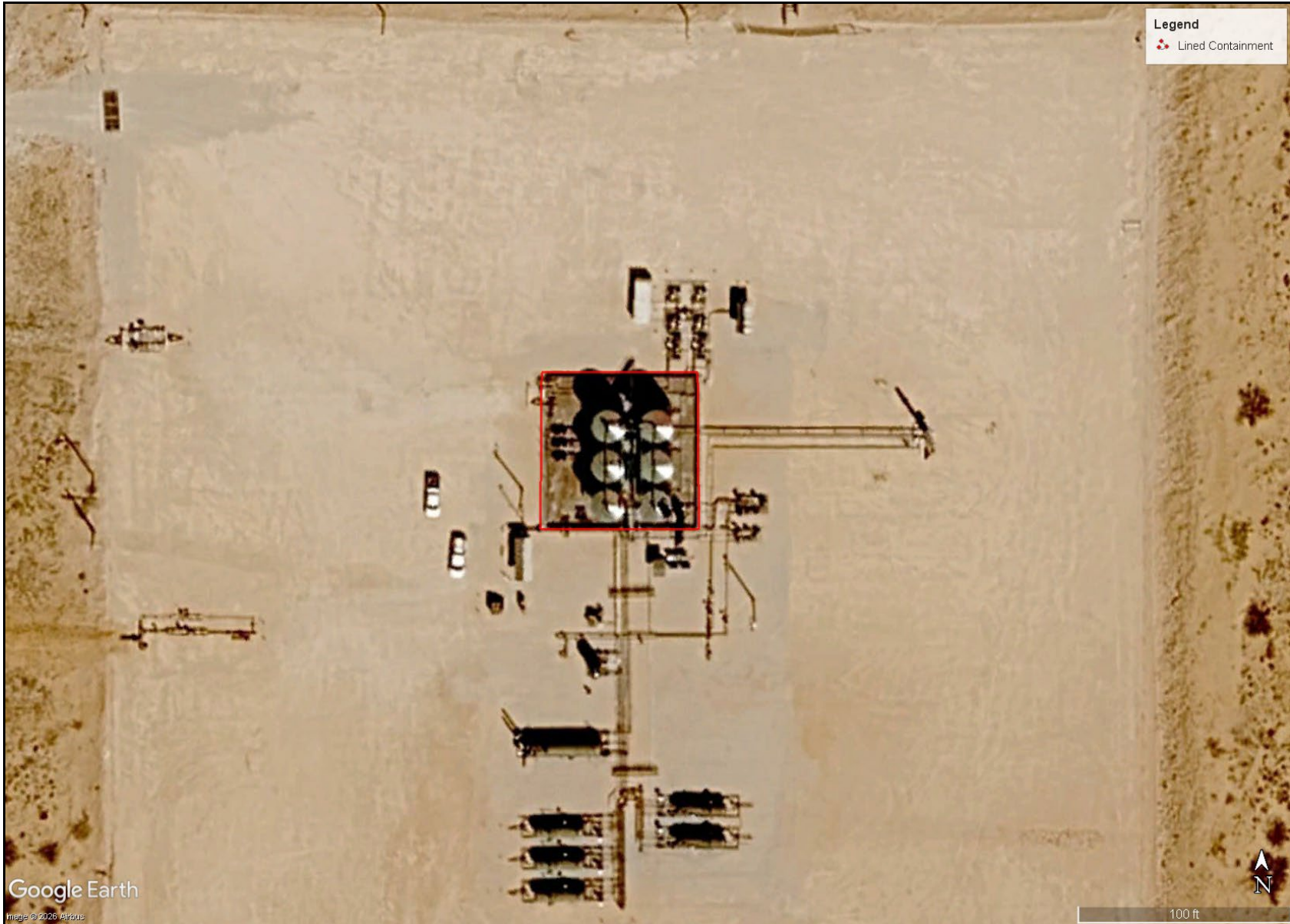
FIGURE 1




TOPOGRAPHIC MAP
DEVON ENERGY PRODUCTION
FIJI 17 CTB 1
EDDY COUNTY, NEW MEXICO
32.30740934, -103.7962152



FIGURE 2



<p>CONTAINMENT MAP DEVON ENERGY PRODUCTION FIJI 17 CTB 1 EDDY COUNTY, NEW MEXICO 32.30740934, -103.7962152</p>	<p>CARMONA RESOURCES </p>	<p>FIGURE 3</p>
--	--	-----------------

APPENDIX A

CARMONA RESOURCES



PHOTOGRAPHIC LOG

Devon Energy Production

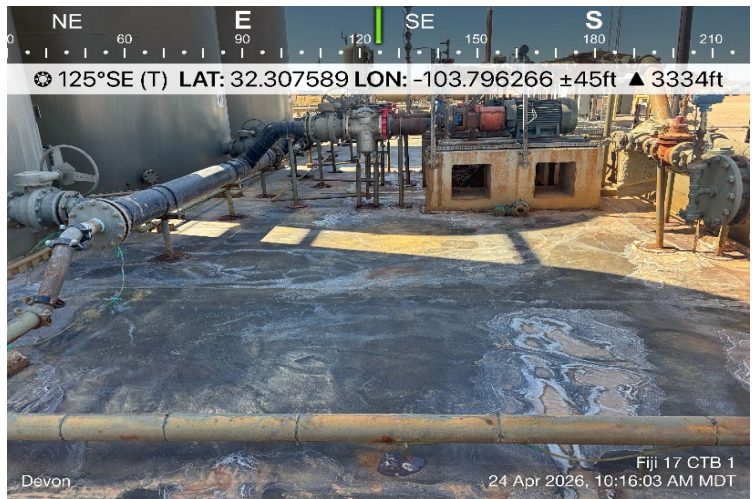
Photograph No. 1

Facility: Fiji 17 CTB 1
County: Eddy County, New Mexico
Description:
View Northeast of the facility sign.



Photograph No. 2

Facility: Fiji 17 CTB 1
County: Eddy County, New Mexico
Description:
View Southeast of the exposed liner.



Photograph No. 3

Facility: Fiji 17 CTB 1
County: Eddy County, New Mexico
Description:
View Southwest of the exposed liner.



PHOTOGRAPHIC LOG

Devon Energy Production

Photograph No. 4

Facility: Fiji 17 CTB 1
County: Eddy County, New Mexico
Description:
View South of the exposed liner.



Photograph No. 5

Facility: Fiji 17 CTB 1
County: Eddy County, New Mexico
Description:
View Southwest of the exposed liner.



Photograph No. 6

Facility: Fiji 17 CTB 1
County: Eddy County, New Mexico
Description:
View South of the exposed liner.

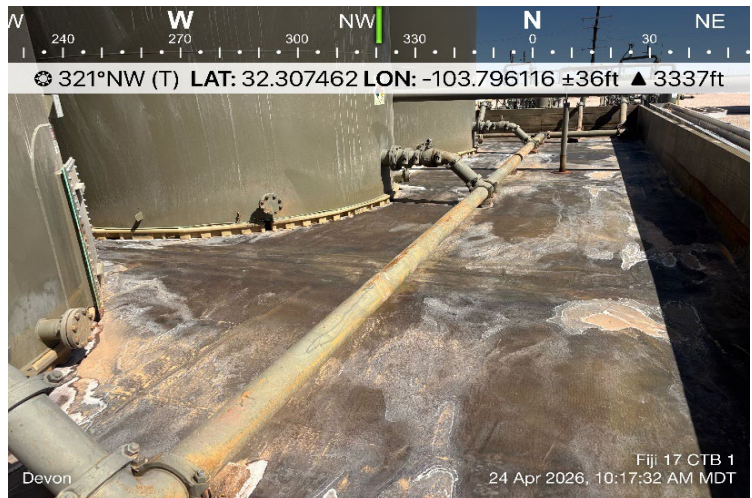


PHOTOGRAPHIC LOG

Devon Energy Production

Photograph No. 7

Facility: Fiji 17 CTB 1
County: Eddy County, New Mexico
Description:
View Northwest of the exposed liner.



Photograph No. 8

Facility: Fiji 17 CTB 1
County: Eddy County, New Mexico
Description:
View Northeast of the exposed liner.



Photograph No. 9

Facility: Fiji 17 CTB 1
County: Eddy County, New Mexico
Description:
View Northwest of the exposed liner.



PHOTOGRAPHIC LOG

Devon Energy Production

Photograph No. 10

Facility: Fiji 17 CTB 1
County: Eddy County, New Mexico

Description:
View Northeast of the exposed liner.



Photograph No. 11

Facility: Fiji 17 CTB 1
County: Eddy County, New Mexico

Description:
View East of the exposed liner.



Photograph No. 12

Facility: Fiji 17 CTB 1
County: Eddy County, New Mexico

Description:
View Southeast of the exposed liner.



PHOTOGRAPHIC LOG

Devon Energy Production

Photograph No. 13

Facility: Fiji 17 CTB 1

County: Eddy County, New Mexico

Description:
View Southwest of the exposed liner.



APPENDIX B

CARMONA RESOURCES



Sante Fe Main Office
Phone: (505) 476-3441

General Information
Phone: (505) 629-6116

Online Phone Directory
<https://www.emnrd.nm.gov/ocd/contact-us>

State of New Mexico
Energy, Minerals and Natural Resources
Oil Conservation Division
1220 S. St Francis Dr.
Santa Fe, NM 87505

QUESTIONS

Action 558799

QUESTIONS

Operator: DEVON ENERGY PRODUCTION COMPANY, LP 333 West Sheridan Ave. Oklahoma City, OK 73102	OGRID: 6137
	Action Number: 558799
	Action Type: [NOTIFY] Notification Of Release (NOR)

QUESTIONS

Location of Release Source	
<i>Please answer all the questions in this group.</i>	
Site Name	FIJI 17 CTB 1
Date Release Discovered	02/28/2026
Surface Owner	Federal

Incident Details	
<i>Please answer all the questions in this group.</i>	
Incident Type	Produced Water Release
Did this release result in a fire or is the result of a fire	No
Did this release result in any injuries	No
Has this release reached or does it have a reasonable probability of reaching a watercourse	No
Has this release endangered or does it have a reasonable probability of endangering public health	No
Has this release substantially damaged or will it substantially damage property or the environment	No
Is this release of a volume that is or may with reasonable probability be detrimental to fresh water	No

Nature and Volume of Release	
<i>Material(s) released, please answer all that apply below. Any calculations or specific justifications for the volumes provided should be attached to the follow-up C-141 submission.</i>	
Crude Oil Released (bbls) Details	Not answered.
Produced Water Released (bbls) Details	Cause: Equipment Failure Dump Line Produced Water Released: 742 BBL Recovered: 742 BBL Lost: 0 BBL.
Is the concentration of chloride in the produced water >10,000 mg/l	Yes
Condensate Released (bbls) Details	Not answered.
Natural Gas Vented (Mcf) Details	Not answered.
Natural Gas Flared (Mcf) Details	Not answered.
Other Released Details	Not answered.
Are there additional details for the questions above (i.e. any answer containing Other, Specify, Unknown, and/or Fire, or any negative lost amounts)	Water line developed leak allowing fluids to be released to lined secondary containment. Notification made via email 3/1

Sante Fe Main Office
Phone: (505) 476-3441

General Information
Phone: (505) 629-6116

Online Phone Directory
<https://www.emnrd.nm.gov/ocd/contact-us>

**State of New Mexico
Energy, Minerals and Natural Resources
Oil Conservation Division
1220 S. St Francis Dr.
Santa Fe, NM 87505**

QUESTIONS, Page 2

Action 558799

QUESTIONS (continued)

Operator: DEVON ENERGY PRODUCTION COMPANY, LP 333 West Sheridan Ave. Oklahoma City, OK 73102	OGRID: 6137
	Action Number: 558799
	Action Type: [NOTIFY] Notification Of Release (NOR)

QUESTIONS

Nature and Volume of Release (continued)	
Is this a gas only submission (i.e. only significant Mcf values reported)	No, according to supplied volumes this does not appear to be a "gas only" report.
Was this a major release as defined by Subsection A of 19.15.29.7 NMAC	Yes
Reasons why this would be considered a submission for a notification of a major release	From paragraph A. "Major release" determine using: (1) an unauthorized release of a volume, excluding gases, of 25 barrels or more.
<i>With the implementation of the 19.15.27 NMAC (05/25/2021), venting and/or flaring of natural gas (i.e. gas only) are to be submitted on the C-129 form.</i>	

Initial Response

The responsible party must undertake the following actions immediately unless they could create a safety hazard that would result in injury.

The source of the release has been stopped	True
The impacted area has been secured to protect human health and the environment	True
Released materials have been contained via the use of berms or dikes, absorbent pads, or other containment devices	True
All free liquids and recoverable materials have been removed and managed appropriately	True
If all the actions described above have not been undertaken, explain why	Not answered.

Per Paragraph 4 of Subsection B of 19.15.29.8 NMAC the responsible party may commence remediation immediately after discovery of a release. If remediation has begun, please prepare and attach a narrative of actions to date in the follow-up C-141 submission. If remedial efforts have been successfully completed or if the release occurred within a lined containment area (see 19.15.29.11(A)(5)(a) NMAC), please prepare and attach all information needed for closure evaluation in the follow-up C-141 submission.

Sante Fe Main Office
Phone: (505) 476-3441

General Information
Phone: (505) 629-6116

Online Phone Directory
<https://www.emnrd.nm.gov/ocd/contact-us>

State of New Mexico
Energy, Minerals and Natural Resources
Oil Conservation Division
1220 S. St Francis Dr.
Santa Fe, NM 87505

ACKNOWLEDGMENTS

Action 558799

ACKNOWLEDGMENTS

Operator: DEVON ENERGY PRODUCTION COMPANY, LP 333 West Sheridan Ave. Oklahoma City, OK 73102	OGRID: 6137
	Action Number: 558799
	Action Type: [NOTIFY] Notification Of Release (NOR)

ACKNOWLEDGMENTS

<input checked="" type="checkbox"/>	I acknowledge that I am authorized to submit notification of a release on behalf of my operator.
<input checked="" type="checkbox"/>	I acknowledge that upon submitting this application, I will be creating a new incident file (assigned to my operator) to track the notification(s) and corrective action(s) for a release, pursuant to NMAC 19.15.29.
<input checked="" type="checkbox"/>	I acknowledge that creating a new incident file will require my operator to file subsequent submission(s) of form "C-141, Application for administrative approval of a release notification and corrective action", pursuant to NMAC 19.15.29.
<input checked="" type="checkbox"/>	I hereby certify that the information given above is true and complete to the best of my knowledge and understand that pursuant to OCD rules and regulations all operators are required to report and/or file certain release notifications and perform corrective actions for releases which may endanger public health or the environment.
<input checked="" type="checkbox"/>	I acknowledge the fact that the acceptance of a C-141 report by the OCD does not relieve the operator of liability should their operations have failed to adequately investigate and remediate contamination that pose a threat to groundwater, surface water, human health or the environment.
<input checked="" type="checkbox"/>	I acknowledge the fact that, in addition, OCD acceptance of a C-141 report does not relieve the operator of responsibility for compliance with any other federal, state, or local laws and/or regulations.

Sante Fe Main Office
Phone: (505) 476-3441

General Information
Phone: (505) 629-6116

Online Phone Directory
<https://www.emnrd.nm.gov/ocd/contact-us>

State of New Mexico
Energy, Minerals and Natural Resources
Oil Conservation Division
1220 S. St Francis Dr.
Santa Fe, NM 87505

CONDITIONS

Action 558799

CONDITIONS

Operator: DEVON ENERGY PRODUCTION COMPANY, LP 333 West Sheridan Ave. Oklahoma City, OK 73102	OGRID: 6137
	Action Number: 558799
	Action Type: [NOTIFY] Notification Of Release (NOR)

CONDITIONS

Created By	Condition	Condition Date
jralej	When submitting future reports regarding this release, please submit the calculations used or specific justification for the volumes reported on the initial C-141.	3/2/2026

Spill Volume Calculations

Free Standing Fluid Volume

How do you want to enter area? **Total area from app**

Area from app (ft²) 4837.00

Depth of fluid 13.25 in

Number of Tanks in Fluid Affected Area (if any): 6

Tank Diameter (if needed): 15.0 ft

Volume of Standing Fluid 742.73 bbl

Contaminated Soil Calculations

How do you want to enter area? **Total area from app**

Area from app (ft²)

Depth of impacted soil in

Soil Type Caliche

Spilled Material Produced Water

Soil Saturation Wet - hand is wet/muddy after handling

Volume of Spill In Soil 0.00 bbls

Total Spill Volume 742.73 bbls

Sante Fe Main Office
Phone: (505) 476-3441

General Information
Phone: (505) 629-6116

Online Phone Directory
<https://www.emnrd.nm.gov/ocd/contact-us>

State of New Mexico
Energy, Minerals and Natural Resources
Oil Conservation Division
1220 S. St Francis Dr.
Santa Fe, NM 87505

QUESTIONS

Action 563076

QUESTIONS

Operator: DEVON ENERGY PRODUCTION COMPANY, LP 333 West Sheridan Ave. Oklahoma City, OK 73102	OGRID: 6137
	Action Number: 563076
	Action Type: [C-141] Initial C-141 (C-141-v-Initial)

QUESTIONS

Prerequisites	
Incident ID (n#)	nAPP2606122403
Incident Name	NAPP2606122403 FIJI 17 CTB 1 @ FAPP2130240832
Incident Type	Produced Water Release
Incident Status	Initial C-141 Received
Incident Facility	[fAPP2130240832] FIJI 17 CTB 1

Location of Release Source	
<i>Please answer all the questions in this group.</i>	
Site Name	FIJI 17 CTB 1
Date Release Discovered	02/28/2026
Surface Owner	Federal

Incident Details	
<i>Please answer all the questions in this group.</i>	
Incident Type	Produced Water Release
Did this release result in a fire or is the result of a fire	No
Did this release result in any injuries	No
Has this release reached or does it have a reasonable probability of reaching a watercourse	No
Has this release endangered or does it have a reasonable probability of endangering public health	No
Has this release substantially damaged or will it substantially damage property or the environment	No
Is this release of a volume that is or may with reasonable probability be detrimental to fresh water	No

Nature and Volume of Release	
<i>Material(s) released, please answer all that apply below. Any calculations or specific justifications for the volumes provided should be attached to the follow-up C-141 submission.</i>	
Crude Oil Released (bbls) Details	Not answered.
Produced Water Released (bbls) Details	Cause: Equipment Failure Dump Line Produced Water Released: 742 BBL Recovered: 742 BBL Lost: 0 BBL.
Is the concentration of chloride in the produced water >10,000 mg/l	Yes
Condensate Released (bbls) Details	Not answered.
Natural Gas Vented (Mcf) Details	Not answered.
Natural Gas Flared (Mcf) Details	Not answered.
Other Released Details	Not answered.
Are there additional details for the questions above (i.e. any answer containing Other, Specify, Unknown, and/or Fire, or any negative lost amounts)	Water line developed leak allowing fluids to be released to lined secondary containment. Notification made via email 3/1

Sante Fe Main Office
Phone: (505) 476-3441

General Information
Phone: (505) 629-6116

Online Phone Directory
<https://www.emnrd.nm.gov/ocd/contact-us>

State of New Mexico
Energy, Minerals and Natural Resources
Oil Conservation Division
1220 S. St Francis Dr.
Santa Fe, NM 87505

QUESTIONS, Page 2

Action 563076

QUESTIONS (continued)

Operator: DEVON ENERGY PRODUCTION COMPANY, LP 333 West Sheridan Ave. Oklahoma City, OK 73102	OGRID: 6137
	Action Number: 563076
	Action Type: [C-141] Initial C-141 (C-141-v-Initial)

QUESTIONS

Nature and Volume of Release (continued)	
Is this a gas only submission (i.e. only significant Mcf values reported)	No, according to supplied volumes this does not appear to be a "gas only" report.
Was this a major release as defined by Subsection A of 19.15.29.7 NMAC	Yes
Reasons why this would be considered a submission for a notification of a major release	From paragraph A. "Major release" determine using: (1) an unauthorized release of a volume, excluding gases, of 25 barrels or more.

With the implementation of the 19.15.27 NMAC (05/25/2021), venting and/or flaring of natural gas (i.e. gas only) are to be submitted on the C-129 form.

Initial Response

The responsible party must undertake the following actions immediately unless they could create a safety hazard that would result in injury.

The source of the release has been stopped	True
The impacted area has been secured to protect human health and the environment	True
Released materials have been contained via the use of berms or dikes, absorbent pads, or other containment devices	True
All free liquids and recoverable materials have been removed and managed appropriately	True
If all the actions described above have not been undertaken, explain why	Not answered.

Per Paragraph (4) of Subsection B of 19.15.29.8 NMAC the responsible party may commence remediation immediately after discovery of a release. If remediation has begun, please prepare and attach a narrative of actions to date in the follow-up C-141 submission. If remedial efforts have been successfully completed or if the release occurred within a lined containment area (see Subparagraph (a) of Paragraph (5) of Subsection A of 19.15.29.11 NMAC), please prepare and attach all information needed for closure evaluation in the follow-up C-141 submission.

I hereby certify that the information given above is true and complete to the best of my knowledge and understand that pursuant to OCD rules and regulations all operators are required to report and/or file certain release notifications and perform corrective actions for releases which may endanger public health or the environment. The acceptance of a C-141 report by the OCD does not relieve the operator of liability should their operations have failed to adequately investigate and remediate contamination that pose a threat to groundwater, surface water, human health or the environment. In addition, OCD acceptance of a C-141 report does not relieve the operator of responsibility for compliance with any other federal, state, or local laws and/or regulations.

I hereby agree and sign off to the above statement	Name: James Raley Title: EHS Professional Email: jim.raley@dvn.com Date: 03/16/2026
--	--

Sante Fe Main Office
Phone: (505) 476-3441

General Information
Phone: (505) 629-6116

Online Phone Directory
<https://www.emnrd.nm.gov/ocd/contact-us>

State of New Mexico
Energy, Minerals and Natural Resources
Oil Conservation Division
1220 S. St Francis Dr.
Santa Fe, NM 87505

QUESTIONS, Page 3

Action 563076

QUESTIONS (continued)

Operator: DEVON ENERGY PRODUCTION COMPANY, LP 333 West Sheridan Ave. Oklahoma City, OK 73102	OGRID: 6137
	Action Number: 563076
	Action Type: [C-141] Initial C-141 (C-141-v-Initial)

QUESTIONS

Site Characterization

Please answer all the questions in this group (only required when seeking remediation plan approval and beyond). This information must be provided to the appropriate district office no later than 90 days after the release discovery date.

What is the shallowest depth to groundwater beneath the area affected by the release in feet below ground surface (ft bgs)	Not answered.
What method was used to determine the depth to ground water	Not answered.
Did this release impact groundwater or surface water	Not answered.
What is the minimum distance, between the closest lateral extents of the release and the following surface areas:	
A continuously flowing watercourse or any other significant watercourse	Not answered.
Any lakebed, sinkhole, or playa lake (measured from the ordinary high-water mark)	Not answered.
An occupied permanent residence, school, hospital, institution, or church	Not answered.
A spring or a private domestic fresh water well used by less than five households for domestic or stock watering purposes	Not answered.
Any other fresh water well or spring	Not answered.
Incorporated municipal boundaries or a defined municipal fresh water well field	Not answered.
A wetland	Not answered.
A subsurface mine	Not answered.
An (non-karst) unstable area	Not answered.
Categorize the risk of this well / site being in a karst geology	Not answered.
A 100-year floodplain	Not answered.
Did the release impact areas not on an exploration, development, production, or storage site	Not answered.

Remediation Plan

Please answer all the questions that apply or are indicated. This information must be provided to the appropriate district office no later than 90 days after the release discovery date.

Requesting a remediation plan approval with this submission	No
<i>The OCD recognizes that proposed remediation measures may have to be minimally adjusted in accordance with the physical realities encountered during remediation. If the responsible party has any need to significantly deviate from the remediation plan proposed, then it should consult with the division to determine if another remediation plan submission is required.</i>	

Sante Fe Main Office
Phone: (505) 476-3441

General Information
Phone: (505) 629-6116

Online Phone Directory
<https://www.emnrd.nm.gov/ocd/contact-us>

State of New Mexico
Energy, Minerals and Natural Resources
Oil Conservation Division
1220 S. St Francis Dr.
Santa Fe, NM 87505

CONDITIONS

Action 563076

CONDITIONS

Operator: DEVON ENERGY PRODUCTION COMPANY, LP 333 West Sheridan Ave. Oklahoma City, OK 73102	OGRID: 6137
	Action Number: 563076
	Action Type: [C-141] Initial C-141 (C-141-v-Initial)

CONDITIONS

Created By	Condition	Condition Date
michael.buchanan	Initial C141 is approved. A remediation work plan, site characterization plan or remediation closure is due to the OCD no later than 90-days after the date of discovery, not to exceed 05/29/2026.	3/17/2026

Sante Fe Main Office
Phone: (505) 476-3441

General Information
Phone: (505) 629-6116

Online Phone Directory
<https://www.emnrd.nm.gov/ocd/contact-us>

**State of New Mexico
Energy, Minerals and Natural Resources
Oil Conservation Division
1220 S. St Francis Dr.
Santa Fe, NM 87505**

QUESTIONS

Action 576967

QUESTIONS

Operator: DEVON ENERGY PRODUCTION COMPANY, LP 333 West Sheridan Ave. Oklahoma City, OK 73102	OGRID: 6137
	Action Number: 576967
	Action Type: [NOTIFY] Notification Of Liner Inspection (C-141L)

QUESTIONS

Prerequisites	
Incident ID (n#)	nAPP2606122403
Incident Name	NAPP2606122403 FIJI 17 CTB 1 @ FAPP2130240832
Incident Type	Produced Water Release
Incident Status	Initial C-141 Approved
Incident Facility	[fAPP2130240832] FIJI 17 CTB 1

Location of Release Source	
Site Name	FIJI 17 CTB 1
Date Release Discovered	02/28/2026
Surface Owner	Federal

Liner Inspection Event Information	
<i>Please answer all the questions in this group.</i>	
What is the liner inspection surface area in square feet	5,280
Have all the impacted materials been removed from the liner	Yes
Liner inspection date pursuant to Subparagraph (a) of Paragraph (5) of Subsection A of 19.15.29.11 NMAC	04/24/2026
Time liner inspection will commence	10:00 AM
Please provide any information necessary for observers to liner inspection	Carmona Resources- (432-701-5475)
Please provide any information necessary for navigation to liner inspection site	32.30740934,-103.7962152

Sante Fe Main Office
Phone: (505) 476-3441

General Information
Phone: (505) 629-6116

Online Phone Directory
<https://www.emnrd.nm.gov/ocd/contact-us>

State of New Mexico
Energy, Minerals and Natural Resources
Oil Conservation Division
1220 S. St Francis Dr.
Santa Fe, NM 87505

CONDITIONS

Action 576967

CONDITIONS

Operator: DEVON ENERGY PRODUCTION COMPANY, LP 333 West Sheridan Ave. Oklahoma City, OK 73102	OGRID: 6137
	Action Number: 576967
	Action Type: [NOTIFY] Notification Of Liner Inspection (C-141L)

CONDITIONS

Created By	Condition	Condition Date
jraley	Failure to notify the OCD of liner inspections including any changes in date/time per the requirements of 19.15.29.11.A(5)(a)(ii) NMAC, may result in the inspection not being accepted.	4/20/2026

Sante Fe Main Office
Phone: (505) 476-3441

General Information
Phone: (505) 629-6116

Online Phone Directory
<https://www.emnrd.nm.gov/ocd/contact-us>

State of New Mexico
Energy, Minerals and Natural Resources
Oil Conservation Division
1220 S. St Francis Dr.
Santa Fe, NM 87505

QUESTIONS

Action 558839

QUESTIONS

Operator: DEVON ENERGY PRODUCTION COMPANY, LP 333 West Sheridan Ave. Oklahoma City, OK 73102	OGRID: 6137
	Action Number: 558839
	Action Type: [NOTIFY] Notification Of Release (NOR)

QUESTIONS

Location of Release Source	
<i>Please answer all the questions in this group.</i>	
Site Name	FIJI 17 CTB 1
Date Release Discovered	02/27/2026
Surface Owner	Federal

Incident Details	
<i>Please answer all the questions in this group.</i>	
Incident Type	Produced Water Release
Did this release result in a fire or is the result of a fire	No
Did this release result in any injuries	No
Has this release reached or does it have a reasonable probability of reaching a watercourse	No
Has this release endangered or does it have a reasonable probability of endangering public health	No
Has this release substantially damaged or will it substantially damage property or the environment	No
Is this release of a volume that is or may with reasonable probability be detrimental to fresh water	No

Nature and Volume of Release	
<i>Material(s) released, please answer all that apply below. Any calculations or specific justifications for the volumes provided should be attached to the follow-up C-141 submission.</i>	
Crude Oil Released (bbls) Details	Not answered.
Produced Water Released (bbls) Details	Cause: Corrosion Separator Produced Water Released: 5 BBL Recovered: 0 BBL Lost: 5 BBL.
Is the concentration of chloride in the produced water >10,000 mg/l	Yes
Condensate Released (bbls) Details	Not answered.
Natural Gas Vented (Mcf) Details	Not answered.
Natural Gas Flared (Mcf) Details	Not answered.
Other Released Details	Not answered.
Are there additional details for the questions above (i.e. any answer containing Other, Specify, Unknown, and/or Fire, or any negative lost amounts)	Pinhole leak on 3-phase separator allowed fluids to be released to pad surface.

Sante Fe Main Office
Phone: (505) 476-3441

General Information
Phone: (505) 629-6116

Online Phone Directory
<https://www.emnrd.nm.gov/ocd/contact-us>

**State of New Mexico
Energy, Minerals and Natural Resources
Oil Conservation Division
1220 S. St Francis Dr.
Santa Fe, NM 87505**

QUESTIONS, Page 2

Action 558839

QUESTIONS (continued)

Operator: DEVON ENERGY PRODUCTION COMPANY, LP 333 West Sheridan Ave. Oklahoma City, OK 73102	OGRID: 6137
	Action Number: 558839
	Action Type: [NOTIFY] Notification Of Release (NOR)

QUESTIONS

Nature and Volume of Release (continued)	
Is this a gas only submission (i.e. only significant Mcf values reported)	More volume information must be supplied to determine if this will be treated as a "gas only" report.
Was this a major release as defined by Subsection A of 19.15.29.7 NMAC	No
Reasons why this would be considered a submission for a notification of a major release	<i>Unavailable.</i>
<i>With the implementation of the 19.15.27 NMAC (05/25/2021), venting and/or flaring of natural gas (i.e. gas only) are to be submitted on the C-129 form.</i>	

Initial Response

The responsible party must undertake the following actions immediately unless they could create a safety hazard that would result in injury.

The source of the release has been stopped	True
The impacted area has been secured to protect human health and the environment	True
Released materials have been contained via the use of berms or dikes, absorbent pads, or other containment devices	True
All free liquids and recoverable materials have been removed and managed appropriately	True
If all the actions described above have not been undertaken, explain why	<i>Not answered.</i>

Per Paragraph 4 of Subsection B of 19.15.29.8 NMAC the responsible party may commence remediation immediately after discovery of a release. If remediation has begun, please prepare and attach a narrative of actions to date in the follow-up C-141 submission. If remedial efforts have been successfully completed or if the release occurred within a lined containment area (see 19.15.29.11(A)(5)(a) NMAC), please prepare and attach all information needed for closure evaluation in the follow-up C-141 submission.

Sante Fe Main Office
Phone: (505) 476-3441

General Information
Phone: (505) 629-6116

Online Phone Directory
<https://www.emnrd.nm.gov/ocd/contact-us>

State of New Mexico
Energy, Minerals and Natural Resources
Oil Conservation Division
1220 S. St Francis Dr.
Santa Fe, NM 87505

ACKNOWLEDGMENTS

Action 558839

ACKNOWLEDGMENTS

Operator: DEVON ENERGY PRODUCTION COMPANY, LP 333 West Sheridan Ave. Oklahoma City, OK 73102	OGRID: 6137
	Action Number: 558839
	Action Type: [NOTIFY] Notification Of Release (NOR)

ACKNOWLEDGMENTS

<input checked="" type="checkbox"/>	I acknowledge that I am authorized to submit notification of a release on behalf of my operator.
<input checked="" type="checkbox"/>	I acknowledge that upon submitting this application, I will be creating a new incident file (assigned to my operator) to track the notification(s) and corrective action(s) for a release, pursuant to NMAC 19.15.29.
<input checked="" type="checkbox"/>	I acknowledge that creating a new incident file will require my operator to file subsequent submission(s) of form "C-141, Application for administrative approval of a release notification and corrective action", pursuant to NMAC 19.15.29.
<input checked="" type="checkbox"/>	I hereby certify that the information given above is true and complete to the best of my knowledge and understand that pursuant to OCD rules and regulations all operators are required to report and/or file certain release notifications and perform corrective actions for releases which may endanger public health or the environment.
<input checked="" type="checkbox"/>	I acknowledge the fact that the acceptance of a C-141 report by the OCD does not relieve the operator of liability should their operations have failed to adequately investigate and remediate contamination that pose a threat to groundwater, surface water, human health or the environment.
<input checked="" type="checkbox"/>	I acknowledge the fact that, in addition, OCD acceptance of a C-141 report does not relieve the operator of responsibility for compliance with any other federal, state, or local laws and/or regulations.

Sante Fe Main Office
Phone: (505) 476-3441

General Information
Phone: (505) 629-6116

Online Phone Directory
<https://www.emnrd.nm.gov/ocd/contact-us>

State of New Mexico
Energy, Minerals and Natural Resources
Oil Conservation Division
1220 S. St Francis Dr.
Santa Fe, NM 87505

CONDITIONS

Action 558839

CONDITIONS

Operator: DEVON ENERGY PRODUCTION COMPANY, LP 333 West Sheridan Ave. Oklahoma City, OK 73102	OGRID: 6137
	Action Number: 558839
	Action Type: [NOTIFY] Notification Of Release (NOR)

CONDITIONS

Created By	Condition	Condition Date
jralej	When submitting future reports regarding this release, please submit the calculations used or specific justification for the volumes reported on the initial C-141.	3/2/2026

Spill Volume Calculations

Free Standing Fluid Volume

How do you want to enter area? **Total area from app**

Area from app (ft ²)	576.50
Depth of fluid	0.50 in
Number of Tanks in Fluid Affected Area (if any):	0
Tank Diameter (if needed):	15.0 ft
Volume of Standing Fluid	4.28 bbl

Contaminated Soil Calculations

How do you want to enter area? **Total area from app**

Area from app (ft ²)	576.50
Depth of impacted soil	0.25 in
Soil Type	Caliche
Spilled Material	Produced Water
Soil Saturation	Wet - hand is wet/muddy after handling
Volume of Spill In Soil	0.71 bbls
Total Spill Volume	4.99 bbls

Sante Fe Main Office
Phone: (505) 476-3441

General Information
Phone: (505) 629-6116

Online Phone Directory
<https://www.emnrd.nm.gov/ocd/contact-us>

State of New Mexico
Energy, Minerals and Natural Resources
Oil Conservation Division
1220 S. St Francis Dr.
Santa Fe, NM 87505

QUESTIONS

Action 563069

QUESTIONS

Operator: DEVON ENERGY PRODUCTION COMPANY, LP 333 West Sheridan Ave. Oklahoma City, OK 73102	OGRID: 6137
	Action Number: 563069
	Action Type: [C-141] Initial C-141 (C-141-v-Initial)

QUESTIONS

Prerequisites	
Incident ID (n#)	nAPP2606127142
Incident Name	NAPP2606127142 FIJI 17 CTB 1 @ FAPP2130240832
Incident Type	Produced Water Release
Incident Status	Initial C-141 Received
Incident Facility	[fAPP2130240832] FIJI 17 CTB 1

Location of Release Source	
<i>Please answer all the questions in this group.</i>	
Site Name	FIJI 17 CTB 1
Date Release Discovered	02/27/2026
Surface Owner	Federal

Incident Details	
<i>Please answer all the questions in this group.</i>	
Incident Type	Produced Water Release
Did this release result in a fire or is the result of a fire	No
Did this release result in any injuries	No
Has this release reached or does it have a reasonable probability of reaching a watercourse	No
Has this release endangered or does it have a reasonable probability of endangering public health	No
Has this release substantially damaged or will it substantially damage property or the environment	No
Is this release of a volume that is or may with reasonable probability be detrimental to fresh water	No

Nature and Volume of Release	
<i>Material(s) released, please answer all that apply below. Any calculations or specific justifications for the volumes provided should be attached to the follow-up C-141 submission.</i>	
Crude Oil Released (bbls) Details	Not answered.
Produced Water Released (bbls) Details	Cause: Corrosion Separator Produced Water Released: 5 BBL Recovered: 0 BBL Lost: 5 BBL.
Is the concentration of chloride in the produced water >10,000 mg/l	Yes
Condensate Released (bbls) Details	Not answered.
Natural Gas Vented (Mcf) Details	Not answered.
Natural Gas Flared (Mcf) Details	Not answered.
Other Released Details	Not answered.
Are there additional details for the questions above (i.e. any answer containing Other, Specify, Unknown, and/or Fire, or any negative lost amounts)	Pinhole leak on 3-phase separator allowed fluids to be released to pad surface.

Sante Fe Main Office
Phone: (505) 476-3441

General Information
Phone: (505) 629-6116

Online Phone Directory
<https://www.emnrd.nm.gov/ocd/contact-us>

State of New Mexico
Energy, Minerals and Natural Resources
Oil Conservation Division
1220 S. St Francis Dr.
Santa Fe, NM 87505

QUESTIONS, Page 2

Action 563069

QUESTIONS (continued)

Operator: DEVON ENERGY PRODUCTION COMPANY, LP 333 West Sheridan Ave. Oklahoma City, OK 73102	OGRID: 6137
	Action Number: 563069
	Action Type: [C-141] Initial C-141 (C-141-v-Initial)

QUESTIONS

Nature and Volume of Release (continued)	
Is this a gas only submission (i.e. only significant Mcf values reported)	More info needed to determine if this will be treated as a "gas only" report.
Was this a major release as defined by Subsection A of 19.15.29.7 NMAC	No
Reasons why this would be considered a submission for a notification of a major release	<i>Unavailable.</i>
<i>With the implementation of the 19.15.27 NMAC (05/25/2021), venting and/or flaring of natural gas (i.e. gas only) are to be submitted on the C-129 form.</i>	

Initial Response

The responsible party must undertake the following actions immediately unless they could create a safety hazard that would result in injury.

The source of the release has been stopped	True
The impacted area has been secured to protect human health and the environment	True
Released materials have been contained via the use of berms or dikes, absorbent pads, or other containment devices	True
All free liquids and recoverable materials have been removed and managed appropriately	True
If all the actions described above have not been undertaken, explain why	<i>Not answered.</i>

Per Paragraph (4) of Subsection B of 19.15.29.8 NMAC the responsible party may commence remediation immediately after discovery of a release. If remediation has begun, please prepare and attach a narrative of actions to date in the follow-up C-141 submission. If remedial efforts have been successfully completed or if the release occurred within a lined containment area (see Subparagraph (a) of Paragraph (5) of Subsection A of 19.15.29.11 NMAC), please prepare and attach all information needed for closure evaluation in the follow-up C-141 submission.

I hereby certify that the information given above is true and complete to the best of my knowledge and understand that pursuant to OCD rules and regulations all operators are required to report and/or file certain release notifications and perform corrective actions for releases which may endanger public health or the environment. The acceptance of a C-141 report by the OCD does not relieve the operator of liability should their operations have failed to adequately investigate and remediate contamination that pose a threat to groundwater, surface water, human health or the environment. In addition, OCD acceptance of a C-141 report does not relieve the operator of responsibility for compliance with any other federal, state, or local laws and/or regulations.

I hereby agree and sign off to the above statement	Name: James Raley Title: EHS Professional Email: jim.raley@dvn.com Date: 03/16/2026
--	--

Sante Fe Main Office
Phone: (505) 476-3441

General Information
Phone: (505) 629-6116

Online Phone Directory
<https://www.emnrd.nm.gov/ocd/contact-us>

**State of New Mexico
Energy, Minerals and Natural Resources
Oil Conservation Division
1220 S. St Francis Dr.
Santa Fe, NM 87505**

QUESTIONS, Page 3

Action 563069

QUESTIONS (continued)

Operator: DEVON ENERGY PRODUCTION COMPANY, LP 333 West Sheridan Ave. Oklahoma City, OK 73102	OGRID: 6137
	Action Number: 563069
	Action Type: [C-141] Initial C-141 (C-141-v-Initial)

QUESTIONS

Site Characterization	
<i>Please answer all the questions in this group (only required when seeking remediation plan approval and beyond). This information must be provided to the appropriate district office no later than 90 days after the release discovery date.</i>	
What is the shallowest depth to groundwater beneath the area affected by the release in feet below ground surface (ft bgs)	Not answered.
What method was used to determine the depth to ground water	Not answered.
Did this release impact groundwater or surface water	Not answered.
What is the minimum distance, between the closest lateral extents of the release and the following surface areas:	
A continuously flowing watercourse or any other significant watercourse	Not answered.
Any lakebed, sinkhole, or playa lake (measured from the ordinary high-water mark)	Not answered.
An occupied permanent residence, school, hospital, institution, or church	Not answered.
A spring or a private domestic fresh water well used by less than five households for domestic or stock watering purposes	Not answered.
Any other fresh water well or spring	Not answered.
Incorporated municipal boundaries or a defined municipal fresh water well field	Not answered.
A wetland	Not answered.
A subsurface mine	Not answered.
An (non-karst) unstable area	Not answered.
Categorize the risk of this well / site being in a karst geology	Not answered.
A 100-year floodplain	Not answered.
Did the release impact areas not on an exploration, development, production, or storage site	Not answered.

Remediation Plan	
<i>Please answer all the questions that apply or are indicated. This information must be provided to the appropriate district office no later than 90 days after the release discovery date.</i>	
Requesting a remediation plan approval with this submission	No
<i>The OCD recognizes that proposed remediation measures may have to be minimally adjusted in accordance with the physical realities encountered during remediation. If the responsible party has any need to significantly deviate from the remediation plan proposed, then it should consult with the division to determine if another remediation plan submission is required.</i>	

Sante Fe Main Office
Phone: (505) 476-3441

General Information
Phone: (505) 629-6116

Online Phone Directory
<https://www.emnrd.nm.gov/ocd/contact-us>

State of New Mexico
Energy, Minerals and Natural Resources
Oil Conservation Division
1220 S. St Francis Dr.
Santa Fe, NM 87505

CONDITIONS

Action 563069

CONDITIONS

Operator: DEVON ENERGY PRODUCTION COMPANY, LP 333 West Sheridan Ave. Oklahoma City, OK 73102	OGRID: 6137
	Action Number: 563069
	Action Type: [C-141] Initial C-141 (C-141-v-Initial)

CONDITIONS

Created By	Condition	Condition Date
rhamlet	None	3/16/2026

Sante Fe Main Office
Phone: (505) 476-3441

General Information
Phone: (505) 629-6116

Online Phone Directory
<https://www.emnrd.nm.gov/ocd/contact-us>

**State of New Mexico
Energy, Minerals and Natural Resources
Oil Conservation Division
1220 S. St Francis Dr.
Santa Fe, NM 87505**

QUESTIONS

Action 576962

QUESTIONS

Operator: DEVON ENERGY PRODUCTION COMPANY, LP 333 West Sheridan Ave. Oklahoma City, OK 73102	OGRID: 6137
	Action Number: 576962
	Action Type: [NOTIFY] Notification Of Liner Inspection (C-141L)

QUESTIONS

Prerequisites	
Incident ID (n#)	nAPP2606127142
Incident Name	NAPP2606127142 FIJI 17 CTB 1 @ FAPP2130240832
Incident Type	Produced Water Release
Incident Status	Initial C-141 Approved
Incident Facility	[fAPP2130240832] FIJI 17 CTB 1

Location of Release Source	
Site Name	FIJI 17 CTB 1
Date Release Discovered	02/27/2026
Surface Owner	Federal

Liner Inspection Event Information	
<i>Please answer all the questions in this group.</i>	
What is the liner inspection surface area in square feet	5,280
Have all the impacted materials been removed from the liner	Yes
Liner inspection date pursuant to Subparagraph (a) of Paragraph (5) of Subsection A of 19.15.29.11 NMAC	04/24/2026
Time liner inspection will commence	10:00 AM
Please provide any information necessary for observers to liner inspection	Carmona Resources- (432-701-5475)
Please provide any information necessary for navigation to liner inspection site	32.30740934,-103.7962152

Sante Fe Main Office
Phone: (505) 476-3441

General Information
Phone: (505) 629-6116

Online Phone Directory
<https://www.emnrd.nm.gov/ocd/contact-us>

State of New Mexico
Energy, Minerals and Natural Resources
Oil Conservation Division
1220 S. St Francis Dr.
Santa Fe, NM 87505

CONDITIONS

Action 576962

CONDITIONS

Operator: DEVON ENERGY PRODUCTION COMPANY, LP 333 West Sheridan Ave. Oklahoma City, OK 73102	OGRID: 6137
	Action Number: 576962
	Action Type: [NOTIFY] Notification Of Liner Inspection (C-141L)

CONDITIONS

Created By	Condition	Condition Date
jraley	Failure to notify the OCD of liner inspections including any changes in date/time per the requirements of 19.15.29.11.A(5)(a)(ii) NMAC, may result in the inspection not being accepted.	4/20/2026



Liner Integrity Certification

The following serves to verify that the affected liner has been inspected and found to be in serviceable condition in accordance with 19.15.29.11 A.(5)(a)(i-ii) of the New Mexico Administrative Code.

Facility ID: fAPP2130240832

Date: 04.24.2026

Incident ID(s): nAPP2606122403 & nAPP2606127142

- Responsible Party has visually inspected the liner.
- Liner remains intact and was able to contain the leak in question.
- At least two business days' notice was given to the appropriate division district office before conducting the liner inspection.
- Photographs illustrating liner integrity are included.

APPENDIX C

CARMONA RESOURCES

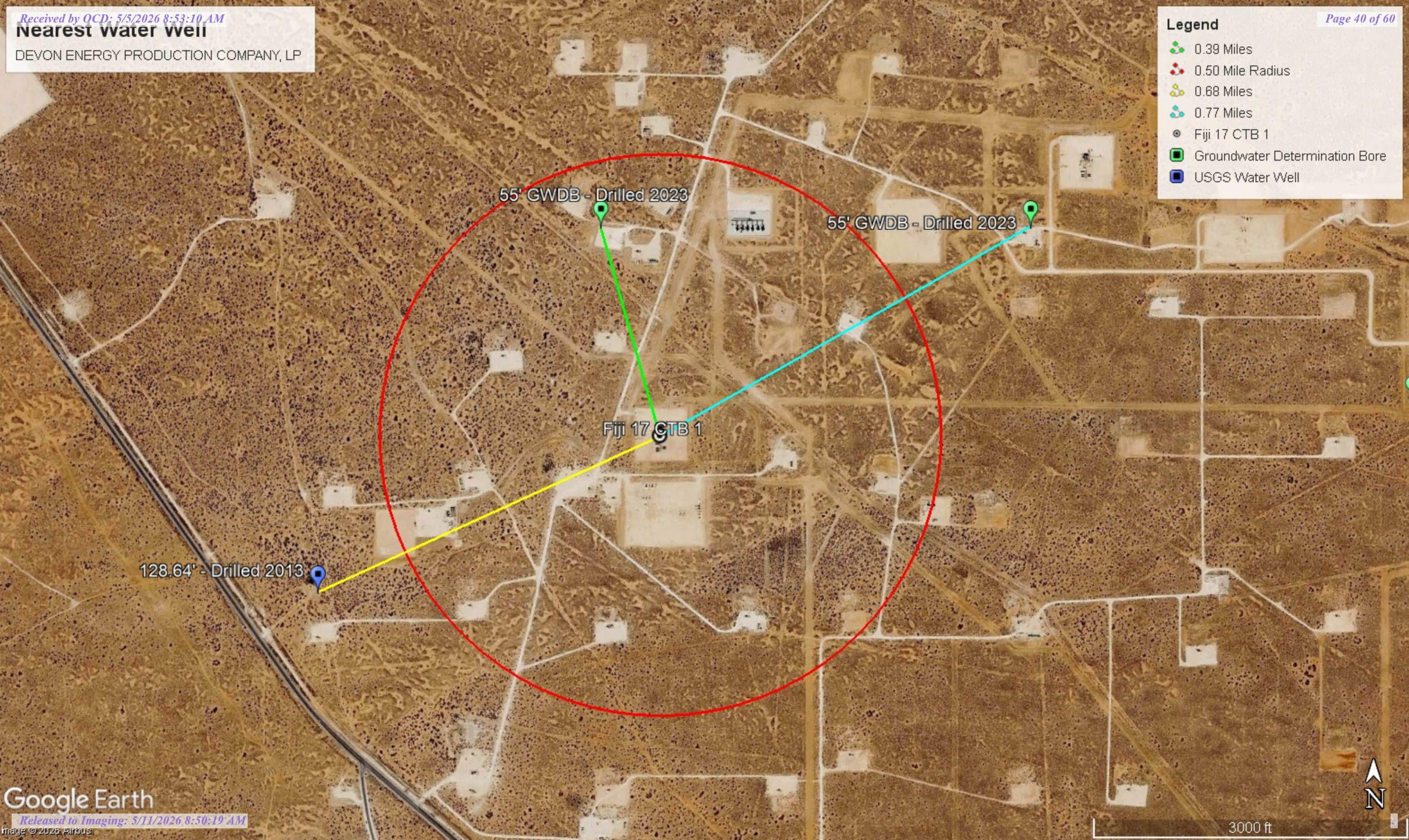


Nearest water well

DEVON ENERGY PRODUCTION COMPANY, LP

Legend

- 0.39 Miles
- 0.50 Mile Radius
- 0.68 Miles
- 0.77 Miles
- Fiji 17 CTB 1
- Groundwater Determination Bore
- USGS Water Well



55' GWDB - Drilled 2023

55' GWDB - Drilled 2023

Fiji 17 CTB 1

128.64' - Drilled 2013





Low Karst

DEVON ENERGY PRODUCTION COMPANY, LP

Legend

 Fiji 17 CTB 1

 Low

 Medium

Fiji 17 CTB 1





New Mexico Office of the State Engineer

Water Column/Average Depth to Water

(A CLW##### in the POD suffix indicates the POD has been replaced & no longer serves a water right file.)

(R=POD has been replaced, O=orphaned, C=the file is closed)

(quarters are smallest to largest)

(meters)

(In feet)

POD Number	Code	Sub basin	County	Q64	Q16	Q4	Sec	Tws	Range	X	Y	Map	Distance	Well Depth	Depth Water	Water Column
C 04712 POD6		CUB	ED	SW	SW	SE	08	23S	31E	613146.6	3575740.1	●	620	55		
C 04776 POD1		CUB	ED	SW	SW	SW	09	23S	31E	613953.1	3575651.8	●	805		105	
C 04712 POD5		CUB	ED	SE	SE	SW	09	23S	31E	614392.9	3575754.4	●	1228	55		
C 04709 POD1		CUB	ED	SW	NW	NW	15	23S	31E	615508.8	3575262.4	●	2185			
C 02954 EXPL		CUB	ED	SW	NW	SE	20	23S	31E	613114.0	3572906.0 *	●	2250	905		
C 04897 POD1		CUB	ED	NW	NE	SW	21	23S	31E	614374.0	3573036.6	●	2355	110		
C 02492 POD2		C	ED	SW	NE	NE	07	23S	31E	611767.4	3576996.6	●	2419	400	125	275
C 02492		CUB	ED	SE	SE	SE	06	23S	31E	612056.0	3577320.0 *	●	2517	135	85	50
C 02865		CUB	ED	SE	SE	SE	06	23S	31E	612056.0	3577320.0 *	●	2517	174		
C 02774		CUB	ED	SW	NW	SW	04	23S	31E	613857.0	3577745.0 *	●	2652	1660		
C 02664		CUB	ED	SW	SW	NE	05	23S	31E	613049.0	3578138.0 *	●	3004	4291	354	3937
C 03520 POD1		C	ED	SW	NW	NW	07	23S	31E	610732.6	3576905.8	●	3134	500		
C 03351		C	ED	SE	NW	SE	04	23S	31E	614916.6	3577861.1	●	3146	320	168	152
C 03140		CUB	ED	SE	NE	SE	04	23S	31E	615266.0	3577758.0 *	●	3253	684		
C 02773		CUB	ED	SE	NW	SW	03	23S	31E	615668.0	3577762.0 *	●	3511	880		
C 04772 POD1		CUB	ED	NW	NW	NW	04	23S	31E	613895.0	3578780.5	●	3678	55		
C 02777		CUB	ED	SE	SE	SE	10	23S	31E	616973.8	3575662.1	●	3684	890		
C 03749 POD1		CUB	ED		NE	NE	15	23S	31E	616973.8	3575662.1	●	3684	865	639	226
C 02776		CUB	ED	NE	NW	NW	05	23S	31E	612440.0	3578731.0 *	●	3692	661		
C 03222 EXPLORE		CUB	ED	NW	NW	SE	12	23S	30E	609833.0	3576349.0 *	●	3694	365		
C 02725		CUB	ED	NW	NW	NW	05	23S	31E	612240.0	3578731.0 *	●	3745	532		
C 02775		CUB	ED	NW	NW	NW	05	23S	31E	612240.0	3578731.0 *	●	3745	529		
C 03139		CUB	ED	SE	NE	SE	01	23S	30E	610424.0	3577764.0 *	●	3908	425		

Average Depth to Water: **246 feet**

Minimum Depth: **85 feet**

Maximum Depth: **639 feet**

Record Count: 23

UTM Filters (in meters):

Easting: 613326.00

Northing: 3575146.00

Radius: 4000

* UTM location was derived from PLSS - see Help

The data is furnished by the NMOSE/ISC and is accepted by the recipient with the expressed understanding that the OSE/ISC make no warranties, expressed or implied, concerning the accuracy, completeness, reliability, usability, or suitability for any particular purpose of



WELL RECORD & LOG

OFFICE OF THE STATE ENGINEER

www.ose.state.nm.us

1. GENERAL AND WELL LOCATION	OSE POD NO. (WELL NO.) <i>Courtesy POD 6</i>		WELL TAG ID NO.		OSE FILE NO(S). <i>C-4712</i>			
	WELL OWNER NAME(S) <i>Harvard Petroleum Company</i>				PHONE (OPTIONAL)			
	WELL OWNER MAILING ADDRESS <i>P.O. Box 936</i>				CITY <i>Roswell</i>	STATE <i>NM</i>	ZIP <i>88202</i>	
	WELL LOCATION (FROM GPS)	DEGREES LATITUDE <i>32</i>	MINUTES <i>18</i>	SECONDS <i>46.0</i>	N	* ACCURACY REQUIRED: ONE TENTH OF A SECOND		
		LONGITUDE <i>-103</i>	<i>47</i>	<i>53.0</i>	W	* DATUM REQUIRED: WGS 84		
DESCRIPTION RELATING WELL LOCATION TO STREET ADDRESS AND COMMON LANDMARKS - PLSS (SECTION, TOWNSHIP, RANGE) WHERE AVAILABLE <i>Sec 08 23 S 31 E 3, 3, 4</i>								
2. DRILLING & CASING INFORMATION	LICENSE NO. <i>1833</i>		NAME OF LICENSED DRILLER <i>Jason Maley</i>			NAME OF WELL DRILLING COMPANY <i>Vision Resources</i>		
	DRILLING STARTED <i>3-9-2023</i>	DRILLING ENDED <i>3-9-2023</i>	DEPTH OF COMPLETED WELL (FT) <i>55</i>	BORE HOLE DEPTH (FT) <i>55</i>	DEPTH WATER FIRST ENCOUNTERED (FT) <i>Dry</i>			
	COMPLETED WELL IS: <input type="checkbox"/> ARTESIAN *add Centralizer info below <input checked="" type="checkbox"/> DRY HOLE <input type="checkbox"/> SHALLOW (UNCONFINED)				STATIC WATER LEVEL IN COMPLETED WELL (FT) <i>Dry</i>	DATE STATIC MEASURED <i>Dry</i>		
	DRILLING FLUID: <input checked="" type="checkbox"/> AIR <input type="checkbox"/> MUD ADDITIVES - SPECIFY:				CHECK HERE IF PITLESS ADAPTER IS INSTALLED <input type="checkbox"/>			
	DRILLING METHOD: <input checked="" type="checkbox"/> ROTARY <input type="checkbox"/> HAMMER <input type="checkbox"/> CABLE TOOL <input type="checkbox"/> OTHER - SPECIFY:							
	DEPTH (feet bgl)		BORE HOLE DIAM (inches)	CASING MATERIAL AND/OR GRADE (include each casing string, and note sections of screen)	CASING CONNECTION TYPE (add coupling diameter)	CASING INSIDE DIAM. (inches)	CASING WALL THICKNESS (inches)	SLOT SIZE (inches)
	FROM	TO						
	<i>0</i>	<i>45</i>	<i>6</i>	<i>2" sch 40</i>	<i>Thread</i>	<i>2"</i>	<i>sch 40</i>	<i>-</i>
	<i>45</i>	<i>55</i>	<i>6</i>	<i>2" sch 40</i>	<i>Thread</i>	<i>2"</i>	<i>sch 40</i>	<i>.02</i>
	OSE DIT APR 4 2023 PM 1:23							
3. ANNULAR MATERIAL	DEPTH (feet bgl)		BORE HOLE DIAM. (inches)	LIST ANNULAR SEAL MATERIAL AND GRAVEL PACK SIZE-RANGE BY INTERVAL <i>*(if using Centralizers for Artesian wells- indicate the spacing below)</i>	AMOUNT (cubic feet)	METHOD OF PLACEMENT		
	FROM	TO						
				<i>None Potted And Plugged</i>				

FOR OSE INTERNAL USE

WR-20 WELL RECORD & LOG (Version 09/22/2022)

FILE NO. <i>C-4712-POD 6</i>	POD NO. <i>6</i>	TRN NO. <i>743189</i>
LOCATION <i>Mon 23.31.08.314</i>	WELL TAG ID NO. _____	PAGE 1 OF 2

4. HYDROGEOLOGIC LOG OF WELL	DEPTH (feet bgl)		THICKNESS (feet)	COLOR AND TYPE OF MATERIAL ENCOUNTERED - INCLUDE WATER-BEARING CAVITIES OR FRACTURE ZONES (attach supplemental sheets to fully describe all units)	WATER BEARING? (YES / NO)		ESTIMATED YIELD FOR WATER-BEARING ZONES (gpm)
	FROM	TO			Y	N	
	0	4	4	Red Sand	Y	N	
	4	15	11	White Calciche	Y	N	
	15	60	45	Red Sand	Y	N	
					Y	N	
					Y	N	
					Y	N	
					Y	N	
					Y	N	
					Y	N	
					Y	N	
					Y	N	
					Y	N	
					Y	N	
					Y	N	
					Y	N	
					Y	N	
					Y	N	
					Y	N	
METHOD USED TO ESTIMATE YIELD OF WATER-BEARING STRATA: <input type="checkbox"/> PUMP <input type="checkbox"/> AIR LIFT <input type="checkbox"/> BAILER <input type="checkbox"/> OTHER - SPECIFY:					TOTAL ESTIMATED WELL YIELD (gpm): 0		

5. TEST; RIG SUPERVISION	WELL TEST	TEST RESULTS - ATTACH A COPY OF DATA COLLECTED DURING WELL TESTING, INCLUDING DISCHARGE METHOD, START TIME, END TIME, AND A TABLE SHOWING DISCHARGE AND DRAWDOWN OVER THE TESTING PERIOD.
	MISCELLANEOUS INFORMATION:	
	PRINT NAME(S) OF DRILL RIG SUPERVISOR(S) THAT PROVIDED ONSITE SUPERVISION OF WELL CONSTRUCTION OTHER THAN LICENSEE: <i>Jason Malley</i>	

6. SIGNATURE	THE UNDERSIGNED HEREBY CERTIFIES THAT, TO THE BEST OF HIS OR HER KNOWLEDGE AND BELIEF, THE FOREGOING IS A TRUE AND CORRECT RECORD OF THE ABOVE DESCRIBED HOLE AND THAT HE OR SHE WILL FILE THIS WELL RECORD WITH THE STATE ENGINEER AND THE PERMIT HOLDER WITHIN 30 DAYS AFTER COMPLETION OF WELL DRILLING:	
	<i>Jason Malley</i> SIGNATURE OF DRILLER / PRINT SIGNEE NAME	3/24/23 DATE

FOR OSE INTERNAL USE		WR-20 WELL RECORD & LOG (Version 09/22/2022)	
FILE NO. <i>C-4712-POD 6</i>	POD NO. <i>6</i>	TRN NO. <i>743189</i>	
LOCATION <i>mon 23.31.08.314</i>	WELL TAG ID NO. _____	PAGE 2 OF 2	

Mike A. Hamman, P.E.
State Engineer



Roswell Office
1900 WEST SECOND STREET
ROSWELL, NM 88201

**STATE OF NEW MEXICO
OFFICE OF THE STATE ENGINEER**

Trn Nbr: 743189
File Nbr: C 04712
Well File Nbr: C 04712 POD6

Apr. 04, 2023

VERTEX RESOURCES
P.O. BOX 936
ROSWELL, NM 88202

Greetings:

The above numbered permit was issued in your name on 02/21/2023.

The Well Record was received in this office on 04/04/2023, stating that it had been completed on 03/09/2023, and was a dry well. The well is to be plugged according to 19.27.4.30 NMAC.

Please note that another well can be drilled under this permit if the well is completed and the well log filed on or before 02/21/2024.

If you have any questions, please feel free to contact us.

Sincerely,

A handwritten signature in cursive script that reads "Maret Thompson".

Maret Thompson
(575) 622-6521

drywell

Monitoring location

23S.31E.17.31141 - USGS-321809103481801

DID YOU KNOW You can see all water data collected at this monitoring location in the *Available data* section of the page.

Learn more about [centralized water data delivery](#) in WDFN.

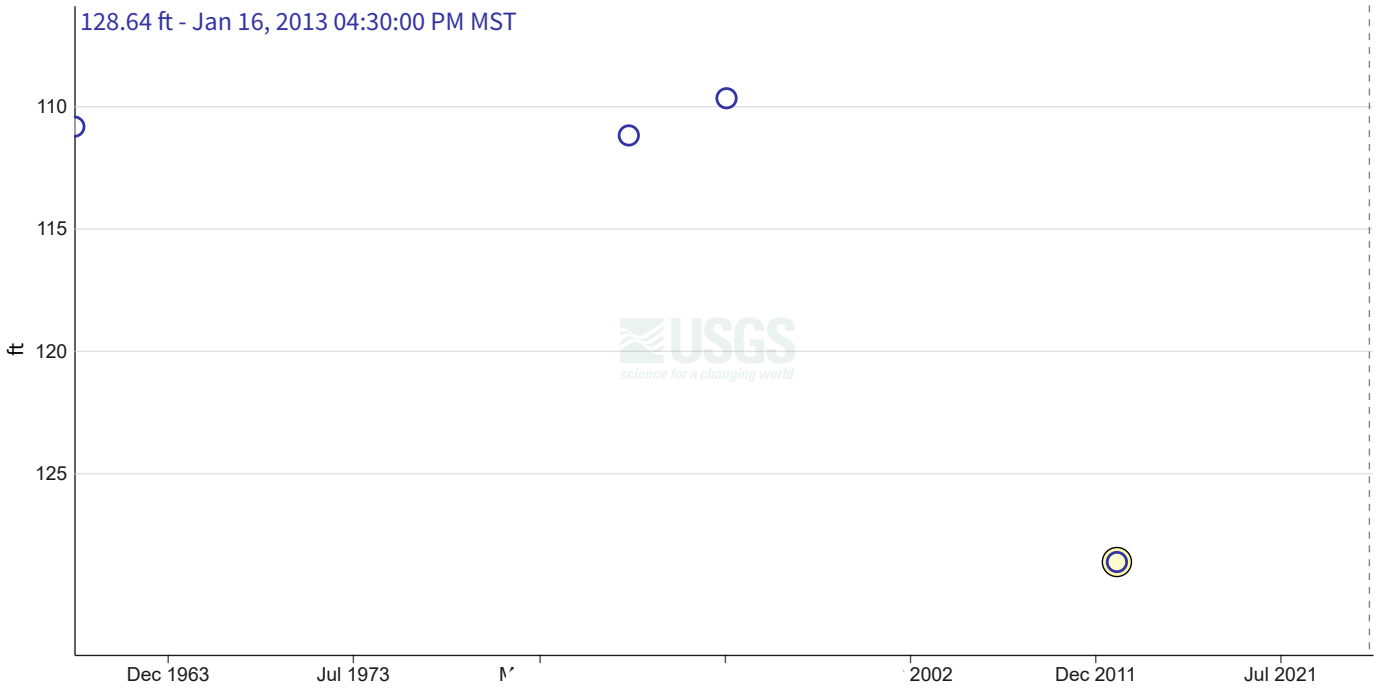
1 year 10 years Period of record

Scale Linear Log

Field measurements

23S.31E.17.31141 - USGS-321809103481801

February 4, 1959 - April 16, 2026
Depth to water level, feet below land surface



Questions or Comments

IMPORTANT Data may be [provisional](#)

[Show legend](#) ▾

[Hide graph details](#) ^

	Value	Status	
<input checked="" type="radio"/> Selected field measurement	128.64	Approved Above, Pumping	Jan 16, 2013 04:30:00 PM MST

[Hide graph details](#) ^

Change time span

Download data

View data records

Available data

Select data types to graph from categories based on the way the data were collected.

Learn about the data collection categories

Expand all data collections

Continuous data

0 data types available

Daily data

0 data types available

Field measurements

3 data types available - data from 1959-02-04 to 2013-01-16

Hide these data types

Field measurements are physically measured values collected during a visit to the monitoring location.

[Learn about Field measurements](#)

	Data type	Data date range
	Graphed Depth to water level, feet below land surface	1959-02-04 2013-01-16
Graph it	Groundwater level above NAVD 1988, feet	1959-02-04 2013-01-16
Graph it	Groundwater level above NGVD 1929, feet	1959-02-04 2013-01-16

Hide these data types

Discrete sample data

1 Observed properties (data types) available - with data from 1972-09-20 to 1972-09-20

1 Sampling activities

Show these data types

Statistical tables for select daily data types

0 data types available

Location details and information

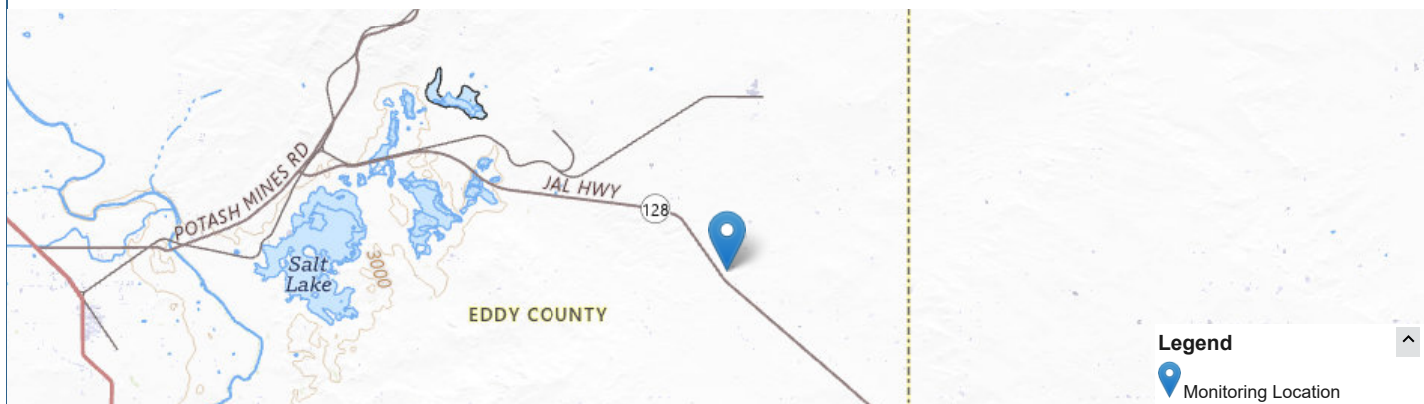
Show location details

Monitoring locations with continuous data in last 120 days

2 locations found

[View these locations in My Favorites](#)

[Use Explore USGS Water Data to discover additional data near this location](#)



Active Monitoring Locations

5 km
3 mi

Leaflet | USGS The National Map: National Boundaries Dataset, 3DEP Elevation Program, Geographic Names Information System, National Hydrography Dataset, N...

Interested in understanding how to access the upstream/downstream data? [Learn about the Network-Linked Data Index \(NLDI\)](#)

DOI Privacy Policy | Legal | Accessibility | Site Map | Contact USGS

Follow - - - - -

U.S. Department of the Interior | DOI Inspector General | White House | No Fear Act | FOIA



WELL RECORD & LOG

OFFICE OF THE STATE ENGINEER

www.ose.state.nm.us

1. GENERAL AND WELL LOCATION	OSE POD NO. (WELL NO.) C-04712 POD 5		WELL TAG ID NO.		OSE FILE NO(S). C-4712		
	WELL OWNER NAME(S) Harvard Petroleum Company				PHONE (OPTIONAL)		
	WELL OWNER MAILING ADDRESS PO Box 936				CITY Roswell	STATE NM	ZIP 88202
	WELL LOCATION (FROM GPS)	DEGREES	MINUTES	SECONDS	* ACCURACY REQUIRED: ONE TENTH OF A SECOND * DATUM REQUIRED: WGS 84		
	LATITUDE	32	18	46.0	N		
	LONGITUDE	103	47	05.3	W		
DESCRIPTION RELATING WELL LOCATION TO STREET ADDRESS AND COMMON LANDMARKS - PLSS (SECTION, TOWNSHIP, RANGE) WHERE AVAILABLE							

2. DRILLING & CASING INFORMATION	LICENSE NO. 1833		NAME OF LICENSED DRILLER Jason Maley			NAME OF WELL DRILLING COMPANY Vision Resources		
	DRILLING STARTED 3-9-23	DRILLING ENDED 3-9-23	DEPTH OF COMPLETED WELL (FT) 55	BORE HOLE DEPTH (FT) 55	DEPTH WATER FIRST ENCOUNTERED (FT) Dry			
	COMPLETED WELL IS: <input type="checkbox"/> ARTESIAN *add Centralizer info below <input checked="" type="checkbox"/> DRY HOLE <input type="checkbox"/> SHALLOW (UNCONFINED)				STATIC WATER LEVEL IN COMPLETED WELL (FT) Dry	DATE STATIC MEASURED Dry		
	DRILLING FLUID: <input checked="" type="checkbox"/> AIR <input type="checkbox"/> MUD				ADDITIVES - SPECIFY:			
	DRILLING METHOD: <input checked="" type="checkbox"/> ROTARY <input type="checkbox"/> HAMMER <input type="checkbox"/> CABLE TOOL <input type="checkbox"/> OTHER - SPECIFY:					CHECK HERE IF PITLESS ADAPTER IS INSTALLED <input type="checkbox"/>		
	DEPTH (feet bgl)		BORE HOLE DIAM (inches)	CASING MATERIAL AND/OR GRADE (include each casing string, and note sections of screen)	CASING CONNECTION TYPE (add coupling diameter)	CASING INSIDE DIAM. (inches)	CASING WALL THICKNESS (inches)	SLOT SIZE (inches)
	FROM	TO						
	0	45	6"	2" POC SH40	Thread	2"	SH40	—
	45	55	6"	2" POC SH40 (Screen)	Thread	2"	SH40	102

3. ANNULAR MATERIAL	DEPTH (feet bgl)		BORE HOLE DIAM. (inches)	LIST ANNULAR SEAL MATERIAL AND GRAVEL PACK SIZE-RANGE BY INTERVAL * (if using Centralizers for Artesian wells- indicate the spacing below)	AMOUNT (cubic feet)	METHOD OF PLACEMENT
	FROM	TO				

FOR OSE INTERNAL USE

WR-20 WELL RECORD & LOG (Version 09/22/2022)

FILE NO. C-4712-POD 5	POD NO. 5	TRN NO. 743189
LOCATION Now 23.31.09.443	WELL TAG ID NO. —	PAGE 1 OF 2

Mike A. Hamman, P.E.
State Engineer



Roswell Office
1900 WEST SECOND STREET
ROSWELL, NM 88201

**STATE OF NEW MEXICO
OFFICE OF THE STATE ENGINEER**

Trn Nbr: 743189
File Nbr: C 04712
Well File Nbr: C 04712 POD5

Apr. 04, 2023

VERTEX RESOURCES
P.O. BOX 936
ROSWELL, NM 88202

Greetings:

The above numbered permit was issued in your name on 02/21/2023.

The Well Record was received in this office on 04/04/2023, stating that it had been completed on 03/09/2023, and was a dry well. The well is to be plugged according to 19.27.4.30 NMAC.

Please note that another well can be drilled under this permit if the well is completed and the well log filed on or before 02/21/2024.

If you have any questions, please feel free to contact us.

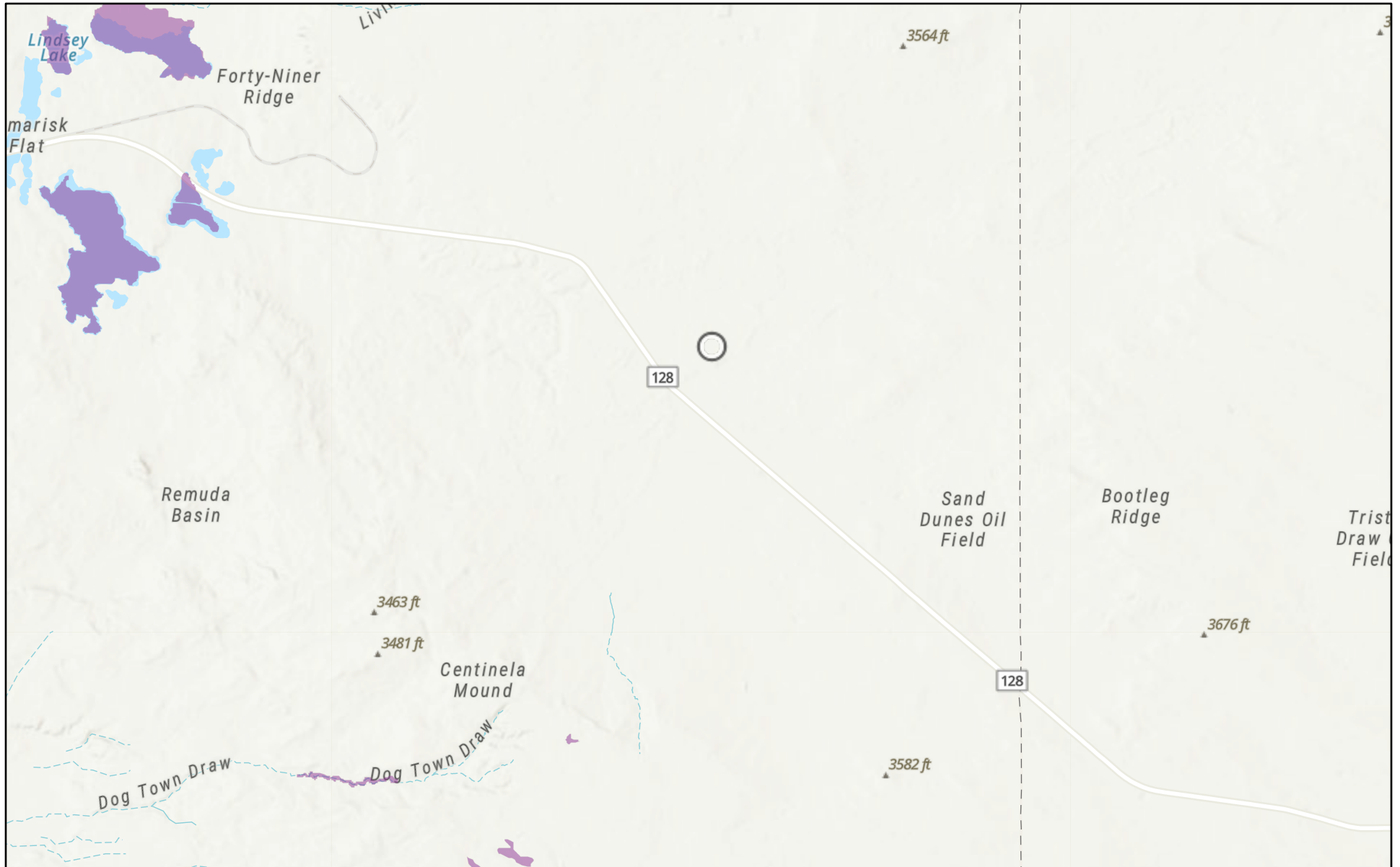
Sincerely,

A handwritten signature in cursive script, appearing to read "Maret Thompson".

Maret Thompson
(575) 622-6521

drywell

Fiji 17 CTB 1

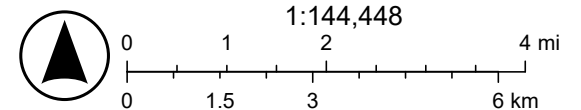


4/16/2026

USA Flood Hazard Areas

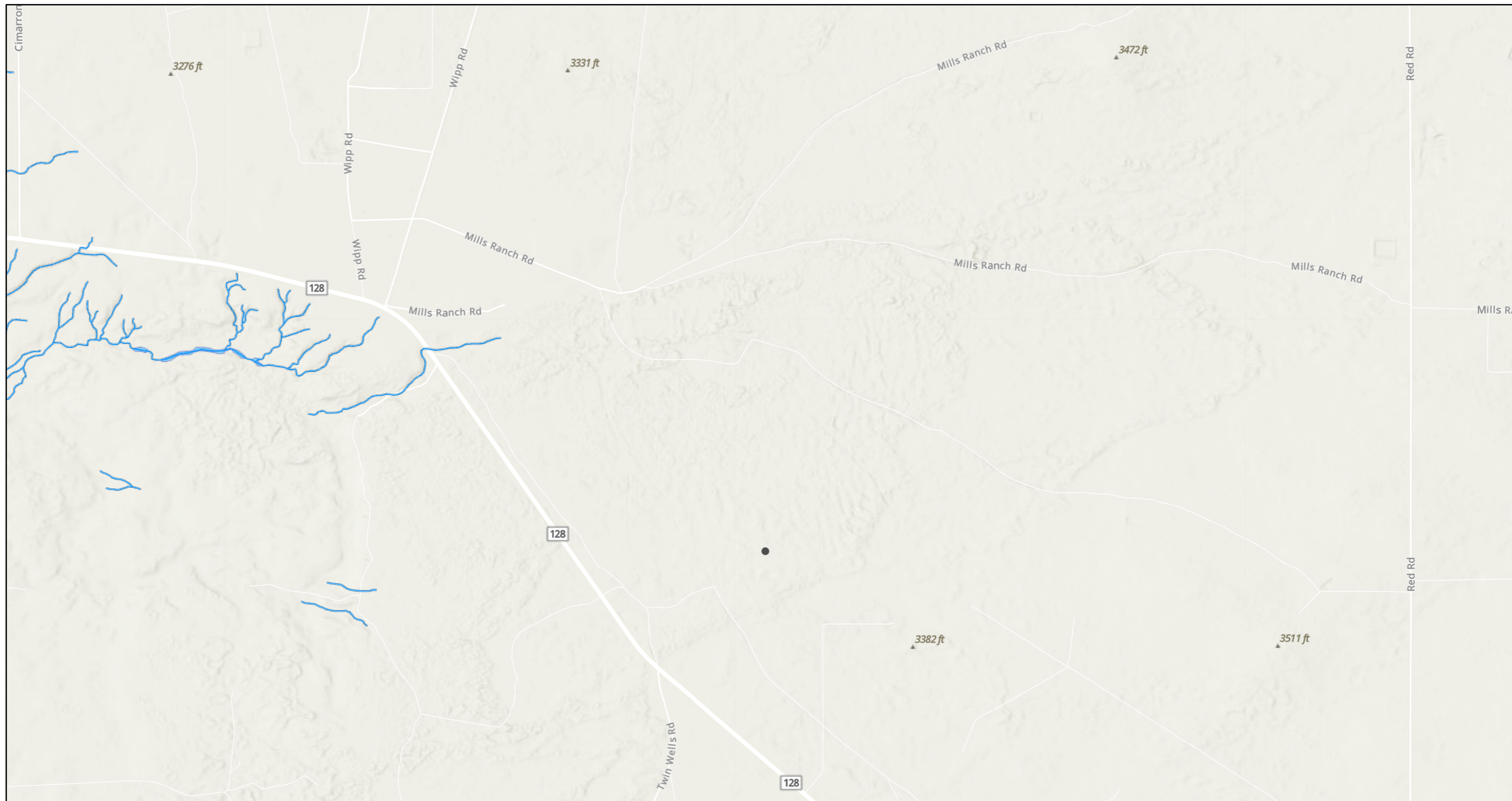
 1% Annual Chance Flood Hazard

World_Hillshade



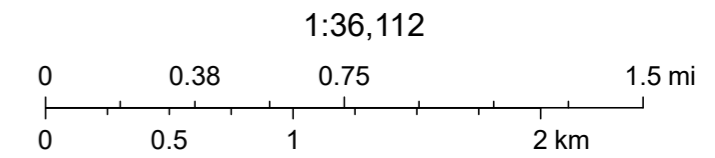
Source: FEMA, Esri, Sources: Esri, TomTom, Garmin, FAO, NOAA, USGS, (c) OpenStreetMap contributors, and the GIS User Community, Esri, NASA,

Fiji 17 CTB 1



4/16/2026, 3:36:28 PM

- OSW Water Bodys
- OSE Streams



NM OSE, Sources: Esri, TomTom, Garmin, FAO, NOAA, USGS, © OpenStreetMap contributors, and the GIS User Community, Esri, NASA, NGA, USGS, FEMA



U.S. Fish and Wildlife Service
National Wetlands Inventory



Fiji 17 CTB 1









U.S. Fish and Wildlife Service, National Standards and Support Team, wetlands_team@fws.gov

April 16, 2026

Wetlands

-  Estuarine and Marine Deepwater
-  Estuarine and Marine Wetland

-  Freshwater Emergent Wetland
-  Freshwater Forested/Shrub Wetland
-  Freshwater Pond

-  Lake
-  Other
-  Riverine

This map is for general reference only. The US Fish and Wildlife Service is not responsible for the accuracy or currentness of the base data shown on this map. All wetlands related data should be used in accordance with the layer metadata found on the Wetlands Mapper web site.

Sante Fe Main Office
Phone: (505) 476-3441

General Information
Phone: (505) 629-6116

Online Phone Directory
<https://www.emnrd.nm.gov/ocd/contact-us>

State of New Mexico
Energy, Minerals and Natural Resources
Oil Conservation Division
1220 S. St Francis Dr.
Santa Fe, NM 87505

QUESTIONS

Action 581822

QUESTIONS

Operator: DEVON ENERGY PRODUCTION COMPANY, LP 333 West Sheridan Ave. Oklahoma City, OK 73102	OGRID: 6137
	Action Number: 581822
	Action Type: [C-141] Remediation Closure Request C-141 (C-141-v-Closure)

QUESTIONS

Prerequisites	
Incident ID (n#)	nAPP2606122403
Incident Name	NAPP2606122403 FIJI 17 CTB 1 @ FAPP2130240832
Incident Type	Produced Water Release
Incident Status	Remediation Closure Report Received
Incident Facility	[fAPP2130240832] FIJI 17 CTB 1

Location of Release Source	
<i>Please answer all the questions in this group.</i>	
Site Name	FIJI 17 CTB 1
Date Release Discovered	02/28/2026
Surface Owner	Federal

Incident Details	
<i>Please answer all the questions in this group.</i>	
Incident Type	Produced Water Release
Did this release result in a fire or is the result of a fire	No
Did this release result in any injuries	No
Has this release reached or does it have a reasonable probability of reaching a watercourse	No
Has this release endangered or does it have a reasonable probability of endangering public health	No
Has this release substantially damaged or will it substantially damage property or the environment	No
Is this release of a volume that is or may with reasonable probability be detrimental to fresh water	No

Nature and Volume of Release	
<i>Material(s) released, please answer all that apply below. Any calculations or specific justifications for the volumes provided should be attached to the follow-up C-141 submission.</i>	
Crude Oil Released (bbls) Details	Not answered.
Produced Water Released (bbls) Details	Cause: Equipment Failure Dump Line Produced Water Released: 742 BBL Recovered: 742 BBL Lost: 0 BBL.
Is the concentration of chloride in the produced water >10,000 mg/l	Yes
Condensate Released (bbls) Details	Not answered.
Natural Gas Vented (Mcf) Details	Not answered.
Natural Gas Flared (Mcf) Details	Not answered.
Other Released Details	Not answered.
Are there additional details for the questions above (i.e. any answer containing Other, Specify, Unknown, and/or Fire, or any negative lost amounts)	Water line developed leak allowing fluids to be released to lined secondary containment. Notification made via email 3/1

Sante Fe Main Office
Phone: (505) 476-3441

General Information
Phone: (505) 629-6116

Online Phone Directory
<https://www.emnrd.nm.gov/ocd/contact-us>

State of New Mexico
Energy, Minerals and Natural Resources
Oil Conservation Division
1220 S. St Francis Dr.
Santa Fe, NM 87505

QUESTIONS, Page 2

Action 581822

QUESTIONS (continued)

Operator: DEVON ENERGY PRODUCTION COMPANY, LP 333 West Sheridan Ave. Oklahoma City, OK 73102	OGRID: 6137
	Action Number: 581822
	Action Type: [C-141] Remediation Closure Request C-141 (C-141-v-Closure)

QUESTIONS

Nature and Volume of Release (continued)	
Is this a gas only submission (i.e. only significant Mcf values reported)	No, according to supplied volumes this does not appear to be a "gas only" report.
Was this a major release as defined by Subsection A of 19.15.29.7 NMAC	Yes
Reasons why this would be considered a submission for a notification of a major release	From paragraph A. "Major release" determine using: (1) an unauthorized release of a volume, excluding gases, of 25 barrels or more.
<i>With the implementation of the 19.15.27 NMAC (05/25/2021), venting and/or flaring of natural gas (i.e. gas only) are to be submitted on the C-129 form.</i>	

Initial Response

The responsible party must undertake the following actions immediately unless they could create a safety hazard that would result in injury.

The source of the release has been stopped	True
The impacted area has been secured to protect human health and the environment	True
Released materials have been contained via the use of berms or dikes, absorbent pads, or other containment devices	True
All free liquids and recoverable materials have been removed and managed appropriately	True
If all the actions described above have not been undertaken, explain why	Not answered.

Per Paragraph (4) of Subsection B of 19.15.29.8 NMAC the responsible party may commence remediation immediately after discovery of a release. If remediation has begun, please prepare and attach a narrative of actions to date in the follow-up C-141 submission. If remedial efforts have been successfully completed or if the release occurred within a lined containment area (see Subparagraph (a) of Paragraph (5) of Subsection A of 19.15.29.11 NMAC), please prepare and attach all information needed for closure evaluation in the follow-up C-141 submission.

I hereby certify that the information given above is true and complete to the best of my knowledge and understand that pursuant to OCD rules and regulations all operators are required to report and/or file certain release notifications and perform corrective actions for releases which may endanger public health or the environment. The acceptance of a C-141 report by the OCD does not relieve the operator of liability should their operations have failed to adequately investigate and remediate contamination that pose a threat to groundwater, surface water, human health or the environment. In addition, OCD acceptance of a C-141 report does not relieve the operator of responsibility for compliance with any other federal, state, or local laws and/or regulations.

I hereby agree and sign off to the above statement	Name: James Raley Title: EHS Professional Email: jim.raley@dvn.com Date: 05/05/2026
--	--

Sante Fe Main Office
Phone: (505) 476-3441

General Information
Phone: (505) 629-6116

Online Phone Directory
<https://www.emnrd.nm.gov/ocd/contact-us>

State of New Mexico
Energy, Minerals and Natural Resources
Oil Conservation Division
1220 S. St Francis Dr.
Santa Fe, NM 87505

QUESTIONS, Page 3

Action 581822

QUESTIONS (continued)

Operator: DEVON ENERGY PRODUCTION COMPANY, LP 333 West Sheridan Ave. Oklahoma City, OK 73102	OGRID: 6137
	Action Number: 581822
	Action Type: [C-141] Remediation Closure Request C-141 (C-141-v-Closure)

QUESTIONS**Site Characterization**

Please answer all the questions in this group (only required when seeking remediation plan approval and beyond). This information must be provided to the appropriate district office no later than 90 days after the release discovery date.

What is the shallowest depth to groundwater beneath the area affected by the release in feet below ground surface (ft bgs)	Between 51 and 75 (ft.)
What method was used to determine the depth to ground water	NM OSE iWaters Database Search
Did this release impact groundwater or surface water	No
What is the minimum distance, between the closest lateral extents of the release and the following surface areas:	
A continuously flowing watercourse or any other significant watercourse	Between 1 and 5 (mi.)
Any lakebed, sinkhole, or playa lake (measured from the ordinary high-water mark)	Greater than 5 (mi.)
An occupied permanent residence, school, hospital, institution, or church	Between 1 and 5 (mi.)
A spring or a private domestic fresh water well used by less than five households for domestic or stock watering purposes	Between 1 and 5 (mi.)
Any other fresh water well or spring	Between 1 and 5 (mi.)
Incorporated municipal boundaries or a defined municipal fresh water well field	Greater than 5 (mi.)
A wetland	Between 1 and 5 (mi.)
A subsurface mine	Greater than 5 (mi.)
An (non-karst) unstable area	Between 1 and 5 (mi.)
Categorize the risk of this well / site being in a karst geology	Low
A 100-year floodplain	Greater than 5 (mi.)
Did the release impact areas not on an exploration, development, production, or storage site	No

Remediation Plan

Please answer all the questions that apply or are indicated. This information must be provided to the appropriate district office no later than 90 days after the release discovery date.

Requesting a remediation plan approval with this submission	Yes
<i>Attach a comprehensive report demonstrating the lateral and vertical extents of soil contamination associated with the release have been determined, pursuant to 19.15.29.11 NMAC and 19.15.29.13 NMAC.</i>	
Have the lateral and vertical extents of contamination been fully delineated	Yes
Was this release entirely contained within a lined containment area	Yes
<i>Per Subsection B of 19.15.29.11 NMAC unless the site characterization report includes completed efforts at remediation, the report must include a proposed remediation plan in accordance with 19.15.29.12 NMAC, which includes the anticipated timelines for beginning and completing the remediation.</i>	
On what estimated date will the remediation commence	04/24/2026
On what date will (or did) the final sampling or liner inspection occur	04/24/2026
On what date will (or was) the remediation complete(d)	04/24/2026
What is the estimated surface area (in square feet) that will be remediated	5280
What is the estimated volume (in cubic yards) that will be remediated	0

These estimated dates and measurements are recognized to be the best guess or calculation at the time of submission and may (be) change(d) over time as more remediation efforts are completed.

The OCD recognizes that proposed remediation measures may have to be minimally adjusted in accordance with the physical realities encountered during remediation. If the responsible party has any need to significantly deviate from the remediation plan proposed, then it should consult with the division to determine if another remediation plan submission is required.

Sante Fe Main Office
Phone: (505) 476-3441

General Information
Phone: (505) 629-6116

Online Phone Directory
<https://www.emnrd.nm.gov/ocd/contact-us>

State of New Mexico
Energy, Minerals and Natural Resources
Oil Conservation Division
1220 S. St Francis Dr.
Santa Fe, NM 87505

QUESTIONS, Page 4

Action 581822

QUESTIONS (continued)

Operator: DEVON ENERGY PRODUCTION COMPANY, LP 333 West Sheridan Ave. Oklahoma City, OK 73102	OGRID: 6137
	Action Number: 581822
	Action Type: [C-141] Remediation Closure Request C-141 (C-141-v-Closure)

QUESTIONS

Remediation Plan (continued)	
<i>Please answer all the questions that apply or are indicated. This information must be provided to the appropriate district office no later than 90 days after the release discovery date.</i>	
This remediation will (or is expected to) utilize the following processes to remediate / reduce contaminants:	
<i>(Select all answers below that apply.)</i>	
Is (or was) there affected material present needing to be removed	No
Is (or was) there a power wash of the lined containment area (to be) performed	Yes
OTHER (Non-listed remedial process)	Not answered.
<i>Per Subsection B of 19.15.29.11 NMAC unless the site characterization report includes completed efforts at remediation, the report must include a proposed remediation plan in accordance with 19.15.29.12 NMAC, which includes the anticipated timelines for beginning and completing the remediation.</i>	
I hereby certify that the information given above is true and complete to the best of my knowledge and understand that pursuant to OCD rules and regulations all operators are required to report and/or file certain release notifications and perform corrective actions for releases which may endanger public health or the environment. The acceptance of a C-141 report by the OCD does not relieve the operator of liability should their operations have failed to adequately investigate and remediate contamination that pose a threat to groundwater, surface water, human health or the environment. In addition, OCD acceptance of a C-141 report does not relieve the operator of responsibility for compliance with any other federal, state, or local laws and/or regulations.	
I hereby agree and sign off to the above statement	Name: James Raley Title: EHS Professional Email: jim.raley@dvsn.com Date: 05/05/2026
<i>The OCD recognizes that proposed remediation measures may have to be minimally adjusted in accordance with the physical realities encountered during remediation. If the responsible party has any need to significantly deviate from the remediation plan proposed, then it should consult with the division to determine if another remediation plan submission is required.</i>	

Sante Fe Main Office
Phone: (505) 476-3441

General Information
Phone: (505) 629-6116

Online Phone Directory
<https://www.emnrd.nm.gov/ocd/contact-us>

State of New Mexico
Energy, Minerals and Natural Resources
Oil Conservation Division
1220 S. St Francis Dr.
Santa Fe, NM 87505

QUESTIONS, Page 6

Action 581822

QUESTIONS (continued)

Operator: DEVON ENERGY PRODUCTION COMPANY, LP 333 West Sheridan Ave. Oklahoma City, OK 73102	OGRID: 6137
	Action Number: 581822
	Action Type: [C-141] Remediation Closure Request C-141 (C-141-v-Closure)

QUESTIONS

Liner Inspection Information	
Last liner inspection notification (C-141L) recorded	576967
Liner inspection date pursuant to Subparagraph (a) of Paragraph (5) of Subsection A of 19.15.29.11 NMAC	04/24/2026
Was all the impacted materials removed from the liner	Yes
What was the liner inspection surface area in square feet	5280

Remediation Closure Request	
<i>Only answer the questions in this group if seeking remediation closure for this release because all remediation steps have been completed.</i>	
Requesting a remediation closure approval with this submission	Yes
Have the lateral and vertical extents of contamination been fully delineated	Yes
Was this release entirely contained within a lined containment area	Yes
What was the total surface area (in square feet) remediated	5280
What was the total volume (cubic yards) remediated	0
Summarize any additional remediation activities not included by answers (above)	Liner Inspected

The responsible party must attach information demonstrating they have complied with all applicable closure requirements and any conditions or directives of the OCD. This demonstration should be in the form of a comprehensive report (in .pdf format) including a scaled site map, sampling diagrams, relevant field notes, photographs of any excavation prior to backfilling, laboratory data including chain of custody documents of final sampling, and a narrative of the remedial activities. Refer to 19.15.29.12 NMAC.

I hereby certify that the information given above is true and complete to the best of my knowledge and understand that pursuant to OCD rules and regulations all operators are required to report and/or file certain release notifications and perform corrective actions for releases which may endanger public health or the environment. The acceptance of a C-141 report by the OCD does not relieve the operator of liability should their operations have failed to adequately investigate and remediate contamination that pose a threat to groundwater, surface water, human health or the environment. In addition, OCD acceptance of a C-141 report does not relieve the operator of responsibility for compliance with any other federal, state, or local laws and/or regulations. The responsible party acknowledges they must substantially restore, reclaim, and re-vegetate the impacted surface area to the conditions that existed prior to the release or their final land use in accordance with 19.15.29.13 NMAC including notification to the OCD when reclamation and re-vegetation are complete.

I hereby agree and sign off to the above statement	Name: James Raley Title: EHS Professional Email: jim.ralej@dmv.com Date: 05/05/2026
--	--

Sante Fe Main Office
Phone: (505) 476-3441

General Information
Phone: (505) 629-6116

Online Phone Directory
<https://www.emnrd.nm.gov/ocd/contact-us>

State of New Mexico
Energy, Minerals and Natural Resources
Oil Conservation Division
1220 S. St Francis Dr.
Santa Fe, NM 87505

CONDITIONS

Action 581822

CONDITIONS

Operator: DEVON ENERGY PRODUCTION COMPANY, LP 333 West Sheridan Ave. Oklahoma City, OK 73102	OGRID: 6137
	Action Number: 581822
	Action Type: [C-141] Remediation Closure Request C-141 (C-141-v-Closure)

CONDITIONS

Created By	Condition	Condition Date
michael.buchanan	Liner inspection and closure for incident approved.	5/11/2026