



May 11, 2026

New Mexico Oil Conservation Division

New Mexico Energy, Minerals, and Natural Resources Department
1220 South St. Francis Drive
Santa Fe, New Mexico 87505

**Re: Closure Request
Macho Nacho State 5H
Incident Number NAPP2608948174
Lea County, New Mexico**

To Whom It May Concern:

COG Production, LLC, (COG), has prepared this *Closure Request* to document the findings of a liner integrity inspection conducted at the Macho Nacho State 5H (Site) following the release of produced water within a lined containment. Based on the liner integrity inspection activities, COG is submitting this Closure Request, describing assessment activities that have occurred and requesting no further action and closure for Incident Number NAPP2608948174.

SITE DESCRIPTION AND RELEASE SUMMARY

The site is located in Unit P, Section 07, Township 24 South, Range 33 East, in Lea County, New Mexico (32.22541944, -103.60426111) and is associated with oil and gas exploration and production operations on surface lands managed by the New Mexico State Land Office (SLO).

On March 29, 2026, field personnel discovered a leak on a water transfer pump causing twenty-four point six eight two seven (24.6827) barrels of produced water to be released into a lined containment. A vacuum truck was dispatched to the site to recover free-standing fluids and approximately twenty (20) barrels of fluid were recovered. The water pump was isolated to prevent fluid being further released. COG reported the release to the New Mexico Oil Conservation Division (NMOCD) on a *Release Notification Form C-141* (Form C-141) on March 30, 2026. The release was assigned Incident Number NAPP2608948174.

SITE CHARACTERIZATION AND CLOSURE CRITERIA

The site is located within a low karst area. Based on a review of the New Mexico Office of State Engineers databases, there is no known water source within a 0.50-mile radius of the location. The closest well is located approximately 0.81 miles Northeast of the Site in Unit Letter O, S08, T24S, R33E and was drilled in 2012. The well has a reported depth of 1533' feet below ground surface and no groundwater was encountered. Per the NMOCD regulatory criteria established in 19.15.29.12 NMAC, the following criteria were utilized in assessing the site.

- Benzene: 10 milligrams per kilogram (mg/kg).
- Benzene, toluene, ethylbenzene, and total xylenes (BTEX): 50 mg/kg.
- TPH: 100 mg/kg (GRO + DRO + MRO).
- Chloride: 600 mg/kg.

LINER INTEGRITY INSPECTION ACTIVITIES

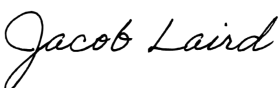
A 48-hour advance notice of the liner inspection was submitted to the NMOCD on April 29, 2026. Prior to conducting the liner integrity inspection, COG operations power washed the liner to remove dirt and debris and recover any residual produced water. A liner integrity inspection was conducted by Jacob Laird on May 6, 2026. Upon inspection, no rips, tears, holes, or damage was observed. The liner was determined to be sufficient, and all released fluids have been removed. Refer to photolog for details.

CLOSURE REQUEST

Based on the liner inspection throughout the facility, the liner was determined to be sufficient. The release was contained laterally by the lined containment and the liner was performing as designed. No further actions are required at the site. COG, LLC respectfully requests that the New Mexico Oil Conservation Division grant closure approval for Incident Number NAPP2608948174.

Should you have any questions or concerns please do not hesitate to contact me.

Sincerely,



Jacob Laird
Environmental Engineer
jacob.laird@conocophillips.com

Appendices:

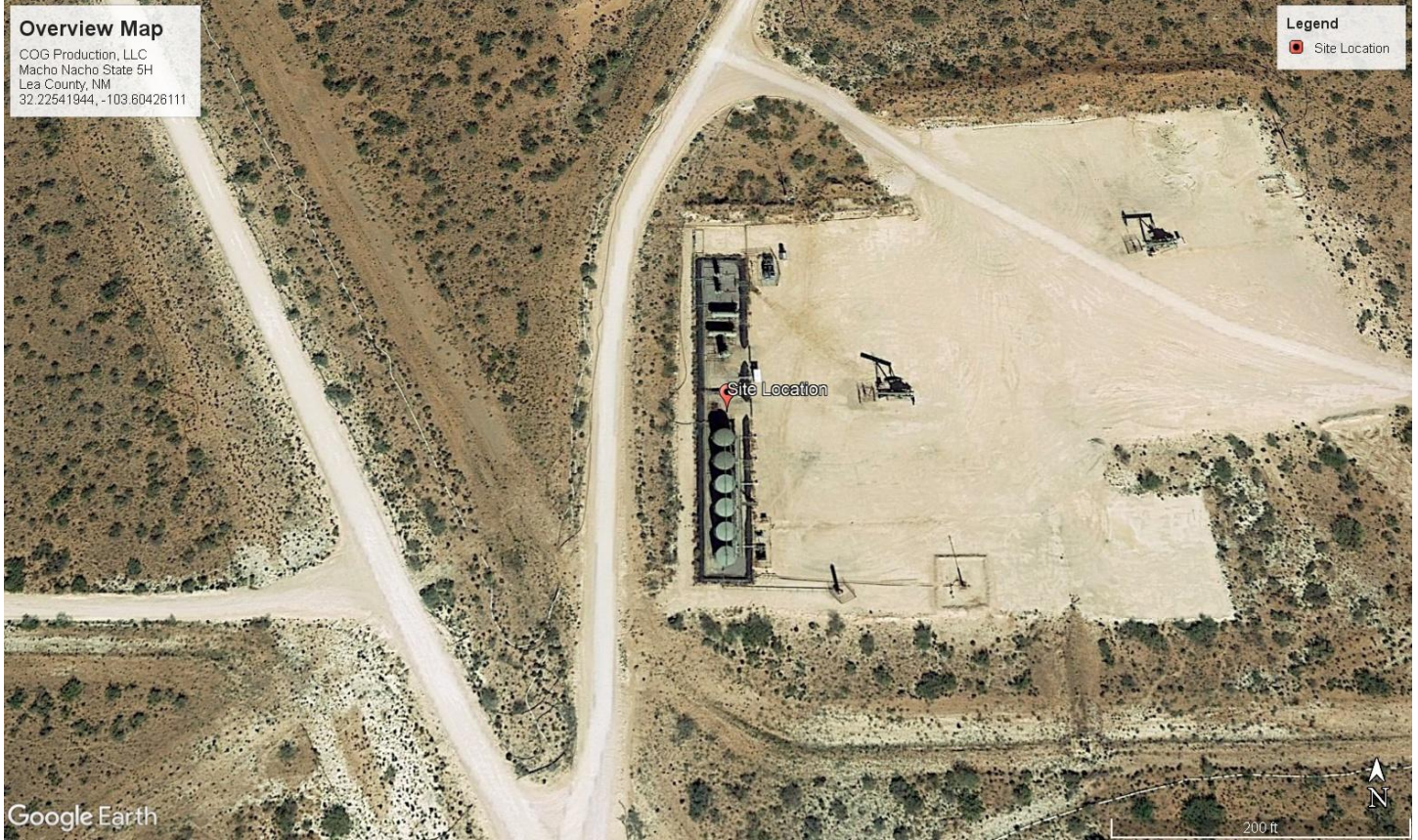
Figures- Site Map Overview, Topography Map, Secondary Containment Map

Appendix A: NMOCD Correspondence

Appendix B: Photolog

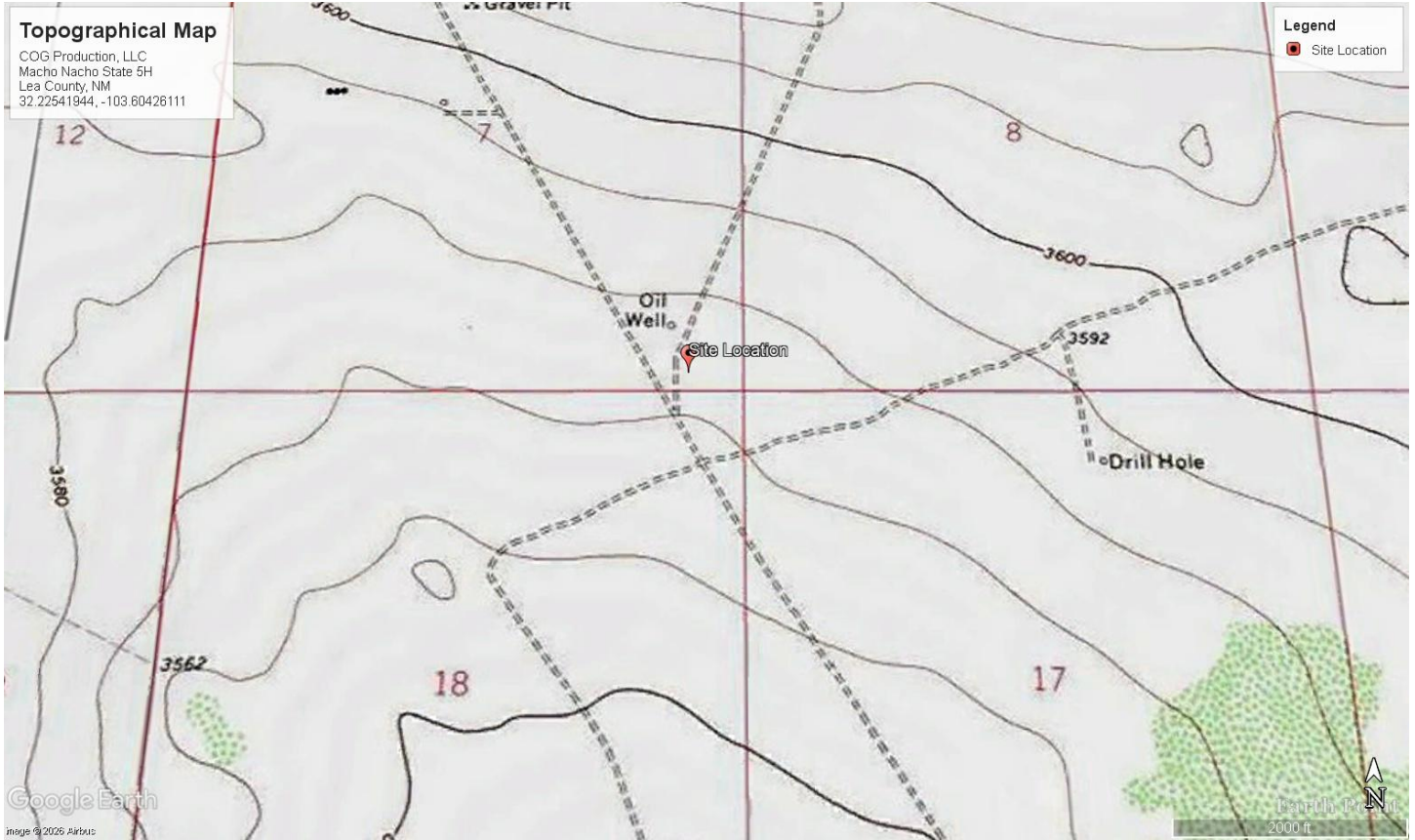
Appendix C: Site Characterization and Ground Water

Figures: Site Maps



Overview Map

COG Production, LLC
Macho Nacho State 5H
Lea County, New Mexico
32.22541944, -103.60426111



Topographical Map

COG Production, LLC
Macho Nacho State 5H
Lea County, New Mexico
32.22541944, -103.60426111



Secondary Containment Map

COG Production, LLC
Macho Nacho State 5H
Lea County, New Mexico
32.22541944, -103.60426111

Appendix A: NMOCD Correspondence

Spill Calculation - On-Pad Surface Pool Spill

*Received by OCD: 5/11/2026 12:51:36 PM**Page 9 of 38*

Convert Irregular shape into a series of rectangles	Length (ft.)	Width (ft.)	Average Depth (in.)	Estimated <u>Pool</u> Area (sq. ft.)	Estimated volume of each pool area (bbl.)	Total Estimated Volume of Spill (bbl.)
Rectangle A	80	80	0.7	6400.00	24.68	24.68
Rectangle B				0.00	0.00	0.00
Rectangle C				0.00	0.00	0.00
Rectangle D				0.00	0.00	0.00
Rectangle E				0.00	0.00	0.00
Rectangle F				0.00	0.00	0.00
Rectangle G				0.00	0.00	0.00
Rectangle H				0.00	0.00	0.00
Rectangle I				0.00	0.00	0.00
Rectangle J				0.00	0.00	0.00

Released to Imaging: 5/15/2026 9:07:26 AM

Total Volume Released to Lined Secondary Containment:

24.6827

Sante Fe Main Office
Phone: (505) 476-3441

General Information
Phone: (505) 629-6116

Online Phone Directory
<https://www.emnrd.nm.gov/ocd/contact-us>

State of New Mexico
Energy, Minerals and Natural Resources
Oil Conservation Division
1220 S. St Francis Dr.
Santa Fe, NM 87505

QUESTIONS

Action 568952

QUESTIONS

Operator: COG PRODUCTION, LLC 600 W. Illinois Ave Midland, TX 79701	OGRID: 217955
	Action Number: 568952
	Action Type: [C-141] Initial C-141 (C-141-v-Initial)

QUESTIONS

Prerequisites	
Incident ID (n#)	nAPP2608948174
Incident Name	NAPP2608948174 MACHO NACHO STATE 5H BATTERY @ P-07-24S-33E
Incident Type	Produced Water Release
Incident Status	Initial C-141 Received

Location of Release Source	
<i>Please answer all the questions in this group.</i>	
Site Name	Macho Nacho State 5H Battery
Date Release Discovered	03/29/2026
Surface Owner	State

Incident Details	
<i>Please answer all the questions in this group.</i>	
Incident Type	Produced Water Release
Did this release result in a fire or is the result of a fire	No
Did this release result in any injuries	No
Has this release reached or does it have a reasonable probability of reaching a watercourse	No
Has this release endangered or does it have a reasonable probability of endangering public health	No
Has this release substantially damaged or will it substantially damage property or the environment	No
Is this release of a volume that is or may with reasonable probability be detrimental to fresh water	No

Nature and Volume of Release	
<i>Material(s) released, please answer all that apply below. Any calculations or specific justifications for the volumes provided should be attached to the follow-up C-141 submission.</i>	
Crude Oil Released (bbls) Details	Not answered.
Produced Water Released (bbls) Details	Cause: Normal Operations Pump Produced Water Released: 25 BBL Recovered: 20 BBL Lost: 5 BBL.
Is the concentration of chloride in the produced water >10,000 mg/l	Yes
Condensate Released (bbls) Details	Not answered.
Natural Gas Vented (Mcf) Details	Not answered.
Natural Gas Flared (Mcf) Details	Not answered.
Other Released Details	Not answered.
Are there additional details for the questions above (i.e. any answer containing Other, Specify, Unknown, and/or Fire, or any negative lost amounts)	Not answered.

Sante Fe Main Office
Phone: (505) 476-3441

General Information
Phone: (505) 629-6116

Online Phone Directory
<https://www.emnrd.nm.gov/ocd/contact-us>

State of New Mexico
Energy, Minerals and Natural Resources
Oil Conservation Division
1220 S. St Francis Dr.
Santa Fe, NM 87505

QUESTIONS, Page 2

Action 568952

QUESTIONS (continued)

Operator: COG PRODUCTION, LLC 600 W. Illinois Ave Midland, TX 79701	OGRID: 217955
	Action Number: 568952
	Action Type: [C-141] Initial C-141 (C-141-v-Initial)

QUESTIONS

Nature and Volume of Release (continued)	
Is this a gas only submission (i.e. only significant Mcf values reported)	No, according to supplied volumes this does not appear to be a "gas only" report.
Was this a major release as defined by Subsection A of 19.15.29.7 NMAC	Yes
Reasons why this would be considered a submission for a notification of a major release	From paragraph A. "Major release" determine using: (1) an unauthorized release of a volume, excluding gases, of 25 barrels or more.
<i>With the implementation of the 19.15.27 NMAC (05/25/2021), venting and/or flaring of natural gas (i.e. gas only) are to be submitted on the C-129 form.</i>	

Initial Response

The responsible party must undertake the following actions immediately unless they could create a safety hazard that would result in injury.

The source of the release has been stopped	True
The impacted area has been secured to protect human health and the environment	True
Released materials have been contained via the use of berms or dikes, absorbent pads, or other containment devices	True
All free liquids and recoverable materials have been removed and managed appropriately	True
If all the actions described above have not been undertaken, explain why	Not answered.

Per Paragraph (4) of Subsection B of 19.15.29.8 NMAC the responsible party may commence remediation immediately after discovery of a release. If remediation has begun, please prepare and attach a narrative of actions to date in the follow-up C-141 submission. If remedial efforts have been successfully completed or if the release occurred within a lined containment area (see Subparagraph (a) of Paragraph (5) of Subsection A of 19.15.29.11 NMAC), please prepare and attach all information needed for closure evaluation in the follow-up C-141 submission.

I hereby certify that the information given above is true and complete to the best of my knowledge and understand that pursuant to OCD rules and regulations all operators are required to report and/or file certain release notifications and perform corrective actions for releases which may endanger public health or the environment. The acceptance of a C-141 report by the OCD does not relieve the operator of liability should their operations have failed to adequately investigate and remediate contamination that pose a threat to groundwater, surface water, human health or the environment. In addition, OCD acceptance of a C-141 report does not relieve the operator of responsibility for compliance with any other federal, state, or local laws and/or regulations.

I hereby agree and sign off to the above statement	Name: Jacob Laird Title: Environmental Engineer Email: jacob.laird@conocophillips.com Date: 03/30/2026
--	---

Sante Fe Main Office
Phone: (505) 476-3441

General Information
Phone: (505) 629-6116

Online Phone Directory
<https://www.emnrd.nm.gov/ocd/contact-us>

State of New Mexico
Energy, Minerals and Natural Resources
Oil Conservation Division
1220 S. St Francis Dr.
Santa Fe, NM 87505

QUESTIONS, Page 3

Action 568952

QUESTIONS (continued)

Operator: COG PRODUCTION, LLC 600 W. Illinois Ave Midland, TX 79701	OGRID: 217955
	Action Number: 568952
	Action Type: [C-141] Initial C-141 (C-141-v-Initial)

QUESTIONS

Site Characterization
Please answer all the questions in this group (only required when seeking remediation plan approval and beyond). This information must be provided to the appropriate district office no later than 90 days after the release discovery date.

What is the shallowest depth to groundwater beneath the area affected by the release in feet below ground surface (ft bgs)	Not answered.
What method was used to determine the depth to ground water	Not answered.
Did this release impact groundwater or surface water	Not answered.
What is the minimum distance, between the closest lateral extents of the release and the following surface areas:	
A continuously flowing watercourse or any other significant watercourse	Not answered.
Any lakebed, sinkhole, or playa lake (measured from the ordinary high-water mark)	Not answered.
An occupied permanent residence, school, hospital, institution, or church	Not answered.
A spring or a private domestic fresh water well used by less than five households for domestic or stock watering purposes	Not answered.
Any other fresh water well or spring	Not answered.
Incorporated municipal boundaries or a defined municipal fresh water well field	Not answered.
A wetland	Not answered.
A subsurface mine	Not answered.
An (non-karst) unstable area	Not answered.
Categorize the risk of this well / site being in a karst geology	Not answered.
A 100-year floodplain	Not answered.
Did the release impact areas not on an exploration, development, production, or storage site	Not answered.

Remediation Plan
Please answer all the questions that apply or are indicated. This information must be provided to the appropriate district office no later than 90 days after the release discovery date.

Requesting a remediation plan approval with this submission	No
The OCD recognizes that proposed remediation measures may have to be minimally adjusted in accordance with the physical realities encountered during remediation. If the responsible party has any need to significantly deviate from the remediation plan proposed, then it should consult with the division to determine if another remediation plan submission is required.	

Sante Fe Main Office
Phone: (505) 476-3441

General Information
Phone: (505) 629-6116

Online Phone Directory
<https://www.emnrd.nm.gov/oecd/contact-us>

State of New Mexico
Energy, Minerals and Natural Resources
Oil Conservation Division
1220 S. St Francis Dr.
Santa Fe, NM 87505

CONDITIONS

Action 568952

CONDITIONS

Operator: COG PRODUCTION, LLC 600 W. Illinois Ave Midland, TX 79701	OGRID: 217955
	Action Number: 568952
	Action Type: [C-141] Initial C-141 (C-141-v-Initial)

CONDITIONS

Created By	Condition	Condition Date
michael.buchanan	Initial C141 is approved. A remediation work plan, site characterization plan or remediation closure is due to the OCD no later than 90-days after the date of discovery, not to exceed 06/29/2026.	4/1/2026

Sante Fe Main Office
Phone: (505) 476-3441

General Information
Phone: (505) 629-6116

Online Phone Directory
<https://www.emnrd.nm.gov/ocd/contact-us>

**State of New Mexico
Energy, Minerals and Natural Resources
Oil Conservation Division
1220 S. St Francis Dr.
Santa Fe, NM 87505**

QUESTIONS

Action 580048

QUESTIONS

Operator: COG PRODUCTION, LLC 600 W. Illinois Ave Midland, TX 79701	OGRID: 217955
	Action Number: 580048
	Action Type: [NOTIFY] Notification Of Liner Inspection (C-141L)

QUESTIONS

Prerequisites	
Incident ID (n#)	nAPP2608948174
Incident Name	NAPP2608948174 MACHO NACHO STATE 5H BATTERY @ P-07-24S-33E
Incident Type	Produced Water Release
Incident Status	Initial C-141 Approved

Location of Release Source	
Site Name	MACHO NACHO STATE 5H BATTERY
Date Release Discovered	03/29/2026
Surface Owner	State

Liner Inspection Event Information	
<i>Please answer all the questions in this group.</i>	
What is the liner inspection surface area in square feet	5,426
Have all the impacted materials been removed from the liner	Yes
Liner inspection date pursuant to Subparagraph (a) of Paragraph (5) of Subsection A of 19.15.29.11 NMAC	05/06/2026
Time liner inspection will commence	08:30 AM
Please provide any information necessary for observers to liner inspection	Jacob Laird 575-703-5482
Please provide any information necessary for navigation to liner inspection site	32.22541944, -103.60426111

Sante Fe Main Office
Phone: (505) 476-3441

General Information
Phone: (505) 629-6116

Online Phone Directory
<https://www.emnrd.nm.gov/ocd/contact-us>

State of New Mexico
Energy, Minerals and Natural Resources
Oil Conservation Division
1220 S. St Francis Dr.
Santa Fe, NM 87505

CONDITIONS

Action 580048

CONDITIONS




Operator: COG PRODUCTION, LLC 600 W. Illinois Ave Midland, TX 79701	OGRID: 217955
	Action Number: 580048
	Action Type: [NOTIFY] Notification Of Liner Inspection (C-141L)

CONDITIONS

Created By	Condition	Condition Date
jlaird	Failure to notify the OCD of liner inspections including any changes in date/time per the requirements of 19.15.29.11.A(5)(a)(ii) NMAC, may result in the inspection not being accepted.	4/29/2026

Appendix B: Photolog

Photographic Log

<p>Facility: Macho Nacho State 5H</p> <p>County: Lea County, New Mexico</p> <p>Description: Facility Sign</p>	 <p>Date & Time: Wed, May 06, 2026 at 08:30:16 MDT Position: 032.225269° W, -103.604579° N, 20.37M Altitude: 3584ft (11.5h) Datum: WGS-84 Azimuth/Bearing: 250° S70W 4444mils True L12° Elevation Angle: -08.3° Horizon Angle: -00.6° Zoom: 0.5X Macho Nacho State Com #5H CTB</p> <p>COG OPERATING LLC MACHO NACHO STATE COM #5H CTB UL P SEC.7-T24S-R33E LEA COUNTY</p> <p>MACHO NACHO STATE #3H LEASE #30-025-40853 MACHO NACHO STATE #4H LEASE #30-025-41266 MACHO NACHO STATE COM #5H LEASE #30-025-42958</p>
<p>Facility: Macho Nacho State 5H</p> <p>County: Lea County, New Mexico</p> <p>Description: Original release photo from 3/29/2026</p>	 <p>A photograph showing a large, dark, covered pipe or structure in the foreground, with industrial buildings and pipes in the background under a clear sky.</p>
<p>Facility: Macho Nacho State 5H</p> <p>County: Lea County, New Mexico</p> <p>Description: Original release photo from 3/29/2026</p>	 <p>A photograph showing a network of industrial pipes and structures, possibly a water treatment or storage facility, with a large covered pipe in the foreground.</p>

Facility: Macho Nacho State 5H

County: Lea County, New Mexico

Description: Original release photo from 3/29/2026



Facility: Macho Nacho State 5H

County: Lea County, New Mexico

Description: View facing South. Lined area East of production tanks



Facility: Macho Nacho State 5H

County: Lea County, New Mexico

Description: View facing South. Lined area East of production tanks



Facility: Macho Nacho State 5H

County: Lea County, New Mexico

Description: View facing South. Lined area East of production tanks



Facility: Macho Nacho State 5H

County: Lea County, New Mexico

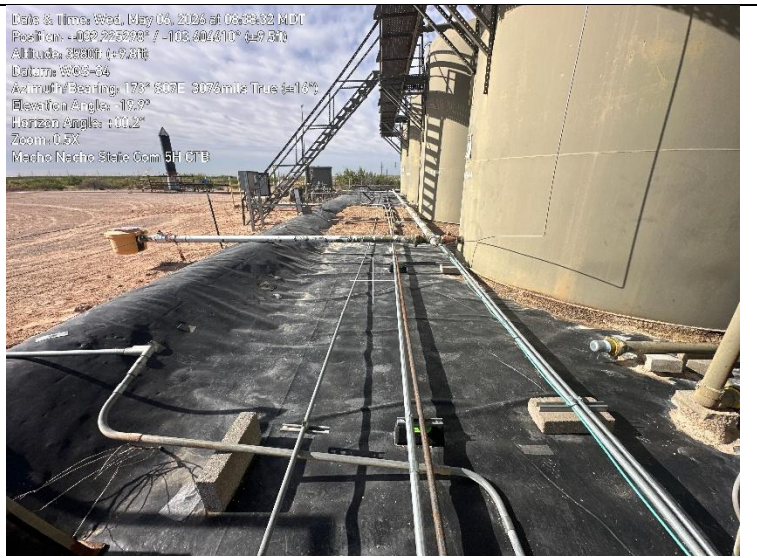
Description: View facing West. Lined area between production tanks



Facility: Macho Nacho State 5H

County: Lea County, New Mexico

Description: View facing South. Lined area East of production tanks



Facility: Macho Nacho State 5H

County: Lea County, New Mexico

Description: View facing West. Lined area between production tanks



Facility: Macho Nacho State 5H

County: Lea County, New Mexico

Description: View facing South. Lined area West of production tanks



Facility: Macho Nacho State 5H

County: Lea County, New Mexico

Description: View facing South. Lined area East of production tanks



Facility: Macho Nacho State 5H

County: Lea County, New Mexico

Description: View facing South. Lined area West of production tanks



Facility: Macho Nacho State 5H

County: Lea County, New Mexico

Description: View facing South. Lined area East of production tanks



Facility: Macho Nacho State 5H

County: Lea County, New Mexico

Description: View facing South. Lined area West of production tanks



Facility: Macho Nacho State 5H

County: Lea County, New Mexico

Description: View facing South. Lined area East of production tanks



Facility: Macho Nacho State 5H

County: Lea County, New Mexico

Description: View facing West. Lined area between production tanks



Facility: Macho Nacho State 5H

County: Lea County, New Mexico

Description: View facing South. Lined area West of production tanks



Facility: Macho Nacho State 5H

County: Lea County, New Mexico

Description: View facing South/Southwest. Lined area South of production tanks



Facility: Macho Nacho State 5H

County: Lea County, New Mexico

Description: View facing North/Northeast. Lined area South of production tanks

Appendix C: Site Characterization and Ground Water



New Mexico Office of the State Engineer Water Column/Average Depth to Water

(A CLW##### in the POD suffix indicates the POD has been replaced & no longer serves a water right file.)
(R=POD has been replaced, O=orphaned, C=the file is closed)

(quarters are smallest to largest)

(meters)

(In feet)

POD Number	Code	Sub basin	County	Q64	Q16	Q4	Sec	Tws	Range	X	Y	Map	Distance	Well Depth	Depth Water	Water Column
C 03565 POD3		CUB	LE		SW	SE	08	24S	33E	632763.4	3566546.9		1310		1533	

Average Depth to Water: **1533 feet**

Minimum Depth: **1533 feet**

Maximum Depth: **1533 feet**

Record Count: 1

Basin/County Search:

County: LE

UTM Filters (in meters):

Easting: 631481.20

Northing: 3566275.98

Radius: 1500

* UTM location was derived from PLSS - see Help

The data is furnished by the NMOSE/ISC and is accepted by the recipient with the expressed understanding that the OSE/ISC make no warranties, expressed or implied, concerning the accuracy, completeness, reliability, usability, or suitability for any particular purpose of the data.



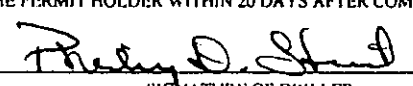
WELL RECORD & LOG
 OFFICE OF THE STATE ENGINEER
 www.ose.state.nm.us

STATE ENGINEER OFFICE
 ROSWELL, NEW MEXICO

2012 DEC 11 P 4: 02 I

1. GENERAL AND WELL LOCATION	POD NUMBER (WELL NUMBER) ICP-085				OSE FILE NUMBER(S) C-3565 POD 3									
	WELL OWNER NAME(S) Intercontinental Potash (USA)				PHONE (OPTIONAL) 575-942-2799									
	WELL OWNER MAILING ADDRESS 600 West Bender Boulevard				CITY Hobbs		STATE NM		ZIP 88240					
	WELL LOCATION (FROM GPS)		DEGREES LATITUDE 32		MINUTES 13		SECONDS 39.75 N		* ACCURACY REQUIRED: ONE TENTH OF A SECOND					
		LONGITUDE 103		35		27.62 W		* DATUM REQUIRED: WGS 84						
DESCRIPTION RELATING WELL LOCATION TO STREET ADDRESS AND COMMON LANDMARKS														
2. OPTIONAL	(2.5 ACRE) 1/4		(10 ACRE) 1/4		(40 ACRE) 1/4		(160 ACRE) 1/4		SECTION 8					
					TOWNSHIP 24		<input type="checkbox"/> NORTH <input checked="" type="checkbox"/> SOUTH		RANGE 33					
	SUBDIVISION NAME				LOT NUMBER		BLOCK NUMBER		UNIT/TRACT					
HYDROGRAPHIC SURVEY						MAP NUMBER		TRACT NUMBER						
3. DRILLING INFORMATION	LICENSE NUMBER WD #331		NAME OF LICENSED DRILLER Phillip Stewart				NAME OF WELL DRILLING COMPANY Stewart Brothers Drilling Co.							
	DRILLING STARTED 9/27/2012		DRILLING ENDED 10/21/2012		DEPTH OF COMPLETED WELL (FT) NA		BORE HOLE DEPTH (FT) 1533 FT		DEPTH WATER FIRST ENCOUNTERED (FT) NA					
	COMPLETED WELL IS: <input type="checkbox"/> ARTESIAN <input checked="" type="checkbox"/> DRY HOLE <input type="checkbox"/> SHALLOW (UNCONFINED)						STATIC WATER LEVEL IN COMPLETED WELL (FT) NA							
	DRILLING FLUID: <input type="checkbox"/> AIR <input checked="" type="checkbox"/> MUD <input type="checkbox"/> ADDITIVES - SPECIFY: ETH GEL, PLATINUM PAC, BI-CARB, SODA ASH,													
	DRILLING METHOD: <input checked="" type="checkbox"/> ROTARY <input type="checkbox"/> HAMMER <input type="checkbox"/> CABLE TOOL <input type="checkbox"/> OTHER - SPECIFY: TACKLE, MYLOGEL, NaCl													
	DEPTH (FT)		BORE HOLE DIA. (IN)		CASING MATERIAL		CONNECTION TYPE (CASING)		INSIDE DIA. CASING (IN)		CASING WALL THICKNESS (IN)		SLOT SIZE (IN)	
	FROM TO													
	0 1250		12.625		J-55 #36 steel		threaded		8.921		0.302			
1250 1533		8.75		NA										
4. WATER BEARING STRATA	DEPTH (FT)		THICKNESS (FT)		FORMATION DESCRIPTION OF PRINCIPAL WATER-BEARING STRATA (INCLUDE WATER-BEARING CAVITIES OR FRACTURE ZONES)						YIELD (GPM)			
	FROM TO													
	NA		NA		NA						NA			
METHOD USED TO ESTIMATE YIELD OF WATER-BEARING STRATA Bypass flow								TOTAL ESTIMATED WELL YIELD (GPM) na						

FOR OSE INTERNAL USE		WELL RECORD & LOG (Version 6/9/08)	
FILE NUMBER	POD NUMBER	TRN NUMBER	
LOCATION			PAGE 1 OF 2

5. SEAL AND PUMP		STATE ENGINEER OFFICE ROSWELL, NEW MEXICO					
		TYPE OF PUMP: <input type="checkbox"/> SUBMERSIBLE <input type="checkbox"/> JET <input checked="" type="checkbox"/> NO PUMP - WELL NOT EQUIPPED <input type="checkbox"/> TURBINE <input type="checkbox"/> CYLINDER <input type="checkbox"/> OTHER - SPECIFY:					
ANNULAR SEAL AND GRAVEL PACK		DEPTH (FT)		BORE HOLE DIA. (IN)	MATERIAL TYPE AND SIZE	VOLUME (CUBIC FT)	METHOD OF PLACEMENT
		FROM	TO				
		NA		NA	NA	NA	NA
6. GEOLOGIC LOG OF WELL		DEPTH (FT)		THICKNESS (FT)	COLOR AND TYPE OF MATERIAL ENCOUNTERED (INCLUDE WATER-BEARING CAVITIES OR FRACTURE ZONES)	WATER BEARING?	
		FROM	TO			<input type="checkbox"/> YES	<input checked="" type="checkbox"/> NO
		0	20	20	Caliche	<input type="checkbox"/> YES	<input checked="" type="checkbox"/> NO
		20	55	35	Gutuna Fm. - red siltstones and sandstones	<input type="checkbox"/> YES	<input checked="" type="checkbox"/> NO
		55	1227	1181	Dewey Lake Fm. Red siltstones and mudstones, gray/green mottling	<input type="checkbox"/> YES	<input checked="" type="checkbox"/> NO
		1227	1262	35	Rustler Fm./A-5, white anhydrite	<input type="checkbox"/> YES	<input checked="" type="checkbox"/> NO
		1262	1295	33	H-4 sub-mbr. - milky white halite	<input type="checkbox"/> YES	<input checked="" type="checkbox"/> NO
		1295	1310	15	A-4 sub-mbr. - white anhydrite	<input type="checkbox"/> YES	<input checked="" type="checkbox"/> NO
		1310	1330	20	Magenta Dolomite	<input type="checkbox"/> YES	<input checked="" type="checkbox"/> NO
		1330	1375	45	A-3 sub-mbr. white anhydrite	<input type="checkbox"/> YES	<input checked="" type="checkbox"/> NO
		1375	1479	112	H-3 sub-mbr. - milky halite	<input type="checkbox"/> YES	<input checked="" type="checkbox"/> NO
		1479	1489	10	Ore zone, anhydrite and white polyhalite	<input type="checkbox"/> YES	<input checked="" type="checkbox"/> NO
		1489	1533	44	Halite, with some anhydrite	<input type="checkbox"/> YES	<input type="checkbox"/> NO
				<input type="checkbox"/> YES	<input type="checkbox"/> NO		
				<input type="checkbox"/> YES	<input type="checkbox"/> NO		
				<input type="checkbox"/> YES	<input type="checkbox"/> NO		
				<input type="checkbox"/> YES	<input type="checkbox"/> NO		
				<input type="checkbox"/> YES	<input type="checkbox"/> NO		
ATTACH ADDITIONAL PAGES AS NEEDED TO FULLY DESCRIBE THE GEOLOGIC LOG OF THE WELL							
7. TEST & ADDITIONAL INFO		WELL TEST					
		METHOD: <input type="checkbox"/> HAULER <input type="checkbox"/> PUMP <input type="checkbox"/> AIR LIFT <input type="checkbox"/> OTHER - SPECIFY: NA TEST RESULTS - ATTACH A COPY OF DATA COLLECTED DURING WELL TESTING, INCLUDING START TIME, END TIME, AND A TABLE SHOWING DISCHARGE AND DRAWDOWN OVER THE TESTING PERIOD.					
8. SIGNATURE		ADDITIONAL STATEMENTS OR EXPLANATIONS:					
8. SIGNATURE		THE UNDERSIGNED HEREBY CERTIFIES THAT, TO THE BEST OF HIS OR HER KNOWLEDGE AND BELIEF, THE FOREGOING IS A TRUE AND CORRECT RECORD OF THE ABOVE DESCRIBED HOLE AND THAT HE OR SHE WILL FILE THIS WELL RECORD WITH THE STATE ENGINEER AND THE PERMIT HOLDER WITHIN 20 DAYS AFTER COMPLETION OF WELL DRILLING:					
		 SIGNATURE OF DRILLER				12-10-12 DATE	

FOR USE INTERNAL USE		WELL RECORD & LOG (Version 6/9/08)	
FILE NUMBER	POD NUMBER	TRN NUMBER	
LOCATION			PAGE 2 OF 2



WELL RECORD & LOG
OFFICE OF THE STATE ENGINEER
www.ose.state.nm.us

STATE ENGINEER OFFICE
 ROSWELL, NEW MEXICO
 2012 DEC 11 10:40:02

1. GENERAL AND WELL LOCATION	POD NUMBER (WELL NUMBER) ICP-085		OSE FILE NUMBER(S) C-3565 POD 3						
	WELL OWNER NAME(S) Intercontinental Potash (USA)		PHONE (OPTIONAL) 575-942-2799						
	WELL OWNER MAILING ADDRESS 600 West Bender Boulevard		CITY Hobbs	STATE NM	ZIP 88240				
	WELL LOCATION (FROM GPS)	DEGREES LATITUDE 32	MINUTES 13	SECONDS 39.75 N	* ACCURACY REQUIRED: ONE TENTH OF A SECOND * DATUM REQUIRED: WGS 84				
LONGITUDE 103 35 27.62 W									
DESCRIPTION RELATING WELL LOCATION TO STREET ADDRESS AND COMMON LANDMARKS									
2. OPTIONAL	(2.5 ACRE) 1/4	(10 ACRE) 1/4	(40 ACRE) 1/4	(160 ACRE) 1/4	SECTION 8	TOWNSHIP 24	<input type="checkbox"/> NORTH <input checked="" type="checkbox"/> SOUTH	RANGE 33	<input checked="" type="checkbox"/> EAST <input type="checkbox"/> WEST
	SUBDIVISION NAME				LOT NUMBER	BLOCK NUMBER	UNIT/TRACT		
	HYDROGRAPHIC SURVEY					MAP NUMBER	TRACT NUMBER		
3. DRILLING INFORMATION	LICENSE NUMBER WD #331	NAME OF LICENSED DRILLER Phillip Stewart			NAME OF WELL DRILLING COMPANY Stewart Brothers Drilling Co.				
	DRILLING STARTED 9/27/2012	DRILLING ENDED 10/21/2012	DEPTH OF COMPLETED WELL (FT) NA	BORE HOLE DEPTH (FT) 1533 FT	DEPTH WATER FIRST ENCOUNTERED (FT) NA				
	COMPLETED WELL IS: <input type="checkbox"/> ARTESIAN <input checked="" type="checkbox"/> DRY HOLE <input type="checkbox"/> SHALLOW (UNCONFINED)				STATIC WATER LEVEL IN COMPLETED WELL (FT) NA				
	DRILLING FLUID: <input type="checkbox"/> AIR <input checked="" type="checkbox"/> MUD <input type="checkbox"/> ADDITIVES - SPECIFY: ETH GEL, PLATINUM PAC, BI-CARB, SODA ASH,								
	DRILLING METHOD: <input checked="" type="checkbox"/> ROTARY <input type="checkbox"/> HAMMER <input type="checkbox"/> CABLE TOOL <input type="checkbox"/> OTHER - SPECIFY: TACKLE, MYLOGEL, NaCl								
	DEPTH (FT) FROM TO	BORE HOLE DIA. (IN)	CASING MATERIAL	CONNECTION TYPE (CASING)	INSIDE DIA. CASING (IN)	CASING WALL THICKNESS (IN)	SLOT SIZE (IN)		
	0 1250	12.525	J-55 #36 steel	threaded	8.921	0.302			
1250 1533	8.75	NA							
4. WATER BEARING STRATA	DEPTH (FT) FROM TO	THICKNESS (FT)	FORMATION DESCRIPTION OF PRINCIPAL WATER-BEARING STRATA (INCLUDE WATER-BEARING CAVITIES OR FRACTURE ZONES)				YIELD (GPM)		
	NA	NA	NA				NA		
METHOD USED TO ESTIMATE YIELD OF WATER-BEARING STRATA Bypass flow					TOTAL ESTIMATED WELL YIELD (GPM) na				

FOR OSE INTERNAL USE		WELL RECORD & LOG (Version 6/9/08)	
FILE NUMBER	POD NUMBER	TRN NUMBER	
LOCATION			PAGE 1 OF 2

5. SEAL AND PUMP	TYPE OF PUMP: <input type="checkbox"/> SUBMERSIBLE <input type="checkbox"/> JET <input checked="" type="checkbox"/> NO PUMP - WELL NOT EQUIPPED <input type="checkbox"/> TURBINE <input type="checkbox"/> CYLINDER <input type="checkbox"/> OTHER - SPECIFY:						
	ANNULAR SEAL AND GRAVEL PACK	DEPTH (FT)		BORE HOLE DIA. (IN)	MATERIAL TYPE AND SIZE	AMOUNT (CUBIC FT)	METHOD OF PLACEMENT
		FROM	TO				
	NA		NA	NA	NA	NA	

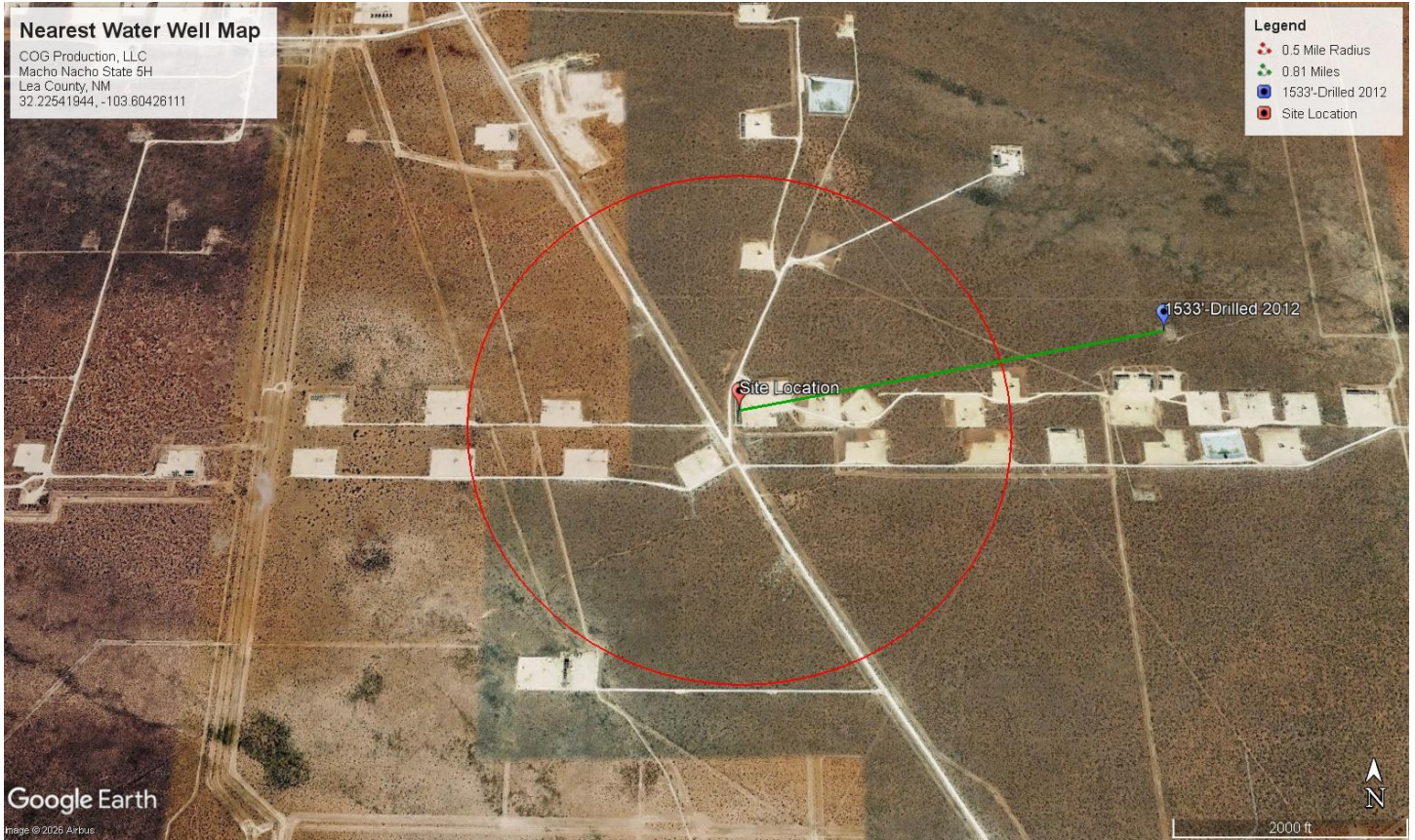
6. GEOLOGIC LOG OF WELL	DEPTH (FT)	THICKNESS (FT)	COLOR AND TYPE OF MATERIAL ENCOUNTERED (INCLUDE WATER-BEARING CAVITIES OR FRACTURE ZONES)	WATER BEARING?	
	FROM	TO			
	0	20	20	Caliche	<input type="checkbox"/> YES <input checked="" type="checkbox"/> NO
	20	55	35	Gutuna Fm. - red siltstones and sandstones	<input type="checkbox"/> YES <input checked="" type="checkbox"/> NO
	55	1227	1181	Dewey Lake Fm. Red siltstones and mudstones, gray/green mottling	<input type="checkbox"/> YES <input checked="" type="checkbox"/> NO
	1227	1262	35	Rustler Fm./A-5, white anhydrite	<input type="checkbox"/> YES <input checked="" type="checkbox"/> NO
	1262	1295	33	H-4 sub-mbr. - milky white halite	<input type="checkbox"/> YES <input checked="" type="checkbox"/> NO
	1295	1310	15	A-4 sub-mbr. - white anhydrite	<input type="checkbox"/> YES <input checked="" type="checkbox"/> NO
	1310	1330	20	Magenta Dolomite	<input type="checkbox"/> YES <input checked="" type="checkbox"/> NO
	1330	1375	45	A-3 sub-mbr. white anhydrite	<input type="checkbox"/> YES <input checked="" type="checkbox"/> NO
	1375	1479	112	H-3 sub-mbr. - milky halite	<input type="checkbox"/> YES <input checked="" type="checkbox"/> NO
	1479	1489	10	Ore zone, anhydrite and white polyhalite	<input type="checkbox"/> YES <input checked="" type="checkbox"/> NO
	1489	1533	44	Halite, with some anhydrite	<input type="checkbox"/> YES <input type="checkbox"/> NO
					<input type="checkbox"/> YES <input type="checkbox"/> NO
				<input type="checkbox"/> YES <input type="checkbox"/> NO	
				<input type="checkbox"/> YES <input type="checkbox"/> NO	
				<input type="checkbox"/> YES <input type="checkbox"/> NO	
				<input type="checkbox"/> YES <input type="checkbox"/> NO	
ATTACH ADDITIONAL PAGES AS NEEDED TO FULLY DESCRIBE THE GEOLOGIC LOG OF THE WELL.					

7. TEST & ADDITIONAL INFO	WELL TEST	METHOD: <input type="checkbox"/> BAILER <input type="checkbox"/> PUMP <input type="checkbox"/> AIR LIFT <input type="checkbox"/> OTHER - SPECIFY: NA
		TEST RESULTS - ATTACH A COPY OF DATA COLLECTED DURING WELL TESTING, INCLUDING START TIME, END TIME, AND A TABLE SHOWING DISCHARGE AND DRAWDOWN OVER THE TESTING PERIOD.
		ADDITIONAL STATEMENTS OR EXPLANATIONS:

8. SIGNATURE	THE UNDERSIGNED HEREBY CERTIFIES THAT, TO THE BEST OF HIS OR HER KNOWLEDGE AND BELIEF, THE FOREGOING IS A TRUE AND CORRECT RECORD OF THE ABOVE DESCRIBED HOLE AND THAT HE OR SHE WILL FILE THIS WELL RECORD WITH THE STATE ENGINEER AND THE PERMIT HOLDER WITHIN 20 DAYS AFTER COMPLETION OF WELL DRILLING:	
	_____ SIGNATURE OF DRILLER	12-10-12 DATE

FOR USE INTERNAL USE		WELL RECORD & LOG (Version 6/9/08)	
FILE NUMBER	POD NUMBER	TRN NUMBER	
LOCATION: T.I.P. 117		PAGE 2 OF 2	

STATE ENGINEER OFFICE
ROSWELL, NEW MEXICO

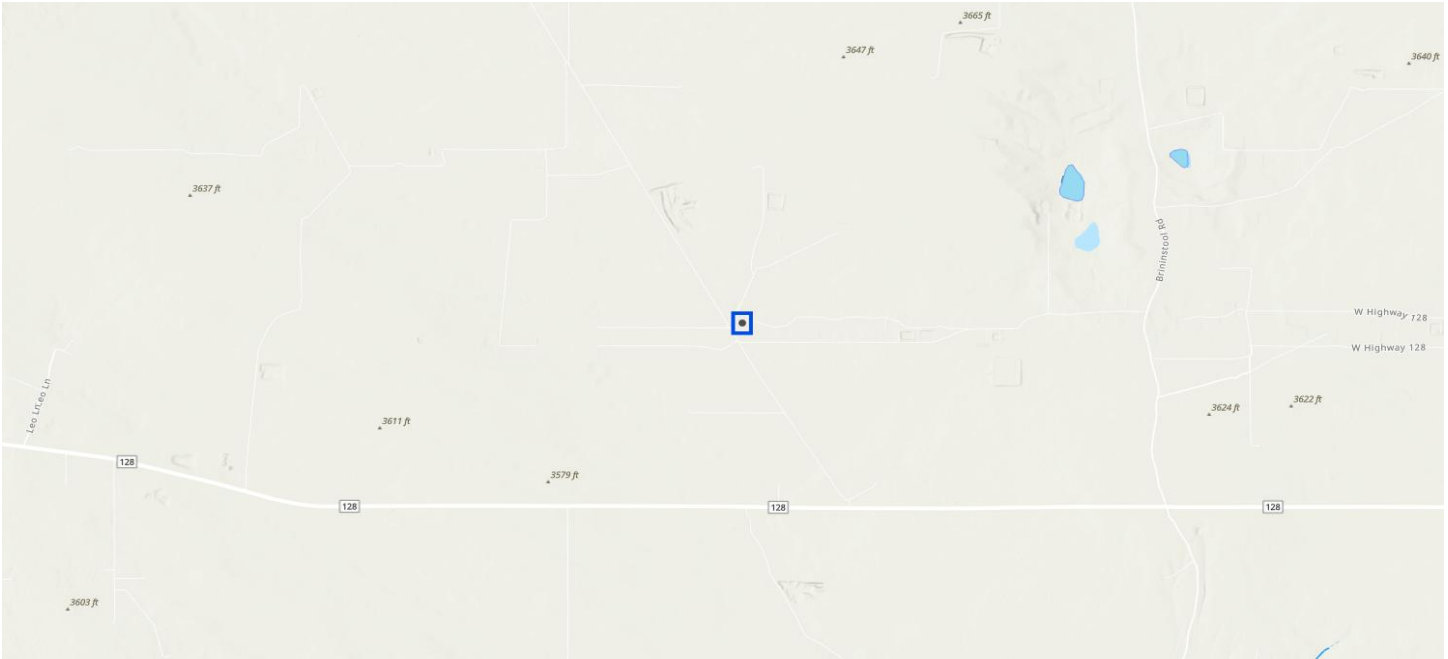


Neatest Water Well Map

COG Production, LLC
Macho Nacho State 5H
Lea County, New Mexico
32.22541944, -103.60426111



Karst Map
COG Production, LLC
Macho Nacho State 5H
Lea County, New Mexico
32.22541944, -103.60426111



Hydrology Map

COG Production, LLC
Macho Nacho State 5H
Lea County, New Mexico
32.22541944, -103.60426111

Sante Fe Main Office
Phone: (505) 476-3441

General Information
Phone: (505) 629-6116

Online Phone Directory
<https://www.emnrd.nm.gov/ocd/contact-us>

State of New Mexico
Energy, Minerals and Natural Resources
Oil Conservation Division
1220 S. St Francis Dr.
Santa Fe, NM 87505

QUESTIONS

Action 583840

QUESTIONS

Operator: COG PRODUCTION, LLC 600 W. Illinois Ave Midland, TX 79701	OGRID: 217955
	Action Number: 583840
	Action Type: [C-141] Remediation Closure Request C-141 (C-141-v-Closure)

QUESTIONS

Prerequisites	
Incident ID (n#)	nAPP2608948174
Incident Name	NAPP2608948174 MACHO NACHO STATE 5H BATTERY @ P-07-24S-33E
Incident Type	Produced Water Release
Incident Status	Remediation Closure Report Received

Location of Release Source	
<i>Please answer all the questions in this group.</i>	
Site Name	MACHO NACHO STATE 5H BATTERY
Date Release Discovered	03/29/2026
Surface Owner	State

Incident Details	
<i>Please answer all the questions in this group.</i>	
Incident Type	Produced Water Release
Did this release result in a fire or is the result of a fire	No
Did this release result in any injuries	No
Has this release reached or does it have a reasonable probability of reaching a watercourse	No
Has this release endangered or does it have a reasonable probability of endangering public health	No
Has this release substantially damaged or will it substantially damage property or the environment	No
Is this release of a volume that is or may with reasonable probability be detrimental to fresh water	No

Nature and Volume of Release	
<i>Material(s) released, please answer all that apply below. Any calculations or specific justifications for the volumes provided should be attached to the follow-up C-141 submission.</i>	
Crude Oil Released (bbls) Details	Not answered.
Produced Water Released (bbls) Details	Cause: Normal Operations Pump Produced Water Released: 25 BBL Recovered: 20 BBL Lost: 5 BBL.
Is the concentration of chloride in the produced water >10,000 mg/l	Yes
Condensate Released (bbls) Details	Not answered.
Natural Gas Vented (Mcf) Details	Not answered.
Natural Gas Flared (Mcf) Details	Not answered.
Other Released Details	Not answered.
Are there additional details for the questions above (i.e. any answer containing Other, Specify, Unknown, and/or Fire, or any negative lost amounts)	Not answered.

Sante Fe Main Office
Phone: (505) 476-3441

General Information
Phone: (505) 629-6116

Online Phone Directory
<https://www.emnrd.nm.gov/ocd/contact-us>

State of New Mexico
Energy, Minerals and Natural Resources
Oil Conservation Division
1220 S. St Francis Dr.
Santa Fe, NM 87505

QUESTIONS, Page 2

Action 583840

QUESTIONS (continued)

Operator: COG PRODUCTION, LLC 600 W. Illinois Ave Midland, TX 79701	OGRID: 217955
	Action Number: 583840
	Action Type: [C-141] Remediation Closure Request C-141 (C-141-v-Closure)

QUESTIONS

Nature and Volume of Release (continued)	
Is this a gas only submission (i.e. only significant Mcf values reported)	No, according to supplied volumes this does not appear to be a "gas only" report.
Was this a major release as defined by Subsection A of 19.15.29.7 NMAC	Yes
Reasons why this would be considered a submission for a notification of a major release	From paragraph A. "Major release" determine using: (1) an unauthorized release of a volume, excluding gases, of 25 barrels or more.
<i>With the implementation of the 19.15.27 NMAC (05/25/2021), venting and/or flaring of natural gas (i.e. gas only) are to be submitted on the C-129 form.</i>	

Initial Response	
<i>The responsible party must undertake the following actions immediately unless they could create a safety hazard that would result in injury.</i>	
The source of the release has been stopped	True
The impacted area has been secured to protect human health and the environment	True
Released materials have been contained via the use of berms or dikes, absorbent pads, or other containment devices	True
All free liquids and recoverable materials have been removed and managed appropriately	True
If all the actions described above have not been undertaken, explain why	<i>Not answered.</i>
<i>Per Paragraph (4) of Subsection B of 19.15.29.8 NMAC the responsible party may commence remediation immediately after discovery of a release. If remediation has begun, please prepare and attach a narrative of actions to date in the follow-up C-141 submission. If remedial efforts have been successfully completed or if the release occurred within a lined containment area (see Subparagraph (a) of Paragraph (5) of Subsection A of 19.15.29.11 NMAC), please prepare and attach all information needed for closure evaluation in the follow-up C-141 submission.</i>	
I hereby certify that the information given above is true and complete to the best of my knowledge and understand that pursuant to OCD rules and regulations all operators are required to report and/or file certain release notifications and perform corrective actions for releases which may endanger public health or the environment. The acceptance of a C-141 report by the OCD does not relieve the operator of liability should their operations have failed to adequately investigate and remediate contamination that pose a threat to groundwater, surface water, human health or the environment. In addition, OCD acceptance of a C-141 report does not relieve the operator of responsibility for compliance with any other federal, state, or local laws and/or regulations.	
I hereby agree and sign off to the above statement	Name: Jacob Laird Title: Environmental Engineer Email: jacob.laird@conocophillips.com Date: 05/11/2026

Sante Fe Main Office
Phone: (505) 476-3441

General Information
Phone: (505) 629-6116

Online Phone Directory
<https://www.emnrd.nm.gov/ocd/contact-us>

State of New Mexico
Energy, Minerals and Natural Resources
Oil Conservation Division
1220 S. St Francis Dr.
Santa Fe, NM 87505

QUESTIONS, Page 3

Action 583840

QUESTIONS (continued)

Operator: COG PRODUCTION, LLC 600 W. Illinois Ave Midland, TX 79701	OGRID: 217955
	Action Number: 583840
	Action Type: [C-141] Remediation Closure Request C-141 (C-141-v-Closure)

QUESTIONS

Site Characterization
Please answer all the questions in this group (only required when seeking remediation plan approval and beyond). This information must be provided to the appropriate district office no later than 90 days after the release discovery date.

What is the shallowest depth to groundwater beneath the area affected by the release in feet below ground surface (ft bgs)	Between 500 and 1000 (ft.)
What method was used to determine the depth to ground water	NM OSE iWaters Database Search
Did this release impact groundwater or surface water	No
What is the minimum distance, between the closest lateral extents of the release and the following surface areas:	
A continuously flowing watercourse or any other significant watercourse	Between 1 and 5 (mi.)
Any lakebed, sinkhole, or playa lake (measured from the ordinary high-water mark)	Between 1 and 5 (mi.)
An occupied permanent residence, school, hospital, institution, or church	Greater than 5 (mi.)
A spring or a private domestic fresh water well used by less than five households for domestic or stock watering purposes	Greater than 5 (mi.)
Any other fresh water well or spring	Between 1 and 5 (mi.)
Incorporated municipal boundaries or a defined municipal fresh water well field	Between 1 and 5 (mi.)
A wetland	Between 1 and 5 (mi.)
A subsurface mine	Between 1 and 5 (mi.)
An (non-karst) unstable area	Greater than 5 (mi.)
Categorize the risk of this well / site being in a karst geology	Low
A 100-year floodplain	Between 1 and 5 (mi.)
Did the release impact areas not on an exploration, development, production, or storage site	No

Remediation Plan
Please answer all the questions that apply or are indicated. This information must be provided to the appropriate district office no later than 90 days after the release discovery date.

Requesting a remediation plan approval with this submission	Yes
<i>Attach a comprehensive report demonstrating the lateral and vertical extents of soil contamination associated with the release have been determined, pursuant to 19.15.29.11 NMAC and 19.15.29.13 NMAC.</i>	
Have the lateral and vertical extents of contamination been fully delineated	Yes
Was this release entirely contained within a lined containment area	Yes
<i>Per Subsection B of 19.15.29.11 NMAC unless the site characterization report includes completed efforts at remediation, the report must include a proposed remediation plan in accordance with 19.15.29.12 NMAC, which includes the anticipated timelines for beginning and completing the remediation.</i>	
On what estimated date will the remediation commence	04/30/2026
On what date will (or did) the final sampling or liner inspection occur	05/06/2026
On what date will (or was) the remediation complete(d)	05/06/2026
What is the estimated surface area (in square feet) that will be remediated	5426
What is the estimated volume (in cubic yards) that will be remediated	0

These estimated dates and measurements are recognized to be the best guess or calculation at the time of submission and may (be) change(d) over time as more remediation efforts are completed. The OCD recognizes that proposed remediation measures may have to be minimally adjusted in accordance with the physical realities encountered during remediation. If the responsible party has any need to significantly deviate from the remediation plan proposed, then it should consult with the division to determine if another remediation plan submission is required.

Sante Fe Main Office
Phone: (505) 476-3441

General Information
Phone: (505) 629-6116

Online Phone Directory
<https://www.emnrd.nm.gov/ocd/contact-us>

State of New Mexico
Energy, Minerals and Natural Resources
Oil Conservation Division
1220 S. St Francis Dr.
Santa Fe, NM 87505

QUESTIONS, Page 4

Action 583840

QUESTIONS (continued)

Operator: COG PRODUCTION, LLC 600 W. Illinois Ave Midland, TX 79701	OGRID: 217955
	Action Number: 583840
	Action Type: [C-141] Remediation Closure Request C-141 (C-141-v-Closure)

QUESTIONS

Remediation Plan (continued)	
<i>Please answer all the questions that apply or are indicated. This information must be provided to the appropriate district office no later than 90 days after the release discovery date.</i>	
This remediation will (or is expected to) utilize the following processes to remediate / reduce contaminants:	
<i>(Select all answers below that apply.)</i>	
Is (or was) there affected material present needing to be removed	Yes
Is (or was) there a power wash of the lined containment area (to be) performed	Yes
OTHER (Non-listed remedial process)	Not answered.
<i>Per Subsection B of 19.15.29.11 NMAC unless the site characterization report includes completed efforts at remediation, the report must include a proposed remediation plan in accordance with 19.15.29.12 NMAC, which includes the anticipated timelines for beginning and completing the remediation.</i>	
I hereby certify that the information given above is true and complete to the best of my knowledge and understand that pursuant to OCD rules and regulations all operators are required to report and/or file certain release notifications and perform corrective actions for releases which may endanger public health or the environment. The acceptance of a C-141 report by the OCD does not relieve the operator of liability should their operations have failed to adequately investigate and remediate contamination that pose a threat to groundwater, surface water, human health or the environment. In addition, OCD acceptance of a C-141 report does not relieve the operator of responsibility for compliance with any other federal, state, or local laws and/or regulations.	
I hereby agree and sign off to the above statement	Name: Jacob Laird Title: Environmental Engineer Email: jacob.laird@conocophillips.com Date: 05/11/2026
<i>The OCD recognizes that proposed remediation measures may have to be minimally adjusted in accordance with the physical realities encountered during remediation. If the responsible party has any need to significantly deviate from the remediation plan proposed, then it should consult with the division to determine if another remediation plan submission is required.</i>	

Sante Fe Main Office
Phone: (505) 476-3441

General Information
Phone: (505) 629-6116

Online Phone Directory
<https://www.emnrd.nm.gov/ocd/contact-us>

State of New Mexico
Energy, Minerals and Natural Resources
Oil Conservation Division
1220 S. St Francis Dr.
Santa Fe, NM 87505

QUESTIONS, Page 6

Action 583840

QUESTIONS (continued)

Operator: COG PRODUCTION, LLC 600 W. Illinois Ave Midland, TX 79701	OGRID: 217955
	Action Number: 583840
	Action Type: [C-141] Remediation Closure Request C-141 (C-141-v-Closure)

QUESTIONS

Liner Inspection Information	
Last liner inspection notification (C-141L) recorded	580048
Liner inspection date pursuant to Subparagraph (a) of Paragraph (5) of Subsection A of 19.15.29.11 NMAC	05/06/2026
Was all the impacted materials removed from the liner	Yes
What was the liner inspection surface area in square feet	5426

Remediation Closure Request	
<i>Only answer the questions in this group if seeking remediation closure for this release because all remediation steps have been completed.</i>	
Requesting a remediation closure approval with this submission	Yes
Have the lateral and vertical extents of contamination been fully delineated	Yes
Was this release entirely contained within a lined containment area	Yes
What was the total surface area (in square feet) remediated	5426
What was the total volume (cubic yards) remediated	0
Summarize any additional remediation activities not included by answers (above)	NA

The responsible party must attach information demonstrating they have complied with all applicable closure requirements and any conditions or directives of the OCD. This demonstration should be in the form of a comprehensive report (in .pdf format) including a scaled site map, sampling diagrams, relevant field notes, photographs of any excavation prior to backfilling, laboratory data including chain of custody documents of final sampling, and a narrative of the remedial activities. Refer to 19.15.29.12 NMAC.

I hereby certify that the information given above is true and complete to the best of my knowledge and understand that pursuant to OCD rules and regulations all operators are required to report and/or file certain release notifications and perform corrective actions for releases which may endanger public health or the environment. The acceptance of a C-141 report by the OCD does not relieve the operator of liability should their operations have failed to adequately investigate and remediate contamination that pose a threat to groundwater, surface water, human health or the environment. In addition, OCD acceptance of a C-141 report does not relieve the operator of responsibility for compliance with any other federal, state, or local laws and/or regulations. The responsible party acknowledges they must substantially restore, reclaim, and re-vegetate the impacted surface area to the conditions that existed prior to the release or their final land use in accordance with 19.15.29.13 NMAC including notification to the OCD when reclamation and re-vegetation are complete.

I hereby agree and sign off to the above statement	Name: Jacob Laird Title: Environmental Engineer Email: jacob.laird@conocophillips.com Date: 05/11/2026
--	---

Sante Fe Main Office
Phone: (505) 476-3441

General Information
Phone: (505) 629-6116

Online Phone Directory
<https://www.emnrd.nm.gov/ocd/contact-us>

State of New Mexico
Energy, Minerals and Natural Resources
Oil Conservation Division
1220 S. St Francis Dr.
Santa Fe, NM 87505

CONDITIONS

Action 583840

CONDITIONS

Operator: COG PRODUCTION, LLC 600 W. Illinois Ave Midland, TX 79701	OGRID: 217955
	Action Number: 583840
	Action Type: [C-141] Remediation Closure Request C-141 (C-141-v-Closure)

CONDITIONS

Created By	Condition	Condition Date
michael.buchanan	Liner inspection and closure approved.	5/15/2026