

Sante Fe Main Office
Phone: (505) 476-3441

General Information
Phone: (505) 629-6116

Online Phone Directory
<https://www.emnrd.nm.gov/ocd/contact-us>

State of New Mexico
Energy, Minerals and Natural Resources
Oil Conservation Division
1220 S. St Francis Dr.
Santa Fe, NM 87505

QUESTIONS

Action 572554

QUESTIONS

Operator: Coterra Energy Operating Co. 6001 Deauville Blvd Midland, TX 79706	OGRID: 215099
	Action Number: 572554
	Action Type: [NOTIFY] Notification Of Release (NOR)

QUESTIONS

Location of Release Source	
<i>Please answer all the questions in this group.</i>	
Site Name	Alpha State Com 301H CTB
Date Release Discovered	04/07/2026
Surface Owner	Private

Incident Details	
<i>Please answer all the questions in this group.</i>	
Incident Type	Produced Water Release
Did this release result in a fire or is the result of a fire	No
Did this release result in any injuries	No
Has this release reached or does it have a reasonable probability of reaching a watercourse	No
Has this release endangered or does it have a reasonable probability of endangering public health	No
Has this release substantially damaged or will it substantially damage property or the environment	No
Is this release of a volume that is or may with reasonable probability be detrimental to fresh water	No

Nature and Volume of Release	
<i>Material(s) released, please answer all that apply below. Any calculations or specific justifications for the volumes provided should be attached to the follow-up C-141 submission.</i>	
Crude Oil Released (bbls) Details	Not answered.
Produced Water Released (bbls) Details	Cause: Equipment Failure Tank (Any) Produced Water Released: 409 BBL Recovered: 409 BBL Lost: 0 BBL.
Is the concentration of chloride in the produced water >10,000 mg/l	Yes
Condensate Released (bbls) Details	Not answered.
Natural Gas Vented (Mcf) Details	Not answered.
Natural Gas Flared (Mcf) Details	Not answered.
Other Released Details	Not answered.
Are there additional details for the questions above (i.e. any answer containing Other, Specify, Unknown, and/or Fire, or any negative lost amounts)	We had a major reportable release at the Alpha State Com 301H Facility due to a failed SWD valve. On Monday, April 6th, the facility was shut in to perform safety system and automation upgrades. During this process, all pumps were secured, the main discharge valve was closed and locked out, and all wells were shut in and locked at the wellheads. When the Operations Team arrived on site Tuesday morning, they found the produced water tank overflowing. As a result, approximately 409 barrels of produced water was released into the lined containment. All fluids inside the lined containment were recovered by vac trucks. The containment will be washed, and a liner inspection scheduled in the coming days.

Sante Fe Main Office
Phone: (505) 476-3441

General Information
Phone: (505) 629-6116

Online Phone Directory
<https://www.emnrd.nm.gov/ocd/contact-us>

**State of New Mexico
Energy, Minerals and Natural Resources
Oil Conservation Division
1220 S. St Francis Dr.
Santa Fe, NM 87505**

QUESTIONS, Page 2

Action 572554

QUESTIONS (continued)

Operator: Coterra Energy Operating Co. 6001 Deauville Blvd Midland, TX 79706	OGRID: 215099
	Action Number: 572554
	Action Type: [NOTIFY] Notification Of Release (NOR)

QUESTIONS

Nature and Volume of Release (continued)	
Is this a gas only submission (i.e. only significant Mcf values reported)	No, according to supplied volumes this does not appear to be a "gas only" report.
Was this a major release as defined by Subsection A of 19.15.29.7 NMAC	Yes
Reasons why this would be considered a submission for a notification of a major release	From paragraph A. "Major release" determine using: (1) an unauthorized release of a volume, excluding gases, of 25 barrels or more.
<i>With the implementation of the 19.15.27 NMAC (05/25/2021), venting and/or flaring of natural gas (i.e. gas only) are to be submitted on the C-129 form.</i>	

Initial Response

The responsible party must undertake the following actions immediately unless they could create a safety hazard that would result in injury.

The source of the release has been stopped	True
The impacted area has been secured to protect human health and the environment	True
Released materials have been contained via the use of berms or dikes, absorbent pads, or other containment devices	True
All free liquids and recoverable materials have been removed and managed appropriately	True
If all the actions described above have not been undertaken, explain why	<i>Not answered.</i>

Per Paragraph 4 of Subsection B of 19.15.29.8 NMAC the responsible party may commence remediation immediately after discovery of a release. If remediation has begun, please prepare and attach a narrative of actions to date in the follow-up C-141 submission. If remedial efforts have been successfully completed or if the release occurred within a lined containment area (see 19.15.29.11(A)(5)(a) NMAC), please prepare and attach all information needed for closure evaluation in the follow-up C-141 submission.

Sante Fe Main Office
Phone: (505) 476-3441

General Information
Phone: (505) 629-6116

Online Phone Directory
<https://www.emnrd.nm.gov/ocd/contact-us>

State of New Mexico
Energy, Minerals and Natural Resources
Oil Conservation Division
1220 S. St Francis Dr.
Santa Fe, NM 87505

ACKNOWLEDGMENTS

Action 572554

ACKNOWLEDGMENTS

Operator: Coterra Energy Operating Co. 6001 Deauville Blvd Midland, TX 79706	OGRID: 215099
	Action Number: 572554
	Action Type: [NOTIFY] Notification Of Release (NOR)

ACKNOWLEDGMENTS

<input checked="" type="checkbox"/>	I acknowledge that I am authorized to submit notification of a release on behalf of my operator.
<input checked="" type="checkbox"/>	I acknowledge that upon submitting this application, I will be creating a new incident file (assigned to my operator) to track the notification(s) and corrective action(s) for a release, pursuant to NMAC 19.15.29.
<input checked="" type="checkbox"/>	I acknowledge that creating a new incident file will require my operator to file subsequent submission(s) of form "C-141, Application for administrative approval of a release notification and corrective action", pursuant to NMAC 19.15.29.
<input checked="" type="checkbox"/>	I hereby certify that the information given above is true and complete to the best of my knowledge and understand that pursuant to OCD rules and regulations all operators are required to report and/or file certain release notifications and perform corrective actions for releases which may endanger public health or the environment.
<input checked="" type="checkbox"/>	I acknowledge the fact that the acceptance of a C-141 report by the OCD does not relieve the operator of liability should their operations have failed to adequately investigate and remediate contamination that pose a threat to groundwater, surface water, human health or the environment.
<input checked="" type="checkbox"/>	I acknowledge the fact that, in addition, OCD acceptance of a C-141 report does not relieve the operator of responsibility for compliance with any other federal, state, or local laws and/or regulations.

Sante Fe Main Office
Phone: (505) 476-3441

General Information
Phone: (505) 629-6116

Online Phone Directory
<https://www.emnrd.nm.gov/ocd/contact-us>

State of New Mexico
Energy, Minerals and Natural Resources
Oil Conservation Division
1220 S. St Francis Dr.
Santa Fe, NM 87505

CONDITIONS

Action 572554

CONDITIONS

Operator: Coterra Energy Operating Co. 6001 Deauville Blvd Midland, TX 79706	OGRID: 215099
	Action Number: 572554
	Action Type: [NOTIFY] Notification Of Release (NOR)

CONDITIONS

Created By	Condition	Condition Date
lluig	When submitting future reports regarding this release, please submit the calculations used or specific justification for the volumes reported on the initial C-141.	4/7/2026



COTERRA ENERGY
ALPHA STATE COM 301H
LEA, NM

9:16



< Home

Standing Liquid Calculation

Alpha

L(Ft)

W(Ft)

D(In)

Oil %

245

75

1.5

%



H₂O Spill Total: 409.06 Bbls

Oil Spill Total: 0.00 Bbls

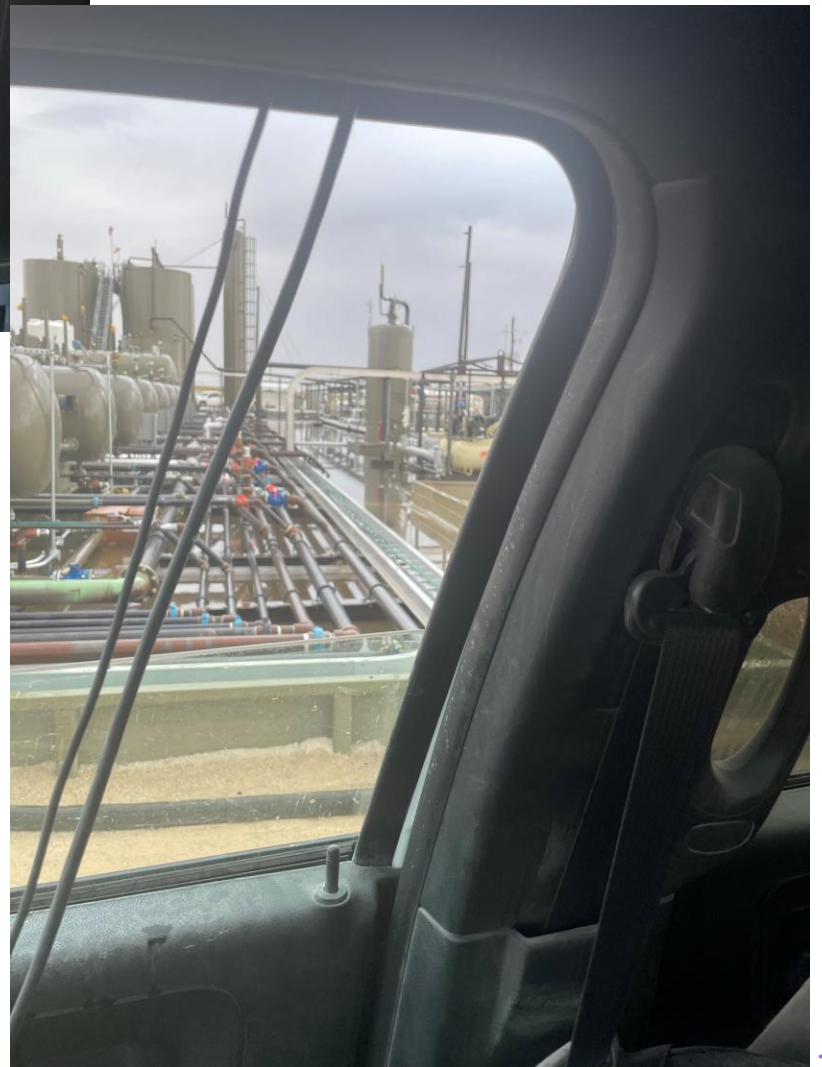
Total Spilled: 409.06 Bbls

Add Section to Spill

1	2 ABC	3 DEF
4 GHI	5 JKL	6 MNO
7 PQRS	8 TUV	9 WXYZ
.	0	⌫



COTERRA ENERGY
ALPHA STATE COM 301H
LEA, NM





COTERRA ENERGY
ALPHA STATE COM 301H
LEA, NM



Sante Fe Main Office
Phone: (505) 476-3441

General Information
Phone: (505) 629-6116

Online Phone Directory
<https://www.emnrd.nm.gov/ocd/contact-us>

State of New Mexico
Energy, Minerals and Natural Resources
Oil Conservation Division
1220 S. St Francis Dr.
Santa Fe, NM 87505

QUESTIONS

Action 574318

QUESTIONS

Operator: Coterra Energy Operating Co. 6001 Deauville Blvd Midland, TX 79706	OGRID: 215099
	Action Number: 574318
	Action Type: [C-141] Initial C-141 (C-141-v-Initial)

QUESTIONS

Prerequisites	
Incident ID (n#)	nAPP2609770085
Incident Name	NAPP2609770085 ALPHA STATE COM 301H CTB @ FAPP2511336425
Incident Type	Produced Water Release
Incident Status	Initial C-141 Received
Incident Facility	[fAPP2511336425] Alpha State Com 301H CTB

Location of Release Source	
<i>Please answer all the questions in this group.</i>	
Site Name	Alpha State Com 301H CTB
Date Release Discovered	04/07/2026
Surface Owner	Private

Incident Details	
<i>Please answer all the questions in this group.</i>	
Incident Type	Produced Water Release
Did this release result in a fire or is the result of a fire	No
Did this release result in any injuries	No
Has this release reached or does it have a reasonable probability of reaching a watercourse	No
Has this release endangered or does it have a reasonable probability of endangering public health	No
Has this release substantially damaged or will it substantially damage property or the environment	No
Is this release of a volume that is or may with reasonable probability be detrimental to fresh water	No

Nature and Volume of Release	
<i>Material(s) released, please answer all that apply below. Any calculations or specific justifications for the volumes provided should be attached to the follow-up C-141 submission.</i>	
Crude Oil Released (bbls) Details	Not answered.
Produced Water Released (bbls) Details	Cause: Equipment Failure Tank (Any) Produced Water Released: 409 BBL Recovered: 409 BBL Lost: 0 BBL.
Is the concentration of chloride in the produced water >10,000 mg/l	Yes
Condensate Released (bbls) Details	Not answered.
Natural Gas Vented (Mcf) Details	Not answered.
Natural Gas Flared (Mcf) Details	Not answered.
Other Released Details	Not answered.
Are there additional details for the questions above (i.e. any answer containing Other, Specify, Unknown, and/or Fire, or any negative lost amounts)	We had a major reportable release at the Alpha State Com 301H Facility due to a failed SWD valve. On Monday, April 6th, the facility was shut in to perform safety system and automation upgrades. During this process, all pumps were secured, the main discharge valve was closed and locked out, and all wells were shut in and locked at the wellheads. When the Operations Team arrived on site Tuesday morning, they found the produced water tank overflowing. As a result, approximately 409 barrels of produced water was released into the lined containment. All fluids inside the lined containment were recovered by vac trucks. The containment will be washed, and a liner inspection scheduled in the coming days.

Sante Fe Main Office
Phone: (505) 476-3441

General Information
Phone: (505) 629-6116

Online Phone Directory
<https://www.emnrd.nm.gov/ocd/contact-us>

State of New Mexico
Energy, Minerals and Natural Resources
Oil Conservation Division
1220 S. St Francis Dr.
Santa Fe, NM 87505

QUESTIONS, Page 2

Action 574318

QUESTIONS (continued)

Operator: Coterra Energy Operating Co. 6001 Deauville Blvd Midland, TX 79706	OGRID: 215099
	Action Number: 574318
	Action Type: [C-141] Initial C-141 (C-141-v-Initial)

QUESTIONS

Nature and Volume of Release (continued)	
Is this a gas only submission (i.e. only significant Mcf values reported)	No, according to supplied volumes this does not appear to be a "gas only" report.
Was this a major release as defined by Subsection A of 19.15.29.7 NMAC	Yes
Reasons why this would be considered a submission for a notification of a major release	From paragraph A. "Major release" determine using: (1) an unauthorized release of a volume, excluding gases, of 25 barrels or more.
<i>With the implementation of the 19.15.27 NMAC (05/25/2021), venting and/or flaring of natural gas (i.e. gas only) are to be submitted on the C-129 form.</i>	

Initial Response

The responsible party must undertake the following actions immediately unless they could create a safety hazard that would result in injury.

The source of the release has been stopped	True
The impacted area has been secured to protect human health and the environment	True
Released materials have been contained via the use of berms or dikes, absorbent pads, or other containment devices	True
All free liquids and recoverable materials have been removed and managed appropriately	True
If all the actions described above have not been undertaken, explain why	<i>Not answered.</i>

Per Paragraph (4) of Subsection B of 19.15.29.8 NMAC the responsible party may commence remediation immediately after discovery of a release. If remediation has begun, please prepare and attach a narrative of actions to date in the follow-up C-141 submission. If remedial efforts have been successfully completed or if the release occurred within a lined containment area (see Subparagraph (a) of Paragraph (5) of Subsection A of 19.15.29.11 NMAC), please prepare and attach all information needed for closure evaluation in the follow-up C-141 submission.

I hereby certify that the information given above is true and complete to the best of my knowledge and understand that pursuant to OCD rules and regulations all operators are required to report and/or file certain release notifications and perform corrective actions for releases which may endanger public health or the environment. The acceptance of a C-141 report by the OCD does not relieve the operator of liability should their operations have failed to adequately investigate and remediate contamination that pose a threat to groundwater, surface water, human health or the environment. In addition, OCD acceptance of a C-141 report does not relieve the operator of responsibility for compliance with any other federal, state, or local laws and/or regulations.

I hereby agree and sign off to the above statement	Name: Laci Luig Title: ES&H Specialist Email: DL_PerminEnvironmental@coterra.com Date: 04/13/2026
--	--

Sante Fe Main Office
Phone: (505) 476-3441

General Information
Phone: (505) 629-6116

Online Phone Directory
<https://www.emnrd.nm.gov/ocd/contact-us>

**State of New Mexico
Energy, Minerals and Natural Resources
Oil Conservation Division
1220 S. St Francis Dr.
Santa Fe, NM 87505**

QUESTIONS, Page 3

Action 574318

QUESTIONS (continued)

Operator: Coterra Energy Operating Co. 6001 Deauville Blvd Midland, TX 79706	OGRID: 215099
	Action Number: 574318
	Action Type: [C-141] Initial C-141 (C-141-v-Initial)

QUESTIONS

Site Characterization

Please answer all the questions in this group (only required when seeking remediation plan approval and beyond). This information must be provided to the appropriate district office no later than 90 days after the release discovery date.

What is the shallowest depth to groundwater beneath the area affected by the release in feet below ground surface (ft bgs)	Not answered.
What method was used to determine the depth to ground water	Not answered.
Did this release impact groundwater or surface water	Not answered.
What is the minimum distance, between the closest lateral extents of the release and the following surface areas:	
A continuously flowing watercourse or any other significant watercourse	Not answered.
Any lakebed, sinkhole, or playa lake (measured from the ordinary high-water mark)	Not answered.
An occupied permanent residence, school, hospital, institution, or church	Not answered.
A spring or a private domestic fresh water well used by less than five households for domestic or stock watering purposes	Not answered.
Any other fresh water well or spring	Not answered.
Incorporated municipal boundaries or a defined municipal fresh water well field	Not answered.
A wetland	Not answered.
A subsurface mine	Not answered.
An (non-karst) unstable area	Not answered.
Categorize the risk of this well / site being in a karst geology	Not answered.
A 100-year floodplain	Not answered.
Did the release impact areas not on an exploration, development, production, or storage site	Not answered.

Remediation Plan

Please answer all the questions that apply or are indicated. This information must be provided to the appropriate district office no later than 90 days after the release discovery date.

Requesting a remediation plan approval with this submission	No
<i>The OCD recognizes that proposed remediation measures may have to be minimally adjusted in accordance with the physical realities encountered during remediation. If the responsible party has any need to significantly deviate from the remediation plan proposed, then it should consult with the division to determine if another remediation plan submission is required.</i>	

Sante Fe Main Office
Phone: (505) 476-3441

General Information
Phone: (505) 629-6116

Online Phone Directory
<https://www.emnrd.nm.gov/ocd/contact-us>

State of New Mexico
Energy, Minerals and Natural Resources
Oil Conservation Division
1220 S. St Francis Dr.
Santa Fe, NM 87505

CONDITIONS

Action 574318

CONDITIONS

Operator: Coterra Energy Operating Co. 6001 Deauville Blvd Midland, TX 79706	OGRID: 215099
	Action Number: 574318
	Action Type: [C-141] Initial C-141 (C-141-v-Initial)

CONDITIONS

Created By	Condition	Condition Date
rhamlet	None	4/13/2026

Sante Fe Main Office
Phone: (505) 476-3441

General Information
Phone: (505) 629-6116

Online Phone Directory
<https://www.emnrd.nm.gov/ocd/contact-us>

**State of New Mexico
Energy, Minerals and Natural Resources
Oil Conservation Division
1220 S. St Francis Dr.
Santa Fe, NM 87505**

QUESTIONS

Action 577364

QUESTIONS

Operator: Coterra Energy Operating Co. 6001 Deauville Blvd Midland, TX 79706	OGRID: 215099
	Action Number: 577364
	Action Type: [NOTIFY] Notification Of Liner Inspection (C-141L)

QUESTIONS

Prerequisites	
Incident ID (n#)	nAPP2609770085
Incident Name	NAPP2609770085 ALPHA STATE COM 301H CTB @ FAPP2511336425
Incident Type	Produced Water Release
Incident Status	Initial C-141 Approved
Incident Facility	[fAPP2511336425] Alpha State Com 301H CTB

Location of Release Source	
Site Name	Alpha State Com 301H CTB
Date Release Discovered	04/07/2026
Surface Owner	Private

Liner Inspection Event Information	
<i>Please answer all the questions in this group.</i>	
What is the liner inspection surface area in square feet	18,500
Have all the impacted materials been removed from the liner	Yes
Liner inspection date pursuant to Subparagraph (a) of Paragraph (5) of Subsection A of 19.15.29.11 NMAC	04/22/2026
Time liner inspection will commence	11:30 AM
Please provide any information necessary for observers to liner inspection	Inspecting tank containment
Please provide any information necessary for navigation to liner inspection site	Coordinates: 32.68139, -103.46313

Sante Fe Main Office
Phone: (505) 476-3441

General Information
Phone: (505) 629-6116

Online Phone Directory
<https://www.emnrd.nm.gov/ocd/contact-us>

State of New Mexico
Energy, Minerals and Natural Resources
Oil Conservation Division
1220 S. St Francis Dr.
Santa Fe, NM 87505

CONDITIONS

Action 577364

CONDITIONS

Operator: Coterra Energy Operating Co. 6001 Deauville Blvd Midland, TX 79706	OGRID: 215099
	Action Number: 577364
	Action Type: [NOTIFY] Notification Of Liner Inspection (C-141L)

CONDITIONS

Created By	Condition	Condition Date
lluig	Failure to notify the OCD of liner inspections including any changes in date/time per the requirements of 19.15.29.11.A(5)(a)(ii) NMAC, may result in the inspection not being accepted.	4/20/2026



Liner Integrity Certification

The following serves to verify that the affected liner has been inspected and found to be in serviceable condition in accordance with 19.15.29.11 A.(5)(a)(i-ii) of the New Mexico Administrative Code.

Facility ID: fAPP2511336425

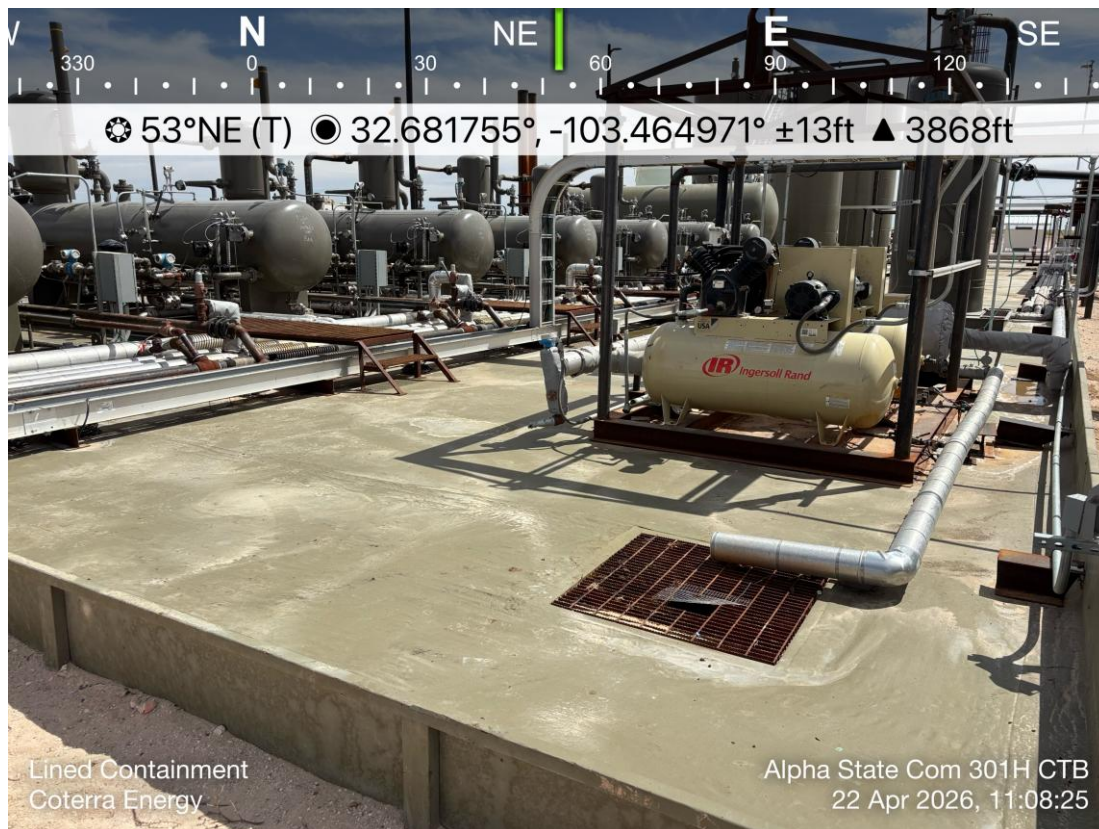
Date: 05/14/2026

Incident ID(s): nAPP2609770085

- Responsible Party has visually inspected the liner.
- Liner remains intact and was able to contain the leak in question.
- At least two business days' notice was given to the appropriate division district office before conducting the liner inspection.
- Photographs illustrating liner integrity are included.

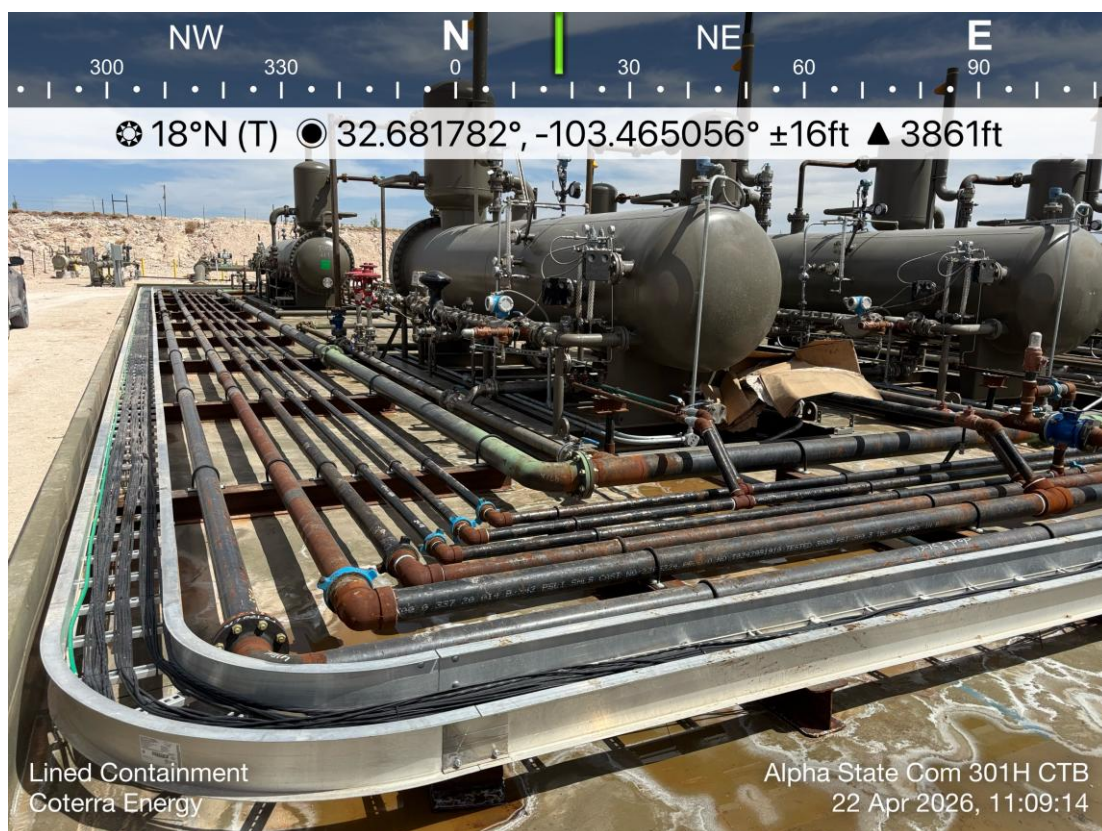
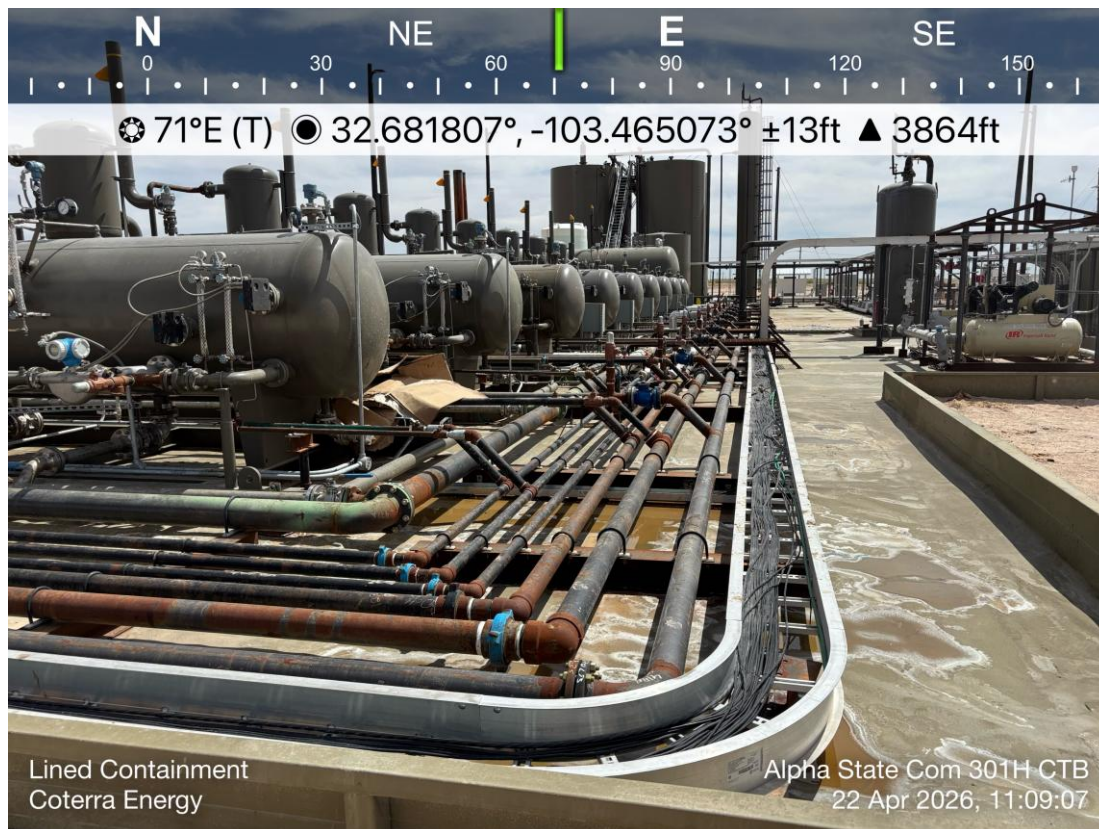


CIMAREX ENERGY
Alpha State Com 301H CTB
Lea Co, NM



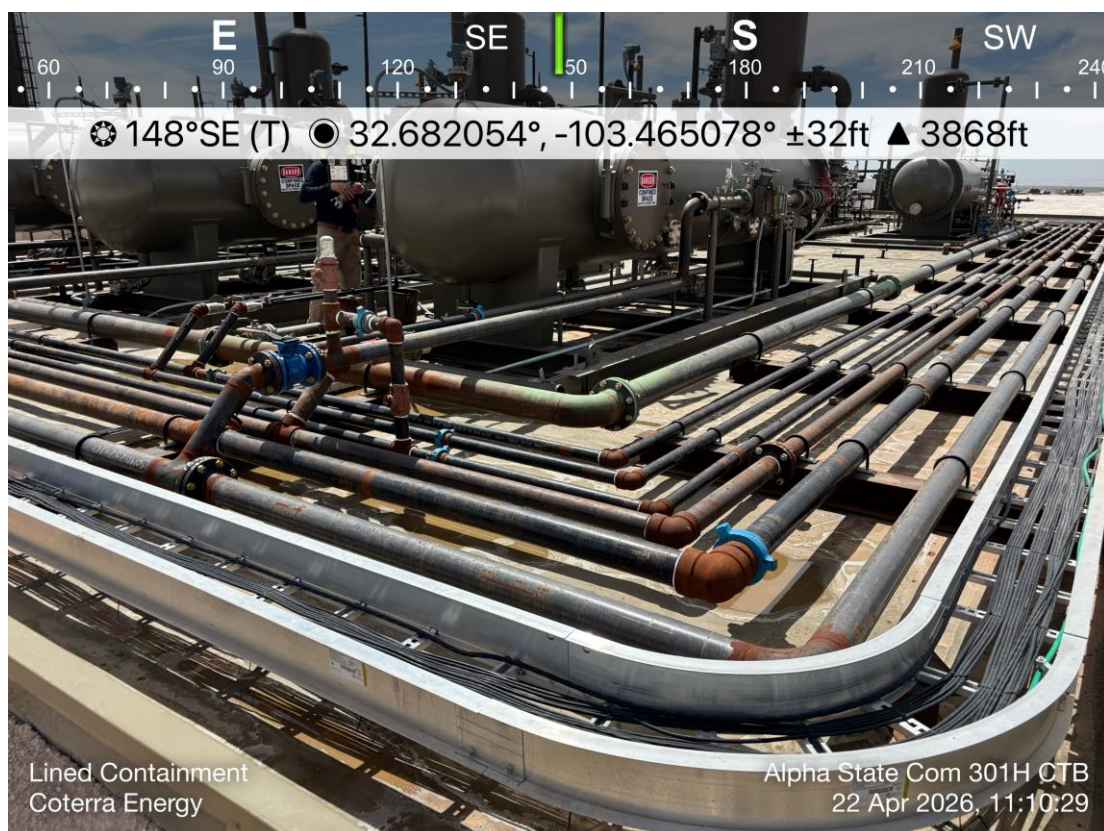
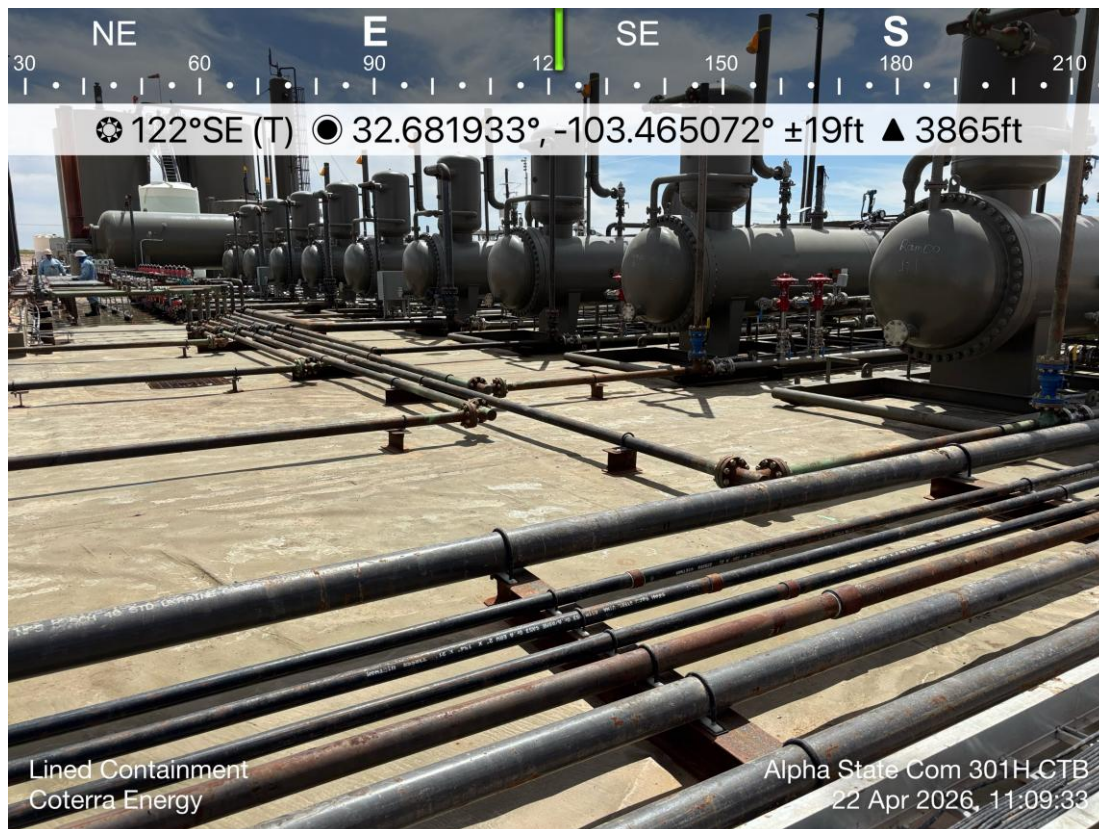


CIMAREX ENERGY
Alpha State Com 301H CTB
Lea Co, NM



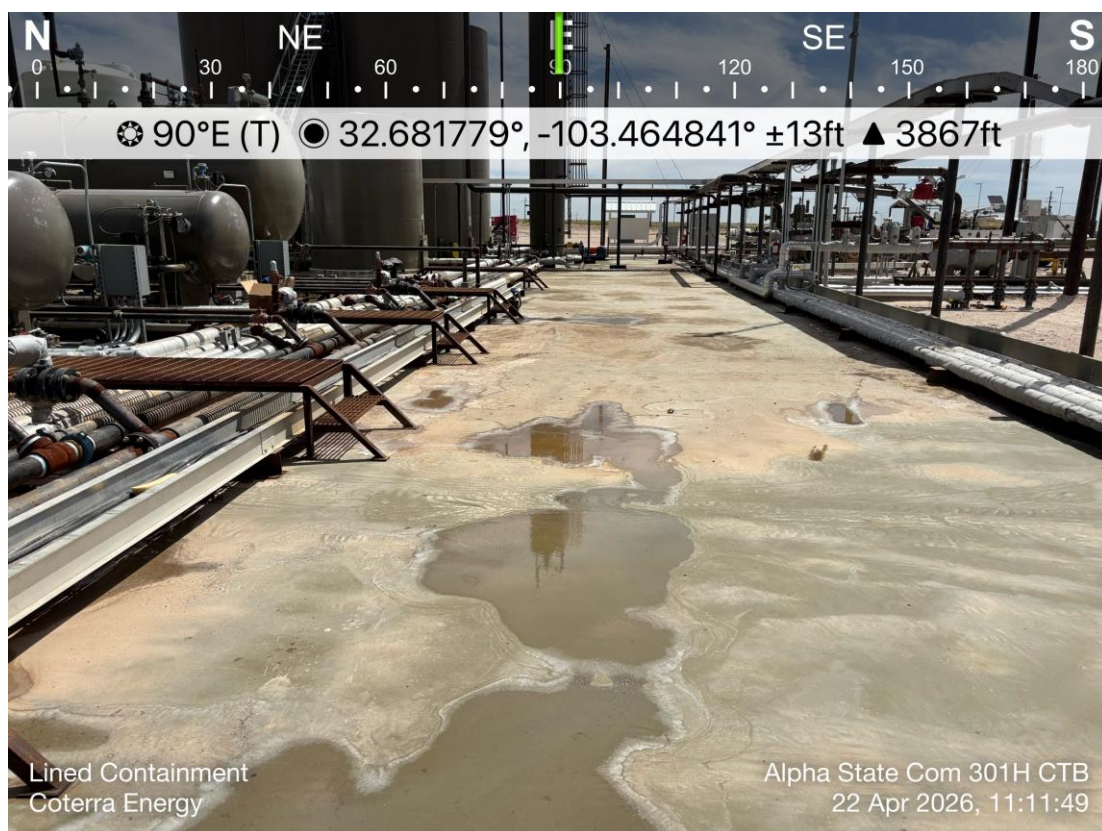
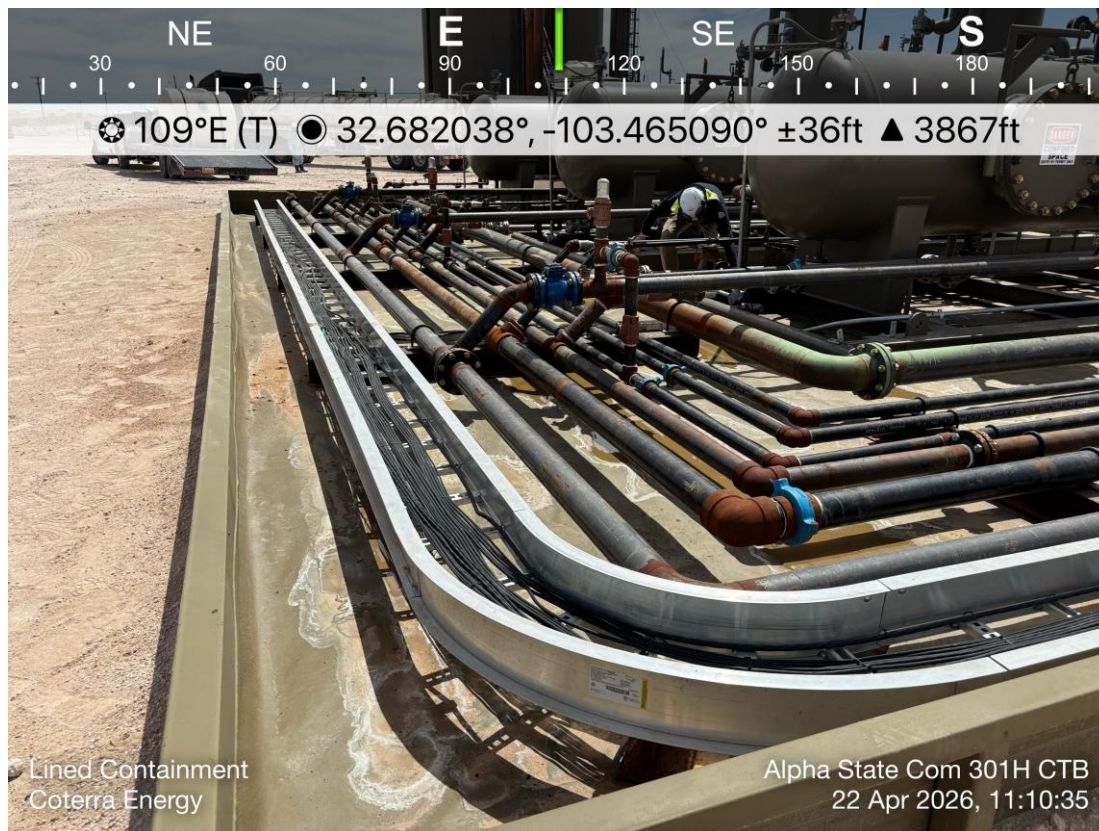


CIMAREX ENERGY
Alpha State Com 301H CTB
Lea Co, NM



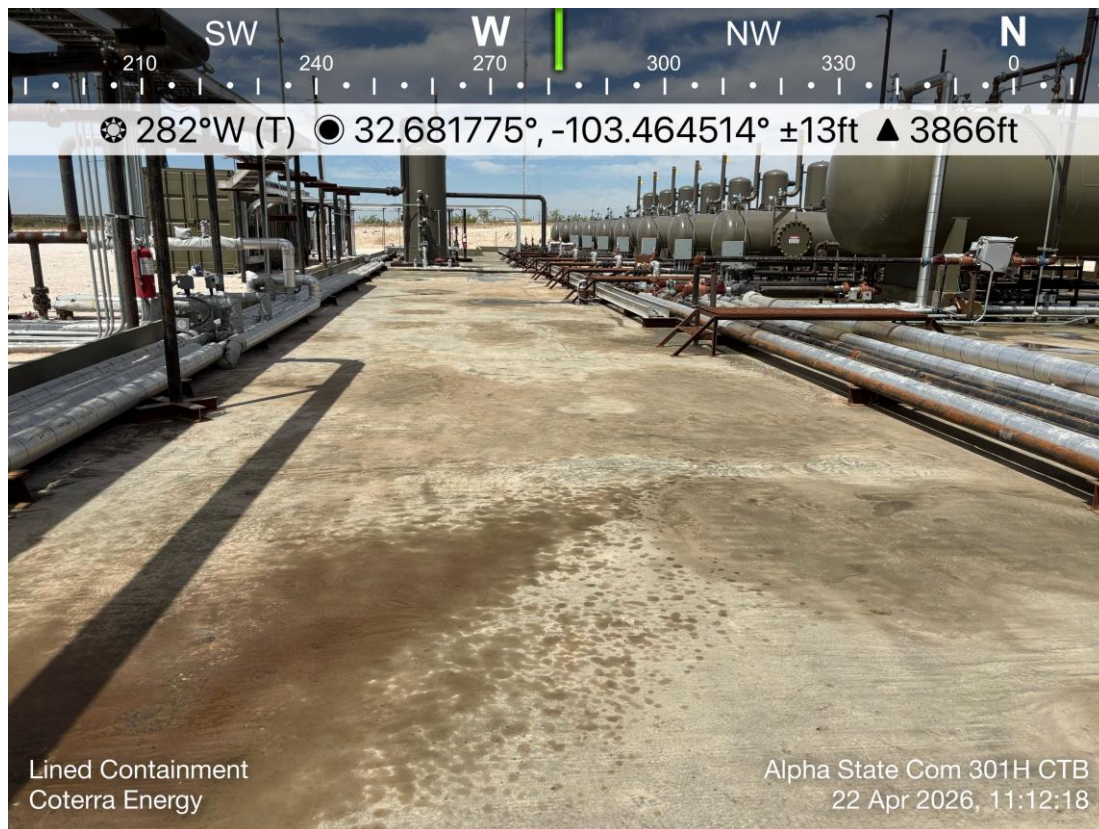


CIMAREX ENERGY
Alpha State Com 301H CTB
Lea Co, NM





CIMAREX ENERGY
Alpha State Com 301H CTB
Lea Co, NM



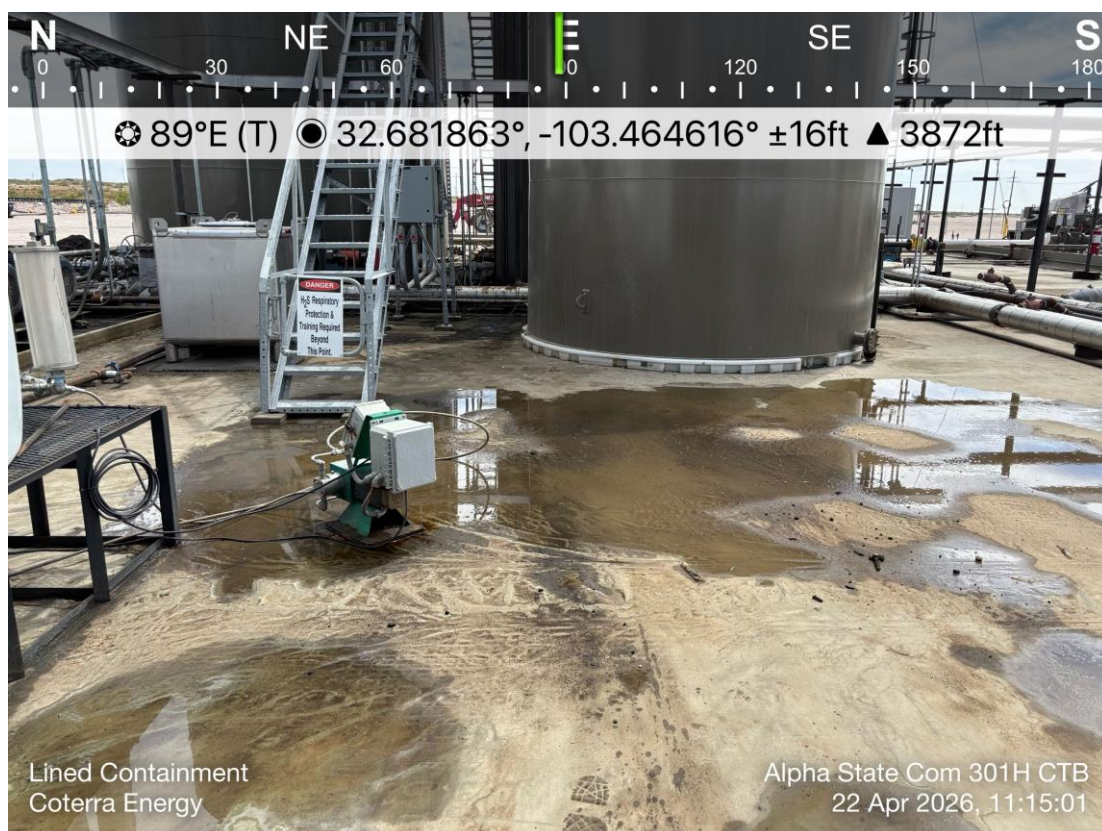
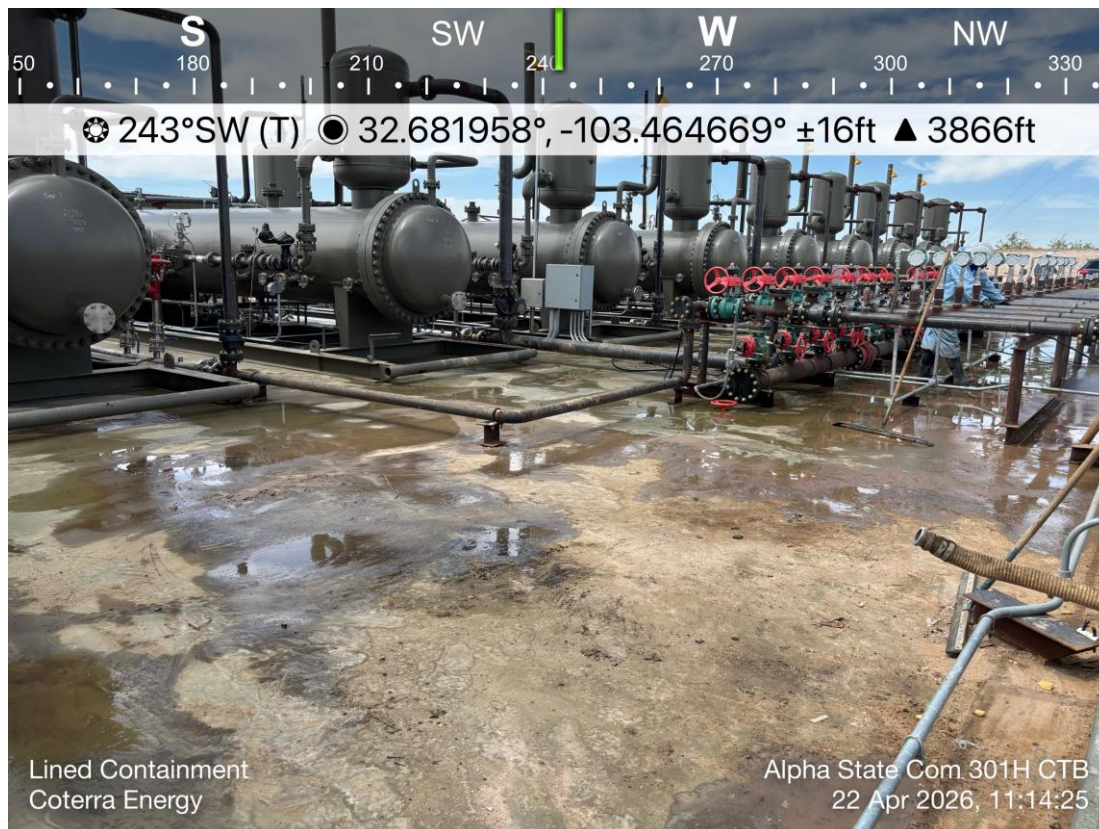


CIMAREX ENERGY
Alpha State Com 301H CTB
Lea Co, NM



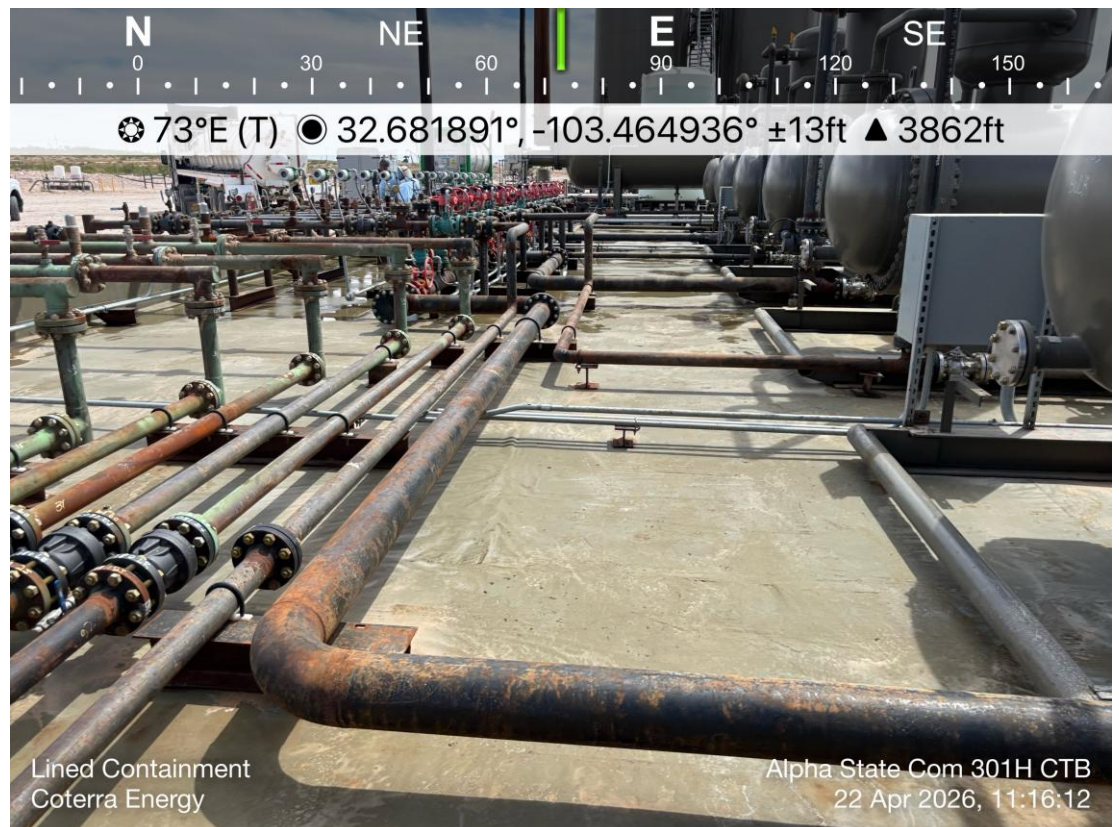
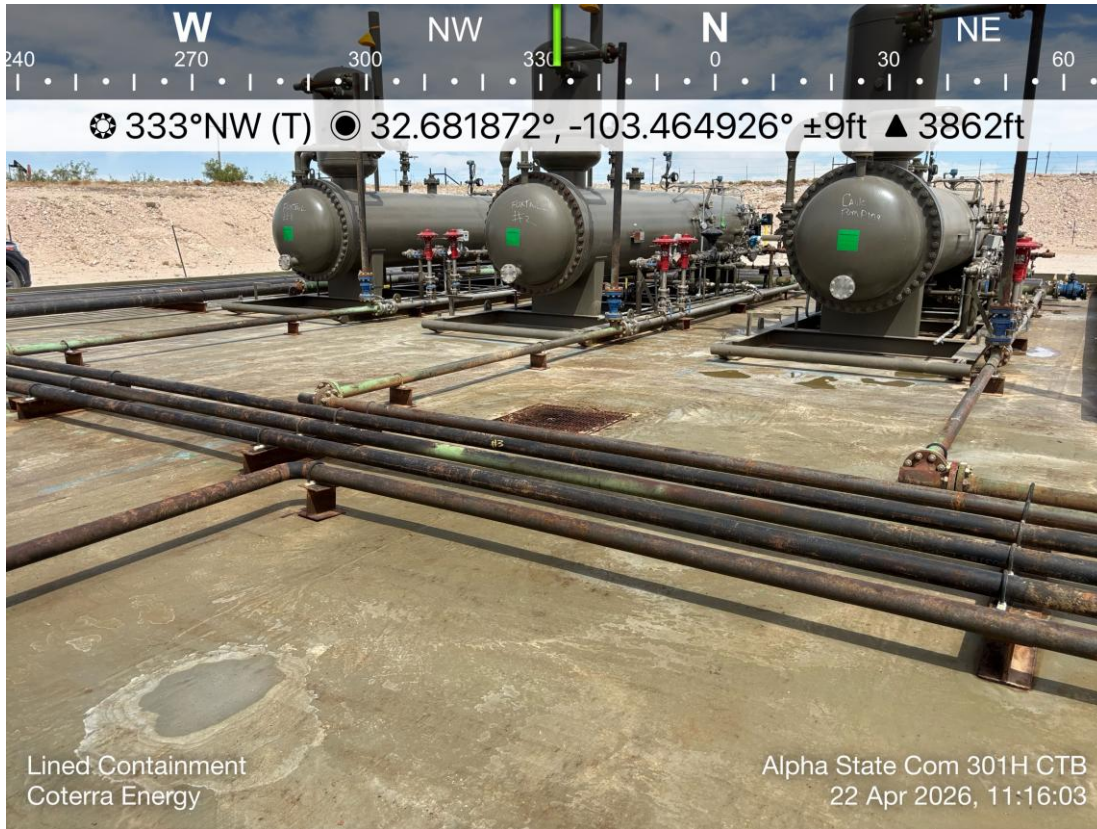


CIMAREX ENERGY
Alpha State Com 301H CTB
Lea Co, NM





CIMAREX ENERGY
Alpha State Com 301H CTB
Lea Co, NM



Legend

- Alpha State Com 301H CTB (04.07.2026)
- Low

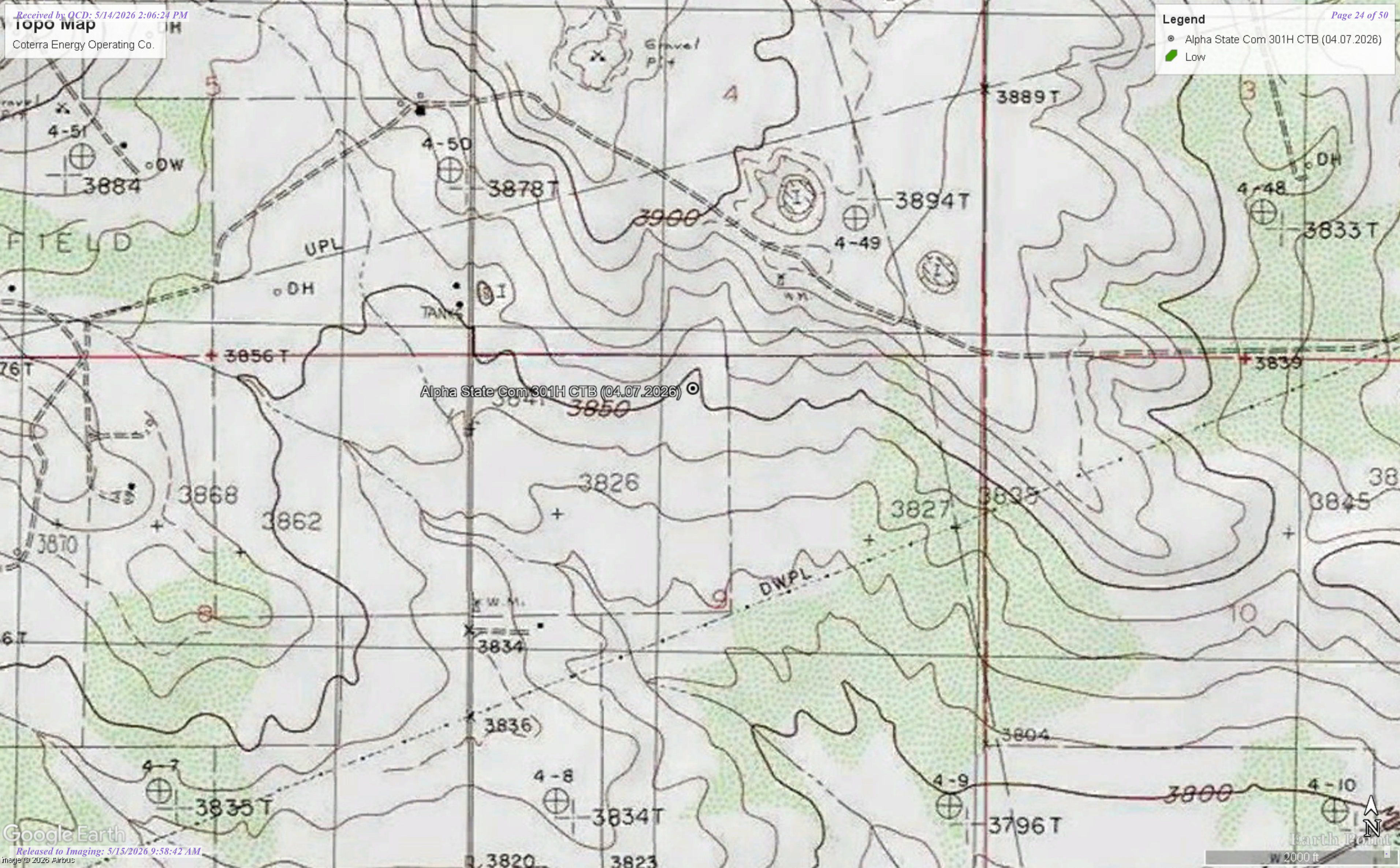


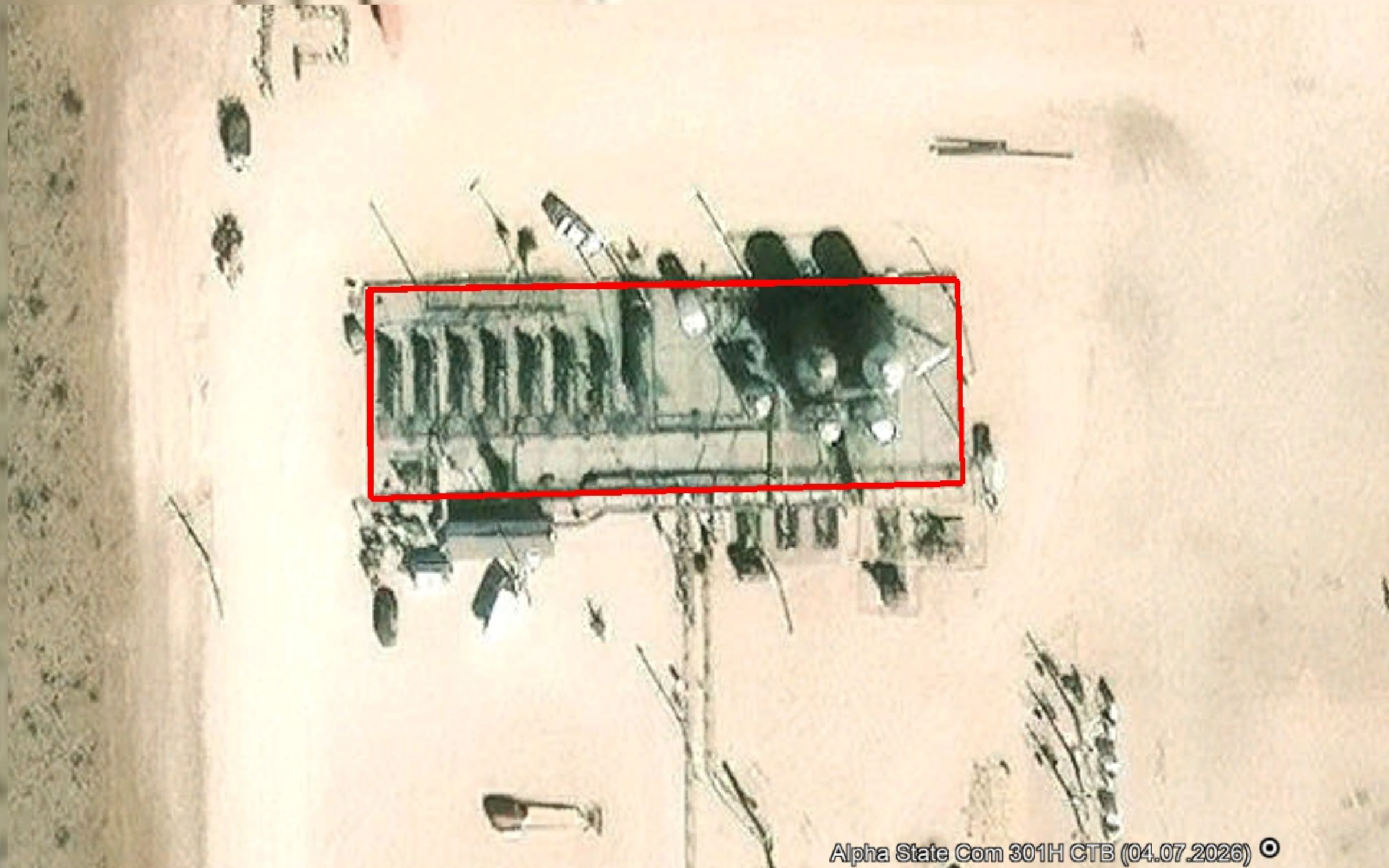
Alpha State Com 301H CTB (04.07.2026)



Legend

- Alpha State Com 301H CTB (04.07.2026)
- Low





Alpha State Com 301H CTB (04.07.2026) ●

Nearest water well

Coterra Energy Operating Co.

Legend

- 0.27 Miles
- 0.50 Mile Radius
- 0.54 Miles
- 0.61 Miles
- Alpha State Com 301H CTB (04.07.2026)
- USGS Water Well

49.25' - Drilled 1991

83.75' - Drilled 1991

Alpha State Com 301H CTB (04.07.2026)

19.45' - Drilled 1996



Low Karst

Coterra Energy Operating Co.

Legend

- Alpha State Com 301H CTB (04.07.2026)
- Low



Alpha State Com 301H CTB (04.07.2026)





New Mexico Office of the State Engineer

Water Column/Average Depth to Water

(A CLW##### in the POD suffix indicates the POD has been replaced & no longer serves a water right file.)

(R=POD has been replaced, O=orphaned, C=the file is closed)

(quarters are smallest to largest)

(meters)

(In feet)

POD Number	Code	Sub basin	County	Q64	Q16	Q4	Sec	Tws	Range	X	Y	Map	Distance	Well Depth	Depth Water	Water Column
L 05339		L	LE		SW	SE	04	19S	35E	644358.0	3617317.0 *	●	427	128	83	45
L 09103		L	LE		SW	SE	04	19S	35E	644358.0	3617317.0 *	●	427	140	70	70
L 08973		L	LE	NW	SW	SE	04	19S	35E	644257.0	3617416.0 *	●	446	140	95	45
L 09077		L	LE	NE	SW	SE	04	19S	35E	644457.0	3617416.0 *	●	567	144	95	49
L 09294		L	LE	NW	SE	SE	04	19S	35E	644661.0	3617420.0 *	●	729	150		
L 14182 POD1		L	LE	SW	SW	NW	09	19S	35E	643391.8	3616347.1	●	941	78	25	53
L 11281		L	LE	SE	NE	SE	05	19S	35E	643304.4	3617707.4	●	1014	102		
L 03887		L	LE	NE	NE	SE	05	19S	35E	643242.0	3617804.0	●	1126	90	55	35
L 09347		L	LE	NE	NE	SE	05	19S	35E	643242.0	3617804.0 *	●	1126	94	55	39
L 03887 POD2		L	LE	NE	NE	SE	05	19S	35E	643241.3	3617804.4	●	1127	153	58	95
L 10613		L	LE		NE	SE	05	19S	35E	643143.0	3617705.0 *	●	1137	100	100	0
L 04276		L	LE		NE	SE	08	19S	35E	643168.0	3616092.0 *	●	1280	57	18	39
L 05178		L	LE	SE	SE	NE	05	19S	35E	643184.7	3618063.0	●	1355	142	85	57
L 01667		L	LE	NW	NW	SE	05	19S	35E	642640.0	3617799.0 *	●	1611	103	37	66
L 14200 POD2		L	LE	NE	NE	NE	05	19S	35E	643291.1	3618631.3	●	1781	180	60	120
L 09762		L	LE		SW	SW	33	18S	35E	643526.0	3618913.0 *	●	1964	160	80	80
L 14200 POD1		L	LE	NE	NE	NE	05	19S	35E	642952.2	3618657.2	●	1971	180	60	120
L 09428		L	LE	SW	SE	NW	05	19S	35E	642231.0	3617997.0 *	●	2065	130		
L 14477 POD1		L	LE	SW	SE	SW	10	19S	35E	645580.6	3615575.5	●	2103	200		
L 15510 POD1		L	LE	SE	SE	SE	10	19S	35E	645584.0	3615553.4	●	2121	38		
L 15510 POD2		L	LE	SE	SE	SE	10	19S	35E	645584.0	3615553.4	●	2121	38		
L 15510 POD3		L	LE	NE	NE	NE	10	19S	35E	645584.0	3615553.4	●	2121	38		
L 15510 POD4		L	LE	NE	NE	NE	10	19S	35E	645584.0	3615553.4	●	2121	38		
L 07129		L	LE	SE	SW	SW	34	18S	35E	645237.0	3618830.0 *	●	2163	60	40	20
L 14371 POD1		L	LE	NW	NW	NE	05	19S	35E	642616.1	3618661.6	●	2180	172	60	112
L 04763		L	LE	SE	NW	NW	15	19S	35E	645295.0	3615211.0 *	●	2195	75	20	55
L 04808		L	LE	SW	SW	SE	10	19S	35E	645895.0	3615624.0 *	●	2312	80	53	27
L 00493		L	LE	NW	NE	NW	05	19S	35E	642290.5	3618663.1	●	2408	100		
L 05217		L	LE		NE	NE	07	19S	35E	641547.0	3616879.0 *	●	2507	105	55	50
L 05444		L	LE		SE	SW	32	18S	35E	642319.0	3618899.0 *	●	2555	80	58	22
L 08793		L	LE		NW	NE	15	19S	35E	646002.0	3615322.0 *	●	2586	50	40	10
L 13988 POD1		L	LE	NW	SW	SE	34	18S	35E	645839.1	3618945.6	●	2627	110	38	72
L 14208 POD1		L	LE	NE	NE	NE	18	19S	35E	641684.9	3615464.5	●	2831	78		
L 08234		L	LE	NE	NE	SW	17	19S	35E	642487.0	3614566.0 *	●	2910	120	90	30
L 05220		L	LE		NW	SE	06	19S	35E	641131.0	3617681.0 *	●	2993	100	55	45
L 05246		L	LE	SW	NW	NE	07	19S	35E	641043.0	3616774.0 *	●	3018	100	60	40
L 13384 POD1		L	LE	SW	NW	NW	02	19S	35E	646695.5	3618522.0	●	3041	120		
L 09468		L	LE		SW	SW	15	19S	35E	645214.0	3614102.0 *	●	3141	52	28	24
L 04762		L	LE				06	19S	35E	640945.0	3617872.0 *	●	3220	175	130	45
L 09700		L	LE		NW	NW	14	19S	35E	646808.0	3615332.0 *	●	3232	140	27	113

(A CLW##### in the POD suffix indicates the POD has been replaced & no longer serves a water right file.) (R=POD has been replaced, O=orphaned, C=the file is closed)

(quarters are smallest to largest)

(meters)

(In feet)

POD Number	Code	Sub basin	County	Q64	Q16	Q4	Sec	Tws	Range	X	Y	Map	Distance	Well Depth	Depth Water	Water Column	
L 04583		L	LE		SE	SW	15	19S	35E	645617.0	3614107.0	*	●	3307	55	18	37
L 08234 S2		L	LE			SW	17	19S	35E	642192.0	3614259.0	*	●	3328	126	80	46
L 09569		L	LE		SE	SW	17	19S	35E	642394.0	3614063.0	*	●	3389	80	30	50
L 00335		L	LE	SE	NW	SW	35	18S	35E	646843.0	3619253.0	*	●	3575	124	45	79
L 03145		L	LE		NW	NW	07	19S	35E	640347.0	3616866.0	*	●	3707	97	45	52
L 16009 POD1		L	LE	NW	NE	NW	20	19S	35E	642317.1	3613691.2		●	3753	201	90	111
L 04211		L	LE		NW	SW	06	19S	35E	640337.0	3617672.0	*	●	3770	130	60	70
L 09745		L	LE	NE	SE	SW	35	18S	35E	647254.0	3619055.0	*	●	3794	106	65	41
L 01225 POD1		L	LE	NW	NE	SW	35	18S	35E	647047.0	3619458.0	*	●	3862	97	50	47
L 08234 S		L	LE	SE	SE	NW	18	19S	35E	640871.0	3614751.0	*	●	3906	106	60	46
L 15999 POD38		L	LE	SW	SW	NW	22	19S	35E	645169.1	3613272.1		●	3911	50		
L 15999 POD39		L	LE	SW	SW	NW	22	19S	35E	645190.2	3613277.4		●	3912	50		
L 15999 POD37		L	LE	SW	SW	NW	22	19S	35E	645147.7	3613257.7		●	3918	50		
L 15999 POD36		L	LE	SW	SW	NW	22	19S	35E	645135.2	3613239.9		●	3932	50		
L 15999 POD40		L	LE	SW	SW	NW	22	19S	35E	645202.2	3613259.1		●	3933	50		
L 15999 POD43		L	LE	SW	SW	NW	22	19S	35E	645218.6	3613257.8		●	3939	50		
L 15999 POD42		L	LE	SE	SW	NW	22	19S	35E	645232.0	3613250.0		●	3950	50		
L 15999 POD35		L	LE	SW	SW	NW	22	19S	35E	645128.8	3613214.3		●	3955	50		
L 15999 POD33		L	LE	SW	SW	NW	22	19S	35E	645154.9	3613211.2		●	3965	50		
L 15999 POD41		L	LE	SW	SW	NW	22	19S	35E	645214.6	3613227.8		●	3966	50		
L 15999 POD24		L	LE	SW	SW	NW	22	19S	35E	645184.6	3613213.2		●	3971	50		
L 15999 POD25		L	LE	SW	SW	NW	22	19S	35E	645194.5	3613215.5		●	3972	50		
L 15999 POD34		L	LE	SW	SW	NW	22	19S	35E	645142.8	3613199.7		●	3973	50		
L 15999 POD26		L	LE	SW	SW	NW	22	19S	35E	645205.7	3613215.4		●	3975	50		
L 15999 POD27		L	LE	SW	SW	NW	22	19S	35E	645215.8	3613215.8		●	3978	50		
L 15999 POD23		L	LE	SW	SW	NW	22	19S	35E	645171.7	3613202.3		●	3978	50		
L 15999 POD17		L	LE	SW	SW	NW	22	19S	35E	645189.4	3613206.2		●	3980	50		
L 15999 POD16		L	LE	SW	SW	NW	22	19S	35E	645198.7	3613208.2		●	3980	50		
L 15999 POD15		L	LE	SW	SW	NW	22	19S	35E	645207.3	3613208.6		●	3982	50		
L 15999 POD28		L	LE	SW	SW	NW	22	19S	35E	645220.1	3613212.2		●	3983	50		
L 15999 POD14		L	LE	SW	SW	NW	22	19S	35E	645192.8	3613201.9		●	3985	50		
L 15999 POD11		L	LE	SW	SW	NW	22	19S	35E	645214.4	3613207.5		●	3986	50		
L 15999 POD13		L	LE	SW	SW	NW	22	19S	35E	645201.2	3613203.3		●	3986	50		
L 15999 POD18		L	LE	SW	SW	NW	22	19S	35E	645183.8	3613197.8		●	3986	50		
L 15999 POD12		L	LE	SW	SW	NW	22	19S	35E	645192.4	3613197.0		●	3989	50		
L 15999 POD2		L	LE	SW	SW	NW	22	19S	35E	645206.4	3613201.2		●	3989	50		
L 15999 POD29		L	LE	SW	SW	NW	22	19S	35E	645216.5	3613202.6		●	3991	50		
L 15999 POD1		L	LE	SW	SW	NW	22	19S	35E	645199.2	3613195.6		●	3993	50		
L 15999 POD5		L	LE	SW	SW	NW	22	19S	35E	645211.9	3613199.4		●	3993	50		
L 15999 POD19		L	LE	SW	SW	NW	22	19S	35E	645184.4	3613190.4		●	3993	50		
L 15999 POD3		L	LE	SW	SW	NW	22	19S	35E	645206.5	3613196.0		●	3994	50		
L 15999 POD22		L	LE	SW	SW	NW	22	19S	35E	645179.0	3613184.8		●	3997	50		

Average Depth to Water: **58 feet**

Minimum Depth: 18 feet

Maximum Depth: 130 feet

Record Count: 82

UTM Filters (in meters):

Easting: 644051.00

Northing: 3617020.00

Radius: 4000.0

* UTM location was derived from PLSS - see Help

The data is furnished by the NMOSE/ISC and is accepted by the recipient with the expressed understanding that the OSE/ISC make no warranties, expressed or implied, concerning the accuracy, completeness, reliability, usability, or suitability for any particular purpose of the data.

Monitoring location

19S.35E.04.431442 - USGS-324053103273001

Important for you to know:



- USGS will be performing maintenance on WDFN webpages beginning Tuesday, May 26. If you cannot access the page you are intending or are unexpectedly redirected to a different page, please reach out to wdfn@usgs.gov for assistance.

DID YOU KNOW You can see all water data collected at this monitoring location in the *Available data* section of the page. Learn more about [centralized water data delivery](#) in WDFN.



1 year
 10 years
 Period of record

Scale Linear

[Log](#)

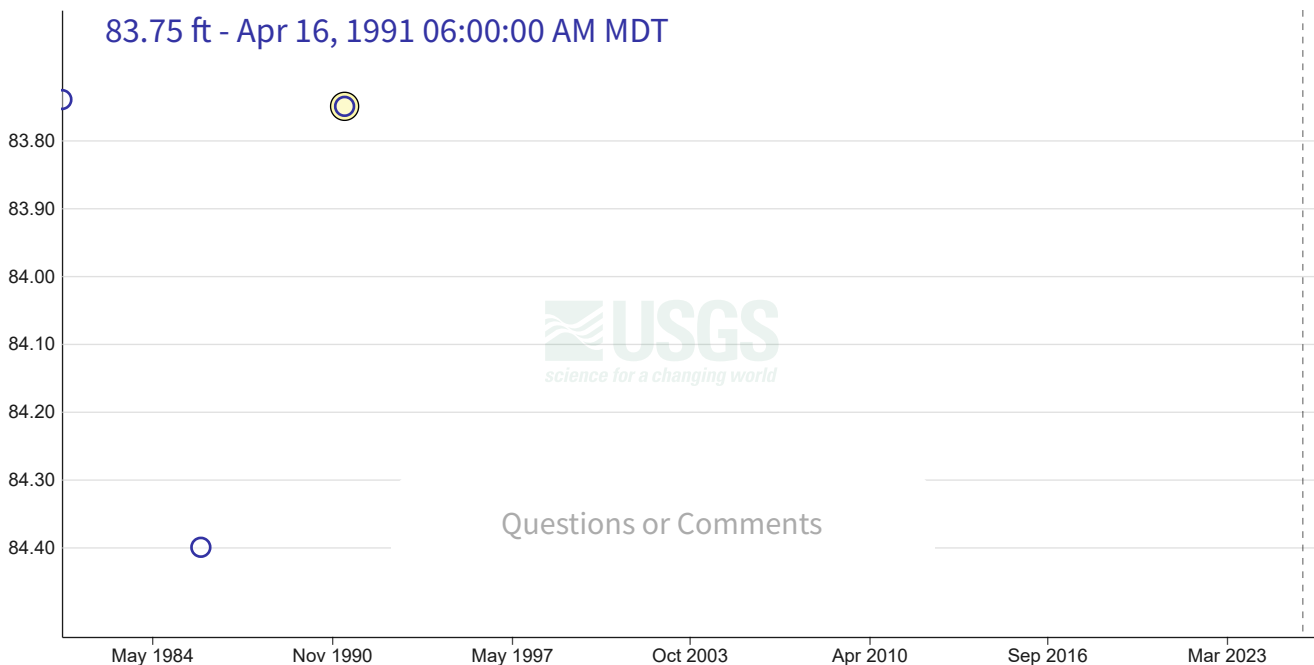
Field measurements

19S.35E.04.431442 - USGS-324053103273001

January 27, 1981 - May 14, 2026

Depth to water level, feet below land surface

83.75 ft - Apr 16, 1991 06:00:00 AM MDT



Questions or Comments

IMPORTANT Data may be [provisional](#)

[Show legend](#) ▾

[Hide graph details](#) ^

	Value	Status	
<input checked="" type="radio"/> Selected field measurement	83.75	Approved Static	Apr 16, 1991 06:00:00 AM MDT

[Hide graph details](#) ^

Change time span

Download data

View tabular data

Available data

Select data types to graph from categories based on the way the data were collected.

[Learn about the data collection categories](#)

[Expand all data collections](#)

Continuous data

0 data types available

Daily data

0 data types available

Field measurements

3 data types available - data from 1981-01-27 to 1991-04-16

[Hide these data types](#)

Field measurements are physically measured values collected during a visit to the monitoring location.

[Learn about Field measurements](#)

	Data type	Data date range
Graphed	Depth to water level, feet below land surface	1981-01-27 1991-04-16
Graph it	Groundwater level above NAVD 1988, feet	1981-01-27 1991-04-16
Graph it	Groundwater level above NGVD 1929, feet	1981-01-27 1991-04-16

Hide these data types

Discrete sample data

0 observed properties (data types) available

Statistical tables for select daily data types

0 data types available

Location details and information

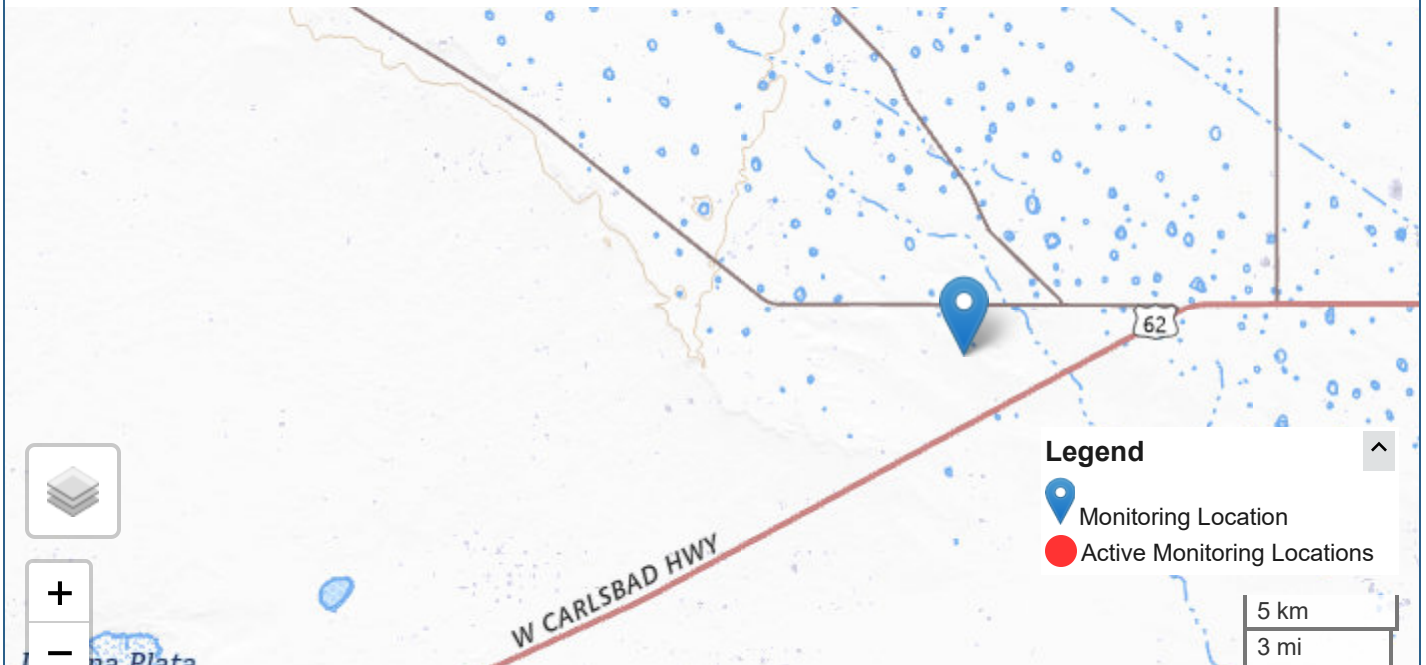
Show location details

Monitoring locations with continuous data in last 120 days

No locations found

Zoom out to see link to My Favorites

[Use Explore USGS Water Data to discover additional data near this location](#)



National Boundaries Dataset, 3DEP Elevation Program, Geographic Names Information System, National Hydrography Dataset, N...

Interested in understanding how to access the upstream/downstream data? [Learn about the Network-Linked Data Index \(NLDI\)](#).

Monitoring location

19S.35E.05.42211 - USGS-324105103281701

DID YOU KNOW You can see all water data collected at this monitoring location in the *Available data* section of the page. Learn more about [centralized water data delivery](#) in WDFN.

1 year 10 years Period of record

Scale Linear

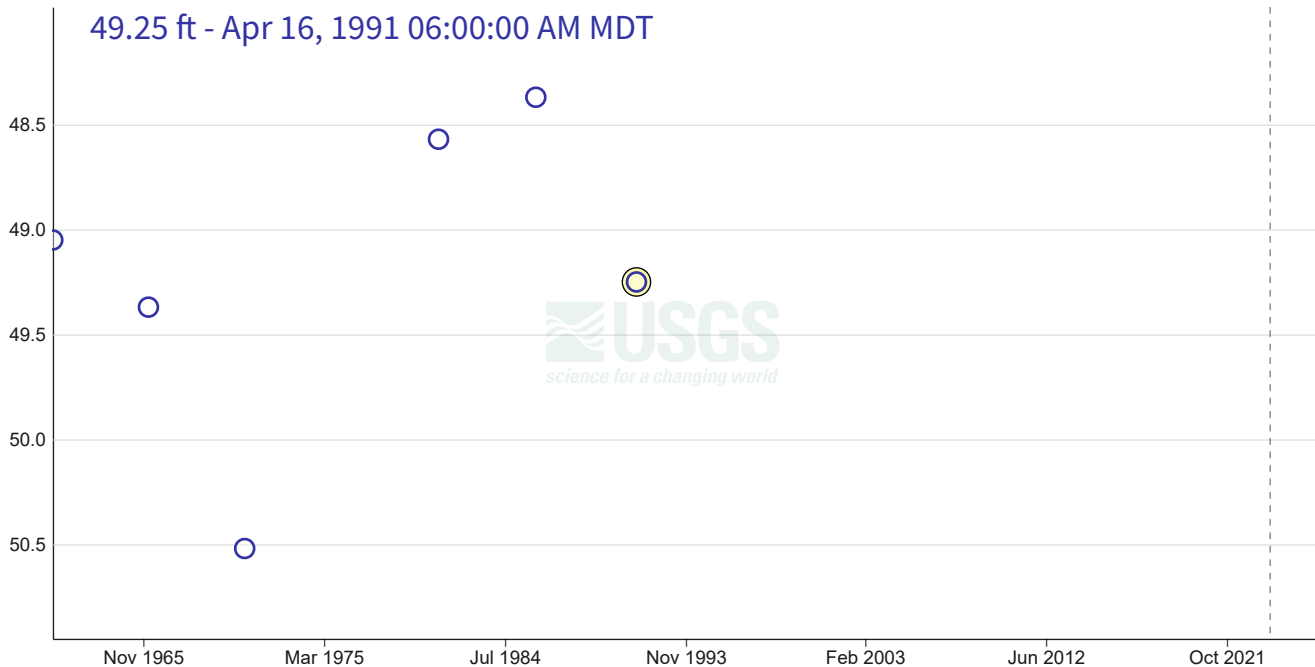
Log

Field measurements

19S.35E.05.42211 - USGS-324105103281701

March 3, 1961 - May 14, 2026

Depth to water level, feet below land surface



IMPORTANT Data may be [provisional](#)

Show legend

Hide graph details

	Value	Status	
<input checked="" type="radio"/> Selected field measurement	49.25	Approved Above, Pumping	Apr 16, 1991 06:00:00 AM MDT

[Hide graph details ^](#)

Change time span

Download data

View tabular data

Available data

Select data types to graph from [Questions or Comments](#) : collected.

Learn about the data collection categories

[Expand all data collections](#)

Continuous data

0 data types available

Daily data

0 data types available

Field measurements

3 data types available - data from 1961-03-03 to 1991-04-16

[Hide these data types](#)

Field measurements are physically measured values collected during a visit to the monitoring location.

[Learn about Field measurements](#)

	Data type	Data date range
Graphed	Depth to water level, feet below land surface	1961-03-03 1991-04-16
Graph it	Groundwater level above NAVD 1988, feet	1961-03-03 1991-04-16
Graph it	Groundwater level above NGVD 1929, feet	1961-03-03 1991-04-16

[Hide these data types](#)

Discrete sample data

0 observed properties (data types) available

Statistical tables for select daily data types

0 data types available

Location details and information

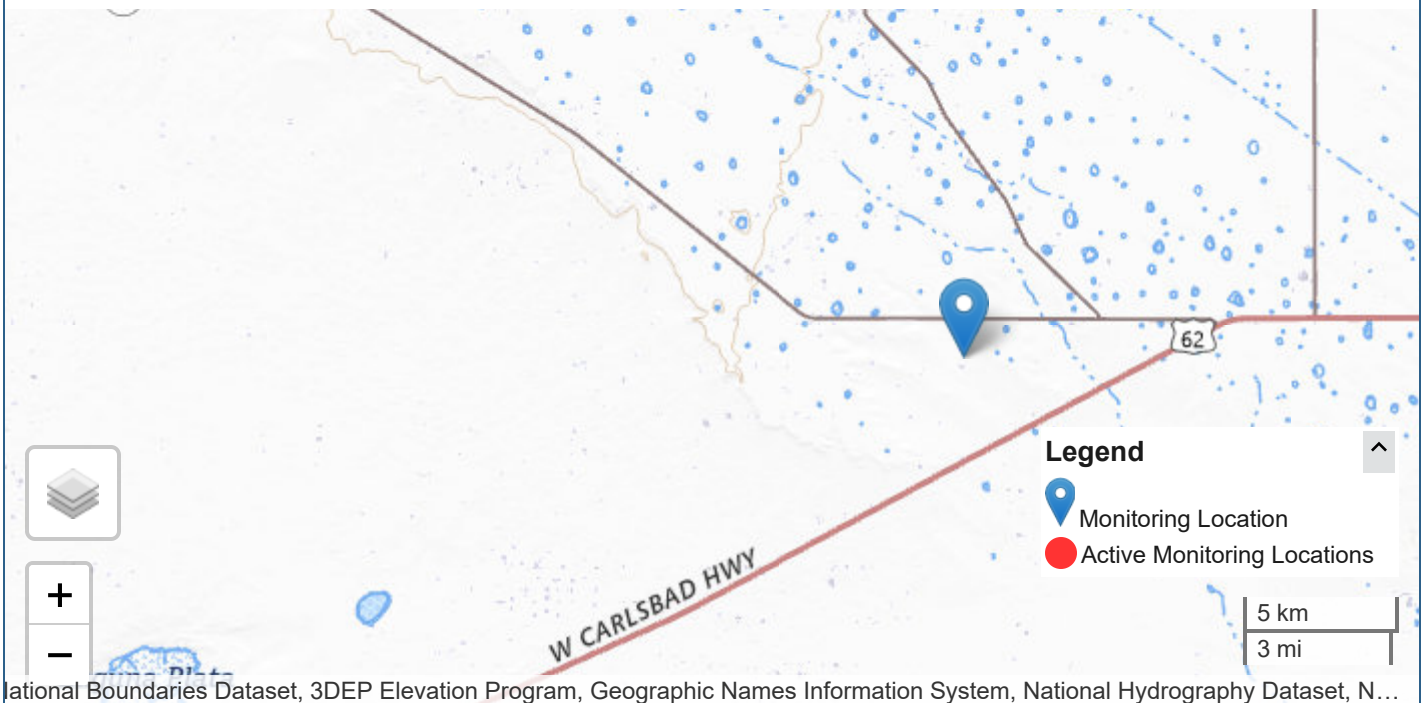
Show location details

Monitoring locations with continuous data in last 120 days

No locations found

Zoom out to see link to My Favorites

[Use Explore USGS Water Data to discover additional data near this location](#)



Interested in understanding how to access the upstream/downstream data? [Learn about the Network-Linked Data Index \(NLDI\)](#)

[DOI Privacy Policy](#) | [Legal](#) | [Accessibility](#) | [Site Map](#) | [Contact USGS](#)

Follow

[U.S. Department of the Interior](#) | [DOI Inspector General](#) | [White House](#) | [No Fear Act](#) | [FOIA](#)

Monitoring location

19S.35E.09.13333 - USGS-324015103280801

Important for you to know:



- USGS will be performing maintenance on WDFN webpages beginning Tuesday, May 26. If you cannot access the page you are intending or are unexpectedly redirected to a different page, please reach out to wdfn@usgs.gov for assistance.

DID YOU KNOW You can see all water data collected at this monitoring location in the *Available data* section of the page. Learn more about [centralized water data delivery](#) in WDFN.



1 year
 10 years
 Period of record

Scale Linear

[Log](#)

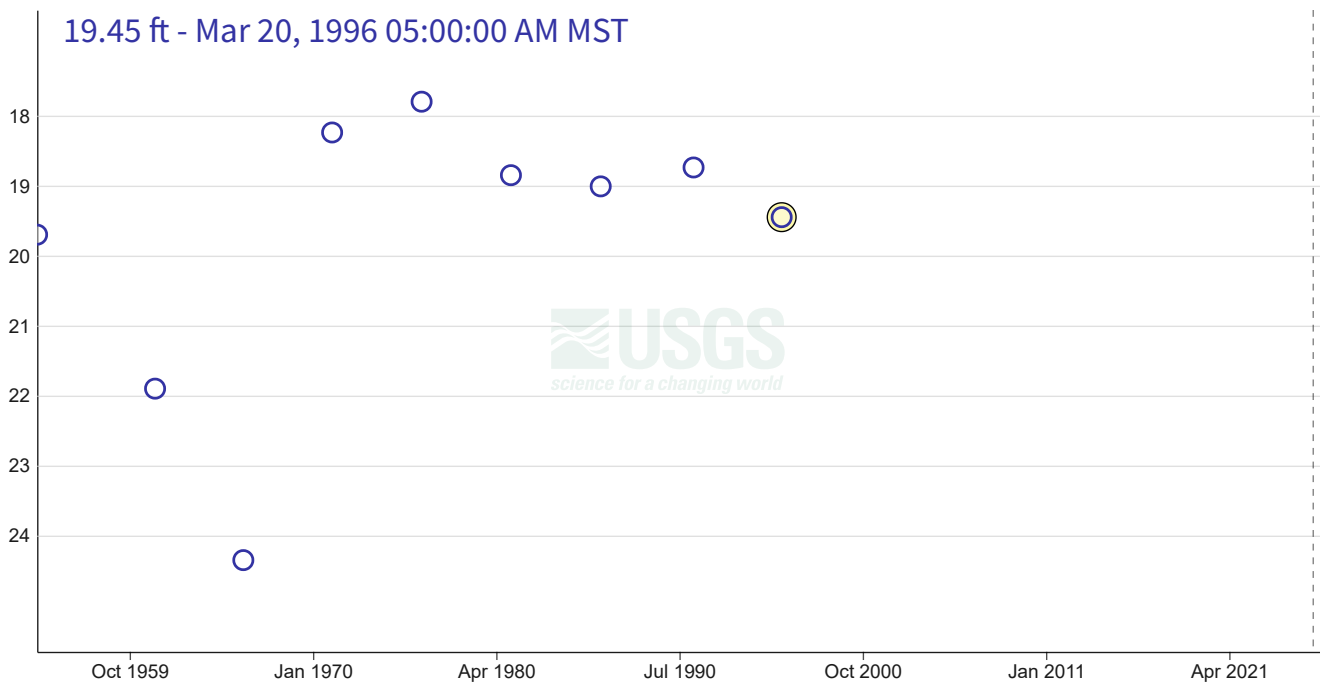
Field measurements

19S.35E.09.13333 - USGS-324015103280801

July 28, 1954 - May 14, 2026

Depth to water level, feet below land surface

19.45 ft - Mar 20, 1996 05:00:00 AM MST



IMPORTANT Data may be [provisional](#)

[Show legend](#) ▾

[Hide graph details](#) ^

	Value	Status	
<input checked="" type="radio"/> Selected field measurement	19.45	Approved Above, Pumping	Mar 20, 1996 05:00:00 AM MST

[Hide graph details](#) ^

Change time span

Download data

View tabular data

Available data

Select data types to graph from
[Learn about the data collector](#)

[Questions or Comments](#)

0 collected.

[Expand all data collections](#)

Continuous data

0 data types available

Daily data

0 data types available

Field measurements

3 data types available - data from 1954-07-28 to 1996-03-20

[Hide these data types](#)

Field measurements are physically measured values collected during a visit to the monitoring location.

[Learn about Field measurements](#)

	Data type	Data date range
Graph it	Depth to water level, feet below land surface	1954-07-28 1996-03-20
Graph it	Groundwater level above NAVD 1988, feet	1954-07-28 1996-03-20
Graph it	Groundwater level above NGVD 1929, feet	1954-07-28 1996-03-20

Hide these data types

Discrete sample data

0 observed properties (data types) available

Statistical tables for select daily data types

0 data types available

Location details and information

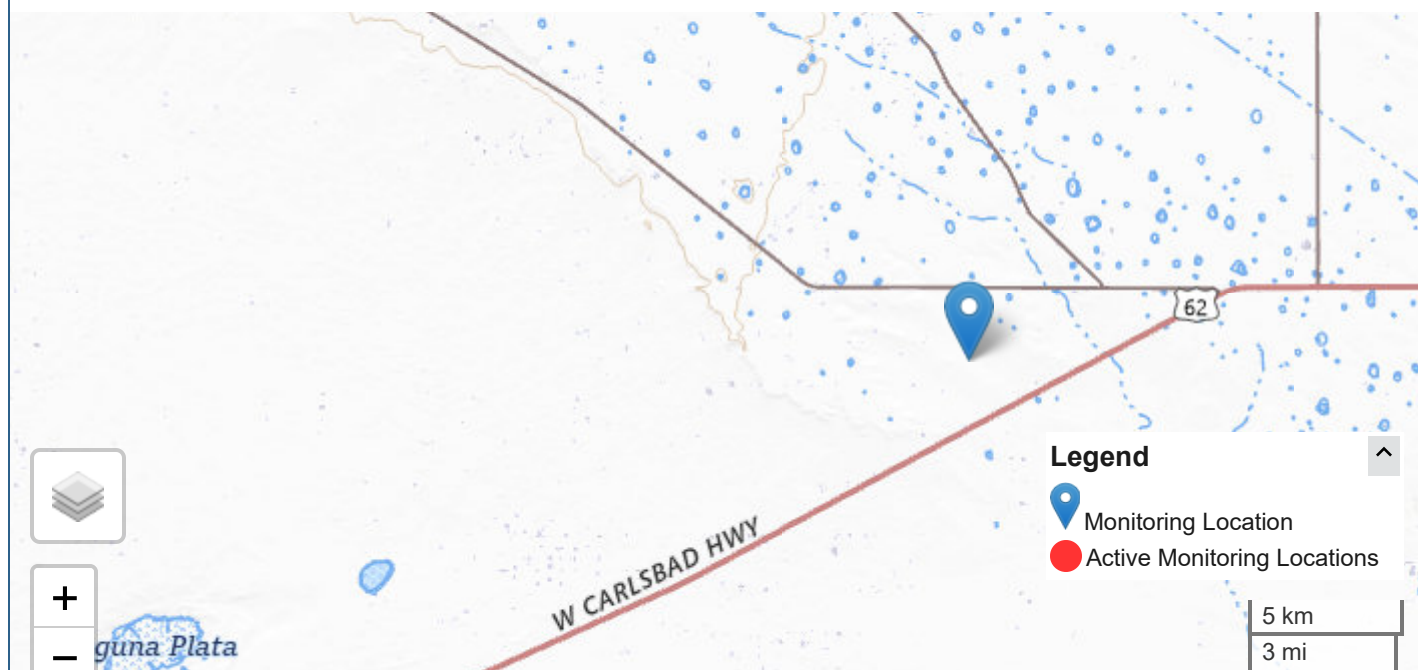
Show location details

Monitoring locations with continuous data in last 120 days

No locations found

Zoom out to see link to My Favorites

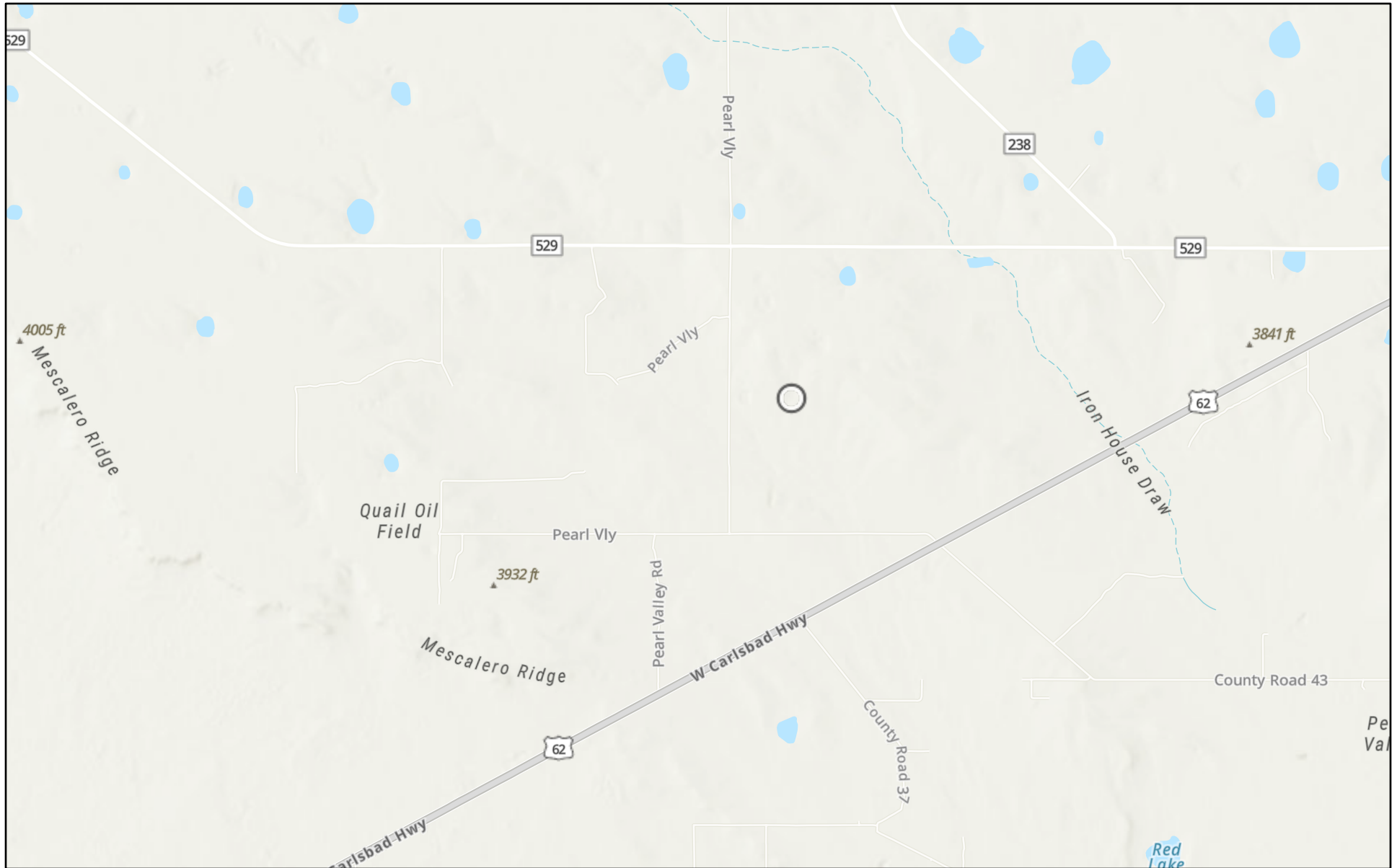
[Use Explore USGS Water Data to discover additional data near this location](#)



National Boundaries Dataset, 3DEP Elevation Program, Geographic Names Information System, National Hydrography Dataset, N...

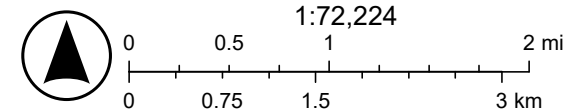
Interested in understanding how to access the upstream/downstream data? [Learn about the Network-Linked Data Index \(NLDI\)](#).

Alpha State Com 301H CTB (04.07.2026)



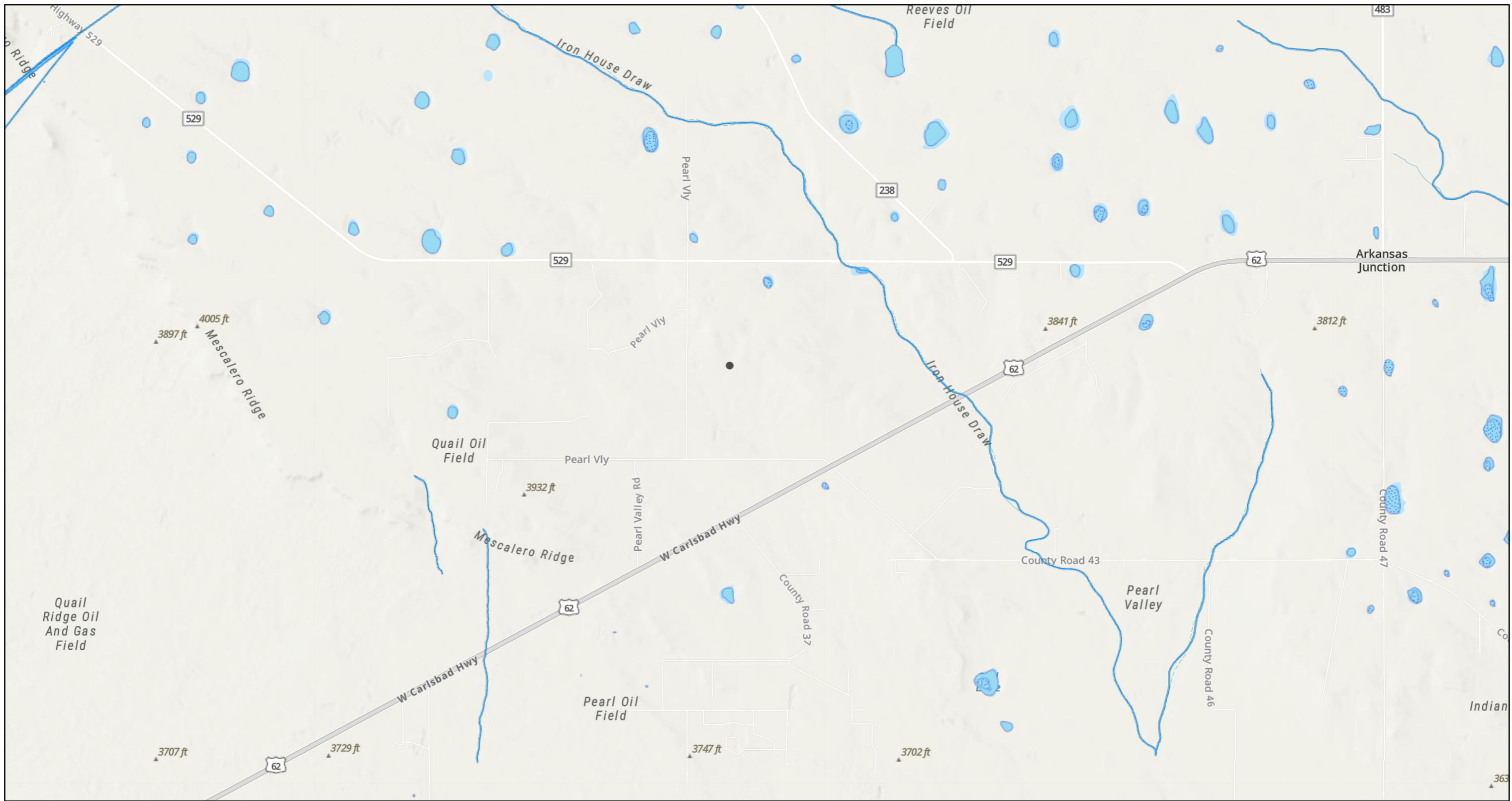
5/14/2026

World_Hillshade



Source: FEMA, Esri, Sources: Esri, TomTom, Garmin, FAO, NOAA, USGS, (c) OpenStreetMap contributors, and the GIS User Community, Esri, NASA,

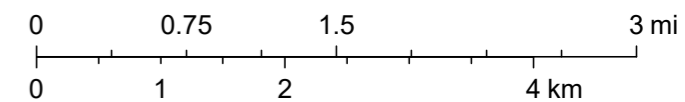
Alpha State Com 301H CTB (04.07.2026)



5/14/2026, 2:19:38 PM

1:72,224

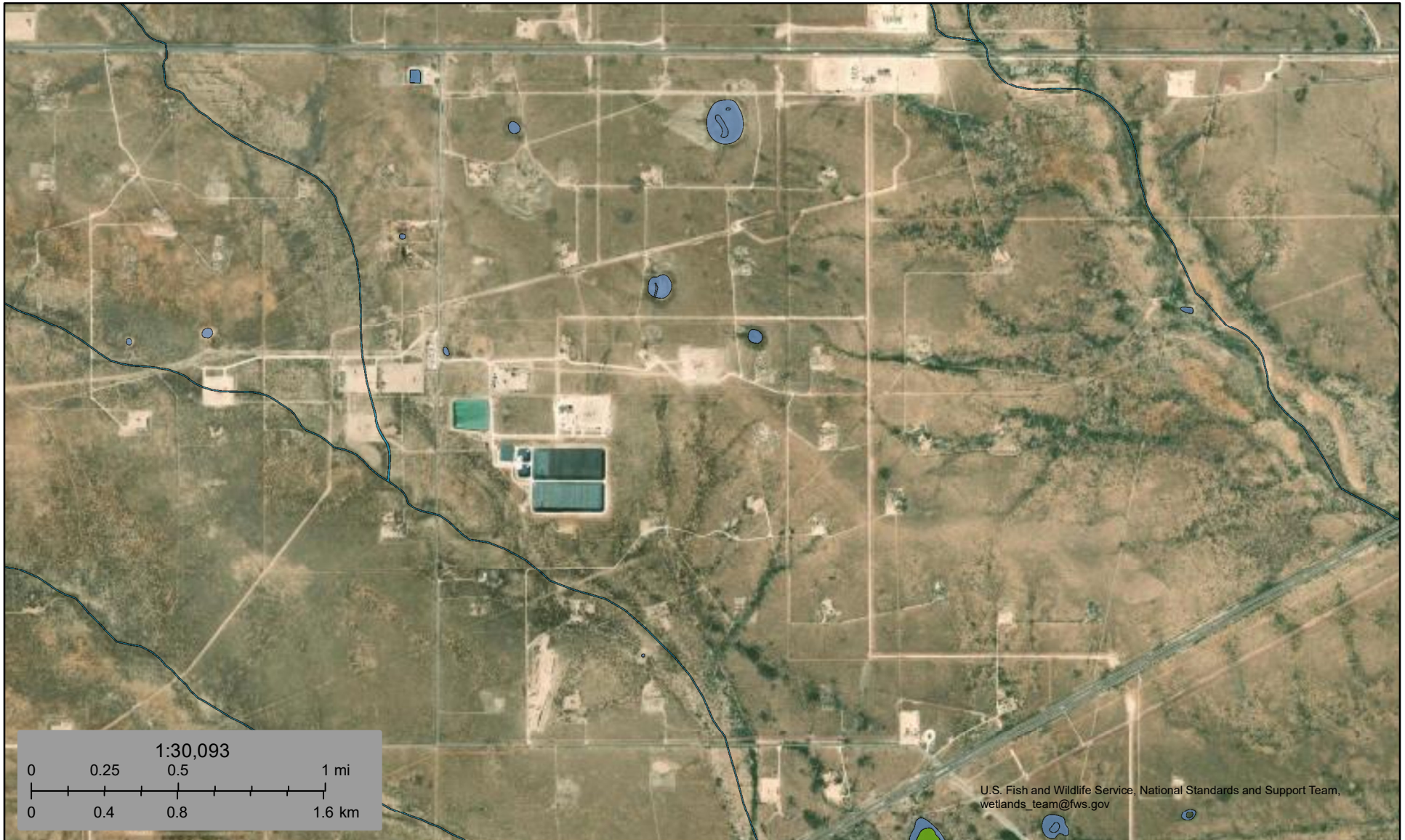
- OSW Water Bodies
- OSE Probable Playas
- OSE Streams



NM OSE, Sources: Esri, TomTom, Garmin, FAO, NOAA, USGS, © OpenStreetMap contributors, and the GIS User Community, Esri, NASA, NGA, USGS, FEMA

U.S. Fish and Wildlife Service
National Wetlands Inventory

Alpha State Com 301H CTB (04.07.2026)



U.S. Fish and Wildlife Service, National Standards and Support Team, wetlands_team@fws.gov

May 14, 2026

Wetlands

- | | | |
|--|---|--|
|  Estuarine and Marine Deepwater |  Freshwater Emergent Wetland |  Lake |
|  Estuarine and Marine Wetland |  Freshwater Forested/Shrub Wetland |  Other |
| |  Freshwater Pond |  Riverine |

This map is for general reference only. The US Fish and Wildlife Service is not responsible for the accuracy or currentness of the base data shown on this map. All wetlands related data should be used in accordance with the layer metadata found on the Wetlands Mapper web site.

Sante Fe Main Office
Phone: (505) 476-3441

General Information
Phone: (505) 629-6116

Online Phone Directory
<https://www.emnrd.nm.gov/ocd/contact-us>

State of New Mexico
Energy, Minerals and Natural Resources
Oil Conservation Division
1220 S. St Francis Dr.
Santa Fe, NM 87505

QUESTIONS

Action 585382

QUESTIONS

Operator: Coterra Energy Operating Co. 6001 Deauville Blvd Midland, TX 79706	OGRID: 215099
	Action Number: 585382
	Action Type: [C-141] Remediation Closure Request C-141 (C-141-v-Closure)

QUESTIONS

Prerequisites	
Incident ID (n#)	nAPP2609770085
Incident Name	NAPP2609770085 ALPHA STATE COM 301H CTB @ FAPP2511336425
Incident Type	Produced Water Release
Incident Status	Remediation Closure Report Received
Incident Facility	[fAPP2511336425] Alpha State Com 301H CTB

Location of Release Source	
<i>Please answer all the questions in this group.</i>	
Site Name	Alpha State Com 301H CTB
Date Release Discovered	04/07/2026
Surface Owner	Private

Incident Details	
<i>Please answer all the questions in this group.</i>	
Incident Type	Produced Water Release
Did this release result in a fire or is the result of a fire	No
Did this release result in any injuries	No
Has this release reached or does it have a reasonable probability of reaching a watercourse	No
Has this release endangered or does it have a reasonable probability of endangering public health	No
Has this release substantially damaged or will it substantially damage property or the environment	No
Is this release of a volume that is or may with reasonable probability be detrimental to fresh water	No

Nature and Volume of Release	
<i>Material(s) released, please answer all that apply below. Any calculations or specific justifications for the volumes provided should be attached to the follow-up C-141 submission.</i>	
Crude Oil Released (bbls) Details	Not answered.
Produced Water Released (bbls) Details	Cause: Equipment Failure Tank (Any) Produced Water Released: 409 BBL Recovered: 409 BBL Lost: 0 BBL.
Is the concentration of chloride in the produced water >10,000 mg/l	Yes
Condensate Released (bbls) Details	Not answered.
Natural Gas Vented (Mcf) Details	Not answered.
Natural Gas Flared (Mcf) Details	Not answered.
Other Released Details	Not answered.
Are there additional details for the questions above (i.e. any answer containing Other, Specify, Unknown, and/or Fire, or any negative lost amounts)	We had a major reportable release at the Alpha State Com 301H Facility due to a failed SWD valve. On Monday, April 6th, the facility was shut in to perform safety system and automation upgrades. During this process, all pumps were secured, the main discharge valve was closed and locked out, and all wells were shut in and locked at the wellheads. When the Operations Team arrived on site Tuesday morning, they found the produced water tank overflowing. As a result, approximately 409 barrels of produced water was released into the lined containment. All fluids inside the lined containment were recovered by vac trucks. The containment will be washed, and a liner inspection scheduled in the coming days.

Sante Fe Main Office
Phone: (505) 476-3441

General Information
Phone: (505) 629-6116

Online Phone Directory
<https://www.emnrd.nm.gov/ocd/contact-us>

State of New Mexico
Energy, Minerals and Natural Resources
Oil Conservation Division
1220 S. St Francis Dr.
Santa Fe, NM 87505

QUESTIONS, Page 2

Action 585382

QUESTIONS (continued)

Operator: Coterra Energy Operating Co. 6001 Deauville Blvd Midland, TX 79706	OGRID: 215099
	Action Number: 585382
	Action Type: [C-141] Remediation Closure Request C-141 (C-141-v-Closure)

QUESTIONS

Nature and Volume of Release (continued)	
Is this a gas only submission (i.e. only significant Mcf values reported)	No, according to supplied volumes this does not appear to be a "gas only" report.
Was this a major release as defined by Subsection A of 19.15.29.7 NMAC	Yes
Reasons why this would be considered a submission for a notification of a major release	From paragraph A. "Major release" determine using: (1) an unauthorized release of a volume, excluding gases, of 25 barrels or more.
<i>With the implementation of the 19.15.27 NMAC (05/25/2021), venting and/or flaring of natural gas (i.e. gas only) are to be submitted on the C-129 form.</i>	

Initial Response	
<i>The responsible party must undertake the following actions immediately unless they could create a safety hazard that would result in injury.</i>	
The source of the release has been stopped	True
The impacted area has been secured to protect human health and the environment	True
Released materials have been contained via the use of berms or dikes, absorbent pads, or other containment devices	True
All free liquids and recoverable materials have been removed and managed appropriately	True
If all the actions described above have not been undertaken, explain why	Not answered.
<i>Per Paragraph (4) of Subsection B of 19.15.29.8 NMAC the responsible party may commence remediation immediately after discovery of a release. If remediation has begun, please prepare and attach a narrative of actions to date in the follow-up C-141 submission. If remedial efforts have been successfully completed or if the release occurred within a lined containment area (see Subparagraph (a) of Paragraph (5) of Subsection A of 19.15.29.11 NMAC), please prepare and attach all information needed for closure evaluation in the follow-up C-141 submission.</i>	
I hereby certify that the information given above is true and complete to the best of my knowledge and understand that pursuant to OCD rules and regulations all operators are required to report and/or file certain release notifications and perform corrective actions for releases which may endanger public health or the environment. The acceptance of a C-141 report by the OCD does not relieve the operator of liability should their operations have failed to adequately investigate and remediate contamination that pose a threat to groundwater, surface water, human health or the environment. In addition, OCD acceptance of a C-141 report does not relieve the operator of responsibility for compliance with any other federal, state, or local laws and/or regulations.	
I hereby agree and sign off to the above statement	Name: Ashton Thielke Title: EHS Specialist Email: Ashton.Thielke@coterra.com Date: 05/14/2026

Sante Fe Main Office
Phone: (505) 476-3441

General Information
Phone: (505) 629-6116

Online Phone Directory
<https://www.emnrd.nm.gov/ocd/contact-us>

State of New Mexico
Energy, Minerals and Natural Resources
Oil Conservation Division
1220 S. St Francis Dr.
Santa Fe, NM 87505

QUESTIONS, Page 3

Action 585382

QUESTIONS (continued)

Operator: Coterra Energy Operating Co. 6001 Deauville Blvd Midland, TX 79706	OGRID: 215099
	Action Number: 585382
	Action Type: [C-141] Remediation Closure Request C-141 (C-141-v-Closure)

QUESTIONS

Site Characterization

Please answer all the questions in this group (only required when seeking remediation plan approval and beyond). This information must be provided to the appropriate district office no later than 90 days after the release discovery date.

What is the shallowest depth to groundwater beneath the area affected by the release in feet below ground surface (ft bgs)	Less than or equal 25 (ft.)
What method was used to determine the depth to ground water	U.S. Geological Survey
Did this release impact groundwater or surface water	No
What is the minimum distance, between the closest lateral extents of the release and the following surface areas:	
A continuously flowing watercourse or any other significant watercourse	Between 1000 (ft.) and ½ (mi.)
Any lakebed, sinkhole, or playa lake (measured from the ordinary high-water mark)	Between 1000 (ft.) and ½ (mi.)
An occupied permanent residence, school, hospital, institution, or church	Between ½ and 1 (mi.)
A spring or a private domestic fresh water well used by less than five households for domestic or stock watering purposes	Between ½ and 1 (mi.)
Any other fresh water well or spring	Between ½ and 1 (mi.)
Incorporated municipal boundaries or a defined municipal fresh water well field	Greater than 5 (mi.)
A wetland	Between 1000 (ft.) and ½ (mi.)
A subsurface mine	Greater than 5 (mi.)
An (non-karst) unstable area	Greater than 5 (mi.)
Categorize the risk of this well / site being in a karst geology	Low
A 100-year floodplain	Between 1000 (ft.) and ½ (mi.)
Did the release impact areas not on an exploration, development, production, or storage site	No

Remediation Plan

Please answer all the questions that apply or are indicated. This information must be provided to the appropriate district office no later than 90 days after the release discovery date.

Requesting a remediation plan approval with this submission	Yes
<i>Attach a comprehensive report demonstrating the lateral and vertical extents of soil contamination associated with the release have been determined, pursuant to 19.15.29.11 NMAC and 19.15.29.13 NMAC.</i>	
Have the lateral and vertical extents of contamination been fully delineated	Yes
Was this release entirely contained within a lined containment area	Yes
<i>Per Subsection B of 19.15.29.11 NMAC unless the site characterization report includes completed efforts at remediation, the report must include a proposed remediation plan in accordance with 19.15.29.12 NMAC, which includes the anticipated timelines for beginning and completing the remediation.</i>	
On what estimated date will the remediation commence	04/22/2026
On what date will (or did) the final sampling or liner inspection occur	04/22/2026
On what date will (or was) the remediation complete(d)	04/22/2026
What is the estimated surface area (in square feet) that will be remediated	18500
What is the estimated volume (in cubic yards) that will be remediated	0

These estimated dates and measurements are recognized to be the best guess or calculation at the time of submission and may (be) change(d) over time as more remediation efforts are completed. The OCD recognizes that proposed remediation measures may have to be minimally adjusted in accordance with the physical realities encountered during remediation. If the responsible party has any need to significantly deviate from the remediation plan proposed, then it should consult with the division to determine if another remediation plan submission is required.

Sante Fe Main Office
Phone: (505) 476-3441

General Information
Phone: (505) 629-6116

Online Phone Directory
<https://www.emnrd.nm.gov/ocd/contact-us>

State of New Mexico
Energy, Minerals and Natural Resources
Oil Conservation Division
1220 S. St Francis Dr.
Santa Fe, NM 87505

QUESTIONS, Page 4

Action 585382

QUESTIONS (continued)

Operator: Coterra Energy Operating Co. 6001 Deauville Blvd Midland, TX 79706	OGRID: 215099
	Action Number: 585382
	Action Type: [C-141] Remediation Closure Request C-141 (C-141-v-Closure)

QUESTIONS

Remediation Plan (continued)	
<i>Please answer all the questions that apply or are indicated. This information must be provided to the appropriate district office no later than 90 days after the release discovery date.</i>	
This remediation will (or is expected to) utilize the following processes to remediate / reduce contaminants:	
<i>(Select all answers below that apply.)</i>	
Is (or was) there affected material present needing to be removed	Yes
Is (or was) there a power wash of the lined containment area (to be) performed	Yes
OTHER (Non-listed remedial process)	Not answered.
<i>Per Subsection B of 19.15.29.11 NMAC unless the site characterization report includes completed efforts at remediation, the report must include a proposed remediation plan in accordance with 19.15.29.12 NMAC, which includes the anticipated timelines for beginning and completing the remediation.</i>	
I hereby certify that the information given above is true and complete to the best of my knowledge and understand that pursuant to OCD rules and regulations all operators are required to report and/or file certain release notifications and perform corrective actions for releases which may endanger public health or the environment. The acceptance of a C-141 report by the OCD does not relieve the operator of liability should their operations have failed to adequately investigate and remediate contamination that pose a threat to groundwater, surface water, human health or the environment. In addition, OCD acceptance of a C-141 report does not relieve the operator of responsibility for compliance with any other federal, state, or local laws and/or regulations.	
I hereby agree and sign off to the above statement	Name: Ashton Thielke Title: EHS Specialist Email: Ashton.Thielke@coterra.com Date: 05/14/2026
<i>The OCD recognizes that proposed remediation measures may have to be minimally adjusted in accordance with the physical realities encountered during remediation. If the responsible party has any need to significantly deviate from the remediation plan proposed, then it should consult with the division to determine if another remediation plan submission is required.</i>	

Sante Fe Main Office
Phone: (505) 476-3441

General Information
Phone: (505) 629-6116

Online Phone Directory
<https://www.emnrd.nm.gov/ocd/contact-us>

**State of New Mexico
Energy, Minerals and Natural Resources
Oil Conservation Division
1220 S. St Francis Dr.
Santa Fe, NM 87505**

QUESTIONS, Page 6

Action 585382

QUESTIONS (continued)

Operator: Coterra Energy Operating Co. 6001 Deauville Blvd Midland, TX 79706	OGRID: 215099
	Action Number: 585382
	Action Type: [C-141] Remediation Closure Request C-141 (C-141-v-Closure)

QUESTIONS

Liner Inspection Information	
Last liner inspection notification (C-141L) recorded	577364
Liner inspection date pursuant to Subparagraph (a) of Paragraph (5) of Subsection A of 19.15.29.11 NMAC	04/22/2026
Was all the impacted materials removed from the liner	Yes
What was the liner inspection surface area in square feet	18500

Remediation Closure Request	
<i>Only answer the questions in this group if seeking remediation closure for this release because all remediation steps have been completed.</i>	
Requesting a remediation closure approval with this submission	Yes
Have the lateral and vertical extents of contamination been fully delineated	Yes
Was this release entirely contained within a lined containment area	Yes
What was the total surface area (in square feet) remediated	18500
What was the total volume (cubic yards) remediated	0
Summarize any additional remediation activities not included by answers (above)	Liner power washed and cleaned following the release. Inspection resulted in no integrity issues.

The responsible party must attach information demonstrating they have complied with all applicable closure requirements and any conditions or directives of the OCD. This demonstration should be in the form of a comprehensive report (in .pdf format) including a scaled site map, sampling diagrams, relevant field notes, photographs of any excavation prior to backfilling, laboratory data including chain of custody documents of final sampling, and a narrative of the remedial activities. Refer to 19.15.29.12 NMAC.

I hereby certify that the information given above is true and complete to the best of my knowledge and understand that pursuant to OCD rules and regulations all operators are required to report and/or file certain release notifications and perform corrective actions for releases which may endanger public health or the environment. The acceptance of a C-141 report by the OCD does not relieve the operator of liability should their operations have failed to adequately investigate and remediate contamination that pose a threat to groundwater, surface water, human health or the environment. In addition, OCD acceptance of a C-141 report does not relieve the operator of responsibility for compliance with any other federal, state, or local laws and/or regulations. The responsible party acknowledges they must substantially restore, reclaim, and re-vegetate the impacted surface area to the conditions that existed prior to the release or their final land use in accordance with 19.15.29.13 NMAC including notification to the OCD when reclamation and re-vegetation are complete.

I hereby agree and sign off to the above statement	Name: Ashton Thielke Title: EHS Specialist Email: Ashton.Thielke@coterra.com Date: 05/14/2026
--	--

Sante Fe Main Office
Phone: (505) 476-3441

General Information
Phone: (505) 629-6116

Online Phone Directory
<https://www.emnrd.nm.gov/oecd/contact-us>

State of New Mexico
Energy, Minerals and Natural Resources
Oil Conservation Division
1220 S. St Francis Dr.
Santa Fe, NM 87505

CONDITIONS

Action 585382

CONDITIONS

Operator: Coterra Energy Operating Co. 6001 Deauville Blvd Midland, TX 79706	OGRID: 215099
	Action Number: 585382
	Action Type: [C-141] Remediation Closure Request C-141 (C-141-v-Closure)

CONDITIONS

Created By	Condition	Condition Date
rhamlet	We have received your Remediation Closure Report for Incident #nAPP2609770085 Alpha State Com 301H CTB, thank you. This Remediation Closure Report is approved.	5/15/2026