



## CLOSURE REQUEST

Pegasus 3 Fed Com CTB  
Incident Number nAPP2606335846  
Lea County, New Mexico  
Unit K, Section 03, T24S, R32E  
32.24343, -103.66292

May 7, 2026

## TABLE OF CONTENTS

- 1.0 SITE DESCRIPTION AND RELEASE SUMMARY
- 2.0 SITE CHARACTERIZATION AND CLOSURE CRITERIA
- 3.0 CONFIRMATION SOIL SAMPLING ACTIVITIES
- 4.0 LABORATORY ANALYTICAL RESULTS
- 5.0 RECLAMATION PLAN
- 6.0 CONCLUSIONS

## LIST OF APPENDICES

- Figure 1 Site Location Map
- Figure 2 Site Vicinity Map
- Figure 3 Confirmation Sample Map
- Table 1 Soil Sample Analytical Results
- Appendix A Site Characterization and Groundwater
  - Figure A 0.5 Mile Radius Water Well Map
  - Figure B National Wetlands Inventory Map
  - Figure C FEMA Flood Map
  - Figure D Karst Potential Map
  - Figure E Residence Map
- Appendix B Referenced Well Records
- Appendix C Photographic Log
- Appendix D Laboratory Analytical Reports & Chain-of-Custody Documentation



May 7, 2026

**New Mexico Oil Conservation Division**

New Mexico Energy, Minerals, and Natural Resources Department  
1220 South St. Francis Drive  
Santa Fe, New Mexico 87505

**Re: Closure Request  
Pegasus 3 Fed Com CTB  
Incident Number nAPP2602335846  
Lea County, New Mexico**

To whom it may concern:

EOG Resources, Inc. (EOG) has prepared the following *Closure Request* to document soil sampling activities at the Pegasus 3 Fed Com CTB (Site). The purpose of the remedial activities was to access for the presence or absence of impacts to soil resulting from a flare fire at the Site. Based on field observations, field screening activities, and laboratory analytical results, EOG is submitting this *Closure Request*, describing soil sampling activities that have occurred and requesting no further action for Incident Number nAPP2602335846.

**1.0 Site Description and Release Summary**

The Site is located in Unit K, Section 3, Township 24 South, Range 32 East, in Lea County, New Mexico (32.24343, -103.66292) and is associated with oil and gas exploration and production operations on private land.

On March 3, 2026, facility HP line pressure rose rapidly allowing a release of gas to the HP flare. This resulted in the release of crude oil that ignited and extinguished itself after reaching the ground. The fire affected the adjacent pasture. The released volume was estimated to be approximately 1 barrel (bbl) of crude oil. No released fluids were recovered. During emergency response activities, EOG personnel scraped the burned vegetation from the ground surface to remove any residual staining. EOG reported the release to the New Mexico Oil Conservation Division (NMOCD) via a Notification of Release (NOR) on March 4, 2026, and subsequently on an Initial C-141 Application (C-141) on March 24, 2026. The release was assigned Incident Number nAPP2606335846.

**2.0 Site Characterization and Closure Criteria**

The Site was characterized for applicability of Table I, Closure Criteria for Soils Impacted by a Release, of Title 19, Chapter 15, Part 29 (19.15.29) of the New Mexico Administrative Code (NMAC). Results from the characterization desktop review are presented below.



Depth to groundwater at the Site is estimated to be greater than 100 feet below ground surface (bgs) based on a nearby livestock well. On March 30, 2026, Carmona personnel gauged livestock well C-3527, located approximately 1,121 feet northwest of the Site. The livestock well was drilled to a total depth of 500 feet bgs, and no groundwater was encountered at the gauged depth of 153 feet bgs. All wells used for depth to groundwater determination are presented on Figure A included in Appendix A and the associated well records are included in Appendix B.

The closest continuously flowing or significant watercourse to the Site is a freshwater emergent wetland, located approximately 1.2 miles south of the Site. The Site is greater than 200 feet from a lakebed, sinkhole, or playa lake and greater than 300 feet from an occupied residence, school, hospital, institution, church, or wetland. The Site is greater than 1,000 feet to a freshwater well or spring and is not within a 100-year floodplain or overlying a subsurface mine. The Site is not underlain by unstable geology (low potential karst designation area). Potential Site receptors are identified in Figures A through D included in Appendix A.

Based on the results of the Site Characterization, the following NMOCD Table I Closure Criteria (Closure Criteria) apply:

- Benzene: 10 milligrams per kilogram (mg/kg)
- Benzene, toluene, ethylbenzene, and total xylenes (BTEX): 50 mg/kg
- Total petroleum hydrocarbons (TPH)-gasoline range organics (GRO) and TPH-diesel range organics (DRO): 1,000 mg/kg
- TPH: 2,500 mg/kg
- Chloride: 20,000 mg/kg

A reclamation requirement of 600 mg/kg chloride and 100 mg/kg TPH was applied to the top 4 feet of the release, per 19.15.29.13 D (1) NMAC for the top 4 feet of areas that will be immediately reclaimed following remediation.

### **3.0 Confirmation Soil Sampling Activities**

On March 30, 2026, Carmona Resources (Carmona) personnel were at the Site to complete confirmation soil sampling activities. Carmona personnel collected 5-point composite confirmation soil samples representing no more than 200 square feet from the release extent. The 5-point composite soil samples were collected by placing five equivalent aliquots of soil into a resealable plastic bag and homogenizing the samples by thoroughly mixing. Confirmation soil samples CS-1 through CS-23 were collected from the surface of the release extent. The release extent and confirmation soil sample locations are presented on Figure 3. The release extent measured approximately 4,600 square feet.

The confirmation soil samples were placed directly into pre-cleaned glass jars, labeled with the location, date, time, sampler name, method of analysis, and immediately placed on ice. The soil



samples were transported under strict chain-of-custody procedures to Cardinal Laboratories (Cardinal) in Hobbs, New Mexico, for analysis of the following chemicals of concern (COCs): BTEX following United States Environmental Protection Agency (EPA) Method 8021B; TPH-GRO, TPH-DRO, and TPH-oil range organics (ORO) following EPA Method 8015M/D; and chloride following Standard Method SM4500.

#### 4.0 Laboratory Analytical Results

Laboratory analytical results for confirmation soil samples CS-1 through CS-23 indicated all COCs were in compliance with the reclamation requirements and Closure Criteria. Laboratory analytical results are summarized in Table 1, and the complete laboratory analytical reports are included as Appendix D.

#### 5.0 Reclamation Plan

Due to the fire burning some of the vegetation within the release extent, the Site will be seeded with BLM seed mix #2 for sandy sites at a rate specified in pounds of pure live seed (PLS) per acre.

Species/Cultivar	PLS/Acre
Sand love grass ( <i>Eragrostis trichodes</i> )	1.0
Sand dropseed ( <i>Sporobolus cryptandrus</i> )	1.0
Plains bristlegrass ( <i>Setaria macrostachya</i> )	2.0

The seed mix will be applied via drill seeding or broadcast seeding. If broadcast seeding is selected, the PLS/acre will be doubled and the seed will be raked in by chaining or dragging the Site. Reclamation activities will be documented via on-site monitoring and photographs will be included in a *Re-Vegetation Report*.

#### 6.0 Conclusions

Soil sampling activities were conducted at the Site to address the Marh 3, 2026, crude oil and flare fire release. Laboratory analytical results for all confirmation soil samples collected from the release extent indicated that all COCs were compliant with the Closure Criteria. Based on the soil sample analytical results, no further remediation was required.

Depth to groundwater has been determined to be greater than 100 feet bgs and no other sensitive receptors were identified near the Site. EOG believes these remedial actions are protective of human health, the environment, and groundwater. As such, EOG respectfully requests closure for Incident Number nAPP2606335846.



If you have any questions or comments, please contact the undersigned.

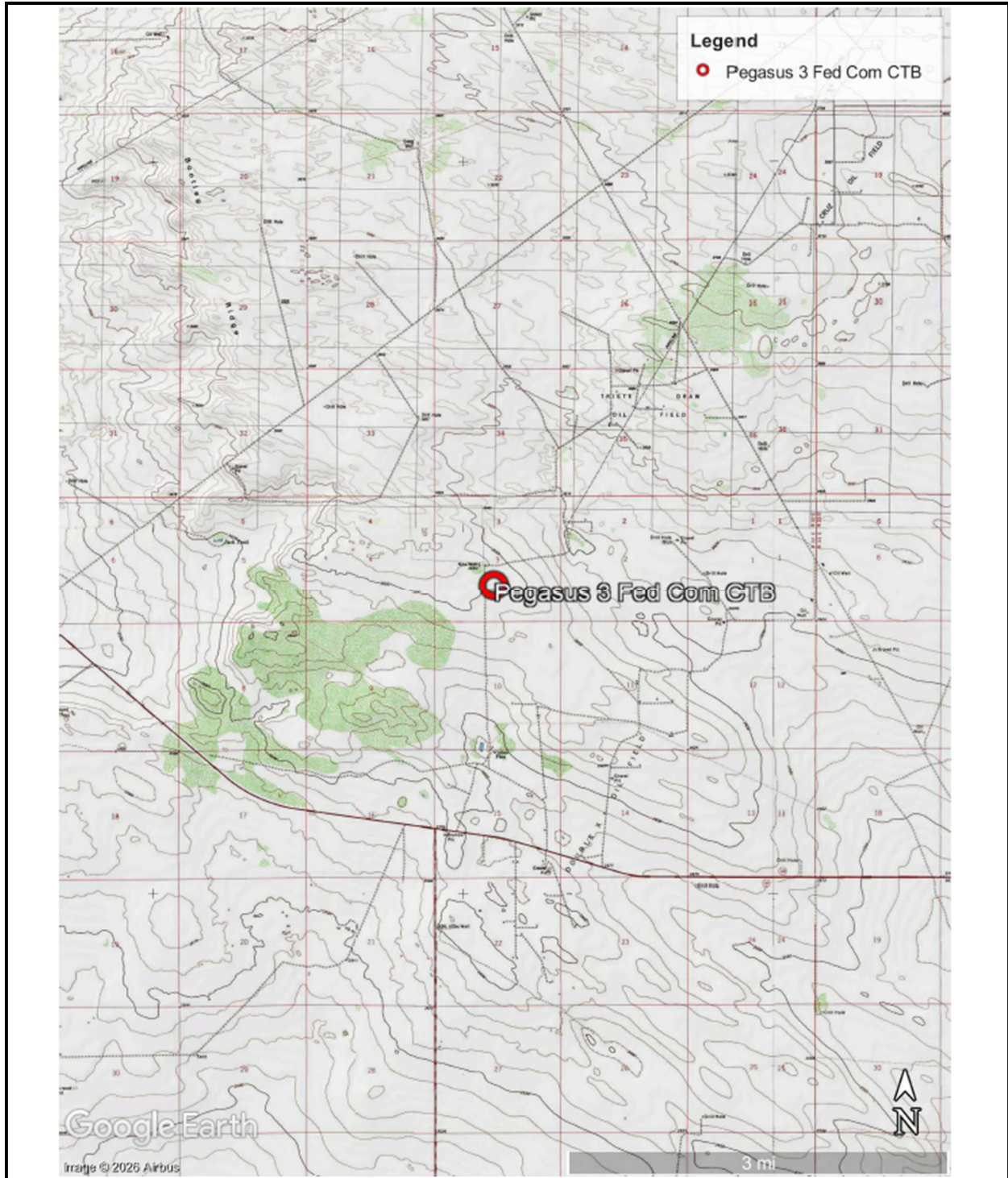
Sincerely,  
**EOG Resources, Inc.**


*Hadlie Stout*

Hadlie Stout  
(346) 324-7612  
[Hadlie\\_stout@eogresources.com](mailto:Hadlie_stout@eogresources.com)  
Environmental Representative II




## FIGURES




	<p><b>Site Location Map</b> EOG Resources, Inc. Pegasus 3 Fed Com CTB Incident Number nAPP2606335846 Unit K, Section 03, T24S, R32E Lea County, New Mexico</p>	<p><b>FIGURE</b> <b>1</b></p>
---	--	-----------------------------------



	<p><b>Site Vicinity Map</b> EOG Resources, Inc. Pegasus 3 Fed Com CTB Incident Number nAPP2606335846 Unit K, Section 03, T24S, R32E Lea County, New Mexico</p>	<p><b>FIGURE</b> <b>2</b></p>
---	--	-----------------------------------



<p>SAMPLE LOCATION MAP EOG RESOURCES INC PEGASUS 3 FED COM CTB LEA COUNTY, NEW MEXICO 32.243280°, -103.662957°</p>	<p>CARMONA RESOURCES </p>	<p>FIGURE 3</p>
--	--	-----------------



<p>CONFIRMATION SAMPLE MAP EOG RESOURCES INC PEGASUS 3 FED COM CTB LEA COUNTY, NEW MEXICO 32.243280°, -103.662957°</p>	<p>CARMONA RESOURCES </p>	<p>FIGURE 4</p>
--	--	-----------------



# TABLES

**Table 1**  
**EOG Resources Inc**  
**PEGASUS 3 FED COM CTB**  
**Lea County, New Mexico**

Sample ID	Date	Depth (ft)	TPH (mg/kg)				Benzene (mg/kg)	Toluene (mg/kg)	Ethylbenzene (mg/kg)	Xylene (mg/kg)	Total BTEX (mg/kg)	Chloride (mg/kg)
			GRO	DRO	MRO	Total						
<b>S-1</b>	3/18/2026	0.25'	<10.0	<10.0	<10.0	<10.0	<0.050	<0.050	<0.050	<0.150	<0.300	32.0
	"	0.5'	<10.0	<10.0	<10.0	<10.0	<0.050	<0.050	<0.050	<0.150	<0.300	16.0
	"	1'	<10.0	<10.0	<10.0	<10.0	<0.050	<0.050	<0.050	<0.150	<0.300	<16.0
	"	1.5'	<10.0	<10.0	<10.0	<10.0	<0.050	<0.050	<0.050	<0.150	<0.300	<16.0
<b>S-2</b>	3/18/2026	0.25'	<10.0	<10.0	<10.0	<10.0	<0.050	<0.050	<0.050	<0.150	<0.300	<16.0
	"	0.5'	<10.0	<10.0	<10.0	<10.0	<0.050	<0.050	<0.050	<0.150	<0.300	16.0
	"	1'	<10.0	<10.0	<10.0	<10.0	<0.050	<0.050	<0.050	<0.150	<0.300	<16.0
	"	1.5'	<10.0	<10.0	<10.0	<10.0	<0.050	<0.050	<0.050	<0.150	<0.300	16.0
<b>H-1</b>	3/18/2026	0-0.5'	<10.0	<10.0	<10.0	<10.0	<0.050	<0.050	<0.050	<0.150	<0.300	<16.0
<b>H-2</b>	3/18/2026	0-0.5'	<10.0	<10.0	<10.0	<10.0	<0.050	<0.050	<0.050	<0.150	<0.300	16.0
<b>H-3</b>	3/18/2026	0-0.5'	<10.0	<10.0	<10.0	<10.0	<0.050	<0.050	<0.050	<0.150	<0.300	<16.0
<b>H-4</b>	3/18/2026	0-0.5'	<10.0	<10.0	<10.0	<10.0	<0.050	<0.050	<0.050	<0.150	<0.300	<16.0
<b>Regulatory Criteria<sup>A</sup></b>			<b>1,000 mg/kg</b>			<b>2,500 mg/kg</b>	<b>10 mg/kg</b>				<b>50 mg/kg</b>	<b>20,000 mg/kg</b>

(-) Not Analyzed

<sup>A</sup> – Table 1 - 19.15.29 NMAC

mg/kg - milligram per kilogram

TPH- Total Petroleum Hydrocarbons

ft-feet

(S) Sample Point

(H) Horizontal Sample

**Table 2**  
**EOG Resources Inc.**  
**PEGASUS 3 FED COM CTB**  
**Lea County, New Mexico**

Sample ID	Date	Depth (ft)	TPH (mg/kg)				Benzene (mg/kg)	Toluene (mg/kg)	Ethylbenzene (mg/kg)	Xylene (mg/kg)	Total BTEX (mg/kg)	Chloride (mg/kg)
			GRO	DRO	MRO	Total						
CS-1	3/30/2026	Surface	<10.0	<10.0	<10.0	<10.0	<0.050	<0.050	<0.050	<0.150	<0.300	<16.0
CS-2	3/30/2026	Surface	<10.0	<10.0	<10.0	<10.0	<0.050	<0.050	<0.050	<0.150	<0.300	<16.0
CS-3	3/30/2026	Surface	<10.0	<10.0	<10.0	<10.0	<0.050	<0.050	<0.050	<0.150	<0.300	<16.0
CS-4	3/30/2026	Surface	<10.0	<10.0	<10.0	<10.0	<0.050	<0.050	<0.050	<0.150	<0.300	32.0
CS-5	3/30/2026	Surface	<10.0	<10.0	<10.0	<10.0	<0.050	<0.050	<0.050	<0.150	<0.300	<16.0
CS-6	3/30/2026	Surface	<10.0	<10.0	<10.0	<10.0	<0.050	<0.050	<0.050	<0.150	<0.300	32.0
CS-7	3/30/2026	Surface	<10.0	<10.0	<10.0	<10.0	<0.050	<0.050	<0.050	<0.150	<0.300	32.0
CS-8	3/30/2026	Surface	<10.0	<10.0	<10.0	<10.0	<0.050	<0.050	<0.050	<0.150	<0.300	<16.0
CS-9	3/30/2026	Surface	<10.0	<10.0	<10.0	<10.0	<0.050	<0.050	<0.050	<0.150	<0.300	32.0
CS-10	3/30/2026	Surface	<10.0	<10.0	<10.0	<10.0	<0.050	<0.050	<0.050	<0.150	<0.300	48.0
CS-11	3/30/2026	Surface	<10.0	<10.0	<10.0	<10.0	<0.050	<0.050	<0.050	<0.150	<0.300	32.0
CS-12	3/30/2026	Surface	<10.0	<10.0	<10.0	<10.0	<0.050	<0.050	<0.050	<0.150	<0.300	32.0
CS-13	3/30/2026	Surface	<10.0	<10.0	<10.0	<10.0	<0.050	<0.050	<0.050	<0.150	<0.300	<16.0
CS-14	3/30/2026	Surface	<10.0	<10.0	<10.0	<10.0	<0.050	<0.050	<0.050	<0.150	<0.300	16.0
CS-15	3/30/2026	Surface	<10.0	<10.0	<10.0	<10.0	<0.050	<0.050	<0.050	<0.150	<0.300	<16.0
CS-16	3/30/2026	Surface	<10.0	<10.0	<10.0	<10.0	<0.050	<0.050	<0.050	<0.150	<0.300	<16.0
CS-17	3/30/2026	Surface	<10.0	<10.0	<10.0	<10.0	<0.050	<0.050	<0.050	<0.150	<0.300	<16.0
CS-18	3/30/2026	Surface	<10.0	<10.0	<10.0	<10.0	<0.050	<0.050	<0.050	<0.150	<0.300	16.0
CS-19	3/30/2026	Surface	<10.0	<10.0	<10.0	<10.0	<0.050	<0.050	<0.050	<0.150	<0.300	16.0
CS-20	3/30/2026	Surface	<10.0	<10.0	<10.0	<10.0	<0.050	<0.050	<0.050	<0.150	<0.300	<16.0
CS-21	3/30/2026	Surface	<10.0	<10.0	<10.0	<10.0	<0.050	<0.050	<0.050	<0.150	<0.300	<16.0
CS-22	3/30/2026	Surface	<10.0	<10.0	<10.0	<10.0	<0.050	<0.050	<0.050	<0.150	<0.300	16.0
CS-23	3/30/2026	Surface	<10.0	<10.0	<10.0	<10.0	<0.050	<0.050	<0.050	<0.150	<0.300	<16.0
<i>Regulatory Criteria<sup>A</sup></i>			1,000 mg/kg		2,500 mg/kg		10 mg/kg				50 mg/kg 20,000 mg/kg	

(-) Not Analyzed

<sup>A</sup> – Table 1 - 19.15.29 NMAC

mg/kg - milligram per kilogram

TPH- Total Petroleum Hydrocarbons

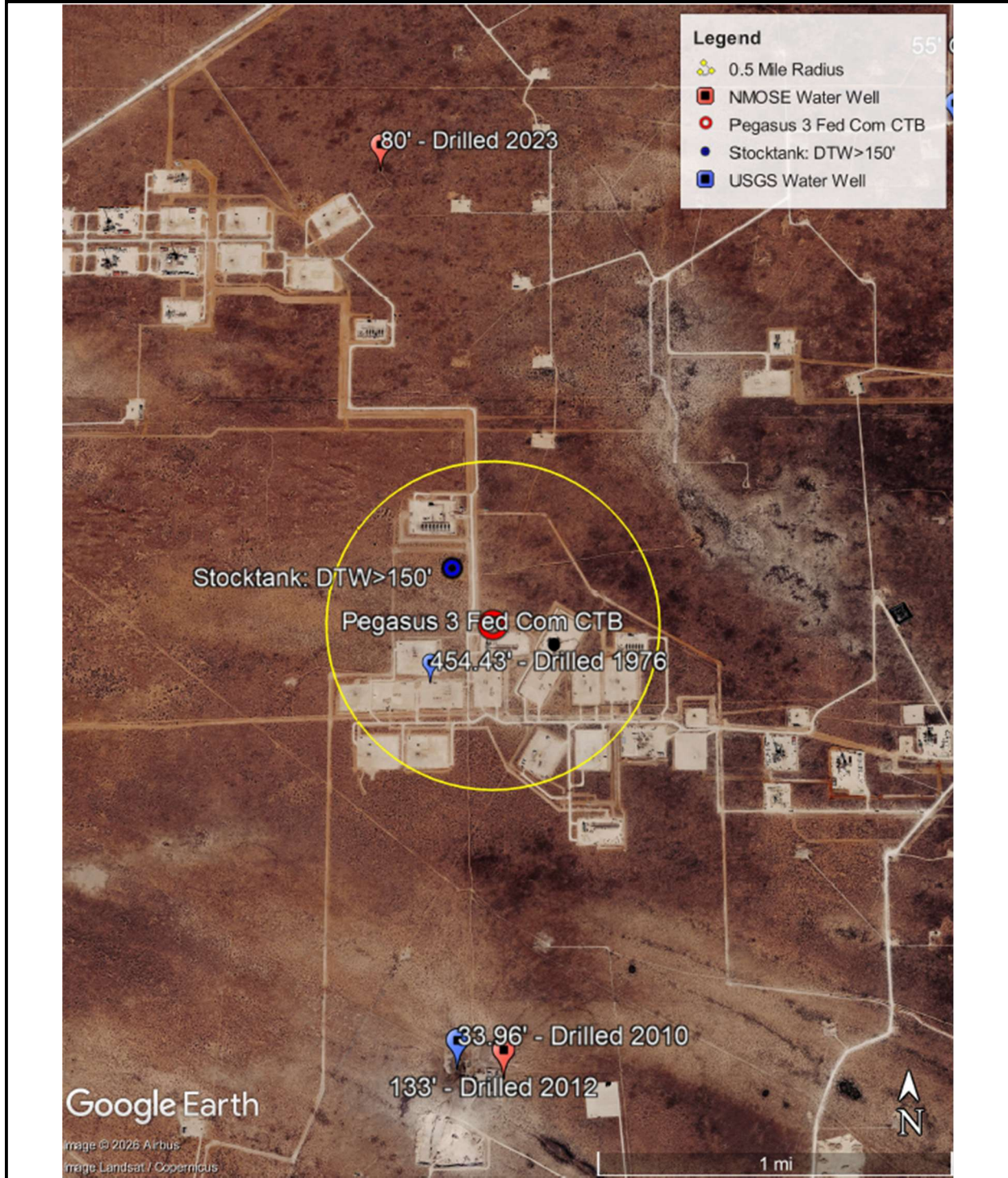
ft-feet


(CS) Confirmation Sample



# APPENDIX A

## Site Characterization and Groundwater

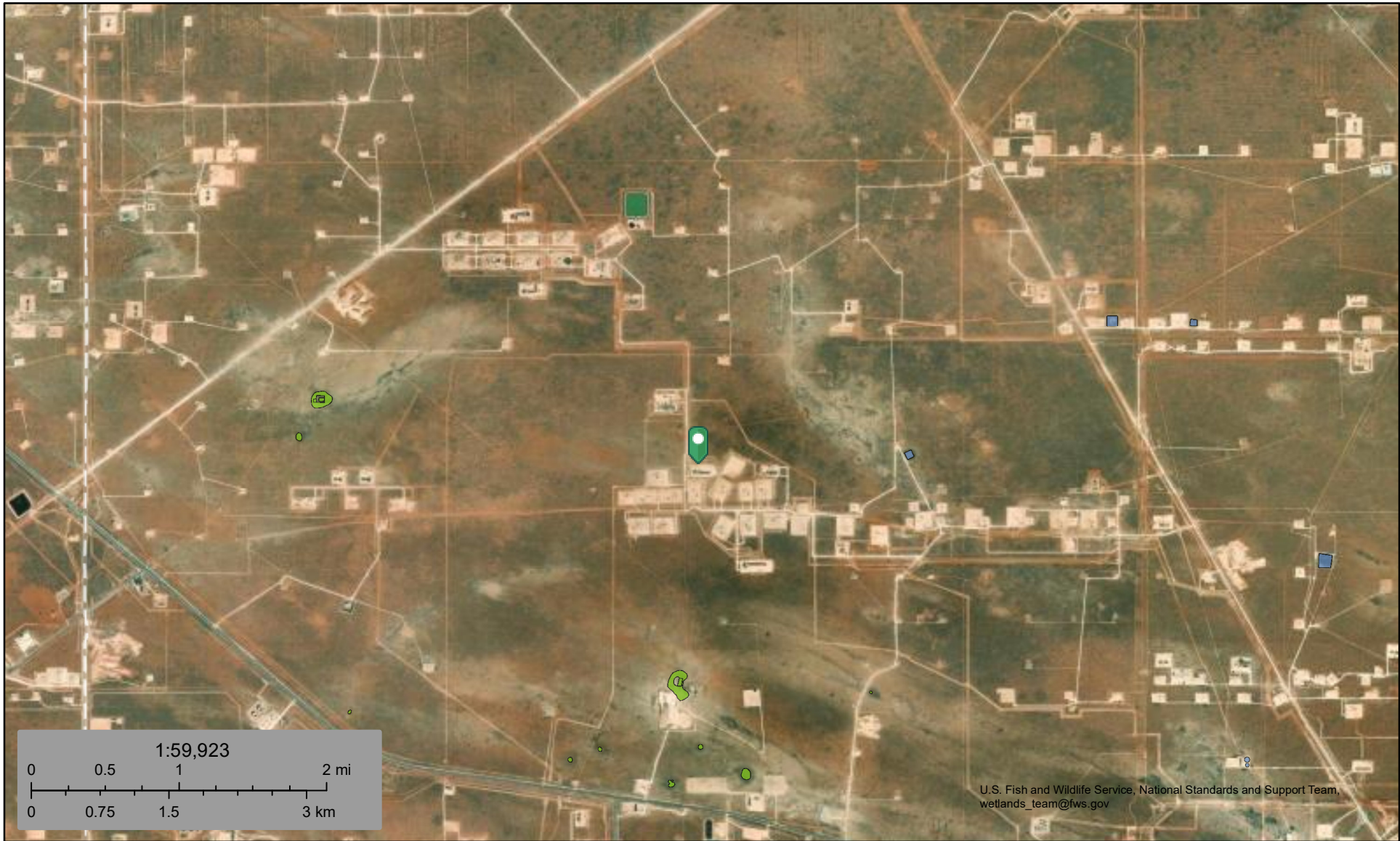


	<p align="center"><b>0.5 Mile Radius Water Well Map</b>          EOG Resources, Inc.          Pegasus 3 Fed Com CTB          Incident Number nAPP2606335846          Unit K, Section 03, T24S, R32E          Lea County, New Mexico</p>	<p align="center"><b>FIGURE A</b></p>
---	---	---





**U.S. Fish and Wildlife Service**  
**National Wetlands Inventory**




Figure B. National Wetlands Inventory Map






April 21, 2026

**Wetlands**

-  Estuarine and Marine Deepwater
-  Estuarine and Marine Wetland

-  Freshwater Emergent Wetland
-  Freshwater Forested/Shrub Wetland
-  Freshwater Pond

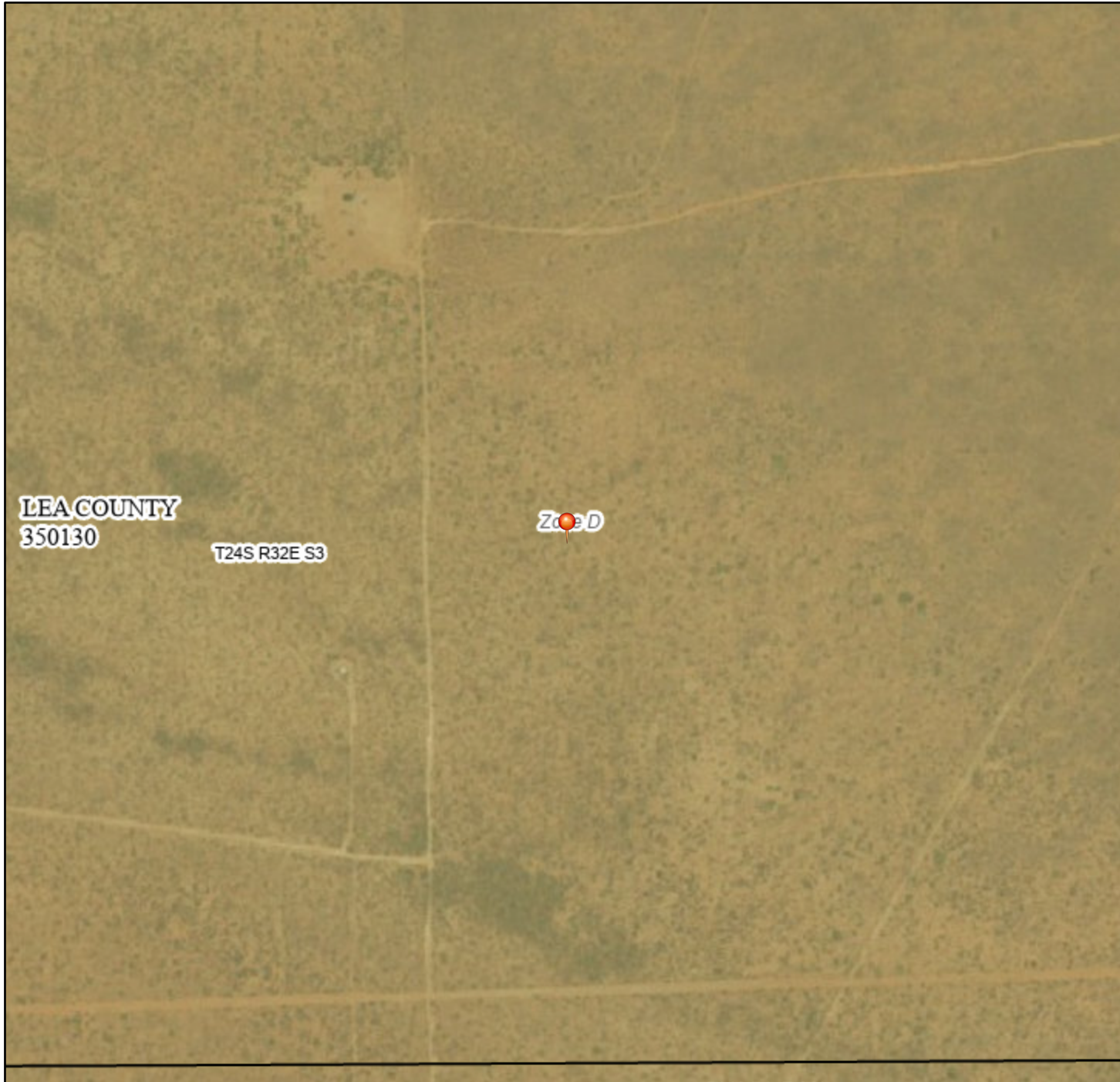
-  Lake
-  Other
-  Riverine

This map is for general reference only. The US Fish and Wildlife Service is not responsible for the accuracy or currentness of the base data shown on this map. All wetlands related data should be used in accordance with the layer metadata found on the Wetlands Mapper web site.

# Figure C: FEMA Flood Map



103°40'5"W 32°14'52"N



## Legend

SEE FIS REPORT FOR DETAILED LEGEND AND INDEX MAP FOR FIRM PANEL LAYOUT

SPECIAL FLOOD HAZARD AREAS		Without Base Flood Elevation (BFE) <i>Zone A, V, A99</i>
		With BFE or Depth <i>Zone AE, AO, AH, VE, AR</i>
		Regulatory Floodway

OTHER AREAS OF FLOOD HAZARD		0.2% Annual Chance Flood Hazard, Areas of 1% annual chance flood with average depth less than one foot or with drainage areas of less than one square mile <i>Zone X</i>
		Future Conditions 1% Annual Chance Flood Hazard <i>Zone X</i>
		Area with Reduced Flood Risk due to Levee. See Notes. <i>Zone X</i>
		Area with Flood Risk due to Levee <i>Zone D</i>

OTHER AREAS		NO SCREEN Area of Minimal Flood Hazard <i>Zone X</i>
		Effective LOMRs
		Area of Undetermined Flood Hazard <i>Zone D</i>

GENERAL STRUCTURES		Channel, Culvert, or Storm Sewer
		Levee, Dike, or Floodwall

OTHER FEATURES		20.2 Cross Sections with 1% Annual Chance Water Surface Elevation
		17.5 Cross Sections with 1% Annual Chance Water Surface Elevation
		Coastal Transect
		Base Flood Elevation Line (BFE)
		Limit of Study
		Jurisdiction Boundary

MAP PANELS		Digital Data Available
		No Digital Data Available
		Unmapped



The pin displayed on the map is an approximate point selected by the user and does not represent an authoritative property location.

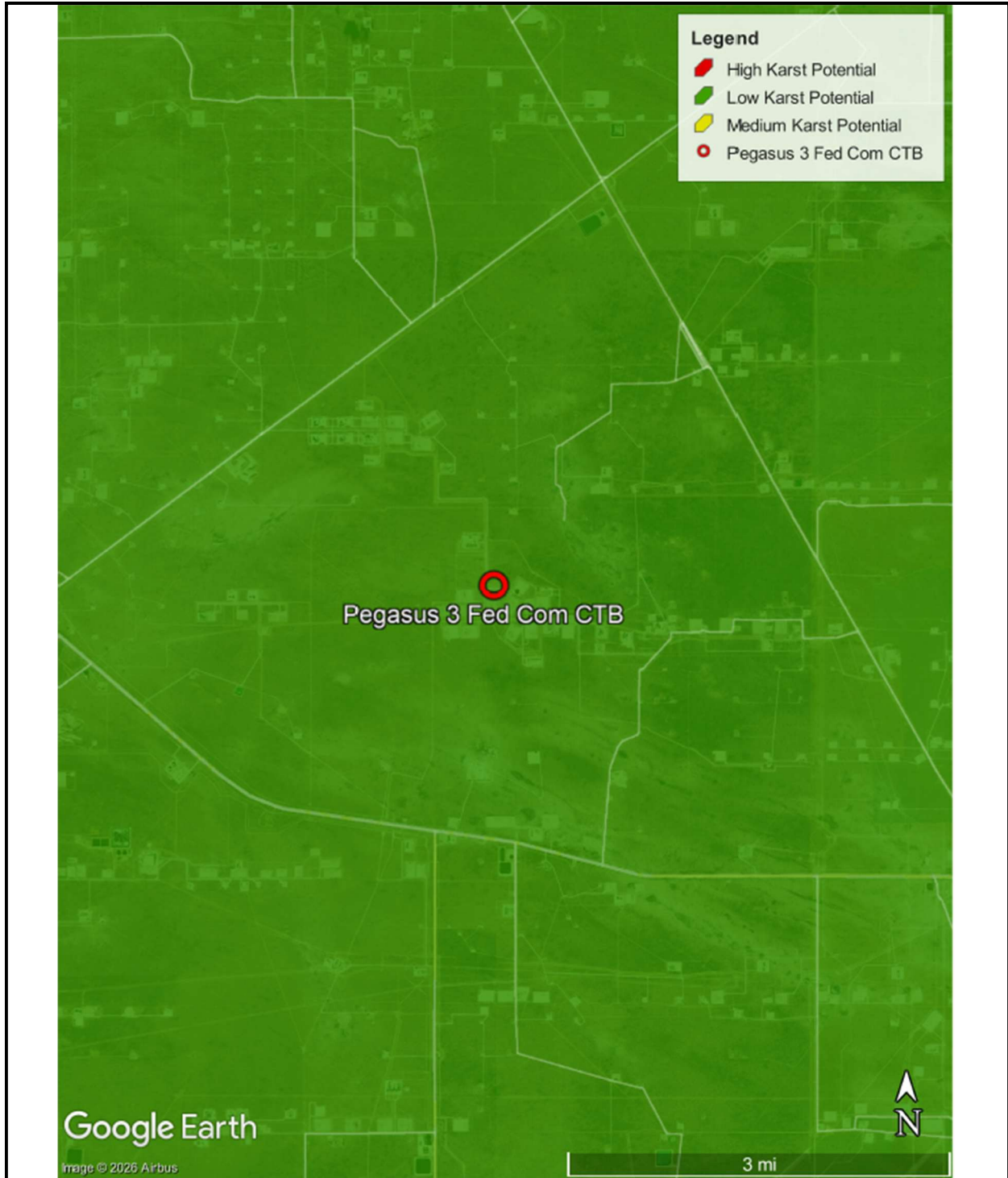
This map complies with FEMA's standards for the use of digital flood maps if it is not void as described below. The basemap shown complies with FEMA's basemap accuracy standards


The flood hazard information is derived directly from the authoritative NFHL web services provided by FEMA. This map was exported on 4/21/2026 at 2:54 PM and does not reflect changes or amendments subsequent to this date and time. The NFHL and effective information may change or become superseded by new data over time.

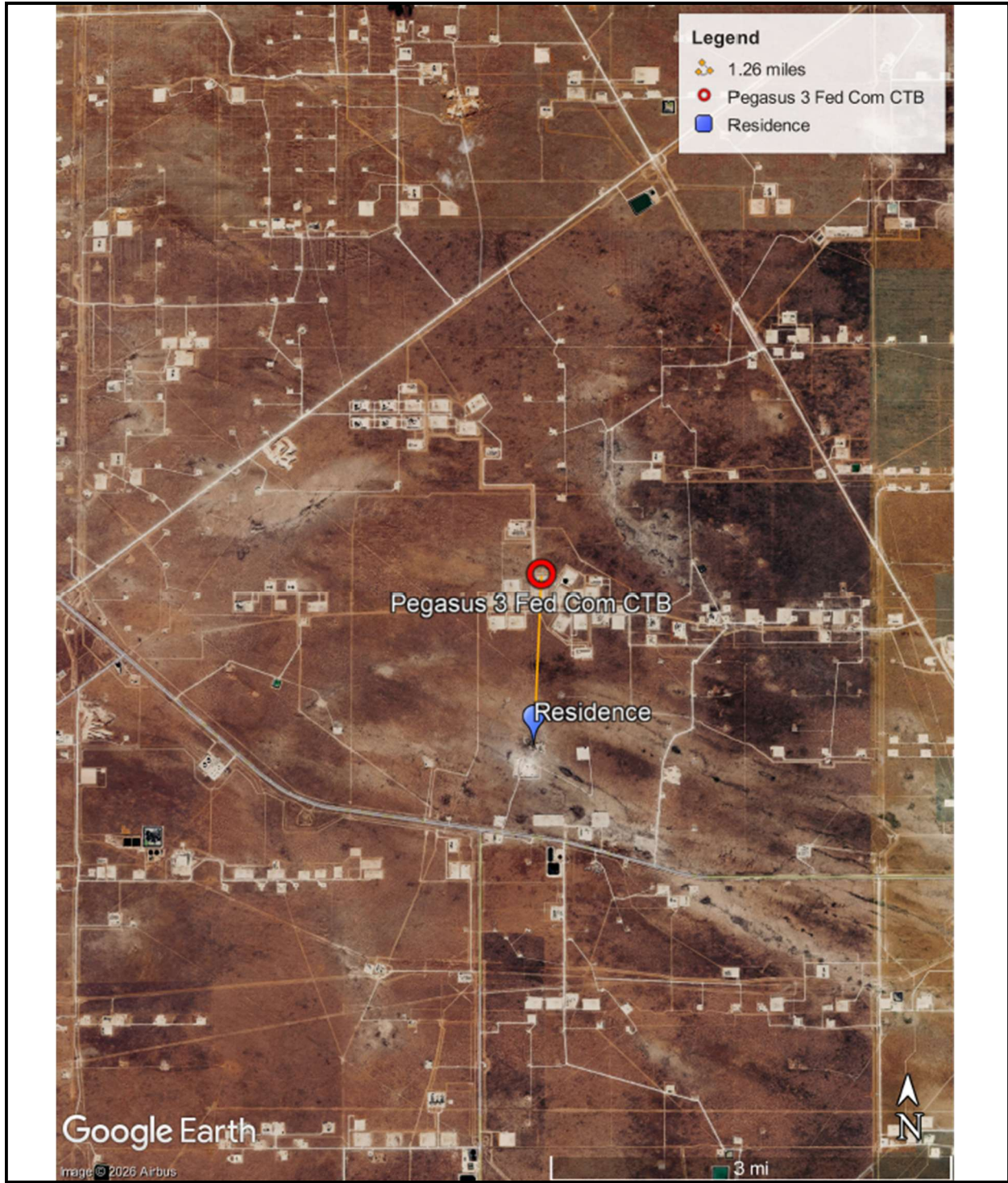
This map image is void if the one or more of the following map elements do not appear: basemap imagery, flood zone labels, legend, scale bar, map creation date, community identifiers, FIRM panel number, and FIRM effective date. Map images for unmapped and unmodernized areas cannot be used for regulatory purposes.

Released to Imaging: 5/18/2026 4:17:03 PM

1:6,000  
Basemap Imagery Source: USGS National Map 2023



	<p><b>Karst Potential Map</b> EOG Resources, Inc. Pegasus 3 Fed Com CTB Incident Number nAPP2606335846 Unit K, Section 03, T24S, R32E Lea County, New Mexico</p>	<p><b>FIGURE D</b></p>
---	--	----------------------------



	<p><b>Residence Map</b> EOG Resources, Inc. Dauntless 7 Fed CTB Incident Number nAPP2534354925 Unit N, Section 07, T25S, R33E Lea County, New Mexico</p>	<p><b>FIGURE E</b></p>
--	--	----------------------------



APPENDIX B  
Referenced Well Records

---





**RECORD OF WELL DEVELOPMENT**

Date: 3-30-2026 By: Carmona Resources

SITE ID C 03527 POD1 SITE NAME Pegasus 3 Fed Com CTB OTHER ID \_\_\_\_\_  
 SECTION/TWINE \_\_\_\_\_ COUNTY Lea County STATE NM  
 7.5' QUAD Sec 3 245 32E DRILLER \_\_\_\_\_  
 OWNER \_\_\_\_\_

**WELL CONSTRUCTION**

TOTAL DEPTH OF WELL 500' bgs WELL DIAMETER 8"  
 DEPTH(S) TO SCREENED OR OPEN INTERVAL(S) N/A

**WATER LEVEL**

MEASUREMENT POINT (MP) DESCRIPTION Gauge well with water level meter  
 MEASURING POINT 150 feet ABOVE \_\_\_\_\_ BELOW X LSD (Land surface datum)

DATE	TIME	PERSON- WEL	TYPE - post drilling, post-development, post-development, ...	HOLD	CUT	H <sub>2</sub> O DEPTH BELOW MP	MP	H <sub>2</sub> O DEPTH BELOW LSD
				feet	feet	feet	feet above LSD	feet
<u>3/30/26</u>	<u>12:16</u>	<u>CMM</u>	<u>Post-Develop</u>	<u>N/A</u>	<u>N/A</u>	<u>350</u>	<u>3</u>	<u>150</u>

**ESTIMATION OF PURGE VOLUME AND PURGE TIME FOR WATER-QUALITY SAMPLING**

Well volume -  $V = 0.0408 HD^2$  -      gallons  
 V = volume of water in the well, in gallons  
 D = inside diameter of well, in inches  
 H = height of water column, in feet

Well casing diameter (D)	Gallons/foot of casing	Well casing diameter (D)	Gallons/foot of casing
1.0	0.04	6.0	1.47
1.5	0.09	8.0	2.61
2.0	0.16	10.0	4.08
3.0	0.37	12.0	5.88
4.0	0.63	24.0	23.5
4.5	0.83	36.0	32.9
5.0	1.02		

Purge volume = (n)(V) =      gallons  
 n = number of well volumes to be removed during purging  
 Q = Estimated pumping rate =      gallons per minute  
 Approximate Purge Time = (Purge Volume)/Q =      minutes



APPENDIX C  
Photographic Log

---

**Photographic Log**  
EOG Resources, Inc.  
Pegasus 3 Fed Com CTB  
Incident Number nAPP2606335846



Photograph: 1 Date: 3/3/2026

Description: Initial release footprint

Photograph: 2 Date: 3/3/2026

Description: Initial release footprint



Photograph: 3 Date: 3/3/2026

Description: Initial release footprint

Photograph: 4 Date: 3/3/2026

Description: Initial release footprint

# PHOTOGRAPHIC LOG

EOG Resources, Inc

## Photograph No. 1

Facility: Pegasus 3 Fed Com CTB

County: Lea County, New Mexico

**Description:**

View Northeast of tagging Groundwater Determination Bore.



## Photograph No. 2

Facility: Pegasus 3 Fed Com CTB

County: Lea County, New Mexico

**Description:**

View South, area of CS-1 through CS-16.



## Photograph No. 3

Facility: Pegasus 3 Fed Com CTB

County: Lea County, New Mexico

**Description:**

View West, area of CS-16 through CS-23.



# PHOTOGRAPHIC LOG

EOG Resources, Inc

**Photograph No. 4**

**Facility:** Pegasus 3 Fed Com CTB

**County:** Lea County, New Mexico

**Description:**  
View West, area of CS-1 through CS-23.





## APPENDIX D

# Laboratory Analytical Reports & Chain-of-Custody Documentation

---



PHONE (575) 393-2326 ° 101 E. MARLAND ° HOBBS, NM 88240

---

March 24, 2026

CONNER MOEHRING  
CARMONA RESOURCES  
310 W WALL ST, SUITE 500  
MIDLAND, TX 79701

RE: PEGASUS 3 FED COM CTB

Enclosed are the results of analyses for samples received by the laboratory on 03/18/26 14:14.

Cardinal Laboratories is accredited through Texas NELAP under certificate number TX-C25-00101. Accreditation applies to drinking water, non-potable water and solid and chemical materials. All accredited analytes are denoted by an asterisk (\*). For a complete list of accredited analytes and matrices visit the TCEQ website at [www.tceq.texas.gov/field/qa/lab\\_accred\\_certif.html](http://www.tceq.texas.gov/field/qa/lab_accred_certif.html).

Cardinal Laboratories is accredited through the State of Colorado Department of Public Health and Environment for:

Method EPA 552.2	Haloacetic Acids (HAA-5)
Method EPA 524.2	Total Trihalomethanes (TTHM)
Method EPA 524.4	Regulated VOCs (V1, V2, V3)

Accreditation applies to public drinking water matrices.

This report meets NELAP requirements and is made up of a cover page, analytical results, and a copy of the original chain-of-custody. If you have any questions concerning this report, please feel free to contact me.

Sincerely,

A handwritten signature in black ink that reads "Celey D. Keene".

Celey D. Keene  
Lab Director/Quality Manager



PHONE (575) 393-2326 ° 101 E. MARLAND ° HOBBS, NM 88240

**Analytical Results For:**

CARMONA RESOURCES  
 CONNER MOEHRING  
 310 W WALL ST, SUITE 500  
 MIDLAND TX, 79701  
 Fax To:

Received:	03/18/2026	Sampling Date:	03/18/2026
Reported:	03/24/2026	Sampling Type:	Soil
Project Name:	PEGASUS 3 FED COM CTB	Sampling Condition:	Cool & Intact
Project Number:	3191	Sample Received By:	Alyssa Parras
Project Location:	EOG - LEA COUNTY, NEW MEXICO		

**Sample ID: S-1 (0-0.25') (H261507-01)**

BTEX 8021B		mg/kg		Analyzed By: JH					
Analyte	Result	Reporting Limit	Analyzed	Method Blank	BS	% Recovery	True Value QC	RPD	Qualifier
Benzene*	<0.050	0.050	03/19/2026	ND	2.17	109	2.00	5.61	
Toluene*	<0.050	0.050	03/19/2026	ND	2.09	105	2.00	5.81	
Ethylbenzene*	<0.050	0.050	03/19/2026	ND	1.98	99.0	2.00	3.99	
Total Xylenes*	<0.150	0.150	03/19/2026	ND	6.06	101	6.00	4.21	
Total BTEX	<0.300	0.300	03/19/2026	ND					

Surrogate: 4-Bromofluorobenzene (PID) 107 % 70.4-141

Chloride, SM4500Cl-B		mg/kg		Analyzed By: AC					
Analyte	Result	Reporting Limit	Analyzed	Method Blank	BS	% Recovery	True Value QC	RPD	Qualifier
Chloride	32.0	16.0	03/19/2026	ND	432	108	400	0.00	

TPH 8015M		mg/kg		Analyzed By: JF					
Analyte	Result	Reporting Limit	Analyzed	Method Blank	BS	% Recovery	True Value QC	RPD	Qualifier
GRO C6-C10*	<10.0	10.0	03/19/2026	ND	215	107	200	0.488	
DRO >C10-C28*	<10.0	10.0	03/19/2026	ND	200	100	200	5.04	
EXT DRO >C28-C36	<10.0	10.0	03/19/2026	ND					

Surrogate: 1-Chlorooctane 101 % 52.4-130

Surrogate: 1-Chlorooctadecane 104 % 39.9-141

Cardinal Laboratories

\*=Accredited Analyte

PLEASE NOTE: Liability and Damages. Cardinal's liability and client's exclusive remedy for any claim arising, whether based in contract or tort, shall be limited to the amount paid by client for analyses. All claims, including those for negligence and any other cause whatsoever shall be deemed waived unless made in writing and received by Cardinal within thirty (30) days after completion of the applicable service. In no event shall Cardinal be liable for incidental or consequential damages, including, without limitation, business interruptions, loss of use, or loss of profits incurred by client, its subsidiaries, affiliates or successors arising out of or related to the performance of the services hereunder by Cardinal, regardless of whether such claim is based upon any of the above stated reasons or otherwise. Results relate only to the samples identified above. This report shall not be reproduced except in full with written approval of Cardinal Laboratories.

Celey D. Keene, Lab Director/Quality Manager



PHONE (575) 393-2326 ° 101 E. MARLAND ° HOBBS, NM 88240

**Analytical Results For:**

CARMONA RESOURCES  
 CONNER MOEHRING  
 310 W WALL ST, SUITE 500  
 MIDLAND TX, 79701  
 Fax To:

Received:	03/18/2026	Sampling Date:	03/18/2026
Reported:	03/24/2026	Sampling Type:	Soil
Project Name:	PEGASUS 3 FED COM CTB	Sampling Condition:	Cool & Intact
Project Number:	3191	Sample Received By:	Alyssa Parras
Project Location:	EOG - LEA COUNTY, NEW MEXICO		

**Sample ID: S-1 (0.5') (H261507-02)**

BTEX 8021B		mg/kg		Analyzed By: JH					
Analyte	Result	Reporting Limit	Analyzed	Method Blank	BS	% Recovery	True Value QC	RPD	Qualifier
Benzene*	<0.050	0.050	03/19/2026	ND	2.17	109	2.00	5.61	
Toluene*	<0.050	0.050	03/19/2026	ND	2.09	105	2.00	5.81	
Ethylbenzene*	<0.050	0.050	03/19/2026	ND	1.98	99.0	2.00	3.99	
Total Xylenes*	<0.150	0.150	03/19/2026	ND	6.06	101	6.00	4.21	
Total BTEX	<0.300	0.300	03/19/2026	ND					

Surrogate: 4-Bromofluorobenzene (PID) 110 % 70.4-141

Chloride, SM4500CI-B		mg/kg		Analyzed By: AC					
Analyte	Result	Reporting Limit	Analyzed	Method Blank	BS	% Recovery	True Value QC	RPD	Qualifier
Chloride	16.0	16.0	03/19/2026	ND	432	108	400	0.00	

TPH 8015M		mg/kg		Analyzed By: JF					
Analyte	Result	Reporting Limit	Analyzed	Method Blank	BS	% Recovery	True Value QC	RPD	Qualifier
GRO C6-C10*	<10.0	10.0	03/19/2026	ND	215	107	200	0.488	
DRO >C10-C28*	<10.0	10.0	03/19/2026	ND	200	100	200	5.04	
EXT DRO >C28-C36	<10.0	10.0	03/19/2026	ND					

Surrogate: 1-Chlorooctane 106 % 52.4-130

Surrogate: 1-Chlorooctadecane 108 % 39.9-141

Cardinal Laboratories

\*=Accredited Analyte

PLEASE NOTE: Liability and Damages. Cardinal's liability and client's exclusive remedy for any claim arising, whether based in contract or tort, shall be limited to the amount paid by client for analyses. All claims, including those for negligence and any other cause whatsoever shall be deemed waived unless made in writing and received by Cardinal within thirty (30) days after completion of the applicable service. In no event shall Cardinal be liable for incidental or consequential damages, including, without limitation, business interruptions, loss of use, or loss of profits incurred by client, its subsidiaries, affiliates or successors arising out of or related to the performance of the services hereunder by Cardinal, regardless of whether such claim is based upon any of the above stated reasons or otherwise. Results relate only to the samples identified above. This report shall not be reproduced except in full with written approval of Cardinal Laboratories.

Celey D. Keene, Lab Director/Quality Manager



PHONE (575) 393-2326 ° 101 E. MARLAND ° HOBBS, NM 88240

**Analytical Results For:**

CARMONA RESOURCES  
 CONNER MOEHRING  
 310 W WALL ST, SUITE 500  
 MIDLAND TX, 79701  
 Fax To:

Received:	03/18/2026	Sampling Date:	03/18/2026
Reported:	03/24/2026	Sampling Type:	Soil
Project Name:	PEGASUS 3 FED COM CTB	Sampling Condition:	Cool & Intact
Project Number:	3191	Sample Received By:	Alyssa Parras
Project Location:	EOG - LEA COUNTY, NEW MEXICO		

**Sample ID: S-1 (1') (H261507-03)**

BTEX 8021B		mg/kg		Analyzed By: JH					
Analyte	Result	Reporting Limit	Analyzed	Method Blank	BS	% Recovery	True Value QC	RPD	Qualifier
Benzene*	<0.050	0.050	03/19/2026	ND	2.17	109	2.00	5.61	
Toluene*	<0.050	0.050	03/19/2026	ND	2.09	105	2.00	5.81	
Ethylbenzene*	<0.050	0.050	03/19/2026	ND	1.98	99.0	2.00	3.99	
Total Xylenes*	<0.150	0.150	03/19/2026	ND	6.06	101	6.00	4.21	
Total BTEX	<0.300	0.300	03/19/2026	ND					

Surrogate: 4-Bromofluorobenzene (PID) 109 % 70.4-141

Chloride, SM4500CI-B		mg/kg		Analyzed By: KH					
Analyte	Result	Reporting Limit	Analyzed	Method Blank	BS	% Recovery	True Value QC	RPD	Qualifier
Chloride	<16.0	16.0	03/19/2026	ND	448	112	400	3.64	

TPH 8015M		mg/kg		Analyzed By: JF					
Analyte	Result	Reporting Limit	Analyzed	Method Blank	BS	% Recovery	True Value QC	RPD	Qualifier
GRO C6-C10*	<10.0	10.0	03/19/2026	ND	215	107	200	0.488	
DRO >C10-C28*	<10.0	10.0	03/19/2026	ND	200	100	200	5.04	
EXT DRO >C28-C36	<10.0	10.0	03/19/2026	ND					

Surrogate: 1-Chlorooctane 101 % 52.4-130

Surrogate: 1-Chlorooctadecane 102 % 39.9-141

Cardinal Laboratories

\*=Accredited Analyte

PLEASE NOTE: Liability and Damages. Cardinal's liability and client's exclusive remedy for any claim arising, whether based in contract or tort, shall be limited to the amount paid by client for analyses. All claims, including those for negligence and any other cause whatsoever shall be deemed waived unless made in writing and received by Cardinal within thirty (30) days after completion of the applicable service. In no event shall Cardinal be liable for incidental or consequential damages, including, without limitation, business interruptions, loss of use, or loss of profits incurred by client, its subsidiaries, affiliates or successors arising out of or related to the performance of the services hereunder by Cardinal, regardless of whether such claim is based upon any of the above stated reasons or otherwise. Results relate only to the samples identified above. This report shall not be reproduced except in full with written approval of Cardinal Laboratories.

Celey D. Keene, Lab Director/Quality Manager



PHONE (575) 393-2326 ° 101 E. MARLAND ° HOBBS, NM 88240

**Analytical Results For:**

CARMONA RESOURCES  
 CONNER MOEHRING  
 310 W WALL ST, SUITE 500  
 MIDLAND TX, 79701  
 Fax To:

Received:	03/18/2026	Sampling Date:	03/18/2026
Reported:	03/24/2026	Sampling Type:	Soil
Project Name:	PEGASUS 3 FED COM CTB	Sampling Condition:	Cool & Intact
Project Number:	3191	Sample Received By:	Alyssa Parras
Project Location:	EOG - LEA COUNTY, NEW MEXICO		

**Sample ID: S-1 (1.5') (H261507-04)**

BTEX 8021B		mg/kg		Analyzed By: JH					
Analyte	Result	Reporting Limit	Analyzed	Method Blank	BS	% Recovery	True Value QC	RPD	Qualifier
Benzene*	<0.050	0.050	03/19/2026	ND	2.17	109	2.00	5.61	
Toluene*	<0.050	0.050	03/19/2026	ND	2.09	105	2.00	5.81	
Ethylbenzene*	<0.050	0.050	03/19/2026	ND	1.98	99.0	2.00	3.99	
Total Xylenes*	<0.150	0.150	03/19/2026	ND	6.06	101	6.00	4.21	
Total BTEX	<0.300	0.300	03/19/2026	ND					

Surrogate: 4-Bromofluorobenzene (PID) 110 % 70.4-141

Chloride, SM4500CI-B		mg/kg		Analyzed By: KH					
Analyte	Result	Reporting Limit	Analyzed	Method Blank	BS	% Recovery	True Value QC	RPD	Qualifier
Chloride	<16.0	16.0	03/19/2026	ND	448	112	400	3.64	

TPH 8015M		mg/kg		Analyzed By: JF					
Analyte	Result	Reporting Limit	Analyzed	Method Blank	BS	% Recovery	True Value QC	RPD	Qualifier
GRO C6-C10*	<10.0	10.0	03/19/2026	ND	215	107	200	0.488	
DRO >C10-C28*	<10.0	10.0	03/19/2026	ND	200	100	200	5.04	
EXT DRO >C28-C36	<10.0	10.0	03/19/2026	ND					

Surrogate: 1-Chlorooctane 103 % 52.4-130

Surrogate: 1-Chlorooctadecane 104 % 39.9-141

Cardinal Laboratories

\*=Accredited Analyte

PLEASE NOTE: Liability and Damages. Cardinal's liability and client's exclusive remedy for any claim arising, whether based in contract or tort, shall be limited to the amount paid by client for analyses. All claims, including those for negligence and any other cause whatsoever shall be deemed waived unless made in writing and received by Cardinal within thirty (30) days after completion of the applicable service. In no event shall Cardinal be liable for incidental or consequential damages, including, without limitation, business interruptions, loss of use, or loss of profits incurred by client, its subsidiaries, affiliates or successors arising out of or related to the performance of the services hereunder by Cardinal, regardless of whether such claim is based upon any of the above stated reasons or otherwise. Results relate only to the samples identified above. This report shall not be reproduced except in full with written approval of Cardinal Laboratories.

Celey D. Keene, Lab Director/Quality Manager



PHONE (575) 393-2326 ° 101 E. MARLAND ° HOBBS, NM 88240

**Analytical Results For:**

CARMONA RESOURCES  
 CONNER MOEHRING  
 310 W WALL ST, SUITE 500  
 MIDLAND TX, 79701  
 Fax To:

Received:	03/18/2026	Sampling Date:	03/18/2026
Reported:	03/24/2026	Sampling Type:	Soil
Project Name:	PEGASUS 3 FED COM CTB	Sampling Condition:	Cool & Intact
Project Number:	3191	Sample Received By:	Alyssa Parras
Project Location:	EOG - LEA COUNTY, NEW MEXICO		

**Sample ID: S-2 (0-0.25') (H261507-05)**

BTEX 8021B		mg/kg		Analyzed By: JH						
Analyte	Result	Reporting Limit	Analyzed	Method Blank	BS	% Recovery	True Value QC	RPD	Qualifier	
Benzene*	<0.050	0.050	03/19/2026	ND	2.17	109	2.00	5.61		
Toluene*	<0.050	0.050	03/19/2026	ND	2.09	105	2.00	5.81		
Ethylbenzene*	<0.050	0.050	03/19/2026	ND	1.98	99.0	2.00	3.99		
Total Xylenes*	<0.150	0.150	03/19/2026	ND	6.06	101	6.00	4.21		
Total BTEX	<0.300	0.300	03/19/2026	ND						

Surrogate: 4-Bromofluorobenzene (PID) 109 % 70.4-141

Chloride, SM4500CI-B		mg/kg		Analyzed By: KH						
Analyte	Result	Reporting Limit	Analyzed	Method Blank	BS	% Recovery	True Value QC	RPD	Qualifier	
Chloride	<16.0	16.0	03/19/2026	ND	448	112	400	3.64		

TPH 8015M		mg/kg		Analyzed By: JF						
Analyte	Result	Reporting Limit	Analyzed	Method Blank	BS	% Recovery	True Value QC	RPD	Qualifier	
GRO C6-C10*	<10.0	10.0	03/19/2026	ND	215	107	200	0.488		
DRO >C10-C28*	<10.0	10.0	03/19/2026	ND	200	100	200	5.04		
EXT DRO >C28-C36	<10.0	10.0	03/19/2026	ND						

Surrogate: 1-Chlorooctane 103 % 52.4-130

Surrogate: 1-Chlorooctadecane 104 % 39.9-141

Cardinal Laboratories

\*=Accredited Analyte

PLEASE NOTE: Liability and Damages. Cardinal's liability and client's exclusive remedy for any claim arising, whether based in contract or tort, shall be limited to the amount paid by client for analyses. All claims, including those for negligence and any other cause whatsoever shall be deemed waived unless made in writing and received by Cardinal within thirty (30) days after completion of the applicable service. In no event shall Cardinal be liable for incidental or consequential damages, including, without limitation, business interruptions, loss of use, or loss of profits incurred by client, its subsidiaries, affiliates or successors arising out of or related to the performance of the services hereunder by Cardinal, regardless of whether such claim is based upon any of the above stated reasons or otherwise. Results relate only to the samples identified above. This report shall not be reproduced except in full with written approval of Cardinal Laboratories.

Celey D. Keene, Lab Director/Quality Manager



PHONE (575) 393-2326 ° 101 E. MARLAND ° HOBBS, NM 88240

**Analytical Results For:**

CARMONA RESOURCES  
 CONNER MOEHRING  
 310 W WALL ST, SUITE 500  
 MIDLAND TX, 79701  
 Fax To:

Received:	03/18/2026	Sampling Date:	03/18/2026
Reported:	03/24/2026	Sampling Type:	Soil
Project Name:	PEGASUS 3 FED COM CTB	Sampling Condition:	Cool & Intact
Project Number:	3191	Sample Received By:	Alyssa Parras
Project Location:	EOG - LEA COUNTY, NEW MEXICO		

**Sample ID: S-2 (0.5') (H261507-06)**

BTEX 8021B		mg/kg		Analyzed By: JH					
Analyte	Result	Reporting Limit	Analyzed	Method Blank	BS	% Recovery	True Value QC	RPD	Qualifier
Benzene*	<0.050	0.050	03/19/2026	ND	2.17	109	2.00	5.61	
Toluene*	<0.050	0.050	03/19/2026	ND	2.09	105	2.00	5.81	
Ethylbenzene*	<0.050	0.050	03/19/2026	ND	1.98	99.0	2.00	3.99	
Total Xylenes*	<0.150	0.150	03/19/2026	ND	6.06	101	6.00	4.21	
Total BTEX	<0.300	0.300	03/19/2026	ND					

Surrogate: 4-Bromofluorobenzene (PID) 110 % 70.4-141

Chloride, SM4500Cl-B		mg/kg		Analyzed By: KH					
Analyte	Result	Reporting Limit	Analyzed	Method Blank	BS	% Recovery	True Value QC	RPD	Qualifier
Chloride	16.0	16.0	03/19/2026	ND	448	112	400	3.64	

TPH 8015M		mg/kg		Analyzed By: JF					
Analyte	Result	Reporting Limit	Analyzed	Method Blank	BS	% Recovery	True Value QC	RPD	Qualifier
GRO C6-C10*	<10.0	10.0	03/19/2026	ND	215	107	200	0.488	
DRO >C10-C28*	<10.0	10.0	03/19/2026	ND	200	100	200	5.04	
EXT DRO >C28-C36	<10.0	10.0	03/19/2026	ND					

Surrogate: 1-Chlorooctane 105 % 52.4-130

Surrogate: 1-Chlorooctadecane 105 % 39.9-141

Cardinal Laboratories

\*=Accredited Analyte

PLEASE NOTE: Liability and Damages. Cardinal's liability and client's exclusive remedy for any claim arising, whether based in contract or tort, shall be limited to the amount paid by client for analyses. All claims, including those for negligence and any other cause whatsoever shall be deemed waived unless made in writing and received by Cardinal within thirty (30) days after completion of the applicable service. In no event shall Cardinal be liable for incidental or consequential damages, including, without limitation, business interruptions, loss of use, or loss of profits incurred by client, its subsidiaries, affiliates or successors arising out of or related to the performance of the services hereunder by Cardinal, regardless of whether such claim is based upon any of the above stated reasons or otherwise. Results relate only to the samples identified above. This report shall not be reproduced except in full with written approval of Cardinal Laboratories.

Celey D. Keene, Lab Director/Quality Manager



PHONE (575) 393-2326 ° 101 E. MARLAND ° HOBBS, NM 88240

**Analytical Results For:**

CARMONA RESOURCES  
 CONNER MOEHRING  
 310 W WALL ST, SUITE 500  
 MIDLAND TX, 79701  
 Fax To:

Received:	03/18/2026	Sampling Date:	03/18/2026
Reported:	03/24/2026	Sampling Type:	Soil
Project Name:	PEGASUS 3 FED COM CTB	Sampling Condition:	Cool & Intact
Project Number:	3191	Sample Received By:	Alyssa Parras
Project Location:	EOG - LEA COUNTY, NEW MEXICO		

**Sample ID: S-2 (1') (H261507-07)**

BTEX 8021B		mg/kg		Analyzed By: JH					
Analyte	Result	Reporting Limit	Analyzed	Method Blank	BS	% Recovery	True Value QC	RPD	Qualifier
Benzene*	<0.050	0.050	03/19/2026	ND	2.17	109	2.00	5.61	
Toluene*	<0.050	0.050	03/19/2026	ND	2.09	105	2.00	5.81	
Ethylbenzene*	<0.050	0.050	03/19/2026	ND	1.98	99.0	2.00	3.99	
Total Xylenes*	<0.150	0.150	03/19/2026	ND	6.06	101	6.00	4.21	
Total BTEX	<0.300	0.300	03/19/2026	ND					

Surrogate: 4-Bromofluorobenzene (PID) 113 % 70.4-141

Chloride, SM4500CI-B		mg/kg		Analyzed By: KH					
Analyte	Result	Reporting Limit	Analyzed	Method Blank	BS	% Recovery	True Value QC	RPD	Qualifier
Chloride	<16.0	16.0	03/19/2026	ND	448	112	400	3.64	

TPH 8015M		mg/kg		Analyzed By: JF					
Analyte	Result	Reporting Limit	Analyzed	Method Blank	BS	% Recovery	True Value QC	RPD	Qualifier
GRO C6-C10*	<10.0	10.0	03/19/2026	ND	215	107	200	0.488	
DRO >C10-C28*	<10.0	10.0	03/19/2026	ND	200	100	200	5.04	
EXT DRO >C28-C36	<10.0	10.0	03/19/2026	ND					

Surrogate: 1-Chlorooctane 102 % 52.4-130

Surrogate: 1-Chlorooctadecane 101 % 39.9-141

Cardinal Laboratories

\*=Accredited Analyte

PLEASE NOTE: Liability and Damages. Cardinal's liability and client's exclusive remedy for any claim arising, whether based in contract or tort, shall be limited to the amount paid by client for analyses. All claims, including those for negligence and any other cause whatsoever shall be deemed waived unless made in writing and received by Cardinal within thirty (30) days after completion of the applicable service. In no event shall Cardinal be liable for incidental or consequential damages, including, without limitation, business interruptions, loss of use, or loss of profits incurred by client, its subsidiaries, affiliates or successors arising out of or related to the performance of the services hereunder by Cardinal, regardless of whether such claim is based upon any of the above stated reasons or otherwise. Results relate only to the samples identified above. This report shall not be reproduced except in full with written approval of Cardinal Laboratories.

Celey D. Keene, Lab Director/Quality Manager



PHONE (575) 393-2326 ° 101 E. MARLAND ° HOBBS, NM 88240

**Analytical Results For:**

CARMONA RESOURCES  
 CONNER MOEHRING  
 310 W WALL ST, SUITE 500  
 MIDLAND TX, 79701  
 Fax To:

Received:	03/18/2026	Sampling Date:	03/18/2026
Reported:	03/24/2026	Sampling Type:	Soil
Project Name:	PEGASUS 3 FED COM CTB	Sampling Condition:	Cool & Intact
Project Number:	3191	Sample Received By:	Alyssa Parras
Project Location:	EOG - LEA COUNTY, NEW MEXICO		

**Sample ID: S-2 (1.5') (H261507-08)**

BTEX 8021B		mg/kg		Analyzed By: JH					
Analyte	Result	Reporting Limit	Analyzed	Method Blank	BS	% Recovery	True Value QC	RPD	Qualifier
Benzene*	<0.050	0.050	03/19/2026	ND	2.17	109	2.00	5.61	
Toluene*	<0.050	0.050	03/19/2026	ND	2.09	105	2.00	5.81	
Ethylbenzene*	<0.050	0.050	03/19/2026	ND	1.98	99.0	2.00	3.99	
Total Xylenes*	<0.150	0.150	03/19/2026	ND	6.06	101	6.00	4.21	
Total BTEX	<0.300	0.300	03/19/2026	ND					

Surrogate: 4-Bromofluorobenzene (PID) 108 % 70.4-141

Chloride, SM4500CI-B		mg/kg		Analyzed By: KH					
Analyte	Result	Reporting Limit	Analyzed	Method Blank	BS	% Recovery	True Value QC	RPD	Qualifier
Chloride	16.0	16.0	03/19/2026	ND	448	112	400	3.64	

TPH 8015M		mg/kg		Analyzed By: JF					
Analyte	Result	Reporting Limit	Analyzed	Method Blank	BS	% Recovery	True Value QC	RPD	Qualifier
GRO C6-C10*	<10.0	10.0	03/19/2026	ND	193	96.6	200	1.66	
DRO >C10-C28*	<10.0	10.0	03/19/2026	ND	180	90.1	200	2.52	
EXT DRO >C28-C36	<10.0	10.0	03/19/2026	ND					

Surrogate: 1-Chlorooctane 78.3 % 52.4-130

Surrogate: 1-Chlorooctadecane 89.0 % 39.9-141

Cardinal Laboratories

\*=Accredited Analyte

PLEASE NOTE: Liability and Damages. Cardinal's liability and client's exclusive remedy for any claim arising, whether based in contract or tort, shall be limited to the amount paid by client for analyses. All claims, including those for negligence and any other cause whatsoever shall be deemed waived unless made in writing and received by Cardinal within thirty (30) days after completion of the applicable service. In no event shall Cardinal be liable for incidental or consequential damages, including, without limitation, business interruptions, loss of use, or loss of profits incurred by client, its subsidiaries, affiliates or successors arising out of or related to the performance of the services hereunder by Cardinal, regardless of whether such claim is based upon any of the above stated reasons or otherwise. Results relate only to the samples identified above. This report shall not be reproduced except in full with written approval of Cardinal Laboratories.

Celey D. Keene, Lab Director/Quality Manager



PHONE (575) 393-2326 ° 101 E. MARLAND ° HOBBS, NM 88240

Notes and Definitions

- QM-07 The spike recovery was outside acceptance limits for the MS and/or MSD. The batch was accepted based on acceptable LCS recovery.
BS-3 Blank spike recovery outside of lab established statistical limits, but still within method limits. Data is not adversely affected.
ND Analyte NOT DETECTED at or above the reporting limit
RPD Relative Percent Difference
\*\* Samples not received at proper temperature of 6°C or below.
\*\*\* Insufficient time to reach temperature.
- Chloride by SM4500Cl-B does not require samples be received at or below 6°C
Samples reported on an as received basis (wet) unless otherwise noted on report

Cardinal Laboratories

\*=Accredited Analyte

PLEASE NOTE: Liability and Damages. Cardinal's liability and client's exclusive remedy for any claim arising, whether based in contract or tort, shall be limited to the amount paid by client for analyses. All claims, including those for negligence and any other cause whatsoever shall be deemed waived unless made in writing and received by Cardinal within thirty (30) days after completion of the applicable service. In no event shall Cardinal be liable for incidental or consequential damages, including, without limitation, business interruptions, loss of use, or loss of profits incurred by client, its subsidiaries, affiliates or successors arising out of or related to the performance of the services hereunder by Cardinal, regardless of whether such claim is based upon any of the above stated reasons or otherwise. Results relate only to the samples identified above. This report shall not be reproduced except in full with written approval of Cardinal Laboratories.

Celey D. Keene

Celey D. Keene, Lab Director/Quality Manager





PHONE (575) 393-2326 ° 101 E. MARLAND ° HOBBS, NM 88240

---

March 24, 2026

CONNER MOEHRING  
CARMONA RESOURCES  
310 W WALL ST, SUITE 500  
MIDLAND, TX 79701

RE: PEGASUS 3 FED COM CTB

Enclosed are the results of analyses for samples received by the laboratory on 03/18/26 14:14.

Cardinal Laboratories is accredited through Texas NELAP under certificate number TX-C25-00101. Accreditation applies to drinking water, non-potable water and solid and chemical materials. All accredited analytes are denoted by an asterisk (\*). For a complete list of accredited analytes and matrices visit the TCEQ website at [www.tceq.texas.gov/field/qa/lab\\_accred\\_certif.html](http://www.tceq.texas.gov/field/qa/lab_accred_certif.html).

Cardinal Laboratories is accredited through the State of Colorado Department of Public Health and Environment for:

Method EPA 552.2	Haloacetic Acids (HAA-5)
Method EPA 524.2	Total Trihalomethanes (TTHM)
Method EPA 524.4	Regulated VOCs (V1, V2, V3)

Accreditation applies to public drinking water matrices.

This report meets NELAP requirements and is made up of a cover page, analytical results, and a copy of the original chain-of-custody. If you have any questions concerning this report, please feel free to contact me.

Sincerely,

A handwritten signature in black ink that reads "Celey D. Keene".

Celey D. Keene  
Lab Director/Quality Manager



PHONE (575) 393-2326 ° 101 E. MARLAND ° HOBBS, NM 88240

**Analytical Results For:**

CARMONA RESOURCES  
 CONNER MOEHRING  
 310 W WALL ST, SUITE 500  
 MIDLAND TX, 79701  
 Fax To:

Received:	03/18/2026	Sampling Date:	03/18/2026
Reported:	03/24/2026	Sampling Type:	Soil
Project Name:	PEGASUS 3 FED COM CTB	Sampling Condition:	Cool & Intact
Project Number:	3191	Sample Received By:	Alyssa Parras
Project Location:	EOG - LEA COUNTY, NM		

**Sample ID: H-1 (0-0.5') (H261508-01)**

BTEX 8021B		mg/kg		Analyzed By: JH					
Analyte	Result	Reporting Limit	Analyzed	Method Blank	BS	% Recovery	True Value QC	RPD	Qualifier
Benzene*	<0.050	0.050	03/19/2026	ND	2.17	109	2.00	5.61	
Toluene*	<0.050	0.050	03/19/2026	ND	2.09	105	2.00	5.81	
Ethylbenzene*	<0.050	0.050	03/19/2026	ND	1.98	99.0	2.00	3.99	
Total Xylenes*	<0.150	0.150	03/19/2026	ND	6.06	101	6.00	4.21	
Total BTEX	<0.300	0.300	03/19/2026	ND					

Surrogate: 4-Bromofluorobenzene (PID) 108 % 70.4-141

Chloride, SM4500Cl-B		mg/kg		Analyzed By: KH					
Analyte	Result	Reporting Limit	Analyzed	Method Blank	BS	% Recovery	True Value QC	RPD	Qualifier
Chloride	<16.0	16.0	03/19/2026	ND	448	112	400	3.64	

TPH 8015M		mg/kg		Analyzed By: JF					
Analyte	Result	Reporting Limit	Analyzed	Method Blank	BS	% Recovery	True Value QC	RPD	Qualifier
GRO C6-C10*	<10.0	10.0	03/19/2026	ND	193	96.6	200	1.66	
DRO >C10-C28*	<10.0	10.0	03/19/2026	ND	180	90.1	200	2.52	
EXT DRO >C28-C36	<10.0	10.0	03/19/2026	ND					

Surrogate: 1-Chlorooctane 88.7 % 52.4-130

Surrogate: 1-Chlorooctadecane 96.6 % 39.9-141

Cardinal Laboratories

\*=Accredited Analyte

PLEASE NOTE: Liability and Damages. Cardinal's liability and client's exclusive remedy for any claim arising, whether based in contract or tort, shall be limited to the amount paid by client for analyses. All claims, including those for negligence and any other cause whatsoever shall be deemed waived unless made in writing and received by Cardinal within thirty (30) days after completion of the applicable service. In no event shall Cardinal be liable for incidental or consequential damages, including, without limitation, business interruptions, loss of use, or loss of profits incurred by client, its subsidiaries, affiliates or successors arising out of or related to the performance of the services hereunder by Cardinal, regardless of whether such claim is based upon any of the above stated reasons or otherwise. Results relate only to the samples identified above. This report shall not be reproduced except in full with written approval of Cardinal Laboratories.

Celey D. Keene, Lab Director/Quality Manager



PHONE (575) 393-2326 ° 101 E. MARLAND ° HOBBS, NM 88240

**Analytical Results For:**

CARMONA RESOURCES  
 CONNER MOEHRING  
 310 W WALL ST, SUITE 500  
 MIDLAND TX, 79701  
 Fax To:

Received:	03/18/2026	Sampling Date:	03/18/2026
Reported:	03/24/2026	Sampling Type:	Soil
Project Name:	PEGASUS 3 FED COM CTB	Sampling Condition:	Cool & Intact
Project Number:	3191	Sample Received By:	Alyssa Parras
Project Location:	EOG - LEA COUNTY, NM		

**Sample ID: H-2 (0-0.5') (H261508-02)**

BTEX 8021B		mg/kg		Analyzed By: JH					
Analyte	Result	Reporting Limit	Analyzed	Method Blank	BS	% Recovery	True Value QC	RPD	Qualifier
Benzene*	<0.050	0.050	03/19/2026	ND	2.17	109	2.00	5.61	
Toluene*	<0.050	0.050	03/19/2026	ND	2.09	105	2.00	5.81	
Ethylbenzene*	<0.050	0.050	03/19/2026	ND	1.98	99.0	2.00	3.99	
Total Xylenes*	<0.150	0.150	03/19/2026	ND	6.06	101	6.00	4.21	
Total BTEX	<0.300	0.300	03/19/2026	ND					

Surrogate: 4-Bromofluorobenzene (PID) 111 % 70.4-141

Chloride, SM4500CI-B		mg/kg		Analyzed By: KH					
Analyte	Result	Reporting Limit	Analyzed	Method Blank	BS	% Recovery	True Value QC	RPD	Qualifier
Chloride	16.0	16.0	03/19/2026	ND	448	112	400	3.64	

TPH 8015M		mg/kg		Analyzed By: JF					
Analyte	Result	Reporting Limit	Analyzed	Method Blank	BS	% Recovery	True Value QC	RPD	Qualifier
GRO C6-C10*	<10.0	10.0	03/19/2026	ND	193	96.6	200	1.66	
DRO >C10-C28*	<10.0	10.0	03/19/2026	ND	180	90.1	200	2.52	
EXT DRO >C28-C36	<10.0	10.0	03/19/2026	ND					

Surrogate: 1-Chlorooctane 72.6 % 52.4-130

Surrogate: 1-Chlorooctadecane 78.4 % 39.9-141

Cardinal Laboratories

\*=Accredited Analyte

PLEASE NOTE: Liability and Damages. Cardinal's liability and client's exclusive remedy for any claim arising, whether based in contract or tort, shall be limited to the amount paid by client for analyses. All claims, including those for negligence and any other cause whatsoever shall be deemed waived unless made in writing and received by Cardinal within thirty (30) days after completion of the applicable service. In no event shall Cardinal be liable for incidental or consequential damages, including, without limitation, business interruptions, loss of use, or loss of profits incurred by client, its subsidiaries, affiliates or successors arising out of or related to the performance of the services hereunder by Cardinal, regardless of whether such claim is based upon any of the above stated reasons or otherwise. Results relate only to the samples identified above. This report shall not be reproduced except in full with written approval of Cardinal Laboratories.

Celey D. Keene, Lab Director/Quality Manager



PHONE (575) 393-2326 ° 101 E. MARLAND ° HOBBS, NM 88240

**Analytical Results For:**

CARMONA RESOURCES  
 CONNER MOEHRING  
 310 W WALL ST, SUITE 500  
 MIDLAND TX, 79701  
 Fax To:

Received:	03/18/2026	Sampling Date:	03/18/2026
Reported:	03/24/2026	Sampling Type:	Soil
Project Name:	PEGASUS 3 FED COM CTB	Sampling Condition:	Cool & Intact
Project Number:	3191	Sample Received By:	Alyssa Parras
Project Location:	EOG - LEA COUNTY, NM		

**Sample ID: H-3 (0-0.5') (H261508-03)**

BTEX 8021B		mg/kg		Analyzed By: JH					
Analyte	Result	Reporting Limit	Analyzed	Method Blank	BS	% Recovery	True Value QC	RPD	Qualifier
Benzene*	<0.050	0.050	03/19/2026	ND	2.17	109	2.00	5.61	
Toluene*	<0.050	0.050	03/19/2026	ND	2.09	105	2.00	5.81	
Ethylbenzene*	<0.050	0.050	03/19/2026	ND	1.98	99.0	2.00	3.99	
Total Xylenes*	<0.150	0.150	03/19/2026	ND	6.06	101	6.00	4.21	
Total BTEX	<0.300	0.300	03/19/2026	ND					

Surrogate: 4-Bromofluorobenzene (PID) 109 % 70.4-141

Chloride, SM4500CI-B		mg/kg		Analyzed By: KH					
Analyte	Result	Reporting Limit	Analyzed	Method Blank	BS	% Recovery	True Value QC	RPD	Qualifier
Chloride	<16.0	16.0	03/19/2026	ND	448	112	400	3.64	

TPH 8015M		mg/kg		Analyzed By: JF					
Analyte	Result	Reporting Limit	Analyzed	Method Blank	BS	% Recovery	True Value QC	RPD	Qualifier
GRO C6-C10*	<10.0	10.0	03/19/2026	ND	193	96.6	200	1.66	
DRO >C10-C28*	<10.0	10.0	03/19/2026	ND	180	90.1	200	2.52	
EXT DRO >C28-C36	<10.0	10.0	03/19/2026	ND					

Surrogate: 1-Chlorooctane 84.1 % 52.4-130

Surrogate: 1-Chlorooctadecane 94.8 % 39.9-141

Cardinal Laboratories

\*=Accredited Analyte

PLEASE NOTE: Liability and Damages. Cardinal's liability and client's exclusive remedy for any claim arising, whether based in contract or tort, shall be limited to the amount paid by client for analyses. All claims, including those for negligence and any other cause whatsoever shall be deemed waived unless made in writing and received by Cardinal within thirty (30) days after completion of the applicable service. In no event shall Cardinal be liable for incidental or consequential damages, including, without limitation, business interruptions, loss of use, or loss of profits incurred by client, its subsidiaries, affiliates or successors arising out of or related to the performance of the services hereunder by Cardinal, regardless of whether such claim is based upon any of the above stated reasons or otherwise. Results relate only to the samples identified above. This report shall not be reproduced except in full with written approval of Cardinal Laboratories.

Celey D. Keene, Lab Director/Quality Manager



PHONE (575) 393-2326 ° 101 E. MARLAND ° HOBBS, NM 88240

**Analytical Results For:**

CARMONA RESOURCES  
 CONNER MOEHRING  
 310 W WALL ST, SUITE 500  
 MIDLAND TX, 79701  
 Fax To:

Received:	03/18/2026	Sampling Date:	03/18/2026
Reported:	03/24/2026	Sampling Type:	Soil
Project Name:	PEGASUS 3 FED COM CTB	Sampling Condition:	Cool & Intact
Project Number:	3191	Sample Received By:	Alyssa Parras
Project Location:	EOG - LEA COUNTY, NM		

**Sample ID: H-4 (0-0.5') (H261508-04)**

BTEX 8021B		mg/kg		Analyzed By: JH					
Analyte	Result	Reporting Limit	Analyzed	Method Blank	BS	% Recovery	True Value QC	RPD	Qualifier
Benzene*	<0.050	0.050	03/19/2026	ND	2.17	109	2.00	5.61	
Toluene*	<0.050	0.050	03/19/2026	ND	2.09	105	2.00	5.81	
Ethylbenzene*	<0.050	0.050	03/19/2026	ND	1.98	99.0	2.00	3.99	
Total Xylenes*	<0.150	0.150	03/19/2026	ND	6.06	101	6.00	4.21	
Total BTEX	<0.300	0.300	03/19/2026	ND					

Surrogate: 4-Bromofluorobenzene (PID) 111 % 70.4-141

Chloride, SM4500CI-B		mg/kg		Analyzed By: KH					
Analyte	Result	Reporting Limit	Analyzed	Method Blank	BS	% Recovery	True Value QC	RPD	Qualifier
Chloride	<16.0	16.0	03/19/2026	ND	448	112	400	3.64	

TPH 8015M		mg/kg		Analyzed By: JF					
Analyte	Result	Reporting Limit	Analyzed	Method Blank	BS	% Recovery	True Value QC	RPD	Qualifier
GRO C6-C10*	<10.0	10.0	03/19/2026	ND	193	96.6	200	1.66	
DRO >C10-C28*	<10.0	10.0	03/19/2026	ND	180	90.1	200	2.52	
EXT DRO >C28-C36	<10.0	10.0	03/19/2026	ND					

Surrogate: 1-Chlorooctane 86.3 % 52.4-130

Surrogate: 1-Chlorooctadecane 94.9 % 39.9-141

Cardinal Laboratories

\*=Accredited Analyte

PLEASE NOTE: Liability and Damages. Cardinal's liability and client's exclusive remedy for any claim arising, whether based in contract or tort, shall be limited to the amount paid by client for analyses. All claims, including those for negligence and any other cause whatsoever shall be deemed waived unless made in writing and received by Cardinal within thirty (30) days after completion of the applicable service. In no event shall Cardinal be liable for incidental or consequential damages, including, without limitation, business interruptions, loss of use, or loss of profits incurred by client, its subsidiaries, affiliates or successors arising out of or related to the performance of the services hereunder by Cardinal, regardless of whether such claim is based upon any of the above stated reasons or otherwise. Results relate only to the samples identified above. This report shall not be reproduced except in full with written approval of Cardinal Laboratories.

Celey D. Keene, Lab Director/Quality Manager



PHONE (575) 393-2326 ° 101 E. MARLAND ° HOBBS, NM 88240

Notes and Definitions

- QM-07 The spike recovery was outside acceptance limits for the MS and/or MSD. The batch was accepted based on acceptable LCS recovery.
BS-3 Blank spike recovery outside of lab established statistical limits, but still within method limits. Data is not adversely affected.
ND Analyte NOT DETECTED at or above the reporting limit
RPD Relative Percent Difference
\*\* Samples not received at proper temperature of 6°C or below.
\*\*\* Insufficient time to reach temperature.
- Chloride by SM4500Cl-B does not require samples be received at or below 6°C
Samples reported on an as received basis (wet) unless otherwise noted on report

Cardinal Laboratories

\*=Accredited Analyte

PLEASE NOTE: Liability and Damages. Cardinal's liability and client's exclusive remedy for any claim arising, whether based in contract or tort, shall be limited to the amount paid by client for analyses. All claims, including those for negligence and any other cause whatsoever shall be deemed waived unless made in writing and received by Cardinal within thirty (30) days after completion of the applicable service.

Celey D. Keene

Celey D. Keene, Lab Director/Quality Manager

Chain of Custody

Work Order No: 18201508

Project Manager:	Conner Moehring	Bill to: (if different)	Todd Wells
Company Name:	Carmona Resources	Company Name:	EOG Resources
Address:	310 W Wall St Ste 500	Address:	5509 Champion - Dr
City, State ZIP:	Midland, TX 79701	City, State ZIP:	Midland, Tx 79706
Phone:	(432) 813-6823	Email:	Todd Wells@eogresources.com

Program: UST/PST <input type="checkbox"/> PRP <input type="checkbox"/> Rowfields <input type="checkbox"/> JRC <input type="checkbox"/> Jperfund <input type="checkbox"/> State of Project:	
Reporting Level II <input type="checkbox"/> Level III <input type="checkbox"/> ST/UST <input type="checkbox"/> RRP <input type="checkbox"/> Level IV <input type="checkbox"/>	Deliverables: EDD <input type="checkbox"/> ADaPT <input type="checkbox"/> Other:

Project Name:	Project Number:	Project Location:	Sampler's Name:	PO #:	Turn Around		Pres. Code	ANALYSIS REQUEST			Preservative Codes
					<input checked="" type="checkbox"/> Routine	<input type="checkbox"/> Rush		BTX 8021B	TPH 8015M ( GRO + DRO + MRO)	Chloride 4500	
Pegasus 3 Fed Com CTB	3191	Lea County, New Mexico	CMM		<input checked="" type="checkbox"/>	<input type="checkbox"/>					
SAMPLE RECEIPT Received Intact: Yes <input checked="" type="checkbox"/> No <input type="checkbox"/> Cooler Custody Seals: Yes <input checked="" type="checkbox"/> No <input type="checkbox"/> Sample Custody Seals: Yes <input checked="" type="checkbox"/> No <input type="checkbox"/> N/A Total Containers:					Temp Blank:	Yes <input checked="" type="checkbox"/> No <input type="checkbox"/>	Thermometer ID:	Wet Ice:	Yes <input checked="" type="checkbox"/> No <input type="checkbox"/>	Parameters	
					Temp Blank:	Yes <input type="checkbox"/> No <input checked="" type="checkbox"/>	Thermometer ID:	Wet Ice:	Yes <input type="checkbox"/> No <input checked="" type="checkbox"/>		
					Temp Blank:	Yes <input type="checkbox"/> No <input checked="" type="checkbox"/>	Thermometer ID:	Wet Ice:	Yes <input type="checkbox"/> No <input checked="" type="checkbox"/>		
					Temp Blank:	Yes <input type="checkbox"/> No <input checked="" type="checkbox"/>	Thermometer ID:	Wet Ice:	Yes <input type="checkbox"/> No <input checked="" type="checkbox"/>		
					Temp Blank:	Yes <input type="checkbox"/> No <input checked="" type="checkbox"/>	Thermometer ID:	Wet Ice:	Yes <input type="checkbox"/> No <input checked="" type="checkbox"/>		
					Temp Blank:	Yes <input type="checkbox"/> No <input checked="" type="checkbox"/>	Thermometer ID:	Wet Ice:	Yes <input type="checkbox"/> No <input checked="" type="checkbox"/>		
					Temp Blank:	Yes <input type="checkbox"/> No <input checked="" type="checkbox"/>	Thermometer ID:	Wet Ice:	Yes <input type="checkbox"/> No <input checked="" type="checkbox"/>		
					Temp Blank:	Yes <input type="checkbox"/> No <input checked="" type="checkbox"/>	Thermometer ID:	Wet Ice:	Yes <input type="checkbox"/> No <input checked="" type="checkbox"/>		
					Temp Blank:	Yes <input type="checkbox"/> No <input checked="" type="checkbox"/>	Thermometer ID:	Wet Ice:	Yes <input type="checkbox"/> No <input checked="" type="checkbox"/>		
					Temp Blank:	Yes <input type="checkbox"/> No <input checked="" type="checkbox"/>	Thermometer ID:	Wet Ice:	Yes <input type="checkbox"/> No <input checked="" type="checkbox"/>		
					Temp Blank:	Yes <input type="checkbox"/> No <input checked="" type="checkbox"/>	Thermometer ID:	Wet Ice:	Yes <input type="checkbox"/> No <input checked="" type="checkbox"/>		
					Temp Blank:	Yes <input type="checkbox"/> No <input checked="" type="checkbox"/>	Thermometer ID:	Wet Ice:	Yes <input type="checkbox"/> No <input checked="" type="checkbox"/>		
					Temp Blank:	Yes <input type="checkbox"/> No <input checked="" type="checkbox"/>	Thermometer ID:	Wet Ice:	Yes <input type="checkbox"/> No <input checked="" type="checkbox"/>		
					Temp Blank:	Yes <input type="checkbox"/> No <input checked="" type="checkbox"/>	Thermometer ID:	Wet Ice:	Yes <input type="checkbox"/> No <input checked="" type="checkbox"/>		
					Temp Blank:	Yes <input type="checkbox"/> No <input checked="" type="checkbox"/>	Thermometer ID:	Wet Ice:	Yes <input type="checkbox"/> No <input checked="" type="checkbox"/>		
					Temp Blank:	Yes <input type="checkbox"/> No <input checked="" type="checkbox"/>	Thermometer ID:	Wet Ice:	Yes <input type="checkbox"/> No <input checked="" type="checkbox"/>		
					Temp Blank:	Yes <input type="checkbox"/> No <input checked="" type="checkbox"/>	Thermometer ID:	Wet Ice:	Yes <input type="checkbox"/> No <input checked="" type="checkbox"/>		
					Temp Blank:	Yes <input type="checkbox"/> No <input checked="" type="checkbox"/>	Thermometer ID:	Wet Ice:	Yes <input type="checkbox"/> No <input checked="" type="checkbox"/>		
					Temp Blank:	Yes <input type="checkbox"/> No <input checked="" type="checkbox"/>	Thermometer ID:	Wet Ice:	Yes <input type="checkbox"/> No <input checked="" type="checkbox"/>		
					Temp Blank:	Yes <input type="checkbox"/> No <input checked="" type="checkbox"/>	Thermometer ID:	Wet Ice:	Yes <input type="checkbox"/> No <input checked="" type="checkbox"/>		
					Temp Blank:	Yes <input type="checkbox"/> No <input checked="" type="checkbox"/>	Thermometer ID:	Wet Ice:	Yes <input type="checkbox"/> No <input checked="" type="checkbox"/>		
					Temp Blank:	Yes <input type="checkbox"/> No <input checked="" type="checkbox"/>	Thermometer ID:	Wet Ice:	Yes <input type="checkbox"/> No <input checked="" type="checkbox"/>		
					Temp Blank:	Yes <input type="checkbox"/> No <input checked="" type="checkbox"/>	Thermometer ID:	Wet Ice:	Yes <input type="checkbox"/> No <input checked="" type="checkbox"/>		
					Temp Blank:	Yes <input type="checkbox"/> No <input checked="" type="checkbox"/>	Thermometer ID:	Wet Ice:	Yes <input type="checkbox"/> No <input checked="" type="checkbox"/>		
					Temp Blank:	Yes <input type="checkbox"/> No <input checked="" type="checkbox"/>	Thermometer ID:	Wet Ice:	Yes <input type="checkbox"/> No <input checked="" type="checkbox"/>		
					Temp Blank:	Yes <input type="checkbox"/> No <input checked="" type="checkbox"/>	Thermometer ID:	Wet Ice:	Yes <input type="checkbox"/> No <input checked="" type="checkbox"/>		
					Temp Blank:	Yes <input type="checkbox"/> No <input checked="" type="checkbox"/>	Thermometer ID:	Wet Ice:	Yes <input type="checkbox"/> No <input checked="" type="checkbox"/>		
					Temp Blank:	Yes <input type="checkbox"/> No <input checked="" type="checkbox"/>	Thermometer ID:	Wet Ice:	Yes <input type="checkbox"/> No <input checked="" type="checkbox"/>		
					Temp Blank:	Yes <input type="checkbox"/> No <input checked="" type="checkbox"/>	Thermometer ID:	Wet Ice:	Yes <input type="checkbox"/> No <input checked="" type="checkbox"/>		
					Temp Blank:	Yes <input type="checkbox"/> No <input checked="" type="checkbox"/>	Thermometer ID:	Wet Ice:	Yes <input type="checkbox"/> No <input checked="" type="checkbox"/>		
					Temp Blank:	Yes <input type="checkbox"/> No <input checked="" type="checkbox"/>	Thermometer ID:	Wet Ice:	Yes <input type="checkbox"/> No <input checked="" type="checkbox"/>		
					Temp Blank:	Yes <input type="checkbox"/> No <input checked="" type="checkbox"/>	Thermometer ID:	Wet Ice:	Yes <input type="checkbox"/> No <input checked="" type="checkbox"/>		
					Temp Blank:	Yes <input type="checkbox"/> No <input checked="" type="checkbox"/>	Thermometer ID:	Wet Ice:	Yes <input type="checkbox"/> No <input checked="" type="checkbox"/>		
					Temp Blank:	Yes <input type="checkbox"/> No <input checked="" type="checkbox"/>	Thermometer ID:	Wet Ice:	Yes <input type="checkbox"/> No <input checked="" type="checkbox"/>		
					Temp Blank:	Yes <input type="checkbox"/> No <input checked="" type="checkbox"/>	Thermometer ID:	Wet Ice:	Yes <input type="checkbox"/> No <input checked="" type="checkbox"/>		
					Temp Blank:	Yes <input type="checkbox"/> No <input checked="" type="checkbox"/>	Thermometer ID:	Wet Ice:	Yes <input type="checkbox"/> No <input checked="" type="checkbox"/>		
					Temp Blank:	Yes <input type="checkbox"/> No <input checked="" type="checkbox"/>	Thermometer ID:	Wet Ice:	Yes <input type="checkbox"/> No <input checked="" type="checkbox"/>		
					Temp Blank:	Yes <input type="checkbox"/> No <input checked="" type="checkbox"/>	Thermometer ID:	Wet Ice:	Yes <input type="checkbox"/> No <input checked="" type="checkbox"/>		
					Temp Blank:	Yes <input type="checkbox"/> No <input checked="" type="checkbox"/>	Thermometer ID:	Wet Ice:	Yes <input type="checkbox"/> No <input checked="" type="checkbox"/>		
					Temp Blank:	Yes <input type="checkbox"/> No <input checked="" type="checkbox"/>	Thermometer ID:	Wet Ice:	Yes <input type="checkbox"/> No <input checked="" type="checkbox"/>		
					Temp Blank:	Yes <input type="checkbox"/> No <input checked="" type="checkbox"/>	Thermometer ID:	Wet Ice:	Yes <input type="checkbox"/> No <input checked="" type="checkbox"/>		
					Temp Blank:	Yes <input type="checkbox"/> No <input checked="" type="checkbox"/>	Thermometer ID:	Wet Ice:	Yes <input type="checkbox"/> No <input checked="" type="checkbox"/>		
					Temp Blank:	Yes <input type="checkbox"/> No <input checked="" type="checkbox"/>	Thermometer ID:	Wet Ice:	Yes <input type="checkbox"/> No <input checked="" type="checkbox"/>		
					Temp Blank:	Yes <input type="checkbox"/> No <input checked="" type="checkbox"/>	Thermometer ID:	Wet Ice:	Yes <input type="checkbox"/> No <input checked="" type="checkbox"/>		
					Temp Blank:	Yes <input type="checkbox"/> No <input checked="" type="checkbox"/>	Thermometer ID:	Wet Ice:	Yes <input type="checkbox"/> No <input checked="" type="checkbox"/>		
					Temp Blank:	Yes <input type="checkbox"/> No <input checked="" type="checkbox"/>	Thermometer ID:	Wet Ice:	Yes <input type="checkbox"/> No <input checked="" type="checkbox"/>		
					Temp Blank:	Yes <input type="checkbox"/> No <input checked="" type="checkbox"/>	Thermometer ID:	Wet Ice:	Yes <input type="checkbox"/> No <input checked="" type="checkbox"/>		
					Temp Blank:	Yes <input type="checkbox"/> No <input checked="" type="checkbox"/>	Thermometer ID:	Wet Ice:	Yes <input type="checkbox"/> No <input checked="" type="checkbox"/>		
					Temp Blank:	Yes <input type="checkbox"/> No <input checked="" type="checkbox"/>	Thermometer ID:	Wet Ice:	Yes <input type="checkbox"/> No <input checked="" type="checkbox"/>		
					Temp Blank:	Yes <input type="checkbox"/> No <input checked="" type="checkbox"/>	Thermometer ID:	Wet Ice:	Yes <input type="checkbox"/> No <input checked="" type="checkbox"/>		
					Temp Blank:	Yes <input type="checkbox"/> No <input checked="" type="checkbox"/>	Thermometer ID:	Wet Ice:	Yes <input type="checkbox"/> No <input checked="" type="checkbox"/>		
					Temp Blank:	Yes <input type="checkbox"/> No <input checked="" type="checkbox"/>	Thermometer ID:	Wet Ice:	Yes <input type="checkbox"/> No <input checked="" type="checkbox"/>		
					Temp Blank:	Yes <input type="checkbox"/> No <input checked="" type="checkbox"/>	Thermometer ID:	Wet Ice:	Yes <input type="checkbox"/> No <input checked="" type="checkbox"/>		
					Temp Blank:	Yes <input type="checkbox"/> No <input checked="" type="checkbox"/>	Thermometer ID:	Wet Ice:	Yes <input type="checkbox"/> No <input checked="" type="checkbox"/>		
					Temp Blank:	Yes <input type="checkbox"/> No <input checked="" type="checkbox"/>	Thermometer ID:	Wet Ice:	Yes <input type="checkbox"/> No <input checked="" type="checkbox"/>		
					Temp Blank:	Yes <input type="checkbox"/> No <input checked="" type="checkbox"/>	Thermometer ID:	Wet Ice:	Yes <input type="checkbox"/> No <input checked="" type="checkbox"/>		
					Temp Blank:	Yes <input type="checkbox"/> No <input checked="" type="checkbox"/>	Thermometer ID:	Wet Ice:	Yes <input type="checkbox"/> No <input checked="" type="checkbox"/>		
					Temp Blank:	Yes <input type="checkbox"/> No <input checked="" type="checkbox"/>	Thermometer ID:	Wet Ice:	Yes <input type="checkbox"/> No <input checked="" type="checkbox"/>		
					Temp Blank:	Yes <input type="checkbox"/> No <input checked="" type="checkbox"/>	Thermometer ID:	Wet Ice:	Yes <input type="checkbox"/> No <input checked="" type="checkbox"/>		
					Temp Blank:	Yes <input type="checkbox"/> No <input checked="" type="checkbox"/>	Thermometer ID:	Wet Ice:	Yes <input type="checkbox"/> No <input checked="" type="checkbox"/>		
					Temp Blank:	Yes <input type="checkbox"/> No <input checked="" type="checkbox"/>	Thermometer ID:	Wet Ice:	Yes <input type="checkbox"/> No <input checked="" type="checkbox"/>		
					Temp Blank:	Yes <input type="checkbox"/> No <input checked="" type="checkbox"/>	Thermometer ID:	Wet Ice:	Yes <input type="checkbox"/> No <input checked="" type="checkbox"/>		
					Temp Blank:	Yes <input type="checkbox"/> No <input checked="" type="checkbox"/>	Thermometer ID:	Wet Ice:	Yes <input type="checkbox"/> No <input checked="" type="checkbox"/>		
					Temp Blank:	Yes <input type="checkbox"/> No <input checked="" type="checkbox"/>	Thermometer ID:	Wet Ice:	Yes <input type="checkbox"/> No <input checked="" type="checkbox"/>		
					Temp Blank:	Yes <input type="checkbox"/> No <input checked="" type="checkbox"/>	Thermometer ID:	Wet Ice:	Yes <input type="checkbox"/> No <input checked="" type="checkbox"/>		
					Temp Blank:	Yes <input type="checkbox"/> No <input checked="" type="checkbox"/>	Thermometer ID:	Wet Ice:	Yes <input type="checkbox"/> No <input checked="" type="checkbox"/>		
					Temp Blank:	Yes <input type="checkbox"/> No <input checked="" type="checkbox"/>	Thermometer ID:	Wet Ice:	Yes <input type="checkbox"/> No <input checked="" type="checkbox"/>		
					Temp Blank:	Yes <input type="checkbox"/> No <input checked="" type="checkbox"/>	Thermometer ID:	Wet Ice:	Yes <input type="checkbox"/> No <input checked="" type="checkbox"/>		
					Temp Blank:	Yes <input type="checkbox"/> No <input checked="" type="checkbox"/>	Thermometer ID:	Wet Ice:	Yes <input type="checkbox"/> No <input checked="" type="checkbox"/>		
					Temp Blank:	Yes <input type="checkbox"/> No <input checked="" type="checkbox"/>	Thermometer ID:	Wet Ice:	Yes <input type="checkbox"/> No <input checked="" type="checkbox"/>		
					Temp Blank:	Yes <input type="checkbox"/> No <input checked="" type="checkbox"/>	Thermometer ID:	Wet Ice:	Yes <input type="checkbox"/> No <input checked="" type="checkbox"/>		
					Temp Blank:	Yes <input type="checkbox"/> No <input checked="" type="checkbox"/>	Thermometer ID:	Wet Ice:	Yes <input type="checkbox"/> No <input checked="" type="checkbox"/>		
					Temp Blank:	Yes <input type="checkbox"/> No <input checked="" type="checkbox"/>	Thermometer ID:	Wet Ice:	Yes <input type="checkbox"/> No <input checked="" type="checkbox"/>		
					Temp Blank:	Yes <input type="checkbox"/> No <input checked="" type="checkbox"/>	Thermometer ID:	Wet Ice:	Yes <input type="checkbox"/> No <input checked="" type="checkbox"/>		
					Temp Blank:	Yes <input type="checkbox"/> No <input checked="" type="checkbox"/>	Thermometer ID:	Wet Ice:	Yes <input type="checkbox"/> No <input checked="" type="checkbox"/>		
					Temp Blank:	Yes <input type="checkbox"/> No <input checked="" type="checkbox"/>	Thermometer ID:	Wet Ice:	Yes <input type="checkbox"/> No <input checked="" type="checkbox"/>		
					Temp Blank:	Yes <input type="checkbox"/> No <input checked="" type="checkbox"/>	Thermometer ID:	Wet Ice:	Yes <input type="checkbox"/> No <input checked="" type="checkbox"/>		
					Temp Blank:	Yes <input type="checkbox"/> No <input checked="" type="checkbox"/>	Thermometer ID:	Wet Ice:	Yes <input type="checkbox"/> No <input checked="" type="checkbox"/>		
					Temp Blank:	Yes <input type="checkbox"/> No <input checked="" type="checkbox"/>	Thermometer ID:	Wet Ice:	Yes <input type="checkbox"/> No <input checked="" type="checkbox"/>		
					Temp Blank:	Yes <input type="checkbox"/> No <input checked="" type="checkbox"/>	Thermometer ID:	Wet Ice:	Yes <input type="checkbox"/> No <input checked="" type="checkbox"/>		
					Temp Blank:	Yes <input type="checkbox"/> No <input checked="" type="checkbox"/>	Thermometer ID:	Wet Ice:	Yes <input type="checkbox"/> No <input checked="" type="checkbox"/>		
					Temp Blank:	Yes <input type="checkbox"/> No <input checked="" type="checkbox"/>	Thermometer ID:	Wet Ice:	Yes <input type="checkbox"/> No <input checked="" type="checkbox"/>		
					Temp Blank:	Yes <input type="checkbox"/> No <input checked="" type="checkbox"/>	Thermometer ID:	Wet Ice:	Yes <input type="checkbox"/> No <input checked="" type="checkbox"/>		
					Temp Blank:	Yes <input type="checkbox"/> No <input checked="" type="checkbox"/>	Thermometer ID:	Wet Ice:	Yes <input type="checkbox"/> No <input checked="" type="checkbox"/>		
					Temp Blank:	Yes <input type="checkbox"/> No <input checked="" type="checkbox"/>	Thermometer ID:	Wet Ice:	Yes <input type="checkbox"/> No <input checked="" type="checkbox"/>		
					Temp Blank:	Yes <input type="checkbox"/> No <input checked="" type="checkbox"/>	Thermometer ID:	Wet Ice:	Yes <input type="checkbox"/> No <input checked="" type="checkbox"/>		
					Temp Blank:	Yes <input type="checkbox"/> No <input checked="" type="checkbox"/>	Thermometer ID:	Wet Ice:	Yes <input type="checkbox"/> No <input checked="" type="checkbox"/>		
					Temp Blank:	Yes <input type="checkbox"/> No <input checked="" type="checkbox"/>	Thermometer ID:	Wet Ice:	Yes <input type="checkbox"/> No <input checked="" type="checkbox"/>		
					Temp Blank:	Yes <input type="checkbox"/> No <input checked="" type="checkbox"/>	Thermometer ID:	Wet Ice:	Yes <input type="checkbox"/> No <input checked="" type="checkbox"/>		
					Temp Blank:	Yes <input type="checkbox"/> No <input checked="" type="checkbox"/>	Thermometer ID:	Wet Ice:	Yes <input type="checkbox"/> No <input checked="" type="checkbox"/>		
					Temp Blank:	Yes <input type="checkbox"/> No <input checked="" type="checkbox"/>	Thermometer ID:	Wet Ice:	Yes <input type="checkbox"/> No <input checked="" type="checkbox"/>		
					Temp Blank:	Yes <input type="checkbox"/> No <input checked="" type="checkbox"/>	Thermometer ID:	Wet Ice:	Yes <input type="checkbox"/> No <input checked="" type="checkbox"/>		
					Temp Blank:	Yes <input type="checkbox"/> No <input checked="" type="checkbox"/>	Thermometer ID:	Wet Ice:	Yes <input type="checkbox"/> No <input checked="" type="checkbox"/>		
					Temp Blank:	Yes <input type="checkbox"/> No <input checked="" type="checkbox"/>	Thermometer ID:	Wet Ice:	Yes <input type="checkbox"/> No <input checked="" type="checkbox"/>		
					Temp Blank:	Yes <input type="checkbox"/> No <input checked="" type="checkbox"/>	Thermometer ID:	Wet Ice:	Yes <input type="checkbox"/> No <input checked="" type="checkbox"/>		
					Temp Blank:	Yes <input type="checkbox"/> No <input checked="" type="checkbox"/>	Thermometer ID:	Wet Ice:	Yes <input type="checkbox"/> No <input checked="" type="checkbox"/>		
					Temp Blank:	Yes <input type="checkbox"/> No <input checked="" type="checkbox"/>	Thermometer ID:	Wet Ice:	Yes <input type="checkbox"/> No <input checked="" type="checkbox"/>		
					Temp Blank:	Yes <input type="checkbox"/> No <input checked="" type="checkbox"/>	Thermometer ID:	Wet Ice:	Yes <input type="checkbox"/> No <input checked="" type="checkbox"/>		
					Temp Blank:	Yes <input type="checkbox"/> No <input checked="" type="checkbox"/>	Thermometer ID:	Wet Ice:	Yes <input type="checkbox"/> No <input checked="" type="checkbox"/>		
					Temp Blank:	Yes <input type="checkbox"/> No <input checked="" type="checkbox"/>	Thermometer ID:	Wet Ice:	Yes <input type="checkbox"/> No <input checked="" type="checkbox"/>		
					Temp Blank:	Yes <input type="checkbox"/> No <input checked="" type="checkbox"/>	Thermometer ID:	Wet Ice:	Yes <input type="checkbox"/> No <input checked="" type="checkbox"/>		
					Temp Blank:	Yes <input type="checkbox"/> No <input checked="" type="checkbox"/>	Thermometer ID:	Wet Ice:	Yes <input type="checkbox"/> No <input checked="" type="checkbox"/>		
					Temp Blank:	Yes <input type="checkbox"/> No <input checked="" type="checkbox"/>	Thermometer ID:	Wet Ice:	Yes <input type="checkbox"/> No <input checked="" type="checkbox"/>		
					Temp Blank:	Yes <input type="checkbox"/> No <input checked="" type="checkbox"/>	Thermometer ID:	Wet Ice:	Yes <input type="checkbox"/> No <input checked="" type="checkbox"/>		
					Temp Blank:	Yes <input type="checkbox"/> No <input checked="" type="checkbox"/>	Thermometer ID:	Wet Ice:	Yes <input type="checkbox"/> No <input checked="" type="checkbox"/>		
					Temp Blank:	Yes <input type="checkbox"/> No <input checked="" type="checkbox"/>	Thermometer ID:	Wet Ice:	Yes <input type="checkbox"/> No <input checked="" type="checkbox"/>		
					Temp Blank:	Yes <input type="checkbox"/> No <input checked="" type="checkbox"/>	Thermometer ID:	Wet Ice:	Yes <input type="checkbox"/> No <input checked="" type="checkbox"/>		
					Temp Blank:	Yes <input type="checkbox"/> No <input checked="" type="checkbox"/>	Thermometer ID:	Wet Ice:	Yes <input type="checkbox"/> No <input checked="" type="checkbox"/>		
					Temp Blank:	Yes <input type="checkbox"/> No <input checked="" type="checkbox"/>	Thermometer ID:	Wet Ice:	Yes <input type="checkbox"/> No <input checked="" type="checkbox"/>		
					Temp Blank:	Yes <input type="checkbox"/> No <input checked="" type="checkbox"/>	Thermometer ID:	Wet Ice:	Yes <input type="checkbox"/> No <input checked="" type="checkbox"/>		
					Temp Blank:	Yes <input type="checkbox"/> No <input checked="" type="checkbox"/>	Thermometer ID:	Wet Ice:	Yes <input type="checkbox"/> No <input checked="" type="checkbox"/>		
					Temp Blank:	Yes <input type="checkbox"/> No <input checked="" type="checkbox"/>	Thermometer ID:	Wet Ice:	Yes <input type="checkbox"/> No <input checked="" type="checkbox"/>		
					Temp Blank:	Yes <input type="checkbox"/> No <input checked="" type="checkbox"/>	Thermometer ID:	Wet Ice:	Yes <input type="checkbox"/> No <input checked="" type="checkbox"/>		
					Temp Blank:	Yes <input type="checkbox"/> No <input checked="" type="checkbox"/>	Thermometer ID:	Wet Ice:	Yes <input type="checkbox"/> No <input checked="" type="checkbox"/>		
					Temp Blank:	Yes <input type="checkbox"/> No <input checked="" type="checkbox"/>	Thermometer ID:	Wet Ice:	Yes <input type="checkbox"/> No <input checked="" type="checkbox"/>		
					Temp Blank:	Yes <input type="checkbox"/> No <input checked="" type="checkbox"/>	Thermometer ID:	Wet Ice:	Yes <input type="checkbox"/> No <input checked="" type="checkbox"/>		
					Temp Blank:	Yes <input type="checkbox"/> No <input checked="" type="checkbox"/>	Thermometer ID:	Wet Ice:	Yes <input type="checkbox"/> No <input checked="" type="checkbox"/>		
					Temp Blank:	Yes <input type="checkbox"/> No <input checked="" type="checkbox"/>	Thermometer ID:	Wet Ice:	Yes <input type="checkbox"/> No <input checked="" type="checkbox"/>		
					Temp Blank:	Yes <input type="checkbox"/> No <input checked="" type="checkbox"/>	Thermometer ID:	Wet Ice:	Yes <input type="checkbox"/> No <input checked="" type="checkbox"/>		
					Temp Blank:	Yes					



PHONE (575) 393-2326 ° 101 E. MARLAND ° HOBBS, NM 88240

---

April 09, 2026

CONNER MOEHRING  
CARMONA RESOURCES  
310 W WALL ST, SUITE 500  
MIDLAND, TX 79701

RE: PEGASUS 3 FED COM CTB

Enclosed are the results of analyses for samples received by the laboratory on 04/06/26 15:23.

Cardinal Laboratories is accredited through Texas NELAP under certificate number TX-C25-00101. Accreditation applies to drinking water, non-potable water and solid and chemical materials. All accredited analytes are denoted by an asterisk (\*). For a complete list of accredited analytes and matrices visit the TCEQ website at [www.tceq.texas.gov/field/qa/lab\\_accred\\_certif.html](http://www.tceq.texas.gov/field/qa/lab_accred_certif.html).

Cardinal Laboratories is accredited through the State of Colorado Department of Public Health and Environment for:

Method EPA 552.2	Haloacetic Acids (HAA-5)
Method EPA 524.2	Total Trihalomethanes (TTHM)
Method EPA 524.4	Regulated VOCs (V1, V2, V3)

Accreditation applies to public drinking water matrices.

This report meets NELAP requirements and is made up of a cover page, analytical results, and a copy of the original chain-of-custody. If you have any questions concerning this report, please feel free to contact me.

Sincerely,

A handwritten signature in black ink that reads "Celey D. Keene".

Celey D. Keene  
Lab Director/Quality Manager



PHONE (575) 393-2326 ° 101 E. MARLAND ° HOBBS, NM 88240

**Analytical Results For:**

CARMONA RESOURCES  
 CONNER MOEHRING  
 310 W WALL ST, SUITE 500  
 MIDLAND TX, 79701  
 Fax To:

Received:	04/06/2026	Sampling Date:	03/30/2026
Reported:	04/09/2026	Sampling Type:	Soil
Project Name:	PEGASUS 3 FED COM CTB	Sampling Condition:	Cool & Intact
Project Number:	3191	Sample Received By:	Tamara Oldaker
Project Location:	EOG - LEA COUNTY, NM		

**Sample ID: CS - 1 ( SURFACE ) (H261903-01)**

BTEX 8021B		mg/kg		Analyzed By: SK					
Analyte	Result	Reporting Limit	Analyzed	Method Blank	BS	% Recovery	True Value QC	RPD	Qualifier
Benzene*	<0.050	0.050	04/08/2026	ND	1.93	96.4	2.00	0.762	
Toluene*	<0.050	0.050	04/08/2026	ND	1.74	86.9	2.00	0.441	
Ethylbenzene*	<0.050	0.050	04/08/2026	ND	1.66	83.1	2.00	0.440	
Total Xylenes*	<0.150	0.150	04/08/2026	ND	4.91	81.8	6.00	0.575	
Total BTEX	<0.300	0.300	04/08/2026	ND					

Surrogate: 4-Bromofluorobenzene (PID) 93.0 % 70.4-141

Chloride, SM4500Cl-B		mg/kg		Analyzed By: AC					
Analyte	Result	Reporting Limit	Analyzed	Method Blank	BS	% Recovery	True Value QC	RPD	Qualifier
Chloride	<16.0	16.0	04/07/2026	ND	416	104	400	7.41	

TPH 8015M		mg/kg		Analyzed By: MS					
Analyte	Result	Reporting Limit	Analyzed	Method Blank	BS	% Recovery	True Value QC	RPD	Qualifier
GRO C6-C10*	<10.0	10.0	04/07/2026	ND	176	88.0	200	0.875	
DRO >C10-C28*	<10.0	10.0	04/07/2026	ND	176	88.2	200	0.0753	
EXT DRO >C28-C36	<10.0	10.0	04/07/2026	ND					

Surrogate: 1-Chlorooctane 70.0 % 52.4-130

Surrogate: 1-Chlorooctadecane 63.5 % 39.9-141

Cardinal Laboratories

\*=Accredited Analyte

PLEASE NOTE: Liability and Damages. Cardinal's liability and client's exclusive remedy for any claim arising, whether based in contract or tort, shall be limited to the amount paid by client for analyses. All claims, including those for negligence and any other cause whatsoever shall be deemed waived unless made in writing and received by Cardinal within thirty (30) days after completion of the applicable service. In no event shall Cardinal be liable for incidental or consequential damages, including, without limitation, business interruptions, loss of use, or loss of profits incurred by client, its subsidiaries, affiliates or successors arising out of or related to the performance of the services hereunder by Cardinal, regardless of whether such claim is based upon any of the above stated reasons or otherwise. Results relate only to the samples identified above. This report shall not be reproduced except in full with written approval of Cardinal Laboratories.

Celey D. Keene, Lab Director/Quality Manager



PHONE (575) 393-2326 ° 101 E. MARLAND ° HOBBS, NM 88240

**Analytical Results For:**

CARMONA RESOURCES  
 CONNER MOEHRING  
 310 W WALL ST, SUITE 500  
 MIDLAND TX, 79701  
 Fax To:

Received: 04/06/2026  
 Reported: 04/09/2026  
 Project Name: PEGASUS 3 FED COM CTB  
 Project Number: 3191  
 Project Location: EOG - LEA COUNTY, NM

Sampling Date: 03/30/2026  
 Sampling Type: Soil  
 Sampling Condition: Cool & Intact  
 Sample Received By: Tamara Oldaker

**Sample ID: CS - 2 ( SURFACE ) (H261903-02)**

BTEX 8021B		mg/kg		Analyzed By: SK					
Analyte	Result	Reporting Limit	Analyzed	Method Blank	BS	% Recovery	True Value QC	RPD	Qualifier
Benzene*	<0.050	0.050	04/08/2026	ND	1.93	96.4	2.00	0.762	
Toluene*	<0.050	0.050	04/08/2026	ND	1.74	86.9	2.00	0.441	
Ethylbenzene*	<0.050	0.050	04/08/2026	ND	1.66	83.1	2.00	0.440	
Total Xylenes*	<0.150	0.150	04/08/2026	ND	4.91	81.8	6.00	0.575	
Total BTEX	<0.300	0.300	04/08/2026	ND					

Surrogate: 4-Bromofluorobenzene (PID) 94.3 % 70.4-141

Chloride, SM4500Cl-B		mg/kg		Analyzed By: AC					
Analyte	Result	Reporting Limit	Analyzed	Method Blank	BS	% Recovery	True Value QC	RPD	Qualifier
Chloride	<16.0	16.0	04/07/2026	ND	416	104	400	7.41	

TPH 8015M		mg/kg		Analyzed By: MS					
Analyte	Result	Reporting Limit	Analyzed	Method Blank	BS	% Recovery	True Value QC	RPD	Qualifier
GRO C6-C10*	<10.0	10.0	04/07/2026	ND	176	88.0	200	0.875	
DRO >C10-C28*	<10.0	10.0	04/07/2026	ND	176	88.2	200	0.0753	
EXT DRO >C28-C36	<10.0	10.0	04/07/2026	ND					

Surrogate: 1-Chlorooctane 71.9 % 52.4-130

Surrogate: 1-Chlorooctadecane 64.7 % 39.9-141

Cardinal Laboratories

\*=Accredited Analyte

PLEASE NOTE: Liability and Damages. Cardinal's liability and client's exclusive remedy for any claim arising, whether based in contract or tort, shall be limited to the amount paid by client for analyses. All claims, including those for negligence and any other cause whatsoever shall be deemed waived unless made in writing and received by Cardinal within thirty (30) days after completion of the applicable service. In no event shall Cardinal be liable for incidental or consequential damages, including, without limitation, business interruptions, loss of use, or loss of profits incurred by client, its subsidiaries, affiliates or successors arising out of or related to the performance of the services hereunder by Cardinal, regardless of whether such claim is based upon any of the above stated reasons or otherwise. Results relate only to the samples identified above. This report shall not be reproduced except in full with written approval of Cardinal Laboratories.

Celey D. Keene, Lab Director/Quality Manager



PHONE (575) 393-2326 ° 101 E. MARLAND ° HOBBS, NM 88240

**Analytical Results For:**

CARMONA RESOURCES  
 CONNER MOEHRING  
 310 W WALL ST, SUITE 500  
 MIDLAND TX, 79701  
 Fax To:

Received:	04/06/2026	Sampling Date:	03/30/2026
Reported:	04/09/2026	Sampling Type:	Soil
Project Name:	PEGASUS 3 FED COM CTB	Sampling Condition:	Cool & Intact
Project Number:	3191	Sample Received By:	Tamara Oldaker
Project Location:	EOG - LEA COUNTY, NM		

**Sample ID: CS - 3 ( SURFACE ) (H261903-03)**

BTEX 8021B		mg/kg		Analyzed By: SK					
Analyte	Result	Reporting Limit	Analyzed	Method Blank	BS	% Recovery	True Value QC	RPD	Qualifier
Benzene*	<0.050	0.050	04/08/2026	ND	1.93	96.4	2.00	0.762	
Toluene*	<0.050	0.050	04/08/2026	ND	1.74	86.9	2.00	0.441	
Ethylbenzene*	<0.050	0.050	04/08/2026	ND	1.66	83.1	2.00	0.440	
Total Xylenes*	<0.150	0.150	04/08/2026	ND	4.91	81.8	6.00	0.575	
Total BTEX	<0.300	0.300	04/08/2026	ND					

Surrogate: 4-Bromofluorobenzene (PID) 92.1 % 70.4-141

Chloride, SM4500Cl-B		mg/kg		Analyzed By: AC					
Analyte	Result	Reporting Limit	Analyzed	Method Blank	BS	% Recovery	True Value QC	RPD	Qualifier
Chloride	<16.0	16.0	04/07/2026	ND	416	104	400	7.41	

TPH 8015M		mg/kg		Analyzed By: MS					
Analyte	Result	Reporting Limit	Analyzed	Method Blank	BS	% Recovery	True Value QC	RPD	Qualifier
GRO C6-C10*	<10.0	10.0	04/07/2026	ND	176	88.0	200	0.875	
DRO >C10-C28*	<10.0	10.0	04/07/2026	ND	176	88.2	200	0.0753	
EXT DRO >C28-C36	<10.0	10.0	04/07/2026	ND					

Surrogate: 1-Chlorooctane 79.6 % 52.4-130

Surrogate: 1-Chlorooctadecane 71.3 % 39.9-141

Cardinal Laboratories

\*=Accredited Analyte

PLEASE NOTE: Liability and Damages. Cardinal's liability and client's exclusive remedy for any claim arising, whether based in contract or tort, shall be limited to the amount paid by client for analyses. All claims, including those for negligence and any other cause whatsoever shall be deemed waived unless made in writing and received by Cardinal within thirty (30) days after completion of the applicable service. In no event shall Cardinal be liable for incidental or consequential damages, including, without limitation, business interruptions, loss of use, or loss of profits incurred by client, its subsidiaries, affiliates or successors arising out of or related to the performance of the services hereunder by Cardinal, regardless of whether such claim is based upon any of the above stated reasons or otherwise. Results relate only to the samples identified above. This report shall not be reproduced except in full with written approval of Cardinal Laboratories.

Celey D. Keene, Lab Director/Quality Manager



PHONE (575) 393-2326 ° 101 E. MARLAND ° HOBBS, NM 88240

**Analytical Results For:**

CARMONA RESOURCES  
 CONNER MOEHRING  
 310 W WALL ST, SUITE 500  
 MIDLAND TX, 79701  
 Fax To:

Received:	04/06/2026	Sampling Date:	03/30/2026
Reported:	04/09/2026	Sampling Type:	Soil
Project Name:	PEGASUS 3 FED COM CTB	Sampling Condition:	Cool & Intact
Project Number:	3191	Sample Received By:	Tamara Oldaker
Project Location:	EOG - LEA COUNTY, NM		

**Sample ID: CS - 4 ( SURFACE ) (H261903-04)**

BTEX 8021B		mg/kg		Analyzed By: SK					
Analyte	Result	Reporting Limit	Analyzed	Method Blank	BS	% Recovery	True Value QC	RPD	Qualifier
Benzene*	<0.050	0.050	04/08/2026	ND	1.93	96.4	2.00	0.762	
Toluene*	<0.050	0.050	04/08/2026	ND	1.74	86.9	2.00	0.441	
Ethylbenzene*	<0.050	0.050	04/08/2026	ND	1.66	83.1	2.00	0.440	
Total Xylenes*	<0.150	0.150	04/08/2026	ND	4.91	81.8	6.00	0.575	
Total BTEX	<0.300	0.300	04/08/2026	ND					

Surrogate: 4-Bromofluorobenzene (PID) 93.7 % 70.4-141

Chloride, SM4500Cl-B		mg/kg		Analyzed By: AC					
Analyte	Result	Reporting Limit	Analyzed	Method Blank	BS	% Recovery	True Value QC	RPD	Qualifier
Chloride	32.0	16.0	04/07/2026	ND	416	104	400	7.41	

TPH 8015M		mg/kg		Analyzed By: MS					
Analyte	Result	Reporting Limit	Analyzed	Method Blank	BS	% Recovery	True Value QC	RPD	Qualifier
GRO C6-C10*	<10.0	10.0	04/07/2026	ND	176	88.0	200	0.875	
DRO >C10-C28*	<10.0	10.0	04/07/2026	ND	176	88.2	200	0.0753	
EXT DRO >C28-C36	<10.0	10.0	04/07/2026	ND					

Surrogate: 1-Chlorooctane 77.3 % 52.4-130

Surrogate: 1-Chlorooctadecane 68.8 % 39.9-141

Cardinal Laboratories

\*=Accredited Analyte

PLEASE NOTE: Liability and Damages. Cardinal's liability and client's exclusive remedy for any claim arising, whether based in contract or tort, shall be limited to the amount paid by client for analyses. All claims, including those for negligence and any other cause whatsoever shall be deemed waived unless made in writing and received by Cardinal within thirty (30) days after completion of the applicable service. In no event shall Cardinal be liable for incidental or consequential damages, including, without limitation, business interruptions, loss of use, or loss of profits incurred by client, its subsidiaries, affiliates or successors arising out of or related to the performance of the services hereunder by Cardinal, regardless of whether such claim is based upon any of the above stated reasons or otherwise. Results relate only to the samples identified above. This report shall not be reproduced except in full with written approval of Cardinal Laboratories.

Celey D. Keene, Lab Director/Quality Manager



PHONE (575) 393-2326 ° 101 E. MARLAND ° HOBBS, NM 88240

**Analytical Results For:**

CARMONA RESOURCES  
 CONNER MOEHRING  
 310 W WALL ST, SUITE 500  
 MIDLAND TX, 79701  
 Fax To:

Received:	04/06/2026	Sampling Date:	03/30/2026
Reported:	04/09/2026	Sampling Type:	Soil
Project Name:	PEGASUS 3 FED COM CTB	Sampling Condition:	Cool & Intact
Project Number:	3191	Sample Received By:	Tamara Oldaker
Project Location:	EOG - LEA COUNTY, NM		

**Sample ID: CS - 5 ( SURFACE ) (H261903-05)**

BTEX 8021B		mg/kg		Analyzed By: SK					
Analyte	Result	Reporting Limit	Analyzed	Method Blank	BS	% Recovery	True Value QC	RPD	Qualifier
Benzene*	<0.050	0.050	04/08/2026	ND	1.93	96.4	2.00	0.762	
Toluene*	<0.050	0.050	04/08/2026	ND	1.74	86.9	2.00	0.441	
Ethylbenzene*	<0.050	0.050	04/08/2026	ND	1.66	83.1	2.00	0.440	
Total Xylenes*	<0.150	0.150	04/08/2026	ND	4.91	81.8	6.00	0.575	
Total BTEX	<0.300	0.300	04/08/2026	ND					

Surrogate: 4-Bromofluorobenzene (PID) 93.2 % 70.4-141

Chloride, SM4500Cl-B		mg/kg		Analyzed By: AC					
Analyte	Result	Reporting Limit	Analyzed	Method Blank	BS	% Recovery	True Value QC	RPD	Qualifier
Chloride	<16.0	16.0	04/07/2026	ND	416	104	400	7.41	

TPH 8015M		mg/kg		Analyzed By: MS					
Analyte	Result	Reporting Limit	Analyzed	Method Blank	BS	% Recovery	True Value QC	RPD	Qualifier
GRO C6-C10*	<10.0	10.0	04/07/2026	ND	176	88.0	200	0.875	
DRO >C10-C28*	<10.0	10.0	04/07/2026	ND	176	88.2	200	0.0753	
EXT DRO >C28-C36	<10.0	10.0	04/07/2026	ND					

Surrogate: 1-Chlorooctane 78.6 % 52.4-130

Surrogate: 1-Chlorooctadecane 69.8 % 39.9-141

Cardinal Laboratories

\*=Accredited Analyte

PLEASE NOTE: Liability and Damages. Cardinal's liability and client's exclusive remedy for any claim arising, whether based in contract or tort, shall be limited to the amount paid by client for analyses. All claims, including those for negligence and any other cause whatsoever shall be deemed waived unless made in writing and received by Cardinal within thirty (30) days after completion of the applicable service. In no event shall Cardinal be liable for incidental or consequential damages, including, without limitation, business interruptions, loss of use, or loss of profits incurred by client, its subsidiaries, affiliates or successors arising out of or related to the performance of the services hereunder by Cardinal, regardless of whether such claim is based upon any of the above stated reasons or otherwise. Results relate only to the samples identified above. This report shall not be reproduced except in full with written approval of Cardinal Laboratories.

Celey D. Keene, Lab Director/Quality Manager



PHONE (575) 393-2326 ° 101 E. MARLAND ° HOBBS, NM 88240

**Analytical Results For:**

CARMONA RESOURCES  
 CONNER MOEHRING  
 310 W WALL ST, SUITE 500  
 MIDLAND TX, 79701  
 Fax To:

Received:	04/06/2026	Sampling Date:	03/30/2026
Reported:	04/09/2026	Sampling Type:	Soil
Project Name:	PEGASUS 3 FED COM CTB	Sampling Condition:	Cool & Intact
Project Number:	3191	Sample Received By:	Tamara Oldaker
Project Location:	EOG - LEA COUNTY, NM		

**Sample ID: CS - 6 ( SURFACE ) (H261903-06)**

BTEX 8021B		mg/kg		Analyzed By: SK					
Analyte	Result	Reporting Limit	Analyzed	Method Blank	BS	% Recovery	True Value QC	RPD	Qualifier
Benzene*	<0.050	0.050	04/08/2026	ND	1.93	96.4	2.00	0.762	
Toluene*	<0.050	0.050	04/08/2026	ND	1.74	86.9	2.00	0.441	
Ethylbenzene*	<0.050	0.050	04/08/2026	ND	1.66	83.1	2.00	0.440	
Total Xylenes*	<0.150	0.150	04/08/2026	ND	4.91	81.8	6.00	0.575	
Total BTEX	<0.300	0.300	04/08/2026	ND					

Surrogate: 4-Bromofluorobenzene (PID) 93.4 % 70.4-141

Chloride, SM4500CI-B		mg/kg		Analyzed By: AC					
Analyte	Result	Reporting Limit	Analyzed	Method Blank	BS	% Recovery	True Value QC	RPD	Qualifier
Chloride	32.0	16.0	04/07/2026	ND	416	104	400	7.41	

TPH 8015M		mg/kg		Analyzed By: MS					
Analyte	Result	Reporting Limit	Analyzed	Method Blank	BS	% Recovery	True Value QC	RPD	Qualifier
GRO C6-C10*	<10.0	10.0	04/07/2026	ND	176	88.0	200	0.875	
DRO >C10-C28*	<10.0	10.0	04/07/2026	ND	176	88.2	200	0.0753	
EXT DRO >C28-C36	<10.0	10.0	04/07/2026	ND					

Surrogate: 1-Chlorooctane 70.7 % 52.4-130

Surrogate: 1-Chlorooctadecane 63.3 % 39.9-141

Cardinal Laboratories

\*=Accredited Analyte

PLEASE NOTE: Liability and Damages. Cardinal's liability and client's exclusive remedy for any claim arising, whether based in contract or tort, shall be limited to the amount paid by client for analyses. All claims, including those for negligence and any other cause whatsoever shall be deemed waived unless made in writing and received by Cardinal within thirty (30) days after completion of the applicable service. In no event shall Cardinal be liable for incidental or consequential damages, including, without limitation, business interruptions, loss of use, or loss of profits incurred by client, its subsidiaries, affiliates or successors arising out of or related to the performance of the services hereunder by Cardinal, regardless of whether such claim is based upon any of the above stated reasons or otherwise. Results relate only to the samples identified above. This report shall not be reproduced except in full with written approval of Cardinal Laboratories.

Celey D. Keene, Lab Director/Quality Manager



PHONE (575) 393-2326 ° 101 E. MARLAND ° HOBBS, NM 88240

**Analytical Results For:**

CARMONA RESOURCES  
 CONNER MOEHRING  
 310 W WALL ST, SUITE 500  
 MIDLAND TX, 79701  
 Fax To:

Received:	04/06/2026	Sampling Date:	03/30/2026
Reported:	04/09/2026	Sampling Type:	Soil
Project Name:	PEGASUS 3 FED COM CTB	Sampling Condition:	Cool & Intact
Project Number:	3191	Sample Received By:	Tamara Oldaker
Project Location:	EOG - LEA COUNTY, NM		

**Sample ID: CS - 7 ( SURFACE ) (H261903-07)**

BTEX 8021B		mg/kg		Analyzed By: SK					
Analyte	Result	Reporting Limit	Analyzed	Method Blank	BS	% Recovery	True Value QC	RPD	Qualifier
Benzene*	<0.050	0.050	04/08/2026	ND	1.93	96.4	2.00	0.762	
Toluene*	<0.050	0.050	04/08/2026	ND	1.74	86.9	2.00	0.441	
Ethylbenzene*	<0.050	0.050	04/08/2026	ND	1.66	83.1	2.00	0.440	
Total Xylenes*	<0.150	0.150	04/08/2026	ND	4.91	81.8	6.00	0.575	
Total BTEX	<0.300	0.300	04/08/2026	ND					

Surrogate: 4-Bromofluorobenzene (PID) 92.6 % 70.4-141

Chloride, SM4500CI-B		mg/kg		Analyzed By: AC					
Analyte	Result	Reporting Limit	Analyzed	Method Blank	BS	% Recovery	True Value QC	RPD	Qualifier
Chloride	32.0	16.0	04/07/2026	ND	416	104	400	7.41	

TPH 8015M		mg/kg		Analyzed By: MS					
Analyte	Result	Reporting Limit	Analyzed	Method Blank	BS	% Recovery	True Value QC	RPD	Qualifier
GRO C6-C10*	<10.0	10.0	04/07/2026	ND	176	88.0	200	0.875	
DRO >C10-C28*	<10.0	10.0	04/07/2026	ND	176	88.2	200	0.0753	
EXT DRO >C28-C36	<10.0	10.0	04/07/2026	ND					

Surrogate: 1-Chlorooctane 78.6 % 52.4-130

Surrogate: 1-Chlorooctadecane 70.3 % 39.9-141

Cardinal Laboratories

\*=Accredited Analyte

PLEASE NOTE: Liability and Damages. Cardinal's liability and client's exclusive remedy for any claim arising, whether based in contract or tort, shall be limited to the amount paid by client for analyses. All claims, including those for negligence and any other cause whatsoever shall be deemed waived unless made in writing and received by Cardinal within thirty (30) days after completion of the applicable service. In no event shall Cardinal be liable for incidental or consequential damages, including, without limitation, business interruptions, loss of use, or loss of profits incurred by client, its subsidiaries, affiliates or successors arising out of or related to the performance of the services hereunder by Cardinal, regardless of whether such claim is based upon any of the above stated reasons or otherwise. Results relate only to the samples identified above. This report shall not be reproduced except in full with written approval of Cardinal Laboratories.

Celey D. Keene, Lab Director/Quality Manager



PHONE (575) 393-2326 ° 101 E. MARLAND ° HOBBS, NM 88240

**Analytical Results For:**

CARMONA RESOURCES  
 CONNER MOEHRING  
 310 W WALL ST, SUITE 500  
 MIDLAND TX, 79701  
 Fax To:

Received:	04/06/2026	Sampling Date:	03/30/2026
Reported:	04/09/2026	Sampling Type:	Soil
Project Name:	PEGASUS 3 FED COM CTB	Sampling Condition:	Cool & Intact
Project Number:	3191	Sample Received By:	Tamara Oldaker
Project Location:	EOG - LEA COUNTY, NM		

**Sample ID: CS - 8 ( SURFACE ) (H261903-08)**

BTEX 8021B		mg/kg		Analyzed By: SK					
Analyte	Result	Reporting Limit	Analyzed	Method Blank	BS	% Recovery	True Value QC	RPD	Qualifier
Benzene*	<0.050	0.050	04/08/2026	ND	1.93	96.4	2.00	0.762	
Toluene*	<0.050	0.050	04/08/2026	ND	1.74	86.9	2.00	0.441	
Ethylbenzene*	<0.050	0.050	04/08/2026	ND	1.66	83.1	2.00	0.440	
Total Xylenes*	<0.150	0.150	04/08/2026	ND	4.91	81.8	6.00	0.575	
Total BTEX	<0.300	0.300	04/08/2026	ND					

Surrogate: 4-Bromofluorobenzene (PID) 93.6 % 70.4-141

Chloride, SM4500Cl-B		mg/kg		Analyzed By: AC					
Analyte	Result	Reporting Limit	Analyzed	Method Blank	BS	% Recovery	True Value QC	RPD	Qualifier
Chloride	<16.0	16.0	04/07/2026	ND	416	104	400	7.41	

TPH 8015M		mg/kg		Analyzed By: MS					
Analyte	Result	Reporting Limit	Analyzed	Method Blank	BS	% Recovery	True Value QC	RPD	Qualifier
GRO C6-C10*	<10.0	10.0	04/07/2026	ND	176	88.0	200	0.875	
DRO >C10-C28*	<10.0	10.0	04/07/2026	ND	176	88.2	200	0.0753	
EXT DRO >C28-C36	<10.0	10.0	04/07/2026	ND					

Surrogate: 1-Chlorooctane 77.3 % 52.4-130

Surrogate: 1-Chlorooctadecane 72.4 % 39.9-141

Cardinal Laboratories

\*=Accredited Analyte

PLEASE NOTE: Liability and Damages. Cardinal's liability and client's exclusive remedy for any claim arising, whether based in contract or tort, shall be limited to the amount paid by client for analyses. All claims, including those for negligence and any other cause whatsoever shall be deemed waived unless made in writing and received by Cardinal within thirty (30) days after completion of the applicable service. In no event shall Cardinal be liable for incidental or consequential damages, including, without limitation, business interruptions, loss of use, or loss of profits incurred by client, its subsidiaries, affiliates or successors arising out of or related to the performance of the services hereunder by Cardinal, regardless of whether such claim is based upon any of the above stated reasons or otherwise. Results relate only to the samples identified above. This report shall not be reproduced except in full with written approval of Cardinal Laboratories.

Celey D. Keene, Lab Director/Quality Manager



PHONE (575) 393-2326 ° 101 E. MARLAND ° HOBBS, NM 88240

**Analytical Results For:**

CARMONA RESOURCES  
 CONNER MOEHRING  
 310 W WALL ST, SUITE 500  
 MIDLAND TX, 79701  
 Fax To:

Received:	04/06/2026	Sampling Date:	03/30/2026
Reported:	04/09/2026	Sampling Type:	Soil
Project Name:	PEGASUS 3 FED COM CTB	Sampling Condition:	Cool & Intact
Project Number:	3191	Sample Received By:	Tamara Oldaker
Project Location:	EOG - LEA COUNTY, NM		

**Sample ID: CS - 9 ( SURFACE ) (H261903-09)**

BTEX 8021B		mg/kg		Analyzed By: SK					
Analyte	Result	Reporting Limit	Analyzed	Method Blank	BS	% Recovery	True Value QC	RPD	Qualifier
Benzene*	<0.050	0.050	04/08/2026	ND	1.93	96.4	2.00	0.762	
Toluene*	<0.050	0.050	04/08/2026	ND	1.74	86.9	2.00	0.441	
Ethylbenzene*	<0.050	0.050	04/08/2026	ND	1.66	83.1	2.00	0.440	
Total Xylenes*	<0.150	0.150	04/08/2026	ND	4.91	81.8	6.00	0.575	
Total BTEX	<0.300	0.300	04/08/2026	ND					

Surrogate: 4-Bromofluorobenzene (PID) 93.4 % 70.4-141

Chloride, SM4500CI-B		mg/kg		Analyzed By: AC					
Analyte	Result	Reporting Limit	Analyzed	Method Blank	BS	% Recovery	True Value QC	RPD	Qualifier
Chloride	32.0	16.0	04/07/2026	ND	416	104	400	7.41	

TPH 8015M		mg/kg		Analyzed By: MS					
Analyte	Result	Reporting Limit	Analyzed	Method Blank	BS	% Recovery	True Value QC	RPD	Qualifier
GRO C6-C10*	<10.0	10.0	04/07/2026	ND	176	88.0	200	0.875	
DRO >C10-C28*	<10.0	10.0	04/07/2026	ND	176	88.2	200	0.0753	
EXT DRO >C28-C36	<10.0	10.0	04/07/2026	ND					

Surrogate: 1-Chlorooctane 75.6 % 52.4-130

Surrogate: 1-Chlorooctadecane 67.9 % 39.9-141

Cardinal Laboratories

\*=Accredited Analyte

PLEASE NOTE: Liability and Damages. Cardinal's liability and client's exclusive remedy for any claim arising, whether based in contract or tort, shall be limited to the amount paid by client for analyses. All claims, including those for negligence and any other cause whatsoever shall be deemed waived unless made in writing and received by Cardinal within thirty (30) days after completion of the applicable service. In no event shall Cardinal be liable for incidental or consequential damages, including, without limitation, business interruptions, loss of use, or loss of profits incurred by client, its subsidiaries, affiliates or successors arising out of or related to the performance of the services hereunder by Cardinal, regardless of whether such claim is based upon any of the above stated reasons or otherwise. Results relate only to the samples identified above. This report shall not be reproduced except in full with written approval of Cardinal Laboratories.

Celey D. Keene, Lab Director/Quality Manager



PHONE (575) 393-2326 ° 101 E. MARLAND ° HOBBS, NM 88240

**Analytical Results For:**

CARMONA RESOURCES  
 CONNER MOEHRING  
 310 W WALL ST, SUITE 500  
 MIDLAND TX, 79701  
 Fax To:

Received: 04/06/2026  
 Reported: 04/09/2026  
 Project Name: PEGASUS 3 FED COM CTB  
 Project Number: 3191  
 Project Location: EOG - LEA COUNTY, NM

Sampling Date: 03/30/2026  
 Sampling Type: Soil  
 Sampling Condition: Cool & Intact  
 Sample Received By: Tamara Oldaker

**Sample ID: CS - 10 ( SURFACE ) (H261903-10)**

BTEX 8021B		mg/kg		Analyzed By: SK					
Analyte	Result	Reporting Limit	Analyzed	Method Blank	BS	% Recovery	True Value QC	RPD	Qualifier
Benzene*	<0.050	0.050	04/08/2026	ND	1.93	96.4	2.00	0.762	
Toluene*	<0.050	0.050	04/08/2026	ND	1.74	86.9	2.00	0.441	
Ethylbenzene*	<0.050	0.050	04/08/2026	ND	1.66	83.1	2.00	0.440	
Total Xylenes*	<0.150	0.150	04/08/2026	ND	4.91	81.8	6.00	0.575	
Total BTEX	<0.300	0.300	04/08/2026	ND					

Surrogate: 4-Bromofluorobenzene (PID) 93.6 % 70.4-141

Chloride, SM4500CI-B		mg/kg		Analyzed By: AC					
Analyte	Result	Reporting Limit	Analyzed	Method Blank	BS	% Recovery	True Value QC	RPD	Qualifier
Chloride	48.0	16.0	04/07/2026	ND	416	104	400	7.41	

TPH 8015M		mg/kg		Analyzed By: MS					
Analyte	Result	Reporting Limit	Analyzed	Method Blank	BS	% Recovery	True Value QC	RPD	Qualifier
GRO C6-C10*	<10.0	10.0	04/07/2026	ND	176	88.0	200	0.875	
DRO >C10-C28*	<10.0	10.0	04/07/2026	ND	176	88.2	200	0.0753	
EXT DRO >C28-C36	<10.0	10.0	04/07/2026	ND					

Surrogate: 1-Chlorooctane 67.3 % 52.4-130

Surrogate: 1-Chlorooctadecane 59.9 % 39.9-141

Cardinal Laboratories

\*=Accredited Analyte

PLEASE NOTE: Liability and Damages. Cardinal's liability and client's exclusive remedy for any claim arising, whether based in contract or tort, shall be limited to the amount paid by client for analyses. All claims, including those for negligence and any other cause whatsoever shall be deemed waived unless made in writing and received by Cardinal within thirty (30) days after completion of the applicable service. In no event shall Cardinal be liable for incidental or consequential damages, including, without limitation, business interruptions, loss of use, or loss of profits incurred by client, its subsidiaries, affiliates or successors arising out of or related to the performance of the services hereunder by Cardinal, regardless of whether such claim is based upon any of the above stated reasons or otherwise. Results relate only to the samples identified above. This report shall not be reproduced except in full with written approval of Cardinal Laboratories.

Celey D. Keene, Lab Director/Quality Manager



PHONE (575) 393-2326 ° 101 E. MARLAND ° HOBBS, NM 88240

**Analytical Results For:**

CARMONA RESOURCES  
 CONNER MOEHRING  
 310 W WALL ST, SUITE 500  
 MIDLAND TX, 79701  
 Fax To:

Received:	04/06/2026	Sampling Date:	03/30/2026
Reported:	04/09/2026	Sampling Type:	Soil
Project Name:	PEGASUS 3 FED COM CTB	Sampling Condition:	Cool & Intact
Project Number:	3191	Sample Received By:	Tamara Oldaker
Project Location:	EOG - LEA COUNTY, NM		

**Sample ID: CS - 11 ( SURFACE ) (H261903-11)**

BTEX 8021B		mg/kg		Analyzed By: SK					
Analyte	Result	Reporting Limit	Analyzed	Method Blank	BS	% Recovery	True Value QC	RPD	Qualifier
Benzene*	<0.050	0.050	04/08/2026	ND	1.93	96.4	2.00	0.762	
Toluene*	<0.050	0.050	04/08/2026	ND	1.74	86.9	2.00	0.441	
Ethylbenzene*	<0.050	0.050	04/08/2026	ND	1.66	83.1	2.00	0.440	
Total Xylenes*	<0.150	0.150	04/08/2026	ND	4.91	81.8	6.00	0.575	
Total BTEX	<0.300	0.300	04/08/2026	ND					

Surrogate: 4-Bromofluorobenzene (PID) 93.4 % 70.4-141

Chloride, SM4500CI-B		mg/kg		Analyzed By: AC					
Analyte	Result	Reporting Limit	Analyzed	Method Blank	BS	% Recovery	True Value QC	RPD	Qualifier
Chloride	32.0	16.0	04/07/2026	ND	416	104	400	7.41	

TPH 8015M		mg/kg		Analyzed By: MS					
Analyte	Result	Reporting Limit	Analyzed	Method Blank	BS	% Recovery	True Value QC	RPD	Qualifier
GRO C6-C10*	<10.0	10.0	04/07/2026	ND	176	88.0	200	0.875	
DRO >C10-C28*	<10.0	10.0	04/07/2026	ND	176	88.2	200	0.0753	
EXT DRO >C28-C36	<10.0	10.0	04/07/2026	ND					

Surrogate: 1-Chlorooctane 75.1 % 52.4-130

Surrogate: 1-Chlorooctadecane 68.1 % 39.9-141

Cardinal Laboratories

\*=Accredited Analyte

PLEASE NOTE: Liability and Damages. Cardinal's liability and client's exclusive remedy for any claim arising, whether based in contract or tort, shall be limited to the amount paid by client for analyses. All claims, including those for negligence and any other cause whatsoever shall be deemed waived unless made in writing and received by Cardinal within thirty (30) days after completion of the applicable service. In no event shall Cardinal be liable for incidental or consequential damages, including, without limitation, business interruptions, loss of use, or loss of profits incurred by client, its subsidiaries, affiliates or successors arising out of or related to the performance of the services hereunder by Cardinal, regardless of whether such claim is based upon any of the above stated reasons or otherwise. Results relate only to the samples identified above. This report shall not be reproduced except in full with written approval of Cardinal Laboratories.

Celey D. Keene, Lab Director/Quality Manager



PHONE (575) 393-2326 ° 101 E. MARLAND ° HOBBS, NM 88240

**Analytical Results For:**

CARMONA RESOURCES  
 CONNER MOEHRING  
 310 W WALL ST, SUITE 500  
 MIDLAND TX, 79701  
 Fax To:

Received:	04/06/2026	Sampling Date:	03/30/2026
Reported:	04/09/2026	Sampling Type:	Soil
Project Name:	PEGASUS 3 FED COM CTB	Sampling Condition:	Cool & Intact
Project Number:	3191	Sample Received By:	Tamara Oldaker
Project Location:	EOG - LEA COUNTY, NM		

**Sample ID: CS - 12 ( SURFACE ) (H261903-12)**

BTEX 8021B		mg/kg		Analyzed By: SK					
Analyte	Result	Reporting Limit	Analyzed	Method Blank	BS	% Recovery	True Value QC	RPD	Qualifier
Benzene*	<0.050	0.050	04/08/2026	ND	1.93	96.4	2.00	0.762	
Toluene*	<0.050	0.050	04/08/2026	ND	1.74	86.9	2.00	0.441	
Ethylbenzene*	<0.050	0.050	04/08/2026	ND	1.66	83.1	2.00	0.440	
Total Xylenes*	<0.150	0.150	04/08/2026	ND	4.91	81.8	6.00	0.575	
Total BTEX	<0.300	0.300	04/08/2026	ND					

Surrogate: 4-Bromofluorobenzene (PID) 94.4 % 70.4-141

Chloride, SM4500Cl-B		mg/kg		Analyzed By: AC					
Analyte	Result	Reporting Limit	Analyzed	Method Blank	BS	% Recovery	True Value QC	RPD	Qualifier
Chloride	<16.0	16.0	04/07/2026	ND	416	104	400	7.41	

TPH 8015M		mg/kg		Analyzed By: MS					
Analyte	Result	Reporting Limit	Analyzed	Method Blank	BS	% Recovery	True Value QC	RPD	Qualifier
GRO C6-C10*	<10.0	10.0	04/07/2026	ND	176	88.0	200	0.875	
DRO >C10-C28*	<10.0	10.0	04/07/2026	ND	176	88.2	200	0.0753	
EXT DRO >C28-C36	<10.0	10.0	04/07/2026	ND					

Surrogate: 1-Chlorooctane 63.1 % 52.4-130

Surrogate: 1-Chlorooctadecane 56.7 % 39.9-141

Cardinal Laboratories

\*=Accredited Analyte

PLEASE NOTE: Liability and Damages. Cardinal's liability and client's exclusive remedy for any claim arising, whether based in contract or tort, shall be limited to the amount paid by client for analyses. All claims, including those for negligence and any other cause whatsoever shall be deemed waived unless made in writing and received by Cardinal within thirty (30) days after completion of the applicable service. In no event shall Cardinal be liable for incidental or consequential damages, including, without limitation, business interruptions, loss of use, or loss of profits incurred by client, its subsidiaries, affiliates or successors arising out of or related to the performance of the services hereunder by Cardinal, regardless of whether such claim is based upon any of the above stated reasons or otherwise. Results relate only to the samples identified above. This report shall not be reproduced except in full with written approval of Cardinal Laboratories.

Celey D. Keene, Lab Director/Quality Manager



PHONE (575) 393-2326 ° 101 E. MARLAND ° HOBBS, NM 88240

**Analytical Results For:**

CARMONA RESOURCES  
 CONNER MOEHRING  
 310 W WALL ST, SUITE 500  
 MIDLAND TX, 79701  
 Fax To:

Received: 04/06/2026  
 Reported: 04/09/2026  
 Project Name: PEGASUS 3 FED COM CTB  
 Project Number: 3191  
 Project Location: EOG - LEA COUNTY, NM

Sampling Date: 03/30/2026  
 Sampling Type: Soil  
 Sampling Condition: Cool & Intact  
 Sample Received By: Tamara Oldaker

**Sample ID: CS - 13 ( SURFACE ) (H261903-13)**

BTEX 8021B		mg/kg		Analyzed By: SK					
Analyte	Result	Reporting Limit	Analyzed	Method Blank	BS	% Recovery	True Value QC	RPD	Qualifier
Benzene*	<0.050	0.050	04/08/2026	ND	1.93	96.4	2.00	0.762	
Toluene*	<0.050	0.050	04/08/2026	ND	1.74	86.9	2.00	0.441	
Ethylbenzene*	<0.050	0.050	04/08/2026	ND	1.66	83.1	2.00	0.440	
Total Xylenes*	<0.150	0.150	04/08/2026	ND	4.91	81.8	6.00	0.575	
Total BTEX	<0.300	0.300	04/08/2026	ND					

Surrogate: 4-Bromofluorobenzene (PID) 92.8 % 70.4-141

Chloride, SM4500Cl-B		mg/kg		Analyzed By: AC					
Analyte	Result	Reporting Limit	Analyzed	Method Blank	BS	% Recovery	True Value QC	RPD	Qualifier
Chloride	<16.0	16.0	04/07/2026	ND	400	100	400	3.92	

TPH 8015M		mg/kg		Analyzed By: MS					
Analyte	Result	Reporting Limit	Analyzed	Method Blank	BS	% Recovery	True Value QC	RPD	Qualifier
GRO C6-C10*	<10.0	10.0	04/07/2026	ND	176	88.0	200	0.875	
DRO >C10-C28*	<10.0	10.0	04/07/2026	ND	176	88.2	200	0.0753	
EXT DRO >C28-C36	<10.0	10.0	04/07/2026	ND					

Surrogate: 1-Chlorooctane 76.0 % 52.4-130

Surrogate: 1-Chlorooctadecane 67.9 % 39.9-141

Cardinal Laboratories

\*=Accredited Analyte

PLEASE NOTE: Liability and Damages. Cardinal's liability and client's exclusive remedy for any claim arising, whether based in contract or tort, shall be limited to the amount paid by client for analyses. All claims, including those for negligence and any other cause whatsoever shall be deemed waived unless made in writing and received by Cardinal within thirty (30) days after completion of the applicable service. In no event shall Cardinal be liable for incidental or consequential damages, including, without limitation, business interruptions, loss of use, or loss of profits incurred by client, its subsidiaries, affiliates or successors arising out of or related to the performance of the services hereunder by Cardinal, regardless of whether such claim is based upon any of the above stated reasons or otherwise. Results relate only to the samples identified above. This report shall not be reproduced except in full with written approval of Cardinal Laboratories.

Celey D. Keene, Lab Director/Quality Manager



PHONE (575) 393-2326 ° 101 E. MARLAND ° HOBBS, NM 88240

**Analytical Results For:**

CARMONA RESOURCES  
 CONNER MOEHRING  
 310 W WALL ST, SUITE 500  
 MIDLAND TX, 79701  
 Fax To:

Received: 04/06/2026  
 Reported: 04/09/2026  
 Project Name: PEGASUS 3 FED COM CTB  
 Project Number: 3191  
 Project Location: EOG - LEA COUNTY, NM

Sampling Date: 03/30/2026  
 Sampling Type: Soil  
 Sampling Condition: Cool & Intact  
 Sample Received By: Tamara Oldaker

**Sample ID: CS - 14 ( SURFACE ) (H261903-14)**

BTEX 8021B		mg/kg		Analyzed By: SK					
Analyte	Result	Reporting Limit	Analyzed	Method Blank	BS	% Recovery	True Value QC	RPD	Qualifier
Benzene*	<0.050	0.050	04/08/2026	ND	1.93	96.4	2.00	0.762	
Toluene*	<0.050	0.050	04/08/2026	ND	1.74	86.9	2.00	0.441	
Ethylbenzene*	<0.050	0.050	04/08/2026	ND	1.66	83.1	2.00	0.440	
Total Xylenes*	<0.150	0.150	04/08/2026	ND	4.91	81.8	6.00	0.575	
Total BTEX	<0.300	0.300	04/08/2026	ND					

Surrogate: 4-Bromofluorobenzene (PID) 93.4 % 70.4-141

Chloride, SM4500Cl-B		mg/kg		Analyzed By: AC					
Analyte	Result	Reporting Limit	Analyzed	Method Blank	BS	% Recovery	True Value QC	RPD	Qualifier
Chloride	16.0	16.0	04/07/2026	ND	400	100	400	3.92	

TPH 8015M		mg/kg		Analyzed By: MS					
Analyte	Result	Reporting Limit	Analyzed	Method Blank	BS	% Recovery	True Value QC	RPD	Qualifier
GRO C6-C10*	<10.0	10.0	04/07/2026	ND	176	88.0	200	0.875	
DRO >C10-C28*	<10.0	10.0	04/07/2026	ND	176	88.2	200	0.0753	
EXT DRO >C28-C36	<10.0	10.0	04/07/2026	ND					

Surrogate: 1-Chlorooctane 77.9 % 52.4-130

Surrogate: 1-Chlorooctadecane 69.8 % 39.9-141

Cardinal Laboratories

\*=Accredited Analyte

PLEASE NOTE: Liability and Damages. Cardinal's liability and client's exclusive remedy for any claim arising, whether based in contract or tort, shall be limited to the amount paid by client for analyses. All claims, including those for negligence and any other cause whatsoever shall be deemed waived unless made in writing and received by Cardinal within thirty (30) days after completion of the applicable service. In no event shall Cardinal be liable for incidental or consequential damages, including, without limitation, business interruptions, loss of use, or loss of profits incurred by client, its subsidiaries, affiliates or successors arising out of or related to the performance of the services hereunder by Cardinal, regardless of whether such claim is based upon any of the above stated reasons or otherwise. Results relate only to the samples identified above. This report shall not be reproduced except in full with written approval of Cardinal Laboratories.

Celey D. Keene, Lab Director/Quality Manager



PHONE (575) 393-2326 ° 101 E. MARLAND ° HOBBS, NM 88240

**Analytical Results For:**

CARMONA RESOURCES  
 CONNER MOEHRING  
 310 W WALL ST, SUITE 500  
 MIDLAND TX, 79701  
 Fax To:

Received: 04/06/2026  
 Reported: 04/09/2026  
 Project Name: PEGASUS 3 FED COM CTB  
 Project Number: 3191  
 Project Location: EOG - LEA COUNTY, NM

Sampling Date: 03/30/2026  
 Sampling Type: Soil  
 Sampling Condition: Cool & Intact  
 Sample Received By: Tamara Oldaker

**Sample ID: CS - 15 ( SURFACE ) (H261903-15)**

BTEX 8021B		mg/kg		Analyzed By: SK					
Analyte	Result	Reporting Limit	Analyzed	Method Blank	BS	% Recovery	True Value QC	RPD	Qualifier
Benzene*	<0.050	0.050	04/08/2026	ND	1.93	96.4	2.00	0.762	
Toluene*	<0.050	0.050	04/08/2026	ND	1.74	86.9	2.00	0.441	
Ethylbenzene*	<0.050	0.050	04/08/2026	ND	1.66	83.1	2.00	0.440	
Total Xylenes*	<0.150	0.150	04/08/2026	ND	4.91	81.8	6.00	0.575	
Total BTEX	<0.300	0.300	04/08/2026	ND					

Surrogate: 4-Bromofluorobenzene (PID) 93.6 % 70.4-141

Chloride, SM4500Cl-B		mg/kg		Analyzed By: AC					
Analyte	Result	Reporting Limit	Analyzed	Method Blank	BS	% Recovery	True Value QC	RPD	Qualifier
Chloride	<16.0	16.0	04/07/2026	ND	400	100	400	3.92	

TPH 8015M		mg/kg		Analyzed By: MS					
Analyte	Result	Reporting Limit	Analyzed	Method Blank	BS	% Recovery	True Value QC	RPD	Qualifier
GRO C6-C10*	<10.0	10.0	04/07/2026	ND	176	88.0	200	0.875	
DRO >C10-C28*	<10.0	10.0	04/07/2026	ND	176	88.2	200	0.0753	
EXT DRO >C28-C36	<10.0	10.0	04/07/2026	ND					

Surrogate: 1-Chlorooctane 79.4 % 52.4-130

Surrogate: 1-Chlorooctadecane 71.4 % 39.9-141

Cardinal Laboratories

\*=Accredited Analyte

PLEASE NOTE: Liability and Damages. Cardinal's liability and client's exclusive remedy for any claim arising, whether based in contract or tort, shall be limited to the amount paid by client for analyses. All claims, including those for negligence and any other cause whatsoever shall be deemed waived unless made in writing and received by Cardinal within thirty (30) days after completion of the applicable service. In no event shall Cardinal be liable for incidental or consequential damages, including, without limitation, business interruptions, loss of use, or loss of profits incurred by client, its subsidiaries, affiliates or successors arising out of or related to the performance of the services hereunder by Cardinal, regardless of whether such claim is based upon any of the above stated reasons or otherwise. Results relate only to the samples identified above. This report shall not be reproduced except in full with written approval of Cardinal Laboratories.

Celey D. Keene, Lab Director/Quality Manager



PHONE (575) 393-2326 ° 101 E. MARLAND ° HOBBS, NM 88240

**Analytical Results For:**

CARMONA RESOURCES  
 CONNER MOEHRING  
 310 W WALL ST, SUITE 500  
 MIDLAND TX, 79701  
 Fax To:

Received:	04/06/2026	Sampling Date:	03/30/2026
Reported:	04/09/2026	Sampling Type:	Soil
Project Name:	PEGASUS 3 FED COM CTB	Sampling Condition:	Cool & Intact
Project Number:	3191	Sample Received By:	Tamara Oldaker
Project Location:	EOG - LEA COUNTY, NM		

**Sample ID: CS - 16 ( SURFACE ) (H261903-16)**

BTEX 8021B		mg/kg		Analyzed By: SK					
Analyte	Result	Reporting Limit	Analyzed	Method Blank	BS	% Recovery	True Value QC	RPD	Qualifier
Benzene*	<0.050	0.050	04/08/2026	ND	1.93	96.4	2.00	0.762	
Toluene*	<0.050	0.050	04/08/2026	ND	1.74	86.9	2.00	0.441	
Ethylbenzene*	<0.050	0.050	04/08/2026	ND	1.66	83.1	2.00	0.440	
Total Xylenes*	<0.150	0.150	04/08/2026	ND	4.91	81.8	6.00	0.575	
Total BTEX	<0.300	0.300	04/08/2026	ND					

Surrogate: 4-Bromofluorobenzene (PID) 93.7 % 70.4-141

Chloride, SM4500Cl-B		mg/kg		Analyzed By: AC					
Analyte	Result	Reporting Limit	Analyzed	Method Blank	BS	% Recovery	True Value QC	RPD	Qualifier
Chloride	<16.0	16.0	04/07/2026	ND	400	100	400	3.92	

TPH 8015M		mg/kg		Analyzed By: MS					
Analyte	Result	Reporting Limit	Analyzed	Method Blank	BS	% Recovery	True Value QC	RPD	Qualifier
GRO C6-C10*	<10.0	10.0	04/07/2026	ND	176	88.0	200	0.875	
DRO >C10-C28*	<10.0	10.0	04/07/2026	ND	176	88.2	200	0.0753	
EXT DRO >C28-C36	<10.0	10.0	04/07/2026	ND					

Surrogate: 1-Chlorooctane 78.7 % 52.4-130

Surrogate: 1-Chlorooctadecane 70.2 % 39.9-141

Cardinal Laboratories

\*=Accredited Analyte

PLEASE NOTE: Liability and Damages. Cardinal's liability and client's exclusive remedy for any claim arising, whether based in contract or tort, shall be limited to the amount paid by client for analyses. All claims, including those for negligence and any other cause whatsoever shall be deemed waived unless made in writing and received by Cardinal within thirty (30) days after completion of the applicable service. In no event shall Cardinal be liable for incidental or consequential damages, including, without limitation, business interruptions, loss of use, or loss of profits incurred by client, its subsidiaries, affiliates or successors arising out of or related to the performance of the services hereunder by Cardinal, regardless of whether such claim is based upon any of the above stated reasons or otherwise. Results relate only to the samples identified above. This report shall not be reproduced except in full with written approval of Cardinal Laboratories.

Celey D. Keene, Lab Director/Quality Manager



PHONE (575) 393-2326 ° 101 E. MARLAND ° HOBBS, NM 88240

**Analytical Results For:**

CARMONA RESOURCES  
 CONNER MOEHRING  
 310 W WALL ST, SUITE 500  
 MIDLAND TX, 79701  
 Fax To:

Received:	04/06/2026	Sampling Date:	03/30/2026
Reported:	04/09/2026	Sampling Type:	Soil
Project Name:	PEGASUS 3 FED COM CTB	Sampling Condition:	Cool & Intact
Project Number:	3191	Sample Received By:	Tamara Oldaker
Project Location:	EOG - LEA COUNTY, NM		

**Sample ID: CS - 17 ( SURFACE ) (H261903-17)**

BTEX 8021B		mg/kg		Analyzed By: SK					
Analyte	Result	Reporting Limit	Analyzed	Method Blank	BS	% Recovery	True Value QC	RPD	Qualifier
Benzene*	<0.050	0.050	04/08/2026	ND	1.93	96.4	2.00	0.762	
Toluene*	<0.050	0.050	04/08/2026	ND	1.74	86.9	2.00	0.441	
Ethylbenzene*	<0.050	0.050	04/08/2026	ND	1.66	83.1	2.00	0.440	
Total Xylenes*	<0.150	0.150	04/08/2026	ND	4.91	81.8	6.00	0.575	
Total BTEX	<0.300	0.300	04/08/2026	ND					

Surrogate: 4-Bromofluorobenzene (PID) 94.3 % 70.4-141

Chloride, SM4500Cl-B		mg/kg		Analyzed By: AC					
Analyte	Result	Reporting Limit	Analyzed	Method Blank	BS	% Recovery	True Value QC	RPD	Qualifier
Chloride	<16.0	16.0	04/07/2026	ND	400	100	400	3.92	

TPH 8015M		mg/kg		Analyzed By: MS					
Analyte	Result	Reporting Limit	Analyzed	Method Blank	BS	% Recovery	True Value QC	RPD	Qualifier
GRO C6-C10*	<10.0	10.0	04/07/2026	ND	176	88.0	200	0.875	
DRO >C10-C28*	<10.0	10.0	04/07/2026	ND	176	88.2	200	0.0753	
EXT DRO >C28-C36	<10.0	10.0	04/07/2026	ND					

Surrogate: 1-Chlorooctane 75.3 % 52.4-130

Surrogate: 1-Chlorooctadecane 69.8 % 39.9-141

Cardinal Laboratories

\*=Accredited Analyte

PLEASE NOTE: Liability and Damages. Cardinal's liability and client's exclusive remedy for any claim arising, whether based in contract or tort, shall be limited to the amount paid by client for analyses. All claims, including those for negligence and any other cause whatsoever shall be deemed waived unless made in writing and received by Cardinal within thirty (30) days after completion of the applicable service. In no event shall Cardinal be liable for incidental or consequential damages, including, without limitation, business interruptions, loss of use, or loss of profits incurred by client, its subsidiaries, affiliates or successors arising out of or related to the performance of the services hereunder by Cardinal, regardless of whether such claim is based upon any of the above stated reasons or otherwise. Results relate only to the samples identified above. This report shall not be reproduced except in full with written approval of Cardinal Laboratories.

Celey D. Keene, Lab Director/Quality Manager



PHONE (575) 393-2326 ° 101 E. MARLAND ° HOBBS, NM 88240

**Analytical Results For:**

CARMONA RESOURCES  
 CONNER MOEHRING  
 310 W WALL ST, SUITE 500  
 MIDLAND TX, 79701  
 Fax To:

Received:	04/06/2026	Sampling Date:	03/30/2026
Reported:	04/09/2026	Sampling Type:	Soil
Project Name:	PEGASUS 3 FED COM CTB	Sampling Condition:	Cool & Intact
Project Number:	3191	Sample Received By:	Tamara Oldaker
Project Location:	EOG - LEA COUNTY, NM		

**Sample ID: CS - 18 ( SURFACE ) (H261903-18)**

BTEX 8021B		mg/kg		Analyzed By: SK					
Analyte	Result	Reporting Limit	Analyzed	Method Blank	BS	% Recovery	True Value QC	RPD	Qualifier
Benzene*	<0.050	0.050	04/08/2026	ND	1.93	96.4	2.00	0.762	
Toluene*	<0.050	0.050	04/08/2026	ND	1.74	86.9	2.00	0.441	
Ethylbenzene*	<0.050	0.050	04/08/2026	ND	1.66	83.1	2.00	0.440	
Total Xylenes*	<0.150	0.150	04/08/2026	ND	4.91	81.8	6.00	0.575	
Total BTEX	<0.300	0.300	04/08/2026	ND					

Surrogate: 4-Bromofluorobenzene (PID) 93.0 % 70.4-141

Chloride, SM4500Cl-B		mg/kg		Analyzed By: AC					
Analyte	Result	Reporting Limit	Analyzed	Method Blank	BS	% Recovery	True Value QC	RPD	Qualifier
Chloride	16.0	16.0	04/07/2026	ND	400	100	400	3.92	

TPH 8015M		mg/kg		Analyzed By: MS					
Analyte	Result	Reporting Limit	Analyzed	Method Blank	BS	% Recovery	True Value QC	RPD	Qualifier
GRO C6-C10*	<10.0	10.0	04/07/2026	ND	176	88.0	200	0.875	
DRO >C10-C28*	<10.0	10.0	04/07/2026	ND	176	88.2	200	0.0753	
EXT DRO >C28-C36	<10.0	10.0	04/07/2026	ND					

Surrogate: 1-Chlorooctane 75.1 % 52.4-130

Surrogate: 1-Chlorooctadecane 69.1 % 39.9-141

Cardinal Laboratories

\*=Accredited Analyte

PLEASE NOTE: Liability and Damages. Cardinal's liability and client's exclusive remedy for any claim arising, whether based in contract or tort, shall be limited to the amount paid by client for analyses. All claims, including those for negligence and any other cause whatsoever shall be deemed waived unless made in writing and received by Cardinal within thirty (30) days after completion of the applicable service. In no event shall Cardinal be liable for incidental or consequential damages, including, without limitation, business interruptions, loss of use, or loss of profits incurred by client, its subsidiaries, affiliates or successors arising out of or related to the performance of the services hereunder by Cardinal, regardless of whether such claim is based upon any of the above stated reasons or otherwise. Results relate only to the samples identified above. This report shall not be reproduced except in full with written approval of Cardinal Laboratories.

Celey D. Keene, Lab Director/Quality Manager



PHONE (575) 393-2326 ° 101 E. MARLAND ° HOBBS, NM 88240

**Analytical Results For:**

CARMONA RESOURCES  
 CONNER MOEHRING  
 310 W WALL ST, SUITE 500  
 MIDLAND TX, 79701  
 Fax To:

Received: 04/06/2026  
 Reported: 04/09/2026  
 Project Name: PEGASUS 3 FED COM CTB  
 Project Number: 3191  
 Project Location: EOG - LEA COUNTY, NM

Sampling Date: 03/30/2026  
 Sampling Type: Soil  
 Sampling Condition: Cool & Intact  
 Sample Received By: Tamara Oldaker

**Sample ID: CS - 19 ( SURFACE ) (H261903-19)**

BTEX 8021B		mg/kg		Analyzed By: SK					
Analyte	Result	Reporting Limit	Analyzed	Method Blank	BS	% Recovery	True Value QC	RPD	Qualifier
Benzene*	<0.050	0.050	04/08/2026	ND	1.93	96.4	2.00	0.762	
Toluene*	<0.050	0.050	04/08/2026	ND	1.74	86.9	2.00	0.441	
Ethylbenzene*	<0.050	0.050	04/08/2026	ND	1.66	83.1	2.00	0.440	
Total Xylenes*	<0.150	0.150	04/08/2026	ND	4.91	81.8	6.00	0.575	
Total BTEX	<0.300	0.300	04/08/2026	ND					

Surrogate: 4-Bromofluorobenzene (PID) 93.2 % 70.4-141

Chloride, SM4500Cl-B		mg/kg		Analyzed By: AC					
Analyte	Result	Reporting Limit	Analyzed	Method Blank	BS	% Recovery	True Value QC	RPD	Qualifier
Chloride	16.0	16.0	04/07/2026	ND	400	100	400	3.92	

TPH 8015M		mg/kg		Analyzed By: MS					
Analyte	Result	Reporting Limit	Analyzed	Method Blank	BS	% Recovery	True Value QC	RPD	Qualifier
GRO C6-C10*	<10.0	10.0	04/07/2026	ND	176	88.0	200	0.875	
DRO >C10-C28*	<10.0	10.0	04/07/2026	ND	176	88.2	200	0.0753	
EXT DRO >C28-C36	<10.0	10.0	04/07/2026	ND					

Surrogate: 1-Chlorooctane 78.8 % 52.4-130

Surrogate: 1-Chlorooctadecane 72.6 % 39.9-141

Cardinal Laboratories

\*=Accredited Analyte

PLEASE NOTE: Liability and Damages. Cardinal's liability and client's exclusive remedy for any claim arising, whether based in contract or tort, shall be limited to the amount paid by client for analyses. All claims, including those for negligence and any other cause whatsoever shall be deemed waived unless made in writing and received by Cardinal within thirty (30) days after completion of the applicable service. In no event shall Cardinal be liable for incidental or consequential damages, including, without limitation, business interruptions, loss of use, or loss of profits incurred by client, its subsidiaries, affiliates or successors arising out of or related to the performance of the services hereunder by Cardinal, regardless of whether such claim is based upon any of the above stated reasons or otherwise. Results relate only to the samples identified above. This report shall not be reproduced except in full with written approval of Cardinal Laboratories.

Celey D. Keene, Lab Director/Quality Manager



PHONE (575) 393-2326 ° 101 E. MARLAND ° HOBBS, NM 88240

**Analytical Results For:**

CARMONA RESOURCES  
 CONNER MOEHRING  
 310 W WALL ST, SUITE 500  
 MIDLAND TX, 79701  
 Fax To:

Received:	04/06/2026	Sampling Date:	03/30/2026
Reported:	04/09/2026	Sampling Type:	Soil
Project Name:	PEGASUS 3 FED COM CTB	Sampling Condition:	Cool & Intact
Project Number:	3191	Sample Received By:	Tamara Oldaker
Project Location:	EOG - LEA COUNTY, NM		

**Sample ID: CS - 20 ( SURFACE ) (H261903-20)**

BTEX 8021B		mg/kg		Analyzed By: JH					
Analyte	Result	Reporting Limit	Analyzed	Method Blank	BS	% Recovery	True Value QC	RPD	Qualifier
Benzene*	<0.050	0.050	04/09/2026	ND	1.97	98.7	2.00	0.411	
Toluene*	<0.050	0.050	04/09/2026	ND	1.86	92.8	2.00	2.89	
Ethylbenzene*	<0.050	0.050	04/09/2026	ND	1.78	89.0	2.00	4.79	
Total Xylenes*	<0.150	0.150	04/09/2026	ND	5.36	89.4	6.00	4.21	
Total BTEX	<0.300	0.300	04/09/2026	ND					

Surrogate: 4-Bromofluorobenzene (PID) 114 % 70.4-141

Chloride, SM4500CI-B		mg/kg		Analyzed By: AC					
Analyte	Result	Reporting Limit	Analyzed	Method Blank	BS	% Recovery	True Value QC	RPD	Qualifier
Chloride	<16.0	16.0	04/07/2026	ND	400	100	400	3.92	

TPH 8015M		mg/kg		Analyzed By: MS					
Analyte	Result	Reporting Limit	Analyzed	Method Blank	BS	% Recovery	True Value QC	RPD	Qualifier
GRO C6-C10*	<10.0	10.0	04/07/2026	ND	176	88.0	200	0.875	
DRO >C10-C28*	<10.0	10.0	04/07/2026	ND	176	88.2	200	0.0753	
EXT DRO >C28-C36	<10.0	10.0	04/07/2026	ND					

Surrogate: 1-Chlorooctane 79.7 % 52.4-130

Surrogate: 1-Chlorooctadecane 73.1 % 39.9-141

Cardinal Laboratories

\*=Accredited Analyte

PLEASE NOTE: Liability and Damages. Cardinal's liability and client's exclusive remedy for any claim arising, whether based in contract or tort, shall be limited to the amount paid by client for analyses. All claims, including those for negligence and any other cause whatsoever shall be deemed waived unless made in writing and received by Cardinal within thirty (30) days after completion of the applicable service. In no event shall Cardinal be liable for incidental or consequential damages, including, without limitation, business interruptions, loss of use, or loss of profits incurred by client, its subsidiaries, affiliates or successors arising out of or related to the performance of the services hereunder by Cardinal, regardless of whether such claim is based upon any of the above stated reasons or otherwise. Results relate only to the samples identified above. This report shall not be reproduced except in full with written approval of Cardinal Laboratories.

Celey D. Keene, Lab Director/Quality Manager



PHONE (575) 393-2326 ° 101 E. MARLAND ° HOBBS, NM 88240

**Analytical Results For:**

CARMONA RESOURCES  
 CONNER MOEHRING  
 310 W WALL ST, SUITE 500  
 MIDLAND TX, 79701  
 Fax To:

Received:	04/06/2026	Sampling Date:	03/30/2026
Reported:	04/09/2026	Sampling Type:	Soil
Project Name:	PEGASUS 3 FED COM CTB	Sampling Condition:	Cool & Intact
Project Number:	3191	Sample Received By:	Tamara Oldaker
Project Location:	EOG - LEA COUNTY, NM		

**Sample ID: CS - 21 ( SURFACE ) (H261903-21)**

BTEX 8021B		mg/kg		Analyzed By: JH						
Analyte	Result	Reporting Limit	Analyzed	Method Blank	BS	% Recovery	True Value QC	RPD	Qualifier	
Benzene*	<0.050	0.050	04/09/2026	ND	1.97	98.7	2.00	0.411		
Toluene*	<0.050	0.050	04/09/2026	ND	1.86	92.8	2.00	2.89		
Ethylbenzene*	<0.050	0.050	04/09/2026	ND	1.78	89.0	2.00	4.79		
Total Xylenes*	<0.150	0.150	04/09/2026	ND	5.36	89.4	6.00	4.21		
Total BTEX	<0.300	0.300	04/09/2026	ND						

Surrogate: 4-Bromofluorobenzene (PID) 116 % 70.4-141

Chloride, SM4500Cl-B		mg/kg		Analyzed By: AC						
Analyte	Result	Reporting Limit	Analyzed	Method Blank	BS	% Recovery	True Value QC	RPD	Qualifier	
Chloride	<16.0	16.0	04/07/2026	ND	400	100	400	3.92		

TPH 8015M		mg/kg		Analyzed By: JF						
Analyte	Result	Reporting Limit	Analyzed	Method Blank	BS	% Recovery	True Value QC	RPD	Qualifier	
GRO C6-C10*	<10.0	10.0	04/07/2026	ND	207	103	200	0.0271		
DRO >C10-C28*	<10.0	10.0	04/07/2026	ND	196	98.1	200	3.27		
EXT DRO >C28-C36	<10.0	10.0	04/07/2026	ND						

Surrogate: 1-Chlorooctane 85.9 % 52.4-130

Surrogate: 1-Chlorooctadecane 79.8 % 39.9-141

Cardinal Laboratories

\*=Accredited Analyte

PLEASE NOTE: Liability and Damages. Cardinal's liability and client's exclusive remedy for any claim arising, whether based in contract or tort, shall be limited to the amount paid by client for analyses. All claims, including those for negligence and any other cause whatsoever shall be deemed waived unless made in writing and received by Cardinal within thirty (30) days after completion of the applicable service. In no event shall Cardinal be liable for incidental or consequential damages, including, without limitation, business interruptions, loss of use, or loss of profits incurred by client, its subsidiaries, affiliates or successors arising out of or related to the performance of the services hereunder by Cardinal, regardless of whether such claim is based upon any of the above stated reasons or otherwise. Results relate only to the samples identified above. This report shall not be reproduced except in full with written approval of Cardinal Laboratories.

Celey D. Keene, Lab Director/Quality Manager



PHONE (575) 393-2326 ° 101 E. MARLAND ° HOBBS, NM 88240

**Analytical Results For:**

CARMONA RESOURCES  
 CONNER MOEHRING  
 310 W WALL ST, SUITE 500  
 MIDLAND TX, 79701  
 Fax To:

Received:	04/06/2026	Sampling Date:	03/30/2026
Reported:	04/09/2026	Sampling Type:	Soil
Project Name:	PEGASUS 3 FED COM CTB	Sampling Condition:	Cool & Intact
Project Number:	3191	Sample Received By:	Tamara Oldaker
Project Location:	EOG - LEA COUNTY, NM		

**Sample ID: CS - 22 ( SURFACE ) (H261903-22)**

BTEX 8021B		mg/kg		Analyzed By: JH						
Analyte	Result	Reporting Limit	Analyzed	Method Blank	BS	% Recovery	True Value QC	RPD	Qualifier	
Benzene*	<0.050	0.050	04/09/2026	ND	1.97	98.7	2.00	0.411		
Toluene*	<0.050	0.050	04/09/2026	ND	1.86	92.8	2.00	2.89		
Ethylbenzene*	<0.050	0.050	04/09/2026	ND	1.78	89.0	2.00	4.79		
Total Xylenes*	<0.150	0.150	04/09/2026	ND	5.36	89.4	6.00	4.21		
Total BTEX	<0.300	0.300	04/09/2026	ND						

Surrogate: 4-Bromofluorobenzene (PID) 116 % 70.4-141

Chloride, SM4500Cl-B		mg/kg		Analyzed By: AC						
Analyte	Result	Reporting Limit	Analyzed	Method Blank	BS	% Recovery	True Value QC	RPD	Qualifier	
Chloride	16.0	16.0	04/07/2026	ND	400	100	400	3.92		

TPH 8015M		mg/kg		Analyzed By: JF						
Analyte	Result	Reporting Limit	Analyzed	Method Blank	BS	% Recovery	True Value QC	RPD	Qualifier	
GRO C6-C10*	<10.0	10.0	04/07/2026	ND	207	103	200	0.0271		
DRO >C10-C28*	<10.0	10.0	04/07/2026	ND	196	98.1	200	3.27		
EXT DRO >C28-C36	<10.0	10.0	04/07/2026	ND						

Surrogate: 1-Chlorooctane 85.3 % 52.4-130

Surrogate: 1-Chlorooctadecane 78.1 % 39.9-141

Cardinal Laboratories

\*=Accredited Analyte

PLEASE NOTE: Liability and Damages. Cardinal's liability and client's exclusive remedy for any claim arising, whether based in contract or tort, shall be limited to the amount paid by client for analyses. All claims, including those for negligence and any other cause whatsoever shall be deemed waived unless made in writing and received by Cardinal within thirty (30) days after completion of the applicable service. In no event shall Cardinal be liable for incidental or consequential damages, including, without limitation, business interruptions, loss of use, or loss of profits incurred by client, its subsidiaries, affiliates or successors arising out of or related to the performance of the services hereunder by Cardinal, regardless of whether such claim is based upon any of the above stated reasons or otherwise. Results relate only to the samples identified above. This report shall not be reproduced except in full with written approval of Cardinal Laboratories.

Celey D. Keene, Lab Director/Quality Manager



PHONE (575) 393-2326 ° 101 E. MARLAND ° HOBBS, NM 88240

**Analytical Results For:**

CARMONA RESOURCES  
 CONNER MOEHRING  
 310 W WALL ST, SUITE 500  
 MIDLAND TX, 79701  
 Fax To:

Received: 04/06/2026  
 Reported: 04/09/2026  
 Project Name: PEGASUS 3 FED COM CTB  
 Project Number: 3191  
 Project Location: EOG - LEA COUNTY, NM

Sampling Date: 03/30/2026  
 Sampling Type: Soil  
 Sampling Condition: Cool & Intact  
 Sample Received By: Tamara Oldaker

**Sample ID: CS - 23 ( SURFACE ) (H261903-23)**

BTEX 8021B		mg/kg		Analyzed By: JH					
Analyte	Result	Reporting Limit	Analyzed	Method Blank	BS	% Recovery	True Value QC	RPD	Qualifier
Benzene*	<0.050	0.050	04/09/2026	ND	1.97	98.7	2.00	0.411	
Toluene*	<0.050	0.050	04/09/2026	ND	1.86	92.8	2.00	2.89	
Ethylbenzene*	<0.050	0.050	04/09/2026	ND	1.78	89.0	2.00	4.79	
Total Xylenes*	<0.150	0.150	04/09/2026	ND	5.36	89.4	6.00	4.21	
Total BTEX	<0.300	0.300	04/09/2026	ND					

Surrogate: 4-Bromofluorobenzene (PID) 114 % 70.4-141

Chloride, SM4500Cl-B		mg/kg		Analyzed By: AC					
Analyte	Result	Reporting Limit	Analyzed	Method Blank	BS	% Recovery	True Value QC	RPD	Qualifier
Chloride	<16.0	16.0	04/07/2026	ND	400	100	400	3.92	

TPH 8015M		mg/kg		Analyzed By: JF					
Analyte	Result	Reporting Limit	Analyzed	Method Blank	BS	% Recovery	True Value QC	RPD	Qualifier
GRO C6-C10*	<10.0	10.0	04/07/2026	ND	207	103	200	0.0271	
DRO >C10-C28*	<10.0	10.0	04/07/2026	ND	196	98.1	200	3.27	
EXT DRO >C28-C36	<10.0	10.0	04/07/2026	ND					

Surrogate: 1-Chlorooctane 88.4 % 52.4-130

Surrogate: 1-Chlorooctadecane 83.2 % 39.9-141

Cardinal Laboratories

\*=Accredited Analyte

PLEASE NOTE: Liability and Damages. Cardinal's liability and client's exclusive remedy for any claim arising, whether based in contract or tort, shall be limited to the amount paid by client for analyses. All claims, including those for negligence and any other cause whatsoever shall be deemed waived unless made in writing and received by Cardinal within thirty (30) days after completion of the applicable service. In no event shall Cardinal be liable for incidental or consequential damages, including, without limitation, business interruptions, loss of use, or loss of profits incurred by client, its subsidiaries, affiliates or successors arising out of or related to the performance of the services hereunder by Cardinal, regardless of whether such claim is based upon any of the above stated reasons or otherwise. Results relate only to the samples identified above. This report shall not be reproduced except in full with written approval of Cardinal Laboratories.

Celey D. Keene, Lab Director/Quality Manager



PHONE (575) 393-2326 ° 101 E. MARLAND ° HOBBS, NM 88240

Notes and Definitions

- ND Analyte NOT DETECTED at or above the reporting limit
- RPD Relative Percent Difference
- \*\* Samples not received at proper temperature of 6°C or below.
- \*\*\* Insufficient time to reach temperature.
- Chloride by SM4500Cl-B does not require samples be received at or below 6°C  
Samples reported on an as received basis (wet) unless otherwise noted on report

Cardinal Laboratories

\*=Accredited Analyte

PLEASE NOTE: Liability and Damages. Cardinal's liability and client's exclusive remedy for any claim arising, whether based in contract or tort, shall be limited to the amount paid by client for analyses. All claims, including those for negligence and any other cause whatsoever shall be deemed waived unless made in writing and received by Cardinal within thirty (30) days after completion of the applicable service. In no event shall Cardinal be liable for incidental or consequential damages, including, without limitation, business interruptions, loss of use, or loss of profits incurred by client, its subsidiaries, affiliates or successors arising out of or related to the performance of the services hereunder by Cardinal, regardless of whether such claim is based upon any of the above stated reasons or otherwise. Results relate only to the samples identified above. This report shall not be reproduced except in full with written approval of Cardinal Laboratories.

*Celey D. Keene*

Celey D. Keene, Lab Director/Quality Manager







Sante Fe Main Office  
Phone: (505) 476-3441

General Information  
Phone: (505) 629-6116

Online Phone Directory  
<https://www.emnrd.nm.gov/ocd/contact-us>

**State of New Mexico**  
**Energy, Minerals and Natural Resources**  
**Oil Conservation Division**  
**1220 S. St Francis Dr.**  
**Santa Fe, NM 87505**

QUESTIONS

Action 582931

**QUESTIONS**

Operator: EOG RESOURCES INC 5509 Champions Drive Midland, TX 79706	OGRID: 7377
	Action Number: 582931
	Action Type: [C-141] Reclamation Report C-141 (C-141-v-Reclamation)

**QUESTIONS**

<b>Prerequisites</b>	
Incident ID (n#)	nAPP2606335846
Incident Name	NAPP2606335846 PEGASUS 3 FED COM CTB @ FAPP2130550580
Incident Type	Oil Release
Incident Status	Reclamation Report Received
Incident Facility	[fAPP2130550580] PEGASUS 3 FED COM CTB

<b>Location of Release Source</b>	
<i>Please answer all the questions in this group.</i>	
Site Name	PEGASUS 3 FED COM CTB
Date Release Discovered	03/03/2026
Surface Owner	Federal

<b>Incident Details</b>	
<i>Please answer all the questions in this group.</i>	
Incident Type	Oil Release
Did this release result in a fire or is the result of a fire	Yes
Did this release result in any injuries	No
Has this release reached or does it have a reasonable probability of reaching a watercourse	No
Has this release endangered or does it have a reasonable probability of endangering public health	No
Has this release substantially damaged or will it substantially damage property or the environment	No
Is this release of a volume that is or may with reasonable probability be detrimental to fresh water	No

<b>Nature and Volume of Release</b>	
<i>Material(s) released, please answer all that apply below. Any calculations or specific justifications for the volumes provided should be attached to the follow-up C-141 submission.</i>	
Crude Oil Released (bbls) Details	Cause: High Line Pressure   Other (Specify)   Crude Oil   Released: 1 BBL   Recovered: 0 BBL   Lost: 1 BBL.
Produced Water Released (bbls) Details	Not answered.
Is the concentration of chloride in the produced water >10,000 mg/l	No
Condensate Released (bbls) Details	Not answered.
Natural Gas Vented (Mcf) Details	Not answered.
Natural Gas Flared (Mcf) Details	Not answered.
Other Released Details	Not answered.
Are there additional details for the questions above (i.e. any answer containing Other, Specify, Unknown, and/or Fire, or any negative lost amounts)	High pressure flare line, resulting in flare fire

Sante Fe Main Office  
Phone: (505) 476-3441

General Information  
Phone: (505) 629-6116

Online Phone Directory  
<https://www.emnrd.nm.gov/ocd/contact-us>

**State of New Mexico**  
**Energy, Minerals and Natural Resources**  
**Oil Conservation Division**  
**1220 S. St Francis Dr.**  
**Santa Fe, NM 87505**

QUESTIONS, Page 2

Action 582931

**QUESTIONS (continued)**

Operator: EOG RESOURCES INC 5509 Champions Drive Midland, TX 79706	OGRID: 7377
	Action Number: 582931
	Action Type: [C-141] Reclamation Report C-141 (C-141-v-Reclamation)

**QUESTIONS**

<b>Nature and Volume of Release (continued)</b>	
Is this a gas only submission (i.e. only significant Mcf values reported)	<b>More info needed to determine if this will be treated as a "gas only" report.</b>
Was this a major release as defined by Subsection A of 19.15.29.7 NMAC	<b>Yes</b>
Reasons why this would be considered a submission for a notification of a major release	<b>From paragraph A. "Major release" determine using: (2) an unauthorized release of a volume that: (a) results in a fire or is the result of a fire.</b>
<i>With the implementation of the 19.15.27 NMAC (05/25/2021), venting and/or flaring of natural gas (i.e. gas only) are to be submitted on the C-129 form.</i>	

**Initial Response**

*The responsible party must undertake the following actions immediately unless they could create a safety hazard that would result in injury.*

The source of the release has been stopped	True
The impacted area has been secured to protect human health and the environment	True
Released materials have been contained via the use of berms or dikes, absorbent pads, or other containment devices	True
All free liquids and recoverable materials have been removed and managed appropriately	True
If all the actions described above have not been undertaken, explain why	Not answered.

*Per Paragraph (4) of Subsection B of 19.15.29.8 NMAC the responsible party may commence remediation immediately after discovery of a release. If remediation has begun, please prepare and attach a narrative of actions to date in the follow-up C-141 submission. If remedial efforts have been successfully completed or if the release occurred within a lined containment area (see Subparagraph (a) of Paragraph (5) of Subsection A of 19.15.29.11 NMAC), please prepare and attach all information needed for closure evaluation in the follow-up C-141 submission.*

I hereby certify that the information given above is true and complete to the best of my knowledge and understand that pursuant to OCD rules and regulations all operators are required to report and/or file certain release notifications and perform corrective actions for releases which may endanger public health or the environment. The acceptance of a C-141 report by the OCD does not relieve the operator of liability should their operations have failed to adequately investigate and remediate contamination that pose a threat to groundwater, surface water, human health or the environment. In addition, OCD acceptance of a C-141 report does not relieve the operator of responsibility for compliance with any other federal, state, or local laws and/or regulations.

I hereby agree and sign off to the above statement	Name: Hadlie Stout Title: Environmental Representative II Email: Hadlie_stout@eogresources.com Date: 05/07/2026
--	--

Sante Fe Main Office  
Phone: (505) 476-3441

General Information  
Phone: (505) 629-6116

Online Phone Directory  
<https://www.emnrd.nm.gov/ocd/contact-us>

**State of New Mexico**  
**Energy, Minerals and Natural Resources**  
**Oil Conservation Division**  
**1220 S. St Francis Dr.**  
**Santa Fe, NM 87505**

QUESTIONS, Page 3

Action 582931

**QUESTIONS (continued)**

Operator: EOG RESOURCES INC 5509 Champions Drive Midland, TX 79706	OGRID: 7377
	Action Number: 582931
	Action Type: [C-141] Reclamation Report C-141 (C-141-v-Reclamation)

**QUESTIONS**

**Site Characterization**

Please answer all the questions in this group (only required when seeking remediation plan approval and beyond). This information must be provided to the appropriate district office no later than 90 days after the release discovery date.

What is the shallowest depth to groundwater beneath the area affected by the release in feet below ground surface (ft bgs)	Between 100 and 500 (ft.)
What method was used to determine the depth to ground water	U.S. Geological Survey
Did this release impact groundwater or surface water	No
<b>What is the minimum distance, between the closest lateral extents of the release and the following surface areas:</b>	
A continuously flowing watercourse or any other significant watercourse	Between 1 and 5 (mi.)
Any lakebed, sinkhole, or playa lake (measured from the ordinary high-water mark)	Between 1 and 5 (mi.)
An occupied permanent residence, school, hospital, institution, or church	Between 1 and 5 (mi.)
A spring or a private domestic fresh water well used by less than five households for domestic or stock watering purposes	Between 1000 (ft.) and ½ (mi.)
Any other fresh water well or spring	Between 1000 (ft.) and ½ (mi.)
Incorporated municipal boundaries or a defined municipal fresh water well field	Greater than 5 (mi.)
A wetland	Between 1 and 5 (mi.)
A subsurface mine	Greater than 5 (mi.)
An (non-karst) unstable area	Greater than 5 (mi.)
Categorize the risk of this well / site being in a karst geology	Low
A 100-year floodplain	Greater than 5 (mi.)
Did the release impact areas not on an exploration, development, production, or storage site	Yes

**Remediation Plan**

Please answer all the questions that apply or are indicated. This information must be provided to the appropriate district office no later than 90 days after the release discovery date.

Requesting a remediation plan approval with this submission	Yes
<i>Attach a comprehensive report demonstrating the lateral and vertical extents of soil contamination associated with the release have been determined, pursuant to 19.15.29.11 NMAC and 19.15.29.13 NMAC.</i>	
Have the lateral and vertical extents of contamination been fully delineated	Yes
Was this release entirely contained within a lined containment area	No

**Soil Contamination Sampling:** (Provide the highest observable value for each, in milligrams per kilograms.)

Chloride (EPA 300.0 or SM4500 Cl B)	48
TPH (GRO+DRO+MRO) (EPA SW-846 Method 8015M)	0
GRO+DRO (EPA SW-846 Method 8015M)	0
BTEX (EPA SW-846 Method 8021B or 8260B)	0
Benzene (EPA SW-846 Method 8021B or 8260B)	0

Per Subsection B of 19.15.29.11 NMAC unless the site characterization report includes completed efforts at remediation, the report must include a proposed remediation plan in accordance with 19.15.29.12 NMAC, which includes the anticipated timelines for beginning and completing the remediation.

On what estimated date will the remediation commence	03/03/2026
On what date will (or did) the final sampling or liner inspection occur	03/30/2026
On what date will (or was) the remediation complete(d)	03/30/2026
What is the estimated surface area (in square feet) that will be reclaimed	0
What is the estimated volume (in cubic yards) that will be reclaimed	0
What is the estimated surface area (in square feet) that will be remediated	0
What is the estimated volume (in cubic yards) that will be remediated	0

*These estimated dates and measurements are recognized to be the best guess or calculation at the time of submission and may (be) change(d) over time as more remediation efforts are completed.*

*The OCD recognizes that proposed remediation measures may have to be minimally adjusted in accordance with the physical realities encountered during remediation. If the responsible party has any need to significantly deviate from the remediation plan proposed, then it should consult with the division to determine if another remediation plan submission is required.*

Sante Fe Main Office  
Phone: (505) 476-3441

General Information  
Phone: (505) 629-6116

Online Phone Directory  
<https://www.emnrd.nm.gov/ocd/contact-us>

**State of New Mexico**  
**Energy, Minerals and Natural Resources**  
**Oil Conservation Division**  
**1220 S. St Francis Dr.**  
**Santa Fe, NM 87505**

QUESTIONS, Page 4

Action 582931

**QUESTIONS (continued)**

Operator: EOG RESOURCES INC 5509 Champions Drive Midland, TX 79706	OGRID: 7377
	Action Number: 582931
	Action Type: [C-141] Reclamation Report C-141 (C-141-v-Reclamation)

**QUESTIONS**

**Remediation Plan (continued)**

Please answer all the questions that apply or are indicated. This information must be provided to the appropriate district office no later than 90 days after the release discovery date.

**This remediation will (or is expected to) utilize the following processes to remediate / reduce contaminants:**

(Select all answers below that apply.)

(Ex Situ) Excavation and <b>off-site</b> disposal (i.e. dig and haul, hydrovac, etc.)	No
(Ex Situ) Excavation and <b>on-site</b> remediation (i.e. On-Site Land Farms)	No
(In Situ) Soil Vapor Extraction	Not answered.
(In Situ) Chemical processing (i.e. Soil Shredding, Potassium Permanganate, etc.)	Not answered.
(In Situ) Biological processing (i.e. Microbes / Fertilizer, etc.)	Not answered.
(In Situ) Physical processing (i.e. Soil Washing, Gypsum, Disking, etc.)	Not answered.
Ground Water Abatement pursuant to 19.15.30 NMAC	Not answered.
OTHER (Non-listed remedial process)	Yes
Other Non-listed Remedial Process. Please specify	No impacted soil identified within release area.

Per Subsection B of 19.15.29.11 NMAC unless the site characterization report includes completed efforts at remediation, the report must include a proposed remediation plan in accordance with 19.15.29.12 NMAC, which includes the anticipated timelines for beginning and completing the remediation.

I hereby certify that the information given above is true and complete to the best of my knowledge and understand that pursuant to OCD rules and regulations all operators are required to report and/or file certain release notifications and perform corrective actions for releases which may endanger public health or the environment. The acceptance of a C-141 report by the OCD does not relieve the operator of liability should their operations have failed to adequately investigate and remediate contamination that pose a threat to groundwater, surface water, human health or the environment. In addition, OCD acceptance of a C-141 report does not relieve the operator of responsibility for compliance with any other federal, state, or local laws and/or regulations.

I hereby agree and sign off to the above statement	Name: Hadlie Stout Title: Environmental Representative II Email: Hadlie_stout@eogresources.com Date: 05/07/2026
--	--

The OCD recognizes that proposed remediation measures may have to be minimally adjusted in accordance with the physical realities encountered during remediation. If the responsible party has any need to significantly deviate from the remediation plan proposed, then it should consult with the division to determine if another remediation plan submission is required.

Sante Fe Main Office  
Phone: (505) 476-3441

General Information  
Phone: (505) 629-6116

Online Phone Directory  
<https://www.emnrd.nm.gov/ocd/contact-us>

**State of New Mexico**  
**Energy, Minerals and Natural Resources**  
**Oil Conservation Division**  
**1220 S. St Francis Dr.**  
**Santa Fe, NM 87505**

QUESTIONS, Page 5

Action 582931

**QUESTIONS (continued)**

Operator: EOG RESOURCES INC 5509 Champions Drive Midland, TX 79706	OGRID: 7377
	Action Number: 582931
	Action Type: [C-141] Reclamation Report C-141 (C-141-v-Reclamation)

**QUESTIONS**

<b>Deferral Requests Only</b>	
<i>Only answer the questions in this group if seeking a deferral upon approval this submission. Each of the following items must be confirmed as part of any request for deferral of remediation.</i>	
Requesting a deferral of the remediation closure due date with the approval of this submission	No

Sante Fe Main Office  
Phone: (505) 476-3441

General Information  
Phone: (505) 629-6116

Online Phone Directory  
<https://www.emnrd.nm.gov/ocd/contact-us>

**State of New Mexico**  
**Energy, Minerals and Natural Resources**  
**Oil Conservation Division**  
**1220 S. St Francis Dr.**  
**Santa Fe, NM 87505**

QUESTIONS, Page 6

Action 582931

**QUESTIONS (continued)**

Operator: EOG RESOURCES INC 5509 Champions Drive Midland, TX 79706	OGRID: 7377
	Action Number: 582931
	Action Type: [C-141] Reclamation Report C-141 (C-141-v-Reclamation)

**QUESTIONS**

<b>Sampling Event Information</b>	
Last sampling notification (C-141N) recorded	<b>566789</b>
Sampling date pursuant to Subparagraph (a) of Paragraph (1) of Subsection D of 19.15.29.12 NMAC	<b>03/30/2026</b>
What was the (estimated) number of samples that were to be gathered	<b>23</b>
What was the sampling surface area in square feet	<b>4500</b>

**Remediation Closure Request**

*Only answer the questions in this group if seeking remediation closure for this release because all remediation steps have been completed.*

Requesting a remediation closure approval with this submission	Yes
Have the lateral and vertical extents of contamination been fully delineated	Yes
Was this release entirely contained within a lined containment area	No
All areas reasonably needed for production or subsequent drilling operations have been stabilized, returned to the sites existing grade, and have a soil cover that prevents ponding of water, minimizing dust and erosion	Yes
What was the total surface area (in square feet) remediated	0
What was the total volume (cubic yards) remediated	0
All areas not reasonably needed for production or subsequent drilling operations have been reclaimed to contain a minimum of four feet of non-waste contain earthen material with concentrations less than 600 mg/kg chlorides, 100 mg/kg TPH, 50 mg/kg BTEX, and 10 mg/kg Benzene	Yes
What was the total surface area (in square feet) reclaimed	0
What was the total volume (in cubic yards) reclaimed	0
Summarize any additional remediation activities not included by answers (above)	no impacted soil identified during assessment and confirmation sampling activities. Burned vegetation was removed and the area will be reseeded to promote healthy vegetation growth

*The responsible party must attach information demonstrating they have complied with all applicable closure requirements and any conditions or directives of the OCD. This demonstration should be in the form of a comprehensive report (in .pdf format) including a scaled site map, sampling diagrams, relevant field notes, photographs of any excavation prior to backfilling, laboratory data including chain of custody documents of final sampling, and a narrative of the remedial activities. Refer to 19.15.29.12 NMAC.*

I hereby certify that the information given above is true and complete to the best of my knowledge and understand that pursuant to OCD rules and regulations all operators are required to report and/or file certain release notifications and perform corrective actions for releases which may endanger public health or the environment. The acceptance of a C-141 report by the OCD does not relieve the operator of liability should their operations have failed to adequately investigate and remediate contamination that pose a threat to groundwater, surface water, human health or the environment. In addition, OCD acceptance of a C-141 report does not relieve the operator of responsibility for compliance with any other federal, state, or local laws and/or regulations. The responsible party acknowledges they must substantially restore, reclaim, and re-vegetate the impacted surface area to the conditions that existed prior to the release or their final land use in accordance with 19.15.29.13 NMAC including notification to the OCD when reclamation and re-vegetation are complete.

I hereby agree and sign off to the above statement	Name: Hadlie Stout Title: Environmental Representative II Email: Hadlie_stout@eogresources.com Date: 05/07/2026
--	--

Sante Fe Main Office  
Phone: (505) 476-3441

General Information  
Phone: (505) 629-6116

Online Phone Directory  
<https://www.emnrd.nm.gov/ocd/contact-us>

**State of New Mexico**  
**Energy, Minerals and Natural Resources**  
**Oil Conservation Division**  
**1220 S. St Francis Dr.**  
**Santa Fe, NM 87505**

QUESTIONS, Page 7

Action 582931

**QUESTIONS (continued)**

Operator: EOG RESOURCES INC 5509 Champions Drive Midland, TX 79706	OGRID: 7377
	Action Number: 582931
	Action Type: [C-141] Reclamation Report C-141 (C-141-v-Reclamation)

**QUESTIONS**

<b>Reclamation Report</b>	
<i>Only answer the questions in this group if all reclamation steps have been completed.</i>	
Requesting a reclamation approval with this submission	Yes
What was the total reclamation surface area (in square feet) for this site	4600
What was the total volume of replacement material (in cubic yards) for this site	0
<i>Per Paragraph (1) of Subsection D of 19.15.29.13 NMAC the reclamation must contain a minimum of four feet of non-waste containing, uncontaminated, earthen material with chloride concentrations less than 600 mg/kg as analyzed by EPA Method 300.0, or other test methods approved by the division. The soil cover must include a top layer, which is either the background thickness of topsoil or one foot of suitable material to establish vegetation at the site, whichever is greater.</i>	
Is the soil top layer complete and is it suitable material to establish vegetation	Yes
On what (estimated) date will (or was) the reseeded commence(d)	09/01/2026
Summarize any additional reclamation activities not included by answers (above)	Since the fire burned some of the vegetation within the release extent, the Site will be seeded with BLM seed mix #2 for sandy sites
<i>The responsible party must attach information demonstrating they have complied with all applicable reclamation requirements and any conditions or directives of the OCD. This demonstration should be in the form of attachments (in .pdf format) including a scaled site map, any proposed reseeded plans or relevant field notes, photographs of reclaimed area, and a narrative of the reclamation activities. Refer to 19.15.29.13 NMAC.</i>	
I hereby certify that the information given above is true and complete to the best of my knowledge and understand that pursuant to OCD rules and regulations all operators are required to report and/or file certain release notifications and perform corrective actions for releases which may endanger public health or the environment. The acceptance of a C-141 report by the OCD does not relieve the operator of liability should their operations have failed to adequately investigate and remediate contamination that pose a threat to groundwater, surface water, human health or the environment. In addition, OCD acceptance of a C-141 report does not relieve the operator of responsibility for compliance with any other federal, state, or local laws and/or regulations. The responsible party acknowledges they must substantially restore, reclaim, and re-vegetate the impacted surface area to the conditions that existed prior to the release or their final land use in accordance with 19.15.29.13 NMAC including notification to the OCD when reclamation and re-vegetation are complete.	
I hereby agree and sign off to the above statement	Name: Hadlie Stout Title: Environmental Representative II Email: Hadlie_stout@eogresources.com Date: 05/07/2026

Sante Fe Main Office  
Phone: (505) 476-3441

General Information  
Phone: (505) 629-6116

Online Phone Directory  
<https://www.emnrd.nm.gov/ocd/contact-us>

**State of New Mexico**  
**Energy, Minerals and Natural Resources**  
**Oil Conservation Division**  
**1220 S. St Francis Dr.**  
**Santa Fe, NM 87505**

QUESTIONS, Page 8

Action 582931

**QUESTIONS (continued)**

Operator: EOG RESOURCES INC 5509 Champions Drive Midland, TX 79706	OGRID: 7377
	Action Number: 582931
	Action Type: [C-141] Reclamation Report C-141 (C-141-v-Reclamation)

**QUESTIONS**

<b>Revegetation Report</b>	
<i>Only answer the questions in this group if all surface restoration, reclamation and re-vegetation obligations have been satisfied.</i>	
Requesting a restoration complete approval with this submission	No
<i>Per Paragraph (4) of Subsection (D) of 19.15.29.13 NMAC for any major or minor release containing liquids, the responsible party must notify the division when reclamation and re-vegetation are complete.</i>	

Sante Fe Main Office  
Phone: (505) 476-3441

General Information  
Phone: (505) 629-6116

Online Phone Directory  
<https://www.emnrd.nm.gov/oecd/contact-us>

**State of New Mexico**  
**Energy, Minerals and Natural Resources**  
**Oil Conservation Division**  
**1220 S. St Francis Dr.**  
**Santa Fe, NM 87505**

CONDITIONS

Action 582931

**CONDITIONS**

Operator: EOG RESOURCES INC 5509 Champions Drive Midland, TX 79706	OGRID: 7377
	Action Number: 582931
	Action Type: [C-141] Reclamation Report C-141 (C-141-v-Reclamation)

**CONDITIONS**

Created By	Condition	Condition Date
scwells	None	5/18/2026