

<b>Spill Volume(Bbls) Calculator</b>		
<i>Inputs in blue, Outputs in red</i>		
Length(Ft)	Width(Ft)	Depth(In)
52.000	100.000	2.000
Cubic Feet Impacted		866.667
Barrels		154.35
Soil Type		Lined Containment
Bbls Assuming 100% Saturation		154.35
Saturation	Fluid present with shovel/backhoe	
Estimated Barrels Released		154.40000

<b>Instructions</b>
1. Input spill measurements below. Length and width need to be input in feet and depth in inches.
2. Select a soil type from the drop down menu.
3. Select a saturation level from the drop down menu.
(For data gathering instructions see appendix tab)

<b>Measurements</b>	
Length (ft)	52
Width (ft)	100
Depth (in)	2.000









GJ WEST COOP UNIT 92 TB

Incident ID nAPP2606927793

PREPARED BY:  
PIMA ENVIRONMENTAL SERVICES, LLC

PREPARED FOR:  
Spur Energy

## Liner Inspection and Closure Report

April 27, 2026

FACILITY NAME	GJ WEST COOP UNIT 92 TB
DATE OF RELEASE	3/6/2026
INCIDENT NO.	nAPP2606927793



Pima Environmental Services  
 5614 N. Lovington Highway  
 Hobbs, NM 88240  
 575-964-7740

<b>Site Characterization</b>	
DTGW What is the shallowest DTGW beneath the area affected by the release in ft below ground surface (ft bgs)	Between 75 and 100 ft.
GW Depth Determination What method was used to determine the DTGW?	NM OSE iWaters Database Search
Ground or Surface Water Impacted Did this release impact GW or Surface Water?	No
<b>What is the min. distance between the closest lateral extents of the release and the following surace areas?</b>	
Distance to Watercourse A continuously flowing watercourse or any other significant watercourse?	> 5 mi.
Distance to Lakebed Any lakebed, sinkhole, or playa lake (measured from the ordinary high-water mark)?	> 5 mi.
Distance to Public An occupied permanent residence, school, hospital, institution, or church?	> 5 mi.
Distance to Private A spring or a private domestic FW well used by less than five households for domestic or stock watering purposes?	Between 1 mi. and 5 mi.
Distance to Fresh Water Any other FW well spring?	Between 1 mi. and 5 mi.
Within Municipal Boundaries Incorporated municipal boundaries or a defined municipal FW well field?	> 5 mi.
Distance to Wetland A wetland?	Between 1/2 mi. and 1 mi.
Overlying Subsurface Mine A subsurface mine?	> 5 mi.
Overlying (Non-Karst) Unstable Area An (non-karst) unstable area?	> 5 mi.
Risk of Karst Geology Categorize the risk of this well/site being in a karst geology?	Low
Distance to or Within 100 yr Floodplain A 100-year floodplain?	Between 1000 ft and 1/2 mi.
Areas NOT Other Site Did the release impact areas not on exploration, development, production, or storage site?	No
<b>Remediation Plan</b>	
Have the lateral and vertical extents of contamination been fully delineated?	Yes
Lined Containment Area Only Was this release entirely contained within a lined containment area?	Yes
<b>Soil Containment Sampling</b>	
Chloride Constituent Chloride (mg/kg)	(EPA 300.00 or SW4500 Cl B?) 0
	(EPA SW-846 Method 8015M)?
TPH (GRO+DRO+MRO) Constituent TPH (mg/kg)	0
	(EPA SW-846 Method 8015M)?
GRO + DRO Constituent GRO-DRO (mg/kg)	0
	(EPA SW-846 Method 8021B or 8260B)?
BTEX Constituent BTEX (mg/kg)	0
	(EPA SW-846 Method 8021B or 8260B)?
Benzene Constituent Benzene (mg/kg)	0
<b>Per Subsection B of 19.15.29.11 NMAC unless the site characterization report includes competed efforts at remediation, the report must include a proposed remediation plan in accordance with 19.15.29 NMAC, which includes the anticipated timelines for beginning and completing the remediation.</b>	
Start of Remediation On what estimated date will remediation commence?	3/17/2026
Start of Sampling or Liner Inspection On what date will (or did) the final sampling or liner inspection occur?	3/18/2026
Finish of Remediation On what date will (or was) the remediation complete(d)?	3/18/2026
Surface Area (sq ft) To Be Reclaimed What is the estimated surface area (in sq ft) that will be reclaimed?	0
Surface Area (sq ft) To Be Remediated What is the estimated surface are (in sq ft) that will be remediated?	4,600
Volume (cu yd) To Be Remediated What is the estimated volume (in cubic yds) that will be remediated?	0
<b>Remediation Plan (Cont.) Please answer all that apply</b>	
Ex Situ Excavation Off-Site (Ex Situ) Excavation and off-site disposal (i.e. dig and haul, hydrovac, etc)?	No
Ex Situ Excavation On-Site (Ex Situ) Excavation and on-site remediation (i.e. On-Site Land Farms)?	No
In Situ Soil Vapor Extraction (SVE)?	No
In Situ Chemical Processing (In Situ) Chemical processing (i.e. Soil Shredding, Potassium Permanganate, etc.)?	No
In Situ Biological Processing (In Situ) Biological processing (i.e. Microbes/Fertilizer, etc.)?	No
In Situ Physical Processing (In Situ) Physical processing (i.e. Soil Washing, Gypsum, Dinking, etc.)?	No
In Situ Ground Water Abatement GW Abatement pursuant to 19.15.30 NMAC?	No
Remediation Other Other (Non-listed remedial process)?	No
<b>Deferral Request Only</b>	
Requesting a deferral of the remediation closure due date with the approval of this submission	No

FACILITY NAME	GJ WEST COOP UNIT 92 TB
DATE OF RELEASE	3/6/2026
INCIDENT NO.	nAPP2606927793



Pima Environmental Services  
 5614 N. Lovington Highway  
 Hobbs, NM 88240  
 575-964-7740

Requesting a remediation closure approval with this submission?	Yes
Have the lateral and vertical extents of contamination been fully delineated?	Yes
Was this release entirely contained within a lined containment area?	Yes
<b>Restored Areas For Production Use</b> All areas reasonably needed for production or subsequent drilling operations have been stabilized, returned to the sites existing grade, and have a soil cover that prevents ponding of water, minimizing dust and erosion?	Yes
<b>Total Surface Area (sq ft) Remediated</b> What was the total surface area (sq ft) remediated?	4,600
<b>Total Volume (cu yd) Remediated</b> What was the total volume (cubic yards) remediated?	0
<b>Reclaimed to Condition Prior Release</b> All areas not reasonably needed for production or subsequent drilling operations have been reclaimed to contain a minimum of four ft of non-waste contain earthen material with concentrations less than 600 mg/kg chlorides, 100 mg/kg TPH, 50 mg/kg BTEX and 10 mg/kg Benzene?	Yes
<b>Total Surface Area (sq ft) Reclaimed</b> What was the total surface area (in sq ft) reclaimed?	0
<b>Remediation Summary</b> Summarize any additional remedialton activities not included by answers (above).	The lined containment was power-washed, and all standing fluids were removed using a vacuum truck. Following remediation, a liner inspection was conducted, confirming that the containment liner remained intact and maintained its integrity.



**Pima Environmental Services**  
**5614 N. Lovington Highway**  
**Hobbs, NM 88240**  
**575-964-7740**

April 27, 2026

NMOCD District 2  
811 S. First St  
Artesia, NM, 88210

Bureau of Land Management  
620 East Green Street  
Carlsbad, NM 88220

**RE: Liner Inspection and Closure Report**  
**GJ WEST COOP UNIT 92 TB**  
**Facility ID: [fAB1434354066]**  
**GPS: Latitude 32.80261 Longitude -104.07831**  
**UL- J, Section 28, Township 17S, Range 29E**  
**NMOCD Reference No. nAPP2606927793**

Spur Energy Partners (Spur) has contracted Pima Environmental Services, LLC (Pima) to perform a liner inspection and prepare this closure report for the release of produced water that happened on the GJ West Coop Unit 92 TB (Site). An initial release was discovered on March 6, 2026. This incident was assigned Incident ID nAPP2606927793, by the New Mexico Oil Conservation Division (NMOCD).

#### **Site Information and Site Characterization**

The Site is located approximately 5.80 miles southwest of Loco Hills, NM. This spill site is in Unit J, Section 28, Township 17S, Range 29E, Latitude 32.80261 Longitude -104.07831, Eddy County, NM. A Location Map can be found in Figure 1.

A review of well water data from the New Mexico Office of the State Engineer indicates that no registered water wells are located within a 0.5-mile radius of the site. This finding is corroborated by data from the United States Geological Survey, which similarly shows no water wells within the same distance of the site boundary. Detailed references to the surveys and mapped well locations are provided in Appendix A, including the associated figures. The site is situated within an area identified as having a low potential for karst development, as shown in Figure 3. A topographic map of the site and surrounding area is provided in Figure 2 to further illustrate the local terrain and geologic context.

#### **Release Information**

**nAPP2606927793:** On March 6, 2026, a water transfer pump seal failed, releasing produced water into the lined containment. Approximately 155 barrels of produced water were released. Spur personnel immediately initiated response actions and successfully recovered all fluids using a vacuum truck. No impacts occurred outside of the lined containment. A site map is provided in Figure 4.

#### **Site Assessment and Liner Inspection**

On March 15, 2026, Spur personnel submitted a notification for a liner inspection, adhering to the necessary 48-hour notice period. The details of the 48-hour notification can be referenced in Appendix C.

On March 18, 2026, Pima Environmental conducted a thorough inspection of the lined containment area. The evaluation process included cleaning the liner with a power washer and using a vacuum truck to ensure the complete removal of any residual fluids. The inspection confirmed that the system remained intact and successfully retained all fluids. As a result, the liner was deemed functional, preventing any further environmental impact. A detailed report, including photographic evidence, is provided in Appendices C and D.

**Closure Request**

After careful review, Pima requests that this incident nAPP2606927793 be closed. Spur has complied with the applicable closure requirements.

For questions or additional information, please feel free to contact:  
Spur Energy – Katherine Purvis at 575-441-8619 or katherine.purvis@spurenergy.com  
Pima Environmental Services – Sebastian Orozco at 619-721-4813 or Sebastian@pimaoil.com.

**Attachments**

Figures:

- 1- Location Map
- 2- Topographic Map
- 3- Karst Map
- 4- Site Map

Appendices:

- Appendix A- Referenced Water Surveys
- Appendix B- Soil Survey, Geological Data, FEMA Flood Map, Wetland Map
- Appendix C-48 Hour Notification and Liner Inspection Form
- Appendix D- Photographic Documentation



## Figures:

Figure 1- Location Map

Figure 2- Topographic Map

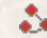

Figure 3- Karst Map

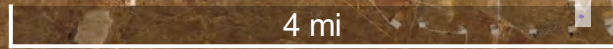
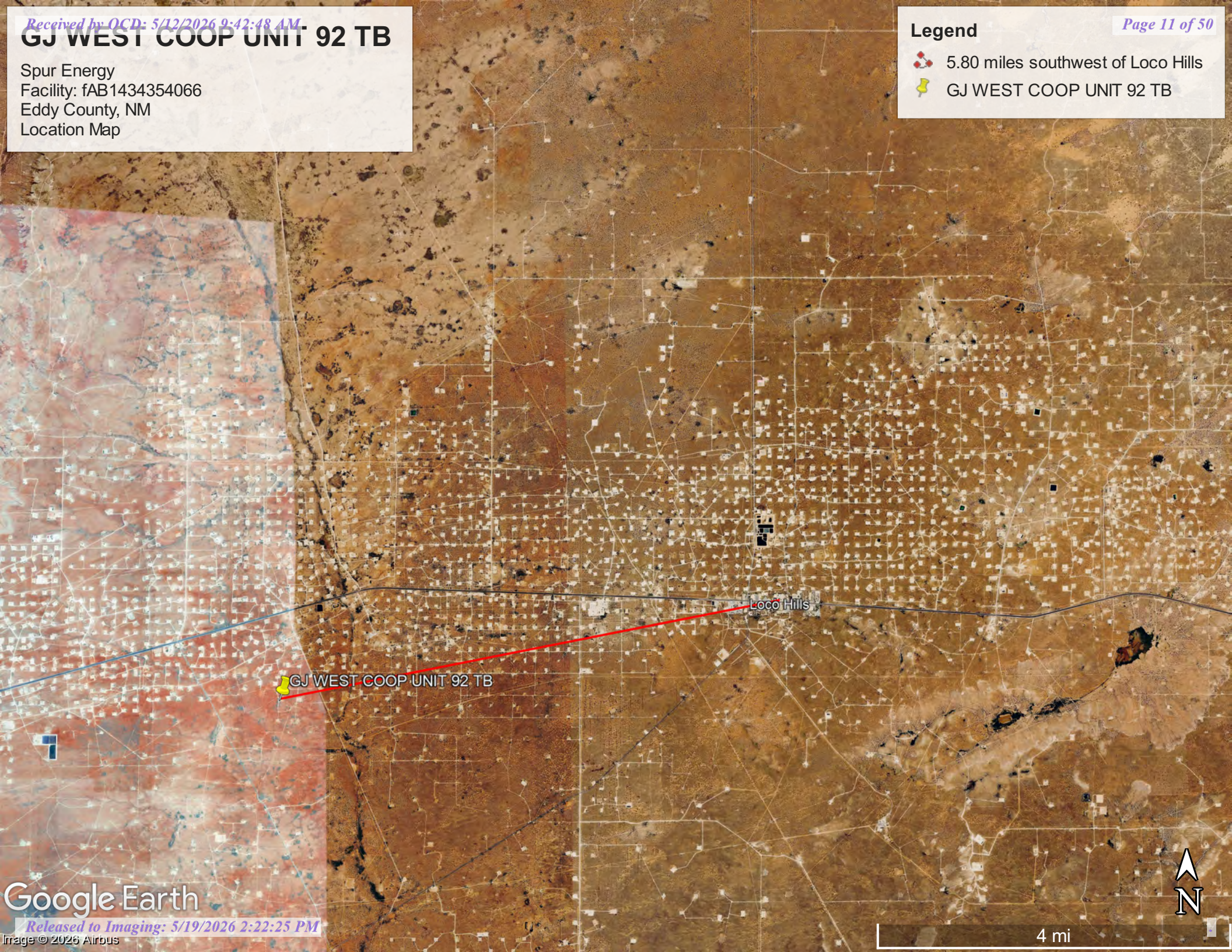
Figure 4- Site Map

# GJ WEST COOP UNIT 92 TB

Spur Energy  
Facility: fAB1434354066  
Eddy County, NM  
Location Map

## Legend

-  5.80 miles southwest of Loco Hills
-  GJ WEST COOP UNIT 92 TB

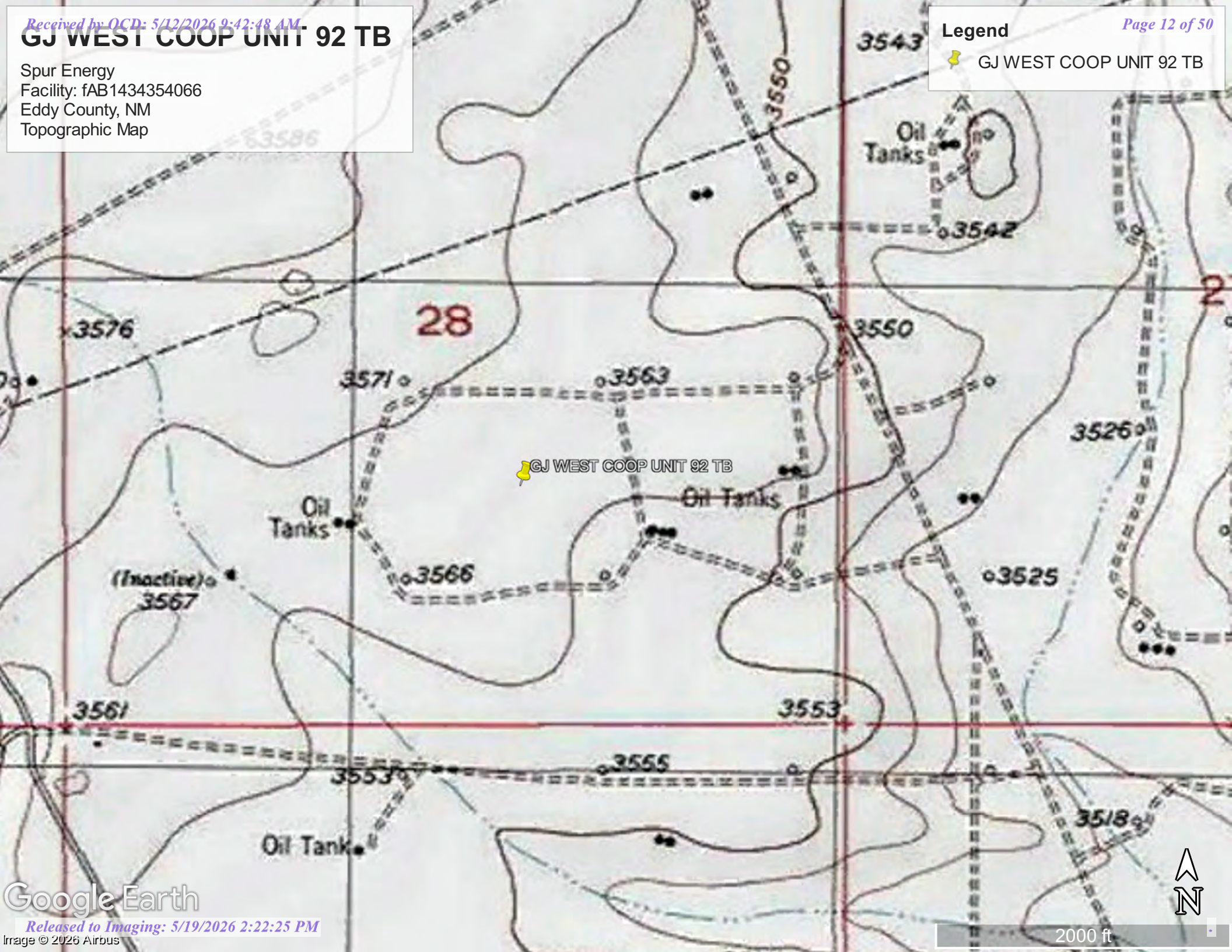


# GJ WEST COOP UNIT 92 TB

Spur Energy  
Facility: fAB1434354066  
Eddy County, NM  
Topographic Map

**Legend**

-  GJ WEST COOP UNIT 92 TB

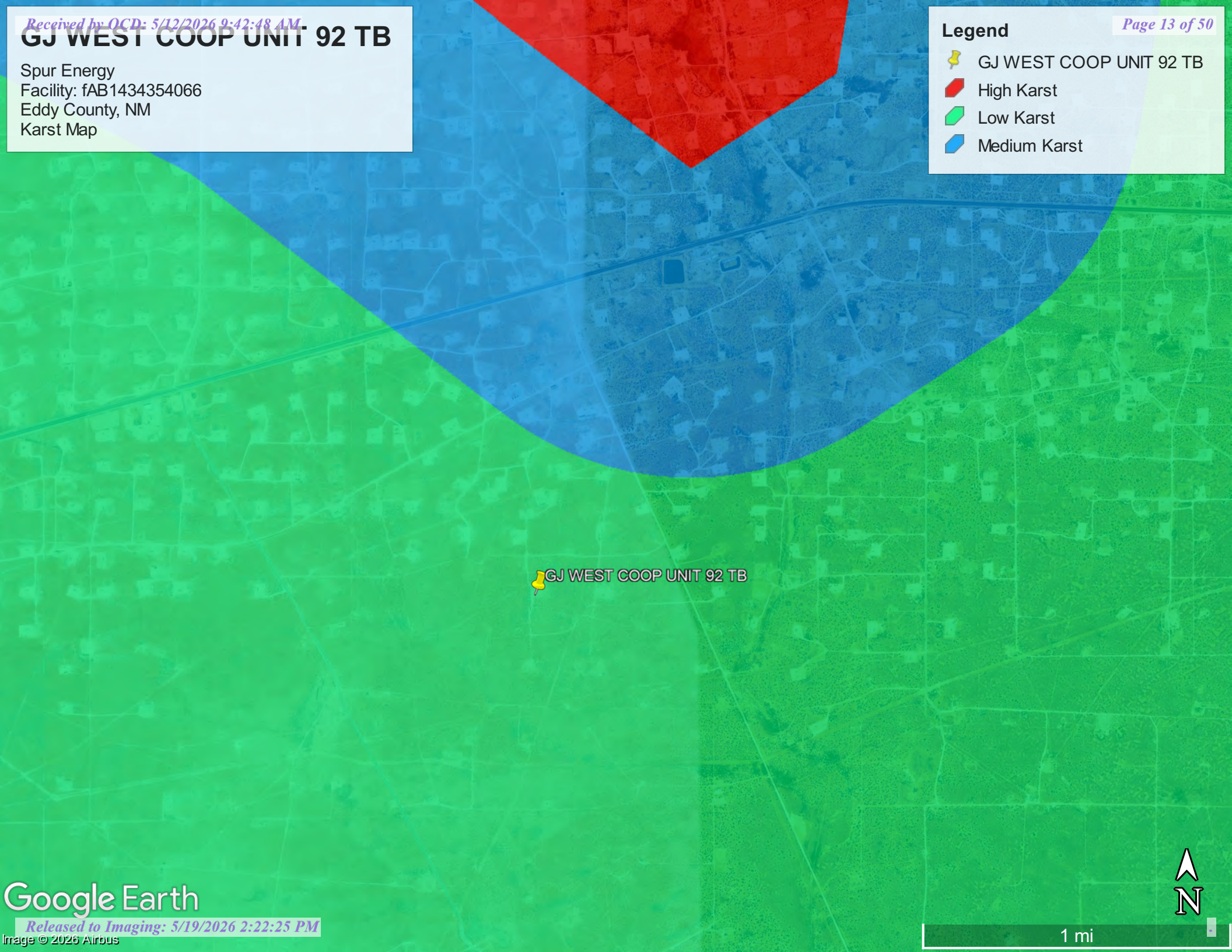



# GJ WEST COOP UNIT 92 TB

Spur Energy  
Facility: fAB1434354066  
Eddy County, NM  
Karst Map

**Legend**

-  GJ WEST COOP UNIT 92 TB
-  High Karst
-  Low Karst
-  Medium Karst




 GJ WEST COOP UNIT 92 TB



# GJ WEST COOP UNIT 92 TB

Spur Energy  
Facility: fAB1434354066  
Eddy County, NM  
Site Map

## Legend

 Liner Inspection Area





## Appendix A


### Water Surveys:

- OSE
- USGS
- Surface Water Map

# Point of Diversion Summary

quarters are 1=NW 2=NE 3=SW 4=SE  
quarters are smallest to largest

NAD83 UTM in meters

Well Tag	POD Nbr	Q64	Q16	Q4	Sec	Tws	Rng	X	Y	Map
RA 11807	POD1	NW	NE	SW	22	17S	29E	587359.7	3631585.6	

\* UTM location was derived from PLSS - see Help

<b>Driller License:</b>	1348	<b>Driller Company:</b>	TAYLOR WATER WELL SERVICE		
<b>Driller Name:</b>	TAYLOR, CLINTON E.				
<b>Drill Start Date:</b>	2012-11-23	<b>Drill Finish Date:</b>	2012-11-26	<b>Plug Date:</b>	
<b>Log File Date:</b>	2013-03-26	<b>PCW Rcv Date:</b>		<b>Source:</b>	Shallow
<b>Pump Type:</b>		<b>Pipe Discharge Size:</b>		<b>Estimated Yield:</b>	4
<b>Casing Size:</b>	4.50	<b>Depth Well:</b>	131	<b>Depth Water:</b>	76

## Water Bearing Stratifications:

Top	Bottom	Description
104	128	Other/Unknown

## Casing Perforations:

Top	Bottom
91	131

The data is furnished by the NMOSE/ISC and is accepted by the recipient with the expressed understanding that the OSE/ISC make no warranties, expressed or implied, concerning the accuracy, completeness, reliability, usability, or suitability for any particular purpose of the data.

3/12/26 1:05 PM MST

Point of Diversion Summary

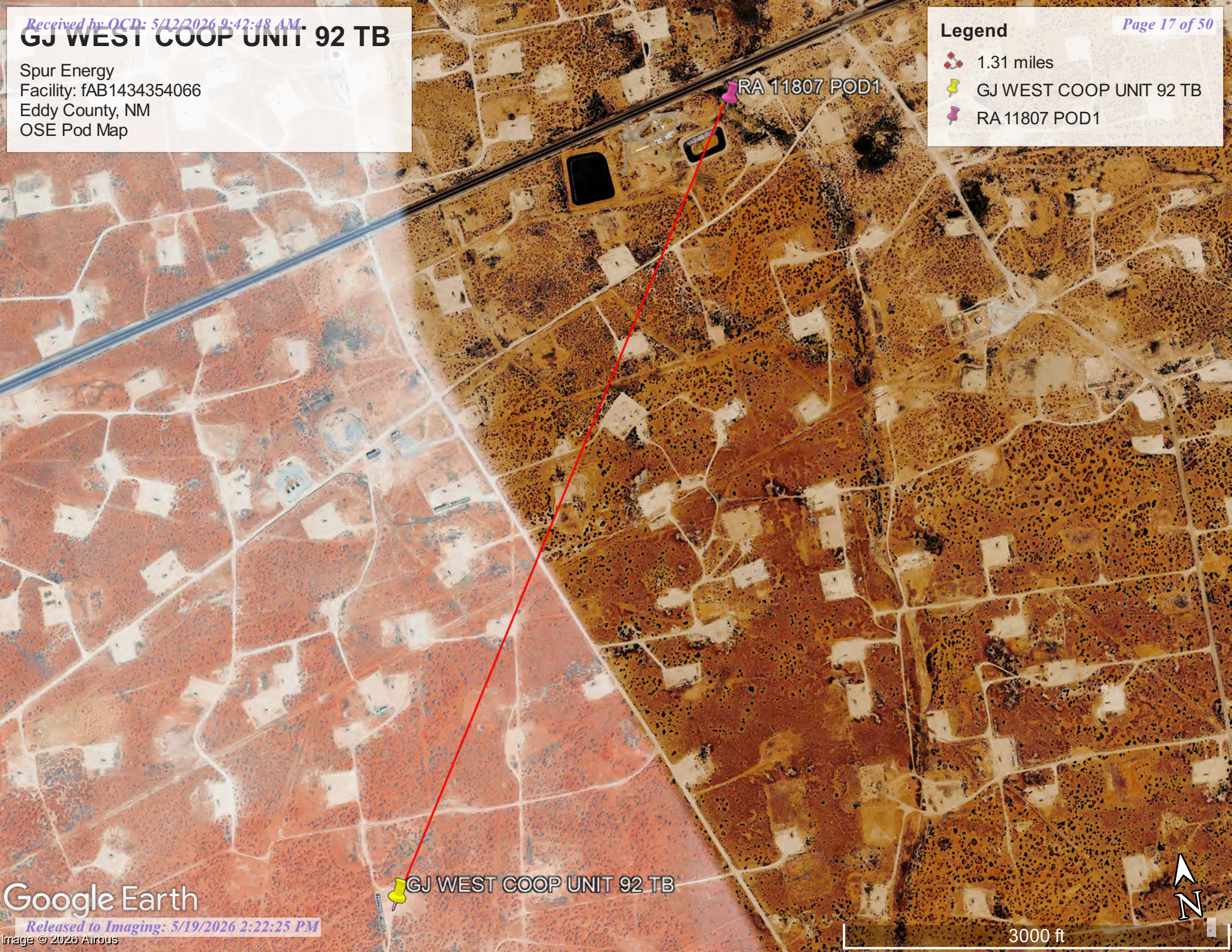
©2024 New Mexico Office of the State Engineer, All Rights Reserved. | [Disclaimer](#) | [Contact Us](#) | [Help](#) | [Home](#) |

# GJ WEST COOP UNIT 92 TB

Spur Energy  
Facility: fAB1434354066  
Eddy County, NM  
OSE Pod Map

**Legend**


-  1.31 miles
-  GJ WEST COOP UNIT 92 TB
-  RA 11807 POD1



Google Earth

 GJ WEST COOP UNIT 92 TB

 RA 11807 POD1

3000 ft 

# Monitoring location

17S.27E.11.12311 - USGS-325122104151001

**DID YOU KNOW** You can see all water data collected at this monitoring location in the *Available data* section of the page. Learn more about [centralized water data delivery](#) in WDFN.

1 year  10 years  Period of record

Scale Linear

[Log](#)

## Field measurements

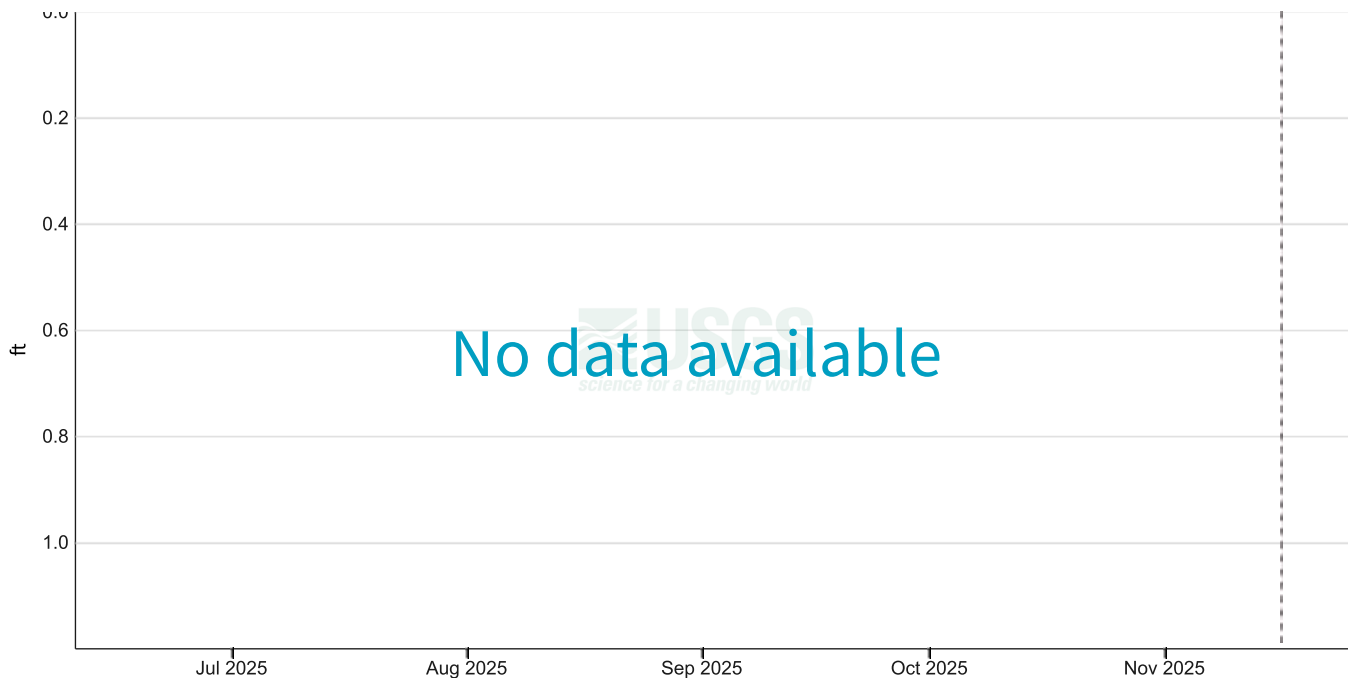
**17S.27E.11.12311 - USGS-?**

Questions or Comments

- using graph zoom -

March 12, 2025 - March 12, 2026

**Depth to water level, feet below land surface**



IMPORTANT Data may be [provisional](#)

[Show legend](#) ▾

[Hide graph details](#) ▲

Value	Status
<a href="#">Hide graph details ^</a>	

Change time span

Download data

View data records

### Available data

Select data types to graph from categories based on the way the data were collected.

Learn about the data collection categories

[Expand all data collections](#)

**Continuous data**  
0 data types available

**Daily data**  
0 data types available

**Field measurements**  
3 data types available - data from 1994-02-24 to 2015-01-21

[Hide these data types](#)

Field measurements are physically measured values collected during a visit to the monitoring location.  
[Learn about Field measurements](#)

	Data type	Data date range
Graphed	Depth to water level, feet below land surface	1994-02-24 2015-01-21
<a href="#">Graph it</a>	Groundwater level above NAVD 1988, feet	1994-02-24 2015-01-21
<a href="#">Graph it</a>	Groundwater level above NGVD 1929, feet	1994-02-24 2015-01-21

[Hide these data types](#)

**Discrete sample data**  
0 observed properties (data types) available

**Statistical tables for select daily data types**

0 data types available

## Location details and information

Hide location details

Metadata Element	Location Metadata	Metadata Code
<b>Agency</b> ⓘ	U.S. Geological Survey	USGS
<b>Location identification number</b> ⓘ	325122104151001	n/a
<b>Location name</b> ⓘ	17S.27E.11.12311	n/a
<b>Site type</b> ⓘ	Well ⓘ	GW
<b>Decimal latitude (WGS84)</b>	32.8562243285742	n/a
<b>Decimal longitude (WGS84)</b>	-104.253291842215	n/a
<b>Latitude-longitude method</b> ⓘ	Interpolated from map	M
<b>Latitude-longitude accuracy</b> ⓘ	Unknown or unspecified.	U
<b>District</b> ⓘ	New Mexico	35
<b>State</b> ⓘ	New Mexico	35
<b>County</b> ⓘ	Eddy County	015
<b>Country</b>	United States of America	n/a
<b>Altitude of gage/land surface</b>	3390 feet	n/a
<b>Method altitude determined</b>	Interpolated from topographic map.	M
<b>Altitude accuracy</b>	5 feet	n/a

Metadata Element	Location Metadata	Metadata Code
<b>Altitude datum</b> ⓘ	National Geodetic Vertical Datum of 1929	NGVD29
<b>Subbasin hydrologic unit</b> ⓘ	Upper Pecos-Black	13060011
<b>Drainage basin</b> ⓘ		n/a
<b>Date of first construction</b> ⓘ		n/a
<b>Drainage area</b> ⓘ		n/a
<b>Contributing drainage area</b>		n/a
<b>Time zone abbreviation</b>	MST	n/a
<b>Site honors Daylight Saving Time</b> ⓘ	Y	n/a
<b>National aquifer</b>	Other aquifers	N9999OTHER
<b>Local aquifer</b>	Artesia Group	313ARTS
<b>Local aquifer type</b>	Confined single aquifer	C
<b>Well depth</b>	100 feet	n/a
<b>Hole depth</b> ⓘ		n/a
<b>Source of depth data</b>		n/a

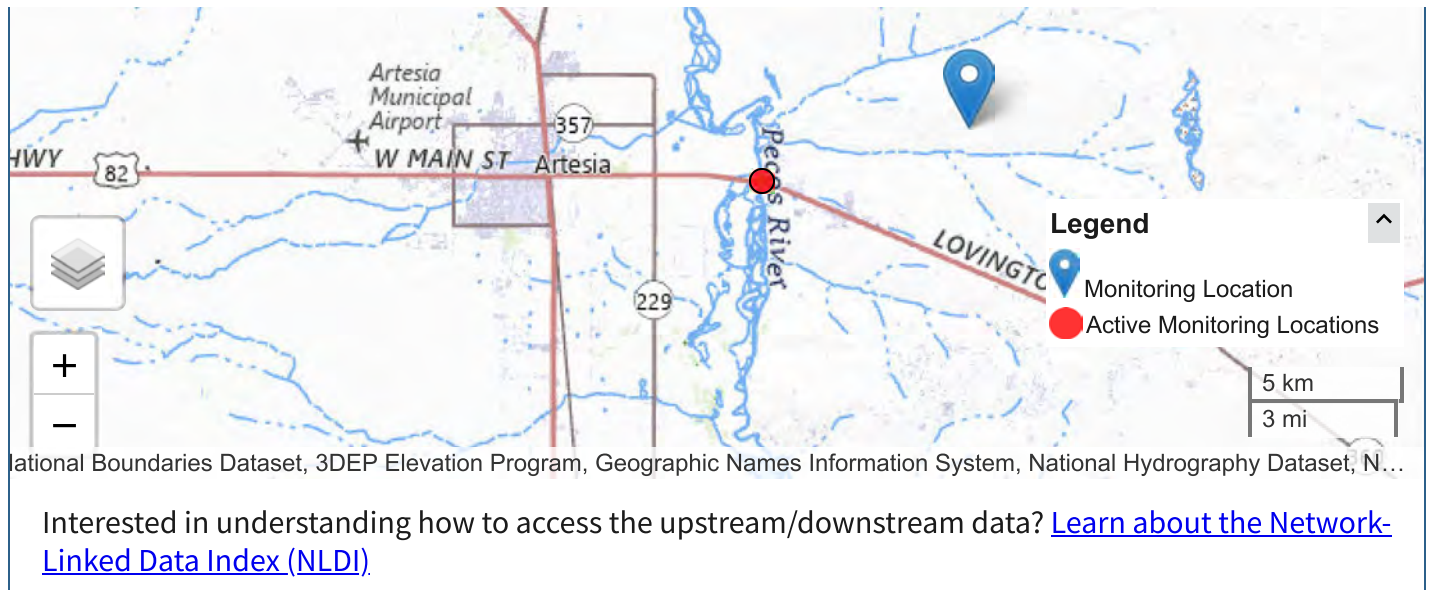
## Monitoring locations with continuous data in last 120 days

1 locations found

[View these locations in My Favorites](#)

[Use Explore USGS Water Data to discover additional data near this location](#)





DOI Privacy Policy | Legal | Accessibility | Site Map | Contact USGS




Follow

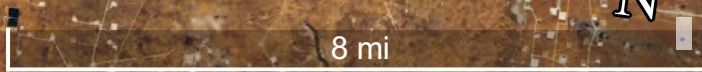
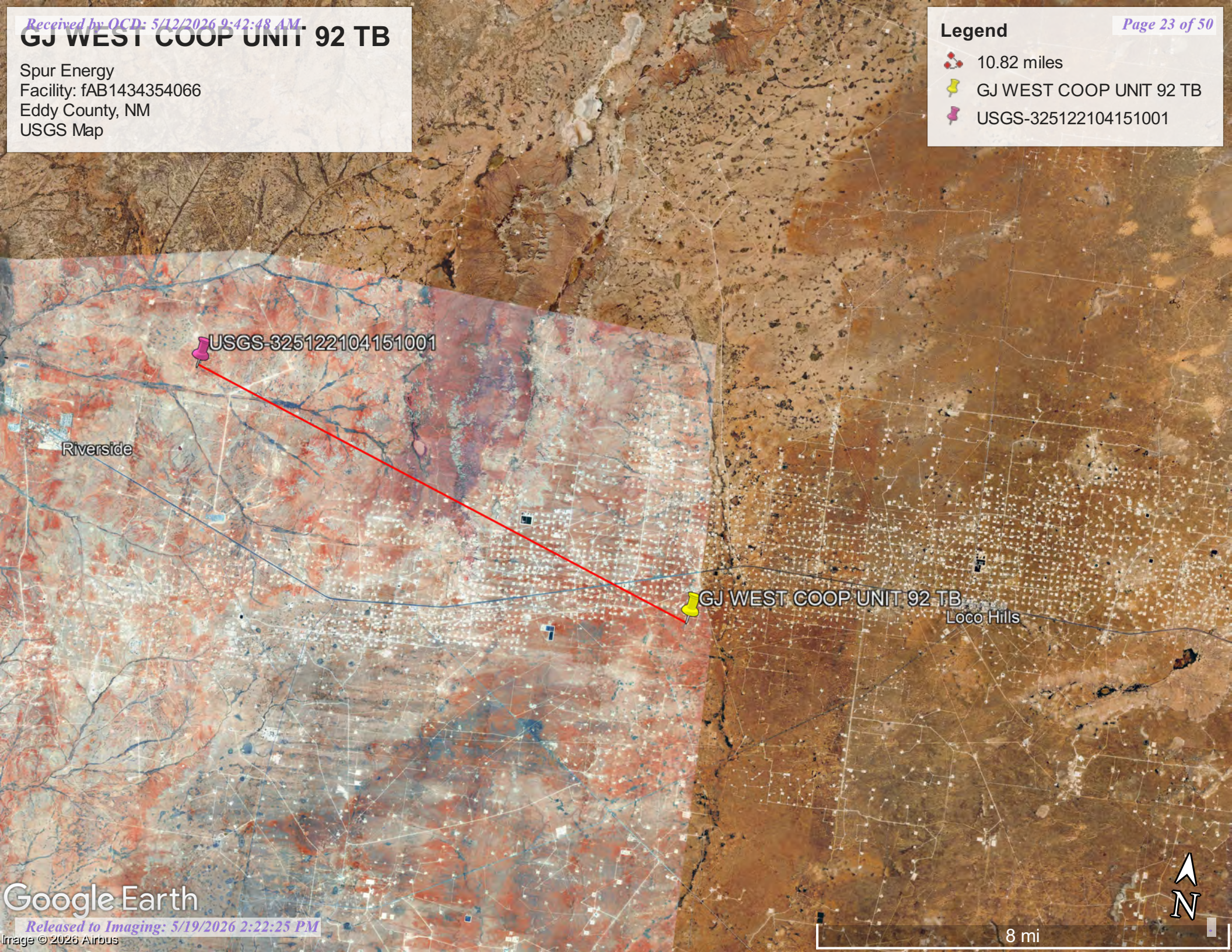
U.S. Department of the Interior | DOI Inspector General | White House | No Fear Act | FOIA

# GJ WEST COOP UNIT 92 TB

Spur Energy  
Facility: fAB1434354066  
Eddy County, NM  
USGS Map

**Legend**




-  10.82 miles
-  GJ WEST COOP UNIT 92 TB
-  USGS-325122104151001

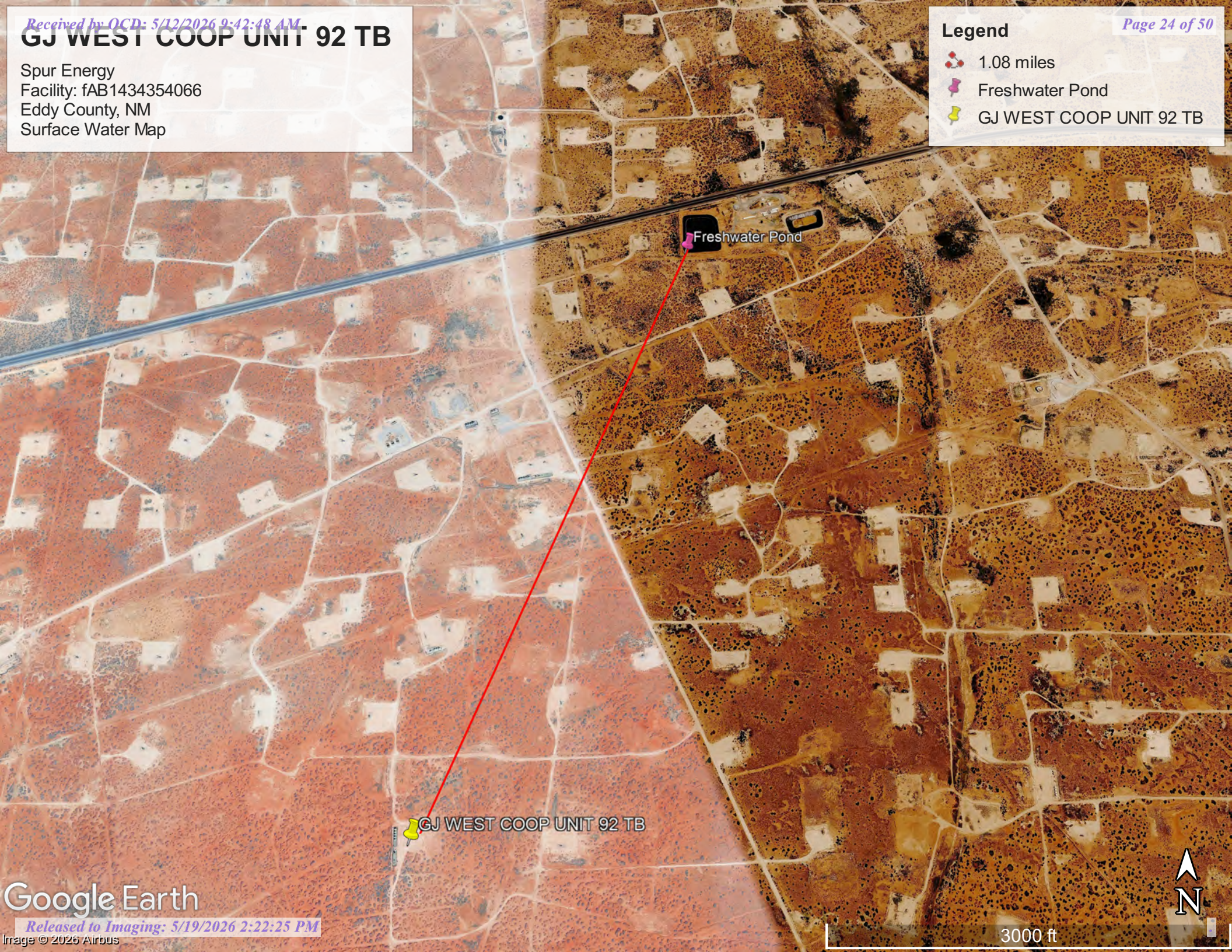


# GJ WEST COOP UNIT 92 TB

Spur Energy  
Facility: fAB1434354066  
Eddy County, NM  
Surface Water Map

**Legend**

-  1.08 miles
-  Freshwater Pond
-  GJ WEST COOP UNIT 92 TB



Freshwater Pond

GJ WEST COOP UNIT 92 TB





## Appendix B

- Soil Survey & Soil Maps
- Geological Data
- FEMA Flood Map
- Wetlands Map

Map Unit Description: Berino-Dune land complex, 0 to 3 percent slopes---Eddy Area, New Mexico

---

## Eddy Area, New Mexico

### BD—Berino-Dune land complex, 0 to 3 percent slopes

#### Map Unit Setting

*National map unit symbol:* 1w44  
*Landscape:* Uplands  
*Elevation:* 2,450 to 5,500 feet  
*Mean annual precipitation:* 8 to 15 inches  
*Mean annual air temperature:* 57 to 70 degrees F  
*Frost-free period:* 180 to 230 days  
*Farmland classification:* Not prime farmland

#### Map Unit Composition

*Berino and similar soils:* 45 percent  
*Dune land:* 40 percent  
*Minor components:* 15 percent  
*Estimates are based on observations, descriptions, and transects of the mapunit.*

#### Description of Berino

##### Setting

*Landscape:* Uplands  
*Landform:* Fan piedmonts, Sandy plains  
*Landform position (three-dimensional):* Riser  
*Down-slope shape:* Convex  
*Across-slope shape:* Linear  
*Parent material:* Mixed alluvium and/or eolian sands

##### Typical profile

*H1 - 0 to 17 inches:* fine sandy loam  
*H2 - 17 to 50 inches:* sandy clay loam  
*H3 - 50 to 60 inches:* loamy sand

##### Properties and qualities

*Slope:* 0 to 3 percent  
*Depth to restrictive feature:* More than 80 inches  
*Drainage class:* Well drained  
*Runoff class:* Low  
*Capacity of the most limiting layer to transmit water (Ksat):*  
 Moderately high to high (0.60 to 2.00 in/hr)  
*Depth to water table:* More than 80 inches  
*Frequency of flooding:* None  
*Frequency of ponding:* None  
*Calcium carbonate, maximum content:* 40 percent  
*Maximum salinity:* Very slightly saline to slightly saline (2.0 to 4.0 mmhos/cm)  
*Sodium adsorption ratio, maximum:* 1.0  
*Available water supply, 0 to 60 inches:* Moderate (about 7.7 inches)

Map Unit Description: Berino-Dune land complex, 0 to 3 percent slopes---Eddy Area, New Mexico

---

### Interpretive groups

*Land capability classification (irrigated):* 3e  
*Land capability classification (nonirrigated):* 7e  
*Hydrologic Soil Group:* B  
*Ecological site:* R070BC007NM - Loamy  
*Hydric soil rating:* No

### Description of Dune Land

#### Setting

*Landscape:* Sandhills  
*Landform:* Dune fields  
*Landform position (two-dimensional):* Shoulder, backslope, footslope  
*Landform position (three-dimensional):* Talf  
*Down-slope shape:* Linear, convex  
*Across-slope shape:* Linear, convex  
*Parent material:* Mixed alluvium and/or eolian sands

#### Typical profile

*H1 - 0 to 6 inches:* sandy loam  
*H2 - 6 to 60 inches:* sandy loam

### Interpretive groups

*Land capability classification (irrigated):* None specified  
*Land capability classification (nonirrigated):* 7e  
*Hydric soil rating:* No

### Minor Components

#### Active dune land

*Percent of map unit:* 5 percent  
*Hydric soil rating:* No

#### Cacique

*Percent of map unit:* 5 percent  
*Ecological site:* R070BD004NM - Sandy  
*Hydric soil rating:* No

#### Kermi

*Percent of map unit:* 5 percent  
*Ecological site:* R070BD005NM - Deep Sand  
*Hydric soil rating:* No

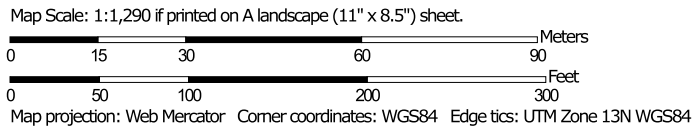
## Data Source Information

Soil Survey Area: Eddy Area, New Mexico  
Survey Area Data: Version 21, Sep 9, 2025

### Soil Map—Eddy Area, New Mexico




Soil Map may not be valid at this scale.




### MAP LEGEND


**Area of Interest (AOI)**

 Area of Interest (AOI)




















**Soils**







 Soil Map Unit Polygons

 Soil Map Unit Lines


 Soil Map Unit Points

**Special Point Features**





-  Blowout
-  Borrow Pit
-  Clay Spot
-  Closed Depression
-  Gravel Pit
-  Gravelly Spot
-  Landfill
-  Lava Flow
-  Marsh or swamp
-  Mine or Quarry
-  Miscellaneous Water
-  Perennial Water
-  Rock Outcrop
-  Saline Spot
-  Sandy Spot
-  Severely Eroded Spot
-  Sinkhole
-  Slide or Slip
-  Sodic Spot

-  Spoil Area
-  Stony Spot
-  Very Stony Spot
-  Wet Spot
-  Other
-  Special Line Features

**Water Features**

 Streams and Canals

**Transportation**

-  Rails
-  Interstate Highways
-  US Routes
-  Major Roads
-  Local Roads

**Background**

 Aerial Photography

### MAP INFORMATION

The soil surveys that comprise your AOI were mapped at 1:20,000.

**Warning:** Soil Map may not be valid at this scale.  
 Enlargement of maps beyond the scale of mapping can cause misunderstanding of the detail of mapping and accuracy of soil line placement. The maps do not show the small areas of contrasting soils that could have been shown at a more detailed scale.

Please rely on the bar scale on each map sheet for map measurements.

Source of Map: Natural Resources Conservation Service  
 Web Soil Survey URL:  
 Coordinate System: Web Mercator (EPSG:3857)

Maps from the Web Soil Survey are based on the Web Mercator projection, which preserves direction and shape but distorts distance and area. A projection that preserves area, such as the Albers equal-area conic projection, should be used if more accurate calculations of distance or area are required.

This product is generated from the USDA-NRCS certified data as of the version date(s) listed below.

Soil Survey Area: Eddy Area, New Mexico  
 Survey Area Data: Version 21, Sep 9, 2025

Soil map units are labeled (as space allows) for map scales 1:50,000 or larger.

Date(s) aerial images were photographed: Mar 22, 2025—Apr 12, 2025

The orthophoto or other base map on which the soil lines were compiled and digitized probably differs from the background imagery displayed on these maps. As a result, some minor shifting of map unit boundaries may be evident.

## Map Unit Legend

Map Unit Symbol	Map Unit Name	Acres in AOI	Percent of AOI
BD	Berino-Dune land complex, 0 to 3 percent slopes	8.6	100.0%
<b>Totals for Area of Interest</b>		<b>8.6</b>	<b>100.0%</b>

(<https://www.usgs.gov/>)

Mineral Resources (<https://www.usgs.gov/energy-and-minerals/mineral-resources-program>)  
 / Online Spatial Data (/) / Geology (/geology/) / by state (/geology/state/)  
 / New Mexico (/geology/state/state.php?state=NM)

## Eolian and piedmont deposits

XML (/geology/state/xml/NMQep;0)

JSON (/geology/state/json/NMQep;0)

Shapefile (/geology/state/unit-shape.php?unit=NMQep;0)

*Interlayered eolian sands and piedmont-slope deposits along the eastern flank of the Pecos River valley, primarily between Roswell and Carlsbad. Typically capped by thin eolian deposits.*

<b>State</b>	New Mexico (/geology/state/state.php?state=NM)
<b>Name</b>	Eolian and piedmont deposits
<b>Geologic age</b>	Holocene to middle Pleistocene
<b>Lithologic constituents</b>	Major Unconsolidated (Eolian) <i>Interlayered eolian sands and piedmont-slope deposits</i>
<b>References</b>	New Mexico Bureau of Geology and Mineral Resources, 2003, Geologic Map of New Mexico, scale 1:500,000 (includes some new polygons, faults, and attributes not in NM001 - heads up digitizing by JHorton).
<b>NGMDB product</b>	NGMDB product page for 22974 ( <a href="https://ngmdb.usgs.gov/Prodesc/proddesc_22974.htm">https://ngmdb.usgs.gov/Prodesc/proddesc_22974.htm</a> )

---

**Counties**

Chaves (/geology/state/fips-unit.php?code=f35005) - DeBaca (/geology/state/fips-unit.php?code=f35011) - Eddy (/geology/state/fips-unit.php?code=f35015) - Lea (/geology/state/fips-unit.php?code=f35025) - Roosevelt (/geology/state/fips-unit.php?code=f35041)

---

[DOI Privacy Policy \(https://www.doi.gov/privacy\)](https://www.doi.gov/privacy) | [Legal \(https://www.usgs.gov/laws/policies\\_notices.html\)](https://www.usgs.gov/laws/policies_notices.html) | [Accessibility \(https://www2.usgs.gov/laws/accessibility.html\)](https://www2.usgs.gov/laws/accessibility.html) |

[Site Map \(https://www.usgs.gov/sitemap.html\)](https://www.usgs.gov/sitemap.html) | [Contact USGS \(https://answers.usgs.gov/\)](https://answers.usgs.gov/)

---




[U.S. Department of the Interior \(https://www.doi.gov/\)](https://www.doi.gov/) | [DOI Inspector General \(https://www.doioig.gov/\)](https://www.doioig.gov/) | [White House \(https://www.whitehouse.gov/\)](https://www.whitehouse.gov/) |

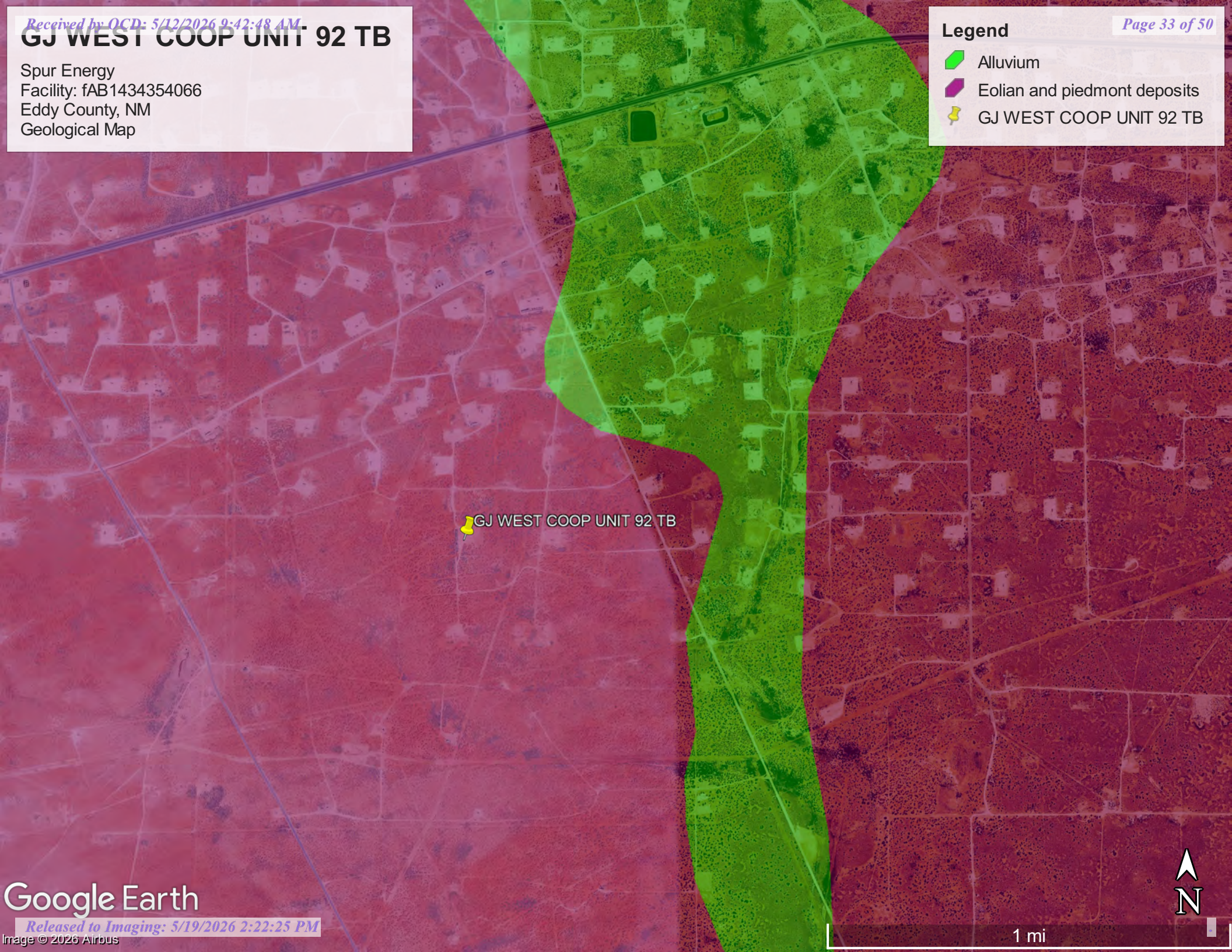
[E-gov \(https://www.whitehouse.gov/omb/management/egov/\)](https://www.whitehouse.gov/omb/management/egov/) | [No Fear Act \(https://www.doi.gov/pmb/eeo/no-fear-act\)](https://www.doi.gov/pmb/eeo/no-fear-act) | [FOIA \(https://www2.usgs.gov/foia\)](https://www2.usgs.gov/foia)

# GJ WEST COOP UNIT 92 TB

Spur Energy  
Facility: fAB1434354066  
Eddy County, NM  
Geological Map

**Legend**

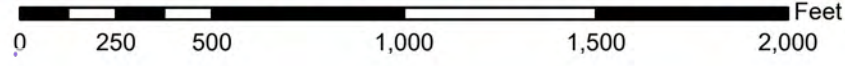
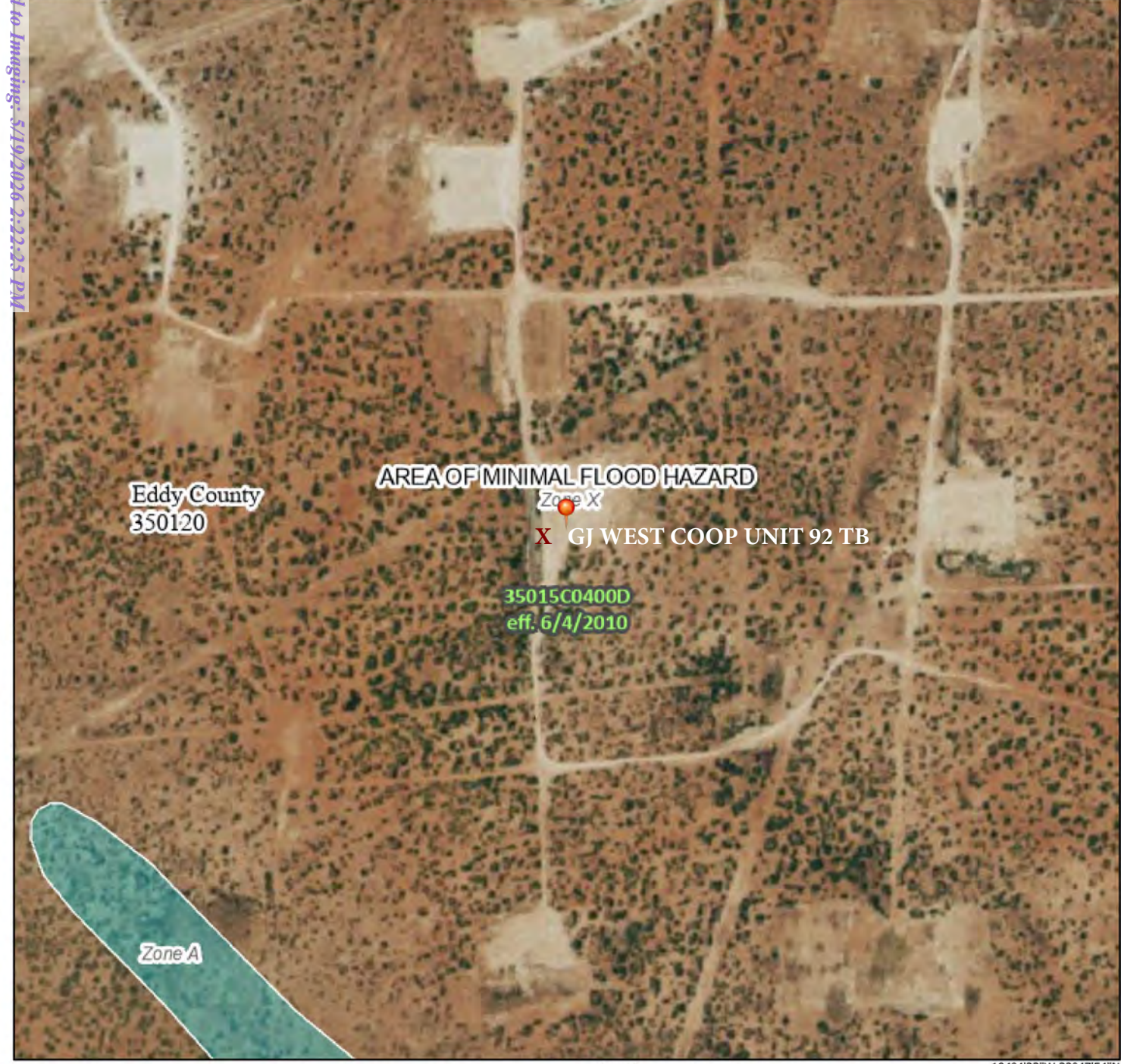
-  Alluvium
-  Eolian and piedmont deposits
-  GJ WEST COOP UNIT 92 TB



# National Flood Hazard Layer FIRMMette



104°5'1"W 32°48'25"N



1:6,000

104°4'23"W 32°47'54"N

Basemap Imagery Source: USGS National Map 2023

### Legend

SEE FIS REPORT FOR DETAILED LEGEND AND INDEX MAP FOR FIRM PANEL LAYOUT

SPECIAL FLOOD HAZARD AREAS		Without Base Flood Elevation (BFE) <i>Zone A, V, A99</i>
		With BFE or Depth <i>Zone AE, AO, AH, VE, AR</i>
		Regulatory Floodway
OTHER AREAS OF FLOOD HAZARD		0.2% Annual Chance Flood Hazard, Areas of 1% annual chance flood with average depth less than one foot or with drainage areas of less than one square mile <i>Zone B</i>
		Future Conditions 1% Annual Chance Flood Hazard <i>Zone X</i>
		Area with Reduced Flood Risk due to Levee. See Notes. <i>Zone X</i>
		Area with Flood Risk due to Levee <i>Zone X</i>
OTHER AREAS		NO SCREEN Area of Minimal Flood Hazard <i>Zone X</i>
		Effective LOMRs
GENERAL STRUCTURES		Area of Undetermined Flood Hazard <i>Zone D</i>
		Channel, Culvert, or Storm Sewer
		Levee, Dike, or Floodwall
OTHER FEATURES		20.2 Cross Sections with 1% Annual Chance
		17.5 Water Surface Elevation
		Coastal Transect
		Base Flood Elevation Line (BFE)
		Limit of Study
MAP PANELS		Jurisdiction Boundary
		Coastal Transect Baseline
		Profile Baseline
		Hydrographic Feature
		Digital Data Available
		No Digital Data Available
		Unmapped

The pin displayed on the map is an approximate point selected by the user and does not represent an authoritative property location.

This map complies with FEMA's standards for the use of digital flood maps if it is not void as described below. The basemap shown complies with FEMA's basemap accuracy standards

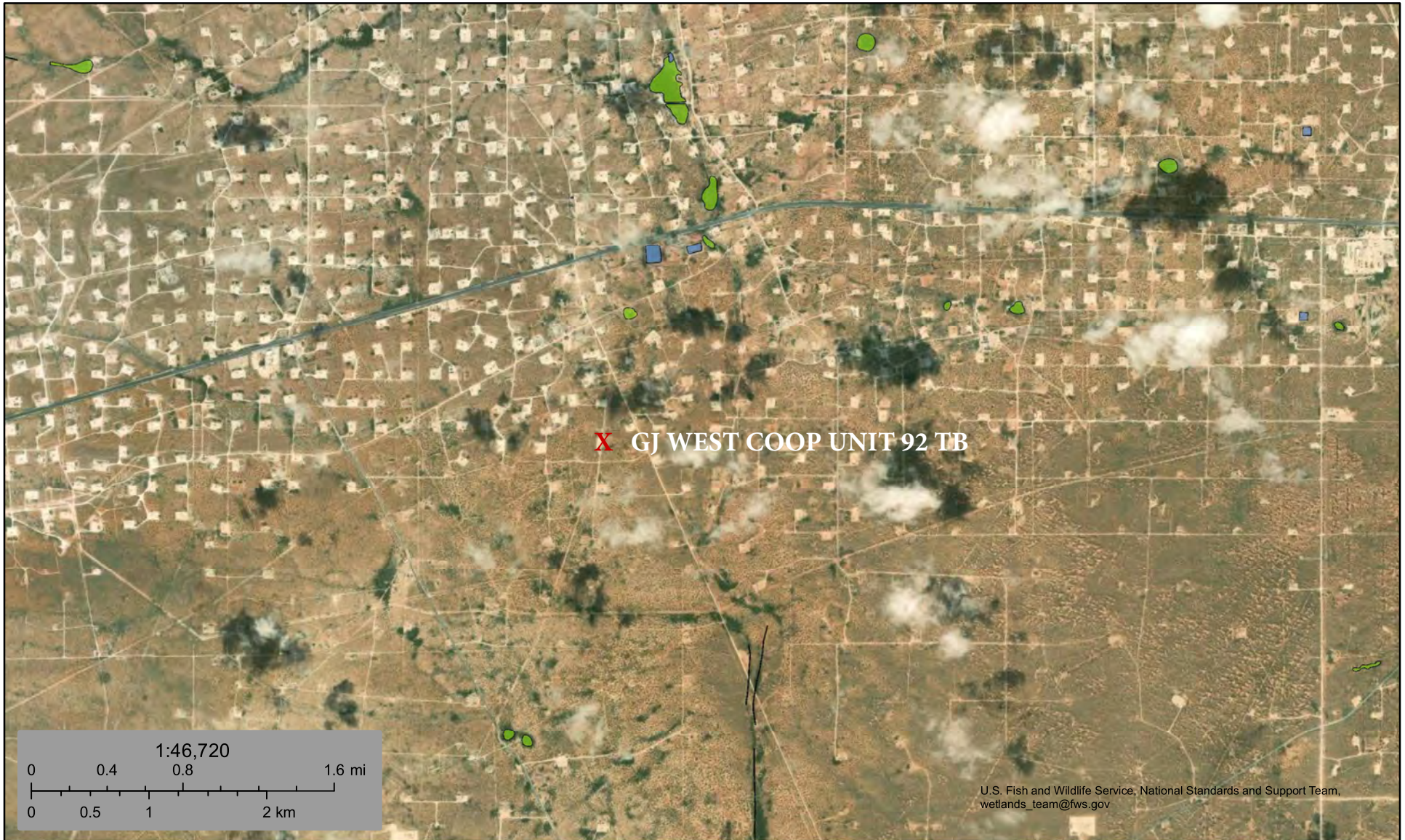
The flood hazard information is derived directly from the authoritative NFHL web services provided by FEMA. This map was exported on 3/12/2026 at 6:45 PM and does not reflect changes or amendments subsequent to this date and time. The NFHL and effective information may change or become superseded by new data over time.

This map image is void if the one or more of the following map elements do not appear: basemap imagery, flood zone labels, legend, scale bar, map creation date, community identifiers, FIRM panel number, and FIRM effective date. Map images for unmapped and unmodernized areas cannot be used for regulatory purposes.

Released to Imaging: 5/19/2026 2:22:25 PM








Received by OCD: 5/19/2026 9:42:48 AM

Page 34 of 50



March 12, 2026

**Wetlands**

- |   |                                |   |                                   |   |          |
|---|--------------------------------|---|-----------------------------------|---|----------|
|  | Estuarine and Marine Deepwater |  | Freshwater Emergent Wetland       |  | Lake     |
|  | Estuarine and Marine Wetland   |  | Freshwater Forested/Shrub Wetland |  | Other    |
|   |                                |  | Freshwater Pond                   |  | Riverine |

This map is for general reference only. The US Fish and Wildlife Service is not responsible for the accuracy or currentness of the base data shown on this map. All wetlands related data should be used in accordance with the layer metadata found on the Wetlands Mapper web site.



## Appendix C

- 48-Hour Notification
- Liner Inspection Form

**Sebastian@pimaoil.com**

---

**From:** OCDOnline@emnrd.nm.gov  
**Sent:** Sunday, March 15, 2026 5:12 PM  
**To:** sebastian@pimaoil.com  
**Subject:** The Oil Conservation Division (OCD) has accepted the application, Application ID: 562990

To whom it may concern (c/o Sebastian Orozco for Spur Energy Partners LLC),

The OCD has received the submitted *Notification for Liner Inspection for a Release* (C-141L), for incident ID (n#) nAPP2606927793.

The liner inspection is expected to take place:

**When:** 03/18/2026 @ 10:00

**Where:** J-28-17S-29E 0 FNL 0 FEL (32.80261,-104.07831)

**Additional Information:** Pima Environmental Services  
619-721-4813

**Additional Instructions:** 32.80261,-104.07831

An OCD representative may be available onsite at the date and time reported. In the absence or presence of an OCD representative, liner inspection pursuant to 19.15.29.11.A(5)(a) NMAC is required. Should there be a change in the scheduled date and time of the sampling event, then another notification should be resubmitted through OCD permitting as soon as possible.

- **Failure to notify the OCD of liner inspections including any changes in date/time per the requirements of 19.15.29.11.A(5)(a)(ii) NMAC, may result in the inspection not being accepted.**

If you have any questions regarding this application, or don't know why you have received this email, please contact us.

**New Mexico Energy, Minerals and Natural Resources Department**  
1220 South St. Francis Drive  
Santa Fe, NM 87505



Pima Environmental Services, LLC

**Liner Inspection Form**

Company Name: Spur Energy

Site: GJ WEST COOP UNIT 92 TB

Lat/Long: 32.80261,-104.07831

NMOCD Incident ID & Incident Date: nAPP2606927793 03/06/2026

2-Day Notification Sent: via OCD portal 03/15/2026

Inspection Date: 03/18/2026

Liner Type:      Earthen w/liner                      Earthen no liner                      Polystar  
                          Steel w/poly liner                      Steel w/spray epoxy                      No Liner

Other: \_\_\_\_\_

Visualization	Yes	No	Comments
Is there a tear in the liner?		X	
Are there holes in the liner?		X	
Is the liner retaining any fluids?	X		Standing fluid is visible inside the lined containment due to power washing efforts.
Does the liner have integrity to contain a leak?	X		

Comments: \_\_\_\_\_

Inspector Name: Andrew Franco      Inspector Signature: Andrew Franco



## Appendix D

- Photographic Documentation

### PHOTOGRAPHIC DOCUMENTATION

SITE NAME: GJ West Coop Unit 2 TB

#### Initial Assessment :



Site Information Sign.



Photograph taken during initial spill release facing southwest.



Photograph taken during initial spill release facing northwest.



Photograph taken during initial spill release facing southwest.



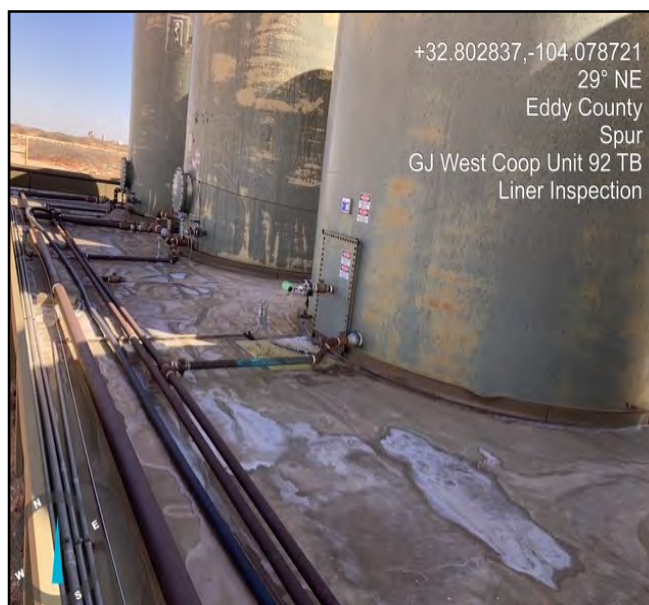
Photograph taken during initial spill release facing east.



Photograph taken during initial spill release facing west.



Photograph taken during initial spill release facing northwest.



Photograph taken during initial spill release facing northeast.

### PHOTOGRAPHIC DOCUMENTATION

SITE NAME: GJ West Coop Unit 2 TB

Pre- Powerwash :



Photograph taken pre powerwash facing southwest.



Photograph taken pre powerwash facing northwest.



Photograph taken pre powerwash facing west.



Photograph taken pre powerwash facing northwest.

### PHOTOGRAPHIC DOCUMENTATION

SITE NAME: GJ West Coop Unit 2 TB

Post Powerwash :



Photograph taken post powerwash facing northwest.



Photograph taken post powerwash facing southeast.



Photograph taken post powerwash facing east.

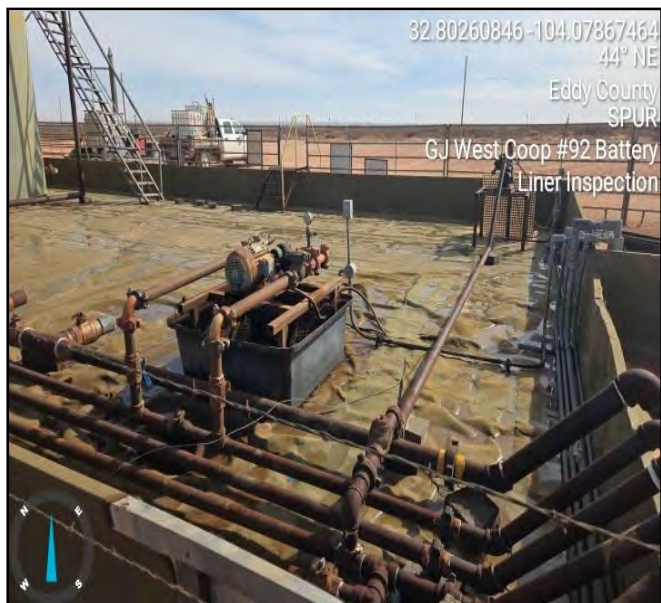


Photograph taken post powerwash facing north.

### PHOTOGRAPHIC DOCUMENTATION

SITE NAME: GJ West Coop Unit 2 TB

#### Liner Inspection :



Photograph taken during Liner Inspection facing northeast.



Photograph taken during Liner Inspection facing northwest.



Photograph taken during Liner Inspection facing west.



Photograph taken during Liner Inspection facing southeast.

Sante Fe Main Office  
Phone: (505) 476-3441

General Information  
Phone: (505) 629-6116

Online Phone Directory  
<https://www.emnrd.nm.gov/ocd/contact-us>

**State of New Mexico**  
**Energy, Minerals and Natural Resources**  
**Oil Conservation Division**  
**1220 S. St Francis Dr.**  
**Santa Fe, NM 87505**

QUESTIONS

Action 584184

**QUESTIONS**

Operator: Spur Energy Partners LLC 9655 Katy Freeway Houston, TX 77024	OGRID: 328947
	Action Number: 584184
	Action Type: [C-141] Remediation Closure Request C-141 (C-141-v-Closure)

**QUESTIONS**

<b>Prerequisites</b>	
Incident ID (n#)	nAPP2606927793
Incident Name	NAPP2606927793 GJ WEST COOP UNIT 92 TB @ FAB1434354066
Incident Type	Produced Water Release
Incident Status	Remediation Closure Report Received
Incident Facility	[fAB1434354066] GJ West Coop #92 Battery

<b>Location of Release Source</b>	
<i>Please answer all the questions in this group.</i>	
Site Name	GJ WEST COOP UNIT 92 TB
Date Release Discovered	03/06/2026
Surface Owner	Federal

<b>Incident Details</b>	
<i>Please answer all the questions in this group.</i>	
Incident Type	Produced Water Release
Did this release result in a fire or is the result of a fire	No
Did this release result in any injuries	No
Has this release reached or does it have a reasonable probability of reaching a watercourse	No
Has this release endangered or does it have a reasonable probability of endangering public health	No
Has this release substantially damaged or will it substantially damage property or the environment	No
Is this release of a volume that is or may with reasonable probability be detrimental to fresh water	No

<b>Nature and Volume of Release</b>	
<i>Material(s) released, please answer all that apply below. Any calculations or specific justifications for the volumes provided should be attached to the follow-up C-141 submission.</i>	
Crude Oil Released (bbls) Details	Not answered.
Produced Water Released (bbls) Details	Cause: Equipment Failure   Pump   Produced Water   Released: 155 BBL   Recovered: 155 BBL   Lost: 0 BBL.
Is the concentration of chloride in the produced water >10,000 mg/l	Yes
Condensate Released (bbls) Details	Not answered.
Natural Gas Vented (Mcf) Details	Not answered.
Natural Gas Flared (Mcf) Details	Not answered.
Other Released Details	Not answered.
Are there additional details for the questions above (i.e. any answer containing Other, Specify, Unknown, and/or Fire, or any negative lost amounts)	WT PUMP SEAL FAILED RELEASING PW INTO LINED CONTAINMENT

Sante Fe Main Office  
Phone: (505) 476-3441

General Information  
Phone: (505) 629-6116

Online Phone Directory  
<https://www.emnrd.nm.gov/ocd/contact-us>

**State of New Mexico**  
**Energy, Minerals and Natural Resources**  
**Oil Conservation Division**  
**1220 S. St Francis Dr.**  
**Santa Fe, NM 87505**

QUESTIONS, Page 2

Action 584184

**QUESTIONS (continued)**

Operator: Spur Energy Partners LLC 9655 Katy Freeway Houston, TX 77024	OGRID: 328947
	Action Number: 584184
	Action Type: [C-141] Remediation Closure Request C-141 (C-141-v-Closure)

**QUESTIONS**

<b>Nature and Volume of Release (continued)</b>	
Is this a gas only submission (i.e. only significant Mcf values reported)	<b>No, according to supplied volumes this does not appear to be a "gas only" report.</b>
Was this a major release as defined by Subsection A of 19.15.29.7 NMAC	<b>Yes</b>
Reasons why this would be considered a submission for a notification of a major release	<b>From paragraph A. "Major release" determine using: (1) an unauthorized release of a volume, excluding gases, of 25 barrels or more.</b>

*With the implementation of the 19.15.27 NMAC (05/25/2021), venting and/or flaring of natural gas (i.e. gas only) are to be submitted on the C-129 form.*

**Initial Response**

*The responsible party must undertake the following actions immediately unless they could create a safety hazard that would result in injury.*

The source of the release has been stopped	True
The impacted area has been secured to protect human health and the environment	True
Released materials have been contained via the use of berms or dikes, absorbent pads, or other containment devices	True
All free liquids and recoverable materials have been removed and managed appropriately	True
If all the actions described above have not been undertaken, explain why	N/A

*Per Paragraph (4) of Subsection B of 19.15.29.8 NMAC the responsible party may commence remediation immediately after discovery of a release. If remediation has begun, please prepare and attach a narrative of actions to date in the follow-up C-141 submission. If remedial efforts have been successfully completed or if the release occurred within a lined containment area (see Subparagraph (a) of Paragraph (5) of Subsection A of 19.15.29.11 NMAC), please prepare and attach all information needed for closure evaluation in the follow-up C-141 submission.*

I hereby certify that the information given above is true and complete to the best of my knowledge and understand that pursuant to OCD rules and regulations all operators are required to report and/or file certain release notifications and perform corrective actions for releases which may endanger public health or the environment. The acceptance of a C-141 report by the OCD does not relieve the operator of liability should their operations have failed to adequately investigate and remediate contamination that pose a threat to groundwater, surface water, human health or the environment. In addition, OCD acceptance of a C-141 report does not relieve the operator of responsibility for compliance with any other federal, state, or local laws and/or regulations.

I hereby agree and sign off to the above statement	Name: Katherine Purvis Title: EHS Coordinator Email: katherine.purvis@spurenergy.com Date: 05/12/2026
--	--

Sante Fe Main Office  
Phone: (505) 476-3441

General Information  
Phone: (505) 629-6116

Online Phone Directory  
<https://www.emnrd.nm.gov/ocd/contact-us>

**State of New Mexico**  
**Energy, Minerals and Natural Resources**  
**Oil Conservation Division**  
**1220 S. St Francis Dr.**  
**Santa Fe, NM 87505**

QUESTIONS, Page 3

Action 584184

**QUESTIONS (continued)**

Operator: Spur Energy Partners LLC 9655 Katy Freeway Houston, TX 77024	OGRID: 328947
	Action Number: 584184
	Action Type: [C-141] Remediation Closure Request C-141 (C-141-v-Closure)

**QUESTIONS**

**Site Characterization**

Please answer all the questions in this group (only required when seeking remediation plan approval and beyond). This information must be provided to the appropriate district office no later than 90 days after the release discovery date.

What is the shallowest depth to groundwater beneath the area affected by the release in feet below ground surface (ft bgs)	Between 75 and 100 (ft.)
What method was used to determine the depth to ground water	NM OSE iWaters Database Search
Did this release impact groundwater or surface water	No
<b>What is the minimum distance, between the closest lateral extents of the release and the following surface areas:</b>	
A continuously flowing watercourse or any other significant watercourse	Greater than 5 (mi.)
Any lakebed, sinkhole, or playa lake (measured from the ordinary high-water mark)	Greater than 5 (mi.)
An occupied permanent residence, school, hospital, institution, or church	Greater than 5 (mi.)
A spring or a private domestic fresh water well used by less than five households for domestic or stock watering purposes	Between 1 and 5 (mi.)
Any other fresh water well or spring	Between 1 and 5 (mi.)
Incorporated municipal boundaries or a defined municipal fresh water well field	Greater than 5 (mi.)
A wetland	Between ½ and 1 (mi.)
A subsurface mine	Greater than 5 (mi.)
An (non-karst) unstable area	Greater than 5 (mi.)
Categorize the risk of this well / site being in a karst geology	Low
A 100-year floodplain	Between 1000 (ft.) and ½ (mi.)
Did the release impact areas not on an exploration, development, production, or storage site	No

**Remediation Plan**

Please answer all the questions that apply or are indicated. This information must be provided to the appropriate district office no later than 90 days after the release discovery date.

Requesting a remediation plan approval with this submission	Yes
<i>Attach a comprehensive report demonstrating the lateral and vertical extents of soil contamination associated with the release have been determined, pursuant to 19.15.29.11 NMAC and 19.15.29.13 NMAC.</i>	
Have the lateral and vertical extents of contamination been fully delineated	Yes
Was this release entirely contained within a lined containment area	Yes
<i>Per Subsection B of 19.15.29.11 NMAC unless the site characterization report includes completed efforts at remediation, the report must include a proposed remediation plan in accordance with 19.15.29.12 NMAC, which includes the anticipated timelines for beginning and completing the remediation.</i>	
On what estimated date will the remediation commence	03/17/2026
On what date will (or did) the final sampling or liner inspection occur	03/18/2026
On what date will (or was) the remediation complete(d)	03/18/2026
What is the estimated surface area (in square feet) that will be remediated	4600
What is the estimated volume (in cubic yards) that will be remediated	0

*These estimated dates and measurements are recognized to be the best guess or calculation at the time of submission and may (be) change(d) over time as more remediation efforts are completed. The OCD recognizes that proposed remediation measures may have to be minimally adjusted in accordance with the physical realities encountered during remediation. If the responsible party has any need to significantly deviate from the remediation plan proposed, then it should consult with the division to determine if another remediation plan submission is required.*

Sante Fe Main Office  
Phone: (505) 476-3441

General Information  
Phone: (505) 629-6116

Online Phone Directory  
<https://www.emnrd.nm.gov/ocd/contact-us>

**State of New Mexico**  
**Energy, Minerals and Natural Resources**  
**Oil Conservation Division**  
**1220 S. St Francis Dr.**  
**Santa Fe, NM 87505**

QUESTIONS, Page 4

Action 584184

**QUESTIONS (continued)**

Operator: Spur Energy Partners LLC 9655 Katy Freeway Houston, TX 77024	OGRID: 328947
	Action Number: 584184
	Action Type: [C-141] Remediation Closure Request C-141 (C-141-v-Closure)

**QUESTIONS**

<b>Remediation Plan (continued)</b>	
<i>Please answer all the questions that apply or are indicated. This information must be provided to the appropriate district office no later than 90 days after the release discovery date.</i>	
<b>This remediation will (or is expected to) utilize the following processes to remediate / reduce contaminants:</b>	
<i>(Select all answers below that apply.)</i>	
Is (or was) there affected material present needing to be removed	No
Is (or was) there a power wash of the lined containment area (to be) performed	Yes
OTHER (Non-listed remedial process)	Not answered.
<i>Per Subsection B of 19.15.29.11 NMAC unless the site characterization report includes completed efforts at remediation, the report must include a proposed remediation plan in accordance with 19.15.29.12 NMAC, which includes the anticipated timelines for beginning and completing the remediation.</i>	
I hereby certify that the information given above is true and complete to the best of my knowledge and understand that pursuant to OCD rules and regulations all operators are required to report and/or file certain release notifications and perform corrective actions for releases which may endanger public health or the environment. The acceptance of a C-141 report by the OCD does not relieve the operator of liability should their operations have failed to adequately investigate and remediate contamination that pose a threat to groundwater, surface water, human health or the environment. In addition, OCD acceptance of a C-141 report does not relieve the operator of responsibility for compliance with any other federal, state, or local laws and/or regulations.	
I hereby agree and sign off to the above statement	Name: Katherine Purvis Title: EHS Coordinator Email: <a href="mailto:katherine.purvis@spurenergy.com">katherine.purvis@spurenergy.com</a> Date: 05/12/2026
<i>The OCD recognizes that proposed remediation measures may have to be minimally adjusted in accordance with the physical realities encountered during remediation. If the responsible party has any need to significantly deviate from the remediation plan proposed, then it should consult with the division to determine if another remediation plan submission is required.</i>	

Sante Fe Main Office  
Phone: (505) 476-3441

General Information  
Phone: (505) 629-6116

Online Phone Directory  
<https://www.emnrd.nm.gov/ocd/contact-us>

**State of New Mexico**  
**Energy, Minerals and Natural Resources**  
**Oil Conservation Division**  
**1220 S. St Francis Dr.**  
**Santa Fe, NM 87505**

QUESTIONS, Page 6

Action 584184

**QUESTIONS (continued)**

Operator: Spur Energy Partners LLC 9655 Katy Freeway Houston, TX 77024	OGRID: 328947
	Action Number: 584184
	Action Type: [C-141] Remediation Closure Request C-141 (C-141-v-Closure)

**QUESTIONS**

<b>Liner Inspection Information</b>	
Last liner inspection notification (C-141L) recorded	<b>562990</b>
Liner inspection date pursuant to Subparagraph (a) of Paragraph (5) of Subsection A of 19.15.29.11 NMAC	<b>03/18/2026</b>
Was all the impacted materials removed from the liner	<b>Yes</b>
What was the liner inspection surface area in square feet	<b>4600</b>

<b>Remediation Closure Request</b>	
<i>Only answer the questions in this group if seeking remediation closure for this release because all remediation steps have been completed.</i>	
Requesting a remediation closure approval with this submission	<b>Yes</b>
Have the lateral and vertical extents of contamination been fully delineated	<b>Yes</b>
Was this release entirely contained within a lined containment area	<b>Yes</b>
What was the total surface area (in square feet) remediated	<b>4600</b>
What was the total volume (cubic yards) remediated	<b>0</b>
Summarize any additional remediation activities not included by answers (above)	The lined containment was power-washed, and all standing fluids were removed using a vacuum truck. Following remediation, a liner inspection was conducted, confirming that the containment liner remained intact and maintained its integrity.

*The responsible party must attach information demonstrating they have complied with all applicable closure requirements and any conditions or directives of the OCD. This demonstration should be in the form of a comprehensive report (in .pdf format) including a scaled site map, sampling diagrams, relevant field notes, photographs of any excavation prior to backfilling, laboratory data including chain of custody documents of final sampling, and a narrative of the remedial activities. Refer to 19.15.29.12 NMAC.*

I hereby certify that the information given above is true and complete to the best of my knowledge and understand that pursuant to OCD rules and regulations all operators are required to report and/or file certain release notifications and perform corrective actions for releases which may endanger public health or the environment. The acceptance of a C-141 report by the OCD does not relieve the operator of liability should their operations have failed to adequately investigate and remediate contamination that pose a threat to groundwater, surface water, human health or the environment. In addition, OCD acceptance of a C-141 report does not relieve the operator of responsibility for compliance with any other federal, state, or local laws and/or regulations. The responsible party acknowledges they must substantially restore, reclaim, and re-vegetate the impacted surface area to the conditions that existed prior to the release or their final land use in accordance with 19.15.29.13 NMAC including notification to the OCD when reclamation and re-vegetation are complete.

I hereby agree and sign off to the above statement	Name: Katherine Purvis Title: EHS Coordinator Email: <a href="mailto:katherine.purvis@spurenergy.com">katherine.purvis@spurenergy.com</a> Date: 05/12/2026
--	---

Sante Fe Main Office  
Phone: (505) 476-3441

General Information  
Phone: (505) 629-6116

Online Phone Directory  
<https://www.emnrd.nm.gov/ocd/contact-us>

**State of New Mexico**  
**Energy, Minerals and Natural Resources**  
**Oil Conservation Division**  
**1220 S. St Francis Dr.**  
**Santa Fe, NM 87505**

CONDITIONS

Action 584184

**CONDITIONS**

Operator: Spur Energy Partners LLC 9655 Katy Freeway Houston, TX 77024	OGRID: 328947
	Action Number: 584184
	Action Type: [C-141] Remediation Closure Request C-141 (C-141-v-Closure)

**CONDITIONS**

Created By	Condition	Condition Date
scott.rodgers	Application ID #584184 Liner Inspection is approved.	5/19/2026