



26A-02185

Characterization Plan

Rio Penasco KD Com #001

Incident ID# nMCS0124836953

API: 30-015-23227

Coordinates: 32.684597, -104.4577332

Prepared for:

Riley Exploration Permian, Inc.

Prepared by:

Vertex Resource Services, Inc.

Date:

April 2026

Riley Exploration Permian, Inc.

Rio Penasco KD Com #001

Characterization Plan

April 2026

Characterization Plan

Rio Penasco KD Com #001

Incident ID: nMCS0124836953

API: 30-015-23227

Coordinates: 32.684597, -104.4577332

On behalf of:

Riley Exploration Permian, Inc.

500, 29 East Reno Avenue

Oklahoma City, Oklahoma 73104

Prepared for:

New Mexico Oil Conservation

508 West Texas Avenue

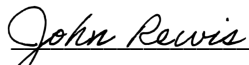
Artesia, New Mexico 88210

Prepared by:

Vertex Resource Services, Inc.

3101 Boyd Drive

Carlsbad, New Mexico 88220

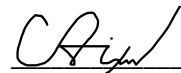


John Rewis, B.Sc.

ENVIRONMENTAL TECHNICIAN, REPORTING

4/22/2026

Date



Chance Dixon, B.Sc.

PROJECT MANAGER, REPORT REVIEW

4/22/2026

Date

Table of Contents

1.0	Introduction.....	1
2.0	Background.....	1
2.1	Site Description	1
3.0	Site Evaluation	1
3.1	Assessment of Soil Suitability	1
4.0	Characterization Plan	2
5.0	References	3
6.0	Limitations.....	4

In-text Tables

Table 1. Closure Criteria for Soils Impacted by a Release DTGW \leq 50 feet bgs

List of Figures

Figure 1. Proposed Characterization Sampling Schematic

List of Tables

Table 2. Closure Criteria Determination

List of Appendices

Appendix A. Closure Criteria Documentation

Appendix B. Field Reports

1.0 Introduction

Riley Exploration Permian, Inc. retained Vertex Resource Services Inc. (Vertex) to complete an initial site assessment and Characterization Plan for Rio Penasco KD Com #001; API: 30-015-23227 (hereafter referred to as “site”). This Characterization Plan discusses actions conducted to date and proposes additional characterization activities for the open incident (nMCS0124836953) that was initiated on July 12, 2005.

2.0 Background

2.1 Site Description

The site is an active production pad for oil and gas operations including the battery and containment where the incident occurred. (Figure 1). Surface and subsurface mineral ownership belongs to the Wilson Ranch. The site is situated in a mostly flat area surrounded by gravelly, sandy loam plains with grassy mesquite shrublands. Grama grasses and forbs are present on and off the pad.

3.0 Site Evaluation

Initial site assessment occurred on April 8, 2026, by Vertex personnel. The caliche production pad is intact. Vegetation is sparse throughout the site. Documentation of the site visit is included in the field report (Appendix B).

- During the initial site inspection, no visual evidence of staining, impacts, or environmental disturbance associated with the historical incident was observed on the pad
- The load line extending from the fiberglass tank exhibited no observable signs of leaks or corrosion
- The containment exhibited no observable staining

3.1 Assessment of Soil Suitability

The site is in a medium karst potential area, therefore the most stringent Closure Criteria per Table 1 of New Mexico Administrative Code (NMAC) 19.15.29 applies (New Mexico Oil Conservation Division, 2018). Closure Criteria determination is summarized in Table 1 and visualized in the Closure Criteria Documentation in Appendix A.

Table 1. Closure Criteria for Soils Impacted by a Release DTGW ≤ 50 feet bgs		
Minimum depth below any point within the horizontal boundary of the release to groundwater less than 10,000 mg/l TDS	Constituent	Limit
≤ 50 feet	Chloride	600 mg/kg
	TPH (GRO+DRO+MRO)	100 mg/kg
	BTEX	50 mg/kg
	Benzene	10 mg/kg

TDS – total dissolved solids

TPH – total petroleum hydrocarbons, GRO – gas range organics, DRO – diesel range organics, MRO – motor oil range organics

BTEX – benzene, toluene, ethylbenzene and xylenes

DTGW – depth to groundwater

bgs – below ground surface

For the purpose of this document, soil suitability is defined as:

- Suitable Soils – soils that meet the above Closure Criteria concentrations and consist of compositions that support vegetative growth (i.e., topsoil)
- Unsuitable Soils – soils that exceed the above Closure Criteria
- Undesirable Soils – soils that meet the above Closure Criteria and consists of caliche, gypsum, limestone or compositions that inhibit vegetation growth

4.0 Characterization Plan

Vertex personnel will advance four exploratory boreholes/test pits at the locations shown on Figure 1 to a depth of four feet below ground surface, or until analytical results indicate that the vertical extent of impacts meets the closure criteria established in Table 1, in accordance with 19.15.29 NMAC requirements to define the nature and extent of contamination. Soil samples will be collected at two-foot intervals and will satisfy the delineation requirements per 19.15.29 NMAC with more than two discrete samples collected per sample point. Field screening results will be used to guide sample collection and evaluate the vertical extent of potential impacts.

Horizontal delineation will be completed if any impact is detected.

Field screening will be conducted using a photoionization detector (PID) for volatile hydrocarbons, a Dextil PetroFlag in accordance with EPA SW-846 Method 9074 for extractable hydrocarbons, and silver nitrate titration for chlorides. Laboratory analyses will be performed in accordance with the following methods:

- Benzene, toluene, ethylbenzene and xylene – Method 8021
- Total Petroleum Hydrocarbons – Method SW-8015B
- Chlorides – Method 300.0

5.0 References

Google Inc. (2026). *Google Earth Pro (Version 7.3.3)* [Software]. Retrieved from <https://earth.google.com>

Griffith, G.E., Omernik, J.M., McGraw, M.M., Jacobi, G.Z., Canavan, C.M., Schrader, T.S., Mercer, D., Hill, R., and Moran, B.C. (2006). *Ecoregions of New Mexico*. Available at: <https://www.epa.gov/eco-research/ecoregion-download-files-state-region-6#pane-29>

Natural Resources Conservation Service. (2012, Reprint 2021). *Field Book for Describing and Sampling Soils Version 3.0*. National Soil Survey Center: Natural Resources Conservation Service. U.S. Department of Agriculture. Pg. 2-89. Retrieved from: <https://www.nrcs.usda.gov/sites/default/files/2022-09/field-book.pdf>

New Mexico Oil Conservation Division. (2018). *New Mexico Administrative Code – Natural Resources and Wildlife Oil and Gas Releases*. Santa Fe, New Mexico.

United States Department of Agriculture, Natural Resources Conservation Service. (2026). *Web Soil Survey*. Retrieved from: <https://websoilsurvey.nrcs.usda.gov/app/WebSoilSurvey.aspx>

6.0 Limitations


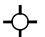


This report has been prepared for the sole benefit of Riley Exploration Permian, Inc. This document may not be used by any other person or entity, with the exception of the New Mexico Oil Conservation Division, without the express written consent of Vertex Resource Services Inc. (Vertex) and Riley Exploration Permian, Inc. Any use of this report by a third party, or any reliance on decisions made based on it, or damages suffered as a result of the use of this report are the sole responsibility of the user.

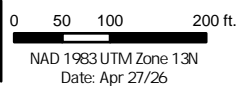
The information and conclusions contained in this report are based upon work undertaken by trained professional and technical staff in accordance with generally accepted scientific practices current at the time the work was performed. The conclusions and recommendations presented represent the best judgement of Vertex based on the data collected during the assessment. Due to the nature of the assessment and the data available, Vertex cannot warrant against undiscovered environmental liabilities. Conclusions and recommendations presented in this report should not be considered legal advice.

FIGURES

Document Path: S:\04 - Geomatics\1 - Projects\US PROJECTS\Riley Exploration Permian, Inc\26A-02185 - Rio Penasco KD Com.001100 - ArcPro\Rio Penasco KD Com 001.aprx



-  Testpit
-  Wellhead
-  Pipeline (Aboveground)
-  Containment Boundary



Map Center:
 Lat: 32.684354°N,
 Long: 104.457249°W



Proposed Characterizat on Sampling Schemat c
 Rio Penasco KD Com #001

FIGURE:
 1



Geospatial data presented in this figure may be derived from external sources and Vertex does not assume any liability for inaccuracies. This figure is intended for reference use only and is not certified for legal, survey, or engineering purposes.

Note: Image from Esri, 2025. Site features from GPS by Vertex Professional Services Ltd., 2026.

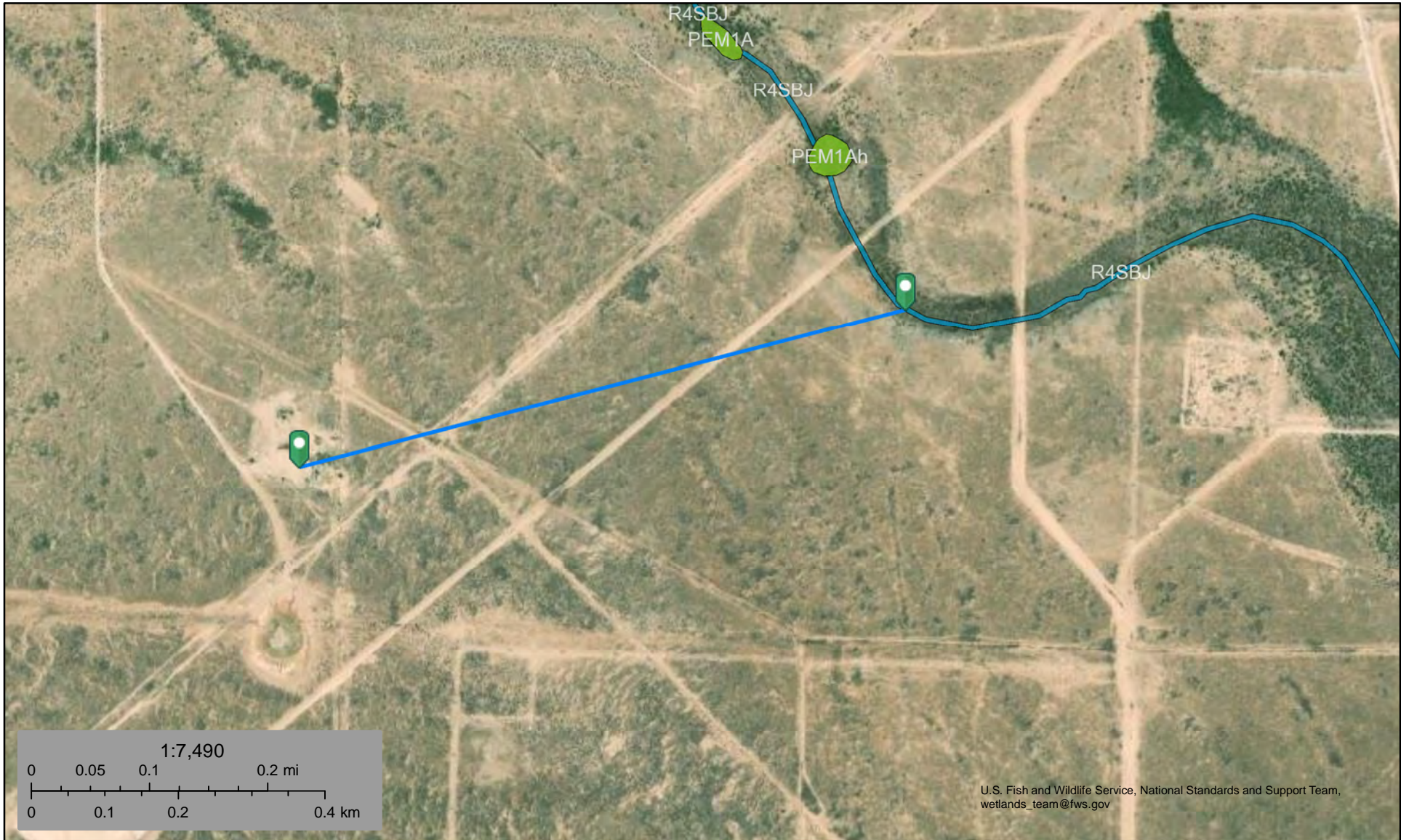
TABLES

Table 2. Closure Criteria Determination			
Site Name: Rio Penasco KD Com #001			
Spill Coordinates: 32.684597,-104.4577332		X: 550836.11	Y: 3616452.13
Site Specific Conditions		Value	Unit
1	Depth to Groundwater (nearest reference)	110	feet
	Distance between release and nearest DTGW reference	2,873	feet
		0.54	miles
Date of nearest DTGW reference measurement		April 18, 1960	
2	Within 300 feet of any continuously flowing watercourse or any other significant watercourse	2,356	feet
3	Within 200 feet of any lakebed, sinkhole or playa lake (measured from the ordinary high-water mark)	39,488	feet
4	Within 300 feet from an occupied residence, school, hospital, institution or church	5,757	feet
5	i) Within 500 feet of a spring or a private, domestic fresh water well used by less than five households for domestic or stock watering purposes, or	2,917	feet
	ii) Within 1000 feet of any fresh water well or spring	2,917	feet
6	Within incorporated municipal boundaries or within a defined municipal fresh water field covered under a municipal ordinance adopted pursuant to Section 3-27-3 NMSA 1978 as amended, unless the municipality specifically approves	No	feet
7	Within 300 feet of a wetland	2,220	feet
8	Within the area overlying a subsurface mine	No	feet
	Distance between release and nearest registered mine	148,003	feet
9	Within an unstable area (Karst Map)	Medium	Critical High Medium Low
	Distance between release and nearest unstable area	0	feet
10	Within a 100-year Floodplain	500	year
	Distance between release and nearest FEMA Zone A (100-year Floodplain)	2,089	feet
11	Soil Type	Reagan-Upton	
12	Ecological Classification	Loamy	
13	Geology	Qp	
	NMAC 19.15.29.12 E (Table 1) Closure Criteria	<50'	≤ 50' 51-100' >100'

APPENDIX A – Closure Criteria Research Documentation



Rio Penasco KD Com #001 Watercourse



U.S. Fish and Wildlife Service, National Standards and Support Team, wetlands_team@fws.gov

April 14, 2026

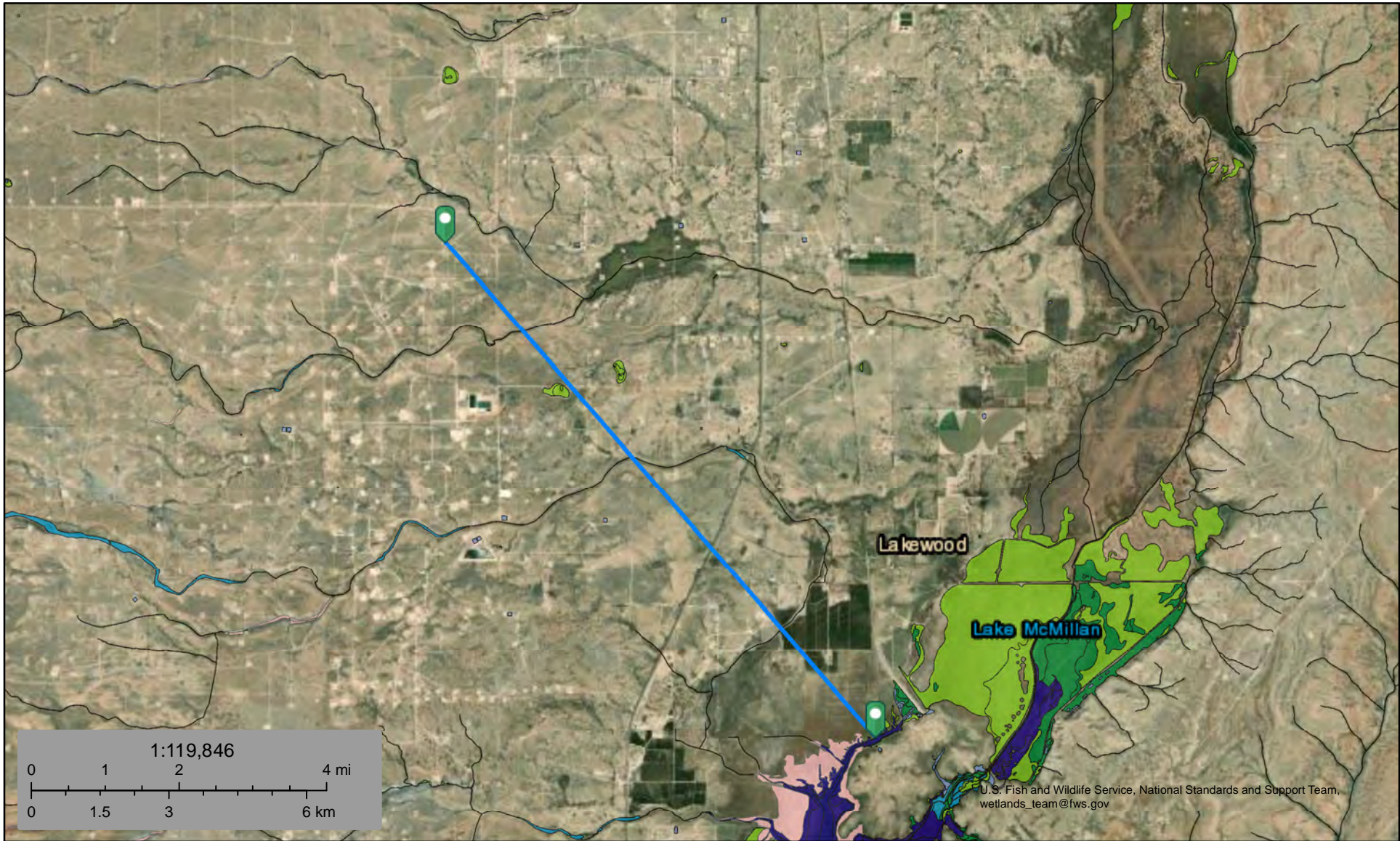
Wetlands

- | | | |
|--------------------------------|-----------------------------------|----------|
| Estuarine and Marine Deepwater | Freshwater Emergent Wetland | Lake |
| Estuarine and Marine Wetland | Freshwater Forested/Shrub Wetland | Other |
| | Freshwater Pond | Riverine |

This map is for general reference only. The US Fish and Wildlife Service is not responsible for the accuracy or currentness of the base data shown on this map. All wetlands related data should be used in accordance with the layer metadata found on the Wetlands Mapper web site.



Rio Penasco KD Com #001 Lake



April 14, 2026

Wetlands




- | | | | | | |
|---|--------------------------------|---|-----------------------------------|---|----------|
|  | Estuarine and Marine Deepwater |  | Freshwater Emergent Wetland |  | Lake |
|  | Estuarine and Marine Wetland |  | Freshwater Forested/Shrub Wetland |  | Other |
| | |  | Freshwater Pond |  | Riverine |

This map is for general reference only. The US Fish and Wildlife Service is not responsible for the accuracy or currentness of the base data shown on this map. All wetlands related data should be used in accordance with the layer metadata found on the Wetlands Mapper web site.

Rio Penasco KD Com #001

Distance to Nearest Residence: 5,757ft

Legend

-  Line Measure
-  Resident
-  Rio Penasco KD Com #001



Resident

Rio Penasco KD Com #001



Active & Inactive Points of Diversion (with Ownership Information)

WR File Nbr	Sub basin	Use	Diversion	Owner	County	POD Number	Well Tag	Code	Grant	Source	(quarters are 1=NW 2=NE 3=SW 4=SE) (quarters are smallest to largest)					(NAD83 UTM in meters)		Map	Distance	
											q64	q16	q4	Sec	Tws	Range	X			Y
RA 04236	RA	PRO	0.000	LEE DRILLING COMPANY	ED	RA 04236				Artesian	SW	SW	NW	02	19S	25E	550335.0	3617145.0 *		855.1
RA 04722	RA	DOL	3.000	MARK B KINCAID	ED	RA 04722				Shallow		SW	NW	02	19S	25E	550436.0	3617246.0 *		889.0
RA 04208	RA	PRO	0.000	LEE DRILLING COMPANY	ED	RA 04208				Shallow		NE	SE	03	19S	25E	550036.0	3616845.0 *		891.4
RA 04128	RA	DOL	3.000	E.T. HOWELL	ED	RA 04128				Shallow			NE	02	19S	25E	551443.0	3617449.0 *		1,167.1
RA 07639	RA	PRO	0.000	NEARBURG PRODUCING CO.	ED	RA 07639				Shallow		SW	NW	01	19S	25E	552049.0	3617250.0 *		1,451.8
RA 13482	RA	STK	3.000	DAVID WILSON	ED	RA 13482 POD1	215EE				SW	SE	SW	01	19S	25E	552400.3	3616329.7		1,569.0

Record Count: 6

Filters Applied:

UTM Filters (in meters):

Eastings: 550836.11

Northings: 3616452.13

Radius: 1610

Sorted By: Distance

* UTM location was derived from PLSS - see Help

The data is furnished by the NMOSE/ISC and is accepted by the recipient with the expressed understanding that the OSE/ISC make no warranties, expressed or implied, concerning the accuracy, completeness, reliability, usability, or suitability for any particular purpose of the data.

4/13/26 5:57 PM MST

Active & Inactive Points of Diversion

©2024 New Mexico Office of the State Engineer, All Rights Reserved. | [Disclaimer](#) | [Contact Us](#) | [Help](#) | [Home](#) |



Rio Penasco KD Com #001 Wetland



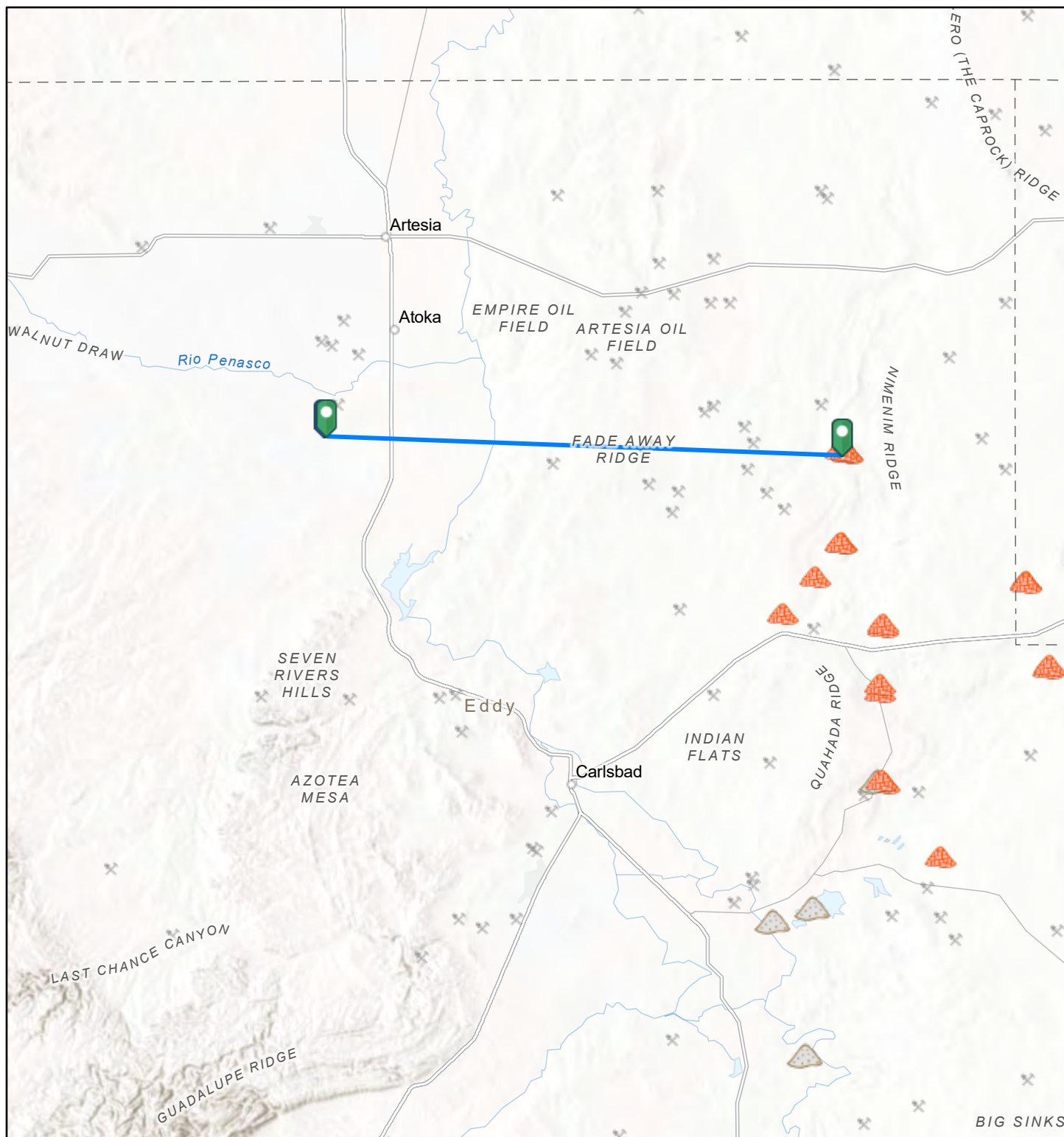
April 14, 2026

Wetlands

- Estuarine and Marine Deepwater
- Freshwater Emergent Wetland
- Lake
- Estuarine and Marine Wetland
- Freshwater Forested/Shrub Wetland
- Other
- Freshwater Pond
- Riverine

This map is for general reference only. The US Fish and Wildlife Service is not responsible for the accuracy or currentness of the base data shown on this map. All wetlands related data should be used in accordance with the layer metadata found on the Wetlands Mapper web site.

Rio Penasco KD Com #001 Mine



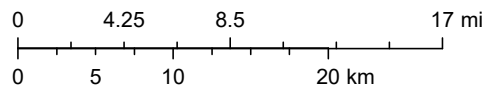
4/13/2026, 6:27:53 PM

1:577,791

Registered Mines

- ✕ Aggregate, Stone etc.
- ✕ Aggregate, Stone etc.
- ✕ Aggregate, Stone etc.
- ✕ Aggregate, Stone etc.
- ✕ Aggregate, Stone etc.

- ✕ Aggregate, Stone etc.
- ▲ Potash
- ▲ Salt






Sources: Esri, TomTom, Garmin, FAO, NOAA, USGS, © OpenStreetMap contributors, and the GIS User Community, Esri, CGIAR, USGS

Rio Penasco KD Com #001

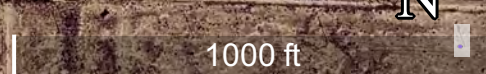
Distance to FEMA Flood Zone A: 2,089ft

Legend

-  FEMA Flood Zone A
-  Line Measure
-  Rio Penasco KD Com #001

anch Rd

Rio Penasco KD Com #001



National Flood Hazard Layer FIRMette



104°27'47"W 32°41'20"N



Legend

SEE FIS REPORT FOR DETAILED LEGEND AND INDEX MAP FOR FIRM PANEL LAYOUT

- SPECIAL FLOOD HAZARD AREAS**
 - Without Base Flood Elevation (BFE) Zone A, V, A99
 - With BFE or Depth Zone AE, AO, AH, VE, AR
 - Regulatory Floodway
- OTHER AREAS OF FLOOD HAZARD**
 - 0.2% Annual Chance Flood Hazard, Areas of 1% annual chance flood with average depth less than one foot or with drainage areas of less than one square mile Zone X
 - Future Conditions 1% Annual Chance Flood Hazard Zone X
 - Area with Reduced Flood Risk due to Levee. See Notes. Zone X
 - Area with Flood Risk due to Levee Zone D
- OTHER AREAS**
 - NO SCREEN Area of Minimal Flood Hazard Zone X
 - Effective LOMRs
 - Area of Undetermined Flood Hazard Zone D
- GENERAL STRUCTURES**
 - Channel, Culvert, or Storm Sewer
 - Levee, Dike, or Floodwall
- OTHER FEATURES**
 - Cross Sections with 1% Annual Chance Water Surface Elevation
 - Coastal Transect
 - Base Flood Elevation Line (BFE)
 - Limit of Study
 - Jurisdiction Boundary
 - Coastal Transect Baseline
 - Profile Baseline
 - Hydrographic Feature
- MAP PANELS**
 - Digital Data Available
 - No Digital Data Available
 - Unmapped



The pin displayed on the map is an approximate point selected by the user and does not represent an authoritative property location.

This map complies with FEMA's standards for the use of digital flood maps if it is not void as described below. The basemap shown complies with FEMA's basemap accuracy standards

The flood hazard information is derived directly from the authoritative NFHL web services provided by FEMA. This map was exported on 4/14/2026 at 12:29 AM and does not reflect changes or amendments subsequent to this date and time. The NFHL and effective information may change or become superseded by new data over time.

This map image is void if the one or more of the following map elements do not appear: basemap imagery, flood zone labels, legend, scale bar, map creation date, community identifiers, FIRM panel number, and FIRM effective date. Map images for unmapped and unmodernized areas cannot be used for regulatory purposes.

Released to Imaging: 5/20/2026 8:00:58 AM

1:6,000

Basemap Imagery Source: USGS National Map 2023

Custom Soil Resource Report

Eddy Area, New Mexico**RE—Reagan-Upton association, 0 to 9 percent slopes****Map Unit Setting**

National map unit symbol: 1w5d
Landscape: Uplands
Elevation: 1,100 to 5,400 feet
Mean annual precipitation: 6 to 14 inches
Mean annual air temperature: 60 to 64 degrees F
Frost-free period: 180 to 240 days
Farmland classification: Farmland of statewide importance

Map Unit Composition

Reagan and similar soils: 70 percent
Upton and similar soils: 25 percent
Minor components: 5 percent
Estimates are based on observations, descriptions, and transects of the mapunit.

Description of Reagan**Setting**

Landscape: Uplands
Landform: Alluvial fans, Fan remnants
Landform position (three-dimensional): Rise
Down-slope shape: Linear, convex
Across-slope shape: Linear
Parent material: Alluvium and/or eolian deposits

Typical profile

H1 - 0 to 8 inches: loam
H2 - 8 to 60 inches: loam

Properties and qualities

Slope: 0 to 3 percent
Depth to restrictive feature: More than 80 inches
Drainage class: Well drained
Runoff class: Low
Capacity of the most limiting layer to transmit water (Ksat): Moderately high to high (0.60 to 2.00 in/hr)
Depth to water table: More than 80 inches
Frequency of flooding: None
Frequency of ponding: None
Calcium carbonate, maximum content: 40 percent
Maximum salinity: Very slightly saline to moderately saline (2.0 to 8.0 mmhos/cm)
Sodium adsorption ratio, maximum: 1.0
Available water supply, 0 to 60 inches: Moderate (about 8.2 inches)

Interpretive groups

Land capability classification (irrigated): 2e
Land capability classification (nonirrigated): 6e
Hydrologic Soil Group: B
Ecological site: R042CY153NM - Loamy
Hydric soil rating: No

Custom Soil Resource Report

Description of Upton**Setting**

Landscape: Uplands
Landform: Fans, Ridges
Landform position (three-dimensional): Side slope, rise
Down-slope shape: Convex
Across-slope shape: Convex
Parent material: Residuum weathered from limestone

Typical profile

H1 - 0 to 9 inches: gravelly loam
H2 - 9 to 13 inches: gravelly loam
H3 - 13 to 21 inches: cemented
H4 - 21 to 60 inches: very gravelly loam

Properties and qualities

Slope: 0 to 9 percent
Depth to restrictive feature: 7 to 20 inches to petrocalcic
Drainage class: Well drained
Runoff class: High
Capacity of the most limiting layer to transmit water (Ksat): Low to moderately high (0.01 to 0.60 in/hr)
Depth to water table: More than 80 inches
Frequency of flooding: None
Frequency of ponding: None
Calcium carbonate, maximum content: 75 percent
Maximum salinity: Nonsaline to very slightly saline (0.0 to 2.0 mmhos/cm)
Sodium adsorption ratio, maximum: 1.0
Available water supply, 0 to 60 inches: Very low (about 1.4 inches)

Interpretive groups

Land capability classification (irrigated): None specified
Land capability classification (nonirrigated): 7s
Hydrologic Soil Group: D
Ecological site: R042CY159NM - Shallow Loamy
Hydric soil rating: No

Minor Components**Atoka**

Percent of map unit: 3 percent
Ecological site: R070BC007NM - Loamy
Hydric soil rating: No

Pima

Percent of map unit: 2 percent
Ecological site: R070BC017NM - Bottomland
Hydric soil rating: No

APPENDIX B – Field Reports



Daily Field Log
Site: Rio Penasco KD COM #001

04/08/2026

Location: Rio Penasco KD Federal #001

By: John Rewis

Table with 4 columns: Field Name, Value, Field Name, Value. Includes Weather (Sunny), Staff On-site (John Rewis), Contractor, Contractor Crew, Staff From Time, Equipment On Site, Tailgate meeting conducted (Yes), Incident ID Number.

Work Summary:

Site Documentation

Time Observations

Table with 2 columns: Time, Observations. Contains two entries: 12:25:17 (Completed safety paperwork...) and 12:26:22 (The area within the containment and the AOI associated with the load line from the fiberglass tank were inspected...)

Pictures/Attachments

Date: 4/8/2026
Time: 12:39
Notes: Overview of the AOI and adjacent containment.
Latitude: 32.68426944444444
Longitude: -104.45755833333334
Direction: E



Rio Penasco KD Federal #001 | Lat: 32.68427, Lon: -104.45756 | Azimuth: 72.2 E, Wed, Apr 8, 2026 12:39



Daily Field Log
Site: Rio Penasco KD COM #001

Pictures/Attachments

Date: 4/8/2026
 Time: 12:39
 Notes: Northwest extent of the containment.
 Latitude: 32.68426944444444
 Longitude: -104.45755833333334
 Direction: E



Date: 4/8/2026
 Time: 12:39
 Notes: Northeast extent of the containment.
 Latitude: 32.68426944444444
 Longitude: -104.45755833333334
 Direction: E





Daily Field Log
Site: Rio Penasco KD COM #001

Pictures/Attachments

Date: 4/8/2026
 Time: 12:39
 Notes: Southeast extent of the containment.
 Latitude: 32.68426944444444
 Longitude: -104.45755833333334
 Direction: E



Date: 4/8/2026
 Time: 12:39
 Notes: Southwest extent of the containment.
 Latitude: 32.68426944444444
 Longitude: -104.45755833333334
 Direction: E





Daily Field Log
Site: Rio Penasco KD COM #001

Pictures/Attachments

Date: 4/8/2026
 Time: 12:39
 Notes: West side of the fiberglass water tank and load line in question.
 Latitude: 32.684238888888885
 Longitude: -104.45757222222223
 Direction: E



Date: 4/8/2026
 Time: 12:39
 Notes: West side of the fiberglass water tank and load tank in question. Viewed from the pad.
 Latitude: 32.684238888888885
 Longitude: -104.45757222222223
 Direction: E





Daily Field Log
Site: Rio Penasco KD COM #001

Pictures/Attachments

Date: 4/8/2026
 Time: 12:39
 Notes: Load line coming off a crude oil tank.
 Latitude: 32.68420277777778
 Longitude: -104.45758888888889
 Direction: E



Date: 4/8/2026
 Time: 12:39
 Notes: AOI located adjacent to the west side of the containment.
 Latitude: 32.68420277777778
 Longitude: -104.45758888888889
 Direction: S





Daily Field Log
Site: Rio Penasco KD COM #001

Pictures/Attachments

Date: 4/8/2026
 Time: 12:42
 Notes: AOI on the west side of the containment.
 Latitude: 32.68415555555555
 Longitude: -104.45761944444445
 Direction: NE



Date: 4/8/2026
 Time: 13:08
 Notes: AOI.
 Latitude: 32.65207777777778
 Longitude: -104.44674722222223
 Direction: W





Daily Field Log
Site: Rio Penasco KD COM #001

Pictures/Attachments

Date: 4/8/2026
Time: 13:09
Notes:
Latitude: 32.640708333333336
Longitude: -104.44428888888889
Direction: W



Date: 4/8/2026
Time: 13:09
Notes:
Latitude: 32.640708333333336
Longitude: -104.44428888888889
Direction: W



Sante Fe Main Office
Phone: (505) 476-3441

General Information
Phone: (505) 629-6116

Online Phone Directory
<https://www.emnrd.nm.gov/ocd/contact-us>

State of New Mexico
Energy, Minerals and Natural Resources
Oil Conservation Division
1220 S. St Francis Dr.
Santa Fe, NM 87505

QUESTIONS

Action 585768

QUESTIONS

Operator: RILEY PERMIAN OPERATING COMPANY, LLC 29 E Reno Avenue Oklahoma City, OK 73104	OGRID: 372290
	Action Number: 585768
	Action Type: [C-141] Initial C-141 (C-141-v-Initial)

QUESTIONS

Prerequisites	
Incident ID (n#)	nMCS0124836953
Incident Name	NMCS0124836953 RIO PENASCO KD COM #001 @ 30-015-23227
Incident Type	Oil Release
Incident Status	Initial C-141 Received
Incident Well	[30-015-23227] RIO PENASCO KD COM #001

Location of Release Source

Please answer all the questions in this group.

Site Name	RIO PENASCO KD COM #001
Date Release Discovered	06/20/2001
Surface Owner	Private

Incident Details

Please answer all the questions in this group.

Incident Type	Oil Release
Did this release result in a fire or is the result of a fire	No
Did this release result in any injuries	No
Has this release reached or does it have a reasonable probability of reaching a watercourse	No
Has this release endangered or does it have a reasonable probability of endangering public health	No
Has this release substantially damaged or will it substantially damage property or the environment	No
Is this release of a volume that is or may with reasonable probability be detrimental to fresh water	No

Nature and Volume of Release

Material(s) released, please answer all that apply below. Any calculations or specific justifications for the volumes provided should be attached to the follow-up C-141 submission.

Crude Oil Released (bbls) Details	Cause: Equipment Failure Production Tank Crude Oil Released: 1 BBL Recovered: 0 BBL Lost: 1 BBL.
Produced Water Released (bbls) Details	Cause: Produced Water Released: 7 BBL Recovered: 0 BBL Lost: 7 BBL.
Is the concentration of chloride in the produced water >10,000 mg/l	Yes
Condensate Released (bbls) Details	Not answered.
Natural Gas Vented (Mcf) Details	Not answered.
Natural Gas Flared (Mcf) Details	Not answered.
Other Released Details	Not answered.
Are there additional details for the questions above (i.e. any answer containing Other, Specify, Unknown, and/or Fire, or any negative lost amounts)	This C-141 is also addressing a historical release identified by an OCD inspector on a routine/periodic inspection on 07/07/2005 and stated the following: "Valve on load line from fiberglass water tank appears to have been opened allowing produced fluids to run out across location. Violation Rule 13."

Sante Fe Main Office
Phone: (505) 476-3441

General Information
Phone: (505) 629-6116

Online Phone Directory
<https://www.emnrd.nm.gov/ocd/contact-us>

State of New Mexico
Energy, Minerals and Natural Resources
Oil Conservation Division
1220 S. St Francis Dr.
Santa Fe, NM 87505

QUESTIONS, Page 2

Action 585768

QUESTIONS (continued)

Operator: RILEY PERMIAN OPERATING COMPANY, LLC 29 E Reno Avenue Oklahoma City, OK 73104	OGRID: 372290
	Action Number: 585768
	Action Type: [C-141] Initial C-141 (C-141-v-Initial)

QUESTIONS

Nature and Volume of Release (continued)	
Is this a gas only submission (i.e. only significant Mcf values reported)	No, according to supplied volumes this does not appear to be a "gas only" report.
Was this a major release as defined by Subsection A of 19.15.29.7 NMAC	No
Reasons why this would be considered a submission for a notification of a major release	<i>Unavailable.</i>

With the implementation of the 19.15.27 NMAC (05/25/2021), venting and/or flaring of natural gas (i.e. gas only) are to be submitted on the C-129 form.

Initial Response

The responsible party must undertake the following actions immediately unless they could create a safety hazard that would result in injury.

The source of the release has been stopped	True
The impacted area has been secured to protect human health and the environment	True
Released materials have been contained via the use of berms or dikes, absorbent pads, or other containment devices	True
All free liquids and recoverable materials have been removed and managed appropriately	True
If all the actions described above have not been undertaken, explain why	<i>Not answered.</i>

Per Paragraph (4) of Subsection B of 19.15.29.8 NMAC the responsible party may commence remediation immediately after discovery of a release. If remediation has begun, please prepare and attach a narrative of actions to date in the follow-up C-141 submission. If remedial efforts have been successfully completed or if the release occurred within a lined containment area (see Subparagraph (a) of Paragraph (5) of Subsection A of 19.15.29.11 NMAC), please prepare and attach all information needed for closure evaluation in the follow-up C-141 submission.

I hereby certify that the information given above is true and complete to the best of my knowledge and understand that pursuant to OCD rules and regulations all operators are required to report and/or file certain release notifications and perform corrective actions for releases which may endanger public health or the environment. The acceptance of a C-141 report by the OCD does not relieve the operator of liability should their operations have failed to adequately investigate and remediate contamination that pose a threat to groundwater, surface water, human health or the environment. In addition, OCD acceptance of a C-141 report does not relieve the operator of responsibility for compliance with any other federal, state, or local laws and/or regulations.

I hereby agree and sign off to the above statement	Name: Fernando Rodriguez Title: SR EHS Specialist Email: fernandorodriguez@rileypermian.com Date: 05/17/2026
--	---

Sante Fe Main Office
Phone: (505) 476-3441

General Information
Phone: (505) 629-6116

Online Phone Directory
<https://www.emnrd.nm.gov/ocd/contact-us>

State of New Mexico
Energy, Minerals and Natural Resources
Oil Conservation Division
1220 S. St Francis Dr.
Santa Fe, NM 87505

QUESTIONS, Page 3

Action 585768

QUESTIONS (continued)

Operator: RILEY PERMIAN OPERATING COMPANY, LLC 29 E Reno Avenue Oklahoma City, OK 73104	OGRID: 372290
	Action Number: 585768
	Action Type: [C-141] Initial C-141 (C-141-v-Initial)

QUESTIONS

Site Characterization
Please answer all the questions in this group (only required when seeking remediation plan approval and beyond). This information must be provided to the appropriate district office no later than 90 days after the release discovery date.

What is the shallowest depth to groundwater beneath the area affected by the release in feet below ground surface (ft bgs)	Between 100 and 500 (ft.)
What method was used to determine the depth to ground water	NM OSE iWaters Database Search
Did this release impact groundwater or surface water	No
What is the minimum distance, between the closest lateral extents of the release and the following surface areas:	
A continuously flowing watercourse or any other significant watercourse	Between 1000 (ft.) and ½ (mi.)
Any lakebed, sinkhole, or playa lake (measured from the ordinary high-water mark)	Greater than 5 (mi.)
An occupied permanent residence, school, hospital, institution, or church	Between 1 and 5 (mi.)
A spring or a private domestic fresh water well used by less than five households for domestic or stock watering purposes	Between ½ and 1 (mi.)
Any other fresh water well or spring	Between ½ and 1 (mi.)
Incorporated municipal boundaries or a defined municipal fresh water well field	Greater than 5 (mi.)
A wetland	Between 1000 (ft.) and ½ (mi.)
A subsurface mine	Greater than 5 (mi.)
An (non-karst) unstable area	Between 1 and 5 (mi.)
Categorize the risk of this well / site being in a karst geology	Medium
A 100-year floodplain	Between 1000 (ft.) and ½ (mi.)
Did the release impact areas not on an exploration, development, production, or storage site	No

Remediation Plan
Please answer all the questions that apply or are indicated. This information must be provided to the appropriate district office no later than 90 days after the release discovery date.

Requesting a remediation plan approval with this submission	No
---	----

The OCD recognizes that proposed remediation measures may have to be minimally adjusted in accordance with the physical realities encountered during remediation. If the responsible party has any need to significantly deviate from the remediation plan proposed, then it should consult with the division to determine if another remediation plan submission is required.

Sante Fe Main Office
Phone: (505) 476-3441

General Information
Phone: (505) 629-6116

Online Phone Directory
<https://www.emnrd.nm.gov/ocd/contact-us>

State of New Mexico
Energy, Minerals and Natural Resources
Oil Conservation Division
1220 S. St Francis Dr.
Santa Fe, NM 87505

CONDITIONS

Action 585768

CONDITIONS

Operator: RILEY PERMIAN OPERATING COMPANY, LLC 29 E Reno Avenue Oklahoma City, OK 73104	OGRID: 372290
	Action Number: 585768
	Action Type: [C-141] Initial C-141 (C-141-v-Initial)

CONDITIONS

Created By	Condition	Condition Date
rhamlet	The Characterization Plan is Conditionally Approved. Any area designated as a "Release Area" will need to have 5-point composite confirmation soil samples conducted within the entire boundary of that area. All samples must be analyzed for all constituents listed in Table I of 19.15.29.12 NMAC. Floor confirmation samples should be delineated/excavated to meet closure criteria standards from Table 1 of the OCD Spill Rule for site receptor characterization/proven depth to water determination. Please make sure that the edge of the release extent is accurately defined. Sidewall/edge samples should be delineated/excavated to 600 mg/kg for chlorides and 100 mg/kg for TPH to define the edge of the release. All off pad areas must meet reclamation standards in the OCD Spill Rule. The work will need to be completed in 90 days after the report has been reviewed.	5/20/2026