

Sante Fe Main Office
Phone: (505) 476-3441

General Information
Phone: (505) 629-6116

Online Phone Directory
<https://www.emnrd.nm.gov/ocd/contact-us>

State of New Mexico
Energy, Minerals and Natural Resources
Oil Conservation Division
1220 S. St Francis Dr.
Santa Fe, NM 87505

QUESTIONS

Action 488593

QUESTIONS

Operator: CIMAREX ENERGY CO. OF COLORADO 6001 Deauville Blvd Midland, TX 79706	OGRID: 162683
	Action Number: 488593
	Action Type: [NOTIFY] Notification Of Release (NOR)

QUESTIONS

Location of Release Source	
<i>Please answer all the questions in this group.</i>	
Site Name	Penny Pincher 21 Federal 1H
Date Release Discovered	07/24/2025
Surface Owner	Federal

Incident Details	
<i>Please answer all the questions in this group.</i>	
Incident Type	Oil Release
Did this release result in a fire or is the result of a fire	No
Did this release result in any injuries	No
Has this release reached or does it have a reasonable probability of reaching a watercourse	No
Has this release endangered or does it have a reasonable probability of endangering public health	No
Has this release substantially damaged or will it substantially damage property or the environment	No
Is this release of a volume that is or may with reasonable probability be detrimental to fresh water	No

Nature and Volume of Release	
<i>Material(s) released, please answer all that apply below. Any calculations or specific justifications for the volumes provided should be attached to the follow-up C-141 submission.</i>	
Crude Oil Released (bbls) Details	Cause: Equipment Failure Separator Crude Oil Released: 50 BBL Recovered: 50 BBL Lost: 0 BBL.
Produced Water Released (bbls) Details	Not answered.
Is the concentration of chloride in the produced water >10,000 mg/l	Not answered.
Condensate Released (bbls) Details	Not answered.
Natural Gas Vented (Mcf) Details	Not answered.
Natural Gas Flared (Mcf) Details	Not answered.
Other Released Details	Not answered.
Are there additional details for the questions above (i.e. any answer containing Other, Specify, Unknown, and/or Fire, or any negative lost amounts)	Upon arrival, the operator discovered that a crack had developed in the heater treater firetube, leading to a fluid release into the gravel-lined containment area. This incident resulted in an estimated 50 barrels of oil being released. Vacuum trucks successfully recovered all fluid from the containment. The affected gravel will be removed, and an inspection is scheduled for the coming weeks.

Sante Fe Main Office
Phone: (505) 476-3441

General Information
Phone: (505) 629-6116

Online Phone Directory
<https://www.emnrd.nm.gov/ocd/contact-us>

State of New Mexico
Energy, Minerals and Natural Resources
Oil Conservation Division
1220 S. St Francis Dr.
Santa Fe, NM 87505

QUESTIONS, Page 2

Action 488593

QUESTIONS (continued)

Operator: CIMAREX ENERGY CO. OF COLORADO 6001 Deauville Blvd Midland, TX 79706	OGRID: 162683
	Action Number: 488593
	Action Type: [NOTIFY] Notification Of Release (NOR)

QUESTIONS

Nature and Volume of Release (continued)	
Is this a gas only submission (i.e. only significant Mcf values reported)	No, according to supplied volumes this does not appear to be a "gas only" report.
Was this a major release as defined by Subsection A of 19.15.29.7 NMAC	Yes
Reasons why this would be considered a submission for a notification of a major release	From paragraph A. "Major release" determine using: (1) an unauthorized release of a volume, excluding gases, of 25 barrels or more.

With the implementation of the 19.15.27 NMAC (05/25/2021), venting and/or flaring of natural gas (i.e. gas only) are to be submitted on the C-129 form.

Initial Response

The responsible party must undertake the following actions immediately unless they could create a safety hazard that would result in injury.

The source of the release has been stopped	True
The impacted area has been secured to protect human health and the environment	True
Released materials have been contained via the use of berms or dikes, absorbent pads, or other containment devices	True
All free liquids and recoverable materials have been removed and managed appropriately	True
If all the actions described above have not been undertaken, explain why	Not answered.

Per Paragraph 4 of Subsection B of 19.15.29.8 NMAC the responsible party may commence remediation immediately after discovery of a release. If remediation has begun, please prepare and attach a narrative of actions to date in the follow-up C-141 submission. If remedial efforts have been successfully completed or if the release occurred within a lined containment area (see 19.15.29.11(A)(5)(a) NMAC), please prepare and attach all information needed for closure evaluation in the follow-up C-141 submission.

Sante Fe Main Office
Phone: (505) 476-3441

General Information
Phone: (505) 629-6116

Online Phone Directory
<https://www.emnrd.nm.gov/ocd/contact-us>

**State of New Mexico
Energy, Minerals and Natural Resources
Oil Conservation Division
1220 S. St Francis Dr.
Santa Fe, NM 87505**

ACKNOWLEDGMENTS

Action 488593

ACKNOWLEDGMENTS

Operator: CIMAREX ENERGY CO. OF COLORADO 6001 Deauville Blvd Midland, TX 79706	OGRID: 162683
	Action Number: 488593
	Action Type: [NOTIFY] Notification Of Release (NOR)

ACKNOWLEDGMENTS

<input checked="" type="checkbox"/>	I acknowledge that I am authorized to submit notification of a release on behalf of my operator.
<input checked="" type="checkbox"/>	I acknowledge that upon submitting this application, I will be creating a new incident file (assigned to my operator) to track the notification(s) and corrective action(s) for a release, pursuant to NMAC 19.15.29.
<input checked="" type="checkbox"/>	I acknowledge that creating a new incident file will require my operator to file subsequent submission(s) of form "C-141, Application for administrative approval of a release notification and corrective action", pursuant to NMAC 19.15.29.
<input checked="" type="checkbox"/>	I hereby certify that the information given above is true and complete to the best of my knowledge and understand that pursuant to OCD rules and regulations all operators are required to report and/or file certain release notifications and perform corrective actions for releases which may endanger public health or the environment.
<input checked="" type="checkbox"/>	I acknowledge the fact that the acceptance of a C-141 report by the OCD does not relieve the operator of liability should their operations have failed to adequately investigate and remediate contamination that pose a threat to groundwater, surface water, human health or the environment.
<input checked="" type="checkbox"/>	I acknowledge the fact that, in addition, OCD acceptance of a C-141 report does not relieve the operator of responsibility for compliance with any other federal, state, or local laws and/or regulations.

Sante Fe Main Office
Phone: (505) 476-3441

General Information
Phone: (505) 629-6116

Online Phone Directory
<https://www.emnrd.nm.gov/ocd/contact-us>

State of New Mexico
Energy, Minerals and Natural Resources
Oil Conservation Division
1220 S. St Francis Dr.
Santa Fe, NM 87505

CONDITIONS

Action 488593

CONDITIONS

Operator: CIMAREX ENERGY CO. OF COLORADO 6001 Deauville Blvd Midland, TX 79706	OGRID: 162683
	Action Number: 488593
	Action Type: [NOTIFY] Notification Of Release (NOR)

CONDITIONS

Created By	Condition	Condition Date
lluig	When submitting future reports regarding this release, please submit the calculations used or specific justification for the volumes reported on the initial C-141.	7/24/2025



CIMAREX ENERGY
PENNY PINCHER 21 FEDERAL 1
EDDY, NM

8:13



[← Back](#)

Square/Rectangle Contained Spill with Vessel Displacement

Penny pincher 1

L(Ft) W(Ft) D(In) Oil %

86 39 1 100

Tank Size (Ft) Tank Count

Tank OD Tank Count



Tank Displacement

Vol: 0.00

Oil Spill Total: 49.78

H₂O Spill Total: 0.00

Add Section to Spill



CIMAREX ENERGY
PENNY PINCHER 21 FEDERAL 1
EDDY, NM





CIMAREX ENERGY
PENNY PINCHER 21 FEDERAL 1
EDDY, NM



Sante Fe Main Office
Phone: (505) 476-3441

General Information
Phone: (505) 629-6116

Online Phone Directory
<https://www.emnrd.nm.gov/ocd/contact-us>

State of New Mexico
Energy, Minerals and Natural Resources
Oil Conservation Division
1220 S. St Francis Dr.
Santa Fe, NM 87505

QUESTIONS

Action 488879

QUESTIONS

Operator: CIMAREX ENERGY CO. OF COLORADO 6001 Deauville Blvd Midland, TX 79706	OGRID: 162683
	Action Number: 488879
	Action Type: [C-141] Initial C-141 (C-141-v-Initial)

QUESTIONS

Prerequisites	
Incident ID (n#)	nAPP2520573252
Incident Name	NAPP2520573252 PENNY PINCHER 21 FEDERAL 1H @ 0
Incident Type	Oil Release
Incident Status	Initial C-141 Received
Incident Facility	[fAPP2202645322] PENNY PINCHER 21 FEDERAL 1H

Location of Release Source	
<i>Please answer all the questions in this group.</i>	
Site Name	Penny Pincher 21 Federal 1H
Date Release Discovered	07/24/2025
Surface Owner	Federal

Incident Details	
<i>Please answer all the questions in this group.</i>	
Incident Type	Oil Release
Did this release result in a fire or is the result of a fire	No
Did this release result in any injuries	No
Has this release reached or does it have a reasonable probability of reaching a watercourse	No
Has this release endangered or does it have a reasonable probability of endangering public health	No
Has this release substantially damaged or will it substantially damage property or the environment	No
Is this release of a volume that is or may with reasonable probability be detrimental to fresh water	No

Nature and Volume of Release	
<i>Material(s) released, please answer all that apply below. Any calculations or specific justifications for the volumes provided should be attached to the follow-up C-141 submission.</i>	
Crude Oil Released (bbls) Details	Cause: Equipment Failure Separator Crude Oil Released: 50 BBL Recovered: 50 BBL Lost: 0 BBL.
Produced Water Released (bbls) Details	Not answered.
Is the concentration of chloride in the produced water >10,000 mg/l	No
Condensate Released (bbls) Details	Not answered.
Natural Gas Vented (Mcf) Details	Not answered.
Natural Gas Flared (Mcf) Details	Not answered.
Other Released Details	Not answered.
Are there additional details for the questions above (i.e. any answer containing Other, Specify, Unknown, and/or Fire, or any negative lost amounts)	Upon arrival, the operator discovered that a crack had developed in the heater treater firetube, leading to a fluid release into the gravel-lined containment area. This incident resulted in an estimated 50 barrels of oil being released. Vacuum trucks successfully recovered all fluid from the containment. The affected gravel will be removed, and an inspection is scheduled for the coming weeks.

Sante Fe Main Office
Phone: (505) 476-3441

General Information
Phone: (505) 629-6116

Online Phone Directory
<https://www.emnrd.nm.gov/ocd/contact-us>

**State of New Mexico
Energy, Minerals and Natural Resources
Oil Conservation Division
1220 S. St Francis Dr.
Santa Fe, NM 87505**

QUESTIONS, Page 2

Action 488879

QUESTIONS (continued)

Operator: CIMAREX ENERGY CO. OF COLORADO 6001 Deauville Blvd Midland, TX 79706	OGRID: 162683
	Action Number: 488879
	Action Type: [C-141] Initial C-141 (C-141-v-Initial)

QUESTIONS

Nature and Volume of Release (continued)	
Is this a gas only submission (i.e. only significant Mcf values reported)	No, according to supplied volumes this does not appear to be a "gas only" report.
Was this a major release as defined by Subsection A of 19.15.29.7 NMAC	Yes
Reasons why this would be considered a submission for a notification of a major release	From paragraph A. "Major release" determine using: (1) an unauthorized release of a volume, excluding gases, of 25 barrels or more.
<i>With the implementation of the 19.15.27 NMAC (05/25/2021), venting and/or flaring of natural gas (i.e. gas only) are to be submitted on the C-129 form.</i>	

Initial Response

The responsible party must undertake the following actions immediately unless they could create a safety hazard that would result in injury.

The source of the release has been stopped	True
The impacted area has been secured to protect human health and the environment	True
Released materials have been contained via the use of berms or dikes, absorbent pads, or other containment devices	True
All free liquids and recoverable materials have been removed and managed appropriately	True
If all the actions described above have not been undertaken, explain why	Not answered.

Per Paragraph (4) of Subsection B of 19.15.29.8 NMAC the responsible party may commence remediation immediately after discovery of a release. If remediation has begun, please prepare and attach a narrative of actions to date in the follow-up C-141 submission. If remedial efforts have been successfully completed or if the release occurred within a lined containment area (see Subparagraph (a) of Paragraph (5) of Subsection A of 19.15.29.11 NMAC), please prepare and attach all information needed for closure evaluation in the follow-up C-141 submission.

I hereby certify that the information given above is true and complete to the best of my knowledge and understand that pursuant to OCD rules and regulations all operators are required to report and/or file certain release notifications and perform corrective actions for releases which may endanger public health or the environment. The acceptance of a C-141 report by the OCD does not relieve the operator of liability should their operations have failed to adequately investigate and remediate contamination that pose a threat to groundwater, surface water, human health or the environment. In addition, OCD acceptance of a C-141 report does not relieve the operator of responsibility for compliance with any other federal, state, or local laws and/or regulations.

I hereby agree and sign off to the above statement	Name: Laci Luig Title: ES&H Specialist Email: DL_PerminianEnvironmental@coterra.com Date: 07/26/2025
--	---

Sante Fe Main Office
Phone: (505) 476-3441

General Information
Phone: (505) 629-6116

Online Phone Directory
<https://www.emnrd.nm.gov/ocd/contact-us>

**State of New Mexico
Energy, Minerals and Natural Resources
Oil Conservation Division
1220 S. St Francis Dr.
Santa Fe, NM 87505**

QUESTIONS, Page 3

Action 488879

QUESTIONS (continued)

Operator: CIMAREX ENERGY CO. OF COLORADO 6001 Deauville Blvd Midland, TX 79706	OGRID: 162683
	Action Number: 488879
	Action Type: [C-141] Initial C-141 (C-141-v-Initial)

QUESTIONS

Site Characterization

Please answer all the questions in this group (only required when seeking remediation plan approval and beyond). This information must be provided to the appropriate district office no later than 90 days after the release discovery date.

What is the shallowest depth to groundwater beneath the area affected by the release in feet below ground surface (ft bgs)	Not answered.
What method was used to determine the depth to ground water	Not answered.
Did this release impact groundwater or surface water	Not answered.
What is the minimum distance, between the closest lateral extents of the release and the following surface areas:	
A continuously flowing watercourse or any other significant watercourse	Not answered.
Any lakebed, sinkhole, or playa lake (measured from the ordinary high-water mark)	Not answered.
An occupied permanent residence, school, hospital, institution, or church	Not answered.
A spring or a private domestic fresh water well used by less than five households for domestic or stock watering purposes	Not answered.
Any other fresh water well or spring	Not answered.
Incorporated municipal boundaries or a defined municipal fresh water well field	Not answered.
A wetland	Not answered.
A subsurface mine	Not answered.
An (non-karst) unstable area	Not answered.
Categorize the risk of this well / site being in a karst geology	Not answered.
A 100-year floodplain	Not answered.
Did the release impact areas not on an exploration, development, production, or storage site	Not answered.

Remediation Plan

Please answer all the questions that apply or are indicated. This information must be provided to the appropriate district office no later than 90 days after the release discovery date.

Requesting a remediation plan approval with this submission	No
<i>The OCD recognizes that proposed remediation measures may have to be minimally adjusted in accordance with the physical realities encountered during remediation. If the responsible party has any need to significantly deviate from the remediation plan proposed, then it should consult with the division to determine if another remediation plan submission is required.</i>	

Sante Fe Main Office
Phone: (505) 476-3441

General Information
Phone: (505) 629-6116

Online Phone Directory
<https://www.emnrd.nm.gov/ocd/contact-us>

State of New Mexico
Energy, Minerals and Natural Resources
Oil Conservation Division
1220 S. St Francis Dr.
Santa Fe, NM 87505

CONDITIONS

Action 488879

CONDITIONS

Operator: CIMAREX ENERGY CO. OF COLORADO 6001 Deauville Blvd Midland, TX 79706	OGRID: 162683
	Action Number: 488879
	Action Type: [C-141] Initial C-141 (C-141-v-Initial)

CONDITIONS

Created By	Condition	Condition Date
scott.rodgers	None	8/4/2025

Sante Fe Main Office
Phone: (505) 476-3441

General Information
Phone: (505) 629-6116

Online Phone Directory
<https://www.emnrd.nm.gov/ocd/contact-us>

State of New Mexico
Energy, Minerals and Natural Resources
Oil Conservation Division
1220 S. St Francis Dr.
Santa Fe, NM 87505

QUESTIONS

Action 574139

QUESTIONS

Operator: Coterra Energy Operating Co. 6001 Deauville Blvd Midland, TX 79706	OGRID: 215099
	Action Number: 574139
	Action Type: [NOTIFY] Notification Of Liner Inspection (C-141L)

QUESTIONS

Prerequisites	
Incident ID (n#)	nAPP2520573252
Incident Name	NAPP2520573252 PENNY PINCHER 21 FEDERAL 1H @ FAPP2202645322
Incident Type	Oil Release
Incident Status	Initial C-141 Approved
Incident Facility	[fAPP2202645322] PENNY PINCHER 21 FEDERAL 1H

Location of Release Source	
Site Name	Penny Pincher 21 Federal 1H
Date Release Discovered	07/24/2025
Surface Owner	Federal

Liner Inspection Event Information	
<i>Please answer all the questions in this group.</i>	
What is the liner inspection surface area in square feet	4,400
Have all the impacted materials been removed from the liner	Yes
Liner inspection date pursuant to Subparagraph (a) of Paragraph (5) of Subsection A of 19.15.29.11 NMAC	04/14/2026
Time liner inspection will commence	09:30 AM
Please provide any information necessary for observers to liner inspection	Inspecting west half of containment
Please provide any information necessary for navigation to liner inspection site	Coordinates: 32.65124, -103.87919

Sante Fe Main Office
Phone: (505) 476-3441

General Information
Phone: (505) 629-6116

Online Phone Directory
<https://www.emnrd.nm.gov/ocd/contact-us>

State of New Mexico
Energy, Minerals and Natural Resources
Oil Conservation Division
1220 S. St Francis Dr.
Santa Fe, NM 87505

CONDITIONS

Action 574139

CONDITIONS

Operator: Coterra Energy Operating Co. 6001 Deauville Blvd Midland, TX 79706	OGRID: 215099
	Action Number: 574139
	Action Type: [NOTIFY] Notification Of Liner Inspection (C-141L)

CONDITIONS

Created By	Condition	Condition Date
lluig	Failure to notify the OCD of liner inspections including any changes in date/time per the requirements of 19.15.29.11.A(5)(a)(ii) NMAC, may result in the inspection not being accepted.	4/10/2026



Liner Integrity Certification

The following serves to verify that the affected liner has been inspected and found to be in serviceable condition in accordance with 19.15.29.11 A.(5)(a)(i-ii) of the New Mexico Administrative Code.

Facility ID: fAPP2202645322

Date: 05/12/2026

Incident ID(s): nAPP2520573252

- Responsible Party has visually inspected the liner.
- Liner remains intact and was able to contain the leak in question.
- At least two business days' notice was given to the appropriate division district office before conducting the liner inspection.
- Photographs illustrating liner integrity are included.



CIMAREX ENERGY
Penny Pincher 21 Federal 1H
Eddy Co, NM



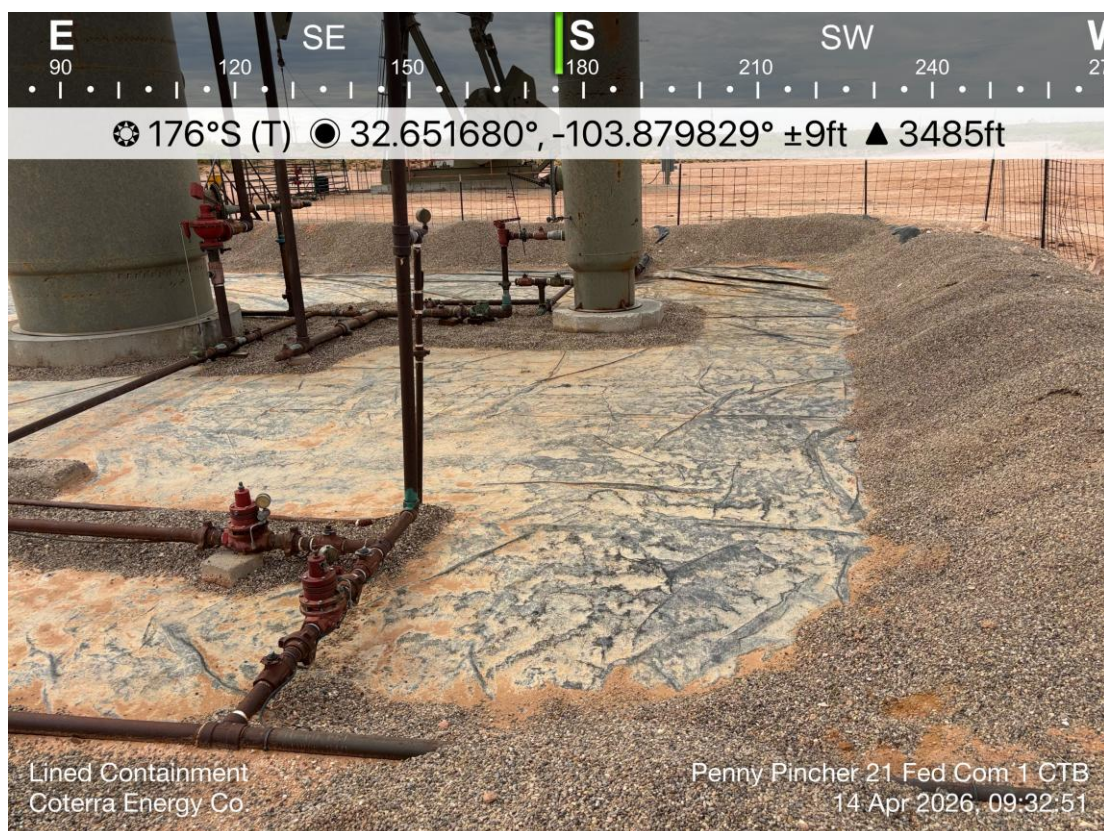
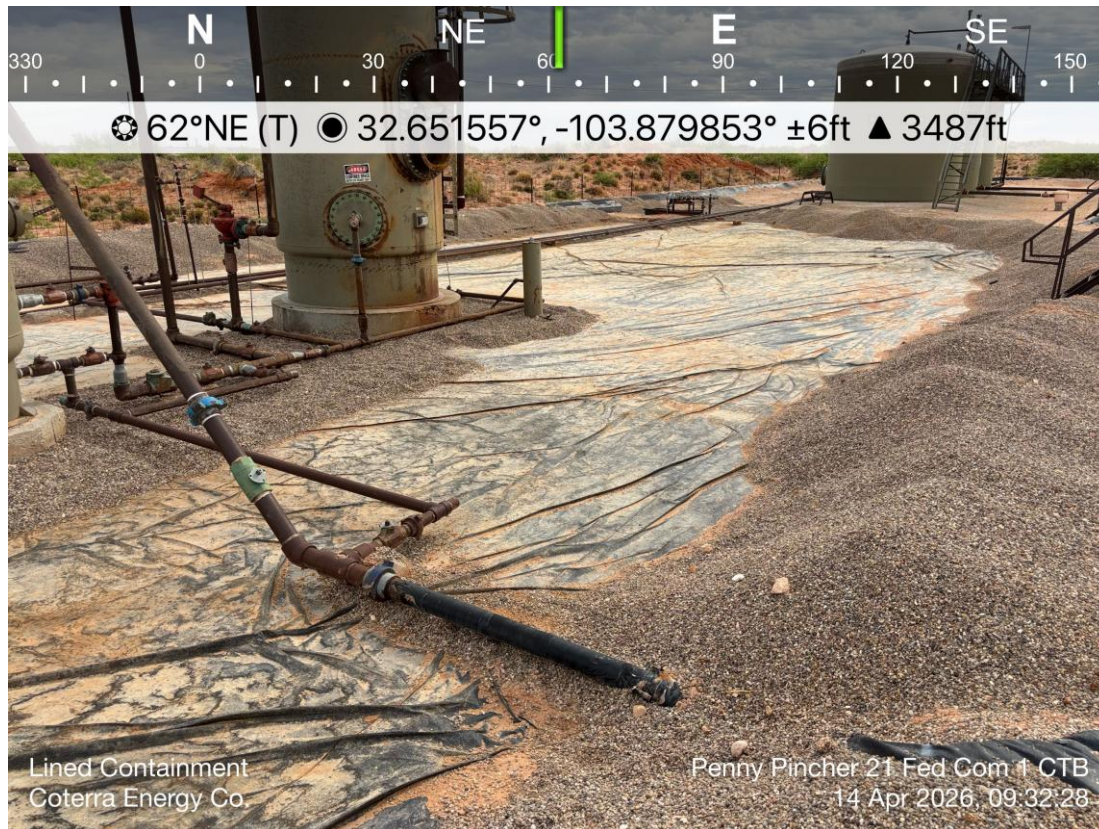


CIMAREX ENERGY
Penny Pincher 21 Federal 1H
Eddy Co, NM



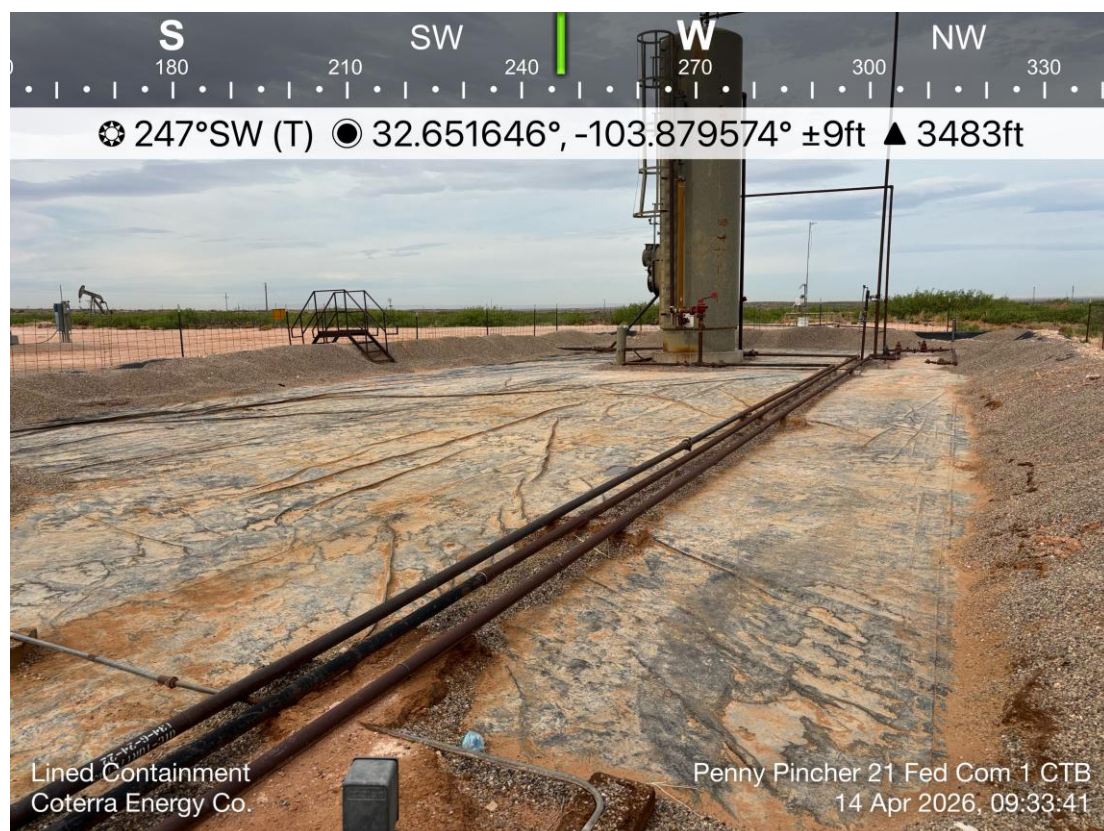


CIMAREX ENERGY
Penny Pincher 21 Federal 1H
Eddy Co, NM





CIMAREX ENERGY
Penny Pincher 21 Federal 1H
Eddy Co, NM

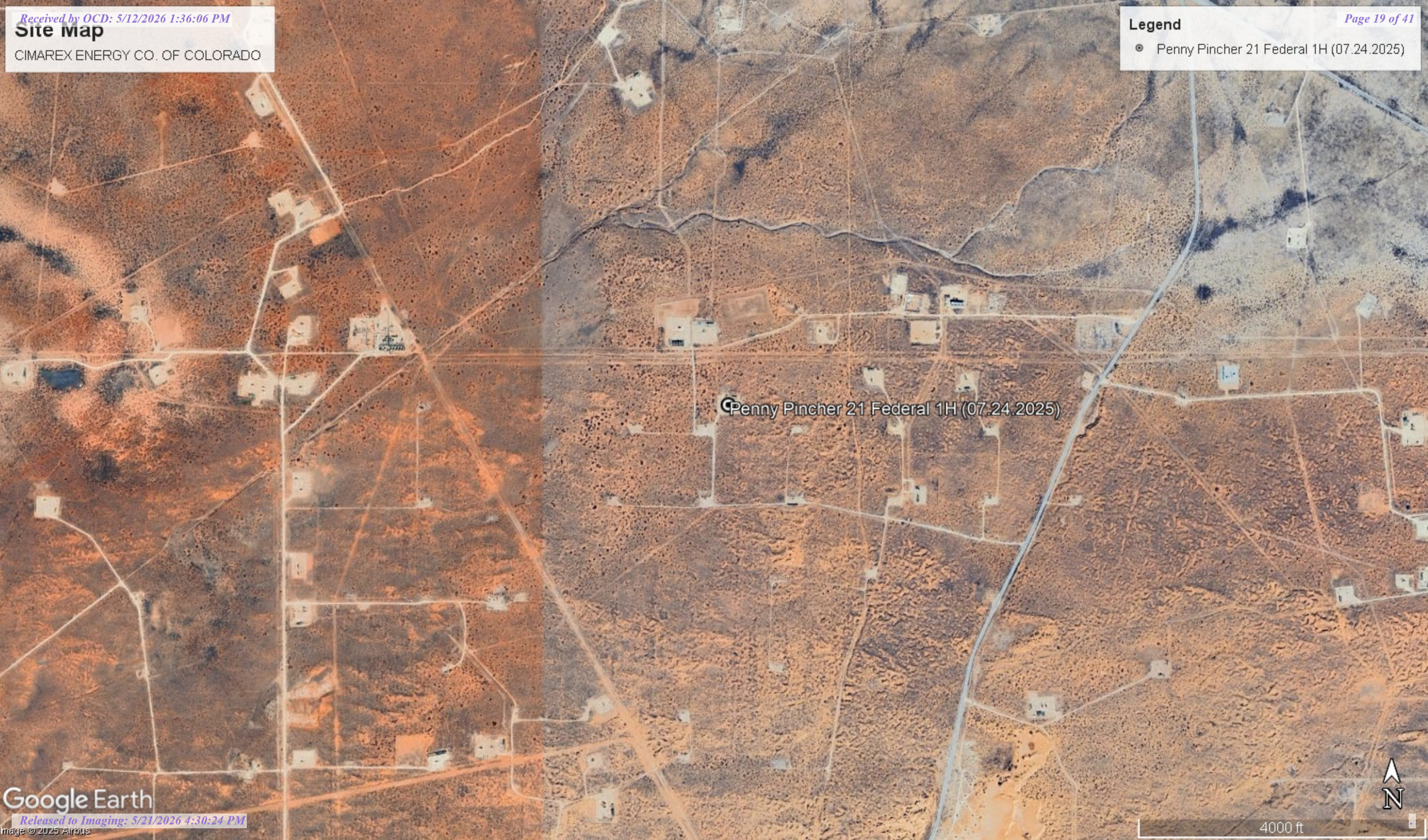


Site map

CIMAREX ENERGY CO. OF COLORADO

Legend

- Penny Pincher 21 Federal 1H (07.24.2025)



Penny Pincher 21 Federal 1H (07.24.2025)



Topo map

CIMAREX ENERGY CO. OF COLORADO

Legend



- Penny Pincher 21 Federal 1H (07.24.2025)



Containment map

CIMAREX ENERGY CO. OF COLORADO

Legend

-  Containment Map
-  Penny Pincher 21 Federal 1H (07.24.2025)



Penny Pincher 21 Federal 1H (07.24.2025)

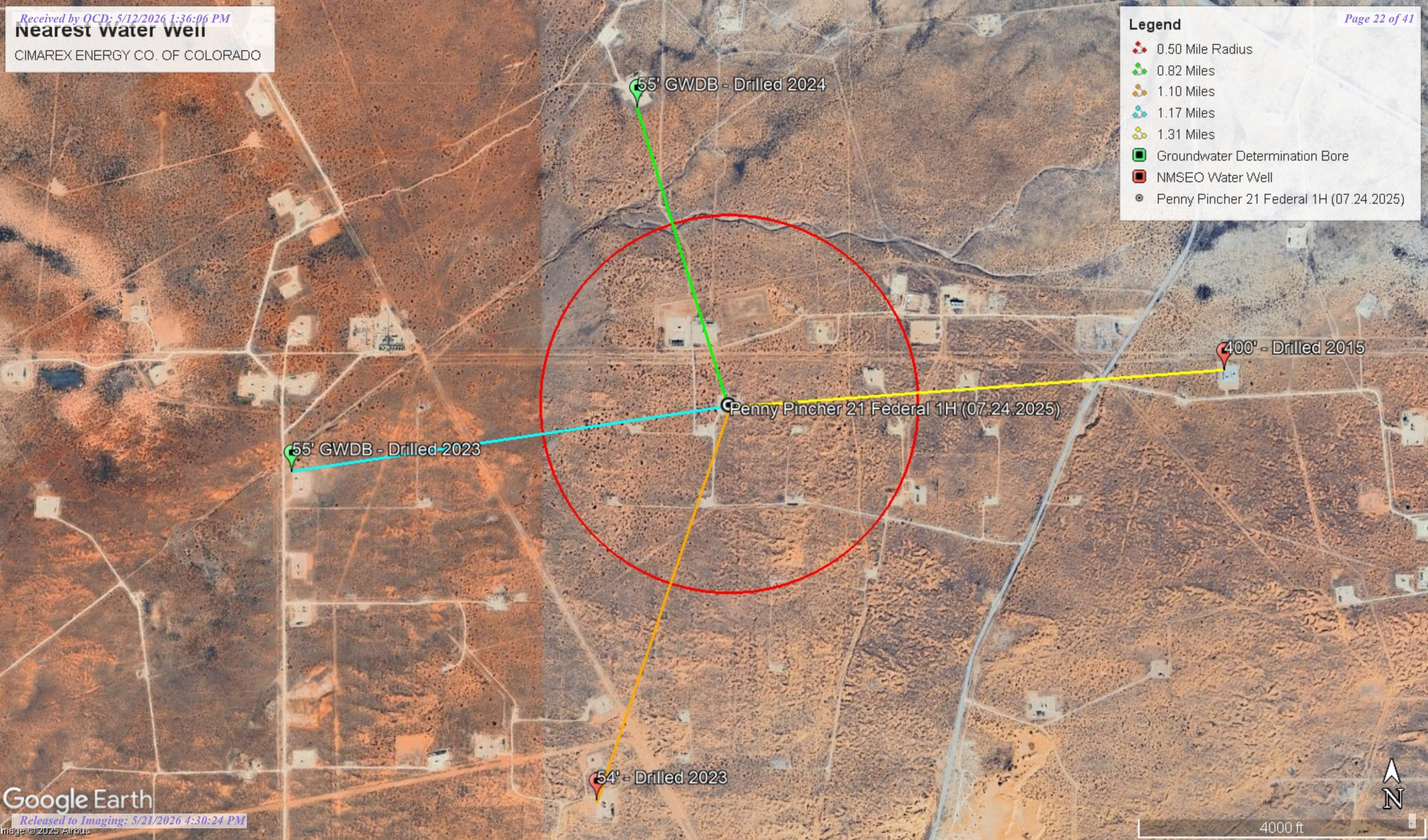


Nearest water well

CIMAREX ENERGY CO. OF COLORADO

Legend




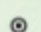
- 0.50 Mile Radius
- 0.82 Miles
- 1.10 Miles
- 1.17 Miles
- 1.31 Miles
- Groundwater Determination Bore
- NMSEO Water Well
- Penny Pincher 21 Federal 1H (07.24.2025)



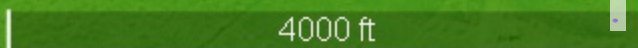
Low Karst

CIMAREX ENERGY CO. OF COLORADO

Legend

-  High
-  Low
-  Medium
-  Penny Pincher 21 Federal 1H (07.24.2025)

Penny Pincher 21 Federal 1H (07.24.2025)





New Mexico Office of the State Engineer

Water Column/Average Depth to Water

(A CLW##### in the POD suffix indicates the POD has been replaced & no longer serves a water right file.)

(R=POD has been replaced, O=orphaned, C=the file is closed)

(quarters are smallest to largest)

(meters)

(In feet)

POD Number	Code	Sub basin	County	Q64	Q16	Q4	Sec	Tws	Range	X	Y	Map	Distance	Well Depth	Depth Water	Water Column
CP 01985 POD1		CP	ED	NE	SE	NE	17	19S	31E	604666.5	3614438.3	●	1311	55		
CP 00829 POD1		CP	LE		NE	SE	16	19S	31E	606165.0	3614009.0 *	●	1368	120		
CP 01941 POD1		CP	ED	SW	NE	NE	29	19S	31E	604524.2	3611512.8	●	1763	55	54	1
CP 01943 POD1		CP	ED	NW	SW	NW	20	19S	31E	603217.4	3612883.9	●	1876	55		
CP 01554 POD2		CP	LE	NE	NE	NW	22	19S	31E	607165.4	3613322.3	●	2100	400		
CP 01554 POD1		CP	LE	NE	NE	NW	22	19S	31E	607165.6	3613354.6	●	2102	400		
CP 02011 POD1		CP	ED	SW	SW	SW	10	19S	31E	606373.4	3615144.8	●	2350	105		
CP 01907 POD1		CP	ED	SE	NE	NE	18	19S	31E	603017.2	3614737.1	●	2569			
CP 00725 POD1		CP	ED	NW	SW	SW	28	19S	31E	604906.0	3610473.0 *	●	2721	231		
CP 00722 POD1		CP	LE	SE	SW	SW	28	19S	31E	605106.0	3610273.0 *	●	2917	200		
CP 00722 POD1	R	CP	LE	SE	SW	SW	28	19S	31E	605106.0	3610273.0 *	●	2917	200		
CP 00722 POD4		CP	LE	SE	SW	SW	28	19S	31E	605058.6	3610260.0	●	2929	220	100	120
CP 00723 POD1		CP	ED	NE	NW	NW	33	19S	31E	605111.0	3610071.0 *	●	3119	139		
CP 00873 POD1		CP	LE		NW	NW	19	19S	31E	601772.0	3613147.0 *	●	3297	340	180	160
CP 00722 POD3		CP	LE	NE	SE	NW	33	19S	31E	605519.0	3609673.0 *	●	3545	220	140	80
CP 01864 POD1		CP	ED	SE	NE	NW	34	19S	31E	607068.1	3609824.0	●	3914	110		

Average Depth to Water: **118 feet**

Minimum Depth: **54 feet**

Maximum Depth: **180 feet**

Record Count: 16

UTM Filters (in meters):

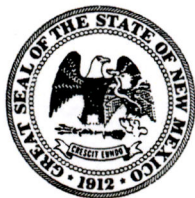
Easting: 605069.07

Northing: 3613189.80

Radius: 4000

* UTM location was derived from PLSS - see Help

The data is furnished by the NMOSE/ISC and is accepted by the recipient with the expressed understanding that the OSE/ISC make no warranties, expressed or implied, concerning the accuracy, completeness, reliability, usability, or suitability for any particular purpose of the data.



WELL RECORD & LOG

OFFICE OF THE STATE ENGINEER

www.ose.state.nm.us

1. GENERAL AND WELL LOCATION	OSE POD NO. (WELL NO.) CP-1985-POD 1		WELL TAG ID NO.		OSE FILE NO(S). CP-1985			
	WELL OWNER NAME(S) DEVON ENERGY RESOURCES				PHONE (OPTIONAL) 405-318-4697			
	WELL OWNER MAILING ADDRESS 205 E BENDER ROAD # 150				CITY HOBBS	STATE NM	ZIP 88240	
	WELL LOCATION (FROM GPS)	DEGREES LATITUDE	MINUTES 32	SECONDS 39	45.5076	* ACCURACY REQUIRED: ONE TENTH OF A SECOND		
		LONGITUDE	-103	53	1.7664	* DATUM REQUIRED: WGS 84		
DESCRIPTION RELATING WELL LOCATION TO STREET ADDRESS AND COMMON LANDMARKS - PLSS (SECTION, TOWNSHIP, RANGE) WHERE AVAILABLE SIRIUS 17 FEDERAL # 006H								
2. DRILLING & CASING INFORMATION	LICENSE NO. WD-1184	NAME OF LICENSED DRILLER RUSSELL SOUTHERLAND			NAME OF WELL DRILLING COMPANY WEST TEXAS WATER WELL SERVICE			
	DRILLING STARTED 1/18/2024	DRILLING ENDED 1/18/2024	DEPTH OF COMPLETED WELL (FT)	BORE HOLE DEPTH (FT) 55	DEPTH WATER FIRST ENCOUNTERED (FT)			
	COMPLETED WELL IS: <input type="checkbox"/> ARTESIAN <input checked="" type="checkbox"/> DRY HOLE <input type="checkbox"/> SHALLOW (UNCONFINED)				STATIC WATER LEVEL IN COMPLETED WELL (FT) N/A			
	DRILLING FLUID: <input checked="" type="checkbox"/> AIR <input type="checkbox"/> MUD				ADDITIVES - SPECIFY:			
	DRILLING METHOD: <input checked="" type="checkbox"/> ROTARY <input type="checkbox"/> HAMMER <input type="checkbox"/> CABLE TOOL <input type="checkbox"/> OTHER - SPECIFY:							
	DEPTH (feet bgl)		BORE HOLE DIAM (inches)	CASING MATERIAL AND/OR GRADE (include each casing string, and note sections of screen)	CASING CONNECTION TYPE (add coupling diameter)	CASING INSIDE DIAM. (inches)	CASING WALL THICKNESS (inches)	SLOT SIZE (inches)
	FROM	TO						
				NO CASING IN HOLE				
3. ANNULAR MATERIAL	DEPTH (feet bgl)		BORE HOLE DIAM. (inches)	LIST ANNULAR SEAL MATERIAL AND GRAVEL PACK SIZE-RANGE BY INTERVAL	AMOUNT (cubic feet)	METHOD OF PLACEMENT		
	FROM	TO						
				N/A				

FOR OSE INTERNAL USE		WR-20 WELL RECORD & LOG (Version 04/30/19)			
FILE NO. CP-1985	POD NO. 1	TRN NO. 753942			
LOCATION 195.31E.17 242	WELL TAG ID NO. NA			PAGE 1 OF 2	



WELL RECORD & LOG

OFFICE OF THE STATE ENGINEER

www.ose.state.nm.us

1. GENERAL AND WELL LOCATION	OSE POD NO. (WELL NO.) POD 1 (TW-1)		WELL TAG ID NO. N/A		OSE FILE NO(S). CP-1941		
	WELL OWNER NAME(S) Devon Energy				PHONE (OPTIONAL) 575-748-1838		
	WELL OWNER MAILING ADDRESS 6488 7 Rivers Hwy				CITY Artesia	STATE NM	ZIP 88210
	WELL LOCATION (FROM GPS)	DEGREES LATITUDE 32	MINUTES 38	SECONDS 10.56	N	* ACCURACY REQUIRED: ONE TENTH OF A SECOND	
		LONGITUDE 103	53	8.4	W	* DATUM REQUIRED: WGS 84	
DESCRIPTION RELATING WELL LOCATION TO STREET ADDRESS AND COMMON LANDMARKS - PLSS (SECTION, TOWNSHIP, RANGE) WHERE AVAILABLE SW NE NE Sec.29 T19S R31E NMPM							

2. DRILLING & CASING INFORMATION	LICENSE NO. 1249	NAME OF LICENSED DRILLER Jackie D. Atkins			NAME OF WELL DRILLING COMPANY Atkins Engineering Associates, Inc.			
	DRILLING STARTED 4/4/23	DRILLING ENDED 4/4/23	DEPTH OF COMPLETED WELL (FT) Temporary well 55'	BORE HOLE DEPTH (FT) ±55	DEPTH WATER FIRST ENCOUNTERED (FT) 54			
	COMPLETED WELL IS: <input type="checkbox"/> ARTESIAN <input type="checkbox"/> DRY HOLE <input checked="" type="checkbox"/> SHALLOW (UNCONFINED)				STATIC WATER LEVEL IN COMPLETED WELL (FT) 44.00	DATE STATIC MEASURED 4/18/23		
	DRILLING FLUID: <input type="checkbox"/> AIR <input type="checkbox"/> MUD ADDITIVES - SPECIFY:							
	DRILLING METHOD: <input type="checkbox"/> ROTARY <input type="checkbox"/> HAMMER <input type="checkbox"/> CABLE TOOL <input checked="" type="checkbox"/> OTHER - SPECIFY: Hollow Stem Auger					CHECK HERE IF PITLESS ADAPTER IS INSTALLED <input type="checkbox"/>		
	DEPTH (feet bgl)		BORE HOLE DIAM (inches)	CASING MATERIAL AND/OR GRADE (include each casing string, and note sections of screen)	CASING CONNECTION TYPE (add coupling diameter)	CASING INSIDE DIAM. (inches)	CASING WALL THICKNESS (inches)	SLOT SIZE (inches)
	FROM	TO						
	0	55	±6.25	Boring	--	--	--	--

3. ANNULAR MATERIAL	DEPTH (feet bgl)		BORE HOLE DIAM. (inches)	LIST ANNULAR SEAL MATERIAL AND GRAVEL PACK SIZE-RANGE BY INTERVAL	AMOUNT (cubic feet)	METHOD OF PLACEMENT
	FROM	TO				
				N/A		

FOR OSE INTERNAL USE			WR-20 WELL RECORD & LOG (Version 01/28/2022)		
FILE NO.	CP-01941	POD NO.	1	TRN NO.	740387
LOCATION	195.31E.29.322	WELL TAG ID NO.		PAGE 1 OF 2	



WELL RECORD & LOG

OFFICE OF THE STATE ENGINEER
www.ose.state.nm.us

OSE OFF APR 27 2023 4:03 26

1. GENERAL AND WELL LOCATION	OSE POD NO. (WELL NO.) POD 1 (TW-1)		WELL TAG ID NO. N/A		OSE FILE NO(S). CP-1943	
	WELL OWNER NAME(S) Devon Energy				PHONE (OPTIONAL) 575-748-1838	
	WELL OWNER MAILING ADDRESS 6488 7 Rivers Hwy				CITY Artesia	STATE ZIP NM 88210
	WELL LOCATION (FROM GPS)	LATITUDE	DEGREES 32	MINUTES 38	SECONDS 55.52	N
	LONGITUDE	103	53	58.0	W	* DATUM REQUIRED: WGS 84
DESCRIPTION RELATING WELL LOCATION TO STREET ADDRESS AND COMMON LANDMARKS - PLSS (SECTION, TOWNSHIP, RANGE) WHERE AVAILABLE NW SW NW Sec.20 T19S R31E NMPM						


2. DRILLING & CASING INFORMATION	LICENSE NO. 1249		NAME OF LICENSED DRILLER Jackie D. Atkins			NAME OF WELL DRILLING COMPANY Atkins Engineering Associates, Inc.		
	DRILLING STARTED 4/6/2023		DRILLING ENDED 4/9/2023	DEPTH OF COMPLETED WELL (FT) Temporary Well Material		BORE HOLE DEPTH (FT) ±55	DEPTH WATER FIRST ENCOUNTERED (FT) N/A	
	COMPLETED WELL IS: <input type="checkbox"/> ARTESIAN <input checked="" type="checkbox"/> DRY HOLE <input type="checkbox"/> SHALLOW (UNCONFINED)					STATIC WATER LEVEL IN COMPLETED WELL (FT) N/A	DATE STATIC MEASURED 4/18/23	
	DRILLING FLUID: <input type="checkbox"/> AIR <input type="checkbox"/> MUD ADDITIVES - SPECIFY:							
	DRILLING METHOD: <input type="checkbox"/> ROTARY <input type="checkbox"/> HAMMER <input type="checkbox"/> CABLE TOOL <input checked="" type="checkbox"/> OTHER - SPECIFY: Hollow Stem Auger						CHECK HERE IF PITLESS ADAPTER IS INSTALLED <input type="checkbox"/>	
	DEPTH (feet bgl)		BORE HOLE DIAM (inches)	CASING MATERIAL AND/OR GRADE (include each casing string, and note sections of screen)	CASING CONNECTION TYPE (add coupling diameter)	CASING INSIDE DIAM. (inches)	CASING WALL THICKNESS (inches)	SLOT SIZE (inches)
	FROM	TO						
	0	55	±6.25	Soil Boring	--	--	--	--

3. ANNULAR MATERIAL	DEPTH (feet bgl)		BORE HOLE DIAM. (inches)	LIST ANNULAR SEAL MATERIAL AND GRAVEL PACK SIZE-RANGE BY INTERVAL		AMOUNT (cubic feet)	METHOD OF PLACEMENT
	FROM	TO					
				N/A			

FOR OSE INTERNAL USE				WR-20 WELL RECORD & LOG (Version 01/28/2022)			
FILE NO. CP-1943		POD NO. 1		TRN NO. 740394			
LOCATION 19S. 31E. 20 1 31				WELL TAG ID NO. MA		PAGE 1 OF 2	

4. HYDROGEOLOGIC LOG OF WELL	DEPTH (feet bgl)		THICKNESS (feet)	COLOR AND TYPE OF MATERIAL ENCOUNTERED - INCLUDE WATER-BEARING CAVITIES OR FRACTURE ZONES (attach supplemental sheets to fully describe all units)	WATER BEARING? (YES / NO)	ESTIMATED YIELD FOR WATER-BEARING ZONES (gpm)
	FROM	TO				
	0	4	4	Sand, fine-grained, poorly graded, unconsolidated Brown	Y <input checked="" type="checkbox"/> N	
	4	25	21	Caliche, with very fine- grained sand, Tan off white	Y <input checked="" type="checkbox"/> N	
	25	50	25	Sand, fine-grained, poorly graded, consolidated, Brown	Y <input checked="" type="checkbox"/> N	
	50	55	5	Sand, fine-grained, poorly graded, unconsolidated, Tan	Y <input checked="" type="checkbox"/> N	
					Y N	
					Y N	
					Y N	
					Y N	
					Y N	
					Y N	
					Y N	
					Y N	
					Y N	
					Y N	
					Y N	
					Y N	
					Y N	
					Y N	
					Y N	
					Y N	
					Y N	
METHOD USED TO ESTIMATE YIELD OF WATER-BEARING STRATA: <input type="checkbox"/> PUMP <input type="checkbox"/> AIR LIFT <input type="checkbox"/> BAILER <input type="checkbox"/> OTHER - SPECIFY:					TOTAL ESTIMATED WELL YIELD (gpm): 0.00	

5. TEST; RIG SUPERVISION	WELL TEST	TEST RESULTS - ATTACH A COPY OF DATA COLLECTED DURING WELL TESTING, INCLUDING DISCHARGE METHOD, START TIME, END TIME, AND A TABLE SHOWING DISCHARGE AND DRAWDOWN OVER THE TESTING PERIOD.
		MISCELLANEOUS INFORMATION: Temporary well material removed and soil boring backfilled using drill cuttings from total depth to ten feet below ground surface(bgs), then hydrated bentonite chips ten feet bgs to surface. 5 Rigel 20 Fed Com 2H <div style="text-align: right; color: gray; font-size: small;">OGE DTI APR 27 2023 14:25</div>
	PRINT NAME(S) OF DRILL RIG SUPERVISOR(S) THAT PROVIDED ONSITE SUPERVISION OF WELL CONSTRUCTION OTHER THAN LICENSEE: Shane Eldridge, Cameron Pruitt	

6. SIGNATURE	THE UNDERSIGNED HEREBY CERTIFIES THAT, TO THE BEST OF HIS OR HER KNOWLEDGE AND BELIEF, THE FOREGOING IS A TRUE AND CORRECT RECORD OF THE ABOVE DESCRIBED HOLE AND THAT HE OR SHE WILL FILE THIS WELL RECORD WITH THE STATE ENGINEER AND THE PERMIT HOLDER WITHIN 30 DAYS AFTER COMPLETION OF WELL DRILLING:	
	 Jackie D. Atkins	4/26/23
	SIGNATURE OF DRILLER / PRINT SIGNEE NAME	DATE

FOR OSE INTERNAL USE		WR-20 WELL RECORD & LOG (Version 01/28/2022)	
FILE NO. CP-1943	POD NO. 1	TRN NO. 740394	
LOCATION 195-31E-20 131	WELL TAG ID NO. M4	PAGE 2 OF 2	



WELL RECORD & LOG

OFFICE OF THE STATE ENGINEER

www.ose.state.nm.us

1. GENERAL AND WELL LOCATION	OSE POD NUMBER (WELL NUMBER) CP-01554 POD-2			OSE FILE NUMBER(S)		
	WELL OWNER NAME(S) Central Valley Electric COOP, Philip R McKee			PHONE (OPTIONAL)		
	WELL OWNER MAILING ADDRESS 1505 N 13th St.			CITY Artesia	STATE NM	ZIP 88210
	WELL LOCATION (FROM GPS)	DEGREES LATITUDE 32	MINUTES 39	SECONDS 9.45	* ACCURACY REQUIRED: ONE TENTH OF A SECOND	
	LONGITUDE 103	51	26.28	* DATUM REQUIRED: WGS 84		
DESCRIPTION RELATING WELL LOCATION TO STREET ADDRESS AND COMMON LANDMARKS - PLSS (SECTION, TOWNSHIP, RANGE) WHERE AVAILABLE						

2. DRILLING & CASING INFORMATION	LICENSE NUMBER WD-1632	NAME OF LICENSED DRILLER Caleb Curry			NAME OF WELL DRILLING COMPANY Hopper Pump & Drilling Inc.			
	DRILLING STARTED 9/24/2015	DRILLING ENDED 9/25/2015	DEPTH OF COMPLETED WELL (FT) 400	BORE HOLE DEPTH (FT) 400	DEPTH WATER FIRST ENCOUNTERED (FT)			
	COMPLETED WELL IS: <input type="radio"/> ARTESIAN <input checked="" type="radio"/> DRY HOLE <input type="radio"/> SHALLOW (UNCONFINED)				STATIC WATER LEVEL IN COMPLETED WELL (FT)			
	DRILLING FLUID: <input checked="" type="radio"/> AIR <input type="radio"/> MUD ADDITIVES - SPECIFY:							
	DRILLING METHOD: <input type="radio"/> ROTARY <input type="radio"/> HAMMER <input type="radio"/> CABLE TOOL <input type="radio"/> OTHER - SPECIFY:							
	DEPTH (feet bgl)		BORE HOLE DIAM (inches)	CASING MATERIAL AND/OR GRADE (include each casing string, and note sections of screen)	CASING CONNECTION TYPE	CASING INSIDE DIAM. (inches)	CASING WALL THICKNESS (inches)	SLOT SIZE (inches)
	FROM	TO						

3. ANNULAR MATERIAL	DEPTH (feet bgl)		BORE HOLE DIAM. (inches)	LIST ANNULAR SEAL MATERIAL AND GRAVEL PACK SIZE-RANGE BY INTERVAL	AMOUNT (cubic feet)	METHOD OF PLACEMENT
	FROM	TO				
	0	40	8	3/8 bentonite chip		
	40	400	8	Natural Fill		

FOR OSE INTERNAL USE			WR-20 WELL RECORD & LOG (Version 06/08/2012)		
FILE NUMBER	CP-1554	POD NUMBER	2	TRN NUMBER	575706
LOCATION	Catholic	195.31E, 22.122			PAGE 1 OF 2

Tom Blaine, P.E.
State Engineer



Roswell Office
1900 WEST SECOND STREET
ROSWELL, NM 88201

**STATE OF NEW MEXICO
OFFICE OF THE STATE ENGINEER**

Trn Nbr: 575706
File Nbr: CP 01554
Well File Nbr: CP 01554 POD2

Oct. 06, 2015

CALEB CURRY
ALAN HOPPER
1002 W PINE LODGE
ROSWELL, NM 88201

Greetings:

The above numbered permit was issued in your name on 09/11/2015.

The Well Record was received in this office on 10/05/2015, stating that it had been completed on 09/25/2015, and was a dry well. The well is to be plugged or capped or otherwise maintained in a manner satisfactory to the State Engineer.

Please note that another well can be drilled under this permit if the well is completed and the well log filed on or before 09/30/2016.

If you have any questions, please feel free to contact us.

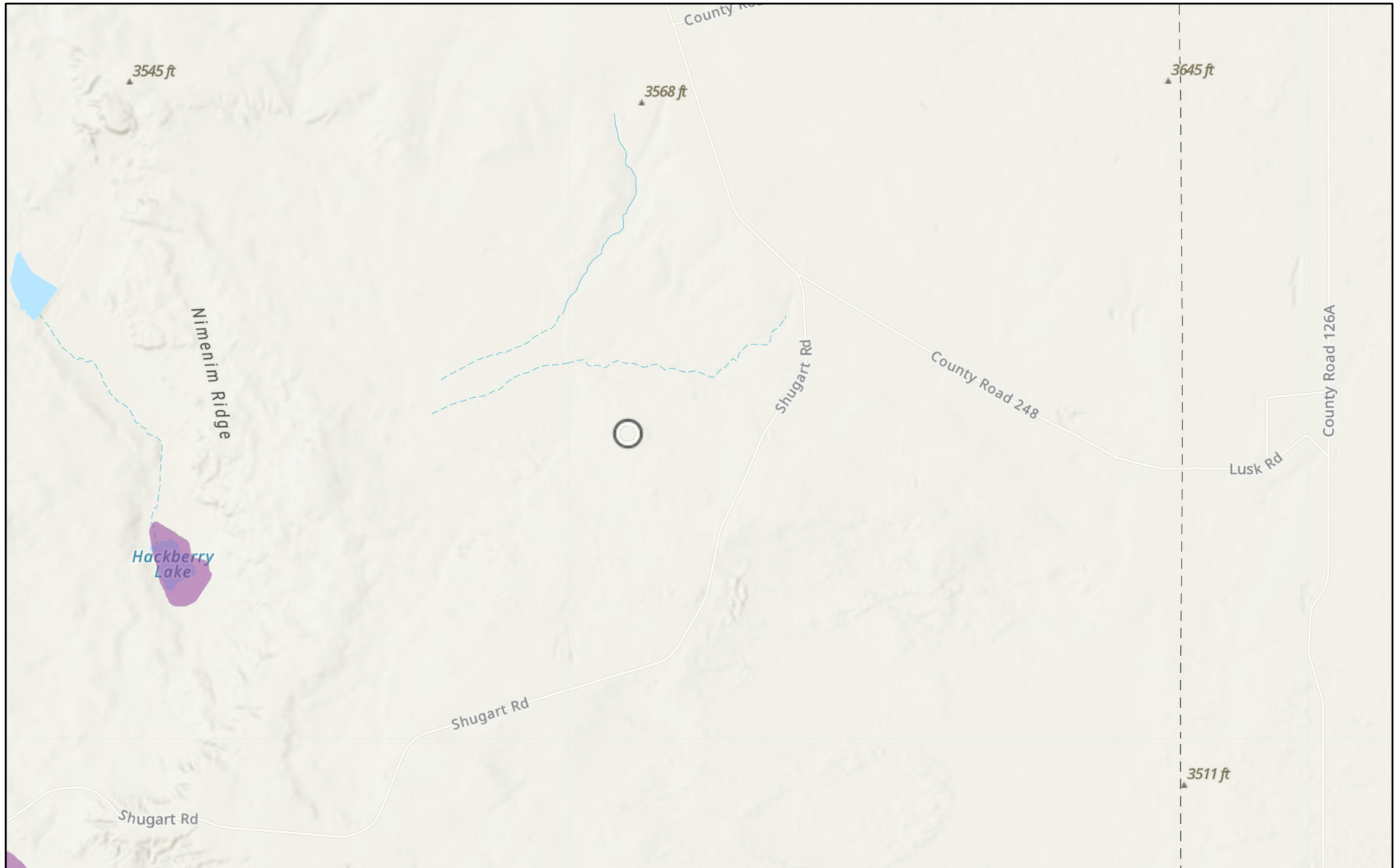
Sincerely,

A handwritten signature in cursive script, appearing to read "Yolanda Mendiola".

Yolanda Mendiola
(575) 622-6521


drywell

Penny Pincher 21 Federal 1H (07.24.2025)

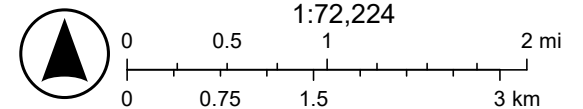


8/4/2025

USA Flood Hazard Areas

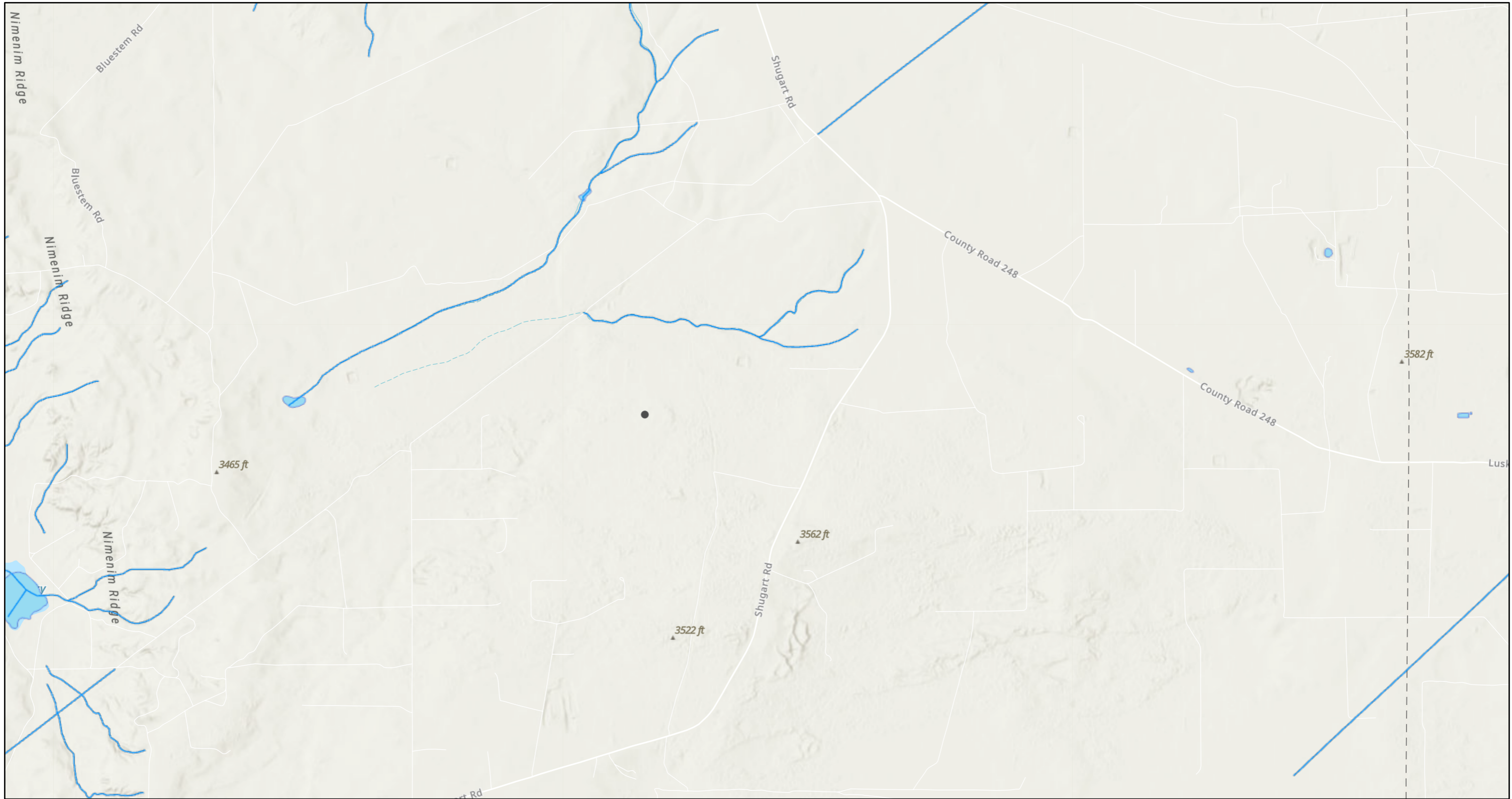
 1% Annual Chance Flood Hazard

World_Hillshade



Esri, NASA, NGA, USGS, FEMA, Sources: Esri, TomTom, Garmin, FAO, NOAA, USGS, (c) OpenStreetMap contributors, and the GIS User

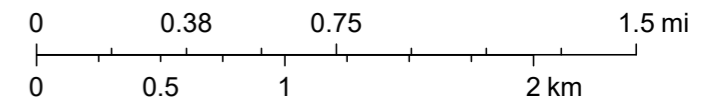
Penny Pincher 21 Federal 1H (07.24.2025)



8/4/2025, 1:08:40 PM

- OSW Water Bodys
- OSE Streams

1:36,112



Esri, NASA, NGA, USGS, FEMA, Sources: Esri, TomTom, Garmin, FAO, NOAA, USGS, © OpenStreetMap contributors, and the GIS User Community, NM OSE

Sante Fe Main Office
Phone: (505) 476-3441

General Information
Phone: (505) 629-6116

Online Phone Directory
<https://www.emnrd.nm.gov/ocd/contact-us>

State of New Mexico
Energy, Minerals and Natural Resources
Oil Conservation Division
1220 S. St Francis Dr.
Santa Fe, NM 87505

QUESTIONS

Action 584324

QUESTIONS

Operator: Coterra Energy Operating Co. 6001 Deauville Blvd Midland, TX 79706	OGRID: 215099
	Action Number: 584324
	Action Type: [C-141] Remediation Closure Request C-141 (C-141-v-Closure)

QUESTIONS

Prerequisites	
Incident ID (n#)	nAPP2520573252
Incident Name	NAPP2520573252 PENNY PINCHER 21 FEDERAL 1H @ FAPP2202645322
Incident Type	Oil Release
Incident Status	Remediation Closure Report Received
Incident Facility	[fAPP2202645322] PENNY PINCHER 21 FEDERAL 1H

Location of Release Source	
<i>Please answer all the questions in this group.</i>	
Site Name	Penny Pincher 21 Federal 1H
Date Release Discovered	07/24/2025
Surface Owner	Federal

Incident Details	
<i>Please answer all the questions in this group.</i>	
Incident Type	Oil Release
Did this release result in a fire or is the result of a fire	No
Did this release result in any injuries	No
Has this release reached or does it have a reasonable probability of reaching a watercourse	No
Has this release endangered or does it have a reasonable probability of endangering public health	No
Has this release substantially damaged or will it substantially damage property or the environment	No
Is this release of a volume that is or may with reasonable probability be detrimental to fresh water	No

Nature and Volume of Release	
<i>Material(s) released, please answer all that apply below. Any calculations or specific justifications for the volumes provided should be attached to the follow-up C-141 submission.</i>	
Crude Oil Released (bbls) Details	Cause: Equipment Failure Separator Crude Oil Released: 50 BBL Recovered: 50 BBL Lost: 0 BBL.
Produced Water Released (bbls) Details	Not answered.
Is the concentration of chloride in the produced water >10,000 mg/l	No
Condensate Released (bbls) Details	Not answered.
Natural Gas Vented (Mcf) Details	Not answered.
Natural Gas Flared (Mcf) Details	Not answered.
Other Released Details	Not answered.
Are there additional details for the questions above (i.e. any answer containing Other, Specify, Unknown, and/or Fire, or any negative lost amounts)	Upon arrival, the operator discovered that a crack had developed in the heater treater firetube, leading to a fluid release into the gravel-lined containment area. This incident resulted in an estimated 50 barrels of oil being released. Vacuum trucks successfully recovered all fluid from the containment. The affected gravel will be removed, and an inspection is scheduled for the coming weeks.

Sante Fe Main Office
Phone: (505) 476-3441

General Information
Phone: (505) 629-6116

Online Phone Directory
<https://www.emnrd.nm.gov/ocd/contact-us>

State of New Mexico
Energy, Minerals and Natural Resources
Oil Conservation Division
1220 S. St Francis Dr.
Santa Fe, NM 87505

QUESTIONS, Page 2

Action 584324

QUESTIONS (continued)

Operator: Coterra Energy Operating Co. 6001 Deauville Blvd Midland, TX 79706	OGRID: 215099
	Action Number: 584324
	Action Type: [C-141] Remediation Closure Request C-141 (C-141-v-Closure)

QUESTIONS

Nature and Volume of Release (continued)	
Is this a gas only submission (i.e. only significant Mcf values reported)	No, according to supplied volumes this does not appear to be a "gas only" report.
Was this a major release as defined by Subsection A of 19.15.29.7 NMAC	Yes
Reasons why this would be considered a submission for a notification of a major release	From paragraph A. "Major release" determine using: (1) an unauthorized release of a volume, excluding gases, of 25 barrels or more.
<i>With the implementation of the 19.15.27 NMAC (05/25/2021), venting and/or flaring of natural gas (i.e. gas only) are to be submitted on the C-129 form.</i>	

Initial Response	
<i>The responsible party must undertake the following actions immediately unless they could create a safety hazard that would result in injury.</i>	
The source of the release has been stopped	True
The impacted area has been secured to protect human health and the environment	True
Released materials have been contained via the use of berms or dikes, absorbent pads, or other containment devices	True
All free liquids and recoverable materials have been removed and managed appropriately	True
If all the actions described above have not been undertaken, explain why	<i>Not answered.</i>
<i>Per Paragraph (4) of Subsection B of 19.15.29.8 NMAC the responsible party may commence remediation immediately after discovery of a release. If remediation has begun, please prepare and attach a narrative of actions to date in the follow-up C-141 submission. If remedial efforts have been successfully completed or if the release occurred within a lined containment area (see Subparagraph (a) of Paragraph (5) of Subsection A of 19.15.29.11 NMAC), please prepare and attach all information needed for closure evaluation in the follow-up C-141 submission.</i>	
I hereby certify that the information given above is true and complete to the best of my knowledge and understand that pursuant to OCD rules and regulations all operators are required to report and/or file certain release notifications and perform corrective actions for releases which may endanger public health or the environment. The acceptance of a C-141 report by the OCD does not relieve the operator of liability should their operations have failed to adequately investigate and remediate contamination that pose a threat to groundwater, surface water, human health or the environment. In addition, OCD acceptance of a C-141 report does not relieve the operator of responsibility for compliance with any other federal, state, or local laws and/or regulations.	
I hereby agree and sign off to the above statement	Name: Ashton Thielke Title: EHS Specialist Email: Ashton.Thielke@coterra.com Date: 05/12/2026

Sante Fe Main Office
Phone: (505) 476-3441

General Information
Phone: (505) 629-6116

Online Phone Directory
<https://www.emnrd.nm.gov/ocd/contact-us>

State of New Mexico
Energy, Minerals and Natural Resources
Oil Conservation Division
1220 S. St Francis Dr.
Santa Fe, NM 87505

QUESTIONS, Page 3

Action 584324

QUESTIONS (continued)

Operator: Coterra Energy Operating Co. 6001 Deauville Blvd Midland, TX 79706	OGRID: 215099
	Action Number: 584324
	Action Type: [C-141] Remediation Closure Request C-141 (C-141-v-Closure)

QUESTIONS

Site Characterization

Please answer all the questions in this group (only required when seeking remediation plan approval and beyond). This information must be provided to the appropriate district office no later than 90 days after the release discovery date.

What is the shallowest depth to groundwater beneath the area affected by the release in feet below ground surface (ft bgs)	Between 51 and 75 (ft.)
What method was used to determine the depth to ground water	NM OSE iWaters Database Search
Did this release impact groundwater or surface water	No
What is the minimum distance, between the closest lateral extents of the release and the following surface areas:	
A continuously flowing watercourse or any other significant watercourse	Between 1000 (ft.) and ½ (mi.)
Any lakebed, sinkhole, or playa lake (measured from the ordinary high-water mark)	Between 1 and 5 (mi.)
An occupied permanent residence, school, hospital, institution, or church	Between 1 and 5 (mi.)
A spring or a private domestic fresh water well used by less than five households for domestic or stock watering purposes	Between 1 and 5 (mi.)
Any other fresh water well or spring	Between 1 and 5 (mi.)
Incorporated municipal boundaries or a defined municipal fresh water well field	Greater than 5 (mi.)
A wetland	Between 1000 (ft.) and ½ (mi.)
A subsurface mine	Greater than 5 (mi.)
An (non-karst) unstable area	Between 1 and 5 (mi.)
Categorize the risk of this well / site being in a karst geology	Low
A 100-year floodplain	Between 1000 (ft.) and ½ (mi.)
Did the release impact areas not on an exploration, development, production, or storage site	No

Remediation Plan

Please answer all the questions that apply or are indicated. This information must be provided to the appropriate district office no later than 90 days after the release discovery date.

Requesting a remediation plan approval with this submission	Yes
<i>Attach a comprehensive report demonstrating the lateral and vertical extents of soil contamination associated with the release have been determined, pursuant to 19.15.29.11 NMAC and 19.15.29.13 NMAC.</i>	
Have the lateral and vertical extents of contamination been fully delineated	Yes
Was this release entirely contained within a lined containment area	Yes
<i>Per Subsection B of 19.15.29.11 NMAC unless the site characterization report includes completed efforts at remediation, the report must include a proposed remediation plan in accordance with 19.15.29.12 NMAC, which includes the anticipated timelines for beginning and completing the remediation.</i>	
On what estimated date will the remediation commence	04/09/2026
On what date will (or did) the final sampling or liner inspection occur	04/14/2026
On what date will (or was) the remediation complete(d)	04/09/2026
What is the estimated surface area (in square feet) that will be remediated	4400
What is the estimated volume (in cubic yards) that will be remediated	0

These estimated dates and measurements are recognized to be the best guess or calculation at the time of submission and may (be) change(d) over time as more remediation efforts are completed.

The OCD recognizes that proposed remediation measures may have to be minimally adjusted in accordance with the physical realities encountered during remediation. If the responsible party has any need to significantly deviate from the remediation plan proposed, then it should consult with the division to determine if another remediation plan submission is required.

Sante Fe Main Office
Phone: (505) 476-3441

General Information
Phone: (505) 629-6116

Online Phone Directory
<https://www.emnrd.nm.gov/ocd/contact-us>

State of New Mexico
Energy, Minerals and Natural Resources
Oil Conservation Division
1220 S. St Francis Dr.
Santa Fe, NM 87505

QUESTIONS, Page 4

Action 584324

QUESTIONS (continued)

Operator: Coterra Energy Operating Co. 6001 Deauville Blvd Midland, TX 79706	OGRID: 215099
	Action Number: 584324
	Action Type: [C-141] Remediation Closure Request C-141 (C-141-v-Closure)

QUESTIONS

Remediation Plan (continued)	
<i>Please answer all the questions that apply or are indicated. This information must be provided to the appropriate district office no later than 90 days after the release discovery date.</i>	
This remediation will (or is expected to) utilize the following processes to remediate / reduce contaminants:	
<i>(Select all answers below that apply.)</i>	
Is (or was) there affected material present needing to be removed	Yes
Is (or was) there a power wash of the lined containment area (to be) performed	Yes
OTHER (Non-listed remedial process)	Not answered.
<i>Per Subsection B of 19.15.29.11 NMAC unless the site characterization report includes completed efforts at remediation, the report must include a proposed remediation plan in accordance with 19.15.29.12 NMAC, which includes the anticipated timelines for beginning and completing the remediation.</i>	
I hereby certify that the information given above is true and complete to the best of my knowledge and understand that pursuant to OCD rules and regulations all operators are required to report and/or file certain release notifications and perform corrective actions for releases which may endanger public health or the environment. The acceptance of a C-141 report by the OCD does not relieve the operator of liability should their operations have failed to adequately investigate and remediate contamination that pose a threat to groundwater, surface water, human health or the environment. In addition, OCD acceptance of a C-141 report does not relieve the operator of responsibility for compliance with any other federal, state, or local laws and/or regulations.	
I hereby agree and sign off to the above statement	Name: Ashton Thielke Title: EHS Specialist Email: Ashton.Thielke@coterra.com Date: 05/12/2026
<i>The OCD recognizes that proposed remediation measures may have to be minimally adjusted in accordance with the physical realities encountered during remediation. If the responsible party has any need to significantly deviate from the remediation plan proposed, then it should consult with the division to determine if another remediation plan submission is required.</i>	

Sante Fe Main Office
Phone: (505) 476-3441

General Information
Phone: (505) 629-6116

Online Phone Directory
<https://www.emnrd.nm.gov/ocd/contact-us>

State of New Mexico
Energy, Minerals and Natural Resources
Oil Conservation Division
1220 S. St Francis Dr.
Santa Fe, NM 87505

QUESTIONS, Page 6

Action 584324

QUESTIONS (continued)

Operator: Coterra Energy Operating Co. 6001 Deauville Blvd Midland, TX 79706	OGRID: 215099
	Action Number: 584324
	Action Type: [C-141] Remediation Closure Request C-141 (C-141-v-Closure)

QUESTIONS

Liner Inspection Information	
Last liner inspection notification (C-141L) recorded	574139
Liner inspection date pursuant to Subparagraph (a) of Paragraph (5) of Subsection A of 19.15.29.11 NMAC	04/14/2026
Was all the impacted materials removed from the liner	Yes
What was the liner inspection surface area in square feet	4400

Remediation Closure Request	
<i>Only answer the questions in this group if seeking remediation closure for this release because all remediation steps have been completed.</i>	
Requesting a remediation closure approval with this submission	Yes
Have the lateral and vertical extents of contamination been fully delineated	Yes
Was this release entirely contained within a lined containment area	Yes
What was the total surface area (in square feet) remediated	4400
What was the total volume (cubic yards) remediated	0
Summarize any additional remediation activities not included by answers (above)	The affected area inside the containment area had the pea gravel removed and power washed to uncover the liner. The liner was inspected with no issues.

The responsible party must attach information demonstrating they have complied with all applicable closure requirements and any conditions or directives of the OCD. This demonstration should be in the form of a comprehensive report (in .pdf format) including a scaled site map, sampling diagrams, relevant field notes, photographs of any excavation prior to backfilling, laboratory data including chain of custody documents of final sampling, and a narrative of the remedial activities. Refer to 19.15.29.12 NMAC.

I hereby certify that the information given above is true and complete to the best of my knowledge and understand that pursuant to OCD rules and regulations all operators are required to report and/or file certain release notifications and perform corrective actions for releases which may endanger public health or the environment. The acceptance of a C-141 report by the OCD does not relieve the operator of liability should their operations have failed to adequately investigate and remediate contamination that pose a threat to groundwater, surface water, human health or the environment. In addition, OCD acceptance of a C-141 report does not relieve the operator of responsibility for compliance with any other federal, state, or local laws and/or regulations. The responsible party acknowledges they must substantially restore, reclaim, and re-vegetate the impacted surface area to the conditions that existed prior to the release or their final land use in accordance with 19.15.29.13 NMAC including notification to the OCD when reclamation and re-vegetation are complete.

I hereby agree and sign off to the above statement	Name: Ashton Thielke Title: EHS Specialist Email: Ashton.Thielke@coterra.com Date: 05/12/2026
--	--

Sante Fe Main Office
Phone: (505) 476-3441

General Information
Phone: (505) 629-6116

Online Phone Directory
<https://www.emnrd.nm.gov/ocd/contact-us>

State of New Mexico
Energy, Minerals and Natural Resources
Oil Conservation Division
1220 S. St Francis Dr.
Santa Fe, NM 87505

CONDITIONS

Action 584324

CONDITIONS

Operator: Coterra Energy Operating Co. 6001 Deauville Blvd Midland, TX 79706	OGRID: 215099
	Action Number: 584324
	Action Type: [C-141] Remediation Closure Request C-141 (C-141-v-Closure)

CONDITIONS

Created By	Condition	Condition Date
scott.rodgers	Application ID#584324 Liner Inspection is approved.	5/21/2026