



SITE INFORMATION

Closure Report
Julie #2 Battery (11.11.2025)
Incident ID: nAPP2532348853
Eddy County, New Mexico
Unit N, S08, T19S, R25E
32.670605°, -104.509081°

Crude Oil Release
Point of Release: Production Tank Overflow Inside the Containment
Release Date: 11.11.2025
Volume Released: 6 Barrels of Crude Oil
Volume Recovered: 6 Barrels of Crude Oil

CARMONA RESOURCES



Prepared for:
Riley Permian Operating
29 E. Reno Ave, Suite 500
Oklahoma City, Oklahoma 73104

Prepared by:
Carmona Resources, LLC
310 West Wall Street
Suite 500
Midland, Texas 79701

310 West Wall Street, Suite 500
Midland TX, 79701
432.813.1992

TABLE OF CONTENTS

1.0 SITE INFORMATION AND BACKGROUND

2.0 SITE CHARACTERIZATION AND GROUNDWATER

3.0 NMAC REGULATORY CRITERIA

4.0 LINER INSPECTION ACTIVITIES

5.0 CONCLUSIONS

FIGURES

FIGURE 1	OVERVIEW	FIGURE 2	TOPOGRAPHIC
FIGURE 3	CONTAINMENT		

APPENDICES

APPENDIX A	PHOTOS
APPENDIX B	NMOCD CORRESPONDENCE
APPENDIX C	SITE CHARACTERIZATION AND GROUNDWATER



April 16, 2026

Mike Bratcher
District Supervisor
Oil Conservation Division, District II
811 S. First Street
Artesia, New Mexico 88210

Re: **Closure Report**
JULIE #2 BATTERY (11.11.2025)
Incident ID: nAPP253234885
Riley Permian Operating Company, LLC
Site Location: Unit N, S08, T19S, R25E
32.670605°, -104.509081°
Eddy County, New Mexico

Mr. Bratcher:

At the request of Riley Permian Operating Company, LLC (Riley Permian), Carmona Resources, LLC has prepared this letter to document the liner inspection activities conducted at the Julie #2 Battery (11.11.2025) (Site) located at 32.670605°, -104.509081° in Eddy County, New Mexico (Figures 1 and 2).

1.0 Site Information and Background

Based on the initial C-141 obtained from the New Mexico Oil Conservation Division (NMOCD), the release was discovered on November 11, 2025, due to a production tank overflowing causing a release inside the containment. It resulted in approximately six (6) barrels of crude oil being released inside the lined containment, with six (6) barrels of crude oil being immediately recovered. The containment area is approximately 4,700 sq ft. The containment boundaries are shown in Figure 3. The initial C-141 form is attached in Appendix B.

2.0 Site Characterization and Groundwater

The site is located within a medium karst area. Based on a review of the New Mexico Office of State Engineers and USGS databases, there are no water wells or groundwater determination bores within a 0.50-mile radius of the location. The nearest water well is approximately 0.51 miles Southeast of the site in S17 T19S R28E and was last gauged in 2010. The depth of water during the 2010 gauging event was 75.23' (ft bgs). A copy of the associated Summary Report is attached in Appendix C.

3.0 NMAC Regulatory Criteria

Per the NMOCD regulatory criteria established in 19.15.29.12 NMAC, the following criteria were utilized in assessing and remediating the site.

- Benzene: 10 milligrams per kilogram (mg/kg).
- Benzene, toluene, ethylbenzene, and total xylenes (BTEX): 50 mg/kg.
- TPH: 100 mg/kg (GRO + DRO + MRO).
- Chloride: 600 mg/kg.



4.0 Liner Inspection Activities

Prior to Carmona Resources conducting a Liner Inspection, Riley Permian contractors removed all fluid and washed the containment. The NMOCD division office was notified via NMOCD portal on April 13, 2026, per Subsection D of 19.15.29.12 NMAC. See Appendix B for the NMOCD correspondence prior to performing the liner inspection. On April 16, 2026, Carmona Resources, LLC conducted liner inspection activities to assess the tank batteries lined containment integrity and determined there were no integrity issues. Refer to the Photolog in Appendix A. Appendix B also contains a Liner Integrity Certification. Figure 3 shows the containment area outline.

5.0 Conclusions

Based on the liner integrity inspection taken place onsite, no further actions are required at the site. Riley Permian formally requests the closure of the spill. If you have any questions regarding this report or need additional information, please contact us at 432-813-8988.

Sincerely,
Carmona Resources, LLC

Ashton Thielke
Director of Operations


Riley Plogger
Project Manager

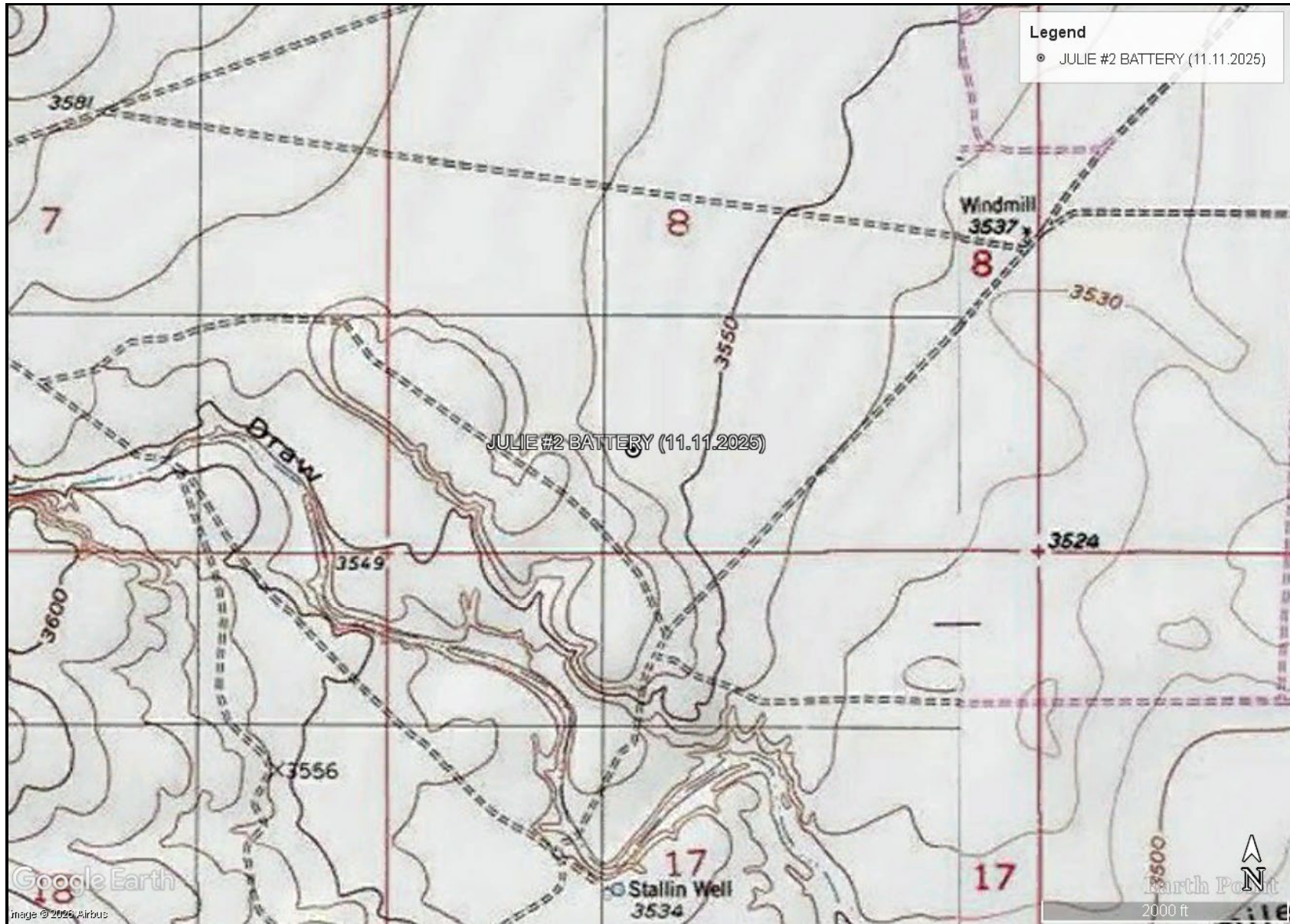
FIGURES

CARMONA RESOURCES





<p>OVERVIEW MAP RILEY PERMIAN OPERATING JULIE #2 BATTERY (11.11.2025) EDDY COUNTY, NEW MEXICO 32.670605°, -104.509081°</p>	<p>CARMONA RESOURCES </p>	<p>FIGURE 1</p>
--	--	-----------------




TOPOGRAPHIC MAP
RILEY PERMIAN OPERATING
JULIE #2 BATTERY (11.11.2025)
EDDY COUNTY, NEW MEXICO
32.670605°, -104.509081°



FIGURE 2



<p>CONTAINMENT MAP RILEY PERMIAN OPERATING JULIE #2 BATTERY (11.11.2025) EDDY COUNTY, NEW MEXICO 32.670605°, -104.509081°</p>	<p>CARMONA RESOURCES </p>	<p>FIGURE 3</p>
---	--	-----------------

APPENDIX A

CARMONA RESOURCES



PHOTOGRAPHIC LOG

Riley Permian Operating

Photograph No. 1

Facility: JULIE #2 BATTERY (11.11.2025)

County: Eddy County, New Mexico

Description:
View North of the Facility Sign.

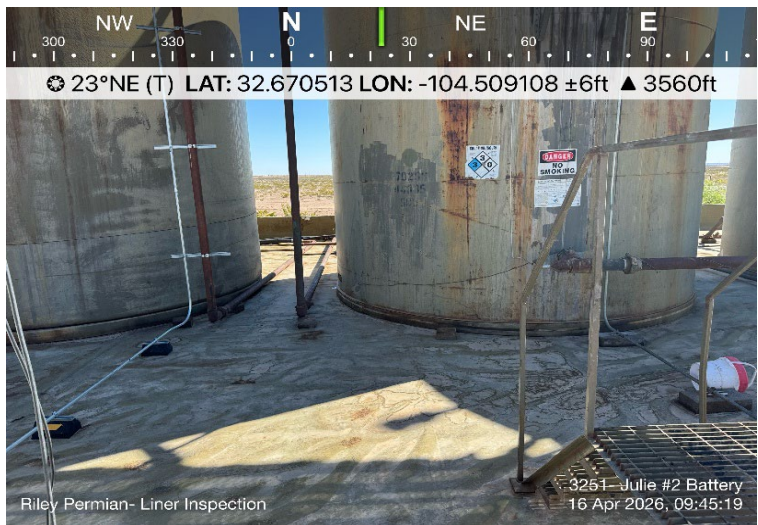


Photograph No. 2

Facility: JULIE #2 BATTERY (11.11.2025)

County: Eddy County, New Mexico

Description:
View Northeast of exposed liner.



Photograph No. 3

Facility: JULIE #2 BATTERY (11.11.2025)

County: Eddy County, New Mexico

Description:
View Northeast of exposed liner.



PHOTOGRAPHIC LOG

Riley Permian Operating

Photograph No. 4

Facility: JULIE #2 BATTERY (11.11.2025)

County: Eddy County, New Mexico

Description:
View Southeast of exposed liner.



Photograph No. 5

Facility: JULIE #2 BATTERY (11.11.2025)

County: Eddy County, New Mexico

Description:
View Southeast of exposed liner.

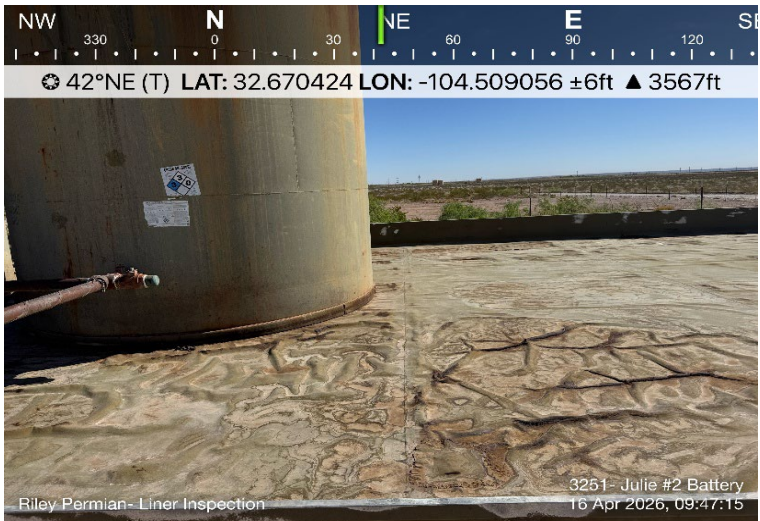


Photograph No. 6

Facility: JULIE #2 BATTERY (11.11.2025)

County: Eddy County, New Mexico

Description:
View Northeast of exposed liner.



PHOTOGRAPHIC LOG

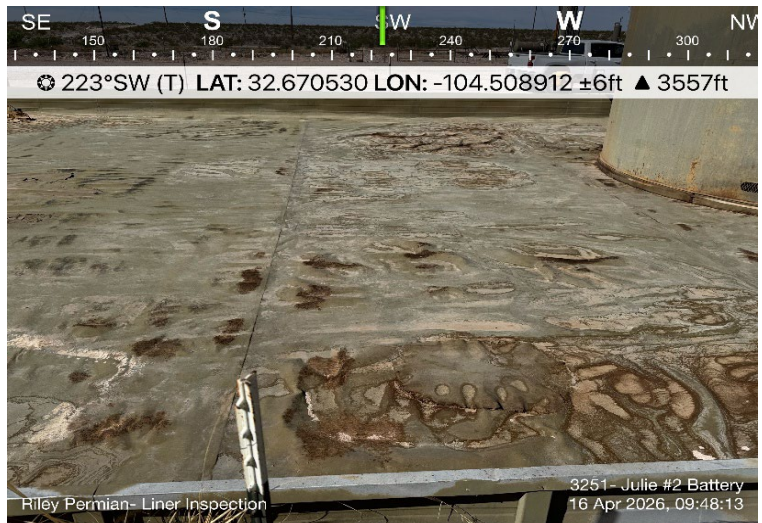
Riley Permian Operating

Photograph No. 7

Facility: JULIE #2 BATTERY (11.11.2025)

County: Eddy County, New Mexico

Description:
View Southwest of exposed liner.



Photograph No. 8

Facility: JULIE #2 BATTERY (11.11.2025)

County: Eddy County, New Mexico

Description:
View Southwest of exposed liner.

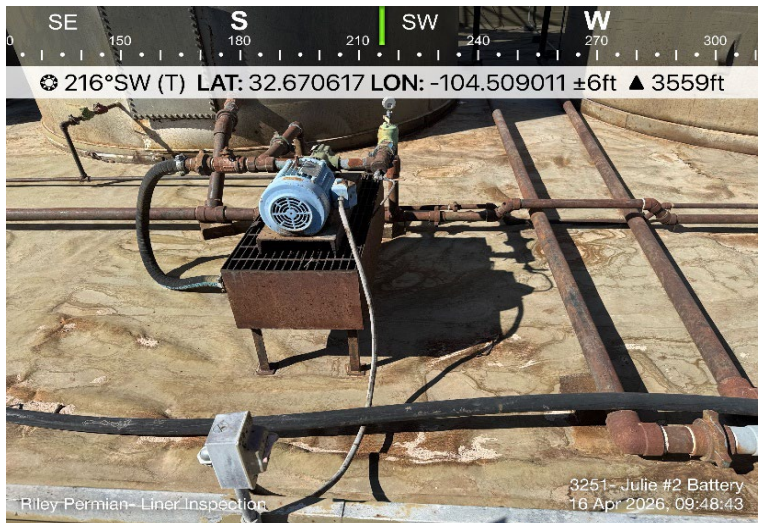


Photograph No. 9

Facility: JULIE #2 BATTERY (11.11.2025)

County: Eddy County, New Mexico

Description:
View Southwest of exposed liner.



PHOTOGRAPHIC LOG

Riley Permian Operating

Photograph No. 10

Facility: JULIE #2 BATTERY (11.11.2025)

County: Eddy County, New Mexico

Description:
View Southwest of exposed liner.



APPENDIX B

CARMONA RESOURCES



Sante Fe Main Office
Phone: (505) 476-3441

General Information
Phone: (505) 629-6116

Online Phone Directory
<https://www.emnrd.nm.gov/ocd/contact-us>

State of New Mexico
Energy, Minerals and Natural Resources
Oil Conservation Division
1220 S. St Francis Dr.
Santa Fe, NM 87505

QUESTIONS

Action 527011

QUESTIONS

Operator: Silverback Operating II, LLC 1001 W. Wilshire Blvd Oklahoma City, OK 73112	OGRID: 330968
	Action Number: 527011
	Action Type: [NOTIFY] Notification Of Release (NOR)

QUESTIONS

Location of Release Source	
<i>Please answer all the questions in this group.</i>	
Site Name	Julie #2 Battery
Date Release Discovered	11/11/2025
Surface Owner	Private

Incident Details	
<i>Please answer all the questions in this group.</i>	
Incident Type	Oil Release
Did this release result in a fire or is the result of a fire	No
Did this release result in any injuries	No
Has this release reached or does it have a reasonable probability of reaching a watercourse	No
Has this release endangered or does it have a reasonable probability of endangering public health	No
Has this release substantially damaged or will it substantially damage property or the environment	No
Is this release of a volume that is or may with reasonable probability be detrimental to fresh water	No

Nature and Volume of Release	
<i>Material(s) released, please answer all that apply below. Any calculations or specific justifications for the volumes provided should be attached to the follow-up C-141 submission.</i>	
Crude Oil Released (bbls) Details	Cause: Overflow - Tank, Pit, Etc. Production Tank Crude Oil Released: 5 BBL Recovered: 5 BBL Lost: 0 BBL.
Produced Water Released (bbls) Details	Not answered.
Is the concentration of chloride in the produced water >10,000 mg/l	Not answered.
Condensate Released (bbls) Details	Not answered.
Natural Gas Vented (Mcf) Details	Not answered.
Natural Gas Flared (Mcf) Details	Not answered.
Other Released Details	Not answered.
Are there additional details for the questions above (i.e. any answer containing Other, Specify, Unknown, and/or Fire, or any negative lost amounts)	Not answered.

Sante Fe Main Office
Phone: (505) 476-3441

General Information
Phone: (505) 629-6116

Online Phone Directory
<https://www.emnrd.nm.gov/ocd/contact-us>

State of New Mexico
Energy, Minerals and Natural Resources
Oil Conservation Division
1220 S. St Francis Dr.
Santa Fe, NM 87505

QUESTIONS, Page 2

Action 527011

QUESTIONS (continued)

Operator: Silverback Operating II, LLC 1001 W. Wilshire Blvd Oklahoma City, OK 73112	OGRID: 330968
	Action Number: 527011
	Action Type: [NOTIFY] Notification Of Release (NOR)

QUESTIONS

Nature and Volume of Release (continued)	
Is this a gas only submission (i.e. only significant Mcf values reported)	More volume information must be supplied to determine if this will be treated as a "gas only" report.
Was this a major release as defined by Subsection A of 19.15.29.7 NMAC	No
Reasons why this would be considered a submission for a notification of a major release	<i>Unavailable.</i>
<i>With the implementation of the 19.15.27 NMAC (05/25/2021), venting and/or flaring of natural gas (i.e. gas only) are to be submitted on the C-129 form.</i>	

Initial Response

The responsible party must undertake the following actions immediately unless they could create a safety hazard that would result in injury.

The source of the release has been stopped	True
The impacted area has been secured to protect human health and the environment	True
Released materials have been contained via the use of berms or dikes, absorbent pads, or other containment devices	True
All free liquids and recoverable materials have been removed and managed appropriately	True
If all the actions described above have not been undertaken, explain why	<i>Not answered.</i>

Per Paragraph 4 of Subsection B of 19.15.29.8 NMAC the responsible party may commence remediation immediately after discovery of a release. If remediation has begun, please prepare and attach a narrative of actions to date in the follow-up C-141 submission. If remedial efforts have been successfully completed or if the release occurred within a lined containment area (see 19.15.29.11(A)(5)(a) NMAC), please prepare and attach all information needed for closure evaluation in the follow-up C-141 submission.

Sante Fe Main Office
Phone: (505) 476-3441

General Information
Phone: (505) 629-6116

Online Phone Directory
<https://www.emnrd.nm.gov/ocd/contact-us>

State of New Mexico
Energy, Minerals and Natural Resources
Oil Conservation Division
1220 S. St Francis Dr.
Santa Fe, NM 87505

ACKNOWLEDGMENTS

Action 527011

ACKNOWLEDGMENTS

Operator: Silverback Operating II, LLC 1001 W. Wilshire Blvd Oklahoma City, OK 73112	OGRID: 330968
	Action Number: 527011
	Action Type: [NOTIFY] Notification Of Release (NOR)

ACKNOWLEDGMENTS

<input checked="" type="checkbox"/>	I acknowledge that I am authorized to submit notification of a release on behalf of my operator.
<input checked="" type="checkbox"/>	I acknowledge that upon submitting this application, I will be creating a new incident file (assigned to my operator) to track the notification(s) and corrective action(s) for a release, pursuant to NMAC 19.15.29.
<input checked="" type="checkbox"/>	I acknowledge that creating a new incident file will require my operator to file subsequent submission(s) of form "C-141, Application for administrative approval of a release notification and corrective action", pursuant to NMAC 19.15.29.
<input checked="" type="checkbox"/>	I hereby certify that the information given above is true and complete to the best of my knowledge and understand that pursuant to OCD rules and regulations all operators are required to report and/or file certain release notifications and perform corrective actions for releases which may endanger public health or the environment.
<input checked="" type="checkbox"/>	I acknowledge the fact that the acceptance of a C-141 report by the OCD does not relieve the operator of liability should their operations have failed to adequately investigate and remediate contamination that pose a threat to groundwater, surface water, human health or the environment.
<input checked="" type="checkbox"/>	I acknowledge the fact that, in addition, OCD acceptance of a C-141 report does not relieve the operator of responsibility for compliance with any other federal, state, or local laws and/or regulations.

Sante Fe Main Office
Phone: (505) 476-3441

General Information
Phone: (505) 629-6116

Online Phone Directory
<https://www.emnrd.nm.gov/ocd/contact-us>

State of New Mexico
Energy, Minerals and Natural Resources
Oil Conservation Division
1220 S. St Francis Dr.
Santa Fe, NM 87505

CONDITIONS

Action 527011

CONDITIONS

Operator: Silverback Operating II, LLC 1001 W. Wilshire Blvd Oklahoma City, OK 73112	OGRID: 330968
	Action Number: 527011
	Action Type: [NOTIFY] Notification Of Release (NOR)

CONDITIONS

Created By	Condition	Condition Date
frodriguez	When submitting future reports regarding this release, please submit the calculations used or specific justification for the volumes reported on the initial C-141.	11/19/2025



Volume Justification

This form is to be used to convey justification of spill volumes in the event of a release. Clearly indicate by calculations or description in the space provided below.

Justification:

Soil Type	Porosity	Length	Width	Depth (.083 per inch)	Cubic Feet	Estimated Barrels	Soil Type
Clay	0.15	10	10	0.083	8.3	0.22	Clay
Peat	0.40	10	10	0.083	8.3	0.59	Peat
Glacial Sediments	0.13	10	10	0.083	8.3	0.19	Glacial Sediments
Sandy Clay	0.12	10	10	0.083	8.3	0.18	Sandy Clay
Silt	0.16	10	10	0.083	8.3	0.24	Silt
Loess	0.25	10	10	0.083	8.3	0.37	Loess
Fine Sand	0.16	10	10	0.083	8.3	0.24	Fine Sand
Medium Sand	0.25	10	10	0.083	8.3	0.37	Medium Sand
Coarse Sand	0.26	10	10	0.083	8.3	0.38	Coarse Sand
Gravelly Sand	0.26	10	10	0.083	8.3	0.38	Gravelly Sand
Fine Gravel	0.26	10	10	0.083	8.3	0.38	Fine Gravel
Medium Gravel	0.20	10	10	0.083	8.3	0.30	Medium Gravel
Coarse Gravel	0.18	36	36	0.042	54.432	1.75	Coarse Gravel
Sandstone	0.25	10	10	0.083	8.3	0.37	Sandstone
Siltstone	0.18	10	10	0.083	8.3	0.27	Siltstone
Shale	0.05	10	10	0.083	8.3	0.07	Shale
Limestone	0.13	10	10	0.083	8.3	0.19	Limestone
Basalt	0.19	10	10	0.083	8.3	0.28	Basalt
Volcanic Tuff	0.20	10	10	0.083	8.3	0.30	Volcanic Tuff
Standing Liquids	X	41	41	0.0208	34.9648	6.23	Standing Liquids

1	2	3	4	5	6
0.083	0.166	0.250	0.332	0.415	0.500
7	8	9	10	11	12
0.581	0.664	0.750	0.830	0.913	1.000

NOTE: This is an **estimate** tool designed for quick field estimates of whether a C-141 should be required (i.e. a release is estimated to be greater than or less than 5 barrel volumes)

Choose the one prevailing ground type for estimating spill volumes at a single location.

Note that the depth should be measured in feet and tenths of feet (1 inch = .083)

Cubic Feet = L x W x D
 Estimated Barrels = ((Cubic Feet x Porosity) / 5.61)

~1,700sqft x 0.021ft average depth = 34.97cuft
 Estimated Barrels Released: **6.23bbbl** = (34.97cuft / 5.61)

Approved by: **Fernando Rodriguez** Date: 12/11/2025

Sante Fe Main Office
Phone: (505) 476-3441

General Information
Phone: (505) 629-6116

Online Phone Directory
<https://www.emnrd.nm.gov/ocd/contact-us>

State of New Mexico
Energy, Minerals and Natural Resources
Oil Conservation Division
1220 S. St Francis Dr.
Santa Fe, NM 87505

QUESTIONS

Action 531485

QUESTIONS

Operator: Silverback Operating II, LLC 1001 W. Wilshire Blvd Oklahoma City, OK 73112	OGRID: 330968
	Action Number: 531485
	Action Type: [C-141] Initial C-141 (C-141-v-Initial)

QUESTIONS

Prerequisites	
Incident ID (n#)	nAPP2532348853
Incident Name	NAPP2532348853 JULIE #2 BATTERY @ N-08-19S-25E 660S 1980W
Incident Type	Oil Release
Incident Status	Initial C-141 Received

Location of Release Source	
<i>Please answer all the questions in this group.</i>	
Site Name	Julie #2 Battery
Date Release Discovered	11/11/2025
Surface Owner	Private

Incident Details	
<i>Please answer all the questions in this group.</i>	
Incident Type	Oil Release
Did this release result in a fire or is the result of a fire	No
Did this release result in any injuries	No
Has this release reached or does it have a reasonable probability of reaching a watercourse	No
Has this release endangered or does it have a reasonable probability of endangering public health	No
Has this release substantially damaged or will it substantially damage property or the environment	No
Is this release of a volume that is or may with reasonable probability be detrimental to fresh water	No

Nature and Volume of Release	
<i>Material(s) released, please answer all that apply below. Any calculations or specific justifications for the volumes provided should be attached to the follow-up C-141 submission.</i>	
Crude Oil Released (bbls) Details	Cause: Overflow - Tank, Pit, Etc. Production Tank Crude Oil Released: 6 BBL Recovered: 6 BBL Lost: 0 BBL.
Produced Water Released (bbls) Details	Not answered.
Is the concentration of chloride in the produced water >10,000 mg/l	No
Condensate Released (bbls) Details	Not answered.
Natural Gas Vented (Mcf) Details	Not answered.
Natural Gas Flared (Mcf) Details	Not answered.
Other Released Details	Not answered.
Are there additional details for the questions above (i.e. any answer containing Other, Specify, Unknown, and/or Fire, or any negative lost amounts)	Not answered.

Sante Fe Main Office
Phone: (505) 476-3441

General Information
Phone: (505) 629-6116

Online Phone Directory
<https://www.emnrd.nm.gov/ocd/contact-us>

State of New Mexico
Energy, Minerals and Natural Resources
Oil Conservation Division
1220 S. St Francis Dr.
Santa Fe, NM 87505

QUESTIONS, Page 2

Action 531485

QUESTIONS (continued)

Operator: Silverback Operating II, LLC 1001 W. Wilshire Blvd Oklahoma City, OK 73112	OGRID: 330968
	Action Number: 531485
	Action Type: [C-141] Initial C-141 (C-141-v-Initial)

QUESTIONS

Nature and Volume of Release (continued)	
Is this a gas only submission (i.e. only significant Mcf values reported)	No, according to supplied volumes this does not appear to be a "gas only" report.
Was this a major release as defined by Subsection A of 19.15.29.7 NMAC	No
Reasons why this would be considered a submission for a notification of a major release	<i>Unavailable.</i>
<i>With the implementation of the 19.15.27 NMAC (05/25/2021), venting and/or flaring of natural gas (i.e. gas only) are to be submitted on the C-129 form.</i>	

Initial Response

The responsible party must undertake the following actions immediately unless they could create a safety hazard that would result in injury.

The source of the release has been stopped	True
The impacted area has been secured to protect human health and the environment	True
Released materials have been contained via the use of berms or dikes, absorbent pads, or other containment devices	True
All free liquids and recoverable materials have been removed and managed appropriately	True
If all the actions described above have not been undertaken, explain why	<i>Not answered.</i>

Per Paragraph (4) of Subsection B of 19.15.29.8 NMAC the responsible party may commence remediation immediately after discovery of a release. If remediation has begun, please prepare and attach a narrative of actions to date in the follow-up C-141 submission. If remedial efforts have been successfully completed or if the release occurred within a lined containment area (see Subparagraph (a) of Paragraph (5) of Subsection A of 19.15.29.11 NMAC), please prepare and attach all information needed for closure evaluation in the follow-up C-141 submission.

I hereby certify that the information given above is true and complete to the best of my knowledge and understand that pursuant to OCD rules and regulations all operators are required to report and/or file certain release notifications and perform corrective actions for releases which may endanger public health or the environment. The acceptance of a C-141 report by the OCD does not relieve the operator of liability should their operations have failed to adequately investigate and remediate contamination that pose a threat to groundwater, surface water, human health or the environment. In addition, OCD acceptance of a C-141 report does not relieve the operator of responsibility for compliance with any other federal, state, or local laws and/or regulations.

I hereby agree and sign off to the above statement	Name: Fernando Rodriguez Email: frodriguez@silverbackexp.com Date: 12/11/2025
--	--

Sante Fe Main Office
Phone: (505) 476-3441

General Information
Phone: (505) 629-6116

Online Phone Directory
<https://www.emnrd.nm.gov/ocd/contact-us>

**State of New Mexico
Energy, Minerals and Natural Resources
Oil Conservation Division
1220 S. St Francis Dr.
Santa Fe, NM 87505**

QUESTIONS, Page 3

Action 531485

QUESTIONS (continued)

Operator: Silverback Operating II, LLC 1001 W. Wilshire Blvd Oklahoma City, OK 73112	OGRID: 330968
	Action Number: 531485
	Action Type: [C-141] Initial C-141 (C-141-v-Initial)

QUESTIONS

Site Characterization

Please answer all the questions in this group (only required when seeking remediation plan approval and beyond). This information must be provided to the appropriate district office no later than 90 days after the release discovery date.

What is the shallowest depth to groundwater beneath the area affected by the release in feet below ground surface (ft bgs)	Not answered.
What method was used to determine the depth to ground water	Not answered.
Did this release impact groundwater or surface water	Not answered.
What is the minimum distance, between the closest lateral extents of the release and the following surface areas:	
A continuously flowing watercourse or any other significant watercourse	Not answered.
Any lakebed, sinkhole, or playa lake (measured from the ordinary high-water mark)	Not answered.
An occupied permanent residence, school, hospital, institution, or church	Not answered.
A spring or a private domestic fresh water well used by less than five households for domestic or stock watering purposes	Not answered.
Any other fresh water well or spring	Not answered.
Incorporated municipal boundaries or a defined municipal fresh water well field	Not answered.
A wetland	Not answered.
A subsurface mine	Not answered.
An (non-karst) unstable area	Not answered.
Categorize the risk of this well / site being in a karst geology	Not answered.
A 100-year floodplain	Not answered.
Did the release impact areas not on an exploration, development, production, or storage site	Not answered.

Remediation Plan

Please answer all the questions that apply or are indicated. This information must be provided to the appropriate district office no later than 90 days after the release discovery date.

Requesting a remediation plan approval with this submission	No
<i>The OCD recognizes that proposed remediation measures may have to be minimally adjusted in accordance with the physical realities encountered during remediation. If the responsible party has any need to significantly deviate from the remediation plan proposed, then it should consult with the division to determine if another remediation plan submission is required.</i>	

Sante Fe Main Office
Phone: (505) 476-3441

General Information
Phone: (505) 629-6116

Online Phone Directory
<https://www.emnrd.nm.gov/ocd/contact-us>

State of New Mexico
Energy, Minerals and Natural Resources
Oil Conservation Division
1220 S. St Francis Dr.
Santa Fe, NM 87505

CONDITIONS

Action 531485

CONDITIONS

Operator: Silverback Operating II, LLC 1001 W. Wilshire Blvd Oklahoma City, OK 73112	OGRID: 330968
	Action Number: 531485
	Action Type: [C-141] Initial C-141 (C-141-v-Initial)

CONDITIONS

Created By	Condition	Condition Date
michael.buchanan	Initial C141 is approved. A remediation closure, site characterization plan OR remediation work plan is due for submission to OCD no later than 90-days after the discovery of the release. The final date to submit is by 02/16/2026.	12/11/2025

Sante Fe Main Office
Phone: (505) 476-3441

General Information
Phone: (505) 629-6116

Online Phone Directory
<https://www.emnrd.nm.gov/ocd/contact-us>

**State of New Mexico
Energy, Minerals and Natural Resources
Oil Conservation Division
1220 S. St Francis Dr.
Santa Fe, NM 87505**

QUESTIONS

Action 569143

QUESTIONS

Operator: RILEY PERMIAN OPERATING COMPANY, LLC 29 E Reno Avenue Oklahoma City, OK 73104	OGRID: 372290
	Action Number: 569143
	Action Type: [NOTIFY] Notification Of Liner Inspection (C-141L)

QUESTIONS

Prerequisites	
Incident ID (n#)	nAPP2532348853
Incident Name	NAPP2532348853 JULIE #2 BATTERY @ N-08-19S-25E 660S 1980W
Incident Type	Oil Release
Incident Status	Initial C-141 Approved

Location of Release Source	
Site Name	JULIE #2 BATTERY
Date Release Discovered	11/11/2025
Surface Owner	Private

Liner Inspection Event Information	
<i>Please answer all the questions in this group.</i>	
What is the liner inspection surface area in square feet	4,700
Have all the impacted materials been removed from the liner	Yes
Liner inspection date pursuant to Subparagraph (a) of Paragraph (5) of Subsection A of 19.15.29.11 NMAC	04/02/2026
Time liner inspection will commence	10:00 AM
Please provide any information necessary for observers to liner inspection	Contact: Fernando Rodriguez @ 575.231.5961
Please provide any information necessary for navigation to liner inspection site	At intersection of US Hwy 285 S and W Kincaid Ranch Rd (Co 38) travel W for approximately 2.9mi, stay left on W Kincaid Ranch Rd (Co 38) and travel S/SW for 3.2mi, arrive at gate at (32.689971, -104.481662) code: 0924, travel on south access road 2.4mi until location.

Sante Fe Main Office
Phone: (505) 476-3441

General Information
Phone: (505) 629-6116

Online Phone Directory
<https://www.emnrd.nm.gov/ocd/contact-us>

State of New Mexico
Energy, Minerals and Natural Resources
Oil Conservation Division
1220 S. St Francis Dr.
Santa Fe, NM 87505

CONDITIONS

Action 569143

CONDITIONS

Operator: RILEY PERMIAN OPERATING COMPANY, LLC 29 E Reno Avenue Oklahoma City, OK 73104	OGRID: 372290
	Action Number: 569143
	Action Type: [NOTIFY] Notification Of Liner Inspection (C-141L)

CONDITIONS

Created By	Condition	Condition Date
frodriguez01	Failure to notify the OCD of liner inspections including any changes in date/time per the requirements of 19.15.29.11.A(5)(a)(ii) NMAC, may result in the inspection not being accepted.	3/31/2026

Sante Fe Main Office
Phone: (505) 476-3441

General Information
Phone: (505) 629-6116

Online Phone Directory
<https://www.emnrd.nm.gov/ocd/contact-us>

**State of New Mexico
Energy, Minerals and Natural Resources
Oil Conservation Division
1220 S. St Francis Dr.
Santa Fe, NM 87505**

QUESTIONS

Action 574583

QUESTIONS

Operator: RILEY PERMIAN OPERATING COMPANY, LLC 29 E Reno Avenue Oklahoma City, OK 73104	OGRID: 372290
	Action Number: 574583
	Action Type: [NOTIFY] Notification Of Liner Inspection (C-141L)

QUESTIONS

Prerequisites	
Incident ID (n#)	nAPP2532348853
Incident Name	NAPP2532348853 JULIE #2 BATTERY @ N-08-19S-25E 660S 1980W
Incident Type	Oil Release
Incident Status	Initial C-141 Approved

Location of Release Source	
Site Name	JULIE #2 BATTERY
Date Release Discovered	11/11/2025
Surface Owner	Private

Liner Inspection Event Information	
<i>Please answer all the questions in this group.</i>	
What is the liner inspection surface area in square feet	4,700
Have all the impacted materials been removed from the liner	Yes
Liner inspection date pursuant to Subparagraph (a) of Paragraph (5) of Subsection A of 19.15.29.11 NMAC	04/16/2026
Time liner inspection will commence	09:00 AM
Please provide any information necessary for observers to liner inspection	Contact: Fernando Rodriguez @ 575.231.5961
Please provide any information necessary for navigation to liner inspection site	At intersection of US Hwy 285 S and W Kincaid Ranch Rd (Co 38) travel W for approximately 2.9mi, stay left on W Kincaid Ranch Rd (Co 38) and travel S/SW for 3.2mi, arrive at gate at (32.689971, -104.481662) code: 0924, travel on south access road 2.4mi until location.

Sante Fe Main Office
Phone: (505) 476-3441

General Information
Phone: (505) 629-6116

Online Phone Directory
<https://www.emnrd.nm.gov/ocd/contact-us>

State of New Mexico
Energy, Minerals and Natural Resources
Oil Conservation Division
1220 S. St Francis Dr.
Santa Fe, NM 87505

CONDITIONS

Action 574583

CONDITIONS

Operator: RILEY PERMIAN OPERATING COMPANY, LLC 29 E Reno Avenue Oklahoma City, OK 73104	OGRID: 372290
	Action Number: 574583
	Action Type: [NOTIFY] Notification Of Liner Inspection (C-141L)

CONDITIONS

Created By	Condition	Condition Date
frodriguez01	Failure to notify the OCD of liner inspections including any changes in date/time per the requirements of 19.15.29.11.A(5)(a)(ii) NMAC, may result in the inspection not being accepted.	4/13/2026



Liner Integrity Certification

The following serves to verify that the affected liner has been inspected and found to be in serviceable condition in accordance with 19.15.29.11 A.(5)(a)(i-ii) of the New Mexico Administrative Code.

Facility ID:

Date: 04.16.2026

Incident ID(s): nAPP2532348853

- Responsible Party has visually inspected the liner.
- Liner remains intact and was able to contain the leak in question.
- At least two business days' notice was given to the appropriate division district office before conducting the liner inspection.
- Photographs illustrating liner integrity are included.

APPENDIX C

CARMONA RESOURCES

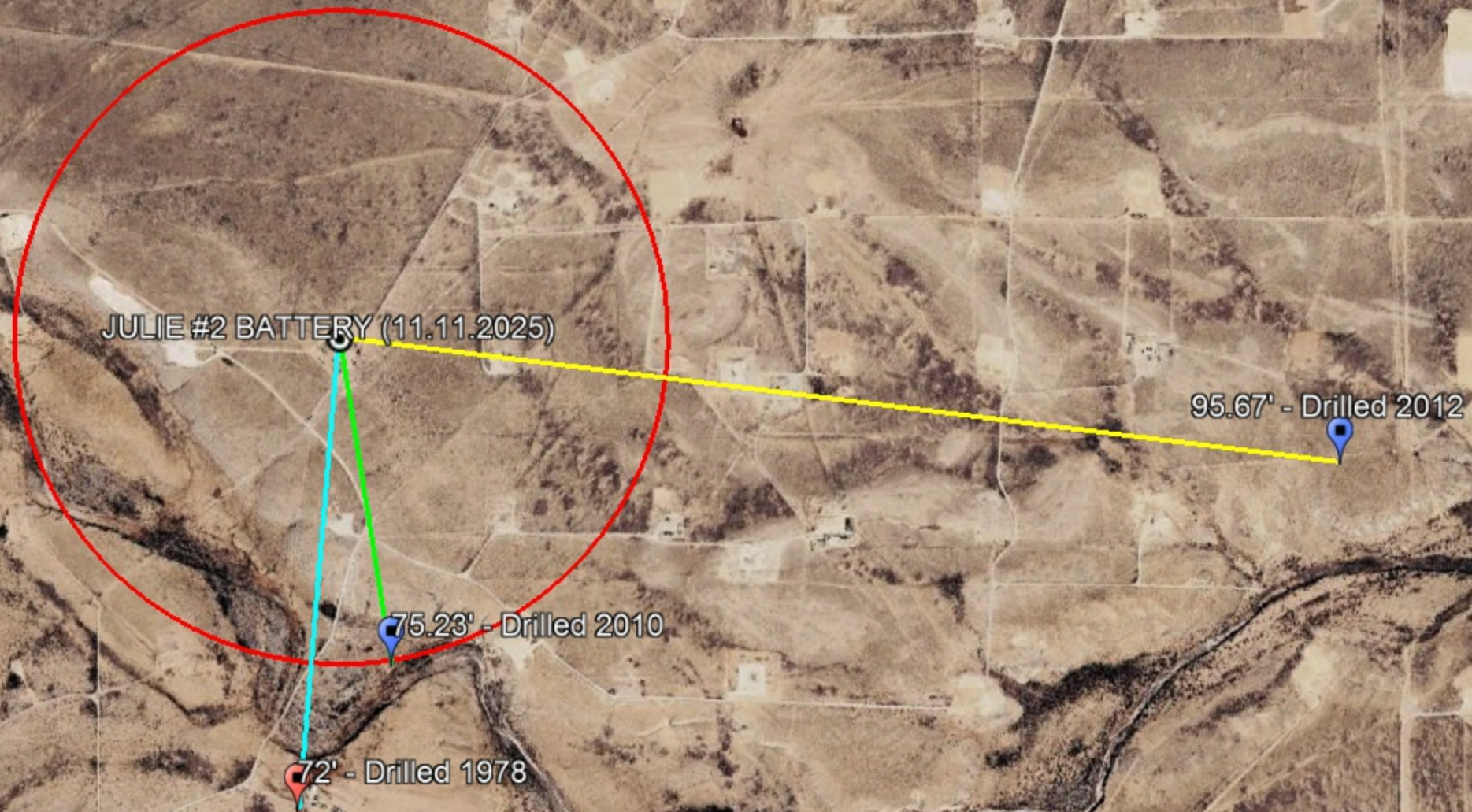


Nearest water well

Riley Permian Operating

Legend

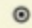

- 0.50 Mile Radius
- 0.51 Miles
- 0.72 Miles
- 1.54 Miles
- JULIE #2 BATTERY (11.11.2025)
- NMSEO Water Well
- USGS Water Well



Medium Karst

Riley Permian Operating

Legend

-  JULIE #2 BATTERY (11.11.2025)
-  Medium

JULIE #2 BATTERY (11.11.2025)





New Mexico Office of the State Engineer

Water Column/Average Depth to Water

(A CLW##### in the POD suffix indicates the POD has been replaced & no longer serves a water right file.)

(R=POD has been replaced, O=orphaned, C=the file is closed)

(quarters are smallest to largest)

(meters)

(In feet)

POD Number	Code	Sub basin	County	Q64	Q16	Q4	Sec	Tws	Range	X	Y	Map	Distance	Well Depth	Depth Water	Water Column
RA 06418		RA	ED	NW	NE	SW	17	19S	25E	545959.7	3613809.4	●	1070	120	72	48
RA 13269 POD1		RA	ED	SE	NW	NW	16	19S	25E	547275.5	3614401.3	●	1333	55		
RA 05331		RA	ED	NW	NW	SE	05	19S	25E	546308.0	3616955.0 *	●	2095	460	305	155
RA 05900		RA	ED		NE	NE	16	19S	25E	548392.9	3614627.7	●	2376	185	95	90
RA 13243 POD1		RA	ED	SE	SW	SW	06	19S	25E	544060.4	3616318.2	●	2439	105		
RA 03959		RA	ED		NE	SE	12	19S	24E	543589.0	3615225.0 *	●	2465	545	265	280
RA 05333	O	RA	ED		NE	NE	09	19S	25E	548430.0	3616046.0 *	●	2669	315	260	55
RA 04726		RA	ED	SE	SW	NE	19	19S	25E	544838.6	3612354.5	●	2790	390	310	80
RA 06436		RA	ED	SW	NW	SE	12	19S	24E	543145.5	3615180.4	●	2899		300	
RA 13122 POD1		RA	ED	NW	SW	NE	21	19S	25E	548012.0	3612422.0	●	3155			
RA 13122 POD2		RA	ED	SW	SW	NE	21	19S	25E	547997.6	3612384.3	●	3176		56	
RA 13230 POD1		RA	ED	SE	NE	NE	14	19S	24E	542086.1	3614287.7	●	3987	105		

Average Depth to Water: **207 feet**

Minimum Depth: **56 feet**

Maximum Depth: **310 feet**

Record Count: 12

UTM Filters (in meters):

Easting: 546029.49

Northing: 3614877.59

Radius: 4000

* UTM location was derived from PLSS - see Help

The data is furnished by the NMOSE/ISC and is accepted by the recipient with the expressed understanding that the OSE/ISC make no warranties, expressed or implied, concerning the accuracy, completeness, reliability, usability, or suitability for any particular purpose of the data.

Date	Time	? Water-level date-time accuracy	? Parameter code	Water level, feet below land surface	Water level, feet above specific vertical datum	Referenced vertical datum	? Status	
						Groundwater	New Mexico	GO

Click to hide News Bulletins

- See the [Water Data for the Nation Blog](#) for the latest news and updates.

Groundwater levels for New Mexico

Click to hide state-specific text

i Important: [Next Generation Monitoring Location Page](#)

Search Results -- 1 sites found

Agency code = usgs

- site_no list =
- 323948104302801

Minimum number of levels = 1

[Save file of selected sites](#) to local disk for future upload

USGS 323948104302801 19S.25E.17.321212

Eddy County, New Mexico

Latitude 32°39'48", Longitude 104°30'28" NAD27

Land-surface elevation 3,526 feet above NAVD88

This well is completed in the Roswell Basin aquifer system (S400RSWLBS) national aquifer.

This well is completed in the Alluvium, Bolson Deposits and Other Surface Deposits (110AVMB) local aquifer.

Output formats

Table of data
Tab-separated data
Graph of data
Reselect period

Date	Time	? Water-level date-time accuracy	? Parameter code	Water level, feet below land surface	Water level, feet above specific vertical datum	Referenced vertical datum	? Status	? Method of measurement	? Measuring agency	? Source measu
1948-10-01			D 62610		3440.42	NGVD29	1		Z	
1948-10-01			D 62611		3442.00	NAVD88	1		Z	
1948-10-01			D 72019	84.00			1		Z	
1955-01-04			D 62610		3440.74	NGVD29	1		Z	
1955-01-04			D 62611		3442.32	NAVD88	1		Z	
1955-01-04			D 72019	83.68			1		Z	
1956-01-18			D 62610		3442.32	NGVD29	1		Z	
1956-01-18			D 62611		3443.90	NAVD88	1		Z	
1956-01-18			D 72019	82.10			1		Z	
1957-01-15			D 62610		3434.70	NGVD29	1		Z	
1957-01-15			D 62611		3436.28	NAVD88	1		Z	
1957-01-15			D 72019	89.72			1		Z	
1958-01-30			D 62610		3433.82	NGVD29	1		Z	
1958-01-30			D 62611		3435.40	NAVD88	1		Z	
1958-01-30			D 72019	90.60			1		Z	
1959-01-26			D 62610		3440.02	NGVD29	1		Z	

Date	Time	Water-level date-time accuracy	Parameter code	Water level, feet below land surface	Water level, feet above specific vertical datum	Referenced vertical datum	Status
1959-01-26		D	62611	3441.60	NAVD88	1	Z
1959-01-26		D	72019	84.40		1	Z
1960-01-26		D	62610	3433.38	NGVD29	P	Z
1960-01-26		D	62611	3434.96	NAVD88	P	Z
1960-01-26		D	72019	91.04		P	Z
1961-01-23		D	62610	3443.10	NGVD29	1	Z
1961-01-23		D	62611	3444.68	NAVD88	1	Z
1961-01-23		D	72019	81.32		1	Z
1962-01-30		D	62610	3434.37	NGVD29	1	Z
1962-01-30		D	62611	3435.95	NAVD88	1	Z
1962-01-30		D	72019	90.05		1	Z
1963-01-07		D	62610	3435.53	NGVD29	1	Z
1963-01-07		D	62611	3437.11	NAVD88	1	Z
1963-01-07		D	72019	88.89		1	Z
1963-07-23		D	62610	3434.52	NGVD29	1	Z
1963-07-23		D	62611	3436.10	NAVD88	1	Z
1963-07-23		D	72019	89.90		1	Z
1963-09-04		D	62610	3433.81	NGVD29	1	Z
1963-09-04		D	62611	3435.39	NAVD88	1	Z
1963-09-04		D	72019	90.61		1	Z
1963-10-04		D	62610	3434.31	NGVD29	1	Z
1963-10-04		D	62611	3435.89	NAVD88	1	Z
1963-10-04		D	72019	90.11		1	Z
1963-11-19		D	62610	3433.14	NGVD29	1	Z
1963-11-19		D	62611	3434.72	NAVD88	1	Z
1963-11-19		D	72019	91.28		1	Z
1964-01-10		D	62610	3433.15	NGVD29	1	Z
1964-01-10		D	62611	3434.73	NAVD88	1	Z
1964-01-10		D	72019	91.27		1	Z
1979-03-08		D	62610	3467.49	NGVD29	1	Z
1979-03-08		D	62611	3469.07	NAVD88	1	Z
1979-03-08		D	72019	56.93		1	Z
1979-07-03		D	62610	3479.28	NGVD29	1	Z
1979-07-03		D	62611	3480.86	NAVD88	1	Z
1979-07-03		D	72019	45.14		1	Z
1984-02-01		D	62610	3459.16	NGVD29	1	Z
1984-02-01		D	62611	3460.74	NAVD88	1	Z
1984-02-01		D	72019	65.26		1	Z
1990-02-22		D	62610	3457.81	NGVD29	1	S
1990-02-22		D	62611	3459.39	NAVD88	1	S
1990-02-22		D	72019	66.61		1	S
1992-02-03		D	62610	3456.10	NGVD29	1	S
1992-02-03		D	62611	3457.68	NAVD88	1	S
1992-02-03		D	72019	68.32		1	S
1993-02-03		D	62610	3455.29	NGVD29	1	S
1993-02-03		D	62611	3456.87	NAVD88	1	S
1993-02-03		D	72019	69.13		1	S
1994-02-21		D	62610	3454.15	NGVD29	1	S
1994-02-21		D	62611	3455.73	NAVD88	1	S
1994-02-21		D	72019	70.27		1	S

Date	Time	?	?	Water level, feet below land surface	Water level, feet above specific vertical datum	Referenced vertical datum	?
		Water-level date-time accuracy	Parameter code				Status
2006-02-08	19:30 UTC	m	62610	3454.55	NGVD29	1	NM001
2006-02-08	19:30 UTC	m	62611	3456.13	NAVD88	1	NM001
2006-02-08	19:30 UTC	m	72019	69.87		1	NM001
2007-02-13	18:15 UTC	m	62610	3452.92	NGVD29	1	NM001
2007-02-13	18:15 UTC	m	62611	3454.50	NAVD88	1	NM001
2007-02-13	18:15 UTC	m	72019	71.50		1	NM001
2009-01-06	19:15 UTC	m	62610	3450.54	NGVD29	1	NM001
2009-01-06	19:15 UTC	m	62611	3452.12	NAVD88	1	NM001
2009-01-06	19:15 UTC	m	72019	73.88		1	NM001
2010-01-20	18:20 UTC	m	62610	3449.19	NGVD29	1	NM001
2010-01-20	18:20 UTC	m	62611	3450.77	NAVD88	1	NM001
2010-01-20	18:20 UTC	m	72019	75.23		1	NM001

Explanation

Section	Code	Description
Water-level date-time accuracy	D	Date is accurate to the Day
Water-level date-time accuracy	m	Date is accurate to the Minute
Parameter code	62610	Groundwater level above NGVD 1929, feet
Parameter code	62611	Groundwater level above NAVD 1988, feet
Parameter code	72019	Depth to water level, feet below land surface
Referenced vertical datum	NAVD88	North American Vertical Datum of 1988
Referenced vertical datum	NGVD29	National Geodetic Vertical Datum of 1929
Status	1	Static
Status	P	Pumping
Method of measurement	S	Steel-tape measurement.
Method of measurement	Z	Other.
Measuring agency		Not determined
Measuring agency	NM001	New Mexico State Engineers Office
Source of measurement		Not determined
Source of measurement	A	Reported by another government agency (do not use "A" if reported by owner, use "O").
Water-level approval status	A	Approved for publication -- Processing and review completed.

- [Questions about sites/data?](#)
- [Feedback on this web site](#)
- [Automated retrievals](#)
- [Help](#)
- [Data Tips](#)
- [Explanation of terms](#)
- [Subscribe for system changes](#)
- [News](#)

Accessibility FOIA Privacy Policies and Notices

[U.S. Department of the Interior](#) | [U.S. Geological Survey](#)

Title: Groundwater for New Mexico: Water Levels

URL: <https://nwis.waterdata.usgs.gov/nm/nwis/gwlevels?>



Page Contact Information: [New Mexico Water Data Maintainer](#)

Page Last Modified: 2022-11-22 22:42:36 EST

0.29 0.24 nadww02



New Mexico Office of the State Engineer

Point of Diversion Summary

		(quarters are 1=NW 2=NE 3=SW 4=SE)							
		(quarters are smallest to largest)						(NAD83 UTM in meters)	
Well Tag	POD Number	Q64	Q16	Q4	Sec	Tw	Rng	X	Y
RA 06418		1	2	3	17	19S	25E	545925	3613710*

Driller License: 406	Driller Company: TIDWELL, CLYDE J.	
Driller Name:		
Drill Start Date: 12/11/1978	Drill Finish Date: 12/18/1978	Plug Date:
Log File Date: 12/26/1978	PCW Rev Date:	Source: Shallow
Pump Type:	Pipe Discharge Size:	Estimated Yield:
Casing Size: 7.00	Depth Well: 120 feet	Depth Water: 72 feet

Water Bearing Stratifications:	Top	Bottom	Description
	72	75	Shallow Alluvium/Basin Fill
	106	112	Shallow Alluvium/Basin Fill

Casing Perforations:	Top	Bottom
	51	109

*UTM location was derived from PLSS - see Help

The data is furnished by the NMOSE/ISC and is accepted by the recipient with the expressed understanding that the OSE/ISC make no warranties, expressed or implied, concerning the accuracy, completeness, reliability, usability, or suitability for any particular purpose of the data.

11/22/22 8:32 PM

POINT OF DIVERSION SUMMARY

Date	Time	? Water-level date-time accuracy	? Parameter code	Water level, feet below land surface	Water level, feet above specific vertical datum	Referenced vertical datum	? Status	
						Groundwater	New Mexico	GO

Click to hide News Bulletins

- See the [Water Data for the Nation Blog](#) for the latest news and updates.

Groundwater levels for New Mexico

Click to hide state-specific text

i Important: [Next Generation Monitoring Location Page](#)

Search Results -- 1 sites found

Agency code = usgs

- site_no list =
- 324004104285801

Minimum number of levels = 1

[Save file of selected sites](#) to local disk for future upload

USGS 324004104285801 19S.25E.16.22332

Eddy County, New Mexico

Latitude 32°40'04", Longitude 104°28'58" NAD27

Land-surface elevation 3,487 feet above NAVD88

This well is completed in the Roswell Basin aquifer system (S400RSWLBS) national aquifer.

This well is completed in the Alluvium, Bolson Deposits and Other Surface Deposits (110AVMB) local aquifer.

Output formats

Table of data
Tab-separated data
Graph of data
Reselect period

Date	Time	? Water-level date-time accuracy	? Parameter code	Water level, feet below land surface	Water level, feet above specific vertical datum	Referenced vertical datum	? Status	? Method of measurement	? Measuring agency	? Source measu
1979-03-27			D 62610		3390.47	NGVD29	1		Z	
1979-03-27			D 62611		3392.04	NAVD88	1		Z	
1979-03-27			D 72019	94.96			1		Z	
1984-01-31			D 62610		3385.38	NGVD29	1		Z	
1984-01-31			D 62611		3386.95	NAVD88	1		Z	
1984-01-31			D 72019	100.05			1		Z	
1989-01-31			D 62610		3391.15	NGVD29	1		Z	
1989-01-31			D 62611		3392.72	NAVD88	1		Z	
1989-01-31			D 72019	94.28			1		Z	
1990-02-26			D 62610		3388.40	NGVD29	1		S	
1990-02-26			D 62611		3389.97	NAVD88	1		S	
1990-02-26			D 72019	97.03			1		S	
1992-02-07			D 62610		3388.36	NGVD29	1		S	
1992-02-07			D 62611		3389.93	NAVD88	1		S	
1992-02-07			D 72019	97.07			1		S	
1993-02-03			D 62610		3386.20	NGVD29	1		S	

Date	Time	Water-level date-time accuracy	Parameter code	Water level, feet below land surface	Water level, feet above specific vertical datum	Referenced vertical datum	Status
1993-02-03		D	62611	3387.77	NAVD88	1	S
1993-02-03		D	72019	99.23		1	S
1994-02-21		D	62610	3385.06	NGVD29	1	S USGS
1994-02-21		D	62611	3386.63	NAVD88	1	S USGS
1994-02-21		D	72019	100.37		1	S USGS
1999-01-14		D	62610	3384.95	NGVD29	1	S NM001
1999-01-14		D	62611	3386.52	NAVD88	1	S NM001
1999-01-14		D	72019	100.48		1	S NM001
2004-02-04		D	62610	3385.69	NGVD29	1	S NM001
2004-02-04		D	62611	3387.26	NAVD88	1	S NM001
2004-02-04		D	72019	99.74		1	S NM001
2006-02-14	19:05 UTC	m	62610	3386.90	NGVD29	1	S USGS
2006-02-14	19:05 UTC	m	62611	3388.47	NAVD88	1	S USGS
2006-02-14	19:05 UTC	m	72019	98.53		1	S USGS
2007-02-13	19:00 UTC	m	62610	3386.19	NGVD29	1	S NM001
2007-02-13	19:00 UTC	m	62611	3387.76	NAVD88	1	S NM001
2007-02-13	19:00 UTC	m	72019	99.24		1	S NM001
2008-01-14	17:15 UTC	m	62610	3388.39	NGVD29	1	S NM001
2008-01-14	17:15 UTC	m	62611	3389.96	NAVD88	1	S NM001
2008-01-14	17:15 UTC	m	72019	97.04		1	S NM001
2009-01-06	20:45 UTC	m	62610	3395.66	NGVD29	1	S NM001
2009-01-06	20:45 UTC	m	62611	3397.23	NAVD88	1	S NM001
2009-01-06	20:45 UTC	m	72019	89.77		1	S NM001
2010-01-20	20:25 UTC	m	62610	3388.59	NGVD29	1	S NM001
2010-01-20	20:25 UTC	m	62611	3390.16	NAVD88	1	S NM001
2010-01-20	20:25 UTC	m	72019	96.84		1	S NM001
2012-01-05	20:20 UTC	m	62610	3389.76	NGVD29	1	S NM001
2012-01-05	20:20 UTC	m	62611	3391.33	NAVD88	1	S NM001
2012-01-05	20:20 UTC	m	72019	95.67		1	S NM001

Explanation

Section	Code	Description
Water-level date-time accuracy	D	Date is accurate to the Day
Water-level date-time accuracy	m	Date is accurate to the Minute
Parameter code	62610	Groundwater level above NGVD 1929, feet
Parameter code	62611	Groundwater level above NAVD 1988, feet
Parameter code	72019	Depth to water level, feet below land surface
Referenced vertical datum	NAVD88	North American Vertical Datum of 1988
Referenced vertical datum	NGVD29	National Geodetic Vertical Datum of 1929
Status	1	Static
Method of measurement	S	Steel-tape measurement.
Method of measurement	Z	Other.
Measuring agency		Not determined
Measuring agency	NM001	New Mexico State Engineers Office
Measuring agency	USGS	U.S. Geological Survey
Source of measurement		Not determined
Source of measurement	A	Reported by another government agency (do not use "A" if reported by owner, use "O").
Source of measurement	S	Measured by personnel of reporting agency.

Date	Time	? Water-level date-time accuracy	? Parameter code	Water level, feet below land surface	Water level, feet above specific vertical datum	Referenced vertical datum	? Status
------	------	---	------------------------	---	---	---------------------------------	-------------

- [Feedback on this web site](#)
- [Automated retrievals](#)
- [Help](#)
- [Data Tips](#)
- [Explanation of terms](#)
- [Subscribe for system changes](#)
- [News](#)

[Accessibility](#)
 [FOIA](#)
 [Privacy](#)
 [Policies and Notices](#)

[U.S. Department of the Interior](#) |
 [U.S. Geological Survey](#)

Title: Groundwater for New Mexico: Water Levels

URL: <https://nwis.waterdata.usgs.gov/nm/nwis/gwlevels?>

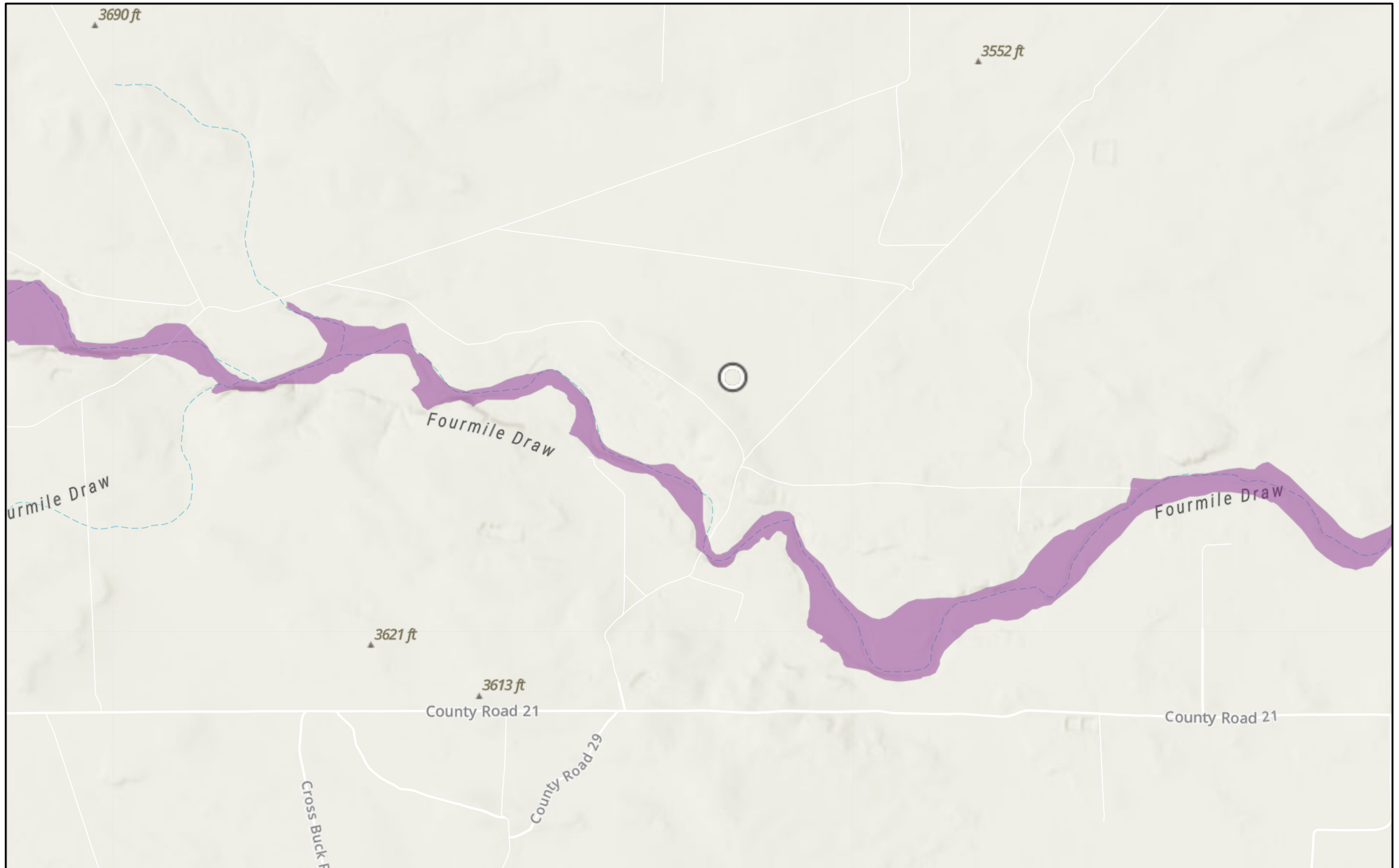


Page Contact Information: [New Mexico Water Data Maintainer](#)

Page Last Modified: 2022-11-22 22:35:58 EST

0.32 0.27 nadww02

JULIE #2 BATTERY (11.11.2025)

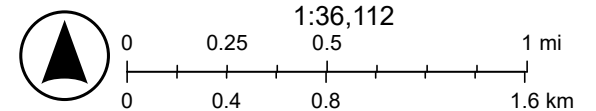


4/16/2026

USA Flood Hazard Areas

 1% Annual Chance Flood Hazard

World_Hillshade



Source: FEMA, Esri, Sources: Esri, TomTom, Garmin, FAO, NOAA, USGS, (c) OpenStreetMap contributors, and the GIS User Community, Esri, NASA,

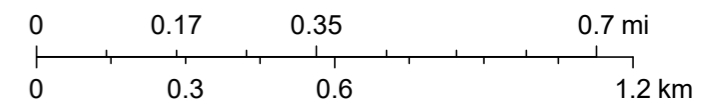
JULIE #2 BATTERY (11.11.2025)



4/16/2026, 7:31:45 AM

- OSW Water Bodys
- OSE Streams

1:18,056



NM OSE, Sources: Esri, TomTom, Garmin, FAO, NOAA, USGS, © OpenStreetMap contributors, and the GIS User Community, Esri, NASA, NGA, USGS, FEMA



JULIE #2 BATTERY (11.11.2025)



U.S. Fish and Wildlife Service, National Standards and Support Team, wetlands_team@fws.gov

April 16, 2026

Wetlands

- Estuarine and Marine Deepwater
- Estuarine and Marine Wetland
- Freshwater Emergent Wetland
- Freshwater Forested/Shrub Wetland
- Freshwater Pond
- Lake
- Other
- Riverine

This map is for general reference only. The US Fish and Wildlife Service is not responsible for the accuracy or currentness of the base data shown on this map. All wetlands related data should be used in accordance with the layer metadata found on the Wetlands Mapper web site.

Sante Fe Main Office
Phone: (505) 476-3441

General Information
Phone: (505) 629-6116

Online Phone Directory
<https://www.emnrd.nm.gov/ocd/contact-us>

State of New Mexico
Energy, Minerals and Natural Resources
Oil Conservation Division
1220 S. St Francis Dr.
Santa Fe, NM 87505

QUESTIONS

Action 576624

QUESTIONS

Operator: RILEY PERMIAN OPERATING COMPANY, LLC 29 E Reno Avenue Oklahoma City, OK 73104	OGRID: 372290
	Action Number: 576624
	Action Type: [C-141] Remediation Closure Request C-141 (C-141-v-Closure)

QUESTIONS

Prerequisites	
Incident ID (n#)	nAPP2532348853
Incident Name	NAPP2532348853 JULIE #2 BATTERY @ N-08-19S-25E 660S 1980W
Incident Type	Oil Release
Incident Status	Remediation Closure Report Received

Location of Release Source	
<i>Please answer all the questions in this group.</i>	
Site Name	JULIE #2 BATTERY
Date Release Discovered	11/11/2025
Surface Owner	Private

Incident Details	
<i>Please answer all the questions in this group.</i>	
Incident Type	Oil Release
Did this release result in a fire or is the result of a fire	No
Did this release result in any injuries	No
Has this release reached or does it have a reasonable probability of reaching a watercourse	No
Has this release endangered or does it have a reasonable probability of endangering public health	No
Has this release substantially damaged or will it substantially damage property or the environment	No
Is this release of a volume that is or may with reasonable probability be detrimental to fresh water	No

Nature and Volume of Release	
<i>Material(s) released, please answer all that apply below. Any calculations or specific justifications for the volumes provided should be attached to the follow-up C-141 submission.</i>	
Crude Oil Released (bbls) Details	Cause: Overflow - Tank, Pit, Etc. Production Tank Crude Oil Released: 6 BBL Recovered: 6 BBL Lost: 0 BBL.
Produced Water Released (bbls) Details	Not answered.
Is the concentration of chloride in the produced water >10,000 mg/l	No
Condensate Released (bbls) Details	Not answered.
Natural Gas Vented (Mcf) Details	Not answered.
Natural Gas Flared (Mcf) Details	Not answered.
Other Released Details	Not answered.
Are there additional details for the questions above (i.e. any answer containing Other, Specify, Unknown, and/or Fire, or any negative lost amounts)	Not answered.

Sante Fe Main Office
Phone: (505) 476-3441

General Information
Phone: (505) 629-6116

Online Phone Directory
<https://www.emnrd.nm.gov/ocd/contact-us>

State of New Mexico
Energy, Minerals and Natural Resources
Oil Conservation Division
1220 S. St Francis Dr.
Santa Fe, NM 87505

QUESTIONS, Page 2

Action 576624

QUESTIONS (continued)

Operator: RILEY PERMIAN OPERATING COMPANY, LLC 29 E Reno Avenue Oklahoma City, OK 73104	OGRID: 372290
	Action Number: 576624
	Action Type: [C-141] Remediation Closure Request C-141 (C-141-v-Closure)

QUESTIONS

Nature and Volume of Release (continued)	
Is this a gas only submission (i.e. only significant Mcf values reported)	No, according to supplied volumes this does not appear to be a "gas only" report.
Was this a major release as defined by Subsection A of 19.15.29.7 NMAC	No
Reasons why this would be considered a submission for a notification of a major release	<i>Unavailable.</i>

With the implementation of the 19.15.27 NMAC (05/25/2021), venting and/or flaring of natural gas (i.e. gas only) are to be submitted on the C-129 form.

Initial Response

The responsible party must undertake the following actions immediately unless they could create a safety hazard that would result in injury.

The source of the release has been stopped	True
The impacted area has been secured to protect human health and the environment	True
Released materials have been contained via the use of berms or dikes, absorbent pads, or other containment devices	True
All free liquids and recoverable materials have been removed and managed appropriately	True
If all the actions described above have not been undertaken, explain why	<i>Not answered.</i>

Per Paragraph (4) of Subsection B of 19.15.29.8 NMAC the responsible party may commence remediation immediately after discovery of a release. If remediation has begun, please prepare and attach a narrative of actions to date in the follow-up C-141 submission. If remedial efforts have been successfully completed or if the release occurred within a lined containment area (see Subparagraph (a) of Paragraph (5) of Subsection A of 19.15.29.11 NMAC), please prepare and attach all information needed for closure evaluation in the follow-up C-141 submission.

I hereby certify that the information given above is true and complete to the best of my knowledge and understand that pursuant to OCD rules and regulations all operators are required to report and/or file certain release notifications and perform corrective actions for releases which may endanger public health or the environment. The acceptance of a C-141 report by the OCD does not relieve the operator of liability should their operations have failed to adequately investigate and remediate contamination that pose a threat to groundwater, surface water, human health or the environment. In addition, OCD acceptance of a C-141 report does not relieve the operator of responsibility for compliance with any other federal, state, or local laws and/or regulations.

I hereby agree and sign off to the above statement	Name: Fernando Rodriguez Title: SR EHS Specialist Email: fernandorodriguez@rileypermian.com Date: 04/17/2026
--	---

Sante Fe Main Office
Phone: (505) 476-3441

General Information
Phone: (505) 629-6116

Online Phone Directory
<https://www.emnrd.nm.gov/ocd/contact-us>

State of New Mexico
Energy, Minerals and Natural Resources
Oil Conservation Division
1220 S. St Francis Dr.
Santa Fe, NM 87505

QUESTIONS, Page 3

Action 576624

QUESTIONS (continued)

Operator: RILEY PERMIAN OPERATING COMPANY, LLC 29 E Reno Avenue Oklahoma City, OK 73104	OGRID: 372290
	Action Number: 576624
	Action Type: [C-141] Remediation Closure Request C-141 (C-141-v-Closure)

QUESTIONS

Site Characterization

Please answer all the questions in this group (only required when seeking remediation plan approval and beyond). This information must be provided to the appropriate district office no later than 90 days after the release discovery date.

What is the shallowest depth to groundwater beneath the area affected by the release in feet below ground surface (ft bgs)	Between 75 and 100 (ft.)
What method was used to determine the depth to ground water	U.S. Geological Survey
Did this release impact groundwater or surface water	No
What is the minimum distance, between the closest lateral extents of the release and the following surface areas:	
A continuously flowing watercourse or any other significant watercourse	Between 1000 (ft.) and ½ (mi.)
Any lakebed, sinkhole, or playa lake (measured from the ordinary high-water mark)	Between 1 and 5 (mi.)
An occupied permanent residence, school, hospital, institution, or church	Between ½ and 1 (mi.)
A spring or a private domestic fresh water well used by less than five households for domestic or stock watering purposes	Between ½ and 1 (mi.)
Any other fresh water well or spring	Between ½ and 1 (mi.)
Incorporated municipal boundaries or a defined municipal fresh water well field	Greater than 5 (mi.)
A wetland	Between 1000 (ft.) and ½ (mi.)
A subsurface mine	Greater than 5 (mi.)
An (non-karst) unstable area	Greater than 5 (mi.)
Categorize the risk of this well / site being in a karst geology	Medium
A 100-year floodplain	Between 1000 (ft.) and ½ (mi.)
Did the release impact areas not on an exploration, development, production, or storage site	No

Remediation Plan

Please answer all the questions that apply or are indicated. This information must be provided to the appropriate district office no later than 90 days after the release discovery date.

Requesting a remediation plan approval with this submission	Yes
<i>Attach a comprehensive report demonstrating the lateral and vertical extents of soil contamination associated with the release have been determined, pursuant to 19.15.29.11 NMAC and 19.15.29.13 NMAC.</i>	
Have the lateral and vertical extents of contamination been fully delineated	Yes
Was this release entirely contained within a lined containment area	Yes
<i>Per Subsection B of 19.15.29.11 NMAC unless the site characterization report includes completed efforts at remediation, the report must include a proposed remediation plan in accordance with 19.15.29.12 NMAC, which includes the anticipated timelines for beginning and completing the remediation.</i>	
On what estimated date will the remediation commence	03/31/2026
On what date will (or did) the final sampling or liner inspection occur	04/16/2026
On what date will (or was) the remediation complete(d)	04/16/2026
What is the estimated surface area (in square feet) that will be remediated	4700
What is the estimated volume (in cubic yards) that will be remediated	0

These estimated dates and measurements are recognized to be the best guess or calculation at the time of submission and may (be) change(d) over time as more remediation efforts are completed. The OCD recognizes that proposed remediation measures may have to be minimally adjusted in accordance with the physical realities encountered during remediation. If the responsible party has any need to significantly deviate from the remediation plan proposed, then it should consult with the division to determine if another remediation plan submission is required.

Sante Fe Main Office
Phone: (505) 476-3441

General Information
Phone: (505) 629-6116

Online Phone Directory
<https://www.emnrd.nm.gov/ocd/contact-us>

State of New Mexico
Energy, Minerals and Natural Resources
Oil Conservation Division
1220 S. St Francis Dr.
Santa Fe, NM 87505

QUESTIONS, Page 4

Action 576624

QUESTIONS (continued)

Operator: RILEY PERMIAN OPERATING COMPANY, LLC 29 E Reno Avenue Oklahoma City, OK 73104	OGRID: 372290
	Action Number: 576624
	Action Type: [C-141] Remediation Closure Request C-141 (C-141-v-Closure)

QUESTIONS

Remediation Plan (continued)	
<i>Please answer all the questions that apply or are indicated. This information must be provided to the appropriate district office no later than 90 days after the release discovery date.</i>	
This remediation will (or is expected to) utilize the following processes to remediate / reduce contaminants:	
<i>(Select all answers below that apply.)</i>	
Is (or was) there affected material present needing to be removed	Yes
Is (or was) there a power wash of the lined containment area (to be) performed	Yes
OTHER (Non-listed remedial process)	Not answered.
<i>Per Subsection B of 19.15.29.11 NMAC unless the site characterization report includes completed efforts at remediation, the report must include a proposed remediation plan in accordance with 19.15.29.12 NMAC, which includes the anticipated timelines for beginning and completing the remediation.</i>	
I hereby certify that the information given above is true and complete to the best of my knowledge and understand that pursuant to OCD rules and regulations all operators are required to report and/or file certain release notifications and perform corrective actions for releases which may endanger public health or the environment. The acceptance of a C-141 report by the OCD does not relieve the operator of liability should their operations have failed to adequately investigate and remediate contamination that pose a threat to groundwater, surface water, human health or the environment. In addition, OCD acceptance of a C-141 report does not relieve the operator of responsibility for compliance with any other federal, state, or local laws and/or regulations.	
I hereby agree and sign off to the above statement	Name: Fernando Rodriguez Title: SR EHS Specialist Email: fernandorodriguez@rileypermian.com Date: 04/17/2026
<i>The OCD recognizes that proposed remediation measures may have to be minimally adjusted in accordance with the physical realities encountered during remediation. If the responsible party has any need to significantly deviate from the remediation plan proposed, then it should consult with the division to determine if another remediation plan submission is required.</i>	

Sante Fe Main Office
Phone: (505) 476-3441

General Information
Phone: (505) 629-6116

Online Phone Directory
<https://www.emnrd.nm.gov/ocd/contact-us>

State of New Mexico
Energy, Minerals and Natural Resources
Oil Conservation Division
1220 S. St Francis Dr.
Santa Fe, NM 87505

QUESTIONS, Page 6

Action 576624

QUESTIONS (continued)

Operator: RILEY PERMIAN OPERATING COMPANY, LLC 29 E Reno Avenue Oklahoma City, OK 73104	OGRID: 372290
	Action Number: 576624
	Action Type: [C-141] Remediation Closure Request C-141 (C-141-v-Closure)

QUESTIONS

Liner Inspection Information	
Last liner inspection notification (C-141L) recorded	574583
Liner inspection date pursuant to Subparagraph (a) of Paragraph (5) of Subsection A of 19.15.29.11 NMAC	04/16/2026
Was all the impacted materials removed from the liner	Yes
What was the liner inspection surface area in square feet	4700

Remediation Closure Request	
<i>Only answer the questions in this group if seeking remediation closure for this release because all remediation steps have been completed.</i>	
Requesting a remediation closure approval with this submission	Yes
Have the lateral and vertical extents of contamination been fully delineated	Yes
Was this release entirely contained within a lined containment area	Yes
What was the total surface area (in square feet) remediated	4700
What was the total volume (cubic yards) remediated	0
Summarize any additional remediation activities not included by answers (above)	The entire containment area was power washed and all released fluid was removed from the containment prior to the linear inspection

The responsible party must attach information demonstrating they have complied with all applicable closure requirements and any conditions or directives of the OCD. This demonstration should be in the form of a comprehensive report (in .pdf format) including a scaled site map, sampling diagrams, relevant field notes, photographs of any excavation prior to backfilling, laboratory data including chain of custody documents of final sampling, and a narrative of the remedial activities. Refer to 19.15.29.12 NMAC.

I hereby certify that the information given above is true and complete to the best of my knowledge and understand that pursuant to OCD rules and regulations all operators are required to report and/or file certain release notifications and perform corrective actions for releases which may endanger public health or the environment. The acceptance of a C-141 report by the OCD does not relieve the operator of liability should their operations have failed to adequately investigate and remediate contamination that pose a threat to groundwater, surface water, human health or the environment. In addition, OCD acceptance of a C-141 report does not relieve the operator of responsibility for compliance with any other federal, state, or local laws and/or regulations. The responsible party acknowledges they must substantially restore, reclaim, and re-vegetate the impacted surface area to the conditions that existed prior to the release or their final land use in accordance with 19.15.29.13 NMAC including notification to the OCD when reclamation and re-vegetation are complete.

I hereby agree and sign off to the above statement	Name: Fernando Rodriguez Title: SR EHS Specialist Email: fernandorodriguez@rileypermian.com Date: 04/17/2026
--	---

Sante Fe Main Office
Phone: (505) 476-3441

General Information
Phone: (505) 629-6116

Online Phone Directory
<https://www.emnrd.nm.gov/ocd/contact-us>

State of New Mexico
Energy, Minerals and Natural Resources
Oil Conservation Division
1220 S. St Francis Dr.
Santa Fe, NM 87505

CONDITIONS

Action 576624

CONDITIONS

Operator: RILEY PERMIAN OPERATING COMPANY, LLC 29 E Reno Avenue Oklahoma City, OK 73104	OGRID: 372290
	Action Number: 576624
	Action Type: [C-141] Remediation Closure Request C-141 (C-141-v-Closure)

CONDITIONS

Created By	Condition	Condition Date
michael.buchanan	Liner inspection and closure approved. The OCD notes that closure was due on 02/16/2026, however, it was not received until 05/19/2026. Parts of the liner are peeling off of the containment wall, which may not be suitable to contain large releases in the future.	5/26/2026