



SITE INFORMATION

Closure Report
Vacuum 35 SWD (05.13.2026)
Incident ID: NAPP2613451180
Lea County, New Mexico
Unit K, S16, T16S, R36E
32.920717°, -103.361345°

Produced Water Release
Point of Release: Hose popped off the fitting on the tank transfer line to the pumps
Release Date: 05.13.2026
Volume Released: 240 Barrels of Produced Water
Volume Recovered: 40 Barrels of Produced Water

CARMONA RESOURCES



Prepared for:
BTA Oil Producers, LLC
104 S Pecos St.
Midland, Texas 79701

Prepared by:
Carmona Resources, LLC
310 West Wall Street
Suite 500
Midland, Texas 79701

TABLE OF CONTENTS

1.0 SITE INFORMATION AND BACKGROUND

2.0 SITE CHARACTERIZATION AND GROUNDWATER

3.0 NMAC REGULATORY CRITERIA

4.0 LINER INSPECTION ACTIVITIES

5.0 CONCLUSIONS

FIGURES

FIGURE 1 OVERVIEW FIGURE 2 TOPOGRAPHIC

FIGURE 3 CONTAINMENT

APPENDICES

APPENDIX A PHOTOS

APPENDIX B NMOCD CORRESPONDENCE

APPENDIX C SITE CHARACTERIZATION AND GROUNDWATER



May 20, 2026

Mike Bratcher
District Supervisor
Oil Conservation Division, District 1
811 S. First Street
Artesia, New Mexico 88210

Re: **Closure Report**
Vacuum 35 SWD (05.13.2026)
Incident ID: NAPP2613451180
BTA Oil Producers, LLC
Site Location: Unit K, S16, T16S, R36E
32.920717°, -103.361345°
Lea County, New Mexico

Mr. Bratcher:

At the request of BTA Oil Producers, LLC (BTA) Carmona Resources LLC, has prepared this letter to document the liner inspection activities conducted at the Vacuum 35 SWD (05.13.2026) (Site) located at 32.920717°, -103.361345° in Lea County, New Mexico (Figures 1 and 2).

1.0 Site Information and Background

Based on the initial C-141 obtained from the New Mexico Oil Conservation Division (NMOCD), the release was discovered on May 13, 2026, due to a hose popping off the fitting on the tank transfer line to the pumps. It resulted in approximately two hundred forty (240) barrels of produced water being released inside the lined containment, with two hundred forty (240) barrels of produced water being immediately recovered. The containment area is approximately 7,200 sq ft. The containment boundaries are shown in Figure 3. The initial C-141 form is attached in Appendix B.

2.0 Site Characterization and Groundwater

The site is located within a low area. Based on a review of the New Mexico Office of State Engineers and USGS databases, there are two historic water wells within a 0.50-mile radius of the location. The nearest water well is approximately 0.33 miles Northeast of the site in S16, T16S, R36E and was drilled in 1955. The well has depth to water reported to be at 65' bgs. A copy of the associated Summary Report is attached in Appendix C.

3.0 NMAC Regulatory Criteria

Per the NMOCD regulatory criteria established in 19.15.29.12 NMAC, the following criteria were utilized in assessing and remediating the site.

- Benzene: 10 milligrams per kilogram (mg/kg).
- Benzene, toluene, ethylbenzene, and total xylenes (BTEX): 50 mg/kg.
- TPH: 100 mg/kg (GRO + DRO + MRO).
- Chloride: 600 mg/kg.



4.0 Liner Inspection Activities

Prior to Carmona Resources conducting a Liner Inspection, BTA contractors removed all fluid and washed the containment. The NMOCD division office was notified via NMOCD portal on May 18, 2026, per Subsection D of 19.15.29.12 NMAC. See Appendix B for the NMOCD correspondence prior to performing the liner inspection. On May 20, 2026, Carmona Resources, LLC conducted liner inspection activities to assess the tank batteries lined containment integrity and determined there were no integrity issues. Refer to the Photolog in Appendix A. Appendix B also contains a Liner Integrity Certification. Figure 3 shows the containment area outline.

5.0 Conclusions

Based on the liner integrity inspection taken place onsite, no further actions are required at the site. BTA formally requests the closure of the spill. If you have any questions regarding this report or need additional information, please contact us at 432-813-8988.

Sincerely,
Carmona Resources, LLC

Ashton Thielke
Environmental Manager


Riley Plogger
Project Manager

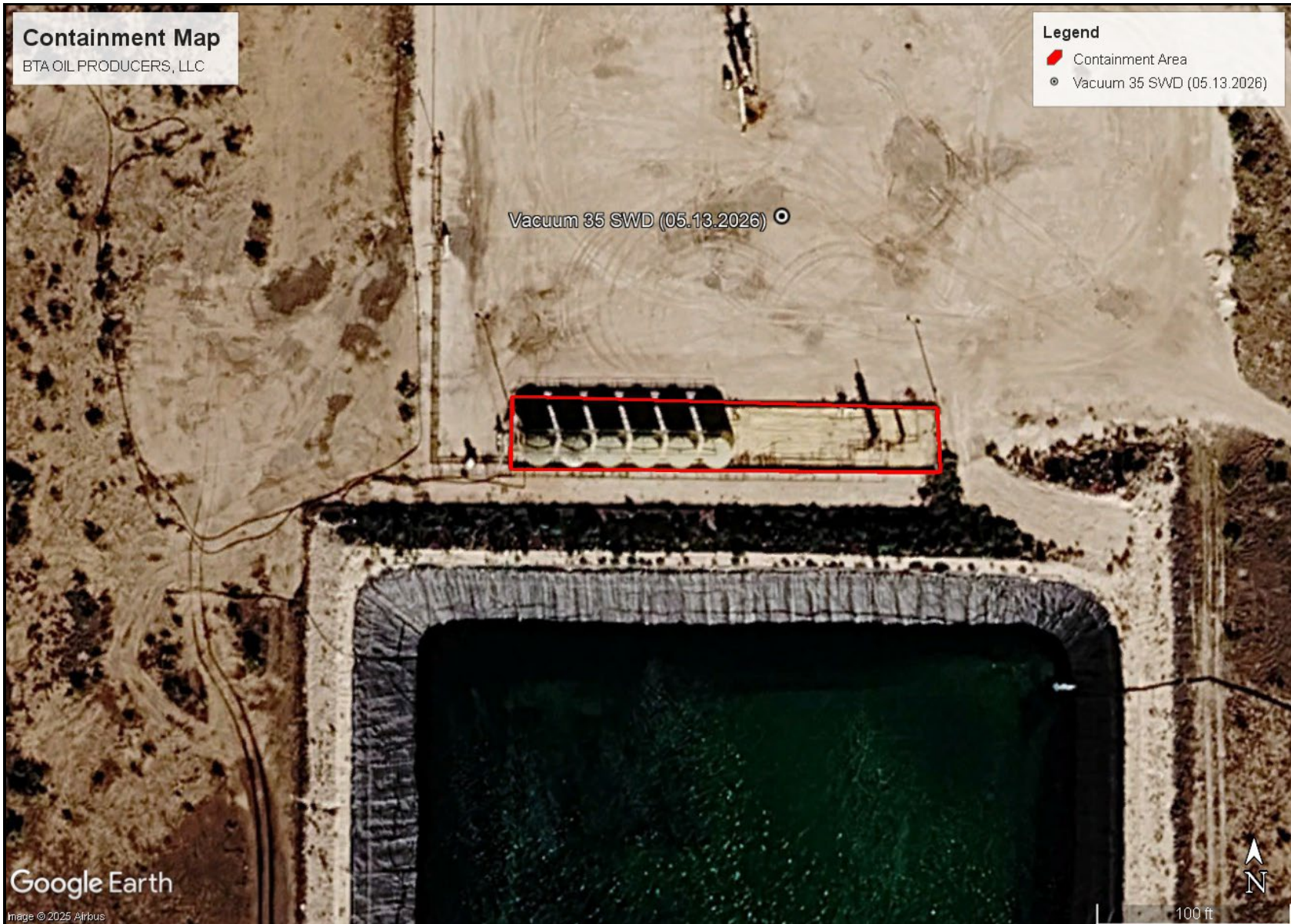
FIGURES

CARMONA RESOURCES





<p>OVERVIEW MAP BTA OIL PRODUCERS, LLC VACUUM 35 SWD (05.13.2026) LEA COUNTY, NEW MEXICO 32.920717°, -103.361345°</p>	<p>CARMONA RESOURCES </p>	<p>FIGURE 1</p>
---	--	-----------------



<p>CONTAINMENT MAP BTA OIL PRODUCERS, LLC MESA B WEST CTB (03.07.2026) LEA COUNTY, NEW MEXICO 32.06221°, -103.61441°</p>	<p>CARMONA RESOURCES </p>	<p>FIGURE 3</p>
--	--	-----------------

APPENDIX A

CARMONA RESOURCES



PHOTOGRAPHIC LOG

BTA Oil Producers, LLC

Photograph No. 1

Facility: Vacuum 35 SWD (05.13.2026)

County: Lea County, New Mexico

Description:

View Southeast of the exposed liner.



Photograph No. 2

Facility: Vacuum 35 SWD (05.13.2026)

County: Lea County, New Mexico

Description:

View Southeast of the exposed liner.



Photograph No. 3

Facility: Vacuum 35 SWD (05.13.2026)

County: Lea County, New Mexico

Description:

View Northwest of the exposed liner.



PHOTOGRAPHIC LOG

BTA Oil Producers, LLC

Photograph No. 4

Facility: Vacuum 35 SWD (05.13.2026)

County: Lea County, New Mexico

Description:

View Northeast of the exposed liner.



Photograph No. 5

Facility: Vacuum 35 SWD (05.13.2026)

County: Lea County, New Mexico

Description:

View Northeast of the exposed liner.



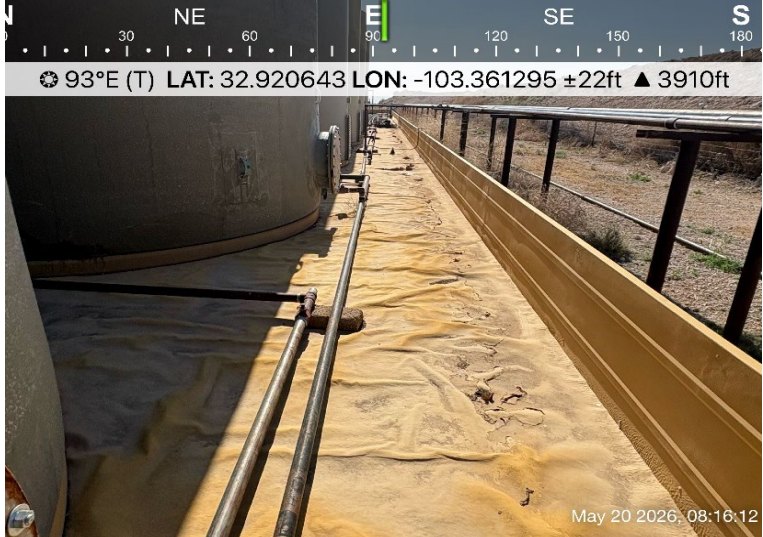
Photograph No. 6

Facility: Vacuum 35 SWD (05.13.2026)

County: Lea County, New Mexico

Description:

View East of the exposed liner.



PHOTOGRAPHIC LOG

BTA Oil Producers, LLC

Photograph No. 7

Facility: Vacuum 35 SWD (05.13.2026)

County: Lea County, New Mexico

Description:
View North of the exposed liner.



Photograph No. 8

Facility: Vacuum 35 SWD (05.13.2026)

County: Lea County, New Mexico

Description:
View North of the exposed liner.



Photograph No. 9

Facility: Vacuum 35 SWD (05.13.2026)

County: Lea County, New Mexico

Description:
View East of the exposed liner.



PHOTOGRAPHIC LOG

BTA Oil Producers, LLC

Photograph No. 10

Facility: Vacuum 35 SWD (05.13.2026)

County: Lea County, New Mexico

Description:
View East of the exposed liner.

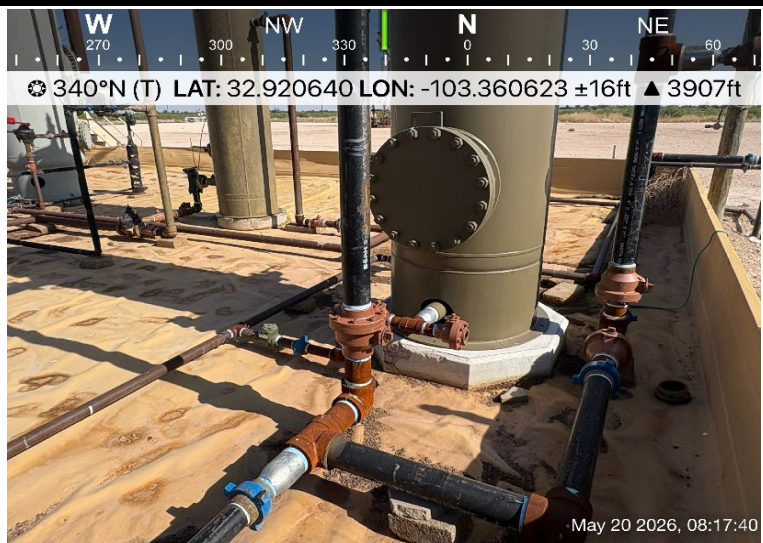


Photograph No. 11

Facility: Vacuum 35 SWD (05.13.2026)

County: Lea County, New Mexico

Description:
View North of the exposed liner.

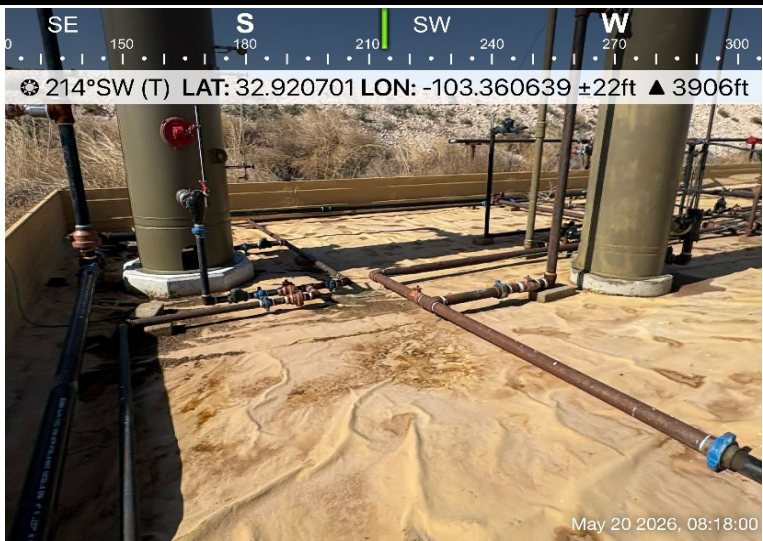


Photograph No. 12

Facility: Vacuum 35 SWD (05.13.2026)

County: Lea County, New Mexico

Description:
View Southwest of the exposed liner.



PHOTOGRAPHIC LOG

BTA Oil Producers, LLC

Photograph No. 13

Facility: Vacuum 35 SWD (05.13.2026)

County: Lea County, New Mexico

Description:
View West of the exposed liner.



Photograph No. 14

Facility: Vacuum 35 SWD (05.13.2026)

County: Lea County, New Mexico

Description:
View East of the exposed liner.



Photograph No. 15

Facility: Vacuum 35 SWD (05.13.2026)

County: Lea County, New Mexico

Description:
View Northwest of the exposed liner.



APPENDIX B

CARMONA RESOURCES



Sante Fe Main Office
Phone: (505) 476-3441

General Information
Phone: (505) 629-6116

Online Phone Directory
<https://www.emnrd.nm.gov/ocd/contact-us>

State of New Mexico
Energy, Minerals and Natural Resources
Oil Conservation Division
1220 S. St Francis Dr.
Santa Fe, NM 87505

QUESTIONS

Action 585374

QUESTIONS

Operator: BTA OIL PRODUCERS, LLC 104 S Pecos Midland, TX 79701	OGRID: 260297
	Action Number: 585374
	Action Type: [NOTIFY] Notification Of Release (NOR)

QUESTIONS

Location of Release Source	
<i>Please answer all the questions in this group.</i>	
Site Name	Vacuum 35 SWD
Date Release Discovered	05/13/2026
Surface Owner	State

Incident Details	
<i>Please answer all the questions in this group.</i>	
Incident Type	Produced Water Release
Did this release result in a fire or is the result of a fire	No
Did this release result in any injuries	No
Has this release reached or does it have a reasonable probability of reaching a watercourse	No
Has this release endangered or does it have a reasonable probability of endangering public health	No
Has this release substantially damaged or will it substantially damage property or the environment	No
Is this release of a volume that is or may with reasonable probability be detrimental to fresh water	No

Nature and Volume of Release	
<i>Material(s) released, please answer all that apply below. Any calculations or specific justifications for the volumes provided should be attached to the follow-up C-141 submission.</i>	
Crude Oil Released (bbls) Details	Not answered.
Produced Water Released (bbls) Details	Cause: Equipment Failure Fitting Produced Water Released: 240 BBL Recovered: 240 BBL Lost: 0 BBL.
Is the concentration of chloride in the produced water >10,000 mg/l	Yes
Condensate Released (bbls) Details	Not answered.
Natural Gas Vented (Mcf) Details	Not answered.
Natural Gas Flared (Mcf) Details	Not answered.
Other Released Details	Not answered.
Are there additional details for the questions above (i.e. any answer containing Other, Specify, Unknown, and/or Fire, or any negative lost amounts)	Not answered.

Sante Fe Main Office
Phone: (505) 476-3441

General Information
Phone: (505) 629-6116

Online Phone Directory
<https://www.emnrd.nm.gov/ocd/contact-us>

**State of New Mexico
Energy, Minerals and Natural Resources
Oil Conservation Division
1220 S. St Francis Dr.
Santa Fe, NM 87505**

QUESTIONS, Page 2

Action 585374

QUESTIONS (continued)

Operator: BTA OIL PRODUCERS, LLC 104 S Pecos Midland, TX 79701	OGRID: 260297
	Action Number: 585374
	Action Type: [NOTIFY] Notification Of Release (NOR)

QUESTIONS

Nature and Volume of Release (continued)	
Is this a gas only submission (i.e. only significant Mcf values reported)	No, according to supplied volumes this does not appear to be a "gas only" report.
Was this a major release as defined by Subsection A of 19.15.29.7 NMAC	Yes
Reasons why this would be considered a submission for a notification of a major release	From paragraph A. "Major release" determine using: (1) an unauthorized release of a volume, excluding gases, of 25 barrels or more.
<i>With the implementation of the 19.15.27 NMAC (05/25/2021), venting and/or flaring of natural gas (i.e. gas only) are to be submitted on the C-129 form.</i>	

Initial Response

The responsible party must undertake the following actions immediately unless they could create a safety hazard that would result in injury.

The source of the release has been stopped	True
The impacted area has been secured to protect human health and the environment	True
Released materials have been contained via the use of berms or dikes, absorbent pads, or other containment devices	True
All free liquids and recoverable materials have been removed and managed appropriately	True
If all the actions described above have not been undertaken, explain why	<i>Not answered.</i>

Per Paragraph 4 of Subsection B of 19.15.29.8 NMAC the responsible party may commence remediation immediately after discovery of a release. If remediation has begun, please prepare and attach a narrative of actions to date in the follow-up C-141 submission. If remedial efforts have been successfully completed or if the release occurred within a lined containment area (see 19.15.29.11(A)(5)(a) NMAC), please prepare and attach all information needed for closure evaluation in the follow-up C-141 submission.

Sante Fe Main Office
Phone: (505) 476-3441

General Information
Phone: (505) 629-6116

Online Phone Directory
<https://www.emnrd.nm.gov/ocd/contact-us>

State of New Mexico
Energy, Minerals and Natural Resources
Oil Conservation Division
1220 S. St Francis Dr.
Santa Fe, NM 87505

ACKNOWLEDGMENTS

Action 585374

ACKNOWLEDGMENTS

Operator: BTA OIL PRODUCERS, LLC 104 S Pecos Midland, TX 79701	OGRID: 260297
	Action Number: 585374
	Action Type: [NOTIFY] Notification Of Release (NOR)

ACKNOWLEDGMENTS

<input checked="" type="checkbox"/>	I acknowledge that I am authorized to submit notification of a release on behalf of my operator.
<input checked="" type="checkbox"/>	I acknowledge that upon submitting this application, I will be creating a new incident file (assigned to my operator) to track the notification(s) and corrective action(s) for a release, pursuant to NMAC 19.15.29.
<input checked="" type="checkbox"/>	I acknowledge that creating a new incident file will require my operator to file subsequent submission(s) of form "C-141, Application for administrative approval of a release notification and corrective action", pursuant to NMAC 19.15.29.
<input checked="" type="checkbox"/>	I hereby certify that the information given above is true and complete to the best of my knowledge and understand that pursuant to OCD rules and regulations all operators are required to report and/or file certain release notifications and perform corrective actions for releases which may endanger public health or the environment.
<input checked="" type="checkbox"/>	I acknowledge the fact that the acceptance of a C-141 report by the OCD does not relieve the operator of liability should their operations have failed to adequately investigate and remediate contamination that pose a threat to groundwater, surface water, human health or the environment.
<input checked="" type="checkbox"/>	I acknowledge the fact that, in addition, OCD acceptance of a C-141 report does not relieve the operator of responsibility for compliance with any other federal, state, or local laws and/or regulations.

Sante Fe Main Office
Phone: (505) 476-3441

General Information
Phone: (505) 629-6116

Online Phone Directory
<https://www.emnrd.nm.gov/ocd/contact-us>

State of New Mexico
Energy, Minerals and Natural Resources
Oil Conservation Division
1220 S. St Francis Dr.
Santa Fe, NM 87505

CONDITIONS

Action 585374

CONDITIONS

Operator: BTA OIL PRODUCERS, LLC 104 S Pecos Midland, TX 79701	OGRID: 260297
	Action Number: 585374
	Action Type: [NOTIFY] Notification Of Release (NOR)

CONDITIONS

Created By	Condition	Condition Date
adelaney	When submitting future reports regarding this release, please submit the calculations used or specific justification for the volumes reported on the initial C-141.	5/14/2026

Sante Fe Main Office
Phone: (505) 476-3441

General Information
Phone: (505) 629-6116

Online Phone Directory
<https://www.emnrd.nm.gov/ocd/contact-us>

**State of New Mexico
Energy, Minerals and Natural Resources
Oil Conservation Division
1220 S. St Francis Dr.
Santa Fe, NM 87505**

QUESTIONS

Action 585452

QUESTIONS

Operator: BTA OIL PRODUCERS, LLC 104 S Pecos Midland, TX 79701	OGRID: 260297
	Action Number: 585452
	Action Type: [NOTIFY] Notification Of Liner Inspection (C-141L)

QUESTIONS

Prerequisites	
Incident ID (n#)	nAPP2613451180
Incident Name	NAPP2613451180 VACUUM 35 SWD @ K-16-16S-36E
Incident Type	Produced Water Release
Incident Status	Notification Accepted

Location of Release Source	
Site Name	Vacuum 35 SWD
Date Release Discovered	05/13/2026
Surface Owner	State

Liner Inspection Event Information	
<i>Please answer all the questions in this group.</i>	
What is the liner inspection surface area in square feet	7,200
Have all the impacted materials been removed from the liner	Yes
Liner inspection date pursuant to Subparagraph (a) of Paragraph (5) of Subsection A of 19.15.29.11 NMAC	05/19/2026
Time liner inspection will commence	08:00 AM
Please provide any information necessary for observers to liner inspection	Carmona Resources – 432-813-8988
Please provide any information necessary for navigation to liner inspection site	32.920717,-103.361345

Sante Fe Main Office
Phone: (505) 476-3441

General Information
Phone: (505) 629-6116

Online Phone Directory
<https://www.emnrd.nm.gov/ocd/contact-us>

State of New Mexico
Energy, Minerals and Natural Resources
Oil Conservation Division
1220 S. St Francis Dr.
Santa Fe, NM 87505

CONDITIONS

Action 585452

CONDITIONS

Operator: BTA OIL PRODUCERS, LLC 104 S Pecos Midland, TX 79701	OGRID: 260297
	Action Number: 585452
	Action Type: [NOTIFY] Notification Of Liner Inspection (C-141L)

CONDITIONS

Created By	Condition	Condition Date
adelaney	Failure to notify the OCD of liner inspections including any changes in date/time per the requirements of 19.15.29.11.A(5)(a)(ii) NMAC, may result in the inspection not being accepted.	5/14/2026

Sante Fe Main Office
Phone: (505) 476-3441

General Information
Phone: (505) 629-6116

Online Phone Directory
<https://www.emnrd.nm.gov/ocd/contact-us>

**State of New Mexico
Energy, Minerals and Natural Resources
Oil Conservation Division
1220 S. St Francis Dr.
Santa Fe, NM 87505**

QUESTIONS

Action 585788

QUESTIONS

Operator: BTA OIL PRODUCERS, LLC 104 S Pecos Midland, TX 79701	OGRID: 260297
	Action Number: 585788
	Action Type: [NOTIFY] Notification Of Liner Inspection (C-141L)

QUESTIONS

Prerequisites	
Incident ID (n#)	nAPP2613451180
Incident Name	NAPP2613451180 VACUUM 35 SWD @ K-16-16S-36E
Incident Type	Produced Water Release
Incident Status	Notification Accepted

Location of Release Source	
Site Name	Vacuum 35 SWD
Date Release Discovered	05/13/2026
Surface Owner	State

Liner Inspection Event Information	
<i>Please answer all the questions in this group.</i>	
What is the liner inspection surface area in square feet	7,200
Have all the impacted materials been removed from the liner	Yes
Liner inspection date pursuant to Subparagraph (a) of Paragraph (5) of Subsection A of 19.15.29.11 NMAC	05/20/2026
Time liner inspection will commence	08:00 AM
Please provide any information necessary for observers to liner inspection	Carmona Resources – 432-813-8988
Please provide any information necessary for navigation to liner inspection site	32.920717,-103.361345

Sante Fe Main Office
Phone: (505) 476-3441

General Information
Phone: (505) 629-6116

Online Phone Directory
<https://www.emnrd.nm.gov/ocd/contact-us>

State of New Mexico
Energy, Minerals and Natural Resources
Oil Conservation Division
1220 S. St Francis Dr.
Santa Fe, NM 87505

CONDITIONS

Action 585788

CONDITIONS

Operator: BTA OIL PRODUCERS, LLC 104 S Pecos Midland, TX 79701	OGRID: 260297
	Action Number: 585788
	Action Type: [NOTIFY] Notification Of Liner Inspection (C-141L)

CONDITIONS

Created By	Condition	Condition Date
adelaney	Failure to notify the OCD of liner inspections including any changes in date/time per the requirements of 19.15.29.11.A(5)(a)(ii) NMAC, may result in the inspection not being accepted.	5/18/2026



Liner Integrity Certification

The following serves to verify that the affected liner has been inspected and found to be in serviceable condition in accordance with 19.15.29.11 A.(5)(a)(i-ii) of the New Mexico Administrative Code.

Well ID: 30-025-44198

Date: 05.20.2026

Incident ID(s): nAPP2613451180

- Responsible Party has visually inspected the liner.
- Liner remains intact and was able to contain the leak in question.
- At least two business days' notice was given to the appropriate division district office before conducting the liner inspection.
- Photographs illustrating liner integrity are included.

APPENDIX C

CARMONA RESOURCES



Nearest water well

BTA OIL PRODUCERS, LLC



Legend

-  0.33 Miles
-  0.34 Miles
-  0.50 Mile Radius
-  0.91 Miles
-  NMSEO Water Well
-  USGS Water Well
-  Vacuum 35 SWD (05.13.2026)



Low Karst
BTA OIL PRODUCERS, LLC

Legend

-  Low
-  Vacuum 35 SWD (05.13.2026)

Vacuum 35 SWD (05.13.2026)





New Mexico Office of the State Engineer

Water Column/Average Depth to Water

(A CLW##### in the POD suffix indicates the POD has been replaced & no longer serves a water right file.)

(R=POD has been replaced, O=orphaned, C=the file is closed)

(quarters are smallest to largest)

(meters)

(In feet)

POD Number	Code	Sub basin	County	Q64	Q16	Q4	Sec	Tws	Range	X	Y	Map	Distance	Well Depth	Depth Water	Water Column
L 00409	R	L	LE		SW	NE	16	16S	36E	653576.0	3644048.0 *	●	505	85		
L 00409 POD4		L	LE	NW	SW	NE	16	16S	36E	653475.0	3644147.0 *	●	524	193	65	128
L 03318		L	LE	NW	SW	NE	16	16S	36E	653475.0	3644147.0 *	●	524	85		
L 00409 S		L	LE	NW	SE	NE	16	16S	36E	653879.0	3644155.0 *	●	806	202	65	137
L 07649 POD3		L	LE		NE	SE	17	16S	36E	652370.0	3643622.0 *	●	853	140	71	69
L 15618 POD1		L	LE	NE	SE	SE	16	16S	36E	654104.7	3643419.9	●	923	192	75	117
L 07649 POD2		L	LE		SE	SE	17	16S	36E	652376.0	3643219.0 *	●	966	160	71	89
L 07649 POD5		L	LE		SE	SE	17	16S	36E	652376.0	3643219.0 *	●	966	140	70	70
L 00435		L	LE	NW	NE	NE	21	16S	36E	653899.0	3642945.0 *	●	1005	100		
L 00435	R	L	LE	NW	NE	NE	21	16S	36E	653899.0	3642945.0 *	●	1005	100		
L 00245		L	LE	NW	NW	SW	15	16S	36E	654290.0	3643760.0	●	1071	90		
L 00245	R	L	LE	NW	NW	SW	15	16S	36E	654290.0	3643760.0	●	1071	90		
L 00245 POD3	R	L	LE	SW	NW	SW	15	16S	36E	654290.0	3643560.0 *	●	1076	98		
L 15599 POD1		L	LE	NW	NE	NE	16	16S	36E	653905.3	3644574.8	●	1120	205	95	110
L 15101 POD1		L	LE	NE	NE	NE	17	16S	36E	652410.5	3644502.3	●	1148	160	70	90
L 05140		L	LE		NW	SW	15	16S	36E	654391.0	3643661.0 *	●	1170	110	90	20
L 01705 S		L	LE		SW	SE	09	16S	36E	653563.0	3644855.0 *	●	1216	95	63	32
L 10572		L	LE	NW	NE	NE	20	16S	36E	652282.0	3642915.0 *	●	1216	150	70	80
L 04487		L	LE	NE	NE	NE	16	16S	36E	654073.0	3644559.0 *	●	1218	110	82	28
L 06130		L	LE		SW	NW	15	16S	36E	654385.0	3644065.0 *	●	1223	85	70	15
L 01508 POD1		L	LE		SW	SW	09	16S	36E	652754.0	3644838.0 *	●	1241	95	55	40
L 02179		L	LE		SW	SW	15	16S	36E	654398.0	3643257.0 *	●	1253	85	57	28
L 04379		L	LE		SW	SW	15	16S	36E	654398.0	3643257.0 *	●	1253	112	70	42
L 00161		L	LE	SW	NW	NW	15	16S	36E	654277.0	3644367.0 *	●	1255	95	65	30
L 00209 POD6		L	LE	NW	NE	NE	17	16S	36E	652255.0	3644527.0 *	●	1279	125	66	59
L 03966		L	LE	SE	NE	NE	21	16S	36E	654099.0	3642745.0 *	●	1288	95	65	30
L 05269		L	LE	SE	NE	NE	21	16S	36E	654099.0	3642745.0 *	●	1288	110	90	20
L 00002		L	LE	SE	SE	SE	08	16S	36E	652449.0	3644730.0 *	●	1296			
L 14168 POD1		L	LE	SE	NE	NE	21	16S	36E	654142.0	3642730.1	●	1328	200	65	135
L 15161 POD1		L	LE	SW	SE	SE	09	16S	36E	653891.5	3644839.9	●	1332	198	62	136
L 00209 POD7		L	LE		SW	SE	17	16S	36E	651972.0	3643212.0 *	●	1336	128	72	56
L 07649 POD4		L	LE		SW	SE	17	16S	36E	651972.0	3643212.0 *	●	1336	140	69	71
L 02338		L	LE	SE	SE	SE	09	16S	36E	654066.0	3644762.0 *	●	1366	90	60	30
L 00245 S2		L	LE		SW		15	16S	36E	654599.0	3643458.0	●	1397	137	65	72
L 00245 S2	R	L	LE		SW		15	16S	36E	654599.0	3643458.0	●	1397	137	65	72
L 00455 POD4		L	LE	SE	NW	NW	15	16S	36E	654477.0	3644367.0 *	●	1427	130	65	65
L 07649		L	LE				17	16S	36E	651767.0	3643800.0 *	●	1458	140	72	68
L 00340 S2		L	LE	NE	SE	SE	08	16S	36E	652449.0	3644930.0 *	●	1462	80		
L 01705 POD3		L	LE	SW	NW	SE	09	16S	36E	653376.7	3645151.9	●	1472	203	75	128
L 00245 S		L	LE	NW	NE	SW	15	16S	36E	654693.0	3643767.0	●	1474	95		

(A CLW##### in the POD suffix indicates the POD has been replaced & no longer serves a water right file.) (R=POD has been replaced, O=orphaned, C=the file is closed)

(quarters are smallest to largest)

POD Number	Code	Sub basin	County	Q64	Q16	Q4	Sec	Tws	Range	X	Y	Map	(meters)		(In feet)		
													Distance	Well Depth	Depth Water	Water Column	
L 00245 S	R	L	LE	NW	NE	SW	15	16S	36E	654693.0	3643767.0	●	1474	95			
L 01705		L	LE	SW	NW	SE	09	16S	36E	653455.0	3645157.0 *	●	1487	95	65	30	
L 00340 POD10		L	LE	NE	NE	SE	08	16S	36E	652518.0	3645018.1	●	1504	136	60	76	
L 01007 POD1		L	LE	SW	SW	SW	10	16S	36E	654271.0	3644771.0 *	●	1508	84	47	37	
L 12780 POD1		L	LE	NW	SE	SE	08	16S	36E	652310.3	3644901.2	●	1516	142	72	70	
L 15124 POD1		L	LE	NW	SE	SE	08	16S	36E	652312.7	3644913.6	●	1525	165	65	100	
L 06135		L	LE	NE	NW	NW	15	16S	36E	654477.0	3644567.0 *	●	1533	85	75	10	
L 04249		L	LE	NW	SE	NW	15	16S	36E	654686.0	3644171.0 *	●	1542	96	74	22	
L 11796	R	L	LE	SE	SW	SE	08	16S	36E	652045.0	3644723.0 *	●	1566	120	61	59	
L 13262 POD1		L	LE	NW	SE	SE	08	16S	36E	652170.2	3644886.7	●	1594	170			
L 00209 POD8		L	LE	NW	NW	NE	17	16S	36E	651851.0	3644520.0 *	●	1602	110	72	38	
L 07757		L	LE	NW	NW	NE	17	16S	36E	651851.0	3644520.0 *	●	1602	120			
L 03304		L	LE	SW	NE	SE	09	16S	36E	653860.0	3645166.0 *	●	1610	96	69	27	
L 01704 POD2	R	L	LE	SW	NE	NW	15	16S	36E	654679.0	3644375.0 *	●	1611	190	62	128	
L 01709 POD1		L	LE	SE	SW	SW	10	16S	36E	654471.0	3644771.0 *	●	1653	100	60	40	
L 07677		L	LE	NW	NE	SW	09	16S	36E	653051.0	3645349.0 *	●	1669	120	70	50	
L 00209 POD4		L	LE	SE	NE	NW	17	16S	36E	651647.0	3644312.0 *	●	1693	126	80	46	
L 13253 POD1		L	LE	NW	NE	SW	09	16S	36E	653106.6	3645382.5	●	1698	144	58	86	
L 03727		L	LE			SE	08	16S	36E	652147.0	3645025.0 *	●	1714	100	60	40	
L 03728		L	LE			SE	08	16S	36E	652147.0	3645025.0 *	●	1714	100	65	35	
L 00196 POD10		L	LE	NE	SW	NW	22	16S	36E	654510.0	3642550.0 *	●	1719	130	63	67	
L 00196 POD10	R	L	LE	NE	SW	NW	22	16S	36E	654510.0	3642550.0 *	●	1719	130	63	67	
L 00340 POD4	R	L	LE	SW	SW	SE	08	16S	36E	651845.0	3644723.0 *	●	1721	100	62	38	
L 00340 S		L	LE	SW	SW	SE	08	16S	36E	651845.0	3644723.0 *	●	1721	80	56	24	
L 01484		L	LE	SW	SW	NW	22	16S	36E	654310.0	3642350.0 *	●	1725	88	55	33	
L 02656		L	LE			NE	15	16S	36E	654780.0	3644476.0 *	●	1746	100	74	26	
L 15207 POD1		L	LE	SE	SE	SW	08	16S	36E	651682.2	3644521.9	●	1750	155	110	45	
L 14512 POD1		L	LE	NW	SW	SE	08	16S	36E	651932.6	3644877.5	●	1753	158	61	97	
L 14617 POD1		L	LE	SE	NW	SE	34	17S	38E	651932.6	3644877.5	●	1753	235	100	135	
L 00196 POD13		L	LE	SE	SW	NW	22	16S	36E	654511.0	3642495.0	●	1757	200	63	137	
L 01244		L	LE				09	16S	36E	653357.0	3645441.0 *	●	1758	90			
L 00340 POD5		L	LE	SW	SE	SE	08	16S	36E	651735.8	3644649.9	●	1769	155	30	125	
L 00209 POD5		L	LE	SW	NE	SW	17	16S	36E	651460.0	3643506.0 *	●	1770	127	83	44	
L 06053		L	LE			NE	08	16S	36E	652343.0	3645234.0 *	●	1777				
L 02486		L	LE	NW	NE	SE	09	16S	36E	653860.0	3645366.0 *	●	1795	90	60	30	
L 15402 POD1		L	LE	SW	SW	NE	15	16S	36E	655008.2	3643943.0	●	1805	210	78	132	
L 13984 POD1		L	LE	SE	SE	SW	08	16S	36E	651705.5	3644697.8	●	1821	131	70	61	
L 12023 POD1		L	LE	SE	NW	SE	08	16S	36E	652049.5	3645134.4	●	1861	110	60	50	
L 00196 POD15		L	LE			SE	NW	22	16S	36E	654632.0	3642457.0	●	1872	200	70	130
L 00322		L	LE	NW	NW	SE	15	16S	36E	655095.0	3643775.0 *	●	1876	125	68	57	
L 08675		L	LE	NW	NW	SE	15	16S	36E	655095.0	3643775.0 *	●	1876	115	67	48	
L 04437		L	LE			SW	17	16S	36E	651365.0	3643398.0 *	●	1878	120	95	25	
L 01339		L	LE	NE	NE	NW	15	16S	36E	654879.0	3644575.0 *	●	1880	100	55	45	

(A CLW##### in the POD suffix indicates the POD has been replaced & no longer serves a water right file.) (R=POD has been replaced, O=orphaned, C=the file is closed)

(quarters are smallest to largest)

POD Number	Code	Sub basin	County	Q64	Q16	Q4	Sec	Tws	Range	X	Y	Map	(meters)		(In feet)	
													Distance	Well Depth	Depth Water	Water Column
L 00340 POD8		L	LE	SE	SE	SW	08	16S	36E	651641.0	3644715.0 *	●	1884	147	74	73
L 01457		L	LE	SE	SE	SW	08	16S	36E	651641.0	3644715.0 *	●	1884	85	60	25
L 03298		L	LE	SE	SE	SW	08	16S	36E	651641.0	3644715.0 *	●	1884	90	65	25
L 03373		L	LE	SE	SE	SW	08	16S	36E	651641.0	3644715.0 *	●	1884	97	72	25
L 05380		L	LE	SE	SE	SW	08	16S	36E	651641.0	3644715.0 *	●	1884	100	64	36
L 02862		L	LE	SW	SW	NE	15	16S	36E	655088.0	3643978.0 *	●	1889	94	55	39
L 14908 POD1		L	LE	SE	SE	SW	08	16S	36E	651685.8	3644793.0	●	1891	172	110	62
L 00207		L	LE	NW	SW	NE	15	16S	36E	655088.0	3644178.0 *	●	1930	90		
L 00207	R	L	LE	NW	SW	NE	15	16S	36E	655088.0	3644178.0 *	●	1930	90		
L 00207 POD2		L	LE	NW	SW	NE	15	16S	36E	655088.0	3644178.0 *	●	1930	100	65	35
L 01049		L	LE	NW	SW	NE	15	16S	36E	655088.0	3644178.0 *	●	1930	80		
L 00340 POD7		L	LE	NW	NE	SE	08	16S	36E	652204.9	3645330.9	●	1931	146	70	76
L 08189		L	LE	SW	SE	SW	08	16S	36E	651535.0	3644633.6	●	1933	120	70	50
L 08189	R	L	LE	SW	SE	SW	08	16S	36E	651535.0	3644633.6	●	1933	120	70	50
L 00455 POD3	R	L	LE	SE	NW	SW	10	16S	36E	654464.0	3645174.0 *	●	1937	208	67	141
L 01121 POD1		L	LE	SE	NW	SW	10	16S	36E	654464.0	3645174.0 *	●	1937	85	55	30
L 00340 POD6		L	LE	NW	NE	SE	08	16S	36E	652207.0	3645347.3	●	1944	155	35	120
L 00340 POD6	R	L	LE	NW	NE	SE	08	16S	36E	652207.0	3645347.3	●	1944	155	35	120
L 13155 POD1		L	LE	NW	SW	SE	15	16S	36E	655162.3	3643448.5	●	1956	106	66	40
L 03550		L	LE		SE	SW	10	16S	36E	654774.0	3644879.0 *	●	1957	87	70	17
L 11796 POD2		L	LE	NE	SE	SW	08	16S	36E	651640.8	3644847.8	●	1960	150	90	60
L 01527 POD1		L	LE		SW	NE	09	16S	36E	653550.0	3645661.0 *	●	2000	85	60	25
L 15891 POD1		L	LE	SW	SE	NE	08	16S	36E	652293.7	3645464.4	●	2003	150	72	78
L 03047		L	LE		SW	NE	15	16S	36E	655189.0	3644079.0 *	●	2006	90	65	25
L 13145 POD1	R	L	LE	SW	NW	SE	08	16S	36E	651746.8	3645049.6	●	2006	111	67	44
L 13145 POD2		L	LE	SW	NW	SE	08	16S	36E	651746.8	3645049.6	●	2006	150		
L 06943		L	LE	SE	SE	NE	08	16S	36E	652436.0	3645536.0 *	●	2007	116	70	46
L 07719		L	LE	SE	SE	NE	08	16S	36E	652436.0	3645536.0 *	●	2007	120	70	50
L 07821		L	LE	SE	SE	NE	08	16S	36E	652436.0	3645536.0 *	●	2007	160	87	73
L 07845		L	LE		SE	SW	08	16S	36E	651542.0	3644816.0 *	●	2022	110	73	37
L 12004 POD1		L	LE	SE	SE	NE	08	16S	36E	652445.1	3645587.2	●	2051	120	63	57
L 01070		L	LE	SW	SE	SW	08	16S	36E	651441.0	3644715.0 *	●	2055	75	55	20
L 14101 POD1		L	LE	SE	SE	NE	08	16S	36E	652232.8	3645490.6	●	2055	146	70	76
L 01124 POD1		L	LE	NE	SE	NW	09	16S	36E	653244.0	3645752.0 *	●	2064	85		
L 02266		L	LE	NE	SE	NW	09	16S	36E	653244.0	3645752.0 *	●	2064	90	60	30
L 03549		L	LE	NE	SE	NW	09	16S	36E	653244.0	3645752.0 *	●	2064	123	70	53
L 02412 POD2		L	LE	NW	NW	NE	15	16S	36E	655082.0	3644582.0 *	●	2064	110	84	26
L 03825		L	LE	NW	NW	NE	15	16S	36E	655082.0	3644582.0 *	●	2064	100	60	40
L 05129		L	LE	NW	NW	NE	15	16S	36E	655082.0	3644582.0 *	●	2064	103	85	18
L 07442		L	LE				20	16S	36E	651793.0	3642188.0 *	●	2071	130		
L 03501		L	LE	NW	SE	NW	09	16S	36E	653044.0	3645752.0 *	●	2071	125	70	55
L 00338		L	LE	NE	NW	SE	15	16S	36E	655295.0	3643775.0 *	●	2075	116		
L 00338	R	L	LE	NE	NW	SE	15	16S	36E	655295.0	3643775.0 *	●	2075	116		

(A CLW##### in the POD suffix indicates the POD has been replaced & no longer serves a water right file.) (R=POD has been replaced, O=orphaned, C=the file is closed)

(quarters are smallest to largest)

(meters)

(In feet)

POD Number	Code	Sub basin	County	Q64	Q16	Q4	Sec	Tws	Range	X	Y	Map	Distance	Well Depth	Depth Water	Water Column	
L 02267		L	LE	NW	SW	NE	09	16S	36E	653449.0	3645760.0	*	●	2084	90	60	30
L 02392		L	LE	NW	SW	NE	09	16S	36E	653449.0	3645760.0	*	●	2084	100	62	38
L 02396		L	LE	NW	SW	NE	09	16S	36E	653449.0	3645760.0	*	●	2084	85	60	25
L 02543		L	LE	NW	SW	NE	09	16S	36E	653449.0	3645760.0	*	●	2084	115	62	53
L 02916		L	LE	NW	SW	NE	09	16S	36E	653449.0	3645760.0	*	●	2084	92	65	27
L 05496		L	LE	NW	SW	NE	09	16S	36E	653449.0	3645760.0	*	●	2084	139	79	60
L 00209 S2		L	LE		SW	NW	17	16S	36E	651151.0	3644003.0	*	●	2093	173	68	105
L 00209 S2	R	L	LE		SW	NW	17	16S	36E	651151.0	3644003.0	*	●	2093	173	68	105
L 05564		L	LE	SW	SE	NE	08	16S	36E	652236.0	3645536.0	*	●	2094	100	68	32
L 07663		L	LE	SW	SE	NE	08	16S	36E	652236.0	3645536.0	*	●	2094	110	72	38
L 08841		L	LE	SW	SE	NE	08	16S	36E	652236.0	3645536.0	*	●	2094	123	53	70
L 01300		L	LE	NE	NW	SW	10	16S	36E	654464.0	3645374.0	*	●	2094	90	60	30
L 02301		L	LE	NE	SE	SW	10	16S	36E	654873.0	3644978.0	*	●	2095	90	62	28
L 05561		L	LE		SE	NE	09	16S	36E	653954.0	3645670.0	*	●	2113	100	75	25
L 08186		L	LE		NW	NE	15	16S	36E	655183.0	3644483.0	*	●	2116	125	63	62
L 15817 POD1		L	LE	SE	SW	NE	08	16S	26E	652023.9	3645445.2		●	2126	144	70	74
L 03236		L	LE	SE	NE	SW	08	16S	36E	651634.0	3645118.0	*	●	2136	96	55	41
L 11253		L	LE	SE	NE	SW	08	16S	36E	651634.0	3645118.0	*	●	2136	140	86	54
L 06223 POD2		L	LE		SE	NE	08	16S	36E	652337.0	3645637.0	*	●	2140	150	102	48
L 00340	R	L	LE	NW	NW	SE	08	16S	36E	651838.0	3645326.0	*	●	2143	87		
L 05856		L	LE			SE	20	16S	36E	652200.0	3641800.0	*	●	2146	106	70	36
L 07443		L	LE			SE	20	16S	36E	652200.0	3641800.0	*	●	2146	140		
L 00209 S		L	LE	SW	SW	NW	17	16S	36E	651050.0	3643902.0	*	●	2181	100	60	40
L 08898		L	LE	SE	NW	NW	20	16S	36E	651269.0	3642693.0	*	●	2190	147	70	77
L 05909		L	LE	SE	SW	NE	08	16S	36E	652031.0	3645528.0	*	●	2191	96	81	15
L 05910		L	LE	SE	SW	NE	08	16S	36E	652031.0	3645528.0	*	●	2191	93	70	23
L 05964		L	LE	SE	SW	NE	08	16S	36E	652031.0	3645528.0	*	●	2191	93	70	23
L 07587		L	LE	SE	SW	NE	08	16S	36E	652031.0	3645528.0	*	●	2191	110	72	38
L 07963		L	LE	SE	SW	NE	08	16S	36E	652031.0	3645528.0	*	●	2191			
L 01741 POD1		L	LE			SE	15	16S	36E	655404.0	3643473.0	*	●	2193	90		
L 02031		L	LE			SE	15	16S	36E	655404.0	3643473.0	*	●	2193	90		
L 02056		L	LE		NW	NW	17	16S	36E	651144.0	3644406.0	*	●	2197	130	60	70
L 07561		L	LE	SE	SE	SE	21	16S	36E	654021.1	3641636.1		●	2202	200		
L 15740 POD1		L	LE	SE	SW	NE	08	16S	36E	652060.8	3645575.1		●	2215	170		
L 00259 POD2		L	LE		NE	SW	10	16S	36E	654768.0	3645283.0	*	●	2221	85	63	22
L 00259		L	LE	SE	NE	SW	10	16S	36E	654867.0	3645182.0	*	●	2222	92		
L 00259	R	L	LE	SE	NE	SW	10	16S	36E	654867.0	3645182.0	*	●	2222	92		
L 02484		L	LE	NW	NE	SW	10	16S	36E	654667.0	3645382.0	*	●	2227	90	60	30
L 09307	R	L	LE	SE	SW	SW	08	16S	36E	651236.0	3644708.0	*	●	2231	135	60	75
L 09307 POD2		L	LE	SE	SW	SW	08	16S	36E	651236.0	3644708.0	*	●	2231	123	70	53
L 03254		L	LE	NE	SE	NE	09	16S	36E	654053.0	3645769.0	*	●	2241	100	68	32
L 00313		L	LE	NE	NW	NE	15	16S	36E	655282.0	3644582.0	*	●	2246			
L 00313	R	L	LE	NE	NW	NE	15	16S	36E	655282.0	3644582.0	*	●	2246			

(A CLW##### in the POD suffix indicates the POD has been replaced & no longer serves a water right file.) (R=POD has been replaced, O=orphaned, C=the file is closed)

(quarters are smallest to largest)

(meters)

(In feet)

POD Number	Code	Sub basin	County	Q64	Q16	Q4	Sec	Tws	Range	X	Y	Map	Distance	Well Depth	Depth Water	Water Column	
L 00313 POD3		L	LE	NE	NW	NE	15	16S	36E	655282.0	3644582.0 *	●	2246	122	66	56	
L 02471		L	LE	NE	NW	NE	15	16S	36E	655282.0	3644582.0 *	●	2246	120	63	57	
L 04433		L	LE			NE	15	16S	36E	655390.0	3644280.0 *	●	2248	112	70	42	
L 05226		L	LE			NE	15	16S	36E	655390.0	3644280.0 *	●	2248	110	85	25	
L 05527		L	LE			NE	15	16S	36E	655390.0	3644280.0 *	●	2248	100	75	25	
L 05529		L	LE			NE	15	16S	36E	655390.0	3644280.0 *	●	2248	100	70	30	
L 05673		L	LE			NE	15	16S	36E	655390.0	3644280.0 *	●	2248	100	75	25	
L 00997 POD1		L	LE	SE	SW	NW	10	16S	36E	654458.0	3645577.0 *	●	2257	80	55	25	
L 14259 POD1		L	LE	SE	SW	NE	08	16S	36E	651966.7	3645581.4	●	2271	150	70	80	
L 00196 S3		L	LE	NW	SE	NE	08	16S	36E	652236.0	3645736.0 *	●	2272		110		
L 04651		L	LE				08	16S	36E	651740.0	3645412.0 *	●	2272	97	85	12	
L 00247 POD6		L	LE	NE	NE	SW	08	16S	36E	651634.0	3645318.0 *	●	2274	90	75	15	
L 03596		L	LE	NE	NE	SW	08	16S	36E	651634.0	3645318.0 *	●	2274	88	70	18	
L 07445		L	LE	NE	NE	SW	08	16S	36E	651634.0	3645318.0 *	●	2274	100	68	32	
L 00247 POD3		L	LE			NE	SW	08	16S	36E	651535.0	3645219.0 *	●	2277	100	60	40
L 00247 POD3	R	L	LE			NE	SW	08	16S	36E	651535.0	3645219.0 *	●	2277	100	60	40
L 00247 POD7		L	LE			NE	SW	08	16S	36E	651535.0	3645219.0 *	●	2277	90	70	20
L 10103		L	LE			NE	SW	08	16S	36E	651535.0	3645219.0 *	●	2277	123		
L 00338 POD2		L	LE	NW	NE	SE	15	16S	36E	655498.0	3643782.0 *	●	2278	96			
L 00338 POD2	R	L	LE	NW	NE	SE	15	16S	36E	655498.0	3643782.0 *	●	2278	96			
L 03271		L	LE	NW	NE	SE	15	16S	36E	655498.0	3643782.0 *	●	2278	106	60	46	
L 03896		L	LE	NW	NE	SE	15	16S	36E	655498.0	3643782.0 *	●	2278	100			
L 11841		L	LE	NW	NW	NW	17	16S	36E	651087.9	3644514.6	●	2287	116	65	51	
L 00499		L	LE	SW	NW	SE	10	16S	36E	655176.0	3644887.0 *	●	2293	112	40	72	
L 10587		L	LE			SW	08	16S	36E	651338.0	3645010.0 *	●	2300	150	58	92	
L 10635		L	LE			SW	08	16S	36E	651338.0	3645010.0 *	●	2300	94	64	30	
L 10880		L	LE			SW	08	16S	36E	651338.0	3645010.0 *	●	2300	150	70	80	
L 07510	R	L	LE	SW	SW	NE	08	16S	36E	651831.0	3645528.0 *	●	2306	120	70	50	
L 08113	R	L	LE	SW	SW	NE	08	16S	36E	651831.0	3645528.0 *	●	2306	104	61	43	
L 08208		L	LE	SW	SW	NE	08	16S	36E	651831.0	3645528.0 *	●	2306	100			
L 00529 POD4		L	LE	SW	SW	NE	22	16S	36E	655115.0	3642364.0 *	●	2310	120	85	35	
L 15678 POD1		L	LE	SW	NE	SW	08	16S	36E	651487.0	3645218.2	●	2312	150	93	57	
L 08113 POD2		L	LE			SW	NE	08	16S	36E	651825.0	3645540.7	●	2319	155		
L 00209		L	LE	NW	NW	NW	17	16S	36E	651043.0	3644505.0 *	●	2326	171			
L 00209	R	L	LE	NW	NW	NW	17	16S	36E	651043.0	3644505.0 *	●	2326	171			
L 09733		L	LE			SW	NE	08	16S	36E	651932.0	3645629.0 *	●	2330	120	78	42
L 01156 POD1		L	LE	SW	NW	NW	09	16S	36E	652633.0	3645946.0 *	●	2333	76	54	22	
L 01329		L	LE	SW	NW	NW	09	16S	36E	652633.0	3645946.0 *	●	2333	71	55	16	
L 02336		L	LE	SW	NW	NW	09	16S	36E	652633.0	3645946.0 *	●	2333	100	63	37	
L 04572		L	LE	SW	NW	NW	09	16S	36E	652633.0	3645946.0 *	●	2333	100	66	34	
L 05282		L	LE	SW	NW	NW	09	16S	36E	652633.0	3645946.0 *	●	2333	92	70	22	
L 05944		L	LE	SW	NW	NW	09	16S	36E	652633.0	3645946.0 *	●	2333	100	68	32	
L 03292		L	LE	NE	NE	SW	10	16S	36E	654867.0	3645382.0 *	●	2361	100	60	40	

(A CLW##### in the POD suffix indicates the POD has been replaced & no longer serves a water right file.) (R=POD has been replaced, O=orphaned, C=the file is closed)

(quarters are smallest to largest)

POD Number	Code	Sub basin	County	Q64	Q16	Q4	Sec	Tws	Range	X	Y	Map	(meters)	(In feet)		
													Distance	Well Depth	Depth Water	Water Column
L 03359		L	LE	NE	NE	SW	10	16S	36E	654867.0	3645382.0 *	●	2361	100	69	31
L 03671		L	LE	NE	NE	SW	10	16S	36E	654867.0	3645382.0 *	●	2361	90	68	22
L 00247 POD5		L	LE		SW	SW	08	16S	36E	651137.0	3644809.0 *	●	2366	110		
L 00247 POD5	R	L	LE		SW	SW	08	16S	36E	651137.0	3644809.0 *	●	2366	110		
L 04939		L	LE		SW	SW	08	16S	36E	651137.0	3644809.0 *	●	2366	100	75	25
L 09466		L	LE		SW	SW	08	16S	36E	651137.0	3644809.0 *	●	2366	135	60	75
L 09913		L	LE		SW	SW	08	16S	36E	651137.0	3644809.0 *	●	2366	140	60	80
L 00208 POD3		L	LE	SW	NE	NE	09	16S	36E	653847.0	3645972.0 *	●	2368	105	57	48
L 00766 POD3		L	LE		NE	NW	09	16S	36E	653139.0	3646056.0 *	●	2369	100	70	30
L 07510 POD2		L	LE	SW	SW	NE	08	16S	36E	651739.7	3645543.1	●	2373	146		
L 07063		L	LE	NE	SE	SE	18	16S	36E	650861.0	3643289.0 *	●	2393	120	80	40
L 14436 POD1		L	LE	NW	NE	NE	15	16S	36E	655413.6	3644650.9	●	2394	160	75	85
L 00196 POD6	R	L	LE			NE	08	16S	36E	652133.0	3645830.0 *	●	2402	140	75	65
L 10255		L	LE			NE	08	16S	36E	652133.0	3645830.0 *	●	2402	150	70	80
L 04674		L	LE		SE	NE	15	16S	36E	655592.0	3644087.0 *	●	2404	90	62	28
L 05533		L	LE		SE	NE	15	16S	36E	655592.0	3644087.0 *	●	2404	100	75	25
L 01378		L	LE	SW	SW	SW	08	16S	36E	651036.0	3644708.0 *	●	2411	73	60	13
L 01581 POD1		L	LE	SW	SW	SW	08	16S	36E	651036.0	3644708.0 *	●	2411	89		
L 05218		L	LE	SW	SW	SW	08	16S	36E	651036.0	3644708.0 *	●	2411	120	90	30
L 00499 POD3		L	LE	NE	SW	SE	10	16S	36E	655275.0	3644986.0 *	●	2429	120	100	20
L 06963		L	LE	SE	SE	SE	18	16S	36E	650861.0	3643089.0 *	●	2434	120	80	40
L 06565		L	LE	NW	NE	NE	15	16S	36E	655484.0	3644590.0 *	●	2436	120	70	50
L 06132		L	LE		NE	SE	18	16S	36E	650755.0	3643593.0 *	●	2467	98	70	28
L 10712		L	LE		NE	SE	18	16S	36E	650755.0	3643593.0 *	●	2467	165	60	105
L 00196		L	LE	NW	SW	NE	08	16S	36E	651831.0	3645728.0 *	●	2468	158		
L 00196	R	L	LE	NW	SW	NE	08	16S	36E	651831.0	3645728.0 *	●	2468	158		
L 00196 POD8		L	LE	NW	SW	NE	08	16S	36E	651831.0	3645728.0 *	●	2468	110	66	44
L 00196 S2		L	LE	NW	SW	NE	08	16S	36E	651831.0	3645728.0 *	●	2468	103	75	28
L 01704 POD4		L	LE	NW	NE	NW	09	16S	36E	653038.0	3646155.0 *	●	2473	120	80	40
L 16056 POD1		L	LE	NE	SE	NE	15	16S	36E	655622.4	3644289.1	●	2475	218	75	143
L 10083		L	LE	NE	NE	SE	15	16S	36E	655698.0	3643782.0 *	●	2478	154	55	99
L 02782		L	LE	SE	NE	SE	15	16S	36E	655698.0	3643582.0 *	●	2479	95	51	44
L 01180 POD1		L	LE	NW	NW	NE	09	16S	36E	653442.0	3646164.0 *	●	2485	78	60	18
L 01380		L	LE	NE	NW	NW	09	16S	36E	652833.0	3646146.0 *	●	2488	74	53	21
L 12584 POD1		L	LE	SE	NE	SE	15	16S	36E	655706.5	3643543.4	●	2489	180		
L 00313 POD2		L	LE		NE	NE	15	16S	36E	655585.0	3644491.0 *	●	2496	96	68	28

Average Depth to Water: **68 feet**

Minimum Depth: **30 feet**

Maximum Depth: **110 feet**

Record Count: 248

UTM Filters (in meters):

Easting: 653221.00

Northing: 3643688.00

Radius: 2500

* UTM location was derived from PLSS - see Help

The data is furnished by the NMOSE/ISC and is accepted by the recipient with the expressed understanding that the OSE/ISC make no warranties, expressed or implied, concerning the accuracy, completeness, reliability, usability, or suitability for any particular purpose of the data.

WELL RECORD

INSTRUCTIONS: This form should be executed in triplicate, preferably typewritten, and submitted to the nearest district office of the State Engineer. All sections, except Section 5, shall be answered as completely and accurately as possible when any well is drilled, repaired or deepened. When this form is used as a plugging record, only Section 1A and Section 5 need be completed.

Section 1

		0	

(Plat of 640 acres)

(A) Owner of well T. M. Blackmon
 Street and Number P.O. Box 718
 City Lovington State New Mexico
 Well was drilled under Permit No. L-409 and is located in the
NW 1/4 SW 1/4 NE 1/4 of Section 16 Twp. 16S Rge. 36E
 (B) Drilling Contractor Cayton & Porter License No. WD-183
 Street and Number Box 1021
 City Lovington State New Mexico
 Drilling was commenced October 1 1955
 Drilling was completed October 3 1955

Elevation at top of casing in feet above sea level _____ Total depth of well 193
 State whether well is shallow or artesian shallow Depth to water upon completion 65

Section 2 PRINCIPAL WATER-BEARING STRATA

No.	Depth in Feet		Thickness in Feet	Description of Water-Bearing Formation
	From	To		
1	72	87	15	Water sand
2	89	107	18	Water sand
3	108	122	14	Water sand
4	123	137	14	Water sand
5	185	188	3	Vari-colored stream bed gravel

STATE ENGINEER OFFICE
 SANTA FE, N.M.
 1957 SEP 17 PM 1:49

Section 3 RECORD OF CASING

#1
#2

Dia in.	Pounds ft.	Threads in	Depth		Feet	Type Shoe	Perforations	
			Top	Bottom			From	To
24	70	weld	0	101	101	open	none	
14	46	weld	0	192	192	plain	101	192

Section 4 RECORD OF MUDDING AND CEMENTING

Depth in Feet		Diameter Hole in in.	Tons Clay	No. Sacks of Cement	Methods Used
From	To				
					75 cu. Gravel Pack @ present

Section 5 PLUGGING RECORD

Name of Plugging Contractor _____ License No. _____
 Street and Number _____ City _____ State _____
 Tons of Clay used _____ Tons of Roughage used _____ Type of roughage _____
 Plugging method used _____ Date Plugged _____ 19 _____
 Plugging approved by: _____ Cement Plugs were placed as follows:

No.	Depth of Plug		No. of Sacks Used
	From	To	

Basin Supervisor

FILED

FOR USE OF STATE ENGINEER ONLY

Date Received JAN 12 1956

OFFICE
GROUND WATER SUPERVISOR
ROSWELL, NEW MEXICO

File No. L-409 Use Drig Location No. 16-36-16-23

546649

Monitoring location

16S.36E.16.231113 - USGS-325521103212101

DID YOU KNOW You can see all water data collected at this monitoring location in the *Available data* section of the page. Learn more about [centralized water data delivery](#) in WDFN.

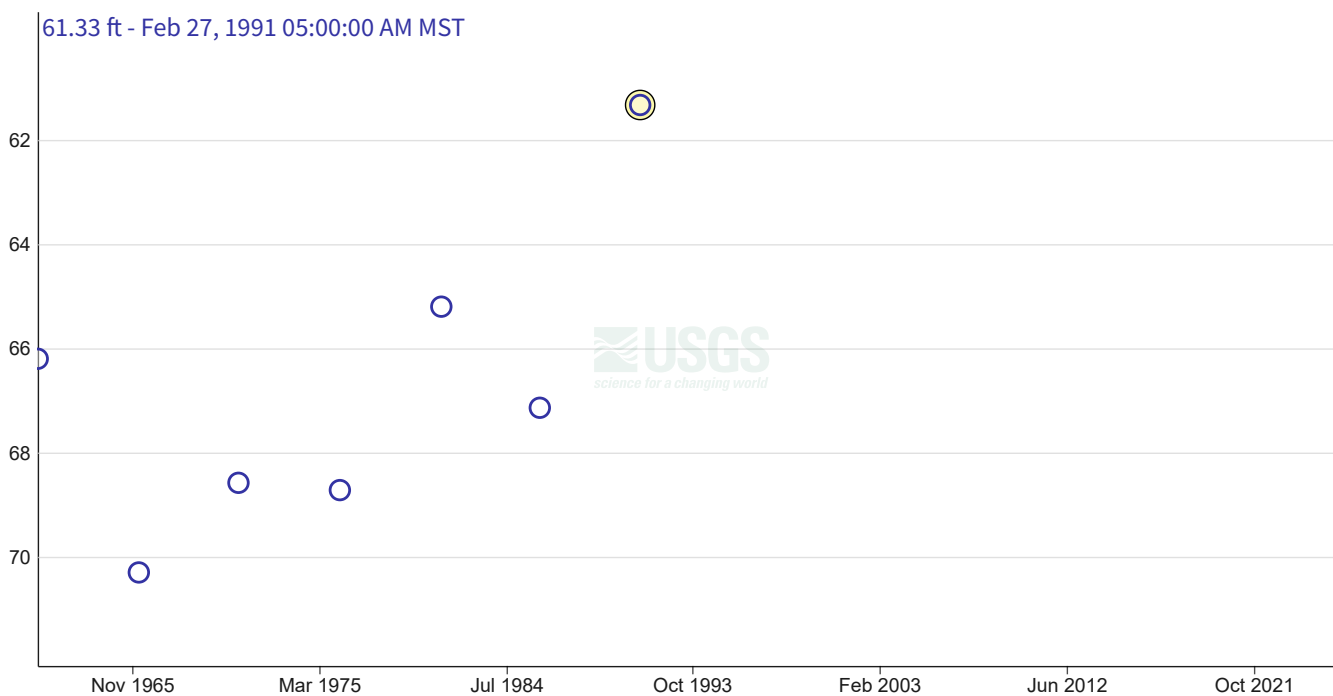
1 year 10 years Period of record

Scale Linear Log

Field measurements

16S.36E.16.231113 - USGS-325521103212101

February 16, 1961 - May 14, 2026
Depth to water level, feet below land surface



IMPORTANT Data may be [provisional](#)

[Show legend](#) ▾

[Hide graph details](#) ▲

	Value	Status	
<input checked="" type="radio"/> Selected field measurement	61.33	Approved Static	Feb 27, 1991 05:00:00 AM MST

[Hide graph details](#) ▲

Change time span

Download data

View tabular data

Available data

Select data types to graph from categories based on the way the data were collected.

Learn about the data collection categories

Expand all data collections

Continuous data

0 data types available

Daily data

0 data types available

Field measurements

3 data types available - data from 1961-02-16 to 1991-02-27

Hide these data types

Field measurements are physically measured values collected during a visit to the monitoring location.

[Learn about Field measurements](#)

	Data type	Data date range
	Graphed Depth to water level, feet below land surface	1961-02-16 1991-02-27
Graph it	Groundwater level above NAVD 1988, feet	1961-02-16 1991-02-27
Graph it	Groundwater level above NGVD 1929, feet	1961-02-16 1991-02-27

Hide these data types

Discrete sample data

0 observed properties (data types) available

Statistical tables for select daily data types

0 data types available

Location details and information

Show location details

Monitoring locations with continuous data in last 120 days

No locations found

Zoom out to see link to My Favorites

[Use Explore USGS Water Data to discover additional data near this location](#)



5/14/26, 3:37 PM



Interested in understanding how to access the upstream/downstream data? [Learn about the Network-Linked Data Index \(NLDI\)](#).

[DOI Privacy Policy](#) | [Legal](#) | [Accessibility](#) | [Site Map](#) | [Contact USGS](#)

Follow

[U.S. Department of the Interior](#) | [DOI Inspector General](#) | [White House](#) | [No Fear Act](#) | [FOIA](#)

Revised June 1972

STATE ENGINEER OFFICE
WELL RECORD

Test hole 2
SANTA FE
513970

Section 1. GENERAL INFORMATION

(A) Owner of well Hulda R. Heidel Owner's Well No. _____
Street or Post Office Address 1018 West Ave. K
City and State Lovington, N.M.

Well was drilled under Permit No. L-7649 and is located in the:

a. $\frac{1}{4}$ ~~SW~~ ^{SE} $\frac{1}{4}$ ~~SW~~ ^{SE} $\frac{1}{4}$ SE $\frac{1}{4}$ of Section 17 Township 16 S. Range 36 E N.M.P.M.

b. Tract No. _____ of Map No. _____ of the _____

c. Lot No. _____ of Block No. _____ of the _____
Subdivision, recorded in Lea County.

d. X= _____ feet, Y= _____ feet, N.M. Coordinate System _____ Zone in
the _____ Grant.

(B) Drilling Contractor E.H. Sumruld License No. WD 230

Address 606 West Ave. I, Lovington, N. M.

Drilling Began 2-4-77 Completed 2-4-77 Type tools rotary Size of hole 4 1/2 in.

Elevation of land surface or _____ at well is _____ ft. Total depth of well 160 ft.

Completed well is shallow artesian. Depth to water upon completion of well 70 1/2 ft.
(Test hole)

Section 2. PRINCIPAL WATER-BEARING STRATA

Depth in Feet		Thickness in Feet	Description of Water-Bearing Formation	Estimated Yield (gallons per minute)
From	To			
74	101	27	sand with sand gravel & layers of sandstone	
101	135	34	red sand with stringers of sandstone	

Section 3. RECORD OF CASING

Diameter (inches)	Pounds per foot	Threads per in.	Depth in Feet		Length (feet)	Type of Shoe	Perforations	
			Top	Bottom			From	To

Section 4. RECORD OF MUDDING AND CEMENTING

Depth in Feet		Hole Diameter	Sacks of Mud	Cubic Feet of Cement	Method of Placement
From	To				

Section 5. PLUGGING RECORD

Plugging Contractor _____
Address _____
Plugging Method _____
Date Well Plugged _____
Plugging approved by: _____

State Engineer Representative

No.	Depth in Feet		Cubic Feet of Cement
	Top	Bottom	
1			
2			
3			
4			

FOR USE OF STATE ENGINEER ONLY

Date Received 2-12-77

Quad _____ FWL _____ FSL _____

Depth in Feet		Thickness in Feet	Color and Type of Material Encountered
From	To		
0	2 1/2	2 1/2	top soil
2 1/2	5	2 1/2	sandy caliche
5	24	19	caliche
24	70	46	sand w/ stringers of sandstone.
70	74	4	white clay & caliche
74	101	27	Brn. sand w/ sand gravel & layers of sandstone.
101	135	34	red sand w/ stringers of sandstone.
135	160	25	red sand, sandy clay w/ colored gravel

From	To	Diameter of Hole	of Mud	of Cement	Method of Placement

(inches) Diameter	bet floor	bet pt	Top	Bottom	(feet) Depth	Type of Spec	From	To

From	To	in Feet	Description of Water-bearing Formation	(feet) Depth

(B) Drilling Contractor: _____

Completed well is shallow artesian

Elevation of land surface of _____ at well is _____ ft. Total depth of well _____ ft.

Drilling began _____ Completed _____ Type tool _____ Size of hole _____

Address: _____

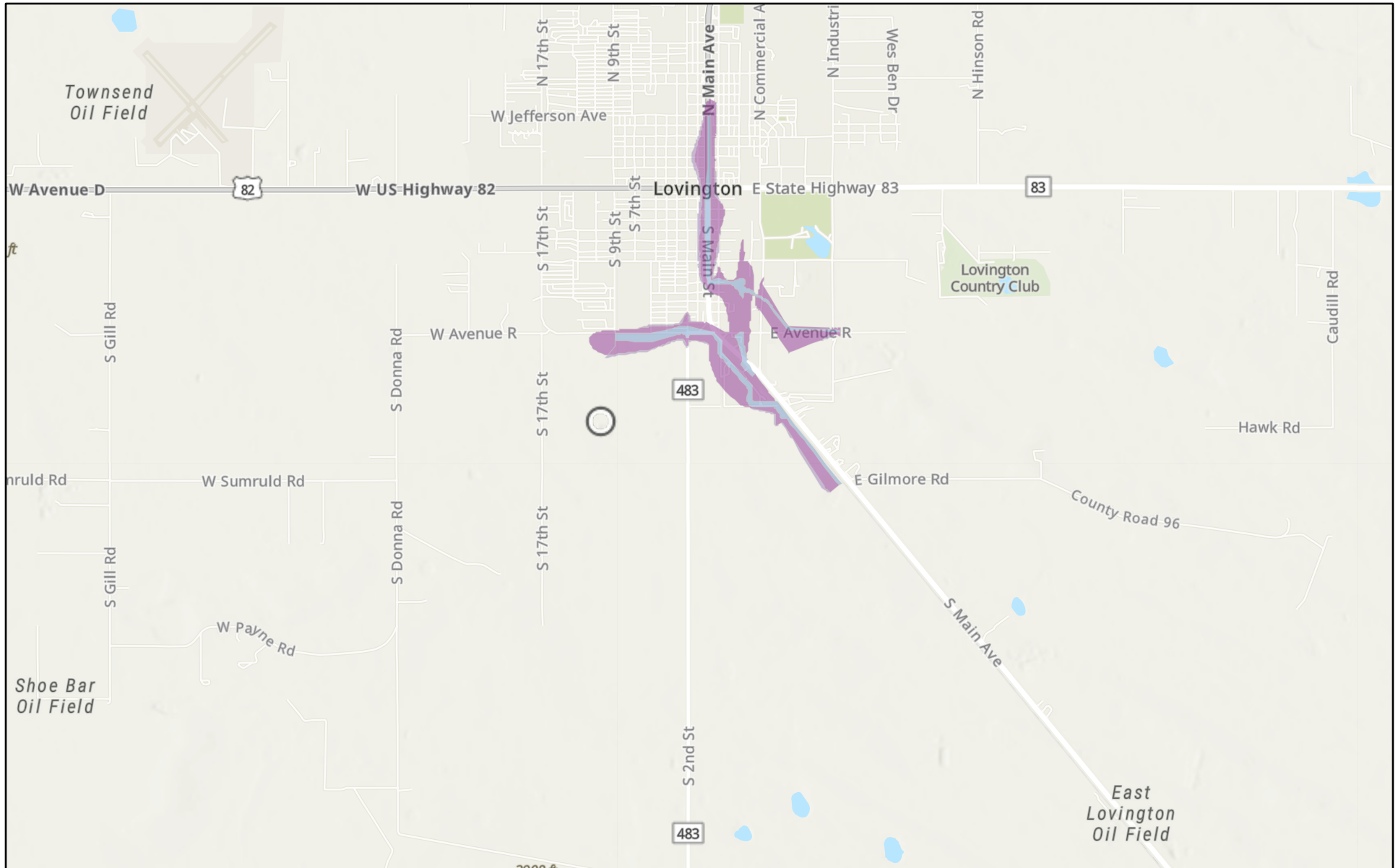
(A) Owner of well: _____

The undersigned hereby certifies that, to the best of his knowledge and belief, the foregoing is a true and correct record of the above described hole.

WELL RECORD E. N. Sumruld
STATE ENGINEER OFFICE Driller

STATE ENGINEER OFFICE
ROB WELLS, M.M.
77 FEB 17 AM 8 26

Vacuum 35 SWD (05.13.2026)



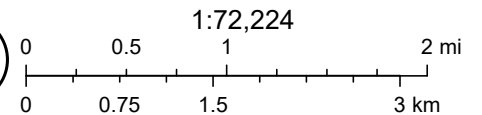
5/14/2026

USA Flood Hazard Areas

- 0.2% Annual Chance Flood Hazard
- 1% Annual Chance Flood Hazard

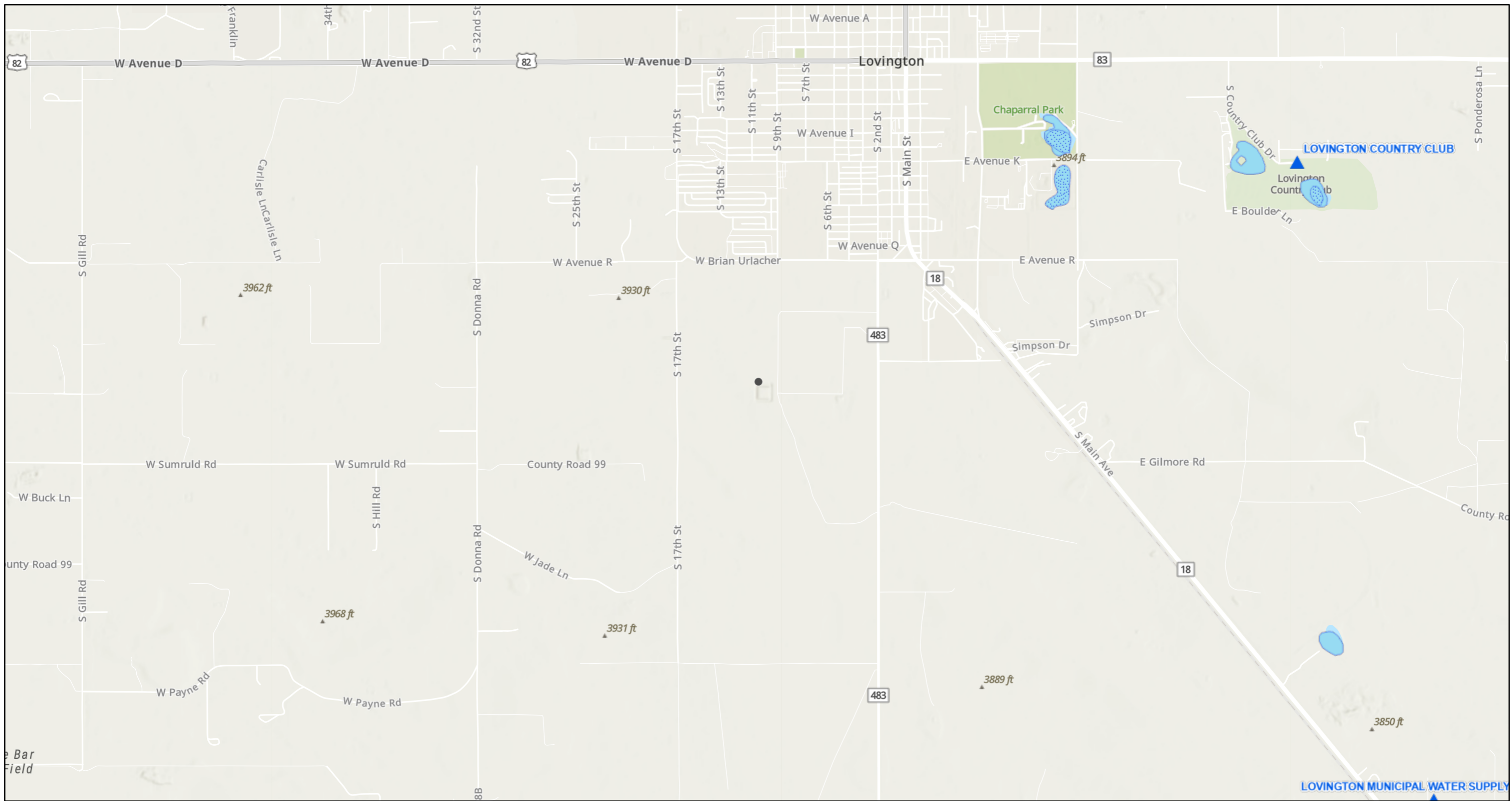
Regulatory Floodway

World_Hillshade



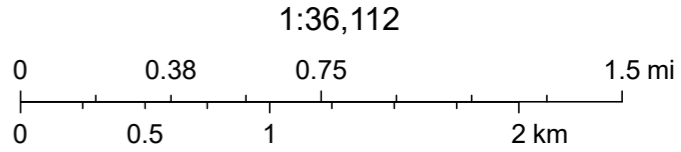
Source: FEMA, Esri, Sources: Esri, TomTom, Garmin, FAO, NOAA, USGS, (c) OpenStreetMap contributors, and the GIS User Community, Esri, NASA,

Vacuum 35 SWD (05.13.2026)



5/14/2026, 3:28:13 PM

- OSW Water Bodys
- OSE Probable Playas
- NMED Drinking Water Systems

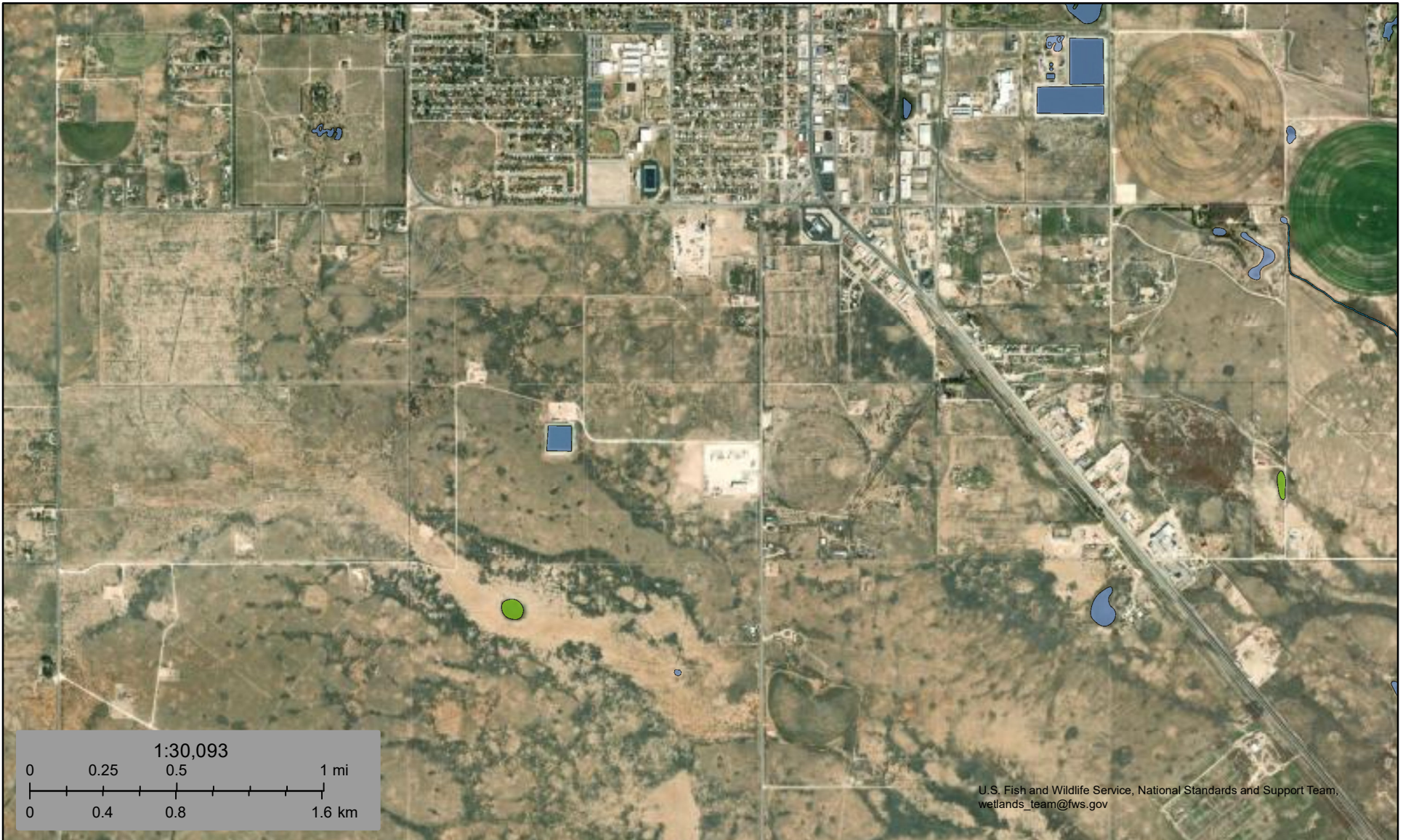


NM OSE, Sources: Esri, TomTom, Garmin, FAO, NOAA, USGS, © OpenStreetMap contributors, and the GIS User Community, Esri, NASA, NGA, USGS, FEMA



U.S. Fish and Wildlife Service
National Wetlands Inventory




Vacuum 35 SWD (05.13.2026)



U.S. Fish and Wildlife Service, National Standards and Support Team, wetlands_team@fws.gov

May 14, 2026

Wetlands

-  Estuarine and Marine Deepwater
-  Estuarine and Marine Wetland
-  Freshwater Emergent Wetland
-  Freshwater Forested/Shrub Wetland
-  Freshwater Pond
-  Lake
-  Other
-  Riverine

This map is for general reference only. The US Fish and Wildlife Service is not responsible for the accuracy or currentness of the base data shown on this map. All wetlands related data should be used in accordance with the layer metadata found on the Wetlands Mapper web site.

IPaC

U.S. Fish & Wildlife Service

IPaC resource list

This report is an automatically generated list of species and other resources such as critical habitat (collectively referred to as *trust resources*) under the U.S. Fish and Wildlife Service's (USFWS) jurisdiction that are known or expected to be on or near the project area referenced below. The list may also include trust resources that occur outside of the project area, but that could potentially be directly or indirectly affected by activities in the project area. However, determining the likelihood and extent of effects a project may have on trust resources typically requires gathering additional site-specific (e.g., vegetation/species surveys) and project-specific (e.g., magnitude and timing of proposed activities) information.

Below is a summary of the project information you provided and contact information for the USFWS office(s) with jurisdiction in the defined project area. Please read the introduction to each section that follows (Endangered Species, Migratory Birds, USFWS Facilities, and NWI Wetlands) for additional information applicable to the trust resources addressed in that section.

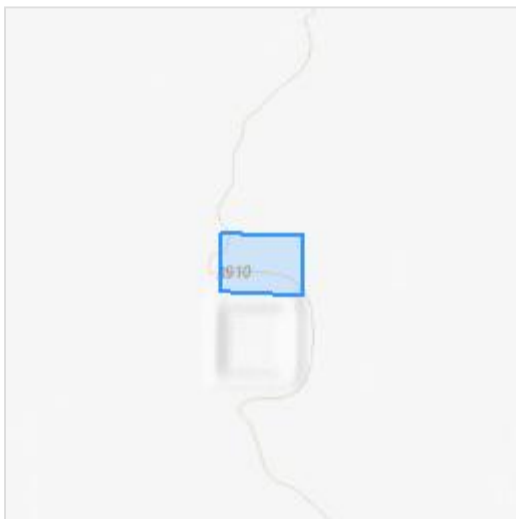
Project information

NAME

Vacuum 35 SWD (05.13.2026)

LOCATION

Lea County, New Mexico

**DESCRIPTION**

None

Local office

New Mexico Ecological Services Field Office

☎ (505) 346-2525

📠 (505) 346-2542

2105 Osuna Road Ne

Albuquerque, NM 87113-1001

Endangered species

This resource list is for informational purposes only and does not constitute an analysis of project level impacts.

The primary information used to generate this list is the known or expected range of each species. Additional areas of influence (AOI) for species are also considered. An AOI includes areas outside of the species range if the species could be indirectly affected by activities in that area (e.g., placing a dam upstream of a fish population even if that fish does not occur at the dam site, may indirectly impact the species by reducing or eliminating water flow downstream). Because species can move, and site conditions can change, the species on this list are not guaranteed to be found on or near the project area. To fully determine any potential effects to species, additional site-specific and project-specific information is often required.

Section 7 of the Endangered Species Act **requires** Federal agencies to "request of the Secretary information whether any species which is listed or proposed to be listed may be present in the area of such proposed action" for any project that is conducted, permitted, funded, or licensed by any Federal agency. A letter from the local office and a species list which fulfills this requirement can **only** be obtained by requesting an official species list from either the Regulatory Review section in IPaC (see directions below) or from the local field office directly.

For project evaluations that require USFWS concurrence/review, please return to the IPaC website and request an official species list by doing the following:

1. Log in to IPaC.
2. Go to your My Projects list.
3. Click PROJECT HOME for this project.
4. Click REQUEST SPECIES LIST.

Listed species¹ and their critical habitats are managed by the [Ecological Services Program](#) of the U.S. Fish and Wildlife Service (USFWS) and the fisheries division of the National Oceanic and Atmospheric Administration (NOAA Fisheries²).

Species and critical habitats under the sole responsibility of NOAA Fisheries are **not** shown on this list. Please contact [NOAA Fisheries](#) for [species under their jurisdiction](#).

1. Species listed under the [Endangered Species Act](#) are threatened or endangered; IPaC also shows species that are candidates, or proposed, for listing. See the [listing status page](#) for more information. IPaC only shows species that are regulated by USFWS (see FAQ).
2. [NOAA Fisheries](#), also known as the National Marine Fisheries Service (NMFS), is an office of the National Oceanic and Atmospheric Administration within the Department of Commerce.

The following species are potentially affected by activities in this location:

Birds

NAME	STATUS
Northern Aplomado Falcon <i>Falco femoralis septentrionalis</i> No critical habitat has been designated for this species. https://ecos.fws.gov/ecp/species/1923	EXPN

Insects

NAME	STATUS
Monarch Butterfly <i>Danaus plexippus</i> Wherever found There is proposed critical habitat for this species. Your location does not overlap the critical habitat. https://ecos.fws.gov/ecp/species/9743	Proposed Threatened

Critical habitats

Potential effects to critical habitat(s) in this location must be analyzed along with the endangered species themselves.

There are no critical habitats at this location.

You are still required to determine if your project(s) may have effects on all above listed species.

Bald & Golden Eagles

Bald and Golden Eagles are protected under the Bald and Golden Eagle Protection Act ² and the Migratory Bird Treaty Act (MBTA) ¹. Any person or organization who plans or conducts activities that may result in impacts to Bald or Golden Eagles, or their habitats, should follow appropriate regulations and consider implementing appropriate avoidance and minimization measures, as described in the various links on this page.

Additional information can be found using the following links:

- Eagle Management <https://www.fws.gov/program/eagle-management>
- Measures for avoiding and minimizing impacts to birds <https://www.fws.gov/library/collections/avoiding-and-minimizing-incident-take-migratory-birds>
- Nationwide avoidance and minimization measures for birds <https://www.fws.gov/sites/default/files/documents/nationwide-standard-conservation-measures.pdf>
- Supplemental Information for Migratory Birds and Eagles in IPaC <https://www.fws.gov/media/supplemental-information-migratory-birds-and-bald-and-golden-eagles-may-occur-project-action>

There are Bald Eagles and/or Golden Eagles in your [project](#) area.

Measures for Proactively Minimizing Eagle Impacts

For information on how to best avoid and minimize disturbance to nesting bald eagles, please review the [National Bald Eagle Management Guidelines](#). You may employ the timing and activity-specific distance recommendations in this document when designing your project/activity to avoid and minimize eagle impacts. For bald eagle information specific to Alaska, please refer to [Bald Eagle Nesting and Sensitivity to Human Activity](#).

The FWS does not currently have guidelines for avoiding and minimizing disturbance to nesting Golden Eagles. For site-specific recommendations regarding nesting Golden Eagles, please consult with the appropriate Regional [Migratory Bird Office](#) or [Ecological Services Field Office](#).

If disturbance or take of eagles cannot be avoided, an [incidental take permit](#) may be available to authorize any take that results from, but is not the purpose of, an otherwise lawful activity. For assistance making this determination for Bald Eagles, visit the [Do I Need A Permit Tool](#). For assistance making this determination for golden eagles, please consult with the appropriate Regional [Migratory Bird Office](#) or [Ecological Services Field Office](#).

Ensure Your Eagle List is Accurate and Complete

If your project area is in a poorly surveyed area in IPaC, your list may not be complete and you may need to rely on other resources to determine what species may be present (e.g. your local FWS field office, state surveys, your own surveys). Please review the [Supplemental Information on Migratory Birds and Eagles](#), to help you properly interpret the report for your specified location, including determining if there is sufficient data to ensure your list is accurate.

For guidance on when to schedule activities or implement avoidance and minimization measures to reduce impacts to bald or golden eagles on your list, see the "Probability of Presence Summary" below to see when these bald or golden eagles are most likely to be present and breeding in your project area.

Review the FAQs

The FAQs below provide important additional information and resources.

NAME	BREEDING SEASON
Golden Eagle <i>Aquila chrysaetos</i> This is not a Bird of Conservation Concern (BCC) in this area, but warrants attention because of the Eagle Act or for potential susceptibilities in offshore areas from certain types of development or activities. https://ecos.fws.gov/ecp/species/1680	Breeds Dec 1 to Aug 31

Probability of Presence Summary

The graphs below provide our best understanding of when birds of concern are most likely to be present in your project area. This information can be used to tailor and schedule your project activities to avoid or minimize impacts to birds. Please make sure you read ["Supplemental Information on Migratory Birds and Eagles"](#), specifically the FAQ section titled "Proper Interpretation and Use of Your Migratory Bird Report" before using or attempting to interpret this report.

Probability of Presence (■)

Each green bar represents the bird's relative probability of presence in the 10km grid cell(s) your project overlaps during a particular week of the year. (A year is represented as 12 4-week months.) A taller bar indicates a higher probability of species presence. The survey effort (see below) can be used to establish a level of confidence in the presence score. One can have higher confidence in the presence score if the corresponding survey effort is also high.

How is the probability of presence score calculated? The calculation is done in three steps:

1. The probability of presence for each week is calculated as the number of survey events in the week where the species was detected divided by the total number of survey events for that week. For example, if in week 12 there were 20 survey events and the Spotted Towhee was found in 5 of them, the probability of presence of the Spotted Towhee in week 12 is 0.25.
2. To properly present the pattern of presence across the year, the relative probability of presence is calculated. This is the probability of presence divided by the maximum probability of presence across all weeks. For example, imagine the probability of presence in week 20 for the Spotted Towhee is 0.05, and that the probability of presence at week 12 (0.25) is the maximum of any week of the year. The relative probability of presence on week 12 is $0.25/0.25 = 1$; at week 20 it is $0.05/0.25 = 0.2$.
3. The relative probability of presence calculated in the previous step undergoes a statistical conversion so that all possible values fall between 0 and 10, inclusive. This is the probability of presence score.

To see a bar's probability of presence score, simply hover your mouse cursor over the bar.

Breeding Season (■)

Yellow bars denote a very liberal estimate of the time-frame inside which the bird breeds across its entire range. If there are no yellow bars shown for a bird, it does not breed in your project area.

Survey Effort (|)

Vertical black lines superimposed on probability of presence bars indicate the number of surveys performed for that species in the 10km grid cell(s) your project area overlaps. The number of surveys is expressed as a range, for example, 33 to 64 surveys.

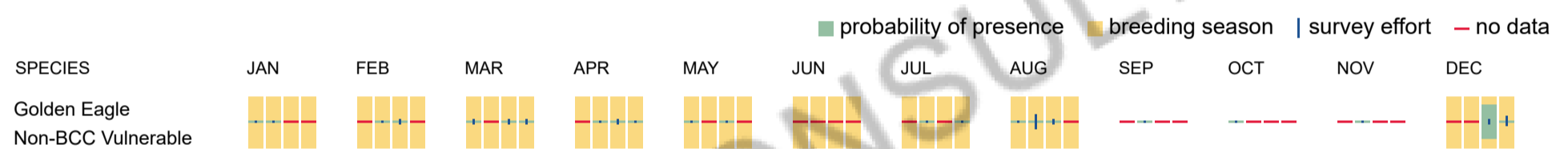
To see a bar's survey effort range, simply hover your mouse cursor over the bar.

No Data (—)

A week is marked as having no data if there were no survey events for that week.

Survey Timeframe

Surveys from only the last 10 years are used in order to ensure delivery of currently relevant information. The exception to this is areas off the Atlantic coast, where bird returns are based on all years of available data, since data in these areas is currently much more sparse.



Bald & Golden Eagles FAQs

What does IPaC use to generate the potential presence of bald and golden eagles in my specified location?

The potential for eagle presence is derived from data provided by the [Avian Knowledge Network \(AKN\)](#). The AKN data is based on a growing collection of [survey, banding, and citizen science datasets](#) and is queried and filtered to return a list of those birds reported as occurring in the 10km grid cell(s) which your project intersects, and that have been identified as warranting special attention because they are an eagle ([Bald and Golden Eagle Protection Act](#) requirements may apply).

Proper interpretation and use of your eagle report

On the graphs provided, please look carefully at the survey effort (indicated by the black vertical line) and for the existence of the "no data" indicator (a red horizontal line). A high survey effort is the key component. If the survey effort is high, then the probability of presence score can be viewed as more dependable. In contrast, a low survey effort line or no data line (red horizontal) means a lack of data and, therefore, a lack of certainty about presence of the species. This list is not perfect; it is simply a starting point for identifying what birds have the potential to be in your project area, when they might be there, and if they might be breeding (which means nests might be present). The list and associated information help you know what to look for to confirm presence and helps guide you in knowing when to implement avoidance and minimization measures to eliminate or reduce potential impacts from your project activities or get the appropriate permits should presence be confirmed.

How do I know if eagles are breeding, wintering, or migrating in my area?

To see what part of a particular bird's range your project area falls within (i.e. breeding, wintering, migrating, or resident), you may query your location using the [RAIL Tool](#) and view the range maps provided for birds in your area at the bottom of the profiles provided for each bird in your results. If an eagle on your IPaC migratory bird species list has a breeding season associated with it (indicated by yellow vertical bars on the phenology graph in your "IPaC PROBABILITY OF PRESENCE SUMMARY" at the top of your results list), there may be nests present at some point within the timeframe specified. If "Breeds elsewhere" is indicated, then the bird likely does not breed in your project area.

Interpreting the Probability of Presence Graphs

Each green bar represents the bird's relative probability of presence in the 10km grid cell(s) your project overlaps during a particular week of the year. A taller bar indicates a higher probability of species presence. The survey effort can be used to establish a level of confidence in the presence score.

How is the probability of presence score calculated? The calculation is done in three steps:

The probability of presence for each week is calculated as the number of survey events in the week where the species was detected divided by the total number of survey events for that week. For example, if in week 12 there were 20 survey events and the Spotted Towhee was found in 5 of them, the probability of presence of the Spotted Towhee in week 12 is 0.25.

To properly present the pattern of presence across the year, the relative probability of presence is calculated. This is the probability of presence divided by the maximum probability of presence across all weeks. For example, imagine the probability of presence in week 20 for the Spotted Towhee is 0.05, and that the probability of presence at week 12 (0.25) is the maximum of any week of the year. The relative probability of presence on week 12 is $0.25/0.25 = 1$; at week 20 it is $0.05/0.25 = 0.2$.

The relative probability of presence calculated in the previous step undergoes a statistical conversion so that all possible values fall between 0 and 10, inclusive. This is the probability of presence score.

Breeding Season ()

Yellow bars denote a very liberal estimate of the time-frame inside which the bird breeds across its entire range. If there are no yellow bars shown for a bird, it does not breed in your project area.

Survey Effort ()

Vertical black lines superimposed on probability of presence bars indicate the number of surveys performed for that species in the 10km grid cell(s) your project area overlaps.

No Data ()

A week is marked as having no data if there were no survey events for that week.

Survey Timeframe

Surveys from only the last 10 years are used in order to ensure delivery of currently relevant information. The exception to this is areas off the Atlantic coast, where bird returns are based on all years of available data, since data in these areas is currently much more sparse.

Migratory birds

The Migratory Bird Treaty Act (MBTA) ¹ prohibits the take (including killing, capturing, selling, trading, and transport) of protected migratory bird species without prior authorization by the Department of Interior U.S. Fish and Wildlife Service (Service).

1. The [Migratory Birds Treaty Act](#) of 1918.
2. The [Bald and Golden Eagle Protection Act](#) of 1940.

Additional information can be found using the following links:

- Eagle Management <https://www.fws.gov/program/eagle-management>
- Measures for avoiding and minimizing impacts to birds <https://www.fws.gov/library/collections/avoiding-and-minimizing-incident-take-migratory-birds>
- Nationwide avoidance and minimization measures for birds
- Supplemental Information for Migratory Birds and Eagles in IPaC <https://www.fws.gov/media/supplemental-information-migratory-birds-and-bald-and-golden-eagles-may-occur-project-action>

Measures for Proactively Minimizing Migratory Bird Impacts

Your IPaC Migratory Bird list showcases [birds of concern](#), including [Birds of Conservation Concern \(BCC\)](#), in your project location. This is not a comprehensive list of all birds found in your project area. However, you can help proactively minimize significant impacts to all birds at your project location by implementing the measures in the [Nationwide avoidance and minimization measures for birds](#) document, and any other project-specific avoidance and minimization measures suggested at the link [Measures for avoiding and minimizing impacts to birds](#) for the birds of concern on your list below.

Ensure Your Migratory Bird List is Accurate and Complete

If your project area is in a poorly surveyed area, your list may not be complete and you may need to rely on other resources to determine what species may be present (e.g. your local FWS field office, state surveys, your own surveys). Please review the [Supplemental Information on Migratory Birds and Eagles document](#), to help you properly interpret the report for your specified location, including determining if there is sufficient data to ensure your list is accurate.

For guidance on when to schedule activities or implement avoidance and minimization measures to reduce impacts to migratory birds on your list, see the "Probability of Presence Summary" below to see when these birds are most likely to be present and breeding in your project area.

Review the FAQs

The FAQs below provide important additional information and resources.

NAME	BREEDING SEASON
Broad-tailed Hummingbird <i>Selasphorus platycercus</i> This is a Bird of Conservation Concern (BCC) throughout its range in the continental USA and Alaska.	Breeds May 25 to Aug 21
Chimney Swift <i>Chaetura pelagica</i> This is a Bird of Conservation Concern (BCC) throughout its range in the continental USA and Alaska.	Breeds Mar 15 to Aug 25
Ferruginous Hawk <i>Buteo regalis</i> This is a Bird of Conservation Concern (BCC) only in particular Bird Conservation Regions (BCRs) in the continental USA https://ecos.fws.gov/ecp/species/6038	Breeds Mar 15 to Aug 15

Golden Eagle *Aquila chrysaetos*

Breeds Dec 1 to Aug 31

This is not a Bird of Conservation Concern (BCC) in this area, but warrants attention because of the Eagle Act or for potential susceptibilities in offshore areas from certain types of development or activities.

<https://ecos.fws.gov/ecp/species/1680>

Long-billed Curlew *Numenius americanus*

Breeds Apr 1 to Jul 31

This is a Bird of Conservation Concern (BCC) only in particular Bird Conservation Regions (BCRs) in the continental USA

<https://ecos.fws.gov/ecp/species/5511>

Northern Harrier *Circus hudsonius*

Breeds Apr 1 to Sep 15

This is a Bird of Conservation Concern (BCC) only in particular Bird Conservation Regions (BCRs) in the continental USA

<https://ecos.fws.gov/ecp/species/8350>

Probability of Presence Summary

The graphs below provide our best understanding of when birds of concern are most likely to be present in your project area. This information can be used to tailor and schedule your project activities to avoid or minimize impacts to birds. Please make sure you read ["Supplemental Information on Migratory Birds and Eagles"](#), specifically the FAQ section titled "Proper Interpretation and Use of Your Migratory Bird Report" before using or attempting to interpret this report.

Probability of Presence (■)

Each green bar represents the bird's relative probability of presence in the 10km grid cell(s) your project overlaps during a particular week of the year. (A year is represented as 12 4-week months.) A taller bar indicates a higher probability of species presence. The survey effort (see below) can be used to establish a level of confidence in the presence score. One can have higher confidence in the presence score if the corresponding survey effort is also high.

How is the probability of presence score calculated? The calculation is done in three steps:

1. The probability of presence for each week is calculated as the number of survey events in the week where the species was detected divided by the total number of survey events for that week. For example, if in week 12 there were 20 survey events and the Spotted Towhee was found in 5 of them, the probability of presence of the Spotted Towhee in week 12 is 0.25.
2. To properly present the pattern of presence across the year, the relative probability of presence is calculated. This is the probability of presence divided by the maximum probability of presence across all weeks. For example, imagine the probability of presence in week 20 for the Spotted Towhee is 0.05, and that the probability of presence at week 12 (0.25) is the maximum of any week of the year. The relative probability of presence on week 12 is 0.25/0.25 = 1; at week 20 it is 0.05/0.25 = 0.2.
3. The relative probability of presence calculated in the previous step undergoes a statistical conversion so that all possible values fall between 0 and 10, inclusive. This is the probability of presence score.

To see a bar's probability of presence score, simply hover your mouse cursor over the bar.

Breeding Season (■)

Yellow bars denote a very liberal estimate of the time-frame inside which the bird breeds across its entire range. If there are no yellow bars shown for a bird, it does not breed in your project area.

Survey Effort (|)

Vertical black lines superimposed on probability of presence bars indicate the number of surveys performed for that species in the 10km grid cell(s) your project area overlaps. The number of surveys is expressed as a range, for example, 33 to 64 surveys.

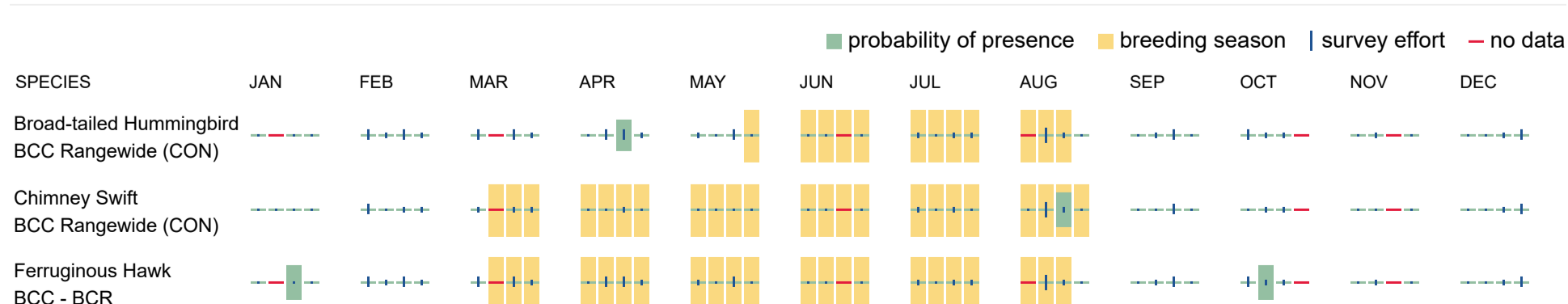
To see a bar's survey effort range, simply hover your mouse cursor over the bar.

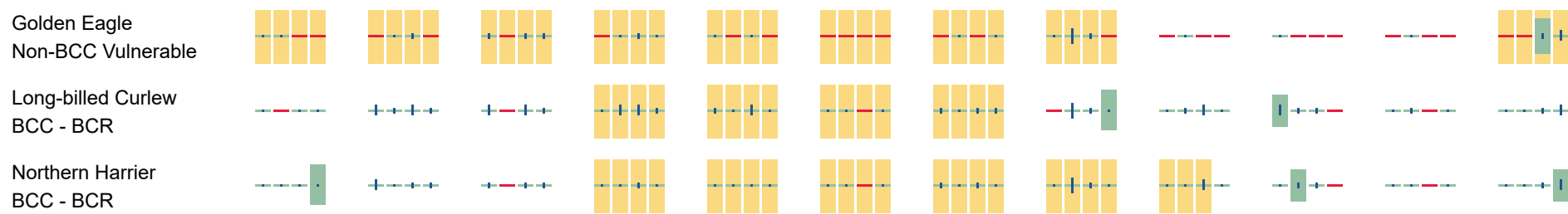
No Data (-)

A week is marked as having no data if there were no survey events for that week.

Survey Timeframe

Surveys from only the last 10 years are used in order to ensure delivery of currently relevant information. The exception to this is areas off the Atlantic coast, where bird returns are based on all years of available data, since data in these areas is currently much more sparse.





Migratory Bird FAQs

Tell me more about avoidance and minimization measures I can implement to avoid or minimize impacts to migratory birds.

[Nationwide Avoidance & Minimization Measures for Birds](#) describes measures that can help avoid and minimize impacts to all birds at any location year-round. When birds may be breeding in the area, identifying the locations of any active nests and avoiding their destruction is one of the most effective ways to minimize impacts. To see when birds are most likely to occur and breed in your project area, view the Probability of Presence Summary. [Additional measures](#) or [permits](#) may be advisable depending on the type of activity you are conducting and the type of infrastructure or bird species present on your project site.

What does IPaC use to generate the list of migratory birds that potentially occur in my specified location?

The Migratory Bird Resource List is comprised of [Birds of Conservation Concern \(BCC\)](#) and other species that may warrant special attention in your project location, such as those listed under the Endangered Species Act or the [Bald and Golden Eagle Protection Act](#) and those species marked as "Vulnerable". See the FAQ "What are the levels of concern for migratory birds?" for more information on the levels of concern covered in the IPaC migratory bird species list.

The migratory bird list generated for your project is derived from data provided by the [Avian Knowledge Network \(AKN\)](#). The AKN data is based on a growing collection of [survey, banding, and citizen science datasets](#) and is queried and filtered to return a list of those birds reported as occurring in the 10km grid cell(s) with which your project intersects. These species have been identified as warranting special attention because they are BCC species in that area, an eagle ([Bald and Golden Eagle Protection Act](#) requirements may apply), or a species that has a particular vulnerability to offshore activities or development.

Again, the Migratory Bird Resource list includes only a subset of birds that may occur in your project area. It is not representative of all birds that may occur in your project area. To get a list of all birds potentially present in your project area, and to verify survey effort when no results present, please visit the [Rapid Avian Information Locator \(RAIL\) Tool](#).

Why are subspecies showing up on my list?

Subspecies profiles are included on the list of species present in your project area because observations in the AKN for **the species** are being detected. If the species are present, that means that the subspecies may also be present. If a subspecies shows up on your list, you may need to rely on other resources to determine if that subspecies may be present (e.g. your local FWS field office, state surveys, your own surveys).

What does IPaC use to generate the probability of presence graphs for the migratory birds potentially occurring in my specified location?

The probability of presence graphs associated with your migratory bird list are based on data provided by the [Avian Knowledge Network \(AKN\)](#). This data is derived from a growing collection of [survey, banding, and citizen science datasets](#).

Probability of presence data is continuously being updated as new and better information becomes available. To learn more about how the probability of presence graphs are produced and how to interpret them, go to the Probability of Presence Summary and then click on the "Tell me about these graphs" link.

How do I know if a bird is breeding, wintering, or migrating in my area?

To see what part of a particular bird's range your project area falls within (i.e. breeding, wintering, migrating, or resident), you may query your location using the [RAIL Tool](#) and view the range maps provided for birds in your area at the bottom of the profiles provided for each bird in your results. If a bird on your IPaC migratory bird species list has a breeding season associated with it (indicated by yellow vertical bars on the phenology graph in your "IPaC PROBABILITY OF PRESENCE SUMMARY" at the top of your results list), there may be nests present at some point within the timeframe specified. If "Breeds elsewhere" is indicated, then the bird likely does not breed in your project area.

What are the levels of concern for migratory birds?

Migratory birds delivered through IPaC fall into the following distinct categories of concern:

1. "BCC Rangewide" birds are [Birds of Conservation Concern \(BCC\)](#) that are of concern throughout their range anywhere within the USA (including Hawaii, the Pacific Islands, Puerto Rico, and the Virgin Islands);
2. "BCC - BCR" birds are BCCs that are of concern only in particular Bird Conservation Regions (BCRs) in the continental USA; and
3. "Non-BCC - Vulnerable" birds are not BCC species in your project area, but appear on your list either because of the [Bald and Golden Eagle Protection Act](#) requirements (for eagles) or (for non-eagles) potential susceptibilities in offshore areas from certain types of development or activities (e.g. offshore energy development or longline fishing).

Although it is important to avoid and minimize impacts to all birds, efforts should be made, in particular, to avoid and minimize impacts to the birds on this list, especially BCC species. For more information on avoidance and minimization measures you can implement to help avoid and minimize migratory bird impacts, please see the FAQ "Tell me more about avoidance and minimization measures I can implement to avoid or minimize impacts to migratory birds".

Details about birds that are potentially affected by offshore projects

For additional details about the relative occurrence and abundance of both individual bird species and groups of bird species within your project area off the Atlantic Coast, please visit the [Northeast Ocean Data Portal](#). The Portal also offers data and information about other taxa besides birds that may be helpful to you in your project review. Alternately, you may download the bird model results files underlying the portal maps through the [NOAA NCCOS Integrative](#)

[Statistical Modeling and Predictive Mapping of Marine Bird Distributions and Abundance on the Atlantic Outer Continental Shelf](#) project webpage.

Proper interpretation and use of your migratory bird report

The migratory bird list generated is not a list of all birds in your project area, only a subset of birds of priority concern. To learn more about how your list is generated and see options for identifying what other birds may be in your project area, please see the FAQ "What does IPaC use to generate the migratory birds potentially occurring in my specified location". Please be aware this report provides the "probability of presence" of birds within the 10 km grid cell(s) that overlap your project; not your exact project footprint. On the graphs provided, please look carefully at the survey effort (indicated by the black vertical line) and for the existence of the "no data" indicator (a red horizontal line). A high survey effort is the key component. If the survey effort is high, then the probability of presence score can be viewed as more dependable. In contrast, a low survey effort bar or no data bar means a lack of data and, therefore, a lack of certainty about presence of the species. This list does not represent all birds present in your project area. It is simply a starting point for identifying what birds of concern have the potential to be in your project area, when they might be there, and if they might be breeding (which means nests might be present). The list and associated information help you know what to look for to confirm presence and helps guide implementation of avoidance and minimization measures to eliminate or reduce potential impacts from your project activities, should presence be confirmed. To learn more about avoidance and minimization measures, visit the FAQ "Tell me about avoidance and minimization measures I can implement to avoid or minimize impacts to migratory birds".

Interpreting the Probability of Presence Graphs

Each green bar represents the bird's relative probability of presence in the 10km grid cell(s) your project overlaps during a particular week of the year. A taller bar indicates a higher probability of species presence. The survey effort can be used to establish a level of confidence in the presence score.

How is the probability of presence score calculated? The calculation is done in three steps:

The probability of presence for each week is calculated as the number of survey events in the week where the species was detected divided by the total number of survey events for that week. For example, if in week 12 there were 20 survey events and the Spotted Towhee was found in 5 of them, the probability of presence of the Spotted Towhee in week 12 is 0.25.

To properly present the pattern of presence across the year, the relative probability of presence is calculated. This is the probability of presence divided by the maximum probability of presence across all weeks. For example, imagine the probability of presence in week 20 for the Spotted Towhee is 0.05, and that the probability of presence at week 12 (0.25) is the maximum of any week of the year. The relative probability of presence on week 12 is $0.25/0.25 = 1$; at week 20 it is $0.05/0.25 = 0.2$.

The relative probability of presence calculated in the previous step undergoes a statistical conversion so that all possible values fall between 0 and 10, inclusive. This is the probability of presence score.

Breeding Season ()

Yellow bars denote a very liberal estimate of the time-frame inside which the bird breeds across its entire range. If there are no yellow bars shown for a bird, it does not breed in your project area.

Survey Effort ()

Vertical black lines superimposed on probability of presence bars indicate the number of surveys performed for that species in the 10km grid cell(s) your project area overlaps.

No Data ()

A week is marked as having no data if there were no survey events for that week.

Survey Timeframe

Surveys from only the last 10 years are used in order to ensure delivery of currently relevant information. The exception to this is areas off the Atlantic coast, where bird returns are based on all years of available data, since data in these areas is currently much more sparse.

Facilities

National Wildlife Refuge lands

Any activity proposed on lands managed by the [National Wildlife Refuge](#) system must undergo a 'Compatibility Determination' conducted by the Refuge. Please contact the individual Refuges to discuss any questions or concerns.

There are no refuge lands at this location.

Fish hatcheries

There are no fish hatcheries at this location.

Wetlands in the National Wetlands Inventory (NWI)

Impacts to [NWI wetlands](#) and other aquatic habitats may be subject to regulation under Section 404 of the Clean Water Act, or other State/Federal statutes.

For more information please contact the Regulatory Program of the local [U.S. Army Corps of Engineers District](#).

This location did not intersect any wetlands mapped by NWI.

NOTE: This initial screening does **not** replace an on-site delineation to determine whether wetlands occur. Additional information on the NWI data is provided below.

Data limitations

The Service's objective of mapping wetlands and deepwater habitats is to produce reconnaissance level information on the location, type and size of these resources. The maps are prepared from the analysis of high altitude imagery. Wetlands are identified based on vegetation, visible hydrology and geography. A margin of error is inherent in the use of imagery; thus, detailed on-the-ground inspection of any particular site may result in revision of the wetland boundaries or classification established through image analysis.

The accuracy of image interpretation depends on the quality of the imagery, the experience of the image analysts, the amount and quality of the collateral data and the amount of ground truth verification work conducted. Metadata should be consulted to determine the date of the source imagery used and any mapping problems.

Wetlands or other mapped features may have changed since the date of the imagery or field work. There may be occasional differences in polygon boundaries or classifications between the information depicted on the map and the actual conditions on site.

Data exclusions

Certain wetland habitats are excluded from the National mapping program because of the limitations of aerial imagery as the primary data source used to detect wetlands. These habitats include seagrasses or submerged aquatic vegetation that are found in the intertidal and subtidal zones of estuaries and nearshore coastal waters. Some deepwater reef communities (coral or tubercid worm reefs) have also been excluded from the inventory. These habitats, because of their depth, go undetected by aerial imagery.

Data precautions

Federal, state, and local regulatory agencies with jurisdiction over wetlands may define and describe wetlands in a different manner than that used in this inventory. There is no attempt, in either the design or products of this inventory, to define the limits of proprietary jurisdiction of any Federal, state, or local government or to establish the geographical scope of the regulatory programs of government agencies. Persons intending to engage in activities involving modifications within or adjacent to wetland areas should seek the advice of appropriate Federal, state, or local agencies concerning specified agency regulatory programs and proprietary jurisdictions that may affect such activities.

NOT FOR CONSULTATION



U.S. Fish and Wildlife Service
National Wetlands Inventory



Vacuum 35 SWD (05.13.2026)









U.S. Fish and Wildlife Service, National Standards and Support Team, wetlands_team@fws.gov

May 15, 2026

Wetlands

-  Estuarine and Marine Deepwater
-  Estuarine and Marine Wetland

-  Freshwater Emergent Wetland
-  Freshwater Forested/Shrub Wetland
-  Freshwater Pond




-  Lake
-  Other
-  Riverine

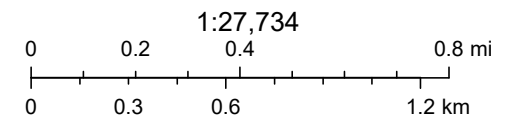
This map is for general reference only. The US Fish and Wildlife Service is not responsible for the accuracy or currentness of the base data shown on this map. All wetlands related data should be used in accordance with the layer metadata found on the Wetlands Mapper web site.

Vacuum 35 SWD (05.13.2026)



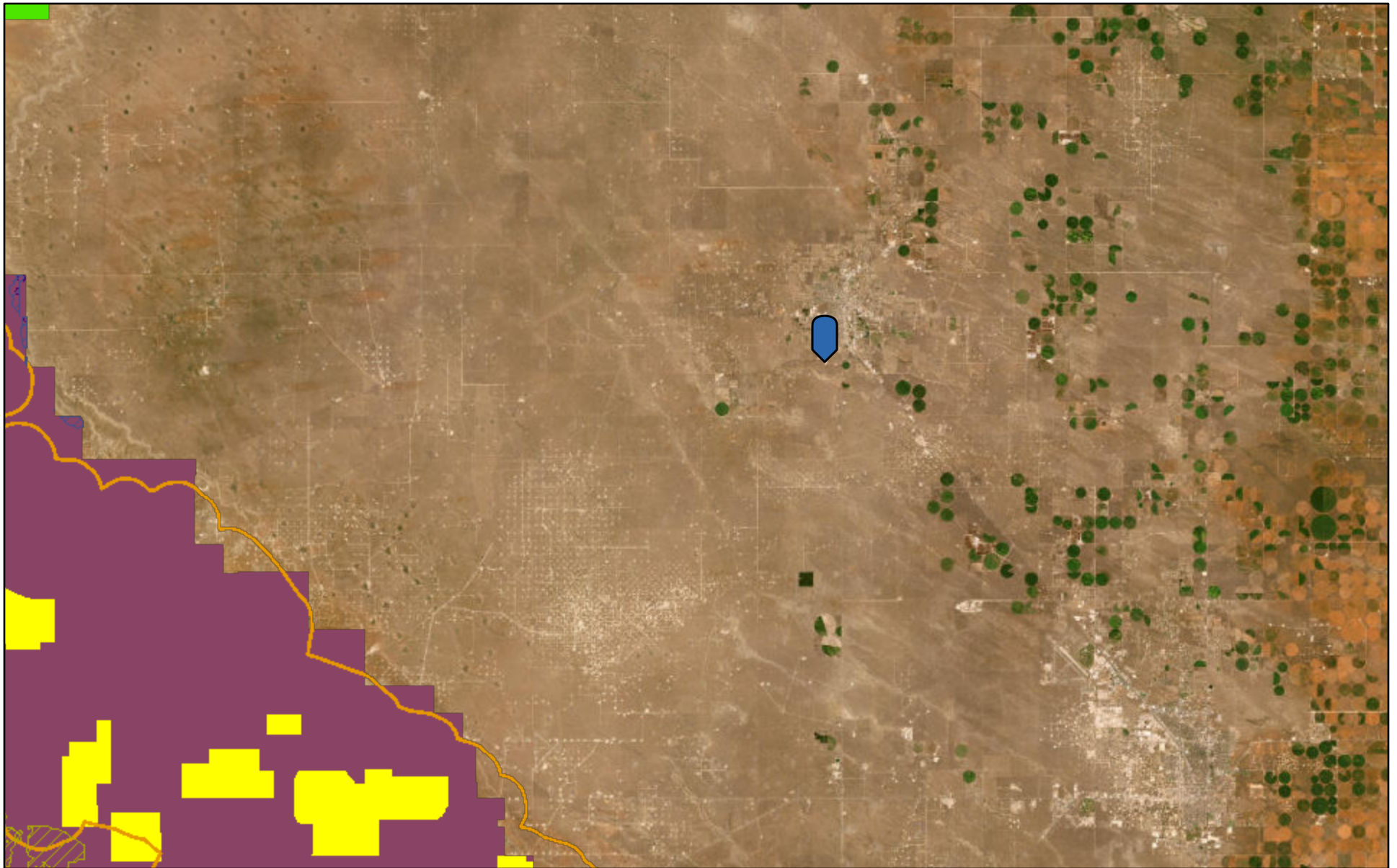
5/15/2026

Crucial Habitat (2024)  1  3  4



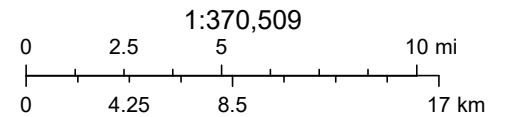
Vantor

Vacuum 35 SWD (05.13.2026)



5/15/2026

- | | | |
|--|---------------------------------|--------------------------------------|
| Potential Habitat (Planning Area Only) | Dunes Sage Brush Lizard Habitat | Sparse and Scattered Population Area |
| Lee's pincushion cactus | Lesser Prairie Chicken Habitat | |
| Scheer's beehive cactus | Habitat Evaluation Area | |
| Tharp's blue-star | Isolated Population Area | |



Bureau of Land Management - New Mexico State Office, Earthstar Geographics

Sante Fe Main Office
Phone: (505) 476-3441

General Information
Phone: (505) 629-6116

Online Phone Directory
<https://www.emnrd.nm.gov/ocd/contact-us>

State of New Mexico
Energy, Minerals and Natural Resources
Oil Conservation Division
1220 S. St Francis Dr.
Santa Fe, NM 87505

QUESTIONS

Action 587424

QUESTIONS

Operator: BTA OIL PRODUCERS, LLC 104 S Pecos Midland, TX 79701	OGRID: 260297
	Action Number: 587424
	Action Type: [C-141] Remediation Closure Request C-141 (C-141-v-Closure)

QUESTIONS

Prerequisites	
Incident ID (n#)	nAPP2613451180
Incident Name	NAPP2613451180 VACUUM 35 SWD @ K-16-16S-36E
Incident Type	Produced Water Release
Incident Status	Remediation Closure Report Received

Location of Release Source	
<i>Please answer all the questions in this group.</i>	
Site Name	Vacuum 35 SWD
Date Release Discovered	05/13/2026
Surface Owner	State

Incident Details	
<i>Please answer all the questions in this group.</i>	
Incident Type	Produced Water Release
Did this release result in a fire or is the result of a fire	No
Did this release result in any injuries	No
Has this release reached or does it have a reasonable probability of reaching a watercourse	No
Has this release endangered or does it have a reasonable probability of endangering public health	No
Has this release substantially damaged or will it substantially damage property or the environment	No
Is this release of a volume that is or may with reasonable probability be detrimental to fresh water	No

Nature and Volume of Release	
<i>Material(s) released, please answer all that apply below. Any calculations or specific justifications for the volumes provided should be attached to the follow-up C-141 submission.</i>	
Crude Oil Released (bbls) Details	Not answered.
Produced Water Released (bbls) Details	Cause: Equipment Failure Fitting Produced Water Released: 240 BBL Recovered: 240 BBL Lost: 0 BBL.
Is the concentration of chloride in the produced water >10,000 mg/l	Yes
Condensate Released (bbls) Details	Not answered.
Natural Gas Vented (Mcf) Details	Not answered.
Natural Gas Flared (Mcf) Details	Not answered.
Other Released Details	Not answered.
Are there additional details for the questions above (i.e. any answer containing Other, Specify, Unknown, and/or Fire, or any negative lost amounts)	Not answered.

Sante Fe Main Office
Phone: (505) 476-3441

General Information
Phone: (505) 629-6116

Online Phone Directory
<https://www.emnrd.nm.gov/ocd/contact-us>

State of New Mexico
Energy, Minerals and Natural Resources
Oil Conservation Division
1220 S. St Francis Dr.
Santa Fe, NM 87505

QUESTIONS, Page 2

Action 587424

QUESTIONS (continued)

Operator: BTA OIL PRODUCERS, LLC 104 S Pecos Midland, TX 79701	OGRID: 260297
	Action Number: 587424
	Action Type: [C-141] Remediation Closure Request C-141 (C-141-v-Closure)

QUESTIONS

Nature and Volume of Release (continued)	
Is this a gas only submission (i.e. only significant Mcf values reported)	No, according to supplied volumes this does not appear to be a "gas only" report.
Was this a major release as defined by Subsection A of 19.15.29.7 NMAC	Yes
Reasons why this would be considered a submission for a notification of a major release	From paragraph A. "Major release" determine using: (1) an unauthorized release of a volume, excluding gases, of 25 barrels or more.
<i>With the implementation of the 19.15.27 NMAC (05/25/2021), venting and/or flaring of natural gas (i.e. gas only) are to be submitted on the C-129 form.</i>	

Initial Response

The responsible party must undertake the following actions immediately unless they could create a safety hazard that would result in injury.

The source of the release has been stopped	True
The impacted area has been secured to protect human health and the environment	True
Released materials have been contained via the use of berms or dikes, absorbent pads, or other containment devices	True
All free liquids and recoverable materials have been removed and managed appropriately	True
If all the actions described above have not been undertaken, explain why	Not answered.

Per Paragraph (4) of Subsection B of 19.15.29.8 NMAC the responsible party may commence remediation immediately after discovery of a release. If remediation has begun, please prepare and attach a narrative of actions to date in the follow-up C-141 submission. If remedial efforts have been successfully completed or if the release occurred within a lined containment area (see Subparagraph (a) of Paragraph (5) of Subsection A of 19.15.29.11 NMAC), please prepare and attach all information needed for closure evaluation in the follow-up C-141 submission.

I hereby certify that the information given above is true and complete to the best of my knowledge and understand that pursuant to OCD rules and regulations all operators are required to report and/or file certain release notifications and perform corrective actions for releases which may endanger public health or the environment. The acceptance of a C-141 report by the OCD does not relieve the operator of liability should their operations have failed to adequately investigate and remediate contamination that pose a threat to groundwater, surface water, human health or the environment. In addition, OCD acceptance of a C-141 report does not relieve the operator of responsibility for compliance with any other federal, state, or local laws and/or regulations.

I hereby agree and sign off to the above statement	Name: Adam Delaney Title: Environmental Engineer Email: Adam.Delaney@btaoil.com Date: 05/21/2026
--	---

Sante Fe Main Office
Phone: (505) 476-3441

General Information
Phone: (505) 629-6116

Online Phone Directory
<https://www.emnrd.nm.gov/ocd/contact-us>

State of New Mexico
Energy, Minerals and Natural Resources
Oil Conservation Division
1220 S. St Francis Dr.
Santa Fe, NM 87505

QUESTIONS, Page 3

Action 587424

QUESTIONS (continued)

Operator: BTA OIL PRODUCERS, LLC 104 S Pecos Midland, TX 79701	OGRID: 260297
	Action Number: 587424
	Action Type: [C-141] Remediation Closure Request C-141 (C-141-v-Closure)

QUESTIONS

Site Characterization

Please answer all the questions in this group (only required when seeking remediation plan approval and beyond). This information must be provided to the appropriate district office no later than 90 days after the release discovery date.

What is the shallowest depth to groundwater beneath the area affected by the release in feet below ground surface (ft bgs)	Between 100 and 500 (ft.)
What method was used to determine the depth to ground water	NM OSE iWaters Database Search
Did this release impact groundwater or surface water	No
What is the minimum distance, between the closest lateral extents of the release and the following surface areas:	
A continuously flowing watercourse or any other significant watercourse	Between 1 and 5 (mi.)
Any lakebed, sinkhole, or playa lake (measured from the ordinary high-water mark)	Between ½ and 1 (mi.)
An occupied permanent residence, school, hospital, institution, or church	Between ½ and 1 (mi.)
A spring or a private domestic fresh water well used by less than five households for domestic or stock watering purposes	Between ½ and 1 (mi.)
Any other fresh water well or spring	Between 1000 (ft.) and ½ (mi.)
Incorporated municipal boundaries or a defined municipal fresh water well field	Between ½ and 1 (mi.)
A wetland	Between ½ and 1 (mi.)
A subsurface mine	Greater than 5 (mi.)
An (non-karst) unstable area	Greater than 5 (mi.)
Categorize the risk of this well / site being in a karst geology	Low
A 100-year floodplain	Between 1 and 5 (mi.)
Did the release impact areas not on an exploration, development, production, or storage site	No

Remediation Plan

Please answer all the questions that apply or are indicated. This information must be provided to the appropriate district office no later than 90 days after the release discovery date.

Requesting a remediation plan approval with this submission	Yes
<i>Attach a comprehensive report demonstrating the lateral and vertical extents of soil contamination associated with the release have been determined, pursuant to 19.15.29.11 NMAC and 19.15.29.13 NMAC.</i>	
Have the lateral and vertical extents of contamination been fully delineated	Yes
Was this release entirely contained within a lined containment area	Yes
<i>Per Subsection B of 19.15.29.11 NMAC unless the site characterization report includes completed efforts at remediation, the report must include a proposed remediation plan in accordance with 19.15.29.12 NMAC, which includes the anticipated timelines for beginning and completing the remediation.</i>	
On what estimated date will the remediation commence	05/18/2026
On what date will (or did) the final sampling or liner inspection occur	05/20/2026
On what date will (or was) the remediation complete(d)	05/18/2026
What is the estimated surface area (in square feet) that will be remediated	7200
What is the estimated volume (in cubic yards) that will be remediated	0

These estimated dates and measurements are recognized to be the best guess or calculation at the time of submission and may (be) change(d) over time as more remediation efforts are completed. The OCD recognizes that proposed remediation measures may have to be minimally adjusted in accordance with the physical realities encountered during remediation. If the responsible party has any need to significantly deviate from the remediation plan proposed, then it should consult with the division to determine if another remediation plan submission is required.

Sante Fe Main Office
Phone: (505) 476-3441

General Information
Phone: (505) 629-6116

Online Phone Directory
<https://www.emnrd.nm.gov/ocd/contact-us>

State of New Mexico
Energy, Minerals and Natural Resources
Oil Conservation Division
1220 S. St Francis Dr.
Santa Fe, NM 87505

QUESTIONS, Page 4

Action 587424

QUESTIONS (continued)

Operator: BTA OIL PRODUCERS, LLC 104 S Pecos Midland, TX 79701	OGRID: 260297
	Action Number: 587424
	Action Type: [C-141] Remediation Closure Request C-141 (C-141-v-Closure)

QUESTIONS

Remediation Plan (continued)	
<i>Please answer all the questions that apply or are indicated. This information must be provided to the appropriate district office no later than 90 days after the release discovery date.</i>	
This remediation will (or is expected to) utilize the following processes to remediate / reduce contaminants:	
<i>(Select all answers below that apply.)</i>	
Is (or was) there affected material present needing to be removed	Yes
Is (or was) there a power wash of the lined containment area (to be) performed	Yes
OTHER (Non-listed remedial process)	Not answered.
<i>Per Subsection B of 19.15.29.11 NMAC unless the site characterization report includes completed efforts at remediation, the report must include a proposed remediation plan in accordance with 19.15.29.12 NMAC, which includes the anticipated timelines for beginning and completing the remediation.</i>	
I hereby certify that the information given above is true and complete to the best of my knowledge and understand that pursuant to OCD rules and regulations all operators are required to report and/or file certain release notifications and perform corrective actions for releases which may endanger public health or the environment. The acceptance of a C-141 report by the OCD does not relieve the operator of liability should their operations have failed to adequately investigate and remediate contamination that pose a threat to groundwater, surface water, human health or the environment. In addition, OCD acceptance of a C-141 report does not relieve the operator of responsibility for compliance with any other federal, state, or local laws and/or regulations.	
I hereby agree and sign off to the above statement	Name: Adam Delaney Title: Environmental Engineer Email: Adam.Delaney@btaoil.com Date: 05/21/2026
<i>The OCD recognizes that proposed remediation measures may have to be minimally adjusted in accordance with the physical realities encountered during remediation. If the responsible party has any need to significantly deviate from the remediation plan proposed, then it should consult with the division to determine if another remediation plan submission is required.</i>	

Sante Fe Main Office
Phone: (505) 476-3441

General Information
Phone: (505) 629-6116

Online Phone Directory
<https://www.emnrd.nm.gov/ocd/contact-us>

State of New Mexico
Energy, Minerals and Natural Resources
Oil Conservation Division
1220 S. St Francis Dr.
Santa Fe, NM 87505

QUESTIONS, Page 6

Action 587424

QUESTIONS (continued)

Operator: BTA OIL PRODUCERS, LLC 104 S Pecos Midland, TX 79701	OGRID: 260297
	Action Number: 587424
	Action Type: [C-141] Remediation Closure Request C-141 (C-141-v-Closure)

QUESTIONS

Liner Inspection Information	
Last liner inspection notification (C-141L) recorded	585788
Liner inspection date pursuant to Subparagraph (a) of Paragraph (5) of Subsection A of 19.15.29.11 NMAC	05/20/2026
Was all the impacted materials removed from the liner	Yes
What was the liner inspection surface area in square feet	7200

Remediation Closure Request	
<i>Only answer the questions in this group if seeking remediation closure for this release because all remediation steps have been completed.</i>	
Requesting a remediation closure approval with this submission	Yes
Have the lateral and vertical extents of contamination been fully delineated	Yes
Was this release entirely contained within a lined containment area	Yes
What was the total surface area (in square feet) remediated	7200
What was the total volume (cubic yards) remediated	0
Summarize any additional remediation activities not included by answers (above)	The entire containment area was power washed and all released fluid was removed from the containment prior to the liner inspection

The responsible party must attach information demonstrating they have complied with all applicable closure requirements and any conditions or directives of the OCD. This demonstration should be in the form of a comprehensive report (in .pdf format) including a scaled site map, sampling diagrams, relevant field notes, photographs of any excavation prior to backfilling, laboratory data including chain of custody documents of final sampling, and a narrative of the remedial activities. Refer to 19.15.29.12 NMAC.

I hereby certify that the information given above is true and complete to the best of my knowledge and understand that pursuant to OCD rules and regulations all operators are required to report and/or file certain release notifications and perform corrective actions for releases which may endanger public health or the environment. The acceptance of a C-141 report by the OCD does not relieve the operator of liability should their operations have failed to adequately investigate and remediate contamination that pose a threat to groundwater, surface water, human health or the environment. In addition, OCD acceptance of a C-141 report does not relieve the operator of responsibility for compliance with any other federal, state, or local laws and/or regulations. The responsible party acknowledges they must substantially restore, reclaim, and re-vegetate the impacted surface area to the conditions that existed prior to the release or their final land use in accordance with 19.15.29.13 NMAC including notification to the OCD when reclamation and re-vegetation are complete.

I hereby agree and sign off to the above statement	Name: Adam Delaney Title: Environmental Engineer Email: Adam.Delaney@btaoil.com Date: 05/21/2026
--	---

Sante Fe Main Office
Phone: (505) 476-3441

General Information
Phone: (505) 629-6116

Online Phone Directory
<https://www.emnrd.nm.gov/ocd/contact-us>

State of New Mexico
Energy, Minerals and Natural Resources
Oil Conservation Division
1220 S. St Francis Dr.
Santa Fe, NM 87505

CONDITIONS

Action 587424

CONDITIONS

Operator: BTA OIL PRODUCERS, LLC 104 S Pecos Midland, TX 79701	OGRID: 260297
	Action Number: 587424
	Action Type: [C-141] Remediation Closure Request C-141 (C-141-v-Closure)

CONDITIONS

Created By	Condition	Condition Date
nvelez	Liner inspection approved, release resolved. Restoration complete.	5/27/2026