



ENERGY SERVICES
One Williams Center
P.O. Box 3102
Tulsa, Oklahoma 74101
918/573-4592

April 25, 2000

Ms. Lori Wrotenbery
New Mexico Oil Conservation Division
2040 S. Pacheco
Santa Fe, NM 87505

Re: Non-Standard Gas Proration Unit
Rosa Unit #183 (API# 30-039-26387)
1555' FNL, 1520' FEL
Section 19(G)-T31N-R5W
Rio Arriba County, NM
Blanco Mesa Verde

MAY 4 2000

Dear Ms. Wrotenbery,

According to rule 605.B(2)(a) Williams Production Company hereby requests administrative approval for a non-standard gas proration unit in the Blanco Mesa Verde pool for the referenced well. The proposed spacing unit is north half of Section 19, T31N, R5W, which is 232.01 acres due to a variation in the legal subdivision of the U.S. Public Land Surveys.

As the Unit Operator of the Rosa Unit, Williams Production is the only offset operator. Attached is a plat indicating the well location and proposed spacing unit.

Thank you for your consideration and approval of this application. If you have any questions, please do not hesitate to call me at (918) 573-6254.

Sincerely,

A handwritten signature in cursive script that reads "Ms. Tracy Ross".

Ms. Tracy Ross
Production Analyst

CC: BLM Farmington NM
NMOCD Aztec NM

District I
PO Box 1980, Hobbs, NM 88241-1980

District II
PO Drawer 00, Artesia, NM 88211-0719

District III
1000 Rio Brazos Rd., Aztec, NM 87410

District IV
PO Box 2088, Santa Fe, NM 87504-2088

State of New Mexico
Energy, Minerals & Natural Resources Department

OIL CONSERVATION DIVISION
PO Box 2088
Santa Fe, NM 87504-2088

Form C-102
Revised February 21, 1994
Instructions on back
Submit to Appropriate District Office
State Lease - 4 Copies
Fee Lease - 3 Copies

☐ AMENDED REPORT

WELL LOCATION AND ACREAGE DEDICATION PLAT

| | | | |
|-------------------------------------|--|----------------------------|----------------------------------|
| *APT. Number 30-039-26387 | | *Pool Code 72319 | *Pool Name Blanco - MV |
| *Property Code 17033 | *Property Name ROSA UNIT | | *Well Number 183 |
| *OGRID No. 120782 | *Operator Name WILLIAMS PRODUCTION COMPANY | | *Elevation 6331' |

10 Surface Location

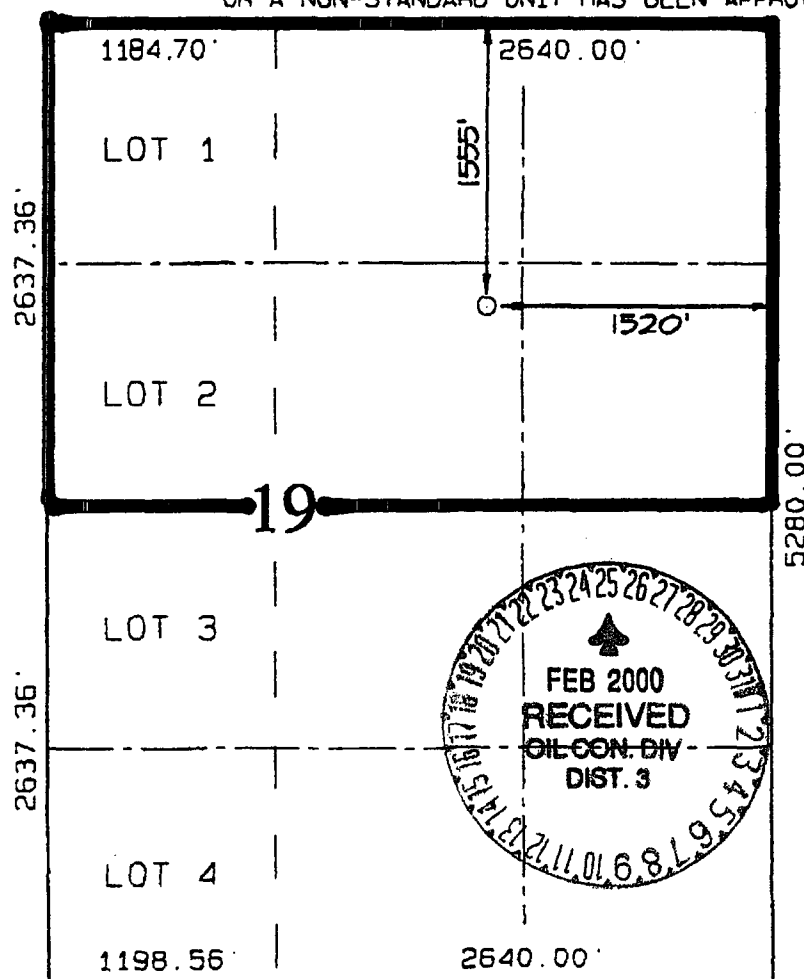
| UL or lot no. | Section | Township | Range | Lot Ion | Feet from the | North/South line | Feet from the | East/West line | County |
|---------------|-----------|------------|-----------|---------|---------------|------------------|---------------|----------------|-------------------|
| G | 19 | 31N | 5W | | 1555 | NORTH | 1520 | EAST | RIO ARriba |

11 Bottom Hole Location If Different From Surface

| UL or lot no. | Section | Township | Range | Lot Ion | Feet from the | North/South line | Feet from the | East/West line | County |
|---------------|---------|----------|-------|---------|---------------|------------------|---------------|----------------|--------|
| | | | | | | | | | |

| | | | |
|---------------------------------------|------------------------------|---------------------------------|------------|
| *Dedicated Acres 232.01 N/2 | *Joint or Infill I | *Consolidation Code U | *Order No. |
|---------------------------------------|------------------------------|---------------------------------|------------|

NO ALLOWABLE WILL BE ASSIGNED TO THIS COMPLETION UNTIL ALL INTERESTS HAVE BEEN CONSOLIDATED OR A NON-STANDARD UNIT HAS BEEN APPROVED BY THE DIVISION



17 OPERATOR CERTIFICATION

I hereby certify that the information contained herein is true and complete to the best of my knowledge and belief.

Steve Nelson
Signature

Steve Nelson
Printed Name

Agent, Nelson Consulting
Title

February 22, 2000
Date

18 SURVEYOR CERTIFICATION

I hereby certify that the well location shown on this plat was plotted from field notes of actual surveys made by me or under my supervision, and that the same is true and correct to the best of my belief.

SEPTEMBER 3, 1999
Date of Survey

Signature and Seal of Surveyor

NEALE C. EDWARDS
NEW MEXICO
6857
Certificate 6857



ENERGY SERVICES
One Williams Center
P.O. Box 3102
Tulsa, Oklahoma 74101
918/573-4592

April 25, 2000

Ms. Lori Wrotenbery
New Mexico Oil Conservation Division
2040 S. Pacheco
Santa Fe, NM 87505

Re: Non-Standard Gas Proration Unit
Rosa Unit #183A (API# 30-039-26386)
1585' FNL, 790' FWL
Section 19(F)-T31N-R5W
Rio Arriba County, NM
Blanco Mesa Verde

MAY 1 2000

Dear Ms. Wrotenbery,

According to rule 605.B(2)(a) Williams Production Company hereby requests administrative approval for a non-standard gas proration unit in the Blanco Mesa Verde pool for the referenced well. The proposed spacing unit is north half of Section 19, T31N, R5W, which is 232.01 acres due to a variation in the legal subdivision of the U.S. Public Land Surveys.

As the Unit Operator of the Rosa Unit, Williams Production is the only offset operator. Attached is a plat indicating the well location and proposed spacing unit.

Thank you for your consideration and approval of this application. If you have any questions, please do not hesitate to call me at (918) 573-6254.

Sincerely,

Ms. Tracy Ross

Ms. Tracy Ross
Production Analyst

CC: BLM Farmington NM
NMOCD Aztec NM

District I
PO Box 1980, Hobbs, NM 88241-1980

District II
PO Drawer 00, Artesia, NM 88211-0719

District III
1000 Rio Brazos Rd., Aztec, NM 87410

District IV
PO Box 2088, Santa Fe, NM 87504-2088

State of New Mexico
Energy, Minerals & Natural Resources Department

OIL CONSERVATION DIVISION
PO Box 2088
Santa Fe, NM 87504-2088

Form C-102
Revised February 21, 1994
Instructions on back
Submit to Appropriate District Office
State Lease - 4 Copies
Fee Lease - 3 Copies

☐ AMENDED REPORT

WELL LOCATION AND ACREAGE DEDICATION PLAT

| | | | |
|-----------------------------------|---|---------------------------|---------------------------------|
| API Number 30-039-26386 | | Pool Code 72319 | Pool Name Blanco - MV |
| Property Code 17033 | Property Name ROSA UNIT | | Well Number 183A |
| OGAID No. 120782 | Operator Name WILLIAMS PRODUCTION COMPANY | | Elevation 6299' |

10 Surface Location

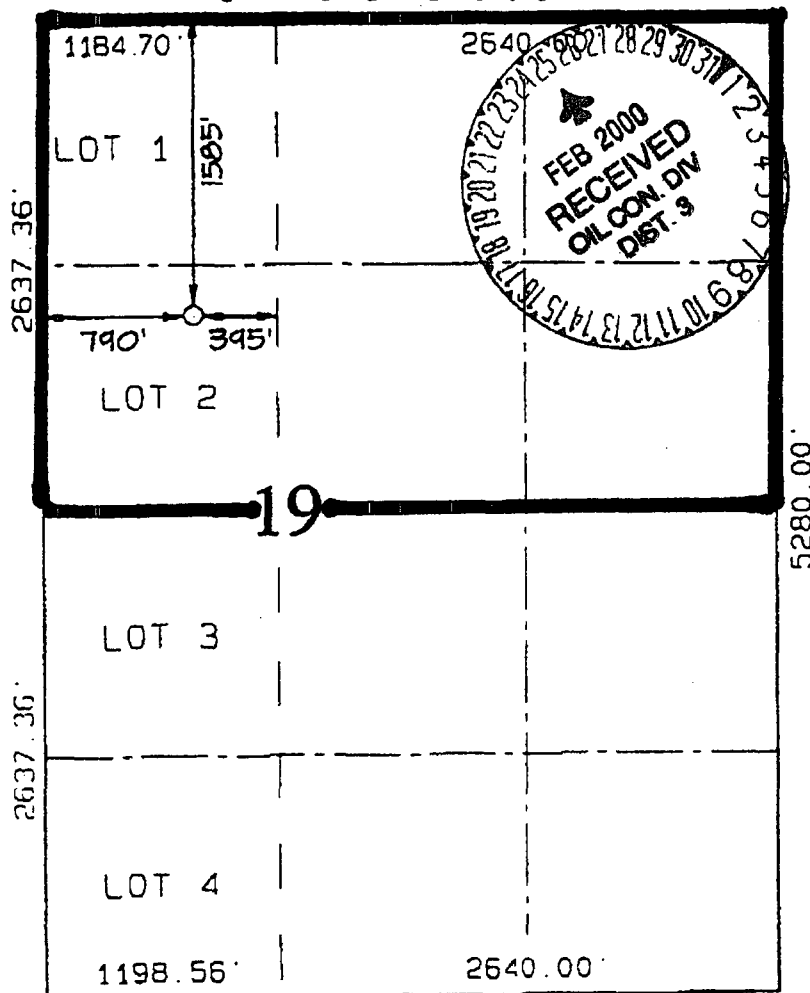
| | | | | | | | | | |
|---------------------------|----------------------|------------------------|--------------------|---------|------------------------------|----------------------------------|-----------------------------|-------------------------------|-----------------------------|
| UL or lot no. F | Section 19 | Township 31N | Range 5W | Lot ID# | Feet from the 1585 | North/South line NORTH | Feet from the 790 | East/West line WEST | County RIO ARriba |
|---------------------------|----------------------|------------------------|--------------------|---------|------------------------------|----------------------------------|-----------------------------|-------------------------------|-----------------------------|

11 Bottom Hole Location If Different From Surface

| | | | | | | | | | |
|---------------|---------|----------|-------|---------|---------------|------------------|---------------|----------------|--------|
| UL or lot no. | Section | Township | Range | Lot ID# | Feet from the | North/South line | Feet from the | East/West line | County |
|---------------|---------|----------|-------|---------|---------------|------------------|---------------|----------------|--------|

| | | | |
|---|--------------------------------|-----------------------------------|--------------|
| 12 Dedicates Acres 232.01 N/2 | 13 Joint or Infill I | 14 Consolidation Code U | 15 Order No. |
|---|--------------------------------|-----------------------------------|--------------|

NO ALLOWABLE WILL BE ASSIGNED TO THIS COMPLETION UNTIL ALL INTERESTS HAVE BEEN CONSOLIDATED
OR A NON-STANDARD UNIT HAS BEEN APPROVED BY THE DIVISION



17 OPERATOR CERTIFICATION

I hereby certify that the information contained herein is true and complete to the best of my knowledge and belief.

Steve Nelson
Signature

Steve Nelson
Printed Name
Agent, Nelson Consulting
Title

February 22, 2000
Date

18 SURVEYOR CERTIFICATION

I hereby certify that the well location shown on this plat was plotted from field notes of actual surveys made by me or under my supervision, and that the same is true and correct to the best of my belief.

AUGUST 14, 1999
Date of Survey

Signature and Seal of Surveyor

NEALEC EDWARDS
NEW MEXICO
6857
Certificate Number 6857

District I
PO Box 1980, Hobbs, NM 88241-1980
District II
811 South First, Artesia, NM 88210
District III
1000 Rio Brazos Rd., Aztec, NM 87410
District IV
2040 South Pacheco, Santa Fe, NM 87505

State of New Mexico
Energy, Minerals & Natural Resources Department

OIL CONSERVATION DIVISION
2040 South Pacheco
Santa Fe, NM 87505

Form C-101
Revised October 18, 1994
Instructions on back
Submit to Appropriate District Office
State Lease - 6 Copies
Fee Lease - 5 Copies
☐ AMENDED REPORT

APPLICATION FOR PERMIT TO DRILL, RE-ENTER, DEEPEN, PLUGBACK OR ADD A ZONE

| | | |
|---|---|---------------------------------------|
| ¹ Operator Name and Address. Williams Production Company P.O. Box 3102, MS 37-2 Tulsa, OK 74101 | | ² OGRID Number 120782 |
| ⁴ Property Code 17033 | ³ Property Name Rosa Unit | ⁵ API Number 30-039-263 |
| | | ⁶ Well No. 183A |

⁷ Surface Location

| UL or lot no. | Section | Township | Range | Lot Idn | Feet from the | North/South line | Feet from the | East/West line | County |
|---------------|---------|----------|-------|---------|---------------|------------------|---------------|----------------|------------|
| F | 19 | 31N | 5W | | 1585' | North | 790' | West | Rio Arriba |

⁸ Proposed Bottom Hole Location If Different From Surface

| UL or lot no. | Section | Township | Range | Lot Idn | Feet from the | North/South line | Feet from the | East/West line | County |
|---------------|---------|----------|-------|---------|---------------|------------------|---------------|----------------|--------|
| | | | | | | | | | |

| | |
|---|-------------------------------|
| ⁹ Proposed Pool Blanco - Mesa Verde | ¹⁰ Proposed Pool 2 |
|---|-------------------------------|

| | | | | |
|-----------------------------------|--|--|--|--|
| ¹¹ Work Type Code N | ¹² Well Type Code G | ¹³ Cable/Rotary Rotary | ¹⁴ Lease Type Code P | ¹⁵ Ground Level Elevation 6299' GR |
| ¹⁶ Multiple No | ¹⁷ Proposed Depth 6081' KB | ¹⁸ Formation Blanco - Mesa Verde | ¹⁹ Contractor Aztec Well Service | ²⁰ Spud Date April 1, 2000 |

²¹ Proposed Casing and Cement Program

| Hole Size | Casing Size | Casing weight/foot | Setting Depth | Sacks of Cement | Estimated TOC |
|-----------|-------------|--------------------|------------------|-------------------|---------------|
| 12-1/4" | 9-5/8" K-55 | 36# | 250' KB | 130 sx (176 cuft) | Surface |
| 8-3/4" | 7" K-55 | 20# | 3646' KB | 585 sx (1096cuft) | Surface |
| 6-1/4" | 4-1/2" | 10.5# | 3546' - 6081' KB | 180 sx (389 cuft) | Top of Liner |
| | | | | | |
| | | | | | |

²² Describe the proposed program. If this application is to DEEPEN or PLUG BACK give the data on the present productive zone and proposed new productive zone. Describe the blowout prevention program, if any. Use additional sheets if necessary.

Williams Exploration & Production proposes to drill a vertical well with an 12-1/4" hole with water & benex to approx. 250' KB and set 9-5/8" 36# K55 surface casing, cement to surface with 130 sx of Class Type III, 2% CaCl₂ (176 cu ft). Then drill 8-3/4" hole to 3646' KB, set 7" K-55 casing. Cement Lead with 410 sx (854 cu ft) of Premium Lite 65/35 Poz/Type III, with 8% gel, 1% CaCl₂; Cement Tail with 175 sx (242 cuft) of class Type III with 1% CaCl₂. Drill 6-1/4" hole to 6081' KB, set 4-1/2" K-55 casing, set production liner, cement Lead with 70 sx (150 Cuft) of Lite HS 65/35, cement Tail with 110 sx (239 cu ft) of Pre. Lite HS, 65/35.. Run cased hole log (TMDL). While drill pipe in use run not less than one BOP test per day. Set 9-5/8" 36# K-55 production casing from 250'KB to surface, set 7", 20# K-55 casing from 250'KB to 3646'KB, and set 4-1/2" 10.5# K-55 casing from 3546'KB to 6081'KB. Top of cement should circulate to surface (will adjust volumes based upon caliper log). A cement bond log will be run across all intervals to be perforated & find top of cement behind all casing strings. Pressure test 7" & 4-1/2" casing to 3300# for 15 minutes. Run 2-3/8", 4.7#, J-55 EUE tubing with a SN (1.91" ID) on top of bottom joint. Land tubing 50' above bottom Point Lookout perforations. Will test Mesa Verde through perforated casing. Will fracture stimulate and put on for production test. Surface ownership is Federal (BLM). Will obtain surface ROW. Formation tops: Ojo Alamo- 2421', Kirtland-2551', Fruitland-2941', Pictured Cliffs 3171', Lewis 3461', Cliff House 5361', Menefee 5406', Point Lookout 5631', Mancos 5951', TD 6081', all KB.

²³ I hereby certify that the information given above is true and complete to the best of my knowledge and belief.

Signature:

Printed name: Steve Nelson

Title: Agent, Nelson Consulting, Inc.

Date: February 22, 2000

Phone: 505-327-6331

OIL CONSERVATION DIVISION

Approved by:

Title: SUPERVISOR DISTRICT # 3

Approval Date: FEB 25 2000 Expiration Date: FEB 25 2001

Conditions of Approval :
Attached ☐

District I
PO Box 1980, Hobbs, NM 88241-1980

District II
PO Drawer 00, Artesia, NM 88211-0719

District III
1000 Rio Brazos Rd., Aztec, NM 87410

District IV
PO Box 2088, Santa Fe, NM 87504-2088

State of New Mexico
Energy, Minerals & Natural Resources Department

OIL CONSERVATION DIVISION
PO Box 2088
Santa Fe, NM 87504-2088

Form C-102
Revised February 21, 1994
Instructions on back
Submit to Appropriate District Office
State Lease - 4 Copies
Fee Lease - 3 Copies

☐ AMENDED REPORT

WELL LOCATION AND ACREAGE DEDICATION PLAT

| | | | |
|------------------------------------|--|----------------------------|----------------------------------|
| *API Number 30-039-26386 | | *Pool Code 72319 | *Pool Name Blanco - MV |
| *Property Code 17033 | *Property Name ROSA UNIT | | *Well Number 183A |
| *GRID No. 120782 | *Operator Name WILLIAMS PRODUCTION COMPANY | | *Elevation 6299' |

10 Surface Location

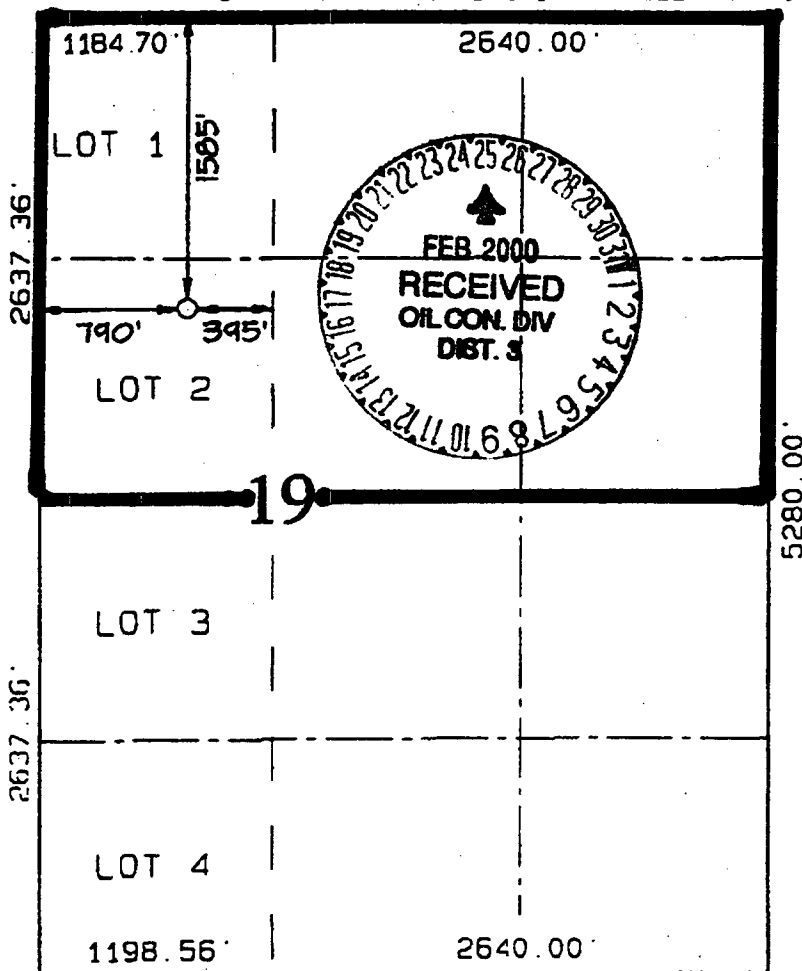
| UL or lot no. | Section | Township | Range | Lot 10n | Feet from the | North/South line | Feet from the | East/West line | County |
|---------------|-----------|------------|-----------|---------|---------------|------------------|---------------|----------------|-------------------|
| F | 19 | 31N | 5W | | 1585 | NORTH | 790 | WEST | RIO ARRIBA |

11 Bottom Hole Location If Different From Surface

| UL or lot no. | Section | Township | Range | Lot 10n | Feet from the | North/South line | Feet from the | East/West line | County |
|---------------|---------|----------|-------|---------|---------------|------------------|---------------|----------------|--------|
| | | | | | | | | | |

| | | | |
|---------------------------------------|------------------------------|---------------------------------|------------|
| *Dedicates Acres 232.01 N/2 | *Joint or Infill I | *Consolidation Code U | *Order No. |
|---------------------------------------|------------------------------|---------------------------------|------------|

NO ALLOWABLE WILL BE ASSIGNED TO THIS COMPLETION UNTIL ALL INTERESTS HAVE BEEN CONSOLIDATED OR A NON-STANDARD UNIT HAS BEEN APPROVED BY THE DIVISION



17 OPERATOR CERTIFICATION

I hereby certify that the information contained herein is true and complete to the best of my knowledge and belief.

Steve Nelson
Signature
Steve Nelson
Printed Name
Agent, Nelson Consulting
Title
February 22, 2000
Date

18 SURVEYOR CERTIFICATION

I hereby certify that the well location shown on this plat was plotted from field notes of actual surveys made by me or under my supervision, and that the same is true and correct to the best of my belief.

AUGUST 14, 1999
Date of Survey
Signature and Seal of Surveyor

NEALE C. EDWARDS
NEW MEXICO
6857
Certificate Number 6857

WILLIAMS PRODUCTION COMPANY ROSA UNIT #183A

1585' FNL & 790' FNL, SECTION 19, T31N, R5W, N.M.P.M.
RIO ARriba COUNTY, NEW MEXICO

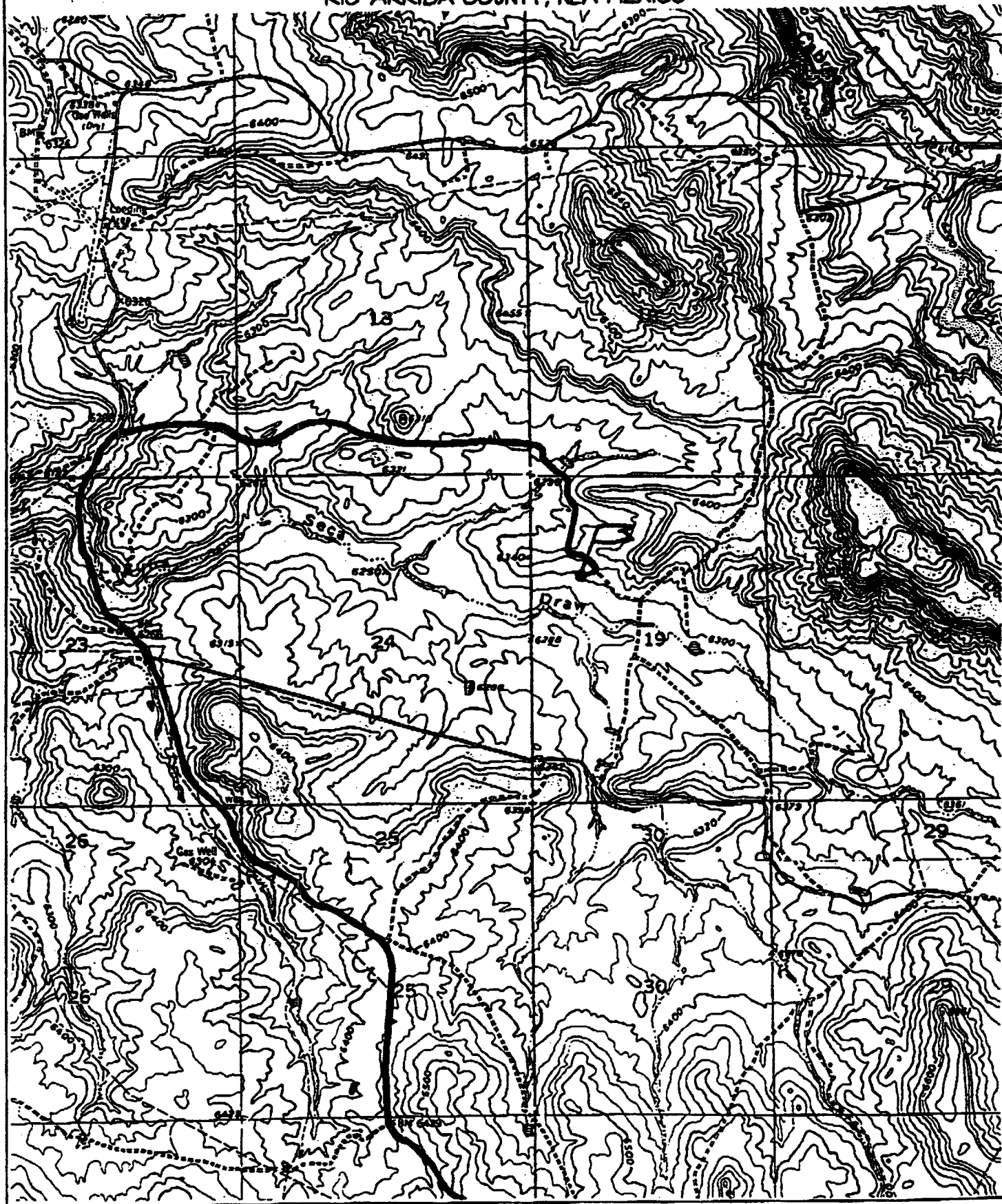
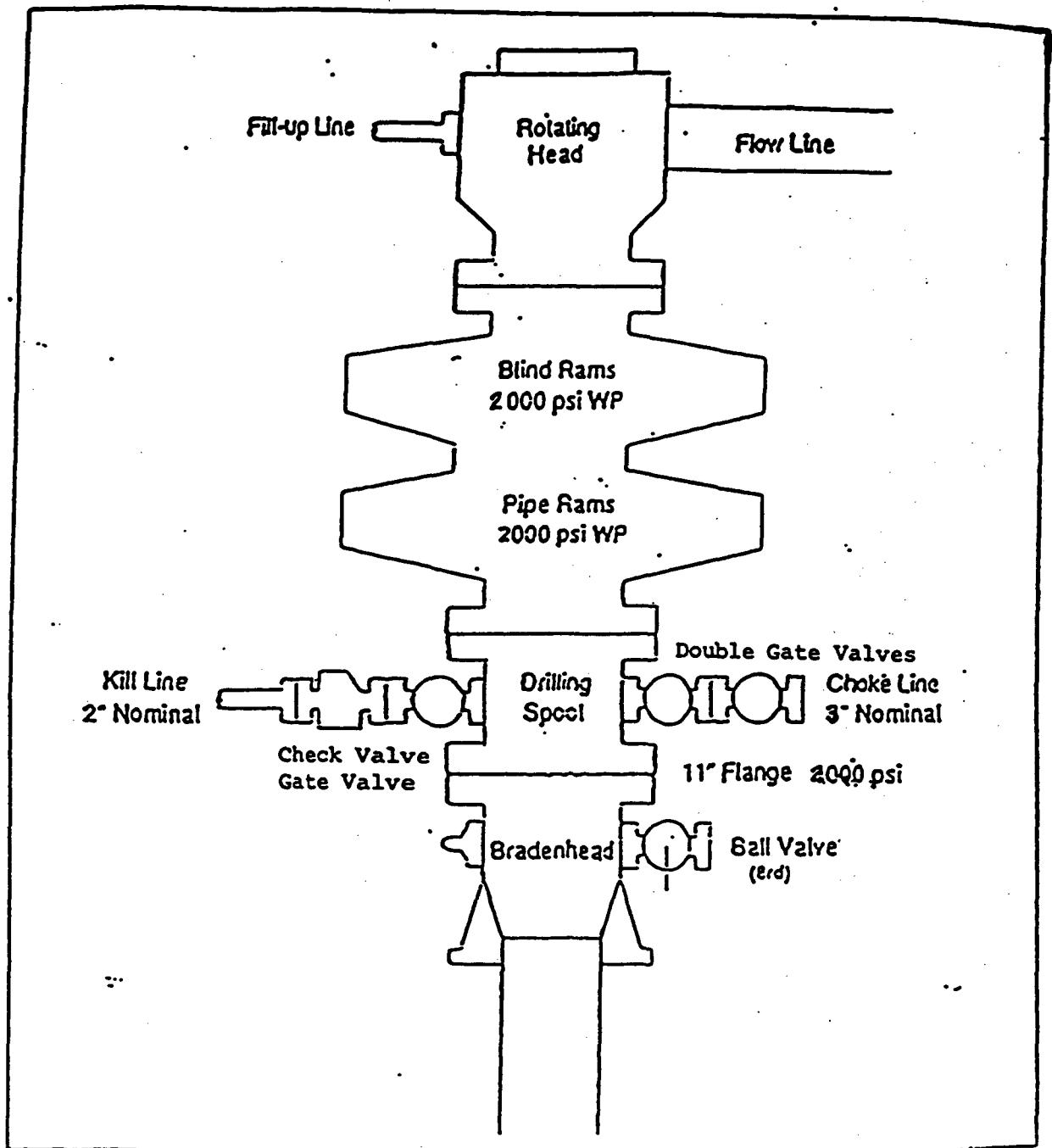


EXHIBIT 1

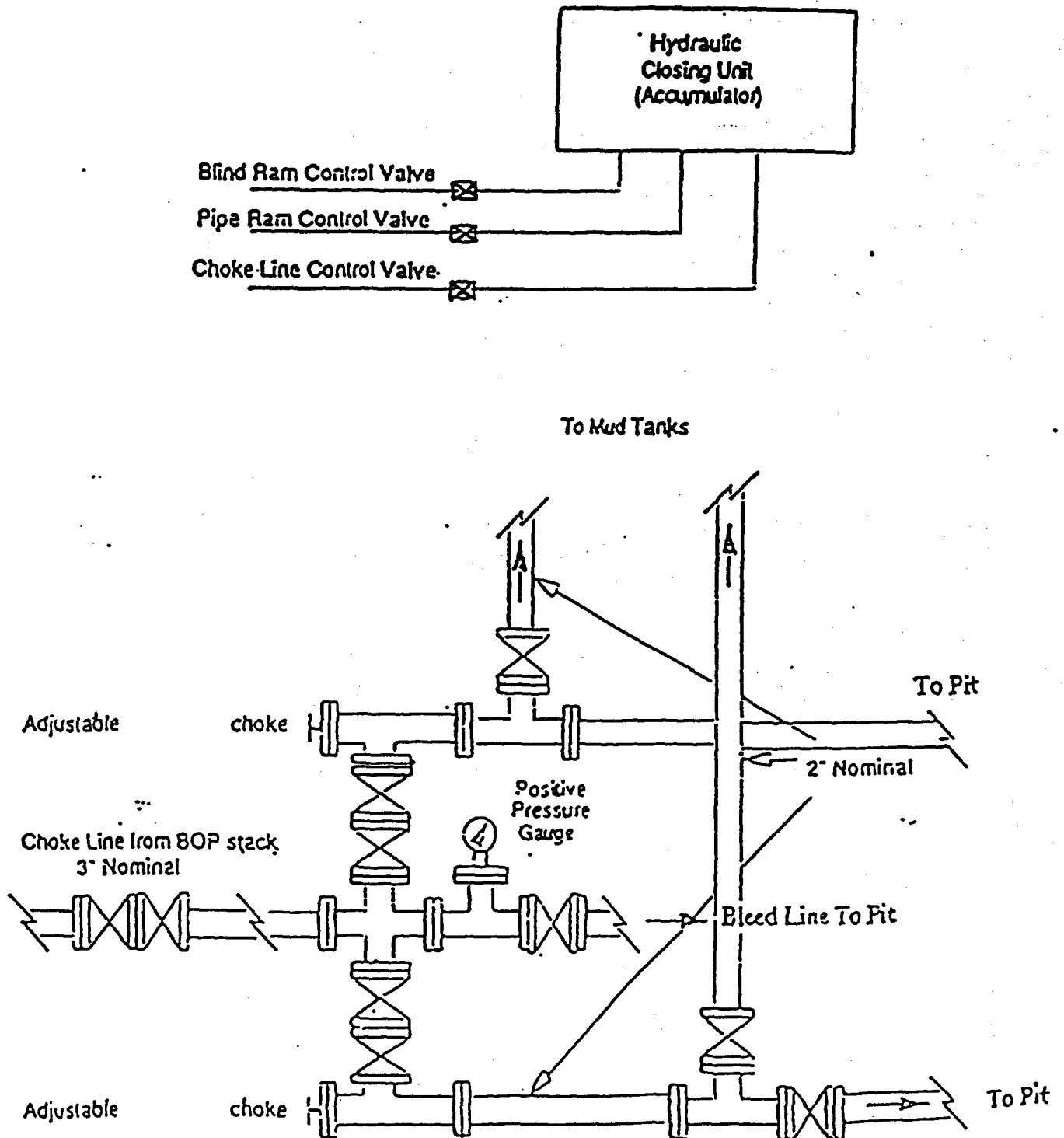
BOP STACK ARRANGEMENT



All ram type preventers and related equipment will be hydraulically tested at nipple-up and after any use under pressure to 1500 psi. The blind rams will be hydraulically activated and checked for operational readiness each time pipe is pulled out of the hole. All checks of the BOP stack and equipment will be noted on the daily drilling report. The BOP equipment will include a kelly cock with handle, floor safety valve with change overs for each tool joint in the string, and choke manifold all rated to 2000 psi.

EXHIBIT 2

Choke Manifold & Accumulator Schematic



District I
PO Box 1980, Hobbs, NM 88241-1980
District II
811 South First, Artesia, NM 88210
District III
1000 Rio Brazos Rd., Aztec, NM 87410
District IV
2040 South Pacheco, Santa Fe, NM 87505

State of New Mexico
Energy, Minerals & Natural Resources Department

OIL CONSERVATION DIVISION
2040 South Pacheco
Santa Fe, NM 87505

Form C-101
Revised October 18, 1994
Instructions on back
Submit to Appropriate District Office
State Lease - 6 Copies
Fee Lease - 5 Copies
☐ AMENDED REPORT

APPLICATION FOR PERMIT TO DRILL, RE-ENTER, DEEPEN, PLUGBACK OR ADD A ZONE

| | | |
|---|---|-------------------------------------|
| ¹ Operator Name and Address. Williams Production Company P.O. Box 3102, MS 37-2 Tulsa, OK 74101 | | ² OGRID Number 120782 |
| ⁴ Property Code 17033 | ⁵ Property Name Rosa Unit | ⁶ Well No. 183A |

⁷ Surface Location

| UL or lot no. | Section | Township | Range | Lot Idn | Feet from the | North/South line | Feet from the | East/West line | County |
|---------------|---------|----------|-------|---------|---------------|------------------|---------------|----------------|------------|
| F | 19 | 31N | 5W | | 1585' | North | 790' | West | Rio Arriba |

⁸ Proposed Bottom Hole Location If Different From Surface

| UL or lot no. | Section | Township | Range | Lot Idn | Feet from the | North/South line | Feet from the | East/West line | County |
|---|---------|----------|-------|---------|-------------------------------|------------------|---------------|----------------|--------|
| | | | | | | | | | |
| ⁹ Proposed Pool Blanco - Mesa Verde | | | | | ¹⁰ Proposed Pool 2 | | | | |

| | | | | |
|-----------------------------------|--|--|--|--|
| ¹¹ Work Type Code N | ¹² Well Type Code G | ¹³ Cable/Rotary Rotary | ¹⁴ Lease Type Code P | ¹⁵ Ground Level Elevation 6299' GR |
| ¹⁶ Multiple No | ¹⁷ Proposed Depth 6081' KB | ¹⁸ Formation Blanco - Mesa Verde | ¹⁹ Contractor Aztec Well Service | ²⁰ Spud Date April 1, 2000 |

²¹ Proposed Casing and Cement Program

| Hole Size | Casing Size | Casing weight/foot | Setting Depth | Sacks of Cement | Estimated TOC |
|-----------|-------------|--------------------|------------------|-------------------|---------------|
| 12-1/4" | 9-5/8" K-55 | 36# | 250' KB | 130 sx (176 cuft) | Surface |
| 8-3/4" | 7" K-55 | 20# | 3646' KB | 585 sx (1096cuft) | Surface |
| 6-1/4" | 4-1/2" | 10.5# | 3546' - 6081' KB | 180 sx (389 cuft) | Top of Liner |
| | | | | | |
| | | | | | |

²² Describe the proposed program. If this application is to DEEPEN or PLUG BACK give the data on the present productive zone and proposed new productive zone. Describe the blowout prevention program, if any. Use additional sheets if necessary.

Williams Exploration & Production proposes to drill a vertical well with an 12-1/4" hole with water & benex to approx. 250' KB and set 9-5/8" 36# K55 surface casing, cement to surface with 130 sx of Class Type III, 2% CaCl2 (176 cu ft). Then drill 8-3/4" hole to 3646' KB, set 7" K-55 casing. Cement Lead with 410 sx (854 cu ft) of Premium Lite 65/35 Poz/Type III, with 8% gel, 1% CaCl2; Cement Tail with 175 sx (242 cuft) of class Type III with 1% CaCl2. Drill 6-1/4" hole to 6081'KB, set 4-1/2" K-55 casing, set production liner, cement Lead with 70 sx (150 Cuft) of Lite HS 65/35, cement Tail with 110 sx (239 cu ft) of Pre. Lite HS, 65/35.. Run cased hole log (TMDL). While drill pipe in use run not less than one BOP test per day. Set 9-5/8" 36# K-55 production casing from 250'KB to surface, set 7", 20# K-55 casing from 250'KB to 3646'KB, and set 4-1/2" 10.5# K-55 casing from 3546'KB to 6081'KB. Top of cement should circulate to surface (will adjust volumes based upon caliper log). A cement bond log will be run across all intervals to be perforated & find top of cement behind all casing strings. Pressure test 7" & 4-1/2" casing to 3300# for 15 minutes. Run 2-3/8", 4.7#, J-55 EUE tubing with a SN (1.91" ID) on top of bottom joint. Land tubing 50' above bottom Point Lookout perforations. Will test Mesa Verde through perforated casing. Will fracture stimulate and put on for production test. Surface ownership is Federal (BLM). Will obtain surface ROW. Formation tops: Ojo Alamo- 2421', Kirtland-2551', Fruitland-2941', Pictured Cliffs 3171', Lewis 3461', Cliff House 5361', Menefee 5406', Point Lookout 5631', Mancos 5951', TD 6081', all KB.

²³ I hereby certify that the information given above is true and complete to the best of my knowledge and belief.

Signature:

Steve Nelson

Printed name: Steve Nelson

Title: Agent, Nelson Consulting, Inc.

Date: February 22, 2000

Phone: 505-327-6331

OIL CONSERVATION DIVISION

Approved by:

[Signature]
SUPERVISOR DISTRICT # 3

Approval Date:

FEB 25 2000

Expiration Date:

FEB 25 2001

Conditions of Approval :
Attached ☐

WILLIAMS PRODUCTION COMPANY ROSA UNIT #183A

1585' FNL & 790' FNL, SECTION 19, T31N, R5W, N.M.P.M.

RIO ARriba COUNTY, NEW MEXICO

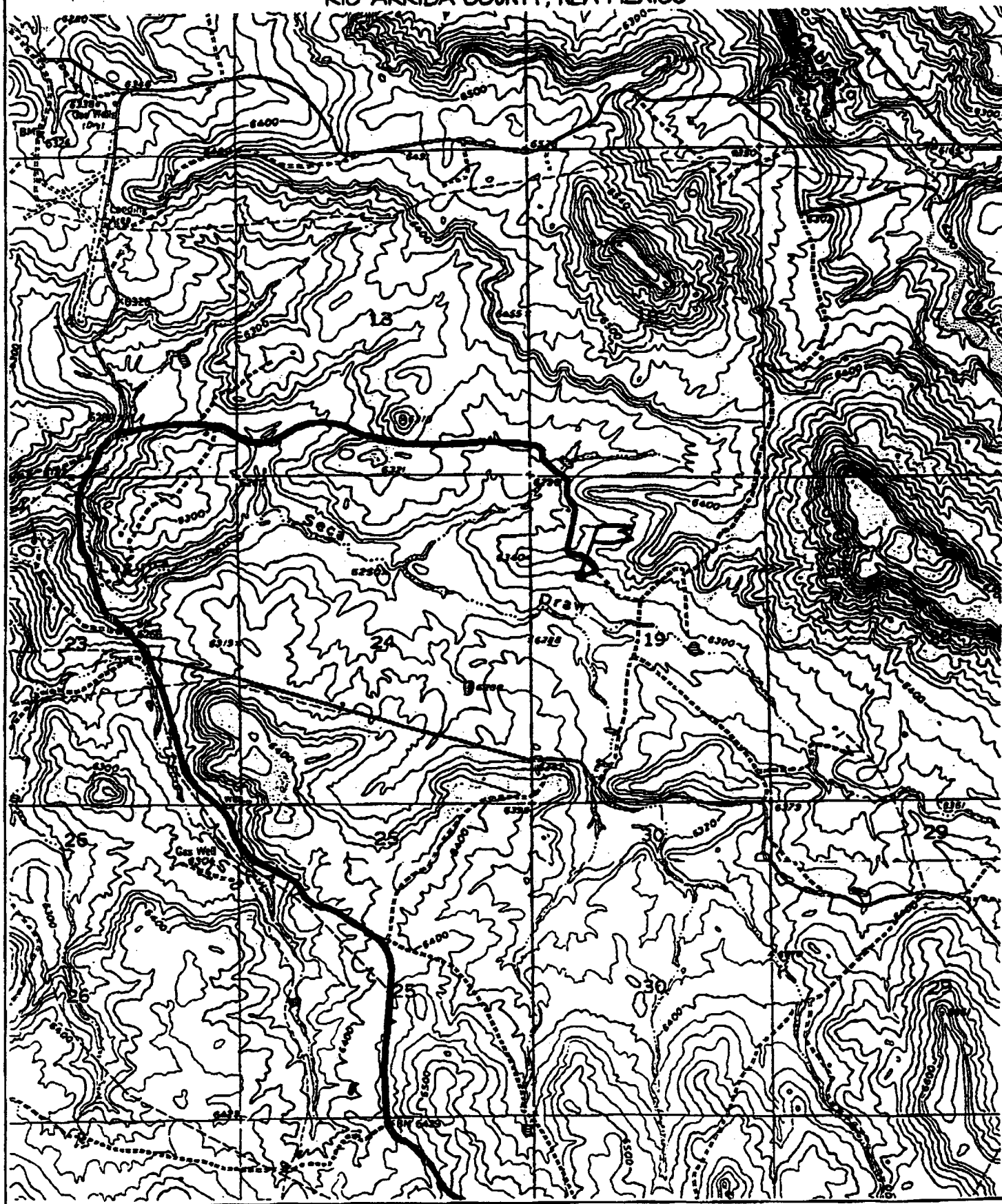
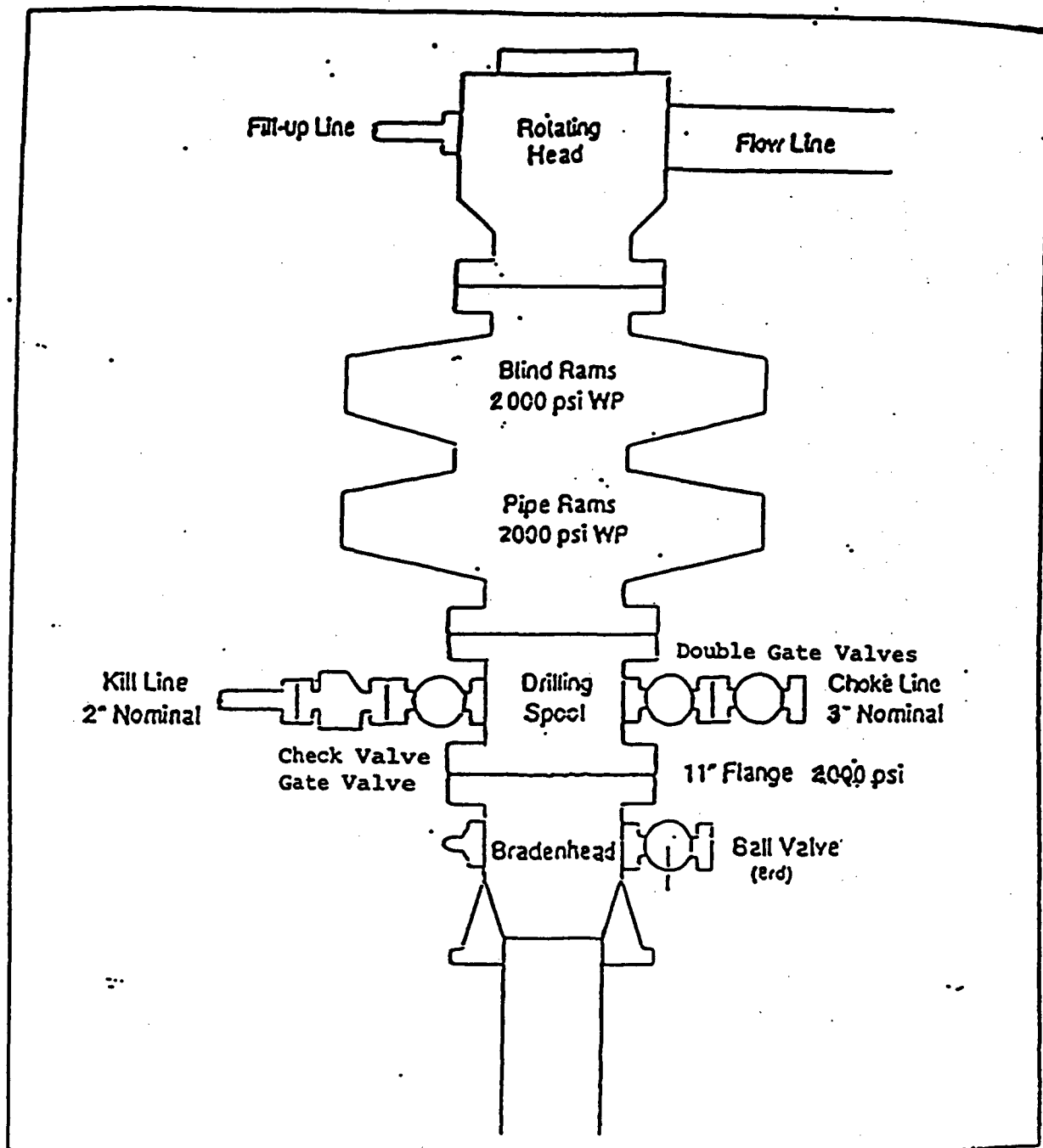


EXHIBIT 1

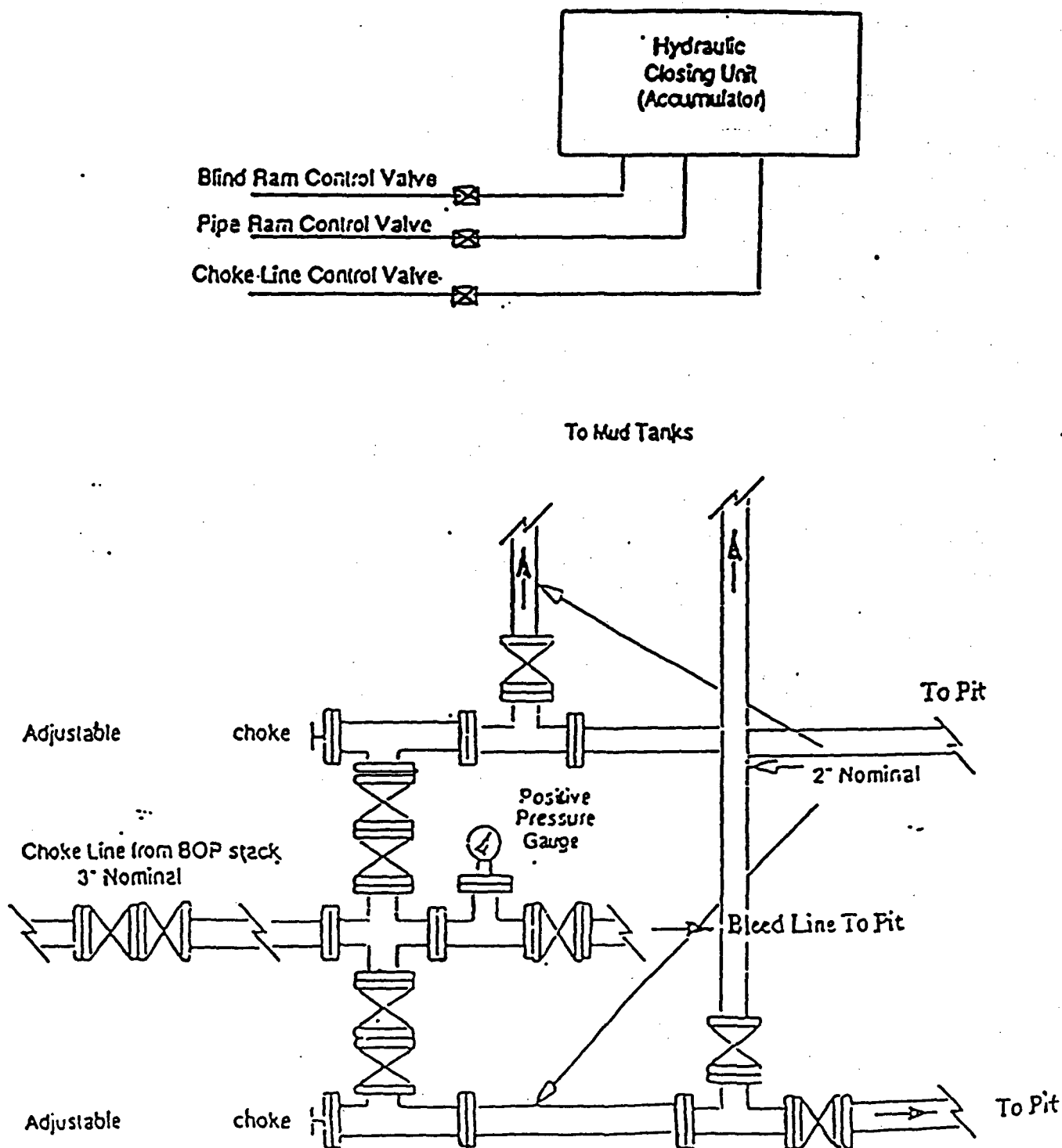
BOP STACK ARRANGEMENT



All ram type preventers and related equipment will be hydraulically tested at nipple-up and after any use under pressure to 1500 psi. The blind rams will be hydraulically activated and checked for operational readiness each time pipe is pulled out of the hole. All checks of the BOP stack and equipment will be noted on the daily drilling report. The BOP equipment will include a kelly cock with handle, floor safety valve with change overs for each tool joint in the string, and choke manifold all rated to 2000 psi.

EXHIBIT 2

Choke Manifold & Accumulator Schematic



CMD :
OG5SECTONGARD
INQUIRE LAND BY SECTION05/02/00 08:43:39
OGOMES -TPOF
PAGE NO: 1

Sec : 19 Twp : 31N Rng : 05W Section Type : NORMAL

| | | | |
|--|---|---|--------------------------------------|
| | 1 35.95 Federal owned U | B 40.00 Federal owned U | A 40.00 Federal owned U |
| | 2 36.06 <u>72.01</u> Fee owned U A | G 40.00 Fee owned U A A | H 40.00 Federal owned U |

PF01 HELP
PF07 BKWDPF02
PF08 FWDPF03 EXIT
PF09 PRINTPF04 GoTo
PF10 SDIVPF05
PF11PF06
PF12

160
72.01
232.01 72.57

CMD :
OG5SECTONGARD
INQUIRE LAND BY SECTION05/02/00 08:43:46
OGOMES -TPOF
PAGE NO: 2

Sec : 19 Twp : 31N Rng : 05W Section Type : NORMAL

| | | | |
|--|---|---|--------------------------------------|
| | 3 36.16 Fee owned U A | J 40.00 Fee owned U | I 40.00 Federal owned U |
| | 4 36.27 Federal owned U A | O 40.00 Federal owned U A | P 40.00 Federal owned U |

PF01 HELP
PF07 BKWDPF02
PF08 FWDPF03 EXIT
PF09 PRINTPF04 GoTo
PF10 SDIVPF05
PF11PF06
PF12

CMD : ONGARD 05/02/00 08:44:02
OG6C101 C101-APPLICATION FOR PERMIT TO DRILL OGOMES -TPOF

OGRID Idn : 120782 API Well No: 30 39 26386 APD Status(A/C/P): A
Opr Name, Addr: WILLIAMS PRODUCTION COMPANY Aprvl/Cncl Date : 02-25-2000
PO BOX 58900
SALT LAKE CITY,UT 84158-0900

Prop Idn: 17033 ROSA UNIT Well No: 183 A

| | U/L | Sec | Township | Range | Lot | Idn | North/South | East/West |
|----------------|-----|-----|----------|--------|-------|-----|--------------|-------------|
| | --- | --- | ----- | ----- | ----- | | ----- | ----- |
| Surface Locn : | 2 | 19 | 31N | 05W | | | FTG 1585 F N | FTG 790 F W |
| OCD U/L : | F | | API | County | : | 39 | | |

Work typ(N/E/D/P/A) : N Well typ(O/G/M/I/S/W/C): G Cable/Rotary (C/R) : F
Lease typ(F/S/P/N/J/U/I): P Ground Level Elevation : 6299

State Lease No: Multiple Comp (Y/N) : N
Prpsd Depth : 6081 Prpsd Frmtn : BLANCO MESAVERDE

E0009: Enter data to modify record

| | | | | | |
|-----------|------|------------|-----------|--------------|--------------|
| PF01 HELP | PF02 | PF03 EXIT | PF04 GoTo | PF05 | PF06 CONFIRM |
| PF07 | PF08 | PF09 PRINT | PF10 C102 | PF11 HISTORY | PF12 |

CMD : ONGARD 05/02/00 08:44:24
OG6C101 C101-APPLICATION FOR PERMIT TO DRILL OGOMES -TPOE

OGRID Idn : 120782 API Well No: 30 39 26387 APD Status(A/C/P): A
Opr Name, Addr: WILLIAMS PRODUCTION COMPANY Aprvl/Cncl Date : 02-25-2000
PO BOX 58900
SALT LAKE CITY,UT 84158-0900

Prop Idn: 17033 ROSA UNIT Well No: 183

| | U/L | Sec | Township | Range | Lot | Idn | North/South | East/West |
|----------------|-----|-----|----------|----------|-------|-----|--------------|--------------|
| | --- | --- | ----- | ----- | ----- | | ----- | ----- |
| Surface Locn : | G | 19 | 31N | 05W | | | FTG 1555 F N | FTG 1520 F E |
| OCD U/L : | G | | API | County : | 39 | | | |

Work typ(N/E/D/P/A) : N Well typ(O/G/M/I/S/W/C): G Cable/Rotary (C/R) : F
Lease typ(F/S/P/N/J/U/I): P Ground Level Elevation : 6331

State Lease No: Multiple Comp (Y/N) : N
Prpsd Depth : 6113 Prpsd Frmtn : BLANCO MESAVERDE

E0009: Enter data to modify record

| | | | | | |
|-----------|------|------------|-----------|--------------|--------------|
| PF01 HELP | PF02 | PF03 EXIT | PF04 GoTo | PF05 | PF06 CONFIRM |
| PF07 | PF08 | PF09 PRINT | PF10 C102 | PF11 HISTORY | PF12 |