

Getty Oil Company

North American Exploration and Production Division

P. O. Box 249  
Hobbs, New Mexico 88240

January 24, 1973

New Mexico Oil Conservation Commission  
P. O. Box 2088  
Santa Fe, New Mexico 87501

Attention: Mr. A. L. Porter, Jr.

*DHC - 124*  
*Due Feb 15*

Re: Application for downhole commingling  
GETTY OIL COMPANY'S H. D. MC KINLEY  
WELL NO. 9 (HOBBS BLINEBRY AND HOBBS  
DRINKARD POOLS) Lea County, New Mexico

Gentlemen:

Getty Oil Company respectfully requests Administrative Approval for downhole commingling in its H. D. Mc Kinley Well No. 9, located 2235' FNL and 2310' FEL of Section 30, Township 18 South, Range 38 East, Lea County, New Mexico.

This well qualifies for Administrative Approval in accordance with State-wide Rule 303, Paragraph C, and in support thereof, the following facts are submitted:

1. The attached plat shows the H. D. Mc Kinley Lease outlined in red and located in Section 30, Township 18 South, Range 38 East, Lea County, New Mexico. Well No. 9 is circled in red on the plat.

2. The well was dually completed in the Hobbs Blinebry and the Hobbs Drinkard Pools and approved by Commission Order No. MC-1883 on September 12, 1969.

3. The latest tests are as follows:

HOBBS BLINEBRY: On January 13, 1973, the Blinebry was produced at a rate of 8 BOPD, 1 BWPD, and a GOR of 250 to 1. (Perforations 5823' - 5908').

HOBBS DRINKARD: On January 14, 1973, the DRinkard was produced at a rate of 24 BOPD, 1 BWPD, and a GOR of 2,667 to 1. (Perforations 6858' - 6965').

NMOCC FORMS C-116 are attached. These producing rates do not exceed the limits set out in Paragraph C, (b), i.e. 40 BOPD.

4. Neither zone produces more water than the combined oil limit as determined in Rule 303, Paragraph C (d).

NMOCC - Santa Fe  
H. D. Mc Kinley Well No. 9  
Downhole Commingling  
January 24, 1973

Page No. 2.

5. Getty Oil Company has commingled the fluids at the surface for several years and has encountered no incompatibility problems; therefore, no reservoir damage will result from downhole commingling these two zones.
6. The surface commingling resulted in no reduction of oil value; therefore, downhole commingling will not reduce the oil value.
7. The ownership of the zones to be commingled is common.
8. Attached is a production decline curve showing the monthly production of oil and water for each zone since 1969.
9. The production from each zone is by artificial lift. Bottomhole pressure is estimated to be less than 500 PSIG in each zone.
10. Commingling the well bore will not jeopardize the efficiency of future secondary operations in either zone.
11. Copies of this application have been furnished to offset operators.
12. It is recommended that the production be allocated 25% to the Blinebry and 75% to the Drinkard.

Very truly yours,  
GETTY OIL COMPANY

*C. L. Wade*  
C. L. Wade,  
AREA SUPERINTENDENT

HBS/bh  
ATTACHMENTS

(HOBBS BLINEBRY AND HOBBS DRINKARD POOLS - LEA COUNTY, NEW MEXICO)

NMOCC  
P. O. Box 1980  
Hobbs, New Mexico 88240

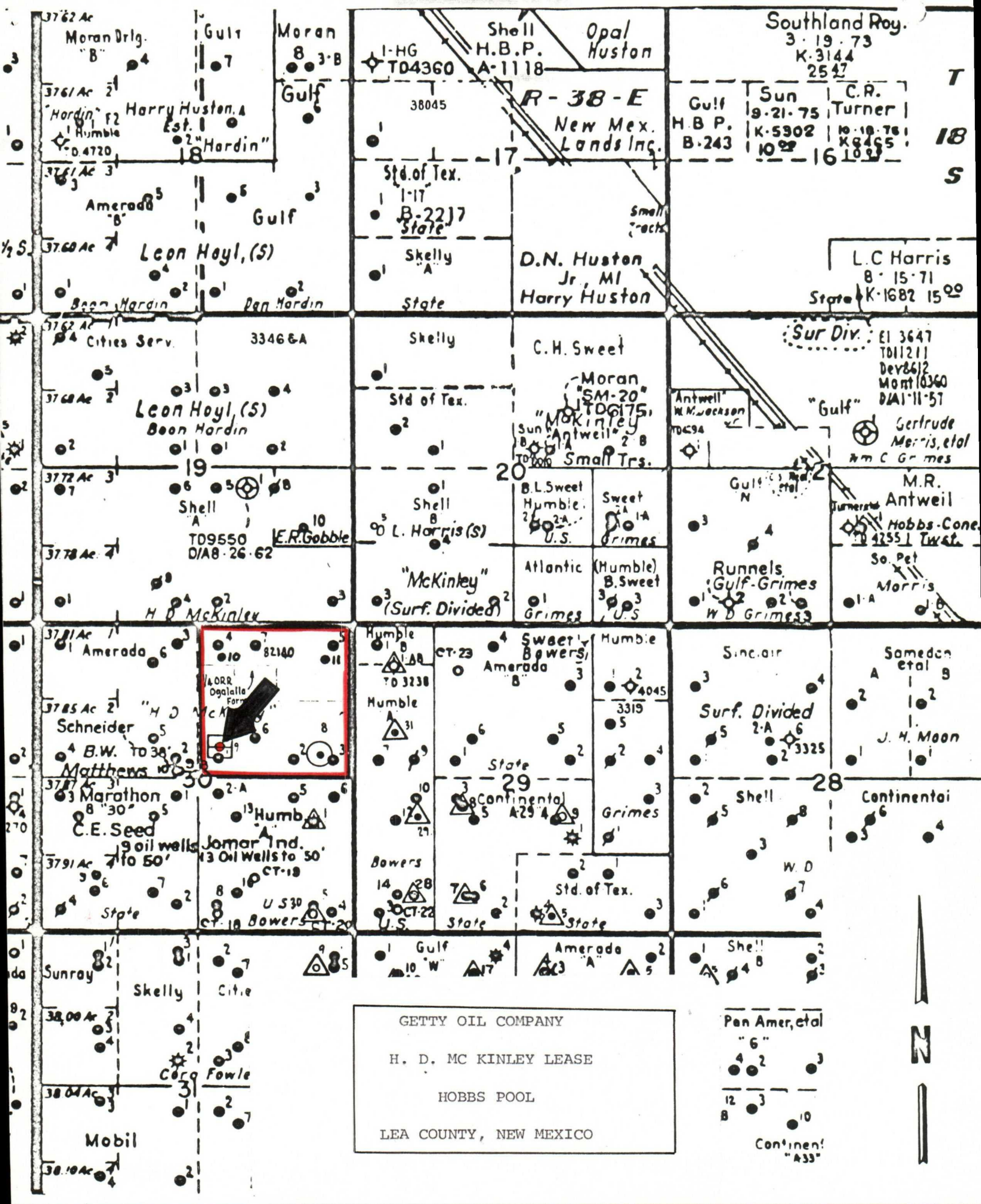
Shell Oil Company  
P. O. Box 1950  
Hobbs, New Mexico 88240

Amerada Hess Corporation  
Drawer 817  
Seminole, Texas 79360

Marathon Oil Company  
P. O. Box 2409  
Hobbs, New Mexico 88240

Humble Oil & Refinery Company  
1700 West Broadway  
Andrews, Texas 79714

Getty Oil Company  
P. O. Box 1231  
Midland, Texas 79701



**NEW MEXICO OIL CONSERVATION COMMISSION  
GAS-OIL RATIO TESTS**

C-116  
Revised 1-1-65

Operator <b>GETTY OIL COMPANY</b>		Pool <b>HOBBS BLINEBRY</b>		County <b>LEA</b>											
Address <b>P.O. BOX 249, HOBBS, NEW MEXICO 88240</b>				Type of Test - (X) <input checked="" type="checkbox"/> TEST - (X)											
LEASE NAME <b>H. D. MC KINLEY</b>				Completion <input type="checkbox"/> Special <input checked="" type="checkbox"/>											
WELL NO.	LOCATION			DATE OF TEST	STATUS	CHOKE SIZE	TBG. PRESS.	DAILY ALLOW-ABLE	LENGTH OF TEST HOURS	PROD. DURING TEST			GAS - OIL RATIO CU.FT./BBL.		
	U	S	T							R	WATER BBL.S.	GRAV. OIL BBL.S.		GAS M.C.F.	
9	6	30	18-S	38-E	1-13-73	P	-	35	12	24	1	35.6	8	2	250
<u>APPLICATION FOR DOWNHOLE COMMINGLING</u>															

No well will be assigned an allowable greater than the amount of oil produced on the official test.

During gas-oil ratio test, each well shall be produced at a rate not exceeding the top unit allowable for the pool in which well is located by more than 25 percent. Operator is encouraged to take advantage of this 25 percent tolerance in order that well can be assigned increased allowables when authorized by the Commission.

Gas volumes must be reported in MCF measured at a pressure base of 15.025 psia and a temperature of 60° F. Specific gravity base will be 0.60.

Report casing pressure in lieu of tubing pressure for any well producing through casing.

Mail original and one copy of this report to the district office of the New Mexico Oil Conservation Commission in accordance with Rule 301 and appropriate pool rules.

I hereby certify that the above information is true and complete to the best of my knowledge and belief.

*E. H. Mad*  
(Signature)  
AREA SUPERINTENDENT

JANUARY 24, 1973  
(Date)

HBS/bh

**NEW MEXICO OIL CONSERVATION COMMISSION  
GAS-OIL RATIO TESTS**

C-116  
Revised 1-1-65

Operator <b>GETTY OIL COMPANY</b>		Pool <b>HOBBS DRINKARD</b>		County <b>LEA</b>										
Address <b>P. O. BOX 249, HOBBS, NEW MEXICO 88240</b>		TYPE OF TEST - (X)		Completion <input type="checkbox"/> Special <input checked="" type="checkbox"/>										
LEASE NAME  <b>H. D. MC KINLEY</b>	WELL NO.  <b>9</b>	LOCATION U S T R			DATE OF TEST <b>1-14-73</b>	STATUS <b>P</b>	CHOKE SIZE <b>-</b>	TBG. PRESS. <b>45</b>	DAILY ALLOW-ABLE <b>28</b>	LENGTH OF TEST HOURS <b>24</b>	PROD. DURING TEST WATER BBLs. GRAV. OIL BBLs. GAS M.C.F.			GAS - OIL RATIO CU.FT./BBL <b>2,667</b>
		<b>G 30 18-S 38-E</b>												
<u>APPLICATION FOR DOWNHOLE COMMINGLING</u>														

No well will be assigned an allowable greater than the amount of oil produced on the official test.  
 During gas-oil ratio test, each well shall be produced at a rate not exceeding the top unit allowable for the pool in which well is located by more than 25 percent. Operator is encouraged to take advantage of this 25 percent tolerance in order that well can be assigned increased allowables when authorized by the Commission.  
 Gas volumes must be reported in MCF measured at a pressure base of 15.025 psia and a temperature of 60° F. Specific gravity base will be 0.60.  
 Report casing pressure in lieu of tubing pressure for any well producing through casing.  
 Mail original and one copy of this report to the district office of the New Mexico Oil Conservation Commission in accordance with Rule 301 and appropriate pool rules.

I hereby certify that the above information is true and complete to the best of my knowledge and belief.

*C. L. Wade*  
 (Signature)  
**C. L. Wade, AREA SUPERINTENDENT**

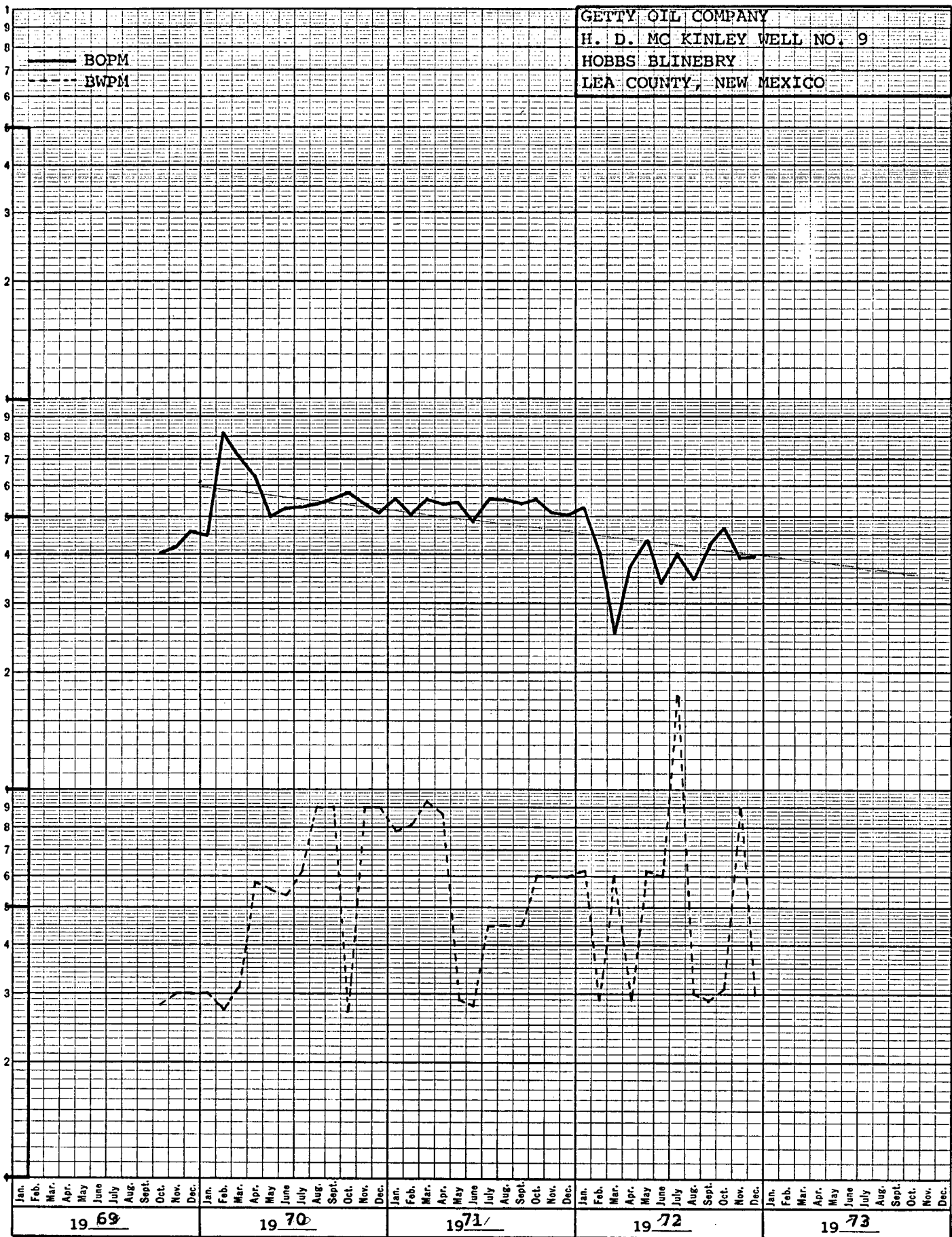
**JANUARY 24, 1973**  
 (Date)

HBS/bh



KE 5 YEARS BY MONTHS 46 6690  
X 3 LOG CYCLES  
KEUFFEL & ESSER CO.  
MADE IN U. S. A.

BARRELS PER MONTH



KE 5 YEARS BY MONTHS 46 6690  
X 3 LOG CYCLES  
MADE IN U.S.A.

KEUFFEL & ESSER CO.

BARRELS PER MONTH

